

## DAILY STATUS REPORT

Prepared By: Antonio Cardenas

WEATHER	Snow		Rain		Overcast		Partly Cloudy		Bright Sun	X
TEMP.	< 32		32-50		50-70	X	70-85	X	>85	

<b>NYSDEC BCP Site No:</b>	C224219	<b>Date:</b>	9/5/2024
<b>Project Name:</b>	450 Union Street, Brooklyn, NY		

<b>Consultant:</b> Vektor Consultants – Antonio Cardenas	<b>Personnel On-Site:</b> Geo-Solutions Inc.- Subcontractor
<b>Visitors:</b>	

### Work Activities Performed:

- GSI continued decommissioning wells DB2-MW-2, DB2-MW-2S, and DB2-MW-2D. Wells were grouted and then pulled to the extent feasible. 22 feet of casing was removed for DB2-MW-2, 15 feet of casing was removed for DB1-MW-1S, and 5 feet of casing was removed for DB1-MW-1D.
- GSI continued pre-clearing ISS locations.
- GSI chopped concrete debris with the hammer attachment and utilized fresh water to suppress dust, as needed.
- Vektor documented the decommissioning of the wells utilizing NYSDEC's Well Decommissioning Record logs to ensure all work conducted was in accordance with NYSDEC's CP-43 Well Decommissioning Policy.

### Community Air Monitoring Program (CAMP)

An Upwind and Downwind CAMP stations were placed within the perimeters of the Site during drilling activities. The Upwind CAMP station was in the northwest portion of the Site and the Downwind CAMP station was in the southeast portion of the Site as the wind was consistently coming from the north.

Background Levels (Initial Readings at Start of Day):

PID: 0.0 ppm      Dust: 0.0803 mg/m<sup>3</sup>

Highest Levels:

PID: 0.0 ppm      Dust: 0.129 mg/m<sup>3</sup>

- Upwind CAMP was implemented during C&D restaging. CAMP equipment consisted of a DustTrack II Model 8530; S/N: 8530210705, AND MiniRAE 3000, Model PGM-7320 photoionization detector (PID); S/N: 592-601281.
- Downwind CAMP was implemented during C&D restaging. CAMP equipment consisted of a DustTrack II Model 8530; S/N: 8530221304, AND MiniRAE 3000, Model PGM-7320 photoionization detector (PID); S/N:592-926055.
- Elevated particulate concentrations were detected at the upwind CAMP from 1:12 to 1:27 PM (Max. 0.129 mg/m<sup>3</sup>) from dusty site conditions. GSI applied dust suppression and readings normalized.
- No other VOC or dust concentrations were detected in exceedance of the daily short-term exposure limit (STEL) at the work area CAMP stations.

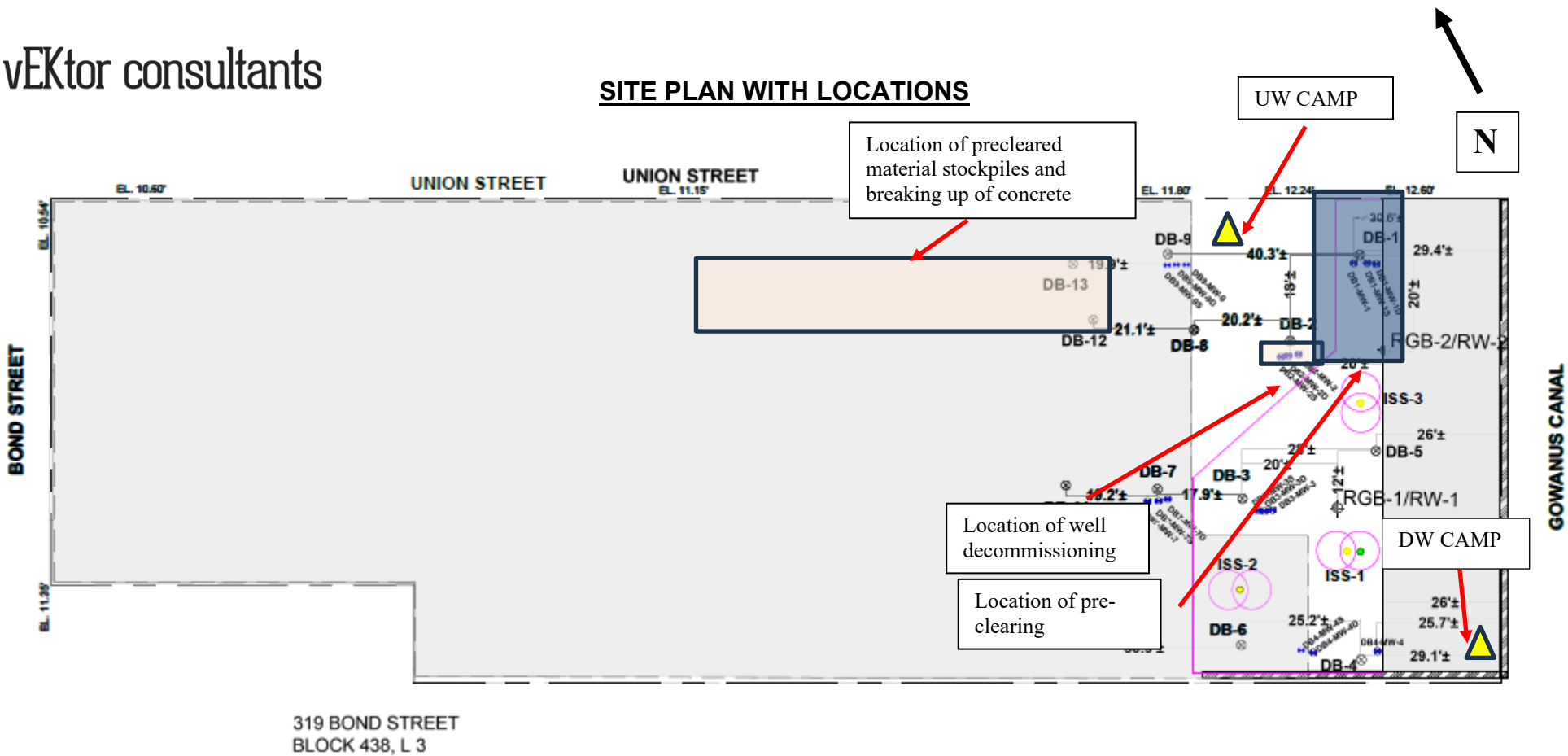
### Problems Encountered

- None

### Planned Activities for the Next Day

Continued removal of the obstructions within the entire treatment area as per the NYSDEC approval of the Addendum Letter to the Pilot Test Work Plan for ISS. Continued decommissioning of all groundwater monitoring wells and recovery wells within the work areas via NYSDEC's CP-43 Well Decommissioning Policy. Submission of the RSO Work Plan for the full ISS scope of work pending receipt of the reagent mix wet sample analytical results.

SITE PLAN WITH LOCATIONS



## Photo Log

Photo 1:  
View of GSI introducing grout for the  
DB2-MW clusters, view facing  
southwest.



Photo 2:  
View of excavation for pre-clearing,  
view facing west.

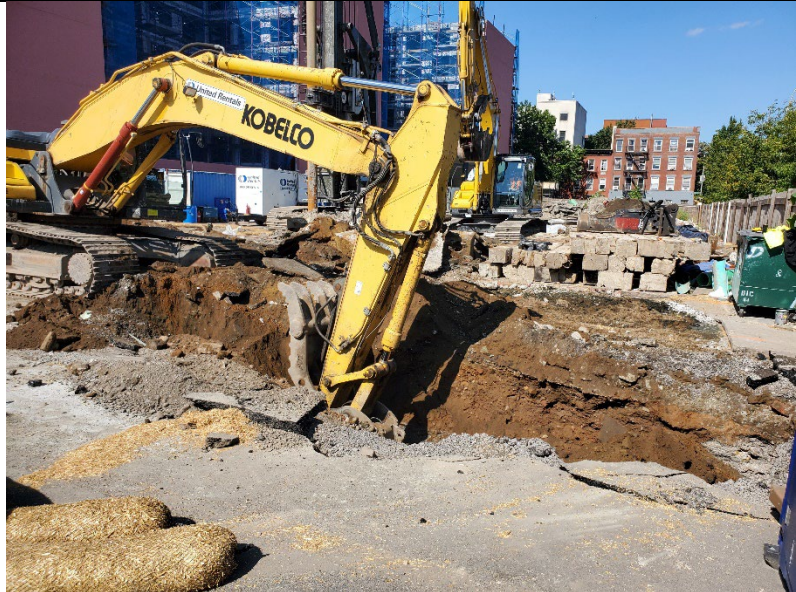


Photo 3:  
View of GSI chopping of concrete  
with hammer attachment, view facing  
west.





Photo 4:  
GSI pulling DB2-MW-2, view facing  
west.



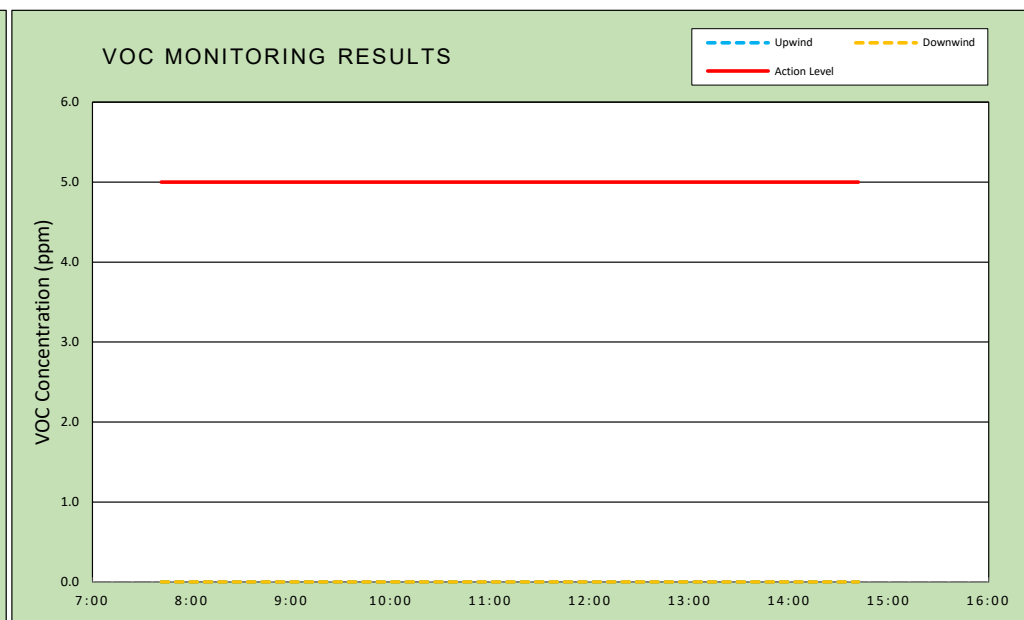
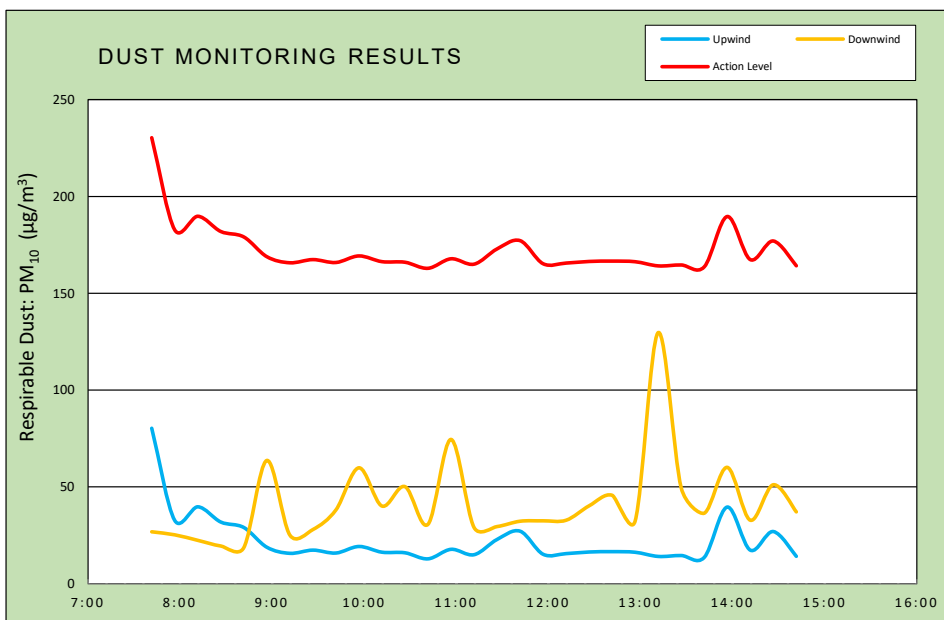
Photo 4:  
GSI pulling DB2-MW-2, view facing  
west.



vEktor consultants	<b>DAILY AIR MONITORING REPORT</b> <b>450 Union Street</b> <b>Brooklyn, New York</b>					09/05/2024	
						Rev. No. 0	Page 1 of 2
						Project Number:	
						Dust Action Level	150 $\mu\text{g}/\text{m}^3$
37 W. 37th St, 6th Floor - New York, NY						VOC Action Level	5 ppm

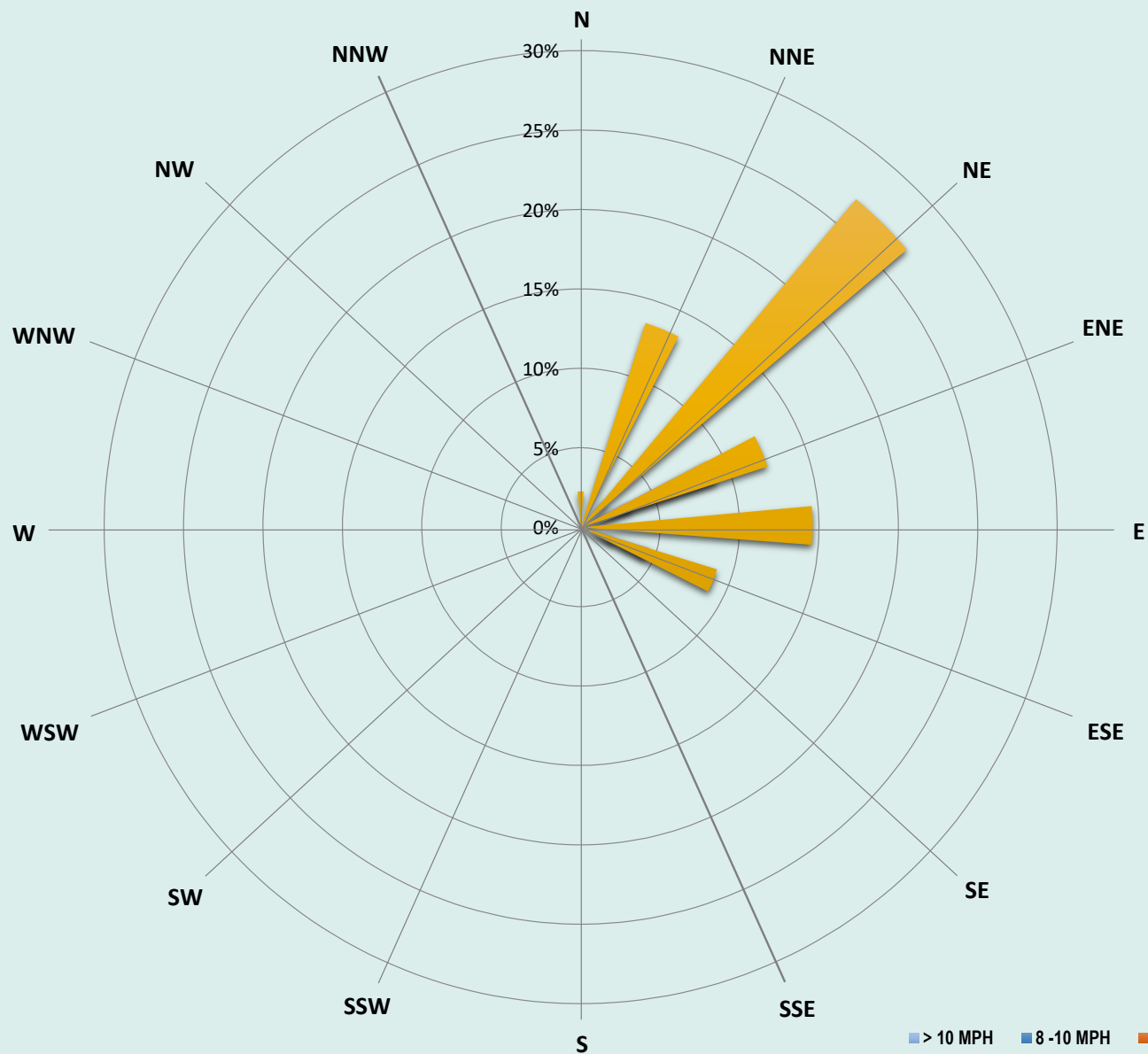
Weather Data Range for Work Day		Wind Direction	NE	Relative Humidity (%)	42.0 - 79.0	Daily Rain Total (in)	0.00	Readings in the summary table and graphs below are the reported downwind concentrations.
Temperature (°F)	61.0 - 78.0	Wind Speed (MPH)	2.3 - 7.7	Barometer (inHg)	30.40 - 30.40	Avg. Dew Point Temp (°F)	57.0	

Station Location	Daily Avg. Dust Concentration ( $\mu\text{g}/\text{m}^3$ )	Max 15-Min Dust Concentration ( $\mu\text{g}/\text{m}^3$ )	Time of Max Dust Reading	Daily Avg. VOC Concentration (ppm)	Max 15-Min VOC Concentration (ppm)	Time of Max VOC Reading
Upwind	22.3	80.3	7:42	0.0	0.0	7:42
Downwind	41.1	129.7	13:12	0.0	0.0	7:42



**Air Monitoring Notes:**

**Weather Notes:**



vEKtor - 450 Union St  
Air Monitoring  
09/05/24  
Wind Speed & Direction  
Daily Readings

■ > 10 MPH 
 ■ 8 - 10 MPH 
 ■ 6 - 8 MPH 
 ■ 4 - 6 MPH 
 ■ 2 - 4 MPH 
 ■ 1 - 2 MPH 
 ■ Calm

Thursday, September 5, 2024				
Number of Instances Where Downwind Particulates				0
Number of Comparable Data Points =				29
Start Time:				7:42
End Time:				14:42
PARTICULATE DATA				
Upwind		Downwind		Exceeds Particulate Alarm Limit
Time	15-Min Avg Concentration (ug/m <sup>3</sup> )	Time	15-Min Avg Concentration (ug/m <sup>3</sup> )	
7:42	80.3	7:42	26.9	-
7:57	32.7	7:57	25.3	-
8:12	39.8	8:12	22.4	-
8:27	31.9	8:27	19.5	-
8:42	29.1	8:42	18.7	-
8:57	18.9	8:57	63.7	-
9:12	15.7	9:12	25.2	-
9:27	17.4	9:27	28.0	-
9:42	15.9	9:42	38.1	-
9:57	19.3	9:57	59.9	-
10:12	16.3	10:12	40.2	-
10:27	16.0	10:27	50.2	-
10:42	12.9	10:42	30.7	-
10:57	17.8	10:57	74.5	-
11:12	15.0	11:12	29.1	-
11:27	22.9	11:27	29.6	-
11:42	27.2	11:42	32.3	-
11:57	15.3	11:57	32.5	-
12:12	15.6	12:12	32.8	-
12:27	16.4	12:27	40.3	-
12:42	16.6	12:42	45.7	-
12:57	16.3	12:57	32.5	-
13:12	14.1	13:12	129.7	-
13:27	14.6	13:27	49.5	-
13:42	13.6	13:42	36.5	-
13:57	39.6	13:57	60.1	-
14:12	17.4	14:12	32.8	-
14:27	27.0	14:27	51.1	-
14:42	14.2	14:42	37.1	-



Thursday, September 5, 2024				
Number of Instances Where Downwind VOCs Exceeds				0
Number of Comparable Data Points =				0
Start Time:				7:42
End Time:				14:42
PID DATA				
Upwind		Downwind		Exceeds VOC Alarm Limit
Time	15-Min Avg Concentration (ppm)	Time	15-Min Avg Concentration (ppm)	
7:42	0.0	7:42	0.0	-
7:57	0.0	7:57	0.0	-
8:12	0.0	8:12	0.0	-
8:27	0.0	8:27	0.0	-
8:42	0.0	8:42	0.0	-
8:57	0.0	8:57	0.0	-
9:12	0.0	9:12	0.0	-
9:27	0.0	9:27	0.0	-
9:42	0.0	9:42	0.0	-
9:57	0.0	9:57	0.0	-
10:12	0.0	10:12	0.0	-
10:27	0.0	10:27	0.0	-
10:42	0.0	10:42	0.0	-
10:57	0.0	10:57	0.0	-
11:12	0.0	11:12	0.0	-
11:27	0.0	11:27	0.0	-
11:42	0.0	11:42	0.0	-
11:57	0.0	11:57	0.0	-
12:12	0.0	12:12	0.0	-
12:27	0.0	12:27	0.0	-
12:42	0.0	12:42	0.0	-
12:57	0.0	12:57	0.0	-
13:12	0.0	13:12	0.0	-
13:27	0.0	13:27	0.0	-
13:42	0.0	13:42	0.0	-
13:57	0.0	13:57	0.0	-
14:12	0.0	14:12	0.0	-
14:27	0.0	14:27	0.0	-
14:42	0.0	14:42	0.0	-

<b>Project:</b>	450 Union Remediation	<b>Project No.:</b>	24-071	<b>Date:</b>	09/05/24
<b>Client:</b>	2201 Union LLC	<b>Location:</b>	Brooklyn, NY	<b>Day of Week:</b>	Thursday
<b>Owner:</b>	2201 Union LLC	<b>Superintendent:</b>	Rick McKay	<b>Days on Site:</b>	22
<b>Manager:</b>	Trae Deri	<b>Engineer:</b>	Srujan Prasad	<b>Shift Times:</b>	7:00-17:00

<b>Weather:</b>		
<b>Low:</b> 60	<b>Cloud Cover:</b> Sunny	<b>Wind:</b> 5-10MPH
<b>High:</b> 78	<b>Precipitation:</b> 0"	<b>Direction:</b> SE
<b>Description of Work Activities:</b>		
<ul style="list-style-type: none"> <li>- 0700 to 0730, GSI held a tailgate safety meeting and discussed the day's planned activities with site personnel.</li> <li>- 0730 to 0900, GSI Began to prepare grout mixture to the Monitoring wells using Type I Portland cement, Bentonite and water filled them with grout mixture.</li> <li>- 0900 to 1000, GSI started decommissioning Recovery well DB2-MW-S2, DB2-MW-2D and DB2-MW-2 As much as it was feasible towards the North portion of the jobsite.</li> <li>- 0800 to 1500, GSI beginning pre-excavation and concrete/debris removal operations in the North portion of the jobsite using 300 Kobelco excavator, clearing big pieces of concrete rocks and steel plates. GSI was successful in removing the obstruction.</li> <li>- 1400 to 1500, GSI used 210 Kobelco excavator and hydraulic hammer to break the big pieces of concrete chunks.</li> <li>- 0800 to 1500, GSI moved the excavated concrete material towards the West of the jobsite using Kobelco excavator and casted on a poly-lined and stockpile.</li> <li>- 1430 to 1500, Kobelco excavator managed ISS spoils, fueled equipment and performed general maintenance.</li> <li>- 1530, All GSI personnel offsite.</li> </ul>		
<b>Conversation with Client/Inspector:</b>		
<b>Production Delays:</b>		
GSI beginning pre-excavation and concrete/debris removal operations in the North portion of the jobsite using 300 Kobelco excavator, clearing big pieces of concrete rocks and steel plates. GSI was successful in removing the obstruction.		
<b>Safety Topics:</b>		
Discussed: Lead paint dangers and safety.		

Rick McKay  
 Foreman/Superintendent

09/05/24  
 Date

<b>Project:</b>	450 Union Remediation	<b>Project No.:</b>	24-071	<b>Date:</b>	09/05/24
<b>Client:</b>	2201 Union LLC	<b>Location:</b>	Brooklyn, NY	<b>Day of Week:</b>	Thursday
<b>Owner:</b>	2201 Union LLC	<b>Superintendent:</b>	Rick McKay	<b>Days on Site:</b>	22
<b>Manager:</b>	Trae Deri	<b>Engineer:</b>	Srujan Prasad	<b>Shift Times:</b>	7:00-17:00
<b>Production:</b>			<b>Completion:</b>		
<b>Today:</b>	0.00 CY	0 Columns	<b>9% Columns</b>		
<b>To-Date:</b>	455.65 CY	4 Columns	<b>10.36% CY</b>		
<b>Materials Received:</b>					
<b>Material</b>	<b>Unit</b>	<b>Today</b>	<b>Total</b>	<b>Notes</b>	
Slag- Grade 120	Ton	0	76		
Portland Cement - Type 1L	Ton	0	25		
<b>Hours</b>	<b>Equipment</b>	<b>Task</b>	<b>Hours</b>	<b>Employees On Site</b>	<b>Trade</b>
9.0	Offroad Forklift	Material Handling		Trae Deri	PM
9.0	185 Air Compressor	ISS Mixing	9.0	Rick McKay	SUPT
9.0	Conex box(1)	Storage	9.0	Srujan Prasad	ENG
9.0	300kw Generator	Batch Plant	9.0	Eric Shannon	DRILL
9.0	Lo-pro silo(2)	Cement Storage	8.5	Miguel Maldonado	LAB
9.0	Flash mixers (2)	Batch Plant		Daniel Oliveira	BPO
9.0	Moyno pump(2)	Batch Plant	8.5	Peter Liota	OP
9.0	Delmag Hydraulic Rig	ISS Mixing	8.5	Steven Reda	LAB
9.0	Manlift(1)	Maintenance			
9.0	Kobelco 210 Excavaor	ISS Mixing			
9.0	250kw Generator	Batch Plant			
9.0	Kobelco 300 Excavator				
<b>108</b>	<b>TOTAL DAY HOURS</b>		<b>53</b>	<b>TOTAL DAY HOURS</b>	

**LEGEND:**

**SUPT**- Superintendent, **PM**- Project Manager, **ENG** - Engineer, **SSHC** - Health & Safety Coordinator, **LAB** - Laborer, **OP** - Operator, **BPO** - Batch plant Operator, **OILER** - Oiler, **DRILLER** - Rig Opeartor

*Rick McKay*

Foreman/Superintendent

09/05/24

Date

<b>Project:</b> 450 Union Remediation	<b>Project No.:</b> 24-071	<b>Date:</b> 9/5/2024
<b>Client:</b> 2201 Union LLC	<b>Location:</b> Brooklyn, NY	<b>Day of Week:</b> Thursday
<b>Owner:</b> 2201 Union LLC	<b>Superintendent:</b> Rick McKay	<b>Days on Site:</b> 22
<b>Manager:</b> Trae Deri	<b>Engineer:</b> Srujan Prasad	<b>Shift Times:</b> 7:00-17:00

### IN-SITU SOIL STABILIZATION - AUGER MIXING SAMPLE TESTING RESULTS

#### Project Specifications:

<b>Perm:</b>	$\leq 1 \times 10^{-6}$
<b>UCS:</b>	> 50 psi

#### Lab Results

Date	Time	Sample ID	Depth (bgs) (ft.)	Number of cylinders casted 3x6s      2x4s		UCS	Permeability	UCS	Permeability	
						7 Day	7 Day	14 Day	14 Day	
						(psi)	(cm/s)	(psi)	(cm/s)	
8/19/24	11:42 AM	E6	18	8	8	243.3	4.4E-09	379.9		
8/19/24	2:10 PM	E7	22	8	8	203.3	4.5E-09	388.6		
8/23/24	11:10 AM	B3	25	8	8	95.4				
8/23/24	12:56 PM	B4	35	8	8	206.3				

Comments:

*Rick McKay*

Foreman/Superintendent

Client QC Manager