

DAILY STATUS REPORT

Prepared By: Antonio Cardenas

WEATHER	Snow	Rain	Overcast	Partly Cloudy	X	Bright Sun	X
TEMP.	< 32	32-50	50-70	X	70-85	X	>85

NYSDEC BCP Site No:	C224219	Date:	9/16/2024
Project Name:	450 Union Street, Brooklyn, NY		

Consultant: Vektor Consultants – Antonio Cardenas	Personnel On-Site: Geo-Solutions Inc.- Subcontractor
Visitors: WSP – Chris Disclafani	

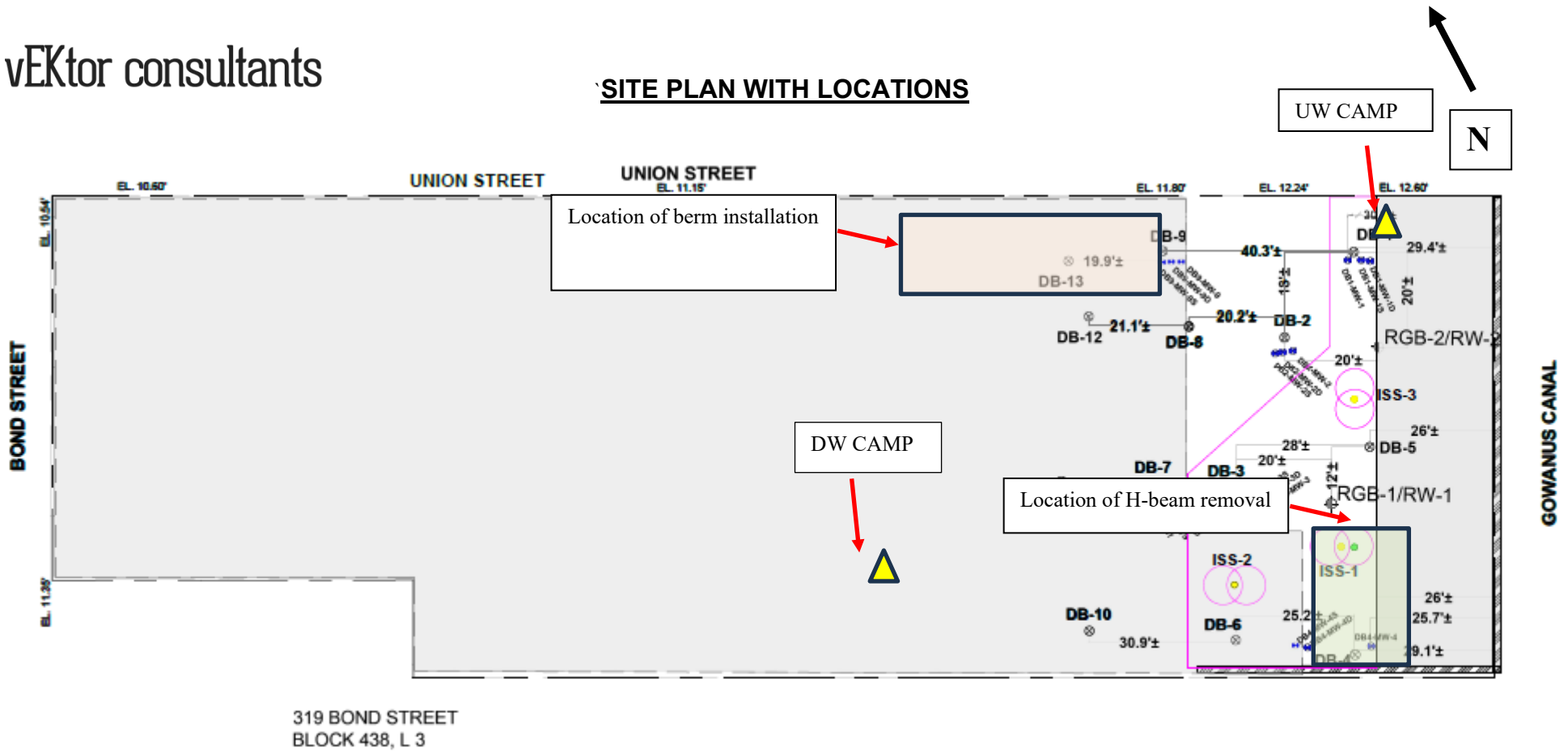
<p>Work Activities Performed:</p> <ul style="list-style-type: none"> GSI removed former SOE elements of the high-level relieving platform that fall within the ISS treatment work area. GSI removed an H-beam and the work area was backfilled at the end of the day. General housekeeping and site grading. The H-beam was staged atop of poly sheeting and screened for residual GCM.

<p>Community Air Monitoring Program (CAMP)</p> <p>An Upwind and Downwind CAMP stations were placed within the perimeters of the Site during drilling activities. The Upwind CAMP station was in the northwest portion of the Site and the Downwind CAMP station was in the southeast portion of the Site as the wind was consistently coming from the northeast.</p> <p>Background Levels (Initial Readings at Start of Day): PID: 0.0 ppm Dust: 0.0208 mg/m³</p> <p>Highest Levels: PID: 0.0 ppm Dust: 0.2323 mg/m³</p> <ul style="list-style-type: none"> Upwind CAMP was implemented during C&D restaging. CAMP equipment consisted of a DustTrack II Model 8530; S/N: 8530210705, AND MiniRAE 3000, Model PGM-7320 photoionization detector (PID); S/N: 592-601281. Downwind CAMP was implemented during C&D restaging. CAMP equipment consisted of a DustTrack II Model 8530; S/N: 8530221304, AND MiniRAE 3000, Model PGM-7320 photoionization detector (PID); S/N:592-926055. Dust exceedances at upwind CAMP from 11:28 to 11:58 AM (Max. 0.213 mg/m³) and from 1:28 to 1:43 PM (Max. 0.2323 mg/m³) due to idling vehicle in the proximity of the CAMP. Readings normalized after. Dust exceedance at downwind CAMP from 11:58 AM to 12:13 PM (Max. 0.1749 mg/m³) due to dust generated from adjacent construction site. Vektor moved the CAMP approximately 15 feet north of it's original location and readings normalized. No other VOC or dust concentrations were detected in exceedance of the daily short-term exposure limit (STEL) at the work area CAMP stations.
--

<p>Problems Encountered</p> <ul style="list-style-type: none"> None

<p>Planned Activities for the Next Day</p> <p>Continued decommissioning of all groundwater monitoring wells and recovery wells within the work areas via NYSDEC's CP-43 Well Decommissioning Policy. Continued site preparation work in anticipation of full-scale ISS operations (upon NYSDEC approval of the RSO Work Plan)</p>
--

SITE PLAN WITH LOCATIONS



319 BOND STREET
BLOCK 438, L 3

Photo Log

Photo 1:
View of GSI excavating to uncover H-beam, facing south.



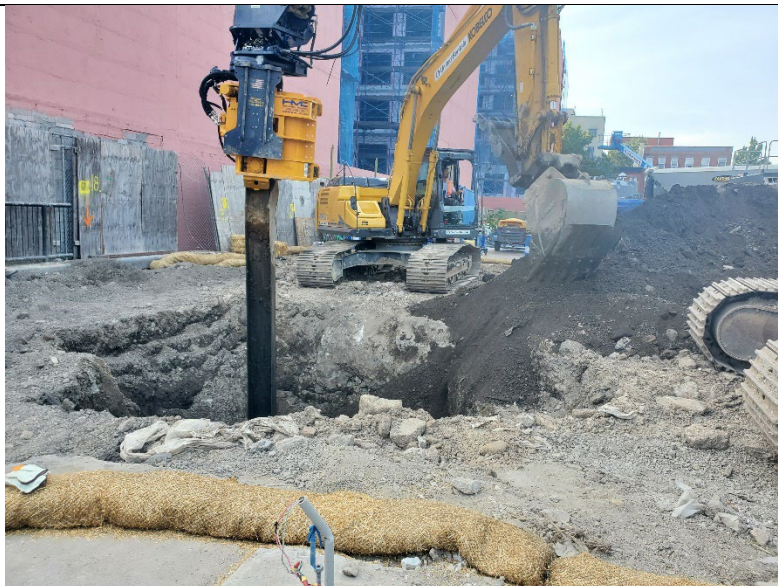
Photo 2:
View of uncovered H-beam, facing south.



Photo 3:
View of visible dust generated from adjacent construction site, facing south.



Photo 4:
View of H-beam removal, facing
southwest.



vEktor consultants

DAILY AIR MONITORING REPORT

450 Union Street Brooklyn, New York

09/16/2024

Rev. No. 0

Page 1 of 2

Project Number:

Dust Action Level

150 $\mu\text{g}/\text{m}^3$

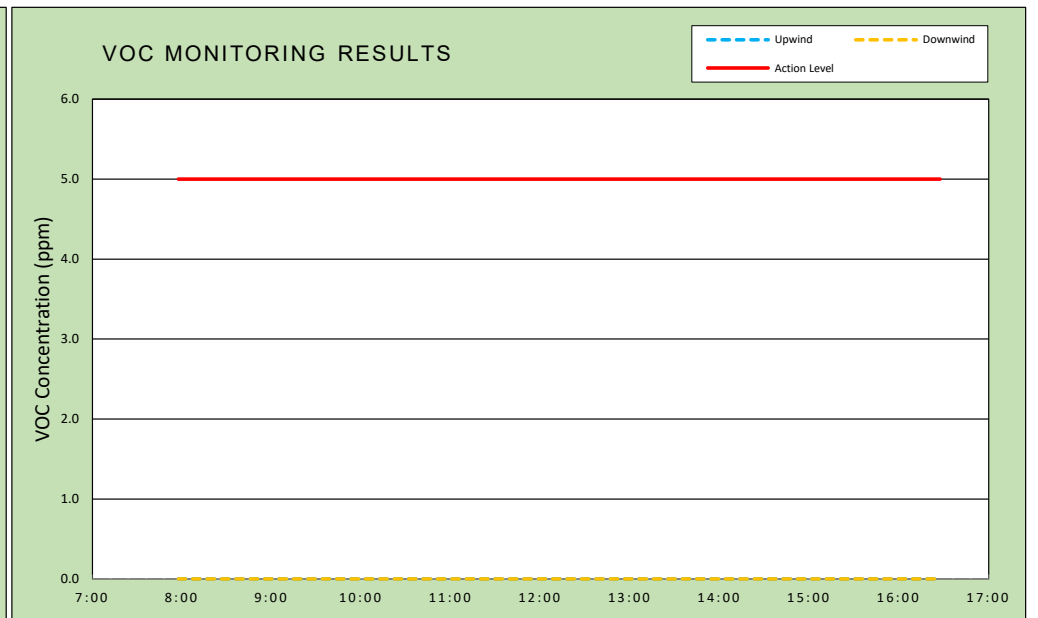
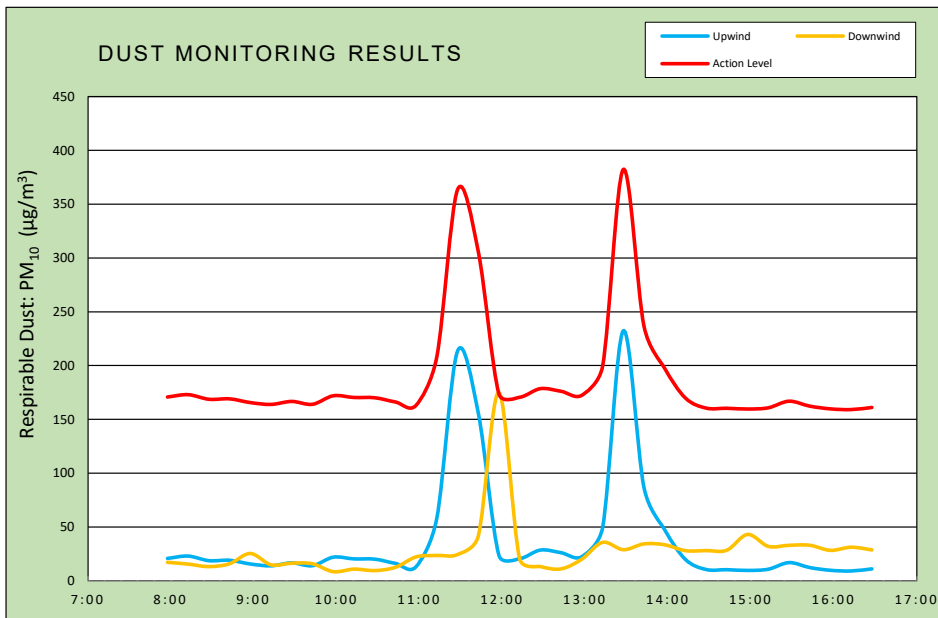
VOC Action Level

5 ppm

37 W. 37th St, 6th Floor - New York, NY

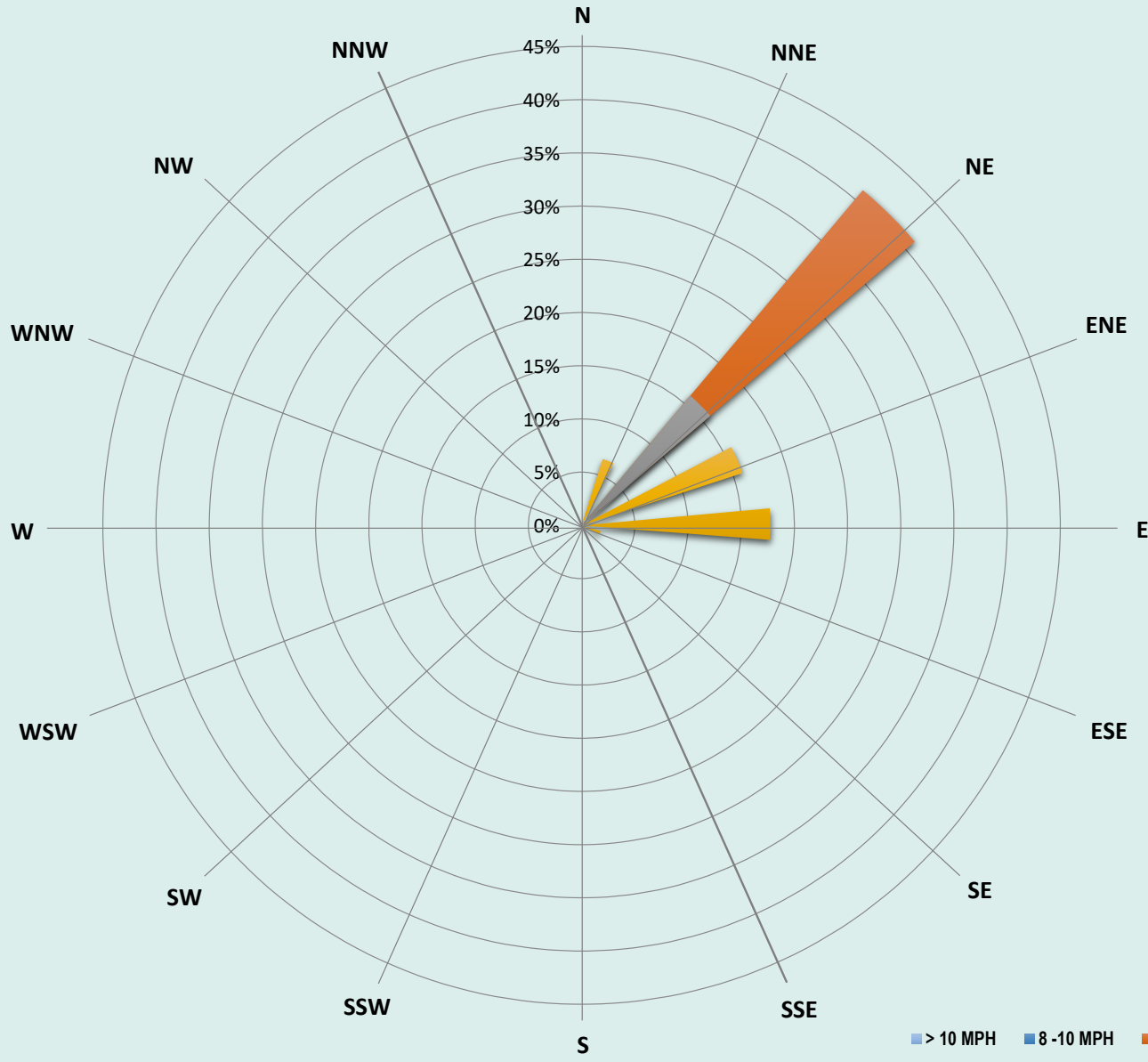
Weather Data Range for Work Day		Wind Direction	NE	Relative Humidity (%)	45.0 - 89.0	Daily Rain Total (in)	0.00	Readings in the summary table and graphs below are the reported downwind concentrations.
Temperature (°F)	62.0 - 78.0	Wind Speed (MPH)	2.4 - 7.9	Barometer (inHg)	30.30 - 30.40	Avg. Dew Point Temp (°F)	57.8	

Station Location	Daily Avg. Dust Concentration ($\mu\text{g}/\text{m}^3$)	Max 15-Min Dust Concentration ($\mu\text{g}/\text{m}^3$)	Time of Max Dust Reading	Daily Avg. VOC Concentration (ppm)	Max 15-Min VOC Concentration (ppm)	Time of Max VOC Reading
Upwind	37.4	232.3	13:28	0.0	0.0	7:58
Downwind	27.8	174.9	11:58	0.0	0.0	7:58



Air Monitoring Notes:

Weather Notes:



vEKtor - 450 Union St
Air Monitoring
09/16/24
Wind Speed & Direction
Daily Readings

■ > 10 MPH ■ 8 - 10 MPH ■ 6 - 8 MPH ■ 4 - 6 MPH ■ 2 - 4 MPH ■ 1 - 2 MPH ■ Calm



Monday, September 16, 2024				
Number of Instances Where Downwind Particulates				1
Number of Comparable Data Points =				35
Start Time:				7:58
End Time:				16:28
PARTICULATE DATA				
Upwind		Downwind		Exceeds Particulate Alarm Limit
Time	15-Min Avg Concentration (ug/m ³)	Time	15-Min Avg Concentration (ug/m ³)	
7:58	20.8	7:58	17.2	-
8:13	23.0	8:13	15.5	-
8:28	18.7	8:28	13.2	-
8:43	19.1	8:43	15.9	-
8:58	15.6	8:58	25.4	-
9:13	13.9	9:13	14.9	-
9:28	16.7	9:28	16.4	-
9:43	14.0	9:43	15.8	-
9:58	21.9	9:58	8.5	-
10:13	20.4	10:13	10.8	-
10:28	20.1	10:28	9.5	-
10:43	16.2	10:43	12.5	-
10:58	13.1	10:58	22.2	-
11:13	58.1	11:13	23.6	-
11:28	213.4	11:28	24.4	-
11:43	156.1	11:43	41.4	-
11:58	23.6	11:58	174.9	X
12:13	20.6	12:13	20.3	-
12:28	28.6	12:28	13.3	-
12:43	26.1	12:43	11.1	-
12:58	22.4	12:58	20.1	-
13:13	49.2	13:13	35.7	-
13:28	232.3	13:28	28.9	-
13:43	86.6	13:43	34.3	-
13:58	47.4	13:58	33.5	-
14:13	19.8	14:13	28.0	-
14:28	10.5	14:28	28.1	-
14:43	10.3	14:43	28.5	-
14:58	9.6	14:58	43.1	-
15:13	10.8	15:13	32.0	-
15:28	16.9	15:28	33.0	-
15:43	12.3	15:43	33.0	-
15:58	9.8	15:58	28.3	-
16:13	9.1	16:13	31.2	-
16:28	11.1	16:28	28.7	-

Monday, September 16, 2024				
Number of Instances Where Downwind VOCs Exceeds				0
Number of Comparable Data Points =				0
Start Time:				7:58
End Time:				16:28
PID DATA				
Upwind		Downwind		Exceeds VOC Alarm Limit
Time	15-Min Avg Concentration (ppm)	Time	15-Min Avg Concentration (ppm)	
7:58	0.0	7:58	0.0	-
8:13	0.0	8:13	0.0	-
8:28	0.0	8:28	0.0	-
8:43	0.0	8:43	0.0	-
8:58	0.0	8:58	0.0	-
9:13	0.0	9:13	0.0	-
9:28	0.0	9:28	0.0	-
9:43	0.0	9:43	0.0	-
9:58	0.0	9:58	0.0	-
10:13	0.0	10:13	0.0	-
10:28	0.0	10:28	0.0	-
10:43	0.0	10:43	0.0	-
10:58	0.0	10:58	0.0	-
11:13	0.0	11:13	0.0	-
11:28	0.0	11:28	0.0	-
11:43	0.0	11:43	0.0	-
11:58	0.0	11:58	0.0	-
12:13	0.0	12:13	0.0	-
12:28	0.0	12:28	0.0	-
12:43	0.0	12:43	0.0	-
12:58	0.0	12:58	0.0	-
13:13	0.0	13:13	0.0	-
13:28	0.0	13:28	0.0	-
13:43	0.0	13:43	0.0	-
13:58	0.0	13:58	0.0	-
14:13	0.0	14:13	0.0	-
14:28	0.0	14:28	0.0	-
14:43	0.0	14:43	0.0	-
14:58	0.0	14:58	0.0	-
15:13	0.0	15:13	0.0	-
15:28	0.0	15:28	0.0	-
15:43	0.0	15:43	0.0	-
15:58	0.0	15:58	0.0	-
16:13	0.0	16:13	0.0	-
16:28	0.0	16:28	0.0	-

Project: 450 Union Remediation	Project No.: 24-071	Date: 09/16/24
Client: 2201 Union LLC	Location: Brooklyn, NY	Day of Week: Monday
Owner: 2201 Union LLC	Superintendent: Rick McKay	Days on Site: 29
Manager: Trae Deri	Engineer: Srujan Prasad	Shift Times: 7:00-17:00

Weather:		
Low: 61	Cloud Cover: Sunny	Wind: 5-10MPH
High: 77	Precipitation: 0"	Direction: SE

Description of Work Activities:

- 0700 to 0730, GSI held a tailgate safety meeting and discussed the day's planned activities with site personnel.
- 0730 to 0900, GSI started excavation towards the Southeast portion of the jobsite using Kobelco 210 excavator to remove the I beam.
- 0800 to 1000, GSI received a delivery of slag.
- 1200 to 1300, GSI received a delivery of SP80H Hammer system to remove the I beam.
- 1300 to 1500, RPI Construction equipment was on site to fix the SP80H hammer system to the 300 Kobelco excavator.
- 1500 to 1700, GSI started pulling out the I beam using 300 Kobelco excavator and cutting it down with the compressed air fire cutter, GSI was successful in removing the I beam, backfilled the area with remaining spoils.
- 1715, All GSI personnel offsite.

Conversation with Client/Inspector:

Production Delays:

Safety Topics:
 Discussed: Seven Basic General Industry Safety Rules Toolbox Talk.

Rick McKay
 Foreman/Superintendent

09/16/24
 Date

Project: 450 Union Remediation	Project No.: 24-071	Date: 09/16/24			
Client: 2201 Union LLC	Location: Brooklyn, NY	Day of Week: Monday			
Owner: 2201 Union LLC	Superintendent: Rick Mckay	Days on Site: 29			
Manager: Trae Deri	Engineer: Srujan Prasad	Shift Times: 7:00-17:00			
Production:		Completion:			
Today: 0.00 CY 0 Columns	9% Columns				
To-Date: 455.65 CY 4 Columns	10.36% CY				
Materials Received:					
Material	Unit	Today	Total	Notes	
Slag- Grade 120	Ton	20	96		
Portland Cement - Type 1L	Ton	0	45		
Disposal Trucks	N/A	7	18		
Hours	Equipment	Task	Hours	Employees On Site	Trade
8.0	Offroad Forklift	Material Handling		Trae Deri	PM
8.0	185 Air Compressor	ISS Mixing	10.0	Rick McKay	SUPT
8.0	Conex box(1)	Storage	10.0	Srujan Prasad	ENG
8.0	300kw Generator	Batch Plant	10.0	Eric Shannon	DRILL
8.0	Lo-pro silo(2)	Cement Storage	8.0	Miguel Maldonado	LAB
8.0	Flash mixers (2)	Batch Plant	8.0	Daniel Santos	BPO
8.0	Moyno pump(2)	Batch Plant	10.0	Peter Liota	OP
8.0	Delmag Hydraulic Rig	ISS Mixing	10.0	Steven Reda	LAB
8.0	Manlift(1)	Maintenance	8.0	Louis Passannante	OP
8.0	Kobelco 210 Excavaor	ISS Mixing	8.0	Christopher Ramdial	OILER
8.0	250kw Generator	Batch Plant			
8.0	Kobelco 300 Excavator				
96	TOTAL DAY HOURS		82	TOTAL DAY HOURS	

LEGEND:

SUPT- Superintendent, PM- Project Manager, ENG - Engineer, SSHC - Health & Safety Coordinator, LAB - Laborer, OP - Operator, BPO - Batch plant Operator, OILER - Oiler, DRILLER - Rig Opeartor

Rick McKay

 Foreman/Superintendent

09/16/24

 Date

