

## DAILY STATUS REPORT

Prepared By: Antonio Cardenas

WEATHER	Snow		Rain		Overcast		Partly Cloudy		Bright Sun	X
TEMP.	< 32		32-50		50-70	X	70-85		>85	

<b>NYSDEC BCP Site No:</b>	C224219	<b>Date:</b>	10/10/2024
<b>Project Name:</b>	450 Union Street, Brooklyn, NY		

<b>Consultant:</b> Vektor Consultants – Antonio Cardenas  <b>Visitors:</b> WSP – Monica Pula NYSDEC – Meghan Medwid	<b>Personnel On-Site:</b> Geo-Solutions Inc.- Subcontractor Craig Geotechnical Drilling Co. Inc.- Subcontractor <b>Time On-Site:</b> 07:00 – 15:00
--	--

### Work Activities Performed:

- Craig drilled one confirmation core for visual inspection for the overlapped area between columns B5 and B6 (ISS-6C) with a NQ2 barrel. ISS-6C was drilled down to 40 feet bgs, with sample cores missing from the 0-3 foot interval. Free product was observed within the sand and grout mix at the 23-28 and 28-33 foot intervals. Craig will continue drilling at the location between columns E9 and E10 (ISS-7C) tomorrow.
- GSI continued general housekeeping and preparation for coring at ISS-7C. Housekeeping included sweeping the site and cleaning equipment.
- Vektor and WSP oversaw GSI implement soil management practices for ISS spoils (covering of stockpiles with poly-sheeting) and documented site conditions upon the end of the shift.

### Community Air Monitoring Program (CAMP)

An Upwind and Downwind CAMP stations were placed within the perimeters of the Site during drilling activities. The Upwind CAMP station was in the northwest of the Site and the Downwind CAMP station was in the east portion of the Site as the wind was consistently coming from the northwest.

Background Levels (Initial Readings at Start of Day):

PID: 0.4 ppm      Dust: 0.0118 mg/m<sup>3</sup>

Highest Levels:

PID: 0.5 ppm      Dust: 0.0369 mg/m<sup>3</sup>

- Upwind CAMP was implemented during ISS activities. CAMP equipment consisted of a DustTrack II Model 8530; S/N: 8530210705, AND MiniRAE 3000, Model PGM-7320 photoionization detector (PID); S/N: 592-601281.
- Downwind CAMP was implemented during ISS activities. CAMP equipment consisted of a DustTrack II Model 8530; S/N: 8530221304, AND MiniRAE 3000, Model PGM-7320 photoionization detector (PID); S/N:592-926055.
- There was a data gap at the Upwind CAMP from 10:15 to 10:45 AM and from the Downwind CAMP from 10:00 to 10:45 AM due to insufficient charge in the CAMP batteries. Batteries were swapped and data continued to be transmitted.
- No VOC or dust concentrations were detected in exceedance of the daily short-term exposure limit (STEL) at the work area CAMP stations.

### Problems Encountered

- None.

### Planned Activities for the Next Day

- ISS 9% coring at overlap location E9-E10.

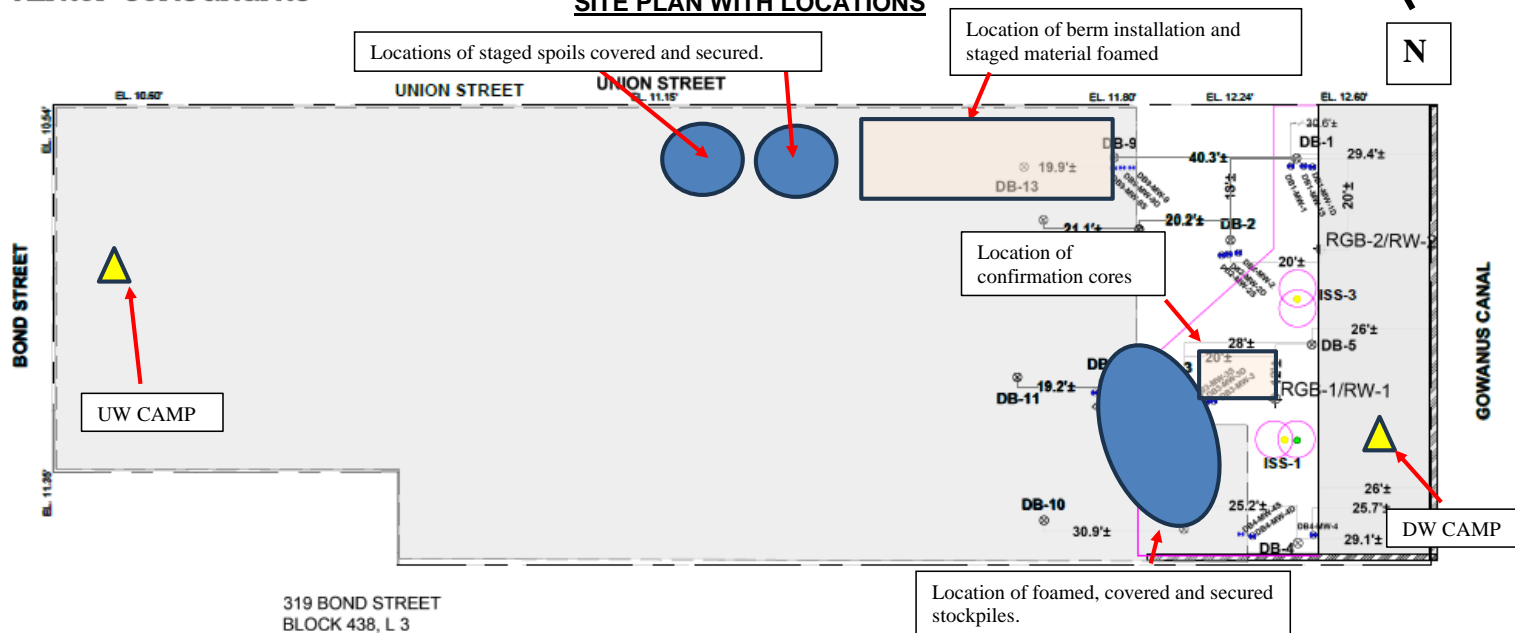


Photo Log

Photo 1:  
View of Craig drilling ISS-6C, facing  
west.



Photo 2:  
View of GSI applying water for dust  
suppression, facing northwest.



Photo 3:  
ISS-6C sample core from the 28-33  
foot interval.



Photo 4:  
ISS-6C sample core from the 33-38  
foot interval.

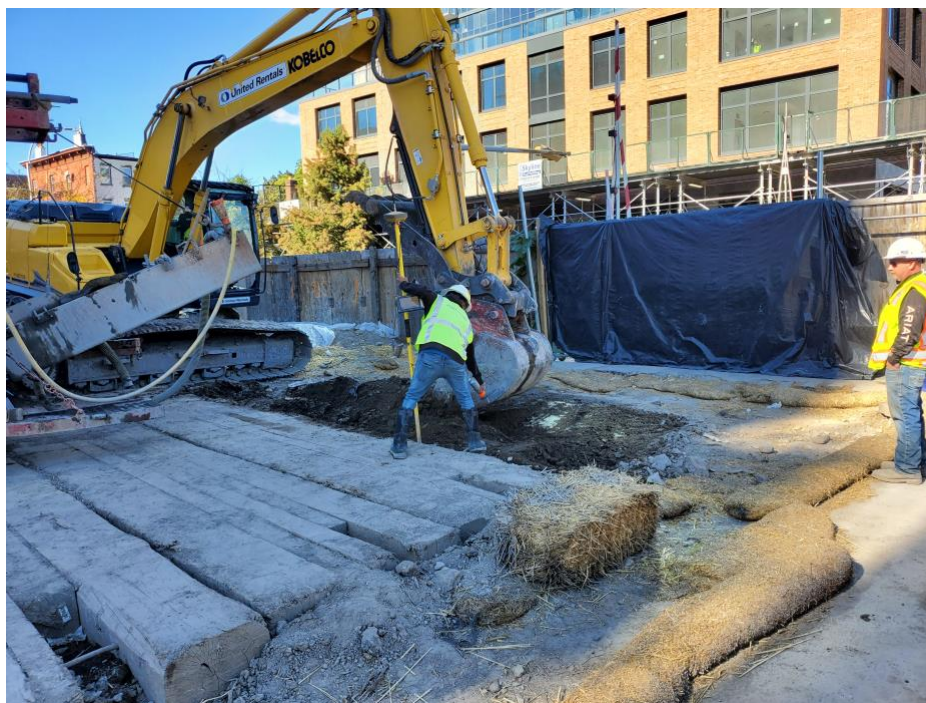




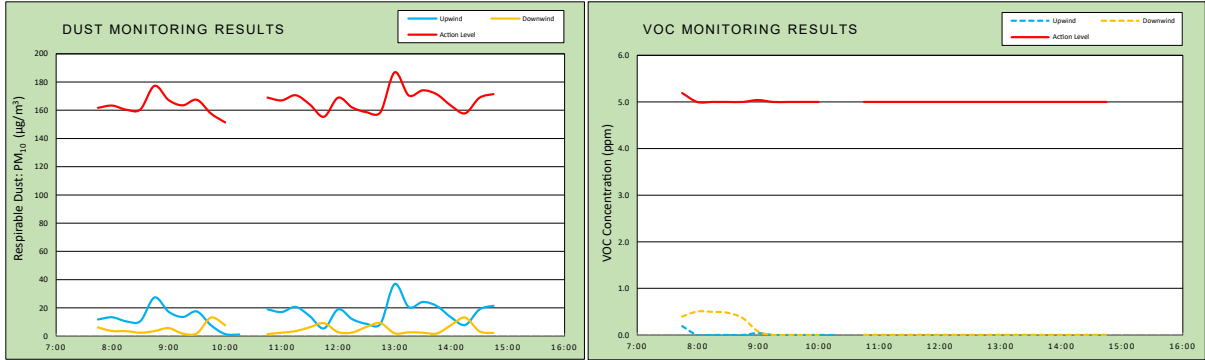
Photo 5:  
ISS-6C sample core from the 38-40  
foot interval.



Photo 6:  
GSI marking out the location for the  
overlap between E9 and E10 (ISS-  
7C), facing northwest.



vEktor consultants		<b>DAILY AIR MONITORING REPORT</b> <b>450 Union Street</b> <b>Brooklyn, New York</b>				10/10/2024	
						Rev. No. 0	Page 1 of 2
37 W. 37th St, 6th Floor - New York, NY		Project Number:					
		Dust Action Level				150 µg/m <sup>3</sup>	
		VOC Action Level				5 ppm	
Weather Data Range for Work Day		Wind Direction	NW	Relative Humidity (%)	39.0 - 70.0	Daily Rain Total (in)	0.00
Temperature (°F)	49.0 - 63.0	Wind Speed (MPH)	2.9 - 8.6	Barometer (inHg)	30.00 - 30.10	Avg. Dew Point Temp (°F)	39.3
Readings in the summary table and graphs below are the reported downwind concentrations.							
Station Location	Daily Avg. Dust Concentration (µg/m <sup>3</sup> )	Max 15-Min Dust Concentration (µg/m <sup>3</sup> )	Time of Max Dust Reading	Daily Avg. VOC Concentration (ppm)	Max 15-Min VOC Concentration (ppm)	Time of Max VOC Reading	
Upwind	14.9	36.9	13:00	0.0	0.2	7:45	
Downwind	4.7	13.1	9:45	0.1	0.5	9:15	



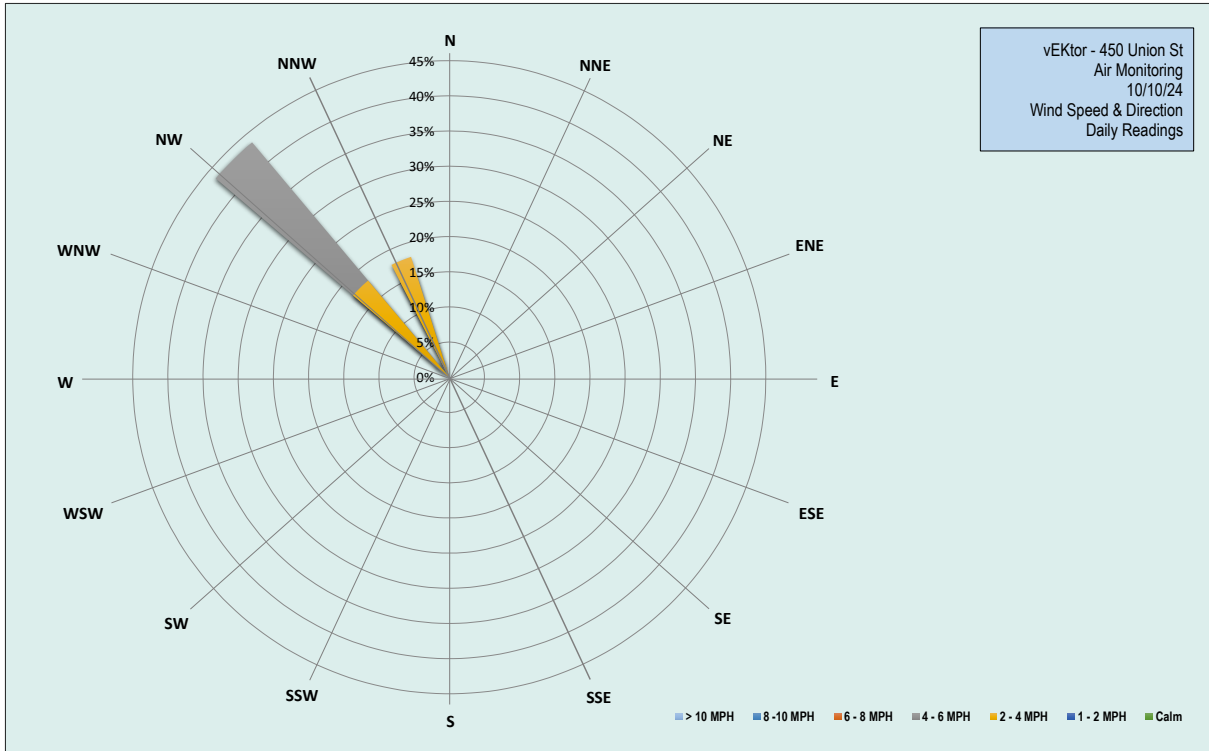
Air Monitoring Notes:

Weather Notes:

10/10/2024 Daily Air Monitoring Report - vEktor - 450 Union St

Wind Rose

Page 2 of 2



Thursday, October 10, 2024				
Number of Instances Where Downwind Particulates				0
Number of Comparable Data Points =				28
Start Time:				7:45
End Time:				14:45
PARTICULATE DATA				
Upwind		Downwind		Exceeds Particulate Alarm Limit
Time	15-Min Avg Concentration (ug/m <sup>3</sup> )	Time	15-Min Avg Concentration (ug/m <sup>3</sup> )	
7:45	11.8	7:45	6.1	-
8:00	13.3	8:00	3.6	-
8:15	10.4	8:15	3.5	-
8:30	10.6	8:30	2.3	-
8:45	27.3	8:45	3.5	-
9:00	17.2	9:00	5.6	-
9:15	13.5	9:15	1.7	-
9:30	17.4	9:30	1.9	-
9:45	7.7	9:45	13.1	-
10:00	1.4	10:00	7.7	-
10:15	1.1	10:15	-	-
10:30	-	10:30	-	-
10:45	19.0	10:45	1.4	-
11:00	17.0	11:00	2.4	-
11:15	20.6	11:15	3.5	-
11:30	14.1	11:30	6.3	-
11:45	5.4	11:45	9.1	-
12:00	18.9	12:00	2.8	-
12:15	12.0	12:15	2.5	-
12:30	8.7	12:30	6.4	-
12:45	8.7	12:45	9.1	-
13:00	36.9	13:00	2.0	-
13:15	20.5	13:15	2.7	-
13:30	24.2	13:30	2.4	-
13:45	21.2	13:45	1.9	-
14:00	13.2	14:00	7.8	-
14:15	7.9	14:15	13.1	-
14:30	18.8	14:30	3.4	-
14:45	21.5	14:45	2.2	-

Thursday, October 10, 2024				
Number of Instances Where Downwind VOCs Exceeds				0
Number of Comparable Data Points =				0
Start Time:				7:45
End Time:				14:45
PID DATA				
Upwind		Downwind		Exceeds VOC Alarm Limit
Time	15-Min Avg Concentration (ppm)	Time	15-Min Avg Concentration (ppm)	
7:45	0.2	7:45	0.4	-
8:00	0.0	8:00	0.5	-
8:15	0.0	8:15	0.5	-
8:30	0.0	8:30	0.5	-
8:45	0.0	8:45	0.4	-
9:00	0.0	9:00	0.1	-
9:15	0.0	9:15	0.0	-
9:30	0.0	9:30	0.0	-
9:45	0.0	9:45	0.0	-
10:00	0.0	10:00	0.0	-
10:15	0.0	10:15	-	-
10:30	-	10:30	-	-
10:45	0.0	10:45	0.0	-
11:00	0.0	11:00	0.0	-
11:15	0.0	11:15	0.0	-
11:30	0.0	11:30	0.0	-
11:45	0.0	11:45	0.0	-
12:00	0.0	12:00	0.0	-
12:15	0.0	12:15	0.0	-
12:30	0.0	12:30	0.0	-
12:45	0.0	12:45	0.0	-
13:00	0.0	13:00	0.0	-
13:15	0.0	13:15	0.0	-
13:30	0.0	13:30	0.0	-
13:45	0.0	13:45	0.0	-
14:00	0.0	14:00	0.0	-
14:15	0.0	14:15	0.0	-
14:30	0.0	14:30	0.0	-
14:45	0.0	14:45	0.0	-



<b>Project:</b>	450 Union Remediation	<b>Project No.:</b>	24-071	<b>Date:</b>	10/10/24
<b>Client:</b>	2201 Union LLC	<b>Location:</b>	Brooklyn, NY	<b>Day of Week:</b>	Thursday
<b>Owner:</b>	2201 Union LLC	<b>Superintendent:</b>	Rick McKay	<b>Days on Site:</b>	47
<b>Manager:</b>	Trae Deri	<b>Engineer:</b>	Srujan Prasad	<b>Shift Times:</b>	7:00-17:00

<b>Weather:</b>		
<b>Low:</b> 47	<b>Cloud Cover:</b> Cloudy	<b>Wind:</b> 15-20MPH
<b>High:</b> 63	<b>Precipitation:</b> 0"	<b>Direction:</b> SE
<b>Description of Work Activities:</b>		
<ul style="list-style-type: none"> <li>- 0700 to 0730, GSI held a tailgate safety meeting and discussed the day's planned activities with site personnel.</li> <li>- 0800 to 1300, Craig geotechnical core drilling was on site and began drilling column B5/B6 using PQ barrel down to 40ft bgs. GSI collected core samples at every 5' intervals.</li> <li>- 1145 to 1230, Core drill rig broke down and addressed the mechanical issue. The issue was corrected and core drilling operations resumed.</li> <li>- 1330 to 1430, GSI cut down the stockpile swell material towards the North portion of the jobsite using 210 Kobelco excavator in order to create room for core drilling of E9-E10 tomorrow.</li> <li>- 0800 to 1500, GSI performed general maintenance and house keeping.</li> <li>- 1330 to 1500, GSI foamed all the stockpiled swell materials and also covered them by using poly-lined.</li> <li>- 1500, All GSI personnel offsite.</li> </ul>		
<b>Conversation with Client/Inspector:</b>		
<b>Production Delays:</b>		
<b>Safety Topics:</b>		
Discussed: Elimination of Hazards Safety Talk.		

Rick McKay  
 Foreman/Superintendent

10/10/24  
 Date

<b>Project:</b>	450 Union Remediation	<b>Project No.:</b>	24-071	<b>Date:</b>	10/10/24
<b>Client:</b>	2201 Union LLC	<b>Location:</b>	Brooklyn, NY	<b>Day of Week:</b>	Thursday
<b>Owner:</b>	2201 Union LLC	<b>Superintendent:</b>	Rick McKay	<b>Days on Site:</b>	47
<b>Manager:</b>	Trae Deri	<b>Engineer:</b>	Srujan Prasad	<b>Shift Times:</b>	7:00-17:00
<b>Production:</b>			<b>Completion:</b>		
<b>Today:</b>	0.00 CY	0 Columns	<b>100% Columns</b>		
<b>To-Date:</b>	3,250.07 CY	37 Columns			
<b>Materials Received:</b>					
<b>Material</b>	<b>Unit</b>	<b>Today</b>	<b>Total</b>	<b>Notes</b>	
Slag- Grade 120	Ton	0	367		
Portland Cement - Type 1L	Ton	0	166		
Disposal Trucks	N/A	0	18		
<b>Hours</b>	<b>Equipment</b>	<b>Task</b>	<b>Hours</b>	<b>Employees On Site</b>	<b>Trade</b>
8.0	Offroad Forklift	Material Handling		Trae Deri	PM
8.0	185 Air Compressor	ISS Mixing	8.5	Rick McKay	SUPT
8.0	Conex box(1)	Storage	8.5	Srujan Prasad	ENG
8.0	300kw Generator	Batch Plant	8.5	Eric Shannon	DRILL
8.0	Lo-pro silo(2)	Cement Storage	8.0	Miguel Maldonado	LAB
8.0	Flash mixers (2)	Batch Plant	8.0	Daniel Santos	BPO
8.0	Moyno pump(2)	Batch Plant	8.0	Peter Liota	OP
8.0	Delmag Hydraulic Rig	ISS Mixing	8.0	Steven Reda	LAB
8.0	Manlift(1)	Maintenance		Louis Passannante	OP
8.0	Kobelco 210 Excavator	ISS Mixing		Christopher Ramdial	OILER
8.0	250kw Generator	Batch Plant	8.5	Angelo Toscano	PM
<b>88</b>	<b>TOTAL DAY HOURS</b>		<b>66</b>	<b>TOTAL DAY HOURS</b>	

**LEGEND:**

**SUPT**- Superintendent, **PM**- Project Manager, **ENG** - Engineer, **SSHC** - Health & Safety Coordinator, **LAB** - Laborer, **OP** - Operator,  
**BPO** - Batch plant Operator, **OILER** - Oiler, **DRILLER** - Rig Operator

*Rick McKay*

Foreman/Superintendent

10/10/24

Date