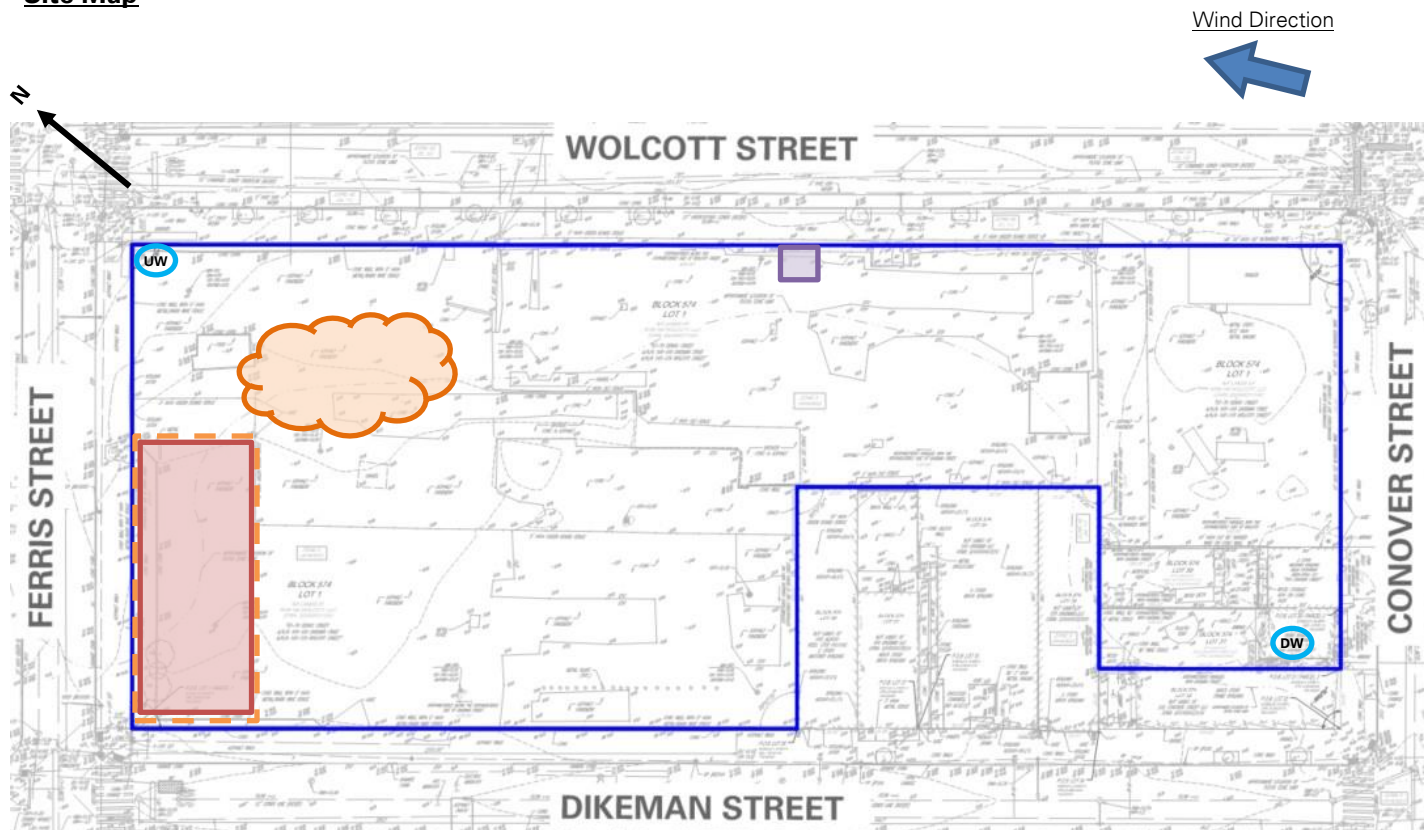


PROJECT No.: 170452203 PROJECT: 145-165 Wolcott Street LOCATION: Brooklyn, New York SITE CODE: C224256	CLIENT: NYM 145 Wolcott, LLC 233 Broadway, 10 th Fl., New York, NY 10279	DATE: Tue., September 02, 2025 WEATHER: Sunny; 73 – 83 °F Wind: SSE @ 0.8 – 5.2 mph TIME: 6:45am – 5:30pm MONITOR: Emma Bitar
EQUIPMENT: AQS1 Air Monitoring Station x 2 MiniRAE 3000 Photoionization Detector (PID) CAT 335F x2 Zaxis ZX670 Hyundai HL955A Trimble DA2		PRESENT AT SITE: Langan (Environmental): Emma Bitar, Laura Grose Urban Atelier Group (UAG): Frank Rivera ECD NY Inc. (ECD): Gary Smith, Gareth McMahon
OBSERVATIONS, DISCUSSIONS, TEST RESULTS, ETC.: <p>Langan was present to document remediation activities in accordance with the New York State Department of Environmental Conservation (NYSDEC)-approved July 22, 2025 Remedial Action Work Plan (RAWP) at the 145-165 Wolcott Street site in Brooklyn, New York (Site No. C224256).</p> <p>Site Activities</p> <ul style="list-style-type: none"> ECD used a CAT 335F excavator to demolish concrete and asphalt in the northwestern part of the site. The construction and demolition (C&D) debris was stockpiled in the northern part of the site for future off-site disposal at a permitted C&D processing facility. Langan used a Trimble DA2 to locate and mark-out on-site monitoring wells and geotechnical observation wells proposed for future decommissioning in accordance with NYSDEC Commissioner Policy-43. <p>Material Tracking</p> <ul style="list-style-type: none"> No material was imported to the site. No material was exported from the site. <p>Sampling</p> <ul style="list-style-type: none"> No samples were collected. <p>Community Air Monitoring Plan (CAMP) Activities</p> <ul style="list-style-type: none"> Langan performed community air monitoring at the perimeter of the work area at one upwind and two downwind locations during intrusive work. Implementation of the Community Air Monitoring Plan (CAMP) included air monitoring for particulate matter for particulates less than 10 µm in diameter (PM10) and volatile organic compounds (VOC). VOC and PM10 concentrations did not exceed the action levels established by the community air monitoring plan. No fugitive dust or odors associated with site activities were observed migrating from the site. <p>Anticipated Activities</p> <ul style="list-style-type: none"> ECD will continue demolition and stockpiling of C&D debris. 		
Cc: M. Burke, G. Nicholls, S. Knoop, N. Palumbo, L. Grose		By: Emma Bitar Langan Eng, Env, Surv, L.A. & Geo, DPC

Site Map



Legend

	Site Boundary		Approximate IDW Drum Staging Area
	Approximate Work Area		Approximate C&D Stockpile
	Approximate Location of Upwind CAMP Station		Approximate Non-Native Fill Stockpile
	Approximate Location of Downwind CAMP Station		
	Approximate Area of Asphalt and Concrete removed		
	Approximate Area Excavated		
	Approximate Area Backfilled		
	Approximate Area Graded		

Notes:

1. Basemap is referenced from 26 March 2025 ALTA/NSPS Land Title Survey prepared by Control Point Associates Inc PC.
2. IDW – Investigation-derived waste generated during the April 2025 and August 2025 supplemental waste characterizations and the January through May 2025 non-aqueous phase liquid gauging.

Cc: M. Burke, G. Nicholls, S. Knoop,
N. Palumbo, L. Grose

By: Emma Bitar

Langan Eng, Env, Surv, L.A. & Geo, DPC

Photographs



Photo 1: ECD removing concrete and asphalt in the western part of the site (facing northwest)




Photo 2: Stockpiled C&D in the western part of the site (facing west).

Cc: M. Burke, G. Nicholls, S. Knoop,
N. Palumbo, L. Grose

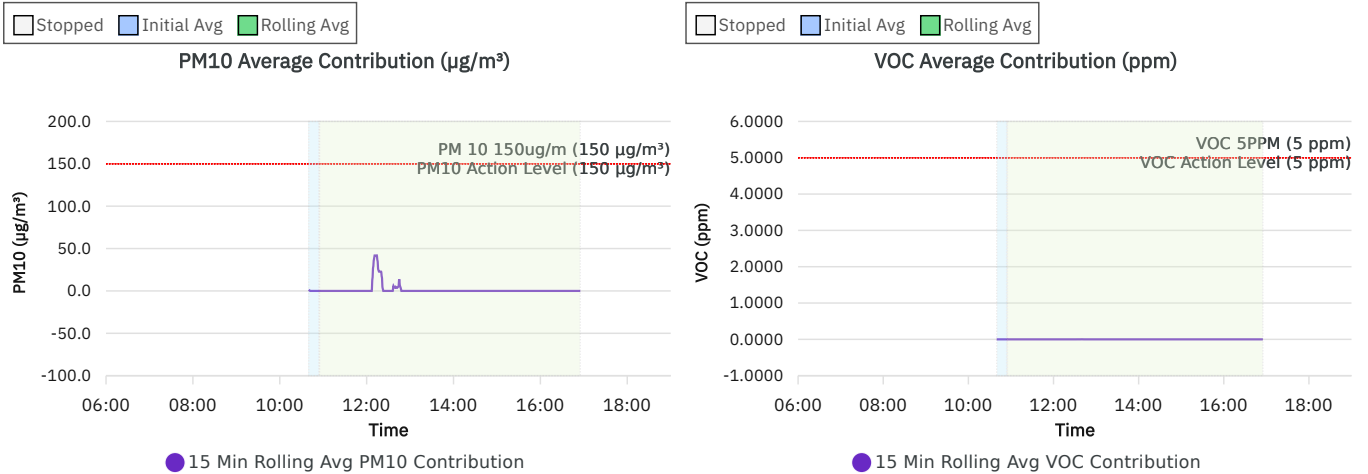
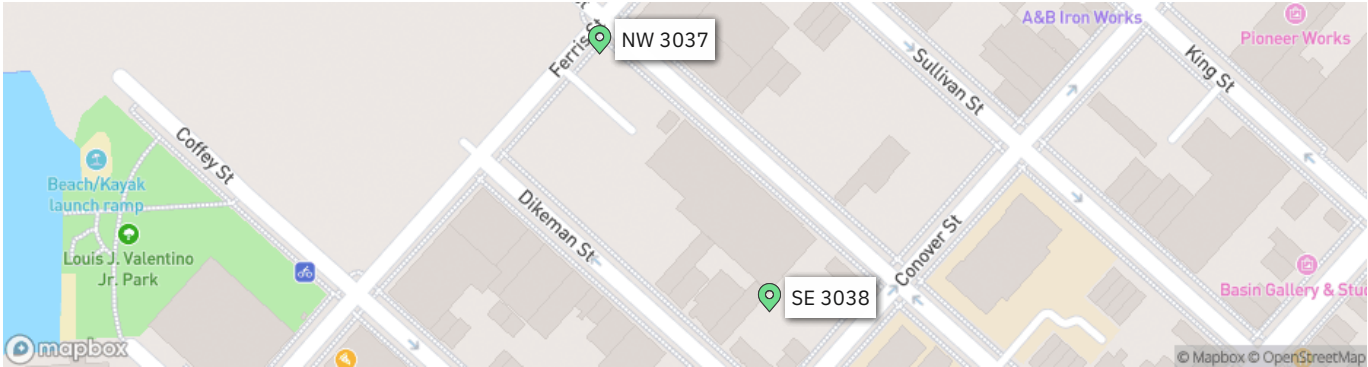
By: Emma Bitar

Langan Eng, Env, Surv, L.A. & Geo, DPC

	145 Wolcott Contribution Report	170562203 - 145 Wolcott St	
		Report Period	
		From:	09/02/2025 06:00
		To:	09/02/2025 19:00
		PM10 Action Level:	150 µg/m³
		VOC Action Level:	5 ppm

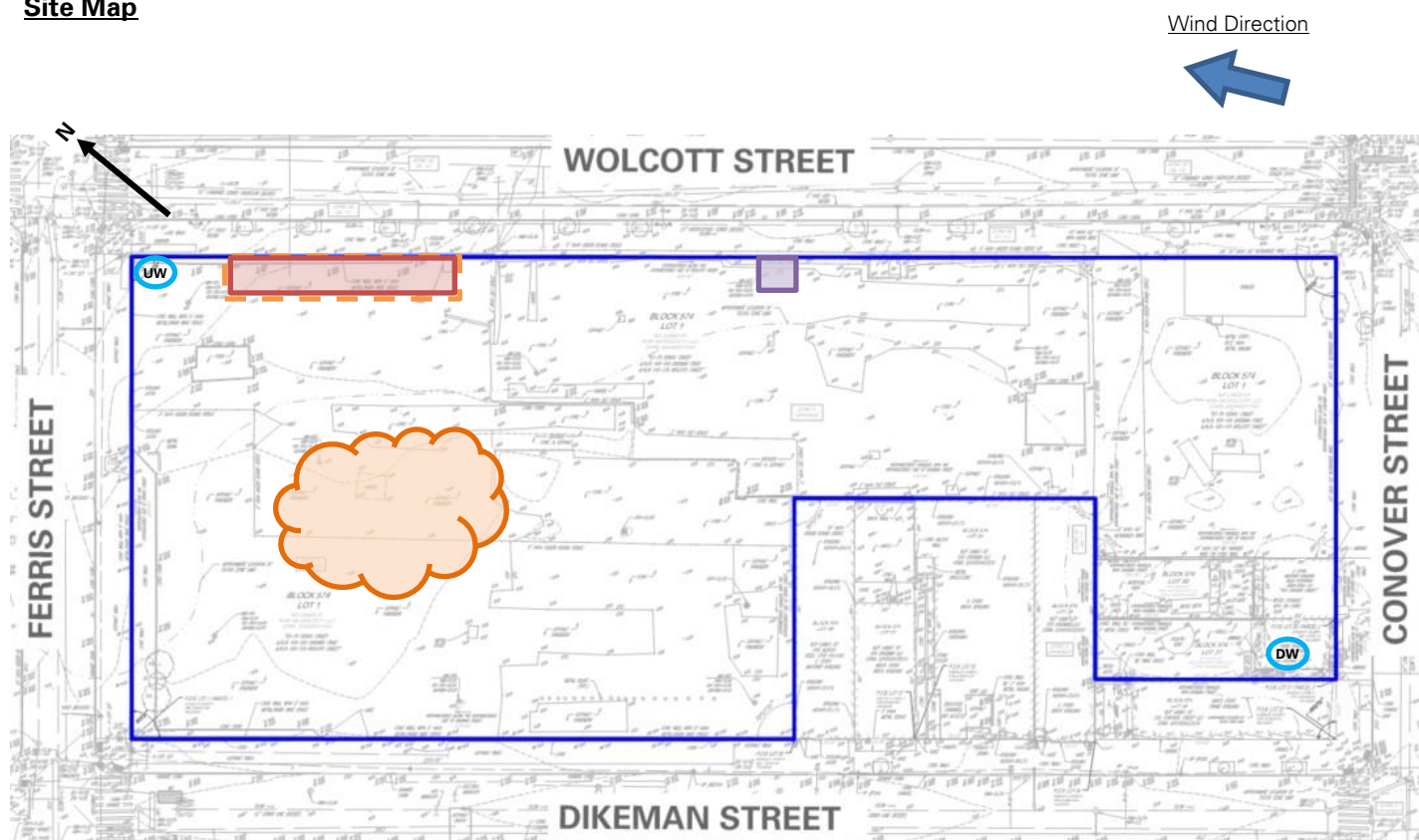
Daily Environmental Summary	Temp (°F)	Relative Humidity (%)	Barometer (inHg)	Wind Speed (mph)	Prevailing Wind Direction
09/02/2025	72.9 - 82.6	42.2 - 59.0	30.1 - 30.2	0.8 - 5.2	SSE

Daily Monitoring Summary	PM10 (µg/m³)	Time	VOC (ppm)	Time
Min Contribution (15 min avg.) - 9/2/2025	0.0	10:42	0.0000	10:40
Max Contribution (15 min avg.) - 9/2/2025	41.9	12:14	0.0020	12:40
Daily Avg. Contribution (15 min avg.) - 9/2/2025	1.3	-	0.0000	-



PROJECT No.: 170452203 PROJECT: 145-165 Wolcott Street LOCATION: Brooklyn, New York SITE CODE: C224256	CLIENT: NYM 145 Wolcott, LLC 233 Broadway, 10 th Fl., New York, NY 10279	DATE: Wed., September 03, 2025 WEATHER: Sunny; 61 – 83 °F Wind: SSE @ 0.7 – 6.6 mph TIME: 6:45am – 5:30pm MONITOR: Emma Bitar
EQUIPMENT: AQS1 Air Monitoring Station x 2 MiniRAE 3000 Photoionization Detector (PID) CAT 335F x2 Zaxis ZX670 Hyundai HL955A Trimble DA2 Bauer BG 36 H		PRESENT AT SITE: Langan (Environmental): Emma Bitar Urban Atelier Group (UAG) ECD NY Inc. (ECD): Gary Smith, Gareth McMahon
OBSERVATIONS, DISCUSSIONS, TEST RESULTS, ETC.: <p>Langan was present to document remediation activities in accordance with the New York State Department of Environmental Conservation (NYSDEC)-approved July 22, 2025 Remedial Action Work Plan (RAWP) at the 145-165 Wolcott Street site in Brooklyn, New York (Site No. C224256).</p> <p>Site Activities</p> <ul style="list-style-type: none"> ECD used a CAT 335F excavator to demolish concrete and asphalt in the northern part of the site. The construction and demolition (C&D) debris was stockpiled in the northern part of the site for future off-site disposal at a permitted C&D processing facility. Langan used a Trimble DA2 to locate and mark-out on-site monitoring wells and geotechnical observation wells proposed for future decommissioning in accordance with NYSDEC Commissioner Policy-43. <p>Material Tracking</p> <ul style="list-style-type: none"> No material was imported to the site. No material was exported from the site. <p>Sampling</p> <ul style="list-style-type: none"> No samples were collected. <p>Community Air Monitoring Plan (CAMP) Activities</p> <ul style="list-style-type: none"> Langan performed community air monitoring at the perimeter of the work area at one upwind and two downwind locations during intrusive work. Implementation of the Community Air Monitoring Plan (CAMP) included air monitoring for particulate matter for particulates less than 10 µm in diameter (PM10) and volatile organic compounds (VOC). VOC and PM10 concentrations did not exceed the action levels established by the community air monitoring plan. No fugitive dust or odors associated with site activities were observed migrating from the site. <p>Anticipated Activities</p> <ul style="list-style-type: none"> ECD will continue demolition and stockpiling of C&D debris. ECD will export stockpiled C&D debris to an appropriate facility. 		
Cc: M. Burke, G. Nicholls, S. Knoop, N. Palumbo, L. Grose		By: Emma Bitar Langan Eng, Env, Surv, L.A. & Geo, DPC

Site Map



Legend

	Site Boundary		Approximate IDW Drum Staging Area
	Approximate Work Area		Approximate C&D Stockpile
	Approximate Location of Upwind CAMP Station		Approximate Non-Native Fill Stockpile
	Approximate Location of Downwind CAMP Station		
	Approximate Area of Asphalt and Concrete removed		
	Approximate Area Excavated		
	Approximate Area Backfilled		
	Approximate Area Graded		

Notes:

1. Basemap is referenced from 26 March 2025 ALTA/NSPS Land Title Survey prepared by Control Point Associates Inc PC.
2. IDW – Investigation-derived waste generated during the April 2025 and August 2025 supplemental waste characterizations and the January through May 2025 non-aqueous phase liquid gauging.

Cc: M. Burke, G. Nicholls, S. Knoop,
N. Palumbo, L. Grose

By: Emma Bitar

Langan Eng, Env, Surv, L.A. & Geo, DPC

Photographs



Photo 1: ECD removing concrete and asphalt in the northern part of the site (facing north)



Photo 2: ECD spraying water for dust suppression during concrete removal (facing east).

Cc: M. Burke, G. Nicholls, S. Knoop,
N. Palumbo, L. Grose

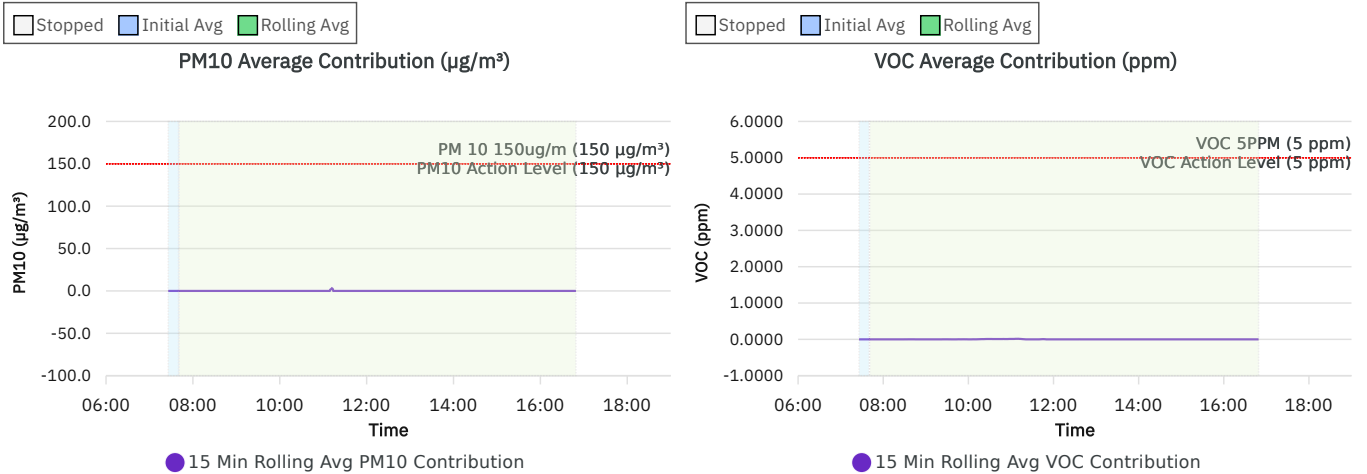
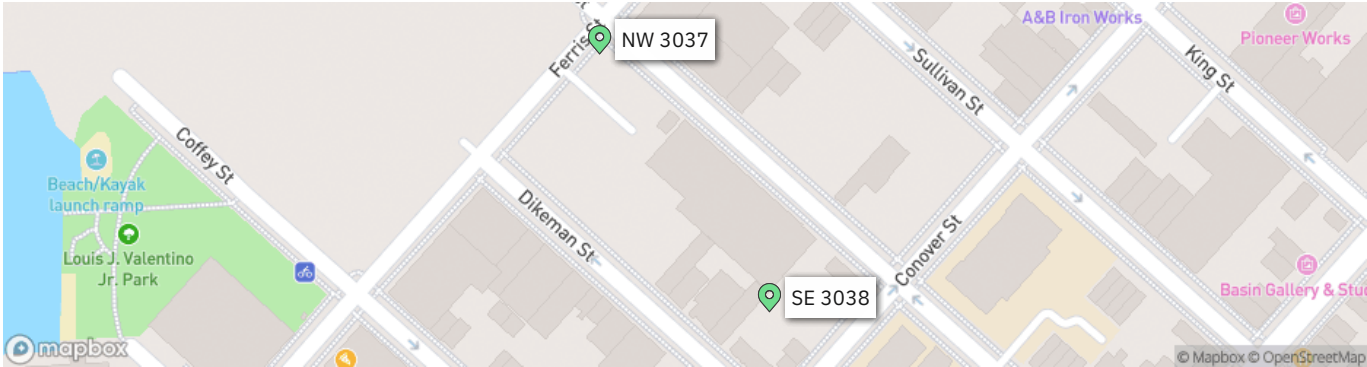
By: Emma Bitar

Langan Eng, Env, Surv, L.A. & Geo, DPC

	145 Wolcott Contribution Report	170562203 - 145 Wolcott St	
		Report Period	
		From:	09/03/2025 06:00
		To:	09/03/2025 19:00
		PM10 Action Level:	150 µg/m³
		VOC Action Level:	5 ppm

Daily Environmental Summary	Temp (°F)	Relative Humidity (%)	Barometer (inHg)	Wind Speed (mph)	Prevailing Wind Direction
09/03/2025	61.2 - 82.8	44.0 - 85.7	29.9 - 30.0	0.7 - 6.6	SSE

Daily Monitoring Summary	PM10 (µg/m³)	Time	VOC (ppm)	Time
Min Contribution (15 min avg.) - 9/3/2025	0.0	07:26	0.0000	07:26
Max Contribution (15 min avg.) - 9/3/2025	3.1	11:12	0.0153	11:10
Daily Avg. Contribution (15 min avg.) - 9/3/2025	0.0	-	0.0013	-



PROJECT No.: 170452203 PROJECT: 145-165 Wolcott Street LOCATION: Brooklyn, New York SITE CODE: C224256	CLIENT: NYM 145 Wolcott, LLC 233 Broadway, 10 th Fl., New York, NY 10279	DATE: Thu., September 04, 2025 WEATHER: Sunny; 63 – 80 °F Wind: SE @ 1.4 – 12.5 mph TIME: 6:45am – 5:30pm MONITOR: Emma Bitar															
EQUIPMENT: AQS1 Air Monitoring Station x 2 MiniRAE 3000 Photoionization Detector (PID) CAT 335F x2 Zaxis ZX670 Hyundai HL955A Trimble DA2 Bauer BG 36 H		PRESENT AT SITE: Langan (Environmental): Emma Bitar Urban Atelier Group (UAG) ECD NY Inc. (ECD): Gary Smith, Gareth McMahon															
OBSERVATIONS, DISCUSSIONS, TEST RESULTS, ETC.: <p>Langan was present to document remediation activities in accordance with the New York State Department of Environmental Conservation (NYSDEC)-approved July 22, 2025 Remedial Action Work Plan (RAWP) at the 145-165 Wolcott Street site in Brooklyn, New York (Site No. C224256).</p> <p>Site Activities</p> <ul style="list-style-type: none"> ECD used a CAT 335F excavator to demolish concrete and asphalt in the western and central parts of the site. The construction and demolition (C&D) debris was stockpiled in the northern part of the site for future off-site disposal at a permitted C&D processing facility. Langan used a Trimble DA2 to locate and mark-out on-site monitoring wells and geotechnical observation wells proposed for future decommissioning in accordance with NYSDEC Commissioner Policy-43. <p>Material Tracking</p> <ul style="list-style-type: none"> No material was imported to the site. ECD exported 14 truckloads (approximately 280 cubic yards) of C&D debris for off-site disposal at the PPark facility, located in Prospect Park, NJ. <table border="1" data-bbox="492 1283 1130 1526"> <thead> <tr> <th colspan="3">Material Export Summary (C&D)</th> </tr> <tr> <th>Facility Name Location</th> <th colspan="2">PPark NJ, LLC Prospect Park, NJ</th> </tr> <tr> <th>Quantities</th> <th>No. of Loads</th> <th>Approx. Volume (CY)</th> </tr> </thead> <tbody> <tr> <td>Today</td> <td>14</td> <td>280</td> </tr> <tr> <td>Project Total</td> <td>14</td> <td>280</td> </tr> </tbody> </table> <p>Sampling</p> <ul style="list-style-type: none"> No samples were collected. <p>Community Air Monitoring Plan (CAMP) Activities</p> <ul style="list-style-type: none"> Langan performed community air monitoring at the perimeter of the work area at one upwind and two downwind locations during intrusive work. Implementation of the Community Air Monitoring Plan (CAMP) included air monitoring for particulate matter for particulates less than 10 µm in diameter (PM10) and volatile organic compounds (VOC). VOC and PM10 concentrations did not exceed the action levels established by the community air monitoring plan. 			Material Export Summary (C&D)			Facility Name Location	PPark NJ, LLC Prospect Park, NJ		Quantities	No. of Loads	Approx. Volume (CY)	Today	14	280	Project Total	14	280
Material Export Summary (C&D)																	
Facility Name Location	PPark NJ, LLC Prospect Park, NJ																
Quantities	No. of Loads	Approx. Volume (CY)															
Today	14	280															
Project Total	14	280															
Cc: M. Burke, G. Nicholls, S. Knoop, N. Palumbo, L. Grose		By: Emma Bitar Langan Eng, Env, Surv, L.A. & Geo, DPC															

LANGAN

DAILY FIELD REPORT – Day 003

- No fugitive dust or odors associated with site activities were observed migrating from the site.

Anticipated Activities

- ECD will continue demolition and stockpiling of C&D debris.
- Lakewood Services, Corp. will decommission monitoring wells and geotechnical observation wells under Langan oversight.

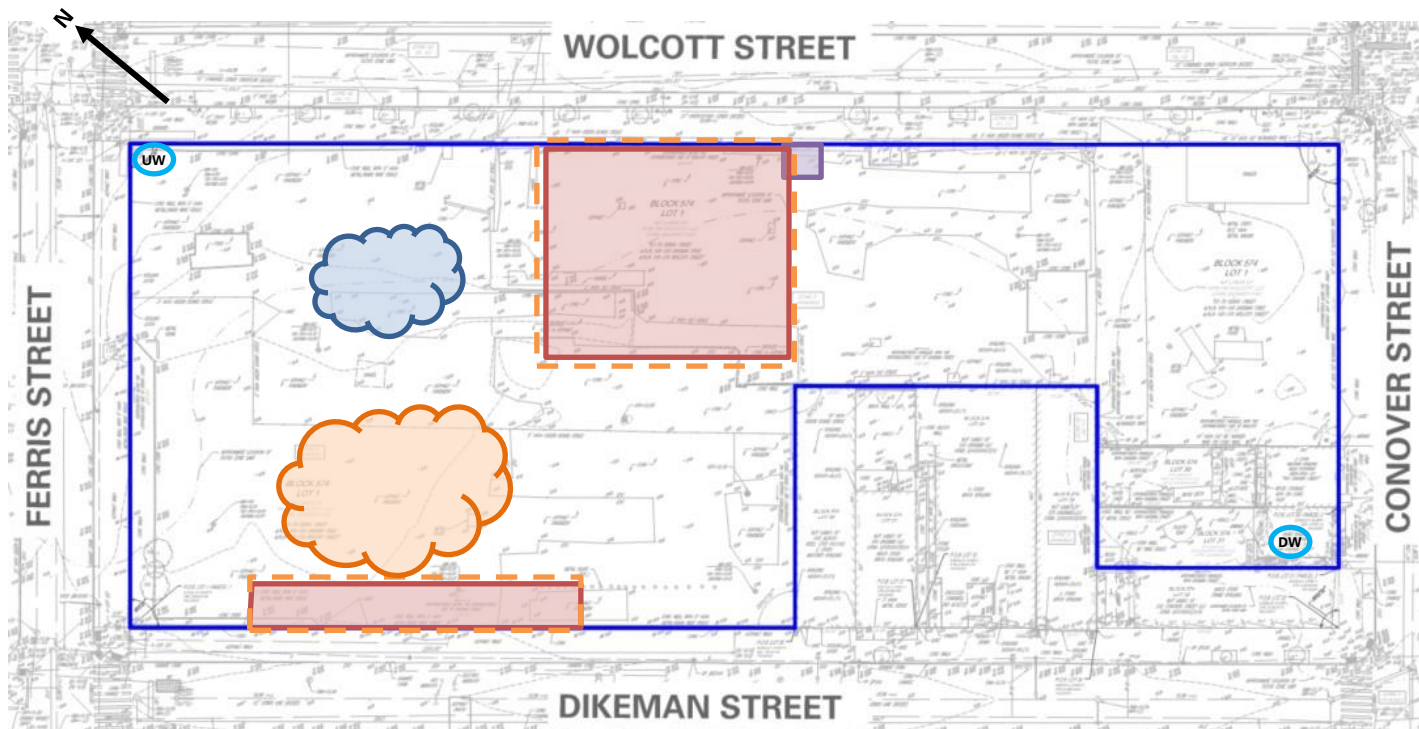
Cc: M. Burke, G. Nicholls, S. Knoop,
N. Palumbo, L. Grose

By: Emma Bitar

Langan Eng, Env, Surv, L.A. & Geo, DPC

Site Map

Wind Direction



Legend

	Site Boundary		Approximate IDW Drum Staging Area
	Approximate Work Area		Approximate C&D Stockpile
	Approximate Location of Upwind CAMP Station		Approximate Non-Native Fill Stockpile
	Approximate Location of Downwind CAMP Station		
	Approximate Area of Asphalt and Concrete removed		
	Approximate Area Excavated		
	Approximate Area Backfilled		
	Approximate Area Graded		

Notes:

1. Basemap is referenced from 26 March 2025 ALTA/NSPS Land Title Survey prepared by Control Point Associates Inc PC.
2. IDW – Investigation-derived waste generated during the April 2025 and August 2025 supplemental waste characterizations and the January through May 2025 non-aqueous phase liquid gauging.

Cc: M. Burke, G. Nicholls, S. Knoop,
N. Palumbo, L. Grose

By: Emma Bitar

Langan Eng, Env, Surv, L.A. & Geo, DPC

Photographs



Photo 1: ECD removing concrete and asphalt in the central part of the site (facing east)



Photo 2: Stockpiled C&D debris in the northern part of the site (facing north)

Cc: M. Burke, G. Nicholls, S. Knoop,
N. Palumbo, L. Grose

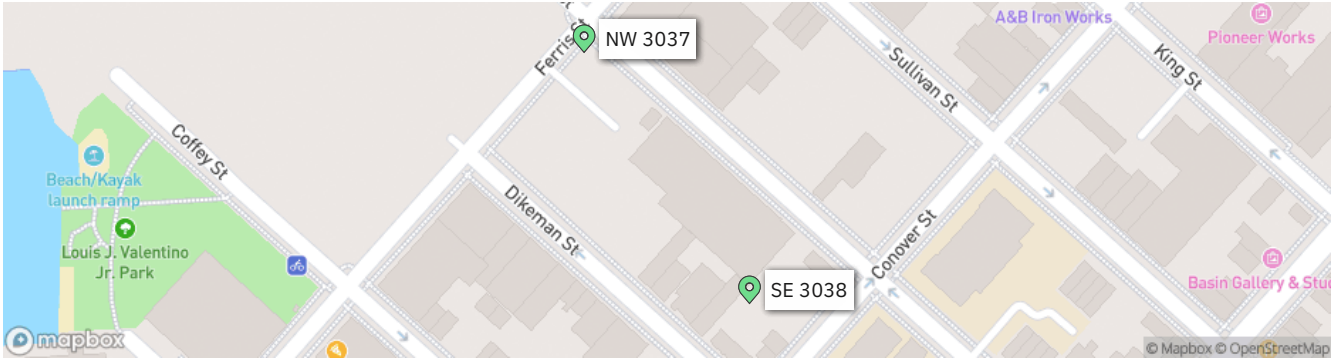
By: Emma Bitar

Langan Eng, Env, Surv, L.A. & Geo, DPC

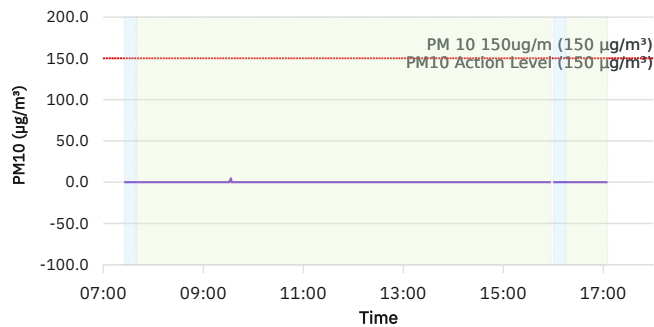
	145 Wolcott Contribution Report	170562203 - 145 Wolcott St	
		Report Period	
		From:	09/04/2025 07:00
		To:	09/04/2025 18:00
		PM10 Action Level:	150 µg/m³
		VOC Action Level:	5 ppm

Daily Environmental Summary	Temp (°F)	Relative Humidity (%)	Barometer (inHg)	Wind Speed (mph)	Prevailing Wind Direction
09/04/2025	63.1 - 79.7	56.2 - 87.4	29.8 - 29.9	1.4 - 12.5	SE

Daily Monitoring Summary	PM10 (µg/m³)	Time	VOC (ppm)	Time
Min Contribution (15 min avg.) - 9/4/2025	0.0	07:25	0.0000	07:25
Max Contribution (15 min avg.) - 9/4/2025	4.3	09:33	0.0087	07:59
Daily Avg. Contribution (15 min avg.) - 9/4/2025	0.0	-	0.0003	-



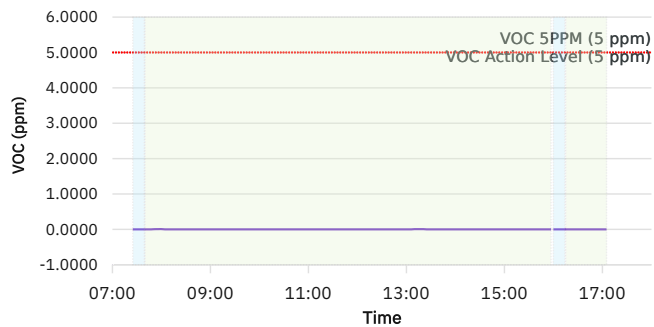
PM10 Average Contribution (µg/m³)



● 15 Min Rolling Avg PM10 Contribution



VOC Average Contribution (ppm)



● 15 Min Rolling Avg VOC Contribution

PROJECT No.: 170452203	CLIENT: NYM 145 Wolcott, LLC 233 Broadway, 10 th Fl., New York, NY 10279	DATE: Fri., September 05, 2025
PROJECT: 145-165 Wolcott Street		WEATHER: Sunny; 63 – 80 °F Wind: SSE @ 0.8 – 6.6 mph
LOCATION: Brooklyn, New York		TIME: 6:45am – 5:00pm
SITE CODE: C224256		MONITOR: Emma Bitar
EQUIPMENT: AQS1 Air Monitoring Station x 2 MiniRAE 3000 Photoionization Detector (PID) CAT 335F x2 Zaxis ZX670 Hyundai HL955A Bauer BG 36 H Tremie Pump		PRESENT AT SITE: Langan (Environmental): Emma Bitar Urban Atelier Group (UAG) ECD NY Inc. (ECD): Gary Smith, Gareth McMahon Lakewood Environmental Services, Inc. (Lakewood): Tim Kelly, Justin Scheer

OBSERVATIONS, DISCUSSIONS, TEST RESULTS, ETC.:

Langan was present to document remediation activities in accordance with the New York State Department of Environmental Conservation (NYSDEC)-approved July 22, 2025 Remedial Action Work Plan (RAWP) at the 145-165 Wolcott Street site in Brooklyn, New York (Site No. C224256).

Site Activities

- ECD used a CAT 335F excavator to demolish concrete and asphalt in the western and central parts of the site. The construction and demolition (C&D) debris was stockpiled in the northern part of the site for future off-site disposal at a permitted C&D processing facility.
- ECD used a CAT 335F to excavate four about 20-foot-long by 10-foot-wide areas to about 3 feet below grade surface (bgs) across the site to remove concrete from previously installed test piles. Excavated non-native fill was screened for odors, staining, and organic vapors using a photoionization detector (PID). No impacts were observed.
 - Excavated concrete was stockpiled in the northern part of the site for future off-site disposal to an appropriate facility.
 - Excavated non-native fill was temporarily stockpiled adjacent to the excavation and then backfilled to the excavation of origin.
- Lakewood decommissioned 25 groundwater monitoring wells via grouting in place with a tremie pump in accordance with NYSDEC Commissioner Policy-43 Groundwater Monitoring well Decommissioning Policy. The monitoring well decommissioning forms will be included in the Final Engineering Report.

Material Tracking

- No material was imported to the site.
- No material was exported from the site.

Material Export Summary (C&D)		
Facility Name Location	PPark NJ, LLC Prospect Park, NJ	
Quantities	No. of Loads	Approx. Volume (CY)
Today	14	280
Project Total	14	280

Cc: M. Burke, G. Nicholls, S. Knoop,
N. Palumbo, L. Grose

By: Emma Bitar

Langan Eng, Env, Surv, L.A. & Geo, DPC

Sampling

- No samples were collected.

Community Air Monitoring Plan (CAMP) Activities

- Langan conducted real-time air monitoring for volatile organic compounds (VOC) and particulate matter smaller than 10 microns in diameter (PM10) at the upwind and downwind perimeters of the work area during ground-intrusive work. VOC and PM10 concentrations did not exceed the action levels established by the community air monitoring plan.

Anticipated Activities

- ECD will continue demolition and stockpiling of C&D debris.

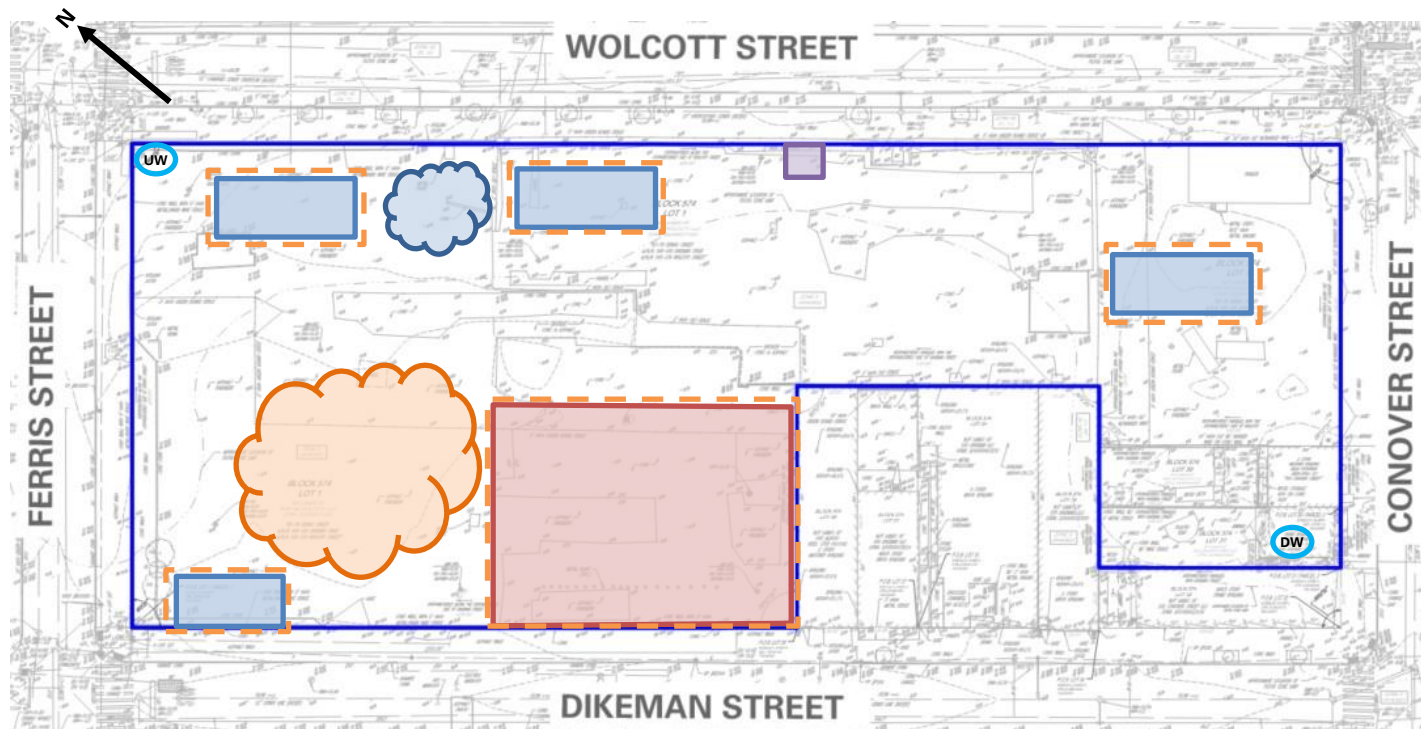
Cc: M. Burke, G. Nicholls, S. Knoop,
N. Palumbo, L. Grose

By: Emma Bitar

Langan Eng, Env, Surv, L.A. & Geo, DPC

Site Map

Wind Direction



Legend

	Site Boundary		Approximate IDW Drum Staging Area
	Approximate Work Area		Approximate C&D Stockpile
	Approximate Location of Upwind CAMP Station		Approximate Non-Native Fill Stockpile
	Approximate Location of Downwind CAMP Station		
	Approximate Area of Asphalt and Concrete removed		
	Approximate Area Excavated		
	Approximate Area Backfilled		
	Approximate Area Graded		

Notes:

1. Basemap is referenced from 26 March 2025 ALTA/NSPS Land Title Survey prepared by Control Point Associates Inc PC.
2. IDW – Investigation-derived waste generated during the April 2025 and August 2025 supplemental waste characterizations and the January through May 2025 non-aqueous phase liquid gauging.

Cc: M. Burke, G. Nicholls, S. Knoop,
N. Palumbo, L. Grose

By: Emma Bitar

Langan Eng, Env, Surv, L.A. & Geo, DPC

Photographs

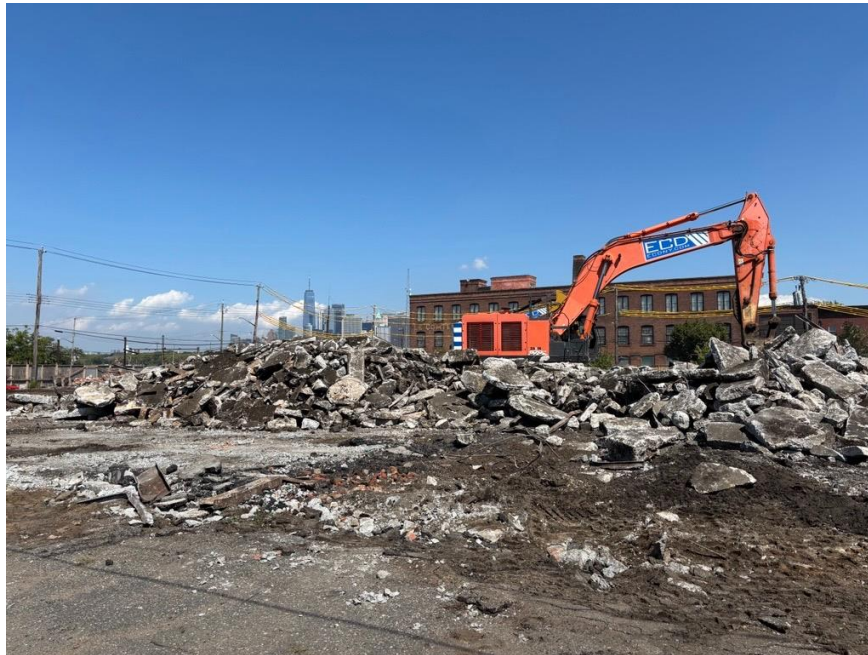


Photo 1: ECD stockpiling C&D debris in the central part of the site (facing north)

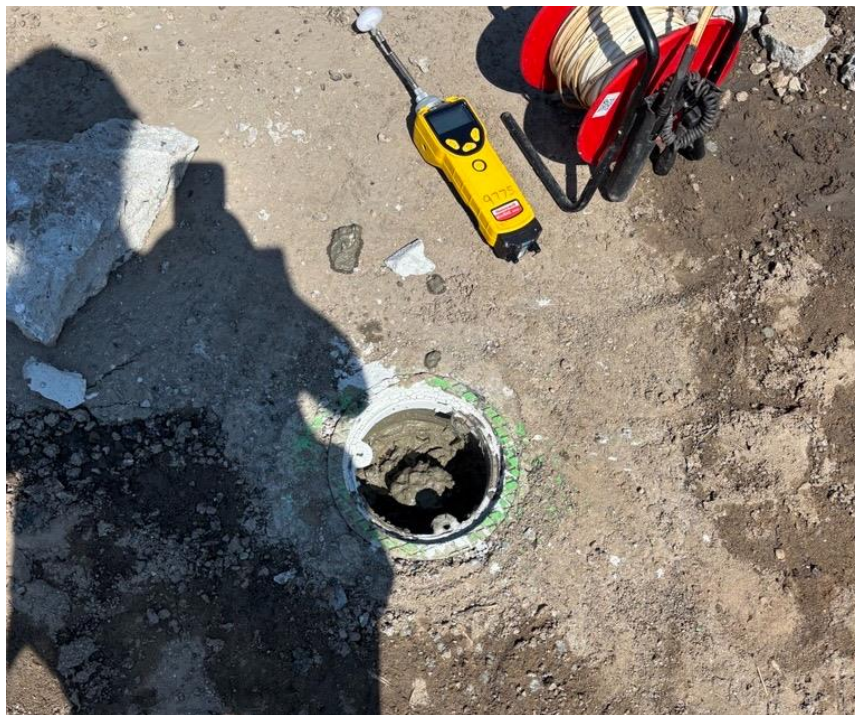



Photo 2: Decommissioned monitoring well MW-005 in the western part of the site.

Cc: M. Burke, G. Nicholls, S. Knoop,
N. Palumbo, L. Grose

By: Emma Bitar

Langan Eng, Env, Surv, L.A. & Geo, DPC

	145 Wolcott Contribution Report	170562203 - 145 Wolcott St	
		Report Period	
		From:	09/05/2025 06:00
		To:	09/05/2025 18:00
		PM10 Action Level:	150 µg/m³
		VOC Action Level:	5 ppm

Daily Environmental Summary	Temp (°F)	Relative Humidity (%)	Barometer (inHg)	Wind Speed (mph)	Prevailing Wind Direction
09/05/2025	64.4 - 86.2	51.3 - 91.9	29.9 - 29.9	0.8 - 6.6	SSE

Daily Monitoring Summary	PM10 (µg/m³)	Time	VOC (ppm)	Time
Min Contribution (15 min avg.) - 9/5/2025	0.0	07:13	0.0000	07:13
Max Contribution (15 min avg.) - 9/5/2025	22.7	11:55	0.0027	07:32
Daily Avg. Contribution (15 min avg.) - 9/5/2025	0.4	-	0.0001	-

