

PROJECT No.: 170452203	CLIENT: NYM 145 Wolcott, LLC 233 Broadway, 10 th Fl., New York, NY 10279	DATE: Wed., February 25, 2026
PROJECT: 145-165 Wolcott Street		WEATHER: Partly Cloudy, 28 – 44 °F Wind: SSW @ 1.3 – 4.1 mph
LOCATION: Brooklyn, New York		TIME: 6:45 am – 6:00 pm
SITE CODE: C224256		MONITOR: Brayden Klein

EQUIPMENT: AQS1 Air Monitoring Station x 4 MiniRAE 3000 Photoionization Detector (PID) CAT 335F x 2 Zaxis 135US Hyundai HL955A Bauer BG 36 H ABI TM22 RTG RG 27S Hitachi 670 Takeuchi TB260 Terex TA9 TB260 Geoprobe 7822DT Kubota KX080-4α2	PRESENT AT SITE: Langan (Environmental): Brayden Klein, Alexandra Fitzgerald, Ozioma Nwachukwu Urban Atelier Group (UAG) ECD NY Inc. (ECD): Kyle McGovern
---	--

OBSERVATIONS, DISCUSSIONS, TEST RESULTS, ETC.:

Langan was present to document remediation activities in accordance with the New York State Department of Environmental Conservation (NYSDEC)-approved July 22, 2025 Remedial Action Work Plan (RAWP) at the 145-165 Wolcott Street site in Brooklyn, New York (Site No. C224256).

Site Activities

- ECD used a CAT 335F to load stockpiled non-hazardous non-native fill in the northeastern part of the site into permitted tri-axle trucks for off-site disposal.
- ECD used a CAT 335F to grade an about 50-foot-long by 20-foot-wide area in the eastern part of the site.
- ECD continued installing Preprufe 300R Plus waterproofing/vapor barrier membrane within the pile caps in the central part of the site.
- ECD continued pile cap installation in the central and southern parts of the site.
- ECD poured concrete within the central part of site to form an about 8-inch-thick crane pad.
- ECD advanced 50 PetroFix injection points to a maximum depth of about 16 feet below grade surface (bgs) in the eastern part of the site (Area 2): Injection wells 67, 68, 69, 70, 71, 72, 202, 203, 77, 78, 79, 80, 81, 82, 208, 209, 88, 89, 90, 91, 92, 93, 213, 100, 101, 102, 103, 104, 105, 115, 116, 117, 118, 119, 120, 129, 130, 131, 132, 133, 134, 135, 145, 146, 147, 148, 149, 150, 151, 152.
- ECD used a Geoprobe 7822DT to continue in-situ injections of PetroFix in the northern part of the site (Area 1). ECD used an MQ submersible pump (Serial No. 804633) to inject a diluted PetroFix mixture (15 to 1 ratio of Water:Petrofix) to the following injection point:

Cc: M. Burke, G. Nicholls, S. Knoop, N. Palumbo, L. Grose	By: Brayden Klein
Langan Eng, Env, Surv, L.A. & Geo, DPC	

LANGAN SITE OBSERVATION REPORT- Day 119

- Offset point between wells 29 and 38: 90 gallons of PetroFix mixture was injected from 17 to 22 feet bgs
- Offset point between wells 29 and 38: 30 gallons of PetroFix mixture was injected from 12 to 17 feet bgs
- ECD continued in-situ injections of PetroFix in the western part of the site (Area 3). ECD used an MQ submersible pump (Serial No. 804633) to inject a diluted PetroFix mixture (30 to 1 ratio of Water:PetroFix) to the following 10 injection points:
 - Well 256: 100 gallons of PetroFix mixture was injected from 15 to 20 feet bgs
 - Well 262: 100 gallons of PetroFix mixture was injected from 10 to 15 feet bgs
 - Well 294: 175 gallons of PetroFix mixture was injected from 10 to 15 feet bgs
 - Well 278: 175 gallons of PetroFix mixture was injected from 20 to 25 feet bgs
 - Well 256: 175 gallons of PetroFix mixture was injected from 10 to 15 feet bgs
 - Well 355: 100 gallons of PetroFix mixture was injected from 15 to 20 feet bgs
 - Well 351: 25 gallons of PetroFix mixture was injected from 15 to 20 feet bgs
 - Well 307: 175 gallons of PetroFix mixture was injected from 20 to 25 feet bgs
 - Well 275: 175 gallons of PetroFix mixture was injected from 10 to 15 feet bgs
 - Well 310: 175 gallons of PetroFix mixture was injected from 10 to 15 feet bgs

Material Tracking

- No material was imported to the site.
- ECD exported the following material:
 - 2 loads (approximately 36 cubic yards) of non-hazardous non-native fill were exported to the Waste Management facility in Morgantown, PA.

Material Export Summary – Soil										
Facility Name Location	Clean Earth of North Jersey Kearny, NJ									
Material	Non-Hazardous Low pH Soil		Hazardous Lead Impacted Soil with UHCs		Hazardous Lead Impacted Soil with No UHCs		High Hazardous Lead		Non-Hazardous Soil	
Quantities	No. of Loads	Approx. Volume (CY)	No. of Loads	Approx. Volume (CY)	No. of Loads	Approx. Volume (CY)	No. of Loads	Approx. Volume (CY)	No. of Loads	Approx. Volume (CY)
Today	-	-	-	-	-	-	-	-	-	-
Project Total	332	5,495	56	901	27	467	5	68	1	18

Notes:

1. UHC – Underlying Hazardous Constituent

Cc: M. Burke, G. Nicholls, S. Knoop,
N. Palumbo, L. Grose

By: Brayden Klein

Langan Eng, Env, Surv, L.A. & Geo, DPC

Material Export Summary – Soil						
Facility Name	Clean Earth of New Castle		Conestoga Landfill		Waste Management	
Location	New Castle, DE		Morgantown, PA		Morgantown, PA	
Material	Non-Hazardous Soil		Non-Hazardous Soil		Non-Hazardous Soil	
Quantities	No. of Loads	Approx. Volume (CY)	No. of Loads	Approx. Volume (CY)	No. of Loads	Approx. Volume (CY)
Today	-	-	-	-	2	36
Project Total	729	13,682	39	703	219	3,929

Material Export Summary – C&D						
Facility Name	PPark NJ, LLC		Bayshore Soil Management, LLC		Silva Recycling, LLC	
Location	Prospect Park, NJ		Keasbey, NJ		Newark, NJ	
Material	Asphalt, Concrete		Asphalt, Concrete		Concrete	
Quantities	No. of Loads	Approx. Volume (CY)	No. of Loads	Approx. Volume (CY)	No. of Loads	Approx. Volume (CY)
Today	-	-	-	-	-	-
Project Total	119	2,380	31	645	25	880

Material Import Summary										
Facility Name	Impact Materials, LLC		Callahan & Nannini Quarry Inc.		Durante Brothers Construction		Tilcon West Nyack Quarry		B.G.L.J Servicing Corp	
Location	Jersey City, NJ		Salisbury Mills, NY		Flushing, NY		West Nyack, NY		Moriches, NY	
Material	3/4" Recycled Clean Stone		2-4" Granite Stone		Clean Fill		ASTM No. 5 Stone		Virgin Sand	
Quantities	No. of Loads	Approx. Volume (CY)	No. of Loads	Approx. Volume (CY)	No. of Loads	Approx. Volume (CY)	No. of Loads	Approx. Volume (CY)	No. of Loads	Approx. Volume (CY)
Today	-	-	-	-	-	-	-	-	-	-
Project Total	62	1,240	4	100	215	3,854	18	324	1	18

Samples

- No samples were collected.

Community Air Monitoring Plan (CAMP) Activities

- Langan performed community air monitoring at the perimeter of the work area at one upwind and three downwind locations during intrusive work. Implementation of the Community Air Monitoring Plan (CAMP) included air monitoring for particulate matter for particulates less than 10 µm in diameter (PM10) and VOCs. PM10 and VOC concentrations did not exceed the action levels established by the community air monitoring plan.
- No fugitive dust or odors associated with site activities were observed migrating from the site.

Anticipated Activities

- ECD will continue in-situ PetroFix injections within Treatment Areas 1, 2, and 3 in the northern, eastern, and western parts of the site.

Cc: M. Burke, G. Nicholls, S. Knoop,
N. Palumbo, L. Grose

By: Brayden Klein

Langan Eng, Env, Surv, L.A. & Geo, DPC

LANGAN SITE OBSERVATION REPORT- Day 119

- ECD will export non-hazardous non-native fill to a facility permitted to accept the waste.
- ECD will continue excavating for pile caps and foundation framing/concrete pouring in the central part of the site.

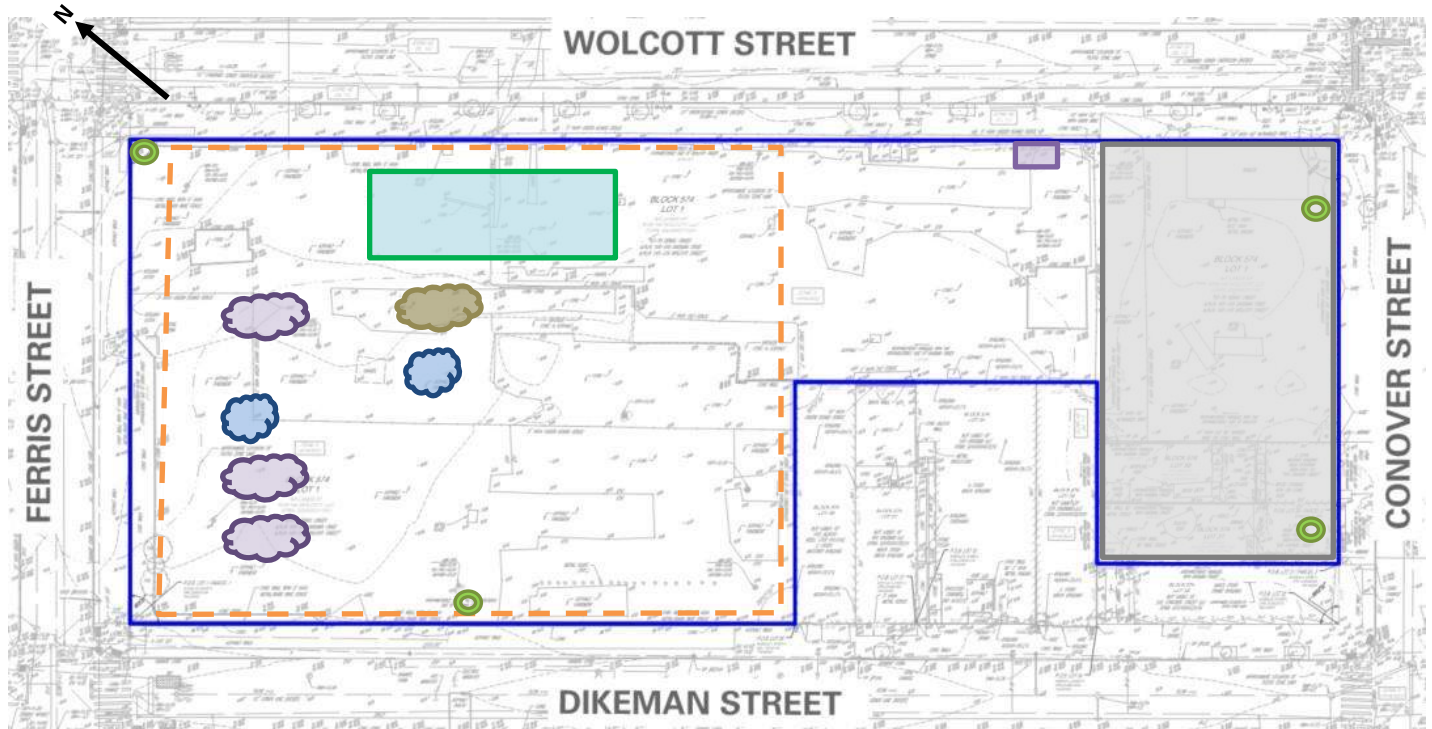
Cc: M. Burke, G. Nicholls, S. Knoop,
N. Palumbo, L. Grose

By: Brayden Klein

Langan Eng, Env, Surv, L.A. & Geo, DPC

Figure 1: Site Map

Wind Direction



Legend

- | | | | |
|--|---|--|---------------------------------------|
| | Site Boundary- | | Approximate Area Excavated |
| | Approximate Work Area | | Approximate Area Backfilled |
| | Approximate Location of Perimeter CAMP Station | | Approximate Area Graded |
| | Approximate Location of Installed Site Cover System | | Approximate IDW Drum Staging Area |
| | | | Approximate C&D Stockpile |
| | | | Approximate Non-Native Fill Stockpile |
| | | | Approximate Stone Stockpile |
| | | | Approximate Sand Stockpile |

Notes:

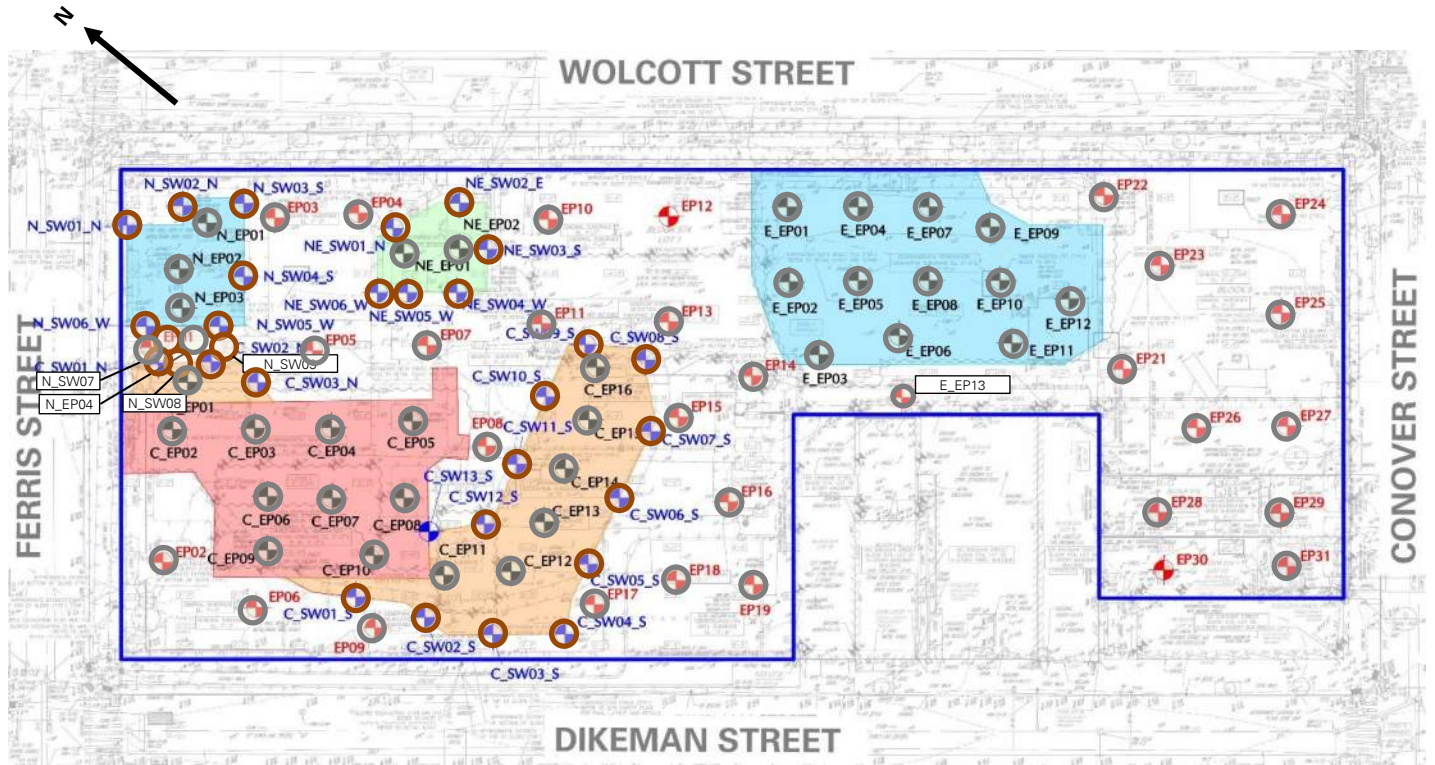
1. Basemap is referenced from 26 March 2025 ALTA/NSPS Land Title Survey prepared by Control Point Associates Inc PC.
2. IDW – Investigation-derived waste generated during the April 2025 and August 2025 supplemental waste characterizations and the January through May 2025 non-aqueous phase liquid gauging.

Cc: M. Burke, G. Nicholls, S. Knoop,
N. Palumbo, L. Grose

By: Brayden Klein

Langan Eng, Env, Surv, L.A. & Geo, DPC

Figure 2: Endpoint / Sidewalk Sample Location Map



Legend

- Site Boundary
- Approximate Location of Documentation Endpoint Soil Sample Collected
- Approximate Location of Documentation Sidewalk Soil Sample Collected
- Approximate Location of Previously Collected Documentation Endpoint Soil Sample
- Approximate Location of Previously Collected Documentation Sidewalk Soil Sample

Notes:

1. Basemap is referenced from 26 March 2025 ALTA/NSPS Land Title Survey prepared by Control Point Associates Inc PC.

Cc: M. Burke, G. Nicholls, S. Knoop,
N. Palumbo, L. Grose

By: Brayden Klein
Langan Eng, Env, Surv, L.A. & Geo, DPC

Photographs



Photo 1: ECD loading a permitted tri-axle truck with non-hazardous non-native fill from the central part of site for off-site disposal (facing west)



Photo 2: ECD pouring concrete within the crane pad in the central part of site (facing southeast)

Cc: M. Burke, G. Nicholls, S. Knoop,
N. Palumbo, L. Grose

By: Brayden Klein
Langan Eng, Env, Surv, L.A. & Geo, DPC



Photo 3: General view of site (facing northwest)



Photo 4: ECD installing the injection points in Treatment Area 2 in the eastern part of site (facing south)

Cc: M. Burke, G. Nicholls, S. Knoop,
N. Palumbo, L. Grose

By: Brayden Klein

Langan Eng, Env, Surv, L.A. & Geo, DPC



Contribution 6 Station 120925 Report

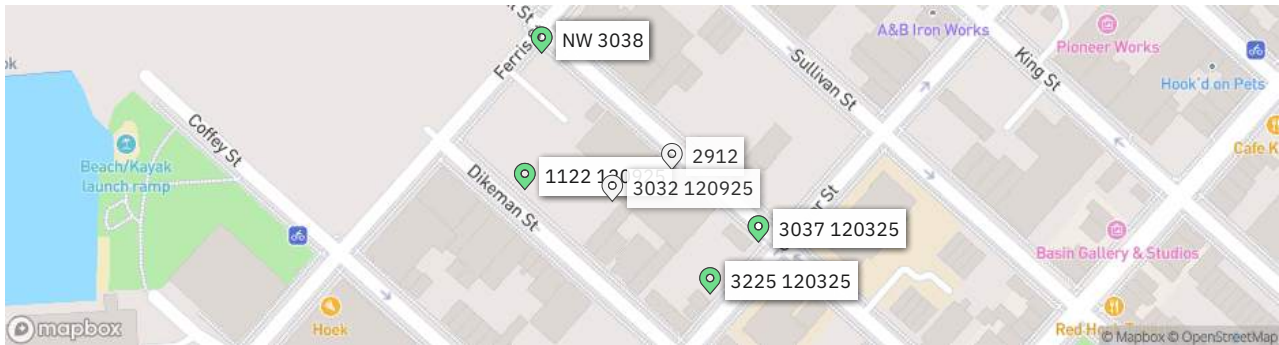
170562203 - 145 Wolcott St

Report Period

From:	02/25/2026 06:00
To:	02/25/2026 18:00
PM10 Action Level:	150 $\mu\text{g}/\text{m}^3$
VOC Action Level:	5 ppm

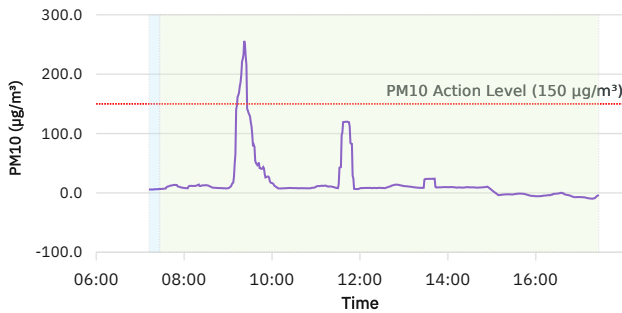
Daily Environmental Summary	Temp (°F)	Relative Humidity (%)	Barometer (inHg)	Wind Speed (mph)	Prevailing Wind Direction
02/25/2026	27.5 - 43.7	57.0 - 91.5	29.6 - 29.7	1.3 - 4.1	SSW

Daily Monitoring Summary	PM10 ($\mu\text{g}/\text{m}^3$)	Time	VOC (ppm)	Time
Min Contribution (15 min avg.) - 2/25/2026	-9.7	17:17	-0.0360	14:54
Max Contribution (15 min avg.) - 2/25/2026	256.1	09:22	0.3633	09:19
Daily Avg. Contribution (15 min avg.) - 2/25/2026	17.0	-	0.0149	-



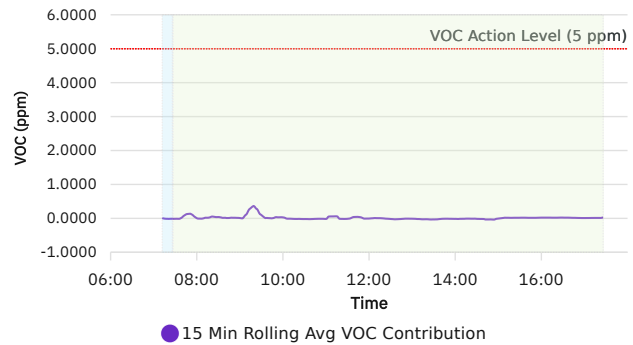
Stopped
 Initial Avg
 Rolling Avg

PM10 Average Contribution ($\mu\text{g}/\text{m}^3$)



Stopped
 Initial Avg
 Rolling Avg

VOC Average Contribution (ppm)



LANGAN SITE OBSERVATION REPORT- Day 120

PROJECT No.: 170452203	CLIENT: NYM 145 Wolcott, LLC 233 Broadway, 10 th Fl., New York, NY 10279	DATE: Thu., February 26, 2026
PROJECT: 145-165 Wolcott Street		WEATHER: Partly Cloudy, 28 – 44 °F Wind: NW @ 0.8 – 4.7 mph
LOCATION: Brooklyn, New York		TIME: 6:45 am – 6:00 pm
SITE CODE: C224256		MONITOR: Brayden Klein

EQUIPMENT: AQS1 Air Monitoring Station x 4 MiniRAE 3000 Photoionization Detector (PID) CAT 335F x 2 Zaxis 135US Hyundai HL955A Bauer BG 36 H ABI TM22 RTG RG 27S Hitachi 670 Takeuchi TB260 Terex TA9 TB260 Geoprobe 7822DT Kubota KX080-4α2	PRESENT AT SITE: Langan (Environmental): Brayden Klein, Alexandra Fitzgerald, Ozioma Nwachukwu, William Bohrer Urban Atelier Group (UAG) ECD NY Inc. (ECD): Kyle McGovern
---	---

OBSERVATIONS, DISCUSSIONS, TEST RESULTS, ETC.:

Langan was present to document remediation activities in accordance with the New York State Department of Environmental Conservation (NYSDEC)-approved July 22, 2025 Remedial Action Work Plan (RAWP) at the 145-165 Wolcott Street site in Brooklyn, New York (Site No. C224256).

Site Activities

- ECD used a CAT 335F to excavate the following areas:
 - An about 40-foot-long by 4-feet-wide to about 3 feet below grade surface (bgs) in the western part of the site for installation of the soil vapor extraction system.
 - An about 30-foot-long by 10-feet-wide to about 1 foot bgs and a 40 foot-long by 30-feet-wide to about 1 foot bgs in the western part of the site for installation of utility piping.
 - Excavated non-native fill was stockpiled adjacent to the excavation and graded to create a level working surface.
 - Excavated non-native fill was screened for odors, staining, and organic vapors using a PID. No impacts were observed.
- ECD used a CAT 335F to backfill an about 75-foot-long by 10-feet-wide area from 8 feet bgs to working grade in the central part of site with previously imported clean fill.
- ECD used a CAT 335F to grade an about 40-foot-long by 40-feet-wide area and an about 30-foot-long by 10-feet-wide area in the eastern and central parts of the site.
- ECD installed Preprufe 300R Plus waterproofing/vapor barrier membrane within the crane pad in the central part of the site.

Cc: M. Burke, G. Nicholls, S. Knoop, N. Palumbo, L. Grose	By: Brayden Klein
Langan Eng, Env, Surv, L.A. & Geo, DPC	

LANGAN SITE OBSERVATION REPORT- Day 120

- ECD advanced 9 PetroFix injection points to a maximum depth of about 16 feet bgs in the central part of the site (Area 2): Injection wells 76, 86, 87, 97, 98, 99, 112, 113, and 114.
- ECD used a Geoprobe 7822DT to continue in-situ injections of PetroFix in the northern part of the site (Area 1). ECD used an MQ submersible pump (Serial No. 804633) to inject a diluted PetroFix mixture (15 to 1 ratio of Water:Petrofix) to the following 3 injection points:
 - Offset point between wells 20 and 29: 90 gallons of PetroFix mixture was injected from 7 to 12 feet bgs
 - Offset point between wells 22 and 31: 90 gallons of PetroFix mixture was injected from 7 to 12 feet bgs
 - Offset point between wells 40, 41, 49, and 50: 100 gallons of PetroFix mixture was injected from 17 to 22 feet bgs
 - Offset point between wells 40, 41, 49, and 50: 100 gallons of PetroFix mixture was injected from 12 to 17 feet bgs
 - Offset point between wells 40, 41, 49, and 50: 90 gallons of PetroFix mixture was injected from 7 to 12 feet bgs
- ECD continued in-situ injections of PetroFix in the eastern part of the site (Area 2). ECD used an MQ submersible pump (Serial No. 804633) to inject a diluted PetroFix mixture (30 to 1 ratio of Water:PetroFix) to the following 10 injection points:
 - Well 243: 175 gallons of PetroFix mixture was injected from 11 to 16 feet bgs
 - Well 243: 175 gallons of PetroFix mixture was injected from 6 to 11 feet bgs
 - Well 227: 175 gallons of PetroFix mixture was injected from 11 to 16 feet bgs
 - Well 227: 175 gallons of PetroFix mixture was injected from 6 to 11 feet bgs
 - Well 228: 175 gallons of PetroFix mixture was injected from 11 to 16 feet bgs
 - Well 228: 175 gallons of PetroFix mixture was injected from 6 to 11 feet bgs
 - Well 241: 175 gallons of PetroFix mixture was injected from 11 to 16 feet bgs
 - Well 241: 175 gallons of PetroFix mixture was injected from 6 to 11 feet bgs
 - Well 242: 175 gallons of PetroFix mixture was injected from 11 to 16 feet bgs
 - Well 242: 175 gallons of PetroFix mixture was injected from 6 to 11 feet bgs
 - Well 226: 175 gallons of PetroFix mixture was injected from 11 to 16 feet bgs
 - Well 226: 175 gallons of PetroFix mixture was injected from 6 to 11 feet bgs
 - Well 217: 175 gallons of PetroFix mixture was injected from 11 to 16 feet bgs
 - Well 217: 175 gallons of PetroFix mixture was injected from 6 to 11 feet bgs
 - Well 196: 75 gallons of PetroFix mixture was injected from 11 to 16 feet bgs
 - Well 196: 175 gallons of PetroFix mixture was injected from 6 to 11 feet bgs
 - Well 194: 175 gallons of PetroFix mixture was injected from 11 to 16 feet bgs
 - Well 181: 175 gallons of PetroFix mixture was injected from 11 to 16 feet bgs

Material Tracking

- No material was imported to the site.

Cc: M. Burke, G. Nicholls, S. Knoop,
N. Palumbo, L. Grose

By: Brayden Klein

Langan Eng, Env, Surv, L.A. & Geo, DPC

- No material was exported from the site.

Material Export Summary – Soil										
Facility Name Location	Clean Earth of North Jersey Kearny, NJ									
Material	Non-Hazardous Low pH Soil		Hazardous Lead Impacted Soil with UHCs		Hazardous Lead Impacted Soil with No UHCs		High Hazardous Lead		Non-Hazardous Soil	
Quantities	No. of Loads	Approx. Volume (CY)	No. of Loads	Approx. Volume (CY)	No. of Loads	Approx. Volume (CY)	No. of Loads	Approx. Volume (CY)	No. of Loads	Approx. Volume (CY)
Today	-	-	-	-	-	-	-	-	-	-
Project Total	332	5,495	56	901	27	467	5	68	1	18

Notes:

- UHC – Underlying Hazardous Constituent

Material Export Summary – Soil						
Facility Name Location	Clean Earth of New Castle New Castle, DE		Conestoga Landfill Morgantown, PA		Waste Management Morgantown, PA	
Material	Non-Hazardous Soil		Non-Hazardous Soil		Non-Hazardous Soil	
Quantities	No. of Loads	Approx. Volume (CY)	No. of Loads	Approx. Volume (CY)	No. of Loads	Approx. Volume (CY)
Today	-	-	-	-	-	-
Project Total	729	13,682	39	703	219	3,929

Material Export Summary – C&D						
Facility Name Location	PPark NJ, LLC Prospect Park, NJ		Bayshore Soil Management, LLC Keasbey, NJ		Silva Recycling, LLC Newark, NJ	
Material	Asphalt, Concrete		Asphalt, Concrete		Concrete	
Quantities	No. of Loads	Approx. Volume (CY)	No. of Loads	Approx. Volume (CY)	No. of Loads	Approx. Volume (CY)
Today	-	-	-	-	-	-
Project Total	119	2,380	31	645	25	880

Cc: M. Burke, G. Nicholls, S. Knoop,
N. Palumbo, L. Grose

By: Brayden Klein

Langan Eng, Env, Surv, L.A. & Geo, DPC

Material Import Summary										
Facility Name	Impact Materials, LLC		Callahan & Nannini Quarry Inc.		Durante Brothers Construction		Tilcon West Nyack Quarry		B.G.L.J Servicing Corp	
Location	Jersey City, NJ		Salisbury Mills, NY		Flushing, NY		West Nyack, NY		Moriches, NY	
Material	3/4" Recycled Clean Stone		2-4" Granite Stone		Clean Fill		ASTM No. 5 Stone		Virgin Sand	
Quantities	No. of Loads	Approx. Volume (CY)	No. of Loads	Approx. Volume (CY)	No. of Loads	Approx. Volume (CY)	No. of Loads	Approx. Volume (CY)	No. of Loads	Approx. Volume (CY)
Today	-	-	-	-	-	-	-	-	-	-
Project Total	62	1,240	4	100	215	3,854	18	324	1	18

Samples

- No samples were collected.

Community Air Monitoring Plan (CAMP) Activities

- Langan performed community air monitoring at the perimeter of the work area at one upwind and three downwind locations during intrusive work. Implementation of the Community Air Monitoring Plan (CAMP) included air monitoring for particulate matter for particulates less than 10 µm in diameter (PM10) and VOCs. PM10 and VOC concentrations did not exceed the action levels established by the community air monitoring plan.
- No fugitive dust or odors associated with site activities were observed migrating from the site.

Anticipated Activities

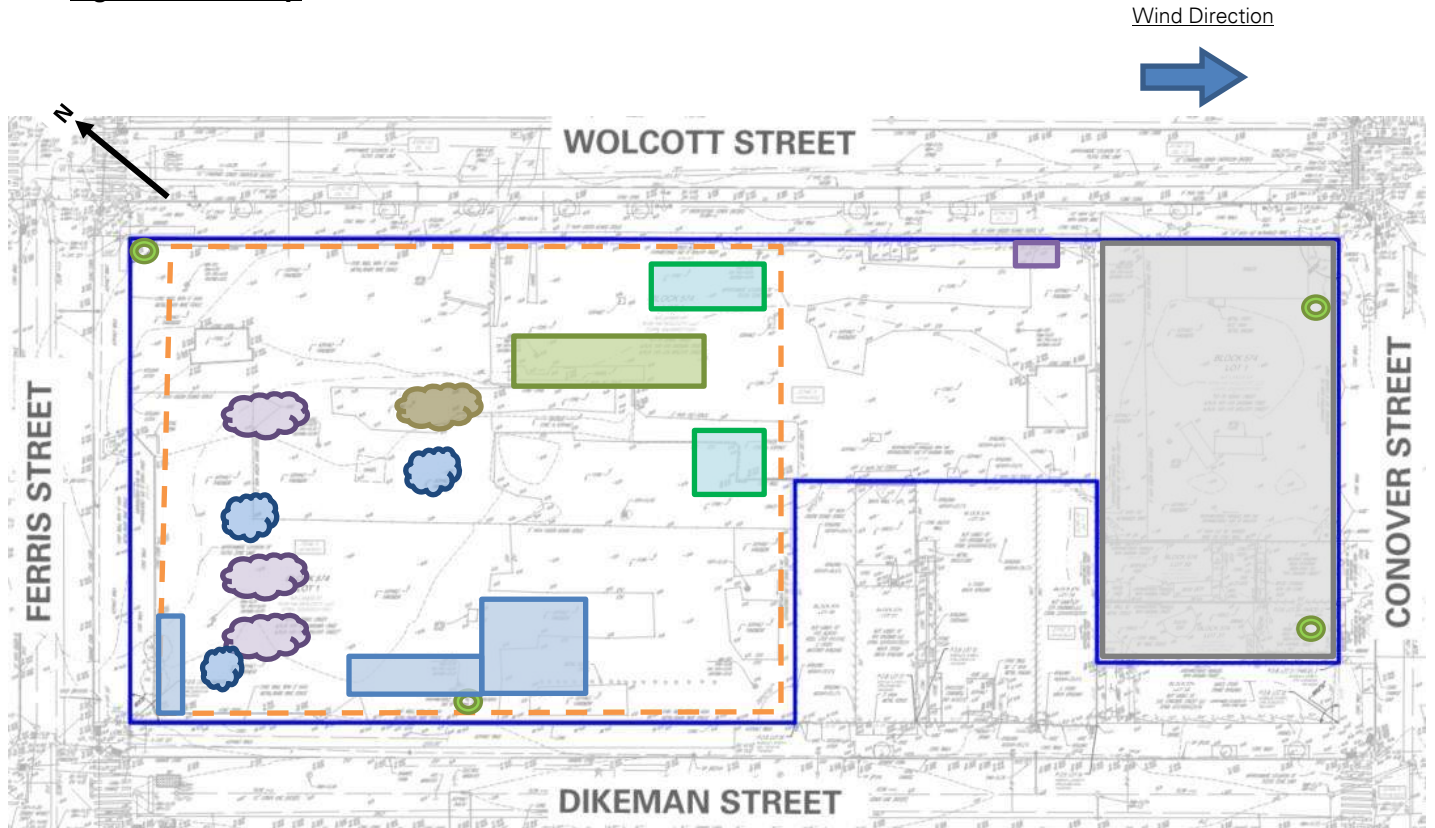
- ECD will continue in-situ PetroFix injections within Treatment Areas 1 and 3 in the northern and western parts of the site.
- ECD will export non-hazardous non-native fill to a facility permitted to accept the waste.
- ECD will continue excavating for pile caps and foundation framing/concrete pouring in the central part of the site.

Cc: M. Burke, G. Nicholls, S. Knoop,
N. Palumbo, L. Grose

By: Brayden Klein

Langan Eng, Env, Surv, L.A. & Geo, DPC

Figure 1: Site Map



Legend

- | | | | |
|--|---|--|---------------------------------------|
| | Site Boundary- | | Approximate Area Excavated |
| | Approximate Work Area | | Approximate Area Backfilled |
| | Approximate Location of Perimeter CAMP Station | | Approximate Area Graded |
| | Approximate Location of Installed Site Cover System | | Approximate IDW Drum Staging Area |
| | | | Approximate C&D Stockpile |
| | | | Approximate Non-Native Fill Stockpile |
| | | | Approximate Stone Stockpile |
| | | | Approximate Sand Stockpile |

Notes:

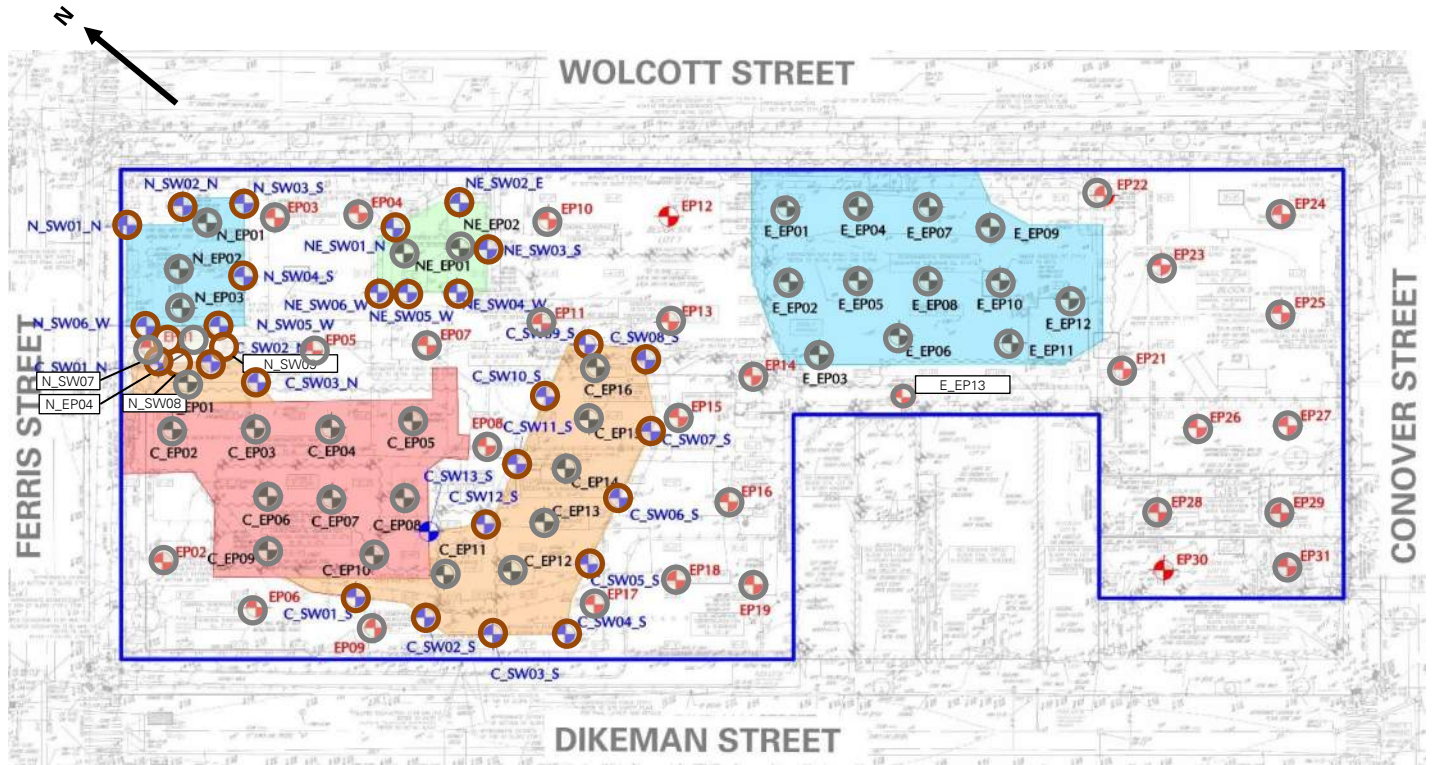
1. Basemap is referenced from 26 March 2025 ALTA/NSPS Land Title Survey prepared by Control Point Associates Inc PC.
2. IDW – Investigation-derived waste generated during the April 2025 and August 2025 supplemental waste characterizations and the January through May 2025 non-aqueous phase liquid gauging.

Cc: M. Burke, G. Nicholls, S. Knoop,
N. Palumbo, L. Grose

By: Brayden Klein

Langan Eng, Env, Surv, L.A. & Geo, DPC

Figure 2: Endpoint / Sidewalk Sample Location Map



Legend

- Site Boundary
- Approximate Location of Documentation Endpoint Soil Sample Collected
- Approximate Location of Documentation Sidewalk Soil Sample Collected
- Approximate Location of Previously Collected Documentation Endpoint Soil Sample
- Approximate Location of Previously Collected Documentation Sidewalk Soil Sample

Notes:

1. Basemap is referenced from 26 March 2025 ALTA/NSPS Land Title Survey prepared by Control Point Associates Inc PC.

Cc: M. Burke, G. Nicholls, S. Knoop,
N. Palumbo, L. Grose

By: Brayden Klein
Langan Eng, Env, Surv, L.A. & Geo, DPC

LANGAN SITE OBSERVATION REPORT- Day 120

Photographs



Photo 1: ECD excavating non-hazardous non-native fill in the western part of the site for utility pipe installation (facing west)



Photo 2: ECD backfilling with previously imported clean fill in the central part of site (facing southwest)

Cc: M. Burke, G. Nicholls, S. Knoop,
N. Palumbo, L. Grose

By: Brayden Klein

Langan Eng, Env, Surv, L.A. & Geo, DPC



Photo 3: General view of Treatment Area 2 in the eastern part of the site (facing south)



Photo 4: ECD using a Geoprobe 7822DT to inject PetroFix in Treatment Area 1 in the northern part of the site (facing northwest)

Cc: M. Burke, G. Nicholls, S. Knoop,
N. Palumbo, L. Grose

By: Brayden Klein

Langan Eng, Env, Surv, L.A. & Geo, DPC



Contribution 6 Station 120925 Report

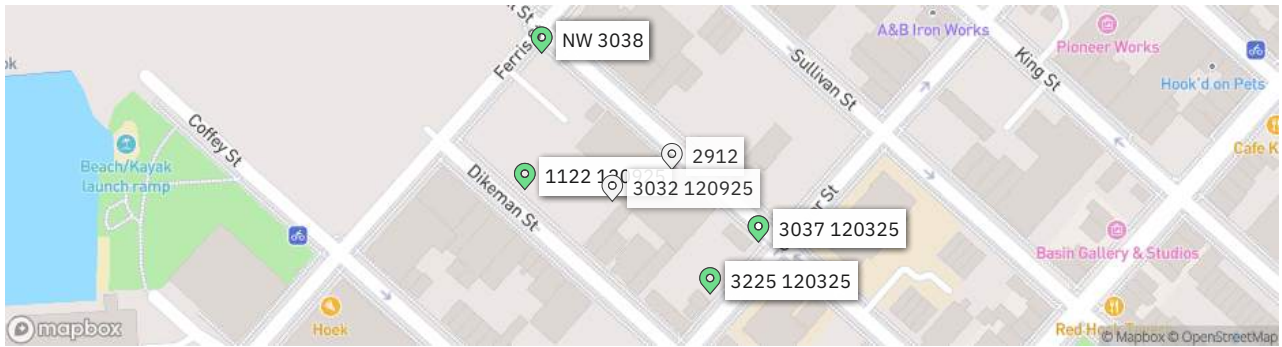
170562203 - 145 Wolcott St

Report Period

From:	02/26/2026 06:00
To:	02/26/2026 18:00
PM10 Action Level:	150 $\mu\text{g}/\text{m}^3$
VOC Action Level:	5 ppm

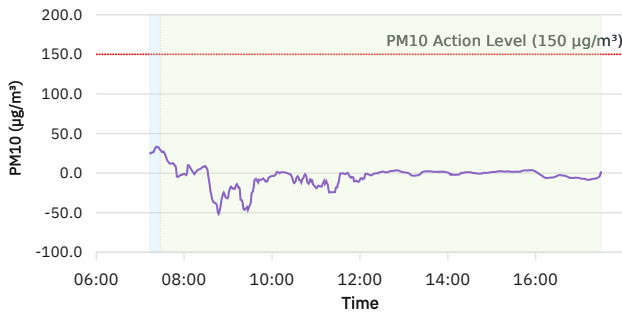
Daily Environmental Summary	Temp (°F)	Relative Humidity (%)	Barometer (inHg)	Wind Speed (mph)	Prevailing Wind Direction
02/26/2026	27.9 - 43.5	49.4 - 93.8	29.8 - 29.9	0.8 - 4.7	NW

Daily Monitoring Summary	PM10 ($\mu\text{g}/\text{m}^3$)	Time	VOC (ppm)	Time
Min Contribution (15 min avg.) - 2/26/2026	-51.4	08:47	-0.0373	08:49
Max Contribution (15 min avg.) - 2/26/2026	33.3	07:22	0.0720	12:17
Daily Avg. Contribution (15 min avg.) - 2/26/2026	-4.0	-	0.0040	-



Stopped
 Initial Avg
 Rolling Avg

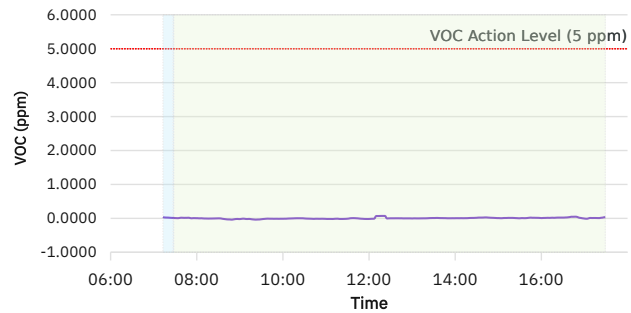
PM10 Average Contribution ($\mu\text{g}/\text{m}^3$)



● 15 Min Rolling Avg PM10 Contribution

Stopped
 Initial Avg
 Rolling Avg

VOC Average Contribution (ppm)



● 15 Min Rolling Avg VOC Contribution

LANGAN SITE OBSERVATION REPORT- Day 121

PROJECT No.: 170452203	CLIENT: NYM 145 Wolcott, LLC 233 Broadway, 10 th Fl., New York, NY 10279	DATE: Fri., February 27, 2026
PROJECT: 145-165 Wolcott Street		WEATHER: Partly Cloudy, 24 – 46 °F Wind: SSW @ 0.4 – 6.9 mph
LOCATION: Brooklyn, New York		TIME: 6:45 am – 5:45 pm
SITE CODE: C224256		MONITOR: Emma Bitar

EQUIPMENT: AQS1 Air Monitoring Station x 4 MiniRAE 3000 Photoionization Detector (PID) CAT 335F x 2 Zaxis 135US Hyundai HL955A Bauer BG 36 H ABI TM22 RTG RG 27S Hitachi 670 Takeuchi TB260 Terex TA9 TB260 Geoprobe 7822DT Kubota KX080-4α2	PRESENT AT SITE: Langan (Environmental): Emma Bitar, Alexandra Fitzgerald, Ozioma Nwachukwu Urban Atelier Group (UAG) ECD NY Inc. (ECD): Kyle McGovern
---	--

OBSERVATIONS, DISCUSSIONS, TEST RESULTS, ETC.:

Langan was present to document remediation activities in accordance with the New York State Department of Environmental Conservation (NYSDEC)-approved July 22, 2025 Remedial Action Work Plan (RAWP) at the 145-165 Wolcott Street site in Brooklyn, New York (Site No. C224256).

Site Activities

- ECD used a CAT 335F to excavate an about 60 foot-long by 50-foot-wide area to about 1 foot below grade surface (bgs) in the western part of the site.
 - Excavated non-native fill was stockpiled adjacent to the area of excavation and graded to create a level working surface.
 - Excavated non-native fill was screened for odors, staining, and organic vapors using a PID. No impacts were observed.
- ECD used a CAT 335F to backfill an about 75-foot-long by 10-foot-wide area from 8 feet bgs to working grade in the central part of site with previously imported clean fill.
- ECD used a CAT 333F to backfill an area of about 25-foot-long by 4-foot-wide area with bucket mixed PetroFix and imported clean fill within the central part of the site.
- ECD used a CAT 335F to grade an about 50 foot-long by 40-feet-wide area and an about 30-foot-long by 10-foot-wide area in the eastern and central parts of the site.
- ECD installed Preprufe 300R Plus waterproofing/vapor barrier membrane within the crane pad in the central part of the site.

Cc: M. Burke, G. Nicholls, S. Knoop, N. Palumbo, L. Grose	By: Emma Bitar
Langan Eng, Env, Surv, L.A. & Geo, DPC	

LANGAN SITE OBSERVATION REPORT- Day 121

- ECD advanced 15 PetroFix injection points to a maximum depth of about 16 feet bgs in the central part of the site (Area 2): Injection wells 64, 65, 66, 73, 74, 75, 83, 84, 85, 94, 95, 96, 109, 110, and 111.
- ECD continued in-situ injections of PetroFix in the eastern part of the site (Area 2). ECD used an MQ submersible pump (Serial No. 804633) to inject a diluted PetroFix mixture (30 to 1 ratio of Water:PetroFix) to the following 12 injection points:
 - Well 194: 175 gallons of PetroFix mixture was injected from 6 to 11 feet bgs
 - Well 196: 100 gallons of PetroFix mixture was injected from 11 to 16 feet bgs
 - Well 182: 175 gallons of PetroFix mixture was injected from 6 to 11 feet bgs
 - Well 183: 175 gallons of PetroFix mixture was injected from 11 to 16 feet bgs
 - Well 183: 175 gallons of PetroFix mixture was injected from 6 to 11 feet bgs
 - Well 240: 175 gallons of PetroFix mixture was injected from 11 to 16 feet bgs
 - Well 240: 175 gallons of PetroFix mixture was injected from 6 to 11 feet bgs
 - Well 168: 175 gallons of PetroFix mixture was injected from 11 to 16 feet bgs
 - Well 168: 175 gallons of PetroFix mixture was injected from 6 to 11 feet bgs
 - Well 239: 175 gallons of PetroFix mixture was injected from 11 to 16 feet bgs
 - Well 239: 175 gallons of PetroFix mixture was injected from 6 to 11 feet bgs
 - Well 167: 175 gallons of PetroFix mixture was injected from 11 to 16 feet bgs
 - Well 125: 175 gallons of PetroFix mixture was injected from 11 to 16 feet bgs
 - Well 125: 175 gallons of PetroFix mixture was injected from 6 to 11 feet bgs
 - Well 165: 175 gallons of PetroFix mixture was injected from 11 to 16 feet bgs
 - Well 165: 175 gallons of PetroFix mixture was injected from 6 to 11 feet bgs
 - Well 181: 175 gallons of PetroFix mixture was injected from 11 to 16 feet bgs
 - Well 181: 175 gallons of PetroFix mixture was injected from 6 to 11 feet bgs
 - Well 124: 175 gallons of PetroFix mixture was injected from 11 to 16 feet bgs
 - Well 124: 175 gallons of PetroFix mixture was injected from 6 to 11 feet bgs

Material Tracking

- No material was imported to the site.
- No material was exported from the site.

Cc: M. Burke, G. Nicholls, S. Knoop,
N. Palumbo, L. Grose

By: Emma Bitar

Langan Eng, Env, Surv, L.A. & Geo, DPC

Material Export Summary – Soil										
Facility Name	Clean Earth of North Jersey									
Location	Kearny, NJ									
Material	Non-Hazardous Low pH Soil		Hazardous Lead Impacted Soil with UHCs		Hazardous Lead Impacted Soil with No UHCs		High Hazardous Lead		Non-Hazardous Soil	
Quantities	No. of Loads	Approx. Volume (CY)	No. of Loads	Approx. Volume (CY)	No. of Loads	Approx. Volume (CY)	No. of Loads	Approx. Volume (CY)	No. of Loads	Approx. Volume (CY)
Today	-	-	-	-	-	-	-	-	-	-
Project Total	332	5,495	56	901	27	467	5	68	1	18

Notes:

1. UHC – Underlying Hazardous Constituent

Material Export Summary – Soil						
Facility Name	Clean Earth of New Castle		Conestoga Landfill		Waste Management	
Location	New Castle, DE		Morgantown, PA		Morgantown, PA	
Material	Non-Hazardous Soil		Non-Hazardous Soil		Non-Hazardous Soil	
Quantities	No. of Loads	Approx. Volume (CY)	No. of Loads	Approx. Volume (CY)	No. of Loads	Approx. Volume (CY)
Today	-	-	-	-	-	-
Project Total	729	13,682	39	703	219	3,929

Material Export Summary – C&D						
Facility Name	PPark NJ, LLC		Bayshore Soil Management, LLC		Silva Recycling, LLC	
Location	Prospect Park, NJ		Keasbey, NJ		Newark, NJ	
Material	Asphalt, Concrete		Asphalt, Concrete		Concrete	
Quantities	No. of Loads	Approx. Volume (CY)	No. of Loads	Approx. Volume (CY)	No. of Loads	Approx. Volume (CY)
Today	-	-	-	-	-	-
Project Total	119	2,380	31	645	25	880

Material Import Summary										
Facility Name	Impact Materials, LLC		Callahan & Nannini Quarry Inc.		Durante Brothers Construction		Tilcon West Nyack Quarry		B.G.L.J Servicing Corp	
Location	Jersey City, NJ		Salisbury Mills, NY		Flushing, NY		West Nyack, NY		Moriches, NY	
Material	3/4" Recycled Clean Stone		2-4" Granite Stone		Clean Fill		ASTM No. 5 Stone		Virgin Sand	
Quantities	No. of Loads	Approx. Volume (CY)	No. of Loads	Approx. Volume (CY)	No. of Loads	Approx. Volume (CY)	No. of Loads	Approx. Volume (CY)	No. of Loads	Approx. Volume (CY)
Today	-	-	-	-	-	-	-	-	-	-
Project Total	62	1,240	4	100	215	3,854	18	324	1	18

Cc: M. Burke, G. Nicholls, S. Knoop,
N. Palumbo, L. Grose

By: Emma Bitar

Langan Eng, Env, Surv, L.A. & Geo, DPC

LANGAN SITE OBSERVATION REPORT– Day 121

Samples

- No samples were collected.

Community Air Monitoring Plan (CAMP) Activities

- Langan performed community air monitoring at the perimeter of the work area at one upwind and three downwind locations during intrusive work. Implementation of the Community Air Monitoring Plan (CAMP) included air monitoring for particulate matter for particulates less than 10 µm in diameter (PM10) and VOCs. PM10 and VOC concentrations did not exceed the action levels established by the community air monitoring plan.
- No fugitive dust or odors associated with site activities were observed migrating from the site.

Anticipated Activities

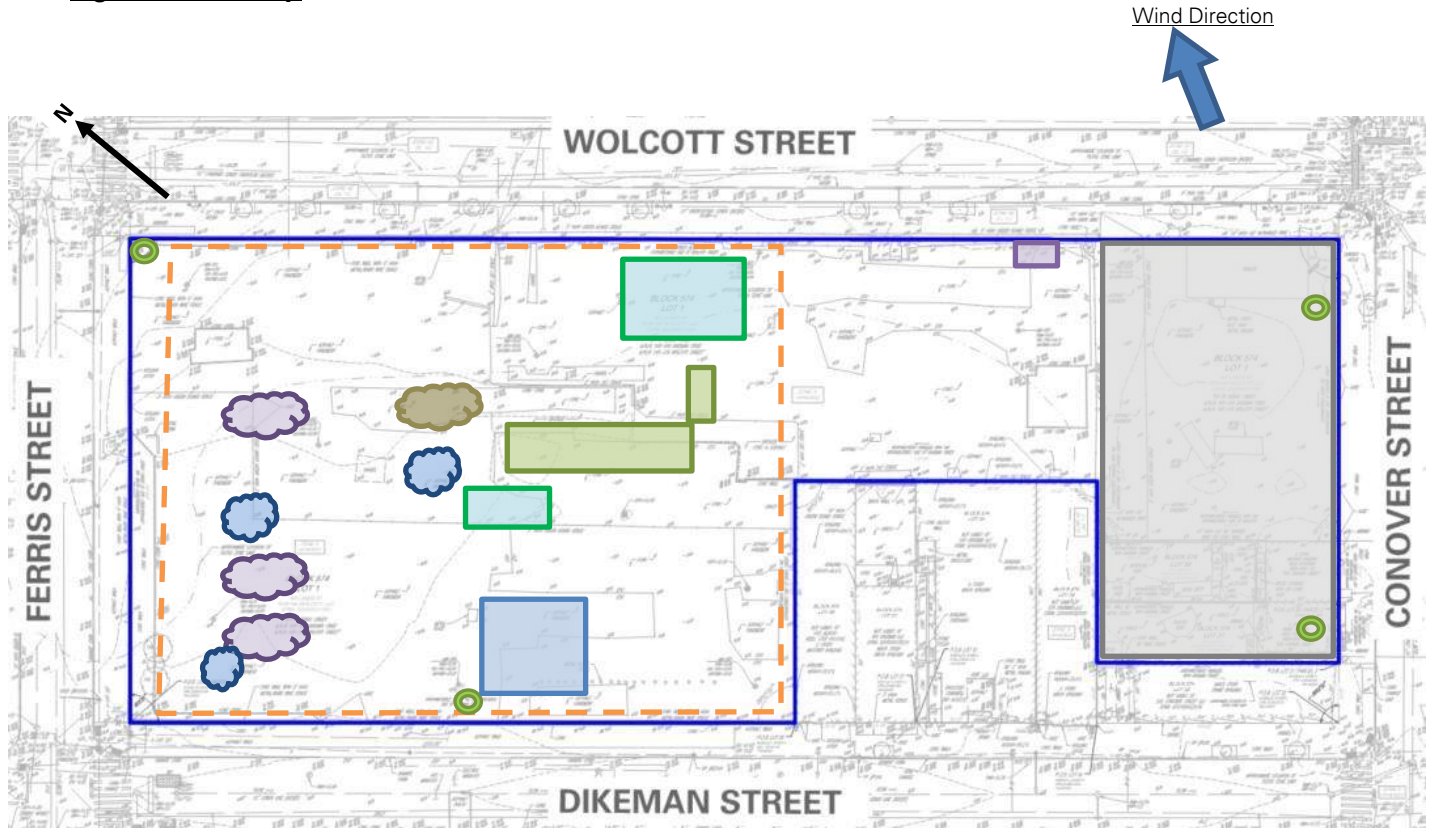
- ECD will continue in-situ PetroFix injections within Treatment Area 2 in the eastern part of the site.
- ECD will export non-hazardous non-native fill to a facility permitted to accept the waste.
- ECD will continue excavating for pile caps and foundation framing/concrete pouring in the central part of the site.

Cc: M. Burke, G. Nicholls, S. Knoop,
N. Palumbo, L. Grose

By: Emma Bitar

Langan Eng, Env, Surv, L.A. & Geo, DPC

Figure 1: Site Map



Legend

- | | | | |
|--|---|--|---------------------------------------|
| | Site Boundary- | | Approximate Area Excavated |
| | Approximate Work Area | | Approximate Area Backfilled |
| | Approximate Location of Perimeter CAMP Station | | Approximate Area Graded |
| | Approximate Location of Installed Site Cover System | | Approximate IDW Drum Staging Area |
| | | | Approximate C&D Stockpile |
| | | | Approximate Non-Native Fill Stockpile |
| | | | Approximate Stone Stockpile |
| | | | Approximate Sand Stockpile |

Notes:

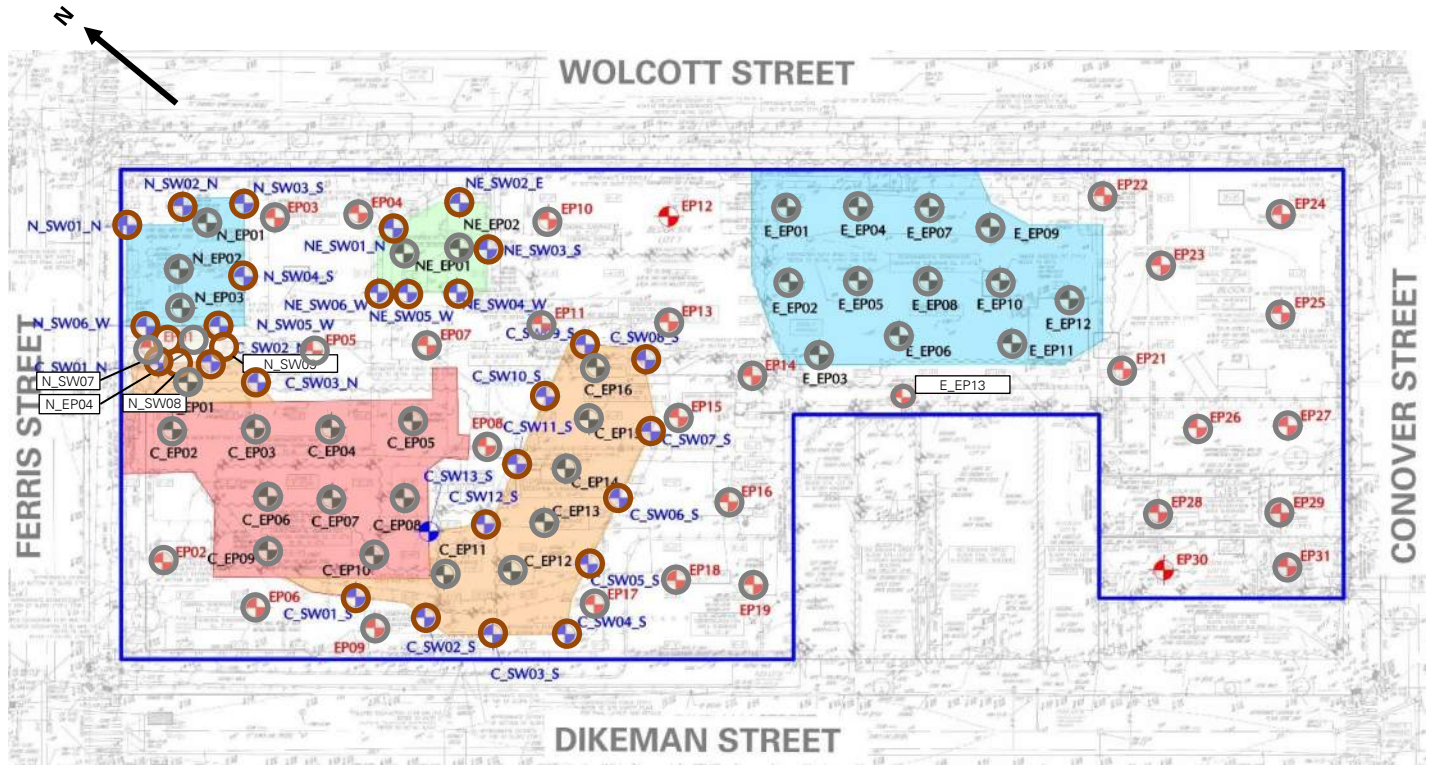
1. Basemap is referenced from 26 March 2025 ALTA/NSPS Land Title Survey prepared by Control Point Associates Inc PC.
2. IDW – Investigation-derived waste generated during the April 2025 and August 2025 supplemental waste characterizations and the January through May 2025 non-aqueous phase liquid gauging.

Cc: M. Burke, G. Nicholls, S. Knoop,
N. Palumbo, L. Grose

By: Emma Bitar

Langan Eng, Env, Surv, L.A. & Geo, DPC

Figure 2: Endpoint / Sidewalk Sample Location Map



Legend

- Site Boundary
- Approximate Location of Documentation Endpoint Soil Sample Collected
- Approximate Location of Documentation Sidewall Soil Sample Collected
- Approximate Location of Previously Collected Documentation Endpoint Soil Sample
- Approximate Location of Previously Collected Documentation Sidewall Soil Sample

Notes:

1. Basemap is referenced from 26 March 2025 ALTA/NSPS Land Title Survey prepared by Control Point Associates Inc PC.

Cc: M. Burke, G. Nicholls, S. Knoop,
N. Palumbo, L. Grose

By: Emma Bitar

Langan Eng, Env, Surv, L.A. & Geo, DPC

Photographs



Photo 1: ECD excavating non-hazardous non-native fill in the western part of the site (facing west)



Photo 2: ECD backfilling with previously imported clean fill and PetroFix in the central part of site (facing northeast)

Cc: M. Burke, G. Nicholls, S. Knoop,
N. Palumbo, L. Grose

By: Emma Bitar

Langan Eng, Env, Surv, L.A. & Geo, DPC



Photo 3: ECD advancing PetroFix injection points in Treatment Area 2 in the eastern part of the site (facing northwest)



Photo 4: ECD excavating in the western part of the site (facing west)

Cc: M. Burke, G. Nicholls, S. Knoop,
N. Palumbo, L. Grose

By: Emma Bitar

Langan Eng, Env, Surv, L.A. & Geo, DPC



Contribution 6 Station 120925 Report

170562203 - 145 Wolcott St

Report Period

From:	02/27/2026 06:00
To:	02/27/2026 18:00
PM10 Action Level:	150 $\mu\text{g}/\text{m}^3$
VOC Action Level:	5 ppm

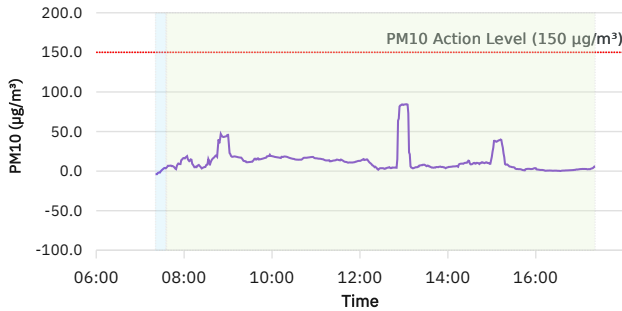
Daily Environmental Summary	Temp (°F)	Relative Humidity (%)	Barometer (inHg)	Wind Speed (mph)	Prevailing Wind Direction
02/27/2026	24.1 - 45.9	45.8 - 84.2	30.1 - 30.2	0.4 - 6.9	SSW

Daily Monitoring Summary	PM10 ($\mu\text{g}/\text{m}^3$)	Time	VOC (ppm)	Time
Min Contribution (15 min avg.) - 2/27/2026	-3.8	07:21	-0.0120	11:48
Max Contribution (15 min avg.) - 2/27/2026	84.5	13:03	0.1500	07:21
Daily Avg. Contribution (15 min avg.) - 2/27/2026	12.4	-	0.0143	-



Stopped
 Initial Avg
 Rolling Avg

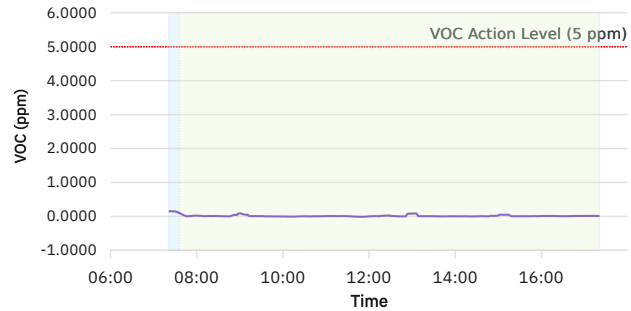
PM10 Average Contribution ($\mu\text{g}/\text{m}^3$)



● 15 Min Rolling Avg PM10 Contribution

Stopped
 Initial Avg
 Rolling Avg

VOC Average Contribution (ppm)



● 15 Min Rolling Avg VOC Contribution

PROJECT No.: 170452203	CLIENT: NYM 145 Wolcott, LLC 233 Broadway, 10 th Fl., New York, NY 10279	DATE: Sat., February 28, 2026
PROJECT: 145-165 Wolcott Street		WEATHER: Partly Cloudy, 37 – 59 °F Wind: SW @ 0.5 – 5.1 mph
LOCATION: Brooklyn, New York		TIME: 9:00 am – 3:45 pm
SITE CODE: C224256		MONITOR: Emma Bitar

EQUIPMENT:

AQS1 Air Monitoring Station x 4
MiniRAE 3000 Photoionization Detector (PID)
CAT 335F x 2
Zaxis 135US
Hyundai HL955A
Bauer BG 36 H
ABI TM22
RTG RG 27S
Hitachi 670
Takeuchi TB260
Terex TA9
TB260
Geoprobe 7822DT
Kubota KX080-4α2
BW120 AD

PRESENT AT SITE:

Langan (Environmental): Emma Bitar,
Charbel Abou-khalil, Ozioma Nwachukwu
Urban Atelier Group (UAG)
ECD NY Inc. (ECD): Kyle McGovern

OBSERVATIONS, DISCUSSIONS, TEST RESULTS, ETC.:

Langan was present to document remediation activities in accordance with the New York State Department of Environmental Conservation (NYSDEC)-approved July 22, 2025 Remedial Action Work Plan (RAWP) at the 145-165 Wolcott Street site in Brooklyn, New York (Site No. C224256).

Site Activities

- ECD used a CAT 335F to excavate an about 30-foot-long by 5-foot-wide area to about 1 foot below grade surface (bgs) in the western part of the site.
 - Excavated non-native fill was stockpiled adjacent to the area of excavation and graded to create a level working surface.
 - Excavated non-native fill was screened for odors, staining, and organic vapors using a PID. No impacts were observed.
- ECD placed geotextile fabric in an about 50-foot-long by 30-foot wide area and an about 8-inch-thick layer of ¾-inch virgin stone (gas permeable aggregate) as part of the sub-slab depressurization (SSD) system within the western part of the site.
- ECD used a CAT 335F to backfill an about 75 foot-long by 10-foot-wide area from 8 feet bgs to working grade in the central part of site with previously imported clean fill.
- ECD continued in-situ injections of PetroFix in the eastern part of the site (Area 2). ECD used an MQ submersible pump (Serial No. 804633) to inject a diluted PetroFix mixture (30 to 1 ratio of Water:PetroFix) to the following 18 injection points:
 - Well 167: 175 gallons of PetroFix mixture was injected from 6 to 11 feet bgs

Cc: M. Burke, G. Nicholls, S. Knoop,
N. Palumbo, L. Grose

By: Emma Bitar

Langan Eng, Env, Surv, L.A. & Geo, DPC

LANGAN SITE OBSERVATION REPORT- Day 122

- Well 180: 175 gallons of PetroFix mixture was injected from 11 to 16 feet bgs
- Well 153: 175 gallons of PetroFix mixture was injected from 11 to 16 feet bgs
- Well 153: 175 gallons of PetroFix mixture was injected from 6 to 11 feet bgs
- Well 223: 175 gallons of PetroFix mixture was injected from 11 to 16 feet bgs
- Well 223: 175 gallons of PetroFix mixture was injected from 6 to 11 feet bgs
- Well 138: 175 gallons of PetroFix mixture was injected from 11 to 16 feet bgs
- Well 138: 175 gallons of PetroFix mixture was injected from 6 to 11 feet bgs
- Well 238: 175 gallons of PetroFix mixture was injected from 11 to 16 feet bgs
- Well 238: 175 gallons of PetroFix mixture was injected from 6 to 11 feet bgs
- Well 197: 175 gallons of PetroFix mixture was injected from 11 to 16 feet bgs
- Well 137: 175 gallons of PetroFix mixture was injected from 11 to 16 feet bgs
- Well 197: 175 gallons of PetroFix mixture was injected from 6 to 11 feet bgs
- Well 137: 175 gallons of PetroFix mixture was injected from 6 to 11 feet bgs

Material Tracking

- ECD imported the following material:
 - 9 loads (approximately 162 CY) of clean fill were imported from Durante Brothers Construction in Flushing, NY.
- No material was exported from the site.

Material Export Summary – Soil										
Facility Name Location	Clean Earth of North Jersey Kearny, NJ									
Material	Non-Hazardous Low pH Soil		Hazardous Lead Impacted Soil with UHCs		Hazardous Lead Impacted Soil with No UHCs		High Hazardous Lead		Non-Hazardous Soil	
Quantities	No. of Loads	Approx. Volume (CY)	No. of Loads	Approx. Volume (CY)	No. of Loads	Approx. Volume (CY)	No. of Loads	Approx. Volume (CY)	No. of Loads	Approx. Volume (CY)
Today	-	-	-	-	-	-	-	-	-	-
Project Total	332	5,495	56	901	27	467	5	68	1	18

Notes:

1. UHC – Underlying Hazardous Constituent

Cc: M. Burke, G. Nicholls, S. Knoop,
N. Palumbo, L. Grose

By: Emma Bitar

Langan Eng, Env, Surv, L.A. & Geo, DPC

Material Export Summary – Soil						
Facility Name	Clean Earth of New Castle		Conestoga Landfill		Waste Management	
Location	New Castle, DE		Morgantown, PA		Morgantown, PA	
Material	Non-Hazardous Soil		Non-Hazardous Soil		Non-Hazardous Soil	
Quantities	No. of Loads	Approx. Volume (CY)	No. of Loads	Approx. Volume (CY)	No. of Loads	Approx. Volume (CY)
Today	-	-	-	-	-	-
Project Total	729	13,682	39	703	219	3,929

Material Export Summary – C&D						
Facility Name	PPark NJ, LLC		Bayshore Soil Management, LLC		Silva Recycling, LLC	
Location	Prospect Park, NJ		Keasbey, NJ		Newark, NJ	
Material	Asphalt, Concrete		Asphalt, Concrete		Concrete	
Quantities	No. of Loads	Approx. Volume (CY)	No. of Loads	Approx. Volume (CY)	No. of Loads	Approx. Volume (CY)
Today	-	-	-	-	-	-
Project Total	119	2,380	31	645	25	880

Material Import Summary										
Facility Name	Impact Materials, LLC		Callahan & Nannini Quarry Inc.		Durante Brothers Construction		Tilcon West Nyack Quarry		B.G.L.J Servicing Corp	
Location	Jersey City, NJ		Salisbury Mills, NY		Flushing, NY		West Nyack, NY		Moriches, NY	
Material	3/4" Recycled Clean Stone		2-4" Granite Stone		Clean Fill		ASTM No. 5 Stone		Virgin Sand	
Quantities	No. of Loads	Approx. Volume (CY)	No. of Loads	Approx. Volume (CY)	No. of Loads	Approx. Volume (CY)	No. of Loads	Approx. Volume (CY)	No. of Loads	Approx. Volume (CY)
Today	-	-	-	-	9	162	-	-	-	-
Project Total	62	1,240	4	100	224	4,016	18	324	1	18

Samples

- No samples were collected.

Community Air Monitoring Plan (CAMP) Activities

- Langan performed community air monitoring at the perimeter of the work area at one upwind and three downwind locations during intrusive work. Implementation of the Community Air Monitoring Plan (CAMP) included air monitoring for particulate matter for particulates less than 10 µm in diameter (PM10) and VOCs. VOC concentrations did not exceed the action levels established by the community air monitoring plan.
- PM10 concentrations exceeded the 15-minute time-weighted average site contribution action level of 150 micrograms per cubic meter for 12 minutes from 2:38 PM to 2:50 PM. The exceedance was attributed to the Contractor drilling forms adjacent to a CAMP station in the southern part of the site and was mitigated by the Contractor halting work until PM10 concentrations returned below the established action level.
- No fugitive dust or odors associated with site activities were observed migrating from the site.

Cc: M. Burke, G. Nicholls, S. Knoop,
N. Palumbo, L. Grose

By: Emma Bitar

Langan Eng, Env, Surv, L.A. & Geo, DPC

LANGAN SITE OBSERVATION REPORT- Day 122

Anticipated Activities

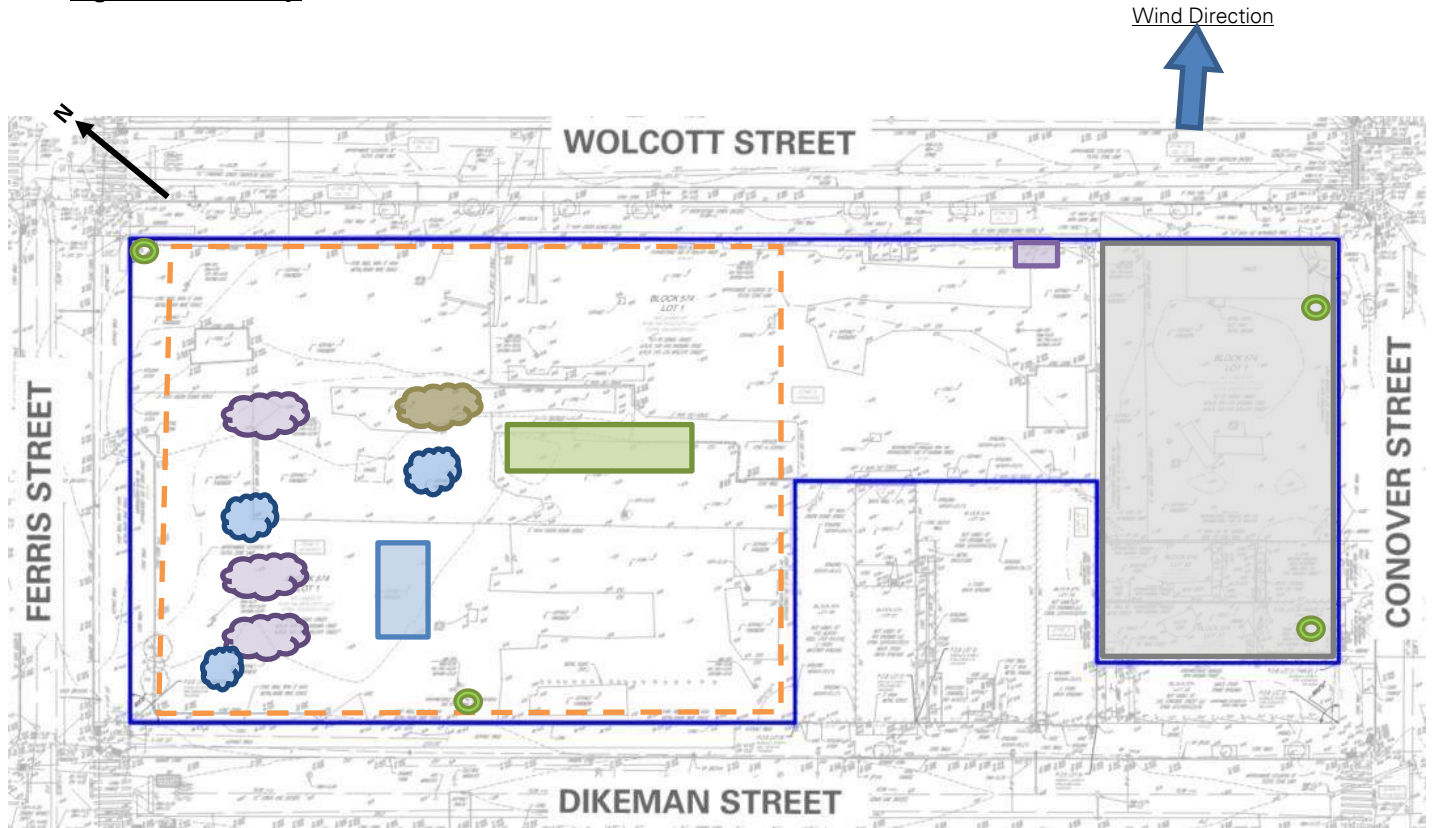
- ECD will continue in-situ PetroFix injections within Treatment Areas 2 in the eastern part of the site.
- ECD will export non-hazardous non-native fill to a facility permitted to accept the waste.
- ECD will continue excavating for pile caps and foundation framing/concrete pouring in the central part of the site.

Cc: M. Burke, G. Nicholls, S. Knoop,
N. Palumbo, L. Grose

By: Emma Bitar

Langan Eng, Env, Surv, L.A. & Geo, DPC

Figure 1: Site Map



Legend

- | | | | |
|--|---|--|---------------------------------------|
| | Site Boundary- | | Approximate Area Excavated |
| | Approximate Work Area | | Approximate Area Backfilled |
| | Approximate Location of Perimeter CAMP Station | | Approximate Area Graded |
| | Approximate Location of Installed Site Cover System | | Approximate IDW Drum Staging Area |
| | | | Approximate C&D Stockpile |
| | | | Approximate Non-Native Fill Stockpile |
| | | | Approximate Stone Stockpile |
| | | | Approximate Sand Stockpile |

Notes:

1. Basemap is referenced from 26 March 2025 ALTA/NSPS Land Title Survey prepared by Control Point Associates Inc PC.
2. IDW – Investigation-derived waste generated during the April 2025 and August 2025 supplemental waste characterizations and the January through May 2025 non-aqueous phase liquid gauging.

Cc: M. Burke, G. Nicholls, S. Knoop,
N. Palumbo, L. Grose

By: Emma Bitar

Langan Eng, Env, Surv, L.A. & Geo, DPC

Photographs

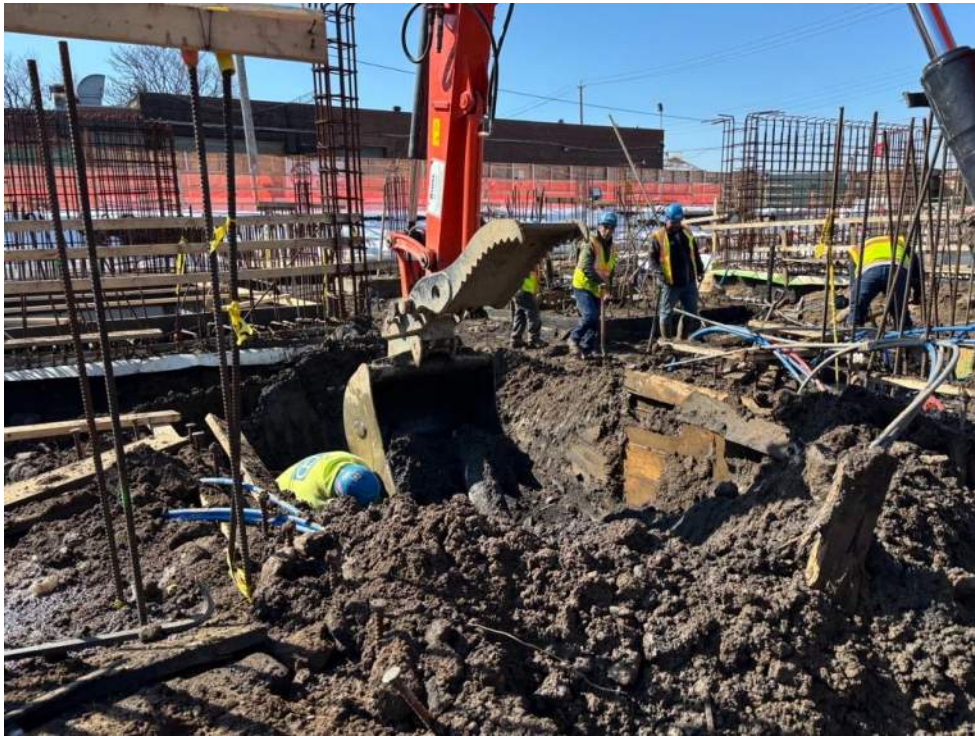


Photo 1: ECD excavating non-hazardous non-native fill in the western part of the site (facing west)



Photo 2: ECD excavating non-hazardous non-native fill in the western part of the site (facing west)

Cc: M. Burke, G. Nicholls, S. Knoop,
N. Palumbo, L. Grose

By: Emma Bitar

Langan Eng, Env, Surv, L.A. & Geo, DPC

LANGAN SITE OBSERVATION REPORT- Day 122



Photo 3: ECD backfilling gas permeable aggregate as part of the SSD system in the western part of the site (facing east)



Photo 4: ECD compacting previously backfilled clean fill in the western part of the site (facing southeast)

Cc: M. Burke, G. Nicholls, S. Knoop,
N. Palumbo, L. Grose

By: Emma Bitar

Langan Eng, Env, Surv, L.A. & Geo, DPC



Contribution 6 Station 120925 Report

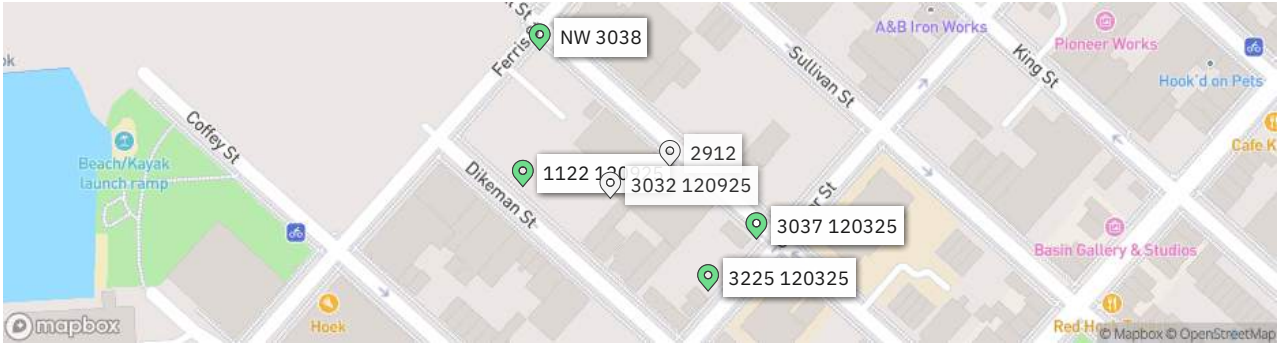
170562203 - 145 Wolcott St

Report Period

From:	02/28/2026 06:00
To:	02/28/2026 18:00
PM10 Action Level:	150 $\mu\text{g}/\text{m}^3$
VOC Action Level:	5 ppm

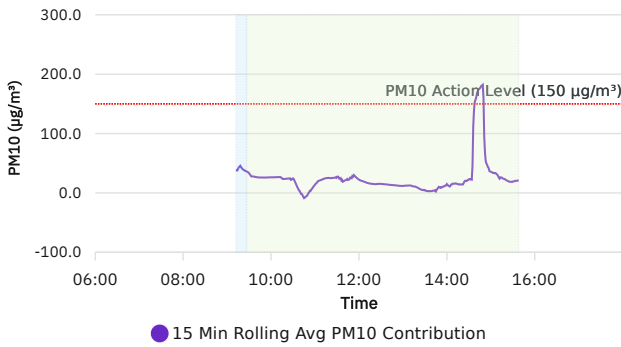
Daily Environmental Summary	Temp (°F)	Relative Humidity (%)	Barometer (inHg)	Wind Speed (mph)	Prevailing Wind Direction
02/28/2026	37.2 - 59.0	46.3 - 77.1	30.0 - 30.2	0.5 - 5.1	SW

Daily Monitoring Summary	PM10 ($\mu\text{g}/\text{m}^3$)	Time	VOC (ppm)	Time
Min Contribution (15 min avg.) - 2/28/2026	-8.8	10:45	-0.0200	09:12
Max Contribution (15 min avg.) - 2/28/2026	182.1	14:49	0.1960	15:13
Daily Avg. Contribution (15 min avg.) - 2/28/2026	25.2	-	0.0264	-



Stopped
 Initial Avg
 Rolling Avg

PM10 Average Contribution ($\mu\text{g}/\text{m}^3$)



Stopped
 Initial Avg
 Rolling Avg

VOC Average Contribution (ppm)

