

# LANGAN SITE OBSERVATION REPORT- Day 140

<b>PROJECT No.:</b> 170452203	<b>CLIENT:</b> NYM 145 Wolcott, LLC 233 Broadway, 10 <sup>th</sup> Fl., New York, NY 10279	<b>DATE:</b> Mon., March 23, 2026
<b>PROJECT:</b> 145-165 Wolcott Street		<b>WEATHER:</b> Clear, 37-43 °F Wind: SSW @ 1.0 – 8.0 mph
<b>LOCATION:</b> Brooklyn, New York		<b>TIME:</b> 6:45 am – 6:00 pm
<b>SITE CODE:</b> C224256		<b>MONITOR:</b> Max Ringold

<b>EQUIPMENT:</b> AQS1 Air Monitoring Station x 2 MiniRAE 3000 Photoionization Detector (PID) CAT 335F x 2 Zaxis 135US Hyundai HL955A Bauer BG 36 H ABI TM22 RTG RG 27S Hitachi 670 Takeuchi TB260 Terex TA9 TB260 Geoprobe 7822DT Kubota KX080-4α2 BW120 AD	<b>PRESENT AT SITE:</b> <b>Langan (Environmental):</b> Max Ringold, Alexandra Fitzgerald <b>Urban Atelier Group (UAG)</b> <b>ECD NY Inc. (ECD):</b> Kyle McGovern
---	---

**OBSERVATIONS, DISCUSSIONS, TEST RESULTS, ETC.:**

Langan was present to document remediation activities in accordance with the New York State Department of Environmental Conservation (NYSDEC)-approved July 22, 2025 Remedial Action Work Plan (RAWP) at the 145-165 Wolcott Street site in Brooklyn, New York (Site No. C224256).

**Site Activities**

- ECD poured an about 8-inch-thick concrete slab within an about 85-foot-long by 80-feet-wide area in the northeastern part of the site.
- ECD used a CAT 335F to excavate an about 50-foot-long by 8-feet-wide area to about 5 feet below grade surface (bgs), and an about 25-foot-long by 8-feet-wide area to about 3 feet bgs in the southeastern part of the site for the installation of utility piping.
  - Excavated clean fill was stockpiled adjacent to the detention tank and used to backfill utility trenches in the north of site.
- ECD used a CAT 335F to grade an about 20-foot-long by 20-feet-wide area in the northern part of the site.
  - Graded clean fill was as backfill within adjacent utility trenches.
- ECD continued in-situ injections of PetroFix in the eastern part of the site (Area 2). ECD used an MQ submersible pump (Serial No. 804633) to inject a diluted PetroFix mixture (30 to 1 ratio of Water:Petrofix) to the following 11 injection points:
  - Well 90: 175 gallons of PetroFix mixture was injected from 8 to 11 feet bgs
  - Well 160: 60 gallons of PetroFix mixture was injected from 11 to 16 feet bgs

Cc: M. Burke, G. Nicholls, S. Knoop, N. Palumbo, L. Grose	By: Max Ringold
<b>Langan Eng, Env, Surv, L.A. &amp; Geo, DPC</b>	

# LANGAN SITE OBSERVATION REPORT- Day 140

- o Well 160: 60 gallons of PetroFix mixture was injected from 6 to 11 feet bgs
- o Well 159: 90 gallons of PetroFix mixture was injected from 11 to 16 feet bgs
- o Well 159: 60 gallons of PetroFix mixture was injected from 6 to 11 feet bgs
- o Well 146: 60 gallons of PetroFix mixture was injected from 11 to 16 feet bgs
- o Well 146: 60 gallons of PetroFix mixture was injected from 8 to 11 feet bgs
- o Well 143: 90 gallons of PetroFix mixture was injected from 11 to 16 feet bgs
- o Well 143: 60 gallons of PetroFix mixture was injected from 6 to 11 feet bgs
- o Well 209: 100 gallons of PetroFix mixture was injected from 6 to 11 feet bgs
- o Well 96: 175 gallons of PetroFix mixture was injected from 8 to 11 feet bgs
- o Well 89: 175 gallons of PetroFix mixture was injected from 8 to 11 feet bgs
- o Well 130: 60 gallons of PetroFix mixture was injected from 11 to 16 feet bgs
- o Well 130: 60 gallons of PetroFix mixture was injected from 8 to 11 feet bgs
- o Well 139: 175 gallons of PetroFix mixture was injected from 6 to 11 feet bgs
- o Well 227: 25 gallons of PetroFix mixture was injected from 11 to 16 feet bgs
- o Well 227: 50 gallons of PetroFix mixture was injected from 6 to 11 feet bgs

## Material Tracking

- No material was imported into the site.
- No material was exported from the site.

Material Export Summary – Soil										
Facility Name Location	Clean Earth of North Jersey Kearny, NJ									
Material	Non-Hazardous Low pH Soil		Hazardous Lead Impacted Soil with UHCs		Hazardous Lead Impacted Soil with No UHCs		High Hazardous Lead		Non-Hazardous Soil	
Quantities	No. of Loads	Approx. Volume (CY)	No. of Loads	Approx. Volume (CY)	No. of Loads	Approx. Volume (CY)	No. of Loads	Approx. Volume (CY)	No. of Loads	Approx. Volume (CY)
<b>Today</b>	-	-	-	-	-	-	-	-	-	-
<b>Project Total</b>	<b>332</b>	<b>5,495</b>	<b>56</b>	<b>901</b>	<b>27</b>	<b>467</b>	<b>5</b>	<b>68</b>	<b>1</b>	<b>18</b>

Notes:

1. UHC – Underlying Hazardous Constituent

Cc: M. Burke, G. Nicholls, S. Knoop,  
N. Palumbo, L. Grose

By: Max Ringold

**Langan Eng, Env, Surv, L.A. & Geo, DPC**

Material Export Summary – Soil						
Facility Name	Clean Earth of New Castle		Conestoga Landfill		Waste Management	
Location	New Castle, DE		Morgantown, PA		Morgantown, PA	
Material	Non-Hazardous Soil		Non-Hazardous Soil		Non-Hazardous Soil	
Quantities	No. of Loads	Approx. Volume (CY)	No. of Loads	Approx. Volume (CY)	No. of Loads	Approx. Volume (CY)
Today	-	-	-	-	-	-
<b>Project Total</b>	<b>729</b>	<b>13,682</b>	<b>39</b>	<b>703</b>	<b>224</b>	<b>4,007</b>

Material Export Summary – C&D						
Facility Name	PPark NJ, LLC		Bayshore Soil Management, LLC		Silva Recycling, LLC	
Location	Prospect Park, NJ		Keasbey, NJ		Newark, NJ	
Material	Asphalt, Concrete		Asphalt, Concrete		Concrete	
Quantities	No. of Loads	Approx. Volume (CY)	No. of Loads	Approx. Volume (CY)	No. of Loads	Approx. Volume (CY)
Today	-	-	-	-	-	-
<b>Project Total</b>	<b>119</b>	<b>2,380</b>	<b>31</b>	<b>645</b>	<b>25</b>	<b>880</b>

Material Import Summary										
Facility Name	Impact Materials, LLC		Callahan & Nannini Quarry Inc.		Durante Brothers Construction		Tilcon West Nyack Quarry		B.G.L.J Servicing Corp	
Location	Jersey City, NJ		Salisbury Mills, NY		Flushing, NY		West Nyack, NY		Moriches, NY	
Material	3/4" Recycled Clean Stone		2-4" Granite Stone		Clean Fill		ASTM No. 5 Stone		Virgin Sand	
Quantities	No. of Loads	Approx. Volume (CY)	No. of Loads	Approx. Volume (CY)	No. of Loads	Approx. Volume (CY)	No. of Loads	Approx. Volume (CY)	No. of Loads	Approx. Volume (CY)
Today	-	-	-	-	-	-	-	-	-	-
<b>Project Total</b>	<b>62</b>	<b>1,240</b>	<b>4</b>	<b>100</b>	<b>228</b>	<b>4,088</b>	<b>38</b>	<b>684</b>	<b>1</b>	<b>18</b>

### Samples

- No samples were collected.

### Community Air Monitoring Plan (CAMP) Activities

- Langan performed community air monitoring at the perimeter of the work area at one upwind and one downwind location during intrusive work. Implementation of the Community Air Monitoring Plan (CAMP) included air monitoring for particulate matter for particulates less than 10 µm in diameter (PM10) and volatile organic compounds (VOC). PM10 and VOC concentrations did not exceed the action levels established by the community air monitoring plan.
- No fugitive dust or odors associated with site activities were observed migrating from the site.

### Anticipated Activities

- ECD will continue in-situ PetroFix injections within Treatment Area 2 in the eastern part of the site.
- ECD will continue excavating and backfilling for utility piping in the northern part of the site.

Cc: M. Burke, G. Nicholls, S. Knoop,  
N. Palumbo, L. Grose

By: Max Ringold

**Langan Eng, Env, Surv, L.A. & Geo, DPC**

# **LANGAN** SITE OBSERVATION REPORT- Day 140

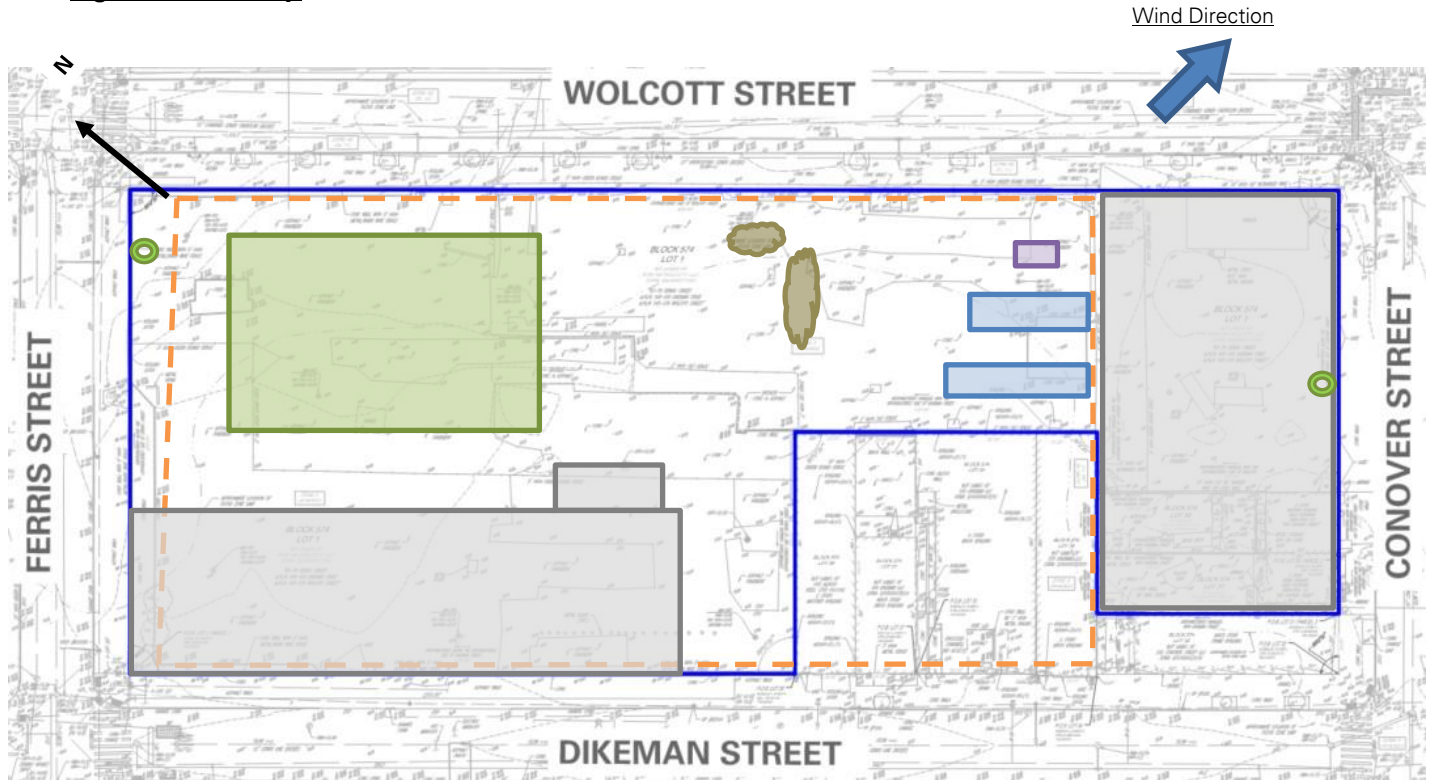
- ECD will continue foundation framing/concrete pouring in the central part of the site.
- ECD will continue laying polyvinyl chloride (PVC) piping, geotextile fabric, and ¾-inch virgin stone as part of the sub-slab depressurization system and soil vapor extraction system installation in the western part of the site.

Cc: M. Burke, G. Nicholls, S. Knoop,  
N. Palumbo, L. Grose

By: Max Ringold

**Langan Eng, Env, Surv, L.A. & Geo, DPC**

**Figure 1: Site Map**



**Legend**

	Site Boundary-		Approximate Area Excavated
	Approximate Work Area		Approximate Area Backfilled
	Approximate Location of Perimeter CAMP Station		Approximate Area Graded
	Approximate Location of Installed Site Cover System		Approximate IDW Drum Staging Area
			Approximate C&D Stockpile
			Approximate Non-Native Fill Stockpile
			Approximate Stone Stockpile
			Approximate imported clean fill Stockpile

**Notes:**

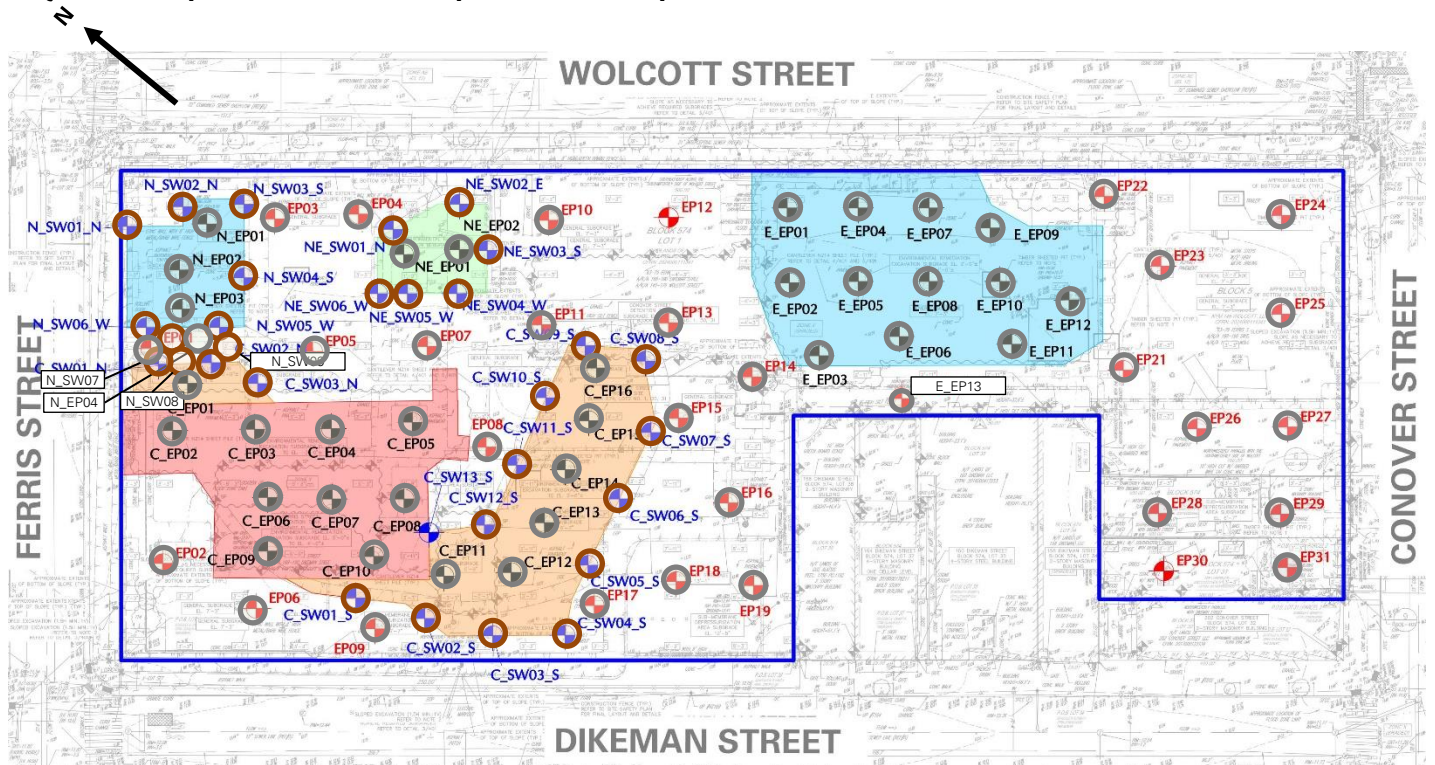
1. Basemap is referenced from 26 March 2025 ALTA/NSPS Land Title Survey prepared by Control Point Associates Inc PC.
2. IDW – Investigation-derived waste generated during the April 2025 and August 2025 supplemental waste characterizations and the January through May 2025 non-aqueous phase liquid gauging.

Cc: M. Burke, G. Nicholls, S. Knoop,  
N. Palumbo, L. Grose

By: Max Ringold

**Langan Eng, Env, Surv, L.A. & Geo, DPC**

**Figure 2: Endpoint / Sidewalk Sample Location Map**



**Legend**

- Site Boundary
- Approximate Location of Documentation Endpoint Soil Sample Collected
- Approximate Location of Documentation Sidewalk Soil Sample Collected
- Approximate Location of Previously Collected Documentation Endpoint Soil Sample
- Approximate Location of Previously Collected Documentation Sidewalk Soil Sample

**Notes:**

1. Basemap is referenced from 26 March 2025 ALTA/NSPS Land Title Survey prepared by Control Point Associates Inc PC.

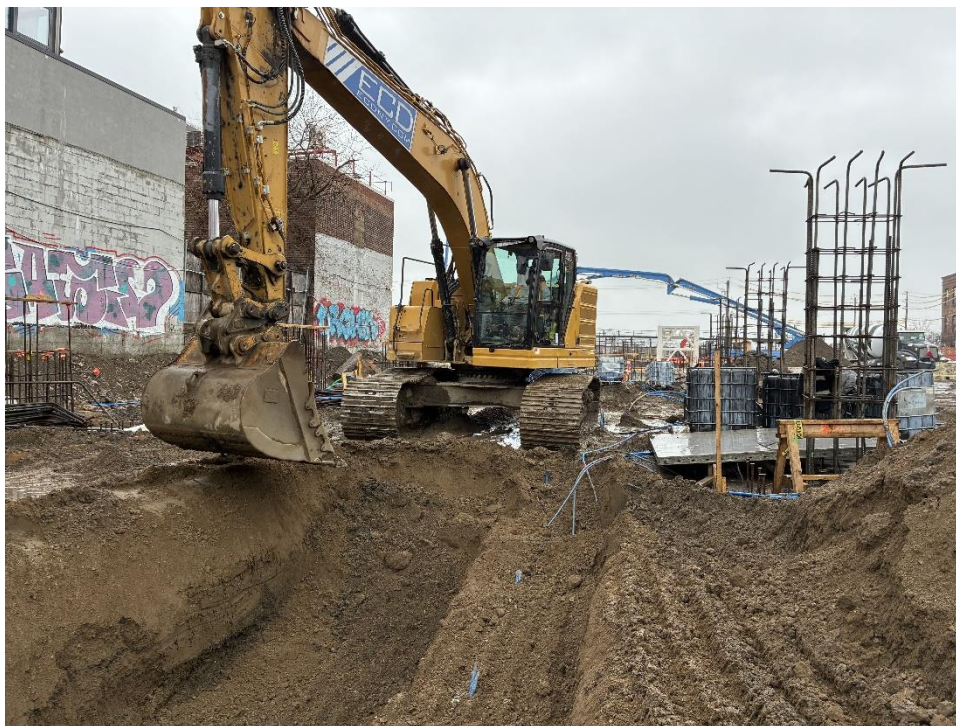
Cc: M. Burke, G. Nicholls, S. Knoop,  
N. Palumbo, L. Grose

By: Max Ringold  
Langan Eng, Env, Surv, L.A. & Geo, DPC

## Photographs



**Photo 1:** ECD pouring an about 8-inch-thick concrete slab in the northeastern part of the site (facing east)



**Photo 2:** ECD excavating within clean fill for utility piping installation in the southern part of the site (facing north)

Cc: M. Burke, G. Nicholls, S. Knoop,  
N. Palumbo, L. Grose

By: Max Ringold  
**Langan Eng, Env, Surv, L.A. & Geo, DPC**

# LANGAN SITE OBSERVATION REPORT- Day 140



**Photo 3:** ECD relocating clean fill in the southern part of the site (facing east)



**Photo 4:** ECD backfilling clean fill to working grade in the northern part of site (facing east).

Cc: M. Burke, G. Nicholls, S. Knoop,  
N. Palumbo, L. Grose

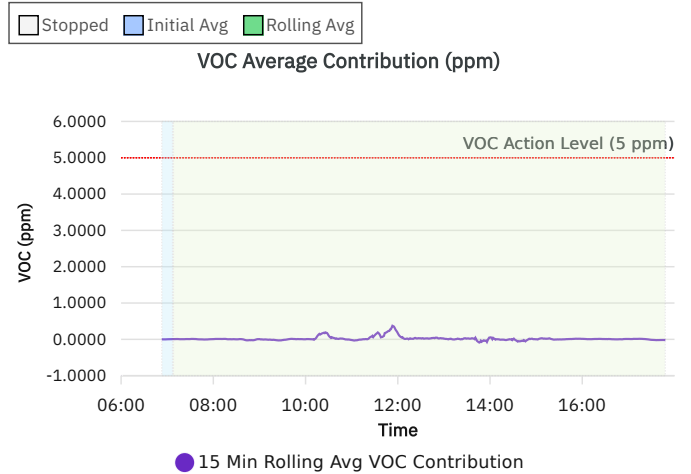
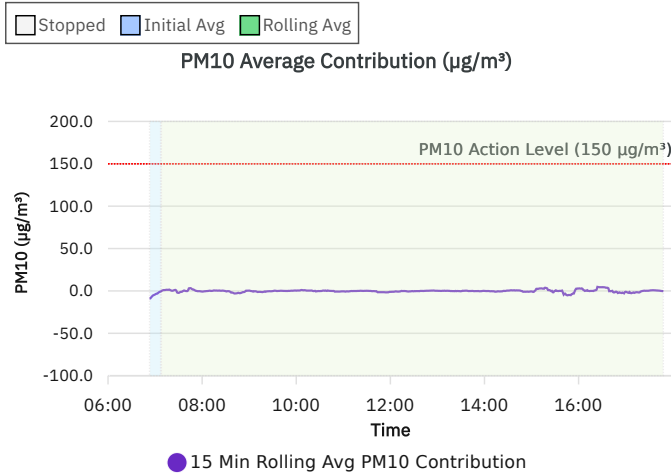
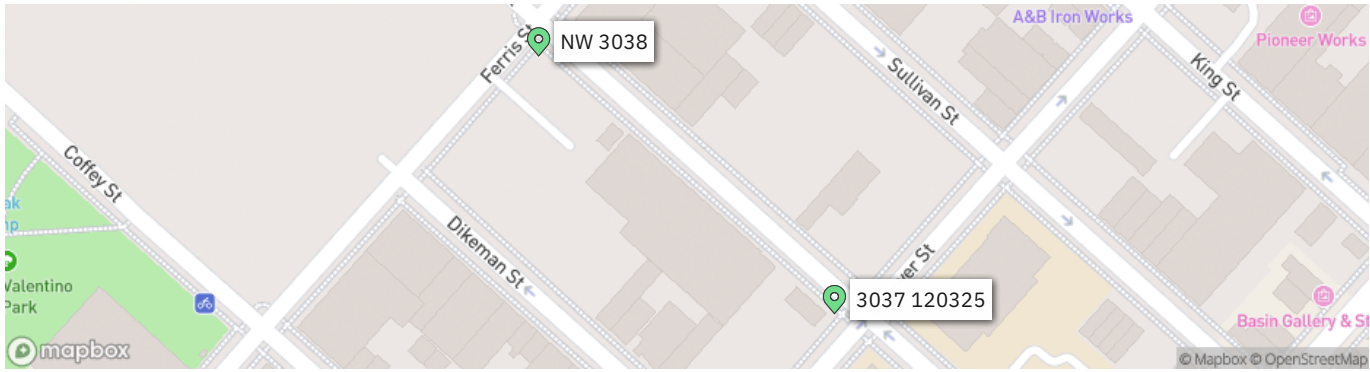
By: Max Ringold

**Langan Eng, Env, Surv, L.A. & Geo, DPC**

<b>LANGAN</b>	Contribution 2 Station 031026 Report	170562203 - 145 Wolcott St	
		Report Period	
		From:	03/23/2026 06:00
		To:	03/23/2026 18:00
		PM10 Action Level:	150 $\mu\text{g}/\text{m}^3$
VOC Action Level:	5 ppm		

Daily Environmental Summary	Temp (°F)	Relative Humidity (%)	Barometer (inHg)	Wind Speed (mph)	Prevailing Wind Direction
03/23/2026	37.2 - 43.2	70.9 - 95.6	29.7 - 30.0	1.0 - 8.0	SSW

Daily Monitoring Summary	PM10 ( $\mu\text{g}/\text{m}^3$ )	Time	VOC (ppm)	Time
Min Contribution (15 min avg.) - 3/23/2026	-8.8	06:53	-0.0880	13:46
Max Contribution (15 min avg.) - 3/23/2026	7.8	06:51	0.3740	11:53
Daily Avg. Contribution (15 min avg.) - 3/23/2026	-0.2	-	0.0180	-



# LANGAN SITE OBSERVATION REPORT- Day 141

<b>PROJECT No.:</b> 170452203	<b>CLIENT:</b> NYM 145 Wolcott, LLC 233 Broadway, 10 <sup>th</sup> Fl., New York, NY 10279	<b>DATE:</b> Tue., March 24, 2026
<b>PROJECT:</b> 145-165 Wolcott Street		<b>WEATHER:</b> Clear, 30-53 °F Wind: S @ 0.8 – 7.4 mph
<b>LOCATION:</b> Brooklyn, New York		<b>TIME:</b> 6:45 am – 6:00 pm
<b>SITE CODE:</b> C224256		<b>MONITOR:</b> Max Ringold

<b>EQUIPMENT:</b> AQS1 Air Monitoring Station x 2 MiniRAE 3000 Photoionization Detector (PID) CAT 335F x 2 Zaxis 135US Hyundai HL955A Bauer BG 36 H ABI TM22 RTG RG 27S Hitachi 670 Takeuchi TB260 Terex TA9 TB260 Geoprobe 7822DT Kubota KX080-4α2 BW120 AD	<b>PRESENT AT SITE:</b> <b>Langan (Environmental):</b> Max Ringold, Alexandra Fitzgerald <b>Urban Atelier Group (UAG)</b> <b>ECD NY Inc. (ECD):</b> Kyle McGovern
---	---

**OBSERVATIONS, DISCUSSIONS, TEST RESULTS, ETC.:**

Langan was present to document remediation activities in accordance with the New York State Department of Environmental Conservation (NYSDEC)-approved July 22, 2025 Remedial Action Work Plan (RAWP) at the 145-165 Wolcott Street site in Brooklyn, New York (Site No. C224256).

**Site Activities**

- ECD used a CAT 335F to excavate an about 25-foot-long by 4-feet-wide area to about 3.5 feet below grade surface (bgs) for the installation of soil vapor extraction (SVE) system piping in the northeastern part of the site.
  - Excavated non-native fill was screened for odors, staining, and organic vapors using a PID. No impacts were observed, and excavated non-native fill was graded adjacent to the excavation.
  - ECD installed geotextile fabric within the trench and used a Terex TA9 to backfill an about 3-foot-thick layer of ¾-inch virgin stone (gas permeable aggregate) as part of the SVE system.
- ECD used a CAT 335F to excavate an about 10-foot-long by 8-feet-wide area to about 3 feet bgs and an about 20-foot-long by 5-foot-wide area to about 3 feet bgs for the installation of utility piping in the southern of the site.
  - Excavated clean fill was stockpiled adjacent to the excavations for future on-site reuse.
- ECD used a Kubota KX080-4α2 to grade an about 100-foot-long by 80-feet-wide area in the northern part of the site in preparation for future concrete rat slab installation.
- ECD poured an about 2-inch-thick concrete rat slab within an about 80-foot-long by 40-feet-wide area within the northern part of the site.

Cc: M. Burke, G. Nicholls, S. Knoop, N. Palumbo, L. Grose	By: Max Ringold
<b>Langan Eng, Env, Surv, L.A. &amp; Geo, DPC</b>	

# LANGAN SITE OBSERVATION REPORT- Day 141

- ECD continued in-situ injections of PetroFix in the eastern part of the site (Area 2). ECD used an MQ submersible pump (Serial No. 804633) to inject a diluted PetroFix mixture (30 to 1 ratio of Water:Petrofix) to the following 3 injection points:
  - Well 96: 175 gallons of PetroFix mixture was injected from 11 to 16 feet bgs
  - Well 159: 30 gallons of PetroFix mixture was injected from 11 to 16 feet bgs
  - Well 159: 30 gallons of PetroFix mixture was injected from 6 to 11 feet bgs
  - Well 143: 30 gallons of PetroFix mixture was injected from 6 to 11 feet bgs

## Material Tracking

- No material was imported into the site.
- No material was exported from the site.

Material Export Summary – Soil										
Facility Name Location	Clean Earth of North Jersey Kearny, NJ									
Material	Non-Hazardous Low pH Soil		Hazardous Lead Impacted Soil with UHCs		Hazardous Lead Impacted Soil with No UHCs		High Hazardous Lead		Non-Hazardous Soil	
Quantities	No. of Loads	Approx. Volume (CY)	No. of Loads	Approx. Volume (CY)	No. of Loads	Approx. Volume (CY)	No. of Loads	Approx. Volume (CY)	No. of Loads	Approx. Volume (CY)
<b>Today</b>	-	-	-	-	-	-	-	-	-	-
<b>Project Total</b>	<b>332</b>	<b>5,495</b>	<b>56</b>	<b>901</b>	<b>27</b>	<b>467</b>	<b>5</b>	<b>68</b>	<b>1</b>	<b>18</b>

Notes:

1. UHC – Underlying Hazardous Constituent

Material Export Summary – Soil						
Facility Name Location	Clean Earth of New Castle New Castle, DE		Conestoga Landfill Morgantown, PA		Waste Management Morgantown, PA	
Material	Non-Hazardous Soil		Non-Hazardous Soil		Non-Hazardous Soil	
Quantities	No. of Loads	Approx. Volume (CY)	No. of Loads	Approx. Volume (CY)	No. of Loads	Approx. Volume (CY)
<b>Today</b>	-	-	-	-	-	-
<b>Project Total</b>	<b>729</b>	<b>13,682</b>	<b>39</b>	<b>703</b>	<b>224</b>	<b>4,007</b>

Cc: M. Burke, G. Nicholls, S. Knoop,  
N. Palumbo, L. Grose

By: Max Ringold

Langan Eng, Env, Surv, L.A. & Geo, DPC

Material Export Summary - C&D						
Facility Name	PPark NJ, LLC		Bayshore Soil Management, LLC		Silva Recycling, LLC	
Location	Prospect Park, NJ		Keasbey, NJ		Newark, NJ	
Material	Asphalt, Concrete		Asphalt, Concrete		Concrete	
Quantities	No. of Loads	Approx. Volume (CY)	No. of Loads	Approx. Volume (CY)	No. of Loads	Approx. Volume (CY)
Today	-	-	-	-	-	-
Project Total	<b>119</b>	<b>2,380</b>	<b>31</b>	<b>645</b>	<b>25</b>	<b>880</b>

Material Import Summary										
Facility Name	Impact Materials, LLC		Callahan & Nannini Quarry Inc.		Durante Brothers Construction		Tilcon West Nyack Quarry		B.G.L.J Servicing Corp	
Location	Jersey City, NJ		Salisbury Mills, NY		Flushing, NY		West Nyack, NY		Moriches, NY	
Material	3/4" Recycled Clean Stone		2-4" Granite Stone		Clean Fill		ASTM No. 5 Stone		Virgin Sand	
Quantities	No. of Loads	Approx. Volume (CY)	No. of Loads	Approx. Volume (CY)	No. of Loads	Approx. Volume (CY)	No. of Loads	Approx. Volume (CY)	No. of Loads	Approx. Volume (CY)
Today	-	-	-	-	-	-	-	-	-	-
Project Total	<b>62</b>	<b>1,240</b>	<b>4</b>	<b>100</b>	<b>228</b>	<b>4,088</b>	<b>38</b>	<b>684</b>	<b>1</b>	<b>18</b>

### Samples

- No samples were collected.

### Community Air Monitoring Plan (CAMP) Activities

- Langan performed community air monitoring at the perimeter of the work area at one upwind and one downwind location during intrusive work. Implementation of the Community Air Monitoring Plan (CAMP) included air monitoring for particulate matter for particulates less than 10 µm in diameter (PM10) and volatile organic compounds (VOC). PM10 and VOC concentrations did not exceed the action levels established by the community air monitoring plan.
- No fugitive dust or odors associated with site activities were observed migrating from the site.

### Anticipated Activities

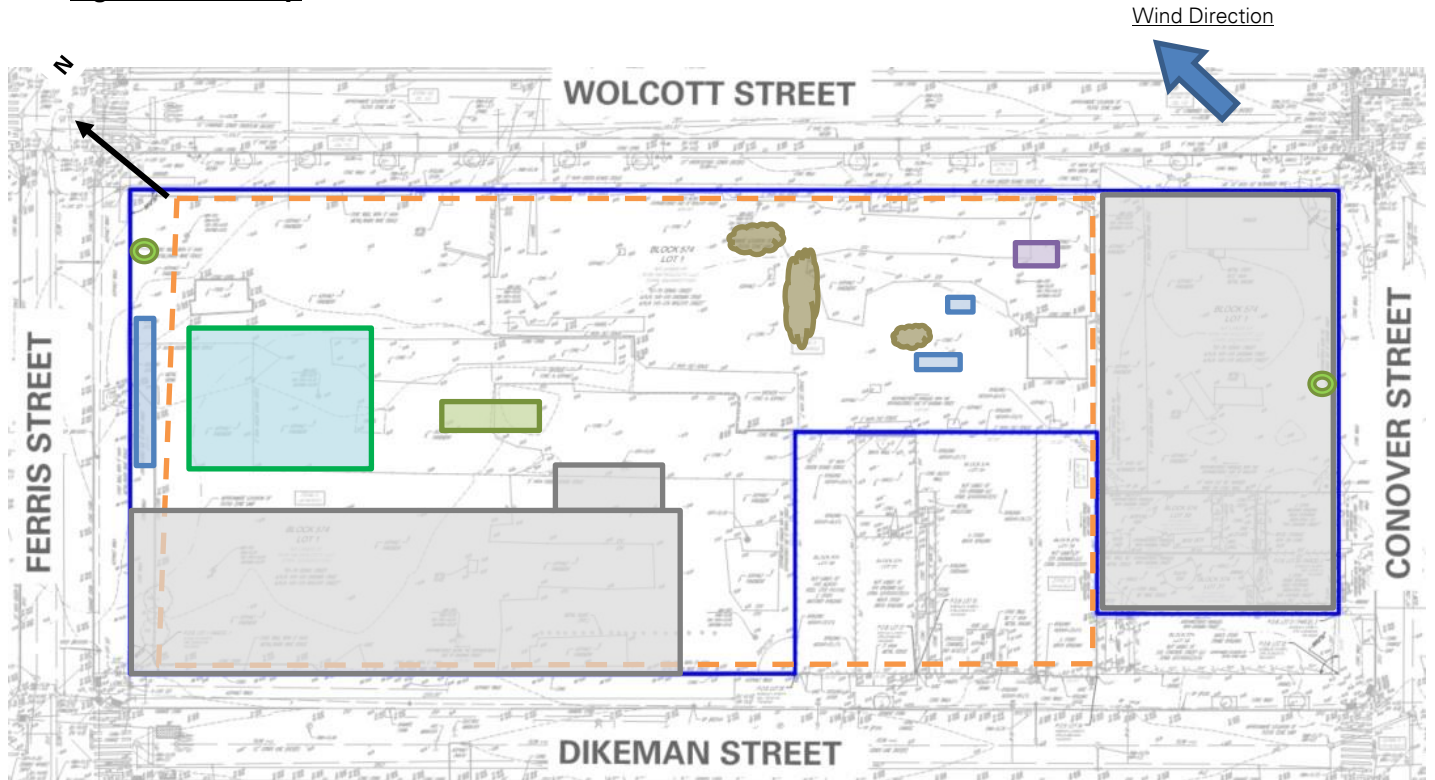
- ECD will continue excavating and backfilling for utility piping in the northern part of the site.
- ECD will continue foundation framing/concrete pouring in the central part of the site.
- ECD will continue laying polyvinyl chloride (PVC) piping, geotextile fabric, and ¾-inch virgin stone as part of the Sub Slab Depressurization System (SSDS) and soil vapor extraction system installation in the western part of the site.

Cc: M. Burke, G. Nicholls, S. Knoop,  
N. Palumbo, L. Grose

By: Max Ringold

**Langan Eng, Env, Surv, L.A. & Geo, DPC**

**Figure 1: Site Map**



**Legend**

- |  |   |  |   |
|--|---|--|---|
|  | Site Boundary-                                      |  | Approximate Area Excavated                |
|  | Approximate Work Area                               |  | Approximate Area Backfilled               |
|  | Approximate Location of Perimeter CAMP Station      |  | Approximate Area Graded                   |
|  | Approximate Location of Installed Site Cover System |  | Approximate IDW Drum Staging Area         |
|  |   |  | Approximate C&D Stockpile                 |
|  |   |  | Approximate Non-Native Fill Stockpile     |
|  |   |  | Approximate Stone Stockpile               |
|  |   |  | Approximate imported clean fill Stockpile |

**Notes:**

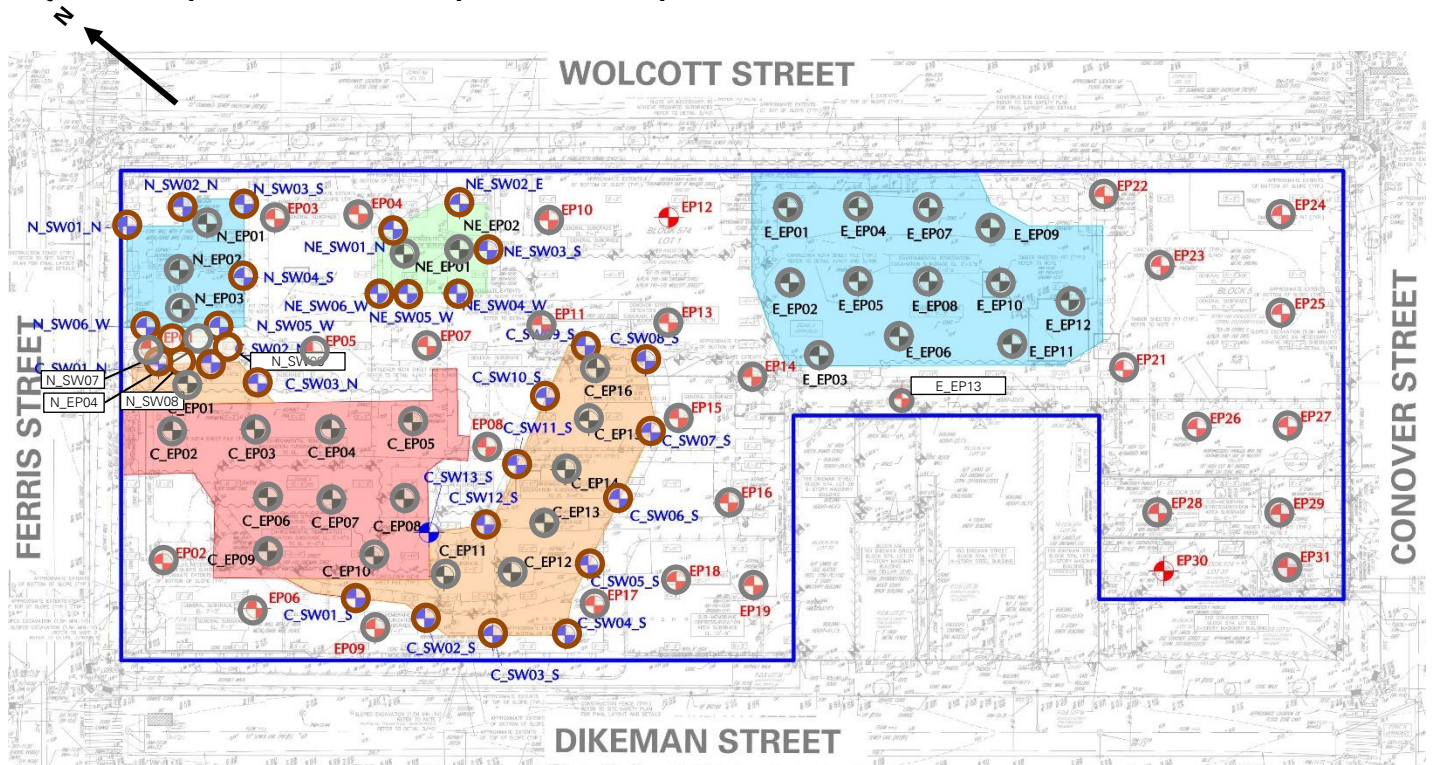
1. Basemap is referenced from 26 March 2025 ALTA/NSPS Land Title Survey prepared by Control Point Associates Inc PC.
2. IDW – Investigation-derived waste generated during the April 2025 and August 2025 supplemental waste characterizations and the January through May 2025 non-aqueous phase liquid gauging.

Cc: M. Burke, G. Nicholls, S. Knoop,  
N. Palumbo, L. Grose

By: Max Ringold

**Langan Eng, Env, Surv, L.A. & Geo, DPC**

**Figure 2: Endpoint / Sidewalk Sample Location Map**



**Legend**

- Site Boundary
- Approximate Location of Documentation Endpoint Soil Sample Collected
- Approximate Location of Documentation Sidewalk Soil Sample Collected
- Approximate Location of Previously Collected Documentation Endpoint Soil Sample
- Approximate Location of Previously Collected Documentation Sidewalk Soil Sample

**Notes:**

1. Basemap is referenced from 26 March 2025 ALTA/NSPS Land Title Survey prepared by Control Point Associates Inc PC.

Cc: M. Burke, G. Nicholls, S. Knoop,  
N. Palumbo, L. Grose

By: Max Ringold  
Langan Eng, Env, Surv, L.A. & Geo, DPC

## Photographs



**Photo 1:** ECD excavating within non-native fill for installation of SVE system components in the northern part of the site (facing north)



**Photo 2:** ECD backfilling  $\frac{3}{4}$ -inch virgin stone (ASTM No. 5) as part of the SVE system in the northern part of the site (facing northwest)

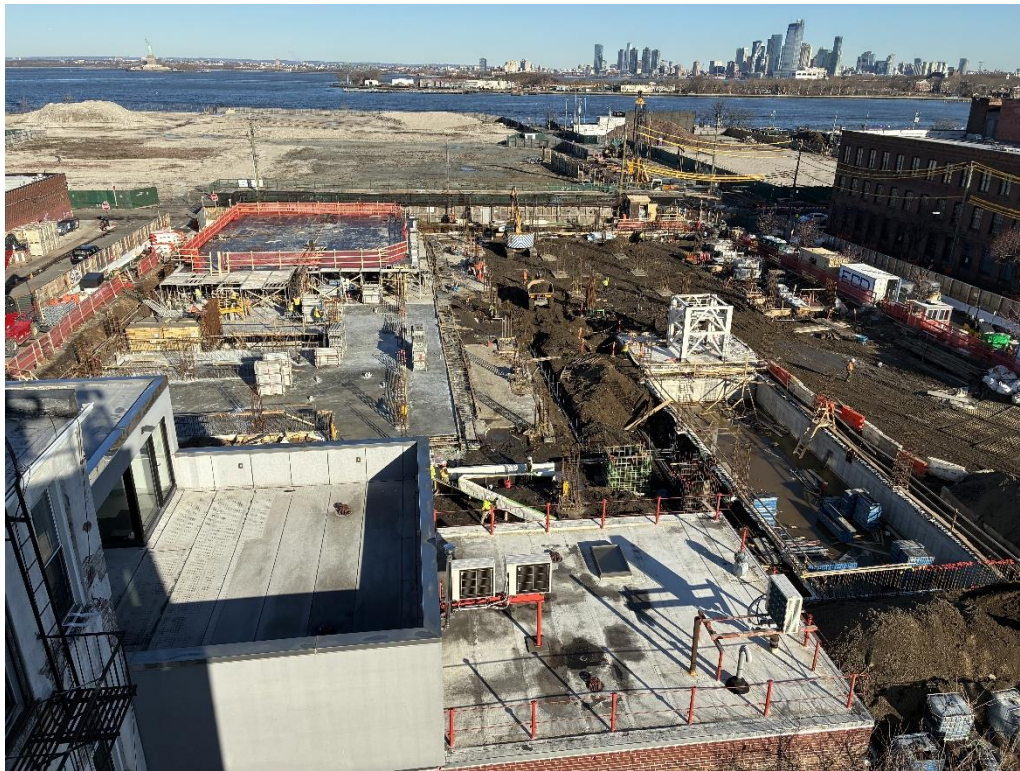
Cc: M. Burke, G. Nicholls, S. Knoop,  
N. Palumbo, L. Grose

By: Max Ringold

Langan Eng, Env, Surv, L.A. & Geo, DPC



**Photo 3:** ECD pouring an about 3-inch-thick concrete rat slab in the northwestern part of the site (facing east)



**Photo 4:** General view of the northern part of the site (facing north).

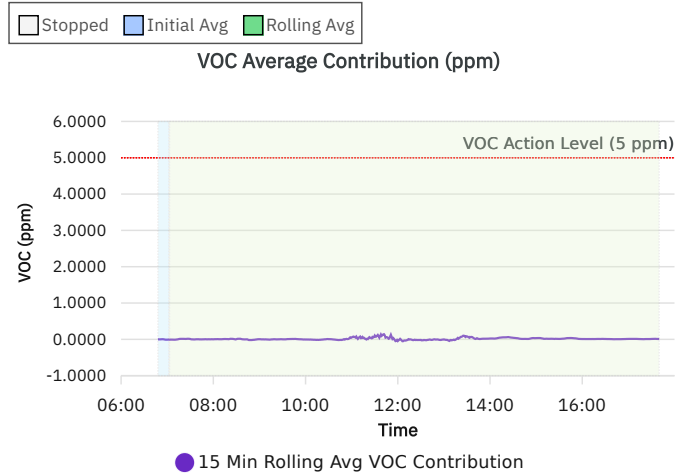
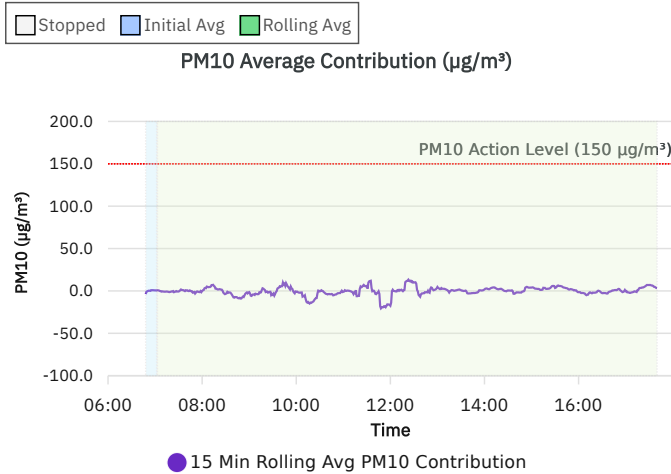
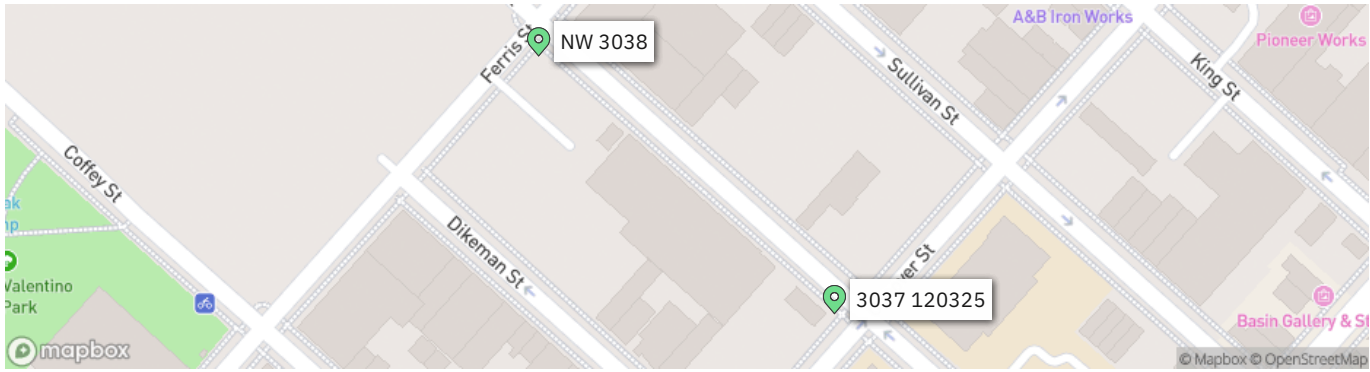
Cc: M. Burke, G. Nicholls, S. Knoop,  
N. Palumbo, L. Grose

By: Max Ringold  
Langan Eng, Env, Surv, L.A. & Geo, DPC

<b>LANGAN</b>	Contribution 2 Station 031026 Report	170562203 - 145 Wolcott St	
		Report Period	
		From:	03/24/2026 06:00
		To:	03/24/2026 18:00
		PM10 Action Level:	150 $\mu\text{g}/\text{m}^3$
VOC Action Level:	5 ppm		

Daily Environmental Summary	Temp (°F)	Relative Humidity (%)	Barometer (inHg)	Wind Speed (mph)	Prevailing Wind Direction
03/24/2026	29.8 - 52.5	27.8 - 70.4	30.3 - 30.4	0.8 - 7.4	S

Daily Monitoring Summary	PM10 ( $\mu\text{g}/\text{m}^3$ )	Time	VOC (ppm)	Time
Min Contribution (15 min avg.) - 3/24/2026	-20.6	11:48	-0.0513	12:06
Max Contribution (15 min avg.) - 3/24/2026	13.3	12:23	0.1420	11:42
Daily Avg. Contribution (15 min avg.) - 3/24/2026	-0.2	-	0.0129	-



# LANGAN SITE OBSERVATION REPORT- Day 142

<b>PROJECT No.:</b> 170452203	<b>CLIENT:</b> NYM 145 Wolcott, LLC 233 Broadway, 10 <sup>th</sup> Fl., New York, NY 10279	<b>DATE:</b> Wed., March 25, 2026
<b>PROJECT:</b> 145-165 Wolcott Street		<b>WEATHER:</b> Clear, 32-55 °F Wind: SE @ 0.4 – 9.8 mph
<b>LOCATION:</b> Brooklyn, New York		<b>TIME:</b> 6:45 am – 6:00 pm
<b>SITE CODE:</b> C224256		<b>MONITOR:</b> Alexandra Fitzgerald

<b>EQUIPMENT:</b> AQS1 Air Monitoring Station x 2 MiniRAE 3000 Photoionization Detector (PID) CAT 335F x 2 Zaxis 135US Hyundai HL955A Bauer BG 36 H ABI TM22 RTG RG 27S Hitachi 670 Takeuchi TB260 Terex TA9 TB260 Geoprobe 7822DT Kubota KX080-4α2 BW120 AD	<b>PRESENT AT SITE:</b> <b>Langan (Environmental):</b> Alexandra Fitzgerald <b>Urban Atelier Group (UAG)</b> <b>ECD NY Inc. (ECD):</b> Kyle McGovern
---	---

**OBSERVATIONS, DISCUSSIONS, TEST RESULTS, ETC.:**

Langan was present to document remediation activities in accordance with the New York State Department of Environmental Conservation (NYSDEC)-approved July 22, 2025 Remedial Action Work Plan (RAWP) at the 145-165 Wolcott Street site in Brooklyn, New York (Site No. C224256).

**Site Activities**

- ECD used a Kubota KX080-4α2 and a CAT 335F to excavate an about 65-foot-long by 8-feet-wide area to about 6 feet below grade surface (bgs) and an about 15-foot-long by 5-feet-wide area to about 4 feet bgs for the installation of utility piping in the southern part of the site.
  - Excavated clean fill was stockpiled adjacent to the excavations for future on-site reuse.
- ECD used a CAT 335F to backfill an about 115-foot-long by 5-feet-wide area with an about 6-inch-thick layer of ¾-inch virgin stone (gas permeable aggregate) for the installation of utility piping within the southern part of the site.
- ECD used a CAT 303E to backfill an about 8-foot-long by 4-feet-wide area with an about 3-foot-thick layer of ¾-inch virgin stone (gas permeable aggregate) as part of the soil vapor extraction (SVE) system within the northern part of the site.
- ECD installed 20-feet of 4-inch-diameter polyvinyl chloride (PVC) piping as part of the SVE system in the northern part of the site.
- ECD poured an about 3-inch-thick concrete rat slab within an about 30-foot-long by 20-feet-wide area within the northern part of the site.

Cc: M. Burke, G. Nicholls, S. Knoop, N. Palumbo, L. Grose	By: Alexandra Fitzgerald
<b>Langan Eng, Env, Surv, L.A. &amp; Geo, DPC</b>	

# LANGAN SITE OBSERVATION REPORT- Day 142

- ECD installed Preprufe 300R Plus waterproofing/vapor barrier membrane atop the rat slab in the northern part of the site.

## Material Tracking

- ECD imported the following material:
  - 2 loads (approximately 36 cubic yards [CY]) of ASTM No. 5 Stone was imported from Tilcon West Nyack Quarry in West Nyack, NY.
- No material was exported from the site.

Material Export Summary – Soil										
Facility Name Location	Clean Earth of North Jersey Kearny, NJ									
Material	Non-Hazardous Low pH Soil		Hazardous Lead Impacted Soil with UHCs		Hazardous Lead Impacted Soil with No UHCs		High Hazardous Lead		Non-Hazardous Soil	
Quantities	No. of Loads	Approx. Volume (CY)	No. of Loads	Approx. Volume (CY)	No. of Loads	Approx. Volume (CY)	No. of Loads	Approx. Volume (CY)	No. of Loads	Approx. Volume (CY)
<b>Today</b>	-	-	-	-	-	-	-	-	-	-
<b>Project Total</b>	<b>332</b>	<b>5,495</b>	<b>56</b>	<b>901</b>	<b>27</b>	<b>467</b>	<b>5</b>	<b>68</b>	<b>1</b>	<b>18</b>

Notes:

- UHC – Underlying Hazardous Constituent

Material Export Summary – Soil						
Facility Name Location	Clean Earth of New Castle New Castle, DE		Conestoga Landfill Morgantown, PA		Waste Management Morgantown, PA	
Material	Non-Hazardous Soil		Non-Hazardous Soil		Non-Hazardous Soil	
Quantities	No. of Loads	Approx. Volume (CY)	No. of Loads	Approx. Volume (CY)	No. of Loads	Approx. Volume (CY)
<b>Today</b>	-	-	-	-	-	-
<b>Project Total</b>	<b>729</b>	<b>13,682</b>	<b>39</b>	<b>703</b>	<b>224</b>	<b>4,007</b>

Material Export Summary – C&D						
Facility Name Location	PPark NJ, LLC Prospect Park, NJ		Bayshore Soil Management, LLC Keasbey, NJ		Silva Recycling, LLC Newark, NJ	
Material	Asphalt, Concrete		Asphalt, Concrete		Concrete	
Quantities	No. of Loads	Approx. Volume (CY)	No. of Loads	Approx. Volume (CY)	No. of Loads	Approx. Volume (CY)
<b>Today</b>	-	-	-	-	-	-
<b>Project Total</b>	<b>119</b>	<b>2,380</b>	<b>31</b>	<b>645</b>	<b>25</b>	<b>880</b>

Cc: M. Burke, G. Nicholls, S. Knoop,  
N. Palumbo, L. Grose

By: Alexandra Fitzgerald

Langan Eng, Env, Surv, L.A. & Geo, DPC

Material Import Summary										
Facility Name Location	Impact Materials, LLC Jersey City, NJ		Callahan & Nannini Quarry Inc. Salisbury Mills, NY		Durante Brothers Construction Flushing, NY		Tilcon West Nyack Quarry West Nyack, NY		B.G.L.J Servicing Corp Moriches, NY	
<b>Material</b>	3/4" Recycled Clean Stone		2-4" Granite Stone		Clean Fill		ASTM No. 5 Stone		Virgin Sand	
<b>Quantities</b>	No. of Loads	Approx. Volume (CY)	No. of Loads	Approx. Volume (CY)	No. of Loads	Approx. Volume (CY)	No. of Loads	Approx. Volume (CY)	No. of Loads	Approx. Volume (CY)
<b>Today</b>	-	-	-	-	-	-	2	36	-	-
<b>Project Total</b>	<b>62</b>	<b>1,240</b>	<b>4</b>	<b>100</b>	<b>228</b>	<b>4,088</b>	<b>40</b>	<b>720</b>	<b>1</b>	<b>18</b>

### Samples

- No samples were collected.

### Community Air Monitoring Plan (CAMP) Activities

- Langan performed community air monitoring at the perimeter of the work area at one upwind and one downwind location during intrusive work. Implementation of the Community Air Monitoring Plan (CAMP) included air monitoring for particulate matter for particulates less than 10 µm in diameter (PM10) and volatile organic compounds (VOC). VOC concentrations did not exceed the action levels established by the community air monitoring plan. PM10 concentrations did exceed the action levels established by the community air monitoring plan between 7:22 and 7:39 and between 8:04 and 8:19 due to blowing concrete dust from the rat slab in the northern part of the site. Measures including spraying water onto the rat slab were implemented to mitigate dust.
- No fugitive dust or odors associated with site activities were observed migrating from the site.

### Anticipated ActivitiesA

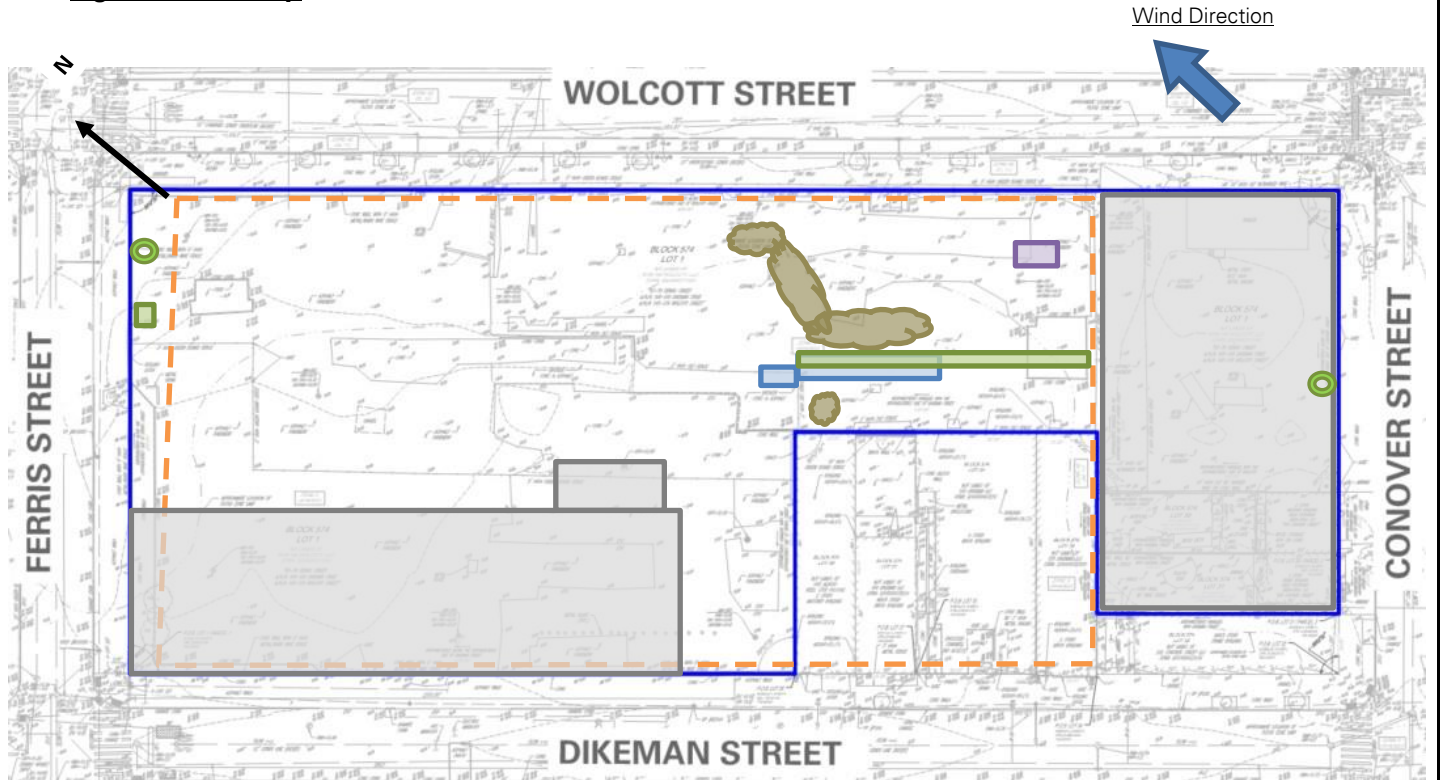
- ECD will continue excavating and backfilling for utility piping in the northern part of the site.
- ECD will continue foundation framing/concrete pouring in the central part of the site.
- ECD will continue laying polyvinyl chloride (PVC) piping, geotextile fabric, and ¾-inch virgin stone as part of the Sub Slab Depressurization System (SSDS) and soil vapor extraction system installation in the western part of the site.

Cc: M. Burke, G. Nicholls, S. Knoop,  
N. Palumbo, L. Grose

By: Alexandra Fitzgerald

**Langan Eng, Env, Surv, L.A. & Geo, DPC**

**Figure 1: Site Map**



**Legend**

	Site Boundary-		Approximate Area Excavated
	Approximate Work Area		Approximate Area Backfilled
	Approximate Location of Perimeter CAMP Station		Approximate Area Graded
	Approximate Location of Installed Site Cover System		Approximate IDW Drum Staging Area
			Approximate C&D Stockpile
			Approximate Non-Native Fill Stockpile
			Approximate Stone Stockpile
			Approximate imported clean fill Stockpile

**Notes:**

1. Basemap is referenced from 26 March 2025 ALTA/NSPS Land Title Survey prepared by Control Point Associates Inc PC.
2. IDW – Investigation-derived waste generated during the April 2025 and August 2025 supplemental waste characterizations and the January through May 2025 non-aqueous phase liquid gauging.

Cc: M. Burke, G. Nicholls, S. Knoop,  
N. Palumbo, L. Grose

By: Alexandra Fitzgerald

**Langan Eng, Env, Surv, L.A. & Geo, DPC**



## Photographs



**Photo 1:** ECD importing ASTM #5 stone in the northeastern part of the site (facing north)



**Photo 2:** ECD backfilling  $\frac{3}{4}$ -inch virgin stone (ASTM No. 5) as part of the SVE system in the northern part of the site (facing north)

Cc: M. Burke, G. Nicholls, S. Knoop,  
N. Palumbo, L. Grose

By: Alexandra Fitzgerald  
**Langan Eng, Env, Surv, L.A. & Geo, DPC**



**Photo 3:** ECD pouring an about 3-inch-thick concrete rat slab in the northern part of the site (facing west)



**Photo 4:** ECD excavating within clean fill for utility piping installation in the southern part of the site (facing west)

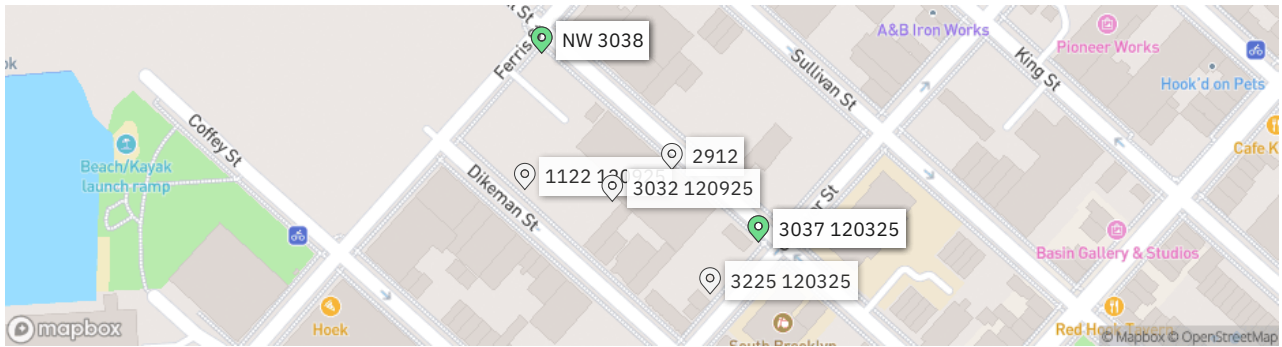
Cc: M. Burke, G. Nicholls, S. Knoop,  
N. Palumbo, L. Grose

By: Alexandra Fitzgerald  
**Langan Eng, Env, Surv, L.A. & Geo, DPC**

<b>LANGAN</b>	Contribution 6 Station 120925 Report	170562203 - 145 Wolcott St	
		Report Period	
		From:	03/25/2026 06:00
		To:	03/25/2026 18:00
		PM10 Action Level:	150 $\mu\text{g}/\text{m}^3$
VOC Action Level:	5 ppm		

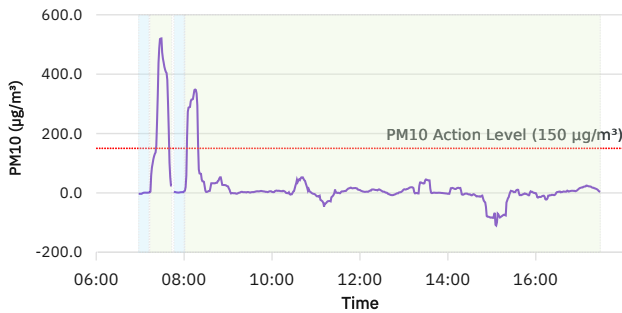
Daily Environmental Summary	Temp (°F)	Relative Humidity (%)	Barometer (inHg)	Wind Speed (mph)	Prevailing Wind Direction
03/25/2026	31.8 - 55.4	31.6 - 80.2	30.2 - 30.4	0.4 - 9.8	SE

Daily Monitoring Summary	PM10 ( $\mu\text{g}/\text{m}^3$ )	Time	VOC (ppm)	Time
Min Contribution (15 min avg.) - 3/25/2026	-109.7	15:06	-0.0387	09:09
Max Contribution (15 min avg.) - 3/25/2026	520.4	07:29	0.2947	09:39
Daily Avg. Contribution (15 min avg.) - 3/25/2026	22.2	-	0.0417	-



Stopped 
  Initial Avg 
  Rolling Avg

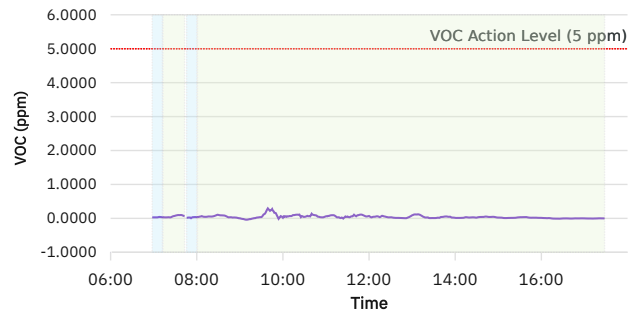
PM10 Average Contribution ( $\mu\text{g}/\text{m}^3$ )



● 15 Min Rolling Avg PM10 Contribution

Stopped 
  Initial Avg 
  Rolling Avg

VOC Average Contribution (ppm)



● 15 Min Rolling Avg VOC Contribution

# LANGAN SITE OBSERVATION REPORT- Day 143

<b>PROJECT No.:</b> 170452203	<b>CLIENT:</b> NYM 145 Wolcott, LLC 233 Broadway, 10 <sup>th</sup> Fl., New York, NY 10279	<b>DATE:</b> Thu., March 26, 2026
<b>PROJECT:</b> 145-165 Wolcott Street		<b>WEATHER:</b> Clear, 46 - 73 °F Wind: SE @ 0.4 – 5.9 mph
<b>LOCATION:</b> Brooklyn, New York		<b>TIME:</b> 6:45 am – 6:00 pm
<b>SITE CODE:</b> C224256		<b>MONITOR:</b> Brayden Klein

<b>EQUIPMENT:</b> AQS1 Air Monitoring Station x 2 MiniRAE 3000 Photoionization Detector (PID) CAT 335F x 2 Zaxis 135US Hyundai HL955A Bauer BG 36 H ABI TM22 RTG RG 27S Hitachi 670 Takeuchi TB260 Terex TA9 TB260 Geoprobe 7822DT Kubota KX080-4α2 BW120 AD	<b>PRESENT AT SITE:</b> <b>Langan (Environmental):</b> Brayden Klein <b>Urban Atelier Group (UAG)</b> <b>ECD NY Inc. (ECD):</b> Kyle McGovern
---	--

**OBSERVATIONS, DISCUSSIONS, TEST RESULTS, ETC.:**

Langan was present to document remediation activities in accordance with the New York State Department of Environmental Conservation (NYSDEC)-approved July 22, 2025 Remedial Action Work Plan (RAWP) at the 145-165 Wolcott Street site in Brooklyn, New York (Site No. C224256).

**Site Activities**

- ECD used a Kubota KX080-4α2 to grade an about 30 foot-long by 20-feet-wide area in the southeastern part of the site.
  - Graded clean fill was added to the stockpile adjacent to the area for future on-site reuse.
- ECD used a Kubota KX080-4α2 to backfill with previously imported clean fill in the following areas:
  - An about 20 foot-long by 20-feet-wide area from 4 feet below grade surface (bgs) to working grade in the southeastern part of the site.
  - An about 15 foot-long by 10-feet-wide area from 3 feet bgs to working grade adjacent to the detention tank in the central part of the site.
- ECD used a CAT 335F to backfill an about 20 foot-long by 5-foot-wide area with an about 6-inch-thick layer of ¾-inch virgin stone (gas permeable aggregate) for the installation of utility piping within the central part of the site.
- ECD poured an about 3-inch-thick concrete rat slab within an about 30 foot-long by 20-feet-wide area within the northern part of the site.

Cc: M. Burke, G. Nicholls, S. Knoop, N. Palumbo, L. Grose	By: Brayden Klein
	<b>Langan Eng, Env, Surv, L.A. &amp; Geo, DPC</b>

# LANGAN SITE OBSERVATION REPORT- Day 143

- ECD installed Preprufe 300R Plus waterproofing/vapor barrier membrane atop the rat slab in the northwestern part of the site.

## Material Tracking

- No material was imported into the site.
- No material was exported from the site.

Material Export Summary – Soil										
Facility Name Location	Clean Earth of North Jersey Kearny, NJ									
Material	Non-Hazardous Low pH Soil		Hazardous Lead Impacted Soil with UHCs		Hazardous Lead Impacted Soil with No UHCs		High Hazardous Lead		Non-Hazardous Soil	
Quantities	No. of Loads	Approx. Volume (CY)	No. of Loads	Approx. Volume (CY)	No. of Loads	Approx. Volume (CY)	No. of Loads	Approx. Volume (CY)	No. of Loads	Approx. Volume (CY)
<b>Today</b>	-	-	-	-	-	-	-	-	-	-
<b>Project Total</b>	<b>332</b>	<b>5,495</b>	<b>56</b>	<b>901</b>	<b>27</b>	<b>467</b>	<b>5</b>	<b>68</b>	<b>1</b>	<b>18</b>

Notes:

- UHC – Underlying Hazardous Constituent

Material Export Summary – Soil							
Facility Name Location	Clean Earth of New Castle New Castle, DE		Conestoga Landfill Morgantown, PA		Waste Management Morgantown, PA		
Material	Non-Hazardous Soil		Non-Hazardous Soil		Non-Hazardous Soil		
Quantities	No. of Loads	Approx. Volume (CY)	No. of Loads	Approx. Volume (CY)	No. of Loads	Approx. Volume (CY)	
<b>Today</b>	-	-	-	-	-	-	
<b>Project Total</b>	<b>729</b>	<b>13,682</b>	<b>39</b>	<b>703</b>	<b>224</b>	<b>4,007</b>	

Material Export Summary – C&D						
Facility Name Location	PPark NJ, LLC Prospect Park, NJ		Bayshore Soil Management, LLC Keasbey, NJ		Silva Recycling, LLC Newark, NJ	
Material	Asphalt, Concrete		Asphalt, Concrete		Concrete	
Quantities	No. of Loads	Approx. Volume (CY)	No. of Loads	Approx. Volume (CY)	No. of Loads	Approx. Volume (CY)
<b>Today</b>	-	-	-	-	-	-
<b>Project Total</b>	<b>119</b>	<b>2,380</b>	<b>31</b>	<b>645</b>	<b>25</b>	<b>880</b>

Cc: M. Burke, G. Nicholls, S. Knoop,  
N. Palumbo, L. Grose

By: Brayden Klein

Langan Eng, Env, Surv, L.A. & Geo, DPC

Material Import Summary										
Facility Name Location	Impact Materials, LLC Jersey City, NJ		Callahan & Nannini Quarry Inc. Salisbury Mills, NY		Durante Brothers Construction Flushing, NY		Tilcon West Nyack Quarry West Nyack, NY		B.G.L.J Servicing Corp Moriches, NY	
Material	3/4" Recycled Clean Stone		2-4" Granite Stone		Clean Fill		ASTM No. 5 Stone		Virgin Sand	
Quantities	No. of Loads	Approx. Volume (CY)	No. of Loads	Approx. Volume (CY)	No. of Loads	Approx. Volume (CY)	No. of Loads	Approx. Volume (CY)	No. of Loads	Approx. Volume (CY)
Today	-	-	-	-	-	-	-	-	-	-
Project Total	62	1,240	4	100	228	4,088	40	720	1	18

### Samples

- No samples were collected.

### Community Air Monitoring Plan (CAMP) Activities

- Langan performed community air monitoring at the perimeter of the work area at one upwind and one downwind location during intrusive work. Implementation of the Community Air Monitoring Plan (CAMP) included air monitoring for particulate matter for particulates less than 10 µm in diameter (PM10) and volatile organic compounds (VOC). PM10 and VOC concentrations did not exceed the action levels established by the community air monitoring plan.
- No fugitive dust or odors associated with site activities were observed migrating from the site.

### Anticipated Activities

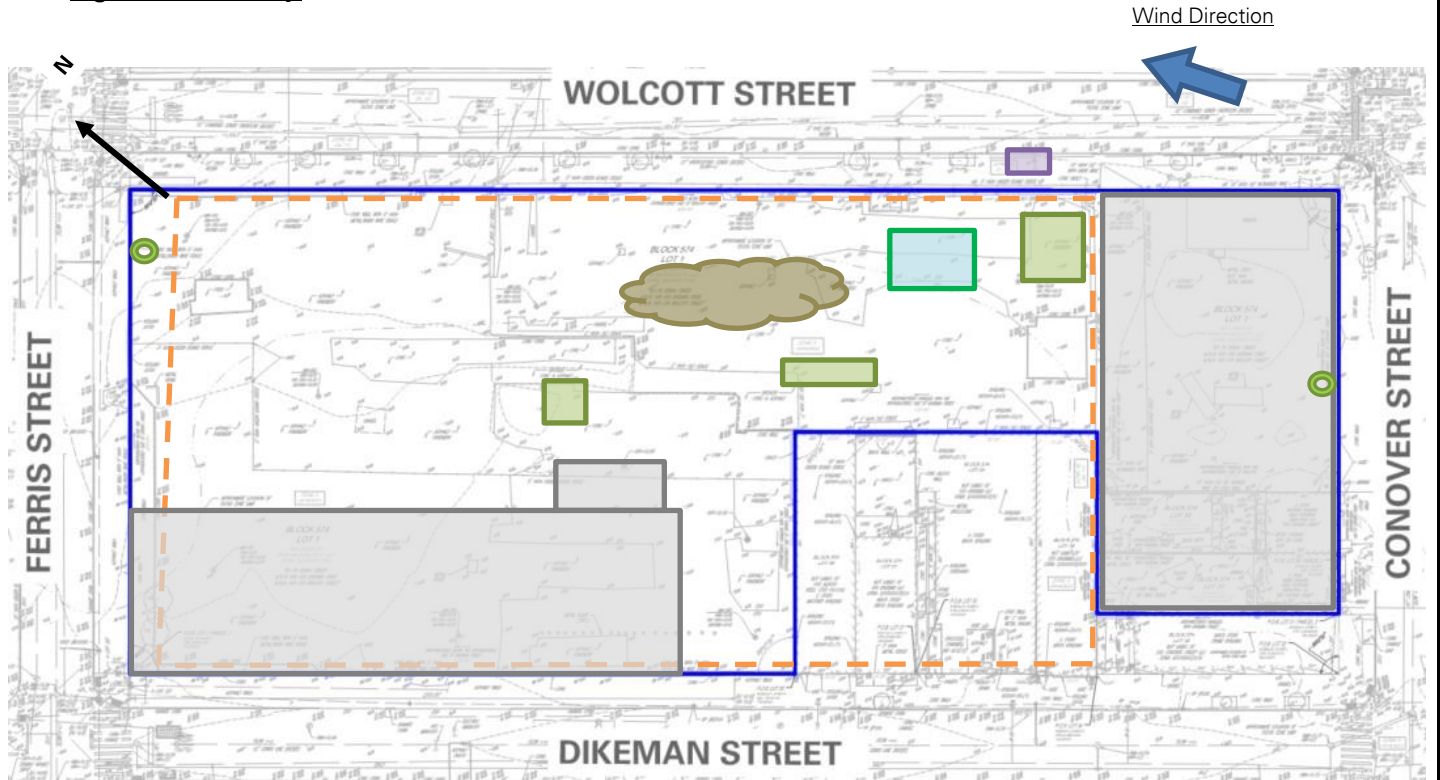
- ECD will continue excavating and backfilling for utility piping in the northern part of the site.
- ECD will continue foundation framing/concrete pouring in the central part of the site.
- ECD will continue laying polyvinyl chloride (PVC) piping, geotextile fabric, and ¾-inch virgin stone as part of the Sub Slab Depressurization System (SSDS) and soil vapor extraction (SVE) system installation in the western part of the site.

Cc: M. Burke, G. Nicholls, S. Knoop,  
N. Palumbo, L. Grose

By: Brayden Klein

Langan Eng, Env, Surv, L.A. & Geo, DPC

**Figure 1: Site Map**



**Legend**

	Site Boundary-		Approximate Area Excavated
	Approximate Work Area		Approximate Area Backfilled
	Approximate Location of Perimeter CAMP Station		Approximate Area Graded
	Approximate Location of Installed Site Cover System		Approximate IDW Drum Staging Area
			Approximate C&D Stockpile
			Approximate Non-Native Fill Stockpile
			Approximate Stone Stockpile
			Approximate imported clean fill Stockpile

**Notes:**

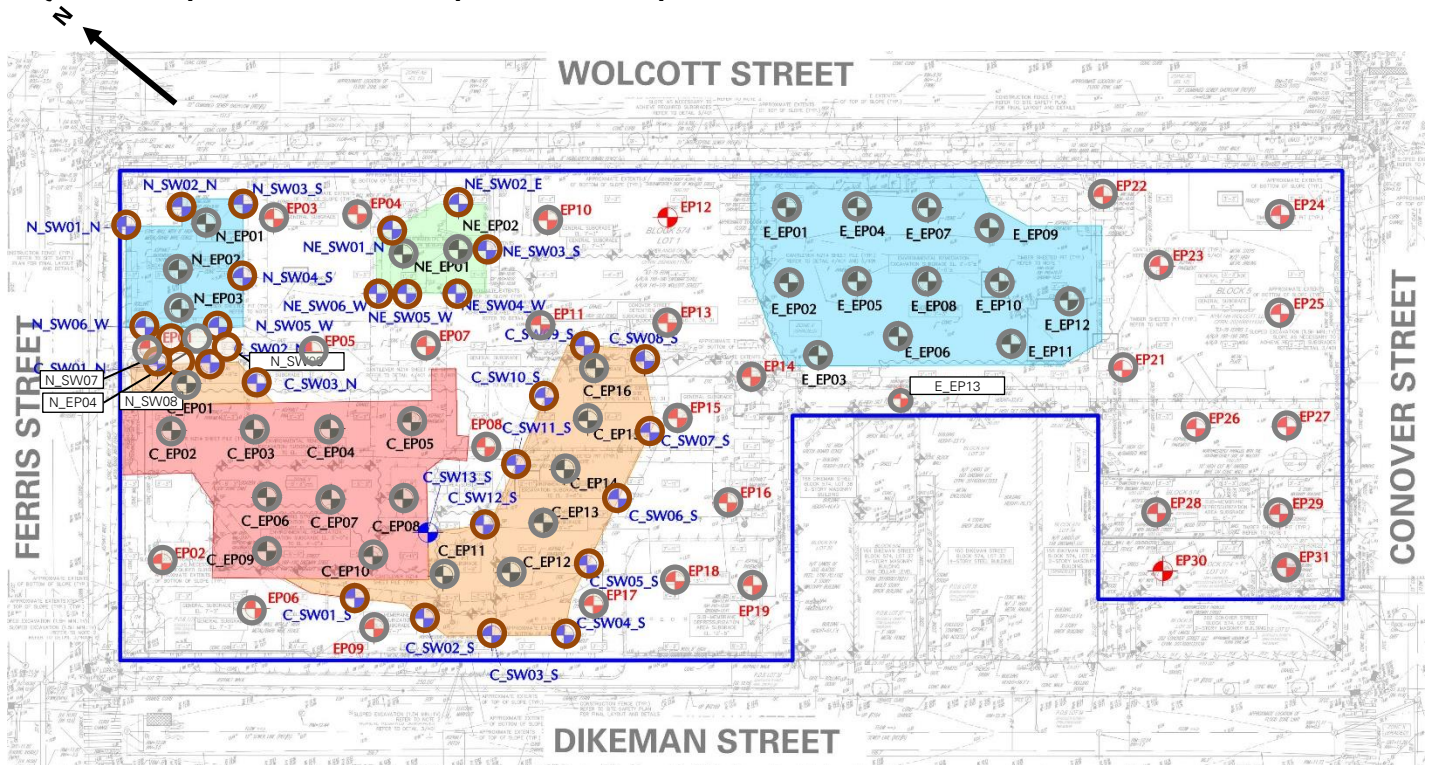
1. Basemap is referenced from 26 March 2025 ALTA/NSPS Land Title Survey prepared by Control Point Associates Inc PC.
2. IDW – Investigation-derived waste generated during the April 2025 and August 2025 supplemental waste characterizations and the January through May 2025 non-aqueous phase liquid gauging.

Cc: M. Burke, G. Nicholls, S. Knoop,  
N. Palumbo, L. Grose

By: Brayden Klein

**Langan Eng, Env, Surv, L.A. & Geo, DPC**

**Figure 2: Endpoint / Sidewall Sample Location Map**



**Legend**

- Site Boundary
- Approximate Location of Documentation Endpoint Soil Sample Collected
- Approximate Location of Documentation Sidewall Soil Sample Collected
- Approximate Location of Previously Collected Documentation Endpoint Soil Sample
- Approximate Location of Previously Collected Documentation Sidewall Soil Sample

**Notes:**

1. Basemap is referenced from 26 March 2025 ALTA/NSPS Land Title Survey prepared by Control Point Associates Inc PC.

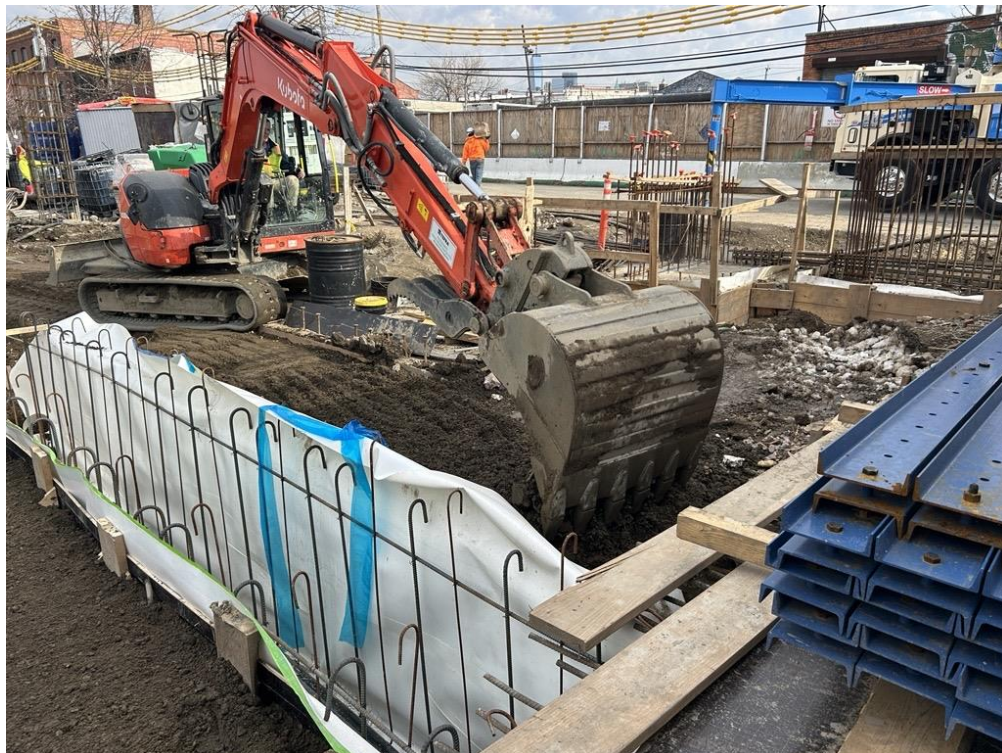
Cc: M. Burke, G. Nicholls, S. Knoop,  
N. Palumbo, L. Grose

By: Brayden Klein  
**Langan Eng, Env, Surv, L.A. & Geo, DPC**

## Photographs



**Photo 1:** ECD adding previously imported clean fill to the stockpile in the central part of the site (facing northeast)



**Photo 2:** ECD backfilling with previously imported clean fill to surface grade in the southeastern part of the site (facing north)

Cc: M. Burke, G. Nicholls, S. Knoop,  
N. Palumbo, L. Grose

By: Brayden Klein

**Langan Eng, Env, Surv, L.A. & Geo, DPC**



**Photo 3:** ECD backfilling with previously imported clean fill to surface grade around the detention tank in the central part of the site (facing east)



**Photo 4:** ECD backfilling an about 6-inch-thick layer of previously imported ¾-inch stone for utility piping installation (facing west)

Cc: M. Burke, G. Nicholls, S. Knoop,  
N. Palumbo, L. Grose

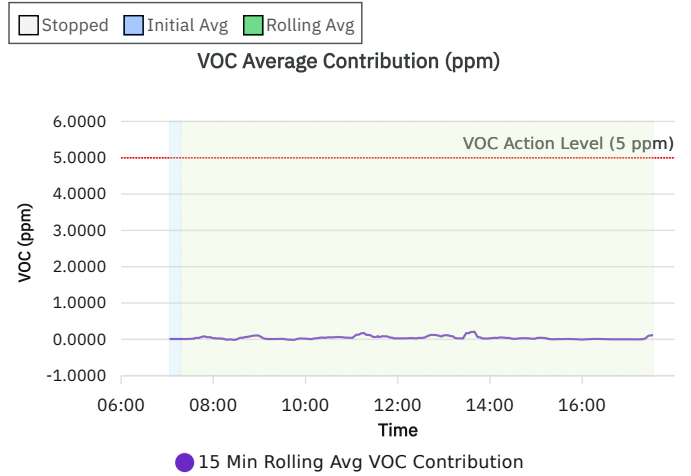
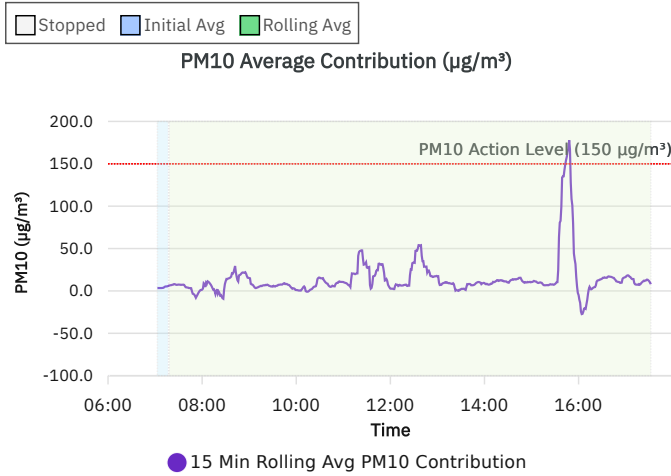
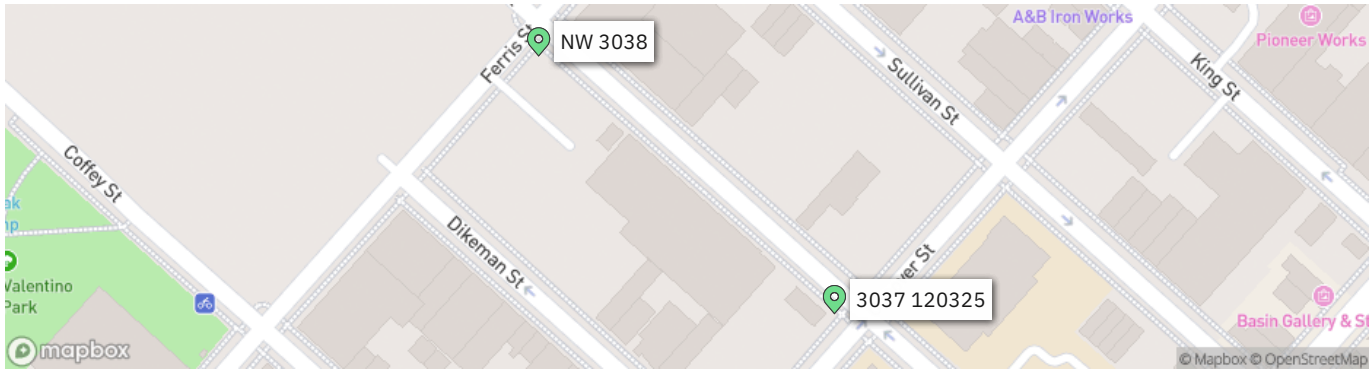
By: Brayden Klein

**Langan Eng, Env, Surv, L.A. & Geo, DPC**

<b>LANGAN</b>	Contribution 2 Station 031026 Report	170562203 - 145 Wolcott St	
		Report Period	
		From:	03/26/2026 06:00
		To:	03/26/2026 18:00
		PM10 Action Level:	150 $\mu\text{g}/\text{m}^3$
VOC Action Level:	5 ppm		

Daily Environmental Summary	Temp (°F)	Relative Humidity (%)	Barometer (inHg)	Wind Speed (mph)	Prevailing Wind Direction
03/26/2026	46.4 - 73.2	39.3 - 76.8	29.7 - 30.0	0.4 - 5.9	SSE

Daily Monitoring Summary	PM10 ( $\mu\text{g}/\text{m}^3$ )	Time	VOC (ppm)	Time
Min Contribution (15 min avg.) - 3/26/2026	-27.3	16:04	-0.0133	09:44
Max Contribution (15 min avg.) - 3/26/2026	177.9	15:48	0.2060	13:40
Daily Avg. Contribution (15 min avg.) - 3/26/2026	14.0	-	0.0407	-



# LANGAN SITE OBSERVATION REPORT- Day 144

<b>PROJECT No.:</b> 170452203	<b>CLIENT:</b>  NYM 145 Wolcott, LLC 233 Broadway, 10 <sup>th</sup> Fl., New York, NY 10279	<b>DATE:</b> Fri., March 27, 2026
<b>PROJECT:</b> 145-165 Wolcott Street		<b>WEATHER:</b> Cloudy, 47 - 56 °F Wind: SW @ 0.9 – 11.0 mph
<b>LOCATION:</b> Brooklyn, New York		<b>TIME:</b> 6:45 am – 6:00 pm
<b>SITE CODE:</b> C224256		<b>MONITOR:</b> Brayden Klein

<b>EQUIPMENT:</b> AQS1 Air Monitoring Station x 2 MiniRAE 3000 Photoionization Detector (PID) CAT 335F x 2 Zaxis 135US Hyundai HL955A Bauer BG 36 H ABI TM22 RTG RG 27S Hitachi 670 Takeuchi TB260 Terex TA9 TB260 Geoprobe 7822DT Kubota KX080-4α2 BW120 AD	<b>PRESENT AT SITE:</b> <b>Langan (Environmental):</b> Brayden Klein <b>Urban Atelier Group (UAG)</b> <b>ECD NY Inc. (ECD):</b> Kyle McGovern
---	--

**OBSERVATIONS, DISCUSSIONS, TEST RESULTS, ETC.:**

Langan was present to document remediation activities in accordance with the New York State Department of Environmental Conservation (NYSDEC)-approved July 22, 2025 Remedial Action Work Plan (RAWP) at the 145-165 Wolcott Street site in Brooklyn, New York (Site No. C224256).

**Site Activities**

- ECD used a CAT 335F to excavate the following areas:
  - An about 45-foot-long by 5-feet-wide area to 5 feet below grade surface (bgs) for utility pipe installation in the southern part of the site.
  - An about 20 foot-long by 20-feet-wide area to 6 feet bgs for soil vapor extraction (SVE) system installation in the southeastern part of the site.
  - During excavation, ECD partially uncovered an about 500-gallon metal structure encased in concrete at about 1 foot bgs in the southeastern corner of the site. The structure was measured to be about 7-feet-long with a 48-inch diameter and was observed to contain water. The structure and surrounding non-native fill were screened for odors, staining, and organic vapors using a PID. No odors were observed and a maximum PID reading of 5.0 parts per million was recorded from the inside the structure. No staining was observed on the concrete encasement nor the surrounding non-native fill, and evidence of release was not observed.
  - Excavated non-native fill was stockpiled adjacent to the excavation.

Cc: M. Burke, G. Nicholls, S. Knoop, N. Palumbo, L. Grose	By: Brayden Klein
	<b>Langan Eng, Env, Surv, L.A. &amp; Geo, DPC</b>

# LANGAN SITE OBSERVATION REPORT- Day 144

- Excavated non-native fill was screened for odors, staining, and organic vapors using a PID. No impacts were observed.
- ECD used a Kubota KX080-4α2 to backfill the following areas with previously imported clean fill:
  - An about 20 foot-long by 5-feet-wide area from 4 bgs to working grade in the southeastern part of the site
  - An about 100 foot-long by 10-feet-wide area from 6 feet bgs to about 4 feet bgs in the southern part of the site
- ECD installed geotextile fabric within an about 25-foot-long by 15-feet-wide area and used a Kubota KX080-4α2 to backfill an about 12-inch-thick layer of ¾-inch virgin stone (gas permeable aggregate) as part of the SVE system within the southern part of the site.
- ECD installed 35 feet of 4-inch-diameter polyvinyl chloride (PVC) piping as part of the SVE in the southern part of the site.
- ECD poured an about 12-inch-thick concrete slab within an about 105-foot-long by 60-feet-wide area within the northern part of the site.
- ECD installed Preprufe 300R Plus waterproofing/vapor barrier membrane atop the rat slab in the southeastern part of the site.

## **Material Tracking**

- ECD imported the following material:
  - 4 loads (approximately 72 cubic yards) of ASTM No. 5 Stone were imported from Tilcon West Nyack Quarry in West Nyack, NY.
- No material was exported from the site.

<b>Material Export Summary – Soil</b>										
<b>Facility Name</b>	<b>Clean Earth of North Jersey</b>									
<b>Location</b>	<b>Kearny, NJ</b>									
<b>Material</b>	Non-Hazardous Low pH Soil		Hazardous Lead Impacted Soil with UHCs		Hazardous Lead Impacted Soil with No UHCs		High Hazardous Lead		Non-Hazardous Soil	
<b>Quantities</b>	No. of Loads	Approx. Volume (CY)	No. of Loads	Approx. Volume (CY)	No. of Loads	Approx. Volume (CY)	No. of Loads	Approx. Volume (CY)	No. of Loads	Approx. Volume (CY)
<b>Today</b>	-	-	-	-	-	-	-	-	-	-
<b>Project Total</b>	<b>332</b>	<b>5,495</b>	<b>56</b>	<b>901</b>	<b>27</b>	<b>467</b>	<b>5</b>	<b>68</b>	<b>1</b>	<b>18</b>

Notes:

1. UHC – Underlying Hazardous Constituent

Cc: M. Burke, G. Nicholls, S. Knoop,  
N. Palumbo, L. Grose

By: Brayden Klein

**Langan Eng, Env, Surv, L.A. & Geo, DPC**

Material Export Summary – Soil						
Facility Name	Clean Earth of New Castle		Conestoga Landfill		Waste Management	
Location	New Castle, DE		Morgantown, PA		Morgantown, PA	
Material	Non-Hazardous Soil		Non-Hazardous Soil		Non-Hazardous Soil	
Quantities	No. of Loads	Approx. Volume (CY)	No. of Loads	Approx. Volume (CY)	No. of Loads	Approx. Volume (CY)
Today	-	-	-	-	-	-
Project Total	<b>729</b>	<b>13,682</b>	<b>39</b>	<b>703</b>	<b>224</b>	<b>4,007</b>

Material Export Summary – C&D						
Facility Name	PPark NJ, LLC		Bayshore Soil Management, LLC		Silva Recycling, LLC	
Location	Prospect Park, NJ		Keasbey, NJ		Newark, NJ	
Material	Asphalt, Concrete		Asphalt, Concrete		Concrete	
Quantities	No. of Loads	Approx. Volume (CY)	No. of Loads	Approx. Volume (CY)	No. of Loads	Approx. Volume (CY)
Today	-	-	-	-	-	-
Project Total	<b>119</b>	<b>2,380</b>	<b>31</b>	<b>645</b>	<b>25</b>	<b>880</b>

Material Import Summary										
Facility Name	Impact Materials, LLC		Callahan & Nannini Quarry Inc.		Durante Brothers Construction		Tilcon West Nyack Quarry		B.G.L.J Servicing Corp	
Location	Jersey City, NJ		Salisbury Mills, NY		Flushing, NY		West Nyack, NY		Moriches, NY	
Material	3/4" Recycled Clean Stone		2-4" Granite Stone		Clean Fill		ASTM No. 5 Stone		Virgin Sand	
Quantities	No. of Loads	Approx. Volume (CY)	No. of Loads	Approx. Volume (CY)	No. of Loads	Approx. Volume (CY)	No. of Loads	Approx. Volume (CY)	No. of Loads	Approx. Volume (CY)
Today	-	-	-	-	-	-	4	72	-	-
Project Total	<b>62</b>	<b>1,240</b>	<b>4</b>	<b>100</b>	<b>228</b>	<b>4,088</b>	<b>44</b>	<b>792</b>	<b>1</b>	<b>18</b>

### Samples

- No samples were collected.

### Community Air Monitoring Plan (CAMP) Activities

- Langan performed community air monitoring at the perimeter of the work area at one upwind and one downwind location during intrusive work. Implementation of the Community Air Monitoring Plan (CAMP) included air monitoring for particulate matter for particulates less than 10 µm in diameter (PM10) and volatile organic compounds (VOC). PM10 and VOC concentrations did not exceed the action levels established by the community air monitoring plan.
- No fugitive dust or odors associated with site activities were observed migrating from the site.

### Anticipated Activities

- ECD will continue excavating and backfilling for utility piping in the northern part of the site.
- ECD will continue foundation framing/concrete pouring in the central part of the site.

Cc: M. Burke, G. Nicholls, S. Knoop,  
N. Palumbo, L. Grose

By: Brayden Klein

**Langan Eng, Env, Surv, L.A. & Geo, DPC**

# **LANGAN** SITE OBSERVATION REPORT- Day 144

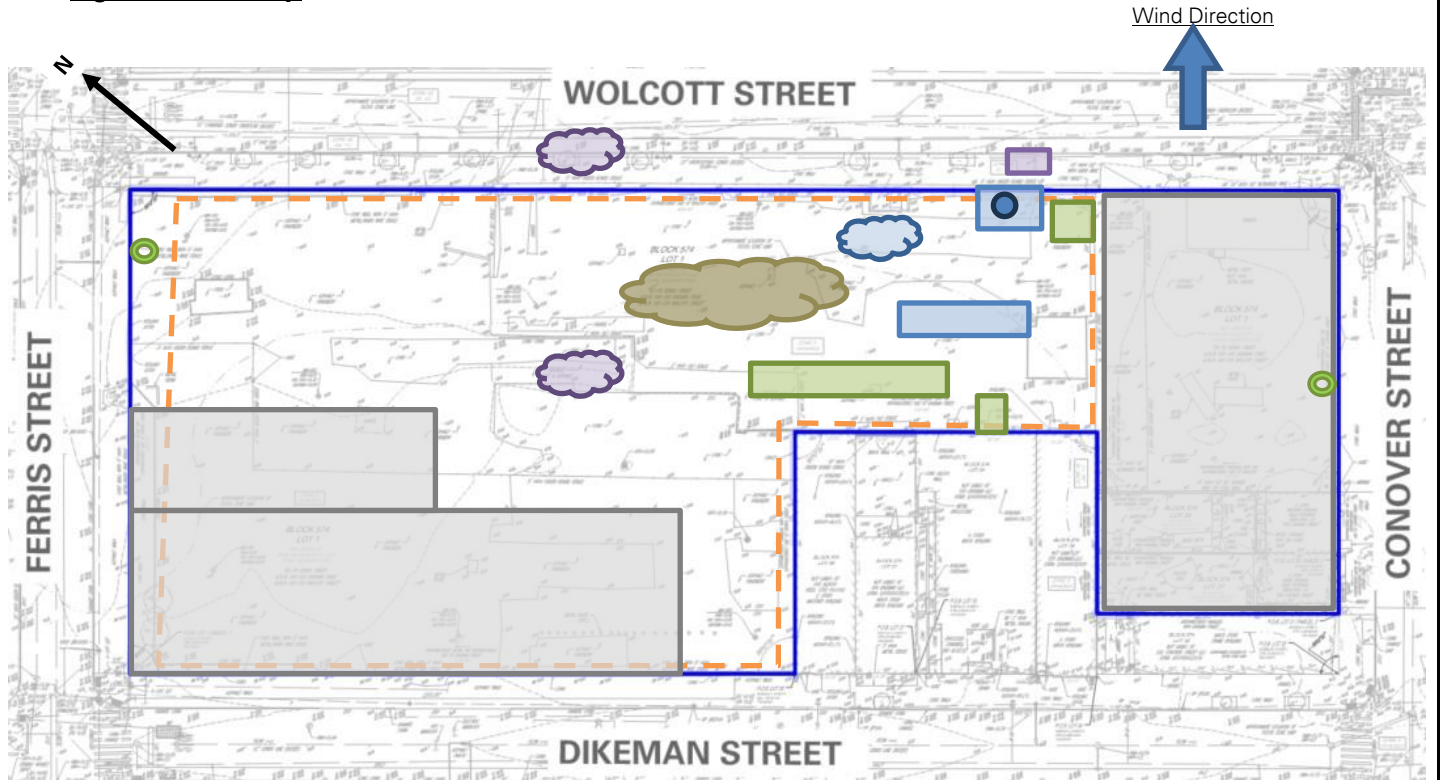
- ECD will continue laying PVC piping, geotextile fabric, and ¾-inch virgin stone as part of the Sub Slab Depressurization System (SSDS) and SVE system installation in the western part of the site.

Cc: M. Burke, G. Nicholls, S. Knoop,  
N. Palumbo, L. Grose

By: Brayden Klein

**Langan Eng, Env, Surv, L.A. & Geo, DPC**

**Figure 1: Site Map**



**Legend**

	Site Boundary-		Approximate Area Excavated
	Approximate Work Area		Approximate Area Backfilled
	Approximate Location of Perimeter CAMP Station		Approximate Area Graded
	Approximate Location of Installed Site Cover System		Approximate IDW Drum Staging Area
			Approximate C&D Stockpile
			Approximate Non-Native Fill Stockpile
			Approximate Stone Stockpile
			Approximate imported clean fill Stockpile
			Approximate metal casing Location

**Notes:**

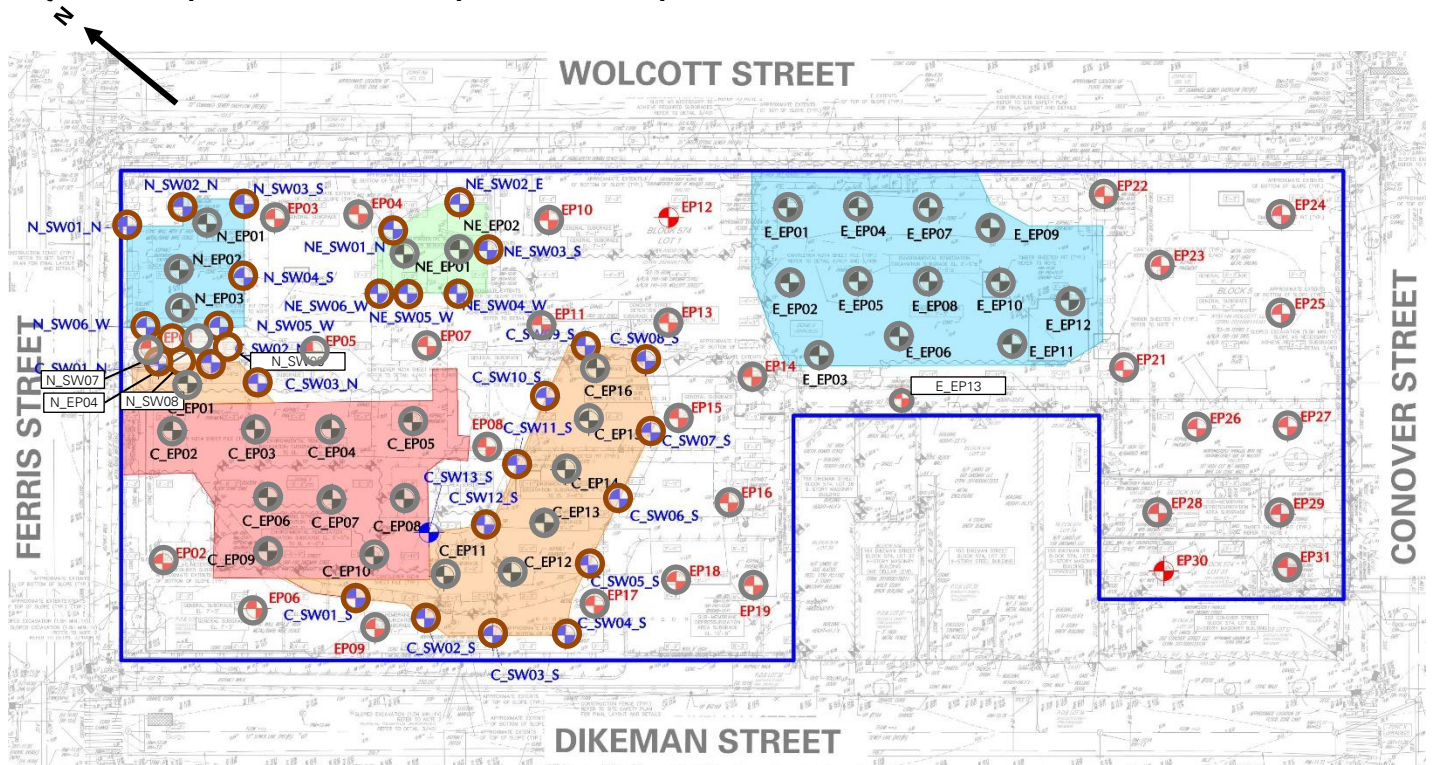
1. Basemap is referenced from 26 March 2025 ALTA/NSPS Land Title Survey prepared by Control Point Associates Inc PC.
2. IDW – Investigation-derived waste generated during the April 2025 and August 2025 supplemental waste characterizations and the January through May 2025 non-aqueous phase liquid gauging.

Cc: M. Burke, G. Nicholls, S. Knoop,  
N. Palumbo, L. Grose

By: Brayden Klein

**Langan Eng, Env, Surv, L.A. & Geo, DPC**

**Figure 2: Endpoint / Sidewalk Sample Location Map**



**Legend**

- Site Boundary
- Approximate Location of Documentation Endpoint Soil Sample Collected
- Approximate Location of Documentation Sidewalk Soil Sample Collected
- Approximate Location of Previously Collected Documentation Endpoint Soil Sample
- Approximate Location of Previously Collected Documentation Sidewalk Soil Sample

**Notes:**

1. Basemap is referenced from 26 March 2025 ALTA/NSPS Land Title Survey prepared by Control Point Associates Inc PC.

Cc: M. Burke, G. Nicholls, S. Knoop,  
N. Palumbo, L. Grose

By: Brayden Klein  
**Langan Eng, Env, Surv, L.A. & Geo, DPC**

# LANGAN SITE OBSERVATION REPORT- Day 144

## Photographs



**Photo 1:** ECD importing 3/4-inch virgin stone in the eastern part of the site (facing northwest)



**Photo 2:** ECD pouring a 12-inch-thick concrete slab in the northern part of the site (facing west)

Cc: M. Burke, G. Nicholls, S. Knoop,  
N. Palumbo, L. Grose

By: Brayden Klein  
**Langan Eng, Env, Surv, L.A. & Geo, DPC**



**Photo 3:** ECD backfilling with previously imported clean fill to surface grade around utility piping in the southern part of the site (facing southwest)



**Photo 4:** ECD installing Preprufe 300R Plus waterproofing / vapor barrier atop rat slab in the southern part of the site (facing north)

Cc: M. Burke, G. Nicholls, S. Knoop,  
N. Palumbo, L. Grose

By: Brayden Klein

**Langan Eng, Env, Surv, L.A. & Geo, DPC**

<b>LANGAN</b>	Contribution 2 Station 031026 Report	170562203 - 145 Wolcott St	
		Report Period	
		From:	03/27/2026 06:00
		To:	03/27/2026 18:00
		PM10 Action Level:	150 $\mu\text{g}/\text{m}^3$
VOC Action Level:	5 ppm		

Daily Environmental Summary	Temp (°F)	Relative Humidity (%)	Barometer (inHg)	Wind Speed (mph)	Prevailing Wind Direction
03/27/2026	47.1 - 56.1	40.5 - 72.9	29.8 - 30.1	0.9 - 11.0	SW

Daily Monitoring Summary	PM10 ( $\mu\text{g}/\text{m}^3$ )	Time	VOC (ppm)	Time
Min Contribution (15 min avg.) - 3/27/2026	-460.4	16:14	-0.2100	10:10
Max Contribution (15 min avg.) - 3/27/2026	76.2	11:20	0.1020	08:29
Daily Avg. Contribution (15 min avg.) - 3/27/2026	-17.0	-	-0.0219	-

