

LANGAN SITE OBSERVATION REPORT- Day 155

PROJECT No.: 170452203	CLIENT: NYM 145 Wolcott, LLC 233 Broadway, 10 th Fl., New York, NY 10279	DATE: Mon., April 13, 2026
PROJECT: 145-165 Wolcott Street		WEATHER: Cloudy, 50 - 76°F Wind: ESE @ 0.5 – 4.8 mph
LOCATION: Brooklyn, New York		TIME: 6:45 am – 6:00 pm
SITE CODE: C224256		MONITOR: Brayden Klein

EQUIPMENT: AQS1 Air Monitoring Station x 2 MiniRAE 3000 Photoionization Detector (PID) CAT 335F x 2 Zaxis 135US Hyundai HL955A Bauer BG 36 H ABI TM22 RTG RG 27S Hitachi 670 Takeuchi TB260 Terex TA9 TB260 Kubota KX080-4α2 BW120 AD	PRESENT AT SITE: Langan (Environmental): Brayden Klein, Richo Brian Urban Atelier Group (UAG) ECD NY Inc. (ECD): Kyle McGovern
--	---

OBSERVATIONS, DISCUSSIONS, TEST RESULTS, ETC.:

Langan was present to document remediation activities in accordance with the New York State Department of Environmental Conservation (NYSDEC)-approved July 22, 2025 Remedial Action Work Plan (RAWP) at the 145-165 Wolcott Street site in Brooklyn, New York (Site No. C224256).

Site Activities

- ECD used a CAT 335F to backfill an about 10-foot-long by 10-feet-wide area from about 6 feet below grade surface (bgs) to surface grade with previously imported clean fill in the central part of the site.
 - Backfill consisted of previously stockpiled clean fill from the central part of the site.
- ECD used a CAT 335F to relocate a stockpile consisting of previously imported clean fill from the central part of the site to the eastern part of the site for future backfill.
- ECD installed Preprufe 300R Plus waterproofing/vapor barrier membrane atop the rat slab within an about 25-foot-long by 15-feet-wide area and an about 30-foot-long by 20-feet-wide area in the central part of the site.
- ECD poured an about 3-inch-thick rat slab within an about 45-foot-long by 10-feet-wide area within the central part of the site.

Material Tracking

- No material was imported into the site.
- No material was exported from the site.

Cc: M. Burke, G. Nicholls, S. Knoop, N. Palumbo, L. Grose	By: Brayden Klein
Langan Eng, Env, Surv, L.A. & Geo, DPC	

Material Export Summary – Soil										
Facility Name	Clean Earth of North Jersey									
Location	Kearny, NJ									
Material	Non-Hazardous Low pH Soil		Hazardous Lead Impacted Soil with UHCs		Hazardous Lead Impacted Soil with No UHCs		High Hazardous Lead		Non-Hazardous Soil	
Quantities	No. of Loads	Approx. Volume (CY)	No. of Loads	Approx. Volume (CY)	No. of Loads	Approx. Volume (CY)	No. of Loads	Approx. Volume (CY)	No. of Loads	Approx. Volume (CY)
Today	-	-	-	-	-	-	-	-	-	-
Project Total	332	5,495	56	901	27	467	5	68	1	18

Notes:

1. UHC – Underlying Hazardous Constituent

Material Export Summary – Soil						
Facility Name	Clean Earth of New Castle		Conestoga Landfill		Waste Management	
Location	New Castle, DE		Morgantown, PA		Morgantown, PA	
Material	Non-Hazardous Soil		Non-Hazardous Soil		Non-Hazardous Soil	
Quantities	No. of Loads	Approx. Volume (CY)	No. of Loads	Approx. Volume (CY)	No. of Loads	Approx. Volume (CY)
Today	-	-	-	-	-	-
Project Total	729	13,682	39	703	224	4,007

Material Export Summary – C&D						
Facility Name	PPark NJ, LLC		Bayshore Soil Management, LLC		Silva Recycling, LLC	
Location	Prospect Park, NJ		Keasbey, NJ		Newark, NJ	
Material	Asphalt, Concrete		Asphalt, Concrete		Concrete	
Quantities	No. of Loads	Approx. Volume (CY)	No. of Loads	Approx. Volume (CY)	No. of Loads	Approx. Volume (CY)
Today	-	-	-	-	-	-
Project Total	119	2,380	31	645	25	880

Material Import Summary										
Facility Name	Impact Materials, LLC		Callahan & Nannini Quarry Inc.		Durante Brothers Construction		Tilcon West Nyack Quarry		B.G.L.J Servicing Corp	
Location	Jersey City, NJ		Salisbury Mills, NY		Flushing, NY		West Nyack, NY		Moriches, NY	
Material	3/4" Recycled Clean Stone		2-4" Granite Stone		Clean Fill		ASTM No. 5 Stone		Virgin Sand	
Quantities	No. of Loads	Approx. Volume (CY)	No. of Loads	Approx. Volume (CY)	No. of Loads	Approx. Volume (CY)	No. of Loads	Approx. Volume (CY)	No. of Loads	Approx. Volume (CY)
Today	-	-	-	-	-	-	-	-	-	-
Project Total	63	1,134	2	36	638	11,484	44	792	1	18

Cc: M. Burke, G. Nicholls, S. Knoop,
N. Palumbo, L. Grose

By: Brayden Klein
Langan Eng, Env, Surv, L.A. & Geo, DPC

LANGAN SITE OBSERVATION REPORT– Day 155

Samples

- No samples were collected.

Community Air Monitoring Plan (CAMP) Activities

- Langan performed community air monitoring at the perimeter of the work area at one upwind and one downwind location during intrusive work. Implementation of the Community Air Monitoring Plan (CAMP) included air monitoring for particulate matter for particulates less than 10 µm in diameter (PM10) and volatile organic compounds (VOC). VOC concentrations did not exceed the action levels established by the community air monitoring plan.
- PM10 exceeded the 15-minute time-weighted-average (TWA) site contribution action level of 150 micrograms per cubic meter (µg/m³) for 18 minutes from 7:13 to 7:31 AM. The exceedance was attributed to dust generated from concrete ready-mix trucks entering the northern part of the site and was mitigated by the Contractor spraying the tracking pad with water. Work was temporarily halted until PM10 concentrations returned to below action levels.
- No fugitive dust or odors associated with site activities were observed migrating from the site.

Anticipated Activities

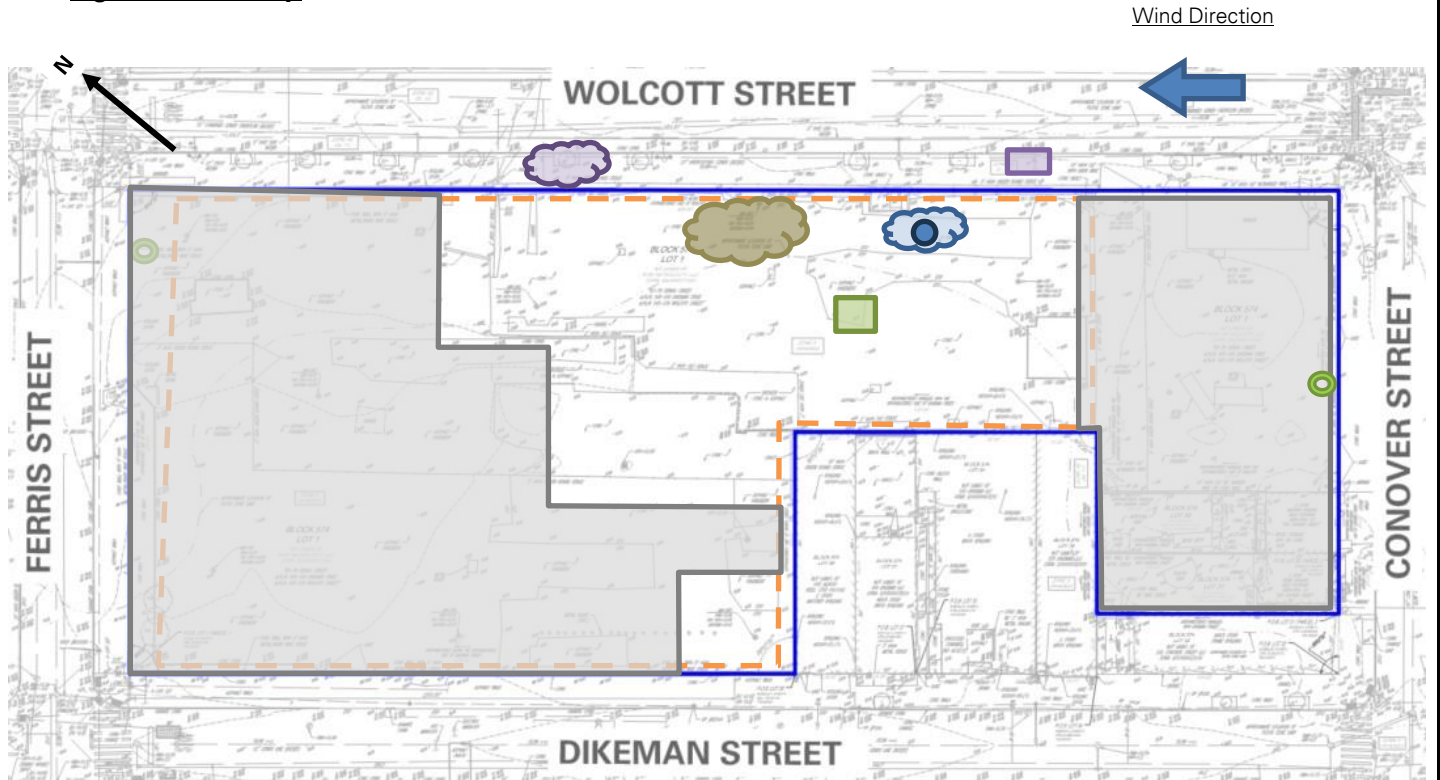
- ECD will continue excavating and backfilling for utility piping in the central part of the site.
- ECD will continue foundation framing and concrete pouring in the central part of the site.
- ECD will continue laying polyvinyl chloride piping, geotextile fabric, and ¾-inch virgin stone as part of the sub slab depressurization system and soil vapor extrusion system installation in the western part of the site.

Cc: M. Burke, G. Nicholls, S. Knoop,
N. Palumbo, L. Grose

By: Brayden Klein

Langan Eng, Env, Surv, L.A. & Geo, DPC

Figure 1: Site Map



Legend

	Site Boundary-		Approximate Area Excavated
	Approximate Work Area		Approximate Area Backfilled
	Approximate Location of Perimeter CAMP Station		Approximate Area Graded
	Approximate Location of Installed Site Cover System		Approximate C&D Stockpile
	Approximate IDW Drum Staging Area		Approximate Non-Native Fill Stockpile
	Approximate Steel Tank Location		Approximate Stone Stockpile
			Approximate Imported Clean Fill Stockpile

Notes:

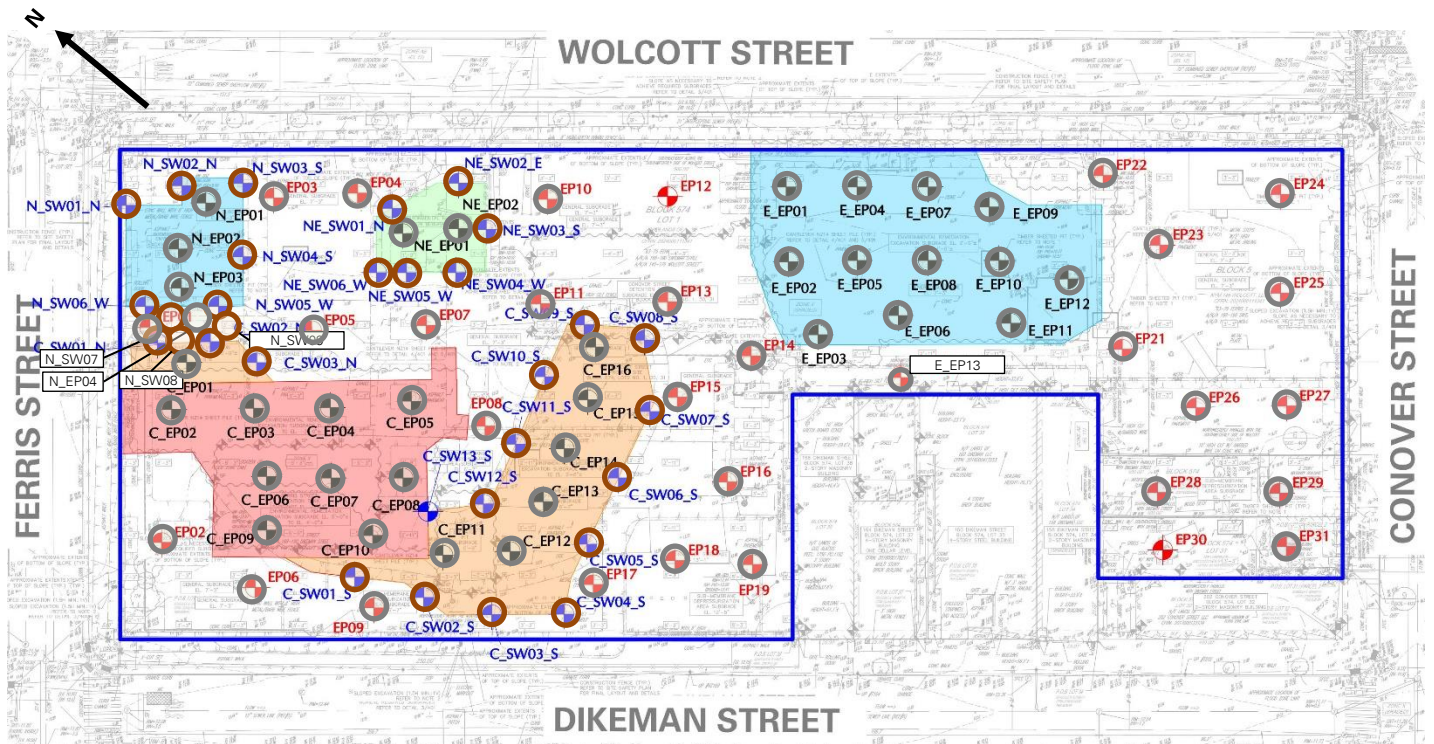
1. Basemap is referenced from 26 March 2025 ALTA/NSPS Land Title Survey prepared by Control Point Associates Inc PC.
2. IDW – Investigation-derived waste generated during the April 2025 and August 2025 supplemental waste characterizations and the January through May 2025 non-aqueous phase liquid gauging.

Cc: M. Burke, G. Nicholls, S. Knoop,
N. Palumbo, L. Grose

By: Brayden Klein

Langan Eng, Env, Surv, L.A. & Geo, DPC

Figure 2: Endpoint / Sidewalk Sample Location Map



Legend

- Site Boundary
- Approximate Location of Documentation Endpoint Soil Sample Collected
- Approximate Location of Documentation Sidewalk Soil Sample Collected
- Approximate Location of Previously Collected Documentation Endpoint Soil Sample
- Approximate Location of Previously Collected Documentation Sidewalk Soil Sample

Notes:

1. Basemap is referenced from 26 March 2025 ALTA/NSPS Land Title Survey prepared by Control Point Associates Inc PC.

Cc: M. Burke, G. Nicholls, S. Knoop,
N. Palumbo, L. Grose

By: Brayden Klein
Langan Eng, Env, Surv, L.A. & Geo, DPC

Photographs

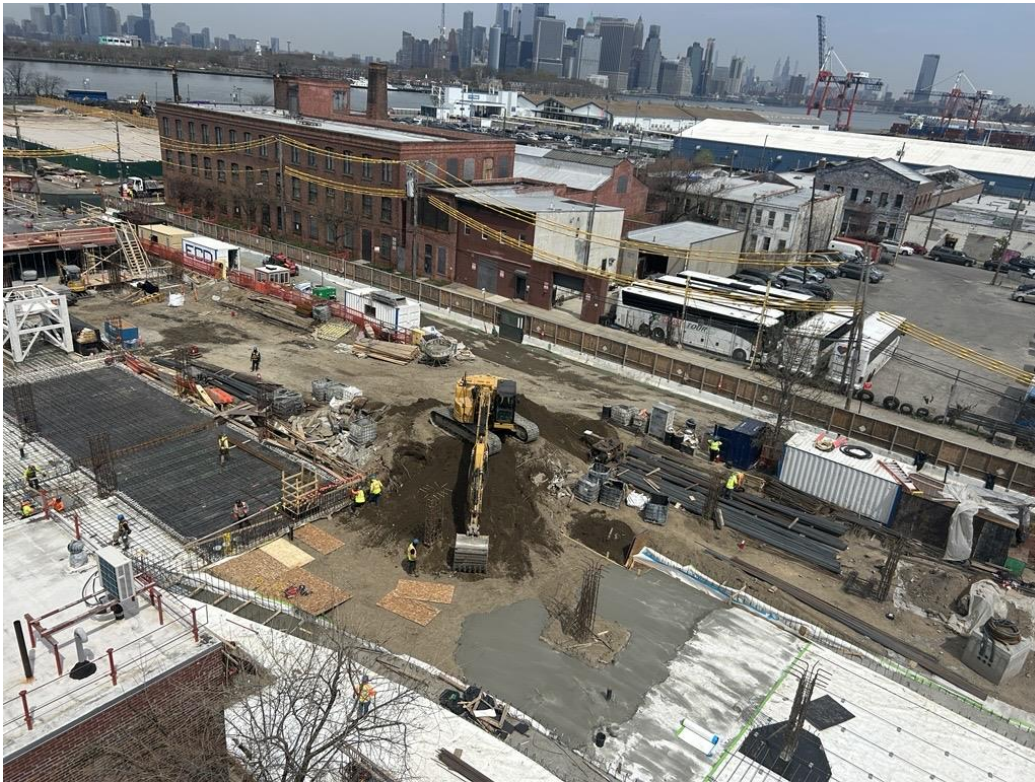


Photo 1: ECD relocating the stockpile consisting of previously imported clean fill in the central part of site (facing north)



Photo 2: ECD backfilling previously imported clean fill in the central part of the site (facing west)

Cc: M. Burke, G. Nicholls, S. Knoop,
N. Palumbo, L. Grose

By: Brayden Klein
Langan Eng, Env, Surv, L.A. & Geo, DPC

LANGAN SITE OBSERVATION REPORT- Day 155



Photo 3: ECD installing Preprufe 300R Plus waterproofing / vapor barrier membrane in the central part of the site (facing northwest)



Photo 4: ECD pouring a 3-inch rat slab in the central part of the site (facing south)

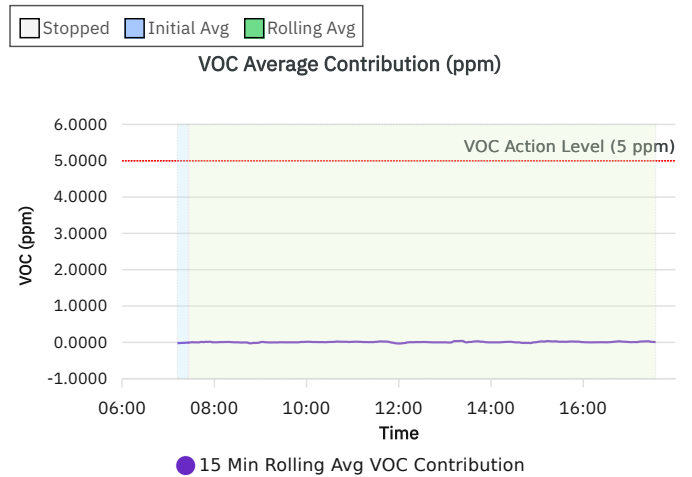
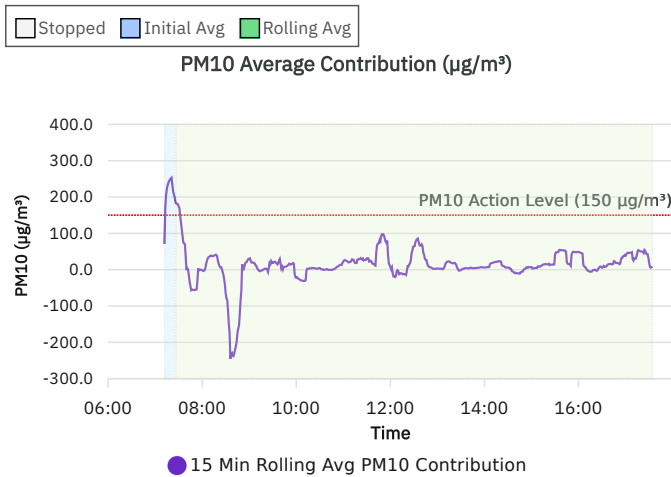
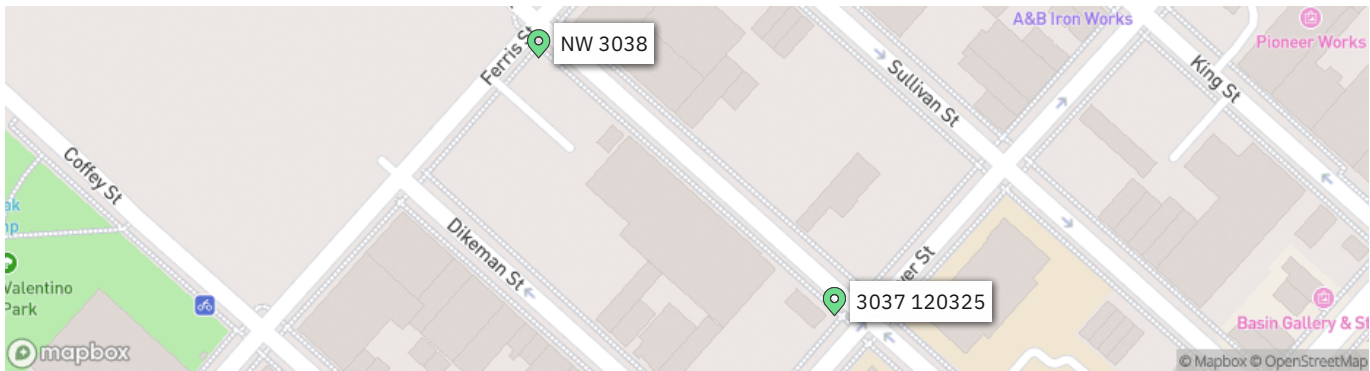
Cc: M. Burke, G. Nicholls, S. Knoop,
N. Palumbo, L. Grose

By: Brayden Klein
Langan Eng, Env, Surv, L.A. & Geo, DPC

LANGAN	Contribution 2 Station 031026 Report	170562203 - 145 Wolcott St	
		Report Period	
		From:	04/13/2026 06:00
		To:	04/13/2026 18:00
		PM10 Action Level:	150 $\mu\text{g}/\text{m}^3$
		VOC Action Level:	5 ppm

Daily Environmental Summary	Temp (°F)	Relative Humidity (%)	Barometer (inHg)	Wind Speed (mph)	Prevailing Wind Direction
04/13/2026	50.0 - 76.1	50.7 - 79.6	29.9 - 30.2	0.5 - 4.8	ESE

Daily Monitoring Summary	PM10 ($\mu\text{g}/\text{m}^3$)	Time	VOC (ppm)	Time
Min Contribution (15 min avg.) - 4/13/2026	-245.0	08:36	-0.0333	12:00
Max Contribution (15 min avg.) - 4/13/2026	253.1	07:21	0.0393	13:20
Daily Avg. Contribution (15 min avg.) - 4/13/2026	16.1	-	0.0073	-



LANGAN SITE OBSERVATION REPORT- Day 156

PROJECT No.: 170452203	CLIENT: NYM 145 Wolcott, LLC 233 Broadway, 10 th Fl., New York, NY 10279	DATE: Tue., April 14, 2026
PROJECT: 145-165 Wolcott Street		WEATHER: Clear, 56 - 88°F Wind: ESE @ 0.3 – 6.4 mph
LOCATION: Brooklyn, New York		TIME: 6:45 am – 6:00 pm
SITE CODE: C224256		MONITOR: Brayden Klein

EQUIPMENT: AQS1 Air Monitoring Station x 2 MiniRAE 3000 Photoionization Detector (PID) CAT 335F x 2 Zaxis 135US Hyundai HL955A Bauer BG 36 H ABI TM22 RTG RG 27S Hitachi 670 Takeuchi TB260 Terex TA9 TB260 Kubota KX080-4α2 BW120 AD Terex TA9 9-ton Dumper	PRESENT AT SITE: Langan (Environmental): Brayden Klein, Nikos Pallis, Richo Brian Urban Atelier Group (UAG) ECD NY Inc. (ECD): Kyle McGovern
--	--

OBSERVATIONS, DISCUSSIONS, TEST RESULTS, ETC.:

Langan was present to document remediation activities in accordance with the New York State Department of Environmental Conservation (NYSDEC)-approved July 22, 2025 Remedial Action Work Plan (RAWP) at the 145-165 Wolcott Street site in Brooklyn, New York (Site No. C224256).

Site Activities

- ECD used a Kubota KX080-4α2 to excavate an about 15-foot-long by 3-foot-wide area to about 1.5 feet below grade surface (bgs) in the northern part of the site for the installation of utility piping.
 - Excavated non-native fill was stockpiled adjacent to the excavation and graded to create a level surface.
 - Excavated non-native fill was screened for odors, staining, and organic vapors using a PID. No impacts were observed.
- ECD used a Kubota KX080-4α2 to backfill an about 60-foot-long by 10-foot-wide area from about 5 feet bgs to surface grade with previously imported clean fill in the western part of the site.
 - Backfill consisted of previously stockpiled clean fill from the eastern part of the site.
- ECD used a Terex TA9 9-ton Dumper to relocate part of a stockpile consisting of previously imported clean fill from the eastern part of the site to the western part of the site for future backfill.

Cc: M. Burke, G. Nicholls, S. Knoop, N. Palumbo, L. Grose	By: Brayden Klein
Langan Eng, Env, Surv, L.A. & Geo, DPC	

LANGAN SITE OBSERVATION REPORT- Day 156

- ECD installed Preprufe 300R Plus waterproofing/vapor barrier membrane atop the rat slab within an about 30-foot-long by 30-feet-wide area in the central part of the site.
- ECD poured an about 12-inch-thick concrete slab within an about 115-foot-long by 60-feet-wide area within the central part of the site.

Material Tracking

- No material was imported into the site.
- No material was exported from the site.

Material Export Summary – Soil										
Facility Name Location	Clean Earth of North Jersey Kearny, NJ									
Material	Non-Hazardous Low pH Soil		Hazardous Lead Impacted Soil with UHCs		Hazardous Lead Impacted Soil with No UHCs		High Hazardous Lead		Non-Hazardous Soil	
Quantities	No. of Loads	Approx. Volume (CY)	No. of Loads	Approx. Volume (CY)	No. of Loads	Approx. Volume (CY)	No. of Loads	Approx. Volume (CY)	No. of Loads	Approx. Volume (CY)
Today	-	-	-	-	-	-	-	-	-	-
Project Total	332	5,495	56	901	27	467	5	68	1	18

Notes:

1. UHC – Underlying Hazardous Constituent

Material Export Summary – Soil							
Facility Name Location	Clean Earth of New Castle New Castle, DE		Conestoga Landfill Morgantown, PA		Waste Management Morgantown, PA		
Material	Non-Hazardous Soil		Non-Hazardous Soil		Non-Hazardous Soil		
Quantities	No. of Loads	Approx. Volume (CY)	No. of Loads	Approx. Volume (CY)	No. of Loads	Approx. Volume (CY)	
Today	-	-	-	-	-	-	
Project Total	729	13,682	39	703	224	4,007	

Material Export Summary – C&D							
Facility Name Location	PPark NJ, LLC Prospect Park, NJ		Bayshore Soil Management, LLC Keasbey, NJ		Silva Recycling, LLC Newark, NJ		
Material	Asphalt, Concrete		Asphalt, Concrete		Concrete		
Quantities	No. of Loads	Approx. Volume (CY)	No. of Loads	Approx. Volume (CY)	No. of Loads	Approx. Volume (CY)	
Today	-	-	-	-	-	-	
Project Total	119	2,380	31	645	25	880	

Cc: M. Burke, G. Nicholls, S. Knoop,
N. Palumbo, L. Grose

By: Brayden Klein

Langan Eng, Env, Surv, L.A. & Geo, DPC

Material Import Summary										
Facility Name Location	Impact Materials, LLC Jersey City, NJ		Callahan & Nannini Quarry Inc. Salisbury Mills, NY		Durante Brothers Construction Flushing, NY		Tilcon West Nyack Quarry West Nyack, NY		B.G.L.J Servicing Corp Moriches, NY	
Material	3/4" Recycled Clean Stone		2-4" Granite Stone		Clean Fill		ASTM No. 5 Stone		Virgin Sand	
Quantities	No. of Loads	Approx. Volume (CY)	No. of Loads	Approx. Volume (CY)	No. of Loads	Approx. Volume (CY)	No. of Loads	Approx. Volume (CY)	No. of Loads	Approx. Volume (CY)
Today	-	-	-	-	-	-	-	-	-	-
Project Total	63	1,134	2	36	638	11,484	44	792	1	18

Samples

- No samples were collected.

Community Air Monitoring Plan (CAMP) Activities

- Langan performed community air monitoring at the perimeter of the work area at one upwind and one downwind location during intrusive work. Implementation of the Community Air Monitoring Plan (CAMP) included air monitoring for particulate matter for particulates less than 10 µm in diameter (PM10) and volatile organic compounds (VOC). VOC concentrations did not exceed the action levels established by the community air monitoring plan.
- PM10 exceeded the 15-minute time-weighted-average (TWA) site contribution action level of 150 micrograms per cubic meter (µg/m³) for 9 minutes from 7:11 to 7:19 AM and for 16 minutes from 3:15 to 3:30 PM. The exceedances were attributed to dust generated from stockpiling of ¾-inch virgin stone in the northern part of the site and were mitigated by the Contractor spraying the stone with water. Work was temporarily halted until PM10 concentrations returned to below action levels.
- No fugitive dust or odors associated with site activities were observed migrating from the site.

Anticipated Activities

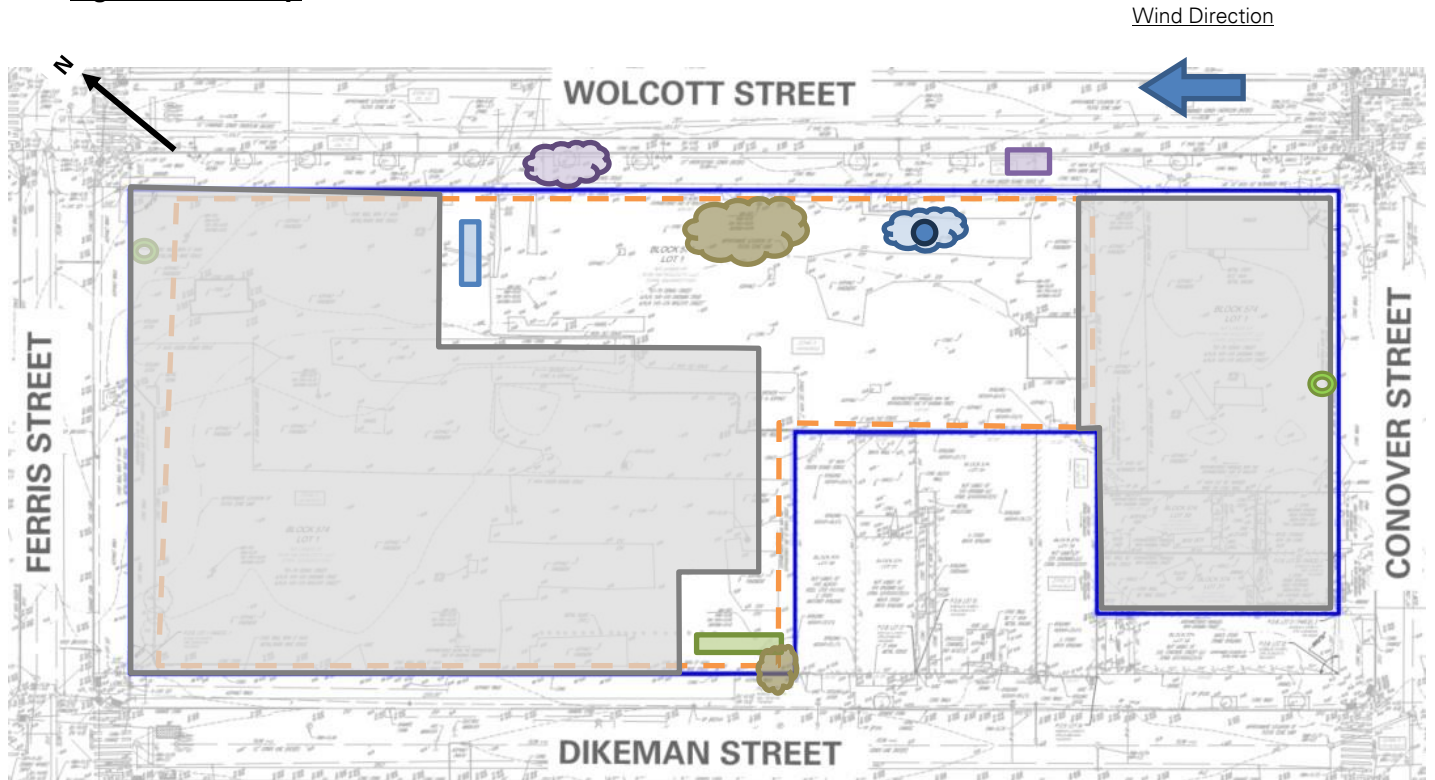
- ECD will continue excavating and backfilling for utility piping in the central part of the site.
- ECD will continue foundation framing and concrete pouring in the central part of the site.
- ECD will continue laying polyvinyl chloride piping, geotextile fabric, and ¾-inch virgin stone as part of the sub slab depressurization system and soil vapor extrusion system installation in the western part of the site.

Cc: M. Burke, G. Nicholls, S. Knoop,
N. Palumbo, L. Grose

By: Brayden Klein

Langan Eng, Env, Surv, L.A. & Geo, DPC

Figure 1: Site Map



Legend

	Site Boundary-		Approximate Area Excavated
	Approximate Work Area		Approximate Area Backfilled
	Approximate Location of Perimeter CAMP Station		Approximate Area Graded
	Approximate Location of Installed Site Cover System		Approximate C&D Stockpile
	Approximate IDW Drum Staging Area		Approximate Non-Native Fill Stockpile
	Approximate Steel Tank Location		Approximate Stone Stockpile
			Approximate Imported Clean Fill Stockpile

Notes:

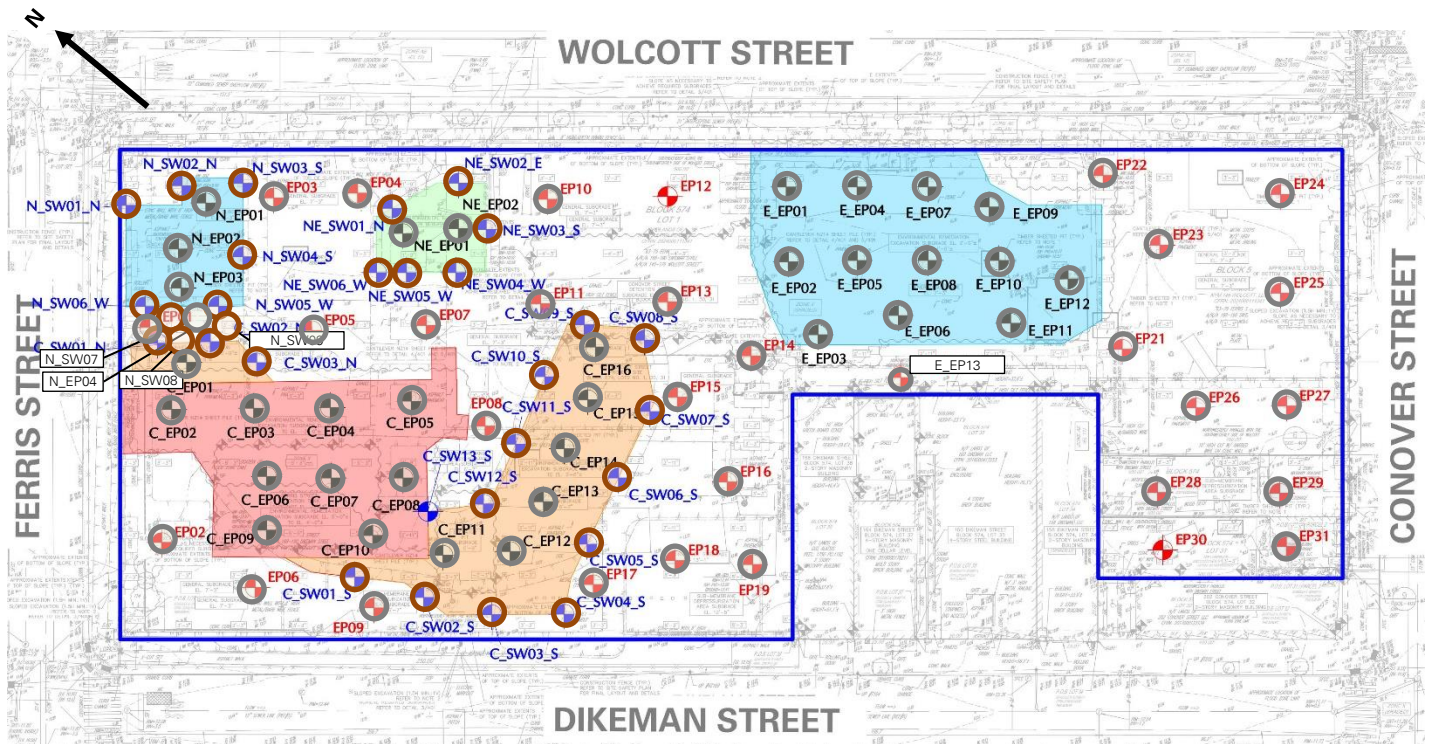
1. Basemap is referenced from 26 March 2025 ALTA/NSPS Land Title Survey prepared by Control Point Associates Inc PC.
2. IDW – Investigation-derived waste generated during the April 2025 and August 2025 supplemental waste characterizations and the January through May 2025 non-aqueous phase liquid gauging.

Cc: M. Burke, G. Nicholls, S. Knoop,
N. Palumbo, L. Grose

By: Brayden Klein

Langan Eng, Env, Surv, L.A. & Geo, DPC

Figure 2: Endpoint / Sidewalk Sample Location Map



Legend

- Site Boundary
- Approximate Location of Documentation Endpoint Soil Sample Collected
- Approximate Location of Documentation Sidewalk Soil Sample Collected
- Approximate Location of Previously Collected Documentation Endpoint Soil Sample
- Approximate Location of Previously Collected Documentation Sidewalk Soil Sample

Notes:

1. Basemap is referenced from 26 March 2025 ALTA/NSPS Land Title Survey prepared by Control Point Associates Inc PC.

Cc: M. Burke, G. Nicholls, S. Knoop,
N. Palumbo, L. Grose

By: Brayden Klein
Langan Eng, Env, Surv, L.A. & Geo, DPC

LANGAN SITE OBSERVATION REPORT- Day 156

Photographs



Photo 1: ECD excavating non-native fill for utility pipe installation in the northern part of the site (facing southwest)



Photo 2: ECD backfilling previously imported clean fill in the western part of the site (facing west)

Cc: M. Burke, G. Nicholls, S. Knoop,
N. Palumbo, L. Grose

By: Brayden Klein
Langan Eng, Env, Surv, L.A. & Geo, DPC



Photo 3: ECD relocating stockpiled imported clean fill from the eastern part of the site to the western part of the site for future backfill (facing south)

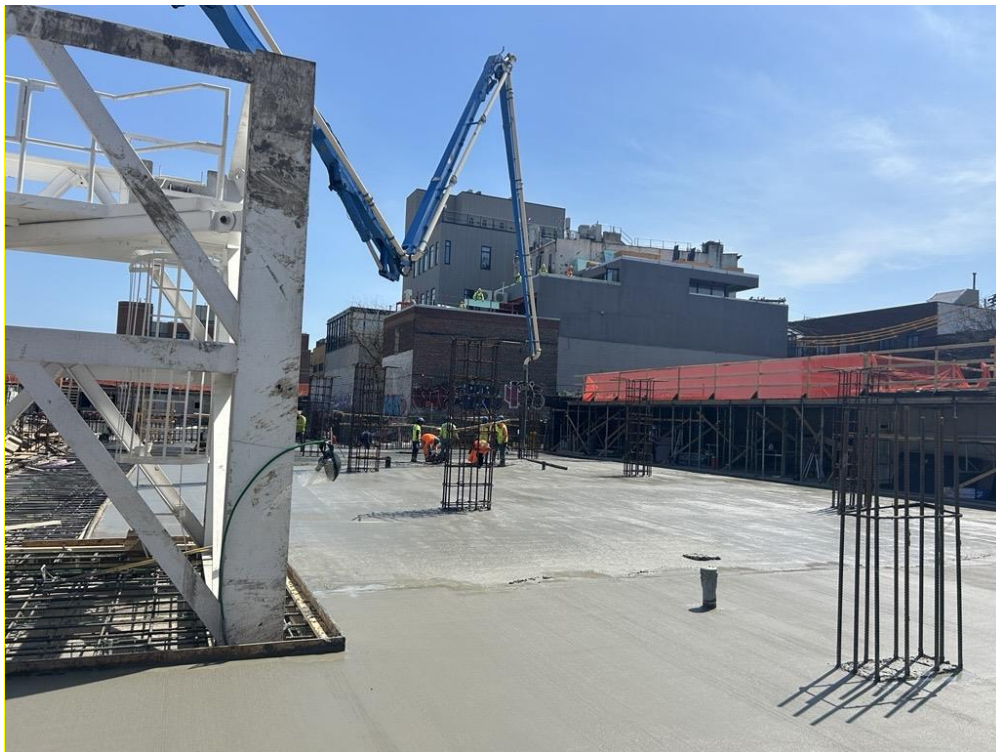


Photo 4: ECD pouring an about 12-inch-thick concrete slab in the central part of the site (facing southeast)

Cc: M. Burke, G. Nicholls, S. Knoop,
N. Palumbo, L. Grose

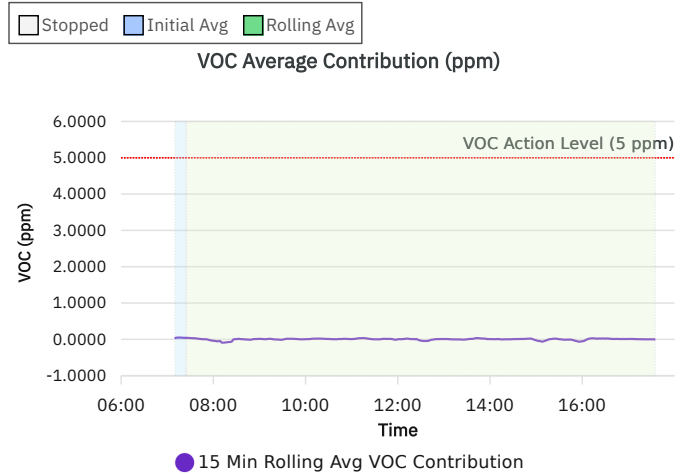
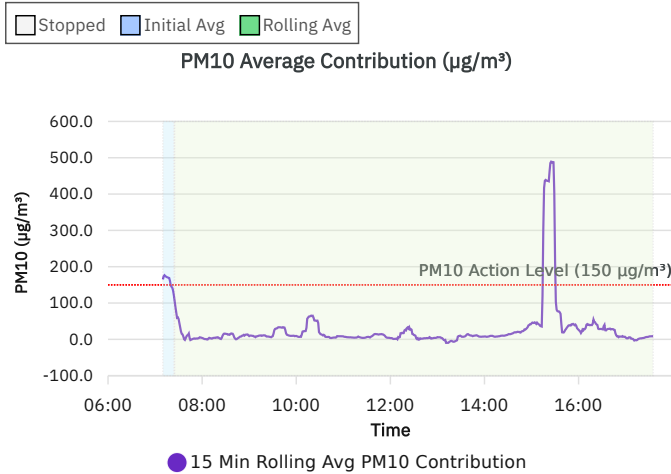
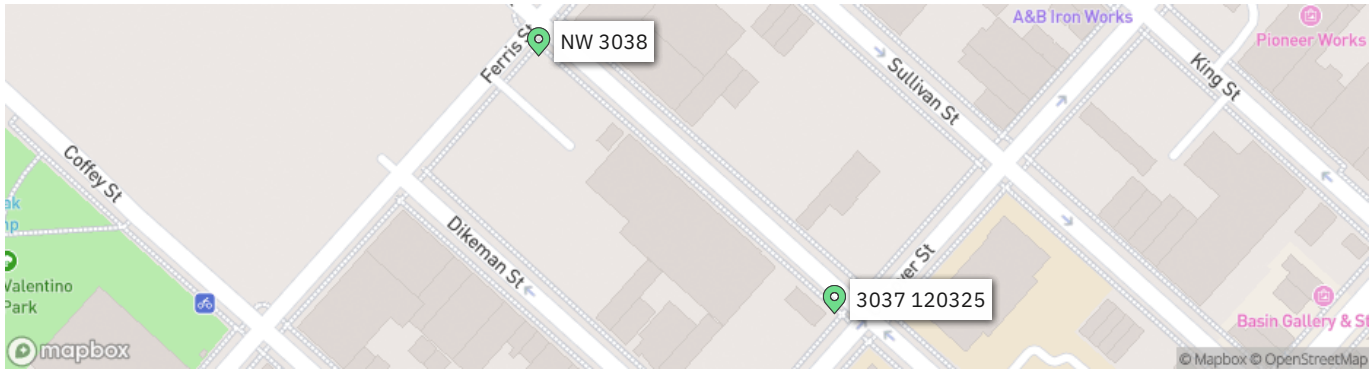
By: Brayden Klein

Langan Eng, Env, Surv, L.A. & Geo, DPC

LANGAN	Contribution 2 Station 031026 Report	170562203 - 145 Wolcott St	
		Report Period	
		From:	04/14/2026 06:00
		To:	04/14/2026 18:00
		PM10 Action Level:	150 µg/m³
VOC Action Level:	5 ppm		

Daily Environmental Summary	Temp (°F)	Relative Humidity (%)	Barometer (inHg)	Wind Speed (mph)	Prevailing Wind Direction
04/14/2026	55.8 - 87.6	39.1 - 81.3	29.8 - 30.1	0.3 - 6.4	ESE

Daily Monitoring Summary	PM10 (µg/m³)	Time	VOC (ppm)	Time
Min Contribution (15 min avg.) - 4/14/2026	-9.7	13:12	-0.0927	08:12
Max Contribution (15 min avg.) - 4/14/2026	489.0	15:25	0.0489	07:18
Daily Avg. Contribution (15 min avg.) - 4/14/2026	29.7	-	0.0028	-



LANGAN SITE OBSERVATION REPORT- Day 157

PROJECT No.: 170452203	CLIENT: NYM 145 Wolcott, LLC 233 Broadway, 10 th Fl., New York, NY 10279	DATE: Wed., April 15, 2026
PROJECT: 145-165 Wolcott Street		WEATHER: Clear, 55 - 92°F Wind: SE @ 0.4 – 4.0 mph
LOCATION: Brooklyn, New York		TIME: 6:45 am – 6:00 pm
SITE CODE: C224256		MONITOR: Brayden Klein

EQUIPMENT: AQS1 Air Monitoring Station x 2 MiniRAE 3000 Photoionization Detector (PID) CAT 335F x 2 Zaxis 135US Hyundai HL955A Bauer BG 36 H ABI TM22 RTG RG 27S Hitachi 670 Takeuchi TB260 Terex TA9 TB260 Kubota KX080-4α2 BW120 AD Terex TA9 9-ton Dumper CAT 303E	PRESENT AT SITE: Langan (Environmental): Brayden Klein, Richo Brian Urban Atelier Group (UAG) ECD NY Inc. (ECD): Kyle McGovern
--	---

OBSERVATIONS, DISCUSSIONS, TEST RESULTS, ETC.:

Langan was present to document remediation activities in accordance with the New York State Department of Environmental Conservation (NYSDEC)-approved July 22, 2025 Remedial Action Work Plan (RAWP) at the 145-165 Wolcott Street site in Brooklyn, New York (Site No. C224256).

Site Activities

- ECD used a CAT 303E to excavate an about 10-foot-long by 3-feet-wide area to about 1.5 feet below grade surface (bgs) in the northern part of the site for the installation of utility piping.
 - Excavated non-native fill was stockpiled adjacent to the excavation and graded to create a level surface.
 - Excavated non-native fill was screened for odors, staining, and organic vapors using a PID. No impacts were observed.
- ECD used a CAT 303E to backfill an about 20-foot-long by 5-feet-wide area from about 1.5 feet bgs to surface grade with previously imported clean fill in the northern part of the site.
- ECD used a Kubota KX080-4α2 to backfill an about 80-foot-long by 55-feet-wide area from about 5 feet bgs to surface grade with previously imported clean fill in the western part of the site.
 - Backfill consisted of previously stockpiled clean fill from the eastern part of the site.

Cc: M. Burke, G. Nicholls, S. Knoop, N. Palumbo, L. Grose	By: Brayden Klein
Langan Eng, Env, Surv, L.A. & Geo, DPC	

LANGAN SITE OBSERVATION REPORT- Day 157

- ECD used a Kubota KX080-4α2 to grade an about 50-foot-long by 50-feet-wide area in the western part of the site.
- ECD used a Terex TA9 9-ton Dumper to relocate stockpiled previously imported clean fill from the eastern part of the site to the western part of the site for future backfill.
- ECD installed geotextile fabric within an about 25 foot-long by 10-feet wide area and used a Kubota KX080-4 α2 to backfill an about 12-inch-thick layer of ¾-inch virgin stone (gas permeable aggregate) as part of the soil vapor extraction (SVE) system within the western part of the site.
- ECD installed 80 feet of 4-inch-diameter polyvinyl chloride (PVC) piping as part of the SVE system in the western part of the site.
- ECD installed Preprufe 300R Plus waterproofing/vapor barrier membrane within an about 20-foot-long by 20-feet-wide area in the western part of the site.

Material Tracking

- No material was imported into the site.
- No material was exported from the site.

Material Export Summary – Soil										
Facility Name Location	Clean Earth of North Jersey Kearny, NJ									
Material	Non-Hazardous Low pH Soil		Hazardous Lead Impacted Soil with UHCs		Hazardous Lead Impacted Soil with No UHCs		High Hazardous Lead		Non-Hazardous Soil	
Quantities	No. of Loads	Approx. Volume (CY)	No. of Loads	Approx. Volume (CY)	No. of Loads	Approx. Volume (CY)	No. of Loads	Approx. Volume (CY)	No. of Loads	Approx. Volume (CY)
Today	-	-	-	-	-	-	-	-	-	-
Project Total	332	5,495	56	901	27	467	5	68	1	18

Notes:

1. UHC – Underlying Hazardous Constituent

Material Export Summary – Soil						
Facility Name Location	Clean Earth of New Castle New Castle, DE		Conestoga Landfill Morgantown, PA		Waste Management Morgantown, PA	
Material	Non-Hazardous Soil		Non-Hazardous Soil		Non-Hazardous Soil	
Quantities	No. of Loads	Approx. Volume (CY)	No. of Loads	Approx. Volume (CY)	No. of Loads	Approx. Volume (CY)
Today	-	-	-	-	-	-
Project Total	729	13,682	39	703	224	4,007

Cc: M. Burke, G. Nicholls, S. Knoop,
N. Palumbo, L. Grose

By: Brayden Klein

Langan Eng, Env, Surv, L.A. & Geo, DPC

Material Export Summary - C&D						
Facility Name	PPark NJ, LLC		Bayshore Soil Management, LLC		Silva Recycling, LLC	
Location	Prospect Park, NJ		Keasbey, NJ		Newark, NJ	
Material	Asphalt, Concrete		Asphalt, Concrete		Concrete	
Quantities	No. of Loads	Approx. Volume (CY)	No. of Loads	Approx. Volume (CY)	No. of Loads	Approx. Volume (CY)
Today	-	-	-	-	-	-
Project Total	119	2,380	31	645	25	880

Material Import Summary										
Facility Name	Impact Materials, LLC		Callahan & Nannini Quarry Inc.		Durante Brothers Construction		Tilcon West Nyack Quarry		B.G.L.J Servicing Corp	
Location	Jersey City, NJ		Salisbury Mills, NY		Flushing, NY		West Nyack, NY		Moriches, NY	
Material	3/4" Recycled Clean Stone		2-4" Granite Stone		Clean Fill		ASTM No. 5 Stone		Virgin Sand	
Quantities	No. of Loads	Approx. Volume (CY)	No. of Loads	Approx. Volume (CY)	No. of Loads	Approx. Volume (CY)	No. of Loads	Approx. Volume (CY)	No. of Loads	Approx. Volume (CY)
Today	-	-	-	-	-	-	-	-	-	-
Project Total	63	1,134	2	36	638	11,484	44	792	1	18

Samples

- No samples were collected.

Community Air Monitoring Plan (CAMP) Activities

- Langan performed community air monitoring at the perimeter of the work area at one upwind and one downwind location during intrusive work. Implementation of the Community Air Monitoring Plan (CAMP) included air monitoring for particulate matter for particulates less than 10 µm in diameter (PM10) and volatile organic compounds (VOC). VOC concentrations did not exceed the action levels established by the community air monitoring plan.
- PM10 exceeded the 15-minute time-weighted-average (TWA) site contribution action level of 150 micrograms per cubic meter (µg/m³) for 19 minutes from 10:51 to 11:09 AM. The exceedance was attributed to dust generated from stockpiling of ¾-inch virgin stone in the northern part of the site and was mitigated by the Contractor spraying the stone with water. Work was temporarily halted until PM10 concentrations returned to below action levels.
- No fugitive dust or odors associated with site activities were observed migrating from the site.

Anticipated Activities

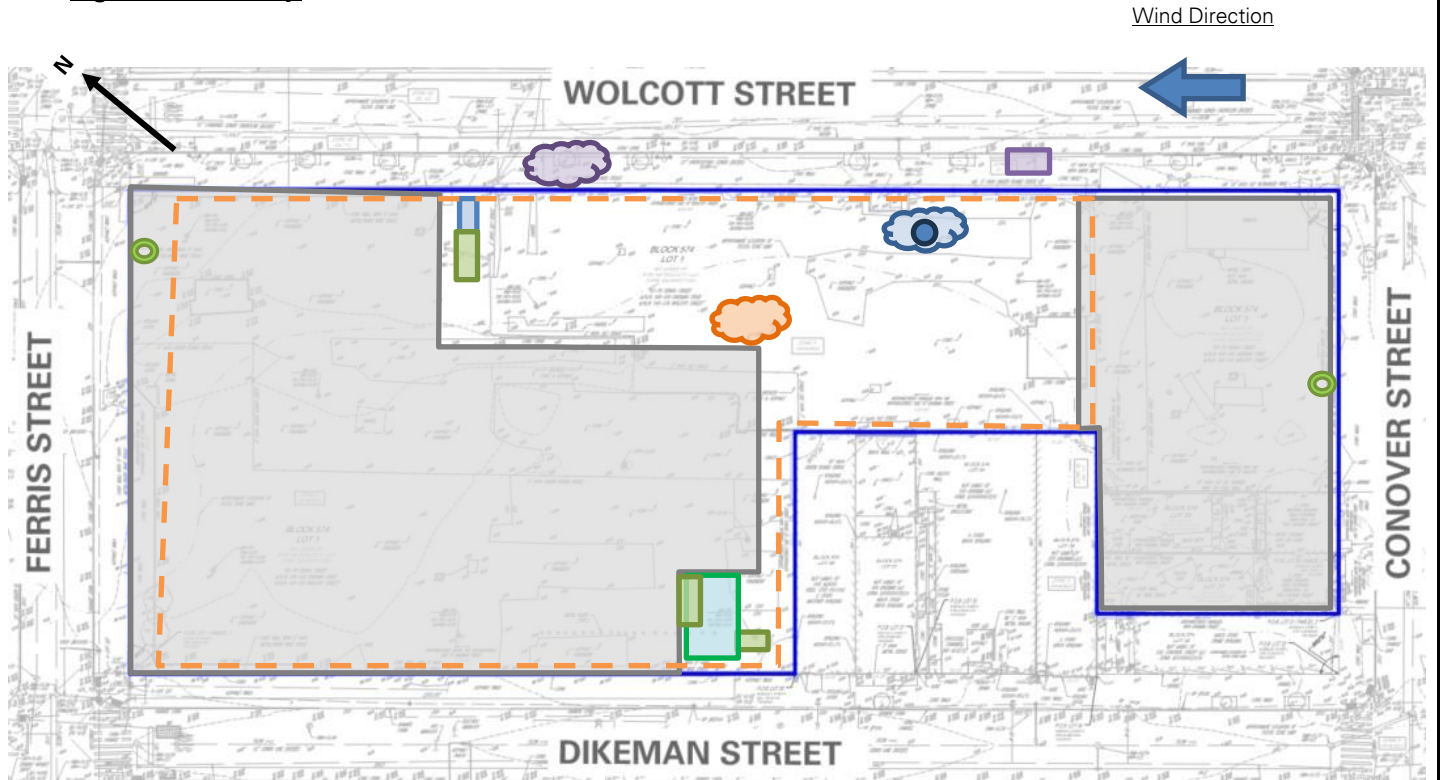
- ECD will continue excavating and backfilling for utility piping in the central part of the site.
- ECD will continue foundation framing and concrete pouring in the central part of the site.
- ECD will continue laying PVC piping, geotextile fabric, and ¾-inch virgin stone as part of the sub slab depressurization system and SVE system installation in the western part of the site.

Cc: M. Burke, G. Nicholls, S. Knoop,
N. Palumbo, L. Grose

By: Brayden Klein

Langan Eng, Env, Surv, L.A. & Geo, DPC

Figure 1: Site Map



Legend

	Site Boundary-		Approximate Area Excavated
	Approximate Work Area		Approximate Area Backfilled
	Approximate Location of Perimeter CAMP Station		Approximate Area Graded
	Approximate Location of Installed Site Cover System		Approximate C&D Stockpile
	Approximate IDW Drum Staging Area		Approximate Non-Native Fill Stockpile
	Approximate Steel Tank Location		Approximate Stone Stockpile
			Approximate Imported Clean Fill Stockpile

Notes:

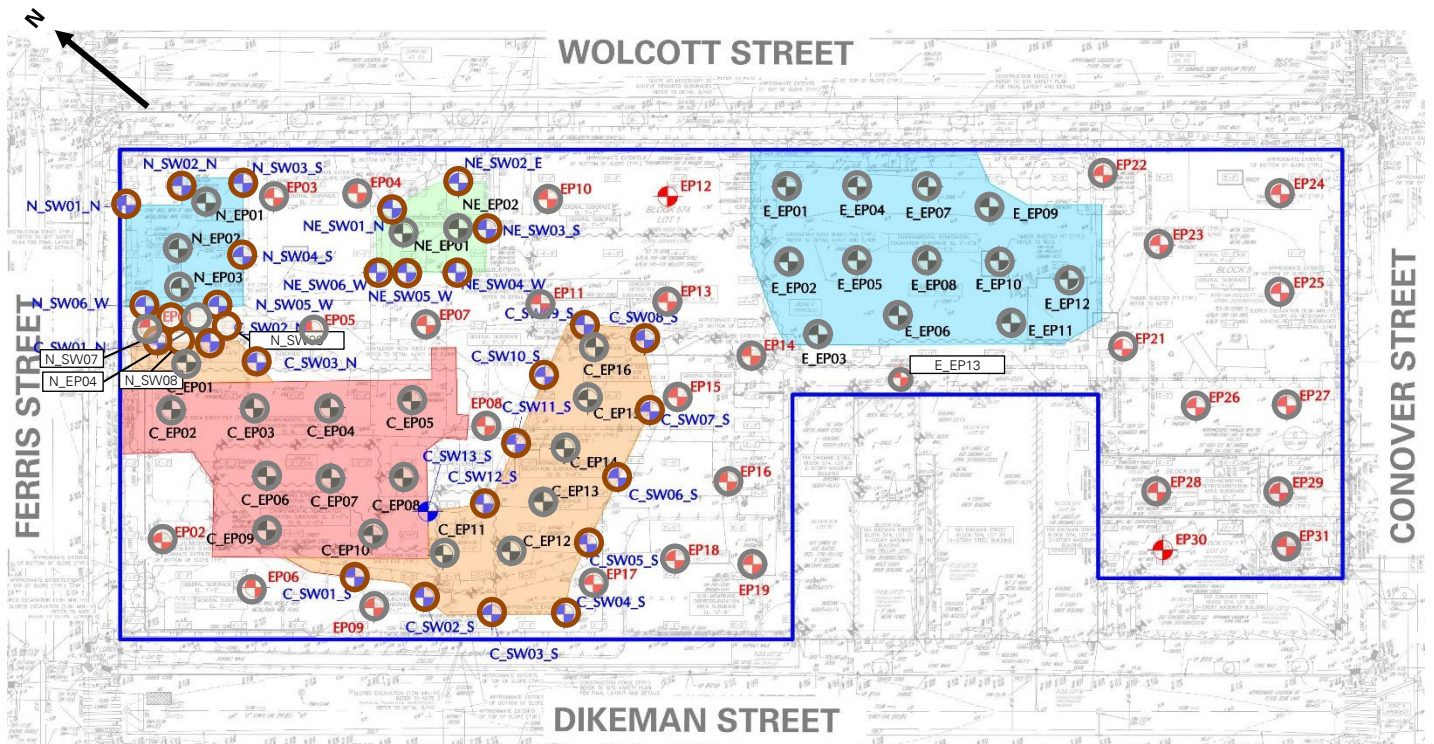
1. Basemap is referenced from 26 March 2025 ALTA/NSPS Land Title Survey prepared by Control Point Associates Inc PC.
2. IDW – Investigation-derived waste generated during the April 2025 and August 2025 supplemental waste characterizations and the January through May 2025 non-aqueous phase liquid gauging.

Cc: M. Burke, G. Nicholls, S. Knoop,
N. Palumbo, L. Grose

By: Brayden Klein

Langan Eng, Env, Surv, L.A. & Geo, DPC

Figure 2: Endpoint / Sidewalk Sample Location Map



Legend

- Site Boundary
- Approximate Location of Documentation Endpoint Soil Sample Collected
- Approximate Location of Documentation Sidewalk Soil Sample Collected
- Approximate Location of Previously Collected Documentation Endpoint Soil Sample
- Approximate Location of Previously Collected Documentation Sidewalk Soil Sample

Notes:

1. Basemap is referenced from 26 March 2025 ALTA/NSPS Land Title Survey prepared by Control Point Associates Inc PC.

Cc: M. Burke, G. Nicholls, S. Knoop,
N. Palumbo, L. Grose

By: Brayden Klein
Langan Eng, Env, Surv, L.A. & Geo, DPC

LANGAN SITE OBSERVATION REPORT- Day 157

Photographs



Photo 1: ECD installing SVE piping in the western part of the site (facing west)



Photo 2: ECD backfilling $\frac{3}{4}$ -inch ASTM No.5 stone atop geotextile fabric in the western part of the site (facing south)

Cc: M. Burke, G. Nicholls, S. Knoop,
N. Palumbo, L. Grose

By: Brayden Klein
Langan Eng, Env, Surv, L.A. & Geo, DPC



Photo 3: ECD backfilling with imported 3/4-inch ASTM No. 5 stone for the SVE system installation in the western part of the site (facing southwest)



Photo 4: ECD stockpiling previously imported clean fill from the eastern part of the site in the western part of the site (facing east)

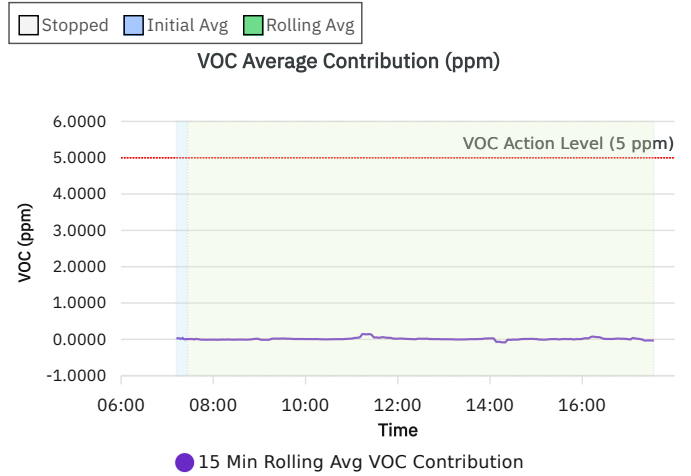
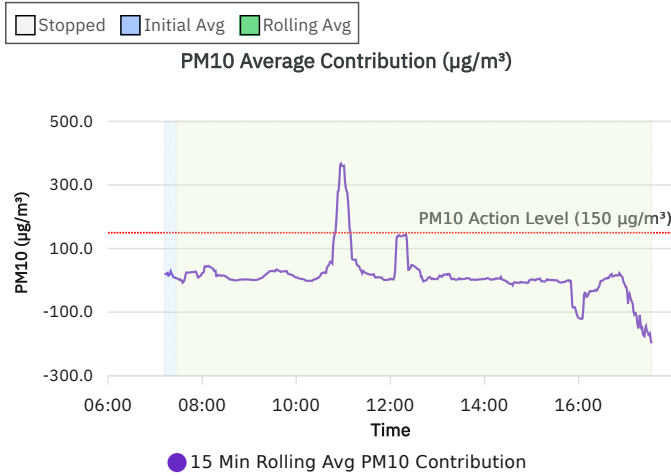
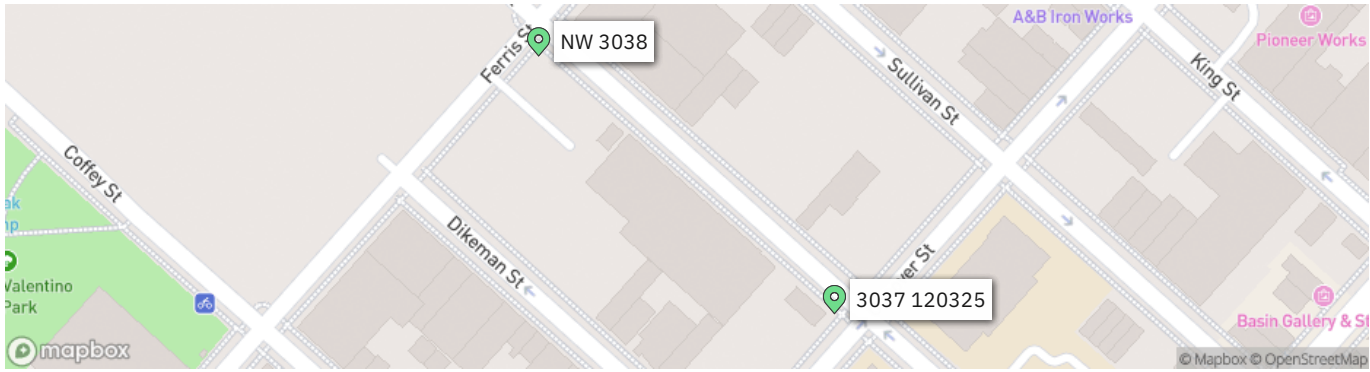
Cc: M. Burke, G. Nicholls, S. Knoop,
N. Palumbo, L. Grose

By: Brayden Klein
Langan Eng, Env, Surv, L.A. & Geo, DPC

LANGAN	Contribution 2 Station 031026 Report	170562203 - 145 Wolcott St	
		Report Period	
		From:	04/15/2026 06:00
		To:	04/15/2026 18:00
		PM10 Action Level:	150 $\mu\text{g}/\text{m}^3$
VOC Action Level:	5 ppm		

Daily Environmental Summary	Temp (°F)	Relative Humidity (%)	Barometer (inHg)	Wind Speed (mph)	Prevailing Wind Direction
04/15/2026	55.2 - 92.1	41.0 - 96.3	29.8 - 30.0	0.4 - 4.0	SE

Daily Monitoring Summary	PM10 ($\mu\text{g}/\text{m}^3$)	Time	VOC (ppm)	Time
Min Contribution (15 min avg.) - 4/15/2026	-198.0	17:33	-0.0840	14:19
Max Contribution (15 min avg.) - 4/15/2026	367.0	10:57	0.1460	11:15
Daily Avg. Contribution (15 min avg.) - 4/15/2026	12.3	-	0.0112	-



LANGAN SITE OBSERVATION REPORT- Day 158

PROJECT No.: 170452203	CLIENT: NYM 145 Wolcott, LLC 233 Broadway, 10 th Fl., New York, NY 10279	DATE: Thu., April 16, 2026
PROJECT: 145-165 Wolcott Street		WEATHER: Sunny, 66-93°F Wind: SSE @ 0.5 – 5.1 mph
LOCATION: Brooklyn, New York		TIME: 6:45 am – 6:00 pm
SITE CODE: C224256		MONITOR: Nikos Pallis

EQUIPMENT: AQS1 Air Monitoring Station x 2 MiniRAE 3000 Photoionization Detector (PID) CAT 335F x 2 Zaxis 135US Hyundai HL955A Bauer BG 36 H ABI TM22 RTG RG 27S Hitachi 670 Takeuchi TB260 Terex TA9 TB260 Kubota KX080-4α2 BW120 AD Terex TA9 9-ton Dumper CAT 303E	PRESENT AT SITE: Langan (Environmental): Nikos Pallis Urban Atelier Group (UAG) ECD NY Inc. (ECD): Kyle McGovern
--	---

OBSERVATIONS, DISCUSSIONS, TEST RESULTS, ETC.:

Langan was present to document remediation activities in accordance with the New York State Department of Environmental Conservation (NYSDEC)-approved July 22, 2025 Remedial Action Work Plan (RAWP) at the 145-165 Wolcott Street site in Brooklyn, New York (Site No. C224256).

Site Activities

- ECD used a CAT 303E to excavate an about 50-foot-long by 8-feet-wide area to about 1.5 feet below grade surface (bgs) in the central part of the site for the installation of utility piping.
 - Excavated non-native fill was stockpiled adjacent to the excavation and graded to create a level surface.
 - Excavated non-native fill was screened for odors, staining, and organic vapors using a PID. No impacts were observed.
- ECD used a Kubota KX080-4α2 to backfill an about 80-foot-long by 55-feet-wide area from about 5 feet bgs to surface grade with previously imported clean fill in the western part of the site.
 - Backfill consisted of previously stockpiled clean fill from the eastern part of the site.
- ECD used a Kubota KX080-4α2 to grade an about 80-foot-long by 55-feet-wide area with non-hazardous non-native fill in the western part of the site.

Cc: M. Burke, G. Nicholls, S. Knoop, N. Palumbo, L. Grose	By: Nikos Pallis
	Langan Eng, Env, Surv, L.A. & Geo, DPC

LANGAN SITE OBSERVATION REPORT- Day 158

- ECD used a Terex TA9 9-ton Dumper to relocate stockpiled previously imported clean fill from the eastern part of the site to the western part of the site for future backfill.
- ECD installed geotextile fabric in two about 25 foot-long by 10-feet wide area and used a Kubota KX080-4α2 to backfill an about 12-inch-thick layer of ¾-inch virgin stone (gas permeable aggregate) as part of the soil vapor extraction (SVE) system within the western part of the site.
- ECD used a Kubota KX080-4α2 to backfill three about 25 foot-long by 10-feet wide area from about 5 feet bgs to surface grade with previously imported of ¾-inch virgin stone (gas permeable aggregate) in the western part of the site.
- ECD installed 40 feet and 15 feet of 4-inch-diameter polyvinyl chloride (PVC) piping as part of the SVE system in the western and northern part of the site respectively.
- ECD installed Preprufe 300R Plus waterproofing/vapor barrier membrane within an about 50-foot-long by 30-feet-wide area in the northern part of the site.

Material Tracking

- ECD imported the following material:
 - 3 loads (approximately 54 cubic yards) of ¾-inch ASTM No.5 stone were imported from Tilcon West Nyack Quarry in West Nyack, NY.
- No material was exported from the site.

Material Export Summary – Soil										
Facility Name Location	Clean Earth of North Jersey Kearny, NJ									
Material	Non-Hazardous Low pH Soil		Hazardous Lead Impacted Soil with UHCs		Hazardous Lead Impacted Soil with No UHCs		High Hazardous Lead		Non-Hazardous Soil	
Quantities	No. of Loads	Approx. Volume (CY)	No. of Loads	Approx. Volume (CY)	No. of Loads	Approx. Volume (CY)	No. of Loads	Approx. Volume (CY)	No. of Loads	Approx. Volume (CY)
Today	-	-	-	-	-	-	-	-	-	-
Project Total	332	5,495	56	901	27	467	5	68	1	18

Notes:

1. UHC – Underlying Hazardous Constituent

Material Export Summary – Soil						
Facility Name Location	Clean Earth of New Castle New Castle, DE		Conestoga Landfill Morgantown, PA		Waste Management Morgantown, PA	
Material	Non-Hazardous Soil		Non-Hazardous Soil		Non-Hazardous Soil	
Quantities	No. of Loads	Approx. Volume (CY)	No. of Loads	Approx. Volume (CY)	No. of Loads	Approx. Volume (CY)
Today	-	-	-	-	-	-
Project Total	729	13,682	39	703	224	4,007

Cc: M. Burke, G. Nicholls, S. Knoop,
N. Palumbo, L. Grose

By:

Nikos Pallis

Langan Eng, Env, Surv, L.A. & Geo, DPC

Material Export Summary - C&D						
Facility Name	PPark NJ, LLC		Bayshore Soil Management, LLC		Silva Recycling, LLC	
Location	Prospect Park, NJ		Keasbey, NJ		Newark, NJ	
Material	Asphalt, Concrete		Asphalt, Concrete		Concrete	
Quantities	No. of Loads	Approx. Volume (CY)	No. of Loads	Approx. Volume (CY)	No. of Loads	Approx. Volume (CY)
Today	-	-	-	-	-	-
Project Total	119	2,380	31	645	25	880

Material Import Summary										
Facility Name	Impact Materials, LLC		Callahan & Nannini Quarry Inc.		Durante Brothers Construction		Tilcon West Nyack Quarry		B.G.L.J Servicing Corp	
Location	Jersey City, NJ		Salisbury Mills, NY		Flushing, NY		West Nyack, NY		Moriches, NY	
Material	3/4" Recycled Clean Stone		2-4" Granite Stone		Clean Fill		ASTM No. 5 Stone		Virgin Sand	
Quantities	No. of Loads	Approx. Volume (CY)	No. of Loads	Approx. Volume (CY)	No. of Loads	Approx. Volume (CY)	No. of Loads	Approx. Volume (CY)	No. of Loads	Approx. Volume (CY)
Today	-	-	-	-	-	-	3	54	-	-
Project Total	63	1,134	2	36	638	11,484	47	846	1	18

Samples

- No samples were collected.

Community Air Monitoring Plan (CAMP) Activities

- Langan performed community air monitoring at the perimeter of the work area at one upwind and one downwind location during intrusive work. Implementation of the Community Air Monitoring Plan (CAMP) included air monitoring for particulate matter for particulates less than 10 µm in diameter (PM10) and volatile organic compounds (VOC). VOC concentrations did not exceed the action levels established by the community air monitoring plan.
- PM10 exceeded the 15-minute time-weighted-average (TWA) site contribution action level of 150 micrograms per cubic meter (µg/m³) for 16 minutes from 9:35 to 09:50 AM, for 13 minutes from 2:16 to 2:28 PM, for 44 minutes from 2:35 to 3:18 PM, for 23 minutes from 3:33 to 3:55 PM, for 31 minutes from 3:57 to 4:27 PM, for 20 minutes from 4:37 to 4:56 PM, and for 11 minutes from 5:13 to 5:23 PM. The exceedances were attributed to dust generated from stockpiling of ¾-inch virgin stone in the northern part of the site and dust generated from off-site construction activities to the north of the site. Exceedances resulting from on-site operations were mitigated by the Contractor spraying the stone with water. Work was temporarily halted until PM10 concentrations returned to below action levels.
- No fugitive dust or odors associated with site activities were observed migrating from the site.

Anticipated Activities

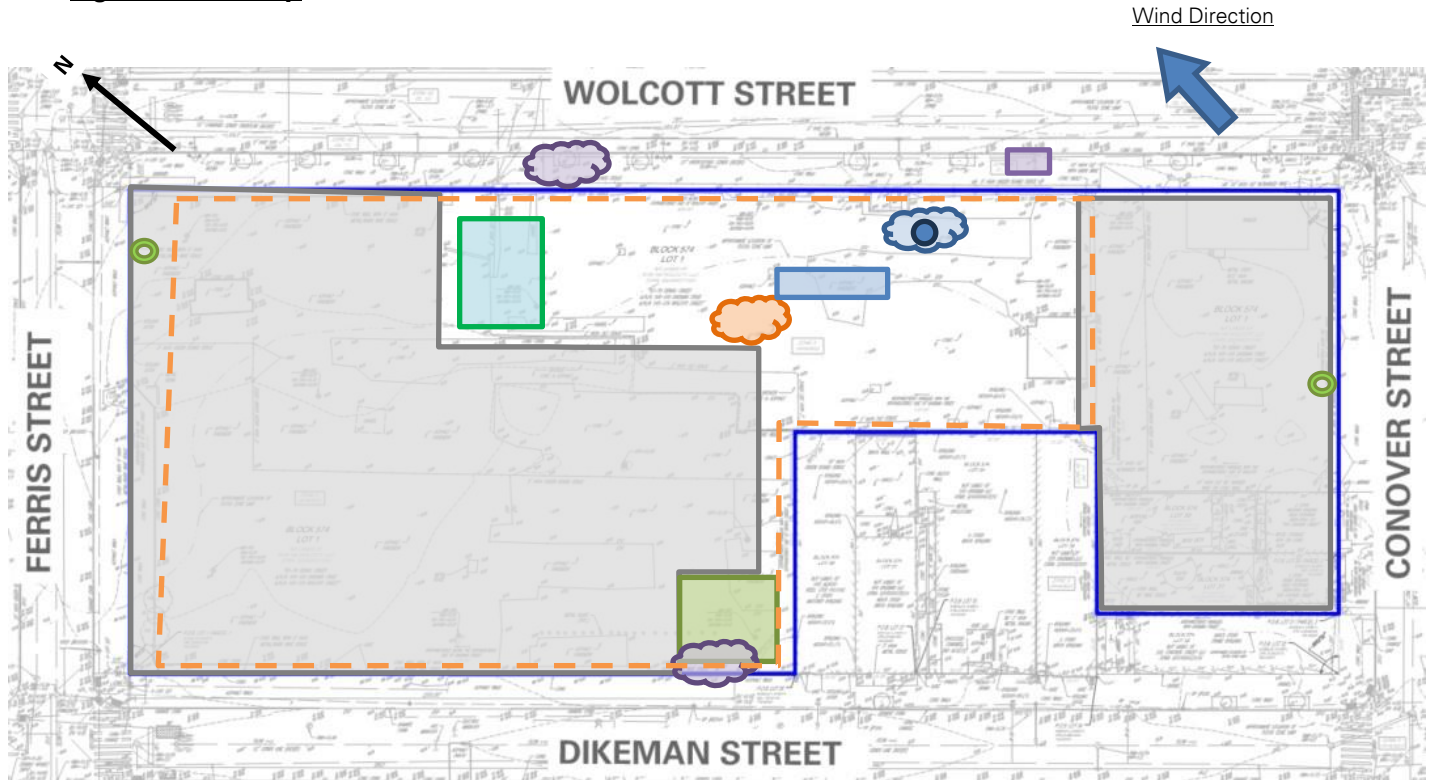
- ECD will continue excavating and backfilling for utility piping in the central part of the site.
- ECD will continue foundation framing and concrete pouring in the central part of the site.
- ECD will continue laying polyvinyl chloride piping, geotextile fabric, and ¾-inch virgin stone as part of the sub slab depressurization system and SVE system installation in the western part of the site.

Cc: M. Burke, G. Nicholls, S. Knoop,
N. Palumbo, L. Grose

By: Nikos Pallis

Langan Eng, Env, Surv, L.A. & Geo, DPC

Figure 1: Site Map



Legend

	Site Boundary-		Approximate Area Excavated
	Approximate Work Area		Approximate Area Backfilled
	Approximate Location of Perimeter CAMP Station		Approximate Area Graded
	Approximate Location of Installed Site Cover System		Approximate C&D Stockpile
	Approximate IDW Drum Staging Area		Approximate Non-Native Fill Stockpile
	Approximate Steel Tank Location		Approximate Stone Stockpile
			Approximate Imported Clean Fill Stockpile

Notes:

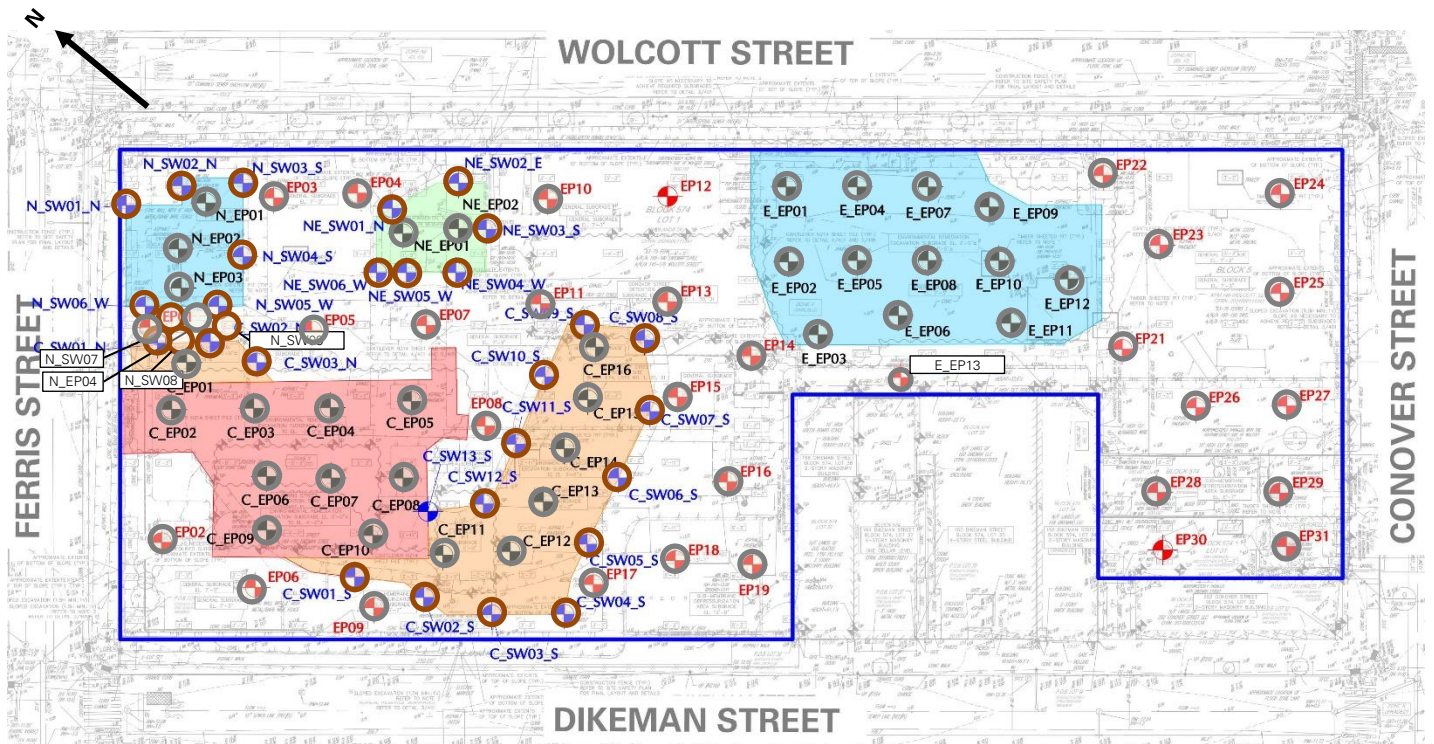
1. Basemap is referenced from 26 March 2025 ALTA/NSPS Land Title Survey prepared by Control Point Associates Inc PC.
2. IDW – Investigation-derived waste generated during the April 2025 and August 2025 supplemental waste characterizations and the January through May 2025 non-aqueous phase liquid gauging.

Cc: M. Burke, G. Nicholls, S. Knoop,
N. Palumbo, L. Grose

By: Nikos Pallis

Langan Eng, Env, Surv, L.A. & Geo, DPC

Figure 2: Endpoint / Sidewalk Sample Location Map



Legend

- Site Boundary
- Approximate Location of Documentation Endpoint Soil Sample Collected
- Approximate Location of Documentation Sidewalk Soil Sample Collected
- Approximate Location of Previously Collected Documentation Endpoint Soil Sample
- Approximate Location of Previously Collected Documentation Sidewalk Soil Sample

Notes:

1. Basemap is referenced from 26 March 2025 ALTA/NSPS Land Title Survey prepared by Control Point Associates Inc PC.

Cc: M. Burke, G. Nicholls, S. Knoop,
N. Palumbo, L. Grose

By: Nikos Pallis
Langan Eng, Env, Surv, L.A. & Geo, DPC

Photographs

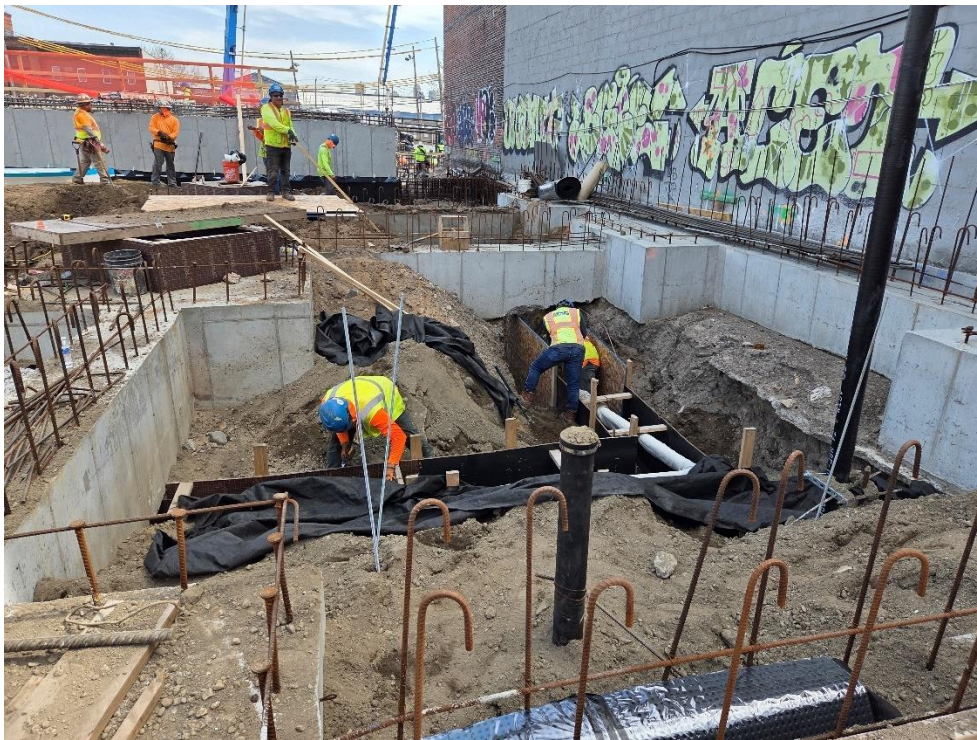


Photo 1: ECD installing SVE piping in the western part of the site (facing east)



Photo 2: ECD installing Preprufe 300R Plus waterproofing/vapor barrier in the northern part of the site (facing west).

Cc: M. Burke, G. Nicholls, S. Knoop,
N. Palumbo, L. Grose

By: Nikos Pallis

Langan Eng, Env, Surv, L.A. & Geo, DPC



Photo 3: ECD backfilling with imported ¾-inch ASTM No. 5 stone for the SVE system installation in the western part of the site (facing east)



Photo 4: ECD pouring concrete in the central part of the site (facing down)

Cc: M. Burke, G. Nicholls, S. Knoop,
N. Palumbo, L. Grose

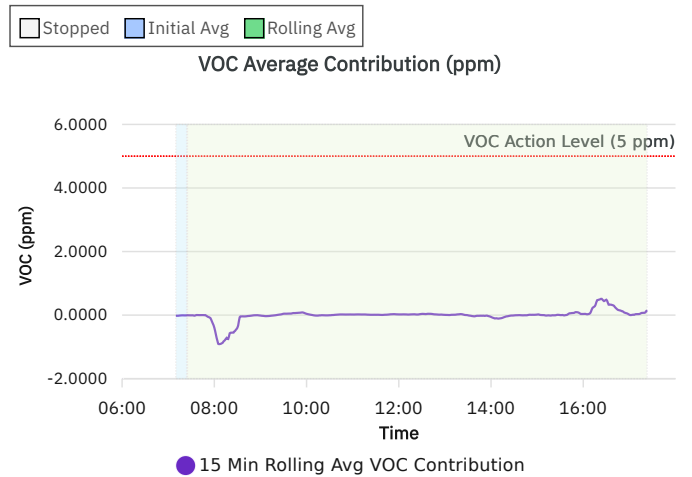
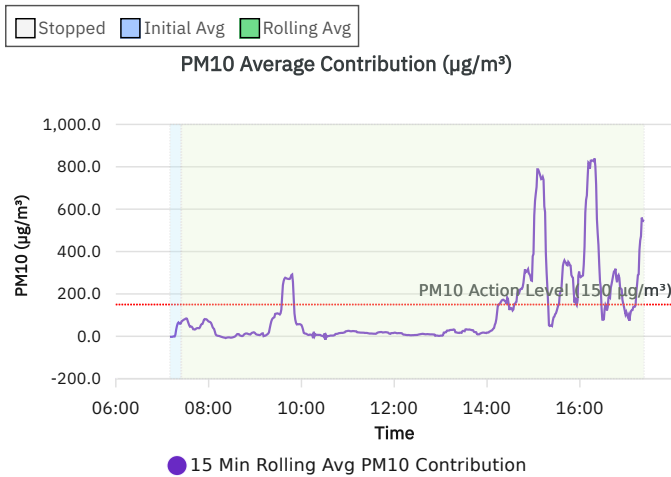
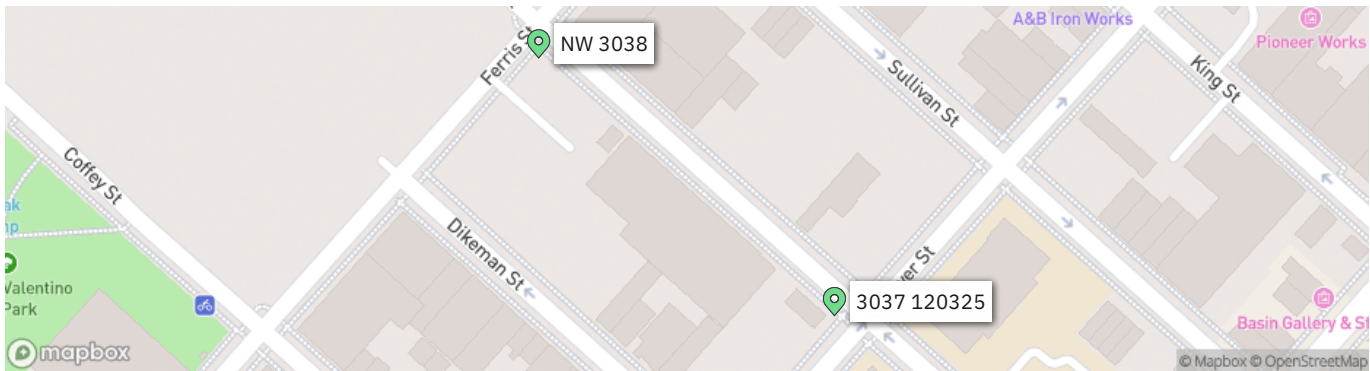
By: Nikos Pallis

Langan Eng, Env, Surv, L.A. & Geo, DPC

LANGAN	Contribution 2 Station 031026 Report	170562203 - 145 Wolcott St	
		Report Period	
		From:	04/16/2026 06:00
		To:	04/16/2026 18:00
		PM10 Action Level:	150 µg/m³
		VOC Action Level:	5 ppm

Daily Environmental Summary	Temp (°F)	Relative Humidity (%)	Barometer (inHg)	Wind Speed (mph)	Prevailing Wind Direction
04/16/2026	65.7 - 92.5	40.3 - 69.4	29.7 - 29.9	0.5 - 5.1	SSE

Daily Monitoring Summary	PM10 (µg/m³)	Time	VOC (ppm)	Time
Min Contribution (15 min avg.) - 4/16/2026	-16.3	10:31	-0.9127	08:06
Max Contribution (15 min avg.) - 4/16/2026	839.3	16:19	0.5120	16:23
Daily Avg. Contribution (15 min avg.) - 4/16/2026	116.9	-	-0.0078	-



LANGAN SITE OBSERVATION REPORT- Day 159

PROJECT No.: 170452203	CLIENT: NYM 145 Wolcott, LLC 233 Broadway, 10 th Fl., New York, NY 10279	DATE: Fri., April 17, 2026
PROJECT: 145-165 Wolcott Street		WEATHER: Sunny, 64 - 87°F Wind: WNW @ 0.4 – 9.8 mph
LOCATION: Brooklyn, New York		TIME: 6:45 am – 6:00 pm
SITE CODE: C224256		MONITOR: Brayden Klein

EQUIPMENT: AQS1 Air Monitoring Station x 2 MiniRAE 3000 Photoionization Detector (PID) CAT 335F Zaxis 135US Hyundai HL955A Bauer BG 36 H ABI TM22 RTG RG 27S Hitachi 670 Takeuchi TB260 Terex TA9 TB260 Kubota KX080-4α2 BW120 AD Terex TA9 9-ton Dumper CAT 303E	PRESENT AT SITE: Langan (Environmental): Brayden Klein Urban Atelier Group (UAG) ECD NY Inc. (ECD): Kyle McGovern
--	--

OBSERVATIONS, DISCUSSIONS, TEST RESULTS, ETC.:

Langan was present to document remediation activities in accordance with the New York State Department of Environmental Conservation (NYSDEC)-approved July 22, 2025 Remedial Action Work Plan (RAWP) at the 145-165 Wolcott Street site in Brooklyn, New York (Site No. C224256).

Site Activities

- ECD used a CAT 335F to excavate an about 25-foot-long by 8-feet-wide area to about 6 feet below grade surface (bgs) in the central part of the site for the installation of utility piping.
 - Excavated non-native fill was stockpiled adjacent to the excavation.
 - Excavated non-native fill was screened for odors, staining, and organic vapors using a PID. No impacts were observed.
- ECD used a Kubota KX080-4α2 to backfill an about 40-foot-long by 10-feet-wide area from about 3 feet bgs to surface grade with previously imported clean fill in the western part of the site.
 - Backfill consisted of previously stockpiled clean fill from the eastern part of the site.
- ECD used a Terex TA9 9-ton Dumper to relocate stockpiled previously imported clean fill from the eastern part of the site to the western part of the site for future backfill.

Cc: M. Burke, G. Nicholls, S. Knoop, N. Palumbo, L. Grose	By: Brayden Klein
Langan Eng, Env, Surv, L.A. & Geo, DPC	

LANGAN SITE OBSERVATION REPORT- Day 159

- ECD installed geotextile fabric in an about 15 foot-long by 8-feet wide area and used a CAT 303E to backfill an about 12-inch-thick layer of ¾-inch virgin stone (gas permeable aggregate) as part of the soil vapor extraction (SVE) system within the northern part of the site.
- ECD installed geotextile fabric in an about 45-foot-long by 8-feet wide area and used a Kubota KX080-4α2 to backfill an about 12-inch-thick layer of ¾-inch virgin stone (gas permeable aggregate) as part of the sub slab depressurization system (SSDS) system within the western part of the site.
- ECD installed 55 feet of 4-inch-diameter polyvinyl chloride (PVC) piping as part of the SSDS system in the western part of the site.
- ECD poured an about 12-inch-thick concrete slab within an about 60-foot-long by 15-feet-wide area in the northern part of the site.
- ECD installed Preprufe 300R Plus waterproofing/vapor barrier membrane within an about 55-foot-long by 20-feet-wide area in the northern part of the site.
- ECD installed Florprufe 120 waterproofing/vapor barrier membrane within an about 80-foot-long by 50-feet-wide area in the western part of the site.

Material Tracking

- ECD imported the following material:
 - 2 loads (approximately 36 cubic yards) of ¾-inch ASTM No.5 stone were imported from Tilcon West Nyack Quarry in West Nyack, NY.
- No material was exported from the site.

Material Export Summary – Soil										
Facility Name	Clean Earth of North Jersey									
Location	Kearny, NJ									
Material	Non-Hazardous Low pH Soil		Hazardous Lead Impacted Soil with UHCs		Hazardous Lead Impacted Soil with No UHCs		High Hazardous Lead		Non-Hazardous Soil	
Quantities	No. of Loads	Approx. Volume (CY)	No. of Loads	Approx. Volume (CY)	No. of Loads	Approx. Volume (CY)	No. of Loads	Approx. Volume (CY)	No. of Loads	Approx. Volume (CY)
Today	-	-	-	-	-	-	-	-	-	-
Project Total	332	5,495	56	901	27	467	5	68	1	18

Notes:

1. UHC – Underlying Hazardous Constituent

Cc: M. Burke, G. Nicholls, S. Knoop,
N. Palumbo, L. Grose

By: Brayden Klein

Langan Eng, Env, Surv, L.A. & Geo, DPC

Material Export Summary – Soil						
Facility Name	Clean Earth of New Castle		Conestoga Landfill		Waste Management	
Location	New Castle, DE		Morgantown, PA		Morgantown, PA	
Material	Non-Hazardous Soil		Non-Hazardous Soil		Non-Hazardous Soil	
Quantities	No. of Loads	Approx. Volume (CY)	No. of Loads	Approx. Volume (CY)	No. of Loads	Approx. Volume (CY)
Today	-	-	-	-	-	-
Project Total	729	13,682	39	703	224	4,007

Material Export Summary – C&D						
Facility Name	PPark NJ, LLC		Bayshore Soil Management, LLC		Silva Recycling, LLC	
Location	Prospect Park, NJ		Keasbey, NJ		Newark, NJ	
Material	Asphalt, Concrete		Asphalt, Concrete		Concrete	
Quantities	No. of Loads	Approx. Volume (CY)	No. of Loads	Approx. Volume (CY)	No. of Loads	Approx. Volume (CY)
Today	-	-	-	-	-	-
Project Total	119	2,380	31	645	25	880

Material Import Summary										
Facility Name	Impact Materials, LLC		Callahan & Nannini Quarry Inc.		Durante Brothers Construction		Tilcon West Nyack Quarry		B.G.L.J Servicing Corp	
Location	Jersey City, NJ		Salisbury Mills, NY		Flushing, NY		West Nyack, NY		Moriches, NY	
Material	3/4" Recycled Clean Stone		2-4" Granite Stone		Clean Fill		ASTM No. 5 Stone		Virgin Sand	
Quantities	No. of Loads	Approx. Volume (CY)	No. of Loads	Approx. Volume (CY)	No. of Loads	Approx. Volume (CY)	No. of Loads	Approx. Volume (CY)	No. of Loads	Approx. Volume (CY)
Today	-	-	-	-	-	-	2	36	-	-
Project Total	63	1,134	2	36	638	11,484	49	882	1	18

Samples

- No samples were collected.

Community Air Monitoring Plan (CAMP) Activities

- Langan performed community air monitoring at the perimeter of the work area at one upwind and one downwind location during intrusive work. Implementation of the Community Air Monitoring Plan (CAMP) included air monitoring for particulate matter for particulates less than 10 µm in diameter (PM10) and volatile organic compounds (VOC). PM10 and VOC concentrations did not exceed the action levels established by the community air monitoring plan.
- No fugitive dust or odors associated with site activities were observed migrating from the site.

Anticipated Activities

- ECD will continue excavating and backfilling for utility piping in the central part of the site.
- ECD will continue foundation framing and concrete pouring in the central part of the site.

Cc: M. Burke, G. Nicholls, S. Knoop,
N. Palumbo, L. Grose

By: Brayden Klein

Langan Eng, Env, Surv, L.A. & Geo, DPC

LANGAN SITE OBSERVATION REPORT- Day 159

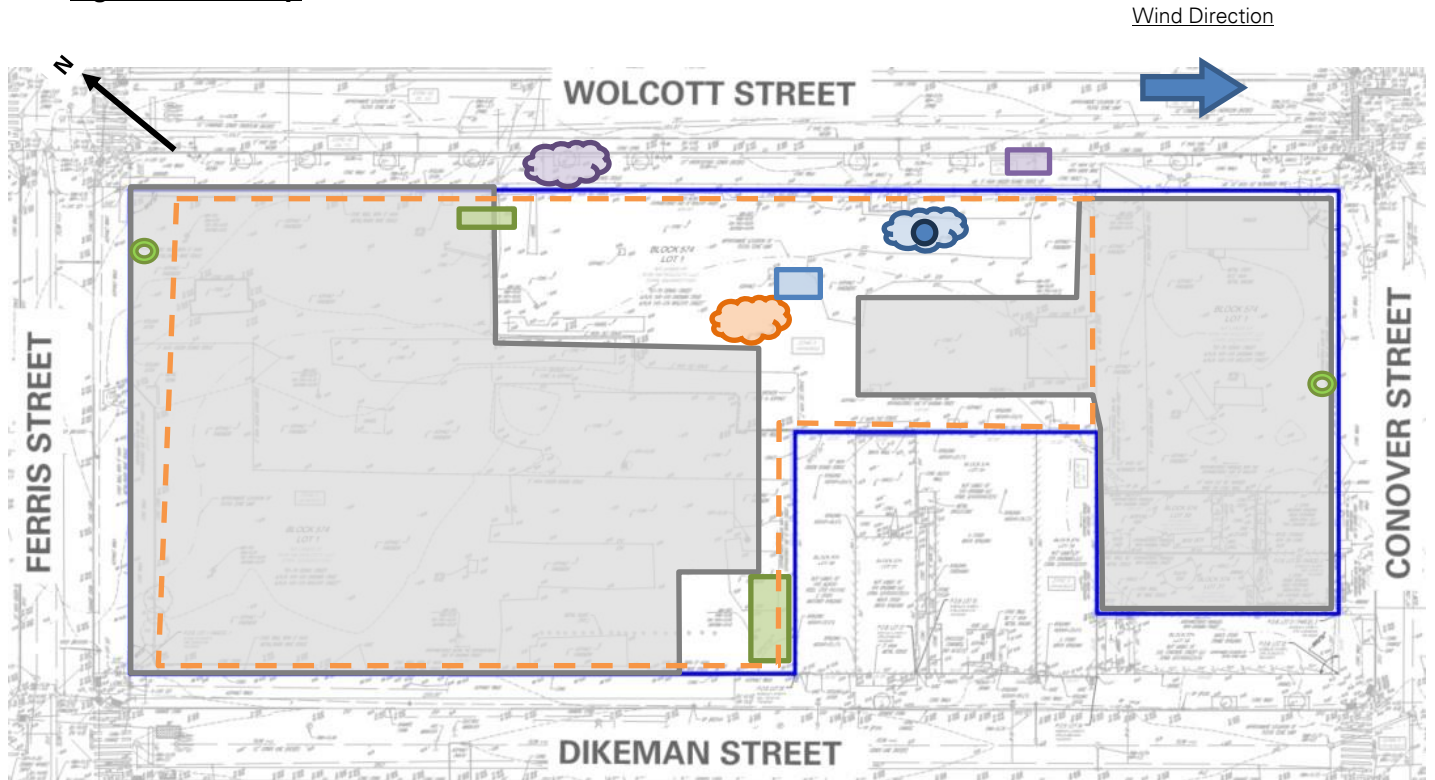
- ECD will continue laying PVC piping, geotextile fabric, and ¾-inch virgin stone as part of the SSDS and SVE system installation in the western part of the site.

Cc: M. Burke, G. Nicholls, S. Knoop,
N. Palumbo, L. Grose

By: Brayden Klein

Langan Eng, Env, Surv, L.A. & Geo, DPC

Figure 1: Site Map



Legend

	Site Boundary-		Approximate Area Excavated
	Approximate Work Area		Approximate Area Backfilled
	Approximate Location of Perimeter CAMP Station		Approximate Area Graded
	Approximate Location of Installed Site Cover System		Approximate C&D Stockpile
	Approximate IDW Drum Staging Area		Approximate Non-Native Fill Stockpile
	Approximate Steel Tank Location		Approximate Stone Stockpile
			Approximate Imported Clean Fill Stockpile

Notes:

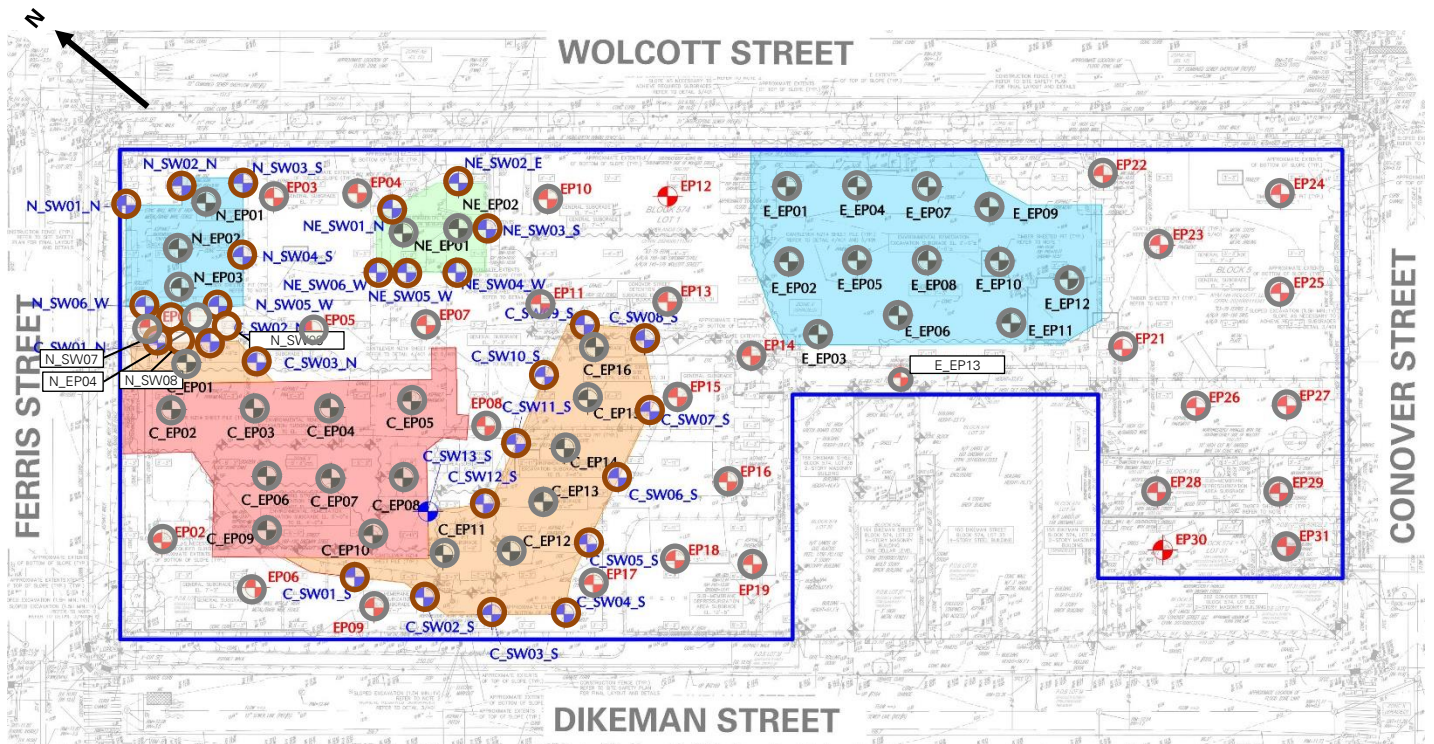
1. Basemap is referenced from 26 March 2025 ALTA/NSPS Land Title Survey prepared by Control Point Associates Inc PC.
2. IDW – Investigation-derived waste generated during the April 2025 and August 2025 supplemental waste characterizations and the January through May 2025 non-aqueous phase liquid gauging.

Cc: M. Burke, G. Nicholls, S. Knoop,
N. Palumbo, L. Grose

By: Brayden Klein

Langan Eng, Env, Surv, L.A. & Geo, DPC

Figure 2: Endpoint / Sidewalk Sample Location Map



Legend

- Site Boundary
- Approximate Location of Documentation Endpoint Soil Sample Collected
- Approximate Location of Documentation Sidewalk Soil Sample Collected
- Approximate Location of Previously Collected Documentation Endpoint Soil Sample
- Approximate Location of Previously Collected Documentation Sidewalk Soil Sample

Notes:

1. Basemap is referenced from 26 March 2025 ALTA/NSPS Land Title Survey prepared by Control Point Associates Inc PC.

Cc: M. Burke, G. Nicholls, S. Knoop,
N. Palumbo, L. Grose

By: Brayden Klein
Langan Eng, Env, Surv, L.A. & Geo, DPC

LANGAN SITE OBSERVATION REPORT- Day 159

Photographs



Photo 1: ECD importing approved ¾-inch ASTM No.5 stone in the eastern part of the site (facing southeast)



Photo 2: ECD backfilling with ¾-inch virgin stone (gas permeable aggregate) as the SVE system in the northern part of the site (facing west)

Cc: M. Burke, G. Nicholls, S. Knoop,
N. Palumbo, L. Grose

By: Brayden Klein

Langan Eng, Env, Surv, L.A. & Geo, DPC



Photo 3: ECD installing Florprufe 120 waterproofing / vapor barrier in the western part of the site (facing north)



Photo 4: ECD backfilling with previously imported clean fill in the western part of the site (facing west)

Cc: M. Burke, G. Nicholls, S. Knoop,
N. Palumbo, L. Grose

By: Brayden Klein
Langan Eng, Env, Surv, L.A. & Geo, DPC

LANGAN	Contribution 2 Station 031026 Report	170562203 - 145 Wolcott St	
		Report Period	
		From:	04/17/2026 06:00
		To:	04/17/2026 18:00
		PM10 Action Level:	150 $\mu\text{g}/\text{m}^3$
VOC Action Level:	5 ppm		

Daily Environmental Summary	Temp (°F)	Relative Humidity (%)	Barometer (inHg)	Wind Speed (mph)	Prevailing Wind Direction
04/17/2026	64.0 - 86.7	38.6 - 86.8	29.8 - 29.9	0.4 - 9.8	WNW

Daily Monitoring Summary	PM10 ($\mu\text{g}/\text{m}^3$)	Time	VOC (ppm)	Time
Min Contribution (15 min avg.) - 4/17/2026	-79.0	07:55	-0.1473	12:34
Max Contribution (15 min avg.) - 4/17/2026	16.7	13:15	0.1133	12:19
Daily Avg. Contribution (15 min avg.) - 4/17/2026	-5.9	-	-0.0386	-

