

Daily Status Report

Prepared by: Victor Chang

Date: 10/4/2023

Weather: Overcast, 66-83 °F

Wind: East, 3-13 mph

Project: 29 Wythe Avenue - Brooklyn, NY - BCP Site # C224262

Engineer:

Matthew Carroll, P.E.
Tenen Environmental, LLC (Tenen)

Field Scientist:

Honpong Lau and Mark Accetturi
Tenen Environmental, LLC

Sub-Contractor:

AARCO Environmental Services, Inc.
(AARCO)

Work Activities Performed:

- 1) Tenen and AARCO collected soil samples in the northwestern portion of the Site via boring advancement using a Geoprobe Direct-Push Probe (DPP) drill rig to supplement and delineate initial waste characterization data for disposal facility approvals.
- 2) Spill No. 2305757 was assigned to the Site after Tenen notified the NYSDEC Spill Hotline due to evidence of petroleum contamination including suspect staining and odors observed in soil borings. The boring locations (shown on Site Plan) that were observed with suspect petroleum impacts in the soil at the approximately between 6-10 feet below surface grade, at and directly above the water table.
- 3) Jennifer Gonzalez from NYSDEC conducted a site visit.

Samples Collected (Since Last Report): Soil samples for waste characterization and delineating areas with elevated concentrations of lead.

Air Monitoring (Since Last Report): CAMP was implemented during intrusive work.

Prestart Conditions –

Upwind -- PID = 0.0 ppm, Dust = 0.043 mg/m³

Downwind -- PID = 0.0 ppm, Dust = 0.010 mg/m³

High Conditions –

Upwind -- PID = 0.0 ppm, Dust = 0.051 mg/m³

Downwind -- PID = 0.0 ppm, Dust = 0.022 mg/m³

Problems Encountered:

None.

Planned Work Activities for Next Day/Week:

Waste characterization and delineation sampling will continue.

Site Plan

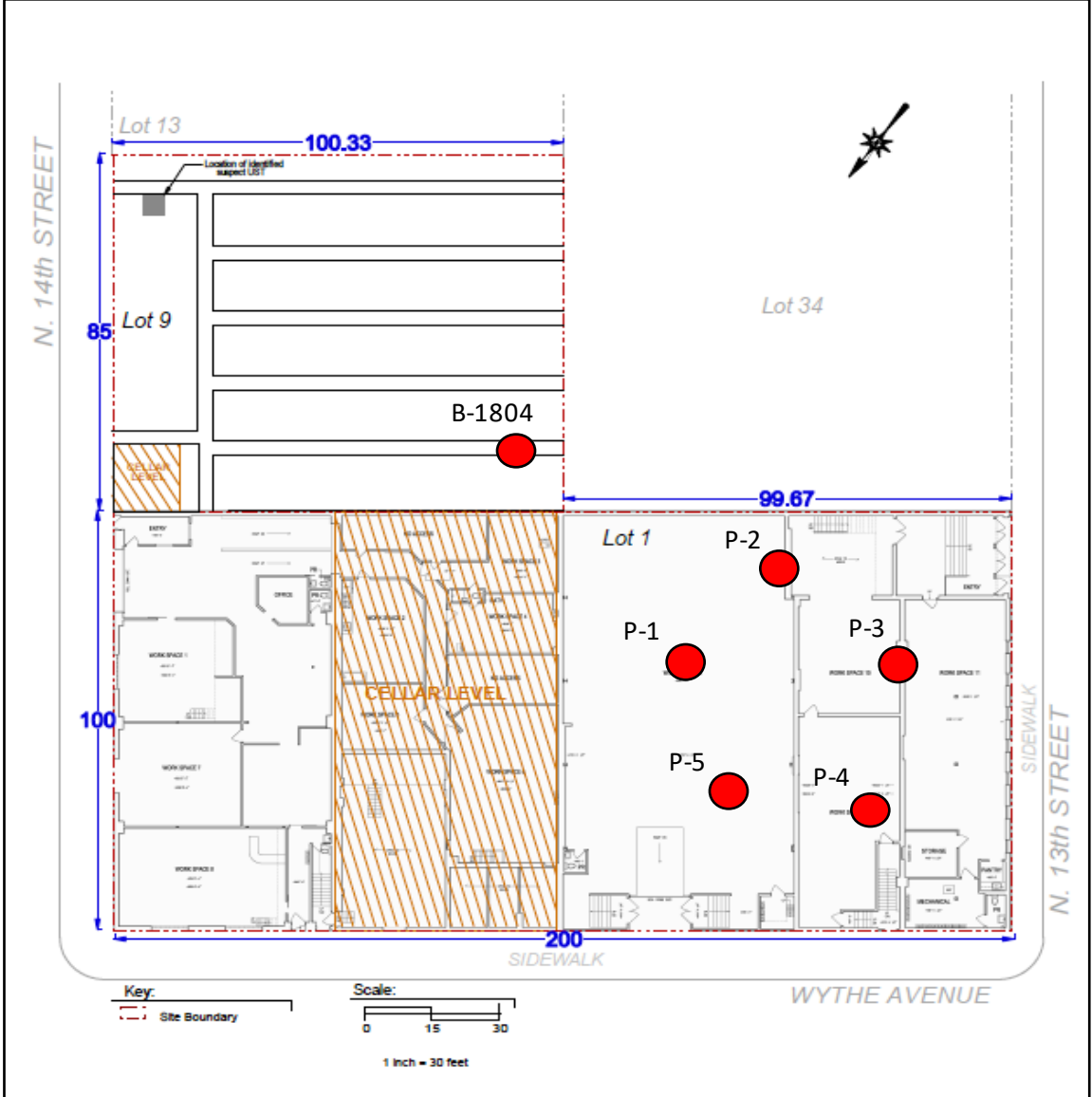


Photo 1: Soil boring advancement for waste characterization sample collection.

Direction: Southwest



Photo 2: Soil sample collection at boring location P-2 with evidence of petroleum.

Direction: N/A



Air Monitoring Data

146		Location <u>N14 and Wythe</u>		Date <u>10/4/23</u>	
		Project / Client <u>Brooklyn</u>			
<u>N14/Wythe</u>			<u>N13/Wythe</u>		
08:28	0.0	0.003	08:31	0.0	0.010
08:52	0.0	0.027	08:50	0.0	0.004
09:07	0.0	0.0051	08:56	0.0	0.003
09:25	0.0	0.043	09:24	0.0	0.015
09:50	0.0	0.040	09:52	0.0	0.018
10:13	0.0	0.015	09:11	0.0	0.018
10:31	0.0	0.037	10:32	0.0	0.014
10:48	0.0	0.027	10:46	0.0	0.014
11:02	0.0	0.030	11:03	0.0	0.017
11:23	0.0	0.031	11:23	0.0	0.019
11:46	0.0	0.035	11:48	0.0	0.022
12:06	0.0	0.030	12:07	0.0	0.020
12:31	0.0	0.038	12:30	0.0	0.016
12:52	0.0	0.040	12:50	0.0	0.008
13:09	0.0	0.010	13:10	0.0	0.000
13:34	0.0	0.017	13:35	0.0	0.011
13:53	0.0	0.021	13:55	0.0	0.001
14:10	0.0	0.026	14:11	0.0	0.018
14:30	0.0	0.020	14:32	0.0	0.022
14:45	0.0	0.016	15:00	END	

Daily Status Report

Prepared by: Victor Chang

Date: 10/5/2023

Weather: Partly Cloudy, 64-76 °F

Wind: South, 4-9 mph

Project: 29 Wythe Avenue - Brooklyn, NY - BCP Site # C224262

Engineer:

Matthew Carroll, P.E.
Tenen Environmental, LLC (Tenen)

Field Scientist:

Honpong Lau and Mark Accetturi
Tenen Environmental, LLC

Sub-Contractor:

AARCO Environmental Services, Inc.
(AARCO)

Work Activities Performed:

1) Tenen and AARCO continued collecting soil samples throughout the entire Site via boring advancement using a Geoprobe Direct-Push Probe (DPP) Drill Rig to supplement and delineate initial waste characterization data for disposal facility approvals. Following completion of sampling, Tenen and AARCO demobilized from the Site.

Samples Collected (Since Last Report): Soil samples for waste characterization and delineating areas with elevated concentrations of lead.

Air Monitoring (Since Last Report): CAMP was implemented during intrusive work.

Prestart Conditions –

Upwind -- PID = 0.0 ppm, Dust = 0.029 mg/m³

Downwind -- PID = 0.0 ppm, Dust = 0.034 mg/m³

High Conditions –

Upwind -- PID = 0.0 ppm, Dust = 0.089 mg/m³

Downwind -- PID = 0.0 ppm, Dust = 0.114 mg/m³

Problems Encountered:

None.

Planned Work Activities for Next Day/Week:

None.

Site Plan

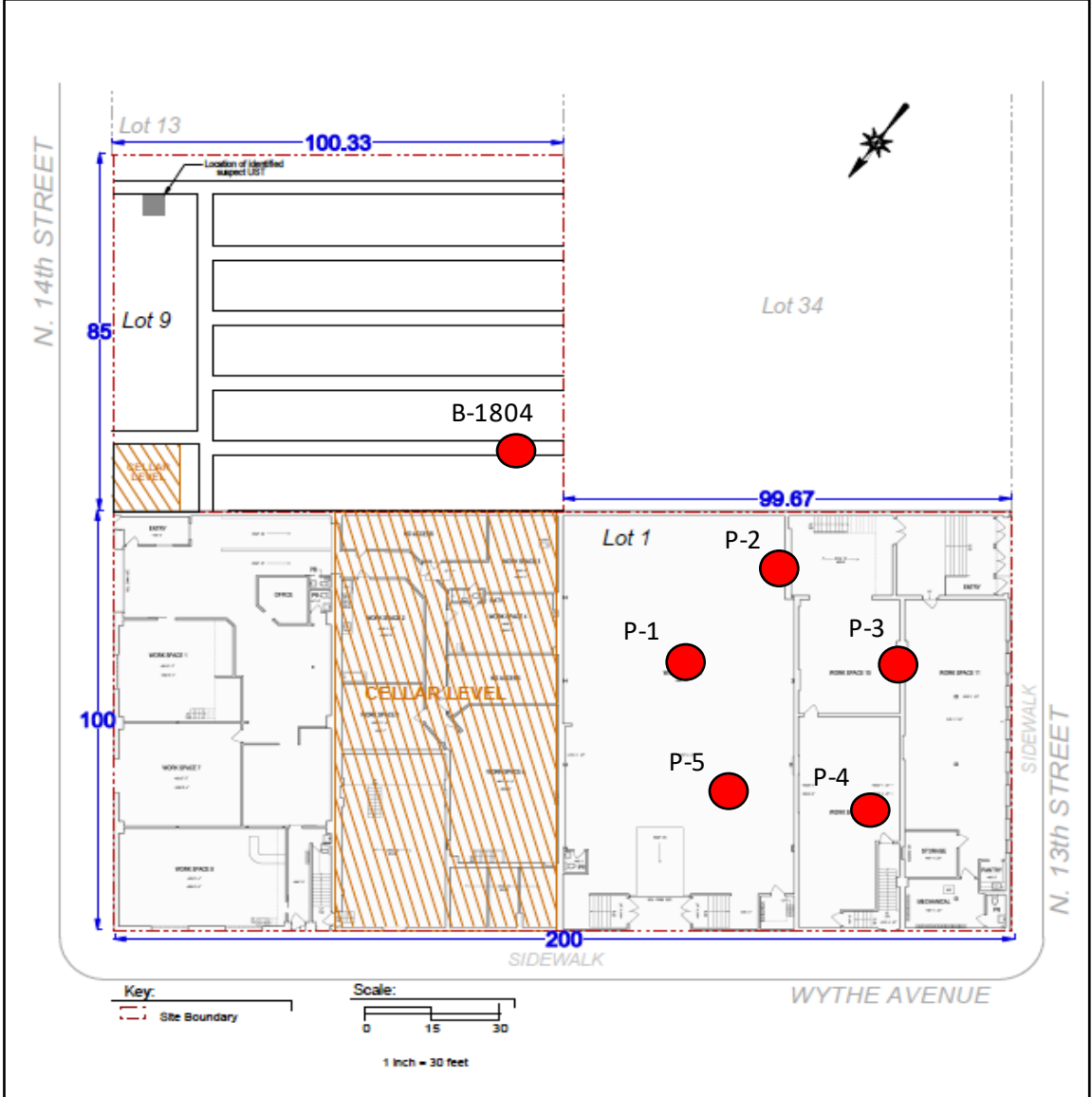


Photo 1: Soil boring advancement for waste characterization sample collection.

Direction: Southwest



Photo 2: Soil sample collection at boring location B1804 with evidence of petroleum.

Direction: N/A



Air Monitoring Data - Upwind

28 SF, clear CAMP			10/5 10/5/2023 (uW)		
Time	Dust	PID	Time	Dust	PID.
0645	0.029	0.0	1245	0.059	0.0
0700	0.034	0.0	1300	0.067	0.0
0715	0.037	0.0	1315	0.087	0.0
0730	0.029	0.0	1330	0.074	0.0
0745	0.042	0.0	1345	0.071	0.0
0800	0.057	0.0	1400	0.054	0.0
0815	0.069	0.0	1415	0.071	0.0
0830	0.067	0.0	1430	0.057	0.0
0845	0.059	0.0			
0900	0.063	0.0		unit.	
0915	0.072	0.0		Dust (mg/m ³)	
0930	0.089	0.0		PID (ppm)	
0945	0.049	0.0			
1000	0.029	0.0		Background readings:	
1015	0.034	0.0		Dust (uW)	0.27 mg/m ³
1020	0.037	0.0		(DW)	0.30 mg/m ³
1045	0.045	0.0		PID (uW)	0.0 ppm
1100	0.044	0.0		(DW)	0.0 ppm
1115	0.045	0.0			
1130	0.049	0.0			
1145	0.054	0.0			
1200	0.059	0.0			
1215	0.051	0.0			
1230	0.047	0.0			

Air Monitoring Data - Downwind

uW)

10/5/2023

29

Time	Dust	PID	Time	Dust	PID
0645	0.034	0.0	1245	0.071	0.0
0700	0.039	0.0	1300	0.077	0.0
0715	0.047	0.0	1315	0.063	0.0
0730	0.051	0.0	1330	0.074	0.0
0745	0.063	0.0	1345	0.084	0.0
0800	0.072	0.0	1400	0.077	0.0
0815	0.089	0.0	1415	0.081	0.0
0830	0.114	0.0	1430	0.075	0.0
0845	0.074	0.0			
0900	0.083	0.0			
0915	0.067	0.0			
0930	0.094	0.0			
0945	0.049	0.0			
1000	0.027	0.0			
1015	0.054	0.0			
1030	0.063	0.0			
1045	0.071	0.0			
1100	0.075	0.0			
1115	0.074	0.0			
1130	0.081	0.0			
1145	0.075	0.0			
1200	0.064	0.0			
1215	0.067	0.0			
1230	0.054	0.0			

mg/m³
mg/m³
m
m

Rite in the Rain