

SITE OBSERVATION REPORT

PROJECT No.: 170552901	CLIENT: SPG Boerum LLC	DATE: Thursday, November 17, 2022
PROJECT: 159 Boerum Street		WEATHER: Cloudy, 38-46 °F Wind: W @ 4.0-8.4 mph
LOCATION: Brooklyn, NY		TIME: 6:45 am to 5:45 pm
CONTRACTOR: SD Builders		LANGAN REP. : Elsayh Boak

CONTRACTOR'S EQUIPMENT: Hitachi ZX 160LC Excavator Deere 300G Excavator Casagrande C9 Drill Rig Kubota SVL65-2 Skid Steer	PRESENT AT SITE: Elsah Boak – Langan James Hsu – SD Builders – General Contractor Lucas Alvarez – Rise Concrete (Rise) – Foundation Contractor Able Siquij – Anel Queens Construction Inc. (Anel) – Drilling Contractor
--	--

OBSERVATIONS, DISCUSSIONS, TEST RESULTS, ETC.:

Langan was present to observe environmental protocols in accordance with the New York State Department of Environmental Conservation (NYSDEC)-approved Remedial Action Work Plan (RAWP) for Brownfield Cleanup Program (BCP) site C224291 at 159 Boerum Street (Block 3071, Lot 40). Observed activities were as follows:

Site Activities

- Rise excavated an about 50-foot long by 80-foot wide area to about 6 feet below grade surface (bgs) along the eastern sit boundary for support of excavation (SOE) lagging installation. Excavated material consisted of non-hazardous fill and was screened for odors, staining, and organic vapors using a photoionization detector (PID); evidence of impacts were not observed. The excavated fill was stockpiled on and covered with polyethylene sheeting at the conclusion of excavation in the northeastern part of the site for future off-site disposal.
- Anel used a Casagrande drill rig to install soldier piles along the western site boundary to a maximum depth of 30 feet bgs.

Material Tracking

- No material was imported to the site.
- No material was exported from the site.

Materials Import Summary			
Facility	Imported	Today	Total
Allocco Recycling, Inc. Brooklyn, NY ¾-inch RCA	No. Loads	0	45
	Quantity (CY)	0	900
	NYSDEC Approved Quantity (CY)		1,000

Sampling

- No samples were collected.

Cc:	L. Haley, K. Semon, B. Gochenaur (Langan)	By:	Elsah Boak
		LANGAN	

SITE OBSERVATION REPORT

CAMP Activities

Langan performed on-site air monitoring during ground-intrusive activities for particulate matter smaller than 10 microns in diameter (PM10) or volatile organic compounds (VOCs). Fifteen-minute average concentrations of VOCs did not exceed action levels established by the community air monitoring plan (CAMP). No fugitive dust or odors were observed leaving the site.

- One minute PM10 and VOCs concentrations were not recorded at the upwind monitoring station from 7:17 to 7:23 due to a server error. The equipment was restarted and the issue was resolved.

Particulate Monitoring (mg/m ³)			Organic Vapor Monitoring (ppm)		
Daily background	0.034		Daily Background	0.1	
Averaging Period	Upwind	Downwind	Averaging Period	Upwind	Downwind
Daily Time Weighted Average	0.034	0.032	Daily Time Weighted Average	0.0	0.1
Maximum 15-min Average	0.345	0.134	Maximum 15-min Average	0.5	1.1
Minimum 1-min Instant Reading	0.006	0.009	Minimum 1-min Instant Reading	0.0	0.0
Maximum 1-min Instant Reading	1.340	0.562	Maximum 1-min Instant Reading	0.6	1.3

mg/m³ = milligrams per cubic meter

ppm = parts per million

NA = Not Available

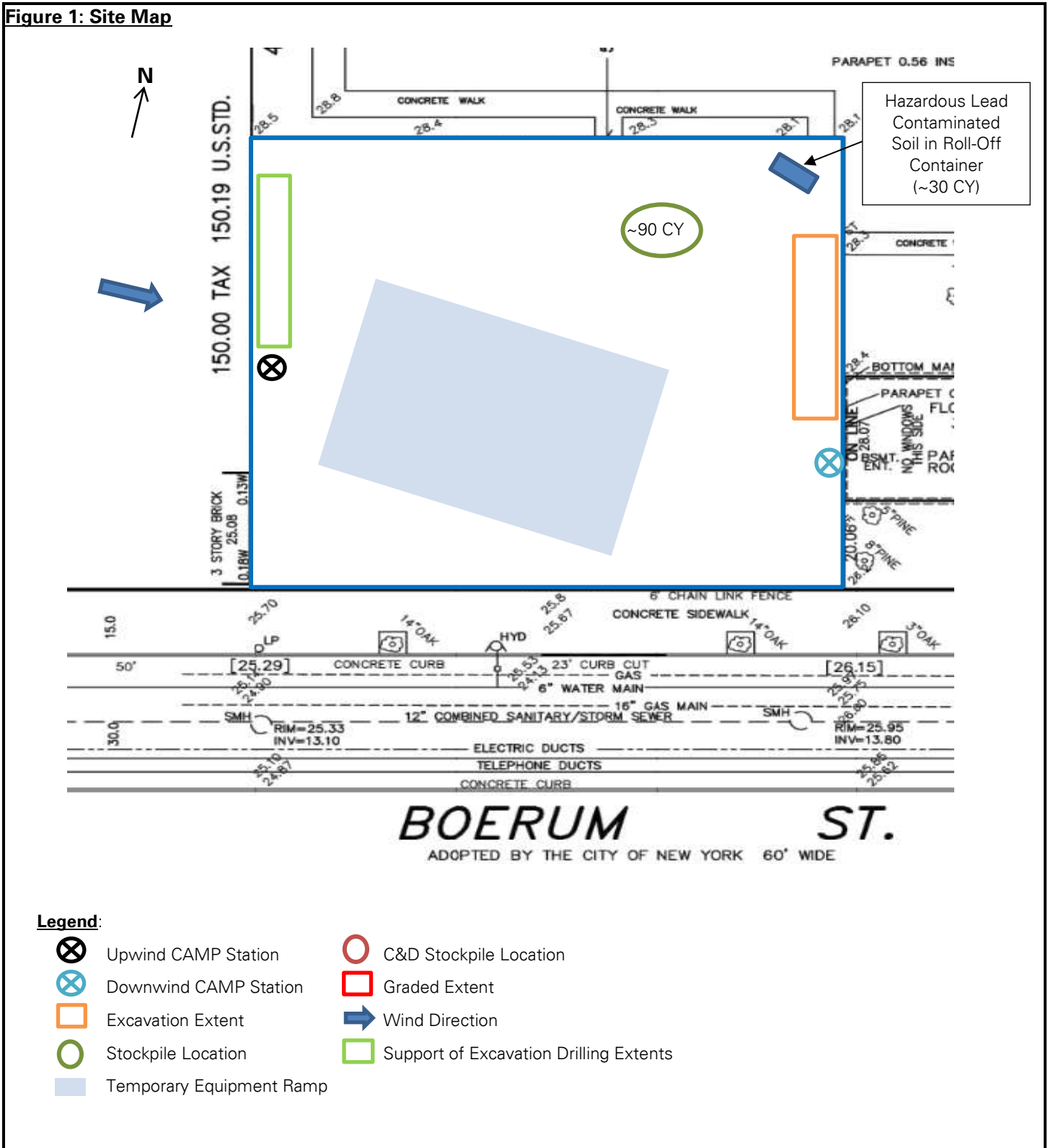
Anticipated Activities

- Anel will continue to install soldier piles along the western site boundary.
- Rise will install SOE elements in the northeastern part of the site.





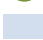




Cc:	L. Haley, K. Semon, B. Gochenaur (Langan)	By:	Elsah Boak
			LANGAN

SITE OBSERVATION REPORT

Figure 1: Site Map



Legend:

-  Upwind CAMP Station
-  Downwind CAMP Station
-  Excavation Extent
-  Stockpile Location
-  Temporary Equipment Ramp
-  C&D Stockpile Location
-  Graded Extent
-  Wind Direction
-  Support of Excavation Drilling Extents

Cc:	L. Haley, K. Semon, B. Gochenaur (Langan)	By:	Elsah Boak
		LANGAN	

SITE OBSERVATION REPORT

SITE PHOTOGRAPHS



Photo 1: View of Rise stockpiling non-hazardous fill in the northeastern part of the site (facing east).



Photo 2: View of Anel drilling soldier piles along the western site boundary (facing northwest).

Cc:	L. Haley, K. Semon, B. Gochenaur (Langan)	By:	Elsah Boak LANGAN
-----	---	-----	-----------------------------