

1



**SOIL SAMPLES AT 1665 STILLWELL  
AVENUE BROOKLYN, NY PHOTOS TAKEN WEDS 10/26/2022**





**SOIL SAMPLE SBO-5 IN FRONT OF  
WORK-SITE ON STILLWELL AVENUE 2**





**SOIL SAMPLE SBO-5 IN FRONT OF  
WORK-SITE ON  
ON STILLWELL AVENUE**



# SOIL SAMPLE SBO-5 IN FRONT OF WORK- SITE ON STILLWELL AVENUE







**5**

**SOIL SAMPLE SBO-5  
IN FRONT OF WORK-  
SITE ON STILLWELL  
AVENUE**



SOIL SAMPLE SBO-5 IN FRONT OF  
WORK-SITE ON STILLWELL AVENUE







**SOIL SAMPLE SBO-4 MIDDLE OF  
BLOCK ON STILLWELL AVENUE**





**SOIL SAMPLE SBO-4 MIDDLE OF  
BLOCK ON STILLWELL AVENUE**

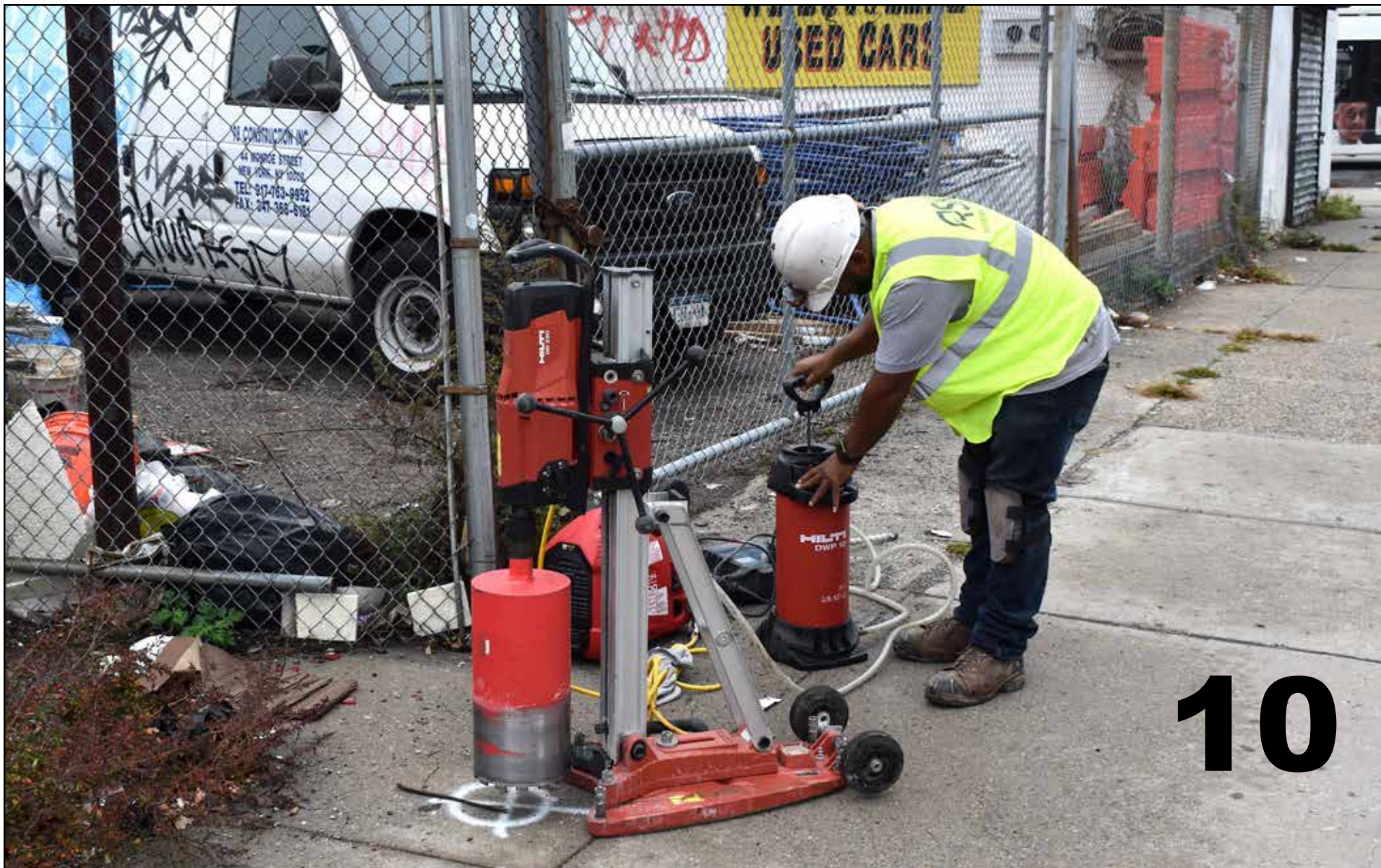




9

**SOIL SAMPLE SBO-4 MIDDLE OF  
BLOCK ON STILLWELL AVENUE**





10

**SOIL SAMPLE SBO-9 NEAR THE  
BUS STOP AT CORNER OF STILLWELL  
& KINGS HIGHWAY**



11



**SOIL SAMPLE SBO-9 NEAR THE  
BUS STOP AT CORNER OF STILLWELL  
& KINGS HIGHWAY**



12



**SOIL SAMPLE SBO-9 NEAR THE  
BUS STOP AT CORNER OF STILLWELL  
& KINGS HIGHWAY**





SOIL SAMPLE  
SBO-9

13



**14**



**SOIL SAMPLE SBO-9 NEAR THE  
BUS STOP AT CORNER OF STILLWELL  
& KINGS HIGHWAY**



# 15

SAMPLING  
SBO-9





# SOIL SAMPLE SBO-8 NEAR THE CORNER OF WEST 13TH & KINGS HIGHWAY





# 17



**SOIL SAMPLE  
SBO-8 NEAR THE CORNER OF  
WEST 13TH & KINGS HIGHWAY**



# 18

A black circular soil sampling device is embedded in a concrete surface. The device has a white triangle in the center and four small circular indentations around its perimeter. A small metal tab is visible at the top of the device. The surrounding concrete is light gray and shows some texture and shadows.

SOIL SAMPLE  
SBO-8 NEAR THE CORNER OF  
WEST 13TH & KINGS HIGHWAY