

<b>PROJECT No.:</b> 170430003	<b>CLIENT:</b>	<b>DATE:</b> Thursday, October 13, 2022
<b>PROJECT:</b> 240 Huntington Street	300 Huntington Street LLC	<b>WEATHER:</b> Sunny, 63-70 °F Wind: SSE @ 1.9 – 5.7 mph
<b>LOCATION:</b> Brooklyn, New York		<b>TIME:</b> 7:00 am – 5:15 pm
<b>BCP SITE NO:</b> C224314		<b>MONITORS:</b> Ellie Seery
<b>EQUIPMENT:</b> Hand Tools Bobcat E50 Mini Excavator Kolbeco Excavator Deere 245C Excavator Takeuchi TB260 Mini Excavator Takeuchi TL10V2	<b>PRESENT AT SITE:</b> <b>Langan:</b> Ellie Seery <b>Bauer Structures (Bauer):</b> George Lopez <b>Monadnock Construction Inc. (Monadnock):</b> Joe Lombardo <b>American Standard Plumbing and Heating (American Standard):</b> Pawel Chrzan <b>Reliant Electrical Cont. Inc. (Reliant):</b> Christian Paris	

### OBSERVATIONS, DISCUSSIONS, TEST RESULTS, ETC.:

Langan Engineering, Environmental, Surveying, Landscape Architecture and Geology, D.P.C. (Langan) was present to document site remediation in accordance with the New York State Department of Environmental Conservation (NYSDEC)-approved Remedial Action Work Plan (RAWP) for the BCP Site No. C224314.

#### Site Activities

- Bauer Structures (Bauer) backfilled an about 30-foot-wide by 30-foot-wide area with stockpiled fill from Evergreen Recycling of Corona (EROC) in Flushing, NY and recycled concrete aggregate (RCA) from the DOT stockpile in Brooklyn, NY in the central part of the site.
- Bauer placed filter fabric in an about 30-foot-long by 30-foot-wide area in the central part of the site for the installation of the sub-membrane depressurization (SMD) system.
- Bauer backfilled an about 30-foot-wide by 30-foot-wide area with about 8 inches of previously imported and stockpiled ASTM #5 stone in the central part of the site for installation of the SMD system.
- Reliant Electrical Cont. Inc. (Reliant) installed plastic electrical conduit in the central part of the site.
- American Standard Plumbing and Heating (American Standard) installed 4-inch-diameter utility conduit in the central and western parts of the site.
- Bauer installed Stego® Wrap 20-mil Vapor Barrier on an about 40-foot-long by 30-foot-wide area in the northeastern part of the site as part of the SMD system.
- Bauer installed rebar in the northeastern part of the site.
- Bauer imported 3 truckloads of ASTM #5 stone from Tilcon New York Inc. Mount Hope Quarry located in Wharton, New Jersey for the SMD system.
- Bauer exported one truckload of concrete to Allocco Recycling located in Brooklyn, NY.

## **Sampling**

- None.

## **CAMP Activities**

Community air monitoring was performed at the perimeters of the site at two locations (upwind and downwind) for particulate matter less than 10  $\mu\text{m}$  in diameter (PM10) and volatile organic compounds (VOC).

- VOC and PM10 concentrations were not recorded above the action levels established in the site Community Air Monitoring Plan (CAMP).
  - CAMP was not performed from 13:09 to 13:38 due to heavy precipitation. Once the precipitation stopped, datalogging resumed.
- Dust was not observed migrating off-site throughout the day.
- Refer to the attached Daily Air Monitoring Report for summary and raw CAMP results.

## **Anticipated Activities**

- Bauer will continue installation of foundation elements.

## 240 HUNTINGTON STREET CONSTRUCTION/FOUNDATION - EXPORT SUMMARIES

### MATERIALS EXPORT SUMMARY

<b>Facility Name</b>	<i>Clean Earth of Carteret</i>		<i>Allocco Recycling</i>		<i>Advanced Waste Water Treatment Corp.</i>		<i>Allocco Recycling</i>	
<b>Location</b>	<i>Middlesex, NJ</i>		<i>Brooklyn, NY</i>		<i>Farmingdale, NY</i>		<i>Brooklyn, NY</i>	
<b>Type of Waste</b>	<i>Non-Hazardous Soil</i>		<i>Concrete</i>		<i>Water with Trace Gasoline</i>		<i>Scrap Metal</i>	
Today	Number of Loads	Approx. Volume (CY)	Number of Loads	Approx. Volume (CY)	Number of Loads	Approx. Volume (CY)	Number of Loads	Approx. Volume (CY)
	0	-	1	20	0	-	0	-
Total	Number of Loads	Approx. Volume (CY)	Number of Loads	Approx. Volume (CY)	Number of Loads	Approx. Volume (CY)	Number of Loads	Approx. Volume (CY)
	263	9,095	26	515	2	30	2	30

### MATERIALS EXPORT SUMMARY

<b>Facility Name</b>	<i>Clean Earth Of Southeastern Pennsylvania</i>		<i>Clean Earth of North Jersey</i>					
<b>Location</b>	<i>Brooklyn, NY</i>		<i>Kearney, NJ</i>					
<b>Type of Material</b>	<i>Non-Hazardous Soil</i>		<i>Hazardous Soil</i>					
Today	Number of Loads	Approx. Volume (CY)	Number of Loads	Approx. Volume (CY)	Number of Loads	Approx. Volume (CY)	Number of Loads	Approx. Volume (CY)
	0	-	0	-	0	-	0	-
Total	Number of Loads	Approx. Volume (CY)	Number of Loads	Approx. Volume (CY)	Number of Loads	Approx. Volume (CY)	Number of Loads	Approx. Volume (CY)
	63	1,440	3	54	0	-	0	-

## 240 HUNTINGTON STREET CONSTRUCTION/FOUNDATION - IMPORT SUMMARIES

MATERIALS IMPORT SUMMARY								
Facility Name	<i>Tilcon New York Inc. - Mount Hope Quarry</i>		<i>Tilcon New York Inc. - Mount Hope Quarry</i>		<i>Clean Soil Bank (CSB) Forbell Street Stockpile</i>		<i>DOT RCA Stockpile - DOT Sunset Park Yard</i>	
Location	<i>Wharton, NJ</i>		<i>Wharton, NJ</i>		<i>Brooklyn, NY</i>		<i>Brooklyn, NY</i>	
Type of Material	<i>ASTM #3 Stone</i>		<i>ASTM #5 Stone</i>		<i>Soil</i>		<i>RCA</i>	
Today	Number of Loads	Volume (tons)	Number of Loads	Volume (tons)	Number of Loads	Volume (CY)	Number of Loads	Volume (CY)
		0	-	3	76.17	0	-	0
Total	Number of Loads	Volume (tons)	Number of Loads	Volume (tons)	Number of Loads	Volume (CY)	Number of Loads	Volume (CY)
		5	123.44	28	698.76	46	920	197
NYSDEC-Approved Quantity	-	540*	-	1,800*	-	7,000	-	4,000

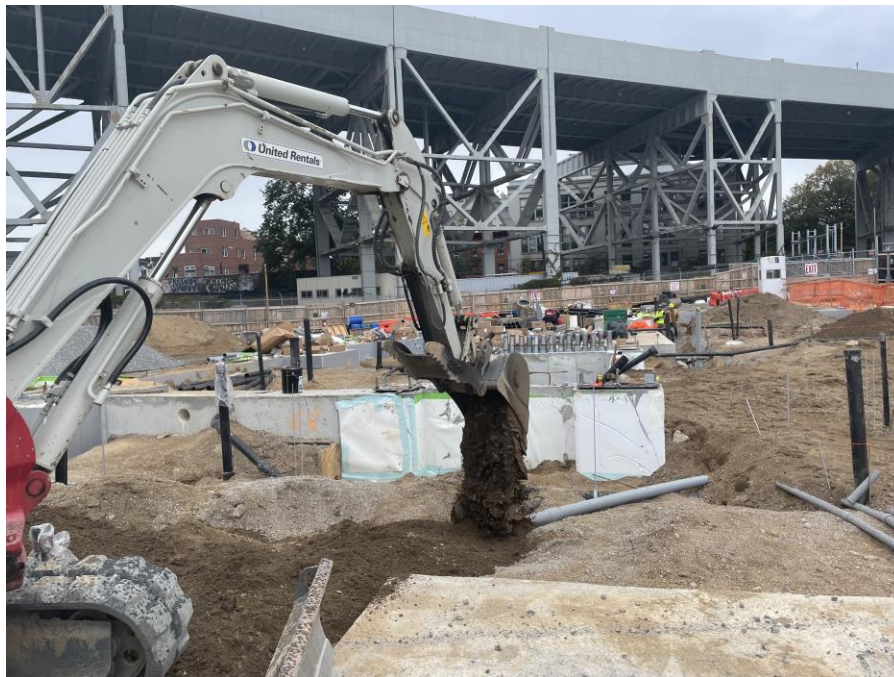
\* - ASTM #3 stone and ASTM #5 stone from Tilcon New York Inc. Mount Hope Quarry were approved for import of 300 cubic yards (CY) and 1,000 CY, respectively. Assuming a conversation factor of 1.8, each quantity was converted to tons in order to accurately compare with import weight tickets.

MATERIALS IMPORT SUMMARY								
Facility Name	<i>Evergreen Recycling of Corona Inc.</i>							
Location	<i>Flushing, NY</i>							
Type of Material	<i>Clean Fill</i>							
Today	Number of Loads	Volume (tons)	Number of Loads	Approx. Volume (CY)	Number of Loads	Approx. Volume (CY)	Number of Loads	Approx. Volume (CY)
		0	-	0	-	0	-	0
Total	Number of Loads	Volume (tons)	Number of Loads	Approx. Volume (CY)	Number of Loads	Approx. Volume (CY)	Number of Loads	Approx. Volume (CY)
		205	3,912	0	-	0	-	0
NYSDEC-Approved Quantity	-	6,000						

## Site Photos



**Photo 1:** Bauer installing Stego® Wrap 20-mil Vapor Barrier in the northeastern part of the site (facing down).



**Photo 2:** Bauer backfilling with imported clean fill and RCA in the central part of the site (facing west).

## Site Map:



### LEGEND

- Approximate Site Boundary
- Approximate Location of Geophysical Anomaly
- Upwind CAMP Station
- Downwind CAMP Station
- Approximate Excavation Area
- Approximate Area Previously Excavated
- Approximate Graded Area
- Approximate Backfill Area
- Approximate Location of UST
- ☁ Soil/Fill Stockpile
- ☁ RCA/Imported Stone Stockpiled
- Approximate SMD Trench Excavation
- Approximate SMD Backfill Area
- Approximate Location of Completed Building Slab

Note: Drawing background from December 2021 Remedial Investigation Report by Langan Engineering.

Drawing Shown Not to Scale



# DAILY AIR MONITORING REPORT

**240 Huntington Street  
Brooklyn, New York**

10/13/22

Project number: 170430003

Page 1 of 1

Rev. No. 0

Submitted By:

**Dust Action Level**

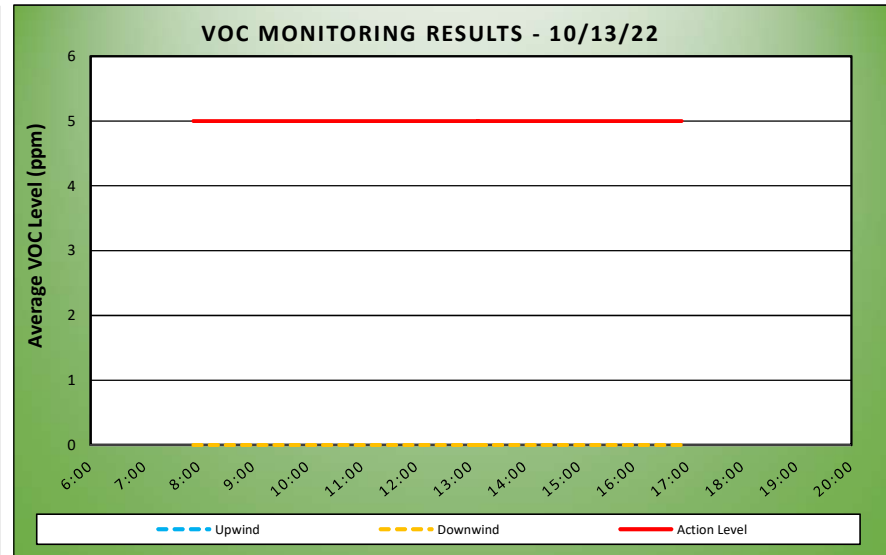
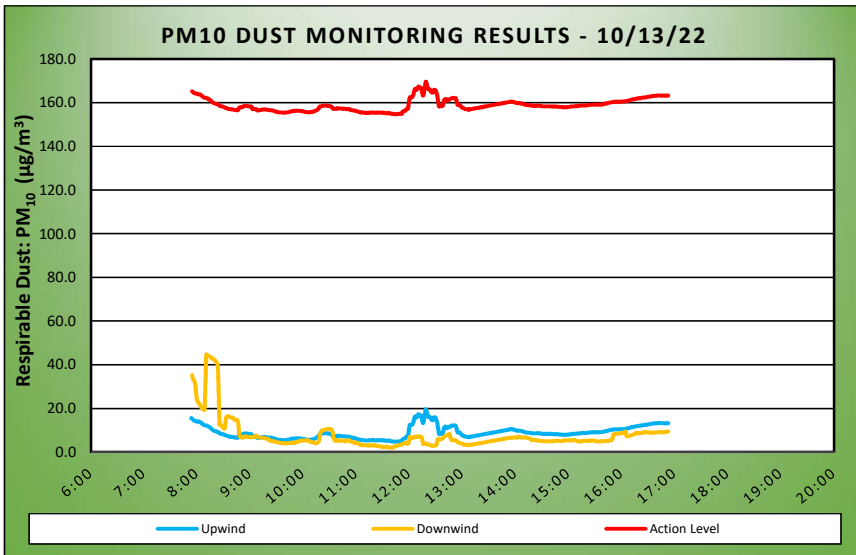
**150 µg/m<sup>3</sup>**

**TVOC Action Level**

**5 ppm**

<b>Weather Data Range for Work Day</b>		<b>Wind Direction</b>	<b>SSE</b>	<b>Relative Humidity (%)</b>	77.0 - 95.0	<b>Daily Rain (in)</b>	0.12	Readings in the summary table and graphs below are the reported downwind concentrations.
<b>Temp (°F)</b>	63.0 - 70.0	<b>Wind Speed (MPH)</b>	1.9 - 5.7	<b>Barometer (inHg)</b>	29.80 - 30.00			

Station Location Area	Work	Daily Avg. Dust Concentration (µg/m <sup>3</sup> )	Max 15 Min Dust Concentration (µg/m <sup>3</sup> )	Time of Maximum 15 Minute Avg Dust Reading	Daily Avg. VOC Concentration (ppm)	Max 15 Min VOC Concentration (ppm)	Time of Max VOC Reading
Upwind		9.1	19.6	12:19	0.0	0.0	7:54
Downwind		8.5	44.7	8:11	0.0	0.0	7:54



**Air Monitoring Notes:**

**Sampling Notes:**

**Weather Notes:**



Thursday, October 13, 2022						
Number of Instances Where Downwind Particulates Exceeds Upwind Particulate + 150 =						0
Number of Comparable Data Points =						494
Start Time:						7:39
End Time:						16:53
PARTICULATE DATA						
Upwind			Downwind			Exceeds Particulate Alarm Limit
Time	Concentration (ug/m <sup>3</sup> )	15-Min Avg Concentration (ug/m <sup>3</sup> )	Time	Concentration (ug/m <sup>3</sup> )	15-Min Avg Concentration (ug/m <sup>3</sup> )	
7:39	17.5	-	7:39	-	-	-
7:40	18.0	-	7:40	184.0	-	-
7:41	17.3	-	7:41	50.0	-	-
7:42	17.3	-	7:42	30.2	-	-
7:43	16.5	-	7:43	30.3	-	-
7:44	15.0	-	7:44	58.0	-	-
7:45	15.3	-	7:45	88.3	-	-
7:46	15.0	-	7:46	40.8	-	-
7:47	15.8	-	7:47	31.8	-	-
7:48	15.5	-	7:48	28.5	-	-
7:49	15.5	-	7:49	25.8	-	-
7:50	14.8	-	7:50	26.0	-	-
7:51	15.8	-	7:51	23.8	-	-
7:52	15.0	-	7:52	23.5	-	-
7:53	14.0	-	7:53	24.5	-	-
7:54	13.0	15.6	7:54	23.8	-	-
7:55	12.0	15.2	7:55	23.0	35.2	-
7:56	12.0	14.8	7:56	22.0	33.3	-
7:57	12.3	14.5	7:57	20.3	32.7	-
7:58	14.0	14.3	7:58	19.8	32.0	-
7:59	14.3	14.3	7:59	19.0	29.4	-
8:00	12.5	14.1	8:00	18.8	24.7	-
8:01	12.5	13.9	8:01	17.8	23.2	-
8:02	16.8	14.0	8:02	24.8	22.7	-
8:03	14.5	13.9	8:03	18.8	22.1	-
8:04	13.0	13.8	8:04	15.3	21.4	-
8:05	10.8	13.5	8:05	14.5	20.6	-
8:06	10.0	13.1	8:06	15.8	20.1	-
8:07	9.3	12.7	8:07	17.3	19.7	-
8:08	10.0	12.5	8:08	21.0	19.4	-
8:09	10.3	12.3	8:09	22.5	19.4	-
8:10	11.3	12.2	8:10	212.5	32.0	-
8:11	11.4	12.2	8:11	212.3	44.7	-
8:12	10.0	12.0	8:12	17.8	44.5	-
8:13	10.0	11.8	8:13	15.3	44.2	-
8:14	10.0	11.5	8:14	15.5	44.0	-
8:15	9.8	11.3	8:15	15.3	43.7	-
8:16	9.0	11.1	8:16	14.5	43.5	-
8:17	9.0	10.5	8:17	15.3	42.9	-
8:18	9.5	10.2	8:18	17.3	42.8	-
8:19	8.3	9.9	8:19	13.8	42.7	-
8:20	8.0	9.7	8:20	8.5	42.3	-
8:21	8.3	9.6	8:21	8.5	41.8	-
8:22	8.0	9.5	8:22	10.3	41.3	-
8:23	7.5	9.3	8:23	10.5	40.6	-



PARTICULATE DATA						
Upwind			Downwind			Exceeds Particulate Alarm Limit
Time	Concentration (ug/m <sup>3</sup> )	15-Min Avg Concentration (ug/m <sup>3</sup> )	Time	Concentration (ug/m <sup>3</sup> )	15-Min Avg Concentration (ug/m <sup>3</sup> )	
8:24	8.0	9.2	8:24	8.8	39.7	-
8:25	7.3	8.9	8:25	8.8	26.1	-
8:26	7.0	8.6	8:26	9.0	12.6	-
8:27	7.5	8.5	8:27	13.3	12.3	-
8:28	8.0	8.3	8:28	14.0	12.2	-
8:29	9.0	8.3	8:29	7.5	11.7	-
8:30	7.8	8.1	8:30	7.8	11.2	-
8:31	6.3	8.0	8:31	7.3	10.7	-
8:32	6.8	7.8	8:32	21.5	11.1	-
8:33	6.8	7.6	8:33	76.0	15.0	-
8:34	6.3	7.5	8:34	31.0	16.2	-
8:35	6.0	7.4	8:35	12.3	16.4	-
8:36	6.0	7.2	8:36	8.3	16.4	-
8:37	6.0	7.1	8:37	6.5	16.2	-
8:38	7.3	7.1	8:38	7.3	15.9	-
8:39	7.5	7.0	8:39	8.3	15.9	-
8:40	6.0	6.9	8:40	8.0	15.9	-
8:41	6.0	6.9	8:41	7.3	15.7	-
8:42	6.8	6.8	8:42	6.8	15.3	-
8:43	7.0	6.8	8:43	6.3	14.8	-
8:44	7.0	6.6	8:44	7.5	14.8	-
8:45	7.0	6.6	8:45	6.5	14.7	-
8:46	7.0	6.6	8:46	6.0	14.6	-
8:47	8.0	6.7	8:47	5.3	13.5	-
8:48	21.5	7.7	8:48	6.0	8.9	-
8:49	8.8	7.9	8:49	7.0	7.3	-
8:50	7.5	8.0	8:50	6.4	6.9	-
8:51	6.3	8.0	8:51	5.4	6.7	-
8:52	6.0	8.0	8:52	5.8	6.6	-
8:53	13.5	8.4	8:53	11.5	6.9	-
8:54	9.0	8.5	8:54	12.0	7.2	-
8:55	6.5	8.5	8:55	7.8	7.2	-
8:56	6.0	8.5	8:56	5.8	7.1	-
8:57	6.0	8.5	8:57	5.3	7.0	-
8:58	6.0	8.4	8:58	6.0	6.9	-
8:59	6.0	8.3	8:59	6.0	6.8	-
9:00	6.0	8.3	9:00	6.0	6.8	-
9:01	6.3	8.2	9:01	6.0	6.8	-
9:02	7.0	8.2	9:02	6.5	6.9	-
9:03	7.0	7.2	9:03	6.5	6.9	-
9:04	7.0	7.1	9:04	6.8	6.9	-
9:05	7.0	7.0	9:05	7.3	7.0	-
9:06	7.0	7.1	9:06	8.3	7.2	-
9:07	7.0	7.2	9:07	12.3	7.6	-
9:08	6.5	6.7	9:08	7.8	7.3	-
9:09	6.0	6.5	9:09	5.0	6.9	-
9:10	7.0	6.5	9:10	5.5	6.7	-
9:11	6.8	6.6	9:11	5.3	6.7	-
9:12	7.0	6.6	9:12	5.0	6.7	-
9:13	7.0	6.7	9:13	5.8	6.7	-

PARTICULATE DATA						
Upwind			Downwind			Exceeds Particulate Alarm Limit
Time	Concentration (ug/m <sup>3</sup> )	15-Min Avg Concentration (ug/m <sup>3</sup> )	Time	Concentration (ug/m <sup>3</sup> )	15-Min Avg Concentration (ug/m <sup>3</sup> )	
9:14	7.3	6.8	9:14	5.0	6.6	-
9:15	7.3	6.9	9:15	5.3	6.5	-
9:16	7.0	6.9	9:16	4.5	6.4	-
9:17	7.0	6.9	9:17	5.0	6.3	-
9:18	6.5	6.9	9:18	5.3	6.3	-
9:19	6.0	6.8	9:19	6.0	6.2	-
9:20	6.0	6.8	9:20	5.3	6.1	-
9:21	6.0	6.7	9:21	6.5	6.0	-
9:22	6.0	6.6	9:22	4.8	5.5	-
9:23	6.0	6.6	9:23	4.0	5.2	-
9:24	6.0	6.6	9:24	4.0	5.1	-
9:25	5.8	6.5	9:25	4.5	5.1	-
9:26	5.0	6.4	9:26	4.3	5.0	-
9:27	5.8	6.3	9:27	5.3	5.0	-
9:28	5.3	6.2	9:28	3.8	4.9	-
9:29	5.0	6.0	9:29	3.5	4.8	-
9:30	5.0	5.9	9:30	3.5	4.7	-
9:31	5.0	5.8	9:31	3.0	4.6	-
9:32	5.0	5.6	9:32	3.3	4.5	-
9:33	5.0	5.5	9:33	4.0	4.4	-
9:34	6.0	5.5	9:34	4.0	4.2	-
9:35	6.0	5.5	9:35	4.3	4.2	-
9:36	6.0	5.5	9:36	4.8	4.1	-
9:37	5.5	5.5	9:37	5.3	4.1	-
9:38	5.0	5.4	9:38	4.5	4.1	-
9:39	5.5	5.4	9:39	3.8	4.1	-
9:40	6.5	5.4	9:40	3.3	4.0	-
9:41	6.5	5.5	9:41	4.0	4.0	-
9:42	6.0	5.6	9:42	4.0	3.9	-
9:43	6.0	5.6	9:43	4.0	3.9	-
9:44	6.8	5.7	9:44	4.5	4.0	-
9:45	6.3	5.8	9:45	5.3	4.1	-
9:46	6.3	5.9	9:46	5.0	4.3	-
9:47	7.8	6.1	9:47	4.0	4.3	-
9:48	6.8	6.2	9:48	3.3	4.3	-
9:49	6.0	6.2	9:49	4.0	4.3	-
9:50	6.0	6.2	9:50	4.5	4.3	-
9:51	6.8	6.2	9:51	3.5	4.2	-
9:52	6.5	6.3	9:52	8.3	4.4	-
9:53	5.5	6.3	9:53	7.5	4.6	-
9:54	5.3	6.3	9:54	6.0	4.7	-
9:55	6.0	6.3	9:55	4.8	4.8	-
9:56	6.5	6.3	9:56	5.8	5.0	-
9:57	6.0	6.3	9:57	7.3	5.2	-
9:58	5.3	6.2	9:58	6.4	5.3	-
9:59	5.0	6.1	9:59	4.8	5.3	-
10:00	5.0	6.0	10:00	4.6	5.3	-
10:01	5.3	6.0	10:01	4.3	5.3	-
10:02	6.0	5.9	10:02	3.8	5.2	-
10:03	5.5	5.8	10:03	5.0	5.4	-

PARTICULATE DATA						
Upwind			Downwind			Exceeds Particulate Alarm Limit
Time	Concentration ( $\mu\text{g}/\text{m}^3$ )	15-Min Avg Concentration ( $\mu\text{g}/\text{m}^3$ )	Time	Concentration ( $\mu\text{g}/\text{m}^3$ )	15-Min Avg Concentration ( $\mu\text{g}/\text{m}^3$ )	
10:04	5.0	5.7	10:04	4.8	5.4	-
10:05	5.5	5.7	10:05	4.0	5.4	-
10:06	6.0	5.6	10:06	4.3	5.4	-
10:07	6.0	5.6	10:07	4.5	5.2	-
10:08	6.0	5.6	10:08	3.0	4.9	-
10:09	6.0	5.7	10:09	3.0	4.7	-
10:10	6.8	5.7	10:10	3.3	4.6	-
10:11	7.3	5.8	10:11	6.5	4.6	-
10:12	8.0	5.9	10:12	4.5	4.4	-
10:13	8.5	6.1	10:13	3.0	4.2	-
10:14	7.5	6.3	10:14	3.8	4.1	-
10:15	7.5	6.5	10:15	4.0	4.1	-
10:16	8.3	6.7	10:16	4.8	4.1	-
10:17	11.0	7.0	10:17	9.5	4.5	-
10:18	11.0	7.4	10:18	11.8	5.0	-
10:19	17.0	8.2	10:19	24.3	6.3	-
10:20	7.8	8.3	10:20	41.5	8.8	-
10:21	7.0	8.4	10:21	18.0	9.7	-
10:22	8.0	8.5	10:22	7.0	9.9	-
10:23	7.5	8.6	10:23	5.3	10.0	-
10:24	7.0	8.7	10:24	5.0	10.1	-
10:25	7.8	8.7	10:25	5.8	10.3	-
10:26	7.0	8.7	10:26	7.0	10.3	-
10:27	7.0	8.7	10:27	6.5	10.5	-
10:28	7.0	8.6	10:28	5.0	10.6	-
10:29	7.0	8.5	10:29	4.3	10.6	-
10:30	7.0	8.5	10:30	4.0	10.6	-
10:31	7.0	8.4	10:31	4.0	10.6	-
10:32	7.0	8.1	10:32	7.5	10.5	-
10:33	8.0	7.9	10:33	5.5	10.0	-
10:34	7.4	7.3	10:34	5.0	8.8	-
10:35	7.0	7.2	10:35	5.0	6.3	-
10:36	7.0	7.2	10:36	4.3	5.4	-
10:37	7.0	7.2	10:37	3.8	5.2	-
10:38	8.0	7.2	10:38	4.3	5.1	-
10:39	11.5	7.5	10:39	10.5	5.5	-
10:40	7.0	7.5	10:40	5.8	5.5	-
10:41	6.0	7.4	10:41	5.3	5.4	-
10:42	6.0	7.3	10:42	5.3	5.3	-
10:43	6.8	7.3	10:43	4.0	5.2	-
10:44	6.8	7.3	10:44	4.3	5.2	-
10:45	6.3	7.2	10:45	5.0	5.3	-
10:46	7.3	7.3	10:46	4.3	5.3	-
10:47	7.0	7.3	10:47	4.0	5.1	-
10:48	6.5	7.2	10:48	3.8	5.0	-
10:49	6.8	7.1	10:49	4.5	4.9	-
10:50	6.8	7.1	10:50	10.0	5.3	-
10:51	7.0	7.1	10:51	5.3	5.3	-
10:52	7.3	7.1	10:52	4.8	5.4	-
10:53	6.0	7.0	10:53	4.3	5.4	-

PARTICULATE DATA						
Upwind			Downwind			Exceeds Particulate Alarm Limit
Time	Concentration ( $\mu\text{g}/\text{m}^3$ )	15-Min Avg Concentration ( $\mu\text{g}/\text{m}^3$ )	Time	Concentration ( $\mu\text{g}/\text{m}^3$ )	15-Min Avg Concentration ( $\mu\text{g}/\text{m}^3$ )	
10:54	6.0	6.6	10:54	3.8	4.9	-
10:55	6.0	6.6	10:55	3.0	4.8	-
10:56	6.0	6.6	10:56	3.0	4.6	-
10:57	6.0	6.6	10:57	3.0	4.5	-
10:58	5.0	6.4	10:58	2.3	4.3	-
10:59	5.0	6.3	10:59	2.3	4.2	-
11:00	5.0	6.2	11:00	7.0	4.3	-
11:01	5.0	6.1	11:01	3.0	4.3	-
11:02	4.8	5.9	11:02	2.0	4.1	-
11:03	5.0	5.8	11:03	2.0	4.0	-
11:04	5.0	5.7	11:04	1.8	3.8	-
11:05	5.3	5.6	11:05	2.0	3.3	-
11:06	6.8	5.6	11:06	3.3	3.2	-
11:07	5.8	5.5	11:07	4.8	3.2	-
11:08	5.5	5.5	11:08	5.5	3.2	-
11:09	5.5	5.4	11:09	3.2	3.2	-
11:10	5.0	5.4	11:10	2.8	3.2	-
11:11	5.8	5.4	11:11	2.0	3.1	-
11:12	5.8	5.3	11:12	3.0	3.1	-
11:13	5.0	5.3	11:13	2.0	3.1	-
11:14	5.0	5.3	11:14	3.5	3.2	-
11:15	6.0	5.4	11:15	3.3	2.9	-
11:16	6.0	5.5	11:16	4.8	3.0	-
11:17	4.3	5.4	11:17	3.0	3.1	-
11:18	5.0	5.4	11:18	1.5	3.1	-
11:19	6.8	5.6	11:19	2.0	3.1	-
11:20	5.0	5.5	11:20	2.0	3.1	-
11:21	5.0	5.4	11:21	5.3	3.2	-
11:22	5.0	5.4	11:22	2.8	3.1	-
11:23	5.5	5.4	11:23	2.0	2.9	-
11:24	6.5	5.4	11:24	2.0	2.8	-
11:25	6.3	5.5	11:25	2.0	2.7	-
11:26	5.0	5.5	11:26	1.3	2.7	-
11:27	5.0	5.4	11:27	1.8	2.6	-
11:28	5.3	5.4	11:28	2.0	2.6	-
11:29	5.5	5.5	11:29	1.8	2.5	-
11:30	5.0	5.4	11:30	1.8	2.4	-
11:31	5.0	5.3	11:31	2.5	2.2	-
11:32	5.0	5.4	11:32	2.8	2.2	-
11:33	4.5	5.4	11:33	3.0	2.3	-
11:34	4.8	5.2	11:34	3.8	2.4	-
11:35	4.3	5.2	11:35	2.8	2.5	-
11:36	5.0	5.2	11:36	2.0	2.3	-
11:37	7.0	5.3	11:37	1.5	2.2	-
11:38	4.8	5.3	11:38	1.0	2.1	-
11:39	4.0	5.1	11:39	1.0	2.1	-
11:40	4.0	4.9	11:40	1.0	2.0	-
11:41	4.8	4.9	11:41	1.5	2.0	-
11:42	4.3	4.9	11:42	2.3	2.0	-
11:43	4.5	4.8	11:43	7.5	2.4	-

PARTICULATE DATA						
Upwind			Downwind			Exceeds Particulate Alarm Limit
Time	Concentration ( $\mu\text{g}/\text{m}^3$ )	15-Min Avg Concentration ( $\mu\text{g}/\text{m}^3$ )	Time	Concentration ( $\mu\text{g}/\text{m}^3$ )	15-Min Avg Concentration ( $\mu\text{g}/\text{m}^3$ )	
11:44	4.8	4.8	11:44	5.3	2.6	-
11:45	4.8	4.8	11:45	2.0	2.7	-
11:46	5.0	4.8	11:46	3.8	2.7	-
11:47	6.0	4.8	11:47	6.8	3.0	-
11:48	5.0	4.9	11:48	5.0	3.1	-
11:49	5.0	4.9	11:49	4.8	3.2	-
11:50	5.8	5.0	11:50	3.8	3.3	-
11:51	5.0	5.0	11:51	3.0	3.3	-
11:52	6.5	4.9	11:52	2.5	3.4	-
11:53	18.3	5.8	11:53	5.5	3.7	-
11:54	7.5	6.1	11:54	4.5	3.9	-
11:55	6.8	6.3	11:55	3.5	4.1	-
11:56	6.0	6.3	11:56	2.0	4.1	-
11:57	13.5	7.0	11:57	3.5	4.2	-
11:58	8.8	7.2	11:58	3.5	4.0	-
11:59	6.5	7.4	11:59	4.3	3.9	-
12:00	45.8	10.1	12:00	17.5	4.9	-
12:01	40.0	12.4	12:01	33.5	6.9	-
12:02	6.5	12.5	12:02	5.5	6.8	-
12:03	5.3	12.5	12:03	3.0	6.7	-
12:04	8.8	12.7	12:04	3.5	6.6	-
12:05	18.3	13.6	12:05	3.3	6.6	-
12:06	32.5	15.4	12:06	5.3	6.7	-
12:07	20.3	16.3	12:07	8.5	7.1	-
12:08	10.5	15.8	12:08	3.8	7.0	-
12:09	11.3	16.0	12:09	2.8	6.9	-
12:10	20.5	17.0	12:10	5.8	7.0	-
12:11	12.3	17.4	12:11	4.8	7.2	-
12:12	6.3	16.9	12:12	3.0	7.2	-
12:13	6.0	16.7	12:13	2.3	7.1	-
12:14	6.8	16.7	12:14	1.5	6.9	-
12:15	12.3	14.5	12:15	1.6	5.9	-
12:16	21.8	13.3	12:16	2.8	3.8	-
12:17	28.5	14.7	12:17	4.4	3.7	-
12:18	40.8	17.1	12:18	3.8	3.8	-
12:19	45.5	19.6	12:19	3.4	3.8	-
12:20	7.0	18.8	12:20	4.2	3.8	-
12:21	6.8	17.1	12:21	3.6	3.7	-
12:22	6.0	16.1	12:22	2.6	3.3	-
12:23	10.3	16.1	12:23	2.5	3.3	-
12:24	9.5	16.0	12:24	2.8	3.3	-
12:25	6.8	15.1	12:25	2.0	3.0	-
12:26	6.0	14.7	12:26	2.0	2.8	-
12:27	6.8	14.7	12:27	2.0	2.8	-
12:28	21.0	15.7	12:28	3.5	2.8	-
12:29	10.5	16.0	12:29	3.8	3.0	-
12:30	8.8	15.7	12:30	2.5	3.1	-
12:31	8.8	14.9	12:31	4.5	3.2	-
12:32	5.5	13.3	12:32	31.5	5.0	-
12:33	5.5	11.0	12:33	18.5	6.0	-

PARTICULATE DATA						
Upwind			Downwind			Exceeds Particulate Alarm Limit
Time	Concentration ( $\mu\text{g}/\text{m}^3$ )	15-Min Avg Concentration ( $\mu\text{g}/\text{m}^3$ )	Time	Concentration ( $\mu\text{g}/\text{m}^3$ )	15-Min Avg Concentration ( $\mu\text{g}/\text{m}^3$ )	
12:34	6.0	8.3	12:34	3.0	5.9	-
12:35	7.5	8.4	12:35	3.0	5.8	-
12:36	8.0	8.5	12:36	5.3	6.0	-
12:37	8.8	8.6	12:37	3.8	6.0	-
12:38	7.3	8.4	12:38	5.5	6.2	-
12:39	28.8	9.7	12:39	8.0	6.6	-
12:40	31.0	11.3	12:40	10.5	7.2	-
12:41	9.3	11.6	12:41	6.5	7.5	-
12:42	8.3	11.7	12:42	5.8	7.7	-
12:43	10.3	10.9	12:43	6.0	7.9	-
12:44	15.3	11.3	12:44	3.5	7.9	-
12:45	13.0	11.5	12:45	4.5	8.0	-
12:46	8.3	11.5	12:46	7.8	8.2	-
12:47	9.0	11.7	12:47	7.0	6.6	-
12:48	9.8	12.0	12:48	3.3	5.6	-
12:49	8.0	12.2	12:49	3.0	5.6	-
12:50	8.3	12.2	12:50	3.0	5.6	-
12:51	7.4	12.2	12:51	3.8	5.5	-
12:52	7.5	12.1	12:52	4.0	5.5	-
12:53	7.0	12.1	12:53	4.0	5.4	-
12:54	7.0	10.6	12:54	3.0	5.0	-
12:55	7.4	9.0	12:55	3.8	4.6	-
12:56	9.0	9.0	12:56	3.3	4.4	-
12:57	7.8	9.0	12:57	3.8	4.2	-
12:58	7.0	8.8	12:58	3.0	4.0	-
12:59	7.0	8.2	12:59	3.5	4.0	-
13:00	6.3	7.8	13:00	3.8	4.0	-
13:01	6.0	7.6	13:01	3.0	3.7	-
13:02	5.8	7.4	13:02	2.5	3.4	-
13:03	6.8	7.2	13:03	3.0	3.4	-
13:04	6.3	7.1	13:04	3.0	3.4	-
13:05	7.0	7.0	13:05	3.0	3.4	-
13:06	6.5	6.9	13:06	3.0	3.3	-
13:07	6.8	6.9	13:07	3.0	3.2	-
13:08	7.0	6.9	13:08	3.5	3.2	-
13:09	-	-	13:09	-	-	-
13:10	-	-	13:10	-	-	-
13:11	-	-	13:11	-	-	-
13:12	-	-	13:12	-	-	-
13:13	-	-	13:13	-	-	-
13:14	-	-	13:14	-	-	-
13:15	-	-	13:15	-	-	-
13:16	-	-	13:16	-	-	-
13:17	-	-	13:17	-	-	-
13:18	-	-	13:18	-	-	-
13:19	-	-	13:19	-	-	-
13:20	-	-	13:20	-	-	-
13:21	-	-	13:21	-	-	-
13:22	-	-	13:22	-	-	-
13:23	-	-	13:23	-	-	-

PARTICULATE DATA						
Upwind			Downwind			Exceeds Particulate Alarm Limit
Time	Concentration (ug/m <sup>3</sup> )	15-Min Avg Concentration (ug/m <sup>3</sup> )	Time	Concentration (ug/m <sup>3</sup> )	15-Min Avg Concentration (ug/m <sup>3</sup> )	
13:24	-	-	13:24	-	-	-
13:25	-	-	13:25	-	-	-
13:26	-	-	13:26	-	-	-
13:27	-	-	13:27	-	-	-
13:28	-	-	13:28	-	-	-
13:29	-	-	13:29	-	-	-
13:30	-	-	13:30	-	-	-
13:31	-	-	13:31	-	-	-
13:32	-	-	13:32	-	-	-
13:33	-	-	13:33	-	-	-
13:34	-	-	13:34	-	-	-
13:35	-	-	13:35	-	-	-
13:36	-	-	13:36	-	-	-
13:37	-	-	13:37	-	-	-
13:38	-	-	13:38	-	-	-
13:39	6.0	-	13:39	6.0	-	-
13:40	9.0	-	13:40	6.0	-	-
13:41	10.3	-	13:41	6.0	-	-
13:42	10.5	-	13:42	6.0	-	-
13:43	10.0	-	13:43	6.3	-	-
13:44	12.3	-	13:44	6.3	-	-
13:45	13.3	-	13:45	6.0	-	-
13:46	11.5	-	13:46	7.8	-	-
13:47	10.3	-	13:47	8.0	-	-
13:48	9.3	-	13:48	6.0	-	-
13:49	9.3	-	13:49	6.5	-	-
13:50	10.3	-	13:50	6.8	-	-
13:51	10.0	-	13:51	6.8	-	-
13:52	9.3	-	13:52	7.0	-	-
13:53	10.0	-	13:53	6.0	-	-
13:54	10.8	10.4	13:54	6.8	6.5	-
13:55	11.0	10.5	13:55	6.3	6.6	-
13:56	9.5	10.5	13:56	7.0	6.6	-
13:57	9.5	10.4	13:57	6.0	6.6	-
13:58	10.3	10.4	13:58	6.8	6.7	-
13:59	10.3	10.3	13:59	6.5	6.7	-
14:00	10.0	10.1	14:00	6.5	6.7	-
14:01	9.0	9.9	14:01	5.5	6.6	-
14:02	9.0	9.8	14:02	8.5	6.6	-
14:03	9.0	9.8	14:03	10.0	6.9	-
14:04	10.0	9.9	14:04	10.3	7.1	-
14:05	9.3	9.8	14:05	5.0	7.0	-
14:06	9.0	9.7	14:06	5.0	6.9	-
14:07	8.8	9.7	14:07	5.0	6.7	-
14:08	8.3	9.6	14:08	5.8	6.7	-
14:09	8.5	9.4	14:09	5.3	6.6	-
14:10	8.0	9.2	14:10	6.5	6.6	-
14:11	8.0	9.1	14:11	8.0	6.7	-
14:12	8.0	9.0	14:12	5.0	6.6	-
14:13	9.3	9.0	14:13	5.8	6.6	-

PARTICULATE DATA						
Upwind			Downwind			Exceeds Particulate Alarm Limit
Time	Concentration ( $\mu\text{g}/\text{m}^3$ )	15-Min Avg Concentration ( $\mu\text{g}/\text{m}^3$ )	Time	Concentration ( $\mu\text{g}/\text{m}^3$ )	15-Min Avg Concentration ( $\mu\text{g}/\text{m}^3$ )	
14:14	10.0	8.9	14:14	5.0	6.5	-
14:15	9.0	8.9	14:15	5.3	6.4	-
14:16	8.8	8.9	14:16	5.0	6.4	-
14:17	8.3	8.8	14:17	5.0	6.1	-
14:18	8.0	8.7	14:18	5.0	5.8	-
14:19	8.0	8.6	14:19	5.3	5.5	-
14:20	9.0	8.6	14:20	6.0	5.5	-
14:21	8.5	8.6	14:21	5.0	5.5	-
14:22	8.8	8.6	14:22	5.0	5.5	-
14:23	8.3	8.6	14:23	5.0	5.5	-
14:24	8.8	8.6	14:24	5.0	5.5	-
14:25	8.5	8.6	14:25	5.0	5.4	-
14:26	8.5	8.6	14:26	5.8	5.2	-
14:27	8.8	8.7	14:27	5.0	5.2	-
14:28	8.0	8.6	14:28	5.0	5.2	-
14:29	8.0	8.5	14:29	4.3	5.1	-
14:30	8.0	8.4	14:30	5.0	5.1	-
14:31	8.0	8.4	14:31	4.5	5.1	-
14:32	8.0	8.3	14:32	5.0	5.1	-
14:33	8.0	8.3	14:33	4.5	5.0	-
14:34	8.3	8.4	14:34	4.5	5.0	-
14:35	9.0	8.4	14:35	5.0	4.9	-
14:36	8.0	8.3	14:36	5.0	4.9	-
14:37	8.5	8.3	14:37	5.0	4.9	-
14:38	8.8	8.3	14:38	5.8	5.0	-
14:39	8.5	8.3	14:39	5.5	5.0	-
14:40	8.3	8.3	14:40	5.0	5.0	-
14:41	8.0	8.3	14:41	5.0	4.9	-
14:42	8.5	8.3	14:42	5.0	4.9	-
14:43	8.4	8.3	14:43	5.8	5.0	-
14:44	7.2	8.2	14:44	6.0	5.1	-
14:45	7.8	8.2	14:45	5.8	5.2	-
14:46	8.0	8.2	14:46	5.0	5.2	-
14:47	7.5	8.2	14:47	5.0	5.2	-
14:48	7.8	8.2	14:48	5.0	5.2	-
14:49	7.3	8.1	14:49	4.0	5.2	-
14:50	8.5	8.1	14:50	4.0	5.1	-
14:51	8.0	8.1	14:51	4.0	5.1	-
14:52	8.0	8.0	14:52	4.8	5.0	-
14:53	8.0	8.0	14:53	5.5	5.0	-
14:54	8.0	7.9	14:54	7.8	5.2	-
14:55	8.0	7.9	14:55	6.3	5.3	-
14:56	8.0	7.9	14:56	6.0	5.3	-
14:57	8.0	7.9	14:57	7.5	5.5	-
14:58	8.0	7.9	14:58	5.3	5.5	-
14:59	9.0	8.0	14:59	5.0	5.4	-
15:00	8.3	8.0	15:00	4.8	5.3	-
15:01	8.0	8.0	15:01	4.8	5.3	-
15:02	8.3	8.1	15:02	6.0	5.4	-
15:03	9.0	8.2	15:03	5.0	5.4	-



PARTICULATE DATA						
Upwind			Downwind			Exceeds Particulate Alarm Limit
Time	Concentration ( $\mu\text{g}/\text{m}^3$ )	15-Min Avg Concentration ( $\mu\text{g}/\text{m}^3$ )	Time	Concentration ( $\mu\text{g}/\text{m}^3$ )	15-Min Avg Concentration ( $\mu\text{g}/\text{m}^3$ )	
15:04	9.8	8.3	15:04	4.3	5.4	-
15:05	8.5	8.3	15:05	4.8	5.4	-
15:06	8.5	8.4	15:06	5.0	5.5	-
15:07	8.0	8.4	15:07	5.0	5.5	-
15:08	8.8	8.4	15:08	4.8	5.5	-
15:09	8.3	8.4	15:09	4.0	5.2	-
15:10	8.0	8.4	15:10	4.8	5.1	-
15:11	9.0	8.5	15:11	4.5	5.0	-
15:12	9.0	8.6	15:12	5.0	4.9	-
15:13	9.0	8.6	15:13	5.0	4.8	-
15:14	8.8	8.6	15:14	4.8	4.8	-
15:15	9.3	8.7	15:15	4.8	4.8	-
15:16	8.8	8.7	15:16	7.5	5.0	-
15:17	8.8	8.8	15:17	7.8	5.1	-
15:18	9.0	8.8	15:18	5.3	5.1	-
15:19	9.0	8.7	15:19	4.8	5.2	-
15:20	9.0	8.7	15:20	4.5	5.2	-
15:21	9.5	8.8	15:21	4.3	5.1	-
15:22	9.3	8.9	15:22	5.0	5.1	-
15:23	9.0	8.9	15:23	4.3	5.1	-
15:24	9.3	9.0	15:24	6.3	5.2	-
15:25	9.0	9.0	15:25	5.3	5.3	-
15:26	9.0	9.0	15:26	5.0	5.3	-
15:27	9.0	9.0	15:27	5.0	5.3	-
15:28	9.8	9.1	15:28	5.0	5.3	-
15:29	9.0	9.1	15:29	5.0	5.3	-
15:30	9.0	9.1	15:30	5.0	5.3	-
15:31	9.0	9.1	15:31	4.4	5.1	-
15:32	9.0	9.1	15:32	4.2	4.9	-
15:33	9.0	9.1	15:33	4.6	4.8	-
15:34	8.5	9.1	15:34	5.0	4.8	-
15:35	9.8	9.1	15:35	5.0	4.9	-
15:36	9.3	9.1	15:36	5.0	4.9	-
15:37	9.5	9.1	15:37	5.0	4.9	-
15:38	9.5	9.2	15:38	5.0	5.0	-
15:39	10.0	9.2	15:39	5.0	4.9	-
15:40	10.0	9.3	15:40	5.8	4.9	-
15:41	11.8	9.5	15:41	6.0	5.0	-
15:42	10.8	9.6	15:42	5.5	5.0	-
15:43	10.0	9.6	15:43	5.5	5.1	-
15:44	10.3	9.7	15:44	5.3	5.1	-
15:45	11.5	9.9	15:45	5.3	5.1	-
15:46	10.3	9.9	15:46	6.0	5.2	-
15:47	10.5	10.0	15:47	6.0	5.3	-
15:48	10.5	10.1	15:48	5.5	5.4	-
15:49	10.0	10.2	15:49	6.0	5.5	-
15:50	10.0	10.3	15:50	9.5	5.8	-
15:51	10.8	10.4	15:51	36.0	7.8	-
15:52	10.2	10.4	15:52	11.3	8.2	-
15:53	10.0	10.4	15:53	6.5	8.3	-

PARTICULATE DATA						
Upwind			Downwind			Exceeds Particulate Alarm Limit
Time	Concentration ( $\mu\text{g}/\text{m}^3$ )	15-Min Avg Concentration ( $\mu\text{g}/\text{m}^3$ )	Time	Concentration ( $\mu\text{g}/\text{m}^3$ )	15-Min Avg Concentration ( $\mu\text{g}/\text{m}^3$ )	
15:54	10.0	10.4	15:54	6.0	8.4	-
15:55	10.3	10.5	15:55	6.0	8.4	-
15:56	10.0	10.3	15:56	5.8	8.4	-
15:57	10.8	10.3	15:57	5.8	8.4	-
15:58	11.5	10.4	15:58	6.5	8.5	-
15:59	11.5	10.5	15:59	7.0	8.6	-
16:00	10.5	10.5	16:00	6.3	8.7	-
16:01	11.0	10.5	16:01	6.5	8.7	-
16:02	11.0	10.5	16:02	7.0	8.8	-
16:03	11.0	10.6	16:03	10.0	9.1	-
16:04	11.0	10.6	16:04	10.0	9.3	-
16:05	10.8	10.7	16:05	9.0	9.3	-
16:06	11.8	10.7	16:06	8.3	7.5	-
16:07	11.0	10.8	16:07	8.0	7.2	-
16:08	11.5	10.9	16:08	7.8	7.3	-
16:09	12.0	11.0	16:09	8.0	7.5	-
16:10	12.5	11.2	16:10	8.0	7.6	-
16:11	12.3	11.3	16:11	8.3	7.8	-
16:12	12.5	11.5	16:12	8.0	7.9	-
16:13	12.3	11.5	16:13	8.0	8.0	-
16:14	12.0	11.5	16:14	8.8	8.1	-
16:15	12.0	11.6	16:15	8.0	8.2	-
16:16	12.5	11.7	16:16	9.3	8.4	-
16:17	12.5	11.8	16:17	13.3	8.8	-
16:18	12.0	11.9	16:18	9.5	8.8	-
16:19	12.0	12.0	16:19	9.3	8.8	-
16:20	12.0	12.1	16:20	7.8	8.7	-
16:21	12.0	12.1	16:21	8.3	8.7	-
16:22	12.3	12.2	16:22	8.8	8.7	-
16:23	13.0	12.3	16:23	9.0	8.8	-
16:24	13.0	12.3	16:24	9.0	8.9	-
16:25	13.0	12.4	16:25	10.0	9.0	-
16:26	13.0	12.4	16:26	9.3	9.1	-
16:27	13.0	12.4	16:27	8.0	9.1	-
16:28	13.0	12.5	16:28	8.0	9.1	-
16:29	13.8	12.6	16:29	8.5	9.1	-
16:30	13.3	12.7	16:30	9.0	9.1	-
16:31	13.0	12.7	16:31	9.3	9.1	-
16:32	13.0	12.8	16:32	9.8	8.9	-
16:33	13.8	12.9	16:33	8.8	8.8	-
16:34	13.3	13.0	16:34	8.8	8.8	-
16:35	13.0	13.0	16:35	9.0	8.9	-
16:36	13.0	13.1	16:36	9.0	8.9	-
16:37	13.0	13.1	16:37	9.3	9.0	-
16:38	13.3	13.2	16:38	9.8	9.0	-
16:39	13.0	13.2	16:39	9.0	9.0	-
16:40	13.8	13.2	16:40	9.6	9.0	-
16:41	14.0	13.3	16:41	9.4	9.0	-
16:42	13.3	13.3	16:42	9.3	9.1	-
16:43	13.8	13.3	16:43	9.3	9.2	-

PARTICULATE DATA						
Upwind			Downwind			Exceeds Particulate Alarm Limit
Time	Concentration ( $\mu\text{g}/\text{m}^3$ )	15-Min Avg Concentration ( $\mu\text{g}/\text{m}^3$ )	Time	Concentration ( $\mu\text{g}/\text{m}^3$ )	15-Min Avg Concentration ( $\mu\text{g}/\text{m}^3$ )	
16:44	13.0	13.3	16:44	9.0	9.2	-
16:45	13.0	13.3	16:45	9.0	9.2	-
16:46	13.0	13.3	16:46	8.5	9.2	-
16:47	13.0	13.3	16:47	8.8	9.1	-
16:48	13.0	13.2	16:48	8.3	9.1	-
16:49	13.0	13.2	16:49	11.3	9.2	-
16:50	13.0	13.2	16:50	11.3	9.4	-
16:51	13.0	13.2	16:51	9.0	9.4	-
16:52	13.5	13.2	16:52	8.8	9.3	-
16:53	13.0	13.2	16:53	10.3	9.4	-

Thursday, October 13, 2022						
Number of Instances Where Downwind VOCs Exceeds Upwind VOCs + 5 =						0
Number of Comparable Data Points =						495
Start Time:						7:39
End Time:						16:53
PID DATA						
Upwind			Downwind			Exceeds VOC Alarm Limit
Time	Concentration (ppm)	15-Min Avg Concentration (ppm)	Time	Concentration (ppm)	15-Min Avg Concentration (ppm)	
7:39	0.0	-	7:39	0.0	-	-
7:40	0.0	-	7:40	0.0	-	-
7:41	0.0	-	7:41	0.0	-	-
7:42	0.0	-	7:42	0.0	-	-
7:43	0.0	-	7:43	0.0	-	-
7:44	0.0	-	7:44	0.0	-	-
7:45	0.0	-	7:45	0.0	-	-
7:46	0.0	-	7:46	0.0	-	-
7:47	0.0	-	7:47	0.0	-	-
7:48	0.0	-	7:48	0.0	-	-
7:49	0.0	-	7:49	0.0	-	-
7:50	0.0	-	7:50	0.0	-	-
7:51	0.0	-	7:51	0.0	-	-
7:52	0.0	-	7:52	0.0	-	-
7:53	0.0	-	7:53	0.0	-	-
7:54	0.0	0.0	7:54	0.0	0.0	-
7:55	0.0	0.0	7:55	0.0	0.0	-
7:56	0.0	0.0	7:56	0.0	0.0	-
7:57	0.0	0.0	7:57	0.0	0.0	-
7:58	0.0	0.0	7:58	0.0	0.0	-
7:59	0.0	0.0	7:59	0.0	0.0	-
8:00	0.0	0.0	8:00	0.0	0.0	-
8:01	0.0	0.0	8:01	0.0	0.0	-
8:02	0.0	0.0	8:02	0.0	0.0	-
8:03	0.0	0.0	8:03	0.0	0.0	-
8:04	0.0	0.0	8:04	0.0	0.0	-
8:05	0.0	0.0	8:05	0.0	0.0	-
8:06	0.0	0.0	8:06	0.0	0.0	-
8:07	0.0	0.0	8:07	0.0	0.0	-
8:08	0.0	0.0	8:08	0.0	0.0	-
8:09	0.0	0.0	8:09	0.0	0.0	-
8:10	0.0	0.0	8:10	0.0	0.0	-
8:11	0.0	0.0	8:11	0.0	0.0	-
8:12	0.0	0.0	8:12	0.0	0.0	-
8:13	0.0	0.0	8:13	0.0	0.0	-
8:14	0.0	0.0	8:14	0.0	0.0	-
8:15	0.0	0.0	8:15	0.0	0.0	-
8:16	0.0	0.0	8:16	0.0	0.0	-
8:17	0.0	0.0	8:17	0.0	0.0	-
8:18	0.0	0.0	8:18	0.0	0.0	-
8:19	0.0	0.0	8:19	0.0	0.0	-
8:20	0.0	0.0	8:20	0.0	0.0	-
8:21	0.0	0.0	8:21	0.0	0.0	-
8:22	0.0	0.0	8:22	0.0	0.0	-
8:23	0.0	0.0	8:23	0.0	0.0	-

PID DATA						
Upwind			Downwind			Exceeds VOC Alarm Limit
Time	Concentration (ppm)	15-Min Avg Concentration (ppm)	Time	Concentration (ppm)	15-Min Avg Concentration (ppm)	
8:24	0.0	0.0	8:24	0.0	0.0	-
8:25	0.0	0.0	8:25	0.0	0.0	-
8:26	0.0	0.0	8:26	0.0	0.0	-
8:27	0.0	0.0	8:27	0.0	0.0	-
8:28	0.0	0.0	8:28	0.0	0.0	-
8:29	0.0	0.0	8:29	0.0	0.0	-
8:30	0.0	0.0	8:30	0.0	0.0	-
8:31	0.0	0.0	8:31	0.0	0.0	-
8:32	0.0	0.0	8:32	0.0	0.0	-
8:33	0.0	0.0	8:33	0.0	0.0	-
8:34	0.0	0.0	8:34	0.0	0.0	-
8:35	0.0	0.0	8:35	0.0	0.0	-
8:36	0.0	0.0	8:36	0.0	0.0	-
8:37	0.0	0.0	8:37	0.0	0.0	-
8:38	0.0	0.0	8:38	0.0	0.0	-
8:39	0.0	0.0	8:39	0.0	0.0	-
8:40	0.0	0.0	8:40	0.0	0.0	-
8:41	0.0	0.0	8:41	0.0	0.0	-
8:42	0.0	0.0	8:42	0.0	0.0	-
8:43	0.0	0.0	8:43	0.0	0.0	-
8:44	0.0	0.0	8:44	0.0	0.0	-
8:45	0.0	0.0	8:45	0.0	0.0	-
8:46	0.0	0.0	8:46	0.0	0.0	-
8:47	0.0	0.0	8:47	0.0	0.0	-
8:48	0.0	0.0	8:48	0.0	0.0	-
8:49	0.0	0.0	8:49	0.0	0.0	-
8:50	0.0	0.0	8:50	0.0	0.0	-
8:51	0.0	0.0	8:51	0.0	0.0	-
8:52	0.0	0.0	8:52	0.0	0.0	-
8:53	0.0	0.0	8:53	0.0	0.0	-
8:54	0.0	0.0	8:54	0.0	0.0	-
8:55	0.0	0.0	8:55	0.0	0.0	-
8:56	0.0	0.0	8:56	0.0	0.0	-
8:57	0.0	0.0	8:57	0.0	0.0	-
8:58	0.0	0.0	8:58	0.0	0.0	-
8:59	0.0	0.0	8:59	0.0	0.0	-
9:00	0.0	0.0	9:00	0.0	0.0	-
9:01	0.0	0.0	9:01	0.0	0.0	-
9:02	0.0	0.0	9:02	0.0	0.0	-
9:03	0.0	0.0	9:03	0.0	0.0	-
9:04	0.0	0.0	9:04	0.0	0.0	-
9:05	0.0	0.0	9:05	0.0	0.0	-
9:06	0.0	0.0	9:06	0.0	0.0	-
9:07	0.0	0.0	9:07	0.0	0.0	-
9:08	0.0	0.0	9:08	0.0	0.0	-
9:09	0.0	0.0	9:09	0.0	0.0	-
9:10	0.0	0.0	9:10	0.0	0.0	-
9:11	0.0	0.0	9:11	0.0	0.0	-
9:12	0.0	0.0	9:12	0.0	0.0	-
9:13	0.0	0.0	9:13	0.0	0.0	-

PID DATA						
Upwind			Downwind			Exceeds VOC Alarm Limit
Time	Concentration (ppm)	15-Min Avg Concentration (ppm)	Time	Concentration (ppm)	15-Min Avg Concentration (ppm)	
9:14	0.0	0.0	9:14	0.0	0.0	-
9:15	0.0	0.0	9:15	0.0	0.0	-
9:16	0.0	0.0	9:16	0.0	0.0	-
9:17	0.0	0.0	9:17	0.0	0.0	-
9:18	0.0	0.0	9:18	0.0	0.0	-
9:19	0.0	0.0	9:19	0.0	0.0	-
9:20	0.0	0.0	9:20	0.0	0.0	-
9:21	0.0	0.0	9:21	0.0	0.0	-
9:22	0.0	0.0	9:22	0.0	0.0	-
9:23	0.0	0.0	9:23	0.0	0.0	-
9:24	0.0	0.0	9:24	0.0	0.0	-
9:25	0.0	0.0	9:25	0.0	0.0	-
9:26	0.0	0.0	9:26	0.0	0.0	-
9:27	0.0	0.0	9:27	0.0	0.0	-
9:28	0.0	0.0	9:28	0.0	0.0	-
9:29	0.0	0.0	9:29	0.0	0.0	-
9:30	0.0	0.0	9:30	0.0	0.0	-
9:31	0.0	0.0	9:31	0.0	0.0	-
9:32	0.0	0.0	9:32	0.0	0.0	-
9:33	0.0	0.0	9:33	0.0	0.0	-
9:34	0.0	0.0	9:34	0.0	0.0	-
9:35	0.0	0.0	9:35	0.0	0.0	-
9:36	0.0	0.0	9:36	0.0	0.0	-
9:37	0.0	0.0	9:37	0.0	0.0	-
9:38	0.0	0.0	9:38	0.0	0.0	-
9:39	0.0	0.0	9:39	0.0	0.0	-
9:40	0.0	0.0	9:40	0.0	0.0	-
9:41	0.0	0.0	9:41	0.0	0.0	-
9:42	0.0	0.0	9:42	0.0	0.0	-
9:43	0.0	0.0	9:43	0.0	0.0	-
9:44	0.0	0.0	9:44	0.0	0.0	-
9:45	0.0	0.0	9:45	0.0	0.0	-
9:46	0.0	0.0	9:46	0.0	0.0	-
9:47	0.0	0.0	9:47	0.0	0.0	-
9:48	0.0	0.0	9:48	0.0	0.0	-
9:49	0.0	0.0	9:49	0.0	0.0	-
9:50	0.0	0.0	9:50	0.0	0.0	-
9:51	0.0	0.0	9:51	0.0	0.0	-
9:52	0.0	0.0	9:52	0.0	0.0	-
9:53	0.0	0.0	9:53	0.0	0.0	-
9:54	0.0	0.0	9:54	0.0	0.0	-
9:55	0.0	0.0	9:55	0.0	0.0	-
9:56	0.0	0.0	9:56	0.0	0.0	-
9:57	0.0	0.0	9:57	0.0	0.0	-
9:58	0.0	0.0	9:58	0.0	0.0	-
9:59	0.0	0.0	9:59	0.0	0.0	-
10:00	0.0	0.0	10:00	0.0	0.0	-
10:01	0.0	0.0	10:01	0.0	0.0	-
10:02	0.0	0.0	10:02	0.0	0.0	-
10:03	0.0	0.0	10:03	0.0	0.0	-

PID DATA						
Upwind			Downwind			Exceeds VOC Alarm Limit
Time	Concentration (ppm)	15-Min Avg Concentration (ppm)	Time	Concentration (ppm)	15-Min Avg Concentration (ppm)	
10:04	0.0	0.0	10:04	0.0	0.0	-
10:05	0.0	0.0	10:05	0.0	0.0	-
10:06	0.0	0.0	10:06	0.0	0.0	-
10:07	0.0	0.0	10:07	0.0	0.0	-
10:08	0.0	0.0	10:08	0.0	0.0	-
10:09	0.0	0.0	10:09	0.0	0.0	-
10:10	0.0	0.0	10:10	0.0	0.0	-
10:11	0.0	0.0	10:11	0.0	0.0	-
10:12	0.0	0.0	10:12	0.0	0.0	-
10:13	0.0	0.0	10:13	0.0	0.0	-
10:14	0.0	0.0	10:14	0.0	0.0	-
10:15	0.0	0.0	10:15	0.0	0.0	-
10:16	0.0	0.0	10:16	0.0	0.0	-
10:17	0.0	0.0	10:17	0.0	0.0	-
10:18	0.0	0.0	10:18	0.0	0.0	-
10:19	0.0	0.0	10:19	0.0	0.0	-
10:20	0.0	0.0	10:20	0.0	0.0	-
10:21	0.0	0.0	10:21	0.0	0.0	-
10:22	0.0	0.0	10:22	0.0	0.0	-
10:23	0.0	0.0	10:23	0.0	0.0	-
10:24	0.0	0.0	10:24	0.0	0.0	-
10:25	0.0	0.0	10:25	0.0	0.0	-
10:26	0.0	0.0	10:26	0.0	0.0	-
10:27	0.0	0.0	10:27	0.0	0.0	-
10:28	0.0	0.0	10:28	0.0	0.0	-
10:29	0.0	0.0	10:29	0.0	0.0	-
10:30	0.0	0.0	10:30	0.0	0.0	-
10:31	0.0	0.0	10:31	0.0	0.0	-
10:32	0.0	0.0	10:32	0.0	0.0	-
10:33	0.0	0.0	10:33	0.0	0.0	-
10:34	0.0	0.0	10:34	0.0	0.0	-
10:35	0.0	0.0	10:35	0.0	0.0	-
10:36	0.0	0.0	10:36	0.0	0.0	-
10:37	0.0	0.0	10:37	0.0	0.0	-
10:38	0.0	0.0	10:38	0.0	0.0	-
10:39	0.0	0.0	10:39	0.0	0.0	-
10:40	0.0	0.0	10:40	0.0	0.0	-
10:41	0.0	0.0	10:41	0.0	0.0	-
10:42	0.0	0.0	10:42	0.0	0.0	-
10:43	0.0	0.0	10:43	0.0	0.0	-
10:44	0.0	0.0	10:44	0.0	0.0	-
10:45	0.0	0.0	10:45	0.0	0.0	-
10:46	0.0	0.0	10:46	0.0	0.0	-
10:47	0.0	0.0	10:47	0.0	0.0	-
10:48	0.0	0.0	10:48	0.0	0.0	-
10:49	0.0	0.0	10:49	0.0	0.0	-
10:50	0.0	0.0	10:50	0.0	0.0	-
10:51	0.0	0.0	10:51	0.0	0.0	-
10:52	0.0	0.0	10:52	0.0	0.0	-
10:53	0.0	0.0	10:53	0.0	0.0	-

PID DATA						
Upwind			Downwind			Exceeds VOC Alarm Limit
Time	Concentration (ppm)	15-Min Avg Concentration (ppm)	Time	Concentration (ppm)	15-Min Avg Concentration (ppm)	
10:54	0.0	0.0	10:54	0.0	0.0	-
10:55	0.0	0.0	10:55	0.0	0.0	-
10:56	0.0	0.0	10:56	0.0	0.0	-
10:57	0.0	0.0	10:57	0.0	0.0	-
10:58	0.0	0.0	10:58	0.0	0.0	-
10:59	0.0	0.0	10:59	0.0	0.0	-
11:00	0.0	0.0	11:00	0.0	0.0	-
11:01	0.0	0.0	11:01	0.0	0.0	-
11:02	0.0	0.0	11:02	0.0	0.0	-
11:03	0.0	0.0	11:03	0.0	0.0	-
11:04	0.0	0.0	11:04	0.0	0.0	-
11:05	0.0	0.0	11:05	0.0	0.0	-
11:06	0.0	0.0	11:06	0.0	0.0	-
11:07	0.0	0.0	11:07	0.0	0.0	-
11:08	0.0	0.0	11:08	0.0	0.0	-
11:09	0.0	0.0	11:09	0.0	0.0	-
11:10	0.0	0.0	11:10	0.0	0.0	-
11:11	0.0	0.0	11:11	0.0	0.0	-
11:12	0.0	0.0	11:12	0.0	0.0	-
11:13	0.0	0.0	11:13	0.0	0.0	-
11:14	0.0	0.0	11:14	0.0	0.0	-
11:15	0.0	0.0	11:15	0.0	0.0	-
11:16	0.0	0.0	11:16	0.0	0.0	-
11:17	0.0	0.0	11:17	0.0	0.0	-
11:18	0.0	0.0	11:18	0.0	0.0	-
11:19	0.0	0.0	11:19	0.0	0.0	-
11:20	0.0	0.0	11:20	0.0	0.0	-
11:21	0.0	0.0	11:21	0.0	0.0	-
11:22	0.0	0.0	11:22	0.0	0.0	-
11:23	0.0	0.0	11:23	0.0	0.0	-
11:24	0.0	0.0	11:24	0.0	0.0	-
11:25	0.0	0.0	11:25	0.0	0.0	-
11:26	0.0	0.0	11:26	0.0	0.0	-
11:27	0.0	0.0	11:27	0.0	0.0	-
11:28	0.0	0.0	11:28	0.0	0.0	-
11:29	0.0	0.0	11:29	0.0	0.0	-
11:30	0.0	0.0	11:30	0.0	0.0	-
11:31	0.0	0.0	11:31	0.0	0.0	-
11:32	0.0	0.0	11:32	0.0	0.0	-
11:33	0.0	0.0	11:33	0.0	0.0	-
11:34	0.0	0.0	11:34	0.0	0.0	-
11:35	0.0	0.0	11:35	0.0	0.0	-
11:36	0.0	0.0	11:36	0.0	0.0	-
11:37	0.0	0.0	11:37	0.0	0.0	-
11:38	0.0	0.0	11:38	0.0	0.0	-
11:39	0.0	0.0	11:39	0.0	0.0	-
11:40	0.0	0.0	11:40	0.0	0.0	-
11:41	0.0	0.0	11:41	0.0	0.0	-
11:42	0.0	0.0	11:42	0.0	0.0	-
11:43	0.0	0.0	11:43	0.0	0.0	-



PID DATA						
Upwind			Downwind			Exceeds VOC Alarm Limit
Time	Concentration (ppm)	15-Min Avg Concentration (ppm)	Time	Concentration (ppm)	15-Min Avg Concentration (ppm)	
11:44	0.0	0.0	11:44	0.0	0.0	-
11:45	0.0	0.0	11:45	0.0	0.0	-
11:46	0.0	0.0	11:46	0.0	0.0	-
11:47	0.0	0.0	11:47	0.0	0.0	-
11:48	0.0	0.0	11:48	0.0	0.0	-
11:49	0.0	0.0	11:49	0.0	0.0	-
11:50	0.0	0.0	11:50	0.0	0.0	-
11:51	0.0	0.0	11:51	0.0	0.0	-
11:52	0.0	0.0	11:52	0.0	0.0	-
11:53	0.0	0.0	11:53	0.0	0.0	-
11:54	0.0	0.0	11:54	0.0	0.0	-
11:55	0.0	0.0	11:55	0.0	0.0	-
11:56	0.0	0.0	11:56	0.0	0.0	-
11:57	0.0	0.0	11:57	0.0	0.0	-
11:58	0.0	0.0	11:58	0.0	0.0	-
11:59	0.0	0.0	11:59	0.0	0.0	-
12:00	0.0	0.0	12:00	0.0	0.0	-
12:01	0.0	0.0	12:01	0.0	0.0	-
12:02	0.0	0.0	12:02	0.0	0.0	-
12:03	0.0	0.0	12:03	0.0	0.0	-
12:04	0.0	0.0	12:04	0.0	0.0	-
12:05	0.0	0.0	12:05	0.0	0.0	-
12:06	0.0	0.0	12:06	0.0	0.0	-
12:07	0.0	0.0	12:07	0.0	0.0	-
12:08	0.0	0.0	12:08	0.0	0.0	-
12:09	0.0	0.0	12:09	0.0	0.0	-
12:10	0.0	0.0	12:10	0.0	0.0	-
12:11	0.0	0.0	12:11	0.0	0.0	-
12:12	0.0	0.0	12:12	0.0	0.0	-
12:13	0.0	0.0	12:13	0.0	0.0	-
12:14	0.0	0.0	12:14	0.0	0.0	-
12:15	0.0	0.0	12:15	0.0	0.0	-
12:16	0.0	0.0	12:16	0.0	0.0	-
12:17	0.0	0.0	12:17	0.0	0.0	-
12:18	0.0	0.0	12:18	0.0	0.0	-
12:19	0.0	0.0	12:19	0.0	0.0	-
12:20	0.0	0.0	12:20	0.0	0.0	-
12:21	0.0	0.0	12:21	0.0	0.0	-
12:22	0.0	0.0	12:22	0.0	0.0	-
12:23	0.0	0.0	12:23	0.0	0.0	-
12:24	0.0	0.0	12:24	0.0	0.0	-
12:25	0.0	0.0	12:25	0.0	0.0	-
12:26	0.0	0.0	12:26	0.0	0.0	-
12:27	0.0	0.0	12:27	0.0	0.0	-
12:28	0.0	0.0	12:28	0.0	0.0	-
12:29	0.0	0.0	12:29	0.0	0.0	-
12:30	0.0	0.0	12:30	0.0	0.0	-
12:31	0.0	0.0	12:31	0.0	0.0	-
12:32	0.0	0.0	12:32	0.0	0.0	-
12:33	0.0	0.0	12:33	0.0	0.0	-

PID DATA						
Upwind			Downwind			Exceeds VOC Alarm Limit
Time	Concentration (ppm)	15-Min Avg Concentration (ppm)	Time	Concentration (ppm)	15-Min Avg Concentration (ppm)	
12:34	0.0	0.0	12:34	0.0	0.0	-
12:35	0.0	0.0	12:35	0.0	0.0	-
12:36	0.0	0.0	12:36	0.0	0.0	-
12:37	0.0	0.0	12:37	0.0	0.0	-
12:38	0.0	0.0	12:38	0.0	0.0	-
12:39	0.0	0.0	12:39	0.0	0.0	-
12:40	0.0	0.0	12:40	0.0	0.0	-
12:41	0.0	0.0	12:41	0.0	0.0	-
12:42	0.0	0.0	12:42	0.0	0.0	-
12:43	0.0	0.0	12:43	0.0	0.0	-
12:44	0.0	0.0	12:44	0.0	0.0	-
12:45	0.0	0.0	12:45	0.0	0.0	-
12:46	0.0	0.0	12:46	0.0	0.0	-
12:47	0.0	0.0	12:47	0.0	0.0	-
12:48	0.0	0.0	12:48	0.0	0.0	-
12:49	0.0	0.0	12:49	0.0	0.0	-
12:50	0.0	0.0	12:50	0.0	0.0	-
12:51	0.0	0.0	12:51	0.0	0.0	-
12:52	0.0	0.0	12:52	0.0	0.0	-
12:53	0.0	0.0	12:53	0.0	0.0	-
12:54	0.0	0.0	12:54	0.0	0.0	-
12:55	0.0	0.0	12:55	0.0	0.0	-
12:56	0.0	0.0	12:56	0.0	0.0	-
12:57	0.0	0.0	12:57	0.0	0.0	-
12:58	0.0	0.0	12:58	0.0	0.0	-
12:59	0.0	0.0	12:59	0.0	0.0	-
13:00	0.0	0.0	13:00	0.0	0.0	-
13:01	0.0	0.0	13:01	0.0	0.0	-
13:02	0.0	0.0	13:02	0.0	0.0	-
13:03	0.0	0.0	13:03	0.0	0.0	-
13:04	0.0	0.0	13:04	0.0	0.0	-
13:05	0.0	0.0	13:05	0.0	0.0	-
13:06	0.0	0.0	13:06	0.0	0.0	-
13:07	0.0	0.0	13:07	0.0	0.0	-
13:08	0.0	0.0	13:08	0.0	0.0	-
13:09	-	-	13:09	-	-	-
13:10	-	-	13:10	-	-	-
13:11	-	-	13:11	-	-	-
13:12	-	-	13:12	-	-	-
13:13	-	-	13:13	-	-	-
13:14	-	-	13:14	-	-	-
13:15	-	-	13:15	-	-	-
13:16	-	-	13:16	-	-	-
13:17	-	-	13:17	-	-	-
13:18	-	-	13:18	-	-	-
13:19	-	-	13:19	-	-	-
13:20	-	-	13:20	-	-	-
13:21	-	-	13:21	-	-	-
13:22	-	-	13:22	-	-	-
13:23	-	-	13:23	-	-	-

PID DATA						
Upwind			Downwind			Exceeds VOC Alarm Limit
Time	Concentration (ppm)	15-Min Avg Concentration (ppm)	Time	Concentration (ppm)	15-Min Avg Concentration (ppm)	
13:24	-	-	13:24	-	-	-
13:25	-	-	13:25	-	-	-
13:26	-	-	13:26	-	-	-
13:27	-	-	13:27	-	-	-
13:28	-	-	13:28	-	-	-
13:29	-	-	13:29	-	-	-
13:30	-	-	13:30	-	-	-
13:31	-	-	13:31	-	-	-
13:32	-	-	13:32	-	-	-
13:33	-	-	13:33	-	-	-
13:34	-	-	13:34	-	-	-
13:35	-	-	13:35	-	-	-
13:36	-	-	13:36	-	-	-
13:37	-	-	13:37	-	-	-
13:38	-	-	13:38	-	-	-
13:39	0.0	-	13:39	0.0	-	-
13:40	0.0	-	13:40	0.0	-	-
13:41	0.0	-	13:41	0.0	-	-
13:42	0.0	-	13:42	0.0	-	-
13:43	0.0	-	13:43	0.0	-	-
13:44	0.0	-	13:44	0.0	-	-
13:45	0.0	-	13:45	0.0	-	-
13:46	0.0	-	13:46	0.0	-	-
13:47	0.0	-	13:47	0.0	-	-
13:48	0.0	-	13:48	0.0	-	-
13:49	0.0	-	13:49	0.0	-	-
13:50	0.0	-	13:50	0.0	-	-
13:51	0.0	-	13:51	0.0	-	-
13:52	0.0	-	13:52	0.0	-	-
13:53	0.0	-	13:53	0.0	-	-
13:54	0.0	0.0	13:54	0.0	0.0	-
13:55	0.0	0.0	13:55	0.0	0.0	-
13:56	0.0	0.0	13:56	0.0	0.0	-
13:57	0.0	0.0	13:57	0.0	0.0	-
13:58	0.0	0.0	13:58	0.0	0.0	-
13:59	0.0	0.0	13:59	0.0	0.0	-
14:00	0.0	0.0	14:00	0.0	0.0	-
14:01	0.0	0.0	14:01	0.0	0.0	-
14:02	0.0	0.0	14:02	0.0	0.0	-
14:03	0.0	0.0	14:03	0.0	0.0	-
14:04	0.0	0.0	14:04	0.0	0.0	-
14:05	0.0	0.0	14:05	0.0	0.0	-
14:06	0.0	0.0	14:06	0.0	0.0	-
14:07	0.0	0.0	14:07	0.0	0.0	-
14:08	0.0	0.0	14:08	0.0	0.0	-
14:09	0.0	0.0	14:09	0.0	0.0	-
14:10	0.0	0.0	14:10	0.0	0.0	-
14:11	0.0	0.0	14:11	0.0	0.0	-
14:12	0.0	0.0	14:12	0.0	0.0	-
14:13	0.0	0.0	14:13	0.0	0.0	-

PID DATA						
Upwind			Downwind			Exceeds VOC Alarm Limit
Time	Concentration (ppm)	15-Min Avg Concentration (ppm)	Time	Concentration (ppm)	15-Min Avg Concentration (ppm)	
14:14	0.0	0.0	14:14	0.0	0.0	-
14:15	0.0	0.0	14:15	0.0	0.0	-
14:16	0.0	0.0	14:16	0.0	0.0	-
14:17	0.0	0.0	14:17	0.0	0.0	-
14:18	0.0	0.0	14:18	0.0	0.0	-
14:19	0.0	0.0	14:19	0.0	0.0	-
14:20	0.0	0.0	14:20	0.0	0.0	-
14:21	0.0	0.0	14:21	0.0	0.0	-
14:22	0.0	0.0	14:22	0.0	0.0	-
14:23	0.0	0.0	14:23	0.0	0.0	-
14:24	0.0	0.0	14:24	0.0	0.0	-
14:25	0.0	0.0	14:25	0.0	0.0	-
14:26	0.0	0.0	14:26	0.0	0.0	-
14:27	0.0	0.0	14:27	0.0	0.0	-
14:28	0.0	0.0	14:28	0.0	0.0	-
14:29	0.0	0.0	14:29	0.0	0.0	-
14:30	0.0	0.0	14:30	0.0	0.0	-
14:31	0.0	0.0	14:31	0.0	0.0	-
14:32	0.0	0.0	14:32	0.0	0.0	-
14:33	0.0	0.0	14:33	0.0	0.0	-
14:34	0.0	0.0	14:34	0.0	0.0	-
14:35	0.0	0.0	14:35	0.0	0.0	-
14:36	0.0	0.0	14:36	0.0	0.0	-
14:37	0.0	0.0	14:37	0.0	0.0	-
14:38	0.0	0.0	14:38	0.0	0.0	-
14:39	0.0	0.0	14:39	0.0	0.0	-
14:40	0.0	0.0	14:40	0.0	0.0	-
14:41	0.0	0.0	14:41	0.0	0.0	-
14:42	0.0	0.0	14:42	0.0	0.0	-
14:43	0.0	0.0	14:43	0.0	0.0	-
14:44	0.0	0.0	14:44	0.0	0.0	-
14:45	0.0	0.0	14:45	0.0	0.0	-
14:46	0.0	0.0	14:46	0.0	0.0	-
14:47	0.0	0.0	14:47	0.0	0.0	-
14:48	0.0	0.0	14:48	0.0	0.0	-
14:49	0.0	0.0	14:49	0.0	0.0	-
14:50	0.0	0.0	14:50	0.0	0.0	-
14:51	0.0	0.0	14:51	0.0	0.0	-
14:52	0.0	0.0	14:52	0.0	0.0	-
14:53	0.0	0.0	14:53	0.0	0.0	-
14:54	0.0	0.0	14:54	0.0	0.0	-
14:55	0.0	0.0	14:55	0.0	0.0	-
14:56	0.0	0.0	14:56	0.0	0.0	-
14:57	0.0	0.0	14:57	0.0	0.0	-
14:58	0.0	0.0	14:58	0.0	0.0	-
14:59	0.0	0.0	14:59	0.0	0.0	-
15:00	0.0	0.0	15:00	0.0	0.0	-
15:01	0.0	0.0	15:01	0.0	0.0	-
15:02	0.0	0.0	15:02	0.0	0.0	-
15:03	0.0	0.0	15:03	0.0	0.0	-

PID DATA						
Upwind			Downwind			Exceeds VOC Alarm Limit
Time	Concentration (ppm)	15-Min Avg Concentration (ppm)	Time	Concentration (ppm)	15-Min Avg Concentration (ppm)	
15:04	0.0	0.0	15:04	0.0	0.0	-
15:05	0.0	0.0	15:05	0.0	0.0	-
15:06	0.0	0.0	15:06	0.0	0.0	-
15:07	0.0	0.0	15:07	0.0	0.0	-
15:08	0.0	0.0	15:08	0.0	0.0	-
15:09	0.0	0.0	15:09	0.0	0.0	-
15:10	0.0	0.0	15:10	0.0	0.0	-
15:11	0.0	0.0	15:11	0.0	0.0	-
15:12	0.0	0.0	15:12	0.0	0.0	-
15:13	0.0	0.0	15:13	0.0	0.0	-
15:14	0.0	0.0	15:14	0.0	0.0	-
15:15	0.0	0.0	15:15	0.0	0.0	-
15:16	0.0	0.0	15:16	0.0	0.0	-
15:17	0.0	0.0	15:17	0.0	0.0	-
15:18	0.0	0.0	15:18	0.0	0.0	-
15:19	0.0	0.0	15:19	0.0	0.0	-
15:20	0.0	0.0	15:20	0.0	0.0	-
15:21	0.0	0.0	15:21	0.0	0.0	-
15:22	0.0	0.0	15:22	0.0	0.0	-
15:23	0.0	0.0	15:23	0.0	0.0	-
15:24	0.0	0.0	15:24	0.0	0.0	-
15:25	0.0	0.0	15:25	0.0	0.0	-
15:26	0.0	0.0	15:26	0.0	0.0	-
15:27	0.0	0.0	15:27	0.0	0.0	-
15:28	0.0	0.0	15:28	0.0	0.0	-
15:29	0.0	0.0	15:29	0.0	0.0	-
15:30	0.0	0.0	15:30	0.0	0.0	-
15:31	0.0	0.0	15:31	0.0	0.0	-
15:32	0.0	0.0	15:32	0.0	0.0	-
15:33	0.0	0.0	15:33	0.0	0.0	-
15:34	0.0	0.0	15:34	0.0	0.0	-
15:35	0.0	0.0	15:35	0.0	0.0	-
15:36	0.0	0.0	15:36	0.0	0.0	-
15:37	0.0	0.0	15:37	0.0	0.0	-
15:38	0.0	0.0	15:38	0.0	0.0	-
15:39	0.0	0.0	15:39	0.0	0.0	-
15:40	0.0	0.0	15:40	0.0	0.0	-
15:41	0.0	0.0	15:41	0.0	0.0	-
15:42	0.0	0.0	15:42	0.0	0.0	-
15:43	0.0	0.0	15:43	0.0	0.0	-
15:44	0.0	0.0	15:44	0.0	0.0	-
15:45	0.0	0.0	15:45	0.0	0.0	-
15:46	0.0	0.0	15:46	0.0	0.0	-
15:47	0.0	0.0	15:47	0.0	0.0	-
15:48	0.0	0.0	15:48	0.0	0.0	-
15:49	0.0	0.0	15:49	0.0	0.0	-
15:50	0.0	0.0	15:50	0.0	0.0	-
15:51	0.0	0.0	15:51	0.0	0.0	-
15:52	0.0	0.0	15:52	0.0	0.0	-
15:53	0.0	0.0	15:53	0.0	0.0	-

PID DATA						
Upwind			Downwind			Exceeds VOC Alarm Limit
Time	Concentration (ppm)	15-Min Avg Concentration (ppm)	Time	Concentration (ppm)	15-Min Avg Concentration (ppm)	
15:54	0.0	0.0	15:54	0.0	0.0	-
15:55	0.0	0.0	15:55	0.0	0.0	-
15:56	0.0	0.0	15:56	0.0	0.0	-
15:57	0.0	0.0	15:57	0.0	0.0	-
15:58	0.0	0.0	15:58	0.0	0.0	-
15:59	0.0	0.0	15:59	0.0	0.0	-
16:00	0.0	0.0	16:00	0.0	0.0	-
16:01	0.0	0.0	16:01	0.0	0.0	-
16:02	0.0	0.0	16:02	0.0	0.0	-
16:03	0.0	0.0	16:03	0.0	0.0	-
16:04	0.0	0.0	16:04	0.0	0.0	-
16:05	0.0	0.0	16:05	0.0	0.0	-
16:06	0.0	0.0	16:06	0.0	0.0	-
16:07	0.0	0.0	16:07	0.0	0.0	-
16:08	0.0	0.0	16:08	0.0	0.0	-
16:09	0.0	0.0	16:09	0.0	0.0	-
16:10	0.0	0.0	16:10	0.0	0.0	-
16:11	0.0	0.0	16:11	0.0	0.0	-
16:12	0.0	0.0	16:12	0.0	0.0	-
16:13	0.0	0.0	16:13	0.0	0.0	-
16:14	0.0	0.0	16:14	0.0	0.0	-
16:15	0.0	0.0	16:15	0.0	0.0	-
16:16	0.0	0.0	16:16	0.0	0.0	-
16:17	0.0	0.0	16:17	0.0	0.0	-
16:18	0.0	0.0	16:18	0.0	0.0	-
16:19	0.0	0.0	16:19	0.0	0.0	-
16:20	0.0	0.0	16:20	0.0	0.0	-
16:21	0.0	0.0	16:21	0.0	0.0	-
16:22	0.0	0.0	16:22	0.0	0.0	-
16:23	0.0	0.0	16:23	0.0	0.0	-
16:24	0.0	0.0	16:24	0.0	0.0	-
16:25	0.0	0.0	16:25	0.0	0.0	-
16:26	0.0	0.0	16:26	0.0	0.0	-
16:27	0.0	0.0	16:27	0.0	0.0	-
16:28	0.0	0.0	16:28	0.0	0.0	-
16:29	0.0	0.0	16:29	0.0	0.0	-
16:30	0.0	0.0	16:30	0.0	0.0	-
16:31	0.0	0.0	16:31	0.0	0.0	-
16:32	0.0	0.0	16:32	0.0	0.0	-
16:33	0.0	0.0	16:33	0.0	0.0	-
16:34	0.0	0.0	16:34	0.0	0.0	-
16:35	0.0	0.0	16:35	0.0	0.0	-
16:36	0.0	0.0	16:36	0.0	0.0	-
16:37	0.0	0.0	16:37	0.0	0.0	-
16:38	0.0	0.0	16:38	0.0	0.0	-
16:39	0.0	0.0	16:39	0.0	0.0	-
16:40	0.0	0.0	16:40	0.0	0.0	-
16:41	0.0	0.0	16:41	0.0	0.0	-
16:42	0.0	0.0	16:42	0.0	0.0	-
16:43	0.0	0.0	16:43	0.0	0.0	-

PID DATA						
Upwind			Downwind			Exceeds VOC Alarm Limit
Time	Concentration (ppm)	15-Min Avg Concentration (ppm)	Time	Concentration (ppm)	15-Min Avg Concentration (ppm)	
16:44	0.0	0.0	16:44	0.0	0.0	-
16:45	0.0	0.0	16:45	0.0	0.0	-
16:46	0.0	0.0	16:46	0.0	0.0	-
16:47	0.0	0.0	16:47	0.0	0.0	-
16:48	0.0	0.0	16:48	0.0	0.0	-
16:49	0.0	0.0	16:49	0.0	0.0	-
16:50	0.0	0.0	16:50	0.0	0.0	-
16:51	0.0	0.0	16:51	0.0	0.0	-
16:52	0.0	0.0	16:52	0.0	0.0	-
16:53	0.0	0.0	16:53	0.0	0.0	-