

<b>PROJECT No.:</b> 170430003	<b>CLIENT:</b>	<b>DATE:</b> Wednesday, December 7, 2022
<b>PROJECT:</b> 240 Huntington Street	300 Huntington Street LLC	<b>WEATHER:</b> Rainy, 52-57 °F Wind: N @ 0 – 3 mph
<b>LOCATION:</b> Brooklyn, New York		<b>TIME:</b> 6:45 am – 3:30 pm
<b>BCP SITE NO:</b> C224314		<b>MONITORS:</b> Elsayh Boak

<b>EQUIPMENT:</b> Hand Tools Bobcat E50 Mini Excavator Kolbeco Excavator Deere 245C Excavator Takeuchi TL10V2	<b>PRESENT AT SITE:</b> <b>Langan:</b> Elsayh Boak <b>Bauer Structures (Bauer):</b> George Lopez <b>Monadnock Construction Inc. (Monadnock):</b> David Parlo <b>Urban Erectors (Urban):</b> Ricky Persaud
--	---

**OBSERVATIONS, DISCUSSIONS, TEST RESULTS, ETC.:**

Langan Engineering, Environmental, Surveying, Landscape Architecture and Geology, D.P.C. (Langan) was present to document site remediation in accordance with the New York State Department of Environmental Conservation (NYSDEC)-approved Remedial Action Work Plan (RAWP) for the BCP Site No. C224314.

**Site Activities**

- Bauer Structures (Bauer) relocated previously stockpiled imported clean fill in the south-central part of the site further west to access excavation areas.
- Bauer excavated three about 4-foot-wide by 20-foot-long trenches to about 3-feet below grade surface (bgs) in previously imported backfilled clean fill for stormwater conduit installation in the south-central part of the site. Excavated material was stockpiled adjacent to the excavation for future use as backfill.
- Bauer stockpiled imported clean fill from Evergreen Recycling of Corona Inc. in Flushing, NY (EROC) in the northwestern part of the site.
- Urban Erectors (Urban) installed steel elements in the central and eastern parts of the site.

**Material Tracking**

- Bauer imported three truckloads (60 cubic yards) of general fill from Evergreen Recycling of Corona Inc. in Flushing, NY.
- No material was exported from the site.

**Sampling**

- None.

**CAMP Activities**

- Community air monitoring was not deployed due to sustained precipitation.
- Dust and odors were not observed migrating off-site throughout the day.

**Anticipated Activities**

- Urban Erectors will install steel elements on the building foundation.
- Bauer will backfill around installed utility conduits.

## 240 HUNTINGTON STREET CONSTRUCTION/FOUNDATION - EXPORT SUMMARIES

### MATERIALS EXPORT SUMMARY

<b>Facility Name</b>	<i>Clean Earth of Carteret</i>		<i>Allocco Recycling</i>		<i>Advanced Waste Water Treatment Corp.</i>		<i>Allocco Recycling</i>	
<b>Location</b>	<i>Middlesex, NJ</i>		<i>Brooklyn, NY</i>		<i>Farmingdale, NY</i>		<i>Brooklyn, NY</i>	
<b>Type of Waste</b>	<i>Non-Hazardous Soil</i>		<i>Concrete</i>		<i>Water with Trace Gasoline</i>		<i>Scrap Metal</i>	
Today	Number of Loads	Approx. Volume (CY)	Number of Loads	Approx. Volume (CY)	Number of Loads	Approx. Volume (CY)	Number of Loads	Approx. Volume (CY)
	0	-	0	-	0	-	0	-
Total	Number of Loads	Approx. Volume (CY)	Number of Loads	Approx. Volume (CY)	Number of Loads	Approx. Volume (CY)	Number of Loads	Approx. Volume (CY)
	263	9,095	26	515	2	30	2	30

### MATERIALS EXPORT SUMMARY

<b>Facility Name</b>	<i>Clean Earth Of Southeastern Pennsylvania</i>		<i>Clean Earth of North Jersey</i>					
<b>Location</b>	<i>Brooklyn, NY</i>		<i>Kearney, NJ</i>					
<b>Type of Material</b>	<i>Non-Hazardous Soil</i>		<i>Hazardous Soil</i>					
Today	Number of Loads	Approx. Volume (CY)	Number of Loads	Approx. Volume (CY)	Number of Loads	Approx. Volume (CY)	Number of Loads	Approx. Volume (CY)
	0	-	0	-	0	-	0	-
Total	Number of Loads	Approx. Volume (CY)	Number of Loads	Approx. Volume (CY)	Number of Loads	Approx. Volume (CY)	Number of Loads	Approx. Volume (CY)
	63	1,440	3	54	0	-	0	-

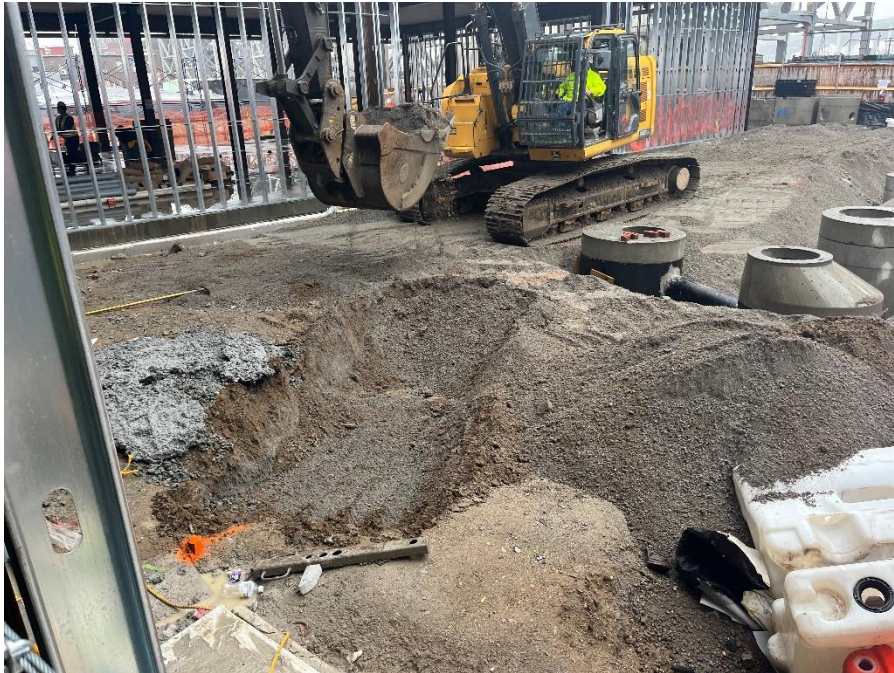
## 240 HUNTINGTON STREET CONSTRUCTION/FOUNDATION - IMPORT SUMMARIES

MATERIALS IMPORT SUMMARY								
Facility Name	<i>Tilcon New York Inc. - Mount Hope Quarry</i>		<i>Tilcon New York Inc. - Mount Hope Quarry</i>		<i>Clean Soil Bank (CSB) Forbell Street Stockpile</i>		<i>DOT RCA Stockpile - DOT Sunset Park Yard</i>	
Location	<i>Wharton, NJ</i>		<i>Wharton, NJ</i>		<i>Brooklyn, NY</i>		<i>Brooklyn, NY</i>	
Type of Material	<i>ASTM #3 Stone</i>		<i>ASTM #5 Stone</i>		<i>Soil</i>		<i>RCA</i>	
Today	Number of Loads	Volume (tons)	Number of Loads	Volume (tons)	Number of Loads	Volume (CY)	Number of Loads	Volume (CY)
		0	-	0	-	0	-	0
Total	Number of Loads	Volume (tons)	Number of Loads	Volume (tons)	Number of Loads	Volume (CY)	Number of Loads	Volume (CY)
	9	224.62	36	933.90	46	920	197	3,940
NYSDEC-Approved Quantity	-	540*	-	1,800*	-	7,000	-	4,000

\* - ASTM #3 stone and ASTM #5 stone from Tilcon New York Inc. Mount Hope Quarry were approved for import of 300 cubic yards (CY) and 1,000 CY, respectively. Assuming a conversation factor of 1.8, each quantity was converted to tons in order to accurately compare with import weight tickets.

MATERIALS IMPORT SUMMARY								
Facility Name	<i>Evergreen Recycling of Corona Inc.</i>							
Location	<i>Flushing, NY</i>							
Type of Material	<i>Clean Fill</i>							
Today	Number of Loads	Volume (CY)	Number of Loads	Approx. Volume (CY)	Number of Loads	Approx. Volume (CY)	Number of Loads	Approx. Volume (CY)
		3	60	0	-	0	-	0
Total	Number of Loads	Volume (CY)	Number of Loads	Approx. Volume (CY)	Number of Loads	Approx. Volume (CY)	Number of Loads	Approx. Volume (CY)
	214	4,092	0	-	0	-	0	-
NYSDEC-Approved Quantity	-	6,000						

## Site Photos



**Photo 1:** Bauer excavating for utility conduit installation in the south-central part of the site (facing east)



**Photo 2:** Bauer stockpiling imported clean fill from EROC in the northwestern part of the site (facing northwest)

## Site Map:



### LEGEND

- Approximate Site Boundary
- Approximate Location of Geophysical Anomaly
- Upwind CAMP Station
- Downwind CAMP Station
- Approximate Excavation Area
- Approximate Area Previously Excavated
- Approximate Graded Area
- Approximate Backfill Area
- Approximate Location of UST
- Soil/Fill Stockpile
- RCA/Imported Stone Stockpiled
- Approximate SMD Trench Excavation
- Approximate SMD Backfill Area
- Approximate Location of Completed Building Slab

Note: Drawing background from December 2021 Remedial Investigation Report by Langan Engineering.

Drawing Shown Not to Scale