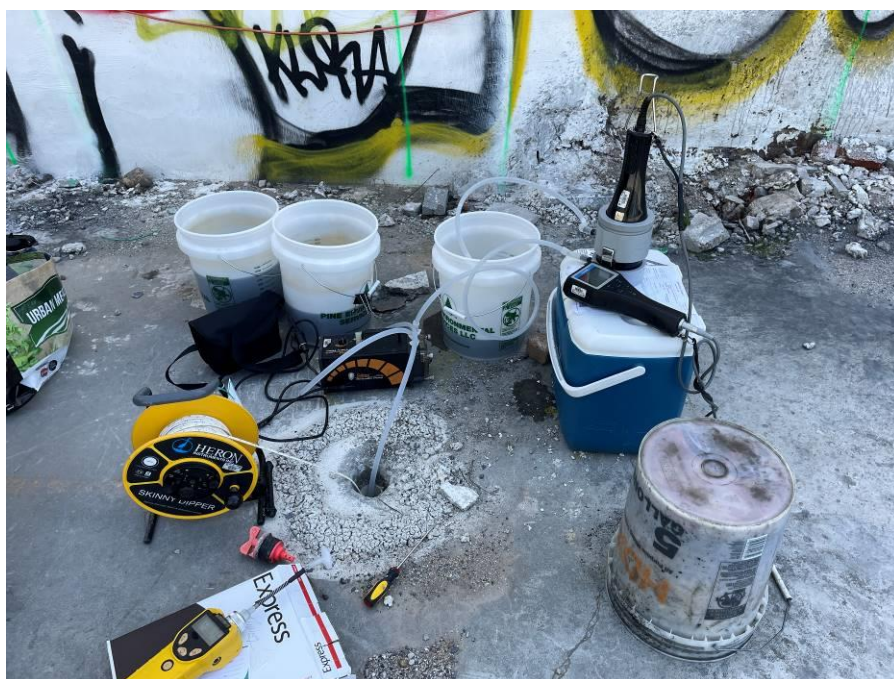


<b>PROJECT No.:</b> 170361307	<b>CLIENT:</b> Gowanus President Owner LLC	<b>DATE:</b> Tue., April 11 <sup>th</sup> , 2023
<b>PROJECT:</b> 514 Union Street		<b>WEATHER:</b> Sunny, 48– 74 °F Wind: WSW @ 5 – 15 mph
<b>LOCATION:</b> Brooklyn, New York		<b>TIME:</b> 6:45 am – 1:30 pm
<b>BCP SITE ID:</b> C224318		<b>MONITOR:</b> Audrey Seery
<b>EQUIPMENT:</b> MiniRAE 3000 Photoionization Detector (PID) Heron Instruments Water Level Meter Horiba U-52 Water Quality Meter	<b>PRESENT AT SITE:</b> <b>Langan:</b> Audrey Seery	
<b>OBSERVATIONS, DISCUSSIONS, TEST RESULTS, ETC.:</b> Langan was on-site to document implementation of the New York State Department of Environmental Conservation (NYSDEC)-approved February 2 <sup>nd</sup> , 2023 Interim Remedial Measures Work Plan (IRMWP) No. 2.		
<b>Site Activities</b>		
<ul style="list-style-type: none"><li>Langan collected three post-injection groundwater samples from groundwater monitoring wells MW11D, MW13D, and MW14S. Purged groundwater was containerized in a 55-gallon drum.</li></ul>		
<b>Sampling</b>		
<ul style="list-style-type: none"><li>Langan collected three post-injection groundwater samples MW11D_041123, MW13D_041123, and MW14S_041123 and associated quality assurance/quality control (QA/QC) samples to be analyzed for chlorinated volatile organic compounds (CVOCs). Samples were relinquished to Alpha Analytical, Inc., a New York State Department of Health (NYSDOH) Environmental Laboratory Accredited Program (ELAP)-certified laboratory under standard chain-of-custody protocols.</li></ul>		
<b>CAMP</b>		
<ul style="list-style-type: none"><li>Continuous air monitoring was not performed because ground-intrusive activities were not conducted. Periodic air monitoring for volatile organic compounds (VOCs) was conducted with a handheld PID during groundwater sampling.</li></ul>		
<b>Anticipated Activities</b>		
<ul style="list-style-type: none"><li>Langan will coordinate off-site disposal of 55-gallon drums on site.</li></ul>		
<b>Cc:</b>	J. Hayes, M. Burke, P. McMahon, V. De Paula, B. Koontz	<b>By:</b> Audrey Seery <b>Langan, D.P.C.</b>

**Site Photographs**



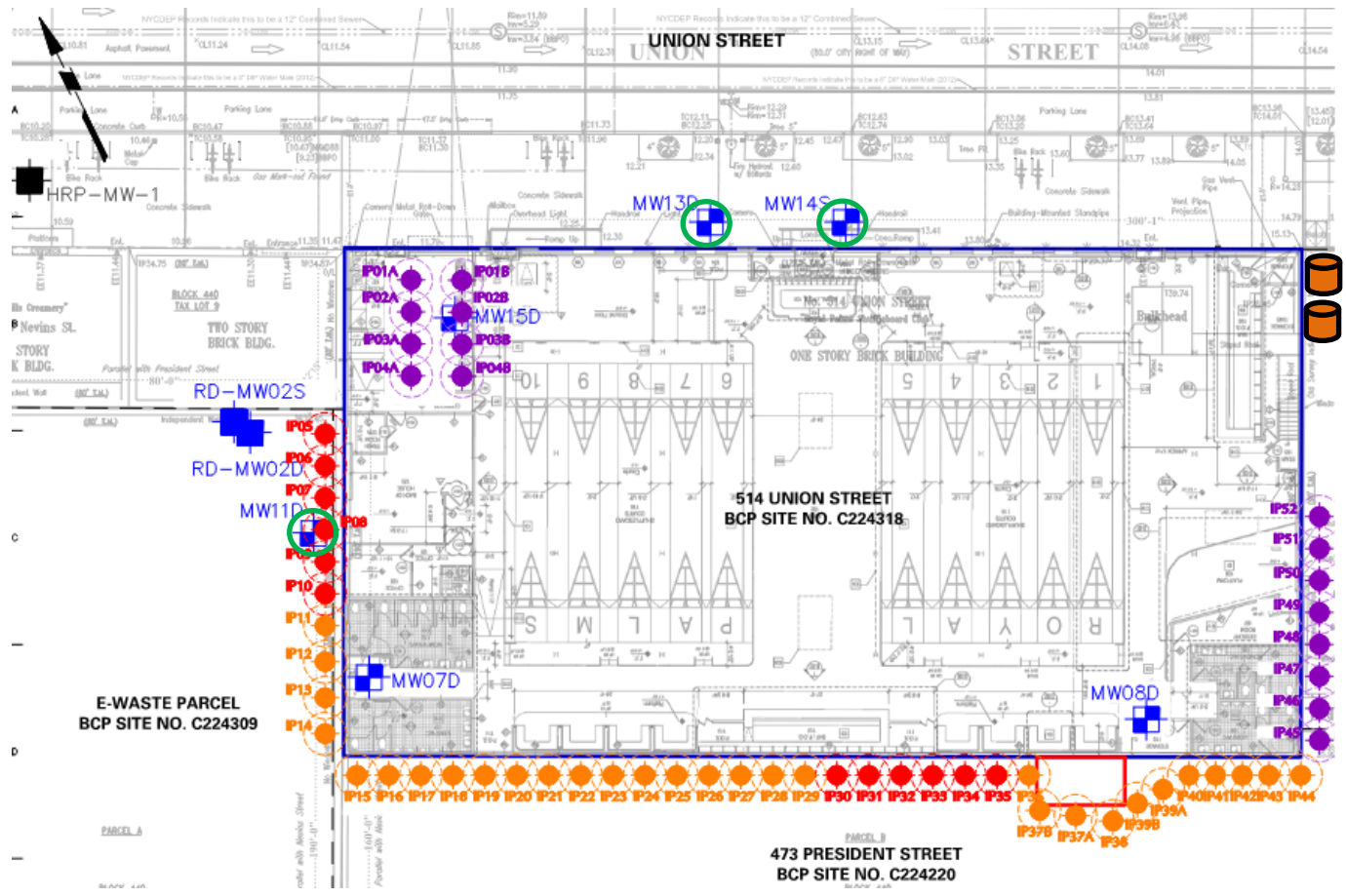
**Photo 1:** Groundwater sampling setup at monitoring well MW14S (facing northwest).






**Photo 2:** Groundwater sampling setup at monitoring well MW11D (facing east).

Cc:	J. Hayes, M. Burke, P. McMahon, V. De Paula, B. Koontz	By:	Audrey Seery <b>Langan, D.P.C.</b>
-----	--	-----	---------------------------------------

**Site Map**



**Legend**

-  Approximate Site Boundary
-  Approximate Drum Location
-  Groundwater Sample Location

**Notes**

1. Base Map adapted from Figure 8 of the 2 February 2023 IRMWP No. 2.

**Drum Inventory**

1. Two 55-gallon drums containing purged groundwater.

Cc:	J. Hayes, M. Burke, P. McMahon, V. De Paula, B. Koontz	By:	Audrey Seery <b>Langan, D.P.C.</b>
-----	--	-----	---------------------------------------