

DAILY STATUS REPORT

Prepared By: Matthew Del Balzo

WEATHER	Snow	Rain	Overcast	Partly Cloudy	×	Bright Sun
TEMP.	< 32	32-50	50-70	×	70-85	>85

DEC Project No.:	C224319	E-Number:	15TMP0625K,	Date:	5-26-2022
VCP Project No.:	NA	DOB Job No.:	15EHAN039K		
Project Name:	205 Park Avenue, Brooklyn, NY			SW 7MPH	

Consultant: GZA GeoEnvironmental of New York	Safety Officer: Isaac Feuerwerger Pyramid Builders NY LLC	Equipment CAMP Station 1 (Airlogics-downwind SW corner of Site) CAMP Station 2 (PID and dust track-work area/ upwind NE corner of Site)
General Contractor: Isaac Feuerwerger Pyramid Builders NY LLC	Site Manager/ Supervisor: Isaac Feuerwerger Pyramid Builders NY LLC	Field Representative Adam Spaulding (GZA)

Work Activities Performed (Since Last Report):

Import virgin quarry stone for SSDS
 Continue laying down geotextile fabric for SSDS
 Concrete pour along western footers and elevator pit
 Form footers along northwest corner of the Site

Working In Grid #: A, B, C, D, E, F

Samples Collected (Since Last Report):

None

Air Monitoring (Since Last Report):

See attached CAMP log.

Problems Encountered:

None

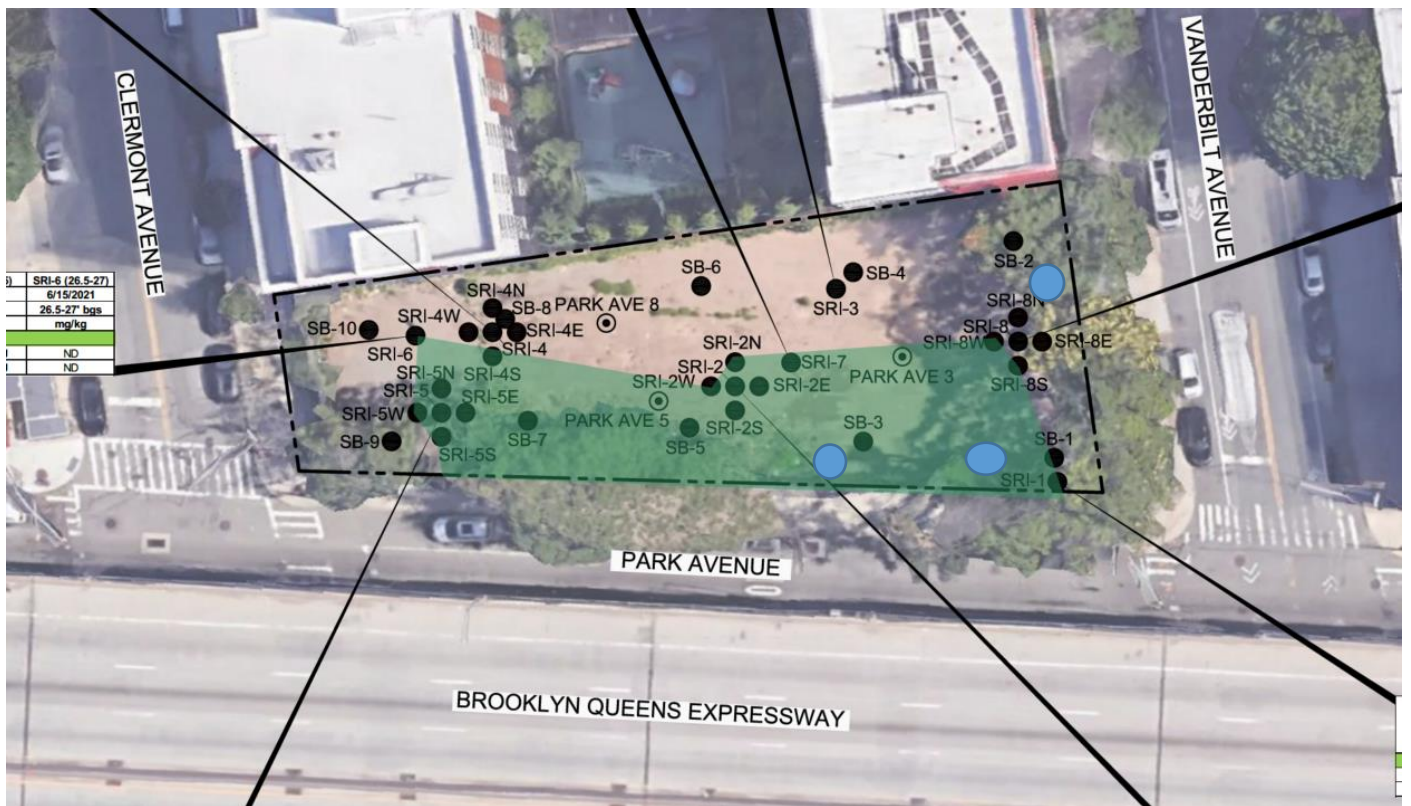
Planned Activities for the Next Day/ Week:

Plumbing pipe for SSDS
 Clean stone import for SSDS
 Install remaining wall forms

Facility # Name/ Location Type of Waste Solid <u>Or</u> Liquid	Clean Earth 24 Middlesex Ave, Carteret, NJ 07008 Non-Hazardous waste		Coplay Quarry facility 5101 Beekmantown Road, Whitehall, PA. Non-Hazardous waste							
	Trucks	Appx/Cu. Yds.	Trucks	Appx/Cu. Yds.	Trucks	Appx/Cu. Yds.	Trucks	Appx/Cu. Yds.	Trucks	Gallons.
Today										
Total	58	1,160	293	5,860	0	0	0	0	0	0

Site Grid Map

Not to Scale



APPROXIMATE LOCATION OF MONITORING WELLS



SOILS TO BE DISPOSED AT CLEAN EARTH OR FACILITY THAT ACCEPT THE PFAS SPLP SOILS

Photo 1 –
Facing
Northeast

Pour concrete
along southern
perimeter wall
and west of
elevator slab.



Photo 2 –
Facing West

Installing
forms for
western wall.
CAMP Station
1 located on
SW corner



Photo 3 –
Facing West
Import 1 load
of 3/4" blue
stone for
SSDS.



Photo 4 –
Facing North
Laying down
base layer of
geotextile
fabric for
SSDS.



GZA · Park Ave · Location 1
 Monitoring Location Data export
 5/26/2022 to 5/26/2022
 (UTC-05:00) Eastern Time (US & Canada) (Summer time adjusted)
 Averaging period: 15 minutes

Time	VOC (ppm)	PM10 (µg/)	Battery voltage (V)
5/26/2022 7:00	0.01	2.02	13.236
5/26/2022 7:15	0.01	1.46	13.043
5/26/2022 7:30	0	1.58	13.043
5/26/2022 7:45	0	1.08	13.043
5/26/2022 8:00	0	0.5	13.044
5/26/2022 8:15	0	1.27	13.045
5/26/2022 8:30	0	0.66	13.046
5/26/2022 8:45	0.01	4.46	13.048
5/26/2022 9:00	0.01	1.33	13.048
5/26/2022 9:15	0	0.06	13.047
5/26/2022 9:30	0	0.65	13.047
5/26/2022 9:45	0	0.63	13.046
5/26/2022 10:00	0	3.91	13.045
5/26/2022 10:15	0	0.87	13.043
5/26/2022 10:30	0	9.73	13.042
5/26/2022 10:45	0	22.25	13.034
5/26/2022 11:00	0	3.79	13.011
5/26/2022 11:15	0	3.01	12.996
5/26/2022 11:30	0	4.12	12.97
5/26/2022 11:45	0.01	45.45	12.94
5/26/2022 12:00	0	54.82	12.928
5/26/2022 12:15	0	22.35	12.91
5/26/2022 12:30	0	12.94	12.904
5/26/2022 12:45	0	13.28	12.903
5/26/2022 13:00	0	9.36	12.903
5/26/2022 13:15	0	12.79	12.902
5/26/2022 13:30	0	12.87	12.9
5/26/2022 13:45	0	15.33	12.899
5/26/2022 14:00	0	20.74	12.896
5/26/2022 14:15	0	18.5	12.889
5/26/2022 14:30	0	12.34	12.88
5/26/2022 14:45	0	13.7	12.872
5/26/2022 15:00	0	77.5	12.869
5/26/2022 15:15	0	37.45	12.867
5/26/2022 15:30	0	19.75	12.866
5/26/2022 15:45	0	12.63	12.859
5/26/2022 16:00	0	10.98	12.836
5/26/2022 16:15	0	12.04	12.835

5-26-2022 CAMP Location 2

Air Monitoring Data

Time	PID Readings (ppm)	DUST Readings (mg/m ³)
6:55:00 AM	0.0	0.016
7:25:00 AM	0.0	0.012
7:55:00 AM	0.0	0.007
8:25:00 AM	0.0	0.012
8:55:00 AM	0.0	0.016
9:25:00 AM	0.0	0.011
9:55:00 AM	0.0	0.008
10:25:00 AM	0.0	0.006
10:55:00 AM	0.0	0.005
11:25:00 AM	0.0	0.006
11:55:00 AM	0.0	0.008
12:25:00 PM	0.0	0.008
12:55:00 PM	0.0	0.008
1:25:00 PM	0.0	0.006
1:55:00 PM	0.0	0.007
2:25:00 PM	0.0	0.008
2:55:00 PM	0.0	0.009
3:25:00 PM	0.0	0.008
3:55:00 PM	0.0	0.01