

---

## **MSR 025: MONTHLY STATUS REPORT, 2435 Pacific Street (C224322): BCP Work Activities for June 2025**

**From:** Scott Spitzer, Gallagher Bassett Technical Services (GBTS)      scott\_spitzer@gbtpa.com

**To:** Tara Rutland, NYSDEC      tara.rutland@dec.ny.gov  
Bob Corcoran, NYSDEC      bob.corcoran@dec.ny.gov  
Sarita Wagh, NYSDOH      sarita.wagh@health.ny.gov

**CC:** Dan Bellucci, Bellucci Engineering      bellucciengineeringpllc@gmail.com  
Richard Hooker, GBTS      richard\_hooker@gbtpa.com  
Gina Buffone, Alembic      gbuffone@alembiccommunity.com  
Jenny Marone, Alembic      jmarone@alembiccommunity.com  
Benjamin Warnke, Alembic      bwarnke@alembiccommunity.com  
Scott McDonald, GBTS      scott\_mcdonald@gbtpa.com  
Samden Lama, Mega      slama@megagroup.nyc  
Nikolaos Hantzopoulos, Mega      nhantzopoulos@megagroup.nyc

**RE:** Monthly Status Report for the 2435 Pacific Street BCP Site, Brooklyn, New York

Fieldwork activities have been performed in accordance with the NYSDEC-approved Remedial Action Work Plan (RAWP, May 2023), under the supervision of qualified personnel from Gallagher Bassett Technical Services (GBTS).

### **A) Overview of Remedial Services Completed During Reporting Period:**

Environmental oversight and CAMP implementation have been suspended during the temporary shutdown of site construction activities. The NYCDEP has also approved a temporary shutdown of site construction activities resulting in a reduced SWPPP inspection frequency to once every 30 days. The shutdown does not include construction on the building superstructure.

### **B) Locations of Work and Quantities of Material Imported and Exported:**

The contractor continued installing concrete-filled sonotubes for fence post bases along the northern property line on the following dates, June 4 and 5, 2025. Landscaping and hardscaping north of the building (which will begin after removal of the temporary lift and scaffolding) is tentatively scheduled to start the beginning of July 2025. Daily construction work is limited to completion of the building superstructure and the fence post bases.

### **C) Sampling Events:**

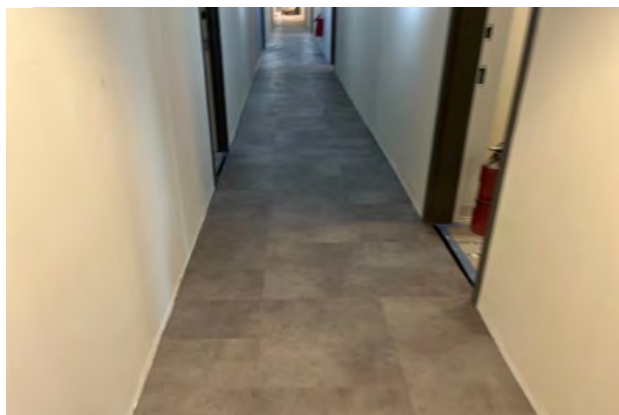
There were no samples collected during the reporting period.

### **D) General Compliance with Governing Documents:**

There were no significant deviations from the RAWP. No complaints were received. Dust and VOC monitoring was performed during fence post sonotube installation but is otherwise suspended during the temporary shutdown.

### **E) Representative Site Photographs:**

See attachment. All photographs show typical activities conducted during the reporting period.



1. 5<sup>th</sup> floor hallway – finished flooring and painted walls



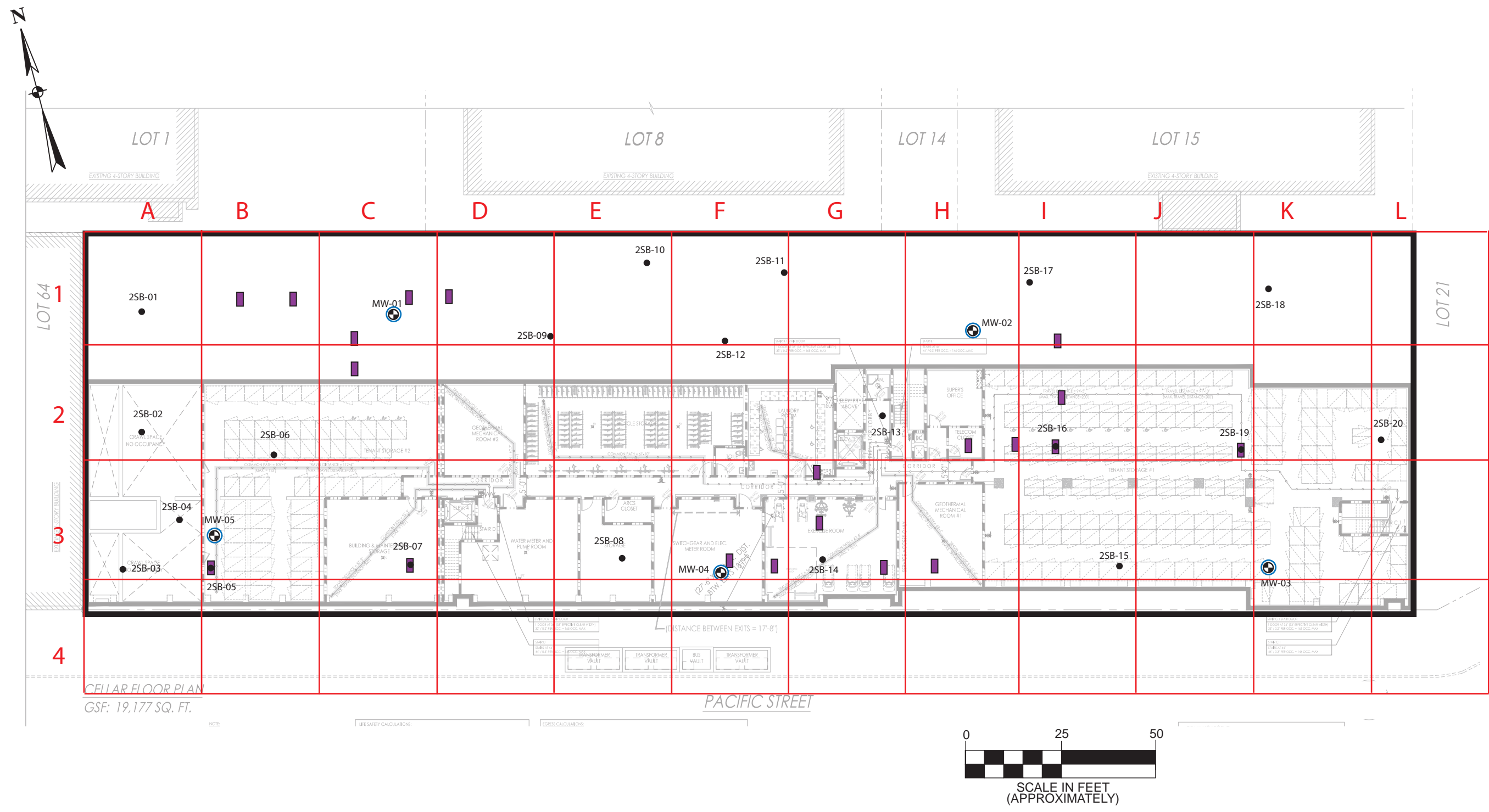
2. 8<sup>th</sup> floor hallway-Taped



3. 8<sup>th</sup> floor apartment kitchen



4. Roof parapet and solar panels



Base map provided by SLCEArchitects, LLP - Cellar Floor Plan A-050 dated 8/18/22. All feature locations are approximate. This map is intended as a schematic to be used in conjunction with the associated report, and it should not be relied upon as a survey for planning or other activities.