

**Monthly Progress Report No. 17**  
101 Fleet Place Redevelopment BCP Site  
101 Fleet Place, Brooklyn, NY  
Brownfield Cleanup Program Site #: **C224345**  
Reporting Period: 01 July 2023 – 31 July 2023

**1. Introduction**

In accordance with the reporting requirements of the 7 March 2022 Brownfield Site Cleanup Agreement (BCA) for the 101 Fleet Place Redevelopment Site, located at 101 Fleet Place in Brooklyn, NY (Site), Haley & Aldrich of New York (Haley & Aldrich), has prepared this monthly progress report, on behalf of 101 Fleet Place LLC, 101 Fleet Realty LLC, 101 Fleet Holding LLC (the Volunteers), to summarize the work performed at the Site from 01 July 2023 through 31 July 2023.

The Site, identified as Block 2061, Lot 100 on the New York City tax map, is about 20,000-square feet and is bound to the north by a mixed-use residential and commercial development followed by Myrtle Avenue, to the east by a parking lot and residential development, to the south by parking and a residential development followed by Willoughby Street, and to the west by Fleet Place. The Site is an irregular-shaped lot and is improved with a one-story building with an open courtyard in the southern region. The Site is currently vacant and was most recently occupied by the Duffield Children Center which operated as a 3K through Pre-K children's center (operations ceased early November 2021). Building demolition began in late March 2022. The Site location is shown on Figure 1.

The Volunteers propose construction of a new 21-story building with a full cellar level. The building will be used for mixed residential and commercial uses, including 421-a affordable housing. The proposed gross square footage of the new development is 304,860.53 square feet. The cellar is anticipated to encompass the approximately 20,000-square-foot Site footprint and extend to a depth of about 12-14 feet below grade surface (feet bgs). The proposed development is compatible with the existing R6 residential and C2-4 commercial zoning.

**2. Investigation or Remedial Actions Relative to the Site during this Reporting Period**

No BCP investigation or remedial actions were conducted during this reporting period.

**3. Actions Relative to the Site Anticipated for the Next Reporting Period**

Anticipated actions relative to the Site for the next reporting period include continued building demolition and the beginning of construction activities.

**4. Approved Activity Modifications (changes of work scope and/or schedule)**

No activity modifications were approved by New York State Department of Environmental Conservation (NYSDEC) during this reporting period.

**5. Deliverables Submitted During This Reporting Period**

None.

**6. Information Regarding Percentage of Completion**

The demolition portion of this project is approximately 95% complete. The remedial investigation/ design phase is 100% complete.

**7. Unresolved Delays Encountered or Anticipated That May Affect the Schedule and Mitigation Efforts**

No unresolved delays were encountered during this reporting period.

**8. Community Participation (CP) Plan Activities during This Reporting Period**

None.

**9. Activities Anticipated in Support of the CP Plan for the Next Reporting Period:**

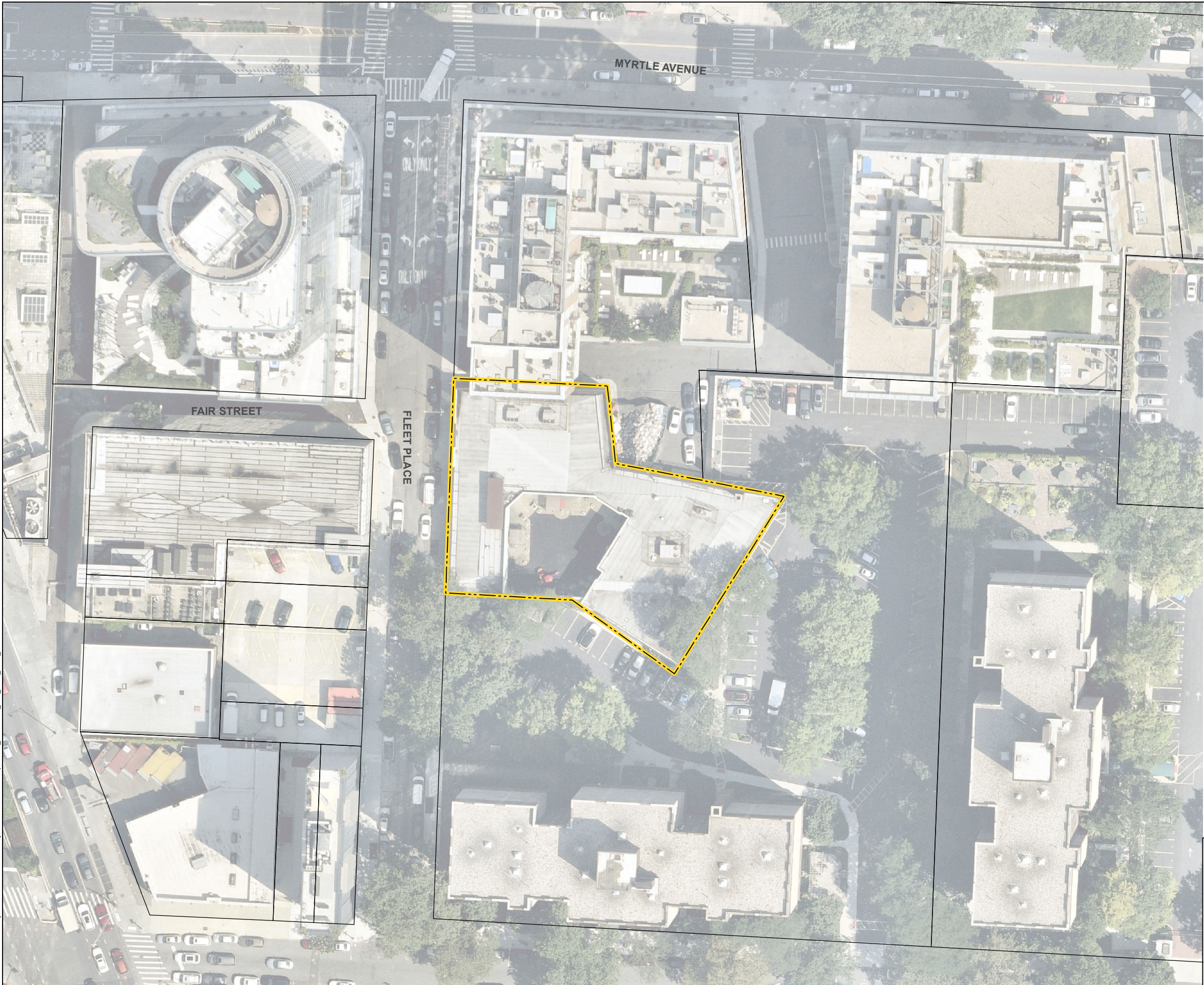
Anticipated activities include the completion of demolition and start of Site remediation.

**10. Miscellaneous Information**



None.



GIS FILE PATH: \\haleyaldrich.com\share\CF\Projects\0203708\GIS\Maps\2021\_10\203708\_000\_0002\_SITE\_PLAN.mxd — USER: khensen — LAST SAVED: 7/6/2022 8:51:09 AM



LEGEND

-  SITE BOUNDARY
-  PARCEL BOUNDARY

NOTES

1. ALL LOCATIONS ARE APPROXIMATE.
2. ASSESSOR PARCEL DATA SOURCE: NEW YORK CITY DEPARTMENT OF CITY PLANNING GIS
3. AERIAL IMAGERY SOURCE: NEARMAP, 12 AUGUST 2021



0 60 120  
SCALE IN FEET

HALEY  
ALDRICH

101 FLEET PLACE  
BROOKLYN, NEW YORK

SITE PLAN

JULY 2022

FIGURE 1