

**Monthly Progress Report No. 27**  
101 Fleet Place Redevelopment BCP Site  
101 Fleet Place, Brooklyn, NY  
Brownfield Cleanup Program Site #: **C224345**  
Reporting Period: 01 May 2024 – 31 May 2024

**1. Introduction**

In accordance with the reporting requirements of the 7 March 2022 Brownfield Site Cleanup Agreement (BCA) for the 101 Fleet Place Redevelopment Site, located at 101 Fleet Place in Brooklyn, NY (Site), Haley & Aldrich of New York (Haley & Aldrich), has prepared this monthly progress report, on behalf of 101 Fleet Place LLC, 101 Fleet Realty LLC, 101 Fleet Holding LLC (the Volunteers), to summarize the work performed at the Site from 01 May 2024 through 31 May 2024.

The Site, identified as Block 2061, Lot 100 on the New York City tax map, is about 20,000-square feet and is bound to the north by a mixed-use residential and commercial development followed by Myrtle Avenue, to the east by a parking lot and residential development, to the south by parking and a residential development followed by Willoughby Street, and to the west by Fleet Place. The Site is an irregular-shaped lot and is improved with a one-story building with an open courtyard in the southern region. The Site is currently vacant and was most recently occupied by the Duffield Children Center which operated as a 3K through Pre-K children's center (operations ceased early November 2021). Building demolition began in late March 2022. The Site location is shown on Figure 1.

Construction of a new 21-story building with a full cellar level is underway. The building will be used for mixed residential and commercial uses, including 421-a affordable housing. The anticipated gross square footage of the new development is 304,860.53 square feet. The cellar is anticipated to encompass the approximately 20,000-square-foot Site footprint and extend to a depth of about 12-14 feet below grade surface (feet bgs). The ongoing development is compatible with the existing R6 residential and C2-4 commercial zoning.

**2. Investigation or Remedial Actions Relative to the Site during this Reporting Period**

The building is currently under construction. No BCP remedial activities were conducted during this reporting period. The draft Final Engineering Report (FER) was submitted to NYSDEC and the New York State Department of Health (NYSDOH) during this reporting period.

**3. Actions Relative to the Site Anticipated for the Next Reporting Period**

Anticipated actions relative to the Site for the next reporting period include receiving comments from NYSDEC and NYSDOH and submitting an approved FER.

**4. Approved Activity Modifications (changes of work scope and/or schedule)**

No activity modifications were approved by New York State Department of Environmental Conservation (NYSDEC) during this reporting period.

**5. Deliverables Submitted During This Reporting Period**

No Daily Reports were submitted to NYSDEC and NYSDOH during this reporting period.

**6. Information Regarding Percentage of Completion**

The remedial action phase is approximately 98% complete.

**7. Unresolved Delays Encountered or Anticipated That May Affect the Schedule and Mitigation Efforts**

No unresolved delays were encountered during this reporting period.

**8. Community Participation (CP) Plan Activities during This Reporting Period**

None.

**9. Activities Anticipated in Support of the CP Plan for the Next Reporting Period:**

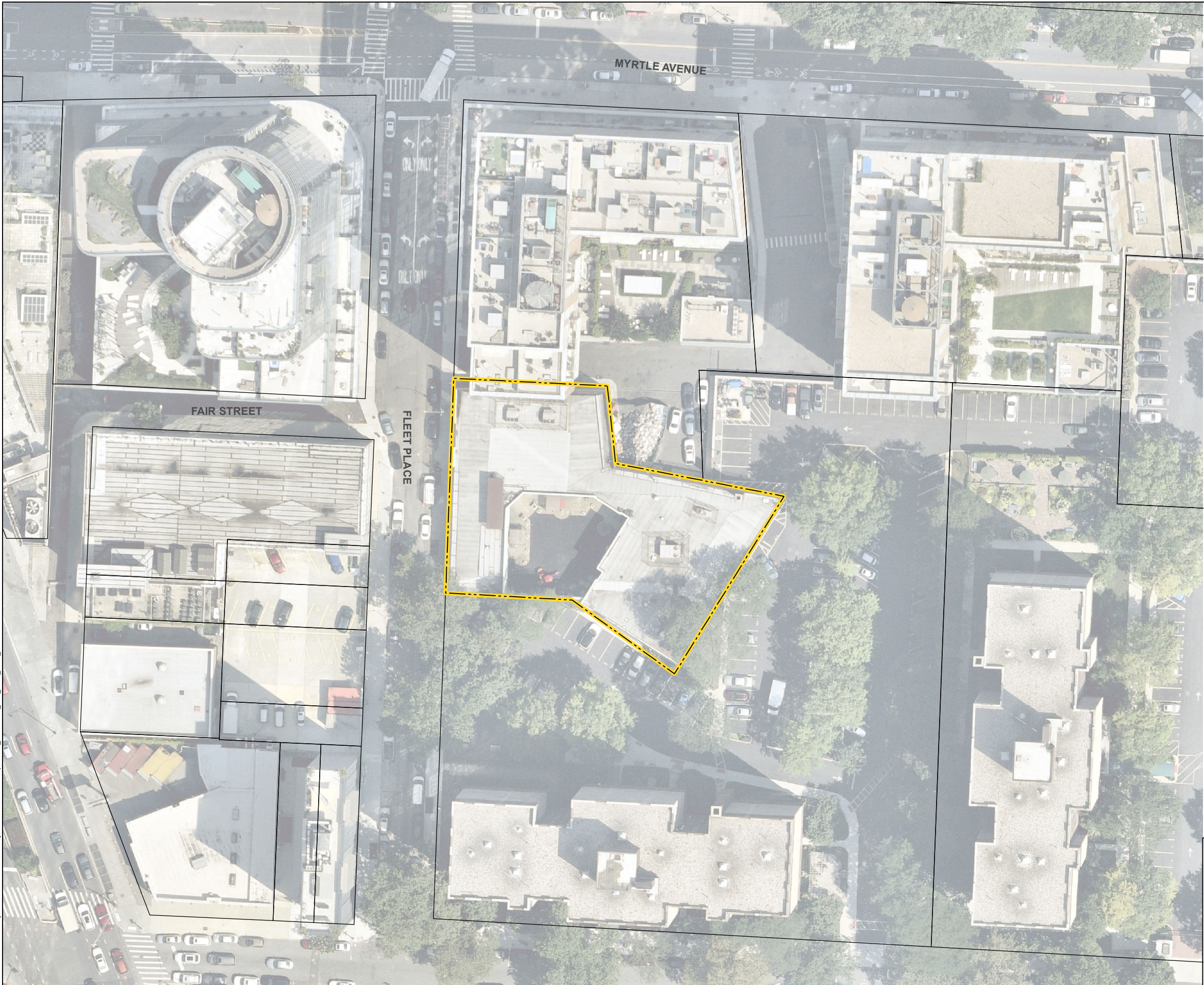
A Fact Sheet announcing that cleanup action has been completed will be prepared during the next reporting period.

**10. Miscellaneous Information**



Upon completion of the building envelope, the sub-slab depressurization system (SSDS) riser and monitoring points will be installed. A soil vapor intrusion evaluation will be conducted during the upcoming heating season.



GIS FILE PATH: \\haleyaldrich.com\share\CF\Projects\0203708\GIS\Maps\2021\_10\203708\_000\_0002\_SITE\_PLAN.mxd — USER: khensen — LAST SAVED: 7/6/2022 8:51:09 AM



LEGEND

-  SITE BOUNDARY
-  PARCEL BOUNDARY

NOTES

1. ALL LOCATIONS ARE APPROXIMATE.
2. ASSESSOR PARCEL DATA SOURCE: NEW YORK CITY DEPARTMENT OF CITY PLANNING GIS
3. AERIAL IMAGERY SOURCE: NEARMAP, 12 AUGUST 2021



0 60 120  
SCALE IN FEET

HALEY  
ALDRICH

101 FLEET PLACE  
BROOKLYN, NEW YORK

SITE PLAN

JULY 2022

FIGURE 1