

LANGAN SITE OBSERVATION REPORT – Day 213

<p>CLIENT: Gowanus Canal LLC, GowCan Owner, LLC, and Bayside Gowanus Owner, L.L.C.</p> <p>PROJECT No.: 170295301</p> <p>PROJECT: Gowanus Canal Northside</p> <p>LOCATION: Brooklyn, New York</p>	<p>DATE: Friday, June 2, 2023</p> <p>WEATHER: Clear, 66 – 90 °F Wind: SSW @ 1 – 4 mph</p> <p>TIME: 06:30 – 18:30</p> <p>BCP SITE ID: C224080</p>
<p>EQUIPMENT: Komatsu PC 490 Excavator Komatsu PC 240 Excavator Komatsu PC 78 US Excavator Komatsu Wheel Loader Komatsu PC 490 Excavator</p>	<p>PRESENT AT SITE: Langan: Lauren Roper (Environmental), Ashlene Bisram (Geotechnical) Urban Atelier Group (UAG): Seth Anderson Kingdom Associates, Inc. (Kingdom): George Minchala TT Mechanical Corp. (TT Mechanical): Damien Sokol</p>
<p>OBSERVATIONS, DISCUSSIONS, TEST RESULTS, ETC.:</p> <p>Langan was on-site to document implementation of the New York State Department of Environmental Conservation (NYSDEC)-approved March 24, 2022 Remedial Action Work Plan (RAWP) for Brownfield Cleanup Program (BCP) Site No. C224080. Site Map 1 presents the Society Brooklyn and Sackett Place developments, which together comprise the BCP site.</p> <p>Site Activities</p> <ul style="list-style-type: none"> • Kingdom imported 1 truckload of 0.5-inch crushed stone. The crushed stone will be used for general backfill throughout the site. See material tracking section for details. • Kingdom backfilled around the cellar wall with imported 0.5-inch crushed stone in the northern part of Society Brooklyn. • Kingdom graded an about 60-foot-long by 20-foot-wide area and an about 15-foot-long by 10-foot-wide area in the northeastern part of Society Brooklyn to install components of the submembrane depressurization (SMD) system. <ul style="list-style-type: none"> ○ Kingdom placed a geotextile membrane on top of the subgrade and placed ASTM #5 virgin quarry stone on top of the geotextile membrane. ○ Kingdom installed perforated piping wrapped with polyester filter sleeves for the SMD system in the northern part of Society Brooklyn. ○ Kingdom backfilled around the perforated piping with ASTM #5 virgin quarry stone. • Kingdom installed a waterproofing/vapor barrier membrane (PREPRUFE 300R from GCP Applied Technologies) in the central part of Society Brooklyn. • Kingdom placed concrete for a mud slab in the northern part of Society Brooklyn. • Kingdom performed utility installation-related work within an about 20-foot-long by 10-foot-wide area within the Sackett Street right-of-way outside the BCP boundary as part of development-related construction. This work is not part of RAWP implementation. 	
<p>Cc: J. Hayes, M. Burke, P. Farnham, E. Adkins, A. Nesci</p>	<p>By: Lauren Roper Langan, D.P.C.</p>

Import and Export Tracking

- Kingdom imported 1 truckload of ASTM #5 virgin quarry stone from Tilcon New York Inc.'s Mt. Hope quarry in Wharton, NJ.
- No material was exported from the site.

Soil/Fill Export Summary			
Facility	Exported	Today	Total
Bayshore Soil Management Keasbey, NJ Non-Hazardous Soil/Fill	No. Loads	0	764
	Quantity (CY)	0	15,280
Bayshore Soil Management Keasbey, NJ Non-Hazardous MGP-Impacted Soil/Fill	No. Loads	0	79
	Quantity (CY)	0	1,580
Phase III Environmental Palmerton, PA Non-Hazardous Soil/Fill	No. Loads	0	67
	Quantity (CY)	0	1,340

Material Import Summary				
Facility	NYSDEC Approved Quantity (CY)	Imported	Today	Total
Stavola Construction Materials, Inc Bridgewater, NJ 2.5-inch Stone	1,000	No. Loads	0	15
		Quantity (CY)	0	300
87 19th Avenue Astoria, NY 2.5-inch Stone	2,000	No. Loads	0	31
		Quantity (CY)	0	650
Impact Environmental Jersey City, NJ 0.5-inch Crushed Stone	5,000	No. Loads	0	224
		Quantity (CY)	0	4,480
Impact Environmental Lyndhurst, NJ 0.5-inch Crushed Stone	6,000	No. Loads	0	48
		Quantity (CY)	0	960
Impact Environmental Lyndhurst, NJ 0.75-inch Crushed Stone	4,000	No. Loads	0	29
		Quantity (CY)	0	580
Tilcon New York Inc. Wharton, NJ ASTM #5 Virgin Quarry Stone	3,500	No. Loads	1	95
		Quantity (CY)	20	1,900

Sampling

- No samples were collected.

Community Air Monitoring

- Langan conducted real-time air monitoring for volatile organic compounds (VOC) and particulate matter smaller than 10 microns in diameter (PM10) at the upwind and downwind perimeters of the work area during ground-intrusive work. VOC and PM10 concentrations did not exceed the action levels established by the community air monitoring plan (CAMP).

Cc:	J. Hayes, M. Burke, P. Farnham, E. Adkins, A. Nesci	By:	Lauren Roper
			Langan, D.P.C.

Anticipated Activities

- Kingdom will continue to install SMD system components at Society Brooklyn.

Cc:

J. Hayes, M. Burke, P. Farnham, E. Adkins, A. Nesci

By:

Lauren Roper

Langan, D.P.C.

Site Photographs



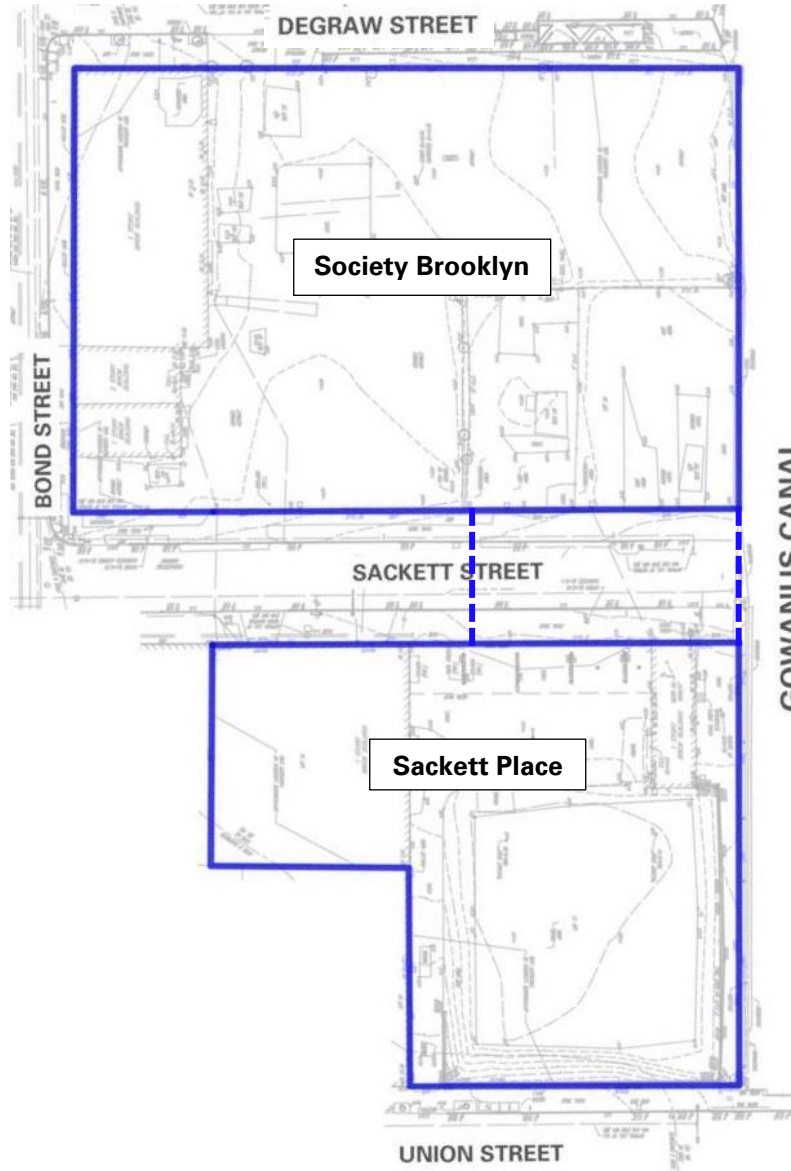
Photo 1: Kingdom installing SMD system components in the northeastern part of Society Brooklyn (facing west)



Photo 2: Kingdom installing a waterproofing/vapor barrier membrane in the central part of Society Brooklyn (facing northeast)

Cc:	J. Hayes, M. Burke, P. Farnham, E. Adkins, A. Nesci	By:	Lauren Roper Langan, D.P.C.
-----	---	-----	---------------------------------------

Site Map 1:



Legend

- Approximate BCP site boundary
- - - Approximate construction fence boundary

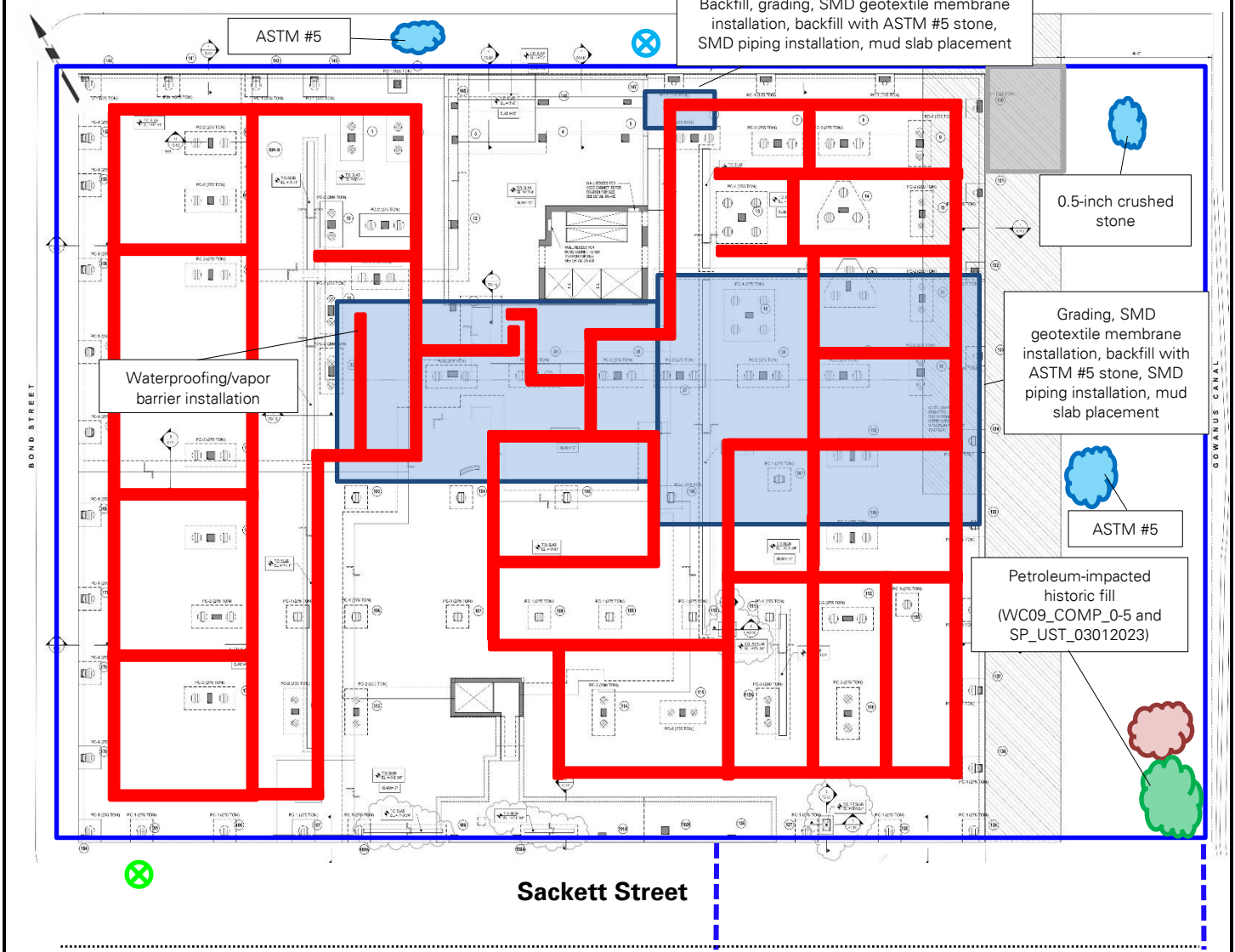
Notes

1. Base map adapted from 24 March 2022 RAWP, Figure 2 – Site Plan.
2. This Site Map is provided for context only; refer to the Northern (Society Brooklyn) and Southern (Sackett Place) Work Area Maps on the following pages for work and air monitoring location(s).

Cc:	J. Hayes, M. Burke, P. Farnham, E. Adkins, A. Nesci	By:	Lauren Roper Langan, D.P.C.
-----	---	-----	---------------------------------------

Site Map 2: Northern Work Area Map (Society Brooklyn)

Base map adapted from 1 April 2022 drawing FO-201.00, "Ground Floor Framing Plan" for Society Brooklyn, prepared by DeSimone Consulting Engineers.



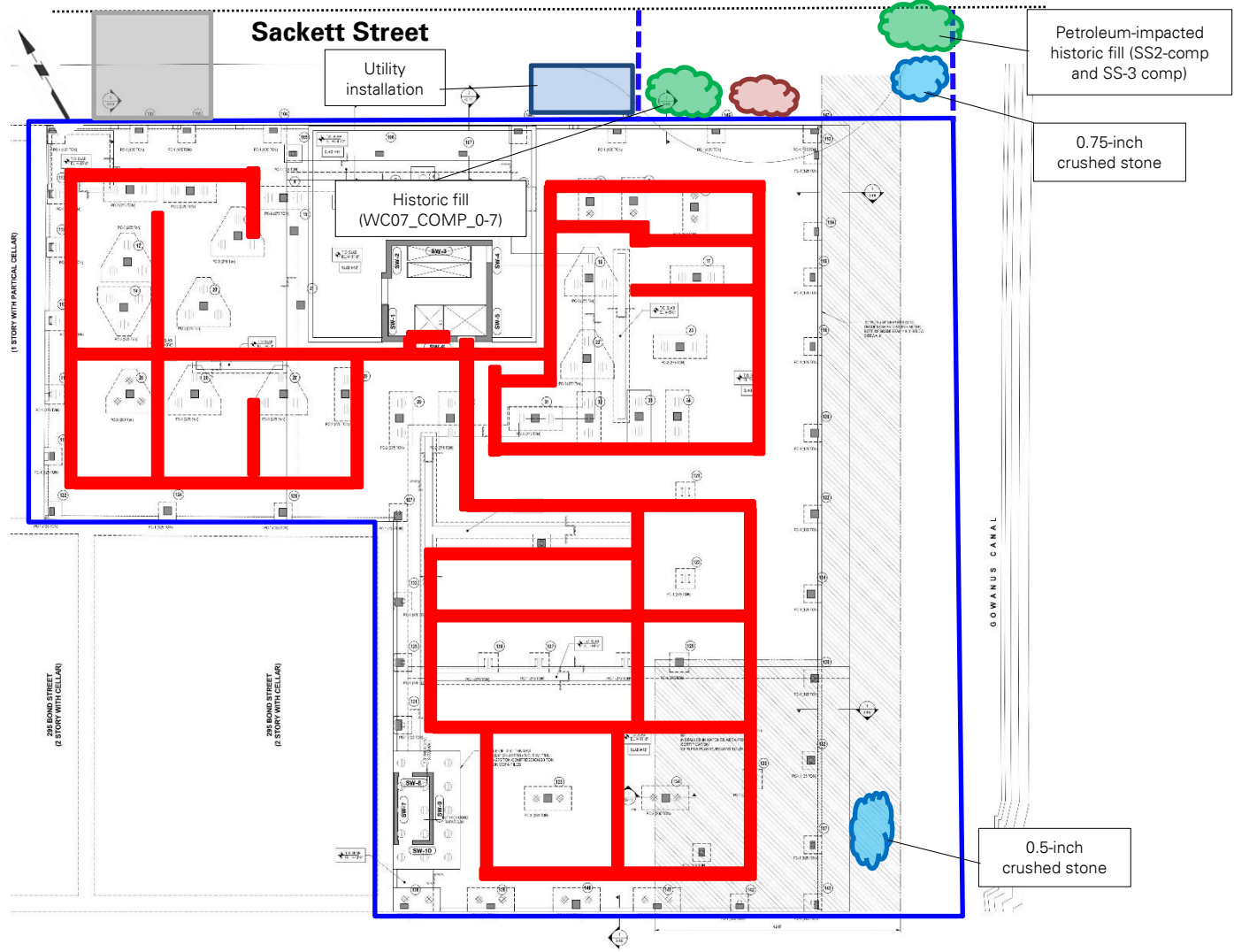
Legend:

- Approximate site boundary
- - - Approximate construction fence boundary
- ⊗ Upwind air monitoring station
- ⊗ Downwind air monitoring station
- Approximate work area
- Approximate stabilized construction entrance
- Approximate soil/fill stockpile location
- Approximate import stockpile location
- Approximate C&D debris stockpile location
- Approximate location of 20 cubic yard scrap metal container
- Approximate location of SMD piping installation

Cc:	J. Hayes, M. Burke, P. Farnham, E. Adkins, A. Nesci	By:	Lauren Roper Langan, D.P.C.
-----	---	-----	---------------------------------------

Site Map 3: Southern Work Area Map (Sackett Place)

Base map adapted from 1 April 2022 drawing FO-201.00, "Ground Floor Framing Plan" for Sackett Place, prepared by DeSimone Consulting Engineers.



Legend:

- Approximate site boundary
- - - Approximate construction fence boundary
- ⊗ Upwind air monitoring station
- ⊗ Downwind air monitoring station
- Approximate work area
- Approximate stabilized construction entrance
- ☁ Approximate soil/fill stockpile location
- ☁ Approximate import stockpile location
- ☁ Approximate C&D debris stockpile location
- █ Approximate location of SMD piping installation

Cc:	J. Hayes, M. Burke, P. Farnham, E. Adkins, A. Nesci	By:	Lauren Roper Langan, D.P.C.
-----	---	-----	---------------------------------------



DAILY AIR MONITORING REPORT

Gowanus Canal Northside

267 Bond Street, Brooklyn, New York

06/02/23

Project number: 170295301

Page 1 of 1

Rev. No. 0

Submitted By:

Dust Action Level

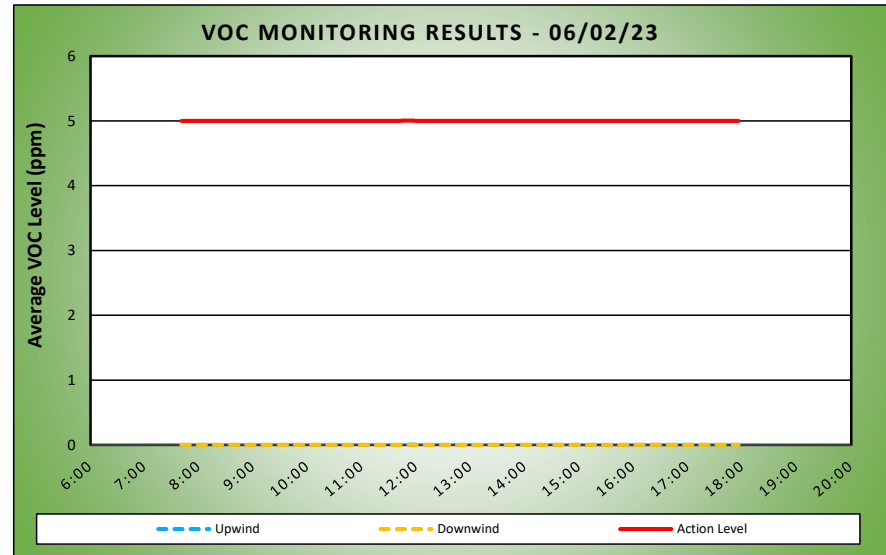
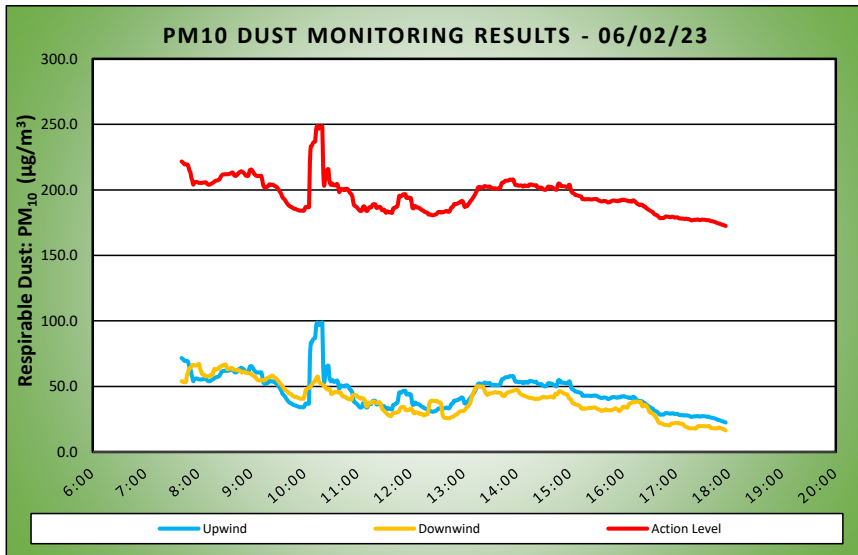
150 $\mu\text{g}/\text{m}^3$

TVOC Action Level

5 ppm

Weather Data Range for Work Day		Wind Direction	SSW	Relative Humidity (%)	31.0 - 80.0	Daily Rain (in)	0.00	Readings in the summary table and graphs below are the reported downwind concentrations.
Temp (°F)	66.0 - 90.0	Wind Speed (MPH)	0.5 - 4.4	Barometer (inHg)	29.80 - 29.90			

Station Location Area	Work	Daily Avg. Dust Concentration ($\mu\text{g}/\text{m}^3$)	Max 15 Min Dust Concentration ($\mu\text{g}/\text{m}^3$)	Time of Maximum 15 Minute Avg Dust Reading	Daily Avg. VOC Concentration (ppm)	Max 15 Min VOC Concentration (ppm)	Time of Max VOC Reading
Upwind		45.5	98.8	10:20	0.0	0.0	11:44
Downwind		40.1	67.1	8:00	0.0	0.0	7:41



Air Monitoring Notes:

Sampling Notes:

Weather Notes:



Friday, June 2, 2023

Number of Instances Where Downwind Particulates Exceeds Upwind Particulate + 150 =	0
Number of Comparable Data Points =	616
Start Time:	7:26
End Time:	17:56

PARTICULATE DATA

Upwind			Downwind			Exceeds Particulate Alarm Limit
Time	Concentration (ug/m ³)	15-Min Avg Concentration (ug/m ³)	Time	Concentration (ug/m ³)	15-Min Avg Concentration (ug/m ³)	
7:26	59.0	-	7:26	54.0	-	-
7:27	60.7	-	7:27	55.8	-	-
7:28	63.4	-	7:28	55.3	-	-
7:29	68.7	-	7:29	54.3	-	-
7:30	57.0	-	7:30	54.0	-	-
7:31	54.8	-	7:31	53.8	-	-
7:32	55.2	-	7:32	52.0	-	-
7:33	56.1	-	7:33	53.0	-	-
7:34	85.1	-	7:34	53.8	-	-
7:35	89.3	-	7:35	53.2	-	-
7:36	73.8	-	7:36	52.2	-	-
7:37	115.9	-	7:37	51.4	-	-
7:38	77.5	-	7:38	51.2	-	-
7:39	110.8	-	7:39	52.0	-	-
7:40	52.2	-	7:40	59.3	-	-
7:41	54.8	71.7	7:41	58.9	54.0	-
7:42	53.0	71.2	7:42	51.9	53.7	-
7:43	52.4	70.4	7:43	50.4	53.4	-
7:44	55.2	69.5	7:44	52.3	53.3	-
7:45	57.8	69.6	7:45	53.3	53.2	-
7:46	53.6	69.5	7:46	59.3	53.6	-
7:47	52.8	69.3	7:47	128.0	58.7	-
7:48	52.0	69.1	7:48	73.5	60.0	-
7:49	52.8	66.9	7:49	97.1	62.9	-
7:50	53.4	64.5	7:50	68.5	63.9	-
7:51	54.4	63.2	7:51	55.4	64.1	-
7:52	54.8	59.2	7:52	65.9	65.1	-
7:53	52.2	57.5	7:53	67.3	66.2	-
7:54	59.4	54.1	7:54	53.6	66.3	-
7:55	68.6	55.1	7:55	58.5	66.2	-
7:56	62.2	55.6	7:56	56.0	66.1	-
7:57	58.0	56.0	7:57	52.6	66.1	-
7:58	54.0	56.1	7:58	54.5	66.4	-
7:59	51.8	55.9	7:59	53.8	66.5	-
8:00	51.8	55.5	8:00	62.1	67.1	-
8:01	52.0	55.3	8:01	57.0	66.9	-
8:02	52.2	55.3	8:02	65.3	62.7	-
8:03	52.2	55.3	8:03	58.8	61.8	-
8:04	53.2	55.3	8:04	65.3	59.6	-
8:05	57.0	55.6	8:05	60.1	59.1	-
8:06	54.8	55.6	8:06	55.0	59.0	-
8:07	55.2	55.6	8:07	54.0	58.3	-
8:08	54.4	55.8	8:08	59.3	57.7	-
8:09	54.4	55.5	8:09	57.0	57.9	-
8:10	55.2	54.6	8:10	55.1	57.7	-

PARTICULATE DATA						
Upwind			Downwind			Exceeds Particulate Alarm Limit
Time	Concentration ($\mu\text{g}/\text{m}^3$)	15-Min Avg Concentration ($\mu\text{g}/\text{m}^3$)	Time	Concentration ($\mu\text{g}/\text{m}^3$)	15-Min Avg Concentration ($\mu\text{g}/\text{m}^3$)	
8:11	55.0	54.1	8:11	56.9	57.8	-
8:12	56.0	53.9	8:12	55.6	58.0	-
8:13	56.8	54.1	8:13	55.9	58.1	-
8:14	57.4	54.5	8:14	63.9	58.7	-
8:15	57.6	54.9	8:15	57.1	58.4	-
8:16	57.6	55.3	8:16	64.1	58.9	-
8:17	59.6	55.8	8:17	105.6	61.6	-
8:18	60.4	56.3	8:18	85.5	63.4	-
8:19	60.6	56.8	8:19	60.4	63.0	-
8:20	59.4	57.0	8:20	58.8	62.9	-
8:21	58.0	57.2	8:21	57.6	63.1	-
8:22	58.2	57.4	8:22	57.6	63.4	-
8:23	60.2	57.8	8:23	61.0	63.5	-
8:24	62.0	58.3	8:24	78.1	64.9	-
8:25	77.5	59.8	8:25	60.2	65.2	-
8:26	71.4	60.8	8:26	60.4	65.5	-
8:27	66.0	61.5	8:27	61.6	65.9	-
8:28	61.0	61.8	8:28	63.4	66.4	-
8:29	58.4	61.9	8:29	62.6	66.3	-
8:30	58.8	61.9	8:30	63.6	66.7	-
8:31	58.0	62.0	8:31	61.8	66.5	-
8:32	59.0	61.9	8:32	68.0	64.0	-
8:33	60.5	61.9	8:33	72.0	63.1	-
8:34	62.3	62.0	8:34	63.0	63.3	-
8:35	63.1	62.3	8:35	61.5	63.5	-
8:36	61.3	62.5	8:36	61.0	63.7	-
8:37	61.5	62.7	8:37	61.5	64.0	-
8:38	69.0	63.3	8:38	61.3	64.0	-
8:39	58.4	63.1	8:39	61.5	62.9	-
8:40	56.5	61.7	8:40	60.8	62.9	-
8:41	58.3	60.8	8:41	59.5	62.9	-
8:42	66.9	60.9	8:42	58.3	62.6	-
8:43	60.1	60.8	8:43	59.0	62.4	-
8:44	77.1	62.0	8:44	62.5	62.3	-
8:45	61.6	62.2	8:45	64.3	62.4	-
8:46	74.6	63.3	8:46	61.8	62.4	-
8:47	63.5	63.6	8:47	60.3	61.9	-
8:48	67.8	64.1	8:48	61.3	61.2	-
8:49	60.8	64.0	8:49	56.5	60.7	-
8:50	57.1	63.6	8:50	63.5	60.9	-
8:51	53.1	63.1	8:51	67.0	61.3	-
8:52	51.9	62.4	8:52	60.3	61.2	-
8:53	51.1	61.3	8:53	54.0	60.7	-
8:54	52.1	60.8	8:54	58.0	60.5	-
8:55	54.9	60.7	8:55	56.5	60.2	-
8:56	55.3	60.5	8:56	59.5	60.2	-
8:57	89.4	62.0	8:57	56.8	60.1	-
8:58	105.1	65.0	8:58	58.5	60.0	-
8:59	81.0	65.3	8:59	58.8	59.8	-
9:00	65.3	65.5	9:00	53.5	59.1	-

PARTICULATE DATA						
Upwind			Downwind			Exceeds Particulate Alarm Limit
Time	Concentration ($\mu\text{g}/\text{m}^3$)	15-Min Avg Concentration ($\mu\text{g}/\text{m}^3$)	Time	Concentration ($\mu\text{g}/\text{m}^3$)	15-Min Avg Concentration ($\mu\text{g}/\text{m}^3$)	
9:01	58.1	64.4	9:01	53.8	58.5	-
9:02	49.8	63.5	9:02	56.3	58.3	-
9:03	49.1	62.3	9:03	52.3	57.7	-
9:04	50.0	61.6	9:04	53.0	57.4	-
9:05	48.5	61.0	9:05	51.0	56.6	-
9:06	47.4	60.6	9:06	50.3	55.5	-
9:07	53.1	60.7	9:07	51.5	54.9	-
9:08	50.8	60.7	9:08	53.8	54.9	-
9:09	51.4	60.6	9:09	52.3	54.5	-
9:10	56.0	60.7	9:10	59.8	54.7	-
9:11	56.3	60.7	9:11	64.5	55.1	-
9:12	50.1	58.1	9:12	56.0	55.0	-
9:13	48.3	54.3	9:13	53.5	54.7	-
9:14	52.4	52.4	9:14	55.0	54.4	-
9:15	56.8	51.9	9:15	64.5	55.2	-
9:16	56.3	51.7	9:16	58.3	55.5	-
9:17	58.4	52.3	9:17	66.8	56.2	-
9:18	51.9	52.5	9:18	56.3	56.4	-
9:19	58.8	53.1	9:19	56.3	56.6	-
9:20	63.8	54.1	9:20	53.8	56.8	-
9:21	49.0	54.2	9:21	57.3	57.3	-
9:22	47.8	53.8	9:22	61.5	58.0	-
9:23	50.5	53.8	9:23	55.8	58.1	-
9:24	53.6	54.0	9:24	52.3	58.1	-
9:25	50.8	53.6	9:25	51.8	57.6	-
9:26	47.3	53.0	9:26	51.0	56.7	-
9:27	46.4	52.8	9:27	51.3	56.3	-
9:28	42.6	52.4	9:28	45.3	55.8	-
9:29	41.9	51.7	9:29	46.0	55.2	-
9:30	42.4	50.7	9:30	47.8	54.1	-
9:31	42.0	49.8	9:31	49.8	53.5	-
9:32	40.5	48.6	9:32	48.8	52.3	-
9:33	37.5	47.6	9:33	48.3	51.8	-
9:34	36.9	46.2	9:34	44.3	51.0	-
9:35	36.1	44.3	9:35	42.3	50.2	-
9:36	38.3	43.6	9:36	43.3	49.3	-
9:37	37.4	42.9	9:37	44.0	48.1	-
9:38	37.6	42.1	9:38	44.8	47.4	-
9:39	36.5	40.9	9:39	44.8	46.9	-
9:40	35.0	39.9	9:40	45.0	46.4	-
9:41	34.6	39.0	9:41	41.8	45.8	-
9:42	34.0	38.2	9:42	40.0	45.1	-
9:43	34.4	37.7	9:43	39.8	44.7	-
9:44	34.5	37.2	9:44	40.5	44.3	-
9:45	40.9	37.1	9:45	40.0	43.8	-
9:46	33.9	36.5	9:46	40.0	43.2	-
9:47	33.1	36.0	9:47	42.0	42.7	-
9:48	33.0	35.7	9:48	42.3	42.3	-
9:49	33.1	35.5	9:49	40.0	42.0	-
9:50	34.0	35.4	9:50	42.8	42.1	-

PARTICULATE DATA						
Upwind			Downwind			Exceeds Particulate Alarm Limit
Time	Concentration ($\mu\text{g}/\text{m}^3$)	15-Min Avg Concentration ($\mu\text{g}/\text{m}^3$)	Time	Concentration ($\mu\text{g}/\text{m}^3$)	15-Min Avg Concentration ($\mu\text{g}/\text{m}^3$)	
9:51	33.3	35.0	9:51	40.5	41.9	-
9:52	33.5	34.8	9:52	39.5	41.6	-
9:53	33.6	34.5	9:53	40.3	41.3	-
9:54	33.0	34.3	9:54	40.3	41.0	-
9:55	33.4	34.2	9:55	39.3	40.6	-
9:56	34.0	34.1	9:56	42.8	40.7	-
9:57	34.6	34.2	9:57	40.3	40.7	-
9:58	33.9	34.1	9:58	39.8	40.7	-
9:59	33.8	34.1	9:59	40.5	40.7	-
10:00	55.1	35.0	10:00	78.8	43.3	-
10:01	61.5	36.9	10:01	90.5	46.6	-
10:02	34.3	36.9	10:02	59.0	47.8	-
10:03	32.5	36.9	10:03	52.5	48.4	-
10:04	32.9	36.9	10:04	43.5	48.7	-
10:05	33.0	36.8	10:05	44.3	48.8	-
10:06	535.4	70.3	10:06	51.3	49.5	-
10:07	228.8	83.3	10:07	52.8	50.4	-
10:08	36.3	83.5	10:08	53.3	51.2	-
10:09	57.1	85.1	10:09	57.3	52.4	-
10:10	50.4	86.2	10:10	52.8	53.3	-
10:11	39.8	86.6	10:11	47.8	53.6	-
10:12	39.8	87.0	10:12	55.0	54.6	-
10:13	168.4	95.9	10:13	59.0	55.9	-
10:14	73.9	98.6	10:14	59.5	57.1	-
10:15	47.6	98.1	10:15	83.5	57.5	-
10:16	40.4	96.7	10:16	42.5	54.3	-
10:17	43.8	97.3	10:17	40.0	53.0	-
10:18	42.3	98.0	10:18	40.5	52.2	-
10:19	37.5	98.3	10:19	39.5	51.9	-
10:20	40.4	98.8	10:20	39.8	51.6	-
10:21	44.4	66.0	10:21	40.5	50.9	-
10:22	41.0	53.5	10:22	40.8	50.1	-
10:23	84.0	56.7	10:23	50.8	49.9	-
10:24	138.6	62.1	10:24	40.0	48.8	-
10:25	91.8	64.9	10:25	42.3	48.1	-
10:26	51.9	65.7	10:26	41.3	47.7	-
10:27	40.6	65.8	10:27	67.0	48.5	-
10:28	39.6	57.2	10:28	48.0	47.7	-
10:29	36.1	54.7	10:29	48.3	47.0	-
10:30	35.1	53.8	10:30	43.8	44.3	-
10:31	57.9	55.0	10:31	45.3	44.5	-
10:32	32.1	54.2	10:32	46.3	44.9	-
10:33	32.4	53.6	10:33	42.8	45.1	-
10:34	37.1	53.5	10:34	49.5	45.7	-
10:35	42.9	53.7	10:35	42.3	45.9	-
10:36	54.1	54.4	10:36	38.3	45.8	-
10:37	41.5	54.4	10:37	40.3	45.7	-
10:38	49.3	52.1	10:38	43.5	45.2	-
10:39	83.6	48.4	10:39	41.3	45.3	-
10:40	106.6	49.4	10:40	42.8	45.4	-

PARTICULATE DATA						
Upwind			Downwind			Exceeds Particulate Alarm Limit
Time	Concentration ($\mu\text{g}/\text{m}^3$)	15-Min Avg Concentration ($\mu\text{g}/\text{m}^3$)	Time	Concentration ($\mu\text{g}/\text{m}^3$)	15-Min Avg Concentration ($\mu\text{g}/\text{m}^3$)	
10:41	73.0	50.8	10:41	39.5	45.2	-
10:42	35.6	50.5	10:42	37.8	43.3	-
10:43	35.4	50.2	10:43	39.3	42.7	-
10:44	34.0	50.0	10:44	38.5	42.1	-
10:45	44.0	50.6	10:45	45.5	42.2	-
10:46	46.6	49.9	10:46	42.3	42.0	-
10:47	46.3	50.8	10:47	36.0	41.3	-
10:48	31.6	50.8	10:48	44.0	41.4	-
10:49	29.5	50.3	10:49	36.8	40.5	-
10:50	30.0	49.4	10:50	37.8	40.2	-
10:51	32.3	48.0	10:51	39.0	40.3	-
10:52	30.9	47.2	10:52	36.5	40.0	-
10:53	37.9	46.5	10:53	41.5	39.9	-
10:54	60.8	45.0	10:54	81.8	42.6	-
10:55	42.6	40.7	10:55	55.8	43.5	-
10:56	35.1	38.2	10:56	40.0	43.5	-
10:57	30.9	37.9	10:57	38.3	43.5	-
10:58	27.0	37.3	10:58	35.0	43.2	-
10:59	26.8	36.8	10:59	32.0	42.8	-
11:00	30.5	35.9	11:00	35.0	42.1	-
11:01	36.3	35.2	11:01	36.3	41.7	-
11:02	32.6	34.3	11:02	31.5	41.4	-
11:03	26.3	34.0	11:03	34.3	40.8	-
11:04	29.0	33.9	11:04	38.0	40.8	-
11:05	40.0	34.6	11:05	44.5	41.3	-
11:06	67.0	36.9	11:06	31.0	40.8	-
11:07	39.9	37.5	11:07	30.3	40.3	-
11:08	29.0	36.9	11:08	30.0	39.6	-
11:09	28.3	34.7	11:09	32.3	36.3	-
11:10	30.9	34.0	11:10	33.5	34.8	-
11:11	38.5	34.2	11:11	45.8	35.2	-
11:12	53.3	35.7	11:12	55.0	36.3	-
11:13	40.5	36.6	11:13	52.3	37.4	-
11:14	28.9	36.7	11:14	33.5	37.5	-
11:15	26.8	36.5	11:15	36.8	37.7	-
11:16	52.3	37.5	11:16	35.0	37.6	-
11:17	50.9	38.8	11:17	42.0	38.3	-
11:18	31.1	39.1	11:18	36.8	38.4	-
11:19	27.4	39.0	11:19	35.8	38.3	-
11:20	39.8	39.0	11:20	34.3	37.6	-
11:21	29.0	36.4	11:21	30.8	37.6	-
11:22	37.3	36.2	11:22	27.6	37.4	-
11:23	34.0	36.6	11:23	34.1	37.7	-
11:24	33.5	36.9	11:24	37.5	38.0	-
11:25	32.0	37.0	11:25	28.4	37.7	-
11:26	32.0	36.6	11:26	25.5	36.3	-
11:27	30.5	35.1	11:27	25.0	34.3	-
11:28	32.0	34.5	11:28	26.6	32.6	-
11:29	30.8	34.6	11:29	25.1	32.1	-
11:30	31.0	34.9	11:30	24.4	31.3	-

PARTICULATE DATA						
Upwind			Downwind			Exceeds Particulate Alarm Limit
Time	Concentration ($\mu\text{g}/\text{m}^3$)	15-Min Avg Concentration ($\mu\text{g}/\text{m}^3$)	Time	Concentration ($\mu\text{g}/\text{m}^3$)	15-Min Avg Concentration ($\mu\text{g}/\text{m}^3$)	
11:31	31.8	33.5	11:31	25.5	30.6	-
11:32	35.3	32.5	11:32	29.5	29.8	-
11:33	41.3	33.2	11:33	26.9	29.1	-
11:34	33.5	33.6	11:34	25.8	28.5	-
11:35	30.0	32.9	11:35	25.4	27.9	-
11:36	30.3	33.0	11:36	26.6	27.6	-
11:37	33.5	32.8	11:37	26.4	27.5	-
11:38	31.8	32.6	11:38	33.3	27.5	-
11:39	32.0	32.5	11:39	58.4	28.8	-
11:40	81.3	35.8	11:40	39.5	29.6	-
11:41	34.8	36.0	11:41	27.1	29.7	-
11:42	37.5	36.4	11:42	26.8	29.8	-
11:43	33.5	36.5	11:43	27.4	29.9	-
11:44	42.8	37.3	11:44	29.9	30.2	-
11:45	34.8	37.6	11:45	26.4	30.3	-
11:46	89.5	41.4	11:46	30.5	30.6	-
11:47	95.8	45.5	11:47	42.4	31.5	-
11:48	38.3	45.3	11:48	51.8	33.2	-
11:49	32.0	45.2	11:49	39.0	34.0	-
11:50	36.0	45.6	11:50	27.9	34.2	-
11:51	43.3	46.4	11:51	28.6	34.3	-
11:52	36.0	46.6	11:52	26.4	34.3	-
11:53	31.0	46.6	11:53	25.9	33.9	-
11:54	34.0	46.7	11:54	31.4	32.1	-
11:55	40.8	44.0	11:55	34.5	31.7	-
11:56	33.5	43.9	11:56	28.1	31.8	-
11:57	41.0	44.1	11:57	29.6	32.0	-
11:58	34.5	44.2	11:58	29.6	32.1	-
11:59	31.8	43.5	11:59	36.1	32.5	-
12:00	40.5	43.9	12:00	36.3	33.2	-
12:01	37.8	40.4	12:01	25.3	32.9	-
12:02	32.3	36.2	12:02	24.9	31.7	-
12:03	35.5	36.0	12:03	27.5	30.1	-
12:04	41.5	36.6	12:04	30.3	29.5	-
12:05	53.5	37.8	12:05	39.5	30.3	-
12:06	32.8	37.1	12:06	25.9	30.1	-
12:07	28.8	36.6	12:07	25.9	30.0	-
12:08	30.3	36.6	12:08	25.0	30.0	-
12:09	31.8	36.4	12:09	25.0	29.6	-
12:10	31.3	35.8	12:10	26.0	29.0	-
12:11	31.3	35.6	12:11	30.5	29.2	-
12:12	29.3	34.8	12:12	28.1	29.1	-
12:13	28.3	34.4	12:13	26.9	28.9	-
12:14	29.5	34.3	12:14	25.4	28.2	-
12:15	30.3	33.6	12:15	30.4	27.8	-
12:16	31.8	33.2	12:16	35.3	28.4	-
12:17	29.3	33.0	12:17	29.1	28.7	-
12:18	30.8	32.7	12:18	27.6	28.7	-
12:19	37.0	32.4	12:19	33.1	28.9	-
12:20	36.5	31.2	12:20	83.4	31.8	-

PARTICULATE DATA						
Upwind			Downwind			Exceeds Particulate Alarm Limit
Time	Concentration (ug/m ³)	15-Min Avg Concentration (ug/m ³)	Time	Concentration (ug/m ³)	15-Min Avg Concentration (ug/m ³)	
12:21	31.5	31.2	12:21	104.3	37.1	-
12:22	30.0	31.2	12:22	45.5	38.4	-
12:23	26.3	31.0	12:23	35.0	39.0	-
12:24	29.0	30.8	12:24	26.1	39.1	-
12:25	29.3	30.7	12:25	25.0	39.0	-
12:26	32.8	30.8	12:26	26.8	38.8	-
12:27	34.0	31.1	12:27	27.5	38.8	-
12:28	30.5	31.2	12:28	29.0	38.9	-
12:29	34.3	31.5	12:29	28.0	39.1	-
12:30	41.8	32.3	12:30	26.4	38.8	-
12:31	42.3	33.0	12:31	25.6	38.2	-
12:32	32.5	33.2	12:32	25.3	37.9	-
12:33	29.0	33.1	12:33	25.4	37.8	-
12:34	30.0	32.6	12:34	24.9	37.2	-
12:35	41.5	33.0	12:35	27.1	33.5	-
12:36	31.0	32.9	12:36	24.6	28.1	-
12:37	31.3	33.0	12:37	24.6	26.8	-
12:38	31.5	33.4	12:38	24.5	26.1	-
12:39	31.0	33.5	12:39	24.9	26.0	-
12:40	35.0	33.9	12:40	25.0	26.0	-
12:41	30.8	33.8	12:41	24.3	25.8	-
12:42	28.5	33.4	12:42	24.5	25.6	-
12:43	28.8	33.3	12:43	29.3	25.6	-
12:44	42.3	33.8	12:44	31.8	25.9	-
12:45	62.8	35.2	12:45	30.0	26.1	-
12:46	63.8	36.6	12:46	31.5	26.5	-
12:47	35.5	36.8	12:47	28.9	26.7	-
12:48	40.0	37.6	12:48	28.3	26.9	-
12:49	53.8	39.2	12:49	32.6	27.5	-
12:50	38.3	38.9	12:50	36.1	28.1	-
12:51	36.3	39.3	12:51	28.9	28.3	-
12:52	33.0	39.4	12:52	30.6	28.7	-
12:53	34.3	39.6	12:53	30.9	29.2	-
12:54	38.8	40.1	12:54	38.0	30.0	-
12:55	37.8	40.3	12:55	32.8	30.6	-
12:56	39.5	40.9	12:56	29.0	30.9	-
12:57	34.8	41.3	12:57	29.4	31.2	-
12:58	33.0	41.6	12:58	30.0	31.2	-
12:59	32.5	40.9	12:59	30.0	31.1	-
13:00	33.0	38.9	13:00	33.8	31.4	-
13:01	33.8	36.9	13:01	42.3	32.1	-
13:02	42.5	37.4	13:02	40.3	32.9	-
13:03	49.3	38.0	13:03	42.6	33.8	-
13:04	50.3	37.8	13:04	42.9	34.5	-
13:05	55.3	38.9	13:05	43.0	35.0	-
13:06	50.8	39.9	13:06	42.3	35.8	-
13:07	49.0	41.0	13:07	48.3	37.0	-
13:08	47.0	41.8	13:08	69.8	39.6	-
13:09	48.5	42.5	13:09	74.8	42.1	-
13:10	57.0	43.7	13:10	50.6	43.3	-

PARTICULATE DATA						
Upwind			Downwind			Exceeds Particulate Alarm Limit
Time	Concentration (ug/m ³)	15-Min Avg Concentration (ug/m ³)	Time	Concentration (ug/m ³)	15-Min Avg Concentration (ug/m ³)	
13:11	51.5	44.5	13:11	66.0	45.7	-
13:12	53.0	45.8	13:12	48.0	47.0	-
13:13	52.3	47.0	13:13	47.6	48.1	-
13:14	52.3	48.4	13:14	47.8	49.3	-
13:15	53.8	49.7	13:15	44.8	50.1	-
13:16	64.5	51.8	13:16	42.9	50.1	-
13:17	49.0	52.2	13:17	40.1	50.1	-
13:18	47.8	52.1	13:18	40.3	49.9	-
13:19	50.0	52.1	13:19	42.0	49.9	-
13:20	49.0	51.7	13:20	42.3	49.8	-
13:21	52.0	51.8	13:21	44.0	49.9	-
13:22	51.3	51.9	13:22	42.9	49.6	-
13:23	58.8	52.7	13:23	43.8	47.8	-
13:24	51.8	52.9	13:24	42.8	45.7	-
13:25	51.5	52.6	13:25	42.9	45.2	-
13:26	50.5	52.5	13:26	43.4	43.7	-
13:27	51.0	52.4	13:27	46.4	43.6	-
13:28	54.0	52.5	13:28	61.1	44.5	-
13:29	53.8	52.6	13:29	47.5	44.5	-
13:30	48.8	52.2	13:30	49.4	44.8	-
13:31	48.0	51.1	13:31	42.5	44.7	-
13:32	48.3	51.1	13:32	43.3	45.0	-
13:33	48.8	51.2	13:33	42.6	45.1	-
13:34	50.3	51.2	13:34	45.5	45.3	-
13:35	49.8	51.2	13:35	45.1	45.5	-
13:36	50.0	51.1	13:36	42.8	45.5	-
13:37	50.0	51.0	13:37	41.4	45.4	-
13:38	56.5	50.9	13:38	41.1	45.2	-
13:39	53.5	51.0	13:39	43.4	45.2	-
13:40	55.5	51.2	13:40	42.4	45.2	-
13:41	52.0	51.3	13:41	40.8	45.0	-
13:42	83.3	53.5	13:42	42.5	44.8	-
13:43	81.8	55.3	13:43	41.4	43.4	-
13:44	58.3	55.6	13:44	42.5	43.1	-
13:45	50.5	55.8	13:45	41.0	42.5	-
13:46	58.8	56.5	13:46	44.0	42.6	-
13:47	54.8	56.9	13:47	57.1	43.6	-
13:48	50.8	57.0	13:48	61.5	44.8	-
13:49	50.3	57.0	13:49	51.4	45.2	-
13:50	50.5	57.1	13:50	49.8	45.5	-
13:51	55.0	57.4	13:51	45.4	45.7	-
13:52	57.0	57.9	13:52	45.1	46.0	-
13:53	54.3	57.7	13:53	42.8	46.1	-
13:54	55.0	57.8	13:54	46.5	46.3	-
13:55	56.3	57.9	13:55	47.0	46.6	-
13:56	51.3	57.8	13:56	45.1	46.9	-
13:57	52.0	55.8	13:57	43.3	46.9	-
13:58	56.0	54.0	13:58	44.6	47.1	-
13:59	50.8	53.5	13:59	42.8	47.2	-
14:00	54.5	53.8	14:00	43.4	47.3	-

PARTICULATE DATA						
Upwind			Downwind			Exceeds Particulate Alarm Limit
Time	Concentration ($\mu\text{g}/\text{m}^3$)	15-Min Avg Concentration ($\mu\text{g}/\text{m}^3$)	Time	Concentration ($\mu\text{g}/\text{m}^3$)	15-Min Avg Concentration ($\mu\text{g}/\text{m}^3$)	
14:01	53.5	53.5	14:01	41.1	47.1	-
14:02	51.5	53.2	14:02	43.1	46.2	-
14:03	51.5	53.3	14:03	42.5	44.9	-
14:04	52.3	53.4	14:04	42.6	44.3	-
14:05	49.5	53.4	14:05	41.1	43.8	-
14:06	49.3	53.0	14:06	41.4	43.5	-
14:07	49.5	52.5	14:07	40.8	43.2	-
14:08	65.8	53.2	14:08	39.3	43.0	-
14:09	58.0	53.4	14:09	42.9	42.7	-
14:10	48.0	52.9	14:10	40.6	42.3	-
14:11	55.3	53.2	14:11	41.5	42.1	-
14:12	49.8	53.0	14:12	39.9	41.8	-
14:13	53.3	52.8	14:13	39.3	41.5	-
14:14	67.5	53.9	14:14	40.5	41.3	-
14:15	57.8	54.2	14:15	42.5	41.3	-
14:16	52.8	54.1	14:16	41.8	41.3	-
14:17	49.3	54.0	14:17	39.5	41.1	-
14:18	48.0	53.7	14:18	39.1	40.8	-
14:19	49.8	53.6	14:19	40.6	40.7	-
14:20	47.8	53.4	14:20	38.4	40.5	-
14:21	49.8	53.5	14:21	38.6	40.3	-
14:22	51.0	53.6	14:22	42.8	40.5	-
14:23	45.5	52.2	14:23	41.1	40.6	-
14:24	49.5	51.7	14:24	41.5	40.5	-
14:25	49.5	51.8	14:25	40.6	40.5	-
14:26	52.8	51.6	14:26	46.5	40.8	-
14:27	52.0	51.7	14:27	43.4	41.1	-
14:28	52.0	51.7	14:28	47.5	41.6	-
14:29	56.8	50.9	14:29	43.6	41.8	-
14:30	49.8	50.4	14:30	46.0	42.1	-
14:31	48.8	50.1	14:31	39.5	41.9	-
14:32	47.5	50.0	14:32	37.1	41.8	-
14:33	53.0	50.4	14:33	37.4	41.6	-
14:34	57.3	50.9	14:34	39.4	41.6	-
14:35	70.0	52.3	14:35	41.8	41.8	-
14:36	52.0	52.5	14:36	41.3	42.0	-
14:37	46.8	52.2	14:37	42.5	41.9	-
14:38	47.5	52.3	14:38	43.1	42.1	-
14:39	46.5	52.1	14:39	41.6	42.1	-
14:40	46.0	51.9	14:40	37.6	41.9	-
14:41	45.5	51.4	14:41	40.6	41.5	-
14:42	44.8	50.9	14:42	48.3	41.8	-
14:43	47.5	50.6	14:43	73.4	43.5	-
14:44	49.8	50.2	14:44	57.9	44.5	-
14:45	51.0	50.3	14:45	40.1	44.1	-
14:46	92.3	53.2	14:46	40.8	44.2	-
14:47	72.8	54.8	14:47	58.3	45.6	-
14:48	50.5	54.7	14:48	48.9	46.4	-
14:49	50.3	54.2	14:49	39.5	46.4	-
14:50	50.3	52.9	14:50	35.5	46.0	-

PARTICULATE DATA						
Upwind			Downwind			Exceeds Particulate Alarm Limit
Time	Concentration (ug/m ³)	15-Min Avg Concentration (ug/m ³)	Time	Concentration (ug/m ³)	15-Min Avg Concentration (ug/m ³)	
14:51	52.8	52.9	14:51	36.5	45.6	-
14:52	45.0	52.8	14:52	36.0	45.2	-
14:53	46.5	52.8	14:53	36.0	44.7	-
14:54	45.0	52.7	14:54	35.1	44.3	-
14:55	43.5	52.5	14:55	35.8	44.2	-
14:56	42.5	52.3	14:56	37.9	44.0	-
14:57	46.3	52.4	14:57	45.1	43.8	-
14:58	50.3	52.6	14:58	50.8	42.3	-
14:59	69.8	53.9	14:59	34.6	40.7	-
15:00	42.8	53.4	15:00	37.3	40.5	-
15:01	42.5	50.0	15:01	33.6	40.1	-
15:02	47.3	48.3	15:02	33.8	38.4	-
15:03	42.0	47.8	15:03	33.9	37.4	-
15:04	43.3	47.3	15:04	32.3	36.9	-
15:05	45.0	47.0	15:05	31.9	36.7	-
15:06	40.8	46.2	15:06	32.1	36.4	-
15:07	43.0	46.0	15:07	32.8	36.2	-
15:08	42.5	45.8	15:08	33.0	36.0	-
15:09	43.8	45.7	15:09	32.6	35.8	-
15:10	40.3	45.5	15:10	32.1	35.6	-
15:11	40.5	45.3	15:11	31.3	35.1	-
15:12	43.0	45.1	15:12	31.4	34.2	-
15:13	43.5	44.7	15:13	32.5	33.0	-
15:14	44.3	43.0	15:14	34.6	33.0	-
15:15	42.0	42.9	15:15	36.3	32.9	-
15:16	43.5	43.0	15:16	37.1	33.2	-
15:17	44.0	42.8	15:17	32.6	33.1	-
15:18	43.3	42.8	15:18	33.0	33.0	-
15:19	44.8	42.9	15:19	34.0	33.2	-
15:20	43.5	42.8	15:20	34.4	33.3	-
15:21	43.5	43.0	15:21	36.9	33.6	-
15:22	40.3	42.8	15:22	32.1	33.6	-
15:23	41.8	42.8	15:23	32.5	33.6	-
15:24	41.8	42.7	15:24	33.5	33.6	-
15:25	41.5	42.7	15:25	33.1	33.7	-
15:26	42.5	42.9	15:26	33.0	33.8	-
15:27	45.5	43.0	15:27	33.0	33.9	-
15:28	43.3	43.0	15:28	32.3	33.9	-
15:29	42.8	42.9	15:29	32.0	33.7	-
15:30	43.5	43.0	15:30	30.6	33.3	-
15:31	37.3	42.6	15:31	29.5	32.8	-
15:32	36.8	42.1	15:32	29.9	32.7	-
15:33	39.0	41.8	15:33	29.1	32.4	-
15:34	40.3	41.5	15:34	28.8	32.0	-
15:35	39.0	41.2	15:35	29.6	31.7	-
15:36	43.5	41.2	15:36	30.5	31.3	-
15:37	40.8	41.3	15:37	36.9	31.6	-
15:38	46.0	41.6	15:38	35.1	31.8	-
15:39	42.0	41.6	15:39	33.8	31.8	-
15:40	39.8	41.5	15:40	42.6	32.4	-

PARTICULATE DATA						
Upwind			Downwind			Exceeds Particulate Alarm Limit
Time	Concentration (ug/m ³)	15-Min Avg Concentration (ug/m ³)	Time	Concentration (ug/m ³)	15-Min Avg Concentration (ug/m ³)	
15:41	40.0	41.3	15:41	31.4	32.3	-
15:42	38.0	40.8	15:42	30.0	32.1	-
15:43	37.8	40.4	15:43	29.6	32.0	-
15:44	44.3	40.5	15:44	29.0	31.8	-
15:45	48.0	40.8	15:45	30.8	31.8	-
15:46	39.0	40.9	15:46	30.5	31.8	-
15:47	46.0	41.6	15:47	30.6	31.9	-
15:48	42.0	41.8	15:48	34.6	32.3	-
15:49	42.5	41.9	15:49	32.5	32.5	-
15:50	39.0	41.9	15:50	33.8	32.8	-
15:51	40.5	41.7	15:51	38.8	33.3	-
15:52	40.8	41.7	15:52	33.1	33.1	-
15:53	41.8	41.4	15:53	29.1	32.7	-
15:54	42.5	41.5	15:54	27.6	32.3	-
15:55	46.0	41.9	15:55	28.0	31.3	-
15:56	38.0	41.7	15:56	32.5	31.4	-
15:57	37.8	41.7	15:57	36.8	31.8	-
15:58	47.8	42.4	15:58	42.6	32.7	-
15:59	44.5	42.4	15:59	43.3	33.6	-
16:00	47.5	42.4	16:00	43.3	34.5	-
16:01	43.0	42.6	16:01	30.3	34.5	-
16:02	39.3	42.2	16:02	29.5	34.4	-
16:03	40.0	42.1	16:03	29.8	34.1	-
16:04	39.5	41.9	16:04	29.3	33.8	-
16:05	37.5	41.8	16:05	33.0	33.8	-
16:06	35.5	41.4	16:06	66.3	35.6	-
16:07	38.3	41.3	16:07	50.1	36.8	-
16:08	46.5	41.6	16:08	34.6	37.1	-
16:09	36.3	41.2	16:09	29.9	37.3	-
16:10	44.0	41.0	16:10	35.6	37.8	-
16:11	50.8	41.9	16:11	37.4	38.1	-
16:12	40.3	42.0	16:12	39.8	38.3	-
16:13	40.0	41.5	16:13	34.6	37.8	-
16:14	35.0	40.9	16:14	52.6	38.4	-
16:15	35.3	40.1	16:15	45.0	38.5	-
16:16	33.8	39.5	16:16	28.4	38.4	-
16:17	34.0	39.1	16:17	27.8	38.3	-
16:18	33.3	38.7	16:18	26.1	38.0	-
16:19	34.3	38.3	16:19	29.8	38.1	-
16:20	44.8	38.8	16:20	35.3	38.2	-
16:21	34.8	38.7	16:21	33.8	36.0	-
16:22	33.3	38.4	16:22	30.4	34.7	-
16:23	32.0	37.4	16:23	39.1	35.0	-
16:24	37.3	37.5	16:24	42.4	35.9	-
16:25	36.8	37.0	16:25	34.6	35.8	-
16:26	38.0	36.2	16:26	32.8	35.5	-
16:27	36.5	35.9	16:27	24.8	34.5	-
16:28	29.3	35.2	16:28	23.5	33.7	-
16:29	29.0	34.8	16:29	23.8	31.8	-
16:30	29.0	34.4	16:30	22.8	30.3	-

PARTICULATE DATA						
Upwind			Downwind			Exceeds Particulate Alarm Limit
Time	Concentration ($\mu\text{g}/\text{m}^3$)	15-Min Avg Concentration ($\mu\text{g}/\text{m}^3$)	Time	Concentration ($\mu\text{g}/\text{m}^3$)	15-Min Avg Concentration ($\mu\text{g}/\text{m}^3$)	
16:31	28.0	34.0	16:31	24.5	30.1	-
16:32	27.5	33.6	16:32	22.4	29.7	-
16:33	28.0	33.2	16:33	23.9	29.6	-
16:34	28.0	32.8	16:34	22.9	29.1	-
16:35	28.3	31.7	16:35	21.3	28.2	-
16:36	27.8	31.2	16:36	21.0	27.3	-
16:37	29.5	31.0	16:37	21.8	26.8	-
16:38	30.5	30.9	16:38	20.8	25.5	-
16:39	28.0	30.3	16:39	20.0	24.0	-
16:40	25.5	29.5	16:40	19.4	23.0	-
16:41	28.5	28.9	16:41	20.5	22.2	-
16:42	28.8	28.4	16:42	21.5	22.0	-
16:43	31.8	28.5	16:43	20.0	21.8	-
16:44	29.0	28.5	16:44	20.0	21.5	-
16:45	27.8	28.5	16:45	19.4	21.3	-
16:46	30.0	28.6	16:46	19.0	20.9	-
16:47	36.0	29.2	16:47	19.0	20.7	-
16:48	36.0	29.7	16:48	21.3	20.5	-
16:49	27.5	29.7	16:49	23.6	20.6	-
16:50	27.0	29.6	16:50	20.0	20.5	-
16:51	27.0	29.5	16:51	19.0	20.3	-
16:52	26.0	29.3	16:52	20.1	20.2	-
16:53	29.0	29.2	16:53	22.5	20.4	-
16:54	28.5	29.2	16:54	34.4	21.3	-
16:55	29.5	29.5	16:55	25.8	21.7	-
16:56	28.3	29.5	16:56	21.4	21.8	-
16:57	27.3	29.4	16:57	21.8	21.8	-
16:58	25.8	29.0	16:58	21.0	21.9	-
16:59	27.5	28.9	16:59	21.9	22.0	-
17:00	29.5	29.0	17:00	20.3	22.1	-
17:01	31.3	29.1	17:01	19.5	22.1	-
17:02	33.3	28.9	17:02	19.0	22.1	-
17:03	27.8	28.3	17:03	19.0	21.9	-
17:04	26.0	28.2	17:04	18.3	21.6	-
17:05	26.0	28.2	17:05	18.7	21.5	-
17:06	25.0	28.0	17:06	20.1	21.6	-
17:07	27.3	28.1	17:07	17.8	21.4	-
17:08	27.3	28.0	17:08	17.6	21.1	-
17:09	26.5	27.9	17:09	18.0	20.0	-
17:10	28.5	27.8	17:10	18.0	19.5	-
17:11	31.8	28.0	17:11	17.3	19.2	-
17:12	25.0	27.9	17:12	17.0	18.9	-
17:13	25.0	27.8	17:13	17.0	18.6	-
17:14	25.0	27.7	17:14	17.0	18.3	-
17:15	26.3	27.5	17:15	17.6	18.1	-
17:16	26.5	27.1	17:16	17.9	18.0	-
17:17	27.3	26.7	17:17	18.1	18.0	-
17:18	28.5	26.8	17:18	19.0	18.0	-
17:19	28.8	27.0	17:19	19.2	18.0	-
17:20	28.3	27.1	17:20	19.1	18.0	-

PARTICULATE DATA						
Upwind			Downwind			Exceeds Particulate Alarm Limit
Time	Concentration ($\mu\text{g}/\text{m}^3$)	15-Min Avg Concentration ($\mu\text{g}/\text{m}^3$)	Time	Concentration ($\mu\text{g}/\text{m}^3$)	15-Min Avg Concentration ($\mu\text{g}/\text{m}^3$)	
17:21	26.0	27.2	17:21	18.4	17.9	-
17:22	26.8	27.2	17:22	17.2	17.9	-
17:23	29.3	27.3	17:23	21.6	18.2	-
17:24	28.3	27.4	17:24	35.0	19.3	-
17:25	27.3	27.3	17:25	22.2	19.6	-
17:26	26.0	26.9	17:26	18.6	19.7	-
17:27	26.8	27.1	17:27	17.3	19.7	-
17:28	26.0	27.1	17:28	17.0	19.7	-
17:29	26.8	27.2	17:29	17.0	19.7	-
17:30	27.5	27.3	17:30	17.9	19.7	-
17:31	26.0	27.3	17:31	17.3	19.7	-
17:32	26.3	27.2	17:32	17.4	19.6	-
17:33	27.5	27.2	17:33	18.1	19.6	-
17:34	26.3	27.0	17:34	19.6	19.6	-
17:35	26.0	26.8	17:35	19.4	19.6	-
17:36	27.3	26.9	17:36	19.7	19.7	-
17:37	25.8	26.9	17:37	18.1	19.7	-
17:38	24.5	26.5	17:38	18.0	19.5	-
17:39	23.8	26.2	17:39	19.6	18.5	-
17:40	26.0	26.2	17:40	17.9	18.2	-
17:41	24.8	26.1	17:41	17.6	18.1	-
17:42	23.5	25.9	17:42	16.0	18.0	-
17:43	23.3	25.7	17:43	16.2	18.0	-
17:44	23.8	25.5	17:44	16.9	18.0	-
17:45	22.8	25.2	17:45	17.1	17.9	-
17:46	21.8	24.9	17:46	16.6	17.9	-
17:47	22.3	24.6	17:47	23.7	18.3	-
17:48	24.0	24.4	17:48	23.4	18.6	-
17:49	24.3	24.2	17:49	17.9	18.5	-
17:50	22.0	24.0	17:50	15.0	18.2	-
17:51	22.5	23.7	17:51	14.8	17.9	-
17:52	22.8	23.5	17:52	16.7	17.8	-
17:53	21.5	23.3	17:53	14.2	17.6	-
17:54	21.3	23.1	17:54	13.0	17.1	-
17:55	20.3	22.7	17:55	12.5	16.8	-
17:56	21.3	22.5	17:56	12.5	16.4	-

Friday, June 2, 2023

Number of Instances Where Downwind VOCs Exceeds Upwind VOCs + 5 = 0

Number of Comparable Data Points = 616

Start Time: 7:26

End Time: 17:56

PID DATA

Upwind			Downwind			Exceeds VOC Alarm Limit
Time	Concentration (ppm)	15-Min Avg Concentration (ppm)	Time	Concentration (ppm)	15-Min Avg Concentration (ppm)	
7:26	0.0	-	7:26	0.0	-	-
7:27	0.0	-	7:27	0.0	-	-
7:28	0.0	-	7:28	0.0	-	-
7:29	0.0	-	7:29	0.0	-	-
7:30	0.0	-	7:30	0.0	-	-
7:31	0.0	-	7:31	0.0	-	-
7:32	0.0	-	7:32	0.0	-	-
7:33	0.0	-	7:33	0.0	-	-
7:34	0.0	-	7:34	0.0	-	-
7:35	0.0	-	7:35	0.0	-	-
7:36	0.0	-	7:36	0.0	-	-
7:37	0.0	-	7:37	0.0	-	-
7:38	0.0	-	7:38	0.0	-	-
7:39	0.0	-	7:39	0.0	-	-
7:40	0.0	-	7:40	0.0	-	-
7:41	0.0	0.0	7:41	0.0	0.0	-
7:42	0.0	0.0	7:42	0.0	0.0	-
7:43	0.0	0.0	7:43	0.0	0.0	-
7:44	0.0	0.0	7:44	0.0	0.0	-
7:45	0.0	0.0	7:45	0.0	0.0	-
7:46	0.0	0.0	7:46	0.0	0.0	-
7:47	0.0	0.0	7:47	0.0	0.0	-
7:48	0.0	0.0	7:48	0.0	0.0	-
7:49	0.0	0.0	7:49	0.0	0.0	-
7:50	0.0	0.0	7:50	0.0	0.0	-
7:51	0.0	0.0	7:51	0.0	0.0	-
7:52	0.0	0.0	7:52	0.0	0.0	-
7:53	0.0	0.0	7:53	0.0	0.0	-
7:54	0.0	0.0	7:54	0.0	0.0	-
7:55	0.0	0.0	7:55	0.0	0.0	-
7:56	0.0	0.0	7:56	0.0	0.0	-
7:57	0.0	0.0	7:57	0.0	0.0	-
7:58	0.0	0.0	7:58	0.0	0.0	-
7:59	0.0	0.0	7:59	0.0	0.0	-
8:00	0.0	0.0	8:00	0.0	0.0	-
8:01	0.0	0.0	8:01	0.0	0.0	-
8:02	0.0	0.0	8:02	0.0	0.0	-
8:03	0.0	0.0	8:03	0.0	0.0	-
8:04	0.0	0.0	8:04	0.0	0.0	-
8:05	0.0	0.0	8:05	0.0	0.0	-
8:06	0.0	0.0	8:06	0.0	0.0	-
8:07	0.0	0.0	8:07	0.0	0.0	-
8:08	0.0	0.0	8:08	0.0	0.0	-
8:09	0.0	0.0	8:09	0.0	0.0	-
8:10	0.0	0.0	8:10	0.0	0.0	-

PID DATA						
Upwind			Downwind			Exceeds VOC Alarm Limit
Time	Concentration (ppm)	15-Min Avg Concentration (ppm)	Time	Concentration (ppm)	15-Min Avg Concentration (ppm)	
8:11	0.0	0.0	8:11	0.0	0.0	-
8:12	0.0	0.0	8:12	0.0	0.0	-
8:13	0.0	0.0	8:13	0.0	0.0	-
8:14	0.0	0.0	8:14	0.0	0.0	-
8:15	0.0	0.0	8:15	0.0	0.0	-
8:16	0.0	0.0	8:16	0.0	0.0	-
8:17	0.0	0.0	8:17	0.0	0.0	-
8:18	0.0	0.0	8:18	0.0	0.0	-
8:19	0.0	0.0	8:19	0.0	0.0	-
8:20	0.0	0.0	8:20	0.0	0.0	-
8:21	0.0	0.0	8:21	0.0	0.0	-
8:22	0.0	0.0	8:22	0.0	0.0	-
8:23	0.0	0.0	8:23	0.0	0.0	-
8:24	0.0	0.0	8:24	0.0	0.0	-
8:25	0.0	0.0	8:25	0.0	0.0	-
8:26	0.0	0.0	8:26	0.0	0.0	-
8:27	0.0	0.0	8:27	0.0	0.0	-
8:28	0.0	0.0	8:28	0.0	0.0	-
8:29	0.0	0.0	8:29	0.0	0.0	-
8:30	0.0	0.0	8:30	0.0	0.0	-
8:31	0.0	0.0	8:31	0.0	0.0	-
8:32	0.0	0.0	8:32	0.0	0.0	-
8:33	0.0	0.0	8:33	0.0	0.0	-
8:34	0.0	0.0	8:34	0.0	0.0	-
8:35	0.0	0.0	8:35	0.0	0.0	-
8:36	0.0	0.0	8:36	0.0	0.0	-
8:37	0.0	0.0	8:37	0.0	0.0	-
8:38	0.0	0.0	8:38	0.0	0.0	-
8:39	0.0	0.0	8:39	0.0	0.0	-
8:40	0.0	0.0	8:40	0.0	0.0	-
8:41	0.0	0.0	8:41	0.0	0.0	-
8:42	0.0	0.0	8:42	0.0	0.0	-
8:43	0.0	0.0	8:43	0.0	0.0	-
8:44	0.0	0.0	8:44	0.0	0.0	-
8:45	0.0	0.0	8:45	0.0	0.0	-
8:46	0.0	0.0	8:46	0.0	0.0	-
8:47	0.0	0.0	8:47	0.0	0.0	-
8:48	0.0	0.0	8:48	0.0	0.0	-
8:49	0.0	0.0	8:49	0.0	0.0	-
8:50	0.0	0.0	8:50	0.0	0.0	-
8:51	0.0	0.0	8:51	0.0	0.0	-
8:52	0.0	0.0	8:52	0.0	0.0	-
8:53	0.0	0.0	8:53	0.0	0.0	-
8:54	0.0	0.0	8:54	0.0	0.0	-
8:55	0.0	0.0	8:55	0.0	0.0	-
8:56	0.0	0.0	8:56	0.0	0.0	-
8:57	0.0	0.0	8:57	0.0	0.0	-
8:58	0.0	0.0	8:58	0.0	0.0	-
8:59	0.0	0.0	8:59	0.0	0.0	-
9:00	0.0	0.0	9:00	0.0	0.0	-

PID DATA						
Upwind			Downwind			Exceeds VOC Alarm Limit
Time	Concentration (ppm)	15-Min Avg Concentration (ppm)	Time	Concentration (ppm)	15-Min Avg Concentration (ppm)	
9:01	0.0	0.0	9:01	0.0	0.0	-
9:02	0.0	0.0	9:02	0.0	0.0	-
9:03	0.0	0.0	9:03	0.0	0.0	-
9:04	0.0	0.0	9:04	0.0	0.0	-
9:05	0.0	0.0	9:05	0.0	0.0	-
9:06	0.0	0.0	9:06	0.0	0.0	-
9:07	0.0	0.0	9:07	0.0	0.0	-
9:08	0.0	0.0	9:08	0.0	0.0	-
9:09	0.0	0.0	9:09	0.0	0.0	-
9:10	0.0	0.0	9:10	0.0	0.0	-
9:11	0.0	0.0	9:11	0.0	0.0	-
9:12	0.0	0.0	9:12	0.0	0.0	-
9:13	0.0	0.0	9:13	0.0	0.0	-
9:14	0.0	0.0	9:14	0.0	0.0	-
9:15	0.0	0.0	9:15	0.0	0.0	-
9:16	0.0	0.0	9:16	0.0	0.0	-
9:17	0.0	0.0	9:17	0.0	0.0	-
9:18	0.0	0.0	9:18	0.0	0.0	-
9:19	0.0	0.0	9:19	0.0	0.0	-
9:20	0.0	0.0	9:20	0.0	0.0	-
9:21	0.0	0.0	9:21	0.0	0.0	-
9:22	0.0	0.0	9:22	0.0	0.0	-
9:23	0.0	0.0	9:23	0.0	0.0	-
9:24	0.0	0.0	9:24	0.0	0.0	-
9:25	0.0	0.0	9:25	0.0	0.0	-
9:26	0.0	0.0	9:26	0.0	0.0	-
9:27	0.0	0.0	9:27	0.0	0.0	-
9:28	0.0	0.0	9:28	0.0	0.0	-
9:29	0.0	0.0	9:29	0.0	0.0	-
9:30	0.0	0.0	9:30	0.0	0.0	-
9:31	0.0	0.0	9:31	0.0	0.0	-
9:32	0.0	0.0	9:32	0.0	0.0	-
9:33	0.0	0.0	9:33	0.0	0.0	-
9:34	0.0	0.0	9:34	0.0	0.0	-
9:35	0.0	0.0	9:35	0.0	0.0	-
9:36	0.0	0.0	9:36	0.0	0.0	-
9:37	0.0	0.0	9:37	0.0	0.0	-
9:38	0.0	0.0	9:38	0.0	0.0	-
9:39	0.0	0.0	9:39	0.0	0.0	-
9:40	0.0	0.0	9:40	0.0	0.0	-
9:41	0.0	0.0	9:41	0.0	0.0	-
9:42	0.0	0.0	9:42	0.0	0.0	-
9:43	0.0	0.0	9:43	0.0	0.0	-
9:44	0.0	0.0	9:44	0.0	0.0	-
9:45	0.0	0.0	9:45	0.0	0.0	-
9:46	0.0	0.0	9:46	0.0	0.0	-
9:47	0.0	0.0	9:47	0.0	0.0	-
9:48	0.0	0.0	9:48	0.0	0.0	-
9:49	0.0	0.0	9:49	0.0	0.0	-
9:50	0.0	0.0	9:50	0.0	0.0	-

PID DATA						
Upwind			Downwind			Exceeds VOC Alarm Limit
Time	Concentration (ppm)	15-Min Avg Concentration (ppm)	Time	Concentration (ppm)	15-Min Avg Concentration (ppm)	
9:51	0.0	0.0	9:51	0.0	0.0	-
9:52	0.0	0.0	9:52	0.0	0.0	-
9:53	0.0	0.0	9:53	0.0	0.0	-
9:54	0.0	0.0	9:54	0.0	0.0	-
9:55	0.0	0.0	9:55	0.0	0.0	-
9:56	0.0	0.0	9:56	0.0	0.0	-
9:57	0.0	0.0	9:57	0.0	0.0	-
9:58	0.0	0.0	9:58	0.0	0.0	-
9:59	0.0	0.0	9:59	0.0	0.0	-
10:00	0.0	0.0	10:00	0.0	0.0	-
10:01	0.0	0.0	10:01	0.0	0.0	-
10:02	0.0	0.0	10:02	0.0	0.0	-
10:03	0.0	0.0	10:03	0.0	0.0	-
10:04	0.0	0.0	10:04	0.0	0.0	-
10:05	0.0	0.0	10:05	0.0	0.0	-
10:06	0.0	0.0	10:06	0.0	0.0	-
10:07	0.0	0.0	10:07	0.0	0.0	-
10:08	0.0	0.0	10:08	0.0	0.0	-
10:09	0.0	0.0	10:09	0.0	0.0	-
10:10	0.0	0.0	10:10	0.0	0.0	-
10:11	0.0	0.0	10:11	0.0	0.0	-
10:12	0.0	0.0	10:12	0.0	0.0	-
10:13	0.0	0.0	10:13	0.0	0.0	-
10:14	0.0	0.0	10:14	0.0	0.0	-
10:15	0.0	0.0	10:15	0.0	0.0	-
10:16	0.0	0.0	10:16	0.0	0.0	-
10:17	0.0	0.0	10:17	0.0	0.0	-
10:18	0.0	0.0	10:18	0.0	0.0	-
10:19	0.0	0.0	10:19	0.0	0.0	-
10:20	0.0	0.0	10:20	0.0	0.0	-
10:21	0.0	0.0	10:21	0.0	0.0	-
10:22	0.0	0.0	10:22	0.0	0.0	-
10:23	0.0	0.0	10:23	0.0	0.0	-
10:24	0.0	0.0	10:24	0.0	0.0	-
10:25	0.0	0.0	10:25	0.0	0.0	-
10:26	0.0	0.0	10:26	0.0	0.0	-
10:27	0.0	0.0	10:27	0.0	0.0	-
10:28	0.0	0.0	10:28	0.0	0.0	-
10:29	0.0	0.0	10:29	0.0	0.0	-
10:30	0.0	0.0	10:30	0.0	0.0	-
10:31	0.0	0.0	10:31	0.0	0.0	-
10:32	0.0	0.0	10:32	0.0	0.0	-
10:33	0.0	0.0	10:33	0.0	0.0	-
10:34	0.0	0.0	10:34	0.0	0.0	-
10:35	0.0	0.0	10:35	0.0	0.0	-
10:36	0.0	0.0	10:36	0.0	0.0	-
10:37	0.0	0.0	10:37	0.0	0.0	-
10:38	0.0	0.0	10:38	0.0	0.0	-
10:39	0.0	0.0	10:39	0.0	0.0	-
10:40	0.0	0.0	10:40	0.0	0.0	-

PID DATA						
Upwind			Downwind			Exceeds VOC Alarm Limit
Time	Concentration (ppm)	15-Min Avg Concentration (ppm)	Time	Concentration (ppm)	15-Min Avg Concentration (ppm)	
10:41	0.0	0.0	10:41	0.0	0.0	-
10:42	0.0	0.0	10:42	0.0	0.0	-
10:43	0.0	0.0	10:43	0.0	0.0	-
10:44	0.0	0.0	10:44	0.0	0.0	-
10:45	0.0	0.0	10:45	0.0	0.0	-
10:46	0.0	0.0	10:46	0.0	0.0	-
10:47	0.0	0.0	10:47	0.0	0.0	-
10:48	0.0	0.0	10:48	0.0	0.0	-
10:49	0.0	0.0	10:49	0.0	0.0	-
10:50	0.0	0.0	10:50	0.0	0.0	-
10:51	0.0	0.0	10:51	0.0	0.0	-
10:52	0.0	0.0	10:52	0.0	0.0	-
10:53	0.0	0.0	10:53	0.0	0.0	-
10:54	0.0	0.0	10:54	0.0	0.0	-
10:55	0.0	0.0	10:55	0.0	0.0	-
10:56	0.0	0.0	10:56	0.0	0.0	-
10:57	0.0	0.0	10:57	0.0	0.0	-
10:58	0.0	0.0	10:58	0.0	0.0	-
10:59	0.0	0.0	10:59	0.0	0.0	-
11:00	0.0	0.0	11:00	0.0	0.0	-
11:01	0.0	0.0	11:01	0.0	0.0	-
11:02	0.0	0.0	11:02	0.0	0.0	-
11:03	0.0	0.0	11:03	0.0	0.0	-
11:04	0.0	0.0	11:04	0.0	0.0	-
11:05	0.0	0.0	11:05	0.0	0.0	-
11:06	0.0	0.0	11:06	0.0	0.0	-
11:07	0.0	0.0	11:07	0.0	0.0	-
11:08	0.0	0.0	11:08	0.0	0.0	-
11:09	0.0	0.0	11:09	0.0	0.0	-
11:10	0.0	0.0	11:10	0.0	0.0	-
11:11	0.0	0.0	11:11	0.0	0.0	-
11:12	0.0	0.0	11:12	0.0	0.0	-
11:13	0.0	0.0	11:13	0.0	0.0	-
11:14	0.0	0.0	11:14	0.0	0.0	-
11:15	0.0	0.0	11:15	0.0	0.0	-
11:16	0.0	0.0	11:16	0.0	0.0	-
11:17	0.0	0.0	11:17	0.0	0.0	-
11:18	0.0	0.0	11:18	0.0	0.0	-
11:19	0.0	0.0	11:19	0.0	0.0	-
11:20	0.0	0.0	11:20	0.0	0.0	-
11:21	0.0	0.0	11:21	0.0	0.0	-
11:22	0.0	0.0	11:22	0.0	0.0	-
11:23	0.0	0.0	11:23	0.0	0.0	-
11:24	0.0	0.0	11:24	0.0	0.0	-
11:25	0.0	0.0	11:25	0.0	0.0	-
11:26	0.0	0.0	11:26	0.0	0.0	-
11:27	0.0	0.0	11:27	0.0	0.0	-
11:28	0.0	0.0	11:28	0.0	0.0	-
11:29	0.0	0.0	11:29	0.0	0.0	-
11:30	0.0	0.0	11:30	0.0	0.0	-

PID DATA						
Upwind			Downwind			Exceeds VOC Alarm Limit
Time	Concentration (ppm)	15-Min Avg Concentration (ppm)	Time	Concentration (ppm)	15-Min Avg Concentration (ppm)	
11:31	0.0	0.0	11:31	0.0	0.0	-
11:32	0.0	0.0	11:32	0.0	0.0	-
11:33	0.0	0.0	11:33	0.0	0.0	-
11:34	0.0	0.0	11:34	0.0	0.0	-
11:35	0.0	0.0	11:35	0.0	0.0	-
11:36	0.0	0.0	11:36	0.0	0.0	-
11:37	0.0	0.0	11:37	0.0	0.0	-
11:38	0.0	0.0	11:38	0.0	0.0	-
11:39	0.0	0.0	11:39	0.0	0.0	-
11:40	0.0	0.0	11:40	0.0	0.0	-
11:41	0.0	0.0	11:41	0.0	0.0	-
11:42	0.0	0.0	11:42	0.0	0.0	-
11:43	0.0	0.0	11:43	0.0	0.0	-
11:44	0.1	0.0	11:44	0.0	0.0	-
11:45	0.0	0.0	11:45	0.0	0.0	-
11:46	0.0	0.0	11:46	0.0	0.0	-
11:47	0.0	0.0	11:47	0.0	0.0	-
11:48	0.0	0.0	11:48	0.0	0.0	-
11:49	0.0	0.0	11:49	0.0	0.0	-
11:50	0.0	0.0	11:50	0.0	0.0	-
11:51	0.0	0.0	11:51	0.0	0.0	-
11:52	0.0	0.0	11:52	0.0	0.0	-
11:53	0.0	0.0	11:53	0.0	0.0	-
11:54	0.0	0.0	11:54	0.0	0.0	-
11:55	0.0	0.0	11:55	0.0	0.0	-
11:56	0.0	0.0	11:56	0.0	0.0	-
11:57	0.0	0.0	11:57	0.0	0.0	-
11:58	0.0	0.0	11:58	0.0	0.0	-
11:59	0.0	0.0	11:59	0.0	0.0	-
12:00	0.0	0.0	12:00	0.0	0.0	-
12:01	0.0	0.0	12:01	0.0	0.0	-
12:02	0.0	0.0	12:02	0.0	0.0	-
12:03	0.0	0.0	12:03	0.0	0.0	-
12:04	0.0	0.0	12:04	0.0	0.0	-
12:05	0.0	0.0	12:05	0.0	0.0	-
12:06	0.0	0.0	12:06	0.0	0.0	-
12:07	0.0	0.0	12:07	0.0	0.0	-
12:08	0.0	0.0	12:08	0.0	0.0	-
12:09	0.0	0.0	12:09	0.0	0.0	-
12:10	0.0	0.0	12:10	0.0	0.0	-
12:11	0.0	0.0	12:11	0.0	0.0	-
12:12	0.0	0.0	12:12	0.0	0.0	-
12:13	0.0	0.0	12:13	0.0	0.0	-
12:14	0.0	0.0	12:14	0.0	0.0	-
12:15	0.0	0.0	12:15	0.0	0.0	-
12:16	0.0	0.0	12:16	0.0	0.0	-
12:17	0.0	0.0	12:17	0.0	0.0	-
12:18	0.0	0.0	12:18	0.0	0.0	-
12:19	0.0	0.0	12:19	0.0	0.0	-
12:20	0.0	0.0	12:20	0.0	0.0	-

PID DATA						
Upwind			Downwind			Exceeds VOC Alarm Limit
Time	Concentration (ppm)	15-Min Avg Concentration (ppm)	Time	Concentration (ppm)	15-Min Avg Concentration (ppm)	
12:21	0.0	0.0	12:21	0.0	0.0	-
12:22	0.0	0.0	12:22	0.0	0.0	-
12:23	0.0	0.0	12:23	0.0	0.0	-
12:24	0.0	0.0	12:24	0.0	0.0	-
12:25	0.0	0.0	12:25	0.0	0.0	-
12:26	0.0	0.0	12:26	0.0	0.0	-
12:27	0.0	0.0	12:27	0.0	0.0	-
12:28	0.0	0.0	12:28	0.0	0.0	-
12:29	0.0	0.0	12:29	0.0	0.0	-
12:30	0.0	0.0	12:30	0.0	0.0	-
12:31	0.0	0.0	12:31	0.0	0.0	-
12:32	0.0	0.0	12:32	0.0	0.0	-
12:33	0.0	0.0	12:33	0.0	0.0	-
12:34	0.0	0.0	12:34	0.0	0.0	-
12:35	0.0	0.0	12:35	0.0	0.0	-
12:36	0.0	0.0	12:36	0.0	0.0	-
12:37	0.0	0.0	12:37	0.0	0.0	-
12:38	0.0	0.0	12:38	0.0	0.0	-
12:39	0.0	0.0	12:39	0.0	0.0	-
12:40	0.0	0.0	12:40	0.0	0.0	-
12:41	0.0	0.0	12:41	0.0	0.0	-
12:42	0.0	0.0	12:42	0.0	0.0	-
12:43	0.0	0.0	12:43	0.0	0.0	-
12:44	0.0	0.0	12:44	0.0	0.0	-
12:45	0.0	0.0	12:45	0.0	0.0	-
12:46	0.0	0.0	12:46	0.0	0.0	-
12:47	0.0	0.0	12:47	0.0	0.0	-
12:48	0.0	0.0	12:48	0.0	0.0	-
12:49	0.0	0.0	12:49	0.0	0.0	-
12:50	0.0	0.0	12:50	0.0	0.0	-
12:51	0.0	0.0	12:51	0.0	0.0	-
12:52	0.0	0.0	12:52	0.0	0.0	-
12:53	0.0	0.0	12:53	0.0	0.0	-
12:54	0.0	0.0	12:54	0.0	0.0	-
12:55	0.0	0.0	12:55	0.0	0.0	-
12:56	0.0	0.0	12:56	0.0	0.0	-
12:57	0.0	0.0	12:57	0.0	0.0	-
12:58	0.0	0.0	12:58	0.0	0.0	-
12:59	0.0	0.0	12:59	0.0	0.0	-
13:00	0.0	0.0	13:00	0.0	0.0	-
13:01	0.0	0.0	13:01	0.0	0.0	-
13:02	0.0	0.0	13:02	0.0	0.0	-
13:03	0.0	0.0	13:03	0.0	0.0	-
13:04	0.0	0.0	13:04	0.0	0.0	-
13:05	0.0	0.0	13:05	0.0	0.0	-
13:06	0.0	0.0	13:06	0.0	0.0	-
13:07	0.0	0.0	13:07	0.0	0.0	-
13:08	0.0	0.0	13:08	0.0	0.0	-
13:09	0.0	0.0	13:09	0.0	0.0	-
13:10	0.0	0.0	13:10	0.0	0.0	-

PID DATA						
Upwind			Downwind			Exceeds VOC Alarm Limit
Time	Concentration (ppm)	15-Min Avg Concentration (ppm)	Time	Concentration (ppm)	15-Min Avg Concentration (ppm)	
13:11	0.0	0.0	13:11	0.0	0.0	-
13:12	0.0	0.0	13:12	0.0	0.0	-
13:13	0.0	0.0	13:13	0.0	0.0	-
13:14	0.0	0.0	13:14	0.0	0.0	-
13:15	0.0	0.0	13:15	0.0	0.0	-
13:16	0.0	0.0	13:16	0.0	0.0	-
13:17	0.0	0.0	13:17	0.0	0.0	-
13:18	0.0	0.0	13:18	0.0	0.0	-
13:19	0.0	0.0	13:19	0.0	0.0	-
13:20	0.0	0.0	13:20	0.0	0.0	-
13:21	0.0	0.0	13:21	0.0	0.0	-
13:22	0.0	0.0	13:22	0.0	0.0	-
13:23	0.0	0.0	13:23	0.0	0.0	-
13:24	0.0	0.0	13:24	0.0	0.0	-
13:25	0.0	0.0	13:25	0.0	0.0	-
13:26	0.0	0.0	13:26	0.0	0.0	-
13:27	0.0	0.0	13:27	0.0	0.0	-
13:28	0.0	0.0	13:28	0.0	0.0	-
13:29	0.0	0.0	13:29	0.0	0.0	-
13:30	0.0	0.0	13:30	0.0	0.0	-
13:31	0.0	0.0	13:31	0.0	0.0	-
13:32	0.0	0.0	13:32	0.0	0.0	-
13:33	0.0	0.0	13:33	0.0	0.0	-
13:34	0.0	0.0	13:34	0.0	0.0	-
13:35	0.0	0.0	13:35	0.0	0.0	-
13:36	0.0	0.0	13:36	0.0	0.0	-
13:37	0.0	0.0	13:37	0.0	0.0	-
13:38	0.0	0.0	13:38	0.0	0.0	-
13:39	0.0	0.0	13:39	0.0	0.0	-
13:40	0.0	0.0	13:40	0.0	0.0	-
13:41	0.0	0.0	13:41	0.0	0.0	-
13:42	0.0	0.0	13:42	0.0	0.0	-
13:43	0.0	0.0	13:43	0.0	0.0	-
13:44	0.0	0.0	13:44	0.0	0.0	-
13:45	0.0	0.0	13:45	0.0	0.0	-
13:46	0.0	0.0	13:46	0.0	0.0	-
13:47	0.0	0.0	13:47	0.0	0.0	-
13:48	0.0	0.0	13:48	0.0	0.0	-
13:49	0.0	0.0	13:49	0.0	0.0	-
13:50	0.0	0.0	13:50	0.0	0.0	-
13:51	0.0	0.0	13:51	0.0	0.0	-
13:52	0.0	0.0	13:52	0.0	0.0	-
13:53	0.0	0.0	13:53	0.0	0.0	-
13:54	0.0	0.0	13:54	0.0	0.0	-
13:55	0.0	0.0	13:55	0.0	0.0	-
13:56	0.0	0.0	13:56	0.0	0.0	-
13:57	0.0	0.0	13:57	0.0	0.0	-
13:58	0.0	0.0	13:58	0.0	0.0	-
13:59	0.0	0.0	13:59	0.0	0.0	-
14:00	0.0	0.0	14:00	0.0	0.0	-

PID DATA						
Upwind			Downwind			Exceeds VOC Alarm Limit
Time	Concentration (ppm)	15-Min Avg Concentration (ppm)	Time	Concentration (ppm)	15-Min Avg Concentration (ppm)	
14:01	0.0	0.0	14:01	0.0	0.0	-
14:02	0.0	0.0	14:02	0.0	0.0	-
14:03	0.0	0.0	14:03	0.0	0.0	-
14:04	0.0	0.0	14:04	0.0	0.0	-
14:05	0.0	0.0	14:05	0.0	0.0	-
14:06	0.0	0.0	14:06	0.0	0.0	-
14:07	0.0	0.0	14:07	0.0	0.0	-
14:08	0.0	0.0	14:08	0.0	0.0	-
14:09	0.0	0.0	14:09	0.0	0.0	-
14:10	0.0	0.0	14:10	0.0	0.0	-
14:11	0.0	0.0	14:11	0.0	0.0	-
14:12	0.0	0.0	14:12	0.0	0.0	-
14:13	0.0	0.0	14:13	0.0	0.0	-
14:14	0.0	0.0	14:14	0.0	0.0	-
14:15	0.0	0.0	14:15	0.0	0.0	-
14:16	0.0	0.0	14:16	0.0	0.0	-
14:17	0.0	0.0	14:17	0.0	0.0	-
14:18	0.0	0.0	14:18	0.0	0.0	-
14:19	0.0	0.0	14:19	0.0	0.0	-
14:20	0.0	0.0	14:20	0.0	0.0	-
14:21	0.0	0.0	14:21	0.0	0.0	-
14:22	0.0	0.0	14:22	0.0	0.0	-
14:23	0.0	0.0	14:23	0.0	0.0	-
14:24	0.0	0.0	14:24	0.0	0.0	-
14:25	0.0	0.0	14:25	0.0	0.0	-
14:26	0.0	0.0	14:26	0.0	0.0	-
14:27	0.0	0.0	14:27	0.0	0.0	-
14:28	0.0	0.0	14:28	0.0	0.0	-
14:29	0.0	0.0	14:29	0.0	0.0	-
14:30	0.0	0.0	14:30	0.0	0.0	-
14:31	0.0	0.0	14:31	0.0	0.0	-
14:32	0.0	0.0	14:32	0.0	0.0	-
14:33	0.0	0.0	14:33	0.0	0.0	-
14:34	0.0	0.0	14:34	0.0	0.0	-
14:35	0.0	0.0	14:35	0.0	0.0	-
14:36	0.0	0.0	14:36	0.0	0.0	-
14:37	0.0	0.0	14:37	0.0	0.0	-
14:38	0.0	0.0	14:38	0.0	0.0	-
14:39	0.0	0.0	14:39	0.0	0.0	-
14:40	0.0	0.0	14:40	0.0	0.0	-
14:41	0.0	0.0	14:41	0.0	0.0	-
14:42	0.0	0.0	14:42	0.0	0.0	-
14:43	0.0	0.0	14:43	0.0	0.0	-
14:44	0.0	0.0	14:44	0.0	0.0	-
14:45	0.0	0.0	14:45	0.0	0.0	-
14:46	0.0	0.0	14:46	0.0	0.0	-
14:47	0.0	0.0	14:47	0.0	0.0	-
14:48	0.0	0.0	14:48	0.0	0.0	-
14:49	0.0	0.0	14:49	0.0	0.0	-
14:50	0.0	0.0	14:50	0.0	0.0	-

PID DATA						
Upwind			Downwind			Exceeds VOC Alarm Limit
Time	Concentration (ppm)	15-Min Avg Concentration (ppm)	Time	Concentration (ppm)	15-Min Avg Concentration (ppm)	
14:51	0.0	0.0	14:51	0.0	0.0	-
14:52	0.0	0.0	14:52	0.0	0.0	-
14:53	0.0	0.0	14:53	0.0	0.0	-
14:54	0.0	0.0	14:54	0.0	0.0	-
14:55	0.0	0.0	14:55	0.0	0.0	-
14:56	0.0	0.0	14:56	0.0	0.0	-
14:57	0.0	0.0	14:57	0.0	0.0	-
14:58	0.0	0.0	14:58	0.0	0.0	-
14:59	0.0	0.0	14:59	0.0	0.0	-
15:00	0.0	0.0	15:00	0.0	0.0	-
15:01	0.0	0.0	15:01	0.0	0.0	-
15:02	0.0	0.0	15:02	0.0	0.0	-
15:03	0.0	0.0	15:03	0.0	0.0	-
15:04	0.0	0.0	15:04	0.0	0.0	-
15:05	0.0	0.0	15:05	0.0	0.0	-
15:06	0.0	0.0	15:06	0.0	0.0	-
15:07	0.0	0.0	15:07	0.0	0.0	-
15:08	0.0	0.0	15:08	0.0	0.0	-
15:09	0.0	0.0	15:09	0.0	0.0	-
15:10	0.0	0.0	15:10	0.0	0.0	-
15:11	0.0	0.0	15:11	0.0	0.0	-
15:12	0.0	0.0	15:12	0.0	0.0	-
15:13	0.0	0.0	15:13	0.0	0.0	-
15:14	0.0	0.0	15:14	0.0	0.0	-
15:15	0.0	0.0	15:15	0.0	0.0	-
15:16	0.0	0.0	15:16	0.0	0.0	-
15:17	0.0	0.0	15:17	0.0	0.0	-
15:18	0.0	0.0	15:18	0.0	0.0	-
15:19	0.0	0.0	15:19	0.0	0.0	-
15:20	0.0	0.0	15:20	0.0	0.0	-
15:21	0.0	0.0	15:21	0.0	0.0	-
15:22	0.0	0.0	15:22	0.0	0.0	-
15:23	0.0	0.0	15:23	0.0	0.0	-
15:24	0.0	0.0	15:24	0.0	0.0	-
15:25	0.0	0.0	15:25	0.0	0.0	-
15:26	0.0	0.0	15:26	0.0	0.0	-
15:27	0.0	0.0	15:27	0.0	0.0	-
15:28	0.0	0.0	15:28	0.0	0.0	-
15:29	0.0	0.0	15:29	0.0	0.0	-
15:30	0.0	0.0	15:30	0.0	0.0	-
15:31	0.0	0.0	15:31	0.0	0.0	-
15:32	0.0	0.0	15:32	0.0	0.0	-
15:33	0.0	0.0	15:33	0.0	0.0	-
15:34	0.0	0.0	15:34	0.0	0.0	-
15:35	0.0	0.0	15:35	0.0	0.0	-
15:36	0.0	0.0	15:36	0.0	0.0	-
15:37	0.0	0.0	15:37	0.0	0.0	-
15:38	0.0	0.0	15:38	0.0	0.0	-
15:39	0.0	0.0	15:39	0.0	0.0	-
15:40	0.0	0.0	15:40	0.0	0.0	-

PID DATA						
Upwind			Downwind			Exceeds VOC Alarm Limit
Time	Concentration (ppm)	15-Min Avg Concentration (ppm)	Time	Concentration (ppm)	15-Min Avg Concentration (ppm)	
15:41	0.0	0.0	15:41	0.0	0.0	-
15:42	0.0	0.0	15:42	0.0	0.0	-
15:43	0.0	0.0	15:43	0.0	0.0	-
15:44	0.0	0.0	15:44	0.0	0.0	-
15:45	0.0	0.0	15:45	0.0	0.0	-
15:46	0.0	0.0	15:46	0.0	0.0	-
15:47	0.0	0.0	15:47	0.0	0.0	-
15:48	0.0	0.0	15:48	0.0	0.0	-
15:49	0.0	0.0	15:49	0.0	0.0	-
15:50	0.0	0.0	15:50	0.0	0.0	-
15:51	0.0	0.0	15:51	0.0	0.0	-
15:52	0.0	0.0	15:52	0.0	0.0	-
15:53	0.0	0.0	15:53	0.0	0.0	-
15:54	0.0	0.0	15:54	0.0	0.0	-
15:55	0.0	0.0	15:55	0.0	0.0	-
15:56	0.0	0.0	15:56	0.0	0.0	-
15:57	0.0	0.0	15:57	0.0	0.0	-
15:58	0.0	0.0	15:58	0.0	0.0	-
15:59	0.0	0.0	15:59	0.0	0.0	-
16:00	0.0	0.0	16:00	0.0	0.0	-
16:01	0.0	0.0	16:01	0.0	0.0	-
16:02	0.0	0.0	16:02	0.0	0.0	-
16:03	0.0	0.0	16:03	0.0	0.0	-
16:04	0.0	0.0	16:04	0.0	0.0	-
16:05	0.0	0.0	16:05	0.0	0.0	-
16:06	0.0	0.0	16:06	0.0	0.0	-
16:07	0.0	0.0	16:07	0.0	0.0	-
16:08	0.0	0.0	16:08	0.0	0.0	-
16:09	0.0	0.0	16:09	0.0	0.0	-
16:10	0.0	0.0	16:10	0.0	0.0	-
16:11	0.0	0.0	16:11	0.0	0.0	-
16:12	0.0	0.0	16:12	0.0	0.0	-
16:13	0.0	0.0	16:13	0.0	0.0	-
16:14	0.0	0.0	16:14	0.0	0.0	-
16:15	0.0	0.0	16:15	0.0	0.0	-
16:16	0.0	0.0	16:16	0.0	0.0	-
16:17	0.0	0.0	16:17	0.0	0.0	-
16:18	0.0	0.0	16:18	0.0	0.0	-
16:19	0.0	0.0	16:19	0.0	0.0	-
16:20	0.0	0.0	16:20	0.0	0.0	-
16:21	0.0	0.0	16:21	0.0	0.0	-
16:22	0.0	0.0	16:22	0.0	0.0	-
16:23	0.0	0.0	16:23	0.0	0.0	-
16:24	0.0	0.0	16:24	0.0	0.0	-
16:25	0.0	0.0	16:25	0.0	0.0	-
16:26	0.0	0.0	16:26	0.0	0.0	-
16:27	0.0	0.0	16:27	0.0	0.0	-
16:28	0.0	0.0	16:28	0.0	0.0	-
16:29	0.0	0.0	16:29	0.0	0.0	-
16:30	0.0	0.0	16:30	0.0	0.0	-

PID DATA						
Upwind			Downwind			Exceeds VOC Alarm Limit
Time	Concentration (ppm)	15-Min Avg Concentration (ppm)	Time	Concentration (ppm)	15-Min Avg Concentration (ppm)	
16:31	0.0	0.0	16:31	0.0	0.0	-
16:32	0.0	0.0	16:32	0.0	0.0	-
16:33	0.0	0.0	16:33	0.0	0.0	-
16:34	0.0	0.0	16:34	0.0	0.0	-
16:35	0.0	0.0	16:35	0.0	0.0	-
16:36	0.0	0.0	16:36	0.0	0.0	-
16:37	0.0	0.0	16:37	0.0	0.0	-
16:38	0.0	0.0	16:38	0.0	0.0	-
16:39	0.0	0.0	16:39	0.0	0.0	-
16:40	0.0	0.0	16:40	0.0	0.0	-
16:41	0.0	0.0	16:41	0.0	0.0	-
16:42	0.0	0.0	16:42	0.0	0.0	-
16:43	0.0	0.0	16:43	0.0	0.0	-
16:44	0.0	0.0	16:44	0.0	0.0	-
16:45	0.0	0.0	16:45	0.0	0.0	-
16:46	0.0	0.0	16:46	0.0	0.0	-
16:47	0.0	0.0	16:47	0.0	0.0	-
16:48	0.0	0.0	16:48	0.0	0.0	-
16:49	0.0	0.0	16:49	0.0	0.0	-
16:50	0.0	0.0	16:50	0.0	0.0	-
16:51	0.0	0.0	16:51	0.0	0.0	-
16:52	0.0	0.0	16:52	0.0	0.0	-
16:53	0.0	0.0	16:53	0.0	0.0	-
16:54	0.0	0.0	16:54	0.0	0.0	-
16:55	0.0	0.0	16:55	0.0	0.0	-
16:56	0.0	0.0	16:56	0.0	0.0	-
16:57	0.0	0.0	16:57	0.0	0.0	-
16:58	0.0	0.0	16:58	0.0	0.0	-
16:59	0.0	0.0	16:59	0.0	0.0	-
17:00	0.0	0.0	17:00	0.0	0.0	-
17:01	0.0	0.0	17:01	0.0	0.0	-
17:02	0.0	0.0	17:02	0.0	0.0	-
17:03	0.0	0.0	17:03	0.0	0.0	-
17:04	0.0	0.0	17:04	0.0	0.0	-
17:05	0.0	0.0	17:05	0.0	0.0	-
17:06	0.0	0.0	17:06	0.0	0.0	-
17:07	0.0	0.0	17:07	0.0	0.0	-
17:08	0.0	0.0	17:08	0.0	0.0	-
17:09	0.0	0.0	17:09	0.0	0.0	-
17:10	0.0	0.0	17:10	0.0	0.0	-
17:11	0.0	0.0	17:11	0.0	0.0	-
17:12	0.0	0.0	17:12	0.0	0.0	-
17:13	0.0	0.0	17:13	0.0	0.0	-
17:14	0.0	0.0	17:14	0.0	0.0	-
17:15	0.0	0.0	17:15	0.0	0.0	-
17:16	0.0	0.0	17:16	0.0	0.0	-
17:17	0.0	0.0	17:17	0.0	0.0	-
17:18	0.0	0.0	17:18	0.0	0.0	-
17:19	0.0	0.0	17:19	0.0	0.0	-
17:20	0.0	0.0	17:20	0.0	0.0	-

PID DATA						
Upwind			Downwind			Exceeds VOC Alarm Limit
Time	Concentration (ppm)	15-Min Avg Concentration (ppm)	Time	Concentration (ppm)	15-Min Avg Concentration (ppm)	
17:21	0.0	0.0	17:21	0.0	0.0	-
17:22	0.0	0.0	17:22	0.0	0.0	-
17:23	0.0	0.0	17:23	0.0	0.0	-
17:24	0.0	0.0	17:24	0.0	0.0	-
17:25	0.0	0.0	17:25	0.0	0.0	-
17:26	0.0	0.0	17:26	0.0	0.0	-
17:27	0.0	0.0	17:27	0.0	0.0	-
17:28	0.0	0.0	17:28	0.0	0.0	-
17:29	0.0	0.0	17:29	0.0	0.0	-
17:30	0.0	0.0	17:30	0.0	0.0	-
17:31	0.0	0.0	17:31	0.0	0.0	-
17:32	0.0	0.0	17:32	0.0	0.0	-
17:33	0.0	0.0	17:33	0.0	0.0	-
17:34	0.0	0.0	17:34	0.0	0.0	-
17:35	0.0	0.0	17:35	0.0	0.0	-
17:36	0.0	0.0	17:36	0.0	0.0	-
17:37	0.0	0.0	17:37	0.0	0.0	-
17:38	0.0	0.0	17:38	0.0	0.0	-
17:39	0.0	0.0	17:39	0.0	0.0	-
17:40	0.0	0.0	17:40	0.0	0.0	-
17:41	0.0	0.0	17:41	0.0	0.0	-
17:42	0.0	0.0	17:42	0.0	0.0	-
17:43	0.0	0.0	17:43	0.0	0.0	-
17:44	0.0	0.0	17:44	0.0	0.0	-
17:45	0.0	0.0	17:45	0.0	0.0	-
17:46	0.0	0.0	17:46	0.0	0.0	-
17:47	0.0	0.0	17:47	0.0	0.0	-
17:48	0.0	0.0	17:48	0.0	0.0	-
17:49	0.0	0.0	17:49	0.0	0.0	-
17:50	0.0	0.0	17:50	0.0	0.0	-
17:51	0.0	0.0	17:51	0.0	0.0	-
17:52	0.0	0.0	17:52	0.0	0.0	-
17:53	0.0	0.0	17:53	0.0	0.0	-
17:54	0.0	0.0	17:54	0.0	0.0	-
17:55	0.0	0.0	17:55	0.0	0.0	-
17:56	0.0	0.0	17:56	0.0	0.0	-