



DAILY STATUS REPORT

Prepared By:

Marius Sidlauskas

WEATHER	Snow		Rain		Overcast		Partly Cloudy		Bright Sun		Wind
TEMP.	< 32		32-50	X	50-70		70-85		>85		SE 7 mph

IEC Project No:	15977	NYSDEC BCP Site No:	C224350	Date:	03/22/24
Project:	318 Nevins Street, Brooklyn, NY				

<p>Consultant: Impact Environmental Engineering and Geology, PLLC (IEEG)</p> <p>Time On: 06:00 Time Out: 16:15</p>	<p>Personnel On Site: IEEG (Environmental) – Victor Barraza / Bill Chaky Capital (Contractor) ECD (Pile Installation) GES (Geotech) WSP (Environmental oversight) – Tim Williams</p> <p>Equipment On Site: Dustrack (3x), PID (3x), Pile Rig</p>
---	--

Scope of Work: Oversee excavation by Capital, continue to collect endpoint samples, gauging and sampling of sentinel wells.

Site Activities:

- Deploy three (3) CAMP stations at the start of the workday;
- Depth to water gauging within all 13 of sentinel wells for dewatering purposes (it should be noted that one well needs to be installed-the installation of this well is scheduled for 3/26);
- 62 (sixty-two) loads of approved crushed limestone were imported on site and stockpiled in grids J7 to O7. Refer to the Alpha Numeric Grid Map for grid locations;
- 27 (twenty-seven) truckloads of material were disposed offsite to the Conestoga Facility;
- Excavation to 10’ bsg in grids D4, F4 and G3. Refer to the Alpha Numeric Grid Map for grid locations;
- Continued footing excavations and pile cap work in grids B6/7-E6/7;
- Continued bracing of sheet piles in hot spot SB-13;
- Pile installation in grids N5 and O5;
- Low flow groundwater sampling of the following sentinel wells: NMAW-2A, HRP-MW-5A and HRP-MW-5B;
- Liquid pumped from truck wash holding tanks to 2,000-gallon frack tank;
- Perimeter check of the Site conducted at the end of the day to confirm that there was no presence of soil or liquid material observed leaving the Site; and
- Tim (WSP) on behalf of DEC required all stockpiles to be secured with poly-sheeting and silt-socks to be installed along Gate # 1 and Gate # 4 due to incoming storm.

Community Air Monitoring Program (CAMP) – CAMP action level for dust (0.1 mg/m³) and VOCs (5 ppm)

- No sustained dust exceedances were observed over a 7-min period during monitoring;
- Prestart Upwind Conditions – PID = _0.0_ ppm, Dust = _0.126_ mg/m³ @ 06:13
- High Conditions (Upwind) – PID = _0.1_ ppm @ 08:19, Dust = 0.126_ mg/m³ @ 06:13
- High Conditions (Downwind 1) – PID = _0.0_ ppm, Dust = _0.554_ mg/m³ @ 14:48
- High Conditions (Downwind 2) – PID = _2.6_ ppm @ 14:58 Dust = _0.229_ mg/m³ @ 06:25

Notable Site Conditions:

- Due to the flood warning issued for 3/23/24, the NYSDEC sent a memo regarding *Stormwater Protection-Potential Flooding*. At the end of the day all stockpiles were securely covered, silt socks were verified as functioning and as requested by WSP silt-socks were installed along Gate # 1 and Gate # 4.

Planned Activities for the Next Day/Week:

- Endpoint sampling;
- Further grid excavation;
- Triumvirate to pump out 2,000-gallon frack tank containing truck pad wash water on 3/25/24.

Photo Log

318 Nevins Street, Brooklyn, NY



Photo Log

Photo 1 –

Representative photo of trucks being cleaned over track pad before departing offsite.



Photo 2 –

Representative photo of crew applying water to gravel roadway for dust suppression.



Photo 3 –
Representative
photo of soil
excavation.



Photo 4 –
Representative
photo of truck
pad wash water
being pumped to
2,000-gallon
frack tank.

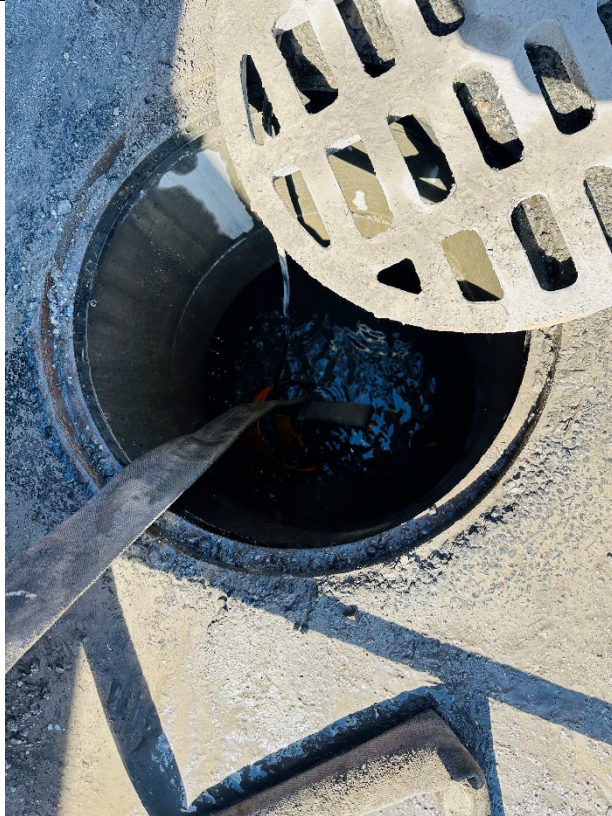


Photo 5 –

Representative photo of silt-sock installed along south gate for incoming storm.



Photo 6 –

Representative photo of soil stockpile secured with poly-sheeting.



Alpha Numeric Grid Map

318 Nevins Street, Brooklyn, NY





IMPACT ENVIRONMENTAL

welcome to solid ground...

170 Keyland Court | Bohemia | NY | 11716 | 631.269.8800

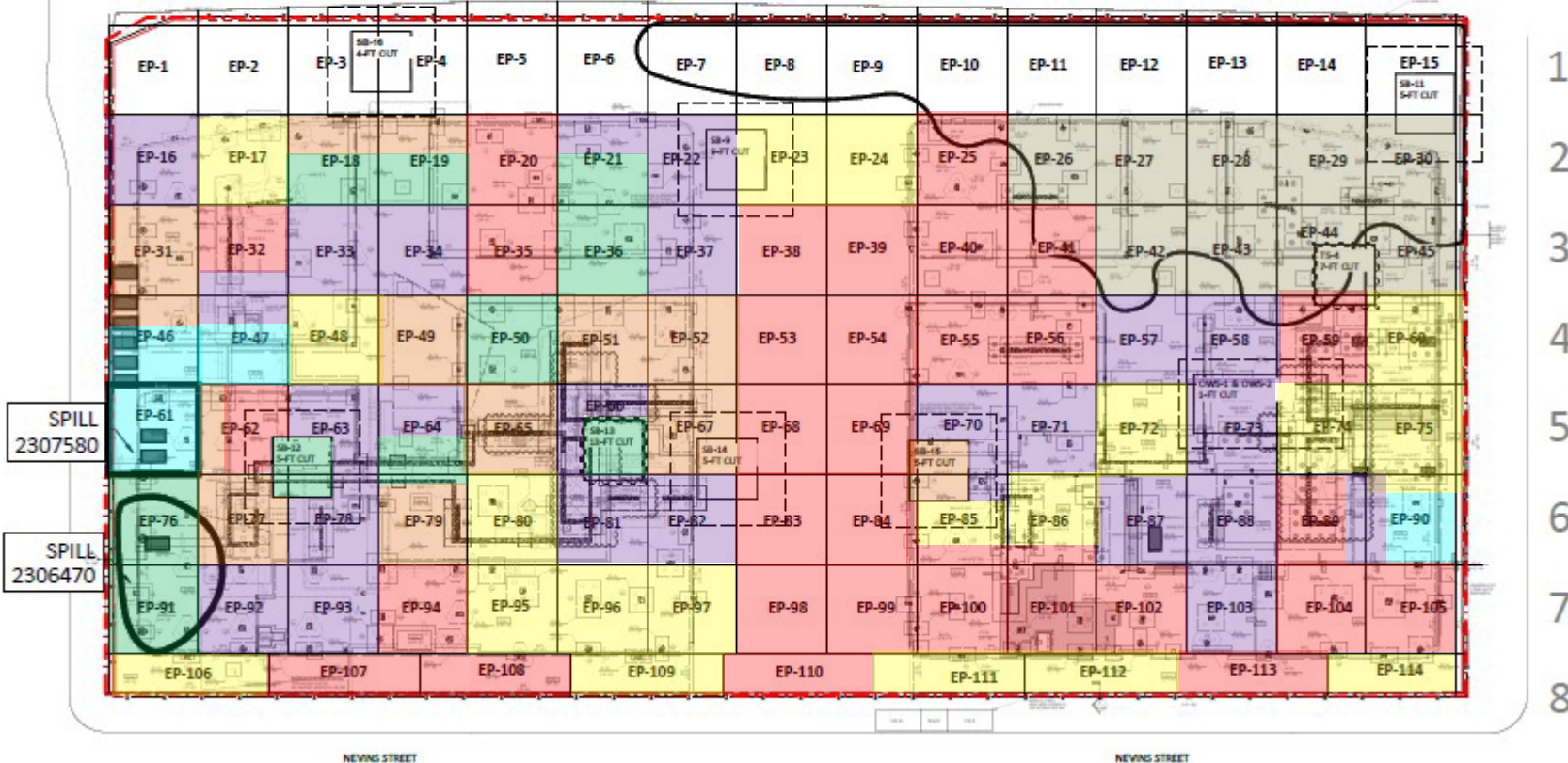
www.impactenvironmental.com



A B C D E F G H I J K L M N O

GOWANUS CANAL

GOWANUS CANAL



- 1 = 2' Excavation
- 2 = 4' Excavation
- 3 = 6' Excavation
- 4 = 7-8' Excavation
- 5 = 9' Excavation
- 6 = 10' Excavation
- 7 = 11' Excavation
- 8

Site Plan

318 Nevins Street, Brooklyn, NY



UPWIND Air Monitor

318 Nevins Street, Brooklyn, NY



Instrument Name	DustTrak II
Model Number	8530
Serial Number	8530132208
Firmware Version	3.1
Calibration Date	7/31/2023
Test Name	MANUAL_008
Test Start Time	6:13:55 AM
Test Start Date	3/22/2024
Test Length [D:H:M]	0:08:57
Test Interval [M:S]	1:00
Mass Average [mg/m3]	0.014
Mass Minimum [mg/m3]	0.005
Mass Maximum [mg/m3]	0.126
Mass TWA [mg/m3]	0.014
Photometric User Cal	1
Flow User Cal	0
Errors	
Number of Samples	537

Elapsed Time [s]	Mass [mg/m3]	Alarms	Errors
60	0.126		
120	0.007		
180	0.007		
240	0.006		
300	0.007		
360	0.006		
420	0.006		
480	0.006		
540	0.005		
600	0.006		
660	0.006		
720	0.006		
780	0.006		
840	0.006		
900	0.006		
960	0.006		
1020	0.006		
1080	0.007		
1140	0.006		
1200	0.006		
1260	0.006		
1320	0.009		
1380	0.007		
1440	0.007		

1500	0.008
1560	0.007
1620	0.008
1680	0.008
1740	0.008
1800	0.006
1860	0.007
1920	0.007
1980	0.007
2040	0.008
2100	0.008
2160	0.008
2220	0.007
2280	0.007
2340	0.007
2400	0.011
2460	0.009
2520	0.008
2580	0.007
2640	0.009
2700	0.007
2760	0.014
2820	0.008
2880	0.007
2940	0.007
3000	0.009
3060	0.01
3120	0.013
3180	0.01
3240	0.013
3300	0.014
3360	0.013
3420	0.018
3480	0.01
3540	0.009
3600	0.017
3660	0.009
3720	0.008
3780	0.007
3840	0.008
3900	0.008
3960	0.01
4020	0.009
4080	0.009

4140	0.01
4200	0.01
4260	0.024
4320	0.014
4380	0.008
4440	0.008
4500	0.008
4560	0.007
4620	0.009
4680	0.008
4740	0.009
4800	0.008
4860	0.007
4920	0.007
4980	0.007
5040	0.008
5100	0.007
5160	0.008
5220	0.008
5280	0.008
5340	0.008
5400	0.007
5460	0.007
5520	0.007
5580	0.007
5640	0.008
5700	0.007
5760	0.008
5820	0.007
5880	0.008
5940	0.015
6000	0.008
6060	0.011
6120	0.011
6180	0.01
6240	0.013
6300	0.013
6360	0.01
6420	0.01
6480	0.012
6540	0.015
6600	0.041
6660	0.051
6720	0.021

6780	0.018
6840	0.015
6900	0.013
6960	0.012
7020	0.011
7080	0.008
7140	0.007
7200	0.011
7260	0.009
7320	0.009
7380	0.019
7440	0.016
7500	0.009
7560	0.007
7620	0.009
7680	0.017
7740	0.022
7800	0.012
7860	0.015
7920	0.009
7980	0.01
8040	0.009
8100	0.009
8160	0.012
8220	0.011
8280	0.009
8340	0.008
8400	0.009
8460	0.009
8520	0.008
8580	0.008
8640	0.009
8700	0.009
8760	0.008
8820	0.01
8880	0.01
8940	0.01
9000	0.008
9060	0.009
9120	0.011
9180	0.008
9240	0.009
9300	0.009
9360	0.044

9420	0.01
9480	0.009
9540	0.008
9600	0.009
9660	0.009
9720	0.008
9780	0.011
9840	0.01
9900	0.008
9960	0.009
10020	0.065
10080	0.011
10140	0.017
10200	0.015
10260	0.012
10320	0.01
10380	0.011
10440	0.011
10500	0.009
10560	0.008
10620	0.013
10680	0.01
10740	0.009
10800	0.008
10860	0.007
10920	0.007
10980	0.009
11040	0.009
11100	0.009
11160	0.009
11220	0.011
11280	0.011
11340	0.01
11400	0.011
11460	0.01
11520	0.015
11580	0.01
11640	0.015
11700	0.01
11760	0.013
11820	0.012
11880	0.011
11940	0.012
12000	0.009

12060	0.009
12120	0.01
12180	0.01
12240	0.015
12300	0.012
12360	0.01
12420	0.014
12480	0.014
12540	0.011
12600	0.011
12660	0.014
12720	0.015
12780	0.012
12840	0.01
12900	0.01
12960	0.011
13020	0.018
13080	0.011
13140	0.011
13200	0.011
13260	0.009
13320	0.01
13380	0.011
13440	0.013
13500	0.014
13560	0.01
13620	0.01
13680	0.01
13740	0.01
13800	0.011
13860	0.01
13920	0.009
13980	0.009
14040	0.01
14100	0.009
14160	0.009
14220	0.01
14280	0.01
14340	0.009
14400	0.009
14460	0.009
14520	0.009
14580	0.013
14640	0.01

14700	0.014
14760	0.012
14820	0.01
14880	0.01
14940	0.009
15000	0.009
15060	0.01
15120	0.01
15180	0.034
15240	0.013
15300	0.011
15360	0.009
15420	0.01
15480	0.011
15540	0.021
15600	0.01
15660	0.01
15720	0.011
15780	0.011
15840	0.011
15900	0.01
15960	0.012
16020	0.01
16080	0.01
16140	0.012
16200	0.012
16260	0.011
16320	0.01
16380	0.01
16440	0.011
16500	0.01
16560	0.014
16620	0.017
16680	0.01
16740	0.013
16800	0.024
16860	0.012
16920	0.012
16980	0.014
17040	0.012
17100	0.016
17160	0.013
17220	0.015
17280	0.018

17340	0.015
17400	0.014
17460	0.012
17520	0.012
17580	0.012
17640	0.043
17700	0.013
17760	0.012
17820	0.014
17880	0.016
17940	0.015
18000	0.014
18060	0.014
18120	0.02
18180	0.013
18240	0.017
18300	0.018
18360	0.033
18420	0.02
18480	0.013
18540	0.014
18600	0.015
18660	0.014
18720	0.021
18780	0.016
18840	0.016
18900	0.013
18960	0.015
19020	0.014
19080	0.046
19140	0.015
19200	0.042
19260	0.017
19320	0.015
19380	0.019
19440	0.013
19500	0.02
19560	0.016
19620	0.025
19680	0.023
19740	0.014
19800	0.015
19860	0.025
19920	0.014

19980	0.014
20040	0.015
20100	0.012
20160	0.013
20220	0.02
20280	0.016
20340	0.017
20400	0.016
20460	0.018
20520	0.014
20580	0.015
20640	0.014
20700	0.014
20760	0.013
20820	0.013
20880	0.013
20940	0.013
21000	0.014
21060	0.024
21120	0.015
21180	0.013
21240	0.013
21300	0.012
21360	0.023
21420	0.018
21480	0.014
21540	0.014
21600	0.013
21660	0.014
21720	0.014
21780	0.018
21840	0.016
21900	0.014
21960	0.017
22020	0.021
22080	0.015
22140	0.026
22200	0.015
22260	0.014
22320	0.015
22380	0.015
22440	0.015
22500	0.015
22560	0.018

22620	0.017
22680	0.018
22740	0.024
22800	0.017
22860	0.017
22920	0.018
22980	0.03
23040	0.02
23100	0.016
23160	0.025
23220	0.018
23280	0.016
23340	0.016
23400	0.015
23460	0.018
23520	0.072
23580	0.038
23640	0.026
23700	0.044
23760	0.023
23820	0.017
23880	0.031
23940	0.031
24000	0.022
24060	0.021
24120	0.019
24180	0.016
24240	0.025
24300	0.016
24360	0.017
24420	0.017
24480	0.016
24540	0.015
24600	0.015
24660	0.016
24720	0.017
24780	0.014
24840	0.015
24900	0.017
24960	0.017
25020	0.017
25080	0.014
25140	0.015
25200	0.015

25260	0.014
25320	0.013
25380	0.013
25440	0.014
25500	0.015
25560	0.014
25620	0.015
25680	0.014
25740	0.015
25800	0.014
25860	0.017
25920	0.015
25980	0.015
26040	0.016
26100	0.014
26160	0.013
26220	0.014
26280	0.018
26340	0.016
26400	0.015
26460	0.014
26520	0.016
26580	0.038
26640	0.023
26700	0.015
26760	0.014
26820	0.014
26880	0.016
26940	0.015
27000	0.016
27060	0.015
27120	0.023
27180	0.017
27240	0.014
27300	0.013
27360	0.019
27420	0.015
27480	0.015
27540	0.014
27600	0.014
27660	0.015
27720	0.015
27780	0.016
27840	0.014

27900	0.016
27960	0.014
28020	0.022
28080	0.02
28140	0.015
28200	0.015
28260	0.016
28320	0.014
28380	0.013
28440	0.015
28500	0.013
28560	0.016
28620	0.012
28680	0.016
28740	0.022
28800	0.025
28860	0.014
28920	0.023
28980	0.015
29040	0.017
29100	0.017
29160	0.017
29220	0.019
29280	0.019
29340	0.014
29400	0.014
29460	0.017
29520	0.014
29580	0.013
29640	0.016
29700	0.014
29760	0.02
29820	0.015
29880	0.013
29940	0.039
30000	0.015
30060	0.012
30120	0.02
30180	0.016
30240	0.014
30300	0.019
30360	0.018
30420	0.016
30480	0.017

30540	0.013
30600	0.012
30660	0.014
30720	0.014
30780	0.016
30840	0.013
30900	0.014
30960	0.013
31020	0.014
31080	0.013
31140	0.015
31200	0.015
31260	0.016
31320	0.018
31380	0.015
31440	0.018
31500	0.023
31560	0.017
31620	0.021
31680	0.017
31740	0.015
31800	0.015
31860	0.014
31920	0.013
31980	0.013
32040	0.014
32100	0.014
32160	0.013
32220	0.013

Device Serial No	Log Time	Log Type	Sensor 1 Type	Sensor 1 Serial Number	Sensor 1 Status	Sensor 1 Gas Reading
592-600853	3/22/2024 9:01	Readings	PID	SC23030449A8	Normal	0.1
592-600853	3/22/2024 9:00	Readings	PID	SC23030449A8	Normal	0.1
592-600853	3/22/2024 8:59	Readings	PID	SC23030449A8	Normal	0.1
592-600853	3/22/2024 8:58	Readings	PID	SC23030449A8	Normal	0.1
592-600853	3/22/2024 8:57	Readings	PID	SC23030449A8	Normal	0.1
592-600853	3/22/2024 8:56	Readings	PID	SC23030449A8	Normal	0.1
592-600853	3/22/2024 8:55	Readings	PID	SC23030449A8	Normal	0.1
592-600853	3/22/2024 8:54	Readings	PID	SC23030449A8	Normal	0.1
592-600853	3/22/2024 8:53	Readings	PID	SC23030449A8	Normal	0.1
592-600853	3/22/2024 8:52	Readings	PID	SC23030449A8	Normal	0.1
592-600853	3/22/2024 8:51	Readings	PID	SC23030449A8	Normal	0.1
592-600853	3/22/2024 8:50	Readings	PID	SC23030449A8	Normal	0.1
592-600853	3/22/2024 8:49	Readings	PID	SC23030449A8	Normal	0.1
592-600853	3/22/2024 8:48	Readings	PID	SC23030449A8	Normal	0.1
592-600853	3/22/2024 8:47	Readings	PID	SC23030449A8	Normal	0.1
592-600853	3/22/2024 8:46	Readings	PID	SC23030449A8	Normal	0.1
592-600853	3/22/2024 8:45	Readings	PID	SC23030449A8	Normal	0.1
592-600853	3/22/2024 8:44	Readings	PID	SC23030449A8	Normal	0.1
592-600853	3/22/2024 8:43	Readings	PID	SC23030449A8	Normal	0.1
592-600853	3/22/2024 8:42	Readings	PID	SC23030449A8	Normal	0.1
592-600853	3/22/2024 8:41	Readings	PID	SC23030449A8	Normal	0.1
592-600853	3/22/2024 8:40	Readings	PID	SC23030449A8	Normal	0.1
592-600853	3/22/2024 8:39	Readings	PID	SC23030449A8	Normal	0.1
592-600853	3/22/2024 8:38	Readings	PID	SC23030449A8	Normal	0.1
592-600853	3/22/2024 8:37	Readings	PID	SC23030449A8	Normal	0.1
592-600853	3/22/2024 8:36	Readings	PID	SC23030449A8	Normal	0.1
592-600853	3/22/2024 8:35	Readings	PID	SC23030449A8	Normal	0.1
592-600853	3/22/2024 8:34	Readings	PID	SC23030449A8	Normal	0.1
592-600853	3/22/2024 8:33	Readings	PID	SC23030449A8	Normal	0.1
592-600853	3/22/2024 8:32	Readings	PID	SC23030449A8	Normal	0.1
592-600853	3/22/2024 8:31	Readings	PID	SC23030449A8	Normal	0.1
592-600853	3/22/2024 8:30	Readings	PID	SC23030449A8	Normal	0.1

592-600853	3/22/2024 8:29	Readings	PID	SC23030449A8	Normal	0.1
592-600853	3/22/2024 8:28	Readings	PID	SC23030449A8	Normal	0.1
592-600853	3/22/2024 8:27	Readings	PID	SC23030449A8	Normal	0.1
592-600853	3/22/2024 8:26	Readings	PID	SC23030449A8	Normal	0.1
592-600853	3/22/2024 8:25	Readings	PID	SC23030449A8	Normal	0.1
592-600853	3/22/2024 8:24	Readings	PID	SC23030449A8	Normal	0.1
592-600853	3/22/2024 8:23	Readings	PID	SC23030449A8	Normal	0.1
592-600853	3/22/2024 8:22	Readings	PID	SC23030449A8	Normal	0.1
592-600853	3/22/2024 8:21	Readings	PID	SC23030449A8	Normal	0
592-600853	3/22/2024 8:20	Readings	PID	SC23030449A8	Normal	0
592-600853	3/22/2024 8:19	Readings	PID	SC23030449A8	Normal	0.1
592-600853	3/22/2024 8:18	Readings	PID	SC23030449A8	Normal	0
592-600853	3/22/2024 8:17	Readings	PID	SC23030449A8	Normal	0
592-600853	3/22/2024 8:16	Readings	PID	SC23030449A8	Normal	0
592-600853	3/22/2024 8:15	Readings	PID	SC23030449A8	Normal	0
592-600853	3/22/2024 8:14	Readings	PID	SC23030449A8	Normal	0
592-600853	3/22/2024 8:13	Readings	PID	SC23030449A8	Normal	0
592-600853	3/22/2024 8:12	Readings	PID	SC23030449A8	Normal	0
592-600853	3/22/2024 8:11	Readings	PID	SC23030449A8	Normal	0
592-600853	3/22/2024 8:10	Readings	PID	SC23030449A8	Normal	0
592-600853	3/22/2024 8:09	Readings	PID	SC23030449A8	Normal	0
592-600853	3/22/2024 8:08	Readings	PID	SC23030449A8	Normal	0
592-600853	3/22/2024 8:07	Readings	PID	SC23030449A8	Normal	0
592-600853	3/22/2024 8:06	Readings	PID	SC23030449A8	Normal	0
592-600853	3/22/2024 8:05	Readings	PID	SC23030449A8	Normal	0
592-600853	3/22/2024 8:04	Readings	PID	SC23030449A8	Normal	0
592-600853	3/22/2024 8:03	Readings	PID	SC23030449A8	Normal	0
592-600853	3/22/2024 8:02	Readings	PID	SC23030449A8	Normal	0
592-600853	3/22/2024 8:01	Readings	PID	SC23030449A8	Normal	0
592-600853	3/22/2024 8:00	Readings	PID	SC23030449A8	Normal	0
592-600853	3/22/2024 7:59	Readings	PID	SC23030449A8	Normal	0
592-600853	3/22/2024 7:58	Readings	PID	SC23030449A8	Normal	0
592-600853	3/22/2024 7:57	Readings	PID	SC23030449A8	Normal	0

592-600853	3/22/2024 7:23	Readings	PID	SC23030449A8	Normal	0
592-600853	3/22/2024 7:22	Readings	PID	SC23030449A8	Normal	0
592-600853	3/22/2024 7:21	Readings	PID	SC23030449A8	Normal	0
592-600853	3/22/2024 7:20	Readings	PID	SC23030449A8	Normal	0
592-600853	3/22/2024 7:19	Readings	PID	SC23030449A8	Normal	0
592-600853	3/22/2024 7:18	Readings	PID	SC23030449A8	Normal	0
592-600853	3/22/2024 7:17	Readings	PID	SC23030449A8	Normal	0
592-600853	3/22/2024 7:16	Readings	PID	SC23030449A8	Normal	0
592-600853	3/22/2024 7:15	Readings	PID	SC23030449A8	Normal	0
592-600853	3/22/2024 7:14	Readings	PID	SC23030449A8	Normal	0
592-600853	3/22/2024 7:13	Readings	PID	SC23030449A8	Normal	0
592-600853	3/22/2024 7:12	Readings	PID	SC23030449A8	Normal	0
592-600853	3/22/2024 7:11	Readings	PID	SC23030449A8	Normal	0
592-600853	3/22/2024 7:10	Readings	PID	SC23030449A8	Normal	0
592-600853	3/22/2024 7:09	Readings	PID	SC23030449A8	Normal	0
592-600853	3/22/2024 7:08	Readings	PID	SC23030449A8	Normal	0
592-600853	3/22/2024 7:07	Readings	PID	SC23030449A8	Normal	0
592-600853	3/22/2024 7:06	Readings	PID	SC23030449A8	Normal	0
592-600853	3/22/2024 7:05	Readings	PID	SC23030449A8	Normal	0
592-600853	3/22/2024 7:04	Readings	PID	SC23030449A8	Normal	0
592-600853	3/22/2024 7:03	Readings	PID	SC23030449A8	Normal	0
592-600853	3/22/2024 7:02	Readings	PID	SC23030449A8	Normal	0
592-600853	3/22/2024 7:01	Readings	PID	SC23030449A8	Normal	0
592-600853	3/22/2024 7:00	Readings	PID	SC23030449A8	Normal	0
592-600853	3/22/2024 6:59	Readings	PID	SC23030449A8	Normal	0
592-600853	3/22/2024 6:58	Readings	PID	SC23030449A8	Normal	0
592-600853	3/22/2024 6:57	Readings	PID	SC23030449A8	Normal	0
592-600853	3/22/2024 6:56	Readings	PID	SC23030449A8	Normal	0
592-600853	3/22/2024 6:55	Readings	PID	SC23030449A8	Normal	0
592-600853	3/22/2024 6:54	Readings	PID	SC23030449A8	Normal	0
592-600853	3/22/2024 6:53	Readings	PID	SC23030449A8	Normal	0
592-600853	3/22/2024 6:52	CONFIG	PID	SC23030449A8		

DOWNWIND Air Monitor

318 Nevins Street, Brooklyn, NY



Instrument Name	DustTrak II
Model Number	8530
Serial Number	8530173513
Firmware Version	3.1
Calibration Date	8/1/2023
Test Name	MANUAL_008
Test Start Time	6:20:29 AM
Test Start Date	3/22/2024
Test Length [D:H:M]	0:09:01
Test Interval [M:S]	1:00
Mass Average [mg/m3]	0.025
Mass Minimum [mg/m3]	0.006
Mass Maximum [mg/m3]	0.554
Mass TWA [mg/m3]	0.026
Photometric User Cal	1
Flow User Cal	0
Errors	
Number of Samples	541

Elapsed Time [s]	Mass [mg/m3]	Alarms	Errors
60	0.295		
120	0.023		
180	0.012		
240	0.008		
300	0.008		
360	0.011		
420	0.011		
480	0.011		
540	0.007		
600	0.006		
660	0.009		
720	0.01		
780	0.012		
840	0.007		
900	0.014		
960	0.021		
1020	0.008		
1080	0.009		
1140	0.006		
1200	0.007		
1260	0.007		
1320	0.007		
1380	0.007		
1440	0.011		

1500	0.012
1560	0.007
1620	0.006
1680	0.006
1740	0.006
1800	0.007
1860	0.009
1920	0.015
1980	0.006
2040	0.006
2100	0.008
2160	0.007
2220	0.006
2280	0.006
2340	0.006
2400	0.006
2460	0.006
2520	0.01
2580	0.006
2640	0.006
2700	0.009
2760	0.009
2820	0.019
2880	0.01
2940	0.01
3000	0.015
3060	0.012
3120	0.008
3180	0.008
3240	0.012
3300	0.009
3360	0.008
3420	0.006
3480	0.007
3540	0.008
3600	0.008
3660	0.011
3720	0.009
3780	0.008
3840	0.01
3900	0.009
3960	0.007
4020	0.01
4080	0.012

4140	0.026
4200	0.011
4260	0.009
4320	0.008
4380	0.008
4440	0.011
4500	0.011
4560	0.011
4620	0.009
4680	0.009
4740	0.008
4800	0.009
4860	0.012
4920	0.012
4980	0.008
5040	0.015
5100	0.025
5160	0.017
5220	0.015
5280	0.014
5340	0.013
5400	0.01
5460	0.009
5520	0.01
5580	0.012
5640	0.012
5700	0.012
5760	0.013
5820	0.034
5880	0.025
5940	0.012
6000	0.015
6060	0.01
6120	0.009
6180	0.012
6240	0.011
6300	0.01
6360	0.011
6420	0.016
6480	0.014
6540	0.01
6600	0.008
6660	0.01
6720	0.009

6780	0.015
6840	0.014
6900	0.01
6960	0.009
7020	0.019
7080	0.015
7140	0.013
7200	0.009
7260	0.011
7320	0.009
7380	0.009
7440	0.009
7500	0.009
7560	0.009
7620	0.009
7680	0.009
7740	0.014
7800	0.013
7860	0.019
7920	0.009
7980	0.01
8040	0.009
8100	0.01
8160	0.019
8220	0.012
8280	0.01
8340	0.009
8400	0.019
8460	0.011
8520	0.008
8580	0.009
8640	0.028
8700	0.01
8760	0.008
8820	0.009
8880	0.01
8940	0.01
9000	0.015
9060	0.014
9120	0.011
9180	0.012
9240	0.009
9300	0.007
9360	0.007

9420	0.007
9480	0.008
9540	0.009
9600	0.01
9660	0.009
9720	0.008
9780	0.008
9840	0.008
9900	0.008
9960	0.008
10020	0.009
10080	0.008
10140	0.008
10200	0.008
10260	0.008
10320	0.008
10380	0.009
10440	0.012
10500	0.01
10560	0.012
10620	0.025
10680	0.01
10740	0.009
10800	0.009
10860	0.009
10920	0.017
10980	0.01
11040	0.011
11100	0.016
11160	0.009
11220	0.01
11280	0.031
11340	0.031
11400	0.01
11460	0.01
11520	0.013
11580	0.011
11640	0.01
11700	0.009
11760	0.119
11820	0.033
11880	0.014
11940	0.116
12000	0.016

12060	0.096
12120	0.022
12180	0.011
12240	0.024
12300	0.011
12360	0.01
12420	0.01
12480	0.058
12540	0.032
12600	0.01
12660	0.009
12720	0.012
12780	0.012
12840	0.091
12900	0.02
12960	0.011
13020	0.017
13080	0.014
13140	0.014
13200	0.016
13260	0.02
13320	0.012
13380	0.014
13440	0.01
13500	0.014
13560	0.011
13620	0.029
13680	0.022
13740	0.017
13800	0.017
13860	0.013
13920	0.01
13980	0.01
14040	0.01
14100	0.01
14160	0.01
14220	0.009
14280	0.01
14340	0.009
14400	0.01
14460	0.011
14520	0.013
14580	0.011
14640	0.019

14700	0.025
14760	0.014
14820	0.017
14880	0.03
14940	0.028
15000	0.026
15060	0.015
15120	0.026
15180	0.014
15240	0.013
15300	0.016
15360	0.016
15420	0.116
15480	0.031
15540	0.024
15600	0.018
15660	0.022
15720	0.01
15780	0.013
15840	0.027
15900	0.241
15960	0.03
16020	0.045
16080	0.023
16140	0.028
16200	0.091
16260	0.041
16320	0.012
16380	0.015
16440	0.013
16500	0.076
16560	0.056
16620	0.015
16680	0.065
16740	0.013
16800	0.031
16860	0.022
16920	0.025
16980	0.014
17040	0.037
17100	0.037
17160	0.014
17220	0.016
17280	0.054

17340	0.022
17400	0.042
17460	0.05
17520	0.054
17580	0.101
17640	0.078
17700	0.07
17760	0.057
17820	0.051
17880	0.052
17940	0.033
18000	0.022
18060	0.036
18120	0.046
18180	0.048
18240	0.08
18300	0.047
18360	0.045
18420	0.024
18480	0.013
18540	0.014
18600	0.027
18660	0.03
18720	0.015
18780	0.022
18840	0.076
18900	0.059
18960	0.055
19020	0.027
19080	0.015
19140	0.015
19200	0.014
19260	0.027
19320	0.026
19380	0.014
19440	0.014
19500	0.054
19560	0.074
19620	0.038
19680	0.039
19740	0.022
19800	0.047
19860	0.037
19920	0.066

19980	0.044
20040	0.025
20100	0.033
20160	0.046
20220	0.024
20280	0.033
20340	0.022
20400	0.021
20460	0.049
20520	0.017
20580	0.014
20640	0.014
20700	0.015
20760	0.019
20820	0.017
20880	0.025
20940	0.044
21000	0.015
21060	0.016
21120	0.023
21180	0.037
21240	0.088
21300	0.03
21360	0.02
21420	0.015
21480	0.021
21540	0.027
21600	0.074
21660	0.037
21720	0.024
21780	0.018
21840	0.075
21900	0.069
21960	0.05
22020	0.031
22080	0.077
22140	0.029
22200	0.017
22260	0.018
22320	0.019
22380	0.024
22440	0.022
22500	0.021
22560	0.021

22620	0.019
22680	0.021
22740	0.027
22800	0.022
22860	0.021
22920	0.021
22980	0.022
23040	0.06
23100	0.023
23160	0.019
23220	0.023
23280	0.027
23340	0.049
23400	0.045
23460	0.041
23520	0.091
23580	0.074
23640	0.064
23700	0.054
23760	0.032
23820	0.033
23880	0.026
23940	0.043
24000	0.059
24060	0.061
24120	0.026
24180	0.047
24240	0.056
24300	0.035
24360	0.021
24420	0.018
24480	0.022
24540	0.018
24600	0.017
24660	0.027
24720	0.03
24780	0.033
24840	0.043
24900	0.036
24960	0.089
25020	0.04
25080	0.066
25140	0.035
25200	0.019

25260	0.028
25320	0.035
25380	0.034
25440	0.029
25500	0.02
25560	0.02
25620	0.031
25680	0.046
25740	0.046
25800	0.044
25860	0.042
25920	0.039
25980	0.053
26040	0.044
26100	0.026
26160	0.026
26220	0.022
26280	0.022
26340	0.019
26400	0.046
26460	0.024
26520	0.018
26580	0.018
26640	0.015
26700	0.017
26760	0.019
26820	0.017
26880	0.022
26940	0.034
27000	0.023
27060	0.022
27120	0.053
27180	0.035
27240	0.032
27300	0.022
27360	0.031
27420	0.057
27480	0.029
27540	0.019
27600	0.022
27660	0.554
27720	0.045
27780	0.027
27840	0.024

27900	0.028
27960	0.042
28020	0.043
28080	0.041
28140	0.069
28200	0.184
28260	0.035
28320	0.052
28380	0.067
28440	0.064
28500	0.024
28560	0.026
28620	0.029
28680	0.025
28740	0.018
28800	0.016
28860	0.023
28920	0.043
28980	0.02
29040	0.017
29100	0.016
29160	0.015
29220	0.017
29280	0.017
29340	0.016
29400	0.039
29460	0.018
29520	0.015
29580	0.014
29640	0.016
29700	0.018
29760	0.017
29820	0.018
29880	0.03
29940	0.021
30000	0.016
30060	0.016
30120	0.017
30180	0.019
30240	0.017
30300	0.018
30360	0.02
30420	0.026
30480	0.018

30540	0.016
30600	0.017
30660	0.016
30720	0.017
30780	0.017
30840	0.018
30900	0.019
30960	0.022
31020	0.018
31080	0.018
31140	0.022
31200	0.027
31260	0.018
31320	0.018
31380	0.02
31440	0.026
31500	0.026
31560	0.022
31620	0.036
31680	0.022
31740	0.02
31800	0.019
31860	0.02
31920	0.018
31980	0.017
32040	0.017
32100	0.016
32160	0.015
32220	0.016
32280	0.015
32340	0.017
32400	0.016
32460	0.018

Device Serial No	Log Time	Log Type	Sensor 1 Type	Sensor 1 Serial Number	Sensor 1 Status	Sensor 1 Gas Reading
592-000289	3/22/2024 15:49	Readings	PID	SC23030140W3	Normal	0
592-000289	3/22/2024 15:48	Readings	PID	SC23030140W3	Normal	0
592-000289	3/22/2024 15:47	Readings	PID	SC23030140W3	Normal	0
592-000289	3/22/2024 15:46	Readings	PID	SC23030140W3	Normal	0
592-000289	3/22/2024 15:45	Readings	PID	SC23030140W3	Normal	0
592-000289	3/22/2024 15:44	Readings	PID	SC23030140W3	Normal	0
592-000289	3/22/2024 15:43	Readings	PID	SC23030140W3	Normal	0
592-000289	3/22/2024 15:42	Readings	PID	SC23030140W3	Normal	0
592-000289	3/22/2024 15:41	Readings	PID	SC23030140W3	Normal	0
592-000289	3/22/2024 15:40	Readings	PID	SC23030140W3	Normal	0
592-000289	3/22/2024 15:39	Readings	PID	SC23030140W3	Normal	0
592-000289	3/22/2024 15:38	Readings	PID	SC23030140W3	Normal	0
592-000289	3/22/2024 15:37	Readings	PID	SC23030140W3	Normal	0
592-000289	3/22/2024 15:36	Readings	PID	SC23030140W3	Normal	0
592-000289	3/22/2024 15:35	Readings	PID	SC23030140W3	Normal	0
592-000289	3/22/2024 15:34	Readings	PID	SC23030140W3	Normal	0
592-000289	3/22/2024 15:33	Readings	PID	SC23030140W3	Normal	0
592-000289	3/22/2024 15:32	Readings	PID	SC23030140W3	Normal	0
592-000289	3/22/2024 15:31	Readings	PID	SC23030140W3	Normal	0
592-000289	3/22/2024 15:30	Readings	PID	SC23030140W3	Normal	0
592-000289	3/22/2024 15:29	Readings	PID	SC23030140W3	Normal	0
592-000289	3/22/2024 15:28	Readings	PID	SC23030140W3	Normal	0
592-000289	3/22/2024 15:27	Readings	PID	SC23030140W3	Normal	0
592-000289	3/22/2024 15:26	Readings	PID	SC23030140W3	Normal	0
592-000289	3/22/2024 15:25	Readings	PID	SC23030140W3	Normal	0
592-000289	3/22/2024 15:24	Readings	PID	SC23030140W3	Normal	0
592-000289	3/22/2024 15:23	Readings	PID	SC23030140W3	Normal	0
592-000289	3/22/2024 15:22	Readings	PID	SC23030140W3	Normal	0
592-000289	3/22/2024 15:21	Readings	PID	SC23030140W3	Normal	0
592-000289	3/22/2024 15:20	Readings	PID	SC23030140W3	Normal	0
592-000289	3/22/2024 15:19	Readings	PID	SC23030140W3	Normal	0
592-000289	3/22/2024 15:18	Readings	PID	SC23030140W3	Normal	0

592-000289	3/22/2024 10:20 Readings	PID	SC23030140W3	Normal	0
592-000289	3/22/2024 10:19 Readings	PID	SC23030140W3	Normal	0
592-000289	3/22/2024 10:18 Readings	PID	SC23030140W3	Normal	0
592-000289	3/22/2024 10:17 Readings	PID	SC23030140W3	Normal	0
592-000289	3/22/2024 10:16 Readings	PID	SC23030140W3	Normal	0
592-000289	3/22/2024 10:15 Readings	PID	SC23030140W3	Normal	0
592-000289	3/22/2024 10:14 Readings	PID	SC23030140W3	Normal	0
592-000289	3/22/2024 10:13 Readings	PID	SC23030140W3	Normal	0
592-000289	3/22/2024 10:12 Readings	PID	SC23030140W3	Normal	0
592-000289	3/22/2024 10:11 Readings	PID	SC23030140W3	Normal	0
592-000289	3/22/2024 10:10 Readings	PID	SC23030140W3	Normal	0
592-000289	3/22/2024 10:09 Readings	PID	SC23030140W3	Normal	0
592-000289	3/22/2024 10:08 Readings	PID	SC23030140W3	Normal	0
592-000289	3/22/2024 10:07 Readings	PID	SC23030140W3	Normal	0
592-000289	3/22/2024 10:06 Readings	PID	SC23030140W3	Normal	0
592-000289	3/22/2024 10:05 Readings	PID	SC23030140W3	Normal	0
592-000289	3/22/2024 10:04 Readings	PID	SC23030140W3	Normal	0
592-000289	3/22/2024 10:03 Readings	PID	SC23030140W3	Normal	0
592-000289	3/22/2024 10:02 Readings	PID	SC23030140W3	Normal	0
592-000289	3/22/2024 10:01 Readings	PID	SC23030140W3	Normal	0
592-000289	3/22/2024 10:00 Readings	PID	SC23030140W3	Normal	0
592-000289	3/22/2024 9:59 Readings	PID	SC23030140W3	Normal	0
592-000289	3/22/2024 9:58 Readings	PID	SC23030140W3	Normal	0
592-000289	3/22/2024 9:57 Readings	PID	SC23030140W3	Normal	0
592-000289	3/22/2024 9:56 Readings	PID	SC23030140W3	Normal	0
592-000289	3/22/2024 9:55 Readings	PID	SC23030140W3	Normal	0
592-000289	3/22/2024 9:54 Readings	PID	SC23030140W3	Normal	0
592-000289	3/22/2024 9:53 Readings	PID	SC23030140W3	Normal	0
592-000289	3/22/2024 9:52 Readings	PID	SC23030140W3	Normal	0
592-000289	3/22/2024 9:51 Readings	PID	SC23030140W3	Normal	0
592-000289	3/22/2024 9:50 Readings	PID	SC23030140W3	Normal	0
592-000289	3/22/2024 9:49 Readings	PID	SC23030140W3	Normal	0
592-000289	3/22/2024 9:48 Readings	PID	SC23030140W3	Normal	0

592-000289	3/22/2024 7:02 Readings	PID	SC23030140W3	Normal	0
592-000289	3/22/2024 7:01 Readings	PID	SC23030140W3	Normal	0
592-000289	3/22/2024 7:00 Readings	PID	SC23030140W3	Normal	0
592-000289	3/22/2024 6:59 Readings	PID	SC23030140W3	Normal	0
592-000289	3/22/2024 6:58 Readings	PID	SC23030140W3	Normal	0
592-000289	3/22/2024 6:57 Readings	PID	SC23030140W3	Normal	0
592-000289	3/22/2024 6:56 Readings	PID	SC23030140W3	Normal	0
592-000289	3/22/2024 6:55 Readings	PID	SC23030140W3	Normal	0
592-000289	3/22/2024 6:54 Readings	PID	SC23030140W3	Normal	0
592-000289	3/22/2024 6:53 Readings	PID	SC23030140W3	Normal	0
592-000289	3/22/2024 6:52 Readings	PID	SC23030140W3	Normal	0
592-000289	3/22/2024 6:51 Readings	PID	SC23030140W3	Normal	0
592-000289	3/22/2024 6:50 Readings	PID	SC23030140W3	Normal	0
592-000289	3/22/2024 6:49 Readings	PID	SC23030140W3	Normal	0
592-000289	3/22/2024 6:48 Readings	PID	SC23030140W3	Normal	0
592-000289	3/22/2024 6:47 Readings	PID	SC23030140W3	Normal	0
592-000289	3/22/2024 6:46 Readings	PID	SC23030140W3	Normal	0
592-000289	3/22/2024 6:45 Readings	PID	SC23030140W3	Normal	0
592-000289	3/22/2024 6:44 Readings	PID	SC23030140W3	Normal	0
592-000289	3/22/2024 6:43 CONFIG	PID	SC23030140W3		

Instrument Name	DustTrak II
Model Number	8530
Serial Number	8530152812
Firmware Version	3.1
Calibration Date	5/2/2023
Test Name	MANUAL_008
Test Start Time	6:20:09 AM
Test Start Date	3/22/2024
Test Length [D:H:M]	0:09:06
Test Interval [M:S]	1:00
Mass Average [mg/m3]	0.022
Mass Minimum [mg/m3]	0.007
Mass Maximum [mg/m3]	0.229
Mass TWA [mg/m3]	0.023
Photometric User Cal	1
Flow User Cal	0
Errors	
Number of Samples	546

Elapsed Time [s]	Mass [mg/m3]	Alarms	Errors
60	0.161		
120	0.031		
180	0.069		
240	0.059		
300	0.045		
360	0.229		
420	0.179		
480	0.039		
540	0.016		
600	0.09		
660	0.028		
720	0.015		
780	0.072		
840	0.04		
900	0.014		
960	0.012		
1020	0.036		
1080	0.009		
1140	0.032		
1200	0.012		
1260	0.008		
1320	0.011		
1380	0.033		
1440	0.03		

1500	0.02
1560	0.033
1620	0.01
1680	0.007
1740	0.008
1800	0.013
1860	0.014
1920	0.01
1980	0.008
2040	0.009
2100	0.01
2160	0.007
2220	0.007
2280	0.011
2340	0.012
2400	0.023
2460	0.017
2520	0.03
2580	0.01
2640	0.009
2700	0.013
2760	0.011
2820	0.02
2880	0.016
2940	0.029
3000	0.039
3060	0.038
3120	0.036
3180	0.012
3240	0.011
3300	0.013
3360	0.01
3420	0.014
3480	0.021
3540	0.013
3600	0.015
3660	0.029
3720	0.037
3780	0.011
3840	0.011
3900	0.017
3960	0.009
4020	0.015
4080	0.059

4140	0.016
4200	0.036
4260	0.052
4320	0.017
4380	0.029
4440	0.037
4500	0.034
4560	0.025
4620	0.029
4680	0.018
4740	0.011
4800	0.011
4860	0.016
4920	0.014
4980	0.011
5040	0.016
5100	0.013
5160	0.016
5220	0.015
5280	0.018
5340	0.029
5400	0.051
5460	0.033
5520	0.013
5580	0.015
5640	0.016
5700	0.014
5760	0.018
5820	0.019
5880	0.014
5940	0.015
6000	0.015
6060	0.026
6120	0.018
6180	0.017
6240	0.021
6300	0.04
6360	0.034
6420	0.015
6480	0.015
6540	0.037
6600	0.019
6660	0.017
6720	0.012

6780	0.011
6840	0.013
6900	0.016
6960	0.015
7020	0.016
7080	0.014
7140	0.015
7200	0.014
7260	0.019
7320	0.016
7380	0.013
7440	0.012
7500	0.011
7560	0.017
7620	0.014
7680	0.017
7740	0.019
7800	0.027
7860	0.016
7920	0.02
7980	0.018
8040	0.021
8100	0.016
8160	0.027
8220	0.018
8280	0.018
8340	0.018
8400	0.014
8460	0.013
8520	0.036
8580	0.022
8640	0.021
8700	0.014
8760	0.013
8820	0.013
8880	0.019
8940	0.02
9000	0.019
9060	0.019
9120	0.015
9180	0.019
9240	0.015
9300	0.02
9360	0.015

9420	0.021
9480	0.017
9540	0.015
9600	0.018
9660	0.019
9720	0.015
9780	0.014
9840	0.013
9900	0.015
9960	0.012
10020	0.018
10080	0.021
10140	0.019
10200	0.016
10260	0.015
10320	0.014
10380	0.019
10440	0.016
10500	0.04
10560	0.023
10620	0.016
10680	0.012
10740	0.013
10800	0.012
10860	0.013
10920	0.012
10980	0.012
11040	0.012
11100	0.017
11160	0.018
11220	0.019
11280	0.018
11340	0.032
11400	0.023
11460	0.025
11520	0.022
11580	0.014
11640	0.039
11700	0.03
11760	0.013
11820	0.014
11880	0.014
11940	0.021
12000	0.02

12060	0.017
12120	0.025
12180	0.063
12240	0.014
12300	0.014
12360	0.014
12420	0.013
12480	0.013
12540	0.017
12600	0.014
12660	0.014
12720	0.013
12780	0.014
12840	0.016
12900	0.013
12960	0.014
13020	0.015
13080	0.014
13140	0.015
13200	0.014
13260	0.014
13320	0.014
13380	0.014
13440	0.014
13500	0.017
13560	0.015
13620	0.015
13680	0.018
13740	0.016
13800	0.019
13860	0.016
13920	0.015
13980	0.014
14040	0.014
14100	0.014
14160	0.015
14220	0.015
14280	0.014
14340	0.014
14400	0.014
14460	0.014
14520	0.015
14580	0.015
14640	0.021

14700	0.02
14760	0.021
14820	0.031
14880	0.017
14940	0.018
15000	0.016
15060	0.019
15120	0.015
15180	0.017
15240	0.017
15300	0.023
15360	0.022
15420	0.016
15480	0.016
15540	0.017
15600	0.021
15660	0.016
15720	0.017
15780	0.047
15840	0.033
15900	0.023
15960	0.028
16020	0.028
16080	0.015
16140	0.016
16200	0.017
16260	0.018
16320	0.087
16380	0.033
16440	0.028
16500	0.024
16560	0.018
16620	0.024
16680	0.025
16740	0.025
16800	0.017
16860	0.016
16920	0.018
16980	0.025
17040	0.022
17100	0.022
17160	0.023
17220	0.021
17280	0.029

17340	0.026
17400	0.021
17460	0.018
17520	0.018
17580	0.022
17640	0.024
17700	0.021
17760	0.023
17820	0.02
17880	0.028
17940	0.033
18000	0.02
18060	0.023
18120	0.03
18180	0.026
18240	0.052
18300	0.042
18360	0.021
18420	0.07
18480	0.044
18540	0.025
18600	0.111
18660	0.024
18720	0.02
18780	0.022
18840	0.023
18900	0.031
18960	0.027
19020	0.023
19080	0.02
19140	0.022
19200	0.024
19260	0.025
19320	0.025
19380	0.027
19440	0.076
19500	0.025
19560	0.03
19620	0.033
19680	0.017
19740	0.021
19800	0.021
19860	0.028
19920	0.028

19980	0.02
20040	0.019
20100	0.021
20160	0.017
20220	0.019
20280	0.021
20340	0.021
20400	0.018
20460	0.017
20520	0.026
20580	0.02
20640	0.093
20700	0.081
20760	0.025
20820	0.019
20880	0.016
20940	0.018
21000	0.022
21060	0.144
21120	0.027
21180	0.018
21240	0.017
21300	0.017
21360	0.017
21420	0.017
21480	0.018
21540	0.018
21600	0.02
21660	0.019
21720	0.017
21780	0.018
21840	0.018
21900	0.018
21960	0.018
22020	0.018
22080	0.021
22140	0.092
22200	0.067
22260	0.037
22320	0.045
22380	0.026
22440	0.046
22500	0.019
22560	0.031

22620	0.027
22680	0.03
22740	0.021
22800	0.022
22860	0.018
22920	0.019
22980	0.024
23040	0.043
23100	0.084
23160	0.03
23220	0.037
23280	0.017
23340	0.019
23400	0.056
23460	0.022
23520	0.036
23580	0.039
23640	0.028
23700	0.026
23760	0.022
23820	0.019
23880	0.017
23940	0.017
24000	0.018
24060	0.021
24120	0.019
24180	0.02
24240	0.021
24300	0.018
24360	0.017
24420	0.016
24480	0.016
24540	0.016
24600	0.015
24660	0.015
24720	0.018
24780	0.021
24840	0.022
24900	0.029
24960	0.016
25020	0.014
25080	0.018
25140	0.019
25200	0.021

25260	0.016
25320	0.021
25380	0.019
25440	0.018
25500	0.027
25560	0.022
25620	0.016
25680	0.015
25740	0.013
25800	0.014
25860	0.014
25920	0.017
25980	0.018
26040	0.019
26100	0.017
26160	0.016
26220	0.024
26280	0.022
26340	0.017
26400	0.017
26460	0.02
26520	0.02
26580	0.014
26640	0.014
26700	0.018
26760	0.019
26820	0.023
26880	0.017
26940	0.014
27000	0.017
27060	0.016
27120	0.018
27180	0.014
27240	0.014
27300	0.015
27360	0.015
27420	0.015
27480	0.016
27540	0.014
27600	0.015
27660	0.014
27720	0.013
27780	0.013
27840	0.014

27900	0.015
27960	0.015
28020	0.018
28080	0.019
28140	0.016
28200	0.011
28260	0.012
28320	0.012
28380	0.016
28440	0.012
28500	0.014
28560	0.014
28620	0.017
28680	0.012
28740	0.013
28800	0.016
28860	0.013
28920	0.012
28980	0.015
29040	0.015
29100	0.013
29160	0.022
29220	0.015
29280	0.012
29340	0.031
29400	0.016
29460	0.016
29520	0.012
29580	0.011
29640	0.012
29700	0.02
29760	0.062
29820	0.016
29880	0.013
29940	0.014
30000	0.014
30060	0.013
30120	0.013
30180	0.017
30240	0.054
30300	0.015
30360	0.013
30420	0.014
30480	0.014

30540	0.014
30600	0.013
30660	0.013
30720	0.014
30780	0.018
30840	0.019
30900	0.019
30960	0.014
31020	0.015
31080	0.016
31140	0.018
31200	0.02
31260	0.017
31320	0.014
31380	0.013
31440	0.015
31500	0.017
31560	0.018
31620	0.014
31680	0.015
31740	0.015
31800	0.015
31860	0.017
31920	0.016
31980	0.013
32040	0.013
32100	0.013
32160	0.016
32220	0.014
32280	0.014
32340	0.019
32400	0.019
32460	0.014
32520	0.015
32580	0.015
32640	0.016
32700	0.017
32760	0.019

Device Serial No	Log Time	Log Type	Sensor 1 Type	Sensor 1 Serial Number	Sensor 1 Status	Sensor 1 Gas Reading
592-602176	3/22/2024 15:43	Readings	PID	SC23030140W3	Normal	0
592-602176	3/22/2024 15:43	Readings	PID	SC23030140W3	Normal	0.1
592-602176	3/22/2024 15:43	Readings	PID	SC23030140W3	Normal	0.2
592-602176	3/22/2024 15:43	Readings	PID	SC23030140W3	Normal	2.4
592-602176	3/22/2024 15:43	Readings	PID	SC23030140W3	Normal	0
592-602176	3/22/2024 15:43	Readings	PID	SC23030140W3	Normal	0
592-602176	3/22/2024 15:43	Readings	PID	SC23030140W3	Normal	0.1
592-602176	3/22/2024 15:43	Readings	PID	SC23030140W3	Normal	0
592-602176	3/22/2024 15:43	Readings	PID	SC23030140W3	Normal	0
592-602176	3/22/2024 15:43	Readings	PID	SC23030140W3	Normal	0.2
592-602176	3/22/2024 15:43	Readings	PID	SC23030140W3	Normal	0
592-602176	3/22/2024 15:43	Readings	PID	SC23030140W3	Normal	0
592-602176	3/22/2024 15:43	Readings	PID	SC23030140W3	Normal	0.1
592-602176	3/22/2024 15:43	Readings	PID	SC23030140W3	Normal	0
592-602176	3/22/2024 15:43	Readings	PID	SC23030140W3	Normal	0.2
592-602176	3/22/2024 15:43	Readings	PID	SC23030140W3	Normal	0
592-602176	3/22/2024 15:43	Readings	PID	SC23030140W3	Normal	0.1
592-602176	3/22/2024 15:43	Readings	PID	SC23030140W3	Normal	0.2
592-602176	3/22/2024 15:43	Readings	PID	SC23030140W3	Normal	2.4
592-602176	3/22/2024 15:43	Readings	PID	SC23030140W3	Normal	0
592-602176	3/22/2024 15:43	Readings	PID	SC23030140W3	Normal	0
592-602176	3/22/2024 15:43	Readings	PID	SC23030140W3	Normal	0.1
592-602176	3/22/2024 15:43	Readings	PID	SC23030140W3	Normal	0
592-602176	3/22/2024 15:43	Readings	PID	SC23030602B4	Normal	0.2
592-602176	3/22/2024 15:42	Readings	PID	SC23030140W3	Normal	0
592-602176	3/22/2024 15:42	Readings	PID	SC23030140W3	Normal	0.1
592-602176	3/22/2024 15:42	Readings	PID	SC23030140W3	Normal	0.2
592-602176	3/22/2024 15:42	Readings	PID	SC23030140W3	Normal	2.4
592-602176	3/22/2024 15:42	Readings	PID	SC23030140W3	Normal	0
592-602176	3/22/2024 15:42	Readings	PID	SC23030140W3	Normal	0
592-602176	3/22/2024 15:42	Readings	PID	SC23030140W3	Normal	0.1
592-602176	3/22/2024 15:42	Readings	PID	SC23030140W3	Normal	0

592-602176	3/22/2024 15:35 Readings	PID	SC23030140W3	Normal	0.1
592-602176	3/22/2024 15:35 Readings	PID	SC23030140W3	Normal	0
592-602176	3/22/2024 15:35 Readings	PID	SC23030140W3	Normal	0.2
592-602176	3/22/2024 15:35 Readings	PID	SC23030140W3	Normal	0
592-602176	3/22/2024 15:35 Readings	PID	SC23030140W3	Normal	0.1
592-602176	3/22/2024 15:35 Readings	PID	SC23030140W3	Normal	0.2
592-602176	3/22/2024 15:35 Readings	PID	SC23030140W3	Normal	2.4
592-602176	3/22/2024 15:35 Readings	PID	SC23030140W3	Normal	1.3
592-602176	3/22/2024 15:35 Readings	PID	SC23030140W3	Normal	0
592-602176	3/22/2024 15:35 Readings	PID	SC23030140W3	Normal	0
592-602176	3/22/2024 15:35 Readings	PID	SC23030140W3	Normal	0.1
592-602176	3/22/2024 15:35 Readings	PID	SC23030140W3	Normal	0
592-602176	3/22/2024 15:35 Readings	PID	SC23030140W3	Normal	0
592-602176	3/22/2024 15:35 Readings	PID	SC23030602B4	Normal	0.2
592-602176	3/22/2024 15:34 Readings	PID	SC23030140W3	Normal	0
592-602176	3/22/2024 15:34 Readings	PID	SC23030140W3	Normal	0.2
592-602176	3/22/2024 15:34 Readings	PID	SC23030140W3	Normal	0.2
592-602176	3/22/2024 15:34 Readings	PID	SC23030140W3	Normal	2.4
592-602176	3/22/2024 15:34 Readings	PID	SC23030140W3	Normal	1.3
592-602176	3/22/2024 15:34 Readings	PID	SC23030140W3	Normal	0
592-602176	3/22/2024 15:34 Readings	PID	SC23030140W3	Normal	0
592-602176	3/22/2024 15:34 Readings	PID	SC23030140W3	Normal	0.1
592-602176	3/22/2024 15:34 Readings	PID	SC23030140W3	Normal	0
592-602176	3/22/2024 15:34 Readings	PID	SC23030140W3	Normal	0
592-602176	3/22/2024 15:34 Readings	PID	SC23030140W3	Normal	0.2
592-602176	3/22/2024 15:34 Readings	PID	SC23030140W3	Normal	0
592-602176	3/22/2024 15:34 Readings	PID	SC23030140W3	Normal	0
592-602176	3/22/2024 15:34 Readings	PID	SC23030140W3	Normal	0.2
592-602176	3/22/2024 15:34 Readings	PID	SC23030140W3	Normal	0
592-602176	3/22/2024 15:34 Readings	PID	SC23030140W3	Normal	0.1
592-602176	3/22/2024 15:34 Readings	PID	SC23030140W3	Normal	0

592-602176	3/22/2024 15:34 Readings	PID	SC23030140W3	Normal	0.2
592-602176	3/22/2024 15:34 Readings	PID	SC23030140W3	Normal	0
592-602176	3/22/2024 15:34 Readings	PID	SC23030140W3	Normal	0.2
592-602176	3/22/2024 15:34 Readings	PID	SC23030140W3	Normal	0.2
592-602176	3/22/2024 15:34 Readings	PID	SC23030140W3	Normal	2.4
592-602176	3/22/2024 15:34 Readings	PID	SC23030140W3	Normal	1.3
592-602176	3/22/2024 15:34 Readings	PID	SC23030140W3	Normal	0
592-602176	3/22/2024 15:34 Readings	PID	SC23030140W3	Normal	0
592-602176	3/22/2024 15:34 Readings	PID	SC23030140W3	Normal	0.1
592-602176	3/22/2024 15:34 Readings	PID	SC23030140W3	Normal	0
592-602176	3/22/2024 15:34 Readings	PID	SC23030140W3	Normal	0
592-602176	3/22/2024 15:34 Readings	PID	SC23030602B4	Normal	0.2
592-602176	3/22/2024 15:33 Readings	PID	SC23030140W3	Normal	0
592-602176	3/22/2024 15:33 Readings	PID	SC23030140W3	Normal	0.2
592-602176	3/22/2024 15:33 Readings	PID	SC23030140W3	Normal	0.2
592-602176	3/22/2024 15:33 Readings	PID	SC23030140W3	Normal	2.4
592-602176	3/22/2024 15:33 Readings	PID	SC23030140W3	Normal	1.3
592-602176	3/22/2024 15:33 Readings	PID	SC23030140W3	Normal	0
592-602176	3/22/2024 15:33 Readings	PID	SC23030140W3	Normal	0
592-602176	3/22/2024 15:33 Readings	PID	SC23030140W3	Normal	0.1
592-602176	3/22/2024 15:33 Readings	PID	SC23030140W3	Normal	0
592-602176	3/22/2024 15:33 Readings	PID	SC23030140W3	Normal	0
592-602176	3/22/2024 15:33 Readings	PID	SC23030140W3	Normal	0
592-602176	3/22/2024 15:33 Readings	PID	SC23030140W3	Normal	0
592-602176	3/22/2024 15:33 Readings	PID	SC23030140W3	Normal	0.2
592-602176	3/22/2024 15:33 Readings	PID	SC23030140W3	Normal	0
592-602176	3/22/2024 15:33 Readings	PID	SC23030140W3	Normal	0
592-602176	3/22/2024 15:33 Readings	PID	SC23030140W3	Normal	0.2
592-602176	3/22/2024 15:33 Readings	PID	SC23030140W3	Normal	0
592-602176	3/22/2024 15:33 Readings	PID	SC23030140W3	Normal	0.1
592-602176	3/22/2024 15:33 Readings	PID	SC23030140W3	Normal	0
592-602176	3/22/2024 15:33 Readings	PID	SC23030140W3	Normal	0.2

592-602176	3/22/2024 15:25 Readings	PID	SC23030140W3	Normal	0
592-602176	3/22/2024 15:25 Readings	PID	SC23030140W3	Normal	0.1
592-602176	3/22/2024 15:25 Readings	PID	SC23030140W3	Normal	0
592-602176	3/22/2024 15:25 Readings	PID	SC23030140W3	Normal	0.2
592-602176	3/22/2024 15:25 Readings	PID	SC23030140W3	Normal	0
592-602176	3/22/2024 15:25 Readings	PID	SC23030140W3	Normal	0.1
592-602176	3/22/2024 15:25 Readings	PID	SC23030140W3	Normal	0
592-602176	3/22/2024 15:25 Readings	PID	SC23030140W3	Normal	0
592-602176	3/22/2024 15:25 Readings	PID	SC23030140W3	Normal	0.2
592-602176	3/22/2024 15:25 Readings	PID	SC23030140W3	Normal	0
592-602176	3/22/2024 15:25 Readings	PID	SC23030140W3	Normal	0.1
592-602176	3/22/2024 15:25 Readings	PID	SC23030140W3	Normal	0
592-602176	3/22/2024 15:25 Readings	PID	SC23030140W3	Normal	0.1
592-602176	3/22/2024 15:25 Readings	PID	SC23030140W3	Normal	0.3
592-602176	3/22/2024 15:25 Readings	PID	SC23030140W3	Normal	0
592-602176	3/22/2024 15:25 Readings	PID	SC23030140W3	Normal	0.2
592-602176	3/22/2024 15:25 Readings	PID	SC23030140W3	Normal	0.3
592-602176	3/22/2024 15:25 Readings	PID	SC23030140W3	Normal	2.5
592-602176	3/22/2024 15:25 Readings	PID	SC23030140W3	Normal	1.4
592-602176	3/22/2024 15:25 Readings	PID	SC23030140W3	Normal	0
592-602176	3/22/2024 15:25 Readings	PID	SC23030140W3	Normal	0
592-602176	3/22/2024 15:25 Readings	PID	SC23030140W3	Normal	0
592-602176	3/22/2024 15:25 Readings	PID	SC23030140W3	Normal	0
592-602176	3/22/2024 15:25 Readings	PID	SC23030602B4	Normal	0.2
592-602176	3/22/2024 15:24 Readings	PID	SC23030140W3	Normal	0
592-602176	3/22/2024 15:24 Readings	PID	SC23030140W3	Normal	0.1
592-602176	3/22/2024 15:24 Readings	PID	SC23030140W3	Normal	0.3
592-602176	3/22/2024 15:24 Readings	PID	SC23030140W3	Normal	2.5
592-602176	3/22/2024 15:24 Readings	PID	SC23030140W3	Normal	1.4
592-602176	3/22/2024 15:24 Readings	PID	SC23030140W3	Normal	0

592-602176	3/22/2024 15:21 Readings	PID	SC23030140W3	Normal	0
592-602176	3/22/2024 15:21 Readings	PID	SC23030140W3	Normal	0.1
592-602176	3/22/2024 15:21 Readings	PID	SC23030140W3	Normal	0
592-602176	3/22/2024 15:21 Readings	PID	SC23030140W3	Normal	0.1
592-602176	3/22/2024 15:21 Readings	PID	SC23030140W3	Normal	0.3
592-602176	3/22/2024 15:21 Readings	PID	SC23030140W3	Normal	0
592-602176	3/22/2024 15:21 Readings	PID	SC23030140W3	Normal	0.1
592-602176	3/22/2024 15:21 Readings	PID	SC23030140W3	Normal	0.3
592-602176	3/22/2024 15:21 Readings	PID	SC23030140W3	Normal	2.5
592-602176	3/22/2024 15:21 Readings	PID	SC23030140W3	Normal	1.4
592-602176	3/22/2024 15:21 Readings	PID	SC23030140W3	Normal	0
592-602176	3/22/2024 15:21 Readings	PID	SC23030140W3	Normal	0
592-602176	3/22/2024 15:21 Readings	PID	SC23030140W3	Normal	0
592-602176	3/22/2024 15:21 Readings	PID	SC23030140W3	Normal	0
592-602176	3/22/2024 15:21 Readings	PID	SC23030602B4	Normal	0.2
592-602176	3/22/2024 15:20 Readings	PID	SC23030140W3	Normal	0
592-602176	3/22/2024 15:20 Readings	PID	SC23030140W3	Normal	0.1
592-602176	3/22/2024 15:20 Readings	PID	SC23030140W3	Normal	0.3
592-602176	3/22/2024 15:20 Readings	PID	SC23030140W3	Normal	2.5
592-602176	3/22/2024 15:20 Readings	PID	SC23030140W3	Normal	1.4
592-602176	3/22/2024 15:20 Readings	PID	SC23030140W3	Normal	0
592-602176	3/22/2024 15:20 Readings	PID	SC23030140W3	Normal	0
592-602176	3/22/2024 15:20 Readings	PID	SC23030140W3	Normal	0
592-602176	3/22/2024 15:20 Readings	PID	SC23030140W3	Normal	0
592-602176	3/22/2024 15:20 Readings	PID	SC23030140W3	Normal	0
592-602176	3/22/2024 15:20 Readings	PID	SC23030140W3	Normal	0.1
592-602176	3/22/2024 15:20 Readings	PID	SC23030140W3	Normal	0
592-602176	3/22/2024 15:20 Readings	PID	SC23030140W3	Normal	0.3
592-602176	3/22/2024 15:20 Readings	PID	SC23030140W3	Normal	0
592-602176	3/22/2024 15:20 Readings	PID	SC23030140W3	Normal	0.1
592-602176	3/22/2024 15:20 Readings	PID	SC23030140W3	Normal	0

592-602176	3/22/2024 15:16 Readings	PID	SC23030140W3	Normal	0
592-602176	3/22/2024 15:16 Readings	PID	SC23030140W3	Normal	0
592-602176	3/22/2024 15:16 Readings	PID	SC23030140W3	Normal	0
592-602176	3/22/2024 15:16 Readings	PID	SC23030140W3	Normal	0
592-602176	3/22/2024 15:16 Readings	PID	SC23030140W3	Normal	0.2
592-602176	3/22/2024 15:16 Readings	PID	SC23030140W3	Normal	0.1
592-602176	3/22/2024 15:16 Readings	PID	SC23030140W3	Normal	0
592-602176	3/22/2024 15:16 Readings	PID	SC23030140W3	Normal	0
592-602176	3/22/2024 15:16 Readings	PID	SC23030140W3	Normal	0.1
592-602176	3/22/2024 15:16 Readings	PID	SC23030140W3	Normal	0
592-602176	3/22/2024 15:16 Readings	PID	SC23030140W3	Normal	0.1
592-602176	3/22/2024 15:16 Readings	PID	SC23030140W3	Normal	0.4
592-602176	3/22/2024 15:16 Readings	PID	SC23030140W3	Normal	0
592-602176	3/22/2024 15:16 Readings	PID	SC23030140W3	Normal	0.2
592-602176	3/22/2024 15:16 Readings	PID	SC23030140W3	Normal	0.3
592-602176	3/22/2024 15:16 Readings	PID	SC23030140W3	Normal	2.5
592-602176	3/22/2024 15:16 Readings	PID	SC23030140W3	Normal	1.4
592-602176	3/22/2024 15:16 Readings	PID	SC23030140W3	Normal	0
592-602176	3/22/2024 15:16 Readings	PID	SC23030140W3	Normal	0
592-602176	3/22/2024 15:16 Readings	PID	SC23030140W3	Normal	0
592-602176	3/22/2024 15:16 Readings	PID	SC23030140W3	Normal	0
592-602176	3/22/2024 15:16 Readings	PID	SC23030602B4	Normal	0.2
592-602176	3/22/2024 15:15 Readings	PID	SC23030140W3	Normal	0
592-602176	3/22/2024 15:15 Readings	PID	SC23030140W3	Normal	0.1
592-602176	3/22/2024 15:15 Readings	PID	SC23030140W3	Normal	0.3
592-602176	3/22/2024 15:15 Readings	PID	SC23030140W3	Normal	2.5
592-602176	3/22/2024 15:15 Readings	PID	SC23030140W3	Normal	1.4
592-602176	3/22/2024 15:15 Readings	PID	SC23030140W3	Normal	0
592-602176	3/22/2024 15:15 Readings	PID	SC23030140W3	Normal	0
592-602176	3/22/2024 15:15 Readings	PID	SC23030140W3	Normal	0
592-602176	3/22/2024 15:15 Readings	PID	SC23030140W3	Normal	0

592-602176	3/22/2024 15:12 Readings	PID	SC23030602B4	Normal	0.2
592-602176	3/22/2024 15:11 Readings	PID	SC23030140W3	Normal	0
592-602176	3/22/2024 15:11 Readings	PID	SC23030140W3	Normal	0.1
592-602176	3/22/2024 15:11 Readings	PID	SC23030140W3	Normal	0.3
592-602176	3/22/2024 15:11 Readings	PID	SC23030140W3	Normal	2.5
592-602176	3/22/2024 15:11 Readings	PID	SC23030140W3	Normal	1.4
592-602176	3/22/2024 15:11 Readings	PID	SC23030140W3	Normal	0
592-602176	3/22/2024 15:11 Readings	PID	SC23030140W3	Normal	0
592-602176	3/22/2024 15:11 Readings	PID	SC23030140W3	Normal	0
592-602176	3/22/2024 15:11 Readings	PID	SC23030140W3	Normal	0
592-602176	3/22/2024 15:11 Readings	PID	SC23030140W3	Normal	0
592-602176	3/22/2024 15:11 Readings	PID	SC23030140W3	Normal	0.1
592-602176	3/22/2024 15:11 Readings	PID	SC23030140W3	Normal	0
592-602176	3/22/2024 15:11 Readings	PID	SC23030140W3	Normal	0.3
592-602176	3/22/2024 15:11 Readings	PID	SC23030140W3	Normal	0
592-602176	3/22/2024 15:11 Readings	PID	SC23030140W3	Normal	0
592-602176	3/22/2024 15:11 Readings	PID	SC23030140W3	Normal	0
592-602176	3/22/2024 15:11 Readings	PID	SC23030140W3	Normal	0.2
592-602176	3/22/2024 15:11 Readings	PID	SC23030140W3	Normal	0
592-602176	3/22/2024 15:11 Readings	PID	SC23030140W3	Normal	0
592-602176	3/22/2024 15:11 Readings	PID	SC23030140W3	Normal	0
592-602176	3/22/2024 15:11 Readings	PID	SC23030140W3	Normal	0.2
592-602176	3/22/2024 15:11 Readings	PID	SC23030140W3	Normal	0.2
592-602176	3/22/2024 15:11 Readings	PID	SC23030140W3	Normal	0.1
592-602176	3/22/2024 15:11 Readings	PID	SC23030140W3	Normal	0
592-602176	3/22/2024 15:11 Readings	PID	SC23030140W3	Normal	0
592-602176	3/22/2024 15:11 Readings	PID	SC23030140W3	Normal	0
592-602176	3/22/2024 15:11 Readings	PID	SC23030140W3	Normal	0.1
592-602176	3/22/2024 15:11 Readings	PID	SC23030140W3	Normal	0
592-602176	3/22/2024 15:11 Readings	PID	SC23030140W3	Normal	0.1

592-602176	3/22/2024 15:03 Readings	PID	SC23030140W3	Normal	1.4
592-602176	3/22/2024 15:03 Readings	PID	SC23030140W3	Normal	0
592-602176	3/22/2024 15:03 Readings	PID	SC23030140W3	Normal	0
592-602176	3/22/2024 15:03 Readings	PID	SC23030140W3	Normal	0
592-602176	3/22/2024 15:03 Readings	PID	SC23030140W3	Normal	0
592-602176	3/22/2024 15:03 Readings	PID	SC23030140W3	Normal	0
592-602176	3/22/2024 15:03 Readings	PID	SC23030602B4	Normal	0.2
592-602176	3/22/2024 15:02 Readings	PID	SC23030140W3	Normal	0
592-602176	3/22/2024 15:02 Readings	PID	SC23030140W3	Normal	0.3
592-602176	3/22/2024 15:02 Readings	PID	SC23030140W3	Normal	0.3
592-602176	3/22/2024 15:02 Readings	PID	SC23030140W3	Normal	2.5
592-602176	3/22/2024 15:02 Readings	PID	SC23030140W3	Normal	1.4
592-602176	3/22/2024 15:02 Readings	PID	SC23030140W3	Normal	0
592-602176	3/22/2024 15:02 Readings	PID	SC23030140W3	Normal	0
592-602176	3/22/2024 15:02 Readings	PID	SC23030140W3	Normal	0
592-602176	3/22/2024 15:02 Readings	PID	SC23030140W3	Normal	0
592-602176	3/22/2024 15:02 Readings	PID	SC23030140W3	Normal	0
592-602176	3/22/2024 15:02 Readings	PID	SC23030140W3	Normal	0.3
592-602176	3/22/2024 15:02 Readings	PID	SC23030140W3	Normal	0
592-602176	3/22/2024 15:02 Readings	PID	SC23030140W3	Normal	0.2
592-602176	3/22/2024 15:02 Readings	PID	SC23030140W3	Normal	0
592-602176	3/22/2024 15:02 Readings	PID	SC23030140W3	Normal	0
592-602176	3/22/2024 15:02 Readings	PID	SC23030140W3	Normal	0
592-602176	3/22/2024 15:02 Readings	PID	SC23030140W3	Normal	0.3
592-602176	3/22/2024 15:02 Readings	PID	SC23030140W3	Normal	0
592-602176	3/22/2024 15:02 Readings	PID	SC23030140W3	Normal	0
592-602176	3/22/2024 15:02 Readings	PID	SC23030140W3	Normal	0
592-602176	3/22/2024 15:02 Readings	PID	SC23030140W3	Normal	0
592-602176	3/22/2024 15:02 Readings	PID	SC23030140W3	Normal	0.3
592-602176	3/22/2024 15:02 Readings	PID	SC23030140W3	Normal	0

592-602176	3/22/2024 15:00 Readings	PID	SC23030140W3	Normal	0.2
592-602176	3/22/2024 15:00 Readings	PID	SC23030140W3	Normal	0.4
592-602176	3/22/2024 15:00 Readings	PID	SC23030140W3	Normal	0
592-602176	3/22/2024 15:00 Readings	PID	SC23030140W3	Normal	0.3
592-602176	3/22/2024 15:00 Readings	PID	SC23030140W3	Normal	0.3
592-602176	3/22/2024 15:00 Readings	PID	SC23030140W3	Normal	2.5
592-602176	3/22/2024 15:00 Readings	PID	SC23030140W3	Normal	1.4
592-602176	3/22/2024 15:00 Readings	PID	SC23030140W3	Normal	0
592-602176	3/22/2024 15:00 Readings	PID	SC23030140W3	Normal	0
592-602176	3/22/2024 15:00 Readings	PID	SC23030140W3	Normal	0
592-602176	3/22/2024 15:00 Readings	PID	SC23030140W3	Normal	0
592-602176	3/22/2024 15:00 Readings	PID	SC23030602B4	Normal	0.2
592-602176	3/22/2024 14:59 Readings	PID	SC23030140W3	Normal	0
592-602176	3/22/2024 14:59 Readings	PID	SC23030140W3	Normal	0.1
592-602176	3/22/2024 14:59 Readings	PID	SC23030140W3	Normal	0.3
592-602176	3/22/2024 14:59 Readings	PID	SC23030140W3	Normal	2.6
592-602176	3/22/2024 14:59 Readings	PID	SC23030140W3	Normal	1.4
592-602176	3/22/2024 14:59 Readings	PID	SC23030140W3	Normal	0
592-602176	3/22/2024 14:59 Readings	PID	SC23030140W3	Normal	0
592-602176	3/22/2024 14:59 Readings	PID	SC23030140W3	Normal	0
592-602176	3/22/2024 14:59 Readings	PID	SC23030140W3	Normal	0
592-602176	3/22/2024 14:59 Readings	PID	SC23030140W3	Normal	0
592-602176	3/22/2024 14:59 Readings	PID	SC23030140W3	Normal	0.1
592-602176	3/22/2024 14:59 Readings	PID	SC23030140W3	Normal	0
592-602176	3/22/2024 14:59 Readings	PID	SC23030140W3	Normal	0.2
592-602176	3/22/2024 14:59 Readings	PID	SC23030140W3	Normal	0
592-602176	3/22/2024 14:59 Readings	PID	SC23030140W3	Normal	0
592-602176	3/22/2024 14:59 Readings	PID	SC23030140W3	Normal	0
592-602176	3/22/2024 14:59 Readings	PID	SC23030140W3	Normal	0
592-602176	3/22/2024 14:59 Readings	PID	SC23030140W3	Normal	0.3
592-602176	3/22/2024 14:59 Readings	PID	SC23030140W3	Normal	0

592-602176	3/22/2024 14:56	Readings	PID	SC23030140W3	Normal	0
592-602176	3/22/2024 14:56	Readings	PID	SC23030602B4	Normal	0.2
592-602176	3/22/2024 14:55	Readings	PID	SC23030140W3	Normal	0
592-602176	3/22/2024 14:55	Readings	PID	SC23030140W3	Normal	0.1
592-602176	3/22/2024 14:55	Readings	PID	SC23030140W3	Normal	0.3
592-602176	3/22/2024 14:55	Readings	PID	SC23030140W3	Normal	2.5
592-602176	3/22/2024 14:55	Readings	PID	SC23030140W3	Normal	1.4
592-602176	3/22/2024 14:55	Readings	PID	SC23030140W3	Normal	0
592-602176	3/22/2024 14:55	Readings	PID	SC23030140W3	Normal	0
592-602176	3/22/2024 14:55	Readings	PID	SC23030140W3	Normal	0
592-602176	3/22/2024 14:55	Readings	PID	SC23030140W3	Normal	0
592-602176	3/22/2024 14:55	Readings	PID	SC23030140W3	Normal	0
592-602176	3/22/2024 14:55	Readings	PID	SC23030140W3	Normal	0.2
592-602176	3/22/2024 14:55	Readings	PID	SC23030140W3	Normal	0
592-602176	3/22/2024 14:55	Readings	PID	SC23030140W3	Normal	0.2
592-602176	3/22/2024 14:55	Readings	PID	SC23030140W3	Normal	0
592-602176	3/22/2024 14:55	Readings	PID	SC23030140W3	Normal	0
592-602176	3/22/2024 14:55	Readings	PID	SC23030140W3	Normal	0
592-602176	3/22/2024 14:55	Readings	PID	SC23030140W3	Normal	0.3
592-602176	3/22/2024 14:55	Readings	PID	SC23030140W3	Normal	0
592-602176	3/22/2024 14:55	Readings	PID	SC23030140W3	Normal	0
592-602176	3/22/2024 14:55	Readings	PID	SC23030140W3	Normal	0
592-602176	3/22/2024 14:55	Readings	PID	SC23030140W3	Normal	0.6
592-602176	3/22/2024 14:55	Readings	PID	SC23030140W3	Normal	0
592-602176	3/22/2024 14:55	Readings	PID	SC23030140W3	Normal	0.2
592-602176	3/22/2024 14:55	Readings	PID	SC23030140W3	Normal	0.1
592-602176	3/22/2024 14:55	Readings	PID	SC23030140W3	Normal	0
592-602176	3/22/2024 14:55	Readings	PID	SC23030140W3	Normal	0
592-602176	3/22/2024 14:55	Readings	PID	SC23030140W3	Normal	0

592-602176	3/22/2024 13:58 Readings	PID	SC23030140W3	Normal	0.1
592-602176	3/22/2024 13:58 Readings	PID	SC23030140W3	Normal	0
592-602176	3/22/2024 13:58 Readings	PID	SC23030140W3	Normal	0
592-602176	3/22/2024 13:58 Readings	PID	SC23030140W3	Normal	0.2
592-602176	3/22/2024 13:58 Readings	PID	SC23030140W3	Normal	0.5
592-602176	3/22/2024 13:58 Readings	PID	SC23030140W3	Normal	0
592-602176	3/22/2024 13:58 Readings	PID	SC23030140W3	Normal	0.2
592-602176	3/22/2024 13:58 Readings	PID	SC23030140W3	Normal	0.3
592-602176	3/22/2024 13:58 Readings	PID	SC23030140W3	Normal	1.7
592-602176	3/22/2024 13:58 Readings	PID	SC23030140W3	Normal	0.9
592-602176	3/22/2024 13:58 Readings	PID	SC23030140W3	Normal	0
592-602176	3/22/2024 13:58 Readings	PID	SC23030140W3	Normal	0
592-602176	3/22/2024 13:58 Readings	PID	SC23030140W3	Normal	0
592-602176	3/22/2024 13:58 Readings	PID	SC23030140W3	Normal	0
592-602176	3/22/2024 13:58 Readings	PID	SC23030602B4	Normal	0.3
592-602176	3/22/2024 13:57 Readings	PID	SC23030140W3	Normal	0.5
592-602176	3/22/2024 13:57 Readings	PID	SC23030140W3	Normal	0
592-602176	3/22/2024 13:57 Readings	PID	SC23030140W3	Normal	0.2
592-602176	3/22/2024 13:57 Readings	PID	SC23030140W3	Normal	0.3
592-602176	3/22/2024 13:57 Readings	PID	SC23030140W3	Normal	1.7
592-602176	3/22/2024 13:57 Readings	PID	SC23030140W3	Normal	0.9
592-602176	3/22/2024 13:57 Readings	PID	SC23030140W3	Normal	0
592-602176	3/22/2024 13:57 Readings	PID	SC23030140W3	Normal	0
592-602176	3/22/2024 13:57 Readings	PID	SC23030140W3	Normal	0
592-602176	3/22/2024 13:57 Readings	PID	SC23030140W3	Normal	0
592-602176	3/22/2024 13:57 Readings	PID	SC23030140W3	Normal	0
592-602176	3/22/2024 13:57 Readings	PID	SC23030140W3	Normal	0
592-602176	3/22/2024 13:57 Readings	PID	SC23030140W3	Normal	0
592-602176	3/22/2024 13:57 Readings	PID	SC23030140W3	Normal	0.2
592-602176	3/22/2024 13:57 Readings	PID	SC23030140W3	Normal	0
592-602176	3/22/2024 13:57 Readings	PID	SC23030140W3	Normal	0

592-602176	3/22/2024 9:30 Readings	PID	SC23030140W3	Normal	0
592-602176	3/22/2024 9:30 Readings	PID	SC23030140W3	Normal	0
592-602176	3/22/2024 9:30 Readings	PID	SC23030140W3	Normal	0