



DAILY STATUS REPORT

Prepared By:

Victor Barraza

WEATHER	Snow		Rain		Overcast		Partly Cloudy		Bright Sun	x	Wind
TEMP.	< 32	x	32-50		50-70		70-85		>85		SW-09 MPH

IEC Project No:	13928	NYSDEC BCP Site No:	C224367	Date: 12/13/23
Project:	251 Douglass Street, Brooklyn, NY			

<p>Consultant: Impact Environmental Engineering and Geology, PLLC (IEEG)</p> <p>Time On: 06:30 Time Out: 14:00</p>	<p>Personnel On Site: IEEG (Environmental) –Victor Barraza and Gwen Lynn Broadway Construction Group - Tom Caporale</p> <p>Equipment On Site: Minirae 3000 PID, DustTrak II</p>
---	---

Scope of Work: Partial excavation of WC-3 and collection of confirmation endpoint samples.

Site Activities:

- Deploy three (3) CAMP units at the start of the work day;
- Partial excavation in the eastern portion of WC-3 to 4 feet bgs;
- Confirmation endpoints samples were collected from WC-4 and a portion of WC-3. The following EP’s were collected: EP-14, EP-15, EP-16, EP-22, EP-23 and EP-24;
- National Grid working on gas pipe offsite on the sidewalk and Street (Douglass Street) adjacent to the Site;
- No on-Site activities occurred after 11:45 am, the only work that occurred after that time was National Grid work related to the gas pipe adjacent to the Site.

Community Air Monitoring Program (CAMP) - CAMP action level for dust (0.1 mg/m³) and VOCs (5 ppm)

- PID remained at nominal levels throughout the day;
- No sustained dust exceedances were observed over a 1-min period during monitoring;
- Startup Upwind Conditions – PID = 0.2 ppm, Dust = 0.024 mg/m³ @ 06:58.
- High Conditions (Upwind) – PID = 0.2 ppm @ 11:59, Dust = 0.062 mg/m³ @ 10:33
- High Conditions (Downwind 1) – PID = 4.2 ppm @ 14:57, Dust = 0.044 mg/m³ @ 09:38
- High Conditions (Downwind 2) – PID = 0.2 ppm @ 08:42, Dust = 0.09 mg/m³ @ 06:53

Notable Site Conditions: NA

- NYSDEC informed National Grid to contain water from offsite work related to the relocation of gas main and vault into a holding tank until it settles and National Grid could test the water.

Planned for the Next Day/Week:

- Load trucks to P Park NJ with concrete.
- Continued Sitewide excavation.



PHOTO LOG

251 DOUGLASS STREET, BROOKLYN, NY



Photo 1-
Representative
view of east side of
site, IEEG
measuring waste
class grids.



Photo 2 –
Representative
view of National
Grid working offsite
on sidewalk
adjacent to
Douglass Street.



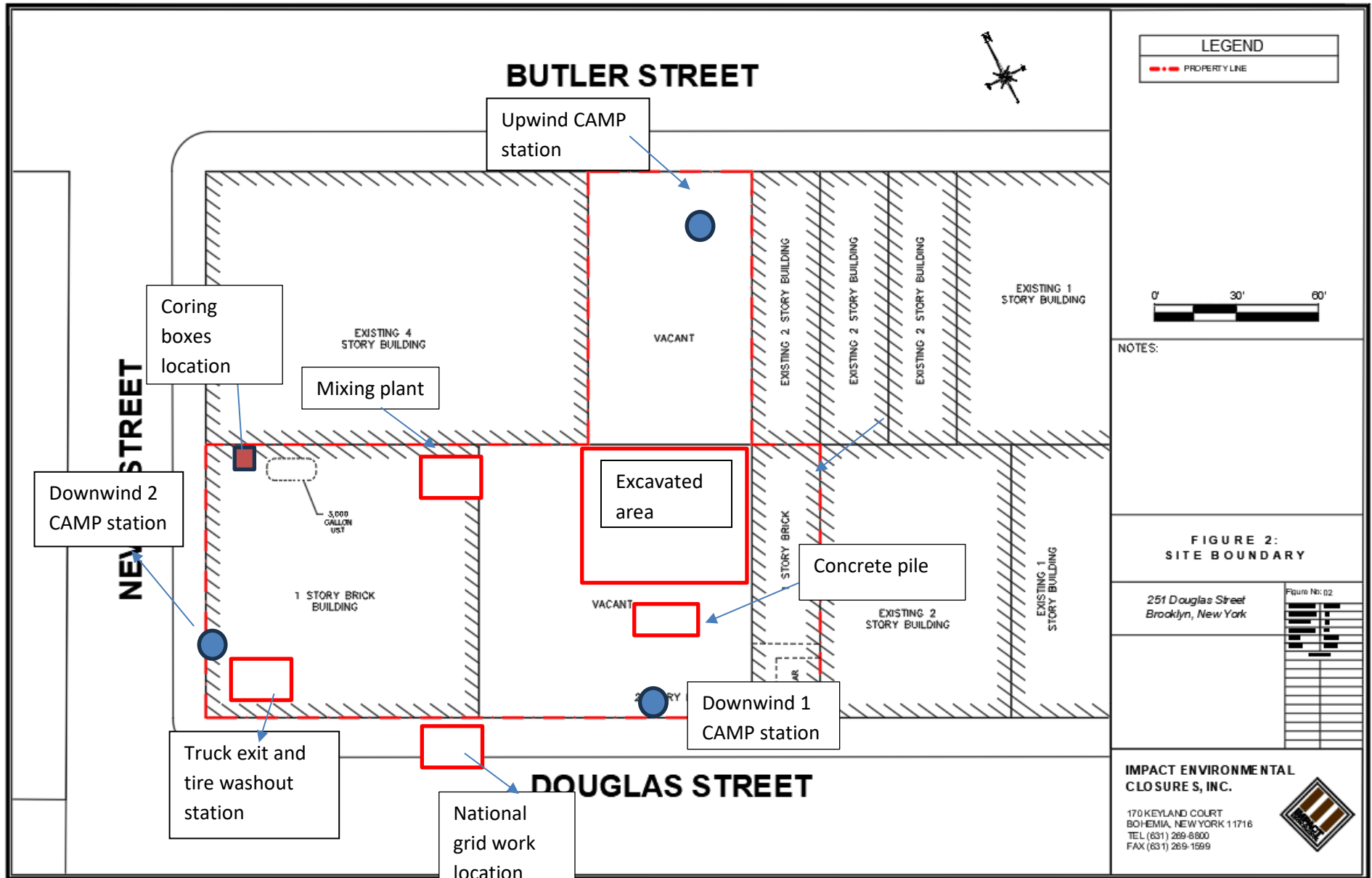
Photo 3-
Representative
view of north side
of the Site at the
end of the days
activities.



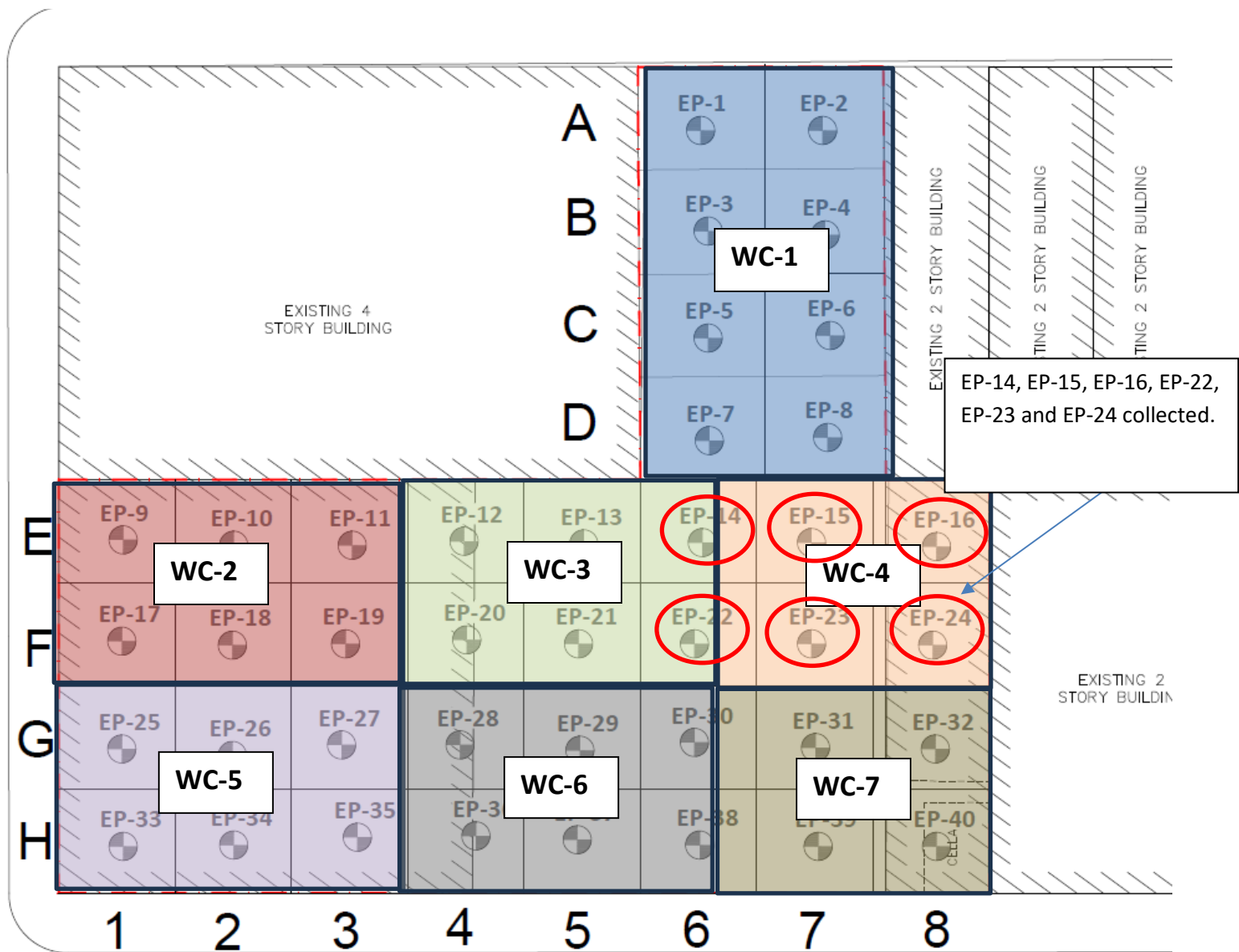
SITE PLANS

251 DOUGLASS STREET, BROOKLYN, NY





NEVINS STREET





IMPACT ENVIRONMENTAL

170 Keyland Court | Bohemia | NY | 11716 | 631.269.8800

welcome to solid ground...

www.impactenvironmental.com

UPWIND CAMP READINGS

251 DOUGLASS STREET, BROOKLYN, NY

Instrument Name	DustTrak II
Model Number	8530
Serial Number	8530224601
Firmware Version	3.1
Calibration Date	11/9/2022
Test Name	MANUAL_002
Test Start Time	6:58:33 AM
Test Start Date	12/13/2023
Test Length [D:H:M]	0:06:05
Test Interval [M:S]	1:00
Mass Average [mg/m3]	0.031
Mass Minimum [mg/m3]	0.008
Mass Maximum [mg/m3]	0.062
Mass TWA [mg/m3]	0.023
Photometric User Cal	1
Flow User Cal	0
Errors	Flow Error
Number of Samples	365

Elapsed Time [s]	Mass [mg/m3]	Alarms	Errors
6:58	0.024		
6:59	0.024		
7:00	0.024		
7:01	0.024		
7:02	0.025		
7:03	0.026		
7:04	0.025		
7:05	0.025		
7:06	0.024		
7:07	0.025		
7:08	0.025		
7:09	0.025		
7:10	0.025		
7:11	0.027		
7:12	0.026		
7:13	0.026		
7:14	0.027		
7:15	0.026		
7:16	0.025		
7:17	0.025		
7:18	0.026		
7:19	0.026		
7:20	0.027		
7:21	0.028		
7:22	0.026		
7:23	0.025		
7:24	0.027		

7:25	0.026
7:26	0.025
7:27	0.025
7:28	0.025
7:29	0.026
7:30	0.027
7:31	0.027
7:32	0.028
7:33	0.027
7:34	0.026
7:35	0.025
7:36	0.027
7:37	0.029
7:38	0.026
7:39	0.026
7:40	0.025
7:41	0.027
7:42	0.029
7:43	0.028
7:44	0.026
7:45	0.026
7:46	0.026
7:47	0.027
7:48	0.026
7:49	0.027
7:50	0.027
7:51	0.028
7:52	0.028
7:53	0.028
7:54	0.03
7:55	0.029
7:56	0.029
7:57	0.028
7:58	0.027
7:59	0.03
8:00	0.029
8:01	0.027
8:02	0.029
8:03	0.03
8:04	0.029
8:05	0.027
8:06	0.028
8:07	0.028
8:08	0.028
8:09	0.028
8:10	0.029
8:11	0.031

8:12	0.032
8:13	0.029
8:14	0.029
8:15	0.03
8:16	0.033
8:17	0.031
8:18	0.03
8:19	0.031
8:20	0.031
8:21	0.033
8:22	0.031
8:23	0.036
8:24	0.036
8:25	0.037
8:26	0.036
8:27	0.038
8:28	0.033
8:29	0.032
8:30	0.034
8:31	0.033
8:32	0.035
8:33	0.036
8:34	0.036
8:35	0.035
8:36	0.039
8:37	0.035
8:38	0.036
8:39	0.034
8:40	0.035
8:41	0.036
8:42	0.034
8:43	0.035
8:44	0.038
8:45	0.035
8:46	0.037
8:47	0.038
8:48	0.04
8:49	0.039
8:50	0.035
8:51	0.035
8:52	0.037
8:53	0.039
8:54	0.038
8:55	0.037
8:56	0.036
8:57	0.036
8:58	0.038

8:59	0.035
9:00	0.034
9:01	0.035
9:02	0.035
9:03	0.033
9:04	0.032
9:05	0.032
9:06	0.034
9:07	0.035
9:08	0.035
9:09	0.034
9:10	0.034
9:11	0.035
9:12	0.035
9:13	0.036
9:14	0.034
9:15	0.032
9:16	0.034
9:17	0.033
9:18	0.038
9:19	0.034
9:20	0.034
9:21	0.032
9:22	0.032
9:23	0.032
9:24	0.032
9:25	0.035
9:26	0.032
9:27	0.031
9:28	0.033
9:29	0.042
9:30	0.035
9:31	0.035
9:32	0.035
9:33	0.035
9:34	0.033
9:35	0.035
9:36	0.033
9:37	0.032
9:38	0.036
9:39	0.035
9:40	0.032
9:41	0.034
9:42	0.035
9:43	0.032
9:44	0.03
9:45	0.031

9:46	0.033
9:47	0.034
9:48	0.035
9:49	0.034
9:50	0.036
9:51	0.035
9:52	0.032
9:53	0.031
9:54	0.031
9:55	0.03
9:56	0.031
9:57	0.032
9:58	0.031
9:59	0.03
10:00	0.035
10:01	0.031
10:02	0.032
10:03	0.034
10:04	0.037
10:05	0.033
10:06	0.035
10:07	0.035
10:08	0.033
10:09	0.034
10:10	0.034
10:11	0.032
10:12	0.033
10:13	0.041
10:14	0.045
10:15	0.047
10:16	0.041
10:17	0.038
10:18	0.036
10:19	0.035
10:20	0.033
10:21	0.034
10:22	0.031
10:23	0.032
10:24	0.033
10:25	0.034
10:26	0.032
10:27	0.032
10:28	0.033
10:29	0.034
10:30	0.034
10:31	0.035
10:32	0.041

10:33	0.062
10:34	0.037
10:35	0.04
10:36	0.033
10:37	0.034
10:38	0.038
10:39	0.035
10:40	0.038
10:41	0.034
10:42	0.033
10:43	0.032
10:44	0.032
10:45	0.031
10:46	0.032
10:47	0.035
10:48	0.033
10:49	0.029
10:50	0.03
10:51	0.029
10:52	0.029
10:53	0.029
10:54	0.028
10:55	0.028
10:56	0.029
10:57	0.033
10:58	0.029
10:59	0.03
11:00	0.032
11:01	0.031
11:02	0.03
11:03	0.032
11:04	0.034
11:05	0.033
11:06	0.029
11:07	0.032
11:08	0.029
11:09	0.03
11:10	0.03
11:11	0.03
11:12	0.032
11:13	0.039
11:14	0.039
11:15	0.03
11:16	0.028
11:17	0.028
11:18	0.027
11:19	0.03

11:20	0.029
11:21	0.028
11:22	0.026
11:23	0.028
11:24	0.031
11:25	0.032
11:26	0.031
11:27	0.028
11:28	0.028
11:29	0.029
11:30	0.029
11:31	0.028
11:32	0.029
11:33	0.027
11:34	0.029
11:35	0.031
11:36	0.032
11:37	0.03
11:38	0.031
11:39	0.032
11:40	0.035
11:41	0.034
11:42	0.038
11:43	0.038
11:44	0.036
11:45	0.029
11:46	0.03
11:47	0.035
11:48	0.033
11:49	0.031
11:50	0.032
11:51	0.037
11:52	0.031
11:53	0.034
11:54	0.031
11:55	0.03
11:56	0.03
11:57	0.029
11:58	0.037
11:59	0.034
12:00	0.029
12:01	0.033
12:02	0.028
12:03	0.028
12:04	0.028
12:05	0.029
12:06	0.027

12:07	0.028	
12:08	0.029	
12:09	0.03	
12:10	0.029	
12:11	0.028	
12:12	0.028	
12:13	0.028	
12:14	0.032	
12:15	0.029	
12:16	0.031	
12:17	0.035	
12:18	0.033	
12:19	0.031	
12:20	0.03	
12:21	0.031	
12:22	0.033	
12:23	0.033	
12:24	0.032	
12:25	0.027	
12:26	0.028	
12:27	0.031	
12:28	0.029	
12:29	0.028	
12:30	0.027	
12:31	0.028	
12:32	0.028	
12:33	0.03	
12:34	0.027	
12:35	0.026	
12:36	0.026	
12:37	0.026	
12:38	0.028	
12:39	0.027	
12:40	0.027	
12:41	0.026	
12:42	0.026	
12:43	0.026	
12:44	0.027	
12:45	0.03	
12:46	0.033	
12:47	0.03	
12:48	0.03	
12:49	0.028	
12:50	0.015	Flow Error
12:51	0.025	Flow Error
12:52	0.028	Flow Error
12:53	0.015	Flow Error

12:54	0.01	Flow Error
12:55	0.022	Flow Error
12:56	0.014	Flow Error
12:57	0.027	Flow Error
12:58	0.015	Flow Error
12:59	0.012	Flow Error
13:00	0.017	Flow Error
13:01	0.013	Flow Error
13:02	0.008	Flow Error

Device Serial No	Log Time	Log Type	Sensor 1 Type	Sensor 1 Serial Number	Sensor 1 Status	Sensor 1 Gas Reading
592-929156	12/13/2023 15:32	Readings	PID	SC23030065D3	Normal	0.2
592-929156	12/13/2023 15:31	Readings	PID	SC23030065D3	Normal	0.2
592-929156	12/13/2023 15:30	Readings	PID	SC23030065D3	Normal	0.2
592-929156	12/13/2023 15:29	Readings	PID	SC23030065D3	Normal	0.2
592-929156	12/13/2023 15:28	Readings	PID	SC23030065D3	Normal	0.2
592-929156	12/13/2023 15:27	Readings	PID	SC23030065D3	Normal	0.2
592-929156	12/13/2023 15:26	Readings	PID	SC23030065D3	Normal	0.2
592-929156	12/13/2023 15:25	Readings	PID	SC23030065D3	Normal	0.2
592-929156	12/13/2023 15:24	Readings	PID	SC23030065D3	Normal	0.2
592-929156	12/13/2023 15:23	Readings	PID	SC23030065D3	Normal	0.2
592-929156	12/13/2023 15:22	Readings	PID	SC23030065D3	Normal	0.2
592-929156	12/13/2023 15:21	Readings	PID	SC23030065D3	Normal	0.2
592-929156	12/13/2023 15:20	Readings	PID	SC23030065D3	Normal	0.2
592-929156	12/13/2023 15:19	Readings	PID	SC23030065D3	Normal	0.2
592-929156	12/13/2023 15:18	Readings	PID	SC23030065D3	Normal	0.2
592-929156	12/13/2023 15:17	Readings	PID	SC23030065D3	Normal	0.2
592-929156	12/13/2023 15:16	Readings	PID	SC23030065D3	Normal	0.2
592-929156	12/13/2023 15:15	Readings	PID	SC23030065D3	Normal	0.2
592-929156	12/13/2023 15:14	Readings	PID	SC23030065D3	Normal	0.2
592-929156	12/13/2023 15:13	Readings	PID	SC23030065D3	Normal	0.2
592-929156	12/13/2023 15:12	Readings	PID	SC23030065D3	Normal	0.2
592-929156	12/13/2023 15:11	Readings	PID	SC23030065D3	Normal	0.2
592-929156	12/13/2023 15:10	Readings	PID	SC23030065D3	Normal	0.2
592-929156	12/13/2023 15:09	Readings	PID	SC23030065D3	Normal	0.2
592-929156	12/13/2023 15:08	Readings	PID	SC23030065D3	Normal	0.2
592-929156	12/13/2023 15:07	Readings	PID	SC23030065D3	Normal	0.2
592-929156	12/13/2023 15:06	Readings	PID	SC23030065D3	Normal	0.2
592-929156	12/13/2023 15:05	Readings	PID	SC23030065D3	Normal	0.2
592-929156	12/13/2023 15:04	Readings	PID	SC23030065D3	Normal	0.2
592-929156	12/13/2023 15:03	Readings	PID	SC23030065D3	Normal	0.2
592-929156	12/13/2023 15:02	Readings	PID	SC23030065D3	Normal	0.2
592-929156	12/13/2023 15:01	Readings	PID	SC23030065D3	Normal	0.2
592-929156	12/13/2023 15:00	Readings	PID	SC23030065D3	Normal	0.2
592-929156	12/13/2023 14:59	Readings	PID	SC23030065D3	Normal	0.2

592-929156	12/13/2023 12:03 Readings	PID	SC23030065D3	Normal	0.2
592-929156	12/13/2023 12:02 Readings	PID	SC23030065D3	Normal	0.2
592-929156	12/13/2023 12:01 Readings	PID	SC23030065D3	Normal	0.2
592-929156	12/13/2023 12:00 Readings	PID	SC23030065D3	Normal	0.2
592-929156	12/13/2023 11:59 CONFIG	PID	SC23030065D3		

DOWNWIND CAMP READINGS

251 DOUGLASS STREET, BROOKLYN, NY



Instrument Name	DustTrak II
Model Number	8530
Serial Number	8530100909
Firmware Version	3.1
Calibration Date	7/24/2023
Test Name	MANUAL_007
Test Start Time	6:53:14 AM
Test Start Date	12/13/2023
Test Length [D:H:M]	0:07:32
Test Interval [M:S]	1:00
Mass Average [mg/m3]	0.006
Mass Minimum [mg/m3]	-0.005
Mass Maximum [mg/m3]	0.044
Mass TWA [mg/m3]	0.006
Photometric User Cal	1
Flow User Cal	0
Errors	
Number of Samples	452

Elapsed Time [s]	Mass [mg/m3]	Alarms	Errors
6:53	0.021		
6:54	0.012		
6:55	0.013		
6:56	0.015		
6:57	0.007		
6:58	0.007		
6:59	0.007		
7:00	0.007		
7:01	0.007		
7:02	0.007		
7:03	0.007		
7:04	0.005		
7:05	0.005		
7:06	0.004		
7:07	0.003		
7:08	0.003		
7:09	0.003		
7:10	0.002		
7:11	0.001		
7:12	0.002		
7:13	0.004		
7:14	0.003		
7:15	0.004		
7:16	0.009		
7:17	0.015		
7:18	0.008		
7:19	0.008		

7:20	0.008
7:21	0.006
7:22	0.005
7:23	0.006
7:24	0.004
7:25	0.007
7:26	0.004
7:27	0.009
7:28	0.005
7:29	0.007
7:30	0.013
7:31	0.008
7:32	0.008
7:33	0.011
7:34	0.008
7:35	0.008
7:36	0.01
7:37	0.006
7:38	0.006
7:39	0.006
7:40	0.002
7:41	0.001
7:42	0.003
7:43	0.009
7:44	0.003
7:45	0.004
7:46	0.003
7:47	0.005
7:48	0.007
7:49	0.005
7:50	0.005
7:51	0.004
7:52	0.005
7:53	0.006
7:54	0.005
7:55	0.006
7:56	0.008
7:57	0.009
7:58	0.007
7:59	0.005
8:00	0.008
8:01	0.007
8:02	0.007
8:03	0.008
8:04	0.007
8:05	0.007
8:06	0.01

8:07	0.005
8:08	0.008
8:09	0.009
8:10	0.007
8:11	0.007
8:12	0.007
8:13	0.008
8:14	0.007
8:15	0.006
8:16	0.007
8:17	0.008
8:18	0.013
8:19	0.009
8:20	0.008
8:21	0.011
8:22	0.011
8:23	0.007
8:24	0.007
8:25	0.009
8:26	0.008
8:27	0.013
8:28	0.013
8:29	0.016
8:30	0.017
8:31	0.018
8:32	0.015
8:33	0.017
8:34	0.013
8:35	0.012
8:36	0.012
8:37	0.013
8:38	0.015
8:39	0.015
8:40	0.015
8:41	0.013
8:42	0.018
8:43	0.014
8:44	0.016
8:45	0.015
8:46	0.014
8:47	0.01
8:48	0.01
8:49	0.014
8:50	0.011
8:51	0.01
8:52	0.014
8:53	0.019

8:54	0.019
8:55	0.016
8:56	0.012
8:57	0.01
8:58	0.015
8:59	0.015
9:00	0.014
9:01	0.008
9:02	0.009
9:03	0.013
9:04	0.012
9:05	0.008
9:06	0.009
9:07	0.009
9:08	0.008
9:09	0.008
9:10	0.005
9:11	0.008
9:12	0.014
9:13	0.022
9:14	0.011
9:15	0.01
9:16	0.01
9:17	0.012
9:18	0.011
9:19	0.008
9:20	0.02
9:21	0.008
9:22	0.008
9:23	0.021
9:24	0.024
9:25	0.013
9:26	0.014
9:27	0.01
9:28	0.012
9:29	0.008
9:30	0.009
9:31	0.01
9:32	0.007
9:33	0.013
9:34	0.011
9:35	0.023
9:36	0.008
9:37	0.008
9:38	0.044
9:39	0.013
9:40	0.007

9:41	0.009
9:42	0.003
9:43	0.004
9:44	0.006
9:45	0.007
9:46	0.004
9:47	0.007
9:48	0.006
9:49	0.004
9:50	0.002
9:51	0.003
9:52	0.005
9:53	0.006
9:54	0.007
9:55	0.007
9:56	0.009
9:57	0.008
9:58	0.004
9:59	0.004
10:00	0.004
10:01	0.004
10:02	0.003
10:03	0.004
10:04	0.003
10:05	0.003
10:06	0.006
10:07	0.002
10:08	0.005
10:09	0.007
10:10	0.005
10:11	0.005
10:12	0.007
10:13	0.007
10:14	0.006
10:15	0.007
10:16	0.006
10:17	0.004
10:18	0.005
10:19	0.009
10:20	0.012
10:21	0.013
10:22	0.007
10:23	0.009
10:24	0.008
10:25	0.004
10:26	0.004
10:27	0.003

10:28	0.003
10:29	0.004
10:30	0.005
10:31	0.006
10:32	0.004
10:33	0.007
10:34	0.006
10:35	0.007
10:36	0.009
10:37	0.015
10:38	0.015
10:39	0.027
10:40	0.019
10:41	0.016
10:42	0.008
10:43	0.008
10:44	0.01
10:45	0.012
10:46	0.013
10:47	0.005
10:48	0.007
10:49	0.004
10:50	0.008
10:51	0.008
10:52	0.022
10:53	0.023
10:54	0.011
10:55	0.009
10:56	0.005
10:57	0.012
10:58	0.005
10:59	0.007
11:00	0.008
11:01	0.004
11:02	0.005
11:03	0.008
11:04	0.006
11:05	0.015
11:06	0.017
11:07	0.004
11:08	0.012
11:09	0.013
11:10	0.011
11:11	0.017
11:12	0.008
11:13	0.003
11:14	0.011

11:15	0.013
11:16	0.005
11:17	0.008
11:18	0.023
11:19	0.018
11:20	0.003
11:21	0.003
11:22	0.004
11:23	0.005
11:24	0.023
11:25	0.007
11:26	0.013
11:27	0.008
11:28	0.007
11:29	0.005
11:30	0.01
11:31	0.017
11:32	0.003
11:33	0.006
11:34	0.007
11:35	0.004
11:36	0.003
11:37	0.006
11:38	0.004
11:39	0.005
11:40	0.003
11:41	0.01
11:42	0.006
11:43	0.013
11:44	0.012
11:45	0.005
11:46	0.011
11:47	0.016
11:48	0.009
11:49	0.01
11:50	0.007
11:51	0.004
11:52	0.003
11:53	0.01
11:54	0.004
11:55	0.004
11:56	0.005
11:57	0.012
11:58	0.012
11:59	0.003
12:00	0.005
12:01	0.002

12:02	0.003
12:03	0.004
12:04	0.012
12:05	0.007
12:06	0.009
12:07	0.01
12:08	0.002
12:09	0.001
12:10	0.004
12:11	0.001
12:12	0.006
12:13	0.004
12:14	0.003
12:15	0.004
12:16	0.001
12:17	0.003
12:18	0.003
12:19	0.006
12:20	0.009
12:21	0.002
12:22	0.031
12:23	0.007
12:24	0.006
12:25	0.002
12:26	0.01
12:27	0.013
12:28	0.012
12:29	0.007
12:30	0.001
12:31	0.003
12:32	0.006
12:33	0.01
12:34	0.006
12:35	0
12:36	0
12:37	0
12:38	0
12:39	0.005
12:40	0
12:41	0
12:42	0
12:43	0
12:44	0
12:45	0
12:46	0
12:47	0
12:48	0

12:49	0
12:50	0
12:51	0.002
12:52	0.001
12:53	0
12:54	0.001
12:55	0
12:56	0
12:57	0.002
12:58	0.001
12:59	0.002
13:00	0
13:01	0.002
13:02	0
13:03	0
13:04	0
13:05	-0.001
13:06	0
13:07	0
13:08	0
13:09	0
13:10	0
13:11	0
13:12	0.001
13:13	0
13:14	0
13:15	0
13:16	0
13:17	0
13:18	-0.002
13:19	-0.003
13:20	0.009
13:21	0.028
13:22	0.003
13:23	0.01
13:24	0.011
13:25	0.01
13:26	-0.002
13:27	0
13:28	-0.001
13:29	-0.003
13:30	-0.001
13:31	-0.001
13:32	-0.004
13:33	-0.004
13:34	-0.002
13:35	0

13:36	-0.002
13:37	-0.003
13:38	0
13:39	-0.001
13:40	-0.003
13:41	-0.005
13:42	-0.003
13:43	-0.002
13:44	0.023
13:45	0.012
13:46	0.001
13:47	-0.002
13:48	-0.001
13:49	-0.002
13:50	-0.001
13:51	0
13:52	-0.002
13:53	0
13:54	-0.001
13:55	0
13:56	-0.001
13:57	0
13:58	-0.003
13:59	0.001
14:00	0.003
14:01	0.011
14:02	-0.002
14:03	-0.003
14:04	-0.002
14:05	-0.004
14:06	-0.003
14:07	-0.005
14:08	-0.005
14:09	-0.003
14:10	-0.005
14:11	-0.003
14:12	-0.005
14:13	-0.001
14:14	-0.003
14:15	-0.003
14:16	-0.002
14:17	-0.004
14:18	-0.003
14:19	-0.004
14:20	-0.004
14:21	-0.004
14:22	-0.004

14:23	-0.004
14:24	-0.004

Device Serial No	Log Time	Log Type	Sensor 1 Type	Sensor 1 Serial Number	Sensor 1 Status	Sensor 1 Gas Reading
592-602816	12/13/2023 15:25	Readings	PID	SC23030324C7	Normal	1.4
592-602816	12/13/2023 15:24	Readings	PID	SC23030324C7	Normal	1.4
592-602816	12/13/2023 15:23	Readings	PID	SC23030324C7	Normal	1.4
592-602816	12/13/2023 15:22	Readings	PID	SC23030324C7	Normal	1.4
592-602816	12/13/2023 15:21	Readings	PID	SC23030324C7	Normal	1.4
592-602816	12/13/2023 15:20	Readings	PID	SC23030324C7	Normal	1.4
592-602816	12/13/2023 15:19	Readings	PID	SC23030324C7	Normal	1.5
592-602816	12/13/2023 15:18	Readings	PID	SC23030324C7	Normal	1.5
592-602816	12/13/2023 15:17	Readings	PID	SC23030324C7	Normal	1.8
592-602816	12/13/2023 15:16	Readings	PID	SC23030324C7	Normal	2
592-602816	12/13/2023 15:15	Readings	PID	SC23030324C7	Normal	1.4
592-602816	12/13/2023 15:14	Readings	PID	SC23030324C7	Normal	1.5
592-602816	12/13/2023 15:13	Readings	PID	SC23030324C7	Normal	1.5
592-602816	12/13/2023 15:12	Readings	PID	SC23030324C7	Normal	1.5
592-602816	12/13/2023 15:11	Readings	PID	SC23030324C7	Normal	1.5
592-602816	12/13/2023 15:10	Readings	PID	SC23030324C7	Normal	1.5
592-602816	12/13/2023 15:09	Readings	PID	SC23030324C7	Normal	1.5
592-602816	12/13/2023 15:08	Readings	PID	SC23030324C7	Normal	1.6
592-602816	12/13/2023 15:07	Readings	PID	SC23030324C7	Normal	1.5
592-602816	12/13/2023 15:06	Readings	PID	SC23030324C7	Normal	1.5
592-602816	12/13/2023 15:05	Readings	PID	SC23030324C7	Normal	1.6
592-602816	12/13/2023 15:04	Readings	PID	SC23030324C7	Normal	1.6
592-602816	12/13/2023 15:03	Readings	PID	SC23030324C7	Normal	1.6
592-602816	12/13/2023 15:02	Readings	PID	SC23030324C7	Normal	1.7
592-602816	12/13/2023 15:01	Readings	PID	SC23030324C7	Normal	1.7
592-602816	12/13/2023 15:00	Readings	PID	SC23030324C7	Normal	1.9
592-602816	12/13/2023 14:59	Readings	PID	SC23030324C7	Normal	1.9
592-602816	12/13/2023 14:58	Readings	PID	SC23030324C7	Normal	3.5
592-602816	12/13/2023 14:57	Readings	PID	SC23030324C7	Normal	4.2
592-602816	12/13/2023 14:56	Readings	PID	SC23030324C7	Normal	3.8
592-602816	12/13/2023 14:55	Readings	PID	SC23030324C7	Normal	1.8
592-602816	12/13/2023 14:54	Readings	PID	SC23030324C7	Normal	1.9
592-602816	12/13/2023 14:53	Readings	PID	SC23030324C7	Normal	2
592-602816	12/13/2023 14:52	Readings	PID	SC23030324C7	Normal	2.1

592-602816	12/13/2023 14:16	Readings	PID	SC23030324C7	Normal	1.4
592-602816	12/13/2023 14:15	Readings	PID	SC23030324C7	Normal	1.8
592-602816	12/13/2023 14:14	Readings	PID	SC23030324C7	Normal	1.8
592-602816	12/13/2023 14:13	Readings	PID	SC23030324C7	Normal	1.4
592-602816	12/13/2023 14:12	Readings	PID	SC23030324C7	Normal	1.6
592-602816	12/13/2023 14:11	Readings	PID	SC23030324C7	Normal	1.5
592-602816	12/13/2023 14:10	Readings	PID	SC23030324C7	Normal	1.5
592-602816	12/13/2023 14:09	Readings	PID	SC23030324C7	Normal	1.6
592-602816	12/13/2023 14:08	Readings	PID	SC23030324C7	Normal	1.6
592-602816	12/13/2023 14:07	Readings	PID	SC23030324C7	Normal	1.6
592-602816	12/13/2023 14:06	Readings	PID	SC23030324C7	Normal	1.5
592-602816	12/13/2023 14:05	Readings	PID	SC23030324C7	Normal	1.4
592-602816	12/13/2023 14:04	Readings	PID	SC23030324C7	Normal	1.4
592-602816	12/13/2023 14:03	Readings	PID	SC23030324C7	Normal	1.4
592-602816	12/13/2023 14:02	Readings	PID	SC23030324C7	Normal	1.4
592-602816	12/13/2023 14:01	Readings	PID	SC23030324C7	Normal	1.3
592-602816	12/13/2023 14:00	Readings	PID	SC23030324C7	Normal	1.4
592-602816	12/13/2023 13:59	Readings	PID	SC23030324C7	Normal	1.4
592-602816	12/13/2023 13:58	Readings	PID	SC23030324C7	Normal	1.4
592-602816	12/13/2023 13:57	Readings	PID	SC23030324C7	Normal	1.4
592-602816	12/13/2023 13:56	Readings	PID	SC23030324C7	Normal	1.4
592-602816	12/13/2023 13:55	Readings	PID	SC23030324C7	Normal	1.4
592-602816	12/13/2023 13:54	Readings	PID	SC23030324C7	Normal	1.4
592-602816	12/13/2023 13:53	Readings	PID	SC23030324C7	Normal	1.4
592-602816	12/13/2023 13:52	Readings	PID	SC23030324C7	Normal	1.5
592-602816	12/13/2023 13:51	Readings	PID	SC23030324C7	Normal	1.6
592-602816	12/13/2023 13:50	Readings	PID	SC23030324C7	Normal	1.4
592-602816	12/13/2023 13:49	Readings	PID	SC23030324C7	Normal	1.4
592-602816	12/13/2023 13:48	Readings	PID	SC23030324C7	Normal	1.4
592-602816	12/13/2023 13:47	Readings	PID	SC23030324C7	Normal	1.5
592-602816	12/13/2023 13:46	Readings	PID	SC23030324C7	Normal	1.5
592-602816	12/13/2023 13:45	Readings	PID	SC23030324C7	Normal	1.5
592-602816	12/13/2023 13:44	Readings	PID	SC23030324C7	Normal	1.5
592-602816	12/13/2023 13:43	Readings	PID	SC23030324C7	Normal	1.5
592-602816	12/13/2023 13:42	Readings	PID	SC23030324C7	Normal	1.6

592-602816	12/13/2023 10:11	Readings	PID	SC23030324C7	Normal	1.4
592-602816	12/13/2023 10:10	Readings	PID	SC23030324C7	Normal	1.4
592-602816	12/13/2023 10:09	Readings	PID	SC23030324C7	Normal	1.4
592-602816	12/13/2023 10:08	Readings	PID	SC23030324C7	Normal	1.5
592-602816	12/13/2023 10:07	Readings	PID	SC23030324C7	Normal	1.5
592-602816	12/13/2023 10:06	Readings	PID	SC23030324C7	Normal	1.5
592-602816	12/13/2023 10:05	Readings	PID	SC23030324C7	Normal	1.5
592-602816	12/13/2023 10:04	Readings	PID	SC23030324C7	Normal	1.5
592-602816	12/13/2023 10:03	Readings	PID	SC23030324C7	Normal	1.5
592-602816	12/13/2023 10:02	Readings	PID	SC23030324C7	Normal	1.5
592-602816	12/13/2023 10:01	Readings	PID	SC23030324C7	Normal	1.5
592-602816	12/13/2023 10:00	Readings	PID	SC23030324C7	Normal	1.4
592-602816	12/13/2023 9:59	Readings	PID	SC23030324C7	Normal	1.5
592-602816	12/13/2023 9:58	Readings	PID	SC23030324C7	Normal	1.5
592-602816	12/13/2023 9:57	Readings	PID	SC23030324C7	Normal	1.5
592-602816	12/13/2023 9:56	Readings	PID	SC23030324C7	Normal	1.6
592-602816	12/13/2023 9:55	Readings	PID	SC23030324C7	Normal	1.4
592-602816	12/13/2023 9:54	Readings	PID	SC23030324C7	Normal	1.4
592-602816	12/13/2023 9:53	Readings	PID	SC23030324C7	Normal	1.4
592-602816	12/13/2023 9:52	Readings	PID	SC23030324C7	Normal	2.4
592-602816	12/13/2023 9:51	Readings	PID	SC23030324C7	Normal	1.4
592-602816	12/13/2023 9:50	Readings	PID	SC23030324C7	Normal	1.4
592-602816	12/13/2023 9:49	Readings	PID	SC23030324C7	Normal	1.4
592-602816	12/13/2023 9:48	Readings	PID	SC23030324C7	Normal	1.4
592-602816	12/13/2023 9:47	Readings	PID	SC23030324C7	Normal	1.4
592-602816	12/13/2023 9:46	Readings	PID	SC23030324C7	Normal	1.4
592-602816	12/13/2023 9:45	Readings	PID	SC23030324C7	Normal	1.4
592-602816	12/13/2023 9:44	Readings	PID	SC23030324C7	Normal	1.4
592-602816	12/13/2023 9:43	Readings	PID	SC23030324C7	Normal	1.4
592-602816	12/13/2023 9:42	Readings	PID	SC23030324C7	Normal	1.5
592-602816	12/13/2023 9:41	Readings	PID	SC23030324C7	Normal	1.5
592-602816	12/13/2023 9:40	Readings	PID	SC23030324C7	Normal	1.3
592-602816	12/13/2023 9:39	Readings	PID	SC23030324C7	Normal	1.3
592-602816	12/13/2023 9:38	Readings	PID	SC23030324C7	Normal	1.3
592-602816	12/13/2023 9:37	Readings	PID	SC23030324C7	Normal	1.3

592-602816	12/13/2023 9:01	Readings	PID	SC23030324C7	Normal	1
592-602816	12/13/2023 9:00	Readings	PID	SC23030324C7	Normal	1
592-602816	12/13/2023 8:59	Readings	PID	SC23030324C7	Normal	1
592-602816	12/13/2023 8:58	Readings	PID	SC23030324C7	Normal	1
592-602816	12/13/2023 8:57	Readings	PID	SC23030324C7	Normal	1
592-602816	12/13/2023 8:56	Readings	PID	SC23030324C7	Normal	1
592-602816	12/13/2023 8:55	Readings	PID	SC23030324C7	Normal	1
592-602816	12/13/2023 8:54	Readings	PID	SC23030324C7	Normal	0.9
592-602816	12/13/2023 8:53	Readings	PID	SC23030324C7	Normal	0.9
592-602816	12/13/2023 8:52	Readings	PID	SC23030324C7	Normal	0.9
592-602816	12/13/2023 8:51	Readings	PID	SC23030324C7	Normal	0.9
592-602816	12/13/2023 8:50	Readings	PID	SC23030324C7	Normal	0.9
592-602816	12/13/2023 8:49	Readings	PID	SC23030324C7	Normal	0.9
592-602816	12/13/2023 8:48	Readings	PID	SC23030324C7	Normal	0.9
592-602816	12/13/2023 8:47	Readings	PID	SC23030324C7	Normal	0.9
592-602816	12/13/2023 8:46	Readings	PID	SC23030324C7	Normal	0.9
592-602816	12/13/2023 8:45	Readings	PID	SC23030324C7	Normal	0.9
592-602816	12/13/2023 8:44	Readings	PID	SC23030324C7	Normal	1
592-602816	12/13/2023 8:43	Readings	PID	SC23030324C7	Normal	1.4
592-602816	12/13/2023 8:42	Readings	PID	SC23030324C7	Normal	0.9
592-602816	12/13/2023 8:41	Readings	PID	SC23030324C7	Normal	1.2
592-602816	12/13/2023 8:40	Readings	PID	SC23030324C7	Normal	0.8
592-602816	12/13/2023 8:39	Readings	PID	SC23030324C7	Normal	0.8
592-602816	12/13/2023 8:38	Readings	PID	SC23030324C7	Normal	0.8
592-602816	12/13/2023 8:37	Readings	PID	SC23030324C7	Normal	0.7
592-602816	12/13/2023 8:36	Readings	PID	SC23030324C7	Normal	0.8
592-602816	12/13/2023 8:35	Readings	PID	SC23030324C7	Normal	0.7
592-602816	12/13/2023 8:34	Readings	PID	SC23030324C7	Normal	0.7
592-602816	12/13/2023 8:33	Readings	PID	SC23030324C7	Normal	0.7
592-602816	12/13/2023 8:32	Readings	PID	SC23030324C7	Normal	0.7
592-602816	12/13/2023 8:31	Readings	PID	SC23030324C7	Normal	1
592-602816	12/13/2023 8:30	Readings	PID	SC23030324C7	Normal	1
592-602816	12/13/2023 8:29	Readings	PID	SC23030324C7	Normal	3.3
592-602816	12/13/2023 8:28	Readings	PID	SC23030324C7	Normal	0.5
592-602816	12/13/2023 8:27	Readings	PID	SC23030324C7	Normal	0.4

592-602816	12/13/2023 8:26	Readings	PID	SC23030324C7	Normal	0.4
592-602816	12/13/2023 8:25	Readings	PID	SC23030324C7	Normal	0.4
592-602816	12/13/2023 8:24	Readings	PID	SC23030324C7	Normal	0.4
592-602816	12/13/2023 8:23	Readings	PID	SC23030324C7	Normal	0.3
592-602816	12/13/2023 8:22	Readings	PID	SC23030324C7	Normal	0.3
592-602816	12/13/2023 8:21	Readings	PID	SC23030324C7	Normal	0.3
592-602816	12/13/2023 8:20	Readings	PID	SC23030324C7	Normal	0.3
592-602816	12/13/2023 8:19	Readings	PID	SC23030324C7	Normal	0.2
592-602816	12/13/2023 8:18	Readings	PID	SC23030324C7	Normal	0.2
592-602816	12/13/2023 8:17	Readings	PID	SC23030324C7	Normal	0.2
592-602816	12/13/2023 8:16	Readings	PID	SC23030324C7	Normal	0.2
592-602816	12/13/2023 8:15	Readings	PID	SC23030324C7	Normal	0.2
592-602816	12/13/2023 8:14	Readings	PID	SC23030324C7	Normal	0.1
592-602816	12/13/2023 8:13	Readings	PID	SC23030324C7	Normal	0.1
592-602816	12/13/2023 8:12	Readings	PID	SC23030324C7	Normal	0.1
592-602816	12/13/2023 8:11	Readings	PID	SC23030324C7	Normal	0
592-602816	12/13/2023 8:10	Readings	PID	SC23030324C7	Normal	0
592-602816	12/13/2023 8:09	Readings	PID	SC23030324C7	Normal	0
592-602816	12/13/2023 8:08	Readings	PID	SC23030324C7	Normal	0
592-602816	12/13/2023 8:07	Readings	PID	SC23030324C7	Normal	0
592-602816	12/13/2023 8:06	Readings	PID	SC23030324C7	Normal	0
592-602816	12/13/2023 8:05	Readings	PID	SC23030324C7	Normal	0
592-602816	12/13/2023 8:04	Readings	PID	SC23030324C7	Normal	0
592-602816	12/13/2023 8:03	CONFIG	PID	SC23030324C7		

Instrument Name	DustTrak II
Model Number	8530
Serial Number	8530113005
Firmware Version	3.1
Calibration Date	2/11/2023
Test Name	MANUAL_008
Test Start Time	6:53:17 AM
Test Start Date	12/13/2023
Test Length [D:H:M]	0:07:09
Test Interval [M:S]	1:00
Mass Average [mg/m3]	0.038
Mass Minimum [mg/m3]	0.016
Mass Maximum [mg/m3]	0.09
Mass TWA [mg/m3]	0.034
Photometric User Cal	1
Flow User Cal	0
Errors	
Number of Samples	429

Elapsed Time [s]	Mass [mg/m3]	Alarms	Errors
6:53	0.09		
6:54	0.034		
6:55	0.031		
6:56	0.026		
6:57	0.026		
6:58	0.026		
6:59	0.025		
7:00	0.026		
7:01	0.026		
7:02	0.027		
7:03	0.027		
7:04	0.027		
7:05	0.026		
7:06	0.027		
7:07	0.026		
7:08	0.028		
7:09	0.027		
7:10	0.027		
7:11	0.028		
7:12	0.03		
7:13	0.03		
7:14	0.035		
7:15	0.033		
7:16	0.034		
7:17	0.035		
7:18	0.034		
7:19	0.035		

7:20	0.038
7:21	0.034
7:22	0.04
7:23	0.034
7:24	0.039
7:25	0.037
7:26	0.046
7:27	0.045
7:28	0.036
7:29	0.041
7:30	0.036
7:31	0.036
7:32	0.037
7:33	0.036
7:34	0.038
7:35	0.043
7:36	0.036
7:37	0.038
7:38	0.036
7:39	0.034
7:40	0.033
7:41	0.04
7:42	0.044
7:43	0.036
7:44	0.036
7:45	0.036
7:46	0.037
7:47	0.04
7:48	0.034
7:49	0.039
7:50	0.036
7:51	0.037
7:52	0.039
7:53	0.034
7:54	0.038
7:55	0.041
7:56	0.038
7:57	0.038
7:58	0.04
7:59	0.042
8:00	0.036
8:01	0.037
8:02	0.037
8:03	0.036
8:04	0.04
8:05	0.039
8:06	0.039

8:07	0.042	
8:08	0.036	
8:09	0.037	
8:10	0.039	
8:11	0.023	
8:12	0.029	
8:13	0.03	
8:14	0.049	
8:15	0.016	
8:16	0.056	
8:17	0.021	
8:18	0.046	
8:19	0.033	
8:20	0.029	
8:21	0.05	
8:22	0.041	
8:23	0.041	
8:24	0.043	
8:25	0.046	
8:26	0.046	
8:27	0.045	
8:28	0.047	
8:29	0.053	
8:30	0.049	
8:31	0.051	
8:32	0.051	
8:33	0.042	
8:34	0.044	
8:35	0.046	
8:36	0.054	
8:37	0.046	
8:38	0.041	
8:39	0.042	
8:40	0.045	
8:41	0.05	
8:42	0.053	
8:43	0.053	
8:44	0.049	
8:45	0.047	
8:46	0.041	
8:47	0.05	
8:48	0.049	
8:49	0.045	
8:50	0.046	Flow Error
8:51	0.052	Flow Error
8:52	0.036	Flow Error
8:53	0.035	Flow Error

8:54	0.037	Flow Error
8:55	0.047	Flow Error
8:56	0.047	Flow Error
8:57	0.036	Flow Error
8:58	0.029	
8:59	0.04	
9:00	0.044	
9:01	0.044	
9:02	0.046	
9:03	0.044	
9:04	0.039	
9:05	0.042	
9:06	0.043	
9:07	0.04	
9:08	0.043	
9:09	0.04	
9:10	0.044	
9:11	0.049	
9:12	0.06	
9:13	0.044	
9:14	0.043	
9:15	0.044	
9:16	0.044	
9:17	0.045	
9:18	0.044	
9:19	0.046	
9:20	0.044	
9:21	0.044	
9:22	0.059	
9:23	0.057	
9:24	0.041	
9:25	0.042	
9:26	0.04	
9:27	0.043	
9:28	0.038	
9:29	0.044	
9:30	0.043	
9:31	0.039	
9:32	0.04	
9:33	0.052	
9:34	0.05	
9:35	0.041	
9:36	0.042	
9:37	0.046	
9:38	0.046	
9:39	0.042	
9:40	0.042	

9:41	0.035
9:42	0.042
9:43	0.045
9:44	0.042
9:45	0.041
9:46	0.046
9:47	0.039
9:48	0.037
9:49	0.035
9:50	0.038
9:51	0.042
9:52	0.044
9:53	0.042
9:54	0.045
9:55	0.042
9:56	0.041
9:57	0.037
9:58	0.038
9:59	0.04
10:00	0.035
10:01	0.036
10:02	0.041
10:03	0.037
10:04	0.04
10:05	0.043
10:06	0.039
10:07	0.045
10:08	0.048
10:09	0.041
10:10	0.044
10:11	0.041
10:12	0.043
10:13	0.041
10:14	0.044
10:15	0.039
10:16	0.04
10:17	0.04
10:18	0.047
10:19	0.055
10:20	0.048
10:21	0.043
10:22	0.046
10:23	0.037
10:24	0.043
10:25	0.042
10:26	0.038
10:27	0.039

10:28	0.04
10:29	0.042
10:30	0.04
10:31	0.038
10:32	0.045
10:33	0.04
10:34	0.039
10:35	0.042
10:36	0.042
10:37	0.042
10:38	0.049
10:39	0.052
10:40	0.057
10:41	0.04
10:42	0.041
10:43	0.045
10:44	0.044
10:45	0.046
10:46	0.037
10:47	0.041
10:48	0.039
10:49	0.039
10:50	0.037
10:51	0.036
10:52	0.041
10:53	0.042
10:54	0.038
10:55	0.037
10:56	0.035
10:57	0.038
10:58	0.035
10:59	0.034
11:00	0.039
11:01	0.038
11:02	0.038
11:03	0.035
11:04	0.04
11:05	0.048
11:06	0.041
11:07	0.041
11:08	0.043
11:09	0.043
11:10	0.035
11:11	0.039
11:12	0.034
11:13	0.036
11:14	0.036

11:15	0.041
11:16	0.041
11:17	0.048
11:18	0.046
11:19	0.034
11:20	0.038
11:21	0.04
11:22	0.035
11:23	0.037
11:24	0.037
11:25	0.037
11:26	0.037
11:27	0.035
11:28	0.039
11:29	0.039
11:30	0.053
11:31	0.039
11:32	0.038
11:33	0.032
11:34	0.04
11:35	0.033
11:36	0.034
11:37	0.034
11:38	0.035
11:39	0.036
11:40	0.037
11:41	0.037
11:42	0.036
11:43	0.032
11:44	0.043
11:45	0.046
11:46	0.044
11:47	0.06
11:48	0.042
11:49	0.04
11:50	0.035
11:51	0.042
11:52	0.042
11:53	0.035
11:54	0.038
11:55	0.039
11:56	0.038
11:57	0.036
11:58	0.034
11:59	0.03
12:00	0.034
12:01	0.038

12:02	0.039
12:03	0.041
12:04	0.039
12:05	0.042
12:06	0.036
12:07	0.033
12:08	0.036
12:09	0.034
12:10	0.037
12:11	0.034
12:12	0.037
12:13	0.04
12:14	0.038
12:15	0.036
12:16	0.035
12:17	0.035
12:18	0.035
12:19	0.039
12:20	0.038
12:21	0.043
12:22	0.044
12:23	0.038
12:24	0.037
12:25	0.038
12:26	0.037
12:27	0.037
12:28	0.047
12:29	0.03
12:30	0.034
12:31	0.037
12:32	0.038
12:33	0.039
12:34	0.034
12:35	0.03
12:36	0.031
12:37	0.041
12:38	0.045
12:39	0.035
12:40	0.032
12:41	0.034
12:42	0.034
12:43	0.033
12:44	0.034
12:45	0.034
12:46	0.038
12:47	0.031
12:48	0.034

12:49	0.041
12:50	0.04
12:51	0.038
12:52	0.032
12:53	0.037
12:54	0.033
12:55	0.037
12:56	0.035
12:57	0.037
12:58	0.036
12:59	0.033
13:00	0.035
13:01	0.038
13:02	0.033
13:03	0.034
13:04	0.034
13:05	0.035
13:06	0.033
13:07	0.034
13:08	0.031
13:09	0.032
13:10	0.034
13:11	0.039
13:12	0.035
13:13	0.03
13:14	0.031
13:15	0.029
13:16	0.031
13:17	0.029
13:18	0.026
13:19	0.03
13:20	0.032
13:21	0.031
13:22	0.03
13:23	0.031
13:24	0.029
13:25	0.031
13:26	0.035
13:27	0.031
13:28	0.028
13:29	0.031
13:30	0.027
13:31	0.025
13:32	0.025
13:33	0.027
13:34	0.037
13:35	0.027

13:36	0.026
13:37	0.034
13:38	0.031
13:39	0.025
13:40	0.027
13:41	0.024
13:42	0.028
13:43	0.028
13:44	0.027
13:45	0.025
13:46	0.027
13:47	0.029
13:48	0.027
13:49	0.028
13:50	0.029
13:51	0.025
13:52	0.028
13:53	0.028
13:54	0.031
13:55	0.03
13:56	0.03
13:57	0.031
13:58	0.027
13:59	0.03
14:00	0.025
14:01	0.024

Device Serial No	Log Time	Log Type	Sensor 1 Type	Sensor 1 Serial Number	Sensor 1 Status	Sensor 1 Gas Reading
592-600871	12/13/2023 15:16	Readings	PID	SC23030408A8	Normal	0
592-600871	12/13/2023 15:15	Readings	PID	SC23030408A8	Normal	0
592-600871	12/13/2023 15:14	Readings	PID	SC23030408A8	Normal	0
592-600871	12/13/2023 15:13	Readings	PID	SC23030408A8	Normal	0
592-600871	12/13/2023 15:12	Readings	PID	SC23030408A8	Normal	0
592-600871	12/13/2023 15:11	Readings	PID	SC23030408A8	Normal	0
592-600871	12/13/2023 15:10	Readings	PID	SC23030408A8	Normal	0
592-600871	12/13/2023 15:09	Readings	PID	SC23030408A8	Normal	0
592-600871	12/13/2023 15:08	Readings	PID	SC23030408A8	Normal	0
592-600871	12/13/2023 15:07	Readings	PID	SC23030408A8	Normal	0
592-600871	12/13/2023 15:06	Readings	PID	SC23030408A8	Normal	0
592-600871	12/13/2023 15:05	Readings	PID	SC23030408A8	Normal	0
592-600871	12/13/2023 15:04	Readings	PID	SC23030408A8	Normal	0
592-600871	12/13/2023 15:03	Readings	PID	SC23030408A8	Normal	0
592-600871	12/13/2023 15:02	Readings	PID	SC23030408A8	Normal	0
592-600871	12/13/2023 15:01	Readings	PID	SC23030408A8	Normal	0
592-600871	12/13/2023 15:00	Readings	PID	SC23030408A8	Normal	0
592-600871	12/13/2023 14:59	Readings	PID	SC23030408A8	Normal	0
592-600871	12/13/2023 14:58	Readings	PID	SC23030408A8	Normal	0
592-600871	12/13/2023 14:57	Readings	PID	SC23030408A8	Normal	0
592-600871	12/13/2023 14:56	Readings	PID	SC23030408A8	Normal	0
592-600871	12/13/2023 14:55	Readings	PID	SC23030408A8	Normal	0
592-600871	12/13/2023 14:54	Readings	PID	SC23030408A8	Normal	0
592-600871	12/13/2023 14:53	Readings	PID	SC23030408A8	Normal	0
592-600871	12/13/2023 14:52	Readings	PID	SC23030408A8	Normal	0
592-600871	12/13/2023 14:51	Readings	PID	SC23030408A8	Normal	0
592-600871	12/13/2023 14:50	Readings	PID	SC23030408A8	Normal	0
592-600871	12/13/2023 14:49	Readings	PID	SC23030408A8	Normal	0
592-600871	12/13/2023 14:48	Readings	PID	SC23030408A8	Normal	0
592-600871	12/13/2023 14:47	Readings	PID	SC23030408A8	Normal	0
592-600871	12/13/2023 14:46	Readings	PID	SC23030408A8	Normal	0
592-600871	12/13/2023 14:45	Readings	PID	SC23030408A8	Normal	0
592-600871	12/13/2023 14:44	Readings	PID	SC23030408A8	Normal	0
592-600871	12/13/2023 14:43	Readings	PID	SC23030408A8	Normal	0

592-600871	12/13/2023 8:17 Readings	PID	SC23030408A8	Normal	0
592-600871	12/13/2023 8:16 Readings	PID	SC23030408A8	Normal	0
592-600871	12/13/2023 8:15 Readings	PID	SC23030408A8	Normal	0
592-600871	12/13/2023 8:14 Readings	PID	SC23030408A8	Normal	0
592-600871	12/13/2023 8:13 Readings	PID	SC23030408A8	Normal	0
592-600871	12/13/2023 8:12 Readings	PID	SC23030408A8	Normal	0
592-600871	12/13/2023 8:11 Readings	PID	SC23030408A8	Normal	0
592-600871	12/13/2023 8:10 Readings	PID	SC23030408A8	Normal	0
592-600871	12/13/2023 8:09 Readings	PID	SC23030408A8	Normal	0
592-600871	12/13/2023 8:08 Readings	PID	SC23030408A8	Normal	0
592-600871	12/13/2023 8:07 Readings	PID	SC23030408A8	Normal	0
592-600871	12/13/2023 8:06 CONFIG	PID	SC23030408A8		