



DAILY STATUS REPORT

Prepared By:

WEATHER	Snow		Rain		Overcast		Partly Cloudy		Bright Sun	x	Wind
TEMP.	< 32	x	32-50		50-70		70-85		>85		SW-13 MPH

Victor Barraza

IEC Project No:	13928	NYSDEC BCP Site No:	C224367	Date: 12/14/23
Project:	251 Douglass Street, Brooklyn, NY			

<p>Consultant: Impact Environmental Engineering and Geology, PLLC (IEEG)</p> <p>Time On: 06:50 Time Out: 15:00</p>	<p>Personnel On Site: IEEG (Environmental) –Victor Barraza and Gwen Lynn Broadway Construction Group - Tom Caporale</p> <p>Equipment On Site: Minirae 3000 PID, DustTrak II</p>
---	---

Scope of Work: Excavate WC-7 and load out soil and concrete trucks.

Site Activities:

- Deploy three (3) CAMP units at the start of the work day;
- Partial excavation in WC-7, excavation ceased when a UST was discovered, refer to Site plan for approximate location. Excavation ceased in this portion of the Site until a tank contractor can come to pump out the contents. The UST is 7’x4’ and contains about 15” of liquid (a mixture of oil and water);
- Two (2) truckloads of concrete were loaded offsite to P Park;
- One (1) truckload of material from WC- 7 was loaded offsite to Bay Shore.

Community Air Monitoring Program (CAMP) - CAMP action level for dust (0.1 mg/m³) and VOCs (5 ppm)

- PID remained at nominal levels throughout the day.
- No sustained dust exceedances were observed over a 1-min period during monitoring;
- Startup Upwind Conditions – PID = _0.0_ ppm, Dust = _0.014_ mg/m³ @ 07:08.
- High Conditions (Upwind) – PID = _0.3_ ppm @ 10:41, Dust = _0.112_ mg/m³ @ 08:25
- High Conditions (Downwind 1) – PID = _2.7_ ppm @ 08:26, Dust = _0.040_ mg/m³ @ 09:35
- High Conditions (Downwind 2) – PID = _0.0_ ppm, Dust = _0.100_ mg/m³ @ 01:12

Notable Site Conditions: NA

- None

Planned for the Next Day/Week:

- Continue loading and excavating material from WC-7.

PHOTO LOG

251 DOUGLASS STREET, BROOKLYN, NY



Photo 1-
Representative
photo of truck
loading in WC-
7.



Photo 2 –
Representative
view of truck
tires being
washed off on
the truck pad/
decon area.



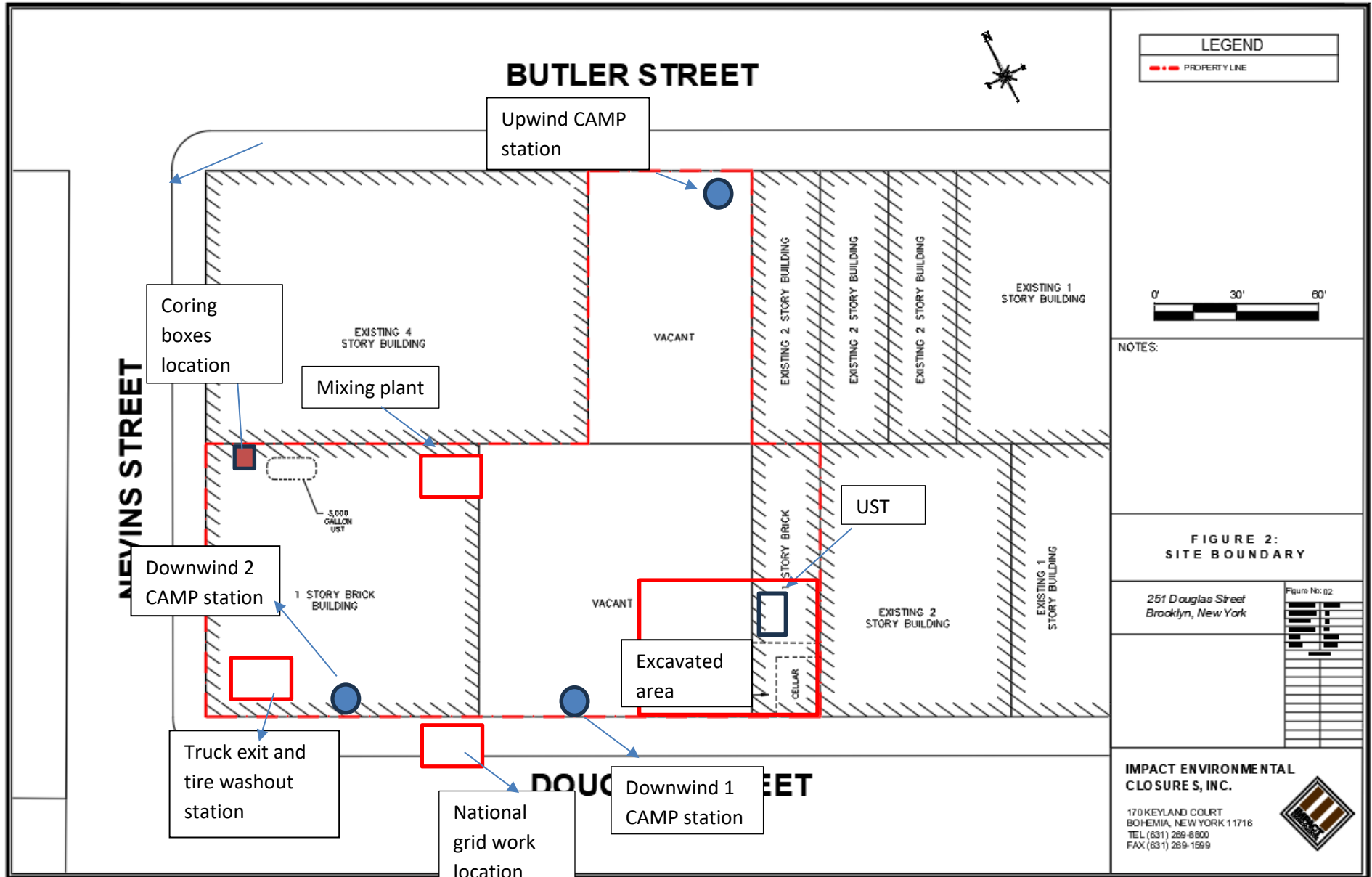
Photo 3-
Representative
view of
excavation
work within
WC-7.



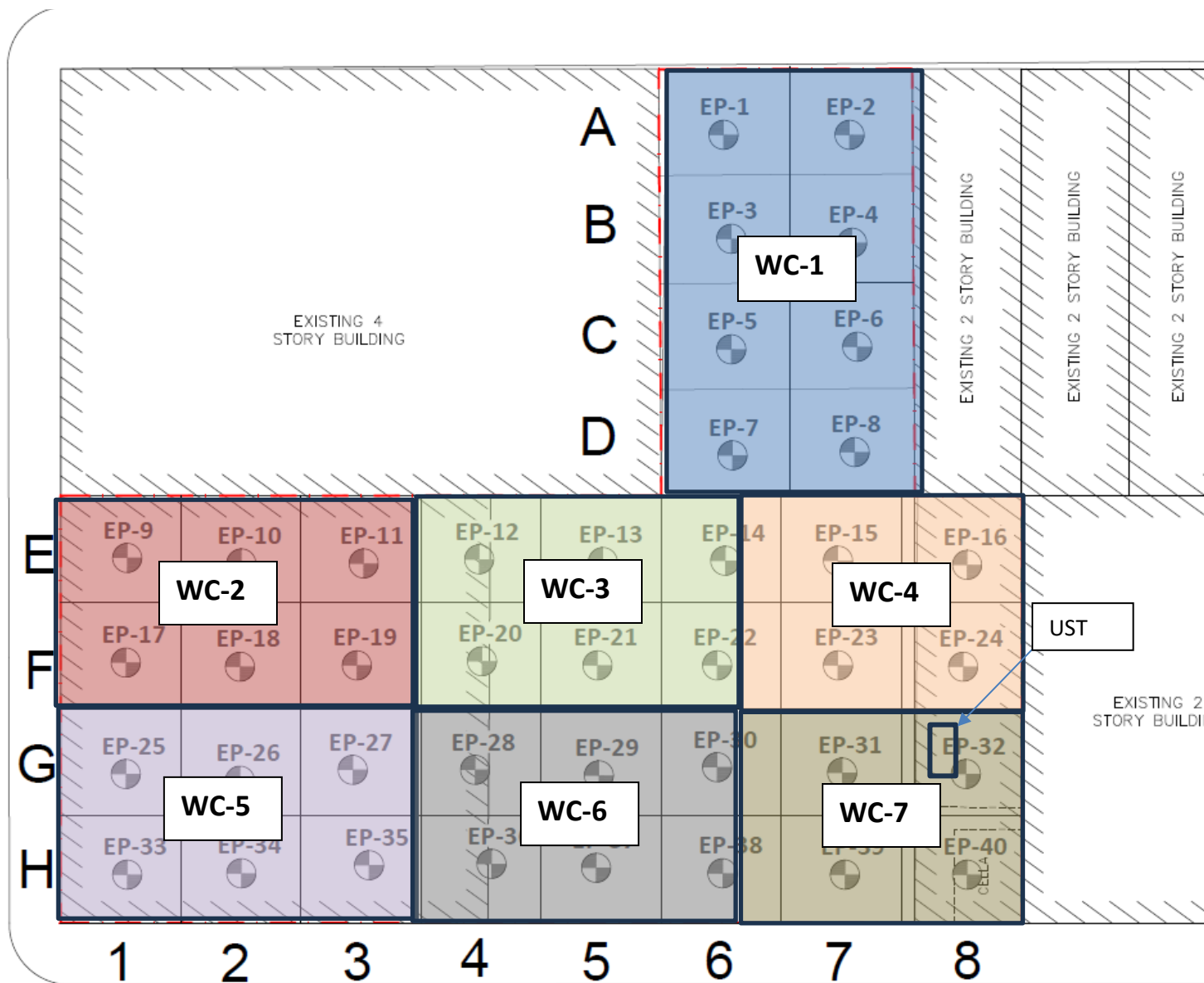
SITE PLANS

251 DOUGLASS STREET, BROOKLYN, NY





NEVINS STREET





IMPACT ENVIRONMENTAL

170 Keyland Court | Bohemia | NY | 11716 | 631.269.8800

welcome to solid ground...

www.impactenvironmental.com

UPWIND CAMP READINGS

251 DOUGLASS STREET, BROOKLYN, NY

Instrument Name	DustTrak II
Model Number	8530
Serial Number	8530173225
Firmware Version	3.1
Calibration Date	11/30/2022
Test Name	MANUAL_001
Test Start Time	7:07:13 AM
Test Start Date	12/14/2023
Test Length [D:H:M]	7:32:00
Test Interval [M:S]	1:00
Mass Average [mg/m3]	0.018
Mass Minimum [mg/m3]	0.004
Mass Maximum [mg/m3]	0.112
Mass TWA [mg/m3]	0.017
Photometric User Cal	1
Flow User Cal	0
Errors	
Number of Samples	452

Elapsed Time [s]		Mass [mg/m3]	Alarms	Errors
0	7:07:13 AM			
60	7:08:13 AM	0.014		
120	7:09:13 AM	0.007		
180	7:10:13 AM	0.011		
240	7:11:13 AM	0.005		
300	7:12:13 AM	0.006		
360	7:13:13 AM	0.004		
420	7:14:13 AM	0.005		
480	7:15:13 AM	0.005		
540	7:16:13 AM	0.006		
600	7:17:13 AM	0.006		
660	7:18:13 AM	0.006		
720	7:19:13 AM	0.007		
780	7:20:13 AM	0.006		
840	7:21:13 AM	0.006		
900	7:22:13 AM	0.006		
960	7:23:13 AM	0.006		
1020	7:24:13 AM	0.006		
1080	7:25:13 AM	0.062		
1140	7:26:13 AM	0.1		
1200	7:27:13 AM	0.043		
1260	7:28:13 AM	0.011		
1320	7:29:13 AM	0.011		
1380	7:30:13 AM	0.018		
1440	7:31:13 AM	0.011		
1500	7:32:13 AM	0.013		
1560	7:33:13 AM	0.014		

1620	7:34:13 AM	0.009
1680	7:35:13 AM	0.01
1740	7:36:13 AM	0.008
1800	7:37:13 AM	0.007
1860	7:38:13 AM	0.007
1920	7:39:13 AM	0.008
1980	7:40:13 AM	0.008
2040	7:41:13 AM	0.009
2100	7:42:13 AM	0.009
2160	7:43:13 AM	0.012
2220	7:44:13 AM	0.009
2280	7:45:13 AM	0.01
2340	7:46:13 AM	0.012
2400	7:47:13 AM	0.011
2460	7:48:13 AM	0.01
2520	7:49:13 AM	0.01
2580	7:50:13 AM	0.023
2640	7:51:13 AM	0.011
2700	7:52:13 AM	0.01
2760	7:53:13 AM	0.01
2820	7:54:13 AM	0.013
2880	7:55:13 AM	0.01
2940	7:56:13 AM	0.014
3000	7:57:13 AM	0.029
3060	7:58:13 AM	0.014
3120	7:59:13 AM	0.012
3180	8:00:13 AM	0.014
3240	8:01:13 AM	0.017
3300	8:02:13 AM	0.014
3360	8:03:13 AM	0.046
3420	8:04:13 AM	0.038
3480	8:05:13 AM	0.026
3540	8:06:13 AM	0.014
3600	8:07:13 AM	0.014
3660	8:08:13 AM	0.015
3720	8:09:13 AM	0.013
3780	8:10:13 AM	0.014
3840	8:11:13 AM	0.014
3900	8:12:13 AM	0.013
3960	8:13:13 AM	0.014
4020	8:14:13 AM	0.028
4080	8:15:13 AM	0.02
4140	8:16:13 AM	0.019
4200	8:17:13 AM	0.014
4260	8:18:13 AM	0.014
4320	8:19:13 AM	0.014
4380	8:20:13 AM	0.013

4440	8:21:13 AM	0.013
4500	8:22:13 AM	0.015
4560	8:23:13 AM	0.015
4620	8:24:13 AM	0.013
4680	8:25:13 AM	0.112
4740	8:26:13 AM	0.016
4800	8:27:13 AM	0.016
4860	8:28:13 AM	0.014
4920	8:29:13 AM	0.014
4980	8:30:13 AM	0.013
5040	8:31:13 AM	0.013
5100	8:32:13 AM	0.014
5160	8:33:13 AM	0.014
5220	8:34:13 AM	0.015
5280	8:35:13 AM	0.018
5340	8:36:13 AM	0.016
5400	8:37:13 AM	0.016
5460	8:38:13 AM	0.019
5520	8:39:13 AM	0.016
5580	8:40:13 AM	0.018
5640	8:41:13 AM	0.015
5700	8:42:13 AM	0.014
5760	8:43:13 AM	0.014
5820	8:44:13 AM	0.014
5880	8:45:13 AM	0.014
5940	8:46:13 AM	0.014
6000	8:47:13 AM	0.014
6060	8:48:13 AM	0.015
6120	8:49:13 AM	0.016
6180	8:50:13 AM	0.015
6240	8:51:13 AM	0.016
6300	8:52:13 AM	0.019
6360	8:53:13 AM	0.018
6420	8:54:13 AM	0.021
6480	8:55:13 AM	0.018
6540	8:56:13 AM	0.017
6600	8:57:13 AM	0.016
6660	8:58:13 AM	0.017
6720	8:59:13 AM	0.02
6780	9:00:13 AM	0.018
6840	9:01:13 AM	0.017
6900	9:02:13 AM	0.016
6960	9:03:13 AM	0.017
7020	9:04:13 AM	0.018
7080	9:05:13 AM	0.019
7140	9:06:13 AM	0.019
7200	9:07:13 AM	0.018

7260	9:08:13 AM	0.016
7320	9:09:13 AM	0.015
7380	9:10:13 AM	0.011
7440	9:11:13 AM	0.011
7500	9:12:13 AM	0.009
7560	9:13:13 AM	0.008
7620	9:14:13 AM	0.008
7680	9:15:13 AM	0.007
7740	9:16:13 AM	0.007
7800	9:17:13 AM	0.008
7860	9:18:13 AM	0.006
7920	9:19:13 AM	0.015
7980	9:20:13 AM	0.016
8040	9:21:13 AM	0.018
8100	9:22:13 AM	0.021
8160	9:23:13 AM	0.034
8220	9:24:13 AM	0.033
8280	9:25:13 AM	0.031
8340	9:26:13 AM	0.03
8400	9:27:13 AM	0.032
8460	9:28:13 AM	0.031
8520	9:29:13 AM	0.032
8580	9:30:13 AM	0.029
8640	9:31:13 AM	0.029
8700	9:32:13 AM	0.03
8760	9:33:13 AM	0.029
8820	9:34:13 AM	0.029
8880	9:35:13 AM	0.029
8940	9:36:13 AM	0.03
9000	9:37:13 AM	0.03
9060	9:38:13 AM	0.03
9120	9:39:13 AM	0.035
9180	9:40:13 AM	0.03
9240	9:41:13 AM	0.031
9300	9:42:13 AM	0.029
9360	9:43:13 AM	0.028
9420	9:44:13 AM	0.031
9480	9:45:13 AM	0.029
9540	9:46:13 AM	0.028
9600	9:47:13 AM	0.029
9660	9:48:13 AM	0.029
9720	9:49:13 AM	0.028
9780	9:50:13 AM	0.027
9840	9:51:13 AM	0.027
9900	9:52:13 AM	0.03
9960	9:53:13 AM	0.029
10020	9:54:13 AM	0.027

10080	9:55:13 AM	0.027
10140	9:56:13 AM	0.027
10200	9:57:13 AM	0.028
10260	9:58:13 AM	0.026
10320	9:59:13 AM	0.026
10380	10:00:13 AM	0.027
10440	10:01:13 AM	0.027
10500	10:02:13 AM	0.027
10560	10:03:13 AM	0.027
10620	10:04:13 AM	0.027
10680	10:05:13 AM	0.027
10740	10:06:13 AM	0.028
10800	10:07:13 AM	0.027
10860	10:08:13 AM	0.027
10920	10:09:13 AM	0.027
10980	10:10:13 AM	0.031
11040	10:11:13 AM	0.027
11100	10:12:13 AM	0.027
11160	10:13:13 AM	0.027
11220	10:14:13 AM	0.026
11280	10:15:13 AM	0.027
11340	10:16:13 AM	0.027
11400	10:17:13 AM	0.027
11460	10:18:13 AM	0.027
11520	10:19:13 AM	0.027
11580	10:20:13 AM	0.028
11640	10:21:13 AM	0.03
11700	10:22:13 AM	0.029
11760	10:23:13 AM	0.027
11820	10:24:13 AM	0.028
11880	10:25:13 AM	0.027
11940	10:26:13 AM	0.027
12000	10:27:13 AM	0.028
12060	10:28:13 AM	0.03
12120	10:29:13 AM	0.028
12180	10:30:13 AM	0.028
12240	10:31:13 AM	0.026
12300	10:32:13 AM	0.025
12360	10:33:13 AM	0.027
12420	10:34:13 AM	0.025
12480	10:35:13 AM	0.025
12540	10:36:13 AM	0.032
12600	10:37:13 AM	0.031
12660	10:38:13 AM	0.027
12720	10:39:13 AM	0.026
12780	10:40:13 AM	0.027
12840	10:41:13 AM	0.029

12900	10:42:13 AM	0.027
12960	10:43:13 AM	0.026
13020	10:44:13 AM	0.028
13080	10:45:13 AM	0.027
13140	10:46:13 AM	0.027
13200	10:47:13 AM	0.027
13260	10:48:13 AM	0.028
13320	10:49:13 AM	0.03
13380	10:50:13 AM	0.03
13440	10:51:13 AM	0.026
13500	10:52:13 AM	0.028
13560	10:53:13 AM	0.029
13620	10:54:13 AM	0.026
13680	10:55:13 AM	0.025
13740	10:56:13 AM	0.024
13800	10:57:13 AM	0.025
13860	10:58:13 AM	0.024
13920	10:59:13 AM	0.024
13980	11:00:13 AM	0.024
14040	11:01:13 AM	0.024
14100	11:02:13 AM	0.024
14160	11:03:13 AM	0.023
14220	11:04:13 AM	0.023
14280	11:05:13 AM	0.025
14340	11:06:13 AM	0.024
14400	11:07:13 AM	0.023
14460	11:08:13 AM	0.024
14520	11:09:13 AM	0.023
14580	11:10:13 AM	0.023
14640	11:11:13 AM	0.023
14700	11:12:13 AM	0.023
14760	11:13:13 AM	0.023
14820	11:14:13 AM	0.023
14880	11:15:13 AM	0.022
14940	11:16:13 AM	0.022
15000	11:17:13 AM	0.022
15060	11:18:13 AM	0.023
15120	11:19:13 AM	0.022
15180	11:20:13 AM	0.022
15240	11:21:13 AM	0.023
15300	11:22:13 AM	0.022
15360	11:23:13 AM	0.022
15420	11:24:13 AM	0.023
15480	11:25:13 AM	0.022
15540	11:26:13 AM	0.021
15600	11:27:13 AM	0.022
15660	11:28:13 AM	0.021

15720	11:29:13 AM	0.021
15780	11:30:13 AM	0.022
15840	11:31:13 AM	0.021
15900	11:32:13 AM	0.021
15960	11:33:13 AM	0.022
16020	11:34:13 AM	0.022
16080	11:35:13 AM	0.022
16140	11:36:13 AM	0.023
16200	11:37:13 AM	0.021
16260	11:38:13 AM	0.021
16320	11:39:13 AM	0.021
16380	11:40:13 AM	0.021
16440	11:41:13 AM	0.022
16500	11:42:13 AM	0.022
16560	11:43:13 AM	0.022
16620	11:44:13 AM	0.022
16680	11:45:13 AM	0.021
16740	11:46:13 AM	0.021
16800	11:47:13 AM	0.013
16860	11:48:13 AM	0.013
16920	11:49:13 AM	0.013
16980	11:50:13 AM	0.013
17040	11:51:13 AM	0.013
17100	11:52:13 AM	0.013
17160	11:53:13 AM	0.012
17220	11:54:13 AM	0.012
17280	11:55:13 AM	0.011
17340	11:56:13 AM	0.011
17400	11:57:13 AM	0.012
17460	11:58:13 AM	0.012
17520	11:59:13 AM	0.013
17580	12:00:13 PM	0.013
17640	12:01:13 PM	0.013
17700	12:02:13 PM	0.013
17760	12:03:13 PM	0.013
17820	12:04:13 PM	0.013
17880	12:05:13 PM	0.014
17940	12:06:13 PM	0.014
18000	12:07:13 PM	0.013
18060	12:08:13 PM	0.014
18120	12:09:13 PM	0.014
18180	12:10:13 PM	0.015
18240	12:11:13 PM	0.013
18300	12:12:13 PM	0.013
18360	12:13:13 PM	0.014
18420	12:14:13 PM	0.013
18480	12:15:13 PM	0.011

18540	12:16:13 PM	0.012
18600	12:17:13 PM	0.011
18660	12:18:13 PM	0.011
18720	12:19:13 PM	0.011
18780	12:20:13 PM	0.012
18840	12:21:13 PM	0.012
18900	12:22:13 PM	0.011
18960	12:23:13 PM	0.012
19020	12:24:13 PM	0.011
19080	12:25:13 PM	0.011
19140	12:26:13 PM	0.012
19200	12:27:13 PM	0.012
19260	12:28:13 PM	0.012
19320	12:29:13 PM	0.012
19380	12:30:13 PM	0.013
19440	12:31:13 PM	0.013
19500	12:32:13 PM	0.013
19560	12:33:13 PM	0.014
19620	12:34:13 PM	0.014
19680	12:35:13 PM	0.013
19740	12:36:13 PM	0.012
19800	12:37:13 PM	0.012
19860	12:38:13 PM	0.012
19920	12:39:13 PM	0.012
19980	12:40:13 PM	0.012
20040	12:41:13 PM	0.012
20100	12:42:13 PM	0.012
20160	12:43:13 PM	0.012
20220	12:44:13 PM	0.012
20280	12:45:13 PM	0.013
20340	12:46:13 PM	0.012
20400	12:47:13 PM	0.013
20460	12:48:13 PM	0.012
20520	12:49:13 PM	0.012
20580	12:50:13 PM	0.011
20640	12:51:13 PM	0.012
20700	12:52:13 PM	0.012
20760	12:53:13 PM	0.011
20820	12:54:13 PM	0.011
20880	12:55:13 PM	0.011
20940	12:56:13 PM	0.013
21000	12:57:13 PM	0.012
21060	12:58:13 PM	0.013
21120	12:59:13 PM	0.012
21180	1:00:13 PM	0.012
21240	1:01:13 PM	0.012
21300	1:02:13 PM	0.012

21360	1:03:13 PM	0.012
21420	1:04:13 PM	0.011
21480	1:05:13 PM	0.012
21540	1:06:13 PM	0.012
21600	1:07:13 PM	0.013
21660	1:08:13 PM	0.013
21720	1:09:13 PM	0.013
21780	1:10:13 PM	0.013
21840	1:11:13 PM	0.012
21900	1:12:13 PM	0.012
21960	1:13:13 PM	0.012
22020	1:14:13 PM	0.013
22080	1:15:13 PM	0.013
22140	1:16:13 PM	0.012
22200	1:17:13 PM	0.012
22260	1:18:13 PM	0.012
22320	1:19:13 PM	0.013
22380	1:20:13 PM	0.012
22440	1:21:13 PM	0.011
22500	1:22:13 PM	0.011
22560	1:23:13 PM	0.012
22620	1:24:13 PM	0.012
22680	1:25:13 PM	0.011
22740	1:26:13 PM	0.012
22800	1:27:13 PM	0.012
22860	1:28:13 PM	0.012
22920	1:29:13 PM	0.014
22980	1:30:13 PM	0.013
23040	1:31:13 PM	0.013
23100	1:32:13 PM	0.012
23160	1:33:13 PM	0.013
23220	1:34:13 PM	0.013
23280	1:35:13 PM	0.013
23340	1:36:13 PM	0.013
23400	1:37:13 PM	0.012
23460	1:38:13 PM	0.014
23520	1:39:13 PM	0.012
23580	1:40:13 PM	0.012
23640	1:41:13 PM	0.012
23700	1:42:13 PM	0.011
23760	1:43:13 PM	0.016
23820	1:44:13 PM	0.012
23880	1:45:13 PM	0.011
23940	1:46:13 PM	0.011
24000	1:47:13 PM	0.011
24060	1:48:13 PM	0.011
24120	1:49:13 PM	0.011

24180	1:50:13 PM	0.011
24240	1:51:13 PM	0.011
24300	1:52:13 PM	0.011
24360	1:53:13 PM	0.011
24420	1:54:13 PM	0.011
24480	1:55:13 PM	0.011
24540	1:56:13 PM	0.011
24600	1:57:13 PM	0.011
24660	1:58:13 PM	0.011
24720	1:59:13 PM	0.012
24780	2:00:13 PM	0.012
24840	2:01:13 PM	0.012
24900	2:02:13 PM	0.012
24960	2:03:13 PM	0.013
25020	2:04:13 PM	0.013
25080	2:05:13 PM	0.012
25140	2:06:13 PM	0.012
25200	2:07:13 PM	0.013
25260	2:08:13 PM	0.012
25320	2:09:13 PM	0.014
25380	2:10:13 PM	0.013
25440	2:11:13 PM	0.013
25500	2:12:13 PM	0.013
25560	2:13:13 PM	0.014
25620	2:14:13 PM	0.012
25680	2:15:13 PM	0.013
25740	2:16:13 PM	0.013
25800	2:17:13 PM	0.012
25860	2:18:13 PM	0.013
25920	2:19:13 PM	0.013
25980	2:20:13 PM	0.015
26040	2:21:13 PM	0.013
26100	2:22:13 PM	0.014
26160	2:23:13 PM	0.013
26220	2:24:13 PM	0.012
26280	2:25:13 PM	0.012
26340	2:26:13 PM	0.013
26400	2:27:13 PM	0.013
26460	2:28:13 PM	0.013
26520	2:29:13 PM	0.013
26580	2:30:13 PM	0.013
26640	2:31:13 PM	0.013
26700	2:32:13 PM	0.013
26760	2:33:13 PM	0.012
26820	2:34:13 PM	0.013
26880	2:35:13 PM	0.014
26940	2:36:13 PM	0.013

27000	2:37:13 PM	0.013
27060	2:38:13 PM	0.013
27120	2:39:13 PM	0.013

Device Serial No	Log Time	Log Type	Sensor 1 Type	Sensor 1 Serial Number	Sensor 1 Status	Sensor 1 Gas Reading
592-929156	12/14/2023 14:58	Readings	PID	SC23030065D3	Normal	0.3
592-929156	12/14/2023 14:57	Readings	PID	SC23030065D3	Normal	0.3
592-929156	12/14/2023 14:56	Readings	PID	SC23030065D3	Normal	0.3
592-929156	12/14/2023 14:55	Readings	PID	SC23030065D3	Normal	0.3
592-929156	12/14/2023 14:54	Readings	PID	SC23030065D3	Normal	0.3
592-929156	12/14/2023 14:53	Readings	PID	SC23030065D3	Normal	0.3
592-929156	12/14/2023 14:52	Readings	PID	SC23030065D3	Normal	0.3
592-929156	12/14/2023 14:51	Readings	PID	SC23030065D3	Normal	0.3
592-929156	12/14/2023 14:50	Readings	PID	SC23030065D3	Normal	0.3
592-929156	12/14/2023 14:49	Readings	PID	SC23030065D3	Normal	0.3
592-929156	12/14/2023 14:48	Readings	PID	SC23030065D3	Normal	0.3
592-929156	12/14/2023 14:47	Readings	PID	SC23030065D3	Normal	0.3
592-929156	12/14/2023 14:46	Readings	PID	SC23030065D3	Normal	0.3
592-929156	12/14/2023 14:45	Readings	PID	SC23030065D3	Normal	0.3
592-929156	12/14/2023 14:44	Readings	PID	SC23030065D3	Normal	0.3
592-929156	12/14/2023 14:43	Readings	PID	SC23030065D3	Normal	0.3
592-929156	12/14/2023 14:42	Readings	PID	SC23030065D3	Normal	0.3
592-929156	12/14/2023 14:41	Readings	PID	SC23030065D3	Normal	0.3
592-929156	12/14/2023 14:40	Readings	PID	SC23030065D3	Normal	0.3
592-929156	12/14/2023 14:39	Readings	PID	SC23030065D3	Normal	0.3
592-929156	12/14/2023 14:38	Readings	PID	SC23030065D3	Normal	0.3
592-929156	12/14/2023 14:37	Readings	PID	SC23030065D3	Normal	0.3
592-929156	12/14/2023 14:36	Readings	PID	SC23030065D3	Normal	0.3
592-929156	12/14/2023 14:35	Readings	PID	SC23030065D3	Normal	0.3
592-929156	12/14/2023 14:34	Readings	PID	SC23030065D3	Normal	0.3
592-929156	12/14/2023 14:33	Readings	PID	SC23030065D3	Normal	0.3
592-929156	12/14/2023 14:32	Readings	PID	SC23030065D3	Normal	0.3
592-929156	12/14/2023 14:31	Readings	PID	SC23030065D3	Normal	0.3
592-929156	12/14/2023 14:30	Readings	PID	SC23030065D3	Normal	0.3
592-929156	12/14/2023 14:29	Readings	PID	SC23030065D3	Normal	0.3
592-929156	12/14/2023 14:28	Readings	PID	SC23030065D3	Normal	0.3
592-929156	12/14/2023 14:27	Readings	PID	SC23030065D3	Normal	0.3
592-929156	12/14/2023 14:26	Readings	PID	SC23030065D3	Normal	0.3
592-929156	12/14/2023 14:25	Readings	PID	SC23030065D3	Normal	0.3

592-929156	12/14/2023 8:34	Readings	PID	SC23030065D3	Normal	0
592-929156	12/14/2023 8:33	Readings	PID	SC23030065D3	Normal	0
592-929156	12/14/2023 8:32	Readings	PID	SC23030065D3	Normal	0
592-929156	12/14/2023 8:31	Readings	PID	SC23030065D3	Normal	0
592-929156	12/14/2023 8:30	Readings	PID	SC23030065D3	Normal	0
592-929156	12/14/2023 8:29	Readings	PID	SC23030065D3	Normal	0
592-929156	12/14/2023 8:28	Readings	PID	SC23030065D3	Normal	0
592-929156	12/14/2023 8:27	Readings	PID	SC23030065D3	Normal	0
592-929156	12/14/2023 8:26	Readings	PID	SC23030065D3	Normal	0
592-929156	12/14/2023 8:25	Readings	PID	SC23030065D3	Normal	0
592-929156	12/14/2023 8:24	Readings	PID	SC23030065D3	Normal	0
592-929156	12/14/2023 8:23	Readings	PID	SC23030065D3	Normal	0
592-929156	12/14/2023 8:22	Readings	PID	SC23030065D3	Normal	0
592-929156	12/14/2023 8:21	Readings	PID	SC23030065D3	Normal	0
592-929156	12/14/2023 8:20	Readings	PID	SC23030065D3	Normal	0
592-929156	12/14/2023 8:19	Readings	PID	SC23030065D3	Normal	0
592-929156	12/14/2023 8:18	Readings	PID	SC23030065D3	Normal	0
592-929156	12/14/2023 8:17	Readings	PID	SC23030065D3	Normal	0
592-929156	12/14/2023 8:16	Readings	PID	SC23030065D3	Normal	0
592-929156	12/14/2023 8:15	Readings	PID	SC23030065D3	Normal	0
592-929156	12/14/2023 8:14	Readings	PID	SC23030065D3	Normal	0
592-929156	12/14/2023 8:13	Readings	PID	SC23030065D3	Normal	0
592-929156	12/14/2023 8:12	Readings	PID	SC23030065D3	Normal	0
592-929156	12/14/2023 8:11	Readings	PID	SC23030065D3	Normal	0
592-929156	12/14/2023 8:10	CONFIG	PID	SC23030065D3		

DOWNWIND CAMP READINGS

251 DOUGLASS STREET, BROOKLYN, NY



Instrument Name	DustTrak II
Model Number	8530
Serial Number	8530100909
Firmware Version	3.1
Calibration Date	7/24/2023
Test Name	MANUAL_008
Test Start Time	6:56:17 AM
Test Start Date	12/14/2023
Test Length [D:H:M]	7:44:00
Test Interval [M:S]	1:00
Mass Average [mg/m3]	0.006
Mass Minimum [mg/m3]	0
Mass Maximum [mg/m3]	0.04
Mass TWA [mg/m3]	0.005
Photometric User Cal	1
Flow User Cal	0
Errors	
Number of Samples	464

Elapsed Time [s]		Mass [mg/m3]	Alarms	Errors
0	6:56:17 AM			
60	6:57:17 AM	0.023		
120	6:58:17 AM	0.003		
180	6:59:17 AM	0.002		
240	7:00:17 AM	0.004		
300	7:01:17 AM	0.004		
360	7:02:17 AM	0.004		
420	7:03:17 AM	0.007		
480	7:04:17 AM	0.011		
540	7:05:17 AM	0.031		
600	7:06:17 AM	0.013		
660	7:07:17 AM	0.013		
720	7:08:17 AM	0.014		
780	7:09:17 AM	0.016		
840	7:10:17 AM	0.007		
900	7:11:17 AM	0.012		
960	7:12:17 AM	0.005		
1020	7:13:17 AM	0.005		
1080	7:14:17 AM	0.002		
1140	7:15:17 AM	0.002		
1200	7:16:17 AM	0.006		
1260	7:17:17 AM	0.008		
1320	7:18:17 AM	0.013		
1380	7:19:17 AM	0.012		
1440	7:20:17 AM	0.015		
1500	7:21:17 AM	0.012		
1560	7:22:17 AM	0.011		

1620	7:23:17 AM	0.007
1680	7:24:17 AM	0.002
1740	7:25:17 AM	0.007
1800	7:26:17 AM	0.006
1860	7:27:17 AM	0.01
1920	7:28:17 AM	0.017
1980	7:29:17 AM	0.016
2040	7:30:17 AM	0.014
2100	7:31:17 AM	0.017
2160	7:32:17 AM	0.012
2220	7:33:17 AM	0.012
2280	7:34:17 AM	0.012
2340	7:35:17 AM	0.027
2400	7:36:17 AM	0.02
2460	7:37:17 AM	0.015
2520	7:38:17 AM	0.015
2580	7:39:17 AM	0.013
2640	7:40:17 AM	0.009
2700	7:41:17 AM	0.008
2760	7:42:17 AM	0.005
2820	7:43:17 AM	0.012
2880	7:44:17 AM	0.005
2940	7:45:17 AM	0.016
3000	7:46:17 AM	0.007
3060	7:47:17 AM	0.005
3120	7:48:17 AM	0.006
3180	7:49:17 AM	0.004
3240	7:50:17 AM	0.004
3300	7:51:17 AM	0.009
3360	7:52:17 AM	0.009
3420	7:53:17 AM	0.007
3480	7:54:17 AM	0.009
3540	7:55:17 AM	0.008
3600	7:56:17 AM	0.004
3660	7:57:17 AM	0.006
3720	7:58:17 AM	0.012
3780	7:59:17 AM	0.015
3840	8:00:17 AM	0.009
3900	8:01:17 AM	0.007
3960	8:02:17 AM	0.013
4020	8:03:17 AM	0.004
4080	8:04:17 AM	0.003
4140	8:05:17 AM	0.002
4200	8:06:17 AM	0.014
4260	8:07:17 AM	0.006
4320	8:08:17 AM	0.009
4380	8:09:17 AM	0.023

4440	8:10:17 AM	0.02
4500	8:11:17 AM	0.021
4560	8:12:17 AM	0.01
4620	8:13:17 AM	0.009
4680	8:14:17 AM	0.008
4740	8:15:17 AM	0.014
4800	8:16:17 AM	0.017
4860	8:17:17 AM	0.011
4920	8:18:17 AM	0.01
4980	8:19:17 AM	0.007
5040	8:20:17 AM	0.008
5100	8:21:17 AM	0.01
5160	8:22:17 AM	0.005
5220	8:23:17 AM	0.007
5280	8:24:17 AM	0.01
5340	8:25:17 AM	0.007
5400	8:26:17 AM	0.004
5460	8:27:17 AM	0.005
5520	8:28:17 AM	0.004
5580	8:29:17 AM	0.012
5640	8:30:17 AM	0.006
5700	8:31:17 AM	0.001
5760	8:32:17 AM	0
5820	8:33:17 AM	0
5880	8:34:17 AM	0.005
5940	8:35:17 AM	0.007
6000	8:36:17 AM	0.012
6060	8:37:17 AM	0.007
6120	8:38:17 AM	0.01
6180	8:39:17 AM	0.012
6240	8:40:17 AM	0.011
6300	8:41:17 AM	0.012
6360	8:42:17 AM	0.003
6420	8:43:17 AM	0.003
6480	8:44:17 AM	0.002
6540	8:45:17 AM	0.006
6600	8:46:17 AM	0.004
6660	8:47:17 AM	0.005
6720	8:48:17 AM	0.003
6780	8:49:17 AM	0.003
6840	8:50:17 AM	0.003
6900	8:51:17 AM	0.016
6960	8:52:17 AM	0.005
7020	8:53:17 AM	0.018
7080	8:54:17 AM	0.02
7140	8:55:17 AM	0.019
7200	8:56:17 AM	0.011

7260	8:57:17 AM	0.011
7320	8:58:17 AM	0.009
7380	8:59:17 AM	0.017
7440	9:00:17 AM	0.017
7500	9:01:17 AM	0.015
7560	9:02:17 AM	0.011
7620	9:03:17 AM	0.003
7680	9:04:17 AM	0.011
7740	9:05:17 AM	0.011
7800	9:06:17 AM	0.001
7860	9:07:17 AM	0.003
7920	9:08:17 AM	0.005
7980	9:09:17 AM	0.004
8040	9:10:17 AM	0.011
8100	9:11:17 AM	0.016
8160	9:12:17 AM	0.017
8220	9:13:17 AM	0.017
8280	9:14:17 AM	0.007
8340	9:15:17 AM	0.012
8400	9:16:17 AM	0.013
8460	9:17:17 AM	0.014
8520	9:18:17 AM	0.012
8580	9:19:17 AM	0.009
8640	9:20:17 AM	0.0017
8700	9:21:17 AM	0.016
8760	9:22:17 AM	0.017
8820	9:23:17 AM	0.017
8880	9:24:17 AM	0.017
8940	9:25:17 AM	0.012
9000	9:26:17 AM	0.016
9060	9:27:17 AM	0.005
9120	9:28:17 AM	0.016
9180	9:29:17 AM	0.016
9240	9:30:17 AM	0.016
9300	9:31:17 AM	0.016
9360	9:32:17 AM	0.003
9420	9:33:17 AM	0.016
9480	9:34:17 AM	0.003
9540	9:35:17 AM	0.04
9600	9:36:17 AM	0.037
9660	9:37:17 AM	0.022
9720	9:38:17 AM	0.012
9780	9:39:17 AM	0.014
9840	9:40:17 AM	0.018
9900	9:41:17 AM	0.007
9960	9:42:17 AM	0.008
10020	9:43:17 AM	0.009

10080	9:44:17 AM	0.01
10140	9:45:17 AM	0.008
10200	9:46:17 AM	0.007
10260	9:47:17 AM	0.007
10320	9:48:17 AM	0.007
10380	9:49:17 AM	0.006
10440	9:50:17 AM	0.008
10500	9:51:17 AM	0.008
10560	9:52:17 AM	0.007
10620	9:53:17 AM	0.01
10680	9:54:17 AM	0.007
10740	9:55:17 AM	0.009
10800	9:56:17 AM	0.006
10860	9:57:17 AM	0.006
10920	9:58:17 AM	0.007
10980	9:59:17 AM	0.007
11040	10:00:17 AM	0.007
11100	10:01:17 AM	0.007
11160	10:02:17 AM	0.006
11220	10:03:17 AM	0.006
11280	10:04:17 AM	0.007
11340	10:05:17 AM	0.006
11400	10:06:17 AM	0.006
11460	10:07:17 AM	0.007
11520	10:08:17 AM	0.005
11580	10:09:17 AM	0.006
11640	10:10:17 AM	0.005
11700	10:11:17 AM	0.006
11760	10:12:17 AM	0.005
11820	10:13:17 AM	0.004
11880	10:14:17 AM	0.007
11940	10:15:17 AM	0.004
12000	10:16:17 AM	0.004
12060	10:17:17 AM	0.005
12120	10:18:17 AM	0.005
12180	10:19:17 AM	0.004
12240	10:20:17 AM	0.004
12300	10:21:17 AM	0.004
12360	10:22:17 AM	0.005
12420	10:23:17 AM	0.005
12480	10:24:17 AM	0.005
12540	10:25:17 AM	0.006
12600	10:26:17 AM	0.004
12660	10:27:17 AM	0.005
12720	10:28:17 AM	0.005
12780	10:29:17 AM	0.004
12840	10:30:17 AM	0.004

12900	10:31:17 AM	0.004
12960	10:32:17 AM	0.003
13020	10:33:17 AM	0.003
13080	10:34:17 AM	0.003
13140	10:35:17 AM	0.003
13200	10:36:17 AM	0.003
13260	10:37:17 AM	0.003
13320	10:38:17 AM	0.004
13380	10:39:17 AM	0.004
13440	10:40:17 AM	0.004
13500	10:41:17 AM	0.004
13560	10:42:17 AM	0.004
13620	10:43:17 AM	0.004
13680	10:44:17 AM	0.004
13740	10:45:17 AM	0.004
13800	10:46:17 AM	0.003
13860	10:47:17 AM	0.003
13920	10:48:17 AM	0.003
13980	10:49:17 AM	0.003
14040	10:50:17 AM	0.003
14100	10:51:17 AM	0.003
14160	10:52:17 AM	0.003
14220	10:53:17 AM	0.003
14280	10:54:17 AM	0.004
14340	10:55:17 AM	0.003
14400	10:56:17 AM	0.005
14460	10:57:17 AM	0.003
14520	10:58:17 AM	0.004
14580	10:59:17 AM	0.003
14640	11:00:17 AM	0.003
14700	11:01:17 AM	0.003
14760	11:02:17 AM	0.003
14820	11:03:17 AM	0.003
14880	11:04:17 AM	0.003
14940	11:05:17 AM	0.003
15000	11:06:17 AM	0.003
15060	11:07:17 AM	0.003
15120	11:08:17 AM	0.003
15180	11:09:17 AM	0.004
15240	11:10:17 AM	0.004
15300	11:11:17 AM	0.003
15360	11:12:17 AM	0.003
15420	11:13:17 AM	0.003
15480	11:14:17 AM	0.003
15540	11:15:17 AM	0.003
15600	11:16:17 AM	0.003
15660	11:17:17 AM	0.003

15720	11:18:17 AM	0.003
15780	11:19:17 AM	0.003
15840	11:20:17 AM	0.003
15900	11:21:17 AM	0.003
15960	11:22:17 AM	0.002
16020	11:23:17 AM	0.003
16080	11:24:17 AM	0.002
16140	11:25:17 AM	0.002
16200	11:26:17 AM	0.002
16260	11:27:17 AM	0.002
16320	11:28:17 AM	0.002
16380	11:29:17 AM	0.002
16440	11:30:17 AM	0.002
16500	11:31:17 AM	0.003
16560	11:32:17 AM	0.003
16620	11:33:17 AM	0.002
16680	11:34:17 AM	0.002
16740	11:35:17 AM	0.005
16800	11:36:17 AM	0.005
16860	11:37:17 AM	0.004
16920	11:38:17 AM	0.003
16980	11:39:17 AM	0.003
17040	11:40:17 AM	0.003
17100	11:41:17 AM	0.003
17160	11:42:17 AM	0.002
17220	11:43:17 AM	0.003
17280	11:44:17 AM	0.003
17340	11:45:17 AM	0.003
17400	11:46:17 AM	0.003
17460	11:47:17 AM	0.003
17520	11:48:17 AM	0.003
17580	11:49:17 AM	0.003
17640	11:50:17 AM	0.002
17700	11:51:17 AM	0.003
17760	11:52:17 AM	0.002
17820	11:53:17 AM	0.002
17880	11:54:17 AM	0.002
17940	11:55:17 AM	0.002
18000	11:56:17 AM	0.002
18060	11:57:17 AM	0.002
18120	11:58:17 AM	0.002
18180	11:59:17 AM	0.002
18240	12:00:17 PM	0.003
18300	12:01:17 PM	0.003
18360	12:02:17 PM	0.003
18420	12:03:17 PM	0.003
18480	12:04:17 PM	0.003

18540	12:05:17 PM	0.004
18600	12:06:17 PM	0.004
18660	12:07:17 PM	0.005
18720	12:08:17 PM	0.003
18780	12:09:17 PM	0.001
18840	12:10:17 PM	0.003
18900	12:11:17 PM	0.001
18960	12:12:17 PM	0.001
19020	12:13:17 PM	0.002
19080	12:14:17 PM	0.002
19140	12:15:17 PM	0.001
19200	12:16:17 PM	0.001
19260	12:17:17 PM	0
19320	12:18:17 PM	0
19380	12:19:17 PM	0.001
19440	12:20:17 PM	0.001
19500	12:21:17 PM	0.001
19560	12:22:17 PM	0.001
19620	12:23:17 PM	0.001
19680	12:24:17 PM	0.002
19740	12:25:17 PM	0.004
19800	12:26:17 PM	0.002
19860	12:27:17 PM	0.001
19920	12:28:17 PM	0.001
19980	12:29:17 PM	0.002
20040	12:30:17 PM	0.001
20100	12:31:17 PM	0.001
20160	12:32:17 PM	0.001
20220	12:33:17 PM	0.001
20280	12:34:17 PM	0.001
20340	12:35:17 PM	0.004
20400	12:36:17 PM	0.002
20460	12:37:17 PM	0.002
20520	12:38:17 PM	0.002
20580	12:39:17 PM	0
20640	12:40:17 PM	0.001
20700	12:41:17 PM	0
20760	12:42:17 PM	0.001
20820	12:43:17 PM	0.002
20880	12:44:17 PM	0.002
20940	12:45:17 PM	0.003
21000	12:46:17 PM	0.004
21060	12:47:17 PM	0.006
21120	12:48:17 PM	0.003
21180	12:49:17 PM	0.005
21240	12:50:17 PM	0.003
21300	12:51:17 PM	0.004

21360	12:52:17 PM	0.003
21420	12:53:17 PM	0.003
21480	12:54:17 PM	0.003
21540	12:55:17 PM	0.003
21600	12:56:17 PM	0.003
21660	12:57:17 PM	0.003
21720	12:58:17 PM	0.002
21780	12:59:17 PM	0.003
21840	1:00:17 PM	0.004
21900	1:01:17 PM	0.004
21960	1:02:17 PM	0.004
22020	1:03:17 PM	0.003
22080	1:04:17 PM	0.003
22140	1:05:17 PM	0.003
22200	1:06:17 PM	0.003
22260	1:07:17 PM	0.002
22320	1:08:17 PM	0.003
22380	1:09:17 PM	0.002
22440	1:10:17 PM	0.003
22500	1:11:17 PM	0.002
22560	1:12:17 PM	0.002
22620	1:13:17 PM	0.002
22680	1:14:17 PM	0.002
22740	1:15:17 PM	0.002
22800	1:16:17 PM	0.002
22860	1:17:17 PM	0.002
22920	1:18:17 PM	0.002
22980	1:19:17 PM	0.002
23040	1:20:17 PM	0.002
23100	1:21:17 PM	0.002
23160	1:22:17 PM	0.003
23220	1:23:17 PM	0.011
23280	1:24:17 PM	0.005
23340	1:25:17 PM	0.003
23400	1:26:17 PM	0.003
23460	1:27:17 PM	0.003
23520	1:28:17 PM	0.003
23580	1:29:17 PM	0.003
23640	1:30:17 PM	0.003
23700	1:31:17 PM	0.004
23760	1:32:17 PM	0.003
23820	1:33:17 PM	0.003
23880	1:34:17 PM	0.003
23940	1:35:17 PM	0.003
24000	1:36:17 PM	0.002
24060	1:37:17 PM	0.003
24120	1:38:17 PM	0.003

24180	1:39:17 PM	0.002
24240	1:40:17 PM	0.004
24300	1:41:17 PM	0.003
24360	1:42:17 PM	0.003
24420	1:43:17 PM	0.004
24480	1:44:17 PM	0.002
24540	1:45:17 PM	0.001
24600	1:46:17 PM	0.002
24660	1:47:17 PM	0.002
24720	1:48:17 PM	0.002
24780	1:49:17 PM	0.002
24840	1:50:17 PM	0.002
24900	1:51:17 PM	0.002
24960	1:52:17 PM	0.004
25020	1:53:17 PM	0.004
25080	1:54:17 PM	0.004
25140	1:55:17 PM	0.004
25200	1:56:17 PM	0.004
25260	1:57:17 PM	0.003
25320	1:58:17 PM	0.004
25380	1:59:17 PM	0.003
25440	2:00:17 PM	0.003
25500	2:01:17 PM	0.002
25560	2:02:17 PM	0.003
25620	2:03:17 PM	0.002
25680	2:04:17 PM	0.003
25740	2:05:17 PM	0.003
25800	2:06:17 PM	0.007
25860	2:07:17 PM	0.005
25920	2:08:17 PM	0.005
25980	2:09:17 PM	0.005
26040	2:10:17 PM	0.014
26100	2:11:17 PM	0.004
26160	2:12:17 PM	0.002
26220	2:13:17 PM	0.002
26280	2:14:17 PM	0.002
26340	2:15:17 PM	0.002
26400	2:16:17 PM	0.002
26460	2:17:17 PM	0.002
26520	2:18:17 PM	0.002
26580	2:19:17 PM	0.002
26640	2:20:17 PM	0.002
26700	2:21:17 PM	0.002
26760	2:22:17 PM	0.004
26820	2:23:17 PM	0.004
26880	2:24:17 PM	0.002
26940	2:25:17 PM	0.002

27000	2:26:17 PM	0.003
27060	2:27:17 PM	0.003
27120	2:28:17 PM	0.003
27180	2:29:17 PM	0.007
27240	2:30:17 PM	0.003
27300	2:31:17 PM	0.003
27360	2:32:17 PM	0.005
27420	2:33:17 PM	0.008
27480	2:34:17 PM	0.002
27540	2:35:17 PM	0.002
27600	2:36:17 PM	0.004
27660	2:37:17 PM	0.004
27720	2:38:17 PM	0.003
27780	2:39:17 PM	0.003
27840	2:40:17 PM	0.003

Device Serial No	Log Time	Log Type	Sensor 1 Type	Sensor 1 Serial Number	Sensor 1 Status	Sensor 1 Gas Reading
592-602816	12/14/2023 15:08	Readings	PID	SC23030324C7	Normal	0
592-602816	12/14/2023 15:07	Readings	PID	SC23030324C7	Normal	0
592-602816	12/14/2023 15:06	Readings	PID	SC23030324C7	Normal	0
592-602816	12/14/2023 15:05	Readings	PID	SC23030324C7	Normal	0
592-602816	12/14/2023 15:04	Readings	PID	SC23030324C7	Normal	0
592-602816	12/14/2023 15:03	Readings	PID	SC23030324C7	Normal	0
592-602816	12/14/2023 15:02	Readings	PID	SC23030324C7	Normal	0
592-602816	12/14/2023 15:01	Readings	PID	SC23030324C7	Normal	0
592-602816	12/14/2023 15:00	Readings	PID	SC23030324C7	Normal	0
592-602816	12/14/2023 14:59	Readings	PID	SC23030324C7	Normal	0
592-602816	12/14/2023 14:58	Readings	PID	SC23030324C7	Normal	0
592-602816	12/14/2023 14:57	Readings	PID	SC23030324C7	Normal	0
592-602816	12/14/2023 14:56	Readings	PID	SC23030324C7	Normal	0
592-602816	12/14/2023 14:55	Readings	PID	SC23030324C7	Normal	0
592-602816	12/14/2023 14:54	Readings	PID	SC23030324C7	Normal	0
592-602816	12/14/2023 14:53	Readings	PID	SC23030324C7	Normal	0
592-602816	12/14/2023 14:52	Readings	PID	SC23030324C7	Normal	0
592-602816	12/14/2023 14:51	Readings	PID	SC23030324C7	Normal	0
592-602816	12/14/2023 14:50	Readings	PID	SC23030324C7	Normal	0
592-602816	12/14/2023 14:49	Readings	PID	SC23030324C7	Normal	0
592-602816	12/14/2023 14:48	Readings	PID	SC23030324C7	Normal	0
592-602816	12/14/2023 14:47	Readings	PID	SC23030324C7	Normal	0
592-602816	12/14/2023 14:46	Readings	PID	SC23030324C7	Normal	0
592-602816	12/14/2023 14:45	Readings	PID	SC23030324C7	Normal	0
592-602816	12/14/2023 14:44	Readings	PID	SC23030324C7	Normal	0
592-602816	12/14/2023 14:43	Readings	PID	SC23030324C7	Normal	0
592-602816	12/14/2023 14:42	Readings	PID	SC23030324C7	Normal	0
592-602816	12/14/2023 14:41	Readings	PID	SC23030324C7	Normal	0
592-602816	12/14/2023 14:40	Readings	PID	SC23030324C7	Normal	0
592-602816	12/14/2023 14:39	Readings	PID	SC23030324C7	Normal	0
592-602816	12/14/2023 14:38	Readings	PID	SC23030324C7	Normal	0
592-602816	12/14/2023 14:37	Readings	PID	SC23030324C7	Normal	0
592-602816	12/14/2023 14:36	Readings	PID	SC23030324C7	Normal	0
592-602816	12/14/2023 14:35	Readings	PID	SC23030324C7	Normal	0

592-602816	12/14/2023 11:04	Readings	PID	SC23030324C7	Normal	0.1
592-602816	12/14/2023 11:03	Readings	PID	SC23030324C7	Normal	0.1
592-602816	12/14/2023 11:02	Readings	PID	SC23030324C7	Normal	0.1
592-602816	12/14/2023 11:01	Readings	PID	SC23030324C7	Normal	0.1
592-602816	12/14/2023 11:00	Readings	PID	SC23030324C7	Normal	0.1
592-602816	12/14/2023 10:59	Readings	PID	SC23030324C7	Normal	0.1
592-602816	12/14/2023 10:58	Readings	PID	SC23030324C7	Normal	0.1
592-602816	12/14/2023 10:57	Readings	PID	SC23030324C7	Normal	0.1
592-602816	12/14/2023 10:56	Readings	PID	SC23030324C7	Normal	0.1
592-602816	12/14/2023 10:55	Readings	PID	SC23030324C7	Normal	0.1
592-602816	12/14/2023 10:54	Readings	PID	SC23030324C7	Normal	0.1
592-602816	12/14/2023 10:53	Readings	PID	SC23030324C7	Normal	0
592-602816	12/14/2023 10:52	Readings	PID	SC23030324C7	Normal	0.1
592-602816	12/14/2023 10:51	Readings	PID	SC23030324C7	Normal	0
592-602816	12/14/2023 10:50	Readings	PID	SC23030324C7	Normal	0
592-602816	12/14/2023 10:49	Readings	PID	SC23030324C7	Normal	0
592-602816	12/14/2023 10:48	Readings	PID	SC23030324C7	Normal	0
592-602816	12/14/2023 10:47	Readings	PID	SC23030324C7	Normal	0
592-602816	12/14/2023 10:46	Readings	PID	SC23030324C7	Normal	0
592-602816	12/14/2023 10:45	Readings	PID	SC23030324C7	Normal	0
592-602816	12/14/2023 10:44	Readings	PID	SC23030324C7	Normal	0
592-602816	12/14/2023 10:43	Readings	PID	SC23030324C7	Normal	0
592-602816	12/14/2023 10:42	Readings	PID	SC23030324C7	Normal	0
592-602816	12/14/2023 10:41	Readings	PID	SC23030324C7	Normal	0
592-602816	12/14/2023 10:40	Readings	PID	SC23030324C7	Normal	0.1
592-602816	12/14/2023 10:39	Readings	PID	SC23030324C7	Normal	0.1
592-602816	12/14/2023 10:38	Readings	PID	SC23030324C7	Normal	0
592-602816	12/14/2023 10:37	Readings	PID	SC23030324C7	Normal	0.1
592-602816	12/14/2023 10:36	Readings	PID	SC23030324C7	Normal	0
592-602816	12/14/2023 10:35	Readings	PID	SC23030324C7	Normal	0.1
592-602816	12/14/2023 10:34	Readings	PID	SC23030324C7	Normal	0
592-602816	12/14/2023 10:33	CONFIG	PID	SC23030324C7		
592-602816	12/14/2023 10:31	Readings	PID	SC23030324C7	Normal	1.8
592-602816	12/14/2023 10:30	Readings	PID	SC23030324C7	Normal	1.8
592-602816	12/14/2023 10:29	Readings	PID	SC23030324C7	Normal	1.8

592-602816	12/14/2023 10:28	Readings	PID	SC23030324C7	Normal	1.8
592-602816	12/14/2023 10:27	Readings	PID	SC23030324C7	Normal	1.7
592-602816	12/14/2023 10:26	Readings	PID	SC23030324C7	Normal	1.3
592-602816	12/14/2023 10:25	Readings	PID	SC23030324C7	Normal	1.3
592-602816	12/14/2023 10:24	Readings	PID	SC23030324C7	Normal	1.3
592-602816	12/14/2023 10:23	Readings	PID	SC23030324C7	Normal	1.3
592-602816	12/14/2023 10:22	Readings	PID	SC23030324C7	Normal	1.3
592-602816	12/14/2023 10:21	Readings	PID	SC23030324C7	Normal	1.2
592-602816	12/14/2023 10:20	Readings	PID	SC23030324C7	Normal	1.2
592-602816	12/14/2023 10:19	Readings	PID	SC23030324C7	Normal	1.3
592-602816	12/14/2023 10:18	Readings	PID	SC23030324C7	Normal	1.2
592-602816	12/14/2023 10:17	Readings	PID	SC23030324C7	Normal	1.3
592-602816	12/14/2023 10:16	Readings	PID	SC23030324C7	Normal	1.3
592-602816	12/14/2023 10:15	Readings	PID	SC23030324C7	Normal	1.3
592-602816	12/14/2023 10:14	Readings	PID	SC23030324C7	Normal	1.3
592-602816	12/14/2023 10:13	Readings	PID	SC23030324C7	Normal	1.3
592-602816	12/14/2023 10:12	Readings	PID	SC23030324C7	Normal	1.3
592-602816	12/14/2023 10:11	Readings	PID	SC23030324C7	Normal	1.3
592-602816	12/14/2023 10:10	Readings	PID	SC23030324C7	Normal	1.3
592-602816	12/14/2023 10:09	Readings	PID	SC23030324C7	Normal	1.3
592-602816	12/14/2023 10:08	Readings	PID	SC23030324C7	Normal	1.3
592-602816	12/14/2023 10:07	Readings	PID	SC23030324C7	Normal	1.3
592-602816	12/14/2023 10:06	Readings	PID	SC23030324C7	Normal	1.3
592-602816	12/14/2023 10:05	Readings	PID	SC23030324C7	Normal	1.3
592-602816	12/14/2023 10:04	Readings	PID	SC23030324C7	Normal	1.2
592-602816	12/14/2023 10:03	Readings	PID	SC23030324C7	Normal	1.3
592-602816	12/14/2023 10:02	Readings	PID	SC23030324C7	Normal	1.3
592-602816	12/14/2023 10:01	Readings	PID	SC23030324C7	Normal	1.2
592-602816	12/14/2023 10:00	Readings	PID	SC23030324C7	Normal	1.2
592-602816	12/14/2023 9:59	Readings	PID	SC23030324C7	Normal	1.2
592-602816	12/14/2023 9:58	Readings	PID	SC23030324C7	Normal	1.1
592-602816	12/14/2023 9:57	Readings	PID	SC23030324C7	Normal	1.2
592-602816	12/14/2023 9:56	Readings	PID	SC23030324C7	Normal	1.2
592-602816	12/14/2023 9:55	Readings	PID	SC23030324C7	Normal	1.1
592-602816	12/14/2023 9:54	Readings	PID	SC23030324C7	Normal	1.1

592-602816	12/14/2023 9:53	Readings	PID	SC23030324C7	Normal	1.2
592-602816	12/14/2023 9:52	Readings	PID	SC23030324C7	Normal	1.2
592-602816	12/14/2023 9:51	Readings	PID	SC23030324C7	Normal	1.2
592-602816	12/14/2023 9:50	Readings	PID	SC23030324C7	Normal	1.2
592-602816	12/14/2023 9:49	Readings	PID	SC23030324C7	Normal	1.2
592-602816	12/14/2023 9:48	Readings	PID	SC23030324C7	Normal	1.2
592-602816	12/14/2023 9:47	Readings	PID	SC23030324C7	Normal	1.1
592-602816	12/14/2023 9:46	Readings	PID	SC23030324C7	Normal	1.1
592-602816	12/14/2023 9:45	Readings	PID	SC23030324C7	Normal	1.1
592-602816	12/14/2023 9:44	Readings	PID	SC23030324C7	Normal	1
592-602816	12/14/2023 9:43	Readings	PID	SC23030324C7	Normal	1
592-602816	12/14/2023 9:42	Readings	PID	SC23030324C7	Normal	1.2
592-602816	12/14/2023 9:41	Readings	PID	SC23030324C7	Normal	1.1
592-602816	12/14/2023 9:40	Readings	PID	SC23030324C7	Normal	1.1
592-602816	12/14/2023 9:39	Readings	PID	SC23030324C7	Normal	1.1
592-602816	12/14/2023 9:38	Readings	PID	SC23030324C7	Normal	1.1
592-602816	12/14/2023 9:37	Readings	PID	SC23030324C7	Normal	1.1
592-602816	12/14/2023 9:36	Readings	PID	SC23030324C7	Normal	1.1
592-602816	12/14/2023 9:35	Readings	PID	SC23030324C7	Normal	1.1
592-602816	12/14/2023 9:34	Readings	PID	SC23030324C7	Normal	1
592-602816	12/14/2023 9:33	Readings	PID	SC23030324C7	Normal	1.1
592-602816	12/14/2023 9:32	Readings	PID	SC23030324C7	Normal	1.1
592-602816	12/14/2023 9:31	Readings	PID	SC23030324C7	Normal	1
592-602816	12/14/2023 9:30	Readings	PID	SC23030324C7	Normal	1
592-602816	12/14/2023 9:29	Readings	PID	SC23030324C7	Normal	1.1
592-602816	12/14/2023 9:28	Readings	PID	SC23030324C7	Normal	1.1
592-602816	12/14/2023 9:27	Readings	PID	SC23030324C7	Normal	1.1
592-602816	12/14/2023 9:26	Readings	PID	SC23030324C7	Normal	1
592-602816	12/14/2023 9:25	Readings	PID	SC23030324C7	Normal	1
592-602816	12/14/2023 9:24	Readings	PID	SC23030324C7	Normal	1
592-602816	12/14/2023 9:23	Readings	PID	SC23030324C7	Normal	1
592-602816	12/14/2023 9:22	Readings	PID	SC23030324C7	Normal	1
592-602816	12/14/2023 9:21	Readings	PID	SC23030324C7	Normal	1
592-602816	12/14/2023 9:20	Readings	PID	SC23030324C7	Normal	1
592-602816	12/14/2023 9:19	Readings	PID	SC23030324C7	Normal	0.9

592-602816	12/14/2023 8:43	Readings	PID	SC23030324C7	Normal	0.3
592-602816	12/14/2023 8:42	Readings	PID	SC23030324C7	Normal	0.4
592-602816	12/14/2023 8:41	Readings	PID	SC23030324C7	Normal	0.4
592-602816	12/14/2023 8:40	Readings	PID	SC23030324C7	Normal	0.3
592-602816	12/14/2023 8:39	Readings	PID	SC23030324C7	Normal	0.2
592-602816	12/14/2023 8:38	Readings	PID	SC23030324C7	Normal	0.2
592-602816	12/14/2023 8:37	Readings	PID	SC23030324C7	Normal	0.1
592-602816	12/14/2023 8:36	Readings	PID	SC23030324C7	Normal	0.1
592-602816	12/14/2023 8:35	Readings	PID	SC23030324C7	Normal	0.1
592-602816	12/14/2023 8:34	Readings	PID	SC23030324C7	Normal	0.1
592-602816	12/14/2023 8:33	Readings	PID	SC23030324C7	Normal	0.1
592-602816	12/14/2023 8:32	Readings	PID	SC23030324C7	Normal	0
592-602816	12/14/2023 8:31	Readings	PID	SC23030324C7	Normal	0
592-602816	12/14/2023 8:30	Readings	PID	SC23030324C7	Normal	0.2
592-602816	12/14/2023 8:29	Readings	PID	SC23030324C7	Normal	0.9
592-602816	12/14/2023 8:28	Readings	PID	SC23030324C7	Normal	0
592-602816	12/14/2023 8:27	Readings	PID	SC23030324C7	Normal	0.9
592-602816	12/14/2023 8:26	Readings	PID	SC23030324C7	Normal	2.7
592-602816	12/14/2023 8:25	Readings	PID	SC23030324C7	Normal	0
592-602816	12/14/2023 8:24	Readings	PID	SC23030324C7	Normal	0
592-602816	12/14/2023 8:23	Readings	PID	SC23030324C7	Normal	0
592-602816	12/14/2023 8:22	Readings	PID	SC23030324C7	Normal	0
592-602816	12/14/2023 8:21	Readings	PID	SC23030324C7	Normal	0
592-602816	12/14/2023 8:20	Readings	PID	SC23030324C7	Normal	0.2
592-602816	12/14/2023 8:19	CONFIG	PID	SC23030324C7		

Instrument Name	DustTrak II
Model Number	8530
Serial Number	8530113005
Firmware Version	3.1
Calibration Date	2/11/2023
Test Name	MANUAL_009
Test Start Time	7:01:36 AM
Test Start Date	12/14/2023
Test Length [D:H:M]	7:40:00
Test Interval [M:S]	1:00
Mass Average [mg/m3]	0.022
Mass Minimum [mg/m3]	0.003
Mass Maximum [mg/m3]	0.1
Mass TWA [mg/m3]	0.021
Photometric User Cal	1
Flow User Cal	0
Errors	
Number of Samples	481

Elapsed Time [s]		Mass [mg/m3]	Alarms	Errors
0	7:01:36 AM			
60	7:02:36 AM	0.014		
120	7:03:36 AM	0.071		
180	7:04:36 AM	0.011		
240	7:05:36 AM	0.009		
300	7:06:36 AM	0.016		
360	7:07:36 AM	0.014		
420	7:08:36 AM	0.008		
480	7:09:36 AM	0.009		
540	7:10:36 AM	0.012		
600	7:11:36 AM	0.006		
660	7:12:36 AM	0.006		
720	7:13:36 AM	0.004		
780	7:14:36 AM	0.005		
840	7:15:36 AM	0.009		
900	7:16:36 AM	0.01		
960	7:17:36 AM	0.009		
1020	7:18:36 AM	0.007		
1080	7:19:36 AM	0.014		
1140	7:20:36 AM	0.012		
1200	7:21:36 AM	0.009		
1260	7:22:36 AM	0.007		
1320	7:23:36 AM	0.005		
1380	7:24:36 AM	0.008		
1440	7:25:36 AM	0.009		
1500	7:26:36 AM	0.015		
1560	7:27:36 AM	0.02		

1620	7:28:36 AM	0.019
1680	7:29:36 AM	0.019
1740	7:30:36 AM	0.008
1800	7:31:36 AM	0.014
1860	7:32:36 AM	0.011
1920	7:33:36 AM	0.016
1980	7:34:36 AM	0.028
2040	7:35:36 AM	0.017
2100	7:36:36 AM	0.013
2160	7:37:36 AM	0.01
2220	7:38:36 AM	0.012
2280	7:39:36 AM	0.007
2340	7:40:36 AM	0.008
2400	7:41:36 AM	0.013
2460	7:42:36 AM	0.012
2520	7:43:36 AM	0.013
2580	7:44:36 AM	0.016
2640	7:45:36 AM	0.009
2700	7:46:36 AM	0.009
2760	7:47:36 AM	0.011
2820	7:48:36 AM	0.007
2880	7:49:36 AM	0.009
2940	7:50:36 AM	0.009
3000	7:51:36 AM	0.009
3060	7:52:36 AM	0.007
3120	7:53:36 AM	0.008
3180	7:54:36 AM	0.007
3240	7:55:36 AM	0.007
3300	7:56:36 AM	0.026
3360	7:57:36 AM	0.02
3420	7:58:36 AM	0.012
3480	7:59:36 AM	0.009
3540	8:00:36 AM	0.013
3600	8:01:36 AM	0.016
3660	8:02:36 AM	0.008
3720	8:03:36 AM	0.009
3780	8:04:36 AM	0.009
3840	8:05:36 AM	0.017
3900	8:06:36 AM	0.012
3960	8:07:36 AM	0.017
4020	8:08:36 AM	0.027
4080	8:09:36 AM	0.027
4140	8:10:36 AM	0.022
4200	8:11:36 AM	0.013
4260	8:12:36 AM	0.012
4320	8:13:36 AM	0.011
4380	8:14:36 AM	0.021

4440	8:15:36 AM	0.013
4500	8:16:36 AM	0.017
4560	8:17:36 AM	0.007
4620	8:18:36 AM	0.01
4680	8:19:36 AM	0.012
4740	8:20:36 AM	0.013
4800	8:21:36 AM	0.009
4860	8:22:36 AM	0.007
4920	8:23:36 AM	0.013
4980	8:24:36 AM	0.008
5040	8:25:36 AM	0.006
5100	8:26:36 AM	0.005
5160	8:27:36 AM	0.008
5220	8:28:36 AM	0.012
5280	8:29:36 AM	0.006
5340	8:30:36 AM	0.004
5400	8:31:36 AM	0.003
5460	8:32:36 AM	0.005
5520	8:33:36 AM	0.01
5580	8:34:36 AM	0.009
5640	8:35:36 AM	0.01
5700	8:36:36 AM	0.01
5760	8:37:36 AM	0.01
5820	8:38:36 AM	0.012
5880	8:39:36 AM	0.016
5940	8:40:36 AM	0.011
6000	8:41:36 AM	0.006
6060	8:42:36 AM	0.005
6120	8:43:36 AM	0.006
6180	8:44:36 AM	0.009
6240	8:45:36 AM	0.006
6300	8:46:36 AM	0.006
6360	8:47:36 AM	0.007
6420	8:48:36 AM	0.006
6480	8:49:36 AM	0.008
6540	8:50:36 AM	0.024
6600	8:51:36 AM	0.012
6660	8:52:36 AM	0.021
6720	8:53:36 AM	0.026
6780	8:54:36 AM	0.017
6840	8:55:36 AM	0.015
6900	8:56:36 AM	0.011
6960	8:57:36 AM	0.015
7020	8:58:36 AM	0.019
7080	8:59:36 AM	0.023
7140	9:00:36 AM	0.019
7200	9:01:36 AM	0.009

7260	9:02:36 AM	0.008
7320	9:03:36 AM	0.016
7380	9:04:36 AM	0.009
7440	9:05:36 AM	0.005
7500	9:06:36 AM	0.006
7560	9:07:36 AM	0.005
7620	9:08:36 AM	0.007
7680	9:09:36 AM	0.009
7740	9:10:36 AM	0.012
7800	9:11:36 AM	0.014
7860	9:12:36 AM	0.01
7920	9:13:36 AM	0.017
7980	9:14:36 AM	0.025
8040	9:15:36 AM	0.029
8100	9:16:36 AM	0.03
8160	9:17:36 AM	0.025
8220	9:18:36 AM	0.027
8280	9:19:36 AM	0.026
8340	9:20:36 AM	0.026
8400	9:21:36 AM	0.024
8460	9:22:36 AM	0.025
8520	9:23:36 AM	0.026
8580	9:24:36 AM	0.026
8640	9:25:36 AM	0.028
8700	9:26:36 AM	0.026
8760	9:27:36 AM	0.027
8820	9:28:36 AM	0.025
8880	9:29:36 AM	0.025
8940	9:30:36 AM	0.026
9000	9:31:36 AM	0.026
9060	9:32:36 AM	0.025
9120	9:33:36 AM	0.026
9180	9:34:36 AM	0.025
9240	9:35:36 AM	0.026
9300	9:36:36 AM	0.027
9360	9:37:36 AM	0.025
9420	9:38:36 AM	0.026
9480	9:39:36 AM	0.025
9540	9:40:36 AM	0.027
9600	9:41:36 AM	0.028
9660	9:42:36 AM	0.027
9720	9:43:36 AM	0.027
9780	9:44:36 AM	0.027
9840	9:45:36 AM	0.027
9900	9:46:36 AM	0.027
9960	9:47:36 AM	0.031
10020	9:48:36 AM	0.028

10080	9:49:36 AM	0.027
10140	9:50:36 AM	0.027
10200	9:51:36 AM	0.028
10260	9:52:36 AM	0.03
10320	9:53:36 AM	0.03
10380	9:54:36 AM	0.027
10440	9:55:36 AM	0.027
10500	9:56:36 AM	0.027
10560	9:57:36 AM	0.027
10620	9:58:36 AM	0.027
10680	9:59:36 AM	0.028
10740	10:00:36 AM	0.028
10800	10:01:36 AM	0.027
10860	10:02:36 AM	0.026
10920	10:03:36 AM	0.026
10980	10:04:36 AM	0.027
11040	10:05:36 AM	0.027
11100	10:06:36 AM	0.025
11160	10:07:36 AM	0.029
11220	10:08:36 AM	0.049
11280	10:09:36 AM	0.043
11340	10:10:36 AM	0.044
11400	10:11:36 AM	0.043
11460	10:12:36 AM	0.043
11520	10:13:36 AM	0.044
11580	10:14:36 AM	0.043
11640	10:15:36 AM	0.041
11700	10:16:36 AM	0.041
11760	10:17:36 AM	0.042
11820	10:18:36 AM	0.042
11880	10:19:36 AM	0.043
11940	10:20:36 AM	0.041
12000	10:21:36 AM	0.041
12060	10:22:36 AM	0.043
12120	10:23:36 AM	0.043
12180	10:24:36 AM	0.044
12240	10:25:36 AM	0.042
12300	10:26:36 AM	0.041
12360	10:27:36 AM	0.041
12420	10:28:36 AM	0.042
12480	10:29:36 AM	0.043
12540	10:30:36 AM	0.044
12600	10:31:36 AM	0.044
12660	10:32:36 AM	0.045
12720	10:33:36 AM	0.046
12780	10:34:36 AM	0.044
12840	10:35:36 AM	0.045

12900	10:36:36 AM	0.046
12960	10:37:36 AM	0.045
13020	10:38:36 AM	0.045
13080	10:39:36 AM	0.043
13140	10:40:36 AM	0.042
13200	10:41:36 AM	0.041
13260	10:42:36 AM	0.042
13320	10:43:36 AM	0.041
13380	10:44:36 AM	0.042
13440	10:45:36 AM	0.04
13500	10:46:36 AM	0.038
13560	10:47:36 AM	0.038
13620	10:48:36 AM	0.039
13680	10:49:36 AM	0.039
13740	10:50:36 AM	0.04
13800	10:51:36 AM	0.04
13860	10:52:36 AM	0.037
13920	10:53:36 AM	0.036
13980	10:54:36 AM	0.036
14040	10:55:36 AM	0.035
14100	10:56:36 AM	0.036
14160	10:57:36 AM	0.037
14220	10:58:36 AM	0.036
14280	10:59:36 AM	0.036
14340	11:00:36 AM	0.036
14400	11:01:36 AM	0.038
14460	11:02:36 AM	0.04
14520	11:03:36 AM	0.039
14580	11:04:36 AM	0.039
14640	11:05:36 AM	0.006
14700	11:06:36 AM	0.006
14760	11:07:36 AM	0.007
14820	11:08:36 AM	0.093
14880	11:09:36 AM	0.054
14940	11:10:36 AM	0.011
15000	11:11:36 AM	0.007
15060	11:12:36 AM	0.02
15120	11:13:36 AM	0.021
15180	11:14:36 AM	0.059
15240	11:15:36 AM	0.097
15300	11:16:36 AM	0.011
15360	11:17:36 AM	0.011
15420	11:18:36 AM	0.011
15480	11:19:36 AM	0.02
15540	11:20:36 AM	0.007
15600	11:21:36 AM	0.007
15660	11:22:36 AM	0.007

15720	11:23:36 AM	0.007
15780	11:24:36 AM	0.008
15840	11:25:36 AM	0.008
15900	11:26:36 AM	0.008
15960	11:27:36 AM	0.008
16020	11:28:36 AM	0.008
16080	11:29:36 AM	0.01
16140	11:30:36 AM	0.083
16200	11:31:36 AM	0.064
16260	11:32:36 AM	0.084
16320	11:33:36 AM	0.041
16380	11:34:36 AM	0.035
16440	11:35:36 AM	0.025
16500	11:36:36 AM	0.011
16560	11:37:36 AM	0.013
16620	11:38:36 AM	0.045
16680	11:39:36 AM	0.019
16740	11:40:36 AM	0.013
16800	11:41:36 AM	0.014
16860	11:42:36 AM	0.017
16920	11:43:36 AM	0.015
16980	11:44:36 AM	0.014
17040	11:45:36 AM	0.012
17100	11:46:36 AM	0.012
17160	11:47:36 AM	0.016
17220	11:48:36 AM	0.014
17280	11:49:36 AM	0.012
17340	11:50:36 AM	0.013
17400	11:51:36 AM	0.015
17460	11:52:36 AM	0.016
17520	11:53:36 AM	0.013
17580	11:54:36 AM	0.013
17640	11:55:36 AM	0.013
17700	11:56:36 AM	0.013
17760	11:57:36 AM	0.016
17820	11:58:36 AM	0.015
17880	11:59:36 AM	0.013
17940	12:00:36 PM	0.012
18000	12:01:36 PM	0.031
18060	12:02:36 PM	0.055
18120	12:03:36 PM	0.078
18180	12:04:36 PM	0.014
18240	12:05:36 PM	0.037
18300	12:06:36 PM	0.016
18360	12:07:36 PM	0.016
18420	12:08:36 PM	0.02
18480	12:09:36 PM	0.013

18540	12:10:36 PM	0.012
18600	12:11:36 PM	0.013
18660	12:12:36 PM	0.014
18720	12:13:36 PM	0.013
18780	12:14:36 PM	0.013
18840	12:15:36 PM	0.013
18900	12:16:36 PM	0.018
18960	12:17:36 PM	0.013
19020	12:18:36 PM	0.038
19080	12:19:36 PM	0.022
19140	12:20:36 PM	0.012
19200	12:21:36 PM	0.012
19260	12:22:36 PM	0.012
19320	12:23:36 PM	0.013
19380	12:24:36 PM	0.013
19440	12:25:36 PM	0.016
19500	12:26:36 PM	0.016
19560	12:27:36 PM	0.016
19620	12:28:36 PM	0.034
19680	12:29:36 PM	0.017
19740	12:30:36 PM	0.014
19800	12:31:36 PM	0.016
19860	12:32:36 PM	0.014
19920	12:33:36 PM	0.012
19980	12:34:36 PM	0.011
20040	12:35:36 PM	0.012
20100	12:36:36 PM	0.012
20160	12:37:36 PM	0.012
20220	12:38:36 PM	0.011
20280	12:39:36 PM	0.012
20340	12:40:36 PM	0.014
20400	12:41:36 PM	0.012
20460	12:42:36 PM	0.011
20520	12:43:36 PM	0.012
20580	12:44:36 PM	0.012
20640	12:45:36 PM	0.012
20700	12:46:36 PM	0.011
20760	12:47:36 PM	0.011
20820	12:48:36 PM	0.011
20880	12:49:36 PM	0.012
20940	12:50:36 PM	0.011
21000	12:51:36 PM	0.011
21060	12:52:36 PM	0.011
21120	12:53:36 PM	0.011
21180	12:54:36 PM	0.011
21240	12:55:36 PM	0.014
21300	12:56:36 PM	0.013

21360	12:57:36 PM	0.012
21420	12:58:36 PM	0.012
21480	12:59:36 PM	0.012
21540	1:00:36 PM	0.012
21600	1:01:36 PM	0.012
21660	1:02:36 PM	0.012
21720	1:03:36 PM	0.012
21780	1:04:36 PM	0.011
21840	1:05:36 PM	0.014
21900	1:06:36 PM	0.013
21960	1:07:36 PM	0.015
22020	1:08:36 PM	0.015
22080	1:09:36 PM	0.013
22140	1:10:36 PM	0.02
22200	1:11:36 PM	0.027
22260	1:12:36 PM	0.1
22320	1:13:36 PM	0.072
22380	1:14:36 PM	0.086
22440	1:15:36 PM	0.028
22500	1:16:36 PM	0.018
22560	1:17:36 PM	0.018
22620	1:18:36 PM	0.025
22680	1:19:36 PM	0.06
22740	1:20:36 PM	0.034
22800	1:21:36 PM	0.029
22860	1:22:36 PM	0.041
22920	1:23:36 PM	0.028
22980	1:24:36 PM	0.054
23040	1:25:36 PM	0.022
23100	1:26:36 PM	0.054
23160	1:27:36 PM	0.025
23220	1:28:36 PM	0.023
23280	1:29:36 PM	0.022
23340	1:30:36 PM	0.028
23400	1:31:36 PM	0.018
23460	1:32:36 PM	0.047
23520	1:33:36 PM	0.023
23580	1:34:36 PM	0.039
23640	1:35:36 PM	0.016
23700	1:36:36 PM	0.037
23760	1:37:36 PM	0.054
23820	1:38:36 PM	0.069
23880	1:39:36 PM	0.03
23940	1:40:36 PM	0.031
24000	1:41:36 PM	0.059
24060	1:42:36 PM	0.054
24120	1:43:36 PM	0.031

24180	1:44:36 PM	0.02
24240	1:45:36 PM	0.028
24300	1:46:36 PM	0.016
24360	1:47:36 PM	0.019
24420	1:48:36 PM	0.013
24480	1:49:36 PM	0.02
24540	1:50:36 PM	0.028
24600	1:51:36 PM	0.019
24660	1:52:36 PM	0.02
24720	1:53:36 PM	0.036
24780	1:54:36 PM	0.054
24840	1:55:36 PM	0.028
24900	1:56:36 PM	0.018
24960	1:57:36 PM	0.019
25020	1:58:36 PM	0.029
25080	1:59:36 PM	0.053
25140	2:00:36 PM	0.034
25200	2:01:36 PM	0.022
25260	2:02:36 PM	0.018
25320	2:03:36 PM	0.038
25380	2:04:36 PM	0.041
25440	2:05:36 PM	0.024
25500	2:06:36 PM	0.014
25560	2:07:36 PM	0.014
25620	2:08:36 PM	0.025
25680	2:09:36 PM	0.027
25740	2:10:36 PM	0.017
25800	2:11:36 PM	0.023
25860	2:12:36 PM	0.018
25920	2:13:36 PM	0.014
25980	2:14:36 PM	0.013
26040	2:15:36 PM	0.015
26100	2:16:36 PM	0.015
26160	2:17:36 PM	0.019
26220	2:18:36 PM	0.011
26280	2:19:36 PM	0.012
26340	2:20:36 PM	0.017
26400	2:21:36 PM	0.016
26460	2:22:36 PM	0.015
26520	2:23:36 PM	0.014
26580	2:24:36 PM	0.012
26640	2:25:36 PM	0.011
26700	2:26:36 PM	0.014
26760	2:27:36 PM	0.017
26820	2:28:36 PM	0.013
26880	2:29:36 PM	0.018
26940	2:30:36 PM	0.021

27000	2:31:36 PM	0.012
27060	2:32:36 PM	0.018
27120	2:33:36 PM	0.013
27180	2:34:36 PM	0.013
27240	2:35:36 PM	0.012
27300	2:36:36 PM	0.016
27360	2:37:36 PM	0.014
27420	2:38:36 PM	0.1
27480	2:39:36 PM	0.033
27540	2:40:36 PM	0.015
27600	2:41:36 PM	0.015

Device Serial No	Log Time	Log Type	Sensor 1 Type	Sensor 1 Serial Number	Sensor 1 Status	Sensor 1 Gas Reading
592-600871	12/14/2023 15:10	Readings	PID	SC23030408A8	Normal	0
592-600871	12/14/2023 15:09	Readings	PID	SC23030408A8	Normal	0
592-600871	12/14/2023 15:08	Readings	PID	SC23030408A8	Normal	0
592-600871	12/14/2023 15:07	Readings	PID	SC23030408A8	Normal	0
592-600871	12/14/2023 15:06	Readings	PID	SC23030408A8	Normal	0
592-600871	12/14/2023 15:05	Readings	PID	SC23030408A8	Normal	0
592-600871	12/14/2023 15:04	Readings	PID	SC23030408A8	Normal	0
592-600871	12/14/2023 15:03	Readings	PID	SC23030408A8	Normal	0
592-600871	12/14/2023 15:02	Readings	PID	SC23030408A8	Normal	0
592-600871	12/14/2023 15:01	Readings	PID	SC23030408A8	Normal	0
592-600871	12/14/2023 15:00	Readings	PID	SC23030408A8	Normal	0
592-600871	12/14/2023 14:59	Readings	PID	SC23030408A8	Normal	0
592-600871	12/14/2023 14:58	Readings	PID	SC23030408A8	Normal	0
592-600871	12/14/2023 14:57	Readings	PID	SC23030408A8	Normal	0
592-600871	12/14/2023 14:56	Readings	PID	SC23030408A8	Normal	0
592-600871	12/14/2023 14:55	Readings	PID	SC23030408A8	Normal	0
592-600871	12/14/2023 14:54	Readings	PID	SC23030408A8	Normal	0
592-600871	12/14/2023 14:53	Readings	PID	SC23030408A8	Normal	0
592-600871	12/14/2023 14:52	Readings	PID	SC23030408A8	Normal	0
592-600871	12/14/2023 14:51	Readings	PID	SC23030408A8	Normal	0
592-600871	12/14/2023 14:50	Readings	PID	SC23030408A8	Normal	0
592-600871	12/14/2023 14:49	Readings	PID	SC23030408A8	Normal	0
592-600871	12/14/2023 14:48	Readings	PID	SC23030408A8	Normal	0
592-600871	12/14/2023 14:47	Readings	PID	SC23030408A8	Normal	0
592-600871	12/14/2023 14:46	Readings	PID	SC23030408A8	Normal	0
592-600871	12/14/2023 14:45	Readings	PID	SC23030408A8	Normal	0
592-600871	12/14/2023 14:44	Readings	PID	SC23030408A8	Normal	0
592-600871	12/14/2023 14:43	Readings	PID	SC23030408A8	Normal	0
592-600871	12/14/2023 14:42	Readings	PID	SC23030408A8	Normal	0
592-600871	12/14/2023 14:41	Readings	PID	SC23030408A8	Normal	0
592-600871	12/14/2023 14:40	Readings	PID	SC23030408A8	Normal	0
592-600871	12/14/2023 14:39	Readings	PID	SC23030408A8	Normal	0
592-600871	12/14/2023 14:38	Readings	PID	SC23030408A8	Normal	0
592-600871	12/14/2023 14:37	Readings	PID	SC23030408A8	Normal	0

592-600871	12/14/2023 8:46	Readings	PID	SC23030408A8	Normal	0
592-600871	12/14/2023 8:45	Readings	PID	SC23030408A8	Normal	0
592-600871	12/14/2023 8:44	Readings	PID	SC23030408A8	Normal	0
592-600871	12/14/2023 8:43	Readings	PID	SC23030408A8	Normal	0
592-600871	12/14/2023 8:42	Readings	PID	SC23030408A8	Normal	0
592-600871	12/14/2023 8:41	Readings	PID	SC23030408A8	Normal	0
592-600871	12/14/2023 8:40	Readings	PID	SC23030408A8	Normal	0
592-600871	12/14/2023 8:39	Readings	PID	SC23030408A8	Normal	0
592-600871	12/14/2023 8:38	Readings	PID	SC23030408A8	Normal	0
592-600871	12/14/2023 8:37	Readings	PID	SC23030408A8	Normal	0
592-600871	12/14/2023 8:36	Readings	PID	SC23030408A8	Normal	0
592-600871	12/14/2023 8:35	Readings	PID	SC23030408A8	Normal	0
592-600871	12/14/2023 8:34	Readings	PID	SC23030408A8	Normal	0
592-600871	12/14/2023 8:33	Readings	PID	SC23030408A8	Normal	0
592-600871	12/14/2023 8:32	Readings	PID	SC23030408A8	Normal	0
592-600871	12/14/2023 8:31	Readings	PID	SC23030408A8	Normal	0
592-600871	12/14/2023 8:30	Readings	PID	SC23030408A8	Normal	0
592-600871	12/14/2023 8:29	Readings	PID	SC23030408A8	Normal	0
592-600871	12/14/2023 8:28	Readings	PID	SC23030408A8	Normal	0
592-600871	12/14/2023 8:27	Readings	PID	SC23030408A8	Normal	0
592-600871	12/14/2023 8:26	Readings	PID	SC23030408A8	Normal	0
592-600871	12/14/2023 8:25	Readings	PID	SC23030408A8	Normal	0
592-600871	12/14/2023 8:24	Readings	PID	SC23030408A8	Normal	0
592-600871	12/14/2023 8:23	Readings	PID	SC23030408A8	Normal	0
592-600871	12/14/2023 8:22	Readings	PID	SC23030408A8	Normal	0
592-600871	12/14/2023 8:21	Readings	PID	SC23030408A8	Normal	0
592-600871	12/14/2023 8:20	Readings	PID	SC23030408A8	Normal	0
592-600871	12/14/2023 8:19	Readings	PID	SC23030408A8	Normal	0
592-600871	12/14/2023 8:18	Readings	PID	SC23030408A8	Normal	0
592-600871	12/14/2023 8:17	CONFIG	PID	SC23030408A8		