



**DAILY STATUS REPORT**

**Prepared By:**

|         |      |   |       |  |          |  |               |  |            |   |            |
|---------|------|---|-------|--|----------|--|---------------|--|------------|---|------------|
| WEATHER | Snow |   | Rain  |  | Overcast |  | Partly Cloudy |  | Bright Sun | x | Wind       |
| TEMP.   | < 32 | x | 32-50 |  | 50-70    |  | 70-85         |  | >85        |   | WSW-09 MPH |

Victor Barraza

|                        |                                   |                            |         |                       |
|------------------------|-----------------------------------|----------------------------|---------|-----------------------|
| <b>IEC Project No:</b> | 13928                             | <b>NYSDEC BCP Site No:</b> | C224367 | <b>Date:</b> 12/19/23 |
| <b>Project:</b>        | 251 Douglass Street, Brooklyn, NY |                            |         |                       |

|   |   |
|---|---|
| <p><b>Consultant:</b><br/>Impact Environmental Engineering and Geology, PLLC (IEEG)</p> <p>Time On: 06:45<br/>Time Out: 13:50</p> | <p><b>Personnel On Site:</b><br/>IEEG (Environmental) –Victor Barraza and Gwen Lynn<br/>Broadway Construction Group - Tom Caporale</p> <p><b>Equipment On Site:</b> Minirae 3000 PID, DustTrak II</p> |
|---|---|

**Scope of Work:** Continued excavation in WC-6 and WC-3 soil to load out.

**Site Activities:**

- Deploy three (3) CAMP units at the start of the work day;
- Excavation of portions of WC-6 and WC-3; and
- Stockpiled material covered with poly sheeting.

**Community Air Monitoring Program (CAMP) - CAMP** action level for dust (0.1 mg/m<sup>3</sup>) and VOCs (5 ppm)

- PID remained at nominal levels throughout the day.
- No sustained dust exceedances were observed over a 1-min period during monitoring;
- Startup Upwind Conditions – PID = 0.0 ppm, Dust = 0.13 mg/m<sup>3</sup> @ 06:59.
- High Conditions (Upwind) – PID = 0.3 ppm @ 10:38, Dust = 0.065 mg/m<sup>3</sup> @ 10:54
- High Conditions (Downwind 1) – PID = 1.5 ppm @ 11:33, Dust = 0.629 mg/m<sup>3</sup> @ 8:11
- High Conditions (Downwind 2) – PID = 0.0 ppm, Dust = 0.033 mg/m<sup>3</sup> @ 08:24

**Notable Site Conditions:**

- None

**Planned for the Next Day/Week:**

- Material loadout to Bay Shore facility.

**PHOTO LOG**

251 DOUGLASS STREET, BROOKLYN, NY



**Photo 1-** Representative view of west side of site.



**Photo 2 –** Representative view of excavation activities in WC-3.



**Photo 3-** Representative view of excavation activities in WC-7 and active dust suppression.



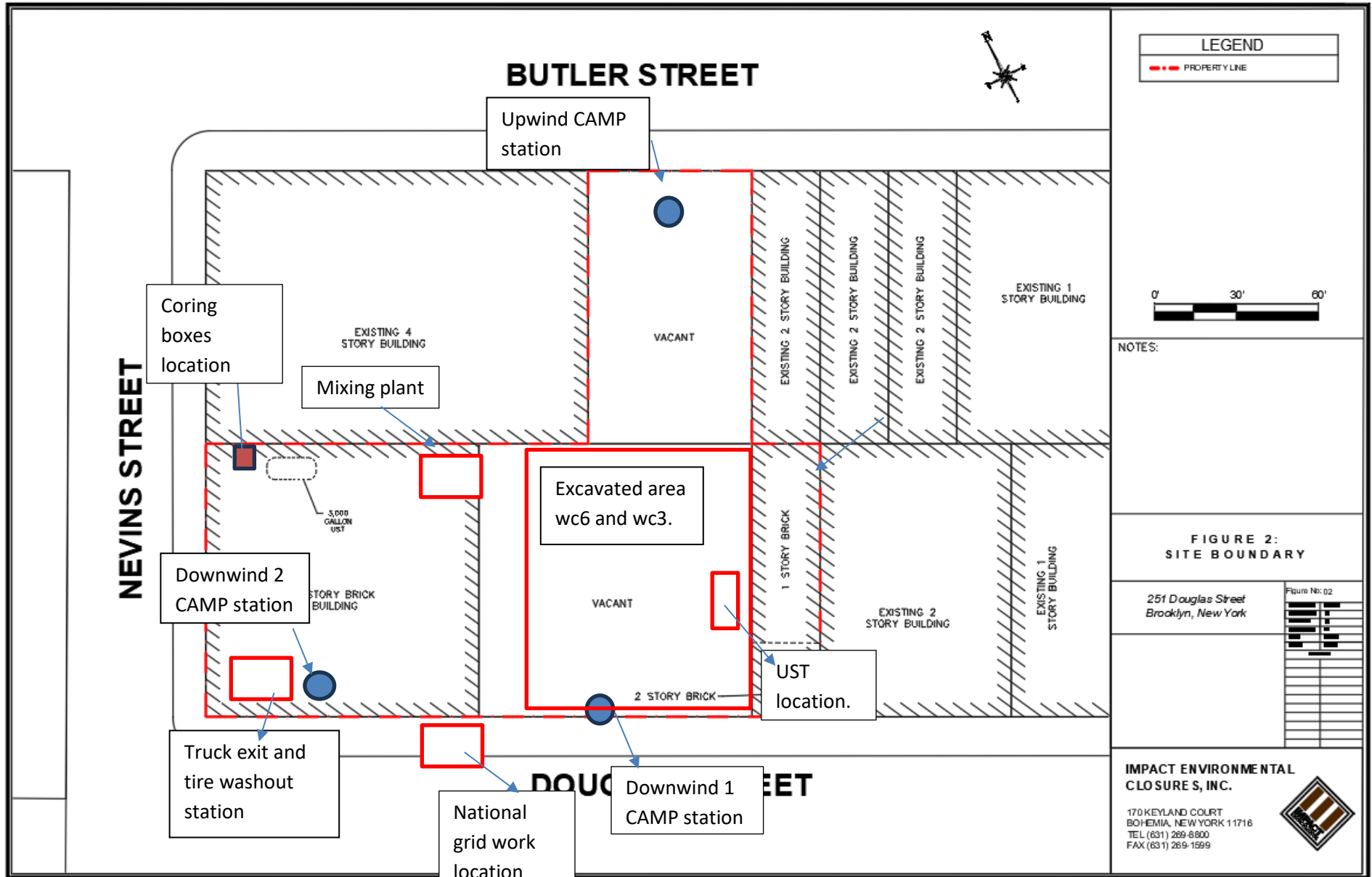
**Photo 4-** Representative view of material stockpiles covered with poly sheeting at the end of the days activities.



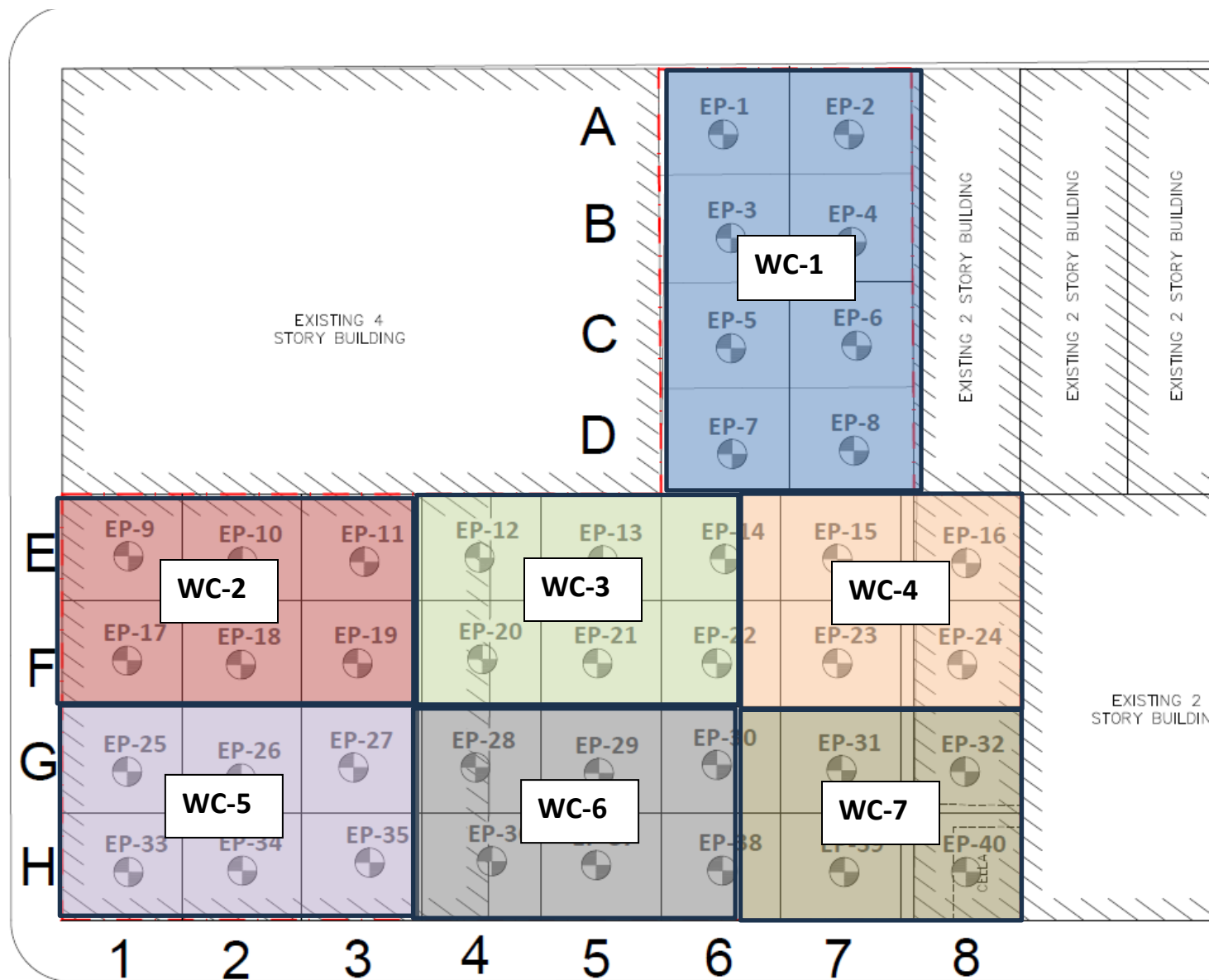
**SITE PLANS**

251 DOUGLASS STREET, BROOKLYN, NY





# NEVINS STREET





**IMPACT ENVIRONMENTAL**

170 Keyland Court | Bohemia | NY | 11716 | 631.269.8800

welcome to solid ground...

[www.impactenvironmental.com](http://www.impactenvironmental.com)

---

**UPWIND CAMP READINGS**

251 DOUGLASS STREET, BROOKLYN, NY



|                          |              |
|--------------------------|--------------|
| Instrument Name          | DustTrak DRX |
| Model Number             | 8533         |
| Serial Number            | 8533181207   |
| Firmware Version         | 3.1          |
| Calibration Date         | 6/1/2023     |
| Test Name                | MANUAL_002   |
| Test Start Time          | 6:59:14 AM   |
| Test Start Date          | 12/19/2023   |
| Test Length [D:H:M]      | 0:05:43      |
| Test Interval [M:S]      | 1:00         |
| PM10 Average [mg/m3]     | 0.016        |
| PM10 Minimum [mg/m3]     | 0.007        |
| PM10 Maximum [mg/m3]     | 0.065        |
| PM10 TWA [mg/m3]         | 0.012        |
| TOTAL Average [mg/m3]    | 0.016        |
| TOTAL Minimum [mg/m3]    | 0.007        |
| TOTAL Maximum [mg/m3]    | 0.065        |
| TOTAL TWA [mg/m3]        | 0.012        |
| Photometric User Cal     | 1            |
| Size Correction User Cal | 1            |
| Flow User Cal            | 0            |
| Errors                   |              |
| Number of Samples        | 343          |

| Elapsed Time [s] |            | PM10 [mg/m3] | TOTAL [mg/m3] | Alarms | Errors |
|------------------|------------|--------------|---------------|--------|--------|
| 60               | 6:59:14 AM | 0.013        | 0.013         |        |        |
| 120              | 7:00:14 AM | 0.014        | 0.014         |        |        |
| 180              | 7:01:14 AM | 0.013        | 0.013         |        |        |
| 240              | 7:02:14 AM | 0.013        | 0.013         |        |        |
| 300              | 7:03:14 AM | 0.013        | 0.013         |        |        |
| 360              | 7:04:14 AM | 0.013        | 0.013         |        |        |
| 420              | 7:05:14 AM | 0.014        | 0.014         |        |        |
| 480              | 7:06:14 AM | 0.015        | 0.015         |        |        |
| 540              | 7:07:14 AM | 0.016        | 0.016         |        |        |
| 600              | 7:08:14 AM | 0.018        | 0.021         |        |        |
| 660              | 7:09:14 AM | 0.016        | 0.016         |        |        |
| 720              | 7:10:14 AM | 0.017        | 0.017         |        |        |
| 780              | 7:11:14 AM | 0.016        | 0.016         |        |        |
| 840              | 7:12:14 AM | 0.017        | 0.017         |        |        |
| 900              | 7:13:14 AM | 0.016        | 0.016         |        |        |
| 960              | 7:14:14 AM | 0.015        | 0.015         |        |        |
| 1020             | 7:15:14 AM | 0.014        | 0.014         |        |        |
| 1080             | 7:16:14 AM | 0.018        | 0.018         |        |        |
| 1140             | 7:17:14 AM | 0.016        | 0.016         |        |        |
| 1200             | 7:18:14 AM | 0.014        | 0.014         |        |        |
| 1260             | 7:19:14 AM | 0.014        | 0.014         |        |        |
| 1320             | 7:20:14 AM | 0.014        | 0.014         |        |        |

|      |            |       |       |
|------|------------|-------|-------|
| 1380 | 7:21:14 AM | 0.013 | 0.013 |
| 1440 | 7:22:14 AM | 0.013 | 0.013 |
| 1500 | 7:23:14 AM | 0.013 | 0.013 |
| 1560 | 7:24:14 AM | 0.014 | 0.014 |
| 1620 | 7:25:14 AM | 0.014 | 0.014 |
| 1680 | 7:26:14 AM | 0.014 | 0.014 |
| 1740 | 7:27:14 AM | 0.013 | 0.013 |
| 1800 | 7:28:14 AM | 0.013 | 0.013 |
| 1860 | 7:29:14 AM | 0.013 | 0.013 |
| 1920 | 7:30:14 AM | 0.014 | 0.014 |
| 1980 | 7:31:14 AM | 0.014 | 0.014 |
| 2040 | 7:32:14 AM | 0.014 | 0.014 |
| 2100 | 7:33:14 AM | 0.013 | 0.013 |
| 2160 | 7:34:14 AM | 0.014 | 0.014 |
| 2220 | 7:35:14 AM | 0.013 | 0.013 |
| 2280 | 7:36:14 AM | 0.012 | 0.012 |
| 2340 | 7:37:14 AM | 0.013 | 0.013 |
| 2400 | 7:38:14 AM | 0.015 | 0.015 |
| 2460 | 7:39:14 AM | 0.015 | 0.015 |
| 2520 | 7:40:14 AM | 0.015 | 0.015 |
| 2580 | 7:41:14 AM | 0.017 | 0.017 |
| 2640 | 7:42:14 AM | 0.029 | 0.029 |
| 2700 | 7:43:14 AM | 0.016 | 0.016 |
| 2760 | 7:44:14 AM | 0.014 | 0.014 |
| 2820 | 7:45:14 AM | 0.015 | 0.015 |
| 2880 | 7:46:14 AM | 0.016 | 0.016 |
| 2940 | 7:47:14 AM | 0.017 | 0.017 |
| 3000 | 7:48:14 AM | 0.015 | 0.015 |
| 3060 | 7:49:14 AM | 0.018 | 0.018 |
| 3120 | 7:50:14 AM | 0.015 | 0.015 |
| 3180 | 7:51:14 AM | 0.021 | 0.021 |
| 3240 | 7:52:14 AM | 0.014 | 0.014 |
| 3300 | 7:53:14 AM | 0.014 | 0.014 |
| 3360 | 7:54:14 AM | 0.016 | 0.016 |
| 3420 | 7:55:14 AM | 0.03  | 0.03  |
| 3480 | 7:56:14 AM | 0.017 | 0.017 |
| 3540 | 7:57:14 AM | 0.024 | 0.024 |
| 3600 | 7:58:14 AM | 0.02  | 0.02  |
| 3660 | 7:59:14 AM | 0.018 | 0.018 |
| 3720 | 8:00:14 AM | 0.013 | 0.013 |
| 3780 | 8:01:14 AM | 0.016 | 0.016 |
| 3840 | 8:02:14 AM | 0.019 | 0.019 |
| 3900 | 8:03:14 AM | 0.03  | 0.03  |
| 3960 | 8:04:14 AM | 0.057 | 0.057 |
| 4020 | 8:05:14 AM | 0.049 | 0.049 |
| 4080 | 8:06:14 AM | 0.043 | 0.043 |
| 4140 | 8:07:14 AM | 0.053 | 0.053 |

|      |            |       |       |
|------|------------|-------|-------|
| 4200 | 8:08:14 AM | 0.017 | 0.017 |
| 4260 | 8:09:14 AM | 0.017 | 0.017 |
| 4320 | 8:10:14 AM | 0.048 | 0.048 |
| 4380 | 8:11:14 AM | 0.035 | 0.035 |
| 4440 | 8:12:14 AM | 0.04  | 0.04  |
| 4500 | 8:13:14 AM | 0.023 | 0.023 |
| 4560 | 8:14:14 AM | 0.021 | 0.022 |
| 4620 | 8:15:14 AM | 0.015 | 0.015 |
| 4680 | 8:16:14 AM | 0.018 | 0.018 |
| 4740 | 8:17:14 AM | 0.018 | 0.018 |
| 4800 | 8:18:14 AM | 0.031 | 0.031 |
| 4860 | 8:19:14 AM | 0.026 | 0.026 |
| 4920 | 8:20:14 AM | 0.021 | 0.021 |
| 4980 | 8:21:14 AM | 0.02  | 0.02  |
| 5040 | 8:22:14 AM | 0.021 | 0.021 |
| 5100 | 8:23:14 AM | 0.025 | 0.025 |
| 5160 | 8:24:14 AM | 0.023 | 0.023 |
| 5220 | 8:25:14 AM | 0.029 | 0.029 |
| 5280 | 8:26:14 AM | 0.027 | 0.027 |
| 5340 | 8:27:14 AM | 0.03  | 0.03  |
| 5400 | 8:28:14 AM | 0.025 | 0.025 |
| 5460 | 8:29:14 AM | 0.028 | 0.028 |
| 5520 | 8:30:14 AM | 0.022 | 0.022 |
| 5580 | 8:31:14 AM | 0.021 | 0.021 |
| 5640 | 8:32:14 AM | 0.018 | 0.018 |
| 5700 | 8:33:14 AM | 0.025 | 0.025 |
| 5760 | 8:34:14 AM | 0.022 | 0.022 |
| 5820 | 8:35:14 AM | 0.022 | 0.022 |
| 5880 | 8:36:14 AM | 0.026 | 0.026 |
| 5940 | 8:37:14 AM | 0.045 | 0.045 |
| 6000 | 8:38:14 AM | 0.032 | 0.032 |
| 6060 | 8:39:14 AM | 0.016 | 0.016 |
| 6120 | 8:40:14 AM | 0.018 | 0.018 |
| 6180 | 8:41:14 AM | 0.02  | 0.02  |
| 6240 | 8:42:14 AM | 0.023 | 0.023 |
| 6300 | 8:43:14 AM | 0.017 | 0.017 |
| 6360 | 8:44:14 AM | 0.016 | 0.016 |
| 6420 | 8:45:14 AM | 0.018 | 0.018 |
| 6480 | 8:46:14 AM | 0.018 | 0.018 |
| 6540 | 8:47:14 AM | 0.017 | 0.017 |
| 6600 | 8:48:14 AM | 0.02  | 0.02  |
| 6660 | 8:49:14 AM | 0.023 | 0.023 |
| 6720 | 8:50:14 AM | 0.019 | 0.019 |
| 6780 | 8:51:14 AM | 0.018 | 0.018 |
| 6840 | 8:52:14 AM | 0.02  | 0.02  |
| 6900 | 8:53:14 AM | 0.023 | 0.023 |
| 6960 | 8:54:14 AM | 0.031 | 0.031 |

|      |            |       |       |
|------|------------|-------|-------|
| 7020 | 8:55:14 AM | 0.023 | 0.023 |
| 7080 | 8:56:14 AM | 0.027 | 0.027 |
| 7140 | 8:57:14 AM | 0.037 | 0.037 |
| 7200 | 8:58:14 AM | 0.021 | 0.021 |
| 7260 | 8:59:14 AM | 0.023 | 0.023 |
| 7320 | 9:00:14 AM | 0.03  | 0.03  |
| 7380 | 9:01:14 AM | 0.022 | 0.022 |
| 7440 | 9:02:14 AM | 0.051 | 0.051 |
| 7500 | 9:03:14 AM | 0.024 | 0.024 |
| 7560 | 9:04:14 AM | 0.017 | 0.017 |
| 7620 | 9:05:14 AM | 0.016 | 0.016 |
| 7680 | 9:06:14 AM | 0.017 | 0.017 |
| 7740 | 9:07:14 AM | 0.015 | 0.015 |
| 7800 | 9:08:14 AM | 0.014 | 0.014 |
| 7860 | 9:09:14 AM | 0.014 | 0.014 |
| 7920 | 9:10:14 AM | 0.014 | 0.014 |
| 7980 | 9:11:14 AM | 0.015 | 0.015 |
| 8040 | 9:12:14 AM | 0.014 | 0.014 |
| 8100 | 9:13:14 AM | 0.015 | 0.015 |
| 8160 | 9:14:14 AM | 0.02  | 0.02  |
| 8220 | 9:15:14 AM | 0.028 | 0.028 |
| 8280 | 9:16:14 AM | 0.036 | 0.036 |
| 8340 | 9:17:14 AM | 0.044 | 0.051 |
| 8400 | 9:18:14 AM | 0.027 | 0.027 |
| 8460 | 9:19:14 AM | 0.02  | 0.02  |
| 8520 | 9:20:14 AM | 0.018 | 0.018 |
| 8580 | 9:21:14 AM | 0.016 | 0.016 |
| 8640 | 9:22:14 AM | 0.017 | 0.017 |
| 8700 | 9:23:14 AM | 0.015 | 0.015 |
| 8760 | 9:24:14 AM | 0.016 | 0.016 |
| 8820 | 9:25:14 AM | 0.026 | 0.026 |
| 8880 | 9:26:14 AM | 0.023 | 0.023 |
| 8940 | 9:27:14 AM | 0.025 | 0.025 |
| 9000 | 9:28:14 AM | 0.023 | 0.023 |
| 9060 | 9:29:14 AM | 0.02  | 0.02  |
| 9120 | 9:30:14 AM | 0.024 | 0.024 |
| 9180 | 9:31:14 AM | 0.021 | 0.021 |
| 9240 | 9:32:14 AM | 0.024 | 0.024 |
| 9300 | 9:33:14 AM | 0.023 | 0.023 |
| 9360 | 9:34:14 AM | 0.014 | 0.014 |
| 9420 | 9:35:14 AM | 0.017 | 0.017 |
| 9480 | 9:36:14 AM | 0.021 | 0.022 |
| 9540 | 9:37:14 AM | 0.018 | 0.018 |
| 9600 | 9:38:14 AM | 0.018 | 0.018 |
| 9660 | 9:39:14 AM | 0.019 | 0.019 |
| 9720 | 9:40:14 AM | 0.021 | 0.021 |
| 9780 | 9:41:14 AM | 0.013 | 0.013 |

|       |             |       |       |
|-------|-------------|-------|-------|
| 9840  | 9:42:14 AM  | 0.016 | 0.016 |
| 9900  | 9:43:14 AM  | 0.014 | 0.014 |
| 9960  | 9:44:14 AM  | 0.014 | 0.014 |
| 10020 | 9:45:14 AM  | 0.013 | 0.013 |
| 10080 | 9:46:14 AM  | 0.013 | 0.013 |
| 10140 | 9:47:14 AM  | 0.012 | 0.012 |
| 10200 | 9:48:14 AM  | 0.013 | 0.013 |
| 10260 | 9:49:14 AM  | 0.015 | 0.015 |
| 10320 | 9:50:14 AM  | 0.015 | 0.015 |
| 10380 | 9:51:14 AM  | 0.014 | 0.014 |
| 10440 | 9:52:14 AM  | 0.015 | 0.015 |
| 10500 | 9:53:14 AM  | 0.014 | 0.014 |
| 10560 | 9:54:14 AM  | 0.014 | 0.014 |
| 10620 | 9:55:14 AM  | 0.015 | 0.015 |
| 10680 | 9:56:14 AM  | 0.017 | 0.017 |
| 10740 | 9:57:14 AM  | 0.015 | 0.015 |
| 10800 | 9:58:14 AM  | 0.015 | 0.015 |
| 10860 | 9:59:14 AM  | 0.02  | 0.02  |
| 10920 | 10:00:14 AM | 0.02  | 0.02  |
| 10980 | 10:01:14 AM | 0.018 | 0.018 |
| 11040 | 10:02:14 AM | 0.016 | 0.016 |
| 11100 | 10:03:14 AM | 0.013 | 0.013 |
| 11160 | 10:04:14 AM | 0.013 | 0.013 |
| 11220 | 10:05:14 AM | 0.015 | 0.015 |
| 11280 | 10:06:14 AM | 0.012 | 0.012 |
| 11340 | 10:07:14 AM | 0.011 | 0.011 |
| 11400 | 10:08:14 AM | 0.012 | 0.012 |
| 11460 | 10:09:14 AM | 0.014 | 0.014 |
| 11520 | 10:10:14 AM | 0.012 | 0.012 |
| 11580 | 10:11:14 AM | 0.011 | 0.011 |
| 11640 | 10:12:14 AM | 0.011 | 0.011 |
| 11700 | 10:13:14 AM | 0.011 | 0.011 |
| 11760 | 10:14:14 AM | 0.011 | 0.011 |
| 11820 | 10:15:14 AM | 0.011 | 0.011 |
| 11880 | 10:16:14 AM | 0.013 | 0.013 |
| 11940 | 10:17:14 AM | 0.013 | 0.013 |
| 12000 | 10:18:14 AM | 0.011 | 0.011 |
| 12060 | 10:19:14 AM | 0.012 | 0.012 |
| 12120 | 10:20:14 AM | 0.011 | 0.011 |
| 12180 | 10:21:14 AM | 0.012 | 0.012 |
| 12240 | 10:22:14 AM | 0.019 | 0.019 |
| 12300 | 10:23:14 AM | 0.024 | 0.024 |
| 12360 | 10:24:14 AM | 0.04  | 0.041 |
| 12420 | 10:25:14 AM | 0.039 | 0.041 |
| 12480 | 10:26:14 AM | 0.022 | 0.022 |
| 12540 | 10:27:14 AM | 0.014 | 0.014 |
| 12600 | 10:28:14 AM | 0.021 | 0.021 |

|       |             |       |       |
|-------|-------------|-------|-------|
| 12660 | 10:29:14 AM | 0.018 | 0.018 |
| 12720 | 10:30:14 AM | 0.012 | 0.012 |
| 12780 | 10:31:14 AM | 0.011 | 0.011 |
| 12840 | 10:32:14 AM | 0.015 | 0.015 |
| 12900 | 10:33:14 AM | 0.029 | 0.029 |
| 12960 | 10:34:14 AM | 0.02  | 0.02  |
| 13020 | 10:35:14 AM | 0.012 | 0.012 |
| 13080 | 10:36:14 AM | 0.01  | 0.01  |
| 13140 | 10:37:14 AM | 0.008 | 0.008 |
| 13200 | 10:38:14 AM | 0.009 | 0.009 |
| 13260 | 10:39:14 AM | 0.009 | 0.009 |
| 13320 | 10:40:14 AM | 0.008 | 0.008 |
| 13380 | 10:41:14 AM | 0.008 | 0.008 |
| 13440 | 10:42:14 AM | 0.009 | 0.009 |
| 13500 | 10:43:14 AM | 0.012 | 0.012 |
| 13560 | 10:44:14 AM | 0.02  | 0.02  |
| 13620 | 10:45:14 AM | 0.011 | 0.011 |
| 13680 | 10:46:14 AM | 0.011 | 0.011 |
| 13740 | 10:47:14 AM | 0.015 | 0.015 |
| 13800 | 10:48:14 AM | 0.012 | 0.013 |
| 13860 | 10:49:14 AM | 0.011 | 0.011 |
| 13920 | 10:50:14 AM | 0.02  | 0.02  |
| 13980 | 10:51:14 AM | 0.025 | 0.025 |
| 14040 | 10:52:14 AM | 0.021 | 0.021 |
| 14100 | 10:53:14 AM | 0.057 | 0.057 |
| 14160 | 10:54:14 AM | 0.065 | 0.065 |
| 14220 | 10:55:14 AM | 0.04  | 0.04  |
| 14280 | 10:56:14 AM | 0.031 | 0.031 |
| 14340 | 10:57:14 AM | 0.025 | 0.025 |
| 14400 | 10:58:14 AM | 0.027 | 0.027 |
| 14460 | 10:59:14 AM | 0.015 | 0.015 |
| 14520 | 11:00:14 AM | 0.02  | 0.02  |
| 14580 | 11:01:14 AM | 0.028 | 0.028 |
| 14640 | 11:02:14 AM | 0.013 | 0.013 |
| 14700 | 11:03:14 AM | 0.008 | 0.008 |
| 14760 | 11:04:14 AM | 0.008 | 0.008 |
| 14820 | 11:05:14 AM | 0.01  | 0.01  |
| 14880 | 11:06:14 AM | 0.012 | 0.012 |
| 14940 | 11:07:14 AM | 0.009 | 0.009 |
| 15000 | 11:08:14 AM | 0.008 | 0.008 |
| 15060 | 11:09:14 AM | 0.008 | 0.009 |
| 15120 | 11:10:14 AM | 0.012 | 0.012 |
| 15180 | 11:11:14 AM | 0.019 | 0.019 |
| 15240 | 11:12:14 AM | 0.016 | 0.016 |
| 15300 | 11:13:14 AM | 0.008 | 0.008 |
| 15360 | 11:14:14 AM | 0.007 | 0.007 |
| 15420 | 11:15:14 AM | 0.018 | 0.018 |

|       |             |       |       |
|-------|-------------|-------|-------|
| 15480 | 11:16:14 AM | 0.01  | 0.01  |
| 15540 | 11:17:14 AM | 0.008 | 0.008 |
| 15600 | 11:18:14 AM | 0.009 | 0.009 |
| 15660 | 11:19:14 AM | 0.009 | 0.009 |
| 15720 | 11:20:14 AM | 0.009 | 0.009 |
| 15780 | 11:21:14 AM | 0.009 | 0.009 |
| 15840 | 11:22:14 AM | 0.008 | 0.008 |
| 15900 | 11:23:14 AM | 0.007 | 0.008 |
| 15960 | 11:24:14 AM | 0.007 | 0.007 |
| 16020 | 11:25:14 AM | 0.008 | 0.008 |
| 16080 | 11:26:14 AM | 0.008 | 0.008 |
| 16140 | 11:27:14 AM | 0.009 | 0.009 |
| 16200 | 11:28:14 AM | 0.008 | 0.008 |
| 16260 | 11:29:14 AM | 0.008 | 0.008 |
| 16320 | 11:30:14 AM | 0.009 | 0.009 |
| 16380 | 11:31:14 AM | 0.008 | 0.008 |
| 16440 | 11:32:14 AM | 0.008 | 0.008 |
| 16500 | 11:33:14 AM | 0.008 | 0.008 |
| 16560 | 11:34:14 AM | 0.008 | 0.008 |
| 16620 | 11:35:14 AM | 0.007 | 0.007 |
| 16680 | 11:36:14 AM | 0.007 | 0.007 |
| 16740 | 11:37:14 AM | 0.012 | 0.013 |
| 16800 | 11:38:14 AM | 0.032 | 0.032 |
| 16860 | 11:39:14 AM | 0.028 | 0.028 |
| 16920 | 11:40:14 AM | 0.012 | 0.012 |
| 16980 | 11:41:14 AM | 0.021 | 0.021 |
| 17040 | 11:42:14 AM | 0.014 | 0.014 |
| 17100 | 11:43:14 AM | 0.009 | 0.009 |
| 17160 | 11:44:14 AM | 0.011 | 0.011 |
| 17220 | 11:45:14 AM | 0.008 | 0.008 |
| 17280 | 11:46:14 AM | 0.01  | 0.01  |
| 17340 | 11:47:14 AM | 0.008 | 0.008 |
| 17400 | 11:48:14 AM | 0.008 | 0.008 |
| 17460 | 11:49:14 AM | 0.008 | 0.008 |
| 17520 | 11:50:14 AM | 0.007 | 0.007 |
| 17580 | 11:51:14 AM | 0.008 | 0.008 |
| 17640 | 11:52:14 AM | 0.011 | 0.011 |
| 17700 | 11:53:14 AM | 0.013 | 0.013 |
| 17760 | 11:54:14 AM | 0.01  | 0.01  |
| 17820 | 11:55:14 AM | 0.008 | 0.008 |
| 17880 | 11:56:14 AM | 0.008 | 0.009 |
| 17940 | 11:57:14 AM | 0.007 | 0.007 |
| 18000 | 11:58:14 AM | 0.007 | 0.007 |
| 18060 | 11:59:14 AM | 0.007 | 0.007 |
| 18120 | 12:00:14 PM | 0.007 | 0.007 |
| 18180 | 12:01:14 PM | 0.007 | 0.007 |
| 18240 | 12:02:14 PM | 0.007 | 0.007 |

|       |             |       |       |
|-------|-------------|-------|-------|
| 18300 | 12:03:14 PM | 0.007 | 0.007 |
| 18360 | 12:04:14 PM | 0.007 | 0.007 |
| 18420 | 12:05:14 PM | 0.007 | 0.007 |
| 18480 | 12:06:14 PM | 0.007 | 0.007 |
| 18540 | 12:07:14 PM | 0.008 | 0.008 |
| 18600 | 12:08:14 PM | 0.007 | 0.007 |
| 18660 | 12:09:14 PM | 0.008 | 0.008 |
| 18720 | 12:10:14 PM | 0.008 | 0.008 |
| 18780 | 12:11:14 PM | 0.01  | 0.01  |
| 18840 | 12:12:14 PM | 0.009 | 0.009 |
| 18900 | 12:13:14 PM | 0.008 | 0.008 |
| 18960 | 12:14:14 PM | 0.007 | 0.007 |
| 19020 | 12:15:14 PM | 0.007 | 0.007 |
| 19080 | 12:16:14 PM | 0.007 | 0.007 |
| 19140 | 12:17:14 PM | 0.008 | 0.008 |
| 19200 | 12:18:14 PM | 0.009 | 0.009 |
| 19260 | 12:19:14 PM | 0.008 | 0.008 |
| 19320 | 12:20:14 PM | 0.008 | 0.008 |
| 19380 | 12:21:14 PM | 0.008 | 0.008 |
| 19440 | 12:22:14 PM | 0.008 | 0.008 |
| 19500 | 12:23:14 PM | 0.008 | 0.008 |
| 19560 | 12:24:14 PM | 0.007 | 0.007 |
| 19620 | 12:25:14 PM | 0.007 | 0.007 |
| 19680 | 12:26:14 PM | 0.007 | 0.007 |
| 19740 | 12:27:14 PM | 0.008 | 0.008 |
| 19800 | 12:28:14 PM | 0.008 | 0.008 |
| 19860 | 12:29:14 PM | 0.008 | 0.008 |
| 19920 | 12:30:14 PM | 0.008 | 0.008 |
| 19980 | 12:31:14 PM | 0.008 | 0.008 |
| 20040 | 12:32:14 PM | 0.007 | 0.007 |
| 20100 | 12:33:14 PM | 0.007 | 0.008 |
| 20160 | 12:34:14 PM | 0.008 | 0.008 |
| 20220 | 12:35:14 PM | 0.007 | 0.007 |
| 20280 | 12:36:14 PM | 0.007 | 0.007 |
| 20340 | 12:37:14 PM | 0.008 | 0.008 |
| 20400 | 12:38:14 PM | 0.008 | 0.008 |
| 20460 | 12:39:14 PM | 0.008 | 0.008 |
| 20520 | 12:40:14 PM | 0.007 | 0.007 |
| 20580 | 12:41:14 PM | 0.009 | 0.009 |



| Device Serial No | Log Time         | Log Type | Sensor 1 Type | Sensor 1 Serial Number | Sensor 1 Status | Sensor 1 Gas Reading |
|------------------|------------------|----------|---------------|------------------------|-----------------|----------------------|
| 592-929156       | 12/19/2023 14:04 | Readings | PID           | SC23030065D3           | Normal          | 0.2                  |
| 592-929156       | 12/19/2023 14:03 | Readings | PID           | SC23030065D3           | Normal          | 0.2                  |
| 592-929156       | 12/19/2023 14:02 | Readings | PID           | SC23030065D3           | Normal          | 0.2                  |
| 592-929156       | 12/19/2023 14:01 | Readings | PID           | SC23030065D3           | Normal          | 0.3                  |
| 592-929156       | 12/19/2023 14:00 | Readings | PID           | SC23030065D3           | Normal          | 0.2                  |
| 592-929156       | 12/19/2023 13:59 | Readings | PID           | SC23030065D3           | Normal          | 0.2                  |
| 592-929156       | 12/19/2023 13:58 | Readings | PID           | SC23030065D3           | Normal          | 0.2                  |
| 592-929156       | 12/19/2023 13:57 | Readings | PID           | SC23030065D3           | Normal          | 0.2                  |
| 592-929156       | 12/19/2023 13:56 | Readings | PID           | SC23030065D3           | Normal          | 0.2                  |
| 592-929156       | 12/19/2023 13:55 | Readings | PID           | SC23030065D3           | Normal          | 0.2                  |
| 592-929156       | 12/19/2023 13:54 | Readings | PID           | SC23030065D3           | Normal          | 0.2                  |
| 592-929156       | 12/19/2023 13:53 | Readings | PID           | SC23030065D3           | Normal          | 0.2                  |
| 592-929156       | 12/19/2023 13:52 | Readings | PID           | SC23030065D3           | Normal          | 0.2                  |
| 592-929156       | 12/19/2023 13:51 | Readings | PID           | SC23030065D3           | Normal          | 0.2                  |
| 592-929156       | 12/19/2023 13:50 | Readings | PID           | SC23030065D3           | Normal          | 0.2                  |
| 592-929156       | 12/19/2023 13:49 | Readings | PID           | SC23030065D3           | Normal          | 0.2                  |
| 592-929156       | 12/19/2023 13:48 | Readings | PID           | SC23030065D3           | Normal          | 0.2                  |
| 592-929156       | 12/19/2023 13:47 | Readings | PID           | SC23030065D3           | Normal          | 0.2                  |
| 592-929156       | 12/19/2023 13:46 | Readings | PID           | SC23030065D3           | Normal          | 0.2                  |
| 592-929156       | 12/19/2023 13:45 | Readings | PID           | SC23030065D3           | Normal          | 0.2                  |
| 592-929156       | 12/19/2023 13:44 | Readings | PID           | SC23030065D3           | Normal          | 0.2                  |
| 592-929156       | 12/19/2023 13:43 | Readings | PID           | SC23030065D3           | Normal          | 0.2                  |
| 592-929156       | 12/19/2023 13:42 | Readings | PID           | SC23030065D3           | Normal          | 0.2                  |
| 592-929156       | 12/19/2023 13:41 | Readings | PID           | SC23030065D3           | Normal          | 0.2                  |
| 592-929156       | 12/19/2023 13:40 | Readings | PID           | SC23030065D3           | Normal          | 0.2                  |
| 592-929156       | 12/19/2023 13:39 | Readings | PID           | SC23030065D3           | Normal          | 0.2                  |
| 592-929156       | 12/19/2023 13:38 | Readings | PID           | SC23030065D3           | Normal          | 0.2                  |
| 592-929156       | 12/19/2023 13:37 | Readings | PID           | SC23030065D3           | Normal          | 0.2                  |
| 592-929156       | 12/19/2023 13:36 | Readings | PID           | SC23030065D3           | Normal          | 0.2                  |
| 592-929156       | 12/19/2023 13:35 | Readings | PID           | SC23030065D3           | Normal          | 0.2                  |
| 592-929156       | 12/19/2023 13:34 | Readings | PID           | SC23030065D3           | Normal          | 0.2                  |
| 592-929156       | 12/19/2023 13:33 | Readings | PID           | SC23030065D3           | Normal          | 0.2                  |
| 592-929156       | 12/19/2023 13:32 | Readings | PID           | SC23030065D3           | Normal          | 0.2                  |
| 592-929156       | 12/19/2023 13:31 | Readings | PID           | SC23030065D3           | Normal          | 0.2                  |



















|            |                 |          |     |              |        |   |
|------------|-----------------|----------|-----|--------------|--------|---|
| 592-929156 | 12/19/2023 8:50 | Readings | PID | SC23030065D3 | Normal | 0 |
| 592-929156 | 12/19/2023 8:49 | Readings | PID | SC23030065D3 | Normal | 0 |
| 592-929156 | 12/19/2023 8:48 | Readings | PID | SC23030065D3 | Normal | 0 |
| 592-929156 | 12/19/2023 8:47 | Readings | PID | SC23030065D3 | Normal | 0 |
| 592-929156 | 12/19/2023 8:46 | Readings | PID | SC23030065D3 | Normal | 0 |
| 592-929156 | 12/19/2023 8:45 | Readings | PID | SC23030065D3 | Normal | 0 |
| 592-929156 | 12/19/2023 8:44 | Readings | PID | SC23030065D3 | Normal | 0 |
| 592-929156 | 12/19/2023 8:43 | Readings | PID | SC23030065D3 | Normal | 0 |
| 592-929156 | 12/19/2023 8:42 | Readings | PID | SC23030065D3 | Normal | 0 |
| 592-929156 | 12/19/2023 8:41 | Readings | PID | SC23030065D3 | Normal | 0 |
| 592-929156 | 12/19/2023 8:40 | Readings | PID | SC23030065D3 | Normal | 0 |
| 592-929156 | 12/19/2023 8:39 | Readings | PID | SC23030065D3 | Normal | 0 |
| 592-929156 | 12/19/2023 8:38 | Readings | PID | SC23030065D3 | Normal | 0 |
| 592-929156 | 12/19/2023 8:37 | Readings | PID | SC23030065D3 | Normal | 0 |
| 592-929156 | 12/19/2023 8:36 | Readings | PID | SC23030065D3 | Normal | 0 |
| 592-929156 | 12/19/2023 8:35 | Readings | PID | SC23030065D3 | Normal | 0 |
| 592-929156 | 12/19/2023 8:34 | Readings | PID | SC23030065D3 | Normal | 0 |
| 592-929156 | 12/19/2023 8:33 | Readings | PID | SC23030065D3 | Normal | 0 |
| 592-929156 | 12/19/2023 8:32 | Readings | PID | SC23030065D3 | Normal | 0 |
| 592-929156 | 12/19/2023 8:31 | Readings | PID | SC23030065D3 | Normal | 0 |
| 592-929156 | 12/19/2023 8:30 | Readings | PID | SC23030065D3 | Normal | 0 |
| 592-929156 | 12/19/2023 8:29 | Readings | PID | SC23030065D3 | Normal | 0 |
| 592-929156 | 12/19/2023 8:28 | Readings | PID | SC23030065D3 | Normal | 0 |
| 592-929156 | 12/19/2023 8:27 | Readings | PID | SC23030065D3 | Normal | 0 |
| 592-929156 | 12/19/2023 8:26 | Readings | PID | SC23030065D3 | Normal | 0 |
| 592-929156 | 12/19/2023 8:25 | Readings | PID | SC23030065D3 | Normal | 0 |
| 592-929156 | 12/19/2023 8:24 | Readings | PID | SC23030065D3 | Normal | 0 |
| 592-929156 | 12/19/2023 8:23 | Readings | PID | SC23030065D3 | Normal | 0 |
| 592-929156 | 12/19/2023 8:22 | Readings | PID | SC23030065D3 | Normal | 0 |
| 592-929156 | 12/19/2023 8:21 | Readings | PID | SC23030065D3 | Normal | 0 |
| 592-929156 | 12/19/2023 8:20 | Readings | PID | SC23030065D3 | Normal | 0 |
| 592-929156 | 12/19/2023 8:19 | CONFIG   | PID | SC23030065D3 |        |   |

**DOWNWIND CAMP READINGS**

251 DOUGLASS STREET, BROOKLYN, NY



|                          |              |
|--------------------------|--------------|
| Instrument Name          | DustTrak DRX |
| Model Number             | 8533         |
| Serial Number            | 8533181208   |
| Firmware Version         | 3.1          |
| Calibration Date         | 6/1/2023     |
| Test Name                | MANUAL_012   |
| Test Start Time          | 6:59:30 AM   |
| Test Start Date          | 12/19/2023   |
| Test Length [D:H:M]      | 0:05:11      |
| Test Interval [M:S]      | 1:00         |
| PM10 Average [mg/m3]     | 0.012        |
| PM10 Minimum [mg/m3]     | 0.001        |
| PM10 Maximum [mg/m3]     | 0.629        |
| PM10 TWA [mg/m3]         | 0.008        |
| TOTAL Average [mg/m3]    | 0.013        |
| TOTAL Minimum [mg/m3]    | 0.001        |
| TOTAL Maximum [mg/m3]    | 0.632        |
| TOTAL TWA [mg/m3]        | 0.008        |
| Photometric User Cal     | 1            |
| Size Correction User Cal | 1            |
| Flow User Cal            | 0            |
| Errors                   |              |
| Number of Samples        | 311          |

| Elapsed Time [s] | time       | PM10 [mg/m3] | TOTAL [mg/m3] | Alarms | Errors |
|------------------|------------|--------------|---------------|--------|--------|
| 61               | 6:59:30 AM | 0.013        | 0.013         |        |        |
| 120              | 7:00:30 AM | 0.012        | 0.012         |        |        |
| 180              | 7:01:30 AM | 0.012        | 0.012         |        |        |
| 240              | 7:02:30 AM | 0.011        | 0.011         |        |        |
| 300              | 7:03:30 AM | 0.013        | 0.015         |        |        |
| 360              | 7:04:30 AM | 0.018        | 0.023         |        |        |
| 420              | 7:05:30 AM | 0.018        | 0.022         |        |        |
| 480              | 7:06:30 AM | 0.017        | 0.017         |        |        |
| 540              | 7:07:30 AM | 0.014        | 0.014         |        |        |
| 600              | 7:08:30 AM | 0.016        | 0.016         |        |        |
| 660              | 7:09:30 AM | 0.015        | 0.015         |        |        |
| 720              | 7:10:30 AM | 0.02         | 0.022         |        |        |
| 780              | 7:11:30 AM | 0.013        | 0.013         |        |        |
| 840              | 7:12:30 AM | 0.01         | 0.01          |        |        |
| 900              | 7:13:30 AM | 0.014        | 0.014         |        |        |
| 960              | 7:14:30 AM | 0.013        | 0.013         |        |        |
| 1021             | 7:15:30 AM | 0.012        | 0.012         |        |        |
| 1080             | 7:16:30 AM | 0.011        | 0.011         |        |        |
| 1140             | 7:17:30 AM | 0.012        | 0.012         |        |        |
| 1200             | 7:18:30 AM | 0.013        | 0.013         |        |        |
| 1260             | 7:19:30 AM | 0.011        | 0.011         |        |        |
| 1320             | 7:20:30 AM | 0.009        | 0.009         |        |        |

|      |            |       |       |
|------|------------|-------|-------|
| 1380 | 7:21:30 AM | 0.01  | 0.01  |
| 1440 | 7:22:30 AM | 0.011 | 0.011 |
| 1500 | 7:23:30 AM | 0.012 | 0.012 |
| 1560 | 7:24:30 AM | 0.012 | 0.012 |
| 1620 | 7:25:30 AM | 0.012 | 0.012 |
| 1680 | 7:26:30 AM | 0.01  | 0.01  |
| 1740 | 7:27:30 AM | 0.011 | 0.011 |
| 1800 | 7:28:30 AM | 0.01  | 0.01  |
| 1861 | 7:29:30 AM | 0.012 | 0.012 |
| 1920 | 7:30:30 AM | 0.011 | 0.011 |
| 1980 | 7:31:30 AM | 0.011 | 0.011 |
| 2040 | 7:32:30 AM | 0.01  | 0.01  |
| 2100 | 7:33:30 AM | 0.011 | 0.011 |
| 2160 | 7:34:30 AM | 0.009 | 0.009 |
| 2220 | 7:35:30 AM | 0.01  | 0.01  |
| 2280 | 7:36:30 AM | 0.011 | 0.011 |
| 2340 | 7:37:30 AM | 0.012 | 0.012 |
| 2400 | 7:38:30 AM | 0.013 | 0.013 |
| 2460 | 7:39:30 AM | 0.013 | 0.013 |
| 2520 | 7:40:30 AM | 0.013 | 0.013 |
| 2580 | 7:41:30 AM | 0.012 | 0.012 |
| 2640 | 7:42:30 AM | 0.011 | 0.011 |
| 2700 | 7:43:30 AM | 0.01  | 0.01  |
| 2760 | 7:44:30 AM | 0.011 | 0.011 |
| 2820 | 7:45:30 AM | 0.011 | 0.011 |
| 2880 | 7:46:30 AM | 0.01  | 0.01  |
| 2940 | 7:47:30 AM | 0.012 | 0.012 |
| 3000 | 7:48:30 AM | 0.01  | 0.01  |
| 3060 | 7:49:30 AM | 0.011 | 0.011 |
| 3120 | 7:50:30 AM | 0.01  | 0.01  |
| 3180 | 7:51:30 AM | 0.011 | 0.011 |
| 3240 | 7:52:30 AM | 0.011 | 0.011 |
| 3300 | 7:53:30 AM | 0.012 | 0.012 |
| 3360 | 7:54:30 AM | 0.013 | 0.013 |
| 3420 | 7:55:30 AM | 0.012 | 0.012 |
| 3480 | 7:56:30 AM | 0.011 | 0.011 |
| 3540 | 7:57:30 AM | 0.011 | 0.011 |
| 3600 | 7:58:30 AM | 0.013 | 0.013 |
| 3660 | 7:59:30 AM | 0.011 | 0.011 |
| 3720 | 8:00:30 AM | 0.01  | 0.01  |
| 3780 | 8:01:30 AM | 0.012 | 0.012 |
| 3840 | 8:02:30 AM | 0.013 | 0.014 |
| 3900 | 8:03:30 AM | 0.012 | 0.012 |
| 3960 | 8:04:30 AM | 0.013 | 0.013 |
| 4020 | 8:05:30 AM | 0.011 | 0.011 |
| 4080 | 8:06:30 AM | 0.011 | 0.011 |
| 4140 | 8:07:30 AM | 0.009 | 0.009 |

|      |            |       |       |
|------|------------|-------|-------|
| 4200 | 8:08:30 AM | 0.011 | 0.011 |
| 4260 | 8:09:30 AM | 0.01  | 0.01  |
| 4320 | 8:10:30 AM | 0.017 | 0.017 |
| 4380 | 8:11:30 AM | 0.629 | 0.632 |
| 4440 | 8:12:30 AM | 0.011 | 0.011 |
| 4500 | 8:13:30 AM | 0.012 | 0.012 |
| 4560 | 8:14:30 AM | 0.011 | 0.011 |
| 4620 | 8:15:30 AM | 0.009 | 0.009 |
| 4681 | 8:16:30 AM | 0.009 | 0.009 |
| 4740 | 8:17:30 AM | 0.011 | 0.011 |
| 4800 | 8:18:30 AM | 0.01  | 0.01  |
| 4860 | 8:19:30 AM | 0.012 | 0.012 |
| 4920 | 8:20:30 AM | 0.01  | 0.01  |
| 4980 | 8:21:30 AM | 0.012 | 0.012 |
| 5040 | 8:22:30 AM | 0.011 | 0.011 |
| 5100 | 8:23:30 AM | 0.01  | 0.01  |
| 5160 | 8:24:30 AM | 0.011 | 0.011 |
| 5220 | 8:25:30 AM | 0.015 | 0.015 |
| 5280 | 8:26:30 AM | 0.022 | 0.022 |
| 5340 | 8:27:30 AM | 0.024 | 0.024 |
| 5400 | 8:28:30 AM | 0.02  | 0.02  |
| 5460 | 8:29:30 AM | 0.017 | 0.017 |
| 5521 | 8:30:30 AM | 0.022 | 0.022 |
| 5580 | 8:31:30 AM | 0.032 | 0.032 |
| 5640 | 8:32:30 AM | 0.011 | 0.011 |
| 5700 | 8:33:30 AM | 0.023 | 0.023 |
| 5760 | 8:34:30 AM | 0.01  | 0.01  |
| 5820 | 8:35:30 AM | 0.011 | 0.011 |
| 5880 | 8:36:30 AM | 0.013 | 0.013 |
| 5940 | 8:37:30 AM | 0.014 | 0.014 |
| 6000 | 8:38:30 AM | 0.01  | 0.01  |
| 6060 | 8:39:30 AM | 0.011 | 0.012 |
| 6120 | 8:40:30 AM | 0.01  | 0.01  |
| 6180 | 8:41:30 AM | 0.012 | 0.012 |
| 6240 | 8:42:30 AM | 0.012 | 0.012 |
| 6300 | 8:43:30 AM | 0.011 | 0.011 |
| 6360 | 8:44:30 AM | 0.01  | 0.01  |
| 6420 | 8:45:30 AM | 0.011 | 0.011 |
| 6480 | 8:46:30 AM | 0.011 | 0.011 |
| 6540 | 8:47:30 AM | 0.012 | 0.012 |
| 6600 | 8:48:30 AM | 0.011 | 0.011 |
| 6660 | 8:49:30 AM | 0.011 | 0.011 |
| 6720 | 8:50:30 AM | 0.009 | 0.009 |
| 6780 | 8:51:30 AM | 0.211 | 0.211 |
| 6840 | 8:52:30 AM | 0.013 | 0.013 |
| 6900 | 8:53:30 AM | 0.01  | 0.01  |
| 6960 | 8:54:30 AM | 0.011 | 0.011 |

|      |            |       |       |
|------|------------|-------|-------|
| 7020 | 8:55:30 AM | 0.011 | 0.011 |
| 7080 | 8:56:30 AM | 0.063 | 0.063 |
| 7140 | 8:57:30 AM | 0.014 | 0.014 |
| 7200 | 8:58:30 AM | 0.01  | 0.01  |
| 7260 | 8:59:30 AM | 0.011 | 0.011 |
| 7320 | 9:00:30 AM | 0.011 | 0.011 |
| 7380 | 9:01:30 AM | 0.01  | 0.01  |
| 7440 | 9:02:30 AM | 0.011 | 0.011 |
| 7500 | 9:03:30 AM | 0.009 | 0.009 |
| 7560 | 9:04:30 AM | 0.01  | 0.01  |
| 7620 | 9:05:30 AM | 0.014 | 0.014 |
| 7680 | 9:06:30 AM | 0.013 | 0.013 |
| 7740 | 9:07:30 AM | 0.01  | 0.01  |
| 7800 | 9:08:30 AM | 0.009 | 0.009 |
| 7860 | 9:09:30 AM | 0.01  | 0.01  |
| 7920 | 9:10:30 AM | 0.01  | 0.01  |
| 7980 | 9:11:30 AM | 0.011 | 0.011 |
| 8040 | 9:12:30 AM | 0.01  | 0.01  |
| 8101 | 9:13:30 AM | 0.01  | 0.01  |
| 8160 | 9:14:30 AM | 0.015 | 0.019 |
| 8220 | 9:15:30 AM | 0.011 | 0.011 |
| 8280 | 9:16:30 AM | 0.013 | 0.013 |
| 8340 | 9:17:30 AM | 0.015 | 0.016 |
| 8400 | 9:18:30 AM | 0.01  | 0.01  |
| 8460 | 9:19:30 AM | 0.009 | 0.009 |
| 8520 | 9:20:30 AM | 0.008 | 0.008 |
| 8580 | 9:21:30 AM | 0.008 | 0.008 |
| 8640 | 9:22:30 AM | 0.007 | 0.007 |
| 8700 | 9:23:30 AM | 0.008 | 0.008 |
| 8760 | 9:24:30 AM | 0.01  | 0.01  |
| 8820 | 9:25:30 AM | 0.013 | 0.013 |
| 8880 | 9:26:30 AM | 0.015 | 0.015 |
| 8940 | 9:27:30 AM | 0.011 | 0.011 |
| 9000 | 9:28:30 AM | 0.012 | 0.012 |
| 9060 | 9:29:30 AM | 0.01  | 0.01  |
| 9120 | 9:30:30 AM | 0.013 | 0.013 |
| 9180 | 9:31:30 AM | 0.016 | 0.016 |
| 9240 | 9:32:30 AM | 0.01  | 0.01  |
| 9300 | 9:33:30 AM | 0.008 | 0.008 |
| 9360 | 9:34:30 AM | 0.009 | 0.009 |
| 9420 | 9:35:30 AM | 0.009 | 0.009 |
| 9480 | 9:36:30 AM | 0.008 | 0.008 |
| 9540 | 9:37:30 AM | 0.009 | 0.009 |
| 9600 | 9:38:30 AM | 0.009 | 0.009 |
| 9660 | 9:39:30 AM | 0.011 | 0.011 |
| 9720 | 9:40:30 AM | 0.011 | 0.011 |
| 9780 | 9:41:30 AM | 0.009 | 0.009 |

|       |             |       |       |
|-------|-------------|-------|-------|
| 9840  | 9:42:30 AM  | 0.01  | 0.01  |
| 9900  | 9:43:30 AM  | 0.012 | 0.012 |
| 9960  | 9:44:30 AM  | 0.01  | 0.01  |
| 10020 | 9:45:30 AM  | 0.008 | 0.008 |
| 10080 | 9:46:30 AM  | 0.008 | 0.008 |
| 10140 | 9:47:30 AM  | 0.008 | 0.008 |
| 10200 | 9:48:30 AM  | 0.009 | 0.009 |
| 10260 | 9:49:30 AM  | 0.011 | 0.011 |
| 10320 | 9:50:30 AM  | 0.01  | 0.01  |
| 10380 | 9:51:30 AM  | 0.01  | 0.01  |
| 10440 | 9:52:30 AM  | 0.009 | 0.009 |
| 10500 | 9:53:30 AM  | 0.01  | 0.01  |
| 10560 | 9:54:30 AM  | 0.009 | 0.009 |
| 10620 | 9:55:30 AM  | 0.009 | 0.009 |
| 10680 | 9:56:30 AM  | 0.01  | 0.01  |
| 10740 | 9:57:30 AM  | 0.008 | 0.008 |
| 10800 | 9:58:30 AM  | 0.009 | 0.009 |
| 10860 | 9:59:30 AM  | 0.01  | 0.01  |
| 10920 | 10:00:30 AM | 0.016 | 0.016 |
| 10980 | 10:01:30 AM | 0.009 | 0.009 |
| 11040 | 10:02:30 AM | 0.007 | 0.007 |
| 11100 | 10:03:30 AM | 0.009 | 0.009 |
| 11160 | 10:04:30 AM | 0.009 | 0.009 |
| 11220 | 10:05:30 AM | 0.006 | 0.006 |
| 11280 | 10:06:30 AM | 0.005 | 0.005 |
| 11340 | 10:07:30 AM | 0.005 | 0.005 |
| 11400 | 10:08:30 AM | 0.006 | 0.006 |
| 11460 | 10:09:30 AM | 0.006 | 0.006 |
| 11520 | 10:10:30 AM | 0.005 | 0.005 |
| 11580 | 10:11:30 AM | 0.005 | 0.005 |
| 11640 | 10:12:30 AM | 0.006 | 0.007 |
| 11700 | 10:13:30 AM | 0.006 | 0.006 |
| 11761 | 10:14:30 AM | 0.006 | 0.006 |
| 11820 | 10:15:30 AM | 0.007 | 0.007 |
| 11880 | 10:16:30 AM | 0.007 | 0.007 |
| 11940 | 10:17:30 AM | 0.005 | 0.005 |
| 12000 | 10:18:30 AM | 0.005 | 0.005 |
| 12060 | 10:19:30 AM | 0.005 | 0.005 |
| 12120 | 10:20:30 AM | 0.007 | 0.007 |
| 12180 | 10:21:30 AM | 0.006 | 0.006 |
| 12240 | 10:22:30 AM | 0.007 | 0.007 |
| 12300 | 10:23:30 AM | 0.005 | 0.005 |
| 12360 | 10:24:30 AM | 0.006 | 0.006 |
| 12420 | 10:25:30 AM | 0.005 | 0.006 |
| 12480 | 10:26:30 AM | 0.003 | 0.003 |
| 12540 | 10:27:30 AM | 0.003 | 0.003 |
| 12600 | 10:28:30 AM | 0.004 | 0.004 |



|       |             |       |       |
|-------|-------------|-------|-------|
| 12660 | 10:29:30 AM | 0.004 | 0.004 |
| 12721 | 10:30:30 AM | 0.005 | 0.006 |
| 12780 | 10:31:30 AM | 0.004 | 0.005 |
| 12840 | 10:32:30 AM | 0.003 | 0.003 |
| 12900 | 10:33:30 AM | 0.009 | 0.009 |
| 12960 | 10:34:30 AM | 0.005 | 0.005 |
| 13020 | 10:35:30 AM | 0.003 | 0.003 |
| 13080 | 10:36:30 AM | 0.004 | 0.004 |
| 13140 | 10:37:30 AM | 0.003 | 0.003 |
| 13200 | 10:38:30 AM | 0.009 | 0.009 |
| 13260 | 10:39:30 AM | 0.003 | 0.003 |
| 13320 | 10:40:30 AM | 0.006 | 0.007 |
| 13380 | 10:41:30 AM | 0.005 | 0.005 |
| 13440 | 10:42:30 AM | 0.069 | 0.069 |
| 13500 | 10:43:30 AM | 0.007 | 0.007 |
| 13560 | 10:44:30 AM | 0.004 | 0.004 |
| 13620 | 10:45:30 AM | 0.004 | 0.004 |
| 13680 | 10:46:30 AM | 0.051 | 0.051 |
| 13740 | 10:47:30 AM | 0.007 | 0.007 |
| 13800 | 10:48:30 AM | 0.042 | 0.042 |
| 13860 | 10:49:30 AM | 0.01  | 0.01  |
| 13920 | 10:50:30 AM | 0.012 | 0.012 |
| 13980 | 10:51:30 AM | 0.012 | 0.012 |
| 14040 | 10:52:30 AM | 0.013 | 0.013 |
| 14100 | 10:53:30 AM | 0.006 | 0.006 |
| 14160 | 10:54:30 AM | 0.008 | 0.008 |
| 14220 | 10:55:30 AM | 0.169 | 0.169 |
| 14280 | 10:56:30 AM | 0.019 | 0.02  |
| 14340 | 10:57:30 AM | 0.005 | 0.005 |
| 14400 | 10:58:30 AM | 0.004 | 0.004 |
| 14460 | 10:59:30 AM | 0.003 | 0.003 |
| 14520 | 11:00:30 AM | 0.003 | 0.003 |
| 14580 | 11:01:30 AM | 0.003 | 0.003 |
| 14640 | 11:02:30 AM | 0.003 | 0.003 |
| 14700 | 11:03:30 AM | 0.004 | 0.004 |
| 14760 | 11:04:30 AM | 0.003 | 0.003 |
| 14820 | 11:05:30 AM | 0.003 | 0.003 |
| 14880 | 11:06:30 AM | 0.003 | 0.003 |
| 14940 | 11:07:30 AM | 0.003 | 0.003 |
| 15000 | 11:08:30 AM | 0.003 | 0.003 |
| 15060 | 11:09:30 AM | 0.003 | 0.003 |
| 15120 | 11:10:30 AM | 0.004 | 0.005 |
| 15180 | 11:11:30 AM | 0.002 | 0.002 |
| 15240 | 11:12:30 AM | 0.003 | 0.003 |
| 15300 | 11:13:30 AM | 0.004 | 0.004 |
| 15360 | 11:14:30 AM | 0.003 | 0.003 |
| 15420 | 11:15:30 AM | 0.002 | 0.002 |

|       |             |       |       |
|-------|-------------|-------|-------|
| 15480 | 11:16:30 AM | 0.003 | 0.003 |
| 15540 | 11:17:30 AM | 0.002 | 0.002 |
| 15600 | 11:18:30 AM | 0.003 | 0.003 |
| 15660 | 11:19:30 AM | 0.002 | 0.002 |
| 15720 | 11:20:30 AM | 0.003 | 0.003 |
| 15780 | 11:21:30 AM | 0.003 | 0.003 |
| 15840 | 11:22:30 AM | 0.003 | 0.003 |
| 15900 | 11:23:30 AM | 0.003 | 0.003 |
| 15960 | 11:24:30 AM | 0.003 | 0.003 |
| 16020 | 11:25:30 AM | 0.003 | 0.003 |
| 16080 | 11:26:30 AM | 0.005 | 0.005 |
| 16141 | 11:27:30 AM | 0.003 | 0.003 |
| 16200 | 11:28:30 AM | 0.004 | 0.004 |
| 16260 | 11:29:30 AM | 0.004 | 0.004 |
| 16320 | 11:30:30 AM | 0.004 | 0.004 |
| 16380 | 11:31:30 AM | 0.003 | 0.003 |
| 16440 | 11:32:30 AM | 0.003 | 0.003 |
| 16500 | 11:33:30 AM | 0.004 | 0.004 |
| 16560 | 11:34:30 AM | 0.003 | 0.003 |
| 16620 | 11:35:30 AM | 0.003 | 0.003 |
| 16680 | 11:36:30 AM | 0.002 | 0.002 |
| 16740 | 11:37:30 AM | 0.003 | 0.005 |
| 16800 | 11:38:30 AM | 0.001 | 0.001 |
| 16860 | 11:39:30 AM | 0.003 | 0.003 |
| 16920 | 11:40:30 AM | 0.004 | 0.004 |
| 16980 | 11:41:30 AM | 0.003 | 0.003 |
| 17040 | 11:42:30 AM | 0.002 | 0.002 |
| 17100 | 11:43:30 AM | 0.003 | 0.003 |
| 17160 | 11:44:30 AM | 0.001 | 0.001 |
| 17220 | 11:45:30 AM | 0.003 | 0.003 |
| 17280 | 11:46:30 AM | 0.003 | 0.003 |
| 17340 | 11:47:30 AM | 0.003 | 0.003 |
| 17400 | 11:48:30 AM | 0.003 | 0.003 |
| 17460 | 11:49:30 AM | 0.003 | 0.003 |
| 17520 | 11:50:30 AM | 0.004 | 0.004 |
| 17580 | 11:51:30 AM | 0.003 | 0.003 |
| 17640 | 11:52:30 AM | 0.003 | 0.003 |
| 17700 | 11:53:30 AM | 0.003 | 0.003 |
| 17760 | 11:54:30 AM | 0.002 | 0.002 |
| 17820 | 11:55:30 AM | 0.003 | 0.003 |
| 17880 | 11:56:30 AM | 0.002 | 0.002 |
| 17940 | 11:57:30 AM | 0.001 | 0.001 |
| 18000 | 11:58:30 AM | 0.001 | 0.001 |
| 18060 | 11:59:30 AM | 0.002 | 0.002 |
| 18120 | 12:00:30 PM | 0.003 | 0.003 |
| 18180 | 12:01:30 PM | 0.004 | 0.004 |
| 18240 | 12:02:30 PM | 0.003 | 0.003 |

|       |             |       |       |
|-------|-------------|-------|-------|
| 18300 | 12:03:30 PM | 0.003 | 0.003 |
| 18360 | 12:04:30 PM | 0.002 | 0.002 |
| 18420 | 12:05:30 PM | 0.003 | 0.003 |
| 18480 | 12:06:30 PM | 0.002 | 0.002 |
| 18540 | 12:07:30 PM | 0.008 | 0.008 |
| 18600 | 12:08:30 PM | 0.006 | 0.006 |
| 18660 | 12:09:30 PM | 0.005 | 0.005 |

| Device Serial No | Log Time         | Log Type | Sensor 1 Type | Sensor 1 Serial Number | Sensor 1 Status | Sensor 1 Gas Reading |
|------------------|------------------|----------|---------------|------------------------|-----------------|----------------------|
| 592-602816       | 12/19/2023 13:39 | Readings | PID           | SC23030324C7           | Normal          | 1                    |
| 592-602816       | 12/19/2023 13:38 | Readings | PID           | SC23030324C7           | Normal          | 1.1                  |
| 592-602816       | 12/19/2023 13:37 | Readings | PID           | SC23030324C7           | Normal          | 1.1                  |
| 592-602816       | 12/19/2023 13:36 | Readings | PID           | SC23030324C7           | Normal          | 1.1                  |
| 592-602816       | 12/19/2023 13:35 | Readings | PID           | SC23030324C7           | Normal          | 1.1                  |
| 592-602816       | 12/19/2023 13:34 | Readings | PID           | SC23030324C7           | Normal          | 1.1                  |
| 592-602816       | 12/19/2023 13:33 | Readings | PID           | SC23030324C7           | Normal          | 1.1                  |
| 592-602816       | 12/19/2023 13:32 | Readings | PID           | SC23030324C7           | Normal          | 1.1                  |
| 592-602816       | 12/19/2023 13:31 | Readings | PID           | SC23030324C7           | Normal          | 1.1                  |
| 592-602816       | 12/19/2023 13:30 | Readings | PID           | SC23030324C7           | Normal          | 1.1                  |
| 592-602816       | 12/19/2023 13:29 | Readings | PID           | SC23030324C7           | Normal          | 1.1                  |
| 592-602816       | 12/19/2023 13:28 | Readings | PID           | SC23030324C7           | Normal          | 1.1                  |
| 592-602816       | 12/19/2023 13:27 | Readings | PID           | SC23030324C7           | Normal          | 1.1                  |
| 592-602816       | 12/19/2023 13:26 | Readings | PID           | SC23030324C7           | Normal          | 1.2                  |
| 592-602816       | 12/19/2023 13:25 | Readings | PID           | SC23030324C7           | Normal          | 1.2                  |
| 592-602816       | 12/19/2023 13:24 | Readings | PID           | SC23030324C7           | Normal          | 1.1                  |
| 592-602816       | 12/19/2023 13:23 | Readings | PID           | SC23030324C7           | Normal          | 1.2                  |
| 592-602816       | 12/19/2023 13:22 | Readings | PID           | SC23030324C7           | Normal          | 1.2                  |
| 592-602816       | 12/19/2023 13:21 | Readings | PID           | SC23030324C7           | Normal          | 1.2                  |
| 592-602816       | 12/19/2023 13:20 | Readings | PID           | SC23030324C7           | Normal          | 1.2                  |
| 592-602816       | 12/19/2023 13:19 | Readings | PID           | SC23030324C7           | Normal          | 1.2                  |
| 592-602816       | 12/19/2023 13:18 | Readings | PID           | SC23030324C7           | Normal          | 1.2                  |
| 592-602816       | 12/19/2023 13:17 | Readings | PID           | SC23030324C7           | Normal          | 1.2                  |
| 592-602816       | 12/19/2023 13:16 | Readings | PID           | SC23030324C7           | Normal          | 1.2                  |
| 592-602816       | 12/19/2023 13:15 | Readings | PID           | SC23030324C7           | Normal          | 1.2                  |
| 592-602816       | 12/19/2023 13:14 | Readings | PID           | SC23030324C7           | Normal          | 1.2                  |
| 592-602816       | 12/19/2023 13:13 | Readings | PID           | SC23030324C7           | Normal          | 1.2                  |
| 592-602816       | 12/19/2023 13:12 | Readings | PID           | SC23030324C7           | Normal          | 1.2                  |
| 592-602816       | 12/19/2023 13:11 | Readings | PID           | SC23030324C7           | Normal          | 1.2                  |
| 592-602816       | 12/19/2023 13:10 | Readings | PID           | SC23030324C7           | Normal          | 1.2                  |
| 592-602816       | 12/19/2023 13:09 | Readings | PID           | SC23030324C7           | Normal          | 1.2                  |
| 592-602816       | 12/19/2023 13:08 | Readings | PID           | SC23030324C7           | Normal          | 1.2                  |
| 592-602816       | 12/19/2023 13:07 | Readings | PID           | SC23030324C7           | Normal          | 1.2                  |
| 592-602816       | 12/19/2023 13:06 | Readings | PID           | SC23030324C7           | Normal          | 1.2                  |



















|            |                 |          |     |              |        |   |
|------------|-----------------|----------|-----|--------------|--------|---|
| 592-602816 | 12/19/2023 8:25 | Readings | PID | SC23030324C7 | Normal | 0 |
| 592-602816 | 12/19/2023 8:24 | Readings | PID | SC23030324C7 | Normal | 0 |
| 592-602816 | 12/19/2023 8:23 | Readings | PID | SC23030324C7 | Normal | 0 |
| 592-602816 | 12/19/2023 8:22 | Readings | PID | SC23030324C7 | Normal | 0 |
| 592-602816 | 12/19/2023 8:21 | Readings | PID | SC23030324C7 | Normal | 0 |
| 592-602816 | 12/19/2023 8:20 | Readings | PID | SC23030324C7 | Normal | 0 |
| 592-602816 | 12/19/2023 8:19 | Readings | PID | SC23030324C7 | Normal | 0 |
| 592-602816 | 12/19/2023 8:18 | Readings | PID | SC23030324C7 | Normal | 0 |
| 592-602816 | 12/19/2023 8:17 | Readings | PID | SC23030324C7 | Normal | 0 |
| 592-602816 | 12/19/2023 8:16 | Readings | PID | SC23030324C7 | Normal | 0 |
| 592-602816 | 12/19/2023 8:15 | Readings | PID | SC23030324C7 | Normal | 0 |
| 592-602816 | 12/19/2023 8:14 | Readings | PID | SC23030324C7 | Normal | 0 |
| 592-602816 | 12/19/2023 8:13 | CONFIG   | PID | SC23030324C7 |        |   |

|                          |              |
|--------------------------|--------------|
| Instrument Name          | DustTrak DRX |
| Model Number             | 8533         |
| Serial Number            | 8533181205   |
| Firmware Version         | 3.1          |
| Calibration Date         | 5/31/2023    |
| Test Name                | MANUAL_011   |
| Test Start Time          | 6:55:45 AM   |
| Test Start Date          | 12/19/2023   |
| Test Length [D:H:M]      | 0:05:11      |
| Test Interval [M:S]      | 1:00         |
| PM10 Average [mg/m3]     | 0.01         |
| PM10 Minimum [mg/m3]     | 0.004        |
| PM10 Maximum [mg/m3]     | 0.033        |
| PM10 TWA [mg/m3]         | 0.007        |
| TOTAL Average [mg/m3]    | 0.01         |
| TOTAL Minimum [mg/m3]    | 0.004        |
| TOTAL Maximum [mg/m3]    | 0.033        |
| TOTAL TWA [mg/m3]        | 0.007        |
| Photometric User Cal     | 1            |
| Size Correction User Cal | 1            |
| Flow User Cal            | 0            |
| Errors                   |              |
| Number of Samples        | 311          |

| Elapsed Time [s] |            | PM10 [mg/m3] | TOTAL [mg/m3] | Alarms | Errors |
|------------------|------------|--------------|---------------|--------|--------|
| 60               | 6:55:45 AM | 0.009        | 0.009         |        |        |
| 120              | 6:56:45 AM | 0.01         | 0.011         |        |        |
| 180              | 6:57:45 AM | 0.011        | 0.011         |        |        |
| 240              | 6:58:45 AM | 0.01         | 0.01          |        |        |
| 300              | 6:59:45 AM | 0.01         | 0.01          |        |        |
| 360              | 7:00:45 AM | 0.01         | 0.01          |        |        |
| 420              | 7:01:45 AM | 0.011        | 0.011         |        |        |
| 480              | 7:02:45 AM | 0.014        | 0.014         |        |        |
| 540              | 7:03:45 AM | 0.015        | 0.015         |        |        |
| 600              | 7:04:45 AM | 0.013        | 0.013         |        |        |
| 660              | 7:05:45 AM | 0.017        | 0.022         |        |        |
| 720              | 7:06:45 AM | 0.015        | 0.015         |        |        |
| 780              | 7:07:45 AM | 0.015        | 0.015         |        |        |
| 840              | 7:08:45 AM | 0.012        | 0.012         |        |        |
| 900              | 7:09:45 AM | 0.012        | 0.012         |        |        |
| 960              | 7:10:45 AM | 0.016        | 0.016         |        |        |
| 1020             | 7:11:45 AM | 0.013        | 0.013         |        |        |
| 1080             | 7:12:45 AM | 0.012        | 0.012         |        |        |
| 1140             | 7:13:45 AM | 0.011        | 0.011         |        |        |
| 1200             | 7:14:45 AM | 0.014        | 0.014         |        |        |
| 1260             | 7:15:45 AM | 0.016        | 0.016         |        |        |
| 1320             | 7:16:45 AM | 0.013        | 0.013         |        |        |

|      |            |       |       |
|------|------------|-------|-------|
| 1380 | 7:17:45 AM | 0.01  | 0.01  |
| 1440 | 7:18:45 AM | 0.011 | 0.011 |
| 1500 | 7:19:45 AM | 0.011 | 0.011 |
| 1560 | 7:20:45 AM | 0.013 | 0.013 |
| 1620 | 7:21:45 AM | 0.012 | 0.012 |
| 1680 | 7:22:45 AM | 0.012 | 0.012 |
| 1740 | 7:23:45 AM | 0.012 | 0.012 |
| 1800 | 7:24:45 AM | 0.013 | 0.013 |
| 1860 | 7:25:45 AM | 0.011 | 0.011 |
| 1920 | 7:26:45 AM | 0.015 | 0.015 |
| 1980 | 7:27:45 AM | 0.012 | 0.012 |
| 2040 | 7:28:45 AM | 0.013 | 0.013 |
| 2100 | 7:29:45 AM | 0.012 | 0.012 |
| 2160 | 7:30:45 AM | 0.012 | 0.012 |
| 2220 | 7:31:45 AM | 0.01  | 0.01  |
| 2280 | 7:32:45 AM | 0.012 | 0.012 |
| 2340 | 7:33:45 AM | 0.012 | 0.012 |
| 2400 | 7:34:45 AM | 0.013 | 0.013 |
| 2460 | 7:35:45 AM | 0.014 | 0.014 |
| 2520 | 7:36:45 AM | 0.014 | 0.014 |
| 2580 | 7:37:45 AM | 0.014 | 0.014 |
| 2640 | 7:38:45 AM | 0.011 | 0.011 |
| 2700 | 7:39:45 AM | 0.011 | 0.011 |
| 2760 | 7:40:45 AM | 0.011 | 0.011 |
| 2820 | 7:41:45 AM | 0.012 | 0.012 |
| 2880 | 7:42:45 AM | 0.012 | 0.012 |
| 2940 | 7:43:45 AM | 0.011 | 0.011 |
| 3000 | 7:44:45 AM | 0.013 | 0.013 |
| 3060 | 7:45:45 AM | 0.012 | 0.012 |
| 3120 | 7:46:45 AM | 0.011 | 0.011 |
| 3180 | 7:47:45 AM | 0.011 | 0.011 |
| 3240 | 7:48:45 AM | 0.012 | 0.012 |
| 3300 | 7:49:45 AM | 0.011 | 0.011 |
| 3360 | 7:50:45 AM | 0.013 | 0.013 |
| 3420 | 7:51:45 AM | 0.012 | 0.012 |
| 3480 | 7:52:45 AM | 0.011 | 0.011 |
| 3540 | 7:53:45 AM | 0.011 | 0.011 |
| 3600 | 7:54:45 AM | 0.011 | 0.011 |
| 3660 | 7:55:45 AM | 0.014 | 0.014 |
| 3720 | 7:56:45 AM | 0.012 | 0.012 |
| 3780 | 7:57:45 AM | 0.012 | 0.012 |
| 3840 | 7:58:45 AM | 0.014 | 0.014 |
| 3900 | 7:59:45 AM | 0.014 | 0.014 |
| 3960 | 8:00:45 AM | 0.013 | 0.013 |
| 4020 | 8:01:45 AM | 0.015 | 0.015 |
| 4080 | 8:02:45 AM | 0.013 | 0.013 |
| 4140 | 8:03:45 AM | 0.013 | 0.013 |

|      |            |       |       |
|------|------------|-------|-------|
| 4200 | 8:04:45 AM | 0.012 | 0.012 |
| 4260 | 8:05:45 AM | 0.013 | 0.013 |
| 4320 | 8:06:45 AM | 0.01  | 0.01  |
| 4380 | 8:07:45 AM | 0.012 | 0.012 |
| 4440 | 8:08:45 AM | 0.014 | 0.014 |
| 4500 | 8:09:45 AM | 0.013 | 0.013 |
| 4560 | 8:10:45 AM | 0.013 | 0.013 |
| 4620 | 8:11:45 AM | 0.013 | 0.013 |
| 4680 | 8:12:45 AM | 0.011 | 0.011 |
| 4740 | 8:13:45 AM | 0.012 | 0.012 |
| 4800 | 8:14:45 AM | 0.012 | 0.012 |
| 4860 | 8:15:45 AM | 0.01  | 0.01  |
| 4920 | 8:16:45 AM | 0.015 | 0.015 |
| 4980 | 8:17:45 AM | 0.012 | 0.012 |
| 5040 | 8:18:45 AM | 0.012 | 0.012 |
| 5100 | 8:19:45 AM | 0.013 | 0.013 |
| 5160 | 8:20:45 AM | 0.012 | 0.012 |
| 5220 | 8:21:45 AM | 0.012 | 0.012 |
| 5280 | 8:22:45 AM | 0.013 | 0.013 |
| 5340 | 8:23:45 AM | 0.019 | 0.019 |
| 5400 | 8:24:45 AM | 0.033 | 0.033 |
| 5460 | 8:25:45 AM | 0.019 | 0.019 |
| 5520 | 8:26:45 AM | 0.016 | 0.016 |
| 5580 | 8:27:45 AM | 0.02  | 0.02  |
| 5640 | 8:28:45 AM | 0.014 | 0.014 |
| 5700 | 8:29:45 AM | 0.011 | 0.011 |
| 5760 | 8:30:45 AM | 0.012 | 0.012 |
| 5820 | 8:31:45 AM | 0.01  | 0.01  |
| 5880 | 8:32:45 AM | 0.011 | 0.011 |
| 5940 | 8:33:45 AM | 0.016 | 0.016 |
| 6000 | 8:34:45 AM | 0.017 | 0.017 |
| 6060 | 8:35:45 AM | 0.011 | 0.011 |
| 6120 | 8:36:45 AM | 0.012 | 0.012 |
| 6180 | 8:37:45 AM | 0.012 | 0.012 |
| 6240 | 8:38:45 AM | 0.012 | 0.012 |
| 6300 | 8:39:45 AM | 0.014 | 0.014 |
| 6360 | 8:40:45 AM | 0.012 | 0.012 |
| 6420 | 8:41:45 AM | 0.013 | 0.013 |
| 6480 | 8:42:45 AM | 0.013 | 0.013 |
| 6540 | 8:43:45 AM | 0.013 | 0.013 |
| 6600 | 8:44:45 AM | 0.014 | 0.014 |
| 6660 | 8:45:45 AM | 0.013 | 0.013 |
| 6720 | 8:46:45 AM | 0.015 | 0.015 |
| 6780 | 8:47:45 AM | 0.012 | 0.012 |
| 6840 | 8:48:45 AM | 0.013 | 0.013 |
| 6900 | 8:49:45 AM | 0.013 | 0.013 |
| 6960 | 8:50:45 AM | 0.012 | 0.012 |



|      |            |       |       |
|------|------------|-------|-------|
| 7020 | 8:51:45 AM | 0.012 | 0.012 |
| 7080 | 8:52:45 AM | 0.014 | 0.014 |
| 7140 | 8:53:45 AM | 0.018 | 0.018 |
| 7200 | 8:54:45 AM | 0.016 | 0.016 |
| 7260 | 8:55:45 AM | 0.012 | 0.013 |
| 7320 | 8:56:45 AM | 0.013 | 0.013 |
| 7380 | 8:57:45 AM | 0.012 | 0.012 |
| 7440 | 8:58:45 AM | 0.012 | 0.012 |
| 7500 | 8:59:45 AM | 0.013 | 0.013 |
| 7560 | 9:00:45 AM | 0.011 | 0.011 |
| 7620 | 9:01:45 AM | 0.011 | 0.011 |
| 7680 | 9:02:45 AM | 0.016 | 0.016 |
| 7740 | 9:03:45 AM | 0.015 | 0.015 |
| 7800 | 9:04:45 AM | 0.011 | 0.011 |
| 7860 | 9:05:45 AM | 0.01  | 0.01  |
| 7920 | 9:06:45 AM | 0.011 | 0.011 |
| 7980 | 9:07:45 AM | 0.011 | 0.011 |
| 8040 | 9:08:45 AM | 0.011 | 0.011 |
| 8100 | 9:09:45 AM | 0.011 | 0.011 |
| 8160 | 9:10:45 AM | 0.012 | 0.012 |
| 8220 | 9:11:45 AM | 0.009 | 0.009 |
| 8280 | 9:12:45 AM | 0.012 | 0.012 |
| 8340 | 9:13:45 AM | 0.016 | 0.016 |
| 8400 | 9:14:45 AM | 0.019 | 0.019 |
| 8460 | 9:15:45 AM | 0.012 | 0.012 |
| 8520 | 9:16:45 AM | 0.01  | 0.01  |
| 8580 | 9:17:45 AM | 0.009 | 0.009 |
| 8640 | 9:18:45 AM | 0.01  | 0.01  |
| 8700 | 9:19:45 AM | 0.009 | 0.009 |
| 8760 | 9:20:45 AM | 0.01  | 0.01  |
| 8820 | 9:21:45 AM | 0.012 | 0.013 |
| 8880 | 9:22:45 AM | 0.016 | 0.016 |
| 8940 | 9:23:45 AM | 0.015 | 0.015 |
| 9000 | 9:24:45 AM | 0.013 | 0.013 |
| 9060 | 9:25:45 AM | 0.013 | 0.013 |
| 9120 | 9:26:45 AM | 0.014 | 0.015 |
| 9180 | 9:27:45 AM | 0.016 | 0.016 |
| 9240 | 9:28:45 AM | 0.017 | 0.017 |
| 9300 | 9:29:45 AM | 0.013 | 0.013 |
| 9360 | 9:30:45 AM | 0.01  | 0.01  |
| 9420 | 9:31:45 AM | 0.012 | 0.012 |
| 9480 | 9:32:45 AM | 0.011 | 0.011 |
| 9540 | 9:33:45 AM | 0.01  | 0.01  |
| 9600 | 9:34:45 AM | 0.011 | 0.011 |
| 9660 | 9:35:45 AM | 0.01  | 0.01  |
| 9720 | 9:36:45 AM | 0.014 | 0.014 |
| 9780 | 9:37:45 AM | 0.015 | 0.015 |

|       |             |       |       |
|-------|-------------|-------|-------|
| 9840  | 9:38:45 AM  | 0.01  | 0.01  |
| 9900  | 9:39:45 AM  | 0.016 | 0.016 |
| 9960  | 9:40:45 AM  | 0.016 | 0.016 |
| 10020 | 9:41:45 AM  | 0.014 | 0.014 |
| 10080 | 9:42:45 AM  | 0.011 | 0.011 |
| 10140 | 9:43:45 AM  | 0.009 | 0.009 |
| 10200 | 9:44:45 AM  | 0.01  | 0.01  |
| 10260 | 9:45:45 AM  | 0.01  | 0.01  |
| 10320 | 9:46:45 AM  | 0.016 | 0.016 |
| 10380 | 9:47:45 AM  | 0.012 | 0.012 |
| 10440 | 9:48:45 AM  | 0.013 | 0.013 |
| 10500 | 9:49:45 AM  | 0.013 | 0.013 |
| 10560 | 9:50:45 AM  | 0.013 | 0.013 |
| 10620 | 9:51:45 AM  | 0.011 | 0.011 |
| 10680 | 9:52:45 AM  | 0.01  | 0.01  |
| 10740 | 9:53:45 AM  | 0.012 | 0.012 |
| 10800 | 9:54:45 AM  | 0.012 | 0.012 |
| 10860 | 9:55:45 AM  | 0.014 | 0.014 |
| 10920 | 9:56:45 AM  | 0.014 | 0.014 |
| 10980 | 9:57:45 AM  | 0.016 | 0.016 |
| 11040 | 9:58:45 AM  | 0.011 | 0.011 |
| 11100 | 9:59:45 AM  | 0.01  | 0.01  |
| 11160 | 10:00:45 AM | 0.01  | 0.01  |
| 11220 | 10:01:45 AM | 0.011 | 0.011 |
| 11280 | 10:02:45 AM | 0.01  | 0.01  |
| 11340 | 10:03:45 AM | 0.007 | 0.007 |
| 11400 | 10:04:45 AM | 0.008 | 0.008 |
| 11460 | 10:05:45 AM | 0.008 | 0.008 |
| 11520 | 10:06:45 AM | 0.007 | 0.007 |
| 11580 | 10:07:45 AM | 0.007 | 0.007 |
| 11640 | 10:08:45 AM | 0.007 | 0.007 |
| 11700 | 10:09:45 AM | 0.009 | 0.009 |
| 11760 | 10:10:45 AM | 0.009 | 0.009 |
| 11820 | 10:11:45 AM | 0.008 | 0.008 |
| 11880 | 10:12:45 AM | 0.008 | 0.008 |
| 11940 | 10:13:45 AM | 0.01  | 0.01  |
| 12000 | 10:14:45 AM | 0.007 | 0.007 |
| 12060 | 10:15:45 AM | 0.008 | 0.008 |
| 12120 | 10:16:45 AM | 0.008 | 0.008 |
| 12180 | 10:17:45 AM | 0.009 | 0.009 |
| 12240 | 10:18:45 AM | 0.008 | 0.008 |
| 12300 | 10:19:45 AM | 0.009 | 0.009 |
| 12360 | 10:20:45 AM | 0.007 | 0.007 |
| 12420 | 10:21:45 AM | 0.009 | 0.009 |
| 12480 | 10:22:45 AM | 0.007 | 0.007 |
| 12540 | 10:23:45 AM | 0.005 | 0.006 |
| 12600 | 10:24:45 AM | 0.005 | 0.005 |

|       |             |       |       |
|-------|-------------|-------|-------|
| 12660 | 10:25:45 AM | 0.005 | 0.005 |
| 12720 | 10:26:45 AM | 0.004 | 0.005 |
| 12780 | 10:27:45 AM | 0.007 | 0.007 |
| 12840 | 10:28:45 AM | 0.007 | 0.007 |
| 12900 | 10:29:45 AM | 0.007 | 0.007 |
| 12960 | 10:30:45 AM | 0.006 | 0.006 |
| 13020 | 10:31:45 AM | 0.007 | 0.007 |
| 13080 | 10:32:45 AM | 0.005 | 0.005 |
| 13140 | 10:33:45 AM | 0.005 | 0.005 |
| 13200 | 10:34:45 AM | 0.006 | 0.006 |
| 13260 | 10:35:45 AM | 0.005 | 0.005 |
| 13320 | 10:36:45 AM | 0.005 | 0.005 |
| 13380 | 10:37:45 AM | 0.009 | 0.01  |
| 13440 | 10:38:45 AM | 0.007 | 0.007 |
| 13500 | 10:39:45 AM | 0.011 | 0.011 |
| 13560 | 10:40:45 AM | 0.008 | 0.008 |
| 13620 | 10:41:45 AM | 0.008 | 0.008 |
| 13680 | 10:42:45 AM | 0.006 | 0.006 |
| 13740 | 10:43:45 AM | 0.007 | 0.007 |
| 13800 | 10:44:45 AM | 0.005 | 0.005 |
| 13860 | 10:45:45 AM | 0.005 | 0.005 |
| 13920 | 10:46:45 AM | 0.007 | 0.007 |
| 13980 | 10:47:45 AM | 0.005 | 0.005 |
| 14040 | 10:48:45 AM | 0.007 | 0.007 |
| 14100 | 10:49:45 AM | 0.007 | 0.007 |
| 14160 | 10:50:45 AM | 0.008 | 0.008 |
| 14220 | 10:51:45 AM | 0.007 | 0.007 |
| 14280 | 10:52:45 AM | 0.006 | 0.006 |
| 14340 | 10:53:45 AM | 0.006 | 0.006 |
| 14400 | 10:54:45 AM | 0.008 | 0.008 |
| 14460 | 10:55:45 AM | 0.008 | 0.008 |
| 14520 | 10:56:45 AM | 0.006 | 0.006 |
| 14580 | 10:57:45 AM | 0.005 | 0.005 |
| 14640 | 10:58:45 AM | 0.006 | 0.006 |
| 14700 | 10:59:45 AM | 0.006 | 0.006 |
| 14760 | 11:00:45 AM | 0.006 | 0.006 |
| 14820 | 11:01:45 AM | 0.006 | 0.006 |
| 14880 | 11:02:45 AM | 0.006 | 0.006 |
| 14940 | 11:03:45 AM | 0.006 | 0.006 |
| 15000 | 11:04:45 AM | 0.007 | 0.007 |
| 15060 | 11:05:45 AM | 0.006 | 0.006 |
| 15120 | 11:06:45 AM | 0.005 | 0.005 |
| 15180 | 11:07:45 AM | 0.006 | 0.006 |
| 15240 | 11:08:45 AM | 0.004 | 0.004 |
| 15300 | 11:09:45 AM | 0.006 | 0.008 |
| 15360 | 11:10:45 AM | 0.006 | 0.008 |
| 15420 | 11:11:45 AM | 0.006 | 0.006 |

|       |             |       |       |
|-------|-------------|-------|-------|
| 15480 | 11:12:45 AM | 0.004 | 0.004 |
| 15540 | 11:13:45 AM | 0.005 | 0.005 |
| 15600 | 11:14:45 AM | 0.005 | 0.005 |
| 15660 | 11:15:45 AM | 0.006 | 0.006 |
| 15720 | 11:16:45 AM | 0.004 | 0.004 |
| 15780 | 11:17:45 AM | 0.005 | 0.005 |
| 15840 | 11:18:45 AM | 0.006 | 0.006 |
| 15900 | 11:19:45 AM | 0.005 | 0.005 |
| 15960 | 11:20:45 AM | 0.006 | 0.006 |
| 16020 | 11:21:45 AM | 0.006 | 0.006 |
| 16080 | 11:22:45 AM | 0.006 | 0.006 |
| 16140 | 11:23:45 AM | 0.008 | 0.008 |
| 16200 | 11:24:45 AM | 0.007 | 0.008 |
| 16260 | 11:25:45 AM | 0.006 | 0.006 |
| 16320 | 11:26:45 AM | 0.008 | 0.008 |
| 16380 | 11:27:45 AM | 0.006 | 0.006 |
| 16440 | 11:28:45 AM | 0.006 | 0.006 |
| 16500 | 11:29:45 AM | 0.007 | 0.007 |
| 16560 | 11:30:45 AM | 0.006 | 0.006 |
| 16620 | 11:31:45 AM | 0.007 | 0.007 |
| 16680 | 11:32:45 AM | 0.006 | 0.006 |
| 16740 | 11:33:45 AM | 0.005 | 0.005 |
| 16800 | 11:34:45 AM | 0.004 | 0.004 |
| 16860 | 11:35:45 AM | 0.004 | 0.004 |
| 16920 | 11:36:45 AM | 0.007 | 0.007 |
| 16980 | 11:37:45 AM | 0.01  | 0.01  |
| 17040 | 11:38:45 AM | 0.007 | 0.007 |
| 17100 | 11:39:45 AM | 0.006 | 0.006 |
| 17160 | 11:40:45 AM | 0.007 | 0.007 |
| 17220 | 11:41:45 AM | 0.004 | 0.004 |
| 17280 | 11:42:45 AM | 0.007 | 0.007 |
| 17340 | 11:43:45 AM | 0.008 | 0.008 |
| 17400 | 11:44:45 AM | 0.009 | 0.011 |
| 17460 | 11:45:45 AM | 0.007 | 0.007 |
| 17520 | 11:46:45 AM | 0.006 | 0.006 |
| 17580 | 11:47:45 AM | 0.008 | 0.008 |
| 17640 | 11:48:45 AM | 0.008 | 0.008 |
| 17700 | 11:49:45 AM | 0.007 | 0.007 |
| 17760 | 11:50:45 AM | 0.007 | 0.007 |
| 17820 | 11:51:45 AM | 0.006 | 0.006 |
| 17880 | 11:52:45 AM | 0.008 | 0.008 |
| 17940 | 11:53:45 AM | 0.006 | 0.006 |
| 18000 | 11:54:45 AM | 0.005 | 0.005 |
| 18060 | 11:55:45 AM | 0.005 | 0.005 |
| 18120 | 11:56:45 AM | 0.007 | 0.007 |
| 18180 | 11:57:45 AM | 0.006 | 0.006 |
| 18240 | 11:58:45 AM | 0.006 | 0.006 |

|       |             |       |       |
|-------|-------------|-------|-------|
| 18300 | 11:59:45 AM | 0.006 | 0.006 |
| 18360 | 12:00:45 PM | 0.007 | 0.007 |
| 18420 | 12:01:45 PM | 0.006 | 0.006 |
| 18480 | 12:02:45 PM | 0.007 | 0.007 |
| 18540 | 12:03:45 PM | 0.009 | 0.009 |
| 18600 | 12:04:45 PM | 0.021 | 0.022 |
| 18660 | 12:05:45 PM | 0.012 | 0.012 |

| Device Serial No | Log Time         | Log Type | Sensor 1 Type | Sensor 1 Serial Number | Sensor 1 Status | Sensor 1 Gas Reading |
|------------------|------------------|----------|---------------|------------------------|-----------------|----------------------|
| 592-600871       | 12/19/2023 13:26 | Readings | PID           | SC23030408A8           | Normal          | 0                    |
| 592-600871       | 12/19/2023 13:25 | Readings | PID           | SC23030408A8           | Normal          | 0                    |
| 592-600871       | 12/19/2023 13:24 | Readings | PID           | SC23030408A8           | Normal          | 0                    |
| 592-600871       | 12/19/2023 13:23 | Readings | PID           | SC23030408A8           | Normal          | 0                    |
| 592-600871       | 12/19/2023 13:22 | Readings | PID           | SC23030408A8           | Normal          | 0                    |
| 592-600871       | 12/19/2023 13:21 | Readings | PID           | SC23030408A8           | Normal          | 0                    |
| 592-600871       | 12/19/2023 13:20 | Readings | PID           | SC23030408A8           | Normal          | 0                    |
| 592-600871       | 12/19/2023 13:19 | Readings | PID           | SC23030408A8           | Normal          | 0                    |
| 592-600871       | 12/19/2023 13:18 | Readings | PID           | SC23030408A8           | Normal          | 0                    |
| 592-600871       | 12/19/2023 13:17 | Readings | PID           | SC23030408A8           | Normal          | 0                    |
| 592-600871       | 12/19/2023 13:16 | Readings | PID           | SC23030408A8           | Normal          | 0                    |
| 592-600871       | 12/19/2023 13:15 | Readings | PID           | SC23030408A8           | Normal          | 0                    |
| 592-600871       | 12/19/2023 13:14 | Readings | PID           | SC23030408A8           | Normal          | 0                    |
| 592-600871       | 12/19/2023 13:13 | Readings | PID           | SC23030408A8           | Normal          | 0                    |
| 592-600871       | 12/19/2023 13:12 | Readings | PID           | SC23030408A8           | Normal          | 0                    |
| 592-600871       | 12/19/2023 13:11 | Readings | PID           | SC23030408A8           | Normal          | 0                    |
| 592-600871       | 12/19/2023 13:10 | Readings | PID           | SC23030408A8           | Normal          | 0                    |
| 592-600871       | 12/19/2023 13:09 | Readings | PID           | SC23030408A8           | Normal          | 0                    |
| 592-600871       | 12/19/2023 13:08 | Readings | PID           | SC23030408A8           | Normal          | 0                    |
| 592-600871       | 12/19/2023 13:07 | Readings | PID           | SC23030408A8           | Normal          | 0                    |
| 592-600871       | 12/19/2023 13:06 | Readings | PID           | SC23030408A8           | Normal          | 0                    |
| 592-600871       | 12/19/2023 13:05 | Readings | PID           | SC23030408A8           | Normal          | 0                    |
| 592-600871       | 12/19/2023 13:04 | Readings | PID           | SC23030408A8           | Normal          | 0                    |
| 592-600871       | 12/19/2023 13:03 | Readings | PID           | SC23030408A8           | Normal          | 0                    |
| 592-600871       | 12/19/2023 13:02 | Readings | PID           | SC23030408A8           | Normal          | 0                    |
| 592-600871       | 12/19/2023 13:01 | Readings | PID           | SC23030408A8           | Normal          | 0                    |
| 592-600871       | 12/19/2023 13:00 | Readings | PID           | SC23030408A8           | Normal          | 0                    |
| 592-600871       | 12/19/2023 12:59 | Readings | PID           | SC23030408A8           | Normal          | 0                    |
| 592-600871       | 12/19/2023 12:58 | Readings | PID           | SC23030408A8           | Normal          | 0                    |
| 592-600871       | 12/19/2023 12:57 | Readings | PID           | SC23030408A8           | Normal          | 0                    |
| 592-600871       | 12/19/2023 12:56 | Readings | PID           | SC23030408A8           | Normal          | 0                    |
| 592-600871       | 12/19/2023 12:55 | Readings | PID           | SC23030408A8           | Normal          | 0                    |
| 592-600871       | 12/19/2023 12:54 | Readings | PID           | SC23030408A8           | Normal          | 0                    |
| 592-600871       | 12/19/2023 12:53 | Readings | PID           | SC23030408A8           | Normal          | 0                    |

















|            |                 |          |     |              |        |   |
|------------|-----------------|----------|-----|--------------|--------|---|
| 592-600871 | 12/19/2023 8:47 | Readings | PID | SC23030408A8 | Normal | 0 |
| 592-600871 | 12/19/2023 8:46 | Readings | PID | SC23030408A8 | Normal | 0 |
| 592-600871 | 12/19/2023 8:45 | Readings | PID | SC23030408A8 | Normal | 0 |
| 592-600871 | 12/19/2023 8:44 | Readings | PID | SC23030408A8 | Normal | 0 |
| 592-600871 | 12/19/2023 8:43 | Readings | PID | SC23030408A8 | Normal | 0 |
| 592-600871 | 12/19/2023 8:42 | Readings | PID | SC23030408A8 | Normal | 0 |
| 592-600871 | 12/19/2023 8:41 | Readings | PID | SC23030408A8 | Normal | 0 |
| 592-600871 | 12/19/2023 8:40 | Readings | PID | SC23030408A8 | Normal | 0 |
| 592-600871 | 12/19/2023 8:39 | Readings | PID | SC23030408A8 | Normal | 0 |
| 592-600871 | 12/19/2023 8:38 | Readings | PID | SC23030408A8 | Normal | 0 |
| 592-600871 | 12/19/2023 8:37 | Readings | PID | SC23030408A8 | Normal | 0 |
| 592-600871 | 12/19/2023 8:36 | Readings | PID | SC23030408A8 | Normal | 0 |
| 592-600871 | 12/19/2023 8:35 | Readings | PID | SC23030408A8 | Normal | 0 |
| 592-600871 | 12/19/2023 8:34 | Readings | PID | SC23030408A8 | Normal | 0 |
| 592-600871 | 12/19/2023 8:33 | Readings | PID | SC23030408A8 | Normal | 0 |
| 592-600871 | 12/19/2023 8:32 | Readings | PID | SC23030408A8 | Normal | 0 |
| 592-600871 | 12/19/2023 8:31 | Readings | PID | SC23030408A8 | Normal | 0 |
| 592-600871 | 12/19/2023 8:30 | Readings | PID | SC23030408A8 | Normal | 0 |
| 592-600871 | 12/19/2023 8:29 | Readings | PID | SC23030408A8 | Normal | 0 |
| 592-600871 | 12/19/2023 8:28 | Readings | PID | SC23030408A8 | Normal | 0 |
| 592-600871 | 12/19/2023 8:27 | Readings | PID | SC23030408A8 | Normal | 0 |
| 592-600871 | 12/19/2023 8:26 | Readings | PID | SC23030408A8 | Normal | 0 |
| 592-600871 | 12/19/2023 8:25 | Readings | PID | SC23030408A8 | Normal | 0 |
| 592-600871 | 12/19/2023 8:24 | Readings | PID | SC23030408A8 | Normal | 0 |
| 592-600871 | 12/19/2023 8:23 | Readings | PID | SC23030408A8 | Normal | 0 |
| 592-600871 | 12/19/2023 8:22 | Readings | PID | SC23030408A8 | Normal | 0 |
| 592-600871 | 12/19/2023 8:21 | Readings | PID | SC23030408A8 | Normal | 0 |
| 592-600871 | 12/19/2023 8:20 | Readings | PID | SC23030408A8 | Normal | 0 |
| 592-600871 | 12/19/2023 8:19 | Readings | PID | SC23030408A8 | Normal | 0 |
| 592-600871 | 12/19/2023 8:18 | Readings | PID | SC23030408A8 | Normal | 0 |
| 592-600871 | 12/19/2023 8:17 | CONFIG   | PID | SC23030408A8 |        | 0 |