



**DAILY STATUS REPORT**

**Prepared By:**

Victor Barraza

WEATHER	Snow	Rain		Overcast	Partly Cloudy	Bright Sun	x	Wind
TEMP.	< 32	32-50	x	50-70	70-85	>85		NW-09MPH

<b>IEC Project No:</b>	13928	<b>NYSDEC BCP Site No:</b>	C224367	<b>Date:</b> 12/21/23
<b>Project:</b>	251 Douglass Street, Brooklyn, NY			

<p><b>Consultant:</b> Impact Environmental Engineering and Geology, PLLC (IEEG)</p> <p>Time On: 06:25 Time Out: 15:00</p>	<p><b>Personnel On Site:</b> IEEG (Environmental) –Victor Barraza, Gwen Lynn Broadway Construction Group - Tom Caporale</p> <p><b>Equipment On Site:</b> Minirae 3000 PID, DustTrak II</p>
---	--

**Scope of Work:** Continued excavation in WC-6 and WC-3

**Site Activities:**

- Deploy three (3) CAMP units at the start of the work day;
- ABC Tank on site to clean, cut and take tank off site;
- Continued minimal excavation in grids WC-6 and WC-3; and
- Standing water within the cellar of the former building was pumped into the frac tank.

**Community Air Monitoring Program (CAMP) - CAMP** action level for dust (0.1 mg/m<sup>3</sup>) and VOCs (5 ppm)

- PID remained at nominal levels throughout the day.
- No sustained dust exceedances were observed over a 1-min period during monitoring;
- Startup Upwind Conditions – PID = 0.0 ppm, Dust = 0.013 mg/m<sup>3</sup> @ 06:53.
- High Conditions (Upwind) – PID = 1.1 ppm @ 8:06, Dust = 0.017 mg/m<sup>3</sup> @ 12:40
- High Conditions (Downwind 1) – PID = 3.5 ppm @ 10:52, Dust = 0.029 mg/m<sup>3</sup> @ 7:34
- High Conditions (Downwind 2) – PID = 0.0 ppm, Dust = 0.025 mg/m<sup>3</sup> @ 06:53

**Notable Site Conditions:**

During removal of the UST a water/sludge mixture was identified beneath the UST, PID readings (44.6 ppm on west side of tank grave, 56.4 ppm on south side, 4.6 ppm on east side and 13 ppm on north side) as well as odors were observed within this area. The DEC Case Manager was notified, and Spill 23-07767 was called in for the Site. Oil absorbent pads were placed in the tank grave, the pads will be placed in labeled 55-gallon steel drums and handled as IDW.

**Planned for the Next Day/Week:**

- Pump water in vault basement space into frak tank; use absorb pads for watery material under tank and over excavation of same

**PHOTO LOG**

251 DOUGLASS STREET, BROOKLYN, NY



**Photo 1-** Representative photo of tank being cut open by ABC tank in order to pump out contents.



**Photo 2 –** Representative photo ABC Tank pumping out contents of UST.



**Photo 3-** Representative photo of tank being cut and prepped for scrapping by ABC Tank.



**Photo 4-** Representative photo of tank grave covered with poly.



**Photo 5-** Representative photo of material below the UST.



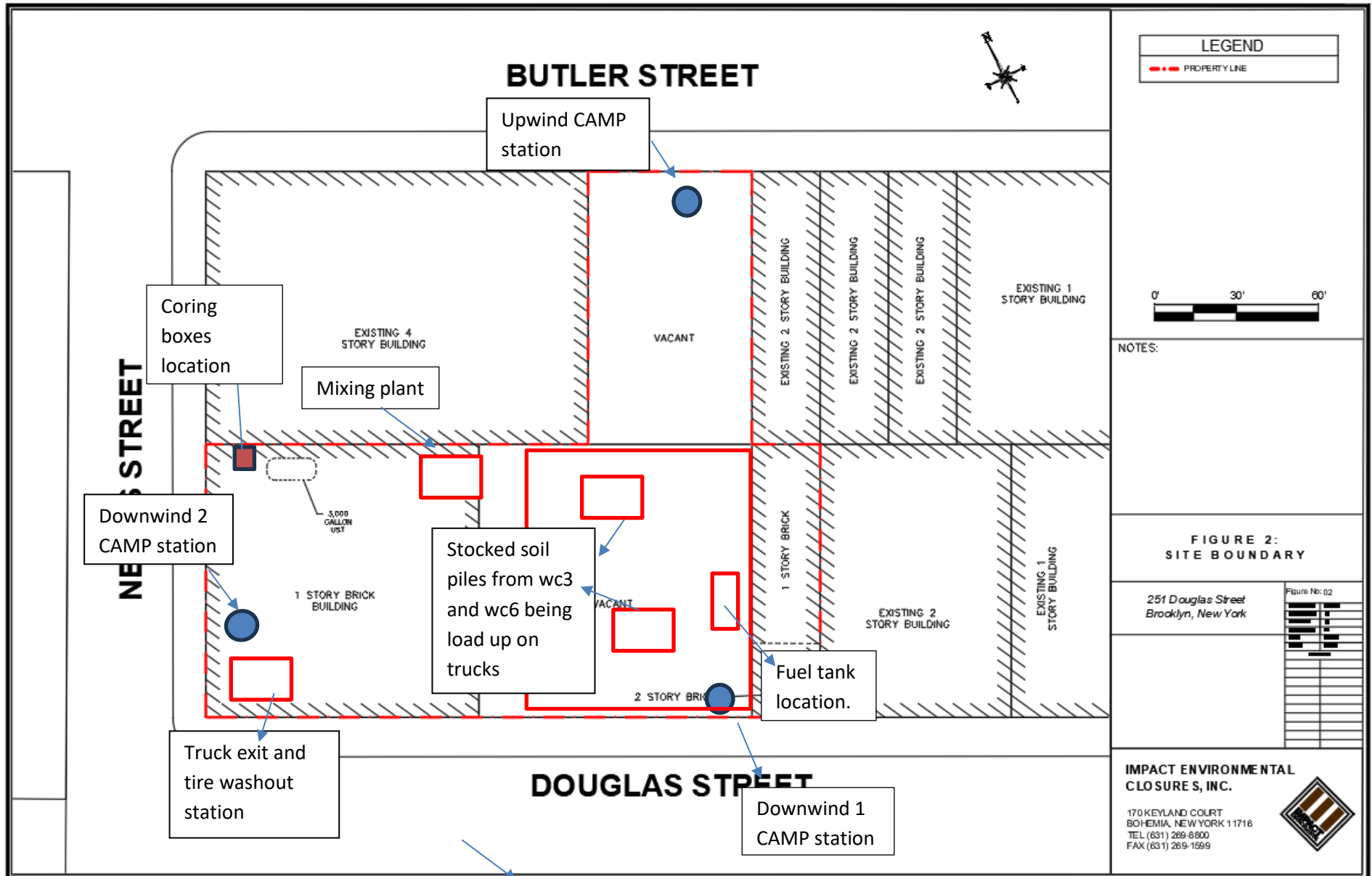
**Photo 6-** Representative photo of standing water in former building cellar.



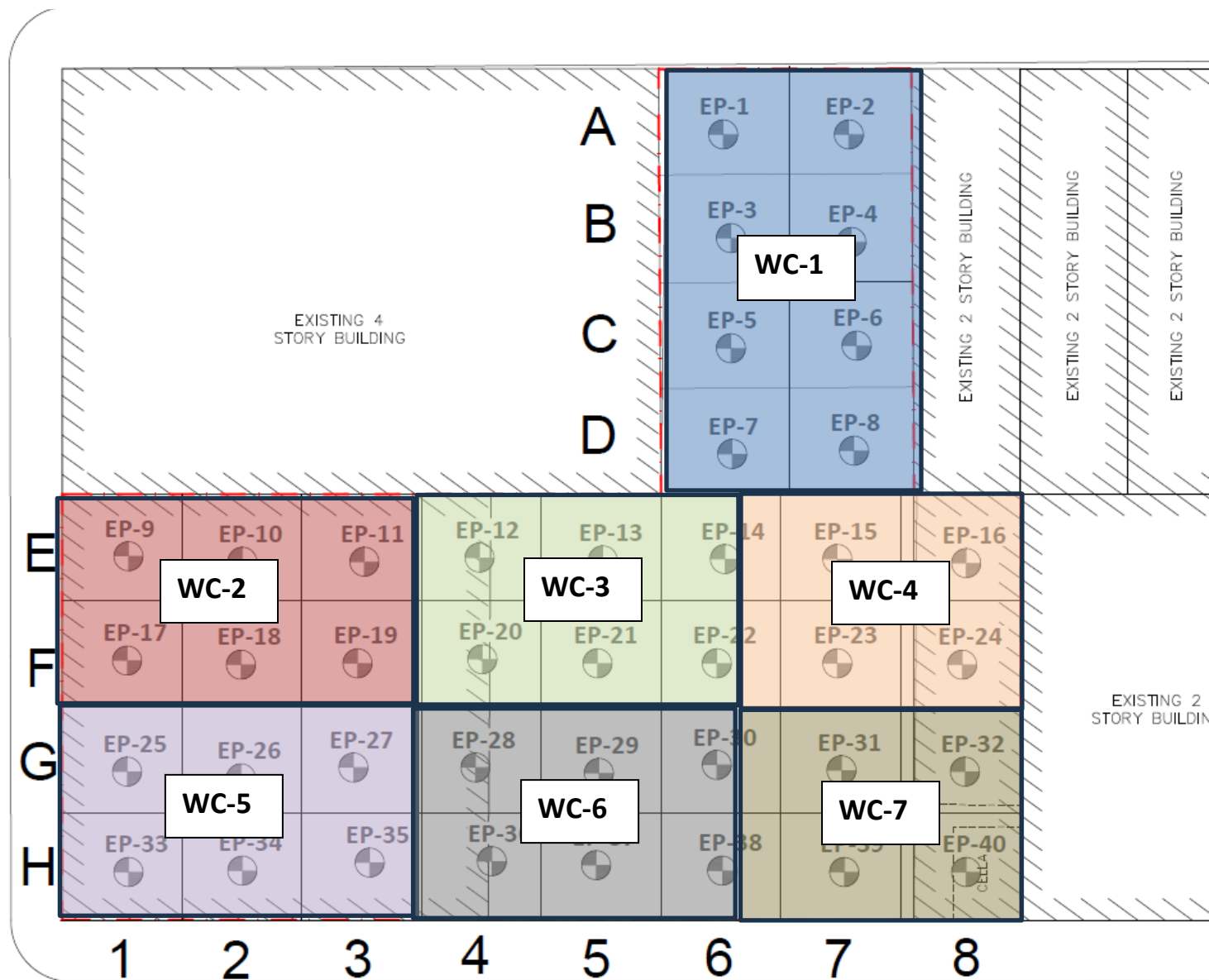
**SITE PLANS**

251 DOUGLASS STREET, BROOKLYN, NY





# NEVINS STREET







**IMPACT ENVIRONMENTAL**

170 Keyland Court | Bohemia | NY | 11716 | 631.269.8800

welcome to solid ground...

[www.impactenvironmental.com](http://www.impactenvironmental.com)

---

**UPWIND CAMP READINGS**

251 DOUGLASS STREET, BROOKLYN, NY

Instrument DustTrak DRX  
 Model Num 8533  
 Serial Num 8533181207  
 Firmware V 3.1  
 Calibration 6/1/2023  
 Test Name MANUAL\_004  
 Test Start T 6:56:00 AM  
 Test Start L 12/21/2023  
 Test Length 0:07:06  
 Test Interv: 1:00  
 PM10 Aver 0.011  
 PM10 Mini 0.005  
 PM10 Max 0.017  
 PM10 TWA 0.01  
 TOTAL Ave 0.011  
 TOTAL Min 0.005  
 TOTAL Max 0.017  
 TOTAL TW/ 0.01  
 Photometr 1  
 Size Correc 1  
 Flow User ( 0  
 Errors  
 Number of 426

Elapsed Time [s]	PM10 [mg/m3]	PID (ppmv)	Alarms	Errors
60	6:56:00 AM	0.013	0.0	
120	6:57:00 AM	0.014	0.3	
180	6:58:00 AM	0.013	0.3	
240	6:59:00 AM	0.013	0.3	
300	7:00:00 AM	0.014	0.3	
360	7:01:00 AM	0.014	0.3	
420	7:02:00 AM	0.014	0.3	
480	7:03:00 AM	0.014	0.3	
540	7:04:00 AM	0.013	0.3	
600	7:05:00 AM	0.013	0.3	
660	7:06:00 AM	0.014	0.3	
720	7:07:00 AM	0.014	0.3	
780	7:08:00 AM	0.014	0.3	
840	7:09:00 AM	0.014	0.3	
900	7:10:00 AM	0.014	0.3	
960	7:11:00 AM	0.014	0.3	
1020	7:12:00 AM	0.014	0.3	
1080	7:13:00 AM	0.014	0.3	
1140	7:14:00 AM	0.014	0.3	
1200	7:15:00 AM	0.014	0.3	
1260	7:16:00 AM	0.014	0.3	
1320	7:17:00 AM	0.014	0.3	

1380	7:18:00 AM	0.014	0.3
1440	7:19:00 AM	0.014	0.3
1500	7:20:00 AM	0.014	0.3
1560	7:21:00 AM	0.014	0.3
1620	7:22:00 AM	0.015	0.2
1680	7:23:00 AM	0.015	0.3
1740	7:24:00 AM	0.015	0.3
1800	7:25:00 AM	0.015	0.3
1860	7:26:00 AM	0.015	0.3
1920	7:27:00 AM	0.015	0.2
1980	7:28:00 AM	0.015	0.3
2040	7:29:00 AM	0.015	0.3
2100	7:30:00 AM	0.015	0.3
2160	7:31:00 AM	0.015	0.3
2220	7:32:00 AM	0.015	0.3
2280	7:33:00 AM	0.016	0.3
2340	7:34:00 AM	0.015	0.2
2400	7:35:00 AM	0.015	0.2
2460	7:36:00 AM	0.015	0.3
2520	7:37:00 AM	0.015	0.2
2580	7:38:00 AM	0.015	0.2
2640	7:39:00 AM	0.015	0.2
2700	7:40:00 AM	0.015	0.2
2760	7:41:00 AM	0.014	0.2
2820	7:42:00 AM	0.014	0.3
2880	7:43:00 AM	0.015	0.2
2940	7:44:00 AM	0.015	0.2
3000	7:45:00 AM	0.015	0.3
3060	7:46:00 AM	0.014	0.3
3120	7:47:00 AM	0.014	0.2
3180	7:48:00 AM	0.014	0.3
3240	7:49:00 AM	0.015	0.2
3300	7:50:00 AM	0.014	0.3
3360	7:51:00 AM	0.014	0.3
3420	7:52:00 AM	0.014	0.3
3480	7:53:00 AM	0.014	0.3
3540	7:54:00 AM	0.014	0.3
3600	7:55:00 AM	0.014	0.3
3660	7:56:00 AM	0.014	0.3
3720	7:57:00 AM	0.014	0.3
3780	7:58:00 AM	0.015	0.3
3840	7:59:00 AM	0.014	0.3
3900	8:00:00 AM	0.014	0.2
3960	8:01:00 AM	0.014	0.2
4020	8:02:00 AM	0.013	0.2
4080	8:03:00 AM	0.013	0.3
4140	8:04:00 AM	0.013	0.2

4200	8:05:00 AM	0.014	0.3
4260	8:06:00 AM	0.013	1.1
4320	8:07:00 AM	0.013	0.2
4380	8:08:00 AM	0.013	0.2
4440	8:09:00 AM	0.014	0.2
4500	8:10:00 AM	0.014	0.2
4560	8:11:00 AM	0.014	0.2
4620	8:12:00 AM	0.013	0.2
4680	8:13:00 AM	0.013	0.2
4740	8:14:00 AM	0.013	0.2
4800	8:15:00 AM	0.013	0.3
4860	8:16:00 AM	0.012	0.2
4920	8:17:00 AM	0.012	0.2
4980	8:18:00 AM	0.012	0.2
5040	8:19:00 AM	0.013	0.2
5100	8:20:00 AM	0.013	0.3
5160	8:21:00 AM	0.012	0.2
5220	8:22:00 AM	0.013	0.2
5280	8:23:00 AM	0.013	0.2
5340	8:24:00 AM	0.013	0.2
5400	8:25:00 AM	0.013	0.2
5460	8:26:00 AM	0.013	0.2
5520	8:27:00 AM	0.013	0.2
5580	8:28:00 AM	0.013	0.2
5640	8:29:00 AM	0.013	0.3
5700	8:30:00 AM	0.013	0.2
5760	8:31:00 AM	0.013	0.2
5820	8:32:00 AM	0.013	0.2
5880	8:33:00 AM	0.013	0.2
5940	8:34:00 AM	0.012	0.3
6000	8:35:00 AM	0.013	0.2
6060	8:36:00 AM	0.013	0.3
6120	8:37:00 AM	0.013	0.2
6180	8:38:00 AM	0.013	0.2
6240	8:39:00 AM	0.013	0.2
6300	8:40:00 AM	0.014	0.2
6360	8:41:00 AM	0.013	0.2
6420	8:42:00 AM	0.013	0.2
6480	8:43:00 AM	0.013	0.2
6540	8:44:00 AM	0.013	0.2
6600	8:45:00 AM	0.013	0.2
6660	8:46:00 AM	0.013	0.2
6720	8:47:00 AM	0.012	0.2
6780	8:48:00 AM	0.012	0.3
6840	8:49:00 AM	0.013	0.3
6900	8:50:00 AM	0.013	0.2
6960	8:51:00 AM	0.013	0.4

7020	8:52:00 AM	0.012	0.2
7080	8:53:00 AM	0.013	0.2
7140	8:54:00 AM	0.012	0.2
7200	8:55:00 AM	0.012	0.2
7260	8:56:00 AM	0.012	0.2
7320	8:57:00 AM	0.011	0.2
7380	8:58:00 AM	0.011	0.2
7440	8:59:00 AM	0.011	0.3
7500	9:00:00 AM	0.011	0.2
7560	9:01:00 AM	0.012	0.3
7620	9:02:00 AM	0.012	0.2
7680	9:03:00 AM	0.012	0.2
7740	9:04:00 AM	0.012	0.2
7800	9:05:00 AM	0.012	0.4
7860	9:06:00 AM	0.013	0.2
7920	9:07:00 AM	0.012	0.2
7980	9:08:00 AM	0.013	0.3
8040	9:09:00 AM	0.013	0.2
8100	9:10:00 AM	0.012	0.2
8160	9:11:00 AM	0.012	0.2
8220	9:12:00 AM	0.012	0.2
8280	9:13:00 AM	0.011	0.2
8340	9:14:00 AM	0.012	0.3
8400	9:15:00 AM	0.011	0.3
8460	9:16:00 AM	0.011	0.3
8520	9:17:00 AM	0.011	0.4
8580	9:18:00 AM	0.011	0.3
8640	9:19:00 AM	0.011	0.4
8700	9:20:00 AM	0.011	0.4
8760	9:21:00 AM	0.011	0.2
8820	9:22:00 AM	0.012	0.2
8880	9:23:00 AM	0.012	0.3
8940	9:24:00 AM	0.011	0.2
9000	9:25:00 AM	0.011	0.2
9060	9:26:00 AM	0.011	0.2
9120	9:27:00 AM	0.012	0.2
9180	9:28:00 AM	0.012	0.2
9240	9:29:00 AM	0.012	0.2
9300	9:30:00 AM	0.012	0.3
9360	9:31:00 AM	0.012	0.2
9420	9:32:00 AM	0.013	0.2
9480	9:33:00 AM	0.013	0.2
9540	9:34:00 AM	0.012	0.2
9600	9:35:00 AM	0.012	0.2
9660	9:36:00 AM	0.012	0.2
9720	9:37:00 AM	0.012	0.2
9780	9:38:00 AM	0.012	0.1

9840	9:39:00 AM	0.012	0.1
9900	9:40:00 AM	0.013	0.1
9960	9:41:00 AM	0.013	0.1
10020	9:42:00 AM	0.013	0.1
10080	9:43:00 AM	0.013	0.1
10140	9:44:00 AM	0.012	0.1
10200	9:45:00 AM	0.013	0.2
10260	9:46:00 AM	0.012	0.3
10320	9:47:00 AM	0.013	0.1
10380	9:48:00 AM	0.013	0.1
10440	9:49:00 AM	0.013	0.1
10500	9:50:00 AM	0.013	0.1
10560	9:51:00 AM	0.013	0.1
10620	9:52:00 AM	0.013	0.1
10680	9:53:00 AM	0.013	0.2
10740	9:54:00 AM	0.013	0.1
10800	9:55:00 AM	0.013	0.2
10860	9:56:00 AM	0.013	0.1
10920	9:57:00 AM	0.013	0.1
10980	9:58:00 AM	0.014	0.1
11040	9:59:00 AM	0.015	0.1
11100	10:00:00 AM	0.013	0.1
11160	10:01:00 AM	0.013	0.6
11220	10:02:00 AM	0.014	0.1
11280	10:03:00 AM	0.014	0.5
11340	10:04:00 AM	0.014	0.1
11400	10:05:00 AM	0.014	0.1
11460	10:06:00 AM	0.013	0.1
11520	10:07:00 AM	0.013	0.1
11580	10:08:00 AM	0.012	0.1
11640	10:09:00 AM	0.013	0.1
11700	10:10:00 AM	0.013	0.1
11760	10:11:00 AM	0.013	0.1
11820	10:12:00 AM	0.012	0.1
11880	10:13:00 AM	0.013	0.1
11940	10:14:00 AM	0.013	0.1
12000	10:15:00 AM	0.013	0.1
12060	10:16:00 AM	0.013	0.1
12120	10:17:00 AM	0.012	0.1
12180	10:18:00 AM	0.012	0.1
12240	10:19:00 AM	0.012	0.1
12300	10:20:00 AM	0.011	0.1
12360	10:21:00 AM	0.011	0.1
12420	10:22:00 AM	0.012	0.1
12480	10:23:00 AM	0.012	0.1
12540	10:24:00 AM	0.012	0.1
12600	10:25:00 AM	0.012	0.1

12660	10:26:00 AM	0.012	0.1
12720	10:27:00 AM	0.011	0.1
12780	10:28:00 AM	0.011	0.1
12840	10:29:00 AM	0.012	0.1
12900	10:30:00 AM	0.011	0.1
12960	10:31:00 AM	0.011	0.1
13020	10:32:00 AM	0.012	0.1
13080	10:33:00 AM	0.012	0.1
13140	10:34:00 AM	0.012	0.1
13200	10:35:00 AM	0.012	0.1
13260	10:36:00 AM	0.012	0.1
13320	10:37:00 AM	0.011	0.1
13380	10:38:00 AM	0.012	0.1
13440	10:39:00 AM	0.012	0.1
13500	10:40:00 AM	0.011	0.1
13560	10:41:00 AM	0.012	0.1
13620	10:42:00 AM	0.011	0.1
13680	10:43:00 AM	0.011	0.1
13740	10:44:00 AM	0.011	0.1
13800	10:45:00 AM	0.011	0.1
13860	10:46:00 AM	0.012	0.1
13920	10:47:00 AM	0.011	0.1
13980	10:48:00 AM	0.012	0.1
14040	10:49:00 AM	0.01	0.1
14100	10:50:00 AM	0.01	0.1
14160	10:51:00 AM	0.011	0.1
14220	10:52:00 AM	0.011	0.1
14280	10:53:00 AM	0.011	0.1
14340	10:54:00 AM	0.012	0.1
14400	10:55:00 AM	0.012	0.1
14460	10:56:00 AM	0.012	0.1
14520	10:57:00 AM	0.012	0.1
14580	10:58:00 AM	0.012	0.1
14640	10:59:00 AM	0.012	0.1
14700	11:00:00 AM	0.012	0.1
14760	11:01:00 AM	0.012	0.1
14820	11:02:00 AM	0.011	0.1
14880	11:03:00 AM	0.012	0.1
14940	11:04:00 AM	0.012	0.1
15000	11:05:00 AM	0.011	0.1
15060	11:06:00 AM	0.011	0.1
15120	11:07:00 AM	0.011	0.1
15180	11:08:00 AM	0.011	0.1
15240	11:09:00 AM	0.011	0.1
15300	11:10:00 AM	0.014	0.1
15360	11:11:00 AM	0.011	0.1
15420	11:12:00 AM	0.011	0.1

15480	11:13:00 AM	0.011	0.1
15540	11:14:00 AM	0.011	0.1
15600	11:15:00 AM	0.014	0.1
15660	11:16:00 AM	0.011	0.1
15720	11:17:00 AM	0.011	0.1
15780	11:18:00 AM	0.011	0.1
15840	11:19:00 AM	0.011	0.1
15900	11:20:00 AM	0.012	0.1
15960	11:21:00 AM	0.012	0.1
16020	11:22:00 AM	0.011	0.1
16080	11:23:00 AM	0.011	0.1
16140	11:24:00 AM	0.012	0.1
16200	11:25:00 AM	0.011	0.1
16260	11:26:00 AM	0.011	0.1
16320	11:27:00 AM	0.011	0.1
16380	11:28:00 AM	0.012	0.1
16440	11:29:00 AM	0.012	0.1
16500	11:30:00 AM	0.016	0.1
16560	11:31:00 AM	0.012	0.1
16620	11:32:00 AM	0.012	0.1
16680	11:33:00 AM	0.012	0.1
16740	11:34:00 AM	0.013	0.1
16800	11:35:00 AM	0.012	0.1
16860	11:36:00 AM	0.012	0.1
16920	11:37:00 AM	0.013	0.1
16980	11:38:00 AM	0.012	0.1
17040	11:39:00 AM	0.013	0.1
17100	11:40:00 AM	0.012	0.1
17160	11:41:00 AM	0.011	0.1
17220	11:42:00 AM	0.012	0.1
17280	11:43:00 AM	0.012	0.1
17340	11:44:00 AM	0.011	0.1
17400	11:45:00 AM	0.012	0.1
17460	11:46:00 AM	0.01	0.1
17520	11:47:00 AM	0.01	0.1
17580	11:48:00 AM	0.01	0.1
17640	11:49:00 AM	0.01	0.1
17700	11:50:00 AM	0.01	0.1
17760	11:51:00 AM	0.01	0.1
17820	11:52:00 AM	0.01	0.1
17880	11:53:00 AM	0.01	0.1
17940	11:54:00 AM	0.01	0.1
18000	11:55:00 AM	0.01	0.1
18060	11:56:00 AM	0.01	0.1
18120	11:57:00 AM	0.01	0.1
18180	11:58:00 AM	0.009	0.1
18240	11:59:00 AM	0.009	0.1



18300	12:00:00 PM	0.009	0.1
18360	12:01:00 PM	0.009	0.1
18420	12:02:00 PM	0.009	0.1
18480	12:03:00 PM	0.009	0.1
18540	12:04:00 PM	0.009	0.1
18600	12:05:00 PM	0.009	0.1
18660	12:06:00 PM	0.009	0.1
18720	12:07:00 PM	0.009	0.1
18780	12:08:00 PM	0.01	0.1
18840	12:09:00 PM	0.011	0.1
18900	12:10:00 PM	0.009	0.1
18960	12:11:00 PM	0.009	0.1
19020	12:12:00 PM	0.009	0.1
19080	12:13:00 PM	0.011	0.1
19140	12:14:00 PM	0.009	0.1
19200	12:15:00 PM	0.009	0.1
19260	12:16:00 PM	0.009	0.1
19320	12:17:00 PM	0.009	0.1
19380	12:18:00 PM	0.009	0.1
19440	12:19:00 PM	0.008	0.1
19500	12:20:00 PM	0.009	0.1
19560	12:21:00 PM	0.008	0.1
19620	12:22:00 PM	0.008	0.1
19680	12:23:00 PM	0.008	0.1
19740	12:24:00 PM	0.008	0.1
19800	12:25:00 PM	0.008	0.1
19860	12:26:00 PM	0.009	0.1
19920	12:27:00 PM	0.009	0.1
19980	12:28:00 PM	0.009	0.1
20040	12:29:00 PM	0.009	0.1
20100	12:30:00 PM	0.009	0.1
20160	12:31:00 PM	0.009	0.1
20220	12:32:00 PM	0.009	0.1
20280	12:33:00 PM	0.009	0.1
20340	12:34:00 PM	0.011	0.1
20400	12:35:00 PM	0.009	0.1
20460	12:36:00 PM	0.009	0.1
20520	12:37:00 PM	0.009	0.1
20580	12:38:00 PM	0.009	0.1
20640	12:39:00 PM	0.009	0.1
20700	12:40:00 PM	0.017	0.1
20760	12:41:00 PM	0.009	0.1
20820	12:42:00 PM	0.012	0.1
20880	12:43:00 PM	0.01	0.1
20940	12:44:00 PM	0.009	0.1
21000	12:45:00 PM	0.009	0.1
21060	12:46:00 PM	0.008	0.1

21120	12:47:00 PM	0.007	0.1
21180	12:48:00 PM	0.007	0.1
21240	12:49:00 PM	0.008	0.1
21300	12:50:00 PM	0.008	0.1
21360	12:51:00 PM	0.008	0.1
21420	12:52:00 PM	0.009	0.1
21480	12:53:00 PM	0.008	0.1
21540	12:54:00 PM	0.009	0.1
21600	12:55:00 PM	0.009	0.1
21660	12:56:00 PM	0.009	0.1
21720	12:57:00 PM	0.009	0.1
21780	12:58:00 PM	0.008	0.1
21840	12:59:00 PM	0.008	0.1
21900	1:00:00 PM	0.008	0.1
21960	1:01:00 PM	0.008	0.1
22020	1:02:00 PM	0.01	0.1
22080	1:03:00 PM	0.008	0.1
22140	1:04:00 PM	0.008	0.1
22200	1:05:00 PM	0.008	0.1
22260	1:06:00 PM	0.008	0.1
22320	1:07:00 PM	0.008	0.1
22380	1:08:00 PM	0.009	0.1
22440	1:09:00 PM	0.009	0.1
22500	1:10:00 PM	0.009	0.1
22560	1:11:00 PM	0.009	0.1
22620	1:12:00 PM	0.009	0.1
22680	1:13:00 PM	0.008	0.1
22740	1:14:00 PM	0.009	0.1
22800	1:15:00 PM	0.008	0.1
22860	1:16:00 PM	0.008	0.1
22920	1:17:00 PM	0.008	0.1
22980	1:18:00 PM	0.007	0.1
23040	1:19:00 PM	0.007	0.1
23100	1:20:00 PM	0.007	0.1
23160	1:21:00 PM	0.007	0.1
23220	1:22:00 PM	0.007	0.1
23280	1:23:00 PM	0.007	0.1
23340	1:24:00 PM	0.007	0.1
23400	1:25:00 PM	0.007	0.1
23460	1:26:00 PM	0.01	0.1
23520	1:27:00 PM	0.007	0.1
23580	1:28:00 PM	0.007	0.1
23640	1:29:00 PM	0.008	0.1
23700	1:30:00 PM	0.007	0.1
23760	1:31:00 PM	0.007	0.1
23820	1:32:00 PM	0.007	0.1
23880	1:33:00 PM	0.007	0.1

23940	1:34:00 PM	0.007	0.1
24000	1:35:00 PM	0.007	0.1
24060	1:36:00 PM	0.007	0.1
24120	1:37:00 PM	0.007	0.1
24180	1:38:00 PM	0.008	0.1
24240	1:39:00 PM	0.008	0.1
24300	1:40:00 PM	0.007	0.1
24360	1:41:00 PM	0.007	0.1
24420	1:42:00 PM	0.007	0.1
24480	1:43:00 PM	0.007	0.1
24540	1:44:00 PM	0.007	0.1
24600	1:45:00 PM	0.007	0.1
24660	1:46:00 PM	0.006	0.1
24720	1:47:00 PM	0.006	0.1
24780	1:48:00 PM	0.006	0.1
24840	1:49:00 PM	0.006	0.1
24900	1:50:00 PM	0.006	0.1
24960	1:51:00 PM	0.007	0.1
25020	1:52:00 PM	0.007	0.1
25080	1:53:00 PM	0.006	0.1
25140	1:54:00 PM	0.006	0.1
25200	1:55:00 PM	0.005	0.1
25260	1:56:00 PM	0.005	0.1
25320	1:57:00 PM	0.009	0.1
25380	1:58:00 PM	0.006	0.1
25440	1:59:00 PM	0.005	0.1
25500	2:00:00 PM	0.006	0.0
25560	2:01:00 PM	0.006	0.0

**DOWNWIND CAMP READINGS**

251 DOUGLASS STREET, BROOKLYN, NY



Instrument Name	DustTrak DRX
Model Number	8533
Serial Number	8533181208
Firmware Version	3.1
Calibration Date	6/1/2023
Test Name	MANUAL_016
Test Start Time	6:53:35 AM
Test Start Date	12/21/2023
Test Length [D:H:M]	0:05:04
Test Interval [M:S]	1:00
PM10 Average [mg/m3]	0.008
PM10 Minimum [mg/m3]	0.002
PM10 Maximum [mg/m3]	0.029
PM10 TWA [mg/m3]	0.005
TOTAL Average [mg/m3]	0.009
TOTAL Minimum [mg/m3]	0.002
TOTAL Maximum [mg/m3]	0.029
TOTAL TWA [mg/m3]	0.005
Photometric User Cal	1
Size Correction User Cal	1
Flow User Cal	0
Errors	
Number of Samples	304

Elapsed Time [s]		PM10 [mg/m3]	Alarms	Errors
60	6:53:35 AM	0.013		
120	6:54:35 AM	0.013		
180	6:55:35 AM	0.013		
240	6:56:35 AM	0.015		
300	6:57:35 AM	0.012		
360	6:58:35 AM	0.012		
421	6:59:35 AM	0.013		
480	7:00:35 AM	0.012		
540	7:01:35 AM	0.012		
600	7:02:35 AM	0.012		
660	7:03:35 AM	0.013		
720	7:04:35 AM	0.013		
780	7:05:35 AM	0.013		
840	7:06:35 AM	0.012		
900	7:07:35 AM	0.013		
960	7:08:35 AM	0.012		
1020	7:09:35 AM	0.012		
1081	7:10:35 AM	0.012		
1140	7:11:35 AM	0.011		
1200	7:12:35 AM	0.013		
1260	7:13:35 AM	0.011		
1320	7:14:35 AM	0.011		

1380	7:15:35 AM	0.01
1440	7:16:35 AM	0.01
1500	7:17:35 AM	0.01
1560	7:18:35 AM	0.01
1620	7:19:35 AM	0.011
1680	7:20:35 AM	0.01
1740	7:21:35 AM	0.013
1800	7:22:35 AM	0.011
1860	7:23:35 AM	0.01
1920	7:24:35 AM	0.011
1980	7:25:35 AM	0.011
2040	7:26:35 AM	0.01
2100	7:27:35 AM	0.012
2160	7:28:35 AM	0.012
2220	7:29:35 AM	0.011
2280	7:30:35 AM	0.011
2340	7:31:35 AM	0.012
2400	7:32:35 AM	0.013
2460	7:33:35 AM	0.017
2520	7:34:35 AM	0.029
2580	7:35:35 AM	0.013
2641	7:36:35 AM	0.012
2700	7:37:35 AM	0.011
2760	7:38:35 AM	0.012
2820	7:39:35 AM	0.012
2880	7:40:35 AM	0.011
2940	7:41:35 AM	0.012
3000	7:42:35 AM	0.012
3060	7:43:35 AM	0.01
3120	7:44:35 AM	0.011
3180	7:45:35 AM	0.016
3240	7:46:35 AM	0.012
3300	7:47:35 AM	0.011
3360	7:48:35 AM	0.011
3420	7:49:35 AM	0.012
3480	7:50:35 AM	0.012
3540	7:51:35 AM	0.011
3600	7:52:35 AM	0.015
3661	7:53:35 AM	0.012
3720	7:54:35 AM	0.011
3780	7:55:35 AM	0.011
3840	7:56:35 AM	0.011
3900	7:57:35 AM	0.012
3960	7:58:35 AM	0.012
4020	7:59:35 AM	0.011
4080	8:00:35 AM	0.011
4140	8:01:35 AM	0.011

4200	8:02:35 AM	0.011
4260	8:03:35 AM	0.011
4320	8:04:35 AM	0.01
4380	8:05:35 AM	0.011
4440	8:06:35 AM	0.012
4500	8:07:35 AM	0.011
4560	8:08:35 AM	0.011
4620	8:09:35 AM	0.01
4680	8:10:35 AM	0.011
4740	8:11:35 AM	0.011
4800	8:12:35 AM	0.011
4861	8:13:35 AM	0.012
4920	8:14:35 AM	0.014
4980	8:15:35 AM	0.012
5040	8:16:35 AM	0.01
5100	8:17:35 AM	0.01
5160	8:18:35 AM	0.011
5220	8:19:35 AM	0.009
5280	8:20:35 AM	0.008
5340	8:21:35 AM	0.009
5400	8:22:35 AM	0.009
5460	8:23:35 AM	0.01
5521	8:24:35 AM	0.01
5580	8:25:35 AM	0.009
5640	8:26:35 AM	0.009
5700	8:27:35 AM	0.01
5760	8:28:35 AM	0.009
5820	8:29:35 AM	0.009
5881	8:30:35 AM	0.008
5940	8:31:35 AM	0.009
6000	8:32:35 AM	0.011
6060	8:33:35 AM	0.012
6120	8:34:35 AM	0.01
6180	8:35:35 AM	0.009
6240	8:36:35 AM	0.009
6300	8:37:35 AM	0.009
6360	8:38:35 AM	0.008
6420	8:39:35 AM	0.009
6480	8:40:35 AM	0.01
6541	8:41:35 AM	0.01
6600	8:42:35 AM	0.009
6660	8:43:35 AM	0.015
6720	8:44:35 AM	0.012
6780	8:45:35 AM	0.008
6840	8:46:35 AM	0.008
6900	8:47:35 AM	0.01
6960	8:48:35 AM	0.008

7020	8:49:35 AM	0.007
7080	8:50:35 AM	0.008
7140	8:51:35 AM	0.008
7200	8:52:35 AM	0.008
7260	8:53:35 AM	0.008
7320	8:54:35 AM	0.009
7380	8:55:35 AM	0.009
7440	8:56:35 AM	0.009
7500	8:57:35 AM	0.009
7560	8:58:35 AM	0.008
7620	8:59:35 AM	0.009
7680	9:00:35 AM	0.009
7740	9:01:35 AM	0.009
7800	9:02:35 AM	0.009
7860	9:03:35 AM	0.009
7920	9:04:35 AM	0.008
7980	9:05:35 AM	0.008
8040	9:06:35 AM	0.009
8101	9:07:35 AM	0.009
8160	9:08:35 AM	0.007
8220	9:09:35 AM	0.009
8280	9:10:35 AM	0.008
8340	9:11:35 AM	0.009
8400	9:12:35 AM	0.012
8460	9:13:35 AM	0.009
8520	9:14:35 AM	0.009
8580	9:15:35 AM	0.01
8640	9:16:35 AM	0.009
8700	9:17:35 AM	0.008
8760	9:18:35 AM	0.007
8820	9:19:35 AM	0.008
8880	9:20:35 AM	0.009
8940	9:21:35 AM	0.009
9000	9:22:35 AM	0.007
9060	9:23:35 AM	0.008
9120	9:24:35 AM	0.008
9180	9:25:35 AM	0.008
9240	9:26:35 AM	0.009
9301	9:27:35 AM	0.01
9360	9:28:35 AM	0.008
9420	9:29:35 AM	0.008
9480	9:30:35 AM	0.01
9540	9:31:35 AM	0.01
9600	9:32:35 AM	0.009
9660	9:33:35 AM	0.009
9720	9:34:35 AM	0.009
9780	9:35:35 AM	0.009



9840	9:36:35 AM	0.009
9900	9:37:35 AM	0.009
9961	9:38:35 AM	0.009
10020	9:39:35 AM	0.009
10080	9:40:35 AM	0.008
10140	9:41:35 AM	0.01
10200	9:42:35 AM	0.011
10260	9:43:35 AM	0.01
10320	9:44:35 AM	0.008
10380	9:45:35 AM	0.008
10440	9:46:35 AM	0.009
10500	9:47:35 AM	0.007
10560	9:48:35 AM	0.007
10620	9:49:35 AM	0.008
10680	9:50:35 AM	0.006
10740	9:51:35 AM	0.008
10800	9:52:35 AM	0.007
10860	9:53:35 AM	0.006
10920	9:54:35 AM	0.007
10981	9:55:35 AM	0.009
11040	9:56:35 AM	0.006
11100	9:57:35 AM	0.006
11160	9:58:35 AM	0.007
11220	9:59:35 AM	0.007
11280	10:00:35 AM	0.006
11340	10:01:35 AM	0.006
11400	10:02:35 AM	0.006
11460	10:03:35 AM	0.005
11521	10:04:35 AM	0.005
11580	10:05:35 AM	0.006
11640	10:06:35 AM	0.006
11700	10:07:35 AM	0.006
11760	10:08:35 AM	0.006
11820	10:09:35 AM	0.008
11880	10:10:35 AM	0.006
11940	10:11:35 AM	0.005
12000	10:12:35 AM	0.007
12060	10:13:35 AM	0.008
12120	10:14:35 AM	0.011
12180	10:15:35 AM	0.005
12240	10:16:35 AM	0.005
12300	10:17:35 AM	0.006
12360	10:18:35 AM	0.004
12420	10:19:35 AM	0.008
12480	10:20:35 AM	0.005
12541	10:21:35 AM	0.005
12600	10:22:35 AM	0.006

12660	10:23:35 AM	0.006
12720	10:24:35 AM	0.005
12780	10:25:35 AM	0.006
12840	10:26:35 AM	0.005
12900	10:27:35 AM	0.005
12960	10:28:35 AM	0.005
13020	10:29:35 AM	0.005
13080	10:30:35 AM	0.006
13140	10:31:35 AM	0.005
13200	10:32:35 AM	0.005
13260	10:33:35 AM	0.006
13320	10:34:35 AM	0.006
13380	10:35:35 AM	0.006
13440	10:36:35 AM	0.007
13500	10:37:35 AM	0.008
13560	10:38:35 AM	0.005
13620	10:39:35 AM	0.005
13680	10:40:35 AM	0.005
13741	10:41:35 AM	0.006
13800	10:42:35 AM	0.005
13860	10:43:35 AM	0.005
13920	10:44:35 AM	0.005
13980	10:45:35 AM	0.004
14040	10:46:35 AM	0.003
14100	10:47:35 AM	0.003
14160	10:48:35 AM	0.004
14220	10:49:35 AM	0.004
14280	10:50:35 AM	0.004
14340	10:51:35 AM	0.004
14401	10:52:35 AM	0.004
14460	10:53:35 AM	0.005
14520	10:54:35 AM	0.005
14580	10:55:35 AM	0.007
14640	10:56:35 AM	0.006
14700	10:57:35 AM	0.004
14761	10:58:35 AM	0.004
14820	10:59:35 AM	0.006
14880	11:00:35 AM	0.004
14940	11:01:35 AM	0.004
15000	11:02:35 AM	0.004
15060	11:03:35 AM	0.004
15120	11:04:35 AM	0.004
15180	11:05:35 AM	0.004
15240	11:06:35 AM	0.004
15300	11:07:35 AM	0.008
15360	11:08:35 AM	0.005
15421	11:09:35 AM	0.004

15480	11:10:35 AM	0.004
15540	11:11:35 AM	0.004
15600	11:12:35 AM	0.005
15660	11:13:35 AM	0.004
15720	11:14:35 AM	0.004
15780	11:15:35 AM	0.006
15840	11:16:35 AM	0.004
15900	11:17:35 AM	0.004
15960	11:18:35 AM	0.005
16020	11:19:35 AM	0.013
16080	11:20:35 AM	0.004
16140	11:21:35 AM	0.004
16200	11:22:35 AM	0.003
16260	11:23:35 AM	0.003
16320	11:24:35 AM	0.004
16380	11:25:35 AM	0.004
16440	11:26:35 AM	0.004
16500	11:27:35 AM	0.009
16560	11:28:35 AM	0.005
16620	11:29:35 AM	0.004
16680	11:30:35 AM	0.004
16740	11:31:35 AM	0.004
16800	11:32:35 AM	0.004
16860	11:33:35 AM	0.003
16920	11:34:35 AM	0.004
16981	11:35:35 AM	0.003
17040	11:36:35 AM	0.003
17100	11:37:35 AM	0.004
17160	11:38:35 AM	0.004
17220	11:39:35 AM	0.009
17280	11:40:35 AM	0.009
17340	11:41:35 AM	0.011
17400	11:42:35 AM	0.007
17460	11:43:35 AM	0.004
17520	11:44:35 AM	0.006
17580	11:45:35 AM	0.002
17640	11:46:35 AM	0.013
17700	11:47:35 AM	0.012
17760	11:48:35 AM	0.002
17820	11:49:35 AM	0.006
17880	11:50:35 AM	0.02
17940	11:51:35 AM	0.011
18000	11:52:35 AM	0.003
18060	11:53:35 AM	0.008
18120	11:54:35 AM	0.007
18181	11:55:35 AM	0.008
18240	11:56:35 AM	0.027

18300	11:57:35 AM	0.003
18360	11:58:35 AM	0.003
18420	11:59:35 AM	0.003
18480	12:00:35 PM	0.003
18540	12:01:35 PM	0.003
18600	12:02:35 PM	0.003
18660	12:03:35 PM	0.003
18720	12:04:35 PM	0.003
18780	12:05:35 PM	0.003
18840	12:06:35 PM	0.003
18900	12:07:35 PM	0.003
18960	12:08:35 PM	0.003
19020	12:09:35 PM	0.003
19080	12:10:35 PM	0.008
19140	12:11:35 PM	0.004
19200	12:12:35 PM	0.004
19260	12:13:35 PM	0.004
19320	12:14:35 PM	0.004
19380	12:15:35 PM	0.004
19440	12:16:35 PM	0.004
19500	12:17:35 PM	0.004
19560	12:18:35 PM	0.004
19620	12:19:35 PM	0.004
19680	12:20:35 PM	0.004
19740	12:21:35 PM	0.004
19800	12:22:35 PM	0.004

Device Serial No	Log Time	Log Type	Sensor 1 Type	Sensor 1 Serial Number	Sensor 1 Status	Sensor 1 Gas Reading
592-602816	12/21/2023 15:12	Readings	PID	SC23030324C7	Normal	1.4
592-602816	12/21/2023 15:11	Readings	PID	SC23030324C7	Normal	1.5
592-602816	12/21/2023 15:10	Readings	PID	SC23030324C7	Normal	1.4
592-602816	12/21/2023 15:09	Readings	PID	SC23030324C7	Normal	1.4
592-602816	12/21/2023 15:08	Readings	PID	SC23030324C7	Normal	1.4
592-602816	12/21/2023 15:07	Readings	PID	SC23030324C7	Normal	1.5
592-602816	12/21/2023 15:06	Readings	PID	SC23030324C7	Normal	1.5
592-602816	12/21/2023 15:05	Readings	PID	SC23030324C7	Normal	1.5
592-602816	12/21/2023 15:04	Readings	PID	SC23030324C7	Normal	1.5
592-602816	12/21/2023 15:03	Readings	PID	SC23030324C7	Normal	1.4
592-602816	12/21/2023 15:02	Readings	PID	SC23030324C7	Normal	1.5
592-602816	12/21/2023 15:01	Readings	PID	SC23030324C7	Normal	1.5
592-602816	12/21/2023 15:00	Readings	PID	SC23030324C7	Normal	1.5
592-602816	12/21/2023 14:59	Readings	PID	SC23030324C7	Normal	1.4
592-602816	12/21/2023 14:58	Readings	PID	SC23030324C7	Normal	1.4
592-602816	12/21/2023 14:57	Readings	PID	SC23030324C7	Normal	1.4
592-602816	12/21/2023 14:56	Readings	PID	SC23030324C7	Normal	1.5
592-602816	12/21/2023 14:55	Readings	PID	SC23030324C7	Normal	1.4
592-602816	12/21/2023 14:54	Readings	PID	SC23030324C7	Normal	1.4
592-602816	12/21/2023 14:53	Readings	PID	SC23030324C7	Normal	1.4
592-602816	12/21/2023 14:52	Readings	PID	SC23030324C7	Normal	1.4
592-602816	12/21/2023 14:51	Readings	PID	SC23030324C7	Normal	1.4
592-602816	12/21/2023 14:50	Readings	PID	SC23030324C7	Normal	1.4
592-602816	12/21/2023 14:49	Readings	PID	SC23030324C7	Normal	1.4
592-602816	12/21/2023 14:48	Readings	PID	SC23030324C7	Normal	1.4
592-602816	12/21/2023 14:47	Readings	PID	SC23030324C7	Normal	1.5
592-602816	12/21/2023 14:46	Readings	PID	SC23030324C7	Normal	1.5
592-602816	12/21/2023 14:45	Readings	PID	SC23030324C7	Normal	1.4
592-602816	12/21/2023 14:44	Readings	PID	SC23030324C7	Normal	1.4
592-602816	12/21/2023 14:43	Readings	PID	SC23030324C7	Normal	1.4
592-602816	12/21/2023 14:42	Readings	PID	SC23030324C7	Normal	1.9
592-602816	12/21/2023 14:41	Readings	PID	SC23030324C7	Normal	1.5
592-602816	12/21/2023 14:40	Readings	PID	SC23030324C7	Normal	1.5
592-602816	12/21/2023 14:39	Readings	PID	SC23030324C7	Normal	1.5















592-602816	12/21/2023 11:08	Readings	PID	SC23030324C7	Normal	1.7
592-602816	12/21/2023 11:07	Readings	PID	SC23030324C7	Normal	1.7
592-602816	12/21/2023 11:06	Readings	PID	SC23030324C7	Normal	1.7
592-602816	12/21/2023 11:05	Readings	PID	SC23030324C7	Normal	1.7
592-602816	12/21/2023 11:04	Readings	PID	SC23030324C7	Normal	1.7
592-602816	12/21/2023 11:03	Readings	PID	SC23030324C7	Normal	1.7
592-602816	12/21/2023 11:02	Readings	PID	SC23030324C7	Normal	1.7
592-602816	12/21/2023 11:01	Readings	PID	SC23030324C7	Normal	1.7
592-602816	12/21/2023 11:00	Readings	PID	SC23030324C7	Normal	1.7
592-602816	12/21/2023 10:59	Readings	PID	SC23030324C7	Normal	1.7
592-602816	12/21/2023 10:58	Readings	PID	SC23030324C7	Normal	1.7
592-602816	12/21/2023 10:57	Readings	PID	SC23030324C7	Normal	1.7
592-602816	12/21/2023 10:56	Readings	PID	SC23030324C7	Normal	1.7
592-602816	12/21/2023 10:55	Readings	PID	SC23030324C7	Normal	1.9
592-602816	12/21/2023 10:54	Readings	PID	SC23030324C7	Normal	2.3
592-602816	12/21/2023 10:53	Readings	PID	SC23030324C7	Normal	2.2
592-602816	12/21/2023 10:52	Readings	PID	SC23030324C7	Normal	3.5
592-602816	12/21/2023 10:51	Readings	PID	SC23030324C7	Normal	3.2
592-602816	12/21/2023 10:50	Readings	PID	SC23030324C7	Normal	2.6
592-602816	12/21/2023 10:49	Readings	PID	SC23030324C7	Normal	1.7
592-602816	12/21/2023 10:48	Readings	PID	SC23030324C7	Normal	1.7
592-602816	12/21/2023 10:47	Readings	PID	SC23030324C7	Normal	1.7
592-602816	12/21/2023 10:46	Readings	PID	SC23030324C7	Normal	1.7
592-602816	12/21/2023 10:45	Readings	PID	SC23030324C7	Normal	1.7
592-602816	12/21/2023 10:44	Readings	PID	SC23030324C7	Normal	1.7
592-602816	12/21/2023 10:43	Readings	PID	SC23030324C7	Normal	1.7
592-602816	12/21/2023 10:42	Readings	PID	SC23030324C7	Normal	1.7
592-602816	12/21/2023 10:41	Readings	PID	SC23030324C7	Normal	1.7
592-602816	12/21/2023 10:40	Readings	PID	SC23030324C7	Normal	1.7
592-602816	12/21/2023 10:39	Readings	PID	SC23030324C7	Normal	1.7
592-602816	12/21/2023 10:38	Readings	PID	SC23030324C7	Normal	1.7
592-602816	12/21/2023 10:37	Readings	PID	SC23030324C7	Normal	1.7
592-602816	12/21/2023 10:36	Readings	PID	SC23030324C7	Normal	1.6
592-602816	12/21/2023 10:35	Readings	PID	SC23030324C7	Normal	1.6
592-602816	12/21/2023 10:34	Readings	PID	SC23030324C7	Normal	1.6











592-602816	12/21/2023 8:13 Readings	PID	SC23030324C7	Normal	0.2
592-602816	12/21/2023 8:12 Readings	PID	SC23030324C7	Normal	0.1
592-602816	12/21/2023 8:11 Readings	PID	SC23030324C7	Normal	0.1
592-602816	12/21/2023 8:10 Readings	PID	SC23030324C7	Normal	0.1
592-602816	12/21/2023 8:09 Readings	PID	SC23030324C7	Normal	0.1
592-602816	12/21/2023 8:08 Readings	PID	SC23030324C7	Normal	0.1
592-602816	12/21/2023 8:07 Readings	PID	SC23030324C7	Normal	0.1
592-602816	12/21/2023 8:06 Readings	PID	SC23030324C7	Normal	0.1
592-602816	12/21/2023 8:05 Readings	PID	SC23030324C7	Normal	0
592-602816	12/21/2023 8:04 Readings	PID	SC23030324C7	Normal	0
592-602816	12/21/2023 8:03 CONFIG	PID	SC23030324C7		

Instrument Name	DustTrak DRX
Model Number	8533
Serial Number	8533181205
Firmware Version	3.1
Calibration Date	5/31/2023
Test Name	MANUAL_013
Test Start Time	6:50:56 AM
Test Start Date	12/21/2023
Test Length [D:H:M]	0:07:02
Test Interval [M:S]	1:00
PM10 Average [mg/m3]	0.012
PM10 Minimum [mg/m3]	0.005
PM10 Maximum [mg/m3]	0.025
PM10 TWA [mg/m3]	0.011
TOTAL Average [mg/m3]	0.012
TOTAL Minimum [mg/m3]	0.005
TOTAL Maximum [mg/m3]	0.032
TOTAL TWA [mg/m3]	0.011
Photometric User Cal	1
Size Correction User Cal	1
Flow User Cal	0
Errors	
Number of Samples	422

Elapsed Time [s]		PM10 [mg/m3]	Alarms	Errors
60	6:50:56 AM	0.019		
120	6:51:56 AM	0.02		
180	6:52:56 AM	0.019		
240	6:53:56 AM	0.025		
300	6:54:56 AM	0.018		
360	6:55:56 AM	0.018		
420	6:56:56 AM	0.018		
480	6:57:56 AM	0.018		
540	6:58:56 AM	0.018		
600	6:59:56 AM	0.018		
660	7:00:56 AM	0.018		
720	7:01:56 AM	0.018		
780	7:02:56 AM	0.018		
840	7:03:56 AM	0.019		
900	7:04:56 AM	0.017		
960	7:05:56 AM	0.017		
1020	7:06:56 AM	0.018		
1080	7:07:56 AM	0.017		
1140	7:08:56 AM	0.017		
1200	7:09:56 AM	0.018		
1260	7:10:56 AM	0.018		
1320	7:11:56 AM	0.017		

1380	7:12:56 AM	0.017
1440	7:13:56 AM	0.018
1500	7:14:56 AM	0.017
1560	7:15:56 AM	0.017
1620	7:16:56 AM	0.016
1680	7:17:56 AM	0.017
1740	7:18:56 AM	0.017
1800	7:19:56 AM	0.017
1860	7:20:56 AM	0.018
1920	7:21:56 AM	0.018
1980	7:22:56 AM	0.018
2040	7:23:56 AM	0.019
2100	7:24:56 AM	0.019
2160	7:25:56 AM	0.018
2220	7:26:56 AM	0.018
2280	7:27:56 AM	0.018
2340	7:28:56 AM	0.018
2400	7:29:56 AM	0.019
2460	7:30:56 AM	0.021
2520	7:31:56 AM	0.02
2580	7:32:56 AM	0.019
2640	7:33:56 AM	0.018
2700	7:34:56 AM	0.018
2760	7:35:56 AM	0.018
2820	7:36:56 AM	0.017
2880	7:37:56 AM	0.017
2940	7:38:56 AM	0.017
3000	7:39:56 AM	0.017
3060	7:40:56 AM	0.017
3120	7:41:56 AM	0.02
3180	7:42:56 AM	0.016
3240	7:43:56 AM	0.016
3300	7:44:56 AM	0.016
3360	7:45:56 AM	0.016
3420	7:46:56 AM	0.016
3480	7:47:56 AM	0.016
3540	7:48:56 AM	0.016
3600	7:49:56 AM	0.016
3660	7:50:56 AM	0.016
3720	7:51:56 AM	0.016
3780	7:52:56 AM	0.016
3840	7:53:56 AM	0.016
3900	7:54:56 AM	0.016
3960	7:55:56 AM	0.016
4020	7:56:56 AM	0.015
4080	7:57:56 AM	0.015
4140	7:58:56 AM	0.015

4200	7:59:56 AM	0.014
4260	8:00:56 AM	0.014
4320	8:01:56 AM	0.015
4380	8:02:56 AM	0.014
4440	8:03:56 AM	0.014
4500	8:04:56 AM	0.014
4560	8:05:56 AM	0.014
4620	8:06:56 AM	0.014
4680	8:07:56 AM	0.015
4740	8:08:56 AM	0.014
4800	8:09:56 AM	0.013
4860	8:10:56 AM	0.014
4920	8:11:56 AM	0.015
4980	8:12:56 AM	0.013
5040	8:13:56 AM	0.013
5100	8:14:56 AM	0.014
5160	8:15:56 AM	0.014
5220	8:16:56 AM	0.014
5280	8:17:56 AM	0.014
5340	8:18:56 AM	0.014
5400	8:19:56 AM	0.014
5460	8:20:56 AM	0.014
5520	8:21:56 AM	0.014
5580	8:22:56 AM	0.014
5640	8:23:56 AM	0.015
5700	8:24:56 AM	0.014
5760	8:25:56 AM	0.015
5820	8:26:56 AM	0.014
5880	8:27:56 AM	0.013
5940	8:28:56 AM	0.014
6000	8:29:56 AM	0.014
6060	8:30:56 AM	0.013
6120	8:31:56 AM	0.013
6180	8:32:56 AM	0.013
6240	8:33:56 AM	0.013
6300	8:34:56 AM	0.013
6360	8:35:56 AM	0.012
6420	8:36:56 AM	0.013
6480	8:37:56 AM	0.013
6540	8:38:56 AM	0.014
6600	8:39:56 AM	0.015
6660	8:40:56 AM	0.014
6720	8:41:56 AM	0.016
6780	8:42:56 AM	0.014
6840	8:43:56 AM	0.013
6900	8:44:56 AM	0.013
6960	8:45:56 AM	0.013

7020	8:46:56 AM	0.013
7080	8:47:56 AM	0.013
7140	8:48:56 AM	0.013
7200	8:49:56 AM	0.013
7260	8:50:56 AM	0.013
7320	8:51:56 AM	0.014
7380	8:52:56 AM	0.014
7440	8:53:56 AM	0.013
7500	8:54:56 AM	0.012
7560	8:55:56 AM	0.012
7620	8:56:56 AM	0.012
7680	8:57:56 AM	0.012
7740	8:58:56 AM	0.012
7800	8:59:56 AM	0.012
7860	9:00:56 AM	0.013
7920	9:01:56 AM	0.013
7980	9:02:56 AM	0.013
8040	9:03:56 AM	0.013
8100	9:04:56 AM	0.013
8160	9:05:56 AM	0.013
8220	9:06:56 AM	0.013
8280	9:07:56 AM	0.012
8340	9:08:56 AM	0.013
8400	9:09:56 AM	0.012
8460	9:10:56 AM	0.012
8520	9:11:56 AM	0.012
8580	9:12:56 AM	0.012
8640	9:13:56 AM	0.011
8700	9:14:56 AM	0.016
8760	9:15:56 AM	0.011
8820	9:16:56 AM	0.011
8880	9:17:56 AM	0.011
8940	9:18:56 AM	0.013
9000	9:19:56 AM	0.012
9060	9:20:56 AM	0.012
9120	9:21:56 AM	0.011
9180	9:22:56 AM	0.011
9240	9:23:56 AM	0.011
9300	9:24:56 AM	0.016
9360	9:25:56 AM	0.012
9420	9:26:56 AM	0.012
9480	9:27:56 AM	0.012
9540	9:28:56 AM	0.012
9600	9:29:56 AM	0.012
9660	9:30:56 AM	0.011
9720	9:31:56 AM	0.012
9780	9:32:56 AM	0.011

9840	9:33:56 AM	0.012
9900	9:34:56 AM	0.012
9960	9:35:56 AM	0.013
10020	9:36:56 AM	0.014
10080	9:37:56 AM	0.013
10140	9:38:56 AM	0.013
10200	9:39:56 AM	0.013
10260	9:40:56 AM	0.012
10320	9:41:56 AM	0.013
10380	9:42:56 AM	0.012
10440	9:43:56 AM	0.013
10500	9:44:56 AM	0.014
10560	9:45:56 AM	0.013
10620	9:46:56 AM	0.014
10680	9:47:56 AM	0.014
10740	9:48:56 AM	0.013
10800	9:49:56 AM	0.016
10860	9:50:56 AM	0.014
10920	9:51:56 AM	0.013
10980	9:52:56 AM	0.015
11040	9:53:56 AM	0.016
11100	9:54:56 AM	0.016
11160	9:55:56 AM	0.014
11220	9:56:56 AM	0.013
11280	9:57:56 AM	0.016
11340	9:58:56 AM	0.014
11400	9:59:56 AM	0.014
11460	10:00:56 AM	0.015
11520	10:01:56 AM	0.013
11580	10:02:56 AM	0.013
11640	10:03:56 AM	0.013
11700	10:04:56 AM	0.014
11760	10:05:56 AM	0.013
11820	10:06:56 AM	0.013
11880	10:07:56 AM	0.014
11940	10:08:56 AM	0.013
12000	10:09:56 AM	0.013
12060	10:10:56 AM	0.014
12120	10:11:56 AM	0.013
12180	10:12:56 AM	0.013
12240	10:13:56 AM	0.013
12300	10:14:56 AM	0.015
12360	10:15:56 AM	0.012
12420	10:16:56 AM	0.011
12480	10:17:56 AM	0.011
12540	10:18:56 AM	0.011
12600	10:19:56 AM	0.012

12660	10:20:56 AM	0.013
12720	10:21:56 AM	0.012
12780	10:22:56 AM	0.011
12840	10:23:56 AM	0.011
12900	10:24:56 AM	0.011
12960	10:25:56 AM	0.011
13020	10:26:56 AM	0.011
13080	10:27:56 AM	0.011
13140	10:28:56 AM	0.012
13200	10:29:56 AM	0.012
13260	10:30:56 AM	0.014
13320	10:31:56 AM	0.012
13380	10:32:56 AM	0.011
13440	10:33:56 AM	0.011
13500	10:34:56 AM	0.011
13560	10:35:56 AM	0.011
13620	10:36:56 AM	0.011
13680	10:37:56 AM	0.012
13740	10:38:56 AM	0.012
13800	10:39:56 AM	0.011
13860	10:40:56 AM	0.011
13920	10:41:56 AM	0.012
13980	10:42:56 AM	0.011
14040	10:43:56 AM	0.012
14100	10:44:56 AM	0.011
14160	10:45:56 AM	0.01
14220	10:46:56 AM	0.01
14280	10:47:56 AM	0.011
14340	10:48:56 AM	0.01
14400	10:49:56 AM	0.011
14460	10:50:56 AM	0.011
14520	10:51:56 AM	0.012
14580	10:52:56 AM	0.013
14640	10:53:56 AM	0.012
14700	10:54:56 AM	0.011
14760	10:55:56 AM	0.011
14820	10:56:56 AM	0.012
14880	10:57:56 AM	0.012
14940	10:58:56 AM	0.015
15000	10:59:56 AM	0.012
15060	11:00:56 AM	0.011
15120	11:01:56 AM	0.011
15180	11:02:56 AM	0.011
15240	11:03:56 AM	0.012
15300	11:04:56 AM	0.012
15360	11:05:56 AM	0.011
15420	11:06:56 AM	0.011

15480	11:07:56 AM	0.011
15540	11:08:56 AM	0.011
15600	11:09:56 AM	0.011
15660	11:10:56 AM	0.011
15720	11:11:56 AM	0.011
15780	11:12:56 AM	0.011
15840	11:13:56 AM	0.011
15900	11:14:56 AM	0.01
15960	11:15:56 AM	0.011
16020	11:16:56 AM	0.011
16080	11:17:56 AM	0.012
16140	11:18:56 AM	0.012
16200	11:19:56 AM	0.011
16260	11:20:56 AM	0.011
16320	11:21:56 AM	0.013
16380	11:22:56 AM	0.012
16440	11:23:56 AM	0.012
16500	11:24:56 AM	0.012
16560	11:25:56 AM	0.012
16620	11:26:56 AM	0.012
16680	11:27:56 AM	0.015
16740	11:28:56 AM	0.013
16800	11:29:56 AM	0.012
16860	11:30:56 AM	0.013
16920	11:31:56 AM	0.012
16980	11:32:56 AM	0.012
17040	11:33:56 AM	0.015
17100	11:34:56 AM	0.018
17160	11:35:56 AM	0.014
17220	11:36:56 AM	0.013
17280	11:37:56 AM	0.012
17340	11:38:56 AM	0.014
17400	11:39:56 AM	0.014
17460	11:40:56 AM	0.011
17520	11:41:56 AM	0.011
17580	11:42:56 AM	0.01
17640	11:43:56 AM	0.011
17700	11:44:56 AM	0.01
17760	11:45:56 AM	0.01
17820	11:46:56 AM	0.01
17880	11:47:56 AM	0.01
17940	11:48:56 AM	0.01
18000	11:49:56 AM	0.009
18060	11:50:56 AM	0.01
18120	11:51:56 AM	0.011
18180	11:52:56 AM	0.01
18240	11:53:56 AM	0.01



18300	11:54:56 AM	0.01
18360	11:55:56 AM	0.014
18420	11:56:56 AM	0.009
18480	11:57:56 AM	0.009
18540	11:58:56 AM	0.009
18600	11:59:56 AM	0.008
18660	12:00:56 PM	0.009
18720	12:01:56 PM	0.009
18780	12:02:56 PM	0.009
18840	12:03:56 PM	0.01
18900	12:04:56 PM	0.01
18960	12:05:56 PM	0.01
19020	12:06:56 PM	0.01
19080	12:07:56 PM	0.009
19140	12:08:56 PM	0.009
19200	12:09:56 PM	0.008
19260	12:10:56 PM	0.008
19320	12:11:56 PM	0.009
19380	12:12:56 PM	0.009
19440	12:13:56 PM	0.009
19500	12:14:56 PM	0.008
19560	12:15:56 PM	0.008
19620	12:16:56 PM	0.008
19680	12:17:56 PM	0.008
19740	12:18:56 PM	0.008
19800	12:19:56 PM	0.01
19860	12:20:56 PM	0.008
19920	12:21:56 PM	0.008
19980	12:22:56 PM	0.008
20040	12:23:56 PM	0.008
20100	12:24:56 PM	0.008
20160	12:25:56 PM	0.009
20220	12:26:56 PM	0.009
20280	12:27:56 PM	0.009
20340	12:28:56 PM	0.008
20400	12:29:56 PM	0.009
20460	12:30:56 PM	0.009
20520	12:31:56 PM	0.009
20580	12:32:56 PM	0.009
20640	12:33:56 PM	0.009
20700	12:34:56 PM	0.011
20760	12:35:56 PM	0.008
20820	12:36:56 PM	0.008
20880	12:37:56 PM	0.009
20940	12:38:56 PM	0.009
21000	12:39:56 PM	0.009
21060	12:40:56 PM	0.009

21120	12:41:56 PM	0.009
21180	12:42:56 PM	0.01
21240	12:43:56 PM	0.007
21300	12:44:56 PM	0.007
21360	12:45:56 PM	0.007
21420	12:46:56 PM	0.007
21480	12:47:56 PM	0.008
21540	12:48:56 PM	0.009
21600	12:49:56 PM	0.009
21660	12:50:56 PM	0.009
21720	12:51:56 PM	0.008
21780	12:52:56 PM	0.013
21840	12:53:56 PM	0.009
21900	12:54:56 PM	0.008
21960	12:55:56 PM	0.008
22020	12:56:56 PM	0.009
22080	12:57:56 PM	0.008
22140	12:58:56 PM	0.008
22200	12:59:56 PM	0.008
22260	1:00:56 PM	0.007
22320	1:01:56 PM	0.007
22380	1:02:56 PM	0.008
22440	1:03:56 PM	0.009
22500	1:04:56 PM	0.01
22560	1:05:56 PM	0.008
22620	1:06:56 PM	0.008
22680	1:07:56 PM	0.009
22740	1:08:56 PM	0.009
22800	1:09:56 PM	0.008
22860	1:10:56 PM	0.008
22920	1:11:56 PM	0.008
22980	1:12:56 PM	0.008
23040	1:13:56 PM	0.007
23100	1:14:56 PM	0.007
23160	1:15:56 PM	0.009
23220	1:16:56 PM	0.009
23280	1:17:56 PM	0.007
23340	1:18:56 PM	0.007
23400	1:19:56 PM	0.006
23460	1:20:56 PM	0.006
23520	1:21:56 PM	0.008
23580	1:22:56 PM	0.01
23640	1:23:56 PM	0.007
23700	1:24:56 PM	0.008
23760	1:25:56 PM	0.007
23820	1:26:56 PM	0.007
23880	1:27:56 PM	0.007

23940	1:28:56 PM	0.008
24000	1:29:56 PM	0.008
24060	1:30:56 PM	0.007
24120	1:31:56 PM	0.007
24180	1:32:56 PM	0.007
24240	1:33:56 PM	0.007
24300	1:34:56 PM	0.008
24360	1:35:56 PM	0.008
24420	1:36:56 PM	0.009
24480	1:37:56 PM	0.009
24540	1:38:56 PM	0.007
24600	1:39:56 PM	0.007
24660	1:40:56 PM	0.007
24720	1:41:56 PM	0.007
24780	1:42:56 PM	0.005
24840	1:43:56 PM	0.006
24900	1:44:56 PM	0.006
24960	1:45:56 PM	0.006
25020	1:46:56 PM	0.005
25080	1:47:56 PM	0.006
25140	1:48:56 PM	0.006
25200	1:49:56 PM	0.006
25260	1:50:56 PM	0.007
25320	1:51:56 PM	0.006

Device Serial No	Log Time	Log Type	Sensor 1 Type	Sensor 1 Serial Number	Sensor 1 Status	Sensor 1 Gas Reading
592-600871	12/21/2023 15:13	Readings	PID	SC23030408A8	Normal	0
592-600871	12/21/2023 15:12	Readings	PID	SC23030408A8	Normal	0
592-600871	12/21/2023 15:11	Readings	PID	SC23030408A8	Normal	0
592-600871	12/21/2023 15:10	Readings	PID	SC23030408A8	Normal	0
592-600871	12/21/2023 15:09	Readings	PID	SC23030408A8	Normal	0
592-600871	12/21/2023 15:08	Readings	PID	SC23030408A8	Normal	0
592-600871	12/21/2023 15:07	Readings	PID	SC23030408A8	Normal	0
592-600871	12/21/2023 15:06	Readings	PID	SC23030408A8	Normal	0
592-600871	12/21/2023 15:05	Readings	PID	SC23030408A8	Normal	0
592-600871	12/21/2023 15:04	Readings	PID	SC23030408A8	Normal	0
592-600871	12/21/2023 15:03	Readings	PID	SC23030408A8	Normal	0
592-600871	12/21/2023 15:02	Readings	PID	SC23030408A8	Normal	0
592-600871	12/21/2023 15:01	Readings	PID	SC23030408A8	Normal	0
592-600871	12/21/2023 15:00	Readings	PID	SC23030408A8	Normal	0
592-600871	12/21/2023 14:59	Readings	PID	SC23030408A8	Normal	0
592-600871	12/21/2023 14:58	Readings	PID	SC23030408A8	Normal	0
592-600871	12/21/2023 14:57	Readings	PID	SC23030408A8	Normal	0
592-600871	12/21/2023 14:56	Readings	PID	SC23030408A8	Normal	0
592-600871	12/21/2023 14:55	Readings	PID	SC23030408A8	Normal	0
592-600871	12/21/2023 14:54	Readings	PID	SC23030408A8	Normal	0
592-600871	12/21/2023 14:53	Readings	PID	SC23030408A8	Normal	0
592-600871	12/21/2023 14:52	Readings	PID	SC23030408A8	Normal	0
592-600871	12/21/2023 14:51	Readings	PID	SC23030408A8	Normal	0
592-600871	12/21/2023 14:50	Readings	PID	SC23030408A8	Normal	0
592-600871	12/21/2023 14:49	Readings	PID	SC23030408A8	Normal	0
592-600871	12/21/2023 14:48	Readings	PID	SC23030408A8	Normal	0
592-600871	12/21/2023 14:47	Readings	PID	SC23030408A8	Normal	0
592-600871	12/21/2023 14:46	Readings	PID	SC23030408A8	Normal	0
592-600871	12/21/2023 14:45	Readings	PID	SC23030408A8	Normal	0
592-600871	12/21/2023 14:44	Readings	PID	SC23030408A8	Normal	0
592-600871	12/21/2023 14:43	Readings	PID	SC23030408A8	Normal	0
592-600871	12/21/2023 14:42	Readings	PID	SC23030408A8	Normal	0
592-600871	12/21/2023 14:41	Readings	PID	SC23030408A8	Normal	0
592-600871	12/21/2023 14:40	Readings	PID	SC23030408A8	Normal	0

























592-600871	12/21/2023 8:14 Readings	PID	SC23030408A8	Normal	0
592-600871	12/21/2023 8:13 Readings	PID	SC23030408A8	Normal	0
592-600871	12/21/2023 8:12 Readings	PID	SC23030408A8	Normal	0
592-600871	12/21/2023 8:11 Readings	PID	SC23030408A8	Normal	0
592-600871	12/21/2023 8:10 Readings	PID	SC23030408A8	Normal	0
592-600871	12/21/2023 8:09 Readings	PID	SC23030408A8	Normal	0
592-600871	12/21/2023 8:08 Readings	PID	SC23030408A8	Normal	0
592-600871	12/21/2023 8:07 Readings	PID	SC23030408A8	Normal	0
592-600871	12/21/2023 8:06 Readings	PID	SC23030408A8	Normal	0
592-600871	12/21/2023 8:05 CONFIG	PID	SC23030408A8		