



DAILY STATUS REPORT

Prepared By:

Gwen Lynn

WEATHER	Snow	Rain		Overcast	Partly Cloudy	Bright Sun	x	Wind
TEMP.	< 32	32-50	x	50-70	70-85	>85		NW-11MPH

IEC Project No:	13928	NYSDEC BCP Site No:	C224367	Date: 12/22/23
Project:	251 Douglass Street, Brooklyn, NY			

<p>Consultant: Impact Environmental Engineering and Geology, PLLC (IEEG)</p> <p>Time On: 06:30 Time Out: 13:00</p>	<p>Personnel On Site: IEEG (Environmental) –Gwen Lynn Broadway Construction Group - Tom Caporale</p> <p>Equipment On Site: Minirae 3000 PID, DustTrak II</p>
---	--

Scope of Work: Pump out water from the cellar area into the frack tank, minimal excavation in WC-3 and WC-6.

Site Activities:

- Deploy three (3) CAMP units at the start of the work day;
- Pumped out additional standing water within the cellar of former building located on the eastern portion of the Site into frack tank;
- Oil absorbent pads within spill area (NYSDEC Spill No. 23-07767), placed into labeled 55-gallon steel drums; and
- Continued minimal excavation in grids WC-3 and WC-6

Community Air Monitoring Program (CAMP) - CAMP action level for dust (0.1 mg/m³) and VOCs (5 ppm)

- PID remained at nominal levels throughout the day.
- No sustained dust exceedances were observed over a 1-min period during monitoring;
- Startup Upwind Conditions – PID = _0.0_ ppm, Dust = _0.09_ mg/m³ @ 07:07.
- High Conditions (Upwind) – PID = _0.0_ ppm, Dust = _0.170_ mg/m³ @ 9:41
- High Conditions (Downwind 1) – PID = _2.1_ ppm @10:53, Dust = _0.338_ mg/m³ @ 11:39
- High Conditions (Downwind 2) – PID = _0.4_ ppm @ 11:56, Dust = _0.346_ mg/m³ @ 08:40

Notable Site Conditions:

- None

Planned for the Next Day/Week: Break down concrete from former foundation elements, soil loading.

- Excavation work, soil disposal and confirmation endpoint sampling as well as tank grave sampling.

PHOTO LOG

251 DOUGLASS STREET, BROOKLYN, NY



Photo 1- Representative view of the water within the cellar being pumping out.

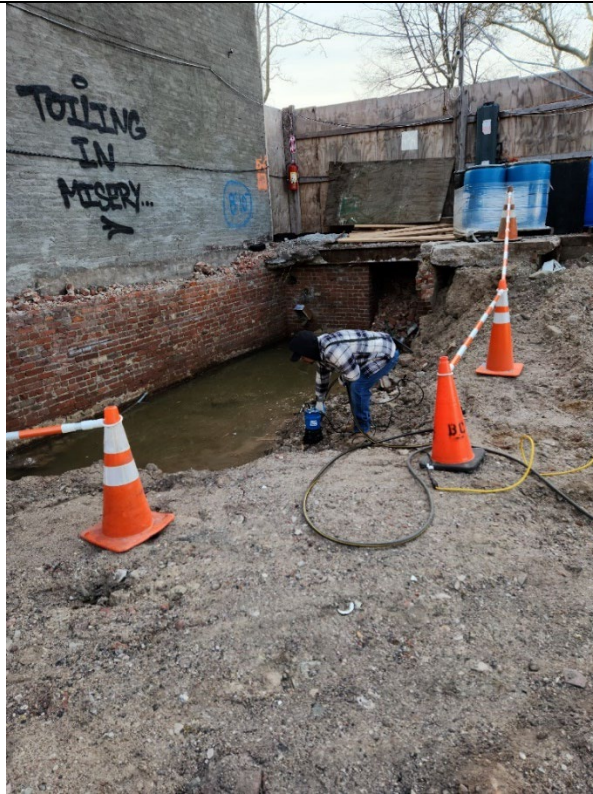


Photo 2- Representative view of frac tank on-Site.



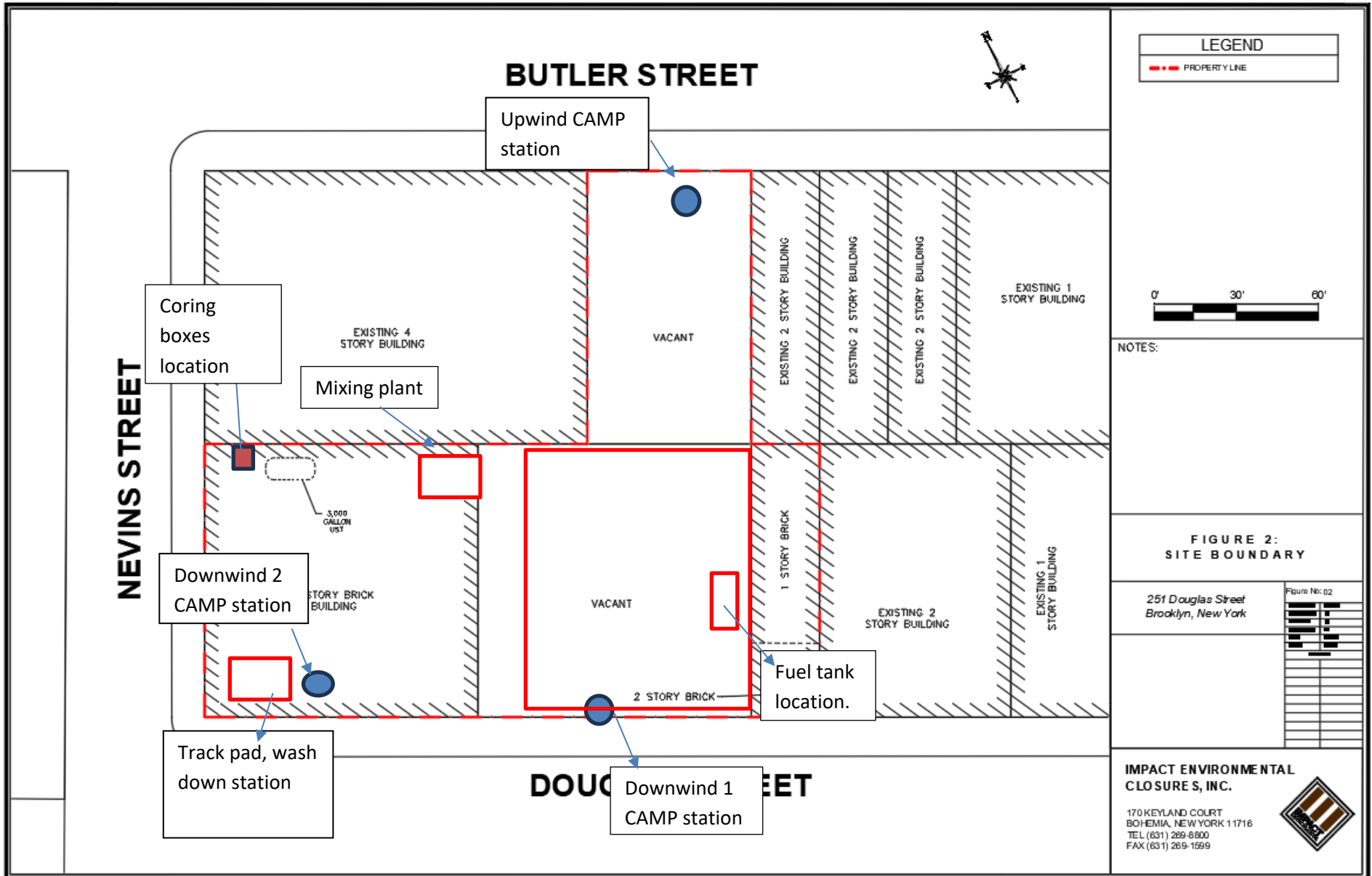
Photo 3- Representative view of oil absorbent pads within the tank grave area, pads were placed into labeled, 55-gallon drums.



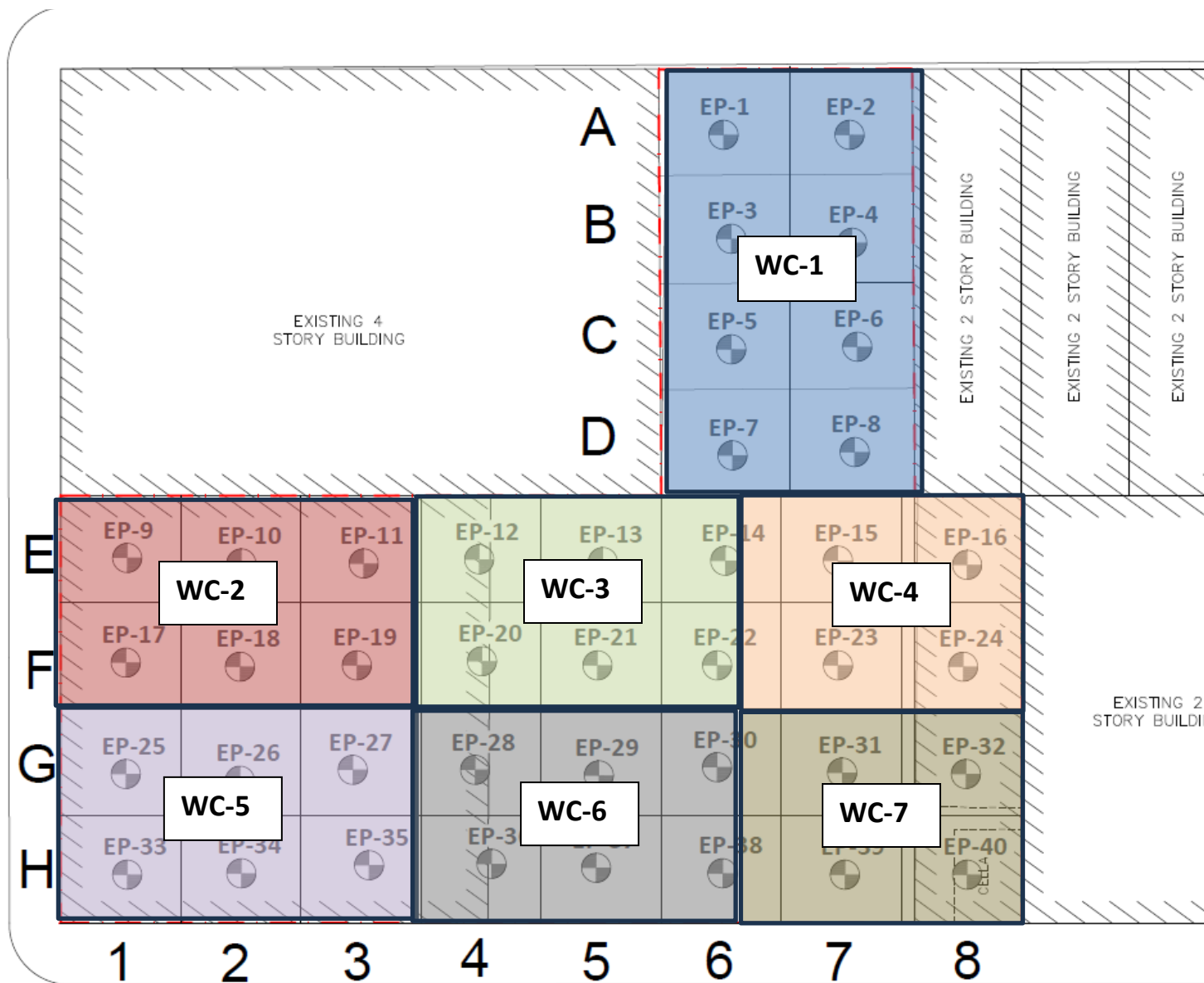
SITE PLANS

251 DOUGLASS STREET, BROOKLYN, NY





NEVINS STREET





IMPACT ENVIRONMENTAL

170 Keyland Court | Bohemia | NY | 11716 | 631.269.8800

welcome to solid ground...

www.impactenvironmental.com

UPWIND CAMP READINGS

251 DOUGLASS STREET, BROOKLYN, NY

Instrument Name	DustTrak DRX
Model Number	8533
Serial Number	8533181208
Firmware Version	3.1
Calibration Date	6/1/2023
Test Name	MANUAL_017
Test Start Time	7:07:26 AM
Test Start Date	12/22/2023
Test Length [D:H:M]	0:05:09
Test Interval [M:S]	1:00
PM10 Average [mg/m3]	0.012
PM10 Minimum [mg/m3]	0.003
PM10 Maximum [mg/m3]	0.169
PM10 TWA [mg/m3]	0.008
TOTAL Average [mg/m3]	0.012
TOTAL Minimum [mg/m3]	0.003
TOTAL Maximum [mg/m3]	0.17
TOTAL TWA [mg/m3]	0.008
Photometric User Cal	1
Size Correction User Cal	1
Flow User Cal	0
Errors	
Number of Samples	309

Elapsed Time [s]		PM10 [mg/m3]	Alarms	Errors
60	7:07:26 AM	0.009		
120	7:08:26 AM	0.007		
180	7:09:26 AM	0.003		
240	7:10:26 AM	0.004		
300	7:11:26 AM	0.015		
360	7:12:26 AM	0.005		
421	7:13:26 AM	0.01		
480	7:14:26 AM	0.005		
540	7:15:26 AM	0.005		
600	7:16:26 AM	0.005		
660	7:17:26 AM	0.005		
720	7:18:26 AM	0.005		
780	7:19:26 AM	0.005		
840	7:20:26 AM	0.006		
900	7:21:26 AM	0.005		
960	7:22:26 AM	0.006		
1020	7:23:26 AM	0.006		
1080	7:24:26 AM	0.006		
1140	7:25:26 AM	0.005		
1200	7:26:26 AM	0.006		
1260	7:27:26 AM	0.006		
1320	7:28:26 AM	0.009		

1380	7:29:26 AM	0.007
1440	7:30:26 AM	0.006
1500	7:31:26 AM	0.007
1560	7:32:26 AM	0.007
1620	7:33:26 AM	0.006
1680	7:34:26 AM	0.006
1740	7:35:26 AM	0.006
1800	7:36:26 AM	0.006
1860	7:37:26 AM	0.006
1920	7:38:26 AM	0.007
1980	7:39:26 AM	0.007
2040	7:40:26 AM	0.007
2100	7:41:26 AM	0.007
2160	7:42:26 AM	0.007
2220	7:43:26 AM	0.007
2280	7:44:26 AM	0.007
2340	7:45:26 AM	0.007
2400	7:46:26 AM	0.007
2460	7:47:26 AM	0.007
2520	7:48:26 AM	0.007
2580	7:49:26 AM	0.008
2640	7:50:26 AM	0.007
2700	7:51:26 AM	0.008
2760	7:52:26 AM	0.008
2820	7:53:26 AM	0.008
2880	7:54:26 AM	0.008
2940	7:55:26 AM	0.008
3000	7:56:26 AM	0.009
3060	7:57:26 AM	0.009
3120	7:58:26 AM	0.009
3180	7:59:26 AM	0.01
3240	8:00:26 AM	0.01
3300	8:01:26 AM	0.011
3360	8:02:26 AM	0.01
3420	8:03:26 AM	0.01
3480	8:04:26 AM	0.01
3540	8:05:26 AM	0.01
3600	8:06:26 AM	0.009
3660	8:07:26 AM	0.01
3720	8:08:26 AM	0.009
3780	8:09:26 AM	0.01
3840	8:10:26 AM	0.007
3901	8:11:26 AM	0.007
3960	8:12:26 AM	0.008
4020	8:13:26 AM	0.007
4080	8:14:26 AM	0.008
4140	8:15:26 AM	0.01

4200	8:16:26 AM	0.008
4260	8:17:26 AM	0.008
4320	8:18:26 AM	0.02
4380	8:19:26 AM	0.007
4440	8:20:26 AM	0.011
4500	8:21:26 AM	0.009
4560	8:22:26 AM	0.012
4620	8:23:26 AM	0.009
4680	8:24:26 AM	0.016
4740	8:25:26 AM	0.016
4800	8:26:26 AM	0.007
4860	8:27:26 AM	0.008
4920	8:28:26 AM	0.007
4980	8:29:26 AM	0.008
5040	8:30:26 AM	0.007
5101	8:31:26 AM	0.007
5160	8:32:26 AM	0.007
5220	8:33:26 AM	0.007
5280	8:34:26 AM	0.007
5340	8:35:26 AM	0.008
5400	8:36:26 AM	0.008
5460	8:37:26 AM	0.009
5520	8:38:26 AM	0.008
5580	8:39:26 AM	0.008
5640	8:40:26 AM	0.008
5700	8:41:26 AM	0.008
5761	8:42:26 AM	0.008
5820	8:43:26 AM	0.009
5880	8:44:26 AM	0.008
5940	8:45:26 AM	0.01
6000	8:46:26 AM	0.01
6060	8:47:26 AM	0.01
6120	8:48:26 AM	0.011
6180	8:49:26 AM	0.01
6240	8:50:26 AM	0.011
6300	8:51:26 AM	0.012
6360	8:52:26 AM	0.013
6420	8:53:26 AM	0.014
6480	8:54:26 AM	0.014
6540	8:55:26 AM	0.014
6600	8:56:26 AM	0.014
6660	8:57:26 AM	0.014
6720	8:58:26 AM	0.015
6780	8:59:26 AM	0.015
6840	9:00:26 AM	0.014
6900	9:01:26 AM	0.013
6960	9:02:26 AM	0.011

7020	9:03:26 AM	0.012
7080	9:04:26 AM	0.01
7140	9:05:26 AM	0.01
7200	9:06:26 AM	0.01
7260	9:07:26 AM	0.011
7320	9:08:26 AM	0.011
7380	9:09:26 AM	0.012
7440	9:10:26 AM	0.011
7500	9:11:26 AM	0.011
7560	9:12:26 AM	0.011
7620	9:13:26 AM	0.011
7680	9:14:26 AM	0.011
7740	9:15:26 AM	0.011
7800	9:16:26 AM	0.01
7860	9:17:26 AM	0.015
7920	9:18:26 AM	0.023
7980	9:19:26 AM	0.011
8040	9:20:26 AM	0.011
8100	9:21:26 AM	0.013
8160	9:22:26 AM	0.013
8220	9:23:26 AM	0.013
8280	9:24:26 AM	0.011
8340	9:25:26 AM	0.011
8400	9:26:26 AM	0.011
8460	9:27:26 AM	0.011
8520	9:28:26 AM	0.011
8580	9:29:26 AM	0.011
8640	9:30:26 AM	0.011
8700	9:31:26 AM	0.011
8760	9:32:26 AM	0.034
8820	9:33:26 AM	0.014
8880	9:34:26 AM	0.031
8940	9:35:26 AM	0.018
9000	9:36:26 AM	0.011
9060	9:37:26 AM	0.012
9120	9:38:26 AM	0.011
9180	9:39:26 AM	0.011
9240	9:40:26 AM	0.012
9300	9:41:26 AM	0.17
9360	9:42:26 AM	0.025
9420	9:43:26 AM	0.011
9480	9:44:26 AM	0.019
9540	9:45:26 AM	0.025
9600	9:46:26 AM	0.018
9660	9:47:26 AM	0.015
9720	9:48:26 AM	0.011
9780	9:49:26 AM	0.011

9840	9:50:26 AM	0.011
9900	9:51:26 AM	0.01
9960	9:52:26 AM	0.011
10020	9:53:26 AM	0.011
10080	9:54:26 AM	0.013
10140	9:55:26 AM	0.011
10200	9:56:26 AM	0.011
10260	9:57:26 AM	0.011
10321	9:58:26 AM	0.011
10380	9:59:26 AM	0.01
10440	10:00:26 AM	0.011
10500	10:01:26 AM	0.012
10560	10:02:26 AM	0.011
10620	10:03:26 AM	0.011
10680	10:04:26 AM	0.011
10740	10:05:26 AM	0.011
10800	10:06:26 AM	0.011
10860	10:07:26 AM	0.011
10920	10:08:26 AM	0.011
10980	10:09:26 AM	0.011
11040	10:10:26 AM	0.011
11100	10:11:26 AM	0.011
11161	10:12:26 AM	0.011
11220	10:13:26 AM	0.011
11280	10:14:26 AM	0.011
11340	10:15:26 AM	0.011
11400	10:16:26 AM	0.011
11460	10:17:26 AM	0.011
11520	10:18:26 AM	0.012
11580	10:19:26 AM	0.01
11640	10:20:26 AM	0.01
11700	10:21:26 AM	0.01
11760	10:22:26 AM	0.011
11820	10:23:26 AM	0.011
11880	10:24:26 AM	0.011
11940	10:25:26 AM	0.011
12000	10:26:26 AM	0.011
12060	10:27:26 AM	0.011
12120	10:28:26 AM	0.011
12180	10:29:26 AM	0.012
12240	10:30:26 AM	0.013
12300	10:31:26 AM	0.012
12360	10:32:26 AM	0.011
12420	10:33:26 AM	0.012
12480	10:34:26 AM	0.013
12540	10:35:26 AM	0.016
12600	10:36:26 AM	0.014

12660	10:37:26 AM	0.016
12720	10:38:26 AM	0.013
12780	10:39:26 AM	0.011
12840	10:40:26 AM	0.011
12900	10:41:26 AM	0.011
12960	10:42:26 AM	0.011
13020	10:43:26 AM	0.011
13080	10:44:26 AM	0.012
13140	10:45:26 AM	0.011
13200	10:46:26 AM	0.012
13260	10:47:26 AM	0.012
13320	10:48:26 AM	0.012
13380	10:49:26 AM	0.012
13440	10:50:26 AM	0.015
13500	10:51:26 AM	0.016
13560	10:52:26 AM	0.014
13620	10:53:26 AM	0.012
13680	10:54:26 AM	0.011
13740	10:55:26 AM	0.013
13800	10:56:26 AM	0.013
13860	10:57:26 AM	0.013
13920	10:58:26 AM	0.012
13981	10:59:26 AM	0.012
14040	11:00:26 AM	0.012
14100	11:01:26 AM	0.012
14160	11:02:26 AM	0.012
14220	11:03:26 AM	0.012
14280	11:04:26 AM	0.012
14340	11:05:26 AM	0.014
14400	11:06:26 AM	0.012
14460	11:07:26 AM	0.012
14520	11:08:26 AM	0.011
14580	11:09:26 AM	0.013
14640	11:10:26 AM	0.012
14700	11:11:26 AM	0.012
14760	11:12:26 AM	0.013
14820	11:13:26 AM	0.013
14880	11:14:26 AM	0.012
14940	11:15:26 AM	0.013
15000	11:16:26 AM	0.012
15060	11:17:26 AM	0.012
15120	11:18:26 AM	0.013
15180	11:19:26 AM	0.012
15240	11:20:26 AM	0.013
15300	11:21:26 AM	0.013
15360	11:22:26 AM	0.014
15420	11:23:26 AM	0.016

15480	11:24:26 AM	0.016
15540	11:25:26 AM	0.014
15600	11:26:26 AM	0.013
15660	11:27:26 AM	0.013
15720	11:28:26 AM	0.013
15780	11:29:26 AM	0.015
15840	11:30:26 AM	0.015
15900	11:31:26 AM	0.015
15960	11:32:26 AM	0.013
16020	11:33:26 AM	0.017
16080	11:34:26 AM	0.019
16140	11:35:26 AM	0.013
16200	11:36:26 AM	0.012
16260	11:37:26 AM	0.012
16320	11:38:26 AM	0.012
16380	11:39:26 AM	0.016
16440	11:40:26 AM	0.013
16500	11:41:26 AM	0.015
16560	11:42:26 AM	0.014
16620	11:43:26 AM	0.014
16680	11:44:26 AM	0.015
16740	11:45:26 AM	0.014
16800	11:46:26 AM	0.013
16860	11:47:26 AM	0.012
16920	11:48:26 AM	0.012
16980	11:49:26 AM	0.013
17040	11:50:26 AM	0.014
17100	11:51:26 AM	0.015
17160	11:52:26 AM	0.014
17220	11:53:26 AM	0.012
17280	11:54:26 AM	0.012
17340	11:55:26 AM	0.015
17400	11:56:26 AM	0.015
17460	11:57:26 AM	0.021
17520	11:58:26 AM	0.017
17580	11:59:26 AM	0.013
17640	12:00:26 PM	0.013
17700	12:01:26 PM	0.013
17760	12:02:26 PM	0.013
17820	12:03:26 PM	0.013
17881	12:04:26 PM	0.013
17940	12:05:26 PM	0.014
18000	12:06:26 PM	0.015
18060	12:07:26 PM	0.015
18120	12:08:26 PM	0.014
18180	12:09:26 PM	0.013
18240	12:10:26 PM	0.014

18300	12:11:26 PM	0.013
18360	12:12:26 PM	0.013
18420	12:13:26 PM	0.013
18480	12:14:26 PM	0.013
18540	12:15:26 PM	0.017

Device Serial No	Log Time	Log Type	Sensor 1 Type	Sensor 1 Serial Number	Sensor 1 Status	Sensor 1 Gas Reading
592-600871	12/22/2023 1:20:13 PM	Readings	PID	SC23030408A8	Normal	0.0
592-600871	12/22/2023 1:19:13 PM	Readings	PID	SC23030408A8	Normal	0.0
592-600871	12/22/2023 1:18:13 PM	Readings	PID	SC23030408A8	Normal	0.0
592-600871	12/22/2023 1:17:13 PM	Readings	PID	SC23030408A8	Normal	0.0
592-600871	12/22/2023 1:16:13 PM	Readings	PID	SC23030408A8	Normal	0.0
592-600871	12/22/2023 1:15:13 PM	Readings	PID	SC23030408A8	Normal	0.0
592-600871	12/22/2023 1:14:13 PM	Readings	PID	SC23030408A8	Normal	0.0
592-600871	12/22/2023 1:13:13 PM	Readings	PID	SC23030408A8	Normal	0.0
592-600871	12/22/2023 1:12:13 PM	Readings	PID	SC23030408A8	Normal	0.0
592-600871	12/22/2023 1:11:13 PM	Readings	PID	SC23030408A8	Normal	0.0
592-600871	12/22/2023 1:10:13 PM	Readings	PID	SC23030408A8	Normal	0.0
592-600871	12/22/2023 1:09:13 PM	Readings	PID	SC23030408A8	Normal	0.0
592-600871	12/22/2023 1:08:13 PM	Readings	PID	SC23030408A8	Normal	0.0
592-600871	12/22/2023 1:07:13 PM	Readings	PID	SC23030408A8	Normal	0.0
592-600871	12/22/2023 1:06:13 PM	Readings	PID	SC23030408A8	Normal	0.0
592-600871	12/22/2023 1:05:13 PM	Readings	PID	SC23030408A8	Normal	0.0
592-600871	12/22/2023 1:04:13 PM	Readings	PID	SC23030408A8	Normal	0.0
592-600871	12/22/2023 1:03:13 PM	Readings	PID	SC23030408A8	Normal	0.0
592-600871	12/22/2023 1:02:13 PM	Readings	PID	SC23030408A8	Normal	0.0
592-600871	12/22/2023 1:01:13 PM	Readings	PID	SC23030408A8	Normal	0.0
592-600871	12/22/2023 1:00:13 PM	Readings	PID	SC23030408A8	Normal	0.0
592-600871	12/22/2023 12:59:13 PM	Readings	PID	SC23030408A8	Normal	0.0
592-600871	12/22/2023 12:58:13 PM	Readings	PID	SC23030408A8	Normal	0.0
592-600871	12/22/2023 12:57:13 PM	Readings	PID	SC23030408A8	Normal	0.0
592-600871	12/22/2023 12:56:13 PM	Readings	PID	SC23030408A8	Normal	0.0
592-600871	12/22/2023 12:55:13 PM	Readings	PID	SC23030408A8	Normal	0.0
592-600871	12/22/2023 12:54:13 PM	Readings	PID	SC23030408A8	Normal	0.0
592-600871	12/22/2023 12:53:13 PM	Readings	PID	SC23030408A8	Normal	0.0
592-600871	12/22/2023 12:52:13 PM	Readings	PID	SC23030408A8	Normal	0.0
592-600871	12/22/2023 12:51:13 PM	Readings	PID	SC23030408A8	Normal	0.0
592-600871	12/22/2023 12:50:13 PM	Readings	PID	SC23030408A8	Normal	0.0
592-600871	12/22/2023 12:49:13 PM	Readings	PID	SC23030408A8	Normal	0.0
592-600871	12/22/2023 12:48:13 PM	Readings	PID	SC23030408A8	Normal	0.0
592-600871	12/22/2023 12:47:13 PM	Readings	PID	SC23030408A8	Normal	0.0
592-600871	12/22/2023 12:46:13 PM	Readings	PID	SC23030408A8	Normal	0.0
592-600871	12/22/2023 12:45:13 PM	Readings	PID	SC23030408A8	Normal	0.0
592-600871	12/22/2023 12:44:13 PM	Readings	PID	SC23030408A8	Normal	0.0

592-600871	12/22/2023 8:43:13 AM	Readings	PID	SC23030408A8	Normal	0.0
592-600871	12/22/2023 8:42:13 AM	Readings	PID	SC23030408A8	Normal	0.0
592-600871	12/22/2023 8:41:13 AM	Readings	PID	SC23030408A8	Normal	0.0
592-600871	12/22/2023 8:40:13 AM	CONFIG	PID	SC23030408A8		

DOWNWIND CAMP READINGS

251 DOUGLASS STREET, BROOKLYN, NY



Instrument Name	DustTrak DRX
Model Number	8533
Serial Number	8533181205
Firmware Version	3.1
Calibration Date	5/31/2023
Test Name	MANUAL_014
Test Start Time	7:16:20 AM
Test Start Date	12/22/2023
Test Length [D:H:M]	0:05:41
Test Interval [M:S]	1:00
PM10 Average [mg/m3]	0.014
PM10 Minimum [mg/m3]	0
PM10 Maximum [mg/m3]	0.144
PM10 TWA [mg/m3]	0.01
TOTAL Average [mg/m3]	0.016
TOTAL Minimum [mg/m3]	0
TOTAL Maximum [mg/m3]	0.338
TOTAL TWA [mg/m3]	0.011
Photometric User Cal	1
Size Correction User Cal	1
Flow User Cal	0
Errors	
Number of Samples	279

Elapsed Time [s]		PM10 [mg/m3]	Alarms	Errors
60	7:16:20 AM	0.01		
120	7:17:20 AM	0.008		
180	7:18:20 AM	0.016		
240	7:19:20 AM	0.008		
300	7:20:20 AM	0.008		
360	7:21:20 AM	0.008		
420	7:22:20 AM	0.01		
480	7:23:20 AM	0.009		
540	7:24:20 AM	0.008		
600	7:25:20 AM	0.007		
660	7:26:20 AM	0.007		
720	7:27:20 AM	0.009		
780	7:28:20 AM	0.029		
840	7:29:20 AM	0.014		
900	7:30:20 AM	0.008		
960	7:31:20 AM	0.008		
1020	7:32:20 AM	0.008		
1080	7:33:20 AM	0.008		
1140	7:34:20 AM	0.009		
1200	7:35:20 AM	0.008		
1260	7:36:20 AM	0.009		
1320	7:37:20 AM	0.008		

1380	7:38:20 AM	0.008
1440	7:39:20 AM	0.008
1500	7:40:20 AM	0.009
1560	7:41:20 AM	0.009
1620	7:42:20 AM	0.009
1680	7:43:20 AM	0.009
1740	7:44:20 AM	0.009
1800	7:45:20 AM	0.009
1860	7:46:20 AM	0.008
1920	7:47:20 AM	0.009
1980	7:48:20 AM	0.009
2040	7:49:20 AM	0.009
2100	7:50:20 AM	0.01
2160	7:51:20 AM	0.009
2220	7:52:20 AM	0.01
2280	7:53:20 AM	0.01
2340	7:54:20 AM	0.011
2400	7:55:20 AM	0.011
2460	7:56:20 AM	0.01
2520	7:57:20 AM	0.012
2580	7:58:20 AM	0.011
2640	7:59:20 AM	0.011
2700	8:00:20 AM	0.011
2760	8:01:20 AM	0.01
2820	8:02:20 AM	0.011
2880	8:03:20 AM	0.016
2940	8:04:20 AM	0.012
3000	8:05:20 AM	0.01
3060	8:06:20 AM	0.01
3120	8:07:20 AM	0.01
3180	8:08:20 AM	0.009
3240	8:09:20 AM	0.009
3300	8:10:20 AM	0.009
3360	8:11:20 AM	0.009
3420	8:12:20 AM	0.009
3480	8:13:20 AM	0.009
3540	8:14:20 AM	0.008
3600	8:15:20 AM	0.01
3660	8:16:20 AM	0.012
3720	8:17:20 AM	0.009
3780	8:18:20 AM	0.01
3840	8:19:20 AM	0.009
3900	8:20:20 AM	0.009
3960	8:21:20 AM	0.009
4020	8:22:20 AM	0.01
4080	8:23:20 AM	0.009
4140	8:24:20 AM	0.01

4200	8:25:20 AM	0.011
4260	8:26:20 AM	0.009
4320	8:27:20 AM	0.013
4380	8:28:20 AM	0.009
4440	8:29:20 AM	0.009
4500	8:30:20 AM	0.009
4560	8:31:20 AM	0.01
4620	8:32:20 AM	0.061
4680	8:33:20 AM	0.012
4740	8:34:20 AM	0.009
4800	8:35:20 AM	0.009
4860	8:36:20 AM	0.009
4920	8:37:20 AM	0.009
4980	8:38:20 AM	0.009
5040	8:39:20 AM	0.009
5100	8:40:20 AM	0.009
5160	8:41:20 AM	0.01
5220	8:42:20 AM	0.011
5280	8:43:20 AM	0.011
5340	8:44:20 AM	0.012
5400	8:45:20 AM	0.012
5460	8:46:20 AM	0.012
5520	8:47:20 AM	0.012
5580	8:48:20 AM	0.013
5640	8:49:20 AM	0.014
5700	8:50:20 AM	0.015
5760	8:51:20 AM	0.016
5820	8:52:20 AM	0.016
5880	8:53:20 AM	0.016
5940	8:54:20 AM	0.016
6000	8:55:20 AM	0.017
6060	8:56:20 AM	0.017
6120	8:57:20 AM	0.016
6180	8:58:20 AM	0.016
6240	8:59:20 AM	0.013
6300	9:00:20 AM	0.013
6360	9:01:20 AM	0.012
6420	9:02:20 AM	0.011
6480	9:03:20 AM	0.012
6540	9:04:20 AM	0.013
6600	9:05:20 AM	0.013
6660	9:06:20 AM	0.014
6720	9:07:20 AM	0.013
6780	9:08:20 AM	0.013
6840	9:09:20 AM	0.012
6900	9:10:20 AM	0.012
6960	9:11:20 AM	0.012

7020	9:12:20 AM	0.013
7080	9:13:20 AM	0.012
7140	9:14:20 AM	0.012
7200	9:15:20 AM	0.013
7260	9:16:20 AM	0.012
7320	9:17:20 AM	0.013
7380	9:18:20 AM	0.013
7440	9:19:20 AM	0.014
7500	9:20:20 AM	0.015
7560	9:21:20 AM	0.013
7620	9:22:20 AM	0.013
7680	9:23:20 AM	0.013
7740	9:24:20 AM	0.012
7800	9:25:20 AM	0.012
7860	9:26:20 AM	0.012
7920	9:27:20 AM	0.012
7980	9:28:20 AM	0.012
8040	9:29:20 AM	0.017
8100	9:30:20 AM	0.032
8160	9:31:20 AM	0.016
8220	9:32:20 AM	0.02
8280	9:33:20 AM	0.014
8340	9:34:20 AM	0.013
8400	9:35:20 AM	0.013
8460	9:36:20 AM	0.013
8520	9:37:20 AM	0.012
8580	9:38:20 AM	0.063
8640	9:39:20 AM	0.04
8700	9:40:20 AM	0.017
8760	9:41:20 AM	0.015
8820	9:42:20 AM	0.018
8880	9:43:20 AM	0.015
8940	9:44:20 AM	0.018
9000	9:45:20 AM	0.015
9060	9:46:20 AM	0.014
9120	9:47:20 AM	0.012
9180	9:48:20 AM	0.012
9240	9:49:20 AM	0.012
9300	9:50:20 AM	0.012
9360	9:51:20 AM	0.013
9420	9:52:20 AM	0.013
9480	9:53:20 AM	0.012
9540	9:54:20 AM	0.012
9600	9:55:20 AM	0.012
9660	9:56:20 AM	0.012
9720	9:57:20 AM	0.012
9780	9:58:20 AM	0.013

9840	9:59:20 AM	0.013
9900	10:00:20 AM	0.013
9960	10:01:20 AM	0.012
10020	10:02:20 AM	0.013
10080	10:03:20 AM	0.013
10140	10:04:20 AM	0.013
10200	10:05:20 AM	0.012
10260	10:06:20 AM	0.013
10320	10:07:20 AM	0.013
10380	10:08:20 AM	0.012
10440	10:09:20 AM	0.013
10500	10:10:20 AM	0.012
10560	10:11:20 AM	0.013
10620	10:12:20 AM	0.013
10680	10:13:20 AM	0.013
10740	10:14:20 AM	0.013
10800	10:15:20 AM	0.014
10860	10:16:20 AM	0.012
10920	10:17:20 AM	0.012
10980	10:18:20 AM	0.013
11040	10:19:20 AM	0.012
11100	10:20:20 AM	0.012
11160	10:21:20 AM	0.012
11220	10:22:20 AM	0.013
11280	10:23:20 AM	0.013
11340	10:24:20 AM	0.013
11400	10:25:20 AM	0.013
11460	10:26:20 AM	0.015
11520	10:27:20 AM	0.015
11580	10:28:20 AM	0.015
11640	10:29:20 AM	0.014
11700	10:30:20 AM	0.014
11760	10:31:20 AM	0.016
11820	10:32:20 AM	0.022
11880	10:33:20 AM	0.015
11940	10:34:20 AM	0.018
12000	10:35:20 AM	0.018
12060	10:36:20 AM	0.013
12120	10:37:20 AM	0.012
12180	10:38:20 AM	0.012
12240	10:39:20 AM	0.012
12300	10:40:20 AM	0.012
12360	10:41:20 AM	0.013
12420	10:42:20 AM	0.013
12480	10:43:20 AM	0.013
12540	10:44:20 AM	0.014
12600	10:45:20 AM	0.014

12660	10:46:20 AM	0.013
12720	10:47:20 AM	0.015
12780	10:48:20 AM	0.018
12840	10:49:20 AM	0.017
12900	10:50:20 AM	0.014
12960	10:51:20 AM	0.013
13020	10:52:20 AM	0.014
13080	10:53:20 AM	0.016
13140	10:54:20 AM	0.014
13200	10:55:20 AM	0.013
13260	10:56:20 AM	0.014
13320	10:57:20 AM	0.014
13380	10:58:20 AM	0.013
13440	10:59:20 AM	0.013
13500	11:00:20 AM	0.013
13560	11:01:20 AM	0.013
13620	11:02:20 AM	0.015
13680	11:03:20 AM	0.014
13740	11:04:20 AM	0.014
13800	11:05:20 AM	0.013
13860	11:06:20 AM	0.013
13920	11:07:20 AM	0.014
13980	11:08:20 AM	0.014
14040	11:09:20 AM	0.015
14100	11:10:20 AM	0.017
14160	11:11:20 AM	0.015
14220	11:12:20 AM	0.015
14280	11:13:20 AM	0.014
14340	11:14:20 AM	0.014
14400	11:15:20 AM	0.014
14460	11:16:20 AM	0.015
14520	11:17:20 AM	0.015
14580	11:18:20 AM	0.015
14640	11:19:20 AM	0.017
14700	11:20:20 AM	0.019
14760	11:21:20 AM	0.02
14820	11:22:20 AM	0.016
14880	11:23:20 AM	0.015
14940	11:24:20 AM	0.015
15000	11:25:20 AM	0.016
15060	11:26:20 AM	0.016
15120	11:27:20 AM	0.019
15180	11:28:20 AM	0.017
15240	11:29:20 AM	0.015
15300	11:30:20 AM	0.02
15360	11:31:20 AM	0.026
15420	11:32:20 AM	0.015

15480	11:33:20 AM	0.015
15540	11:34:20 AM	0.014
19373	11:35:20 AM	0
19380	11:36:20 AM	0.032
19440	11:37:20 AM	0.032
19500	11:38:20 AM	0.044
19560	11:39:20 AM	0.338
19620	11:40:20 AM	0.032
19680	11:41:20 AM	0.023
19740	11:42:20 AM	0.023
19800	11:43:20 AM	0.047
19860	11:44:20 AM	0.025
19920	11:45:20 AM	0.024
19980	11:46:20 AM	0.027
20040	11:47:20 AM	0.029
20100	11:48:20 AM	0.026
20160	11:49:20 AM	0.023
20220	11:50:20 AM	0.035
20280	11:51:20 AM	0.024
20340	11:52:20 AM	0.021
20455	11:53:20 AM	0
20460	11:54:20 AM	0.015

Device Serial No	Log Time	Log Type	Sensor 1 Type	Sensor 1 Serial Number	Sensor 1 Status	Sensor 1 Gas Reading
592-602816	12/22/2023 1:14:04 PM	Readings	PID	SC23030324C7	Normal	1.5
592-602816	12/22/2023 1:13:04 PM	Readings	PID	SC23030324C7	Normal	1.4
592-602816	12/22/2023 1:12:04 PM	Readings	PID	SC23030324C7	Normal	1.5
592-602816	12/22/2023 1:11:04 PM	Readings	PID	SC23030324C7	Normal	1.4
592-602816	12/22/2023 1:10:04 PM	Readings	PID	SC23030324C7	Normal	1.5
592-602816	12/22/2023 1:09:04 PM	Readings	PID	SC23030324C7	Normal	1.5
592-602816	12/22/2023 1:08:04 PM	Readings	PID	SC23030324C7	Normal	1.4
592-602816	12/22/2023 1:07:04 PM	Readings	PID	SC23030324C7	Normal	1.4
592-602816	12/22/2023 1:06:04 PM	Readings	PID	SC23030324C7	Normal	1.4
592-602816	12/22/2023 1:05:04 PM	Readings	PID	SC23030324C7	Normal	1.5
592-602816	12/22/2023 1:04:04 PM	Readings	PID	SC23030324C7	Normal	1.5
592-602816	12/22/2023 1:03:04 PM	Readings	PID	SC23030324C7	Normal	1.5
592-602816	12/22/2023 1:02:04 PM	Readings	PID	SC23030324C7	Normal	1.5
592-602816	12/22/2023 1:01:04 PM	Readings	PID	SC23030324C7	Normal	1.5
592-602816	12/22/2023 1:00:04 PM	Readings	PID	SC23030324C7	Normal	1.5
592-602816	12/22/2023 12:59:04 PM	Readings	PID	SC23030324C7	Normal	1.5
592-602816	12/22/2023 12:58:04 PM	Readings	PID	SC23030324C7	Normal	1.5
592-602816	12/22/2023 12:57:04 PM	Readings	PID	SC23030324C7	Normal	1.4
592-602816	12/22/2023 12:56:04 PM	Readings	PID	SC23030324C7	Normal	1.4
592-602816	12/22/2023 12:55:04 PM	Readings	PID	SC23030324C7	Normal	1.4
592-602816	12/22/2023 12:54:04 PM	Readings	PID	SC23030324C7	Normal	1.4
592-602816	12/22/2023 12:53:04 PM	Readings	PID	SC23030324C7	Normal	1.4
592-602816	12/22/2023 12:52:04 PM	Readings	PID	SC23030324C7	Normal	1.4
592-602816	12/22/2023 12:51:04 PM	Readings	PID	SC23030324C7	Normal	1.4
592-602816	12/22/2023 12:50:04 PM	Readings	PID	SC23030324C7	Normal	1.4
592-602816	12/22/2023 12:49:04 PM	Readings	PID	SC23030324C7	Normal	1.4
592-602816	12/22/2023 12:48:04 PM	Readings	PID	SC23030324C7	Normal	1.4
592-602816	12/22/2023 12:47:04 PM	Readings	PID	SC23030324C7	Normal	1.4
592-602816	12/22/2023 12:46:04 PM	Readings	PID	SC23030324C7	Normal	1.4
592-602816	12/22/2023 12:45:04 PM	Readings	PID	SC23030324C7	Normal	1.4
592-602816	12/22/2023 12:44:04 PM	Readings	PID	SC23030324C7	Normal	1.4
592-602816	12/22/2023 12:43:04 PM	Readings	PID	SC23030324C7	Normal	1.4
592-602816	12/22/2023 12:42:04 PM	Readings	PID	SC23030324C7	Normal	1.4
592-602816	12/22/2023 12:41:04 PM	Readings	PID	SC23030324C7	Normal	1.4
592-602816	12/22/2023 12:40:04 PM	Readings	PID	SC23030324C7	Normal	1.4
592-602816	12/22/2023 12:39:04 PM	Readings	PID	SC23030324C7	Normal	1.4

592-602816	12/22/2023 8:44:04 AM	Readings	PID	SC23030324C7	Normal	0.2
592-602816	12/22/2023 8:43:04 AM	Readings	PID	SC23030324C7	Normal	0.2
592-602816	12/22/2023 8:42:04 AM	Readings	PID	SC23030324C7	Normal	0.1
592-602816	12/22/2023 8:41:04 AM	Readings	PID	SC23030324C7	Normal	0.1
592-602816	12/22/2023 8:40:04 AM	Readings	PID	SC23030324C7	Normal	0.1
592-602816	12/22/2023 8:39:04 AM	Readings	PID	SC23030324C7	Normal	0.1
592-602816	12/22/2023 8:38:04 AM	Readings	PID	SC23030324C7	Normal	0.0
592-602816	12/22/2023 8:37:04 AM	Readings	PID	SC23030324C7	Normal	0.0
592-602816	12/22/2023 8:36:04 AM	Readings	PID	SC23030324C7	Normal	0.0
592-602816	12/22/2023 8:35:04 AM	Readings	PID	SC23030324C7	Normal	0.0
592-602816	12/22/2023 8:34:04 AM	Readings	PID	SC23030324C7	Normal	0.0
592-602816	12/22/2023 8:33:04 AM	Readings	PID	SC23030324C7	Normal	0.0
592-602816	12/22/2023 8:32:04 AM	Readings	PID	SC23030324C7	Normal	0.0
592-602816	12/22/2023 8:31:04 AM	Readings	PID	SC23030324C7	Normal	0.0
592-602816	12/22/2023 8:30:04 AM	Readings	PID	SC23030324C7	Normal	0.0
592-602816	12/22/2023 8:29:04 AM	Readings	PID	SC23030324C7	Normal	0.0
592-602816	12/22/2023 8:28:04 AM	CONFIG	PID	SC23030324C7		

Instrument Name	
Model Number	
Serial Number	
Firmware Version	3.1
Calibration Date	6/1/2023
Test Name	MANUAL_005
Test Start Time	8:05:16 AM
Test Start Date	12/22/2023
Test Length [D:H:M]	0:05:04
Test Interval [M:S]	1:00
PM10 Average [mg/m3]	0.015
PM10 Minimum [mg/m3]	0.005
PM10 Maximum [mg/m3]	0.294
PM10 TWA [mg/m3]	0.009
TOTAL Average [mg/m3]	0.016
TOTAL Minimum [mg/m3]	0.005
TOTAL Maximum [mg/m3]	0.346
TOTAL TWA [mg/m3]	0.01
Photometric User Cal	1
Size Correction User Cal	1
Flow User Cal	0
Errors	
Number of Samples	304

Elapsed Time [s]		PM10 [mg/m3]	Alarms	Errors
60	8:05:16 AM	0.02		
120	8:06:16 AM	0.009		
180	8:07:16 AM	0.006		
240	8:08:16 AM	0.006		
300	8:09:16 AM	0.006		
360	8:10:16 AM	0.006		
420	8:11:16 AM	0.005		
480	8:12:16 AM	0.005		
540	8:13:16 AM	0.005		
600	8:14:16 AM	0.006		
660	8:15:16 AM	0.006		
720	8:16:16 AM	0.006		
780	8:17:16 AM	0.006		
840	8:18:16 AM	0.007		
900	8:19:16 AM	0.006		
960	8:20:16 AM	0.006		
1020	8:21:16 AM	0.006		
1080	8:22:16 AM	0.006		
1140	8:23:16 AM	0.018		
1200	8:24:16 AM	0.006		
1260	8:25:16 AM	0.006		
1320	8:26:16 AM	0.007		

1380	8:27:16 AM	0.007
1440	8:28:16 AM	0.007
1500	8:29:16 AM	0.008
1560	8:30:16 AM	0.007
1620	8:31:16 AM	0.008
1680	8:32:16 AM	0.008
1740	8:33:16 AM	0.008
1800	8:34:16 AM	0.009
1860	8:35:16 AM	0.011
1920	8:36:16 AM	0.009
1980	8:37:16 AM	0.008
2040	8:38:16 AM	0.008
2100	8:39:16 AM	0.067
2160	8:40:16 AM	0.346
2220	8:41:16 AM	0.094
2280	8:42:16 AM	0.014
2340	8:43:16 AM	0.021
2400	8:44:16 AM	0.017
2460	8:45:16 AM	0.009
2520	8:46:16 AM	0.009
2580	8:47:16 AM	0.009
2640	8:48:16 AM	0.009
2700	8:49:16 AM	0.009
2760	8:50:16 AM	0.01
2820	8:51:16 AM	0.017
2880	8:52:16 AM	0.036
2940	8:53:16 AM	0.01
3000	8:54:16 AM	0.011
3060	8:55:16 AM	0.009
3120	8:56:16 AM	0.01
3180	8:57:16 AM	0.009
3240	8:58:16 AM	0.01
3300	8:59:16 AM	0.012
3360	9:00:16 AM	0.012
3420	9:01:16 AM	0.012
3480	9:02:16 AM	0.012
3540	9:03:16 AM	0.011
3600	9:04:16 AM	0.011
3660	9:05:16 AM	0.011
3720	9:06:16 AM	0.009
3780	9:07:16 AM	0.009
3840	9:08:16 AM	0.009
3900	9:09:16 AM	0.009
3960	9:10:16 AM	0.008
4020	9:11:16 AM	0.008
4080	9:12:16 AM	0.008
4140	9:13:16 AM	0.008

4200	9:14:16 AM	0.008
4260	9:15:16 AM	0.008
4320	9:16:16 AM	0.008
4380	9:17:16 AM	0.008
4440	9:18:16 AM	0.008
4500	9:19:16 AM	0.008
4560	9:20:16 AM	0.008
4620	9:21:16 AM	0.008
4680	9:22:16 AM	0.008
4740	9:23:16 AM	0.008
4800	9:24:16 AM	0.008
4860	9:25:16 AM	0.008
4920	9:26:16 AM	0.008
4980	9:27:16 AM	0.008
5040	9:28:16 AM	0.009
5100	9:29:16 AM	0.008
5160	9:30:16 AM	0.008
5220	9:31:16 AM	0.008
5280	9:32:16 AM	0.009
5340	9:33:16 AM	0.008
5400	9:34:16 AM	0.008
5460	9:35:16 AM	0.009
5520	9:36:16 AM	0.01
5580	9:37:16 AM	0.018
5640	9:38:16 AM	0.009
5700	9:39:16 AM	0.01
5760	9:40:16 AM	0.012
5820	9:41:16 AM	0.011
5880	9:42:16 AM	0.009
5940	9:43:16 AM	0.009
6000	9:44:16 AM	0.012
6060	9:45:16 AM	0.011
6120	9:46:16 AM	0.012
6180	9:47:16 AM	0.012
6240	9:48:16 AM	0.011
6300	9:49:16 AM	0.012
6360	9:50:16 AM	0.012
6420	9:51:16 AM	0.013
6480	9:52:16 AM	0.014
6540	9:53:16 AM	0.015
6600	9:54:16 AM	0.016
6660	9:55:16 AM	0.015
6720	9:56:16 AM	0.015
6780	9:57:16 AM	0.015
6840	9:58:16 AM	0.015
6900	9:59:16 AM	0.015
6960	10:00:16 AM	0.016

7020	10:01:16 AM	0.016
7080	10:02:16 AM	0.013
7140	10:03:16 AM	0.013
7200	10:04:16 AM	0.011
7260	10:05:16 AM	0.011
7320	10:06:16 AM	0.011
7380	10:07:16 AM	0.012
7440	10:08:16 AM	0.012
7500	10:09:16 AM	0.013
7560	10:10:16 AM	0.013
7620	10:11:16 AM	0.012
7680	10:12:16 AM	0.012
7740	10:13:16 AM	0.012
7800	10:14:16 AM	0.013
7860	10:15:16 AM	0.013
7920	10:16:16 AM	0.012
7980	10:17:16 AM	0.012
8040	10:18:16 AM	0.011
8100	10:19:16 AM	0.012
8160	10:20:16 AM	0.013
8220	10:21:16 AM	0.013
8280	10:22:16 AM	0.014
8340	10:23:16 AM	0.013
8400	10:24:16 AM	0.013
8460	10:25:16 AM	0.012
8520	10:26:16 AM	0.012
8580	10:27:16 AM	0.012
8640	10:28:16 AM	0.012
8700	10:29:16 AM	0.012
8760	10:30:16 AM	0.012
8820	10:31:16 AM	0.012
8880	10:32:16 AM	0.012
8940	10:33:16 AM	0.012
9000	10:34:16 AM	0.012
9060	10:35:16 AM	0.012
9120	10:36:16 AM	0.012
9180	10:37:16 AM	0.012
9240	10:38:16 AM	0.012
9300	10:39:16 AM	0.012
9360	10:40:16 AM	0.012
9420	10:41:16 AM	0.012
9480	10:42:16 AM	0.013
9540	10:43:16 AM	0.012
9600	10:44:16 AM	0.012
9660	10:45:16 AM	0.017
9720	10:46:16 AM	0.013
9780	10:47:16 AM	0.012

9840	10:48:16 AM	0.011
9900	10:49:16 AM	0.012
9960	10:50:16 AM	0.012
10020	10:51:16 AM	0.012
10080	10:52:16 AM	0.012
10140	10:53:16 AM	0.012
10200	10:54:16 AM	0.012
10260	10:55:16 AM	0.012
10320	10:56:16 AM	0.012
10380	10:57:16 AM	0.021
10440	10:58:16 AM	0.012
10500	10:59:16 AM	0.012
10560	11:00:16 AM	0.012
10620	11:01:16 AM	0.012
10680	11:02:16 AM	0.012
10740	11:03:16 AM	0.013
10800	11:04:16 AM	0.013
10860	11:05:16 AM	0.012
10920	11:06:16 AM	0.013
10980	11:07:16 AM	0.012
11040	11:08:16 AM	0.012
11100	11:09:16 AM	0.012
11160	11:10:16 AM	0.012
11220	11:11:16 AM	0.012
11280	11:12:16 AM	0.013
11340	11:13:16 AM	0.012
11400	11:14:16 AM	0.012
11460	11:15:16 AM	0.012
11520	11:16:16 AM	0.013
11580	11:17:16 AM	0.013
11640	11:18:16 AM	0.012
11700	11:19:16 AM	0.012
11760	11:20:16 AM	0.013
11820	11:21:16 AM	0.012
11880	11:22:16 AM	0.012
11940	11:23:16 AM	0.012
12000	11:24:16 AM	0.012
12060	11:25:16 AM	0.012
12120	11:26:16 AM	0.012
12180	11:27:16 AM	0.012
12240	11:28:16 AM	0.012
12300	11:29:16 AM	0.013
12360	11:30:16 AM	0.014
12420	11:31:16 AM	0.014
12480	11:32:16 AM	0.013
12540	11:33:16 AM	0.013
12600	11:34:16 AM	0.013

12660	11:35:16 AM	0.016
12720	11:36:16 AM	0.015
12780	11:37:16 AM	0.013
12840	11:38:16 AM	0.014
12900	11:39:16 AM	0.015
12960	11:40:16 AM	0.012
13020	11:41:16 AM	0.012
13080	11:42:16 AM	0.012
13140	11:43:16 AM	0.012
13200	11:44:16 AM	0.012
13260	11:45:16 AM	0.013
13320	11:46:16 AM	0.013
13380	11:47:16 AM	0.012
13440	11:48:16 AM	0.014
13500	11:49:16 AM	0.014
13560	11:50:16 AM	0.013
13620	11:51:16 AM	0.014
13680	11:52:16 AM	0.016
13740	11:53:16 AM	0.014
13800	11:54:16 AM	0.013
13860	11:55:16 AM	0.013
13920	11:56:16 AM	0.014
13980	11:57:16 AM	0.014
14040	11:58:16 AM	0.013
14100	11:59:16 AM	0.013
14160	12:00:16 PM	0.013
14220	12:01:16 PM	0.013
14280	12:02:16 PM	0.013
14340	12:03:16 PM	0.013
14400	12:04:16 PM	0.013
14460	12:05:16 PM	0.013
14520	12:06:16 PM	0.013
14580	12:07:16 PM	0.013
14640	12:08:16 PM	0.014
14700	12:09:16 PM	0.013
14760	12:10:16 PM	0.014
14820	12:11:16 PM	0.013
14880	12:12:16 PM	0.014
14940	12:13:16 PM	0.014
15000	12:14:16 PM	0.016
15060	12:15:16 PM	0.014
15120	12:16:16 PM	0.013
15180	12:17:16 PM	0.013
15240	12:18:16 PM	0.013
15300	12:19:16 PM	0.014
15360	12:20:16 PM	0.014
15420	12:21:16 PM	0.014

15480	12:22:16 PM	0.015
15540	12:23:16 PM	0.015
15600	12:24:16 PM	0.016
15660	12:25:16 PM	0.016
15720	12:26:16 PM	0.015
15780	12:27:16 PM	0.014
15840	12:28:16 PM	0.014
15900	12:29:16 PM	0.015
15960	12:30:16 PM	0.015
16020	12:31:16 PM	0.016
16080	12:32:16 PM	0.015
16140	12:33:16 PM	0.014
16200	12:34:16 PM	0.017
16260	12:35:16 PM	0.016
16320	12:36:16 PM	0.014
16380	12:37:16 PM	0.015
16440	12:38:16 PM	0.014
16500	12:39:16 PM	0.014
16560	12:40:16 PM	0.014
16620	12:41:16 PM	0.016
16680	12:42:16 PM	0.018
16740	12:43:16 PM	0.016
16800	12:44:16 PM	0.016
16860	12:45:16 PM	0.053
16920	12:46:16 PM	0.115
16980	12:47:16 PM	0.161
17040	12:48:16 PM	0.02
17100	12:49:16 PM	0.023
17160	12:50:16 PM	0.022
17220	12:51:16 PM	0.042
17280	12:52:16 PM	0.041
17340	12:53:16 PM	0.018
17400	12:54:16 PM	0.018
17460	12:55:16 PM	0.016
17520	12:56:16 PM	0.017
17580	12:57:16 PM	0.017
17640	12:58:16 PM	0.019
17700	12:59:16 PM	0.022
17760	1:00:16 PM	0.018
17820	1:01:16 PM	0.017
17880	1:02:16 PM	0.018
17940	1:03:16 PM	0.023
18000	1:04:16 PM	0.017
18060	1:05:16 PM	0.02
18120	1:06:16 PM	0.024
18180	1:07:16 PM	0.023
18240	1:08:16 PM	0.025

Device Serial No	Log Time	Log Type	Sensor 1 Type	Sensor 1 Serial Number	Sensor 1 Status	Sensor 1 Gas Reading
592-929156	12/22/2023 1:28:04 PM	Readings	PID	SC23030065D3	Normal	0.4
592-929156	12/22/2023 1:27:04 PM	Readings	PID	SC23030065D3	Normal	0.4
592-929156	12/22/2023 1:26:04 PM	Readings	PID	SC23030065D3	Normal	0.4
592-929156	12/22/2023 1:25:04 PM	Readings	PID	SC23030065D3	Normal	0.4
592-929156	12/22/2023 1:24:04 PM	Readings	PID	SC23030065D3	Normal	0.4
592-929156	12/22/2023 1:23:04 PM	Readings	PID	SC23030065D3	Normal	0.4
592-929156	12/22/2023 1:22:04 PM	Readings	PID	SC23030065D3	Normal	0.4
592-929156	12/22/2023 1:21:04 PM	Readings	PID	SC23030065D3	Normal	0.4
592-929156	12/22/2023 1:20:04 PM	Readings	PID	SC23030065D3	Normal	0.4
592-929156	12/22/2023 1:19:04 PM	Readings	PID	SC23030065D3	Normal	0.4
592-929156	12/22/2023 1:18:04 PM	Readings	PID	SC23030065D3	Normal	0.4
592-929156	12/22/2023 1:17:04 PM	Readings	PID	SC23030065D3	Normal	0.4
592-929156	12/22/2023 1:16:04 PM	Readings	PID	SC23030065D3	Normal	0.4
592-929156	12/22/2023 1:15:04 PM	Readings	PID	SC23030065D3	Normal	0.4
592-929156	12/22/2023 1:14:04 PM	Readings	PID	SC23030065D3	Normal	0.4
592-929156	12/22/2023 1:13:04 PM	Readings	PID	SC23030065D3	Normal	0.4
592-929156	12/22/2023 1:12:04 PM	Readings	PID	SC23030065D3	Normal	0.4
592-929156	12/22/2023 1:11:04 PM	Readings	PID	SC23030065D3	Normal	0.4
592-929156	12/22/2023 1:10:04 PM	Readings	PID	SC23030065D3	Normal	0.4
592-929156	12/22/2023 1:09:04 PM	Readings	PID	SC23030065D3	Normal	0.4
592-929156	12/22/2023 1:08:04 PM	Readings	PID	SC23030065D3	Normal	0.4
592-929156	12/22/2023 1:07:04 PM	Readings	PID	SC23030065D3	Normal	0.4
592-929156	12/22/2023 1:06:04 PM	Readings	PID	SC23030065D3	Normal	0.4
592-929156	12/22/2023 1:05:04 PM	Readings	PID	SC23030065D3	Normal	0.4
592-929156	12/22/2023 1:04:04 PM	Readings	PID	SC23030065D3	Normal	0.4
592-929156	12/22/2023 1:03:04 PM	Readings	PID	SC23030065D3	Normal	0.4
592-929156	12/22/2023 1:02:04 PM	Readings	PID	SC23030065D3	Normal	0.4
592-929156	12/22/2023 1:01:04 PM	Readings	PID	SC23030065D3	Normal	0.4
592-929156	12/22/2023 1:00:04 PM	Readings	PID	SC23030065D3	Normal	0.4
592-929156	12/22/2023 12:59:04 PM	Readings	PID	SC23030065D3	Normal	0.4
592-929156	12/22/2023 12:58:04 PM	Readings	PID	SC23030065D3	Normal	0.4
592-929156	12/22/2023 12:57:04 PM	Readings	PID	SC23030065D3	Normal	0.4
592-929156	12/22/2023 12:56:04 PM	Readings	PID	SC23030065D3	Normal	0.4
592-929156	12/22/2023 12:55:04 PM	Readings	PID	SC23030065D3	Normal	0.4
592-929156	12/22/2023 12:54:04 PM	Readings	PID	SC23030065D3	Normal	0.3
592-929156	12/22/2023 12:53:04 PM	Readings	PID	SC23030065D3	Normal	0.3
592-929156	12/22/2023 12:52:04 PM	Readings	PID	SC23030065D3	Normal	0.4

592-929156	12/22/2023 9:31:04 AM	Readings	PID	SC23030065D3	Normal	0.1
592-929156	12/22/2023 9:30:04 AM	Readings	PID	SC23030065D3	Normal	0.1
592-929156	12/22/2023 9:29:04 AM	Readings	PID	SC23030065D3	Normal	0.1
592-929156	12/22/2023 9:28:04 AM	Readings	PID	SC23030065D3	Normal	0.1
592-929156	12/22/2023 9:27:04 AM	Readings	PID	SC23030065D3	Normal	0.1
592-929156	12/22/2023 9:26:04 AM	Readings	PID	SC23030065D3	Normal	0.1
592-929156	12/22/2023 9:25:04 AM	Readings	PID	SC23030065D3	Normal	0.1
592-929156	12/22/2023 9:24:04 AM	Readings	PID	SC23030065D3	Normal	0.1
592-929156	12/22/2023 9:23:04 AM	Readings	PID	SC23030065D3	Normal	0.1
592-929156	12/22/2023 9:22:04 AM	Readings	PID	SC23030065D3	Normal	0.1
592-929156	12/22/2023 9:21:04 AM	Readings	PID	SC23030065D3	Normal	0.1
592-929156	12/22/2023 9:20:04 AM	Readings	PID	SC23030065D3	Normal	0.1
592-929156	12/22/2023 9:19:04 AM	Readings	PID	SC23030065D3	Normal	0.1
592-929156	12/22/2023 9:18:04 AM	Readings	PID	SC23030065D3	Normal	0.1
592-929156	12/22/2023 9:17:04 AM	Readings	PID	SC23030065D3	Normal	0.1
592-929156	12/22/2023 9:16:04 AM	Readings	PID	SC23030065D3	Normal	0.1
592-929156	12/22/2023 9:15:04 AM	Readings	PID	SC23030065D3	Normal	0.1
592-929156	12/22/2023 9:14:04 AM	Readings	PID	SC23030065D3	Normal	0.1
592-929156	12/22/2023 9:13:04 AM	Readings	PID	SC23030065D3	Normal	0.1
592-929156	12/22/2023 9:12:04 AM	Readings	PID	SC23030065D3	Normal	0.1
592-929156	12/22/2023 9:11:04 AM	Readings	PID	SC23030065D3	Normal	0.1
592-929156	12/22/2023 9:10:04 AM	Readings	PID	SC23030065D3	Normal	0.1
592-929156	12/22/2023 9:09:04 AM	CONFIG	PID	SC23030065D3		