



DAILY STATUS REPORT

Prepared By:

Thomas Jensen

WEATHER	Snow	Rain		Overcast	Partly Cloudy	x	Bright Sun	X	Wind
TEMP.	< 32	32-50	x	50-70	70-85		>85		E-9MPH

IEC Project No:	13928	NYSDEC BCP Site No:	C224367	Date:	01/08/24
Project:	251 Douglass Street, Brooklyn, NY				

<p>Consultant: Impact Environmental Engineering and Geology, PLLC (IEEG)</p> <p>Time On: 06:50 Time Out: 15:30</p>	<p>Personnel On Site: IEEG (Environmental) –Thomas Jensen Broadway Construction Group - Tom Caporale Xolle – Hand Demolition Contractor</p> <p>Equipment On Site: Minirae 3000 PID, DustTrak II</p>
---	---

Scope of Work: Hand demolition of old foundation wall.

Site Activities:

- Deploy three (3) CAMP units at the start of the work day;
- Xolle arrived on site to begin hand demolition of old foundation wall on the western portion of the Site; and
- The following two (2) confirmation endpoint samples were collected, EP-29 and EP-37.

Community Air Monitoring Program (CAMP) - CAMP action level for dust (0.1 mg/m³) and VOCs (5 ppm)

- PID remained at nominal levels throughout the day.
- No sustained dust exceedances were observed over a 1-min period during monitoring;
- Startup Upwind Conditions – PID = 0.0 ppm, Dust = 0.011 mg/m³ @ 08:28.
- High Conditions (Upwind) – PID = 0.5 ppm @ 14:40, Dust = 0.018 mg/m³ @ 09:20
- High Conditions (Downwind 1) – PID = 0.7 ppm @ 12:48, Dust = 0.094 mg/m³ @ 12:51
- High Conditions (Downwind 2) – PID = 0.0 ppm, Dust = 0.019 mg/m³ @ 15:08

Notable Site Conditions:

None

Planned for the Next Day/Week:

- Light hand demolition dependent upon weather;
- Excavate and stockpile soil from 4’-6’ within the arsenic hotspot location; and
- Horizontal and vertical excavation of soil from beneath tank-2 (spill area) and collection of tank endpoint samples.

PHOTO LOG

251 DOUGLASS STREET, BROOKLYN, NY



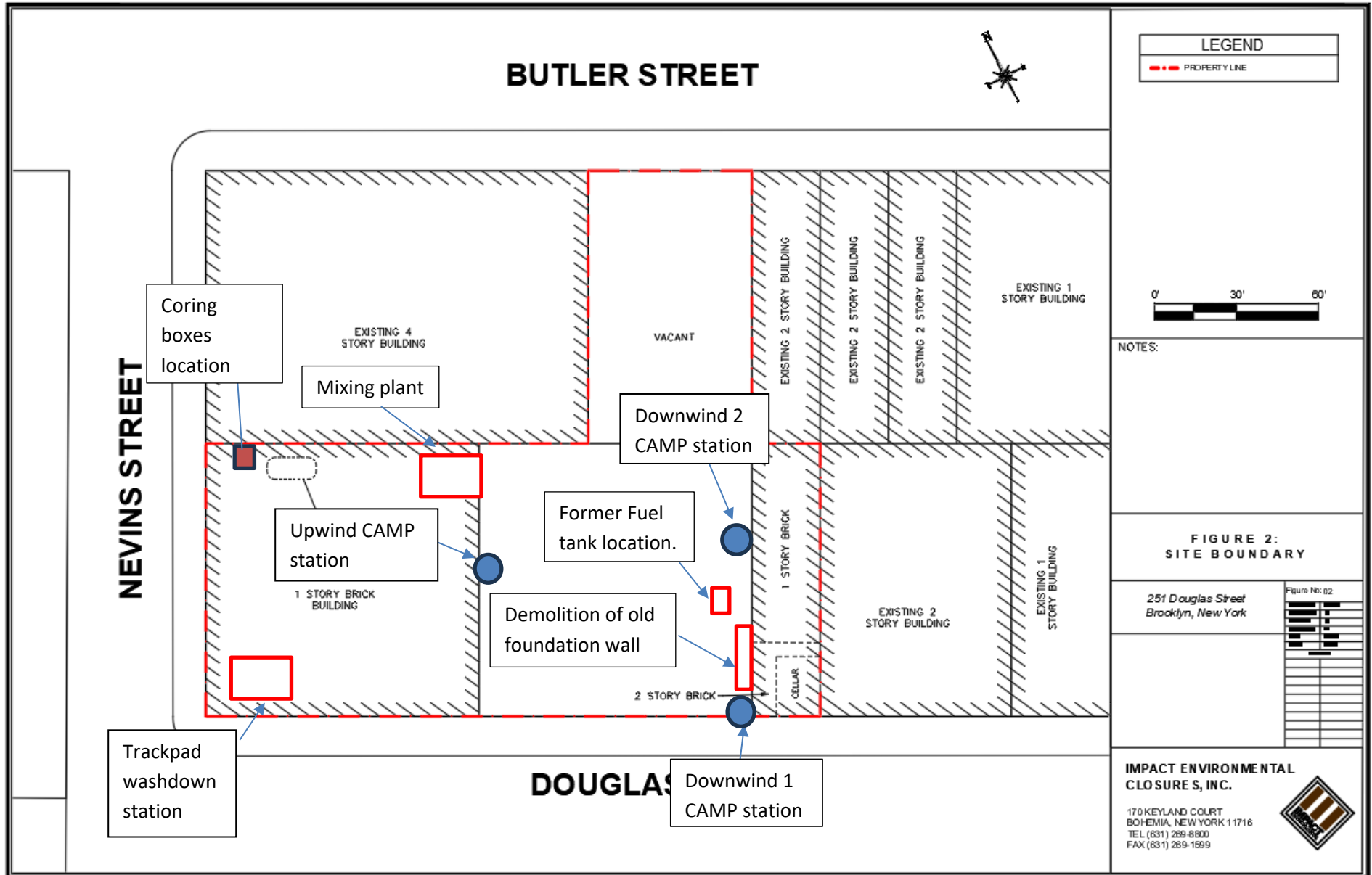
Photo 1-
Representative
view of hand
demolition work
on the western
portion of the
Site.



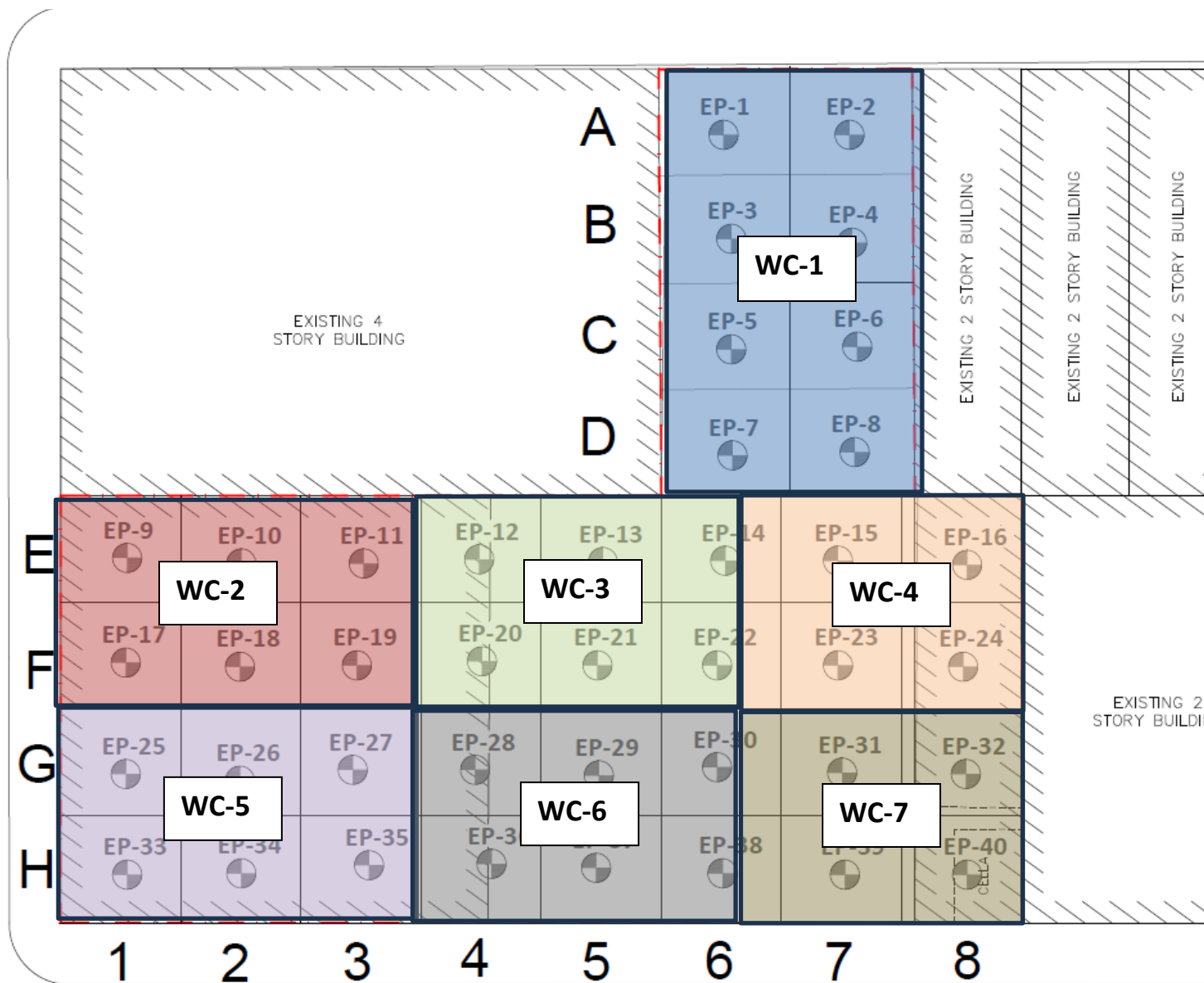
SITE PLANS

251 DOUGLASS STREET, BROOKLYN, NY





NEVINS STREET





IMPACT ENVIRONMENTAL

170 Keyland Court | Bohemia | NY | 11716 | 631.269.8800

welcome to solid ground...

www.impactenvironmental.com

UPWIND CAMP READINGS

251 DOUGLASS STREET, BROOKLYN, NY

Instrument Name	DustTrak DRX
Model Number	8533
Serial Number	8533181208
Firmware Version	3.1
Calibration Date	6/1/2023
Test Name	MANUAL_002
Test Start Time	8:28:42 AM
Test Start Date	1/8/2024
Test Length [D:H:M]	0:06:52
Test Interval [M:S]	1:00
PM1 Average [mg/m3]	0.007
PM1 Minimum [mg/m3]	0.003
PM1 Maximum [mg/m3]	0.018
PM1 TWA [mg/m3]	0.006
Photometric User Cal	1
Size Correction User Cal	1
Flow User Cal	0
Errors	
Number of Samples	412

Elapsed Time [s]	PM1 [mg/m3]	Alarms	Errors
8:28	0.011		
8:29	0.013		
8:30	0.012		
8:31	0.013		
8:32	0.012		
8:33	0.012		
8:34	0.012		
8:35	0.011		
8:36	0.011		
8:37	0.011		
8:38	0.01		
8:39	0.012		
8:40	0.011		
8:41	0.01		
8:42	0.009		
8:43	0.009		
8:44	0.01		
8:45	0.009		
8:46	0.01		
8:47	0.01		
8:48	0.01		
8:49	0.009		
8:50	0.009		
8:51	0.01		
8:52	0.01		
8:53	0.01		

8:54	0.01
8:55	0.009
8:56	0.009
8:57	0.009
8:58	0.009
8:59	0.01
9:00	0.01
9:01	0.011
9:02	0.01
9:03	0.009
9:04	0.01
9:05	0.011
9:06	0.01
9:07	0.014
9:08	0.01
9:09	0.013
9:10	0.01
9:11	0.013
9:12	0.009
9:13	0.009
9:14	0.011
9:15	0.009
9:16	0.009
9:17	0.009
9:18	0.009
9:19	0.011
9:20	0.018
9:21	0.015
9:22	0.016
9:23	0.012
9:24	0.011
9:25	0.011
9:26	0.011
9:27	0.01
9:28	0.015
9:29	0.01
9:30	0.011
9:31	0.01
9:32	0.009
9:33	0.009
9:34	0.009
9:35	0.009
9:36	0.012
9:37	0.01
9:38	0.008
9:39	0.007
9:40	0.007

9:41	0.009
9:42	0.007
9:43	0.01
9:44	0.008
9:45	0.008
9:46	0.008
9:47	0.008
9:48	0.008
9:49	0.008
9:50	0.007
9:51	0.007
9:52	0.008
9:53	0.007
9:54	0.007
9:55	0.007
9:56	0.007
9:57	0.009
9:58	0.009
9:59	0.008
10:00	0.01
10:01	0.008
10:02	0.009
10:03	0.007
10:04	0.007
10:05	0.015
10:06	0.008
10:07	0.008
10:08	0.007
10:09	0.009
10:10	0.008
10:11	0.008
10:12	0.007
10:13	0.007
10:14	0.006
10:15	0.006
10:16	0.007
10:17	0.007
10:18	0.007
10:19	0.007
10:20	0.007
10:21	0.007
10:22	0.007
10:23	0.007
10:24	0.008
10:25	0.008
10:26	0.011
10:27	0.009

10:28	0.008
10:29	0.009
10:30	0.009
10:31	0.009
10:32	0.009
10:33	0.016
10:34	0.01
10:35	0.008
10:36	0.009
10:37	0.008
10:38	0.008
10:39	0.008
10:40	0.007
10:41	0.009
10:42	0.007
10:43	0.008
10:44	0.007
10:45	0.008
10:46	0.008
10:47	0.008
10:48	0.008
10:49	0.01
10:50	0.008
10:51	0.008
10:52	0.007
10:53	0.007
10:54	0.006
10:55	0.006
10:56	0.006
10:57	0.005
10:58	0.009
10:59	0.006
11:00	0.006
11:01	0.007
11:02	0.007
11:03	0.008
11:04	0.006
11:05	0.005
11:06	0.006
11:07	0.005
11:08	0.005
11:09	0.006
11:10	0.005
11:11	0.005
11:12	0.006
11:13	0.005
11:14	0.005

11:15	0.009
11:16	0.01
11:17	0.007
11:18	0.006
11:19	0.005
11:20	0.005
11:21	0.005
11:22	0.009
11:23	0.007
11:24	0.007
11:25	0.006
11:26	0.005
11:27	0.005
11:28	0.006
11:29	0.007
11:30	0.004
11:31	0.004
11:32	0.003
11:33	0.004
11:34	0.006
11:35	0.005
11:36	0.004
11:37	0.005
11:38	0.004
11:39	0.005
11:40	0.004
11:41	0.004
11:42	0.004
11:43	0.006
11:44	0.005
11:45	0.005
11:46	0.007
11:47	0.005
11:48	0.006
11:49	0.007
11:50	0.006
11:51	0.006
11:52	0.005
11:53	0.004
11:54	0.004
11:55	0.004
11:56	0.004
11:57	0.004
11:58	0.006
11:59	0.005
12:00	0.006
12:01	0.005

12:02	0.004
12:03	0.004
12:04	0.004
12:05	0.005
12:06	0.004
12:07	0.006
12:08	0.006
12:09	0.008
12:10	0.007
12:11	0.005
12:12	0.01
12:13	0.006
12:14	0.006
12:15	0.006
12:16	0.008
12:17	0.004
12:18	0.005
12:19	0.004
12:20	0.005
12:21	0.007
12:22	0.004
12:23	0.004
12:24	0.005
12:25	0.004
12:26	0.004
12:27	0.005
12:28	0.004
12:29	0.004
12:30	0.004
12:31	0.004
12:32	0.004
12:33	0.004
12:34	0.005
12:35	0.004
12:36	0.004
12:37	0.005
12:38	0.004
12:39	0.004
12:40	0.004
12:41	0.004
12:42	0.005
12:43	0.004
12:44	0.004
12:45	0.004
12:46	0.004
12:47	0.004
12:48	0.005

12:49	0.004
12:50	0.005
12:51	0.006
12:52	0.006
12:53	0.004
12:54	0.004
12:55	0.003
12:56	0.004
12:57	0.004
12:58	0.005
12:59	0.006
13:00	0.005
13:01	0.004
13:02	0.005
13:03	0.004
13:04	0.004
13:05	0.005
13:06	0.005
13:07	0.004
13:08	0.004
13:09	0.004
13:10	0.004
13:11	0.004
13:12	0.005
13:13	0.005
13:14	0.004
13:15	0.004
13:16	0.005
13:17	0.004
13:18	0.004
13:19	0.004
13:20	0.006
13:21	0.005
13:22	0.006
13:23	0.005
13:24	0.005
13:25	0.006
13:26	0.004
13:27	0.005
13:28	0.005
13:29	0.005
13:30	0.005
13:31	0.005
13:32	0.01
13:33	0.006
13:34	0.006
13:35	0.006

13:36	0.008
13:37	0.008
13:38	0.009
13:39	0.005
13:40	0.005
13:41	0.006
13:42	0.005
13:43	0.006
13:44	0.007
13:45	0.005
13:46	0.004
13:47	0.004
13:48	0.006
13:49	0.006
13:50	0.006
13:51	0.006
13:52	0.006
13:53	0.006
13:54	0.005
13:55	0.006
13:56	0.007
13:57	0.006
13:58	0.007
13:59	0.008
14:00	0.007
14:01	0.005
14:02	0.005
14:03	0.006
14:04	0.006
14:05	0.008
14:06	0.007
14:07	0.009
14:08	0.006
14:09	0.005
14:10	0.006
14:11	0.006
14:12	0.006
14:13	0.004
14:14	0.004
14:15	0.003
14:16	0.004
14:17	0.009
14:18	0.01
14:19	0.007
14:20	0.006
14:21	0.004
14:22	0.007

14:23	0.008
14:24	0.007
14:25	0.007
14:26	0.008
14:27	0.009
14:28	0.008
14:29	0.009
14:30	0.005
14:31	0.005
14:32	0.008
14:33	0.01
14:34	0.007
14:35	0.005
14:36	0.005
14:37	0.007
14:38	0.006
14:39	0.007
14:40	0.006
14:41	0.009
14:42	0.009
14:43	0.007
14:44	0.007
14:45	0.008
14:46	0.007
14:47	0.008
14:48	0.008
14:49	0.009
14:50	0.01
14:51	0.009
14:52	0.008
14:53	0.007
14:54	0.007
14:55	0.006
14:56	0.007
14:57	0.007
14:58	0.006
14:59	0.006
15:00	0.009
15:01	0.006
15:02	0.006
15:03	0.007
15:04	0.006
15:05	0.008
15:06	0.01
15:07	0.009
15:08	0.011
15:09	0.011

15:10	0.008
15:11	0.009
15:12	0.007
15:13	0.007
15:14	0.009
15:15	0.01
15:16	0.007
15:17	0.009
15:18	0.008
15:19	0.009

Device Serial No	Log Time	Log Type	Sensor 1 Type	Sensor 1 Serial Number	Sensor 1 Status	Sensor 1 Gas Reading
592-929156	1/8/2024 16:43	Readings	PID	SC23030065D3	Normal	0.3
592-929156	1/8/2024 16:42	Readings	PID	SC23030065D3	Normal	0.3
592-929156	1/8/2024 16:41	Readings	PID	SC23030065D3	Normal	0.3
592-929156	1/8/2024 16:40	Readings	PID	SC23030065D3	Normal	0.3
592-929156	1/8/2024 16:39	Readings	PID	SC23030065D3	Normal	0.3
592-929156	1/8/2024 16:38	Readings	PID	SC23030065D3	Normal	0.3
592-929156	1/8/2024 16:37	Readings	PID	SC23030065D3	Normal	0.3
592-929156	1/8/2024 16:36	Readings	PID	SC23030065D3	Normal	0.3
592-929156	1/8/2024 16:35	Readings	PID	SC23030065D3	Normal	0.3
592-929156	1/8/2024 16:34	Readings	PID	SC23030065D3	Normal	0.3
592-929156	1/8/2024 16:33	Readings	PID	SC23030065D3	Normal	0.3
592-929156	1/8/2024 16:32	Readings	PID	SC23030065D3	Normal	0.3
592-929156	1/8/2024 16:31	Readings	PID	SC23030065D3	Normal	0.3
592-929156	1/8/2024 16:30	Readings	PID	SC23030065D3	Normal	0.3
592-929156	1/8/2024 16:29	Readings	PID	SC23030065D3	Normal	0.2
592-929156	1/8/2024 16:28	Readings	PID	SC23030065D3	Normal	0.3
592-929156	1/8/2024 16:27	Readings	PID	SC23030065D3	Normal	0.3
592-929156	1/8/2024 16:26	Readings	PID	SC23030065D3	Normal	0.3
592-929156	1/8/2024 16:25	Readings	PID	SC23030065D3	Normal	0.3
592-929156	1/8/2024 16:24	Readings	PID	SC23030065D3	Normal	0.3
592-929156	1/8/2024 16:23	Readings	PID	SC23030065D3	Normal	0.3
592-929156	1/8/2024 16:22	Readings	PID	SC23030065D3	Normal	0.2
592-929156	1/8/2024 16:21	Readings	PID	SC23030065D3	Normal	0.3
592-929156	1/8/2024 16:20	Readings	PID	SC23030065D3	Normal	0.2
592-929156	1/8/2024 16:19	Readings	PID	SC23030065D3	Normal	0.3
592-929156	1/8/2024 16:18	Readings	PID	SC23030065D3	Normal	0.3
592-929156	1/8/2024 16:17	Readings	PID	SC23030065D3	Normal	0.3
592-929156	1/8/2024 16:16	Readings	PID	SC23030065D3	Normal	0.3
592-929156	1/8/2024 16:15	Readings	PID	SC23030065D3	Normal	0.3
592-929156	1/8/2024 16:14	Readings	PID	SC23030065D3	Normal	0.3
592-929156	1/8/2024 16:13	Readings	PID	SC23030065D3	Normal	0.3
592-929156	1/8/2024 16:12	Readings	PID	SC23030065D3	Normal	0.3
592-929156	1/8/2024 16:11	Readings	PID	SC23030065D3	Normal	0.3
592-929156	1/8/2024 16:10	Readings	PID	SC23030065D3	Normal	0.3

592-929156	1/8/2024 14:59	Readings	PID	SC23030065D3	Normal	0.2
592-929156	1/8/2024 14:58	Readings	PID	SC23030065D3	Normal	0.2
592-929156	1/8/2024 14:57	Readings	PID	SC23030065D3	Normal	0.2
592-929156	1/8/2024 14:56	Readings	PID	SC23030065D3	Normal	0.3
592-929156	1/8/2024 14:55	Readings	PID	SC23030065D3	Normal	0.2
592-929156	1/8/2024 14:54	Readings	PID	SC23030065D3	Normal	0.2
592-929156	1/8/2024 14:53	Readings	PID	SC23030065D3	Normal	0.2
592-929156	1/8/2024 14:52	Readings	PID	SC23030065D3	Normal	0.2
592-929156	1/8/2024 14:51	Readings	PID	SC23030065D3	Normal	0.2
592-929156	1/8/2024 14:50	Readings	PID	SC23030065D3	Normal	0.3
592-929156	1/8/2024 14:49	Readings	PID	SC23030065D3	Normal	0.3
592-929156	1/8/2024 14:48	Readings	PID	SC23030065D3	Normal	0.2
592-929156	1/8/2024 14:47	Readings	PID	SC23030065D3	Normal	0.2
592-929156	1/8/2024 14:46	Readings	PID	SC23030065D3	Normal	0.2
592-929156	1/8/2024 14:45	Readings	PID	SC23030065D3	Normal	0.2
592-929156	1/8/2024 14:44	Readings	PID	SC23030065D3	Normal	0.3
592-929156	1/8/2024 14:43	Readings	PID	SC23030065D3	Normal	0.2
592-929156	1/8/2024 14:42	Readings	PID	SC23030065D3	Normal	0.2
592-929156	1/8/2024 14:41	Readings	PID	SC23030065D3	Normal	0.3
592-929156	1/8/2024 14:40	Readings	PID	SC23030065D3	Normal	0.5
592-929156	1/8/2024 14:39	Readings	PID	SC23030065D3	Normal	0.2
592-929156	1/8/2024 14:38	Readings	PID	SC23030065D3	Normal	0.3
592-929156	1/8/2024 14:37	Readings	PID	SC23030065D3	Normal	0.3
592-929156	1/8/2024 14:36	Readings	PID	SC23030065D3	Normal	0.3
592-929156	1/8/2024 14:35	Readings	PID	SC23030065D3	Normal	0.2
592-929156	1/8/2024 14:34	Readings	PID	SC23030065D3	Normal	0.2
592-929156	1/8/2024 14:33	Readings	PID	SC23030065D3	Normal	0.2
592-929156	1/8/2024 14:32	Readings	PID	SC23030065D3	Normal	0.2
592-929156	1/8/2024 14:31	Readings	PID	SC23030065D3	Normal	0.2
592-929156	1/8/2024 14:30	Readings	PID	SC23030065D3	Normal	0.2
592-929156	1/8/2024 14:29	Readings	PID	SC23030065D3	Normal	0.3
592-929156	1/8/2024 14:28	Readings	PID	SC23030065D3	Normal	0.2
592-929156	1/8/2024 14:27	Readings	PID	SC23030065D3	Normal	0.2
592-929156	1/8/2024 14:26	Readings	PID	SC23030065D3	Normal	0.2
592-929156	1/8/2024 14:25	Readings	PID	SC23030065D3	Normal	0.2

592-929156	1/8/2024 10:19	Readings	PID	SC23030065D3	Normal	0
592-929156	1/8/2024 10:18	Readings	PID	SC23030065D3	Normal	0
592-929156	1/8/2024 10:17	Readings	PID	SC23030065D3	Normal	0
592-929156	1/8/2024 10:16	Readings	PID	SC23030065D3	Normal	0
592-929156	1/8/2024 10:15	Readings	PID	SC23030065D3	Normal	0
592-929156	1/8/2024 10:14	Readings	PID	SC23030065D3	Normal	0
592-929156	1/8/2024 10:13	Readings	PID	SC23030065D3	Normal	0
592-929156	1/8/2024 10:12	Readings	PID	SC23030065D3	Normal	0
592-929156	1/8/2024 10:11	Readings	PID	SC23030065D3	Normal	0
592-929156	1/8/2024 10:10	Readings	PID	SC23030065D3	Normal	0
592-929156	1/8/2024 10:09	Readings	PID	SC23030065D3	Normal	0
592-929156	1/8/2024 10:08	Readings	PID	SC23030065D3	Normal	0
592-929156	1/8/2024 10:07	Readings	PID	SC23030065D3	Normal	0
592-929156	1/8/2024 10:06	Readings	PID	SC23030065D3	Normal	0
592-929156	1/8/2024 10:05	Readings	PID	SC23030065D3	Normal	0
592-929156	1/8/2024 10:04	Readings	PID	SC23030065D3	Normal	0
592-929156	1/8/2024 10:03	Readings	PID	SC23030065D3	Normal	0
592-929156	1/8/2024 10:02	Readings	PID	SC23030065D3	Normal	0
592-929156	1/8/2024 10:01	Readings	PID	SC23030065D3	Normal	0
592-929156	1/8/2024 10:00	Readings	PID	SC23030065D3	Normal	0
592-929156	1/8/2024 9:59	Readings	PID	SC23030065D3	Normal	0
592-929156	1/8/2024 9:58	Readings	PID	SC23030065D3	Normal	0
592-929156	1/8/2024 9:57	Readings	PID	SC23030065D3	Normal	0
592-929156	1/8/2024 9:56	Readings	PID	SC23030065D3	Normal	0
592-929156	1/8/2024 9:55	Readings	PID	SC23030065D3	Normal	0
592-929156	1/8/2024 9:54	CONFIG	PID	SC23030065D3		

DOWNWIND CAMP READINGS

251 DOUGLASS STREET, BROOKLYN, NY



Instrument Name	DustTrak DRX
Model Number	8533
Serial Number	8533181207
Firmware Version	3.1
Calibration Date	6/1/2023
Test Name	MANUAL_003
Test Start Time	8:17:26 AM
Test Start Date	1/8/2024
Test Length [D:H:M]	0:06:59
Test Interval [M:S]	1:00
PM1 Average [mg/m3]	0.014
PM1 Minimum [mg/m3]	0.008
PM1 Maximum [mg/m3]	0.094
PM1 TWA [mg/m3]	0.012
Photometric User Cal	1
Size Correction User Cal	1
Flow User Cal	0
Errors	
Number of Samples	419

Elapsed Time [s]	PM1 [mg/m3]	Alarms	Errors
8:17	0.014		
8:18	0.014		
8:19	0.013		
8:20	0.013		
8:21	0.014		
8:22	0.014		
8:23	0.014		
8:24	0.014		
8:25	0.014		
8:26	0.014		
8:27	0.014		
8:28	0.014		
8:29	0.014		
8:30	0.014		
8:31	0.014		
8:32	0.014		
8:33	0.014		
8:34	0.014		
8:35	0.014		
8:36	0.013		
8:37	0.013		
8:38	0.014		
8:39	0.014		
8:40	0.015		
8:41	0.014		
8:42	0.013		

8:43	0.013
8:44	0.013
8:45	0.013
8:46	0.013
8:47	0.013
8:48	0.013
8:49	0.013
8:50	0.013
8:51	0.013
8:52	0.013
8:53	0.013
8:54	0.013
8:55	0.012
8:56	0.012
8:57	0.012
8:58	0.012
8:59	0.012
9:00	0.012
9:01	0.012
9:02	0.02
9:03	0.012
9:04	0.013
9:05	0.013
9:06	0.017
9:07	0.013
9:08	0.014
9:09	0.013
9:10	0.012
9:11	0.012
9:12	0.012
9:13	0.012
9:14	0.012
9:15	0.012
9:16	0.012
9:17	0.013
9:18	0.013
9:19	0.013
9:20	0.014
9:21	0.016
9:22	0.017
9:23	0.015
9:24	0.014
9:25	0.014
9:26	0.014
9:27	0.013
9:28	0.012
9:29	0.014

9:30	0.013
9:31	0.012
9:32	0.013
9:33	0.013
9:34	0.012
9:35	0.013
9:36	0.013
9:37	0.014
9:38	0.025
9:39	0.014
9:40	0.012
9:41	0.011
9:42	0.012
9:43	0.011
9:44	0.012
9:45	0.012
9:46	0.012
9:47	0.012
9:48	0.012
9:49	0.012
9:50	0.015
9:51	0.012
9:52	0.011
9:53	0.011
9:54	0.011
9:55	0.011
9:56	0.011
9:57	0.011
9:58	0.012
9:59	0.013
10:00	0.012
10:01	0.012
10:02	0.011
10:03	0.012
10:04	0.012
10:05	0.011
10:06	0.014
10:07	0.028
10:08	0.013
10:09	0.014
10:10	0.019
10:11	0.016
10:12	0.015
10:13	0.013
10:14	0.014
10:15	0.012
10:16	0.011

10:17	0.014
10:18	0.015
10:19	0.013
10:20	0.014
10:21	0.02
10:22	0.013
10:23	0.011
10:24	0.012
10:25	0.012
10:26	0.013
10:27	0.016
10:28	0.015
10:29	0.013
10:30	0.014
10:31	0.013
10:32	0.013
10:33	0.015
10:34	0.018
10:35	0.013
10:36	0.011
10:37	0.012
10:38	0.012
10:39	0.011
10:40	0.012
10:41	0.011
10:42	0.012
10:43	0.015
10:44	0.011
10:45	0.011
10:46	0.014
10:47	0.016
10:48	0.012
10:49	0.011
10:50	0.012
10:51	0.011
10:52	0.011
10:53	0.015
10:54	0.013
10:55	0.011
10:56	0.013
10:57	0.009
10:58	0.013
10:59	0.012
11:00	0.011
11:01	0.011
11:02	0.011
11:03	0.01

11:04	0.011
11:05	0.013
11:06	0.015
11:07	0.012
11:08	0.009
11:09	0.01
11:10	0.01
11:11	0.009
11:12	0.01
11:13	0.01
11:14	0.01
11:15	0.009
11:16	0.009
11:17	0.01
11:18	0.011
11:19	0.01
11:20	0.009
11:21	0.01
11:22	0.01
11:23	0.014
11:24	0.012
11:25	0.015
11:26	0.012
11:27	0.015
11:28	0.016
11:29	0.014
11:30	0.015
11:31	0.013
11:32	0.008
11:33	0.008
11:34	0.009
11:35	0.016
11:36	0.017
11:37	0.009
11:38	0.008
11:39	0.023
11:40	0.009
11:41	0.012
11:42	0.012
11:43	0.009
11:44	0.01
11:45	0.009
11:46	0.011
11:47	0.01
11:48	0.009
11:49	0.01
11:50	0.012

11:51	0.011
11:52	0.01
11:53	0.015
11:54	0.011
11:55	0.014
11:56	0.014
11:57	0.011
11:58	0.017
11:59	0.023
12:00	0.014
12:01	0.018
12:02	0.01
12:03	0.02
12:04	0.01
12:05	0.009
12:06	0.008
12:07	0.008
12:08	0.01
12:09	0.011
12:10	0.01
12:11	0.009
12:12	0.009
12:13	0.009
12:14	0.009
12:15	0.009
12:16	0.009
12:17	0.009
12:18	0.008
12:19	0.011
12:20	0.013
12:21	0.027
12:22	0.018
12:23	0.01
12:24	0.01
12:25	0.035
12:26	0.022
12:27	0.027
12:28	0.055
12:29	0.017
12:30	0.011
12:31	0.017
12:32	0.013
12:33	0.011
12:34	0.017
12:35	0.014
12:36	0.008
12:37	0.016

12:38	0.025
12:39	0.01
12:40	0.014
12:41	0.029
12:42	0.028
12:43	0.022
12:44	0.026
12:45	0.033
12:46	0.016
12:47	0.013
12:48	0.02
12:49	0.039
12:50	0.017
12:51	0.094
12:52	0.028
12:53	0.011
12:54	0.013
12:55	0.015
12:56	0.01
12:57	0.011
12:58	0.01
12:59	0.013
13:00	0.01
13:01	0.018
13:02	0.01
13:03	0.009
13:04	0.019
13:05	0.014
13:06	0.013
13:07	0.014
13:08	0.01
13:09	0.021
13:10	0.022
13:11	0.046
13:12	0.018
13:13	0.01
13:14	0.031
13:15	0.016
13:16	0.013
13:17	0.013
13:18	0.013
13:19	0.014
13:20	0.015
13:21	0.016
13:22	0.012
13:23	0.01
13:24	0.01

13:25	0.011
13:26	0.02
13:27	0.016
13:28	0.019
13:29	0.012
13:30	0.009
13:31	0.012
13:32	0.009
13:33	0.013
13:34	0.009
13:35	0.009
13:36	0.018
13:37	0.033
13:38	0.019
13:39	0.011
13:40	0.009
13:41	0.01
13:42	0.011
13:43	0.012
13:44	0.009
13:45	0.013
13:46	0.009
13:47	0.008
13:48	0.01
13:49	0.011
13:50	0.011
13:51	0.017
13:52	0.023
13:53	0.025
13:54	0.02
13:55	0.014
13:56	0.034
13:57	0.015
13:58	0.012
13:59	0.016
14:00	0.017
14:01	0.011
14:02	0.034
14:03	0.012
14:04	0.01
14:05	0.012
14:06	0.012
14:07	0.011
14:08	0.017
14:09	0.013
14:10	0.008
14:11	0.015

14:12	0.011
14:13	0.008
14:14	0.008
14:15	0.008
14:16	0.008
14:17	0.025
14:18	0.024
14:19	0.024
14:20	0.021
14:21	0.014
14:22	0.011
14:23	0.011
14:24	0.019
14:25	0.021
14:26	0.031
14:27	0.021
14:28	0.015
14:29	0.014
14:30	0.021
14:31	0.016
14:32	0.013
14:33	0.015
14:34	0.023
14:35	0.036
14:36	0.011
14:37	0.01
14:38	0.012
14:39	0.015
14:40	0.014
14:41	0.014
14:42	0.015
14:43	0.016
14:44	0.011
14:45	0.012
14:46	0.013
14:47	0.011
14:48	0.014
14:49	0.018
14:50	0.014
14:51	0.019
14:52	0.018
14:53	0.021
14:54	0.023
14:55	0.011
14:56	0.009
14:57	0.027
14:58	0.016

14:59	0.032
15:00	0.022
15:01	0.017
15:02	0.019
15:03	0.01
15:04	0.012
15:05	0.01
15:06	0.011
15:07	0.012
15:08	0.011
15:09	0.01
15:10	0.012
15:11	0.012
15:12	0.011
15:13	0.011
15:14	0.01
15:15	0.011

Device Serial No	Log Time	Log Type	Sensor 1 Type	Sensor 1 Serial Number	Sensor 1 Status	Sensor 1 Gas Reading
592-602816	1/8/2024 16:34	Readings	PID	SC23030324C7	Normal	0.3
592-602816	1/8/2024 16:33	Readings	PID	SC23030324C7	Normal	0.3
592-602816	1/8/2024 16:32	Readings	PID	SC23030324C7	Normal	0.3
592-602816	1/8/2024 16:31	Readings	PID	SC23030324C7	Normal	0.3
592-602816	1/8/2024 16:30	Readings	PID	SC23030324C7	Normal	0.3
592-602816	1/8/2024 16:29	Readings	PID	SC23030324C7	Normal	0.3
592-602816	1/8/2024 16:28	Readings	PID	SC23030324C7	Normal	0.3
592-602816	1/8/2024 16:27	Readings	PID	SC23030324C7	Normal	0.3
592-602816	1/8/2024 16:26	Readings	PID	SC23030324C7	Normal	0.3
592-602816	1/8/2024 16:25	Readings	PID	SC23030324C7	Normal	0.3
592-602816	1/8/2024 16:24	Readings	PID	SC23030324C7	Normal	0.3
592-602816	1/8/2024 16:23	Readings	PID	SC23030324C7	Normal	0.3
592-602816	1/8/2024 16:22	Readings	PID	SC23030324C7	Normal	0.3
592-602816	1/8/2024 16:21	Readings	PID	SC23030324C7	Normal	0.3
592-602816	1/8/2024 16:20	Readings	PID	SC23030324C7	Normal	0.3
592-602816	1/8/2024 16:19	Readings	PID	SC23030324C7	Normal	0.3
592-602816	1/8/2024 16:18	Readings	PID	SC23030324C7	Normal	0.3
592-602816	1/8/2024 16:17	Readings	PID	SC23030324C7	Normal	0.3
592-602816	1/8/2024 16:16	Readings	PID	SC23030324C7	Normal	0.3
592-602816	1/8/2024 16:15	Readings	PID	SC23030324C7	Normal	0.3
592-602816	1/8/2024 16:14	Readings	PID	SC23030324C7	Normal	0.3
592-602816	1/8/2024 16:13	Readings	PID	SC23030324C7	Normal	0.4
592-602816	1/8/2024 16:12	Readings	PID	SC23030324C7	Normal	0.4
592-602816	1/8/2024 16:11	Readings	PID	SC23030324C7	Normal	0.3
592-602816	1/8/2024 16:10	Readings	PID	SC23030324C7	Normal	0.3
592-602816	1/8/2024 16:09	Readings	PID	SC23030324C7	Normal	0.3
592-602816	1/8/2024 16:08	Readings	PID	SC23030324C7	Normal	0.3
592-602816	1/8/2024 16:07	Readings	PID	SC23030324C7	Normal	0.3
592-602816	1/8/2024 16:06	Readings	PID	SC23030324C7	Normal	0.3
592-602816	1/8/2024 16:05	Readings	PID	SC23030324C7	Normal	0.3
592-602816	1/8/2024 16:04	Readings	PID	SC23030324C7	Normal	0.3
592-602816	1/8/2024 16:03	Readings	PID	SC23030324C7	Normal	0.3
592-602816	1/8/2024 16:02	Readings	PID	SC23030324C7	Normal	0.3
592-602816	1/8/2024 16:01	Readings	PID	SC23030324C7	Normal	0.3

592-602816	1/8/2024 15:25	Readings	PID	SC23030324C7	Normal	0.4
592-602816	1/8/2024 15:24	Readings	PID	SC23030324C7	Normal	0.5
592-602816	1/8/2024 15:23	Readings	PID	SC23030324C7	Normal	0.4
592-602816	1/8/2024 15:22	Readings	PID	SC23030324C7	Normal	0.3
592-602816	1/8/2024 15:21	Readings	PID	SC23030324C7	Normal	0.4
592-602816	1/8/2024 15:20	Readings	PID	SC23030324C7	Normal	0.5
592-602816	1/8/2024 15:19	Readings	PID	SC23030324C7	Normal	0.5
592-602816	1/8/2024 15:18	Readings	PID	SC23030324C7	Normal	0.5
592-602816	1/8/2024 15:17	Readings	PID	SC23030324C7	Normal	0.3
592-602816	1/8/2024 15:16	Readings	PID	SC23030324C7	Normal	0.3
592-602816	1/8/2024 15:15	Readings	PID	SC23030324C7	Normal	0.4
592-602816	1/8/2024 15:14	Readings	PID	SC23030324C7	Normal	0.4
592-602816	1/8/2024 15:13	Readings	PID	SC23030324C7	Normal	0.5
592-602816	1/8/2024 15:12	Readings	PID	SC23030324C7	Normal	0.4
592-602816	1/8/2024 15:11	Readings	PID	SC23030324C7	Normal	0.4
592-602816	1/8/2024 15:10	Readings	PID	SC23030324C7	Normal	0.3
592-602816	1/8/2024 15:09	Readings	PID	SC23030324C7	Normal	0.3
592-602816	1/8/2024 15:08	Readings	PID	SC23030324C7	Normal	0.3
592-602816	1/8/2024 15:07	Readings	PID	SC23030324C7	Normal	0.3
592-602816	1/8/2024 15:06	Readings	PID	SC23030324C7	Normal	0.3
592-602816	1/8/2024 15:05	Readings	PID	SC23030324C7	Normal	0.3
592-602816	1/8/2024 15:04	Readings	PID	SC23030324C7	Normal	0.4
592-602816	1/8/2024 15:03	Readings	PID	SC23030324C7	Normal	0.4
592-602816	1/8/2024 15:02	Readings	PID	SC23030324C7	Normal	0.4
592-602816	1/8/2024 15:01	Readings	PID	SC23030324C7	Normal	0.5
592-602816	1/8/2024 15:00	Readings	PID	SC23030324C7	Normal	0.5
592-602816	1/8/2024 14:59	Readings	PID	SC23030324C7	Normal	0.4
592-602816	1/8/2024 14:58	Readings	PID	SC23030324C7	Normal	0.4
592-602816	1/8/2024 14:57	Readings	PID	SC23030324C7	Normal	0.4
592-602816	1/8/2024 14:56	Readings	PID	SC23030324C7	Normal	0.4
592-602816	1/8/2024 14:55	Readings	PID	SC23030324C7	Normal	0.3
592-602816	1/8/2024 14:54	Readings	PID	SC23030324C7	Normal	0.3
592-602816	1/8/2024 14:53	Readings	PID	SC23030324C7	Normal	0.3
592-602816	1/8/2024 14:52	Readings	PID	SC23030324C7	Normal	0.3
592-602816	1/8/2024 14:51	Readings	PID	SC23030324C7	Normal	0.3

592-602816	1/8/2024 13:05	Readings	PID	SC23030324C7	Normal	0.4
592-602816	1/8/2024 13:04	Readings	PID	SC23030324C7	Normal	0.4
592-602816	1/8/2024 13:03	Readings	PID	SC23030324C7	Normal	0.4
592-602816	1/8/2024 13:02	Readings	PID	SC23030324C7	Normal	0.4
592-602816	1/8/2024 13:01	Readings	PID	SC23030324C7	Normal	0.4
592-602816	1/8/2024 13:00	Readings	PID	SC23030324C7	Normal	0.4
592-602816	1/8/2024 12:59	Readings	PID	SC23030324C7	Normal	0.4
592-602816	1/8/2024 12:58	Readings	PID	SC23030324C7	Normal	0.4
592-602816	1/8/2024 12:57	Readings	PID	SC23030324C7	Normal	0.4
592-602816	1/8/2024 12:56	Readings	PID	SC23030324C7	Normal	0.4
592-602816	1/8/2024 12:55	Readings	PID	SC23030324C7	Normal	0.4
592-602816	1/8/2024 12:54	Readings	PID	SC23030324C7	Normal	0.5
592-602816	1/8/2024 12:53	Readings	PID	SC23030324C7	Normal	0.5
592-602816	1/8/2024 12:52	Readings	PID	SC23030324C7	Normal	0.5
592-602816	1/8/2024 12:51	Readings	PID	SC23030324C7	Normal	0.6
592-602816	1/8/2024 12:50	Readings	PID	SC23030324C7	Normal	0.6
592-602816	1/8/2024 12:49	Readings	PID	SC23030324C7	Normal	0.5
592-602816	1/8/2024 12:48	Readings	PID	SC23030324C7	Normal	0.7
592-602816	1/8/2024 12:47	Readings	PID	SC23030324C7	Normal	0.6
592-602816	1/8/2024 12:46	Readings	PID	SC23030324C7	Normal	0.4
592-602816	1/8/2024 12:45	Readings	PID	SC23030324C7	Normal	0.5
592-602816	1/8/2024 12:44	Readings	PID	SC23030324C7	Normal	0.4
592-602816	1/8/2024 12:43	Readings	PID	SC23030324C7	Normal	0.4
592-602816	1/8/2024 12:42	Readings	PID	SC23030324C7	Normal	0.4
592-602816	1/8/2024 12:41	Readings	PID	SC23030324C7	Normal	0.4
592-602816	1/8/2024 12:40	Readings	PID	SC23030324C7	Normal	0.4
592-602816	1/8/2024 12:39	Readings	PID	SC23030324C7	Normal	0.4
592-602816	1/8/2024 12:38	Readings	PID	SC23030324C7	Normal	0.4
592-602816	1/8/2024 12:37	Readings	PID	SC23030324C7	Normal	0.4
592-602816	1/8/2024 12:36	Readings	PID	SC23030324C7	Normal	0.4
592-602816	1/8/2024 12:35	Readings	PID	SC23030324C7	Normal	0.3
592-602816	1/8/2024 12:34	Readings	PID	SC23030324C7	Normal	0.3
592-602816	1/8/2024 12:33	Readings	PID	SC23030324C7	Normal	0.4
592-602816	1/8/2024 12:32	Readings	PID	SC23030324C7	Normal	0.3
592-602816	1/8/2024 12:31	Readings	PID	SC23030324C7	Normal	0.3

592-602816	1/8/2024 10:10	Readings	PID	SC23030324C7	Normal	0.1
592-602816	1/8/2024 10:09	Readings	PID	SC23030324C7	Normal	0.1
592-602816	1/8/2024 10:08	Readings	PID	SC23030324C7	Normal	0.1
592-602816	1/8/2024 10:07	Readings	PID	SC23030324C7	Normal	0.1
592-602816	1/8/2024 10:06	Readings	PID	SC23030324C7	Normal	0.1
592-602816	1/8/2024 10:05	Readings	PID	SC23030324C7	Normal	0.1
592-602816	1/8/2024 10:04	Readings	PID	SC23030324C7	Normal	0.1
592-602816	1/8/2024 10:03	Readings	PID	SC23030324C7	Normal	0.1
592-602816	1/8/2024 10:02	Readings	PID	SC23030324C7	Normal	0.1
592-602816	1/8/2024 10:01	Readings	PID	SC23030324C7	Normal	0.1
592-602816	1/8/2024 10:00	Readings	PID	SC23030324C7	Normal	0
592-602816	1/8/2024 9:59	Readings	PID	SC23030324C7	Normal	0
592-602816	1/8/2024 9:58	Readings	PID	SC23030324C7	Normal	0
592-602816	1/8/2024 9:57	Readings	PID	SC23030324C7	Normal	0
592-602816	1/8/2024 9:56	Readings	PID	SC23030324C7	Normal	0
592-602816	1/8/2024 9:55	Readings	PID	SC23030324C7	Normal	0
592-602816	1/8/2024 9:54	Readings	PID	SC23030324C7	Normal	0
592-602816	1/8/2024 9:53	Readings	PID	SC23030324C7	Normal	0
592-602816	1/8/2024 9:52	Readings	PID	SC23030324C7	Normal	0
592-602816	1/8/2024 9:51	Readings	PID	SC23030324C7	Normal	0
592-602816	1/8/2024 9:50	Readings	PID	SC23030324C7	Normal	0
592-602816	1/8/2024 9:49	Readings	PID	SC23030324C7	Normal	0
592-602816	1/8/2024 9:48	Readings	PID	SC23030324C7	Normal	0
592-602816	1/8/2024 9:47	Readings	PID	SC23030324C7	Normal	0
592-602816	1/8/2024 9:46	Readings	PID	SC23030324C7	Normal	0
592-602816	1/8/2024 9:45	Readings	PID	SC23030324C7	Normal	0
592-602816	1/8/2024 9:44	Readings	PID	SC23030324C7	Normal	0
592-602816	1/8/2024 9:43	Readings	PID	SC23030324C7	Normal	0
592-602816	1/8/2024 9:42	Readings	PID	SC23030324C7	Normal	0
592-602816	1/8/2024 9:41	Readings	PID	SC23030324C7	Normal	0
592-602816	1/8/2024 9:40	Readings	PID	SC23030324C7	Normal	0
592-602816	1/8/2024 9:39	Readings	PID	SC23030324C7	Normal	0
592-602816	1/8/2024 9:38	Readings	PID	SC23030324C7	Normal	0
592-602816	1/8/2024 9:37	Readings	PID	SC23030324C7	Normal	0
592-602816	1/8/2024 9:36	CONFIG	PID	SC23030324C7		

Instrument Name	DustTrak DRX
Model Number	8533
Serial Number	8533181205
Firmware Version	3.1
Calibration Date	5/31/2023
Test Name	MANUAL_002
Test Start Time	8:21:00 AM
Test Start Date	1/8/2024
Test Length [D:H:M]	0:06:48
Test Interval [M:S]	1:00
PM1 Average [mg/m3]	0.01
PM1 Minimum [mg/m3]	0.006
PM1 Maximum [mg/m3]	0.019
PM1 TWA [mg/m3]	0.009
Photometric User Cal	1
Size Correction User Cal	1
Flow User Cal	0
Errors	
Number of Samples	408

Elapsed Time [s]	PM1 [mg/m3]	Alarms	Errors
8:21	0.018		
8:22	0.014		
8:23	0.014		
8:24	0.014		
8:25	0.015		
8:26	0.014		
8:27	0.014		
8:28	0.014		
8:29	0.013		
8:30	0.014		
8:31	0.014		
8:32	0.013		
8:33	0.012		
8:34	0.013		
8:35	0.013		
8:36	0.013		
8:37	0.013		
8:38	0.013		
8:39	0.012		
8:40	0.012		
8:41	0.012		
8:42	0.012		
8:43	0.012		
8:44	0.011		
8:45	0.011		
8:46	0.012		

8:47	0.011
8:48	0.011
8:49	0.011
8:50	0.011
8:51	0.012
8:52	0.011
8:53	0.011
8:54	0.011
8:55	0.011
8:56	0.011
8:57	0.011
8:58	0.011
8:59	0.011
9:00	0.011
9:01	0.011
9:02	0.011
9:03	0.012
9:04	0.012
9:05	0.013
9:06	0.012
9:07	0.011
9:08	0.011
9:09	0.011
9:10	0.01
9:11	0.01
9:12	0.011
9:13	0.011
9:14	0.011
9:15	0.011
9:16	0.012
9:17	0.012
9:18	0.014
9:19	0.014
9:20	0.013
9:21	0.013
9:22	0.012
9:23	0.013
9:24	0.012
9:25	0.011
9:26	0.011
9:27	0.012
9:28	0.011
9:29	0.011
9:30	0.011
9:31	0.011
9:32	0.011
9:33	0.011

9:34	0.013
9:35	0.012
9:36	0.011
9:37	0.01
9:38	0.01
9:39	0.01
9:40	0.011
9:41	0.01
9:42	0.011
9:43	0.01
9:44	0.01
9:45	0.01
9:46	0.01
9:47	0.01
9:48	0.01
9:49	0.01
9:50	0.01
9:51	0.011
9:52	0.01
9:53	0.01
9:54	0.01
9:55	0.011
9:56	0.011
9:57	0.011
9:58	0.01
9:59	0.01
10:00	0.011
10:01	0.011
10:02	0.01
10:03	0.012
10:04	0.011
10:05	0.012
10:06	0.012
10:07	0.011
10:08	0.012
10:09	0.01
10:10	0.011
10:11	0.01
10:12	0.015
10:13	0.009
10:14	0.01
10:15	0.01
10:16	0.009
10:17	0.009
10:18	0.01
10:19	0.009
10:20	0.009

10:21	0.01
10:22	0.01
10:23	0.011
10:24	0.011
10:25	0.011
10:26	0.011
10:27	0.013
10:28	0.011
10:29	0.011
10:30	0.013
10:31	0.017
10:32	0.012
10:33	0.011
10:34	0.011
10:35	0.011
10:36	0.01
10:37	0.012
10:38	0.01
10:39	0.012
10:40	0.011
10:41	0.01
10:42	0.009
10:43	0.01
10:44	0.008
10:45	0.01
10:46	0.009
10:47	0.01
10:48	0.01
10:49	0.01
10:50	0.011
10:51	0.01
10:52	0.011
10:53	0.011
10:54	0.009
10:55	0.008
10:56	0.009
10:57	0.009
10:58	0.012
10:59	0.01
11:00	0.009
11:01	0.01
11:02	0.009
11:03	0.016
11:04	0.012
11:05	0.011
11:06	0.009
11:07	0.01

11:08	0.013
11:09	0.011
11:10	0.008
11:11	0.007
11:12	0.007
11:13	0.011
11:14	0.008
11:15	0.009
11:16	0.008
11:17	0.01
11:18	0.011
11:19	0.009
11:20	0.012
11:21	0.014
11:22	0.01
11:23	0.011
11:24	0.011
11:25	0.013
11:26	0.011
11:27	0.013
11:28	0.008
11:29	0.008
11:30	0.012
11:31	0.01
11:32	0.01
11:33	0.007
11:34	0.007
11:35	0.009
11:36	0.007
11:37	0.011
11:38	0.008
11:39	0.006
11:40	0.013
11:41	0.008
11:42	0.009
11:43	0.01
11:44	0.011
11:45	0.011
11:46	0.011
11:47	0.012
11:48	0.008
11:49	0.009
11:50	0.007
11:51	0.006
11:52	0.007
11:53	0.007
11:54	0.007

11:55	0.006
11:56	0.008
11:57	0.007
11:58	0.008
11:59	0.007
12:00	0.006
12:01	0.006
12:02	0.006
12:03	0.006
12:04	0.006
12:05	0.007
12:06	0.009
12:07	0.008
12:08	0.008
12:09	0.007
12:10	0.008
12:11	0.007
12:12	0.007
12:13	0.007
12:14	0.007
12:15	0.006
12:16	0.007
12:17	0.008
12:18	0.006
12:19	0.01
12:20	0.007
12:21	0.007
12:22	0.006
12:23	0.007
12:24	0.008
12:25	0.009
12:26	0.007
12:27	0.008
12:28	0.008
12:29	0.007
12:30	0.007
12:31	0.006
12:32	0.006
12:33	0.008
12:34	0.008
12:35	0.007
12:36	0.007
12:37	0.007
12:38	0.008
12:39	0.007
12:40	0.008
12:41	0.009

12:42	0.011
12:43	0.011
12:44	0.006
12:45	0.006
12:46	0.009
12:47	0.008
12:48	0.008
12:49	0.008
12:50	0.008
12:51	0.007
12:52	0.006
12:53	0.006
12:54	0.008
12:55	0.011
12:56	0.009
12:57	0.009
12:58	0.007
12:59	0.009
13:00	0.009
13:01	0.008
13:02	0.01
13:03	0.01
13:04	0.008
13:05	0.008
13:06	0.015
13:07	0.008
13:08	0.008
13:09	0.01
13:10	0.008
13:11	0.007
13:12	0.007
13:13	0.006
13:14	0.008
13:15	0.007
13:16	0.007
13:17	0.008
13:18	0.009
13:19	0.009
13:20	0.014
13:21	0.014
13:22	0.018
13:23	0.01
13:24	0.007
13:25	0.009
13:26	0.01
13:27	0.013
13:28	0.009

13:29	0.012
13:30	0.011
13:31	0.008
13:32	0.011
13:33	0.009
13:34	0.01
13:35	0.011
13:36	0.011
13:37	0.008
13:38	0.008
13:39	0.008
13:40	0.007
13:41	0.01
13:42	0.01
13:43	0.012
13:44	0.014
13:45	0.012
13:46	0.009
13:47	0.008
13:48	0.008
13:49	0.011
13:50	0.008
13:51	0.008
13:52	0.012
13:53	0.01
13:54	0.01
13:55	0.01
13:56	0.01
13:57	0.01
13:58	0.01
13:59	0.01
14:00	0.009
14:01	0.009
14:02	0.009
14:03	0.011
14:04	0.01
14:05	0.012
14:06	0.012
14:07	0.009
14:08	0.011
14:09	0.016
14:10	0.009
14:11	0.008
14:12	0.007
14:13	0.008
14:14	0.008
14:15	0.008

14:16	0.01
14:17	0.01
14:18	0.01
14:19	0.008
14:20	0.009
14:21	0.011
14:22	0.01
14:23	0.01
14:24	0.013
14:25	0.011
14:26	0.011
14:27	0.01
14:28	0.009
14:29	0.01
14:30	0.012
14:31	0.011
14:32	0.012
14:33	0.013
14:34	0.012
14:35	0.014
14:36	0.015
14:37	0.012
14:38	0.012
14:39	0.012
14:40	0.011
14:41	0.011
14:42	0.017
14:43	0.01
14:44	0.011
14:45	0.011
14:46	0.012
14:47	0.012
14:48	0.011
14:49	0.012
14:50	0.016
14:51	0.013
14:52	0.011
14:53	0.01
14:54	0.012
14:55	0.012
14:56	0.01
14:57	0.01
14:58	0.012
14:59	0.014
15:00	0.012
15:01	0.015
15:02	0.01

15:03	0.01
15:04	0.011
15:05	0.011
15:06	0.012
15:07	0.012
15:08	0.019

Device Serial No	Log Time	Log Type	Sensor 1 Type	Sensor 1 Serial Number	Sensor 1 Status	Sensor 1 Gas Reading
592-600871	1/8/2024 16:33	Readings	PID	SC23030408A8	Normal	0
592-600871	1/8/2024 16:32	Readings	PID	SC23030408A8	Normal	0
592-600871	1/8/2024 16:31	Readings	PID	SC23030408A8	Normal	0
592-600871	1/8/2024 16:30	Readings	PID	SC23030408A8	Normal	0
592-600871	1/8/2024 16:29	Readings	PID	SC23030408A8	Normal	0
592-600871	1/8/2024 16:28	Readings	PID	SC23030408A8	Normal	0
592-600871	1/8/2024 16:27	Readings	PID	SC23030408A8	Normal	0
592-600871	1/8/2024 16:26	Readings	PID	SC23030408A8	Normal	0
592-600871	1/8/2024 16:25	Readings	PID	SC23030408A8	Normal	0
592-600871	1/8/2024 16:24	Readings	PID	SC23030408A8	Normal	0
592-600871	1/8/2024 16:23	Readings	PID	SC23030408A8	Normal	0
592-600871	1/8/2024 16:22	Readings	PID	SC23030408A8	Normal	0
592-600871	1/8/2024 16:21	Readings	PID	SC23030408A8	Normal	0
592-600871	1/8/2024 16:20	Readings	PID	SC23030408A8	Normal	0
592-600871	1/8/2024 16:19	Readings	PID	SC23030408A8	Normal	0
592-600871	1/8/2024 16:18	Readings	PID	SC23030408A8	Normal	0
592-600871	1/8/2024 16:17	Readings	PID	SC23030408A8	Normal	0
592-600871	1/8/2024 16:16	Readings	PID	SC23030408A8	Normal	0
592-600871	1/8/2024 16:15	Readings	PID	SC23030408A8	Normal	0
592-600871	1/8/2024 16:14	Readings	PID	SC23030408A8	Normal	0
592-600871	1/8/2024 16:13	Readings	PID	SC23030408A8	Normal	0
592-600871	1/8/2024 16:12	Readings	PID	SC23030408A8	Normal	0
592-600871	1/8/2024 16:11	Readings	PID	SC23030408A8	Normal	0
592-600871	1/8/2024 16:10	Readings	PID	SC23030408A8	Normal	0
592-600871	1/8/2024 16:09	Readings	PID	SC23030408A8	Normal	0
592-600871	1/8/2024 16:08	Readings	PID	SC23030408A8	Normal	0
592-600871	1/8/2024 16:07	Readings	PID	SC23030408A8	Normal	0
592-600871	1/8/2024 16:06	Readings	PID	SC23030408A8	Normal	0
592-600871	1/8/2024 16:05	Readings	PID	SC23030408A8	Normal	0
592-600871	1/8/2024 16:04	Readings	PID	SC23030408A8	Normal	0
592-600871	1/8/2024 16:03	Readings	PID	SC23030408A8	Normal	0
592-600871	1/8/2024 16:02	Readings	PID	SC23030408A8	Normal	0
592-600871	1/8/2024 16:01	Readings	PID	SC23030408A8	Normal	0
592-600871	1/8/2024 16:00	Readings	PID	SC23030408A8	Normal	0

592-600871	1/8/2024 10:09	Readings	PID	SC23030408A8	Normal	0
592-600871	1/8/2024 10:08	Readings	PID	SC23030408A8	Normal	0
592-600871	1/8/2024 10:07	Readings	PID	SC23030408A8	Normal	0
592-600871	1/8/2024 10:06	Readings	PID	SC23030408A8	Normal	0
592-600871	1/8/2024 10:05	Readings	PID	SC23030408A8	Normal	0
592-600871	1/8/2024 10:04	Readings	PID	SC23030408A8	Normal	0
592-600871	1/8/2024 10:03	Readings	PID	SC23030408A8	Normal	0
592-600871	1/8/2024 10:02	Readings	PID	SC23030408A8	Normal	0
592-600871	1/8/2024 10:01	Readings	PID	SC23030408A8	Normal	0
592-600871	1/8/2024 10:00	Readings	PID	SC23030408A8	Normal	0
592-600871	1/8/2024 9:59	Readings	PID	SC23030408A8	Normal	0
592-600871	1/8/2024 9:58	Readings	PID	SC23030408A8	Normal	0
592-600871	1/8/2024 9:57	Readings	PID	SC23030408A8	Normal	0
592-600871	1/8/2024 9:56	Readings	PID	SC23030408A8	Normal	0
592-600871	1/8/2024 9:55	Readings	PID	SC23030408A8	Normal	0
592-600871	1/8/2024 9:54	Readings	PID	SC23030408A8	Normal	0
592-600871	1/8/2024 9:53	Readings	PID	SC23030408A8	Normal	0
592-600871	1/8/2024 9:52	Readings	PID	SC23030408A8	Normal	0
592-600871	1/8/2024 9:51	Readings	PID	SC23030408A8	Normal	0
592-600871	1/8/2024 9:50	Readings	PID	SC23030408A8	Normal	0
592-600871	1/8/2024 9:49	Readings	PID	SC23030408A8	Normal	0
592-600871	1/8/2024 9:48	Readings	PID	SC23030408A8	Normal	0
592-600871	1/8/2024 9:47	Readings	PID	SC23030408A8	Normal	0
592-600871	1/8/2024 9:46	Readings	PID	SC23030408A8	Normal	0
592-600871	1/8/2024 9:45	Readings	PID	SC23030408A8	Normal	0
592-600871	1/8/2024 9:44	Readings	PID	SC23030408A8	Normal	0
592-600871	1/8/2024 9:43	Readings	PID	SC23030408A8	Normal	0
592-600871	1/8/2024 9:42	CONFIG	PID	SC23030408A8		