



**DAILY STATUS REPORT**

**Prepared By:**

Gwen Lynn

WEATHER	Snow	Rain		Overcast	Partly Cloudy	x	Bright Sun		Wind
TEMP.	< 32	32-50	x	50-70	70-85		>85		NW-10 MPH

<b>IEC Project No:</b>	13928	<b>NYSDEC BCP Site No:</b>	C224367	<b>Date:</b>	01/15/24
<b>Project:</b>	251 Douglass Street, Brooklyn, NY				

<p><b>Consultant:</b> Impact Environmental Engineering and Geology, PLLC (IEEG)</p> <p>Time On: 06:20 Time Out: 15:45</p>	<p><b>Personnel On Site:</b> IEEG (Environmental) – Gwen Lynn Broadway Construction Group - Tom Caporale Xolle Demo Contractor</p> <p><b>Equipment On Site:</b> Minirae 3000 PID, DustTrak II</p>
---	---

**Scope of Work:** Hand demolition of old foundation wall.

**Site Activities:**

- Deploy three (3) CAMP units at the start of the work day; and
- Xolle continues with hand demolition of concrete from old building foundation on eastern portion of the Site.

**Community Air Monitoring Program (CAMP) - CAMP** action level for dust (0.1 mg/m<sup>3</sup>) and VOCs (5 ppm)

- PID remained at nominal levels throughout the day.
- No sustained dust exceedances were observed over a 1-min period during monitoring;
- Startup Upwind Conditions – PID = 0.0 ppm, Dust = 0.111 mg/m<sup>3</sup> @ 07:10.
- High Conditions (Upwind) – PID = 0.0 ppm, Dust = 0.111 mg/m<sup>3</sup> @ 07:10
- High Conditions (Downwind 1) – PID = 0.4 ppm @ 11:29, Dust = 0.496 mg/m<sup>3</sup> @ 14:12
- High Conditions (Downwind 2) – PID = 0.3 ppm @ 11:18, Dust = 0.281 mg/m<sup>3</sup> @ 09:19

**Notable Site Conditions:**

None

**Planned for the Next Day/Week:**

- Hand demolition of the old foundation wall along the eastern portion of the Site; and
- Excavator to be used to move concrete along east wall.

**PHOTO LOG**

251 DOUGLASS STREET, BROOKLYN, NY



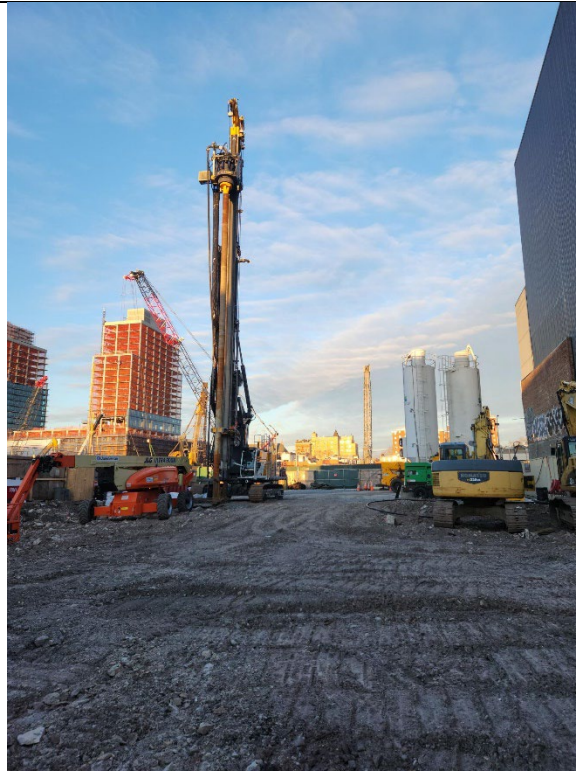
**Photo 1** – Representative view hand demolition/ chipping of concrete from old building on eastern portion of the Site.



**Photo 2** – Representative view looking north of the eastern portion of the Site post demolition of concrete wall.



**Photo 3** – Representative photo of the Site facing west.



**Photo 4** – Representative photo of the Site facing north.



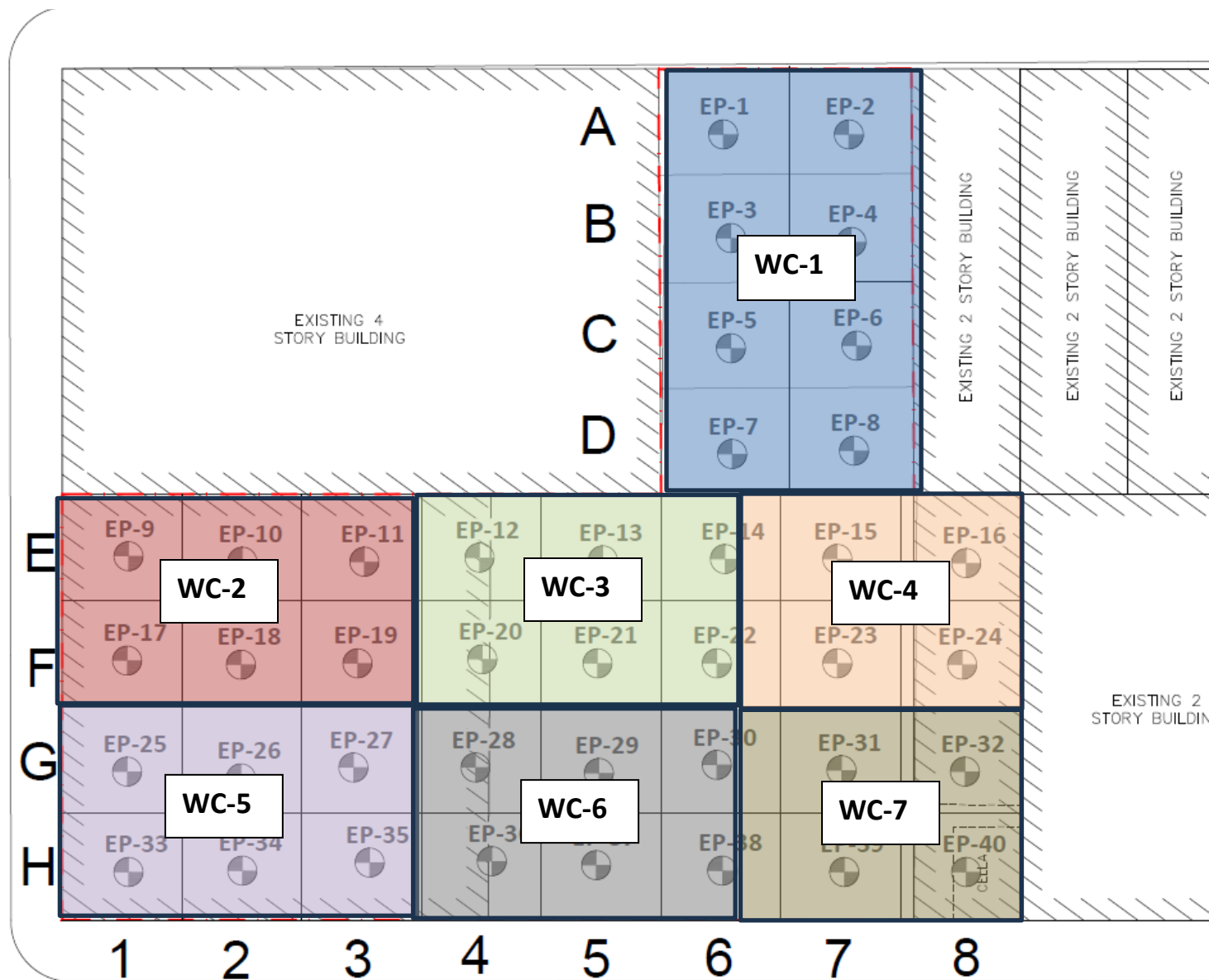
**SITE PLANS**

251 DOUGLASS STREET, BROOKLYN, NY





# NEVINS STREET





**UPWIND CAMP READINGS**

251 DOUGLASS STREET, BROOKLYN, NY



Instrument Name	DustTrak DRX
Model Number	8533
Serial Number	8533181205
Firmware Version	3.1
Calibration Date	5/31/2023
Test Name	MANUAL_002
Test Start Time	7:10:01 AM
Test Start Date	1/15/2024
Test Length [D:H:M]	0:08:08
Test Interval [M:S]	1:00
PM10 Average [mg/m3]	0.013
PM10 Minimum [mg/m3]	0.01
PM10 Maximum [mg/m3]	0.111
PM10 TWA [mg/m3]	0.013
Photometric User Cal	1
Size Correction User Cal	1
Flow User Cal	0
Errors	
Number of Samples	488

Elapsed Time [s]	PM10 [mg/m3]	Alarms	Errors
7:10	0.111		
7:11	0.023		
7:12	0.033		
7:13	0.014		
7:14	0.012		
7:15	0.011		
7:16	0.011		
7:17	0.011		
7:18	0.011		
7:19	0.012		
7:20	0.016		
7:21	0.012		
7:22	0.011		
7:23	0.011		
7:24	0.011		
7:25	0.012		
7:26	0.011		
7:27	0.011		
7:28	0.011		
7:29	0.011		
7:30	0.011		
7:31	0.011		
7:32	0.012		
7:33	0.071		
7:34	0.029		
7:35	0.018		

7:36	0.012
7:37	0.011
7:38	0.02
7:39	0.017
7:40	0.011
7:41	0.011
7:42	0.012
7:43	0.011
7:44	0.011
7:45	0.012
7:46	0.013
7:47	0.013
7:48	0.013
7:49	0.014
7:50	0.013
7:51	0.012
7:52	0.013
7:53	0.013
7:54	0.012
7:55	0.013
7:56	0.012
7:57	0.012
7:58	0.012
7:59	0.012
8:00	0.013
8:01	0.014
8:02	0.012
8:03	0.012
8:04	0.013
8:05	0.011
8:06	0.011
8:07	0.012
8:08	0.013
8:09	0.012
8:10	0.012
8:11	0.013
8:12	0.012
8:13	0.012
8:14	0.012
8:15	0.012
8:16	0.012
8:17	0.015
8:18	0.013
8:19	0.012
8:20	0.012
8:21	0.012
8:22	0.012

8:23	0.013
8:24	0.013
8:25	0.012
8:26	0.012
8:27	0.012
8:28	0.013
8:29	0.014
8:30	0.013
8:31	0.012
8:32	0.012
8:33	0.012
8:34	0.013
8:35	0.012
8:36	0.012
8:37	0.012
8:38	0.012
8:39	0.012
8:40	0.012
8:41	0.013
8:42	0.023
8:43	0.015
8:44	0.012
8:45	0.013
8:46	0.013
8:47	0.013
8:48	0.012
8:49	0.013
8:50	0.012
8:51	0.014
8:52	0.012
8:53	0.012
8:54	0.013
8:55	0.013
8:56	0.012
8:57	0.011
8:58	0.011
8:59	0.012
9:00	0.012
9:01	0.012
9:02	0.012
9:03	0.012
9:04	0.012
9:05	0.012
9:06	0.011
9:07	0.011
9:08	0.011
9:09	0.011

9:10	0.012
9:11	0.012
9:12	0.011
9:13	0.011
9:14	0.011
9:15	0.011
9:16	0.011
9:17	0.012
9:18	0.012
9:19	0.012
9:20	0.012
9:21	0.012
9:22	0.012
9:23	0.012
9:24	0.011
9:25	0.011
9:26	0.011
9:27	0.011
9:28	0.011
9:29	0.011
9:30	0.011
9:31	0.011
9:32	0.011
9:33	0.011
9:34	0.011
9:35	0.011
9:36	0.011
9:37	0.01
9:38	0.011
9:39	0.011
9:40	0.011
9:41	0.011
9:42	0.012
9:43	0.011
9:44	0.011
9:45	0.011
9:46	0.011
9:47	0.011
9:48	0.012
9:49	0.011
9:50	0.011
9:51	0.011
9:52	0.012
9:53	0.012
9:54	0.012
9:55	0.015
9:56	0.013

9:57	0.013
9:58	0.013
9:59	0.013
10:00	0.012
10:01	0.012
10:02	0.013
10:03	0.014
10:04	0.014
10:05	0.014
10:06	0.015
10:07	0.015
10:08	0.013
10:09	0.013
10:10	0.013
10:11	0.014
10:12	0.012
10:13	0.011
10:14	0.012
10:15	0.013
10:16	0.012
10:17	0.012
10:18	0.014
10:19	0.019
10:20	0.014
10:21	0.015
10:22	0.012
10:23	0.011
10:24	0.013
10:25	0.013
10:26	0.012
10:27	0.012
10:28	0.012
10:29	0.013
10:30	0.012
10:31	0.012
10:32	0.012
10:33	0.014
10:34	0.014
10:35	0.014
10:36	0.013
10:37	0.016
10:38	0.014
10:39	0.014
10:40	0.012
10:41	0.011
10:42	0.011
10:43	0.011

10:44	0.012
10:45	0.012
10:46	0.012
10:47	0.012
10:48	0.012
10:49	0.011
10:50	0.011
10:51	0.012
10:52	0.014
10:53	0.012
10:54	0.013
10:55	0.013
10:56	0.012
10:57	0.012
10:58	0.014
10:59	0.015
11:00	0.015
11:01	0.015
11:02	0.013
11:03	0.012
11:04	0.014
11:05	0.012
11:06	0.012
11:07	0.012
11:08	0.014
11:09	0.014
11:10	0.013
11:11	0.013
11:12	0.012
11:13	0.013
11:14	0.013
11:15	0.013
11:16	0.013
11:17	0.013
11:18	0.013
11:19	0.013
11:20	0.014
11:21	0.013
11:22	0.013
11:23	0.012
11:24	0.013
11:25	0.014
11:26	0.013
11:27	0.014
11:28	0.013
11:29	0.012
11:30	0.014

11:31	0.012
11:32	0.013
11:33	0.012
11:34	0.012
11:35	0.012
11:36	0.012
11:37	0.012
11:38	0.017
11:39	0.014
11:40	0.013
11:41	0.015
11:42	0.021
11:43	0.021
11:44	0.018
11:45	0.023
11:46	0.015
11:47	0.014
11:48	0.021
11:49	0.016
11:50	0.021
11:51	0.016
11:52	0.015
11:53	0.013
11:54	0.012
11:55	0.012
11:56	0.012
11:57	0.012
11:58	0.012
11:59	0.012
12:00	0.025
12:01	0.019
12:02	0.012
12:03	0.012
12:04	0.012
12:05	0.012
12:06	0.011
12:07	0.014
12:08	0.014
12:09	0.015
12:10	0.013
12:11	0.013
12:12	0.013
12:13	0.014
12:14	0.012
12:15	0.014
12:16	0.014
12:17	0.012

12:18	0.012
12:19	0.013
12:20	0.012
12:21	0.012
12:22	0.012
12:23	0.012
12:24	0.012
12:25	0.012
12:26	0.012
12:27	0.013
12:28	0.013
12:29	0.012
12:30	0.012
12:31	0.013
12:32	0.014
12:33	0.012
12:34	0.013
12:35	0.014
12:36	0.012
12:37	0.012
12:38	0.013
12:39	0.012
12:40	0.012
12:41	0.014
12:42	0.012
12:43	0.012
12:44	0.015
12:45	0.013
12:46	0.013
12:47	0.012
12:48	0.012
12:49	0.013
12:50	0.014
12:51	0.016
12:52	0.013
12:53	0.012
12:54	0.012
12:55	0.012
12:56	0.013
12:57	0.012
12:58	0.012
12:59	0.013
13:00	0.013
13:01	0.013
13:02	0.012
13:03	0.012
13:04	0.015



13:05	0.017
13:06	0.013
13:07	0.012
13:08	0.012
13:09	0.013
13:10	0.014
13:11	0.014
13:12	0.015
13:13	0.014
13:14	0.012
13:15	0.012
13:16	0.033
13:17	0.017
13:18	0.017
13:19	0.012
13:20	0.011
13:21	0.012
13:22	0.011
13:23	0.013
13:24	0.014
13:25	0.011
13:26	0.011
13:27	0.012
13:28	0.012
13:29	0.013
13:30	0.012
13:31	0.012
13:32	0.013
13:33	0.012
13:34	0.012
13:35	0.012
13:36	0.012
13:37	0.013
13:38	0.014
13:39	0.012
13:40	0.012
13:41	0.013
13:42	0.012
13:43	0.011
13:44	0.012
13:45	0.012
13:46	0.013
13:47	0.012
13:48	0.012
13:49	0.014
13:50	0.015
13:51	0.014

13:52	0.013
13:53	0.014
13:54	0.012
13:55	0.013
13:56	0.014
13:57	0.013
13:58	0.012
13:59	0.011
14:00	0.012
14:01	0.012
14:02	0.013
14:03	0.011
14:04	0.013
14:05	0.012
14:06	0.013
14:07	0.014
14:08	0.012
14:09	0.012
14:10	0.013
14:11	0.014
14:12	0.013
14:13	0.019
14:14	0.016
14:15	0.015
14:16	0.014
14:17	0.012
14:18	0.012
14:19	0.012
14:20	0.012
14:21	0.013
14:22	0.012
14:23	0.012
14:24	0.012
14:25	0.013
14:26	0.014
14:27	0.014
14:28	0.014
14:29	0.016
14:30	0.014
14:31	0.013
14:32	0.013
14:33	0.013
14:34	0.013
14:35	0.015
14:36	0.013
14:37	0.013
14:38	0.012

14:39	0.013
14:40	0.013
14:41	0.013
14:42	0.013
14:43	0.013
14:44	0.013
14:45	0.013
14:46	0.013
14:47	0.015
14:48	0.014
14:49	0.015
14:50	0.015
14:51	0.02
14:52	0.014
14:53	0.012
14:54	0.013
14:55	0.014
14:56	0.012
14:57	0.012
14:58	0.012
14:59	0.011
15:00	0.011
15:01	0.012
15:02	0.015
15:03	0.012
15:04	0.012
15:05	0.011
15:06	0.013
15:07	0.012
15:08	0.012
15:09	0.014
15:10	0.018
15:11	0.051
15:12	0.026
15:13	0.013
15:14	0.013
15:15	0.012
15:16	0.014
15:17	0.022

Device Serial No	Log Time	Log Type	Sensor 1 Type	Sensor 1 Serial Number	Sensor 1 Status	Sensor 1 Gas Reading
592-600871	1/15/2024 4:44:11 PM	Readings	PID	SC23030408A8	Normal	0.0
592-600871	1/15/2024 4:43:11 PM	Readings	PID	SC23030408A8	Normal	0.0
592-600871	1/15/2024 4:42:11 PM	Readings	PID	SC23030408A8	Normal	0.0
592-600871	1/15/2024 4:41:11 PM	Readings	PID	SC23030408A8	Normal	0.0
592-600871	1/15/2024 4:40:11 PM	Readings	PID	SC23030408A8	Normal	0.0
592-600871	1/15/2024 4:39:11 PM	Readings	PID	SC23030408A8	Normal	0.0
592-600871	1/15/2024 4:38:11 PM	Readings	PID	SC23030408A8	Normal	0.0
592-600871	1/15/2024 4:37:11 PM	Readings	PID	SC23030408A8	Normal	0.0
592-600871	1/15/2024 4:36:11 PM	Readings	PID	SC23030408A8	Normal	0.0
592-600871	1/15/2024 4:35:11 PM	Readings	PID	SC23030408A8	Normal	0.0
592-600871	1/15/2024 4:34:11 PM	Readings	PID	SC23030408A8	Normal	0.0
592-600871	1/15/2024 4:33:11 PM	Readings	PID	SC23030408A8	Normal	0.0
592-600871	1/15/2024 4:32:11 PM	Readings	PID	SC23030408A8	Normal	0.0
592-600871	1/15/2024 4:31:11 PM	Readings	PID	SC23030408A8	Normal	0.0
592-600871	1/15/2024 4:30:11 PM	Readings	PID	SC23030408A8	Normal	0.0
592-600871	1/15/2024 4:29:11 PM	Readings	PID	SC23030408A8	Normal	0.0
592-600871	1/15/2024 4:28:11 PM	Readings	PID	SC23030408A8	Normal	0.0
592-600871	1/15/2024 4:27:11 PM	Readings	PID	SC23030408A8	Normal	0.0
592-600871	1/15/2024 4:26:11 PM	Readings	PID	SC23030408A8	Normal	0.0
592-600871	1/15/2024 4:25:11 PM	Readings	PID	SC23030408A8	Normal	0.0
592-600871	1/15/2024 4:24:11 PM	Readings	PID	SC23030408A8	Normal	0.0
592-600871	1/15/2024 4:23:11 PM	Readings	PID	SC23030408A8	Normal	0.0
592-600871	1/15/2024 4:22:11 PM	Readings	PID	SC23030408A8	Normal	0.0
592-600871	1/15/2024 4:21:11 PM	Readings	PID	SC23030408A8	Normal	0.0
592-600871	1/15/2024 4:20:11 PM	Readings	PID	SC23030408A8	Normal	0.0
592-600871	1/15/2024 4:19:11 PM	Readings	PID	SC23030408A8	Normal	0.0
592-600871	1/15/2024 4:18:11 PM	Readings	PID	SC23030408A8	Normal	0.0
592-600871	1/15/2024 4:17:11 PM	Readings	PID	SC23030408A8	Normal	0.0
592-600871	1/15/2024 4:16:11 PM	Readings	PID	SC23030408A8	Normal	0.0
592-600871	1/15/2024 4:15:11 PM	Readings	PID	SC23030408A8	Normal	0.0
592-600871	1/15/2024 4:14:11 PM	Readings	PID	SC23030408A8	Normal	0.0
592-600871	1/15/2024 4:13:11 PM	Readings	PID	SC23030408A8	Normal	0.0
592-600871	1/15/2024 4:12:11 PM	Readings	PID	SC23030408A8	Normal	0.0
592-600871	1/15/2024 4:11:11 PM	Readings	PID	SC23030408A8	Normal	0.0
592-600871	1/15/2024 4:10:11 PM	Readings	PID	SC23030408A8	Normal	0.0
592-600871	1/15/2024 4:09:11 PM	Readings	PID	SC23030408A8	Normal	0.0





























**DOWNWIND CAMP READINGS**

251 DOUGLASS STREET, BROOKLYN, NY



Instrument Name	DustTrak DRX
Model Number	8533
Serial Number	8533181207
Firmware Version	3.1
Calibration Date	6/1/2023
Test Name	MANUAL_002
Test Start Time	7:09:10 AM
Test Start Date	1/15/2024
Test Length [D:H:M]	0:08:19
Test Interval [M:S]	1:00
PM10 Average [mg/m3]	0.125
PM10 Minimum [mg/m3]	0.011
PM10 Maximum [mg/m3]	0.496
PM10 TWA [mg/m3]	0.126
Photometric User Cal	1
Size Correction User Cal	1
Flow User Cal	0
Errors	
Number of Samples	499

Elapsed Time [s]	PM10 [mg/m3]	Alarms	Errors
7:09	0.018		
7:10	0.015		
7:11	0.129		
7:12	0.017		
7:13	0.012		
7:14	0.013		
7:15	0.052		
7:16	0.013		
7:17	0.012		
7:18	0.013		
7:19	0.015		
7:20	0.013		
7:21	0.012		
7:22	0.012		
7:23	0.012		
7:24	0.013		
7:25	0.012		
7:26	0.012		
7:27	0.012		
7:28	0.027		
7:29	0.016		
7:30	0.02		
7:31	0.012		
7:32	0.033		
7:33	0.041		
7:34	0.075		

7:35	0.023
7:36	0.033
7:37	0.019
7:38	0.037
7:39	0.088
7:40	0.049
7:41	0.03
7:42	0.09
7:43	0.069
7:44	0.078
7:45	0.015
7:46	0.013
7:47	0.136
7:48	0.027
7:49	0.055
7:50	0.075
7:51	0.016
7:52	0.034
7:53	0.046
7:54	0.029
7:55	0.02
7:56	0.089
7:57	0.023
7:58	0.019
7:59	0.03
8:00	0.014
8:01	0.013
8:02	0.016
8:03	0.031
8:04	0.041
8:05	0.025
8:06	0.061
8:07	0.145
8:08	0.035
8:09	0.012
8:10	0.012
8:11	0.014
8:12	0.027
8:13	0.075
8:14	0.037
8:15	0.034
8:16	0.013
8:17	0.015
8:18	0.016
8:19	0.028
8:20	0.05
8:21	0.025

8:22	0.035
8:23	0.032
8:24	0.047
8:25	0.05
8:26	0.066
8:27	0.042
8:28	0.059
8:29	0.022
8:30	0.038
8:31	0.036
8:32	0.098
8:33	0.035
8:34	0.051
8:35	0.03
8:36	0.015
8:37	0.035
8:38	0.09
8:39	0.042
8:40	0.057
8:41	0.035
8:42	0.049
8:43	0.045
8:44	0.033
8:45	0.017
8:46	0.075
8:47	0.048
8:48	0.047
8:49	0.09
8:50	0.066
8:51	0.017
8:52	0.092
8:53	0.081
8:54	0.051
8:55	0.045
8:56	0.012
8:57	0.016
8:58	0.19
8:59	0.066
9:00	0.056
9:01	0.014
9:02	0.039
9:03	0.017
9:04	0.017
9:05	0.042
9:06	0.017
9:07	0.067
9:08	0.028

9:09	0.077
9:10	0.074
9:11	0.046
9:12	0.024
9:13	0.036
9:14	0.078
9:15	0.045
9:16	0.147
9:17	0.132
9:18	0.043
9:19	0.1
9:20	0.123
9:21	0.198
9:22	0.116
9:23	0.036
9:24	0.034
9:25	0.065
9:26	0.139
9:27	0.129
9:28	0.083
9:29	0.056
9:30	0.094
9:31	0.045
9:32	0.021
9:33	0.011
9:34	0.182
9:35	0.066
9:36	0.044
9:37	0.13
9:38	0.1
9:39	0.175
9:40	0.136
9:41	0.073
9:42	0.08
9:43	0.051
9:44	0.057
9:45	0.116
9:46	0.07
9:47	0.027
9:48	0.087
9:49	0.074
9:50	0.086
9:51	0.05
9:52	0.022
9:53	0.049
9:54	0.018
9:55	0.031

9:56	0.114
9:57	0.058
9:58	0.048
9:59	0.026
10:00	0.053
10:01	0.016
10:02	0.014
10:03	0.017
10:04	0.019
10:05	0.07
10:06	0.018
10:07	0.037
10:08	0.099
10:09	0.056
10:10	0.151
10:11	0.044
10:12	0.029
10:13	0.128
10:14	0.11
10:15	0.168
10:16	0.038
10:17	0.276
10:18	0.119
10:19	0.08
10:20	0.057
10:21	0.036
10:22	0.021
10:23	0.076
10:24	0.299
10:25	0.217
10:26	0.073
10:27	0.086
10:28	0.071
10:29	0.12
10:30	0.055
10:31	0.044
10:32	0.09
10:33	0.036
10:34	0.091
10:35	0.082
10:36	0.079
10:37	0.104
10:38	0.026
10:39	0.201
10:40	0.033
10:41	0.054
10:42	0.253

10:43	0.274
10:44	0.041
10:45	0.082
10:46	0.023
10:47	0.031
10:48	0.199
10:49	0.105
10:50	0.025
10:51	0.041
10:52	0.026
10:53	0.012
10:54	0.012
10:55	0.011
10:56	0.013
10:57	0.013
10:58	0.016
10:59	0.014
11:00	0.015
11:01	0.015
11:02	0.015
11:03	0.015
11:04	0.015
11:05	0.014
11:06	0.013
11:07	0.014
11:08	0.013
11:09	0.013
11:10	0.013
11:11	0.014
11:12	0.015
11:13	0.014
11:14	0.014
11:15	0.014
11:16	0.013
11:17	0.013
11:18	0.013
11:19	0.013
11:20	0.013
11:21	0.013
11:22	0.014
11:23	0.013
11:24	0.013
11:25	0.014
11:26	0.013
11:27	0.013
11:28	0.014
11:29	0.015

11:30	0.014
11:31	0.013
11:32	0.013
11:33	0.015
11:34	0.015
11:35	0.013
11:36	0.014
11:37	0.017
11:38	0.011
11:39	0.012
11:40	0.012
11:41	0.013
11:42	0.015
11:43	0.014
11:44	0.014
11:45	0.019
11:46	0.019
11:47	0.018
11:48	0.019
11:49	0.054
11:50	0.018
11:51	0.016
11:52	0.073
11:53	0.207
11:54	0.308
11:55	0.15
11:56	0.242
11:57	0.023
11:58	0.239
11:59	0.046
12:00	0.033
12:01	0.145
12:02	0.326
12:03	0.446
12:04	0.166
12:05	0.198
12:06	0.038
12:07	0.236
12:08	0.103
12:09	0.099
12:10	0.475
12:11	0.083
12:12	0.165
12:13	0.123
12:14	0.165
12:15	0.035
12:16	0.017



12:17	0.387
12:18	0.144
12:19	0.228
12:20	0.469
12:21	0.077
12:22	0.196
12:23	0.267
12:24	0.102
12:25	0.126
12:26	0.052
12:27	0.045
12:28	0.291
12:29	0.336
12:30	0.105
12:31	0.212
12:32	0.068
12:33	0.033
12:34	0.048
12:35	0.153
12:36	0.402
12:37	0.214
12:38	0.023
12:39	0.194
12:40	0.386
12:41	0.148
12:42	0.221
12:43	0.198
12:44	0.255
12:45	0.381
12:46	0.128
12:47	0.07
12:48	0.081
12:49	0.019
12:50	0.017
12:51	0.079
12:52	0.117
12:53	0.09
12:54	0.069
12:55	0.096
12:56	0.051
12:57	0.156
12:58	0.235
12:59	0.144
13:00	0.288
13:01	0.087
13:02	0.023
13:03	0.149

13:04	0.036
13:05	0.208
13:06	0.072
13:07	0.022
13:08	0.297
13:09	0.234
13:10	0.16
13:11	0.486
13:12	0.035
13:13	0.026
13:14	0.019
13:15	0.076
13:16	0.134
13:17	0.221
13:18	0.108
13:19	0.124
13:20	0.14
13:21	0.439
13:22	0.274
13:23	0.282
13:24	0.218
13:25	0.334
13:26	0.098
13:27	0.246
13:28	0.199
13:29	0.158
13:30	0.051
13:31	0.316
13:32	0.27
13:33	0.235
13:34	0.118
13:35	0.42
13:36	0.13
13:37	0.337
13:38	0.281
13:39	0.089
13:40	0.227
13:41	0.29
13:42	0.186
13:43	0.198
13:44	0.165
13:45	0.215
13:46	0.254
13:47	0.047
13:48	0.112
13:49	0.403
13:50	0.374

13:51	0.196
13:52	0.244
13:53	0.069
13:54	0.021
13:55	0.22
13:56	0.158
13:57	0.302
13:58	0.169
13:59	0.047
14:00	0.36
14:01	0.281
14:02	0.171
14:03	0.129
14:04	0.25
14:05	0.301
14:06	0.407
14:07	0.349
14:08	0.11
14:09	0.479
14:10	0.119
14:11	0.226
14:12	0.496
14:13	0.318
14:14	0.03
14:15	0.131
14:16	0.278
14:17	0.312
14:18	0.053
14:19	0.239
14:20	0.152
14:21	0.341
14:22	0.202
14:23	0.379
14:24	0.198
14:25	0.402
14:26	0.247
14:27	0.21
14:28	0.255
14:29	0.21
14:30	0.225
14:31	0.083
14:32	0.127
14:33	0.022
14:34	0.171
14:35	0.221
14:36	0.174
14:37	0.061

14:38	0.392
14:39	0.171
14:40	0.045
14:41	0.385
14:42	0.198
14:43	0.116
14:44	0.347
14:45	0.395
14:46	0.142
14:47	0.037
14:48	0.048
14:49	0.237
14:50	0.364
14:51	0.213
14:52	0.024
14:53	0.199
14:54	0.263
14:55	0.267
14:56	0.086
14:57	0.19
14:58	0.174
14:59	0.197
15:00	0.248
15:01	0.107
15:02	0.365
15:03	0.375
15:04	0.019
15:05	0.225
15:06	0.299
15:07	0.104
15:08	0.128
15:09	0.154
15:10	0.046
15:11	0.017
15:12	0.09
15:13	0.017
15:14	0.032
15:15	0.033
15:16	0.016
15:17	0.016
15:18	0.013
15:19	0.013
15:20	0.013
15:21	0.023
15:22	0.013
15:23	0.014
15:24	0.013

15:25	0.012
15:26	0.013
15:27	0.123

Device Serial No	Log Time	Log Type	Sensor 1 Type	Sensor 1 Serial Number	Sensor 1 Status	Sensor 1 Gas Reading
592-602816	1/15/2024 4:33:25 PM	Readings	PID	SC23030324C7	Normal	0.4
592-602816	1/15/2024 4:32:25 PM	Readings	PID	SC23030324C7	Normal	0.4
592-602816	1/15/2024 4:31:25 PM	Readings	PID	SC23030324C7	Normal	0.4
592-602816	1/15/2024 4:30:25 PM	Readings	PID	SC23030324C7	Normal	0.4
592-602816	1/15/2024 4:29:25 PM	Readings	PID	SC23030324C7	Normal	0.4
592-602816	1/15/2024 4:28:25 PM	Readings	PID	SC23030324C7	Normal	0.4
592-602816	1/15/2024 4:27:25 PM	Readings	PID	SC23030324C7	Normal	0.4
592-602816	1/15/2024 4:26:25 PM	Readings	PID	SC23030324C7	Normal	0.4
592-602816	1/15/2024 4:25:25 PM	Readings	PID	SC23030324C7	Normal	0.4
592-602816	1/15/2024 4:24:25 PM	Readings	PID	SC23030324C7	Normal	0.4
592-602816	1/15/2024 4:23:25 PM	Readings	PID	SC23030324C7	Normal	0.4
592-602816	1/15/2024 4:22:25 PM	Readings	PID	SC23030324C7	Normal	0.4
592-602816	1/15/2024 4:21:25 PM	Readings	PID	SC23030324C7	Normal	0.4
592-602816	1/15/2024 4:20:25 PM	Readings	PID	SC23030324C7	Normal	0.4
592-602816	1/15/2024 4:19:25 PM	Readings	PID	SC23030324C7	Normal	0.4
592-602816	1/15/2024 4:18:25 PM	Readings	PID	SC23030324C7	Normal	0.4
592-602816	1/15/2024 4:17:25 PM	Readings	PID	SC23030324C7	Normal	0.4
592-602816	1/15/2024 4:16:25 PM	Readings	PID	SC23030324C7	Normal	0.4
592-602816	1/15/2024 4:15:25 PM	Readings	PID	SC23030324C7	Normal	0.5
592-602816	1/15/2024 4:14:25 PM	Readings	PID	SC23030324C7	Normal	0.5
592-602816	1/15/2024 4:13:25 PM	Readings	PID	SC23030324C7	Normal	0.5
592-602816	1/15/2024 4:12:25 PM	Readings	PID	SC23030324C7	Normal	0.5
592-602816	1/15/2024 4:11:25 PM	Readings	PID	SC23030324C7	Normal	0.5
592-602816	1/15/2024 4:10:25 PM	Readings	PID	SC23030324C7	Normal	0.5
592-602816	1/15/2024 4:09:25 PM	Readings	PID	SC23030324C7	Normal	0.4
592-602816	1/15/2024 4:08:25 PM	Readings	PID	SC23030324C7	Normal	0.4
592-602816	1/15/2024 4:07:25 PM	Readings	PID	SC23030324C7	Normal	0.4
592-602816	1/15/2024 4:06:25 PM	Readings	PID	SC23030324C7	Normal	0.4
592-602816	1/15/2024 4:05:25 PM	Readings	PID	SC23030324C7	Normal	0.4
592-602816	1/15/2024 4:04:25 PM	Readings	PID	SC23030324C7	Normal	0.4
592-602816	1/15/2024 4:03:25 PM	Readings	PID	SC23030324C7	Normal	0.5
592-602816	1/15/2024 4:02:25 PM	Readings	PID	SC23030324C7	Normal	0.4
592-602816	1/15/2024 4:01:25 PM	Readings	PID	SC23030324C7	Normal	0.4
592-602816	1/15/2024 4:00:25 PM	Readings	PID	SC23030324C7	Normal	0.4
592-602816	1/15/2024 3:59:25 PM	Readings	PID	SC23030324C7	Normal	0.4
592-602816	1/15/2024 3:58:25 PM	Readings	PID	SC23030324C7	Normal	0.4



























592-602816	1/15/2024 8:48:25 AM	Readings	PID	SC23030324C7	Normal	0.0
592-602816	1/15/2024 8:47:25 AM	Readings	PID	SC23030324C7	Normal	0.0
592-602816	1/15/2024 8:46:25 AM	Readings	PID	SC23030324C7	Normal	0.0
592-602816	1/15/2024 8:45:25 AM	Readings	PID	SC23030324C7	Normal	0.0
592-602816	1/15/2024 8:44:25 AM	Readings	PID	SC23030324C7	Normal	0.0
592-602816	1/15/2024 8:43:25 AM	Readings	PID	SC23030324C7	Normal	0.0
592-602816	1/15/2024 8:42:25 AM	Readings	PID	SC23030324C7	Normal	0.0
592-602816	1/15/2024 8:41:25 AM	Readings	PID	SC23030324C7	Normal	0.0
592-602816	1/15/2024 8:40:25 AM	Readings	PID	SC23030324C7	Normal	0.0
592-602816	1/15/2024 8:39:25 AM	Readings	PID	SC23030324C7	Normal	0.0
592-602816	1/15/2024 8:38:25 AM	Readings	PID	SC23030324C7	Normal	0.0
592-602816	1/15/2024 8:37:25 AM	Readings	PID	SC23030324C7	Normal	0.0
592-602816	1/15/2024 8:36:25 AM	Readings	PID	SC23030324C7	Normal	0.0
592-602816	1/15/2024 8:35:25 AM	Readings	PID	SC23030324C7	Normal	0.0
592-602816	1/15/2024 8:34:25 AM	Readings	PID	SC23030324C7	Normal	0.0
592-602816	1/15/2024 8:33:25 AM	Readings	PID	SC23030324C7	Normal	0.0
592-602816	1/15/2024 8:32:25 AM	Readings	PID	SC23030324C7	Normal	0.0
592-602816	1/15/2024 8:31:25 AM	Readings	PID	SC23030324C7	Normal	0.0
592-602816	1/15/2024 8:30:25 AM	Readings	PID	SC23030324C7	Normal	0.0
592-602816	1/15/2024 8:29:25 AM	Readings	PID	SC23030324C7	Normal	0.0
592-602816	1/15/2024 8:28:25 AM	Readings	PID	SC23030324C7	Normal	0.0
592-602816	1/15/2024 8:27:25 AM	Readings	PID	SC23030324C7	Normal	0.0
592-602816	1/15/2024 8:26:25 AM	Readings	PID	SC23030324C7	Normal	0.0
592-602816	1/15/2024 8:25:25 AM	Readings	PID	SC23030324C7	Normal	0.0
592-602816	1/15/2024 8:24:25 AM	Readings	PID	SC23030324C7	Normal	0.0
592-602816	1/15/2024 8:23:25 AM	Readings	PID	SC23030324C7	Normal	0.0
592-602816	1/15/2024 8:22:25 AM	CONFIG	PID	SC23030324C7		

Instrument Name	DustTrak DRX
Model Number	8533
Serial Number	8533181208
Firmware Version	3.1
Calibration Date	6/1/2023
Test Name	MANUAL_001
Test Start Time	6:49:15 AM
Test Start Date	1/12/2024
Test Length [D:H:M]	0:08:07
Test Interval [M:S]	1:00
PM10 Average [mg/m3]	0.019
PM10 Minimum [mg/m3]	0.007
PM10 Maximum [mg/m3]	0.281
PM10 TWA [mg/m3]	0.019
Photometric User Cal	1
Size Correction User Cal	1
Flow User Cal	0
Errors	
Number of Samples	487

Elapsed Time [s]	PM10 [mg/m3]	Alarms	Errors
6:49	0.018		
6:50	0.047		
6:51	0.018		
6:52	0.019		
6:53	0.018		
6:54	0.017		
6:55	0.017		
6:56	0.019		
6:57	0.018		
6:58	0.019		
6:59	0.017		
7:00	0.019		
7:01	0.02		
7:02	0.019		
7:03	0.018		
7:04	0.02		
7:05	0.02		
7:06	0.02		
7:07	0.019		
7:08	0.019		
7:09	0.019		
7:10	0.019		
7:11	0.019		
7:12	0.019		
7:13	0.018		
7:14	0.016		

7:15	0.016
7:16	0.016
7:17	0.018
7:18	0.02
7:19	0.023
7:20	0.018
7:21	0.017
7:22	0.017
7:23	0.018
7:24	0.019
7:25	0.018
7:26	0.016
7:27	0.017
7:28	0.017
7:29	0.016
7:30	0.016
7:31	0.016
7:32	0.017
7:33	0.016
7:34	0.017
7:35	0.018
7:36	0.019
7:37	0.017
7:38	0.02
7:39	0.02
7:40	0.019
7:41	0.018
7:42	0.024
7:43	0.021
7:44	0.02
7:45	0.02
7:46	0.018
7:47	0.018
7:48	0.017
7:49	0.018
7:50	0.018
7:51	0.018
7:52	0.019
7:53	0.022
7:54	0.024
7:55	0.027
7:56	0.024
7:57	0.027
7:58	0.027
7:59	0.023
8:00	0.025
8:01	0.021

8:02	0.019
8:03	0.02
8:04	0.02
8:05	0.02
8:06	0.024
8:07	0.02
8:08	0.02
8:09	0.022
8:10	0.021
8:11	0.023
8:12	0.022
8:13	0.023
8:14	0.02
8:15	0.02
8:16	0.021
8:17	0.021
8:18	0.021
8:19	0.022
8:20	0.023
8:21	0.024
8:22	0.025
8:23	0.026
8:24	0.026
8:25	0.026
8:26	0.025
8:27	0.03
8:28	0.028
8:29	0.032
8:30	0.033
8:31	0.034
8:32	0.037
8:33	0.038
8:34	0.036
8:35	0.036
8:36	0.032
8:37	0.026
8:38	0.024
8:39	0.023
8:40	0.024
8:41	0.024
8:42	0.026
8:43	0.029
8:44	0.04
8:45	0.034
8:46	0.03
8:47	0.025
8:48	0.032

8:49	0.03
8:50	0.036
8:51	0.028
8:52	0.024
8:53	0.03
8:54	0.025
8:55	0.025
8:56	0.026
8:57	0.026
8:58	0.026
8:59	0.024
9:00	0.022
9:01	0.025
9:02	0.024
9:03	0.023
9:04	0.025
9:05	0.024
9:06	0.024
9:07	0.024
9:08	0.026
9:09	0.02
9:10	0.019
9:11	0.018
9:12	0.02
9:13	0.02
9:14	0.019
9:15	0.02
9:16	0.019
9:17	0.02
9:18	0.021
9:19	0.281
9:20	0.073
9:21	0.019
9:22	0.018
9:23	0.019
9:24	0.018
9:25	0.018
9:26	0.017
9:27	0.017
9:28	0.018
9:29	0.019
9:30	0.02
9:31	0.02
9:32	0.02
9:33	0.02
9:34	0.021
9:35	0.019

9:36	0.015
9:37	0.014
9:38	0.012
9:39	0.013
9:40	0.013
9:41	0.013
9:42	0.013
9:43	0.013
9:44	0.013
9:45	0.013
9:46	0.014
9:47	0.013
9:48	0.013
9:49	0.013
9:50	0.013
9:51	0.013
9:52	0.013
9:53	0.014
9:54	0.013
9:55	0.013
9:56	0.013
9:57	0.014
9:58	0.014
9:59	0.014
10:00	0.014
10:01	0.014
10:02	0.013
10:03	0.014
10:04	0.014
10:05	0.015
10:06	0.014
10:07	0.014
10:08	0.014
10:09	0.014
10:10	0.014
10:11	0.013
10:12	0.013
10:13	0.013
10:14	0.016
10:15	0.014
10:16	0.014
10:17	0.017
10:18	0.015
10:19	0.014
10:20	0.014
10:21	0.018
10:22	0.016

10:23	0.016
10:24	0.015
10:25	0.018
10:26	0.015
10:27	0.015
10:28	0.014
10:29	0.015
10:30	0.015
10:31	0.017
10:32	0.017
10:33	0.017
10:34	0.016
10:35	0.017
10:36	0.016
10:37	0.017
10:38	0.017
10:39	0.017
10:40	0.016
10:41	0.017
10:42	0.018
10:43	0.018
10:44	0.018
10:45	0.018
10:46	0.017
10:47	0.017
10:48	0.017
10:49	0.017
10:50	0.016
10:51	0.017
10:52	0.017
10:53	0.019
10:54	0.018
10:55	0.016
10:56	0.016
10:57	0.017
10:58	0.019
10:59	0.018
11:00	0.018
11:01	0.017
11:02	0.017
11:03	0.017
11:04	0.021
11:05	0.017
11:06	0.017
11:07	0.018
11:08	0.017
11:09	0.019



11:10	0.019
11:11	0.02
11:12	0.02
11:13	0.023
11:14	0.019
11:15	0.024
11:16	0.02
11:17	0.021
11:18	0.021
11:19	0.022
11:20	0.019
11:21	0.019
11:22	0.02
11:23	0.02
11:24	0.022
11:25	0.021
11:26	0.02
11:27	0.021
11:28	0.023
11:29	0.019
11:30	0.021
11:31	0.019
11:32	0.066
11:33	0.025
11:34	0.022
11:35	0.019
11:36	0.019
11:37	0.018
11:38	0.021
11:39	0.017
11:40	0.019
11:41	0.021
11:42	0.021
11:43	0.019
11:44	0.021
11:45	0.019
11:46	0.02
11:47	0.02
11:48	0.021
11:49	0.02
11:50	0.022
11:51	0.021
11:52	0.019
11:53	0.02
11:54	0.019
11:55	0.019
11:56	0.019

11:57	0.019
11:58	0.02
11:59	0.021
12:00	0.02
12:01	0.019
12:02	0.019
12:03	0.025
12:04	0.022
12:05	0.022
12:06	0.022
12:07	0.022
12:08	0.022
12:09	0.025
12:10	0.022
12:11	0.022
12:12	0.021
12:13	0.021
12:14	0.021
12:15	0.02
12:16	0.02
12:17	0.021
12:18	0.021
12:19	0.021
12:20	0.025
12:21	0.021
12:22	0.021
12:23	0.021
12:24	0.021
12:25	0.021
12:26	0.021
12:27	0.02
12:28	0.022
12:29	0.02
12:30	0.024
12:31	0.019
12:32	0.017
12:33	0.011
12:34	0.013
12:35	0.012
12:36	0.009
12:37	0.007
12:38	0.008
12:39	0.016
12:40	0.014
12:41	0.007
12:42	0.007
12:43	0.007

12:44	0.01
12:45	0.015
12:46	0.011
12:47	0.011
12:48	0.013
12:49	0.012
12:50	0.016
12:51	0.02
12:52	0.018
12:53	0.011
12:54	0.011
12:55	0.011
12:56	0.012
12:57	0.011
12:58	0.024
12:59	0.011
13:00	0.009
13:01	0.01
13:02	0.015
13:03	0.018
13:04	0.02
13:05	0.026
13:06	0.017
13:07	0.009
13:08	0.01
13:09	0.009
13:10	0.01
13:11	0.027
13:12	0.009
13:13	0.01
13:14	0.01
13:15	0.01
13:16	0.013
13:17	0.018
13:18	0.014
13:19	0.016
13:20	0.019
13:21	0.023
13:22	0.02
13:23	0.018
13:24	0.017
13:25	0.013
13:26	0.013
13:27	0.011
13:28	0.01
13:29	0.01
13:30	0.012

13:31	0.011
13:32	0.014
13:33	0.012
13:34	0.015
13:35	0.011
13:36	0.01
13:37	0.011
13:38	0.011
13:39	0.011
13:40	0.01
13:41	0.011
13:42	0.009
13:43	0.009
13:44	0.009
13:45	0.01
13:46	0.013
13:47	0.012
13:48	0.01
13:49	0.011
13:50	0.015
13:51	0.024
13:52	0.012
13:53	0.011
13:54	0.013
13:55	0.013
13:56	0.013
13:57	0.012
13:58	0.018
13:59	0.015
14:00	0.012
14:01	0.011
14:02	0.012
14:03	0.013
14:04	0.011
14:05	0.013
14:06	0.009
14:07	0.009
14:08	0.008
14:09	0.008
14:10	0.013
14:11	0.01
14:12	0.01
14:13	0.01
14:14	0.011
14:15	0.011
14:16	0.011
14:17	0.01

14:18	0.01
14:19	0.011
14:20	0.012
14:21	0.013
14:22	0.015
14:23	0.012
14:24	0.011
14:25	0.026
14:26	0.012
14:27	0.012
14:28	0.012
14:29	0.011
14:30	0.013
14:31	0.011
14:32	0.011
14:33	0.011
14:34	0.011
14:35	0.012
14:36	0.011
14:37	0.014
14:38	0.013
14:39	0.013
14:40	0.015
14:41	0.016
14:42	0.017
14:43	0.013
14:44	0.012
14:45	0.012
14:46	0.011
14:47	0.016
14:48	0.016
14:49	0.02
14:50	0.018
14:51	0.012
14:52	0.011
14:53	0.012
14:54	0.011
14:55	0.014

Device Serial No	Log Time	Log Type	Sensor 1 Type	Sensor 1 Serial Number	Sensor 1 Status	Sensor 1 Gas Reading
592-929156	1/15/2024 4:51:28 PM	Readings	PID	SC23030065D3	Normal	0.1
592-929156	1/15/2024 4:50:28 PM	Readings	PID	SC23030065D3	Normal	0.1
592-929156	1/15/2024 4:49:28 PM	Readings	PID	SC23030065D3	Normal	0.1
592-929156	1/15/2024 4:48:28 PM	Readings	PID	SC23030065D3	Normal	0.1
592-929156	1/15/2024 4:47:28 PM	Readings	PID	SC23030065D3	Normal	0.1
592-929156	1/15/2024 4:46:28 PM	Readings	PID	SC23030065D3	Normal	0.1
592-929156	1/15/2024 4:45:28 PM	Readings	PID	SC23030065D3	Normal	0.1
592-929156	1/15/2024 4:44:28 PM	Readings	PID	SC23030065D3	Normal	0.1
592-929156	1/15/2024 4:43:28 PM	Readings	PID	SC23030065D3	Normal	0.1
592-929156	1/15/2024 4:42:28 PM	Readings	PID	SC23030065D3	Normal	0.1
592-929156	1/15/2024 4:41:28 PM	Readings	PID	SC23030065D3	Normal	0.2
592-929156	1/15/2024 4:40:28 PM	Readings	PID	SC23030065D3	Normal	0.2
592-929156	1/15/2024 4:39:28 PM	Readings	PID	SC23030065D3	Normal	0.2
592-929156	1/15/2024 4:38:28 PM	Readings	PID	SC23030065D3	Normal	0.2
592-929156	1/15/2024 4:37:28 PM	Readings	PID	SC23030065D3	Normal	0.2
592-929156	1/15/2024 4:36:28 PM	Readings	PID	SC23030065D3	Normal	0.1
592-929156	1/15/2024 4:35:28 PM	Readings	PID	SC23030065D3	Normal	0.1
592-929156	1/15/2024 4:34:28 PM	Readings	PID	SC23030065D3	Normal	0.1
592-929156	1/15/2024 4:33:28 PM	Readings	PID	SC23030065D3	Normal	0.1
592-929156	1/15/2024 4:32:28 PM	Readings	PID	SC23030065D3	Normal	0.1
592-929156	1/15/2024 4:31:28 PM	Readings	PID	SC23030065D3	Normal	0.1
592-929156	1/15/2024 4:30:28 PM	Readings	PID	SC23030065D3	Normal	0.2
592-929156	1/15/2024 4:29:28 PM	Readings	PID	SC23030065D3	Normal	0.1
592-929156	1/15/2024 4:28:28 PM	Readings	PID	SC23030065D3	Normal	0.1
592-929156	1/15/2024 4:27:28 PM	Readings	PID	SC23030065D3	Normal	0.1
592-929156	1/15/2024 4:26:28 PM	Readings	PID	SC23030065D3	Normal	0.1
592-929156	1/15/2024 4:25:28 PM	Readings	PID	SC23030065D3	Normal	0.2
592-929156	1/15/2024 4:24:28 PM	Readings	PID	SC23030065D3	Normal	0.1
592-929156	1/15/2024 4:23:28 PM	Readings	PID	SC23030065D3	Normal	0.2
592-929156	1/15/2024 4:22:28 PM	Readings	PID	SC23030065D3	Normal	0.2
592-929156	1/15/2024 4:21:28 PM	Readings	PID	SC23030065D3	Normal	0.2
592-929156	1/15/2024 4:20:28 PM	Readings	PID	SC23030065D3	Normal	0.2
592-929156	1/15/2024 4:19:28 PM	Readings	PID	SC23030065D3	Normal	0.2
592-929156	1/15/2024 4:18:28 PM	Readings	PID	SC23030065D3	Normal	0.2
592-929156	1/15/2024 4:17:28 PM	Readings	PID	SC23030065D3	Normal	0.2
592-929156	1/15/2024 4:16:28 PM	Readings	PID	SC23030065D3	Normal	0.2





























592-929156

|1/15/2024 8:27:28 AM |CONFIG

|PID

|SC23030065D3

|

|

|