



DAILY STATUS REPORT

Prepared By:

Gwen Lynn

WEATHER	Snow		Rain		Overcast	Partly Cloudy	x	Bright Sun		Wind
TEMP.	< 32	x	32-50		50-70	70-85		>85		W-14 MPH

IEC Project No:	13928	NYSDEC BCP Site No:	C224367	Date:	01/17/24
Project:	251 Douglass Street, Brooklyn, NY				

<p>Consultant: Impact Environmental Engineering and Geology, PLLC (IEEG)</p> <p>Time On: 06:30 Time Out: 16:30</p>	<p>Personnel On Site: IEEG (Environmental) – Gwen Lynn Broadway Construction Group - Tom Caporale Xolle (Demo Contractor)</p> <p>Equipment On Site: Minirae 3000 PID, DustTrak II</p>
---	---

Scope of Work: Excavation and movement of soil and concrete away from eastern wall

Site Activities:

- Deploy three (3) CAMP units at the start of the work day;
- Xolle continues with hand demolition of concrete from old building on eastern portion of the Site; and
- Excavator utilized to clear area proximal to the east wall to provide more access for hand demo of concrete.

Community Air Monitoring Program (CAMP) - CAMP action level for dust (0.1 mg/m³) and VOCs (5 ppm)

- PID remained at nominal levels throughout the day.
- No sustained dust exceedances were observed over a 1-min period during monitoring;
- Startup Upwind Conditions – PID = 0.0 ppm, Dust = 0.11 mg/m³ @ 06:45.
- High Conditions (Upwind) – PID = 0.0 ppm, Dust = 0.11 mg/m³ @ 06:45
- High Conditions (Downwind 1) – PID = 0.8 ppm @ 10:31, Dust = 0.649 mg/m³ @ 06:47
- High Conditions (Downwind 2) – PID = 3.5 ppm @ 08:21, Dust = 0.153 mg/m³ @ 07:03

Notable Site Conditions:

None.

Planned for the Next Day/Week:

- Hand demolition of the old foundation wall along the eastern portion of the site.

PHOTO LOG

251 DOUGLASS STREET, BROOKLYN, NY



Photo 1 – Representative photo of the excavator clearing the area proximal to the east wall.



Photo 2 – Representative photo facing north.



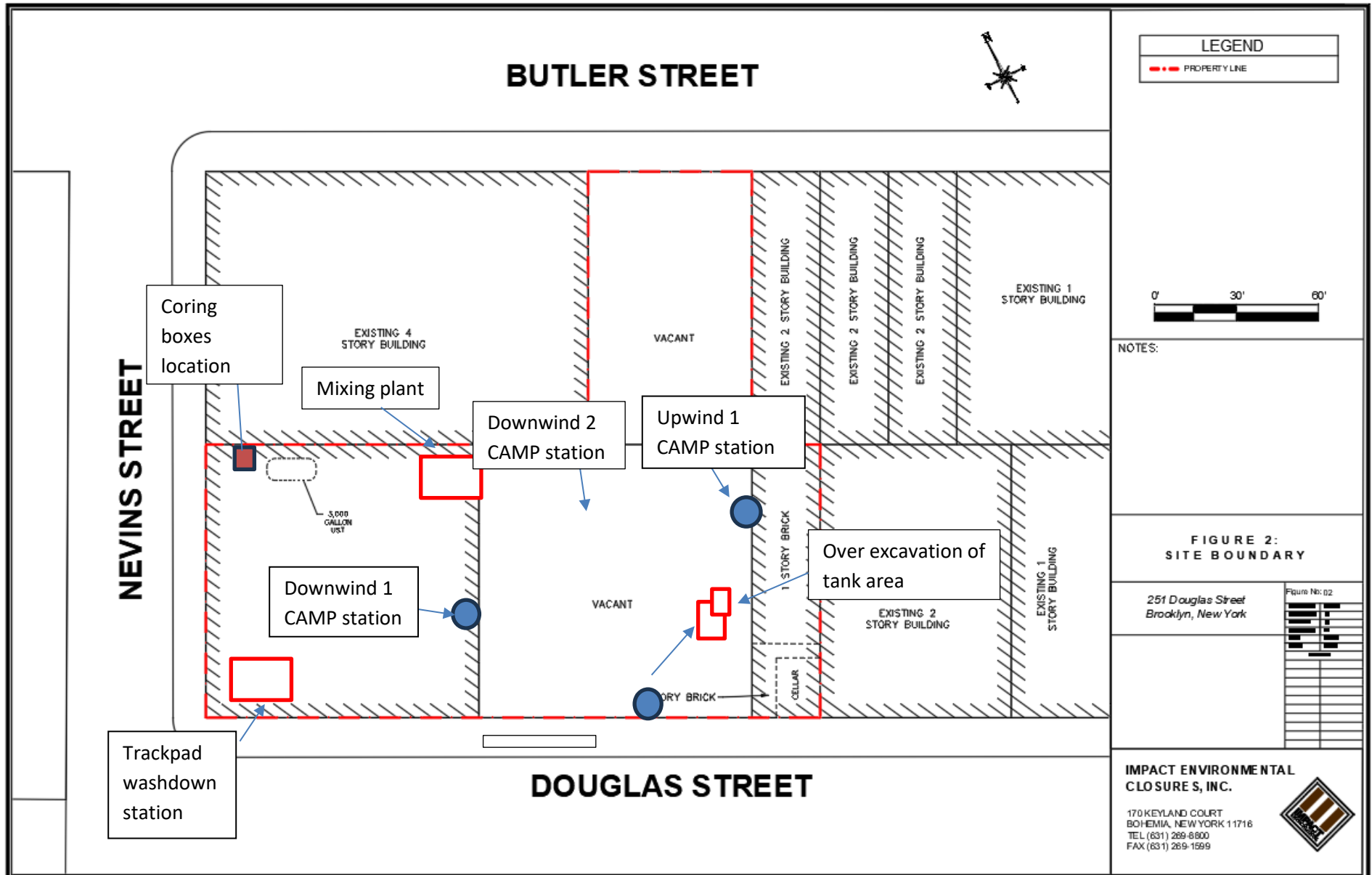
Photo 3 – Representative photo of the rig.



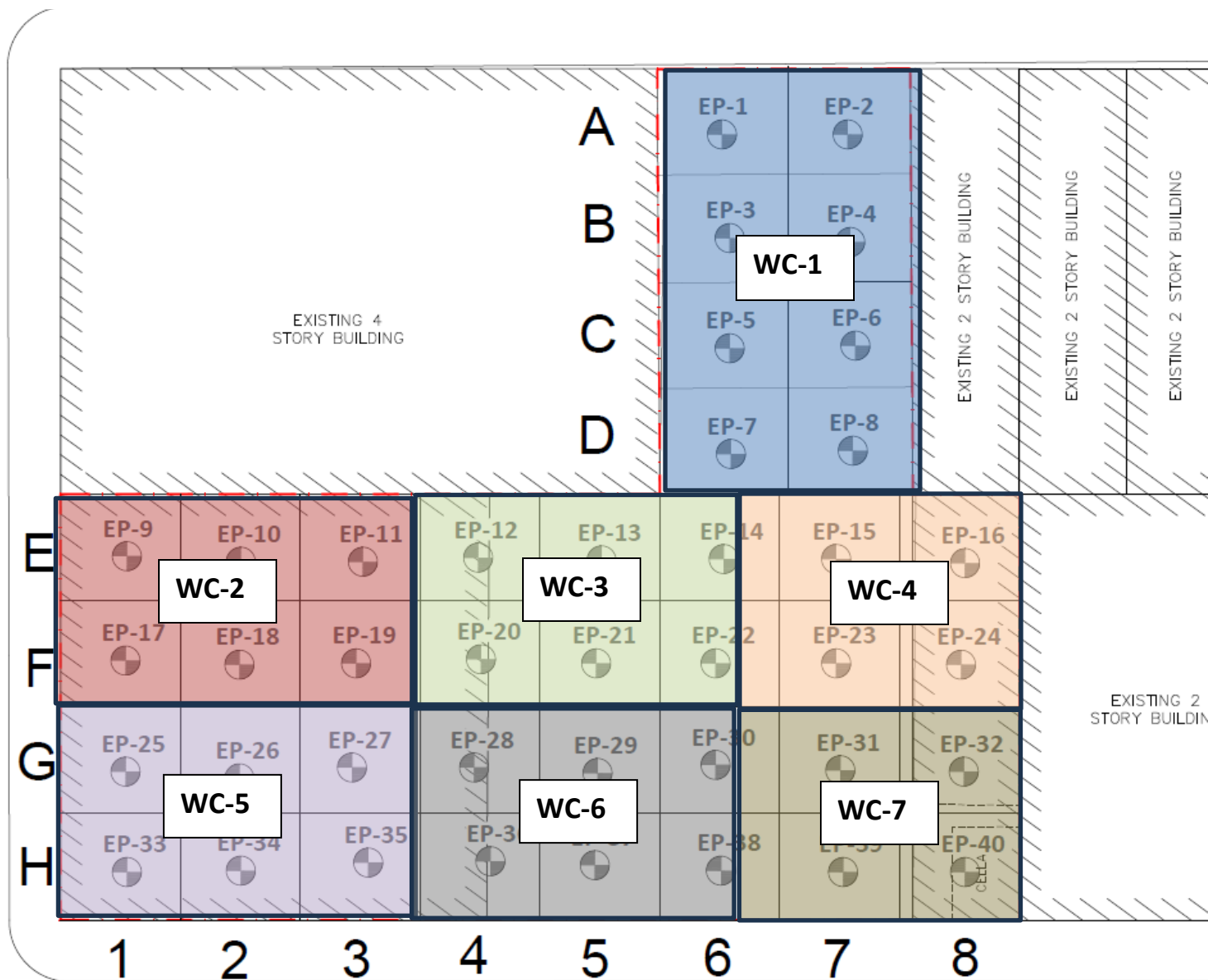
SITE PLANS

251 DOUGLASS STREET, BROOKLYN, NY





NEVINS STREET





UPWIND CAMP READINGS

251 DOUGLASS STREET, BROOKLYN, NY

Instrument Name	DustTrak DRX
Model Number	8533
Serial Number	8533181205
Firmware Version	3.1
Calibration Date	5/31/2023
Test Name	MANUAL_004
Test Start Time	6:45:59 AM
Test Start Date	1/17/2024
Test Length [D:H:M]	0:05:23
Test Interval [M:S]	1:00
PM10 Average [mg/m3]	0.017
PM10 Minimum [mg/m3]	0.012
PM10 Maximum [mg/m3]	0.11
PM10 TWA [mg/m3]	0.011
Photometric User Cal	1
Size Correction User Cal	1
Flow User Cal	0
Errors	
Number of Samples	323

Elapsed Time [s]		PM10 [mg/ Alarms]	Errors
60	6:45:59 AM	0.11	
120	6:46:59 AM	0.016	
180	6:47:59 AM	0.015	
240	6:48:59 AM	0.027	
300	6:49:59 AM	0.017	
360	6:50:59 AM	0.014	
420	6:51:59 AM	0.021	
480	6:52:59 AM	0.013	
540	6:53:59 AM	0.015	
600	6:54:59 AM	0.013	
660	6:55:59 AM	0.013	
720	6:56:59 AM	0.016	
780	6:57:59 AM	0.014	
840	6:58:59 AM	0.013	
900	6:59:59 AM	0.013	
960	7:00:59 AM	0.013	
1020	7:01:59 AM	0.013	
1080	7:02:59 AM	0.013	
1140	7:03:59 AM	0.013	
1200	7:04:59 AM	0.013	
1260	7:05:59 AM	0.013	
1320	7:06:59 AM	0.013	
1380	7:07:59 AM	0.013	
1440	7:08:59 AM	0.013	
1500	7:09:59 AM	0.012	
1560	7:10:59 AM	0.012	

1620	7:11:59 AM	0.013
1680	7:12:59 AM	0.013
1740	7:13:59 AM	0.013
1800	7:14:59 AM	0.014
1860	7:15:59 AM	0.013
1920	7:16:59 AM	0.014
1980	7:17:59 AM	0.014
2040	7:18:59 AM	0.014
2100	7:19:59 AM	0.014
2160	7:20:59 AM	0.013
2220	7:21:59 AM	0.013
2280	7:22:59 AM	0.014
2340	7:23:59 AM	0.013
2400	7:24:59 AM	0.013
2460	7:25:59 AM	0.013
2520	7:26:59 AM	0.013
2580	7:27:59 AM	0.014
2640	7:28:59 AM	0.014
2700	7:29:59 AM	0.014
2760	7:30:59 AM	0.014
2820	7:31:59 AM	0.014
2880	7:32:59 AM	0.014
2940	7:33:59 AM	0.013
3000	7:34:59 AM	0.014
3060	7:35:59 AM	0.014
3120	7:36:59 AM	0.014
3180	7:37:59 AM	0.016
3240	7:38:59 AM	0.014
3300	7:39:59 AM	0.014
3360	7:40:59 AM	0.015
3420	7:41:59 AM	0.015
3480	7:42:59 AM	0.014
3540	7:43:59 AM	0.015
3600	7:44:59 AM	0.015
3660	7:45:59 AM	0.014
3720	7:46:59 AM	0.014
3780	7:47:59 AM	0.015
3840	7:48:59 AM	0.014
3900	7:49:59 AM	0.017
3960	7:50:59 AM	0.015
4020	7:51:59 AM	0.014
4080	7:52:59 AM	0.015
4140	7:53:59 AM	0.015
4200	7:54:59 AM	0.015
4260	7:55:59 AM	0.015
4320	7:56:59 AM	0.015
4380	7:57:59 AM	0.015

4440	7:58:59 AM	0.016
4500	7:59:59 AM	0.016
4560	8:00:59 AM	0.015
4620	8:01:59 AM	0.017
4680	8:02:59 AM	0.016
4740	8:03:59 AM	0.016
4800	8:04:59 AM	0.018
4860	8:05:59 AM	0.018
4920	8:06:59 AM	0.017
4980	8:07:59 AM	0.016
5040	8:08:59 AM	0.017
5100	8:09:59 AM	0.017
5160	8:10:59 AM	0.016
5220	8:11:59 AM	0.017
5280	8:12:59 AM	0.016
5340	8:13:59 AM	0.017
5400	8:14:59 AM	0.017
5460	8:15:59 AM	0.017
5520	8:16:59 AM	0.017
5580	8:17:59 AM	0.016
5640	8:18:59 AM	0.016
5700	8:19:59 AM	0.016
5760	8:20:59 AM	0.017
5820	8:21:59 AM	0.017
5880	8:22:59 AM	0.016
5940	8:23:59 AM	0.017
6000	8:24:59 AM	0.024
6060	8:25:59 AM	0.02
6120	8:26:59 AM	0.018
6180	8:27:59 AM	0.017
6240	8:28:59 AM	0.017
6300	8:29:59 AM	0.022
6360	8:30:59 AM	0.018
6420	8:31:59 AM	0.017
6480	8:32:59 AM	0.022
6540	8:33:59 AM	0.017
6600	8:34:59 AM	0.019
6660	8:35:59 AM	0.018
6720	8:36:59 AM	0.017
6780	8:37:59 AM	0.018
6840	8:38:59 AM	0.018
6900	8:39:59 AM	0.017
6960	8:40:59 AM	0.017
7020	8:41:59 AM	0.017
7080	8:42:59 AM	0.017
7140	8:43:59 AM	0.017
7200	8:44:59 AM	0.017

7260	8:45:59 AM	0.018
7320	8:46:59 AM	0.018
7380	8:47:59 AM	0.018
7440	8:48:59 AM	0.018
7500	8:49:59 AM	0.018
7560	8:50:59 AM	0.017
7620	8:51:59 AM	0.017
7680	8:52:59 AM	0.023
7740	8:53:59 AM	0.017
7800	8:54:59 AM	0.017
7860	8:55:59 AM	0.017
7920	8:56:59 AM	0.017
7980	8:57:59 AM	0.017
8040	8:58:59 AM	0.017
8100	8:59:59 AM	0.018
8160	9:00:59 AM	0.017
8220	9:01:59 AM	0.017
8280	9:02:59 AM	0.018
8340	9:03:59 AM	0.018
8400	9:04:59 AM	0.017
8460	9:05:59 AM	0.017
8520	9:06:59 AM	0.018
8580	9:07:59 AM	0.019
8640	9:08:59 AM	0.019
8700	9:09:59 AM	0.019
8760	9:10:59 AM	0.019
8820	9:11:59 AM	0.019
8880	9:12:59 AM	0.019
8940	9:13:59 AM	0.019
9000	9:14:59 AM	0.018
9060	9:15:59 AM	0.018
9120	9:16:59 AM	0.018
9180	9:17:59 AM	0.019
9240	9:18:59 AM	0.019
9300	9:19:59 AM	0.019
9360	9:20:59 AM	0.018
9420	9:21:59 AM	0.017
9480	9:22:59 AM	0.019
9540	9:23:59 AM	0.018
9600	9:24:59 AM	0.018
9660	9:25:59 AM	0.019
9720	9:26:59 AM	0.018
9780	9:27:59 AM	0.018
9840	9:28:59 AM	0.018
9900	9:29:59 AM	0.018
9960	9:30:59 AM	0.019
10020	9:31:59 AM	0.018

10080	9:32:59 AM	0.018
10140	9:33:59 AM	0.019
10200	9:34:59 AM	0.021
10260	9:35:59 AM	0.021
10320	9:36:59 AM	0.02
10380	9:37:59 AM	0.019
10440	9:38:59 AM	0.018
10500	9:39:59 AM	0.018
10560	9:40:59 AM	0.018
10620	9:41:59 AM	0.019
10680	9:42:59 AM	0.019
10740	9:43:59 AM	0.019
10800	9:44:59 AM	0.019
10860	9:45:59 AM	0.019
10920	9:46:59 AM	0.019
10980	9:47:59 AM	0.018
11040	9:48:59 AM	0.017
11100	9:49:59 AM	0.018
11160	9:50:59 AM	0.018
11220	9:51:59 AM	0.018
11280	9:52:59 AM	0.017
11340	9:53:59 AM	0.017
11400	9:54:59 AM	0.018
11460	9:55:59 AM	0.017
11520	9:56:59 AM	0.017
11580	9:57:59 AM	0.017
11640	9:58:59 AM	0.017
11700	9:59:59 AM	0.019
11760	10:00:59 AM	0.018
11820	10:01:59 AM	0.017
11880	10:02:59 AM	0.017
11940	10:03:59 AM	0.017
12000	10:04:59 AM	0.017
12060	10:05:59 AM	0.017
12120	10:06:59 AM	0.017
12180	10:07:59 AM	0.018
12240	10:08:59 AM	0.019
12300	10:09:59 AM	0.017
12360	10:10:59 AM	0.017
12420	10:11:59 AM	0.017
12480	10:12:59 AM	0.016
12540	10:13:59 AM	0.018
12600	10:14:59 AM	0.02
12660	10:15:59 AM	0.017
12720	10:16:59 AM	0.016
12780	10:17:59 AM	0.016
12840	10:18:59 AM	0.018

12900	10:19:59 AM	0.018
12960	10:20:59 AM	0.017
13020	10:21:59 AM	0.017
13080	10:22:59 AM	0.016
13140	10:23:59 AM	0.016
13200	10:24:59 AM	0.016
13260	10:25:59 AM	0.016
13320	10:26:59 AM	0.017
13380	10:27:59 AM	0.016
13440	10:28:59 AM	0.016
13500	10:29:59 AM	0.016
13560	10:30:59 AM	0.016
13620	10:31:59 AM	0.016
13680	10:32:59 AM	0.016
13740	10:33:59 AM	0.016
13800	10:34:59 AM	0.016
13860	10:35:59 AM	0.016
13920	10:36:59 AM	0.016
13980	10:37:59 AM	0.016
14040	10:38:59 AM	0.016
14100	10:39:59 AM	0.016
14160	10:40:59 AM	0.016
14220	10:41:59 AM	0.016
14280	10:42:59 AM	0.015
14340	10:43:59 AM	0.015
14400	10:44:59 AM	0.015
14460	10:45:59 AM	0.015
14520	10:46:59 AM	0.015
14580	10:47:59 AM	0.016
14640	10:48:59 AM	0.016
14700	10:49:59 AM	0.016
14760	10:50:59 AM	0.016
14820	10:51:59 AM	0.016
14880	10:52:59 AM	0.014
14940	10:53:59 AM	0.015
15000	10:54:59 AM	0.015
15060	10:55:59 AM	0.017
15120	10:56:59 AM	0.015
15180	10:57:59 AM	0.016
15240	10:58:59 AM	0.017
15300	10:59:59 AM	0.016
15360	11:00:59 AM	0.015
15420	11:01:59 AM	0.014
15480	11:02:59 AM	0.015
15540	11:03:59 AM	0.014
15600	11:04:59 AM	0.015
15660	11:05:59 AM	0.015

15720	11:06:59 AM	0.015
15780	11:07:59 AM	0.014
15840	11:08:59 AM	0.014
15900	11:09:59 AM	0.016
15960	11:10:59 AM	0.014
16020	11:11:59 AM	0.014
16080	11:12:59 AM	0.015
16140	11:13:59 AM	0.015
16200	11:14:59 AM	0.015
16260	11:15:59 AM	0.016
16320	11:16:59 AM	0.016
16380	11:17:59 AM	0.015
16440	11:18:59 AM	0.016
16500	11:19:59 AM	0.017
16560	11:20:59 AM	0.016
16620	11:21:59 AM	0.017
16680	11:22:59 AM	0.014
16740	11:23:59 AM	0.016
16800	11:24:59 AM	0.015
16860	11:25:59 AM	0.016
16920	11:26:59 AM	0.015
16980	11:27:59 AM	0.014
17040	11:28:59 AM	0.014
17100	11:29:59 AM	0.014
17160	11:30:59 AM	0.014
17220	11:31:59 AM	0.014
17280	11:32:59 AM	0.014
17340	11:33:59 AM	0.014
17400	11:34:59 AM	0.014
17460	11:35:59 AM	0.013
17520	11:36:59 AM	0.014
17580	11:37:59 AM	0.016
17640	11:38:59 AM	0.015
17700	11:39:59 AM	0.016
17760	11:40:59 AM	0.015
17820	11:41:59 AM	0.017
17880	11:42:59 AM	0.018
17940	11:43:59 AM	0.016
18000	11:44:59 AM	0.015
18060	11:45:59 AM	0.015
18120	11:46:59 AM	0.015
18180	11:47:59 AM	0.015
18240	11:48:59 AM	0.015
18300	11:49:59 AM	0.015
18360	11:50:59 AM	0.014
18420	11:51:59 AM	0.015
18480	11:52:59 AM	0.016

18540	11:53:59 AM	0.015
18600	11:54:59 AM	0.015
18660	11:55:59 AM	0.014
18720	11:56:59 AM	0.015
18780	11:57:59 AM	0.015
18840	11:58:59 AM	0.014
18900	11:59:59 AM	0.014
18960	12:00:59 PM	0.014
19020	12:01:59 PM	0.015
19080	12:02:59 PM	0.017
19140	12:03:59 PM	0.015
19200	12:04:59 PM	0.014
19260	12:05:59 PM	0.015
19320	12:06:59 PM	0.017
19380	12:07:59 PM	0.031

Device Serial No	Log Time	Log Type	Sensor 1 Type	Sensor 1 Serial Number	Sensor 1 Status	Sensor 1 Gas Reading
592-600871	1/17/2024 1:35:26 PM	Readings	PID	SC23030408A8	Normal	0.0
592-600871	1/17/2024 1:34:26 PM	Readings	PID	SC23030408A8	Normal	0.0
592-600871	1/17/2024 1:33:26 PM	Readings	PID	SC23030408A8	Normal	0.0
592-600871	1/17/2024 1:32:26 PM	Readings	PID	SC23030408A8	Normal	0.0
592-600871	1/17/2024 1:31:26 PM	Readings	PID	SC23030408A8	Normal	0.0
592-600871	1/17/2024 1:30:26 PM	Readings	PID	SC23030408A8	Normal	0.0
592-600871	1/17/2024 1:29:26 PM	Readings	PID	SC23030408A8	Normal	0.0
592-600871	1/17/2024 1:28:26 PM	Readings	PID	SC23030408A8	Normal	0.0
592-600871	1/17/2024 1:27:26 PM	Readings	PID	SC23030408A8	Normal	0.0
592-600871	1/17/2024 1:26:26 PM	Readings	PID	SC23030408A8	Normal	0.0
592-600871	1/17/2024 1:25:26 PM	Readings	PID	SC23030408A8	Normal	0.0
592-600871	1/17/2024 1:24:26 PM	Readings	PID	SC23030408A8	Normal	0.0
592-600871	1/17/2024 1:23:26 PM	Readings	PID	SC23030408A8	Normal	0.0
592-600871	1/17/2024 1:22:26 PM	Readings	PID	SC23030408A8	Normal	0.0
592-600871	1/17/2024 1:21:26 PM	Readings	PID	SC23030408A8	Normal	0.0
592-600871	1/17/2024 1:20:26 PM	Readings	PID	SC23030408A8	Normal	0.0
592-600871	1/17/2024 1:19:26 PM	Readings	PID	SC23030408A8	Normal	0.0
592-600871	1/17/2024 1:18:26 PM	Readings	PID	SC23030408A8	Normal	0.0
592-600871	1/17/2024 1:17:26 PM	Readings	PID	SC23030408A8	Normal	0.0
592-600871	1/17/2024 1:16:26 PM	Readings	PID	SC23030408A8	Normal	0.0
592-600871	1/17/2024 1:15:26 PM	Readings	PID	SC23030408A8	Normal	0.0
592-600871	1/17/2024 1:14:26 PM	Readings	PID	SC23030408A8	Normal	0.0
592-600871	1/17/2024 1:13:26 PM	Readings	PID	SC23030408A8	Normal	0.0
592-600871	1/17/2024 1:12:26 PM	Readings	PID	SC23030408A8	Normal	0.0
592-600871	1/17/2024 1:11:26 PM	Readings	PID	SC23030408A8	Normal	0.0
592-600871	1/17/2024 1:10:26 PM	Readings	PID	SC23030408A8	Normal	0.0
592-600871	1/17/2024 1:09:26 PM	Readings	PID	SC23030408A8	Normal	0.0
592-600871	1/17/2024 1:08:26 PM	Readings	PID	SC23030408A8	Normal	0.0
592-600871	1/17/2024 1:07:26 PM	Readings	PID	SC23030408A8	Normal	0.0
592-600871	1/17/2024 1:06:26 PM	Readings	PID	SC23030408A8	Normal	0.0
592-600871	1/17/2024 1:05:26 PM	Readings	PID	SC23030408A8	Normal	0.0
592-600871	1/17/2024 1:04:26 PM	Readings	PID	SC23030408A8	Normal	0.0
592-600871	1/17/2024 1:03:26 PM	Readings	PID	SC23030408A8	Normal	0.0
592-600871	1/17/2024 1:02:26 PM	Readings	PID	SC23030408A8	Normal	0.0
592-600871	1/17/2024 1:01:26 PM	Readings	PID	SC23030408A8	Normal	0.0
592-600871	1/17/2024 1:00:26 PM	Readings	PID	SC23030408A8	Normal	0.0

592-600871	1/17/2024 8:26:26 AM	Readings	PID	SC23030408A8	Normal	0.0
592-600871	1/17/2024 8:25:26 AM	Readings	PID	SC23030408A8	Normal	0.0
592-600871	1/17/2024 8:24:26 AM	Readings	PID	SC23030408A8	Normal	0.0
592-600871	1/17/2024 8:23:26 AM	Readings	PID	SC23030408A8	Normal	0.0
592-600871	1/17/2024 8:22:26 AM	Readings	PID	SC23030408A8	Normal	0.0
592-600871	1/17/2024 8:21:26 AM	Readings	PID	SC23030408A8	Normal	0.0
592-600871	1/17/2024 8:20:26 AM	CONFIG	PID	SC23030408A8		

DOWNWIND CAMP READINGS

251 DOUGLASS STREET, BROOKLYN, NY



Instrument Name	DustTrak DRX
Model Number	8533
Serial Number	8533181207
Firmware Version	3.1
Calibration Date	6/1/2023
Test Name	MANUAL_004
Test Start Time	6:43:24 AM
Test Start Date	1/17/2024
Test Length [D:H:M]	0:05:41
Test Interval [M:S]	1:00
PM10 Average [mg/m3]	0.021
PM10 Minimum [mg/m3]	0.012
PM10 Maximum [mg/m3]	0.649
PM10 TWA [mg/m3]	0.015
Photometric User Cal	1
Size Correction User Cal	1
Flow User Cal	0
Errors	
Number of Samples	341

Elapsed Time [s]		PM10 [mg/ Alarms]	Errors
60	6:43:24 AM	0.045	
120	6:44:24 AM	0.019	
180	6:45:24 AM	0.07	
240	6:46:24 AM	0.015	
300	6:47:24 AM	0.649	
360	6:48:24 AM	0.017	
420	6:49:24 AM	0.013	
480	6:50:24 AM	0.014	
540	6:51:24 AM	0.016	
600	6:52:24 AM	0.014	
660	6:53:24 AM	0.012	
720	6:54:24 AM	0.013	
780	6:55:24 AM	0.013	
840	6:56:24 AM	0.013	
900	6:57:24 AM	0.013	
960	6:58:24 AM	0.013	
1020	6:59:24 AM	0.013	
1080	7:00:24 AM	0.014	
1140	7:01:24 AM	0.014	
1200	7:02:24 AM	0.019	
1260	7:03:24 AM	0.013	
1320	7:04:24 AM	0.013	
1380	7:05:24 AM	0.013	
1440	7:06:24 AM	0.013	
1500	7:07:24 AM	0.013	
1560	7:08:24 AM	0.013	

1620	7:09:24 AM	0.03
1680	7:10:24 AM	0.014
1740	7:11:24 AM	0.013
1800	7:12:24 AM	0.013
1860	7:13:24 AM	0.013
1920	7:14:24 AM	0.013
1980	7:15:24 AM	0.013
2040	7:16:24 AM	0.013
2100	7:17:24 AM	0.014
2160	7:18:24 AM	0.255
2220	7:19:24 AM	0.328
2280	7:20:24 AM	0.019
2340	7:21:24 AM	0.017
2400	7:22:24 AM	0.014
2460	7:23:24 AM	0.014
2520	7:24:24 AM	0.014
2580	7:25:24 AM	0.017
2640	7:26:24 AM	0.045
2700	7:27:24 AM	0.028
2760	7:28:24 AM	0.032
2820	7:29:24 AM	0.016
2880	7:30:24 AM	0.034
2940	7:31:24 AM	0.031
3000	7:32:24 AM	0.019
3060	7:33:24 AM	0.015
3120	7:34:24 AM	0.017
3180	7:35:24 AM	0.018
3240	7:36:24 AM	0.033
3300	7:37:24 AM	0.026
3360	7:38:24 AM	0.02
3420	7:39:24 AM	0.02
3480	7:40:24 AM	0.014
3540	7:41:24 AM	0.016
3600	7:42:24 AM	0.014
3660	7:43:24 AM	0.017
3720	7:44:24 AM	0.015
3780	7:45:24 AM	0.015
3840	7:46:24 AM	0.015
3900	7:47:24 AM	0.014
3960	7:48:24 AM	0.015
4020	7:49:24 AM	0.016
4080	7:50:24 AM	0.016
4140	7:51:24 AM	0.014
4200	7:52:24 AM	0.015
4260	7:53:24 AM	0.015
4320	7:54:24 AM	0.015
4380	7:55:24 AM	0.017

4440	7:56:24 AM	0.015
4500	7:57:24 AM	0.014
4560	7:58:24 AM	0.015
4620	7:59:24 AM	0.015
4680	8:00:24 AM	0.015
4740	8:01:24 AM	0.015
4800	8:02:24 AM	0.016
4860	8:03:24 AM	0.015
4920	8:04:24 AM	0.015
4980	8:05:24 AM	0.016
5040	8:06:24 AM	0.015
5100	8:07:24 AM	0.015
5160	8:08:24 AM	0.016
5220	8:09:24 AM	0.017
5280	8:10:24 AM	0.017
5340	8:11:24 AM	0.016
5400	8:12:24 AM	0.016
5460	8:13:24 AM	0.016
5520	8:14:24 AM	0.016
5580	8:15:24 AM	0.017
5640	8:16:24 AM	0.016
5700	8:17:24 AM	0.016
5760	8:18:24 AM	0.016
5820	8:19:24 AM	0.016
5880	8:20:24 AM	0.016
5940	8:21:24 AM	0.016
6000	8:22:24 AM	0.016
6060	8:23:24 AM	0.016
6120	8:24:24 AM	0.016
6180	8:25:24 AM	0.016
6240	8:26:24 AM	0.016
6300	8:27:24 AM	0.016
6360	8:28:24 AM	0.02
6420	8:29:24 AM	0.018
6480	8:30:24 AM	0.017
6540	8:31:24 AM	0.017
6600	8:32:24 AM	0.016
6660	8:33:24 AM	0.02
6720	8:34:24 AM	0.018
6780	8:35:24 AM	0.017
6840	8:36:24 AM	0.02
6900	8:37:24 AM	0.017
6960	8:38:24 AM	0.018
7020	8:39:24 AM	0.018
7080	8:40:24 AM	0.017
7140	8:41:24 AM	0.017
7200	8:42:24 AM	0.018

7260	8:43:24 AM	0.017
7320	8:44:24 AM	0.017
7380	8:45:24 AM	0.017
7440	8:46:24 AM	0.016
7500	8:47:24 AM	0.017
7560	8:48:24 AM	0.017
7620	8:49:24 AM	0.017
7680	8:50:24 AM	0.017
7740	8:51:24 AM	0.017
7800	8:52:24 AM	0.017
7860	8:53:24 AM	0.017
7920	8:54:24 AM	0.017
7980	8:55:24 AM	0.018
8040	8:56:24 AM	0.017
8100	8:57:24 AM	0.017
8160	8:58:24 AM	0.017
8220	8:59:24 AM	0.016
8280	9:00:24 AM	0.017
8340	9:01:24 AM	0.017
8400	9:02:24 AM	0.017
8460	9:03:24 AM	0.017
8520	9:04:24 AM	0.017
8580	9:05:24 AM	0.017
8640	9:06:24 AM	0.017
8700	9:07:24 AM	0.018
8760	9:08:24 AM	0.017
8820	9:09:24 AM	0.016
8880	9:10:24 AM	0.017
8940	9:11:24 AM	0.018
9000	9:12:24 AM	0.018
9060	9:13:24 AM	0.018
9120	9:14:24 AM	0.018
9180	9:15:24 AM	0.019
9240	9:16:24 AM	0.018
9300	9:17:24 AM	0.018
9360	9:18:24 AM	0.017
9420	9:19:24 AM	0.017
9480	9:20:24 AM	0.017
9540	9:21:24 AM	0.017
9600	9:22:24 AM	0.018
9660	9:23:24 AM	0.018
9720	9:24:24 AM	0.018
9780	9:25:24 AM	0.017
9840	9:26:24 AM	0.017
9900	9:27:24 AM	0.017
9960	9:28:24 AM	0.018
10020	9:29:24 AM	0.018

10080	9:30:24 AM	0.018
10140	9:31:24 AM	0.017
10200	9:32:24 AM	0.017
10260	9:33:24 AM	0.017
10320	9:34:24 AM	0.017
10380	9:35:24 AM	0.017
10440	9:36:24 AM	0.018
10500	9:37:24 AM	0.02
10560	9:38:24 AM	0.02
10620	9:39:24 AM	0.02
10680	9:40:24 AM	0.019
10740	9:41:24 AM	0.019
10800	9:42:24 AM	0.018
10860	9:43:24 AM	0.018
10920	9:44:24 AM	0.018
10980	9:45:24 AM	0.018
11040	9:46:24 AM	0.018
11100	9:47:24 AM	0.018
11160	9:48:24 AM	0.019
11220	9:49:24 AM	0.018
11280	9:50:24 AM	0.018
11340	9:51:24 AM	0.017
11400	9:52:24 AM	0.017
11460	9:53:24 AM	0.017
11520	9:54:24 AM	0.017
11580	9:55:24 AM	0.017
11640	9:56:24 AM	0.017
11700	9:57:24 AM	0.017
11760	9:58:24 AM	0.017
11820	9:59:24 AM	0.017
11880	10:00:24 AM	0.016
11940	10:01:24 AM	0.016
12000	10:02:24 AM	0.017
12060	10:03:24 AM	0.018
12120	10:04:24 AM	0.017
12180	10:05:24 AM	0.017
12240	10:06:24 AM	0.017
12300	10:07:24 AM	0.017
12360	10:08:24 AM	0.017
12420	10:09:24 AM	0.016
12480	10:10:24 AM	0.017
12540	10:11:24 AM	0.017
12600	10:12:24 AM	0.019
12660	10:13:24 AM	0.017
12720	10:14:24 AM	0.017
12780	10:15:24 AM	0.017
12840	10:16:24 AM	0.018

12900	10:17:24 AM	0.019
12960	10:18:24 AM	0.018
13020	10:19:24 AM	0.018
13080	10:20:24 AM	0.016
13140	10:21:24 AM	0.016
13200	10:22:24 AM	0.021
13260	10:23:24 AM	0.017
13320	10:24:24 AM	0.017
13380	10:25:24 AM	0.017
13440	10:26:24 AM	0.016
13500	10:27:24 AM	0.016
13560	10:28:24 AM	0.017
13620	10:29:24 AM	0.016
13680	10:30:24 AM	0.016
13740	10:31:24 AM	0.018
13800	10:32:24 AM	0.016
13860	10:33:24 AM	0.016
13920	10:34:24 AM	0.016
13980	10:35:24 AM	0.016
14040	10:36:24 AM	0.017
14100	10:37:24 AM	0.016
14160	10:38:24 AM	0.016
14220	10:39:24 AM	0.016
14280	10:40:24 AM	0.016
14340	10:41:24 AM	0.017
14400	10:42:24 AM	0.018
14460	10:43:24 AM	0.017
14520	10:44:24 AM	0.016
14580	10:45:24 AM	0.017
14640	10:46:24 AM	0.016
14700	10:47:24 AM	0.015
14760	10:48:24 AM	0.016
14820	10:49:24 AM	0.016
14880	10:50:24 AM	0.015
14940	10:51:24 AM	0.017
15000	10:52:24 AM	0.016
15060	10:53:24 AM	0.016
15120	10:54:24 AM	0.017
15180	10:55:24 AM	0.017
15240	10:56:24 AM	0.016
15300	10:57:24 AM	0.016
15360	10:58:24 AM	0.015
15420	10:59:24 AM	0.017
15480	11:00:24 AM	0.016
15540	11:01:24 AM	0.016
15600	11:02:24 AM	0.018
15660	11:03:24 AM	0.016

15720	11:04:24 AM	0.015
15780	11:05:24 AM	0.014
15840	11:06:24 AM	0.016
15900	11:07:24 AM	0.015
15960	11:08:24 AM	0.016
16020	11:09:24 AM	0.015
16080	11:10:24 AM	0.017
16140	11:11:24 AM	0.014
16200	11:12:24 AM	0.015
16260	11:13:24 AM	0.014
16320	11:14:24 AM	0.015
16380	11:15:24 AM	0.014
16440	11:16:24 AM	0.014
16500	11:17:24 AM	0.015
16560	11:18:24 AM	0.015
16620	11:19:24 AM	0.016
16680	11:20:24 AM	0.016
16740	11:21:24 AM	0.016
16800	11:22:24 AM	0.017
16860	11:23:24 AM	0.017
16920	11:24:24 AM	0.035
16980	11:25:24 AM	0.016
17040	11:26:24 AM	0.015
17100	11:27:24 AM	0.017
17160	11:28:24 AM	0.016
17220	11:29:24 AM	0.015
17280	11:30:24 AM	0.015
17340	11:31:24 AM	0.016
17400	11:32:24 AM	0.015
17460	11:33:24 AM	0.014
17520	11:34:24 AM	0.014
17580	11:35:24 AM	0.015
17640	11:36:24 AM	0.015
17700	11:37:24 AM	0.014
17760	11:38:24 AM	0.019
17820	11:39:24 AM	0.015
17880	11:40:24 AM	0.015
17940	11:41:24 AM	0.015
18000	11:42:24 AM	0.015
18060	11:43:24 AM	0.016
18120	11:44:24 AM	0.017
18180	11:45:24 AM	0.016
18240	11:46:24 AM	0.02
18300	11:47:24 AM	0.015
18360	11:48:24 AM	0.017
18420	11:49:24 AM	0.015
18480	11:50:24 AM	0.015

18540	11:51:24 AM	0.015
18600	11:52:24 AM	0.015
18660	11:53:24 AM	0.016
18720	11:54:24 AM	0.017
18780	11:55:24 AM	0.015
18840	11:56:24 AM	0.016
18900	11:57:24 AM	0.015
18960	11:58:24 AM	0.017
19020	11:59:24 AM	0.014
19080	12:00:24 PM	0.016
19140	12:01:24 PM	0.015
19200	12:02:24 PM	0.015
19260	12:03:24 PM	0.015
19320	12:04:24 PM	0.019
19380	12:05:24 PM	0.015
19440	12:06:24 PM	0.016
19500	12:07:24 PM	0.015
19560	12:08:24 PM	0.015
19620	12:09:24 PM	0.016
19680	12:10:24 PM	0.016
19740	12:11:24 PM	0.016
19800	12:12:24 PM	0.016
19860	12:13:24 PM	0.015
19920	12:14:24 PM	0.015
19980	12:15:24 PM	0.015
20040	12:16:24 PM	0.016
20100	12:17:24 PM	0.017
20160	12:18:24 PM	0.014
20220	12:19:24 PM	0.014
20280	12:20:24 PM	0.014
20340	12:21:24 PM	0.014
20400	12:22:24 PM	0.022
20460	12:23:24 PM	0.058

Device Serial No	Log Time	Log Type	Sensor 1 Type	Sensor 1 Serial Number	Sensor 1 Status	F1.
592-602816	1/17/2024 1:36:47 PM	Readings	PID	SC23030324C7	Normal	0.7
592-602816	1/17/2024 1:35:47 PM	Readings	PID	SC23030324C7	Normal	0.7
592-602816	1/17/2024 1:34:47 PM	Readings	PID	SC23030324C7	Normal	0.7
592-602816	1/17/2024 1:33:47 PM	Readings	PID	SC23030324C7	Normal	0.7
592-602816	1/17/2024 1:32:47 PM	Readings	PID	SC23030324C7	Normal	0.7
592-602816	1/17/2024 1:31:47 PM	Readings	PID	SC23030324C7	Normal	0.7
592-602816	1/17/2024 1:30:47 PM	Readings	PID	SC23030324C7	Normal	0.7
592-602816	1/17/2024 1:29:47 PM	Readings	PID	SC23030324C7	Normal	0.7
592-602816	1/17/2024 1:28:47 PM	Readings	PID	SC23030324C7	Normal	0.8
592-602816	1/17/2024 1:27:47 PM	Readings	PID	SC23030324C7	Normal	0.8
592-602816	1/17/2024 1:26:47 PM	Readings	PID	SC23030324C7	Normal	0.7
592-602816	1/17/2024 1:25:47 PM	Readings	PID	SC23030324C7	Normal	0.7
592-602816	1/17/2024 1:24:47 PM	Readings	PID	SC23030324C7	Normal	0.7
592-602816	1/17/2024 1:23:47 PM	Readings	PID	SC23030324C7	Normal	0.7
592-602816	1/17/2024 1:22:47 PM	Readings	PID	SC23030324C7	Normal	0.7
592-602816	1/17/2024 1:21:47 PM	Readings	PID	SC23030324C7	Normal	0.7
592-602816	1/17/2024 1:20:47 PM	Readings	PID	SC23030324C7	Normal	0.7
592-602816	1/17/2024 1:19:47 PM	Readings	PID	SC23030324C7	Normal	0.7
592-602816	1/17/2024 1:18:47 PM	Readings	PID	SC23030324C7	Normal	0.7
592-602816	1/17/2024 1:17:47 PM	Readings	PID	SC23030324C7	Normal	0.8
592-602816	1/17/2024 1:16:47 PM	Readings	PID	SC23030324C7	Normal	0.7
592-602816	1/17/2024 1:15:47 PM	Readings	PID	SC23030324C7	Normal	0.7
592-602816	1/17/2024 1:14:47 PM	Readings	PID	SC23030324C7	Normal	0.7
592-602816	1/17/2024 1:13:47 PM	Readings	PID	SC23030324C7	Normal	0.7
592-602816	1/17/2024 1:12:47 PM	Readings	PID	SC23030324C7	Normal	0.7
592-602816	1/17/2024 1:11:47 PM	Readings	PID	SC23030324C7	Normal	0.7
592-602816	1/17/2024 1:10:47 PM	Readings	PID	SC23030324C7	Normal	0.7
592-602816	1/17/2024 1:09:47 PM	Readings	PID	SC23030324C7	Normal	0.7
592-602816	1/17/2024 1:08:47 PM	Readings	PID	SC23030324C7	Normal	0.7
592-602816	1/17/2024 1:07:47 PM	Readings	PID	SC23030324C7	Normal	0.7
592-602816	1/17/2024 1:06:47 PM	Readings	PID	SC23030324C7	Normal	0.7
592-602816	1/17/2024 1:05:47 PM	Readings	PID	SC23030324C7	Normal	0.7
592-602816	1/17/2024 1:04:47 PM	Readings	PID	SC23030324C7	Normal	0.7
592-602816	1/17/2024 1:03:47 PM	Readings	PID	SC23030324C7	Normal	0.7
592-602816	1/17/2024 1:02:47 PM	Readings	PID	SC23030324C7	Normal	0.7
592-602816	1/17/2024 1:01:47 PM	Readings	PID	SC23030324C7	Normal	0.7

Instrument Name	DustTrak DRX
Model Number	8533
Serial Number	8533181208
Firmware Version	3.1
Calibration Date	6/1/2023
Test Name	MANUAL_004
Test Start Time	7:00:45 AM
Test Start Date	1/17/2024
Test Length [D:H:M]	0:05:16
Test Interval [M:S]	1:00
PM10 Average [mg/m3]	0.021
PM10 Minimum [mg/m3]	0.013
PM10 Maximum [mg/m3]	0.153
PM10 TWA [mg/m3]	0.014
Photometric User Cal	1
Size Correction User Cal	1
Flow User Cal	0
Errors	
Number of Samples	316

Elapsed Time [s]		PM10 [mg/m3]	Alarms	Errors
61	7:00:45 AM	0.113		
121	7:01:45 AM	0.03		
181	7:02:45 AM	0.015		
241	7:03:45 AM	0.153		
301	7:04:45 AM	0.017		
362	7:05:45 AM	0.014		
421	7:06:45 AM	0.014		
482	7:07:45 AM	0.013		
541	7:08:45 AM	0.014		
601	7:09:45 AM	0.014		
661	7:10:45 AM	0.014		
721	7:11:45 AM	0.014		
781	7:12:45 AM	0.013		
841	7:13:45 AM	0.013		
901	7:14:45 AM	0.013		
961	7:15:45 AM	0.013		
1021	7:16:45 AM	0.014		
1081	7:17:45 AM	0.02		
1141	7:18:45 AM	0.073		
1201	7:19:45 AM	0.032		
1261	7:20:45 AM	0.014		
1321	7:21:45 AM	0.014		
1381	7:22:45 AM	0.014		
1441	7:23:45 AM	0.014		
1501	7:24:45 AM	0.014		
1561	7:25:45 AM	0.03		

1621	7:26:45 AM	0.018
1681	7:27:45 AM	0.016
1741	7:28:45 AM	0.014
1801	7:29:45 AM	0.014
1861	7:30:45 AM	0.032
1921	7:31:45 AM	0.018
1981	7:32:45 AM	0.016
2041	7:33:45 AM	0.015
2101	7:34:45 AM	0.016
2161	7:35:45 AM	0.016
2221	7:36:45 AM	0.018
2281	7:37:45 AM	0.018
2341	7:38:45 AM	0.016
2401	7:39:45 AM	0.014
2461	7:40:45 AM	0.018
2521	7:41:45 AM	0.016
2581	7:42:45 AM	0.015
2641	7:43:45 AM	0.015
2701	7:44:45 AM	0.016
2761	7:45:45 AM	0.016
2821	7:46:45 AM	0.016
2881	7:47:45 AM	0.015
2941	7:48:45 AM	0.015
3001	7:49:45 AM	0.015
3061	7:50:45 AM	0.015
3121	7:51:45 AM	0.015
3181	7:52:45 AM	0.015
3241	7:53:45 AM	0.016
3301	7:54:45 AM	0.015
3361	7:55:45 AM	0.015
3421	7:56:45 AM	0.015
3481	7:57:45 AM	0.015
3541	7:58:45 AM	0.016
3602	7:59:45 AM	0.016
3661	8:00:45 AM	0.016
3721	8:01:45 AM	0.016
3781	8:02:45 AM	0.017
3841	8:03:45 AM	0.017
3901	8:04:45 AM	0.02
3961	8:05:45 AM	0.017
4021	8:06:45 AM	0.016
4081	8:07:45 AM	0.016
4141	8:08:45 AM	0.018
4201	8:09:45 AM	0.018
4261	8:10:45 AM	0.017
4321	8:11:45 AM	0.017
4381	8:12:45 AM	0.018

4441	8:13:45 AM	0.017
4501	8:14:45 AM	0.017
4562	8:15:45 AM	0.017
4621	8:16:45 AM	0.018
4681	8:17:45 AM	0.018
4741	8:18:45 AM	0.018
4801	8:19:45 AM	0.018
4861	8:20:45 AM	0.017
4921	8:21:45 AM	0.018
4981	8:22:45 AM	0.017
5041	8:23:45 AM	0.017
5101	8:24:45 AM	0.018
5161	8:25:45 AM	0.018
5221	8:26:45 AM	0.018
5281	8:27:45 AM	0.02
5341	8:28:45 AM	0.022
5401	8:29:45 AM	0.02
5461	8:30:45 AM	0.018
5521	8:31:45 AM	0.018
5581	8:32:45 AM	0.019
5641	8:33:45 AM	0.022
5701	8:34:45 AM	0.019
5761	8:35:45 AM	0.02
5821	8:36:45 AM	0.021
5881	8:37:45 AM	0.019
5941	8:38:45 AM	0.024
6001	8:39:45 AM	0.018
6061	8:40:45 AM	0.018
6121	8:41:45 AM	0.018
6181	8:42:45 AM	0.019
6241	8:43:45 AM	0.019
6301	8:44:45 AM	0.018
6361	8:45:45 AM	0.018
6421	8:46:45 AM	0.018
6481	8:47:45 AM	0.018
6541	8:48:45 AM	0.019
6601	8:49:45 AM	0.019
6661	8:50:45 AM	0.019
6721	8:51:45 AM	0.019
6781	8:52:45 AM	0.019
6841	8:53:45 AM	0.019
6901	8:54:45 AM	0.018
6961	8:55:45 AM	0.019
7021	8:56:45 AM	0.018
7081	8:57:45 AM	0.018
7141	8:58:45 AM	0.018
7201	8:59:45 AM	0.018

7261	9:00:45 AM	0.018
7321	9:01:45 AM	0.018
7381	9:02:45 AM	0.019
7441	9:03:45 AM	0.019
7501	9:04:45 AM	0.019
7561	9:05:45 AM	0.018
7621	9:06:45 AM	0.019
7681	9:07:45 AM	0.019
7741	9:08:45 AM	0.018
7801	9:09:45 AM	0.019
7861	9:10:45 AM	0.019
7921	9:11:45 AM	0.02
7982	9:12:45 AM	0.02
8041	9:13:45 AM	0.02
8101	9:14:45 AM	0.02
8161	9:15:45 AM	0.02
8221	9:16:45 AM	0.019
8281	9:17:45 AM	0.02
8341	9:18:45 AM	0.019
8401	9:19:45 AM	0.019
8461	9:20:45 AM	0.019
8521	9:21:45 AM	0.019
8581	9:22:45 AM	0.022
8641	9:23:45 AM	0.019
8701	9:24:45 AM	0.018
8761	9:25:45 AM	0.019
8821	9:26:45 AM	0.019
8881	9:27:45 AM	0.019
8941	9:28:45 AM	0.019
9001	9:29:45 AM	0.02
9061	9:30:45 AM	0.019
9121	9:31:45 AM	0.019
9181	9:32:45 AM	0.019
9241	9:33:45 AM	0.019
9301	9:34:45 AM	0.019
9361	9:35:45 AM	0.019
9421	9:36:45 AM	0.02
9481	9:37:45 AM	0.021
9541	9:38:45 AM	0.022
9601	9:39:45 AM	0.021
9661	9:40:45 AM	0.021
9721	9:41:45 AM	0.02
9781	9:42:45 AM	0.019
9841	9:43:45 AM	0.019
9901	9:44:45 AM	0.019
9961	9:45:45 AM	0.02
10021	9:46:45 AM	0.019

10081	9:47:45 AM	0.02
10141	9:48:45 AM	0.02
10201	9:49:45 AM	0.019
10261	9:50:45 AM	0.019
10321	9:51:45 AM	0.018
10381	9:52:45 AM	0.018
10441	9:53:45 AM	0.018
10501	9:54:45 AM	0.018
10561	9:55:45 AM	0.018
10621	9:56:45 AM	0.018
10681	9:57:45 AM	0.019
10741	9:58:45 AM	0.018
10802	9:59:45 AM	0.018
10861	10:00:45 AM	0.019
10921	10:01:45 AM	0.017
10981	10:02:45 AM	0.018
11041	10:03:45 AM	0.02
11101	10:04:45 AM	0.019
11161	10:05:45 AM	0.018
11221	10:06:45 AM	0.018
11281	10:07:45 AM	0.018
11341	10:08:45 AM	0.017
11401	10:09:45 AM	0.018
11461	10:10:45 AM	0.018
11521	10:11:45 AM	0.019
11581	10:12:45 AM	0.018
11642	10:13:45 AM	0.018
11701	10:14:45 AM	0.018
11761	10:15:45 AM	0.017
11821	10:16:45 AM	0.018
11881	10:17:45 AM	0.019
11941	10:18:45 AM	0.019
12001	10:19:45 AM	0.017
12061	10:20:45 AM	0.017
12121	10:21:45 AM	0.017
12181	10:22:45 AM	0.017
12241	10:23:45 AM	0.018
12301	10:24:45 AM	0.018
12361	10:25:45 AM	0.019
12421	10:26:45 AM	0.017
12481	10:27:45 AM	0.017
12541	10:28:45 AM	0.016
12601	10:29:45 AM	0.016
12661	10:30:45 AM	0.024
12721	10:31:45 AM	0.023
12781	10:32:45 AM	0.024
12841	10:33:45 AM	0.023

12901	10:34:45 AM	0.023
12961	10:35:45 AM	0.024
13021	10:36:45 AM	0.024
13081	10:37:45 AM	0.023
13141	10:38:45 AM	0.024
13201	10:39:45 AM	0.024
13261	10:40:45 AM	0.024
13321	10:41:45 AM	0.024
13381	10:42:45 AM	0.024
13441	10:43:45 AM	0.024
13501	10:44:45 AM	0.023
13561	10:45:45 AM	0.025
13621	10:46:45 AM	0.023
13681	10:47:45 AM	0.023
13741	10:48:45 AM	0.023
13801	10:49:45 AM	0.024
13861	10:50:45 AM	0.023
13921	10:51:45 AM	0.026
13981	10:52:45 AM	0.024
14041	10:53:45 AM	0.024
14101	10:54:45 AM	0.025
14161	10:55:45 AM	0.024
14221	10:56:45 AM	0.023
14281	10:57:45 AM	0.023
14341	10:58:45 AM	0.024
14401	10:59:45 AM	0.025
14461	11:00:45 AM	0.025
14521	11:01:45 AM	0.027
14581	11:02:45 AM	0.025
14641	11:03:45 AM	0.024
14701	11:04:45 AM	0.023
14761	11:05:45 AM	0.023
14821	11:06:45 AM	0.023
14881	11:07:45 AM	0.022
14941	11:08:45 AM	0.023
15001	11:09:45 AM	0.023
15061	11:10:45 AM	0.023
15121	11:11:45 AM	0.023
15181	11:12:45 AM	0.024
15241	11:13:45 AM	0.023
15301	11:14:45 AM	0.022
15361	11:15:45 AM	0.023
15421	11:16:45 AM	0.023
15481	11:17:45 AM	0.023
15541	11:18:45 AM	0.024
15601	11:19:45 AM	0.025
15661	11:20:45 AM	0.024

15721	11:21:45 AM	0.024
15781	11:22:45 AM	0.024
15841	11:23:45 AM	0.025
15901	11:24:45 AM	0.024
15961	11:25:45 AM	0.024
16021	11:26:45 AM	0.024
16081	11:27:45 AM	0.024
16141	11:28:45 AM	0.023
16201	11:29:45 AM	0.024
16261	11:30:45 AM	0.023
16321	11:31:45 AM	0.022
16381	11:32:45 AM	0.022
16441	11:33:45 AM	0.025
16501	11:34:45 AM	0.022
16561	11:35:45 AM	0.022
16621	11:36:45 AM	0.023
16681	11:37:45 AM	0.022
16741	11:38:45 AM	0.031
16801	11:39:45 AM	0.022
16861	11:40:45 AM	0.023
16921	11:41:45 AM	0.024
16981	11:42:45 AM	0.023
17041	11:43:45 AM	0.024
17101	11:44:45 AM	0.023
17161	11:45:45 AM	0.027
17221	11:46:45 AM	0.024
17281	11:47:45 AM	0.024
17341	11:48:45 AM	0.023
17401	11:49:45 AM	0.023
17461	11:50:45 AM	0.023
17521	11:51:45 AM	0.023
17581	11:52:45 AM	0.024
17641	11:53:45 AM	0.023
17701	11:54:45 AM	0.023
17761	11:55:45 AM	0.024
17821	11:56:45 AM	0.025
17881	11:57:45 AM	0.023
17941	11:58:45 AM	0.024
18001	11:59:45 AM	0.023
18061	12:00:45 PM	0.023
18121	12:01:45 PM	0.025
18181	12:02:45 PM	0.023
18241	12:03:45 PM	0.023
18301	12:04:45 PM	0.024
18361	12:05:45 PM	0.023
18421	12:06:45 PM	0.025
18481	12:07:45 PM	0.023

18541	12:08:45 PM	0.023
18601	12:09:45 PM	0.025
18661	12:10:45 PM	0.024
18721	12:11:45 PM	0.023
18781	12:12:45 PM	0.023
18842	12:13:45 PM	0.023
18901	12:14:45 PM	0.024
18961	12:15:45 PM	0.024

Device Serial No	Log Time	Log Type	Sensor 1 Type	Sensor 1 Serial Number	Sensor 1 Status	Sensor 1 Gas Reading
592-929156	1/17/2024 1:48:55 PM	Readings	PID	SC23030065D3	Normal	0.0
592-929156	1/17/2024 1:47:55 PM	Readings	PID	SC23030065D3	Normal	0.0
592-929156	1/17/2024 1:46:55 PM	Readings	PID	SC23030065D3	Normal	0.0
592-929156	1/17/2024 1:45:55 PM	Readings	PID	SC23030065D3	Normal	0.0
592-929156	1/17/2024 1:44:55 PM	Readings	PID	SC23030065D3	Normal	0.0
592-929156	1/17/2024 1:43:55 PM	Readings	PID	SC23030065D3	Normal	0.0
592-929156	1/17/2024 1:42:55 PM	Readings	PID	SC23030065D3	Normal	0.0
592-929156	1/17/2024 1:41:55 PM	Readings	PID	SC23030065D3	Normal	0.0
592-929156	1/17/2024 1:40:55 PM	Readings	PID	SC23030065D3	Normal	0.0
592-929156	1/17/2024 1:39:55 PM	Readings	PID	SC23030065D3	Normal	0.0
592-929156	1/17/2024 1:38:55 PM	Readings	PID	SC23030065D3	Normal	0.0
592-929156	1/17/2024 1:37:55 PM	Readings	PID	SC23030065D3	Normal	0.0
592-929156	1/17/2024 1:36:55 PM	Readings	PID	SC23030065D3	Normal	0.0
592-929156	1/17/2024 1:35:55 PM	Readings	PID	SC23030065D3	Normal	0.0
592-929156	1/17/2024 1:34:55 PM	Readings	PID	SC23030065D3	Normal	0.0
592-929156	1/17/2024 1:33:55 PM	Readings	PID	SC23030065D3	Normal	0.0
592-929156	1/17/2024 1:32:55 PM	Readings	PID	SC23030065D3	Normal	0.0
592-929156	1/17/2024 1:31:55 PM	Readings	PID	SC23030065D3	Normal	0.0
592-929156	1/17/2024 1:30:55 PM	Readings	PID	SC23030065D3	Normal	0.0
592-929156	1/17/2024 1:29:55 PM	Readings	PID	SC23030065D3	Normal	0.0
592-929156	1/17/2024 1:28:55 PM	Readings	PID	SC23030065D3	Normal	0.0
592-929156	1/17/2024 1:27:55 PM	Readings	PID	SC23030065D3	Normal	0.0
592-929156	1/17/2024 1:26:55 PM	Readings	PID	SC23030065D3	Normal	0.0
592-929156	1/17/2024 1:25:55 PM	Readings	PID	SC23030065D3	Normal	0.0
592-929156	1/17/2024 1:24:55 PM	Readings	PID	SC23030065D3	Normal	0.0
592-929156	1/17/2024 1:23:55 PM	Readings	PID	SC23030065D3	Normal	0.0
592-929156	1/17/2024 1:22:55 PM	Readings	PID	SC23030065D3	Normal	0.0
592-929156	1/17/2024 1:21:55 PM	Readings	PID	SC23030065D3	Normal	0.0
592-929156	1/17/2024 1:20:55 PM	Readings	PID	SC23030065D3	Normal	0.0
592-929156	1/17/2024 1:19:55 PM	Readings	PID	SC23030065D3	Normal	0.0
592-929156	1/17/2024 1:18:55 PM	Readings	PID	SC23030065D3	Normal	0.0
592-929156	1/17/2024 1:17:55 PM	Readings	PID	SC23030065D3	Normal	0.0
592-929156	1/17/2024 1:16:55 PM	Readings	PID	SC23030065D3	Normal	0.0
592-929156	1/17/2024 1:15:55 PM	Readings	PID	SC23030065D3	Normal	0.0
592-929156	1/17/2024 1:14:55 PM	Readings	PID	SC23030065D3	Normal	0.0
592-929156	1/17/2024 1:13:55 PM	Readings	PID	SC23030065D3	Normal	0.0

592-929156	1/17/2024 8:39:55 AM	Readings	PID	SC23030065D3	Normal	0.0
592-929156	1/17/2024 8:38:55 AM	Readings	PID	SC23030065D3	Normal	0.0
592-929156	1/17/2024 8:37:55 AM	Readings	PID	SC23030065D3	Normal	0.0
592-929156	1/17/2024 8:36:55 AM	Readings	PID	SC23030065D3	Normal	0.0
592-929156	1/17/2024 8:35:55 AM	Readings	PID	SC23030065D3	Normal	0.0
592-929156	1/17/2024 8:34:55 AM	Readings	PID	SC23030065D3	Normal	0.9
592-929156	1/17/2024 8:33:55 AM	Readings	PID	SC23030065D3	Normal	2.2
592-929156	1/17/2024 8:32:55 AM	Readings	PID	SC23030065D3	Normal	2.1
592-929156	1/17/2024 8:31:55 AM	Readings	PID	SC23030065D3	Normal	2.5
592-929156	1/17/2024 8:30:55 AM	Readings	PID	SC23030065D3	Normal	2.8
592-929156	1/17/2024 8:29:55 AM	Readings	PID	SC23030065D3	Normal	2.9
592-929156	1/17/2024 8:28:55 AM	Readings	PID	SC23030065D3	Normal	3.0
592-929156	1/17/2024 8:27:55 AM	Readings	PID	SC23030065D3	Normal	3.5
592-929156	1/17/2024 8:26:55 AM	Readings	PID	SC23030065D3	Normal	3.5
592-929156	1/17/2024 8:25:55 AM	Readings	PID	SC23030065D3	Normal	3.3
592-929156	1/17/2024 8:24:55 AM	Readings	PID	SC23030065D3	Normal	3.4
592-929156	1/17/2024 8:23:55 AM	Readings	PID	SC23030065D3	Normal	3.4
592-929156	1/17/2024 8:22:55 AM	Readings	PID	SC23030065D3	Normal	3.3
592-929156	1/17/2024 8:21:55 AM	Readings	PID	SC23030065D3	Normal	3.5
592-929156	1/17/2024 8:20:55 AM	Readings	PID	SC23030065D3	Normal	1.2
592-929156	1/17/2024 8:19:55 AM	Readings	PID	SC23030065D3	Normal	0.0
592-929156	1/17/2024 8:18:55 AM	Readings	PID	SC23030065D3	Normal	0.1
592-929156	1/17/2024 8:17:55 AM	Readings	PID	SC23030065D3	Normal	0.4
592-929156	1/17/2024 8:16:55 AM	Readings	PID	SC23030065D3	Normal	0.4
592-929156	1/17/2024 8:15:55 AM	Readings	PID	SC23030065D3	Normal	0.2
592-929156	1/17/2024 8:14:55 AM	Readings	PID	SC23030065D3	Normal	0.0
592-929156	1/17/2024 8:13:55 AM	Readings	PID	SC23030065D3	Normal	0.0
592-929156	1/17/2024 8:12:55 AM	Readings	PID	SC23030065D3	Normal	0.0
592-929156	1/17/2024 8:11:55 AM	Readings	PID	SC23030065D3	Normal	0.0
592-929156	1/17/2024 8:10:55 AM	CONFIG	PID	SC23030065D3		