



**DAILY STATUS REPORT**

**Prepared By:**

Thomas Jensen

WEATHER	Snow	Rain		Overcast	Partly Cloudy	X	Bright Sun	x	Wind
TEMP.	< 32	32-50	x	50-70	70-85		>85		S- 3 MPH

<b>IEC Project No:</b>	13928	<b>NYSDEC BCP Site No:</b>	C224367	<b>Date:</b> 02/12/24
<b>Project:</b>	251 Douglass Street, Brooklyn, NY			

<p><b>Consultant:</b> Impact Environmental Engineering and Geology, PLLC (IEEG)</p> <p>Time On: 06:30 Time Out: 14:30</p>	<p><b>Personnel On Site:</b> IEEG (Environmental) –Thomas Jensen Broadway Construction Group - Tom Caporale Control Point- Surveyor Copper Services- Sewer connection</p> <p><b>Equipment On Site:</b> Minirae 3000 PID, DustTrak II</p>
---	--

**Scope of Work:** No site activities, plumbers arrived on-Site, however, did not have the correct work permits.

**Site Activities:**

- Deploy three (3) CAMP units at the start of the work day;
- Copper Services arrived on site to being the sewer connection on Nevins Street; and
- Control Point arrived on site to survey all documentation and confirmation endpoints taken to date, as well as survey the perimeter of the arsenic hotspot, tank graves and Spill No.23-07767 areas.

**Community Air Monitoring Program (CAMP) - CAMP** action level for dust (0.1 mg/m<sup>3</sup>) and VOCs (5 ppm)

- PID remained at nominal levels throughout the day.
- No sustained dust exceedances were observed over a 1-min period during monitoring;
- Startup Upwind Conditions – PID = \_0.2\_ ppm, Dust = \_0.011\_ mg/m<sup>3</sup> @ 06:48
- High Conditions (Upwind) – PID = \_1.5\_ ppm @ 07:27, Dust = \_0.018\_ mg/m<sup>3</sup> @ 07:40
- High Conditions (Downwind 1) – PID = \_0.9\_ ppm @ 09:54, Dust = \_0.119\_ mg/m<sup>3</sup> @ 09:37
- High Conditions (Downwind 2) – PID = \_0.0\_ ppm, Dust = \_0.031\_ mg/m<sup>3</sup> @ 10:33

**Notable Site Conditions:**

- None

**Planned for the Next Day/Week:**

- Cascade will arrive back on site to ensure all equipment is working properly before ISS begins on 2/20/2024; and
- Finish sewer connection on Nevins Street.

**PHOTO LOG**

251 DOUGLASS STREET, BROOKLYN, NY



**Photo 1-**  
Representative view of material from the sewer connection work placed on top of and covered with poly for sampling and disposal.



**Photo 2 –**  
Representative view of Control Point surveying documentation and confirmation end point locations.



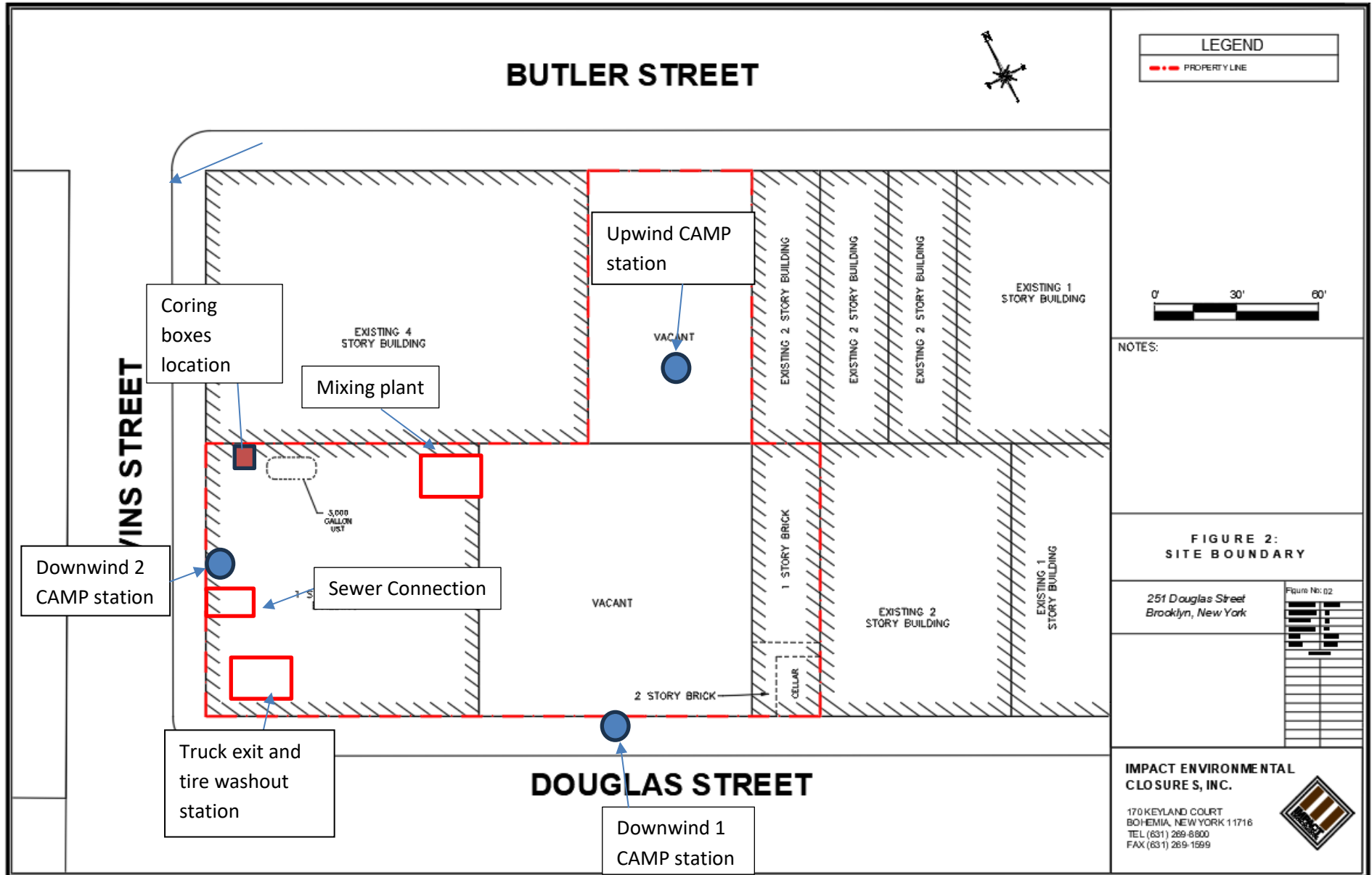
**Photo 3-**  
Representative  
view of work  
on the sewer  
connection.



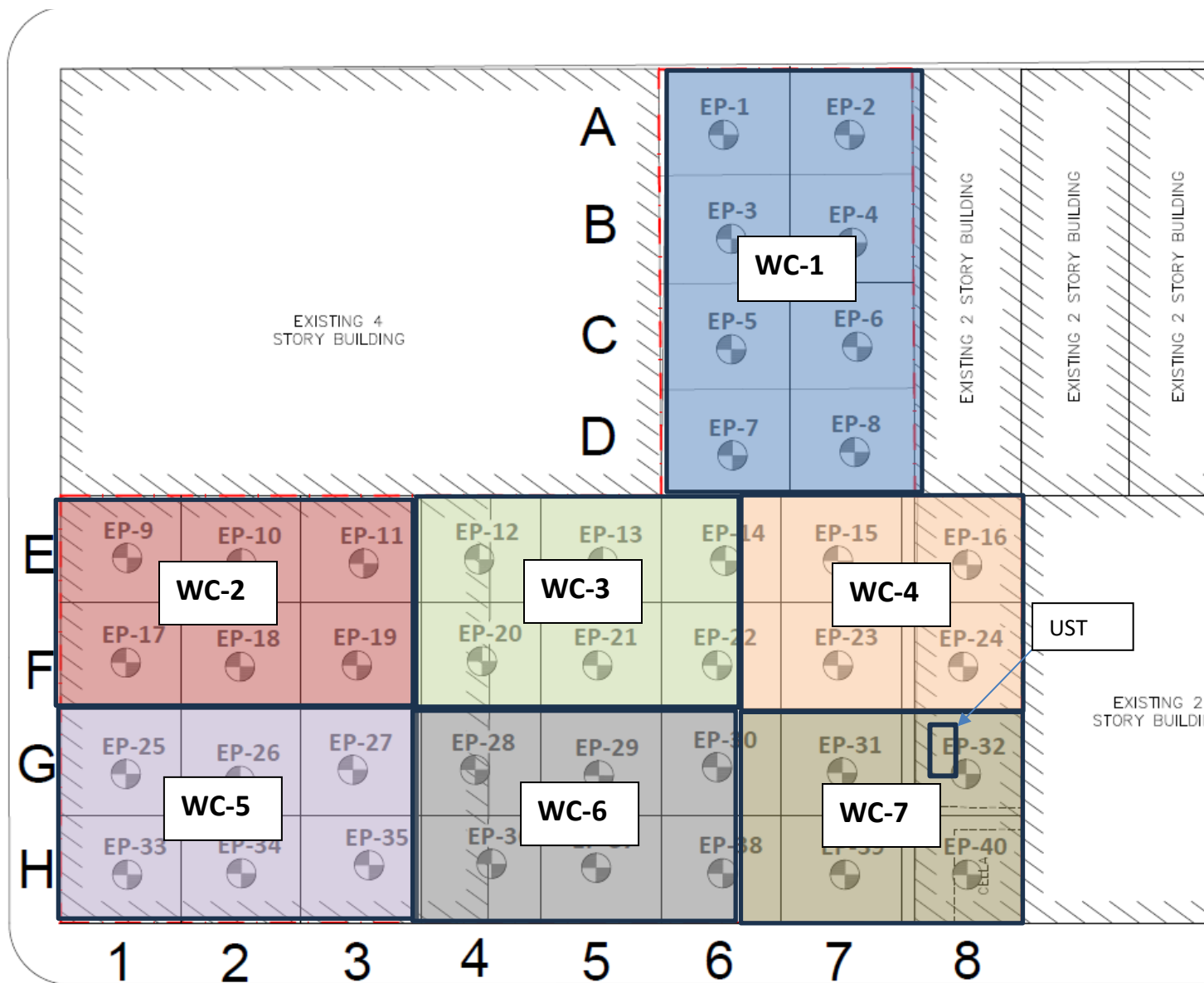
**SITE PLANS**

251 DOUGLASS STREET, BROOKLYN, NY





# NEVINS STREET





**IMPACT ENVIRONMENTAL**

170 Keyland Court | Bohemia | NY | 11716 | 631.269.8800

welcome to solid ground...

[www.impactenvironmental.com](http://www.impactenvironmental.com)

---

**UPWIND CAMP READINGS**

251 DOUGLASS STREET, BROOKLYN, NY



Instrument Name	DustTrak DRX
Model Number	8533
Serial Number	8533181208
Firmware Version	3.1
Calibration Date	6/1/2023
Test Name	MANUAL_002
Test Start Time	6:48:42 AM
Test Start Date	2/12/2024
Test Length [D:H:M]	0:06:52
Test Interval [M:S]	1:00
PM1 Average [mg/m3]	0.007
PM1 Minimum [mg/m3]	0.003
PM1 Maximum [mg/m3]	0.018
PM1 TWA [mg/m3]	0.006
Photometric User Cal	1
Size Correction User Cal	1
Flow User Cal	0
Errors	
Number of Samples	412

Elapsed Time [s]	PM1 [mg/m3]	Alarms	Errors
6:48	0.011		
6:49	0.013		
6:50	0.012		
6:51	0.013		
6:52	0.012		
6:53	0.012		
6:54	0.012		
6:55	0.011		
6:56	0.011		
6:57	0.011		
6:58	0.01		
6:59	0.012		
7:00	0.011		
7:01	0.01		
7:02	0.009		
7:03	0.009		
7:04	0.01		
7:05	0.009		
7:06	0.01		
7:07	0.01		
7:08	0.01		
7:09	0.009		
7:10	0.009		

7:11	0.01
7:12	0.01
7:13	0.01
7:14	0.01
7:15	0.009
7:16	0.009
7:17	0.009
7:18	0.009
7:19	0.01
7:20	0.01
7:21	0.011
7:22	0.01
7:23	0.009
7:24	0.01
7:25	0.011
7:26	0.01
7:27	0.014
7:28	0.01
7:29	0.013
7:30	0.01
7:31	0.013
7:32	0.009
7:33	0.009
7:34	0.011
7:35	0.009
7:36	0.009
7:37	0.009
7:38	0.009
7:39	0.011
7:40	0.018
7:41	0.015
7:42	0.016
7:43	0.012
7:44	0.011
7:45	0.011
7:46	0.011
7:47	0.01
7:48	0.015
7:49	0.01
7:50	0.011
7:51	0.01
7:52	0.009
7:53	0.009
7:54	0.009

7:55	0.009
7:56	0.012
7:57	0.01
7:58	0.008
7:59	0.007
8:00	0.007
8:01	0.009
8:02	0.007
8:03	0.01
8:04	0.008
8:05	0.008
8:06	0.008
8:07	0.008
8:08	0.008
8:09	0.008
8:10	0.007
8:11	0.007
8:12	0.008
8:13	0.007
8:14	0.007
8:15	0.007
8:16	0.007
8:17	0.009
8:18	0.009
8:19	0.008
8:20	0.01
8:21	0.008
8:22	0.009
8:23	0.007
8:24	0.007
8:25	0.015
8:26	0.008
8:27	0.008
8:28	0.007
8:29	0.009
8:30	0.008
8:31	0.008
8:32	0.007
8:33	0.007
8:34	0.006
8:35	0.006
8:36	0.007
8:37	0.007
8:38	0.007

8:39	0.007
8:40	0.007
8:41	0.007
8:42	0.007
8:43	0.007
8:44	0.008
8:45	0.008
8:46	0.011
8:47	0.009
8:48	0.008
8:49	0.009
8:50	0.009
8:51	0.009
8:52	0.009
8:53	0.016
8:54	0.01
8:55	0.008
8:56	0.009
8:57	0.008
8:58	0.008
8:59	0.008
9:00	0.007
9:01	0.009
9:02	0.007
9:03	0.008
9:04	0.007
9:05	0.008
9:06	0.008
9:07	0.008
9:08	0.008
9:09	0.01
9:10	0.008
9:11	0.008
9:12	0.007
9:13	0.007
9:14	0.006
9:15	0.006
9:16	0.006
9:17	0.005
9:18	0.009
9:19	0.006
9:20	0.006
9:21	0.007
9:22	0.007

9:23	0.008
9:24	0.006
9:25	0.005
9:26	0.006
9:27	0.005
9:28	0.005
9:29	0.006
9:30	0.005
9:31	0.005
9:32	0.006
9:33	0.005
9:34	0.005
9:35	0.009
9:36	0.01
9:37	0.007
9:38	0.006
9:39	0.005
9:40	0.005
9:41	0.005
9:42	0.009
9:43	0.007
9:44	0.007
9:45	0.006
9:46	0.005
9:47	0.005
9:48	0.006
9:49	0.007
9:50	0.004
9:51	0.004
9:52	0.003
9:53	0.004
9:54	0.006
9:55	0.005
9:56	0.004
9:57	0.005
9:58	0.004
9:59	0.005
10:00	0.004
10:01	0.004
10:02	0.004
10:03	0.006
10:04	0.005
10:05	0.005
10:06	0.007

10:07	0.005
10:08	0.006
10:09	0.007
10:10	0.006
10:11	0.006
10:12	0.005
10:13	0.004
10:14	0.004
10:15	0.004
10:16	0.004
10:17	0.004
10:18	0.006
10:19	0.005
10:20	0.006
10:21	0.005
10:22	0.004
10:23	0.004
10:24	0.004
10:25	0.005
10:26	0.004
10:27	0.006
10:28	0.006
10:29	0.008
10:30	0.007
10:31	0.005
10:32	0.01
10:33	0.006
10:34	0.006
10:35	0.006
10:36	0.008
10:37	0.004
10:38	0.005
10:39	0.004
10:40	0.005
10:41	0.007
10:42	0.004
10:43	0.004
10:44	0.005
10:45	0.004
10:46	0.004
10:47	0.005
10:48	0.004
10:49	0.004
10:50	0.004

10:51	0.004
10:52	0.004
10:53	0.004
10:54	0.005
10:55	0.004
10:56	0.004
10:57	0.005
10:58	0.004
10:59	0.004
11:00	0.004
11:01	0.004
11:02	0.005
11:03	0.004
11:04	0.004
11:05	0.004
11:06	0.004
11:07	0.004
11:08	0.005
11:09	0.004
11:10	0.005
11:11	0.006
11:12	0.006
11:13	0.004
11:14	0.004
11:15	0.003
11:16	0.004
11:17	0.004
11:18	0.005
11:19	0.006
11:20	0.005
11:21	0.004
11:22	0.005
11:23	0.004
11:24	0.004
11:25	0.005
11:26	0.005
11:27	0.004
11:28	0.004
11:29	0.004
11:30	0.004
11:31	0.004
11:32	0.005
11:33	0.005
11:34	0.004

11:35	0.004
11:36	0.005
11:37	0.004
11:38	0.004
11:39	0.004
11:40	0.006
11:41	0.005
11:42	0.006
11:43	0.005
11:44	0.005
11:45	0.006
11:46	0.004
11:47	0.005
11:48	0.005
11:49	0.005
11:50	0.005
11:51	0.005
11:52	0.01
11:53	0.006
11:54	0.006
11:55	0.006
11:56	0.008
11:57	0.008
11:58	0.009
11:59	0.005
12:00	0.005
12:01	0.006
12:02	0.005
12:03	0.006
12:04	0.007
12:05	0.005
12:06	0.004
12:07	0.004
12:08	0.006
12:09	0.006
12:10	0.006
12:11	0.006
12:12	0.006
12:13	0.006
12:14	0.005
12:15	0.006
12:16	0.007
12:17	0.006
12:18	0.007



12:19	0.008
12:20	0.007
12:21	0.005
12:22	0.005
12:23	0.006
12:24	0.006
12:25	0.008
12:26	0.007
12:27	0.009
12:28	0.006
12:29	0.005
12:30	0.006
12:31	0.006
12:32	0.006
12:33	0.004
12:34	0.004
12:35	0.003
12:36	0.004
12:37	0.009
12:38	0.01
12:39	0.007
12:40	0.006
12:41	0.004
12:42	0.007
12:43	0.008
12:44	0.007
12:45	0.007
12:46	0.008
12:47	0.009
12:48	0.008
12:49	0.009
12:50	0.005
12:51	0.005
12:52	0.008
12:53	0.01
12:54	0.007
12:55	0.005
12:56	0.005
12:57	0.007
12:58	0.006
12:59	0.007
13:00	0.006
13:01	0.009
13:02	0.009

13:03	0.007
13:04	0.007
13:05	0.008
13:06	0.007
13:07	0.008
13:08	0.008
13:09	0.009
13:10	0.01
13:11	0.009
13:12	0.008
13:13	0.007
13:14	0.007
13:15	0.006
13:16	0.007
13:17	0.007
13:18	0.006
13:19	0.006
13:20	0.009
13:21	0.006
13:22	0.006
13:23	0.007
13:24	0.006
13:25	0.008
13:26	0.01
13:27	0.009
13:28	0.011
13:29	0.011
13:30	0.008
13:31	0.009
13:32	0.007
13:33	0.007
13:34	0.009
13:35	0.01
13:36	0.007
13:37	0.009
13:38	0.008
13:39	0.009

Device Serial No	Log Date	Log Time	Log Type	Sensor 1 Type	Sensor 1 Serial Number	Sensor 1 Status	Sensor 1 Gas Reading
592-601274	2/12/2024	15:33	Readings	PID	SC23030921B3	Normal	0
592-601274	2/12/2024	15:32	Readings	PID	SC23030921B3	Normal	0
592-601274	2/12/2024	15:31	Readings	PID	SC23030921B3	Normal	0
592-601274	2/12/2024	15:30	Readings	PID	SC23030921B3	Normal	0
592-601274	2/12/2024	15:29	Readings	PID	SC23030921B3	Normal	0
592-601274	2/12/2024	15:28	Readings	PID	SC23030921B3	Normal	0
592-601274	2/12/2024	15:27	Readings	PID	SC23030921B3	Normal	0
592-601274	2/12/2024	15:26	Readings	PID	SC23030921B3	Normal	0
592-601274	2/12/2024	15:25	Readings	PID	SC23030921B3	Normal	0
592-601274	2/12/2024	15:24	Readings	PID	SC23030921B3	Normal	0
592-601274	2/12/2024	15:23	Readings	PID	SC23030921B3	Normal	0
592-601274	2/12/2024	15:22	Readings	PID	SC23030921B3	Normal	0
592-601274	2/12/2024	15:21	Readings	PID	SC23030921B3	Normal	0
592-601274	2/12/2024	15:20	Readings	PID	SC23030921B3	Normal	0
592-601274	2/12/2024	15:19	Readings	PID	SC23030921B3	Normal	0
592-601274	2/12/2024	15:18	Readings	PID	SC23030921B3	Normal	0
592-601274	2/12/2024	15:17	Readings	PID	SC23030921B3	Normal	0
592-601274	2/12/2024	15:16	Readings	PID	SC23030921B3	Normal	0
592-601274	2/12/2024	15:15	Readings	PID	SC23030921B3	Normal	0
592-601274	2/12/2024	15:14	Readings	PID	SC23030921B3	Normal	0
592-601274	2/12/2024	15:13	Readings	PID	SC23030921B3	Normal	0
592-601274	2/12/2024	15:12	Readings	PID	SC23030921B3	Normal	0
592-601274	2/12/2024	15:11	Readings	PID	SC23030921B3	Normal	0
592-601274	2/12/2024	15:10	Readings	PID	SC23030921B3	Normal	0
592-601274	2/12/2024	15:09	Readings	PID	SC23030921B3	Normal	0
592-601274	2/12/2024	15:08	Readings	PID	SC23030921B3	Normal	0
592-601274	2/12/2024	15:07	Readings	PID	SC23030921B3	Normal	0
592-601274	2/12/2024	15:06	Readings	PID	SC23030921B3	Normal	0
592-601274	2/12/2024	15:05	Readings	PID	SC23030921B3	Normal	0
592-601274	2/12/2024	15:04	Readings	PID	SC23030921B3	Normal	0
592-601274	2/12/2024	15:03	Readings	PID	SC23030921B3	Normal	0
592-601274	2/12/2024	15:02	Readings	PID	SC23030921B3	Normal	0































592-601274	2/12/2024	7:52 Readings	PID	SC23030921B3	Normal	0.1
592-601274	2/12/2024	7:51 Readings	PID	SC23030921B3	Normal	0.1
592-601274	2/12/2024	7:50 Readings	PID	SC23030921B3	Normal	0.1
592-601274	2/12/2024	7:49 Readings	PID	SC23030921B3	Normal	0
592-601274	2/12/2024	7:48 Readings	PID	SC23030921B3	Normal	0
592-601274	2/12/2024	7:47 Readings	PID	SC23030921B3	Normal	0
592-601274	2/12/2024	7:46 Readings	PID	SC23030921B3	Normal	0
592-601274	2/12/2024	7:45 Readings	PID	SC23030921B3	Normal	0
592-601274	2/12/2024	7:44 Readings	PID	SC23030921B3	Normal	0
592-601274	2/12/2024	7:43 CONFIG	PID	SC23030921B3		
592-601274	2/12/2024	7:42 Readings	PID	SC23030921B3	Normal	1.5
592-601274	2/12/2024	7:41 Readings	PID	SC23030921B3	Normal	1.5
592-601274	2/12/2024	7:40 Readings	PID	SC23030921B3	Normal	1.5
592-601274	2/12/2024	7:39 Readings	PID	SC23030921B3	Normal	1.5
592-601274	2/12/2024	7:38 Readings	PID	SC23030921B3	Normal	1.5
592-601274	2/12/2024	7:37 Readings	PID	SC23030921B3	Normal	1.5
592-601274	2/12/2024	7:36 Readings	PID	SC23030921B3	Normal	1.5
592-601274	2/12/2024	7:35 Readings	PID	SC23030921B3	Normal	1.5
592-601274	2/12/2024	7:34 Readings	PID	SC23030921B3	Normal	1.5
592-601274	2/12/2024	7:33 Readings	PID	SC23030921B3	Normal	1.5
592-601274	2/12/2024	7:32 Readings	PID	SC23030921B3	Normal	1.4
592-601274	2/12/2024	7:31 Readings	PID	SC23030921B3	Normal	1.4
592-601274	2/12/2024	7:30 Readings	PID	SC23030921B3	Normal	1.5
592-601274	2/12/2024	7:29 Readings	PID	SC23030921B3	Normal	1.5
592-601274	2/12/2024	7:28 Readings	PID	SC23030921B3	Normal	1.5
592-601274	2/12/2024	7:27 Readings	PID	SC23030921B3	Normal	1.5
592-601274	2/12/2024	7:26 Readings	PID	SC23030921B3	Normal	1.4
592-601274	2/12/2024	7:25 Readings	PID	SC23030921B3	Normal	1.4
592-601274	2/12/2024	7:24 Readings	PID	SC23030921B3	Normal	1.4
592-601274	2/12/2024	7:23 Readings	PID	SC23030921B3	Normal	1.4
592-601274	2/12/2024	7:22 Readings	PID	SC23030921B3	Normal	1.4
592-601274	2/12/2024	7:21 Readings	PID	SC23030921B3	Normal	1.4
592-601274	2/12/2024	7:20 Readings	PID	SC23030921B3	Normal	1.3

592-601274	2/12/2024	7:19 Readings	PID	SC23030921B3	Normal	1.3
592-601274	2/12/2024	7:18 Readings	PID	SC23030921B3	Normal	1.3
592-601274	2/12/2024	7:17 Readings	PID	SC23030921B3	Normal	1.3
592-601274	2/12/2024	7:16 Readings	PID	SC23030921B3	Normal	1.3
592-601274	2/12/2024	7:15 Readings	PID	SC23030921B3	Normal	1.3
592-601274	2/12/2024	7:14 Readings	PID	SC23030921B3	Normal	1.3
592-601274	2/12/2024	7:13 Readings	PID	SC23030921B3	Normal	1.3
592-601274	2/12/2024	7:12 Readings	PID	SC23030921B3	Normal	1.2
592-601274	2/12/2024	7:11 Readings	PID	SC23030921B3	Normal	1.2
592-601274	2/12/2024	7:10 Readings	PID	SC23030921B3	Normal	1.2
592-601274	2/12/2024	7:09 Readings	PID	SC23030921B3	Normal	1.2
592-601274	2/12/2024	7:08 Readings	PID	SC23030921B3	Normal	1.1
592-601274	2/12/2024	7:07 Readings	PID	SC23030921B3	Normal	1.1
592-601274	2/12/2024	7:06 Readings	PID	SC23030921B3	Normal	1.1
592-601274	2/12/2024	7:05 Readings	PID	SC23030921B3	Normal	1.1
592-601274	2/12/2024	7:04 Readings	PID	SC23030921B3	Normal	1
592-601274	2/12/2024	7:03 Readings	PID	SC23030921B3	Normal	1
592-601274	2/12/2024	7:02 Readings	PID	SC23030921B3	Normal	1
592-601274	2/12/2024	7:01 Readings	PID	SC23030921B3	Normal	1
592-601274	2/12/2024	7:00 Readings	PID	SC23030921B3	Normal	1
592-601274	2/12/2024	6:59 Readings	PID	SC23030921B3	Normal	1
592-601274	2/12/2024	6:58 Readings	PID	SC23030921B3	Normal	1
592-601274	2/12/2024	6:57 Readings	PID	SC23030921B3	Normal	0.9
592-601274	2/12/2024	6:56 Readings	PID	SC23030921B3	Normal	0.9
592-601274	2/12/2024	6:55 Readings	PID	SC23030921B3	Normal	0.8
592-601274	2/12/2024	6:54 Readings	PID	SC23030921B3	Normal	0.8
592-601274	2/12/2024	6:53 Readings	PID	SC23030921B3	Normal	0.7
592-601274	2/12/2024	6:52 Readings	PID	SC23030921B3	Normal	0.6
592-601274	2/12/2024	6:51 Readings	PID	SC23030921B3	Normal	0.5
592-601274	2/12/2024	6:50 Readings	PID	SC23030921B3	Normal	0.4
592-601274	2/12/2024	6:49 Readings	PID	SC23030921B3	Normal	0.2
592-601274	2/12/2024	6:48 CONFIG	PID	SC23030921B3		

**DOWNWIND CAMP READINGS**

251 DOUGLASS STREET, BROOKLYN, NY



Instrument Name	DustTrak DRX
Model Number	8533
Serial Number	8533181207
Firmware Version	3.1
Calibration Date	6/1/2023
Test Name	MANUAL_006
Test Start Time	6:48:00 AM
Test Start Date	2/12/2024
Test Length [D:H:M]	0:04:04
Test Interval [M:S]	1:00
PM1 Average [mg/m3]	0.015
PM1 Minimum [mg/m3]	0.001
PM1 Maximum [mg/m3]	0.119
PM1 TWA [mg/m3]	0.008
TOTAL Average [mg/m3]	0.016
TOTAL Minimum [mg/m3]	0.001
TOTAL Maximum [mg/m3]	0.119
TOTAL TWA [mg/m3]	0.008
Photometric User Cal	1
Size Correction User Cal	1
Flow User Cal	0
Errors	Flow Error
Number of Samples	244

Elapsed Time [s]	PM1 [mg/m3]	Alarms	Errors
6:48	0.026		
6:49	0.01		
6:50	0.01		
6:51	0.01		
6:52	0.01		
6:53	0.01		
6:54	0.011		
6:55	0.011		
6:56	0.011		
6:57	0.011		
6:58	0.011		
6:59	0.011		
7:00	0.011		
7:01	0.011		
7:02	0.011		
7:03	0.011		
7:04	0.012		
7:05	0.014		
7:06	0.012		

7:07	0.011
7:08	0.012
7:09	0.012
7:10	0.012
7:11	0.012
7:12	0.013
7:13	0.013
7:14	0.014
7:15	0.014
7:16	0.014
7:17	0.014
7:18	0.014
7:19	0.014
7:20	0.016
7:21	0.015
7:22	0.019
7:23	0.021
7:24	0.015
7:25	0.014
7:26	0.014
7:27	0.014
7:28	0.013
7:29	0.015
7:30	0.018
7:31	0.019
7:32	0.016
7:33	0.015
7:34	0.015
7:35	0.017
7:36	0.018
7:37	0.016
7:38	0.016
7:39	0.015
7:40	0.014
7:41	0.014
7:42	0.017
7:43	0.016
7:44	0.019
7:45	0.016
7:46	0.017
7:47	0.019
7:48	0.02
7:49	0.018
7:50	0.017

7:51	0.017
7:52	0.016
7:53	0.016
7:54	0.016
7:55	0.016
7:56	0.015
7:57	0.015
7:58	0.016
7:59	0.015
8:00	0.016
8:01	0.016
8:02	0.016
8:03	0.017
8:04	0.016
8:05	0.016
8:06	0.016
8:07	0.017
8:08	0.016
8:09	0.017
8:10	0.019
8:11	0.02
8:12	0.02
8:13	0.017
8:14	0.015
8:15	0.016
8:16	0.016
8:17	0.018
8:18	0.02
8:19	0.018
8:20	0.016
8:21	0.017
8:22	0.016
8:23	0.016
8:24	0.016
8:25	0.015
8:26	0.015
8:27	0.016
8:28	0.016
8:29	0.017
8:30	0.015
8:31	0.016
8:32	0.017
8:33	0.017
8:34	0.018

8:35	0.017
8:36	0.017
8:37	0.017
8:38	0.016
8:39	0.016
8:40	0.017
8:41	0.017
8:42	0.017
8:43	0.017
8:44	0.018
8:45	0.018
8:46	0.018
8:47	0.016
8:48	0.017
8:49	0.017
8:50	0.016
8:51	0.016
8:52	0.015
8:53	0.015
8:54	0.016
8:55	0.015
8:56	0.015
8:57	0.016
8:58	0.016
8:59	0.016
9:00	0.016
9:01	0.016
9:02	0.016
9:03	0.016
9:04	0.017
9:05	0.016
9:06	0.016
9:07	0.016
9:08	0.015
9:09	0.015
9:10	0.016
9:11	0.016
9:12	0.015
9:13	0.014
9:14	0.015
9:15	0.015
9:16	0.015
9:17	0.015
9:18	0.016

9:19	0.015
9:20	0.016
9:21	0.014
9:22	0.013
9:23	0.014
9:24	0.017
9:25	0.016
9:26	0.017
9:27	0.013
9:28	0.015
9:29	0.017
9:30	0.015
9:31	0.015
9:32	0.016
9:33	0.014
9:34	0.015
9:35	0.015
9:36	0.016
9:37	0.119
9:38	0.015
9:39	0.013
9:40	0.014
9:41	0.014
9:42	0.02
9:43	0.017
9:44	0.017
9:45	0.017
9:46	0.017
9:47	0.016
9:48	0.016
9:49	0.017
9:50	0.015
9:51	0.016
9:52	0.017
9:53	0.022
9:54	0.02
9:55	0.014
9:56	0.013
9:57	0.018
9:58	0.01
9:59	0.013
10:00	0.011
10:01	0.011
10:02	0.011



10:03	0.013	
10:04	0.016	
10:05	0.018	
10:06	0.013	
10:07	0.014	
10:08	0.028	
10:09	0.014	
10:10	0.013	
10:11	0.014	
10:12	0.013	
10:13	0.014	
10:14	0.014	
10:15	0.012	
10:16	0.014	
10:17	0.015	
10:18	0.013	
10:19	0.013	
10:20	0.02	
10:21	0.015	
10:22	0.016	
10:23	0.016	
10:24	0.016	
10:25	0.014	
10:26	0.014	
10:27	0.015	
10:28	0.016	
10:29	0.021	
10:30	0.018	
10:31	0.018	
10:32	0.016	
10:33	0.016	
10:34	0.018	
10:35	0.018	
10:36	0.02	
10:37	0.019	
10:38	0.017	
10:39	0.007	Flow Error
10:40	0.003	Flow Error
10:41	0.016	Flow Error
10:42	0.012	Flow Error
10:43	0.007	Flow Error
10:44	0.01	Flow Error
10:45	0.007	Flow Error
10:46	0.004	Flow Error

10:47	0.002	Flow Error
10:48	0.001	Flow Error
10:49	0.004	Flow Error
10:50	0.002	Flow Error
10:51	0.002	Flow Error
10:52	0.003	Flow Error
10:53	0.005	Flow Error
10:54	0.001	Flow Error
10:55	0.001	Flow Error
10:56	0.002	Flow Error
10:57	0.002	Flow Error
10:58	0.001	Flow Error
10:59	0.001	Flow Error
11:00	0.002	Flow Error
11:01	0.003	Flow Error
11:02	0.001	Flow Error
11:03	0.001	Flow Error
11:04	0.001	Flow Error
11:05	0.001	Flow Error
11:06	0.001	Flow Error
11:07	0.001	Flow Error
11:08	0.001	Flow Error
11:09	0.001	Flow Error
11:10	0.001	Flow Error
11:11	0.001	Flow Error
11:12	0	Flow Error
11:13	0.001	Flow Error
11:14	0.001	Flow Error
11:15	0.001	Flow Error
11:16	0.001	Flow Error
11:17	0	Flow Error
11:18	0.02	
11:19	0.021	
11:20	0.021	
11:21	0.021	
11:22	0.02	
11:23	0.02	
11:24	0.02	
11:25	0.021	
11:26	0.021	
11:27	0.02	
11:28	0.02	
11:29	0.02	
11:30	0.02	

11:31	0.02
11:32	0.021
11:33	0.023
11:34	0.027
11:35	0.026
11:36	0.022
11:37	0.021
11:38	0.023
11:39	0.022
11:40	0.02
11:41	0.021
11:42	0.023
11:43	0.022
11:44	0.02
11:45	0.021
11:46	0.022
11:47	0.021
11:48	0.021
11:49	0.022
11:50	0.023
11:51	0.024
11:52	0.029
11:53	0.023
11:54	0.022
11:55	0.024
11:56	0.023
11:57	0.021
11:58	0.021
11:59	0.021
12:00	0.022
12:01	0.022
12:02	0.022
12:03	0.022
12:04	0.022
12:05	0.022
12:06	0.023
12:07	0.023
12:08	0.022
12:09	0.025
12:10	0.021
12:11	0.024
12:12	0.023
12:13	0.022
12:14	0.022

12:15	0.023
12:16	0.025
12:17	0.025
12:18	0.022
12:19	0.022
12:20	0.023
12:21	0.022
12:22	0.022
12:23	0.023
12:24	0.021
12:25	0.022
12:26	0.023
12:27	0.023
12:28	0.023
12:29	0.022
12:30	0.021
12:31	0.021
12:32	0.022
12:33	0.022
12:34	0.023
12:35	0.027
12:36	0.024
12:37	0.024
12:38	0.024
12:39	0.024
12:40	0.022
12:41	0.022
12:42	0.023
12:43	0.025
12:44	0.025
12:45	0.024
12:46	0.023
12:47	0.023
12:48	0.023
12:49	0.024
12:50	0.024
12:51	0.022
12:52	0.022
12:53	0.023
12:54	0.023
12:55	0.023
12:56	0.023
12:57	0.025
12:58	0.025

12:59	0.027
13:00	0.024
13:01	0.024
13:02	0.024
13:03	0.033
13:04	0.027
13:05	0.025
13:06	0.027
13:07	0.024
13:08	0.023
13:09	0.023
13:10	0.025
13:11	0.026
13:12	0.024
13:13	0.024
13:14	0.024
13:15	0.024
13:16	0.024
13:17	0.024
13:18	0.025
13:19	0.026
13:20	0.029
13:21	0.027
13:22	0.027
13:23	0.026
13:24	0.026
13:25	0.026
13:26	0.026
13:27	0.026
13:28	0.026
13:29	0.027
13:30	0.027
13:31	0.027
13:32	0.027
13:33	0.026
13:34	0.025
13:35	0.026
13:36	0.026
13:37	0.026
13:38	0.027
13:39	0.026
13:40	0.028
13:41	0.028
13:42	0.027

13:43	0.027
13:44	0.026
13:45	0.025
13:46	0.025
13:47	0.025
13:48	0.025
13:49	0.026
13:50	0.026
13:51	0.027
13:52	0.03
13:53	0.027
13:54	0.028
13:55	0.028
13:56	0.027
13:57	0.026
13:58	0.027

Device Serial No	Log Date	Log Time	Log Type	Sensor 1 Type	Sensor 1 Serial Number	Sensor 1 Status	Sensor 1 Gas Reading
592-602816	2/12/2024	15:38	Readings	PID	SC23030324C7	Normal	0.3
592-602816	2/12/2024	15:37	Readings	PID	SC23030324C7	Normal	0.3
592-602816	2/12/2024	15:36	Readings	PID	SC23030324C7	Normal	0.3
592-602816	2/12/2024	15:35	Readings	PID	SC23030324C7	Normal	0.4
592-602816	2/12/2024	15:34	Readings	PID	SC23030324C7	Normal	0.4
592-602816	2/12/2024	15:33	Readings	PID	SC23030324C7	Normal	0.4
592-602816	2/12/2024	15:32	Readings	PID	SC23030324C7	Normal	0.4
592-602816	2/12/2024	15:31	Readings	PID	SC23030324C7	Normal	0.4
592-602816	2/12/2024	15:30	Readings	PID	SC23030324C7	Normal	0.3
592-602816	2/12/2024	15:29	Readings	PID	SC23030324C7	Normal	0.4
592-602816	2/12/2024	15:28	Readings	PID	SC23030324C7	Normal	0.3
592-602816	2/12/2024	15:27	Readings	PID	SC23030324C7	Normal	0.3
592-602816	2/12/2024	15:26	Readings	PID	SC23030324C7	Normal	0.3
592-602816	2/12/2024	15:25	Readings	PID	SC23030324C7	Normal	0.3
592-602816	2/12/2024	15:24	Readings	PID	SC23030324C7	Normal	0.3
592-602816	2/12/2024	15:23	Readings	PID	SC23030324C7	Normal	0.3
592-602816	2/12/2024	15:22	Readings	PID	SC23030324C7	Normal	0.3
592-602816	2/12/2024	15:21	Readings	PID	SC23030324C7	Normal	0.3
592-602816	2/12/2024	15:20	Readings	PID	SC23030324C7	Normal	0.3
592-602816	2/12/2024	15:19	Readings	PID	SC23030324C7	Normal	0.3
592-602816	2/12/2024	15:18	Readings	PID	SC23030324C7	Normal	0.3
592-602816	2/12/2024	15:17	Readings	PID	SC23030324C7	Normal	0.3
592-602816	2/12/2024	15:16	Readings	PID	SC23030324C7	Normal	0.3
592-602816	2/12/2024	15:15	Readings	PID	SC23030324C7	Normal	0.3
592-602816	2/12/2024	15:14	Readings	PID	SC23030324C7	Normal	0.3
592-602816	2/12/2024	15:13	Readings	PID	SC23030324C7	Normal	0.3
592-602816	2/12/2024	15:12	Readings	PID	SC23030324C7	Normal	0.3
592-602816	2/12/2024	15:11	Readings	PID	SC23030324C7	Normal	0.3
592-602816	2/12/2024	15:10	Readings	PID	SC23030324C7	Normal	0.3
592-602816	2/12/2024	15:09	Readings	PID	SC23030324C7	Normal	0.3
592-602816	2/12/2024	15:08	Readings	PID	SC23030324C7	Normal	0.3
592-602816	2/12/2024	15:07	Readings	PID	SC23030324C7	Normal	0.3

592-602816	2/12/2024	15:06 Readings	PID	SC23030324C7	Normal	0.3
592-602816	2/12/2024	15:05 Readings	PID	SC23030324C7	Normal	0.3
592-602816	2/12/2024	15:04 Readings	PID	SC23030324C7	Normal	0.3
592-602816	2/12/2024	15:03 Readings	PID	SC23030324C7	Normal	0.3
592-602816	2/12/2024	15:02 Readings	PID	SC23030324C7	Normal	0.3
592-602816	2/12/2024	15:01 Readings	PID	SC23030324C7	Normal	0.3
592-602816	2/12/2024	15:00 Readings	PID	SC23030324C7	Normal	0.3
592-602816	2/12/2024	14:59 Readings	PID	SC23030324C7	Normal	0.3
592-602816	2/12/2024	14:58 Readings	PID	SC23030324C7	Normal	0.2
592-602816	2/12/2024	14:57 Readings	PID	SC23030324C7	Normal	0.2
592-602816	2/12/2024	14:56 Readings	PID	SC23030324C7	Normal	0.2
592-602816	2/12/2024	14:55 Readings	PID	SC23030324C7	Normal	0.3
592-602816	2/12/2024	14:54 Readings	PID	SC23030324C7	Normal	0.2
592-602816	2/12/2024	14:53 Readings	PID	SC23030324C7	Normal	0.2
592-602816	2/12/2024	14:52 Readings	PID	SC23030324C7	Normal	0.3
592-602816	2/12/2024	14:51 Readings	PID	SC23030324C7	Normal	0.4
592-602816	2/12/2024	14:50 Readings	PID	SC23030324C7	Normal	0.4
592-602816	2/12/2024	14:49 Readings	PID	SC23030324C7	Normal	0.2
592-602816	2/12/2024	14:48 Readings	PID	SC23030324C7	Normal	0.2
592-602816	2/12/2024	14:47 Readings	PID	SC23030324C7	Normal	0.2
592-602816	2/12/2024	14:46 Readings	PID	SC23030324C7	Normal	0.2
592-602816	2/12/2024	14:45 Readings	PID	SC23030324C7	Normal	0.2
592-602816	2/12/2024	14:44 Readings	PID	SC23030324C7	Normal	0.2
592-602816	2/12/2024	14:43 Readings	PID	SC23030324C7	Normal	0.2
592-602816	2/12/2024	14:42 Readings	PID	SC23030324C7	Normal	0.2
592-602816	2/12/2024	14:41 Readings	PID	SC23030324C7	Normal	0.2
592-602816	2/12/2024	14:40 Readings	PID	SC23030324C7	Normal	0.2
592-602816	2/12/2024	14:39 Readings	PID	SC23030324C7	Normal	0.2
592-602816	2/12/2024	14:38 Readings	PID	SC23030324C7	Normal	0.2
592-602816	2/12/2024	14:37 Readings	PID	SC23030324C7	Normal	0.2
592-602816	2/12/2024	14:36 Readings	PID	SC23030324C7	Normal	0.2
592-602816	2/12/2024	14:35 Readings	PID	SC23030324C7	Normal	0.2
592-602816	2/12/2024	14:34 Readings	PID	SC23030324C7	Normal	0.2



592-602816	2/12/2024	14:33 Readings	PID	SC23030324C7	Normal	0.2
592-602816	2/12/2024	14:32 Readings	PID	SC23030324C7	Normal	0.2
592-602816	2/12/2024	14:31 Readings	PID	SC23030324C7	Normal	0.2
592-602816	2/12/2024	14:30 Readings	PID	SC23030324C7	Normal	0.2
592-602816	2/12/2024	14:29 Readings	PID	SC23030324C7	Normal	0.2
592-602816	2/12/2024	14:28 Readings	PID	SC23030324C7	Normal	0.2
592-602816	2/12/2024	14:27 Readings	PID	SC23030324C7	Normal	0.2
592-602816	2/12/2024	14:26 Readings	PID	SC23030324C7	Normal	0.2
592-602816	2/12/2024	14:25 Readings	PID	SC23030324C7	Normal	0.2
592-602816	2/12/2024	14:24 Readings	PID	SC23030324C7	Normal	0.2
592-602816	2/12/2024	14:23 Readings	PID	SC23030324C7	Normal	0.3
592-602816	2/12/2024	14:22 Readings	PID	SC23030324C7	Normal	0.3
592-602816	2/12/2024	14:21 Readings	PID	SC23030324C7	Normal	0.2
592-602816	2/12/2024	14:20 Readings	PID	SC23030324C7	Normal	0.2
592-602816	2/12/2024	14:19 Readings	PID	SC23030324C7	Normal	0.3
592-602816	2/12/2024	14:18 Readings	PID	SC23030324C7	Normal	0.4
592-602816	2/12/2024	14:17 Readings	PID	SC23030324C7	Normal	0.4
592-602816	2/12/2024	14:16 Readings	PID	SC23030324C7	Normal	0.3
592-602816	2/12/2024	14:15 Readings	PID	SC23030324C7	Normal	0.3
592-602816	2/12/2024	14:14 Readings	PID	SC23030324C7	Normal	0.3
592-602816	2/12/2024	14:13 Readings	PID	SC23030324C7	Normal	0.2
592-602816	2/12/2024	14:12 Readings	PID	SC23030324C7	Normal	0.2
592-602816	2/12/2024	14:11 Readings	PID	SC23030324C7	Normal	0.2
592-602816	2/12/2024	14:10 Readings	PID	SC23030324C7	Normal	0.2
592-602816	2/12/2024	14:09 Readings	PID	SC23030324C7	Normal	0.2
592-602816	2/12/2024	14:08 Readings	PID	SC23030324C7	Normal	0.2
592-602816	2/12/2024	14:07 Readings	PID	SC23030324C7	Normal	0.2
592-602816	2/12/2024	14:06 Readings	PID	SC23030324C7	Normal	0.2
592-602816	2/12/2024	14:05 Readings	PID	SC23030324C7	Normal	0.2
592-602816	2/12/2024	14:04 Readings	PID	SC23030324C7	Normal	0.1
592-602816	2/12/2024	14:03 Readings	PID	SC23030324C7	Normal	0.1
592-602816	2/12/2024	14:02 Readings	PID	SC23030324C7	Normal	0.1
592-602816	2/12/2024	14:01 Readings	PID	SC23030324C7	Normal	0.1

592-602816	2/12/2024	14:00 Readings	PID	SC23030324C7	Normal	0.1
592-602816	2/12/2024	13:59 Readings	PID	SC23030324C7	Normal	0.2
592-602816	2/12/2024	13:58 Readings	PID	SC23030324C7	Normal	0.2
592-602816	2/12/2024	13:57 Readings	PID	SC23030324C7	Normal	0.3
592-602816	2/12/2024	13:56 Readings	PID	SC23030324C7	Normal	0.3
592-602816	2/12/2024	13:55 Readings	PID	SC23030324C7	Normal	0.2
592-602816	2/12/2024	13:54 Readings	PID	SC23030324C7	Normal	0.1
592-602816	2/12/2024	13:53 Readings	PID	SC23030324C7	Normal	0.1
592-602816	2/12/2024	13:52 Readings	PID	SC23030324C7	Normal	0.1
592-602816	2/12/2024	13:51 Readings	PID	SC23030324C7	Normal	0.1
592-602816	2/12/2024	13:50 Readings	PID	SC23030324C7	Normal	0.1
592-602816	2/12/2024	13:49 Readings	PID	SC23030324C7	Normal	0.1
592-602816	2/12/2024	13:48 Readings	PID	SC23030324C7	Normal	0.1
592-602816	2/12/2024	13:47 Readings	PID	SC23030324C7	Normal	0.1
592-602816	2/12/2024	13:46 Readings	PID	SC23030324C7	Normal	0.1
592-602816	2/12/2024	13:45 Readings	PID	SC23030324C7	Normal	0.1
592-602816	2/12/2024	13:44 Readings	PID	SC23030324C7	Normal	0.1
592-602816	2/12/2024	13:43 Readings	PID	SC23030324C7	Normal	0.1
592-602816	2/12/2024	13:42 Readings	PID	SC23030324C7	Normal	0.1
592-602816	2/12/2024	13:41 Readings	PID	SC23030324C7	Normal	0.1
592-602816	2/12/2024	13:40 Readings	PID	SC23030324C7	Normal	0.1
592-602816	2/12/2024	13:39 Readings	PID	SC23030324C7	Normal	0.1
592-602816	2/12/2024	13:38 Readings	PID	SC23030324C7	Normal	0.1
592-602816	2/12/2024	13:37 Readings	PID	SC23030324C7	Normal	0.1
592-602816	2/12/2024	13:36 Readings	PID	SC23030324C7	Normal	0.1
592-602816	2/12/2024	13:35 Readings	PID	SC23030324C7	Normal	0.1
592-602816	2/12/2024	13:34 Readings	PID	SC23030324C7	Normal	0.1
592-602816	2/12/2024	13:33 Readings	PID	SC23030324C7	Normal	0.2
592-602816	2/12/2024	13:32 Readings	PID	SC23030324C7	Normal	0.2
592-602816	2/12/2024	13:31 Readings	PID	SC23030324C7	Normal	0.2
592-602816	2/12/2024	13:30 Readings	PID	SC23030324C7	Normal	0.2
592-602816	2/12/2024	13:29 Readings	PID	SC23030324C7	Normal	0.2
592-602816	2/12/2024	13:28 Readings	PID	SC23030324C7	Normal	0.2

592-602816	2/12/2024	13:27 Readings	PID	SC23030324C7	Normal	0.2
592-602816	2/12/2024	13:26 Readings	PID	SC23030324C7	Normal	0.2
592-602816	2/12/2024	13:25 Readings	PID	SC23030324C7	Normal	0.1
592-602816	2/12/2024	13:24 Readings	PID	SC23030324C7	Normal	0.1
592-602816	2/12/2024	13:23 Readings	PID	SC23030324C7	Normal	0.1
592-602816	2/12/2024	13:22 Readings	PID	SC23030324C7	Normal	0.1
592-602816	2/12/2024	13:21 Readings	PID	SC23030324C7	Normal	0.1
592-602816	2/12/2024	13:20 Readings	PID	SC23030324C7	Normal	0.1
592-602816	2/12/2024	13:19 Readings	PID	SC23030324C7	Normal	0.1
592-602816	2/12/2024	13:18 Readings	PID	SC23030324C7	Normal	0.2
592-602816	2/12/2024	13:17 Readings	PID	SC23030324C7	Normal	0.2
592-602816	2/12/2024	13:16 Readings	PID	SC23030324C7	Normal	0.1
592-602816	2/12/2024	13:15 Readings	PID	SC23030324C7	Normal	0.1
592-602816	2/12/2024	13:14 Readings	PID	SC23030324C7	Normal	0.2
592-602816	2/12/2024	13:13 Readings	PID	SC23030324C7	Normal	0.2
592-602816	2/12/2024	13:12 Readings	PID	SC23030324C7	Normal	0.2
592-602816	2/12/2024	13:11 Readings	PID	SC23030324C7	Normal	0.2
592-602816	2/12/2024	13:10 Readings	PID	SC23030324C7	Normal	0.2
592-602816	2/12/2024	13:09 Readings	PID	SC23030324C7	Normal	0.1
592-602816	2/12/2024	13:08 Readings	PID	SC23030324C7	Normal	0.1
592-602816	2/12/2024	13:07 Readings	PID	SC23030324C7	Normal	0.1
592-602816	2/12/2024	13:06 Readings	PID	SC23030324C7	Normal	0.1
592-602816	2/12/2024	13:05 Readings	PID	SC23030324C7	Normal	0.1
592-602816	2/12/2024	13:04 Readings	PID	SC23030324C7	Normal	0.1
592-602816	2/12/2024	13:03 Readings	PID	SC23030324C7	Normal	0.1
592-602816	2/12/2024	13:02 Readings	PID	SC23030324C7	Normal	0.1
592-602816	2/12/2024	13:01 Readings	PID	SC23030324C7	Normal	0.1
592-602816	2/12/2024	13:00 Readings	PID	SC23030324C7	Normal	0.1
592-602816	2/12/2024	12:59 Readings	PID	SC23030324C7	Normal	0.1
592-602816	2/12/2024	12:58 Readings	PID	SC23030324C7	Normal	0.1
592-602816	2/12/2024	12:57 Readings	PID	SC23030324C7	Normal	0.1
592-602816	2/12/2024	12:56 Readings	PID	SC23030324C7	Normal	0.1
592-602816	2/12/2024	12:55 Readings	PID	SC23030324C7	Normal	0.2

592-602816	2/12/2024	12:54 Readings	PID	SC23030324C7	Normal	0.1
592-602816	2/12/2024	12:53 Readings	PID	SC23030324C7	Normal	0.1
592-602816	2/12/2024	12:52 Readings	PID	SC23030324C7	Normal	0.1
592-602816	2/12/2024	12:51 Readings	PID	SC23030324C7	Normal	0.2
592-602816	2/12/2024	12:50 Readings	PID	SC23030324C7	Normal	0.1
592-602816	2/12/2024	12:49 Readings	PID	SC23030324C7	Normal	0.2
592-602816	2/12/2024	12:48 Readings	PID	SC23030324C7	Normal	0.3
592-602816	2/12/2024	12:47 Readings	PID	SC23030324C7	Normal	0.4
592-602816	2/12/2024	12:46 Readings	PID	SC23030324C7	Normal	0.3
592-602816	2/12/2024	12:45 Readings	PID	SC23030324C7	Normal	0.3
592-602816	2/12/2024	12:44 Readings	PID	SC23030324C7	Normal	0.2
592-602816	2/12/2024	12:43 Readings	PID	SC23030324C7	Normal	0.2
592-602816	2/12/2024	12:42 Readings	PID	SC23030324C7	Normal	0.2
592-602816	2/12/2024	12:41 Readings	PID	SC23030324C7	Normal	0.2
592-602816	2/12/2024	12:40 Readings	PID	SC23030324C7	Normal	0.3
592-602816	2/12/2024	12:39 Readings	PID	SC23030324C7	Normal	0.5
592-602816	2/12/2024	12:38 Readings	PID	SC23030324C7	Normal	0.1
592-602816	2/12/2024	12:37 Readings	PID	SC23030324C7	Normal	0.2
592-602816	2/12/2024	12:36 Readings	PID	SC23030324C7	Normal	0.1
592-602816	2/12/2024	12:35 Readings	PID	SC23030324C7	Normal	0.1
592-602816	2/12/2024	12:34 Readings	PID	SC23030324C7	Normal	0.1
592-602816	2/12/2024	12:33 Readings	PID	SC23030324C7	Normal	0.3
592-602816	2/12/2024	12:32 Readings	PID	SC23030324C7	Normal	0.1
592-602816	2/12/2024	12:31 Readings	PID	SC23030324C7	Normal	0.2
592-602816	2/12/2024	12:30 Readings	PID	SC23030324C7	Normal	0.7
592-602816	2/12/2024	12:29 Readings	PID	SC23030324C7	Normal	0.2
592-602816	2/12/2024	12:28 Readings	PID	SC23030324C7	Normal	0.2
592-602816	2/12/2024	12:27 Readings	PID	SC23030324C7	Normal	0.2
592-602816	2/12/2024	12:26 Readings	PID	SC23030324C7	Normal	0.2
592-602816	2/12/2024	12:25 Readings	PID	SC23030324C7	Normal	0.3
592-602816	2/12/2024	12:24 Readings	PID	SC23030324C7	Normal	0.4
592-602816	2/12/2024	12:23 Readings	PID	SC23030324C7	Normal	0.2
592-602816	2/12/2024	12:22 Readings	PID	SC23030324C7	Normal	0.2

592-602816	2/12/2024	12:21 Readings	PID	SC23030324C7	Normal	0.2
592-602816	2/12/2024	12:20 Readings	PID	SC23030324C7	Normal	0.3
592-602816	2/12/2024	12:19 Readings	PID	SC23030324C7	Normal	0.2
592-602816	2/12/2024	12:18 Readings	PID	SC23030324C7	Normal	0.1
592-602816	2/12/2024	12:17 Readings	PID	SC23030324C7	Normal	0.2
592-602816	2/12/2024	12:16 Readings	PID	SC23030324C7	Normal	0.2
592-602816	2/12/2024	12:15 Readings	PID	SC23030324C7	Normal	0.2
592-602816	2/12/2024	12:14 Readings	PID	SC23030324C7	Normal	0.1
592-602816	2/12/2024	12:13 Readings	PID	SC23030324C7	Normal	0.2
592-602816	2/12/2024	12:12 Readings	PID	SC23030324C7	Normal	0.1
592-602816	2/12/2024	12:11 Readings	PID	SC23030324C7	Normal	0.2
592-602816	2/12/2024	12:10 Readings	PID	SC23030324C7	Normal	0.1
592-602816	2/12/2024	12:09 Readings	PID	SC23030324C7	Normal	0.1
592-602816	2/12/2024	12:08 Readings	PID	SC23030324C7	Normal	0.1
592-602816	2/12/2024	12:07 Readings	PID	SC23030324C7	Normal	0.1
592-602816	2/12/2024	12:06 Readings	PID	SC23030324C7	Normal	0.1
592-602816	2/12/2024	12:05 Readings	PID	SC23030324C7	Normal	0.2
592-602816	2/12/2024	12:04 Readings	PID	SC23030324C7	Normal	0.2
592-602816	2/12/2024	12:03 Readings	PID	SC23030324C7	Normal	0.2
592-602816	2/12/2024	12:02 Readings	PID	SC23030324C7	Normal	0.2
592-602816	2/12/2024	12:01 Readings	PID	SC23030324C7	Normal	0.2
592-602816	2/12/2024	12:00 Readings	PID	SC23030324C7	Normal	0.2
592-602816	2/12/2024	11:59 Readings	PID	SC23030324C7	Normal	0.2
592-602816	2/12/2024	11:58 Readings	PID	SC23030324C7	Normal	0.2
592-602816	2/12/2024	11:57 Readings	PID	SC23030324C7	Normal	0.2
592-602816	2/12/2024	11:56 Readings	PID	SC23030324C7	Normal	0.2
592-602816	2/12/2024	11:55 Readings	PID	SC23030324C7	Normal	0.2
592-602816	2/12/2024	11:54 Readings	PID	SC23030324C7	Normal	0.2
592-602816	2/12/2024	11:53 Readings	PID	SC23030324C7	Normal	0.2
592-602816	2/12/2024	11:52 Readings	PID	SC23030324C7	Normal	0.2
592-602816	2/12/2024	11:51 Readings	PID	SC23030324C7	Normal	0.2
592-602816	2/12/2024	11:50 Readings	PID	SC23030324C7	Normal	0.2
592-602816	2/12/2024	11:49 Readings	PID	SC23030324C7	Normal	0.2

592-602816	2/12/2024	11:48 Readings	PID	SC23030324C7	Normal	0.2
592-602816	2/12/2024	11:47 Readings	PID	SC23030324C7	Normal	0.2
592-602816	2/12/2024	11:46 Readings	PID	SC23030324C7	Normal	0.3
592-602816	2/12/2024	11:45 Readings	PID	SC23030324C7	Normal	0.3
592-602816	2/12/2024	11:44 Readings	PID	SC23030324C7	Normal	0.2
592-602816	2/12/2024	11:43 Readings	PID	SC23030324C7	Normal	0.2
592-602816	2/12/2024	11:42 Readings	PID	SC23030324C7	Normal	0.3
592-602816	2/12/2024	11:41 Readings	PID	SC23030324C7	Normal	0.4
592-602816	2/12/2024	11:40 Readings	PID	SC23030324C7	Normal	0.2
592-602816	2/12/2024	11:39 Readings	PID	SC23030324C7	Normal	0.2
592-602816	2/12/2024	11:38 Readings	PID	SC23030324C7	Normal	0.2
592-602816	2/12/2024	11:37 Readings	PID	SC23030324C7	Normal	0.2
592-602816	2/12/2024	11:36 Readings	PID	SC23030324C7	Normal	0.2
592-602816	2/12/2024	11:35 Readings	PID	SC23030324C7	Normal	0.2
592-602816	2/12/2024	11:34 Readings	PID	SC23030324C7	Normal	0.3
592-602816	2/12/2024	11:33 Readings	PID	SC23030324C7	Normal	0.3
592-602816	2/12/2024	11:32 Readings	PID	SC23030324C7	Normal	0.3
592-602816	2/12/2024	11:31 Readings	PID	SC23030324C7	Normal	0.3
592-602816	2/12/2024	11:30 Readings	PID	SC23030324C7	Normal	0.3
592-602816	2/12/2024	11:29 Readings	PID	SC23030324C7	Normal	0.4
592-602816	2/12/2024	11:28 Readings	PID	SC23030324C7	Normal	0.5
592-602816	2/12/2024	11:27 Readings	PID	SC23030324C7	Normal	0.3
592-602816	2/12/2024	11:26 Readings	PID	SC23030324C7	Normal	0.3
592-602816	2/12/2024	11:25 Readings	PID	SC23030324C7	Normal	0.3
592-602816	2/12/2024	11:24 Readings	PID	SC23030324C7	Normal	0.3
592-602816	2/12/2024	11:23 Readings	PID	SC23030324C7	Normal	0.3
592-602816	2/12/2024	11:22 Readings	PID	SC23030324C7	Normal	0.3
592-602816	2/12/2024	11:21 Readings	PID	SC23030324C7	Normal	0.3
592-602816	2/12/2024	11:20 Readings	PID	SC23030324C7	Normal	0.3
592-602816	2/12/2024	11:19 Readings	PID	SC23030324C7	Normal	0.3
592-602816	2/12/2024	11:18 Readings	PID	SC23030324C7	Normal	0.3
592-602816	2/12/2024	11:17 Readings	PID	SC23030324C7	Normal	0.3
592-602816	2/12/2024	11:16 Readings	PID	SC23030324C7	Normal	0.3







592-602816	2/12/2024	10:09 Readings	PID	SC23030324C7	Normal	0.4
592-602816	2/12/2024	10:08 Readings	PID	SC23030324C7	Normal	0.4
592-602816	2/12/2024	10:07 Readings	PID	SC23030324C7	Normal	0.4
592-602816	2/12/2024	10:06 Readings	PID	SC23030324C7	Normal	0.4
592-602816	2/12/2024	10:05 Readings	PID	SC23030324C7	Normal	0.4
592-602816	2/12/2024	10:04 Readings	PID	SC23030324C7	Normal	0.4
592-602816	2/12/2024	10:03 Readings	PID	SC23030324C7	Normal	0.4
592-602816	2/12/2024	10:02 Readings	PID	SC23030324C7	Normal	0.4
592-602816	2/12/2024	10:01 Readings	PID	SC23030324C7	Normal	0.4
592-602816	2/12/2024	10:00 Readings	PID	SC23030324C7	Normal	0.4
592-602816	2/12/2024	9:59 Readings	PID	SC23030324C7	Normal	0.4
592-602816	2/12/2024	9:58 Readings	PID	SC23030324C7	Normal	0.4
592-602816	2/12/2024	9:57 Readings	PID	SC23030324C7	Normal	0.4
592-602816	2/12/2024	9:56 Readings	PID	SC23030324C7	Normal	0.4
592-602816	2/12/2024	9:55 Readings	PID	SC23030324C7	Normal	0.6
592-602816	2/12/2024	9:54 Readings	PID	SC23030324C7	Normal	0.9
592-602816	2/12/2024	9:53 Readings	PID	SC23030324C7	Normal	0.4
592-602816	2/12/2024	9:52 Readings	PID	SC23030324C7	Normal	0.4
592-602816	2/12/2024	9:51 Readings	PID	SC23030324C7	Normal	0.4
592-602816	2/12/2024	9:50 Readings	PID	SC23030324C7	Normal	0.4
592-602816	2/12/2024	9:49 Readings	PID	SC23030324C7	Normal	0.4
592-602816	2/12/2024	9:48 Readings	PID	SC23030324C7	Normal	0.4
592-602816	2/12/2024	9:47 Readings	PID	SC23030324C7	Normal	0.4
592-602816	2/12/2024	9:46 Readings	PID	SC23030324C7	Normal	0.4
592-602816	2/12/2024	9:45 Readings	PID	SC23030324C7	Normal	0.4
592-602816	2/12/2024	9:44 Readings	PID	SC23030324C7	Normal	0.4
592-602816	2/12/2024	9:43 Readings	PID	SC23030324C7	Normal	0.4
592-602816	2/12/2024	9:42 Readings	PID	SC23030324C7	Normal	0.4
592-602816	2/12/2024	9:41 Readings	PID	SC23030324C7	Normal	0.4
592-602816	2/12/2024	9:40 Readings	PID	SC23030324C7	Normal	0.4
592-602816	2/12/2024	9:39 Readings	PID	SC23030324C7	Normal	0.4
592-602816	2/12/2024	9:38 Readings	PID	SC23030324C7	Normal	0.5
592-602816	2/12/2024	9:37 Readings	PID	SC23030324C7	Normal	0.4



592-602816	2/12/2024	9:03 Readings	PID	SC23030324C7	Normal	0.4
592-602816	2/12/2024	9:02 Readings	PID	SC23030324C7	Normal	0.4
592-602816	2/12/2024	9:01 Readings	PID	SC23030324C7	Normal	0.4
592-602816	2/12/2024	9:00 Readings	PID	SC23030324C7	Normal	0.4
592-602816	2/12/2024	8:59 Readings	PID	SC23030324C7	Normal	0.4
592-602816	2/12/2024	8:58 Readings	PID	SC23030324C7	Normal	0.4
592-602816	2/12/2024	8:57 Readings	PID	SC23030324C7	Normal	0.4
592-602816	2/12/2024	8:56 Readings	PID	SC23030324C7	Normal	0.4
592-602816	2/12/2024	8:55 Readings	PID	SC23030324C7	Normal	0.4
592-602816	2/12/2024	8:54 Readings	PID	SC23030324C7	Normal	0.4
592-602816	2/12/2024	8:53 Readings	PID	SC23030324C7	Normal	0.4
592-602816	2/12/2024	8:52 Readings	PID	SC23030324C7	Normal	0.5
592-602816	2/12/2024	8:51 Readings	PID	SC23030324C7	Normal	0.4
592-602816	2/12/2024	8:50 Readings	PID	SC23030324C7	Normal	0.4
592-602816	2/12/2024	8:49 Readings	PID	SC23030324C7	Normal	0.4
592-602816	2/12/2024	8:48 Readings	PID	SC23030324C7	Normal	0.4
592-602816	2/12/2024	8:47 Readings	PID	SC23030324C7	Normal	0.4
592-602816	2/12/2024	8:46 Readings	PID	SC23030324C7	Normal	0.4
592-602816	2/12/2024	8:45 Readings	PID	SC23030324C7	Normal	0.4
592-602816	2/12/2024	8:44 Readings	PID	SC23030324C7	Normal	0.4
592-602816	2/12/2024	8:43 Readings	PID	SC23030324C7	Normal	0.4
592-602816	2/12/2024	8:42 Readings	PID	SC23030324C7	Normal	0.4
592-602816	2/12/2024	8:41 Readings	PID	SC23030324C7	Normal	0.3
592-602816	2/12/2024	8:40 Readings	PID	SC23030324C7	Normal	0.3
592-602816	2/12/2024	8:39 Readings	PID	SC23030324C7	Normal	0.3
592-602816	2/12/2024	8:38 Readings	PID	SC23030324C7	Normal	0.3
592-602816	2/12/2024	8:37 Readings	PID	SC23030324C7	Normal	0.4
592-602816	2/12/2024	8:36 Readings	PID	SC23030324C7	Normal	0.4
592-602816	2/12/2024	8:35 Readings	PID	SC23030324C7	Normal	0.4
592-602816	2/12/2024	8:34 Readings	PID	SC23030324C7	Normal	0.4
592-602816	2/12/2024	8:33 Readings	PID	SC23030324C7	Normal	0.4
592-602816	2/12/2024	8:32 Readings	PID	SC23030324C7	Normal	0.4
592-602816	2/12/2024	8:31 Readings	PID	SC23030324C7	Normal	0.3

592-602816	2/12/2024	8:30 Readings	PID	SC23030324C7	Normal	0.3
592-602816	2/12/2024	8:29 Readings	PID	SC23030324C7	Normal	0.3
592-602816	2/12/2024	8:28 Readings	PID	SC23030324C7	Normal	0.3
592-602816	2/12/2024	8:27 Readings	PID	SC23030324C7	Normal	0.3
592-602816	2/12/2024	8:26 Readings	PID	SC23030324C7	Normal	0.3
592-602816	2/12/2024	8:25 Readings	PID	SC23030324C7	Normal	0.3
592-602816	2/12/2024	8:24 Readings	PID	SC23030324C7	Normal	0.3
592-602816	2/12/2024	8:23 Readings	PID	SC23030324C7	Normal	0.3
592-602816	2/12/2024	8:22 Readings	PID	SC23030324C7	Normal	0.3
592-602816	2/12/2024	8:21 Readings	PID	SC23030324C7	Normal	0.3
592-602816	2/12/2024	8:20 Readings	PID	SC23030324C7	Normal	0.3
592-602816	2/12/2024	8:19 Readings	PID	SC23030324C7	Normal	0.4
592-602816	2/12/2024	8:18 Readings	PID	SC23030324C7	Normal	0.4
592-602816	2/12/2024	8:17 Readings	PID	SC23030324C7	Normal	0.3
592-602816	2/12/2024	8:16 Readings	PID	SC23030324C7	Normal	0.3
592-602816	2/12/2024	8:15 Readings	PID	SC23030324C7	Normal	0.3
592-602816	2/12/2024	8:14 Readings	PID	SC23030324C7	Normal	0.3
592-602816	2/12/2024	8:13 Readings	PID	SC23030324C7	Normal	0.3
592-602816	2/12/2024	8:12 Readings	PID	SC23030324C7	Normal	0.3
592-602816	2/12/2024	8:11 Readings	PID	SC23030324C7	Normal	0.3
592-602816	2/12/2024	8:10 Readings	PID	SC23030324C7	Normal	0.3
592-602816	2/12/2024	8:09 Readings	PID	SC23030324C7	Normal	0.3
592-602816	2/12/2024	8:08 Readings	PID	SC23030324C7	Normal	0.3
592-602816	2/12/2024	8:07 Readings	PID	SC23030324C7	Normal	0.3
592-602816	2/12/2024	8:06 Readings	PID	SC23030324C7	Normal	0.3
592-602816	2/12/2024	8:05 Readings	PID	SC23030324C7	Normal	0.3
592-602816	2/12/2024	8:04 Readings	PID	SC23030324C7	Normal	0.3
592-602816	2/12/2024	8:03 Readings	PID	SC23030324C7	Normal	0.3
592-602816	2/12/2024	8:02 Readings	PID	SC23030324C7	Normal	0.3
592-602816	2/12/2024	8:01 Readings	PID	SC23030324C7	Normal	0.3
592-602816	2/12/2024	8:00 Readings	PID	SC23030324C7	Normal	0.2
592-602816	2/12/2024	7:59 Readings	PID	SC23030324C7	Normal	0.2
592-602816	2/12/2024	7:58 Readings	PID	SC23030324C7	Normal	0.2





592-602816	2/12/2024	6:51 Readings	PID	SC23030324C7	Normal	0
592-602816	2/12/2024	6:50 Readings	PID	SC23030324C7	Normal	0
592-602816	2/12/2024	6:49 Readings	PID	SC23030324C7	Normal	0
592-602816	2/12/2024	6:48 CONFIG	PID	SC23030324C7		

Instrument Name	DustTrak DRX
Model Number	8533
Serial Number	8533181205
Firmware Version	3.1
Calibration Date	5/31/2023
Test Name	MANUAL_006
Test Start Time	6:40:58 AM
Test Start Date	2/12/2024
Test Length [D:H:M]	0:09:01
Test Interval [M:S]	1:00
PM1 Average [mg/m3]	0.018
PM1 Minimum [mg/m3]	0.009
PM1 Maximum [mg/m3]	0.031
PM1 TWA [mg/m3]	0.017
Photometric User Cal	1
Size Correction User Cal	1
Flow User Cal	0
Errors	
Number of Samples	541

Elapsed Time [s]	PM1 [mg/m3]	Alarms	Errors
6:40	0.02		
6:41	0.013		
6:42	0.011		
6:43	0.011		
6:44	0.012		
6:45	0.011		
6:46	0.011		
6:47	0.011		
6:48	0.01		
6:49	0.01		
6:50	0.011		
6:51	0.011		
6:52	0.011		
6:53	0.011		
6:54	0.015		
6:55	0.022		
6:56	0.017		
6:57	0.013		
6:58	0.012		
6:59	0.011		
7:00	0.011		
7:01	0.012		
7:02	0.011		



7:03	0.012
7:04	0.012
7:05	0.012
7:06	0.013
7:07	0.013
7:08	0.013
7:09	0.013
7:10	0.013
7:11	0.013
7:12	0.013
7:13	0.014
7:14	0.014
7:15	0.014
7:16	0.014
7:17	0.013
7:18	0.013
7:19	0.013
7:20	0.013
7:21	0.013
7:22	0.014
7:23	0.014
7:24	0.014
7:25	0.014
7:26	0.014
7:27	0.017
7:28	0.016
7:29	0.015
7:30	0.022
7:31	0.019
7:32	0.016
7:33	0.018
7:34	0.023
7:35	0.016
7:36	0.016
7:37	0.014
7:38	0.015
7:39	0.015
7:40	0.017
7:41	0.018
7:42	0.015
7:43	0.016
7:44	0.018
7:45	0.02
7:46	0.018

7:47	0.017
7:48	0.016
7:49	0.016
7:50	0.016
7:51	0.015
7:52	0.014
7:53	0.014
7:54	0.014
7:55	0.014
7:56	0.014
7:57	0.015
7:58	0.014
7:59	0.015
8:00	0.015
8:01	0.015
8:02	0.015
8:03	0.016
8:04	0.016
8:05	0.016
8:06	0.016
8:07	0.018
8:08	0.017
8:09	0.016
8:10	0.016
8:11	0.016
8:12	0.017
8:13	0.017
8:14	0.017
8:15	0.017
8:16	0.015
8:17	0.014
8:18	0.015
8:19	0.014
8:20	0.015
8:21	0.015
8:22	0.014
8:23	0.015
8:24	0.015
8:25	0.015
8:26	0.015
8:27	0.016
8:28	0.016
8:29	0.015
8:30	0.016

8:31	0.017
8:32	0.016
8:33	0.015
8:34	0.015
8:35	0.015
8:36	0.015
8:37	0.017
8:38	0.016
8:39	0.016
8:40	0.017
8:41	0.018
8:42	0.016
8:43	0.016
8:44	0.015
8:45	0.016
8:46	0.016
8:47	0.015
8:48	0.015
8:49	0.015
8:50	0.015
8:51	0.015
8:52	0.015
8:53	0.015
8:54	0.015
8:55	0.015
8:56	0.015
8:57	0.015
8:58	0.015
8:59	0.016
9:00	0.016
9:01	0.016
9:02	0.015
9:03	0.014
9:04	0.015
9:05	0.015
9:06	0.015
9:07	0.016
9:08	0.014
9:09	0.013
9:10	0.013
9:11	0.013
9:12	0.014
9:13	0.013
9:14	0.014

9:15	0.013
9:16	0.014
9:17	0.015
9:18	0.014
9:19	0.013
9:20	0.014
9:21	0.015
9:22	0.013
9:23	0.012
9:24	0.013
9:25	0.012
9:26	0.012
9:27	0.013
9:28	0.013
9:29	0.014
9:30	0.013
9:31	0.013
9:32	0.012
9:33	0.027
9:34	0.016
9:35	0.015
9:36	0.015
9:37	0.015
9:38	0.013
9:39	0.013
9:40	0.013
9:41	0.013
9:42	0.014
9:43	0.014
9:44	0.014
9:45	0.014
9:46	0.02
9:47	0.016
9:48	0.016
9:49	0.011
9:50	0.011
9:51	0.013
9:52	0.013
9:53	0.013
9:54	0.009
9:55	0.01
9:56	0.011
9:57	0.01
9:58	0.01

9:59	0.011
10:00	0.011
10:01	0.011
10:02	0.012
10:03	0.011
10:04	0.011
10:05	0.011
10:06	0.011
10:07	0.011
10:08	0.012
10:09	0.012
10:10	0.011
10:11	0.011
10:12	0.011
10:13	0.011
10:14	0.012
10:15	0.012
10:16	0.013
10:17	0.013
10:18	0.014
10:19	0.014
10:20	0.014
10:21	0.014
10:22	0.014
10:23	0.014
10:24	0.015
10:25	0.015
10:26	0.016
10:27	0.016
10:28	0.014
10:29	0.014
10:30	0.015
10:31	0.015
10:32	0.015
10:33	0.031
10:34	0.014
10:35	0.014
10:36	0.016
10:37	0.016
10:38	0.018
10:39	0.019
10:40	0.016
10:41	0.016
10:42	0.016

10:43	0.016
10:44	0.016
10:45	0.016
10:46	0.015
10:47	0.017
10:48	0.016
10:49	0.016
10:50	0.016
10:51	0.017
10:52	0.019
10:53	0.018
10:54	0.016
10:55	0.016
10:56	0.016
10:57	0.016
10:58	0.016
10:59	0.016
11:00	0.015
11:01	0.016
11:02	0.016
11:03	0.017
11:04	0.016
11:05	0.016
11:06	0.016
11:07	0.018
11:08	0.017
11:09	0.016
11:10	0.016
11:11	0.016
11:12	0.017
11:13	0.017
11:14	0.017
11:15	0.017
11:16	0.016
11:17	0.016
11:18	0.017
11:19	0.017
11:20	0.016
11:21	0.016
11:22	0.016
11:23	0.017
11:24	0.016
11:25	0.016
11:26	0.016

11:27	0.017
11:28	0.017
11:29	0.016
11:30	0.017
11:31	0.018
11:32	0.017
11:33	0.016
11:34	0.017
11:35	0.017
11:36	0.018
11:37	0.017
11:38	0.018
11:39	0.02
11:40	0.019
11:41	0.018
11:42	0.019
11:43	0.022
11:44	0.021
11:45	0.017
11:46	0.018
11:47	0.018
11:48	0.017
11:49	0.018
11:50	0.017
11:51	0.017
11:52	0.018
11:53	0.019
11:54	0.02
11:55	0.019
11:56	0.018
11:57	0.018
11:58	0.018
11:59	0.018
12:00	0.018
12:01	0.017
12:02	0.017
12:03	0.018
12:04	0.031
12:05	0.022
12:06	0.018
12:07	0.018
12:08	0.019
12:09	0.022
12:10	0.024

12:11	0.02
12:12	0.02
12:13	0.019
12:14	0.02
12:15	0.02
12:16	0.019
12:17	0.019
12:18	0.019
12:19	0.018
12:20	0.018
12:21	0.018
12:22	0.018
12:23	0.018
12:24	0.019
12:25	0.019
12:26	0.026
12:27	0.02
12:28	0.019
12:29	0.024
12:30	0.021
12:31	0.021
12:32	0.021
12:33	0.02
12:34	0.019
12:35	0.02
12:36	0.02
12:37	0.02
12:38	0.02
12:39	0.02
12:40	0.021
12:41	0.021
12:42	0.021
12:43	0.02
12:44	0.02
12:45	0.02
12:46	0.023
12:47	0.024
12:48	0.024
12:49	0.023
12:50	0.021
12:51	0.02
12:52	0.021
12:53	0.021
12:54	0.022



12:55	0.021
12:56	0.021
12:57	0.02
12:58	0.02
12:59	0.02
13:00	0.021
13:01	0.021
13:02	0.021
13:03	0.021
13:04	0.021
13:05	0.021
13:06	0.022
13:07	0.022
13:08	0.021
13:09	0.023
13:10	0.022
13:11	0.021
13:12	0.022
13:13	0.022
13:14	0.022
13:15	0.022
13:16	0.021
13:17	0.021
13:18	0.022
13:19	0.022
13:20	0.022
13:21	0.021
13:22	0.021
13:23	0.022
13:24	0.022
13:25	0.022
13:26	0.023
13:27	0.023
13:28	0.023
13:29	0.023
13:30	0.023
13:31	0.022
13:32	0.021
13:33	0.021
13:34	0.022
13:35	0.022
13:36	0.022
13:37	0.022
13:38	0.023

13:39	0.023
13:40	0.022
13:41	0.023
13:42	0.023
13:43	0.023
13:44	0.024
13:45	0.024
13:46	0.022
13:47	0.023
13:48	0.023
13:49	0.022
13:50	0.022
13:51	0.022
13:52	0.022
13:53	0.023
13:54	0.023
13:55	0.024
13:56	0.024
13:57	0.022
13:58	0.023
13:59	0.023
14:00	0.022
14:01	0.023
14:02	0.023
14:03	0.024
14:04	0.024
14:05	0.025
14:06	0.024
14:07	0.023
14:08	0.023
14:09	0.024
14:10	0.025
14:11	0.025
14:12	0.025
14:13	0.024
14:14	0.025
14:15	0.024
14:16	0.024
14:17	0.025
14:18	0.026
14:19	0.027
14:20	0.025
14:21	0.024
14:22	0.023

14:23	0.024
14:24	0.026
14:25	0.024
14:26	0.023
14:27	0.024
14:28	0.024
14:29	0.024
14:30	0.024
14:31	0.024
14:32	0.024
14:33	0.024
14:34	0.025
14:35	0.025
14:36	0.023
14:37	0.023
14:38	0.023
14:39	0.022
14:40	0.023
14:41	0.024
14:42	0.024
14:43	0.024
14:44	0.027
14:45	0.026
14:46	0.026
14:47	0.025
14:48	0.025
14:49	0.024
14:50	0.025
14:51	0.025
14:52	0.025
14:53	0.026
14:54	0.027
14:55	0.029
14:56	0.028
14:57	0.028
14:58	0.027
14:59	0.027
15:00	0.027
15:01	0.027
15:02	0.027
15:03	0.027
15:04	0.027
15:05	0.028
15:06	0.027

15:07	0.027
15:08	0.027
15:09	0.027
15:10	0.027
15:11	0.026
15:12	0.026
15:13	0.027
15:14	0.027
15:15	0.028
15:16	0.028
15:17	0.028
15:18	0.027
15:19	0.027
15:20	0.026
15:21	0.026
15:22	0.026
15:23	0.026
15:24	0.026
15:25	0.027
15:26	0.027
15:27	0.029
15:28	0.029
15:29	0.029
15:30	0.028
15:31	0.028
15:32	0.027
15:33	0.027
15:34	0.027
15:35	0.027
15:36	0.028
15:37	0.027
15:38	0.028
15:39	0.028
15:40	0.03

Device Serial No	Log Date	Log Time	Log Type	Sensor 1 Type	Sensor 1 Serial Number	Sensor 1 Status	Sensor 1 Gas Reading
592-600871	2/12/2024	15:41	Readings	PID	SC23030408A8	Normal	0
592-600871	2/12/2024	15:40	Readings	PID	SC23030408A8	Normal	0
592-600871	2/12/2024	15:39	Readings	PID	SC23030408A8	Normal	0
592-600871	2/12/2024	15:38	Readings	PID	SC23030408A8	Normal	0
592-600871	2/12/2024	15:37	Readings	PID	SC23030408A8	Normal	0
592-600871	2/12/2024	15:36	Readings	PID	SC23030408A8	Normal	0
592-600871	2/12/2024	15:35	Readings	PID	SC23030408A8	Normal	0
592-600871	2/12/2024	15:34	Readings	PID	SC23030408A8	Normal	0
592-600871	2/12/2024	15:33	Readings	PID	SC23030408A8	Normal	0
592-600871	2/12/2024	15:32	Readings	PID	SC23030408A8	Normal	0
592-600871	2/12/2024	15:31	Readings	PID	SC23030408A8	Normal	0
592-600871	2/12/2024	15:30	Readings	PID	SC23030408A8	Normal	0
592-600871	2/12/2024	15:29	Readings	PID	SC23030408A8	Normal	0
592-600871	2/12/2024	15:28	Readings	PID	SC23030408A8	Normal	0
592-600871	2/12/2024	15:27	Readings	PID	SC23030408A8	Normal	0
592-600871	2/12/2024	15:26	Readings	PID	SC23030408A8	Normal	0
592-600871	2/12/2024	15:25	Readings	PID	SC23030408A8	Normal	0
592-600871	2/12/2024	15:24	Readings	PID	SC23030408A8	Normal	0
592-600871	2/12/2024	15:23	Readings	PID	SC23030408A8	Normal	0
592-600871	2/12/2024	15:22	Readings	PID	SC23030408A8	Normal	0
592-600871	2/12/2024	15:21	Readings	PID	SC23030408A8	Normal	0
592-600871	2/12/2024	15:20	Readings	PID	SC23030408A8	Normal	0
592-600871	2/12/2024	15:19	Readings	PID	SC23030408A8	Normal	0
592-600871	2/12/2024	15:18	Readings	PID	SC23030408A8	Normal	0
592-600871	2/12/2024	15:17	Readings	PID	SC23030408A8	Normal	0
592-600871	2/12/2024	15:16	Readings	PID	SC23030408A8	Normal	0
592-600871	2/12/2024	15:15	Readings	PID	SC23030408A8	Normal	0
592-600871	2/12/2024	15:14	Readings	PID	SC23030408A8	Normal	0
592-600871	2/12/2024	15:13	Readings	PID	SC23030408A8	Normal	0
592-600871	2/12/2024	15:12	Readings	PID	SC23030408A8	Normal	0
592-600871	2/12/2024	15:11	Readings	PID	SC23030408A8	Normal	0
592-600871	2/12/2024	15:10	Readings	PID	SC23030408A8	Normal	0



































592-600871	2/12/2024	6:54 Readings	PID	SC23030408A8	Normal	0
592-600871	2/12/2024	6:53 Readings	PID	SC23030408A8	Normal	0
592-600871	2/12/2024	6:52 Readings	PID	SC23030408A8	Normal	0
592-600871	2/12/2024	6:51 Readings	PID	SC23030408A8	Normal	0
592-600871	2/12/2024	6:50 Readings	PID	SC23030408A8	Normal	0
592-600871	2/12/2024	6:49 Readings	PID	SC23030408A8	Normal	0
592-600871	2/12/2024	6:48 Readings	PID	SC23030408A8	Normal	0
592-600871	2/12/2024	6:47 Readings	PID	SC23030408A8	Normal	0
592-600871	2/12/2024	6:46 Readings	PID	SC23030408A8	Normal	0
592-600871	2/12/2024	6:45 Readings	PID	SC23030408A8	Normal	0
592-600871	2/12/2024	6:44 Readings	PID	SC23030408A8	Normal	0
592-600871	2/12/2024	6:43 Readings	PID	SC23030408A8	Normal	0
592-600871	2/12/2024	6:42 Readings	PID	SC23030408A8	Normal	0
592-600871	2/12/2024	6:41 Readings	PID	SC23030408A8	Normal	0
592-600871	2/12/2024	6:40 CONFIG	PID	SC23030408A8		