



DAILY STATUS REPORT

Prepared By:

Thomas Jensen

WEATHER	Snow		Rain	X	Overcast	X	Partly Cloudy	X	Bright Sun	X	Wind
TEMP.	< 32	X	32-50	X	50-70		70-85		>85		NNE- 3 MPH

IEC Project No:	13928	NYSDEC BCP Site No:	C224367	Date: 02/22/24
Project:	251 Douglass Street, Brooklyn, NY			

<p>Consultant: Impact Environmental Engineering and Geology, PLLC (IEEG)</p> <p>Time On: 07:00 Time Out: 18:00</p>	<p>Personnel On Site: IEEG (Environmental) –Thomas Jensen Broadway Construction Group - Tom Caporale Cascade NYSDEC WSP</p> <p>Equipment On Site: Minirae 3000 PID, DustTrak II</p>
---	---

Scope of Work: Cascade continues full scale ISS.

Site Activities:

- Deploy three (3) CAMPs at the Start of the work day;
- Delivery of slag; and
- Cascade drilled column 632, column spec below:
 - The column was 8’ diameter and drilled 51’ deep from Site grade;
 - The column consisted of a total of 23 batches;
 - The hose on the hydrant fell off during the end of the first upstroke causing a delay in beginning downstroke 2.
- Cascade drilled column 651, column spec below:
 - The column was 8’ diameter and drilled 51’ deep from Site grade;
 - A wet sample was taken at 47.’ (51’ from sidewalk grade);
 - The column consisted of a total of 23 batches;
 - At 14:12 rotations of the auger were slightly increased to get through an obstruction.
 - At 14:20 advancement was temporarily stopped (auger continued rotating) to get through an obstruction.

Community Air Monitoring Program (CAMP) - CAMP action level for dust (0.1 mg/m³) and VOCs (5 ppm)

- PID remained at nominal levels throughout the day.
- No sustained dust exceedances were observed over a 1-min period during monitoring;
- Startup Upwind Conditions – PID = 0.1 ppm, Dust = 0.044 mg/m³ @ 07:00
- High Conditions (Upwind) – PID = 1.9 ppm @ 16:20, Dust = 1.32 mg/m³ @ 09:01
- High Conditions (Downwind 1) – PID = 0.8 ppm @ 10:44, Dust = 0.100 mg/m³ @ 13:02
- High Conditions (Downwind 2) – PID = 0.1 ppm @ 07:56 Dust = 0.262 mg/m³ @ 10:25

- While excavating a pocket of odorous soil was encountered, excavation was stopped and ATMOS foam was sprayed over the area of excavation.

Notable Site Conditions:

- While drilling columns 630 an obstruction was encountered at 3'/4'. An excavator attempted to remove the obstruction from 13:11 to 13:22. The obstruction was thought to have been removed, but when the auger went back down at 13:22 the obstruction was still in the column. The obstruction was attempted to be removed until 13:45 when a decision was made that the column would temporarily be abandoned until the entire area can be excavated or a jackhammer arrived on site.
- Obstructions encountered from 2/21/2024 were attempted to be removed, but due to a concern of undermining the mats that the drill rig is on it was determined that the mats and rig would have to be moved to remove the obstructions.

Planned for the Next Day/Week:

- Continuation of ISS columns; and
- Expose the obstructions on the eastern portion of the northern lot.



PHOTO LOG

251 DOUGLASS STREET, BROOKLYN, NY



Photo 1-
Representative
photo of
attempting to
remove the
obstructions
from 2/21/2024.



Photo 2 –
Representative
photo of swell
material being
stockpiled on
poly.



Photo 3-
Representative
photo of drilling
an ISS column.



Photo 4-
Representative
photo of the
excavated area
sprayed with
ATMOS foam.



Photo 5-
Representative
photo of poly
being laid for the
decontamination
of the sampling
tool.



SITE PLANS

251 DOUGLASS STREET, BROOKLYN, NY



© 2023 TERRACON, INC. ALL RIGHTS RESERVED.

PLOT DATE: 10/10/2023




FILE PATH: \\P:\PROJECTS\2023\CASCADE\BROOKLYN_NY\BROOKLYN_PROJECT_DRAWING\FIG 4 - ISS COLUMN LAYOUT.DWG
DATE FILE LAST MODIFIED: 10/10/2023



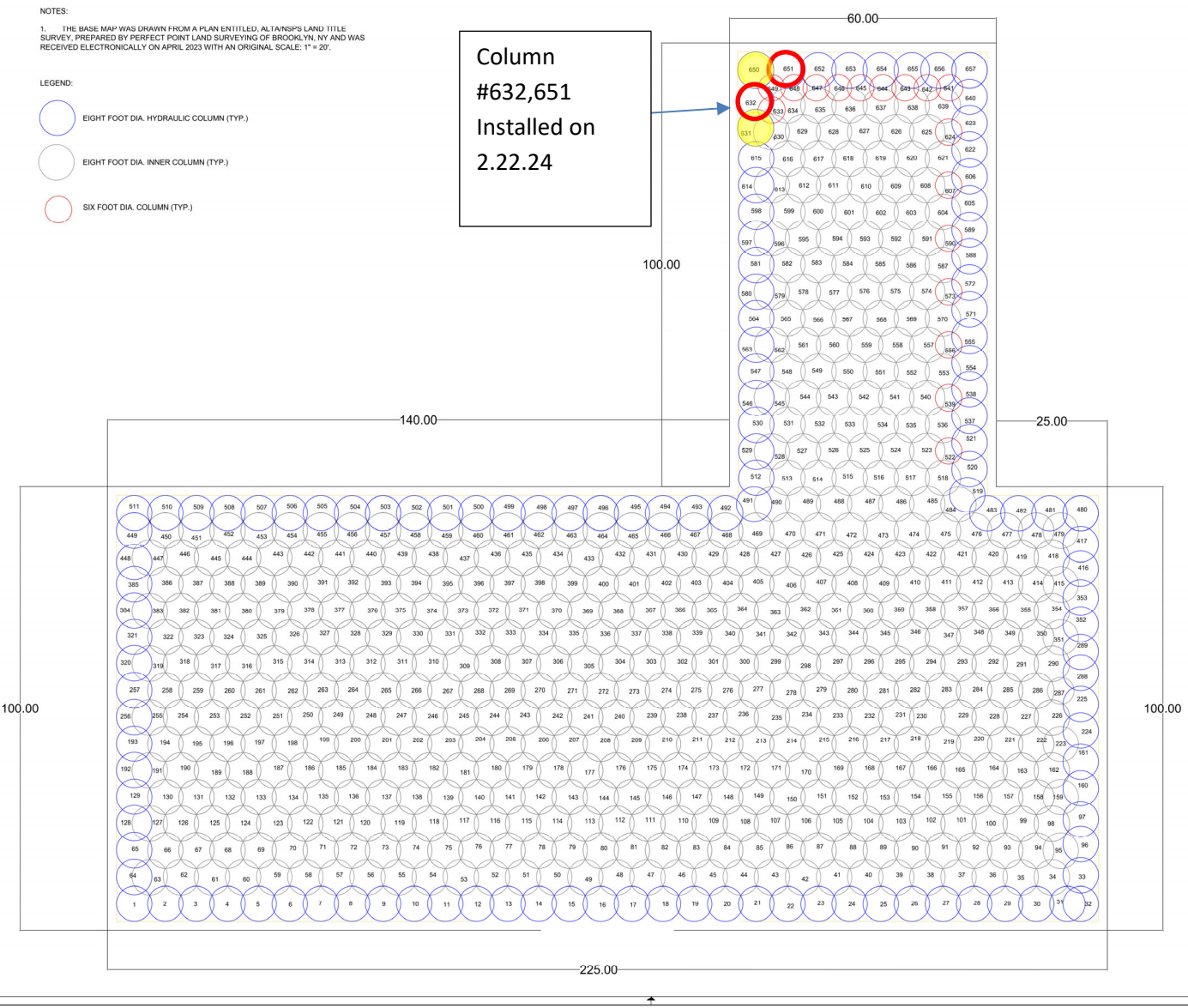
NOTES:

1. THE BASE MAP WAS DRAWN FROM A PLAN ENTITLED, ALTA/NSP'S LAND TITLE SURVEY, PREPARED BY PERFECT POINT LAND SURVEYING OF BROOKLYN, NY AND WAS RECEIVED ELECTRONICALLY ON APRIL, 2023 WITH AN ORIGINAL SCALE: 1" = 20'.

LEGEND:

-  EIGHT FOOT DIA. HYDRAULIC COLUMN (TYP.)
-  EIGHT FOOT DIA. INNER COLUMN (TYP.)
-  SIX FOOT DIA. COLUMN (TYP.)

Column
#632,651
Installed on
2.22.24



SCALE:	
DATE: D	REV: A
PROJECT: ISS	
SHEET: 1 OF 1	
DATE: ISS	

251 DOUGLAS STREET BROOKLYN, NEW YORK

CASCADE

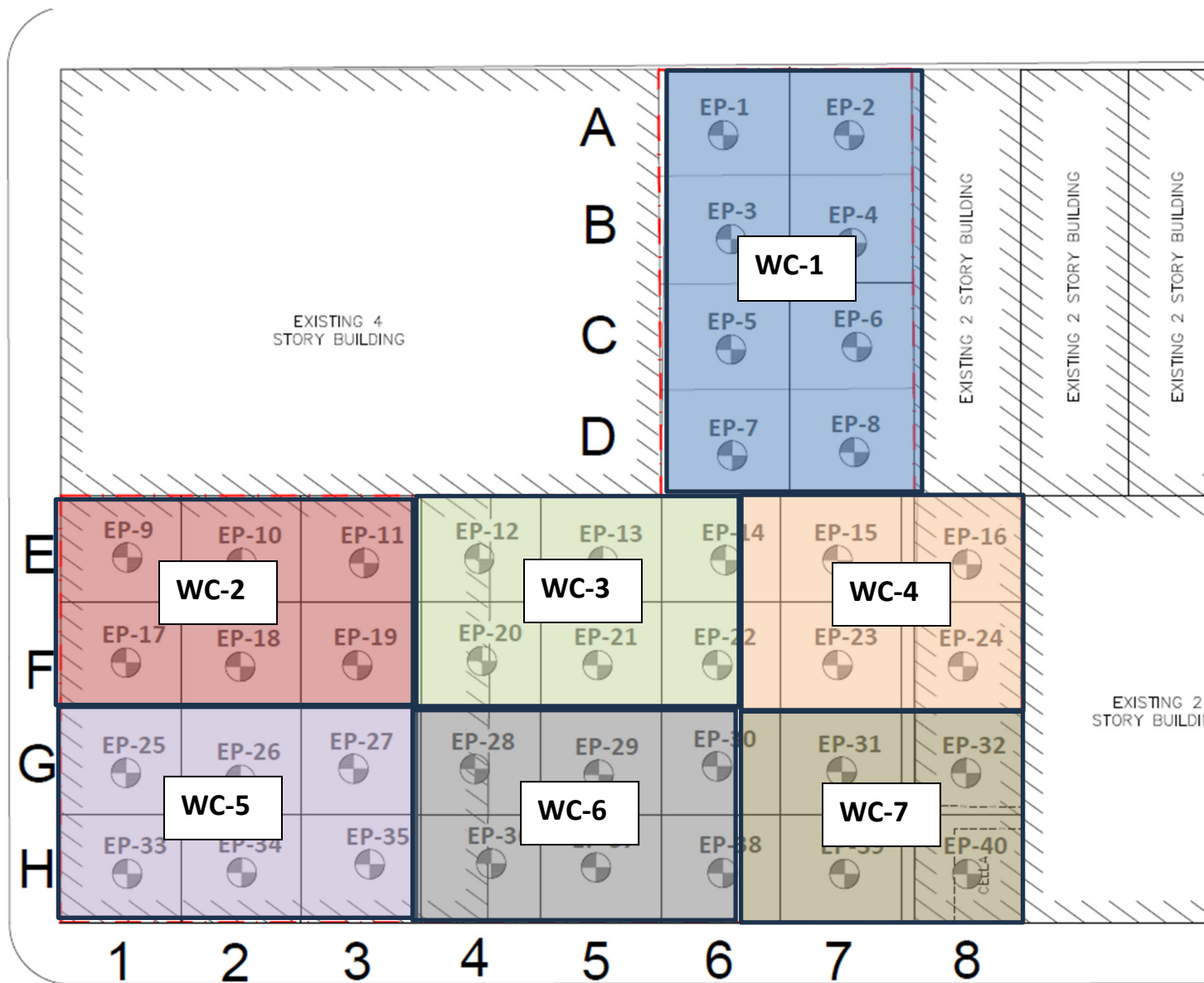
250 RAULTEVILLE DRIVE, SUITE 6
MIDDLETOWN, NEW JERSEY
973-940-6100

THIS DOCUMENT CONTAINS CONFIDENTIAL INFORMATION OWNED BY CASCADE. UNAUTHORIZED DISCLOSURE IS PROHIBITED.

FIGURE 4: ISS COLUMN LAYOUT



NEVINS STREET



SCM Report

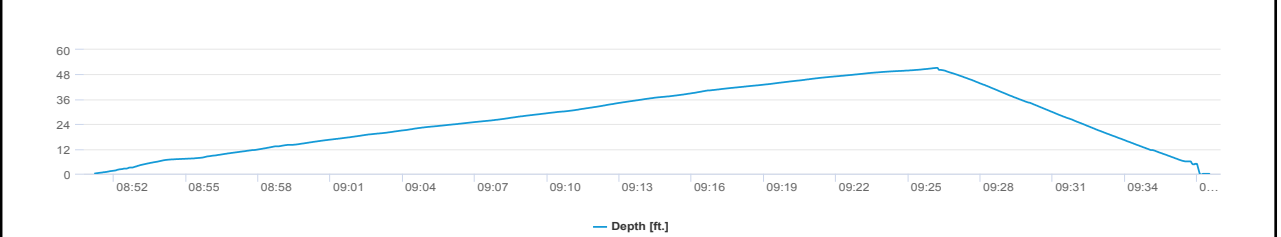
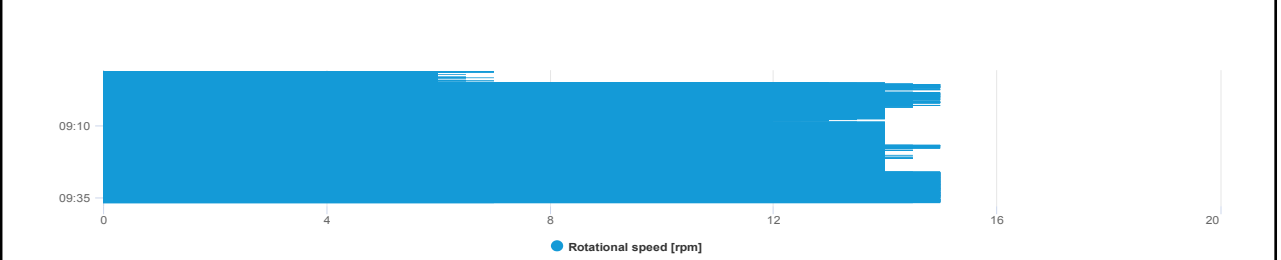
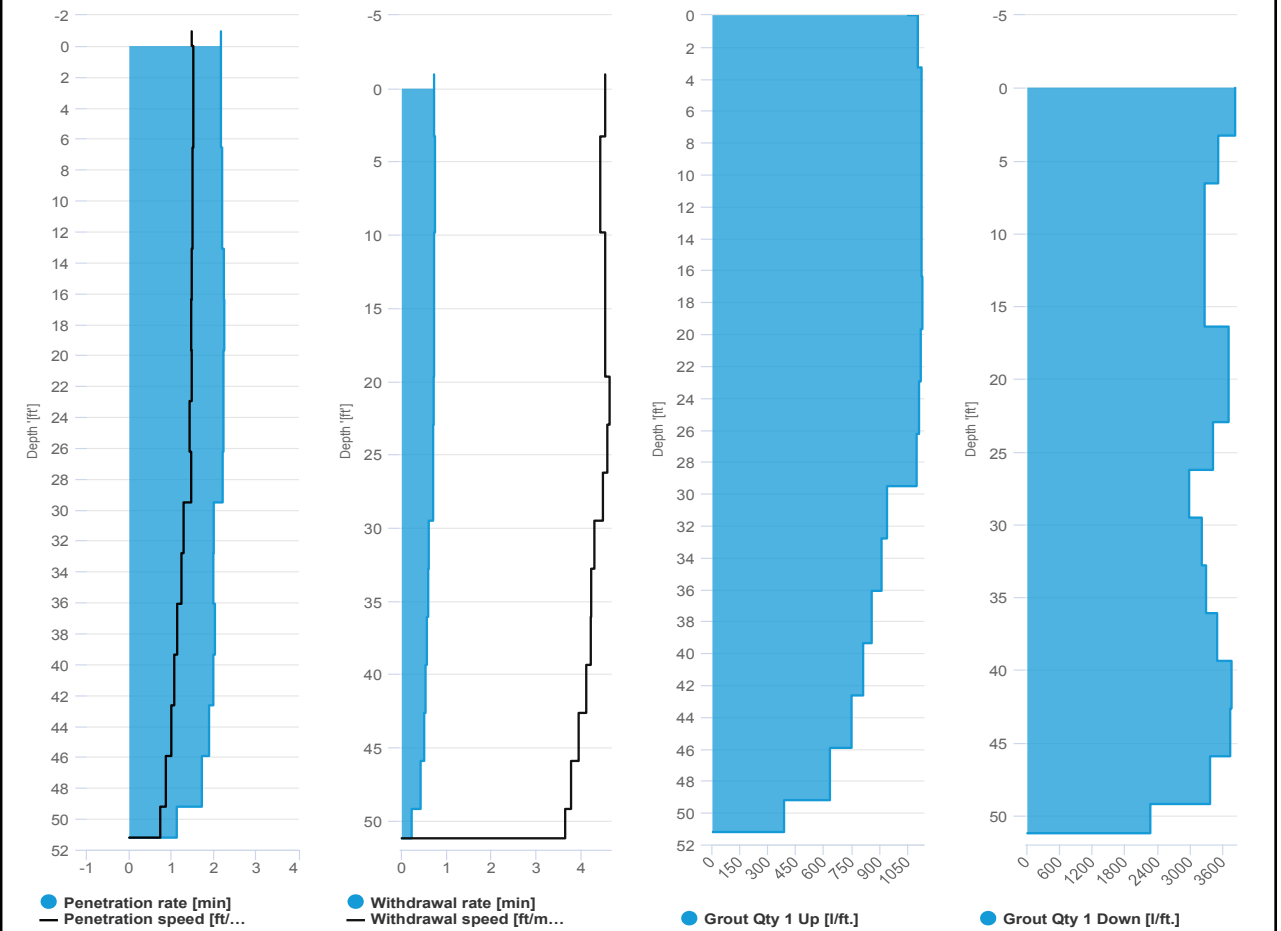


Project name: Douglass Street BCG ISS Element name: c632a
 Project number

Start date: 02/22/2024

Drilling rig: BG36H_5717

Details		Start time: 08:51 AM	
Max. depth: 51.21 ft.		End Date: 02/22/2024	
Volume/m 1: 40.25 ft³		End time: 09:37 AM	
		Production duration: 00:46:19	
		Total suspension quantity:	



SCM Report

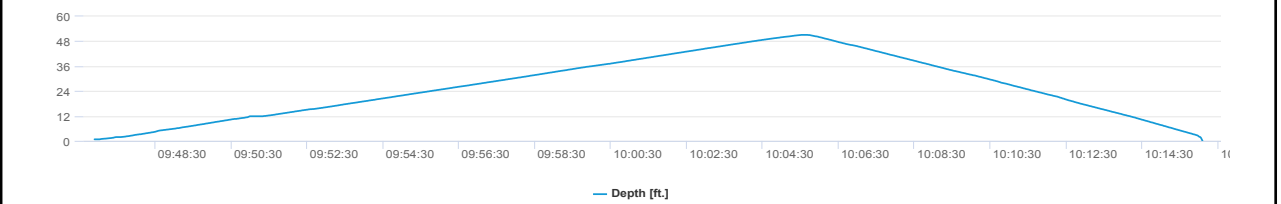
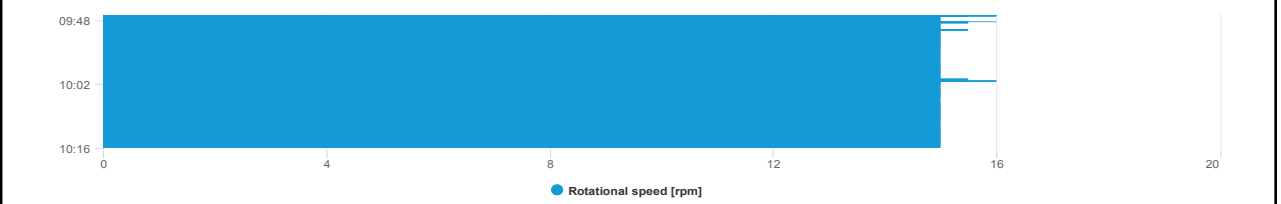
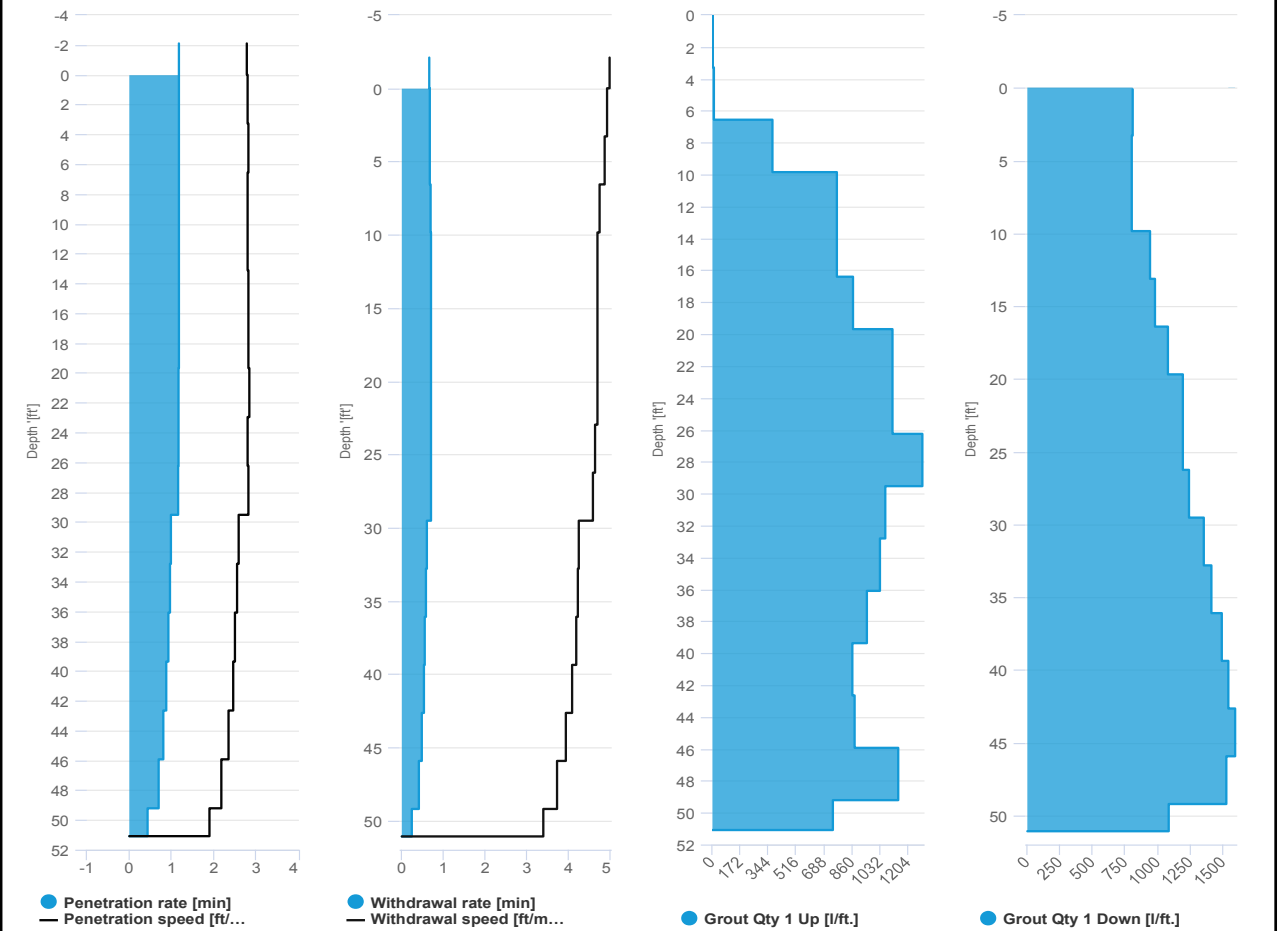


Project name: Douglass Street BCG ISS Element name: c632b
 Project number

Start date: 02/22/2024

Drilling rig: BG36H_5717

Details		Start time: 09:46 AM	
Max. depth: 51.08 ft.		End Date: 02/22/2024	
Volume/m 1: 14.83 ft³		End time: 10:16 AM	
		Production duration: 00:29:24	
		Total suspension quantity:	



SCM Report

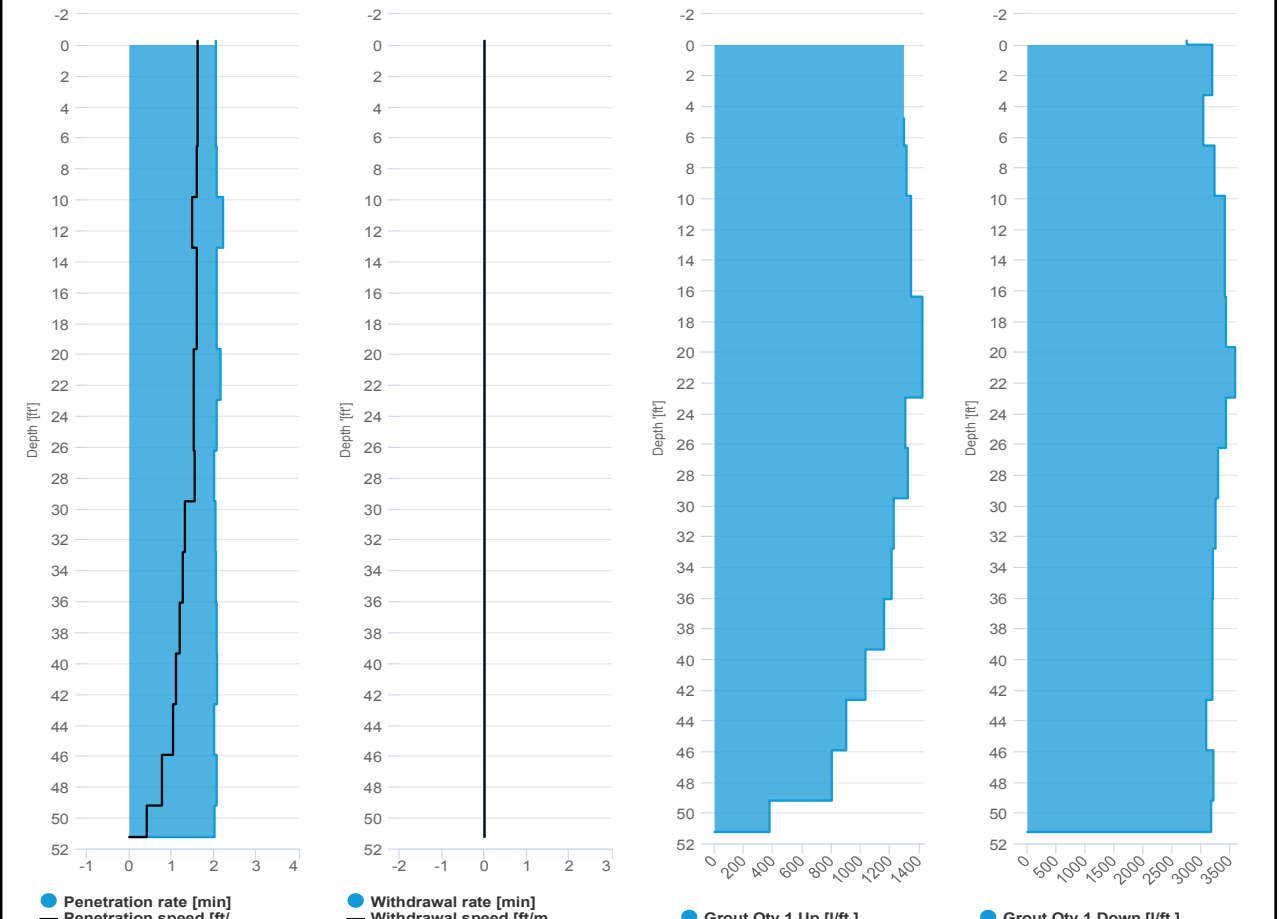


Project name: Douglass Street BCG ISS Element name: c651a
 Project number

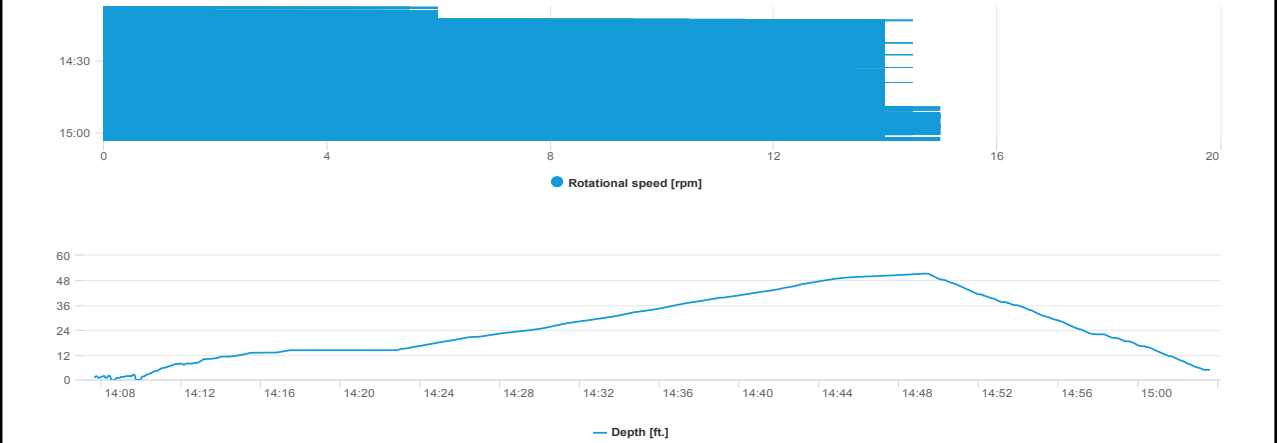
Start date: 02/22/2024

Drilling rig: BG36H_5717

Details		Start time: 02:07 PM	
Max. depth: 51.24 ft.		End Date: 02/22/2024	
Volume/m 1: 37.43 ft³		End time: 03:03 PM	
		Production duration: 00:55:55	
		Final depth time: 02:49 PM	
		Total suspension quantity:	



*No data was recorded



SCM Report

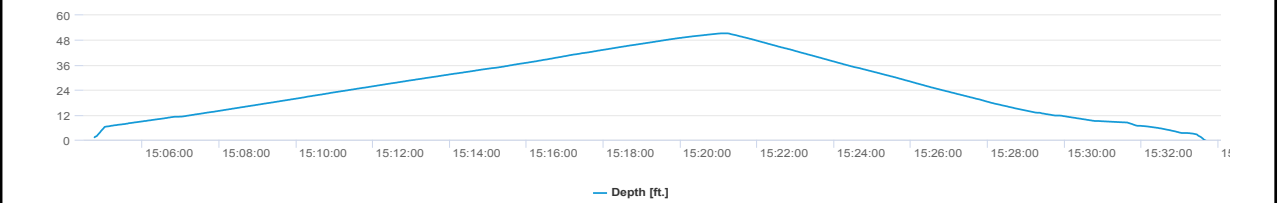
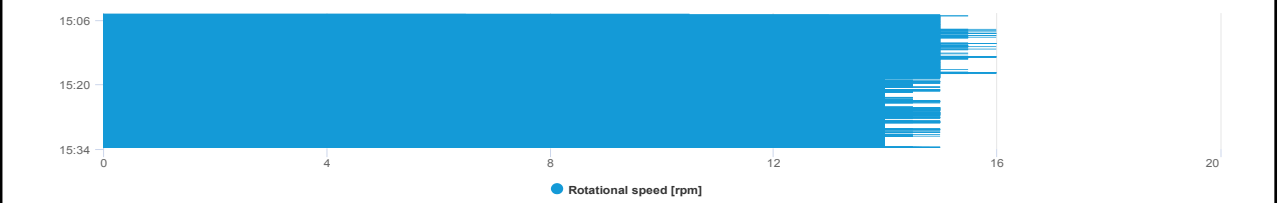
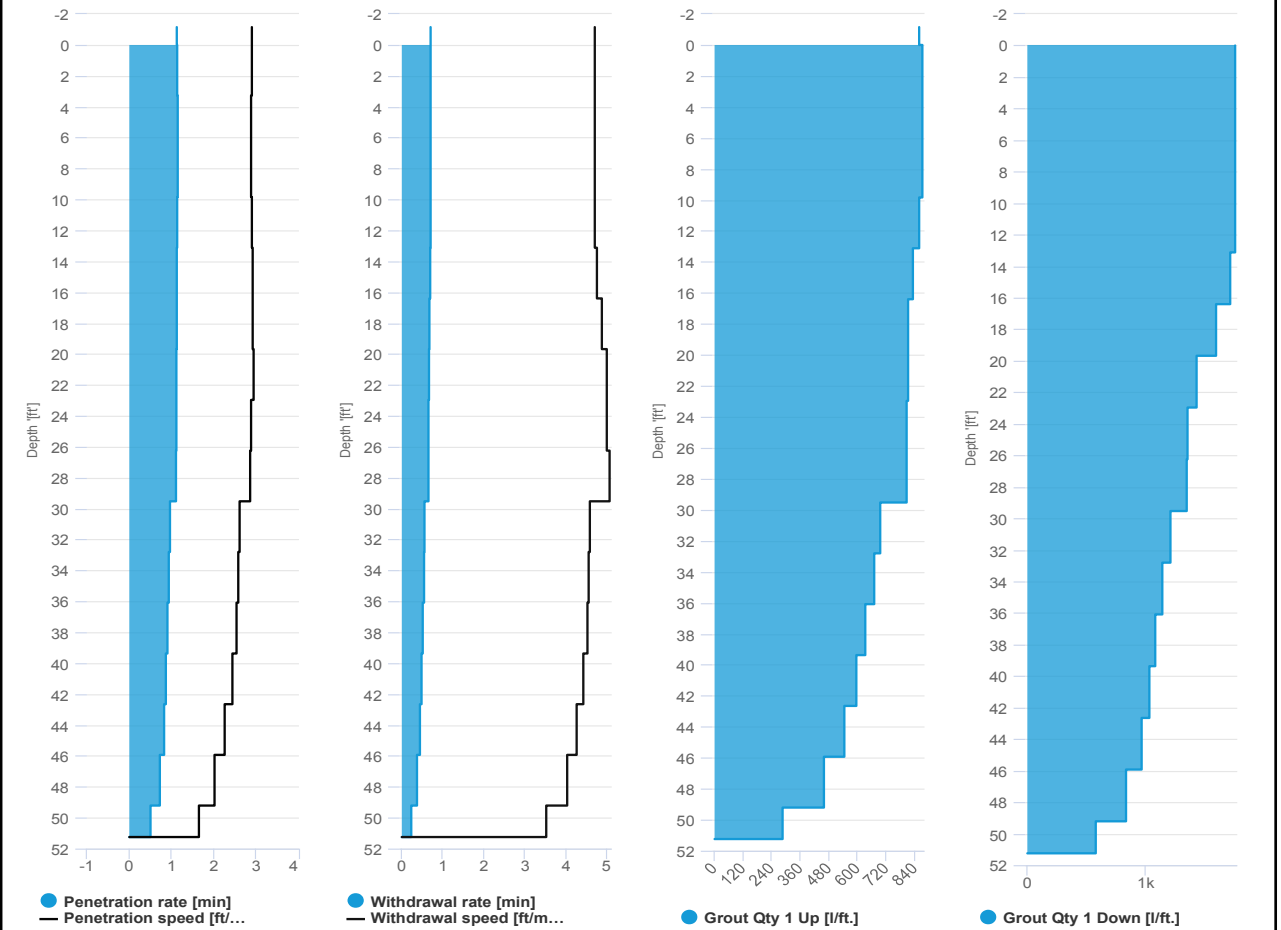


Project name: Douglass Street BCG ISS Element name: c651b
 Project number

Start date: 02/22/2024

Drilling rig: BG36H_5717

Details		Start time: 03:04 PM	
Max. depth: 51.24 ft.		End Date: 02/22/2024	
Volume/m 1: 19.42 ft³		End time: 03:33 PM	
		Production duration: 00:29:03	
		Final depth time: 03:21 PM	
		Total suspension quantity:	





IMPACT ENVIRONMENTAL

welcome to solid ground...

170 Keyland Court | Bohemia | NY | 11716 | 631.269.8800

www.impactenvironmental.com

UPWIND CAMP READINGS

251 DOUGLASS STREET, BROOKLYN, NY

Instrument Name	DustTrak DRX
Model Number	8533
Serial Number	8533181205
Firmware Version	3.1
Calibration Date	5/31/2023
Test Name	MANUAL_005
Test Start Time	7:00:38 AM
Test Start Date	2/22/2024
Test Length [D:H:M]	0:10:07
Test Interval [M:S]	1:00
PM10 Average [mg/m3]	0.015
PM10 Minimum [mg/m3]	0.005
PM10 Maximum [mg/m3]	1.32
PM10 TWA [mg/m3]	0.017
Photometric User Cal	1
Size Correction User Cal	1
Flow User Cal	0
Errors	
Number of Samples	607

Elapsed Time [s]	PM10 [mg/m3]	Alarms	Errors
7:00	0.044		
7:01	0.012		
7:02	0.013		
7:03	0.012		
7:04	0.013		
7:05	0.01		
7:06	0.008		
7:07	0.009		
7:08	0.009		
7:09	0.009		
7:10	0.007		
7:11	0.009		
7:12	0.011		
7:13	0.01		
7:14	0.01		
7:15	0.01		
7:16	0.01		
7:17	0.012		
7:18	0.012		
7:19	0.013		
7:20	0.012		
7:21	0.01		
7:22	0.011		
7:23	0.013		
7:24	0.01		
7:25	0.01		

7:26	0.01
7:27	0.01
7:28	0.009
7:29	0.01
7:30	0.009
7:31	0.01
7:32	0.011
7:33	0.009
7:34	0.011
7:35	0.011
7:36	0.01
7:37	0.01
7:38	0.012
7:39	0.01
7:40	0.009
7:41	0.008
7:42	0.009
7:43	0.013
7:44	0.011
7:45	0.009
7:46	0.009
7:47	0.008
7:48	0.009
7:49	0.009
7:50	0.008
7:51	0.008
7:52	0.015
7:53	0.008
7:54	0.007
7:55	0.007
7:56	0.006
7:57	0.006
7:58	0.007
7:59	0.007
8:00	0.007
8:01	0.007
8:02	0.008
8:03	0.009
8:04	0.009
8:05	0.009
8:06	0.01
8:07	0.011
8:08	0.009
8:09	0.009
8:10	0.009
8:11	0.007
8:12	0.007

8:13	0.007
8:14	0.01
8:15	0.018
8:16	0.022
8:17	0.019
8:18	0.012
8:19	0.01
8:20	0.014
8:21	0.01
8:22	0.009
8:23	0.01
8:24	0.012
8:25	0.01
8:26	0.01
8:27	0.009
8:28	0.01
8:29	0.01
8:30	0.009
8:31	0.009
8:32	0.01
8:33	0.008
8:34	0.008
8:35	0.007
8:36	0.007
8:37	0.009
8:38	0.009
8:39	0.009
8:40	0.009
8:41	0.007
8:42	0.009
8:43	0.008
8:44	0.007
8:45	0.006
8:46	0.006
8:47	0.008
8:48	0.006
8:49	0.006
8:50	0.006
8:51	0.006
8:52	0.005
8:53	0.006
8:54	0.006
8:55	0.007
8:56	0.01
8:57	0.008
8:58	0.01
8:59	0.008

9:00	0.01
9:01	1.32
9:02	0.196
9:03	0.359
9:04	0.017
9:05	0.01
9:06	0.01
9:07	0.009
9:08	0.017
9:09	0.076
9:10	0.014
9:11	0.011
9:12	0.01
9:13	0.01
9:14	0.009
9:15	0.007
9:16	0.006
9:17	0.006
9:18	0.008
9:19	0.007
9:20	0.008
9:21	0.006
9:22	0.009
9:23	0.006
9:24	0.006
9:25	0.007
9:26	0.007
9:27	0.007
9:28	0.016
9:29	0.012
9:30	0.01
9:31	0.011
9:32	0.011
9:33	0.007
9:34	0.006
9:35	0.007
9:36	0.009
9:37	0.008
9:38	0.008
9:39	0.006
9:40	0.01
9:41	0.011
9:42	0.01
9:43	0.008
9:44	0.008
9:45	0.007
9:46	0.008

9:47	0.007
9:48	0.009
9:49	0.008
9:50	0.007
9:51	0.007
9:52	0.006
9:53	0.006
9:54	0.008
9:55	0.009
9:56	0.007
9:57	0.006
9:58	0.006
9:59	0.007
10:00	0.009
10:01	0.008
10:02	0.008
10:03	0.007
10:04	0.008
10:05	0.011
10:06	0.009
10:07	0.009
10:08	0.009
10:09	0.011
10:10	0.01
10:11	0.013
10:12	0.014
10:13	0.028
10:14	0.014
10:15	0.011
10:16	0.01
10:17	0.008
10:18	0.008
10:19	0.021
10:20	0.013
10:21	0.009
10:22	0.013
10:23	0.013
10:24	0.063
10:25	0.011
10:26	0.009
10:27	0.01
10:28	0.008
10:29	0.009
10:30	0.008
10:31	0.009
10:32	0.007
10:33	0.008

10:34	0.01
10:35	0.01
10:36	0.01
10:37	0.011
10:38	0.013
10:39	0.01
10:40	0.01
10:41	0.012
10:42	0.01
10:43	0.009
10:44	0.01
10:45	0.009
10:46	0.008
10:47	0.008
10:48	0.008
10:49	0.009
10:50	0.012
10:51	0.011
10:52	0.011
10:53	0.011
10:54	0.02
10:55	0.016
10:56	0.011
10:57	0.01
10:58	0.013
10:59	0.011
11:00	0.011
11:01	0.009
11:02	0.01
11:03	0.01
11:04	0.009
11:05	0.01
11:06	0.01
11:07	0.01
11:08	0.01
11:09	0.01
11:10	0.009
11:11	0.009
11:12	0.011
11:13	0.015
11:14	0.011
11:15	0.011
11:16	0.011
11:17	0.01
11:18	0.012
11:19	0.016
11:20	0.013

11:21	0.015
11:22	0.014
11:23	0.01
11:24	0.01
11:25	0.009
11:26	0.01
11:27	0.012
11:28	0.009
11:29	0.01
11:30	0.011
11:31	0.01
11:32	0.012
11:33	0.012
11:34	0.01
11:35	0.01
11:36	0.012
11:37	0.009
11:38	0.009
11:39	0.01
11:40	0.011
11:41	0.01
11:42	0.01
11:43	0.011
11:44	0.009
11:45	0.012
11:46	0.011
11:47	0.009
11:48	0.008
11:49	0.008
11:50	0.009
11:51	0.012
11:52	0.012
11:53	0.041
11:54	0.044
11:55	0.01
11:56	0.011
11:57	0.009
11:58	0.008
11:59	0.008
12:00	0.007
12:01	0.008
12:02	0.011
12:03	0.01
12:04	0.009
12:05	0.01
12:06	0.01
12:07	0.009

12:08	0.009
12:09	0.009
12:10	0.011
12:11	0.007
12:12	0.007
12:13	0.008
12:14	0.01
12:15	0.011
12:16	0.01
12:17	0.01
12:18	0.01
12:19	0.008
12:20	0.008
12:21	0.009
12:22	0.01
12:23	0.014
12:24	0.009
12:25	0.009
12:26	0.007
12:27	0.007
12:28	0.007
12:29	0.008
12:30	0.009
12:31	0.009
12:32	0.01
12:33	0.011
12:34	0.01
12:35	0.013
12:36	0.01
12:37	0.009
12:38	0.008
12:39	0.008
12:40	0.012
12:41	0.01
12:42	0.009
12:43	0.009
12:44	0.008
12:45	0.009
12:46	0.011
12:47	0.009
12:48	0.008
12:49	0.011
12:50	0.009
12:51	0.008
12:52	0.008
12:53	0.009
12:54	0.01

12:55	0.009
12:56	0.455
12:57	0.168
12:58	0.056
12:59	0.05
13:00	0.021
13:01	0.01
13:02	0.012
13:03	0.012
13:04	0.011
13:05	0.01
13:06	0.011
13:07	0.01
13:08	0.011
13:09	0.01
13:10	0.031
13:11	0.017
13:12	0.024
13:13	0.022
13:14	0.024
13:15	0.016
13:16	0.009
13:17	0.012
13:18	0.027
13:19	0.03
13:20	0.014
13:21	0.018
13:22	0.03
13:23	0.021
13:24	0.015
13:25	0.01
13:26	0.013
13:27	0.013
13:28	0.02
13:29	0.017
13:30	0.023
13:31	0.013
13:32	0.01
13:33	0.015
13:34	0.013
13:35	0.009
13:36	0.009
13:37	0.009
13:38	0.009
13:39	0.009
13:40	0.008
13:41	0.011

13:42	0.009
13:43	0.011
13:44	0.014
13:45	0.013
13:46	0.011
13:47	0.012
13:48	0.011
13:49	0.01
13:50	0.013
13:51	0.016
13:52	0.013
13:53	0.008
13:54	0.009
13:55	0.014
13:56	0.412
13:57	0.026
13:58	0.013
13:59	0.011
14:00	0.01
14:01	0.009
14:02	0.008
14:03	0.012
14:04	0.009
14:05	0.008
14:06	0.008
14:07	0.008
14:08	0.009
14:09	0.009
14:10	0.008
14:11	0.008
14:12	0.008
14:13	0.009
14:14	0.01
14:15	0.01
14:16	0.009
14:17	0.008
14:18	0.009
14:19	0.011
14:20	0.015
14:21	0.013
14:22	0.011
14:23	0.012
14:24	0.015
14:25	0.025
14:26	0.015
14:27	0.01
14:28	0.009

14:29	0.008
14:30	0.008
14:31	0.01
14:32	0.011
14:33	0.009
14:34	0.008
14:35	0.008
14:36	0.009
14:37	0.009
14:38	0.009
14:39	0.008
14:40	0.008
14:41	0.008
14:42	0.008
14:43	0.01
14:44	0.011
14:45	0.009
14:46	0.012
14:47	0.01
14:48	0.009
14:49	0.01
14:50	0.01
14:51	0.008
14:52	0.008
14:53	0.009
14:54	0.009
14:55	0.009
14:56	0.008
14:57	0.009
14:58	0.011
14:59	0.012
15:00	0.009
15:01	0.012
15:02	0.016
15:03	0.023
15:04	0.009
15:05	0.008
15:06	0.008
15:07	0.008
15:08	0.008
15:09	0.008
15:10	0.013
15:11	0.011
15:12	0.01
15:13	0.009
15:14	0.009
15:15	0.009

15:16	0.008
15:17	0.008
15:18	0.008
15:19	0.009
15:20	0.013
15:21	0.011
15:22	0.012
15:23	0.011
15:24	0.011
15:25	0.011
15:26	0.01
15:27	0.009
15:28	0.008
15:29	0.008
15:30	0.008
15:31	0.008
15:32	0.008
15:33	0.008
15:34	0.01
15:35	0.008
15:36	0.008
15:37	0.008
15:38	0.008
15:39	0.008
15:40	0.008
15:41	0.008
15:42	0.008
15:43	0.008
15:44	0.008
15:45	0.008
15:46	0.008
15:47	0.008
15:48	0.008
15:49	0.007
15:50	0.008
15:51	0.007
15:52	0.009
15:53	0.008
15:54	0.007
15:55	0.008
15:56	0.007
15:57	0.008
15:58	0.009
15:59	0.009
16:00	0.01
16:01	0.008
16:02	0.008

16:03	0.008
16:04	0.007
16:05	0.009
16:06	0.007
16:07	0.008
16:08	0.008
16:09	0.011
16:10	0.015
16:11	0.02
16:12	0.027
16:13	0.009
16:14	0.008
16:15	0.008
16:16	0.007
16:17	0.008
16:18	0.009
16:19	0.008
16:20	0.008
16:21	0.008
16:22	0.008
16:23	0.007
16:24	0.007
16:25	0.007
16:26	0.007
16:27	0.007
16:28	0.008
16:29	0.008
16:30	0.008
16:31	0.008
16:32	0.008
16:33	0.009
16:34	0.009
16:35	0.009
16:36	0.012
16:37	0.014
16:38	0.008
16:39	0.008
16:40	0.008
16:41	0.008
16:42	0.008
16:43	0.008
16:44	0.009
16:45	0.008
16:46	0.009
16:47	0.009
16:48	0.008
16:49	0.008

16:50	0.009
16:51	0.009
16:52	0.01
16:53	0.009
16:54	0.008
16:55	0.009
16:56	0.009
16:57	0.009
16:58	0.009
16:59	0.009
17:00	0.009
17:01	0.008
17:02	0.008
17:03	0.008
17:04	0.008
17:05	0.008
17:06	0.008

592-601274	2/22/2024	7:26 Readings	PID	SC23030921B3	Normal	0.8
592-601274	2/22/2024	7:25 Readings	PID	SC23030921B3	Normal	0.7
592-601274	2/22/2024	7:24 Readings	PID	SC23030921B3	Normal	0.7
592-601274	2/22/2024	7:23 Readings	PID	SC23030921B3	Normal	0.7
592-601274	2/22/2024	7:22 Readings	PID	SC23030921B3	Normal	0.7
592-601274	2/22/2024	7:21 Readings	PID	SC23030921B3	Normal	0.7
592-601274	2/22/2024	7:20 Readings	PID	SC23030921B3	Normal	0.7
592-601274	2/22/2024	7:19 Readings	PID	SC23030921B3	Normal	0.6
592-601274	2/22/2024	7:18 Readings	PID	SC23030921B3	Normal	0.6
592-601274	2/22/2024	7:17 Readings	PID	SC23030921B3	Normal	0.6
592-601274	2/22/2024	7:16 Readings	PID	SC23030921B3	Normal	0.6
592-601274	2/22/2024	7:15 Readings	PID	SC23030921B3	Normal	0.5
592-601274	2/22/2024	7:14 Readings	PID	SC23030921B3	Normal	0.5
592-601274	2/22/2024	7:13 Readings	PID	SC23030921B3	Normal	0.5
592-601274	2/22/2024	7:12 Readings	PID	SC23030921B3	Normal	0.5
592-601274	2/22/2024	7:11 Readings	PID	SC23030921B3	Normal	0.5
592-601274	2/22/2024	7:10 Readings	PID	SC23030921B3	Normal	0.4
592-601274	2/22/2024	7:09 Readings	PID	SC23030921B3	Normal	0.4
592-601274	2/22/2024	7:08 Readings	PID	SC23030921B3	Normal	0.4
592-601274	2/22/2024	7:07 Readings	PID	SC23030921B3	Normal	0.4
592-601274	2/22/2024	7:06 Readings	PID	SC23030921B3	Normal	0.3
592-601274	2/22/2024	7:05 Readings	PID	SC23030921B3	Normal	0.3
592-601274	2/22/2024	7:04 Readings	PID	SC23030921B3	Normal	0.2
592-601274	2/22/2024	7:03 Readings	PID	SC23030921B3	Normal	0.2
592-601274	2/22/2024	7:02 Readings	PID	SC23030921B3	Normal	0.1
592-601274	2/22/2024	7:01 Readings	PID	SC23030921B3	Normal	0.1
592-601274	2/22/2024	7:00 CONFIG	PID	SC23030921B3		

DOWNWIND CAMP READINGS

251 DOUGLASS STREET, BROOKLYN, NY



Instrument Name	DustTrak DRX
Model Number	8533
Serial Number	8533181207
Firmware Version	3.1
Calibration Date	6/1/2023
Test Name	MANUAL_007
Test Start Time	7:14:15 AM
Test Start Date	2/22/2024
Test Length [D:H:M]	0:09:50
Test Interval [M:S]	1:00
PM10 Average [mg/m3]	0.013
PM10 Minimum [mg/m3]	0.007
PM10 Maximum [mg/m3]	0.1
PM10 TWA [mg/m3]	0.013
Photometric User Cal	1
Size Correction User Cal	1
Flow User Cal	0
Errors	
Number of Samples	590

Elapsed Time [s]	PM10 [mg/m3]	Alarms	Errors
7:14	0.039		
7:15	0.017		
7:16	0.01		
7:17	0.011		
7:18	0.01		
7:19	0.011		
7:20	0.009		
7:21	0.01		
7:22	0.011		
7:23	0.01		
7:24	0.01		
7:25	0.015		
7:26	0.011		
7:27	0.012		
7:28	0.011		
7:29	0.01		
7:30	0.014		
7:31	0.03		
7:32	0.033		
7:33	0.03		
7:34	0.025		
7:35	0.013		
7:36	0.014		
7:37	0.011		
7:38	0.017		
7:39	0.015		

7:40	0.012
7:41	0.012
7:42	0.012
7:43	0.019
7:44	0.013
7:45	0.02
7:46	0.022
7:47	0.013
7:48	0.015
7:49	0.011
7:50	0.012
7:51	0.015
7:52	0.013
7:53	0.01
7:54	0.011
7:55	0.01
7:56	0.018
7:57	0.01
7:58	0.008
7:59	0.008
8:00	0.008
8:01	0.008
8:02	0.008
8:03	0.008
8:04	0.01
8:05	0.009
8:06	0.009
8:07	0.009
8:08	0.01
8:09	0.01
8:10	0.012
8:11	0.015
8:12	0.01
8:13	0.011
8:14	0.046
8:15	0.009
8:16	0.008
8:17	0.009
8:18	0.01
8:19	0.012
8:20	0.013
8:21	0.012
8:22	0.01
8:23	0.012
8:24	0.013
8:25	0.009
8:26	0.01

8:27	0.01
8:28	0.009
8:29	0.011
8:30	0.012
8:31	0.011
8:32	0.019
8:33	0.013
8:34	0.01
8:35	0.009
8:36	0.011
8:37	0.009
8:38	0.01
8:39	0.011
8:40	0.009
8:41	0.01
8:42	0.01
8:43	0.011
8:44	0.01
8:45	0.008
8:46	0.01
8:47	0.013
8:48	0.009
8:49	0.01
8:50	0.008
8:51	0.009
8:52	0.008
8:53	0.007
8:54	0.009
8:55	0.01
8:56	0.007
8:57	0.008
8:58	0.009
8:59	0.009
9:00	0.01
9:01	0.012
9:02	0.011
9:03	0.008
9:04	0.009
9:05	0.018
9:06	0.027
9:07	0.038
9:08	0.009
9:09	0.01
9:10	0.009
9:11	0.01
9:12	0.026
9:13	0.022

9:14	0.011
9:15	0.009
9:16	0.011
9:17	0.012
9:18	0.01
9:19	0.008
9:20	0.008
9:21	0.009
9:22	0.009
9:23	0.009
9:24	0.008
9:25	0.008
9:26	0.008
9:27	0.008
9:28	0.008
9:29	0.009
9:30	0.009
9:31	0.009
9:32	0.009
9:33	0.01
9:34	0.009
9:35	0.011
9:36	0.01
9:37	0.007
9:38	0.008
9:39	0.009
9:40	0.009
9:41	0.01
9:42	0.009
9:43	0.009
9:44	0.01
9:45	0.011
9:46	0.009
9:47	0.009
9:48	0.01
9:49	0.009
9:50	0.008
9:51	0.009
9:52	0.009
9:53	0.011
9:54	0.009
9:55	0.009
9:56	0.008
9:57	0.009
9:58	0.01
9:59	0.01
10:00	0.008

10:01	0.008
10:02	0.01
10:03	0.009
10:04	0.01
10:05	0.009
10:06	0.009
10:07	0.009
10:08	0.009
10:09	0.01
10:10	0.01
10:11	0.01
10:12	0.011
10:13	0.011
10:14	0.011
10:15	0.012
10:16	0.017
10:17	0.016
10:18	0.012
10:19	0.011
10:20	0.012
10:21	0.013
10:22	0.012
10:23	0.011
10:24	0.01
10:25	0.011
10:26	0.019
10:27	0.056
10:28	0.023
10:29	0.01
10:30	0.01
10:31	0.01
10:32	0.009
10:33	0.009
10:34	0.009
10:35	0.009
10:36	0.009
10:37	0.01
10:38	0.011
10:39	0.009
10:40	0.01
10:41	0.01
10:42	0.01
10:43	0.009
10:44	0.01
10:45	0.011
10:46	0.008
10:47	0.009

10:48	0.016
10:49	0.01
10:50	0.008
10:51	0.017
10:52	0.014
10:53	0.02
10:54	0.012
10:55	0.011
10:56	0.011
10:57	0.011
10:58	0.013
10:59	0.012
11:00	0.01
11:01	0.013
11:02	0.011
11:03	0.01
11:04	0.009
11:05	0.01
11:06	0.01
11:07	0.01
11:08	0.01
11:09	0.01
11:10	0.01
11:11	0.012
11:12	0.013
11:13	0.011
11:14	0.012
11:15	0.013
11:16	0.012
11:17	0.014
11:18	0.021
11:19	0.017
11:20	0.014
11:21	0.028
11:22	0.02
11:23	0.018
11:24	0.02
11:25	0.013
11:26	0.014
11:27	0.011
11:28	0.012
11:29	0.013
11:30	0.012
11:31	0.012
11:32	0.014
11:33	0.01
11:34	0.012

11:35	0.011
11:36	0.011
11:37	0.012
11:38	0.012
11:39	0.01
11:40	0.011
11:41	0.011
11:42	0.013
11:43	0.012
11:44	0.012
11:45	0.01
11:46	0.011
11:47	0.012
11:48	0.011
11:49	0.01
11:50	0.011
11:51	0.012
11:52	0.01
11:53	0.01
11:54	0.011
11:55	0.012
11:56	0.013
11:57	0.018
11:58	0.014
11:59	0.011
12:00	0.012
12:01	0.01
12:02	0.01
12:03	0.009
12:04	0.01
12:05	0.011
12:06	0.014
12:07	0.011
12:08	0.011
12:09	0.011
12:10	0.01
12:11	0.01
12:12	0.009
12:13	0.011
12:14	0.01
12:15	0.009
12:16	0.01
12:17	0.009
12:18	0.011
12:19	0.012
12:20	0.011
12:21	0.01

12:22	0.012
12:23	0.01
12:24	0.01
12:25	0.011
12:26	0.011
12:27	0.012
12:28	0.011
12:29	0.011
12:30	0.009
12:31	0.009
12:32	0.009
12:33	0.009
12:34	0.01
12:35	0.011
12:36	0.011
12:37	0.01
12:38	0.01
12:39	0.01
12:40	0.01
12:41	0.011
12:42	0.01
12:43	0.033
12:44	0.017
12:45	0.012
12:46	0.016
12:47	0.011
12:48	0.02
12:49	0.011
12:50	0.012
12:51	0.012
12:52	0.011
12:53	0.011
12:54	0.01
12:55	0.014
12:56	0.01
12:57	0.011
12:58	0.01
12:59	0.049
13:00	0.06
13:01	0.035
13:02	0.1
13:03	0.038
13:04	0.02
13:05	0.017
13:06	0.017
13:07	0.023
13:08	0.038

13:09	0.011
13:10	0.012
13:11	0.011
13:12	0.011
13:13	0.017
13:14	0.041
13:15	0.035
13:16	0.043
13:17	0.049
13:18	0.038
13:19	0.012
13:20	0.019
13:21	0.022
13:22	0.02
13:23	0.03
13:24	0.041
13:25	0.057
13:26	0.038
13:27	0.033
13:28	0.017
13:29	0.021
13:30	0.019
13:31	0.026
13:32	0.021
13:33	0.026
13:34	0.028
13:35	0.033
13:36	0.031
13:37	0.018
13:38	0.013
13:39	0.013
13:40	0.011
13:41	0.009
13:42	0.01
13:43	0.009
13:44	0.01
13:45	0.012
13:46	0.01
13:47	0.012
13:48	0.018
13:49	0.011
13:50	0.011
13:51	0.01
13:52	0.01
13:53	0.014
13:54	0.02
13:55	0.014

13:56	0.015
13:57	0.013
13:58	0.033
13:59	0.022
14:00	0.01
14:01	0.01
14:02	0.009
14:03	0.009
14:04	0.008
14:05	0.008
14:06	0.009
14:07	0.009
14:08	0.009
14:09	0.009
14:10	0.009
14:11	0.009
14:12	0.01
14:13	0.01
14:14	0.009
14:15	0.009
14:16	0.01
14:17	0.01
14:18	0.016
14:19	0.012
14:20	0.009
14:21	0.009
14:22	0.012
14:23	0.011
14:24	0.01
14:25	0.011
14:26	0.013
14:27	0.014
14:28	0.02
14:29	0.017
14:30	0.013
14:31	0.01
14:32	0.012
14:33	0.009
14:34	0.01
14:35	0.013
14:36	0.012
14:37	0.011
14:38	0.009
14:39	0.01
14:40	0.011
14:41	0.01
14:42	0.01

14:43	0.013
14:44	0.009
14:45	0.009
14:46	0.01
14:47	0.016
14:48	0.018
14:49	0.01
14:50	0.014
14:51	0.011
14:52	0.012
14:53	0.015
14:54	0.011
14:55	0.01
14:56	0.01
14:57	0.01
14:58	0.01
14:59	0.01
15:00	0.009
15:01	0.011
15:02	0.014
15:03	0.012
15:04	0.01
15:05	0.013
15:06	0.011
15:07	0.01
15:08	0.008
15:09	0.009
15:10	0.009
15:11	0.009
15:12	0.009
15:13	0.01
15:14	0.01
15:15	0.01
15:16	0.01
15:17	0.01
15:18	0.009
15:19	0.009
15:20	0.01
15:21	0.009
15:22	0.042
15:23	0.013
15:24	0.012
15:25	0.011
15:26	0.01
15:27	0.012
15:28	0.014
15:29	0.013

15:30	0.011
15:31	0.01
15:32	0.01
15:33	0.013
15:34	0.017
15:35	0.01
15:36	0.009
15:37	0.011
15:38	0.011
15:39	0.011
15:40	0.012
15:41	0.01
15:42	0.009
15:43	0.009
15:44	0.011
15:45	0.01
15:46	0.01
15:47	0.009
15:48	0.01
15:49	0.009
15:50	0.009
15:51	0.009
15:52	0.01
15:53	0.009
15:54	0.013
15:55	0.011
15:56	0.01
15:57	0.013
15:58	0.01
15:59	0.013
16:00	0.01
16:01	0.01
16:02	0.01
16:03	0.011
16:04	0.01
16:05	0.01
16:06	0.01
16:07	0.009
16:08	0.009
16:09	0.009
16:10	0.01
16:11	0.009
16:12	0.01
16:13	0.025
16:14	0.039
16:15	0.046
16:16	0.011

16:17	0.009
16:18	0.016
16:19	0.012
16:20	0.015
16:21	0.011
16:22	0.01
16:23	0.009
16:24	0.009
16:25	0.009
16:26	0.009
16:27	0.009
16:28	0.009
16:29	0.009
16:30	0.009
16:31	0.009
16:32	0.01
16:33	0.009
16:34	0.01
16:35	0.01
16:36	0.01
16:37	0.012
16:38	0.011
16:39	0.011
16:40	0.014
16:41	0.011
16:42	0.01
16:43	0.01
16:44	0.01
16:45	0.01
16:46	0.01
16:47	0.011
16:48	0.01
16:49	0.011
16:50	0.012
16:51	0.011
16:52	0.01
16:53	0.023
16:54	0.012
16:55	0.012
16:56	0.011
16:57	0.011
16:58	0.011
16:59	0.011
17:00	0.011
17:01	0.011
17:02	0.011
17:03	0.011

592-602816	2/22/2024	7:24 Readings	PID	SC23030324C7	Normal	0
592-602816	2/22/2024	7:23 Readings	PID	SC23030324C7	Normal	0
592-602816	2/22/2024	7:22 Readings	PID	SC23030324C7	Normal	0
592-602816	2/22/2024	7:21 Readings	PID	SC23030324C7	Normal	0
592-602816	2/22/2024	7:20 Readings	PID	SC23030324C7	Normal	0
592-602816	2/22/2024	7:19 Readings	PID	SC23030324C7	Normal	0
592-602816	2/22/2024	7:18 Readings	PID	SC23030324C7	Normal	0
592-602816	2/22/2024	7:17 Readings	PID	SC23030324C7	Normal	0
592-602816	2/22/2024	7:16 Readings	PID	SC23030324C7	Normal	0
592-602816	2/22/2024	7:15 Readings	PID	SC23030324C7	Normal	0
592-602816	2/22/2024	7:14 CONFIG	PID	SC23030324C7	Normal	0

Instrument Name	DustTrak II
Model Number	8530
Serial Number	8530224601
Firmware Version	3.1
Calibration Date	11/9/2022
Test Name	MANUAL_007
Test Start Time	7:08:19 AM
Test Start Date	2/22/2024
Test Length [D:H:M]	0:09:51
Test Interval [M:S]	1:00
Mass Average [mg/m3]	0.02
Mass Minimum [mg/m3]	0.008
Mass Maximum [mg/m3]	0.262
Mass TWA [mg/m3]	0.02
Photometric User Cal	1
Flow User Cal	0
Errors	
Number of Samples	591

Elapsed Time [s]	Mass [mg/m3]	Alarms	Errors
7:08	0.012		
7:09	0.012		
7:10	0.012		
7:11	0.01		
7:12	0.011		
7:13	0.016		
7:14	0.014		
7:15	0.013		
7:16	0.014		
7:17	0.012		
7:18	0.013		
7:19	0.014		
7:20	0.013		
7:21	0.013		
7:22	0.011		
7:23	0.012		
7:24	0.015		
7:25	0.014		
7:26	0.012		
7:27	0.012		
7:28	0.013		
7:29	0.033		
7:30	0.1		
7:31	0.102		
7:32	0.036		
7:33	0.037		
7:34	0.019		

7:35	0.016
7:36	0.027
7:37	0.017
7:38	0.02
7:39	0.018
7:40	0.015
7:41	0.015
7:42	0.014
7:43	0.018
7:44	0.013
7:45	0.016
7:46	0.017
7:47	0.011
7:48	0.018
7:49	0.017
7:50	0.015
7:51	0.01
7:52	0.017
7:53	0.012
7:54	0.016
7:55	0.013
7:56	0.009
7:57	0.008
7:58	0.014
7:59	0.019
8:00	0.016
8:01	0.013
8:02	0.01
8:03	0.014
8:04	0.012
8:05	0.014
8:06	0.028
8:07	0.015
8:08	0.019
8:09	0.032
8:10	0.014
8:11	0.013
8:12	0.015
8:13	0.017
8:14	0.019
8:15	0.02
8:16	0.017
8:17	0.016
8:18	0.018
8:19	0.015
8:20	0.01
8:21	0.013

8:22	0.012
8:23	0.01
8:24	0.011
8:25	0.011
8:26	0.01
8:27	0.012
8:28	0.013
8:29	0.025
8:30	0.023
8:31	0.016
8:32	0.013
8:33	0.014
8:34	0.01
8:35	0.013
8:36	0.011
8:37	0.013
8:38	0.014
8:39	0.014
8:40	0.032
8:41	0.013
8:42	0.012
8:43	0.012
8:44	0.015
8:45	0.019
8:46	0.013
8:47	0.015
8:48	0.012
8:49	0.012
8:50	0.01
8:51	0.023
8:52	0.012
8:53	0.008
8:54	0.017
8:55	0.013
8:56	0.013
8:57	0.015
8:58	0.013
8:59	0.015
9:00	0.014
9:01	0.014
9:02	0.017
9:03	0.02
9:04	0.026
9:05	0.072
9:06	0.018
9:07	0.02
9:08	0.012

9:09	0.016
9:10	0.039
9:11	0.019
9:12	0.012
9:13	0.013
9:14	0.014
9:15	0.014
9:16	0.015
9:17	0.015
9:18	0.009
9:19	0.013
9:20	0.033
9:21	0.023
9:22	0.023
9:23	0.015
9:24	0.012
9:25	0.019
9:26	0.012
9:27	0.013
9:28	0.011
9:29	0.01
9:30	0.012
9:31	0.011
9:32	0.012
9:33	0.013
9:34	0.009
9:35	0.008
9:36	0.009
9:37	0.011
9:38	0.01
9:39	0.012
9:40	0.009
9:41	0.016
9:42	0.023
9:43	0.043
9:44	0.013
9:45	0.011
9:46	0.011
9:47	0.009
9:48	0.01
9:49	0.012
9:50	0.012
9:51	0.011
9:52	0.015
9:53	0.063
9:54	0.03
9:55	0.036

9:56	0.025
9:57	0.053
9:58	0.019
9:59	0.017
10:00	0.024
10:01	0.013
10:02	0.011
10:03	0.009
10:04	0.013
10:05	0.011
10:06	0.014
10:07	0.012
10:08	0.027
10:09	0.012
10:10	0.015
10:11	0.037
10:12	0.048
10:13	0.034
10:14	0.016
10:15	0.017
10:16	0.012
10:17	0.014
10:18	0.013
10:19	0.013
10:20	0.022
10:21	0.012
10:22	0.012
10:23	0.033
10:24	0.021
10:25	0.262
10:26	0.016
10:27	0.012
10:28	0.012
10:29	0.011
10:30	0.012
10:31	0.01
10:32	0.011
10:33	0.011
10:34	0.012
10:35	0.013
10:36	0.014
10:37	0.012
10:38	0.012
10:39	0.012
10:40	0.015
10:41	0.012
10:42	0.014

10:43	0.012
10:44	0.011
10:45	0.013
10:46	0.017
10:47	0.011
10:48	0.012
10:49	0.014
10:50	0.012
10:51	0.015
10:52	0.014
10:53	0.012
10:54	0.013
10:55	0.013
10:56	0.016
10:57	0.019
10:58	0.019
10:59	0.02
11:00	0.017
11:01	0.024
11:02	0.015
11:03	0.022
11:04	0.014
11:05	0.019
11:06	0.018
11:07	0.019
11:08	0.019
11:09	0.017
11:10	0.015
11:11	0.015
11:12	0.013
11:13	0.015
11:14	0.022
11:15	0.019
11:16	0.022
11:17	0.019
11:18	0.019
11:19	0.022
11:20	0.018
11:21	0.021
11:22	0.022
11:23	0.017
11:24	0.014
11:25	0.015
11:26	0.014
11:27	0.015
11:28	0.016
11:29	0.013

11:30	0.016
11:31	0.017
11:32	0.016
11:33	0.017
11:34	0.017
11:35	0.016
11:36	0.018
11:37	0.02
11:38	0.019
11:39	0.018
11:40	0.014
11:41	0.018
11:42	0.016
11:43	0.016
11:44	0.016
11:45	0.017
11:46	0.015
11:47	0.015
11:48	0.015
11:49	0.014
11:50	0.017
11:51	0.015
11:52	0.021
11:53	0.017
11:54	0.018
11:55	0.021
11:56	0.017
11:57	0.016
11:58	0.016
11:59	0.014
12:00	0.014
12:01	0.017
12:02	0.014
12:03	0.016
12:04	0.015
12:05	0.016
12:06	0.019
12:07	0.016
12:08	0.026
12:09	0.013
12:10	0.013
12:11	0.015
12:12	0.013
12:13	0.013
12:14	0.013
12:15	0.013
12:16	0.02

12:17	0.02
12:18	0.015
12:19	0.016
12:20	0.015
12:21	0.012
12:22	0.014
12:23	0.017
12:24	0.018
12:25	0.013
12:26	0.015
12:27	0.012
12:28	0.011
12:29	0.012
12:30	0.012
12:31	0.012
12:32	0.013
12:33	0.014
12:34	0.015
12:35	0.013
12:36	0.014
12:37	0.015
12:38	0.014
12:39	0.014
12:40	0.012
12:41	0.012
12:42	0.015
12:43	0.012
12:44	0.018
12:45	0.016
12:46	0.017
12:47	0.023
12:48	0.017
12:49	0.016
12:50	0.013
12:51	0.015
12:52	0.013
12:53	0.013
12:54	0.014
12:55	0.014
12:56	0.014
12:57	0.021
12:58	0.039
12:59	0.018
13:00	0.02
13:01	0.035
13:02	0.029
13:03	0.021

13:04	0.018
13:05	0.041
13:06	0.06
13:07	0.037
13:08	0.096
13:09	0.065
13:10	0.076
13:11	0.052
13:12	0.071
13:13	0.063
13:14	0.067
13:15	0.063
13:16	0.071
13:17	0.035
13:18	0.022
13:19	0.013
13:20	0.013
13:21	0.089
13:22	0.024
13:23	0.018
13:24	0.02
13:25	0.031
13:26	0.021
13:27	0.039
13:28	0.045
13:29	0.019
13:30	0.018
13:31	0.019
13:32	0.035
13:33	0.054
13:34	0.027
13:35	0.018
13:36	0.015
13:37	0.013
13:38	0.013
13:39	0.015
13:40	0.015
13:41	0.014
13:42	0.013
13:43	0.016
13:44	0.014
13:45	0.016
13:46	0.015
13:47	0.017
13:48	0.015
13:49	0.015
13:50	0.014

13:51	0.027
13:52	0.019
13:53	0.017
13:54	0.027
13:55	0.024
13:56	0.031
13:57	0.017
13:58	0.014
13:59	0.016
14:00	0.017
14:01	0.013
14:02	0.017
14:03	0.019
14:04	0.018
14:05	0.013
14:06	0.012
14:07	0.012
14:08	0.015
14:09	0.019
14:10	0.043
14:11	0.035
14:12	0.013
14:13	0.025
14:14	0.066
14:15	0.036
14:16	0.024
14:17	0.013
14:18	0.02
14:19	0.047
14:20	0.044
14:21	0.026
14:22	0.034
14:23	0.037
14:24	0.042
14:25	0.044
14:26	0.032
14:27	0.038
14:28	0.043
14:29	0.03
14:30	0.014
14:31	0.017
14:32	0.027
14:33	0.045
14:34	0.03
14:35	0.019
14:36	0.018
14:37	0.043

14:38	0.042
14:39	0.027
14:40	0.025
14:41	0.016
14:42	0.016
14:43	0.027
14:44	0.028
14:45	0.026
14:46	0.019
14:47	0.015
14:48	0.021
14:49	0.015
14:50	0.022
14:51	0.019
14:52	0.019
14:53	0.017
14:54	0.017
14:55	0.021
14:56	0.017
14:57	0.016
14:58	0.021
14:59	0.023
15:00	0.029
15:01	0.016
15:02	0.015
15:03	0.02
15:04	0.018
15:05	0.016
15:06	0.018
15:07	0.015
15:08	0.013
15:09	0.021
15:10	0.035
15:11	0.018
15:12	0.018
15:13	0.018
15:14	0.019
15:15	0.016
15:16	0.016
15:17	0.018
15:18	0.023
15:19	0.015
15:20	0.022
15:21	0.021
15:22	0.022
15:23	0.024
15:24	0.019

15:25	0.027
15:26	0.024
15:27	0.019
15:28	0.02
15:29	0.018
15:30	0.02
15:31	0.016
15:32	0.016
15:33	0.017
15:34	0.016
15:35	0.019
15:36	0.014
15:37	0.013
15:38	0.013
15:39	0.013
15:40	0.012
15:41	0.024
15:42	0.015
15:43	0.015
15:44	0.014
15:45	0.014
15:46	0.014
15:47	0.013
15:48	0.013
15:49	0.012
15:50	0.014
15:51	0.013
15:52	0.015
15:53	0.014
15:54	0.014
15:55	0.013
15:56	0.013
15:57	0.014
15:58	0.018
15:59	0.014
16:00	0.016
16:01	0.014
16:02	0.013
16:03	0.013
16:04	0.014
16:05	0.015
16:06	0.015
16:07	0.014
16:08	0.033
16:09	0.023
16:10	0.029
16:11	0.019

16:12	0.018
16:13	0.016
16:14	0.015
16:15	0.015
16:16	0.016
16:17	0.016
16:18	0.028
16:19	0.032
16:20	0.025
16:21	0.023
16:22	0.035
16:23	0.033
16:24	0.038
16:25	0.014
16:26	0.013
16:27	0.013
16:28	0.041
16:29	0.02
16:30	0.014
16:31	0.018
16:32	0.02
16:33	0.018
16:34	0.014
16:35	0.015
16:36	0.018
16:37	0.035
16:38	0.044
16:39	0.076
16:40	0.018
16:41	0.03
16:42	0.022
16:43	0.024
16:44	0.015
16:45	0.014
16:46	0.014
16:47	0.036
16:48	0.017
16:49	0.026
16:50	0.015
16:51	0.015
16:52	0.015
16:53	0.017
16:54	0.016
16:55	0.017
16:56	0.015
16:57	0.016
16:58	0.014

592-600871	2/22/2024	7:21 Readings	PID	SC23030408A8	Normal	0
592-600871	2/22/2024	7:20 Readings	PID	SC23030408A8	Normal	0
592-600871	2/22/2024	7:19 Readings	PID	SC23030408A8	Normal	0
592-600871	2/22/2024	7:18 Readings	PID	SC23030408A8	Normal	0
592-600871	2/22/2024	7:17 Readings	PID	SC23030408A8	Normal	0
592-600871	2/22/2024	7:16 Readings	PID	SC23030408A8	Normal	0
592-600871	2/22/2024	7:15 Readings	PID	SC23030408A8	Normal	0
592-600871	2/22/2024	7:14 Readings	PID	SC23030408A8	Normal	0
592-600871	2/22/2024	7:13 Readings	PID	SC23030408A8	Normal	0
592-600871	2/22/2024	7:12 Readings	PID	SC23030408A8	Normal	0
592-600871	2/22/2024	7:11 Readings	PID	SC23030408A8	Normal	0
592-600871	2/22/2024	7:10 Readings	PID	SC23030408A8	Normal	0
592-600871	2/22/2024	7:09 Readings	PID	SC23030408A8	Normal	0
592-600871	2/22/2024	7:08 CONFIG	PID	SC23030408A8		