



DAILY STATUS REPORT

Prepared By:

Thomas Jensen

WEATHER	Snow		Rain	X	Overcast	X	Partly Cloudy	X	Bright Sun	X	Wind
TEMP.	< 32	X	32-50	X	50-70		70-85		>85		NE- 6 MPH

IEC Project No:	13928	NYSDEC BCP Site No:	C224367	Date: 02/26/24
Project:	251 Douglass Street, Brooklyn, NY			

<p>Consultant: Impact Environmental Engineering and Geology, PLLC (IEEG)</p> <p>Time On: 06:40 Time Out: 18:00</p>	<p>Personnel On Site: IEEG (Environmental) –Thomas Jensen Broadway Construction Group - Tom Caporale Cascade WSP</p> <p>Equipment On Site: Minirae 3000 PID, DustTrak II</p>
---	--

Scope of Work: Cascade continues full scale ISS.

Site Activities:

- Deploy three (3) CAMPs at the Start of the work day;
- National Grid dug a test pit 3' below sidewalk grade on Douglass Street;
- Delivery of slag for batch plant;
- Drilling mats were moved back to the northern portion of the Site; and
- Cascade drilled column 615, column spec below:
 - The column was 8' diameter and drilled 51' deep from Site grade;
 - The column consisted of a total of 23 batches;
 - At 10:26 an obstruction was hit at 5'/6' during downstroke 1. The obstruction was moved and drilling resumed at 10:29.
- Cascade drilled column 563, column spec below:
 - The column was 8' diameter and drilled 51' deep from Site grade;
 - A wet sample was taken at 47.' (51' from sidewalk grade);
 - The column consisted of a total of 25 batches;
 - At 13:32 rotations on the drill rig were lowered due to a possible obstruction.
 - At 13:34 the auger had to come back up to the surface at 10', drilling resumed at 13:38.

Community Air Monitoring Program (CAMP) - CAMP action level for dust (0.1 mg/m³) and VOCs (5 ppm)

- PID remained at nominal levels throughout the day.
- No sustained dust exceedances were observed over a 1-min period during monitoring;
- Startup Upwind Conditions – PID = 0.2 ppm @ 06:37, Dust = 0.019 mg/m³ @ 06:36
- High Conditions (Upwind) – PID = 1.4 ppm @ 11:45, Dust = 0.345 mg/m³ @ 08:37
- High Conditions (Downwind 1) – PID = 1.2 ppm @ 12:12, Dust = 0.095 mg/m³ @ 15:07
- High Conditions (Downwind 2) – PID = 0.1 ppm @ 09:49 Dust = 0.285 mg/m³ @ 09:47

- While excavating a pocket of odorous soil was encountered, excavation was stopped and ATMOS foam was sprayed over the area of excavation.

Notable Site Conditions:

- While drilling columns 581 and 598 an obstruction was encountered at 3'/4'. An excavator attempted to remove the obstruction from both columns between 12:20 to 12:55. The obstruction couldn't be removed, and the columns were temporarily abandoned. When Cascade moves the rigs and drilling mats an excavator will attempt to remove the obstruction from a different angle. If the obstruction cannot be removed using an excavator, a jackhammer will be used to remove the obstruction.

Planned for the Next Day/Week:

- Continuation of ISS columns; and
- Remove obstructions on the eastern portion of the northern lot.



PHOTO LOG

251 DOUGLASS STREET, BROOKLYN, NY



Photo 1-
Representative
photo of
attempting to
remove
obstructions
from columns
581 and 598.



Photo 2 –
Representative
photo of
installing an
ISS column.



Photo 3-
Representative photo of national grid working in the sidewalk on Douglass Street.



Photo 4-
Representative photo of slag being delivered to the Site for the batch plant.



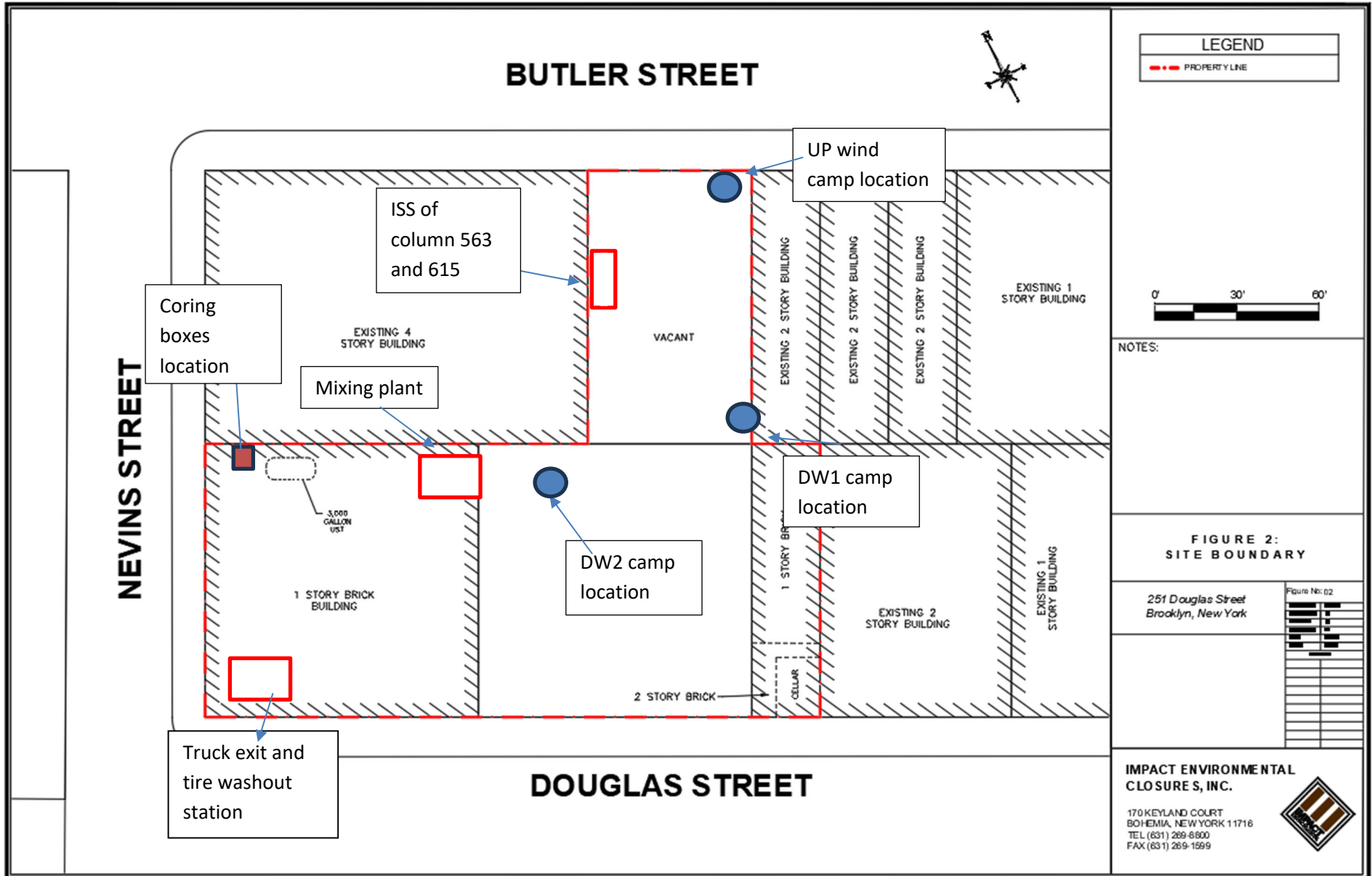
Photo 5-
Representative
photo of the
stabilizing
mats being
moved to the
northern
portion of the
Site.



SITE PLANS

251 DOUGLASS STREET, BROOKLYN, NY





© 2023 TERRACON, INC. ALL RIGHTS RESERVED.

PLCOT DATE: 10/10/2023




FILE PATH: \\P:\PROJECTS\2023\CASCADE\BROOKLYN_NY\BROOKLYN_PROJECT_DRAWING\FIG 4 - ISS COLUMN LAYOUT.DWG



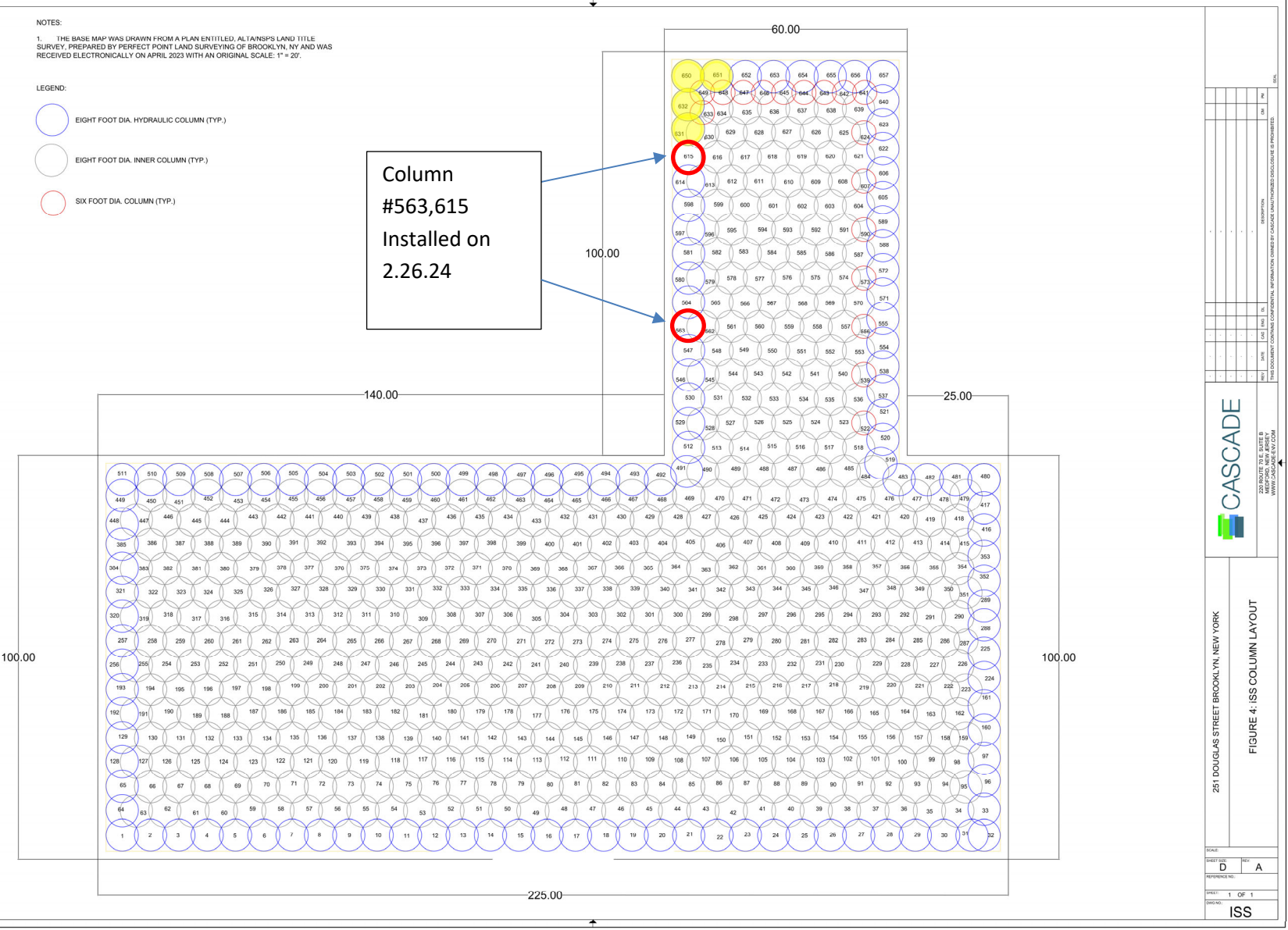
NOTES:

1. THE BASE MAP WAS DRAWN FROM A PLAN ENTITLED, ALTA INSP'S LAND TITLE SURVEY, PREPARED BY PERFECT POINT LAND SURVEYING OF BROOKLYN, NY AND WAS RECEIVED ELECTRONICALLY ON APRIL 2023 WITH AN ORIGINAL SCALE: 1" = 20'.

LEGEND:

-  EIGHT FOOT DIA. HYDRAULIC COLUMN (TYP.)
-  EIGHT FOOT DIA. INNER COLUMN (TYP.)
-  SIX FOOT DIA. COLUMN (TYP.)

Column
#563,615
Installed on
2.26.24



251 DOUGLAS STREET BROOKLYN, NEW YORK

FIGURE 4: ISS COLUMN LAYOUT

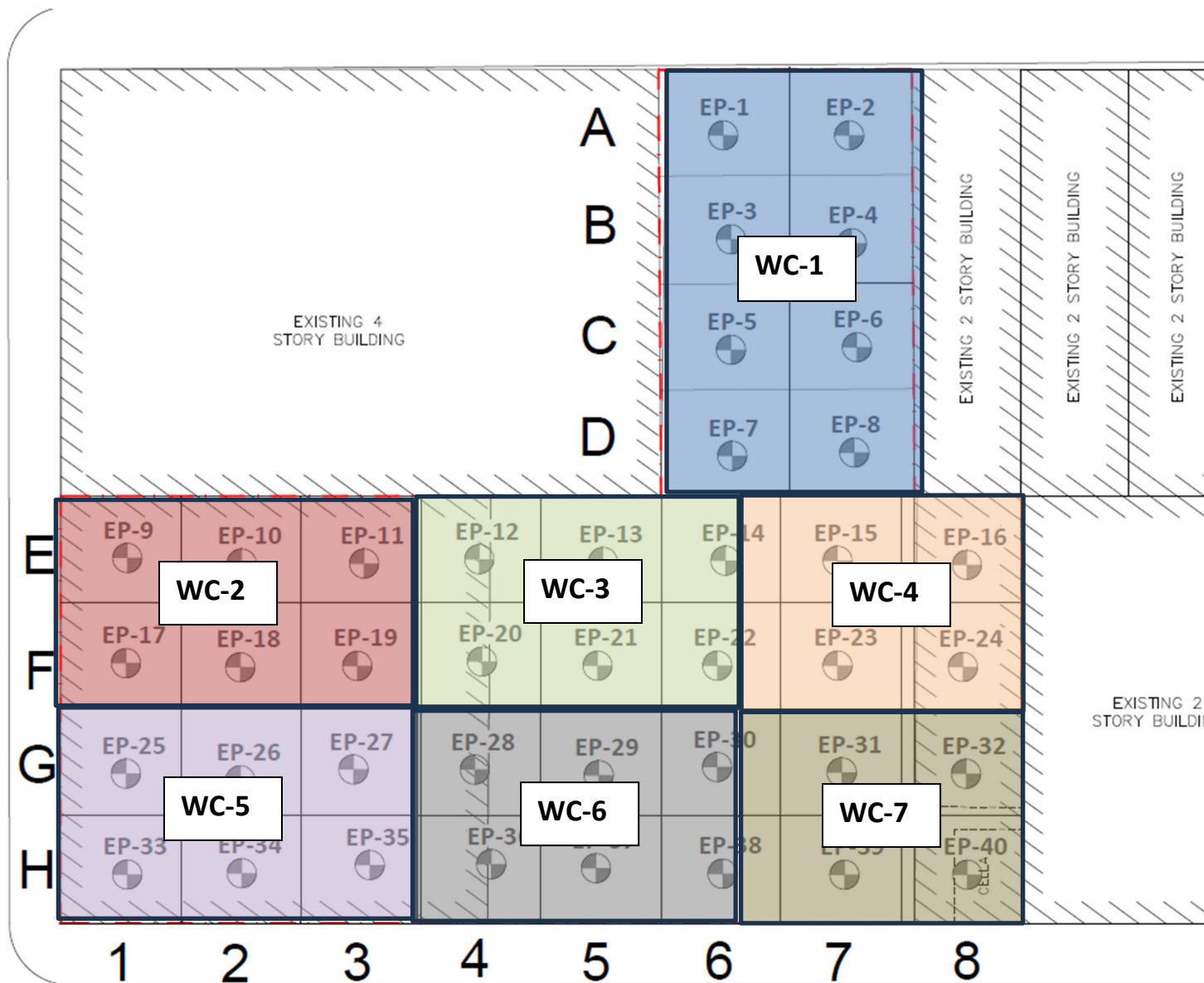
CASCADE

250 RAULTE AVE SUITE 8
MIDDLETOWN, NEW YORK 10941
PH: 845.341.1234
WWW.CASCADENY.COM

SCALE:	D	A
DATE:		
PROJECT:		
SHEET:	1	OF 1
DATE:		
ISS		



NEVINS STREET



SCM Report

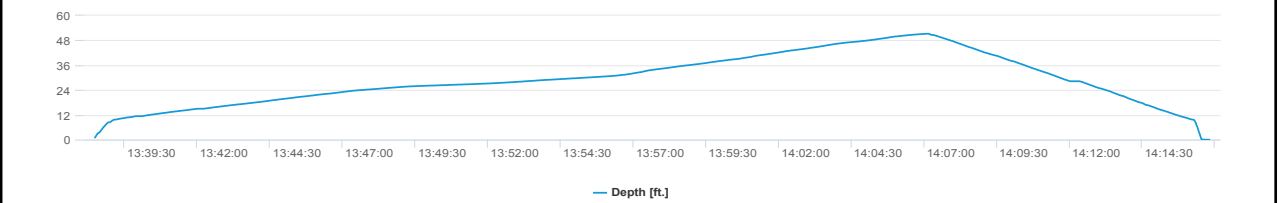
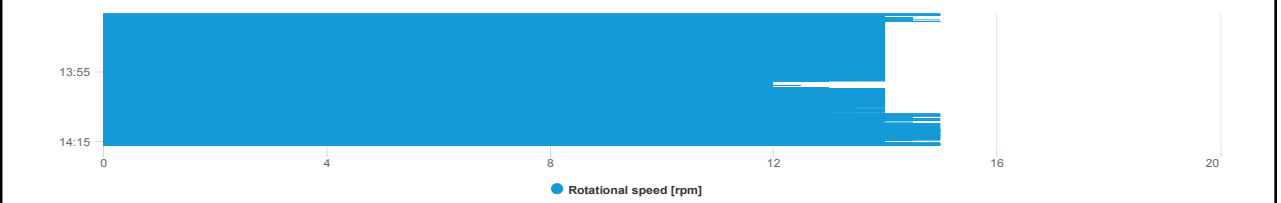
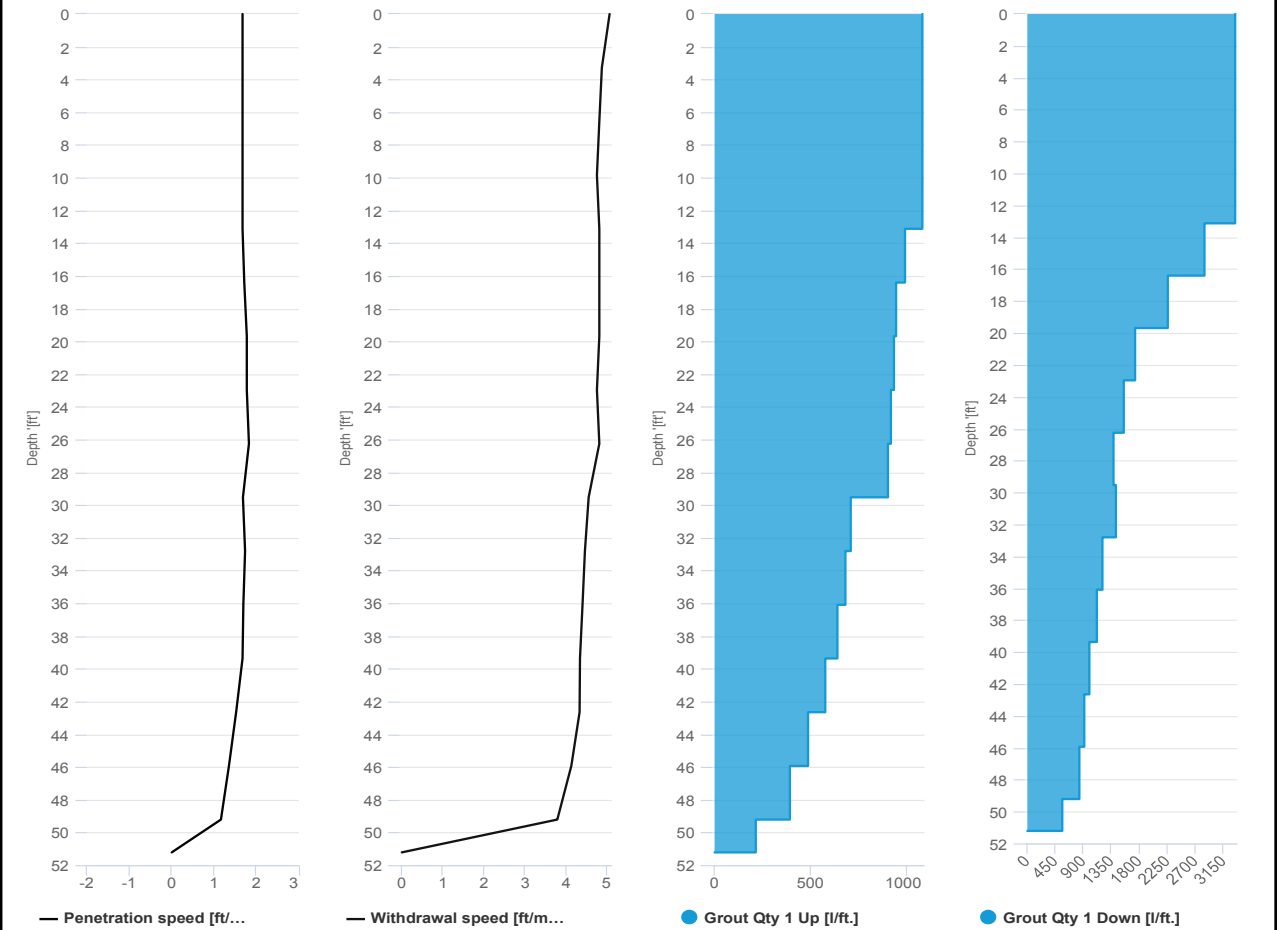


Project name: Douglass Street BCG ISS Element name: c563a_Old
 Project number

Start date: 02/26/2024

Drilling rig: BG36H_5717

Details		Start time: 01:38 PM	
Max. depth: 51.21 ft.		End Date: 02/26/2024	
Volume/m 1: 27.89 ft³		End time: 02:16 PM	
		Production duration: 00:38:21	
		Final depth time: 02:07 PM	
		Total suspension quantity: ft³	



SCM Report

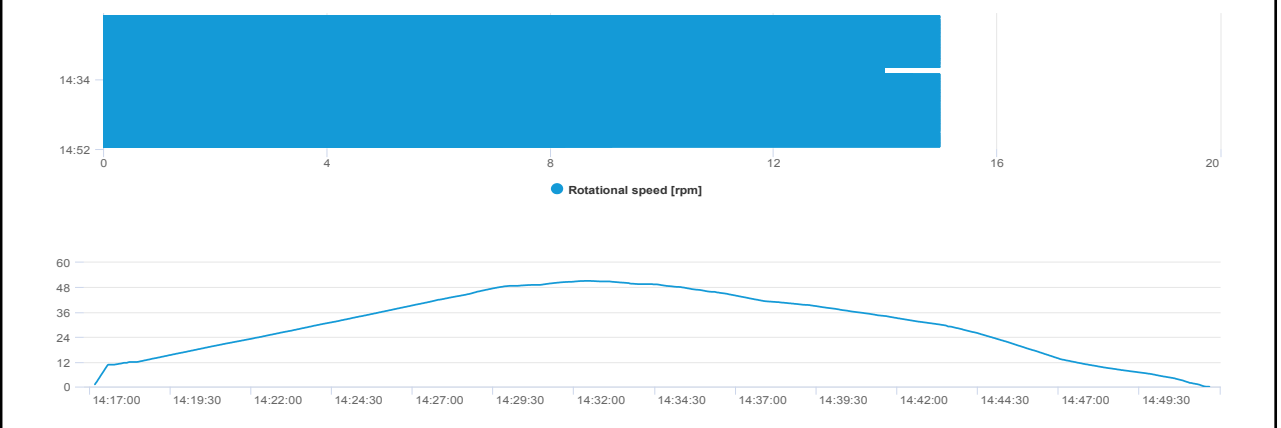
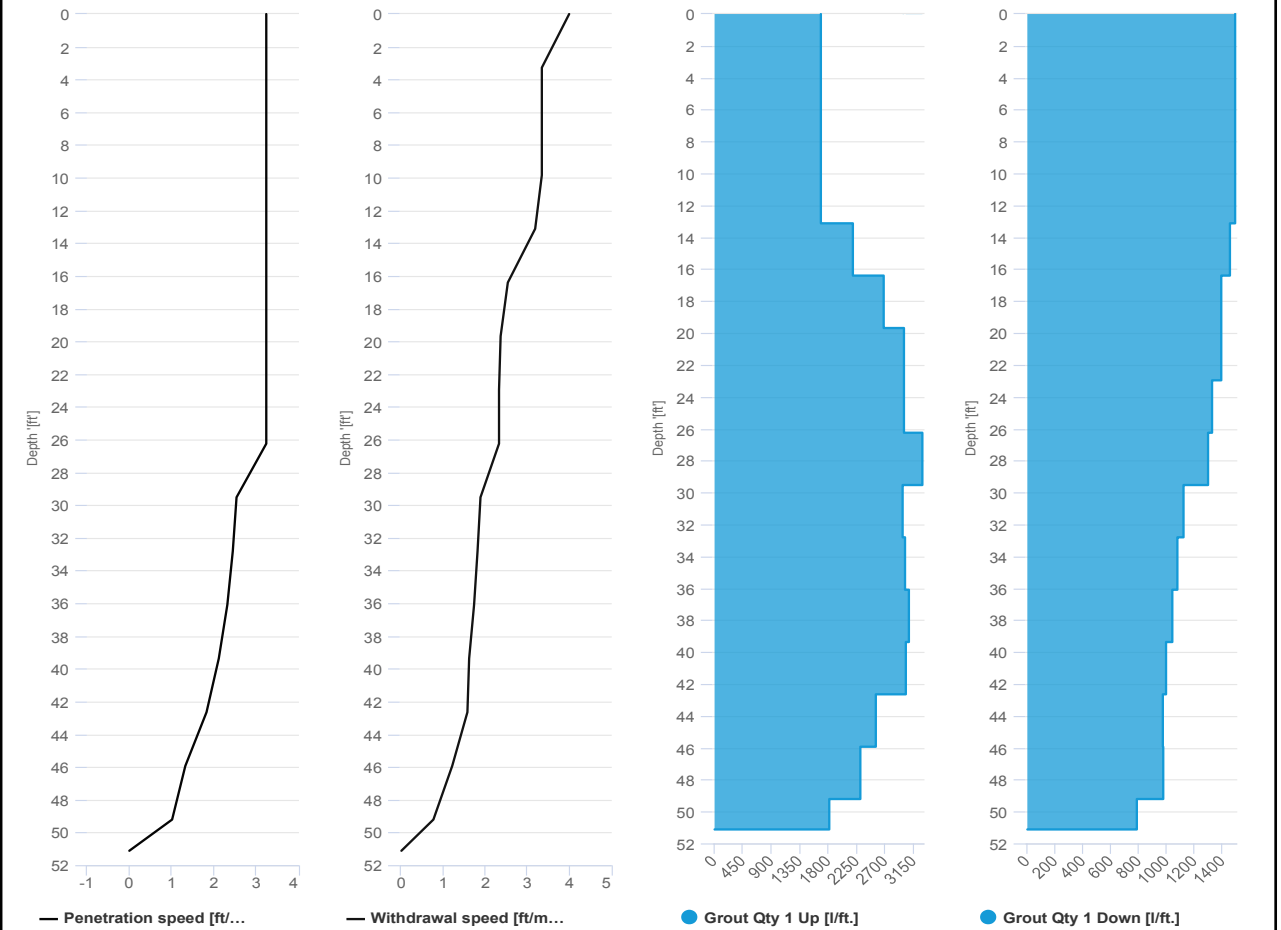


Project name: Douglass Street BCG ISS Element name: c563b_Old
 Project number

Start date: 02/26/2024

Drilling rig: BG36H_5717

Details		Start time: 02:17 PM	
Max. depth: 51.11 ft.		End Date: 02/26/2024	
Volume/m 1: 30.72 ft³		End time: 02:51 PM	
		Production duration: 00:34:31	
		Final depth time: 02:32 PM	
		Total suspension quantity: ft³	



SCM Report

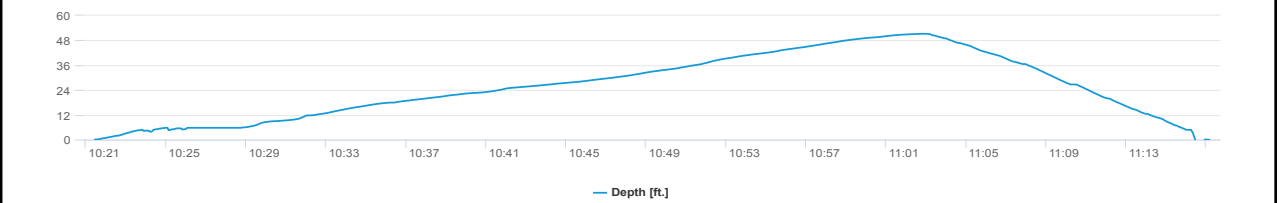
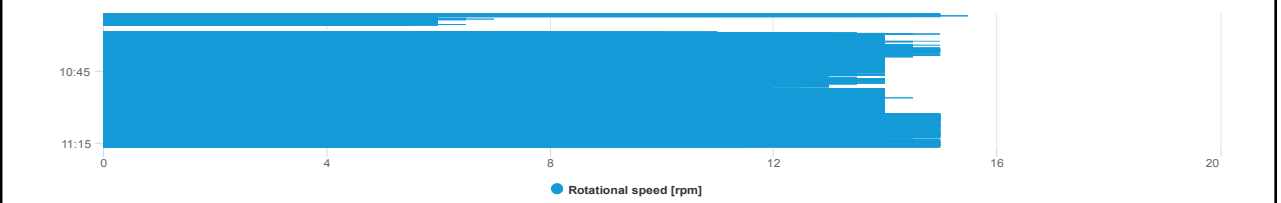
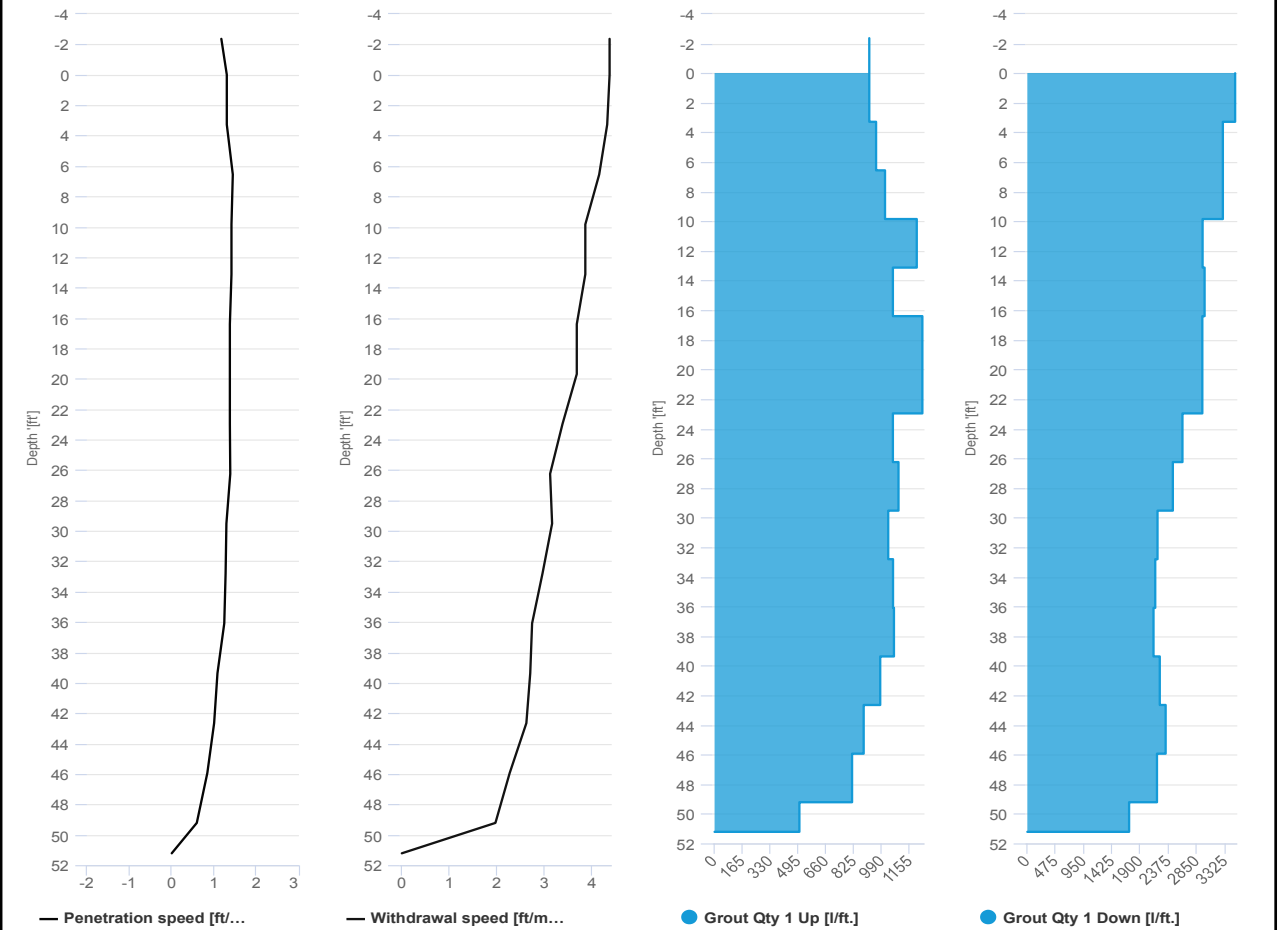


Project name: Douglass Street BCG ISS Element name: c615a_Old
 Project number

Start date: 02/26/2024

Drilling rig: BG36H_5717

Details		Start time: 10:21 AM	
Max. depth: 51.21 ft.		End Date: 02/26/2024	
Volume/m 1: 38.8 ft³		End time: 11:17 AM	
		Production duration: 00:55:44	
		Final depth time: 11:02 AM	
		Total suspension quantity: ft³	



SCM Report

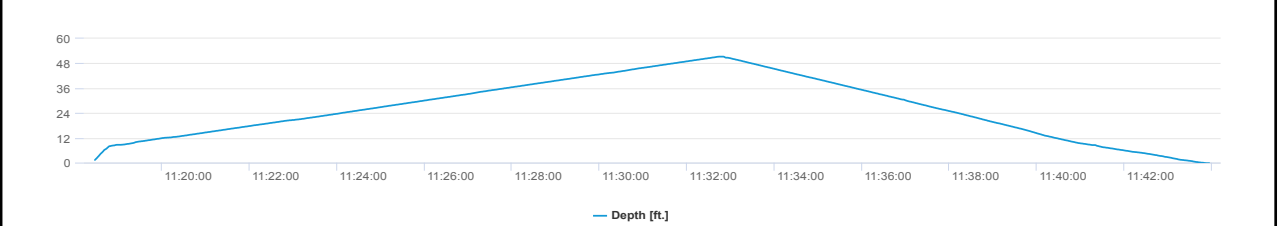
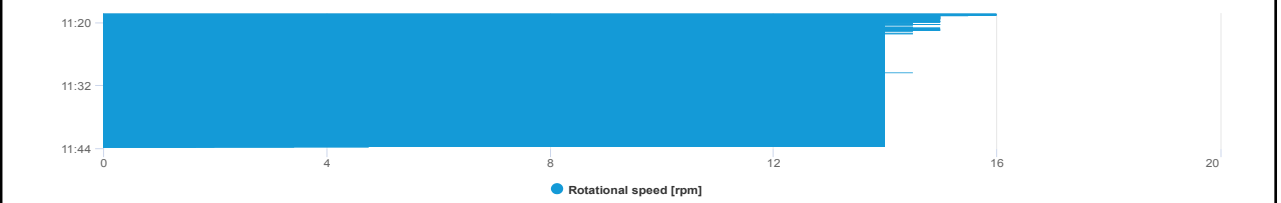
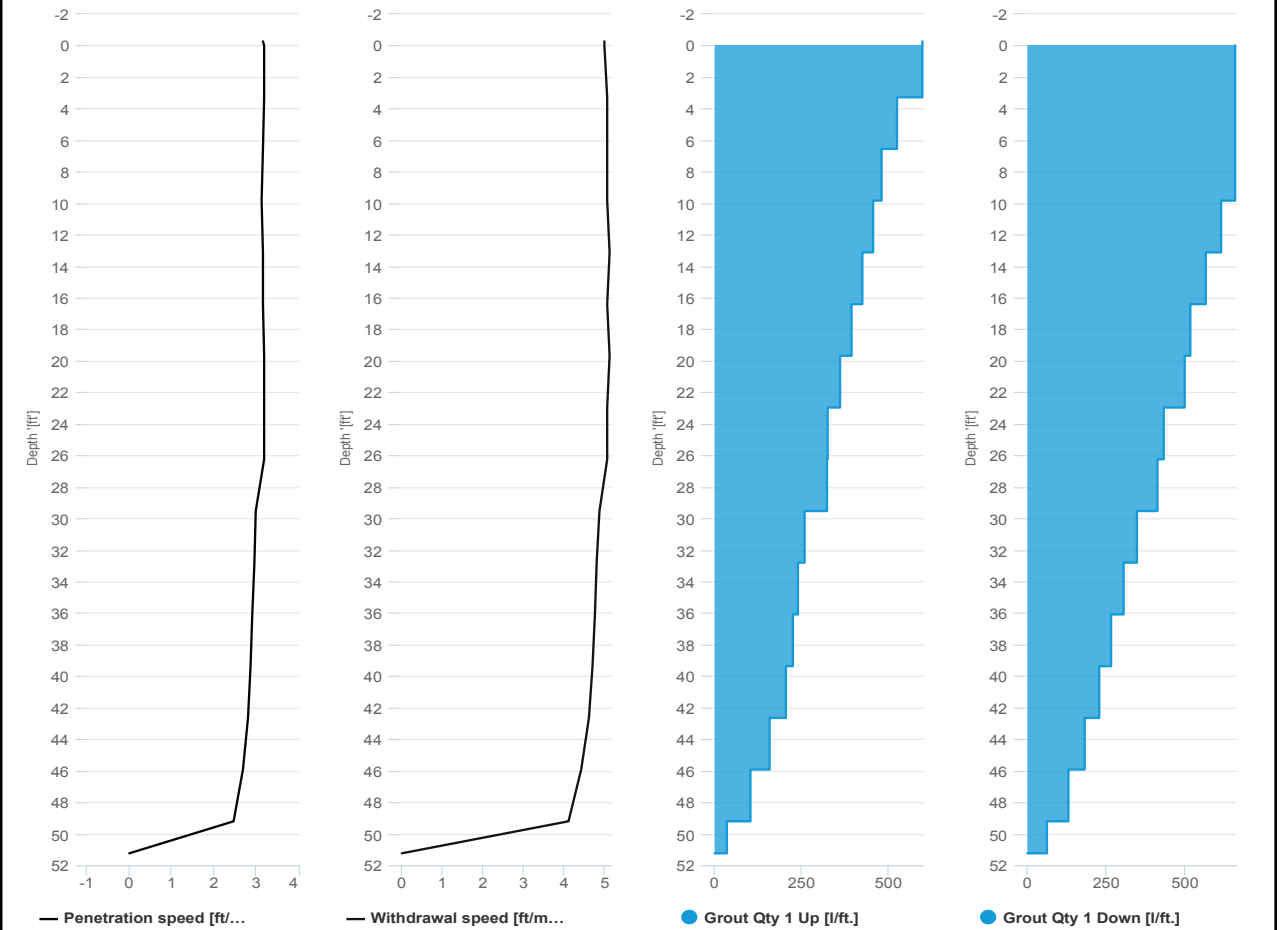


Project name: Douglass Street BCG ISS Element name: c615b_Old
 Project number

Start date: 02/26/2024

Drilling rig: BG36H_5717

Details		Start time: 11:18 AM	
Max. depth: 51.24 ft.		End Date: 02/26/2024	
Volume/m 1: 9.53 ft³		End time: 11:43 AM	
		Production duration: 00:25:30	
		Final depth time: 11:32 AM	
		Total suspension quantity: ft³	





IMPACT ENVIRONMENTAL

welcome to solid ground...

170 Keyland Court | Bohemia | NY | 11716 | 631.269.8800

www.impactenvironmental.com

UPWIND CAMP READINGS

251 DOUGLASS STREET, BROOKLYN, NY

Instrument Name	DustTrak DRX
Model Number	8533
Serial Number	8533181205
Firmware Version	3.1
Calibration Date	5/31/2023
Test Name	MANUAL_008
Test Start Time	6:36:52 AM
Test Start Date	2/26/2024
Test Length [D:H:M]	10:38:00
Test Interval [M:S]	1:00
PM10 Average [mg/m3]	0.023
PM10 Minimum [mg/m3]	0.009
PM10 Maximum [mg/m3]	0.345
PM10 TWA [mg/m3]	0.023
Photometric User Cal	1
Size Correction User Cal	1
Flow User Cal	0
Errors	
Number of Samples	639

Elapsed Time [s]	PM10 [mg/m3]	Alarms	Errors
6:36	0.019		
6:37	0.011		
6:38	0.011		
6:39	0.011		
6:40	0.009		
6:41	0.01		
6:42	0.011		
6:43	0.01		
6:44	0.01		
6:45	0.01		
6:46	0.009		
6:47	0.014		
6:48	0.01		
6:49	0.011		
6:50	0.009		
6:51	0.01		
6:52	0.009		
6:53	0.01		
6:54	0.011		
6:55	0.012		
6:56	0.012		
6:57	0.011		
6:58	0.01		
6:59	0.009		
7:00	0.01		
7:01	0.009		

7:02	0.009
7:03	0.009
7:04	0.009
7:05	0.009
7:06	0.01
7:07	0.011
7:08	0.01
7:09	0.009
7:10	0.01
7:11	0.01
7:12	0.01
7:13	0.011
7:14	0.01
7:15	0.011
7:16	0.01
7:17	0.01
7:18	0.01
7:19	0.011
7:20	0.011
7:21	0.011
7:22	0.011
7:23	0.011
7:24	0.011
7:25	0.011
7:26	0.012
7:27	0.014
7:28	0.01
7:29	0.01
7:30	0.012
7:31	0.017
7:32	0.009
7:33	0.009
7:34	0.009
7:35	0.01
7:36	0.012
7:37	0.012
7:38	0.011
7:39	0.011
7:40	0.012
7:41	0.013
7:42	0.015
7:43	0.014
7:44	0.026
7:45	0.012
7:46	0.01
7:47	0.011
7:48	0.011

7:49	0.011
7:50	0.011
7:51	0.013
7:52	0.012
7:53	0.011
7:54	0.011
7:55	0.013
7:56	0.012
7:57	0.013
7:58	0.012
7:59	0.012
8:00	0.012
8:01	0.013
8:02	0.012
8:03	0.012
8:04	0.013
8:05	0.013
8:06	0.015
8:07	0.016
8:08	0.013
8:09	0.013
8:10	0.012
8:11	0.012
8:12	0.012
8:13	0.016
8:14	0.015
8:15	0.013
8:16	0.014
8:17	0.014
8:18	0.014
8:19	0.014
8:20	0.016
8:21	0.016
8:22	0.013
8:23	0.015
8:24	0.012
8:25	0.016
8:26	0.017
8:27	0.012
8:28	0.012
8:29	0.068
8:30	0.017
8:31	0.041
8:32	0.081
8:33	0.031
8:34	0.098
8:35	0.036

8:36	0.032
8:37	0.345
8:38	0.032
8:39	0.116
8:40	0.145
8:41	0.141
8:42	0.051
8:43	0.015
8:44	0.015
8:45	0.054
8:46	0.061
8:47	0.019
8:48	0.016
8:49	0.013
8:50	0.049
8:51	0.033
8:52	0.014
8:53	0.016
8:54	0.014
8:55	0.012
8:56	0.013
8:57	0.012
8:58	0.012
8:59	0.015
9:00	0.012
9:01	0.012
9:02	0.012
9:03	0.012
9:04	0.012
9:05	0.012
9:06	0.013
9:07	0.013
9:08	0.014
9:09	0.015
9:10	0.014
9:11	0.012
9:12	0.012
9:13	0.013
9:14	0.018
9:15	0.015
9:16	0.014
9:17	0.017
9:18	0.016
9:19	0.017
9:20	0.016
9:21	0.014
9:22	0.018

9:23	0.033
9:24	0.02
9:25	0.023
9:26	0.026
9:27	0.022
9:28	0.02
9:29	0.018
9:30	0.016
9:31	0.015
9:32	0.015
9:33	0.015
9:34	0.016
9:35	0.013
9:36	0.015
9:37	0.015
9:38	0.017
9:39	0.02
9:40	0.018
9:41	0.015
9:42	0.014
9:43	0.015
9:44	0.019
9:45	0.017
9:46	0.015
9:47	0.014
9:48	0.016
9:49	0.016
9:50	0.016
9:51	0.014
9:52	0.015
9:53	0.016
9:54	0.017
9:55	0.02
9:56	0.018
9:57	0.02
9:58	0.021
9:59	0.017
10:00	0.02
10:01	0.018
10:02	0.017
10:03	0.019
10:04	0.02
10:05	0.02
10:06	0.021
10:07	0.02
10:08	0.02
10:09	0.019

10:10	0.022
10:11	0.024
10:12	0.019
10:13	0.225
10:14	0.078
10:15	0.02
10:16	0.044
10:17	0.024
10:18	0.02
10:19	0.02
10:20	0.02
10:21	0.019
10:22	0.019
10:23	0.021
10:24	0.023
10:25	0.024
10:26	0.027
10:27	0.019
10:28	0.022
10:29	0.029
10:30	0.035
10:31	0.023
10:32	0.018
10:33	0.018
10:34	0.019
10:35	0.018
10:36	0.018
10:37	0.025
10:38	0.018
10:39	0.02
10:40	0.023
10:41	0.023
10:42	0.018
10:43	0.016
10:44	0.019
10:45	0.015
10:46	0.017
10:47	0.017
10:48	0.019
10:49	0.018
10:50	0.015
10:51	0.016
10:52	0.016
10:53	0.015
10:54	0.015
10:55	0.016
10:56	0.021

10:57	0.017
10:58	0.017
10:59	0.016
11:00	0.017
11:01	0.019
11:02	0.018
11:03	0.018
11:04	0.019
11:05	0.019
11:06	0.019
11:07	0.018
11:08	0.018
11:09	0.018
11:10	0.018
11:11	0.018
11:12	0.021
11:13	0.018
11:14	0.018
11:15	0.018
11:16	0.017
11:17	0.016
11:18	0.016
11:19	0.017
11:20	0.016
11:21	0.022
11:22	0.018
11:23	0.016
11:24	0.016
11:25	0.015
11:26	0.017
11:27	0.018
11:28	0.016
11:29	0.016
11:30	0.017
11:31	0.018
11:32	0.018
11:33	0.017
11:34	0.018
11:35	0.021
11:36	0.021
11:37	0.018
11:38	0.02
11:39	0.02
11:40	0.019
11:41	0.019
11:42	0.019
11:43	0.021

11:44	0.02
11:45	0.019
11:46	0.02
11:47	0.017
11:48	0.017
11:49	0.022
11:50	0.019
11:51	0.018
11:52	0.02
11:53	0.021
11:54	0.018
11:55	0.017
11:56	0.017
11:57	0.018
11:58	0.018
11:59	0.019
12:00	0.02
12:01	0.02
12:02	0.018
12:03	0.017
12:04	0.017
12:05	0.019
12:06	0.02
12:07	0.019
12:08	0.018
12:09	0.018
12:10	0.018
12:11	0.018
12:12	0.02
12:13	0.02
12:14	0.02
12:15	0.021
12:16	0.021
12:17	0.021
12:18	0.02
12:19	0.021
12:20	0.025
12:21	0.022
12:22	0.022
12:23	0.022
12:24	0.021
12:25	0.02
12:26	0.021
12:27	0.023
12:28	0.023
12:29	0.023
12:30	0.022

12:31	0.023
12:32	0.024
12:33	0.026
12:34	0.027
12:35	0.028
12:36	0.026
12:37	0.023
12:38	0.025
12:39	0.027
12:40	0.023
12:41	0.024
12:42	0.033
12:43	0.032
12:44	0.028
12:45	0.027
12:46	0.026
12:47	0.026
12:48	0.024
12:49	0.026
12:50	0.025
12:51	0.026
12:52	0.025
12:53	0.026
12:54	0.026
12:55	0.028
12:56	0.027
12:57	0.027
12:58	0.026
12:59	0.026
13:00	0.027
13:01	0.026
13:02	0.027
13:03	0.027
13:04	0.027
13:05	0.028
13:06	0.029
13:07	0.029
13:08	0.028
13:09	0.029
13:10	0.03
13:11	0.042
13:12	0.031
13:13	0.028
13:14	0.031
13:15	0.031
13:16	0.028
13:17	0.072

13:18	0.031
13:19	0.03
13:20	0.029
13:21	0.029
13:22	0.026
13:23	0.028
13:24	0.039
13:25	0.031
13:26	0.031
13:27	0.028
13:28	0.028
13:29	0.029
13:30	0.03
13:31	0.029
13:32	0.029
13:33	0.029
13:34	0.027
13:35	0.027
13:36	0.028
13:37	0.031
13:38	0.029
13:39	0.029
13:40	0.03
13:41	0.031
13:42	0.03
13:43	0.029
13:44	0.035
13:45	0.036
13:46	0.033
13:47	0.032
13:48	0.033
13:49	0.047
13:50	0.034
13:51	0.034
13:52	0.031
13:53	0.031
13:54	0.037
13:55	0.033
13:56	0.03
13:57	0.03
13:58	0.031
13:59	0.03
14:00	0.031
14:01	0.03
14:02	0.032
14:03	0.034
14:04	0.039

14:05	0.035
14:06	0.032
14:07	0.034
14:08	0.031
14:09	0.03
14:10	0.031
14:11	0.031
14:12	0.031
14:13	0.029
14:14	0.026
14:15	0.026
14:16	0.026
14:17	0.025
14:18	0.025
14:19	0.028
14:20	0.031
14:21	0.031
14:22	0.028
14:23	0.028
14:24	0.03
14:25	0.034
14:26	0.028
14:27	0.028
14:28	0.031
14:29	0.027
14:30	0.029
14:31	0.03
14:32	0.032
14:33	0.04
14:34	0.036
14:35	0.031
14:36	0.03
14:37	0.029
14:38	0.029
14:39	0.029
14:40	0.029
14:41	0.03
14:42	0.028
14:43	0.027
14:44	0.026
14:45	0.026
14:46	0.028
14:47	0.027
14:48	0.026
14:49	0.026
14:50	0.026
14:51	0.026

14:52	0.027
14:53	0.03
14:54	0.029
14:55	0.028
14:56	0.029
14:57	0.028
14:58	0.027
14:59	0.025
15:00	0.026
15:01	0.025
15:02	0.025
15:03	0.029
15:04	0.029
15:05	0.027
15:06	0.025
15:07	0.024
15:08	0.024
15:09	0.025
15:10	0.024
15:11	0.026
15:12	0.025
15:13	0.027
15:14	0.026
15:15	0.024
15:16	0.023
15:17	0.027
15:18	0.025
15:19	0.024
15:20	0.024
15:21	0.026
15:22	0.024
15:23	0.024
15:24	0.026
15:25	0.027
15:26	0.027
15:27	0.026
15:28	0.025
15:29	0.025
15:30	0.026
15:31	0.025
15:32	0.025
15:33	0.026
15:34	0.027
15:35	0.03
15:36	0.026
15:37	0.026
15:38	0.028

15:39	0.026
15:40	0.028
15:41	0.025
15:42	0.024
15:43	0.028
15:44	0.028
15:45	0.025
15:46	0.026
15:47	0.025
15:48	0.023
15:49	0.024
15:50	0.025
15:51	0.025
15:52	0.023
15:53	0.028
15:54	0.027
15:55	0.024
15:56	0.023
15:57	0.029
15:58	0.026
15:59	0.033
16:00	0.025
16:01	0.023
16:02	0.022
16:03	0.022
16:04	0.023
16:05	0.023
16:06	0.023
16:07	0.023
16:08	0.023
16:09	0.023
16:10	0.023
16:11	0.025
16:12	0.023
16:13	0.023
16:14	0.023
16:15	0.026
16:16	0.023
16:17	0.023
16:18	0.022
16:19	0.022
16:20	0.024
16:21	0.024
16:22	0.023
16:23	0.023
16:24	0.023
16:25	0.024

16:26	0.044
16:27	0.024
16:28	0.023
16:29	0.023
16:30	0.021
16:31	0.023
16:32	0.022
16:33	0.022
16:34	0.022
16:35	0.023
16:36	0.021
16:37	0.02
16:38	0.02
16:39	0.028
16:40	0.023
16:41	0.021
16:42	0.024
16:43	0.025
16:44	0.027
16:45	0.025
16:46	0.022
16:47	0.02
16:48	0.02
16:49	0.021
16:50	0.019
16:51	0.021
16:52	0.012
16:53	0.02
16:54	0.01
16:55	0.018
16:56	0.011
16:57	0.018
16:58	0.009
16:59	0.019
17:00	0.02
17:01	0.027
17:02	0.024
17:03	0.01
17:04	0.015
17:05	0.011
17:06	0.021
17:07	0.027
17:08	0.026
17:09	0.009
17:10	0.015
17:11	0.017
17:12	0.025

17:13
17:14

0.033
0.031

592-601274	2/26/2024	6:47 Readings	PID	SC23030921B3	Normal	0.3
592-601274	2/26/2024	6:46 Readings	PID	SC23030921B3	Normal	0.3
592-601274	2/26/2024	6:45 Readings	PID	SC23030921B3	Normal	0.3
592-601274	2/26/2024	6:44 Readings	PID	SC23030921B3	Normal	0.3
592-601274	2/26/2024	6:43 Readings	PID	SC23030921B3	Normal	0.2
592-601274	2/26/2024	6:42 CONFIG	PID	SC23030921B3		
592-601274	2/26/2024	6:41 Readings	PID	SC23030921B3	Normal	0.6
592-601274	2/26/2024	6:40 Readings	PID	SC23030921B3	Normal	0.6
592-601274	2/26/2024	6:39 Readings	PID	SC23030921B3	Normal	0.5
592-601274	2/26/2024	6:38 Readings	PID	SC23030921B3	Normal	0.4
592-601274	2/26/2024	6:37 Readings	PID	SC23030921B3	Normal	0.2
592-601274	2/26/2024	6:36 CONFIG	PID	SC23030921B3		

DOWNWIND CAMP READINGS

251 DOUGLASS STREET, BROOKLYN, NY



Instrument Name	DustTrak II
Model Number	8530
Serial Number	8530224601
Firmware Version	3.1
Calibration Date	11/9/2022
Test Name	MANUAL_010
Test Start Time	6:46:49 AM
Test Start Date	2/26/2024
Test Length [D:H:M]	10:37:00
Test Interval [M:S]	1:00
Mass Average [mg/m3]	0.031
Mass Minimum [mg/m3]	0.001
Mass Maximum [mg/m3]	0.095
Mass TWA [mg/m3]	0.031
Photometric User Cal	1
Flow User Cal	0
Errors	
Number of Samples	638

Elapsed Time [s]	Mass [mg/m3]	Alarms	Errors
6:46	0.023		
6:47	0.022		
6:48	0.019		
6:49	0.026		
6:50	0.02		
6:51	0.013		
6:52	0.013		
6:53	0.015		
6:54	0.013		
6:55	0.014		
6:56	0.017		
6:57	0.015		
6:58	0.013		
6:59	0.012		
7:00	0.012		
7:01	0.012		
7:02	0.011		
7:03	0.01		
7:04	0.011		
7:05	0.012		
7:06	0.01		
7:07	0.014		
7:08	0.012		
7:09	0.01		
7:10	0.011		
7:11	0.012		
7:12	0.012		

7:13	0.011
7:14	0.012
7:15	0.01
7:16	0.009
7:17	0.013
7:18	0.01
7:19	0.012
7:20	0.014
7:21	0.013
7:22	0.012
7:23	0.013
7:24	0.011
7:25	0.012
7:26	0.012
7:27	0.014
7:28	0.013
7:29	0.012
7:30	0.015
7:31	0.014
7:32	0.011
7:33	0.01
7:34	0.011
7:35	0.011
7:36	0.012
7:37	0.013
7:38	0.014
7:39	0.011
7:40	0.012
7:41	0.013
7:42	0.015
7:43	0.012
7:44	0.012
7:45	0.014
7:46	0.012
7:47	0.012
7:48	0.012
7:49	0.013
7:50	0.012
7:51	0.012
7:52	0.013
7:53	0.013
7:54	0.011
7:55	0.011
7:56	0.013
7:57	0.013
7:58	0.012
7:59	0.014

8:00	0.014
8:01	0.014
8:02	0.013
8:03	0.012
8:04	0.013
8:05	0.015
8:06	0.015
8:07	0.015
8:08	0.014
8:09	0.014
8:10	0.016
8:11	0.016
8:12	0.012
8:13	0.012
8:14	0.018
8:15	0.015
8:16	0.013
8:17	0.014
8:18	0.015
8:19	0.017
8:20	0.014
8:21	0.019
8:22	0.016
8:23	0.014
8:24	0.013
8:25	0.014
8:26	0.014
8:27	0.022
8:28	0.014
8:29	0.012
8:30	0.015
8:31	0.017
8:32	0.017
8:33	0.019
8:34	0.016
8:35	0.017
8:36	0.014
8:37	0.014
8:38	0.018
8:39	0.019
8:40	0.02
8:41	0.015
8:42	0.015
8:43	0.018
8:44	0.018
8:45	0.02
8:46	0.022

8:47	0.02
8:48	0.022
8:49	0.022
8:50	0.016
8:51	0.027
8:52	0.029
8:53	0.019
8:54	0.02
8:55	0.019
8:56	0.015
8:57	0.014
8:58	0.015
8:59	0.015
9:00	0.018
9:01	0.019
9:02	0.017
9:03	0.015
9:04	0.016
9:05	0.017
9:06	0.015
9:07	0.016
9:08	0.018
9:09	0.017
9:10	0.017
9:11	0.017
9:12	0.016
9:13	0.016
9:14	0.016
9:15	0.018
9:16	0.019
9:17	0.019
9:18	0.019
9:19	0.018
9:20	0.02
9:21	0.019
9:22	0.019
9:23	0.018
9:24	0.026
9:25	0.024
9:26	0.023
9:27	0.021
9:28	0.021
9:29	0.018
9:30	0.021
9:31	0.02
9:32	0.018
9:33	0.019

9:34	0.02
9:35	0.019
9:36	0.024
9:37	0.022
9:38	0.021
9:39	0.02
9:40	0.02
9:41	0.018
9:42	0.02
9:43	0.019
9:44	0.022
9:45	0.04
9:46	0.024
9:47	0.038
9:48	0.021
9:49	0.02
9:50	0.021
9:51	0.021
9:52	0.021
9:53	0.023
9:54	0.023
9:55	0.029
9:56	0.021
9:57	0.023
9:58	0.023
9:59	0.028
10:00	0.034
10:01	0.023
10:02	0.022
10:03	0.025
10:04	0.027
10:05	0.025
10:06	0.025
10:07	0.024
10:08	0.024
10:09	0.023
10:10	0.022
10:11	0.021
10:12	0.021
10:13	0.023
10:14	0.023
10:15	0.031
10:16	0.033
10:17	0.025
10:18	0.024
10:19	0.021
10:20	0.023

10:21	0.024
10:22	0.024
10:23	0.023
10:24	0.023
10:25	0.025
10:26	0.025
10:27	0.023
10:28	0.028
10:29	0.025
10:30	0.028
10:31	0.025
10:32	0.025
10:33	0.029
10:34	0.03
10:35	0.024
10:36	0.021
10:37	0.03
10:38	0.059
10:39	0.055
10:40	0.022
10:41	0.024
10:42	0.022
10:43	0.025
10:44	0.027
10:45	0.021
10:46	0.038
10:47	0.049
10:48	0.025
10:49	0.023
10:50	0.021
10:51	0.021
10:52	0.022
10:53	0.022
10:54	0.021
10:55	0.02
10:56	0.021
10:57	0.025
10:58	0.021
10:59	0.021
11:00	0.021
11:01	0.022
11:02	0.024
11:03	0.024
11:04	0.024
11:05	0.024
11:06	0.025
11:07	0.023

11:08	0.023
11:09	0.023
11:10	0.025
11:11	0.023
11:12	0.023
11:13	0.027
11:14	0.023
11:15	0.022
11:16	0.023
11:17	0.024
11:18	0.021
11:19	0.023
11:20	0.024
11:21	0.024
11:22	0.028
11:23	0.025
11:24	0.024
11:25	0.022
11:26	0.023
11:27	0.024
11:28	0.025
11:29	0.023
11:30	0.024
11:31	0.026
11:32	0.024
11:33	0.026
11:34	0.023
11:35	0.03
11:36	0.029
11:37	0.028
11:38	0.026
11:39	0.028
11:40	0.027
11:41	0.027
11:42	0.025
11:43	0.026
11:44	0.029
11:45	0.028
11:46	0.023
11:47	0.028
11:48	0.026
11:49	0.023
11:50	0.027
11:51	0.026
11:52	0.027
11:53	0.026
11:54	0.029

11:55	0.029
11:56	0.025
11:57	0.024
11:58	0.025
11:59	0.026
12:00	0.025
12:01	0.027
12:02	0.027
12:03	0.025
12:04	0.024
12:05	0.023
12:06	0.026
12:07	0.027
12:08	0.027
12:09	0.025
12:10	0.027
12:11	0.031
12:12	0.027
12:13	0.026
12:14	0.028
12:15	0.029
12:16	0.033
12:17	0.029
12:18	0.029
12:19	0.028
12:20	0.029
12:21	0.032
12:22	0.035
12:23	0.03
12:24	0.029
12:25	0.029
12:26	0.028
12:27	0.029
12:28	0.033
12:29	0.032
12:30	0.031
12:31	0.032
12:32	0.032
12:33	0.042
12:34	0.044
12:35	0.071
12:36	0.04
12:37	0.036
12:38	0.034
12:39	0.035
12:40	0.035
12:41	0.034

12:42	0.038
12:43	0.037
12:44	0.037
12:45	0.036
12:46	0.039
12:47	0.038
12:48	0.037
12:49	0.035
12:50	0.035
12:51	0.04
12:52	0.037
12:53	0.036
12:54	0.036
12:55	0.038
12:56	0.036
12:57	0.037
12:58	0.037
12:59	0.036
13:00	0.036
13:01	0.036
13:02	0.038
13:03	0.038
13:04	0.037
13:05	0.037
13:06	0.037
13:07	0.037
13:08	0.039
13:09	0.037
13:10	0.036
13:11	0.04
13:12	0.038
13:13	0.038
13:14	0.04
13:15	0.038
13:16	0.039
13:17	0.037
13:18	0.038
13:19	0.038
13:20	0.036
13:21	0.036
13:22	0.035
13:23	0.035
13:24	0.031
13:25	0.034
13:26	0.033
13:27	0.031
13:28	0.031

13:29	0.033
13:30	0.035
13:31	0.038
13:32	0.042
13:33	0.039
13:34	0.034
13:35	0.031
13:36	0.03
13:37	0.037
13:38	0.041
13:39	0.036
13:40	0.056
13:41	0.037
13:42	0.037
13:43	0.089
13:44	0.052
13:45	0.057
13:46	0.042
13:47	0.044
13:48	0.037
13:49	0.055
13:50	0.053
13:51	0.045
13:52	0.042
13:53	0.054
13:54	0.045
13:55	0.054
13:56	0.055
13:57	0.034
13:58	0.033
13:59	0.034
14:00	0.034
14:01	0.034
14:02	0.036
14:03	0.035
14:04	0.036
14:05	0.038
14:06	0.041
14:07	0.035
14:08	0.087
14:09	0.037
14:10	0.032
14:11	0.033
14:12	0.032
14:13	0.031
14:14	0.031
14:15	0.031

14:16	0.028
14:17	0.026
14:18	0.027
14:19	0.029
14:20	0.031
14:21	0.03
14:22	0.028
14:23	0.042
14:24	0.031
14:25	0.031
14:26	0.032
14:27	0.031
14:28	0.028
14:29	0.029
14:30	0.026
14:31	0.025
14:32	0.023
14:33	0.001
14:34	0.014
14:35	0.016
14:36	0.017
14:37	0.016
14:38	0.018
14:39	0.028
14:40	0.031
14:41	0.037
14:42	0.036
14:43	0.035
14:44	0.032
14:45	0.039
14:46	0.044
14:47	0.044
14:48	0.045
14:49	0.046
14:50	0.049
14:51	0.045
14:52	0.047
14:53	0.045
14:54	0.047
14:55	0.046
14:56	0.046
14:57	0.048
14:58	0.049
14:59	0.048
15:00	0.064
15:01	0.046
15:02	0.045

15:03	0.044
15:04	0.051
15:05	0.062
15:06	0.08
15:07	0.095
15:08	0.066
15:09	0.057
15:10	0.049
15:11	0.052
15:12	0.046
15:13	0.049
15:14	0.046
15:15	0.048
15:16	0.053
15:17	0.05
15:18	0.057
15:19	0.053
15:20	0.048
15:21	0.049
15:22	0.045
15:23	0.048
15:24	0.048
15:25	0.046
15:26	0.045
15:27	0.045
15:28	0.046
15:29	0.046
15:30	0.046
15:31	0.048
15:32	0.051
15:33	0.047
15:34	0.049
15:35	0.048
15:36	0.048
15:37	0.052
15:38	0.051
15:39	0.053
15:40	0.055
15:41	0.057
15:42	0.054
15:43	0.056
15:44	0.057
15:45	0.051
15:46	0.051
15:47	0.053
15:48	0.05
15:49	0.05

15:50	0.051
15:51	0.051
15:52	0.05
15:53	0.051
15:54	0.051
15:55	0.049
15:56	0.051
15:57	0.049
15:58	0.049
15:59	0.05
16:00	0.049
16:01	0.049
16:02	0.049
16:03	0.051
16:04	0.053
16:05	0.054
16:06	0.052
16:07	0.079
16:08	0.041
16:09	0.039
16:10	0.038
16:11	0.039
16:12	0.04
16:13	0.041
16:14	0.044
16:15	0.044
16:16	0.043
16:17	0.044
16:18	0.045
16:19	0.044
16:20	0.043
16:21	0.043
16:22	0.042
16:23	0.044
16:24	0.046
16:25	0.045
16:26	0.043
16:27	0.043
16:28	0.045
16:29	0.043
16:30	0.049
16:31	0.047
16:32	0.045
16:33	0.045
16:34	0.045
16:35	0.042
16:36	0.043

16:37	0.044
16:38	0.045
16:39	0.045
16:40	0.044
16:41	0.044
16:42	0.044
16:43	0.046
16:44	0.045
16:45	0.045
16:46	0.045
16:47	0.053
16:48	0.051
16:49	0.051
16:50	0.051
16:51	0.052
16:52	0.052
16:53	0.052
16:54	0.052
16:55	0.053
16:56	0.053
16:57	0.052
16:58	0.054
16:59	0.052
17:00	0.052
17:01	0.054
17:02	0.052
17:03	0.048
17:04	0.046
17:05	0.049
17:06	0.044
17:07	0.044
17:08	0.046
17:09	0.046
17:10	0.045
17:11	0.046
17:12	0.046
17:13	0.053
17:14	0.059
17:15	0.055
17:16	0.061
17:17	0.056
17:18	0.052
17:19	0.053
17:20	0.053
17:21	0.053
17:22	0.054
17:23	0.053

Instrument Name	DustTrak DRX
Model Number	8533
Serial Number	8533181207
Firmware Version	3.1
Calibration Date	6/1/2023
Test Name	MANUAL_011
Test Start Time	6:44:35 AM
Test Start Date	2/26/2024
Test Length [D:H:M]	0:10:41
Test Interval [M:S]	1:00
PM10 Average [mg/m3]	0.021
PM10 Minimum [mg/m3]	0.01
PM10 Maximum [mg/m3]	0.285
PM10 TWA [mg/m3]	0.021
Photometric User Cal	1
Size Correction User Cal	1
Flow User Cal	0
Errors	
Number of Samples	641

Elapsed Time [s]	PM10 [mg/m3]	Alarms	Errors
6:44	0.087		
6:45	0.013		
6:46	0.011		
6:47	0.011		
6:48	0.012		
6:49	0.014		
6:50	0.01		
6:51	0.011		
6:52	0.011		
6:53	0.019		
6:54	0.011		
6:55	0.01		
6:56	0.01		
6:57	0.011		
6:58	0.011		
6:59	0.012		
7:00	0.011		
7:01	0.011		
7:02	0.01		
7:03	0.01		
7:04	0.011		
7:05	0.01		
7:06	0.01		
7:07	0.01		
7:08	0.01		
7:09	0.01		

7:10	0.011
7:11	0.01
7:12	0.011
7:13	0.011
7:14	0.011
7:15	0.011
7:16	0.011
7:17	0.011
7:18	0.01
7:19	0.011
7:20	0.011
7:21	0.012
7:22	0.012
7:23	0.012
7:24	0.012
7:25	0.012
7:26	0.012
7:27	0.012
7:28	0.013
7:29	0.012
7:30	0.013
7:31	0.012
7:32	0.013
7:33	0.013
7:34	0.012
7:35	0.011
7:36	0.011
7:37	0.011
7:38	0.012
7:39	0.012
7:40	0.013
7:41	0.012
7:42	0.012
7:43	0.013
7:44	0.012
7:45	0.014
7:46	0.017
7:47	0.013
7:48	0.012
7:49	0.013
7:50	0.012
7:51	0.013
7:52	0.012
7:53	0.013
7:54	0.013
7:55	0.012
7:56	0.019

7:57	0.012
7:58	0.013
7:59	0.014
8:00	0.014
8:01	0.013
8:02	0.014
8:03	0.014
8:04	0.015
8:05	0.013
8:06	0.013
8:07	0.014
8:08	0.016
8:09	0.014
8:10	0.015
8:11	0.014
8:12	0.014
8:13	0.016
8:14	0.012
8:15	0.014
8:16	0.012
8:17	0.015
8:18	0.013
8:19	0.013
8:20	0.013
8:21	0.014
8:22	0.016
8:23	0.015
8:24	0.015
8:25	0.014
8:26	0.013
8:27	0.013
8:28	0.014
8:29	0.014
8:30	0.015
8:31	0.013
8:32	0.013
8:33	0.014
8:34	0.014
8:35	0.015
8:36	0.016
8:37	0.014
8:38	0.015
8:39	0.015
8:40	0.015
8:41	0.014
8:42	0.016
8:43	0.015

8:44	0.015
8:45	0.016
8:46	0.015
8:47	0.015
8:48	0.016
8:49	0.02
8:50	0.023
8:51	0.019
8:52	0.026
8:53	0.019
8:54	0.023
8:55	0.022
8:56	0.018
8:57	0.016
8:58	0.015
8:59	0.014
9:00	0.014
9:01	0.014
9:02	0.015
9:03	0.015
9:04	0.015
9:05	0.015
9:06	0.015
9:07	0.016
9:08	0.015
9:09	0.015
9:10	0.017
9:11	0.017
9:12	0.016
9:13	0.016
9:14	0.016
9:15	0.015
9:16	0.019
9:17	0.016
9:18	0.018
9:19	0.017
9:20	0.017
9:21	0.016
9:22	0.017
9:23	0.018
9:24	0.016
9:25	0.016
9:26	0.039
9:27	0.023
9:28	0.029
9:29	0.02
9:30	0.02

9:31	0.019
9:32	0.021
9:33	0.018
9:34	0.02
9:35	0.018
9:36	0.02
9:37	0.02
9:38	0.044
9:39	0.029
9:40	0.02
9:41	0.022
9:42	0.027
9:43	0.019
9:44	0.017
9:45	0.017
9:46	0.092
9:47	0.285
9:48	0.084
9:49	0.045
9:50	0.049
9:51	0.021
9:52	0.018
9:53	0.018
9:54	0.035
9:55	0.017
9:56	0.019
9:57	0.018
9:58	0.018
9:59	0.018
10:00	0.018
10:01	0.022
10:02	0.024
10:03	0.021
10:04	0.017
10:05	0.023
10:06	0.031
10:07	0.03
10:08	0.02
10:09	0.02
10:10	0.022
10:11	0.019
10:12	0.019
10:13	0.018
10:14	0.018
10:15	0.019
10:16	0.019
10:17	0.018

10:18	0.024
10:19	0.024
10:20	0.019
10:21	0.018
10:22	0.019
10:23	0.02
10:24	0.02
10:25	0.021
10:26	0.018
10:27	0.021
10:28	0.023
10:29	0.021
10:30	0.02
10:31	0.019
10:32	0.022
10:33	0.019
10:34	0.021
10:35	0.019
10:36	0.017
10:37	0.016
10:38	0.017
10:39	0.018
10:40	0.019
10:41	0.019
10:42	0.018
10:43	0.018
10:44	0.021
10:45	0.021
10:46	0.02
10:47	0.017
10:48	0.018
10:49	0.017
10:50	0.018
10:51	0.018
10:52	0.018
10:53	0.017
10:54	0.017
10:55	0.019
10:56	0.018
10:57	0.017
10:58	0.017
10:59	0.019
11:00	0.019
11:01	0.018
11:02	0.018
11:03	0.018
11:04	0.018

11:05	0.019
11:06	0.02
11:07	0.019
11:08	0.019
11:09	0.019
11:10	0.019
11:11	0.018
11:12	0.019
11:13	0.02
11:14	0.024
11:15	0.019
11:16	0.019
11:17	0.018
11:18	0.018
11:19	0.017
11:20	0.017
11:21	0.018
11:22	0.021
11:23	0.019
11:24	0.019
11:25	0.023
11:26	0.019
11:27	0.02
11:28	0.018
11:29	0.019
11:30	0.02
11:31	0.02
11:32	0.019
11:33	0.019
11:34	0.02
11:35	0.02
11:36	0.019
11:37	0.019
11:38	0.022
11:39	0.023
11:40	0.02
11:41	0.022
11:42	0.022
11:43	0.021
11:44	0.02
11:45	0.02
11:46	0.021
11:47	0.023
11:48	0.021
11:49	0.019
11:50	0.02
11:51	0.019

11:52	0.02
11:53	0.022
11:54	0.021
11:55	0.021
11:56	0.022
11:57	0.022
11:58	0.021
11:59	0.02
12:00	0.021
12:01	0.02
12:02	0.021
12:03	0.021
12:04	0.021
12:05	0.022
12:06	0.02
12:07	0.019
12:08	0.019
12:09	0.021
12:10	0.02
12:11	0.02
12:12	0.022
12:13	0.019
12:14	0.019
12:15	0.019
12:16	0.021
12:17	0.021
12:18	0.021
12:19	0.022
12:20	0.022
12:21	0.021
12:22	0.021
12:23	0.022
12:24	0.025
12:25	0.027
12:26	0.024
12:27	0.023
12:28	0.022
12:29	0.022
12:30	0.022
12:31	0.025
12:32	0.023
12:33	0.023
12:34	0.024
12:35	0.023
12:36	0.024
12:37	0.025
12:38	0.03

12:39	0.025
12:40	0.024
12:41	0.024
12:42	0.026
12:43	0.024
12:44	0.025
12:45	0.025
12:46	0.028
12:47	0.028
12:48	0.025
12:49	0.028
12:50	0.026
12:51	0.025
12:52	0.024
12:53	0.024
12:54	0.025
12:55	0.026
12:56	0.024
12:57	0.024
12:58	0.024
12:59	0.025
13:00	0.025
13:01	0.025
13:02	0.025
13:03	0.025
13:04	0.027
13:05	0.027
13:06	0.026
13:07	0.028
13:08	0.026
13:09	0.027
13:10	0.029
13:11	0.027
13:12	0.026
13:13	0.027
13:14	0.026
13:15	0.028
13:16	0.026
13:17	0.027
13:18	0.027
13:19	0.027
13:20	0.026
13:21	0.03
13:22	0.027
13:23	0.025
13:24	0.024
13:25	0.024

13:26	0.023
13:27	0.025
13:28	0.025
13:29	0.024
13:30	0.023
13:31	0.024
13:32	0.025
13:33	0.025
13:34	0.025
13:35	0.026
13:36	0.025
13:37	0.024
13:38	0.023
13:39	0.024
13:40	0.028
13:41	0.025
13:42	0.028
13:43	0.035
13:44	0.026
13:45	0.034
13:46	0.045
13:47	0.026
13:48	0.029
13:49	0.03
13:50	0.028
13:51	0.03
13:52	0.029
13:53	0.027
13:54	0.027
13:55	0.028
13:56	0.031
13:57	0.027
13:58	0.076
13:59	0.031
14:00	0.026
14:01	0.025
14:02	0.025
14:03	0.026
14:04	0.026
14:05	0.026
14:06	0.026
14:07	0.027
14:08	0.036
14:09	0.029
14:10	0.027
14:11	0.028
14:12	0.027

14:13	0.024
14:14	0.024
14:15	0.024
14:16	0.023
14:17	0.023
14:18	0.021
14:19	0.02
14:20	0.021
14:21	0.02
14:22	0.02
14:23	0.022
14:24	0.021
14:25	0.023
14:26	0.023
14:27	0.024
14:28	0.025
14:29	0.025
14:30	0.023
14:31	0.023
14:32	0.026
14:33	0.022
14:34	0.022
14:35	0.023
14:36	0.026
14:37	0.039
14:38	0.029
14:39	0.026
14:40	0.028
14:41	0.024
14:42	0.02
14:43	0.021
14:44	0.022
14:45	0.024
14:46	0.022
14:47	0.023
14:48	0.025
14:49	0.025
14:50	0.022
14:51	0.021
14:52	0.024
14:53	0.04
14:54	0.023
14:55	0.028
14:56	0.021
14:57	0.022
14:58	0.023
14:59	0.021

15:00	0.022
15:01	0.022
15:02	0.021
15:03	0.021
15:04	0.022
15:05	0.022
15:06	0.02
15:07	0.023
15:08	0.025
15:09	0.023
15:10	0.023
15:11	0.022
15:12	0.019
15:13	0.021
15:14	0.021
15:15	0.02
15:16	0.026
15:17	0.026
15:18	0.022
15:19	0.021
15:20	0.019
15:21	0.021
15:22	0.021
15:23	0.027
15:24	0.02
15:25	0.023
15:26	0.02
15:27	0.021
15:28	0.021
15:29	0.023
15:30	0.023
15:31	0.025
15:32	0.038
15:33	0.021
15:34	0.039
15:35	0.033
15:36	0.028
15:37	0.073
15:38	0.045
15:39	0.025
15:40	0.051
15:41	0.026
15:42	0.02
15:43	0.02
15:44	0.021
15:45	0.02
15:46	0.019

15:47	0.019
15:48	0.038
15:49	0.021
15:50	0.02
15:51	0.019
15:52	0.019
15:53	0.019
15:54	0.02
15:55	0.019
15:56	0.019
15:57	0.049
15:58	0.034
15:59	0.028
16:00	0.022
16:01	0.018
16:02	0.018
16:03	0.018
16:04	0.018
16:05	0.017
16:06	0.022
16:07	0.02
16:08	0.021
16:09	0.024
16:10	0.059
16:11	0.024
16:12	0.025
16:13	0.019
16:14	0.018
16:15	0.018
16:16	0.018
16:17	0.019
16:18	0.02
16:19	0.02
16:20	0.021
16:21	0.018
16:22	0.018
16:23	0.019
16:24	0.019
16:25	0.019
16:26	0.02
16:27	0.02
16:28	0.018
16:29	0.019
16:30	0.019
16:31	0.02
16:32	0.019
16:33	0.019

16:34	0.019
16:35	0.018
16:36	0.019
16:37	0.019
16:38	0.017
16:39	0.017
16:40	0.017
16:41	0.017
16:42	0.019
16:43	0.019
16:44	0.017
16:45	0.022
16:46	0.021
16:47	0.022
16:48	0.022
16:49	0.018
16:50	0.017
16:51	0.016
16:52	0.017
16:53	0.019
16:54	0.02
16:55	0.022
16:56	0.019
16:57	0.02
16:58	0.02
16:59	0.019
17:00	0.02
17:01	0.021
17:02	0.019
17:03	0.021
17:04	0.018
17:05	0.02
17:06	0.019
17:07	0.019
17:08	0.019
17:09	0.017
17:10	0.017
17:11	0.017
17:12	0.016
17:13	0.016
17:14	0.016
17:15	0.016
17:16	0.017
17:17	0.017
17:18	0.017
17:19	0.016
17:20	0.015

17:21	0.015
17:22	0.015
17:23	0.016
17:24	0.015

592-600871	2/26/2024	6:47	Readings	PID	SC23030408A8	Normal	0
592-600871	2/26/2024	6:46	Readings	PID	SC23030408A8	Normal	0
592-600871	2/26/2024	6:45	Readings	PID	SC23030408A8	Normal	0
592-600871	2/26/2024	6:44	CONFIG	PID	SC23030408A8		