



DAILY STATUS REPORT

Prepared By:

Ryan Just

WEATHER	Snow	Rain		Overcast	X	Partly Cloudy	Bright Sun	Wind
TEMP.	< 32	32-50	x	50-70		70-85	>85	W- 5 MPH

IEC Project No:	13928	NYSDEC BCP Site No:	C224367	Date: 03/07/24
Project:	251 Douglass Street, Brooklyn, NY			

<p>Consultant: Impact Environmental Engineering and Geology, PLLC (IEEG)</p> <p>Time On: 06:30 Time Out: 18:30</p>	<p>Personnel On Site: IEEG (Environmental) –Ryan Just Broadway Construction Group - Tom Caporale Cascade WSP- Charlie Lambert</p> <p>Equipment On Site: Minirae 3000 PID, DustTrak II</p>
---	---

Scope of Work: Continue ISS column installation along the southern portion of the Site, along Douglass Street

- Site Activities:**
- Deploy three (3) CAMPs at the Start of the work day;
 - BCG received a fuel delivery for equipment on site;
 - Cascade received one delivery of slag;
 - Cascade prepared the Site for trucking tomorrow (03/08/2024) by relocating mats and stockpiling swell on poly sheeting.
 - Cascade drilled **Column 20**, column spec below:
 - The column was 8’ diameter and drilled 51’ deep from Site grade;
 - The column consisted of a total of 21 batches;
 - Cascade drilled **Column 22**, column spec below:
 - The column was 8’ diameter and drilled 51’ deep from Site grade;
 - The column consisted of a total of 24 batches;
 - The column is directly adjacent to column 23 from the pilot testing, due to overlap with this column penetration speed was reduced.
 - The column was sampled at a depth of 22.3’ from Site grade.
 - Cascade drilled **Column 49**, column spec below:
 - The column was 8’ diameter and drilled 36’ deep from Site grade;
 - The column consisted of a total of 15 batches;

*Site grade refers to the elevation of the site after the 4’ excavation was completed.

Community Air Monitoring Program (CAMP) - CAMP action level for dust (0.1 mg/m³) and VOCs (5 ppm)

- PID remained at nominal levels throughout the day.
- No sustained dust exceedances were observed over a 1-min period during monitoring;
- Startup Upwind Conditions – PID = _0.6_ ppm @ 6:31 , Dust = _0.004_ mg/m³ @ 06:45
- High Conditions (Upwind) – PID = _3.5_ ppm @ 13:51, Dust = _0.024_ mg/m³ @ 17:00
- High Conditions (Downwind 1) – PID = _3.3_ ppm @ 08:30, Dust = _0.131_ mg/m³ @ 08:39
- High Conditions (Downwind 2) – PID = _1.1_ ppm @ 16:19, Dust = _0.050_ mg/m³ @ 12:40
- ATMOS foam was sprayed throughout the day during drilling and on all swell material.
- It should be noted that the Upwind CAMP unit was replaced and the new DustTrak unit delivered by PINE was automatically preset for a 15-minute logging interval. The settings were changed at the end of the day and will report in a 1-minute interval starting tomorrow 03/08/2024.

Notable Site Conditions:

- None

Planned for the Next Day/Week:

- Offsite transportation and disposal will be performed for two (2) loads of mixed masonry originating from WC-1 and ten (loads) of Swell Stockpile – 030124.
- ECA will be onsite for drill rig maintenance.



PHOTO LOG

251 DOUGLASS STREET, BROOKLYN, NY



Photo 1-

Representative photo of drilling an ISS column.



Photo 2-

Representative photo of swell from ISS sprayed with ATMOs foam.



Photo 3-
Additional
representative
photo of drilling
ISS column.



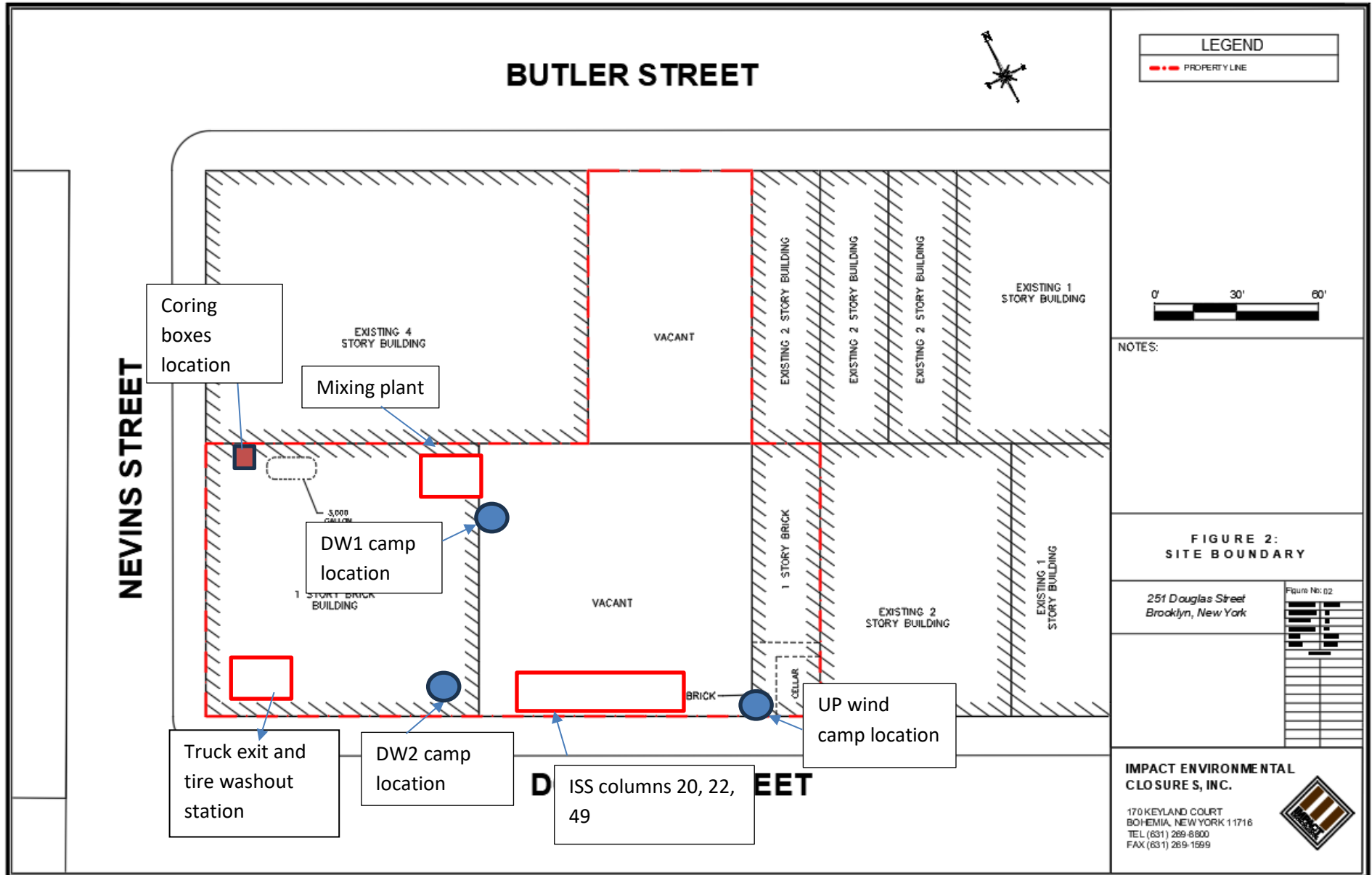
Photo 4-
Representative
photo of the
work area
covered with
ATMOS foam at
the end of the
days activities.



SITE PLANS

251 DOUGLASS STREET, BROOKLYN, NY








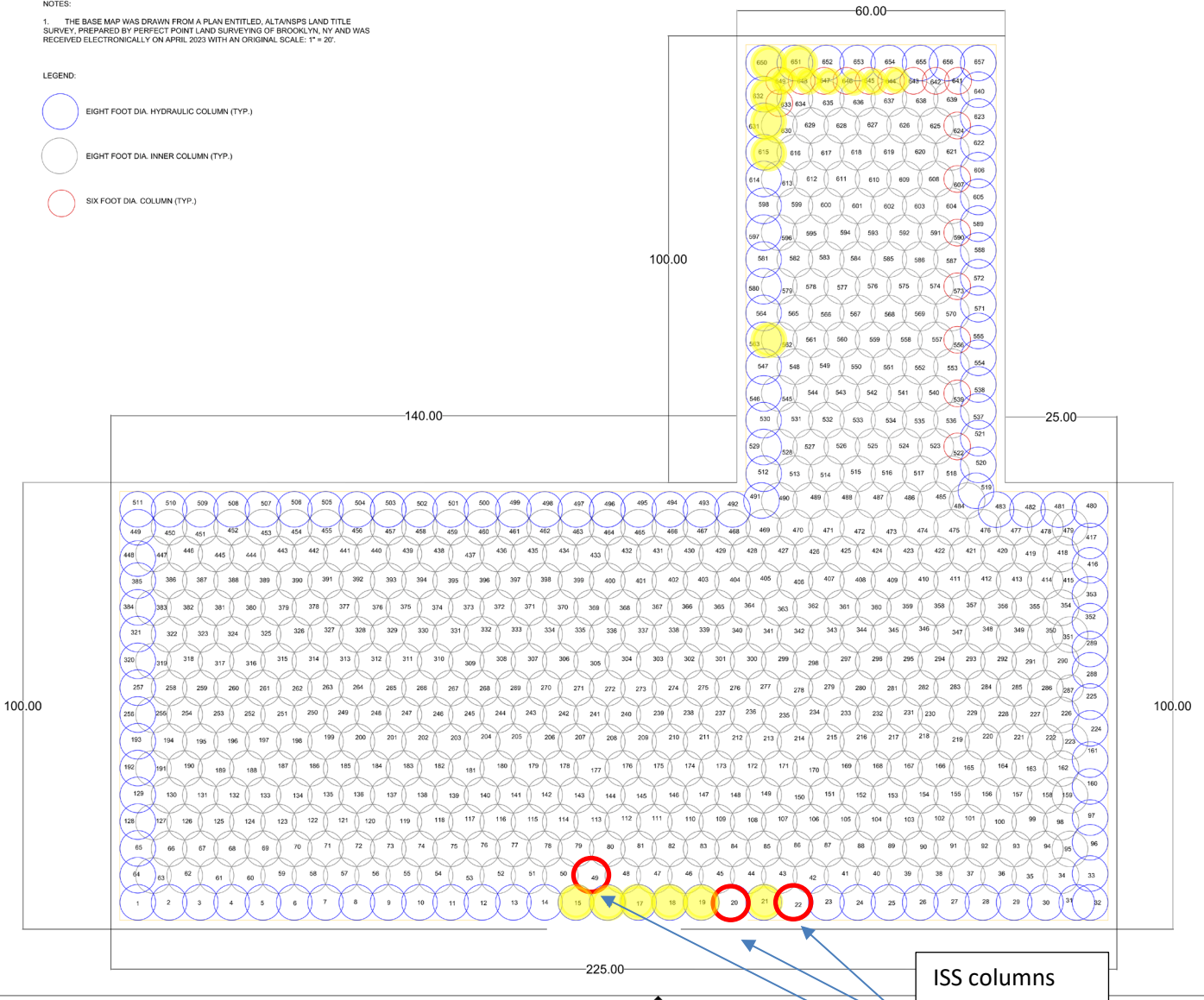


NOTES:

1. THE BASE MAP WAS DRAWN FROM A PLAN ENTITLED, ALTANSPS LAND TITLE SURVEY, PREPARED BY PERFECT POINT LAND SURVEYING OF BROOKLYN, NY AND WAS RECEIVED ELECTRONICALLY ON APRIL 2023 WITH AN ORIGINAL SCALE: 1" = 20'.

LEGEND:

-  EIGHT FOOT DIA. HYDRAULIC COLUMN (TYP.)
-  EIGHT FOOT DIA. INNER COLUMN (TYP.)
-  SIX FOOT DIA. COLUMN (TYP.)



ISS columns
20, 22, 49
completed on
3/7/2024

251 DOUGLAS STREET BROOKLYN, NEW YORK		CASCADE		SUBURBITE FILE B UTILITY B		SUBURBITE FILE B UTILITY B		SUBURBITE FILE B UTILITY B	
FIGURE 4: ISS COLUMN LAYOUT		DATE		DATE		DATE		DATE	
NO.	DATE	BY	CHK	DATE	BY	CHK	DATE	BY	CHK
ISS		ISS		ISS		ISS		ISS	



SCM Report

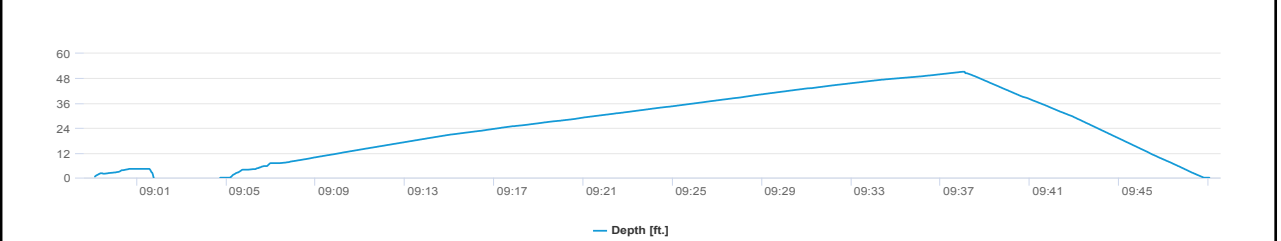
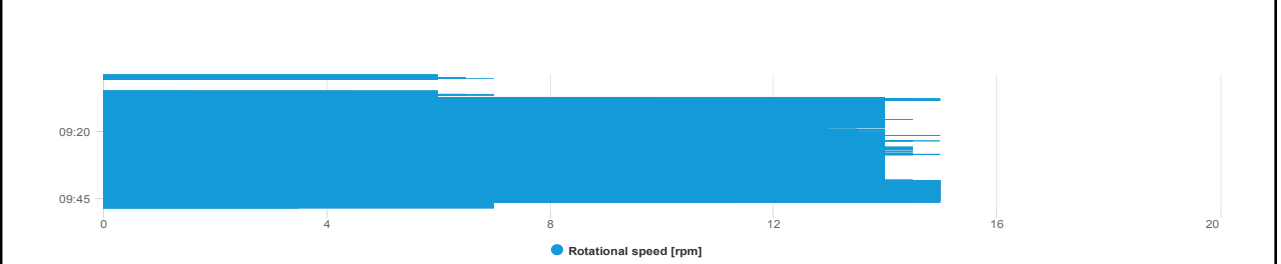
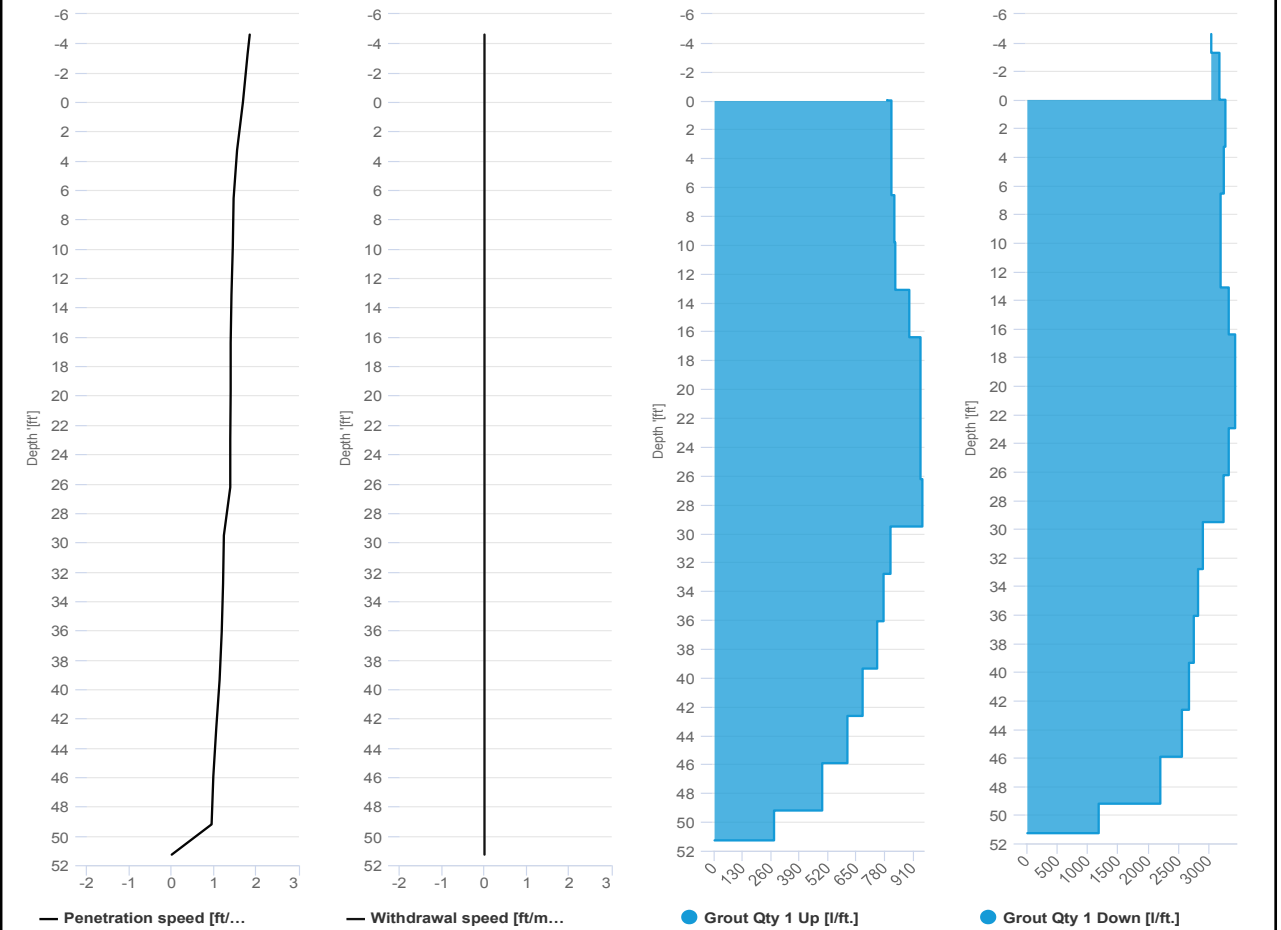


Project name: Douglass Street BCG ISS Element name: c20a
 Project number

Start date: 03/07/2024

Drilling rig: BG36H_5717

Details		Start time	08:59 AM
Max. depth	51.27 ft.	End Date	03/07/2024
Volume/m 1	34.25 ft³	End time	09:49 AM
		Production duration	00:49:57
		Final depth time	09:38 AM
		Total suspension quantity	



SCM Report

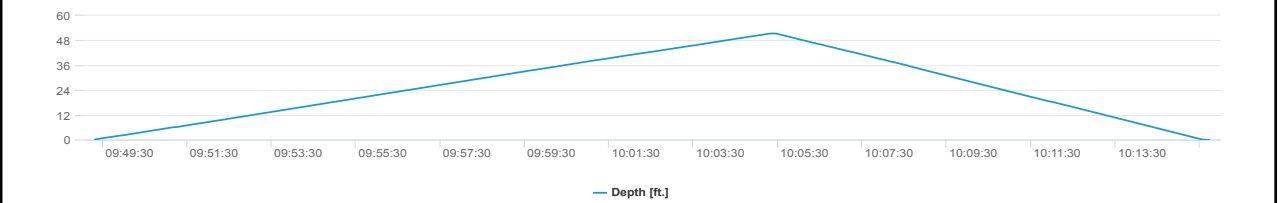
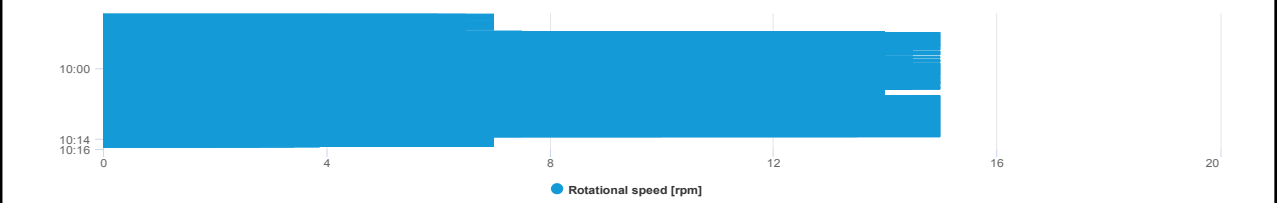
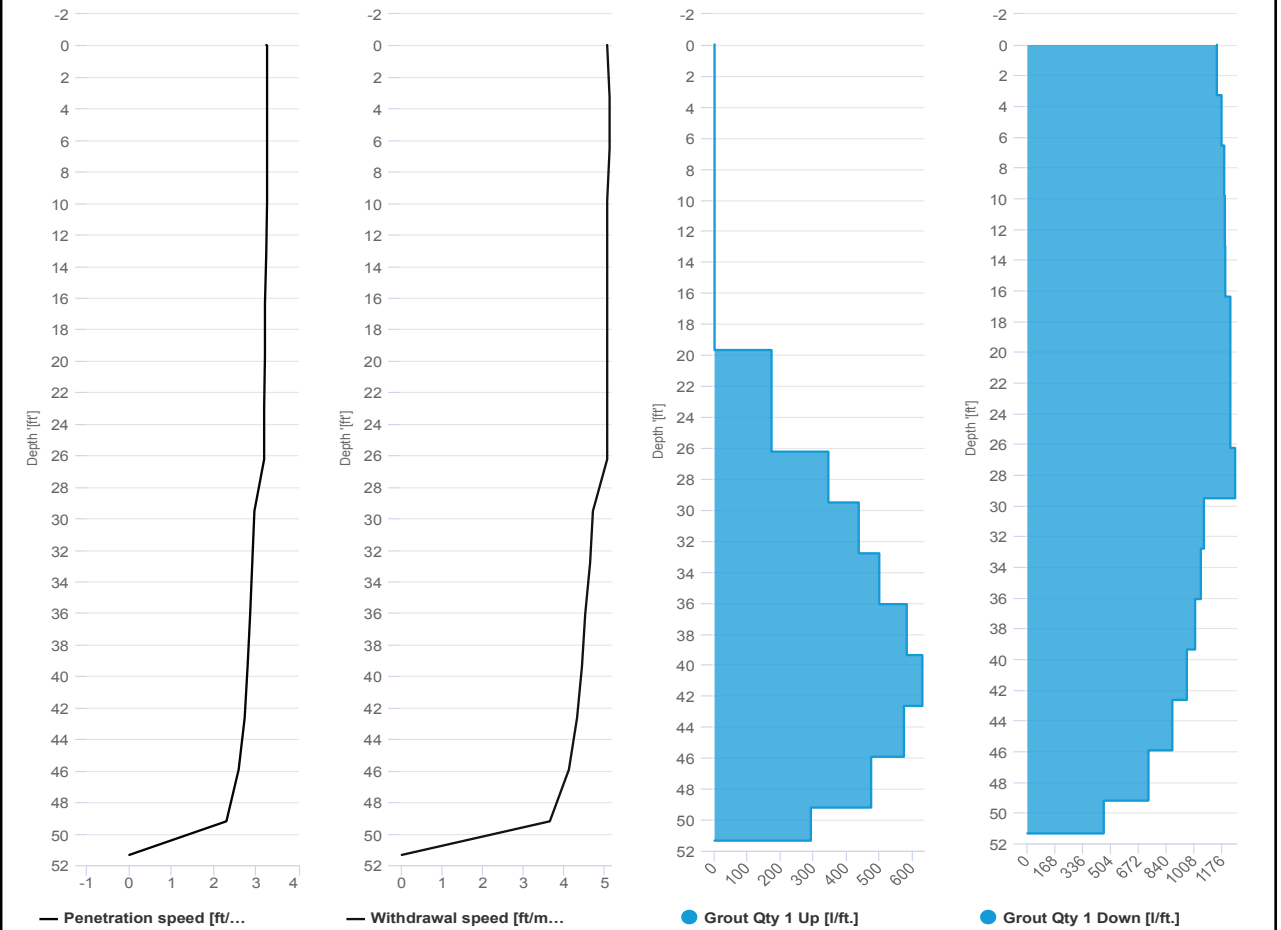


Project name: Douglass Street BCG ISS Element name: c20b
 Project number

Start date: 03/07/2024

Drilling rig: BG36H_5717

Details		Start time: 09:49 AM	
Max. depth: 51.34 ft.		End Date: 03/07/2024	
Volume/m 1: 11.65 ft ³		End time: 10:15 AM	
		Production duration: 00:26:26	
		Final depth time: 10:05 AM	
		Total suspension quantity:	



SCM Report

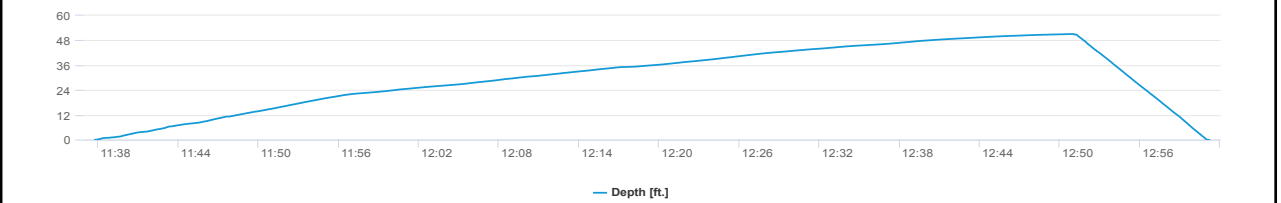
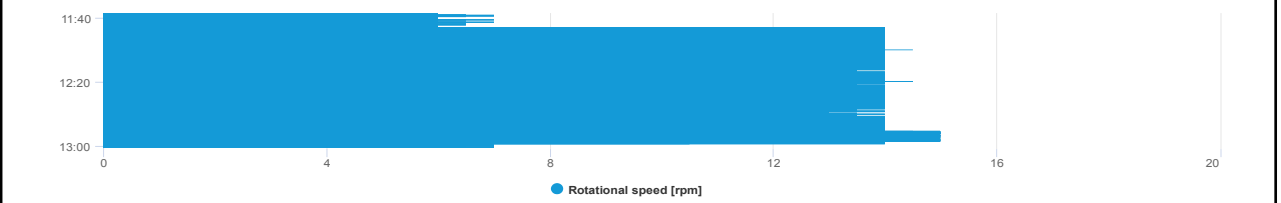
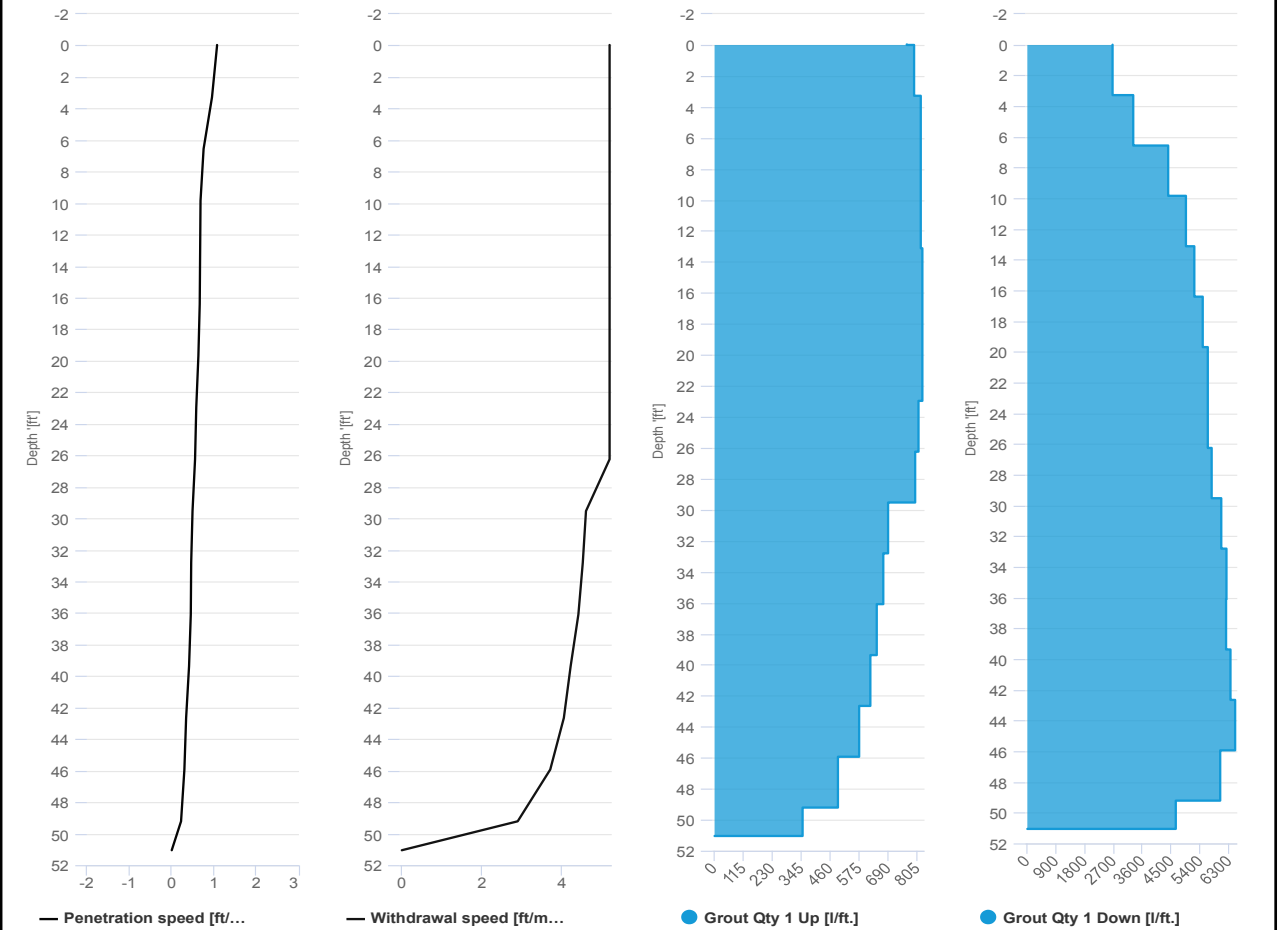


Project name: Douglass Street BCG ISS Element name: c22a
 Project number

Start date: 03/07/2024

Drilling rig: BG36H_5717

Details		Start time: 11:37 AM	
Max. depth: 51.04 ft.		End Date: 03/07/2024	
Volume/m 1: 46.96 ft³		End time: 01:01 PM	
		Production duration: 01:23:28	
		Final depth time: 12:50 PM	
		Total suspension quantity:	



SCM Report

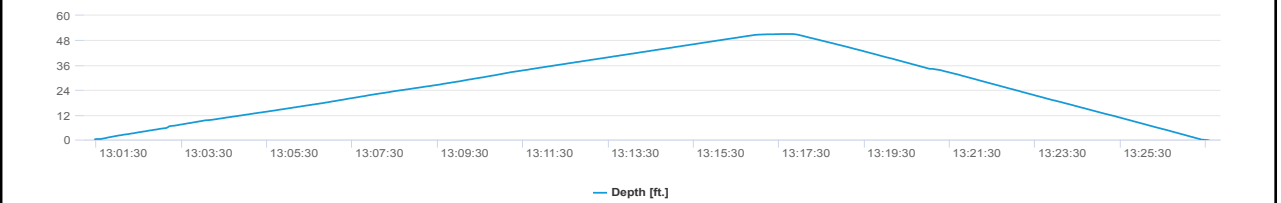
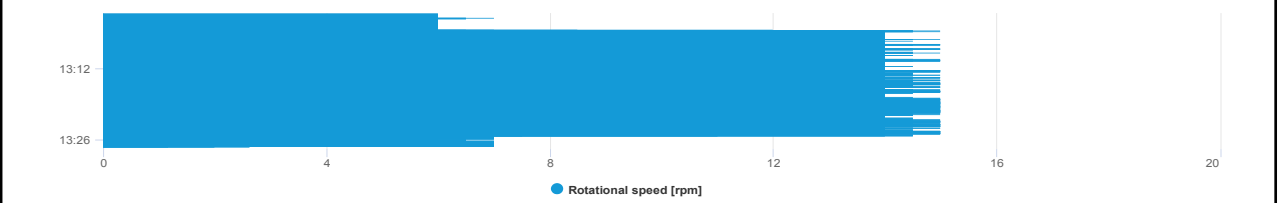
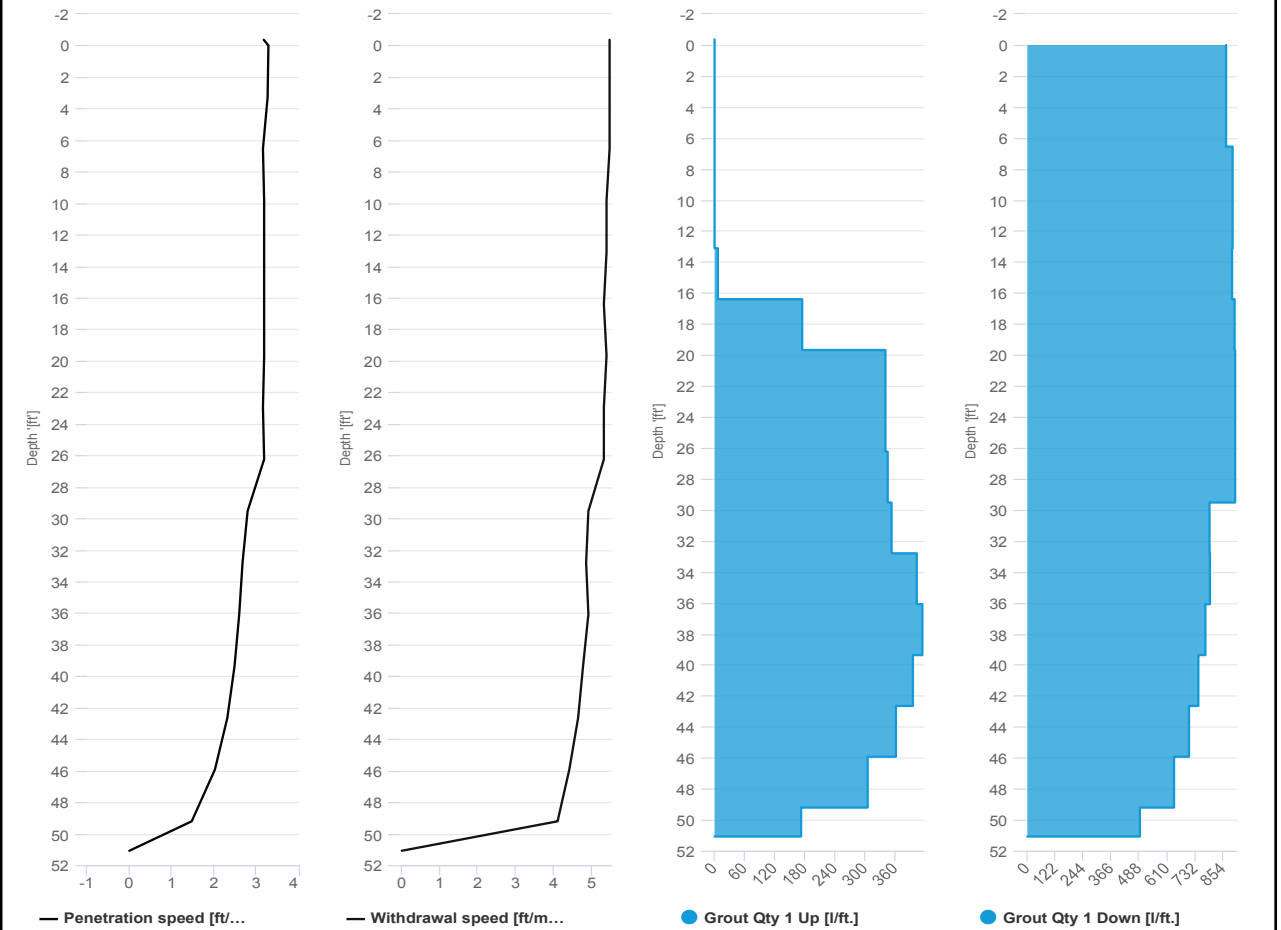


Project name: Douglass Street BCG ISS Element name: c22b
 Project number

Start date: 03/07/2024

Drilling rig: BG36H_5717

Details		Start time: 01:01 PM	
Max. depth: 51.08 ft.		End Date: 03/07/2024	
Volume/m 1: 9.18 ft³		End time: 01:27 PM	
		Production duration: 00:26:08	
		Final depth time: 01:17 PM	
		Total suspension quantity:	



SCM Report

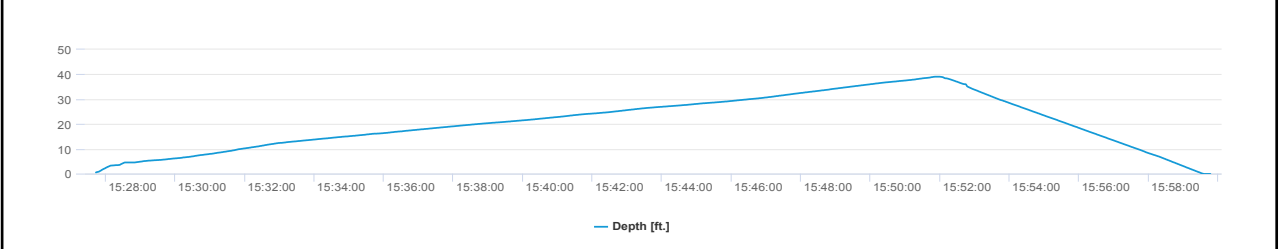
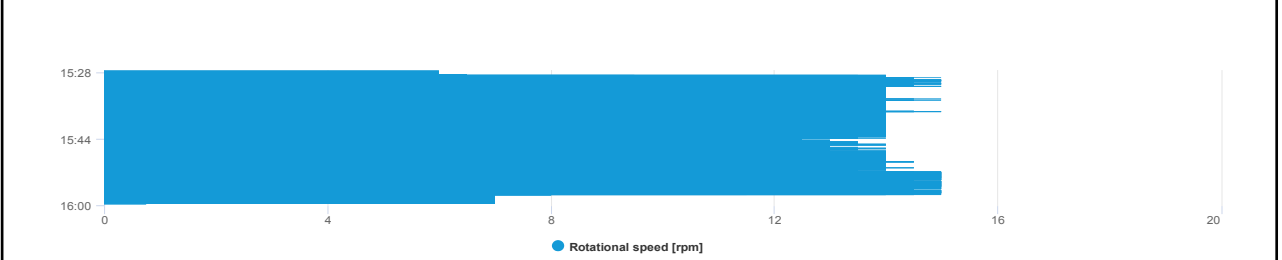
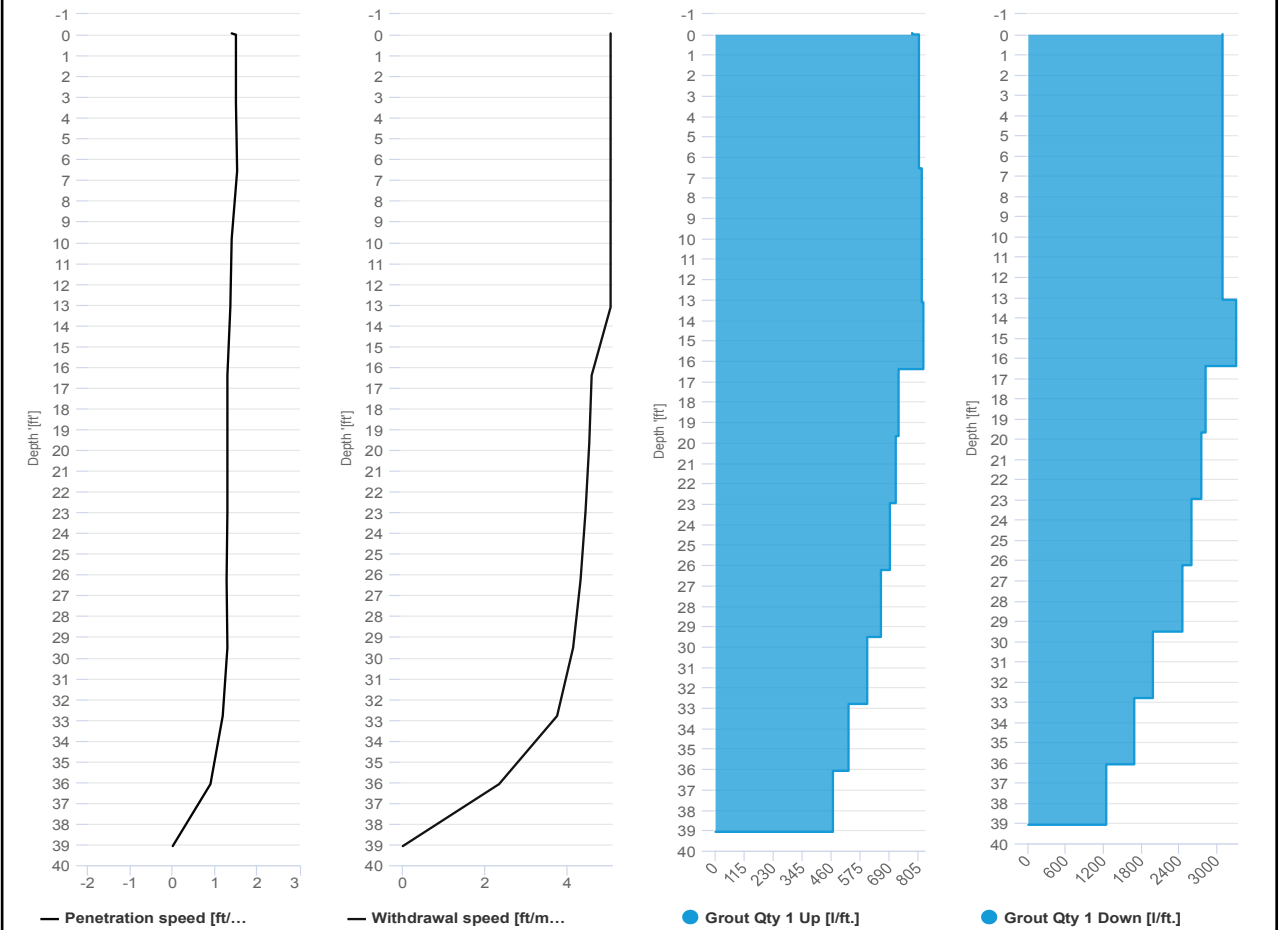


Project name: Douglass Street BCG ISS Element name: c49a
 Project number

Start date: 03/07/2024

Drilling rig: BG36H_5717

Details		Start time: 03:27 PM	
Max. depth: 39.07 ft.		End Date: 03/07/2024	
Volume/m 1: 28.6 ft³		End time: 03:59 PM	
		Production duration: 00:32:05	
		Final depth time: 03:51 PM	
		Total suspension quantity	



SCM Report

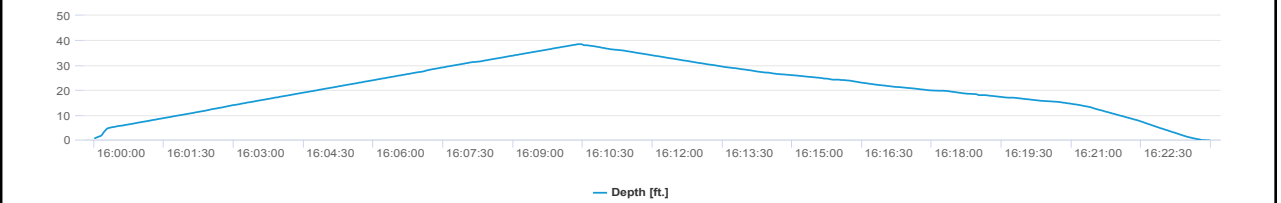
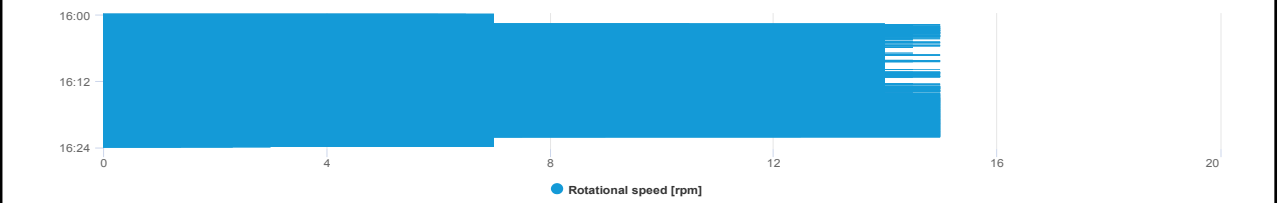
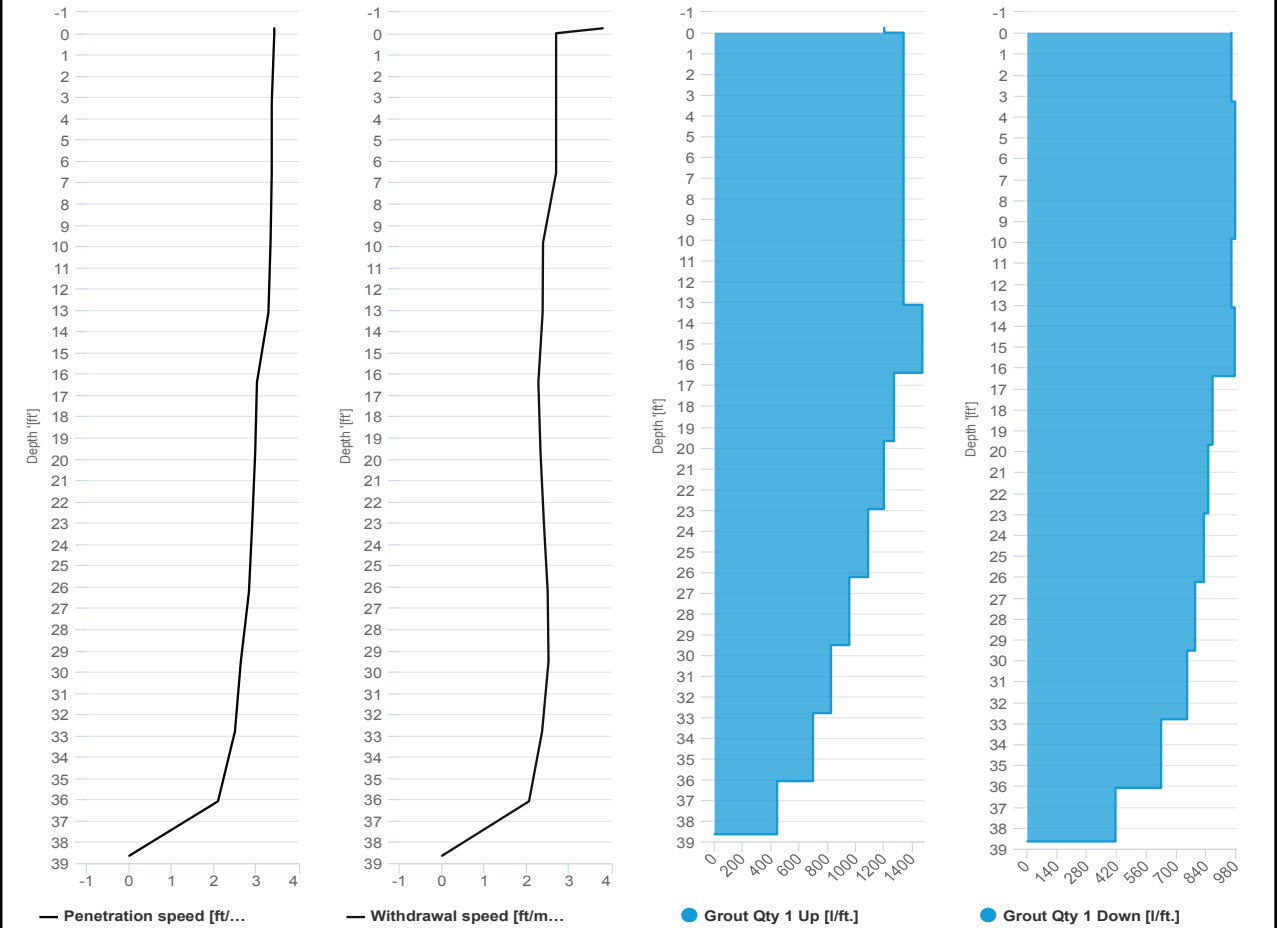


Project name: Douglass Street BCG ISS Element name: c49b
 Project number

Start date: 03/07/2024

Drilling rig: BG36H_5717

Details		Start time	04:00 PM
Max. depth	38.64 ft.	End Date	03/07/2024
Volume/m 1	16.59 ft³	End time	04:23 PM
		Production duration	00:23:58
		Final depth time	04:10 PM
		Total suspension quantity	





IMPACT ENVIRONMENTAL

170 Keyland Court | Bohemia | NY | 11716 | 631.269.8800

welcome to solid ground...

www.impactenvironmental.com

UPWIND CAMP READINGS

251 DOUGLASS STREET, BROOKLYN, NY

Instrument Name	DustTrak II
Model Number	8530
Serial Number	8530123704
Firmware Version	3.1
Calibration Date	8/18/2023
Test Name	MANUAL_008
Test Start Time	6:29:52 AM
Test Start Date	3/7/2024
Test Length [D:H:M]	0:11:15
Test Interval [M:S]	15:00
Mass Average [mg/m3]	0.006
Mass Minimum [mg/m3]	0.002
Mass Maximum [mg/m3]	0.024
Mass TWA [mg/m3]	0.005
Photometric User Cal	1
Flow User Cal	0
Errors	
Number of Samples	45

Elapsed Time [s]	Mass [mg/m3]	Alarms	Errors
6:45	0.004		
7:00	0.004		
7:15	0.002		
7:30	0.004		
7:45	0.004		
8:00	0.003		
8:15	0.005		
8:30	0.002		
8:45	0.002		
9:00	0.004		
9:15	0.006		
9:30	0.006		
9:45	0.004		
10:00	0.002		
10:15	0.003		
10:30	0.002		
10:45	0.004		
11:00	0.004		
11:15	0.003		
11:30	0.003		
11:45	0.008		
12:00	0.006		
12:15	0.012		
12:30	0.008		
12:45	0.012		
13:00	0.006		
13:15	0.011		

13:30	0.006
13:45	0.007
14:00	0.006
14:15	0.005
14:30	0.005
14:45	0.005
15:00	0.005
15:15	0.005
15:30	0.014
15:45	0.011
16:00	0.009
16:15	0.006
16:30	0.007
16:45	0.018
17:00	0.024
17:15	0.006
17:30	0.005
17:45	0.006

592-601274	3/7/2024 17:41	Readings	PID	SC23030921B3	Normal	1
592-601274	3/7/2024 17:42	Readings	PID	SC23030921B3	Normal	0.9
592-601274	3/7/2024 17:43	Readings	PID	SC23030921B3	Normal	1.9
592-601274	3/7/2024 17:44	Readings	PID	SC23030921B3	Normal	1.3
592-601274	3/7/2024 17:45	Readings	PID	SC23030921B3	Normal	1.2
592-601274	3/7/2024 17:46	Readings	PID	SC23030921B3	Normal	1.4
592-601274	3/7/2024 17:47	Readings	PID	SC23030921B3	Normal	1.3
592-601274	3/7/2024 17:48	Readings	PID	SC23030921B3	Normal	1.1
592-601274	3/7/2024 17:49	Readings	PID	SC23030921B3	Normal	1
592-601274	3/7/2024 17:50	Readings	PID	SC23030921B3	Normal	1.1
592-601274	3/7/2024 17:51	Readings	PID	SC23030921B3	Normal	1.1
592-601274	3/7/2024 17:52	Readings	PID	SC23030921B3	Normal	0.9
592-601274	3/7/2024 17:53	Readings	PID	SC23030921B3	Normal	0.9
592-601274	3/7/2024 17:54	Readings	PID	SC23030921B3	Normal	1.1
592-601274	3/7/2024 17:55	Readings	PID	SC23030921B3	Normal	0.9
592-601274	3/7/2024 17:56	Readings	PID	SC23030921B3	Normal	0.9
592-601274	3/7/2024 17:57	Readings	PID	SC23030921B3	Normal	0.9
592-601274	3/7/2024 17:58	Readings	PID	SC23030921B3	Normal	0.9
592-601274	3/7/2024 17:59	Readings	PID	SC23030921B3	Normal	0.9
592-601274	3/7/2024 18:00	Readings	PID	SC23030921B3	Normal	1
592-601274	3/7/2024 18:01	Readings	PID	SC23030921B3	Normal	0.9
592-601274	3/7/2024 18:02	Readings	PID	SC23030921B3	Normal	0.8

DOWNWIND CAMP READINGS

251 DOUGLASS STREET, BROOKLYN, NY



Instrument Name	DustTrak DRX
Model Number	8533
Serial Number	8533181207
Firmware Version	3.1
Calibration Date	6/1/2023
Test Name	MANUAL_020
Test Start Time	6:53:12 AM
Test Start Date	3/7/2024
Test Length [D:H:M]	0:10:56
Test Interval [M:S]	1:00
PM4 TWA [mg/m3]	0.011
PM10 Average [mg/m3]	0.012
PM10 Minimum [mg/m3]	0
PM10 Maximum [mg/m3]	0.131
PM10 TWA [mg/m3]	0.012
Photometric User Cal	1
Size Correction User Cal	1
Flow User Cal	0
Errors	
Number of Samples	651

Elapsed Time [s]	PM10 [mg/m3]	Alarms	Errors
6:53	0.011		
6:54	0.009		
6:55	0.015		
6:56	0.011		
6:57	0.01		
6:58	0.01		
6:59	0.01		
7:00	0.01		
7:01	0.012		
7:02	0.012		
7:03	0.014		
7:04	0.018		
7:05	0.015		
7:06	0.009		
7:07	0.013		
7:08	0.011		
7:09	0.018		
7:10	0.02		
7:11	0.015		
7:12	0.011		
7:13	0.009		
7:14	0.01		
7:15	0.01		
7:16	0.013		
7:17	0.01		

7:18	0.012
7:19	0.01
7:20	0.012
7:21	0.013
7:22	0.01
7:23	0.01
7:24	0.009
7:25	0.01
7:26	0.009
7:27	0.011
7:28	0.01
7:29	0.01
7:30	0.01
7:31	0.008
7:32	0.008
7:33	0.009
7:34	0.009
7:35	0.01
7:36	0.009
7:37	0.008
7:38	0.01
7:39	0.009
7:40	0.009
7:41	0.011
7:42	0.009
7:43	0.009
7:44	0.01
7:45	0.008
7:46	0.009
7:47	0.011
7:48	0.012
7:49	0.009
7:50	0.009
7:51	0.013
7:52	0.012
7:53	0.014
7:54	0.013
7:55	0.014
7:56	0.012
7:57	0.011
7:58	0.013
7:59	0.015
8:00	0.01
8:01	0.01
8:02	0.009
8:03	0.01
8:04	0.009

8:05	0.009
8:06	0.009
8:07	0.009
8:08	0.008
8:09	0.008
8:10	0.008
8:11	0.008
8:12	0.007
8:13	0.008
8:14	0.008
8:15	0.008
8:16	0.007
8:17	0.008
8:18	0.008
8:19	0.01
8:20	0.012
8:21	0.01
8:22	0.011
8:23	0.01
8:24	0.009
8:25	0.008
8:26	0.009
8:27	0.01
8:28	0.008
8:29	0.009
8:30	0.009
8:31	0.01
8:32	0.013
8:33	0.012
8:34	0.016
8:35	0.014
8:36	0.009
8:37	0.009
8:38	0.008
8:39	0.131
8:40	0.012
8:41	0.011
8:42	0.008
8:43	0.009
8:44	0.007
8:45	0.008
8:46	0.007
8:47	0.008
8:48	0.01
8:49	0.009
8:50	0.01
8:51	0.011

8:52	0.009
8:53	0.009
8:54	0.009
8:55	0.009
8:56	0.009
8:57	0.009
8:58	0.01
8:59	0.008
9:00	0.008
9:01	0.009
9:02	0.01
9:03	0.01
9:04	0.009
9:05	0.009
9:06	0.011
9:07	0.012
9:08	0.009
9:09	0.009
9:10	0.017
9:11	0.01
9:12	0.012
9:13	0.009
9:14	0.009
9:15	0.009
9:16	0.011
9:17	0.01
9:18	0.009
9:19	0.009
9:20	0.009
9:21	0.009
9:22	0.009
9:23	0.009
9:24	0.009
9:25	0.009
9:26	0.01
9:27	0.009
9:28	0.01
9:29	0.009
9:30	0.01
9:31	0.01
9:32	0.008
9:33	0.012
9:34	0.008
9:35	0.011
9:36	0.01
9:37	0.011
9:38	0.01

9:39	0.01
9:40	0.009
9:41	0.014
9:42	0.013
9:43	0.014
9:44	0.02
9:45	0.011
9:46	0.009
9:47	0.009
9:48	0.01
9:49	0.009
9:50	0.009
9:51	0.013
9:52	0.009
9:53	0.009
9:54	0.012
9:55	0.01
9:56	0.012
9:57	0.012
9:58	0.008
9:59	0.008
10:00	0.008
10:01	0.012
10:02	0.008
10:03	0.008
10:04	0.008
10:05	0.008
10:06	0.007
10:07	0.009
10:08	0.009
10:09	0.008
10:10	0.008
10:11	0.008
10:12	0.008
10:13	0.008
10:14	0.008
10:15	0.008
10:16	0.008
10:17	0.01
10:18	0.008
10:19	0.008
10:20	0.008
10:21	0.008
10:22	0.008
10:23	0.018
10:24	0.009
10:25	0.009

10:26	0.009
10:27	0.009
10:28	0.009
10:29	0.009
10:30	0.009
10:31	0.008
10:32	0.008
10:33	0.008
10:34	0.009
10:35	0.009
10:36	0.009
10:37	0.009
10:38	0.009
10:39	0.009
10:40	0.008
10:41	0.008
10:42	0.009
10:43	0.009
10:44	0.009
10:45	0.008
10:46	0.009
10:47	0.008
10:48	0.009
10:49	0.009
10:50	0.009
10:51	0.009
10:52	0.01
10:53	0.008
10:54	0.009
10:55	0.009
10:56	0.009
10:57	0.009
10:58	0.009
10:59	0.009
11:00	0.009
11:01	0.009
11:02	0.008
11:03	0.008
11:04	0.008
11:05	0.009
11:06	0.009
11:07	0.009
11:08	0.009
11:09	0.01
11:10	0.009
11:11	0.012
11:12	0.015

11:13	0.026
11:14	0.011
11:15	0.009
11:16	0.009
11:17	0.009
11:18	0.01
11:19	0.008
11:20	0.009
11:21	0.01
11:22	0.011
11:23	0.014
11:24	0.012
11:25	0.012
11:26	0.012
11:27	0.01
11:28	0.013
11:29	0.087
11:30	0.023
11:31	0.014
11:32	0.012
11:33	0.011
11:34	0.009
11:35	0.009
11:36	0.009
11:37	0.009
11:38	0.01
11:39	0.009
11:40	0.009
11:41	0.01
11:42	0.01
11:43	0.009
11:44	0.009
11:45	0.013
11:46	0.009
11:47	0.01
11:48	0.011
11:49	0.01
11:50	0.01
11:51	0.01
11:52	0.01
11:53	0.011
11:54	0.012
11:55	0.011
11:56	0.01
11:57	0.01
11:58	0.01
11:59	0.011

12:00	0.011
12:01	0.01
12:02	0.01
12:03	0.01
12:04	0.01
12:05	0.011
12:06	0.013
12:07	0.011
12:08	0.01
12:09	0.011
12:10	0.011
12:11	0.01
12:12	0.011
12:13	0.012
12:14	0.012
12:15	0.01
12:16	0.011
12:17	0.011
12:18	0.011
12:19	0.01
12:20	0.01
12:21	0.011
12:22	0.011
12:23	0.011
12:24	0.01
12:25	0.01
12:26	0.01
12:27	0.01
12:28	0.01
12:29	0.011
12:30	0.017
12:31	0.034
12:32	0.026
12:33	0.013
12:34	0.011
12:35	0.012
12:36	0.01
12:37	0.01
12:38	0.01
12:39	0.01
12:40	0.011
12:41	0.011
12:42	0.011
12:43	0.011
12:44	0.011
12:45	0.014
12:46	0.012

12:47	0.012
12:48	0.013
12:49	0.011
12:50	0.011
12:51	0.011
12:52	0.011
12:53	0.012
12:54	0.01
12:55	0.01
12:56	0.01
12:57	0.011
12:58	0.01
12:59	0.01
13:00	0.012
13:01	0.011
13:02	0.011
13:03	0.011
13:04	0.011
13:05	0.012
13:06	0.01
13:07	0.011
13:08	0.012
13:09	0.011
13:10	0.011
13:11	0.011
13:12	0.011
13:13	0.011
13:14	0.011
13:15	0.012
13:16	0.012
13:17	0.011
13:18	0.013
13:19	0.012
13:20	0.011
13:21	0.014
13:22	0.015
13:23	0.014
13:24	0.013
13:25	0.014
13:26	0.012
13:27	0.015
13:28	0.014
13:29	0.02
13:30	0.017
13:31	0.018
13:32	0.022
13:33	0.021

13:34	0.022
13:35	0.02
13:36	0.016
13:37	0.016
13:38	0.029
13:39	0.021
13:40	0.016
13:41	0.016
13:42	0.017
13:43	0.019
13:44	0.018
13:45	0.026
13:46	0.015
13:47	0.017
13:48	0.016
13:49	0.015
13:50	0.015
13:51	0.015
13:52	0.014
13:53	0.015
13:54	0.013
13:55	0.012
13:56	0.015
13:57	0.014
13:58	0.02
13:59	0.018
14:00	0.016
14:01	0.019
14:02	0.015
14:03	0.019
14:04	0.017
14:05	0.016
14:06	0.016
14:07	0.014
14:08	0.022
14:09	0.023
14:10	0.018
14:11	0.015
14:12	0.013
14:13	0.013
14:14	0.014
14:15	0.019
14:16	0.018
14:17	0.017
14:18	0.013
14:19	0.013
14:20	0.013

14:21	0.013	
14:22	0.014	
14:23	0.013	
14:24	0.013	
14:25	0.013	
14:26	0.012	
14:27	0.008	Flow Error
14:28	0.005	Flow Error
14:29	0.014	Flow Error
14:30	0.01	Flow Error
14:31	0.008	Flow Error
14:32	0	
14:33	0.012	
14:34	0.011	
14:35	0.011	
14:36	0.012	
14:37	0.013	
14:38	0.012	
14:39	0.012	
14:40	0.012	
14:41	0.012	
14:42	0.012	
14:43	0.012	
14:44	0.013	
14:45	0.012	
14:46	0.012	
14:47	0.012	
14:48	0.013	
14:49	0.012	
14:50	0.011	
14:51	0.012	
14:52	0.013	
14:53	0.012	
14:54	0.013	
14:55	0.012	
14:56	0.013	
14:57	0.013	
14:58	0.013	
14:59	0.012	
15:00	0.013	
15:01	0.016	
15:02	0.013	
15:03	0.013	
15:04	0.013	
15:05	0.012	
15:06	0.013	
15:07	0.011	

15:08	0.012
15:09	0.013
15:10	0.012
15:11	0.012
15:12	0.012
15:13	0.012
15:14	0.013
15:15	0.012
15:16	0.014
15:17	0.012
15:18	0.012
15:19	0.012
15:20	0.012
15:21	0.012
15:22	0.012
15:23	0.012
15:24	0.012
15:25	0.012
15:26	0.012
15:27	0.012
15:28	0.012
15:29	0.012
15:30	0.012
15:31	0.011
15:32	0.012
15:33	0.011
15:34	0.012
15:35	0.02
15:36	0.016
15:37	0.018
15:38	0.02
15:39	0.012
15:40	0.013
15:41	0.012
15:42	0.012
15:43	0.015
15:44	0.012
15:45	0.011
15:46	0.012
15:47	0.013
15:48	0.013
15:49	0.017
15:50	0.014
15:51	0.012
15:52	0.015
15:53	0.015
15:54	0.014

15:55	0.014
15:56	0.013
15:57	0.012
15:58	0.012
15:59	0.014
16:00	0.012
16:01	0.015
16:02	0.015
16:03	0.014
16:04	0.014
16:05	0.012
16:06	0.013
16:07	0.014
16:08	0.013
16:09	0.013
16:10	0.023
16:11	0.013
16:12	0.013
16:13	0.013
16:14	0.016
16:15	0.013
16:16	0.013
16:17	0.014
16:18	0.013
16:19	0.013
16:20	0.014
16:21	0.013
16:22	0.013
16:23	0.012
16:24	0.014
16:25	0.014
16:26	0.013
16:27	0.013
16:28	0.015
16:29	0.013
16:30	0.013
16:31	0.016
16:32	0.018
16:33	0.015
16:34	0.013
16:35	0.013
16:36	0.013
16:37	0.014
16:38	0.013
16:39	0.013
16:40	0.012
16:41	0.016

16:42	0.024
16:43	0.025
16:44	0.015
16:45	0.022
16:46	0.041
16:47	0.02
16:48	0.012
16:49	0.014
16:50	0.013
16:51	0.012
16:52	0.012
16:53	0.014
16:54	0.015
16:55	0.031
16:56	0.03
16:57	0.022
16:58	0.014
16:59	0.013
17:00	0.012
17:01	0.012
17:02	0.012
17:03	0.012
17:04	0.012
17:05	0.012
17:06	0.016
17:07	0.012
17:08	0.012
17:09	0.012
17:10	0.014
17:11	0.013
17:12	0.014
17:13	0.022
17:14	0.012
17:15	0.012
17:16	0.013
17:17	0.013
17:18	0.014
17:19	0.012
17:20	0.016
17:21	0.012
17:22	0.012
17:23	0.013
17:24	0.012
17:25	0.012
17:26	0.012
17:27	0.012
17:28	0.012

17:29	0.011
17:30	0.012
17:31	0.01
17:32	0.008
17:33	0.008
17:34	0.008
17:35	0.007
17:36	0.007
17:37	0.009
17:38	0.005
17:39	0.005
17:40	0.006
17:41	0.007
17:42	0.004
17:43	0.004

592-602816	3/7/2024 18:06 Readings	PID	SC23030324C7	Normal	0.7
592-602816	3/7/2024 18:07 Readings	PID	SC23030324C7	Normal	0.6
592-602816	3/7/2024 18:08 Readings	PID	SC23030324C7	Normal	0.6
592-602816	3/7/2024 18:09 Readings	PID	SC23030324C7	Normal	0.6
592-602816	3/7/2024 18:10 Readings	PID	SC23030324C7	Normal	0.7
592-602816	3/7/2024 18:11 Readings	PID	SC23030324C7	Normal	0.5
592-602816	3/7/2024 18:12 Readings	PID	SC23030324C7	Normal	0.4
592-602816	3/7/2024 18:13 Readings	PID	SC23030324C7	Normal	0.4

Instrument Name	DustTrak II
Model Number	8530
Serial Number	8530224601
Firmware Version	3.1
Calibration Date	11/9/2022
Test Name	MANUAL_019
Test Start Time	7:03:03 AM
Test Start Date	3/7/2024
Test Length [D:H:M]	0:10:28
Test Interval [M:S]	1:00
Mass Average [mg/m3]	0.01
Mass Minimum [mg/m3]	0.002
Mass Maximum [mg/m3]	0.05
Mass TWA [mg/m3]	0.009
Photometric User Cal	1
Flow User Cal	0
Errors	
Number of Samples	628

Elapsed Time [s]	Mass [mg/m3]	Alarms	Errors
7:04	0.015		
7:05	0.008		
7:06	0.007		
7:07	0.006		
7:08	0.006		
7:09	0.006		
7:10	0.008		
7:11	0.007		
7:12	0.01		
7:13	0.01		
7:14	0.007		
7:15	0.008		
7:16	0.008		
7:17	0.007		
7:18	0.022		
7:19	0.016		
7:20	0.009		
7:21	0.006		
7:22	0.005		
7:23	0.005		
7:24	0.005		
7:25	0.007		
7:26	0.006		
7:27	0.012		
7:28	0.006		
7:29	0.01		
7:30	0.008		

7:31	0.006
7:32	0.006
7:33	0.005
7:34	0.005
7:35	0.005
7:36	0.006
7:37	0.008
7:38	0.006
7:39	0.005
7:40	0.003
7:41	0.005
7:42	0.005
7:43	0.008
7:44	0.006
7:45	0.004
7:46	0.007
7:47	0.007
7:48	0.006
7:49	0.006
7:50	0.008
7:51	0.005
7:52	0.005
7:53	0.004
7:54	0.003
7:55	0.004
7:56	0.009
7:57	0.006
7:58	0.009
7:59	0.013
8:00	0.009
8:01	0.01
8:02	0.013
8:03	0.01
8:04	0.01
8:05	0.01
8:06	0.006
8:07	0.007
8:08	0.007
8:09	0.007
8:10	0.006
8:11	0.011
8:12	0.008
8:13	0.009
8:14	0.007
8:15	0.014
8:16	0.007
8:17	0.006

8:18	0.005
8:19	0.006
8:20	0.004
8:21	0.005
8:22	0.004
8:23	0.005
8:24	0.004
8:25	0.006
8:26	0.006
8:27	0.011
8:28	0.009
8:29	0.01
8:30	0.009
8:31	0.009
8:32	0.005
8:33	0.006
8:34	0.006
8:35	0.007
8:36	0.011
8:37	0.005
8:38	0.005
8:39	0.005
8:40	0.006
8:41	0.015
8:42	0.014
8:43	0.008
8:44	0.006
8:45	0.008
8:46	0.007
8:47	0.007
8:48	0.01
8:49	0.007
8:50	0.004
8:51	0.005
8:52	0.005
8:53	0.002
8:54	0.002
8:55	0.005
8:56	0.013
8:57	0.008
8:58	0.008
8:59	0.007
9:00	0.005
9:01	0.005
9:02	0.004
9:03	0.005
9:04	0.005

9:05	0.005
9:06	0.006
9:07	0.006
9:08	0.006
9:09	0.006
9:10	0.007
9:11	0.008
9:12	0.008
9:13	0.008
9:14	0.01
9:15	0.01
9:16	0.008
9:17	0.005
9:18	0.006
9:19	0.009
9:20	0.007
9:21	0.004
9:22	0.004
9:23	0.004
9:24	0.004
9:25	0.005
9:26	0.005
9:27	0.005
9:28	0.006
9:29	0.005
9:30	0.004
9:31	0.004
9:32	0.006
9:33	0.007
9:34	0.014
9:35	0.007
9:36	0.007
9:37	0.008
9:38	0.011
9:39	0.008
9:40	0.008
9:41	0.008
9:42	0.021
9:43	0.008
9:44	0.022
9:45	0.01
9:46	0.027
9:47	0.014
9:48	0.012
9:49	0.012
9:50	0.024
9:51	0.019

9:52	0.018
9:53	0.04
9:54	0.011
9:55	0.01
9:56	0.009
9:57	0.008
9:58	0.011
9:59	0.009
10:00	0.01
10:01	0.013
10:02	0.01
10:03	0.01
10:04	0.008
10:05	0.011
10:06	0.011
10:07	0.013
10:08	0.009
10:09	0.018
10:10	0.009
10:11	0.009
10:12	0.006
10:13	0.006
10:14	0.007
10:15	0.004
10:16	0.006
10:17	0.006
10:18	0.011
10:19	0.007
10:20	0.005
10:21	0.005
10:22	0.006
10:23	0.006
10:24	0.005
10:25	0.006
10:26	0.005
10:27	0.009
10:28	0.008
10:29	0.006
10:30	0.005
10:31	0.006
10:32	0.005
10:33	0.009
10:34	0.023
10:35	0.007
10:36	0.011
10:37	0.007
10:38	0.006

10:39	0.007
10:40	0.009
10:41	0.01
10:42	0.008
10:43	0.006
10:44	0.006
10:45	0.006
10:46	0.007
10:47	0.011
10:48	0.007
10:49	0.007
10:50	0.006
10:51	0.008
10:52	0.006
10:53	0.008
10:54	0.01
10:55	0.005
10:56	0.008
10:57	0.008
10:58	0.008
10:59	0.008
11:00	0.008
11:01	0.008
11:02	0.008
11:03	0.006
11:04	0.006
11:05	0.006
11:06	0.006
11:07	0.005
11:08	0.005
11:09	0.006
11:10	0.006
11:11	0.006
11:12	0.005
11:13	0.005
11:14	0.007
11:15	0.007
11:16	0.006
11:17	0.007
11:18	0.011
11:19	0.011
11:20	0.006
11:21	0.011
11:22	0.009
11:23	0.005
11:24	0.005
11:25	0.006

11:26	0.006
11:27	0.006
11:28	0.005
11:29	0.006
11:30	0.008
11:31	0.008
11:32	0.015
11:33	0.014
11:34	0.01
11:35	0.012
11:36	0.005
11:37	0.009
11:38	0.03
11:39	0.024
11:40	0.013
11:41	0.009
11:42	0.007
11:43	0.006
11:44	0.014
11:45	0.006
11:46	0.011
11:47	0.007
11:48	0.007
11:49	0.007
11:50	0.005
11:51	0.005
11:52	0.007
11:53	0.01
11:54	0.005
11:55	0.004
11:56	0.006
11:57	0.008
11:58	0.007
11:59	0.01
12:00	0.006
12:01	0.031
12:02	0.009
12:03	0.005
12:04	0.005
12:05	0.004
12:06	0.005
12:07	0.007
12:08	0.014
12:09	0.013
12:10	0.006
12:11	0.006
12:12	0.007

12:13	0.006
12:14	0.006
12:15	0.032
12:16	0.008
12:17	0.005
12:18	0.005
12:19	0.005
12:20	0.007
12:21	0.013
12:22	0.008
12:23	0.007
12:24	0.006
12:25	0.01
12:26	0.008
12:27	0.007
12:28	0.006
12:29	0.006
12:30	0.007
12:31	0.009
12:32	0.007
12:33	0.008
12:34	0.006
12:35	0.016
12:36	0.01
12:37	0.006
12:38	0.009
12:39	0.027
12:40	0.05
12:41	0.03
12:42	0.011
12:43	0.012
12:44	0.02
12:45	0.007
12:46	0.009
12:47	0.009
12:48	0.012
12:49	0.011
12:50	0.008
12:51	0.007
12:52	0.007
12:53	0.017
12:54	0.012
12:55	0.01
12:56	0.007
12:57	0.008
12:58	0.009
12:59	0.006

13:00	0.006
13:01	0.008
13:02	0.009
13:03	0.006
13:04	0.007
13:05	0.006
13:06	0.009
13:07	0.007
13:08	0.009
13:09	0.01
13:10	0.007
13:11	0.008
13:12	0.007
13:13	0.006
13:14	0.006
13:15	0.006
13:16	0.009
13:17	0.008
13:18	0.008
13:19	0.011
13:20	0.008
13:21	0.007
13:22	0.008
13:23	0.007
13:24	0.009
13:25	0.009
13:26	0.009
13:27	0.02
13:28	0.008
13:29	0.009
13:30	0.015
13:31	0.009
13:32	0.009
13:33	0.01
13:34	0.008
13:35	0.013
13:36	0.01
13:37	0.011
13:38	0.024
13:39	0.046
13:40	0.021
13:41	0.013
13:42	0.017
13:43	0.013
13:44	0.017
13:45	0.015
13:46	0.017

13:47	0.018
13:48	0.02
13:49	0.015
13:50	0.037
13:51	0.013
13:52	0.029
13:53	0.024
13:54	0.021
13:55	0.022
13:56	0.013
13:57	0.017
13:58	0.016
13:59	0.014
14:00	0.017
14:01	0.013
14:02	0.012
14:03	0.009
14:04	0.011
14:05	0.017
14:06	0.014
14:07	0.028
14:08	0.024
14:09	0.018
14:10	0.009
14:11	0.011
14:12	0.019
14:13	0.017
14:14	0.009
14:15	0.015
14:16	0.017
14:17	0.02
14:18	0.018
14:19	0.017
14:20	0.017
14:21	0.012
14:22	0.012
14:23	0.01
14:24	0.013
14:25	0.014
14:26	0.011
14:27	0.01
14:28	0.011
14:29	0.01
14:30	0.008
14:31	0.01
14:32	0.011
14:33	0.01

14:34	0.009
14:35	0.009
14:36	0.008
14:37	0.008
14:38	0.007
14:39	0.009
14:40	0.009
14:41	0.008
14:42	0.011
14:43	0.007
14:44	0.007
14:45	0.007
14:46	0.007
14:47	0.006
14:48	0.007
14:49	0.007
14:50	0.007
14:51	0.006
14:52	0.011
14:53	0.009
14:54	0.008
14:55	0.006
14:56	0.007
14:57	0.007
14:58	0.012
14:59	0.007
15:00	0.007
15:01	0.008
15:02	0.008
15:03	0.006
15:04	0.007
15:05	0.007
15:06	0.011
15:07	0.008
15:08	0.007
15:09	0.007
15:10	0.008
15:11	0.008
15:12	0.008
15:13	0.007
15:14	0.009
15:15	0.007
15:16	0.007
15:17	0.007
15:18	0.008
15:19	0.007
15:20	0.008

15:21	0.006
15:22	0.006
15:23	0.006
15:24	0.008
15:25	0.008
15:26	0.006
15:27	0.007
15:28	0.01
15:29	0.008
15:30	0.006
15:31	0.006
15:32	0.006
15:33	0.008
15:34	0.008
15:35	0.011
15:36	0.009
15:37	0.006
15:38	0.012
15:39	0.008
15:40	0.009
15:41	0.008
15:42	0.011
15:43	0.009
15:44	0.011
15:45	0.01
15:46	0.008
15:47	0.008
15:48	0.008
15:49	0.014
15:50	0.011
15:51	0.016
15:52	0.011
15:53	0.01
15:54	0.02
15:55	0.015
15:56	0.016
15:57	0.01
15:58	0.009
15:59	0.008
16:00	0.011
16:01	0.015
16:02	0.013
16:03	0.037
16:04	0.009
16:05	0.01
16:06	0.017
16:07	0.015

16:08	0.016
16:09	0.01
16:10	0.008
16:11	0.013
16:12	0.01
16:13	0.011
16:14	0.014
16:15	0.015
16:16	0.011
16:17	0.017
16:18	0.012
16:19	0.009
16:20	0.011
16:21	0.022
16:22	0.012
16:23	0.01
16:24	0.012
16:25	0.012
16:26	0.012
16:27	0.018
16:28	0.013
16:29	0.01
16:30	0.012
16:31	0.011
16:32	0.011
16:33	0.01
16:34	0.01
16:35	0.013
16:36	0.017
16:37	0.011
16:38	0.009
16:39	0.015
16:40	0.01
16:41	0.011
16:42	0.012
16:43	0.009
16:44	0.02
16:45	0.016
16:46	0.013
16:47	0.013
16:48	0.012
16:49	0.012
16:50	0.011
16:51	0.01
16:52	0.009
16:53	0.009
16:54	0.013

16:55	0.024
16:56	0.019
16:57	0.011
16:58	0.017
16:59	0.038
17:00	0.032
17:01	0.013
17:02	0.011
17:03	0.01
17:04	0.01
17:05	0.008
17:06	0.009
17:07	0.012
17:08	0.021
17:09	0.019
17:10	0.026
17:11	0.027
17:12	0.013
17:13	0.01
17:14	0.009
17:15	0.01
17:16	0.01
17:17	0.01
17:18	0.013
17:19	0.006
17:20	0.003
17:21	0.005
17:22	0.002
17:23	0.003
17:24	0.002
17:25	0.003
17:26	0.004
17:27	0.003
17:28	0.004
17:29	0.003
17:30	0.002
17:31	0.005

592-600871	3/7/2024 18:03	Readings	PID	SC23030408A8	Normal	0
592-600871	3/7/2024 18:04	Readings	PID	SC23030408A8	Normal	0
592-600871	3/7/2024 18:05	Readings	PID	SC23030408A8	Normal	0
592-600871	3/7/2024 18:06	Readings	PID	SC23030408A8	Normal	0
592-600871	3/7/2024 18:07	Readings	PID	SC23030408A8	Normal	0
592-600871	3/7/2024 18:08	Readings	PID	SC23030408A8	Normal	0
592-600871	3/7/2024 18:09	Readings	PID	SC23030408A8	Normal	0
592-600871	3/7/2024 18:10	Readings	PID	SC23030408A8	Normal	0
592-600871	3/7/2024 18:11	Readings	PID	SC23030408A8	Normal	0
592-600871	3/7/2024 18:12	Readings	PID	SC23030408A8	Normal	0
592-600871	3/7/2024 18:13	Readings	PID	SC23030408A8	Normal	0
592-600871	3/7/2024 18:14	Readings	PID	SC23030408A8	Normal	0
592-600871	3/7/2024 18:15	Readings	PID	SC23030408A8	Normal	0
592-600871	3/7/2024 18:16	Readings	PID	SC23030408A8	Normal	0
592-600871	3/7/2024 18:17	Readings	PID	SC23030408A8	Normal	0
592-600871	3/7/2024 18:18	Readings	PID	SC23030408A8	Normal	0