



DAILY STATUS REPORT

Prepared By:

Ryan Just

WEATHER	Snow	Rain		Overcast	Partly Cloudy	X	Bright Sun	Wind
TEMP.	< 32	32-50	X	50-70	70-85		>85	NW- 11 MPH

IEC Project No:	13928	NYSDEC BCP Site No:	C224367	Date: 03/21/24
Project:	251 Douglass Street, Brooklyn, NY			

<p>Consultant: Impact Environmental Engineering and Geology, PLLC (IEEG)</p> <p>Time On: 06:40 Time Out: 18:35</p>	<p>Personnel On Site: IEEG (Environmental) – Ryan Just Broadway Construction Group - Tom Caporale Cascade WSP- Charlie Lambert</p> <p>Equipment On Site: Minirae 3000 PID, DustTrak II</p>
---	--

Scope of Work: Continue ISS column installation along the southern portion of the Site, along Douglass Street.

Site Activities:

- Deploy three (3) CAMPs at the Start of the work day;
- Impact collected a sample for the swell stockpile: Swell Stockpile-031324
- Cascade received two (2) deliveries of slag;
- Cascade received one (1) delivery of portland cement;
 - Cascade drilled **Column 103**, column spec below:
 - The column was 8’ diameter and drilled 36’ deep from Site grade;
 - The column consisted of a total of 15 batches;
 - A sample was collected from 36.9’ below site grade;
 - Cascade drilled **Column 144**, column spec below:
 - The column was 8’ diameter and drilled 36’ deep from Site grade;
 - The column consisted of a total of 16 batches;
 - A shallow obstruction was removed from 3’-4’ from 07:31-07:48;
 - Cascade drilled **Column 146**, column spec below:
 - The column was 8’ diameter and drilled 36’ deep from Site grade;
 - The column consisted of a total of 14 batches;
 - Cascade drilled **Column 148**, column spec below:
 - The column was 8’ diameter and drilled 36’ deep from Site grade;
 - The column consisted of a total of 15 batches;
 - Cascade drilled **Column 150**, column spec below:
 - The column was 8’ diameter and drilled 36’ deep from Site grade;
 - The column consisted of a total of 15 batches;
 - Cascade drilled **Column 152**, column spec below:
 - The column was 8’ diameter and drilled 36’ deep from Site grade;

- The column consisted of a total of 15 batches;

*Site grade refers to the elevation of the site after the 4' excavation was completed.

Community Air Monitoring Program (CAMP) - CAMP action level for dust (0.1 mg/m³) and VOCs (5 ppm)

- PID remained at nominal levels throughout the day.
- No sustained dust exceedances were observed over a 1-min period during monitoring;
- Startup Upwind Conditions – PID = _0.0_ ppm, Dust = _0.008_ mg/m³ @ 06:48
- High Conditions (Upwind) – PID = _0.0_ ppm @ 06:48, Dust = _0.270_ mg/m³ @ 16:13
- High Conditions (Downwind 1) – PID = _0.4_ ppm @ 14:52, Dust = _0.156_ mg/m³ @ 17:21
- High Conditions (Downwind 2) – PID = _0.7_ ppm @ 07:09, Dust = _0.187_ mg/m³ @ 13:11

Notable Site Conditions:

- None

Planned for the Next Day/Week:

- Continue ISS column installation; and
- Begin core drilling on 2/25/24



PHOTO LOG

251 DOUGLASS STREET, BROOKLYN, NY



Photo 1-
Representative
photo of drilling
ISS column.



Photo 2-
Representative
photo of ATMOS
foam sprayed
over swell
material.



Photo 3-
Representative
photo of
collecting a wet
mix sample from
ISS Column 103.



Photo 4-
Representative
photo of the wet
mix sampled
collected from
Column 103.



SITE PLANS

251 DOUGLASS STREET, BROOKLYN, NY



SCM Report

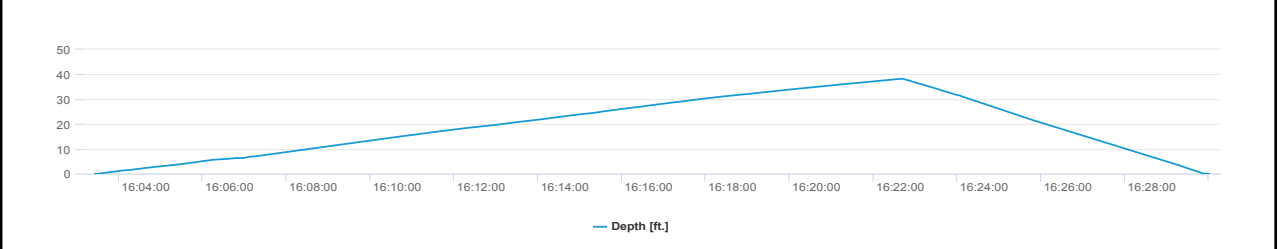
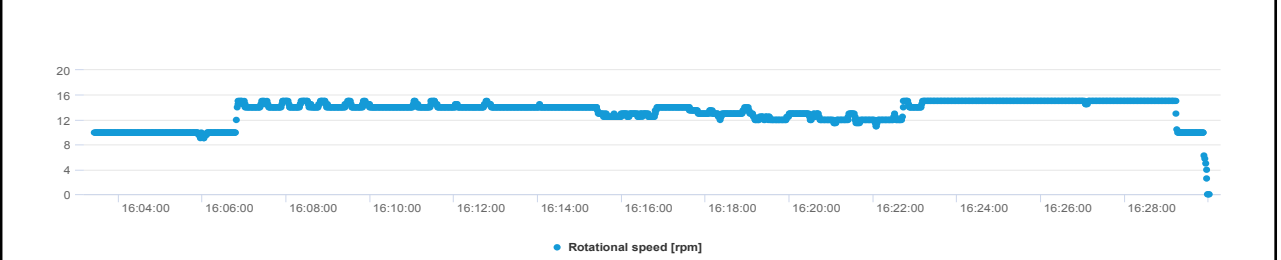
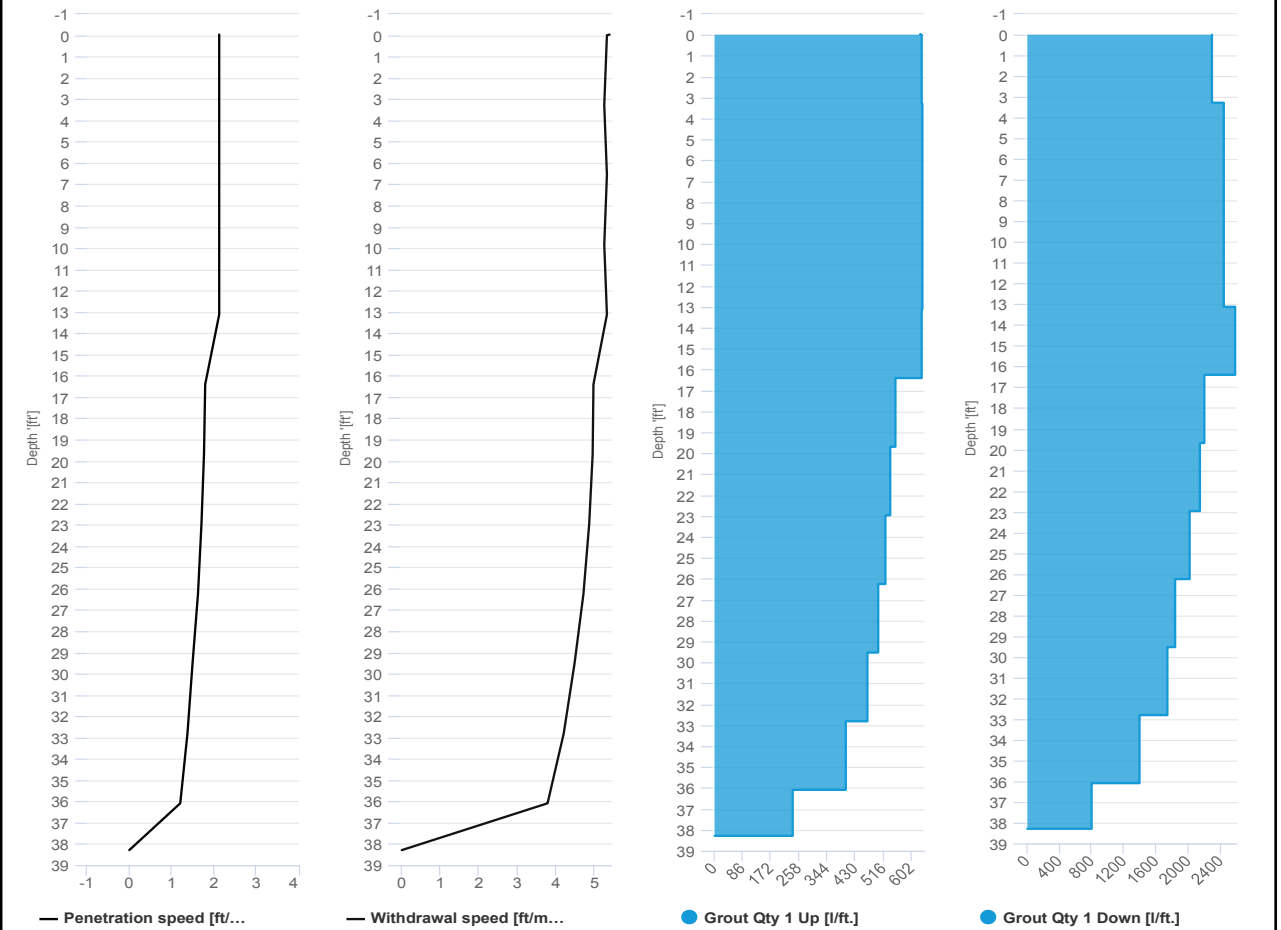


Project name: Douglass Street BCG ISS Element name: c103a
 Project number

Start date: 03/21/2024

Drilling rig: BG36H_5717

Details		Start time	
Max. depth	38.28 ft.	04:03 PM	03/21/2024
Volume/m 1	24.72 ft³	End time	04:30 PM
		Production duration	00:26:36
		Final depth time	04:22 PM
		Total suspension quantity	287.532 ft³



SCM Report

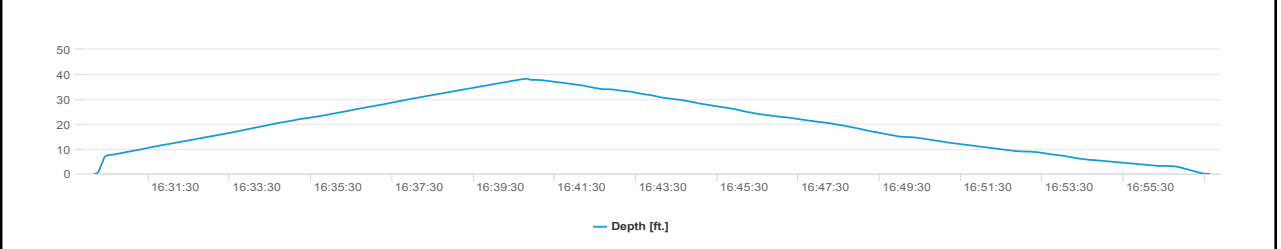
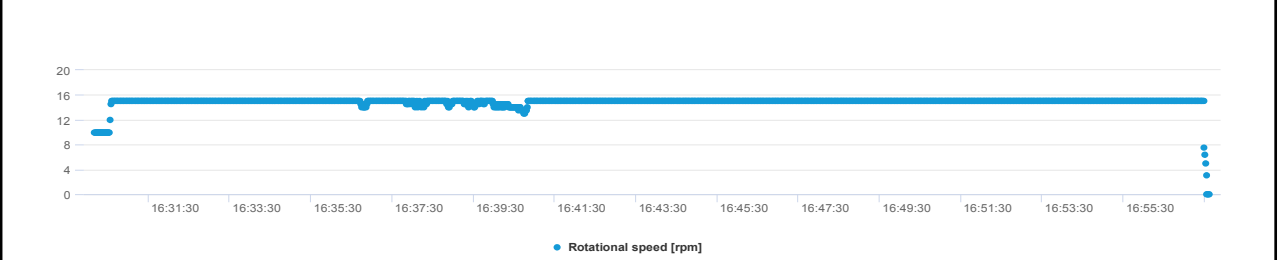
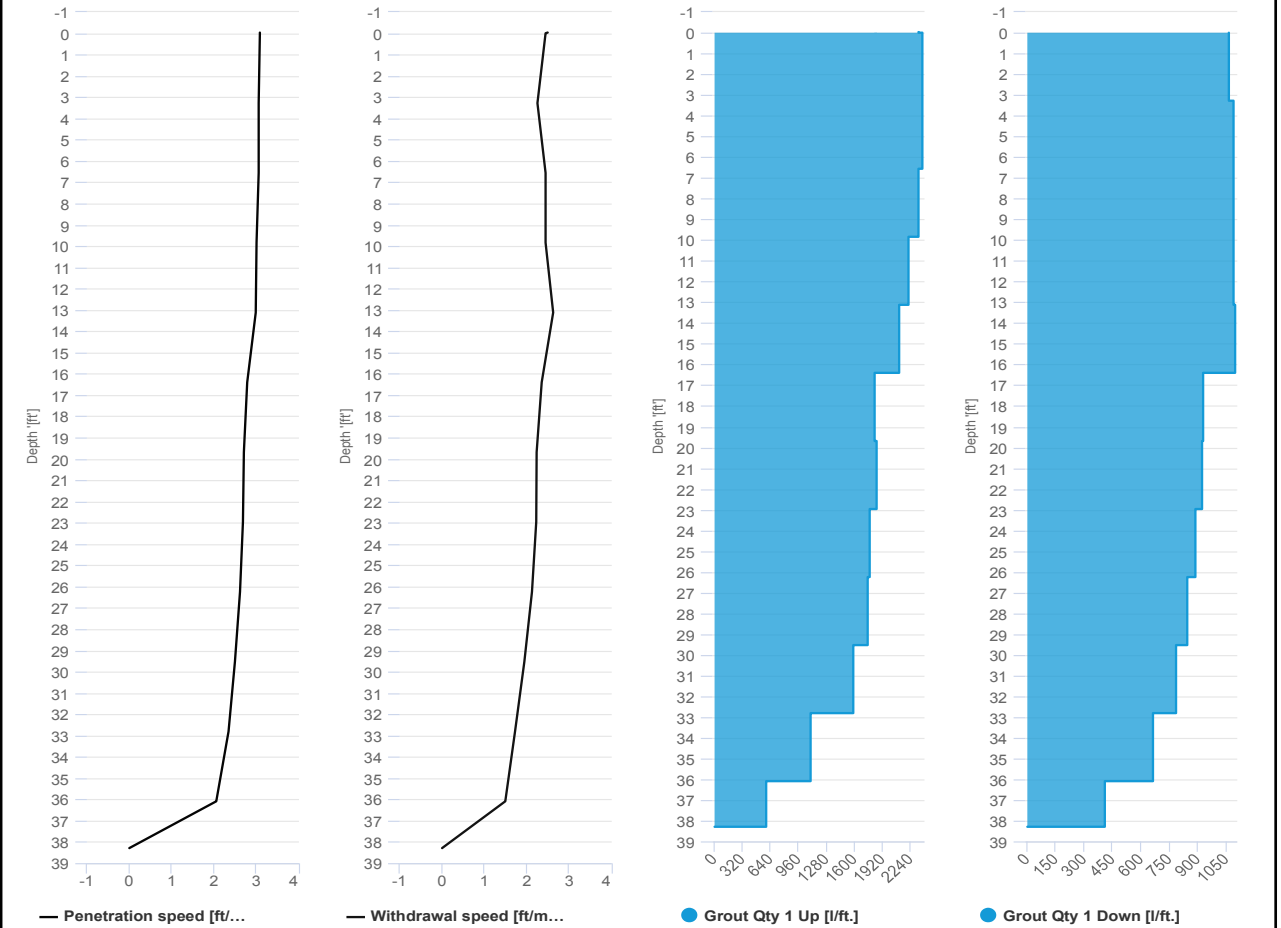


Project name	Douglass Street BCG ISS	Element name	c103b
		Project number	

		Start date	03/21/2024
--	--	------------	------------

Drilling rig	BG36H_5717
--------------	------------

Details			
Max. depth	38.28 ft.	Start time	04:30 PM
Volume/m 1	25.07 ft³	End Date	03/21/2024
		End time	04:57 PM
		Production duration	00:27:27
		Final depth time	04:40 PM
		Total suspension quantity	293.217 ft³



SCM Report

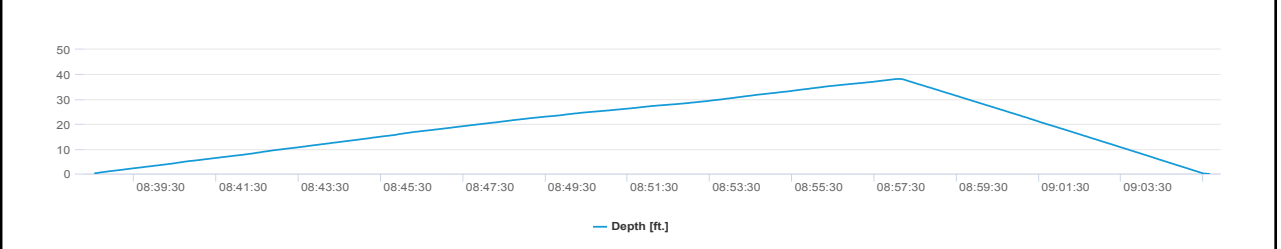
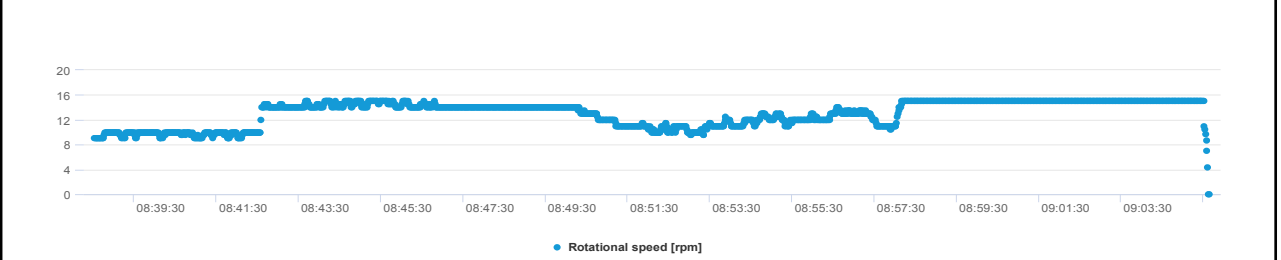
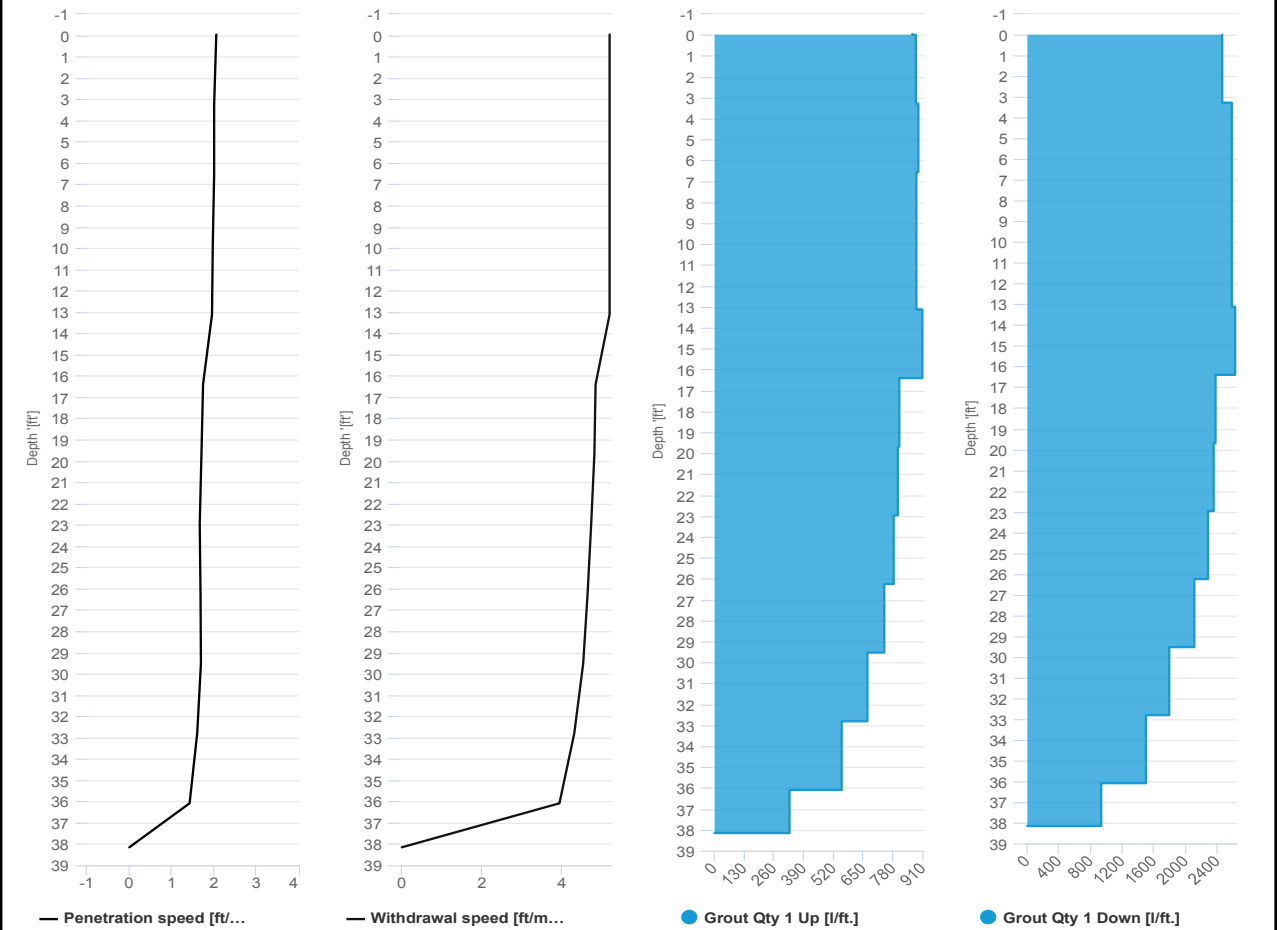


Project name: Douglass Street BCG ISS Element name: c144a
Project number

Start date: 03/21/2024

Drilling rig: BG36H_5717

Details		Start time: 08:38 AM	
Max. depth: 38.15 ft.		End Date: 03/21/2024	
Volume/m 1: 28.6 ft³		End time: 09:05 AM	
		Production duration: 00:27:07	
		Final depth time: 08:58 AM	
		Total suspension quantity: 331.216 ft³	



SCM Report

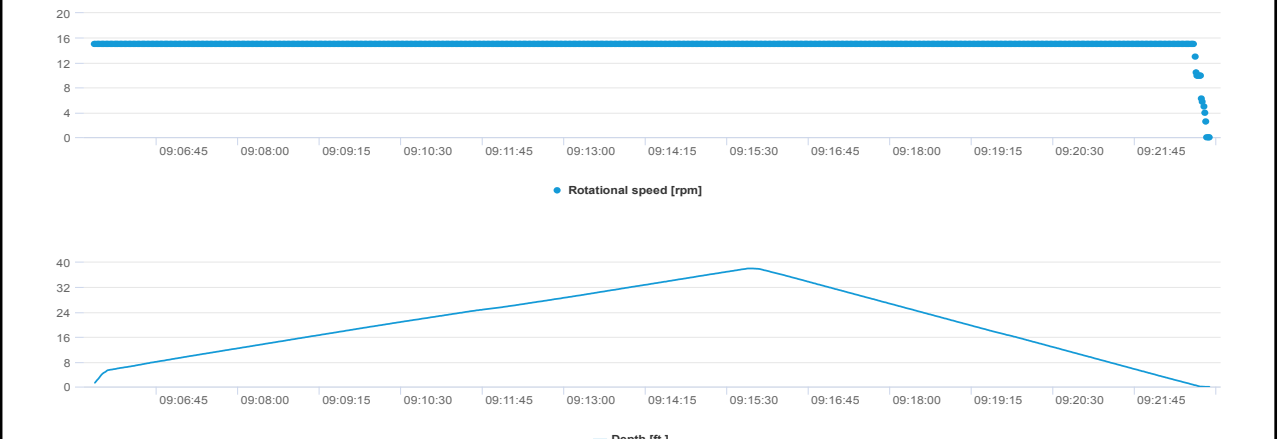
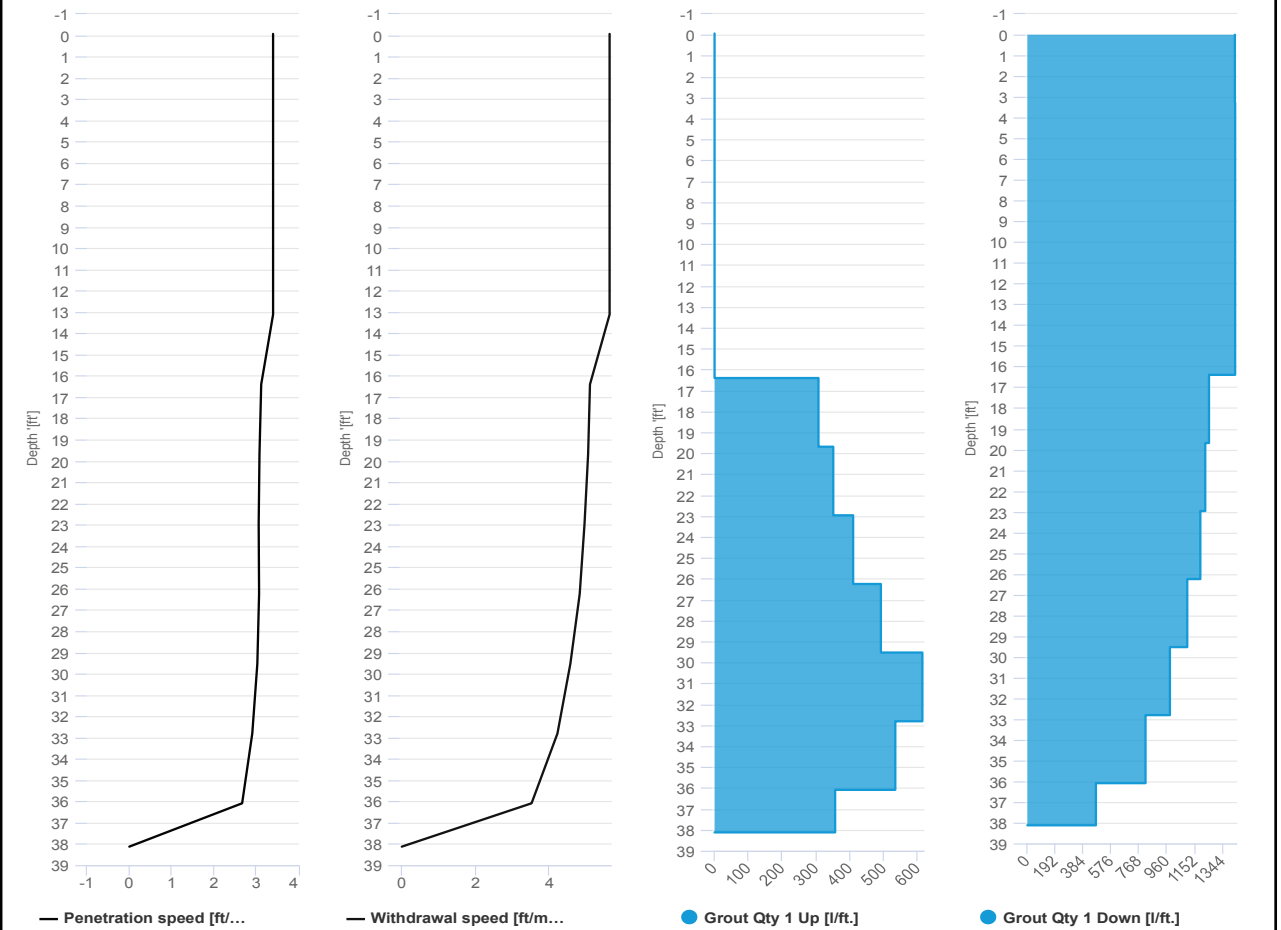


Project name: Douglass Street BCG ISS Element name: c144b
 Project number

Start date: 03/21/2024

Drilling rig: BG36H_5717

Details		Start time	09:05 AM
Max. depth	38.12 ft.	End Date	03/21/2024
Volume/m 1	12.36 ft ³	End time	09:22 AM
		Production duration	00:17:07
		Final depth time	09:15 AM
		Total suspension quantity	142.31 ft ³



SCM Report

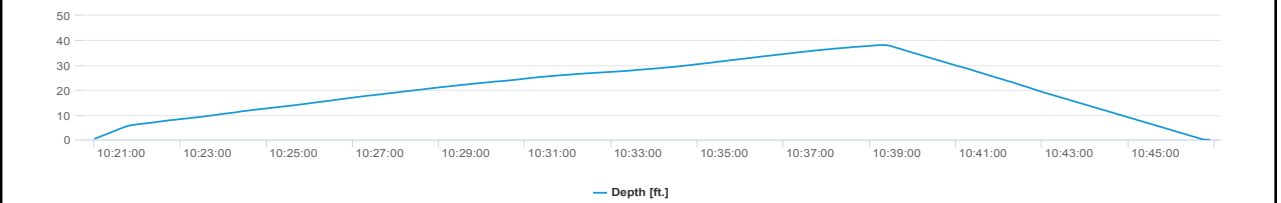
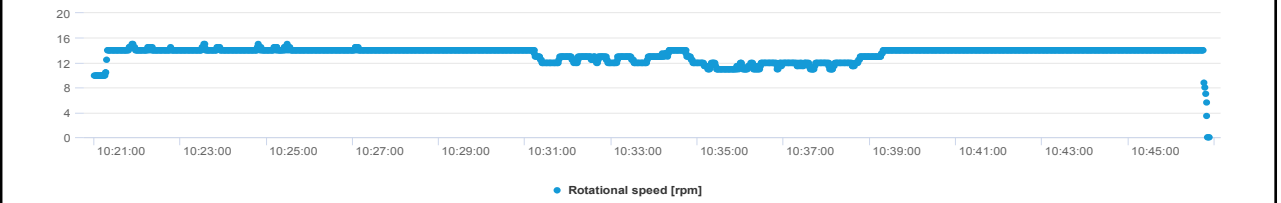
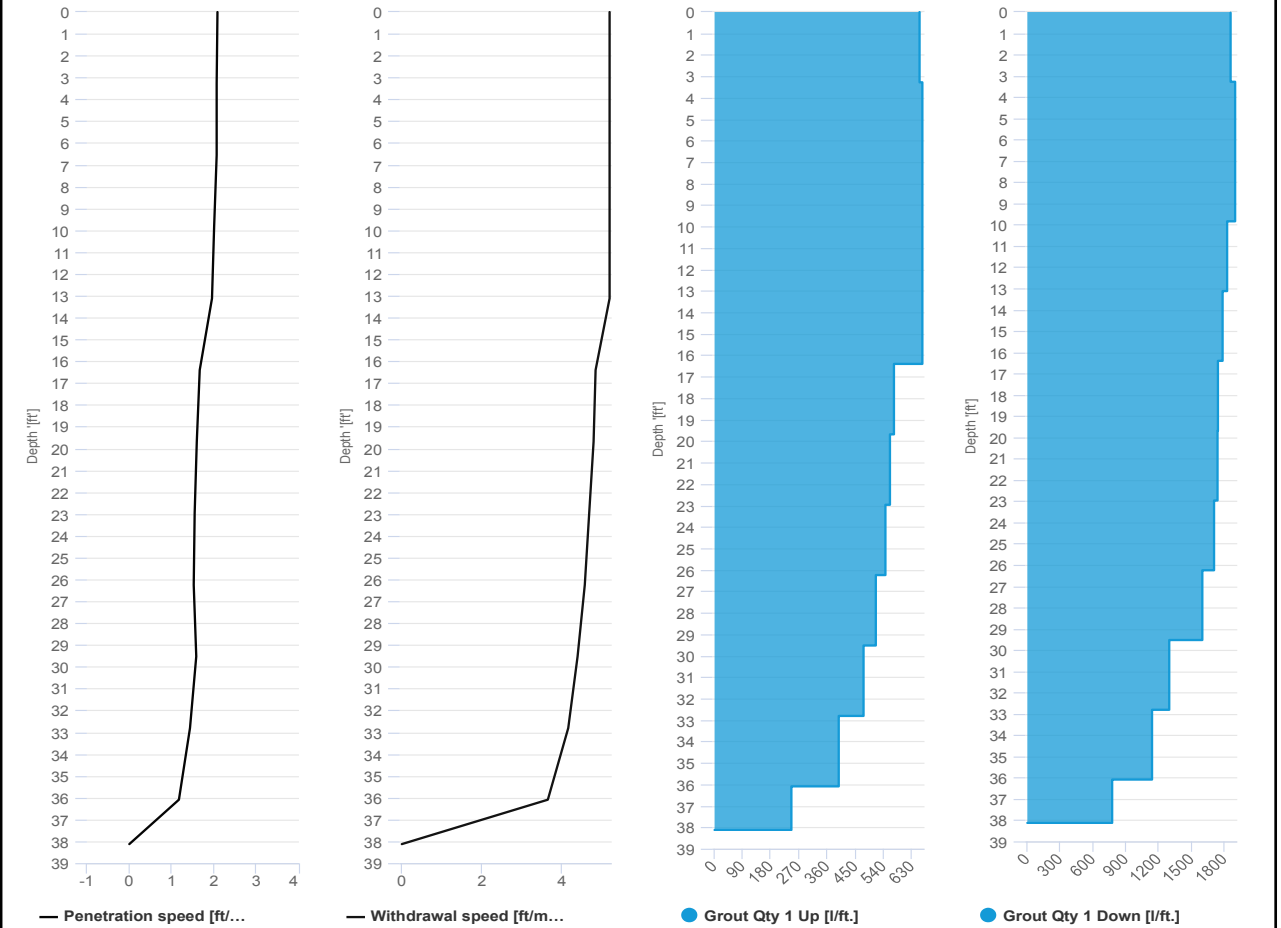


Project name: Douglass Street BCG ISS Element name: c146a
 Project number

Start date: 03/21/2024

Drilling rig: BG36H_5717

Details		Start time: 10:21 AM	
Max. depth: 38.12 ft.		End Date: 03/21/2024	
Volume/m 1: 20.12 ft³		End time: 10:46 AM	
		Production duration: 00:25:53	
		Final depth time: 10:39 AM	
		Total suspension quantity: 233.889 ft³	



SCM Report

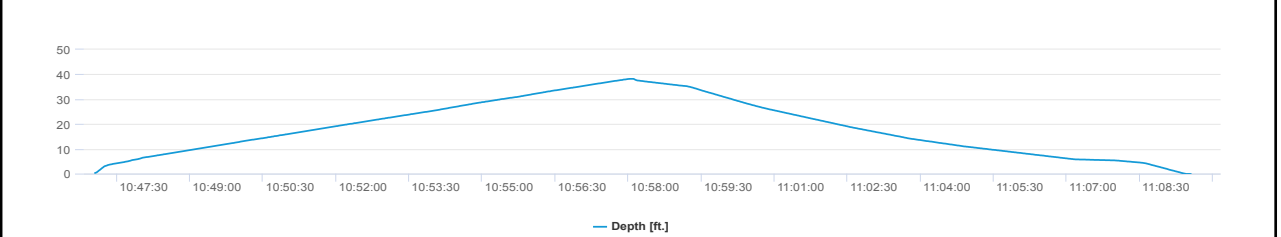
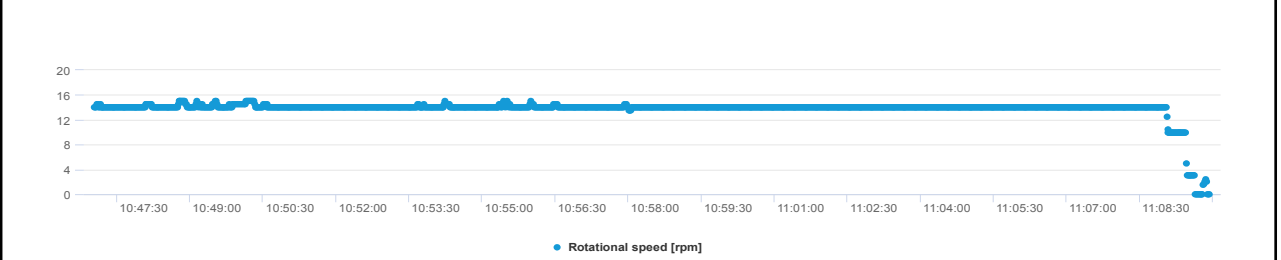
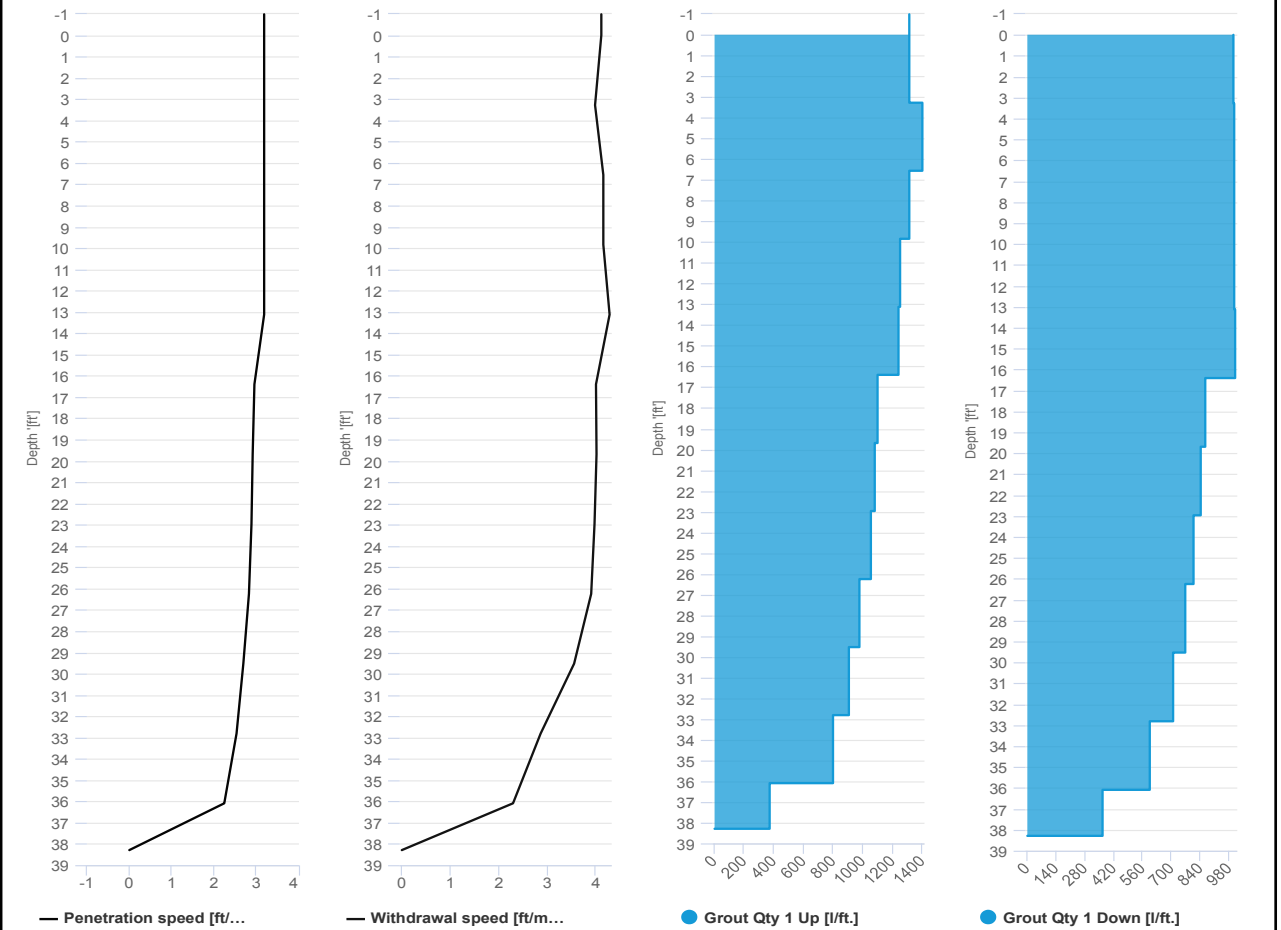


Project name	Douglass Street BCG ISS	Element name	c146b
		Project number	

		Start date	03/21/2024
--	--	------------	------------

Drilling rig	BG36H_5717
--------------	------------

Details			
Max. depth	38.28 ft.	Start time	10:47 AM
Volume/m 1	20.48 ft³	End Date	03/21/2024
		End time	11:09 AM
		Production duration	00:22:54
		Final depth time	10:58 AM_
		Total suspension quantity	240.881 ft³



SCM Report

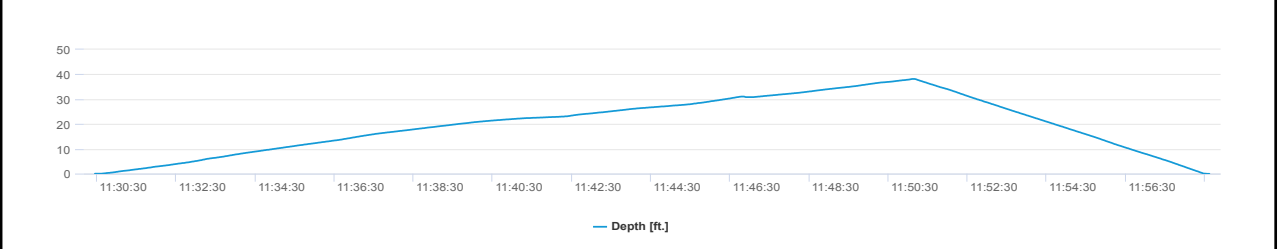
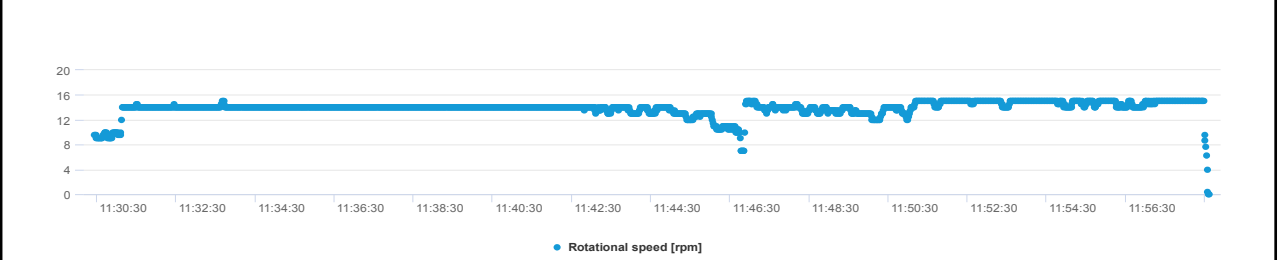
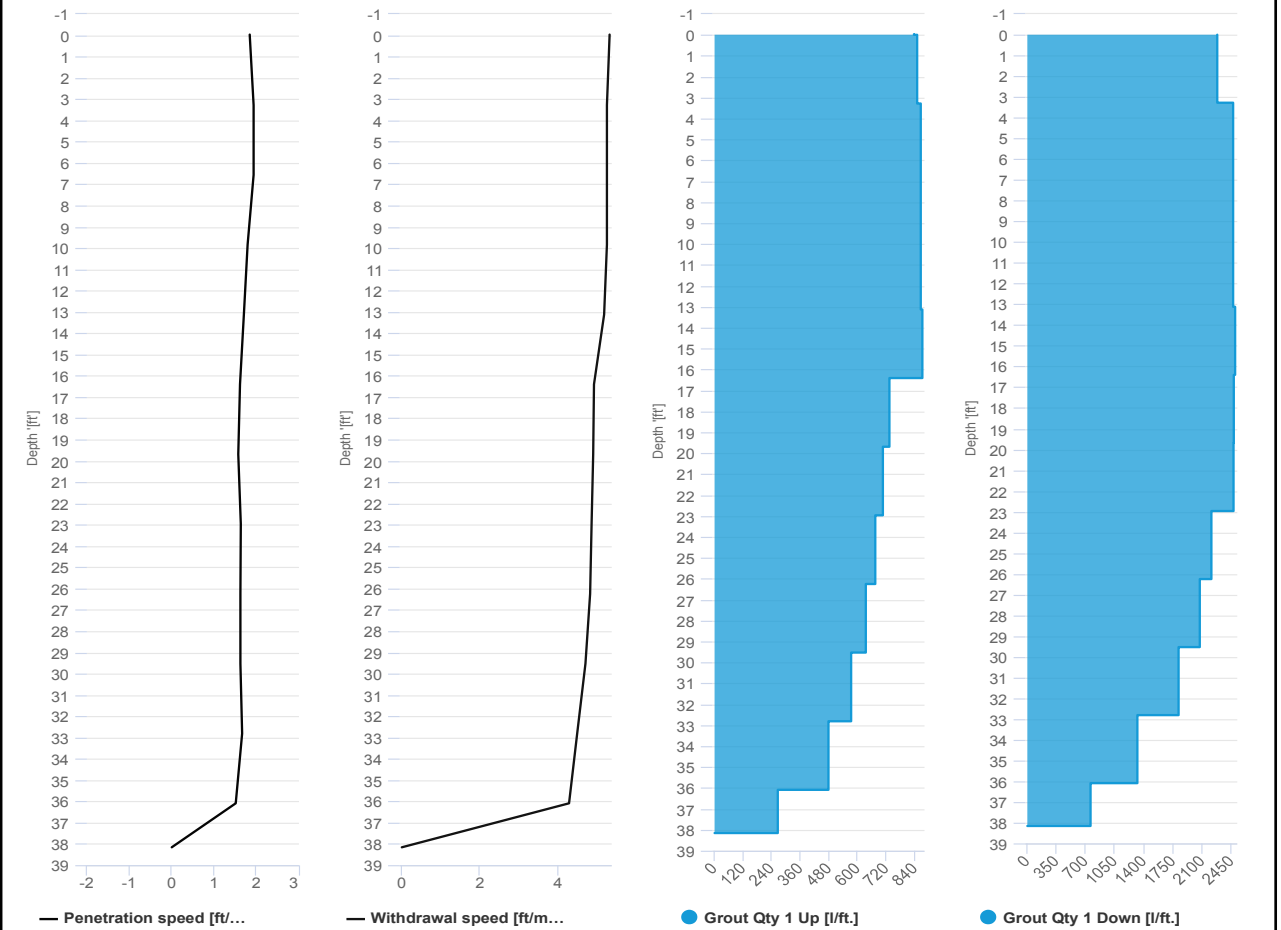


Project name: Douglass Street BCG ISS Element name: c148a
 Project number

Start date: 03/21/2024

Drilling rig: BG36H_5717

Details		Start time: 11:30 AM	
Max. depth: 38.15 ft.		End Date: 03/21/2024	
Volume/m 1: 27.19 ft³		End time: 11:58 AM	
		Production duration: 00:28:11	
		Final depth time: 11:51 AM	
		Total suspension quantity: 317.12 ft³	



SCM Report

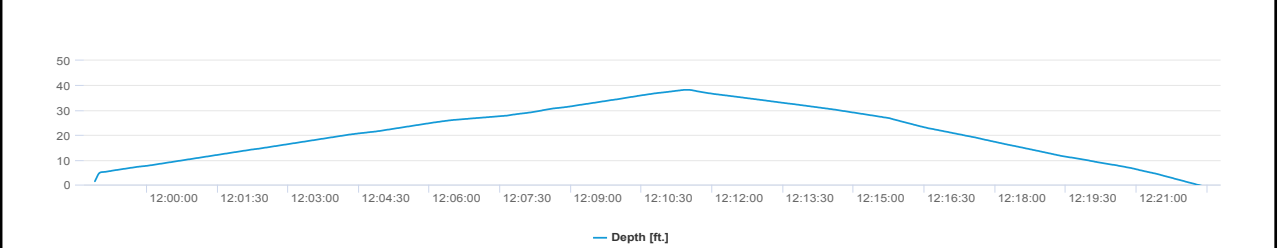
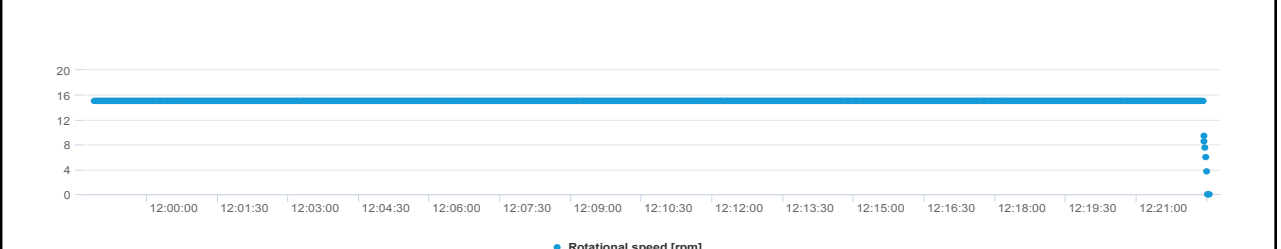
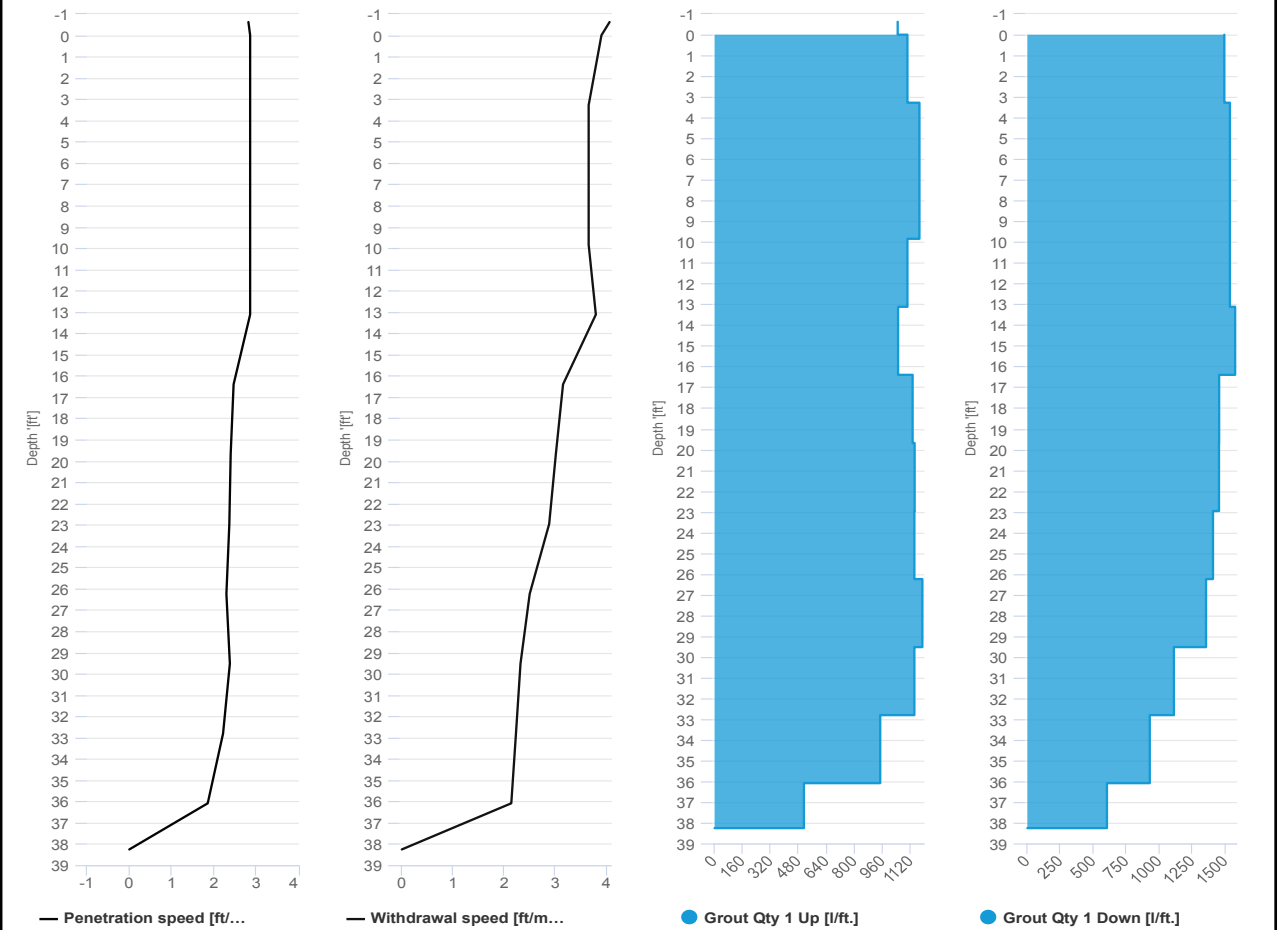


Project name	Douglass Street BCG ISS	Element name	c148b
		Project number	

		Start date	03/21/2024
--	--	------------	------------

Drilling rig	BG36H_5717
--------------	------------

Details			
Max. depth	38.25 ft.	Start time	11:58 AM
Volume/m 1	20.83 ft³	End Date	03/21/2024
		End time	12:22 PM
		Production duration	00:23:40
		Final depth time	12:11 PM
		Total suspension quantity	244.448 ft³



SCM Report

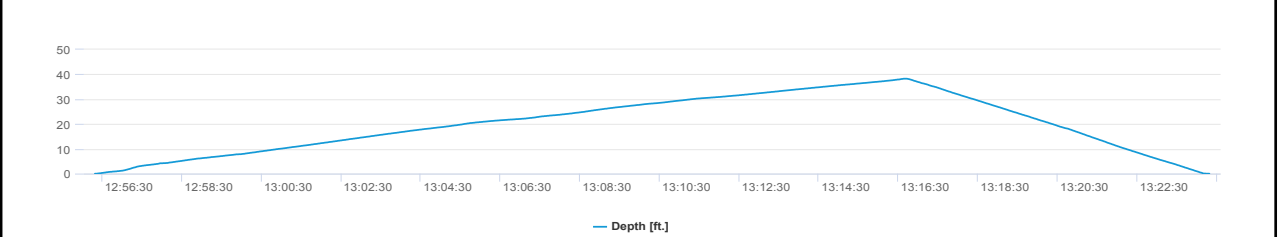
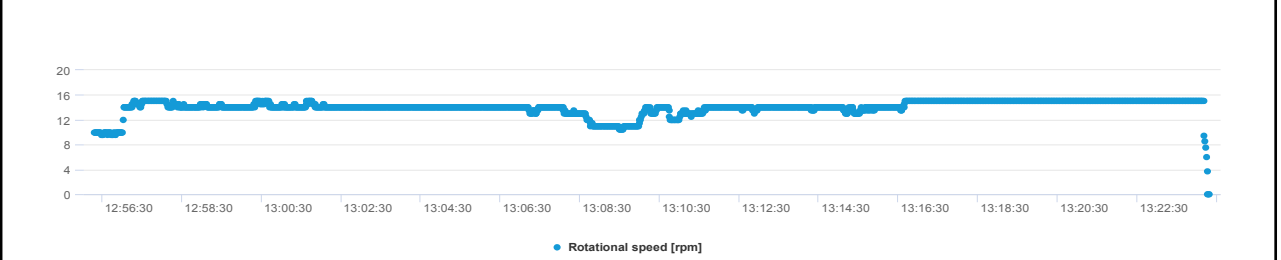
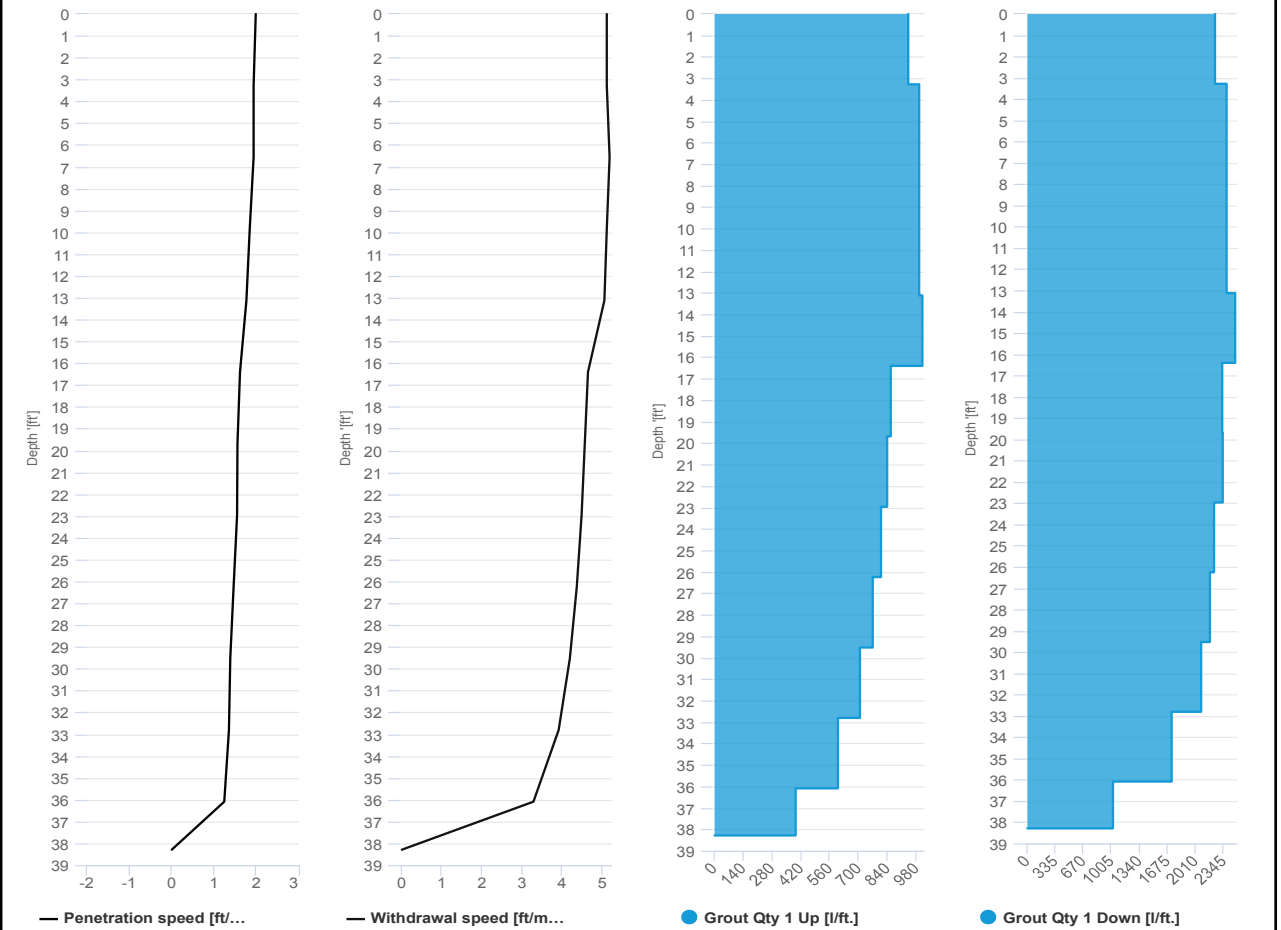


Project name: Douglass Street BCG ISS Element name: c150a
 Project number

Start date: 03/21/2024

Drilling rig: BG36H_5717

Details		Start time: 12:56 PM	
Max. depth: 38.28 ft.		End Date: 03/21/2024	
Volume/m 1: 27.19 ft³		End time: 01:24 PM	
		Production duration: 00:28:01	
		Final depth time: 01:16 PM	
		Total suspension quantity: 315.854 ft³	



SCM Report

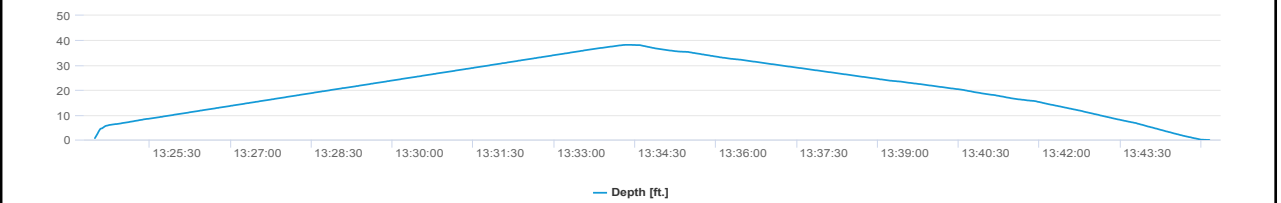
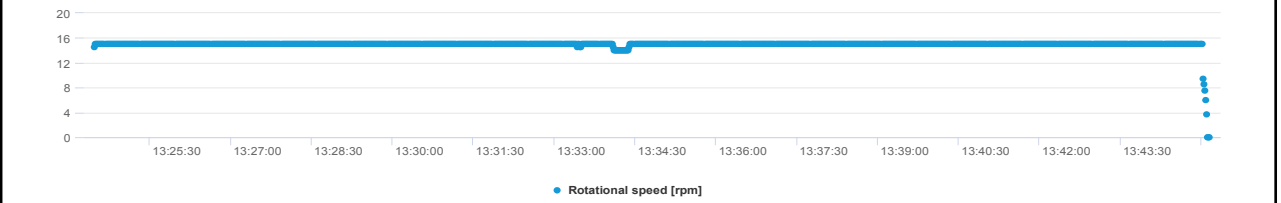
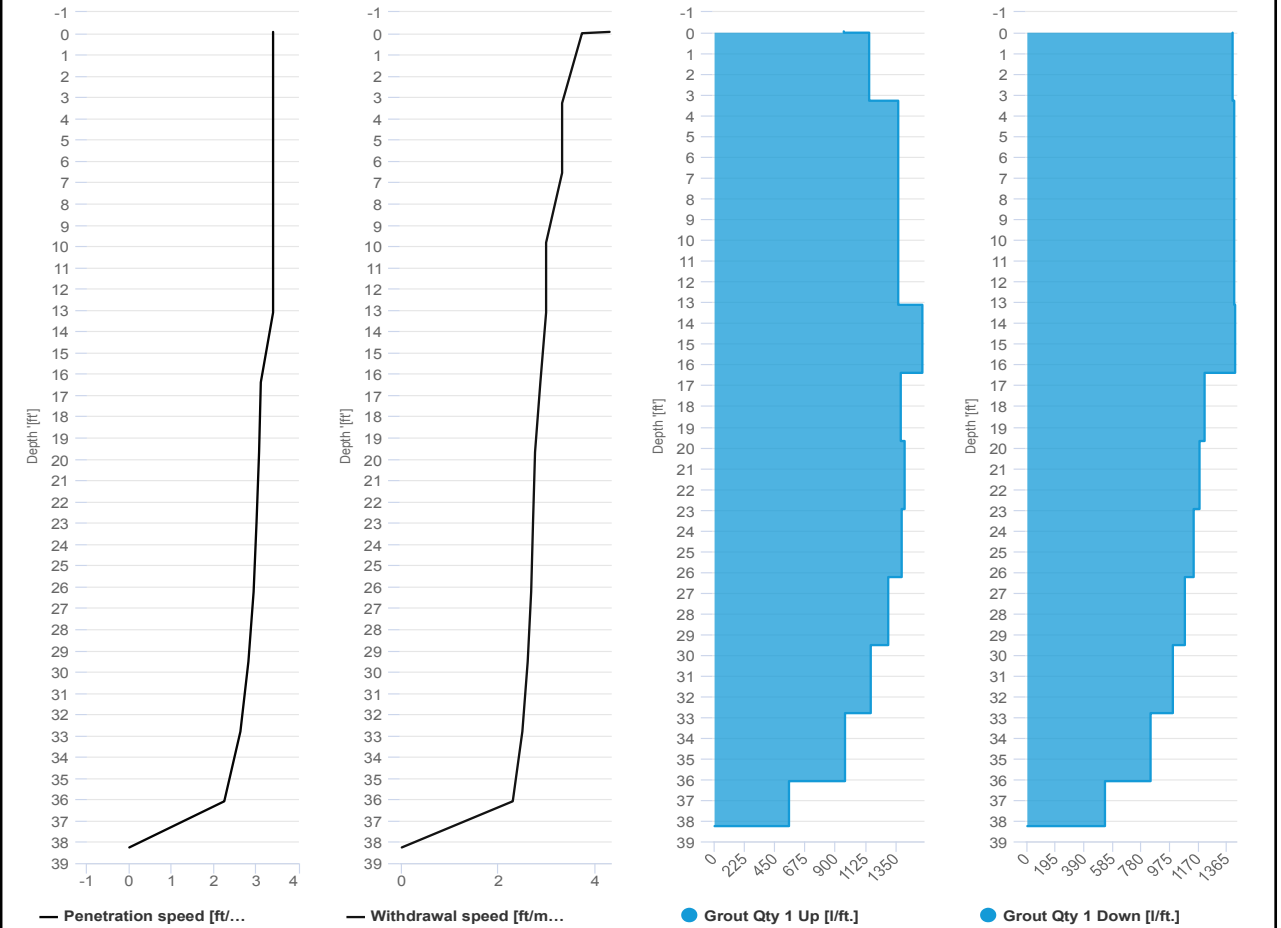


Project name	Douglass Street BCG ISS	Element name	c150b
		Project number	

		Start date	03/21/2024
--	--	------------	------------

Drilling rig	BG36H_5717
--------------	------------

Details			
Max. depth	38.25 ft.	Start time	01:24 PM
Volume/m 1	19.77 ft³	End Date	03/21/2024
		End time	01:45 PM
		Production duration	00:20:41
		Final depth time	01:34 PM
		Total suspension quantity	229.051 ft³



SCM Report

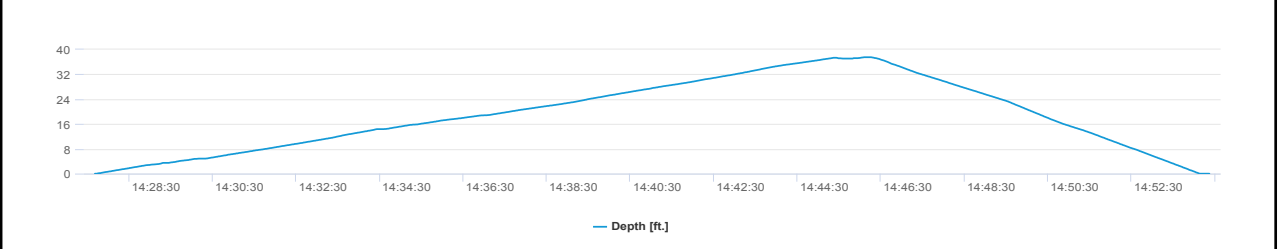
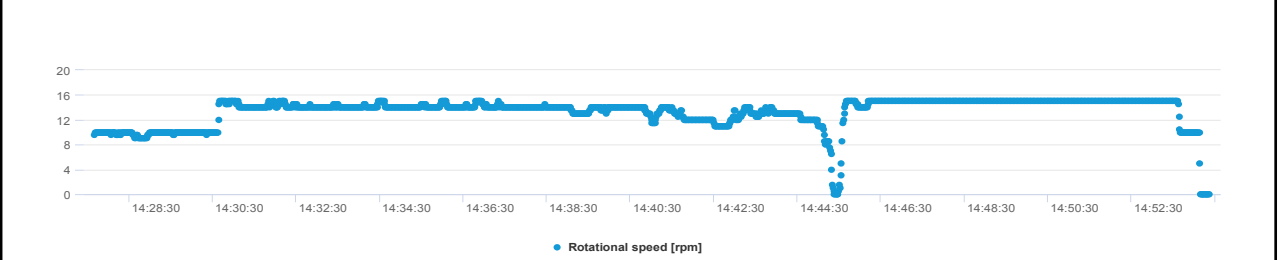
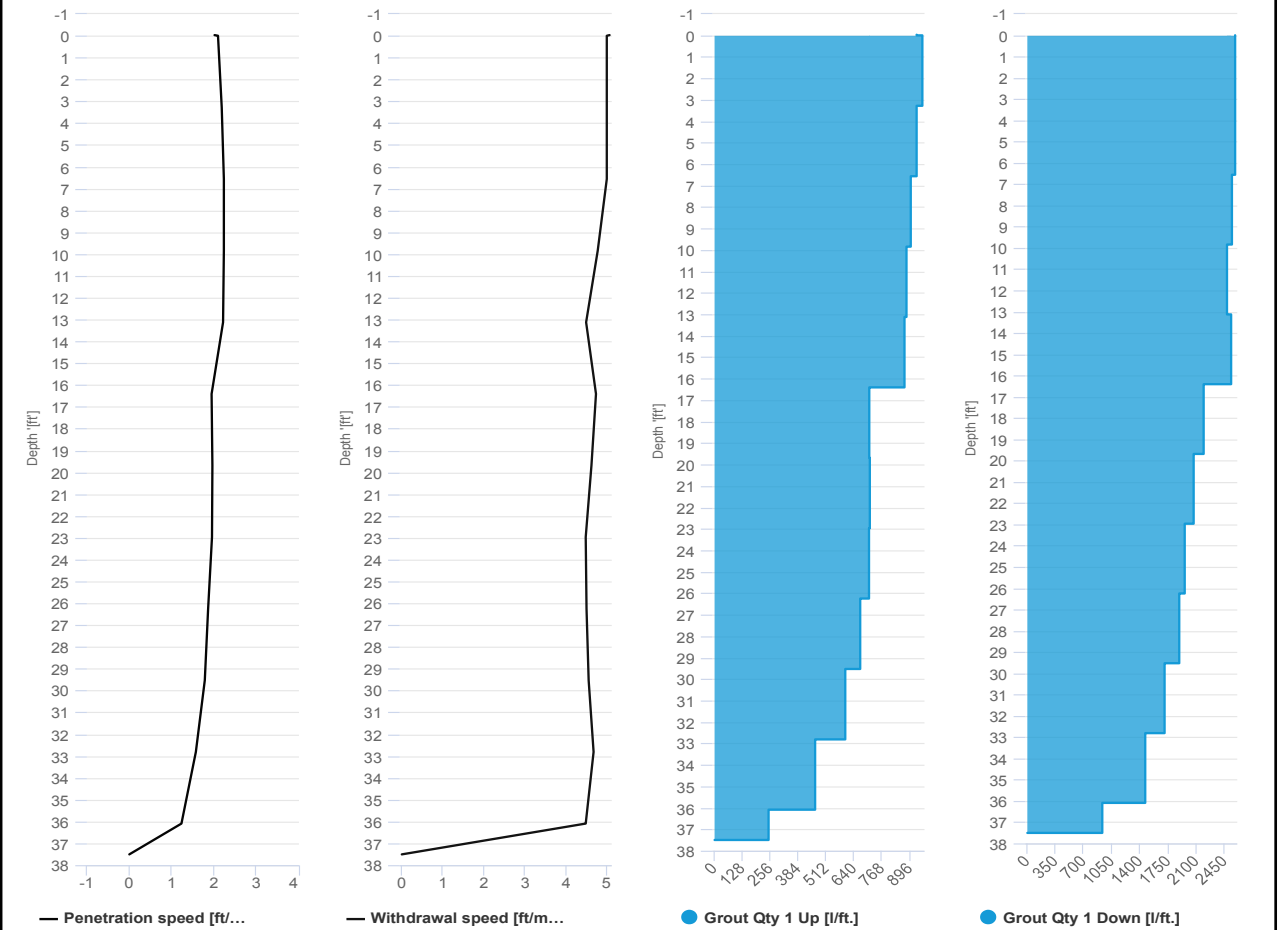


Project name: Douglass Street BCG ISS Element name: c152a
 Project number

Start date: 03/21/2024

Drilling rig: BG36H_5717

Details		Start time: 02:27 PM	
Max. depth: 37.5 ft.		End Date: 03/21/2024	
Volume/m 1: 29.31 ft³		End time: 02:54 PM	
		Production duration: 00:26:42	
		Final depth time: 02:46 PM	
		Total suspension quantity: 333.688 ft³	



SCM Report

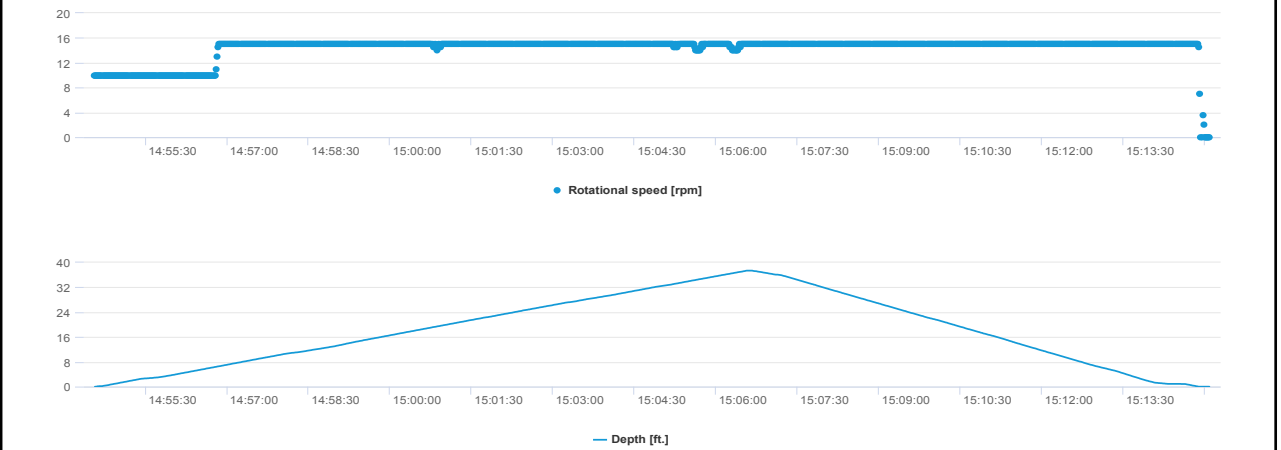
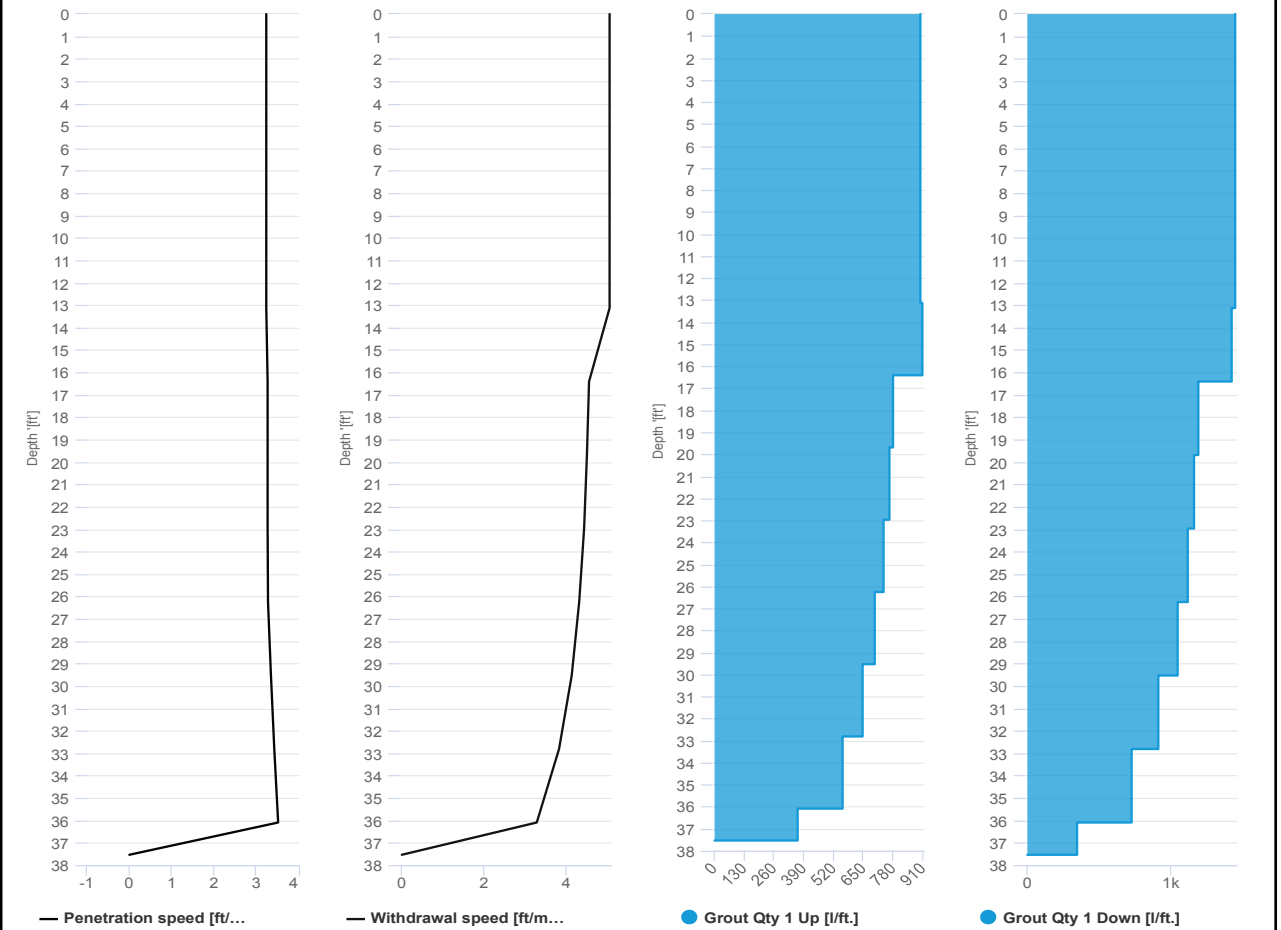


Project name: Douglass Street BCG ISS Element name: c152b
 Project number

Start date: 03/21/2024

Drilling rig: BG36H_5717

Details		Start time	
Max. depth	37.53 ft.	02:54 PM	
Volume/m 1	19.77 ft³	End Date	03/21/2024
		End time	03:15 PM
		Production duration	00:20:32
		Final depth time	03:06 PM
		Total suspension quantity	227.108 ft³





IMPACT ENVIRONMENTAL

welcome to solid ground...

170 Keyland Court | Bohemia | NY | 11716 | 631.269.8800

www.impactenvironmental.com

UPWIND CAMP READINGS

251 DOUGLASS STREET, BROOKLYN, NY

Instrument Name	DustTrak II
Model Number	8530
Serial Number	8530224601
Firmware Version	3.1
Calibration Date	11/9/2022
Test Name	MANUAL_003
Test Start Time	6:47:30 AM
Test Start Date	3/21/2024
Test Length [D:H:M]	0:11:32
Test Interval [M:S]	1:00
Mass Average [mg/m3]	0.013
Mass Minimum [mg/m3]	0.003
Mass Maximum [mg/m3]	0.27
Mass TWA [mg/m3]	0.011
Photometric User Cal	1
Flow User Cal	0
Errors	
Number of Samples	692

Elapsed Time [s]	Mass [mg/m3]	Alarms	Errors
6:48	0.008		
6:49	0.006		
6:50	0.003		
6:51	0.005		
6:52	0.007		
6:53	0.005		
6:54	0.005		
6:55	0.006		
6:56	0.004		
6:57	0.003		
6:58	0.003		
6:59	0.003		
7:00	0.003		
7:01	0.014		
7:02	0.006		
7:03	0.003		
7:04	0.003		
7:05	0.003		
7:06	0.004		
7:07	0.005		
7:08	0.003		
7:09	0.003		
7:10	0.004		
7:11	0.006		

7:12	0.004
7:13	0.004
7:14	0.004
7:15	0.004
7:16	0.005
7:17	0.004
7:18	0.005
7:19	0.006
7:20	0.019
7:21	0.006
7:22	0.005
7:23	0.006
7:24	0.005
7:25	0.005
7:26	0.007
7:27	0.007
7:28	0.006
7:29	0.005
7:30	0.006
7:31	0.009
7:32	0.005
7:33	0.005
7:34	0.007
7:35	0.008
7:36	0.006
7:37	0.007
7:38	0.006
7:39	0.01
7:40	0.007
7:41	0.007
7:42	0.006
7:43	0.01
7:44	0.005
7:45	0.012
7:46	0.009
7:47	0.007
7:48	0.007
7:49	0.005
7:50	0.007
7:51	0.012
7:52	0.006
7:53	0.007
7:54	0.005
7:55	0.008

7:56	0.006
7:57	0.005
7:58	0.007
7:59	0.006
8:00	0.007
8:01	0.009
8:02	0.005
8:03	0.006
8:04	0.008
8:05	0.005
8:06	0.006
8:07	0.004
8:08	0.006
8:09	0.007
8:10	0.004
8:11	0.005
8:12	0.006
8:13	0.007
8:14	0.005
8:15	0.005
8:16	0.005
8:17	0.008
8:18	0.007
8:19	0.006
8:20	0.006
8:21	0.005
8:22	0.005
8:23	0.006
8:24	0.008
8:25	0.007
8:26	0.007
8:27	0.006
8:28	0.006
8:29	0.006
8:30	0.006
8:31	0.005
8:32	0.006
8:33	0.022
8:34	0.01
8:35	0.01
8:36	0.008
8:37	0.007
8:38	0.007
8:39	0.006

8:40	0.007
8:41	0.006
8:42	0.006
8:43	0.008
8:44	0.007
8:45	0.008
8:46	0.012
8:47	0.016
8:48	0.011
8:49	0.011
8:50	0.009
8:51	0.012
8:52	0.018
8:53	0.017
8:54	0.015
8:55	0.015
8:56	0.015
8:57	0.015
8:58	0.012
8:59	0.014
9:00	0.023
9:01	0.03
9:02	0.038
9:03	0.018
9:04	0.015
9:05	0.01
9:06	0.019
9:07	0.016
9:08	0.013
9:09	0.011
9:10	0.017
9:11	0.014
9:12	0.013
9:13	0.019
9:14	0.013
9:15	0.009
9:16	0.01
9:17	0.015
9:18	0.016
9:19	0.015
9:20	0.009
9:21	0.008
9:22	0.008
9:23	0.011

9:24	0.008
9:25	0.013
9:26	0.014
9:27	0.018
9:28	0.011
9:29	0.013
9:30	0.014
9:31	0.013
9:32	0.009
9:33	0.008
9:34	0.008
9:35	0.009
9:36	0.01
9:37	0.015
9:38	0.01
9:39	0.009
9:40	0.007
9:41	0.008
9:42	0.009
9:43	0.007
9:44	0.028
9:45	0.007
9:46	0.01
9:47	0.008
9:48	0.007
9:49	0.008
9:50	0.009
9:51	0.007
9:52	0.007
9:53	0.007
9:54	0.006
9:55	0.009
9:56	0.008
9:57	0.01
9:58	0.006
9:59	0.007
10:00	0.007
10:01	0.007
10:02	0.005
10:03	0.006
10:04	0.007
10:05	0.006
10:06	0.005
10:07	0.008

10:08	0.009
10:09	0.006
10:10	0.006
10:11	0.006
10:12	0.007
10:13	0.005
10:14	0.005
10:15	0.005
10:16	0.004
10:17	0.006
10:18	0.006
10:19	0.007
10:20	0.008
10:21	0.008
10:22	0.006
10:23	0.012
10:24	0.005
10:25	0.007
10:26	0.007
10:27	0.008
10:28	0.008
10:29	0.008
10:30	0.007
10:31	0.007
10:32	0.013
10:33	0.023
10:34	0.025
10:35	0.011
10:36	0.007
10:37	0.011
10:38	0.007
10:39	0.012
10:40	0.012
10:41	0.014
10:42	0.021
10:43	0.033
10:44	0.014
10:45	0.013
10:46	0.015
10:47	0.014
10:48	0.011
10:49	0.017
10:50	0.01
10:51	0.009

10:52	0.012
10:53	0.013
10:54	0.027
10:55	0.01
10:56	0.019
10:57	0.011
10:58	0.005
10:59	0.005
11:00	0.004
11:01	0.007
11:02	0.012
11:03	0.008
11:04	0.006
11:05	0.005
11:06	0.005
11:07	0.009
11:08	0.012
11:09	0.01
11:10	0.007
11:11	0.005
11:12	0.005
11:13	0.007
11:14	0.006
11:15	0.011
11:16	0.007
11:17	0.009
11:18	0.063
11:19	0.008
11:20	0.007
11:21	0.022
11:22	0.007
11:23	0.005
11:24	0.006
11:25	0.018
11:26	0.014
11:27	0.007
11:28	0.02
11:29	0.016
11:30	0.01
11:31	0.016
11:32	0.01
11:33	0.01
11:34	0.015
11:35	0.007

11:36	0.009
11:37	0.007
11:38	0.011
11:39	0.007
11:40	0.006
11:41	0.009
11:42	0.008
11:43	0.009
11:44	0.01
11:45	0.008
11:46	0.009
11:47	0.008
11:48	0.008
11:49	0.004
11:50	0.008
11:51	0.01
11:52	0.01
11:53	0.009
11:54	0.006
11:55	0.006
11:56	0.008
11:57	0.008
11:58	0.008
11:59	0.006
12:00	0.007
12:01	0.007
12:02	0.005
12:03	0.009
12:04	0.008
12:05	0.011
12:06	0.008
12:07	0.01
12:08	0.012
12:09	0.009
12:10	0.009
12:11	0.005
12:12	0.006
12:13	0.005
12:14	0.009
12:15	0.011
12:16	0.018
12:17	0.008
12:18	0.007
12:19	0.009

12:20	0.011
12:21	0.009
12:22	0.015
12:23	0.008
12:24	0.011
12:25	0.008
12:26	0.007
12:27	0.007
12:28	0.012
12:29	0.008
12:30	0.027
12:31	0.026
12:32	0.039
12:33	0.013
12:34	0.007
12:35	0.025
12:36	0.017
12:37	0.01
12:38	0.027
12:39	0.017
12:40	0.011
12:41	0.015
12:42	0.007
12:43	0.009
12:44	0.007
12:45	0.02
12:46	0.007
12:47	0.021
12:48	0.012
12:49	0.023
12:50	0.009
12:51	0.008
12:52	0.016
12:53	0.006
12:54	0.006
12:55	0.015
12:56	0.045
12:57	0.014
12:58	0.01
12:59	0.011
13:00	0.017
13:01	0.015
13:02	0.013
13:03	0.01

13:04	0.009
13:05	0.015
13:06	0.014
13:07	0.014
13:08	0.016
13:09	0.007
13:10	0.008
13:11	0.006
13:12	0.006
13:13	0.023
13:14	0.007
13:15	0.018
13:16	0.068
13:17	0.007
13:18	0.01
13:19	0.041
13:20	0.044
13:21	0.007
13:22	0.019
13:23	0.014
13:24	0.014
13:25	0.01
13:26	0.009
13:27	0.007
13:28	0.007
13:29	0.007
13:30	0.009
13:31	0.01
13:32	0.012
13:33	0.006
13:34	0.006
13:35	0.006
13:36	0.006
13:37	0.01
13:38	0.009
13:39	0.006
13:40	0.01
13:41	0.009
13:42	0.012
13:43	0.009
13:44	0.008
13:45	0.016
13:46	0.018
13:47	0.008

13:48	0.006
13:49	0.007
13:50	0.007
13:51	0.007
13:52	0.009
13:53	0.01
13:54	0.011
13:55	0.013
13:56	0.011
13:57	0.007
13:58	0.008
13:59	0.011
14:00	0.015
14:01	0.013
14:02	0.011
14:03	0.016
14:04	0.021
14:05	0.021
14:06	0.018
14:07	0.019
14:08	0.017
14:09	0.051
14:10	0.021
14:11	0.011
14:12	0.02
14:13	0.035
14:14	0.026
14:15	0.021
14:16	0.013
14:17	0.012
14:18	0.021
14:19	0.03
14:20	0.017
14:21	0.022
14:22	0.024
14:23	0.037
14:24	0.03
14:25	0.014
14:26	0.02
14:27	0.012
14:28	0.014
14:29	0.015
14:30	0.017
14:31	0.017

14:32	0.015
14:33	0.015
14:34	0.023
14:35	0.019
14:36	0.01
14:37	0.023
14:38	0.014
14:39	0.01
14:40	0.008
14:41	0.01
14:42	0.013
14:43	0.016
14:44	0.009
14:45	0.021
14:46	0.025
14:47	0.025
14:48	0.031
14:49	0.015
14:50	0.007
14:51	0.008
14:52	0.009
14:53	0.008
14:54	0.009
14:55	0.008
14:56	0.118
14:57	0.008
14:58	0.009
14:59	0.015
15:00	0.013
15:01	0.039
15:02	0.016
15:03	0.011
15:04	0.008
15:05	0.01
15:06	0.008
15:07	0.009
15:08	0.014
15:09	0.009
15:10	0.016
15:11	0.029
15:12	0.013
15:13	0.017
15:14	0.015
15:15	0.011

15:16	0.01
15:17	0.015
15:18	0.01
15:19	0.009
15:20	0.009
15:21	0.009
15:22	0.009
15:23	0.012
15:24	0.011
15:25	0.019
15:26	0.02
15:27	0.022
15:28	0.02
15:29	0.021
15:30	0.012
15:31	0.022
15:32	0.014
15:33	0.009
15:34	0.015
15:35	0.015
15:36	0.016
15:37	0.013
15:38	0.018
15:39	0.011
15:40	0.011
15:41	0.012
15:42	0.011
15:43	0.011
15:44	0.015
15:45	0.01
15:46	0.009
15:47	0.009
15:48	0.015
15:49	0.028
15:50	0.033
15:51	0.012
15:52	0.008
15:53	0.014
15:54	0.013
15:55	0.032
15:56	0.041
15:57	0.031
15:58	0.047
15:59	0.122

16:00	0.051
16:01	0.058
16:02	0.034
16:03	0.046
16:04	0.053
16:05	0.134
16:06	0.01
16:07	0.01
16:08	0.012
16:09	0.014
16:10	0.026
16:11	0.022
16:12	0.024
16:13	0.27
16:14	0.027
16:15	0.017
16:16	0.015
16:17	0.025
16:18	0.014
16:19	0.029
16:20	0.018
16:21	0.016
16:22	0.019
16:23	0.016
16:24	0.02
16:25	0.035
16:26	0.011
16:27	0.011
16:28	0.01
16:29	0.011
16:30	0.007
16:31	0.008
16:32	0.007
16:33	0.007
16:34	0.008
16:35	0.01
16:36	0.01
16:37	0.009
16:38	0.009
16:39	0.02
16:40	0.008
16:41	0.006
16:42	0.008
16:43	0.008

16:44	0.008
16:45	0.008
16:46	0.007
16:47	0.008
16:48	0.073
16:49	0.008
16:50	0.007
16:51	0.008
16:52	0.012
16:53	0.024
16:54	0.008
16:55	0.008
16:56	0.007
16:57	0.006
16:58	0.007
16:59	0.007
17:00	0.012
17:01	0.007
17:02	0.008
17:03	0.011
17:04	0.008
17:05	0.006
17:06	0.009
17:07	0.008
17:08	0.012
17:09	0.007
17:10	0.008
17:11	0.007
17:12	0.007
17:13	0.006
17:14	0.014
17:15	0.007
17:16	0.008
17:17	0.007
17:18	0.006
17:19	0.007
17:20	0.007
17:21	0.019
17:22	0.007
17:23	0.009
17:24	0.008
17:25	0.007
17:26	0.006
17:27	0.007

17:28	0.007
17:29	0.007
17:30	0.022
17:31	0.008
17:32	0.008
17:33	0.007
17:34	0.009
17:35	0.007
17:36	0.007
17:37	0.008
17:38	0.006
17:39	0.006
17:40	0.007
17:41	0.009
17:42	0.008
17:43	0.008
17:44	0.07
17:45	0.014
17:46	0.012
17:47	0.008
17:48	0.032
17:49	0.007
17:50	0.006
17:51	0.014
17:52	0.009
17:53	0.006
17:54	0.006
17:55	0.006
17:56	0.008
17:57	0.007
17:58	0.007
17:59	0.007
18:00	0.007
18:01	0.007
18:02	0.008
18:03	0.008
18:04	0.011
18:05	0.009
18:06	0.008
18:07	0.012
18:08	0.009
18:09	0.007
18:10	0.006
18:11	0.016

18:12	0.006
18:13	0.007
18:14	0.007
18:15	0.007
18:16	0.009
18:17	0.008
18:18	0.008
18:19	0.024

Device Serial No	Log Time	Log Type	Sensor 1 Type	Sensor 1 Serial Number	Sensor 1 Status	Sensor 1 Gas Reading
592-601274	3/21/2024 6:40	CONFIG	PID	SC23030921B3		
592-601274	3/21/2024 6:41	Readings	PID	SC23030921B3	Normal	0
592-601274	3/21/2024 6:42	Readings	PID	SC23030921B3	Normal	0
592-601274	3/21/2024 6:43	Readings	PID	SC23030921B3	Normal	0
592-601274	3/21/2024 6:44	Readings	PID	SC23030921B3	Normal	0
592-601274	3/21/2024 6:45	Readings	PID	SC23030921B3	Normal	0
592-601274	3/21/2024 6:46	Readings	PID	SC23030921B3	Normal	0
592-601274	3/21/2024 6:47	Readings	PID	SC23030921B3	Normal	0
592-601274	3/21/2024 6:48	Readings	PID	SC23030921B3	Normal	0
592-601274	3/21/2024 6:49	Readings	PID	SC23030921B3	Normal	0
592-601274	3/21/2024 6:50	Readings	PID	SC23030921B3	Normal	0
592-601274	3/21/2024 6:51	Readings	PID	SC23030921B3	Normal	0
592-601274	3/21/2024 6:52	Readings	PID	SC23030921B3	Normal	0
592-601274	3/21/2024 6:53	Readings	PID	SC23030921B3	Normal	0
592-601274	3/21/2024 6:54	Readings	PID	SC23030921B3	Normal	0
592-601274	3/21/2024 6:55	Readings	PID	SC23030921B3	Normal	0
592-601274	3/21/2024 6:56	Readings	PID	SC23030921B3	Normal	0
592-601274	3/21/2024 6:57	Readings	PID	SC23030921B3	Normal	0
592-601274	3/21/2024 6:58	Readings	PID	SC23030921B3	Normal	0
592-601274	3/21/2024 6:59	Readings	PID	SC23030921B3	Normal	0
592-601274	3/21/2024 7:00	Readings	PID	SC23030921B3	Normal	0
592-601274	3/21/2024 7:01	Readings	PID	SC23030921B3	Normal	0
592-601274	3/21/2024 7:02	Readings	PID	SC23030921B3	Normal	0
592-601274	3/21/2024 7:03	Readings	PID	SC23030921B3	Normal	0
592-601274	3/21/2024 7:04	Readings	PID	SC23030921B3	Normal	0
592-601274	3/21/2024 7:05	Readings	PID	SC23030921B3	Normal	0
592-601274	3/21/2024 7:06	Readings	PID	SC23030921B3	Normal	0
592-601274	3/21/2024 7:07	Readings	PID	SC23030921B3	Normal	0
592-601274	3/21/2024 7:08	Readings	PID	SC23030921B3	Normal	0
592-601274	3/21/2024 7:09	Readings	PID	SC23030921B3	Normal	0
592-601274	3/21/2024 7:10	Readings	PID	SC23030921B3	Normal	0
592-601274	3/21/2024 7:11	Readings	PID	SC23030921B3	Normal	0

592-601274

3/21/2024 18:12 Readings PID

SC23030921B3

Normal

0

DOWNWIND CAMP READINGS

251 DOUGLASS STREET, BROOKLYN, NY



Instrument Name	DustTrak DRX
Model Number	8533
Serial Number	8533181207
Firmware Version	3.1
Calibration Date	6/1/2023
Test Name	MANUAL_004
Test Start Time	7:15:06 AM
Test Start Date	3/21/2024
Test Length [D:H:M]	0:03:54
Test Interval [M:S]	1:00
PM1 Average [mg/m3]	0.013
PM1 Minimum [mg/m3]	0.007
PM1 Maximum [mg/m3]	0.156
PM1 TWA [mg/m3]	0.006
Photometric User Cal	1
Size Correction User Cal	1
Flow User Cal	0
Errors	
Number of Samples	644

Elapsed Time [s]	PM1 [mg/m3]	Alarms	Errors
7:16	0.02		
7:17	0.009		
7:18	0.008		
7:19	0.009		
7:20	0.011		
7:21	0.009		
7:22	0.009		
7:23	0.009		
7:24	0.009		
7:25	0.008		
7:26	0.008		
7:27	0.009		
7:28	0.011		
7:29	0.008		
7:30	0.009		
7:31	0.009		
7:32	0.009		
7:33	0.008		
7:34	0.009		
7:35	0.01		
7:36	0.008		
7:37	0.01		
7:38	0.01		

7:39	0.008
7:40	0.009
7:41	0.01
7:42	0.007
7:43	0.007
7:44	0.007
7:45	0.008
7:46	0.007
7:47	0.007
7:48	0.007
7:49	0.008
7:50	0.008
7:51	0.007
7:52	0.008
7:53	0.008
7:54	0.009
7:55	0.008
7:56	0.008
7:57	0.008
7:58	0.008
7:59	0.008
8:00	0.008
8:01	0.008
8:02	0.008
8:03	0.008
8:04	0.008
8:05	0.008
8:06	0.008
8:07	0.008
8:08	0.008
8:09	0.008
8:10	0.039
8:11	0.015
8:12	0.008
8:13	0.008
8:14	0.008
8:15	0.011
8:16	0.008
8:17	0.008
8:18	0.008
8:19	0.008
8:20	0.011
8:21	0.009
8:22	0.01

8:23	0.017
8:24	0.018
8:25	0.016
8:26	0.014
8:27	0.014
8:28	0.013
8:29	0.017
8:30	0.022
8:31	0.019
8:32	0.02
8:33	0.018
8:34	0.017
8:35	0.014
8:36	0.015
8:37	0.018
8:38	0.046
8:39	0.028
8:40	0.018
8:41	0.015
8:42	0.013
8:43	0.019
8:44	0.018
8:45	0.016
8:46	0.015
8:47	0.016
8:48	0.015
8:49	0.015
8:50	0.016
8:51	0.015
8:52	0.011
8:53	0.018
8:54	0.018
8:55	0.016
8:56	0.018
8:57	0.016
8:58	0.01
8:59	0.012
9:00	0.012
9:01	0.012
9:02	0.014
9:03	0.016
9:04	0.017
9:05	0.019
9:06	0.016

9:07	0.018
9:08	0.017
9:09	0.012
9:10	0.015
9:11	0.01
9:12	0.009
9:13	0.012
9:14	0.011
9:15	0.013
9:16	0.012
9:17	0.012
9:18	0.012
9:19	0.011
9:20	0.011
9:21	0.012
9:22	0.013
9:23	0.011
9:24	0.012
9:25	0.011
9:26	0.012
9:27	0.011
9:28	0.015
9:29	0.014
9:30	0.011
9:31	0.012
9:32	0.011
9:33	0.012
9:34	0.011
9:35	0.011
9:36	0.011
9:37	0.009
9:38	0.011
9:39	0.011
9:40	0.01
9:41	0.013
9:42	0.011
9:43	0.011
9:44	0.01
9:45	0.013
9:46	0.011
9:47	0.011
9:48	0.01
9:49	0.009
9:50	0.013

9:51	0.017
9:52	0.011
9:53	0.009
9:54	0.011
9:55	0.01
9:56	0.01
9:57	0.012
9:58	0.021
9:59	0.011
10:00	0.013
10:01	0.125
10:02	0.01
10:03	0.011
10:04	0.01
10:05	0.011
10:06	0.011
10:07	0.02
10:08	0.012
10:09	0.01
10:10	0.014
10:11	0.022
10:12	0.011
10:13	0.009
10:14	0.011
10:15	0.011
10:16	0.015
10:17	0.013
10:18	0.013
10:19	0.02
10:20	0.022
10:21	0.017
10:22	0.017
10:23	0.021
10:24	0.014
10:25	0.018
10:26	0.014
10:27	0.017
10:28	0.016
10:29	0.02
10:30	0.013
10:31	0.015
10:32	0.013
10:33	0.022
10:34	0.013

10:35	0.011
10:36	0.009
10:37	0.008
10:38	0.01
10:39	0.012
10:40	0.02
10:41	0.011
10:42	0.008
10:43	0.009
10:44	0.011
10:45	0.016
10:46	0.01
10:47	0.014
10:48	0.009
10:49	0.009
10:50	0.008
10:51	0.008
10:52	0.028
10:53	0.011
10:54	0.015
10:55	0.031
10:56	0.011
10:57	0.012
10:58	0.011
10:59	0.009
11:00	0.008
11:01	0.009
11:02	0.014
11:03	0.009
11:04	0.012
11:05	0.011
11:06	0.021
11:07	0.01
11:08	0.013
11:09	0.01
11:10	0.015
11:11	0.013
11:12	0.01
11:13	0.009
11:14	0.01
11:15	0.021
11:16	0.009
11:17	0.009
11:18	0.01

11:19	0.008
11:20	0.01
11:21	0.011
11:22	0.009
11:23	0.009
11:24	0.01
11:25	0.015
11:26	0.008
11:27	0.011
11:28	0.011
11:29	0.012
11:30	0.009
11:31	0.009
11:32	0.009
11:33	0.01
11:34	0.01
11:35	0.009
11:36	0.009
11:37	0.009
11:38	0.011
11:39	0.009
11:40	0.01
11:41	0.009
11:42	0.027
11:43	0.011
11:44	0.018
11:45	0.011
11:46	0.013
11:47	0.011
11:48	0.008
11:49	0.008
11:50	0.009
11:51	0.014
11:52	0.012
11:53	0.009
11:54	0.011
11:55	0.01
11:56	0.011
11:57	0.018
11:58	0.01
11:59	0.014
12:00	0.009
12:01	0.012
12:02	0.009

12:03	0.01
12:04	0.01
12:05	0.014
12:06	0.01
12:07	0.041
12:08	0.036
12:09	0.032
12:10	0.014
12:11	0.011
12:12	0.015
12:13	0.022
12:14	0.013
12:15	0.023
12:16	0.012
12:17	0.014
12:18	0.017
12:19	0.01
12:20	0.01
12:21	0.011
12:22	0.021
12:23	0.014
12:24	0.013
12:25	0.017
12:26	0.022
12:27	0.013
12:28	0.012
12:29	0.016
12:30	0.011
12:31	0.01
12:32	0.012
12:33	0.036
12:34	0.014
12:35	0.012
12:36	0.013
12:37	0.024
12:38	0.016
12:39	0.017
12:40	0.01
12:41	0.015
12:42	0.024
12:43	0.017
12:44	0.021
12:45	0.016
12:46	0.011

12:47	0.009
12:48	0.01
12:49	0.011
12:50	0.011
12:51	0.01
12:52	0.013
12:53	0.027
12:54	0.011
12:55	0.012
12:56	0.065
12:57	0.03
12:58	0.011
12:59	0.021
13:00	0.018
13:01	0.04
13:02	0.013
13:03	0.013
13:04	0.01
13:05	0.01
13:06	0.013
13:07	0.012
13:08	0.013
13:09	0.013
13:10	0.01
13:11	0.011
13:12	0.011
13:13	0.01
13:14	0.013
13:15	0.011
13:16	0.015
13:17	0.014
13:18	0.011
13:19	0.02
13:20	0.027
13:21	0.014
13:22	0.017
13:23	0.013
13:24	0.011
13:25	0.011
13:26	0.012
13:27	0.011
13:28	0.012
13:29	0.013
13:30	0.013

13:31	0.013
13:32	0.012
13:33	0.015
13:34	0.013
13:35	0.013
13:36	0.016
13:37	0.016
13:38	0.012
13:39	0.019
13:40	0.017
13:41	0.017
13:42	0.035
13:43	0.022
13:44	0.015
13:45	0.021
13:46	0.036
13:47	0.018
13:48	0.013
13:49	0.014
13:50	0.031
13:51	0.028
13:52	0.031
13:53	0.012
13:54	0.014
13:55	0.018
13:56	0.025
13:57	0.012
13:58	0.013
13:59	0.015
14:00	0.025
14:01	0.012
14:02	0.014
14:03	0.014
14:04	0.013
14:05	0.012
14:06	0.011
14:07	0.011
14:08	0.011
14:09	0.011
14:10	0.011
14:11	0.013
14:12	0.022
14:13	0.012
14:14	0.02

14:15	0.013
14:16	0.01
14:17	0.012
14:18	0.012
14:19	0.012
14:20	0.012
14:21	0.011
14:22	0.014
14:23	0.012
14:24	0.025
14:25	0.019
14:26	0.01
14:27	0.011
14:28	0.011
14:29	0.012
14:30	0.012
14:31	0.013
14:32	0.012
14:33	0.01
14:34	0.01
14:35	0.011
14:36	0.011
14:37	0.014
14:38	0.054
14:39	0.021
14:40	0.014
14:41	0.015
14:42	0.011
14:43	0.011
14:44	0.01
14:45	0.012
14:46	0.012
14:47	0.012
14:48	0.016
14:49	0.011
14:50	0.012
14:51	0.011
14:52	0.015
14:53	0.017
14:54	0.012
14:55	0.011
14:56	0.011
14:57	0.011
14:58	0.013

14:59	0.013
15:00	0.011
15:01	0.011
15:02	0.012
15:03	0.01
15:04	0.013
15:05	0.011
15:06	0.012
15:07	0.014
15:08	0.012
15:09	0.011
15:10	0.01
15:11	0.01
15:12	0.019
15:13	0.015
15:14	0.019
15:15	0.011
15:16	0.018
15:17	0.021
15:18	0.011
15:19	0.011
15:20	0.015
15:21	0.017
15:22	0.011
15:23	0.011
15:24	0.012
15:25	0.014
15:26	0.017
15:27	0.015
15:28	0.015
15:29	0.011
15:30	0.011
15:31	0.012
15:32	0.015
15:33	0.074
15:34	0.036
15:35	0.016
15:36	0.016
15:37	0.02
15:38	0.025
15:39	0.016
15:40	0.015
15:41	0.058
15:42	0.031

15:43	0.015
15:44	0.014
15:45	0.012
15:46	0.011
15:47	0.016
15:48	0.028
15:49	0.023
15:50	0.045
15:51	0.016
15:52	0.014
15:53	0.014
15:54	0.023
15:55	0.014
15:56	0.028
15:57	0.016
15:58	0.011
15:59	0.012
16:00	0.013
16:01	0.017
16:02	0.034
16:03	0.013
16:04	0.011
16:05	0.01
16:06	0.01
16:07	0.009
16:08	0.01
16:09	0.01
16:10	0.011
16:11	0.014
16:12	0.013
16:13	0.02
16:14	0.012
16:15	0.011
16:16	0.014
16:17	0.012
16:18	0.01
16:19	0.012
16:20	0.011
16:21	0.01
16:22	0.01
16:23	0.014
16:24	0.011
16:25	0.012
16:26	0.011

16:27	0.01
16:28	0.016
16:29	0.013
16:30	0.038
16:31	0.011
16:32	0.01
16:33	0.01
16:34	0.01
16:35	0.011
16:36	0.01
16:37	0.035
16:38	0.01
16:39	0.015
16:40	0.013
16:41	0.012
16:42	0.01
16:43	0.011
16:44	0.011
16:45	0.011
16:46	0.01
16:47	0.01
16:48	0.011
16:49	0.01
16:50	0.011
16:51	0.011
16:52	0.011
16:53	0.011
16:54	0.013
16:55	0.01
16:56	0.011
16:57	0.011
16:58	0.011
16:59	0.01
17:00	0.011
17:01	0.01
17:02	0.011
17:03	0.01
17:04	0.01
17:05	0.012
17:06	0.011
17:07	0.022
17:08	0.013
17:09	0.011
17:10	0.011

17:11	0.011
17:12	0.011
17:13	0.011
17:14	0.011
17:15	0.013
17:16	0.01
17:17	0.01
17:18	0.011
17:19	0.012
17:20	0.013
17:21	0.156
17:22	0.013
17:23	0.012
17:24	0.018
17:25	0.013
17:26	0.01
17:27	0.01
17:28	0.015
17:29	0.012
17:30	0.012
17:31	0.011
17:32	0.01
17:33	0.01
17:34	0.01
17:35	0.01
17:36	0.01
17:37	0.01
17:38	0.01
17:39	0.011
17:40	0.011
17:41	0.012
17:42	0.011
17:43	0.011
17:44	0.011
17:45	0.015
17:46	0.01
17:47	0.011
17:48	0.024
17:49	0.01
17:50	0.01
17:51	0.01
17:52	0.013
17:53	0.012
17:54	0.011

17:55	0.011
17:56	0.012
17:57	0.011
17:58	0.011
17:59	0.01

Device Serial No	Log Time	Log Type	Sensor 1 Type	Sensor 1 Serial Number	Sensor 1 Status	Sensor 1 Gas Reading
592-602816	3/21/2024 6:52	CONFIG	PID	SC23030324C7		
592-602816	3/21/2024 6:53	Readings	PID	SC23030324C7	Normal	0
592-602816	3/21/2024 6:54	Readings	PID	SC23030324C7	Normal	0
592-602816	3/21/2024 6:55	Readings	PID	SC23030324C7	Normal	0
592-602816	3/21/2024 6:56	Readings	PID	SC23030324C7	Normal	0
592-602816	3/21/2024 6:57	Readings	PID	SC23030324C7	Normal	0
592-602816	3/21/2024 6:58	Readings	PID	SC23030324C7	Normal	0
592-602816	3/21/2024 6:59	Readings	PID	SC23030324C7	Normal	0
592-602816	3/21/2024 7:00	Readings	PID	SC23030324C7	Normal	0
592-602816	3/21/2024 7:01	Readings	PID	SC23030324C7	Normal	0
592-602816	3/21/2024 7:02	Readings	PID	SC23030324C7	Normal	0
592-602816	3/21/2024 7:03	Readings	PID	SC23030324C7	Normal	0
592-602816	3/21/2024 7:04	Readings	PID	SC23030324C7	Normal	0
592-602816	3/21/2024 7:05	Readings	PID	SC23030324C7	Normal	0
592-602816	3/21/2024 7:06	Readings	PID	SC23030324C7	Normal	0
592-602816	3/21/2024 7:07	Readings	PID	SC23030324C7	Normal	0
592-602816	3/21/2024 7:08	Readings	PID	SC23030324C7	Normal	0
592-602816	3/21/2024 7:09	Readings	PID	SC23030324C7	Normal	0
592-602816	3/21/2024 7:10	Readings	PID	SC23030324C7	Normal	0
592-602816	3/21/2024 7:11	Readings	PID	SC23030324C7	Normal	0
592-602816	3/21/2024 7:12	Readings	PID	SC23030324C7	Normal	0
592-602816	3/21/2024 7:13	Readings	PID	SC23030324C7	Normal	0
592-602816	3/21/2024 7:14	Readings	PID	SC23030324C7	Normal	0
592-602816	3/21/2024 7:15	Readings	PID	SC23030324C7	Normal	0
592-602816	3/21/2024 7:16	Readings	PID	SC23030324C7	Normal	0
592-602816	3/21/2024 7:17	Readings	PID	SC23030324C7	Normal	0
592-602816	3/21/2024 7:18	Readings	PID	SC23030324C7	Normal	0
592-602816	3/21/2024 7:19	Readings	PID	SC23030324C7	Normal	0
592-602816	3/21/2024 7:20	Readings	PID	SC23030324C7	Normal	0
592-602816	3/21/2024 7:21	Readings	PID	SC23030324C7	Normal	0
592-602816	3/21/2024 7:22	Readings	PID	SC23030324C7	Normal	0
592-602816	3/21/2024 7:23	Readings	PID	SC23030324C7	Normal	0

592-602816	3/21/2024 8:30 Readings	PID	SC23030324C7	Normal	0
592-602816	3/21/2024 8:31 Readings	PID	SC23030324C7	Normal	0
592-602816	3/21/2024 8:32 Readings	PID	SC23030324C7	Normal	0
592-602816	3/21/2024 8:33 Readings	PID	SC23030324C7	Normal	0
592-602816	3/21/2024 8:34 Readings	PID	SC23030324C7	Normal	0
592-602816	3/21/2024 8:35 Readings	PID	SC23030324C7	Normal	0.1
592-602816	3/21/2024 8:36 Readings	PID	SC23030324C7	Normal	0.2
592-602816	3/21/2024 8:37 Readings	PID	SC23030324C7	Normal	0.1
592-602816	3/21/2024 8:38 Readings	PID	SC23030324C7	Normal	0.1
592-602816	3/21/2024 8:39 Readings	PID	SC23030324C7	Normal	0.1
592-602816	3/21/2024 8:40 Readings	PID	SC23030324C7	Normal	0.1
592-602816	3/21/2024 8:41 Readings	PID	SC23030324C7	Normal	0.1
592-602816	3/21/2024 8:42 Readings	PID	SC23030324C7	Normal	0
592-602816	3/21/2024 8:43 Readings	PID	SC23030324C7	Normal	0
592-602816	3/21/2024 8:44 Readings	PID	SC23030324C7	Normal	0
592-602816	3/21/2024 8:45 Readings	PID	SC23030324C7	Normal	0
592-602816	3/21/2024 8:46 Readings	PID	SC23030324C7	Normal	0
592-602816	3/21/2024 8:47 Readings	PID	SC23030324C7	Normal	0
592-602816	3/21/2024 8:48 Readings	PID	SC23030324C7	Normal	0
592-602816	3/21/2024 8:49 Readings	PID	SC23030324C7	Normal	0
592-602816	3/21/2024 8:50 Readings	PID	SC23030324C7	Normal	0
592-602816	3/21/2024 8:51 Readings	PID	SC23030324C7	Normal	0
592-602816	3/21/2024 8:52 Readings	PID	SC23030324C7	Normal	0
592-602816	3/21/2024 8:53 Readings	PID	SC23030324C7	Normal	0
592-602816	3/21/2024 8:54 Readings	PID	SC23030324C7	Normal	0
592-602816	3/21/2024 8:55 Readings	PID	SC23030324C7	Normal	0
592-602816	3/21/2024 8:56 Readings	PID	SC23030324C7	Normal	0
592-602816	3/21/2024 8:57 Readings	PID	SC23030324C7	Normal	0
592-602816	3/21/2024 8:58 Readings	PID	SC23030324C7	Normal	0
592-602816	3/21/2024 8:59 Readings	PID	SC23030324C7	Normal	0
592-602816	3/21/2024 9:00 Readings	PID	SC23030324C7	Normal	0
592-602816	3/21/2024 9:01 Readings	PID	SC23030324C7	Normal	0
592-602816	3/21/2024 9:02 Readings	PID	SC23030324C7	Normal	0

592-602816	3/21/2024 9:36	Readings	PID	SC23030324C7	Normal	0
592-602816	3/21/2024 9:37	Readings	PID	SC23030324C7	Normal	0
592-602816	3/21/2024 9:38	Readings	PID	SC23030324C7	Normal	0
592-602816	3/21/2024 9:39	Readings	PID	SC23030324C7	Normal	0
592-602816	3/21/2024 9:40	Readings	PID	SC23030324C7	Normal	0
592-602816	3/21/2024 9:41	Readings	PID	SC23030324C7	Normal	0
592-602816	3/21/2024 9:42	Readings	PID	SC23030324C7	Normal	0
592-602816	3/21/2024 9:43	Readings	PID	SC23030324C7	Normal	0
592-602816	3/21/2024 9:44	Readings	PID	SC23030324C7	Normal	0
592-602816	3/21/2024 9:45	Readings	PID	SC23030324C7	Normal	0
592-602816	3/21/2024 9:46	Readings	PID	SC23030324C7	Normal	0
592-602816	3/21/2024 9:47	Readings	PID	SC23030324C7	Normal	0
592-602816	3/21/2024 9:48	Readings	PID	SC23030324C7	Normal	0
592-602816	3/21/2024 9:49	Readings	PID	SC23030324C7	Normal	0
592-602816	3/21/2024 9:50	Readings	PID	SC23030324C7	Normal	0
592-602816	3/21/2024 9:51	Readings	PID	SC23030324C7	Normal	0
592-602816	3/21/2024 9:52	Readings	PID	SC23030324C7	Normal	0
592-602816	3/21/2024 9:53	Readings	PID	SC23030324C7	Normal	0
592-602816	3/21/2024 9:54	Readings	PID	SC23030324C7	Normal	0
592-602816	3/21/2024 9:55	Readings	PID	SC23030324C7	Normal	0
592-602816	3/21/2024 9:56	Readings	PID	SC23030324C7	Normal	0
592-602816	3/21/2024 9:57	Readings	PID	SC23030324C7	Normal	0
592-602816	3/21/2024 9:58	Readings	PID	SC23030324C7	Normal	0
592-602816	3/21/2024 9:59	Readings	PID	SC23030324C7	Normal	0
592-602816	3/21/2024 10:00	Readings	PID	SC23030324C7	Normal	0
592-602816	3/21/2024 10:01	Readings	PID	SC23030324C7	Normal	0
592-602816	3/21/2024 10:02	Readings	PID	SC23030324C7	Normal	0
592-602816	3/21/2024 10:03	Readings	PID	SC23030324C7	Normal	0
592-602816	3/21/2024 10:04	Readings	PID	SC23030324C7	Normal	0
592-602816	3/21/2024 10:05	Readings	PID	SC23030324C7	Normal	0
592-602816	3/21/2024 10:06	Readings	PID	SC23030324C7	Normal	0
592-602816	3/21/2024 10:07	Readings	PID	SC23030324C7	Normal	0
592-602816	3/21/2024 10:08	Readings	PID	SC23030324C7	Normal	0

592-602816	3/21/2024 11:48	Readings	PID	SC23030324C7	Normal	0
592-602816	3/21/2024 11:49	Readings	PID	SC23030324C7	Normal	0
592-602816	3/21/2024 11:50	Readings	PID	SC23030324C7	Normal	0
592-602816	3/21/2024 11:51	Readings	PID	SC23030324C7	Normal	0
592-602816	3/21/2024 11:52	Readings	PID	SC23030324C7	Normal	0
592-602816	3/21/2024 11:53	Readings	PID	SC23030324C7	Normal	0
592-602816	3/21/2024 11:54	Readings	PID	SC23030324C7	Normal	0
592-602816	3/21/2024 11:55	Readings	PID	SC23030324C7	Normal	0
592-602816	3/21/2024 11:56	Readings	PID	SC23030324C7	Normal	0
592-602816	3/21/2024 11:57	Readings	PID	SC23030324C7	Normal	0
592-602816	3/21/2024 11:58	Readings	PID	SC23030324C7	Normal	0
592-602816	3/21/2024 11:59	Readings	PID	SC23030324C7	Normal	0
592-602816	3/21/2024 12:00	Readings	PID	SC23030324C7	Normal	0
592-602816	3/21/2024 12:01	Readings	PID	SC23030324C7	Normal	0
592-602816	3/21/2024 12:02	Readings	PID	SC23030324C7	Normal	0
592-602816	3/21/2024 12:03	Readings	PID	SC23030324C7	Normal	0
592-602816	3/21/2024 12:04	Readings	PID	SC23030324C7	Normal	0.1
592-602816	3/21/2024 12:05	Readings	PID	SC23030324C7	Normal	0.1
592-602816	3/21/2024 12:06	Readings	PID	SC23030324C7	Normal	0
592-602816	3/21/2024 12:07	Readings	PID	SC23030324C7	Normal	0
592-602816	3/21/2024 12:08	Readings	PID	SC23030324C7	Normal	0
592-602816	3/21/2024 12:09	Readings	PID	SC23030324C7	Normal	0
592-602816	3/21/2024 12:10	Readings	PID	SC23030324C7	Normal	0
592-602816	3/21/2024 12:11	Readings	PID	SC23030324C7	Normal	0
592-602816	3/21/2024 12:12	Readings	PID	SC23030324C7	Normal	0
592-602816	3/21/2024 12:13	Readings	PID	SC23030324C7	Normal	0
592-602816	3/21/2024 12:14	Readings	PID	SC23030324C7	Normal	0
592-602816	3/21/2024 12:15	Readings	PID	SC23030324C7	Normal	0
592-602816	3/21/2024 12:16	Readings	PID	SC23030324C7	Normal	0
592-602816	3/21/2024 12:17	Readings	PID	SC23030324C7	Normal	0
592-602816	3/21/2024 12:18	Readings	PID	SC23030324C7	Normal	0
592-602816	3/21/2024 12:19	Readings	PID	SC23030324C7	Normal	0
592-602816	3/21/2024 12:20	Readings	PID	SC23030324C7	Normal	0

592-602816	3/21/2024 13:27 Readings	PID	SC23030324C7	Normal	0
592-602816	3/21/2024 13:28 Readings	PID	SC23030324C7	Normal	0
592-602816	3/21/2024 13:29 Readings	PID	SC23030324C7	Normal	0
592-602816	3/21/2024 13:30 Readings	PID	SC23030324C7	Normal	0
592-602816	3/21/2024 13:31 Readings	PID	SC23030324C7	Normal	0
592-602816	3/21/2024 13:32 Readings	PID	SC23030324C7	Normal	0
592-602816	3/21/2024 13:33 Readings	PID	SC23030324C7	Normal	0
592-602816	3/21/2024 13:34 Readings	PID	SC23030324C7	Normal	0
592-602816	3/21/2024 13:35 Readings	PID	SC23030324C7	Normal	0
592-602816	3/21/2024 13:36 Readings	PID	SC23030324C7	Normal	0
592-602816	3/21/2024 13:37 Readings	PID	SC23030324C7	Normal	0
592-602816	3/21/2024 13:38 Readings	PID	SC23030324C7	Normal	0
592-602816	3/21/2024 13:39 Readings	PID	SC23030324C7	Normal	0
592-602816	3/21/2024 13:40 Readings	PID	SC23030324C7	Normal	0
592-602816	3/21/2024 13:41 Readings	PID	SC23030324C7	Normal	0
592-602816	3/21/2024 13:42 Readings	PID	SC23030324C7	Normal	0
592-602816	3/21/2024 13:43 Readings	PID	SC23030324C7	Normal	0
592-602816	3/21/2024 13:44 Readings	PID	SC23030324C7	Normal	0
592-602816	3/21/2024 13:45 Readings	PID	SC23030324C7	Normal	0
592-602816	3/21/2024 13:46 Readings	PID	SC23030324C7	Normal	0
592-602816	3/21/2024 13:47 Readings	PID	SC23030324C7	Normal	0
592-602816	3/21/2024 13:48 Readings	PID	SC23030324C7	Normal	0
592-602816	3/21/2024 13:49 Readings	PID	SC23030324C7	Normal	0
592-602816	3/21/2024 13:50 Readings	PID	SC23030324C7	Normal	0
592-602816	3/21/2024 13:51 Readings	PID	SC23030324C7	Normal	0
592-602816	3/21/2024 13:52 Readings	PID	SC23030324C7	Normal	0
592-602816	3/21/2024 13:53 Readings	PID	SC23030324C7	Normal	0
592-602816	3/21/2024 13:54 Readings	PID	SC23030324C7	Normal	0
592-602816	3/21/2024 13:55 Readings	PID	SC23030324C7	Normal	0
592-602816	3/21/2024 13:56 Readings	PID	SC23030324C7	Normal	0
592-602816	3/21/2024 13:57 Readings	PID	SC23030324C7	Normal	0.1
592-602816	3/21/2024 13:58 Readings	PID	SC23030324C7	Normal	0
592-602816	3/21/2024 13:59 Readings	PID	SC23030324C7	Normal	0

592-602816	3/21/2024 14:33 Readings	PID	SC23030324C7	Normal	0
592-602816	3/21/2024 14:34 Readings	PID	SC23030324C7	Normal	0
592-602816	3/21/2024 14:35 Readings	PID	SC23030324C7	Normal	0
592-602816	3/21/2024 14:36 Readings	PID	SC23030324C7	Normal	0
592-602816	3/21/2024 14:37 Readings	PID	SC23030324C7	Normal	0
592-602816	3/21/2024 14:38 Readings	PID	SC23030324C7	Normal	0
592-602816	3/21/2024 14:39 Readings	PID	SC23030324C7	Normal	0
592-602816	3/21/2024 14:40 Readings	PID	SC23030324C7	Normal	0
592-602816	3/21/2024 14:41 Readings	PID	SC23030324C7	Normal	0
592-602816	3/21/2024 14:42 Readings	PID	SC23030324C7	Normal	0
592-602816	3/21/2024 14:43 Readings	PID	SC23030324C7	Normal	0
592-602816	3/21/2024 14:44 Readings	PID	SC23030324C7	Normal	0
592-602816	3/21/2024 14:45 Readings	PID	SC23030324C7	Normal	0
592-602816	3/21/2024 14:46 Readings	PID	SC23030324C7	Normal	0
592-602816	3/21/2024 14:47 Readings	PID	SC23030324C7	Normal	0
592-602816	3/21/2024 14:48 Readings	PID	SC23030324C7	Normal	0
592-602816	3/21/2024 14:49 Readings	PID	SC23030324C7	Normal	0
592-602816	3/21/2024 14:50 Readings	PID	SC23030324C7	Normal	0.1
592-602816	3/21/2024 14:51 Readings	PID	SC23030324C7	Normal	0
592-602816	3/21/2024 14:52 Readings	PID	SC23030324C7	Normal	0.4
592-602816	3/21/2024 14:53 Readings	PID	SC23030324C7	Normal	0
592-602816	3/21/2024 14:54 Readings	PID	SC23030324C7	Normal	0
592-602816	3/21/2024 14:55 Readings	PID	SC23030324C7	Normal	0
592-602816	3/21/2024 14:56 Readings	PID	SC23030324C7	Normal	0
592-602816	3/21/2024 14:57 Readings	PID	SC23030324C7	Normal	0
592-602816	3/21/2024 14:58 Readings	PID	SC23030324C7	Normal	0
592-602816	3/21/2024 14:59 Readings	PID	SC23030324C7	Normal	0
592-602816	3/21/2024 15:00 Readings	PID	SC23030324C7	Normal	0
592-602816	3/21/2024 15:01 Readings	PID	SC23030324C7	Normal	0
592-602816	3/21/2024 15:02 Readings	PID	SC23030324C7	Normal	0
592-602816	3/21/2024 15:03 Readings	PID	SC23030324C7	Normal	0
592-602816	3/21/2024 15:04 Readings	PID	SC23030324C7	Normal	0
592-602816	3/21/2024 15:05 Readings	PID	SC23030324C7	Normal	0

592-602816	3/21/2024 15:39 Readings	PID	SC23030324C7	Normal	0
592-602816	3/21/2024 15:40 Readings	PID	SC23030324C7	Normal	0
592-602816	3/21/2024 15:41 Readings	PID	SC23030324C7	Normal	0
592-602816	3/21/2024 15:42 Readings	PID	SC23030324C7	Normal	0
592-602816	3/21/2024 15:43 Readings	PID	SC23030324C7	Normal	0
592-602816	3/21/2024 15:44 Readings	PID	SC23030324C7	Normal	0
592-602816	3/21/2024 15:45 Readings	PID	SC23030324C7	Normal	0
592-602816	3/21/2024 15:46 Readings	PID	SC23030324C7	Normal	0
592-602816	3/21/2024 15:47 Readings	PID	SC23030324C7	Normal	0
592-602816	3/21/2024 15:48 Readings	PID	SC23030324C7	Normal	0
592-602816	3/21/2024 15:49 Readings	PID	SC23030324C7	Normal	0
592-602816	3/21/2024 15:50 Readings	PID	SC23030324C7	Normal	0
592-602816	3/21/2024 15:51 Readings	PID	SC23030324C7	Normal	0
592-602816	3/21/2024 15:52 Readings	PID	SC23030324C7	Normal	0.3
592-602816	3/21/2024 15:53 Readings	PID	SC23030324C7	Normal	0.1
592-602816	3/21/2024 15:54 Readings	PID	SC23030324C7	Normal	0.1
592-602816	3/21/2024 15:55 Readings	PID	SC23030324C7	Normal	0
592-602816	3/21/2024 15:56 Readings	PID	SC23030324C7	Normal	0.1
592-602816	3/21/2024 15:57 Readings	PID	SC23030324C7	Normal	0.1
592-602816	3/21/2024 15:58 Readings	PID	SC23030324C7	Normal	0
592-602816	3/21/2024 15:59 Readings	PID	SC23030324C7	Normal	0.1
592-602816	3/21/2024 16:00 Readings	PID	SC23030324C7	Normal	0
592-602816	3/21/2024 16:01 Readings	PID	SC23030324C7	Normal	0
592-602816	3/21/2024 16:02 Readings	PID	SC23030324C7	Normal	0
592-602816	3/21/2024 16:03 Readings	PID	SC23030324C7	Normal	0.2
592-602816	3/21/2024 16:04 Readings	PID	SC23030324C7	Normal	0.4
592-602816	3/21/2024 16:05 Readings	PID	SC23030324C7	Normal	0.1
592-602816	3/21/2024 16:06 Readings	PID	SC23030324C7	Normal	0.1
592-602816	3/21/2024 16:07 Readings	PID	SC23030324C7	Normal	0.1
592-602816	3/21/2024 16:08 Readings	PID	SC23030324C7	Normal	0.2
592-602816	3/21/2024 16:09 Readings	PID	SC23030324C7	Normal	0.2
592-602816	3/21/2024 16:10 Readings	PID	SC23030324C7	Normal	0.1
592-602816	3/21/2024 16:11 Readings	PID	SC23030324C7	Normal	0.1

592-602816	3/21/2024 16:45	Readings	PID	SC23030324C7	Normal	0
592-602816	3/21/2024 16:46	Readings	PID	SC23030324C7	Normal	0
592-602816	3/21/2024 16:47	Readings	PID	SC23030324C7	Normal	0
592-602816	3/21/2024 16:48	Readings	PID	SC23030324C7	Normal	0
592-602816	3/21/2024 16:49	Readings	PID	SC23030324C7	Normal	0
592-602816	3/21/2024 16:50	Readings	PID	SC23030324C7	Normal	0
592-602816	3/21/2024 16:51	Readings	PID	SC23030324C7	Normal	0
592-602816	3/21/2024 16:52	Readings	PID	SC23030324C7	Normal	0
592-602816	3/21/2024 16:53	Readings	PID	SC23030324C7	Normal	0
592-602816	3/21/2024 16:54	Readings	PID	SC23030324C7	Normal	0
592-602816	3/21/2024 16:55	Readings	PID	SC23030324C7	Normal	0
592-602816	3/21/2024 16:56	Readings	PID	SC23030324C7	Normal	0
592-602816	3/21/2024 16:57	Readings	PID	SC23030324C7	Normal	0
592-602816	3/21/2024 16:58	Readings	PID	SC23030324C7	Normal	0
592-602816	3/21/2024 16:59	Readings	PID	SC23030324C7	Normal	0
592-602816	3/21/2024 17:00	Readings	PID	SC23030324C7	Normal	0
592-602816	3/21/2024 17:01	Readings	PID	SC23030324C7	Normal	0.3
592-602816	3/21/2024 17:02	Readings	PID	SC23030324C7	Normal	0.2
592-602816	3/21/2024 17:03	Readings	PID	SC23030324C7	Normal	0.4
592-602816	3/21/2024 17:04	Readings	PID	SC23030324C7	Normal	0
592-602816	3/21/2024 17:05	Readings	PID	SC23030324C7	Normal	0
592-602816	3/21/2024 17:06	Readings	PID	SC23030324C7	Normal	0
592-602816	3/21/2024 17:07	Readings	PID	SC23030324C7	Normal	0
592-602816	3/21/2024 17:08	Readings	PID	SC23030324C7	Normal	0
592-602816	3/21/2024 17:09	Readings	PID	SC23030324C7	Normal	0
592-602816	3/21/2024 17:10	Readings	PID	SC23030324C7	Normal	0
592-602816	3/21/2024 17:11	Readings	PID	SC23030324C7	Normal	0
592-602816	3/21/2024 17:12	Readings	PID	SC23030324C7	Normal	0
592-602816	3/21/2024 17:13	Readings	PID	SC23030324C7	Normal	0
592-602816	3/21/2024 17:14	Readings	PID	SC23030324C7	Normal	0
592-602816	3/21/2024 17:15	Readings	PID	SC23030324C7	Normal	0
592-602816	3/21/2024 17:16	Readings	PID	SC23030324C7	Normal	0
592-602816	3/21/2024 17:17	Readings	PID	SC23030324C7	Normal	0

592-602816	3/21/2024 17:51 Readings	PID	SC23030324C7	Normal	0
592-602816	3/21/2024 17:52 Readings	PID	SC23030324C7	Normal	0
592-602816	3/21/2024 17:53 Readings	PID	SC23030324C7	Normal	0
592-602816	3/21/2024 17:54 Readings	PID	SC23030324C7	Normal	0
592-602816	3/21/2024 17:55 Readings	PID	SC23030324C7	Normal	0
592-602816	3/21/2024 17:56 Readings	PID	SC23030324C7	Normal	0
592-602816	3/21/2024 17:57 Readings	PID	SC23030324C7	Normal	0
592-602816	3/21/2024 17:58 Readings	PID	SC23030324C7	Normal	0
592-602816	3/21/2024 17:59 Readings	PID	SC23030324C7	Normal	0
592-602816	3/21/2024 18:00 Readings	PID	SC23030324C7	Normal	0
592-602816	3/21/2024 18:01 Readings	PID	SC23030324C7	Normal	0
592-602816	3/21/2024 18:02 Readings	PID	SC23030324C7	Normal	0
592-602816	3/21/2024 18:03 Readings	PID	SC23030324C7	Normal	0
592-602816	3/21/2024 18:04 Readings	PID	SC23030324C7	Normal	0
592-602816	3/21/2024 18:05 Readings	PID	SC23030324C7	Normal	0
592-602816	3/21/2024 18:06 Readings	PID	SC23030324C7	Normal	0
592-602816	3/21/2024 18:07 Readings	PID	SC23030324C7	Normal	0
592-602816	3/21/2024 18:08 Readings	PID	SC23030324C7	Normal	0
592-602816	3/21/2024 18:09 Readings	PID	SC23030324C7	Normal	0
592-602816	3/21/2024 18:10 Readings	PID	SC23030324C7	Normal	0
592-602816	3/21/2024 18:11 Readings	PID	SC23030324C7	Normal	0
592-602816	3/21/2024 18:12 Readings	PID	SC23030324C7	Normal	0
592-602816	3/21/2024 18:13 Readings	PID	SC23030324C7	Normal	0
592-602816	3/21/2024 18:14 Readings	PID	SC23030324C7	Normal	0
592-602816	3/21/2024 18:15 Readings	PID	SC23030324C7	Normal	0
592-602816	3/21/2024 18:16 Readings	PID	SC23030324C7	Normal	0
592-602816	3/21/2024 18:17 Readings	PID	SC23030324C7	Normal	0
592-602816	3/21/2024 18:18 Readings	PID	SC23030324C7	Normal	0
592-602816	3/21/2024 18:19 Readings	PID	SC23030324C7	Normal	0
592-602816	3/21/2024 18:20 Readings	PID	SC23030324C7	Normal	0

Instrument Name	DustTrak II
Model Number	8530
Serial Number	8530123704
Firmware Version	3.1
Calibration Date	8/18/2023
Test Name	MANUAL_003
Test Start Time	6:42:39 AM
Test Start Date	3/21/2024
Test Length [D:H:M]	0:11:37
Test Interval [M:S]	1:00
Mass Average [mg/m3]	0.012
Mass Minimum [mg/m3]	0.004
Mass Maximum [mg/m3]	0.187
Mass TWA [mg/m3]	0.013
Photometric User Cal	1
Flow User Cal	0
Errors	
Number of Samples	697

Elapsed Time [s]	Mass [mg/m3]	Alarms	Errors
6:43	0.01		
6:44	0.006		
6:45	0.005		
6:46	0.005		
6:47	0.005		
6:48	0.009		
6:49	0.007		
6:50	0.006		
6:51	0.005		
6:52	0.005		
6:53	0.011		
6:54	0.006		
6:55	0.006		
6:56	0.01		
6:57	0.007		
6:58	0.011		
6:59	0.005		
7:00	0.008		
7:01	0.005		
7:02	0.005		
7:03	0.005		
7:04	0.006		
7:05	0.005		
7:06	0.01		

7:07	0.006
7:08	0.005
7:09	0.007
7:10	0.007
7:11	0.022
7:12	0.008
7:13	0.008
7:14	0.011
7:15	0.007
7:16	0.006
7:17	0.005
7:18	0.01
7:19	0.009
7:20	0.006
7:21	0.015
7:22	0.009
7:23	0.007
7:24	0.008
7:25	0.008
7:26	0.008
7:27	0.006
7:28	0.008
7:29	0.024
7:30	0.01
7:31	0.008
7:32	0.007
7:33	0.024
7:34	0.02
7:35	0.006
7:36	0.008
7:37	0.01
7:38	0.006
7:39	0.008
7:40	0.006
7:41	0.007
7:42	0.009
7:43	0.007
7:44	0.012
7:45	0.008
7:46	0.008
7:47	0.006
7:48	0.008
7:49	0.01
7:50	0.015

7:51	0.035
7:52	0.016
7:53	0.014
7:54	0.027
7:55	0.01
7:56	0.006
7:57	0.006
7:58	0.005
7:59	0.011
8:00	0.01
8:01	0.006
8:02	0.006
8:03	0.009
8:04	0.008
8:05	0.006
8:06	0.006
8:07	0.006
8:08	0.008
8:09	0.007
8:10	0.008
8:11	0.006
8:12	0.006
8:13	0.006
8:14	0.006
8:15	0.01
8:16	0.007
8:17	0.009
8:18	0.013
8:19	0.008
8:20	0.012
8:21	0.01
8:22	0.006
8:23	0.007
8:24	0.01
8:25	0.017
8:26	0.006
8:27	0.006
8:28	0.006
8:29	0.006
8:30	0.015
8:31	0.007
8:32	0.008
8:33	0.006
8:34	0.014

8:35	0.006
8:36	0.008
8:37	0.01
8:38	0.008
8:39	0.012
8:40	0.072
8:41	0.038
8:42	0.018
8:43	0.017
8:44	0.012
8:45	0.01
8:46	0.016
8:47	0.021
8:48	0.013
8:49	0.025
8:50	0.019
8:51	0.018
8:52	0.051
8:53	0.144
8:54	0.026
8:55	0.011
8:56	0.01
8:57	0.017
8:58	0.013
8:59	0.027
9:00	0.033
9:01	0.025
9:02	0.02
9:03	0.009
9:04	0.034
9:05	0.065
9:06	0.066
9:07	0.011
9:08	0.011
9:09	0.009
9:10	0.018
9:11	0.013
9:12	0.046
9:13	0.012
9:14	0.009
9:15	0.008
9:16	0.011
9:17	0.018
9:18	0.007

9:19	0.012
9:20	0.011
9:21	0.012
9:22	0.007
9:23	0.007
9:24	0.01
9:25	0.009
9:26	0.007
9:27	0.005
9:28	0.005
9:29	0.008
9:30	0.016
9:31	0.008
9:32	0.01
9:33	0.009
9:34	0.038
9:35	0.016
9:36	0.013
9:37	0.006
9:38	0.009
9:39	0.006
9:40	0.006
9:41	0.006
9:42	0.006
9:43	0.005
9:44	0.005
9:45	0.005
9:46	0.006
9:47	0.01
9:48	0.008
9:49	0.006
9:50	0.006
9:51	0.005
9:52	0.006
9:53	0.006
9:54	0.006
9:55	0.018
9:56	0.006
9:57	0.006
9:58	0.007
9:59	0.009
10:00	0.007
10:01	0.008
10:02	0.008

10:03	0.007
10:04	0.008
10:05	0.008
10:06	0.021
10:07	0.005
10:08	0.007
10:09	0.005
10:10	0.006
10:11	0.008
10:12	0.01
10:13	0.013
10:14	0.013
10:15	0.005
10:16	0.005
10:17	0.005
10:18	0.01
10:19	0.007
10:20	0.009
10:21	0.007
10:22	0.01
10:23	0.01
10:24	0.027
10:25	0.031
10:26	0.006
10:27	0.005
10:28	0.005
10:29	0.006
10:30	0.011
10:31	0.02
10:32	0.009
10:33	0.013
10:34	0.01
10:35	0.008
10:36	0.013
10:37	0.04
10:38	0.012
10:39	0.021
10:40	0.028
10:41	0.013
10:42	0.017
10:43	0.031
10:44	0.015
10:45	0.009
10:46	0.006

10:47	0.006
10:48	0.014
10:49	0.018
10:50	0.005
10:51	0.006
10:52	0.005
10:53	0.026
10:54	0.009
10:55	0.011
10:56	0.006
10:57	0.007
10:58	0.012
10:59	0.025
11:00	0.011
11:01	0.009
11:02	0.006
11:03	0.006
11:04	0.004
11:05	0.01
11:06	0.032
11:07	0.01
11:08	0.005
11:09	0.07
11:10	0.009
11:11	0.009
11:12	0.011
11:13	0.004
11:14	0.004
11:15	0.006
11:16	0.007
11:17	0.009
11:18	0.006
11:19	0.02
11:20	0.01
11:21	0.005
11:22	0.013
11:23	0.012
11:24	0.028
11:25	0.028
11:26	0.008
11:27	0.006
11:28	0.006
11:29	0.016
11:30	0.008

11:31	0.004
11:32	0.006
11:33	0.008
11:34	0.007
11:35	0.013
11:36	0.005
11:37	0.006
11:38	0.005
11:39	0.006
11:40	0.004
11:41	0.005
11:42	0.007
11:43	0.005
11:44	0.008
11:45	0.005
11:46	0.006
11:47	0.01
11:48	0.007
11:49	0.006
11:50	0.005
11:51	0.005
11:52	0.007
11:53	0.005
11:54	0.005
11:55	0.004
11:56	0.01
11:57	0.009
11:58	0.01
11:59	0.025
12:00	0.012
12:01	0.009
12:02	0.005
12:03	0.004
12:04	0.004
12:05	0.01
12:06	0.015
12:07	0.005
12:08	0.007
12:09	0.009
12:10	0.011
12:11	0.027
12:12	0.01
12:13	0.019
12:14	0.014

12:15	0.015
12:16	0.016
12:17	0.008
12:18	0.008
12:19	0.015
12:20	0.014
12:21	0.022
12:22	0.03
12:23	0.052
12:24	0.016
12:25	0.009
12:26	0.01
12:27	0.021
12:28	0.008
12:29	0.019
12:30	0.011
12:31	0.008
12:32	0.029
12:33	0.008
12:34	0.008
12:35	0.008
12:36	0.021
12:37	0.019
12:38	0.022
12:39	0.009
12:40	0.015
12:41	0.011
12:42	0.005
12:43	0.016
12:44	0.008
12:45	0.006
12:46	0.007
12:47	0.02
12:48	0.021
12:49	0.011
12:50	0.02
12:51	0.032
12:52	0.018
12:53	0.039
12:54	0.01
12:55	0.01
12:56	0.032
12:57	0.021
12:58	0.022

12:59	0.017
13:00	0.007
13:01	0.006
13:02	0.006
13:03	0.005
13:04	0.006
13:05	0.011
13:06	0.005
13:07	0.009
13:08	0.009
13:09	0.01
13:10	0.014
13:11	0.187
13:12	0.013
13:13	0.019
13:14	0.02
13:15	0.031
13:16	0.013
13:17	0.006
13:18	0.006
13:19	0.007
13:20	0.016
13:21	0.017
13:22	0.008
13:23	0.02
13:24	0.006
13:25	0.006
13:26	0.007
13:27	0.006
13:28	0.006
13:29	0.007
13:30	0.006
13:31	0.012
13:32	0.01
13:33	0.018
13:34	0.014
13:35	0.019
13:36	0.015
13:37	0.016
13:38	0.007
13:39	0.005
13:40	0.007
13:41	0.007
13:42	0.006

13:43	0.005
13:44	0.007
13:45	0.009
13:46	0.01
13:47	0.006
13:48	0.006
13:49	0.015
13:50	0.015
13:51	0.019
13:52	0.05
13:53	0.009
13:54	0.017
13:55	0.008
13:56	0.007
13:57	0.021
13:58	0.006
13:59	0.022
14:00	0.03
14:01	0.054
14:02	0.023
14:03	0.011
14:04	0.008
14:05	0.007
14:06	0.007
14:07	0.013
14:08	0.009
14:09	0.016
14:10	0.009
14:11	0.01
14:12	0.009
14:13	0.008
14:14	0.008
14:15	0.016
14:16	0.009
14:17	0.021
14:18	0.01
14:19	0.011
14:20	0.007
14:21	0.01
14:22	0.007
14:23	0.013
14:24	0.009
14:25	0.06
14:26	0.025

14:27	0.01
14:28	0.017
14:29	0.019
14:30	0.009
14:31	0.007
14:32	0.009
14:33	0.008
14:34	0.014
14:35	0.009
14:36	0.014
14:37	0.011
14:38	0.049
14:39	0.017
14:40	0.007
14:41	0.006
14:42	0.008
14:43	0.008
14:44	0.011
14:45	0.011
14:46	0.014
14:47	0.009
14:48	0.006
14:49	0.006
14:50	0.009
14:51	0.02
14:52	0.023
14:53	0.032
14:54	0.015
14:55	0.008
14:56	0.009
14:57	0.009
14:58	0.007
14:59	0.027
15:00	0.02
15:01	0.008
15:02	0.028
15:03	0.012
15:04	0.012
15:05	0.009
15:06	0.013
15:07	0.011
15:08	0.018
15:09	0.007
15:10	0.01

15:11	0.007
15:12	0.013
15:13	0.008
15:14	0.008
15:15	0.007
15:16	0.008
15:17	0.01
15:18	0.006
15:19	0.013
15:20	0.011
15:21	0.007
15:22	0.007
15:23	0.01
15:24	0.007
15:25	0.008
15:26	0.016
15:27	0.013
15:28	0.012
15:29	0.01
15:30	0.008
15:31	0.008
15:32	0.006
15:33	0.007
15:34	0.025
15:35	0.015
15:36	0.015
15:37	0.006
15:38	0.006
15:39	0.01
15:40	0.007
15:41	0.008
15:42	0.007
15:43	0.01
15:44	0.007
15:45	0.01
15:46	0.008
15:47	0.009
15:48	0.009
15:49	0.017
15:50	0.015
15:51	0.008
15:52	0.018
15:53	0.018
15:54	0.01

15:55	0.009
15:56	0.007
15:57	0.009
15:58	0.01
15:59	0.008
16:00	0.008
16:01	0.01
16:02	0.009
16:03	0.014
16:04	0.011
16:05	0.047
16:06	0.01
16:07	0.008
16:08	0.03
16:09	0.016
16:10	0.022
16:11	0.031
16:12	0.01
16:13	0.007
16:14	0.009
16:15	0.023
16:16	0.022
16:17	0.008
16:18	0.008
16:19	0.008
16:20	0.007
16:21	0.008
16:22	0.013
16:23	0.008
16:24	0.008
16:25	0.008
16:26	0.008
16:27	0.008
16:28	0.013
16:29	0.009
16:30	0.018
16:31	0.011
16:32	0.006
16:33	0.009
16:34	0.01
16:35	0.007
16:36	0.006
16:37	0.006
16:38	0.007

16:39	0.008
16:40	0.008
16:41	0.008
16:42	0.008
16:43	0.009
16:44	0.014
16:45	0.009
16:46	0.011
16:47	0.008
16:48	0.009
16:49	0.009
16:50	0.008
16:51	0.009
16:52	0.007
16:53	0.01
16:54	0.009
16:55	0.01
16:56	0.008
16:57	0.009
16:58	0.011
16:59	0.008
17:00	0.008
17:01	0.008
17:02	0.011
17:03	0.008
17:04	0.01
17:05	0.007
17:06	0.007
17:07	0.01
17:08	0.008
17:09	0.006
17:10	0.007
17:11	0.008
17:12	0.009
17:13	0.007
17:14	0.008
17:15	0.007
17:16	0.011
17:17	0.009
17:18	0.007
17:19	0.007
17:20	0.008
17:21	0.034
17:22	0.011

17:23	0.008
17:24	0.01
17:25	0.009
17:26	0.008
17:27	0.008
17:28	0.009
17:29	0.007
17:30	0.007
17:31	0.009
17:32	0.009
17:33	0.013
17:34	0.012
17:35	0.017
17:36	0.009
17:37	0.011
17:38	0.01
17:39	0.008
17:40	0.007
17:41	0.008
17:42	0.007
17:43	0.01
17:44	0.007
17:45	0.006
17:46	0.008
17:47	0.007
17:48	0.007
17:49	0.007
17:50	0.007
17:51	0.008
17:52	0.014
17:53	0.026
17:54	0.009
17:55	0.01
17:56	0.009
17:57	0.011
17:58	0.011
17:59	0.008
18:00	0.008
18:01	0.009
18:02	0.009
18:03	0.007
18:04	0.008
18:05	0.007
18:06	0.013

18:07	0.021
18:08	0.041
18:09	0.017
18:10	0.014
18:11	0.008
18:12	0.012
18:13	0.012
18:14	0.007
18:15	0.008
18:16	0.008
18:17	0.009
18:18	0.01
18:19	0.041

Device Serial No	Log Time	Log Type	Sensor 1 Type	Sensor 1 Serial Number	Sensor 1 Status	Sensor 1 Gas Reading
592-600871	3/21/2024 6:45	CONFIG	PID	SC23030408A8		
592-600871	3/21/2024 6:46	Readings	PID	SC23030408A8	Normal	0
592-600871	3/21/2024 6:47	Readings	PID	SC23030408A8	Normal	0
592-600871	3/21/2024 6:48	Readings	PID	SC23030408A8	Normal	0
592-600871	3/21/2024 6:49	Readings	PID	SC23030408A8	Normal	0
592-600871	3/21/2024 6:50	Readings	PID	SC23030408A8	Normal	0
592-600871	3/21/2024 6:51	Readings	PID	SC23030408A8	Normal	0
592-600871	3/21/2024 6:52	Readings	PID	SC23030408A8	Normal	0
592-600871	3/21/2024 6:53	Readings	PID	SC23030408A8	Normal	0
592-600871	3/21/2024 6:54	Readings	PID	SC23030408A8	Normal	0
592-600871	3/21/2024 6:55	Readings	PID	SC23030408A8	Normal	0
592-600871	3/21/2024 6:56	Readings	PID	SC23030408A8	Normal	0
592-600871	3/21/2024 6:57	Readings	PID	SC23030408A8	Normal	0
592-600871	3/21/2024 6:58	Readings	PID	SC23030408A8	Normal	0
592-600871	3/21/2024 6:59	Readings	PID	SC23030408A8	Normal	0
592-600871	3/21/2024 7:00	Readings	PID	SC23030408A8	Normal	0
592-600871	3/21/2024 7:01	Readings	PID	SC23030408A8	Normal	0
592-600871	3/21/2024 7:02	Readings	PID	SC23030408A8	Normal	0
592-600871	3/21/2024 7:03	Readings	PID	SC23030408A8	Normal	0
592-600871	3/21/2024 7:04	Readings	PID	SC23030408A8	Normal	0.4
592-600871	3/21/2024 7:05	Readings	PID	SC23030408A8	Normal	0.1
592-600871	3/21/2024 7:06	Readings	PID	SC23030408A8	Normal	0
592-600871	3/21/2024 7:07	Readings	PID	SC23030408A8	Normal	0.1
592-600871	3/21/2024 7:08	Readings	PID	SC23030408A8	Normal	0.1
592-600871	3/21/2024 7:09	Readings	PID	SC23030408A8	Normal	0.7
592-600871	3/21/2024 7:10	Readings	PID	SC23030408A8	Normal	0.2
592-600871	3/21/2024 7:11	Readings	PID	SC23030408A8	Normal	0
592-600871	3/21/2024 7:12	Readings	PID	SC23030408A8	Normal	0.2
592-600871	3/21/2024 7:13	Readings	PID	SC23030408A8	Normal	0.1
592-600871	3/21/2024 7:14	Readings	PID	SC23030408A8	Normal	0.1
592-600871	3/21/2024 7:15	Readings	PID	SC23030408A8	Normal	0.1
592-600871	3/21/2024 7:16	Readings	PID	SC23030408A8	Normal	0

592-600871	3/21/2024 7:17 Readings	PID	SC23030408A8	Normal	0.1
592-600871	3/21/2024 7:18 Readings	PID	SC23030408A8	Normal	0.1
592-600871	3/21/2024 7:19 Readings	PID	SC23030408A8	Normal	0.1
592-600871	3/21/2024 7:20 Readings	PID	SC23030408A8	Normal	0
592-600871	3/21/2024 7:21 Readings	PID	SC23030408A8	Normal	0.1
592-600871	3/21/2024 7:22 Readings	PID	SC23030408A8	Normal	0
592-600871	3/21/2024 7:23 Readings	PID	SC23030408A8	Normal	0.1
592-600871	3/21/2024 7:24 Readings	PID	SC23030408A8	Normal	0.1
592-600871	3/21/2024 7:25 Readings	PID	SC23030408A8	Normal	0
592-600871	3/21/2024 7:26 Readings	PID	SC23030408A8	Normal	0
592-600871	3/21/2024 7:27 Readings	PID	SC23030408A8	Normal	0.1
592-600871	3/21/2024 7:28 Readings	PID	SC23030408A8	Normal	0
592-600871	3/21/2024 7:29 Readings	PID	SC23030408A8	Normal	0
592-600871	3/21/2024 7:30 Readings	PID	SC23030408A8	Normal	0
592-600871	3/21/2024 7:31 Readings	PID	SC23030408A8	Normal	0
592-600871	3/21/2024 7:32 Readings	PID	SC23030408A8	Normal	0
592-600871	3/21/2024 7:33 Readings	PID	SC23030408A8	Normal	0
592-600871	3/21/2024 7:34 Readings	PID	SC23030408A8	Normal	0
592-600871	3/21/2024 7:35 Readings	PID	SC23030408A8	Normal	0.1
592-600871	3/21/2024 7:36 Readings	PID	SC23030408A8	Normal	0.1
592-600871	3/21/2024 7:37 Readings	PID	SC23030408A8	Normal	0
592-600871	3/21/2024 7:38 Readings	PID	SC23030408A8	Normal	0.1
592-600871	3/21/2024 7:39 Readings	PID	SC23030408A8	Normal	0.1
592-600871	3/21/2024 7:40 Readings	PID	SC23030408A8	Normal	0
592-600871	3/21/2024 7:41 Readings	PID	SC23030408A8	Normal	0
592-600871	3/21/2024 7:42 Readings	PID	SC23030408A8	Normal	0
592-600871	3/21/2024 7:43 Readings	PID	SC23030408A8	Normal	0
592-600871	3/21/2024 7:44 Readings	PID	SC23030408A8	Normal	0
592-600871	3/21/2024 7:45 Readings	PID	SC23030408A8	Normal	0
592-600871	3/21/2024 7:46 Readings	PID	SC23030408A8	Normal	0
592-600871	3/21/2024 7:47 Readings	PID	SC23030408A8	Normal	0
592-600871	3/21/2024 7:48 Readings	PID	SC23030408A8	Normal	0
592-600871	3/21/2024 7:49 Readings	PID	SC23030408A8	Normal	0

592-600871	3/21/2024 7:50 Readings	PID	SC23030408A8	Normal	0
592-600871	3/21/2024 7:51 Readings	PID	SC23030408A8	Normal	0
592-600871	3/21/2024 7:52 Readings	PID	SC23030408A8	Normal	0
592-600871	3/21/2024 7:53 Readings	PID	SC23030408A8	Normal	0
592-600871	3/21/2024 7:54 Readings	PID	SC23030408A8	Normal	0
592-600871	3/21/2024 7:55 Readings	PID	SC23030408A8	Normal	0
592-600871	3/21/2024 7:56 Readings	PID	SC23030408A8	Normal	0.1
592-600871	3/21/2024 7:57 Readings	PID	SC23030408A8	Normal	0
592-600871	3/21/2024 7:58 Readings	PID	SC23030408A8	Normal	0
592-600871	3/21/2024 7:59 Readings	PID	SC23030408A8	Normal	0
592-600871	3/21/2024 8:00 Readings	PID	SC23030408A8	Normal	0
592-600871	3/21/2024 8:01 Readings	PID	SC23030408A8	Normal	0
592-600871	3/21/2024 8:02 Readings	PID	SC23030408A8	Normal	0
592-600871	3/21/2024 8:03 Readings	PID	SC23030408A8	Normal	0
592-600871	3/21/2024 8:04 Readings	PID	SC23030408A8	Normal	0.1
592-600871	3/21/2024 8:05 Readings	PID	SC23030408A8	Normal	0
592-600871	3/21/2024 8:06 Readings	PID	SC23030408A8	Normal	0
592-600871	3/21/2024 8:07 Readings	PID	SC23030408A8	Normal	0
592-600871	3/21/2024 8:08 Readings	PID	SC23030408A8	Normal	0
592-600871	3/21/2024 8:09 Readings	PID	SC23030408A8	Normal	0
592-600871	3/21/2024 8:10 Readings	PID	SC23030408A8	Normal	0
592-600871	3/21/2024 8:11 Readings	PID	SC23030408A8	Normal	0
592-600871	3/21/2024 8:12 Readings	PID	SC23030408A8	Normal	0
592-600871	3/21/2024 8:13 Readings	PID	SC23030408A8	Normal	0
592-600871	3/21/2024 8:14 Readings	PID	SC23030408A8	Normal	0
592-600871	3/21/2024 8:15 Readings	PID	SC23030408A8	Normal	0
592-600871	3/21/2024 8:16 Readings	PID	SC23030408A8	Normal	0
592-600871	3/21/2024 8:17 Readings	PID	SC23030408A8	Normal	0
592-600871	3/21/2024 8:18 Readings	PID	SC23030408A8	Normal	0
592-600871	3/21/2024 8:19 Readings	PID	SC23030408A8	Normal	0
592-600871	3/21/2024 8:20 Readings	PID	SC23030408A8	Normal	0
592-600871	3/21/2024 8:21 Readings	PID	SC23030408A8	Normal	0
592-600871	3/21/2024 8:22 Readings	PID	SC23030408A8	Normal	0

592-600871	3/21/2024 9:29	Readings	PID	SC23030408A8	Normal	0
592-600871	3/21/2024 9:30	Readings	PID	SC23030408A8	Normal	0
592-600871	3/21/2024 9:31	Readings	PID	SC23030408A8	Normal	0
592-600871	3/21/2024 9:32	Readings	PID	SC23030408A8	Normal	0
592-600871	3/21/2024 9:33	Readings	PID	SC23030408A8	Normal	0
592-600871	3/21/2024 9:34	Readings	PID	SC23030408A8	Normal	0
592-600871	3/21/2024 9:35	Readings	PID	SC23030408A8	Normal	0
592-600871	3/21/2024 9:36	Readings	PID	SC23030408A8	Normal	0
592-600871	3/21/2024 9:37	Readings	PID	SC23030408A8	Normal	0
592-600871	3/21/2024 9:38	Readings	PID	SC23030408A8	Normal	0
592-600871	3/21/2024 9:39	Readings	PID	SC23030408A8	Normal	0
592-600871	3/21/2024 9:40	Readings	PID	SC23030408A8	Normal	0
592-600871	3/21/2024 9:41	Readings	PID	SC23030408A8	Normal	0
592-600871	3/21/2024 9:42	Readings	PID	SC23030408A8	Normal	0
592-600871	3/21/2024 9:43	Readings	PID	SC23030408A8	Normal	0
592-600871	3/21/2024 9:44	Readings	PID	SC23030408A8	Normal	0
592-600871	3/21/2024 9:45	Readings	PID	SC23030408A8	Normal	0
592-600871	3/21/2024 9:46	Readings	PID	SC23030408A8	Normal	0
592-600871	3/21/2024 9:47	Readings	PID	SC23030408A8	Normal	0
592-600871	3/21/2024 9:48	Readings	PID	SC23030408A8	Normal	0
592-600871	3/21/2024 9:49	Readings	PID	SC23030408A8	Normal	0
592-600871	3/21/2024 9:50	Readings	PID	SC23030408A8	Normal	0
592-600871	3/21/2024 9:51	Readings	PID	SC23030408A8	Normal	0
592-600871	3/21/2024 9:52	Readings	PID	SC23030408A8	Normal	0
592-600871	3/21/2024 9:53	Readings	PID	SC23030408A8	Normal	0
592-600871	3/21/2024 9:54	Readings	PID	SC23030408A8	Normal	0
592-600871	3/21/2024 9:55	Readings	PID	SC23030408A8	Normal	0
592-600871	3/21/2024 9:56	Readings	PID	SC23030408A8	Normal	0
592-600871	3/21/2024 9:57	Readings	PID	SC23030408A8	Normal	0
592-600871	3/21/2024 9:58	Readings	PID	SC23030408A8	Normal	0
592-600871	3/21/2024 9:59	Readings	PID	SC23030408A8	Normal	0
592-600871	3/21/2024 10:00	Readings	PID	SC23030408A8	Normal	0
592-600871	3/21/2024 10:01	Readings	PID	SC23030408A8	Normal	0

592-600871	3/21/2024 11:41	Readings	PID	SC23030408A8	Normal	0
592-600871	3/21/2024 11:42	Readings	PID	SC23030408A8	Normal	0
592-600871	3/21/2024 11:43	Readings	PID	SC23030408A8	Normal	0
592-600871	3/21/2024 11:44	Readings	PID	SC23030408A8	Normal	0
592-600871	3/21/2024 11:45	Readings	PID	SC23030408A8	Normal	0
592-600871	3/21/2024 11:46	Readings	PID	SC23030408A8	Normal	0
592-600871	3/21/2024 11:47	Readings	PID	SC23030408A8	Normal	0
592-600871	3/21/2024 11:48	Readings	PID	SC23030408A8	Normal	0
592-600871	3/21/2024 11:49	Readings	PID	SC23030408A8	Normal	0
592-600871	3/21/2024 11:50	Readings	PID	SC23030408A8	Normal	0
592-600871	3/21/2024 11:51	Readings	PID	SC23030408A8	Normal	0.1
592-600871	3/21/2024 11:52	Readings	PID	SC23030408A8	Normal	0
592-600871	3/21/2024 11:53	Readings	PID	SC23030408A8	Normal	0
592-600871	3/21/2024 11:54	Readings	PID	SC23030408A8	Normal	0
592-600871	3/21/2024 11:55	Readings	PID	SC23030408A8	Normal	0
592-600871	3/21/2024 11:56	Readings	PID	SC23030408A8	Normal	0
592-600871	3/21/2024 11:57	Readings	PID	SC23030408A8	Normal	0
592-600871	3/21/2024 11:58	Readings	PID	SC23030408A8	Normal	0
592-600871	3/21/2024 11:59	Readings	PID	SC23030408A8	Normal	0
592-600871	3/21/2024 12:00	Readings	PID	SC23030408A8	Normal	0
592-600871	3/21/2024 12:01	Readings	PID	SC23030408A8	Normal	0
592-600871	3/21/2024 12:02	Readings	PID	SC23030408A8	Normal	0
592-600871	3/21/2024 12:03	Readings	PID	SC23030408A8	Normal	0
592-600871	3/21/2024 12:04	Readings	PID	SC23030408A8	Normal	0
592-600871	3/21/2024 12:05	Readings	PID	SC23030408A8	Normal	0.1
592-600871	3/21/2024 12:06	Readings	PID	SC23030408A8	Normal	0
592-600871	3/21/2024 12:07	Readings	PID	SC23030408A8	Normal	0
592-600871	3/21/2024 12:08	Readings	PID	SC23030408A8	Normal	0
592-600871	3/21/2024 12:09	Readings	PID	SC23030408A8	Normal	0
592-600871	3/21/2024 12:10	Readings	PID	SC23030408A8	Normal	0
592-600871	3/21/2024 12:11	Readings	PID	SC23030408A8	Normal	0
592-600871	3/21/2024 12:12	Readings	PID	SC23030408A8	Normal	0
592-600871	3/21/2024 12:13	Readings	PID	SC23030408A8	Normal	0

592-600871	3/21/2024 15:32	Readings	PID	SC23030408A8	Normal	0
592-600871	3/21/2024 15:33	Readings	PID	SC23030408A8	Normal	0
592-600871	3/21/2024 15:34	Readings	PID	SC23030408A8	Normal	0
592-600871	3/21/2024 15:35	Readings	PID	SC23030408A8	Normal	0
592-600871	3/21/2024 15:36	Readings	PID	SC23030408A8	Normal	0
592-600871	3/21/2024 15:37	Readings	PID	SC23030408A8	Normal	0
592-600871	3/21/2024 15:38	Readings	PID	SC23030408A8	Normal	0
592-600871	3/21/2024 15:39	Readings	PID	SC23030408A8	Normal	0
592-600871	3/21/2024 15:40	Readings	PID	SC23030408A8	Normal	0
592-600871	3/21/2024 15:41	Readings	PID	SC23030408A8	Normal	0
592-600871	3/21/2024 15:42	Readings	PID	SC23030408A8	Normal	0
592-600871	3/21/2024 15:43	Readings	PID	SC23030408A8	Normal	0
592-600871	3/21/2024 15:44	Readings	PID	SC23030408A8	Normal	0
592-600871	3/21/2024 15:45	Readings	PID	SC23030408A8	Normal	0
592-600871	3/21/2024 15:46	Readings	PID	SC23030408A8	Normal	0
592-600871	3/21/2024 15:47	Readings	PID	SC23030408A8	Normal	0
592-600871	3/21/2024 15:48	Readings	PID	SC23030408A8	Normal	0
592-600871	3/21/2024 15:49	Readings	PID	SC23030408A8	Normal	0
592-600871	3/21/2024 15:50	Readings	PID	SC23030408A8	Normal	0
592-600871	3/21/2024 15:51	Readings	PID	SC23030408A8	Normal	0
592-600871	3/21/2024 15:52	Readings	PID	SC23030408A8	Normal	0.3
592-600871	3/21/2024 15:53	Readings	PID	SC23030408A8	Normal	0.1
592-600871	3/21/2024 15:54	Readings	PID	SC23030408A8	Normal	0
592-600871	3/21/2024 15:55	Readings	PID	SC23030408A8	Normal	0.1
592-600871	3/21/2024 15:56	Readings	PID	SC23030408A8	Normal	0.1
592-600871	3/21/2024 15:57	Readings	PID	SC23030408A8	Normal	0
592-600871	3/21/2024 15:58	Readings	PID	SC23030408A8	Normal	0
592-600871	3/21/2024 15:59	Readings	PID	SC23030408A8	Normal	0
592-600871	3/21/2024 16:00	Readings	PID	SC23030408A8	Normal	0
592-600871	3/21/2024 16:01	Readings	PID	SC23030408A8	Normal	0
592-600871	3/21/2024 16:02	Readings	PID	SC23030408A8	Normal	0
592-600871	3/21/2024 16:03	Readings	PID	SC23030408A8	Normal	0
592-600871	3/21/2024 16:04	Readings	PID	SC23030408A8	Normal	0

592-600871	3/21/2024 16:05	Readings	PID	SC23030408A8	Normal	0
592-600871	3/21/2024 16:06	Readings	PID	SC23030408A8	Normal	0
592-600871	3/21/2024 16:07	Readings	PID	SC23030408A8	Normal	0
592-600871	3/21/2024 16:08	Readings	PID	SC23030408A8	Normal	0
592-600871	3/21/2024 16:09	Readings	PID	SC23030408A8	Normal	0
592-600871	3/21/2024 16:10	Readings	PID	SC23030408A8	Normal	0
592-600871	3/21/2024 16:11	Readings	PID	SC23030408A8	Normal	0.1
592-600871	3/21/2024 16:12	Readings	PID	SC23030408A8	Normal	0.1
592-600871	3/21/2024 16:13	Readings	PID	SC23030408A8	Normal	0
592-600871	3/21/2024 16:14	Readings	PID	SC23030408A8	Normal	0
592-600871	3/21/2024 16:15	Readings	PID	SC23030408A8	Normal	0
592-600871	3/21/2024 16:16	Readings	PID	SC23030408A8	Normal	0
592-600871	3/21/2024 16:17	Readings	PID	SC23030408A8	Normal	0
592-600871	3/21/2024 16:18	Readings	PID	SC23030408A8	Normal	0
592-600871	3/21/2024 16:19	Readings	PID	SC23030408A8	Normal	0
592-600871	3/21/2024 16:20	Readings	PID	SC23030408A8	Normal	0
592-600871	3/21/2024 16:21	Readings	PID	SC23030408A8	Normal	0
592-600871	3/21/2024 16:22	Readings	PID	SC23030408A8	Normal	0
592-600871	3/21/2024 16:23	Readings	PID	SC23030408A8	Normal	0
592-600871	3/21/2024 16:24	Readings	PID	SC23030408A8	Normal	0
592-600871	3/21/2024 16:25	Readings	PID	SC23030408A8	Normal	0
592-600871	3/21/2024 16:26	Readings	PID	SC23030408A8	Normal	0
592-600871	3/21/2024 16:27	Readings	PID	SC23030408A8	Normal	0
592-600871	3/21/2024 16:28	Readings	PID	SC23030408A8	Normal	0.1
592-600871	3/21/2024 16:29	Readings	PID	SC23030408A8	Normal	0
592-600871	3/21/2024 16:30	Readings	PID	SC23030408A8	Normal	0
592-600871	3/21/2024 16:31	Readings	PID	SC23030408A8	Normal	0
592-600871	3/21/2024 16:32	Readings	PID	SC23030408A8	Normal	0
592-600871	3/21/2024 16:33	Readings	PID	SC23030408A8	Normal	0
592-600871	3/21/2024 16:34	Readings	PID	SC23030408A8	Normal	0
592-600871	3/21/2024 16:35	Readings	PID	SC23030408A8	Normal	0
592-600871	3/21/2024 16:36	Readings	PID	SC23030408A8	Normal	0
592-600871	3/21/2024 16:37	Readings	PID	SC23030408A8	Normal	0

592-600871	3/21/2024 17:44 Readings	PID	SC23030408A8	Normal	0
592-600871	3/21/2024 17:45 Readings	PID	SC23030408A8	Normal	0
592-600871	3/21/2024 17:46 Readings	PID	SC23030408A8	Normal	0
592-600871	3/21/2024 17:47 Readings	PID	SC23030408A8	Normal	0
592-600871	3/21/2024 17:48 Readings	PID	SC23030408A8	Normal	0
592-600871	3/21/2024 17:49 Readings	PID	SC23030408A8	Normal	0
592-600871	3/21/2024 17:50 Readings	PID	SC23030408A8	Normal	0
592-600871	3/21/2024 17:51 Readings	PID	SC23030408A8	Normal	0
592-600871	3/21/2024 17:52 Readings	PID	SC23030408A8	Normal	0
592-600871	3/21/2024 17:53 Readings	PID	SC23030408A8	Normal	0
592-600871	3/21/2024 17:54 Readings	PID	SC23030408A8	Normal	0
592-600871	3/21/2024 17:55 Readings	PID	SC23030408A8	Normal	0
592-600871	3/21/2024 17:56 Readings	PID	SC23030408A8	Normal	0
592-600871	3/21/2024 17:57 Readings	PID	SC23030408A8	Normal	0
592-600871	3/21/2024 17:58 Readings	PID	SC23030408A8	Normal	0
592-600871	3/21/2024 17:59 Readings	PID	SC23030408A8	Normal	0
592-600871	3/21/2024 18:00 Readings	PID	SC23030408A8	Normal	0
592-600871	3/21/2024 18:01 Readings	PID	SC23030408A8	Normal	0
592-600871	3/21/2024 18:02 Readings	PID	SC23030408A8	Normal	0
592-600871	3/21/2024 18:03 Readings	PID	SC23030408A8	Normal	0
592-600871	3/21/2024 18:04 Readings	PID	SC23030408A8	Normal	0
592-600871	3/21/2024 18:05 Readings	PID	SC23030408A8	Normal	0
592-600871	3/21/2024 18:06 Readings	PID	SC23030408A8	Normal	0
592-600871	3/21/2024 18:07 Readings	PID	SC23030408A8	Normal	0
592-600871	3/21/2024 18:08 Readings	PID	SC23030408A8	Normal	0
592-600871	3/21/2024 18:09 Readings	PID	SC23030408A8	Normal	0
592-600871	3/21/2024 18:10 Readings	PID	SC23030408A8	Normal	0
592-600871	3/21/2024 18:11 Readings	PID	SC23030408A8	Normal	0
592-600871	3/21/2024 18:12 Readings	PID	SC23030408A8	Normal	0