



DAILY STATUS REPORT

Prepared By:

Ryan Just

WEATHER	Snow	Rain		Overcast	Partly Cloudy	X	Bright Sun	X	Wind
TEMP.	< 32	32-50	X	50-70	70-85		>85		NW- 6 MPH

IEC Project No:	13928	NYSDEC BCP Site No:	C224367	Date: 03/22/24	
Project:	251 Douglass Street, Brooklyn, NY				

<p>Consultant: Impact Environmental Engineering and Geology, PLLC (IEEG)</p> <p>Time On: 06:45 Time Out: 14:45</p>	<p>Personnel On Site: IEEG (Environmental) – Ryan Just Broadway Construction Group - Tom Caporale Cascade WSP- Charlie Lambert</p> <p>Equipment On Site: Minirae 3000 PID, DustTrak II</p>
---	--

Scope of Work: Continue ISS column installation along the southern portion of the Site, along Douglass Street.

Site Activities:

- Deploy three (3) CAMPs at the Start of the work day;
- Cascade organized mats and equipment to prepare for QA/QC core drilling beginning on Monday 03/25/2024;
 - Cascade drilled **Column 35**, column spec below:
 - The column was 8’ diameter and drilled 36’ deep from Site grade;
 - The column consisted of a total of 16 batches.
 - Cascade drilled **Column 37**, column spec below:
 - The column was 8’ diameter and drilled 36’ deep from Site grade;
 - The column consisted of a total of 13 batches.

*Site grade refers to the elevation of the site after the 4’ excavation was completed.

Community Air Monitoring Program (CAMP) - CAMP action level for dust (0.1 mg/m³) and VOCs (5 ppm)

- PID remained at nominal levels throughout the day.
- No sustained dust exceedances were observed over a 1-min period during monitoring;
- Startup Upwind Conditions – PID = _0.0_ ppm, Dust = _0.051_ mg/m³ @ 06:45
- High Conditions (Upwind) – PID = _0.0_ ppm @ 06:48, Dust = _0.097_ mg/m³ @ 13:30
- High Conditions (Downwind 1) – PID = _0.5_ ppm @ 13:11, Dust = _0.236_ mg/m³ @ 11:52
- High Conditions (Downwind 2) – PID = _1.5_ ppm @ 11:28, Dust = _0.220_ mg/m³ @ 05:47

Notable Site Conditions:

- Due to the flood warning issued for 3/23/24, the NYSDEC sent a memo regarding Stormwater Protection-Potential Flooding. At the end of the day all stockpiles were securely covered and silt socks/screens were verified as functioning.

Planned for the Next Day/Week:

- Start of QA/QC ISS column core drilling on Monday 03/25/2024; and
- Continue ISS column installation.



PHOTO LOG

251 DOUGLASS STREET, BROOKLYN, NY



Photo 1-
Representative
photo of drilling
ISS column.



Photo 2-
Representative
photo of drill rig
decontamination.



Photo 3-
Representative
photo of
stockpiling swell
material to
prepare for core
drilling.



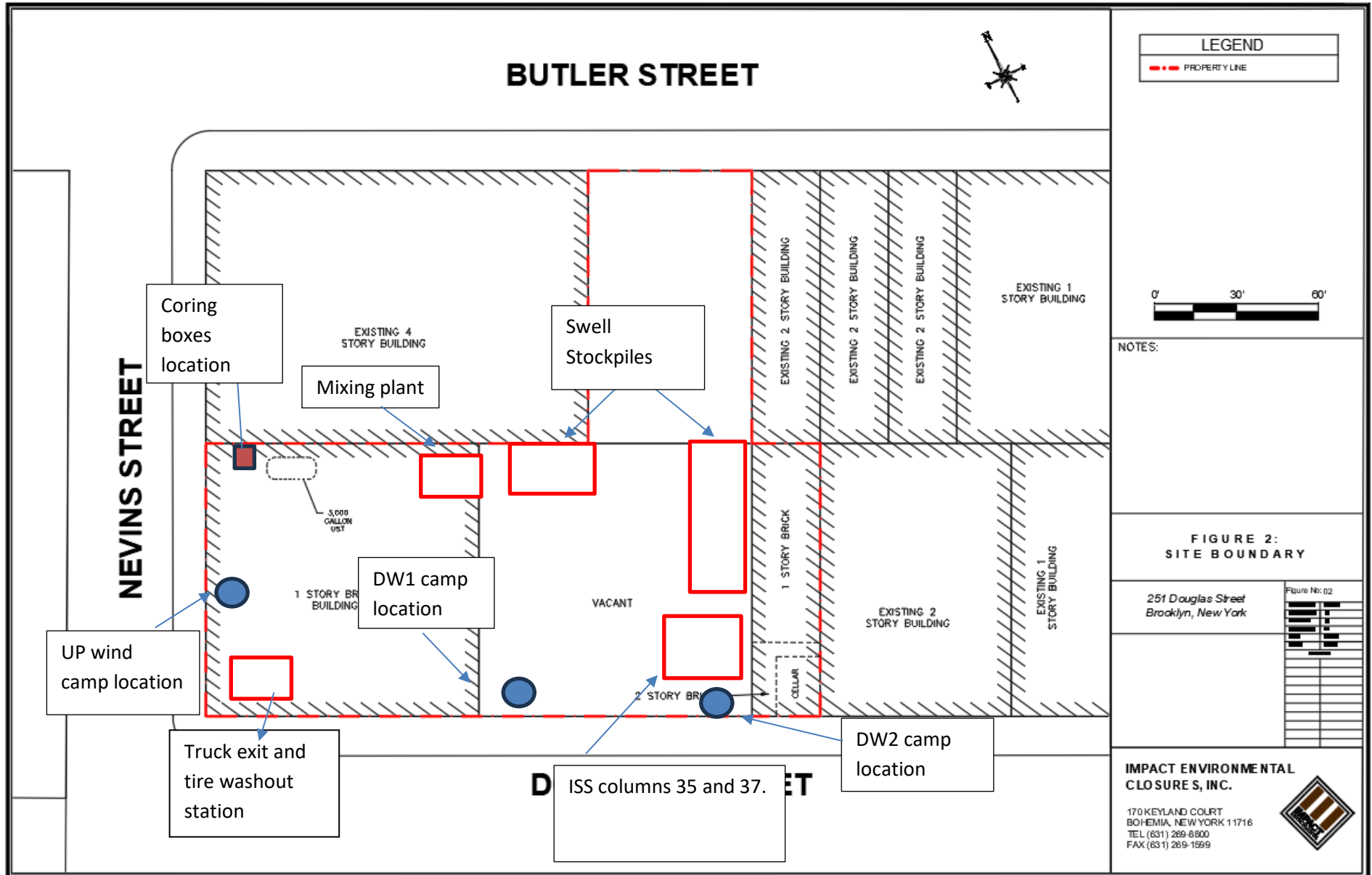
Photo 4-
Representative
photo of swell
stockpile securely
covered in poly
sheeting.



SITE PLANS

251 DOUGLASS STREET, BROOKLYN, NY



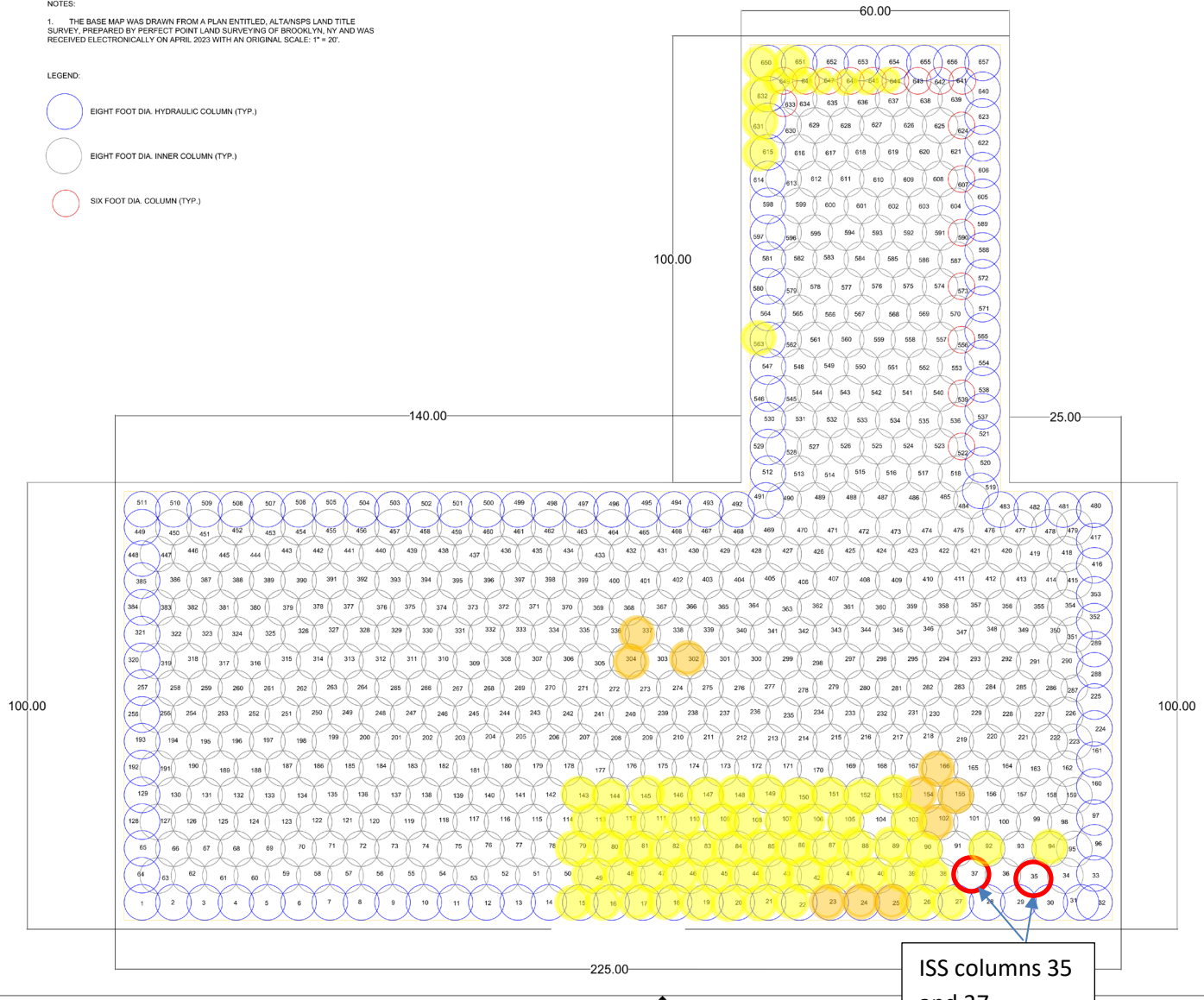


2023 TRANSMISSION, INC. ALL RIGHTS RESERVED
 PROJECT: 115000000000
 FILE: JENKINS/GENCO/CONTRACTUAL/CASCADE-NY/BROOKLYN_NY_2/BROOKLYN_PROJECT_08/ISS/ISS_LAYOUT_115000000000



NOTES:
 1. THE BASE MAP WAS DRAWN FROM A PLAN ENTITLED, ALTANSPS LAND TITLE SURVEY, PREPARED BY PERFECT POINT LAND SURVEYING OF BROOKLYN, NY AND WAS RECEIVED ELECTRONICALLY ON APRIL 2023 WITH AN ORIGINAL SCALE: 1" = 20'.

- LEGEND:**
- EIGHT FOOT DIA. HYDRAULIC COLUMN (TYP.)
 - EIGHT FOOT DIA. INNER COLUMN (TYP.)
 - SIX FOOT DIA. COLUMN (TYP.)



ISS columns 35
 and 37
 completed on
 3/22/2024.

	SHEET NO. D REV. A SHEET 1 OF 1 ISS
	FIGURE 4: ISS COLUMN LAYOUT
251 DOUGLAS STREET BROOKLYN, NEW YORK	251 DOUGLAS STREET BROOKLYN, NEW YORK WWW.CASCADENV.COM

q



SCM Report

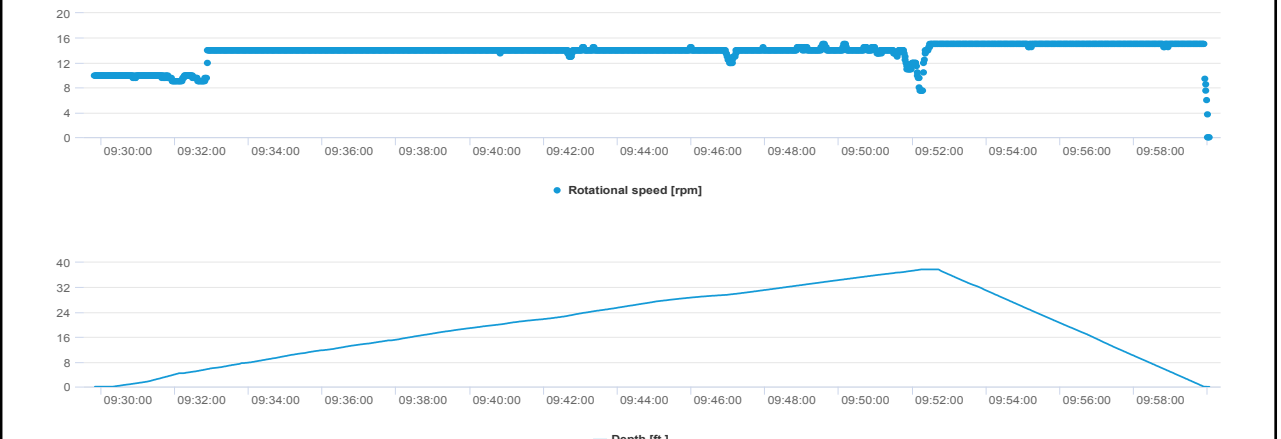
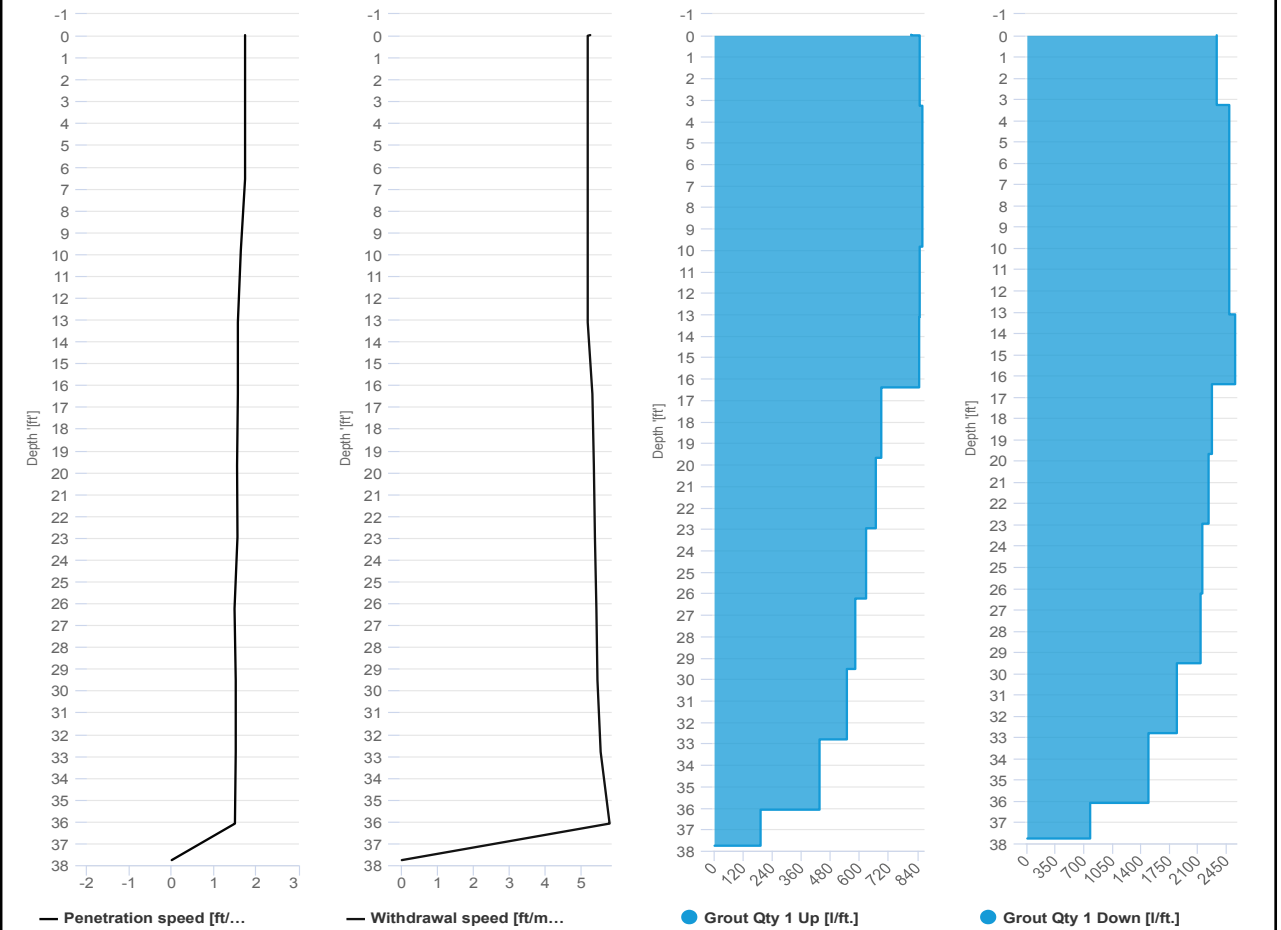


Project name: Douglass Street BCG ISS Element name: c35a
 Project number

Start date: 03/22/2024

Drilling rig: BG36H_5717

Details		Start time: 09:29 AM	
Max. depth: 37.76 ft.		End Date: 03/22/2024	
Volume/m 1: 27.19 ft³		End time: 10:00 AM	
		Production duration: 00:30:14	
		Final depth time: 09:52 AM	
		Total suspension quantity: 312.782 ft³	



SCM Report

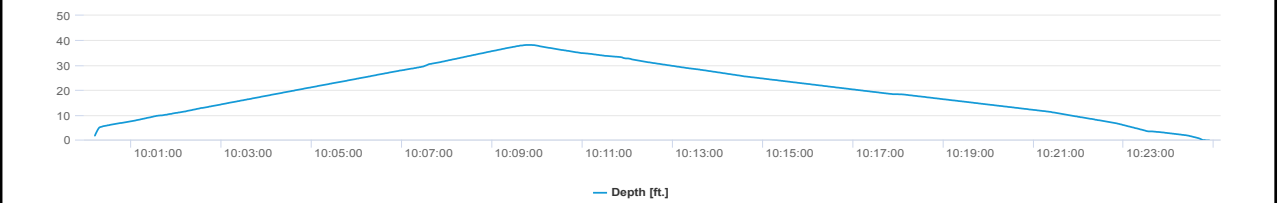
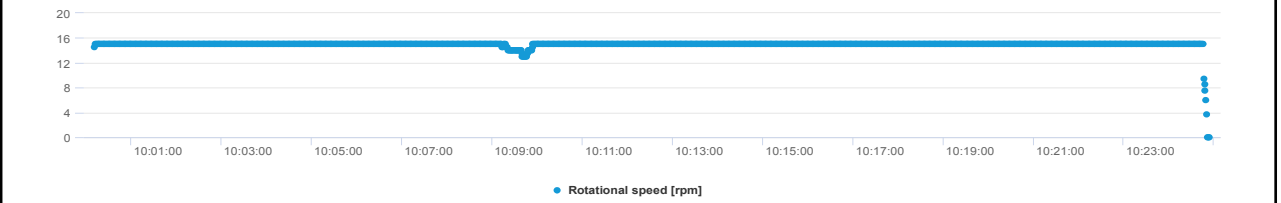
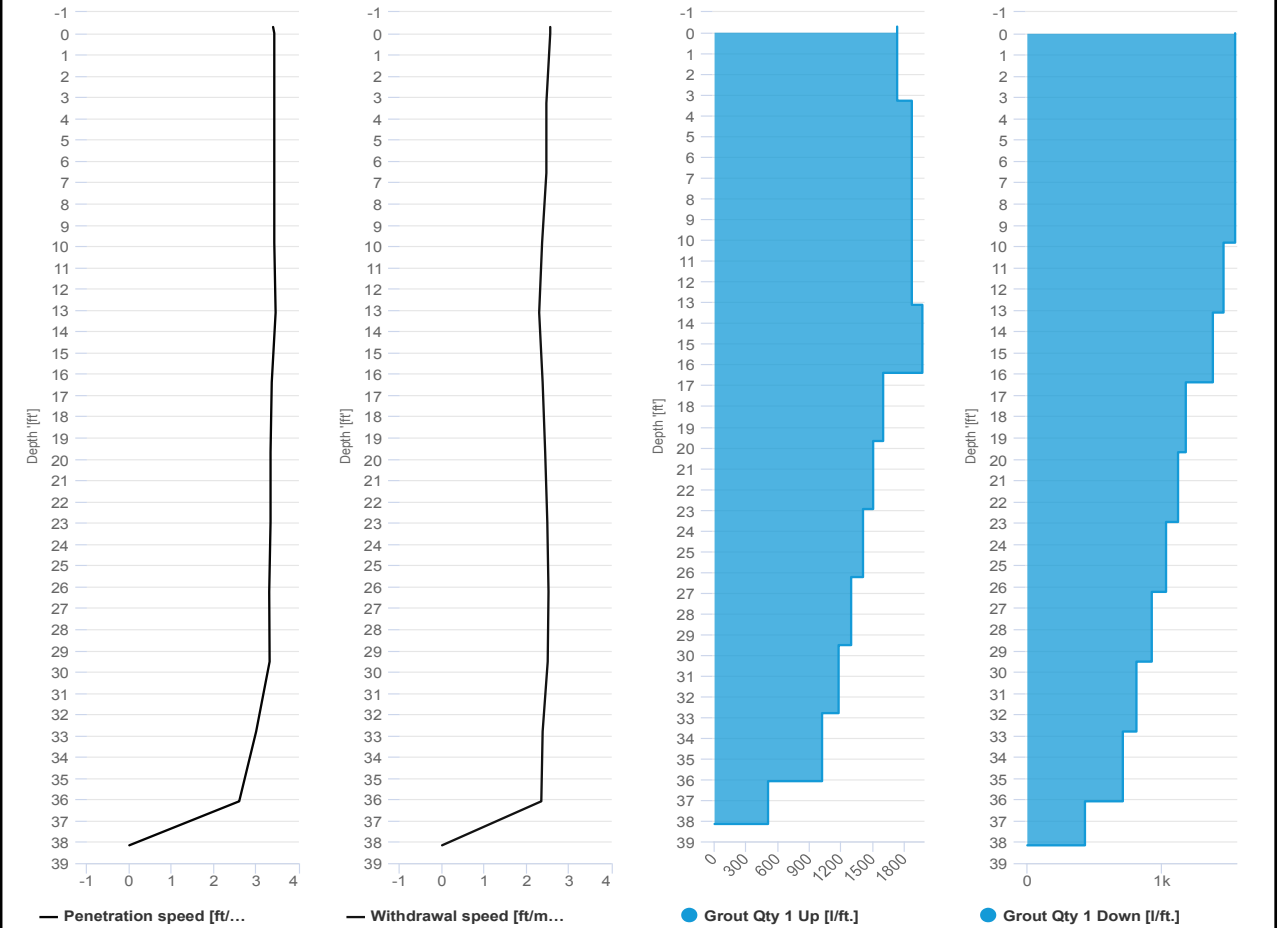


Project name: Douglass Street BCG ISS Element name: c35b
 Project number

Start date: 03/22/2024

Drilling rig: BG36H_5717

Details		Start time	
Max. depth	38.15 ft.	10:00 AM	
Volume/m 1	24.01 ft³	End Date	03/22/2024
		End time	10:24 AM
		Production duration	00:24:43
		Final depth time	10:09 AM
		Total suspension quantity	279.33 ft³



SCM Report

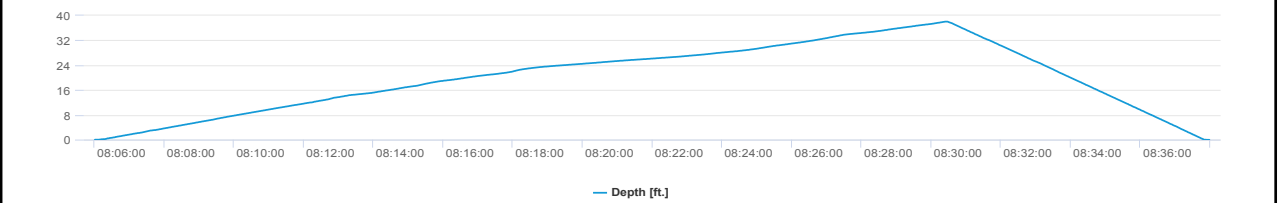
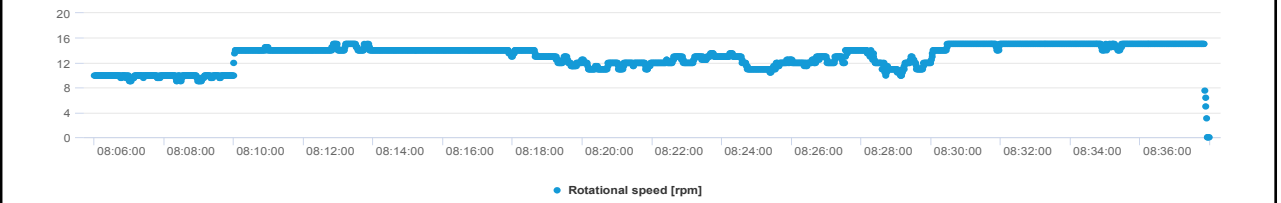
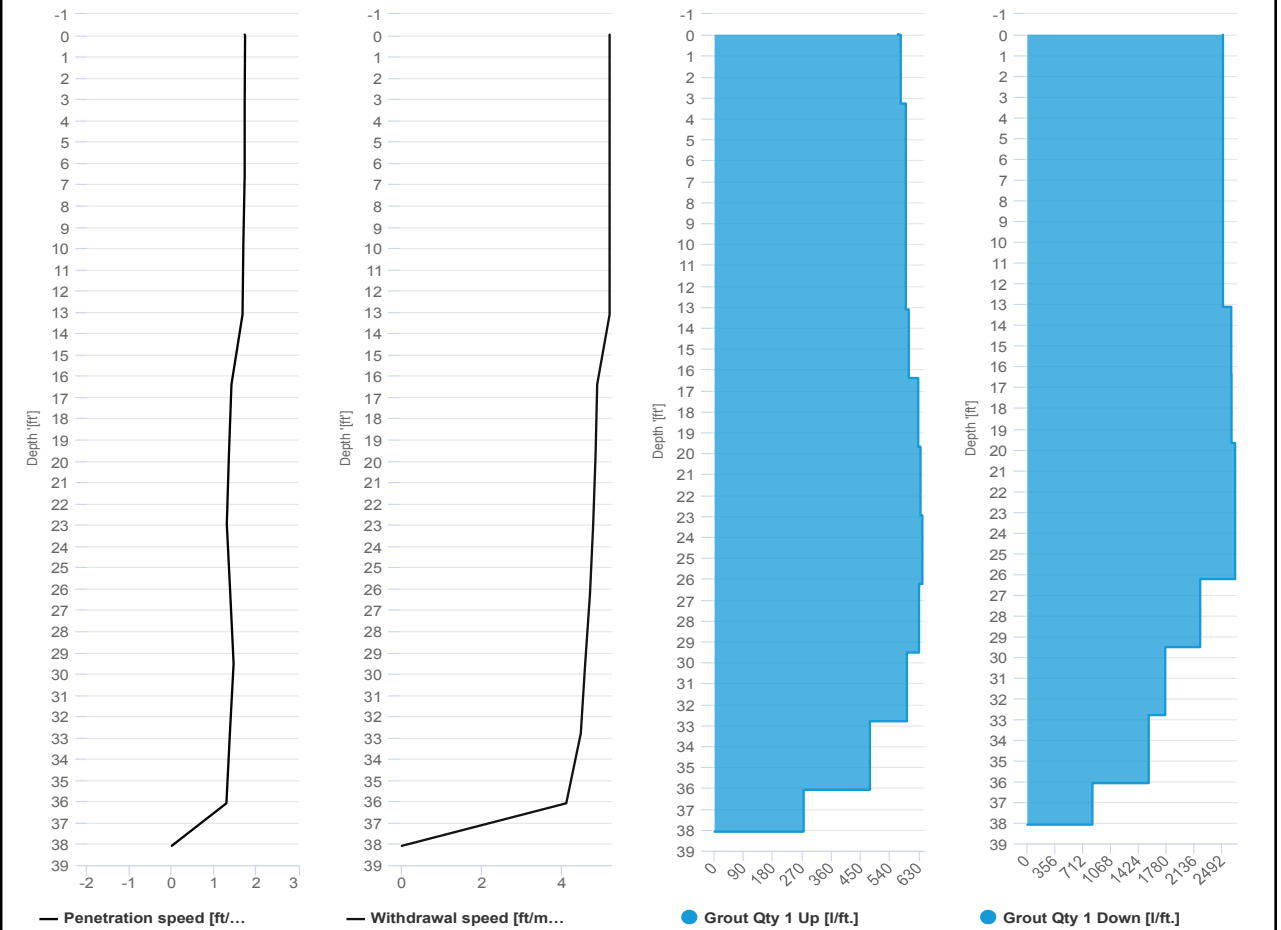


Project name: Douglass Street BCG ISS Element name: c37a
 Project number

Start date: 03/22/2024

Drilling rig: BG36H_5717

Details		Start time: 08:06 AM	
Max. depth: 38.09 ft.		End Date: 03/22/2024	
Volume/m 1: 28.6 ft³		End time: 08:38 AM	
		Production duration: 00:31:59	
		Final depth time: 08:30 AM	
		Total suspension quantity: 332.735 ft³	



SCM Report

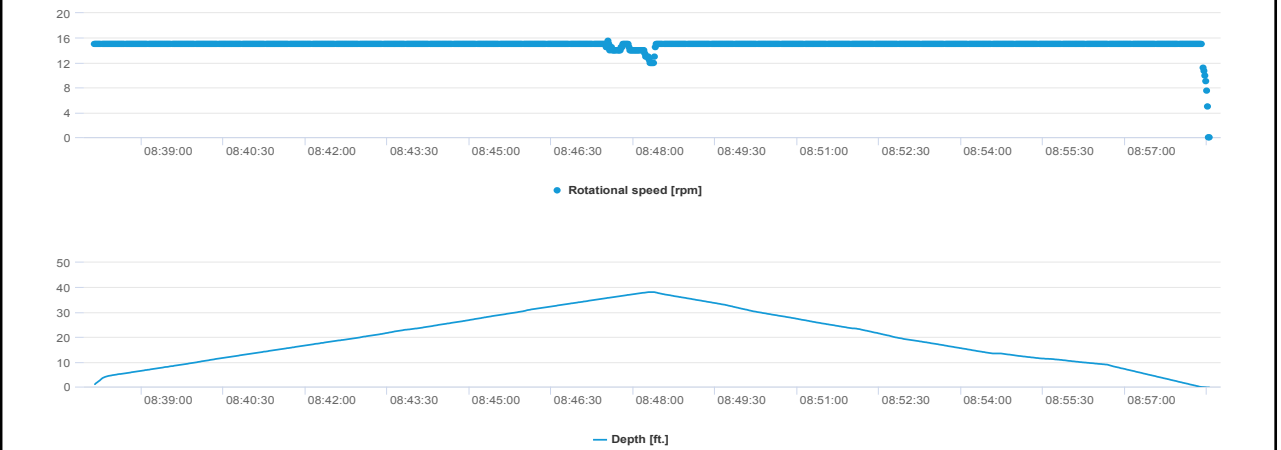
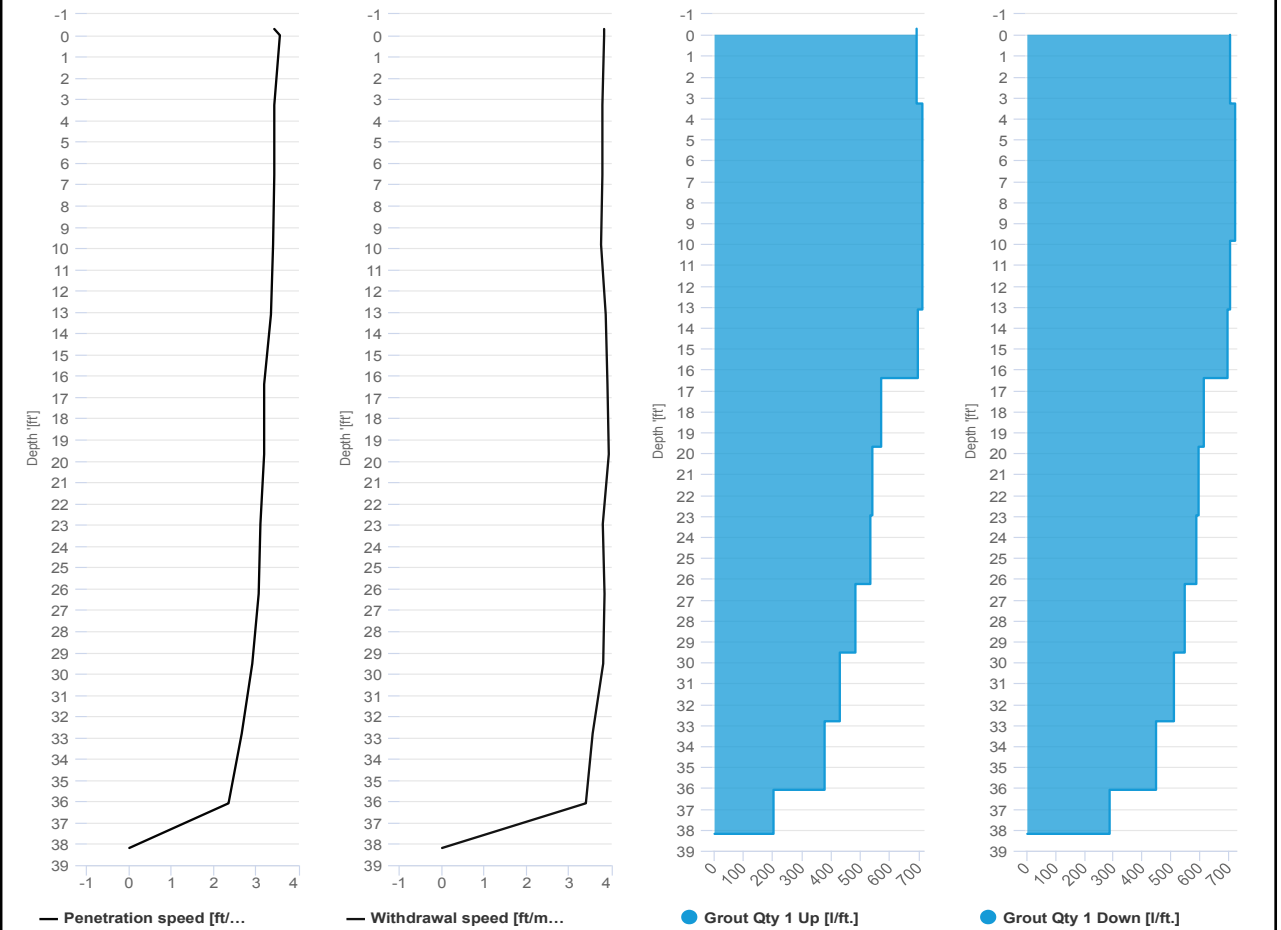


Project name: Douglass Street BCG ISS Element name: c37b
 Project number

Start date: 03/22/2024

Drilling rig: BG36H_5717

Details		Start time: 08:38 AM	
Max. depth: 38.18 ft.		End Date: 03/22/2024	
Volume/m 1: 10.94 ft³		End time: 08:58 AM	
		Production duration: 00:20:25	
		Final depth time: 08:48 AM	
		Total suspension quantity: 128.969 ft³	





IMPACT ENVIRONMENTAL

welcome to solid ground...

170 Keyland Court | Bohemia | NY | 11716 | 631.269.8800

www.impactenvironmental.com

UPWIND CAMP READINGS

251 DOUGLASS STREET, BROOKLYN, NY

Instrument Name	DustTrak DRX
Model Number	8533
Serial Number	8533181207
Firmware Version	3.1
Calibration Date	6/1/2023
Test Name	MANUAL_006
Test Start Time	6:45:50 AM
Test Start Date	3/22/2024
Test Length [D:H:M]	0:07:05
Test Interval [M:S]	1:00
PM1 Average [mg/m3]	0.017
PM1 Minimum [mg/m3]	0.01
PM1 Maximum [mg/m3]	0.097
PM1 TWA [mg/m3]	0.015
Photometric User Cal	1
Size Correction User Cal	1
Flow User Cal	0
Errors	
Number of Samples	425

Elapsed Time [s]	PM1 [mg/m3]	Alarms	Errors
60	0.051		
120	0.012		
180	0.011		
240	0.018		
300	0.01		
360	0.01		
420	0.011		
480	0.011		
540	0.01		
600	0.01		
660	0.01		
720	0.01		
780	0.011		
840	0.01		
900	0.011		
960	0.011		
1020	0.011		
1080	0.011		
1140	0.025		
1200	0.011		
1260	0.011		
1320	0.011		
1380	0.014		

1440	0.019
1500	0.012
1560	0.014
1620	0.013
1680	0.012
1740	0.012
1800	0.011
1860	0.012
1920	0.013
1980	0.011
2040	0.012
2100	0.013
2160	0.012
2220	0.012
2280	0.011
2340	0.011
2400	0.011
2460	0.011
2520	0.011
2580	0.013
2640	0.013
2700	0.011
2760	0.012
2820	0.012
2880	0.012
2940	0.012
3000	0.011
3060	0.011
3120	0.012
3180	0.012
3240	0.011
3300	0.012
3360	0.012
3420	0.013
3480	0.013
3540	0.012
3600	0.012
3660	0.012
3720	0.013
3780	0.012
3840	0.013
3900	0.012
3960	0.013
4020	0.012

4080	0.012
4140	0.012
4200	0.012
4260	0.012
4320	0.012
4380	0.012
4440	0.012
4500	0.012
4560	0.011
4620	0.012
4680	0.012
4740	0.013
4800	0.012
4860	0.012
4920	0.012
4980	0.013
5040	0.013
5100	0.012
5160	0.012
5220	0.013
5280	0.012
5340	0.012
5400	0.013
5460	0.013
5520	0.013
5580	0.014
5640	0.013
5700	0.031
5760	0.017
5820	0.012
5880	0.014
5940	0.016
6000	0.013
6060	0.013
6120	0.013
6180	0.011
6240	0.015
6300	0.015
6360	0.014
6420	0.013
6480	0.015
6540	0.012
6600	0.016
6660	0.014

6720	0.015
6780	0.013
6840	0.014
6900	0.015
6960	0.015
7020	0.015
7080	0.014
7140	0.015
7200	0.013
7260	0.013
7320	0.012
7380	0.012
7440	0.012
7500	0.012
7560	0.012
7620	0.012
7680	0.012
7740	0.012
7800	0.012
7860	0.012
7920	0.013
7980	0.013
8040	0.012
8100	0.013
8160	0.013
8220	0.014
8280	0.013
8340	0.013
8400	0.012
8460	0.013
8520	0.013
8580	0.015
8640	0.013
8700	0.013
8760	0.012
8820	0.013
8880	0.014
8940	0.013
9000	0.012
9060	0.013
9120	0.013
9180	0.013
9240	0.013
9300	0.013

9360	0.013
9420	0.013
9480	0.013
9540	0.013
9600	0.014
9660	0.013
9720	0.013
9780	0.013
9840	0.013
9900	0.013
9960	0.013
10020	0.013
10080	0.013
10140	0.019
10200	0.018
10260	0.018
10320	0.017
10380	0.015
10440	0.018
10500	0.022
10560	0.016
10620	0.017
10680	0.015
10740	0.016
10800	0.017
10860	0.015
10920	0.014
10980	0.014
11040	0.014
11100	0.014
11160	0.014
11220	0.014
11280	0.014
11340	0.014
11400	0.014
11460	0.015
11520	0.014
11580	0.014
11640	0.016
11700	0.015
11760	0.014
11820	0.015
11880	0.014
11940	0.015

12000	0.015
12060	0.015
12120	0.017
12180	0.016
12240	0.015
12300	0.015
12360	0.014
12420	0.014
12480	0.015
12540	0.016
12600	0.015
12660	0.015
12720	0.015
12780	0.015
12840	0.015
12900	0.015
12960	0.015
13020	0.015
13080	0.015
13140	0.015
13200	0.018
13260	0.019
13320	0.016
13380	0.018
13440	0.017
13500	0.015
13560	0.016
13620	0.016
13680	0.015
13740	0.032
13800	0.022
13860	0.016
13920	0.016
13980	0.017
14040	0.02
14100	0.017
14160	0.016
14220	0.017
14280	0.016
14340	0.016
14400	0.016
14460	0.017
14520	0.017
14580	0.017

14640	0.018
14700	0.017
14760	0.021
14820	0.017
14880	0.017
14940	0.018
15000	0.017
15060	0.017
15120	0.017
15180	0.017
15240	0.017
15300	0.018
15360	0.018
15420	0.017
15480	0.018
15540	0.018
15600	0.018
15660	0.018
15720	0.018
15780	0.018
15840	0.019
15900	0.019
15960	0.018
16020	0.018
16080	0.018
16140	0.019
16200	0.018
16260	0.018
16320	0.018
16380	0.018
16440	0.019
16500	0.019
16560	0.019
16620	0.019
16680	0.019
16740	0.02
16800	0.02
16860	0.019
16920	0.02
16980	0.019
17040	0.019
17100	0.019
17160	0.019
17220	0.02

17280	0.019
17340	0.019
17400	0.018
17460	0.02
17520	0.019
17580	0.019
17640	0.02
17700	0.02
17760	0.019
17820	0.02
17880	0.02
17940	0.019
18000	0.019
18060	0.019
18120	0.018
18180	0.019
18240	0.02
18300	0.02
18360	0.02
18420	0.02
18480	0.02
18540	0.019
18600	0.019
18660	0.019
18720	0.019
18780	0.019
18840	0.019
18900	0.019
18960	0.02
19020	0.019
19080	0.02
19140	0.02
19200	0.019
19260	0.019
19320	0.019
19380	0.019
19440	0.019
19500	0.019
19560	0.02
19620	0.02
19680	0.021
19740	0.02
19800	0.02
19860	0.02

19920	0.021
19980	0.021
20040	0.021
20100	0.021
20160	0.022
20220	0.024
20280	0.021
20340	0.021
20400	0.021
20460	0.021
20520	0.021
20580	0.021
20640	0.021
20700	0.021
20760	0.022
20820	0.024
20880	0.023
20940	0.022
21000	0.021
21060	0.021
21120	0.021
21180	0.021
21240	0.021
21300	0.022
21360	0.022
21420	0.021
21480	0.021
21540	0.022
21600	0.021
21660	0.022
21720	0.022
21780	0.023
21840	0.023
21900	0.023
21960	0.025
22020	0.023
22080	0.022
22140	0.021
22200	0.021
22260	0.022
22320	0.021
22380	0.022
22440	0.023
22500	0.021

22560	0.021
22620	0.022
22680	0.021
22740	0.023
22800	0.025
22860	0.025
22920	0.023
22980	0.022
23040	0.02
23100	0.02
23160	0.021
23220	0.022
23280	0.021
23340	0.02
23400	0.021
23460	0.021
23520	0.021
23580	0.021
23640	0.021
23700	0.023
23760	0.021
23820	0.022
23880	0.021
23940	0.097
24000	0.027
24060	0.021
24120	0.024
24180	0.021
24240	0.022
24300	0.022
24360	0.023
24420	0.023
24480	0.023
24540	0.021
24600	0.021
24660	0.021
24720	0.022
24780	0.021
24840	0.023
24900	0.034
24960	0.027
25020	0.023
25080	0.021
25140	0.021

25200	0.023
25260	0.022
25320	0.021
25380	0.02
25440	0.021
25500	0.023

Device Serial No	Log Time	Log Type	Sensor 1 Type	Sensor 1 Serial Number	Sensor 1 Status	Sensor 1 Gas Reading
592-601274	3/22/2024 14:19	Readings	PID	SC23030921B3	Normal	0
592-601274	3/22/2024 14:18	Readings	PID	SC23030921B3	Normal	0
592-601274	3/22/2024 14:17	Readings	PID	SC23030921B3	Normal	0
592-601274	3/22/2024 14:16	Readings	PID	SC23030921B3	Normal	0
592-601274	3/22/2024 14:15	Readings	PID	SC23030921B3	Normal	0
592-601274	3/22/2024 14:14	Readings	PID	SC23030921B3	Normal	0
592-601274	3/22/2024 14:13	Readings	PID	SC23030921B3	Normal	0
592-601274	3/22/2024 14:12	Readings	PID	SC23030921B3	Normal	0
592-601274	3/22/2024 14:11	Readings	PID	SC23030921B3	Normal	0
592-601274	3/22/2024 14:10	Readings	PID	SC23030921B3	Normal	0
592-601274	3/22/2024 14:09	Readings	PID	SC23030921B3	Normal	0
592-601274	3/22/2024 14:08	Readings	PID	SC23030921B3	Normal	0
592-601274	3/22/2024 14:07	Readings	PID	SC23030921B3	Normal	0
592-601274	3/22/2024 14:06	Readings	PID	SC23030921B3	Normal	0
592-601274	3/22/2024 14:05	Readings	PID	SC23030921B3	Normal	0
592-601274	3/22/2024 14:04	Readings	PID	SC23030921B3	Normal	0
592-601274	3/22/2024 14:03	Readings	PID	SC23030921B3	Normal	0
592-601274	3/22/2024 14:02	Readings	PID	SC23030921B3	Normal	0
592-601274	3/22/2024 14:01	Readings	PID	SC23030921B3	Normal	0
592-601274	3/22/2024 14:00	Readings	PID	SC23030921B3	Normal	0
592-601274	3/22/2024 13:59	Readings	PID	SC23030921B3	Normal	0
592-601274	3/22/2024 13:58	Readings	PID	SC23030921B3	Normal	0
592-601274	3/22/2024 13:57	Readings	PID	SC23030921B3	Normal	0
592-601274	3/22/2024 13:56	Readings	PID	SC23030921B3	Normal	0
592-601274	3/22/2024 13:55	Readings	PID	SC23030921B3	Normal	0
592-601274	3/22/2024 13:54	Readings	PID	SC23030921B3	Normal	0
592-601274	3/22/2024 13:53	Readings	PID	SC23030921B3	Normal	0
592-601274	3/22/2024 13:52	Readings	PID	SC23030921B3	Normal	0
592-601274	3/22/2024 13:51	Readings	PID	SC23030921B3	Normal	0
592-601274	3/22/2024 13:50	Readings	PID	SC23030921B3	Normal	0
592-601274	3/22/2024 13:49	Readings	PID	SC23030921B3	Normal	0
592-601274	3/22/2024 13:48	Readings	PID	SC23030921B3	Normal	0

592-601274	3/22/2024 7:11 Readings	PID	SC23030921B3	Normal	0
592-601274	3/22/2024 7:10 Readings	PID	SC23030921B3	Normal	0
592-601274	3/22/2024 7:09 Readings	PID	SC23030921B3	Normal	0
592-601274	3/22/2024 7:08 Readings	PID	SC23030921B3	Normal	0
592-601274	3/22/2024 7:07 CONFIG	PID	SC23030921B3		

DOWNWIND CAMP READINGS

251 DOUGLASS STREET, BROOKLYN, NY



Instrument Name	DustTrak II
Model Number	8530
Serial Number	8530123704
Firmware Version	3.1
Calibration Date	8/18/2023
Test Name	MANUAL_004
Test Start Time	5:46:56 AM
Test Start Date	3/22/2024
Test Length [D:H:M]	0:06:54
Test Interval [M:S]	1:00
Mass Average [mg/m3]	0.018
Mass Minimum [mg/m3]	0.009
Mass Maximum [mg/m3]	0.236
Mass TWA [mg/m3]	0.015
Photometric User Cal	1
Flow User Cal	0
Errors	
Number of Samples	414

Elapsed Time [s]	Mass [mg/m3]	Alarms	Errors
60	0.014		
120	0.012		
180	0.01		
240	0.009		
300	0.012		
360	0.01		
420	0.011		
480	0.01		
540	0.01		
600	0.009		
660	0.009		
720	0.013		
780	0.011		
840	0.009		
900	0.01		
960	0.014		
1020	0.014		
1080	0.022		
1140	0.025		
1200	0.012		
1260	0.012		
1320	0.013		
1380	0.014		
1440	0.016		

1500	0.015
1560	0.012
1620	0.01
1680	0.019
1740	0.015
1800	0.016
1860	0.012
1920	0.013
1980	0.011
2040	0.012
2100	0.012
2160	0.01
2220	0.011
2280	0.01
2340	0.01
2400	0.01
2460	0.01
2520	0.012
2580	0.012
2640	0.011
2700	0.01
2760	0.012
2820	0.011
2880	0.011
2940	0.011
3000	0.011
3060	0.013
3120	0.012
3180	0.01
3240	0.011
3300	0.011
3360	0.011
3420	0.011
3480	0.011
3540	0.011
3600	0.01
3660	0.01
3720	0.012
3780	0.012
3840	0.011
3900	0.011
3960	0.012
4020	0.016
4080	0.013

4140	0.011
4200	0.011
4260	0.012
4320	0.012
4380	0.011
4440	0.009
4500	0.021
4560	0.01
4620	0.012
4680	0.01
4740	0.015
4800	0.013
4860	0.012
4920	0.013
4980	0.01
5040	0.021
5100	0.014
5160	0.016
5220	0.011
5280	0.011
5340	0.018
5400	0.021
5460	0.017
5520	0.014
5580	0.013
5640	0.015
5700	0.014
5760	0.014
5820	0.011
5880	0.011
5940	0.012
6000	0.013
6060	0.011
6120	0.012
6180	0.013
6240	0.017
6300	0.02
6360	0.011
6420	0.01
6480	0.013
6540	0.012
6600	0.01
6660	0.016
6720	0.015

6780	0.012
6840	0.012
6900	0.012
6960	0.012
7020	0.011
7080	0.011
7140	0.013
7200	0.011
7260	0.012
7320	0.012
7380	0.012
7440	0.012
7500	0.011
7560	0.013
7620	0.011
7680	0.012
7740	0.011
7800	0.011
7860	0.011
7920	0.013
7980	0.02
8040	0.012
8100	0.013
8160	0.014
8220	0.011
8280	0.011
8340	0.011
8400	0.012
8460	0.011
8520	0.01
8580	0.011
8640	0.013
8700	0.012
8760	0.012
8820	0.014
8880	0.013
8940	0.015
9000	0.012
9060	0.012
9120	0.045
9180	0.012
9240	0.012
9300	0.012
9360	0.011

9420	0.013
9480	0.014
9540	0.014
9600	0.013
9660	0.012
9720	0.014
9780	0.012
9840	0.013
9900	0.011
9960	0.011
10020	0.012
10080	0.012
10140	0.013
10200	0.016
10260	0.015
10320	0.013
10380	0.014
10440	0.018
10500	0.019
10560	0.017
10620	0.015
10680	0.027
10740	0.023
10800	0.014
10860	0.014
10920	0.014
10980	0.014
11040	0.013
11100	0.014
11160	0.014
11220	0.014
11280	0.014
11340	0.014
11400	0.015
11460	0.014
11520	0.013
11580	0.014
11640	0.013
11700	0.013
11760	0.014
11820	0.013
11880	0.013
11940	0.012
12000	0.015

12060	0.018
12120	0.016
12180	0.014
12240	0.015
12300	0.013
12360	0.013
12420	0.013
12480	0.019
12540	0.015
12600	0.014
12660	0.013
12720	0.012
12780	0.013
12840	0.012
12900	0.013
12960	0.012
13020	0.013
13080	0.012
13140	0.012
13200	0.012
13260	0.015
13320	0.018
13380	0.016
13440	0.013
13500	0.013
13560	0.015
13620	0.015
13680	0.018
13740	0.023
13800	0.016
13860	0.022
13920	0.045
13980	0.018
14040	0.022
14100	0.016
14160	0.014
14220	0.019
14280	0.02
14340	0.047
14400	0.041
14460	0.018
14520	0.039
14580	0.039
14640	0.028

14700	0.018
14760	0.024
14820	0.018
14880	0.038
14940	0.106
15000	0.044
15060	0.038
15120	0.022
15180	0.025
15240	0.024
15300	0.015
15360	0.019
15420	0.016
15480	0.016
15540	0.016
15600	0.017
15660	0.019
15720	0.018
15780	0.02
15840	0.018
15900	0.031
15960	0.056
16020	0.031
16080	0.019
16140	0.033
16200	0.022
16260	0.019
16320	0.016
16380	0.017
16440	0.019
16500	0.021
16560	0.019
16620	0.017
16680	0.019
16740	0.018
16800	0.024
16860	0.02
16920	0.017
16980	0.018
17040	0.018
17100	0.018
17160	0.019
17220	0.016
17280	0.016

17340	0.016
17400	0.019
17460	0.02
17520	0.017
17580	0.018
17640	0.018
17700	0.017
17760	0.019
17820	0.017
17880	0.048
17940	0.236
18000	0.02
18060	0.021
18120	0.109
18180	0.04
18240	0.016
18300	0.017
18360	0.018
18420	0.016
18480	0.016
18540	0.017
18600	0.017
18660	0.022
18720	0.02
18780	0.016
18840	0.017
18900	0.023
18960	0.019
19020	0.017
19080	0.017
19140	0.016
19200	0.016
19260	0.016
19320	0.016
19380	0.016
19440	0.016
19500	0.016
19560	0.017
19620	0.017
19680	0.017
19740	0.017
19800	0.017
19860	0.019
19920	0.018

19980	0.018
20040	0.02
20100	0.022
20160	0.02
20220	0.019
20280	0.02
20340	0.019
20400	0.019
20460	0.019
20520	0.019
20580	0.019
20640	0.019
20700	0.02
20760	0.021
20820	0.02
20880	0.022
20940	0.024
21000	0.021
21060	0.021
21120	0.021
21180	0.019
21240	0.02
21300	0.034
21360	0.047
21420	0.024
21480	0.02
21540	0.019
21600	0.022
21660	0.02
21720	0.021
21780	0.024
21840	0.027
21900	0.022
21960	0.024
22020	0.022
22080	0.02
22140	0.019
22200	0.022
22260	0.03
22320	0.049
22380	0.024
22440	0.019
22500	0.019
22560	0.02

22620	0.02
22680	0.018
22740	0.021
22800	0.031
22860	0.031
22920	0.021
22980	0.018
23040	0.019
23100	0.018
23160	0.018
23220	0.017
23280	0.016
23340	0.017
23400	0.018
23460	0.018
23520	0.018
23580	0.019
23640	0.019
23700	0.017
23760	0.019
23820	0.019
23880	0.017
23940	0.017
24000	0.017
24060	0.017
24120	0.017
24180	0.019
24240	0.018
24300	0.017
24360	0.017
24420	0.017
24480	0.017
24540	0.017
24600	0.017
24660	0.017
24720	0.017
24780	0.017
24840	0.02

Device Serial No	Log Time	Log Type	Sensor 1 Type	Sensor 1 Serial Number	Sensor 1 Status	Sensor 1 Gas Reading
592-602816	3/22/2024 14:15	Readings	PID	SC23030324C7	Normal	0
592-602816	3/22/2024 14:14	Readings	PID	SC23030324C7	Normal	0
592-602816	3/22/2024 14:13	Readings	PID	SC23030324C7	Normal	0
592-602816	3/22/2024 14:12	Readings	PID	SC23030324C7	Normal	0
592-602816	3/22/2024 14:11	Readings	PID	SC23030324C7	Normal	0
592-602816	3/22/2024 14:10	Readings	PID	SC23030324C7	Normal	0
592-602816	3/22/2024 14:09	Readings	PID	SC23030324C7	Normal	0
592-602816	3/22/2024 14:08	Readings	PID	SC23030324C7	Normal	0.1
592-602816	3/22/2024 14:07	Readings	PID	SC23030324C7	Normal	0.1
592-602816	3/22/2024 14:06	Readings	PID	SC23030324C7	Normal	0.2
592-602816	3/22/2024 14:05	Readings	PID	SC23030324C7	Normal	0
592-602816	3/22/2024 14:04	Readings	PID	SC23030324C7	Normal	0.1
592-602816	3/22/2024 14:03	Readings	PID	SC23030324C7	Normal	0
592-602816	3/22/2024 14:02	Readings	PID	SC23030324C7	Normal	0.1
592-602816	3/22/2024 14:01	Readings	PID	SC23030324C7	Normal	0.3
592-602816	3/22/2024 14:00	Readings	PID	SC23030324C7	Normal	0.2
592-602816	3/22/2024 13:59	Readings	PID	SC23030324C7	Normal	0
592-602816	3/22/2024 13:58	Readings	PID	SC23030324C7	Normal	0
592-602816	3/22/2024 13:57	Readings	PID	SC23030324C7	Normal	0.3
592-602816	3/22/2024 13:56	Readings	PID	SC23030324C7	Normal	0.3
592-602816	3/22/2024 13:55	Readings	PID	SC23030324C7	Normal	0
592-602816	3/22/2024 13:54	Readings	PID	SC23030324C7	Normal	0
592-602816	3/22/2024 13:53	Readings	PID	SC23030324C7	Normal	0
592-602816	3/22/2024 13:52	Readings	PID	SC23030324C7	Normal	0.1
592-602816	3/22/2024 13:51	Readings	PID	SC23030324C7	Normal	0
592-602816	3/22/2024 13:50	Readings	PID	SC23030324C7	Normal	0
592-602816	3/22/2024 13:49	Readings	PID	SC23030324C7	Normal	0
592-602816	3/22/2024 13:48	Readings	PID	SC23030324C7	Normal	0
592-602816	3/22/2024 13:47	Readings	PID	SC23030324C7	Normal	0
592-602816	3/22/2024 13:46	Readings	PID	SC23030324C7	Normal	0
592-602816	3/22/2024 13:45	Readings	PID	SC23030324C7	Normal	0
592-602816	3/22/2024 13:44	Readings	PID	SC23030324C7	Normal	0

592-602816	3/22/2024 13:43	Readings	PID	SC23030324C7	Normal	0
592-602816	3/22/2024 13:42	Readings	PID	SC23030324C7	Normal	0
592-602816	3/22/2024 13:41	Readings	PID	SC23030324C7	Normal	0
592-602816	3/22/2024 13:40	Readings	PID	SC23030324C7	Normal	0
592-602816	3/22/2024 13:39	Readings	PID	SC23030324C7	Normal	0
592-602816	3/22/2024 13:38	Readings	PID	SC23030324C7	Normal	0
592-602816	3/22/2024 13:37	Readings	PID	SC23030324C7	Normal	0.1
592-602816	3/22/2024 13:36	Readings	PID	SC23030324C7	Normal	0.1
592-602816	3/22/2024 13:35	Readings	PID	SC23030324C7	Normal	0.1
592-602816	3/22/2024 13:34	Readings	PID	SC23030324C7	Normal	0
592-602816	3/22/2024 13:33	Readings	PID	SC23030324C7	Normal	0
592-602816	3/22/2024 13:32	Readings	PID	SC23030324C7	Normal	0
592-602816	3/22/2024 13:31	Readings	PID	SC23030324C7	Normal	0
592-602816	3/22/2024 13:30	Readings	PID	SC23030324C7	Normal	0
592-602816	3/22/2024 13:29	Readings	PID	SC23030324C7	Normal	0
592-602816	3/22/2024 13:28	Readings	PID	SC23030324C7	Normal	0
592-602816	3/22/2024 13:27	Readings	PID	SC23030324C7	Normal	0
592-602816	3/22/2024 13:26	Readings	PID	SC23030324C7	Normal	0
592-602816	3/22/2024 13:25	Readings	PID	SC23030324C7	Normal	0
592-602816	3/22/2024 13:24	Readings	PID	SC23030324C7	Normal	0
592-602816	3/22/2024 13:23	Readings	PID	SC23030324C7	Normal	0
592-602816	3/22/2024 13:22	Readings	PID	SC23030324C7	Normal	0
592-602816	3/22/2024 13:21	Readings	PID	SC23030324C7	Normal	0.1
592-602816	3/22/2024 13:20	Readings	PID	SC23030324C7	Normal	0
592-602816	3/22/2024 13:19	Readings	PID	SC23030324C7	Normal	0
592-602816	3/22/2024 13:18	Readings	PID	SC23030324C7	Normal	0
592-602816	3/22/2024 13:17	Readings	PID	SC23030324C7	Normal	0
592-602816	3/22/2024 13:16	Readings	PID	SC23030324C7	Normal	0
592-602816	3/22/2024 13:15	Readings	PID	SC23030324C7	Normal	0
592-602816	3/22/2024 13:14	Readings	PID	SC23030324C7	Normal	0
592-602816	3/22/2024 13:13	Readings	PID	SC23030324C7	Normal	0.2
592-602816	3/22/2024 13:12	Readings	PID	SC23030324C7	Normal	0.3
592-602816	3/22/2024 13:11	Readings	PID	SC23030324C7	Normal	0.5

592-602816	3/22/2024 13:10 Readings	PID	SC23030324C7	Normal	0.4
592-602816	3/22/2024 13:09 Readings	PID	SC23030324C7	Normal	0
592-602816	3/22/2024 13:08 Readings	PID	SC23030324C7	Normal	0
592-602816	3/22/2024 13:07 Readings	PID	SC23030324C7	Normal	0.1
592-602816	3/22/2024 13:06 Readings	PID	SC23030324C7	Normal	0.4
592-602816	3/22/2024 13:05 Readings	PID	SC23030324C7	Normal	0.4
592-602816	3/22/2024 13:04 Readings	PID	SC23030324C7	Normal	0
592-602816	3/22/2024 13:03 Readings	PID	SC23030324C7	Normal	0
592-602816	3/22/2024 13:02 Readings	PID	SC23030324C7	Normal	0
592-602816	3/22/2024 13:01 Readings	PID	SC23030324C7	Normal	0
592-602816	3/22/2024 13:00 Readings	PID	SC23030324C7	Normal	0
592-602816	3/22/2024 12:59 Readings	PID	SC23030324C7	Normal	0
592-602816	3/22/2024 12:58 Readings	PID	SC23030324C7	Normal	0
592-602816	3/22/2024 12:57 Readings	PID	SC23030324C7	Normal	0
592-602816	3/22/2024 12:56 Readings	PID	SC23030324C7	Normal	0.1
592-602816	3/22/2024 12:55 Readings	PID	SC23030324C7	Normal	0.2
592-602816	3/22/2024 12:54 Readings	PID	SC23030324C7	Normal	0
592-602816	3/22/2024 12:53 Readings	PID	SC23030324C7	Normal	0
592-602816	3/22/2024 12:52 Readings	PID	SC23030324C7	Normal	0
592-602816	3/22/2024 12:51 Readings	PID	SC23030324C7	Normal	0
592-602816	3/22/2024 12:50 Readings	PID	SC23030324C7	Normal	0
592-602816	3/22/2024 12:49 Readings	PID	SC23030324C7	Normal	0
592-602816	3/22/2024 12:48 Readings	PID	SC23030324C7	Normal	0
592-602816	3/22/2024 12:47 Readings	PID	SC23030324C7	Normal	0
592-602816	3/22/2024 12:46 Readings	PID	SC23030324C7	Normal	0
592-602816	3/22/2024 12:45 Readings	PID	SC23030324C7	Normal	0
592-602816	3/22/2024 12:44 Readings	PID	SC23030324C7	Normal	0
592-602816	3/22/2024 12:43 Readings	PID	SC23030324C7	Normal	0
592-602816	3/22/2024 12:42 Readings	PID	SC23030324C7	Normal	0
592-602816	3/22/2024 12:41 Readings	PID	SC23030324C7	Normal	0
592-602816	3/22/2024 12:40 Readings	PID	SC23030324C7	Normal	0
592-602816	3/22/2024 12:39 Readings	PID	SC23030324C7	Normal	0
592-602816	3/22/2024 12:38 Readings	PID	SC23030324C7	Normal	0

592-602816	3/22/2024 12:37	Readings	PID	SC23030324C7	Normal	0
592-602816	3/22/2024 12:36	Readings	PID	SC23030324C7	Normal	0
592-602816	3/22/2024 12:35	Readings	PID	SC23030324C7	Normal	0
592-602816	3/22/2024 12:34	Readings	PID	SC23030324C7	Normal	0
592-602816	3/22/2024 12:33	Readings	PID	SC23030324C7	Normal	0
592-602816	3/22/2024 12:32	Readings	PID	SC23030324C7	Normal	0
592-602816	3/22/2024 12:31	Readings	PID	SC23030324C7	Normal	0
592-602816	3/22/2024 12:30	Readings	PID	SC23030324C7	Normal	0
592-602816	3/22/2024 12:29	Readings	PID	SC23030324C7	Normal	0.1
592-602816	3/22/2024 12:28	Readings	PID	SC23030324C7	Normal	0
592-602816	3/22/2024 12:27	Readings	PID	SC23030324C7	Normal	0
592-602816	3/22/2024 12:26	Readings	PID	SC23030324C7	Normal	0
592-602816	3/22/2024 12:25	Readings	PID	SC23030324C7	Normal	0
592-602816	3/22/2024 12:24	Readings	PID	SC23030324C7	Normal	0
592-602816	3/22/2024 12:23	Readings	PID	SC23030324C7	Normal	0
592-602816	3/22/2024 12:22	Readings	PID	SC23030324C7	Normal	0
592-602816	3/22/2024 12:21	Readings	PID	SC23030324C7	Normal	0
592-602816	3/22/2024 12:20	Readings	PID	SC23030324C7	Normal	0
592-602816	3/22/2024 12:19	Readings	PID	SC23030324C7	Normal	0
592-602816	3/22/2024 12:18	Readings	PID	SC23030324C7	Normal	0
592-602816	3/22/2024 12:17	Readings	PID	SC23030324C7	Normal	0
592-602816	3/22/2024 12:16	Readings	PID	SC23030324C7	Normal	0
592-602816	3/22/2024 12:15	Readings	PID	SC23030324C7	Normal	0
592-602816	3/22/2024 12:14	Readings	PID	SC23030324C7	Normal	0
592-602816	3/22/2024 12:13	Readings	PID	SC23030324C7	Normal	0
592-602816	3/22/2024 12:12	Readings	PID	SC23030324C7	Normal	0
592-602816	3/22/2024 12:11	Readings	PID	SC23030324C7	Normal	0
592-602816	3/22/2024 12:10	Readings	PID	SC23030324C7	Normal	0
592-602816	3/22/2024 12:09	Readings	PID	SC23030324C7	Normal	0
592-602816	3/22/2024 12:08	Readings	PID	SC23030324C7	Normal	0
592-602816	3/22/2024 12:07	Readings	PID	SC23030324C7	Normal	0
592-602816	3/22/2024 12:06	Readings	PID	SC23030324C7	Normal	0.1
592-602816	3/22/2024 12:05	Readings	PID	SC23030324C7	Normal	0.2

592-602816	3/22/2024 12:04	Readings	PID	SC23030324C7	Normal	0
592-602816	3/22/2024 12:03	Readings	PID	SC23030324C7	Normal	0
592-602816	3/22/2024 12:02	Readings	PID	SC23030324C7	Normal	0.1
592-602816	3/22/2024 12:01	Readings	PID	SC23030324C7	Normal	0.2
592-602816	3/22/2024 12:00	Readings	PID	SC23030324C7	Normal	0
592-602816	3/22/2024 11:59	Readings	PID	SC23030324C7	Normal	0
592-602816	3/22/2024 11:58	Readings	PID	SC23030324C7	Normal	0
592-602816	3/22/2024 11:57	Readings	PID	SC23030324C7	Normal	0
592-602816	3/22/2024 11:56	Readings	PID	SC23030324C7	Normal	0
592-602816	3/22/2024 11:55	Readings	PID	SC23030324C7	Normal	0
592-602816	3/22/2024 11:54	Readings	PID	SC23030324C7	Normal	0
592-602816	3/22/2024 11:53	Readings	PID	SC23030324C7	Normal	0
592-602816	3/22/2024 11:52	Readings	PID	SC23030324C7	Normal	0
592-602816	3/22/2024 11:51	Readings	PID	SC23030324C7	Normal	0
592-602816	3/22/2024 11:50	Readings	PID	SC23030324C7	Normal	0
592-602816	3/22/2024 11:49	Readings	PID	SC23030324C7	Normal	0
592-602816	3/22/2024 11:48	Readings	PID	SC23030324C7	Normal	0
592-602816	3/22/2024 11:47	Readings	PID	SC23030324C7	Normal	0
592-602816	3/22/2024 11:46	Readings	PID	SC23030324C7	Normal	0
592-602816	3/22/2024 11:45	Readings	PID	SC23030324C7	Normal	0
592-602816	3/22/2024 11:44	Readings	PID	SC23030324C7	Normal	0
592-602816	3/22/2024 11:43	Readings	PID	SC23030324C7	Normal	0
592-602816	3/22/2024 11:42	Readings	PID	SC23030324C7	Normal	0
592-602816	3/22/2024 11:41	Readings	PID	SC23030324C7	Normal	0
592-602816	3/22/2024 11:40	Readings	PID	SC23030324C7	Normal	0
592-602816	3/22/2024 11:39	Readings	PID	SC23030324C7	Normal	0
592-602816	3/22/2024 11:38	Readings	PID	SC23030324C7	Normal	0
592-602816	3/22/2024 11:37	Readings	PID	SC23030324C7	Normal	0
592-602816	3/22/2024 11:36	Readings	PID	SC23030324C7	Normal	0
592-602816	3/22/2024 11:35	Readings	PID	SC23030324C7	Normal	0
592-602816	3/22/2024 11:34	Readings	PID	SC23030324C7	Normal	0
592-602816	3/22/2024 11:33	Readings	PID	SC23030324C7	Normal	0
592-602816	3/22/2024 11:32	Readings	PID	SC23030324C7	Normal	0

592-602816	3/22/2024 11:31	Readings	PID	SC23030324C7	Normal	0
592-602816	3/22/2024 11:30	Readings	PID	SC23030324C7	Normal	0
592-602816	3/22/2024 11:29	Readings	PID	SC23030324C7	Normal	0
592-602816	3/22/2024 11:28	Readings	PID	SC23030324C7	Normal	0
592-602816	3/22/2024 11:27	Readings	PID	SC23030324C7	Normal	0
592-602816	3/22/2024 11:26	Readings	PID	SC23030324C7	Normal	0
592-602816	3/22/2024 11:25	Readings	PID	SC23030324C7	Normal	0
592-602816	3/22/2024 11:24	Readings	PID	SC23030324C7	Normal	0
592-602816	3/22/2024 11:23	Readings	PID	SC23030324C7	Normal	0
592-602816	3/22/2024 11:22	Readings	PID	SC23030324C7	Normal	0
592-602816	3/22/2024 11:21	Readings	PID	SC23030324C7	Normal	0.1
592-602816	3/22/2024 11:20	Readings	PID	SC23030324C7	Normal	0.1
592-602816	3/22/2024 11:19	Readings	PID	SC23030324C7	Normal	0.2
592-602816	3/22/2024 11:18	Readings	PID	SC23030324C7	Normal	0.3
592-602816	3/22/2024 11:17	Readings	PID	SC23030324C7	Normal	0.9
592-602816	3/22/2024 11:16	Readings	PID	SC23030324C7	Normal	1.3
592-602816	3/22/2024 11:15	Readings	PID	SC23030324C7	Normal	1.1
592-602816	3/22/2024 11:14	Readings	PID	SC23030324C7	Normal	1.4
592-602816	3/22/2024 11:13	Readings	PID	SC23030324C7	Normal	1.5
592-602816	3/22/2024 11:12	Readings	PID	SC23030324C7	Normal	0.7
592-602816	3/22/2024 11:11	Readings	PID	SC23030324C7	Normal	0.1
592-602816	3/22/2024 11:10	Readings	PID	SC23030324C7	Normal	0
592-602816	3/22/2024 11:09	Readings	PID	SC23030324C7	Normal	0
592-602816	3/22/2024 11:08	Readings	PID	SC23030324C7	Normal	0
592-602816	3/22/2024 11:07	Readings	PID	SC23030324C7	Normal	0
592-602816	3/22/2024 11:06	Readings	PID	SC23030324C7	Normal	0
592-602816	3/22/2024 11:05	Readings	PID	SC23030324C7	Normal	0
592-602816	3/22/2024 11:04	Readings	PID	SC23030324C7	Normal	0
592-602816	3/22/2024 11:03	Readings	PID	SC23030324C7	Normal	0
592-602816	3/22/2024 11:02	Readings	PID	SC23030324C7	Normal	0
592-602816	3/22/2024 11:01	Readings	PID	SC23030324C7	Normal	0
592-602816	3/22/2024 11:00	Readings	PID	SC23030324C7	Normal	0
592-602816	3/22/2024 10:59	Readings	PID	SC23030324C7	Normal	0

592-602816	3/22/2024 10:25	Readings	PID	SC23030324C7	Normal	0
592-602816	3/22/2024 10:24	Readings	PID	SC23030324C7	Normal	0
592-602816	3/22/2024 10:23	Readings	PID	SC23030324C7	Normal	0
592-602816	3/22/2024 10:22	Readings	PID	SC23030324C7	Normal	0
592-602816	3/22/2024 10:21	Readings	PID	SC23030324C7	Normal	0
592-602816	3/22/2024 10:20	Readings	PID	SC23030324C7	Normal	0
592-602816	3/22/2024 10:19	Readings	PID	SC23030324C7	Normal	0
592-602816	3/22/2024 10:18	Readings	PID	SC23030324C7	Normal	0
592-602816	3/22/2024 10:17	Readings	PID	SC23030324C7	Normal	0.1
592-602816	3/22/2024 10:16	Readings	PID	SC23030324C7	Normal	0
592-602816	3/22/2024 10:15	Readings	PID	SC23030324C7	Normal	0
592-602816	3/22/2024 10:14	Readings	PID	SC23030324C7	Normal	0
592-602816	3/22/2024 10:13	Readings	PID	SC23030324C7	Normal	0
592-602816	3/22/2024 10:12	Readings	PID	SC23030324C7	Normal	0
592-602816	3/22/2024 10:11	Readings	PID	SC23030324C7	Normal	0
592-602816	3/22/2024 10:10	Readings	PID	SC23030324C7	Normal	0
592-602816	3/22/2024 10:09	Readings	PID	SC23030324C7	Normal	0
592-602816	3/22/2024 10:08	Readings	PID	SC23030324C7	Normal	0
592-602816	3/22/2024 10:07	Readings	PID	SC23030324C7	Normal	0
592-602816	3/22/2024 10:06	Readings	PID	SC23030324C7	Normal	0
592-602816	3/22/2024 10:05	Readings	PID	SC23030324C7	Normal	0
592-602816	3/22/2024 10:04	Readings	PID	SC23030324C7	Normal	0
592-602816	3/22/2024 10:03	Readings	PID	SC23030324C7	Normal	0
592-602816	3/22/2024 10:02	Readings	PID	SC23030324C7	Normal	0
592-602816	3/22/2024 10:01	Readings	PID	SC23030324C7	Normal	0
592-602816	3/22/2024 10:00	Readings	PID	SC23030324C7	Normal	0
592-602816	3/22/2024 9:59	Readings	PID	SC23030324C7	Normal	0
592-602816	3/22/2024 9:58	Readings	PID	SC23030324C7	Normal	0
592-602816	3/22/2024 9:57	Readings	PID	SC23030324C7	Normal	0
592-602816	3/22/2024 9:56	Readings	PID	SC23030324C7	Normal	0
592-602816	3/22/2024 9:55	Readings	PID	SC23030324C7	Normal	0
592-602816	3/22/2024 9:54	Readings	PID	SC23030324C7	Normal	0
592-602816	3/22/2024 9:53	Readings	PID	SC23030324C7	Normal	0

592-602816	3/22/2024 9:52	Readings	PID	SC23030324C7	Normal	0.1
592-602816	3/22/2024 9:51	Readings	PID	SC23030324C7	Normal	0
592-602816	3/22/2024 9:50	Readings	PID	SC23030324C7	Normal	0
592-602816	3/22/2024 9:49	Readings	PID	SC23030324C7	Normal	0
592-602816	3/22/2024 9:48	Readings	PID	SC23030324C7	Normal	0
592-602816	3/22/2024 9:47	Readings	PID	SC23030324C7	Normal	0
592-602816	3/22/2024 9:46	Readings	PID	SC23030324C7	Normal	0
592-602816	3/22/2024 9:45	Readings	PID	SC23030324C7	Normal	0
592-602816	3/22/2024 9:44	Readings	PID	SC23030324C7	Normal	0
592-602816	3/22/2024 9:43	Readings	PID	SC23030324C7	Normal	0
592-602816	3/22/2024 9:42	Readings	PID	SC23030324C7	Normal	0
592-602816	3/22/2024 9:41	Readings	PID	SC23030324C7	Normal	0
592-602816	3/22/2024 9:40	Readings	PID	SC23030324C7	Normal	0
592-602816	3/22/2024 9:39	Readings	PID	SC23030324C7	Normal	0
592-602816	3/22/2024 9:38	Readings	PID	SC23030324C7	Normal	0
592-602816	3/22/2024 9:37	Readings	PID	SC23030324C7	Normal	0
592-602816	3/22/2024 9:36	Readings	PID	SC23030324C7	Normal	0
592-602816	3/22/2024 9:35	Readings	PID	SC23030324C7	Normal	0
592-602816	3/22/2024 9:34	Readings	PID	SC23030324C7	Normal	0
592-602816	3/22/2024 9:33	Readings	PID	SC23030324C7	Normal	0
592-602816	3/22/2024 9:32	Readings	PID	SC23030324C7	Normal	0
592-602816	3/22/2024 9:31	Readings	PID	SC23030324C7	Normal	0
592-602816	3/22/2024 9:30	Readings	PID	SC23030324C7	Normal	0
592-602816	3/22/2024 9:29	Readings	PID	SC23030324C7	Normal	0
592-602816	3/22/2024 9:28	Readings	PID	SC23030324C7	Normal	0
592-602816	3/22/2024 9:27	Readings	PID	SC23030324C7	Normal	0
592-602816	3/22/2024 9:26	Readings	PID	SC23030324C7	Normal	0
592-602816	3/22/2024 9:25	Readings	PID	SC23030324C7	Normal	0
592-602816	3/22/2024 9:24	Readings	PID	SC23030324C7	Normal	0
592-602816	3/22/2024 9:23	Readings	PID	SC23030324C7	Normal	0
592-602816	3/22/2024 9:22	Readings	PID	SC23030324C7	Normal	0
592-602816	3/22/2024 9:21	Readings	PID	SC23030324C7	Normal	0
592-602816	3/22/2024 9:20	Readings	PID	SC23030324C7	Normal	0

592-602816	3/22/2024 7:40 Readings	PID	SC23030324C7	Normal	0
592-602816	3/22/2024 7:39 Readings	PID	SC23030324C7	Normal	0
592-602816	3/22/2024 7:38 Readings	PID	SC23030324C7	Normal	0
592-602816	3/22/2024 7:37 Readings	PID	SC23030324C7	Normal	0
592-602816	3/22/2024 7:36 Readings	PID	SC23030324C7	Normal	0
592-602816	3/22/2024 7:35 Readings	PID	SC23030324C7	Normal	0
592-602816	3/22/2024 7:34 Readings	PID	SC23030324C7	Normal	0
592-602816	3/22/2024 7:33 Readings	PID	SC23030324C7	Normal	0
592-602816	3/22/2024 7:32 Readings	PID	SC23030324C7	Normal	0
592-602816	3/22/2024 7:31 Readings	PID	SC23030324C7	Normal	0
592-602816	3/22/2024 7:30 Readings	PID	SC23030324C7	Normal	0
592-602816	3/22/2024 7:29 Readings	PID	SC23030324C7	Normal	0
592-602816	3/22/2024 7:28 Readings	PID	SC23030324C7	Normal	0
592-602816	3/22/2024 7:27 Readings	PID	SC23030324C7	Normal	0
592-602816	3/22/2024 7:26 Readings	PID	SC23030324C7	Normal	0
592-602816	3/22/2024 7:25 Readings	PID	SC23030324C7	Normal	0
592-602816	3/22/2024 7:24 Readings	PID	SC23030324C7	Normal	0
592-602816	3/22/2024 7:23 Readings	PID	SC23030324C7	Normal	0
592-602816	3/22/2024 7:22 Readings	PID	SC23030324C7	Normal	0
592-602816	3/22/2024 7:21 Readings	PID	SC23030324C7	Normal	0
592-602816	3/22/2024 7:20 Readings	PID	SC23030324C7	Normal	0
592-602816	3/22/2024 7:19 Readings	PID	SC23030324C7	Normal	0
592-602816	3/22/2024 7:18 Readings	PID	SC23030324C7	Normal	0
592-602816	3/22/2024 7:17 Readings	PID	SC23030324C7	Normal	0
592-602816	3/22/2024 7:16 Readings	PID	SC23030324C7	Normal	0
592-602816	3/22/2024 7:15 Readings	PID	SC23030324C7	Normal	0
592-602816	3/22/2024 7:14 Readings	PID	SC23030324C7	Normal	0
592-602816	3/22/2024 7:13 Readings	PID	SC23030324C7	Normal	0
592-602816	3/22/2024 7:12 Readings	PID	SC23030324C7	Normal	0
592-602816	3/22/2024 7:11 Readings	PID	SC23030324C7	Normal	0
592-602816	3/22/2024 7:10 Readings	PID	SC23030324C7	Normal	0
592-602816	3/22/2024 7:09 Readings	PID	SC23030324C7	Normal	0
592-602816	3/22/2024 7:08 CONFIG	PID	SC23030324C7	Normal	0

Instrument Name	DustTrak II
Model Number	8530
Serial Number	8530224601
Firmware Version	3.1
Calibration Date	11/9/2022
Test Name	MANUAL_004
Test Start Time	5:47:24 AM
Test Start Date	3/22/2024
Test Length [D:H:M]	0:06:55
Test Interval [M:S]	1:00
Mass Average [mg/m3]	0.02
Mass Minimum [mg/m3]	0.008
Mass Maximum [mg/m3]	0.22
Mass TWA [mg/m3]	0.017
Photometric User Cal	1
Flow User Cal	0
Errors	
Number of Samples	415

Elapsed Time [s]	Mass [mg/m3]	Alarms	Errors
60	0.22		
120	0.009		
180	0.009		
240	0.025		
300	0.022		
360	0.01		
420	0.008		
480	0.009		
540	0.009		
600	0.008		
660	0.009		
720	0.021		
780	0.016		
840	0.021		
900	0.163		
960	0.033		
1020	0.015		
1080	0.016		
1140	0.013		
1200	0.019		
1260	0.016		
1320	0.017		
1380	0.013		
1440	0.018		

1500	0.039
1560	0.023
1620	0.017
1680	0.023
1740	0.012
1800	0.072
1860	0.016
1920	0.021
1980	0.013
2040	0.01
2100	0.01
2160	0.01
2220	0.011
2280	0.011
2340	0.013
2400	0.012
2460	0.013
2520	0.018
2580	0.014
2640	0.019
2700	0.013
2760	0.012
2820	0.01
2880	0.013
2940	0.012
3000	0.01
3060	0.01
3120	0.01
3180	0.011
3240	0.012
3300	0.012
3360	0.011
3420	0.011
3480	0.011
3540	0.011
3600	0.012
3660	0.011
3720	0.01
3780	0.012
3840	0.01
3900	0.012
3960	0.01
4020	0.011
4080	0.01

4140	0.011
4200	0.01
4260	0.009
4320	0.01
4380	0.01
4440	0.011
4500	0.01
4560	0.01
4620	0.009
4680	0.011
4740	0.013
4800	0.012
4860	0.01
4920	0.011
4980	0.011
5040	0.01
5100	0.012
5160	0.011
5220	0.01
5280	0.011
5340	0.012
5400	0.014
5460	0.026
5520	0.018
5580	0.012
5640	0.011
5700	0.011
5760	0.017
5820	0.011
5880	0.011
5940	0.011
6000	0.016
6060	0.028
6120	0.016
6180	0.011
6240	0.013
6300	0.013
6360	0.013
6420	0.011
6480	0.027
6540	0.014
6600	0.013
6660	0.013
6720	0.012

6780	0.012
6840	0.012
6900	0.016
6960	0.014
7020	0.014
7080	0.012
7140	0.012
7200	0.011
7260	0.012
7320	0.014
7380	0.013
7440	0.013
7500	0.011
7560	0.01
7620	0.024
7680	0.014
7740	0.018
7800	0.012
7860	0.012
7920	0.015
7980	0.017
8040	0.014
8100	0.012
8160	0.011
8220	0.012
8280	0.011
8340	0.013
8400	0.011
8460	0.015
8520	0.015
8580	0.016
8640	0.019
8700	0.017
8760	0.017
8820	0.014
8880	0.03
8940	0.012
9000	0.014
9060	0.017
9120	0.011
9180	0.012
9240	0.012
9300	0.012
9360	0.013

9420	0.012
9480	0.012
9540	0.011
9600	0.017
9660	0.021
9720	0.012
9780	0.013
9840	0.013
9900	0.013
9960	0.014
10020	0.017
10080	0.014
10140	0.023
10200	0.016
10260	0.029
10320	0.017
10380	0.023
10440	0.03
10500	0.043
10560	0.021
10620	0.03
10680	0.013
10740	0.018
10800	0.021
10860	0.014
10920	0.014
10980	0.013
11040	0.013
11100	0.013
11160	0.014
11220	0.014
11280	0.013
11340	0.013
11400	0.015
11460	0.013
11520	0.014
11580	0.016
11640	0.015
11700	0.014
11760	0.014
11820	0.016
11880	0.017
11940	0.017
12000	0.024

12060	0.014
12120	0.014
12180	0.013
12240	0.014
12300	0.014
12360	0.015
12420	0.016
12480	0.013
12540	0.016
12600	0.014
12660	0.013
12720	0.016
12780	0.015
12840	0.014
12900	0.014
12960	0.014
13020	0.015
13080	0.018
13140	0.018
13200	0.015
13260	0.014
13320	0.015
13380	0.016
13440	0.015
13500	0.051
13560	0.024
13620	0.016
13680	0.015
13740	0.021
13800	0.019
13860	0.017
13920	0.018
13980	0.02
14040	0.018
14100	0.017
14160	0.027
14220	0.018
14280	0.016
14340	0.018
14400	0.018
14460	0.021
14520	0.018
14580	0.017
14640	0.018

14700	0.018
14760	0.018
14820	0.019
14880	0.018
14940	0.058
15000	0.022
15060	0.018
15120	0.018
15180	0.018
15240	0.018
15300	0.02
15360	0.018
15420	0.019
15480	0.019
15540	0.02
15600	0.019
15660	0.021
15720	0.019
15780	0.019
15840	0.019
15900	0.02
15960	0.019
16020	0.023
16080	0.02
16140	0.02
16200	0.02
16260	0.02
16320	0.021
16380	0.02
16440	0.03
16500	0.023
16560	0.023
16620	0.022
16680	0.022
16740	0.025
16800	0.024
16860	0.027
16920	0.023
16980	0.023
17040	0.024
17100	0.02
17160	0.02
17220	0.024
17280	0.023

17340	0.029
17400	0.029
17460	0.023
17520	0.023
17580	0.023
17640	0.022
17700	0.021
17760	0.023
17820	0.023
17880	0.02
17940	0.027
18000	0.024
18060	0.022
18120	0.024
18180	0.023
18240	0.026
18300	0.036
18360	0.022
18420	0.021
18480	0.025
18540	0.021
18600	0.022
18660	0.022
18720	0.022
18780	0.022
18840	0.022
18900	0.022
18960	0.02
19020	0.027
19080	0.022
19140	0.029
19200	0.024
19260	0.024
19320	0.021
19380	0.029
19440	0.022
19500	0.022
19560	0.022
19620	0.023
19680	0.028
19740	0.034
19800	0.023
19860	0.024
19920	0.027

19980	0.027
20040	0.023
20100	0.023
20160	0.023
20220	0.023
20280	0.023
20340	0.024
20400	0.025
20460	0.026
20520	0.025
20580	0.029
20640	0.028
20700	0.025
20760	0.025
20820	0.024
20880	0.024
20940	0.025
21000	0.024
21060	0.025
21120	0.025
21180	0.024
21240	0.025
21300	0.025
21360	0.026
21420	0.026
21480	0.028
21540	0.027
21600	0.03
21660	0.041
21720	0.033
21780	0.034
21840	0.029
21900	0.025
21960	0.024
22020	0.031
22080	0.031
22140	0.046
22200	0.028
22260	0.024
22320	0.024
22380	0.025
22440	0.023
22500	0.025
22560	0.027

22620	0.025
22680	0.025
22740	0.023
22800	0.022
22860	0.024
22920	0.026
22980	0.024
23040	0.022
23100	0.022
23160	0.024
23220	0.023
23280	0.023
23340	0.025
23400	0.026
23460	0.025
23520	0.027
23580	0.024
23640	0.027
23700	0.022
23760	0.026
23820	0.023
23880	0.023
23940	0.026
24000	0.025
24060	0.021
24120	0.027
24180	0.024
24240	0.028
24300	0.022
24360	0.024
24420	0.023
24480	0.025
24540	0.03
24600	0.026
24660	0.027
24720	0.021
24780	0.029
24840	0.023
24900	0.022

Device Serial No	Log Time	Log Type	Sensor 1 Type	Sensor 1 Serial Number	Sensor 1 Status	Sensor 1 Gas Reading
592-600871	3/22/2024 14:15	Readings	PID	SC23030408A8	Normal	0.1
592-600871	3/22/2024 14:14	Readings	PID	SC23030408A8	Normal	0
592-600871	3/22/2024 14:13	Readings	PID	SC23030408A8	Normal	0
592-600871	3/22/2024 14:12	Readings	PID	SC23030408A8	Normal	0
592-600871	3/22/2024 14:11	Readings	PID	SC23030408A8	Normal	0
592-600871	3/22/2024 14:10	Readings	PID	SC23030408A8	Normal	0
592-600871	3/22/2024 14:09	Readings	PID	SC23030408A8	Normal	0
592-600871	3/22/2024 14:08	Readings	PID	SC23030408A8	Normal	0
592-600871	3/22/2024 14:07	Readings	PID	SC23030408A8	Normal	0
592-600871	3/22/2024 14:06	Readings	PID	SC23030408A8	Normal	0.1
592-600871	3/22/2024 14:05	Readings	PID	SC23030408A8	Normal	0
592-600871	3/22/2024 14:04	Readings	PID	SC23030408A8	Normal	0.1
592-600871	3/22/2024 14:03	Readings	PID	SC23030408A8	Normal	0
592-600871	3/22/2024 14:02	Readings	PID	SC23030408A8	Normal	0
592-600871	3/22/2024 14:01	Readings	PID	SC23030408A8	Normal	0
592-600871	3/22/2024 14:00	Readings	PID	SC23030408A8	Normal	0
592-600871	3/22/2024 13:59	Readings	PID	SC23030408A8	Normal	0
592-600871	3/22/2024 13:58	Readings	PID	SC23030408A8	Normal	0.1
592-600871	3/22/2024 13:57	Readings	PID	SC23030408A8	Normal	0.1
592-600871	3/22/2024 13:56	Readings	PID	SC23030408A8	Normal	0.1
592-600871	3/22/2024 13:55	Readings	PID	SC23030408A8	Normal	0.1
592-600871	3/22/2024 13:54	Readings	PID	SC23030408A8	Normal	0.1
592-600871	3/22/2024 13:53	Readings	PID	SC23030408A8	Normal	0.1
592-600871	3/22/2024 13:52	Readings	PID	SC23030408A8	Normal	0
592-600871	3/22/2024 13:51	Readings	PID	SC23030408A8	Normal	0
592-600871	3/22/2024 13:50	Readings	PID	SC23030408A8	Normal	0.1
592-600871	3/22/2024 13:49	Readings	PID	SC23030408A8	Normal	0.1
592-600871	3/22/2024 13:48	Readings	PID	SC23030408A8	Normal	0.1
592-600871	3/22/2024 13:47	Readings	PID	SC23030408A8	Normal	0.1
592-600871	3/22/2024 13:46	Readings	PID	SC23030408A8	Normal	0.1
592-600871	3/22/2024 13:45	Readings	PID	SC23030408A8	Normal	0.1
592-600871	3/22/2024 13:44	Readings	PID	SC23030408A8	Normal	0.1

592-600871	3/22/2024 13:10 Readings	PID	SC23030408A8	Normal	0.1
592-600871	3/22/2024 13:09 Readings	PID	SC23030408A8	Normal	0.1
592-600871	3/22/2024 13:08 Readings	PID	SC23030408A8	Normal	0.1
592-600871	3/22/2024 13:07 Readings	PID	SC23030408A8	Normal	0.1
592-600871	3/22/2024 13:06 Readings	PID	SC23030408A8	Normal	0.1
592-600871	3/22/2024 13:05 Readings	PID	SC23030408A8	Normal	0.1
592-600871	3/22/2024 13:04 Readings	PID	SC23030408A8	Normal	0.1
592-600871	3/22/2024 13:03 Readings	PID	SC23030408A8	Normal	0.1
592-600871	3/22/2024 13:02 Readings	PID	SC23030408A8	Normal	0.1
592-600871	3/22/2024 13:01 Readings	PID	SC23030408A8	Normal	0
592-600871	3/22/2024 13:00 Readings	PID	SC23030408A8	Normal	0
592-600871	3/22/2024 12:59 Readings	PID	SC23030408A8	Normal	0
592-600871	3/22/2024 12:58 Readings	PID	SC23030408A8	Normal	0
592-600871	3/22/2024 12:57 Readings	PID	SC23030408A8	Normal	0.1
592-600871	3/22/2024 12:56 Readings	PID	SC23030408A8	Normal	0.1
592-600871	3/22/2024 12:55 Readings	PID	SC23030408A8	Normal	0.1
592-600871	3/22/2024 12:54 Readings	PID	SC23030408A8	Normal	0
592-600871	3/22/2024 12:53 Readings	PID	SC23030408A8	Normal	0.1
592-600871	3/22/2024 12:52 Readings	PID	SC23030408A8	Normal	0
592-600871	3/22/2024 12:51 Readings	PID	SC23030408A8	Normal	0.1
592-600871	3/22/2024 12:50 Readings	PID	SC23030408A8	Normal	0.1
592-600871	3/22/2024 12:49 Readings	PID	SC23030408A8	Normal	0
592-600871	3/22/2024 12:48 Readings	PID	SC23030408A8	Normal	0.1
592-600871	3/22/2024 12:47 Readings	PID	SC23030408A8	Normal	0
592-600871	3/22/2024 12:46 Readings	PID	SC23030408A8	Normal	0.1
592-600871	3/22/2024 12:45 Readings	PID	SC23030408A8	Normal	0.1
592-600871	3/22/2024 12:44 Readings	PID	SC23030408A8	Normal	0.1
592-600871	3/22/2024 12:43 Readings	PID	SC23030408A8	Normal	0.1
592-600871	3/22/2024 12:42 Readings	PID	SC23030408A8	Normal	0.1
592-600871	3/22/2024 12:41 Readings	PID	SC23030408A8	Normal	0.1
592-600871	3/22/2024 12:40 Readings	PID	SC23030408A8	Normal	0.1
592-600871	3/22/2024 12:39 Readings	PID	SC23030408A8	Normal	0.2
592-600871	3/22/2024 12:38 Readings	PID	SC23030408A8	Normal	0.1

592-600871	3/22/2024 12:37	Readings	PID	SC23030408A8	Normal	0.1
592-600871	3/22/2024 12:36	Readings	PID	SC23030408A8	Normal	0.1
592-600871	3/22/2024 12:35	Readings	PID	SC23030408A8	Normal	0.1
592-600871	3/22/2024 12:34	Readings	PID	SC23030408A8	Normal	0.1
592-600871	3/22/2024 12:33	Readings	PID	SC23030408A8	Normal	0.1
592-600871	3/22/2024 12:32	Readings	PID	SC23030408A8	Normal	0.1
592-600871	3/22/2024 12:31	Readings	PID	SC23030408A8	Normal	0.2
592-600871	3/22/2024 12:30	Readings	PID	SC23030408A8	Normal	0.2
592-600871	3/22/2024 12:29	Readings	PID	SC23030408A8	Normal	0.2
592-600871	3/22/2024 12:28	Readings	PID	SC23030408A8	Normal	0.2
592-600871	3/22/2024 12:27	Readings	PID	SC23030408A8	Normal	0.2
592-600871	3/22/2024 12:26	Readings	PID	SC23030408A8	Normal	0.1
592-600871	3/22/2024 12:25	Readings	PID	SC23030408A8	Normal	0.2
592-600871	3/22/2024 12:24	Readings	PID	SC23030408A8	Normal	0.1
592-600871	3/22/2024 12:23	Readings	PID	SC23030408A8	Normal	0.2
592-600871	3/22/2024 12:22	Readings	PID	SC23030408A8	Normal	0.2
592-600871	3/22/2024 12:21	Readings	PID	SC23030408A8	Normal	0.2
592-600871	3/22/2024 12:20	Readings	PID	SC23030408A8	Normal	0.1
592-600871	3/22/2024 12:19	Readings	PID	SC23030408A8	Normal	0.1
592-600871	3/22/2024 12:18	Readings	PID	SC23030408A8	Normal	0.3
592-600871	3/22/2024 12:17	Readings	PID	SC23030408A8	Normal	0.2
592-600871	3/22/2024 12:16	Readings	PID	SC23030408A8	Normal	0.1
592-600871	3/22/2024 12:15	Readings	PID	SC23030408A8	Normal	0.3
592-600871	3/22/2024 12:14	Readings	PID	SC23030408A8	Normal	0.1
592-600871	3/22/2024 12:13	Readings	PID	SC23030408A8	Normal	0.1
592-600871	3/22/2024 12:12	Readings	PID	SC23030408A8	Normal	0.2
592-600871	3/22/2024 12:11	Readings	PID	SC23030408A8	Normal	0.1
592-600871	3/22/2024 12:10	Readings	PID	SC23030408A8	Normal	0.2
592-600871	3/22/2024 12:09	Readings	PID	SC23030408A8	Normal	0.3
592-600871	3/22/2024 12:08	Readings	PID	SC23030408A8	Normal	0.2
592-600871	3/22/2024 12:07	Readings	PID	SC23030408A8	Normal	0.3
592-600871	3/22/2024 12:06	Readings	PID	SC23030408A8	Normal	0.3
592-600871	3/22/2024 12:05	Readings	PID	SC23030408A8	Normal	0.1

592-600871	3/22/2024 12:04	Readings	PID	SC23030408A8	Normal	0.1
592-600871	3/22/2024 12:03	Readings	PID	SC23030408A8	Normal	0.3
592-600871	3/22/2024 12:02	Readings	PID	SC23030408A8	Normal	0.1
592-600871	3/22/2024 12:01	Readings	PID	SC23030408A8	Normal	0.4
592-600871	3/22/2024 12:00	Readings	PID	SC23030408A8	Normal	0.4
592-600871	3/22/2024 11:59	Readings	PID	SC23030408A8	Normal	0.4
592-600871	3/22/2024 11:58	Readings	PID	SC23030408A8	Normal	0.4
592-600871	3/22/2024 11:57	Readings	PID	SC23030408A8	Normal	0.5
592-600871	3/22/2024 11:56	Readings	PID	SC23030408A8	Normal	0.3
592-600871	3/22/2024 11:55	Readings	PID	SC23030408A8	Normal	0.4
592-600871	3/22/2024 11:54	Readings	PID	SC23030408A8	Normal	0.4
592-600871	3/22/2024 11:53	Readings	PID	SC23030408A8	Normal	0.2
592-600871	3/22/2024 11:52	Readings	PID	SC23030408A8	Normal	0.1
592-600871	3/22/2024 11:51	Readings	PID	SC23030408A8	Normal	0.1
592-600871	3/22/2024 11:50	Readings	PID	SC23030408A8	Normal	0.1
592-600871	3/22/2024 11:49	Readings	PID	SC23030408A8	Normal	0.6
592-600871	3/22/2024 11:48	Readings	PID	SC23030408A8	Normal	0.2
592-600871	3/22/2024 11:47	Readings	PID	SC23030408A8	Normal	0.5
592-600871	3/22/2024 11:46	Readings	PID	SC23030408A8	Normal	0.2
592-600871	3/22/2024 11:45	Readings	PID	SC23030408A8	Normal	0.3
592-600871	3/22/2024 11:44	Readings	PID	SC23030408A8	Normal	0.5
592-600871	3/22/2024 11:43	Readings	PID	SC23030408A8	Normal	0.4
592-600871	3/22/2024 11:42	Readings	PID	SC23030408A8	Normal	0.3
592-600871	3/22/2024 11:41	Readings	PID	SC23030408A8	Normal	0.2
592-600871	3/22/2024 11:40	Readings	PID	SC23030408A8	Normal	0.4
592-600871	3/22/2024 11:39	Readings	PID	SC23030408A8	Normal	0.2
592-600871	3/22/2024 11:38	Readings	PID	SC23030408A8	Normal	0.2
592-600871	3/22/2024 11:37	Readings	PID	SC23030408A8	Normal	0.2
592-600871	3/22/2024 11:36	Readings	PID	SC23030408A8	Normal	0.1
592-600871	3/22/2024 11:35	Readings	PID	SC23030408A8	Normal	0.4
592-600871	3/22/2024 11:34	Readings	PID	SC23030408A8	Normal	0.4
592-600871	3/22/2024 11:33	Readings	PID	SC23030408A8	Normal	0.5
592-600871	3/22/2024 11:32	Readings	PID	SC23030408A8	Normal	0.3

592-600871	3/22/2024 11:31 Readings	PID	SC23030408A8	Normal	0.7
592-600871	3/22/2024 11:30 Readings	PID	SC23030408A8	Normal	0.2
592-600871	3/22/2024 11:29 Readings	PID	SC23030408A8	Normal	0.2
592-600871	3/22/2024 11:28 Readings	PID	SC23030408A8	Normal	1.5
592-600871	3/22/2024 11:27 Readings	PID	SC23030408A8	Normal	0.2
592-600871	3/22/2024 11:26 Readings	PID	SC23030408A8	Normal	0.4
592-600871	3/22/2024 11:25 Readings	PID	SC23030408A8	Normal	0.1
592-600871	3/22/2024 11:24 Readings	PID	SC23030408A8	Normal	0.4
592-600871	3/22/2024 11:23 Readings	PID	SC23030408A8	Normal	0.5
592-600871	3/22/2024 11:22 Readings	PID	SC23030408A8	Normal	0.1
592-600871	3/22/2024 11:21 Readings	PID	SC23030408A8	Normal	0
592-600871	3/22/2024 11:20 Readings	PID	SC23030408A8	Normal	0
592-600871	3/22/2024 11:19 Readings	PID	SC23030408A8	Normal	0
592-600871	3/22/2024 11:18 Readings	PID	SC23030408A8	Normal	0
592-600871	3/22/2024 11:17 Readings	PID	SC23030408A8	Normal	0
592-600871	3/22/2024 11:16 Readings	PID	SC23030408A8	Normal	0
592-600871	3/22/2024 11:15 Readings	PID	SC23030408A8	Normal	0
592-600871	3/22/2024 11:14 Readings	PID	SC23030408A8	Normal	0
592-600871	3/22/2024 11:13 Readings	PID	SC23030408A8	Normal	0
592-600871	3/22/2024 11:12 Readings	PID	SC23030408A8	Normal	0
592-600871	3/22/2024 11:11 Readings	PID	SC23030408A8	Normal	0
592-600871	3/22/2024 11:10 Readings	PID	SC23030408A8	Normal	0
592-600871	3/22/2024 11:09 Readings	PID	SC23030408A8	Normal	0
592-600871	3/22/2024 11:08 Readings	PID	SC23030408A8	Normal	0
592-600871	3/22/2024 11:07 Readings	PID	SC23030408A8	Normal	0
592-600871	3/22/2024 11:06 Readings	PID	SC23030408A8	Normal	0
592-600871	3/22/2024 11:05 Readings	PID	SC23030408A8	Normal	0
592-600871	3/22/2024 11:04 Readings	PID	SC23030408A8	Normal	0
592-600871	3/22/2024 11:03 Readings	PID	SC23030408A8	Normal	0
592-600871	3/22/2024 11:02 Readings	PID	SC23030408A8	Normal	0
592-600871	3/22/2024 11:01 Readings	PID	SC23030408A8	Normal	0
592-600871	3/22/2024 11:00 Readings	PID	SC23030408A8	Normal	0
592-600871	3/22/2024 10:59 Readings	PID	SC23030408A8	Normal	0

592-600871	3/22/2024 10:58	Readings	PID	SC23030408A8	Normal	0.1
592-600871	3/22/2024 10:57	Readings	PID	SC23030408A8	Normal	0.1
592-600871	3/22/2024 10:56	Readings	PID	SC23030408A8	Normal	0
592-600871	3/22/2024 10:55	Readings	PID	SC23030408A8	Normal	0
592-600871	3/22/2024 10:54	Readings	PID	SC23030408A8	Normal	0
592-600871	3/22/2024 10:53	Readings	PID	SC23030408A8	Normal	0
592-600871	3/22/2024 10:52	Readings	PID	SC23030408A8	Normal	0
592-600871	3/22/2024 10:51	Readings	PID	SC23030408A8	Normal	0.1
592-600871	3/22/2024 10:50	Readings	PID	SC23030408A8	Normal	0
592-600871	3/22/2024 10:49	Readings	PID	SC23030408A8	Normal	0.1
592-600871	3/22/2024 10:48	Readings	PID	SC23030408A8	Normal	0
592-600871	3/22/2024 10:47	Readings	PID	SC23030408A8	Normal	0
592-600871	3/22/2024 10:46	Readings	PID	SC23030408A8	Normal	0
592-600871	3/22/2024 10:45	Readings	PID	SC23030408A8	Normal	0
592-600871	3/22/2024 10:44	Readings	PID	SC23030408A8	Normal	0
592-600871	3/22/2024 10:43	Readings	PID	SC23030408A8	Normal	0
592-600871	3/22/2024 10:42	Readings	PID	SC23030408A8	Normal	0
592-600871	3/22/2024 10:41	Readings	PID	SC23030408A8	Normal	0
592-600871	3/22/2024 10:40	Readings	PID	SC23030408A8	Normal	0
592-600871	3/22/2024 10:39	Readings	PID	SC23030408A8	Normal	0
592-600871	3/22/2024 10:38	Readings	PID	SC23030408A8	Normal	0
592-600871	3/22/2024 10:37	Readings	PID	SC23030408A8	Normal	0
592-600871	3/22/2024 10:36	Readings	PID	SC23030408A8	Normal	0
592-600871	3/22/2024 10:35	Readings	PID	SC23030408A8	Normal	0
592-600871	3/22/2024 10:34	Readings	PID	SC23030408A8	Normal	0
592-600871	3/22/2024 10:33	Readings	PID	SC23030408A8	Normal	0
592-600871	3/22/2024 10:32	Readings	PID	SC23030408A8	Normal	0
592-600871	3/22/2024 10:31	Readings	PID	SC23030408A8	Normal	0
592-600871	3/22/2024 10:30	Readings	PID	SC23030408A8	Normal	0
592-600871	3/22/2024 10:29	Readings	PID	SC23030408A8	Normal	0
592-600871	3/22/2024 10:28	Readings	PID	SC23030408A8	Normal	0.1
592-600871	3/22/2024 10:27	Readings	PID	SC23030408A8	Normal	0
592-600871	3/22/2024 10:26	Readings	PID	SC23030408A8	Normal	0

592-600871	3/22/2024 10:25	Readings	PID	SC23030408A8	Normal	0
592-600871	3/22/2024 10:24	Readings	PID	SC23030408A8	Normal	0
592-600871	3/22/2024 10:23	Readings	PID	SC23030408A8	Normal	0
592-600871	3/22/2024 10:22	Readings	PID	SC23030408A8	Normal	0
592-600871	3/22/2024 10:21	Readings	PID	SC23030408A8	Normal	0.1
592-600871	3/22/2024 10:20	Readings	PID	SC23030408A8	Normal	0.1
592-600871	3/22/2024 10:19	Readings	PID	SC23030408A8	Normal	0.2
592-600871	3/22/2024 10:18	Readings	PID	SC23030408A8	Normal	0.1
592-600871	3/22/2024 10:17	Readings	PID	SC23030408A8	Normal	0
592-600871	3/22/2024 10:16	Readings	PID	SC23030408A8	Normal	0
592-600871	3/22/2024 10:15	Readings	PID	SC23030408A8	Normal	0.1
592-600871	3/22/2024 10:14	Readings	PID	SC23030408A8	Normal	0.1
592-600871	3/22/2024 10:13	Readings	PID	SC23030408A8	Normal	0
592-600871	3/22/2024 10:12	Readings	PID	SC23030408A8	Normal	0
592-600871	3/22/2024 10:11	Readings	PID	SC23030408A8	Normal	0
592-600871	3/22/2024 10:10	Readings	PID	SC23030408A8	Normal	0
592-600871	3/22/2024 10:09	Readings	PID	SC23030408A8	Normal	0
592-600871	3/22/2024 10:08	Readings	PID	SC23030408A8	Normal	0
592-600871	3/22/2024 10:07	Readings	PID	SC23030408A8	Normal	0.1
592-600871	3/22/2024 10:06	Readings	PID	SC23030408A8	Normal	0.1
592-600871	3/22/2024 10:05	Readings	PID	SC23030408A8	Normal	0.1
592-600871	3/22/2024 10:04	Readings	PID	SC23030408A8	Normal	0
592-600871	3/22/2024 10:03	Readings	PID	SC23030408A8	Normal	0.1
592-600871	3/22/2024 10:02	Readings	PID	SC23030408A8	Normal	0
592-600871	3/22/2024 10:01	Readings	PID	SC23030408A8	Normal	0
592-600871	3/22/2024 10:00	Readings	PID	SC23030408A8	Normal	0.1
592-600871	3/22/2024 9:59	Readings	PID	SC23030408A8	Normal	0.3
592-600871	3/22/2024 9:58	Readings	PID	SC23030408A8	Normal	0.1
592-600871	3/22/2024 9:57	Readings	PID	SC23030408A8	Normal	0.1
592-600871	3/22/2024 9:56	Readings	PID	SC23030408A8	Normal	0.2
592-600871	3/22/2024 9:55	Readings	PID	SC23030408A8	Normal	0.1
592-600871	3/22/2024 9:54	Readings	PID	SC23030408A8	Normal	0.1
592-600871	3/22/2024 9:53	Readings	PID	SC23030408A8	Normal	0.1

592-600871	3/22/2024 9:52	Readings	PID	SC23030408A8	Normal	0.1
592-600871	3/22/2024 9:51	Readings	PID	SC23030408A8	Normal	0.1
592-600871	3/22/2024 9:50	Readings	PID	SC23030408A8	Normal	0.1
592-600871	3/22/2024 9:49	Readings	PID	SC23030408A8	Normal	0
592-600871	3/22/2024 9:48	Readings	PID	SC23030408A8	Normal	0
592-600871	3/22/2024 9:47	Readings	PID	SC23030408A8	Normal	0
592-600871	3/22/2024 9:46	Readings	PID	SC23030408A8	Normal	0.1
592-600871	3/22/2024 9:45	Readings	PID	SC23030408A8	Normal	0
592-600871	3/22/2024 9:44	Readings	PID	SC23030408A8	Normal	0.1
592-600871	3/22/2024 9:43	Readings	PID	SC23030408A8	Normal	0
592-600871	3/22/2024 9:42	Readings	PID	SC23030408A8	Normal	0
592-600871	3/22/2024 9:41	Readings	PID	SC23030408A8	Normal	0
592-600871	3/22/2024 9:40	Readings	PID	SC23030408A8	Normal	0
592-600871	3/22/2024 9:39	Readings	PID	SC23030408A8	Normal	0
592-600871	3/22/2024 9:38	Readings	PID	SC23030408A8	Normal	0
592-600871	3/22/2024 9:37	Readings	PID	SC23030408A8	Normal	0.1
592-600871	3/22/2024 9:36	Readings	PID	SC23030408A8	Normal	0.1
592-600871	3/22/2024 9:35	Readings	PID	SC23030408A8	Normal	0.1
592-600871	3/22/2024 9:34	Readings	PID	SC23030408A8	Normal	0
592-600871	3/22/2024 9:33	Readings	PID	SC23030408A8	Normal	0.2
592-600871	3/22/2024 9:32	Readings	PID	SC23030408A8	Normal	0.1
592-600871	3/22/2024 9:31	Readings	PID	SC23030408A8	Normal	0.2
592-600871	3/22/2024 9:30	Readings	PID	SC23030408A8	Normal	0.5
592-600871	3/22/2024 9:29	Readings	PID	SC23030408A8	Normal	0.1
592-600871	3/22/2024 9:28	Readings	PID	SC23030408A8	Normal	0
592-600871	3/22/2024 9:27	Readings	PID	SC23030408A8	Normal	0.1
592-600871	3/22/2024 9:26	Readings	PID	SC23030408A8	Normal	0.1
592-600871	3/22/2024 9:25	Readings	PID	SC23030408A8	Normal	0.1
592-600871	3/22/2024 9:24	Readings	PID	SC23030408A8	Normal	0.1
592-600871	3/22/2024 9:23	Readings	PID	SC23030408A8	Normal	0
592-600871	3/22/2024 9:22	Readings	PID	SC23030408A8	Normal	0.1
592-600871	3/22/2024 9:21	Readings	PID	SC23030408A8	Normal	0.2
592-600871	3/22/2024 9:20	Readings	PID	SC23030408A8	Normal	0.2

592-600871	3/22/2024 9:19 Readings	PID	SC23030408A8	Normal	0.1
592-600871	3/22/2024 9:18 Readings	PID	SC23030408A8	Normal	0.3
592-600871	3/22/2024 9:17 Readings	PID	SC23030408A8	Normal	0.1
592-600871	3/22/2024 9:16 Readings	PID	SC23030408A8	Normal	0.3
592-600871	3/22/2024 9:15 Readings	PID	SC23030408A8	Normal	0.1
592-600871	3/22/2024 9:14 Readings	PID	SC23030408A8	Normal	0.1
592-600871	3/22/2024 9:13 Readings	PID	SC23030408A8	Normal	0.2
592-600871	3/22/2024 9:12 Readings	PID	SC23030408A8	Normal	0
592-600871	3/22/2024 9:11 Readings	PID	SC23030408A8	Normal	0
592-600871	3/22/2024 9:10 Readings	PID	SC23030408A8	Normal	0
592-600871	3/22/2024 9:09 Readings	PID	SC23030408A8	Normal	0.1
592-600871	3/22/2024 9:08 Readings	PID	SC23030408A8	Normal	0
592-600871	3/22/2024 9:07 Readings	PID	SC23030408A8	Normal	0
592-600871	3/22/2024 9:06 Readings	PID	SC23030408A8	Normal	0.1
592-600871	3/22/2024 9:05 Readings	PID	SC23030408A8	Normal	0
592-600871	3/22/2024 9:04 Readings	PID	SC23030408A8	Normal	0.1
592-600871	3/22/2024 9:03 Readings	PID	SC23030408A8	Normal	0.1
592-600871	3/22/2024 9:02 Readings	PID	SC23030408A8	Normal	0.1
592-600871	3/22/2024 9:01 Readings	PID	SC23030408A8	Normal	0.7
592-600871	3/22/2024 9:00 Readings	PID	SC23030408A8	Normal	0.1
592-600871	3/22/2024 8:59 Readings	PID	SC23030408A8	Normal	0.1
592-600871	3/22/2024 8:58 Readings	PID	SC23030408A8	Normal	0
592-600871	3/22/2024 8:57 Readings	PID	SC23030408A8	Normal	0
592-600871	3/22/2024 8:56 Readings	PID	SC23030408A8	Normal	0
592-600871	3/22/2024 8:55 Readings	PID	SC23030408A8	Normal	0.1
592-600871	3/22/2024 8:54 Readings	PID	SC23030408A8	Normal	0
592-600871	3/22/2024 8:53 Readings	PID	SC23030408A8	Normal	0
592-600871	3/22/2024 8:52 Readings	PID	SC23030408A8	Normal	0
592-600871	3/22/2024 8:51 Readings	PID	SC23030408A8	Normal	0
592-600871	3/22/2024 8:50 Readings	PID	SC23030408A8	Normal	0.2
592-600871	3/22/2024 8:49 Readings	PID	SC23030408A8	Normal	0
592-600871	3/22/2024 8:48 Readings	PID	SC23030408A8	Normal	0
592-600871	3/22/2024 8:47 Readings	PID	SC23030408A8	Normal	0

592-600871	3/22/2024 8:46 Readings	PID	SC23030408A8	Normal	0
592-600871	3/22/2024 8:45 Readings	PID	SC23030408A8	Normal	0
592-600871	3/22/2024 8:44 Readings	PID	SC23030408A8	Normal	0
592-600871	3/22/2024 8:43 Readings	PID	SC23030408A8	Normal	0
592-600871	3/22/2024 8:42 Readings	PID	SC23030408A8	Normal	0
592-600871	3/22/2024 8:41 Readings	PID	SC23030408A8	Normal	0
592-600871	3/22/2024 8:40 Readings	PID	SC23030408A8	Normal	0
592-600871	3/22/2024 8:39 Readings	PID	SC23030408A8	Normal	0
592-600871	3/22/2024 8:38 Readings	PID	SC23030408A8	Normal	0
592-600871	3/22/2024 8:37 Readings	PID	SC23030408A8	Normal	0
592-600871	3/22/2024 8:36 Readings	PID	SC23030408A8	Normal	0
592-600871	3/22/2024 8:35 Readings	PID	SC23030408A8	Normal	0
592-600871	3/22/2024 8:34 Readings	PID	SC23030408A8	Normal	0
592-600871	3/22/2024 8:33 Readings	PID	SC23030408A8	Normal	0
592-600871	3/22/2024 8:32 Readings	PID	SC23030408A8	Normal	0.1
592-600871	3/22/2024 8:31 Readings	PID	SC23030408A8	Normal	0
592-600871	3/22/2024 8:30 Readings	PID	SC23030408A8	Normal	0
592-600871	3/22/2024 8:29 Readings	PID	SC23030408A8	Normal	0
592-600871	3/22/2024 8:28 Readings	PID	SC23030408A8	Normal	0
592-600871	3/22/2024 8:27 Readings	PID	SC23030408A8	Normal	0
592-600871	3/22/2024 8:26 Readings	PID	SC23030408A8	Normal	0
592-600871	3/22/2024 8:25 Readings	PID	SC23030408A8	Normal	0
592-600871	3/22/2024 8:24 Readings	PID	SC23030408A8	Normal	0
592-600871	3/22/2024 8:23 Readings	PID	SC23030408A8	Normal	0
592-600871	3/22/2024 8:22 Readings	PID	SC23030408A8	Normal	0
592-600871	3/22/2024 8:21 Readings	PID	SC23030408A8	Normal	0
592-600871	3/22/2024 8:20 Readings	PID	SC23030408A8	Normal	0
592-600871	3/22/2024 8:19 Readings	PID	SC23030408A8	Normal	0
592-600871	3/22/2024 8:18 Readings	PID	SC23030408A8	Normal	0
592-600871	3/22/2024 8:17 Readings	PID	SC23030408A8	Normal	0
592-600871	3/22/2024 8:16 Readings	PID	SC23030408A8	Normal	0
592-600871	3/22/2024 8:15 Readings	PID	SC23030408A8	Normal	0
592-600871	3/22/2024 8:14 Readings	PID	SC23030408A8	Normal	0

592-600871	3/22/2024 7:40 Readings	PID	SC23030408A8	Normal	0
592-600871	3/22/2024 7:39 Readings	PID	SC23030408A8	Normal	0
592-600871	3/22/2024 7:38 Readings	PID	SC23030408A8	Normal	0
592-600871	3/22/2024 7:37 Readings	PID	SC23030408A8	Normal	0
592-600871	3/22/2024 7:36 Readings	PID	SC23030408A8	Normal	0
592-600871	3/22/2024 7:35 Readings	PID	SC23030408A8	Normal	0
592-600871	3/22/2024 7:34 Readings	PID	SC23030408A8	Normal	0
592-600871	3/22/2024 7:33 Readings	PID	SC23030408A8	Normal	0
592-600871	3/22/2024 7:32 Readings	PID	SC23030408A8	Normal	0
592-600871	3/22/2024 7:31 Readings	PID	SC23030408A8	Normal	0
592-600871	3/22/2024 7:30 Readings	PID	SC23030408A8	Normal	0
592-600871	3/22/2024 7:29 Readings	PID	SC23030408A8	Normal	0
592-600871	3/22/2024 7:28 Readings	PID	SC23030408A8	Normal	0
592-600871	3/22/2024 7:27 Readings	PID	SC23030408A8	Normal	0
592-600871	3/22/2024 7:26 Readings	PID	SC23030408A8	Normal	0
592-600871	3/22/2024 7:25 Readings	PID	SC23030408A8	Normal	0
592-600871	3/22/2024 7:24 Readings	PID	SC23030408A8	Normal	0
592-600871	3/22/2024 7:23 Readings	PID	SC23030408A8	Normal	0
592-600871	3/22/2024 7:22 Readings	PID	SC23030408A8	Normal	0
592-600871	3/22/2024 7:21 Readings	PID	SC23030408A8	Normal	0
592-600871	3/22/2024 7:20 Readings	PID	SC23030408A8	Normal	0
592-600871	3/22/2024 7:19 Readings	PID	SC23030408A8	Normal	0
592-600871	3/22/2024 7:18 Readings	PID	SC23030408A8	Normal	0
592-600871	3/22/2024 7:17 Readings	PID	SC23030408A8	Normal	0
592-600871	3/22/2024 7:16 Readings	PID	SC23030408A8	Normal	0
592-600871	3/22/2024 7:15 Readings	PID	SC23030408A8	Normal	0
592-600871	3/22/2024 7:14 Readings	PID	SC23030408A8	Normal	0
592-600871	3/22/2024 7:13 CONFIG	PID	SC23030408A8		