



DAILY STATUS REPORT

Prepared By:

Thomas Jensen

WEATHER	Snow	Rain		Overcast	Partly Cloudy	X	Bright Sun	X	Wind
TEMP.	< 32	32-50	X	50-70	70-85		>85		W- 9 MPH

IEC Project No:	13928	NYSDEC BCP Site No:	C224367	Date: 03/25/24	
Project:	251 Douglass Street, Brooklyn, NY				

<p>Consultant: Impact Environmental Engineering and Geology, PLLC (IEEG)</p> <p>Time On: 06:30 Time Out: 18:00</p>	<p>Personnel On Site: IEEG (Environmental) – Thomas Jensen Broadway Construction Group - Tom Caporale Cascade Warren George-Drillers WSP- Charlie Lambert</p> <p>Equipment On Site: Minirae 3000 PID, DustTrak II</p>
---	---

Scope of Work: Continue ISS column installation along, begin QA/QC ISS column core drilling/sampling.

Site Activities:

- Deploy three (3) CAMPs at the Start of the work day;
- Surface water was pumped into the frac tank to create a dry path for the coring rig;
- National grid continued work on the sidewalk adjacent to Douglass Street;
- Warren George, Inc. (ISS core drillers) mobilized to the Site at 13:00 and set up their rig with diamond bit attachment for ISS column coring. The rig was set up at the 24/25 overlap-drilling will begin tomorrow (3/26/24);
- Cascade attached the auger to the ISS drill rig after it was removed for maintenance;
 - Cascade drilled **Column 36**, column spec below:
 - The column was 8’ diameter and drilled 36’ deep from Site grade;
 - The column consisted of a total of 13 batches;
 - A sample was collected from 36’ below site grade;
 - Cascade drilled **Column 104**, column spec below:
 - The column was 8’ diameter and drilled 36’ deep from Site grade;
 - The column consisted of a total of 15 batches;
 - At 16:22 the auger had to come back up due to pressure building up in the lines.

*Site grade refers to the elevation of the site after the 4’ excavation was completed.

Community Air Monitoring Program (CAMP) - CAMP action level for dust (0.1 mg/m³) and VOCs (5 ppm)

- PID remained at nominal levels throughout the day.
- No sustained dust exceedances were observed over a 1-min period during monitoring;
- Startup Upwind Conditions – PID = _0.0_ ppm, Dust = _0.025_ mg/m³ @ 06:41
- High Conditions (Upwind) – PID = _0.0_ ppm, Dust = _0.058_ mg/m³ @ 09:29
- High Conditions (Downwind 1) – PID = _0.5_ ppm @ 15:56, Dust = _0.117_ mg/m³ @ 11:47
- High Conditions (Downwind 2) – PID = _0.0_ ppm, Dust = _0.23_ mg/m³ @ 13:49

Notable Site Conditions:

- Warren George arrived late in the work day, no ISS core drilling was accomplished.

Planned for the Next Day/Week:

- Continuation of QA/QC ISS column core drilling; and
- Continue ISS column installation.



PHOTO LOG

251 DOUGLASS STREET, BROOKLYN, NY



Photo 1-
Representative
photo of drilling
ISS column.



Photo 2-
Representative
photo of the
coring rig.



Photo 3-
Representative photo of stockpiled swell material covered at the end of the day in poly.



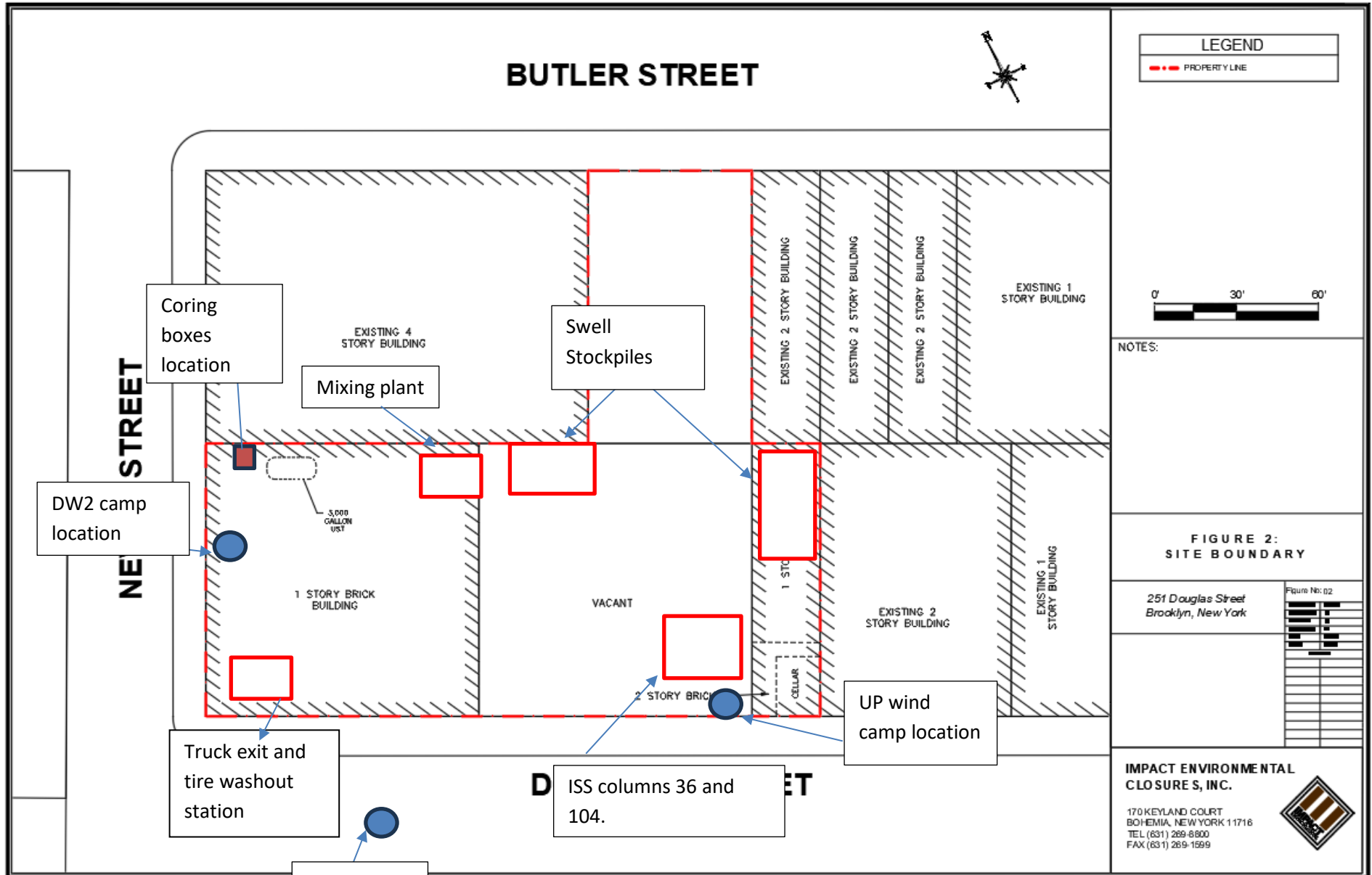
Photo 4-
Representative photo of National Grid work in the sidewalk.



SITE PLANS

251 DOUGLASS STREET, BROOKLYN, NY





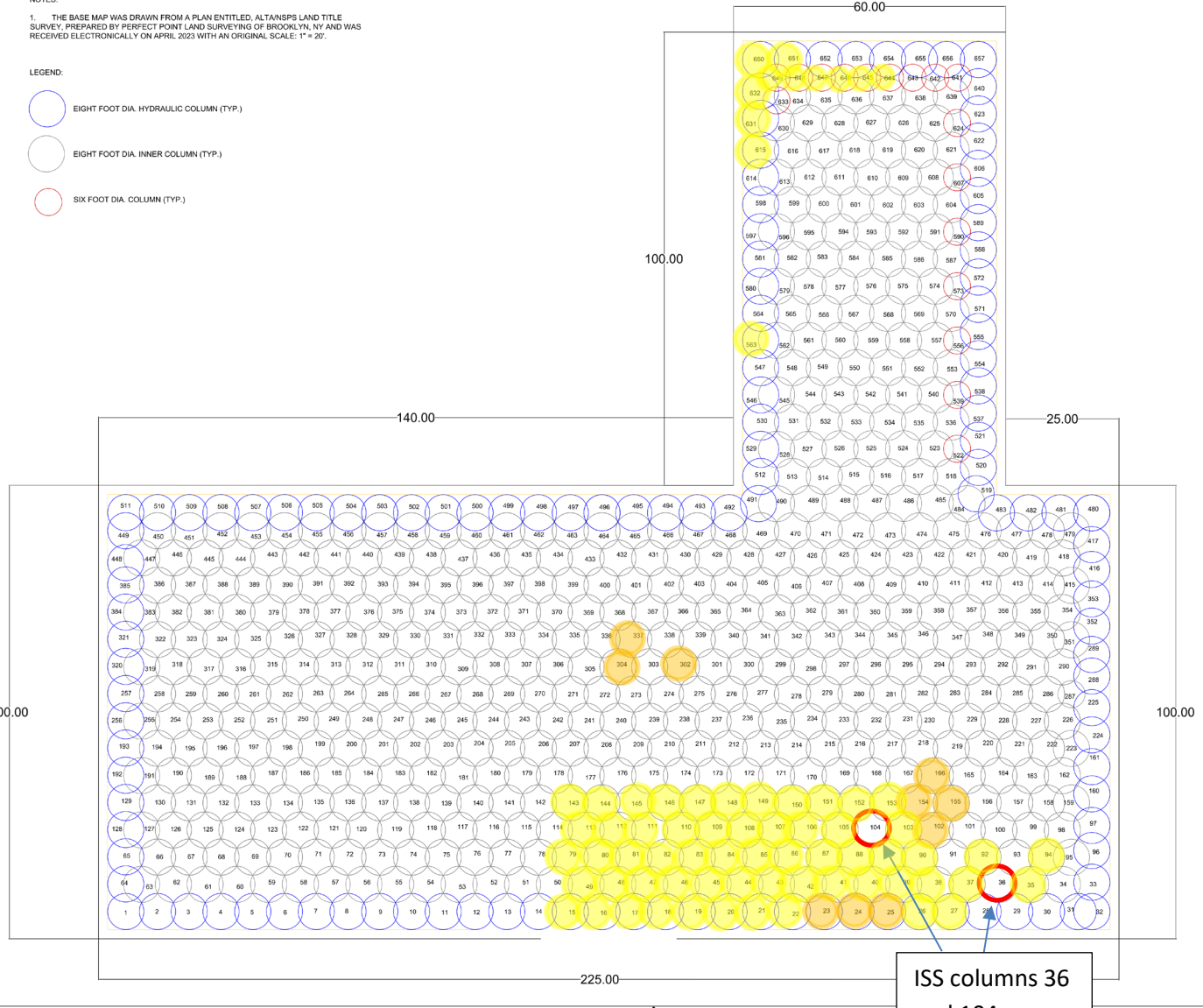


NOTES:

1. THE BASE MAP WAS DRAWN FROM A PLAN ENTITLED, ALTANSPS LAND TITLE SURVEY, PREPARED BY PERFECT POINT LAND SURVEYING OF BROOKLYN, NY AND WAS RECEIVED ELECTRONICALLY ON APRIL, 2023 WITH AN ORIGINAL SCALE: 1" = 20'

LEGEND:

- EIGHT FOOT DIA. HYDRAULIC COLUMN (TYP.)
- EIGHT FOOT DIA. INNER COLUMN (TYP.)
- SIX FOOT DIA. COLUMN (TYP.)



**ISS columns 36
and 104
completed on
3/25/2024.**

<p style="font-size: small; margin: 0;">261 DOUGLAS STREET BROOKLYN, NEW YORK WWW.CASCADEENV.COM</p>	SHEET: 1 OF 1 DATE: 1/12/24 PROJECT: ISS DRAWN BY: [blank] CHECKED BY: [blank]
FIGURE 4: ISS COLUMN LAYOUT	
THIS DOCUMENT CONTAINS CONFIDENTIAL INFORMATION OWNED BY CASCADE ENVIRONMENTAL CONSULTING INC. UNAUTHORIZED DISCLOSURE IS PROHIBITED.	



SCM Report

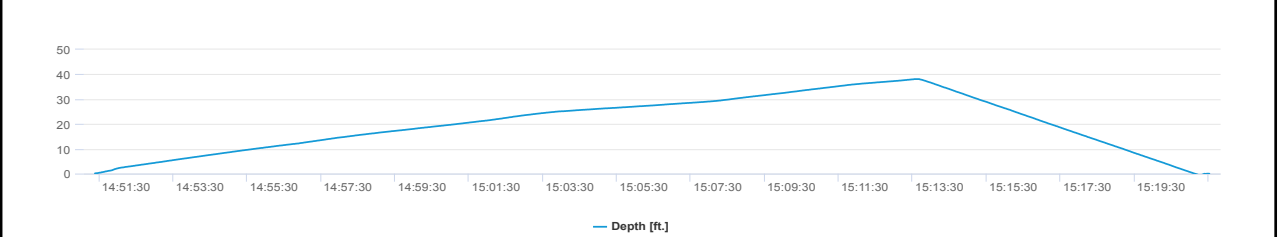
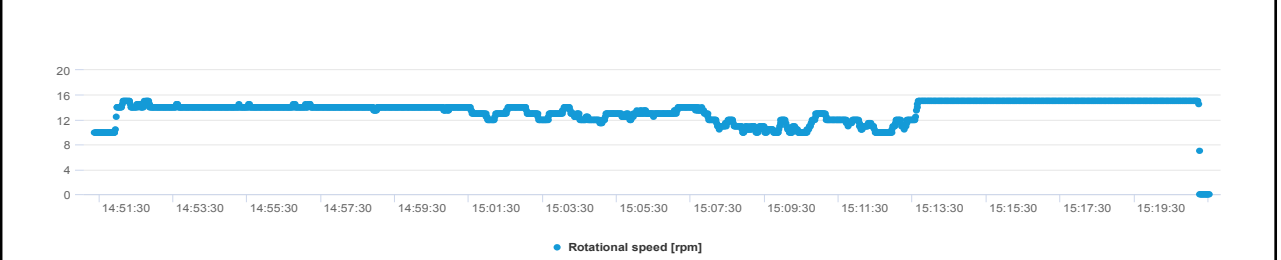
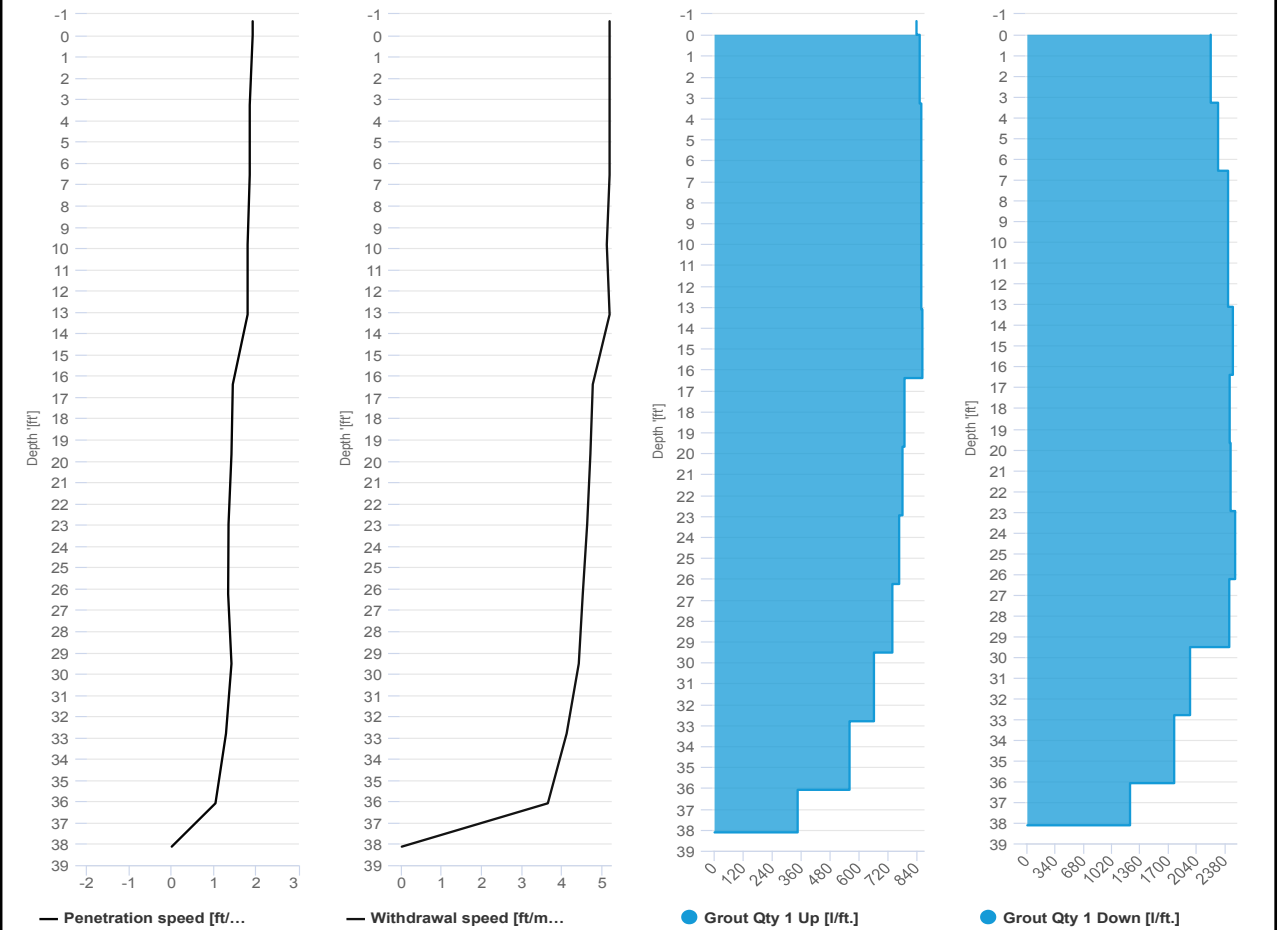


Project name: Douglass Street BCG ISS Element name: c36a
 Project number

Start date: 03/25/2024

Drilling rig: BG36H_5717

Details		Start time: 02:51 PM	
Max. depth: 38.12 ft.		End Date: 03/25/2024	
Volume/m 1: 27.89 ft³		End time: 03:21 PM	
		Production duration: 00:30:10	
		Final depth time: 03:13 PM	
		Total suspension quantity: 323.447 ft³	



SCM Report

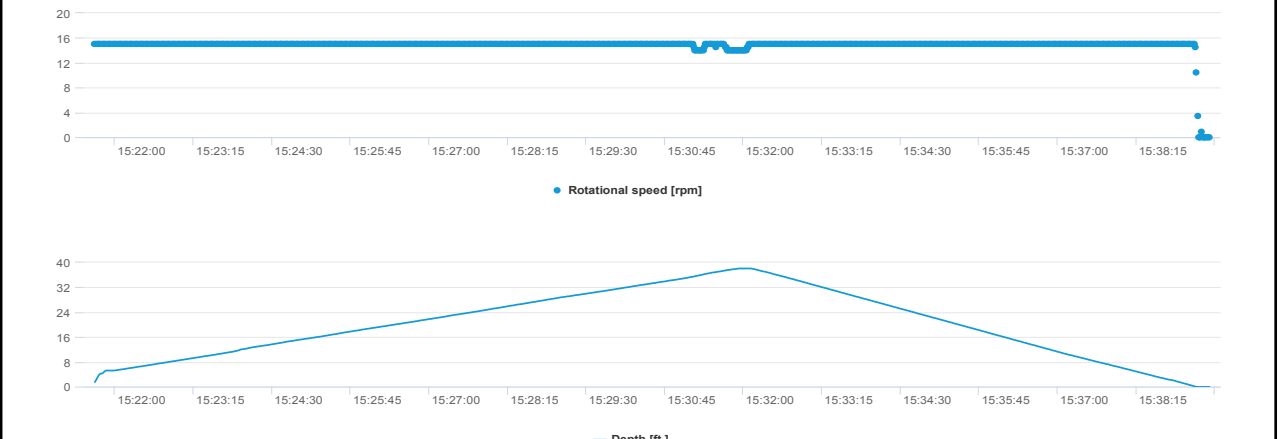
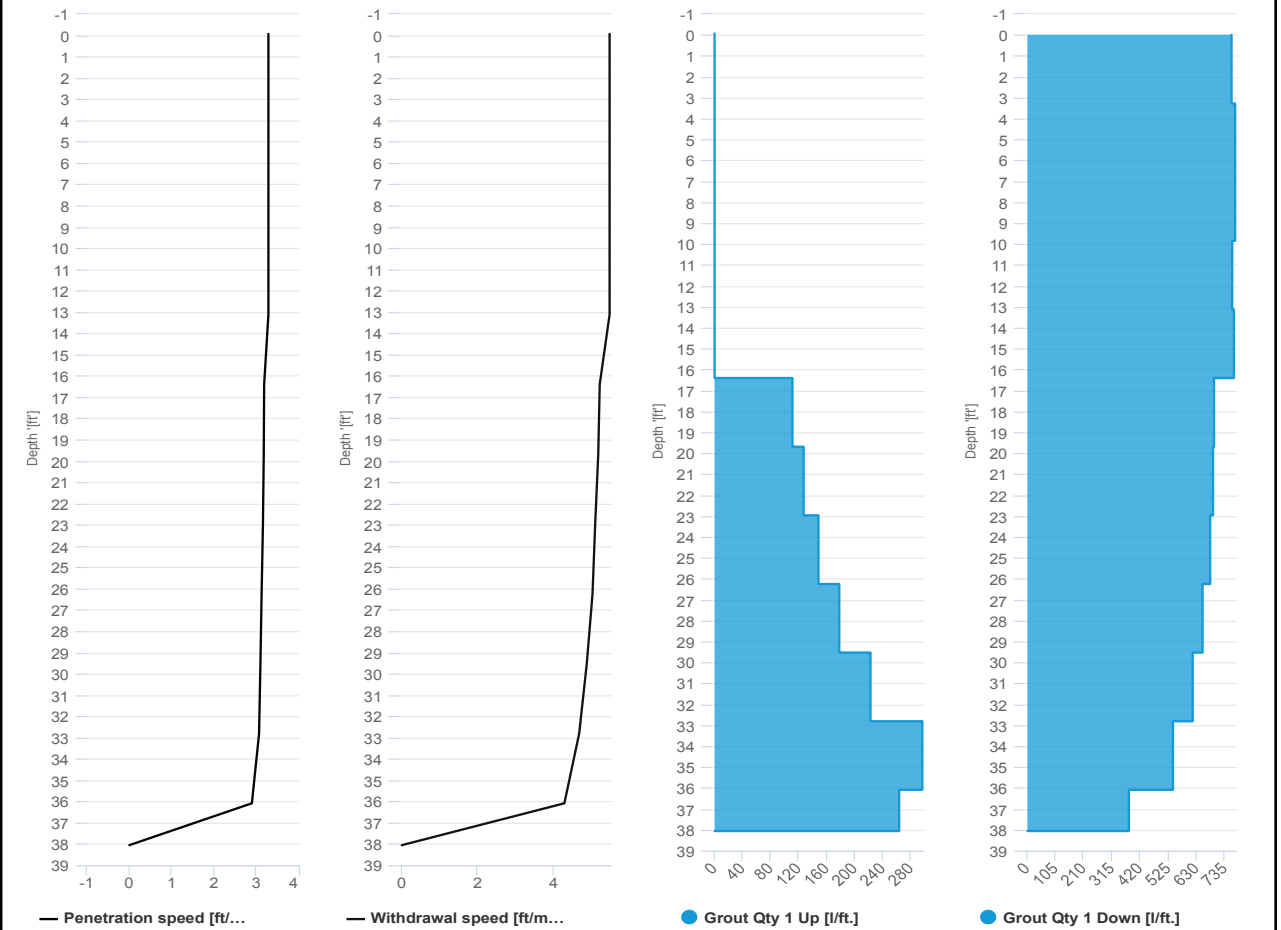


Project name	Douglass Street BCG ISS	Element name	c36b
		Project number	

		Start date	03/25/2024
--	--	------------	------------

Drilling rig	BG36H_5717
--------------	------------

Details		Start time	03:21 PM
Max. depth	38 ft.	End Date	03/25/2024
Volume/m 1	6.7 ft³	End time	03:39 PM
		Production duration	00:17:45
		Final depth time	03:32 PM
		Total suspension quantity	78.61 ft³



SCM Report

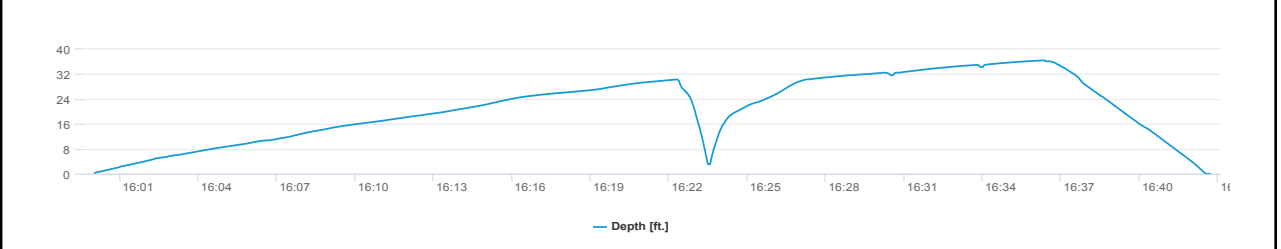
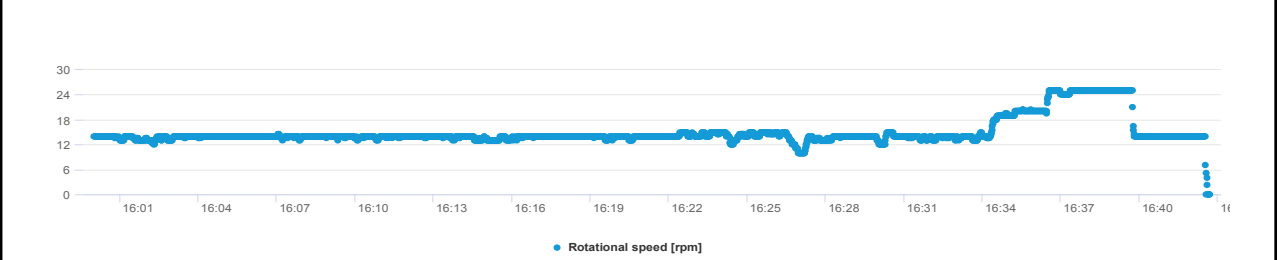
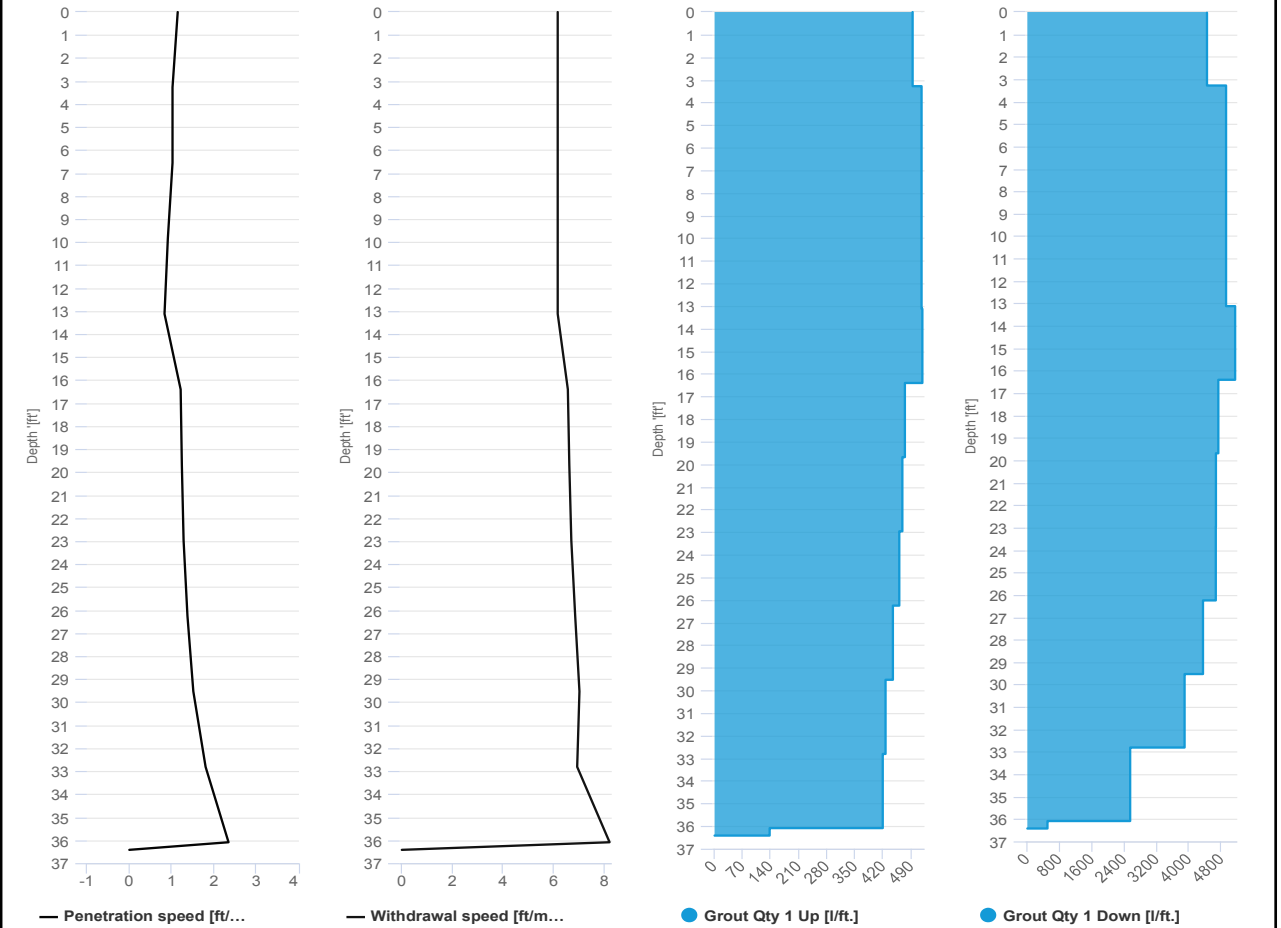


Project name: Douglass Street BCG ISS Element name: c104a
 Project number

Start date: 03/25/2024

Drilling rig: BG36H_5717

Details		Start time: 04:00 PM	
Max. depth: 36.4 ft.		End Date: 03/25/2024	
Volume/m 1: 44.49 ft³		End time: 04:42 PM	
		Production duration: 00:42:41	
		Final depth time: 04:36 PM	
		Total suspension quantity: 495.606 ft³	



SCM Report

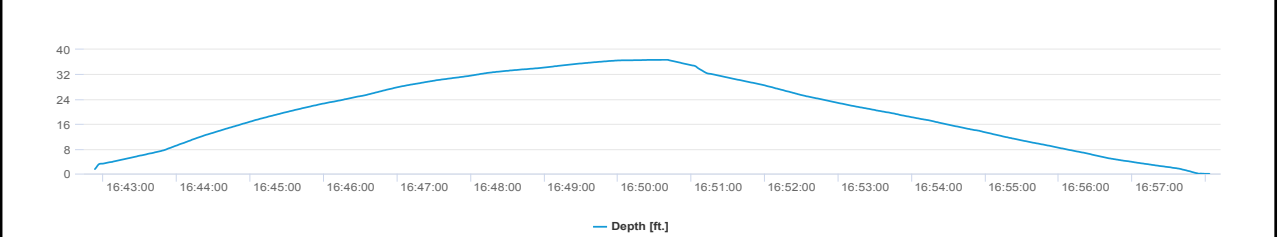
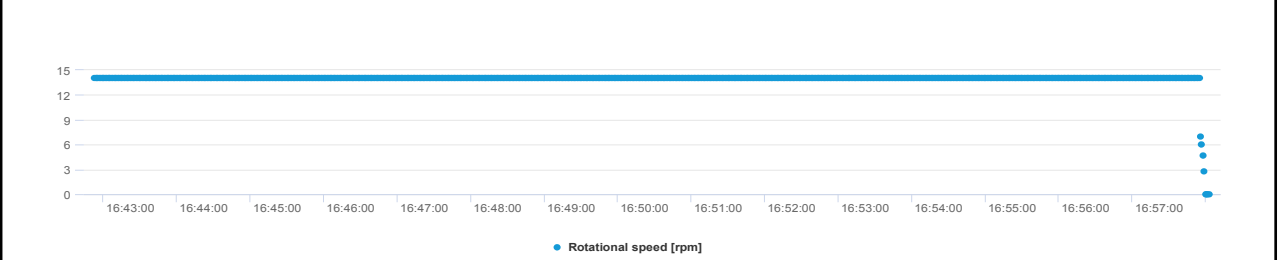
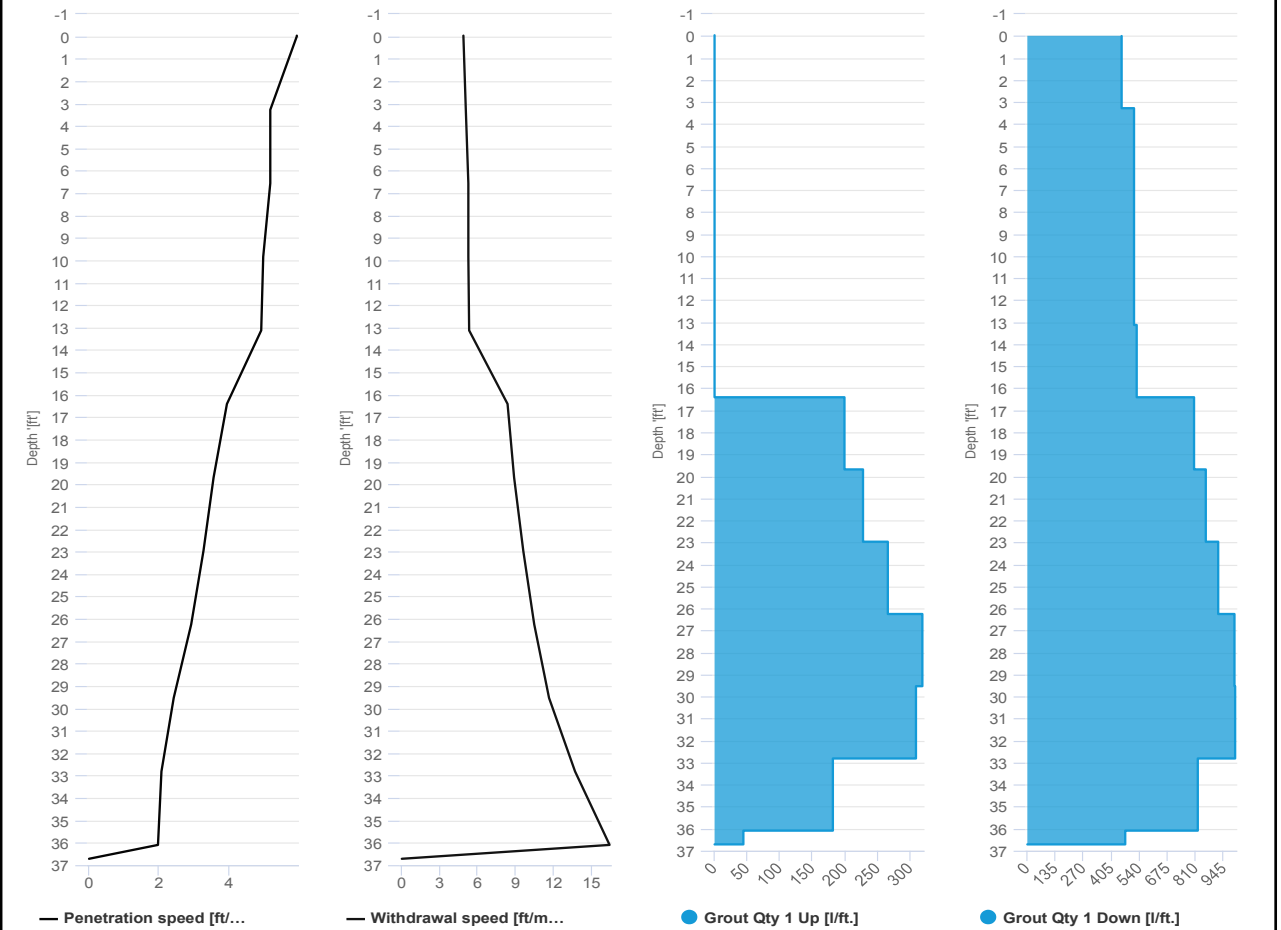


Project name	Douglass Street BCG ISS	Element name	c104b
		Project number	

		Start date	03/25/2024
--	--	------------	------------

Drilling rig	BG36H_5717
--------------	------------

Details			
Max. depth	36.71 ft.	Start time	04:42 PM
Volume/m 1	7.06 ft³	End Date	03/25/2024
		End time	04:58 PM
		Production duration	00:15:11
		Final depth time	04:50 PM
		Total suspension quantity	80.411 ft³





IMPACT ENVIRONMENTAL

welcome to solid ground...

170 Keyland Court | Bohemia | NY | 11716 | 631.269.8800

www.impactenvironmental.com

UPWIND CAMP READINGS

251 DOUGLASS STREET, BROOKLYN, NY

Instrument Name	DustTrak DRX
Model Number	8533
Serial Number	8533181207
Firmware Version	3.1
Calibration Date	6/1/2023
Test Name	MANUAL_007
Test Start Time	6:41:52 AM
Test Start Date	3/25/2024
Test Length [D:H:M]	0:10:23
Test Interval [M:S]	1:00
PM1 Average [mg/m3]	0.016
PM1 Minimum [mg/m3]	0.013
PM1 Maximum [mg/m3]	0.058
PM1 TWA [mg/m3]	0.015
Photometric User Cal	1
Size Correction User Cal	1
Flow User Cal	0
Errors	
Number of Samples	623

Elapsed Time [s]	PM1 [mg/m3]	Alarms	Errors
6:41	0.025		
6:42	0.014		
6:43	0.015		
6:44	0.016		
6:45	0.017		
6:46	0.015		
6:47	0.014		
6:48	0.013		
6:49	0.014		
6:50	0.014		
6:51	0.014		
6:52	0.014		
6:53	0.014		
6:54	0.013		
6:55	0.014		
6:56	0.014		
6:57	0.014		
6:58	0.013		
6:59	0.014		
7:00	0.013		
7:01	0.013		
7:02	0.013		
7:03	0.013		

7:04	0.013
7:05	0.013
7:06	0.013
7:07	0.013
7:08	0.013
7:09	0.013
7:10	0.013
7:11	0.013
7:12	0.013
7:13	0.013
7:14	0.013
7:15	0.014
7:16	0.013
7:17	0.013
7:18	0.013
7:19	0.013
7:20	0.013
7:21	0.014
7:22	0.014
7:23	0.014
7:24	0.014
7:25	0.014
7:26	0.014
7:27	0.015
7:28	0.014
7:29	0.015
7:30	0.015
7:31	0.014
7:32	0.014
7:33	0.017
7:34	0.017
7:35	0.015
7:36	0.015
7:37	0.014
7:38	0.014
7:39	0.015
7:40	0.015
7:41	0.014
7:42	0.014
7:43	0.014
7:44	0.014
7:45	0.014
7:46	0.014
7:47	0.014

7:48	0.014
7:49	0.015
7:50	0.015
7:51	0.015
7:52	0.015
7:53	0.015
7:54	0.014
7:55	0.014
7:56	0.014
7:57	0.015
7:58	0.015
7:59	0.015
8:00	0.015
8:01	0.016
8:02	0.015
8:03	0.015
8:04	0.015
8:05	0.015
8:06	0.015
8:07	0.014
8:08	0.015
8:09	0.014
8:10	0.015
8:11	0.015
8:12	0.015
8:13	0.015
8:14	0.015
8:15	0.015
8:16	0.015
8:17	0.015
8:18	0.015
8:19	0.015
8:20	0.015
8:21	0.015
8:22	0.014
8:23	0.015
8:24	0.017
8:25	0.016
8:26	0.015
8:27	0.015
8:28	0.014
8:29	0.015
8:30	0.015
8:31	0.015

8:32	0.014
8:33	0.015
8:34	0.015
8:35	0.015
8:36	0.015
8:37	0.015
8:38	0.015
8:39	0.015
8:40	0.015
8:41	0.015
8:42	0.016
8:43	0.015
8:44	0.015
8:45	0.014
8:46	0.014
8:47	0.014
8:48	0.017
8:49	0.015
8:50	0.02
8:51	0.017
8:52	0.016
8:53	0.015
8:54	0.014
8:55	0.014
8:56	0.014
8:57	0.015
8:58	0.015
8:59	0.015
9:00	0.014
9:01	0.015
9:02	0.015
9:03	0.014
9:04	0.028
9:05	0.024
9:06	0.041
9:07	0.019
9:08	0.017
9:09	0.018
9:10	0.029
9:11	0.031
9:12	0.027
9:13	0.017
9:14	0.018
9:15	0.015

9:16	0.015
9:17	0.015
9:18	0.015
9:19	0.015
9:20	0.014
9:21	0.015
9:22	0.015
9:23	0.015
9:24	0.014
9:25	0.016
9:26	0.015
9:27	0.014
9:28	0.025
9:29	0.058
9:30	0.018
9:31	0.015
9:32	0.015
9:33	0.015
9:34	0.014
9:35	0.015
9:36	0.015
9:37	0.014
9:38	0.016
9:39	0.016
9:40	0.016
9:41	0.014
9:42	0.015
9:43	0.014
9:44	0.014
9:45	0.015
9:46	0.017
9:47	0.015
9:48	0.014
9:49	0.015
9:50	0.015
9:51	0.014
9:52	0.014
9:53	0.014
9:54	0.014
9:55	0.015
9:56	0.016
9:57	0.014
9:58	0.015
9:59	0.015

10:00	0.019
10:01	0.014
10:02	0.014
10:03	0.015
10:04	0.014
10:05	0.014
10:06	0.017
10:07	0.016
10:08	0.017
10:09	0.019
10:10	0.018
10:11	0.021
10:12	0.015
10:13	0.015
10:14	0.014
10:15	0.015
10:16	0.016
10:17	0.018
10:18	0.016
10:19	0.017
10:20	0.015
10:21	0.015
10:22	0.018
10:23	0.014
10:24	0.014
10:25	0.014
10:26	0.015
10:27	0.015
10:28	0.016
10:29	0.015
10:30	0.014
10:31	0.014
10:32	0.014
10:33	0.014
10:34	0.015
10:35	0.015
10:36	0.016
10:37	0.016
10:38	0.015
10:39	0.015
10:40	0.015
10:41	0.014
10:42	0.015
10:43	0.013

10:44	0.013
10:45	0.014
10:46	0.015
10:47	0.015
10:48	0.015
10:49	0.013
10:50	0.014
10:51	0.014
10:52	0.014
10:53	0.015
10:54	0.015
10:55	0.02
10:56	0.014
10:57	0.014
10:58	0.014
10:59	0.028
11:00	0.014
11:01	0.015
11:02	0.023
11:03	0.017
11:04	0.015
11:05	0.013
11:06	0.013
11:07	0.013
11:08	0.013
11:09	0.014
11:10	0.014
11:11	0.014
11:12	0.014
11:13	0.017
11:14	0.034
11:15	0.02
11:16	0.014
11:17	0.014
11:18	0.014
11:19	0.016
11:20	0.016
11:21	0.016
11:22	0.015
11:23	0.015
11:24	0.016
11:25	0.014
11:26	0.014
11:27	0.014

11:28	0.014
11:29	0.014
11:30	0.014
11:31	0.015
11:32	0.016
11:33	0.015
11:34	0.015
11:35	0.016
11:36	0.015
11:37	0.014
11:38	0.015
11:39	0.014
11:40	0.015
11:41	0.015
11:42	0.017
11:43	0.015
11:44	0.014
11:45	0.015
11:46	0.015
11:47	0.015
11:48	0.016
11:49	0.016
11:50	0.017
11:51	0.017
11:52	0.015
11:53	0.015
11:54	0.016
11:55	0.014
11:56	0.014
11:57	0.015
11:58	0.016
11:59	0.017
12:00	0.015
12:01	0.015
12:02	0.014
12:03	0.015
12:04	0.014
12:05	0.014
12:06	0.014
12:07	0.014
12:08	0.014
12:09	0.014
12:10	0.014
12:11	0.014

12:12	0.014
12:13	0.014
12:14	0.014
12:15	0.015
12:16	0.015
12:17	0.019
12:18	0.015
12:19	0.014
12:20	0.014
12:21	0.014
12:22	0.014
12:23	0.015
12:24	0.014
12:25	0.014
12:26	0.014
12:27	0.014
12:28	0.014
12:29	0.014
12:30	0.015
12:31	0.014
12:32	0.014
12:33	0.014
12:34	0.015
12:35	0.015
12:36	0.014
12:37	0.014
12:38	0.014
12:39	0.014
12:40	0.015
12:41	0.014
12:42	0.014
12:43	0.015
12:44	0.014
12:45	0.014
12:46	0.014
12:47	0.014
12:48	0.015
12:49	0.015
12:50	0.014
12:51	0.014
12:52	0.014
12:53	0.014
12:54	0.014
12:55	0.013

12:56	0.015
12:57	0.015
12:58	0.013
12:59	0.013
13:00	0.013
13:01	0.014
13:02	0.014
13:03	0.014
13:04	0.014
13:05	0.015
13:06	0.016
13:07	0.016
13:08	0.015
13:09	0.014
13:10	0.016
13:11	0.014
13:12	0.015
13:13	0.014
13:14	0.014
13:15	0.015
13:16	0.014
13:17	0.014
13:18	0.014
13:19	0.014
13:20	0.014
13:21	0.013
13:22	0.014
13:23	0.014
13:24	0.015
13:25	0.016
13:26	0.018
13:27	0.015
13:28	0.015
13:29	0.016
13:30	0.017
13:31	0.016
13:32	0.017
13:33	0.017
13:34	0.016
13:35	0.014
13:36	0.014
13:37	0.014
13:38	0.014
13:39	0.015

13:40	0.017
13:41	0.018
13:42	0.017
13:43	0.018
13:44	0.018
13:45	0.021
13:46	0.024
13:47	0.015
13:48	0.017
13:49	0.014
13:50	0.016
13:51	0.017
13:52	0.015
13:53	0.014
13:54	0.015
13:55	0.014
13:56	0.014
13:57	0.015
13:58	0.016
13:59	0.016
14:00	0.015
14:01	0.016
14:02	0.015
14:03	0.016
14:04	0.015
14:05	0.015
14:06	0.015
14:07	0.015
14:08	0.014
14:09	0.016
14:10	0.02
14:11	0.016
14:12	0.016
14:13	0.016
14:14	0.016
14:15	0.014
14:16	0.015
14:17	0.017
14:18	0.017
14:19	0.018
14:20	0.017
14:21	0.015
14:22	0.017
14:23	0.017

14:24	0.019
14:25	0.018
14:26	0.017
14:27	0.018
14:28	0.019
14:29	0.03
14:30	0.04
14:31	0.016
14:32	0.015
14:33	0.021
14:34	0.015
14:35	0.015
14:36	0.016
14:37	0.015
14:38	0.015
14:39	0.018
14:40	0.016
14:41	0.015
14:42	0.015
14:43	0.015
14:44	0.016
14:45	0.015
14:46	0.016
14:47	0.016
14:48	0.019
14:49	0.024
14:50	0.021
14:51	0.018
14:52	0.019
14:53	0.02
14:54	0.022
14:55	0.026
14:56	0.019
14:57	0.015
14:58	0.018
14:59	0.017
15:00	0.016
15:01	0.022
15:02	0.018
15:03	0.025
15:04	0.027
15:05	0.016
15:06	0.023
15:07	0.022

15:08	0.02
15:09	0.015
15:10	0.017
15:11	0.016
15:12	0.014
15:13	0.014
15:14	0.016
15:15	0.018
15:16	0.021
15:17	0.023
15:18	0.02
15:19	0.017
15:20	0.018
15:21	0.019
15:22	0.022
15:23	0.021
15:24	0.019
15:25	0.017
15:26	0.02
15:27	0.017
15:28	0.015
15:29	0.015
15:30	0.017
15:31	0.017
15:32	0.017
15:33	0.016
15:34	0.018
15:35	0.016
15:36	0.017
15:37	0.018
15:38	0.016
15:39	0.016
15:40	0.022
15:41	0.016
15:42	0.017
15:43	0.016
15:44	0.016
15:45	0.015
15:46	0.015
15:47	0.017
15:48	0.02
15:49	0.019
15:50	0.02
15:51	0.016

15:52	0.015
15:53	0.015
15:54	0.017
15:55	0.021
15:56	0.039
15:57	0.016
15:58	0.022
15:59	0.02
16:00	0.016
16:01	0.016
16:02	0.014
16:03	0.018
16:04	0.017
16:05	0.03
16:06	0.046
16:07	0.021
16:08	0.016
16:09	0.015
16:10	0.015
16:11	0.03
16:12	0.023
16:13	0.017
16:14	0.015
16:15	0.021
16:16	0.017
16:17	0.016
16:18	0.025
16:19	0.018
16:20	0.018
16:21	0.016
16:22	0.022
16:23	0.031
16:24	0.015
16:25	0.014
16:26	0.015
16:27	0.018
16:28	0.02
16:29	0.021
16:30	0.018
16:31	0.016
16:32	0.027
16:33	0.026
16:34	0.017
16:35	0.023

16:36	0.015
16:37	0.02
16:38	0.016
16:39	0.016
16:40	0.02
16:41	0.017
16:42	0.02
16:43	0.017
16:44	0.022
16:45	0.024
16:46	0.017
16:47	0.02
16:48	0.018
16:49	0.019
16:50	0.018
16:51	0.018
16:52	0.015
16:53	0.022
16:54	0.017
16:55	0.017
16:56	0.016
16:57	0.017
16:58	0.017
16:59	0.016
17:00	0.016
17:01	0.016
17:02	0.017
17:03	0.015

Device Serial No	Log Date	Log Time	Log Type	Sensor 1 Type	Sensor 1 Serial Number	Sensor 1 Status	Sensor 1 Gas Reading
592-601274	3/25/2024	17:03	Readings	PID	SC23030921B3	Normal	0
592-601274	3/25/2024	17:02	Readings	PID	SC23030921B3	Normal	0
592-601274	3/25/2024	17:01	Readings	PID	SC23030921B3	Normal	0
592-601274	3/25/2024	17:00	Readings	PID	SC23030921B3	Normal	0
592-601274	3/25/2024	16:59	Readings	PID	SC23030921B3	Normal	0
592-601274	3/25/2024	16:58	Readings	PID	SC23030921B3	Normal	0
592-601274	3/25/2024	16:57	Readings	PID	SC23030921B3	Normal	0
592-601274	3/25/2024	16:56	Readings	PID	SC23030921B3	Normal	0
592-601274	3/25/2024	16:55	Readings	PID	SC23030921B3	Normal	0
592-601274	3/25/2024	16:54	Readings	PID	SC23030921B3	Normal	0
592-601274	3/25/2024	16:53	Readings	PID	SC23030921B3	Normal	0
592-601274	3/25/2024	16:52	Readings	PID	SC23030921B3	Normal	0
592-601274	3/25/2024	16:51	Readings	PID	SC23030921B3	Normal	0
592-601274	3/25/2024	16:50	Readings	PID	SC23030921B3	Normal	0
592-601274	3/25/2024	16:49	Readings	PID	SC23030921B3	Normal	0
592-601274	3/25/2024	16:48	Readings	PID	SC23030921B3	Normal	0
592-601274	3/25/2024	16:47	Readings	PID	SC23030921B3	Normal	0
592-601274	3/25/2024	16:46	Readings	PID	SC23030921B3	Normal	0
592-601274	3/25/2024	16:45	Readings	PID	SC23030921B3	Normal	0
592-601274	3/25/2024	16:44	Readings	PID	SC23030921B3	Normal	0
592-601274	3/25/2024	16:43	Readings	PID	SC23030921B3	Normal	0
592-601274	3/25/2024	16:42	Readings	PID	SC23030921B3	Normal	0
592-601274	3/25/2024	16:41	Readings	PID	SC23030921B3	Normal	0
592-601274	3/25/2024	16:40	Readings	PID	SC23030921B3	Normal	0
592-601274	3/25/2024	16:39	Readings	PID	SC23030921B3	Normal	0
592-601274	3/25/2024	16:38	Readings	PID	SC23030921B3	Normal	0
592-601274	3/25/2024	16:37	Readings	PID	SC23030921B3	Normal	0
592-601274	3/25/2024	16:36	Readings	PID	SC23030921B3	Normal	0
592-601274	3/25/2024	16:35	Readings	PID	SC23030921B3	Normal	0
592-601274	3/25/2024	16:34	Readings	PID	SC23030921B3	Normal	0
592-601274	3/25/2024	16:33	Readings	PID	SC23030921B3	Normal	0
592-601274	3/25/2024	16:32	Readings	PID	SC23030921B3	Normal	0

592-601274	3/25/2024	7:10 Readings	PID	SC23030921B3	Normal	0
592-601274	3/25/2024	7:09 Readings	PID	SC23030921B3	Normal	0
592-601274	3/25/2024	7:08 Readings	PID	SC23030921B3	Normal	0
592-601274	3/25/2024	7:07 Readings	PID	SC23030921B3	Normal	0
592-601274	3/25/2024	7:06 Readings	PID	SC23030921B3	Normal	0
592-601274	3/25/2024	7:05 Readings	PID	SC23030921B3	Normal	0
592-601274	3/25/2024	7:04 Readings	PID	SC23030921B3	Normal	0
592-601274	3/25/2024	7:03 Readings	PID	SC23030921B3	Normal	0
592-601274	3/25/2024	7:02 Readings	PID	SC23030921B3	Normal	0
592-601274	3/25/2024	7:01 Readings	PID	SC23030921B3	Normal	0
592-601274	3/25/2024	7:00 Readings	PID	SC23030921B3	Normal	0
592-601274	3/25/2024	6:59 Readings	PID	SC23030921B3	Normal	0
592-601274	3/25/2024	6:58 Readings	PID	SC23030921B3	Normal	0
592-601274	3/25/2024	6:57 Readings	PID	SC23030921B3	Normal	0
592-601274	3/25/2024	6:56 Readings	PID	SC23030921B3	Normal	0
592-601274	3/25/2024	6:55 Readings	PID	SC23030921B3	Normal	0
592-601274	3/25/2024	6:54 Readings	PID	SC23030921B3	Normal	0
592-601274	3/25/2024	6:53 Readings	PID	SC23030921B3	Normal	0
592-601274	3/25/2024	6:52 Readings	PID	SC23030921B3	Normal	0
592-601274	3/25/2024	6:51 Readings	PID	SC23030921B3	Normal	0
592-601274	3/25/2024	6:50 Readings	PID	SC23030921B3	Normal	0
592-601274	3/25/2024	6:49 Readings	PID	SC23030921B3	Normal	0
592-601274	3/25/2024	6:48 Readings	PID	SC23030921B3	Normal	0
592-601274	3/25/2024	6:47 Readings	PID	SC23030921B3	Normal	0
592-601274	3/25/2024	6:46 Readings	PID	SC23030921B3	Normal	0
592-601274	3/25/2024	6:45 Readings	PID	SC23030921B3	Normal	0
592-601274	3/25/2024	6:44 Readings	PID	SC23030921B3	Normal	0
592-601274	3/25/2024	6:43 Readings	PID	SC23030921B3	Normal	0
592-601274	3/25/2024	6:42 Readings	PID	SC23030921B3	Normal	0
592-601274	3/25/2024	6:41 Readings	PID	SC23030921B3	Normal	0
592-601274	3/25/2024	CONFIG	PID	SC23030921B3		

DOWNWIND CAMP READINGS

251 DOUGLASS STREET, BROOKLYN, NY



Instrument Name	DustTrak II
Model Number	8530
Serial Number	8530224601
Firmware Version	3.1
Calibration Date	11/9/2022
Test Name	MANUAL_005
Test Start Time	6:46:39 AM
Test Start Date	3/25/2024
Test Length [D:H:M]	0:10:13
Test Interval [M:S]	1:00
Mass Average [mg/m3]	0.014
Mass Minimum [mg/m3]	0
Mass Maximum [mg/m3]	0.117
Mass TWA [mg/m3]	0.013
Photometric User Cal	1
Flow User Cal	0
Errors	
Number of Samples	613

Elapsed Time [s]	Mass [mg/m3]	Alarms	Errors
6:46	0.041		
6:47	0.011		
6:48	0.01		
6:49	0.012		
6:50	0.013		
6:51	0.01		
6:52	0.029		
6:53	0.015		
6:54	0.014		
6:55	0.011		
6:56	0.023		
6:57	0.042		
6:58	0.009		
6:59	0.009		
7:00	0.012		
7:01	0.01		
7:02	0.008		
7:03	0.008		
7:04	0.008		
7:05	0.008		
7:06	0.009		
7:07	0.009		
7:08	0.009		
7:09	0.021		

7:10	0.011
7:11	0.013
7:12	0.01
7:13	0.01
7:14	0.009
7:15	0.009
7:16	0.011
7:17	0.01
7:18	0.01
7:19	0.011
7:20	0.011
7:21	0.011
7:22	0.011
7:23	0.011
7:24	0.011
7:25	0.011
7:26	0.011
7:27	0.011
7:28	0.011
7:29	0.018
7:30	0.015
7:31	0.022
7:32	0.015
7:33	0.012
7:34	0.012
7:35	0.013
7:36	0.015
7:37	0.013
7:38	0.011
7:39	0.012
7:40	0.011
7:41	0.011
7:42	0.011
7:43	0.012
7:44	0.012
7:45	0.012
7:46	0.014
7:47	0.012
7:48	0.016
7:49	0.014
7:50	0.012
7:51	0.011
7:52	0.011
7:53	0.011

7:54	0.011
7:55	0.011
7:56	0.011
7:57	0.011
7:58	0.011
7:59	0.012
8:00	0.013
8:01	0.012
8:02	0.012
8:03	0.011
8:04	0.012
8:05	0.011
8:06	0.011
8:07	0.011
8:08	0.011
8:09	0.011
8:10	0.011
8:11	0.013
8:12	0.012
8:13	0.012
8:14	0.011
8:15	0.012
8:16	0.015
8:17	0.013
8:18	0.013
8:19	0.013
8:20	0.012
8:21	0.012
8:22	0.012
8:23	0.012
8:24	0.012
8:25	0.014
8:26	0.012
8:27	0.011
8:28	0.014
8:29	0.013
8:30	0.01
8:31	0.011
8:32	0.012
8:33	0.013
8:34	0.014
8:35	0.018
8:36	0.015
8:37	0.011

8:38	0.011
8:39	0.012
8:40	0.017
8:41	0.012
8:42	0.013
8:43	0.012
8:44	0.011
8:45	0.012
8:46	0.013
8:47	0.014
8:48	0.012
8:49	0.012
8:50	0.012
8:51	0.011
8:52	0.012
8:53	0.011
8:54	0.011
8:55	0
8:56	0
8:57	0
8:58	0
8:59	0
9:00	0
9:01	0
9:02	0
9:03	0
9:04	0
9:05	0
9:06	0
9:07	0
9:08	0
9:09	0
9:10	0
9:11	0
9:12	0.013
9:13	0
9:14	0
9:15	0
9:16	0
9:17	0
9:18	0
9:19	0
9:20	0
9:21	0

9:22	0
9:23	0
9:24	0
9:25	0
9:26	0
9:27	0
9:28	0
9:29	0
9:30	0
9:31	0
9:32	0.012
9:33	0
9:34	0
9:35	0
9:36	0
9:37	0
9:38	0.017
9:39	0.014
9:40	0.013
9:41	0.014
9:42	0.014
9:43	0.014
9:44	0.013
9:45	0.014
9:46	0.013
9:47	0.02
9:48	0.018
9:49	0.014
9:50	0.015
9:51	0.013
9:52	0.012
9:53	0.016
9:54	0.015
9:55	0.014
9:56	0.013
9:57	0.014
9:58	0.015
9:59	0.013
10:00	0.013
10:01	0.014
10:02	0.014
10:03	0.016
10:04	0.018
10:05	0.015

10:06	0.014
10:07	0.016
10:08	0.018
10:09	0.014
10:10	0.013
10:11	0.014
10:12	0.012
10:13	0.016
10:14	0.014
10:15	0.015
10:16	0.014
10:17	0.014
10:18	0.014
10:19	0.015
10:20	0.014
10:21	0.015
10:22	0.015
10:23	0.014
10:24	0.015
10:25	0.015
10:26	0.015
10:27	0.015
10:28	0.016
10:29	0.017
10:30	0.015
10:31	0.015
10:32	0.024
10:33	0.02
10:34	0.014
10:35	0.014
10:36	0.015
10:37	0.017
10:38	0.017
10:39	0.014
10:40	0.014
10:41	0.014
10:42	0.013
10:43	0.013
10:44	0.014
10:45	0.014
10:46	0.014
10:47	0.019
10:48	0.018
10:49	0.013

10:50	0.015
10:51	0.015
10:52	0.014
10:53	0.013
10:54	0.02
10:55	0.018
10:56	0.017
10:57	0.017
10:58	0.022
10:59	0.014
11:00	0.015
11:01	0.014
11:02	0.015
11:03	0.015
11:04	0.014
11:05	0.014
11:06	0.015
11:07	0.014
11:08	0.015
11:09	0.013
11:10	0.014
11:11	0.031
11:12	0.025
11:13	0.014
11:14	0.016
11:15	0.028
11:16	0.016
11:17	0.017
11:18	0.017
11:19	0.015
11:20	0.014
11:21	0.015
11:22	0.014
11:23	0.016
11:24	0.015
11:25	0.014
11:26	0.015
11:27	0.015
11:28	0.019
11:29	0.02
11:30	0.018
11:31	0.016
11:32	0.016
11:33	0.016

11:34	0.016
11:35	0.015
11:36	0.016
11:37	0.014
11:38	0.016
11:39	0.016
11:40	0.015
11:41	0.014
11:42	0.014
11:43	0.016
11:44	0.076
11:45	0.022
11:46	0.016
11:47	0.117
11:48	0.018
11:49	0.016
11:50	0.016
11:51	0.014
11:52	0.014
11:53	0.014
11:54	0.014
11:55	0.014
11:56	0.014
11:57	0.015
11:58	0.013
11:59	0.016
12:00	0.013
12:01	0.013
12:02	0.015
12:03	0.028
12:04	0.015
12:05	0.014
12:06	0.014
12:07	0.014
12:08	0.013
12:09	0.013
12:10	0.014
12:11	0.014
12:12	0.015
12:13	0.021
12:14	0.02
12:15	0.019
12:16	0.017
12:17	0.017

12:18	0.014
12:19	0.013
12:20	0.014
12:21	0.026
12:22	0.015
12:23	0.014
12:24	0.014
12:25	0.014
12:26	0.014
12:27	0.014
12:28	0.014
12:29	0.013
12:30	0.021
12:31	0.015
12:32	0.014
12:33	0.014
12:34	0.013
12:35	0.012
12:36	0.013
12:37	0.012
12:38	0.013
12:39	0.014
12:40	0.012
12:41	0.013
12:42	0.012
12:43	0.012
12:44	0.012
12:45	0.013
12:46	0.015
12:47	0.014
12:48	0.013
12:49	0.013
12:50	0.012
12:51	0.011
12:52	0.014
12:53	0.014
12:54	0.012
12:55	0.011
12:56	0.011
12:57	0.011
12:58	0.013
12:59	0.013
13:00	0.013
13:01	0.011

13:02	0.013
13:03	0.015
13:04	0.012
13:05	0.011
13:06	0.011
13:07	0.026
13:08	0.013
13:09	0.011
13:10	0.013
13:11	0.018
13:12	0.012
13:13	0.011
13:14	0.011
13:15	0.011
13:16	0.012
13:17	0.011
13:18	0.011
13:19	0.011
13:20	0.012
13:21	0.011
13:22	0.012
13:23	0.013
13:24	0.014
13:25	0.012
13:26	0.012
13:27	0.012
13:28	0.019
13:29	0.014
13:30	0.014
13:31	0.016
13:32	0.012
13:33	0.012
13:34	0.013
13:35	0.012
13:36	0.012
13:37	0.013
13:38	0.013
13:39	0.012
13:40	0.013
13:41	0.012
13:42	0.012
13:43	0.012
13:44	0.013
13:45	0.013

13:46	0.018
13:47	0.013
13:48	0.014
13:49	0.013
13:50	0.013
13:51	0.013
13:52	0.012
13:53	0.013
13:54	0.013
13:55	0.013
13:56	0.012
13:57	0.012
13:58	0.012
13:59	0.012
14:00	0.012
14:01	0.013
14:02	0.013
14:03	0.014
14:04	0.014
14:05	0.012
14:06	0.011
14:07	0.012
14:08	0.013
14:09	0.014
14:10	0.013
14:11	0.015
14:12	0.013
14:13	0.012
14:14	0.02
14:15	0.014
14:16	0.013
14:17	0.012
14:18	0.013
14:19	0.014
14:20	0.015
14:21	0.013
14:22	0.014
14:23	0.013
14:24	0.014
14:25	0.018
14:26	0.013
14:27	0.011
14:28	0.013
14:29	0.016

14:30	0.012
14:31	0.012
14:32	0.012
14:33	0.011
14:34	0.014
14:35	0.012
14:36	0.012
14:37	0.012
14:38	0.012
14:39	0.014
14:40	0.014
14:41	0.013
14:42	0.015
14:43	0.018
14:44	0.014
14:45	0.012
14:46	0.012
14:47	0.012
14:48	0.013
14:49	0.016
14:50	0.015
14:51	0.013
14:52	0.013
14:53	0.013
14:54	0.014
14:55	0.014
14:56	0.013
14:57	0.014
14:58	0.012
14:59	0.024
15:00	0.02
15:01	0.017
15:02	0.015
15:03	0.015
15:04	0.014
15:05	0.014
15:06	0.013
15:07	0.015
15:08	0.016
15:09	0.023
15:10	0.012
15:11	0.013
15:12	0.013
15:13	0.017

15:14	0.023
15:15	0.014
15:16	0.012
15:17	0.014
15:18	0.02
15:19	0.015
15:20	0.014
15:21	0.017
15:22	0.017
15:23	0.014
15:24	0.012
15:25	0.011
15:26	0.011
15:27	0.012
15:28	0.013
15:29	0.014
15:30	0.021
15:31	0.015
15:32	0.014
15:33	0.012
15:34	0.013
15:35	0.015
15:36	0.015
15:37	0.014
15:38	0.021
15:39	0.029
15:40	0.019
15:41	0.033
15:42	0.039
15:43	0.016
15:44	0.018
15:45	0.015
15:46	0.013
15:47	0.015
15:48	0.052
15:49	0.018
15:50	0.013
15:51	0.013
15:52	0.013
15:53	0.017
15:54	0.014
15:55	0.012
15:56	0.014
15:57	0.015

15:58	0.015
15:59	0.011
16:00	0.012
16:01	0.013
16:02	0.014
16:03	0.014
16:04	0.014
16:05	0.014
16:06	0.014
16:07	0.013
16:08	0.012
16:09	0.019
16:10	0.016
16:11	0.013
16:12	0.012
16:13	0.011
16:14	0.016
16:15	0.015
16:16	0.014
16:17	0.014
16:18	0.015
16:19	0.016
16:20	0.019
16:21	0.016
16:22	0.016
16:23	0.016
16:24	0.016
16:25	0.017
16:26	0.013
16:27	0.013
16:28	0.015
16:29	0.017
16:30	0.025
16:31	0.015
16:32	0.016
16:33	0.014
16:34	0.016
16:35	0.055
16:36	0.018
16:37	0.016
16:38	0.015
16:39	0.013
16:40	0.014
16:41	0.018

16:42	0.013
16:43	0.068
16:44	0.02
16:45	0.015
16:46	0.015
16:47	0.015
16:48	0.015
16:49	0.013
16:50	0.013
16:51	0.014
16:52	0.015
16:53	0.015
16:54	0.012
16:55	0.02
16:56	0.014
16:57	0.014
16:58	0.014

Device Serial No	Log Date	Log Time	Log Type	Sensor 1 Type	Sensor 1 Serial Number	Sensor 1 Status	Sensor 1 Gas Reading
592-602816	3/25/2024	17:00	Readings	PID	SC23030324C7	Normal	0.1
592-602816	3/25/2024	16:59	Readings	PID	SC23030324C7	Normal	0.1
592-602816	3/25/2024	16:58	Readings	PID	SC23030324C7	Normal	0.2
592-602816	3/25/2024	16:57	Readings	PID	SC23030324C7	Normal	0.1
592-602816	3/25/2024	16:56	Readings	PID	SC23030324C7	Normal	0.2
592-602816	3/25/2024	16:55	Readings	PID	SC23030324C7	Normal	0.2
592-602816	3/25/2024	16:54	Readings	PID	SC23030324C7	Normal	0.3
592-602816	3/25/2024	16:53	Readings	PID	SC23030324C7	Normal	0.2
592-602816	3/25/2024	16:52	Readings	PID	SC23030324C7	Normal	0.1
592-602816	3/25/2024	16:51	Readings	PID	SC23030324C7	Normal	0.2
592-602816	3/25/2024	16:50	Readings	PID	SC23030324C7	Normal	0.4
592-602816	3/25/2024	16:49	Readings	PID	SC23030324C7	Normal	0.1
592-602816	3/25/2024	16:48	Readings	PID	SC23030324C7	Normal	0.1
592-602816	3/25/2024	16:47	Readings	PID	SC23030324C7	Normal	0.1
592-602816	3/25/2024	16:46	Readings	PID	SC23030324C7	Normal	0.2
592-602816	3/25/2024	16:45	Readings	PID	SC23030324C7	Normal	0.2
592-602816	3/25/2024	16:44	Readings	PID	SC23030324C7	Normal	0.2
592-602816	3/25/2024	16:43	Readings	PID	SC23030324C7	Normal	0.2
592-602816	3/25/2024	16:42	Readings	PID	SC23030324C7	Normal	0.2
592-602816	3/25/2024	16:41	Readings	PID	SC23030324C7	Normal	0.2
592-602816	3/25/2024	16:40	Readings	PID	SC23030324C7	Normal	0.2
592-602816	3/25/2024	16:39	Readings	PID	SC23030324C7	Normal	0.2
592-602816	3/25/2024	16:38	Readings	PID	SC23030324C7	Normal	0.2
592-602816	3/25/2024	16:37	Readings	PID	SC23030324C7	Normal	0.2
592-602816	3/25/2024	16:36	Readings	PID	SC23030324C7	Normal	0.1
592-602816	3/25/2024	16:35	Readings	PID	SC23030324C7	Normal	0.1
592-602816	3/25/2024	16:34	Readings	PID	SC23030324C7	Normal	0.2
592-602816	3/25/2024	16:33	Readings	PID	SC23030324C7	Normal	0.2
592-602816	3/25/2024	16:32	Readings	PID	SC23030324C7	Normal	0.2
592-602816	3/25/2024	16:31	Readings	PID	SC23030324C7	Normal	0.2
592-602816	3/25/2024	16:30	Readings	PID	SC23030324C7	Normal	0.1
592-602816	3/25/2024	16:29	Readings	PID	SC23030324C7	Normal	0.1

592-602816	3/25/2024	16:28 Readings	PID	SC23030324C7	Normal	0.1
592-602816	3/25/2024	16:27 Readings	PID	SC23030324C7	Normal	0.1
592-602816	3/25/2024	16:26 Readings	PID	SC23030324C7	Normal	0.1
592-602816	3/25/2024	16:25 Readings	PID	SC23030324C7	Normal	0.1
592-602816	3/25/2024	16:24 Readings	PID	SC23030324C7	Normal	0.1
592-602816	3/25/2024	16:23 Readings	PID	SC23030324C7	Normal	0.2
592-602816	3/25/2024	16:22 Readings	PID	SC23030324C7	Normal	0.1
592-602816	3/25/2024	16:21 Readings	PID	SC23030324C7	Normal	0.2
592-602816	3/25/2024	16:20 Readings	PID	SC23030324C7	Normal	0.1
592-602816	3/25/2024	16:19 Readings	PID	SC23030324C7	Normal	0.1
592-602816	3/25/2024	16:18 Readings	PID	SC23030324C7	Normal	0.1
592-602816	3/25/2024	16:17 Readings	PID	SC23030324C7	Normal	0.1
592-602816	3/25/2024	16:16 Readings	PID	SC23030324C7	Normal	0.2
592-602816	3/25/2024	16:15 Readings	PID	SC23030324C7	Normal	0.1
592-602816	3/25/2024	16:14 Readings	PID	SC23030324C7	Normal	0.2
592-602816	3/25/2024	16:13 Readings	PID	SC23030324C7	Normal	0.2
592-602816	3/25/2024	16:12 Readings	PID	SC23030324C7	Normal	0.1
592-602816	3/25/2024	16:11 Readings	PID	SC23030324C7	Normal	0.2
592-602816	3/25/2024	16:10 Readings	PID	SC23030324C7	Normal	0.2
592-602816	3/25/2024	16:09 Readings	PID	SC23030324C7	Normal	0.2
592-602816	3/25/2024	16:08 Readings	PID	SC23030324C7	Normal	0.2
592-602816	3/25/2024	16:07 Readings	PID	SC23030324C7	Normal	0.2
592-602816	3/25/2024	16:06 Readings	PID	SC23030324C7	Normal	0.2
592-602816	3/25/2024	16:05 Readings	PID	SC23030324C7	Normal	0.2
592-602816	3/25/2024	16:04 Readings	PID	SC23030324C7	Normal	0.2
592-602816	3/25/2024	16:03 Readings	PID	SC23030324C7	Normal	0.2
592-602816	3/25/2024	16:02 Readings	PID	SC23030324C7	Normal	0.1
592-602816	3/25/2024	16:01 Readings	PID	SC23030324C7	Normal	0.2
592-602816	3/25/2024	16:00 Readings	PID	SC23030324C7	Normal	0.2
592-602816	3/25/2024	15:59 Readings	PID	SC23030324C7	Normal	0.2
592-602816	3/25/2024	15:58 Readings	PID	SC23030324C7	Normal	0.2
592-602816	3/25/2024	15:57 Readings	PID	SC23030324C7	Normal	0.2
592-602816	3/25/2024	15:56 Readings	PID	SC23030324C7	Normal	0.5

592-602816	3/25/2024	8:13 Readings	PID	SC23030324C7	Normal	0.1
592-602816	3/25/2024	8:12 Readings	PID	SC23030324C7	Normal	0.1
592-602816	3/25/2024	8:11 Readings	PID	SC23030324C7	Normal	0.1
592-602816	3/25/2024	8:10 Readings	PID	SC23030324C7	Normal	0.1
592-602816	3/25/2024	8:09 Readings	PID	SC23030324C7	Normal	0.1
592-602816	3/25/2024	8:08 Readings	PID	SC23030324C7	Normal	0.1
592-602816	3/25/2024	8:07 Readings	PID	SC23030324C7	Normal	0.1
592-602816	3/25/2024	8:06 Readings	PID	SC23030324C7	Normal	0.1
592-602816	3/25/2024	8:05 Readings	PID	SC23030324C7	Normal	0.1
592-602816	3/25/2024	8:04 Readings	PID	SC23030324C7	Normal	0.1
592-602816	3/25/2024	8:03 Readings	PID	SC23030324C7	Normal	0.1
592-602816	3/25/2024	8:02 Readings	PID	SC23030324C7	Normal	0.1
592-602816	3/25/2024	8:01 Readings	PID	SC23030324C7	Normal	0.1
592-602816	3/25/2024	8:00 Readings	PID	SC23030324C7	Normal	0
592-602816	3/25/2024	7:59 Readings	PID	SC23030324C7	Normal	0
592-602816	3/25/2024	7:58 Readings	PID	SC23030324C7	Normal	0
592-602816	3/25/2024	7:57 Readings	PID	SC23030324C7	Normal	0.1
592-602816	3/25/2024	7:56 Readings	PID	SC23030324C7	Normal	0
592-602816	3/25/2024	7:55 Readings	PID	SC23030324C7	Normal	0
592-602816	3/25/2024	7:54 Readings	PID	SC23030324C7	Normal	0
592-602816	3/25/2024	7:53 Readings	PID	SC23030324C7	Normal	0
592-602816	3/25/2024	7:52 Readings	PID	SC23030324C7	Normal	0
592-602816	3/25/2024	7:51 Readings	PID	SC23030324C7	Normal	0
592-602816	3/25/2024	7:50 Readings	PID	SC23030324C7	Normal	0
592-602816	3/25/2024	7:49 Readings	PID	SC23030324C7	Normal	0
592-602816	3/25/2024	7:48 Readings	PID	SC23030324C7	Normal	0
592-602816	3/25/2024	7:47 Readings	PID	SC23030324C7	Normal	0
592-602816	3/25/2024	7:46 Readings	PID	SC23030324C7	Normal	0
592-602816	3/25/2024	7:45 Readings	PID	SC23030324C7	Normal	0
592-602816	3/25/2024	7:44 Readings	PID	SC23030324C7	Normal	0
592-602816	3/25/2024	7:43 Readings	PID	SC23030324C7	Normal	0
592-602816	3/25/2024	7:42 Readings	PID	SC23030324C7	Normal	0
592-602816	3/25/2024	7:41 Readings	PID	SC23030324C7	Normal	0

592-602816	3/25/2024	7:40 Readings	PID	SC23030324C7	Normal	0
592-602816	3/25/2024	7:39 Readings	PID	SC23030324C7	Normal	0
592-602816	3/25/2024	7:38 Readings	PID	SC23030324C7	Normal	0
592-602816	3/25/2024	7:37 Readings	PID	SC23030324C7	Normal	0
592-602816	3/25/2024	7:36 Readings	PID	SC23030324C7	Normal	0
592-602816	3/25/2024	7:35 Readings	PID	SC23030324C7	Normal	0
592-602816	3/25/2024	7:34 Readings	PID	SC23030324C7	Normal	0
592-602816	3/25/2024	7:33 Readings	PID	SC23030324C7	Normal	0
592-602816	3/25/2024	7:32 Readings	PID	SC23030324C7	Normal	0
592-602816	3/25/2024	7:31 Readings	PID	SC23030324C7	Normal	0
592-602816	3/25/2024	7:30 Readings	PID	SC23030324C7	Normal	0
592-602816	3/25/2024	7:29 Readings	PID	SC23030324C7	Normal	0
592-602816	3/25/2024	7:28 Readings	PID	SC23030324C7	Normal	0
592-602816	3/25/2024	7:27 Readings	PID	SC23030324C7	Normal	0
592-602816	3/25/2024	7:26 Readings	PID	SC23030324C7	Normal	0
592-602816	3/25/2024	7:25 Readings	PID	SC23030324C7	Normal	0
592-602816	3/25/2024	7:24 Readings	PID	SC23030324C7	Normal	0
592-602816	3/25/2024	7:23 Readings	PID	SC23030324C7	Normal	0
592-602816	3/25/2024	7:22 Readings	PID	SC23030324C7	Normal	0
592-602816	3/25/2024	7:21 Readings	PID	SC23030324C7	Normal	0
592-602816	3/25/2024	7:20 Readings	PID	SC23030324C7	Normal	0.1
592-602816	3/25/2024	7:19 Readings	PID	SC23030324C7	Normal	0
592-602816	3/25/2024	7:18 Readings	PID	SC23030324C7	Normal	0
592-602816	3/25/2024	7:17 Readings	PID	SC23030324C7	Normal	0
592-602816	3/25/2024	7:16 Readings	PID	SC23030324C7	Normal	0
592-602816	3/25/2024	7:15 Readings	PID	SC23030324C7	Normal	0
592-602816	3/25/2024	7:14 Readings	PID	SC23030324C7	Normal	0
592-602816	3/25/2024	7:13 Readings	PID	SC23030324C7	Normal	0
592-602816	3/25/2024	7:12 Readings	PID	SC23030324C7	Normal	0.1
592-602816	3/25/2024	7:11 Readings	PID	SC23030324C7	Normal	0
592-602816	3/25/2024	7:10 Readings	PID	SC23030324C7	Normal	0
592-602816	3/25/2024	7:09 Readings	PID	SC23030324C7	Normal	0
592-602816	3/25/2024	7:08 Readings	PID	SC23030324C7	Normal	0

592-602816	3/25/2024	7:07 Readings	PID	SC23030324C7	Normal	0
592-602816	3/25/2024	7:06 Readings	PID	SC23030324C7	Normal	0
592-602816	3/25/2024	7:05 Readings	PID	SC23030324C7	Normal	0
592-602816	3/25/2024	7:04 Readings	PID	SC23030324C7	Normal	0
592-602816	3/25/2024	7:03 Readings	PID	SC23030324C7	Normal	0
592-602816	3/25/2024	7:02 Readings	PID	SC23030324C7	Normal	0
592-602816	3/25/2024	7:01 Readings	PID	SC23030324C7	Normal	0
592-602816	3/25/2024	7:00 Readings	PID	SC23030324C7	Normal	0
592-602816	3/25/2024	6:59 Readings	PID	SC23030324C7	Normal	0
592-602816	3/25/2024	6:58 Readings	PID	SC23030324C7	Normal	0
592-602816	3/25/2024	6:57 Readings	PID	SC23030324C7	Normal	0
592-602816	3/25/2024	6:56 Readings	PID	SC23030324C7	Normal	0
592-602816	3/25/2024	6:55 Readings	PID	SC23030324C7	Normal	0
592-602816	3/25/2024	6:54 Readings	PID	SC23030324C7	Normal	0
592-602816	3/25/2024	6:53 Readings	PID	SC23030324C7	Normal	0
592-602816	3/25/2024	6:52 Readings	PID	SC23030324C7	Normal	0
592-602816	3/25/2024	6:51 Readings	PID	SC23030324C7	Normal	0
592-602816	3/25/2024	6:50 Readings	PID	SC23030324C7	Normal	0
592-602816	3/25/2024	6:49 Readings	PID	SC23030324C7	Normal	0
592-602816	3/25/2024	6:48 Readings	PID	SC23030324C7	Normal	0
592-602816	3/25/2024	6:47 Readings	PID	SC23030324C7	Normal	0
592-602816	3/25/2024	6:46 Readings	PID	SC23030324C7	Normal	0
592-602816	3/25/2024	6:45 Readings	PID	SC23030324C7	Normal	0
592-602816	3/25/2024	CONFIG	PID	SC23030324C7		

Instrument Name	DustTrak II
Model Number	8530
Serial Number	8530123704
Firmware Version	3.1
Calibration Date	8/18/2023
Test Name	MANUAL_005
Test Start Time	6:47:05 AM
Test Start Date	3/25/2024
Test Length [D:H:M]	0:10:13
Test Interval [M:S]	1:00
Mass Average [mg/m3]	0.014
Mass Minimum [mg/m3]	0.008
Mass Maximum [mg/m3]	0.23
Mass TWA [mg/m3]	0.014
Photometric User Cal	1
Flow User Cal	0
Errors	
Number of Samples	613

Elapsed Time [s]	Mass [mg/m3]	Alarms	Errors
6:47	0.021		
6:48	0.011		
6:49	0.011		
6:50	0.011		
6:51	0.012		
6:52	0.011		
6:53	0.011		
6:54	0.012		
6:55	0.012		
6:56	0.011		
6:57	0.012		
6:58	0.013		
6:59	0.012		
7:00	0.012		
7:01	0.012		
7:02	0.012		
7:03	0.014		
7:04	0.022		
7:05	0.012		
7:06	0.011		
7:07	0.01		
7:08	0.011		
7:09	0.012		
7:10	0.011		

7:11	0.012
7:12	0.011
7:13	0.011
7:14	0.011
7:15	0.011
7:16	0.011
7:17	0.011
7:18	0.011
7:19	0.011
7:20	0.011
7:21	0.011
7:22	0.012
7:23	0.011
7:24	0.014
7:25	0.012
7:26	0.013
7:27	0.012
7:28	0.012
7:29	0.013
7:30	0.013
7:31	0.014
7:32	0.014
7:33	0.034
7:34	0.019
7:35	0.014
7:36	0.012
7:37	0.013
7:38	0.014
7:39	0.013
7:40	0.013
7:41	0.012
7:42	0.012
7:43	0.012
7:44	0.011
7:45	0.012
7:46	0.012
7:47	0.012
7:48	0.013
7:49	0.013
7:50	0.012
7:51	0.013
7:52	0.012
7:53	0.012
7:54	0.012

7:55	0.013
7:56	0.012
7:57	0.021
7:58	0.013
7:59	0.013
8:00	0.012
8:01	0.012
8:02	0.012
8:03	0.012
8:04	0.013
8:05	0.014
8:06	0.013
8:07	0.013
8:08	0.013
8:09	0.012
8:10	0.012
8:11	0.012
8:12	0.013
8:13	0.013
8:14	0.013
8:15	0.013
8:16	0.013
8:17	0.012
8:18	0.012
8:19	0.013
8:20	0.013
8:21	0.013
8:22	0.012
8:23	0.013
8:24	0.013
8:25	0.013
8:26	0.012
8:27	0.012
8:28	0.012
8:29	0.014
8:30	0.199
8:31	0.029
8:32	0.02
8:33	0.045
8:34	0.029
8:35	0.039
8:36	0.043
8:37	0.015
8:38	0.012

8:39	0.015
8:40	0.017
8:41	0.108
8:42	0.034
8:43	0.016
8:44	0.015
8:45	0.018
8:46	0.014
8:47	0.012
8:48	0.011
8:49	0.029
8:50	0.014
8:51	0.012
8:52	0.012
8:53	0.012
8:54	0.011
8:55	0.013
8:56	0.032
8:57	0.031
8:58	0.016
8:59	0.013
9:00	0.012
9:01	0.014
9:02	0.012
9:03	0.012
9:04	0.014
9:05	0.013
9:06	0.014
9:07	0.019
9:08	0.038
9:09	0.013
9:10	0.013
9:11	0.014
9:12	0.014
9:13	0.013
9:14	0.014
9:15	0.013
9:16	0.016
9:17	0.02
9:18	0.013
9:19	0.013
9:20	0.013
9:21	0.012
9:22	0.013

9:23	0.014
9:24	0.013
9:25	0.013
9:26	0.013
9:27	0.012
9:28	0.012
9:29	0.012
9:30	0.012
9:31	0.014
9:32	0.016
9:33	0.012
9:34	0.012
9:35	0.011
9:36	0.013
9:37	0.013
9:38	0.014
9:39	0.011
9:40	0.012
9:41	0.012
9:42	0.013
9:43	0.012
9:44	0.011
9:45	0.011
9:46	0.014
9:47	0.013
9:48	0.012
9:49	0.011
9:50	0.014
9:51	0.021
9:52	0.011
9:53	0.011
9:54	0.01
9:55	0.014
9:56	0.012
9:57	0.012
9:58	0.012
9:59	0.012
10:00	0.014
10:01	0.013
10:02	0.011
10:03	0.011
10:04	0.012
10:05	0.012
10:06	0.011

10:07	0.012
10:08	0.012
10:09	0.013
10:10	0.014
10:11	0.014
10:12	0.012
10:13	0.01
10:14	0.011
10:15	0.01
10:16	0.011
10:17	0.011
10:18	0.011
10:19	0.011
10:20	0.011
10:21	0.011
10:22	0.012
10:23	0.012
10:24	0.012
10:25	0.012
10:26	0.012
10:27	0.012
10:28	0.013
10:29	0.04
10:30	0.017
10:31	0.019
10:32	0.013
10:33	0.024
10:34	0.013
10:35	0.016
10:36	0.016
10:37	0.011
10:38	0.01
10:39	0.011
10:40	0.013
10:41	0.012
10:42	0.011
10:43	0.012
10:44	0.011
10:45	0.01
10:46	0.009
10:47	0.011
10:48	0.01
10:49	0.01
10:50	0.011

10:51	0.012
10:52	0.01
10:53	0.01
10:54	0.01
10:55	0.01
10:56	0.01
10:57	0.012
10:58	0.014
10:59	0.016
11:00	0.012
11:01	0.015
11:02	0.011
11:03	0.011
11:04	0.01
11:05	0.011
11:06	0.011
11:07	0.009
11:08	0.012
11:09	0.011
11:10	0.016
11:11	0.012
11:12	0.01
11:13	0.011
11:14	0.018
11:15	0.014
11:16	0.011
11:17	0.013
11:18	0.014
11:19	0.013
11:20	0.014
11:21	0.013
11:22	0.013
11:23	0.012
11:24	0.011
11:25	0.014
11:26	0.012
11:27	0.011
11:28	0.011
11:29	0.01
11:30	0.011
11:31	0.014
11:32	0.012
11:33	0.023
11:34	0.014

11:35	0.012
11:36	0.013
11:37	0.013
11:38	0.011
11:39	0.011
11:40	0.01
11:41	0.013
11:42	0.012
11:43	0.012
11:44	0.011
11:45	0.01
11:46	0.011
11:47	0.011
11:48	0.011
11:49	0.013
11:50	0.014
11:51	0.012
11:52	0.012
11:53	0.014
11:54	0.014
11:55	0.014
11:56	0.011
11:57	0.011
11:58	0.011
11:59	0.012
12:00	0.011
12:01	0.012
12:02	0.01
12:03	0.01
12:04	0.046
12:05	0.014
12:06	0.018
12:07	0.025
12:08	0.01
12:09	0.021
12:10	0.011
12:11	0.013
12:12	0.023
12:13	0.014
12:14	0.012
12:15	0.013
12:16	0.019
12:17	0.017
12:18	0.013

12:19	0.017
12:20	0.012
12:21	0.012
12:22	0.011
12:23	0.01
12:24	0.015
12:25	0.022
12:26	0.027
12:27	0.014
12:28	0.011
12:29	0.01
12:30	0.011
12:31	0.01
12:32	0.01
12:33	0.015
12:34	0.01
12:35	0.011
12:36	0.012
12:37	0.01
12:38	0.009
12:39	0.008
12:40	0.008
12:41	0.01
12:42	0.009
12:43	0.009
12:44	0.01
12:45	0.01
12:46	0.009
12:47	0.01
12:48	0.01
12:49	0.01
12:50	0.01
12:51	0.01
12:52	0.01
12:53	0.009
12:54	0.008
12:55	0.013
12:56	0.01
12:57	0.015
12:58	0.009
12:59	0.009
13:00	0.009
13:01	0.009
13:02	0.01

13:03	0.011
13:04	0.011
13:05	0.02
13:06	0.01
13:07	0.01
13:08	0.009
13:09	0.143
13:10	0.015
13:11	0.011
13:12	0.009
13:13	0.027
13:14	0.012
13:15	0.009
13:16	0.016
13:17	0.015
13:18	0.008
13:19	0.009
13:20	0.009
13:21	0.009
13:22	0.01
13:23	0.009
13:24	0.009
13:25	0.009
13:26	0.012
13:27	0.024
13:28	0.016
13:29	0.01
13:30	0.011
13:31	0.011
13:32	0.024
13:33	0.012
13:34	0.01
13:35	0.008
13:36	0.011
13:37	0.009
13:38	0.009
13:39	0.01
13:40	0.009
13:41	0.011
13:42	0.011
13:43	0.009
13:44	0.008
13:45	0.009
13:46	0.009

13:47	0.009
13:48	0.01
13:49	0.23
13:50	0.011
13:51	0.01
13:52	0.01
13:53	0.009
13:54	0.01
13:55	0.01
13:56	0.009
13:57	0.012
13:58	0.01
13:59	0.01
14:00	0.012
14:01	0.011
14:02	0.01
14:03	0.01
14:04	0.01
14:05	0.011
14:06	0.01
14:07	0.016
14:08	0.011
14:09	0.009
14:10	0.01
14:11	0.01
14:12	0.011
14:13	0.01
14:14	0.01
14:15	0.01
14:16	0.011
14:17	0.024
14:18	0.011
14:19	0.01
14:20	0.01
14:21	0.01
14:22	0.012
14:23	0.017
14:24	0.011
14:25	0.012
14:26	0.013
14:27	0.011
14:28	0.013
14:29	0.012
14:30	0.01

14:31	0.011
14:32	0.014
14:33	0.01
14:34	0.01
14:35	0.01
14:36	0.01
14:37	0.03
14:38	0.012
14:39	0.011
14:40	0.011
14:41	0.012
14:42	0.012
14:43	0.01
14:44	0.01
14:45	0.011
14:46	0.011
14:47	0.011
14:48	0.01
14:49	0.01
14:50	0.009
14:51	0.015
14:52	0.019
14:53	0.011
14:54	0.011
14:55	0.01
14:56	0.01
14:57	0.011
14:58	0.014
14:59	0.012
15:00	0.016
15:01	0.01
15:02	0.01
15:03	0.012
15:04	0.011
15:05	0.012
15:06	0.012
15:07	0.011
15:08	0.01
15:09	0.011
15:10	0.01
15:11	0.012
15:12	0.077
15:13	0.012
15:14	0.012

15:15	0.01
15:16	0.014
15:17	0.013
15:18	0.011
15:19	0.009
15:20	0.011
15:21	0.017
15:22	0.011
15:23	0.013
15:24	0.015
15:25	0.012
15:26	0.019
15:27	0.01
15:28	0.01
15:29	0.009
15:30	0.012
15:31	0.01
15:32	0.012
15:33	0.01
15:34	0.011
15:35	0.014
15:36	0.011
15:37	0.014
15:38	0.014
15:39	0.027
15:40	0.017
15:41	0.015
15:42	0.016
15:43	0.014
15:44	0.012
15:45	0.011
15:46	0.013
15:47	0.014
15:48	0.012
15:49	0.011
15:50	0.012
15:51	0.011
15:52	0.012
15:53	0.012
15:54	0.015
15:55	0.012
15:56	0.014
15:57	0.013
15:58	0.014

15:59	0.017
16:00	0.013
16:01	0.011
16:02	0.01
16:03	0.013
16:04	0.012
16:05	0.016
16:06	0.017
16:07	0.016
16:08	0.014
16:09	0.01
16:10	0.014
16:11	0.015
16:12	0.016
16:13	0.017
16:14	0.017
16:15	0.01
16:16	0.015
16:17	0.017
16:18	0.016
16:19	0.015
16:20	0.012
16:21	0.017
16:22	0.013
16:23	0.016
16:24	0.017
16:25	0.016
16:26	0.019
16:27	0.012
16:28	0.012
16:29	0.015
16:30	0.013
16:31	0.013
16:32	0.05
16:33	0.015
16:34	0.016
16:35	0.02
16:36	0.015
16:37	0.013
16:38	0.014
16:39	0.021
16:40	0.018
16:41	0.014
16:42	0.012

16:43	0.016
16:44	0.018
16:45	0.013
16:46	0.032
16:47	0.015
16:48	0.011
16:49	0.014
16:50	0.013
16:51	0.013
16:52	0.012
16:53	0.014
16:54	0.016
16:55	0.017
16:56	0.013
16:57	0.01
16:58	0.013
16:59	0.012

Device Serial No	Log Date	Log Time	Log Type	Sensor 1 Type	Sensor 1 Serial Number	Sensor 1 Status	Sensor 1 Gas Reading
592-600871	3/25/2024	16:59	Readings	PID	SC23030408A8	Normal	0
592-600871	3/25/2024	16:58	Readings	PID	SC23030408A8	Normal	0
592-600871	3/25/2024	16:57	Readings	PID	SC23030408A8	Normal	0
592-600871	3/25/2024	16:56	Readings	PID	SC23030408A8	Normal	0
592-600871	3/25/2024	16:55	Readings	PID	SC23030408A8	Normal	0
592-600871	3/25/2024	16:54	Readings	PID	SC23030408A8	Normal	0
592-600871	3/25/2024	16:53	Readings	PID	SC23030408A8	Normal	0
592-600871	3/25/2024	16:52	Readings	PID	SC23030408A8	Normal	0
592-600871	3/25/2024	16:51	Readings	PID	SC23030408A8	Normal	0
592-600871	3/25/2024	16:50	Readings	PID	SC23030408A8	Normal	0
592-600871	3/25/2024	16:49	Readings	PID	SC23030408A8	Normal	0
592-600871	3/25/2024	16:48	Readings	PID	SC23030408A8	Normal	0
592-600871	3/25/2024	16:47	Readings	PID	SC23030408A8	Normal	0
592-600871	3/25/2024	16:46	Readings	PID	SC23030408A8	Normal	0
592-600871	3/25/2024	16:45	Readings	PID	SC23030408A8	Normal	0
592-600871	3/25/2024	16:44	Readings	PID	SC23030408A8	Normal	0
592-600871	3/25/2024	16:43	Readings	PID	SC23030408A8	Normal	0
592-600871	3/25/2024	16:42	Readings	PID	SC23030408A8	Normal	0
592-600871	3/25/2024	16:41	Readings	PID	SC23030408A8	Normal	0
592-600871	3/25/2024	16:40	Readings	PID	SC23030408A8	Normal	0
592-600871	3/25/2024	16:39	Readings	PID	SC23030408A8	Normal	0
592-600871	3/25/2024	16:38	Readings	PID	SC23030408A8	Normal	0
592-600871	3/25/2024	16:37	Readings	PID	SC23030408A8	Normal	0
592-600871	3/25/2024	16:36	Readings	PID	SC23030408A8	Normal	0
592-600871	3/25/2024	16:35	Readings	PID	SC23030408A8	Normal	0
592-600871	3/25/2024	16:34	Readings	PID	SC23030408A8	Normal	0
592-600871	3/25/2024	16:33	Readings	PID	SC23030408A8	Normal	0
592-600871	3/25/2024	16:32	Readings	PID	SC23030408A8	Normal	0
592-600871	3/25/2024	16:31	Readings	PID	SC23030408A8	Normal	0
592-600871	3/25/2024	16:30	Readings	PID	SC23030408A8	Normal	0
592-600871	3/25/2024	16:29	Readings	PID	SC23030408A8	Normal	0
592-600871	3/25/2024	16:28	Readings	PID	SC23030408A8	Normal	0

592-600871	3/25/2024	7:06 Readings	PID	SC23030408A8	Normal	0
592-600871	3/25/2024	7:05 Readings	PID	SC23030408A8	Normal	0
592-600871	3/25/2024	7:04 Readings	PID	SC23030408A8	Normal	0
592-600871	3/25/2024	7:03 Readings	PID	SC23030408A8	Normal	0
592-600871	3/25/2024	7:02 Readings	PID	SC23030408A8	Normal	0
592-600871	3/25/2024	7:01 Readings	PID	SC23030408A8	Normal	0
592-600871	3/25/2024	7:00 Readings	PID	SC23030408A8	Normal	0
592-600871	3/25/2024	6:59 Readings	PID	SC23030408A8	Normal	0
592-600871	3/25/2024	6:58 Readings	PID	SC23030408A8	Normal	0
592-600871	3/25/2024	6:57 Readings	PID	SC23030408A8	Normal	0
592-600871	3/25/2024	6:56 Readings	PID	SC23030408A8	Normal	0
592-600871	3/25/2024	6:55 Readings	PID	SC23030408A8	Normal	0
592-600871	3/25/2024	6:54 Readings	PID	SC23030408A8	Normal	0
592-600871	3/25/2024	6:53 Readings	PID	SC23030408A8	Normal	0
592-600871	3/25/2024	6:52 Readings	PID	SC23030408A8	Normal	0
592-600871	3/25/2024	6:51 Readings	PID	SC23030408A8	Normal	0
592-600871	3/25/2024	6:50 Readings	PID	SC23030408A8	Normal	0
592-600871	3/25/2024	6:49 Readings	PID	SC23030408A8	Normal	0
592-600871	3/25/2024	6:48 Readings	PID	SC23030408A8	Normal	0
592-600871	3/25/2024	6:47 Readings	PID	SC23030408A8	Normal	0
592-600871	3/25/2024	CONFIG	PID	SC23030408A8		