



**DAILY STATUS REPORT**

**Prepared By:**

Thomas Jensen

WEATHER	Snow	Rain		Overcast	Partly Cloudy	X	Bright Sun	X	Wind
TEMP.	< 32	32-50	X	50-70	70-85		>85		S- 8 MPH

<b>IEC Project No:</b>	13928	<b>NYSDEC BCP Site No:</b>	C224367	<b>Date:</b> 03/26/24	
<b>Project:</b>	251 Douglass Street, Brooklyn, NY				

<p><b>Consultant:</b> Impact Environmental Engineering and Geology, PLLC (IEEG)</p> <p>Time On: 06:30 Time Out: 18:40</p>	<p><b>Personnel On Site:</b> IEEG (Environmental) – Thomas Jensen Broadway Construction Group - Tom Caporale Cascade Warren George-Drillers WSP- Charlie Lambert</p> <p><b>Equipment On Site:</b> Minirae 3000 PID, DustTrak II</p>
---	---

**Scope of Work:** Continue ISS column installation along the southern portion of the Site, along Douglass Street, begin ISS Column core drilling/sampling

**Site Activities:**

- Deploy three (3) CAMPs at the Start of the work day;
- Warren George, Inc. began to core 24-25 OL from the ISS pilot test, it should be noted that coring work was halted due to a piece of the rig breaking;
- Cascade received one (1) delivery of slag;
- National grid continued work on the sidewalk adjacent to Douglass Street;
  - Cascade drilled **Column 158**, column spec below:
    - The column was 8’ diameter and drilled 36’ deep from Site grade;
    - The column consisted of a total of 16 batches;
    - A sample was collected from 36’ below site grade;
  - Cascade drilled **Column 177**, column spec below:
    - The column was 8’ diameter and drilled 36’ deep from Site grade;
    - The column consisted of a total of 14 batches;

\*Site grade refers to the elevation of the site after the 4’ excavation was completed.

**Community Air Monitoring Program (CAMP) - CAMP** action level for dust (0.1 mg/m<sup>3</sup>) and VOCs (5 ppm)

- PID remained at nominal levels throughout the day.
- No sustained dust exceedances were observed over a 1-min period during monitoring;
- Startup Upwind Conditions – PID = 0.0 ppm, Dust = 0.078 mg/m<sup>3</sup> @ 06:38
- High Conditions (Upwind) – PID = 0.0 ppm, Dust = 0.373 mg/m<sup>3</sup> @ 12:37
- High Conditions (Downwind 1) – PID = 2.3 ppm @ 13:39, Dust = 0.552 mg/m<sup>3</sup> @ 11:28
- High Conditions (Downwind 2) – PID = 3.9 ppm @ 07:57, Dust = 0.133 mg/m<sup>3</sup> @ 11:30

\*ATMOS foam was sprayed throughout the day when odors were encountered.

**Notable Site Conditions:**

- The drill rig used for coring broke, the drillers attempted to repair the rig but the attempt was unsuccessful. A replacement part will be brought to the Site in the morning to repair the coring rig and coring will continue.

**Planned for the Next Day/Week:**

- Continuation of QA/QC ISS column core drilling;
- Swell material to be trucked offsite for disposal; and
- Continue ISS column installation.



**PHOTO LOG**

251 DOUGLASS STREET, BROOKLYN, NY



**Photo 1-**  
Representative  
photo of coring  
24-25 OL.



**Photo 2-**  
Representative  
photo of a OL  
core recovered,  
note poor  
recovery.



**Photo 3-**  
Representative  
photo of  
National Grid  
work in the  
sidewalk.



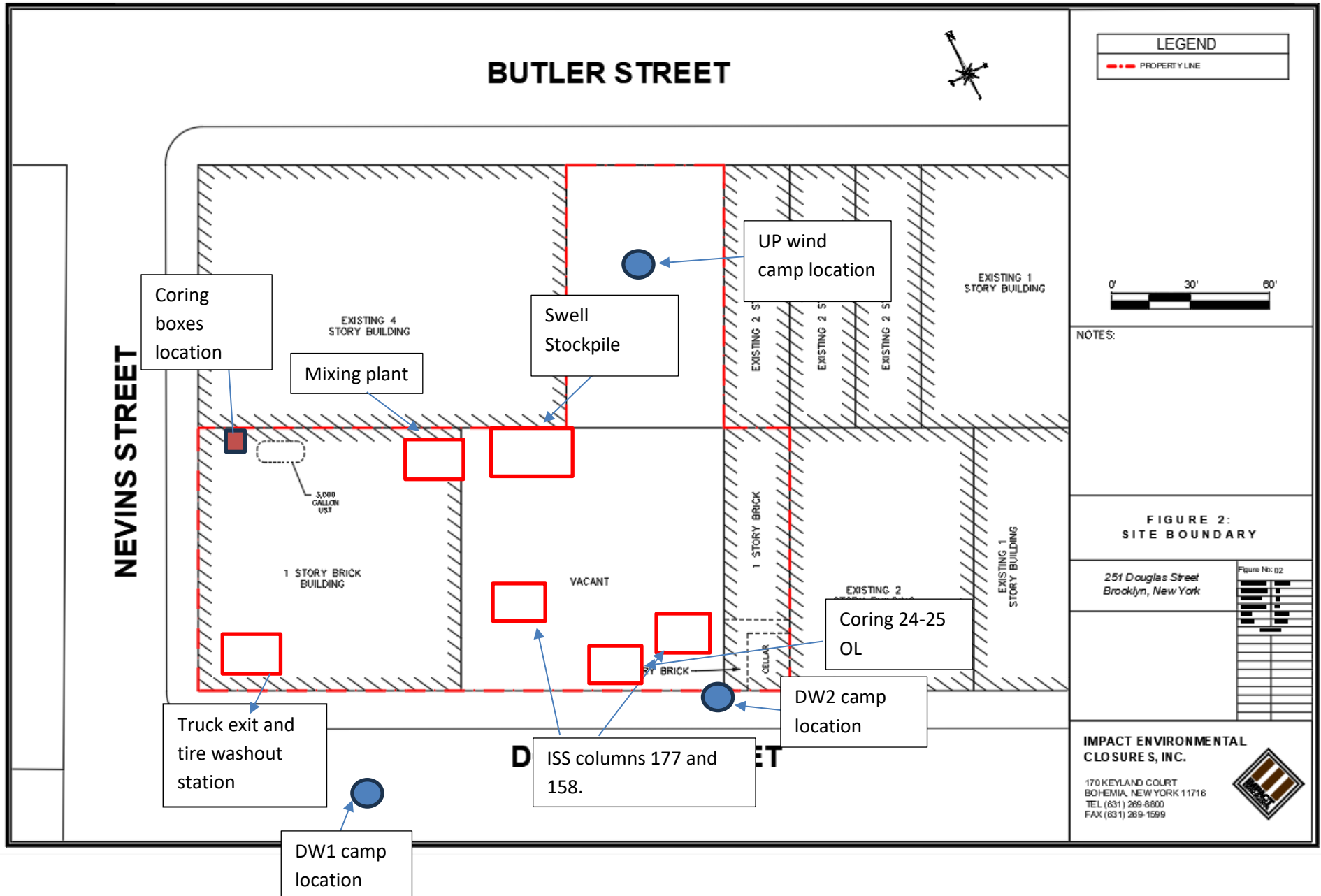
**Photo 4-**  
Representative  
photo of swell  
pile covered  
with ATMOS  
foam.



**SITE PLANS**

251 DOUGLASS STREET, BROOKLYN, NY





LEGEND  
--- PROPERTY LINE

0' 30' 60'

NOTES:

FIGURE 2: SITE BOUNDARY

251 Douglas Street  
Brooklyn, New York

Figure No: 02

IMPACT ENVIRONMENTAL  
CLOSURES, INC.

170 KEYLAND COURT  
BOHEMIA, NEW YORK 11716  
TEL (631) 269-8800  
FAX (631) 269-1599



© 2023 TRANSCAPE, INC. ALL RIGHTS RESERVED

PLU DATE: 1/10/2023




FILE: JENKINSROADCENTRAL/CASCADE/HARBOR/N.Y./BROOKLYN\_PROJECT\_08/2023  
CITY FILE: 113224000238

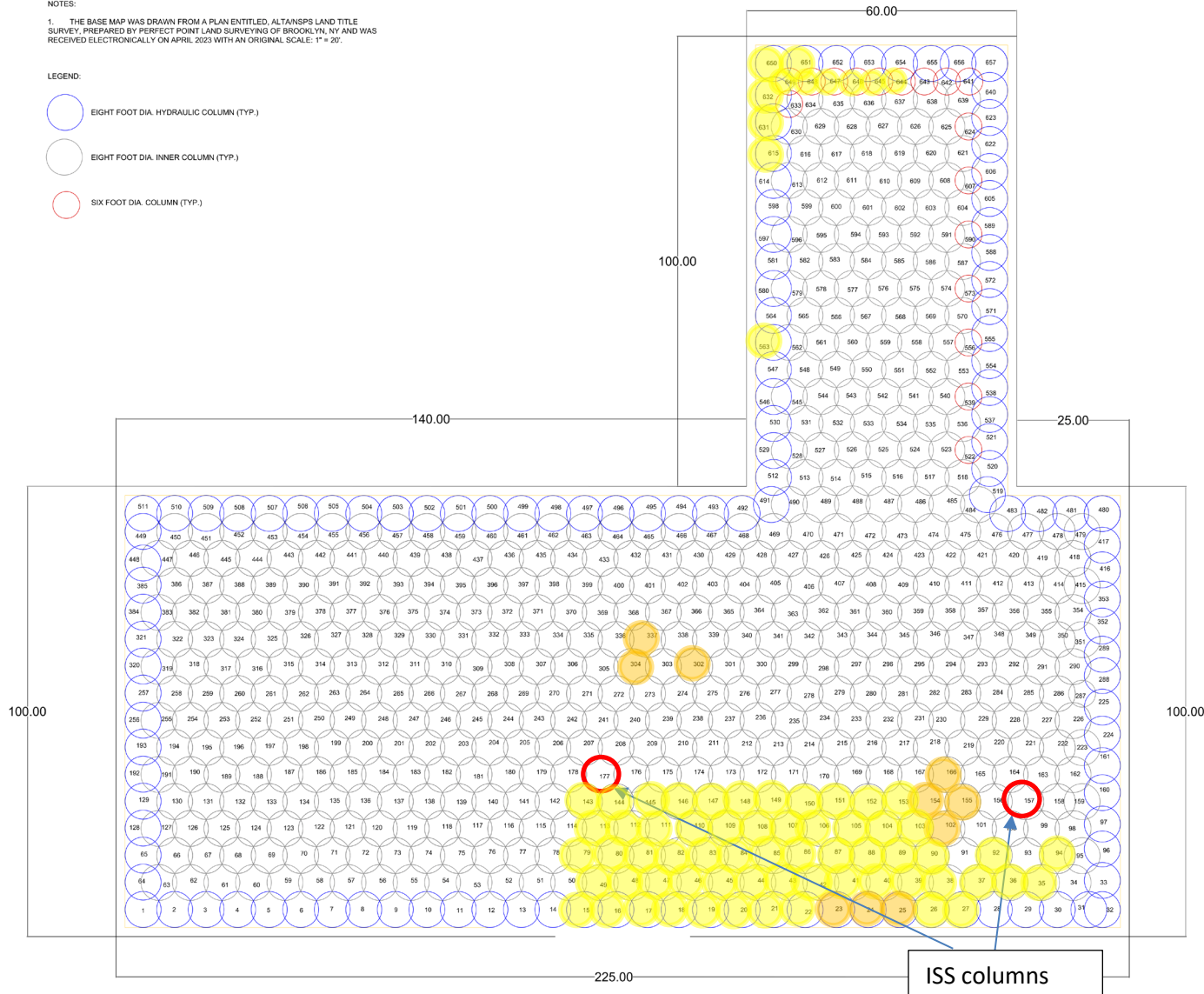


NOTES:

1. THE BASE MAP WAS DRAWN FROM A PLAN ENTITLED, ALTANSPS LAND TITLE SURVEY, PREPARED BY PERFECT POINT LAND SURVEYING OF BROOKLYN, NY AND WAS RECEIVED ELECTRONICALLY ON APRIL, 2023 WITH AN ORIGINAL SCALE: 1" = 20'.

LEGEND:

-  EIGHT FOOT DIA. HYDRAULIC COLUMN (TYP.)
-  EIGHT FOOT DIA. INNER COLUMN (TYP.)
-  SIX FOOT DIA. COLUMN (TYP.)



ISS columns  
157 and 177  
completed on  
3/25/2024.

NO.	DATE	BY	REV.	DESCRIPTION
1				
2				
3				
4				
5				
6				
7				
8				
9				
10				

281 DOUGLAS STREET BROOKLYN, NEW YORK

**CASCADE**  
281 DOUGLAS STREET, SUITE 818  
BROOKLYN, NY 11201  
WWW.CASCADEENV.COM

**FIGURE 4: ISS COLUMN LAYOUT**

SCALE	CHECK DATE	REV.
1" = 20'	D	A
DATE		
BY		
CHECKED		

ISS

q





# SCM Report

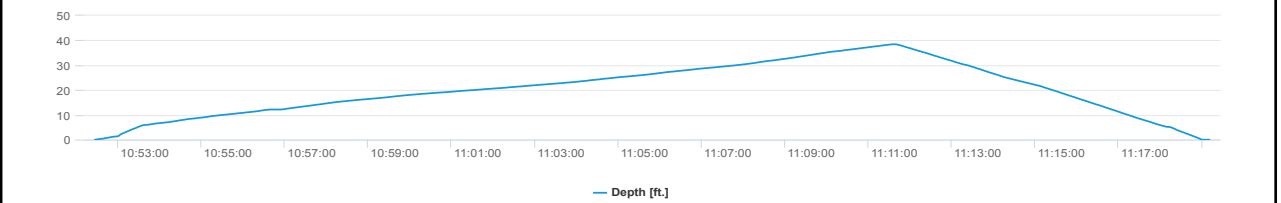
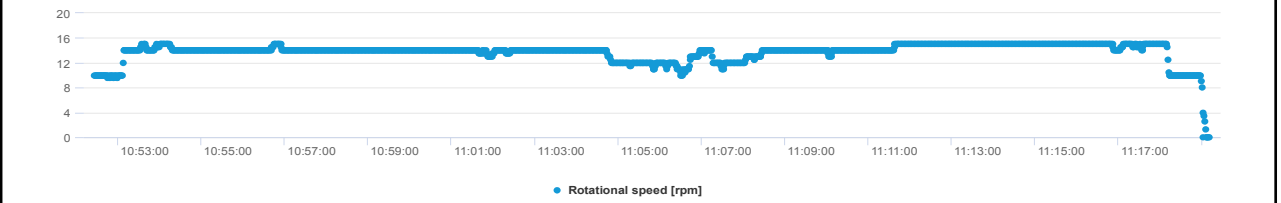
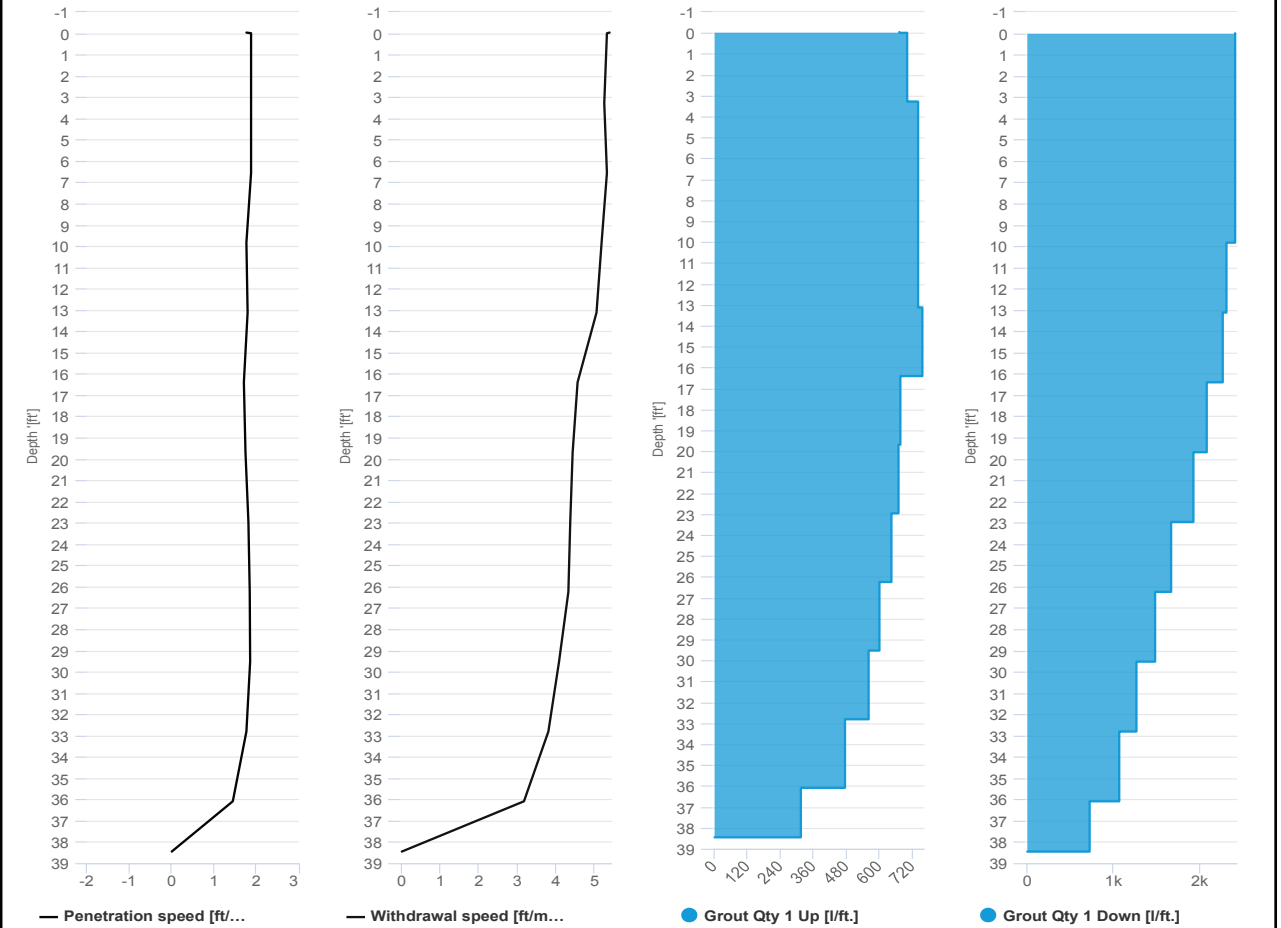


Project name: Douglass Street BCG ISS      Element name: c158a  
 Project number

Start date: 03/26/2024

Drilling rig: BG36H\_5717

Details		Start time	
Max. depth	38.45 ft.	10:52 AM	
Volume/m 1	24.36 ft³	End Date	03/26/2024
		End time	11:19 AM
		Production duration	00:26:45
		Final depth time	11:11 AM
		Total suspension quantity	283.57 ft³



# SCM Report

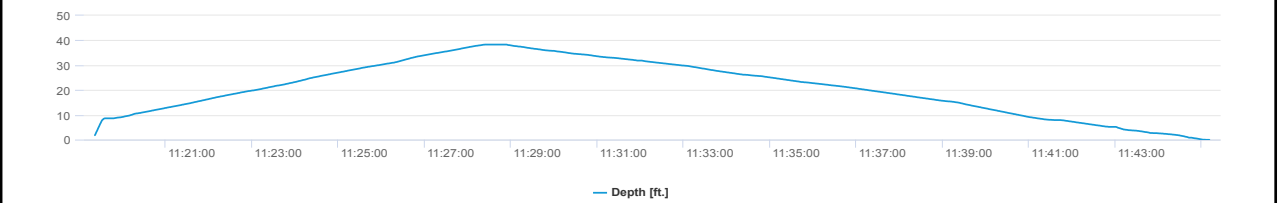
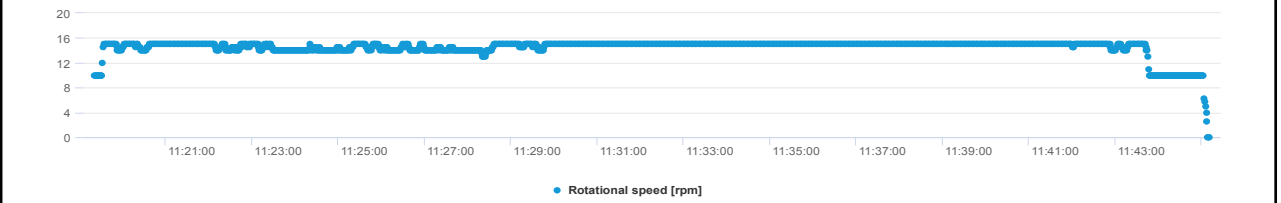
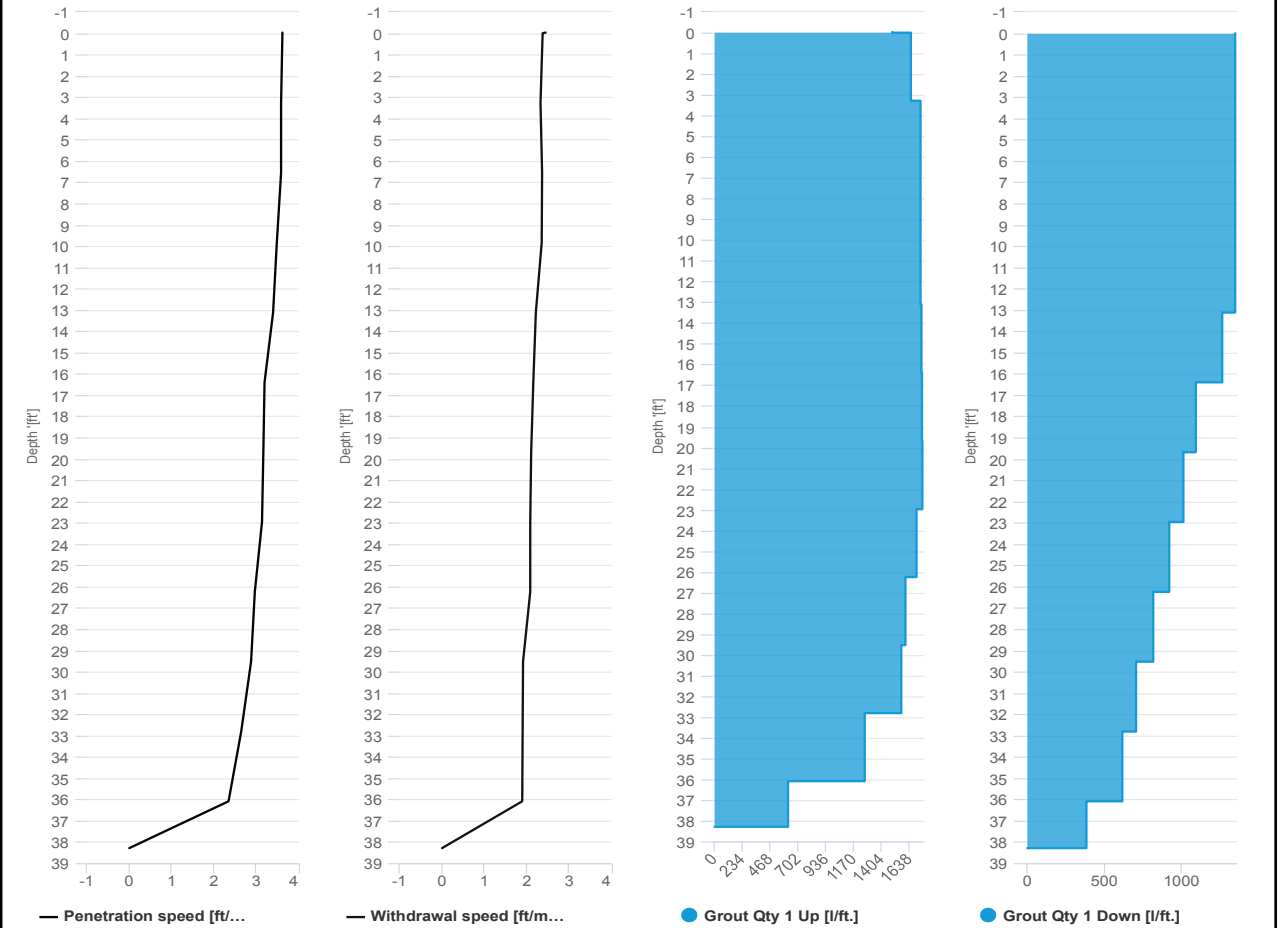


Project name: Douglass Street BCG ISS      Element name: c158b  
 Project number

Start date: 03/26/2024

Drilling rig: BG36H\_5717

<b>Details</b>		Start time: 11:19 AM	
Max. depth: 38.28 ft.		End Date: 03/26/2024	
Volume/m 1: 23.3 ft³		End time: 11:45 AM	
		Production duration: 00:25:50	
		Final depth time: 11:28 AM	
		Total suspension quantity: 271.711 ft³	



# SCM Report

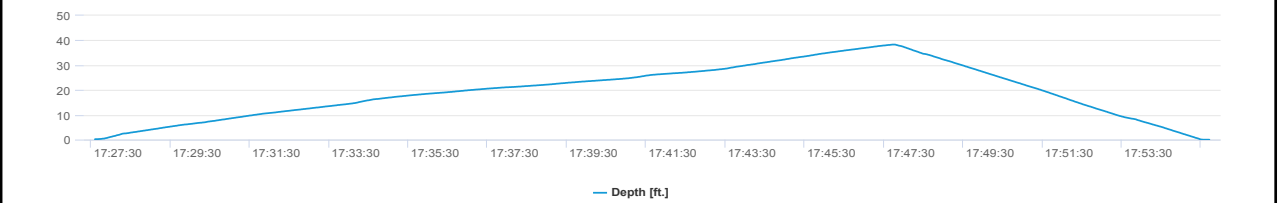
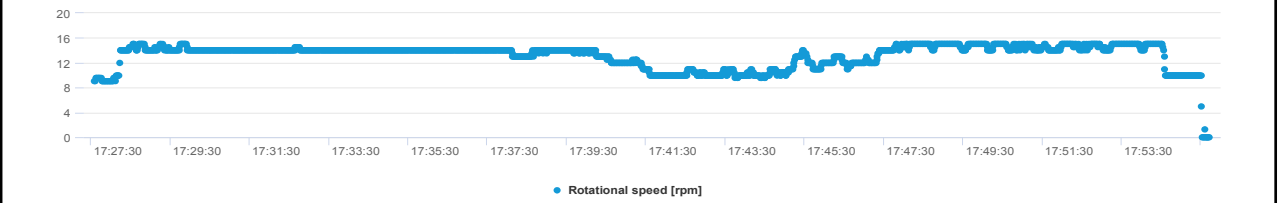
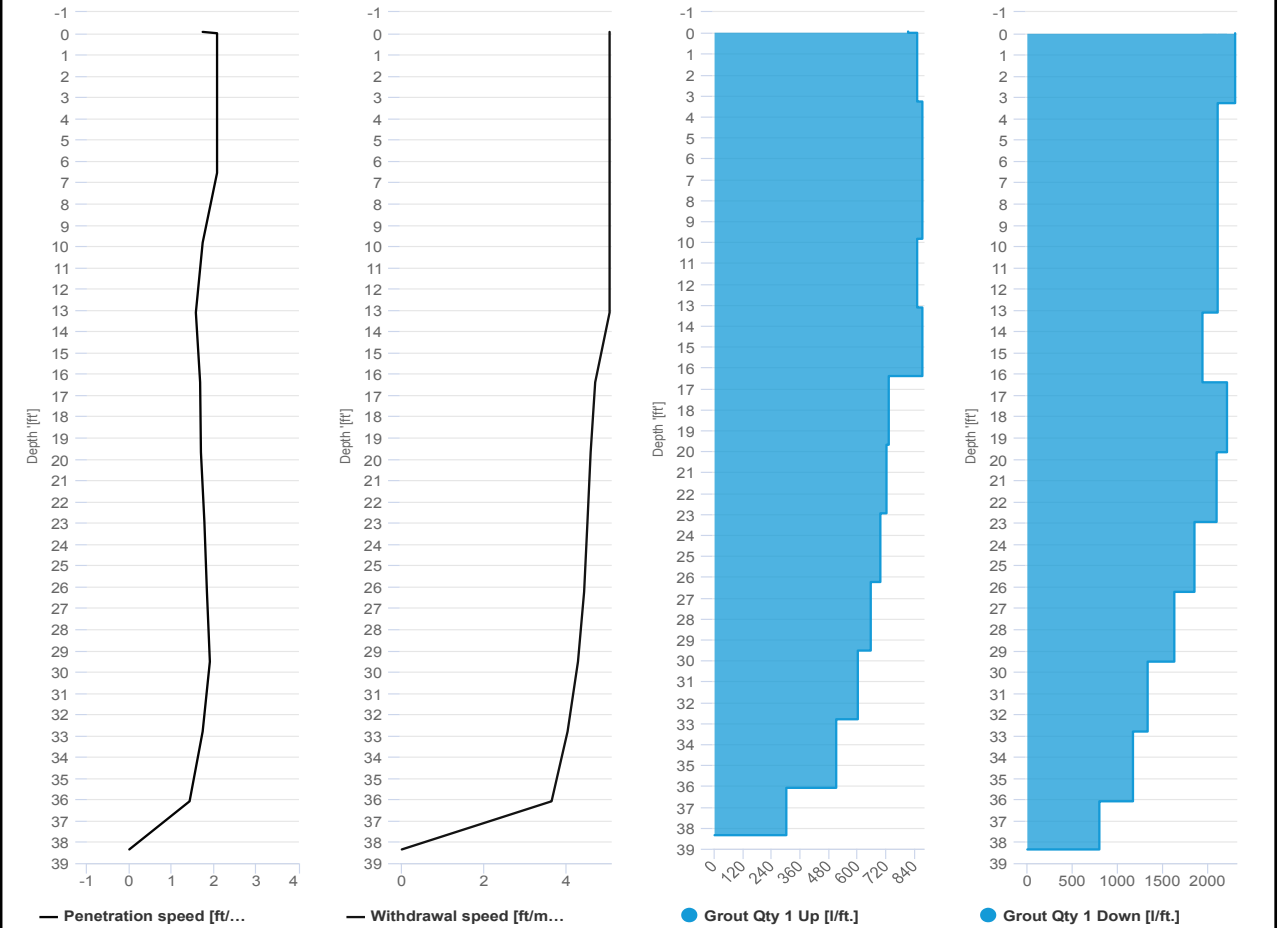


Project name: Douglass Street BCG ISS      Element name: c177a  
 Project number

Start date: 03/26/2024

Drilling rig: BG36H\_5717

<b>Details</b>		Start time: 05:27 PM	
Max. depth: 38.35 ft.		End Date: 03/26/2024	
Volume/m 1: 26.48 ft³		End time: 05:55 PM	
		Production duration: 00:28:08	
		Final depth time: 05:47 PM	
		Total suspension quantity: 308.05 ft³	



# SCM Report

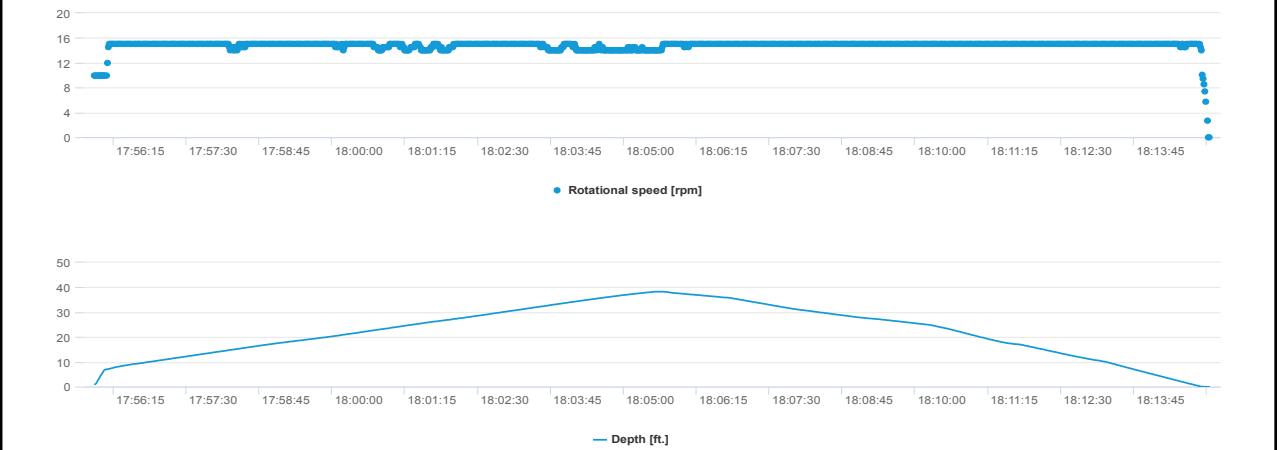
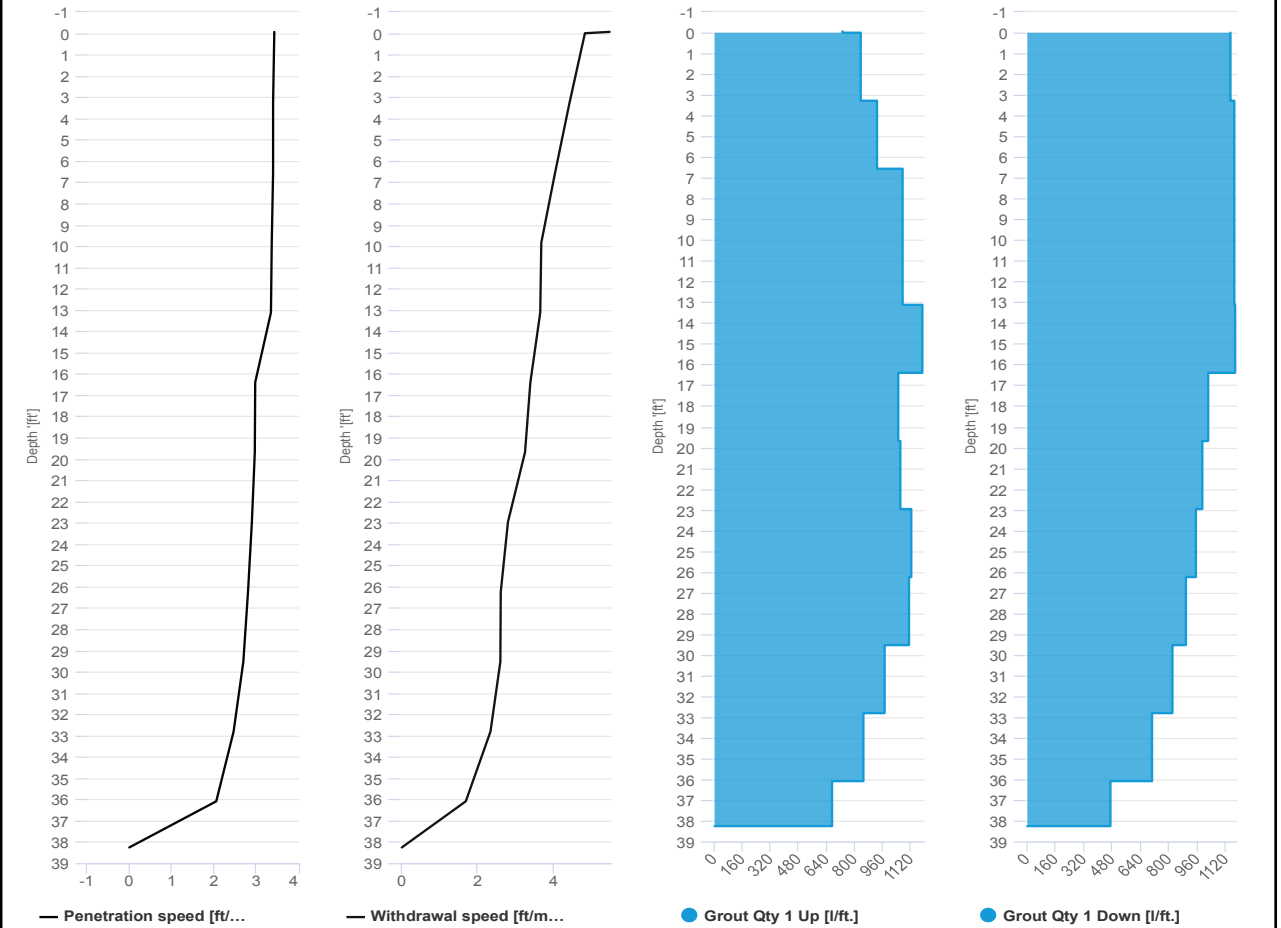


Project name: Douglass Street BCG ISS      Element name: c177b  
 Project number

Start date: 03/26/2024

Drilling rig: BG36H\_5717

<b>Details</b>		Start time: 05:55 PM	
Max. depth: 38.25 ft.		End Date: 03/26/2024	
Volume/m 1: 15.18 ft³		End time: 06:15 PM	
		Production duration: 00:19:08	
		Final depth time: 06:05 PM	
		Total suspension quantity: 176.785 ft³	





**UPWIND CAMP READINGS**

251 DOUGLASS STREET, BROOKLYN, NY

Instrument Name	DustTrak II
Model Number	8530
Serial Number	8530224601
Firmware Version	3.1
Calibration Date	11/9/2022
Test Name	MANUAL_006
Test Start Time	6:38:30 AM
Test Start Date	3/26/2024
Test Length [D:H:M]	0:11:40
Test Interval [M:S]	1:00
Mass Average [mg/m3]	0.021
Mass Minimum [mg/m3]	0.008
Mass Maximum [mg/m3]	0.373
Mass TWA [mg/m3]	0.02
Photometric User Cal	1
Flow User Cal	0
Errors	
Number of Samples	700

Elapsed Time [s]	Mass [mg/m3]	Alarms	Errors
6:38	0.078		
6:39	0.01		
6:40	0.009		
6:41	0.01		
6:42	0.009		
6:43	0.009		
6:44	0.009		
6:45	0.009		
6:46	0.008		
6:47	0.009		
6:48	0.008		
6:49	0.011		
6:50	0.009		
6:51	0.021		
6:52	0.009		
6:53	0.009		
6:54	0.009		
6:55	0.009		
6:56	0.009		
6:57	0.009		
6:58	0.011		
6:59	0.011		
7:00	0.01		
7:01	0.01		

7:02	0.009
7:03	0.009
7:04	0.009
7:05	0.01
7:06	0.01
7:07	0.01
7:08	0.01
7:09	0.01
7:10	0.01
7:11	0.01
7:12	0.01
7:13	0.01
7:14	0.01
7:15	0.01
7:16	0.009
7:17	0.011
7:18	0.012
7:19	0.011
7:20	0.01
7:21	0.009
7:22	0.009
7:23	0.009
7:24	0.011
7:25	0.021
7:26	0.01
7:27	0.01
7:28	0.01
7:29	0.014
7:30	0.011
7:31	0.011
7:32	0.011
7:33	0.011
7:34	0.011
7:35	0.011
7:36	0.011
7:37	0.011
7:38	0.012
7:39	0.011
7:40	0.011
7:41	0.011
7:42	0.011
7:43	0.011
7:44	0.012
7:45	0.011

7:46	0.011
7:47	0.012
7:48	0.012
7:49	0.012
7:50	0.017
7:51	0.014
7:52	0.015
7:53	0.014
7:54	0.014
7:55	0.013
7:56	0.014
7:57	0.014
7:58	0.014
7:59	0.014
8:00	0.013
8:01	0.012
8:02	0.012
8:03	0.012
8:04	0.013
8:05	0.012
8:06	0.013
8:07	0.014
8:08	0.014
8:09	0.013
8:10	0.013
8:11	0.013
8:12	0.013
8:13	0.013
8:14	0.013
8:15	0.013
8:16	0.013
8:17	0.013
8:18	0.013
8:19	0.013
8:20	0.014
8:21	0.013
8:22	0.014
8:23	0.014
8:24	0.014
8:25	0.014
8:26	0.014
8:27	0.015
8:28	0.015
8:29	0.014



8:30	0.021
8:31	0.021
8:32	0.017
8:33	0.015
8:34	0.015
8:35	0.015
8:36	0.015
8:37	0.015
8:38	0.016
8:39	0.019
8:40	0.017
8:41	0.016
8:42	0.016
8:43	0.016
8:44	0.017
8:45	0.017
8:46	0.018
8:47	0.016
8:48	0.023
8:49	0.022
8:50	0.018
8:51	0.016
8:52	0.015
8:53	0.015
8:54	0.015
8:55	0.016
8:56	0.016
8:57	0.016
8:58	0.016
8:59	0.018
9:00	0.017
9:01	0.017
9:02	0.017
9:03	0.018
9:04	0.018
9:05	0.017
9:06	0.018
9:07	0.018
9:08	0.018
9:09	0.016
9:10	0.017
9:11	0.016
9:12	0.017
9:13	0.017

9:14	0.018
9:15	0.019
9:16	0.021
9:17	0.017
9:18	0.018
9:19	0.018
9:20	0.016
9:21	0.015
9:22	0.015
9:23	0.014
9:24	0.014
9:25	0.014
9:26	0.015
9:27	0.015
9:28	0.015
9:29	0.014
9:30	0.015
9:31	0.017
9:32	0.016
9:33	0.016
9:34	0.015
9:35	0.014
9:36	0.014
9:37	0.014
9:38	0.015
9:39	0.015
9:40	0.014
9:41	0.014
9:42	0.014
9:43	0.014
9:44	0.014
9:45	0.014
9:46	0.015
9:47	0.014
9:48	0.015
9:49	0.015
9:50	0.013
9:51	0.013
9:52	0.013
9:53	0.013
9:54	0.012
9:55	0.012
9:56	0.013
9:57	0.012

9:58	0.012
9:59	0.012
10:00	0.012
10:01	0.012
10:02	0.012
10:03	0.012
10:04	0.012
10:05	0.012
10:06	0.012
10:07	0.012
10:08	0.013
10:09	0.012
10:10	0.012
10:11	0.012
10:12	0.013
10:13	0.014
10:14	0.014
10:15	0.013
10:16	0.013
10:17	0.013
10:18	0.012
10:19	0.013
10:20	0.013
10:21	0.013
10:22	0.013
10:23	0.013
10:24	0.013
10:25	0.013
10:26	0.013
10:27	0.013
10:28	0.013
10:29	0.013
10:30	0.013
10:31	0.013
10:32	0.013
10:33	0.013
10:34	0.014
10:35	0.013
10:36	0.014
10:37	0.013
10:38	0.013
10:39	0.014
10:40	0.014
10:41	0.013

10:42	0.014
10:43	0.013
10:44	0.013
10:45	0.013
10:46	0.013
10:47	0.013
10:48	0.012
10:49	0.014
10:50	0.014
10:51	0.013
10:52	0.013
10:53	0.013
10:54	0.013
10:55	0.013
10:56	0.014
10:57	0.013
10:58	0.014
10:59	0.013
11:00	0.014
11:01	0.014
11:02	0.016
11:03	0.014
11:04	0.015
11:05	0.015
11:06	0.015
11:07	0.016
11:08	0.021
11:09	0.017
11:10	0.015
11:11	0.015
11:12	0.015
11:13	0.015
11:14	0.015
11:15	0.014
11:16	0.015
11:17	0.015
11:18	0.015
11:19	0.014
11:20	0.014
11:21	0.014
11:22	0.015
11:23	0.015
11:24	0.015
11:25	0.016

11:26	0.019
11:27	0.06
11:28	0.018
11:29	0.016
11:30	0.015
11:31	0.014
11:32	0.015
11:33	0.015
11:34	0.015
11:35	0.015
11:36	0.015
11:37	0.015
11:38	0.017
11:39	0.015
11:40	0.015
11:41	0.016
11:42	0.016
11:43	0.015
11:44	0.016
11:45	0.017
11:46	0.015
11:47	0.016
11:48	0.016
11:49	0.016
11:50	0.016
11:51	0.016
11:52	0.017
11:53	0.019
11:54	0.018
11:55	0.017
11:56	0.016
11:57	0.016
11:58	0.016
11:59	0.016
12:00	0.017
12:01	0.017
12:02	0.017
12:03	0.017
12:04	0.016
12:05	0.016
12:06	0.016
12:07	0.016
12:08	0.016
12:09	0.016

12:10	0.016
12:11	0.016
12:12	0.015
12:13	0.016
12:14	0.018
12:15	0.016
12:16	0.017
12:17	0.017
12:18	0.017
12:19	0.017
12:20	0.017
12:21	0.017
12:22	0.017
12:23	0.016
12:24	0.017
12:25	0.019
12:26	0.018
12:27	0.019
12:28	0.02
12:29	0.017
12:30	0.016
12:31	0.016
12:32	0.016
12:33	0.223
12:34	0.124
12:35	0.239
12:36	0.098
12:37	0.373
12:38	0.324
12:39	0.029
12:40	0.016
12:41	0.016
12:42	0.018
12:43	0.016
12:44	0.017
12:45	0.018
12:46	0.017
12:47	0.018
12:48	0.017
12:49	0.017
12:50	0.016
12:51	0.017
12:52	0.016
12:53	0.017

12:54	0.018
12:55	0.017
12:56	0.027
12:57	0.074
12:58	0.026
12:59	0.026
13:00	0.03
13:01	0.023
13:02	0.022
13:03	0.02
13:04	0.023
13:05	0.028
13:06	0.023
13:07	0.019
13:08	0.024
13:09	0.027
13:10	0.02
13:11	0.024
13:12	0.028
13:13	0.023
13:14	0.025
13:15	0.026
13:16	0.031
13:17	0.034
13:18	0.036
13:19	0.032
13:20	0.023
13:21	0.023
13:22	0.021
13:23	0.025
13:24	0.022
13:25	0.022
13:26	0.023
13:27	0.024
13:28	0.021
13:29	0.026
13:30	0.03
13:31	0.022
13:32	0.023
13:33	0.022
13:34	0.021
13:35	0.022
13:36	0.026
13:37	0.027

13:38	0.034
13:39	0.041
13:40	0.033
13:41	0.041
13:42	0.028
13:43	0.026
13:44	0.025
13:45	0.023
13:46	0.024
13:47	0.028
13:48	0.067
13:49	0.034
13:50	0.027
13:51	0.024
13:52	0.021
13:53	0.03
13:54	0.04
13:55	0.033
13:56	0.031
13:57	0.03
13:58	0.025
13:59	0.027
14:00	0.032
14:01	0.025
14:02	0.026
14:03	0.03
14:04	0.024
14:05	0.023
14:06	0.023
14:07	0.024
14:08	0.024
14:09	0.025
14:10	0.026
14:11	0.024
14:12	0.022
14:13	0.024
14:14	0.024
14:15	0.025
14:16	0.023
14:17	0.025
14:18	0.025
14:19	0.025
14:20	0.026
14:21	0.029



14:22	0.025
14:23	0.025
14:24	0.025
14:25	0.025
14:26	0.027
14:27	0.027
14:28	0.027
14:29	0.025
14:30	0.025
14:31	0.028
14:32	0.028
14:33	0.027
14:34	0.025
14:35	0.025
14:36	0.026
14:37	0.024
14:38	0.026
14:39	0.028
14:40	0.027
14:41	0.033
14:42	0.029
14:43	0.03
14:44	0.033
14:45	0.029
14:46	0.025
14:47	0.025
14:48	0.025
14:49	0.025
14:50	0.024
14:51	0.024
14:52	0.023
14:53	0.024
14:54	0.025
14:55	0.025
14:56	0.024
14:57	0.024
14:58	0.027
14:59	0.026
15:00	0.025
15:01	0.026
15:02	0.027
15:03	0.025
15:04	0.025
15:05	0.025

15:06	0.026
15:07	0.028
15:08	0.029
15:09	0.026
15:10	0.026
15:11	0.024
15:12	0.024
15:13	0.025
15:14	0.024
15:15	0.025
15:16	0.025
15:17	0.026
15:18	0.026
15:19	0.026
15:20	0.026
15:21	0.026
15:22	0.025
15:23	0.025
15:24	0.027
15:25	0.025
15:26	0.025
15:27	0.024
15:28	0.025
15:29	0.025
15:30	0.025
15:31	0.025
15:32	0.025
15:33	0.025
15:34	0.026
15:35	0.026
15:36	0.028
15:37	0.028
15:38	0.029
15:39	0.028
15:40	0.028
15:41	0.027
15:42	0.036
15:43	0.035
15:44	0.031
15:45	0.028
15:46	0.027
15:47	0.028
15:48	0.027
15:49	0.031

15:50	0.03
15:51	0.029
15:52	0.032
15:53	0.027
15:54	0.029
15:55	0.03
15:56	0.027
15:57	0.028
15:58	0.027
15:59	0.031
16:00	0.032
16:01	0.031
16:02	0.027
16:03	0.024
16:04	0.026
16:05	0.027
16:06	0.027
16:07	0.025
16:08	0.025
16:09	0.025
16:10	0.031
16:11	0.033
16:12	0.03
16:13	0.026
16:14	0.028
16:15	0.024
16:16	0.025
16:17	0.031
16:18	0.026
16:19	0.037
16:20	0.047
16:21	0.051
16:22	0.037
16:23	0.031
16:24	0.027
16:25	0.024
16:26	0.03
16:27	0.035
16:28	0.03
16:29	0.024
16:30	0.023
16:31	0.025
16:32	0.034
16:33	0.03

16:34	0.027
16:35	0.029
16:36	0.032
16:37	0.04
16:38	0.024
16:39	0.023
16:40	0.023
16:41	0.024
16:42	0.028
16:43	0.03
16:44	0.022
16:45	0.025
16:46	0.023
16:47	0.021
16:48	0.021
16:49	0.02
16:50	0.022
16:51	0.022
16:52	0.02
16:53	0.022
16:54	0.022
16:55	0.02
16:56	0.02
16:57	0.021
16:58	0.022
16:59	0.022
17:00	0.019
17:01	0.02
17:02	0.02
17:03	0.02
17:04	0.02
17:05	0.021
17:06	0.021
17:07	0.02
17:08	0.02
17:09	0.02
17:10	0.02
17:11	0.018
17:12	0.019
17:13	0.019
17:14	0.019
17:15	0.019
17:16	0.019
17:17	0.019

17:18	0.019
17:19	0.019
17:20	0.018
17:21	0.019
17:22	0.019
17:23	0.019
17:24	0.019
17:25	0.018
17:26	0.018
17:27	0.02
17:28	0.018
17:29	0.019
17:30	0.02
17:31	0.019
17:32	0.018
17:33	0.019
17:34	0.018
17:35	0.018
17:36	0.018
17:37	0.019
17:38	0.018
17:39	0.018
17:40	0.018
17:41	0.018
17:42	0.018
17:43	0.018
17:44	0.017
17:45	0.018
17:46	0.018
17:47	0.019
17:48	0.019
17:49	0.018
17:50	0.018
17:51	0.018
17:52	0.018
17:53	0.018
17:54	0.018
17:55	0.018
17:56	0.018
17:57	0.018
17:58	0.018
17:59	0.018
18:00	0.019
18:01	0.019

18:02	0.018
18:03	0.019
18:04	0.019
18:05	0.018
18:06	0.019
18:07	0.019
18:08	0.018
18:09	0.018
18:10	0.02
18:11	0.019
18:12	0.019
18:13	0.018
18:14	0.018
18:15	0.018
18:16	0.018
18:17	0.019

Device Serial No	Log Time	Log Time	Log Type	Sensor 1 Type	Sensor 1 Serial Number	Sensor 1 Status	Sensor 1 Gas Reading
592-601274	3/26/2024	18:17	Readings	PID	SC23030921B3	Normal	0
592-601274	3/26/2024	18:16	Readings	PID	SC23030921B3	Normal	0
592-601274	3/26/2024	18:15	Readings	PID	SC23030921B3	Normal	0
592-601274	3/26/2024	18:14	Readings	PID	SC23030921B3	Normal	0
592-601274	3/26/2024	18:13	Readings	PID	SC23030921B3	Normal	0
592-601274	3/26/2024	18:12	Readings	PID	SC23030921B3	Normal	0
592-601274	3/26/2024	18:11	Readings	PID	SC23030921B3	Normal	0
592-601274	3/26/2024	18:10	Readings	PID	SC23030921B3	Normal	0
592-601274	3/26/2024	18:09	Readings	PID	SC23030921B3	Normal	0
592-601274	3/26/2024	18:08	Readings	PID	SC23030921B3	Normal	0
592-601274	3/26/2024	18:07	Readings	PID	SC23030921B3	Normal	0
592-601274	3/26/2024	18:06	Readings	PID	SC23030921B3	Normal	0
592-601274	3/26/2024	18:05	Readings	PID	SC23030921B3	Normal	0
592-601274	3/26/2024	18:04	Readings	PID	SC23030921B3	Normal	0
592-601274	3/26/2024	18:03	Readings	PID	SC23030921B3	Normal	0
592-601274	3/26/2024	18:02	Readings	PID	SC23030921B3	Normal	0
592-601274	3/26/2024	18:01	Readings	PID	SC23030921B3	Normal	0
592-601274	3/26/2024	18:00	Readings	PID	SC23030921B3	Normal	0
592-601274	3/26/2024	17:59	Readings	PID	SC23030921B3	Normal	0
592-601274	3/26/2024	17:58	Readings	PID	SC23030921B3	Normal	0
592-601274	3/26/2024	17:57	Readings	PID	SC23030921B3	Normal	0
592-601274	3/26/2024	17:56	Readings	PID	SC23030921B3	Normal	0
592-601274	3/26/2024	17:55	Readings	PID	SC23030921B3	Normal	0
592-601274	3/26/2024	17:54	Readings	PID	SC23030921B3	Normal	0
592-601274	3/26/2024	17:53	Readings	PID	SC23030921B3	Normal	0
592-601274	3/26/2024	17:52	Readings	PID	SC23030921B3	Normal	0
592-601274	3/26/2024	17:51	Readings	PID	SC23030921B3	Normal	0
592-601274	3/26/2024	17:50	Readings	PID	SC23030921B3	Normal	0
592-601274	3/26/2024	17:49	Readings	PID	SC23030921B3	Normal	0
592-601274	3/26/2024	17:48	Readings	PID	SC23030921B3	Normal	0
592-601274	3/26/2024	17:47	Readings	PID	SC23030921B3	Normal	0
592-601274	3/26/2024	17:46	Readings	PID	SC23030921B3	Normal	0















































592-601274	3/26/2024	6:45 Readings	PID	SC23030921B3	Normal	0
592-601274	3/26/2024	6:44 Readings	PID	SC23030921B3	Normal	0
592-601274	3/26/2024	6:43 Readings	PID	SC23030921B3	Normal	0
592-601274	3/26/2024	6:42 Readings	PID	SC23030921B3	Normal	0
592-601274	3/26/2024	6:41 Readings	PID	SC23030921B3	Normal	0
592-601274	3/26/2024	6:40 Readings	PID	SC23030921B3	Normal	0
592-601274	3/26/2024	6:39 Readings	PID	SC23030921B3	Normal	0
592-601274	3/26/2024	6:38 Readings	PID	SC23030921B3	Normal	0
592-601274	3/26/2024	CONFIG	PID	SC23030921B3		

**DOWNWIND CAMP READINGS**

251 DOUGLASS STREET, BROOKLYN, NY



Instrument Name	DustTrak II
Model Number	8530
Serial Number	8530123704
Firmware Version	3.1
Calibration Date	8/18/2023
Test Name	MANUAL_006
Test Start Time	6:38:07 AM
Test Start Date	3/26/2024
Test Length [D:H:M]	0:11:46
Test Interval [M:S]	1:00
Mass Average [mg/m3]	0.02
Mass Minimum [mg/m3]	0.008
Mass Maximum [mg/m3]	0.552
Mass TWA [mg/m3]	0.016
Photometric User Cal	1
Flow User Cal	0
Errors	
Number of Samples	706

Elapsed Time [s]	Mass [mg/m3]	Alarms	Errors
6:38	0.015		
6:39	0.01		
6:40	0.009		
6:41	0.009		
6:42	0.011		
6:43	0.009		
6:44	0.008		
6:45	0.008		
6:46	0.009		
6:47	0.009		
6:48	0.008		
6:49	0.009		
6:50	0.01		
6:51	0.009		
6:52	0.009		
6:53	0.011		
6:54	0.011		
6:55	0.008		
6:56	0.009		
6:57	0.01		
6:58	0.01		
6:59	0.011		
7:00	0.012		
7:01	0.01		

7:02	0.009
7:03	0.011
7:04	0.017
7:05	0.015
7:06	0.01
7:07	0.011
7:08	0.015
7:09	0.011
7:10	0.011
7:11	0.012
7:12	0.01
7:13	0.011
7:14	0.011
7:15	0.012
7:16	0.01
7:17	0.011
7:18	0.011
7:19	0.015
7:20	0.012
7:21	0.011
7:22	0.011
7:23	0.012
7:24	0.013
7:25	0.011
7:26	0.024
7:27	0.011
7:28	0.01
7:29	0.011
7:30	0.016
7:31	0.011
7:32	0.009
7:33	0.01
7:34	0.011
7:35	0.012
7:36	0.016
7:37	0.014
7:38	0.011
7:39	0.01
7:40	0.011
7:41	0.02
7:42	0.014
7:43	0.012
7:44	0.012
7:45	0.011

7:46	0.011
7:47	0.011
7:48	0.011
7:49	0.011
7:50	0.013
7:51	0.012
7:52	0.013
7:53	0.012
7:54	0.011
7:55	0.014
7:56	0.015
7:57	0.018
7:58	0.015
7:59	0.014
8:00	0.013
8:01	0.016
8:02	0.017
8:03	0.013
8:04	0.011
8:05	0.011
8:06	0.011
8:07	0.015
8:08	0.012
8:09	0.014
8:10	0.013
8:11	0.017
8:12	0.013
8:13	0.011
8:14	0.012
8:15	0.013
8:16	0.013
8:17	0.012
8:18	0.012
8:19	0.012
8:20	0.011
8:21	0.013
8:22	0.014
8:23	0.015
8:24	0.013
8:25	0.013
8:26	0.014
8:27	0.013
8:28	0.013
8:29	0.039



8:30	0.028
8:31	0.016
8:32	0.019
8:33	0.014
8:34	0.013
8:35	0.013
8:36	0.016
8:37	0.015
8:38	0.014
8:39	0.013
8:40	0.016
8:41	0.015
8:42	0.015
8:43	0.055
8:44	0.043
8:45	0.063
8:46	0.022
8:47	0.015
8:48	0.014
8:49	0.016
8:50	0.018
8:51	0.017
8:52	0.015
8:53	0.014
8:54	0.019
8:55	0.024
8:56	0.034
8:57	0.015
8:58	0.023
8:59	0.048
9:00	0.015
9:01	0.014
9:02	0.014
9:03	0.015
9:04	0.021
9:05	0.023
9:06	0.023
9:07	0.019
9:08	0.017
9:09	0.018
9:10	0.017
9:11	0.031
9:12	0.028
9:13	0.022

9:14	0.016
9:15	0.017
9:16	0.018
9:17	0.018
9:18	0.016
9:19	0.016
9:20	0.016
9:21	0.019
9:22	0.053
9:23	0.015
9:24	0.014
9:25	0.013
9:26	0.012
9:27	0.012
9:28	0.012
9:29	0.014
9:30	0.015
9:31	0.013
9:32	0.013
9:33	0.013
9:34	0.015
9:35	0.012
9:36	0.012
9:37	0.013
9:38	0.013
9:39	0.013
9:40	0.013
9:41	0.013
9:42	0.018
9:43	0.014
9:44	0.012
9:45	0.012
9:46	0.012
9:47	0.011
9:48	0.011
9:49	0.013
9:50	0.013
9:51	0.012
9:52	0.02
9:53	0.012
9:54	0.012
9:55	0.011
9:56	0.01
9:57	0.011

9:58	0.01
9:59	0.01
10:00	0.012
10:01	0.012
10:02	0.015
10:03	0.011
10:04	0.01
10:05	0.01
10:06	0.01
10:07	0.011
10:08	0.011
10:09	0.011
10:10	0.01
10:11	0.01
10:12	0.01
10:13	0.009
10:14	0.01
10:15	0.01
10:16	0.017
10:17	0.016
10:18	0.011
10:19	0.02
10:20	0.022
10:21	0.012
10:22	0.01
10:23	0.015
10:24	0.01
10:25	0.01
10:26	0.009
10:27	0.01
10:28	0.011
10:29	0.009
10:30	0.01
10:31	0.011
10:32	0.008
10:33	0.011
10:34	0.009
10:35	0.009
10:36	0.01
10:37	0.009
10:38	0.009
10:39	0.009
10:40	0.011
10:41	0.009

10:42	0.01
10:43	0.012
10:44	0.01
10:45	0.016
10:46	0.01
10:47	0.026
10:48	0.016
10:49	0.009
10:50	0.011
10:51	0.011
10:52	0.012
10:53	0.025
10:54	0.016
10:55	0.012
10:56	0.016
10:57	0.01
10:58	0.01
10:59	0.009
11:00	0.01
11:01	0.011
11:02	0.014
11:03	0.013
11:04	0.01
11:05	0.012
11:06	0.014
11:07	0.013
11:08	0.012
11:09	0.01
11:10	0.015
11:11	0.017
11:12	0.011
11:13	0.009
11:14	0.009
11:15	0.009
11:16	0.009
11:17	0.01
11:18	0.011
11:19	0.01
11:20	0.009
11:21	0.01
11:22	0.009
11:23	0.009
11:24	0.011
11:25	0.011

11:26	0.04
11:27	0.089
11:28	0.552
11:29	0.13
11:30	0.012
11:31	0.069
11:32	0.014
11:33	0.011
11:34	0.012
11:35	0.011
11:36	0.01
11:37	0.012
11:38	0.014
11:39	0.014
11:40	0.013
11:41	0.013
11:42	0.01
11:43	0.014
11:44	0.02
11:45	0.009
11:46	0.009
11:47	0.01
11:48	0.01
11:49	0.012
11:50	0.011
11:51	0.013
11:52	0.014
11:53	0.012
11:54	0.012
11:55	0.012
11:56	0.012
11:57	0.013
11:58	0.013
11:59	0.012
12:00	0.011
12:01	0.011
12:02	0.011
12:03	0.011
12:04	0.027
12:05	0.013
12:06	0.012
12:07	0.012
12:08	0.013
12:09	0.011

12:10	0.013
12:11	0.013
12:12	0.012
12:13	0.011
12:14	0.011
12:15	0.021
12:16	0.012
12:17	0.012
12:18	0.012
12:19	0.012
12:20	0.012
12:21	0.013
12:22	0.013
12:23	0.012
12:24	0.013
12:25	0.013
12:26	0.012
12:27	0.013
12:28	0.012
12:29	0.012
12:30	0.014
12:31	0.014
12:32	0.013
12:33	0.013
12:34	0.012
12:35	0.012
12:36	0.014
12:37	0.016
12:38	0.013
12:39	0.012
12:40	0.012
12:41	0.012
12:42	0.021
12:43	0.018
12:44	0.014
12:45	0.013
12:46	0.013
12:47	0.012
12:48	0.011
12:49	0.012
12:50	0.012
12:51	0.013
12:52	0.014
12:53	0.012

12:54	0.013
12:55	0.012
12:56	0.012
12:57	0.013
12:58	0.013
12:59	0.014
13:00	0.014
13:01	0.014
13:02	0.013
13:03	0.013
13:04	0.013
13:05	0.014
13:06	0.013
13:07	0.012
13:08	0.013
13:09	0.013
13:10	0.012
13:11	0.013
13:12	0.016
13:13	0.015
13:14	0.014
13:15	0.014
13:16	0.014
13:17	0.014
13:18	0.022
13:19	0.014
13:20	0.016
13:21	0.016
13:22	0.026
13:23	0.036
13:24	0.041
13:25	0.018
13:26	0.024
13:27	0.017
13:28	0.013
13:29	0.019
13:30	0.038
13:31	0.035
13:32	0.02
13:33	0.019
13:34	0.023
13:35	0.013
13:36	0.026
13:37	0.016

13:38	0.018
13:39	0.019
13:40	0.042
13:41	0.017
13:42	0.015
13:43	0.025
13:44	0.036
13:45	0.018
13:46	0.015
13:47	0.015
13:48	0.016
13:49	0.017
13:50	0.014
13:51	0.015
13:52	0.014
13:53	0.02
13:54	0.019
13:55	0.019
13:56	0.019
13:57	0.02
13:58	0.017
13:59	0.017
14:00	0.025
14:01	0.018
14:02	0.016
14:03	0.017
14:04	0.018
14:05	0.019
14:06	0.018
14:07	0.02
14:08	0.016
14:09	0.017
14:10	0.018
14:11	0.017
14:12	0.019
14:13	0.017
14:14	0.017
14:15	0.02
14:16	0.018
14:17	0.019
14:18	0.018
14:19	0.019
14:20	0.026
14:21	0.017



14:22	0.018
14:23	0.018
14:24	0.02
14:25	0.018
14:26	0.016
14:27	0.019
14:28	0.019
14:29	0.018
14:30	0.018
14:31	0.021
14:32	0.021
14:33	0.018
14:34	0.023
14:35	0.022
14:36	0.02
14:37	0.021
14:38	0.02
14:39	0.019
14:40	0.025
14:41	0.019
14:42	0.018
14:43	0.019
14:44	0.022
14:45	0.022
14:46	0.028
14:47	0.033
14:48	0.028
14:49	0.021
14:50	0.02
14:51	0.019
14:52	0.018
14:53	0.018
14:54	0.018
14:55	0.018
14:56	0.019
14:57	0.02
14:58	0.019
14:59	0.02
15:00	0.031
15:01	0.025
15:02	0.021
15:03	0.021
15:04	0.065
15:05	0.043

15:06	0.021
15:07	0.022
15:08	0.024
15:09	0.045
15:10	0.019
15:11	0.018
15:12	0.019
15:13	0.018
15:14	0.019
15:15	0.02
15:16	0.021
15:17	0.022
15:18	0.02
15:19	0.02
15:20	0.019
15:21	0.02
15:22	0.019
15:23	0.02
15:24	0.019
15:25	0.019
15:26	0.019
15:27	0.019
15:28	0.019
15:29	0.02
15:30	0.021
15:31	0.023
15:32	0.052
15:33	0.022
15:34	0.022
15:35	0.022
15:36	0.02
15:37	0.019
15:38	0.019
15:39	0.02
15:40	0.02
15:41	0.023
15:42	0.021
15:43	0.023
15:44	0.022
15:45	0.021
15:46	0.02
15:47	0.022
15:48	0.019
15:49	0.022

15:50	0.019
15:51	0.019
15:52	0.02
15:53	0.132
15:54	0.198
15:55	0.031
15:56	0.022
15:57	0.023
15:58	0.024
15:59	0.022
16:00	0.022
16:01	0.022
16:02	0.064
16:03	0.044
16:04	0.055
16:05	0.05
16:06	0.029
16:07	0.063
16:08	0.02
16:09	0.019
16:10	0.019
16:11	0.019
16:12	0.055
16:13	0.027
16:14	0.025
16:15	0.018
16:16	0.031
16:17	0.024
16:18	0.02
16:19	0.019
16:20	0.13
16:21	0.104
16:22	0.026
16:23	0.021
16:24	0.025
16:25	0.029
16:26	0.025
16:27	0.02
16:28	0.026
16:29	0.025
16:30	0.022
16:31	0.021
16:32	0.02
16:33	0.02

16:34	0.021
16:35	0.026
16:36	0.022
16:37	0.028
16:38	0.038
16:39	0.032
16:40	0.047
16:41	0.031
16:42	0.027
16:43	0.025
16:44	0.094
16:45	0.03
16:46	0.016
16:47	0.015
16:48	0.049
16:49	0.025
16:50	0.031
16:51	0.023
16:52	0.018
16:53	0.017
16:54	0.018
16:55	0.051
16:56	0.025
16:57	0.017
16:58	0.02
16:59	0.073
17:00	0.037
17:01	0.015
17:02	0.021
17:03	0.025
17:04	0.019
17:05	0.023
17:06	0.02
17:07	0.069
17:08	0.019
17:09	0.017
17:10	0.022
17:11	0.014
17:12	0.014
17:13	0.013
17:14	0.147
17:15	0.06
17:16	0.016
17:17	0.014

17:18	0.014
17:19	0.013
17:20	0.013
17:21	0.014
17:22	0.067
17:23	0.014
17:24	0.014
17:25	0.022
17:26	0.018
17:27	0.018
17:28	0.021
17:29	0.021
17:30	0.019
17:31	0.018
17:32	0.02
17:33	0.021
17:34	0.021
17:35	0.018
17:36	0.02
17:37	0.02
17:38	0.022
17:39	0.034
17:40	0.032
17:41	0.018
17:42	0.027
17:43	0.026
17:44	0.028
17:45	0.028
17:46	0.025
17:47	0.019
17:48	0.014
17:49	0.014
17:50	0.013
17:51	0.014
17:52	0.015
17:53	0.016
17:54	0.014
17:55	0.013
17:56	0.014
17:57	0.018
17:58	0.014
17:59	0.014
18:00	0.014
18:01	0.016

18:02	0.013
18:03	0.014
18:04	0.014
18:05	0.014
18:06	0.014
18:07	0.015
18:08	0.016
18:09	0.017
18:10	0.019
18:11	0.018
18:12	0.014
18:13	0.014
18:14	0.014
18:15	0.013
18:16	0.014
18:17	0.023
18:18	0.017
18:19	0.033
18:20	0.021
18:21	0.028
18:22	0.016
18:23	0.028

Device Serial No	Log Date	Log Time	Log Type	Sensor 1 Type	Sensor 1 Serial Number	Sensor 1 Status	Sensor 1 Gas Reading
592-602816	3/26/2024	18:23	Readings	PID	SC23030324C7	Normal	0.5
592-602816	3/26/2024	18:22	Readings	PID	SC23030324C7	Normal	0.4
592-602816	3/26/2024	18:21	Readings	PID	SC23030324C7	Normal	0.7
592-602816	3/26/2024	18:20	Readings	PID	SC23030324C7	Normal	0.6
592-602816	3/26/2024	18:19	Readings	PID	SC23030324C7	Normal	0.4
592-602816	3/26/2024	18:18	Readings	PID	SC23030324C7	Normal	0.5
592-602816	3/26/2024	18:17	Readings	PID	SC23030324C7	Normal	0.6
592-602816	3/26/2024	18:16	Readings	PID	SC23030324C7	Normal	0.4
592-602816	3/26/2024	18:15	Readings	PID	SC23030324C7	Normal	0.2
592-602816	3/26/2024	18:14	Readings	PID	SC23030324C7	Normal	0.3
592-602816	3/26/2024	18:13	Readings	PID	SC23030324C7	Normal	0.4
592-602816	3/26/2024	18:12	Readings	PID	SC23030324C7	Normal	0.4
592-602816	3/26/2024	18:11	Readings	PID	SC23030324C7	Normal	1.1
592-602816	3/26/2024	18:10	Readings	PID	SC23030324C7	Normal	0.5
592-602816	3/26/2024	18:09	Readings	PID	SC23030324C7	Normal	0.4
592-602816	3/26/2024	18:08	Readings	PID	SC23030324C7	Normal	0.6
592-602816	3/26/2024	18:07	Readings	PID	SC23030324C7	Normal	0.5
592-602816	3/26/2024	18:06	Readings	PID	SC23030324C7	Normal	0.4
592-602816	3/26/2024	18:05	Readings	PID	SC23030324C7	Normal	0.4
592-602816	3/26/2024	18:04	Readings	PID	SC23030324C7	Normal	0.4
592-602816	3/26/2024	18:03	Readings	PID	SC23030324C7	Normal	0.4
592-602816	3/26/2024	18:02	Readings	PID	SC23030324C7	Normal	0.4
592-602816	3/26/2024	18:01	Readings	PID	SC23030324C7	Normal	0.5
592-602816	3/26/2024	18:00	Readings	PID	SC23030324C7	Normal	0.5
592-602816	3/26/2024	17:59	Readings	PID	SC23030324C7	Normal	0.4
592-602816	3/26/2024	17:58	Readings	PID	SC23030324C7	Normal	0.5
592-602816	3/26/2024	17:57	Readings	PID	SC23030324C7	Normal	0.6
592-602816	3/26/2024	17:56	Readings	PID	SC23030324C7	Normal	0.5
592-602816	3/26/2024	17:55	Readings	PID	SC23030324C7	Normal	0.6
592-602816	3/26/2024	17:54	Readings	PID	SC23030324C7	Normal	0.4
592-602816	3/26/2024	17:53	Readings	PID	SC23030324C7	Normal	0.5
592-602816	3/26/2024	17:52	Readings	PID	SC23030324C7	Normal	0.5

592-602816	3/26/2024	17:51 Readings	PID	SC23030324C7	Normal	0.3
592-602816	3/26/2024	17:50 Readings	PID	SC23030324C7	Normal	0.4
592-602816	3/26/2024	17:49 Readings	PID	SC23030324C7	Normal	0.6
592-602816	3/26/2024	17:48 Readings	PID	SC23030324C7	Normal	0.3
592-602816	3/26/2024	17:47 Readings	PID	SC23030324C7	Normal	0.5
592-602816	3/26/2024	17:46 Readings	PID	SC23030324C7	Normal	0.5
592-602816	3/26/2024	17:45 Readings	PID	SC23030324C7	Normal	0.6
592-602816	3/26/2024	17:44 Readings	PID	SC23030324C7	Normal	0.6
592-602816	3/26/2024	17:43 Readings	PID	SC23030324C7	Normal	0.5
592-602816	3/26/2024	17:42 Readings	PID	SC23030324C7	Normal	0.6
592-602816	3/26/2024	17:41 Readings	PID	SC23030324C7	Normal	0.5
592-602816	3/26/2024	17:40 Readings	PID	SC23030324C7	Normal	1
592-602816	3/26/2024	17:39 Readings	PID	SC23030324C7	Normal	0.7
592-602816	3/26/2024	17:38 Readings	PID	SC23030324C7	Normal	0.7
592-602816	3/26/2024	17:37 Readings	PID	SC23030324C7	Normal	0.5
592-602816	3/26/2024	17:36 Readings	PID	SC23030324C7	Normal	0.5
592-602816	3/26/2024	17:35 Readings	PID	SC23030324C7	Normal	0.6
592-602816	3/26/2024	17:34 Readings	PID	SC23030324C7	Normal	0.7
592-602816	3/26/2024	17:33 Readings	PID	SC23030324C7	Normal	0.5
592-602816	3/26/2024	17:32 Readings	PID	SC23030324C7	Normal	0.5
592-602816	3/26/2024	17:31 Readings	PID	SC23030324C7	Normal	0.4
592-602816	3/26/2024	17:30 Readings	PID	SC23030324C7	Normal	0.6
592-602816	3/26/2024	17:29 Readings	PID	SC23030324C7	Normal	0.4
592-602816	3/26/2024	17:28 Readings	PID	SC23030324C7	Normal	0.3
592-602816	3/26/2024	17:27 Readings	PID	SC23030324C7	Normal	0.3
592-602816	3/26/2024	17:26 Readings	PID	SC23030324C7	Normal	0.3
592-602816	3/26/2024	17:25 Readings	PID	SC23030324C7	Normal	0.1
592-602816	3/26/2024	17:24 Readings	PID	SC23030324C7	Normal	0.1
592-602816	3/26/2024	17:23 Readings	PID	SC23030324C7	Normal	0.1
592-602816	3/26/2024	17:22 Readings	PID	SC23030324C7	Normal	0
592-602816	3/26/2024	17:21 Readings	PID	SC23030324C7	Normal	0.1
592-602816	3/26/2024	17:20 Readings	PID	SC23030324C7	Normal	0.1
592-602816	3/26/2024	17:19 Readings	PID	SC23030324C7	Normal	0



592-602816	3/26/2024	17:18 Readings	PID	SC23030324C7	Normal	0.1
592-602816	3/26/2024	17:17 Readings	PID	SC23030324C7	Normal	0.1
592-602816	3/26/2024	17:16 Readings	PID	SC23030324C7	Normal	0.1
592-602816	3/26/2024	17:15 Readings	PID	SC23030324C7	Normal	0.1
592-602816	3/26/2024	17:14 Readings	PID	SC23030324C7	Normal	0.1
592-602816	3/26/2024	17:13 Readings	PID	SC23030324C7	Normal	0.1
592-602816	3/26/2024	17:12 Readings	PID	SC23030324C7	Normal	0.1
592-602816	3/26/2024	17:11 Readings	PID	SC23030324C7	Normal	0.1
592-602816	3/26/2024	17:10 Readings	PID	SC23030324C7	Normal	0.2
592-602816	3/26/2024	17:09 Readings	PID	SC23030324C7	Normal	0.2
592-602816	3/26/2024	17:08 Readings	PID	SC23030324C7	Normal	0.1
592-602816	3/26/2024	17:07 Readings	PID	SC23030324C7	Normal	0.2
592-602816	3/26/2024	17:06 Readings	PID	SC23030324C7	Normal	0.2
592-602816	3/26/2024	17:05 Readings	PID	SC23030324C7	Normal	0.3
592-602816	3/26/2024	17:04 Readings	PID	SC23030324C7	Normal	0.2
592-602816	3/26/2024	17:03 Readings	PID	SC23030324C7	Normal	0.3
592-602816	3/26/2024	17:02 Readings	PID	SC23030324C7	Normal	0.1
592-602816	3/26/2024	17:01 Readings	PID	SC23030324C7	Normal	0.1
592-602816	3/26/2024	17:00 Readings	PID	SC23030324C7	Normal	0.1
592-602816	3/26/2024	16:59 Readings	PID	SC23030324C7	Normal	0.2
592-602816	3/26/2024	16:58 Readings	PID	SC23030324C7	Normal	0.2
592-602816	3/26/2024	16:57 Readings	PID	SC23030324C7	Normal	0.2
592-602816	3/26/2024	16:56 Readings	PID	SC23030324C7	Normal	0.1
592-602816	3/26/2024	16:55 Readings	PID	SC23030324C7	Normal	0.1
592-602816	3/26/2024	16:54 Readings	PID	SC23030324C7	Normal	0.1
592-602816	3/26/2024	16:53 Readings	PID	SC23030324C7	Normal	0.1
592-602816	3/26/2024	16:52 Readings	PID	SC23030324C7	Normal	0.3
592-602816	3/26/2024	16:51 Readings	PID	SC23030324C7	Normal	0.1
592-602816	3/26/2024	16:50 Readings	PID	SC23030324C7	Normal	0.1
592-602816	3/26/2024	16:49 Readings	PID	SC23030324C7	Normal	0.1
592-602816	3/26/2024	16:48 Readings	PID	SC23030324C7	Normal	0
592-602816	3/26/2024	16:47 Readings	PID	SC23030324C7	Normal	0
592-602816	3/26/2024	16:46 Readings	PID	SC23030324C7	Normal	0

592-602816	3/26/2024	16:45 Readings	PID	SC23030324C7	Normal	0.1
592-602816	3/26/2024	16:44 Readings	PID	SC23030324C7	Normal	0.1
592-602816	3/26/2024	16:43 Readings	PID	SC23030324C7	Normal	0.1
592-602816	3/26/2024	16:42 Readings	PID	SC23030324C7	Normal	0.3
592-602816	3/26/2024	16:41 Readings	PID	SC23030324C7	Normal	0.1
592-602816	3/26/2024	16:40 Readings	PID	SC23030324C7	Normal	0.1
592-602816	3/26/2024	16:39 Readings	PID	SC23030324C7	Normal	0.2
592-602816	3/26/2024	16:38 Readings	PID	SC23030324C7	Normal	0.3
592-602816	3/26/2024	16:37 Readings	PID	SC23030324C7	Normal	0.1
592-602816	3/26/2024	16:36 Readings	PID	SC23030324C7	Normal	0.1
592-602816	3/26/2024	16:35 Readings	PID	SC23030324C7	Normal	0.1
592-602816	3/26/2024	16:34 Readings	PID	SC23030324C7	Normal	0.3
592-602816	3/26/2024	16:33 Readings	PID	SC23030324C7	Normal	0.3
592-602816	3/26/2024	16:32 Readings	PID	SC23030324C7	Normal	0.1
592-602816	3/26/2024	16:31 Readings	PID	SC23030324C7	Normal	0.1
592-602816	3/26/2024	16:30 Readings	PID	SC23030324C7	Normal	0.1
592-602816	3/26/2024	16:29 Readings	PID	SC23030324C7	Normal	0.1
592-602816	3/26/2024	16:28 Readings	PID	SC23030324C7	Normal	0.1
592-602816	3/26/2024	16:27 Readings	PID	SC23030324C7	Normal	0.1
592-602816	3/26/2024	16:26 Readings	PID	SC23030324C7	Normal	0.1
592-602816	3/26/2024	16:25 Readings	PID	SC23030324C7	Normal	0.1
592-602816	3/26/2024	16:24 Readings	PID	SC23030324C7	Normal	0.1
592-602816	3/26/2024	16:23 Readings	PID	SC23030324C7	Normal	0.1
592-602816	3/26/2024	16:22 Readings	PID	SC23030324C7	Normal	0.1
592-602816	3/26/2024	16:21 Readings	PID	SC23030324C7	Normal	0.1
592-602816	3/26/2024	16:20 Readings	PID	SC23030324C7	Normal	0.1
592-602816	3/26/2024	16:19 Readings	PID	SC23030324C7	Normal	0.1
592-602816	3/26/2024	16:18 Readings	PID	SC23030324C7	Normal	0.1
592-602816	3/26/2024	16:17 Readings	PID	SC23030324C7	Normal	0.1
592-602816	3/26/2024	16:16 Readings	PID	SC23030324C7	Normal	0
592-602816	3/26/2024	16:15 Readings	PID	SC23030324C7	Normal	0
592-602816	3/26/2024	16:14 Readings	PID	SC23030324C7	Normal	0.1
592-602816	3/26/2024	16:13 Readings	PID	SC23030324C7	Normal	0.1

592-602816	3/26/2024	16:12 Readings	PID	SC23030324C7	Normal	0.1
592-602816	3/26/2024	16:11 Readings	PID	SC23030324C7	Normal	0.1
592-602816	3/26/2024	16:10 Readings	PID	SC23030324C7	Normal	0.1
592-602816	3/26/2024	16:09 Readings	PID	SC23030324C7	Normal	0.1
592-602816	3/26/2024	16:08 Readings	PID	SC23030324C7	Normal	0.2
592-602816	3/26/2024	16:07 Readings	PID	SC23030324C7	Normal	0.6
592-602816	3/26/2024	16:06 Readings	PID	SC23030324C7	Normal	0.4
592-602816	3/26/2024	16:05 Readings	PID	SC23030324C7	Normal	0.1
592-602816	3/26/2024	16:04 Readings	PID	SC23030324C7	Normal	0.1
592-602816	3/26/2024	16:03 Readings	PID	SC23030324C7	Normal	0.1
592-602816	3/26/2024	16:02 Readings	PID	SC23030324C7	Normal	0.1
592-602816	3/26/2024	16:01 Readings	PID	SC23030324C7	Normal	0.1
592-602816	3/26/2024	16:00 Readings	PID	SC23030324C7	Normal	0.1
592-602816	3/26/2024	15:59 Readings	PID	SC23030324C7	Normal	0.1
592-602816	3/26/2024	15:58 Readings	PID	SC23030324C7	Normal	0.1
592-602816	3/26/2024	15:57 Readings	PID	SC23030324C7	Normal	0.1
592-602816	3/26/2024	15:56 Readings	PID	SC23030324C7	Normal	0.1
592-602816	3/26/2024	15:55 Readings	PID	SC23030324C7	Normal	0.1
592-602816	3/26/2024	15:54 Readings	PID	SC23030324C7	Normal	0.1
592-602816	3/26/2024	15:53 Readings	PID	SC23030324C7	Normal	0.1
592-602816	3/26/2024	15:52 Readings	PID	SC23030324C7	Normal	0.1
592-602816	3/26/2024	15:51 Readings	PID	SC23030324C7	Normal	0.1
592-602816	3/26/2024	15:50 Readings	PID	SC23030324C7	Normal	0.1
592-602816	3/26/2024	15:49 Readings	PID	SC23030324C7	Normal	0.1
592-602816	3/26/2024	15:48 Readings	PID	SC23030324C7	Normal	0.1
592-602816	3/26/2024	15:47 Readings	PID	SC23030324C7	Normal	0.1
592-602816	3/26/2024	15:46 Readings	PID	SC23030324C7	Normal	0.1
592-602816	3/26/2024	15:45 Readings	PID	SC23030324C7	Normal	0.2
592-602816	3/26/2024	15:44 Readings	PID	SC23030324C7	Normal	0.2
592-602816	3/26/2024	15:43 Readings	PID	SC23030324C7	Normal	0.1
592-602816	3/26/2024	15:42 Readings	PID	SC23030324C7	Normal	0.1
592-602816	3/26/2024	15:41 Readings	PID	SC23030324C7	Normal	0.1
592-602816	3/26/2024	15:40 Readings	PID	SC23030324C7	Normal	0.1

592-602816	3/26/2024	15:39 Readings	PID	SC23030324C7	Normal	0.1
592-602816	3/26/2024	15:38 Readings	PID	SC23030324C7	Normal	0.1
592-602816	3/26/2024	15:37 Readings	PID	SC23030324C7	Normal	0.1
592-602816	3/26/2024	15:36 Readings	PID	SC23030324C7	Normal	0.2
592-602816	3/26/2024	15:35 Readings	PID	SC23030324C7	Normal	0.1
592-602816	3/26/2024	15:34 Readings	PID	SC23030324C7	Normal	0.1
592-602816	3/26/2024	15:33 Readings	PID	SC23030324C7	Normal	0.1
592-602816	3/26/2024	15:32 Readings	PID	SC23030324C7	Normal	0.2
592-602816	3/26/2024	15:31 Readings	PID	SC23030324C7	Normal	0.2
592-602816	3/26/2024	15:30 Readings	PID	SC23030324C7	Normal	0.3
592-602816	3/26/2024	15:29 Readings	PID	SC23030324C7	Normal	0.2
592-602816	3/26/2024	15:28 Readings	PID	SC23030324C7	Normal	0.2
592-602816	3/26/2024	15:27 Readings	PID	SC23030324C7	Normal	0
592-602816	3/26/2024	15:26 Readings	PID	SC23030324C7	Normal	0
592-602816	3/26/2024	15:25 Readings	PID	SC23030324C7	Normal	0
592-602816	3/26/2024	15:24 Readings	PID	SC23030324C7	Normal	0.1
592-602816	3/26/2024	15:23 Readings	PID	SC23030324C7	Normal	0.1
592-602816	3/26/2024	15:22 Readings	PID	SC23030324C7	Normal	0.1
592-602816	3/26/2024	15:21 Readings	PID	SC23030324C7	Normal	0.1
592-602816	3/26/2024	15:20 Readings	PID	SC23030324C7	Normal	0.1
592-602816	3/26/2024	15:19 Readings	PID	SC23030324C7	Normal	0
592-602816	3/26/2024	15:18 Readings	PID	SC23030324C7	Normal	0
592-602816	3/26/2024	15:17 Readings	PID	SC23030324C7	Normal	0.1
592-602816	3/26/2024	15:16 Readings	PID	SC23030324C7	Normal	0.1
592-602816	3/26/2024	15:15 Readings	PID	SC23030324C7	Normal	0.1
592-602816	3/26/2024	15:14 Readings	PID	SC23030324C7	Normal	0.1
592-602816	3/26/2024	15:13 Readings	PID	SC23030324C7	Normal	0.1
592-602816	3/26/2024	15:12 Readings	PID	SC23030324C7	Normal	0.1
592-602816	3/26/2024	15:11 Readings	PID	SC23030324C7	Normal	0.1
592-602816	3/26/2024	15:10 Readings	PID	SC23030324C7	Normal	0.1
592-602816	3/26/2024	15:09 Readings	PID	SC23030324C7	Normal	0.1
592-602816	3/26/2024	15:08 Readings	PID	SC23030324C7	Normal	0.1
592-602816	3/26/2024	15:07 Readings	PID	SC23030324C7	Normal	0.2

592-602816	3/26/2024	15:06 Readings	PID	SC23030324C7	Normal	0.1
592-602816	3/26/2024	15:05 Readings	PID	SC23030324C7	Normal	0.1
592-602816	3/26/2024	15:04 Readings	PID	SC23030324C7	Normal	0.1
592-602816	3/26/2024	15:03 Readings	PID	SC23030324C7	Normal	0.1
592-602816	3/26/2024	15:02 Readings	PID	SC23030324C7	Normal	0.1
592-602816	3/26/2024	15:01 Readings	PID	SC23030324C7	Normal	0.1
592-602816	3/26/2024	15:00 Readings	PID	SC23030324C7	Normal	0.1
592-602816	3/26/2024	14:59 Readings	PID	SC23030324C7	Normal	0.1
592-602816	3/26/2024	14:58 Readings	PID	SC23030324C7	Normal	0.1
592-602816	3/26/2024	14:57 Readings	PID	SC23030324C7	Normal	0.1
592-602816	3/26/2024	14:56 Readings	PID	SC23030324C7	Normal	0.1
592-602816	3/26/2024	14:55 Readings	PID	SC23030324C7	Normal	0.1
592-602816	3/26/2024	14:54 Readings	PID	SC23030324C7	Normal	0.1
592-602816	3/26/2024	14:53 Readings	PID	SC23030324C7	Normal	0.1
592-602816	3/26/2024	14:52 Readings	PID	SC23030324C7	Normal	0.2
592-602816	3/26/2024	14:51 Readings	PID	SC23030324C7	Normal	0.2
592-602816	3/26/2024	14:50 Readings	PID	SC23030324C7	Normal	0.2
592-602816	3/26/2024	14:49 Readings	PID	SC23030324C7	Normal	0.3
592-602816	3/26/2024	14:48 Readings	PID	SC23030324C7	Normal	0.5
592-602816	3/26/2024	14:47 Readings	PID	SC23030324C7	Normal	0.5
592-602816	3/26/2024	14:46 Readings	PID	SC23030324C7	Normal	0.3
592-602816	3/26/2024	14:45 Readings	PID	SC23030324C7	Normal	0.1
592-602816	3/26/2024	14:44 Readings	PID	SC23030324C7	Normal	0.1
592-602816	3/26/2024	14:43 Readings	PID	SC23030324C7	Normal	0.2
592-602816	3/26/2024	14:42 Readings	PID	SC23030324C7	Normal	0.2
592-602816	3/26/2024	14:41 Readings	PID	SC23030324C7	Normal	0.1
592-602816	3/26/2024	14:40 Readings	PID	SC23030324C7	Normal	0.1
592-602816	3/26/2024	14:39 Readings	PID	SC23030324C7	Normal	0.1
592-602816	3/26/2024	14:38 Readings	PID	SC23030324C7	Normal	0.1
592-602816	3/26/2024	14:37 Readings	PID	SC23030324C7	Normal	0.1
592-602816	3/26/2024	14:36 Readings	PID	SC23030324C7	Normal	0.1
592-602816	3/26/2024	14:35 Readings	PID	SC23030324C7	Normal	0.2
592-602816	3/26/2024	14:34 Readings	PID	SC23030324C7	Normal	0.3



592-602816	3/26/2024	14:00 Readings	PID	SC23030324C7	Normal	0.9
592-602816	3/26/2024	13:59 Readings	PID	SC23030324C7	Normal	0.1
592-602816	3/26/2024	13:58 Readings	PID	SC23030324C7	Normal	0.1
592-602816	3/26/2024	13:57 Readings	PID	SC23030324C7	Normal	0.1
592-602816	3/26/2024	13:56 Readings	PID	SC23030324C7	Normal	0.3
592-602816	3/26/2024	13:55 Readings	PID	SC23030324C7	Normal	0.4
592-602816	3/26/2024	13:54 Readings	PID	SC23030324C7	Normal	0.3
592-602816	3/26/2024	13:53 Readings	PID	SC23030324C7	Normal	0.3
592-602816	3/26/2024	13:52 Readings	PID	SC23030324C7	Normal	0.2
592-602816	3/26/2024	13:51 Readings	PID	SC23030324C7	Normal	0.6
592-602816	3/26/2024	13:50 Readings	PID	SC23030324C7	Normal	0.4
592-602816	3/26/2024	13:49 Readings	PID	SC23030324C7	Normal	0.2
592-602816	3/26/2024	13:48 Readings	PID	SC23030324C7	Normal	0.2
592-602816	3/26/2024	13:47 Readings	PID	SC23030324C7	Normal	0.4
592-602816	3/26/2024	13:46 Readings	PID	SC23030324C7	Normal	0.2
592-602816	3/26/2024	13:45 Readings	PID	SC23030324C7	Normal	0.3
592-602816	3/26/2024	13:44 Readings	PID	SC23030324C7	Normal	0.3
592-602816	3/26/2024	13:43 Readings	PID	SC23030324C7	Normal	0.3
592-602816	3/26/2024	13:42 Readings	PID	SC23030324C7	Normal	0.6
592-602816	3/26/2024	13:41 Readings	PID	SC23030324C7	Normal	1.2
592-602816	3/26/2024	13:40 Readings	PID	SC23030324C7	Normal	1.4
592-602816	3/26/2024	13:39 Readings	PID	SC23030324C7	Normal	2.3
592-602816	3/26/2024	13:38 Readings	PID	SC23030324C7	Normal	0.1
592-602816	3/26/2024	13:37 Readings	PID	SC23030324C7	Normal	0.1
592-602816	3/26/2024	13:36 Readings	PID	SC23030324C7	Normal	0.1
592-602816	3/26/2024	13:35 Readings	PID	SC23030324C7	Normal	0
592-602816	3/26/2024	13:34 Readings	PID	SC23030324C7	Normal	0.1
592-602816	3/26/2024	13:33 Readings	PID	SC23030324C7	Normal	0.1
592-602816	3/26/2024	13:32 Readings	PID	SC23030324C7	Normal	0.1
592-602816	3/26/2024	13:31 Readings	PID	SC23030324C7	Normal	0.1
592-602816	3/26/2024	13:30 Readings	PID	SC23030324C7	Normal	0.1
592-602816	3/26/2024	13:29 Readings	PID	SC23030324C7	Normal	0.2
592-602816	3/26/2024	13:28 Readings	PID	SC23030324C7	Normal	0

592-602816	3/26/2024	13:27 Readings	PID	SC23030324C7	Normal	0.1
592-602816	3/26/2024	13:26 Readings	PID	SC23030324C7	Normal	0.2
592-602816	3/26/2024	13:25 Readings	PID	SC23030324C7	Normal	0.2
592-602816	3/26/2024	13:24 Readings	PID	SC23030324C7	Normal	0.1
592-602816	3/26/2024	13:23 Readings	PID	SC23030324C7	Normal	0.2
592-602816	3/26/2024	13:22 Readings	PID	SC23030324C7	Normal	0.3
592-602816	3/26/2024	13:21 Readings	PID	SC23030324C7	Normal	0.6
592-602816	3/26/2024	13:20 Readings	PID	SC23030324C7	Normal	0.4
592-602816	3/26/2024	13:19 Readings	PID	SC23030324C7	Normal	0.2
592-602816	3/26/2024	13:18 Readings	PID	SC23030324C7	Normal	0.4
592-602816	3/26/2024	13:17 Readings	PID	SC23030324C7	Normal	0.2
592-602816	3/26/2024	13:16 Readings	PID	SC23030324C7	Normal	0.3
592-602816	3/26/2024	13:15 Readings	PID	SC23030324C7	Normal	0.1
592-602816	3/26/2024	13:14 Readings	PID	SC23030324C7	Normal	0.3
592-602816	3/26/2024	13:13 Readings	PID	SC23030324C7	Normal	0.4
592-602816	3/26/2024	13:12 Readings	PID	SC23030324C7	Normal	1.7
592-602816	3/26/2024	13:11 Readings	PID	SC23030324C7	Normal	0.1
592-602816	3/26/2024	13:10 Readings	PID	SC23030324C7	Normal	0
592-602816	3/26/2024	13:09 Readings	PID	SC23030324C7	Normal	0
592-602816	3/26/2024	13:08 Readings	PID	SC23030324C7	Normal	0
592-602816	3/26/2024	13:07 Readings	PID	SC23030324C7	Normal	0
592-602816	3/26/2024	13:06 Readings	PID	SC23030324C7	Normal	0
592-602816	3/26/2024	13:05 Readings	PID	SC23030324C7	Normal	0
592-602816	3/26/2024	13:04 Readings	PID	SC23030324C7	Normal	0
592-602816	3/26/2024	13:03 Readings	PID	SC23030324C7	Normal	0
592-602816	3/26/2024	13:02 Readings	PID	SC23030324C7	Normal	0
592-602816	3/26/2024	13:01 Readings	PID	SC23030324C7	Normal	0
592-602816	3/26/2024	13:00 Readings	PID	SC23030324C7	Normal	0
592-602816	3/26/2024	12:59 Readings	PID	SC23030324C7	Normal	0
592-602816	3/26/2024	12:58 Readings	PID	SC23030324C7	Normal	0
592-602816	3/26/2024	12:57 Readings	PID	SC23030324C7	Normal	0
592-602816	3/26/2024	12:56 Readings	PID	SC23030324C7	Normal	0
592-602816	3/26/2024	12:55 Readings	PID	SC23030324C7	Normal	0



592-602816	3/26/2024	12:54	Readings	PID	SC23030324C7	Normal	0
592-602816	3/26/2024	12:53	Readings	PID	SC23030324C7	Normal	0.1
592-602816	3/26/2024	12:52	Readings	PID	SC23030324C7	Normal	0
592-602816	3/26/2024	12:51	Readings	PID	SC23030324C7	Normal	0.1
592-602816	3/26/2024	12:50	Readings	PID	SC23030324C7	Normal	0.1
592-602816	3/26/2024	12:49	Readings	PID	SC23030324C7	Normal	0.1
592-602816	3/26/2024	12:48	Readings	PID	SC23030324C7	Normal	0.1
592-602816	3/26/2024	12:47	Readings	PID	SC23030324C7	Normal	0.1
592-602816	3/26/2024	12:46	Readings	PID	SC23030324C7	Normal	0.1
592-602816	3/26/2024	12:45	Readings	PID	SC23030324C7	Normal	0.1
592-602816	3/26/2024	12:44	Readings	PID	SC23030324C7	Normal	0.1
592-602816	3/26/2024	12:43	Readings	PID	SC23030324C7	Normal	0
592-602816	3/26/2024	12:42	Readings	PID	SC23030324C7	Normal	0
592-602816	3/26/2024	12:41	Readings	PID	SC23030324C7	Normal	0
592-602816	3/26/2024	12:40	Readings	PID	SC23030324C7	Normal	0
592-602816	3/26/2024	12:39	Readings	PID	SC23030324C7	Normal	0
592-602816	3/26/2024	12:38	Readings	PID	SC23030324C7	Normal	0
592-602816	3/26/2024	12:37	Readings	PID	SC23030324C7	Normal	0.2
592-602816	3/26/2024	12:36	Readings	PID	SC23030324C7	Normal	0.2
592-602816	3/26/2024	12:35	Readings	PID	SC23030324C7	Normal	0.2
592-602816	3/26/2024	12:34	Readings	PID	SC23030324C7	Normal	0.6
592-602816	3/26/2024	12:33	Readings	PID	SC23030324C7	Normal	0.2
592-602816	3/26/2024	12:32	Readings	PID	SC23030324C7	Normal	0.9
592-602816	3/26/2024	12:31	Readings	PID	SC23030324C7	Normal	0.1
592-602816	3/26/2024	12:30	Readings	PID	SC23030324C7	Normal	0.7
592-602816	3/26/2024	12:29	Readings	PID	SC23030324C7	Normal	2
592-602816	3/26/2024	12:28	Readings	PID	SC23030324C7	Normal	0
592-602816	3/26/2024	12:27	Readings	PID	SC23030324C7	Normal	0
592-602816	3/26/2024	12:26	Readings	PID	SC23030324C7	Normal	0
592-602816	3/26/2024	12:25	Readings	PID	SC23030324C7	Normal	0.1
592-602816	3/26/2024	12:24	Readings	PID	SC23030324C7	Normal	0.1
592-602816	3/26/2024	12:23	Readings	PID	SC23030324C7	Normal	0
592-602816	3/26/2024	12:22	Readings	PID	SC23030324C7	Normal	0

592-602816	3/26/2024	12:21 Readings	PID	SC23030324C7	Normal	0
592-602816	3/26/2024	12:20 Readings	PID	SC23030324C7	Normal	0
592-602816	3/26/2024	12:19 Readings	PID	SC23030324C7	Normal	0
592-602816	3/26/2024	12:18 Readings	PID	SC23030324C7	Normal	0
592-602816	3/26/2024	12:17 Readings	PID	SC23030324C7	Normal	0.1
592-602816	3/26/2024	12:16 Readings	PID	SC23030324C7	Normal	0.1
592-602816	3/26/2024	12:15 Readings	PID	SC23030324C7	Normal	0.2
592-602816	3/26/2024	12:14 Readings	PID	SC23030324C7	Normal	0.2
592-602816	3/26/2024	12:13 Readings	PID	SC23030324C7	Normal	0
592-602816	3/26/2024	12:12 Readings	PID	SC23030324C7	Normal	0
592-602816	3/26/2024	12:11 Readings	PID	SC23030324C7	Normal	0
592-602816	3/26/2024	12:10 Readings	PID	SC23030324C7	Normal	0
592-602816	3/26/2024	12:09 Readings	PID	SC23030324C7	Normal	0
592-602816	3/26/2024	12:08 Readings	PID	SC23030324C7	Normal	0
592-602816	3/26/2024	12:07 Readings	PID	SC23030324C7	Normal	0
592-602816	3/26/2024	12:06 Readings	PID	SC23030324C7	Normal	0.2
592-602816	3/26/2024	12:05 Readings	PID	SC23030324C7	Normal	0.1
592-602816	3/26/2024	12:04 Readings	PID	SC23030324C7	Normal	0.2
592-602816	3/26/2024	12:03 Readings	PID	SC23030324C7	Normal	0.1
592-602816	3/26/2024	12:02 Readings	PID	SC23030324C7	Normal	0.2
592-602816	3/26/2024	12:01 Readings	PID	SC23030324C7	Normal	0.1
592-602816	3/26/2024	12:00 Readings	PID	SC23030324C7	Normal	0.1
592-602816	3/26/2024	11:59 Readings	PID	SC23030324C7	Normal	0.1
592-602816	3/26/2024	11:58 Readings	PID	SC23030324C7	Normal	0.2
592-602816	3/26/2024	11:57 Readings	PID	SC23030324C7	Normal	1.5
592-602816	3/26/2024	11:56 Readings	PID	SC23030324C7	Normal	0.8
592-602816	3/26/2024	11:55 Readings	PID	SC23030324C7	Normal	1.1
592-602816	3/26/2024	11:54 Readings	PID	SC23030324C7	Normal	0
592-602816	3/26/2024	11:53 Readings	PID	SC23030324C7	Normal	0.1
592-602816	3/26/2024	11:52 Readings	PID	SC23030324C7	Normal	0.1
592-602816	3/26/2024	11:51 Readings	PID	SC23030324C7	Normal	0.1
592-602816	3/26/2024	11:50 Readings	PID	SC23030324C7	Normal	0.2
592-602816	3/26/2024	11:49 Readings	PID	SC23030324C7	Normal	0.2



592-602816	3/26/2024	11:15 Readings	PID	SC23030324C7	Normal	0.2
592-602816	3/26/2024	11:14 Readings	PID	SC23030324C7	Normal	0.2
592-602816	3/26/2024	11:13 Readings	PID	SC23030324C7	Normal	0.1
592-602816	3/26/2024	11:12 Readings	PID	SC23030324C7	Normal	0.2
592-602816	3/26/2024	11:11 Readings	PID	SC23030324C7	Normal	0.2
592-602816	3/26/2024	11:10 Readings	PID	SC23030324C7	Normal	0.2
592-602816	3/26/2024	11:09 Readings	PID	SC23030324C7	Normal	0.2
592-602816	3/26/2024	11:08 Readings	PID	SC23030324C7	Normal	0.2
592-602816	3/26/2024	11:07 Readings	PID	SC23030324C7	Normal	0.2
592-602816	3/26/2024	11:06 Readings	PID	SC23030324C7	Normal	0.2
592-602816	3/26/2024	11:05 Readings	PID	SC23030324C7	Normal	0.2
592-602816	3/26/2024	11:04 Readings	PID	SC23030324C7	Normal	0.1
592-602816	3/26/2024	11:03 Readings	PID	SC23030324C7	Normal	0.1
592-602816	3/26/2024	11:02 Readings	PID	SC23030324C7	Normal	0.2
592-602816	3/26/2024	11:01 Readings	PID	SC23030324C7	Normal	0.2
592-602816	3/26/2024	11:00 Readings	PID	SC23030324C7	Normal	0.2
592-602816	3/26/2024	10:59 Readings	PID	SC23030324C7	Normal	0.2
592-602816	3/26/2024	10:58 Readings	PID	SC23030324C7	Normal	0.2
592-602816	3/26/2024	10:57 Readings	PID	SC23030324C7	Normal	0.2
592-602816	3/26/2024	10:56 Readings	PID	SC23030324C7	Normal	0.2
592-602816	3/26/2024	10:55 Readings	PID	SC23030324C7	Normal	0.2
592-602816	3/26/2024	10:54 Readings	PID	SC23030324C7	Normal	0.2
592-602816	3/26/2024	10:53 Readings	PID	SC23030324C7	Normal	0.3
592-602816	3/26/2024	10:52 Readings	PID	SC23030324C7	Normal	0.2
592-602816	3/26/2024	10:51 Readings	PID	SC23030324C7	Normal	0.2
592-602816	3/26/2024	10:50 Readings	PID	SC23030324C7	Normal	0.2
592-602816	3/26/2024	10:49 Readings	PID	SC23030324C7	Normal	0.2
592-602816	3/26/2024	10:48 Readings	PID	SC23030324C7	Normal	0.2
592-602816	3/26/2024	10:47 Readings	PID	SC23030324C7	Normal	0.2
592-602816	3/26/2024	10:46 Readings	PID	SC23030324C7	Normal	0.2
592-602816	3/26/2024	10:45 Readings	PID	SC23030324C7	Normal	0.2
592-602816	3/26/2024	10:44 Readings	PID	SC23030324C7	Normal	0.2
592-602816	3/26/2024	10:43 Readings	PID	SC23030324C7	Normal	0.2



592-602816	3/26/2024	10:09 Readings	PID	SC23030324C7	Normal	0.2
592-602816	3/26/2024	10:08 Readings	PID	SC23030324C7	Normal	0.2
592-602816	3/26/2024	10:07 Readings	PID	SC23030324C7	Normal	0.2
592-602816	3/26/2024	10:06 Readings	PID	SC23030324C7	Normal	0.2
592-602816	3/26/2024	10:05 Readings	PID	SC23030324C7	Normal	0.2
592-602816	3/26/2024	10:04 Readings	PID	SC23030324C7	Normal	0.2
592-602816	3/26/2024	10:03 Readings	PID	SC23030324C7	Normal	0.2
592-602816	3/26/2024	10:02 Readings	PID	SC23030324C7	Normal	0.2
592-602816	3/26/2024	10:01 Readings	PID	SC23030324C7	Normal	0.3
592-602816	3/26/2024	10:00 Readings	PID	SC23030324C7	Normal	0.3
592-602816	3/26/2024	9:59 Readings	PID	SC23030324C7	Normal	0.2
592-602816	3/26/2024	9:58 Readings	PID	SC23030324C7	Normal	0.2
592-602816	3/26/2024	9:57 Readings	PID	SC23030324C7	Normal	0.2
592-602816	3/26/2024	9:56 Readings	PID	SC23030324C7	Normal	0.2
592-602816	3/26/2024	9:55 Readings	PID	SC23030324C7	Normal	0.2
592-602816	3/26/2024	9:54 Readings	PID	SC23030324C7	Normal	0.3
592-602816	3/26/2024	9:53 Readings	PID	SC23030324C7	Normal	0.2
592-602816	3/26/2024	9:52 Readings	PID	SC23030324C7	Normal	0.2
592-602816	3/26/2024	9:51 Readings	PID	SC23030324C7	Normal	0.2
592-602816	3/26/2024	9:50 Readings	PID	SC23030324C7	Normal	0.2
592-602816	3/26/2024	9:49 Readings	PID	SC23030324C7	Normal	0.2
592-602816	3/26/2024	9:48 Readings	PID	SC23030324C7	Normal	0.2
592-602816	3/26/2024	9:47 Readings	PID	SC23030324C7	Normal	0.2
592-602816	3/26/2024	9:46 Readings	PID	SC23030324C7	Normal	0.2
592-602816	3/26/2024	9:45 Readings	PID	SC23030324C7	Normal	0.3
592-602816	3/26/2024	9:44 Readings	PID	SC23030324C7	Normal	0.2
592-602816	3/26/2024	9:43 Readings	PID	SC23030324C7	Normal	0.3
592-602816	3/26/2024	9:42 Readings	PID	SC23030324C7	Normal	0.3
592-602816	3/26/2024	9:41 Readings	PID	SC23030324C7	Normal	0.3
592-602816	3/26/2024	9:40 Readings	PID	SC23030324C7	Normal	0.2
592-602816	3/26/2024	9:39 Readings	PID	SC23030324C7	Normal	0.2
592-602816	3/26/2024	9:38 Readings	PID	SC23030324C7	Normal	0.2
592-602816	3/26/2024	9:37 Readings	PID	SC23030324C7	Normal	0.2

592-602816	3/26/2024	9:36 Readings	PID	SC23030324C7	Normal	0.2
592-602816	3/26/2024	9:35 Readings	PID	SC23030324C7	Normal	0.2
592-602816	3/26/2024	9:34 Readings	PID	SC23030324C7	Normal	0.3
592-602816	3/26/2024	9:33 Readings	PID	SC23030324C7	Normal	0.3
592-602816	3/26/2024	9:32 Readings	PID	SC23030324C7	Normal	0.2
592-602816	3/26/2024	9:31 Readings	PID	SC23030324C7	Normal	0.2
592-602816	3/26/2024	9:30 Readings	PID	SC23030324C7	Normal	0.2
592-602816	3/26/2024	9:29 Readings	PID	SC23030324C7	Normal	0.3
592-602816	3/26/2024	9:28 Readings	PID	SC23030324C7	Normal	0.2
592-602816	3/26/2024	9:27 Readings	PID	SC23030324C7	Normal	0.2
592-602816	3/26/2024	9:26 Readings	PID	SC23030324C7	Normal	0.3
592-602816	3/26/2024	9:25 Readings	PID	SC23030324C7	Normal	0.2
592-602816	3/26/2024	9:24 Readings	PID	SC23030324C7	Normal	0.2
592-602816	3/26/2024	9:23 Readings	PID	SC23030324C7	Normal	0.2
592-602816	3/26/2024	9:22 Readings	PID	SC23030324C7	Normal	0.2
592-602816	3/26/2024	9:21 Readings	PID	SC23030324C7	Normal	0.2
592-602816	3/26/2024	9:20 Readings	PID	SC23030324C7	Normal	0.2
592-602816	3/26/2024	9:19 Readings	PID	SC23030324C7	Normal	0.2
592-602816	3/26/2024	9:18 Readings	PID	SC23030324C7	Normal	0.2
592-602816	3/26/2024	9:17 Readings	PID	SC23030324C7	Normal	0.2
592-602816	3/26/2024	9:16 Readings	PID	SC23030324C7	Normal	0.2
592-602816	3/26/2024	9:15 Readings	PID	SC23030324C7	Normal	0.2
592-602816	3/26/2024	9:14 Readings	PID	SC23030324C7	Normal	0.2
592-602816	3/26/2024	9:13 Readings	PID	SC23030324C7	Normal	0.2
592-602816	3/26/2024	9:12 Readings	PID	SC23030324C7	Normal	0.2
592-602816	3/26/2024	9:11 Readings	PID	SC23030324C7	Normal	0.2
592-602816	3/26/2024	9:10 Readings	PID	SC23030324C7	Normal	0.2
592-602816	3/26/2024	9:09 Readings	PID	SC23030324C7	Normal	0.2
592-602816	3/26/2024	9:08 Readings	PID	SC23030324C7	Normal	0.2
592-602816	3/26/2024	9:07 Readings	PID	SC23030324C7	Normal	0.2
592-602816	3/26/2024	9:06 Readings	PID	SC23030324C7	Normal	0.3
592-602816	3/26/2024	9:05 Readings	PID	SC23030324C7	Normal	1
592-602816	3/26/2024	9:04 Readings	PID	SC23030324C7	Normal	0.2

592-602816	3/26/2024	9:03 Readings	PID	SC23030324C7	Normal	0.2
592-602816	3/26/2024	9:02 Readings	PID	SC23030324C7	Normal	0.2
592-602816	3/26/2024	9:01 Readings	PID	SC23030324C7	Normal	0.2
592-602816	3/26/2024	9:00 Readings	PID	SC23030324C7	Normal	0.3
592-602816	3/26/2024	8:59 Readings	PID	SC23030324C7	Normal	0.4
592-602816	3/26/2024	8:58 Readings	PID	SC23030324C7	Normal	0.2
592-602816	3/26/2024	8:57 Readings	PID	SC23030324C7	Normal	0.3
592-602816	3/26/2024	8:56 Readings	PID	SC23030324C7	Normal	0.3
592-602816	3/26/2024	8:55 Readings	PID	SC23030324C7	Normal	0.4
592-602816	3/26/2024	8:54 Readings	PID	SC23030324C7	Normal	0.3
592-602816	3/26/2024	8:53 Readings	PID	SC23030324C7	Normal	0.2
592-602816	3/26/2024	8:52 Readings	PID	SC23030324C7	Normal	0.2
592-602816	3/26/2024	8:51 Readings	PID	SC23030324C7	Normal	0.2
592-602816	3/26/2024	8:50 Readings	PID	SC23030324C7	Normal	0.2
592-602816	3/26/2024	8:49 Readings	PID	SC23030324C7	Normal	0.2
592-602816	3/26/2024	8:48 Readings	PID	SC23030324C7	Normal	0.2
592-602816	3/26/2024	8:47 Readings	PID	SC23030324C7	Normal	0.2
592-602816	3/26/2024	8:46 Readings	PID	SC23030324C7	Normal	0.3
592-602816	3/26/2024	8:45 Readings	PID	SC23030324C7	Normal	0.3
592-602816	3/26/2024	8:44 Readings	PID	SC23030324C7	Normal	0.3
592-602816	3/26/2024	8:43 Readings	PID	SC23030324C7	Normal	0.4
592-602816	3/26/2024	8:42 Readings	PID	SC23030324C7	Normal	0.2
592-602816	3/26/2024	8:41 Readings	PID	SC23030324C7	Normal	0.1
592-602816	3/26/2024	8:40 Readings	PID	SC23030324C7	Normal	0.2
592-602816	3/26/2024	8:39 Readings	PID	SC23030324C7	Normal	0.1
592-602816	3/26/2024	8:38 Readings	PID	SC23030324C7	Normal	0.2
592-602816	3/26/2024	8:37 Readings	PID	SC23030324C7	Normal	0.2
592-602816	3/26/2024	8:36 Readings	PID	SC23030324C7	Normal	0.2
592-602816	3/26/2024	8:35 Readings	PID	SC23030324C7	Normal	0.2
592-602816	3/26/2024	8:34 Readings	PID	SC23030324C7	Normal	0.2
592-602816	3/26/2024	8:33 Readings	PID	SC23030324C7	Normal	0.2
592-602816	3/26/2024	8:32 Readings	PID	SC23030324C7	Normal	0.2
592-602816	3/26/2024	8:31 Readings	PID	SC23030324C7	Normal	0.2



592-602816	3/26/2024	8:30 Readings	PID	SC23030324C7	Normal	0.2
592-602816	3/26/2024	8:29 Readings	PID	SC23030324C7	Normal	0.1
592-602816	3/26/2024	8:28 Readings	PID	SC23030324C7	Normal	0.2
592-602816	3/26/2024	8:27 Readings	PID	SC23030324C7	Normal	0.2
592-602816	3/26/2024	8:26 Readings	PID	SC23030324C7	Normal	0.2
592-602816	3/26/2024	8:25 Readings	PID	SC23030324C7	Normal	0.2
592-602816	3/26/2024	8:24 Readings	PID	SC23030324C7	Normal	0.2
592-602816	3/26/2024	8:23 Readings	PID	SC23030324C7	Normal	0.2
592-602816	3/26/2024	8:22 Readings	PID	SC23030324C7	Normal	0.2
592-602816	3/26/2024	8:21 Readings	PID	SC23030324C7	Normal	0.2
592-602816	3/26/2024	8:20 Readings	PID	SC23030324C7	Normal	0.2
592-602816	3/26/2024	8:19 Readings	PID	SC23030324C7	Normal	0.2
592-602816	3/26/2024	8:18 Readings	PID	SC23030324C7	Normal	0.2
592-602816	3/26/2024	8:17 Readings	PID	SC23030324C7	Normal	0.2
592-602816	3/26/2024	8:16 Readings	PID	SC23030324C7	Normal	0.2
592-602816	3/26/2024	8:15 Readings	PID	SC23030324C7	Normal	0.2
592-602816	3/26/2024	8:14 Readings	PID	SC23030324C7	Normal	0.2
592-602816	3/26/2024	8:13 Readings	PID	SC23030324C7	Normal	0.1
592-602816	3/26/2024	8:12 Readings	PID	SC23030324C7	Normal	0.2
592-602816	3/26/2024	8:11 Readings	PID	SC23030324C7	Normal	0.3
592-602816	3/26/2024	8:10 Readings	PID	SC23030324C7	Normal	0.2
592-602816	3/26/2024	8:09 Readings	PID	SC23030324C7	Normal	0.2
592-602816	3/26/2024	8:08 Readings	PID	SC23030324C7	Normal	0.2
592-602816	3/26/2024	8:07 Readings	PID	SC23030324C7	Normal	0.2
592-602816	3/26/2024	8:06 Readings	PID	SC23030324C7	Normal	0.2
592-602816	3/26/2024	8:05 Readings	PID	SC23030324C7	Normal	0.1
592-602816	3/26/2024	8:04 Readings	PID	SC23030324C7	Normal	0.2
592-602816	3/26/2024	8:03 Readings	PID	SC23030324C7	Normal	0.3
592-602816	3/26/2024	8:02 Readings	PID	SC23030324C7	Normal	0.2
592-602816	3/26/2024	8:01 Readings	PID	SC23030324C7	Normal	0.2
592-602816	3/26/2024	8:00 Readings	PID	SC23030324C7	Normal	0.1
592-602816	3/26/2024	7:59 Readings	PID	SC23030324C7	Normal	0.2
592-602816	3/26/2024	7:58 Readings	PID	SC23030324C7	Normal	0.2

592-602816	3/26/2024	7:57 Readings	PID	SC23030324C7	Normal	0.1
592-602816	3/26/2024	7:56 Readings	PID	SC23030324C7	Normal	0.1
592-602816	3/26/2024	7:55 Readings	PID	SC23030324C7	Normal	0.1
592-602816	3/26/2024	7:54 Readings	PID	SC23030324C7	Normal	0.1
592-602816	3/26/2024	7:53 Readings	PID	SC23030324C7	Normal	0.1
592-602816	3/26/2024	7:52 Readings	PID	SC23030324C7	Normal	0.1
592-602816	3/26/2024	7:51 Readings	PID	SC23030324C7	Normal	0.2
592-602816	3/26/2024	7:50 Readings	PID	SC23030324C7	Normal	0.1
592-602816	3/26/2024	7:49 Readings	PID	SC23030324C7	Normal	0.1
592-602816	3/26/2024	7:48 Readings	PID	SC23030324C7	Normal	0.1
592-602816	3/26/2024	7:47 Readings	PID	SC23030324C7	Normal	0.1
592-602816	3/26/2024	7:46 Readings	PID	SC23030324C7	Normal	0.1
592-602816	3/26/2024	7:45 Readings	PID	SC23030324C7	Normal	0.2
592-602816	3/26/2024	7:44 Readings	PID	SC23030324C7	Normal	0.2
592-602816	3/26/2024	7:43 Readings	PID	SC23030324C7	Normal	0.2
592-602816	3/26/2024	7:42 Readings	PID	SC23030324C7	Normal	0.2
592-602816	3/26/2024	7:41 Readings	PID	SC23030324C7	Normal	0.1
592-602816	3/26/2024	7:40 Readings	PID	SC23030324C7	Normal	0.2
592-602816	3/26/2024	7:39 Readings	PID	SC23030324C7	Normal	0.2
592-602816	3/26/2024	7:38 Readings	PID	SC23030324C7	Normal	0.1
592-602816	3/26/2024	7:37 Readings	PID	SC23030324C7	Normal	0.1
592-602816	3/26/2024	7:36 Readings	PID	SC23030324C7	Normal	0.1
592-602816	3/26/2024	7:35 Readings	PID	SC23030324C7	Normal	0.1
592-602816	3/26/2024	7:34 Readings	PID	SC23030324C7	Normal	0.1
592-602816	3/26/2024	7:33 Readings	PID	SC23030324C7	Normal	0.1
592-602816	3/26/2024	7:32 Readings	PID	SC23030324C7	Normal	0.1
592-602816	3/26/2024	7:31 Readings	PID	SC23030324C7	Normal	0.3
592-602816	3/26/2024	7:30 Readings	PID	SC23030324C7	Normal	0.3
592-602816	3/26/2024	7:29 Readings	PID	SC23030324C7	Normal	0
592-602816	3/26/2024	7:28 Readings	PID	SC23030324C7	Normal	0
592-602816	3/26/2024	7:27 Readings	PID	SC23030324C7	Normal	0
592-602816	3/26/2024	7:26 Readings	PID	SC23030324C7	Normal	0
592-602816	3/26/2024	7:25 Readings	PID	SC23030324C7	Normal	0

592-602816	3/26/2024	7:24 Readings	PID	SC23030324C7	Normal	0
592-602816	3/26/2024	7:23 Readings	PID	SC23030324C7	Normal	0.1
592-602816	3/26/2024	7:22 Readings	PID	SC23030324C7	Normal	0
592-602816	3/26/2024	7:21 Readings	PID	SC23030324C7	Normal	0
592-602816	3/26/2024	7:20 Readings	PID	SC23030324C7	Normal	0
592-602816	3/26/2024	7:19 Readings	PID	SC23030324C7	Normal	0
592-602816	3/26/2024	7:18 Readings	PID	SC23030324C7	Normal	0
592-602816	3/26/2024	7:17 Readings	PID	SC23030324C7	Normal	0
592-602816	3/26/2024	7:16 Readings	PID	SC23030324C7	Normal	0
592-602816	3/26/2024	7:15 Readings	PID	SC23030324C7	Normal	0
592-602816	3/26/2024	7:14 Readings	PID	SC23030324C7	Normal	0.1
592-602816	3/26/2024	7:13 Readings	PID	SC23030324C7	Normal	0
592-602816	3/26/2024	7:12 Readings	PID	SC23030324C7	Normal	0
592-602816	3/26/2024	7:11 Readings	PID	SC23030324C7	Normal	0
592-602816	3/26/2024	7:10 Readings	PID	SC23030324C7	Normal	0
592-602816	3/26/2024	7:09 Readings	PID	SC23030324C7	Normal	0
592-602816	3/26/2024	7:08 Readings	PID	SC23030324C7	Normal	0
592-602816	3/26/2024	7:07 Readings	PID	SC23030324C7	Normal	0
592-602816	3/26/2024	7:06 Readings	PID	SC23030324C7	Normal	0
592-602816	3/26/2024	7:05 Readings	PID	SC23030324C7	Normal	0
592-602816	3/26/2024	7:04 Readings	PID	SC23030324C7	Normal	0
592-602816	3/26/2024	7:03 Readings	PID	SC23030324C7	Normal	0
592-602816	3/26/2024	7:02 Readings	PID	SC23030324C7	Normal	0
592-602816	3/26/2024	7:01 Readings	PID	SC23030324C7	Normal	0
592-602816	3/26/2024	7:00 Readings	PID	SC23030324C7	Normal	0
592-602816	3/26/2024	6:59 Readings	PID	SC23030324C7	Normal	0
592-602816	3/26/2024	6:58 Readings	PID	SC23030324C7	Normal	0
592-602816	3/26/2024	6:57 Readings	PID	SC23030324C7	Normal	0
592-602816	3/26/2024	6:56 Readings	PID	SC23030324C7	Normal	0
592-602816	3/26/2024	6:55 Readings	PID	SC23030324C7	Normal	0
592-602816	3/26/2024	6:54 Readings	PID	SC23030324C7	Normal	0
592-602816	3/26/2024	6:53 Readings	PID	SC23030324C7	Normal	0
592-602816	3/26/2024	6:52 Readings	PID	SC23030324C7	Normal	0

592-602816	3/26/2024	6:51 Readings	PID	SC23030324C7	Normal	0
592-602816	3/26/2024	6:50 Readings	PID	SC23030324C7	Normal	0
592-602816	3/26/2024	6:49 Readings	PID	SC23030324C7	Normal	0
592-602816	3/26/2024	6:48 Readings	PID	SC23030324C7	Normal	0
592-602816	3/26/2024	6:47 Readings	PID	SC23030324C7	Normal	0
592-602816	3/26/2024	6:46 Readings	PID	SC23030324C7	Normal	0
592-602816	3/26/2024	6:45 Readings	PID	SC23030324C7	Normal	0
592-602816	3/26/2024	6:44 Readings	PID	SC23030324C7	Normal	0
592-602816	3/26/2024	6:43 Readings	PID	SC23030324C7	Normal	0
592-602816	3/26/2024	6:42 Readings	PID	SC23030324C7	Normal	0
592-602816	3/26/2024	6:41 Readings	PID	SC23030324C7	Normal	0
592-602816	3/26/2024	6:40 Readings	PID	SC23030324C7	Normal	0
592-602816	3/26/2024	6:39 Readings	PID	SC23030324C7	Normal	0
592-602816	3/26/2024	6:38 Readings	PID	SC23030324C7	Normal	0
592-602816	3/26/2024	CONFIG	PID	SC23030324C7		

Instrument Name	DustTrak DRX
Model Number	8533
Serial Number	8533181207
Firmware Version	3.1
Calibration Date	6/1/2023
Test Name	MANUAL_008
Test Start Time	6:35:09 AM
Test Start Date	3/26/2024
Test Length [D:H:M]	0:11:53
Test Interval [M:S]	1:00
PM1 Average [mg/m3]	0.023
PM1 Minimum [mg/m3]	0.012
PM1 Maximum [mg/m3]	0.133
PM1 TWA [mg/m3]	0.023
Photometric User Cal	1
Size Correction User Cal	1
Flow User Cal	0
Errors	
Number of Samples	713

Elapsed Time [s]	PM1 [mg/m3]	Alarms	Errors
6:35	0.033		
6:36	0.014		
6:37	0.013		
6:38	0.015		
6:39	0.019		
6:40	0.013		
6:41	0.013		
6:42	0.106		
6:43	0.015		
6:44	0.012		
6:45	0.012		
6:46	0.013		
6:47	0.013		
6:48	0.013		
6:49	0.013		
6:50	0.013		
6:51	0.013		
6:52	0.013		
6:53	0.013		
6:54	0.012		
6:55	0.013		
6:56	0.012		
6:57	0.013		

6:58	0.014
6:59	0.014
7:00	0.014
7:01	0.014
7:02	0.014
7:03	0.023
7:04	0.034
7:05	0.016
7:06	0.016
7:07	0.024
7:08	0.021
7:09	0.018
7:10	0.015
7:11	0.023
7:12	0.016
7:13	0.018
7:14	0.02
7:15	0.014
7:16	0.015
7:17	0.016
7:18	0.018
7:19	0.017
7:20	0.015
7:21	0.018
7:22	0.016
7:23	0.014
7:24	0.019
7:25	0.017
7:26	0.019
7:27	0.017
7:28	0.019
7:29	0.015
7:30	0.015
7:31	0.02
7:32	0.016
7:33	0.018
7:34	0.016
7:35	0.017
7:36	0.018
7:37	0.017
7:38	0.015
7:39	0.016
7:40	0.019
7:41	0.026

7:42	0.029
7:43	0.036
7:44	0.016
7:45	0.016
7:46	0.018
7:47	0.016
7:48	0.016
7:49	0.018
7:50	0.022
7:51	0.018
7:52	0.02
7:53	0.021
7:54	0.019
7:55	0.023
7:56	0.019
7:57	0.023
7:58	0.021
7:59	0.019
8:00	0.018
8:01	0.021
8:02	0.021
8:03	0.016
8:04	0.017
8:05	0.016
8:06	0.018
8:07	0.017
8:08	0.017
8:09	0.019
8:10	0.017
8:11	0.024
8:12	0.021
8:13	0.017
8:14	0.017
8:15	0.016
8:16	0.017
8:17	0.017
8:18	0.016
8:19	0.017
8:20	0.016
8:21	0.016
8:22	0.017
8:23	0.017
8:24	0.017
8:25	0.017

8:26	0.016
8:27	0.017
8:28	0.017
8:29	0.034
8:30	0.025
8:31	0.02
8:32	0.09
8:33	0.118
8:34	0.067
8:35	0.019
8:36	0.026
8:37	0.018
8:38	0.055
8:39	0.12
8:40	0.036
8:41	0.098
8:42	0.05
8:43	0.053
8:44	0.122
8:45	0.084
8:46	0.021
8:47	0.017
8:48	0.017
8:49	0.028
8:50	0.021
8:51	0.02
8:52	0.019
8:53	0.041
8:54	0.017
8:55	0.017
8:56	0.016
8:57	0.018
8:58	0.018
8:59	0.017
9:00	0.043
9:01	0.024
9:02	0.023
9:03	0.02
9:04	0.019
9:05	0.026
9:06	0.047
9:07	0.022
9:08	0.029
9:09	0.025



9:10	0.025
9:11	0.019
9:12	0.019
9:13	0.019
9:14	0.019
9:15	0.018
9:16	0.019
9:17	0.018
9:18	0.021
9:19	0.019
9:20	0.019
9:21	0.019
9:22	0.019
9:23	0.019
9:24	0.017
9:25	0.017
9:26	0.017
9:27	0.016
9:28	0.017
9:29	0.017
9:30	0.017
9:31	0.019
9:32	0.019
9:33	0.024
9:34	0.025
9:35	0.018
9:36	0.019
9:37	0.019
9:38	0.023
9:39	0.018
9:40	0.02
9:41	0.017
9:42	0.018
9:43	0.019
9:44	0.019
9:45	0.03
9:46	0.017
9:47	0.017
9:48	0.016
9:49	0.016
9:50	0.019
9:51	0.016
9:52	0.017
9:53	0.017

9:54	0.016
9:55	0.017
9:56	0.016
9:57	0.016
9:58	0.015
9:59	0.015
10:00	0.015
10:01	0.015
10:02	0.015
10:03	0.016
10:04	0.017
10:05	0.015
10:06	0.015
10:07	0.015
10:08	0.015
10:09	0.014
10:10	0.015
10:11	0.015
10:12	0.016
10:13	0.017
10:14	0.015
10:15	0.017
10:16	0.015
10:17	0.015
10:18	0.015
10:19	0.015
10:20	0.017
10:21	0.015
10:22	0.017
10:23	0.015
10:24	0.017
10:25	0.016
10:26	0.015
10:27	0.017
10:28	0.015
10:29	0.017
10:30	0.016
10:31	0.022
10:32	0.017
10:33	0.019
10:34	0.018
10:35	0.017
10:36	0.017
10:37	0.016

10:38	0.016
10:39	0.016
10:40	0.017
10:41	0.017
10:42	0.017
10:43	0.018
10:44	0.018
10:45	0.017
10:46	0.017
10:47	0.016
10:48	0.018
10:49	0.021
10:50	0.024
10:51	0.015
10:52	0.017
10:53	0.021
10:54	0.028
10:55	0.032
10:56	0.025
10:57	0.046
10:58	0.021
10:59	0.023
11:00	0.049
11:01	0.02
11:02	0.016
11:03	0.019
11:04	0.017
11:05	0.021
11:06	0.019
11:07	0.017
11:08	0.018
11:09	0.018
11:10	0.017
11:11	0.019
11:12	0.018
11:13	0.018
11:14	0.017
11:15	0.018
11:16	0.021
11:17	0.018
11:18	0.017
11:19	0.016
11:20	0.019
11:21	0.017

11:22	0.017
11:23	0.017
11:24	0.018
11:25	0.017
11:26	0.017
11:27	0.016
11:28	0.019
11:29	0.067
11:30	0.133
11:31	0.044
11:32	0.027
11:33	0.017
11:34	0.019
11:35	0.019
11:36	0.017
11:37	0.018
11:38	0.017
11:39	0.017
11:40	0.017
11:41	0.016
11:42	0.016
11:43	0.018
11:44	0.018
11:45	0.017
11:46	0.016
11:47	0.017
11:48	0.018
11:49	0.018
11:50	0.019
11:51	0.018
11:52	0.017
11:53	0.017
11:54	0.017
11:55	0.022
11:56	0.029
11:57	0.022
11:58	0.019
11:59	0.019
12:00	0.017
12:01	0.019
12:02	0.017
12:03	0.017
12:04	0.018
12:05	0.021

12:06	0.017
12:07	0.018
12:08	0.018
12:09	0.022
12:10	0.021
12:11	0.017
12:12	0.017
12:13	0.018
12:14	0.017
12:15	0.019
12:16	0.017
12:17	0.018
12:18	0.019
12:19	0.021
12:20	0.018
12:21	0.03
12:22	0.019
12:23	0.018
12:24	0.018
12:25	0.018
12:26	0.018
12:27	0.019
12:28	0.019
12:29	0.018
12:30	0.019
12:31	0.019
12:32	0.02
12:33	0.02
12:34	0.019
12:35	0.018
12:36	0.017
12:37	0.022
12:38	0.026
12:39	0.026
12:40	0.03
12:41	0.034
12:42	0.033
12:43	0.02
12:44	0.018
12:45	0.018
12:46	0.019
12:47	0.017
12:48	0.018
12:49	0.023

12:50	0.018
12:51	0.018
12:52	0.018
12:53	0.018
12:54	0.027
12:55	0.019
12:56	0.018
12:57	0.018
12:58	0.018
12:59	0.018
13:00	0.019
13:01	0.019
13:02	0.02
13:03	0.018
13:04	0.019
13:05	0.019
13:06	0.019
13:07	0.04
13:08	0.042
13:09	0.021
13:10	0.02
13:11	0.022
13:12	0.02
13:13	0.02
13:14	0.019
13:15	0.02
13:16	0.021
13:17	0.021
13:18	0.021
13:19	0.021
13:20	0.02
13:21	0.019
13:22	0.021
13:23	0.021
13:24	0.019
13:25	0.021
13:26	0.022
13:27	0.03
13:28	0.051
13:29	0.041
13:30	0.025
13:31	0.023
13:32	0.03
13:33	0.023

13:34	0.022
13:35	0.021
13:36	0.019
13:37	0.021
13:38	0.022
13:39	0.024
13:40	0.038
13:41	0.048
13:42	0.033
13:43	0.032
13:44	0.023
13:45	0.035
13:46	0.043
13:47	0.04
13:48	0.036
13:49	0.038
13:50	0.127
13:51	0.067
13:52	0.055
13:53	0.034
13:54	0.04
13:55	0.049
13:56	0.037
13:57	0.026
13:58	0.032
13:59	0.044
14:00	0.026
14:01	0.029
14:02	0.023
14:03	0.021
14:04	0.025
14:05	0.023
14:06	0.022
14:07	0.022
14:08	0.021
14:09	0.021
14:10	0.033
14:11	0.027
14:12	0.022
14:13	0.023
14:14	0.024
14:15	0.021
14:16	0.022
14:17	0.022

14:18	0.023
14:19	0.022
14:20	0.022
14:21	0.021
14:22	0.021
14:23	0.021
14:24	0.021
14:25	0.022
14:26	0.022
14:27	0.022
14:28	0.023
14:29	0.024
14:30	0.025
14:31	0.041
14:32	0.024
14:33	0.022
14:34	0.026
14:35	0.029
14:36	0.023
14:37	0.022
14:38	0.026
14:39	0.034
14:40	0.023
14:41	0.022
14:42	0.023
14:43	0.023
14:44	0.026
14:45	0.024
14:46	0.025
14:47	0.026
14:48	0.027
14:49	0.025
14:50	0.028
14:51	0.027
14:52	0.025
14:53	0.023
14:54	0.022
14:55	0.023
14:56	0.023
14:57	0.023
14:58	0.024
14:59	0.024
15:00	0.029
15:01	0.027



15:02	0.029
15:03	0.026
15:04	0.026
15:05	0.025
15:06	0.025
15:07	0.025
15:08	0.028
15:09	0.024
15:10	0.024
15:11	0.028
15:12	0.04
15:13	0.03
15:14	0.023
15:15	0.023
15:16	0.024
15:17	0.025
15:18	0.025
15:19	0.024
15:20	0.024
15:21	0.024
15:22	0.023
15:23	0.024
15:24	0.026
15:25	0.025
15:26	0.024
15:27	0.024
15:28	0.024
15:29	0.024
15:30	0.024
15:31	0.024
15:32	0.025
15:33	0.027
15:34	0.025
15:35	0.028
15:36	0.028
15:37	0.024
15:38	0.024
15:39	0.024
15:40	0.025
15:41	0.025
15:42	0.027
15:43	0.025
15:44	0.024
15:45	0.025

15:46	0.028
15:47	0.025
15:48	0.025
15:49	0.026
15:50	0.028
15:51	0.028
15:52	0.035
15:53	0.024
15:54	0.024
15:55	0.025
15:56	0.025
15:57	0.026
15:58	0.027
15:59	0.029
16:00	0.025
16:01	0.025
16:02	0.024
16:03	0.025
16:04	0.025
16:05	0.025
16:06	0.027
16:07	0.026
16:08	0.024
16:09	0.024
16:10	0.024
16:11	0.023
16:12	0.026
16:13	0.028
16:14	0.033
16:15	0.026
16:16	0.024
16:17	0.027
16:18	0.024
16:19	0.023
16:20	0.027
16:21	0.027
16:22	0.028
16:23	0.029
16:24	0.027
16:25	0.03
16:26	0.028
16:27	0.027
16:28	0.029
16:29	0.031

16:30	0.027
16:31	0.03
16:32	0.03
16:33	0.023
16:34	0.026
16:35	0.028
16:36	0.03
16:37	0.029
16:38	0.033
16:39	0.032
16:40	0.03
16:41	0.03
16:42	0.024
16:43	0.023
16:44	0.029
16:45	0.037
16:46	0.037
16:47	0.027
16:48	0.021
16:49	0.024
16:50	0.022
16:51	0.023
16:52	0.023
16:53	0.021
16:54	0.022
16:55	0.022
16:56	0.022
16:57	0.023
16:58	0.022
16:59	0.021
17:00	0.021
17:01	0.023
17:02	0.023
17:03	0.021
17:04	0.022
17:05	0.021
17:06	0.02
17:07	0.021
17:08	0.021
17:09	0.022
17:10	0.021
17:11	0.02
17:12	0.021
17:13	0.02

17:14	0.02
17:15	0.021
17:16	0.02
17:17	0.02
17:18	0.02
17:19	0.02
17:20	0.02
17:21	0.019
17:22	0.02
17:23	0.019
17:24	0.019
17:25	0.019
17:26	0.019
17:27	0.019
17:28	0.019
17:29	0.019
17:30	0.019
17:31	0.019
17:32	0.019
17:33	0.019
17:34	0.019
17:35	0.019
17:36	0.019
17:37	0.019
17:38	0.018
17:39	0.018
17:40	0.019
17:41	0.019
17:42	0.019
17:43	0.019
17:44	0.018
17:45	0.019
17:46	0.019
17:47	0.018
17:48	0.018
17:49	0.021
17:50	0.018
17:51	0.019
17:52	0.018
17:53	0.019
17:54	0.018
17:55	0.018
17:56	0.018
17:57	0.018

17:58	0.018
17:59	0.018
18:00	0.018
18:01	0.018
18:02	0.018
18:03	0.018
18:04	0.02
18:05	0.02
18:06	0.021
18:07	0.018
18:08	0.018
18:09	0.019
18:10	0.029
18:11	0.019
18:12	0.021
18:13	0.02
18:14	0.018
18:15	0.018
18:16	0.018
18:17	0.019
18:18	0.02
18:19	0.019
18:20	0.018
18:21	0.018
18:22	0.029
18:23	0.023
18:24	0.019
18:25	0.019
18:26	0.018
18:27	0.02

Device Serial No	Log Date	Log Time	Log Type	Sensor 1 Type	Sensor 1 Serial Number	Sensor 1 Status	Sensor 1 Gas Reading
592-600871	3/26/2024	18:27	Readings	PID	SC23030408A8	Normal	0.1
592-600871	3/26/2024	18:26	Readings	PID	SC23030408A8	Normal	0.1
592-600871	3/26/2024	18:25	Readings	PID	SC23030408A8	Normal	0.1
592-600871	3/26/2024	18:24	Readings	PID	SC23030408A8	Normal	0.1
592-600871	3/26/2024	18:23	Readings	PID	SC23030408A8	Normal	0.1
592-600871	3/26/2024	18:22	Readings	PID	SC23030408A8	Normal	0.1
592-600871	3/26/2024	18:21	Readings	PID	SC23030408A8	Normal	0.1
592-600871	3/26/2024	18:20	Readings	PID	SC23030408A8	Normal	0.1
592-600871	3/26/2024	18:19	Readings	PID	SC23030408A8	Normal	0.1
592-600871	3/26/2024	18:18	Readings	PID	SC23030408A8	Normal	0.1
592-600871	3/26/2024	18:17	Readings	PID	SC23030408A8	Normal	0.1
592-600871	3/26/2024	18:16	Readings	PID	SC23030408A8	Normal	0.1
592-600871	3/26/2024	18:15	Readings	PID	SC23030408A8	Normal	0.1
592-600871	3/26/2024	18:14	Readings	PID	SC23030408A8	Normal	0.1
592-600871	3/26/2024	18:13	Readings	PID	SC23030408A8	Normal	0.1
592-600871	3/26/2024	18:12	Readings	PID	SC23030408A8	Normal	0.1
592-600871	3/26/2024	18:11	Readings	PID	SC23030408A8	Normal	0.1
592-600871	3/26/2024	18:10	Readings	PID	SC23030408A8	Normal	0.1
592-600871	3/26/2024	18:09	Readings	PID	SC23030408A8	Normal	0.1
592-600871	3/26/2024	18:08	Readings	PID	SC23030408A8	Normal	0.1
592-600871	3/26/2024	18:07	Readings	PID	SC23030408A8	Normal	0.1
592-600871	3/26/2024	18:06	Readings	PID	SC23030408A8	Normal	0.1
592-600871	3/26/2024	18:05	Readings	PID	SC23030408A8	Normal	0.1
592-600871	3/26/2024	18:04	Readings	PID	SC23030408A8	Normal	0.1
592-600871	3/26/2024	18:03	Readings	PID	SC23030408A8	Normal	0.1
592-600871	3/26/2024	18:02	Readings	PID	SC23030408A8	Normal	0.1
592-600871	3/26/2024	18:01	Readings	PID	SC23030408A8	Normal	0.1
592-600871	3/26/2024	18:00	Readings	PID	SC23030408A8	Normal	0.1
592-600871	3/26/2024	17:59	Readings	PID	SC23030408A8	Normal	0.1
592-600871	3/26/2024	17:58	Readings	PID	SC23030408A8	Normal	0.1
592-600871	3/26/2024	17:57	Readings	PID	SC23030408A8	Normal	0.1
592-600871	3/26/2024	17:56	Readings	PID	SC23030408A8	Normal	0.1



592-600871	3/26/2024	17:22 Readings	PID	SC23030408A8	Normal	0.1
592-600871	3/26/2024	17:21 Readings	PID	SC23030408A8	Normal	0.1
592-600871	3/26/2024	17:20 Readings	PID	SC23030408A8	Normal	0.1
592-600871	3/26/2024	17:19 Readings	PID	SC23030408A8	Normal	0.1
592-600871	3/26/2024	17:18 Readings	PID	SC23030408A8	Normal	0.1
592-600871	3/26/2024	17:17 Readings	PID	SC23030408A8	Normal	0.1
592-600871	3/26/2024	17:16 Readings	PID	SC23030408A8	Normal	0.1
592-600871	3/26/2024	17:15 Readings	PID	SC23030408A8	Normal	0.2
592-600871	3/26/2024	17:14 Readings	PID	SC23030408A8	Normal	0.1
592-600871	3/26/2024	17:13 Readings	PID	SC23030408A8	Normal	0.1
592-600871	3/26/2024	17:12 Readings	PID	SC23030408A8	Normal	0.2
592-600871	3/26/2024	17:11 Readings	PID	SC23030408A8	Normal	0.2
592-600871	3/26/2024	17:10 Readings	PID	SC23030408A8	Normal	0.2
592-600871	3/26/2024	17:09 Readings	PID	SC23030408A8	Normal	0.2
592-600871	3/26/2024	17:08 Readings	PID	SC23030408A8	Normal	0.2
592-600871	3/26/2024	17:07 Readings	PID	SC23030408A8	Normal	0.2
592-600871	3/26/2024	17:06 Readings	PID	SC23030408A8	Normal	0.2
592-600871	3/26/2024	17:05 Readings	PID	SC23030408A8	Normal	0.3
592-600871	3/26/2024	17:04 Readings	PID	SC23030408A8	Normal	0.2
592-600871	3/26/2024	17:03 Readings	PID	SC23030408A8	Normal	0.3
592-600871	3/26/2024	17:02 Readings	PID	SC23030408A8	Normal	0.2
592-600871	3/26/2024	17:01 Readings	PID	SC23030408A8	Normal	0.3
592-600871	3/26/2024	17:00 Readings	PID	SC23030408A8	Normal	0.2
592-600871	3/26/2024	16:59 Readings	PID	SC23030408A8	Normal	0.2
592-600871	3/26/2024	16:58 Readings	PID	SC23030408A8	Normal	0.3
592-600871	3/26/2024	16:57 Readings	PID	SC23030408A8	Normal	0.2
592-600871	3/26/2024	16:56 Readings	PID	SC23030408A8	Normal	0.2
592-600871	3/26/2024	16:55 Readings	PID	SC23030408A8	Normal	0.3
592-600871	3/26/2024	16:54 Readings	PID	SC23030408A8	Normal	0.2
592-600871	3/26/2024	16:53 Readings	PID	SC23030408A8	Normal	0.3
592-600871	3/26/2024	16:52 Readings	PID	SC23030408A8	Normal	0.3
592-600871	3/26/2024	16:51 Readings	PID	SC23030408A8	Normal	0.3
592-600871	3/26/2024	16:50 Readings	PID	SC23030408A8	Normal	0.3



592-600871	3/26/2024	16:49 Readings	PID	SC23030408A8	Normal	0.3
592-600871	3/26/2024	16:48 Readings	PID	SC23030408A8	Normal	0.2
592-600871	3/26/2024	16:47 Readings	PID	SC23030408A8	Normal	0.2
592-600871	3/26/2024	16:46 Readings	PID	SC23030408A8	Normal	0.2
592-600871	3/26/2024	16:45 Readings	PID	SC23030408A8	Normal	0.2
592-600871	3/26/2024	16:44 Readings	PID	SC23030408A8	Normal	0.2
592-600871	3/26/2024	16:43 Readings	PID	SC23030408A8	Normal	0.1
592-600871	3/26/2024	16:42 Readings	PID	SC23030408A8	Normal	0.1
592-600871	3/26/2024	16:41 Readings	PID	SC23030408A8	Normal	0.2
592-600871	3/26/2024	16:40 Readings	PID	SC23030408A8	Normal	0.1
592-600871	3/26/2024	16:39 Readings	PID	SC23030408A8	Normal	0.1
592-600871	3/26/2024	16:38 Readings	PID	SC23030408A8	Normal	0.2
592-600871	3/26/2024	16:37 Readings	PID	SC23030408A8	Normal	0.1
592-600871	3/26/2024	16:36 Readings	PID	SC23030408A8	Normal	0.2
592-600871	3/26/2024	16:35 Readings	PID	SC23030408A8	Normal	0.2
592-600871	3/26/2024	16:34 Readings	PID	SC23030408A8	Normal	0.2
592-600871	3/26/2024	16:33 Readings	PID	SC23030408A8	Normal	0.2
592-600871	3/26/2024	16:32 Readings	PID	SC23030408A8	Normal	0.2
592-600871	3/26/2024	16:31 Readings	PID	SC23030408A8	Normal	0.2
592-600871	3/26/2024	16:30 Readings	PID	SC23030408A8	Normal	0.2
592-600871	3/26/2024	16:29 Readings	PID	SC23030408A8	Normal	0.2
592-600871	3/26/2024	16:28 Readings	PID	SC23030408A8	Normal	0.2
592-600871	3/26/2024	16:27 Readings	PID	SC23030408A8	Normal	0.2
592-600871	3/26/2024	16:26 Readings	PID	SC23030408A8	Normal	0.1
592-600871	3/26/2024	16:25 Readings	PID	SC23030408A8	Normal	0.1
592-600871	3/26/2024	16:24 Readings	PID	SC23030408A8	Normal	0.1
592-600871	3/26/2024	16:23 Readings	PID	SC23030408A8	Normal	0.2
592-600871	3/26/2024	16:22 Readings	PID	SC23030408A8	Normal	0.2
592-600871	3/26/2024	16:21 Readings	PID	SC23030408A8	Normal	0.2
592-600871	3/26/2024	16:20 Readings	PID	SC23030408A8	Normal	0.2
592-600871	3/26/2024	16:19 Readings	PID	SC23030408A8	Normal	0.2
592-600871	3/26/2024	16:18 Readings	PID	SC23030408A8	Normal	0.2
592-600871	3/26/2024	16:17 Readings	PID	SC23030408A8	Normal	0.2

592-600871	3/26/2024	16:16 Readings	PID	SC23030408A8	Normal	0.3
592-600871	3/26/2024	16:15 Readings	PID	SC23030408A8	Normal	0.3
592-600871	3/26/2024	16:14 Readings	PID	SC23030408A8	Normal	0.3
592-600871	3/26/2024	16:13 Readings	PID	SC23030408A8	Normal	0.3
592-600871	3/26/2024	16:12 Readings	PID	SC23030408A8	Normal	0.4
592-600871	3/26/2024	16:11 Readings	PID	SC23030408A8	Normal	0.2
592-600871	3/26/2024	16:10 Readings	PID	SC23030408A8	Normal	0.2
592-600871	3/26/2024	16:09 Readings	PID	SC23030408A8	Normal	0.2
592-600871	3/26/2024	16:08 Readings	PID	SC23030408A8	Normal	0.2
592-600871	3/26/2024	16:07 Readings	PID	SC23030408A8	Normal	0.3
592-600871	3/26/2024	16:06 Readings	PID	SC23030408A8	Normal	0.3
592-600871	3/26/2024	16:05 Readings	PID	SC23030408A8	Normal	0.3
592-600871	3/26/2024	16:04 Readings	PID	SC23030408A8	Normal	0.2
592-600871	3/26/2024	16:03 Readings	PID	SC23030408A8	Normal	0.2
592-600871	3/26/2024	16:02 Readings	PID	SC23030408A8	Normal	0.2
592-600871	3/26/2024	16:01 Readings	PID	SC23030408A8	Normal	0.3
592-600871	3/26/2024	16:00 Readings	PID	SC23030408A8	Normal	0.3
592-600871	3/26/2024	15:59 Readings	PID	SC23030408A8	Normal	0.2
592-600871	3/26/2024	15:58 Readings	PID	SC23030408A8	Normal	0.3
592-600871	3/26/2024	15:57 Readings	PID	SC23030408A8	Normal	0.3
592-600871	3/26/2024	15:56 Readings	PID	SC23030408A8	Normal	0.2
592-600871	3/26/2024	15:55 Readings	PID	SC23030408A8	Normal	0.3
592-600871	3/26/2024	15:54 Readings	PID	SC23030408A8	Normal	0.3
592-600871	3/26/2024	15:53 Readings	PID	SC23030408A8	Normal	0.4
592-600871	3/26/2024	15:52 Readings	PID	SC23030408A8	Normal	0.4
592-600871	3/26/2024	15:51 Readings	PID	SC23030408A8	Normal	0.4
592-600871	3/26/2024	15:50 Readings	PID	SC23030408A8	Normal	0.5
592-600871	3/26/2024	15:49 Readings	PID	SC23030408A8	Normal	0.4
592-600871	3/26/2024	15:48 Readings	PID	SC23030408A8	Normal	0.4
592-600871	3/26/2024	15:47 Readings	PID	SC23030408A8	Normal	0.4
592-600871	3/26/2024	15:46 Readings	PID	SC23030408A8	Normal	0.3
592-600871	3/26/2024	15:45 Readings	PID	SC23030408A8	Normal	0.3
592-600871	3/26/2024	15:44 Readings	PID	SC23030408A8	Normal	0.2

592-600871	3/26/2024	15:43	Readings	PID	SC23030408A8	Normal	0.2
592-600871	3/26/2024	15:42	Readings	PID	SC23030408A8	Normal	0.3
592-600871	3/26/2024	15:41	Readings	PID	SC23030408A8	Normal	0.3
592-600871	3/26/2024	15:40	Readings	PID	SC23030408A8	Normal	0.3
592-600871	3/26/2024	15:39	Readings	PID	SC23030408A8	Normal	0.3
592-600871	3/26/2024	15:38	Readings	PID	SC23030408A8	Normal	0.3
592-600871	3/26/2024	15:37	Readings	PID	SC23030408A8	Normal	0.2
592-600871	3/26/2024	15:36	Readings	PID	SC23030408A8	Normal	0.4
592-600871	3/26/2024	15:35	Readings	PID	SC23030408A8	Normal	0.4
592-600871	3/26/2024	15:34	Readings	PID	SC23030408A8	Normal	0.4
592-600871	3/26/2024	15:33	Readings	PID	SC23030408A8	Normal	0.5
592-600871	3/26/2024	15:32	Readings	PID	SC23030408A8	Normal	0.5
592-600871	3/26/2024	15:31	Readings	PID	SC23030408A8	Normal	0.5
592-600871	3/26/2024	15:30	Readings	PID	SC23030408A8	Normal	0.5
592-600871	3/26/2024	15:29	Readings	PID	SC23030408A8	Normal	0.4
592-600871	3/26/2024	15:28	Readings	PID	SC23030408A8	Normal	0.5
592-600871	3/26/2024	15:27	Readings	PID	SC23030408A8	Normal	0.6
592-600871	3/26/2024	15:26	Readings	PID	SC23030408A8	Normal	0.4
592-600871	3/26/2024	15:25	Readings	PID	SC23030408A8	Normal	0.4
592-600871	3/26/2024	15:24	Readings	PID	SC23030408A8	Normal	0.9
592-600871	3/26/2024	15:23	Readings	PID	SC23030408A8	Normal	0.7
592-600871	3/26/2024	15:22	Readings	PID	SC23030408A8	Normal	0.2
592-600871	3/26/2024	15:21	Readings	PID	SC23030408A8	Normal	0.4
592-600871	3/26/2024	15:20	Readings	PID	SC23030408A8	Normal	0.7
592-600871	3/26/2024	15:19	Readings	PID	SC23030408A8	Normal	0.4
592-600871	3/26/2024	15:18	Readings	PID	SC23030408A8	Normal	0.4
592-600871	3/26/2024	15:17	Readings	PID	SC23030408A8	Normal	0.4
592-600871	3/26/2024	15:16	Readings	PID	SC23030408A8	Normal	0.8
592-600871	3/26/2024	15:15	Readings	PID	SC23030408A8	Normal	0.5
592-600871	3/26/2024	15:14	Readings	PID	SC23030408A8	Normal	0.3
592-600871	3/26/2024	15:13	Readings	PID	SC23030408A8	Normal	0.5
592-600871	3/26/2024	15:12	Readings	PID	SC23030408A8	Normal	0.6
592-600871	3/26/2024	15:11	Readings	PID	SC23030408A8	Normal	0.7

592-600871	3/26/2024	15:10	Readings	PID	SC23030408A8	Normal	1.2
592-600871	3/26/2024	15:09	Readings	PID	SC23030408A8	Normal	0.5
592-600871	3/26/2024	15:08	Readings	PID	SC23030408A8	Normal	0.6
592-600871	3/26/2024	15:07	Readings	PID	SC23030408A8	Normal	0.6
592-600871	3/26/2024	15:06	Readings	PID	SC23030408A8	Normal	0.5
592-600871	3/26/2024	15:05	Readings	PID	SC23030408A8	Normal	0.8
592-600871	3/26/2024	15:04	Readings	PID	SC23030408A8	Normal	0.8
592-600871	3/26/2024	15:03	Readings	PID	SC23030408A8	Normal	0.7
592-600871	3/26/2024	15:02	Readings	PID	SC23030408A8	Normal	1
592-600871	3/26/2024	15:01	Readings	PID	SC23030408A8	Normal	0.6
592-600871	3/26/2024	15:00	Readings	PID	SC23030408A8	Normal	0.6
592-600871	3/26/2024	14:59	Readings	PID	SC23030408A8	Normal	2.5
592-600871	3/26/2024	14:58	Readings	PID	SC23030408A8	Normal	0.4
592-600871	3/26/2024	14:57	Readings	PID	SC23030408A8	Normal	0.4
592-600871	3/26/2024	14:56	Readings	PID	SC23030408A8	Normal	0.4
592-600871	3/26/2024	14:55	Readings	PID	SC23030408A8	Normal	0.3
592-600871	3/26/2024	14:54	Readings	PID	SC23030408A8	Normal	0.3
592-600871	3/26/2024	14:53	Readings	PID	SC23030408A8	Normal	0.3
592-600871	3/26/2024	14:52	Readings	PID	SC23030408A8	Normal	0.4
592-600871	3/26/2024	14:51	Readings	PID	SC23030408A8	Normal	0.4
592-600871	3/26/2024	14:50	Readings	PID	SC23030408A8	Normal	0.4
592-600871	3/26/2024	14:49	Readings	PID	SC23030408A8	Normal	0.4
592-600871	3/26/2024	14:48	Readings	PID	SC23030408A8	Normal	0.5
592-600871	3/26/2024	14:47	Readings	PID	SC23030408A8	Normal	0.5
592-600871	3/26/2024	14:46	Readings	PID	SC23030408A8	Normal	0.4
592-600871	3/26/2024	14:45	Readings	PID	SC23030408A8	Normal	0.6
592-600871	3/26/2024	14:44	Readings	PID	SC23030408A8	Normal	0.4
592-600871	3/26/2024	14:43	Readings	PID	SC23030408A8	Normal	0.4
592-600871	3/26/2024	14:42	Readings	PID	SC23030408A8	Normal	0.5
592-600871	3/26/2024	14:41	Readings	PID	SC23030408A8	Normal	0.5
592-600871	3/26/2024	14:40	Readings	PID	SC23030408A8	Normal	0.5
592-600871	3/26/2024	14:39	Readings	PID	SC23030408A8	Normal	0.7
592-600871	3/26/2024	14:38	Readings	PID	SC23030408A8	Normal	0.5

592-600871	3/26/2024	14:37 Readings	PID	SC23030408A8	Normal	0.6
592-600871	3/26/2024	14:36 Readings	PID	SC23030408A8	Normal	0.6
592-600871	3/26/2024	14:35 Readings	PID	SC23030408A8	Normal	0.8
592-600871	3/26/2024	14:34 Readings	PID	SC23030408A8	Normal	0.7
592-600871	3/26/2024	14:33 Readings	PID	SC23030408A8	Normal	0.5
592-600871	3/26/2024	14:32 Readings	PID	SC23030408A8	Normal	0.6
592-600871	3/26/2024	14:31 Readings	PID	SC23030408A8	Normal	0.4
592-600871	3/26/2024	14:30 Readings	PID	SC23030408A8	Normal	0.4
592-600871	3/26/2024	14:29 Readings	PID	SC23030408A8	Normal	0.3
592-600871	3/26/2024	14:28 Readings	PID	SC23030408A8	Normal	0.4
592-600871	3/26/2024	14:27 Readings	PID	SC23030408A8	Normal	0.4
592-600871	3/26/2024	14:26 Readings	PID	SC23030408A8	Normal	0.4
592-600871	3/26/2024	14:25 Readings	PID	SC23030408A8	Normal	0.4
592-600871	3/26/2024	14:24 Readings	PID	SC23030408A8	Normal	0.5
592-600871	3/26/2024	14:23 Readings	PID	SC23030408A8	Normal	0.6
592-600871	3/26/2024	14:22 Readings	PID	SC23030408A8	Normal	0.5
592-600871	3/26/2024	14:21 Readings	PID	SC23030408A8	Normal	0.5
592-600871	3/26/2024	14:20 Readings	PID	SC23030408A8	Normal	0.8
592-600871	3/26/2024	14:19 Readings	PID	SC23030408A8	Normal	0.7
592-600871	3/26/2024	14:18 Readings	PID	SC23030408A8	Normal	0.9
592-600871	3/26/2024	14:17 Readings	PID	SC23030408A8	Normal	0.6
592-600871	3/26/2024	14:16 Readings	PID	SC23030408A8	Normal	0.5
592-600871	3/26/2024	14:15 Readings	PID	SC23030408A8	Normal	0.7
592-600871	3/26/2024	14:14 Readings	PID	SC23030408A8	Normal	0.9
592-600871	3/26/2024	14:13 Readings	PID	SC23030408A8	Normal	1
592-600871	3/26/2024	14:12 Readings	PID	SC23030408A8	Normal	0.4
592-600871	3/26/2024	14:11 Readings	PID	SC23030408A8	Normal	0.9
592-600871	3/26/2024	14:10 Readings	PID	SC23030408A8	Normal	0.8
592-600871	3/26/2024	14:09 Readings	PID	SC23030408A8	Normal	1.2
592-600871	3/26/2024	14:08 Readings	PID	SC23030408A8	Normal	1
592-600871	3/26/2024	14:07 Readings	PID	SC23030408A8	Normal	1.9
592-600871	3/26/2024	14:06 Readings	PID	SC23030408A8	Normal	1.5
592-600871	3/26/2024	14:05 Readings	PID	SC23030408A8	Normal	0.6

592-600871	3/26/2024	14:04	Readings	PID	SC23030408A8	Normal	0.7
592-600871	3/26/2024	14:03	Readings	PID	SC23030408A8	Normal	0.7
592-600871	3/26/2024	14:02	Readings	PID	SC23030408A8	Normal	0.8
592-600871	3/26/2024	14:01	Readings	PID	SC23030408A8	Normal	1.3
592-600871	3/26/2024	14:00	Readings	PID	SC23030408A8	Normal	1.2
592-600871	3/26/2024	13:59	Readings	PID	SC23030408A8	Normal	1.5
592-600871	3/26/2024	13:58	Readings	PID	SC23030408A8	Normal	1
592-600871	3/26/2024	13:57	Readings	PID	SC23030408A8	Normal	1.4
592-600871	3/26/2024	13:56	Readings	PID	SC23030408A8	Normal	1.9
592-600871	3/26/2024	13:55	Readings	PID	SC23030408A8	Normal	1.1
592-600871	3/26/2024	13:54	Readings	PID	SC23030408A8	Normal	1.2
592-600871	3/26/2024	13:53	Readings	PID	SC23030408A8	Normal	1.8
592-600871	3/26/2024	13:52	Readings	PID	SC23030408A8	Normal	2.1
592-600871	3/26/2024	13:51	Readings	PID	SC23030408A8	Normal	1.5
592-600871	3/26/2024	13:50	Readings	PID	SC23030408A8	Normal	0.6
592-600871	3/26/2024	13:49	Readings	PID	SC23030408A8	Normal	0.6
592-600871	3/26/2024	13:48	Readings	PID	SC23030408A8	Normal	0.7
592-600871	3/26/2024	13:47	Readings	PID	SC23030408A8	Normal	0.6
592-600871	3/26/2024	13:46	Readings	PID	SC23030408A8	Normal	1
592-600871	3/26/2024	13:45	Readings	PID	SC23030408A8	Normal	2.4
592-600871	3/26/2024	13:44	Readings	PID	SC23030408A8	Normal	0.2
592-600871	3/26/2024	13:43	Readings	PID	SC23030408A8	Normal	0.3
592-600871	3/26/2024	13:42	Readings	PID	SC23030408A8	Normal	0.2
592-600871	3/26/2024	13:41	Readings	PID	SC23030408A8	Normal	0.4
592-600871	3/26/2024	13:40	Readings	PID	SC23030408A8	Normal	0.2
592-600871	3/26/2024	13:39	Readings	PID	SC23030408A8	Normal	0.2
592-600871	3/26/2024	13:38	Readings	PID	SC23030408A8	Normal	0.1
592-600871	3/26/2024	13:37	Readings	PID	SC23030408A8	Normal	0.1
592-600871	3/26/2024	13:36	Readings	PID	SC23030408A8	Normal	0.1
592-600871	3/26/2024	13:35	Readings	PID	SC23030408A8	Normal	0.2
592-600871	3/26/2024	13:34	Readings	PID	SC23030408A8	Normal	0.3
592-600871	3/26/2024	13:33	Readings	PID	SC23030408A8	Normal	0.2
592-600871	3/26/2024	13:32	Readings	PID	SC23030408A8	Normal	0.5

592-600871	3/26/2024	13:31 Readings	PID	SC23030408A8	Normal	0.9
592-600871	3/26/2024	13:30 Readings	PID	SC23030408A8	Normal	0.6
592-600871	3/26/2024	13:29 Readings	PID	SC23030408A8	Normal	0.3
592-600871	3/26/2024	13:28 Readings	PID	SC23030408A8	Normal	0.4
592-600871	3/26/2024	13:27 Readings	PID	SC23030408A8	Normal	1.3
592-600871	3/26/2024	13:26 Readings	PID	SC23030408A8	Normal	0.1
592-600871	3/26/2024	13:25 Readings	PID	SC23030408A8	Normal	1.4
592-600871	3/26/2024	13:24 Readings	PID	SC23030408A8	Normal	0
592-600871	3/26/2024	13:23 Readings	PID	SC23030408A8	Normal	0
592-600871	3/26/2024	13:22 Readings	PID	SC23030408A8	Normal	0
592-600871	3/26/2024	13:21 Readings	PID	SC23030408A8	Normal	0
592-600871	3/26/2024	13:20 Readings	PID	SC23030408A8	Normal	0
592-600871	3/26/2024	13:19 Readings	PID	SC23030408A8	Normal	0
592-600871	3/26/2024	13:18 Readings	PID	SC23030408A8	Normal	0
592-600871	3/26/2024	13:17 Readings	PID	SC23030408A8	Normal	0
592-600871	3/26/2024	13:16 Readings	PID	SC23030408A8	Normal	0
592-600871	3/26/2024	13:15 Readings	PID	SC23030408A8	Normal	0
592-600871	3/26/2024	13:14 Readings	PID	SC23030408A8	Normal	0
592-600871	3/26/2024	13:13 Readings	PID	SC23030408A8	Normal	0
592-600871	3/26/2024	13:12 Readings	PID	SC23030408A8	Normal	0.1
592-600871	3/26/2024	13:11 Readings	PID	SC23030408A8	Normal	0
592-600871	3/26/2024	13:10 Readings	PID	SC23030408A8	Normal	0.1
592-600871	3/26/2024	13:09 Readings	PID	SC23030408A8	Normal	0
592-600871	3/26/2024	13:08 Readings	PID	SC23030408A8	Normal	0
592-600871	3/26/2024	13:07 Readings	PID	SC23030408A8	Normal	0
592-600871	3/26/2024	13:06 Readings	PID	SC23030408A8	Normal	0
592-600871	3/26/2024	13:05 Readings	PID	SC23030408A8	Normal	0
592-600871	3/26/2024	13:04 Readings	PID	SC23030408A8	Normal	0
592-600871	3/26/2024	13:03 Readings	PID	SC23030408A8	Normal	0
592-600871	3/26/2024	13:02 Readings	PID	SC23030408A8	Normal	0
592-600871	3/26/2024	13:01 Readings	PID	SC23030408A8	Normal	0
592-600871	3/26/2024	13:00 Readings	PID	SC23030408A8	Normal	0
592-600871	3/26/2024	12:59 Readings	PID	SC23030408A8	Normal	0









592-600871	3/26/2024	11:19 Readings	PID	SC23030408A8	Normal	0
592-600871	3/26/2024	11:18 Readings	PID	SC23030408A8	Normal	0
592-600871	3/26/2024	11:17 Readings	PID	SC23030408A8	Normal	0
592-600871	3/26/2024	11:16 Readings	PID	SC23030408A8	Normal	0
592-600871	3/26/2024	11:15 Readings	PID	SC23030408A8	Normal	0
592-600871	3/26/2024	11:14 Readings	PID	SC23030408A8	Normal	0.1
592-600871	3/26/2024	11:13 Readings	PID	SC23030408A8	Normal	0
592-600871	3/26/2024	11:12 Readings	PID	SC23030408A8	Normal	0
592-600871	3/26/2024	11:11 Readings	PID	SC23030408A8	Normal	0
592-600871	3/26/2024	11:10 Readings	PID	SC23030408A8	Normal	0
592-600871	3/26/2024	11:09 Readings	PID	SC23030408A8	Normal	0
592-600871	3/26/2024	11:08 Readings	PID	SC23030408A8	Normal	0
592-600871	3/26/2024	11:07 Readings	PID	SC23030408A8	Normal	0
592-600871	3/26/2024	11:06 Readings	PID	SC23030408A8	Normal	0
592-600871	3/26/2024	11:05 Readings	PID	SC23030408A8	Normal	0
592-600871	3/26/2024	11:04 Readings	PID	SC23030408A8	Normal	0
592-600871	3/26/2024	11:03 Readings	PID	SC23030408A8	Normal	0
592-600871	3/26/2024	11:02 Readings	PID	SC23030408A8	Normal	0
592-600871	3/26/2024	11:01 Readings	PID	SC23030408A8	Normal	0
592-600871	3/26/2024	11:00 Readings	PID	SC23030408A8	Normal	0
592-600871	3/26/2024	10:59 Readings	PID	SC23030408A8	Normal	0.1
592-600871	3/26/2024	10:58 Readings	PID	SC23030408A8	Normal	0
592-600871	3/26/2024	10:57 Readings	PID	SC23030408A8	Normal	0
592-600871	3/26/2024	10:56 Readings	PID	SC23030408A8	Normal	0
592-600871	3/26/2024	10:55 Readings	PID	SC23030408A8	Normal	0
592-600871	3/26/2024	10:54 Readings	PID	SC23030408A8	Normal	0
592-600871	3/26/2024	10:53 Readings	PID	SC23030408A8	Normal	0
592-600871	3/26/2024	10:52 Readings	PID	SC23030408A8	Normal	0
592-600871	3/26/2024	10:51 Readings	PID	SC23030408A8	Normal	0
592-600871	3/26/2024	10:50 Readings	PID	SC23030408A8	Normal	0
592-600871	3/26/2024	10:49 Readings	PID	SC23030408A8	Normal	0
592-600871	3/26/2024	10:48 Readings	PID	SC23030408A8	Normal	0
592-600871	3/26/2024	10:47 Readings	PID	SC23030408A8	Normal	0



592-600871	3/26/2024	10:13 Readings	PID	SC23030408A8	Normal	0
592-600871	3/26/2024	10:12 Readings	PID	SC23030408A8	Normal	0
592-600871	3/26/2024	10:11 Readings	PID	SC23030408A8	Normal	0
592-600871	3/26/2024	10:10 Readings	PID	SC23030408A8	Normal	0
592-600871	3/26/2024	10:09 Readings	PID	SC23030408A8	Normal	0
592-600871	3/26/2024	10:08 Readings	PID	SC23030408A8	Normal	0
592-600871	3/26/2024	10:07 Readings	PID	SC23030408A8	Normal	0
592-600871	3/26/2024	10:06 Readings	PID	SC23030408A8	Normal	0
592-600871	3/26/2024	10:05 Readings	PID	SC23030408A8	Normal	0
592-600871	3/26/2024	10:04 Readings	PID	SC23030408A8	Normal	0
592-600871	3/26/2024	10:03 Readings	PID	SC23030408A8	Normal	0
592-600871	3/26/2024	10:02 Readings	PID	SC23030408A8	Normal	0
592-600871	3/26/2024	10:01 Readings	PID	SC23030408A8	Normal	0
592-600871	3/26/2024	10:00 Readings	PID	SC23030408A8	Normal	0
592-600871	3/26/2024	9:59 Readings	PID	SC23030408A8	Normal	0
592-600871	3/26/2024	9:58 Readings	PID	SC23030408A8	Normal	0
592-600871	3/26/2024	9:57 Readings	PID	SC23030408A8	Normal	0
592-600871	3/26/2024	9:56 Readings	PID	SC23030408A8	Normal	0
592-600871	3/26/2024	9:55 Readings	PID	SC23030408A8	Normal	0.1
592-600871	3/26/2024	9:54 Readings	PID	SC23030408A8	Normal	0
592-600871	3/26/2024	9:53 Readings	PID	SC23030408A8	Normal	0
592-600871	3/26/2024	9:52 Readings	PID	SC23030408A8	Normal	0
592-600871	3/26/2024	9:51 Readings	PID	SC23030408A8	Normal	0
592-600871	3/26/2024	9:50 Readings	PID	SC23030408A8	Normal	0
592-600871	3/26/2024	9:49 Readings	PID	SC23030408A8	Normal	0
592-600871	3/26/2024	9:48 Readings	PID	SC23030408A8	Normal	0
592-600871	3/26/2024	9:47 Readings	PID	SC23030408A8	Normal	0.1
592-600871	3/26/2024	9:46 Readings	PID	SC23030408A8	Normal	0
592-600871	3/26/2024	9:45 Readings	PID	SC23030408A8	Normal	0
592-600871	3/26/2024	9:44 Readings	PID	SC23030408A8	Normal	0
592-600871	3/26/2024	9:43 Readings	PID	SC23030408A8	Normal	0
592-600871	3/26/2024	9:42 Readings	PID	SC23030408A8	Normal	0
592-600871	3/26/2024	9:41 Readings	PID	SC23030408A8	Normal	0.1

592-600871	3/26/2024	9:40 Readings	PID	SC23030408A8	Normal	0.1
592-600871	3/26/2024	9:39 Readings	PID	SC23030408A8	Normal	0
592-600871	3/26/2024	9:38 Readings	PID	SC23030408A8	Normal	0
592-600871	3/26/2024	9:37 Readings	PID	SC23030408A8	Normal	0
592-600871	3/26/2024	9:36 Readings	PID	SC23030408A8	Normal	0.1
592-600871	3/26/2024	9:35 Readings	PID	SC23030408A8	Normal	0
592-600871	3/26/2024	9:34 Readings	PID	SC23030408A8	Normal	0.1
592-600871	3/26/2024	9:33 Readings	PID	SC23030408A8	Normal	0.1
592-600871	3/26/2024	9:32 Readings	PID	SC23030408A8	Normal	0.1
592-600871	3/26/2024	9:31 Readings	PID	SC23030408A8	Normal	0
592-600871	3/26/2024	9:30 Readings	PID	SC23030408A8	Normal	0
592-600871	3/26/2024	9:29 Readings	PID	SC23030408A8	Normal	0.1
592-600871	3/26/2024	9:28 Readings	PID	SC23030408A8	Normal	0.1
592-600871	3/26/2024	9:27 Readings	PID	SC23030408A8	Normal	0
592-600871	3/26/2024	9:26 Readings	PID	SC23030408A8	Normal	0
592-600871	3/26/2024	9:25 Readings	PID	SC23030408A8	Normal	0
592-600871	3/26/2024	9:24 Readings	PID	SC23030408A8	Normal	0
592-600871	3/26/2024	9:23 Readings	PID	SC23030408A8	Normal	0
592-600871	3/26/2024	9:22 Readings	PID	SC23030408A8	Normal	0
592-600871	3/26/2024	9:21 Readings	PID	SC23030408A8	Normal	0
592-600871	3/26/2024	9:20 Readings	PID	SC23030408A8	Normal	0
592-600871	3/26/2024	9:19 Readings	PID	SC23030408A8	Normal	0
592-600871	3/26/2024	9:18 Readings	PID	SC23030408A8	Normal	0
592-600871	3/26/2024	9:17 Readings	PID	SC23030408A8	Normal	0
592-600871	3/26/2024	9:16 Readings	PID	SC23030408A8	Normal	0
592-600871	3/26/2024	9:15 Readings	PID	SC23030408A8	Normal	0
592-600871	3/26/2024	9:14 Readings	PID	SC23030408A8	Normal	0
592-600871	3/26/2024	9:13 Readings	PID	SC23030408A8	Normal	0
592-600871	3/26/2024	9:12 Readings	PID	SC23030408A8	Normal	0
592-600871	3/26/2024	9:11 Readings	PID	SC23030408A8	Normal	0.1
592-600871	3/26/2024	9:10 Readings	PID	SC23030408A8	Normal	0.1
592-600871	3/26/2024	9:09 Readings	PID	SC23030408A8	Normal	0
592-600871	3/26/2024	9:08 Readings	PID	SC23030408A8	Normal	0

592-600871	3/26/2024	9:07 Readings	PID	SC23030408A8	Normal	0
592-600871	3/26/2024	9:06 Readings	PID	SC23030408A8	Normal	0
592-600871	3/26/2024	9:05 Readings	PID	SC23030408A8	Normal	0
592-600871	3/26/2024	9:04 Readings	PID	SC23030408A8	Normal	0
592-600871	3/26/2024	9:03 Readings	PID	SC23030408A8	Normal	0.1
592-600871	3/26/2024	9:02 Readings	PID	SC23030408A8	Normal	0.1
592-600871	3/26/2024	9:01 Readings	PID	SC23030408A8	Normal	0
592-600871	3/26/2024	9:00 Readings	PID	SC23030408A8	Normal	0
592-600871	3/26/2024	8:59 Readings	PID	SC23030408A8	Normal	0
592-600871	3/26/2024	8:58 Readings	PID	SC23030408A8	Normal	0
592-600871	3/26/2024	8:57 Readings	PID	SC23030408A8	Normal	0
592-600871	3/26/2024	8:56 Readings	PID	SC23030408A8	Normal	0
592-600871	3/26/2024	8:55 Readings	PID	SC23030408A8	Normal	0
592-600871	3/26/2024	8:54 Readings	PID	SC23030408A8	Normal	0
592-600871	3/26/2024	8:53 Readings	PID	SC23030408A8	Normal	0
592-600871	3/26/2024	8:52 Readings	PID	SC23030408A8	Normal	0.1
592-600871	3/26/2024	8:51 Readings	PID	SC23030408A8	Normal	0
592-600871	3/26/2024	8:50 Readings	PID	SC23030408A8	Normal	0.1
592-600871	3/26/2024	8:49 Readings	PID	SC23030408A8	Normal	0.1
592-600871	3/26/2024	8:48 Readings	PID	SC23030408A8	Normal	0.1
592-600871	3/26/2024	8:47 Readings	PID	SC23030408A8	Normal	0.1
592-600871	3/26/2024	8:46 Readings	PID	SC23030408A8	Normal	0
592-600871	3/26/2024	8:45 Readings	PID	SC23030408A8	Normal	0.1
592-600871	3/26/2024	8:44 Readings	PID	SC23030408A8	Normal	0.1
592-600871	3/26/2024	8:43 Readings	PID	SC23030408A8	Normal	0.1
592-600871	3/26/2024	8:42 Readings	PID	SC23030408A8	Normal	0.1
592-600871	3/26/2024	8:41 Readings	PID	SC23030408A8	Normal	0.1
592-600871	3/26/2024	8:40 Readings	PID	SC23030408A8	Normal	0.1
592-600871	3/26/2024	8:39 Readings	PID	SC23030408A8	Normal	0.1
592-600871	3/26/2024	8:38 Readings	PID	SC23030408A8	Normal	0.1
592-600871	3/26/2024	8:37 Readings	PID	SC23030408A8	Normal	0.1
592-600871	3/26/2024	8:36 Readings	PID	SC23030408A8	Normal	0.1
592-600871	3/26/2024	8:35 Readings	PID	SC23030408A8	Normal	0.1

592-600871	3/26/2024	8:34 Readings	PID	SC23030408A8	Normal	0.1
592-600871	3/26/2024	8:33 Readings	PID	SC23030408A8	Normal	0.1
592-600871	3/26/2024	8:32 Readings	PID	SC23030408A8	Normal	0.1
592-600871	3/26/2024	8:31 Readings	PID	SC23030408A8	Normal	0.1
592-600871	3/26/2024	8:30 Readings	PID	SC23030408A8	Normal	0.1
592-600871	3/26/2024	8:29 Readings	PID	SC23030408A8	Normal	0.1
592-600871	3/26/2024	8:28 Readings	PID	SC23030408A8	Normal	0.1
592-600871	3/26/2024	8:27 Readings	PID	SC23030408A8	Normal	0.1
592-600871	3/26/2024	8:26 Readings	PID	SC23030408A8	Normal	0.1
592-600871	3/26/2024	8:25 Readings	PID	SC23030408A8	Normal	0.1
592-600871	3/26/2024	8:24 Readings	PID	SC23030408A8	Normal	0.2
592-600871	3/26/2024	8:23 Readings	PID	SC23030408A8	Normal	0.2
592-600871	3/26/2024	8:22 Readings	PID	SC23030408A8	Normal	0.1
592-600871	3/26/2024	8:21 Readings	PID	SC23030408A8	Normal	0.2
592-600871	3/26/2024	8:20 Readings	PID	SC23030408A8	Normal	0.2
592-600871	3/26/2024	8:19 Readings	PID	SC23030408A8	Normal	0.2
592-600871	3/26/2024	8:18 Readings	PID	SC23030408A8	Normal	0.1
592-600871	3/26/2024	8:17 Readings	PID	SC23030408A8	Normal	0.1
592-600871	3/26/2024	8:16 Readings	PID	SC23030408A8	Normal	0.2
592-600871	3/26/2024	8:15 Readings	PID	SC23030408A8	Normal	0.2
592-600871	3/26/2024	8:14 Readings	PID	SC23030408A8	Normal	0.1
592-600871	3/26/2024	8:13 Readings	PID	SC23030408A8	Normal	0.1
592-600871	3/26/2024	8:12 Readings	PID	SC23030408A8	Normal	0.1
592-600871	3/26/2024	8:11 Readings	PID	SC23030408A8	Normal	0.1
592-600871	3/26/2024	8:10 Readings	PID	SC23030408A8	Normal	0.2
592-600871	3/26/2024	8:09 Readings	PID	SC23030408A8	Normal	0.1
592-600871	3/26/2024	8:08 Readings	PID	SC23030408A8	Normal	0.2
592-600871	3/26/2024	8:07 Readings	PID	SC23030408A8	Normal	0.2
592-600871	3/26/2024	8:06 Readings	PID	SC23030408A8	Normal	0.2
592-600871	3/26/2024	8:05 Readings	PID	SC23030408A8	Normal	0.2
592-600871	3/26/2024	8:04 Readings	PID	SC23030408A8	Normal	0.1
592-600871	3/26/2024	8:03 Readings	PID	SC23030408A8	Normal	0.1
592-600871	3/26/2024	8:02 Readings	PID	SC23030408A8	Normal	0.3



592-600871	3/26/2024	8:01 Readings	PID	SC23030408A8	Normal	0.1
592-600871	3/26/2024	8:00 Readings	PID	SC23030408A8	Normal	0.2
592-600871	3/26/2024	7:59 Readings	PID	SC23030408A8	Normal	0.2
592-600871	3/26/2024	7:58 Readings	PID	SC23030408A8	Normal	0.6
592-600871	3/26/2024	7:57 Readings	PID	SC23030408A8	Normal	3.9
592-600871	3/26/2024	7:56 Readings	PID	SC23030408A8	Normal	0.1
592-600871	3/26/2024	7:55 Readings	PID	SC23030408A8	Normal	0.1
592-600871	3/26/2024	7:54 Readings	PID	SC23030408A8	Normal	0.1
592-600871	3/26/2024	7:53 Readings	PID	SC23030408A8	Normal	0
592-600871	3/26/2024	7:52 Readings	PID	SC23030408A8	Normal	0.1
592-600871	3/26/2024	7:51 Readings	PID	SC23030408A8	Normal	0.1
592-600871	3/26/2024	7:50 Readings	PID	SC23030408A8	Normal	0.1
592-600871	3/26/2024	7:49 Readings	PID	SC23030408A8	Normal	0.1
592-600871	3/26/2024	7:48 Readings	PID	SC23030408A8	Normal	0.2
592-600871	3/26/2024	7:47 Readings	PID	SC23030408A8	Normal	0.2
592-600871	3/26/2024	7:46 Readings	PID	SC23030408A8	Normal	0.3
592-600871	3/26/2024	7:45 Readings	PID	SC23030408A8	Normal	0.2
592-600871	3/26/2024	7:44 Readings	PID	SC23030408A8	Normal	0.3
592-600871	3/26/2024	7:43 Readings	PID	SC23030408A8	Normal	0.6
592-600871	3/26/2024	7:42 Readings	PID	SC23030408A8	Normal	0.2
592-600871	3/26/2024	7:41 Readings	PID	SC23030408A8	Normal	0.3
592-600871	3/26/2024	7:40 Readings	PID	SC23030408A8	Normal	0.4
592-600871	3/26/2024	7:39 Readings	PID	SC23030408A8	Normal	0.5
592-600871	3/26/2024	7:38 Readings	PID	SC23030408A8	Normal	0.4
592-600871	3/26/2024	7:37 Readings	PID	SC23030408A8	Normal	1.1
592-600871	3/26/2024	7:36 Readings	PID	SC23030408A8	Normal	0.9
592-600871	3/26/2024	7:35 Readings	PID	SC23030408A8	Normal	2.7
592-600871	3/26/2024	7:34 Readings	PID	SC23030408A8	Normal	3.6
592-600871	3/26/2024	7:33 Readings	PID	SC23030408A8	Normal	0.6
592-600871	3/26/2024	7:32 Readings	PID	SC23030408A8	Normal	0
592-600871	3/26/2024	7:31 Readings	PID	SC23030408A8	Normal	0.1
592-600871	3/26/2024	7:30 Readings	PID	SC23030408A8	Normal	0
592-600871	3/26/2024	7:29 Readings	PID	SC23030408A8	Normal	0

592-600871	3/26/2024	7:28 Readings	PID	SC23030408A8	Normal	0
592-600871	3/26/2024	7:27 Readings	PID	SC23030408A8	Normal	0
592-600871	3/26/2024	7:26 Readings	PID	SC23030408A8	Normal	0
592-600871	3/26/2024	7:25 Readings	PID	SC23030408A8	Normal	0
592-600871	3/26/2024	7:24 Readings	PID	SC23030408A8	Normal	0
592-600871	3/26/2024	7:23 Readings	PID	SC23030408A8	Normal	0
592-600871	3/26/2024	7:22 Readings	PID	SC23030408A8	Normal	0
592-600871	3/26/2024	7:21 Readings	PID	SC23030408A8	Normal	0
592-600871	3/26/2024	7:20 Readings	PID	SC23030408A8	Normal	0
592-600871	3/26/2024	7:19 Readings	PID	SC23030408A8	Normal	0
592-600871	3/26/2024	7:18 Readings	PID	SC23030408A8	Normal	0
592-600871	3/26/2024	7:17 Readings	PID	SC23030408A8	Normal	0
592-600871	3/26/2024	7:16 Readings	PID	SC23030408A8	Normal	0
592-600871	3/26/2024	7:15 Readings	PID	SC23030408A8	Normal	0
592-600871	3/26/2024	7:14 Readings	PID	SC23030408A8	Normal	0
592-600871	3/26/2024	7:13 Readings	PID	SC23030408A8	Normal	0
592-600871	3/26/2024	7:12 Readings	PID	SC23030408A8	Normal	0
592-600871	3/26/2024	7:11 Readings	PID	SC23030408A8	Normal	0
592-600871	3/26/2024	7:10 Readings	PID	SC23030408A8	Normal	0
592-600871	3/26/2024	7:09 Readings	PID	SC23030408A8	Normal	0
592-600871	3/26/2024	7:08 Readings	PID	SC23030408A8	Normal	0
592-600871	3/26/2024	7:07 Readings	PID	SC23030408A8	Normal	0
592-600871	3/26/2024	7:06 Readings	PID	SC23030408A8	Normal	0
592-600871	3/26/2024	7:05 Readings	PID	SC23030408A8	Normal	0
592-600871	3/26/2024	7:04 Readings	PID	SC23030408A8	Normal	0.1
592-600871	3/26/2024	7:03 Readings	PID	SC23030408A8	Normal	0.1
592-600871	3/26/2024	7:02 Readings	PID	SC23030408A8	Normal	0
592-600871	3/26/2024	7:01 Readings	PID	SC23030408A8	Normal	0
592-600871	3/26/2024	7:00 Readings	PID	SC23030408A8	Normal	0
592-600871	3/26/2024	6:59 Readings	PID	SC23030408A8	Normal	0
592-600871	3/26/2024	6:58 Readings	PID	SC23030408A8	Normal	0
592-600871	3/26/2024	6:57 Readings	PID	SC23030408A8	Normal	0
592-600871	3/26/2024	6:56 Readings	PID	SC23030408A8	Normal	0

592-600871	3/26/2024	6:55 Readings	PID	SC23030408A8	Normal	0
592-600871	3/26/2024	6:54 Readings	PID	SC23030408A8	Normal	0
592-600871	3/26/2024	6:53 Readings	PID	SC23030408A8	Normal	0
592-600871	3/26/2024	6:52 Readings	PID	SC23030408A8	Normal	0
592-600871	3/26/2024	6:51 Readings	PID	SC23030408A8	Normal	0
592-600871	3/26/2024	6:50 Readings	PID	SC23030408A8	Normal	0
592-600871	3/26/2024	6:49 Readings	PID	SC23030408A8	Normal	0
592-600871	3/26/2024	6:48 Readings	PID	SC23030408A8	Normal	0
592-600871	3/26/2024	6:47 Readings	PID	SC23030408A8	Normal	0
592-600871	3/26/2024	6:46 Readings	PID	SC23030408A8	Normal	0
592-600871	3/26/2024	6:45 Readings	PID	SC23030408A8	Normal	0
592-600871	3/26/2024	6:44 Readings	PID	SC23030408A8	Normal	0
592-600871	3/26/2024	6:43 Readings	PID	SC23030408A8	Normal	0
592-600871	3/26/2024	6:42 Readings	PID	SC23030408A8	Normal	0
592-600871	3/26/2024	6:41 Readings	PID	SC23030408A8	Normal	0
592-600871	3/26/2024	6:40 Readings	PID	SC23030408A8	Normal	0
592-600871	3/26/2024	6:39 Readings	PID	SC23030408A8	Normal	0
592-600871	3/26/2024	6:38 Readings	PID	SC23030408A8	Normal	0
592-600871	3/26/2024	6:37 Readings	PID	SC23030408A8	Normal	0
592-600871	3/26/2024	6:36 Readings	PID	SC23030408A8	Normal	0
592-600871	3/26/2024	6:35 Readings	PID	SC23030408A8	Normal	0
592-600871	3/26/2024	CONFIG	PID	SC23030408A8		