



**DAILY STATUS REPORT**

**Prepared By:**

Ryan Just

WEATHER	Snow	Rain	X	Overcast	X	Partly Cloudy	X	Bright Sun	X	Wind
TEMP.	< 32	32-50		50-70	X	70-85	X	>85	X	NNW – 6 MPH

<b>IEC Project No:</b>	13928	<b>NYSDEC BCP Site No:</b>	C224367	<b>Date:</b> 05/09/24
<b>Project:</b>	251 Douglass Street, Brooklyn, NY			

<p><b>Consultant:</b> Impact Environmental Engineering and Geology, PLLC (IEEG)</p> <p>Time On: 06:35 Time Out: 20:14</p>	<p><b>Personnel On Site:</b> IEEG (Environmental) – Ryan Just Broadway Construction Group - Tom Caporale Cascade WSP - Charlie Lambert</p> <p><b>Equipment On Site:</b> Minirae 3000 PID, DustTrak II</p>
---	---

**Scope of Work:** ISS column installation.

**Site Activities:**

- Deploy three (3) CAMPs at the Start of the work day;
- Cascade received two (2) deliveries of slag and two (2) deliveries of portland; and
  - Cascade drilled **Column 513**, column spec below:
    - The column was 8’ diameter and drilled 36’ deep from Site grade;
    - The column consisted of a total of 18 batches;
  - Cascade drilled **Column 531**, column spec below:
    - The column was 8’ diameter and drilled 36’ deep from Site grade;
    - The column consisted of a total of 19 batches;
    - A wet mix sample was collected at 34.8’ deep from site grade;
  - Cascade drilled **Column 580**, column spec below:
    - The column was 8’ diameter and drilled 51’ deep from Site grade;
    - The column consisted of a total of 46 batches;
    - Downstroke 1 was paused from 16:41 to 16:54 and 17:47 to 18:12 in order to replace teeth on the auger to assist in reaching terminal depth;
    - A chute on the batch plant clogged at 18:44 during Upstroke 1, blockage was cleared after Upstroke 1 was completed and drilling resumed at 19:04 for Downstroke 2;
  - Cascade drilled **Column 613**, column spec below:
    - The column was 8’ diameter and drilled 36’ deep from Site grade;
    - The column consisted of a total of 30 batches.

**Community Air Monitoring Program (CAMP) - CAMP** action level for dust (0.1 mg/m<sup>3</sup>) and VOCs (5 ppm)

- PID remained at nominal levels throughout the day
- No sustained dust exceedances were observed over a 1-min period during monitoring;
- Startup Upwind Conditions – PID = \_0.0\_ ppm, Dust = \_0.01\_ mg/m<sup>3</sup> @ 06:41
- High Conditions (Upwind) – PID = \_0.0\_ ppm, Dust = \_0.06\_ mg/m<sup>3</sup> @ 17:52
- High Conditions (Downwind 1) – PID = \_0.3\_ ppm @ 14:30, Dust = \_0.111\_ mg/m<sup>3</sup> @ 15:38
- High Conditions (Downwind 2) – PID = \_0.0\_ ppm, Dust = \_0.136\_ mg/m<sup>3</sup> @ 06:55

**Notable Site Conditions:**

- The SCM Report for Column 580 expressed that no grout was dispensed during Upstroke 1. This occurred when the chute on the batch plant was clogged, however grout was still being dispensed. The batch plant log is attached for Column 580.

**Planned for the Next Day/Week:**

- Continuation of installing ISS columns; and
- Trucking ISS swell material on 5/10.



**PHOTO LOG**

251 DOUGLASS STREET, BROOKLYN, NY





**Photo 1-**  
Representative  
photo of a slag  
delivery.



**Photo 2-**  
Representative  
photo of swell  
stockpile covered  
at the end of the  
day.





**Photo 3-**  
Representative  
photo of auger  
teeth  
replacement.



**Photo 4-**  
Representative  
photo of wet mix  
sample collected  
from Column  
531.

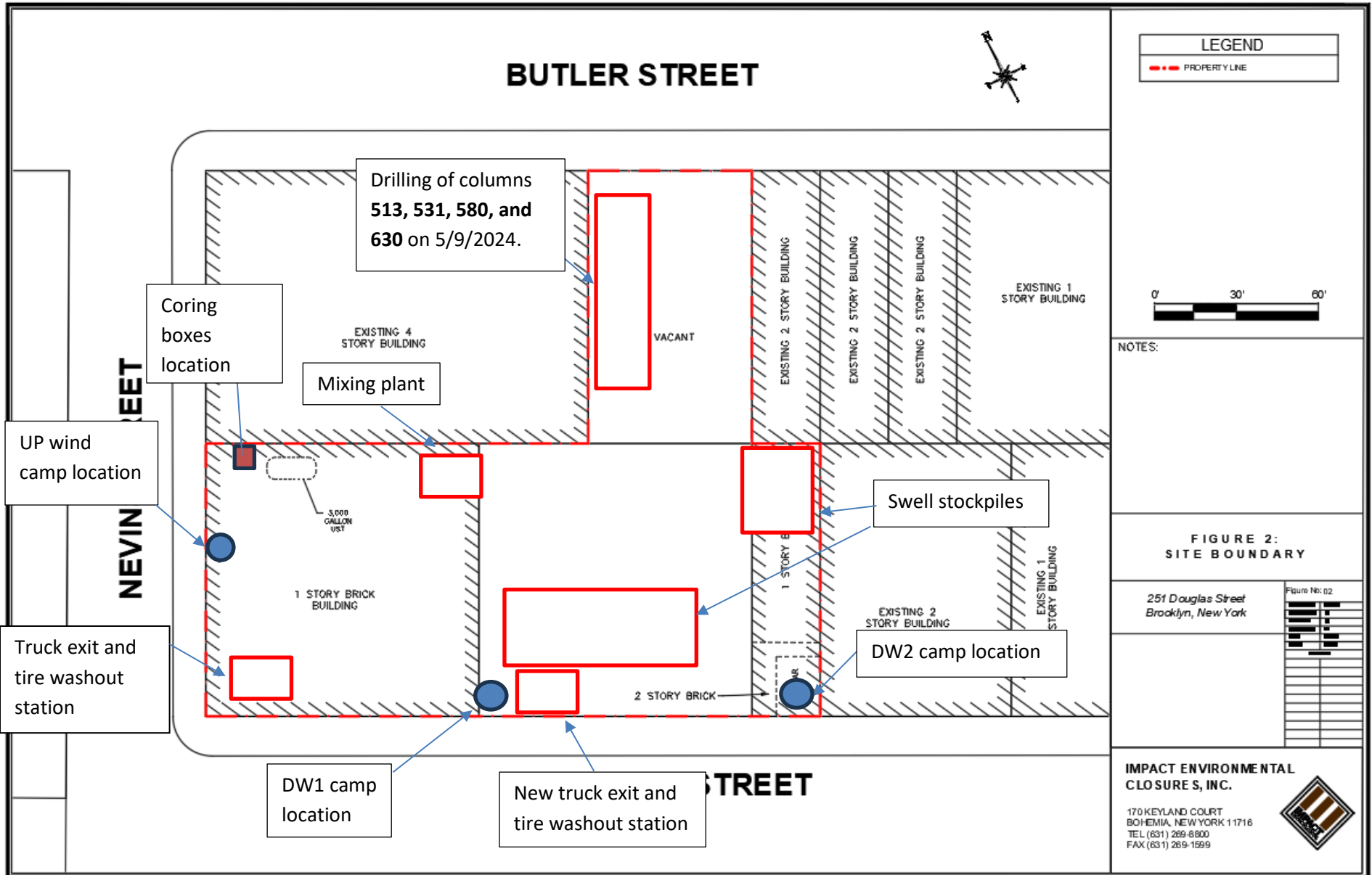


**SITE PLANS**

251 DOUGLASS STREET, BROOKLYN, NY











# SCM Report

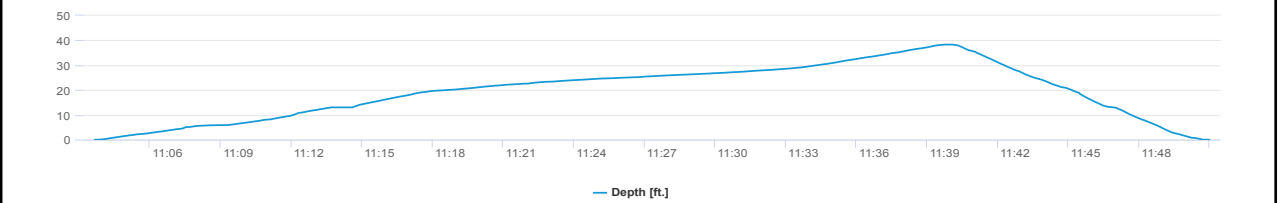
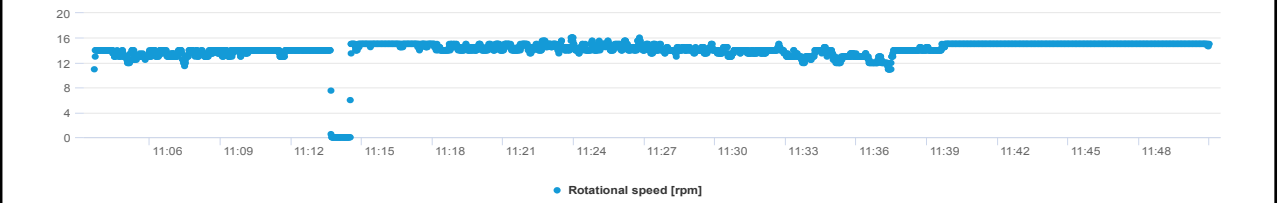
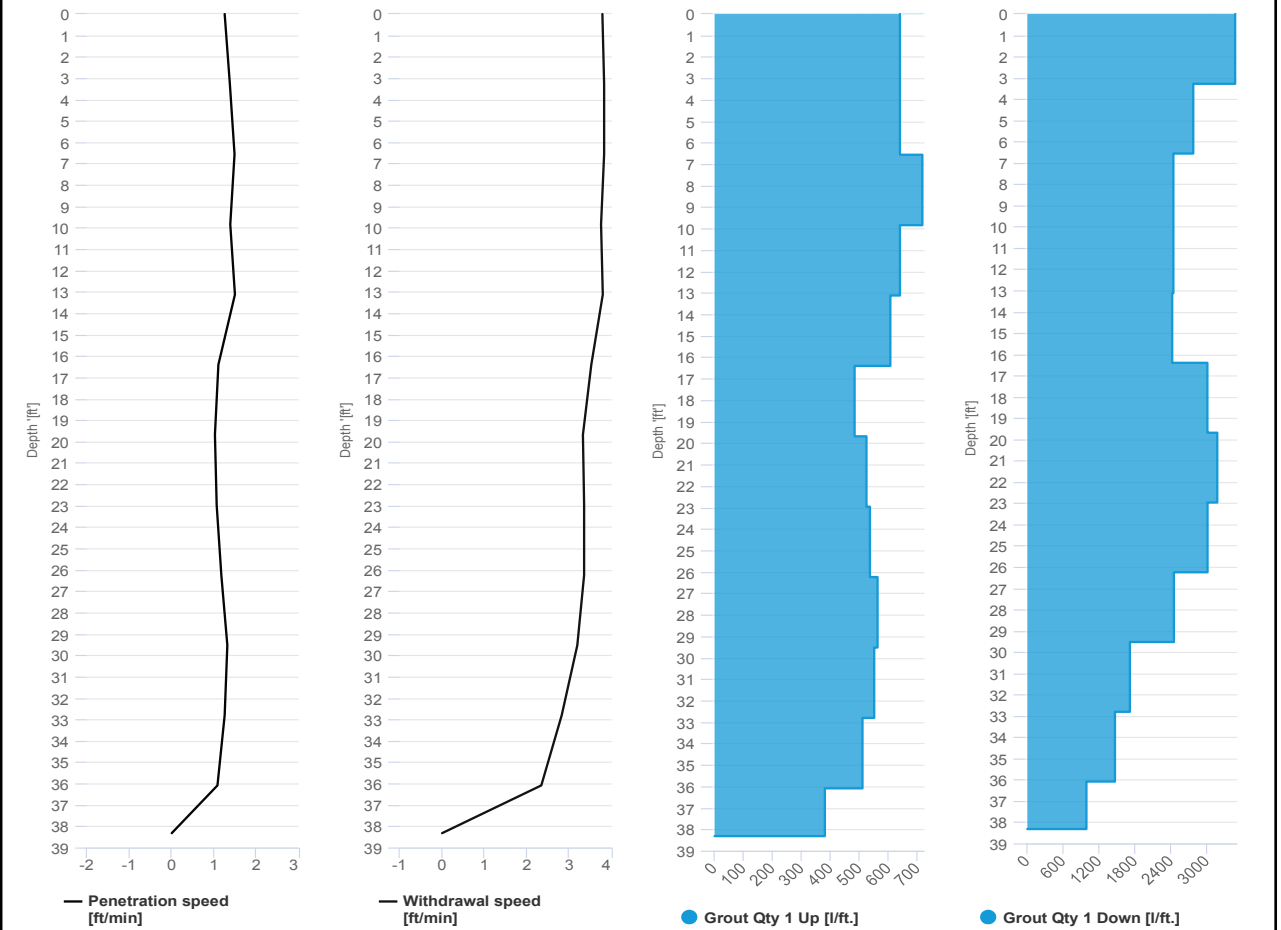


Project name: Douglass Street BCG ISS      Element name: c513a  
 Project number

Start date: 05/09/2024

Drilling rig: BG36H\_5717

<b>Details</b>		Start time: 11:03 AM	
Max. depth: 38.32 ft.		End Date: 05/09/2024	
Volume/m 1: 34.25 ft³		End time: 11:51 AM	
		Production duration: 00:47:21	
		Final depth time: 11:39 AM	
		Total suspension quantity: 400.504 ft³	



# SCM Report

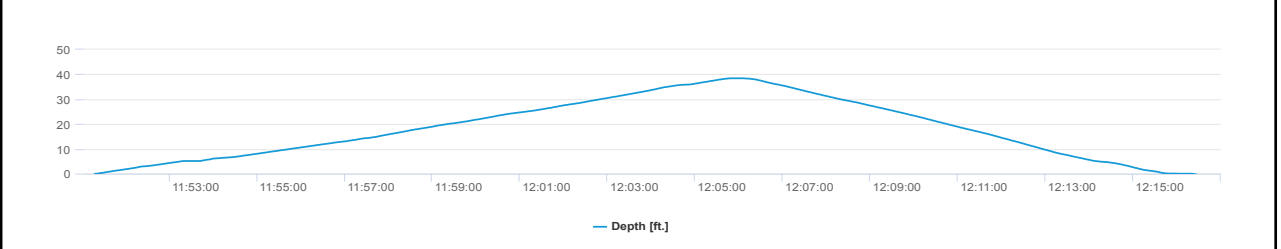
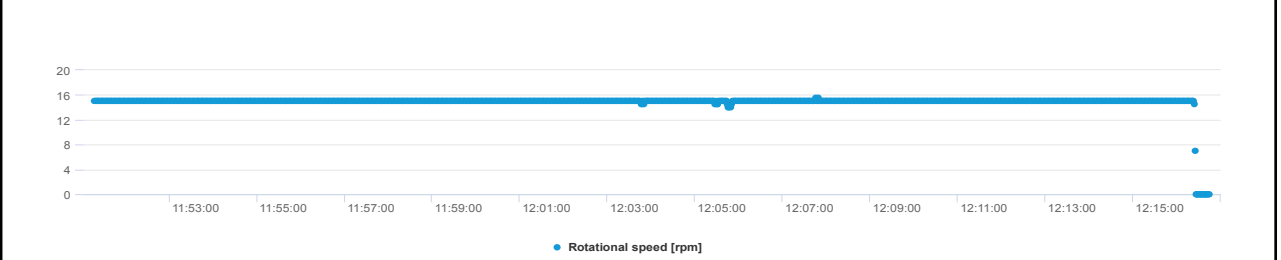
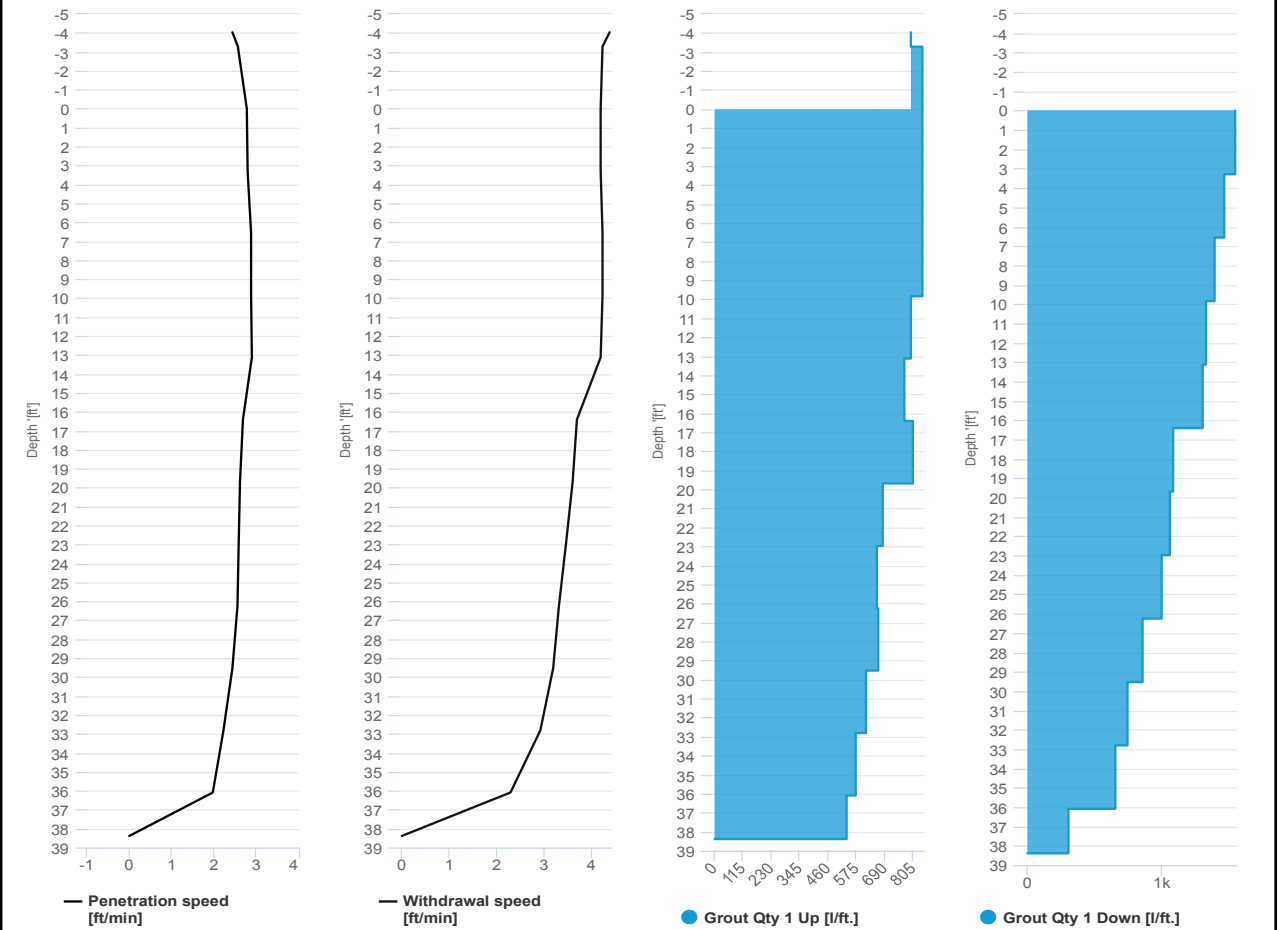


Project name: Douglass Street BCG ISS      Element name: c513b  
 Project number

Start date: 05/09/2024

Drilling rig: BG36H\_5717

Details		Start time	
Max. depth	38.3 ft.	11:51 AM	
Volume/m 1	20.83 ft³	End Date	05/09/2024
		End time	12:16 PM
		Production duration	00:25:28
		Final depth time	12:05 PM
		Total suspension quantity	245.649 ft³



# SCM Report

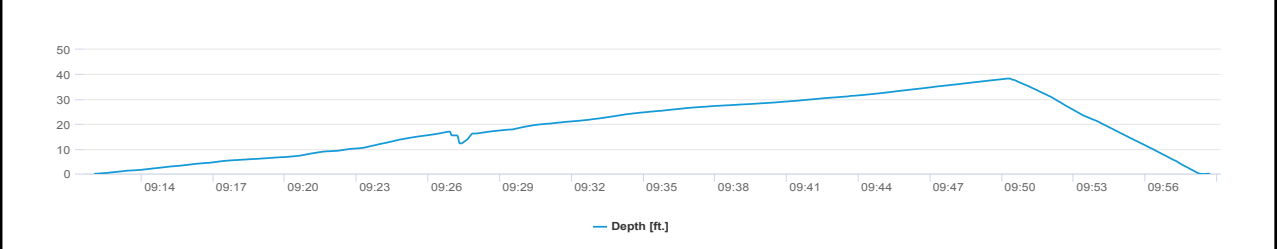
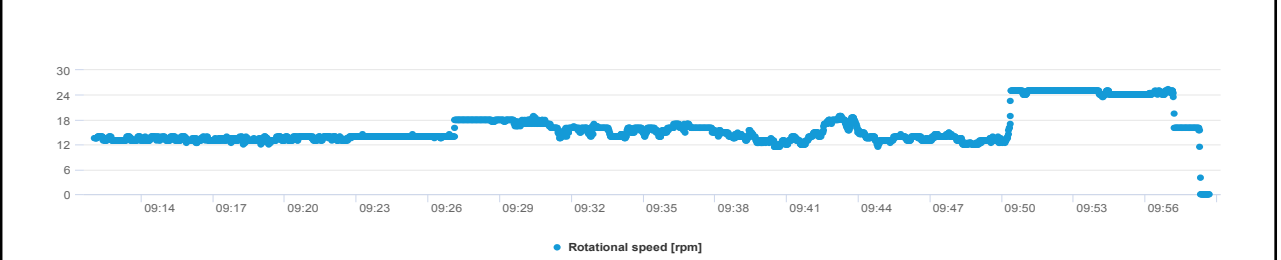
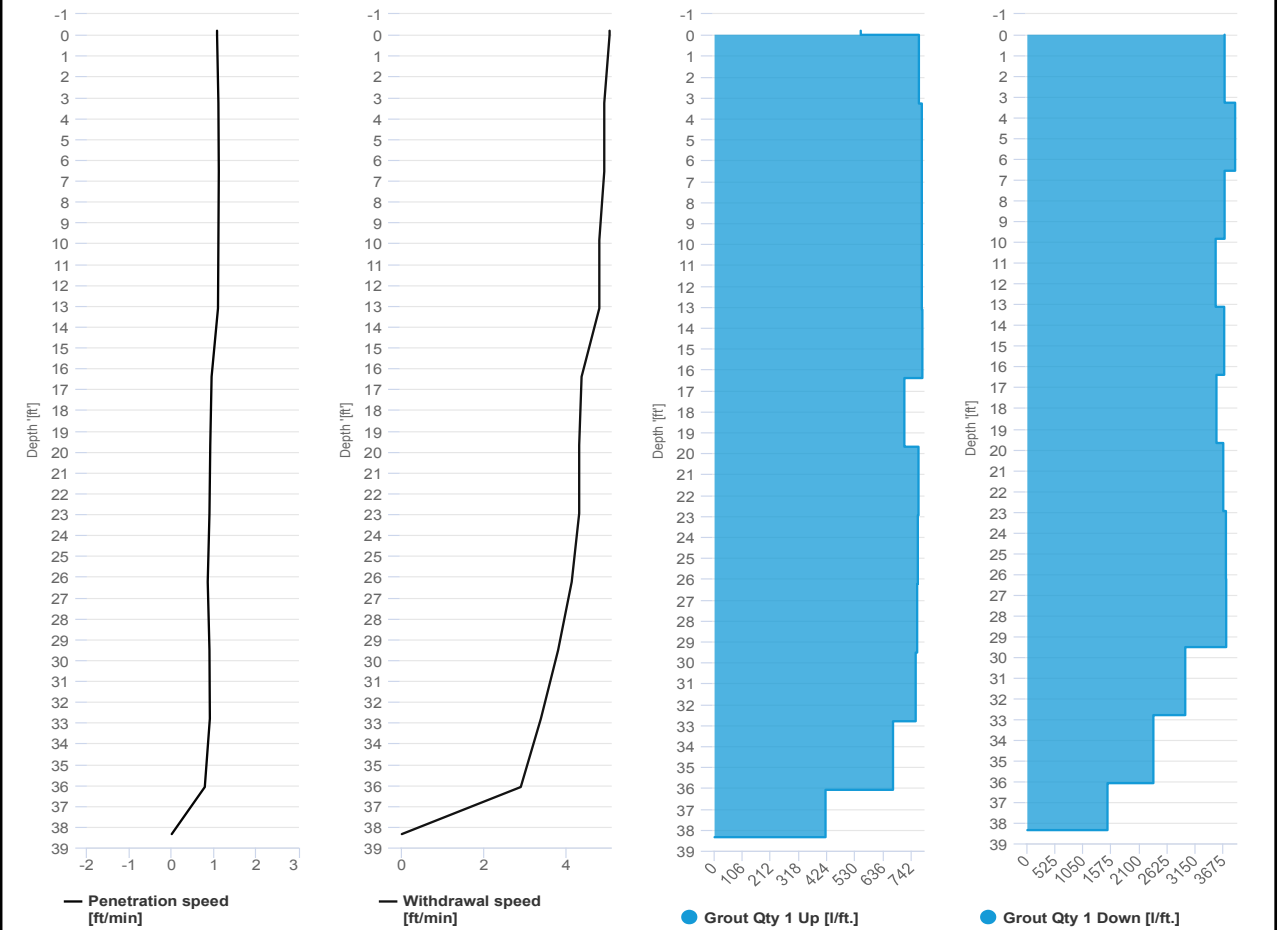


Project name: Douglass Street BCG ISS      Element name: c531a  
 Project number

Start date: 05/09/2024

Drilling rig: BG36H\_5717

<b>Details</b>		Start time: 09:12 AM	
Max. depth: 38.35 ft.		End Date: 05/09/2024	
Volume/m 1: 39.19 ft³		End time: 09:58 AM	
		Production duration: 00:46:39	
		Final depth time: 09:50 AM	
		Total suspension quantity: 458.914 ft³	





# SCM Report

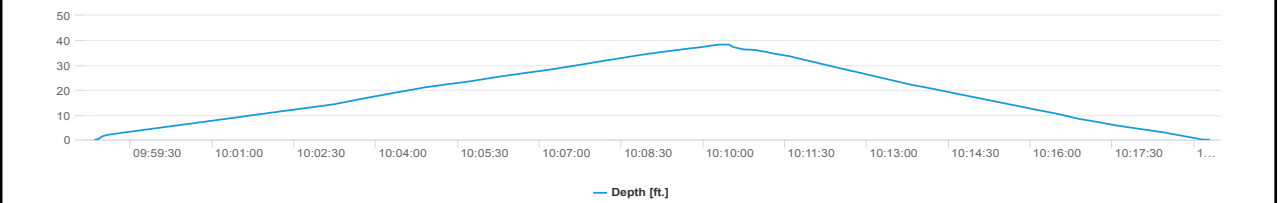
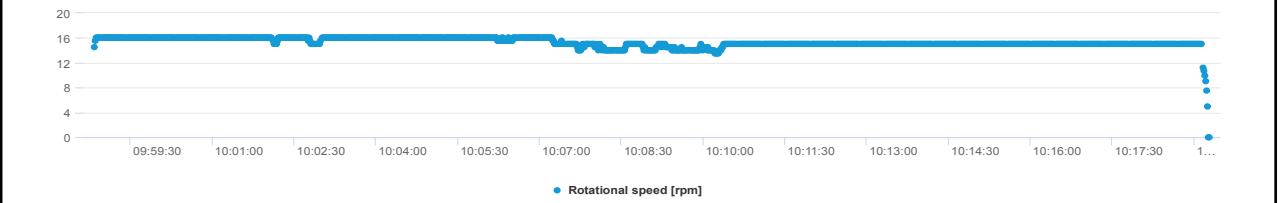
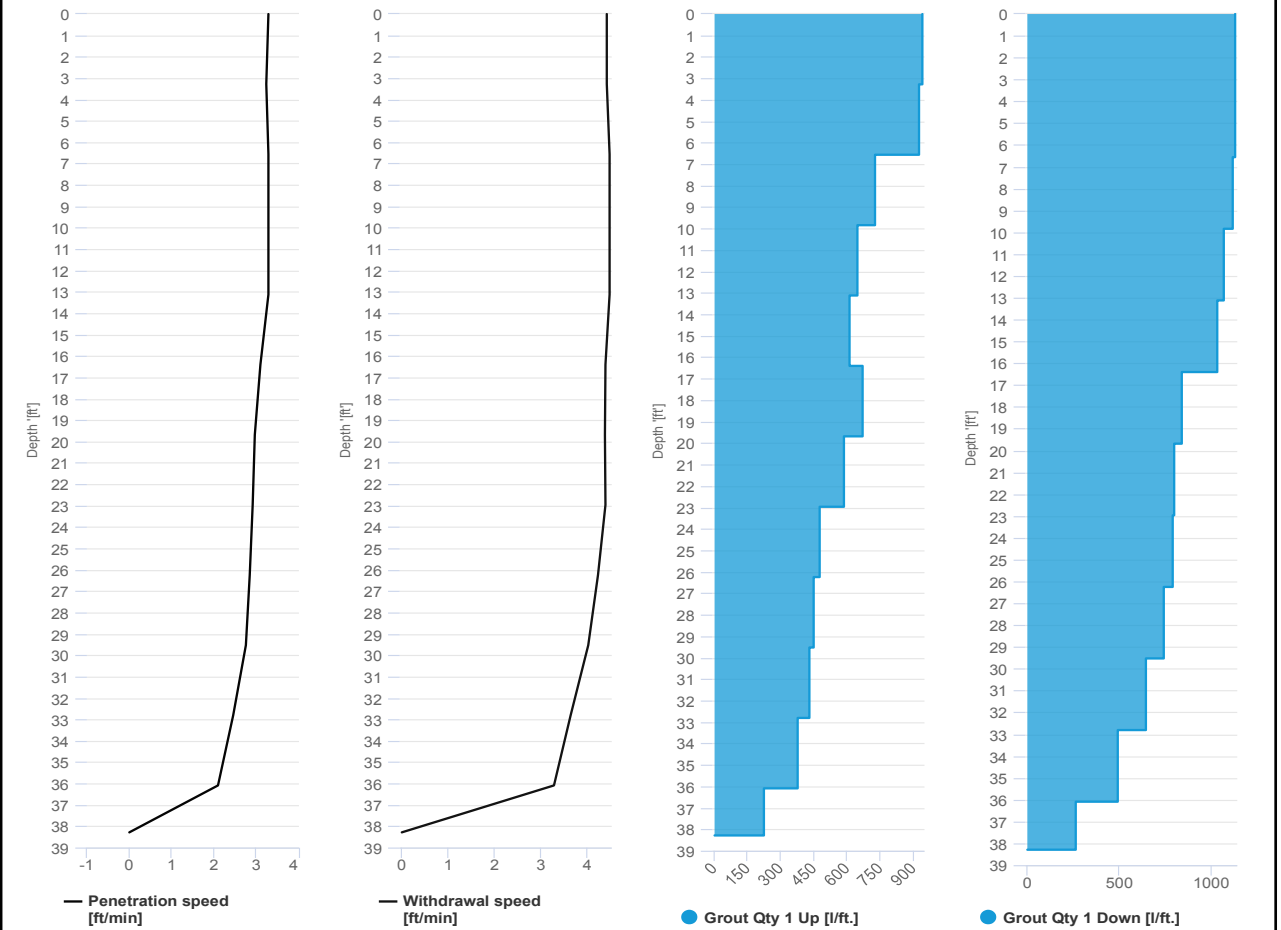


Project name: Douglass Street BCG ISS      Element name: c531b  
 Project number

Start date: 05/09/2024

Drilling rig: BG36H\_5717

<b>Details</b>		Start time: 09:58 AM	
Max. depth: 38.28 ft.		End Date: 05/09/2024	
Volume/m 1: 17.3 ft³		End time: 10:19 AM	
		Production duration: 00:20:27	
		Final depth time: 10:10 AM_	
		Total suspension quantity: 200.728 ft³	



# SCM Report

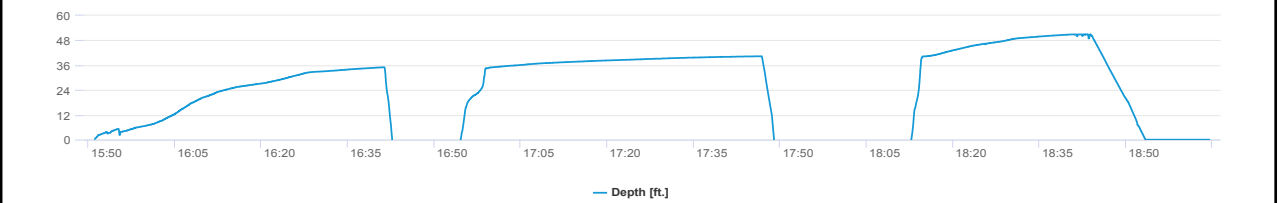
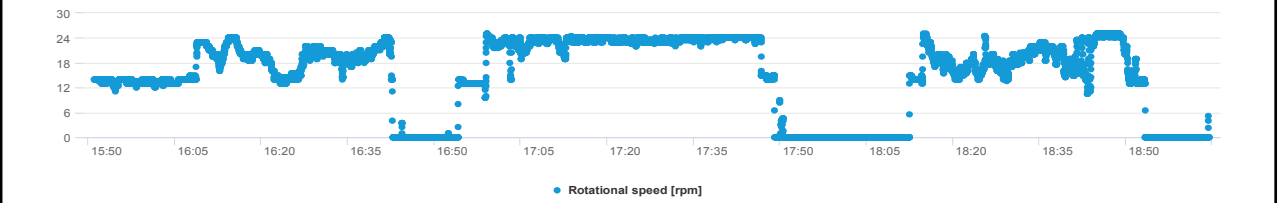
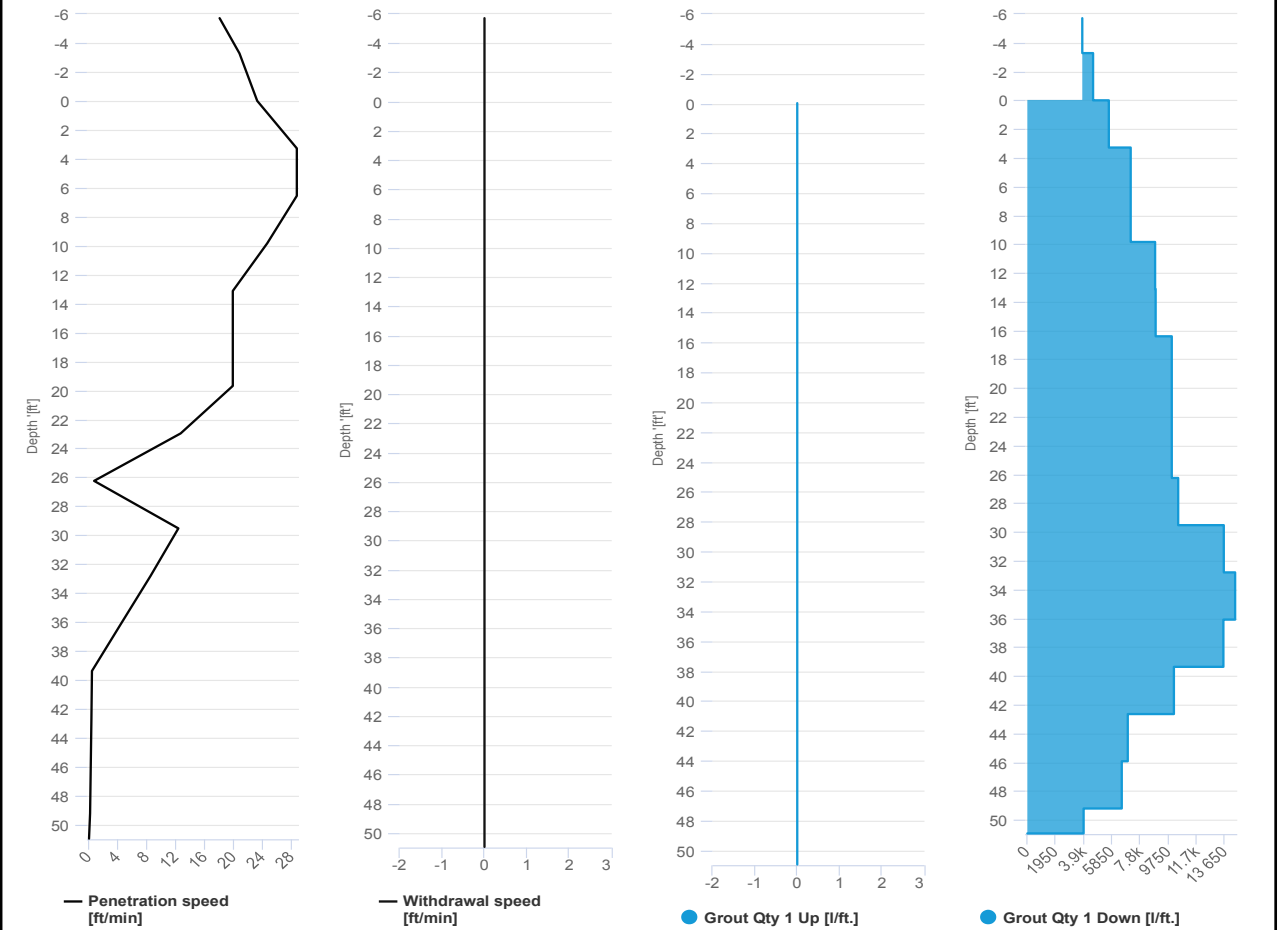


Project name: Douglass Street BCG ISS      Element name: c580a  
Project number

Start date: 05/09/2024

Drilling rig: BG36H\_5717

<b>Details</b>		Start time: 03:51 PM	
Max. depth: 50.95 ft.		End Date: 05/09/2024	
Volume/m 1: 84.4 ft³		End time: 07:04 PM	
		Production duration: 03:13:22	
		Final depth time: 06:42 PM	
		Total suspension quantity: 1,313.389 ft³	



# SCM Report

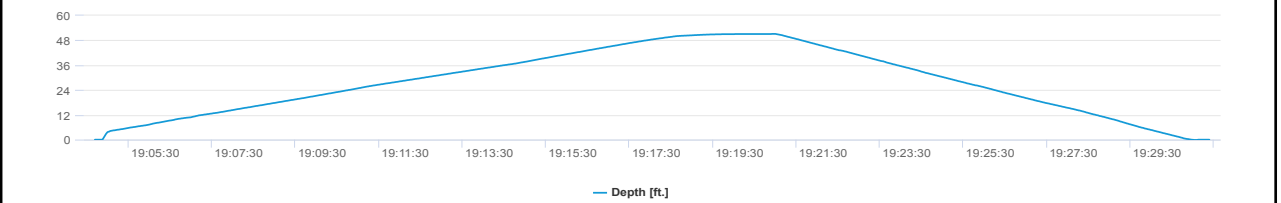
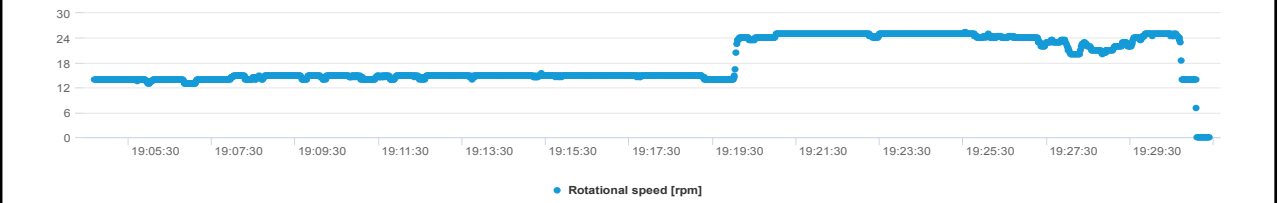
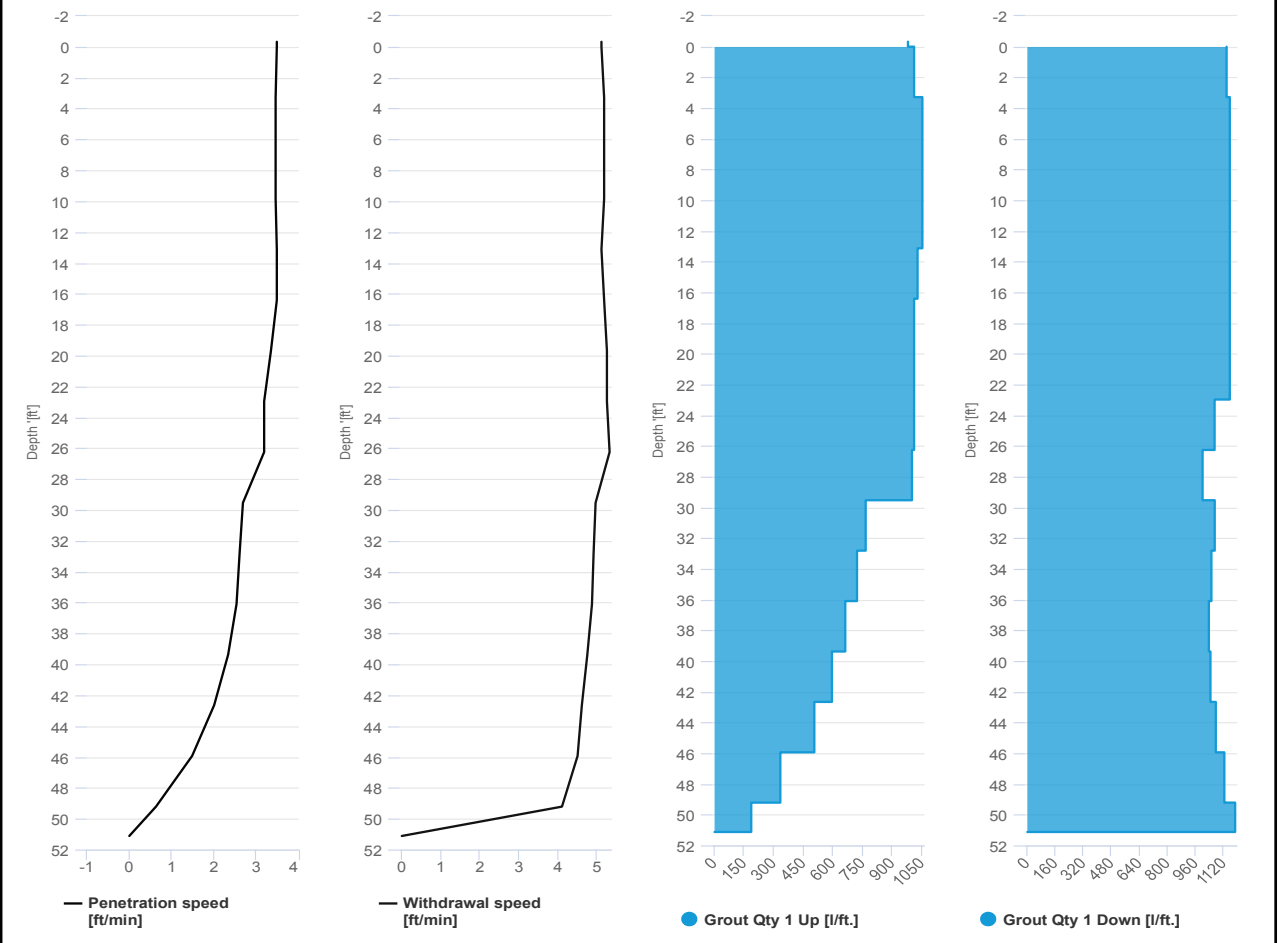


Project name: Douglass Street BCG ISS      Element name: c580b  
 Project number

Start date: 05/09/2024

Drilling rig: BG36H\_5717

<b>Details</b>		Start time	07:04 PM
Max. depth	51.11 ft.	End Date	05/09/2024
Volume/m 1	16.95 ft³	End time	07:31 PM
		Production duration	00:26:43
		Final depth time	07:21 PM
		Total suspension quantity	262.811 ft³





# SCM Report

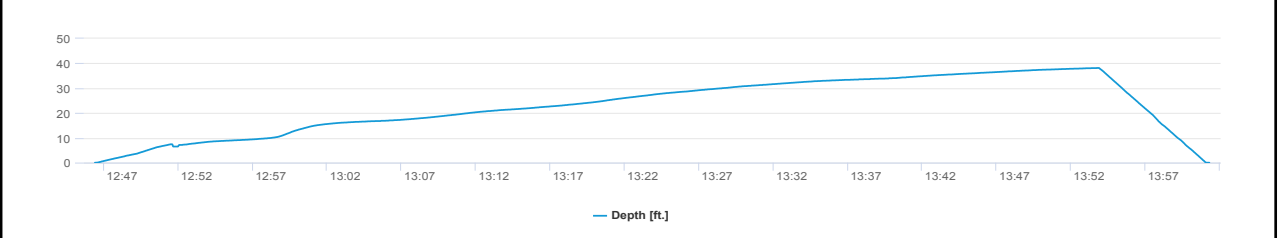
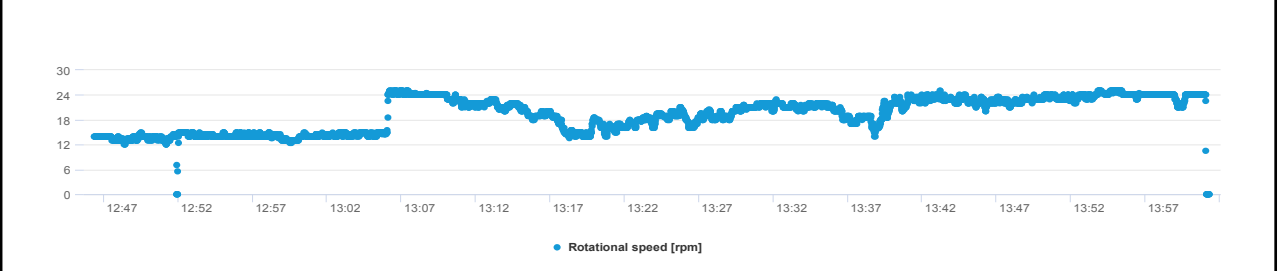
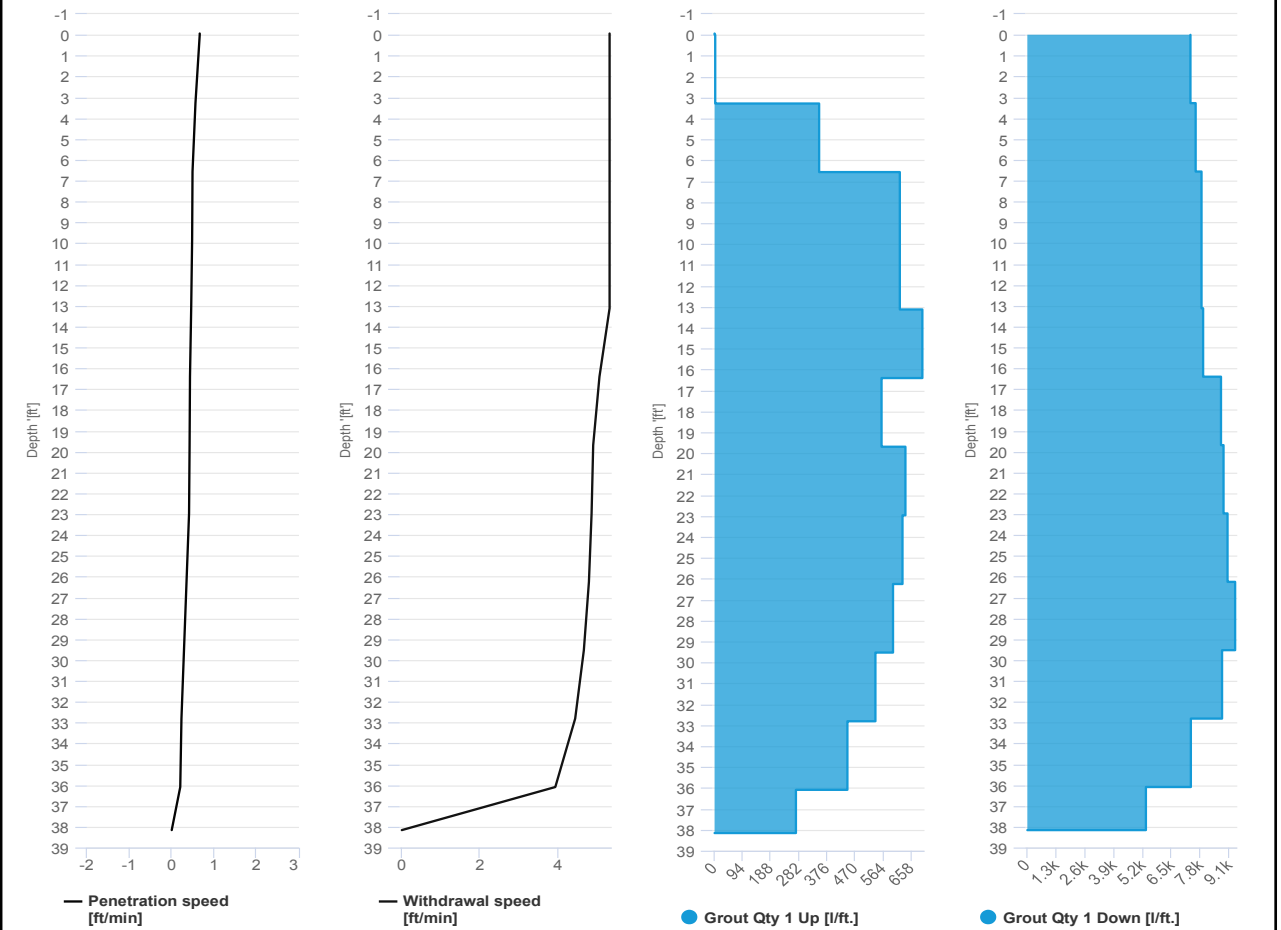


Project name: Douglass Street BCG ISS      Element name: c613a  
 Project number

Start date: 05/09/2024

Drilling rig: BG36H\_5717

<b>Details</b>		Start time: 12:46 PM	
Max. depth: 38.15 ft.		End Date: 05/09/2024	
Volume/m 1: 66.03 ft³		End time: 02:01 PM	
		Production duration: 01:14:56	
		Final depth time: 01:53 PM	
		Total suspension quantity: 769.118 ft³	



# SCM Report

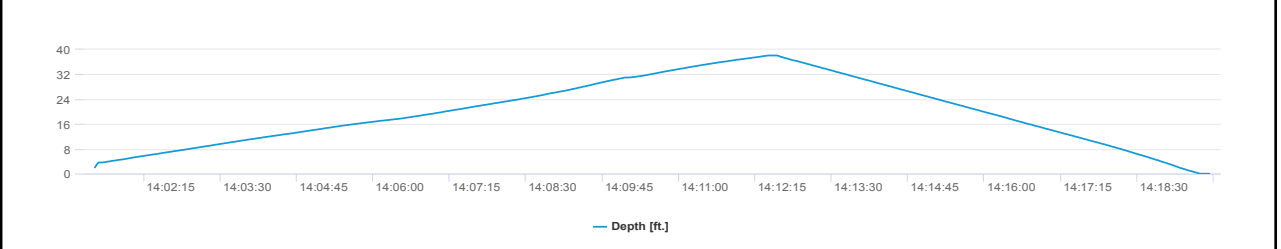
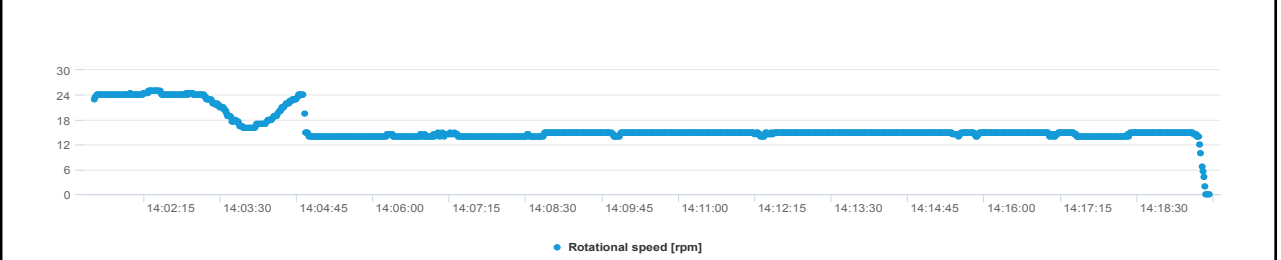
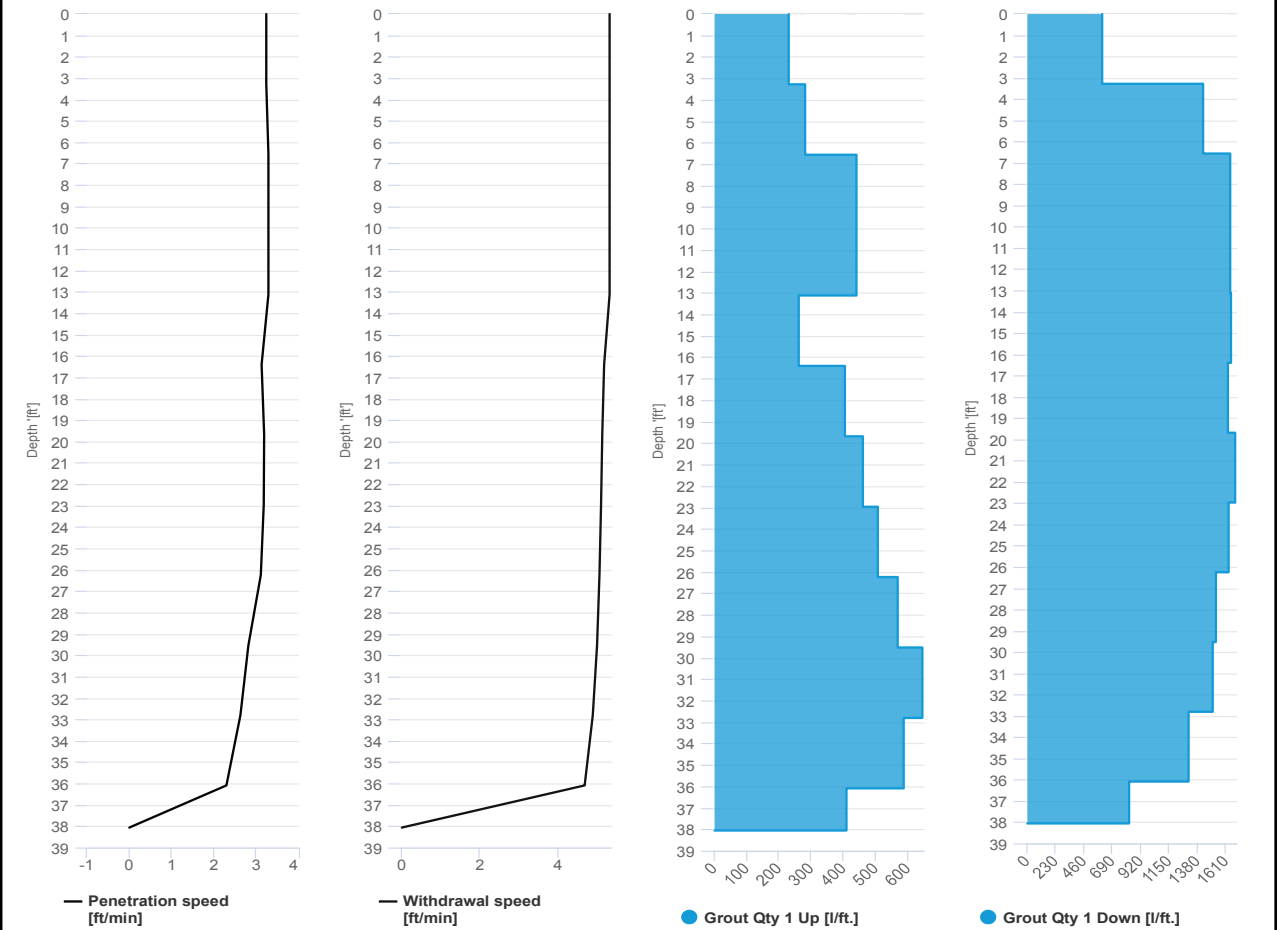


Project name: Douglass Street BCG ISS      Element name: c613b  
 Project number

Start date: 05/09/2024

Drilling rig: BG36H\_5717

<b>Details</b>		Start time: 02:01 PM	
Max. depth: 38 ft.		End Date: 05/09/2024	
Volume/m 1: 13.41 ft <sup>3</sup>		End time: 02:19 PM	
		Production duration: 00:18:15	
		Final depth time: 02:12 PM	
		Total suspension quantity: 156.126 ft <sup>3</sup>	



70	8731	0	0 Pilot mix C_2 9/5/2024
71	8732	0	0 Pilot mix C_2 9/5/2024
72	8733	0	0 Pilot mix C_2 9/5/2024
73	8734	0	0 Pilot mix C_2 9/5/2024
74	8735	0	0 Pilot mix C_2 9/5/2024
75	8736	0	0 Pilot mix C_2 9/5/2024
76	8737	0	0 Pilot mix C_2 9/5/2024
77	8738	0	0 Pilot mix C_2 9/5/2024
78	8739	0	0 Pilot mix C_2 9/5/2024
79	8740	0	0 Pilot mix C_2 9/5/2024
80	8741	0	0 Pilot mix C_2 9/5/2024
81	8742	0	0 Pilot mix C_2 9/5/2024
82	8743	0	0 Pilot mix C_2 9/5/2024
83	8744	0	0 Pilot mix C_2 9/5/2024
84	8745	0	0 Pilot mix C_2 9/5/2024
85	8746	0	0 Pilot mix C_2 9/5/2024
86	8747	0	0 Pilot mix C_2 9/5/2024
87	8748	0	0 Pilot mix C_2 9/5/2024
88	8749	0	0 Pilot mix C_2 9/5/2024
89	8750	0	0 Pilot mix C_2 9/5/2024
90	8751	0	0 Pilot mix C_2 9/5/2024
91	8752	0	0 Pilot mix C_2 9/5/2024
92	8753	0	0 Pilot mix C_2 9/5/2024
93	8754	0	0 Pilot mix C_2 9/5/2024
94	8755	0	0 Pilot mix C_2 9/5/2024
95	8756	0	0 Pilot mix C_2 9/5/2024
96	8757	0	0 Pilot mix C_2 9/5/2024
97	8758	0	0 Pilot mix C_2 9/5/2024
98	8759	0	0 Pilot mix C_2 9/5/2024
99	8760	0	0 Pilot mix C_2 9/5/2024
100	8761	0	0 Pilot mix C_2 9/5/2024
101	8762	0	0 Pilot mix C_2 9/5/2024
102	8763	0	0 Pilot mix C_2 9/5/2024
103	8764	0	0 Pilot mix C_2 9/5/2024
104	8765	0	0 Pilot mix C_2 9/5/2024
105	8766	0	0 Pilot mix C_2 9/5/2024
106	8767	0	0 Pilot mix C_2 9/5/2024
107	8768	0	0 Pilot mix C_2 9/5/2024
108	8769	0	0 Pilot mix C_2 9/5/2024
109	8770	0	0 Pilot mix C_2 9/5/2024
110	8771	0	0 Pilot mix C_2 9/5/2024
111	8772	0	0 Pilot mix C_2 9/5/2024
112	8773	0	0 Pilot mix C_2 9/5/2024
113	8774	0	0 Pilot mix C_2 9/5/2024



2:32:14 PM

2:35:45 PM

3:14:35 PM

3:30:20 PM

3:51:50 PM

3:55:28 PM

3:58:48 PM

4:01:55 PM

4:05:13 PM

4:07:47 PM

4:11:15 PM

4:14:13 PM

4:17:04 PM

4:20:23 PM

4:22:33 PM

4:25:17 PM

4:29:55 PM

4:35:43 PM

4:53:05 PM

4:57:14 PM

5:00:42 PM

5:03:22 PM

5:06:46 PM

5:10:34 PM

5:14:00 PM

5:17:50 PM

5:21:50 PM

5:26:10 PM

5:29:58 PM

5:33:52 PM

5:38:07 PM

5:42:26 PM

6:08:14 PM

6:13:27 PM

6:17:10 PM

6:20:06 PM

6:22:55 PM

6:25:28 PM

6:28:58 PM

6:59:17 PM

7:05:54 PM

7:09:14 PM

7:13:59 PM

7:18:28 PM



**IMPACT ENVIRONMENTAL**

170 Keyland Court | Bohemia | NY | 11716 | 631.269.8800

welcome to solid ground...

[www.impactenvironmental.com](http://www.impactenvironmental.com)

---

**UPWIND CAMP READINGS**

251 DOUGLASS STREET, BROOKLYN, NY

Instrument Name	DustTrak DRX
Model Number	8533
Serial Number	8533181205
Firmware Version	3.1
Calibration Date	5/31/2023
Test Name	MANUAL_005
Test Start Time	6:40:44 AM
Test Start Date	5/9/2024
Test Length [D:H:M]	0:13:01
Test Interval [M:S]	1:00
PM1 Average [mg/m3]	0.008
PM1 Minimum [mg/m3]	0.002
PM1 Maximum [mg/m3]	0.06
PM1 TWA [mg/m3]	0.009
Photometric User Cal	1
Size Correction User Cal	1
Flow User Cal	0
Errors	
Number of Samples	781

Elapsed Time [s]	PM1 [mg/m3]	Alarms	Errors
6:41	0.01		
6:42	0.006		
6:43	0.006		
6:44	0.005		
6:45	0.006		
6:46	0.005		
6:47	0.006		
6:48	0.005		
6:49	0.005		
6:50	0.005		
6:51	0.005		
6:52	0.006		
6:53	0.005		
6:54	0.009		
6:55	0.007		
6:56	0.005		
6:57	0.021		
6:58	0.005		
6:59	0.02		
7:00	0.013		
7:01	0.007		
7:02	0.019		
7:03	0.006		

7:04	0.005
7:05	0.004
7:06	0.003
7:07	0.003
7:08	0.004
7:09	0.004
7:10	0.004
7:11	0.009
7:12	0.006
7:13	0.005
7:14	0.005
7:15	0.005
7:16	0.004
7:17	0.004
7:18	0.005
7:19	0.004
7:20	0.007
7:21	0.005
7:22	0.005
7:23	0.004
7:24	0.004
7:25	0.007
7:26	0.008
7:27	0.006
7:28	0.004
7:29	0.005
7:30	0.012
7:31	0.007
7:32	0.005
7:33	0.007
7:34	0.003
7:35	0.013
7:36	0.003
7:37	0.004
7:38	0.006
7:39	0.005
7:40	0.007
7:41	0.005
7:42	0.004
7:43	0.004
7:44	0.009
7:45	0.004
7:46	0.004
7:47	0.004

7:48	0.005
7:49	0.005
7:50	0.004
7:51	0.005
7:52	0.007
7:53	0.004
7:54	0.005
7:55	0.005
7:56	0.005
7:57	0.005
7:58	0.005
7:59	0.003
8:00	0.003
8:01	0.002
8:02	0.004
8:03	0.006
8:04	0.005
8:05	0.005
8:06	0.005
8:07	0.004
8:08	0.005
8:09	0.006
8:10	0.005
8:11	0.007
8:12	0.004
8:13	0.005
8:14	0.005
8:15	0.004
8:16	0.004
8:17	0.007
8:18	0.014
8:19	0.006
8:20	0.004
8:21	0.008
8:22	0.017
8:23	0.015
8:24	0.012
8:25	0.008
8:26	0.005
8:27	0.007
8:28	0.009
8:29	0.007
8:30	0.012
8:31	0.013



8:32	0.009
8:33	0.009
8:34	0.03
8:35	0.004
8:36	0.005
8:37	0.007
8:38	0.008
8:39	0.016
8:40	0.011
8:41	0.011
8:42	0.01
8:43	0.012
8:44	0.011
8:45	0.011
8:46	0.013
8:47	0.013
8:48	0.016
8:49	0.007
8:50	0.006
8:51	0.009
8:52	0.008
8:53	0.008
8:54	0.008
8:55	0.007
8:56	0.007
8:57	0.009
8:58	0.007
8:59	0.013
9:00	0.006
9:01	0.006
9:02	0.006
9:03	0.012
9:04	0.011
9:05	0.004
9:06	0.011
9:07	0.011
9:08	0.01
9:09	0.022
9:10	0.012
9:11	0.012
9:12	0.009
9:13	0.007
9:14	0.009
9:15	0.011

9:16	0.01
9:17	0.012
9:18	0.012
9:19	0.012
9:20	0.015
9:21	0.008
9:22	0.011
9:23	0.01
9:24	0.011
9:25	0.014
9:26	0.011
9:27	0.011
9:28	0.01
9:29	0.008
9:30	0.009
9:31	0.011
9:32	0.008
9:33	0.009
9:34	0.007
9:35	0.012
9:36	0.011
9:37	0.008
9:38	0.01
9:39	0.011
9:40	0.013
9:41	0.012
9:42	0.008
9:43	0.009
9:44	0.011
9:45	0.01
9:46	0.011
9:47	0.009
9:48	0.009
9:49	0.011
9:50	0.014
9:51	0.018
9:52	0.012
9:53	0.015
9:54	0.011
9:55	0.007
9:56	0.012
9:57	0.005
9:58	0.005
9:59	0.007

10:00	0.009
10:01	0.007
10:02	0.009
10:03	0.018
10:04	0.018
10:05	0.006
10:06	0.012
10:07	0.024
10:08	0.017
10:09	0.008
10:10	0.005
10:11	0.004
10:12	0.004
10:13	0.005
10:14	0.007
10:15	0.006
10:16	0.005
10:17	0.005
10:18	0.013
10:19	0.015
10:20	0.007
10:21	0.007
10:22	0.006
10:23	0.008
10:24	0.007
10:25	0.007
10:26	0.009
10:27	0.011
10:28	0.005
10:29	0.007
10:30	0.011
10:31	0.007
10:32	0.013
10:33	0.011
10:34	0.011
10:35	0.012
10:36	0.011
10:37	0.012
10:38	0.012
10:39	0.008
10:40	0.007
10:41	0.011
10:42	0.01
10:43	0.01

10:44	0.009
10:45	0.006
10:46	0.007
10:47	0.005
10:48	0.005
10:49	0.017
10:50	0.009
10:51	0.009
10:52	0.009
10:53	0.01
10:54	0.008
10:55	0.007
10:56	0.01
10:57	0.008
10:58	0.014
10:59	0.026
11:00	0.009
11:01	0.007
11:02	0.007
11:03	0.007
11:04	0.008
11:05	0.007
11:06	0.008
11:07	0.009
11:08	0.008
11:09	0.03
11:10	0.011
11:11	0.009
11:12	0.009
11:13	0.009
11:14	0.01
11:15	0.009
11:16	0.012
11:17	0.012
11:18	0.01
11:19	0.01
11:20	0.011
11:21	0.011
11:22	0.008
11:23	0.009
11:24	0.008
11:25	0.012
11:26	0.01
11:27	0.007

11:28	0.006
11:29	0.01
11:30	0.014
11:31	0.019
11:32	0.009
11:33	0.008
11:34	0.006
11:35	0.012
11:36	0.011
11:37	0.009
11:38	0.008
11:39	0.008
11:40	0.007
11:41	0.011
11:42	0.009
11:43	0.007
11:44	0.008
11:45	0.01
11:46	0.009
11:47	0.01
11:48	0.01
11:49	0.013
11:50	0.006
11:51	0.006
11:52	0.006
11:53	0.01
11:54	0.01
11:55	0.008
11:56	0.015
11:57	0.012
11:58	0.012
11:59	0.011
12:00	0.009
12:01	0.014
12:02	0.018
12:03	0.053
12:04	0.018
12:05	0.013
12:06	0.021
12:07	0.018
12:08	0.01
12:09	0.011
12:10	0.008
12:11	0.009



12:12	0.008
12:13	0.008
12:14	0.006
12:15	0.006
12:16	0.006
12:17	0.005
12:18	0.006
12:19	0.006
12:20	0.005
12:21	0.005
12:22	0.006
12:23	0.006
12:24	0.007
12:25	0.007
12:26	0.006
12:27	0.006
12:28	0.008
12:29	0.009
12:30	0.024
12:31	0.01
12:32	0.009
12:33	0.008
12:34	0.009
12:35	0.006
12:36	0.006
12:37	0.007
12:38	0.006
12:39	0.007
12:40	0.008
12:41	0.012
12:42	0.009
12:43	0.01
12:44	0.008
12:45	0.006
12:46	0.006
12:47	0.007
12:48	0.006
12:49	0.006
12:50	0.007
12:51	0.006
12:52	0.007
12:53	0.006
12:54	0.007
12:55	0.005

12:56	0.006
12:57	0.009
12:58	0.017
12:59	0.006
13:00	0.006
13:01	0.011
13:02	0.014
13:03	0.007
13:04	0.006
13:05	0.03
13:06	0.025
13:07	0.008
13:08	0.007
13:09	0.009
13:10	0.007
13:11	0.007
13:12	0.007
13:13	0.006
13:14	0.006
13:15	0.01
13:16	0.007
13:17	0.006
13:18	0.011
13:19	0.007
13:20	0.007
13:21	0.006
13:22	0.006
13:23	0.006
13:24	0.009
13:25	0.009
13:26	0.006
13:27	0.006
13:28	0.006
13:29	0.006
13:30	0.008
13:31	0.009
13:32	0.006
13:33	0.008
13:34	0.009
13:35	0.009
13:36	0.007
13:37	0.006
13:38	0.007
13:39	0.008

13:40	0.008
13:41	0.007
13:42	0.009
13:43	0.008
13:44	0.007
13:45	0.006
13:46	0.006
13:47	0.006
13:48	0.007
13:49	0.005
13:50	0.005
13:51	0.005
13:52	0.006
13:53	0.006
13:54	0.006
13:55	0.007
13:56	0.008
13:57	0.007
13:58	0.005
13:59	0.006
14:00	0.005
14:01	0.006
14:02	0.006
14:03	0.005
14:04	0.006
14:05	0.005
14:06	0.005
14:07	0.006
14:08	0.005
14:09	0.006
14:10	0.006
14:11	0.006
14:12	0.005
14:13	0.005
14:14	0.005
14:15	0.006
14:16	0.007
14:17	0.006
14:18	0.006
14:19	0.007
14:20	0.008
14:21	0.005
14:22	0.006
14:23	0.01

14:24	0.016
14:25	0.007
14:26	0.007
14:27	0.007
14:28	0.014
14:29	0.015
14:30	0.008
14:31	0.008
14:32	0.007
14:33	0.007
14:34	0.005
14:35	0.007
14:36	0.009
14:37	0.011
14:38	0.013
14:39	0.009
14:40	0.008
14:41	0.005
14:42	0.005
14:43	0.007
14:44	0.007
14:45	0.005
14:46	0.006
14:47	0.008
14:48	0.009
14:49	0.009
14:50	0.009
14:51	0.006
14:52	0.009
14:53	0.007
14:54	0.007
14:55	0.006
14:56	0.006
14:57	0.012
14:58	0.007
14:59	0.007
15:00	0.009
15:01	0.007
15:02	0.008
15:03	0.006
15:04	0.006
15:05	0.006
15:06	0.006
15:07	0.005

15:08	0.005
15:09	0.006
15:10	0.006
15:11	0.005
15:12	0.005
15:13	0.008
15:14	0.006
15:15	0.006
15:16	0.005
15:17	0.005
15:18	0.005
15:19	0.005
15:20	0.006
15:21	0.005
15:22	0.007
15:23	0.006
15:24	0.006
15:25	0.005
15:26	0.006
15:27	0.005
15:28	0.008
15:29	0.005
15:30	0.005
15:31	0.006
15:32	0.005
15:33	0.005
15:34	0.005
15:35	0.005
15:36	0.006
15:37	0.006
15:38	0.005
15:39	0.007
15:40	0.007
15:41	0.007
15:42	0.006
15:43	0.007
15:44	0.006
15:45	0.011
15:46	0.007
15:47	0.007
15:48	0.007
15:49	0.01
15:50	0.009
15:51	0.008



15:52	0.007
15:53	0.011
15:54	0.007
15:55	0.009
15:56	0.009
15:57	0.009
15:58	0.007
15:59	0.006
16:00	0.008
16:01	0.01
16:02	0.01
16:03	0.009
16:04	0.008
16:05	0.008
16:06	0.006
16:07	0.008
16:08	0.008
16:09	0.008
16:10	0.008
16:11	0.013
16:12	0.009
16:13	0.01
16:14	0.008
16:15	0.01
16:16	0.008
16:17	0.006
16:18	0.006
16:19	0.006
16:20	0.006
16:21	0.007
16:22	0.007
16:23	0.007
16:24	0.007
16:25	0.01
16:26	0.008
16:27	0.012
16:28	0.018
16:29	0.007
16:30	0.008
16:31	0.009
16:32	0.007
16:33	0.007
16:34	0.008
16:35	0.007

16:36	0.006
16:37	0.007
16:38	0.008
16:39	0.009
16:40	0.009
16:41	0.007
16:42	0.009
16:43	0.013
16:44	0.006
16:45	0.006
16:46	0.006
16:47	0.012
16:48	0.031
16:49	0.007
16:50	0.006
16:51	0.005
16:52	0.006
16:53	0.014
16:54	0.007
16:55	0.006
16:56	0.006
16:57	0.006
16:58	0.008
16:59	0.005
17:00	0.006
17:01	0.006
17:02	0.006
17:03	0.007
17:04	0.007
17:05	0.006
17:06	0.008
17:07	0.006
17:08	0.006
17:09	0.008
17:10	0.008
17:11	0.007
17:12	0.009
17:13	0.008
17:14	0.008
17:15	0.007
17:16	0.007
17:17	0.006
17:18	0.007
17:19	0.008

17:20	0.008
17:21	0.007
17:22	0.007
17:23	0.007
17:24	0.01
17:25	0.008
17:26	0.007
17:27	0.01
17:28	0.01
17:29	0.007
17:30	0.009
17:31	0.009
17:32	0.011
17:33	0.02
17:34	0.013
17:35	0.014
17:36	0.011
17:37	0.01
17:38	0.01
17:39	0.01
17:40	0.016
17:41	0.01
17:42	0.011
17:43	0.016
17:44	0.015
17:45	0.009
17:46	0.009
17:47	0.013
17:48	0.02
17:49	0.011
17:50	0.012
17:51	0.012
17:52	0.06
17:53	0.022
17:54	0.018
17:55	0.01
17:56	0.008
17:57	0.008
17:58	0.009
17:59	0.01
18:00	0.009
18:01	0.007
18:02	0.006
18:03	0.007

18:04	0.008
18:05	0.008
18:06	0.008
18:07	0.015
18:08	0.006
18:09	0.006
18:10	0.007
18:11	0.007
18:12	0.006
18:13	0.006
18:14	0.008
18:15	0.008
18:16	0.007
18:17	0.007
18:18	0.007
18:19	0.007
18:20	0.006
18:21	0.006
18:22	0.006
18:23	0.007
18:24	0.008
18:25	0.009
18:26	0.012
18:27	0.032
18:28	0.016
18:29	0.012
18:30	0.009
18:31	0.008
18:32	0.007
18:33	0.006
18:34	0.006
18:35	0.006
18:36	0.011
18:37	0.009
18:38	0.008
18:39	0.013
18:40	0.01
18:41	0.007
18:42	0.009
18:43	0.006
18:44	0.006
18:45	0.007
18:46	0.008
18:47	0.007

18:48	0.006
18:49	0.006
18:50	0.006
18:51	0.006
18:52	0.006
18:53	0.005
18:54	0.006
18:55	0.006
18:56	0.007
18:57	0.007
18:58	0.006
18:59	0.006
19:00	0.007
19:01	0.007
19:02	0.008
19:03	0.007
19:04	0.007
19:05	0.008
19:06	0.007
19:07	0.013
19:08	0.006
19:09	0.007
19:10	0.009
19:11	0.007
19:12	0.008
19:13	0.007
19:14	0.007
19:15	0.006
19:16	0.007
19:17	0.006
19:18	0.007
19:19	0.009
19:20	0.007
19:21	0.006
19:22	0.005
19:23	0.006
19:24	0.006
19:25	0.006
19:26	0.006
19:27	0.007
19:28	0.007
19:29	0.007
19:30	0.008
19:31	0.008

19:32	0.007
19:33	0.007
19:34	0.01
19:35	0.007
19:36	0.006
19:37	0.009
19:38	0.008
19:39	0.005
19:40	0.009
19:41	0.008

Device Serial No	Log Time	Log Type	Sensor 1 Type	Sensor 1 Serial Number	Sensor 1 Status	Sensor 1 Gas Reading
592-601274	5/9/2024 6:51	CONFIG	PID	SC23030921B3		
592-601274	5/9/2024 6:52	Readings	PID	SC23030921B3	Normal	0
592-601274	5/9/2024 6:53	Readings	PID	SC23030921B3	Normal	0
592-601274	5/9/2024 6:54	Readings	PID	SC23030921B3	Normal	0
592-601274	5/9/2024 6:55	Readings	PID	SC23030921B3	Normal	0
592-601274	5/9/2024 6:56	Readings	PID	SC23030921B3	Normal	0
592-601274	5/9/2024 6:57	Readings	PID	SC23030921B3	Normal	0
592-601274	5/9/2024 6:58	Readings	PID	SC23030921B3	Normal	0
592-601274	5/9/2024 6:59	Readings	PID	SC23030921B3	Normal	0
592-601274	5/9/2024 7:00	Readings	PID	SC23030921B3	Normal	0
592-601274	5/9/2024 7:01	Readings	PID	SC23030921B3	Normal	0
592-601274	5/9/2024 7:02	Readings	PID	SC23030921B3	Normal	0
592-601274	5/9/2024 7:03	Readings	PID	SC23030921B3	Normal	0
592-601274	5/9/2024 7:04	Readings	PID	SC23030921B3	Normal	0
592-601274	5/9/2024 7:05	Readings	PID	SC23030921B3	Normal	0
592-601274	5/9/2024 7:06	Readings	PID	SC23030921B3	Normal	0
592-601274	5/9/2024 7:07	Readings	PID	SC23030921B3	Normal	0
592-601274	5/9/2024 7:08	Readings	PID	SC23030921B3	Normal	0
592-601274	5/9/2024 7:09	Readings	PID	SC23030921B3	Normal	0
592-601274	5/9/2024 7:10	Readings	PID	SC23030921B3	Normal	0
592-601274	5/9/2024 7:11	Readings	PID	SC23030921B3	Normal	0
592-601274	5/9/2024 7:12	Readings	PID	SC23030921B3	Normal	0
592-601274	5/9/2024 7:13	Readings	PID	SC23030921B3	Normal	0
592-601274	5/9/2024 7:14	Readings	PID	SC23030921B3	Normal	0
592-601274	5/9/2024 7:15	Readings	PID	SC23030921B3	Normal	0
592-601274	5/9/2024 7:16	Readings	PID	SC23030921B3	Normal	0
592-601274	5/9/2024 7:17	Readings	PID	SC23030921B3	Normal	0
592-601274	5/9/2024 7:18	Readings	PID	SC23030921B3	Normal	0
592-601274	5/9/2024 7:19	Readings	PID	SC23030921B3	Normal	0
592-601274	5/9/2024 7:20	Readings	PID	SC23030921B3	Normal	0
592-601274	5/9/2024 7:21	Readings	PID	SC23030921B3	Normal	0
592-601274	5/9/2024 7:22	Readings	PID	SC23030921B3	Normal	0







592-601274	5/9/2024 8:29 Readings	PID	SC23030921B3	Normal	0
592-601274	5/9/2024 8:30 Readings	PID	SC23030921B3	Normal	0
592-601274	5/9/2024 8:31 Readings	PID	SC23030921B3	Normal	0
592-601274	5/9/2024 8:32 Readings	PID	SC23030921B3	Normal	0
592-601274	5/9/2024 8:33 Readings	PID	SC23030921B3	Normal	0
592-601274	5/9/2024 8:34 Readings	PID	SC23030921B3	Normal	0
592-601274	5/9/2024 8:35 Readings	PID	SC23030921B3	Normal	0
592-601274	5/9/2024 8:36 Readings	PID	SC23030921B3	Normal	0
592-601274	5/9/2024 8:37 Readings	PID	SC23030921B3	Normal	0
592-601274	5/9/2024 8:38 Readings	PID	SC23030921B3	Normal	0
592-601274	5/9/2024 8:39 Readings	PID	SC23030921B3	Normal	0
592-601274	5/9/2024 8:40 Readings	PID	SC23030921B3	Normal	0
592-601274	5/9/2024 8:41 Readings	PID	SC23030921B3	Normal	0
592-601274	5/9/2024 8:42 Readings	PID	SC23030921B3	Normal	0
592-601274	5/9/2024 8:43 Readings	PID	SC23030921B3	Normal	0
592-601274	5/9/2024 8:44 Readings	PID	SC23030921B3	Normal	0
592-601274	5/9/2024 8:45 Readings	PID	SC23030921B3	Normal	0
592-601274	5/9/2024 8:46 Readings	PID	SC23030921B3	Normal	0
592-601274	5/9/2024 8:47 Readings	PID	SC23030921B3	Normal	0
592-601274	5/9/2024 8:48 Readings	PID	SC23030921B3	Normal	0
592-601274	5/9/2024 8:49 Readings	PID	SC23030921B3	Normal	0
592-601274	5/9/2024 8:50 Readings	PID	SC23030921B3	Normal	0
592-601274	5/9/2024 8:51 Readings	PID	SC23030921B3	Normal	0
592-601274	5/9/2024 8:52 Readings	PID	SC23030921B3	Normal	0
592-601274	5/9/2024 8:53 Readings	PID	SC23030921B3	Normal	0
592-601274	5/9/2024 8:54 Readings	PID	SC23030921B3	Normal	0
592-601274	5/9/2024 8:55 Readings	PID	SC23030921B3	Normal	0
592-601274	5/9/2024 8:56 Readings	PID	SC23030921B3	Normal	0
592-601274	5/9/2024 8:57 Readings	PID	SC23030921B3	Normal	0
592-601274	5/9/2024 8:58 Readings	PID	SC23030921B3	Normal	0
592-601274	5/9/2024 8:59 Readings	PID	SC23030921B3	Normal	0
592-601274	5/9/2024 9:00 Readings	PID	SC23030921B3	Normal	0
592-601274	5/9/2024 9:01 Readings	PID	SC23030921B3	Normal	0



592-601274	5/9/2024 9:35	Readings	PID	SC23030921B3	Normal	0
592-601274	5/9/2024 9:36	Readings	PID	SC23030921B3	Normal	0
592-601274	5/9/2024 9:37	Readings	PID	SC23030921B3	Normal	0
592-601274	5/9/2024 9:38	Readings	PID	SC23030921B3	Normal	0
592-601274	5/9/2024 9:39	Readings	PID	SC23030921B3	Normal	0
592-601274	5/9/2024 9:40	Readings	PID	SC23030921B3	Normal	0
592-601274	5/9/2024 9:41	Readings	PID	SC23030921B3	Normal	0
592-601274	5/9/2024 9:42	Readings	PID	SC23030921B3	Normal	0
592-601274	5/9/2024 9:43	Readings	PID	SC23030921B3	Normal	0
592-601274	5/9/2024 9:44	Readings	PID	SC23030921B3	Normal	0
592-601274	5/9/2024 9:45	Readings	PID	SC23030921B3	Normal	0
592-601274	5/9/2024 9:46	Readings	PID	SC23030921B3	Normal	0
592-601274	5/9/2024 9:47	Readings	PID	SC23030921B3	Normal	0
592-601274	5/9/2024 9:48	Readings	PID	SC23030921B3	Normal	0
592-601274	5/9/2024 9:49	Readings	PID	SC23030921B3	Normal	0
592-601274	5/9/2024 9:50	Readings	PID	SC23030921B3	Normal	0
592-601274	5/9/2024 9:51	Readings	PID	SC23030921B3	Normal	0
592-601274	5/9/2024 9:52	Readings	PID	SC23030921B3	Normal	0
592-601274	5/9/2024 9:53	Readings	PID	SC23030921B3	Normal	0
592-601274	5/9/2024 9:54	Readings	PID	SC23030921B3	Normal	0
592-601274	5/9/2024 9:55	Readings	PID	SC23030921B3	Normal	0
592-601274	5/9/2024 9:56	Readings	PID	SC23030921B3	Normal	0
592-601274	5/9/2024 9:57	Readings	PID	SC23030921B3	Normal	0
592-601274	5/9/2024 9:58	Readings	PID	SC23030921B3	Normal	0
592-601274	5/9/2024 9:59	Readings	PID	SC23030921B3	Normal	0
592-601274	5/9/2024 10:00	Readings	PID	SC23030921B3	Normal	0
592-601274	5/9/2024 10:01	Readings	PID	SC23030921B3	Normal	0
592-601274	5/9/2024 10:02	Readings	PID	SC23030921B3	Normal	0
592-601274	5/9/2024 10:03	Readings	PID	SC23030921B3	Normal	0
592-601274	5/9/2024 10:04	Readings	PID	SC23030921B3	Normal	0
592-601274	5/9/2024 10:05	Readings	PID	SC23030921B3	Normal	0
592-601274	5/9/2024 10:06	Readings	PID	SC23030921B3	Normal	0
592-601274	5/9/2024 10:07	Readings	PID	SC23030921B3	Normal	0







































592-601274	5/9/2024 19:29 Readings	PID	SC23030921B3	Normal	0
592-601274	5/9/2024 19:30 Readings	PID	SC23030921B3	Normal	0
592-601274	5/9/2024 19:31 Readings	PID	SC23030921B3	Normal	0
592-601274	5/9/2024 19:32 Readings	PID	SC23030921B3	Normal	0
592-601274	5/9/2024 19:33 Readings	PID	SC23030921B3	Normal	0
592-601274	5/9/2024 19:34 Readings	PID	SC23030921B3	Normal	0
592-601274	5/9/2024 19:35 Readings	PID	SC23030921B3	Normal	0
592-601274	5/9/2024 19:36 Readings	PID	SC23030921B3	Normal	0
592-601274	5/9/2024 19:37 Readings	PID	SC23030921B3	Normal	0
592-601274	5/9/2024 19:38 Readings	PID	SC23030921B3	Normal	0

**DOWNWIND CAMP READINGS**

251 DOUGLASS STREET, BROOKLYN, NY



Instrument Name	DustTrak DRX
Model Number	8533
Serial Number	8533181207
Firmware Version	3.1
Calibration Date	6/1/2023
Test Name	MANUAL_005
Test Start Time	6:47:23 AM
Test Start Date	5/9/2024
Test Length [D:H:M]	0:12:50
Test Interval [M:S]	1:00
PM1 Average [mg/m3]	0.022
PM1 Minimum [mg/m3]	0.016
PM1 Maximum [mg/m3]	0.111
PM1 TWA [mg/m3]	0.023
Photometric User Cal	1
Size Correction User Cal	1
Flow User Cal	0
Errors	
Number of Samples	770

Elapsed Time [s]	PM1 [mg/m3]	Alarms	Errors
6:48	0.018		
6:49	0.018		
6:50	0.019		
6:51	0.02		
6:52	0.02		
6:53	0.018		
6:54	0.018		
6:55	0.017		
6:56	0.016		
6:57	0.016		
6:58	0.016		
6:59	0.017		
7:00	0.016		
7:01	0.016		
7:02	0.017		
7:03	0.044		
7:04	0.018		
7:05	0.017		
7:06	0.016		
7:07	0.017		
7:08	0.016		
7:09	0.016		
7:10	0.018		



7:11	0.022
7:12	0.018
7:13	0.018
7:14	0.02
7:15	0.019
7:16	0.019
7:17	0.018
7:18	0.02
7:19	0.018
7:20	0.022
7:21	0.021
7:22	0.018
7:23	0.021
7:24	0.019
7:25	0.018
7:26	0.021
7:27	0.018
7:28	0.017
7:29	0.018
7:30	0.02
7:31	0.021
7:32	0.019
7:33	0.019
7:34	0.019
7:35	0.018
7:36	0.018
7:37	0.018
7:38	0.02
7:39	0.017
7:40	0.018
7:41	0.018
7:42	0.017
7:43	0.018
7:44	0.017
7:45	0.018
7:46	0.02
7:47	0.018
7:48	0.018
7:49	0.018
7:50	0.017
7:51	0.017
7:52	0.017
7:53	0.019
7:54	0.019

7:55	0.018
7:56	0.019
7:57	0.018
7:58	0.017
7:59	0.016
8:00	0.017
8:01	0.016
8:02	0.019
8:03	0.021
8:04	0.019
8:05	0.018
8:06	0.017
8:07	0.018
8:08	0.023
8:09	0.018
8:10	0.017
8:11	0.019
8:12	0.018
8:13	0.018
8:14	0.017
8:15	0.017
8:16	0.019
8:17	0.022
8:18	0.019
8:19	0.02
8:20	0.017
8:21	0.021
8:22	0.017
8:23	0.017
8:24	0.018
8:25	0.025
8:26	0.042
8:27	0.029
8:28	0.065
8:29	0.109
8:30	0.019
8:31	0.018
8:32	0.017
8:33	0.025
8:34	0.016
8:35	0.016
8:36	0.016
8:37	0.016
8:38	0.02

8:39	0.017
8:40	0.019
8:41	0.018
8:42	0.028
8:43	0.019
8:44	0.017
8:45	0.022
8:46	0.022
8:47	0.017
8:48	0.017
8:49	0.017
8:50	0.017
8:51	0.016
8:52	0.017
8:53	0.022
8:54	0.016
8:55	0.016
8:56	0.016
8:57	0.016
8:58	0.016
8:59	0.016
9:00	0.024
9:01	0.016
9:02	0.016
9:03	0.016
9:04	0.016
9:05	0.017
9:06	0.017
9:07	0.026
9:08	0.017
9:09	0.025
9:10	0.027
9:11	0.022
9:12	0.028
9:13	0.016
9:14	0.019
9:15	0.018
9:16	0.025
9:17	0.018
9:18	0.021
9:19	0.022
9:20	0.022
9:21	0.022
9:22	0.047

9:23	0.021
9:24	0.037
9:25	0.024
9:26	0.021
9:27	0.027
9:28	0.026
9:29	0.021
9:30	0.017
9:31	0.02
9:32	0.019
9:33	0.019
9:34	0.031
9:35	0.027
9:36	0.019
9:37	0.017
9:38	0.018
9:39	0.022
9:40	0.034
9:41	0.029
9:42	0.019
9:43	0.019
9:44	0.019
9:45	0.034
9:46	0.019
9:47	0.017
9:48	0.018
9:49	0.048
9:50	0.028
9:51	0.033
9:52	0.019
9:53	0.02
9:54	0.017
9:55	0.041
9:56	0.039
9:57	0.016
9:58	0.016
9:59	0.017
10:00	0.017
10:01	0.02
10:02	0.027
10:03	0.02
10:04	0.017
10:05	0.02
10:06	0.026

10:07	0.017
10:08	0.021
10:09	0.018
10:10	0.017
10:11	0.016
10:12	0.016
10:13	0.018
10:14	0.018
10:15	0.018
10:16	0.018
10:17	0.018
10:18	0.021
10:19	0.038
10:20	0.031
10:21	0.021
10:22	0.019
10:23	0.019
10:24	0.02
10:25	0.018
10:26	0.018
10:27	0.021
10:28	0.02
10:29	0.019
10:30	0.021
10:31	0.02
10:32	0.021
10:33	0.021
10:34	0.018
10:35	0.02
10:36	0.018
10:37	0.025
10:38	0.021
10:39	0.019
10:40	0.019
10:41	0.023
10:42	0.019
10:43	0.019
10:44	0.02
10:45	0.02
10:46	0.018
10:47	0.017
10:48	0.018
10:49	0.017
10:50	0.017

10:51	0.021
10:52	0.023
10:53	0.018
10:54	0.024
10:55	0.022
10:56	0.02
10:57	0.018
10:58	0.018
10:59	0.02
11:00	0.018
11:01	0.019
11:02	0.046
11:03	0.02
11:04	0.019
11:05	0.02
11:06	0.018
11:07	0.019
11:08	0.02
11:09	0.097
11:10	0.019
11:11	0.029
11:12	0.021
11:13	0.033
11:14	0.021
11:15	0.032
11:16	0.039
11:17	0.023
11:18	0.017
11:19	0.02
11:20	0.027
11:21	0.038
11:22	0.04
11:23	0.021
11:24	0.018
11:25	0.017
11:26	0.058
11:27	0.058
11:28	0.078
11:29	0.036
11:30	0.019
11:31	0.023
11:32	0.06
11:33	0.035
11:34	0.048

11:35	0.025
11:36	0.034
11:37	0.029
11:38	0.066
11:39	0.053
11:40	0.044
11:41	0.023
11:42	0.026
11:43	0.042
11:44	0.05
11:45	0.023
11:46	0.068
11:47	0.022
11:48	0.038
11:49	0.048
11:50	0.038
11:51	0.03
11:52	0.023
11:53	0.044
11:54	0.043
11:55	0.07
11:56	0.043
11:57	0.07
11:58	0.024
11:59	0.023
12:00	0.083
12:01	0.058
12:02	0.019
12:03	0.018
12:04	0.018
12:05	0.03
12:06	0.029
12:07	0.044
12:08	0.034
12:09	0.03
12:10	0.02
12:11	0.02
12:12	0.019
12:13	0.029
12:14	0.019
12:15	0.018
12:16	0.018
12:17	0.017
12:18	0.017

12:19	0.018
12:20	0.017
12:21	0.018
12:22	0.02
12:23	0.019
12:24	0.02
12:25	0.018
12:26	0.018
12:27	0.018
12:28	0.018
12:29	0.018
12:30	0.019
12:31	0.019
12:32	0.019
12:33	0.019
12:34	0.019
12:35	0.019
12:36	0.019
12:37	0.019
12:38	0.018
12:39	0.02
12:40	0.02
12:41	0.02
12:42	0.02
12:43	0.023
12:44	0.019
12:45	0.019
12:46	0.019
12:47	0.024
12:48	0.018
12:49	0.018
12:50	0.018
12:51	0.021
12:52	0.018
12:53	0.018
12:54	0.02
12:55	0.018
12:56	0.018
12:57	0.02
12:58	0.017
12:59	0.017
13:00	0.021
13:01	0.026
13:02	0.022



13:03	0.018
13:04	0.018
13:05	0.019
13:06	0.035
13:07	0.02
13:08	0.02
13:09	0.02
13:10	0.021
13:11	0.019
13:12	0.018
13:13	0.02
13:14	0.018
13:15	0.017
13:16	0.018
13:17	0.019
13:18	0.019
13:19	0.018
13:20	0.017
13:21	0.017
13:22	0.017
13:23	0.019
13:24	0.02
13:25	0.019
13:26	0.018
13:27	0.018
13:28	0.018
13:29	0.019
13:30	0.019
13:31	0.019
13:32	0.019
13:33	0.019
13:34	0.02
13:35	0.019
13:36	0.017
13:37	0.018
13:38	0.019
13:39	0.02
13:40	0.02
13:41	0.021
13:42	0.02
13:43	0.02
13:44	0.018
13:45	0.018
13:46	0.019

13:47	0.02
13:48	0.018
13:49	0.018
13:50	0.018
13:51	0.018
13:52	0.017
13:53	0.018
13:54	0.019
13:55	0.019
13:56	0.019
13:57	0.019
13:58	0.018
13:59	0.018
14:00	0.017
14:01	0.018
14:02	0.018
14:03	0.017
14:04	0.018
14:05	0.018
14:06	0.018
14:07	0.018
14:08	0.018
14:09	0.018
14:10	0.018
14:11	0.018
14:12	0.017
14:13	0.018
14:14	0.017
14:15	0.018
14:16	0.025
14:17	0.02
14:18	0.042
14:19	0.047
14:20	0.02
14:21	0.019
14:22	0.019
14:23	0.019
14:24	0.018
14:25	0.019
14:26	0.019
14:27	0.02
14:28	0.019
14:29	0.019
14:30	0.018

14:31	0.018
14:32	0.018
14:33	0.018
14:34	0.017
14:35	0.019
14:36	0.021
14:37	0.021
14:38	0.019
14:39	0.019
14:40	0.02
14:41	0.019
14:42	0.021
14:43	0.02
14:44	0.019
14:45	0.071
14:46	0.042
14:47	0.025
14:48	0.022
14:49	0.023
14:50	0.022
14:51	0.031
14:52	0.02
14:53	0.03
14:54	0.022
14:55	0.023
14:56	0.022
14:57	0.021
14:58	0.022
14:59	0.027
15:00	0.02
15:01	0.024
15:02	0.033
15:03	0.027
15:04	0.02
15:05	0.023
15:06	0.036
15:07	0.054
15:08	0.025
15:09	0.032
15:10	0.023
15:11	0.022
15:12	0.027
15:13	0.021
15:14	0.021

15:15	0.02
15:16	0.02
15:17	0.019
15:18	0.019
15:19	0.021
15:20	0.022
15:21	0.022
15:22	0.02
15:23	0.022
15:24	0.02
15:25	0.021
15:26	0.022
15:27	0.022
15:28	0.019
15:29	0.019
15:30	0.018
15:31	0.022
15:32	0.022
15:33	0.019
15:34	0.022
15:35	0.02
15:36	0.072
15:37	0.062
15:38	0.111
15:39	0.039
15:40	0.019
15:41	0.02
15:42	0.018
15:43	0.018
15:44	0.018
15:45	0.019
15:46	0.018
15:47	0.018
15:48	0.019
15:49	0.019
15:50	0.021
15:51	0.02
15:52	0.019
15:53	0.019
15:54	0.019
15:55	0.022
15:56	0.02
15:57	0.022
15:58	0.02

15:59	0.018
16:00	0.019
16:01	0.021
16:02	0.021
16:03	0.02
16:04	0.019
16:05	0.019
16:06	0.019
16:07	0.019
16:08	0.02
16:09	0.02
16:10	0.021
16:11	0.019
16:12	0.019
16:13	0.019
16:14	0.018
16:15	0.018
16:16	0.018
16:17	0.018
16:18	0.018
16:19	0.02
16:20	0.018
16:21	0.02
16:22	0.02
16:23	0.019
16:24	0.019
16:25	0.02
16:26	0.021
16:27	0.019
16:28	0.019
16:29	0.019
16:30	0.018
16:31	0.019
16:32	0.019
16:33	0.021
16:34	0.025
16:35	0.02
16:36	0.024
16:37	0.02
16:38	0.02
16:39	0.02
16:40	0.019
16:41	0.019
16:42	0.019

16:43	0.021
16:44	0.018
16:45	0.018
16:46	0.018
16:47	0.038
16:48	0.042
16:49	0.02
16:50	0.018
16:51	0.019
16:52	0.019
16:53	0.019
16:54	0.018
16:55	0.018
16:56	0.018
16:57	0.019
16:58	0.018
16:59	0.018
17:00	0.018
17:01	0.018
17:02	0.018
17:03	0.018
17:04	0.018
17:05	0.019
17:06	0.02
17:07	0.019
17:08	0.018
17:09	0.019
17:10	0.021
17:11	0.02
17:12	0.02
17:13	0.02
17:14	0.019
17:15	0.019
17:16	0.019
17:17	0.02
17:18	0.018
17:19	0.018
17:20	0.018
17:21	0.018
17:22	0.018
17:23	0.019
17:24	0.02
17:25	0.021
17:26	0.019

17:27	0.02
17:28	0.021
17:29	0.019
17:30	0.019
17:31	0.02
17:32	0.022
17:33	0.025
17:34	0.023
17:35	0.024
17:36	0.021
17:37	0.022
17:38	0.022
17:39	0.024
17:40	0.022
17:41	0.021
17:42	0.022
17:43	0.022
17:44	0.023
17:45	0.021
17:46	0.02
17:47	0.023
17:48	0.024
17:49	0.024
17:50	0.024
17:51	0.022
17:52	0.028
17:53	0.027
17:54	0.021
17:55	0.02
17:56	0.022
17:57	0.02
17:58	0.021
17:59	0.021
18:00	0.021
18:01	0.02
18:02	0.019
18:03	0.02
18:04	0.021
18:05	0.021
18:06	0.02
18:07	0.02
18:08	0.019
18:09	0.019
18:10	0.019

18:11	0.019
18:12	0.018
18:13	0.018
18:14	0.019
18:15	0.02
18:16	0.022
18:17	0.019
18:18	0.019
18:19	0.019
18:20	0.019
18:21	0.018
18:22	0.019
18:23	0.019
18:24	0.019
18:25	0.019
18:26	0.019
18:27	0.019
18:28	0.02
18:29	0.019
18:30	0.021
18:31	0.02
18:32	0.021
18:33	0.019
18:34	0.019
18:35	0.018
18:36	0.024
18:37	0.02
18:38	0.019
18:39	0.02
18:40	0.021
18:41	0.02
18:42	0.019
18:43	0.02
18:44	0.019
18:45	0.019
18:46	0.02
18:47	0.02
18:48	0.021
18:49	0.02
18:50	0.02
18:51	0.019
18:52	0.019
18:53	0.02
18:54	0.019



18:55	0.019
18:56	0.02
18:57	0.019
18:58	0.019
18:59	0.02
19:00	0.02
19:01	0.02
19:02	0.019
19:03	0.019
19:04	0.019
19:05	0.021
19:06	0.02
19:07	0.019
19:08	0.02
19:09	0.021
19:10	0.02
19:11	0.02
19:12	0.02
19:13	0.022
19:14	0.019
19:15	0.019
19:16	0.045
19:17	0.02
19:18	0.023
19:19	0.02
19:20	0.019
19:21	0.019
19:22	0.019
19:23	0.019
19:24	0.019
19:25	0.019
19:26	0.019
19:27	0.02
19:28	0.019
19:29	0.019
19:30	0.019
19:31	0.02
19:32	0.02
19:33	0.022
19:34	0.021
19:35	0.022
19:36	0.019
19:37	0.019

Device Serial No	Log Time	Log Type	Sensor 1 Type	Sensor 1 Serial Number	Sensor 1 Status	Sensor 1 Gas Reading
592-602816	5/9/2024 6:44	CONFIG	PID	SC23030324C7		
592-602816	5/9/2024 6:45	Readings	PID	SC23030324C7	Normal	0
592-602816	5/9/2024 6:46	Readings	PID	SC23030324C7	Normal	0
592-602816	5/9/2024 6:47	Readings	PID	SC23030324C7	Normal	0
592-602816	5/9/2024 6:48	Readings	PID	SC23030324C7	Normal	0
592-602816	5/9/2024 6:49	Readings	PID	SC23030324C7	Normal	0
592-602816	5/9/2024 6:50	Readings	PID	SC23030324C7	Normal	0
592-602816	5/9/2024 6:51	Readings	PID	SC23030324C7	Normal	0
592-602816	5/9/2024 6:52	Readings	PID	SC23030324C7	Normal	0
592-602816	5/9/2024 6:53	Readings	PID	SC23030324C7	Normal	0
592-602816	5/9/2024 6:54	Readings	PID	SC23030324C7	Normal	0
592-602816	5/9/2024 6:55	Readings	PID	SC23030324C7	Normal	0
592-602816	5/9/2024 6:56	Readings	PID	SC23030324C7	Normal	0
592-602816	5/9/2024 6:57	Readings	PID	SC23030324C7	Normal	0
592-602816	5/9/2024 6:58	Readings	PID	SC23030324C7	Normal	0
592-602816	5/9/2024 6:59	Readings	PID	SC23030324C7	Normal	0
592-602816	5/9/2024 7:00	Readings	PID	SC23030324C7	Normal	0
592-602816	5/9/2024 7:01	Readings	PID	SC23030324C7	Normal	0
592-602816	5/9/2024 7:02	Readings	PID	SC23030324C7	Normal	0
592-602816	5/9/2024 7:03	Readings	PID	SC23030324C7	Normal	0
592-602816	5/9/2024 7:04	Readings	PID	SC23030324C7	Normal	0
592-602816	5/9/2024 7:05	Readings	PID	SC23030324C7	Normal	0
592-602816	5/9/2024 7:06	Readings	PID	SC23030324C7	Normal	0
592-602816	5/9/2024 7:07	Readings	PID	SC23030324C7	Normal	0
592-602816	5/9/2024 7:08	Readings	PID	SC23030324C7	Normal	0
592-602816	5/9/2024 7:09	Readings	PID	SC23030324C7	Normal	0
592-602816	5/9/2024 7:10	Readings	PID	SC23030324C7	Normal	0
592-602816	5/9/2024 7:11	Readings	PID	SC23030324C7	Normal	0
592-602816	5/9/2024 7:12	Readings	PID	SC23030324C7	Normal	0
592-602816	5/9/2024 7:13	Readings	PID	SC23030324C7	Normal	0
592-602816	5/9/2024 7:14	Readings	PID	SC23030324C7	Normal	0
592-602816	5/9/2024 7:15	Readings	PID	SC23030324C7	Normal	0









592-602816	5/9/2024 9:28	Readings	PID	SC23030324C7	Normal	0
592-602816	5/9/2024 9:29	Readings	PID	SC23030324C7	Normal	0
592-602816	5/9/2024 9:30	Readings	PID	SC23030324C7	Normal	0
592-602816	5/9/2024 9:31	Readings	PID	SC23030324C7	Normal	0
592-602816	5/9/2024 9:32	Readings	PID	SC23030324C7	Normal	0
592-602816	5/9/2024 9:33	Readings	PID	SC23030324C7	Normal	0
592-602816	5/9/2024 9:34	Readings	PID	SC23030324C7	Normal	0
592-602816	5/9/2024 9:35	Readings	PID	SC23030324C7	Normal	0
592-602816	5/9/2024 9:36	Readings	PID	SC23030324C7	Normal	0
592-602816	5/9/2024 9:37	Readings	PID	SC23030324C7	Normal	0
592-602816	5/9/2024 9:38	Readings	PID	SC23030324C7	Normal	0
592-602816	5/9/2024 9:39	Readings	PID	SC23030324C7	Normal	0
592-602816	5/9/2024 9:40	Readings	PID	SC23030324C7	Normal	0
592-602816	5/9/2024 9:41	Readings	PID	SC23030324C7	Normal	0
592-602816	5/9/2024 9:42	Readings	PID	SC23030324C7	Normal	0
592-602816	5/9/2024 9:43	Readings	PID	SC23030324C7	Normal	0
592-602816	5/9/2024 9:44	Readings	PID	SC23030324C7	Normal	0
592-602816	5/9/2024 9:45	Readings	PID	SC23030324C7	Normal	0
592-602816	5/9/2024 9:46	Readings	PID	SC23030324C7	Normal	0
592-602816	5/9/2024 9:47	Readings	PID	SC23030324C7	Normal	0
592-602816	5/9/2024 9:48	Readings	PID	SC23030324C7	Normal	0
592-602816	5/9/2024 9:49	Readings	PID	SC23030324C7	Normal	0
592-602816	5/9/2024 9:50	Readings	PID	SC23030324C7	Normal	0
592-602816	5/9/2024 9:51	Readings	PID	SC23030324C7	Normal	0
592-602816	5/9/2024 9:52	Readings	PID	SC23030324C7	Normal	0
592-602816	5/9/2024 9:53	Readings	PID	SC23030324C7	Normal	0
592-602816	5/9/2024 9:54	Readings	PID	SC23030324C7	Normal	0
592-602816	5/9/2024 9:55	Readings	PID	SC23030324C7	Normal	0
592-602816	5/9/2024 9:56	Readings	PID	SC23030324C7	Normal	0
592-602816	5/9/2024 9:57	Readings	PID	SC23030324C7	Normal	0
592-602816	5/9/2024 9:58	Readings	PID	SC23030324C7	Normal	0
592-602816	5/9/2024 9:59	Readings	PID	SC23030324C7	Normal	0
592-602816	5/9/2024 10:00	Readings	PID	SC23030324C7	Normal	0



















592-602816	5/9/2024 14:25	Readings	PID	SC23030324C7	Normal	0
592-602816	5/9/2024 14:26	Readings	PID	SC23030324C7	Normal	0
592-602816	5/9/2024 14:27	Readings	PID	SC23030324C7	Normal	0
592-602816	5/9/2024 14:28	Readings	PID	SC23030324C7	Normal	0
592-602816	5/9/2024 14:29	Readings	PID	SC23030324C7	Normal	0
592-602816	5/9/2024 14:30	Readings	PID	SC23030324C7	Normal	0.3
592-602816	5/9/2024 14:31	Readings	PID	SC23030324C7	Normal	0
592-602816	5/9/2024 14:32	Readings	PID	SC23030324C7	Normal	0
592-602816	5/9/2024 14:33	Readings	PID	SC23030324C7	Normal	0
592-602816	5/9/2024 14:34	Readings	PID	SC23030324C7	Normal	0
592-602816	5/9/2024 14:35	Readings	PID	SC23030324C7	Normal	0
592-602816	5/9/2024 14:36	Readings	PID	SC23030324C7	Normal	0.3
592-602816	5/9/2024 14:37	Readings	PID	SC23030324C7	Normal	0
592-602816	5/9/2024 14:38	Readings	PID	SC23030324C7	Normal	0
592-602816	5/9/2024 14:39	Readings	PID	SC23030324C7	Normal	0
592-602816	5/9/2024 14:40	Readings	PID	SC23030324C7	Normal	0
592-602816	5/9/2024 14:41	Readings	PID	SC23030324C7	Normal	0
592-602816	5/9/2024 14:42	Readings	PID	SC23030324C7	Normal	0
592-602816	5/9/2024 14:43	Readings	PID	SC23030324C7	Normal	0
592-602816	5/9/2024 14:44	Readings	PID	SC23030324C7	Normal	0
592-602816	5/9/2024 14:45	Readings	PID	SC23030324C7	Normal	0
592-602816	5/9/2024 14:46	Readings	PID	SC23030324C7	Normal	0
592-602816	5/9/2024 14:47	Readings	PID	SC23030324C7	Normal	0
592-602816	5/9/2024 14:48	Readings	PID	SC23030324C7	Normal	0
592-602816	5/9/2024 14:49	Readings	PID	SC23030324C7	Normal	0
592-602816	5/9/2024 14:50	Readings	PID	SC23030324C7	Normal	0
592-602816	5/9/2024 14:51	Readings	PID	SC23030324C7	Normal	0
592-602816	5/9/2024 14:52	Readings	PID	SC23030324C7	Normal	0
592-602816	5/9/2024 14:53	Readings	PID	SC23030324C7	Normal	0
592-602816	5/9/2024 14:54	Readings	PID	SC23030324C7	Normal	0
592-602816	5/9/2024 14:55	Readings	PID	SC23030324C7	Normal	0
592-602816	5/9/2024 14:56	Readings	PID	SC23030324C7	Normal	0
592-602816	5/9/2024 14:57	Readings	PID	SC23030324C7	Normal	0





















592-602816	5/9/2024 19:22 Readings	PID	SC23030324C7	Normal	0
592-602816	5/9/2024 19:23 Readings	PID	SC23030324C7	Normal	0
592-602816	5/9/2024 19:24 Readings	PID	SC23030324C7	Normal	0
592-602816	5/9/2024 19:25 Readings	PID	SC23030324C7	Normal	0
592-602816	5/9/2024 19:26 Readings	PID	SC23030324C7	Normal	0
592-602816	5/9/2024 19:27 Readings	PID	SC23030324C7	Normal	0
592-602816	5/9/2024 19:28 Readings	PID	SC23030324C7	Normal	0
592-602816	5/9/2024 19:29 Readings	PID	SC23030324C7	Normal	0
592-602816	5/9/2024 19:30 Readings	PID	SC23030324C7	Normal	0
592-602816	5/9/2024 19:31 Readings	PID	SC23030324C7	Normal	0
592-602816	5/9/2024 19:32 Readings	PID	SC23030324C7	Normal	0
592-602816	5/9/2024 19:33 Readings	PID	SC23030324C7	Normal	0
592-602816	5/9/2024 19:34 Readings	PID	SC23030324C7	Normal	0
592-602816	5/9/2024 19:35 Readings	PID	SC23030324C7	Normal	0
592-602816	5/9/2024 19:36 Readings	PID	SC23030324C7	Normal	0
592-602816	5/9/2024 19:37 Readings	PID	SC23030324C7	Normal	0

Instrument Name	DustTrak II
Model Number	8530
Serial Number	8530224601
Firmware Version	3.1
Calibration Date	11/9/2022
Test Name	MANUAL_005
Test Start Time	6:50:18 AM
Test Start Date	5/9/2024
Test Length [D:H:M]	0:12:59
Test Interval [M:S]	1:00
Mass Average [mg/m3]	0.014
Mass Minimum [mg/m3]	0.009
Mass Maximum [mg/m3]	0.136
Mass TWA [mg/m3]	0.013
Photometric User Cal	1
Flow User Cal	0
Errors	
Number of Samples	772

Elapsed Time [s]	Mass [mg/m3]	Alarms	Errors
6:51	0.013		
6:52	0.013		
6:53	0.014		
6:54	0.013		
6:55	0.136		
6:56	0.096		
6:57	0.013		
6:58	0.037		
6:59	0.06		
7:00	0.021		
7:01	0.017		
7:02	0.01		
7:03	0.01		
7:04	0.01		
7:05	0.01		
7:06	0.009		
7:07	0.009		
7:08	0.01		
7:09	0.01		
7:10	0.012		
7:11	0.016		
7:12	0.012		
7:13	0.011		
7:14	0.01		

7:15	0.011
7:16	0.011
7:17	0.011
7:18	0.011
7:19	0.011
7:20	0.013
7:21	0.013
7:22	0.011
7:23	0.01
7:24	0.011
7:25	0.013
7:26	0.015
7:27	0.011
7:28	0.012
7:29	0.013
7:30	0.014
7:31	0.013
7:32	0.012
7:33	0.009
7:34	0.01
7:35	0.01
7:36	0.011
7:37	0.011
7:38	0.01
7:39	0.012
7:40	0.011
7:41	0.024
7:42	0.015
7:43	0.01
7:44	0.012
7:45	0.01
7:46	0.009
7:47	0.01
7:48	0.01
7:49	0.009
7:50	0.009
7:51	0.012
7:52	0.01
7:53	0.011
7:54	0.012
7:55	0.012
7:56	0.01
7:57	0.008
7:58	0.009

7:59	0.009
8:00	0.009
8:01	0.008
8:02	0.012
8:03	0.012
8:04	0.011
8:05	0.01
8:06	0.009
8:07	0.01
8:08	0.011
8:09	0.011
8:10	0.011
8:11	0.012
8:12	0.012
8:13	0.012
8:14	0.01
8:15	0.01
8:16	0.011
8:17	0.011
8:18	0.012
8:19	0.01
8:20	0.011
8:21	0.014
8:22	0.015
8:23	0.015
8:24	0.014
8:25	0.013
8:26	0.012
8:27	0.012
8:28	0.01
8:29	0.013
8:30	0.012
8:31	0.013
8:32	0.013
8:33	0.01
8:34	0.009
8:35	0.01
8:36	0.01
8:37	0.011
8:38	0.012
8:39	0.016
8:40	0.012
8:41	0.015
8:42	0.013

8:43	0.012
8:44	0.013
8:45	0.012
8:46	0.014
8:47	0.012
8:48	0.012
8:49	0.01
8:50	0.011
8:51	0.01
8:52	0.01
8:53	0.009
8:54	0.011
8:55	0.01
8:56	0.01
8:57	0.008
8:58	0.012
8:59	0.011
9:00	0.011
9:01	0.011
9:02	0.01
9:03	0.012
9:04	0.014
9:05	0.01
9:06	0.011
9:07	0.019
9:08	0.022
9:09	0.013
9:10	0.012
9:11	0.011
9:12	0.013
9:13	0.011
9:14	0.011
9:15	0.01
9:16	0.011
9:17	0.012
9:18	0.02
9:19	0.015
9:20	0.015
9:21	0.014
9:22	0.014
9:23	0.012
9:24	0.014
9:25	0.012
9:26	0.015

9:27	0.012
9:28	0.009
9:29	0.01
9:30	0.009
9:31	0.014
9:32	0.011
9:33	0.011
9:34	0.013
9:35	0.012
9:36	0.01
9:37	0.011
9:38	0.01
9:39	0.017
9:40	0.011
9:41	0.013
9:42	0.011
9:43	0.014
9:44	0.013
9:45	0.011
9:46	0.01
9:47	0.011
9:48	0.012
9:49	0.012
9:50	0.015
9:51	0.014
9:52	0.014
9:53	0.015
9:54	0.011
9:55	0.01
9:56	0.011
9:57	0.008
9:58	0.01
9:59	0.012
10:00	0.011
10:01	0.011
10:02	0.012
10:03	0.019
10:04	0.018
10:05	0.01
10:06	0.012
10:07	0.012
10:08	0.011
10:09	0.009
10:10	0.009

10:11	0.009
10:12	0.008
10:13	0.01
10:14	0.011
10:15	0.012
10:16	0.01
10:17	0.01
10:18	0.013
10:19	0.014
10:20	0.013
10:21	0.011
10:22	0.011
10:23	0.011
10:24	0.011
10:25	0.012
10:26	0.013
10:27	0.012
10:28	0.011
10:29	0.018
10:30	0.015
10:31	0.014
10:32	0.019
10:33	0.013
10:34	0.012
10:35	0.017
10:36	0.022
10:37	0.018
10:38	0.013
10:39	0.014
10:40	0.018
10:41	0.017
10:42	0.019
10:43	0.017
10:44	0.01
10:45	0.01
10:46	0.011
10:47	0.01
10:48	0.01
10:49	0.013
10:50	0.016
10:51	0.011
10:52	0.016
10:53	0.016
10:54	0.012

10:55	0.014
10:56	0.012
10:57	0.013
10:58	0.012
10:59	0.015
11:00	0.011
11:01	0.012
11:02	0.013
11:03	0.013
11:04	0.016
11:05	0.015
11:06	0.015
11:07	0.014
11:08	0.015
11:09	0.018
11:10	0.016
11:11	0.015
11:12	0.013
11:13	0.012
11:14	0.012
11:15	0.013
11:16	0.016
11:17	0.017
11:18	0.013
11:19	0.016
11:20	0.017
11:21	0.015
11:22	0.012
11:23	0.012
11:24	0.013
11:25	0.023
11:26	0.012
11:27	0.011
11:28	0.017
11:29	0.014
11:30	0.018
11:31	0.011
11:32	0.014
11:33	0.011
11:34	0.014
11:35	0.016
11:36	0.013
11:37	0.013
11:38	0.014



11:39	0.013
11:40	0.014
11:41	0.018
11:42	0.019
11:43	0.014
11:44	0.021
11:45	0.014
11:46	0.014
11:47	0.014
11:48	0.011
11:49	0.01
11:50	0.01
11:51	0.011
11:52	0.017
11:53	0.013
11:54	0.011
11:55	0.016
11:56	0.022
11:57	0.02
11:58	0.024
11:59	0.016
12:00	0.014
12:01	0.012
12:02	0.038
12:03	0.037
12:04	0.015
12:05	0.018
12:06	0.023
12:07	0.015
12:08	0.015
12:09	0.015
12:10	0.013
12:11	0.011
12:12	0.012
12:13	0.016
12:14	0.01
12:15	0.011
12:16	0.01
12:17	0.009
12:18	0.011
12:19	0.01
12:20	0.014
12:21	0.012
12:22	0.011

12:23	0.011
12:24	0.012
12:25	0.012
12:26	0.011
12:27	0.014
12:28	0.016
12:29	0.021
12:30	0.012
12:31	0.019
12:32	0.013
12:33	0.016
12:34	0.014
12:35	0.012
12:36	0.011
12:37	0.017
12:38	0.015
12:39	0.016
12:40	0.013
12:41	0.012
12:42	0.013
12:43	0.018
12:44	0.012
12:45	0.012
12:46	0.014
12:47	0.018
12:48	0.016
12:49	0.013
12:50	0.012
12:51	0.012
12:52	0.012
12:53	0.012
12:54	0.01
12:55	0.01
12:56	0.012
12:57	0.014
12:58	0.012
12:59	0.01
13:00	0.012
13:01	0.012
13:02	0.011
13:03	0.013
13:04	0.011
13:05	0.018
13:06	0.018

13:07	0.012
13:08	0.013
13:09	0.013
13:10	0.014
13:11	0.012
13:12	0.012
13:13	0.013
13:14	0.011
13:15	0.012
13:16	0.011
13:17	0.01
13:18	0.013
13:19	0.013
13:20	0.013
13:21	0.011
13:22	0.01
13:23	0.011
13:24	0.013
13:25	0.01
13:26	0.01
13:27	0.01
13:28	0.01
13:29	0.012
13:30	0.019
13:31	0.011
13:32	0.012
13:33	0.013
13:34	0.013
13:35	0.013
13:36	0.013
13:37	0.012
13:38	0.014
13:39	0.013
13:40	0.012
13:41	0.018
13:42	0.018
13:43	0.017
13:44	0.012
13:45	0.012
13:46	0.013
13:47	0.014
13:48	0.012
13:49	0.011
13:50	0.009

13:51	0.011
13:52	0.01
13:53	0.011
13:54	0.013
13:55	0.012
13:56	0.015
13:57	0.012
13:58	0.013
13:59	0.013
14:00	0.012
14:01	0.012
14:02	0.011
14:03	0.012
14:04	0.012
14:05	0.011
14:06	0.011
14:07	0.011
14:08	0.011
14:09	0.012
14:10	0.02
14:11	0.011
14:12	0.011
14:13	0.009
14:14	0.01
14:15	0.016
14:16	0.014
14:17	0.012
14:18	0.013
14:19	0.013
14:20	0.013
14:21	0.012
14:22	0.014
14:23	0.021
14:24	0.015
14:25	0.01
14:26	0.013
14:27	0.015
14:28	0.017
14:29	0.013
14:30	0.013
14:31	0.012
14:32	0.01
14:33	0.01
14:34	0.011

14:35	0.015
14:36	0.019
14:37	0.015
14:38	0.013
14:39	0.012
14:40	0.011
14:41	0.013
14:42	0.013
14:43	0.013
14:44	0.011
14:45	0.011
14:46	0.011
14:47	0.012
14:48	0.012
14:49	0.013
14:50	0.013
14:51	0.013
14:52	0.012
14:53	0.013
14:54	0.012
14:55	0.016
14:56	0.015
14:57	0.012
14:58	0.015
14:59	0.016
15:00	0.018
15:01	0.015
15:02	0.015
15:03	0.012
15:04	0.011
15:05	0.012
15:06	0.011
15:07	0.013
15:08	0.012
15:09	0.01
15:10	0.01
15:11	0.01
15:12	0.011
15:13	0.011
15:14	0.011
15:15	0.01
15:16	0.009
15:17	0.011
15:18	0.01

15:19	0.012
15:20	0.011
15:21	0.01
15:22	0.011
15:23	0.012
15:24	0.011
15:25	0.011
15:26	0.01
15:27	0.011
15:28	0.01
15:29	0.009
15:30	0.011
15:31	0.011
15:32	0.01
15:33	0.011
15:34	0.01
15:35	0.012
15:36	0.017
15:37	0.013
15:38	0.015
15:39	0.013
15:40	0.012
15:41	0.013
15:42	0.013
15:43	0.013
15:44	0.016
15:45	0.013
15:46	0.011
15:47	0.014
15:48	0.014
15:49	0.017
15:50	0.015
15:51	0.014
15:52	0.023
15:53	0.015
15:54	0.012
15:55	0.014
15:56	0.015
15:57	0.013
15:58	0.012
15:59	0.013
16:00	0.016
16:01	0.021
16:02	0.018

16:03	0.013
16:04	0.013
16:05	0.012
16:06	0.012
16:07	0.015
16:08	0.013
16:09	0.014
16:10	0.014
16:11	0.013
16:12	0.012
16:13	0.012
16:14	0.013
16:15	0.013
16:16	0.015
16:17	0.015
16:18	0.012
16:19	0.012
16:20	0.012
16:21	0.013
16:22	0.013
16:23	0.013
16:24	0.014
16:25	0.016
16:26	0.014
16:27	0.016
16:28	0.015
16:29	0.018
16:30	0.013
16:31	0.013
16:32	0.013
16:33	0.012
16:34	0.012
16:35	0.013
16:36	0.012
16:37	0.012
16:38	0.013
16:39	0.016
16:40	0.017
16:41	0.016
16:42	0.014
16:43	0.015
16:44	0.013
16:45	0.014
16:46	0.013

16:47	0.013
16:48	0.014
16:49	0.011
16:50	0.011
16:51	0.012
16:52	0.012
16:53	0.012
16:54	0.012
16:55	0.011
16:56	0.012
16:57	0.011
16:58	0.012
16:59	0.011
17:00	0.012
17:01	0.013
17:02	0.012
17:03	0.012
17:04	0.011
17:05	0.013
17:06	0.013
17:07	0.012
17:08	0.013
17:09	0.014
17:10	0.013
17:11	0.018
17:12	0.018
17:13	0.016
17:14	0.017
17:15	0.014
17:16	0.013
17:17	0.015
17:18	0.015
17:19	0.014
17:20	0.011
17:21	0.013
17:22	0.012
17:23	0.013
17:24	0.014
17:25	0.013
17:26	0.031
17:27	0.021
17:28	0.015
17:29	0.015
17:30	0.016



17:31	0.018
17:32	0.02
17:33	0.023
17:34	0.024
17:35	0.026
17:36	0.022
17:37	0.019
17:38	0.018
17:39	0.019
17:40	0.016
17:41	0.016
17:42	0.019
17:43	0.019
17:44	0.014
17:45	0.016
17:46	0.015
17:47	0.015
17:48	0.015
17:49	0.019
17:50	0.018
17:51	0.017
17:52	0.018
17:53	0.02
17:54	0.026
17:55	0.015
17:56	0.014
17:57	0.014
17:58	0.014
17:59	0.016
18:00	0.015
18:01	0.013
18:02	0.013
18:03	0.015
18:04	0.017
18:05	0.016
18:06	0.015
18:07	0.014
18:08	0.013
18:09	0.012
18:10	0.013
18:11	0.012
18:12	0.012
18:13	0.012
18:14	0.014

18:15	0.015
18:16	0.014
18:17	0.013
18:18	0.013
18:19	0.014
18:20	0.015
18:21	0.012
18:22	0.012
18:23	0.013
18:24	0.013
18:25	0.012
18:26	0.011
18:27	0.01
18:28	0.01
18:29	0.022
18:30	0.022
18:31	0.015
18:32	0.012
18:33	0.012
18:34	0.013
18:35	0.015
18:36	0.011
18:37	0.012
18:38	0.016
18:39	0.018
18:40	0.014
18:41	0.012
18:42	0.013
18:43	0.013
18:44	0.016
18:45	0.018
18:46	0.014
18:47	0.013
18:48	0.012
18:49	0.012
18:50	0.012
18:51	0.011
18:52	0.011
18:53	0.012
18:54	0.012
18:55	0.012
18:56	0.013
18:57	0.013
18:58	0.013

18:59	0.013
19:00	0.014
19:01	0.014
19:02	0.015
19:03	0.014
19:04	0.014
19:05	0.014
19:06	0.013
19:07	0.012
19:08	0.012
19:09	0.013
19:10	0.015
19:11	0.014
19:12	0.014
19:13	0.014
19:14	0.014
19:15	0.013
19:16	0.013
19:17	0.013
19:18	0.013
19:19	0.013
19:20	0.013
19:21	0.012
19:22	0.013
19:23	0.012
19:24	0.011
19:25	0.017
19:26	0.014
19:27	0.015
19:28	0.015
19:29	0.014
19:30	0.02
19:31	0.017
19:32	0.015
19:33	0.013
19:34	0.016
19:35	0.013
19:36	0.012
19:37	0.012
19:38	0.012
19:39	0.012
19:40	0.012
19:41	0.013
19:42	0.014

Device Serial No	Log Time	Log Type	Sensor 1 Type	Sensor 1 Serial Number	Sensor 1 Status	Sensor 1 Gas Reading
592-600871	5/9/2024 6:49	CONFIG	PID	SC23030408A8		
592-600871	5/9/2024 6:50	Readings	PID	SC23030408A8	Normal	0
592-600871	5/9/2024 6:51	Readings	PID	SC23030408A8	Normal	0
592-600871	5/9/2024 6:52	Readings	PID	SC23030408A8	Normal	0
592-600871	5/9/2024 6:53	Readings	PID	SC23030408A8	Normal	0
592-600871	5/9/2024 6:54	Readings	PID	SC23030408A8	Normal	0
592-600871	5/9/2024 6:55	Readings	PID	SC23030408A8	Normal	0
592-600871	5/9/2024 6:56	Readings	PID	SC23030408A8	Normal	0
592-600871	5/9/2024 6:57	Readings	PID	SC23030408A8	Normal	0
592-600871	5/9/2024 6:58	Readings	PID	SC23030408A8	Normal	0
592-600871	5/9/2024 6:59	Readings	PID	SC23030408A8	Normal	0
592-600871	5/9/2024 7:00	Readings	PID	SC23030408A8	Normal	0
592-600871	5/9/2024 7:01	Readings	PID	SC23030408A8	Normal	0
592-600871	5/9/2024 7:02	Readings	PID	SC23030408A8	Normal	0
592-600871	5/9/2024 7:03	Readings	PID	SC23030408A8	Normal	0
592-600871	5/9/2024 7:04	Readings	PID	SC23030408A8	Normal	0
592-600871	5/9/2024 7:05	Readings	PID	SC23030408A8	Normal	0
592-600871	5/9/2024 7:06	Readings	PID	SC23030408A8	Normal	0
592-600871	5/9/2024 7:07	Readings	PID	SC23030408A8	Normal	0
592-600871	5/9/2024 7:08	Readings	PID	SC23030408A8	Normal	0
592-600871	5/9/2024 7:09	Readings	PID	SC23030408A8	Normal	0
592-600871	5/9/2024 7:10	Readings	PID	SC23030408A8	Normal	0
592-600871	5/9/2024 7:11	Readings	PID	SC23030408A8	Normal	0
592-600871	5/9/2024 7:12	Readings	PID	SC23030408A8	Normal	0
592-600871	5/9/2024 7:13	Readings	PID	SC23030408A8	Normal	0
592-600871	5/9/2024 7:14	Readings	PID	SC23030408A8	Normal	0
592-600871	5/9/2024 7:15	Readings	PID	SC23030408A8	Normal	0
592-600871	5/9/2024 7:16	Readings	PID	SC23030408A8	Normal	0
592-600871	5/9/2024 7:17	Readings	PID	SC23030408A8	Normal	0
592-600871	5/9/2024 7:18	Readings	PID	SC23030408A8	Normal	0
592-600871	5/9/2024 7:19	Readings	PID	SC23030408A8	Normal	0
592-600871	5/9/2024 7:20	Readings	PID	SC23030408A8	Normal	0





592-600871	5/9/2024 8:27 Readings	PID	SC23030408A8	Normal	0
592-600871	5/9/2024 8:28 Readings	PID	SC23030408A8	Normal	0
592-600871	5/9/2024 8:29 Readings	PID	SC23030408A8	Normal	0
592-600871	5/9/2024 8:30 Readings	PID	SC23030408A8	Normal	0
592-600871	5/9/2024 8:31 Readings	PID	SC23030408A8	Normal	0
592-600871	5/9/2024 8:32 Readings	PID	SC23030408A8	Normal	0
592-600871	5/9/2024 8:33 Readings	PID	SC23030408A8	Normal	0
592-600871	5/9/2024 8:34 Readings	PID	SC23030408A8	Normal	0
592-600871	5/9/2024 8:35 Readings	PID	SC23030408A8	Normal	0
592-600871	5/9/2024 8:36 Readings	PID	SC23030408A8	Normal	0
592-600871	5/9/2024 8:37 Readings	PID	SC23030408A8	Normal	0
592-600871	5/9/2024 8:38 Readings	PID	SC23030408A8	Normal	0
592-600871	5/9/2024 8:39 Readings	PID	SC23030408A8	Normal	0
592-600871	5/9/2024 8:40 Readings	PID	SC23030408A8	Normal	0
592-600871	5/9/2024 8:41 Readings	PID	SC23030408A8	Normal	0
592-600871	5/9/2024 8:42 Readings	PID	SC23030408A8	Normal	0
592-600871	5/9/2024 8:43 Readings	PID	SC23030408A8	Normal	0
592-600871	5/9/2024 8:44 Readings	PID	SC23030408A8	Normal	0
592-600871	5/9/2024 8:45 Readings	PID	SC23030408A8	Normal	0
592-600871	5/9/2024 8:46 Readings	PID	SC23030408A8	Normal	0
592-600871	5/9/2024 8:47 Readings	PID	SC23030408A8	Normal	0
592-600871	5/9/2024 8:48 Readings	PID	SC23030408A8	Normal	0
592-600871	5/9/2024 8:49 Readings	PID	SC23030408A8	Normal	0
592-600871	5/9/2024 8:50 Readings	PID	SC23030408A8	Normal	0
592-600871	5/9/2024 8:51 Readings	PID	SC23030408A8	Normal	0
592-600871	5/9/2024 8:52 Readings	PID	SC23030408A8	Normal	0
592-600871	5/9/2024 8:53 Readings	PID	SC23030408A8	Normal	0
592-600871	5/9/2024 8:54 Readings	PID	SC23030408A8	Normal	0
592-600871	5/9/2024 8:55 Readings	PID	SC23030408A8	Normal	0
592-600871	5/9/2024 8:56 Readings	PID	SC23030408A8	Normal	0
592-600871	5/9/2024 8:57 Readings	PID	SC23030408A8	Normal	0
592-600871	5/9/2024 8:58 Readings	PID	SC23030408A8	Normal	0
592-600871	5/9/2024 8:59 Readings	PID	SC23030408A8	Normal	0





592-600871	5/9/2024 9:33	Readings	PID	SC23030408A8	Normal	0
592-600871	5/9/2024 9:34	Readings	PID	SC23030408A8	Normal	0
592-600871	5/9/2024 9:35	Readings	PID	SC23030408A8	Normal	0
592-600871	5/9/2024 9:36	Readings	PID	SC23030408A8	Normal	0
592-600871	5/9/2024 9:37	Readings	PID	SC23030408A8	Normal	0
592-600871	5/9/2024 9:38	Readings	PID	SC23030408A8	Normal	0
592-600871	5/9/2024 9:39	Readings	PID	SC23030408A8	Normal	0
592-600871	5/9/2024 9:40	Readings	PID	SC23030408A8	Normal	0
592-600871	5/9/2024 9:41	Readings	PID	SC23030408A8	Normal	0
592-600871	5/9/2024 9:42	Readings	PID	SC23030408A8	Normal	0
592-600871	5/9/2024 9:43	Readings	PID	SC23030408A8	Normal	0
592-600871	5/9/2024 9:44	Readings	PID	SC23030408A8	Normal	0
592-600871	5/9/2024 9:45	Readings	PID	SC23030408A8	Normal	0
592-600871	5/9/2024 9:46	Readings	PID	SC23030408A8	Normal	0
592-600871	5/9/2024 9:47	Readings	PID	SC23030408A8	Normal	0
592-600871	5/9/2024 9:48	Readings	PID	SC23030408A8	Normal	0
592-600871	5/9/2024 9:49	Readings	PID	SC23030408A8	Normal	0
592-600871	5/9/2024 9:50	Readings	PID	SC23030408A8	Normal	0
592-600871	5/9/2024 9:51	Readings	PID	SC23030408A8	Normal	0
592-600871	5/9/2024 9:52	Readings	PID	SC23030408A8	Normal	0
592-600871	5/9/2024 9:53	Readings	PID	SC23030408A8	Normal	0
592-600871	5/9/2024 9:54	Readings	PID	SC23030408A8	Normal	0
592-600871	5/9/2024 9:55	Readings	PID	SC23030408A8	Normal	0
592-600871	5/9/2024 9:56	Readings	PID	SC23030408A8	Normal	0
592-600871	5/9/2024 9:57	Readings	PID	SC23030408A8	Normal	0
592-600871	5/9/2024 9:58	Readings	PID	SC23030408A8	Normal	0
592-600871	5/9/2024 9:59	Readings	PID	SC23030408A8	Normal	0
592-600871	5/9/2024 10:00	Readings	PID	SC23030408A8	Normal	0
592-600871	5/9/2024 10:01	Readings	PID	SC23030408A8	Normal	0
592-600871	5/9/2024 10:02	Readings	PID	SC23030408A8	Normal	0
592-600871	5/9/2024 10:03	Readings	PID	SC23030408A8	Normal	0
592-600871	5/9/2024 10:04	Readings	PID	SC23030408A8	Normal	0
592-600871	5/9/2024 10:05	Readings	PID	SC23030408A8	Normal	0







































592-600871	5/9/2024 19:27 Readings	PID	SC23030408A8	Normal	0
592-600871	5/9/2024 19:28 Readings	PID	SC23030408A8	Normal	0
592-600871	5/9/2024 19:29 Readings	PID	SC23030408A8	Normal	0
592-600871	5/9/2024 19:30 Readings	PID	SC23030408A8	Normal	0
592-600871	5/9/2024 19:31 Readings	PID	SC23030408A8	Normal	0
592-600871	5/9/2024 19:32 Readings	PID	SC23030408A8	Normal	0
592-600871	5/9/2024 19:33 Readings	PID	SC23030408A8	Normal	0
592-600871	5/9/2024 19:34 Readings	PID	SC23030408A8	Normal	0
592-600871	5/9/2024 19:35 Readings	PID	SC23030408A8	Normal	0
592-600871	5/9/2024 19:36 Readings	PID	SC23030408A8	Normal	0
592-600871	5/9/2024 19:37 Readings	PID	SC23030408A8	Normal	0
592-600871	5/9/2024 19:38 Readings	PID	SC23030408A8	Normal	0
592-600871	5/9/2024 19:39 Readings	PID	SC23030408A8	Normal	0