



DAILY STATUS REPORT

Prepared By:

Ryan Just

WEATHER	Snow	Rain	Overcast	X	Partly Cloudy	X	Bright Sun	Wind
TEMP.	< 32	32-50	50-70	X	70-85	>85		WNW – 12 MPH

IEC Project No:	13928	NYSDEC BCP Site No:	C224367	Date: 05/13/24
Project:	251 Douglass Street, Brooklyn, NY			

<p>Consultant: Impact Environmental Engineering and Geology, PLLC (IEEG)</p> <p>Time On: 06:35 Time Out: 19:37</p>	<p>Personnel On Site: IEEG (Environmental) – Ryan Just Broadway Construction Group - Tom Caporale Cascade WSP - Charlie Lambert</p> <p>Equipment On Site: Minirae 3000 PID, DustTrak II</p>
---	---

Scope of Work: ISS column installation.

Site Activities:

- Deploy three (3) CAMPs at the Start of the work day;
- A total of thirteen (13) loads of swell material was transported offsite for disposal to the Conestoga facility;
- Triumvirate Environmental pumped out the truck wash frac tank onsite;
- Cascade removed obstructions from the western portion of the northern alley; and
- Cascade performed maintenance on the auger and replaced an O-ring in the Kelly bar, repairs will continue tomorrow 05/14/2024, no ISS columns advanced.

Community Air Monitoring Program (CAMP) - CAMP action level for dust (0.1 mg/m³) and VOCs (5 ppm)

- PID remained at nominal levels throughout the day
- No sustained dust exceedances were observed over a 1-min period during monitoring;
- Startup Upwind Conditions – PID = _0.0_ ppm, Dust = _0.011_ mg/m³ @ 06:48
- High Conditions (Upwind) – PID = _0.1_ ppm @ 07:02, Dust = _0.067_ mg/m³ @ 07:19
- High Conditions (Downwind 1) – PID = _2.8_ ppm @ 15:57, Dust = _0.340_ mg/m³ @ 07:20
- High Conditions (Downwind 2) – PID = _0.6_ ppm @ 11:05, Dust = _0.069_ mg/m³ @ 07:17

Notable Site Conditions:

- None

Planned for the Next Day/Week:

- Continuation of installing ISS columns;
- Continuation of kelly bar repairs; and
- Trucking of swell material.

PHOTO LOG

251 DOUGLASS STREET, BROOKLYN, NY



Photo 1-
Representative
photo of swell
material trucking
for offsite
disposal.



Photo 2-
Representative
photo of kelly bar
repairs.



Photo 3-
Representative
photo of Cascade
excavating for
obstructions.



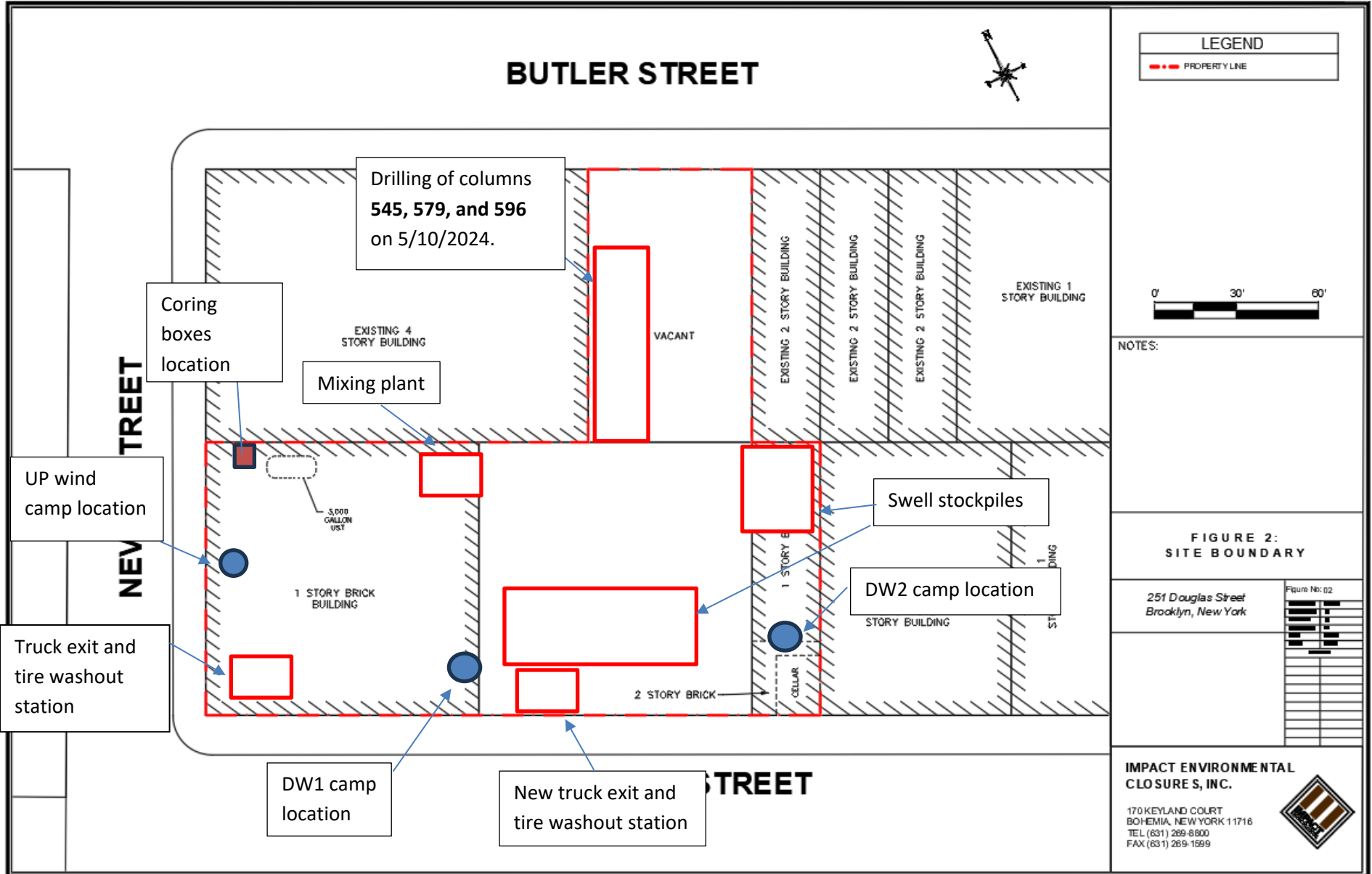
Photo 4-
Representative
photo of
obstructions
removed from
northern alley.



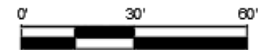
SITE PLANS

251 DOUGLASS STREET, BROOKLYN, NY





LEGEND
- - - PROPERTY LINE



NOTES:

**FIGURE 2:
SITE BOUNDARY**

251 Douglas Street
Brooklyn, New York

Figure No: 02

**IMPACT ENVIRONMENTAL
CLOSURES, INC.**

170 KEYLAND COURT
BOHEMIA, NEW YORK 11716
TEL (631) 269-8800
FAX (631) 269-1599





BUTLER STREET

Legend Extension

- : ISS column installed to terminal depth
- : ISS column unable to be installed to terminal depth
- : Wet mix sample collected from ISS column
- : ISS pilot test column
- : ISS column installed to 51' below site grade
- : Coring location

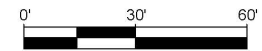
LEGEND

- PROPERTY LINE
- 1500 SFT GRID
- EIGHT FOOT DIA. HYDRAULIC COLUMN (TYP.)
- EIGHT FOOT DIA. INNER COLUMN (TYP.)
- SIX FOOT DIA. COLUMN (TYP.)

PROJECT



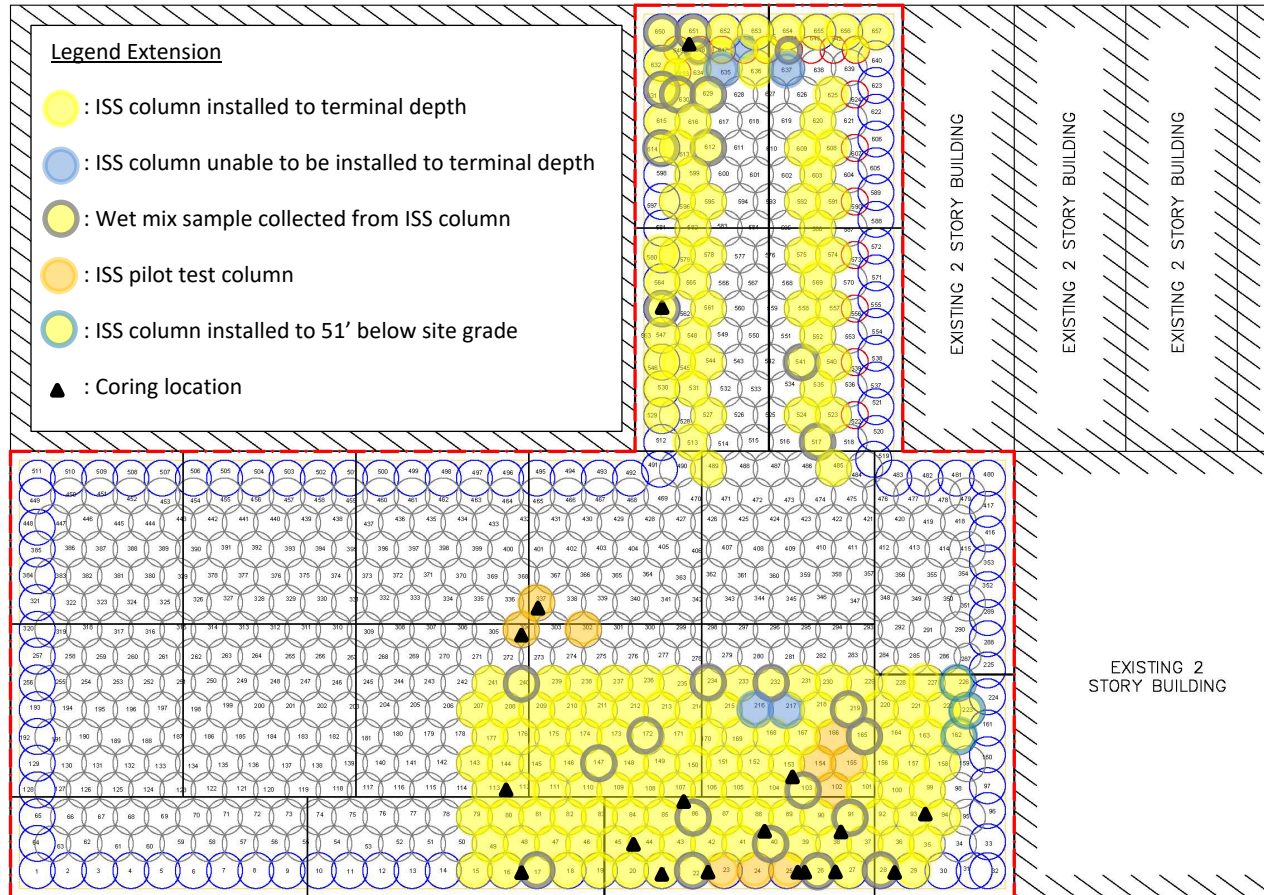
NORTH



NOTES:

1. THE BASE MAP WAS DRAWN FROM A PLAN ENTITLED, ALT A/NSPS LAND TITLE SURVEY, PREPARED BY PERFECT POINT LAND SURVEYING OF BROOKLYN, NY AND WAS RECEIVED ELECTRONICALLY ON APRIL 2023 WITH AN ORIGINAL SCALE: 1" = 20'.

NEVINS STREET



EXISTING 2 STORY BUILDING

QA/QC CORE GRID PLAN

251 Douglass Street
Brooklyn, New York

Figure No: 04

PROJECT NO.	1906-01
DRAWN BY:	JM
CHECKED BY:	JM
CREATED BY:	JFM/K
DATE:	02/07/23
SCALE:	P-20'
REVISIONS:	

IMPACT ENVIRONMENTAL

170 KEYLAND COURT
BOHEMIA, NEW YORK 11716
TEL (631) 269-8800
FAX (631) 269-1599





IMPACT ENVIRONMENTAL

welcome to solid ground...

170 Keyland Court | Bohemia | NY | 11716 | 631.269.8800

www.impactenvironmental.com

UPWIND CAMP READINGS

251 DOUGLASS STREET, BROOKLYN, NY

Instrument Name	DustTrak DRX
Model Number	8533
Serial Number	8533181205
Firmware Version	3.1
Calibration Date	5/31/2023
Test Name	MANUAL_009
Test Start Time	6:47:15 AM
Test Start Date	5/13/2024
Test Length [D:H:M]	0:12:28
Test Interval [M:S]	1:00
PM1 Average [mg/m3]	0.02
PM1 Minimum [mg/m3]	0.01
PM1 Maximum [mg/m3]	0.067
PM1 TWA [mg/m3]	0.023
Photometric User Cal	1
Size Correction User Cal	1
Flow User Cal	0
Errors	
Number of Samples	748

Elapsed Time [s]	PM1 [mg/m3]	Alarms	Errors
6:48	0.011		
6:49	0.012		
6:50	0.012		
6:51	0.011		
6:52	0.011		
6:53	0.01		
6:54	0.01		
6:55	0.01		
6:56	0.011		
6:57	0.011		
6:58	0.012		
6:59	0.013		
7:00	0.013		
7:01	0.015		
7:02	0.015		
7:03	0.016		
7:04	0.016		
7:05	0.018		
7:06	0.02		
7:07	0.024		
7:08	0.019		
7:09	0.019		
7:10	0.021		

7:11	0.019
7:12	0.021
7:13	0.029
7:14	0.028
7:15	0.031
7:16	0.023
7:17	0.067
7:18	0.038
7:19	0.023
7:20	0.023
7:21	0.025
7:22	0.027
7:23	0.024
7:24	0.024
7:25	0.025
7:26	0.025
7:27	0.024
7:28	0.023
7:29	0.024
7:30	0.025
7:31	0.025
7:32	0.024
7:33	0.021
7:34	0.031
7:35	0.034
7:36	0.021
7:37	0.021
7:38	0.022
7:39	0.022
7:40	0.024
7:41	0.024
7:42	0.022
7:43	0.022
7:44	0.022
7:45	0.021
7:46	0.021
7:47	0.02
7:48	0.024
7:49	0.024
7:50	0.023
7:51	0.025
7:52	0.028
7:53	0.028
7:54	0.023

7:55	0.024
7:56	0.025
7:57	0.025
7:58	0.026
7:59	0.025
8:00	0.031
8:01	0.028
8:02	0.027
8:03	0.025
8:04	0.024
8:05	0.023
8:06	0.023
8:07	0.023
8:08	0.024
8:09	0.026
8:10	0.024
8:11	0.027
8:12	0.024
8:13	0.023
8:14	0.023
8:15	0.023
8:16	0.023
8:17	0.026
8:18	0.025
8:19	0.025
8:20	0.025
8:21	0.026
8:22	0.025
8:23	0.026
8:24	0.026
8:25	0.027
8:26	0.028
8:27	0.028
8:28	0.029
8:29	0.029
8:30	0.031
8:31	0.033
8:32	0.034
8:33	0.033
8:34	0.034
8:35	0.034
8:36	0.037
8:37	0.034
8:38	0.033

8:39	0.032
8:40	0.034
8:41	0.042
8:42	0.042
8:43	0.033
8:44	0.033
8:45	0.036
8:46	0.038
8:47	0.035
8:48	0.034
8:49	0.034
8:50	0.034
8:51	0.033
8:52	0.033
8:53	0.034
8:54	0.033
8:55	0.033
8:56	0.035
8:57	0.033
8:58	0.032
8:59	0.031
9:00	0.031
9:01	0.031
9:02	0.032
9:03	0.033
9:04	0.034
9:05	0.033
9:06	0.032
9:07	0.037
9:08	0.034
9:09	0.033
9:10	0.033
9:11	0.035
9:12	0.033
9:13	0.038
9:14	0.038
9:15	0.033
9:16	0.035
9:17	0.033
9:18	0.032
9:19	0.033
9:20	0.033
9:21	0.033
9:22	0.036

9:23	0.035
9:24	0.034
9:25	0.034
9:26	0.035
9:27	0.035
9:28	0.034
9:29	0.034
9:30	0.033
9:31	0.031
9:32	0.033
9:33	0.032
9:34	0.032
9:35	0.032
9:36	0.031
9:37	0.032
9:38	0.034
9:39	0.032
9:40	0.031
9:41	0.031
9:42	0.034
9:43	0.036
9:44	0.032
9:45	0.031
9:46	0.034
9:47	0.03
9:48	0.034
9:49	0.036
9:50	0.031
9:51	0.03
9:52	0.03
9:53	0.03
9:54	0.03
9:55	0.032
9:56	0.033
9:57	0.033
9:58	0.032
9:59	0.032
10:00	0.032
10:01	0.031
10:02	0.031
10:03	0.032
10:04	0.032
10:05	0.031
10:06	0.031

10:07	0.029
10:08	0.03
10:09	0.031
10:10	0.03
10:11	0.031
10:12	0.031
10:13	0.032
10:14	0.032
10:15	0.032
10:16	0.033
10:17	0.03
10:18	0.029
10:19	0.029
10:20	0.03
10:21	0.03
10:22	0.031
10:23	0.029
10:24	0.03
10:25	0.03
10:26	0.03
10:27	0.038
10:28	0.035
10:29	0.027
10:30	0.028
10:31	0.029
10:32	0.032
10:33	0.031
10:34	0.029
10:35	0.029
10:36	0.027
10:37	0.035
10:38	0.028
10:39	0.031
10:40	0.03
10:41	0.029
10:42	0.029
10:43	0.029
10:44	0.033
10:45	0.028
10:46	0.028
10:47	0.027
10:48	0.026
10:49	0.029
10:50	0.038

10:51	0.028
10:52	0.024
10:53	0.024
10:54	0.028
10:55	0.028
10:56	0.024
10:57	0.023
10:58	0.025
10:59	0.023
11:00	0.023
11:01	0.022
11:02	0.021
11:03	0.021
11:04	0.021
11:05	0.021
11:06	0.025
11:07	0.027
11:08	0.022
11:09	0.021
11:10	0.021
11:11	0.023
11:12	0.022
11:13	0.021
11:14	0.024
11:15	0.022
11:16	0.025
11:17	0.02
11:18	0.026
11:19	0.033
11:20	0.02
11:21	0.019
11:22	0.021
11:23	0.019
11:24	0.017
11:25	0.018
11:26	0.018
11:27	0.019
11:28	0.019
11:29	0.018
11:30	0.019
11:31	0.019
11:32	0.021
11:33	0.016
11:34	0.016

11:35	0.019
11:36	0.018
11:37	0.017
11:38	0.017
11:39	0.017
11:40	0.018
11:41	0.021
11:42	0.017
11:43	0.017
11:44	0.022
11:45	0.019
11:46	0.02
11:47	0.017
11:48	0.016
11:49	0.018
11:50	0.019
11:51	0.018
11:52	0.017
11:53	0.016
11:54	0.015
11:55	0.019
11:56	0.024
11:57	0.02
11:58	0.02
11:59	0.04
12:00	0.02
12:01	0.021
12:02	0.022
12:03	0.016
12:04	0.019
12:05	0.016
12:06	0.017
12:07	0.016
12:08	0.024
12:09	0.027
12:10	0.015
12:11	0.015
12:12	0.017
12:13	0.017
12:14	0.022
12:15	0.02
12:16	0.016
12:17	0.017
12:18	0.017

12:19	0.015
12:20	0.015
12:21	0.014
12:22	0.014
12:23	0.014
12:24	0.014
12:25	0.014
12:26	0.014
12:27	0.017
12:28	0.014
12:29	0.015
12:30	0.015
12:31	0.018
12:32	0.018
12:33	0.018
12:34	0.03
12:35	0.017
12:36	0.019
12:37	0.015
12:38	0.015
12:39	0.017
12:40	0.017
12:41	0.016
12:42	0.016
12:43	0.024
12:44	0.016
12:45	0.017
12:46	0.016
12:47	0.016
12:48	0.016
12:49	0.017
12:50	0.017
12:51	0.016
12:52	0.017
12:53	0.018
12:54	0.018
12:55	0.016
12:56	0.016
12:57	0.016
12:58	0.016
12:59	0.017
13:00	0.015
13:01	0.015
13:02	0.016

13:03	0.016
13:04	0.016
13:05	0.014
13:06	0.016
13:07	0.015
13:08	0.021
13:09	0.019
13:10	0.017
13:11	0.015
13:12	0.014
13:13	0.016
13:14	0.015
13:15	0.014
13:16	0.014
13:17	0.016
13:18	0.015
13:19	0.016
13:20	0.016
13:21	0.019
13:22	0.018
13:23	0.014
13:24	0.02
13:25	0.018
13:26	0.018
13:27	0.016
13:28	0.015
13:29	0.014
13:30	0.014
13:31	0.014
13:32	0.014
13:33	0.015
13:34	0.014
13:35	0.016
13:36	0.017
13:37	0.017
13:38	0.015
13:39	0.018
13:40	0.014
13:41	0.017
13:42	0.015
13:43	0.015
13:44	0.016
13:45	0.014
13:46	0.015

13:47	0.016
13:48	0.015
13:49	0.014
13:50	0.016
13:51	0.015
13:52	0.016
13:53	0.015
13:54	0.015
13:55	0.015
13:56	0.016
13:57	0.015
13:58	0.016
13:59	0.016
14:00	0.014
14:01	0.015
14:02	0.016
14:03	0.026
14:04	0.016
14:05	0.017
14:06	0.015
14:07	0.015
14:08	0.015
14:09	0.017
14:10	0.017
14:11	0.016
14:12	0.017
14:13	0.016
14:14	0.016
14:15	0.016
14:16	0.018
14:17	0.014
14:18	0.015
14:19	0.016
14:20	0.017
14:21	0.016
14:22	0.015
14:23	0.015
14:24	0.016
14:25	0.017
14:26	0.017
14:27	0.019
14:28	0.016
14:29	0.017
14:30	0.017

14:31	0.016
14:32	0.016
14:33	0.016
14:34	0.017
14:35	0.017
14:36	0.016
14:37	0.016
14:38	0.016
14:39	0.016
14:40	0.015
14:41	0.014
14:42	0.014
14:43	0.014
14:44	0.014
14:45	0.014
14:46	0.015
14:47	0.015
14:48	0.016
14:49	0.016
14:50	0.016
14:51	0.016
14:52	0.017
14:53	0.015
14:54	0.016
14:55	0.016
14:56	0.015
14:57	0.016
14:58	0.019
14:59	0.019
15:00	0.019
15:01	0.018
15:02	0.018
15:03	0.018
15:04	0.016
15:05	0.016
15:06	0.016
15:07	0.019
15:08	0.017
15:09	0.017
15:10	0.017
15:11	0.017
15:12	0.018
15:13	0.018
15:14	0.018

15:15	0.019
15:16	0.02
15:17	0.023
15:18	0.024
15:19	0.022
15:20	0.018
15:21	0.021
15:22	0.024
15:23	0.02
15:24	0.018
15:25	0.019
15:26	0.018
15:27	0.017
15:28	0.017
15:29	0.017
15:30	0.017
15:31	0.017
15:32	0.033
15:33	0.021
15:34	0.019
15:35	0.017
15:36	0.016
15:37	0.017
15:38	0.016
15:39	0.016
15:40	0.016
15:41	0.016
15:42	0.016
15:43	0.017
15:44	0.016
15:45	0.016
15:46	0.017
15:47	0.017
15:48	0.018
15:49	0.021
15:50	0.02
15:51	0.018
15:52	0.019
15:53	0.025
15:54	0.022
15:55	0.02
15:56	0.023
15:57	0.024
15:58	0.02

15:59	0.022
16:00	0.017
16:01	0.017
16:02	0.016
16:03	0.016
16:04	0.016
16:05	0.017
16:06	0.017
16:07	0.016
16:08	0.016
16:09	0.02
16:10	0.017
16:11	0.017
16:12	0.019
16:13	0.018
16:14	0.02
16:15	0.019
16:16	0.019
16:17	0.02
16:18	0.019
16:19	0.019
16:20	0.019
16:21	0.02
16:22	0.02
16:23	0.02
16:24	0.022
16:25	0.033
16:26	0.02
16:27	0.02
16:28	0.02
16:29	0.02
16:30	0.02
16:31	0.019
16:32	0.018
16:33	0.018
16:34	0.017
16:35	0.021
16:36	0.021
16:37	0.017
16:38	0.016
16:39	0.015
16:40	0.015
16:41	0.015
16:42	0.015

16:43	0.016
16:44	0.016
16:45	0.016
16:46	0.014
16:47	0.015
16:48	0.016
16:49	0.016
16:50	0.017
16:51	0.016
16:52	0.016
16:53	0.015
16:54	0.015
16:55	0.017
16:56	0.014
16:57	0.02
16:58	0.015
16:59	0.015
17:00	0.019
17:01	0.014
17:02	0.014
17:03	0.014
17:04	0.014
17:05	0.012
17:06	0.012
17:07	0.013
17:08	0.017
17:09	0.014
17:10	0.015
17:11	0.013
17:12	0.013
17:13	0.013
17:14	0.012
17:15	0.013
17:16	0.012
17:17	0.012
17:18	0.012
17:19	0.012
17:20	0.012
17:21	0.012
17:22	0.012
17:23	0.015
17:24	0.012
17:25	0.012
17:26	0.011

17:27	0.013
17:28	0.012
17:29	0.012
17:30	0.011
17:31	0.016
17:32	0.011
17:33	0.011
17:34	0.017
17:35	0.012
17:36	0.012
17:37	0.011
17:38	0.011
17:39	0.011
17:40	0.01
17:41	0.01
17:42	0.01
17:43	0.01
17:44	0.011
17:45	0.01
17:46	0.01
17:47	0.011
17:48	0.01
17:49	0.011
17:50	0.011
17:51	0.011
17:52	0.011
17:53	0.011
17:54	0.01
17:55	0.012
17:56	0.01
17:57	0.011
17:58	0.011
17:59	0.011
18:00	0.011
18:01	0.011
18:02	0.011
18:03	0.01
18:04	0.011
18:05	0.012
18:06	0.011
18:07	0.011
18:08	0.01
18:09	0.011
18:10	0.011

18:11	0.011
18:12	0.011
18:13	0.012
18:14	0.012
18:15	0.013
18:16	0.011
18:17	0.012
18:18	0.017
18:19	0.013
18:20	0.015
18:21	0.012
18:22	0.013
18:23	0.014
18:24	0.013
18:25	0.013
18:26	0.012
18:27	0.013
18:28	0.013
18:29	0.013
18:30	0.011
18:31	0.012
18:32	0.011
18:33	0.011
18:34	0.012
18:35	0.012
18:36	0.013
18:37	0.012
18:38	0.014
18:39	0.013
18:40	0.02
18:41	0.017
18:42	0.018
18:43	0.013
18:44	0.011
18:45	0.014
18:46	0.013
18:47	0.012
18:48	0.012
18:49	0.01
18:50	0.01
18:51	0.01
18:52	0.014
18:53	0.015
18:54	0.016

18:55	0.013
18:56	0.018
18:57	0.012
18:58	0.011
18:59	0.012
19:00	0.012
19:01	0.013
19:02	0.022
19:03	0.014
19:04	0.012
19:05	0.011
19:06	0.013
19:07	0.012
19:08	0.013
19:09	0.012
19:10	0.015
19:11	0.024
19:12	0.015
19:13	0.014
19:14	0.011
19:15	0.011

Device Serial No	Log Time	Log Type	Sensor 1 Type	Sensor 1 Serial Number	Sensor 1 Status	Sensor 1 Gas Reading
592-601274	5/13/2024 6:48	CONFIG	PID	SC23030921B3		
592-601274	5/13/2024 6:49	Readings	PID	SC23030921B3	Normal	0
592-601274	5/13/2024 6:50	Readings	PID	SC23030921B3	Normal	0
592-601274	5/13/2024 6:51	Readings	PID	SC23030921B3	Normal	0
592-601274	5/13/2024 6:52	Readings	PID	SC23030921B3	Normal	0
592-601274	5/13/2024 6:53	Readings	PID	SC23030921B3	Normal	0
592-601274	5/13/2024 6:54	Readings	PID	SC23030921B3	Normal	0
592-601274	5/13/2024 6:55	Readings	PID	SC23030921B3	Normal	0
592-601274	5/13/2024 6:56	Readings	PID	SC23030921B3	Normal	0
592-601274	5/13/2024 6:57	Readings	PID	SC23030921B3	Normal	0
592-601274	5/13/2024 6:58	Readings	PID	SC23030921B3	Normal	0
592-601274	5/13/2024 6:59	Readings	PID	SC23030921B3	Normal	0
592-601274	5/13/2024 7:00	Readings	PID	SC23030921B3	Normal	0
592-601274	5/13/2024 7:01	Readings	PID	SC23030921B3	Normal	0
592-601274	5/13/2024 7:02	Readings	PID	SC23030921B3	Normal	0.1
592-601274	5/13/2024 7:03	Readings	PID	SC23030921B3	Normal	0
592-601274	5/13/2024 7:04	Readings	PID	SC23030921B3	Normal	0
592-601274	5/13/2024 7:05	Readings	PID	SC23030921B3	Normal	0
592-601274	5/13/2024 7:06	Readings	PID	SC23030921B3	Normal	0
592-601274	5/13/2024 7:07	Readings	PID	SC23030921B3	Normal	0
592-601274	5/13/2024 7:08	Readings	PID	SC23030921B3	Normal	0
592-601274	5/13/2024 7:09	Readings	PID	SC23030921B3	Normal	0
592-601274	5/13/2024 7:10	Readings	PID	SC23030921B3	Normal	0
592-601274	5/13/2024 7:11	Readings	PID	SC23030921B3	Normal	0
592-601274	5/13/2024 7:12	Readings	PID	SC23030921B3	Normal	0
592-601274	5/13/2024 7:13	Readings	PID	SC23030921B3	Normal	0
592-601274	5/13/2024 7:14	Readings	PID	SC23030921B3	Normal	0
592-601274	5/13/2024 7:15	Readings	PID	SC23030921B3	Normal	0
592-601274	5/13/2024 7:16	Readings	PID	SC23030921B3	Normal	0
592-601274	5/13/2024 7:17	Readings	PID	SC23030921B3	Normal	0
592-601274	5/13/2024 7:18	Readings	PID	SC23030921B3	Normal	0
592-601274	5/13/2024 7:19	Readings	PID	SC23030921B3	Normal	0

592-601274	5/13/2024 18:53 Readings	PID	SC23030921B3	Normal	0
592-601274	5/13/2024 18:54 Readings	PID	SC23030921B3	Normal	0
592-601274	5/13/2024 18:55 Readings	PID	SC23030921B3	Normal	0
592-601274	5/13/2024 18:56 Readings	PID	SC23030921B3	Normal	0
592-601274	5/13/2024 18:57 Readings	PID	SC23030921B3	Normal	0
592-601274	5/13/2024 18:58 Readings	PID	SC23030921B3	Normal	0
592-601274	5/13/2024 18:59 Readings	PID	SC23030921B3	Normal	0
592-601274	5/13/2024 19:00 Readings	PID	SC23030921B3	Normal	0
592-601274	5/13/2024 19:01 Readings	PID	SC23030921B3	Normal	0
592-601274	5/13/2024 19:02 Readings	PID	SC23030921B3	Normal	0
592-601274	5/13/2024 19:03 Readings	PID	SC23030921B3	Normal	0
592-601274	5/13/2024 19:04 Readings	PID	SC23030921B3	Normal	0
592-601274	5/13/2024 19:05 Readings	PID	SC23030921B3	Normal	0
592-601274	5/13/2024 19:06 Readings	PID	SC23030921B3	Normal	0
592-601274	5/13/2024 19:07 Readings	PID	SC23030921B3	Normal	0
592-601274	5/13/2024 19:08 Readings	PID	SC23030921B3	Normal	0
592-601274	5/13/2024 19:09 Readings	PID	SC23030921B3	Normal	0
592-601274	5/13/2024 19:10 Readings	PID	SC23030921B3	Normal	0
592-601274	5/13/2024 19:11 Readings	PID	SC23030921B3	Normal	0
592-601274	5/13/2024 19:12 Readings	PID	SC23030921B3	Normal	0
592-601274	5/13/2024 19:13 Readings	PID	SC23030921B3	Normal	0
592-601274	5/13/2024 19:14 Readings	PID	SC23030921B3	Normal	0
592-601274	5/13/2024 19:15 Readings	PID	SC23030921B3	Normal	0

DOWNWIND CAMP READINGS

251 DOUGLASS STREET, BROOKLYN, NY



Instrument Name	DustTrak DRX
Model Number	8533
Serial Number	8533181207
Firmware Version	0.34
Calibration Date	6/1/2023
Test Name	MANUAL_008
Test Start Time	6:56:59 AM
Test Start Date	5/13/2024
Test Length [D:H:M]	0:12:17
Test Interval [M:S]	1:00
PM1 Average [mg/m3]	0.012
PM1 Minimum [mg/m3]	0.001
PM1 Maximum [mg/m3]	0.34
PM1 TWA [mg/m3]	0.015
Photometric User Cal	1
Size Correction User Cal	1
Flow User Cal	0
Errors	
Number of Samples	737

Elapsed Time [s]	PM1 [mg/m3]	Alarms	Errors
6:57	0.003		
6:58	0.003		
6:59	0.004		
7:00	0.006		
7:01	0.004		
7:02	0.005		
7:03	0.007		
7:04	0.008		
7:05	0.007		
7:06	0.007		
7:07	0.013		
7:08	0.014		
7:09	0.094		
7:10	0.105		
7:11	0.026		
7:12	0.032		
7:13	0.013		
7:14	0.149		
7:15	0.031		
7:16	0.016		
7:17	0.018		
7:18	0.015		
7:19	0.059		

7:20	0.34
7:21	0.06
7:22	0.02
7:23	0.015
7:24	0.014
7:25	0.014
7:26	0.014
7:27	0.013
7:28	0.012
7:29	0.013
7:30	0.014
7:31	0.014
7:32	0.014
7:33	0.017
7:34	0.012
7:35	0.017
7:36	0.026
7:37	0.014
7:38	0.012
7:39	0.012
7:40	0.013
7:41	0.013
7:42	0.014
7:43	0.012
7:44	0.013
7:45	0.013
7:46	0.013
7:47	0.012
7:48	0.011
7:49	0.015
7:50	0.015
7:51	0.014
7:52	0.027
7:53	0.031
7:54	0.014
7:55	0.014
7:56	0.014
7:57	0.015
7:58	0.018
7:59	0.027
8:00	0.031
8:01	0.02
8:02	0.018
8:03	0.018

8:04	0.017
8:05	0.015
8:06	0.015
8:07	0.015
8:08	0.015
8:09	0.017
8:10	0.014
8:11	0.014
8:12	0.015
8:13	0.014
8:14	0.015
8:15	0.015
8:16	0.015
8:17	0.016
8:18	0.017
8:19	0.016
8:20	0.016
8:21	0.015
8:22	0.016
8:23	0.016
8:24	0.017
8:25	0.017
8:26	0.017
8:27	0.017
8:28	0.018
8:29	0.019
8:30	0.019
8:31	0.02
8:32	0.022
8:33	0.022
8:34	0.023
8:35	0.023
8:36	0.023
8:37	0.023
8:38	0.024
8:39	0.022
8:40	0.022
8:41	0.022
8:42	0.023
8:43	0.022
8:44	0.022
8:45	0.023
8:46	0.022
8:47	0.023

8:48	0.024
8:49	0.023
8:50	0.023
8:51	0.023
8:52	0.024
8:53	0.023
8:54	0.024
8:55	0.023
8:56	0.022
8:57	0.026
8:58	0.023
8:59	0.021
9:00	0.021
9:01	0.021
9:02	0.021
9:03	0.021
9:04	0.024
9:05	0.025
9:06	0.025
9:07	0.023
9:08	0.028
9:09	0.025
9:10	0.027
9:11	0.023
9:12	0.021
9:13	0.022
9:14	0.027
9:15	0.024
9:16	0.024
9:17	0.026
9:18	0.024
9:19	0.023
9:20	0.022
9:21	0.023
9:22	0.022
9:23	0.023
9:24	0.023
9:25	0.024
9:26	0.025
9:27	0.026
9:28	0.024
9:29	0.026
9:30	0.027
9:31	0.026

9:32	0.023
9:33	0.024
9:34	0.023
9:35	0.024
9:36	0.023
9:37	0.022
9:38	0.023
9:39	0.022
9:40	0.023
9:41	0.023
9:42	0.022
9:43	0.024
9:44	0.024
9:45	0.023
9:46	0.022
9:47	0.024
9:48	0.022
9:49	0.021
9:50	0.022
9:51	0.021
9:52	0.02
9:53	0.022
9:54	0.02
9:55	0.021
9:56	0.022
9:57	0.023
9:58	0.025
9:59	0.022
10:00	0.022
10:01	0.022
10:02	0.022
10:03	0.022
10:04	0.021
10:05	0.021
10:06	0.02
10:07	0.021
10:08	0.022
10:09	0.021
10:10	0.022
10:11	0.022
10:12	0.022
10:13	0.022
10:14	0.023
10:15	0.023

10:16	0.023
10:17	0.022
10:18	0.021
10:19	0.02
10:20	0.019
10:21	0.023
10:22	0.021
10:23	0.021
10:24	0.02
10:25	0.019
10:26	0.023
10:27	0.025
10:28	0.022
10:29	0.034
10:30	0.021
10:31	0.018
10:32	0.019
10:33	0.022
10:34	0.02
10:35	0.02
10:36	0.019
10:37	0.019
10:38	0.021
10:39	0.019
10:40	0.021
10:41	0.019
10:42	0.022
10:43	0.021
10:44	0.021
10:45	0.021
10:46	0.02
10:47	0.02
10:48	0.018
10:49	0.018
10:50	0.017
10:51	0.019
10:52	0.016
10:53	0.015
10:54	0.015
10:55	0.014
10:56	0.015
10:57	0.013
10:58	0.012
10:59	0.013

11:00	0.012
11:01	0.014
11:02	0.013
11:03	0.012
11:04	0.012
11:05	0.013
11:06	0.011
11:07	0.017
11:08	0.018
11:09	0.015
11:10	0.015
11:11	0.011
11:12	0.016
11:13	0.016
11:14	0.011
11:15	0.013
11:16	0.012
11:17	0.014
11:18	0.01
11:19	0.011
11:20	0.01
11:21	0.009
11:22	0.009
11:23	0.009
11:24	0.013
11:25	0.009
11:26	0.009
11:27	0.009
11:28	0.013
11:29	0.011
11:30	0.008
11:31	0.008
11:32	0.011
11:33	0.012
11:34	0.009
11:35	0.008
11:36	0.013
11:37	0.009
11:38	0.008
11:39	0.007
11:40	0.007
11:41	0.007
11:42	0.007
11:43	0.007

11:44	0.008
11:45	0.009
11:46	0.01
11:47	0.01
11:48	0.007
11:49	0.007
11:50	0.007
11:51	0.01
11:52	0.009
11:53	0.008
11:54	0.007
11:55	0.007
11:56	0.014
11:57	0.024
11:58	0.012
11:59	0.01
12:00	0.008
12:01	0.008
12:02	0.007
12:03	0.009
12:04	0.008
12:05	0.008
12:06	0.006
12:07	0.008
12:08	0.007
12:09	0.01
12:10	0.008
12:11	0.006
12:12	0.007
12:13	0.008
12:14	0.01
12:15	0.007
12:16	0.006
12:17	0.006
12:18	0.006
12:19	0.008
12:20	0.006
12:21	0.012
12:22	0.006
12:23	0.005
12:24	0.005
12:25	0.005
12:26	0.006
12:27	0.005

12:28	0.006
12:29	0.006
12:30	0.006
12:31	0.006
12:32	0.008
12:33	0.008
12:34	0.007
12:35	0.008
12:36	0.008
12:37	0.007
12:38	0.008
12:39	0.007
12:40	0.007
12:41	0.007
12:42	0.007
12:43	0.009
12:44	0.011
12:45	0.008
12:46	0.007
12:47	0.007
12:48	0.008
12:49	0.007
12:50	0.007
12:51	0.008
12:52	0.008
12:53	0.008
12:54	0.009
12:55	0.009
12:56	0.008
12:57	0.006
12:58	0.006
12:59	0.006
13:00	0.006
13:01	0.006
13:02	0.006
13:03	0.007
13:04	0.007
13:05	0.006
13:06	0.005
13:07	0.006
13:08	0.005
13:09	0.006
13:10	0.01
13:11	0.008

13:12	0.008
13:13	0.005
13:14	0.005
13:15	0.006
13:16	0.005
13:17	0.006
13:18	0.009
13:19	0.006
13:20	0.007
13:21	0.008
13:22	0.01
13:23	0.01
13:24	0.008
13:25	0.011
13:26	0.008
13:27	0.008
13:28	0.007
13:29	0.006
13:30	0.007
13:31	0.005
13:32	0.004
13:33	0.005
13:34	0.006
13:35	0.005
13:36	0.006
13:37	0.009
13:38	0.007
13:39	0.008
13:40	0.011
13:41	0.007
13:42	0.01
13:43	0.007
13:44	0.007
13:45	0.007
13:46	0.005
13:47	0.016
13:48	0.013
13:49	0.006
13:50	0.005
13:51	0.005
13:52	0.005
13:53	0.005
13:54	0.005
13:55	0.006

13:56	0.006
13:57	0.006
13:58	0.005
13:59	0.006
14:00	0.006
14:01	0.006
14:02	0.012
14:03	0.009
14:04	0.006
14:05	0.008
14:06	0.009
14:07	0.006
14:08	0.005
14:09	0.005
14:10	0.016
14:11	0.006
14:12	0.007
14:13	0.008
14:14	0.007
14:15	0.006
14:16	0.006
14:17	0.007
14:18	0.005
14:19	0.005
14:20	0.01
14:21	0.008
14:22	0.008
14:23	0.006
14:24	0.007
14:25	0.006
14:26	0.006
14:27	0.009
14:28	0.007
14:29	0.009
14:30	0.007
14:31	0.009
14:32	0.007
14:33	0.007
14:34	0.007
14:35	0.007
14:36	0.008
14:37	0.007
14:38	0.006
14:39	0.006

14:40	0.006
14:41	0.006
14:42	0.006
14:43	0.005
14:44	0.005
14:45	0.005
14:46	0.005
14:47	0.005
14:48	0.005
14:49	0.006
14:50	0.007
14:51	0.007
14:52	0.007
14:53	0.007
14:54	0.007
14:55	0.006
14:56	0.007
14:57	0.006
14:58	0.007
14:59	0.007
15:00	0.009
15:01	0.009
15:02	0.008
15:03	0.009
15:04	0.011
15:05	0.007
15:06	0.007
15:07	0.006
15:08	0.007
15:09	0.007
15:10	0.008
15:11	0.007
15:12	0.008
15:13	0.008
15:14	0.008
15:15	0.017
15:16	0.011
15:17	0.013
15:18	0.018
15:19	0.012
15:20	0.016
15:21	0.009
15:22	0.014
15:23	0.014

15:24	0.01
15:25	0.008
15:26	0.008
15:27	0.008
15:28	0.008
15:29	0.007
15:30	0.007
15:31	0.007
15:32	0.007
15:33	0.007
15:34	0.007
15:35	0.008
15:36	0.007
15:37	0.007
15:38	0.007
15:39	0.007
15:40	0.007
15:41	0.007
15:42	0.006
15:43	0.007
15:44	0.007
15:45	0.007
15:46	0.007
15:47	0.007
15:48	0.007
15:49	0.009
15:50	0.009
15:51	0.008
15:52	0.008
15:53	0.008
15:54	0.007
15:55	0.006
15:56	0.007
15:57	0.008
15:58	0.014
15:59	0.023
16:00	0.009
16:01	0.007
16:02	0.007
16:03	0.006
16:04	0.006
16:05	0.006
16:06	0.006
16:07	0.007

16:08	0.006
16:09	0.006
16:10	0.007
16:11	0.007
16:12	0.007
16:13	0.009
16:14	0.01
16:15	0.01
16:16	0.009
16:17	0.009
16:18	0.01
16:19	0.009
16:20	0.009
16:21	0.009
16:22	0.01
16:23	0.01
16:24	0.01
16:25	0.01
16:26	0.01
16:27	0.01
16:28	0.01
16:29	0.01
16:30	0.01
16:31	0.01
16:32	0.01
16:33	0.009
16:34	0.008
16:35	0.007
16:36	0.008
16:37	0.006
16:38	0.007
16:39	0.006
16:40	0.005
16:41	0.005
16:42	0.005
16:43	0.005
16:44	0.005
16:45	0.006
16:46	0.006
16:47	0.005
16:48	0.005
16:49	0.006
16:50	0.006
16:51	0.006

16:52	0.006
16:53	0.005
16:54	0.006
16:55	0.006
16:56	0.005
16:57	0.005
16:58	0.005
16:59	0.006
17:00	0.005
17:01	0.005
17:02	0.004
17:03	0.004
17:04	0.004
17:05	0.004
17:06	0.003
17:07	0.003
17:08	0.004
17:09	0.004
17:10	0.004
17:11	0.012
17:12	0.004
17:13	0.004
17:14	0.003
17:15	0.003
17:16	0.003
17:17	0.003
17:18	0.002
17:19	0.002
17:20	0.002
17:21	0.003
17:22	0.002
17:23	0.005
17:24	0.002
17:25	0.002
17:26	0.002
17:27	0.009
17:28	0.002
17:29	0.002
17:30	0.002
17:31	0.002
17:32	0.002
17:33	0.002
17:34	0.002
17:35	0.002

17:36	0.001
17:37	0.002
17:38	0.002
17:39	0.002
17:40	0.002
17:41	0.002
17:42	0.001
17:43	0.006
17:44	0.001
17:45	0.001
17:46	0.001
17:47	0.001
17:48	0.001
17:49	0.001
17:50	0.002
17:51	0.002
17:52	0.002
17:53	0.002
17:54	0.002
17:55	0.002
17:56	0.003
17:57	0.001
17:58	0.002
17:59	0.002
18:00	0.002
18:01	0.002
18:02	0.002
18:03	0.002
18:04	0.002
18:05	0.001
18:06	0.002
18:07	0.002
18:08	0.001
18:09	0.001
18:10	0.002
18:11	0.002
18:12	0.002
18:13	0.002
18:14	0.002
18:15	0.003
18:16	0.002
18:17	0.002
18:18	0.002
18:19	0.002

18:20	0.002
18:21	0.002
18:22	0.002
18:23	0.003
18:24	0.003
18:25	0.002
18:26	0.002
18:27	0.002
18:28	0.002
18:29	0.003
18:30	0.004
18:31	0.003
18:32	0.002
18:33	0.003
18:34	0.003
18:35	0.002
18:36	0.003
18:37	0.004
18:38	0.004
18:39	0.003
18:40	0.003
18:41	0.007
18:42	0.008
18:43	0.004
18:44	0.003
18:45	0.003
18:46	0.003
18:47	0.004
18:48	0.004
18:49	0.003
18:50	0.002
18:51	0.002
18:52	0.002
18:53	0.002
18:54	0.003
18:55	0.004
18:56	0.003
18:57	0.004
18:58	0.003
18:59	0.003
19:00	0.002
19:01	0.003
19:02	0.002
19:03	0.004

19:04	0.004
19:05	0.003
19:06	0.002
19:07	0.002
19:08	0.003
19:09	0.003
19:10	0.004
19:11	0.003
19:12	0.003
19:13	0.004

Device Serial No	Log Time	Log Type	Sensor 1 Type	Sensor 1 Serial Number	Sensor 1 Status	Sensor 1 Gas Reading
592-602816	5/13/2024 6:41	CONFIG	PID	SC23030324C7		
592-602816	5/13/2024 6:42	Readings	PID	SC23030324C7	Normal	0
592-602816	5/13/2024 6:43	Readings	PID	SC23030324C7	Normal	0
592-602816	5/13/2024 6:44	Readings	PID	SC23030324C7	Normal	0
592-602816	5/13/2024 6:45	Readings	PID	SC23030324C7	Normal	0
592-602816	5/13/2024 6:46	Readings	PID	SC23030324C7	Normal	0
592-602816	5/13/2024 6:47	Readings	PID	SC23030324C7	Normal	0
592-602816	5/13/2024 6:48	Readings	PID	SC23030324C7	Normal	0
592-602816	5/13/2024 6:49	Readings	PID	SC23030324C7	Normal	0
592-602816	5/13/2024 6:50	Readings	PID	SC23030324C7	Normal	0
592-602816	5/13/2024 6:51	Readings	PID	SC23030324C7	Normal	0
592-602816	5/13/2024 6:52	Readings	PID	SC23030324C7	Normal	0
592-602816	5/13/2024 6:53	Readings	PID	SC23030324C7	Normal	0
592-602816	5/13/2024 6:54	Readings	PID	SC23030324C7	Normal	0
592-602816	5/13/2024 6:55	Readings	PID	SC23030324C7	Normal	0
592-602816	5/13/2024 6:56	Readings	PID	SC23030324C7	Normal	0
592-602816	5/13/2024 6:57	Readings	PID	SC23030324C7	Normal	0
592-602816	5/13/2024 6:58	Readings	PID	SC23030324C7	Normal	0
592-602816	5/13/2024 6:59	Readings	PID	SC23030324C7	Normal	0
592-602816	5/13/2024 7:00	Readings	PID	SC23030324C7	Normal	0
592-602816	5/13/2024 7:01	Readings	PID	SC23030324C7	Normal	0
592-602816	5/13/2024 7:02	Readings	PID	SC23030324C7	Normal	0
592-602816	5/13/2024 7:03	Readings	PID	SC23030324C7	Normal	0
592-602816	5/13/2024 7:04	Readings	PID	SC23030324C7	Normal	0
592-602816	5/13/2024 7:05	Readings	PID	SC23030324C7	Normal	0
592-602816	5/13/2024 7:06	Readings	PID	SC23030324C7	Normal	0
592-602816	5/13/2024 7:07	Readings	PID	SC23030324C7	Normal	0
592-602816	5/13/2024 7:08	Readings	PID	SC23030324C7	Normal	0.1
592-602816	5/13/2024 7:09	Readings	PID	SC23030324C7	Normal	0.1
592-602816	5/13/2024 7:10	Readings	PID	SC23030324C7	Normal	0.1
592-602816	5/13/2024 7:11	Readings	PID	SC23030324C7	Normal	0.2
592-602816	5/13/2024 7:12	Readings	PID	SC23030324C7	Normal	0.1

592-602816	5/13/2024 7:13 Readings	PID	SC23030324C7	Normal	0.1
592-602816	5/13/2024 7:14 Readings	PID	SC23030324C7	Normal	0.1
592-602816	5/13/2024 7:15 Readings	PID	SC23030324C7	Normal	0.1
592-602816	5/13/2024 7:16 Readings	PID	SC23030324C7	Normal	0.1
592-602816	5/13/2024 7:17 Readings	PID	SC23030324C7	Normal	0.1
592-602816	5/13/2024 7:18 Readings	PID	SC23030324C7	Normal	0.1
592-602816	5/13/2024 7:19 Readings	PID	SC23030324C7	Normal	0.1
592-602816	5/13/2024 7:20 Readings	PID	SC23030324C7	Normal	0.1
592-602816	5/13/2024 7:21 Readings	PID	SC23030324C7	Normal	0.1
592-602816	5/13/2024 7:22 Readings	PID	SC23030324C7	Normal	0.1
592-602816	5/13/2024 7:23 Readings	PID	SC23030324C7	Normal	0.1
592-602816	5/13/2024 7:24 Readings	PID	SC23030324C7	Normal	0.1
592-602816	5/13/2024 7:25 Readings	PID	SC23030324C7	Normal	0.1
592-602816	5/13/2024 7:26 Readings	PID	SC23030324C7	Normal	0.1
592-602816	5/13/2024 7:27 Readings	PID	SC23030324C7	Normal	0.1
592-602816	5/13/2024 7:28 Readings	PID	SC23030324C7	Normal	0.1
592-602816	5/13/2024 7:29 Readings	PID	SC23030324C7	Normal	0.2
592-602816	5/13/2024 7:30 Readings	PID	SC23030324C7	Normal	0.2
592-602816	5/13/2024 7:31 Readings	PID	SC23030324C7	Normal	0.1
592-602816	5/13/2024 7:32 Readings	PID	SC23030324C7	Normal	0.2
592-602816	5/13/2024 7:33 Readings	PID	SC23030324C7	Normal	0.3
592-602816	5/13/2024 7:34 Readings	PID	SC23030324C7	Normal	0.3
592-602816	5/13/2024 7:35 Readings	PID	SC23030324C7	Normal	0.2
592-602816	5/13/2024 7:36 Readings	PID	SC23030324C7	Normal	0.2
592-602816	5/13/2024 7:37 Readings	PID	SC23030324C7	Normal	0.2
592-602816	5/13/2024 7:38 Readings	PID	SC23030324C7	Normal	0.2
592-602816	5/13/2024 7:39 Readings	PID	SC23030324C7	Normal	0.2
592-602816	5/13/2024 7:40 Readings	PID	SC23030324C7	Normal	0.3
592-602816	5/13/2024 7:41 Readings	PID	SC23030324C7	Normal	0.2
592-602816	5/13/2024 7:42 Readings	PID	SC23030324C7	Normal	0.2
592-602816	5/13/2024 7:43 Readings	PID	SC23030324C7	Normal	0.2
592-602816	5/13/2024 7:44 Readings	PID	SC23030324C7	Normal	0.2
592-602816	5/13/2024 7:45 Readings	PID	SC23030324C7	Normal	0.2

592-602816	5/13/2024 8:19	Readings	PID	SC23030324C7	Normal	0.2
592-602816	5/13/2024 8:20	Readings	PID	SC23030324C7	Normal	0.2
592-602816	5/13/2024 8:21	Readings	PID	SC23030324C7	Normal	0.3
592-602816	5/13/2024 8:22	Readings	PID	SC23030324C7	Normal	0.3
592-602816	5/13/2024 8:23	Readings	PID	SC23030324C7	Normal	0.3
592-602816	5/13/2024 8:24	Readings	PID	SC23030324C7	Normal	0.3
592-602816	5/13/2024 8:25	Readings	PID	SC23030324C7	Normal	0.2
592-602816	5/13/2024 8:26	Readings	PID	SC23030324C7	Normal	0.2
592-602816	5/13/2024 8:27	Readings	PID	SC23030324C7	Normal	0.2
592-602816	5/13/2024 8:28	Readings	PID	SC23030324C7	Normal	0.3
592-602816	5/13/2024 8:29	Readings	PID	SC23030324C7	Normal	0.3
592-602816	5/13/2024 8:30	Readings	PID	SC23030324C7	Normal	0.3
592-602816	5/13/2024 8:31	Readings	PID	SC23030324C7	Normal	0.3
592-602816	5/13/2024 8:32	Readings	PID	SC23030324C7	Normal	0.3
592-602816	5/13/2024 8:33	Readings	PID	SC23030324C7	Normal	0.3
592-602816	5/13/2024 8:34	Readings	PID	SC23030324C7	Normal	0.3
592-602816	5/13/2024 8:35	Readings	PID	SC23030324C7	Normal	0.3
592-602816	5/13/2024 8:36	Readings	PID	SC23030324C7	Normal	0.3
592-602816	5/13/2024 8:37	Readings	PID	SC23030324C7	Normal	0.3
592-602816	5/13/2024 8:38	Readings	PID	SC23030324C7	Normal	0.3
592-602816	5/13/2024 8:39	Readings	PID	SC23030324C7	Normal	0.3
592-602816	5/13/2024 8:40	Readings	PID	SC23030324C7	Normal	0.3
592-602816	5/13/2024 8:41	Readings	PID	SC23030324C7	Normal	0.3
592-602816	5/13/2024 8:42	Readings	PID	SC23030324C7	Normal	0.3
592-602816	5/13/2024 8:43	Readings	PID	SC23030324C7	Normal	0.3
592-602816	5/13/2024 8:44	Readings	PID	SC23030324C7	Normal	0.3
592-602816	5/13/2024 8:45	Readings	PID	SC23030324C7	Normal	0.5
592-602816	5/13/2024 8:46	Readings	PID	SC23030324C7	Normal	0.4
592-602816	5/13/2024 8:47	Readings	PID	SC23030324C7	Normal	0.3
592-602816	5/13/2024 8:48	Readings	PID	SC23030324C7	Normal	0.3
592-602816	5/13/2024 8:49	Readings	PID	SC23030324C7	Normal	0.3
592-602816	5/13/2024 8:50	Readings	PID	SC23030324C7	Normal	0.3
592-602816	5/13/2024 8:51	Readings	PID	SC23030324C7	Normal	0.3

592-602816	5/13/2024 11:37	Readings	PID	SC23030324C7	Normal	0.2
592-602816	5/13/2024 11:38	Readings	PID	SC23030324C7	Normal	0.3
592-602816	5/13/2024 11:39	Readings	PID	SC23030324C7	Normal	0.3
592-602816	5/13/2024 11:40	Readings	PID	SC23030324C7	Normal	0.4
592-602816	5/13/2024 11:41	Readings	PID	SC23030324C7	Normal	0.3
592-602816	5/13/2024 11:42	Readings	PID	SC23030324C7	Normal	0.2
592-602816	5/13/2024 11:43	Readings	PID	SC23030324C7	Normal	0.3
592-602816	5/13/2024 11:44	Readings	PID	SC23030324C7	Normal	0.2
592-602816	5/13/2024 11:45	Readings	PID	SC23030324C7	Normal	0.2
592-602816	5/13/2024 11:46	Readings	PID	SC23030324C7	Normal	0.3
592-602816	5/13/2024 11:47	Readings	PID	SC23030324C7	Normal	0.2
592-602816	5/13/2024 11:48	Readings	PID	SC23030324C7	Normal	0.2
592-602816	5/13/2024 11:49	Readings	PID	SC23030324C7	Normal	0.2
592-602816	5/13/2024 11:50	Readings	PID	SC23030324C7	Normal	0.3
592-602816	5/13/2024 11:51	Readings	PID	SC23030324C7	Normal	0.2
592-602816	5/13/2024 11:52	Readings	PID	SC23030324C7	Normal	0.2
592-602816	5/13/2024 11:53	Readings	PID	SC23030324C7	Normal	0.2
592-602816	5/13/2024 11:54	Readings	PID	SC23030324C7	Normal	0.2
592-602816	5/13/2024 11:55	Readings	PID	SC23030324C7	Normal	0.2
592-602816	5/13/2024 11:56	Readings	PID	SC23030324C7	Normal	0.2
592-602816	5/13/2024 11:57	Readings	PID	SC23030324C7	Normal	0.2
592-602816	5/13/2024 11:58	Readings	PID	SC23030324C7	Normal	0.2
592-602816	5/13/2024 11:59	Readings	PID	SC23030324C7	Normal	0.2
592-602816	5/13/2024 12:00	Readings	PID	SC23030324C7	Normal	0.2
592-602816	5/13/2024 12:01	Readings	PID	SC23030324C7	Normal	0.2
592-602816	5/13/2024 12:02	Readings	PID	SC23030324C7	Normal	0.2
592-602816	5/13/2024 12:03	Readings	PID	SC23030324C7	Normal	0.2
592-602816	5/13/2024 12:04	Readings	PID	SC23030324C7	Normal	0.2
592-602816	5/13/2024 12:05	Readings	PID	SC23030324C7	Normal	0.3
592-602816	5/13/2024 12:06	Readings	PID	SC23030324C7	Normal	0.3
592-602816	5/13/2024 12:07	Readings	PID	SC23030324C7	Normal	0.2
592-602816	5/13/2024 12:08	Readings	PID	SC23030324C7	Normal	0.2
592-602816	5/13/2024 12:09	Readings	PID	SC23030324C7	Normal	0.2

592-602816	5/13/2024 12:43	Readings	PID	SC23030324C7	Normal	0.2
592-602816	5/13/2024 12:44	Readings	PID	SC23030324C7	Normal	0.2
592-602816	5/13/2024 12:45	Readings	PID	SC23030324C7	Normal	0.2
592-602816	5/13/2024 12:46	Readings	PID	SC23030324C7	Normal	0.2
592-602816	5/13/2024 12:47	Readings	PID	SC23030324C7	Normal	0.2
592-602816	5/13/2024 12:48	Readings	PID	SC23030324C7	Normal	0.3
592-602816	5/13/2024 12:49	Readings	PID	SC23030324C7	Normal	0.3
592-602816	5/13/2024 12:50	Readings	PID	SC23030324C7	Normal	0.2
592-602816	5/13/2024 12:51	Readings	PID	SC23030324C7	Normal	0.2
592-602816	5/13/2024 12:52	Readings	PID	SC23030324C7	Normal	0.2
592-602816	5/13/2024 12:53	Readings	PID	SC23030324C7	Normal	0.2
592-602816	5/13/2024 12:54	Readings	PID	SC23030324C7	Normal	0.2
592-602816	5/13/2024 12:55	Readings	PID	SC23030324C7	Normal	0.2
592-602816	5/13/2024 12:56	Readings	PID	SC23030324C7	Normal	0.2
592-602816	5/13/2024 12:57	Readings	PID	SC23030324C7	Normal	0.2
592-602816	5/13/2024 12:58	Readings	PID	SC23030324C7	Normal	0.2
592-602816	5/13/2024 12:59	Readings	PID	SC23030324C7	Normal	0.3
592-602816	5/13/2024 13:00	Readings	PID	SC23030324C7	Normal	0.2
592-602816	5/13/2024 13:01	Readings	PID	SC23030324C7	Normal	0.3
592-602816	5/13/2024 13:02	Readings	PID	SC23030324C7	Normal	0.3
592-602816	5/13/2024 13:03	Readings	PID	SC23030324C7	Normal	0.2
592-602816	5/13/2024 13:04	Readings	PID	SC23030324C7	Normal	0.3
592-602816	5/13/2024 13:05	Readings	PID	SC23030324C7	Normal	0.3
592-602816	5/13/2024 13:06	Readings	PID	SC23030324C7	Normal	0.3
592-602816	5/13/2024 13:07	Readings	PID	SC23030324C7	Normal	0.2
592-602816	5/13/2024 13:08	Readings	PID	SC23030324C7	Normal	0.3
592-602816	5/13/2024 13:09	Readings	PID	SC23030324C7	Normal	0.2
592-602816	5/13/2024 13:10	Readings	PID	SC23030324C7	Normal	0.2
592-602816	5/13/2024 13:11	Readings	PID	SC23030324C7	Normal	0.3
592-602816	5/13/2024 13:12	Readings	PID	SC23030324C7	Normal	0.2
592-602816	5/13/2024 13:13	Readings	PID	SC23030324C7	Normal	0.2
592-602816	5/13/2024 13:14	Readings	PID	SC23030324C7	Normal	0.2
592-602816	5/13/2024 13:15	Readings	PID	SC23030324C7	Normal	0.2

592-602816	5/13/2024 13:16	Readings	PID	SC23030324C7	Normal	0.2
592-602816	5/13/2024 13:17	Readings	PID	SC23030324C7	Normal	0.2
592-602816	5/13/2024 13:18	Readings	PID	SC23030324C7	Normal	0.3
592-602816	5/13/2024 13:19	Readings	PID	SC23030324C7	Normal	0.2
592-602816	5/13/2024 13:20	Readings	PID	SC23030324C7	Normal	0.2
592-602816	5/13/2024 13:21	Readings	PID	SC23030324C7	Normal	0.2
592-602816	5/13/2024 13:22	Readings	PID	SC23030324C7	Normal	0.2
592-602816	5/13/2024 13:23	Readings	PID	SC23030324C7	Normal	0.2
592-602816	5/13/2024 13:24	Readings	PID	SC23030324C7	Normal	0.2
592-602816	5/13/2024 13:25	Readings	PID	SC23030324C7	Normal	0.2
592-602816	5/13/2024 13:26	Readings	PID	SC23030324C7	Normal	0.1
592-602816	5/13/2024 13:27	Readings	PID	SC23030324C7	Normal	0.1
592-602816	5/13/2024 13:28	Readings	PID	SC23030324C7	Normal	0.2
592-602816	5/13/2024 13:29	Readings	PID	SC23030324C7	Normal	0.2
592-602816	5/13/2024 13:30	Readings	PID	SC23030324C7	Normal	0.1
592-602816	5/13/2024 13:31	Readings	PID	SC23030324C7	Normal	0.1
592-602816	5/13/2024 13:32	Readings	PID	SC23030324C7	Normal	0.1
592-602816	5/13/2024 13:33	Readings	PID	SC23030324C7	Normal	0.1
592-602816	5/13/2024 13:34	Readings	PID	SC23030324C7	Normal	0.1
592-602816	5/13/2024 13:35	Readings	PID	SC23030324C7	Normal	0.2
592-602816	5/13/2024 13:36	Readings	PID	SC23030324C7	Normal	0.2
592-602816	5/13/2024 13:37	Readings	PID	SC23030324C7	Normal	0.1
592-602816	5/13/2024 13:38	Readings	PID	SC23030324C7	Normal	0.1
592-602816	5/13/2024 13:39	Readings	PID	SC23030324C7	Normal	0.1
592-602816	5/13/2024 13:40	Readings	PID	SC23030324C7	Normal	0.1
592-602816	5/13/2024 13:41	Readings	PID	SC23030324C7	Normal	0.1
592-602816	5/13/2024 13:42	Readings	PID	SC23030324C7	Normal	0.1
592-602816	5/13/2024 13:43	Readings	PID	SC23030324C7	Normal	0.1
592-602816	5/13/2024 13:44	Readings	PID	SC23030324C7	Normal	0.1
592-602816	5/13/2024 13:45	Readings	PID	SC23030324C7	Normal	0.1
592-602816	5/13/2024 13:46	Readings	PID	SC23030324C7	Normal	0.1
592-602816	5/13/2024 13:47	Readings	PID	SC23030324C7	Normal	0.1
592-602816	5/13/2024 13:48	Readings	PID	SC23030324C7	Normal	0.1

592-602816	5/13/2024 14:55	Readings	PID	SC23030324C7	Normal	0.1
592-602816	5/13/2024 14:56	Readings	PID	SC23030324C7	Normal	0.1
592-602816	5/13/2024 14:57	Readings	PID	SC23030324C7	Normal	0.1
592-602816	5/13/2024 14:58	Readings	PID	SC23030324C7	Normal	0.1
592-602816	5/13/2024 14:59	Readings	PID	SC23030324C7	Normal	0.1
592-602816	5/13/2024 15:00	Readings	PID	SC23030324C7	Normal	0
592-602816	5/13/2024 15:01	Readings	PID	SC23030324C7	Normal	0
592-602816	5/13/2024 15:02	Readings	PID	SC23030324C7	Normal	0.1
592-602816	5/13/2024 15:03	Readings	PID	SC23030324C7	Normal	0.1
592-602816	5/13/2024 15:04	Readings	PID	SC23030324C7	Normal	0.1
592-602816	5/13/2024 15:05	Readings	PID	SC23030324C7	Normal	0.1
592-602816	5/13/2024 15:06	Readings	PID	SC23030324C7	Normal	0.1
592-602816	5/13/2024 15:07	Readings	PID	SC23030324C7	Normal	0.1
592-602816	5/13/2024 15:08	Readings	PID	SC23030324C7	Normal	0.1
592-602816	5/13/2024 15:09	Readings	PID	SC23030324C7	Normal	0
592-602816	5/13/2024 15:10	Readings	PID	SC23030324C7	Normal	0.1
592-602816	5/13/2024 15:11	Readings	PID	SC23030324C7	Normal	0.1
592-602816	5/13/2024 15:12	Readings	PID	SC23030324C7	Normal	0.1
592-602816	5/13/2024 15:13	Readings	PID	SC23030324C7	Normal	0
592-602816	5/13/2024 15:14	Readings	PID	SC23030324C7	Normal	0
592-602816	5/13/2024 15:15	Readings	PID	SC23030324C7	Normal	0.1
592-602816	5/13/2024 15:16	Readings	PID	SC23030324C7	Normal	0
592-602816	5/13/2024 15:17	Readings	PID	SC23030324C7	Normal	0.1
592-602816	5/13/2024 15:18	Readings	PID	SC23030324C7	Normal	0.1
592-602816	5/13/2024 15:19	Readings	PID	SC23030324C7	Normal	0
592-602816	5/13/2024 15:20	Readings	PID	SC23030324C7	Normal	0.1
592-602816	5/13/2024 15:21	Readings	PID	SC23030324C7	Normal	0.1
592-602816	5/13/2024 15:22	Readings	PID	SC23030324C7	Normal	0.1
592-602816	5/13/2024 15:23	Readings	PID	SC23030324C7	Normal	0.1
592-602816	5/13/2024 15:24	Readings	PID	SC23030324C7	Normal	0.1
592-602816	5/13/2024 15:25	Readings	PID	SC23030324C7	Normal	0.1
592-602816	5/13/2024 15:26	Readings	PID	SC23030324C7	Normal	0.2
592-602816	5/13/2024 15:27	Readings	PID	SC23030324C7	Normal	0.1

592-602816	5/13/2024 15:28	Readings	PID	SC23030324C7	Normal	0.1
592-602816	5/13/2024 15:29	Readings	PID	SC23030324C7	Normal	0.2
592-602816	5/13/2024 15:30	Readings	PID	SC23030324C7	Normal	0.2
592-602816	5/13/2024 15:31	Readings	PID	SC23030324C7	Normal	0.1
592-602816	5/13/2024 15:32	Readings	PID	SC23030324C7	Normal	0.1
592-602816	5/13/2024 15:33	Readings	PID	SC23030324C7	Normal	0.1
592-602816	5/13/2024 15:34	Readings	PID	SC23030324C7	Normal	0.1
592-602816	5/13/2024 15:35	Readings	PID	SC23030324C7	Normal	0.2
592-602816	5/13/2024 15:36	Readings	PID	SC23030324C7	Normal	0.1
592-602816	5/13/2024 15:37	Readings	PID	SC23030324C7	Normal	0.1
592-602816	5/13/2024 15:38	Readings	PID	SC23030324C7	Normal	0.1
592-602816	5/13/2024 15:39	Readings	PID	SC23030324C7	Normal	0.1
592-602816	5/13/2024 15:40	Readings	PID	SC23030324C7	Normal	0.1
592-602816	5/13/2024 15:41	Readings	PID	SC23030324C7	Normal	0.1
592-602816	5/13/2024 15:42	Readings	PID	SC23030324C7	Normal	0.2
592-602816	5/13/2024 15:43	Readings	PID	SC23030324C7	Normal	0.1
592-602816	5/13/2024 15:44	Readings	PID	SC23030324C7	Normal	0.1
592-602816	5/13/2024 15:45	Readings	PID	SC23030324C7	Normal	0.1
592-602816	5/13/2024 15:46	Readings	PID	SC23030324C7	Normal	0.1
592-602816	5/13/2024 15:47	Readings	PID	SC23030324C7	Normal	0.1
592-602816	5/13/2024 15:48	Readings	PID	SC23030324C7	Normal	0.1
592-602816	5/13/2024 15:49	Readings	PID	SC23030324C7	Normal	0.1
592-602816	5/13/2024 15:50	Readings	PID	SC23030324C7	Normal	0.1
592-602816	5/13/2024 15:51	Readings	PID	SC23030324C7	Normal	0.1
592-602816	5/13/2024 15:52	Readings	PID	SC23030324C7	Normal	0.1
592-602816	5/13/2024 15:53	Readings	PID	SC23030324C7	Normal	0.1
592-602816	5/13/2024 15:54	Readings	PID	SC23030324C7	Normal	0.1
592-602816	5/13/2024 15:55	Readings	PID	SC23030324C7	Normal	0.1
592-602816	5/13/2024 15:56	Readings	PID	SC23030324C7	Normal	0.6
592-602816	5/13/2024 15:57	Readings	PID	SC23030324C7	Normal	2.8
592-602816	5/13/2024 15:58	Readings	PID	SC23030324C7	Normal	1.6
592-602816	5/13/2024 15:59	Readings	PID	SC23030324C7	Normal	0.6
592-602816	5/13/2024 16:00	Readings	PID	SC23030324C7	Normal	0.5

592-602816	5/13/2024 16:01	Readings	PID	SC23030324C7	Normal	2.1
592-602816	5/13/2024 16:02	Readings	PID	SC23030324C7	Normal	2.1
592-602816	5/13/2024 16:03	Readings	PID	SC23030324C7	Normal	0.4
592-602816	5/13/2024 16:04	Readings	PID	SC23030324C7	Normal	0.1
592-602816	5/13/2024 16:05	Readings	PID	SC23030324C7	Normal	0.1
592-602816	5/13/2024 16:06	Readings	PID	SC23030324C7	Normal	0.1
592-602816	5/13/2024 16:07	Readings	PID	SC23030324C7	Normal	0.1
592-602816	5/13/2024 16:08	Readings	PID	SC23030324C7	Normal	0.1
592-602816	5/13/2024 16:09	Readings	PID	SC23030324C7	Normal	0.1
592-602816	5/13/2024 16:10	Readings	PID	SC23030324C7	Normal	0.1
592-602816	5/13/2024 16:11	Readings	PID	SC23030324C7	Normal	0.1
592-602816	5/13/2024 16:12	Readings	PID	SC23030324C7	Normal	0.1
592-602816	5/13/2024 16:13	Readings	PID	SC23030324C7	Normal	0.2
592-602816	5/13/2024 16:14	Readings	PID	SC23030324C7	Normal	0.2
592-602816	5/13/2024 16:15	Readings	PID	SC23030324C7	Normal	0.1
592-602816	5/13/2024 16:16	Readings	PID	SC23030324C7	Normal	0.1
592-602816	5/13/2024 16:17	Readings	PID	SC23030324C7	Normal	0.1
592-602816	5/13/2024 16:18	Readings	PID	SC23030324C7	Normal	0.1
592-602816	5/13/2024 16:19	Readings	PID	SC23030324C7	Normal	0.1
592-602816	5/13/2024 16:20	Readings	PID	SC23030324C7	Normal	0.1
592-602816	5/13/2024 16:21	Readings	PID	SC23030324C7	Normal	0.1
592-602816	5/13/2024 16:22	Readings	PID	SC23030324C7	Normal	0.1
592-602816	5/13/2024 16:23	Readings	PID	SC23030324C7	Normal	0.1
592-602816	5/13/2024 16:24	Readings	PID	SC23030324C7	Normal	0.1
592-602816	5/13/2024 16:25	Readings	PID	SC23030324C7	Normal	0.1
592-602816	5/13/2024 16:26	Readings	PID	SC23030324C7	Normal	0.2
592-602816	5/13/2024 16:27	Readings	PID	SC23030324C7	Normal	0.1
592-602816	5/13/2024 16:28	Readings	PID	SC23030324C7	Normal	0.1
592-602816	5/13/2024 16:29	Readings	PID	SC23030324C7	Normal	0.2
592-602816	5/13/2024 16:30	Readings	PID	SC23030324C7	Normal	0.2
592-602816	5/13/2024 16:31	Readings	PID	SC23030324C7	Normal	0.2
592-602816	5/13/2024 16:32	Readings	PID	SC23030324C7	Normal	0.2
592-602816	5/13/2024 16:33	Readings	PID	SC23030324C7	Normal	0.2

592-602816	5/13/2024 17:07	Readings	PID	SC23030324C7	Normal	0.2
592-602816	5/13/2024 17:08	Readings	PID	SC23030324C7	Normal	0.2
592-602816	5/13/2024 17:09	Readings	PID	SC23030324C7	Normal	0.2
592-602816	5/13/2024 17:10	Readings	PID	SC23030324C7	Normal	0.2
592-602816	5/13/2024 17:11	Readings	PID	SC23030324C7	Normal	0.1
592-602816	5/13/2024 17:12	Readings	PID	SC23030324C7	Normal	0.2
592-602816	5/13/2024 17:13	Readings	PID	SC23030324C7	Normal	0.2
592-602816	5/13/2024 17:14	Readings	PID	SC23030324C7	Normal	0.2
592-602816	5/13/2024 17:15	Readings	PID	SC23030324C7	Normal	0.2
592-602816	5/13/2024 17:16	Readings	PID	SC23030324C7	Normal	0.1
592-602816	5/13/2024 17:17	Readings	PID	SC23030324C7	Normal	0.2
592-602816	5/13/2024 17:18	Readings	PID	SC23030324C7	Normal	0.2
592-602816	5/13/2024 17:19	Readings	PID	SC23030324C7	Normal	0.1
592-602816	5/13/2024 17:20	Readings	PID	SC23030324C7	Normal	0.2
592-602816	5/13/2024 17:21	Readings	PID	SC23030324C7	Normal	0.2
592-602816	5/13/2024 17:22	Readings	PID	SC23030324C7	Normal	0.2
592-602816	5/13/2024 17:23	Readings	PID	SC23030324C7	Normal	0.2
592-602816	5/13/2024 17:24	Readings	PID	SC23030324C7	Normal	0.2
592-602816	5/13/2024 17:25	Readings	PID	SC23030324C7	Normal	0.2
592-602816	5/13/2024 17:26	Readings	PID	SC23030324C7	Normal	0.2
592-602816	5/13/2024 17:27	Readings	PID	SC23030324C7	Normal	0.2
592-602816	5/13/2024 17:28	Readings	PID	SC23030324C7	Normal	0.2
592-602816	5/13/2024 17:29	Readings	PID	SC23030324C7	Normal	0.2
592-602816	5/13/2024 17:30	Readings	PID	SC23030324C7	Normal	0.2
592-602816	5/13/2024 17:31	Readings	PID	SC23030324C7	Normal	0.2
592-602816	5/13/2024 17:32	Readings	PID	SC23030324C7	Normal	0.1
592-602816	5/13/2024 17:33	Readings	PID	SC23030324C7	Normal	0.2
592-602816	5/13/2024 17:34	Readings	PID	SC23030324C7	Normal	0.2
592-602816	5/13/2024 17:35	Readings	PID	SC23030324C7	Normal	0.2
592-602816	5/13/2024 17:36	Readings	PID	SC23030324C7	Normal	0.2
592-602816	5/13/2024 17:37	Readings	PID	SC23030324C7	Normal	0.2
592-602816	5/13/2024 17:38	Readings	PID	SC23030324C7	Normal	0.3
592-602816	5/13/2024 17:39	Readings	PID	SC23030324C7	Normal	0.2

592-602816	5/13/2024 18:13	Readings	PID	SC23030324C7	Normal	0.2
592-602816	5/13/2024 18:14	Readings	PID	SC23030324C7	Normal	0.2
592-602816	5/13/2024 18:15	Readings	PID	SC23030324C7	Normal	0.2
592-602816	5/13/2024 18:16	Readings	PID	SC23030324C7	Normal	0.2
592-602816	5/13/2024 18:17	Readings	PID	SC23030324C7	Normal	0.2
592-602816	5/13/2024 18:18	Readings	PID	SC23030324C7	Normal	0.2
592-602816	5/13/2024 18:19	Readings	PID	SC23030324C7	Normal	0.2
592-602816	5/13/2024 18:20	Readings	PID	SC23030324C7	Normal	0.3
592-602816	5/13/2024 18:21	Readings	PID	SC23030324C7	Normal	0.2
592-602816	5/13/2024 18:22	Readings	PID	SC23030324C7	Normal	0.2
592-602816	5/13/2024 18:23	Readings	PID	SC23030324C7	Normal	0.2
592-602816	5/13/2024 18:24	Readings	PID	SC23030324C7	Normal	0.2
592-602816	5/13/2024 18:25	Readings	PID	SC23030324C7	Normal	0.2
592-602816	5/13/2024 18:26	Readings	PID	SC23030324C7	Normal	0.3
592-602816	5/13/2024 18:27	Readings	PID	SC23030324C7	Normal	0.2
592-602816	5/13/2024 18:28	Readings	PID	SC23030324C7	Normal	0.2
592-602816	5/13/2024 18:29	Readings	PID	SC23030324C7	Normal	0.2
592-602816	5/13/2024 18:30	Readings	PID	SC23030324C7	Normal	0.2
592-602816	5/13/2024 18:31	Readings	PID	SC23030324C7	Normal	0.2
592-602816	5/13/2024 18:32	Readings	PID	SC23030324C7	Normal	0.2
592-602816	5/13/2024 18:33	Readings	PID	SC23030324C7	Normal	0.2
592-602816	5/13/2024 18:34	Readings	PID	SC23030324C7	Normal	0.3
592-602816	5/13/2024 18:35	Readings	PID	SC23030324C7	Normal	0.2
592-602816	5/13/2024 18:36	Readings	PID	SC23030324C7	Normal	0.3
592-602816	5/13/2024 18:37	Readings	PID	SC23030324C7	Normal	0.3
592-602816	5/13/2024 18:38	Readings	PID	SC23030324C7	Normal	0.3
592-602816	5/13/2024 18:39	Readings	PID	SC23030324C7	Normal	0.2
592-602816	5/13/2024 18:40	Readings	PID	SC23030324C7	Normal	0.2
592-602816	5/13/2024 18:41	Readings	PID	SC23030324C7	Normal	0.2
592-602816	5/13/2024 18:42	Readings	PID	SC23030324C7	Normal	0.2
592-602816	5/13/2024 18:43	Readings	PID	SC23030324C7	Normal	0.3
592-602816	5/13/2024 18:44	Readings	PID	SC23030324C7	Normal	0.3
592-602816	5/13/2024 18:45	Readings	PID	SC23030324C7	Normal	0.3

592-602816	5/13/2024 18:46	Readings	PID	SC23030324C7	Normal	0.3
592-602816	5/13/2024 18:47	Readings	PID	SC23030324C7	Normal	0.2
592-602816	5/13/2024 18:48	Readings	PID	SC23030324C7	Normal	0.3
592-602816	5/13/2024 18:49	Readings	PID	SC23030324C7	Normal	0.3
592-602816	5/13/2024 18:50	Readings	PID	SC23030324C7	Normal	0.3
592-602816	5/13/2024 18:51	Readings	PID	SC23030324C7	Normal	0.3
592-602816	5/13/2024 18:52	Readings	PID	SC23030324C7	Normal	0.3
592-602816	5/13/2024 18:53	Readings	PID	SC23030324C7	Normal	0.2
592-602816	5/13/2024 18:54	Readings	PID	SC23030324C7	Normal	0.2
592-602816	5/13/2024 18:55	Readings	PID	SC23030324C7	Normal	0.2
592-602816	5/13/2024 18:56	Readings	PID	SC23030324C7	Normal	0.2
592-602816	5/13/2024 18:57	Readings	PID	SC23030324C7	Normal	0.3
592-602816	5/13/2024 18:58	Readings	PID	SC23030324C7	Normal	0.3
592-602816	5/13/2024 18:59	Readings	PID	SC23030324C7	Normal	0.3
592-602816	5/13/2024 19:00	Readings	PID	SC23030324C7	Normal	0.3
592-602816	5/13/2024 19:01	Readings	PID	SC23030324C7	Normal	0.3
592-602816	5/13/2024 19:02	Readings	PID	SC23030324C7	Normal	0.3
592-602816	5/13/2024 19:03	Readings	PID	SC23030324C7	Normal	0.3
592-602816	5/13/2024 19:04	Readings	PID	SC23030324C7	Normal	0.3
592-602816	5/13/2024 19:05	Readings	PID	SC23030324C7	Normal	0.3
592-602816	5/13/2024 19:06	Readings	PID	SC23030324C7	Normal	0.3
592-602816	5/13/2024 19:07	Readings	PID	SC23030324C7	Normal	0.3
592-602816	5/13/2024 19:08	Readings	PID	SC23030324C7	Normal	0.3
592-602816	5/13/2024 19:09	Readings	PID	SC23030324C7	Normal	0.3
592-602816	5/13/2024 19:10	Readings	PID	SC23030324C7	Normal	0.3
592-602816	5/13/2024 19:11	Readings	PID	SC23030324C7	Normal	0.2
592-602816	5/13/2024 19:12	Readings	PID	SC23030324C7	Normal	0.3
592-602816	5/13/2024 19:13	Readings	PID	SC23030324C7	Normal	0.3
592-602816	5/13/2024 19:14	Readings	PID	SC23030324C7	Normal	0.3
592-602816	5/13/2024 19:15	Readings	PID	SC23030324C7	Normal	0.3
592-602816	5/13/2024 19:16	Readings	PID	SC23030324C7	Normal	0.3
592-602816	5/13/2024 19:17	Readings	PID	SC23030324C7	Normal	0.3
592-602816	5/13/2024 19:18	Readings	PID	SC23030324C7	Normal	0.3

Instrument Name	DustTrak II
Model Number	8530
Serial Number	8530224601
Firmware Version	3.1
Calibration Date	11/9/2022
Test Name	MANUAL_008
Test Start Time	6:43:39 AM
Test Start Date	5/13/2024
Test Length [D:H:M]	0:12:29
Test Interval [M:S]	1:00
Mass Average [mg/m3]	0.023
Mass Minimum [mg/m3]	0.002
Mass Maximum [mg/m3]	0.069
Mass TWA [mg/m3]	0.027
Photometric User Cal	1
Flow User Cal	0
Errors	
Number of Samples	750

Elapsed Time [s]	Mass [mg/m3]	Alarms	Errors
6:44	0.014		
6:45	0.019		
6:46	0.018		
6:47	0.015		
6:48	0.012		
6:49	0.013		
6:50	0.014		
6:51	0.012		
6:52	0.013		
6:53	0.01		
6:54	0.011		
6:55	0.012		
6:56	0.014		
6:57	0.015		
6:58	0.015		
6:59	0.017		
7:00	0.018		
7:01	0.019		
7:02	0.019		
7:03	0.02		
7:04	0.021		
7:05	0.021		
7:06	0.022		
7:07	0.022		

7:08	0.025
7:09	0.024
7:10	0.025
7:11	0.025
7:12	0.027
7:13	0.031
7:14	0.03
7:15	0.028
7:16	0.033
7:17	0.069
7:18	0.036
7:19	0.03
7:20	0.031
7:21	0.032
7:22	0.032
7:23	0.032
7:24	0.033
7:25	0.032
7:26	0.031
7:27	0.037
7:28	0.05
7:29	0.036
7:30	0.061
7:31	0.046
7:32	0.036
7:33	0.028
7:34	0.033
7:35	0.031
7:36	0.028
7:37	0.028
7:38	0.029
7:39	0.031
7:40	0.032
7:41	0.032
7:42	0.03
7:43	0.03
7:44	0.031
7:45	0.03
7:46	0.028
7:47	0.027
7:48	0.032
7:49	0.031
7:50	0.032
7:51	0.034

7:52	0.036
7:53	0.034
7:54	0.033
7:55	0.032
7:56	0.034
7:57	0.035
7:58	0.036
7:59	0.036
8:00	0.036
8:01	0.037
8:02	0.035
8:03	0.032
8:04	0.031
8:05	0.031
8:06	0.031
8:07	0.031
8:08	0.032
8:09	0.032
8:10	0.031
8:11	0.033
8:12	0.031
8:13	0.033
8:14	0.032
8:15	0.032
8:16	0.032
8:17	0.034
8:18	0.034
8:19	0.035
8:20	0.035
8:21	0.035
8:22	0.036
8:23	0.036
8:24	0.037
8:25	0.039
8:26	0.039
8:27	0.04
8:28	0.04
8:29	0.042
8:30	0.044
8:31	0.046
8:32	0.047
8:33	0.047
8:34	0.048
8:35	0.047

8:36	0.048
8:37	0.046
8:38	0.047
8:39	0.045
8:40	0.046
8:41	0.053
8:42	0.045
8:43	0.045
8:44	0.045
8:45	0.046
8:46	0.046
8:47	0.048
8:48	0.046
8:49	0.045
8:50	0.045
8:51	0.046
8:52	0.047
8:53	0.047
8:54	0.046
8:55	0.048
8:56	0.046
8:57	0.044
8:58	0.044
8:59	0.043
9:00	0.043
9:01	0.043
9:02	0.045
9:03	0.049
9:04	0.046
9:05	0.045
9:06	0.044
9:07	0.044
9:08	0.044
9:09	0.044
9:10	0.047
9:11	0.046
9:12	0.049
9:13	0.051
9:14	0.046
9:15	0.046
9:16	0.046
9:17	0.045
9:18	0.044
9:19	0.045

9:20	0.046
9:21	0.048
9:22	0.047
9:23	0.045
9:24	0.046
9:25	0.046
9:26	0.047
9:27	0.048
9:28	0.047
9:29	0.046
9:30	0.044
9:31	0.042
9:32	0.043
9:33	0.044
9:34	0.043
9:35	0.043
9:36	0.042
9:37	0.045
9:38	0.046
9:39	0.043
9:40	0.042
9:41	0.042
9:42	0.044
9:43	0.046
9:44	0.043
9:45	0.041
9:46	0.041
9:47	0.039
9:48	0.04
9:49	0.046
9:50	0.042
9:51	0.04
9:52	0.04
9:53	0.041
9:54	0.042
9:55	0.043
9:56	0.042
9:57	0.042
9:58	0.044
9:59	0.044
10:00	0.042
10:01	0.039
10:02	0.042
10:03	0.041

10:04	0.041
10:05	0.041
10:06	0.041
10:07	0.04
10:08	0.041
10:09	0.041
10:10	0.041
10:11	0.042
10:12	0.042
10:13	0.045
10:14	0.044
10:15	0.043
10:16	0.041
10:17	0.04
10:18	0.039
10:19	0.04
10:20	0.038
10:21	0.039
10:22	0.039
10:23	0.037
10:24	0.04
10:25	0.041
10:26	0.038
10:27	0.037
10:28	0.035
10:29	0.036
10:30	0.037
10:31	0.038
10:32	0.039
10:33	0.037
10:34	0.038
10:35	0.039
10:36	0.036
10:37	0.039
10:38	0.039
10:39	0.037
10:40	0.037
10:41	0.036
10:42	0.036
10:43	0.037
10:44	0.037
10:45	0.033
10:46	0.032
10:47	0.031

10:48	0.032
10:49	0.034
10:50	0.038
10:51	0.032
10:52	0.028
10:53	0.03
10:54	0.029
10:55	0.028
10:56	0.026
10:57	0.026
10:58	0.027
10:59	0.029
11:00	0.028
11:01	0.026
11:02	0.024
11:03	0.025
11:04	0.024
11:05	0.024
11:06	0.052
11:07	0.052
11:08	0.03
11:09	0.022
11:10	0.021
11:11	0.022
11:12	0.022
11:13	0.027
11:14	0.027
11:15	0.025
11:16	0.024
11:17	0.021
11:18	0.021
11:19	0.019
11:20	0.018
11:21	0.018
11:22	0.026
11:23	0.022
11:24	0.022
11:25	0.02
11:26	0.021
11:27	0.02
11:28	0.023
11:29	0.02
11:30	0.019
11:31	0.022

11:32	0.018
11:33	0.016
11:34	0.017
11:35	0.02
11:36	0.018
11:37	0.028
11:38	0.019
11:39	0.017
11:40	0.022
11:41	0.018
11:42	0.016
11:43	0.017
11:44	0.018
11:45	0.018
11:46	0.017
11:47	0.016
11:48	0.017
11:49	0.017
11:50	0.018
11:51	0.017
11:52	0.017
11:53	0.016
11:54	0.022
11:55	0.016
11:56	0.018
11:57	0.016
11:58	0.016
11:59	0.018
12:00	0.016
12:01	0.015
12:02	0.014
12:03	0.015
12:04	0.02
12:05	0.015
12:06	0.015
12:07	0.015
12:08	0.014
12:09	0.013
12:10	0.014
12:11	0.014
12:12	0.015
12:13	0.014
12:14	0.014
12:15	0.013

12:16	0.015
12:17	0.015
12:18	0.013
12:19	0.012
12:20	0.013
12:21	0.012
12:22	0.012
12:23	0.012
12:24	0.012
12:25	0.013
12:26	0.013
12:27	0.012
12:28	0.014
12:29	0.014
12:30	0.015
12:31	0.016
12:32	0.015
12:33	0.016
12:34	0.013
12:35	0.014
12:36	0.013
12:37	0.014
12:38	0.014
12:39	0.014
12:40	0.014
12:41	0.013
12:42	0.015
12:43	0.013
12:44	0.016
12:45	0.014
12:46	0.014
12:47	0.014
12:48	0.013
12:49	0.014
12:50	0.013
12:51	0.014
12:52	0.016
12:53	0.013
12:54	0.014
12:55	0.015
12:56	0.014
12:57	0.015
12:58	0.018
12:59	0.013

13:00	0.012
13:01	0.013
13:02	0.017
13:03	0.012
13:04	0.011
13:05	0.012
13:06	0.012
13:07	0.01
13:08	0.014
13:09	0.013
13:10	0.012
13:11	0.009
13:12	0.012
13:13	0.01
13:14	0.008
13:15	0.008
13:16	0.008
13:17	0.009
13:18	0.009
13:19	0.011
13:20	0.014
13:21	0.012
13:22	0.011
13:23	0.01
13:24	0.013
13:25	0.011
13:26	0.01
13:27	0.009
13:28	0.01
13:29	0.009
13:30	0.009
13:31	0.009
13:32	0.009
13:33	0.01
13:34	0.008
13:35	0.01
13:36	0.014
13:37	0.01
13:38	0.011
13:39	0.011
13:40	0.011
13:41	0.012
13:42	0.01
13:43	0.011

13:44	0.01
13:45	0.01
13:46	0.011
13:47	0.011
13:48	0.01
13:49	0.01
13:50	0.009
13:51	0.01
13:52	0.009
13:53	0.01
13:54	0.011
13:55	0.011
13:56	0.011
13:57	0.011
13:58	0.013
13:59	0.011
14:00	0.01
14:01	0.011
14:02	0.011
14:03	0.01
14:04	0.013
14:05	0.011
14:06	0.009
14:07	0.01
14:08	0.012
14:09	0.013
14:10	0.013
14:11	0.012
14:12	0.017
14:13	0.012
14:14	0.011
14:15	0.01
14:16	0.01
14:17	0.01
14:18	0.012
14:19	0.012
14:20	0.012
14:21	0.01
14:22	0.01
14:23	0.01
14:24	0.012
14:25	0.011
14:26	0.013
14:27	0.012

14:28	0.012
14:29	0.012
14:30	0.013
14:31	0.012
14:32	0.012
14:33	0.012
14:34	0.012
14:35	0.012
14:36	0.012
14:37	0.012
14:38	0.012
14:39	0.012
14:40	0.011
14:41	0.009
14:42	0.009
14:43	0.01
14:44	0.009
14:45	0.009
14:46	0.01
14:47	0.011
14:48	0.012
14:49	0.011
14:50	0.012
14:51	0.012
14:52	0.011
14:53	0.012
14:54	0.014
14:55	0.013
14:56	0.013
14:57	0.015
14:58	0.015
14:59	0.014
15:00	0.013
15:01	0.014
15:02	0.016
15:03	0.014
15:04	0.013
15:05	0.011
15:06	0.012
15:07	0.012
15:08	0.013
15:09	0.013
15:10	0.014
15:11	0.014

15:12	0.016
15:13	0.015
15:14	0.016
15:15	0.017
15:16	0.019
15:17	0.019
15:18	0.019
15:19	0.018
15:20	0.015
15:21	0.018
15:22	0.019
15:23	0.016
15:24	0.015
15:25	0.014
15:26	0.015
15:27	0.017
15:28	0.016
15:29	0.013
15:30	0.014
15:31	0.014
15:32	0.014
15:33	0.014
15:34	0.013
15:35	0.013
15:36	0.013
15:37	0.012
15:38	0.013
15:39	0.013
15:40	0.013
15:41	0.013
15:42	0.013
15:43	0.014
15:44	0.012
15:45	0.013
15:46	0.012
15:47	0.014
15:48	0.015
15:49	0.015
15:50	0.014
15:51	0.014
15:52	0.013
15:53	0.013
15:54	0.015
15:55	0.016

15:56	0.016
15:57	0.015
15:58	0.015
15:59	0.016
16:00	0.015
16:01	0.013
16:02	0.013
16:03	0.014
16:04	0.014
16:05	0.015
16:06	0.013
16:07	0.014
16:08	0.014
16:09	0.016
16:10	0.014
16:11	0.015
16:12	0.017
16:13	0.018
16:14	0.017
16:15	0.018
16:16	0.019
16:17	0.017
16:18	0.018
16:19	0.018
16:20	0.02
16:21	0.02
16:22	0.02
16:23	0.02
16:24	0.019
16:25	0.02
16:26	0.02
16:27	0.021
16:28	0.019
16:29	0.02
16:30	0.019
16:31	0.017
16:32	0.016
16:33	0.014
16:34	0.014
16:35	0.014
16:36	0.014
16:37	0.012
16:38	0.012
16:39	0.011

16:40	0.012
16:41	0.012
16:42	0.012
16:43	0.012
16:44	0.012
16:45	0.011
16:46	0.011
16:47	0.012
16:48	0.014
16:49	0.013
16:50	0.013
16:51	0.012
16:52	0.014
16:53	0.013
16:54	0.01
16:55	0.014
16:56	0.011
16:57	0.011
16:58	0.01
16:59	0.01
17:00	0.009
17:01	0.009
17:02	0.01
17:03	0.008
17:04	0.011
17:05	0.017
17:06	0.008
17:07	0.008
17:08	0.008
17:09	0.01
17:10	0.01
17:11	0.01
17:12	0.007
17:13	0.008
17:14	0.006
17:15	0.006
17:16	0.006
17:17	0.006
17:18	0.005
17:19	0.006
17:20	0.005
17:21	0.006
17:22	0.005
17:23	0.005

17:24	0.005
17:25	0.002
17:26	0.005
17:27	0.005
17:28	0.005
17:29	0.005
17:30	0.005
17:31	0.005
17:32	0.005
17:33	0.005
17:34	0.006
17:35	0.007
17:36	0.006
17:37	0.008
17:38	0.008
17:39	0.008
17:40	0.008
17:41	0.006
17:42	0.006
17:43	0.006
17:44	0.006
17:45	0.006
17:46	0.006
17:47	0.006
17:48	0.006
17:49	0.006
17:50	0.006
17:51	0.006
17:52	0.006
17:53	0.005
17:54	0.003
17:55	0.009
17:56	0.009
17:57	0.008
17:58	0.007
17:59	0.007
18:00	0.007
18:01	0.007
18:02	0.007
18:03	0.006
18:04	0.006
18:05	0.006
18:06	0.006
18:07	0.006

18:08	0.006
18:09	0.008
18:10	0.008
18:11	0.008
18:12	0.008
18:13	0.008
18:14	0.005
18:15	0.005
18:16	0.005
18:17	0.005
18:18	0.005
18:19	0.005
18:20	0.005
18:21	0.005
18:22	0.005
18:23	0.006
18:24	0.005
18:25	0.005
18:26	0.006
18:27	0.006
18:28	0.006
18:29	0.006
18:30	0.006
18:31	0.006
18:32	0.006
18:33	0.006
18:34	0.006
18:35	0.008
18:36	0.007
18:37	0.007
18:38	0.005
18:39	0.004
18:40	0.006
18:41	0.005
18:42	0.005
18:43	0.005
18:44	0.005
18:45	0.005
18:46	0.005
18:47	0.005
18:48	0.005
18:49	0.005
18:50	0.005
18:51	0.005

18:52	0.005
18:53	0.005
18:54	0.005
18:55	0.005
18:56	0.004
18:57	0.004
18:58	0.004
18:59	0.004
19:00	0.004
19:01	0.004
19:02	0.004
19:03	0.004
19:04	0.004
19:05	0.004
19:06	0.004
19:07	0.004
19:08	0.004
19:09	0.006
19:10	0.006
19:11	0.003
19:12	0.002
19:13	0.006

Device Serial No	Log Time	Log Type	Sensor 1 Type	Sensor 1 Serial Number	Sensor 1 Status	Sensor 1 Gas Reading
592-600871	5/13/2024 6:39	CONFIG	PID	SC23030408A8		
592-600871	5/13/2024 6:40	Readings	PID	SC23030408A8	Normal	0
592-600871	5/13/2024 6:41	Readings	PID	SC23030408A8	Normal	0
592-600871	5/13/2024 6:42	Readings	PID	SC23030408A8	Normal	0
592-600871	5/13/2024 6:43	Readings	PID	SC23030408A8	Normal	0
592-600871	5/13/2024 6:44	Readings	PID	SC23030408A8	Normal	0
592-600871	5/13/2024 6:45	Readings	PID	SC23030408A8	Normal	0
592-600871	5/13/2024 6:46	Readings	PID	SC23030408A8	Normal	0
592-600871	5/13/2024 6:47	Readings	PID	SC23030408A8	Normal	0
592-600871	5/13/2024 6:48	Readings	PID	SC23030408A8	Normal	0
592-600871	5/13/2024 6:49	Readings	PID	SC23030408A8	Normal	0
592-600871	5/13/2024 6:50	Readings	PID	SC23030408A8	Normal	0
592-600871	5/13/2024 6:51	Readings	PID	SC23030408A8	Normal	0
592-600871	5/13/2024 6:52	Readings	PID	SC23030408A8	Normal	0
592-600871	5/13/2024 6:53	Readings	PID	SC23030408A8	Normal	0
592-600871	5/13/2024 6:54	Readings	PID	SC23030408A8	Normal	0
592-600871	5/13/2024 6:55	Readings	PID	SC23030408A8	Normal	0
592-600871	5/13/2024 6:56	Readings	PID	SC23030408A8	Normal	0
592-600871	5/13/2024 6:57	Readings	PID	SC23030408A8	Normal	0
592-600871	5/13/2024 6:58	Readings	PID	SC23030408A8	Normal	0
592-600871	5/13/2024 6:59	Readings	PID	SC23030408A8	Normal	0
592-600871	5/13/2024 7:00	Readings	PID	SC23030408A8	Normal	0
592-600871	5/13/2024 7:01	Readings	PID	SC23030408A8	Normal	0
592-600871	5/13/2024 7:02	Readings	PID	SC23030408A8	Normal	0
592-600871	5/13/2024 7:03	Readings	PID	SC23030408A8	Normal	0
592-600871	5/13/2024 7:04	Readings	PID	SC23030408A8	Normal	0
592-600871	5/13/2024 7:05	Readings	PID	SC23030408A8	Normal	0
592-600871	5/13/2024 7:06	Readings	PID	SC23030408A8	Normal	0
592-600871	5/13/2024 7:07	Readings	PID	SC23030408A8	Normal	0
592-600871	5/13/2024 7:08	Readings	PID	SC23030408A8	Normal	0
592-600871	5/13/2024 7:09	Readings	PID	SC23030408A8	Normal	0
592-600871	5/13/2024 7:10	Readings	PID	SC23030408A8	Normal	0

592-600871	5/13/2024 8:17 Readings	PID	SC23030408A8	Normal	0
592-600871	5/13/2024 8:18 Readings	PID	SC23030408A8	Normal	0
592-600871	5/13/2024 8:19 Readings	PID	SC23030408A8	Normal	0
592-600871	5/13/2024 8:20 Readings	PID	SC23030408A8	Normal	0
592-600871	5/13/2024 8:21 Readings	PID	SC23030408A8	Normal	0
592-600871	5/13/2024 8:22 Readings	PID	SC23030408A8	Normal	0
592-600871	5/13/2024 8:23 Readings	PID	SC23030408A8	Normal	0
592-600871	5/13/2024 8:24 Readings	PID	SC23030408A8	Normal	0
592-600871	5/13/2024 8:25 Readings	PID	SC23030408A8	Normal	0
592-600871	5/13/2024 8:26 Readings	PID	SC23030408A8	Normal	0
592-600871	5/13/2024 8:27 Readings	PID	SC23030408A8	Normal	0
592-600871	5/13/2024 8:28 Readings	PID	SC23030408A8	Normal	0
592-600871	5/13/2024 8:29 Readings	PID	SC23030408A8	Normal	0
592-600871	5/13/2024 8:30 Readings	PID	SC23030408A8	Normal	0
592-600871	5/13/2024 8:31 Readings	PID	SC23030408A8	Normal	0
592-600871	5/13/2024 8:32 Readings	PID	SC23030408A8	Normal	0
592-600871	5/13/2024 8:33 Readings	PID	SC23030408A8	Normal	0
592-600871	5/13/2024 8:34 Readings	PID	SC23030408A8	Normal	0
592-600871	5/13/2024 8:35 Readings	PID	SC23030408A8	Normal	0
592-600871	5/13/2024 8:36 Readings	PID	SC23030408A8	Normal	0
592-600871	5/13/2024 8:37 Readings	PID	SC23030408A8	Normal	0
592-600871	5/13/2024 8:38 Readings	PID	SC23030408A8	Normal	0
592-600871	5/13/2024 8:39 Readings	PID	SC23030408A8	Normal	0
592-600871	5/13/2024 8:40 Readings	PID	SC23030408A8	Normal	0
592-600871	5/13/2024 8:41 Readings	PID	SC23030408A8	Normal	0
592-600871	5/13/2024 8:42 Readings	PID	SC23030408A8	Normal	0
592-600871	5/13/2024 8:43 Readings	PID	SC23030408A8	Normal	0.1
592-600871	5/13/2024 8:44 Readings	PID	SC23030408A8	Normal	0
592-600871	5/13/2024 8:45 Readings	PID	SC23030408A8	Normal	0
592-600871	5/13/2024 8:46 Readings	PID	SC23030408A8	Normal	0
592-600871	5/13/2024 8:47 Readings	PID	SC23030408A8	Normal	0
592-600871	5/13/2024 8:48 Readings	PID	SC23030408A8	Normal	0
592-600871	5/13/2024 8:49 Readings	PID	SC23030408A8	Normal	0.1

592-600871	5/13/2024 11:02	Readings	PID	SC23030408A8	Normal	0
592-600871	5/13/2024 11:03	Readings	PID	SC23030408A8	Normal	0
592-600871	5/13/2024 11:04	Readings	PID	SC23030408A8	Normal	0
592-600871	5/13/2024 11:05	Readings	PID	SC23030408A8	Normal	0.6
592-600871	5/13/2024 11:06	Readings	PID	SC23030408A8	Normal	0.1
592-600871	5/13/2024 11:07	Readings	PID	SC23030408A8	Normal	0
592-600871	5/13/2024 11:08	Readings	PID	SC23030408A8	Normal	0
592-600871	5/13/2024 11:09	Readings	PID	SC23030408A8	Normal	0
592-600871	5/13/2024 11:10	Readings	PID	SC23030408A8	Normal	0
592-600871	5/13/2024 11:11	Readings	PID	SC23030408A8	Normal	0
592-600871	5/13/2024 11:12	Readings	PID	SC23030408A8	Normal	0
592-600871	5/13/2024 11:13	Readings	PID	SC23030408A8	Normal	0
592-600871	5/13/2024 11:14	Readings	PID	SC23030408A8	Normal	0
592-600871	5/13/2024 11:15	Readings	PID	SC23030408A8	Normal	0
592-600871	5/13/2024 11:16	Readings	PID	SC23030408A8	Normal	0.1
592-600871	5/13/2024 11:17	Readings	PID	SC23030408A8	Normal	0.1
592-600871	5/13/2024 11:18	Readings	PID	SC23030408A8	Normal	0
592-600871	5/13/2024 11:19	Readings	PID	SC23030408A8	Normal	0
592-600871	5/13/2024 11:20	Readings	PID	SC23030408A8	Normal	0
592-600871	5/13/2024 11:21	Readings	PID	SC23030408A8	Normal	0
592-600871	5/13/2024 11:22	Readings	PID	SC23030408A8	Normal	0
592-600871	5/13/2024 11:23	Readings	PID	SC23030408A8	Normal	0
592-600871	5/13/2024 11:24	Readings	PID	SC23030408A8	Normal	0
592-600871	5/13/2024 11:25	Readings	PID	SC23030408A8	Normal	0
592-600871	5/13/2024 11:26	Readings	PID	SC23030408A8	Normal	0
592-600871	5/13/2024 11:27	Readings	PID	SC23030408A8	Normal	0
592-600871	5/13/2024 11:28	Readings	PID	SC23030408A8	Normal	0
592-600871	5/13/2024 11:29	Readings	PID	SC23030408A8	Normal	0
592-600871	5/13/2024 11:30	Readings	PID	SC23030408A8	Normal	0
592-600871	5/13/2024 11:31	Readings	PID	SC23030408A8	Normal	0
592-600871	5/13/2024 11:32	Readings	PID	SC23030408A8	Normal	0
592-600871	5/13/2024 11:33	Readings	PID	SC23030408A8	Normal	0
592-600871	5/13/2024 11:34	Readings	PID	SC23030408A8	Normal	0

592-600871	5/13/2024 19:17 Readings	PID	SC23030408A8	Normal	0
592-600871	5/13/2024 19:18 Readings	PID	SC23030408A8	Normal	0
592-600871	5/13/2024 19:19 Readings	PID	SC23030408A8	Normal	0
592-600871	5/13/2024 19:20 Readings	PID	SC23030408A8	Normal	0
592-600871	5/13/2024 19:21 Readings	PID	SC23030408A8	Normal	0
592-600871	5/13/2024 19:22 Readings	PID	SC23030408A8	Normal	0