



DAILY STATUS REPORT

Prepared By:

Ryan Just

WEATHER	Snow	Rain	X	Overcast	X	Partly Cloudy	Bright Sun	Wind
TEMP.	< 32	32-50		50-70	X	70-85	>85	SSE – 4 MPH

IEC Project No:	13928	NYSDEC BCP Site No:	C224367	Date: 05/14/24
Project:	251 Douglass Street, Brooklyn, NY			

<p>Consultant: Impact Environmental Engineering and Geology, PLLC (IEEG)</p> <p>Time On: 06:45 Time Out: 20:25</p>	<p>Personnel On Site: IEEG (Environmental) – Ryan Just Broadway Construction Group - Tom Caporale Cascade WSP - Charlie Lambert</p> <p>Equipment On Site: Minirae 3000 PID, DustTrak II</p>
---	---

Scope of Work: ISS column installation.

Site Activities:

- Deploy three (3) CAMPs at the Start of the work day;
- Cascade completed repairs on the kelly bar and auger;
- A total of eight (8) loads of swell material was transported offsite for disposal to the Conestoga facility; and,
 - Cascade drilled **Column 597**, column spec below:
 - The column was 8’ diameter and drilled 51’ deep from Site grade;
 - The column consisted of a total of 23 batches;
 - Cascade drilled **Column 562**, column spec below:
 - The column was 8’ diameter and planned to be drilled 36’ deep from Site grade;
 - Downstroke 1 and Upstroke 1 were both completed, however drilling was paused after Upstroke 1;
 - The column was not completed due to a batch plant issue causing grout to not flow beginning at approximately 19:20;
 - The column is planned to be completed tomorrow 05/15/2024 after the issue is resolved;

Community Air Monitoring Program (CAMP) - CAMP action level for dust (0.1 mg/m³) and VOCs (5 ppm)

- PID remained at nominal levels throughout the day
- No sustained dust exceedances were observed over a 1-min period during monitoring;
- Startup Upwind Conditions – PID = 0.0 ppm, Dust = 0.01 mg/m³ @ 06:52
- High Conditions (Upwind) – PID = 0.0 ppm, Dust = 0.039 mg/m³ @ 09:43
- High Conditions (Downwind 1) – PID = 3.4 ppm @ 17:54, Dust = 0.163 mg/m³ @ 19:28
- High Conditions (Downwind 2) – PID = 0.7 ppm @ 19:40, Dust = 0.040 mg/m³ @ 19:21

Notable Site Conditions:

- Column 562 was not completed today and will be completed tomorrow (5/15).

Planned for the Next Day/Week:

- Continuation of installing ISS columns.
- Resolving batch plant issue.



PHOTO LOG

251 DOUGLASS STREET, BROOKLYN, NY



Photo 1-

Representative photo of truck cover strapped down prior to leaving the site with material for Conestoga.



Photo 2-

Representative photo of Cascade attempting to troubleshoot flow issue.



Photo 3-
Representative
photo of kelly bar
repairs.



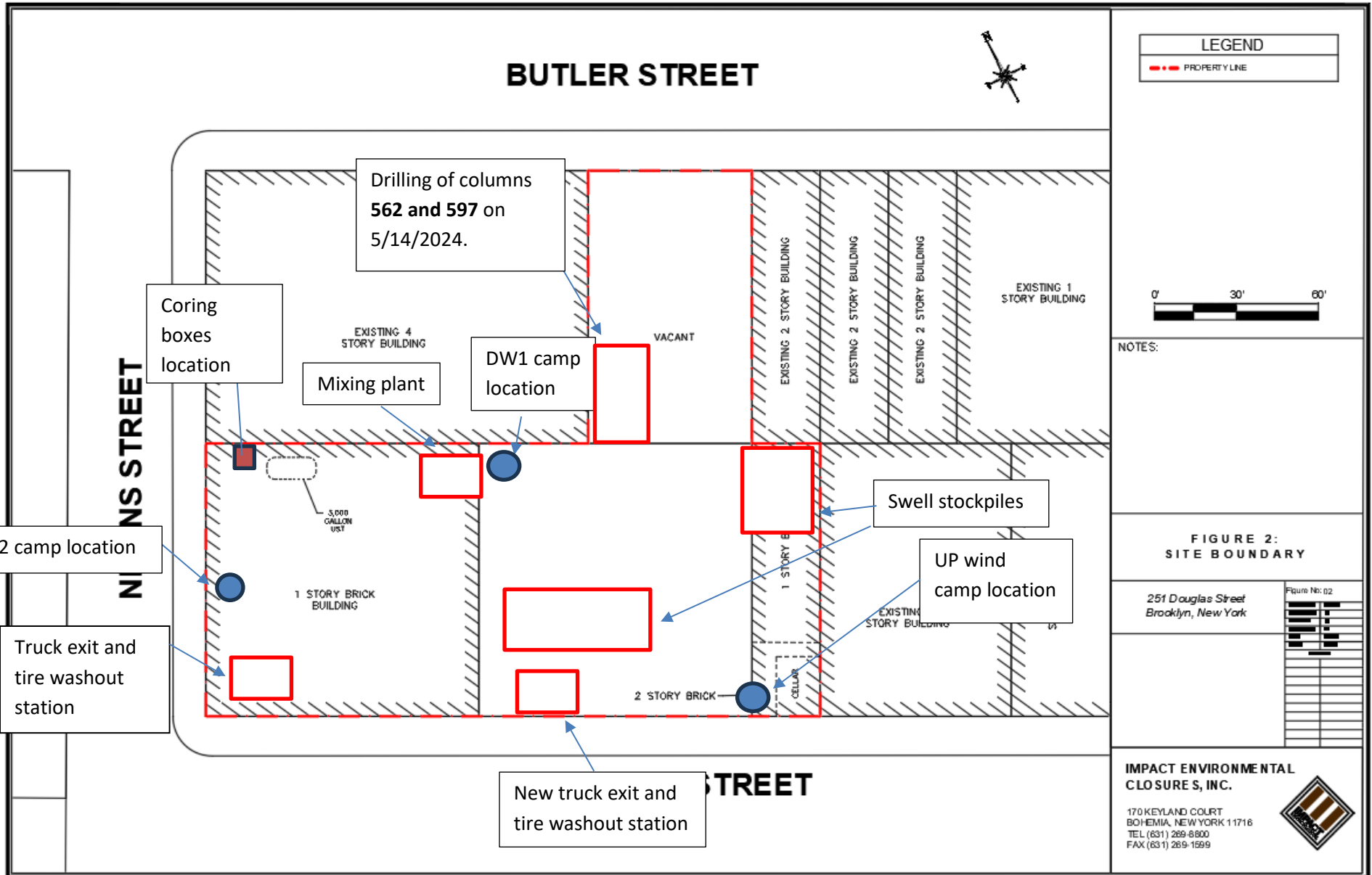
Photo 4-
Representative
photo of swell
material load
out.



SITE PLANS

251 DOUGLASS STREET, BROOKLYN, NY







BUTLER STREET

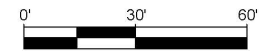
Legend Extension

- : ISS column installed to terminal depth
- : ISS column unable to be installed to terminal depth
- : Wet mix sample collected from ISS column
- : ISS pilot test column
- : ISS column installed to 51' below site grade
- ▲ : Coring location

LEGEND

- PROPERTY LINE
- 1500 SFT GRID
- EIGHT FOOT DIA. HYDRAULIC COLUMN (TYP.)
- EIGHT FOOT DIA. INNER COLUMN (TYP.)
- SIX FOOT DIA. COLUMN (TYP.)

PROJECT

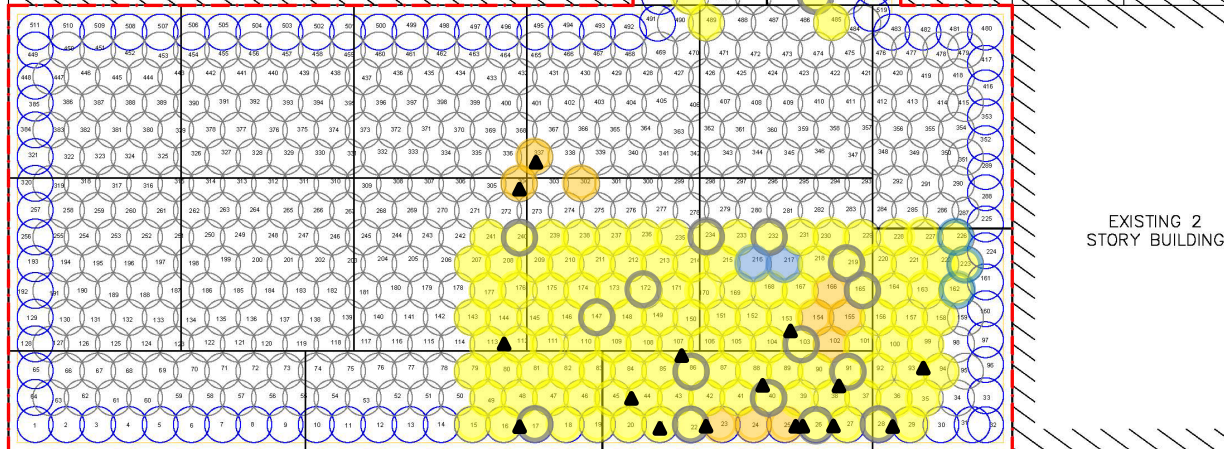


NOTES:

- THE BASE MAP WAS DRAWN FROM A PLAN ENTITLED, ALTA/NSPS LAND TITLE SURVEY, PREPARED BY PERFECT POINT LAND SURVEYING OF BROOKLYN, NY AND WAS RECEIVED ELECTRONICALLY ON APRIL 2023 WITH AN ORIGINAL SCALE: 1" = 20'.

Drilling of columns
597 on 5/14/2024.

NEVINS STREET



QA/QC CORE GRID PLAN

251 Douglass Street
Brooklyn, New York

Figure No: 04

PROJECT NO.	1908-01
DESIGNED BY	JR
DRAWN BY	JR
CHECKED BY	JR/MS
DATE	02/07/23
SCALE	1" = 20'
REVISIONS	

IMPACT ENVIRONMENTAL

170 KEYLAND COURT
BOHEMIA, NEW YORK 11716
TEL (631) 269-8800
FAX (631) 269-1599



SCM Report

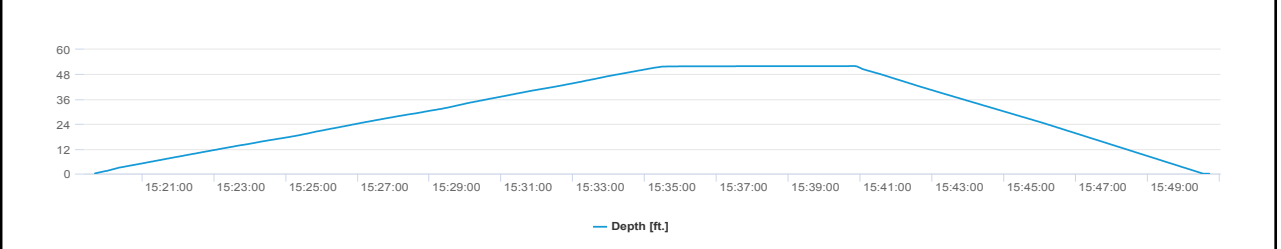
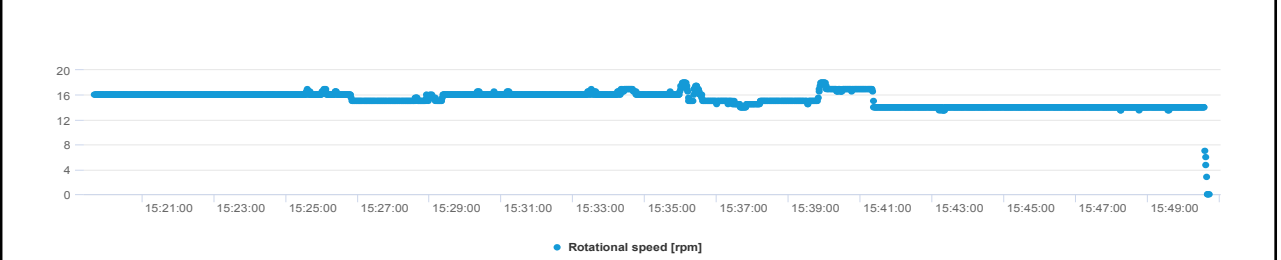
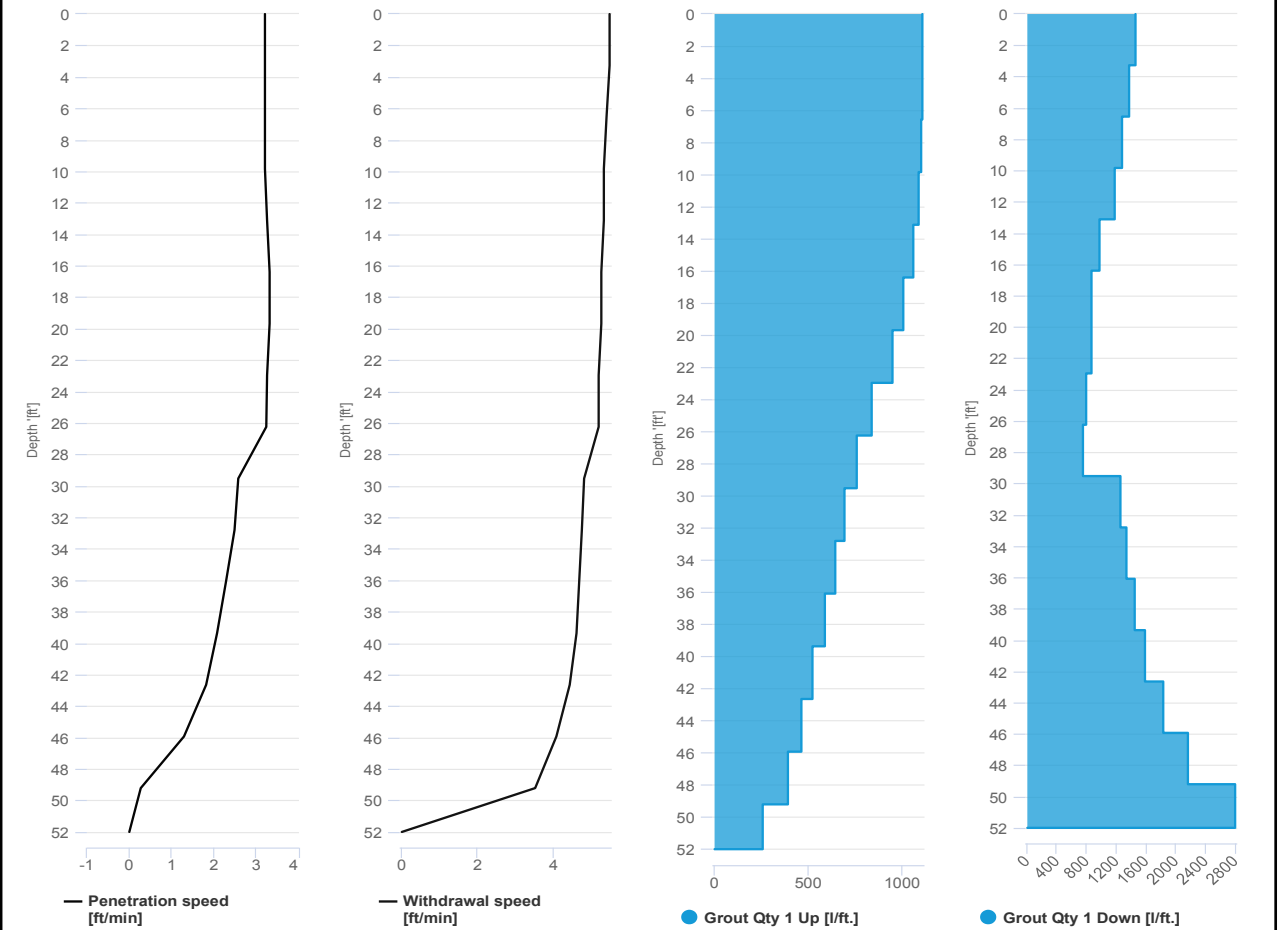


Project name: Douglass Street BCG ISS Element name: 597b
 Project number

Start date: 05/14/2024

Drilling rig: BG36H_5717

Details		Start time: 03:19 PM	
Max. depth: 52 ft.		End Date: 05/14/2024	
Volume/m 1: 19.77 ft³		End time: 03:50 PM	
		Production duration: 00:31:03	
		Final depth time: 03:40 PM	
		Total suspension quantity: 311.546 ft³	



SCM Report

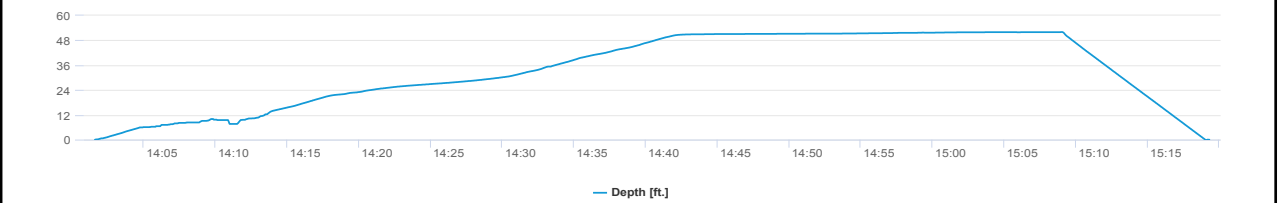
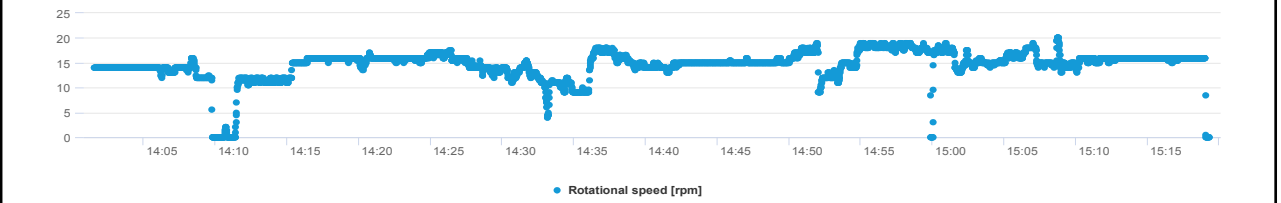
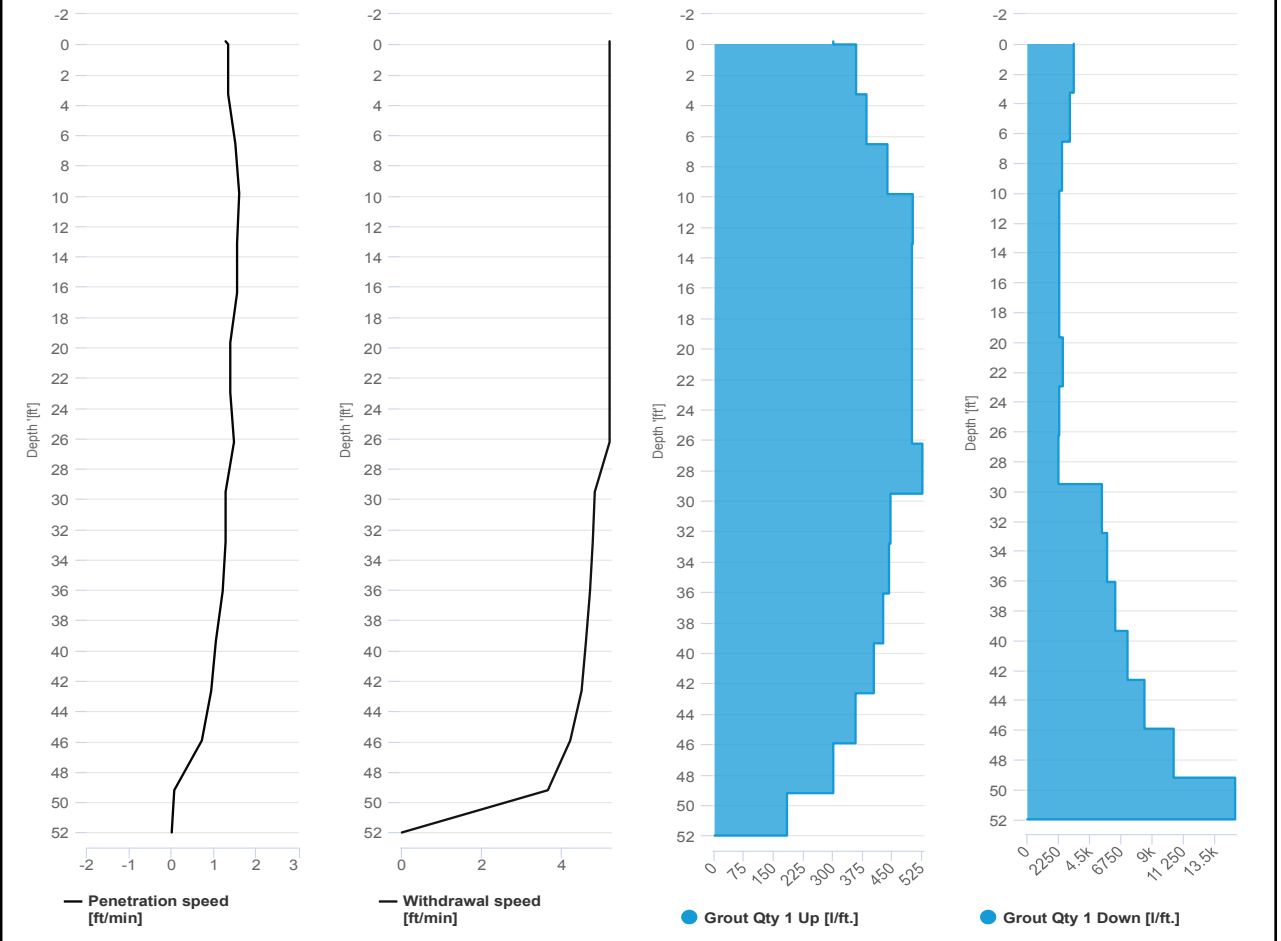


Project name: Douglass Street BCG ISS Element name: c597a
 Project number

Start date: 05/14/2024

Drilling rig: BG36H_5717

Details		Start time: 02:01 AM	
Max. depth: 52 ft.		End Date: 05/14/2024	
Volume/m 1: 42.37 ft³		End time: 03:19 AM	
		Production duration: 01:17:44	
		Final depth time: 03:09 AM	
		Total suspension quantity: 671.509 ft³	





IMPACT ENVIRONMENTAL

170 Keyland Court | Bohemia | NY | 11716 | 631.269.8800

welcome to solid ground...

www.impactenvironmental.com

UPWIND CAMP READINGS

251 DOUGLASS STREET, BROOKLYN, NY

Instrument Name	DustTrak DRX
Model Number	8533
Serial Number	8533181207
Firmware Version	3.1
Calibration Date	6/1/2023
Test Name	MANUAL_009
Test Start Time	6:51:13 AM
Test Start Date	5/14/2024
Test Length [D:H:M]	0:12:59
Test Interval [M:S]	1:00
PM1 Average [mg/m3]	0.007
PM1 Minimum [mg/m3]	0.001
PM1 Maximum [mg/m3]	0.039
PM1 TWA [mg/m3]	0.006
Photometric User Cal	1
Size Correction User Cal	1
Flow User Cal	0
Errors	
Number of Samples	779

Elapsed Time [s]	PM1 [mg/m3]	Alarms	Errors
6:52	0.01		
6:53	0.003		
6:54	0.002		
6:55	0.002		
6:56	0.003		
6:57	0.003		
6:58	0.004		
6:59	0.005		
7:00	0.005		
7:01	0.003		
7:02	0.002		
7:03	0.003		
7:04	0.005		
7:05	0.005		
7:06	0.004		
7:07	0.005		
7:08	0.003		
7:09	0.003		
7:10	0.003		
7:11	0.003		
7:12	0.003		
7:13	0.003		
7:14	0.004		

7:15	0.003
7:16	0.002
7:17	0.002
7:18	0.002
7:19	0.001
7:20	0.002
7:21	0.002
7:22	0.002
7:23	0.002
7:24	0.002
7:25	0.003
7:26	0.002
7:27	0.001
7:28	0.001
7:29	0.002
7:30	0.002
7:31	0.002
7:32	0.002
7:33	0.002
7:34	0.002
7:35	0.002
7:36	0.002
7:37	0.004
7:38	0.002
7:39	0.002
7:40	0.002
7:41	0.002
7:42	0.002
7:43	0.001
7:44	0.002
7:45	0.002
7:46	0.003
7:47	0.003
7:48	0.003
7:49	0.003
7:50	0.003
7:51	0.003
7:52	0.002
7:53	0.002
7:54	0.002
7:55	0.003
7:56	0.004
7:57	0.003
7:58	0.003

7:59	0.003
8:00	0.004
8:01	0.003
8:02	0.003
8:03	0.003
8:04	0.002
8:05	0.002
8:06	0.003
8:07	0.004
8:08	0.004
8:09	0.003
8:10	0.003
8:11	0.003
8:12	0.004
8:13	0.003
8:14	0.002
8:15	0.003
8:16	0.004
8:17	0.004
8:18	0.005
8:19	0.003
8:20	0.003
8:21	0.002
8:22	0.002
8:23	0.002
8:24	0.002
8:25	0.002
8:26	0.002
8:27	0.003
8:28	0.003
8:29	0.003
8:30	0.003
8:31	0.004
8:32	0.005
8:33	0.005
8:34	0.006
8:35	0.003
8:36	0.006
8:37	0.006
8:38	0.003
8:39	0.007
8:40	0.004
8:41	0.003
8:42	0.003

8:43	0.006
8:44	0.004
8:45	0.004
8:46	0.004
8:47	0.006
8:48	0.004
8:49	0.004
8:50	0.003
8:51	0.003
8:52	0.004
8:53	0.006
8:54	0.004
8:55	0.004
8:56	0.005
8:57	0.009
8:58	0.004
8:59	0.006
9:00	0.006
9:01	0.004
9:02	0.004
9:03	0.004
9:04	0.004
9:05	0.003
9:06	0.003
9:07	0.003
9:08	0.004
9:09	0.004
9:10	0.004
9:11	0.004
9:12	0.004
9:13	0.006
9:14	0.006
9:15	0.006
9:16	0.006
9:17	0.007
9:18	0.006
9:19	0.006
9:20	0.005
9:21	0.004
9:22	0.005
9:23	0.005
9:24	0.005
9:25	0.004
9:26	0.004

9:27	0.004
9:28	0.005
9:29	0.009
9:30	0.006
9:31	0.006
9:32	0.005
9:33	0.005
9:34	0.005
9:35	0.008
9:36	0.006
9:37	0.009
9:38	0.007
9:39	0.006
9:40	0.005
9:41	0.006
9:42	0.02
9:43	0.039
9:44	0.019
9:45	0.011
9:46	0.008
9:47	0.015
9:48	0.006
9:49	0.006
9:50	0.005
9:51	0.005
9:52	0.006
9:53	0.006
9:54	0.006
9:55	0.005
9:56	0.006
9:57	0.006
9:58	0.012
9:59	0.007
10:00	0.006
10:01	0.005
10:02	0.005
10:03	0.019
10:04	0.01
10:05	0.006
10:06	0.006
10:07	0.007
10:08	0.007
10:09	0.009
10:10	0.008

10:11	0.006
10:12	0.006
10:13	0.006
10:14	0.007
10:15	0.007
10:16	0.007
10:17	0.012
10:18	0.009
10:19	0.007
10:20	0.007
10:21	0.008
10:22	0.007
10:23	0.006
10:24	0.006
10:25	0.007
10:26	0.007
10:27	0.008
10:28	0.007
10:29	0.007
10:30	0.008
10:31	0.009
10:32	0.007
10:33	0.011
10:34	0.007
10:35	0.008
10:36	0.007
10:37	0.007
10:38	0.007
10:39	0.007
10:40	0.008
10:41	0.007
10:42	0.007
10:43	0.007
10:44	0.008
10:45	0.008
10:46	0.007
10:47	0.008
10:48	0.008
10:49	0.008
10:50	0.009
10:51	0.014
10:52	0.009
10:53	0.008
10:54	0.008

10:55	0.007
10:56	0.031
10:57	0.017
10:58	0.009
10:59	0.008
11:00	0.022
11:01	0.008
11:02	0.009
11:03	0.009
11:04	0.008
11:05	0.007
11:06	0.007
11:07	0.007
11:08	0.008
11:09	0.008
11:10	0.009
11:11	0.007
11:12	0.006
11:13	0.008
11:14	0.007
11:15	0.007
11:16	0.008
11:17	0.007
11:18	0.008
11:19	0.007
11:20	0.007
11:21	0.007
11:22	0.007
11:23	0.008
11:24	0.007
11:25	0.008
11:26	0.008
11:27	0.009
11:28	0.007
11:29	0.007
11:30	0.007
11:31	0.008
11:32	0.009
11:33	0.01
11:34	0.008
11:35	0.007
11:36	0.007
11:37	0.008
11:38	0.007

11:39	0.007
11:40	0.007
11:41	0.007
11:42	0.009
11:43	0.008
11:44	0.006
11:45	0.011
11:46	0.017
11:47	0.016
11:48	0.007
11:49	0.017
11:50	0.014
11:51	0.012
11:52	0.029
11:53	0.022
11:54	0.007
11:55	0.006
11:56	0.007
11:57	0.007
11:58	0.006
11:59	0.006
12:00	0.007
12:01	0.007
12:02	0.006
12:03	0.007
12:04	0.007
12:05	0.007
12:06	0.006
12:07	0.006
12:08	0.007
12:09	0.007
12:10	0.006
12:11	0.007
12:12	0.007
12:13	0.014
12:14	0.01
12:15	0.008
12:16	0.01
12:17	0.006
12:18	0.007
12:19	0.007
12:20	0.007
12:21	0.007
12:22	0.007

12:23	0.007
12:24	0.007
12:25	0.006
12:26	0.006
12:27	0.006
12:28	0.006
12:29	0.006
12:30	0.006
12:31	0.006
12:32	0.008
12:33	0.006
12:34	0.006
12:35	0.006
12:36	0.006
12:37	0.01
12:38	0.01
12:39	0.007
12:40	0.007
12:41	0.007
12:42	0.007
12:43	0.006
12:44	0.006
12:45	0.006
12:46	0.006
12:47	0.009
12:48	0.006
12:49	0.005
12:50	0.005
12:51	0.005
12:52	0.006
12:53	0.012
12:54	0.006
12:55	0.006
12:56	0.005
12:57	0.006
12:58	0.006
12:59	0.006
13:00	0.005
13:01	0.006
13:02	0.007
13:03	0.006
13:04	0.006
13:05	0.005
13:06	0.006

13:07	0.005
13:08	0.005
13:09	0.005
13:10	0.005
13:11	0.005
13:12	0.005
13:13	0.005
13:14	0.005
13:15	0.005
13:16	0.005
13:17	0.005
13:18	0.005
13:19	0.006
13:20	0.007
13:21	0.005
13:22	0.005
13:23	0.005
13:24	0.005
13:25	0.005
13:26	0.005
13:27	0.006
13:28	0.006
13:29	0.009
13:30	0.009
13:31	0.01
13:32	0.007
13:33	0.006
13:34	0.006
13:35	0.01
13:36	0.006
13:37	0.006
13:38	0.006
13:39	0.006
13:40	0.009
13:41	0.006
13:42	0.007
13:43	0.006
13:44	0.006
13:45	0.006
13:46	0.01
13:47	0.01
13:48	0.013
13:49	0.007
13:50	0.007

13:51	0.008
13:52	0.008
13:53	0.007
13:54	0.019
13:55	0.008
13:56	0.006
13:57	0.007
13:58	0.008
13:59	0.007
14:00	0.01
14:01	0.019
14:02	0.008
14:03	0.007
14:04	0.007
14:05	0.007
14:06	0.007
14:07	0.009
14:08	0.007
14:09	0.006
14:10	0.007
14:11	0.007
14:12	0.007
14:13	0.006
14:14	0.007
14:15	0.011
14:16	0.006
14:17	0.006
14:18	0.006
14:19	0.007
14:20	0.007
14:21	0.007
14:22	0.009
14:23	0.008
14:24	0.007
14:25	0.007
14:26	0.006
14:27	0.007
14:28	0.007
14:29	0.007
14:30	0.008
14:31	0.008
14:32	0.008
14:33	0.008
14:34	0.009

14:35	0.014
14:36	0.009
14:37	0.01
14:38	0.008
14:39	0.008
14:40	0.008
14:41	0.009
14:42	0.007
14:43	0.009
14:44	0.008
14:45	0.008
14:46	0.007
14:47	0.012
14:48	0.009
14:49	0.012
14:50	0.01
14:51	0.007
14:52	0.007
14:53	0.007
14:54	0.006
14:55	0.007
14:56	0.008
14:57	0.008
14:58	0.007
14:59	0.006
15:00	0.006
15:01	0.007
15:02	0.008
15:03	0.007
15:04	0.008
15:05	0.008
15:06	0.007
15:07	0.006
15:08	0.007
15:09	0.006
15:10	0.008
15:11	0.009
15:12	0.007
15:13	0.006
15:14	0.007
15:15	0.007
15:16	0.006
15:17	0.006
15:18	0.007

15:19	0.007
15:20	0.008
15:21	0.007
15:22	0.006
15:23	0.007
15:24	0.01
15:25	0.007
15:26	0.007
15:27	0.007
15:28	0.007
15:29	0.007
15:30	0.009
15:31	0.008
15:32	0.006
15:33	0.007
15:34	0.01
15:35	0.007
15:36	0.007
15:37	0.009
15:38	0.007
15:39	0.007
15:40	0.007
15:41	0.007
15:42	0.007
15:43	0.007
15:44	0.008
15:45	0.007
15:46	0.006
15:47	0.007
15:48	0.007
15:49	0.007
15:50	0.007
15:51	0.007
15:52	0.008
15:53	0.008
15:54	0.008
15:55	0.008
15:56	0.007
15:57	0.009
15:58	0.011
15:59	0.009
16:00	0.012
16:01	0.008
16:02	0.008

16:03	0.009
16:04	0.009
16:05	0.009
16:06	0.008
16:07	0.008
16:08	0.008
16:09	0.009
16:10	0.014
16:11	0.009
16:12	0.008
16:13	0.009
16:14	0.008
16:15	0.009
16:16	0.01
16:17	0.009
16:18	0.009
16:19	0.009
16:20	0.008
16:21	0.01
16:22	0.011
16:23	0.009
16:24	0.011
16:25	0.009
16:26	0.009
16:27	0.009
16:28	0.009
16:29	0.009
16:30	0.009
16:31	0.014
16:32	0.01
16:33	0.009
16:34	0.009
16:35	0.009
16:36	0.008
16:37	0.009
16:38	0.009
16:39	0.009
16:40	0.01
16:41	0.011
16:42	0.012
16:43	0.012
16:44	0.01
16:45	0.011
16:46	0.01

16:47	0.01
16:48	0.009
16:49	0.013
16:50	0.014
16:51	0.009
16:52	0.009
16:53	0.013
16:54	0.01
16:55	0.013
16:56	0.01
16:57	0.014
16:58	0.017
16:59	0.01
17:00	0.01
17:01	0.009
17:02	0.01
17:03	0.01
17:04	0.009
17:05	0.009
17:06	0.009
17:07	0.012
17:08	0.008
17:09	0.007
17:10	0.006
17:11	0.008
17:12	0.008
17:13	0.007
17:14	0.007
17:15	0.008
17:16	0.015
17:17	0.007
17:18	0.008
17:19	0.006
17:20	0.007
17:21	0.006
17:22	0.01
17:23	0.007
17:24	0.006
17:25	0.006
17:26	0.005
17:27	0.005
17:28	0.006
17:29	0.007
17:30	0.007

17:31	0.006
17:32	0.006
17:33	0.013
17:34	0.006
17:35	0.005
17:36	0.007
17:37	0.007
17:38	0.006
17:39	0.006
17:40	0.007
17:41	0.007
17:42	0.006
17:43	0.007
17:44	0.006
17:45	0.011
17:46	0.008
17:47	0.005
17:48	0.007
17:49	0.007
17:50	0.013
17:51	0.006
17:52	0.005
17:53	0.006
17:54	0.006
17:55	0.005
17:56	0.005
17:57	0.005
17:58	0.005
17:59	0.005
18:00	0.005
18:01	0.005
18:02	0.005
18:03	0.005
18:04	0.005
18:05	0.004
18:06	0.007
18:07	0.004
18:08	0.005
18:09	0.005
18:10	0.005
18:11	0.005
18:12	0.004
18:13	0.005
18:14	0.005

18:15	0.004
18:16	0.005
18:17	0.005
18:18	0.005
18:19	0.005
18:20	0.005
18:21	0.006
18:22	0.006
18:23	0.005
18:24	0.004
18:25	0.004
18:26	0.006
18:27	0.006
18:28	0.004
18:29	0.004
18:30	0.007
18:31	0.004
18:32	0.004
18:33	0.004
18:34	0.005
18:35	0.005
18:36	0.005
18:37	0.004
18:38	0.005
18:39	0.004
18:40	0.005
18:41	0.006
18:42	0.005
18:43	0.004
18:44	0.005
18:45	0.005
18:46	0.004
18:47	0.004
18:48	0.004
18:49	0.004
18:50	0.004
18:51	0.005
18:52	0.005
18:53	0.005
18:54	0.005
18:55	0.005
18:56	0.005
18:57	0.005
18:58	0.005

18:59	0.005
19:00	0.005
19:01	0.004
19:02	0.004
19:03	0.004
19:04	0.005
19:05	0.005
19:06	0.005
19:07	0.004
19:08	0.004
19:09	0.003
19:10	0.004
19:11	0.004
19:12	0.004
19:13	0.004
19:14	0.004
19:15	0.004
19:16	0.004
19:17	0.005
19:18	0.004
19:19	0.005
19:20	0.005
19:21	0.005
19:22	0.004
19:23	0.004
19:24	0.005
19:25	0.005
19:26	0.005
19:27	0.004
19:28	0.004
19:29	0.005
19:30	0.005
19:31	0.005
19:32	0.005
19:33	0.005
19:34	0.004
19:35	0.004
19:36	0.004
19:37	0.004
19:38	0.004
19:39	0.004
19:40	0.004
19:41	0.003
19:42	0.004

19:43	0.003
19:44	0.003
19:45	0.003
19:46	0.003
19:47	0.004
19:48	0.005
19:49	0.004
19:50	0.004

Device Serial No	Log Time	Log Type	Sensor 1 Type	Sensor 1 Serial Number	Sensor 1 Status	Sensor 1 Gas Reading
592-601274	5/14/2024 6:48	CONFIG	PID	SC23030921B3		
592-601274	5/14/2024 6:49	Readings	PID	SC23030921B3	Normal	0
592-601274	5/14/2024 6:50	Readings	PID	SC23030921B3	Normal	0
592-601274	5/14/2024 6:51	Readings	PID	SC23030921B3	Normal	0
592-601274	5/14/2024 6:52	Readings	PID	SC23030921B3	Normal	0
592-601274	5/14/2024 6:53	Readings	PID	SC23030921B3	Normal	0
592-601274	5/14/2024 6:54	Readings	PID	SC23030921B3	Normal	0
592-601274	5/14/2024 6:55	Readings	PID	SC23030921B3	Normal	0
592-601274	5/14/2024 6:56	Readings	PID	SC23030921B3	Normal	0
592-601274	5/14/2024 6:57	Readings	PID	SC23030921B3	Normal	0
592-601274	5/14/2024 6:58	Readings	PID	SC23030921B3	Normal	0
592-601274	5/14/2024 6:59	Readings	PID	SC23030921B3	Normal	0
592-601274	5/14/2024 7:00	Readings	PID	SC23030921B3	Normal	0
592-601274	5/14/2024 7:01	Readings	PID	SC23030921B3	Normal	0
592-601274	5/14/2024 7:02	Readings	PID	SC23030921B3	Normal	0
592-601274	5/14/2024 7:03	Readings	PID	SC23030921B3	Normal	0
592-601274	5/14/2024 7:04	Readings	PID	SC23030921B3	Normal	0
592-601274	5/14/2024 7:05	Readings	PID	SC23030921B3	Normal	0
592-601274	5/14/2024 7:06	Readings	PID	SC23030921B3	Normal	0
592-601274	5/14/2024 7:07	Readings	PID	SC23030921B3	Normal	0
592-601274	5/14/2024 7:08	Readings	PID	SC23030921B3	Normal	0
592-601274	5/14/2024 7:09	Readings	PID	SC23030921B3	Normal	0
592-601274	5/14/2024 7:10	Readings	PID	SC23030921B3	Normal	0
592-601274	5/14/2024 7:11	Readings	PID	SC23030921B3	Normal	0
592-601274	5/14/2024 7:12	Readings	PID	SC23030921B3	Normal	0
592-601274	5/14/2024 7:13	Readings	PID	SC23030921B3	Normal	0
592-601274	5/14/2024 7:14	Readings	PID	SC23030921B3	Normal	0
592-601274	5/14/2024 7:15	Readings	PID	SC23030921B3	Normal	0
592-601274	5/14/2024 7:16	Readings	PID	SC23030921B3	Normal	0
592-601274	5/14/2024 7:17	Readings	PID	SC23030921B3	Normal	0
592-601274	5/14/2024 7:18	Readings	PID	SC23030921B3	Normal	0
592-601274	5/14/2024 7:19	Readings	PID	SC23030921B3	Normal	0

592-601274	5/14/2024 9:32	Readings	PID	SC23030921B3	Normal	0
592-601274	5/14/2024 9:33	Readings	PID	SC23030921B3	Normal	0
592-601274	5/14/2024 9:34	Readings	PID	SC23030921B3	Normal	0
592-601274	5/14/2024 9:35	Readings	PID	SC23030921B3	Normal	0
592-601274	5/14/2024 9:36	Readings	PID	SC23030921B3	Normal	0
592-601274	5/14/2024 9:37	Readings	PID	SC23030921B3	Normal	0
592-601274	5/14/2024 9:38	Readings	PID	SC23030921B3	Normal	0
592-601274	5/14/2024 9:39	Readings	PID	SC23030921B3	Normal	0
592-601274	5/14/2024 9:40	Readings	PID	SC23030921B3	Normal	0
592-601274	5/14/2024 9:41	Readings	PID	SC23030921B3	Normal	0
592-601274	5/14/2024 9:42	Readings	PID	SC23030921B3	Normal	0
592-601274	5/14/2024 9:43	Readings	PID	SC23030921B3	Normal	0
592-601274	5/14/2024 9:44	Readings	PID	SC23030921B3	Normal	0
592-601274	5/14/2024 9:45	Readings	PID	SC23030921B3	Normal	0
592-601274	5/14/2024 9:46	Readings	PID	SC23030921B3	Normal	0
592-601274	5/14/2024 9:47	Readings	PID	SC23030921B3	Normal	0
592-601274	5/14/2024 9:48	Readings	PID	SC23030921B3	Normal	0
592-601274	5/14/2024 9:49	Readings	PID	SC23030921B3	Normal	0
592-601274	5/14/2024 9:50	Readings	PID	SC23030921B3	Normal	0
592-601274	5/14/2024 9:51	Readings	PID	SC23030921B3	Normal	0
592-601274	5/14/2024 9:52	Readings	PID	SC23030921B3	Normal	0
592-601274	5/14/2024 9:53	Readings	PID	SC23030921B3	Normal	0
592-601274	5/14/2024 9:54	Readings	PID	SC23030921B3	Normal	0
592-601274	5/14/2024 9:55	Readings	PID	SC23030921B3	Normal	0
592-601274	5/14/2024 9:56	Readings	PID	SC23030921B3	Normal	0
592-601274	5/14/2024 9:57	Readings	PID	SC23030921B3	Normal	0
592-601274	5/14/2024 9:58	Readings	PID	SC23030921B3	Normal	0
592-601274	5/14/2024 9:59	Readings	PID	SC23030921B3	Normal	0
592-601274	5/14/2024 10:00	Readings	PID	SC23030921B3	Normal	0
592-601274	5/14/2024 10:01	Readings	PID	SC23030921B3	Normal	0
592-601274	5/14/2024 10:02	Readings	PID	SC23030921B3	Normal	0
592-601274	5/14/2024 10:03	Readings	PID	SC23030921B3	Normal	0
592-601274	5/14/2024 10:04	Readings	PID	SC23030921B3	Normal	0

592-601274	5/14/2024 19:59 Readings	PID	SC23030921B3	Normal	0
592-601274	5/14/2024 20:00 Readings	PID	SC23030921B3	Normal	0
592-601274	5/14/2024 20:01 Readings	PID	SC23030921B3	Normal	0
592-601274	5/14/2024 20:02 Readings	PID	SC23030921B3	Normal	0
592-601274	5/14/2024 20:03 Readings	PID	SC23030921B3	Normal	0
592-601274	5/14/2024 20:04 Readings	PID	SC23030921B3	Normal	0
592-601274	5/14/2024 20:05 Readings	PID	SC23030921B3	Normal	0

DOWNWIND CAMP READINGS

251 DOUGLASS STREET, BROOKLYN, NY



Instrument Name	DustTrak II
Model Number	8530
Serial Number	8530224601
Firmware Version	3.1
Calibration Date	11/9/2022
Test Name	MANUAL_009
Test Start Time	6:53:45 AM
Test Start Date	5/14/2024
Test Length [D:H:M]	0:13:09
Test Interval [M:S]	1:00
Mass Average [mg/m3]	0.013
Mass Minimum [mg/m3]	0.005
Mass Maximum [mg/m3]	0.163
Mass TWA [mg/m3]	0.013
Photometric User Cal	1
Flow User Cal	0
Errors	
Number of Samples	789

Elapsed Time [s]	Mass [mg/m3]	Alarms	Errors
6:54	0.068		
6:55	0.01		
6:56	0.007		
6:57	0.008		
6:58	0.008		
6:59	0.01		
7:00	0.009		
7:01	0.008		
7:02	0.008		
7:03	0.009		
7:04	0.008		
7:05	0.007		
7:06	0.008		
7:07	0.007		
7:08	0.007		
7:09	0.009		
7:10	0.009		
7:11	0.009		
7:12	0.01		
7:13	0.01		
7:14	0.009		
7:15	0.012		
7:16	0.012		
7:17	0.009		

7:18	0.009
7:19	0.009
7:20	0.008
7:21	0.009
7:22	0.007
7:23	0.007
7:24	0.006
7:25	0.008
7:26	0.01
7:27	0.009
7:28	0.008
7:29	0.008
7:30	0.007
7:31	0.007
7:32	0.007
7:33	0.006
7:34	0.007
7:35	0.007
7:36	0.011
7:37	0.011
7:38	0.008
7:39	0.007
7:40	0.007
7:41	0.008
7:42	0.008
7:43	0.009
7:44	0.008
7:45	0.007
7:46	0.007
7:47	0.007
7:48	0.008
7:49	0.008
7:50	0.008
7:51	0.008
7:52	0.01
7:53	0.013
7:54	0.01
7:55	0.01
7:56	0.012
7:57	0.009
7:58	0.01
7:59	0.01
8:00	0.009
8:01	0.011

8:02	0.01
8:03	0.01
8:04	0.01
8:05	0.01
8:06	0.01
8:07	0.009
8:08	0.008
8:09	0.01
8:10	0.009
8:11	0.012
8:12	0.012
8:13	0.011
8:14	0.009
8:15	0.013
8:16	0.01
8:17	0.009
8:18	0.01
8:19	0.009
8:20	0.01
8:21	0.011
8:22	0.01
8:23	0.01
8:24	0.009
8:25	0.007
8:26	0.008
8:27	0.008
8:28	0.009
8:29	0.008
8:30	0.01
8:31	0.014
8:32	0.008
8:33	0.019
8:34	0.011
8:35	0.009
8:36	0.009
8:37	0.009
8:38	0.009
8:39	0.009
8:40	0.008
8:41	0.017
8:42	0.046
8:43	0.031
8:44	0.018
8:45	0.018

8:46	0.015
8:47	0.026
8:48	0.021
8:49	0.015
8:50	0.016
8:51	0.012
8:52	0.013
8:53	0.012
8:54	0.01
8:55	0.009
8:56	0.009
8:57	0.011
8:58	0.009
8:59	0.011
9:00	0.016
9:01	0.023
9:02	0.015
9:03	0.012
9:04	0.021
9:05	0.018
9:06	0.014
9:07	0.011
9:08	0.01
9:09	0.009
9:10	0.01
9:11	0.009
9:12	0.01
9:13	0.017
9:14	0.012
9:15	0.013
9:16	0.013
9:17	0.017
9:18	0.017
9:19	0.018
9:20	0.017
9:21	0.014
9:22	0.016
9:23	0.013
9:24	0.012
9:25	0.013
9:26	0.014
9:27	0.012
9:28	0.014
9:29	0.018

9:30	0.013
9:31	0.012
9:32	0.011
9:33	0.012
9:34	0.014
9:35	0.014
9:36	0.012
9:37	0.013
9:38	0.017
9:39	0.022
9:40	0.015
9:41	0.012
9:42	0.014
9:43	0.013
9:44	0.01
9:45	0.011
9:46	0.012
9:47	0.011
9:48	0.012
9:49	0.013
9:50	0.012
9:51	0.012
9:52	0.012
9:53	0.012
9:54	0.01
9:55	0.011
9:56	0.032
9:57	0.043
9:58	0.047
9:59	0.014
10:00	0.011
10:01	0.011
10:02	0.012
10:03	0.013
10:04	0.011
10:05	0.014
10:06	0.012
10:07	0.01
10:08	0.01
10:09	0.012
10:10	0.014
10:11	0.017
10:12	0.011
10:13	0.017

10:14	0.013
10:15	0.014
10:16	0.01
10:17	0.011
10:18	0.011
10:19	0.013
10:20	0.016
10:21	0.015
10:22	0.014
10:23	0.016
10:24	0.014
10:25	0.013
10:26	0.015
10:27	0.013
10:28	0.01
10:29	0.01
10:30	0.012
10:31	0.013
10:32	0.015
10:33	0.014
10:34	0.013
10:35	0.013
10:36	0.014
10:37	0.016
10:38	0.018
10:39	0.013
10:40	0.016
10:41	0.012
10:42	0.012
10:43	0.013
10:44	0.012
10:45	0.013
10:46	0.014
10:47	0.011
10:48	0.012
10:49	0.017
10:50	0.014
10:51	0.014
10:52	0.014
10:53	0.013
10:54	0.012
10:55	0.013
10:56	0.013
10:57	0.015

10:58	0.014
10:59	0.011
11:00	0.013
11:01	0.014
11:02	0.025
11:03	0.017
11:04	0.014
11:05	0.012
11:06	0.013
11:07	0.014
11:08	0.018
11:09	0.014
11:10	0.014
11:11	0.014
11:12	0.014
11:13	0.014
11:14	0.016
11:15	0.015
11:16	0.012
11:17	0.012
11:18	0.014
11:19	0.014
11:20	0.015
11:21	0.015
11:22	0.016
11:23	0.015
11:24	0.012
11:25	0.013
11:26	0.013
11:27	0.014
11:28	0.015
11:29	0.015
11:30	0.013
11:31	0.015
11:32	0.016
11:33	0.017
11:34	0.015
11:35	0.012
11:36	0.015
11:37	0.016
11:38	0.019
11:39	0.017
11:40	0.014
11:41	0.023

11:42	0.012
11:43	0.012
11:44	0.013
11:45	0.013
11:46	0.013
11:47	0.014
11:48	0.014
11:49	0.012
11:50	0.011
11:51	0.01
11:52	0.011
11:53	0.011
11:54	0.012
11:55	0.013
11:56	0.013
11:57	0.015
11:58	0.013
11:59	0.011
12:00	0.011
12:01	0.011
12:02	0.013
12:03	0.012
12:04	0.012
12:05	0.012
12:06	0.012
12:07	0.011
12:08	0.011
12:09	0.01
12:10	0.01
12:11	0.01
12:12	0.011
12:13	0.011
12:14	0.016
12:15	0.018
12:16	0.013
12:17	0.017
12:18	0.016
12:19	0.016
12:20	0.015
12:21	0.012
12:22	0.015
12:23	0.017
12:24	0.031
12:25	0.017

12:26	0.024
12:27	0.02
12:28	0.017
12:29	0.023
12:30	0.013
12:31	0.017
12:32	0.02
12:33	0.013
12:34	0.015
12:35	0.014
12:36	0.025
12:37	0.023
12:38	0.017
12:39	0.012
12:40	0.011
12:41	0.011
12:42	0.011
12:43	0.012
12:44	0.011
12:45	0.012
12:46	0.011
12:47	0.012
12:48	0.01
12:49	0.01
12:50	0.01
12:51	0.011
12:52	0.011
12:53	0.011
12:54	0.011
12:55	0.012
12:56	0.012
12:57	0.011
12:58	0.011
12:59	0.01
13:00	0.011
13:01	0.011
13:02	0.011
13:03	0.011
13:04	0.01
13:05	0.009
13:06	0.009
13:07	0.01
13:08	0.011
13:09	0.011

13:10	0.013
13:11	0.013
13:12	0.013
13:13	0.011
13:14	0.011
13:15	0.011
13:16	0.009
13:17	0.01
13:18	0.01
13:19	0.011
13:20	0.011
13:21	0.01
13:22	0.011
13:23	0.011
13:24	0.011
13:25	0.012
13:26	0.009
13:27	0.009
13:28	0.01
13:29	0.01
13:30	0.01
13:31	0.012
13:32	0.013
13:33	0.011
13:34	0.011
13:35	0.012
13:36	0.013
13:37	0.013
13:38	0.012
13:39	0.013
13:40	0.013
13:41	0.011
13:42	0.011
13:43	0.012
13:44	0.012
13:45	0.012
13:46	0.012
13:47	0.014
13:48	0.016
13:49	0.012
13:50	0.012
13:51	0.016
13:52	0.02
13:53	0.014

13:54	0.022
13:55	0.013
13:56	0.012
13:57	0.014
13:58	0.014
13:59	0.011
14:00	0.013
14:01	0.014
14:02	0.019
14:03	0.013
14:04	0.012
14:05	0.012
14:06	0.012
14:07	0.012
14:08	0.015
14:09	0.015
14:10	0.013
14:11	0.013
14:12	0.013
14:13	0.013
14:14	0.011
14:15	0.012
14:16	0.014
14:17	0.014
14:18	0.013
14:19	0.012
14:20	0.013
14:21	0.013
14:22	0.013
14:23	0.013
14:24	0.015
14:25	0.014
14:26	0.012
14:27	0.012
14:28	0.013
14:29	0.016
14:30	0.014
14:31	0.013
14:32	0.012
14:33	0.012
14:34	0.013
14:35	0.013
14:36	0.014
14:37	0.013

14:38	0.012
14:39	0.014
14:40	0.015
14:41	0.016
14:42	0.019
14:43	0.017
14:44	0.013
14:45	0.013
14:46	0.013
14:47	0.013
14:48	0.012
14:49	0.013
14:50	0.013
14:51	0.013
14:52	0.013
14:53	0.015
14:54	0.013
14:55	0.014
14:56	0.018
14:57	0.016
14:58	0.015
14:59	0.017
15:00	0.019
15:01	0.014
15:02	0.014
15:03	0.012
15:04	0.014
15:05	0.015
15:06	0.013
15:07	0.013
15:08	0.013
15:09	0.012
15:10	0.012
15:11	0.012
15:12	0.011
15:13	0.012
15:14	0.012
15:15	0.014
15:16	0.013
15:17	0.012
15:18	0.011
15:19	0.011
15:20	0.012
15:21	0.013

15:22	0.018
15:23	0.014
15:24	0.012
15:25	0.012
15:26	0.012
15:27	0.013
15:28	0.012
15:29	0.014
15:30	0.014
15:31	0.014
15:32	0.015
15:33	0.013
15:34	0.012
15:35	0.013
15:36	0.012
15:37	0.012
15:38	0.015
15:39	0.015
15:40	0.011
15:41	0.012
15:42	0.013
15:43	0.013
15:44	0.013
15:45	0.013
15:46	0.02
15:47	0.016
15:48	0.013
15:49	0.013
15:50	0.012
15:51	0.01
15:52	0.011
15:53	0.012
15:54	0.011
15:55	0.012
15:56	0.013
15:57	0.012
15:58	0.013
15:59	0.013
16:00	0.013
16:01	0.013
16:02	0.014
16:03	0.016
16:04	0.012
16:05	0.013

16:06	0.013
16:07	0.014
16:08	0.013
16:09	0.013
16:10	0.015
16:11	0.015
16:12	0.016
16:13	0.015
16:14	0.015
16:15	0.014
16:16	0.014
16:17	0.014
16:18	0.014
16:19	0.014
16:20	0.016
16:21	0.017
16:22	0.015
16:23	0.015
16:24	0.014
16:25	0.015
16:26	0.016
16:27	0.015
16:28	0.015
16:29	0.015
16:30	0.017
16:31	0.016
16:32	0.014
16:33	0.014
16:34	0.016
16:35	0.016
16:36	0.016
16:37	0.016
16:38	0.013
16:39	0.015
16:40	0.019
16:41	0.016
16:42	0.016
16:43	0.016
16:44	0.014
16:45	0.014
16:46	0.017
16:47	0.019
16:48	0.017
16:49	0.015

16:50	0.014
16:51	0.014
16:52	0.015
16:53	0.015
16:54	0.013
16:55	0.014
16:56	0.015
16:57	0.013
16:58	0.012
16:59	0.013
17:00	0.013
17:01	0.014
17:02	0.015
17:03	0.015
17:04	0.015
17:05	0.019
17:06	0.02
17:07	0.016
17:08	0.016
17:09	0.019
17:10	0.019
17:11	0.016
17:12	0.013
17:13	0.013
17:14	0.011
17:15	0.011
17:16	0.011
17:17	0.012
17:18	0.014
17:19	0.018
17:20	0.034
17:21	0.016
17:22	0.017
17:23	0.018
17:24	0.011
17:25	0.009
17:26	0.009
17:27	0.008
17:28	0.009
17:29	0.01
17:30	0.009
17:31	0.008
17:32	0.01
17:33	0.01

17:34	0.011
17:35	0.012
17:36	0.009
17:37	0.012
17:38	0.013
17:39	0.01
17:40	0.009
17:41	0.009
17:42	0.009
17:43	0.009
17:44	0.009
17:45	0.011
17:46	0.009
17:47	0.009
17:48	0.01
17:49	0.01
17:50	0.009
17:51	0.009
17:52	0.009
17:53	0.009
17:54	0.009
17:55	0.009
17:56	0.009
17:57	0.01
17:58	0.011
17:59	0.01
18:00	0.045
18:01	0.011
18:02	0.008
18:03	0.008
18:04	0.009
18:05	0.008
18:06	0.009
18:07	0.009
18:08	0.009
18:09	0.008
18:10	0.008
18:11	0.007
18:12	0.009
18:13	0.008
18:14	0.008
18:15	0.009
18:16	0.008
18:17	0.008

18:18	0.008
18:19	0.008
18:20	0.01
18:21	0.01
18:22	0.009
18:23	0.01
18:24	0.01
18:25	0.011
18:26	0.008
18:27	0.008
18:28	0.007
18:29	0.01
18:30	0.007
18:31	0.009
18:32	0.008
18:33	0.008
18:34	0.008
18:35	0.008
18:36	0.01
18:37	0.011
18:38	0.011
18:39	0.008
18:40	0.008
18:41	0.008
18:42	0.007
18:43	0.007
18:44	0.008
18:45	0.009
18:46	0.008
18:47	0.007
18:48	0.009
18:49	0.007
18:50	0.009
18:51	0.008
18:52	0.018
18:53	0.007
18:54	0.007
18:55	0.01
18:56	0.007
18:57	0.007
18:58	0.007
18:59	0.007
19:00	0.011
19:01	0.012

19:02	0.01
19:03	0.008
19:04	0.007
19:05	0.007
19:06	0.007
19:07	0.008
19:08	0.007
19:09	0.01
19:10	0.006
19:11	0.006
19:12	0.009
19:13	0.006
19:14	0.006
19:15	0.007
19:16	0.006
19:17	0.008
19:18	0.007
19:19	0.007
19:20	0.007
19:21	0.007
19:22	0.007
19:23	0.008
19:24	0.008
19:25	0.008
19:26	0.008
19:27	0.008
19:28	0.163
19:29	0.034
19:30	0.01
19:31	0.009
19:32	0.011
19:33	0.009
19:34	0.008
19:35	0.008
19:36	0.008
19:37	0.008
19:38	0.008
19:39	0.008
19:40	0.009
19:41	0.008
19:42	0.008
19:43	0.008
19:44	0.008
19:45	0.008

19:46	0.009
19:47	0.007
19:48	0.007
19:49	0.007
19:50	0.007
19:51	0.008
19:52	0.009
19:53	0.009
19:54	0.008
19:55	0.009
19:56	0.008
19:57	0.008
19:58	0.008
19:59	0.007
20:00	0.007
20:01	0.005
20:02	0.006

Device Serial No	Log Time	Log Type	Sensor 1 Type	Sensor 1 Serial Number	Sensor 1 Status	Sensor 1 Gas Reading
592-602816	5/14/2024 6:49	CONFIG	PID	SC23030324C7		
592-602816	5/14/2024 6:50	Readings	PID	SC23030324C7	Normal	0
592-602816	5/14/2024 6:51	Readings	PID	SC23030324C7	Normal	0.1
592-602816	5/14/2024 6:52	Readings	PID	SC23030324C7	Normal	0
592-602816	5/14/2024 6:53	Readings	PID	SC23030324C7	Normal	0
592-602816	5/14/2024 6:54	Readings	PID	SC23030324C7	Normal	0
592-602816	5/14/2024 6:55	Readings	PID	SC23030324C7	Normal	0.1
592-602816	5/14/2024 6:56	Readings	PID	SC23030324C7	Normal	0.1
592-602816	5/14/2024 6:57	Readings	PID	SC23030324C7	Normal	0.1
592-602816	5/14/2024 6:58	Readings	PID	SC23030324C7	Normal	0.1
592-602816	5/14/2024 6:59	Readings	PID	SC23030324C7	Normal	0.1
592-602816	5/14/2024 7:00	Readings	PID	SC23030324C7	Normal	0
592-602816	5/14/2024 7:01	Readings	PID	SC23030324C7	Normal	0
592-602816	5/14/2024 7:02	Readings	PID	SC23030324C7	Normal	0.1
592-602816	5/14/2024 7:03	Readings	PID	SC23030324C7	Normal	0.1
592-602816	5/14/2024 7:04	Readings	PID	SC23030324C7	Normal	0.1
592-602816	5/14/2024 7:05	Readings	PID	SC23030324C7	Normal	0.1
592-602816	5/14/2024 7:06	Readings	PID	SC23030324C7	Normal	0.1
592-602816	5/14/2024 7:07	Readings	PID	SC23030324C7	Normal	0.1
592-602816	5/14/2024 7:08	Readings	PID	SC23030324C7	Normal	1.1
592-602816	5/14/2024 7:09	Readings	PID	SC23030324C7	Normal	0.3
592-602816	5/14/2024 7:10	Readings	PID	SC23030324C7	Normal	0.5
592-602816	5/14/2024 7:11	Readings	PID	SC23030324C7	Normal	0.6
592-602816	5/14/2024 7:12	Readings	PID	SC23030324C7	Normal	0.5
592-602816	5/14/2024 7:13	Readings	PID	SC23030324C7	Normal	0.2
592-602816	5/14/2024 7:14	Readings	PID	SC23030324C7	Normal	0.2
592-602816	5/14/2024 7:15	Readings	PID	SC23030324C7	Normal	0.2
592-602816	5/14/2024 7:16	Readings	PID	SC23030324C7	Normal	0.2
592-602816	5/14/2024 7:17	Readings	PID	SC23030324C7	Normal	0.1
592-602816	5/14/2024 7:18	Readings	PID	SC23030324C7	Normal	0.1
592-602816	5/14/2024 7:19	Readings	PID	SC23030324C7	Normal	0.2
592-602816	5/14/2024 7:20	Readings	PID	SC23030324C7	Normal	0.1

592-602816	5/14/2024 9:33	Readings	PID	SC23030324C7	Normal	0.2
592-602816	5/14/2024 9:34	Readings	PID	SC23030324C7	Normal	0.2
592-602816	5/14/2024 9:35	Readings	PID	SC23030324C7	Normal	0.2
592-602816	5/14/2024 9:36	Readings	PID	SC23030324C7	Normal	0.2
592-602816	5/14/2024 9:37	Readings	PID	SC23030324C7	Normal	0.2
592-602816	5/14/2024 9:38	Readings	PID	SC23030324C7	Normal	0.2
592-602816	5/14/2024 9:39	Readings	PID	SC23030324C7	Normal	0.2
592-602816	5/14/2024 9:40	Readings	PID	SC23030324C7	Normal	0.2
592-602816	5/14/2024 9:41	Readings	PID	SC23030324C7	Normal	0.2
592-602816	5/14/2024 9:42	Readings	PID	SC23030324C7	Normal	0.1
592-602816	5/14/2024 9:43	Readings	PID	SC23030324C7	Normal	0.1
592-602816	5/14/2024 9:44	Readings	PID	SC23030324C7	Normal	0.2
592-602816	5/14/2024 9:45	Readings	PID	SC23030324C7	Normal	0.2
592-602816	5/14/2024 9:46	Readings	PID	SC23030324C7	Normal	0.2
592-602816	5/14/2024 9:47	Readings	PID	SC23030324C7	Normal	0.1
592-602816	5/14/2024 9:48	Readings	PID	SC23030324C7	Normal	0.1
592-602816	5/14/2024 9:49	Readings	PID	SC23030324C7	Normal	0.1
592-602816	5/14/2024 9:50	Readings	PID	SC23030324C7	Normal	0.1
592-602816	5/14/2024 9:51	Readings	PID	SC23030324C7	Normal	0.2
592-602816	5/14/2024 9:52	Readings	PID	SC23030324C7	Normal	0.3
592-602816	5/14/2024 9:53	Readings	PID	SC23030324C7	Normal	0.2
592-602816	5/14/2024 9:54	Readings	PID	SC23030324C7	Normal	0.2
592-602816	5/14/2024 9:55	Readings	PID	SC23030324C7	Normal	0.2
592-602816	5/14/2024 9:56	Readings	PID	SC23030324C7	Normal	0.2
592-602816	5/14/2024 9:57	Readings	PID	SC23030324C7	Normal	0.1
592-602816	5/14/2024 9:58	Readings	PID	SC23030324C7	Normal	0.1
592-602816	5/14/2024 9:59	Readings	PID	SC23030324C7	Normal	0.1
592-602816	5/14/2024 10:00	Readings	PID	SC23030324C7	Normal	0.1
592-602816	5/14/2024 10:01	Readings	PID	SC23030324C7	Normal	0.1
592-602816	5/14/2024 10:02	Readings	PID	SC23030324C7	Normal	0.2
592-602816	5/14/2024 10:03	Readings	PID	SC23030324C7	Normal	0.1
592-602816	5/14/2024 10:04	Readings	PID	SC23030324C7	Normal	0.1
592-602816	5/14/2024 10:05	Readings	PID	SC23030324C7	Normal	0.1

592-602816	5/14/2024 10:06	Readings	PID	SC23030324C7	Normal	0.1
592-602816	5/14/2024 10:07	Readings	PID	SC23030324C7	Normal	0.2
592-602816	5/14/2024 10:08	Readings	PID	SC23030324C7	Normal	0.1
592-602816	5/14/2024 10:09	Readings	PID	SC23030324C7	Normal	0.2
592-602816	5/14/2024 10:10	Readings	PID	SC23030324C7	Normal	0.2
592-602816	5/14/2024 10:11	Readings	PID	SC23030324C7	Normal	0.1
592-602816	5/14/2024 10:12	Readings	PID	SC23030324C7	Normal	0.2
592-602816	5/14/2024 10:13	Readings	PID	SC23030324C7	Normal	0.1
592-602816	5/14/2024 10:14	Readings	PID	SC23030324C7	Normal	0.1
592-602816	5/14/2024 10:15	Readings	PID	SC23030324C7	Normal	0.1
592-602816	5/14/2024 10:16	Readings	PID	SC23030324C7	Normal	0.2
592-602816	5/14/2024 10:17	Readings	PID	SC23030324C7	Normal	0.1
592-602816	5/14/2024 10:18	Readings	PID	SC23030324C7	Normal	0.2
592-602816	5/14/2024 10:19	Readings	PID	SC23030324C7	Normal	0.2
592-602816	5/14/2024 10:20	Readings	PID	SC23030324C7	Normal	0.1
592-602816	5/14/2024 10:21	Readings	PID	SC23030324C7	Normal	0.1
592-602816	5/14/2024 10:22	Readings	PID	SC23030324C7	Normal	0.1
592-602816	5/14/2024 10:23	Readings	PID	SC23030324C7	Normal	0.1
592-602816	5/14/2024 10:24	Readings	PID	SC23030324C7	Normal	0.1
592-602816	5/14/2024 10:25	Readings	PID	SC23030324C7	Normal	0.1
592-602816	5/14/2024 10:26	Readings	PID	SC23030324C7	Normal	0.1
592-602816	5/14/2024 10:27	Readings	PID	SC23030324C7	Normal	0.1
592-602816	5/14/2024 10:28	Readings	PID	SC23030324C7	Normal	0.1
592-602816	5/14/2024 10:29	Readings	PID	SC23030324C7	Normal	0.1
592-602816	5/14/2024 10:30	Readings	PID	SC23030324C7	Normal	0.1
592-602816	5/14/2024 10:31	Readings	PID	SC23030324C7	Normal	0.1
592-602816	5/14/2024 10:32	Readings	PID	SC23030324C7	Normal	0.1
592-602816	5/14/2024 10:33	Readings	PID	SC23030324C7	Normal	0.1
592-602816	5/14/2024 10:34	Readings	PID	SC23030324C7	Normal	0.1
592-602816	5/14/2024 10:35	Readings	PID	SC23030324C7	Normal	0.1
592-602816	5/14/2024 10:36	Readings	PID	SC23030324C7	Normal	0.1
592-602816	5/14/2024 10:37	Readings	PID	SC23030324C7	Normal	0.1
592-602816	5/14/2024 10:38	Readings	PID	SC23030324C7	Normal	0.1

592-602816	5/14/2024 10:39	Readings	PID	SC23030324C7	Normal	0.1
592-602816	5/14/2024 10:40	Readings	PID	SC23030324C7	Normal	0.1
592-602816	5/14/2024 10:41	Readings	PID	SC23030324C7	Normal	0.1
592-602816	5/14/2024 10:42	Readings	PID	SC23030324C7	Normal	0.1
592-602816	5/14/2024 10:43	Readings	PID	SC23030324C7	Normal	0.1
592-602816	5/14/2024 10:44	Readings	PID	SC23030324C7	Normal	0.1
592-602816	5/14/2024 10:45	Readings	PID	SC23030324C7	Normal	0.1
592-602816	5/14/2024 10:46	Readings	PID	SC23030324C7	Normal	0.1
592-602816	5/14/2024 10:47	Readings	PID	SC23030324C7	Normal	0.1
592-602816	5/14/2024 10:48	Readings	PID	SC23030324C7	Normal	0.1
592-602816	5/14/2024 10:49	Readings	PID	SC23030324C7	Normal	0.1
592-602816	5/14/2024 10:50	Readings	PID	SC23030324C7	Normal	0.1
592-602816	5/14/2024 10:51	Readings	PID	SC23030324C7	Normal	0.1
592-602816	5/14/2024 10:52	Readings	PID	SC23030324C7	Normal	0.1
592-602816	5/14/2024 10:53	Readings	PID	SC23030324C7	Normal	0.1
592-602816	5/14/2024 10:54	Readings	PID	SC23030324C7	Normal	0.1
592-602816	5/14/2024 10:55	Readings	PID	SC23030324C7	Normal	0.1
592-602816	5/14/2024 10:56	Readings	PID	SC23030324C7	Normal	0
592-602816	5/14/2024 10:57	Readings	PID	SC23030324C7	Normal	0.1
592-602816	5/14/2024 10:58	Readings	PID	SC23030324C7	Normal	0.1
592-602816	5/14/2024 10:59	Readings	PID	SC23030324C7	Normal	0.2
592-602816	5/14/2024 11:00	Readings	PID	SC23030324C7	Normal	0.1
592-602816	5/14/2024 11:01	Readings	PID	SC23030324C7	Normal	0.1
592-602816	5/14/2024 11:02	Readings	PID	SC23030324C7	Normal	0
592-602816	5/14/2024 11:03	Readings	PID	SC23030324C7	Normal	0.1
592-602816	5/14/2024 11:04	Readings	PID	SC23030324C7	Normal	0.1
592-602816	5/14/2024 11:05	Readings	PID	SC23030324C7	Normal	0.2
592-602816	5/14/2024 11:06	Readings	PID	SC23030324C7	Normal	0.2
592-602816	5/14/2024 11:07	Readings	PID	SC23030324C7	Normal	0.1
592-602816	5/14/2024 11:08	Readings	PID	SC23030324C7	Normal	0.1
592-602816	5/14/2024 11:09	Readings	PID	SC23030324C7	Normal	0
592-602816	5/14/2024 11:10	Readings	PID	SC23030324C7	Normal	0.1
592-602816	5/14/2024 11:11	Readings	PID	SC23030324C7	Normal	0.1

592-602816	5/14/2024 11:12	Readings	PID	SC23030324C7	Normal	0.1
592-602816	5/14/2024 11:13	Readings	PID	SC23030324C7	Normal	0
592-602816	5/14/2024 11:14	Readings	PID	SC23030324C7	Normal	0
592-602816	5/14/2024 11:15	Readings	PID	SC23030324C7	Normal	0
592-602816	5/14/2024 11:16	Readings	PID	SC23030324C7	Normal	0
592-602816	5/14/2024 11:17	Readings	PID	SC23030324C7	Normal	0
592-602816	5/14/2024 11:18	Readings	PID	SC23030324C7	Normal	0
592-602816	5/14/2024 11:19	Readings	PID	SC23030324C7	Normal	0
592-602816	5/14/2024 11:20	Readings	PID	SC23030324C7	Normal	0
592-602816	5/14/2024 11:21	Readings	PID	SC23030324C7	Normal	0
592-602816	5/14/2024 11:22	Readings	PID	SC23030324C7	Normal	0
592-602816	5/14/2024 11:23	Readings	PID	SC23030324C7	Normal	0.1
592-602816	5/14/2024 11:24	Readings	PID	SC23030324C7	Normal	0
592-602816	5/14/2024 11:25	Readings	PID	SC23030324C7	Normal	0
592-602816	5/14/2024 11:26	Readings	PID	SC23030324C7	Normal	0
592-602816	5/14/2024 11:27	Readings	PID	SC23030324C7	Normal	0
592-602816	5/14/2024 11:28	Readings	PID	SC23030324C7	Normal	0
592-602816	5/14/2024 11:29	Readings	PID	SC23030324C7	Normal	0
592-602816	5/14/2024 11:30	Readings	PID	SC23030324C7	Normal	0
592-602816	5/14/2024 11:31	Readings	PID	SC23030324C7	Normal	0
592-602816	5/14/2024 11:32	Readings	PID	SC23030324C7	Normal	0
592-602816	5/14/2024 11:33	Readings	PID	SC23030324C7	Normal	0
592-602816	5/14/2024 11:34	Readings	PID	SC23030324C7	Normal	0
592-602816	5/14/2024 11:35	Readings	PID	SC23030324C7	Normal	0.1
592-602816	5/14/2024 11:36	Readings	PID	SC23030324C7	Normal	0.1
592-602816	5/14/2024 11:37	Readings	PID	SC23030324C7	Normal	0
592-602816	5/14/2024 11:38	Readings	PID	SC23030324C7	Normal	0
592-602816	5/14/2024 11:39	Readings	PID	SC23030324C7	Normal	0
592-602816	5/14/2024 11:40	Readings	PID	SC23030324C7	Normal	0
592-602816	5/14/2024 11:41	Readings	PID	SC23030324C7	Normal	0
592-602816	5/14/2024 11:42	Readings	PID	SC23030324C7	Normal	0
592-602816	5/14/2024 11:43	Readings	PID	SC23030324C7	Normal	0
592-602816	5/14/2024 11:44	Readings	PID	SC23030324C7	Normal	0

592-602816	5/14/2024 12:18	Readings	PID	SC23030324C7	Normal	0
592-602816	5/14/2024 12:19	Readings	PID	SC23030324C7	Normal	0
592-602816	5/14/2024 12:20	Readings	PID	SC23030324C7	Normal	0
592-602816	5/14/2024 12:21	Readings	PID	SC23030324C7	Normal	0
592-602816	5/14/2024 12:22	Readings	PID	SC23030324C7	Normal	0.2
592-602816	5/14/2024 12:23	Readings	PID	SC23030324C7	Normal	0.1
592-602816	5/14/2024 12:24	Readings	PID	SC23030324C7	Normal	0
592-602816	5/14/2024 12:25	Readings	PID	SC23030324C7	Normal	0
592-602816	5/14/2024 12:26	Readings	PID	SC23030324C7	Normal	0
592-602816	5/14/2024 12:27	Readings	PID	SC23030324C7	Normal	0
592-602816	5/14/2024 12:28	Readings	PID	SC23030324C7	Normal	0
592-602816	5/14/2024 12:29	Readings	PID	SC23030324C7	Normal	0
592-602816	5/14/2024 12:30	Readings	PID	SC23030324C7	Normal	0
592-602816	5/14/2024 12:31	Readings	PID	SC23030324C7	Normal	0
592-602816	5/14/2024 12:32	Readings	PID	SC23030324C7	Normal	0.1
592-602816	5/14/2024 12:33	Readings	PID	SC23030324C7	Normal	0
592-602816	5/14/2024 12:34	Readings	PID	SC23030324C7	Normal	0
592-602816	5/14/2024 12:35	Readings	PID	SC23030324C7	Normal	0
592-602816	5/14/2024 12:36	Readings	PID	SC23030324C7	Normal	0
592-602816	5/14/2024 12:37	Readings	PID	SC23030324C7	Normal	0
592-602816	5/14/2024 12:38	Readings	PID	SC23030324C7	Normal	0
592-602816	5/14/2024 12:39	Readings	PID	SC23030324C7	Normal	0
592-602816	5/14/2024 12:40	Readings	PID	SC23030324C7	Normal	0
592-602816	5/14/2024 12:41	Readings	PID	SC23030324C7	Normal	0
592-602816	5/14/2024 12:42	Readings	PID	SC23030324C7	Normal	0
592-602816	5/14/2024 12:43	Readings	PID	SC23030324C7	Normal	0
592-602816	5/14/2024 12:44	Readings	PID	SC23030324C7	Normal	0
592-602816	5/14/2024 12:45	Readings	PID	SC23030324C7	Normal	0
592-602816	5/14/2024 12:46	Readings	PID	SC23030324C7	Normal	0
592-602816	5/14/2024 12:47	Readings	PID	SC23030324C7	Normal	0
592-602816	5/14/2024 12:48	Readings	PID	SC23030324C7	Normal	0
592-602816	5/14/2024 12:49	Readings	PID	SC23030324C7	Normal	0
592-602816	5/14/2024 12:50	Readings	PID	SC23030324C7	Normal	0

592-602816	5/14/2024 13:57	Readings	PID	SC23030324C7	Normal	0.1
592-602816	5/14/2024 13:58	Readings	PID	SC23030324C7	Normal	0
592-602816	5/14/2024 13:59	Readings	PID	SC23030324C7	Normal	0
592-602816	5/14/2024 14:00	Readings	PID	SC23030324C7	Normal	0
592-602816	5/14/2024 14:01	Readings	PID	SC23030324C7	Normal	0
592-602816	5/14/2024 14:02	Readings	PID	SC23030324C7	Normal	0.1
592-602816	5/14/2024 14:03	Readings	PID	SC23030324C7	Normal	0.1
592-602816	5/14/2024 14:04	Readings	PID	SC23030324C7	Normal	0.1
592-602816	5/14/2024 14:05	Readings	PID	SC23030324C7	Normal	0
592-602816	5/14/2024 14:06	Readings	PID	SC23030324C7	Normal	0
592-602816	5/14/2024 14:07	Readings	PID	SC23030324C7	Normal	0
592-602816	5/14/2024 14:08	Readings	PID	SC23030324C7	Normal	0.1
592-602816	5/14/2024 14:09	Readings	PID	SC23030324C7	Normal	0
592-602816	5/14/2024 14:10	Readings	PID	SC23030324C7	Normal	0
592-602816	5/14/2024 14:11	Readings	PID	SC23030324C7	Normal	0
592-602816	5/14/2024 14:12	Readings	PID	SC23030324C7	Normal	0
592-602816	5/14/2024 14:13	Readings	PID	SC23030324C7	Normal	0
592-602816	5/14/2024 14:14	Readings	PID	SC23030324C7	Normal	0
592-602816	5/14/2024 14:15	Readings	PID	SC23030324C7	Normal	0
592-602816	5/14/2024 14:16	Readings	PID	SC23030324C7	Normal	0
592-602816	5/14/2024 14:17	Readings	PID	SC23030324C7	Normal	0
592-602816	5/14/2024 14:18	Readings	PID	SC23030324C7	Normal	0
592-602816	5/14/2024 14:19	Readings	PID	SC23030324C7	Normal	0
592-602816	5/14/2024 14:20	Readings	PID	SC23030324C7	Normal	0.1
592-602816	5/14/2024 14:21	Readings	PID	SC23030324C7	Normal	0.1
592-602816	5/14/2024 14:22	Readings	PID	SC23030324C7	Normal	0
592-602816	5/14/2024 14:23	Readings	PID	SC23030324C7	Normal	0
592-602816	5/14/2024 14:24	Readings	PID	SC23030324C7	Normal	0
592-602816	5/14/2024 14:25	Readings	PID	SC23030324C7	Normal	0
592-602816	5/14/2024 14:26	Readings	PID	SC23030324C7	Normal	0
592-602816	5/14/2024 14:27	Readings	PID	SC23030324C7	Normal	0
592-602816	5/14/2024 14:28	Readings	PID	SC23030324C7	Normal	0
592-602816	5/14/2024 14:29	Readings	PID	SC23030324C7	Normal	0

592-602816	5/14/2024 14:30	Readings	PID	SC23030324C7	Normal	0
592-602816	5/14/2024 14:31	Readings	PID	SC23030324C7	Normal	0
592-602816	5/14/2024 14:32	Readings	PID	SC23030324C7	Normal	0
592-602816	5/14/2024 14:33	Readings	PID	SC23030324C7	Normal	0
592-602816	5/14/2024 14:34	Readings	PID	SC23030324C7	Normal	0
592-602816	5/14/2024 14:35	Readings	PID	SC23030324C7	Normal	0
592-602816	5/14/2024 14:36	Readings	PID	SC23030324C7	Normal	0
592-602816	5/14/2024 14:37	Readings	PID	SC23030324C7	Normal	0
592-602816	5/14/2024 14:38	Readings	PID	SC23030324C7	Normal	0
592-602816	5/14/2024 14:39	Readings	PID	SC23030324C7	Normal	0
592-602816	5/14/2024 14:40	Readings	PID	SC23030324C7	Normal	0
592-602816	5/14/2024 14:41	Readings	PID	SC23030324C7	Normal	0
592-602816	5/14/2024 14:42	Readings	PID	SC23030324C7	Normal	0
592-602816	5/14/2024 14:43	Readings	PID	SC23030324C7	Normal	0.1
592-602816	5/14/2024 14:44	Readings	PID	SC23030324C7	Normal	0.1
592-602816	5/14/2024 14:45	Readings	PID	SC23030324C7	Normal	0
592-602816	5/14/2024 14:46	Readings	PID	SC23030324C7	Normal	0.1
592-602816	5/14/2024 14:47	Readings	PID	SC23030324C7	Normal	0.1
592-602816	5/14/2024 14:48	Readings	PID	SC23030324C7	Normal	0.1
592-602816	5/14/2024 14:49	Readings	PID	SC23030324C7	Normal	0.1
592-602816	5/14/2024 14:50	Readings	PID	SC23030324C7	Normal	0.1
592-602816	5/14/2024 14:51	Readings	PID	SC23030324C7	Normal	0.1
592-602816	5/14/2024 14:52	Readings	PID	SC23030324C7	Normal	0.1
592-602816	5/14/2024 14:53	Readings	PID	SC23030324C7	Normal	0
592-602816	5/14/2024 14:54	Readings	PID	SC23030324C7	Normal	0.1
592-602816	5/14/2024 14:55	Readings	PID	SC23030324C7	Normal	0.1
592-602816	5/14/2024 14:56	Readings	PID	SC23030324C7	Normal	0
592-602816	5/14/2024 14:57	Readings	PID	SC23030324C7	Normal	0
592-602816	5/14/2024 14:58	Readings	PID	SC23030324C7	Normal	0.1
592-602816	5/14/2024 14:59	Readings	PID	SC23030324C7	Normal	0.1
592-602816	5/14/2024 15:00	Readings	PID	SC23030324C7	Normal	0
592-602816	5/14/2024 15:01	Readings	PID	SC23030324C7	Normal	0
592-602816	5/14/2024 15:02	Readings	PID	SC23030324C7	Normal	0

592-602816	5/14/2024 15:03	Readings	PID	SC23030324C7	Normal	0
592-602816	5/14/2024 15:04	Readings	PID	SC23030324C7	Normal	0
592-602816	5/14/2024 15:05	Readings	PID	SC23030324C7	Normal	0.2
592-602816	5/14/2024 15:06	Readings	PID	SC23030324C7	Normal	0.1
592-602816	5/14/2024 15:07	Readings	PID	SC23030324C7	Normal	0.3
592-602816	5/14/2024 15:08	Readings	PID	SC23030324C7	Normal	0.3
592-602816	5/14/2024 15:09	Readings	PID	SC23030324C7	Normal	0
592-602816	5/14/2024 15:10	Readings	PID	SC23030324C7	Normal	0.1
592-602816	5/14/2024 15:11	Readings	PID	SC23030324C7	Normal	0.1
592-602816	5/14/2024 15:12	Readings	PID	SC23030324C7	Normal	0.2
592-602816	5/14/2024 15:13	Readings	PID	SC23030324C7	Normal	0.3
592-602816	5/14/2024 15:14	Readings	PID	SC23030324C7	Normal	0.1
592-602816	5/14/2024 15:15	Readings	PID	SC23030324C7	Normal	0.1
592-602816	5/14/2024 15:16	Readings	PID	SC23030324C7	Normal	0.1
592-602816	5/14/2024 15:17	Readings	PID	SC23030324C7	Normal	0.2
592-602816	5/14/2024 15:18	Readings	PID	SC23030324C7	Normal	0.2
592-602816	5/14/2024 15:19	Readings	PID	SC23030324C7	Normal	0.1
592-602816	5/14/2024 15:20	Readings	PID	SC23030324C7	Normal	0.1
592-602816	5/14/2024 15:21	Readings	PID	SC23030324C7	Normal	0.1
592-602816	5/14/2024 15:22	Readings	PID	SC23030324C7	Normal	0.1
592-602816	5/14/2024 15:23	Readings	PID	SC23030324C7	Normal	0.1
592-602816	5/14/2024 15:24	Readings	PID	SC23030324C7	Normal	0.1
592-602816	5/14/2024 15:25	Readings	PID	SC23030324C7	Normal	0.1
592-602816	5/14/2024 15:26	Readings	PID	SC23030324C7	Normal	0.1
592-602816	5/14/2024 15:27	Readings	PID	SC23030324C7	Normal	0.1
592-602816	5/14/2024 15:28	Readings	PID	SC23030324C7	Normal	0.1
592-602816	5/14/2024 15:29	Readings	PID	SC23030324C7	Normal	0.1
592-602816	5/14/2024 15:30	Readings	PID	SC23030324C7	Normal	0
592-602816	5/14/2024 15:31	Readings	PID	SC23030324C7	Normal	0
592-602816	5/14/2024 15:32	Readings	PID	SC23030324C7	Normal	0
592-602816	5/14/2024 15:33	Readings	PID	SC23030324C7	Normal	0
592-602816	5/14/2024 15:34	Readings	PID	SC23030324C7	Normal	0.1
592-602816	5/14/2024 15:35	Readings	PID	SC23030324C7	Normal	0.1

592-602816	5/14/2024 15:36	Readings	PID	SC23030324C7	Normal	0.1
592-602816	5/14/2024 15:37	Readings	PID	SC23030324C7	Normal	0.1
592-602816	5/14/2024 15:38	Readings	PID	SC23030324C7	Normal	0.1
592-602816	5/14/2024 15:39	Readings	PID	SC23030324C7	Normal	0.1
592-602816	5/14/2024 15:40	Readings	PID	SC23030324C7	Normal	0.1
592-602816	5/14/2024 15:41	Readings	PID	SC23030324C7	Normal	0
592-602816	5/14/2024 15:42	Readings	PID	SC23030324C7	Normal	0.1
592-602816	5/14/2024 15:43	Readings	PID	SC23030324C7	Normal	0.2
592-602816	5/14/2024 15:44	Readings	PID	SC23030324C7	Normal	0.2
592-602816	5/14/2024 15:45	Readings	PID	SC23030324C7	Normal	0.1
592-602816	5/14/2024 15:46	Readings	PID	SC23030324C7	Normal	0.1
592-602816	5/14/2024 15:47	Readings	PID	SC23030324C7	Normal	0.1
592-602816	5/14/2024 15:48	Readings	PID	SC23030324C7	Normal	0.1
592-602816	5/14/2024 15:49	Readings	PID	SC23030324C7	Normal	0.1
592-602816	5/14/2024 15:50	Readings	PID	SC23030324C7	Normal	0.1
592-602816	5/14/2024 15:51	Readings	PID	SC23030324C7	Normal	0.1
592-602816	5/14/2024 15:52	Readings	PID	SC23030324C7	Normal	0.1
592-602816	5/14/2024 15:53	Readings	PID	SC23030324C7	Normal	0.1
592-602816	5/14/2024 15:54	Readings	PID	SC23030324C7	Normal	0.1
592-602816	5/14/2024 15:55	Readings	PID	SC23030324C7	Normal	0.1
592-602816	5/14/2024 15:56	Readings	PID	SC23030324C7	Normal	0.1
592-602816	5/14/2024 15:57	Readings	PID	SC23030324C7	Normal	0.1
592-602816	5/14/2024 15:58	Readings	PID	SC23030324C7	Normal	0.1
592-602816	5/14/2024 15:59	Readings	PID	SC23030324C7	Normal	0.1
592-602816	5/14/2024 16:00	Readings	PID	SC23030324C7	Normal	0.1
592-602816	5/14/2024 16:01	Readings	PID	SC23030324C7	Normal	0.1
592-602816	5/14/2024 16:02	Readings	PID	SC23030324C7	Normal	0.1
592-602816	5/14/2024 16:03	Readings	PID	SC23030324C7	Normal	0.1
592-602816	5/14/2024 16:04	Readings	PID	SC23030324C7	Normal	0.1
592-602816	5/14/2024 16:05	Readings	PID	SC23030324C7	Normal	0.1
592-602816	5/14/2024 16:06	Readings	PID	SC23030324C7	Normal	0.3
592-602816	5/14/2024 16:07	Readings	PID	SC23030324C7	Normal	0.2
592-602816	5/14/2024 16:08	Readings	PID	SC23030324C7	Normal	0.2

592-602816	5/14/2024 16:09	Readings	PID	SC23030324C7	Normal	0.5
592-602816	5/14/2024 16:10	Readings	PID	SC23030324C7	Normal	0.1
592-602816	5/14/2024 16:11	Readings	PID	SC23030324C7	Normal	0.2
592-602816	5/14/2024 16:12	Readings	PID	SC23030324C7	Normal	0.2
592-602816	5/14/2024 16:13	Readings	PID	SC23030324C7	Normal	0.2
592-602816	5/14/2024 16:14	Readings	PID	SC23030324C7	Normal	0.1
592-602816	5/14/2024 16:15	Readings	PID	SC23030324C7	Normal	0.2
592-602816	5/14/2024 16:16	Readings	PID	SC23030324C7	Normal	0.2
592-602816	5/14/2024 16:17	Readings	PID	SC23030324C7	Normal	0.3
592-602816	5/14/2024 16:18	Readings	PID	SC23030324C7	Normal	0.2
592-602816	5/14/2024 16:19	Readings	PID	SC23030324C7	Normal	0.2
592-602816	5/14/2024 16:20	Readings	PID	SC23030324C7	Normal	0.2
592-602816	5/14/2024 16:21	Readings	PID	SC23030324C7	Normal	0.2
592-602816	5/14/2024 16:22	Readings	PID	SC23030324C7	Normal	0.2
592-602816	5/14/2024 16:23	Readings	PID	SC23030324C7	Normal	0.1
592-602816	5/14/2024 16:24	Readings	PID	SC23030324C7	Normal	0.1
592-602816	5/14/2024 16:25	Readings	PID	SC23030324C7	Normal	0.1
592-602816	5/14/2024 16:26	Readings	PID	SC23030324C7	Normal	0.2
592-602816	5/14/2024 16:27	Readings	PID	SC23030324C7	Normal	0.2
592-602816	5/14/2024 16:28	Readings	PID	SC23030324C7	Normal	0.1
592-602816	5/14/2024 16:29	Readings	PID	SC23030324C7	Normal	0.1
592-602816	5/14/2024 16:30	Readings	PID	SC23030324C7	Normal	0.2
592-602816	5/14/2024 16:31	Readings	PID	SC23030324C7	Normal	0.1
592-602816	5/14/2024 16:32	Readings	PID	SC23030324C7	Normal	0.1
592-602816	5/14/2024 16:33	Readings	PID	SC23030324C7	Normal	0.2
592-602816	5/14/2024 16:34	Readings	PID	SC23030324C7	Normal	0.1
592-602816	5/14/2024 16:35	Readings	PID	SC23030324C7	Normal	0.1
592-602816	5/14/2024 16:36	Readings	PID	SC23030324C7	Normal	0.1
592-602816	5/14/2024 16:37	Readings	PID	SC23030324C7	Normal	0.1
592-602816	5/14/2024 16:38	Readings	PID	SC23030324C7	Normal	0.2
592-602816	5/14/2024 16:39	Readings	PID	SC23030324C7	Normal	0.2
592-602816	5/14/2024 16:40	Readings	PID	SC23030324C7	Normal	0.2
592-602816	5/14/2024 16:41	Readings	PID	SC23030324C7	Normal	0.2

592-602816	5/14/2024 17:15	Readings	PID	SC23030324C7	Normal	0.2
592-602816	5/14/2024 17:16	Readings	PID	SC23030324C7	Normal	0.1
592-602816	5/14/2024 17:17	Readings	PID	SC23030324C7	Normal	0.1
592-602816	5/14/2024 17:18	Readings	PID	SC23030324C7	Normal	0.1
592-602816	5/14/2024 17:19	Readings	PID	SC23030324C7	Normal	0.1
592-602816	5/14/2024 17:20	Readings	PID	SC23030324C7	Normal	0.2
592-602816	5/14/2024 17:21	Readings	PID	SC23030324C7	Normal	0.2
592-602816	5/14/2024 17:22	Readings	PID	SC23030324C7	Normal	0.1
592-602816	5/14/2024 17:23	Readings	PID	SC23030324C7	Normal	0.2
592-602816	5/14/2024 17:24	Readings	PID	SC23030324C7	Normal	0.2
592-602816	5/14/2024 17:25	Readings	PID	SC23030324C7	Normal	0.2
592-602816	5/14/2024 17:26	Readings	PID	SC23030324C7	Normal	0.2
592-602816	5/14/2024 17:27	Readings	PID	SC23030324C7	Normal	0.1
592-602816	5/14/2024 17:28	Readings	PID	SC23030324C7	Normal	0.1
592-602816	5/14/2024 17:29	Readings	PID	SC23030324C7	Normal	0.1
592-602816	5/14/2024 17:30	Readings	PID	SC23030324C7	Normal	0.1
592-602816	5/14/2024 17:31	Readings	PID	SC23030324C7	Normal	0.1
592-602816	5/14/2024 17:32	Readings	PID	SC23030324C7	Normal	0.1
592-602816	5/14/2024 17:33	Readings	PID	SC23030324C7	Normal	0.1
592-602816	5/14/2024 17:34	Readings	PID	SC23030324C7	Normal	0.1
592-602816	5/14/2024 17:35	Readings	PID	SC23030324C7	Normal	0.1
592-602816	5/14/2024 17:36	Readings	PID	SC23030324C7	Normal	0.1
592-602816	5/14/2024 17:37	Readings	PID	SC23030324C7	Normal	0.1
592-602816	5/14/2024 17:38	Readings	PID	SC23030324C7	Normal	0.2
592-602816	5/14/2024 17:39	Readings	PID	SC23030324C7	Normal	0.2
592-602816	5/14/2024 17:40	Readings	PID	SC23030324C7	Normal	0.1
592-602816	5/14/2024 17:41	Readings	PID	SC23030324C7	Normal	0.1
592-602816	5/14/2024 17:42	Readings	PID	SC23030324C7	Normal	1.1
592-602816	5/14/2024 17:43	Readings	PID	SC23030324C7	Normal	0.1
592-602816	5/14/2024 17:44	Readings	PID	SC23030324C7	Normal	0.1
592-602816	5/14/2024 17:45	Readings	PID	SC23030324C7	Normal	0.2
592-602816	5/14/2024 17:46	Readings	PID	SC23030324C7	Normal	0.2
592-602816	5/14/2024 17:47	Readings	PID	SC23030324C7	Normal	0.2

592-602816	5/14/2024 17:48	Readings	PID	SC23030324C7	Normal	0.2
592-602816	5/14/2024 17:49	Readings	PID	SC23030324C7	Normal	0.2
592-602816	5/14/2024 17:50	Readings	PID	SC23030324C7	Normal	0.1
592-602816	5/14/2024 17:51	Readings	PID	SC23030324C7	Normal	0.1
592-602816	5/14/2024 17:52	Readings	PID	SC23030324C7	Normal	0.1
592-602816	5/14/2024 17:53	Readings	PID	SC23030324C7	Normal	0.1
592-602816	5/14/2024 17:54	Readings	PID	SC23030324C7	Normal	3.4
592-602816	5/14/2024 17:55	Readings	PID	SC23030324C7	Normal	0.4
592-602816	5/14/2024 17:56	Readings	PID	SC23030324C7	Normal	0.1
592-602816	5/14/2024 17:57	Readings	PID	SC23030324C7	Normal	0.1
592-602816	5/14/2024 17:58	Readings	PID	SC23030324C7	Normal	0.1
592-602816	5/14/2024 17:59	Readings	PID	SC23030324C7	Normal	0.1
592-602816	5/14/2024 18:00	Readings	PID	SC23030324C7	Normal	0.1
592-602816	5/14/2024 18:01	Readings	PID	SC23030324C7	Normal	0.1
592-602816	5/14/2024 18:02	Readings	PID	SC23030324C7	Normal	0.1
592-602816	5/14/2024 18:03	Readings	PID	SC23030324C7	Normal	0.1
592-602816	5/14/2024 18:04	Readings	PID	SC23030324C7	Normal	0.1
592-602816	5/14/2024 18:05	Readings	PID	SC23030324C7	Normal	0.1
592-602816	5/14/2024 18:06	Readings	PID	SC23030324C7	Normal	0.1
592-602816	5/14/2024 18:07	Readings	PID	SC23030324C7	Normal	0.1
592-602816	5/14/2024 18:08	Readings	PID	SC23030324C7	Normal	0.1
592-602816	5/14/2024 18:09	Readings	PID	SC23030324C7	Normal	0.1
592-602816	5/14/2024 18:10	Readings	PID	SC23030324C7	Normal	0.1
592-602816	5/14/2024 18:11	Readings	PID	SC23030324C7	Normal	0.1
592-602816	5/14/2024 18:12	Readings	PID	SC23030324C7	Normal	0.1
592-602816	5/14/2024 18:13	Readings	PID	SC23030324C7	Normal	0.1
592-602816	5/14/2024 18:14	Readings	PID	SC23030324C7	Normal	0.1
592-602816	5/14/2024 18:15	Readings	PID	SC23030324C7	Normal	0.1
592-602816	5/14/2024 18:16	Readings	PID	SC23030324C7	Normal	0.1
592-602816	5/14/2024 18:17	Readings	PID	SC23030324C7	Normal	0.1
592-602816	5/14/2024 18:18	Readings	PID	SC23030324C7	Normal	0.1
592-602816	5/14/2024 18:19	Readings	PID	SC23030324C7	Normal	0.1
592-602816	5/14/2024 18:20	Readings	PID	SC23030324C7	Normal	0.1

Instrument Name	DustTrak DRX
Model Number	8533
Serial Number	8533181205
Firmware Version	3.1
Calibration Date	5/31/2023
Test Name	MANUAL_010
Test Start Time	6:52:44 AM
Test Start Date	5/14/2024
Test Length [D:H:M]	0:12:56
Test Interval [M:S]	1:00
PM1 Average [mg/m3]	0.014
PM1 Minimum [mg/m3]	0.008
PM1 Maximum [mg/m3]	0.04
PM1 TWA [mg/m3]	0.013
Photometric User Cal	1
Size Correction User Cal	1
Flow User Cal	0
Errors	
Number of Samples	776

Elapsed Time [s]	PM1 [mg/m3]	Alarms	Errors
6:53	0.016		
6:54	0.012		
6:55	0.012		
6:56	0.01		
6:57	0.011		
6:58	0.01		
6:59	0.012		
7:00	0.011		
7:01	0.011		
7:02	0.012		
7:03	0.012		
7:04	0.01		
7:05	0.01		
7:06	0.01		
7:07	0.01		
7:08	0.01		
7:09	0.01		
7:10	0.01		
7:11	0.009		
7:12	0.009		
7:13	0.009		
7:14	0.008		
7:15	0.009		

7:16	0.01
7:17	0.009
7:18	0.009
7:19	0.009
7:20	0.008
7:21	0.008
7:22	0.008
7:23	0.008
7:24	0.009
7:25	0.009
7:26	0.009
7:27	0.009
7:28	0.01
7:29	0.009
7:30	0.009
7:31	0.009
7:32	0.011
7:33	0.01
7:34	0.01
7:35	0.009
7:36	0.009
7:37	0.009
7:38	0.009
7:39	0.009
7:40	0.01
7:41	0.011
7:42	0.011
7:43	0.01
7:44	0.011
7:45	0.011
7:46	0.012
7:47	0.01
7:48	0.01
7:49	0.01
7:50	0.01
7:51	0.012
7:52	0.01
7:53	0.011
7:54	0.011
7:55	0.013
7:56	0.013
7:57	0.012
7:58	0.011
7:59	0.011

8:00	0.01
8:01	0.01
8:02	0.013
8:03	0.013
8:04	0.01
8:05	0.01
8:06	0.01
8:07	0.011
8:08	0.011
8:09	0.01
8:10	0.01
8:11	0.011
8:12	0.01
8:13	0.01
8:14	0.009
8:15	0.009
8:16	0.009
8:17	0.009
8:18	0.009
8:19	0.009
8:20	0.009
8:21	0.011
8:22	0.011
8:23	0.01
8:24	0.01
8:25	0.01
8:26	0.012
8:27	0.011
8:28	0.01
8:29	0.01
8:30	0.01
8:31	0.011
8:32	0.011
8:33	0.01
8:34	0.01
8:35	0.013
8:36	0.013
8:37	0.01
8:38	0.011
8:39	0.011
8:40	0.012
8:41	0.01
8:42	0.011
8:43	0.01

8:44	0.011
8:45	0.013
8:46	0.01
8:47	0.01
8:48	0.012
8:49	0.01
8:50	0.01
8:51	0.011
8:52	0.012
8:53	0.012
8:54	0.011
8:55	0.011
8:56	0.012
8:57	0.012
8:58	0.011
8:59	0.011
9:00	0.011
9:01	0.011
9:02	0.01
9:03	0.011
9:04	0.011
9:05	0.01
9:06	0.011
9:07	0.011
9:08	0.012
9:09	0.012
9:10	0.013
9:11	0.012
9:12	0.014
9:13	0.014
9:14	0.014
9:15	0.013
9:16	0.012
9:17	0.012
9:18	0.012
9:19	0.012
9:20	0.011
9:21	0.011
9:22	0.012
9:23	0.012
9:24	0.014
9:25	0.014
9:26	0.018
9:27	0.017

9:28	0.014
9:29	0.012
9:30	0.013
9:31	0.012
9:32	0.015
9:33	0.019
9:34	0.016
9:35	0.013
9:36	0.013
9:37	0.014
9:38	0.013
9:39	0.014
9:40	0.015
9:41	0.015
9:42	0.019
9:43	0.015
9:44	0.012
9:45	0.012
9:46	0.012
9:47	0.012
9:48	0.013
9:49	0.013
9:50	0.012
9:51	0.012
9:52	0.012
9:53	0.013
9:54	0.013
9:55	0.012
9:56	0.012
9:57	0.011
9:58	0.011
9:59	0.017
10:00	0.013
10:01	0.013
10:02	0.013
10:03	0.012
10:04	0.013
10:05	0.014
10:06	0.012
10:07	0.012
10:08	0.013
10:09	0.013
10:10	0.013
10:11	0.012

10:12	0.015
10:13	0.03
10:14	0.014
10:15	0.014
10:16	0.014
10:17	0.014
10:18	0.013
10:19	0.012
10:20	0.013
10:21	0.014
10:22	0.014
10:23	0.014
10:24	0.014
10:25	0.014
10:26	0.014
10:27	0.015
10:28	0.014
10:29	0.014
10:30	0.014
10:31	0.013
10:32	0.013
10:33	0.014
10:34	0.013
10:35	0.013
10:36	0.015
10:37	0.013
10:38	0.014
10:39	0.015
10:40	0.014
10:41	0.014
10:42	0.013
10:43	0.013
10:44	0.015
10:45	0.014
10:46	0.014
10:47	0.014
10:48	0.015
10:49	0.015
10:50	0.014
10:51	0.013
10:52	0.013
10:53	0.013
10:54	0.014
10:55	0.014

10:56	0.014
10:57	0.016
10:58	0.013
10:59	0.016
11:00	0.016
11:01	0.014
11:02	0.014
11:03	0.015
11:04	0.015
11:05	0.016
11:06	0.014
11:07	0.014
11:08	0.014
11:09	0.014
11:10	0.013
11:11	0.014
11:12	0.014
11:13	0.015
11:14	0.014
11:15	0.013
11:16	0.013
11:17	0.013
11:18	0.014
11:19	0.014
11:20	0.019
11:21	0.019
11:22	0.018
11:23	0.015
11:24	0.014
11:25	0.014
11:26	0.014
11:27	0.015
11:28	0.016
11:29	0.016
11:30	0.014
11:31	0.014
11:32	0.014
11:33	0.014
11:34	0.014
11:35	0.014
11:36	0.015
11:37	0.015
11:38	0.015
11:39	0.013

11:40	0.013
11:41	0.014
11:42	0.014
11:43	0.016
11:44	0.017
11:45	0.015
11:46	0.015
11:47	0.013
11:48	0.015
11:49	0.014
11:50	0.014
11:51	0.014
11:52	0.014
11:53	0.014
11:54	0.013
11:55	0.014
11:56	0.014
11:57	0.015
11:58	0.014
11:59	0.013
12:00	0.013
12:01	0.013
12:02	0.013
12:03	0.014
12:04	0.014
12:05	0.014
12:06	0.013
12:07	0.015
12:08	0.016
12:09	0.015
12:10	0.014
12:11	0.015
12:12	0.014
12:13	0.016
12:14	0.015
12:15	0.015
12:16	0.015
12:17	0.014
12:18	0.014
12:19	0.015
12:20	0.014
12:21	0.014
12:22	0.014
12:23	0.014

12:24	0.014
12:25	0.014
12:26	0.013
12:27	0.014
12:28	0.014
12:29	0.013
12:30	0.013
12:31	0.015
12:32	0.015
12:33	0.014
12:34	0.014
12:35	0.014
12:36	0.014
12:37	0.014
12:38	0.014
12:39	0.014
12:40	0.014
12:41	0.014
12:42	0.013
12:43	0.014
12:44	0.013
12:45	0.013
12:46	0.013
12:47	0.013
12:48	0.013
12:49	0.013
12:50	0.013
12:51	0.013
12:52	0.013
12:53	0.013
12:54	0.013
12:55	0.013
12:56	0.012
12:57	0.013
12:58	0.013
12:59	0.014
13:00	0.013
13:01	0.013
13:02	0.014
13:03	0.013
13:04	0.013
13:05	0.012
13:06	0.013
13:07	0.013

13:08	0.013
13:09	0.012
13:10	0.013
13:11	0.013
13:12	0.013
13:13	0.012
13:14	0.014
13:15	0.014
13:16	0.013
13:17	0.012
13:18	0.013
13:19	0.013
13:20	0.014
13:21	0.014
13:22	0.016
13:23	0.013
13:24	0.014
13:25	0.013
13:26	0.014
13:27	0.013
13:28	0.013
13:29	0.014
13:30	0.015
13:31	0.014
13:32	0.013
13:33	0.014
13:34	0.014
13:35	0.014
13:36	0.014
13:37	0.015
13:38	0.015
13:39	0.017
13:40	0.014
13:41	0.014
13:42	0.018
13:43	0.018
13:44	0.016
13:45	0.015
13:46	0.017
13:47	0.016
13:48	0.016
13:49	0.014
13:50	0.014
13:51	0.015

13:52	0.016
13:53	0.014
13:54	0.013
13:55	0.014
13:56	0.013
13:57	0.026
13:58	0.027
13:59	0.015
14:00	0.015
14:01	0.014
14:02	0.014
14:03	0.014
14:04	0.015
14:05	0.014
14:06	0.015
14:07	0.015
14:08	0.014
14:09	0.015
14:10	0.02
14:11	0.015
14:12	0.014
14:13	0.014
14:14	0.014
14:15	0.015
14:16	0.015
14:17	0.014
14:18	0.015
14:19	0.018
14:20	0.018
14:21	0.021
14:22	0.015
14:23	0.016
14:24	0.028
14:25	0.02
14:26	0.017
14:27	0.016
14:28	0.016
14:29	0.015
14:30	0.017
14:31	0.016
14:32	0.017
14:33	0.017
14:34	0.017
14:35	0.016

14:36	0.017
14:37	0.015
14:38	0.015
14:39	0.017
14:40	0.016
14:41	0.015
14:42	0.015
14:43	0.015
14:44	0.016
14:45	0.019
14:46	0.017
14:47	0.016
14:48	0.016
14:49	0.021
14:50	0.019
14:51	0.019
14:52	0.016
14:53	0.018
14:54	0.015
14:55	0.014
14:56	0.014
14:57	0.014
14:58	0.014
14:59	0.016
15:00	0.015
15:01	0.017
15:02	0.016
15:03	0.02
15:04	0.018
15:05	0.015
15:06	0.015
15:07	0.015
15:08	0.016
15:09	0.016
15:10	0.017
15:11	0.016
15:12	0.016
15:13	0.016
15:14	0.016
15:15	0.014
15:16	0.015
15:17	0.014
15:18	0.014
15:19	0.016

15:20	0.015
15:21	0.016
15:22	0.014
15:23	0.015
15:24	0.015
15:25	0.014
15:26	0.015
15:27	0.016
15:28	0.016
15:29	0.016
15:30	0.015
15:31	0.014
15:32	0.016
15:33	0.014
15:34	0.017
15:35	0.015
15:36	0.023
15:37	0.017
15:38	0.016
15:39	0.016
15:40	0.015
15:41	0.014
15:42	0.015
15:43	0.015
15:44	0.014
15:45	0.015
15:46	0.015
15:47	0.016
15:48	0.015
15:49	0.019
15:50	0.015
15:51	0.016
15:52	0.017
15:53	0.016
15:54	0.016
15:55	0.016
15:56	0.016
15:57	0.017
15:58	0.017
15:59	0.017
16:00	0.017
16:01	0.017
16:02	0.019
16:03	0.018

16:04	0.017
16:05	0.016
16:06	0.017
16:07	0.017
16:08	0.016
16:09	0.018
16:10	0.017
16:11	0.017
16:12	0.017
16:13	0.017
16:14	0.018
16:15	0.024
16:16	0.023
16:17	0.017
16:18	0.016
16:19	0.017
16:20	0.017
16:21	0.021
16:22	0.018
16:23	0.016
16:24	0.017
16:25	0.016
16:26	0.016
16:27	0.017
16:28	0.016
16:29	0.016
16:30	0.016
16:31	0.017
16:32	0.017
16:33	0.019
16:34	0.018
16:35	0.017
16:36	0.017
16:37	0.023
16:38	0.019
16:39	0.018
16:40	0.016
16:41	0.017
16:42	0.017
16:43	0.016
16:44	0.016
16:45	0.015
16:46	0.016
16:47	0.015

16:48	0.015
16:49	0.016
16:50	0.017
16:51	0.017
16:52	0.021
16:53	0.021
16:54	0.02
16:55	0.018
16:56	0.019
16:57	0.02
16:58	0.018
16:59	0.019
17:00	0.018
17:01	0.018
17:02	0.015
17:03	0.014
17:04	0.014
17:05	0.014
17:06	0.014
17:07	0.017
17:08	0.015
17:09	0.014
17:10	0.016
17:11	0.016
17:12	0.015
17:13	0.015
17:14	0.015
17:15	0.012
17:16	0.012
17:17	0.019
17:18	0.012
17:19	0.012
17:20	0.014
17:21	0.013
17:22	0.014
17:23	0.014
17:24	0.013
17:25	0.015
17:26	0.014
17:27	0.024
17:28	0.014
17:29	0.013
17:30	0.013
17:31	0.014

17:32	0.014
17:33	0.013
17:34	0.021
17:35	0.016
17:36	0.013
17:37	0.013
17:38	0.013
17:39	0.013
17:40	0.014
17:41	0.013
17:42	0.013
17:43	0.013
17:44	0.014
17:45	0.013
17:46	0.013
17:47	0.013
17:48	0.013
17:49	0.013
17:50	0.013
17:51	0.012
17:52	0.012
17:53	0.012
17:54	0.012
17:55	0.012
17:56	0.013
17:57	0.012
17:58	0.013
17:59	0.012
18:00	0.012
18:01	0.011
18:02	0.012
18:03	0.012
18:04	0.012
18:05	0.012
18:06	0.012
18:07	0.011
18:08	0.012
18:09	0.013
18:10	0.012
18:11	0.012
18:12	0.012
18:13	0.012
18:14	0.014
18:15	0.012

18:16	0.012
18:17	0.021
18:18	0.013
18:19	0.011
18:20	0.011
18:21	0.012
18:22	0.012
18:23	0.012
18:24	0.011
18:25	0.012
18:26	0.011
18:27	0.012
18:28	0.012
18:29	0.012
18:30	0.012
18:31	0.013
18:32	0.013
18:33	0.011
18:34	0.011
18:35	0.012
18:36	0.012
18:37	0.012
18:38	0.011
18:39	0.012
18:40	0.012
18:41	0.011
18:42	0.012
18:43	0.011
18:44	0.012
18:45	0.013
18:46	0.012
18:47	0.012
18:48	0.012
18:49	0.012
18:50	0.012
18:51	0.012
18:52	0.014
18:53	0.016
18:54	0.012
18:55	0.012
18:56	0.011
18:57	0.012
18:58	0.012
18:59	0.012

19:00	0.012
19:01	0.011
19:02	0.01
19:03	0.011
19:04	0.012
19:05	0.012
19:06	0.012
19:07	0.012
19:08	0.012
19:09	0.012
19:10	0.011
19:11	0.012
19:12	0.012
19:13	0.012
19:14	0.012
19:15	0.012
19:16	0.012
19:17	0.015
19:18	0.018
19:19	0.012
19:20	0.027
19:21	0.04
19:22	0.017
19:23	0.012
19:24	0.012
19:25	0.012
19:26	0.011
19:27	0.012
19:28	0.011
19:29	0.011
19:30	0.012
19:31	0.012
19:32	0.011
19:33	0.011
19:34	0.011
19:35	0.011
19:36	0.01
19:37	0.011
19:38	0.011
19:39	0.011
19:40	0.011
19:41	0.011
19:42	0.011
19:43	0.012

19:44	0.011
19:45	0.011
19:46	0.011
19:47	0.011
19:48	0.011

Device Serial No	Log Time	Log Type	Sensor 1 Type	Sensor 1 Serial Number	Sensor 1 Status	Sensor 1 Gas Reading
592-600871	5/14/2024 6:54	CONFIG	PID	SC23030408A8		
592-600871	5/14/2024 6:55	Readings	PID	SC23030408A8	Normal	0
592-600871	5/14/2024 6:56	Readings	PID	SC23030408A8	Normal	0
592-600871	5/14/2024 6:57	Readings	PID	SC23030408A8	Normal	0
592-600871	5/14/2024 6:58	Readings	PID	SC23030408A8	Normal	0
592-600871	5/14/2024 6:59	Readings	PID	SC23030408A8	Normal	0
592-600871	5/14/2024 7:00	Readings	PID	SC23030408A8	Normal	0
592-600871	5/14/2024 7:01	Readings	PID	SC23030408A8	Normal	0
592-600871	5/14/2024 7:02	Readings	PID	SC23030408A8	Normal	0
592-600871	5/14/2024 7:03	Readings	PID	SC23030408A8	Normal	0
592-600871	5/14/2024 7:04	Readings	PID	SC23030408A8	Normal	0
592-600871	5/14/2024 7:05	Readings	PID	SC23030408A8	Normal	0
592-600871	5/14/2024 7:06	Readings	PID	SC23030408A8	Normal	0
592-600871	5/14/2024 7:07	Readings	PID	SC23030408A8	Normal	0
592-600871	5/14/2024 7:08	Readings	PID	SC23030408A8	Normal	0
592-600871	5/14/2024 7:09	Readings	PID	SC23030408A8	Normal	0
592-600871	5/14/2024 7:10	Readings	PID	SC23030408A8	Normal	0
592-600871	5/14/2024 7:11	Readings	PID	SC23030408A8	Normal	0
592-600871	5/14/2024 7:12	Readings	PID	SC23030408A8	Normal	0
592-600871	5/14/2024 7:13	Readings	PID	SC23030408A8	Normal	0
592-600871	5/14/2024 7:14	Readings	PID	SC23030408A8	Normal	0
592-600871	5/14/2024 7:15	Readings	PID	SC23030408A8	Normal	0
592-600871	5/14/2024 7:16	Readings	PID	SC23030408A8	Normal	0
592-600871	5/14/2024 7:17	Readings	PID	SC23030408A8	Normal	0
592-600871	5/14/2024 7:18	Readings	PID	SC23030408A8	Normal	0
592-600871	5/14/2024 7:19	Readings	PID	SC23030408A8	Normal	0
592-600871	5/14/2024 7:20	Readings	PID	SC23030408A8	Normal	0
592-600871	5/14/2024 7:21	Readings	PID	SC23030408A8	Normal	0
592-600871	5/14/2024 7:22	Readings	PID	SC23030408A8	Normal	0
592-600871	5/14/2024 7:23	Readings	PID	SC23030408A8	Normal	0
592-600871	5/14/2024 7:24	Readings	PID	SC23030408A8	Normal	0
592-600871	5/14/2024 7:25	Readings	PID	SC23030408A8	Normal	0

592-600871	5/14/2024 9:38	Readings	PID	SC23030408A8	Normal	0
592-600871	5/14/2024 9:39	Readings	PID	SC23030408A8	Normal	0
592-600871	5/14/2024 9:40	Readings	PID	SC23030408A8	Normal	0
592-600871	5/14/2024 9:41	Readings	PID	SC23030408A8	Normal	0
592-600871	5/14/2024 9:42	Readings	PID	SC23030408A8	Normal	0
592-600871	5/14/2024 9:43	Readings	PID	SC23030408A8	Normal	0
592-600871	5/14/2024 9:44	Readings	PID	SC23030408A8	Normal	0
592-600871	5/14/2024 9:45	Readings	PID	SC23030408A8	Normal	0
592-600871	5/14/2024 9:46	Readings	PID	SC23030408A8	Normal	0
592-600871	5/14/2024 9:47	Readings	PID	SC23030408A8	Normal	0
592-600871	5/14/2024 9:48	Readings	PID	SC23030408A8	Normal	0
592-600871	5/14/2024 9:49	Readings	PID	SC23030408A8	Normal	0
592-600871	5/14/2024 9:50	Readings	PID	SC23030408A8	Normal	0
592-600871	5/14/2024 9:51	Readings	PID	SC23030408A8	Normal	0
592-600871	5/14/2024 9:52	Readings	PID	SC23030408A8	Normal	0
592-600871	5/14/2024 9:53	Readings	PID	SC23030408A8	Normal	0
592-600871	5/14/2024 9:54	Readings	PID	SC23030408A8	Normal	0
592-600871	5/14/2024 9:55	Readings	PID	SC23030408A8	Normal	0
592-600871	5/14/2024 9:56	Readings	PID	SC23030408A8	Normal	0
592-600871	5/14/2024 9:57	Readings	PID	SC23030408A8	Normal	0
592-600871	5/14/2024 9:58	Readings	PID	SC23030408A8	Normal	0
592-600871	5/14/2024 9:59	Readings	PID	SC23030408A8	Normal	0
592-600871	5/14/2024 10:00	Readings	PID	SC23030408A8	Normal	0
592-600871	5/14/2024 10:01	Readings	PID	SC23030408A8	Normal	0
592-600871	5/14/2024 10:02	Readings	PID	SC23030408A8	Normal	0
592-600871	5/14/2024 10:03	Readings	PID	SC23030408A8	Normal	0
592-600871	5/14/2024 10:04	Readings	PID	SC23030408A8	Normal	0
592-600871	5/14/2024 10:05	Readings	PID	SC23030408A8	Normal	0
592-600871	5/14/2024 10:06	Readings	PID	SC23030408A8	Normal	0
592-600871	5/14/2024 10:07	Readings	PID	SC23030408A8	Normal	0
592-600871	5/14/2024 10:08	Readings	PID	SC23030408A8	Normal	0
592-600871	5/14/2024 10:09	Readings	PID	SC23030408A8	Normal	0
592-600871	5/14/2024 10:10	Readings	PID	SC23030408A8	Normal	0

592-600871	5/14/2024 19:32	Readings	PID	SC23030408A8	Normal	0
592-600871	5/14/2024 19:33	Readings	PID	SC23030408A8	Normal	0
592-600871	5/14/2024 19:34	Readings	PID	SC23030408A8	Normal	0
592-600871	5/14/2024 19:35	Readings	PID	SC23030408A8	Normal	0
592-600871	5/14/2024 19:36	Readings	PID	SC23030408A8	Normal	0
592-600871	5/14/2024 19:37	Readings	PID	SC23030408A8	Normal	0
592-600871	5/14/2024 19:38	Readings	PID	SC23030408A8	Normal	0
592-600871	5/14/2024 19:39	Readings	PID	SC23030408A8	Normal	0.1
592-600871	5/14/2024 19:40	Readings	PID	SC23030408A8	Normal	0.7
592-600871	5/14/2024 19:41	Readings	PID	SC23030408A8	Normal	0
592-600871	5/14/2024 19:42	Readings	PID	SC23030408A8	Normal	0
592-600871	5/14/2024 19:43	Readings	PID	SC23030408A8	Normal	0
592-600871	5/14/2024 19:44	Readings	PID	SC23030408A8	Normal	0
592-600871	5/14/2024 19:45	Readings	PID	SC23030408A8	Normal	0
592-600871	5/14/2024 19:46	Readings	PID	SC23030408A8	Normal	0
592-600871	5/14/2024 19:47	Readings	PID	SC23030408A8	Normal	0
592-600871	5/14/2024 19:48	Readings	PID	SC23030408A8	Normal	0
592-600871	5/14/2024 19:49	Readings	PID	SC23030408A8	Normal	0
592-600871	5/14/2024 19:50	Readings	PID	SC23030408A8	Normal	0
592-600871	5/14/2024 19:51	Readings	PID	SC23030408A8	Normal	0
592-600871	5/14/2024 19:52	Readings	PID	SC23030408A8	Normal	0
592-600871	5/14/2024 19:53	Readings	PID	SC23030408A8	Normal	0
592-600871	5/14/2024 19:54	Readings	PID	SC23030408A8	Normal	0
592-600871	5/14/2024 19:55	Readings	PID	SC23030408A8	Normal	0
592-600871	5/14/2024 19:56	Readings	PID	SC23030408A8	Normal	0
592-600871	5/14/2024 19:57	Readings	PID	SC23030408A8	Normal	0
592-600871	5/14/2024 19:58	Readings	PID	SC23030408A8	Normal	0
592-600871	5/14/2024 19:59	Readings	PID	SC23030408A8	Normal	0
592-600871	5/14/2024 20:00	Readings	PID	SC23030408A8	Normal	0
592-600871	5/14/2024 20:01	Readings	PID	SC23030408A8	Normal	0
592-600871	5/14/2024 20:02	Readings	PID	SC23030408A8	Normal	0
592-600871	5/14/2024 20:03	Readings	PID	SC23030408A8	Normal	0
592-600871	5/14/2024 20:04	Readings	PID	SC23030408A8	Normal	0

592-600871	5/14/2024 20:05 Readings	PID	SC23030408A8	Normal	0
592-600871	5/14/2024 20:06 Readings	PID	SC23030408A8	Normal	0
592-600871	5/14/2024 20:07 Readings	PID	SC23030408A8	Normal	0