



DAILY STATUS REPORT

Prepared By:

Ryan Just

WEATHER	Snow	Rain	Overcast	X	Partly Cloudy	X	Bright Sun	Wind
TEMP.	< 32	32-50	50-70	X	70-85	X	>85	WNW – 7 MPH

IEC Project No:	13928	NYSDEC BCP Site No:	C224367	Date: 06/10/24
Project:	251 Douglass Street, Brooklyn, NY			

<p>Consultant: Impact Environmental Engineering and Geology, PLLC (IEEG)</p> <p>Time On: 06:35 Time Out: 19:30</p>	<p>Personnel On Site: IEEG (Environmental) – Ryan Just Broadway Construction Group - Tom Caporale Cascade GES MTL WSP - Charlie Lambert</p> <p>Equipment On Site: Minirae 3000 PID, DustTrak II</p>
---	---

Scope of Work: ISS column installation.

Site Activities:

- Deploy three (3) CAMPs at the Start of the work day;
- Cascade received two (2) deliveries of slag;
- GES was onsite to oversee structural integrity corings; and
- Cascade drilled **Column 488**, column spec below:
 - The column 8’ diameter and drilled 36’ deep from Site grade;
 - The column consisted of a total of 14 batches;
- Cascade drilled **Column 516**, column spec below:
 - The column 8’ diameter and drilled 36’ deep from Site grade;
 - The column consisted of a total of 14 batches;
- Cascade drilled **Column 533**, column spec below:
 - The column 8’ diameter and drilled 36’ deep from Site grade;
 - The column consisted of a total of 15 batches;
- Cascade drilled **Column 550**, column spec below:
 - The column 8’ diameter and drilled 36’ deep from Site grade;
 - The column consisted of a total of 17 batches;
- Cascade drilled **Column 643**, column spec below:
 - The column 8’ diameter and drilled 36’ deep from Site grade;
 - The column consisted of a total of 31 batches;

Community Air Monitoring Program (CAMP) - CAMP action level for dust (0.1 mg/m³) and VOCs (5 ppm)

- PID remained at nominal levels throughout the day
- No sustained dust exceedances were observed over a 1-min period during monitoring;
- Startup Upwind Conditions – PID = 0.2 ppm @ 06:44, Dust = 0.016 mg/m³ @ 06:48
- High Conditions (Upwind) – PID = 0.9 ppm @ 06:48, Dust = 0.046 mg/m³ @ 09:35
- High Conditions (Downwind 1) – PID = 0.8 ppm @ 16:43, Dust = 0.283 mg/m³ @ 14:53
- High Conditions (Downwind 2) – PID = 0.0 ppm, Dust = 0.095 mg/m³ @ 08:27

Notable Site Conditions:

- Strong odors originating from adjacent site to the west along Nevins Street were detected from approximately 06:40 to 08:00.

Planned for the Next Day/Week:

- Continuation of installing ISS columns;
- Trucking of swell material on Tuesday (6/11); and
- GES will be onsite Tuesday (6/11) to continue drilling for structural integrity.



PHOTO LOG

251 DOUGLASS STREET, BROOKLYN, NY



Photo 1-
Representative
photo of a slag
delivery.



Photo 2-
Representative
photo of GES
grouting a coring
location.



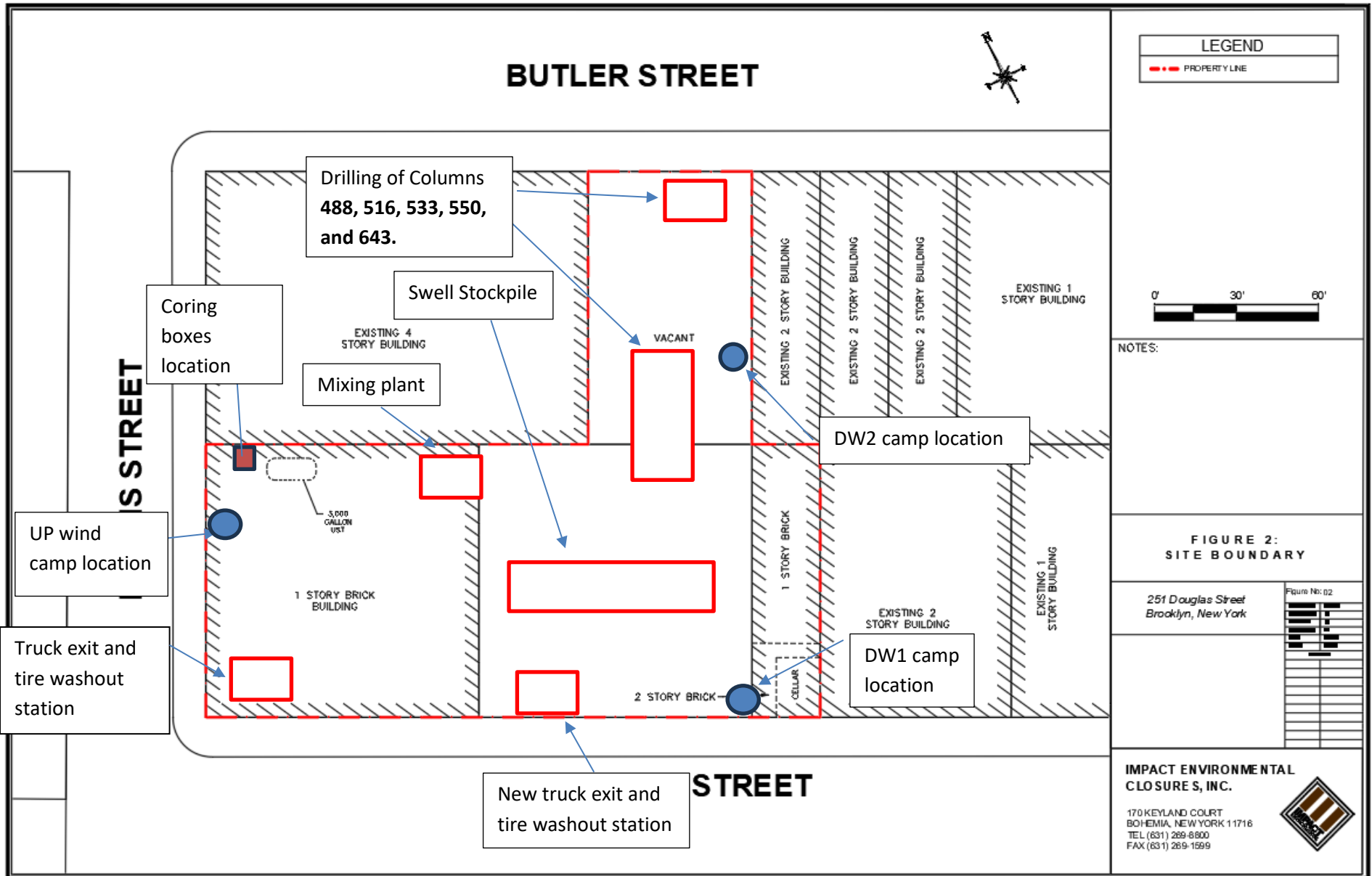
Photo 3-
Representative
photo of ISS
column
installation.



SITE PLANS

251 DOUGLASS STREET, BROOKLYN, NY





LEGEND
 --- PROPERTY LINE

NOTES:

**FIGURE 2:
 SITE BOUNDARY**

251 Douglas Street
 Brooklyn, New York

Figure No: 02

**IMPACT ENVIRONMENTAL
 CLOSURE S, INC.**

170 KEYLAND COURT
 BOHEMIA, NEW YORK 11716
 TEL (631) 269-8800
 FAX (631) 269-1599



BUTLER STREET

Legend Extension

- : ISS column installed to terminal depth
- : ISS column unable to be installed to terminal depth
- : Wet mix sample collected from ISS column
- : ISS pilot test column
- : ISS column installed to 51' below site grade
- ▲ : Coring location

LEGEND

- - - PROPERTY LINE
- 1500 SFT GRID
- EIGHT FOOT DIA. HYDRAULIC COLUMN (TYP.)
- EIGHT FOOT DIA. INNER COLUMN (TYP.)
- SIX FOOT DIA. COLUMN (TYP.)

**Drilling of Columns
488, 516, 533, 550,
and 643 completed
on 06/10/2024.**

PROJECT



NOTES:
1. THE BASE MAP WAS DRAWN FROM A PLAN ENTITLED, ALTA/NSPS LAND TITLE SURVEY, PREPARED BY PERFECT POINT LAND SURVEYING OF BROOKLYN, NY AND WAS RECEIVED ELECTRONICALLY ON APRIL 2023 WITH AN ORIGINAL SCALE: 1" = 20'.

NEVINS STREET

EXISTING 2 STORY BUILDING

QA/QC CORE GRID PLAN

251 Douglass Street
Brooklyn, New York

Figure No: 04

PROJECT NO.	1808-01
DESIGNED BY	JM
DRAWN BY	JM
CHECKED BY	JFM/K
DATE	02/27/23
SCALE	1" = 20'
REVISIONS	

IMPACT ENVIRONMENTAL

170 KEYLAND COURT
BOHEMIA, NEW YORK 11716
TEL (631) 269-8800
FAX (631) 269-1599



DOUGLASS STREET

SCM Report

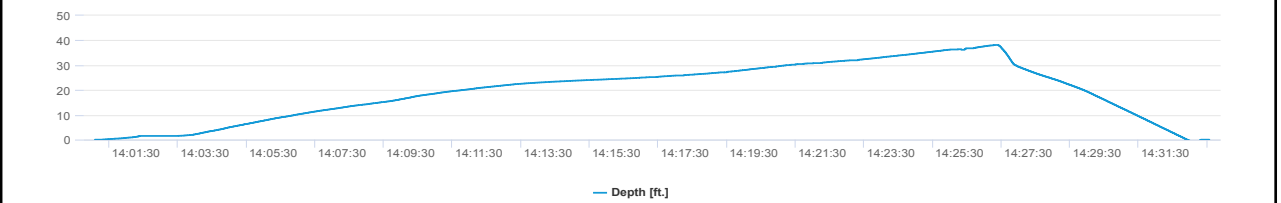
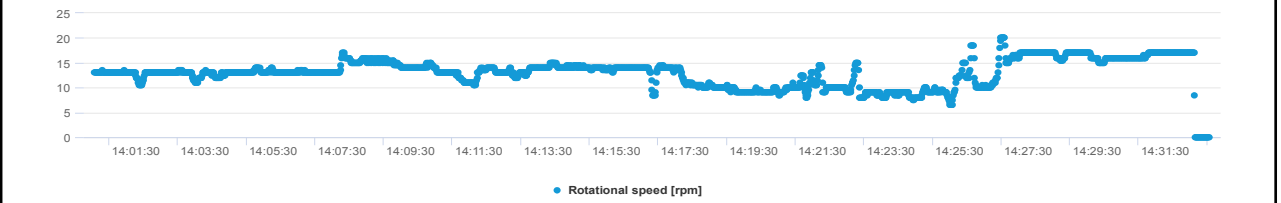
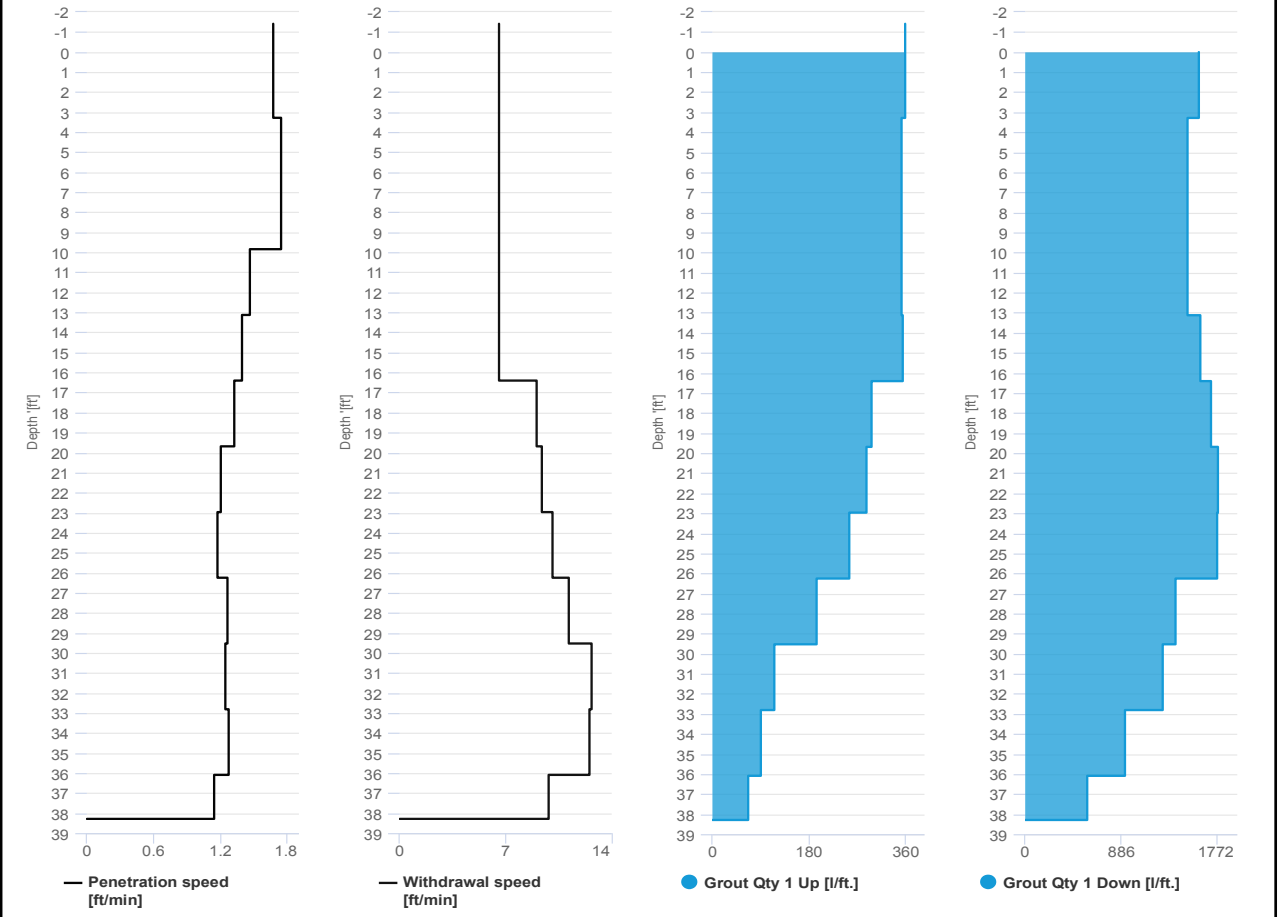


Project name: Douglass Street BCG ISS Element name: 488a
Project number

Start date: 06/10/2024

Drilling rig: BG36H_5717

Details		Start time	02:01 PM
Max. depth	38.28 ft.	End Date	06/10/2024
Volume/m 1	17.65 ft ³	End time	02:33 PM
		Production duration	00:32:30
		Final depth time	02:27 PM
		Total suspension quantity	204.083 ft ³



SCM Report

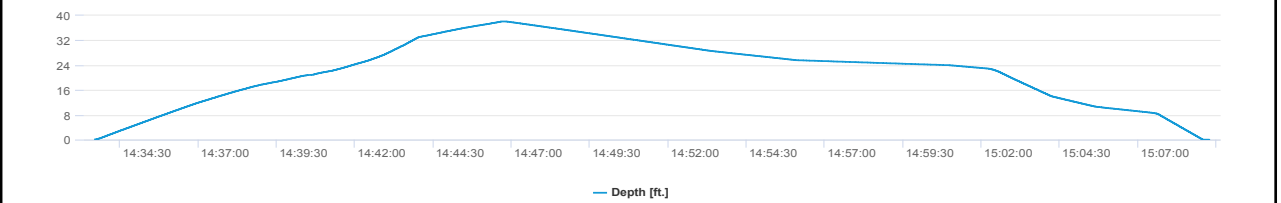
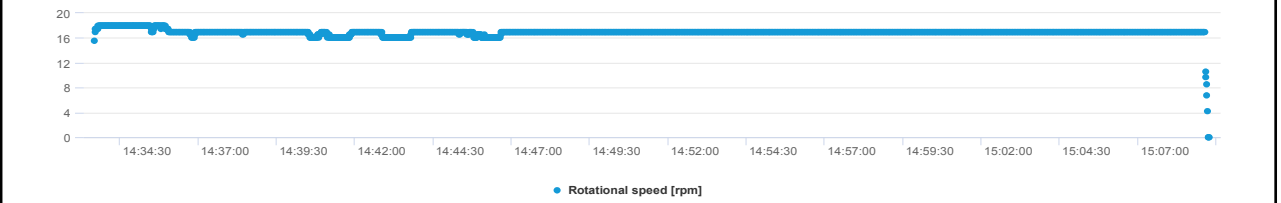
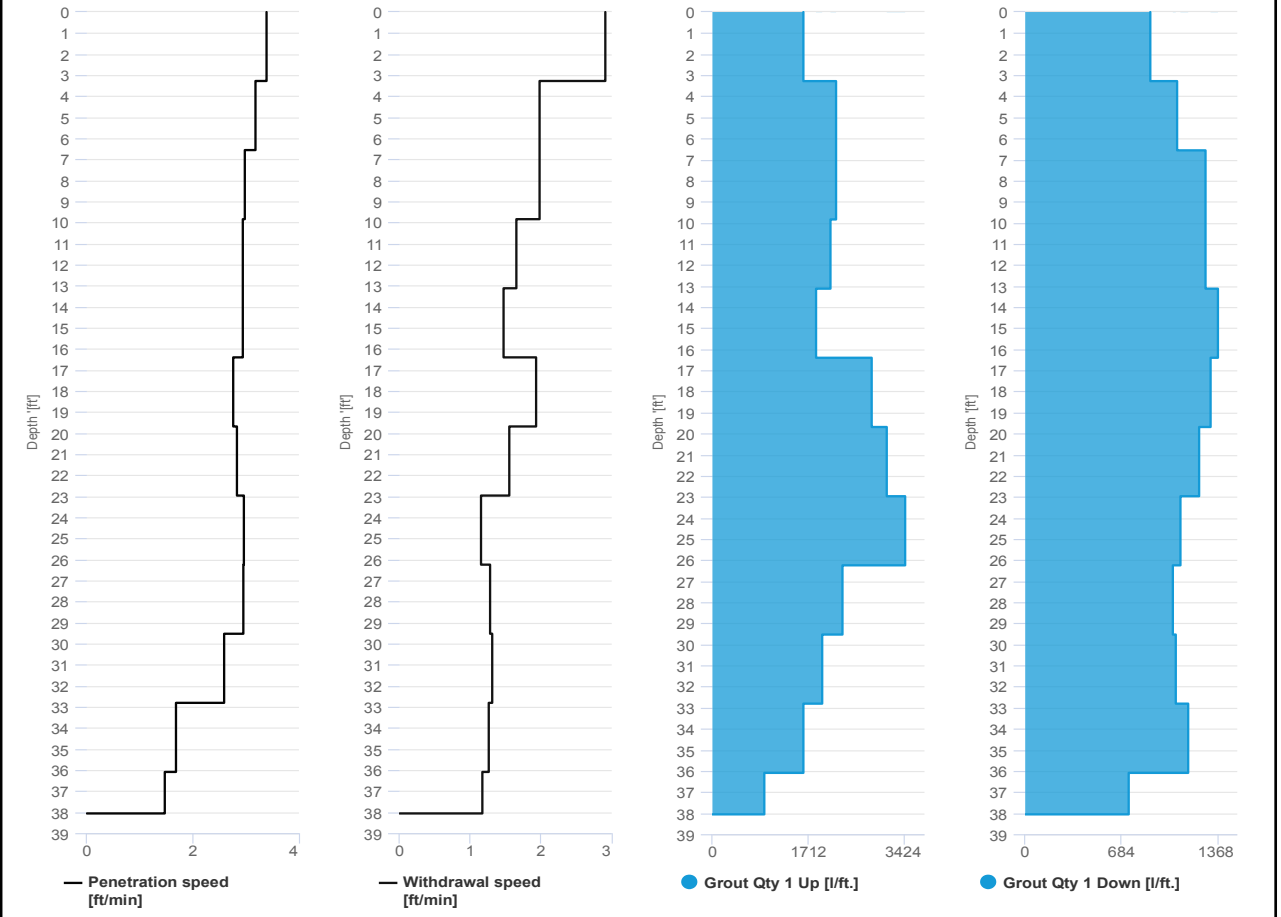


Project name: Douglass Street BCG ISS Element name: 488b
Project number

Start date: 06/10/2024

Drilling rig: BG36H_5717

Details		Start time: 02:33 PM	
Max. depth: 38 ft.		End Date: 06/10/2024	
Volume/m 1: 31.07 ft³		End time: 03:09 PM	
		Production duration: 00:35:36	
		Final depth time: 02:46 PM	
		Total suspension quantity: 361.022 ft³	



SCM Report

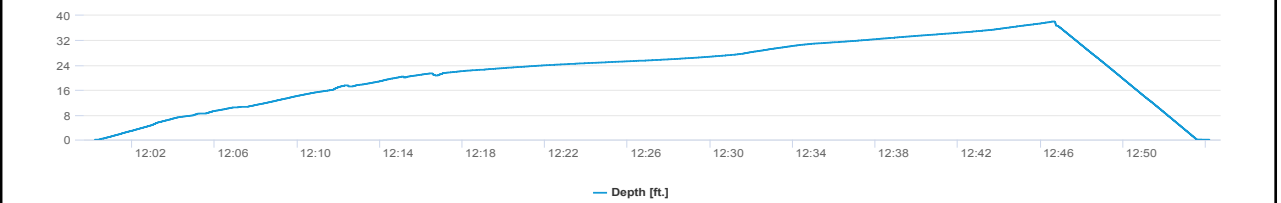
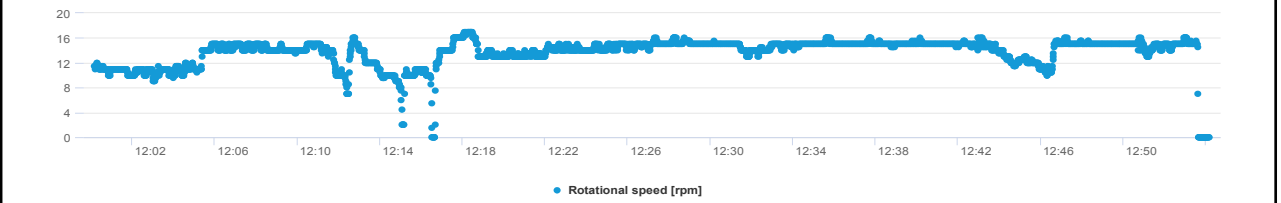
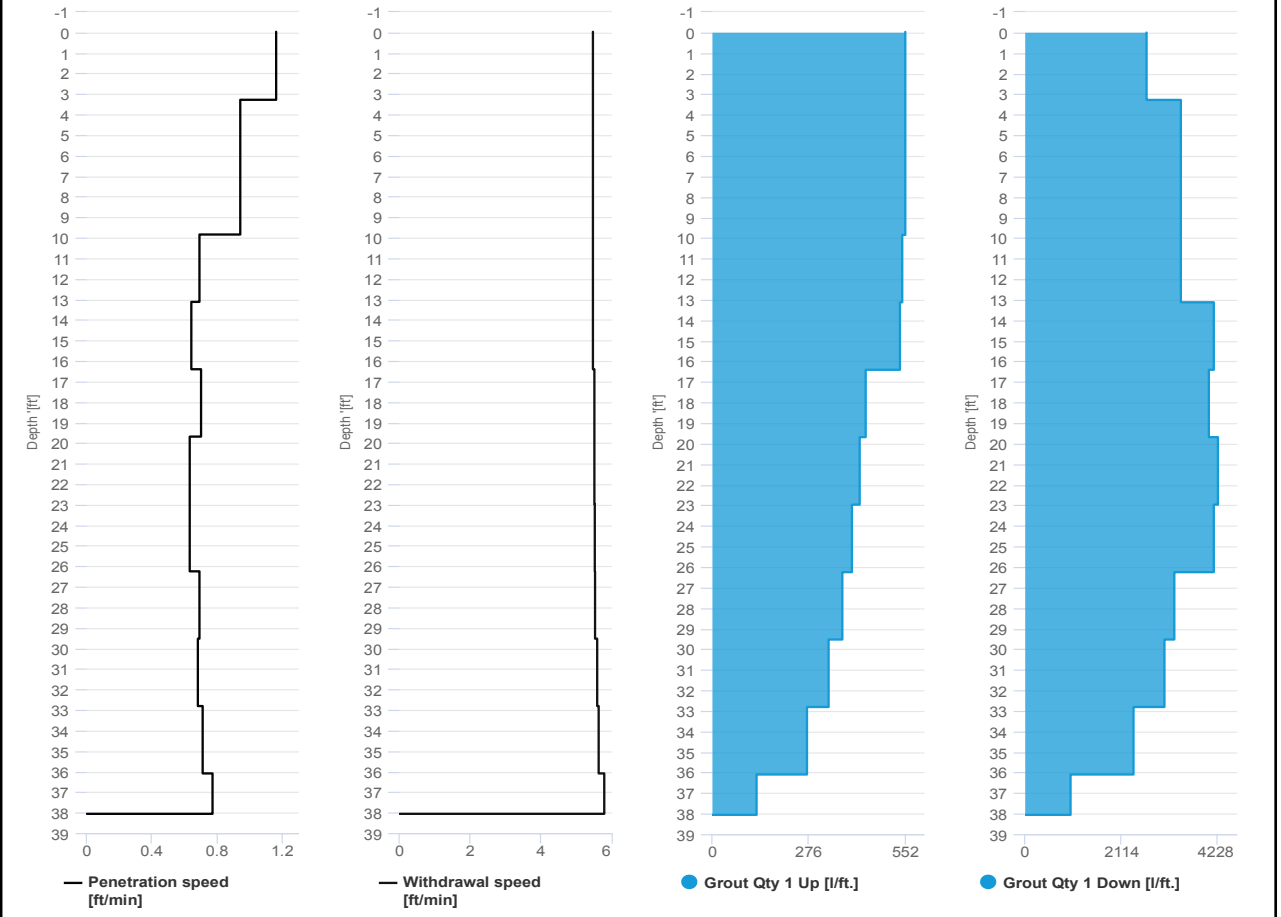


Project name: Douglass Street BCG ISS Element name: 516a
Project number

Start date: 06/10/2024

Drilling rig: BG36H_5717

Details		Start time: 12:00 PM	
Max. depth: 38 ft.		End Date: 06/10/2024	
Volume/m 1: 34.6 ft³		End time: 12:54 PM	
		Production duration: 00:54:00	
		Final depth time: 12:46 PM	
		Total suspension quantity: 399.868 ft³	



SCM Report

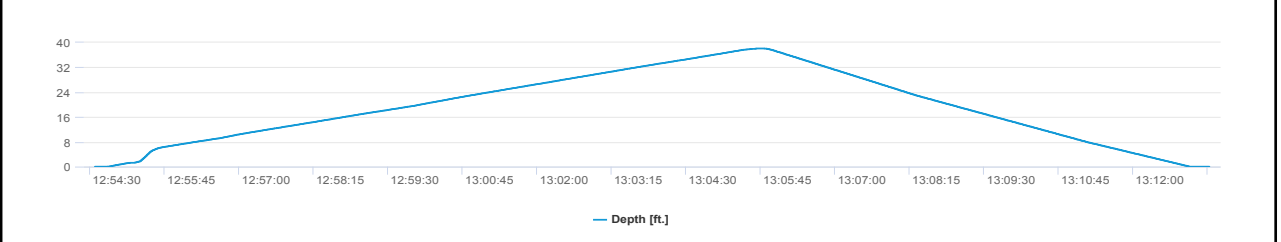
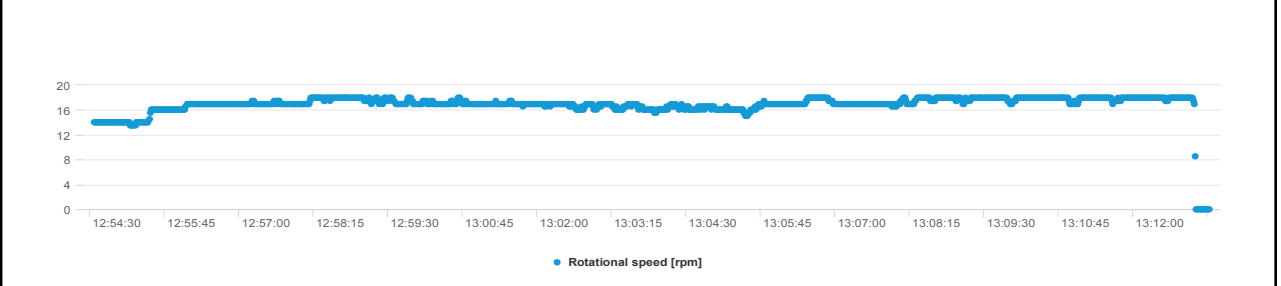
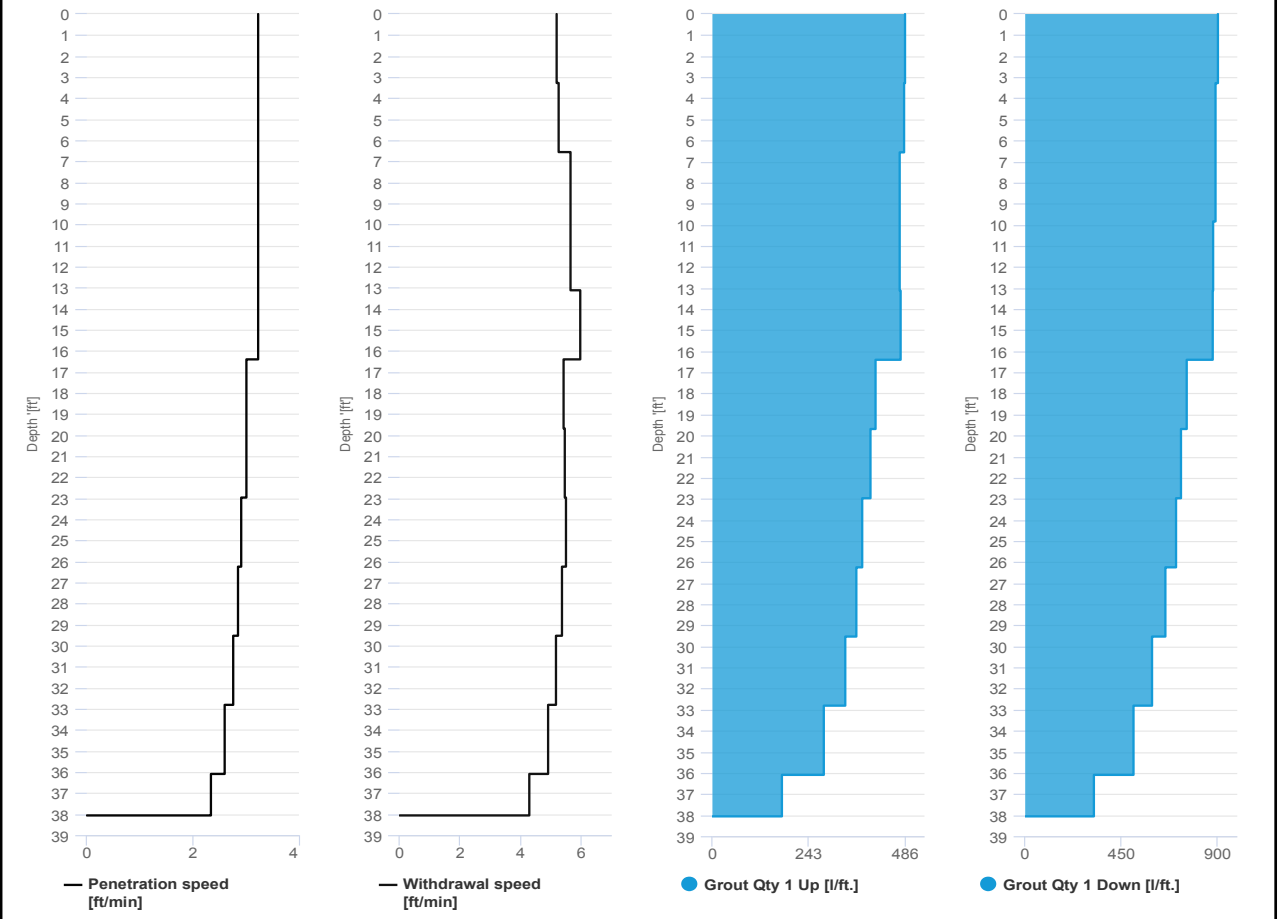


Project name: Douglass Street BCG ISS Element name: 516b
Project number

Start date: 06/10/2024

Drilling rig: BG36H_5717

Details		Start time: 12:54 PM	
Max. depth: 38 ft.		End Date: 06/10/2024	
Volume/m 1: 11.3 ft³		End time: 01:13 PM	
		Production duration: 00:18:43	
		Final depth time: 01:05 PM	
		Total suspension quantity: 131.935 ft³	



SCM Report

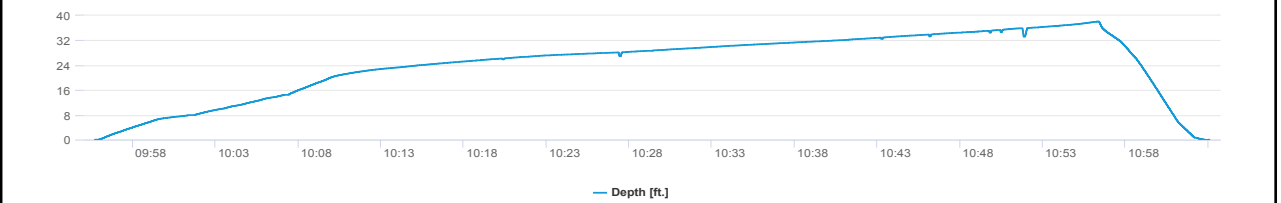
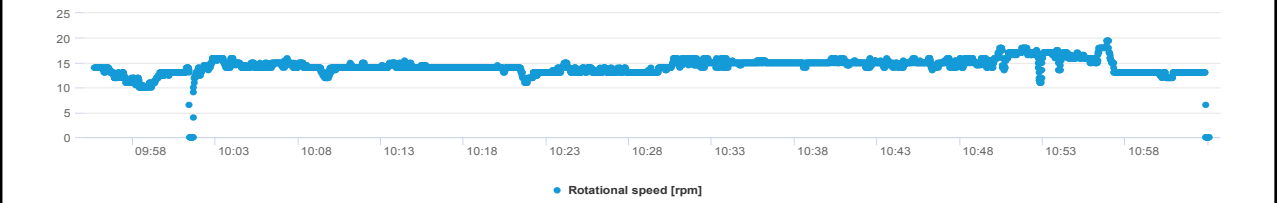
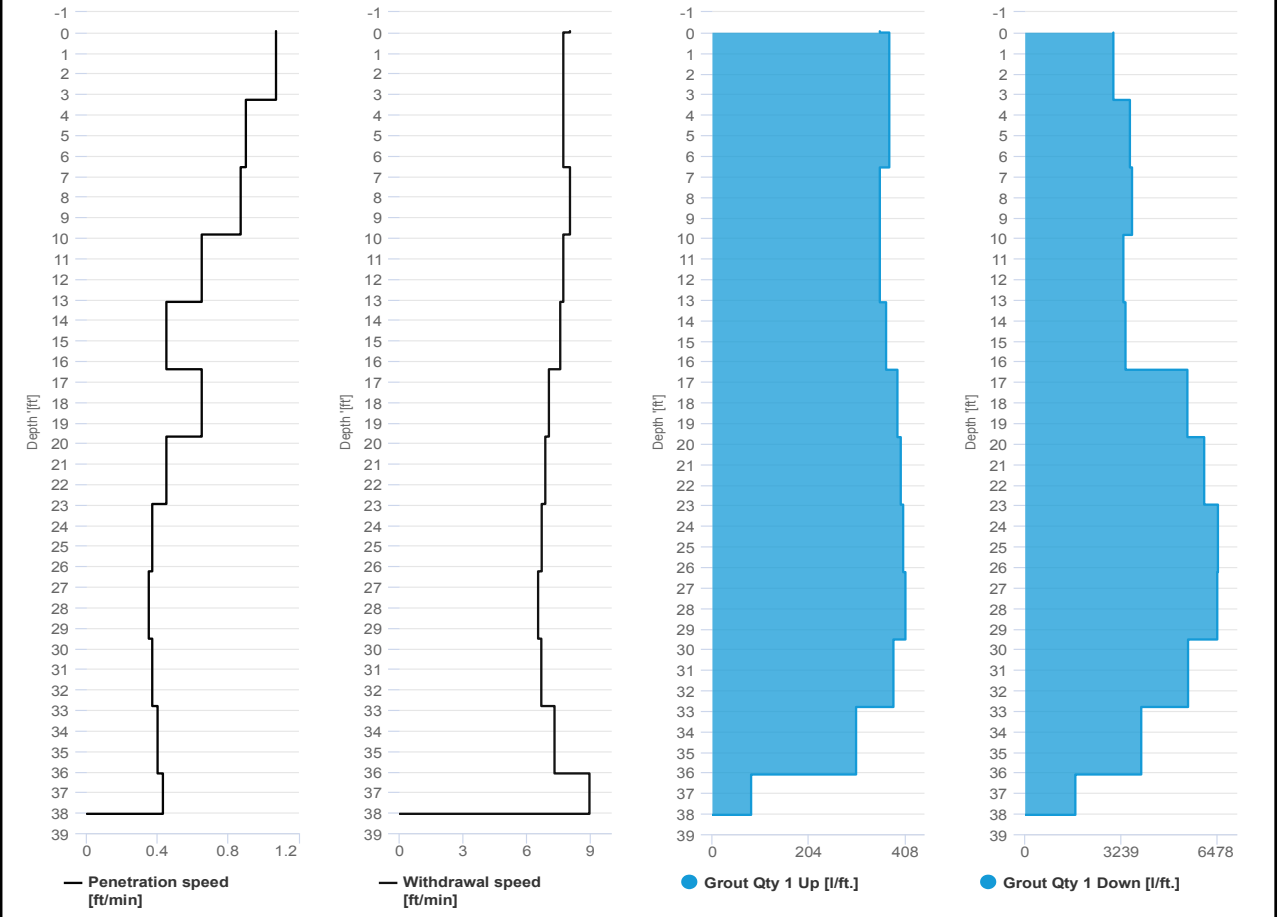


Project name: Douglass Street BCG ISS Element name: 533a
Project number

Start date: 06/10/2024

Drilling rig: BG36H_5717

Details		Start time: 09:55 AM	
Max. depth: 38 ft.		End Date: 06/10/2024	
Volume/m 1: 43.43 ft³		End time: 11:03 AM	
		Production duration: 01:07:23	
		Final depth time: 10:56 AM	
		Total suspension quantity: 502.52 ft³	



SCM Report

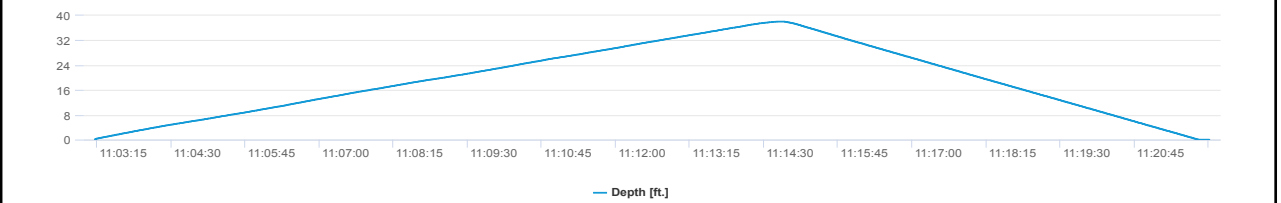
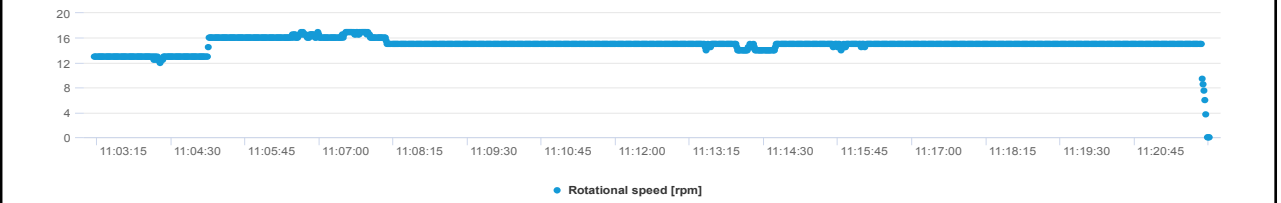
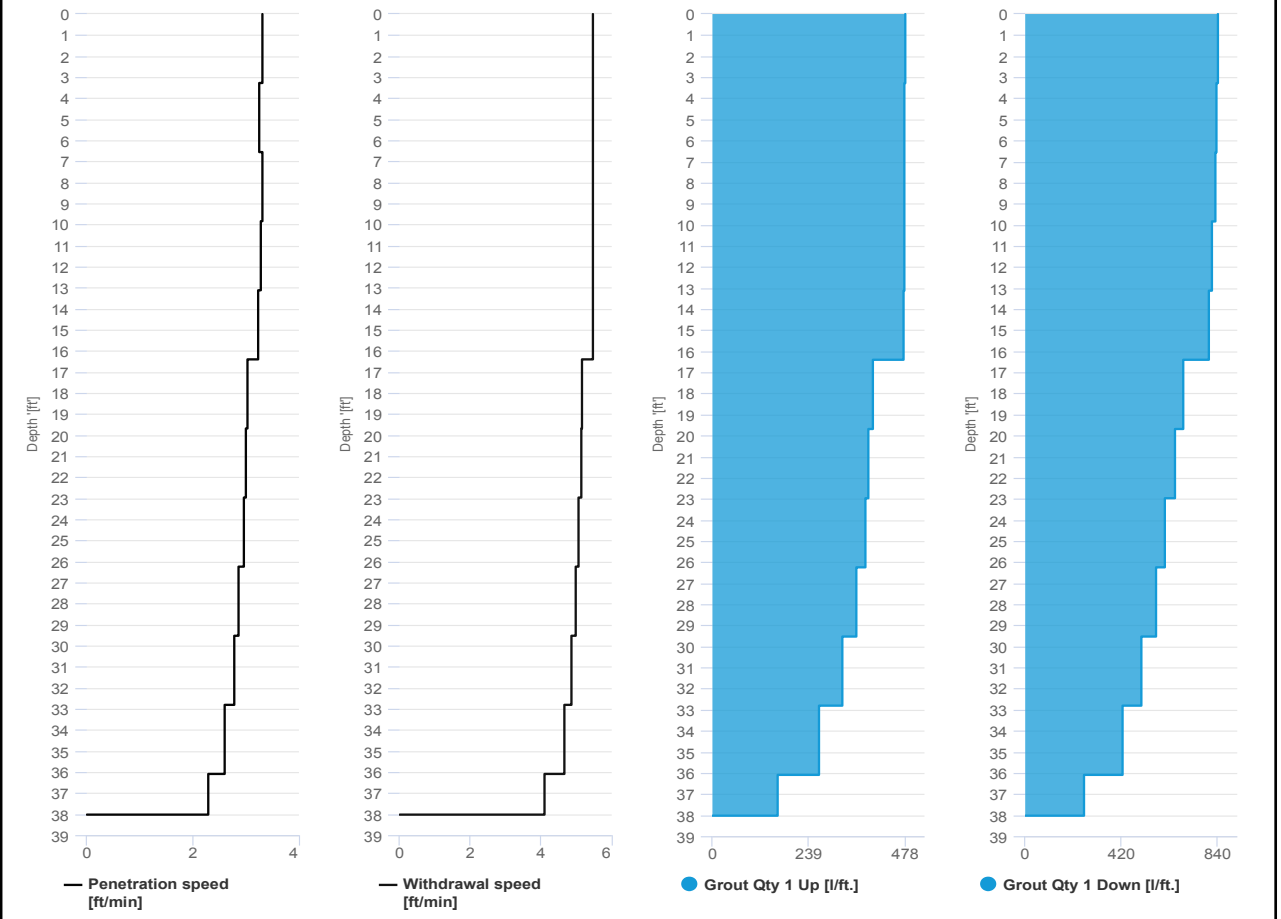


Project name: Douglass Street BCG ISS Element name: 533b
 Project number

Start date: 06/10/2024

Drilling rig: BG36H_5717

Details		Start time: 11:03 AM	
Max. depth: 38.02 ft.		End Date: 06/10/2024	
Volume/m 1: 10.94 ft³		End time: 11:22 AM	
		Production duration: 00:18:49	
		Final depth time: 11:14 AM	
		Total suspension quantity: 126.002 ft³	



SCM Report

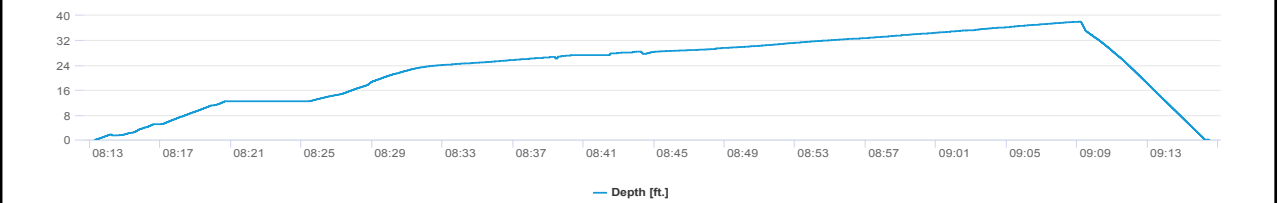
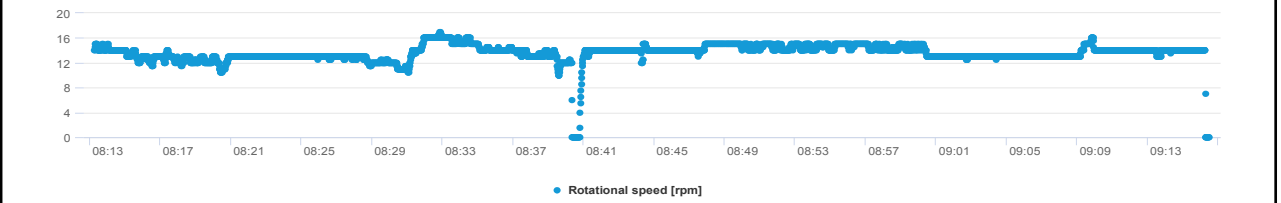
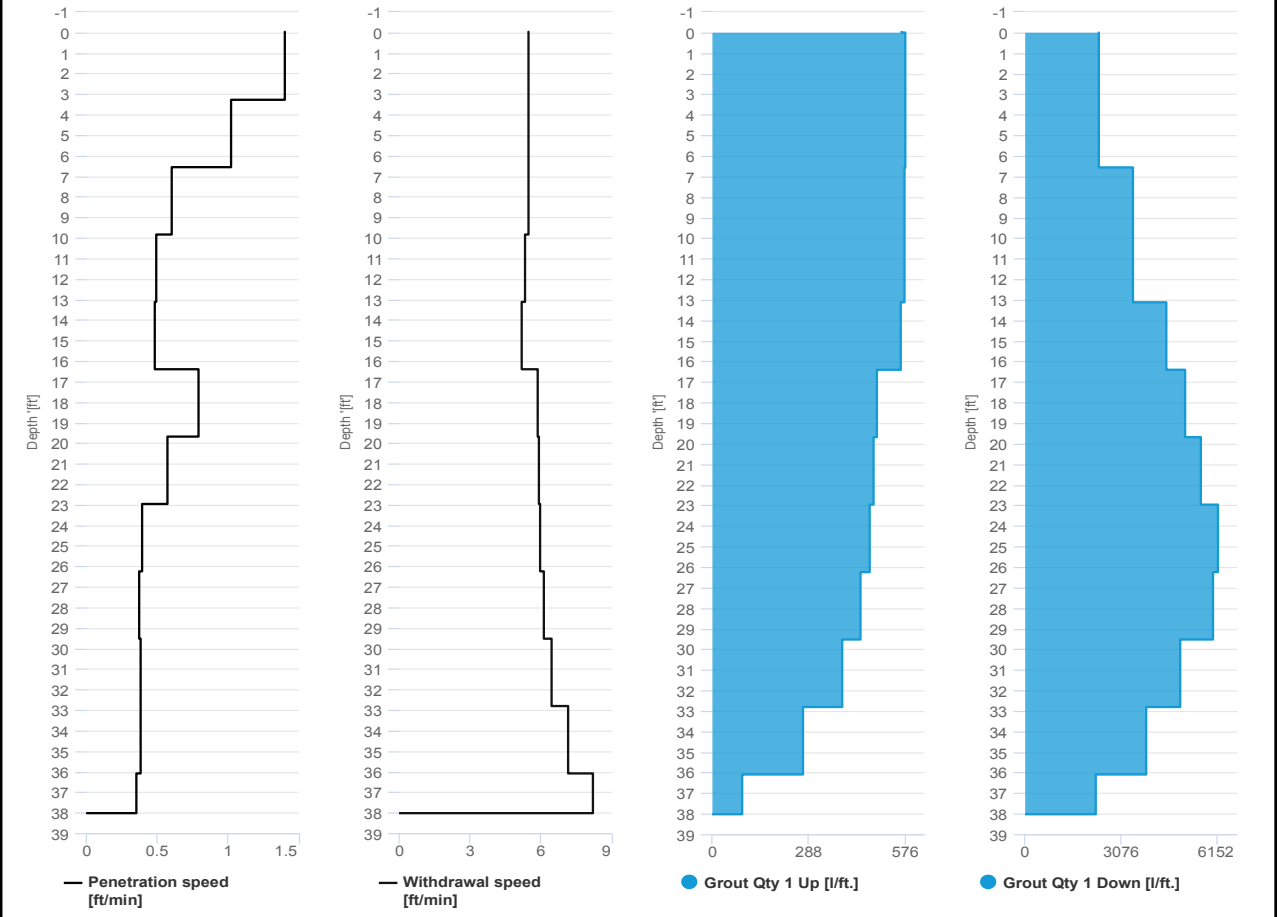


Project name: Douglass Street BCG ISS Element name: 550a
 Project number

Start date: 06/10/2024

Drilling rig: BG36H_5717

Details		Start time: 08:13 AM	
Max. depth: 38.02 ft.		End Date: 06/10/2024	
Volume/m 1: 40.96 ft³		End time: 09:16 AM	
		Production duration: 01:03:13	
		Final depth time: 09:09 AM_	
		Total suspension quantity: 475.053 ft³	



SCM Report

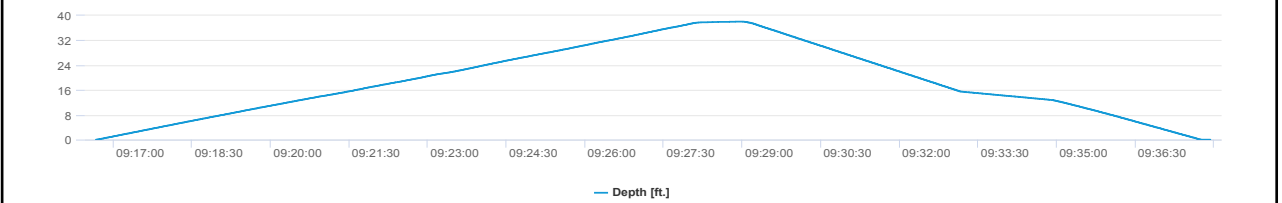
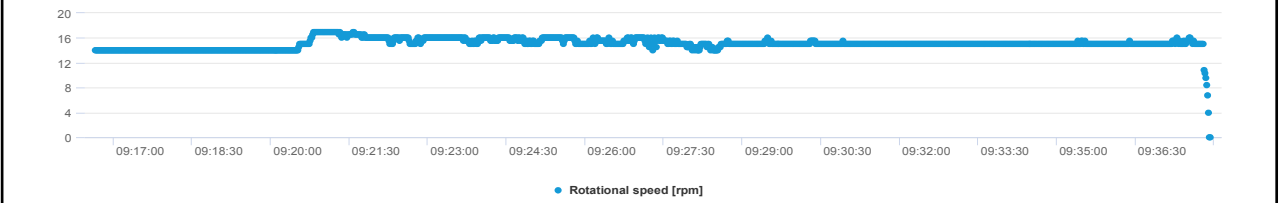
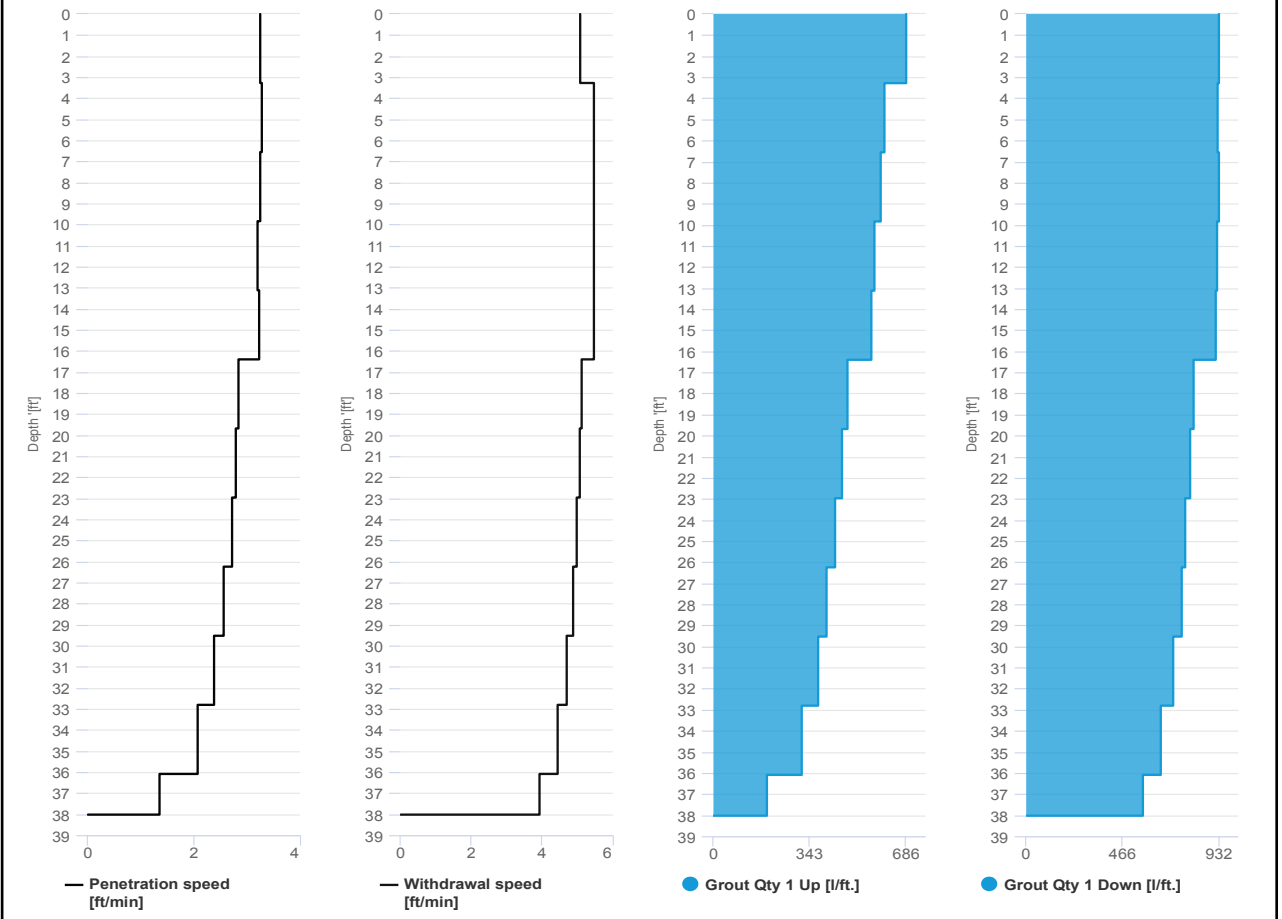


Project name: Douglass Street BCG ISS Element name: 550b
 Project number

Start date: 06/10/2024

Drilling rig: BG36H_5717

Details		Start time: 09:16 AM	
Max. depth: 38.02 ft.		End Date: 06/10/2024	
Volume/m 1: 14.47 ft³		End time: 09:37 AM	
		Production duration: 00:21:17	
		Final depth time: 09:28 AM	
		Total suspension quantity: 168.309 ft³	



SCM Report

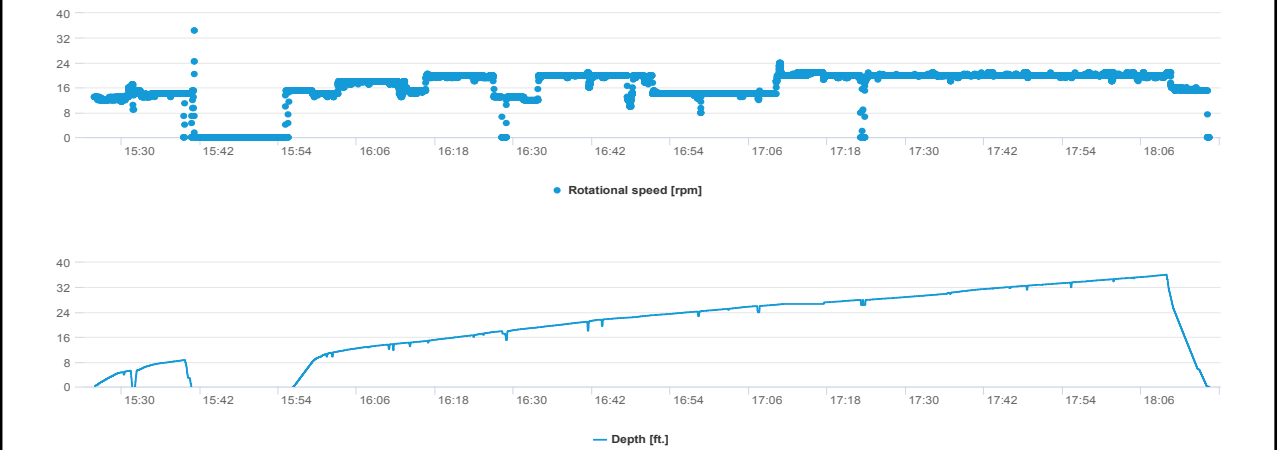
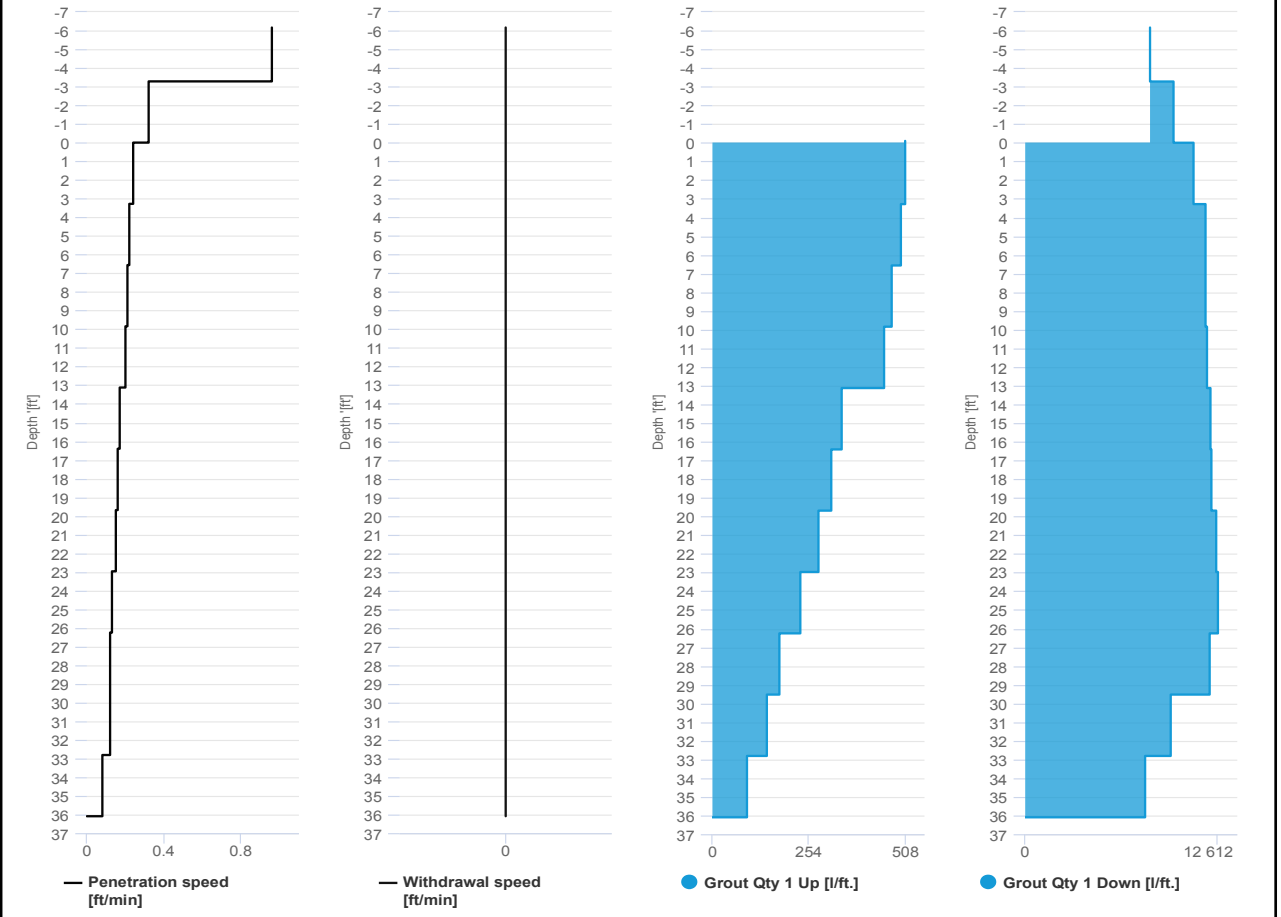


Project name: Douglass Street BCG ISS Element name: 643a
Project number

Start date: 06/10/2024

Drilling rig: BG36H_5717

Details		Start time	
Max. depth	36 ft.	03:25 PM	06:10/2024
Volume/m 1	91.81 ft³	End time	06:16 PM
		Production duration	02:50:33
		Final depth time	06:09 PM
		Total suspension quantity	1,009.929 ft³



SCM Report

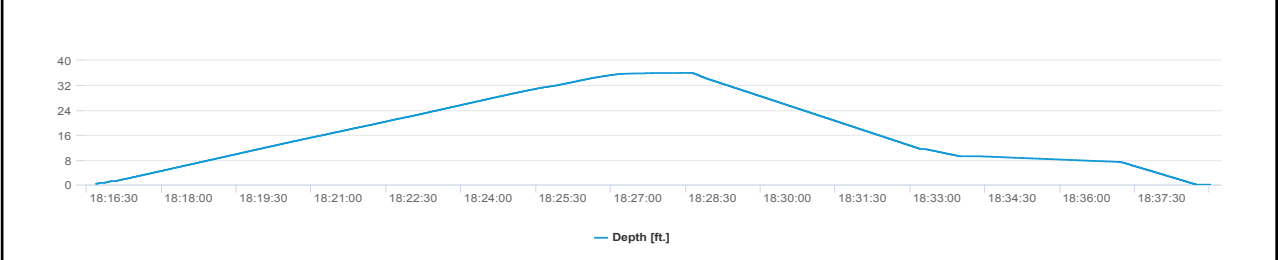
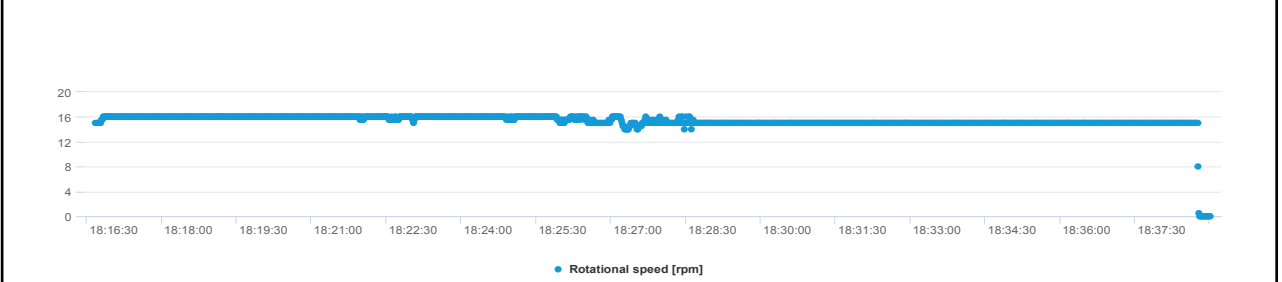
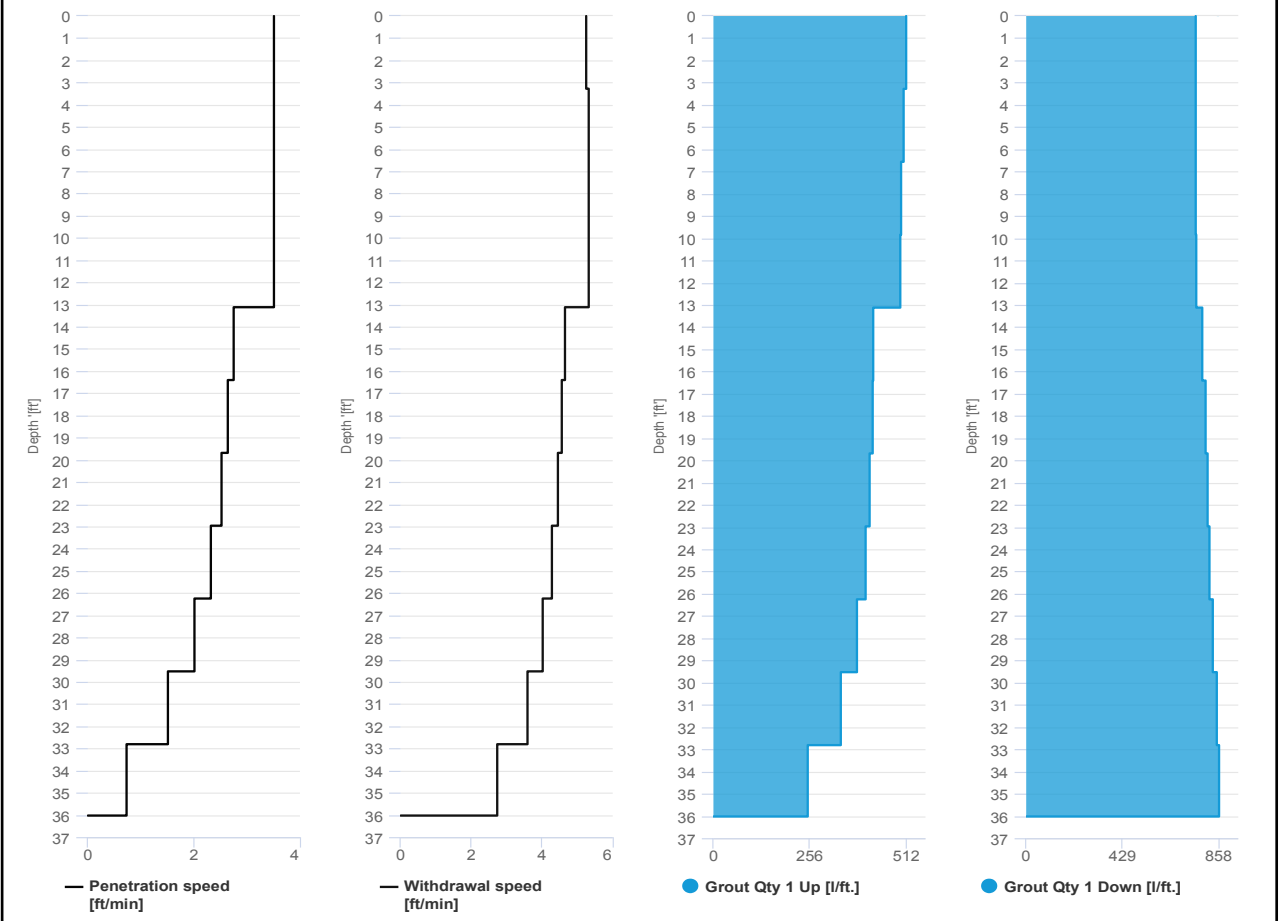


Project name: Douglass Street BCG ISS Element name: 643b
 Project number

Start date: 06/10/2024

Drilling rig: BG36H_5717

Details		Start time: 06:16 PM	
Max. depth: 36.02 ft.		End Date: 06/10/2024	
Volume/m 1: 14.83 ft³		End time: 06:39 PM	
		Production duration: 00:22:21	
		Final depth time: 06:28 PM	
		Total suspension quantity: 162.412 ft³	





IMPACT ENVIRONMENTAL

170 Keyland Court | Bohemia | NY | 11716 | 631.269.8800

welcome to solid ground...

www.impactenvironmental.com

UPWIND CAMP READINGS

251 DOUGLASS STREET, BROOKLYN, NY

Instrument Name	DustTrak DRX
Model Number	8533
Serial Number	8533181205
Firmware Version	3.1
Calibration Date	5/31/2023
Test Name	MANUAL_008
Test Start Time	6:47:43 AM
Test Start Date	6/10/2024
Test Length [D:H:M]	0:12:01
Test Interval [M:S]	1:00
PM1 Average [mg/m3]	0.009
PM1 Minimum [mg/m3]	0.001
PM1 Maximum [mg/m3]	0.046
PM1 TWA [mg/m3]	0.009
Photometric User Cal	1
Size Correction User Cal	1
Flow User Cal	0
Errors	
Number of Samples	721

Elapsed Time [s]	PM1 [mg/m3]	Alarms	Errors
6:48	0.016		
6:49	0.004		
6:50	0.005		
6:51	0.008		
6:52	0.003		
6:53	0.002		
6:54	0.002		
6:55	0.002		
6:56	0.002		
6:57	0.002		
6:58	0.002		
6:59	0.002		
7:00	0.002		
7:01	0.004		
7:02	0.003		
7:03	0.002		
7:04	0.002		
7:05	0.002		
7:06	0.002		
7:07	0.002		
7:08	0.003		
7:09	0.004		
7:10	0.004		

7:11	0.002
7:12	0.002
7:13	0.003
7:14	0.004
7:15	0.005
7:16	0.007
7:17	0.004
7:18	0.002
7:19	0.011
7:20	0.005
7:21	0.006
7:22	0.002
7:23	0.008
7:24	0.004
7:25	0.004
7:26	0.002
7:27	0.004
7:28	0.002
7:29	0.005
7:30	0.003
7:31	0.003
7:32	0.002
7:33	0.004
7:34	0.005
7:35	0.003
7:36	0.001
7:37	0.002
7:38	0.008
7:39	0.006
7:40	0.015
7:41	0.012
7:42	0.004
7:43	0.005
7:44	0.005
7:45	0.013
7:46	0.005
7:47	0.005
7:48	0.003
7:49	0.003
7:50	0.004
7:51	0.002
7:52	0.005
7:53	0.005
7:54	0.007

7:55	0.004
7:56	0.005
7:57	0.002
7:58	0.002
7:59	0.005
8:00	0.004
8:01	0.006
8:02	0.006
8:03	0.004
8:04	0.004
8:05	0.004
8:06	0.004
8:07	0.006
8:08	0.002
8:09	0.006
8:10	0.007
8:11	0.005
8:12	0.007
8:13	0.003
8:14	0.005
8:15	0.004
8:16	0.009
8:17	0.004
8:18	0.011
8:19	0.007
8:20	0.004
8:21	0.008
8:22	0.004
8:23	0.002
8:24	0.003
8:25	0.005
8:26	0.003
8:27	0.002
8:28	0.001
8:29	0.003
8:30	0.004
8:31	0.002
8:32	0.003
8:33	0.004
8:34	0.003
8:35	0.003
8:36	0.003
8:37	0.002
8:38	0.008

8:39	0.008
8:40	0.003
8:41	0.002
8:42	0.002
8:43	0.002
8:44	0.003
8:45	0.008
8:46	0.005
8:47	0.006
8:48	0.004
8:49	0.005
8:50	0.005
8:51	0.005
8:52	0.012
8:53	0.002
8:54	0.003
8:55	0.002
8:56	0.002
8:57	0.004
8:58	0.003
8:59	0.004
9:00	0.005
9:01	0.003
9:02	0.005
9:03	0.004
9:04	0.006
9:05	0.003
9:06	0.002
9:07	0.004
9:08	0.006
9:09	0.006
9:10	0.006
9:11	0.006
9:12	0.005
9:13	0.004
9:14	0.003
9:15	0.005
9:16	0.003
9:17	0.003
9:18	0.003
9:19	0.005
9:20	0.005
9:21	0.006
9:22	0.008

9:23	0.01
9:24	0.016
9:25	0.004
9:26	0.005
9:27	0.005
9:28	0.008
9:29	0.004
9:30	0.004
9:31	0.005
9:32	0.009
9:33	0.013
9:34	0.01
9:35	0.046
9:36	0.007
9:37	0.004
9:38	0.013
9:39	0.013
9:40	0.008
9:41	0.01
9:42	0.006
9:43	0.011
9:44	0.014
9:45	0.009
9:46	0.005
9:47	0.006
9:48	0.005
9:49	0.005
9:50	0.004
9:51	0.006
9:52	0.014
9:53	0.007
9:54	0.019
9:55	0.008
9:56	0.006
9:57	0.016
9:58	0.016
9:59	0.009
10:00	0.014
10:01	0.01
10:02	0.009
10:03	0.007
10:04	0.006
10:05	0.01
10:06	0.006

10:07	0.005
10:08	0.013
10:09	0.011
10:10	0.026
10:11	0.007
10:12	0.006
10:13	0.007
10:14	0.01
10:15	0.007
10:16	0.009
10:17	0.007
10:18	0.007
10:19	0.008
10:20	0.019
10:21	0.008
10:22	0.007
10:23	0.007
10:24	0.009
10:25	0.011
10:26	0.008
10:27	0.008
10:28	0.01
10:29	0.01
10:30	0.007
10:31	0.006
10:32	0.008
10:33	0.011
10:34	0.007
10:35	0.005
10:36	0.006
10:37	0.012
10:38	0.011
10:39	0.008
10:40	0.018
10:41	0.013
10:42	0.008
10:43	0.008
10:44	0.007
10:45	0.018
10:46	0.015
10:47	0.007
10:48	0.017
10:49	0.008
10:50	0.007

10:51	0.014
10:52	0.007
10:53	0.008
10:54	0.007
10:55	0.014
10:56	0.015
10:57	0.018
10:58	0.013
10:59	0.01
11:00	0.008
11:01	0.006
11:02	0.012
11:03	0.009
11:04	0.006
11:05	0.008
11:06	0.011
11:07	0.009
11:08	0.01
11:09	0.007
11:10	0.008
11:11	0.01
11:12	0.006
11:13	0.009
11:14	0.008
11:15	0.008
11:16	0.005
11:17	0.005
11:18	0.006
11:19	0.008
11:20	0.013
11:21	0.02
11:22	0.008
11:23	0.011
11:24	0.008
11:25	0.011
11:26	0.007
11:27	0.006
11:28	0.006
11:29	0.007
11:30	0.007
11:31	0.017
11:32	0.018
11:33	0.008
11:34	0.007

11:35	0.009
11:36	0.009
11:37	0.007
11:38	0.006
11:39	0.008
11:40	0.007
11:41	0.006
11:42	0.008
11:43	0.009
11:44	0.007
11:45	0.007
11:46	0.009
11:47	0.014
11:48	0.009
11:49	0.011
11:50	0.02
11:51	0.013
11:52	0.01
11:53	0.008
11:54	0.015
11:55	0.009
11:56	0.008
11:57	0.007
11:58	0.009
11:59	0.01
12:00	0.009
12:01	0.009
12:02	0.008
12:03	0.014
12:04	0.014
12:05	0.009
12:06	0.008
12:07	0.01
12:08	0.011
12:09	0.006
12:10	0.009
12:11	0.015
12:12	0.014
12:13	0.011
12:14	0.01
12:15	0.008
12:16	0.009
12:17	0.007
12:18	0.008

12:19	0.009
12:20	0.01
12:21	0.014
12:22	0.007
12:23	0.011
12:24	0.008
12:25	0.015
12:26	0.01
12:27	0.015
12:28	0.011
12:29	0.009
12:30	0.009
12:31	0.017
12:32	0.027
12:33	0.008
12:34	0.007
12:35	0.008
12:36	0.008
12:37	0.011
12:38	0.01
12:39	0.01
12:40	0.013
12:41	0.026
12:42	0.011
12:43	0.012
12:44	0.014
12:45	0.015
12:46	0.024
12:47	0.017
12:48	0.01
12:49	0.016
12:50	0.016
12:51	0.012
12:52	0.009
12:53	0.012
12:54	0.012
12:55	0.013
12:56	0.016
12:57	0.012
12:58	0.007
12:59	0.008
13:00	0.009
13:01	0.015
13:02	0.011

13:03	0.009
13:04	0.008
13:05	0.009
13:06	0.015
13:07	0.016
13:08	0.012
13:09	0.012
13:10	0.011
13:11	0.012
13:12	0.009
13:13	0.015
13:14	0.011
13:15	0.011
13:16	0.01
13:17	0.009
13:18	0.012
13:19	0.011
13:20	0.011
13:21	0.009
13:22	0.009
13:23	0.012
13:24	0.009
13:25	0.009
13:26	0.01
13:27	0.014
13:28	0.012
13:29	0.01
13:30	0.012
13:31	0.012
13:32	0.015
13:33	0.013
13:34	0.013
13:35	0.008
13:36	0.012
13:37	0.011
13:38	0.012
13:39	0.008
13:40	0.014
13:41	0.011
13:42	0.012
13:43	0.009
13:44	0.009
13:45	0.012
13:46	0.008

13:47	0.008
13:48	0.008
13:49	0.009
13:50	0.008
13:51	0.009
13:52	0.01
13:53	0.009
13:54	0.01
13:55	0.014
13:56	0.009
13:57	0.012
13:58	0.008
13:59	0.008
14:00	0.008
14:01	0.012
14:02	0.01
14:03	0.009
14:04	0.008
14:05	0.01
14:06	0.009
14:07	0.013
14:08	0.011
14:09	0.011
14:10	0.008
14:11	0.011
14:12	0.023
14:13	0.039
14:14	0.013
14:15	0.016
14:16	0.012
14:17	0.013
14:18	0.014
14:19	0.014
14:20	0.014
14:21	0.012
14:22	0.026
14:23	0.03
14:24	0.009
14:25	0.012
14:26	0.011
14:27	0.012
14:28	0.011
14:29	0.012
14:30	0.013

14:31	0.009
14:32	0.008
14:33	0.01
14:34	0.011
14:35	0.009
14:36	0.009
14:37	0.009
14:38	0.01
14:39	0.01
14:40	0.009
14:41	0.009
14:42	0.01
14:43	0.009
14:44	0.023
14:45	0.014
14:46	0.012
14:47	0.016
14:48	0.012
14:49	0.014
14:50	0.011
14:51	0.026
14:52	0.01
14:53	0.013
14:54	0.01
14:55	0.01
14:56	0.01
14:57	0.012
14:58	0.012
14:59	0.03
15:00	0.016
15:01	0.012
15:02	0.015
15:03	0.012
15:04	0.016
15:05	0.018
15:06	0.016
15:07	0.011
15:08	0.01
15:09	0.01
15:10	0.011
15:11	0.012
15:12	0.014
15:13	0.012
15:14	0.011

15:15	0.011
15:16	0.009
15:17	0.01
15:18	0.009
15:19	0.01
15:20	0.01
15:21	0.01
15:22	0.009
15:23	0.009
15:24	0.008
15:25	0.01
15:26	0.009
15:27	0.008
15:28	0.008
15:29	0.009
15:30	0.011
15:31	0.009
15:32	0.008
15:33	0.008
15:34	0.009
15:35	0.011
15:36	0.011
15:37	0.01
15:38	0.011
15:39	0.011
15:40	0.01
15:41	0.01
15:42	0.008
15:43	0.007
15:44	0.008
15:45	0.014
15:46	0.035
15:47	0.014
15:48	0.01
15:49	0.008
15:50	0.009
15:51	0.01
15:52	0.009
15:53	0.008
15:54	0.009
15:55	0.01
15:56	0.011
15:57	0.009
15:58	0.01

15:59	0.011
16:00	0.01
16:01	0.009
16:02	0.009
16:03	0.01
16:04	0.009
16:05	0.008
16:06	0.01
16:07	0.012
16:08	0.01
16:09	0.009
16:10	0.008
16:11	0.011
16:12	0.01
16:13	0.009
16:14	0.01
16:15	0.009
16:16	0.009
16:17	0.009
16:18	0.011
16:19	0.01
16:20	0.009
16:21	0.015
16:22	0.013
16:23	0.01
16:24	0.011
16:25	0.01
16:26	0.011
16:27	0.01
16:28	0.01
16:29	0.01
16:30	0.011
16:31	0.017
16:32	0.012
16:33	0.009
16:34	0.009
16:35	0.009
16:36	0.013
16:37	0.008
16:38	0.011
16:39	0.012
16:40	0.01
16:41	0.009
16:42	0.011

16:43	0.01
16:44	0.008
16:45	0.013
16:46	0.01
16:47	0.01
16:48	0.009
16:49	0.009
16:50	0.007
16:51	0.008
16:52	0.009
16:53	0.009
16:54	0.01
16:55	0.009
16:56	0.01
16:57	0.01
16:58	0.009
16:59	0.009
17:00	0.008
17:01	0.008
17:02	0.009
17:03	0.01
17:04	0.009
17:05	0.01
17:06	0.009
17:07	0.012
17:08	0.009
17:09	0.009
17:10	0.009
17:11	0.012
17:12	0.01
17:13	0.009
17:14	0.011
17:15	0.009
17:16	0.009
17:17	0.011
17:18	0.01
17:19	0.011
17:20	0.008
17:21	0.011
17:22	0.018
17:23	0.009
17:24	0.012
17:25	0.01
17:26	0.01

17:27	0.009
17:28	0.008
17:29	0.009
17:30	0.009
17:31	0.009
17:32	0.008
17:33	0.009
17:34	0.01
17:35	0.009
17:36	0.01
17:37	0.008
17:38	0.008
17:39	0.008
17:40	0.011
17:41	0.009
17:42	0.009
17:43	0.009
17:44	0.009
17:45	0.009
17:46	0.008
17:47	0.008
17:48	0.011
17:49	0.009
17:50	0.008
17:51	0.008
17:52	0.007
17:53	0.007
17:54	0.009
17:55	0.008
17:56	0.008
17:57	0.009
17:58	0.009
17:59	0.008
18:00	0.009
18:01	0.008
18:02	0.01
18:03	0.012
18:04	0.008
18:05	0.009
18:06	0.012
18:07	0.009
18:08	0.012
18:09	0.011
18:10	0.014

18:11	0.017
18:12	0.015
18:13	0.013
18:14	0.013
18:15	0.009
18:16	0.009
18:17	0.008
18:18	0.008
18:19	0.008
18:20	0.009
18:21	0.009
18:22	0.008
18:23	0.009
18:24	0.009
18:25	0.008
18:26	0.011
18:27	0.009
18:28	0.009
18:29	0.008
18:30	0.008
18:31	0.008
18:32	0.008
18:33	0.008
18:34	0.008
18:35	0.009
18:36	0.009
18:37	0.009
18:38	0.009
18:39	0.01
18:40	0.017
18:41	0.01
18:42	0.008
18:43	0.009
18:44	0.009
18:45	0.009
18:46	0.011
18:47	0.008
18:48	0.007

Device Serial No	Log Time	Log Type	Sensor 1 Type	Sensor 1 Serial Number	Sensor 1 Status	Sensor 1 Gas Reading
592-601274	6/10/2024 6:43	CONFIG	PID	SC23030921B3		
592-601274	6/10/2024 6:44	Readings	PID	SC23030921B3	Normal	0.2
592-601274	6/10/2024 6:45	Readings	PID	SC23030921B3	Normal	0.3
592-601274	6/10/2024 6:46	Readings	PID	SC23030921B3	Normal	0.4
592-601274	6/10/2024 6:47	Readings	PID	SC23030921B3	Normal	0.7
592-601274	6/10/2024 6:48	Readings	PID	SC23030921B3	Normal	0.9
592-601274	6/10/2024 6:49	Readings	PID	SC23030921B3	Normal	0.9
592-601274	6/10/2024 6:50	Readings	PID	SC23030921B3	Normal	0.9
592-601274	6/10/2024 6:51	Readings	PID	SC23030921B3	Normal	0.9
592-601274	6/10/2024 6:52	Readings	PID	SC23030921B3	Normal	0.9
592-601274	6/10/2024 6:53	Readings	PID	SC23030921B3	Normal	0.9
592-601274	6/10/2024 6:54	Readings	PID	SC23030921B3	Normal	0.4
592-601274	6/10/2024 6:55	Readings	PID	SC23030921B3	Normal	0.1
592-601274	6/10/2024 6:56	Readings	PID	SC23030921B3	Normal	0
592-601274	6/10/2024 6:57	Readings	PID	SC23030921B3	Normal	0
592-601274	6/10/2024 6:58	Readings	PID	SC23030921B3	Normal	0
592-601274	6/10/2024 6:59	Readings	PID	SC23030921B3	Normal	0
592-601274	6/10/2024 7:00	Readings	PID	SC23030921B3	Normal	0
592-601274	6/10/2024 7:01	Readings	PID	SC23030921B3	Normal	0
592-601274	6/10/2024 7:02	Readings	PID	SC23030921B3	Normal	0
592-601274	6/10/2024 7:03	Readings	PID	SC23030921B3	Normal	0
592-601274	6/10/2024 7:04	Readings	PID	SC23030921B3	Normal	0
592-601274	6/10/2024 7:05	Readings	PID	SC23030921B3	Normal	0
592-601274	6/10/2024 7:06	Readings	PID	SC23030921B3	Normal	0
592-601274	6/10/2024 7:07	Readings	PID	SC23030921B3	Normal	0
592-601274	6/10/2024 7:08	Readings	PID	SC23030921B3	Normal	0
592-601274	6/10/2024 7:09	Readings	PID	SC23030921B3	Normal	0
592-601274	6/10/2024 7:10	Readings	PID	SC23030921B3	Normal	0
592-601274	6/10/2024 7:11	Readings	PID	SC23030921B3	Normal	0
592-601274	6/10/2024 7:12	Readings	PID	SC23030921B3	Normal	0
592-601274	6/10/2024 7:13	Readings	PID	SC23030921B3	Normal	0
592-601274	6/10/2024 7:14	Readings	PID	SC23030921B3	Normal	0

592-601274

6/10/2024 18:48 Readings PID

SC23030921B3

Normal

0

DOWNWIND CAMP READINGS

251 DOUGLASS STREET, BROOKLYN, NY



Instrument Name	DustTrak II
Model Number	8530
Serial Number	8530224601
Firmware Version	3.1
Calibration Date	11/9/2022
Test Name	MANUAL_009
Test Start Time	6:52:05 AM
Test Start Date	6/10/2024
Test Length [D:H:M]	0:12:04
Test Interval [M:S]	1:00
Mass Average [mg/m3]	0.014
Mass Minimum [mg/m3]	0.006
Mass Maximum [mg/m3]	0.283
Mass TWA [mg/m3]	0.014
Photometric User Cal	1
Flow User Cal	0
Errors	
Number of Samples	724

Elapsed Time [s]	Mass [mg/m3]	Alarms	Errors
6:53	0.022		
6:54	0.008		
6:55	0.01		
6:56	0.013		
6:57	0.011		
6:58	0.012		
6:59	0.006		
7:00	0.007		
7:01	0.008		
7:02	0.007		
7:03	0.009		
7:04	0.011		
7:05	0.007		
7:06	0.007		
7:07	0.007		
7:08	0.007		
7:09	0.011		
7:10	0.01		
7:11	0.011		
7:12	0.007		
7:13	0.008		
7:14	0.007		
7:15	0.008		
7:16	0.009		

7:17	0.01
7:18	0.011
7:19	0.008
7:20	0.01
7:21	0.015
7:22	0.01
7:23	0.008
7:24	0.013
7:25	0.011
7:26	0.008
7:27	0.009
7:28	0.009
7:29	0.012
7:30	0.012
7:31	0.013
7:32	0.011
7:33	0.029
7:34	0.02
7:35	0.014
7:36	0.011
7:37	0.008
7:38	0.02
7:39	0.018
7:40	0.019
7:41	0.017
7:42	0.012
7:43	0.01
7:44	0.014
7:45	0.016
7:46	0.013
7:47	0.019
7:48	0.016
7:49	0.015
7:50	0.01
7:51	0.008
7:52	0.013
7:53	0.011
7:54	0.01
7:55	0.012
7:56	0.029
7:57	0.011
7:58	0.009
7:59	0.011
8:00	0.018

8:01	0.014
8:02	0.014
8:03	0.014
8:04	0.013
8:05	0.013
8:06	0.013
8:07	0.019
8:08	0.016
8:09	0.018
8:10	0.011
8:11	0.016
8:12	0.017
8:13	0.014
8:14	0.015
8:15	0.013
8:16	0.014
8:17	0.013
8:18	0.013
8:19	0.016
8:20	0.014
8:21	0.011
8:22	0.018
8:23	0.013
8:24	0.044
8:25	0.008
8:26	0.009
8:27	0.01
8:28	0.014
8:29	0.012
8:30	0.009
8:31	0.009
8:32	0.007
8:33	0.009
8:34	0.016
8:35	0.013
8:36	0.01
8:37	0.011
8:38	0.024
8:39	0.135
8:40	0.017
8:41	0.006
8:42	0.007
8:43	0.009
8:44	0.007

8:45	0.008
8:46	0.011
8:47	0.011
8:48	0.01
8:49	0.012
8:50	0.007
8:51	0.006
8:52	0.011
8:53	0.028
8:54	0.012
8:55	0.007
8:56	0.008
8:57	0.007
8:58	0.009
8:59	0.008
9:00	0.007
9:01	0.008
9:02	0.009
9:03	0.008
9:04	0.009
9:05	0.008
9:06	0.007
9:07	0.008
9:08	0.009
9:09	0.008
9:10	0.01
9:11	0.011
9:12	0.011
9:13	0.009
9:14	0.009
9:15	0.008
9:16	0.011
9:17	0.007
9:18	0.007
9:19	0.008
9:20	0.01
9:21	0.01
9:22	0.01
9:23	0.025
9:24	0.015
9:25	0.013
9:26	0.012
9:27	0.007
9:28	0.008

9:29	0.011
9:30	0.007
9:31	0.007
9:32	0.008
9:33	0.013
9:34	0.024
9:35	0.022
9:36	0.03
9:37	0.013
9:38	0.009
9:39	0.014
9:40	0.014
9:41	0.011
9:42	0.009
9:43	0.012
9:44	0.008
9:45	0.012
9:46	0.012
9:47	0.016
9:48	0.009
9:49	0.008
9:50	0.008
9:51	0.009
9:52	0.014
9:53	0.022
9:54	0.012
9:55	0.01
9:56	0.009
9:57	0.015
9:58	0.015
9:59	0.016
10:00	0.013
10:01	0.013
10:02	0.013
10:03	0.016
10:04	0.014
10:05	0.011
10:06	0.018
10:07	0.007
10:08	0.01
10:09	0.009
10:10	0.018
10:11	0.009
10:12	0.008

10:13	0.007
10:14	0.008
10:15	0.018
10:16	0.017
10:17	0.01
10:18	0.009
10:19	0.007
10:20	0.012
10:21	0.013
10:22	0.011
10:23	0.019
10:24	0.012
10:25	0.01
10:26	0.01
10:27	0.01
10:28	0.011
10:29	0.011
10:30	0.022
10:31	0.009
10:32	0.012
10:33	0.01
10:34	0.015
10:35	0.008
10:36	0.007
10:37	0.021
10:38	0.012
10:39	0.009
10:40	0.01
10:41	0.015
10:42	0.019
10:43	0.014
10:44	0.01
10:45	0.012
10:46	0.021
10:47	0.048
10:48	0.009
10:49	0.011
10:50	0.009
10:51	0.012
10:52	0.014
10:53	0.006
10:54	0.014
10:55	0.01
10:56	0.022

10:57	0.009
10:58	0.013
10:59	0.01
11:00	0.011
11:01	0.007
11:02	0.015
11:03	0.012
11:04	0.022
11:05	0.009
11:06	0.008
11:07	0.016
11:08	0.014
11:09	0.009
11:10	0.01
11:11	0.009
11:12	0.007
11:13	0.009
11:14	0.01
11:15	0.012
11:16	0.009
11:17	0.009
11:18	0.007
11:19	0.009
11:20	0.018
11:21	0.015
11:22	0.015
11:23	0.014
11:24	0.015
11:25	0.009
11:26	0.009
11:27	0.008
11:28	0.007
11:29	0.008
11:30	0.007
11:31	0.015
11:32	0.024
11:33	0.011
11:34	0.007
11:35	0.01
11:36	0.01
11:37	0.008
11:38	0.008
11:39	0.009
11:40	0.011

11:41	0.007
11:42	0.008
11:43	0.017
11:44	0.015
11:45	0.009
11:46	0.01
11:47	0.015
11:48	0.015
11:49	0.014
11:50	0.014
11:51	0.042
11:52	0.03
11:53	0.011
11:54	0.01
11:55	0.014
11:56	0.01
11:57	0.011
11:58	0.011
11:59	0.01
12:00	0.014
12:01	0.014
12:02	0.01
12:03	0.012
12:04	0.015
12:05	0.012
12:06	0.011
12:07	0.019
12:08	0.016
12:09	0.011
12:10	0.009
12:11	0.026
12:12	0.015
12:13	0.012
12:14	0.016
12:15	0.01
12:16	0.011
12:17	0.01
12:18	0.01
12:19	0.011
12:20	0.009
12:21	0.025
12:22	0.012
12:23	0.012
12:24	0.011

12:25	0.013
12:26	0.015
12:27	0.016
12:28	0.021
12:29	0.016
12:30	0.034
12:31	0.011
12:32	0.016
12:33	0.025
12:34	0.017
12:35	0.027
12:36	0.012
12:37	0.015
12:38	0.017
12:39	0.012
12:40	0.013
12:41	0.015
12:42	0.013
12:43	0.019
12:44	0.015
12:45	0.013
12:46	0.021
12:47	0.026
12:48	0.013
12:49	0.019
12:50	0.039
12:51	0.021
12:52	0.016
12:53	0.048
12:54	0.016
12:55	0.023
12:56	0.019
12:57	0.027
12:58	0.011
12:59	0.011
13:00	0.01
13:01	0.014
13:02	0.014
13:03	0.01
13:04	0.011
13:05	0.012
13:06	0.012
13:07	0.011
13:08	0.016

13:09	0.016
13:10	0.015
13:11	0.018
13:12	0.014
13:13	0.012
13:14	0.015
13:15	0.013
13:16	0.013
13:17	0.012
13:18	0.016
13:19	0.013
13:20	0.01
13:21	0.012
13:22	0.011
13:23	0.012
13:24	0.013
13:25	0.011
13:26	0.011
13:27	0.013
13:28	0.017
13:29	0.013
13:30	0.012
13:31	0.027
13:32	0.035
13:33	0.015
13:34	0.015
13:35	0.01
13:36	0.01
13:37	0.011
13:38	0.012
13:39	0.016
13:40	0.015
13:41	0.013
13:42	0.011
13:43	0.011
13:44	0.014
13:45	0.019
13:46	0.013
13:47	0.011
13:48	0.012
13:49	0.012
13:50	0.013
13:51	0.017
13:52	0.013

13:53	0.014
13:54	0.012
13:55	0.015
13:56	0.016
13:57	0.015
13:58	0.013
13:59	0.013
14:00	0.012
14:01	0.011
14:02	0.012
14:03	0.018
14:04	0.012
14:05	0.011
14:06	0.013
14:07	0.015
14:08	0.012
14:09	0.013
14:10	0.013
14:11	0.018
14:12	0.013
14:13	0.018
14:14	0.014
14:15	0.02
14:16	0.018
14:17	0.015
14:18	0.012
14:19	0.035
14:20	0.016
14:21	0.014
14:22	0.031
14:23	0.018
14:24	0.016
14:25	0.018
14:26	0.016
14:27	0.013
14:28	0.028
14:29	0.028
14:30	0.02
14:31	0.019
14:32	0.014
14:33	0.016
14:34	0.014
14:35	0.013
14:36	0.014

14:37	0.012
14:38	0.012
14:39	0.013
14:40	0.013
14:41	0.015
14:42	0.014
14:43	0.014
14:44	0.021
14:45	0.014
14:46	0.018
14:47	0.015
14:48	0.016
14:49	0.014
14:50	0.012
14:51	0.127
14:52	0.071
14:53	0.283
14:54	0.027
14:55	0.092
14:56	0.039
14:57	0.034
14:58	0.021
14:59	0.014
15:00	0.016
15:01	0.012
15:02	0.011
15:03	0.012
15:04	0.013
15:05	0.015
15:06	0.016
15:07	0.016
15:08	0.016
15:09	0.014
15:10	0.013
15:11	0.016
15:12	0.018
15:13	0.017
15:14	0.011
15:15	0.01
15:16	0.01
15:17	0.019
15:18	0.012
15:19	0.012
15:20	0.021

15:21	0.026
15:22	0.015
15:23	0.014
15:24	0.014
15:25	0.02
15:26	0.011
15:27	0.013
15:28	0.012
15:29	0.008
15:30	0.01
15:31	0.012
15:32	0.025
15:33	0.013
15:34	0.015
15:35	0.016
15:36	0.012
15:37	0.018
15:38	0.015
15:39	0.015
15:40	0.017
15:41	0.017
15:42	0.013
15:43	0.012
15:44	0.014
15:45	0.013
15:46	0.017
15:47	0.025
15:48	0.013
15:49	0.03
15:50	0.02
15:51	0.012
15:52	0.01
15:53	0.009
15:54	0.009
15:55	0.011
15:56	0.013
15:57	0.011
15:58	0.011
15:59	0.011
16:00	0.014
16:01	0.011
16:02	0.009
16:03	0.011
16:04	0.011

16:05	0.01
16:06	0.019
16:07	0.011
16:08	0.013
16:09	0.01
16:10	0.009
16:11	0.009
16:12	0.012
16:13	0.013
16:14	0.011
16:15	0.011
16:16	0.012
16:17	0.011
16:18	0.01
16:19	0.013
16:20	0.011
16:21	0.011
16:22	0.016
16:23	0.015
16:24	0.014
16:25	0.011
16:26	0.012
16:27	0.016
16:28	0.014
16:29	0.013
16:30	0.011
16:31	0.012
16:32	0.015
16:33	0.011
16:34	0.012
16:35	0.012
16:36	0.011
16:37	0.016
16:38	0.011
16:39	0.009
16:40	0.012
16:41	0.012
16:42	0.012
16:43	0.01
16:44	0.012
16:45	0.011
16:46	0.012
16:47	0.011
16:48	0.01

16:49	0.014
16:50	0.01
16:51	0.01
16:52	0.012
16:53	0.011
16:54	0.01
16:55	0.011
16:56	0.011
16:57	0.01
16:58	0.01
16:59	0.01
17:00	0.009
17:01	0.01
17:02	0.01
17:03	0.01
17:04	0.011
17:05	0.01
17:06	0.009
17:07	0.011
17:08	0.011
17:09	0.013
17:10	0.013
17:11	0.014
17:12	0.013
17:13	0.01
17:14	0.011
17:15	0.012
17:16	0.011
17:17	0.011
17:18	0.01
17:19	0.01
17:20	0.01
17:21	0.009
17:22	0.012
17:23	0.017
17:24	0.011
17:25	0.011
17:26	0.011
17:27	0.011
17:28	0.009
17:29	0.009
17:30	0.011
17:31	0.011
17:32	0.011

17:33	0.01
17:34	0.009
17:35	0.009
17:36	0.01
17:37	0.011
17:38	0.01
17:39	0.009
17:40	0.01
17:41	0.01
17:42	0.011
17:43	0.013
17:44	0.01
17:45	0.011
17:46	0.009
17:47	0.016
17:48	0.067
17:49	0.012
17:50	0.011
17:51	0.011
17:52	0.012
17:53	0.013
17:54	0.01
17:55	0.012
17:56	0.034
17:57	0.027
17:58	0.014
17:59	0.011
18:00	0.012
18:01	0.013
18:02	0.013
18:03	0.013
18:04	0.012
18:05	0.012
18:06	0.011
18:07	0.011
18:08	0.01
18:09	0.013
18:10	0.013
18:11	0.016
18:12	0.017
18:13	0.014
18:14	0.015
18:15	0.015
18:16	0.019

18:17	0.014
18:18	0.012
18:19	0.013
18:20	0.012
18:21	0.013
18:22	0.012
18:23	0.011
18:24	0.01
18:25	0.01
18:26	0.011
18:27	0.02
18:28	0.01
18:29	0.01
18:30	0.01
18:31	0.01
18:32	0.009
18:33	0.01
18:34	0.009
18:35	0.01
18:36	0.01
18:37	0.01
18:38	0.01
18:39	0.012
18:40	0.014
18:41	0.017
18:42	0.015
18:43	0.011
18:44	0.011
18:45	0.012
18:46	0.017
18:47	0.019
18:48	0.013
18:49	0.01
18:50	0.01
18:51	0.011
18:52	0.016
18:53	0.017
18:54	0.014
18:55	0.011
18:56	0.014

Device Serial No	Log Time	Log Type	Sensor 1 Type	Sensor 1 Serial Number	Sensor 1 Status	Sensor 1 Gas Reading
592-602816	6/10/2024 6:51	CONFIG	PID	SC23030324C7		
592-602816	6/10/2024 6:52	Readings	PID	SC23030324C7	Normal	0
592-602816	6/10/2024 6:53	Readings	PID	SC23030324C7	Normal	0
592-602816	6/10/2024 6:54	Readings	PID	SC23030324C7	Normal	0
592-602816	6/10/2024 6:55	Readings	PID	SC23030324C7	Normal	0
592-602816	6/10/2024 6:56	Readings	PID	SC23030324C7	Normal	0
592-602816	6/10/2024 6:57	Readings	PID	SC23030324C7	Normal	0
592-602816	6/10/2024 6:58	Readings	PID	SC23030324C7	Normal	0
592-602816	6/10/2024 6:59	Readings	PID	SC23030324C7	Normal	0
592-602816	6/10/2024 7:00	Readings	PID	SC23030324C7	Normal	0
592-602816	6/10/2024 7:01	Readings	PID	SC23030324C7	Normal	0
592-602816	6/10/2024 7:02	Readings	PID	SC23030324C7	Normal	0
592-602816	6/10/2024 7:03	Readings	PID	SC23030324C7	Normal	0
592-602816	6/10/2024 7:04	Readings	PID	SC23030324C7	Normal	0
592-602816	6/10/2024 7:05	Readings	PID	SC23030324C7	Normal	0
592-602816	6/10/2024 7:06	Readings	PID	SC23030324C7	Normal	0
592-602816	6/10/2024 7:07	Readings	PID	SC23030324C7	Normal	0
592-602816	6/10/2024 7:08	Readings	PID	SC23030324C7	Normal	0
592-602816	6/10/2024 7:09	Readings	PID	SC23030324C7	Normal	0
592-602816	6/10/2024 7:10	Readings	PID	SC23030324C7	Normal	0
592-602816	6/10/2024 7:11	Readings	PID	SC23030324C7	Normal	0
592-602816	6/10/2024 7:12	Readings	PID	SC23030324C7	Normal	0
592-602816	6/10/2024 7:13	Readings	PID	SC23030324C7	Normal	0
592-602816	6/10/2024 7:14	Readings	PID	SC23030324C7	Normal	0
592-602816	6/10/2024 7:15	Readings	PID	SC23030324C7	Normal	0
592-602816	6/10/2024 7:16	Readings	PID	SC23030324C7	Normal	0
592-602816	6/10/2024 7:17	Readings	PID	SC23030324C7	Normal	0
592-602816	6/10/2024 7:18	Readings	PID	SC23030324C7	Normal	0
592-602816	6/10/2024 7:19	Readings	PID	SC23030324C7	Normal	0.1
592-602816	6/10/2024 7:20	Readings	PID	SC23030324C7	Normal	0.1
592-602816	6/10/2024 7:21	Readings	PID	SC23030324C7	Normal	0
592-602816	6/10/2024 7:22	Readings	PID	SC23030324C7	Normal	0.1

592-602816	6/10/2024 7:23 Readings	PID	SC23030324C7	Normal	0.1
592-602816	6/10/2024 7:24 Readings	PID	SC23030324C7	Normal	0.1
592-602816	6/10/2024 7:25 Readings	PID	SC23030324C7	Normal	0.1
592-602816	6/10/2024 7:26 Readings	PID	SC23030324C7	Normal	0.1
592-602816	6/10/2024 7:27 Readings	PID	SC23030324C7	Normal	0.1
592-602816	6/10/2024 7:28 Readings	PID	SC23030324C7	Normal	0.1
592-602816	6/10/2024 7:29 Readings	PID	SC23030324C7	Normal	0.1
592-602816	6/10/2024 7:30 Readings	PID	SC23030324C7	Normal	0.1
592-602816	6/10/2024 7:31 Readings	PID	SC23030324C7	Normal	0.1
592-602816	6/10/2024 7:32 Readings	PID	SC23030324C7	Normal	0.1
592-602816	6/10/2024 7:33 Readings	PID	SC23030324C7	Normal	0.1
592-602816	6/10/2024 7:34 Readings	PID	SC23030324C7	Normal	0.1
592-602816	6/10/2024 7:35 Readings	PID	SC23030324C7	Normal	0.1
592-602816	6/10/2024 7:36 Readings	PID	SC23030324C7	Normal	0.1
592-602816	6/10/2024 7:37 Readings	PID	SC23030324C7	Normal	0.1
592-602816	6/10/2024 7:38 Readings	PID	SC23030324C7	Normal	0.1
592-602816	6/10/2024 7:39 Readings	PID	SC23030324C7	Normal	0.1
592-602816	6/10/2024 7:40 Readings	PID	SC23030324C7	Normal	0.1
592-602816	6/10/2024 7:41 Readings	PID	SC23030324C7	Normal	0.1
592-602816	6/10/2024 7:42 Readings	PID	SC23030324C7	Normal	0.3
592-602816	6/10/2024 7:43 Readings	PID	SC23030324C7	Normal	0.2
592-602816	6/10/2024 7:44 Readings	PID	SC23030324C7	Normal	0.2
592-602816	6/10/2024 7:45 Readings	PID	SC23030324C7	Normal	0.2
592-602816	6/10/2024 7:46 Readings	PID	SC23030324C7	Normal	0.2
592-602816	6/10/2024 7:47 Readings	PID	SC23030324C7	Normal	0.1
592-602816	6/10/2024 7:48 Readings	PID	SC23030324C7	Normal	0.2
592-602816	6/10/2024 7:49 Readings	PID	SC23030324C7	Normal	0.1
592-602816	6/10/2024 7:50 Readings	PID	SC23030324C7	Normal	0.2
592-602816	6/10/2024 7:51 Readings	PID	SC23030324C7	Normal	0.2
592-602816	6/10/2024 7:52 Readings	PID	SC23030324C7	Normal	0.1
592-602816	6/10/2024 7:53 Readings	PID	SC23030324C7	Normal	0.2
592-602816	6/10/2024 7:54 Readings	PID	SC23030324C7	Normal	0.1
592-602816	6/10/2024 7:55 Readings	PID	SC23030324C7	Normal	0.1

592-602816	6/10/2024 7:56 Readings	PID	SC23030324C7	Normal	0.1
592-602816	6/10/2024 7:57 Readings	PID	SC23030324C7	Normal	0.1
592-602816	6/10/2024 7:58 Readings	PID	SC23030324C7	Normal	0.2
592-602816	6/10/2024 7:59 Readings	PID	SC23030324C7	Normal	0.3
592-602816	6/10/2024 8:00 Readings	PID	SC23030324C7	Normal	0.3
592-602816	6/10/2024 8:01 Readings	PID	SC23030324C7	Normal	0.2
592-602816	6/10/2024 8:02 Readings	PID	SC23030324C7	Normal	0.2
592-602816	6/10/2024 8:03 Readings	PID	SC23030324C7	Normal	0.2
592-602816	6/10/2024 8:04 Readings	PID	SC23030324C7	Normal	0.2
592-602816	6/10/2024 8:05 Readings	PID	SC23030324C7	Normal	0.2
592-602816	6/10/2024 8:06 Readings	PID	SC23030324C7	Normal	0.2
592-602816	6/10/2024 8:07 Readings	PID	SC23030324C7	Normal	0.2
592-602816	6/10/2024 8:08 Readings	PID	SC23030324C7	Normal	0.2
592-602816	6/10/2024 8:09 Readings	PID	SC23030324C7	Normal	0.2
592-602816	6/10/2024 8:10 Readings	PID	SC23030324C7	Normal	0.2
592-602816	6/10/2024 8:11 Readings	PID	SC23030324C7	Normal	0.2
592-602816	6/10/2024 8:12 Readings	PID	SC23030324C7	Normal	0.2
592-602816	6/10/2024 8:13 Readings	PID	SC23030324C7	Normal	0.2
592-602816	6/10/2024 8:14 Readings	PID	SC23030324C7	Normal	0.2
592-602816	6/10/2024 8:15 Readings	PID	SC23030324C7	Normal	0.2
592-602816	6/10/2024 8:16 Readings	PID	SC23030324C7	Normal	0.2
592-602816	6/10/2024 8:17 Readings	PID	SC23030324C7	Normal	0.2
592-602816	6/10/2024 8:18 Readings	PID	SC23030324C7	Normal	0.2
592-602816	6/10/2024 8:19 Readings	PID	SC23030324C7	Normal	0.2
592-602816	6/10/2024 8:20 Readings	PID	SC23030324C7	Normal	0.2
592-602816	6/10/2024 8:21 Readings	PID	SC23030324C7	Normal	0.2
592-602816	6/10/2024 8:22 Readings	PID	SC23030324C7	Normal	0.2
592-602816	6/10/2024 8:23 Readings	PID	SC23030324C7	Normal	0.2
592-602816	6/10/2024 8:24 Readings	PID	SC23030324C7	Normal	0.2
592-602816	6/10/2024 8:25 Readings	PID	SC23030324C7	Normal	0.2
592-602816	6/10/2024 8:26 Readings	PID	SC23030324C7	Normal	0.2
592-602816	6/10/2024 8:27 Readings	PID	SC23030324C7	Normal	0.2
592-602816	6/10/2024 8:28 Readings	PID	SC23030324C7	Normal	0.2

592-602816	6/10/2024 8:29	Readings	PID	SC23030324C7	Normal	0.2
592-602816	6/10/2024 8:30	Readings	PID	SC23030324C7	Normal	0.2
592-602816	6/10/2024 8:31	Readings	PID	SC23030324C7	Normal	0.2
592-602816	6/10/2024 8:32	Readings	PID	SC23030324C7	Normal	0.2
592-602816	6/10/2024 8:33	Readings	PID	SC23030324C7	Normal	0.2
592-602816	6/10/2024 8:34	Readings	PID	SC23030324C7	Normal	0.2
592-602816	6/10/2024 8:35	Readings	PID	SC23030324C7	Normal	0.2
592-602816	6/10/2024 8:36	Readings	PID	SC23030324C7	Normal	0.2
592-602816	6/10/2024 8:37	Readings	PID	SC23030324C7	Normal	0.2
592-602816	6/10/2024 8:38	Readings	PID	SC23030324C7	Normal	0.2
592-602816	6/10/2024 8:39	Readings	PID	SC23030324C7	Normal	0.2
592-602816	6/10/2024 8:40	Readings	PID	SC23030324C7	Normal	0.2
592-602816	6/10/2024 8:41	Readings	PID	SC23030324C7	Normal	0.2
592-602816	6/10/2024 8:42	Readings	PID	SC23030324C7	Normal	0.2
592-602816	6/10/2024 8:43	Readings	PID	SC23030324C7	Normal	0.2
592-602816	6/10/2024 8:44	Readings	PID	SC23030324C7	Normal	0.2
592-602816	6/10/2024 8:45	Readings	PID	SC23030324C7	Normal	0.2
592-602816	6/10/2024 8:46	Readings	PID	SC23030324C7	Normal	0.2
592-602816	6/10/2024 8:47	Readings	PID	SC23030324C7	Normal	0.2
592-602816	6/10/2024 8:48	Readings	PID	SC23030324C7	Normal	0.2
592-602816	6/10/2024 8:49	Readings	PID	SC23030324C7	Normal	0.2
592-602816	6/10/2024 8:50	Readings	PID	SC23030324C7	Normal	0.2
592-602816	6/10/2024 8:51	Readings	PID	SC23030324C7	Normal	0.2
592-602816	6/10/2024 8:52	Readings	PID	SC23030324C7	Normal	0.2
592-602816	6/10/2024 8:53	Readings	PID	SC23030324C7	Normal	0.2
592-602816	6/10/2024 8:54	Readings	PID	SC23030324C7	Normal	0.2
592-602816	6/10/2024 8:55	Readings	PID	SC23030324C7	Normal	0.2
592-602816	6/10/2024 8:56	Readings	PID	SC23030324C7	Normal	0.1
592-602816	6/10/2024 8:57	Readings	PID	SC23030324C7	Normal	0.2
592-602816	6/10/2024 8:58	Readings	PID	SC23030324C7	Normal	0.2
592-602816	6/10/2024 8:59	Readings	PID	SC23030324C7	Normal	0.2
592-602816	6/10/2024 9:00	Readings	PID	SC23030324C7	Normal	0.2
592-602816	6/10/2024 9:01	Readings	PID	SC23030324C7	Normal	0.2

592-602816	6/10/2024 9:02	Readings	PID	SC23030324C7	Normal	0.2
592-602816	6/10/2024 9:03	Readings	PID	SC23030324C7	Normal	0.2
592-602816	6/10/2024 9:04	Readings	PID	SC23030324C7	Normal	0.2
592-602816	6/10/2024 9:05	Readings	PID	SC23030324C7	Normal	0.2
592-602816	6/10/2024 9:06	Readings	PID	SC23030324C7	Normal	0.2
592-602816	6/10/2024 9:07	Readings	PID	SC23030324C7	Normal	0.2
592-602816	6/10/2024 9:08	Readings	PID	SC23030324C7	Normal	0.2
592-602816	6/10/2024 9:09	Readings	PID	SC23030324C7	Normal	0.2
592-602816	6/10/2024 9:10	Readings	PID	SC23030324C7	Normal	0.2
592-602816	6/10/2024 9:11	Readings	PID	SC23030324C7	Normal	0.2
592-602816	6/10/2024 9:12	Readings	PID	SC23030324C7	Normal	0.2
592-602816	6/10/2024 9:13	Readings	PID	SC23030324C7	Normal	0.2
592-602816	6/10/2024 9:14	Readings	PID	SC23030324C7	Normal	0.2
592-602816	6/10/2024 9:15	Readings	PID	SC23030324C7	Normal	0.2
592-602816	6/10/2024 9:16	Readings	PID	SC23030324C7	Normal	0.2
592-602816	6/10/2024 9:17	Readings	PID	SC23030324C7	Normal	0.2
592-602816	6/10/2024 9:18	Readings	PID	SC23030324C7	Normal	0.2
592-602816	6/10/2024 9:19	Readings	PID	SC23030324C7	Normal	0.2
592-602816	6/10/2024 9:20	Readings	PID	SC23030324C7	Normal	0.2
592-602816	6/10/2024 9:21	Readings	PID	SC23030324C7	Normal	0.3
592-602816	6/10/2024 9:22	Readings	PID	SC23030324C7	Normal	0.5
592-602816	6/10/2024 9:23	Readings	PID	SC23030324C7	Normal	0.3
592-602816	6/10/2024 9:24	Readings	PID	SC23030324C7	Normal	0.2
592-602816	6/10/2024 9:25	Readings	PID	SC23030324C7	Normal	0.2
592-602816	6/10/2024 9:26	Readings	PID	SC23030324C7	Normal	0.2
592-602816	6/10/2024 9:27	Readings	PID	SC23030324C7	Normal	0.2
592-602816	6/10/2024 9:28	Readings	PID	SC23030324C7	Normal	0.2
592-602816	6/10/2024 9:29	Readings	PID	SC23030324C7	Normal	0.2
592-602816	6/10/2024 9:30	Readings	PID	SC23030324C7	Normal	0.2
592-602816	6/10/2024 9:31	Readings	PID	SC23030324C7	Normal	0.2
592-602816	6/10/2024 9:32	Readings	PID	SC23030324C7	Normal	0.3
592-602816	6/10/2024 9:33	Readings	PID	SC23030324C7	Normal	0.3
592-602816	6/10/2024 9:34	Readings	PID	SC23030324C7	Normal	0.2

592-602816	6/10/2024 11:14	Readings	PID	SC23030324C7	Normal	0.2
592-602816	6/10/2024 11:15	Readings	PID	SC23030324C7	Normal	0.1
592-602816	6/10/2024 11:16	Readings	PID	SC23030324C7	Normal	0.1
592-602816	6/10/2024 11:17	Readings	PID	SC23030324C7	Normal	0.1
592-602816	6/10/2024 11:18	Readings	PID	SC23030324C7	Normal	0.1
592-602816	6/10/2024 11:19	Readings	PID	SC23030324C7	Normal	0.2
592-602816	6/10/2024 11:20	Readings	PID	SC23030324C7	Normal	0.1
592-602816	6/10/2024 11:21	Readings	PID	SC23030324C7	Normal	0.2
592-602816	6/10/2024 11:22	Readings	PID	SC23030324C7	Normal	0.1
592-602816	6/10/2024 11:23	Readings	PID	SC23030324C7	Normal	0.2
592-602816	6/10/2024 11:24	Readings	PID	SC23030324C7	Normal	0.2
592-602816	6/10/2024 11:25	Readings	PID	SC23030324C7	Normal	0.1
592-602816	6/10/2024 11:26	Readings	PID	SC23030324C7	Normal	0.1
592-602816	6/10/2024 11:27	Readings	PID	SC23030324C7	Normal	0.1
592-602816	6/10/2024 11:28	Readings	PID	SC23030324C7	Normal	0.2
592-602816	6/10/2024 11:29	Readings	PID	SC23030324C7	Normal	0.1
592-602816	6/10/2024 11:30	Readings	PID	SC23030324C7	Normal	0.1
592-602816	6/10/2024 11:31	Readings	PID	SC23030324C7	Normal	0.2
592-602816	6/10/2024 11:32	Readings	PID	SC23030324C7	Normal	0.1
592-602816	6/10/2024 11:33	Readings	PID	SC23030324C7	Normal	0.1
592-602816	6/10/2024 11:34	Readings	PID	SC23030324C7	Normal	0.1
592-602816	6/10/2024 11:35	Readings	PID	SC23030324C7	Normal	0.2
592-602816	6/10/2024 11:36	Readings	PID	SC23030324C7	Normal	0.1
592-602816	6/10/2024 11:37	Readings	PID	SC23030324C7	Normal	0.1
592-602816	6/10/2024 11:38	Readings	PID	SC23030324C7	Normal	0.1
592-602816	6/10/2024 11:39	Readings	PID	SC23030324C7	Normal	0.1
592-602816	6/10/2024 11:40	Readings	PID	SC23030324C7	Normal	0.1
592-602816	6/10/2024 11:41	Readings	PID	SC23030324C7	Normal	0.2
592-602816	6/10/2024 11:42	Readings	PID	SC23030324C7	Normal	0.2
592-602816	6/10/2024 11:43	Readings	PID	SC23030324C7	Normal	0.1
592-602816	6/10/2024 11:44	Readings	PID	SC23030324C7	Normal	0.1
592-602816	6/10/2024 11:45	Readings	PID	SC23030324C7	Normal	0.1
592-602816	6/10/2024 11:46	Readings	PID	SC23030324C7	Normal	0.1

592-602816	6/10/2024 11:47	Readings	PID	SC23030324C7	Normal	0.1
592-602816	6/10/2024 11:48	Readings	PID	SC23030324C7	Normal	0.1
592-602816	6/10/2024 11:49	Readings	PID	SC23030324C7	Normal	0.2
592-602816	6/10/2024 11:50	Readings	PID	SC23030324C7	Normal	0.1
592-602816	6/10/2024 11:51	Readings	PID	SC23030324C7	Normal	0.1
592-602816	6/10/2024 11:52	Readings	PID	SC23030324C7	Normal	0.1
592-602816	6/10/2024 11:53	Readings	PID	SC23030324C7	Normal	0.1
592-602816	6/10/2024 11:54	Readings	PID	SC23030324C7	Normal	0.1
592-602816	6/10/2024 11:55	Readings	PID	SC23030324C7	Normal	0.1
592-602816	6/10/2024 11:56	Readings	PID	SC23030324C7	Normal	0.1
592-602816	6/10/2024 11:57	Readings	PID	SC23030324C7	Normal	0.1
592-602816	6/10/2024 11:58	Readings	PID	SC23030324C7	Normal	0.1
592-602816	6/10/2024 11:59	Readings	PID	SC23030324C7	Normal	0.1
592-602816	6/10/2024 12:00	Readings	PID	SC23030324C7	Normal	0.2
592-602816	6/10/2024 12:01	Readings	PID	SC23030324C7	Normal	0.1
592-602816	6/10/2024 12:02	Readings	PID	SC23030324C7	Normal	0.2
592-602816	6/10/2024 12:03	Readings	PID	SC23030324C7	Normal	0.1
592-602816	6/10/2024 12:04	Readings	PID	SC23030324C7	Normal	0.1
592-602816	6/10/2024 12:05	Readings	PID	SC23030324C7	Normal	0.1
592-602816	6/10/2024 12:06	Readings	PID	SC23030324C7	Normal	0.1
592-602816	6/10/2024 12:07	Readings	PID	SC23030324C7	Normal	0.1
592-602816	6/10/2024 12:08	Readings	PID	SC23030324C7	Normal	0.1
592-602816	6/10/2024 12:09	Readings	PID	SC23030324C7	Normal	0.1
592-602816	6/10/2024 12:10	Readings	PID	SC23030324C7	Normal	0.1
592-602816	6/10/2024 12:11	Readings	PID	SC23030324C7	Normal	0.1
592-602816	6/10/2024 12:12	Readings	PID	SC23030324C7	Normal	0.2
592-602816	6/10/2024 12:13	Readings	PID	SC23030324C7	Normal	0.1
592-602816	6/10/2024 12:14	Readings	PID	SC23030324C7	Normal	0.1
592-602816	6/10/2024 12:15	Readings	PID	SC23030324C7	Normal	0.1
592-602816	6/10/2024 12:16	Readings	PID	SC23030324C7	Normal	0.1
592-602816	6/10/2024 12:17	Readings	PID	SC23030324C7	Normal	0.2
592-602816	6/10/2024 12:18	Readings	PID	SC23030324C7	Normal	0.1
592-602816	6/10/2024 12:19	Readings	PID	SC23030324C7	Normal	0.1

592-602816	6/10/2024 12:53	Readings	PID	SC23030324C7	Normal	0.1
592-602816	6/10/2024 12:54	Readings	PID	SC23030324C7	Normal	0.1
592-602816	6/10/2024 12:55	Readings	PID	SC23030324C7	Normal	0.1
592-602816	6/10/2024 12:56	Readings	PID	SC23030324C7	Normal	0.1
592-602816	6/10/2024 12:57	Readings	PID	SC23030324C7	Normal	0.1
592-602816	6/10/2024 12:58	Readings	PID	SC23030324C7	Normal	0.1
592-602816	6/10/2024 12:59	Readings	PID	SC23030324C7	Normal	0.1
592-602816	6/10/2024 13:00	Readings	PID	SC23030324C7	Normal	0.1
592-602816	6/10/2024 13:01	Readings	PID	SC23030324C7	Normal	0.1
592-602816	6/10/2024 13:02	Readings	PID	SC23030324C7	Normal	0.1
592-602816	6/10/2024 13:03	Readings	PID	SC23030324C7	Normal	0.1
592-602816	6/10/2024 13:04	Readings	PID	SC23030324C7	Normal	0.1
592-602816	6/10/2024 13:05	Readings	PID	SC23030324C7	Normal	0.1
592-602816	6/10/2024 13:06	Readings	PID	SC23030324C7	Normal	0.1
592-602816	6/10/2024 13:07	Readings	PID	SC23030324C7	Normal	0.2
592-602816	6/10/2024 13:08	Readings	PID	SC23030324C7	Normal	0.1
592-602816	6/10/2024 13:09	Readings	PID	SC23030324C7	Normal	0.2
592-602816	6/10/2024 13:10	Readings	PID	SC23030324C7	Normal	0.1
592-602816	6/10/2024 13:11	Readings	PID	SC23030324C7	Normal	0.1
592-602816	6/10/2024 13:12	Readings	PID	SC23030324C7	Normal	0.1
592-602816	6/10/2024 13:13	Readings	PID	SC23030324C7	Normal	0.1
592-602816	6/10/2024 13:14	Readings	PID	SC23030324C7	Normal	0.1
592-602816	6/10/2024 13:15	Readings	PID	SC23030324C7	Normal	0.1
592-602816	6/10/2024 13:16	Readings	PID	SC23030324C7	Normal	0.1
592-602816	6/10/2024 13:17	Readings	PID	SC23030324C7	Normal	0.1
592-602816	6/10/2024 13:18	Readings	PID	SC23030324C7	Normal	0.1
592-602816	6/10/2024 13:19	Readings	PID	SC23030324C7	Normal	0.1
592-602816	6/10/2024 13:20	Readings	PID	SC23030324C7	Normal	0.2
592-602816	6/10/2024 13:21	Readings	PID	SC23030324C7	Normal	0.1
592-602816	6/10/2024 13:22	Readings	PID	SC23030324C7	Normal	0.1
592-602816	6/10/2024 13:23	Readings	PID	SC23030324C7	Normal	0.1
592-602816	6/10/2024 13:24	Readings	PID	SC23030324C7	Normal	0.2
592-602816	6/10/2024 13:25	Readings	PID	SC23030324C7	Normal	0.2

592-602816	6/10/2024 13:59	Readings	PID	SC23030324C7	Normal	0.1
592-602816	6/10/2024 14:00	Readings	PID	SC23030324C7	Normal	0.1
592-602816	6/10/2024 14:01	Readings	PID	SC23030324C7	Normal	0.1
592-602816	6/10/2024 14:02	Readings	PID	SC23030324C7	Normal	0.2
592-602816	6/10/2024 14:03	Readings	PID	SC23030324C7	Normal	0.1
592-602816	6/10/2024 14:04	Readings	PID	SC23030324C7	Normal	0.1
592-602816	6/10/2024 14:05	Readings	PID	SC23030324C7	Normal	0.1
592-602816	6/10/2024 14:06	Readings	PID	SC23030324C7	Normal	0.1
592-602816	6/10/2024 14:07	Readings	PID	SC23030324C7	Normal	0.1
592-602816	6/10/2024 14:08	Readings	PID	SC23030324C7	Normal	0.1
592-602816	6/10/2024 14:09	Readings	PID	SC23030324C7	Normal	0.1
592-602816	6/10/2024 14:10	Readings	PID	SC23030324C7	Normal	0.1
592-602816	6/10/2024 14:11	Readings	PID	SC23030324C7	Normal	0.1
592-602816	6/10/2024 14:12	Readings	PID	SC23030324C7	Normal	0.1
592-602816	6/10/2024 14:13	Readings	PID	SC23030324C7	Normal	0.1
592-602816	6/10/2024 14:14	Readings	PID	SC23030324C7	Normal	0.1
592-602816	6/10/2024 14:15	Readings	PID	SC23030324C7	Normal	0.1
592-602816	6/10/2024 14:16	Readings	PID	SC23030324C7	Normal	0.1
592-602816	6/10/2024 14:17	Readings	PID	SC23030324C7	Normal	0.1
592-602816	6/10/2024 14:18	Readings	PID	SC23030324C7	Normal	0.2
592-602816	6/10/2024 14:19	Readings	PID	SC23030324C7	Normal	0.2
592-602816	6/10/2024 14:20	Readings	PID	SC23030324C7	Normal	0.1
592-602816	6/10/2024 14:21	Readings	PID	SC23030324C7	Normal	0.1
592-602816	6/10/2024 14:22	Readings	PID	SC23030324C7	Normal	0.1
592-602816	6/10/2024 14:23	Readings	PID	SC23030324C7	Normal	0.1
592-602816	6/10/2024 14:24	Readings	PID	SC23030324C7	Normal	0.1
592-602816	6/10/2024 14:25	Readings	PID	SC23030324C7	Normal	0.1
592-602816	6/10/2024 14:26	Readings	PID	SC23030324C7	Normal	0.1
592-602816	6/10/2024 14:27	Readings	PID	SC23030324C7	Normal	0.2
592-602816	6/10/2024 14:28	Readings	PID	SC23030324C7	Normal	0.1
592-602816	6/10/2024 14:29	Readings	PID	SC23030324C7	Normal	0.1
592-602816	6/10/2024 14:30	Readings	PID	SC23030324C7	Normal	0.1
592-602816	6/10/2024 14:31	Readings	PID	SC23030324C7	Normal	0.1

592-602816	6/10/2024 14:32	Readings	PID	SC23030324C7	Normal	0.1
592-602816	6/10/2024 14:33	Readings	PID	SC23030324C7	Normal	0.1
592-602816	6/10/2024 14:34	Readings	PID	SC23030324C7	Normal	0.1
592-602816	6/10/2024 14:35	Readings	PID	SC23030324C7	Normal	0.1
592-602816	6/10/2024 14:36	Readings	PID	SC23030324C7	Normal	0.1
592-602816	6/10/2024 14:37	Readings	PID	SC23030324C7	Normal	0.1
592-602816	6/10/2024 14:38	Readings	PID	SC23030324C7	Normal	0.1
592-602816	6/10/2024 14:39	Readings	PID	SC23030324C7	Normal	0.1
592-602816	6/10/2024 14:40	Readings	PID	SC23030324C7	Normal	0.1
592-602816	6/10/2024 14:41	Readings	PID	SC23030324C7	Normal	0.1
592-602816	6/10/2024 14:42	Readings	PID	SC23030324C7	Normal	0.2
592-602816	6/10/2024 14:43	Readings	PID	SC23030324C7	Normal	0.1
592-602816	6/10/2024 14:44	Readings	PID	SC23030324C7	Normal	0.1
592-602816	6/10/2024 14:45	Readings	PID	SC23030324C7	Normal	0.1
592-602816	6/10/2024 14:46	Readings	PID	SC23030324C7	Normal	0.1
592-602816	6/10/2024 14:47	Readings	PID	SC23030324C7	Normal	0.2
592-602816	6/10/2024 14:48	Readings	PID	SC23030324C7	Normal	0.2
592-602816	6/10/2024 14:49	Readings	PID	SC23030324C7	Normal	0.2
592-602816	6/10/2024 14:50	Readings	PID	SC23030324C7	Normal	0.2
592-602816	6/10/2024 14:51	Readings	PID	SC23030324C7	Normal	0.1
592-602816	6/10/2024 14:52	Readings	PID	SC23030324C7	Normal	0.2
592-602816	6/10/2024 14:53	Readings	PID	SC23030324C7	Normal	0.1
592-602816	6/10/2024 14:54	Readings	PID	SC23030324C7	Normal	0.1
592-602816	6/10/2024 14:55	Readings	PID	SC23030324C7	Normal	0.2
592-602816	6/10/2024 14:56	Readings	PID	SC23030324C7	Normal	0.1
592-602816	6/10/2024 14:57	Readings	PID	SC23030324C7	Normal	0.2
592-602816	6/10/2024 14:58	Readings	PID	SC23030324C7	Normal	0.1
592-602816	6/10/2024 14:59	Readings	PID	SC23030324C7	Normal	0.1
592-602816	6/10/2024 15:00	Readings	PID	SC23030324C7	Normal	0.1
592-602816	6/10/2024 15:01	Readings	PID	SC23030324C7	Normal	0.1
592-602816	6/10/2024 15:02	Readings	PID	SC23030324C7	Normal	0.1
592-602816	6/10/2024 15:03	Readings	PID	SC23030324C7	Normal	0.2
592-602816	6/10/2024 15:04	Readings	PID	SC23030324C7	Normal	0.2

592-602816	6/10/2024 15:05	Readings	PID	SC23030324C7	Normal	0.2
592-602816	6/10/2024 15:06	Readings	PID	SC23030324C7	Normal	0.2
592-602816	6/10/2024 15:07	Readings	PID	SC23030324C7	Normal	0.2
592-602816	6/10/2024 15:08	Readings	PID	SC23030324C7	Normal	0.2
592-602816	6/10/2024 15:09	Readings	PID	SC23030324C7	Normal	0.2
592-602816	6/10/2024 15:10	Readings	PID	SC23030324C7	Normal	0.2
592-602816	6/10/2024 15:11	Readings	PID	SC23030324C7	Normal	0.2
592-602816	6/10/2024 15:12	Readings	PID	SC23030324C7	Normal	0.2
592-602816	6/10/2024 15:13	Readings	PID	SC23030324C7	Normal	0.1
592-602816	6/10/2024 15:14	Readings	PID	SC23030324C7	Normal	0.1
592-602816	6/10/2024 15:15	Readings	PID	SC23030324C7	Normal	0.1
592-602816	6/10/2024 15:16	Readings	PID	SC23030324C7	Normal	0.2
592-602816	6/10/2024 15:17	Readings	PID	SC23030324C7	Normal	0.2
592-602816	6/10/2024 15:18	Readings	PID	SC23030324C7	Normal	0.1
592-602816	6/10/2024 15:19	Readings	PID	SC23030324C7	Normal	0.2
592-602816	6/10/2024 15:20	Readings	PID	SC23030324C7	Normal	0.1
592-602816	6/10/2024 15:21	Readings	PID	SC23030324C7	Normal	0.2
592-602816	6/10/2024 15:22	Readings	PID	SC23030324C7	Normal	0.2
592-602816	6/10/2024 15:23	Readings	PID	SC23030324C7	Normal	0.1
592-602816	6/10/2024 15:24	Readings	PID	SC23030324C7	Normal	0.1
592-602816	6/10/2024 15:25	Readings	PID	SC23030324C7	Normal	0.1
592-602816	6/10/2024 15:26	Readings	PID	SC23030324C7	Normal	0.1
592-602816	6/10/2024 15:27	Readings	PID	SC23030324C7	Normal	0.2
592-602816	6/10/2024 15:28	Readings	PID	SC23030324C7	Normal	0.1
592-602816	6/10/2024 15:29	Readings	PID	SC23030324C7	Normal	0.1
592-602816	6/10/2024 15:30	Readings	PID	SC23030324C7	Normal	0.1
592-602816	6/10/2024 15:31	Readings	PID	SC23030324C7	Normal	0.1
592-602816	6/10/2024 15:32	Readings	PID	SC23030324C7	Normal	0.2
592-602816	6/10/2024 15:33	Readings	PID	SC23030324C7	Normal	0.2
592-602816	6/10/2024 15:34	Readings	PID	SC23030324C7	Normal	0.2
592-602816	6/10/2024 15:35	Readings	PID	SC23030324C7	Normal	0.2
592-602816	6/10/2024 15:36	Readings	PID	SC23030324C7	Normal	0.3
592-602816	6/10/2024 15:37	Readings	PID	SC23030324C7	Normal	0.2

592-602816	6/10/2024 16:11 Readings	PID	SC23030324C7	Normal	0.2
592-602816	6/10/2024 16:12 Readings	PID	SC23030324C7	Normal	0.2
592-602816	6/10/2024 16:13 Readings	PID	SC23030324C7	Normal	0.2
592-602816	6/10/2024 16:14 Readings	PID	SC23030324C7	Normal	0.1
592-602816	6/10/2024 16:15 Readings	PID	SC23030324C7	Normal	0.2
592-602816	6/10/2024 16:16 Readings	PID	SC23030324C7	Normal	0.2
592-602816	6/10/2024 16:17 Readings	PID	SC23030324C7	Normal	0.2
592-602816	6/10/2024 16:18 Readings	PID	SC23030324C7	Normal	0.2
592-602816	6/10/2024 16:19 Readings	PID	SC23030324C7	Normal	0.2
592-602816	6/10/2024 16:20 Readings	PID	SC23030324C7	Normal	0.1
592-602816	6/10/2024 16:21 Readings	PID	SC23030324C7	Normal	0.2
592-602816	6/10/2024 16:22 Readings	PID	SC23030324C7	Normal	0.2
592-602816	6/10/2024 16:23 Readings	PID	SC23030324C7	Normal	0.2
592-602816	6/10/2024 16:24 Readings	PID	SC23030324C7	Normal	0.2
592-602816	6/10/2024 16:25 Readings	PID	SC23030324C7	Normal	0.2
592-602816	6/10/2024 16:26 Readings	PID	SC23030324C7	Normal	0.2
592-602816	6/10/2024 16:27 Readings	PID	SC23030324C7	Normal	0.2
592-602816	6/10/2024 16:28 Readings	PID	SC23030324C7	Normal	0.2
592-602816	6/10/2024 16:29 Readings	PID	SC23030324C7	Normal	0.2
592-602816	6/10/2024 16:30 Readings	PID	SC23030324C7	Normal	0.2
592-602816	6/10/2024 16:31 Readings	PID	SC23030324C7	Normal	0.3
592-602816	6/10/2024 16:32 Readings	PID	SC23030324C7	Normal	0.2
592-602816	6/10/2024 16:33 Readings	PID	SC23030324C7	Normal	0.2
592-602816	6/10/2024 16:34 Readings	PID	SC23030324C7	Normal	0.3
592-602816	6/10/2024 16:35 Readings	PID	SC23030324C7	Normal	0.3
592-602816	6/10/2024 16:36 Readings	PID	SC23030324C7	Normal	0.2
592-602816	6/10/2024 16:37 Readings	PID	SC23030324C7	Normal	0.2
592-602816	6/10/2024 16:38 Readings	PID	SC23030324C7	Normal	0.2
592-602816	6/10/2024 16:39 Readings	PID	SC23030324C7	Normal	0.2
592-602816	6/10/2024 16:40 Readings	PID	SC23030324C7	Normal	0.2
592-602816	6/10/2024 16:41 Readings	PID	SC23030324C7	Normal	0.2
592-602816	6/10/2024 16:42 Readings	PID	SC23030324C7	Normal	0.4
592-602816	6/10/2024 16:43 Readings	PID	SC23030324C7	Normal	0.8

592-602816	6/10/2024 16:44	Readings	PID	SC23030324C7	Normal	0.3
592-602816	6/10/2024 16:45	Readings	PID	SC23030324C7	Normal	0.2
592-602816	6/10/2024 16:46	Readings	PID	SC23030324C7	Normal	0.2
592-602816	6/10/2024 16:47	Readings	PID	SC23030324C7	Normal	0.2
592-602816	6/10/2024 16:48	Readings	PID	SC23030324C7	Normal	0.5
592-602816	6/10/2024 16:49	Readings	PID	SC23030324C7	Normal	0.4
592-602816	6/10/2024 16:50	Readings	PID	SC23030324C7	Normal	0.1
592-602816	6/10/2024 16:51	Readings	PID	SC23030324C7	Normal	0.2
592-602816	6/10/2024 16:52	Readings	PID	SC23030324C7	Normal	0.2
592-602816	6/10/2024 16:53	Readings	PID	SC23030324C7	Normal	0.2
592-602816	6/10/2024 16:54	Readings	PID	SC23030324C7	Normal	0.2
592-602816	6/10/2024 16:55	Readings	PID	SC23030324C7	Normal	0.2
592-602816	6/10/2024 16:56	Readings	PID	SC23030324C7	Normal	0.2
592-602816	6/10/2024 16:57	Readings	PID	SC23030324C7	Normal	0.2
592-602816	6/10/2024 16:58	Readings	PID	SC23030324C7	Normal	0.1
592-602816	6/10/2024 16:59	Readings	PID	SC23030324C7	Normal	0.1
592-602816	6/10/2024 17:00	Readings	PID	SC23030324C7	Normal	0.1
592-602816	6/10/2024 17:01	Readings	PID	SC23030324C7	Normal	0.1
592-602816	6/10/2024 17:02	Readings	PID	SC23030324C7	Normal	0.1
592-602816	6/10/2024 17:03	Readings	PID	SC23030324C7	Normal	0.1
592-602816	6/10/2024 17:04	Readings	PID	SC23030324C7	Normal	0.1
592-602816	6/10/2024 17:05	Readings	PID	SC23030324C7	Normal	0.1
592-602816	6/10/2024 17:06	Readings	PID	SC23030324C7	Normal	0.1
592-602816	6/10/2024 17:07	Readings	PID	SC23030324C7	Normal	0.1
592-602816	6/10/2024 17:08	Readings	PID	SC23030324C7	Normal	0.2
592-602816	6/10/2024 17:09	Readings	PID	SC23030324C7	Normal	0.2
592-602816	6/10/2024 17:10	Readings	PID	SC23030324C7	Normal	0.3
592-602816	6/10/2024 17:11	Readings	PID	SC23030324C7	Normal	0.1
592-602816	6/10/2024 17:12	Readings	PID	SC23030324C7	Normal	0.2
592-602816	6/10/2024 17:13	Readings	PID	SC23030324C7	Normal	0.2
592-602816	6/10/2024 17:14	Readings	PID	SC23030324C7	Normal	0.2
592-602816	6/10/2024 17:15	Readings	PID	SC23030324C7	Normal	0.1
592-602816	6/10/2024 17:16	Readings	PID	SC23030324C7	Normal	0.2

592-602816	6/10/2024 17:17	Readings	PID	SC23030324C7	Normal	0.2
592-602816	6/10/2024 17:18	Readings	PID	SC23030324C7	Normal	0.2
592-602816	6/10/2024 17:19	Readings	PID	SC23030324C7	Normal	0.2
592-602816	6/10/2024 17:20	Readings	PID	SC23030324C7	Normal	0.2
592-602816	6/10/2024 17:21	Readings	PID	SC23030324C7	Normal	0.2
592-602816	6/10/2024 17:22	Readings	PID	SC23030324C7	Normal	0.2
592-602816	6/10/2024 17:23	Readings	PID	SC23030324C7	Normal	0.2
592-602816	6/10/2024 17:24	Readings	PID	SC23030324C7	Normal	0.2
592-602816	6/10/2024 17:25	Readings	PID	SC23030324C7	Normal	0.2
592-602816	6/10/2024 17:26	Readings	PID	SC23030324C7	Normal	0.2
592-602816	6/10/2024 17:27	Readings	PID	SC23030324C7	Normal	0.1
592-602816	6/10/2024 17:28	Readings	PID	SC23030324C7	Normal	0.1
592-602816	6/10/2024 17:29	Readings	PID	SC23030324C7	Normal	0.2
592-602816	6/10/2024 17:30	Readings	PID	SC23030324C7	Normal	0.1
592-602816	6/10/2024 17:31	Readings	PID	SC23030324C7	Normal	0.2
592-602816	6/10/2024 17:32	Readings	PID	SC23030324C7	Normal	0.2
592-602816	6/10/2024 17:33	Readings	PID	SC23030324C7	Normal	0.2
592-602816	6/10/2024 17:34	Readings	PID	SC23030324C7	Normal	0.1
592-602816	6/10/2024 17:35	Readings	PID	SC23030324C7	Normal	0.3
592-602816	6/10/2024 17:36	Readings	PID	SC23030324C7	Normal	0.2
592-602816	6/10/2024 17:37	Readings	PID	SC23030324C7	Normal	0.2
592-602816	6/10/2024 17:38	Readings	PID	SC23030324C7	Normal	0.3
592-602816	6/10/2024 17:39	Readings	PID	SC23030324C7	Normal	0.2
592-602816	6/10/2024 17:40	Readings	PID	SC23030324C7	Normal	0.2
592-602816	6/10/2024 17:41	Readings	PID	SC23030324C7	Normal	0.2
592-602816	6/10/2024 17:42	Readings	PID	SC23030324C7	Normal	0.2
592-602816	6/10/2024 17:43	Readings	PID	SC23030324C7	Normal	0.2
592-602816	6/10/2024 17:44	Readings	PID	SC23030324C7	Normal	0.2
592-602816	6/10/2024 17:45	Readings	PID	SC23030324C7	Normal	0.2
592-602816	6/10/2024 17:46	Readings	PID	SC23030324C7	Normal	0.4
592-602816	6/10/2024 17:47	Readings	PID	SC23030324C7	Normal	0.3
592-602816	6/10/2024 17:48	Readings	PID	SC23030324C7	Normal	0.3
592-602816	6/10/2024 17:49	Readings	PID	SC23030324C7	Normal	0.2

592-602816	6/10/2024 18:23	Readings	PID	SC23030324C7	Normal	0.2
592-602816	6/10/2024 18:24	Readings	PID	SC23030324C7	Normal	0.2
592-602816	6/10/2024 18:25	Readings	PID	SC23030324C7	Normal	0.1
592-602816	6/10/2024 18:26	Readings	PID	SC23030324C7	Normal	0.1
592-602816	6/10/2024 18:27	Readings	PID	SC23030324C7	Normal	0.1
592-602816	6/10/2024 18:28	Readings	PID	SC23030324C7	Normal	0.1
592-602816	6/10/2024 18:29	Readings	PID	SC23030324C7	Normal	0.2
592-602816	6/10/2024 18:30	Readings	PID	SC23030324C7	Normal	0.3
592-602816	6/10/2024 18:31	Readings	PID	SC23030324C7	Normal	0.2
592-602816	6/10/2024 18:32	Readings	PID	SC23030324C7	Normal	0.2
592-602816	6/10/2024 18:33	Readings	PID	SC23030324C7	Normal	0.2
592-602816	6/10/2024 18:34	Readings	PID	SC23030324C7	Normal	0.1
592-602816	6/10/2024 18:35	Readings	PID	SC23030324C7	Normal	0.1
592-602816	6/10/2024 18:36	Readings	PID	SC23030324C7	Normal	0.1
592-602816	6/10/2024 18:37	Readings	PID	SC23030324C7	Normal	0.2
592-602816	6/10/2024 18:38	Readings	PID	SC23030324C7	Normal	0.2
592-602816	6/10/2024 18:39	Readings	PID	SC23030324C7	Normal	0.2
592-602816	6/10/2024 18:40	Readings	PID	SC23030324C7	Normal	0.2
592-602816	6/10/2024 18:41	Readings	PID	SC23030324C7	Normal	0.2
592-602816	6/10/2024 18:42	Readings	PID	SC23030324C7	Normal	0.2
592-602816	6/10/2024 18:43	Readings	PID	SC23030324C7	Normal	0.1
592-602816	6/10/2024 18:44	Readings	PID	SC23030324C7	Normal	0.1
592-602816	6/10/2024 18:45	Readings	PID	SC23030324C7	Normal	0.2
592-602816	6/10/2024 18:46	Readings	PID	SC23030324C7	Normal	0.1
592-602816	6/10/2024 18:47	Readings	PID	SC23030324C7	Normal	0.1
592-602816	6/10/2024 18:48	Readings	PID	SC23030324C7	Normal	0.2
592-602816	6/10/2024 18:49	Readings	PID	SC23030324C7	Normal	0.2
592-602816	6/10/2024 18:50	Readings	PID	SC23030324C7	Normal	0.2
592-602816	6/10/2024 18:51	Readings	PID	SC23030324C7	Normal	0.3
592-602816	6/10/2024 18:52	Readings	PID	SC23030324C7	Normal	0.3
592-602816	6/10/2024 18:53	Readings	PID	SC23030324C7	Normal	0.3
592-602816	6/10/2024 18:54	Readings	PID	SC23030324C7	Normal	0.2
592-602816	6/10/2024 18:55	Readings	PID	SC23030324C7	Normal	0.2

Instrument Name	DustTrak DRX
Model Number	8533
Serial Number	8533181207
Firmware Version	3.1
Calibration Date	6/1/2023
Test Name	MANUAL_008
Test Start Time	6:57:06 AM
Test Start Date	6/10/2024
Test Length [D:H:M]	0:11:44
Test Interval [M:S]	1:00
PM1 Average [mg/m3]	0.005
PM1 Minimum [mg/m3]	0
PM1 Maximum [mg/m3]	0.095
PM1 TWA [mg/m3]	0.005
Photometric User Cal	1
Size Correction User Cal	1
Flow User Cal	0
Errors	
Number of Samples	704

Elapsed Time [s]	PM1 [mg/m3]	Alarms	Errors
6:58	0.024		
6:59	0		
7:00	0		
7:01	0		
7:02	0		
7:03	0		
7:04	0		
7:05	0.001		
7:06	0		
7:07	0		
7:08	0.007		
7:09	0.001		
7:10	0.002		
7:11	0		
7:12	0.001		
7:13	0.004		
7:14	0		
7:15	0		
7:16	0		
7:17	0.001		
7:18	0.003		
7:19	0.001		
7:20	0		

7:21	0.001
7:22	0.005
7:23	0.007
7:24	0
7:25	0
7:26	0.002
7:27	0.004
7:28	0.003
7:29	0.004
7:30	0.01
7:31	0
7:32	0.003
7:33	0.003
7:34	0.004
7:35	0.004
7:36	0.001
7:37	0.005
7:38	0.001
7:39	0.001
7:40	0.001
7:41	0
7:42	0
7:43	0.002
7:44	0.002
7:45	0.005
7:46	0.001
7:47	0.001
7:48	0.001
7:49	0.003
7:50	0.005
7:51	0.005
7:52	0.001
7:53	0.011
7:54	0.008
7:55	0.015
7:56	0.003
7:57	0.002
7:58	0.001
7:59	0.003
8:00	0.006
8:01	0.005
8:02	0.004
8:03	0.002
8:04	0.005

8:05	0.003
8:06	0.002
8:07	0.005
8:08	0.005
8:09	0
8:10	0.005
8:11	0
8:12	0.001
8:13	0.001
8:14	0.001
8:15	0.001
8:16	0.001
8:17	0
8:18	0.002
8:19	0
8:20	0.001
8:21	0.003
8:22	0.003
8:23	0.002
8:24	0
8:25	0.002
8:26	0.001
8:27	0.095
8:28	0.02
8:29	0.003
8:30	0.002
8:31	0.001
8:32	0
8:33	0.001
8:34	0.001
8:35	0
8:36	0.007
8:37	0
8:38	0
8:39	0.001
8:40	0
8:41	0.007
8:42	0
8:43	0
8:44	0
8:45	0.001
8:46	0
8:47	0.001
8:48	0.001

8:49	0.001
8:50	0
8:51	0
8:52	0
8:53	0
8:54	0
8:55	0
8:56	0
8:57	0
8:58	0
8:59	0.001
9:00	0
9:01	0
9:02	0.001
9:03	0
9:04	0.002
9:05	0
9:06	0
9:07	0
9:08	0
9:09	0
9:10	0
9:11	0.003
9:12	0.003
9:13	0.006
9:14	0.001
9:15	0.001
9:16	0.001
9:17	0.001
9:18	0
9:19	0
9:20	0.002
9:21	0.003
9:22	0.007
9:23	0.007
9:24	0.024
9:25	0.001
9:26	0.001
9:27	0.007
9:28	0.007
9:29	0.003
9:30	0.003
9:31	0.007
9:32	0.006

9:33	0.007
9:34	0.006
9:35	0.006
9:36	0.003
9:37	0.002
9:38	0
9:39	0.001
9:40	0.001
9:41	0.004
9:42	0.003
9:43	0.005
9:44	0.001
9:45	0.005
9:46	0.006
9:47	0.006
9:48	0.002
9:49	0.006
9:50	0.004
9:51	0.008
9:52	0.003
9:53	0.002
9:54	0.004
9:55	0.001
9:56	0.002
9:57	0.003
9:58	0.003
9:59	0.014
10:00	0.002
10:01	0.001
10:02	0.001
10:03	0.008
10:04	0.006
10:05	0.003
10:06	0.002
10:07	0.001
10:08	0.002
10:09	0.004
10:10	0.003
10:11	0.003
10:12	0.002
10:13	0.003
10:14	0.011
10:15	0.002
10:16	0.002

10:17	0.003
10:18	0.003
10:19	0.003
10:20	0.002
10:21	0.004
10:22	0.003
10:23	0.001
10:24	0.001
10:25	0.002
10:26	0.012
10:27	0.009
10:28	0.002
10:29	0.006
10:30	0.005
10:31	0.003
10:32	0.003
10:33	0.002
10:34	0.012
10:35	0.012
10:36	0.002
10:37	0.002
10:38	0.002
10:39	0.003
10:40	0.007
10:41	0.001
10:42	0.002
10:43	0.001
10:44	0.005
10:45	0.007
10:46	0.003
10:47	0.004
10:48	0.003
10:49	0.007
10:50	0.001
10:51	0.003
10:52	0.007
10:53	0.001
10:54	0.001
10:55	0.006
10:56	0.003
10:57	0.003
10:58	0.001
10:59	0.003
11:00	0.002

11:01	0.001
11:02	0.003
11:03	0.002
11:04	0.002
11:05	0.003
11:06	0.004
11:07	0.001
11:08	0.002
11:09	0.014
11:10	0.005
11:11	0.004
11:12	0.005
11:13	0.002
11:14	0.001
11:15	0.001
11:16	0.001
11:17	0.001
11:18	0.001
11:19	0.001
11:20	0.008
11:21	0.004
11:22	0.001
11:23	0.003
11:24	0.003
11:25	0.004
11:26	0.006
11:27	0.002
11:28	0.002
11:29	0.002
11:30	0.001
11:31	0.002
11:32	0.005
11:33	0.002
11:34	0.001
11:35	0.009
11:36	0.007
11:37	0.003
11:38	0.003
11:39	0.005
11:40	0.007
11:41	0.006
11:42	0.002
11:43	0.004
11:44	0.003

11:45	0.002
11:46	0.002
11:47	0.002
11:48	0.002
11:49	0.003
11:50	0.003
11:51	0.005
11:52	0.01
11:53	0.006
11:54	0.003
11:55	0.005
11:56	0.004
11:57	0.004
11:58	0.001
11:59	0.014
12:00	0.019
12:01	0.004
12:02	0.009
12:03	0.004
12:04	0.003
12:05	0.003
12:06	0.003
12:07	0.005
12:08	0.003
12:09	0.003
12:10	0.004
12:11	0.002
12:12	0.003
12:13	0.006
12:14	0.004
12:15	0.003
12:16	0.004
12:17	0.009
12:18	0.003
12:19	0.004
12:20	0.006
12:21	0.006
12:22	0.004
12:23	0.004
12:24	0.005
12:25	0.003
12:26	0.009
12:27	0.005
12:28	0.002

12:29	0.003
12:30	0.008
12:31	0.003
12:32	0.007
12:33	0.004
12:34	0.005
12:35	0.007
12:36	0.005
12:37	0.004
12:38	0.007
12:39	0.008
12:40	0.006
12:41	0.003
12:42	0.003
12:43	0.011
12:44	0.006
12:45	0.008
12:46	0.006
12:47	0.003
12:48	0.003
12:49	0.004
12:50	0.006
12:51	0.004
12:52	0.004
12:53	0.003
12:54	0.004
12:55	0.024
12:56	0.013
12:57	0.007
12:58	0.005
12:59	0.006
13:00	0.01
13:01	0.004
13:02	0.007
13:03	0.006
13:04	0.004
13:05	0.006
13:06	0.004
13:07	0.004
13:08	0.003
13:09	0.008
13:10	0.004
13:11	0.003
13:12	0.003

13:13	0.005
13:14	0.004
13:15	0.004
13:16	0.006
13:17	0.005
13:18	0.004
13:19	0.005
13:20	0.008
13:21	0.005
13:22	0.006
13:23	0.006
13:24	0.003
13:25	0.004
13:26	0.006
13:27	0.016
13:28	0.013
13:29	0.01
13:30	0.006
13:31	0.005
13:32	0.006
13:33	0.004
13:34	0.007
13:35	0.006
13:36	0.005
13:37	0.005
13:38	0.009
13:39	0.006
13:40	0.006
13:41	0.005
13:42	0.005
13:43	0.006
13:44	0.005
13:45	0.005
13:46	0.01
13:47	0.009
13:48	0.005
13:49	0.005
13:50	0.009
13:51	0.005
13:52	0.004
13:53	0.004
13:54	0.005
13:55	0.005
13:56	0.005

13:57	0.006
13:58	0.006
13:59	0.005
14:00	0.005
14:01	0.006
14:02	0.008
14:03	0.004
14:04	0.009
14:05	0.011
14:06	0.006
14:07	0.006
14:08	0.006
14:09	0.011
14:10	0.033
14:11	0.018
14:12	0.029
14:13	0.028
14:14	0.015
14:15	0.009
14:16	0.01
14:17	0.041
14:18	0.03
14:19	0.012
14:20	0.04
14:21	0.025
14:22	0.012
14:23	0.017
14:24	0.009
14:25	0.008
14:26	0.005
14:27	0.026
14:28	0.015
14:29	0.007
14:30	0.008
14:31	0.009
14:32	0.008
14:33	0.005
14:34	0.009
14:35	0.007
14:36	0.006
14:37	0.006
14:38	0.005
14:39	0.005
14:40	0.007

14:41	0.024
14:42	0.076
14:43	0.095
14:44	0.01
14:45	0.011
14:46	0.007
14:47	0.009
14:48	0.008
14:49	0.008
14:50	0.003
14:51	0.005
14:52	0.005
14:53	0.006
14:54	0.006
14:55	0.01
14:56	0.004
14:57	0.004
14:58	0.004
14:59	0.004
15:00	0.021
15:01	0.007
15:02	0.005
15:03	0.004
15:04	0.004
15:05	0.005
15:06	0.004
15:07	0.004
15:08	0.005
15:09	0.005
15:10	0.008
15:11	0.018
15:12	0.004
15:13	0.01
15:14	0.003
15:15	0.004
15:16	0.003
15:17	0.003
15:18	0.003
15:19	0.005
15:20	0.005
15:21	0.003
15:22	0.003
15:23	0.007
15:24	0.005

15:25	0.006
15:26	0.007
15:27	0.006
15:28	0.01
15:29	0.005
15:30	0.004
15:31	0.003
15:32	0.003
15:33	0.003
15:34	0.007
15:35	0.016
15:36	0.007
15:37	0.031
15:38	0.008
15:39	0.006
15:40	0.005
15:41	0.003
15:42	0.003
15:43	0.004
15:44	0.004
15:45	0.004
15:46	0.004
15:47	0.004
15:48	0.005
15:49	0.004
15:50	0.004
15:51	0.003
15:52	0.003
15:53	0.004
15:54	0.003
15:55	0.004
15:56	0.005
15:57	0.004
15:58	0.003
15:59	0.003
16:00	0.003
16:01	0.005
16:02	0.004
16:03	0.004
16:04	0.007
16:05	0.009
16:06	0.005
16:07	0.004
16:08	0.011

16:09	0.004
16:10	0.006
16:11	0.006
16:12	0.004
16:13	0.003
16:14	0.004
16:15	0.004
16:16	0.006
16:17	0.006
16:18	0.004
16:19	0.004
16:20	0.006
16:21	0.006
16:22	0.003
16:23	0.003
16:24	0.005
16:25	0.007
16:26	0.004
16:27	0.004
16:28	0.004
16:29	0.007
16:30	0.004
16:31	0.003
16:32	0.004
16:33	0.006
16:34	0.008
16:35	0.006
16:36	0.003
16:37	0.002
16:38	0.003
16:39	0.002
16:40	0.013
16:41	0.013
16:42	0.003
16:43	0.005
16:44	0.003
16:45	0.003
16:46	0.002
16:47	0.003
16:48	0.006
16:49	0.003
16:50	0.003
16:51	0.003
16:52	0.005

16:53	0.003
16:54	0.003
16:55	0.002
16:56	0.004
16:57	0.003
16:58	0.006
16:59	0.004
17:00	0.005
17:01	0.003
17:02	0.002
17:03	0.004
17:04	0.007
17:05	0.004
17:06	0.003
17:07	0.004
17:08	0.005
17:09	0.002
17:10	0.003
17:11	0.01
17:12	0.003
17:13	0.003
17:14	0.004
17:15	0.004
17:16	0.004
17:17	0.002
17:18	0.003
17:19	0.003
17:20	0.004
17:21	0.003
17:22	0.003
17:23	0.003
17:24	0.003
17:25	0.003
17:26	0.004
17:27	0.003
17:28	0.003
17:29	0.002
17:30	0.004
17:31	0.004
17:32	0.003
17:33	0.003
17:34	0.004
17:35	0.003
17:36	0.009

17:37	0.008
17:38	0.004
17:39	0.004
17:40	0.003
17:41	0.007
17:42	0.005
17:43	0.009
17:44	0.004
17:45	0.009
17:46	0.009
17:47	0.004
17:48	0.003
17:49	0.004
17:50	0.005
17:51	0.004
17:52	0.005
17:53	0.003
17:54	0.003
17:55	0.004
17:56	0.003
17:57	0.004
17:58	0.008
17:59	0.007
18:00	0.005
18:01	0.006
18:02	0.007
18:03	0.005
18:04	0.004
18:05	0.004
18:06	0.004
18:07	0.003
18:08	0.004
18:09	0.004
18:10	0.005
18:11	0.003
18:12	0.005
18:13	0.004
18:14	0.003
18:15	0.004
18:16	0.003
18:17	0.003
18:18	0.002
18:19	0.003
18:20	0.002

18:21	0.003
18:22	0.002
18:23	0.002
18:24	0.002
18:25	0.002
18:26	0.003
18:27	0.003
18:28	0.003
18:29	0.007
18:30	0.005
18:31	0.003
18:32	0.003
18:33	0.003
18:34	0.005
18:35	0.004
18:36	0.003
18:37	0.002
18:38	0.002
18:39	0.007
18:40	0.007
18:41	0.009

Device Serial No	Log Time	Log Type	Sensor 1 Type	Sensor 1 Serial Number	Sensor 1 Status	Sensor 1 Gas Reading
592-600871	6/10/2024 6:49	CONFIG	PID	SC23030408A8		
592-600871	6/10/2024 6:50	Readings	PID	SC23030408A8	Normal	0
592-600871	6/10/2024 6:51	Readings	PID	SC23030408A8	Normal	0
592-600871	6/10/2024 6:52	Readings	PID	SC23030408A8	Normal	0
592-600871	6/10/2024 6:53	Readings	PID	SC23030408A8	Normal	0
592-600871	6/10/2024 6:54	Readings	PID	SC23030408A8	Normal	0
592-600871	6/10/2024 6:55	Readings	PID	SC23030408A8	Normal	0
592-600871	6/10/2024 6:56	Readings	PID	SC23030408A8	Normal	0
592-600871	6/10/2024 6:57	Readings	PID	SC23030408A8	Normal	0
592-600871	6/10/2024 6:58	Readings	PID	SC23030408A8	Normal	0
592-600871	6/10/2024 6:59	Readings	PID	SC23030408A8	Normal	0
592-600871	6/10/2024 7:00	Readings	PID	SC23030408A8	Normal	0
592-600871	6/10/2024 7:01	Readings	PID	SC23030408A8	Normal	0
592-600871	6/10/2024 7:02	Readings	PID	SC23030408A8	Normal	0
592-600871	6/10/2024 7:03	Readings	PID	SC23030408A8	Normal	0
592-600871	6/10/2024 7:04	Readings	PID	SC23030408A8	Normal	0
592-600871	6/10/2024 7:05	Readings	PID	SC23030408A8	Normal	0
592-600871	6/10/2024 7:06	Readings	PID	SC23030408A8	Normal	0
592-600871	6/10/2024 7:07	Readings	PID	SC23030408A8	Normal	0
592-600871	6/10/2024 7:08	Readings	PID	SC23030408A8	Normal	0
592-600871	6/10/2024 7:09	Readings	PID	SC23030408A8	Normal	0
592-600871	6/10/2024 7:10	Readings	PID	SC23030408A8	Normal	0
592-600871	6/10/2024 7:11	Readings	PID	SC23030408A8	Normal	0
592-600871	6/10/2024 7:12	Readings	PID	SC23030408A8	Normal	0
592-600871	6/10/2024 7:13	Readings	PID	SC23030408A8	Normal	0
592-600871	6/10/2024 7:14	Readings	PID	SC23030408A8	Normal	0
592-600871	6/10/2024 7:15	Readings	PID	SC23030408A8	Normal	0
592-600871	6/10/2024 7:16	Readings	PID	SC23030408A8	Normal	0
592-600871	6/10/2024 7:17	Readings	PID	SC23030408A8	Normal	0
592-600871	6/10/2024 7:18	Readings	PID	SC23030408A8	Normal	0
592-600871	6/10/2024 7:19	Readings	PID	SC23030408A8	Normal	0
592-600871	6/10/2024 7:20	Readings	PID	SC23030408A8	Normal	0

592-600871	6/10/2024 18:21	Readings	PID	SC23030408A8	Normal	0
592-600871	6/10/2024 18:22	Readings	PID	SC23030408A8	Normal	0
592-600871	6/10/2024 18:23	Readings	PID	SC23030408A8	Normal	0
592-600871	6/10/2024 18:24	Readings	PID	SC23030408A8	Normal	0
592-600871	6/10/2024 18:25	Readings	PID	SC23030408A8	Normal	0
592-600871	6/10/2024 18:26	Readings	PID	SC23030408A8	Normal	0
592-600871	6/10/2024 18:27	Readings	PID	SC23030408A8	Normal	0
592-600871	6/10/2024 18:28	Readings	PID	SC23030408A8	Normal	0
592-600871	6/10/2024 18:29	Readings	PID	SC23030408A8	Normal	0
592-600871	6/10/2024 18:30	Readings	PID	SC23030408A8	Normal	0
592-600871	6/10/2024 18:31	Readings	PID	SC23030408A8	Normal	0
592-600871	6/10/2024 18:32	Readings	PID	SC23030408A8	Normal	0
592-600871	6/10/2024 18:33	Readings	PID	SC23030408A8	Normal	0
592-600871	6/10/2024 18:34	Readings	PID	SC23030408A8	Normal	0
592-600871	6/10/2024 18:35	Readings	PID	SC23030408A8	Normal	0
592-600871	6/10/2024 18:36	Readings	PID	SC23030408A8	Normal	0
592-600871	6/10/2024 18:37	Readings	PID	SC23030408A8	Normal	0
592-600871	6/10/2024 18:38	Readings	PID	SC23030408A8	Normal	0
592-600871	6/10/2024 18:39	Readings	PID	SC23030408A8	Normal	0
592-600871	6/10/2024 18:40	Readings	PID	SC23030408A8	Normal	0
592-600871	6/10/2024 18:41	Readings	PID	SC23030408A8	Normal	0
592-600871	6/10/2024 18:42	Readings	PID	SC23030408A8	Normal	0
592-600871	6/10/2024 18:43	Readings	PID	SC23030408A8	Normal	0
592-600871	6/10/2024 18:44	Readings	PID	SC23030408A8	Normal	0
592-600871	6/10/2024 18:45	Readings	PID	SC23030408A8	Normal	0