



DAILY STATUS REPORT

Prepared By:

Bill Chaky

WEATHER	Snow	Rain	Overcast	Partly Cloudy	X	Bright Sun	X	Wind
TEMP.	< 32	32-50	50-70	X	70-85	X	>85	N – 6 MPH

IEC Project No:	13928	NYSDEC BCP Site No:	C224367	Date: 06/11/24
Project:	251 Douglass Street, Brooklyn, NY			

<p>Consultant: Impact Environmental Engineering and Geology, PLLC (IEEG)</p> <p>Time On: 06:40 Time Out: 20:05</p>	<p>Personnel On Site: IEEG (Environmental) – Bill Chaky Broadway Construction Group - Tom Caporale Cascade GES - James MTL WSP - Charlie Lambert</p> <p>Equipment On Site: (3) MiniRAE 3000 PID, (3) DustTrak II</p>
---	--

Scope of Work: ISS column installation.

Site Activities:

- Deployed three (3) CAMP stations prior to the start of work activities;
- Cascade received multiple deliveries of slag;
- GES conducted oversight of geo-technical drilling by MTL;
- Cascade drilled **Column 639** with column specification below:
 - Column is 8’ diameter and drilled 36’ deep from Site grade;
 - The column consisted of a total of 16 batches;
- Cascade drilled **Column 621** with column specification below:
 - Column is 8’ diameter and drilled 36’ deep from Site grade;
 - The column consisted of a total of 14 batches;
- Cascade drilled **Column 626** with column specification below:
 - Column is 8’ diameter and drilled 36’ deep from Site grade;
 - The column consisted of a total of 18 batches;
- Cascade drilled **Column 604** with column specification below:
 - Column is 8’ diameter and drilled 51’ deep from Site grade;
 - The column consisted of a total of 20 batches;

Community Air Monitoring Program (CAMP) - CAMP action level for dust (0.1 mg/m³) and VOCs (5 ppm)

- PID remained at nominal levels throughout the day
- No sustained dust exceedances were observed over a 1-min period during monitoring;
- Startup Upwind Conditions – PID = _0.6_ ppm @ 07:31, Dust = _0.021_ mg/m³ @ 07:01
- High Conditions (Upwind) – PID = _0.9_ ppm @ 07:33, Dust = _0.294_ mg/m³ @ 13:54
- High Conditions (Downwind 1) – PID = _1.6_ ppm @ 12:18, Dust = _0.232_ mg/m³ @ 07:01
- High Conditions (Downwind 2) – PID = _0.0_ ppm, Dust = _0.783_ mg/m³ @ 17:43

Notable Site Conditions:

- Sporadic visible dust conditions migrated onto site from offsite work activities conducted along sidewalk on Douglass St. Work consisted of existing sidewalk demolishing and removal, sizing concrete waste and loading into dump-trucks, and tampering soil.

Planned for the Next Day/Week:

- Continuation of ISS column installation;
- Columns 639 and 621 were drilled to the 40' interval instead of the 55' Cascade plans to over drill these locations tomorrow 6/12/24 to reach the intended depth;
- Wet mix and QA/QC coring sampling; and
- GES to continue oversight of geo-technical drilling by MTL.



PHOTO LOG

251 DOUGLASS STREET, BROOKLYN, NY



Photo 1-
Representative
photo of a
delivery of slag.



Photo 2-
Representative
photo of GES and
MTL conducting
geo-technical
drilling.



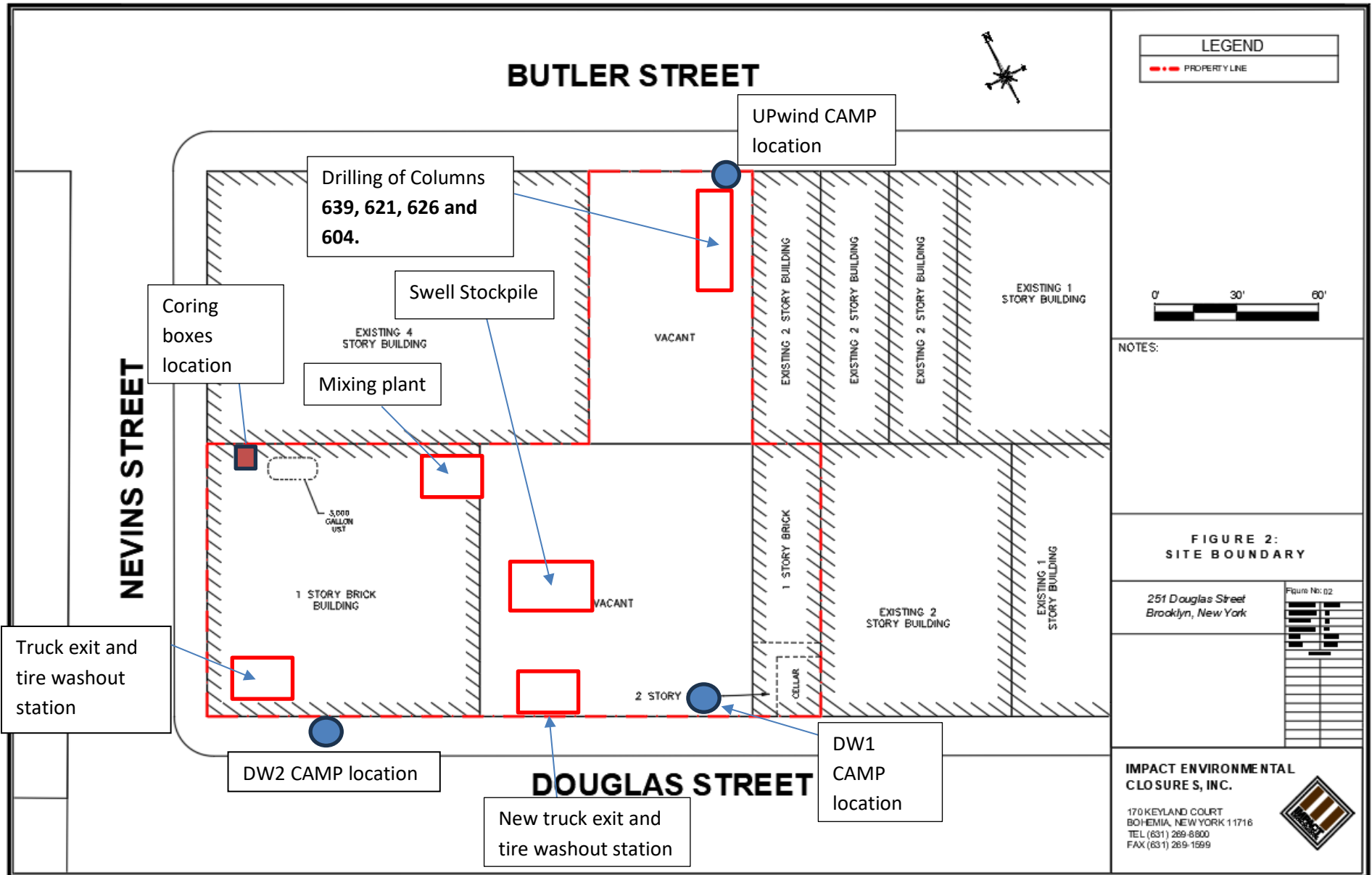
Photo 3-
Representative
photo of ISS
column
installation.

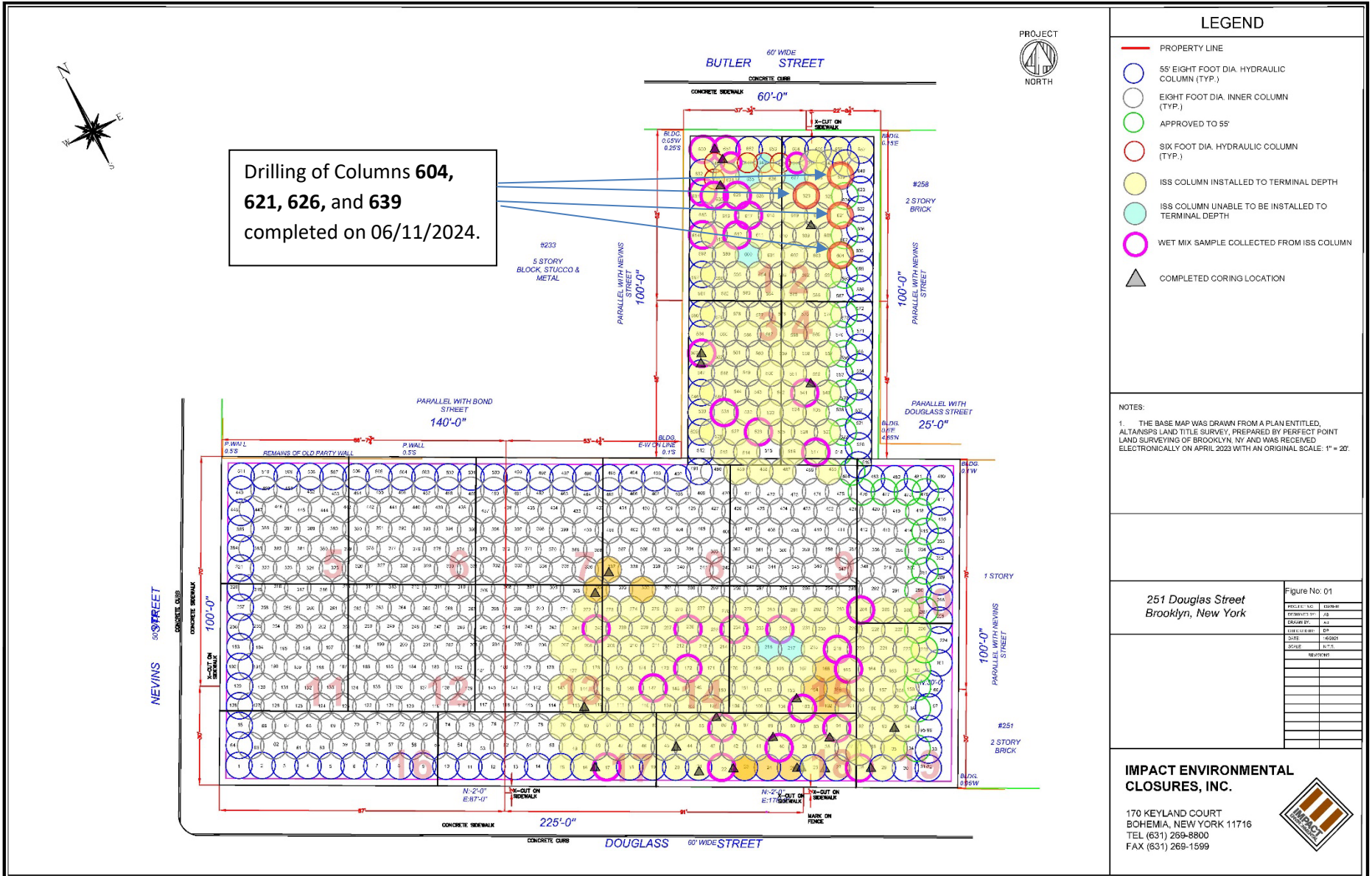


SITE PLANS

251 DOUGLASS STREET, BROOKLYN, NY







LEGEND

- PROPERTY LINE
- 55' EIGHT FOOT DIA. HYDRAULIC COLUMN (TYP.)
- EIGHT FOOT DIA. INNER COLUMN (TYP.)
- APPROVED TO 55'
- SIX FOOT DIA. HYDRAULIC COLUMN (TYP.)
- ISS COLUMN INSTALLED TO TERMINAL DEPTH
- ISS COLUMN UNABLE TO BE INSTALLED TO TERMINAL DEPTH
- WET MIX SAMPLE COLLECTED FROM ISS COLUMN
- ▲ COMPLETED CORING LOCATION

NOTES:
 1. THE BASE MAP WAS DRAWN FROM A PLAN ENTITLED, ALTA/NPS LAND TITLE SURVEY, PREPARED BY PERFECT POINT LAND SURVEYING OF BROOKLYN, NY AND WAS RECEIVED ELECTRONICALLY ON APRIL 2023 WITH AN ORIGINAL SCALE: 1" = 20'.

251 Douglas Street
 Brooklyn, New York

Figure No: 01	
PROJECT NO.	010001
PREPARED BY	JAB
DRAWN BY	NAJ
CHECKED BY	EP
DATE	6/06/24
SCALE	1/8" = 1'-0"
DATE	6/11/24
SCALE	1/8" = 1'-0"
DATE	
SCALE	
DATE	
SCALE	

IMPACT ENVIRONMENTAL CLOSURES, INC.
 170 KEYLAND COURT
 BOHEMIA, NEW YORK 11716
 TEL (631) 269-8800
 FAX (631) 269-1599



SCM Report

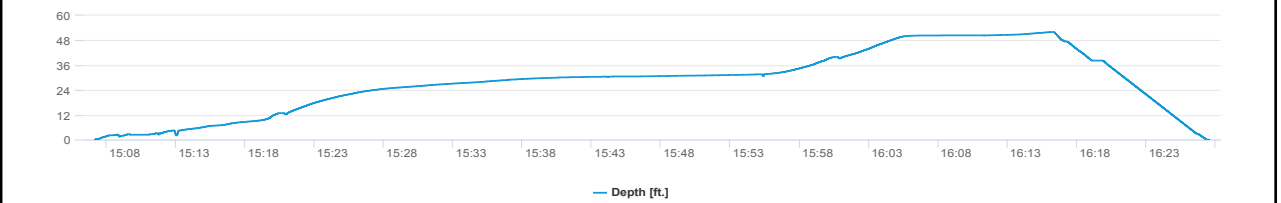
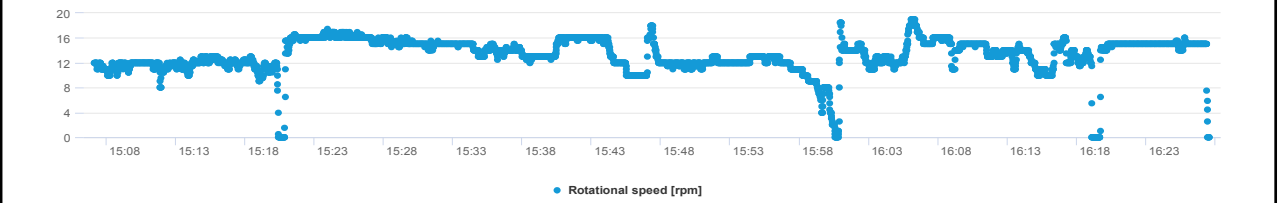
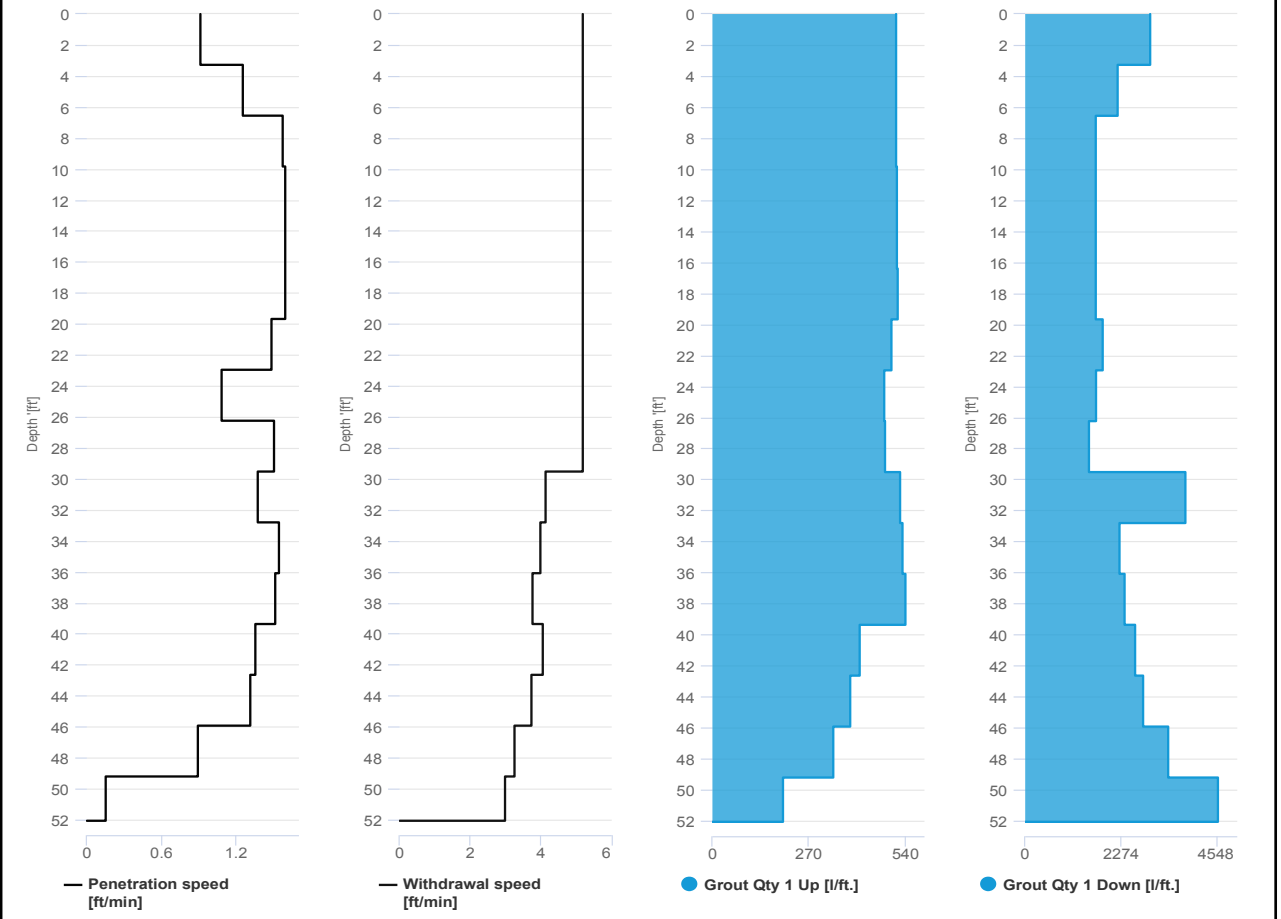


Project name: Douglass Street BCG ISS Element name: 604a
Project number

Start date: 06/11/2024

Drilling rig: BG36H_5717

Details		Start time: 03:07 PM	
Max. depth: 52.06 ft.		End Date: 06/11/2024	
Volume/m 1: 32.84 ft³		End time: 04:27 PM	
		Production duration: 01:20:26	
		Final depth time: 04:16 PM	
		Total suspension quantity: 520.927 ft³	



SCM Report

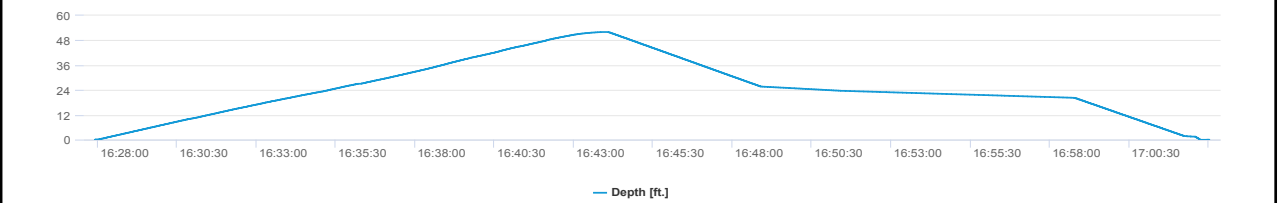
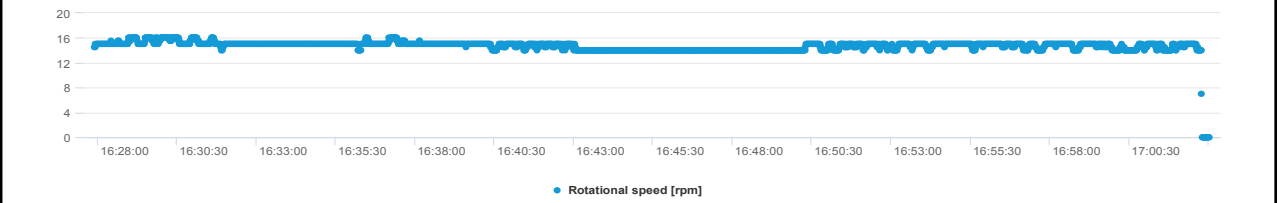
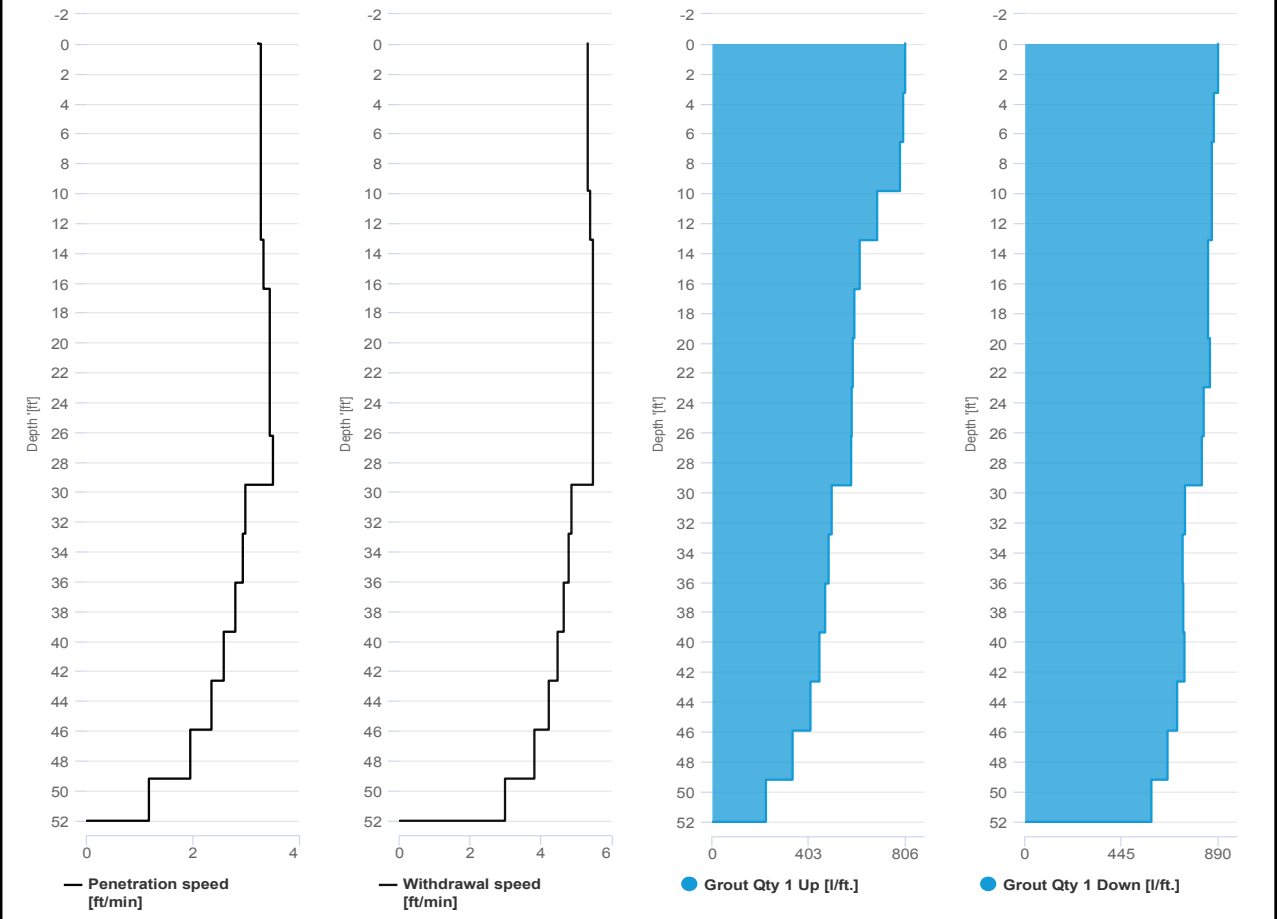


Project name: Douglass Street BCG ISS Element name: 604b
 Project number

Start date: 06/11/2024

Drilling rig: BG36H_5717

Details		Start time: 04:27 PM	
Max. depth: 52.03 ft.		End Date: 06/11/2024	
Volume/m 1: 18.36 ft³		End time: 05:03 PM	
		Production duration: 00:35:08	
		Final depth time: 04:43 PM	
		Total suspension quantity: 290.322 ft³	



SCM Report

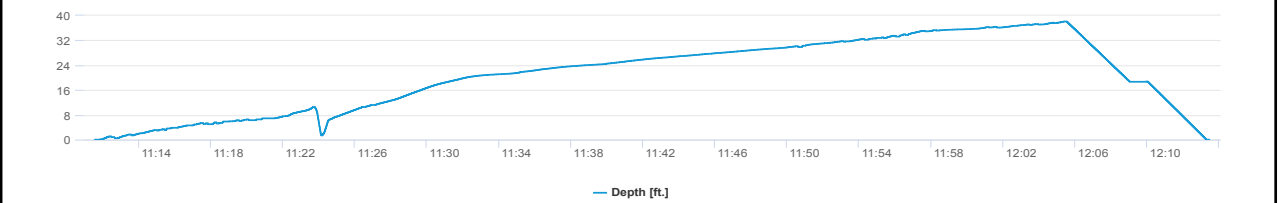
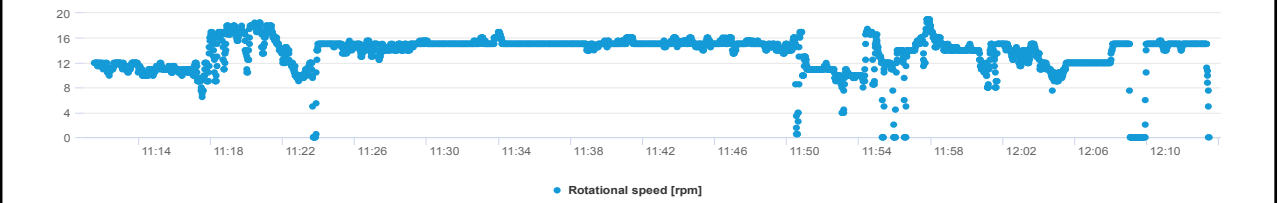
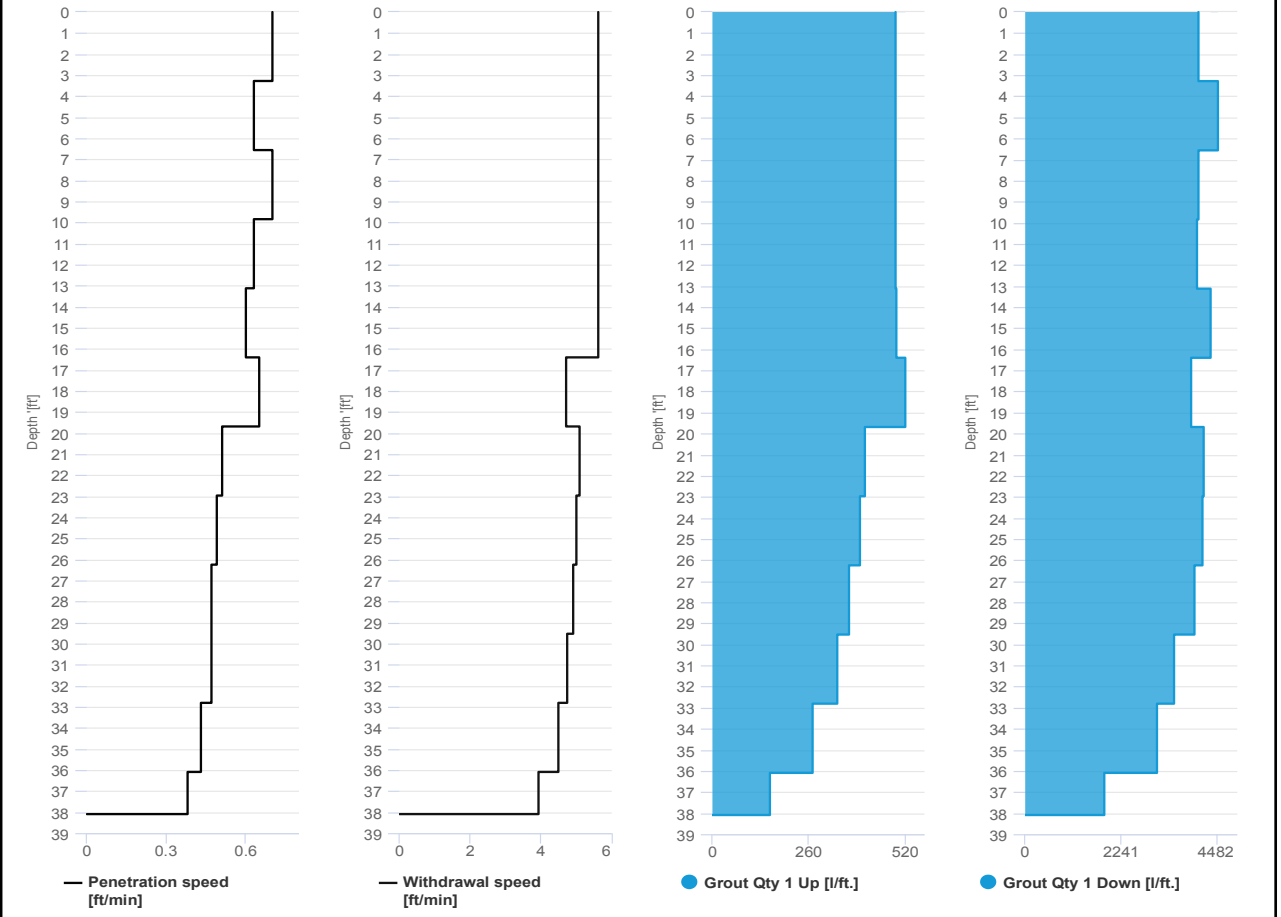


Project name: Douglass Street BCG ISS Element name: 621a
Project number

Start date: 06/11/2024

Drilling rig: BG36H_5717

Details		Start time: 11:11 AM	
Max. depth: 38.09 ft.		End Date: 06/11/2024	
Volume/m 1: 36.72 ft³		End time: 12:13 PM	
		Production duration: 01:01:55	
		Final depth time: 12:05 PM	
		Total suspension quantity: 425.259 ft³	



SCM Report

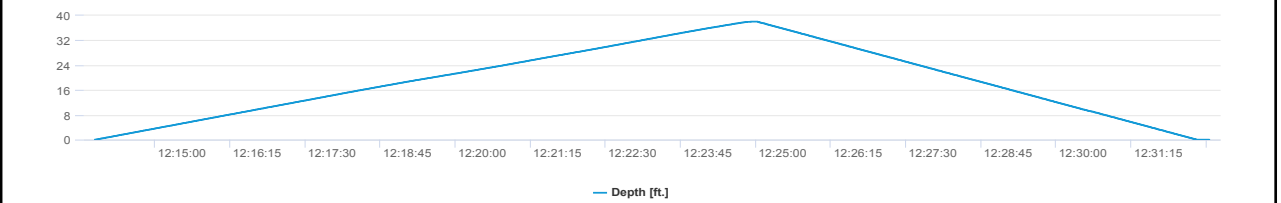
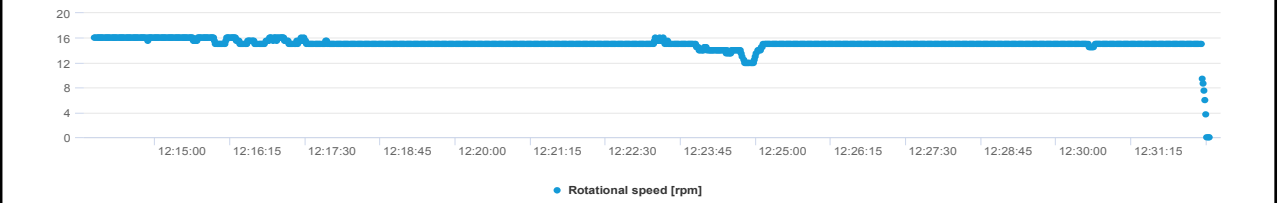
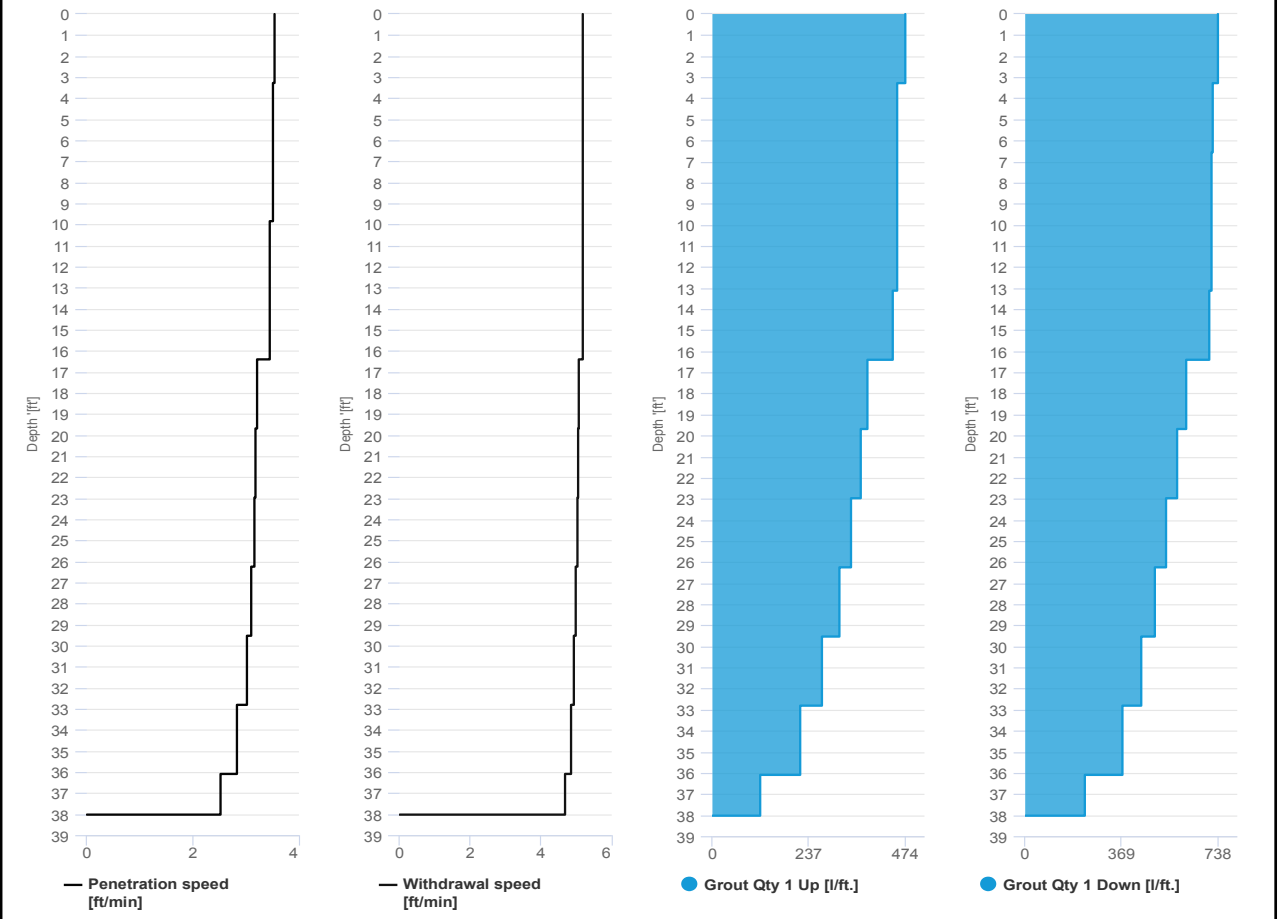


Project name: Douglass Street BCG ISS Element name: 621b
 Project number

Start date: 06/11/2024

Drilling rig: BG36H_5717

Details		Start time: 12:14 PM	
Max. depth: 38.02 ft.		End Date: 06/11/2024	
Volume/m 1: 9.88 ft³		End time: 12:32 PM	
		Production duration: 00:18:34	
		Final depth time: 12:25 PM	
		Total suspension quantity: 115.161 ft³	



SCM Report

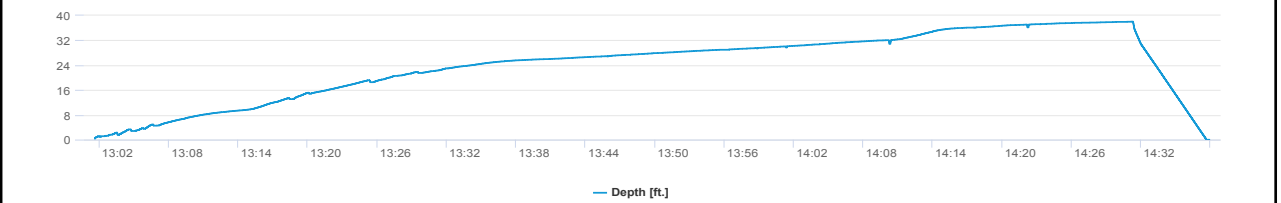
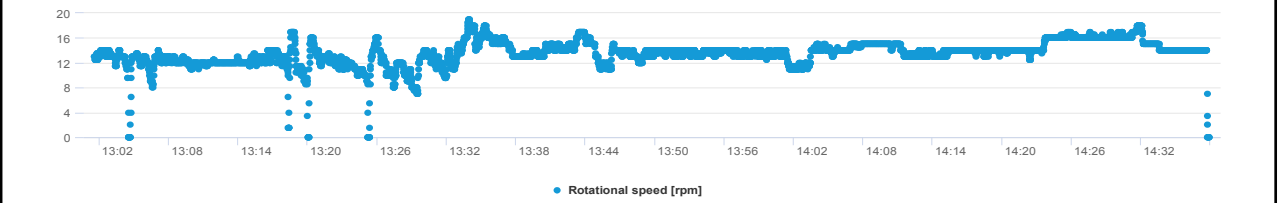
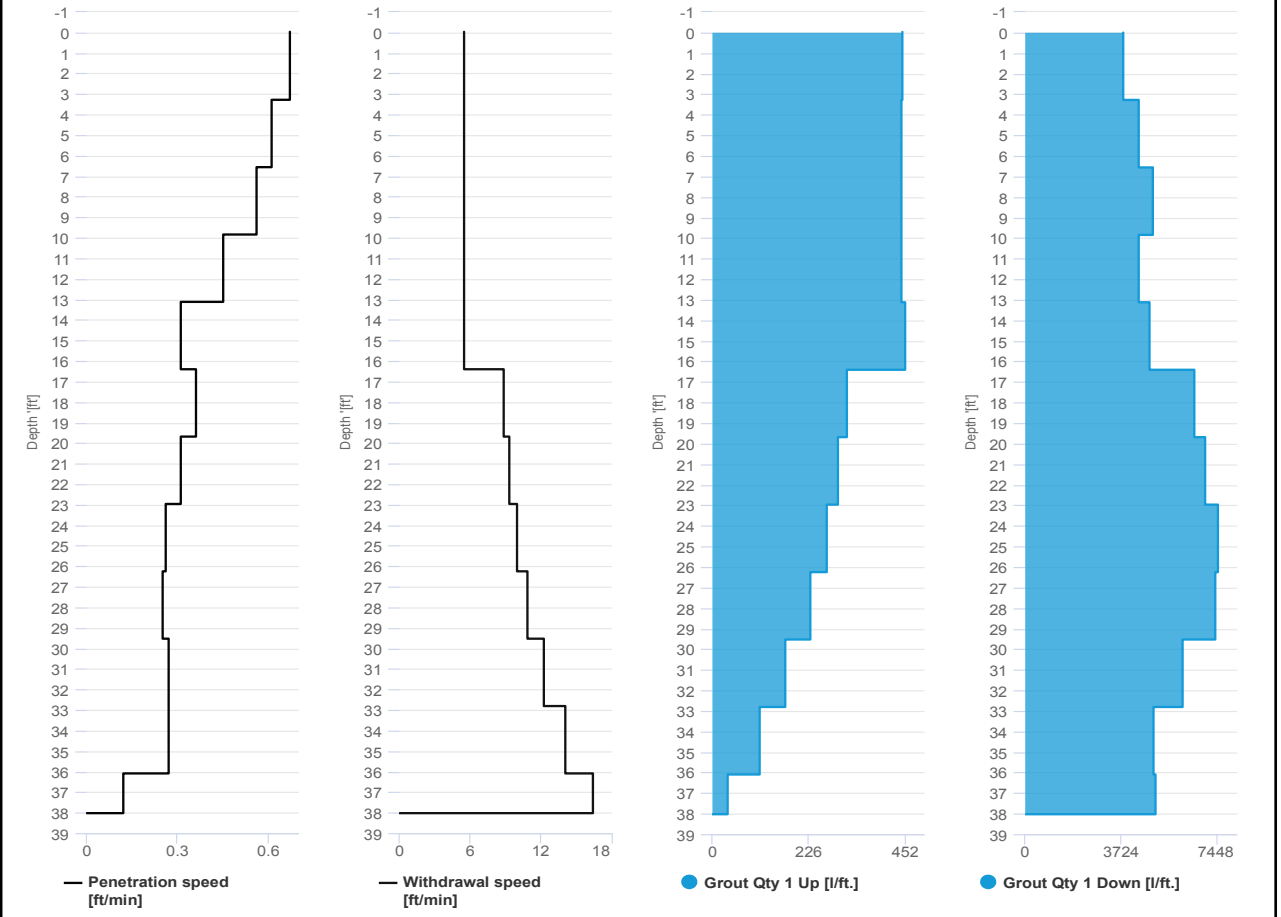


Project name: Douglass Street BCG ISS Element name: 626a
 Project number

Start date: 06/11/2024

Drilling rig: BG36H_5717

Details		Start time: 01:01 PM	
Max. depth: 38.02 ft.		End Date: 06/11/2024	
Volume/m 1: 51.2 ft³		End time: 02:37 PM	
		Production duration: 01:36:19	
		Final depth time: 02:31 PM	
		Total suspension quantity: 592.05 ft³	



SCM Report

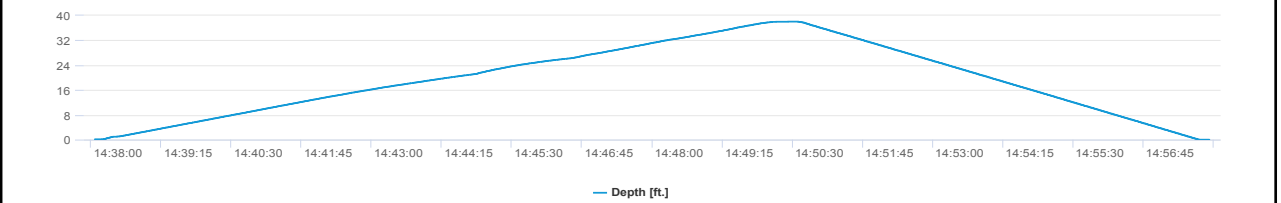
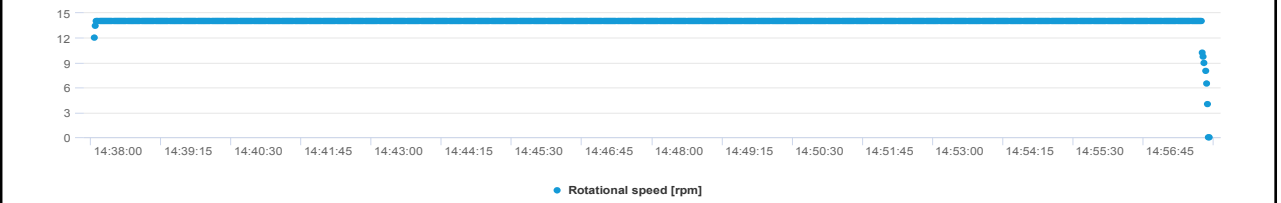
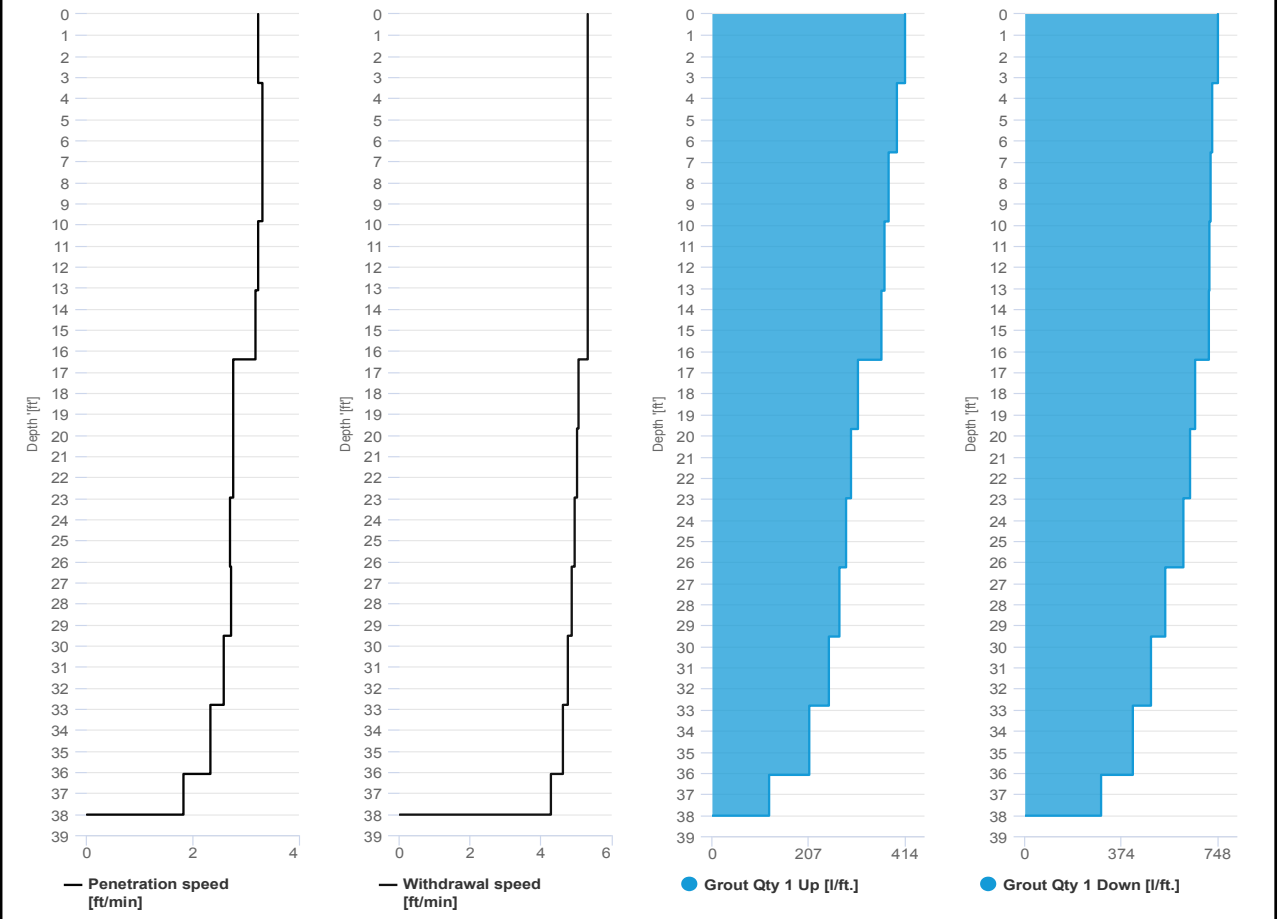


Project name: Douglass Street BCG ISS Element name: 626b
 Project number

Start date: 06/11/2024

Drilling rig: BG36H_5717

Details		Start time: 02:38 PM	
Max. depth: 38.02 ft.		End Date: 06/11/2024	
Volume/m 1: 9.88 ft³		End time: 02:57 PM	
		Production duration: 00:19:53	
		Final depth time: 02:50 PM	
		Total suspension quantity: 112.759 ft³	



SCM Report

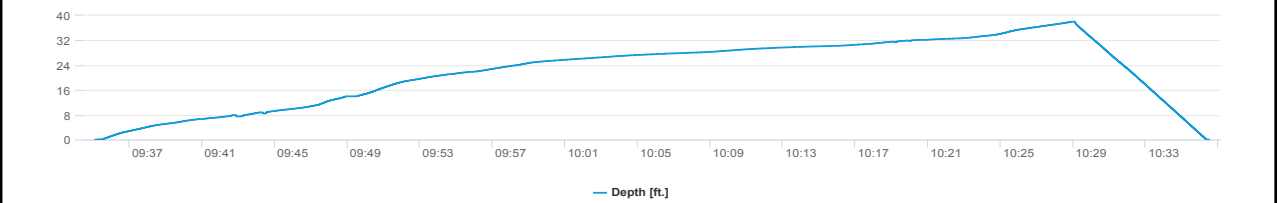
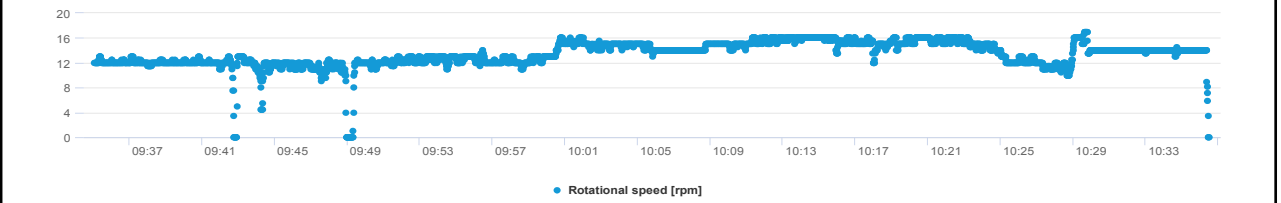
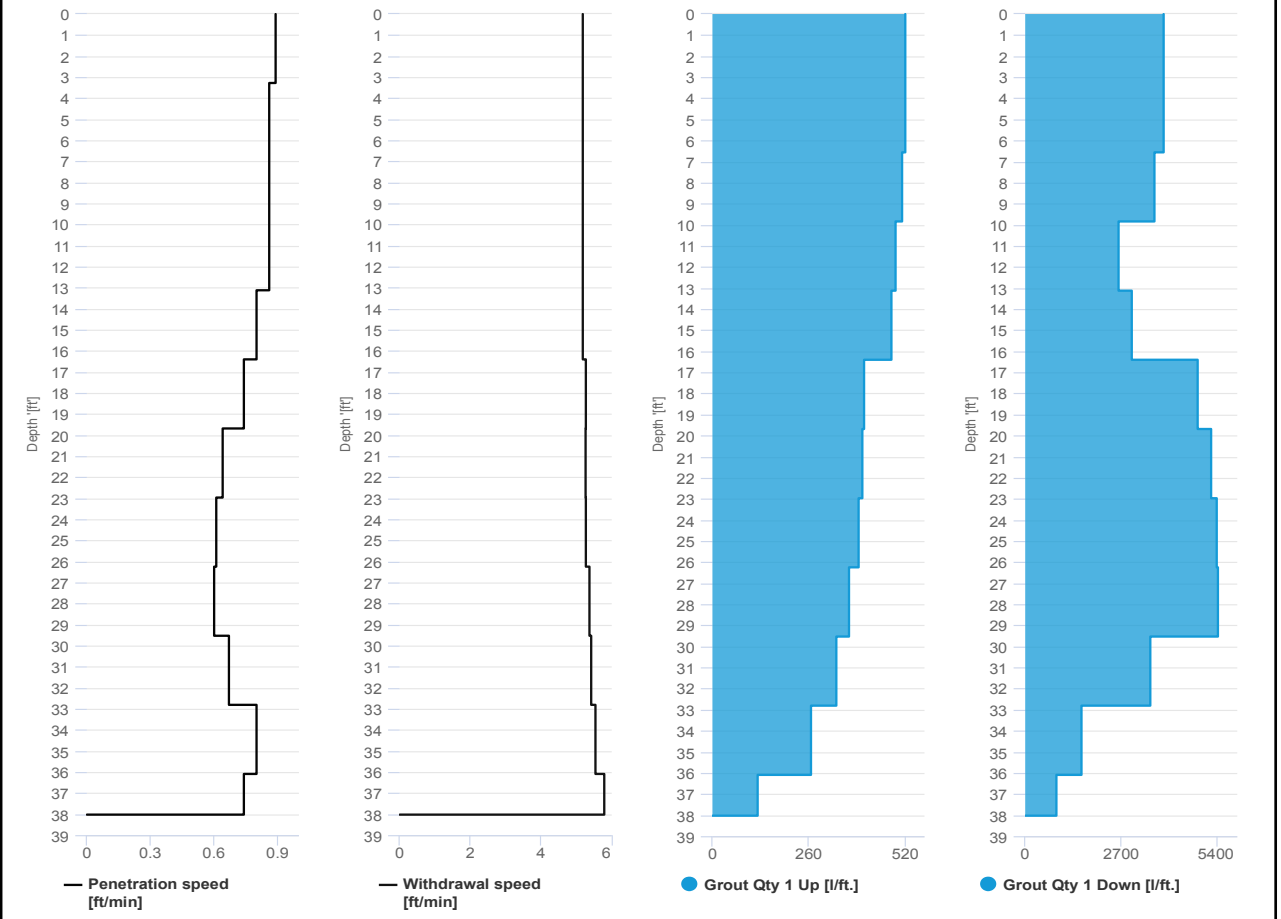


Project name: Douglass Street BCG ISS Element name: 639a
Project number

Start date: 06/11/2024

Drilling rig: BG36H_5717

Details		Start time	09:35 AM
Max. depth	38.02 ft.	End Date	06/11/2024
Volume/m 1	38.84 ft ³	End time	10:36 AM
		Production duration	01:01:26
		Final depth time	10:29 AM
		Total suspension quantity	451.286 ft ³



SCM Report

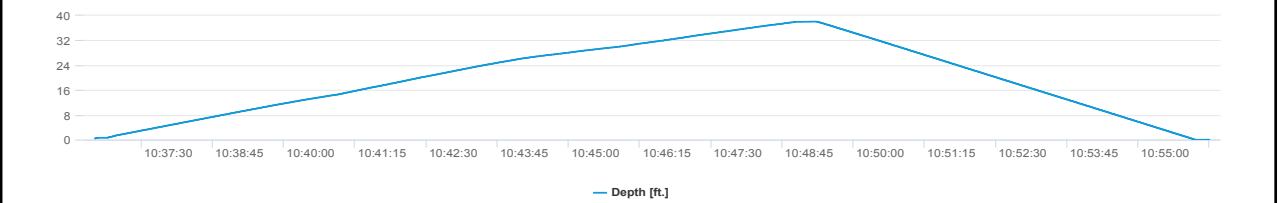
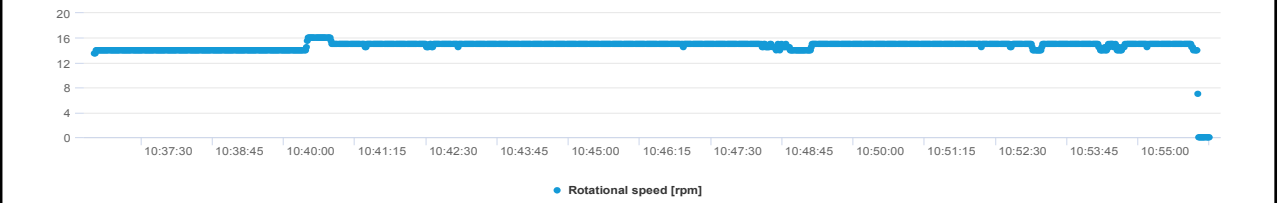
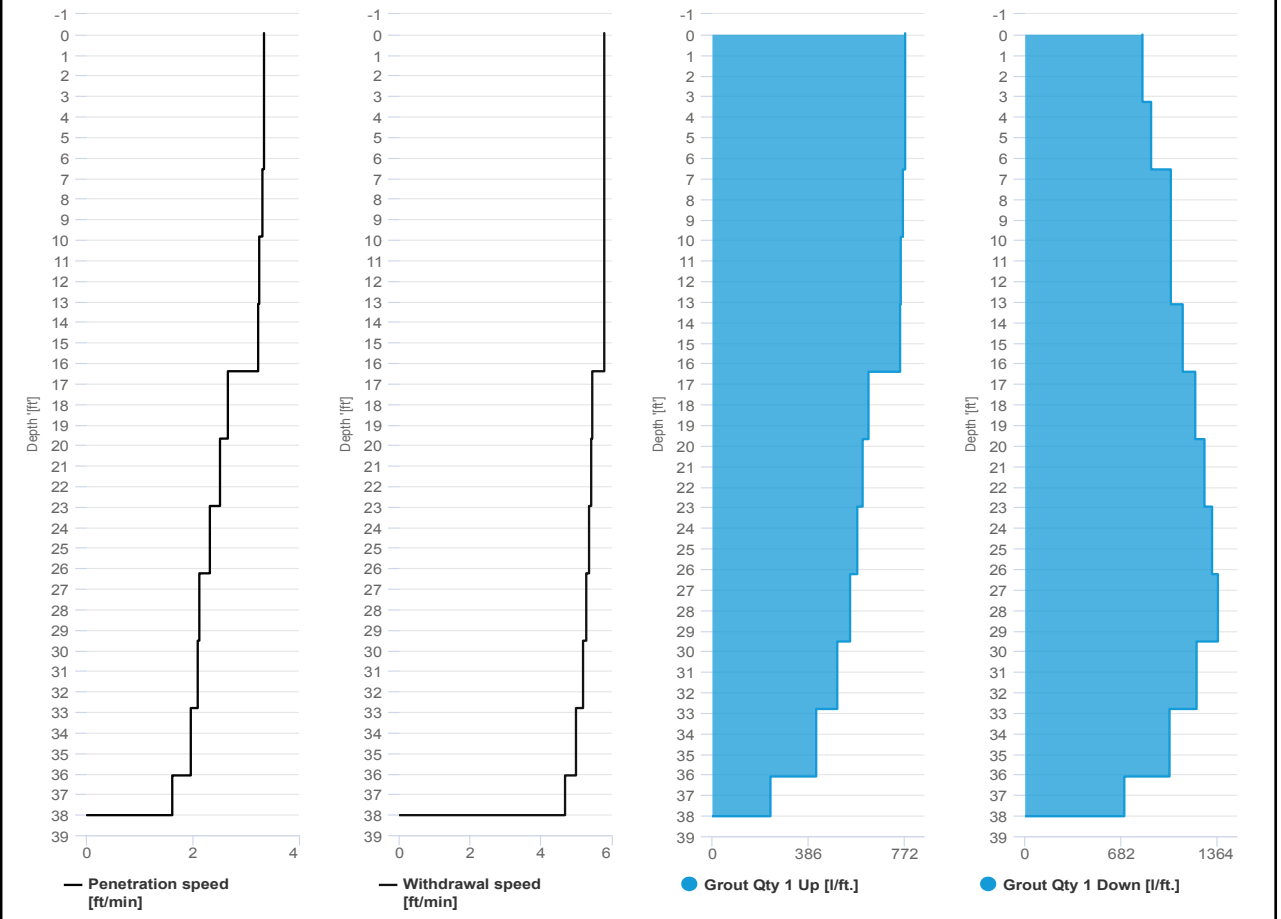


Project name: Douglass Street BCG ISS Element name: 639b
Project number

Start date: 06/11/2024

Drilling rig: BG36H_5717

Details		Start time: 10:36 AM	
Max. depth: 38.02 ft.		End Date: 06/11/2024	
Volume/m 1: 15.89 ft³		End time: 10:56 AM	
		Production duration: 00:19:35	
		Final depth time: 10:49 AM_	
		Total suspension quantity: 184.872 ft³	





IMPACT ENVIRONMENTAL

170 Keyland Court | Bohemia | NY | 11716 | 631.269.8800

welcome to solid ground...

www.impactenvironmental.com

UPWIND CAMP READINGS

251 DOUGLASS STREET, BROOKLYN, NY

Instrument Name	DustTrak DRX
Model Number	8533
Serial Number	8533181207
Firmware Version	3.1
Calibration Date	6/1/2023
Test Name	MANUAL_009
Test Start Time	7:01:23 AM
Test Start Date	6/11/2024
Test Length [D:H:M]	0:11:40
Test Interval [M:S]	1:00
PM10 Average [mg/m3]	0.014
PM10 Minimum [mg/m3]	0.002
PM10 Maximum [mg/m3]	0.294
PM10 TWA [mg/m3]	0.014
Photometric User Cal	1
Size Correction User Cal	1
Flow User Cal	0
Errors	
Number of Samples	700

Elapsed Time [s]	PM10 [mg/m3]	Alarms	Errors
7:01:23 AM	0.021		
7:02:23 AM	0.003		
7:03:23 AM	0.182		
7:04:23 AM	0.004		
7:05:23 AM	0.005		
7:06:23 AM	0.002		
7:07:23 AM	0.002		
7:08:23 AM	0.003		
7:09:23 AM	0.003		
7:10:23 AM	0.005		
7:11:23 AM	0.006		
7:12:23 AM	0.008		
7:13:23 AM	0.003		
7:14:23 AM	0.007		
7:15:23 AM	0.008		
7:16:23 AM	0.004		
7:17:23 AM	0.005		
7:18:23 AM	0.004		
7:19:23 AM	0.003		
7:20:23 AM	0.003		
7:21:23 AM	0.015		
7:22:23 AM	0.005		
7:23:23 AM	0.005		

7:24:23 AM	0.004
7:25:23 AM	0.008
7:26:23 AM	0.005
7:27:23 AM	0.006
7:28:23 AM	0.014
7:29:23 AM	0.007
7:30:23 AM	0.005
7:31:23 AM	0.011
7:32:23 AM	0.006
7:33:23 AM	0.004
7:34:23 AM	0.004
7:35:23 AM	0.006
7:36:23 AM	0.005
7:37:23 AM	0.005
7:38:23 AM	0.004
7:39:23 AM	0.004
7:40:23 AM	0.003
7:41:23 AM	0.006
7:42:23 AM	0.01
7:43:23 AM	0.007
7:44:23 AM	0.007
7:45:23 AM	0.003
7:46:23 AM	0.004
7:47:23 AM	0.004
7:48:23 AM	0.006
7:49:23 AM	0.004
7:50:23 AM	0.006
7:51:23 AM	0.005
7:52:23 AM	0.004
7:53:23 AM	0.005
7:54:23 AM	0.004
7:55:23 AM	0.005
7:56:23 AM	0.004
7:57:23 AM	0.003
7:58:23 AM	0.005
7:59:23 AM	0.003
8:00:23 AM	0.003
8:01:23 AM	0.003
8:02:23 AM	0.004
8:03:23 AM	0.003
8:04:23 AM	0.003
8:05:23 AM	0.003
8:06:23 AM	0.004
8:07:23 AM	0.006

8:08:23 AM	0.005
8:09:23 AM	0.004
8:10:23 AM	0.006
8:11:23 AM	0.004
8:12:23 AM	0.008
8:13:23 AM	0.006
8:14:23 AM	0.008
8:15:23 AM	0.013
8:16:23 AM	0.007
8:17:23 AM	0.005
8:18:23 AM	0.005
8:19:23 AM	0.007
8:20:23 AM	0.004
8:21:23 AM	0.006
8:22:23 AM	0.005
8:23:23 AM	0.007
8:24:23 AM	0.005
8:25:23 AM	0.003
8:26:23 AM	0.004
8:27:23 AM	0.006
8:28:23 AM	0.005
8:29:23 AM	0.005
8:30:23 AM	0.007
8:31:23 AM	0.01
8:32:23 AM	0.009
8:33:23 AM	0.008
8:34:23 AM	0.012
8:35:23 AM	0.009
8:36:23 AM	0.009
8:37:23 AM	0.007
8:38:23 AM	0.01
8:39:23 AM	0.006
8:40:23 AM	0.006
8:41:23 AM	0.009
8:42:23 AM	0.007
8:43:23 AM	0.005
8:44:23 AM	0.011
8:45:23 AM	0.007
8:46:23 AM	0.031
8:47:23 AM	0.012
8:48:23 AM	0.008
8:49:23 AM	0.02
8:50:23 AM	0.023
8:51:23 AM	0.017

8:52:23 AM	0.019
8:53:23 AM	0.029
8:54:23 AM	0.012
8:55:23 AM	0.018
8:56:23 AM	0.008
8:57:23 AM	0.014
8:58:23 AM	0.015
8:59:23 AM	0.006
9:00:23 AM	0.017
9:01:23 AM	0.019
9:02:23 AM	0.012
9:03:23 AM	0.008
9:04:23 AM	0.009
9:05:23 AM	0.013
9:06:23 AM	0.02
9:07:23 AM	0.013
9:08:23 AM	0.012
9:09:23 AM	0.009
9:10:23 AM	0.009
9:11:23 AM	0.012
9:12:23 AM	0.011
9:13:23 AM	0.009
9:14:23 AM	0.007
9:15:23 AM	0.014
9:16:23 AM	0.012
9:17:23 AM	0.018
9:18:23 AM	0.016
9:19:23 AM	0.009
9:20:23 AM	0.01
9:21:23 AM	0.008
9:22:23 AM	0.008
9:23:23 AM	0.011
9:24:23 AM	0.025
9:25:23 AM	0.01
9:26:23 AM	0.017
9:27:23 AM	0.022
9:28:23 AM	0.014
9:29:23 AM	0.031
9:30:23 AM	0.022
9:31:23 AM	0.009
9:32:23 AM	0.017
9:33:23 AM	0.025
9:34:23 AM	0.025
9:35:23 AM	0.026

9:36:23 AM	0.011
9:37:23 AM	0.016
9:38:23 AM	0.019
9:39:23 AM	0.02
9:40:23 AM	0.016
9:41:23 AM	0.048
9:42:23 AM	0.031
9:43:23 AM	0.033
9:44:23 AM	0.05
9:45:23 AM	0.017
9:46:23 AM	0.016
9:47:23 AM	0.011
9:48:23 AM	0.012
9:49:23 AM	0.018
9:50:23 AM	0.036
9:51:23 AM	0.022
9:52:23 AM	0.024
9:53:23 AM	0.052
9:54:23 AM	0.014
9:55:23 AM	0.019
9:56:23 AM	0.006
9:57:23 AM	0.005
9:58:23 AM	0.005
9:59:23 AM	0.014
10:00:23 AM	0.021
10:01:23 AM	0.025
10:02:23 AM	0.022
10:03:23 AM	0.016
10:04:23 AM	0.02
10:05:23 AM	0.025
10:06:23 AM	0.019
10:07:23 AM	0.006
10:08:23 AM	0.016
10:09:23 AM	0.007
10:10:23 AM	0.006
10:11:23 AM	0.004
10:12:23 AM	0.004
10:13:23 AM	0.005
10:14:23 AM	0.017
10:15:23 AM	0.014
10:16:23 AM	0.005
10:17:23 AM	0.007
10:18:23 AM	0.013
10:19:23 AM	0.014

10:20:23 AM	0.009
10:21:23 AM	0.018
10:22:23 AM	0.019
10:23:23 AM	0.042
10:24:23 AM	0.026
10:25:23 AM	0.013
10:26:23 AM	0.016
10:27:23 AM	0.017
10:28:23 AM	0.017
10:29:23 AM	0.014
10:30:23 AM	0.037
10:31:23 AM	0.033
10:32:23 AM	0.01
10:33:23 AM	0.014
10:34:23 AM	0.047
10:35:23 AM	0.024
10:36:23 AM	0.013
10:37:23 AM	0.031
10:38:23 AM	0.089
10:39:23 AM	0.038
10:40:23 AM	0.022
10:41:23 AM	0.014
10:42:23 AM	0.008
10:43:23 AM	0.008
10:44:23 AM	0.024
10:45:23 AM	0.01
10:46:23 AM	0.008
10:47:23 AM	0.014
10:48:23 AM	0.014
10:49:23 AM	0.019
10:50:23 AM	0.006
10:51:23 AM	0.011
10:52:23 AM	0.009
10:53:23 AM	0.006
10:54:23 AM	0.004
10:55:23 AM	0.008
10:56:23 AM	0.009
10:57:23 AM	0.006
10:58:23 AM	0.009
10:59:23 AM	0.013
11:00:23 AM	0.011
11:01:23 AM	0.015
11:02:23 AM	0.015
11:03:23 AM	0.011

11:04:23 AM	0.012
11:05:23 AM	0.013
11:06:23 AM	0.007
11:07:23 AM	0.005
11:08:23 AM	0.007
11:09:23 AM	0.012
11:10:23 AM	0.005
11:11:23 AM	0.005
11:12:23 AM	0.004
11:13:23 AM	0.007
11:14:23 AM	0.009
11:15:23 AM	0.005
11:16:23 AM	0.009
11:17:23 AM	0.006
11:18:23 AM	0.007
11:19:23 AM	0.011
11:20:23 AM	0.005
11:21:23 AM	0.004
11:22:23 AM	0.007
11:23:23 AM	0.009
11:24:23 AM	0.008
11:25:23 AM	0.013
11:26:23 AM	0.016
11:27:23 AM	0.008
11:28:23 AM	0.006
11:29:23 AM	0.004
11:30:23 AM	0.005
11:31:23 AM	0.005
11:32:23 AM	0.004
11:33:23 AM	0.003
11:34:23 AM	0.006
11:35:23 AM	0.004
11:36:23 AM	0.005
11:37:23 AM	0.005
11:38:23 AM	0.007
11:39:23 AM	0.009
11:40:23 AM	0.006
11:41:23 AM	0.008
11:42:23 AM	0.014
11:43:23 AM	0.027
11:44:23 AM	0.017
11:45:23 AM	0.005
11:46:23 AM	0.005
11:47:23 AM	0.004

11:48:23 AM	0.008
11:49:23 AM	0.005
11:50:23 AM	0.007
11:51:23 AM	0.009
11:52:23 AM	0.007
11:53:23 AM	0.011
11:54:23 AM	0.007
11:55:23 AM	0.008
11:56:23 AM	0.01
11:57:23 AM	0.008
11:58:23 AM	0.004
11:59:23 AM	0.005
12:00:23 PM	0.007
12:01:23 PM	0.005
12:02:23 PM	0.004
12:03:23 PM	0.006
12:04:23 PM	0.013
12:05:23 PM	0.01
12:06:23 PM	0.006
12:07:23 PM	0.013
12:08:23 PM	0.008
12:09:23 PM	0.005
12:10:23 PM	0.005
12:11:23 PM	0.008
12:12:23 PM	0.009
12:13:23 PM	0.006
12:14:23 PM	0.009
12:15:23 PM	0.007
12:16:23 PM	0.009
12:17:23 PM	0.008
12:18:23 PM	0.02
12:19:23 PM	0.008
12:20:23 PM	0.033
12:21:23 PM	0.008
12:22:23 PM	0.011
12:23:23 PM	0.014
12:24:23 PM	0.009
12:25:23 PM	0.007
12:26:23 PM	0.022
12:27:23 PM	0.008
12:28:23 PM	0.014
12:29:23 PM	0.025
12:30:23 PM	0.014
12:31:23 PM	0.012

12:32:23 PM	0.01
12:33:23 PM	0.015
12:34:23 PM	0.015
12:35:23 PM	0.009
12:36:23 PM	0.02
12:37:23 PM	0.02
12:38:23 PM	0.005
12:39:23 PM	0.008
12:40:23 PM	0.026
12:41:23 PM	0.013
12:42:23 PM	0.012
12:43:23 PM	0.007
12:44:23 PM	0.018
12:45:23 PM	0.014
12:46:23 PM	0.009
12:47:23 PM	0.009
12:48:23 PM	0.011
12:49:23 PM	0.009
12:50:23 PM	0.01
12:51:23 PM	0.011
12:52:23 PM	0.013
12:53:23 PM	0.01
12:54:23 PM	0.008
12:55:23 PM	0.008
12:56:23 PM	0.006
12:57:23 PM	0.007
12:58:23 PM	0.009
12:59:23 PM	0.007
1:00:23 PM	0.005
1:01:23 PM	0.007
1:02:23 PM	0.008
1:03:23 PM	0.009
1:04:23 PM	0.012
1:05:23 PM	0.006
1:06:23 PM	0.006
1:07:23 PM	0.01
1:08:23 PM	0.012
1:09:23 PM	0.013
1:10:23 PM	0.022
1:11:23 PM	0.015
1:12:23 PM	0.015
1:13:23 PM	0.03
1:14:23 PM	0.035
1:15:23 PM	0.012

1:16:23 PM	0.015
1:17:23 PM	0.02
1:18:23 PM	0.014
1:19:23 PM	0.015
1:20:23 PM	0.014
1:21:23 PM	0.015
1:22:23 PM	0.017
1:23:23 PM	0.017
1:24:23 PM	0.013
1:25:23 PM	0.023
1:26:23 PM	0.029
1:27:23 PM	0.019
1:28:23 PM	0.025
1:29:23 PM	0.016
1:30:23 PM	0.011
1:31:23 PM	0.019
1:32:23 PM	0.035
1:33:23 PM	0.022
1:34:23 PM	0.014
1:35:23 PM	0.01
1:36:23 PM	0.007
1:37:23 PM	0.007
1:38:23 PM	0.014
1:39:23 PM	0.015
1:40:23 PM	0.008
1:41:23 PM	0.011
1:42:23 PM	0.016
1:43:23 PM	0.068
1:44:23 PM	0.027
1:45:23 PM	0.009
1:46:23 PM	0.008
1:47:23 PM	0.014
1:48:23 PM	0.014
1:49:23 PM	0.016
1:50:23 PM	0.036
1:51:23 PM	0.034
1:52:23 PM	0.013
1:53:23 PM	0.008
1:54:23 PM	0.294
1:55:23 PM	0.141
1:56:23 PM	0.023
1:57:23 PM	0.009
1:58:23 PM	0.014
1:59:23 PM	0.014

2:00:23 PM	0.014
2:01:23 PM	0.018
2:02:23 PM	0.014
2:03:23 PM	0.016
2:04:23 PM	0.017
2:05:23 PM	0.016
2:06:23 PM	0.016
2:07:23 PM	0.018
2:08:23 PM	0.017
2:09:23 PM	0.009
2:10:23 PM	0.009
2:11:23 PM	0.018
2:12:23 PM	0.015
2:13:23 PM	0.018
2:14:23 PM	0.018
2:15:23 PM	0.011
2:16:23 PM	0.012
2:17:23 PM	0.016
2:18:23 PM	0.01
2:19:23 PM	0.01
2:20:23 PM	0.018
2:21:23 PM	0.012
2:22:23 PM	0.028
2:23:23 PM	0.028
2:24:23 PM	0.028
2:25:23 PM	0.043
2:26:23 PM	0.014
2:27:23 PM	0.024
2:28:23 PM	0.009
2:29:23 PM	0.012
2:30:23 PM	0.023
2:31:23 PM	0.017
2:32:23 PM	0.01
2:33:23 PM	0.013
2:34:23 PM	0.013
2:35:23 PM	0.011
2:36:23 PM	0.014
2:37:23 PM	0.044
2:38:23 PM	0.014
2:39:23 PM	0.023
2:40:23 PM	0.009
2:41:23 PM	0.023
2:42:23 PM	0.008
2:43:23 PM	0.023

2:44:23 PM	0.038
2:45:23 PM	0.018
2:46:23 PM	0.01
2:47:23 PM	0.016
2:48:23 PM	0.027
2:49:23 PM	0.027
2:50:23 PM	0.011
2:51:23 PM	0.021
2:52:23 PM	0.011
2:53:23 PM	0.012
2:54:23 PM	0.015
2:55:23 PM	0.012
2:56:23 PM	0.013
2:57:23 PM	0.013
2:58:23 PM	0.013
2:59:23 PM	0.014
3:00:23 PM	0.019
3:01:23 PM	0.01
3:02:23 PM	0.009
3:03:23 PM	0.01
3:04:23 PM	0.013
3:05:23 PM	0.01
3:06:23 PM	0.008
3:07:23 PM	0.009
3:08:23 PM	0.012
3:09:23 PM	0.011
3:10:23 PM	0.009
3:11:23 PM	0.01
3:12:23 PM	0.007
3:13:23 PM	0.007
3:14:23 PM	0.007
3:15:23 PM	0.014
3:16:23 PM	0.021
3:17:23 PM	0.021
3:18:23 PM	0.013
3:19:23 PM	0.012
3:20:23 PM	0.013
3:21:23 PM	0.012
3:22:23 PM	0.017
3:23:23 PM	0.023
3:24:23 PM	0.041
3:25:23 PM	0.017
3:26:23 PM	0.01
3:27:23 PM	0.008

3:28:23 PM	0.008
3:29:23 PM	0.009
3:30:23 PM	0.008
3:31:23 PM	0.007
3:32:23 PM	0.007
3:33:23 PM	0.008
3:34:23 PM	0.008
3:35:23 PM	0.011
3:36:23 PM	0.008
3:37:23 PM	0.008
3:38:23 PM	0.008
3:39:23 PM	0.01
3:40:23 PM	0.009
3:41:23 PM	0.008
3:42:23 PM	0.007
3:43:23 PM	0.007
3:44:23 PM	0.009
3:45:23 PM	0.009
3:46:23 PM	0.009
3:47:23 PM	0.007
3:48:23 PM	0.011
3:49:23 PM	0.008
3:50:23 PM	0.008
3:51:23 PM	0.008
3:52:23 PM	0.006
3:53:23 PM	0.006
3:54:23 PM	0.01
3:55:23 PM	0.008
3:56:23 PM	0.007
3:57:23 PM	0.011
3:58:23 PM	0.01
3:59:23 PM	0.006
4:00:23 PM	0.008
4:01:23 PM	0.011
4:02:23 PM	0.007
4:03:23 PM	0.015
4:04:23 PM	0.028
4:05:23 PM	0.011
4:06:23 PM	0.006
4:07:23 PM	0.006
4:08:23 PM	0.006
4:09:23 PM	0.008
4:10:23 PM	0.006
4:11:23 PM	0.004

4:12:23 PM	0.004
4:13:23 PM	0.005
4:14:23 PM	0.006
4:15:23 PM	0.006
4:16:23 PM	0.01
4:17:23 PM	0.007
4:18:23 PM	0.007
4:19:23 PM	0.006
4:20:23 PM	0.006
4:21:23 PM	0.004
4:22:23 PM	0.004
4:23:23 PM	0.004
4:24:23 PM	0.007
4:25:23 PM	0.007
4:26:23 PM	0.008
4:27:23 PM	0.011
4:28:23 PM	0.006
4:29:23 PM	0.006
4:30:23 PM	0.006
4:31:23 PM	0.009
4:32:23 PM	0.009
4:33:23 PM	0.007
4:34:23 PM	0.005
4:35:23 PM	0.005
4:36:23 PM	0.005
4:37:23 PM	0.005
4:38:23 PM	0.006
4:39:23 PM	0.004
4:40:23 PM	0.005
4:41:23 PM	0.01
4:42:23 PM	0.013
4:43:23 PM	0.007
4:44:23 PM	0.008
4:45:23 PM	0.012
4:46:23 PM	0.005
4:47:23 PM	0.025
4:48:23 PM	0.022
4:49:23 PM	0.008
4:50:23 PM	0.007
4:51:23 PM	0.009
4:52:23 PM	0.007
4:53:23 PM	0.004
4:54:23 PM	0.005
4:55:23 PM	0.006

4:56:23 PM	0.006
4:57:23 PM	0.006
4:58:23 PM	0.005
4:59:23 PM	0.007
5:00:23 PM	0.006
5:01:23 PM	0.004
5:02:23 PM	0.005
5:03:23 PM	0.005
5:04:23 PM	0.008
5:05:23 PM	0.008
5:06:23 PM	0.008
5:07:23 PM	0.008
5:08:23 PM	0.008
5:09:23 PM	0.013
5:10:23 PM	0.007
5:11:23 PM	0.011
5:12:23 PM	0.024
5:13:23 PM	0.015
5:14:23 PM	0.008
5:15:23 PM	0.009
5:16:23 PM	0.009
5:17:23 PM	0.01
5:18:23 PM	0.009
5:19:23 PM	0.009
5:20:23 PM	0.01
5:21:23 PM	0.009
5:22:23 PM	0.01
5:23:23 PM	0.019
5:24:23 PM	0.012
5:25:23 PM	0.01
5:26:23 PM	0.01
5:27:23 PM	0.01
5:28:23 PM	0.011
5:29:23 PM	0.017
5:30:23 PM	0.012
5:31:23 PM	0.014
5:32:23 PM	0.016
5:33:23 PM	0.013
5:34:23 PM	0.01
5:35:23 PM	0.01
5:36:23 PM	0.019
5:37:23 PM	0.011
5:38:23 PM	0.012
5:39:23 PM	0.011

5:40:23 PM	0.012
5:41:23 PM	0.012
5:42:23 PM	0.014
5:43:23 PM	0.017
5:44:23 PM	0.014
5:45:23 PM	0.014
5:46:23 PM	0.01
5:47:23 PM	0.01
5:48:23 PM	0.011
5:49:23 PM	0.022
5:50:23 PM	0.027
5:51:23 PM	0.011
5:52:23 PM	0.01
5:53:23 PM	0.011
5:54:23 PM	0.009
5:55:23 PM	0.011
5:56:23 PM	0.009
5:57:23 PM	0.01
5:58:23 PM	0.01
5:59:23 PM	0.01
6:00:23 PM	0.01
6:01:23 PM	0.011
6:02:23 PM	0.01
6:03:23 PM	0.01
6:04:23 PM	0.013
6:05:23 PM	0.01
6:06:23 PM	0.01
6:07:23 PM	0.024
6:08:23 PM	0.009
6:09:23 PM	0.012
6:10:23 PM	0.01
6:11:23 PM	0.015
6:12:23 PM	0.012
6:13:23 PM	0.013
6:14:23 PM	0.015
6:15:23 PM	0.014
6:16:23 PM	0.011
6:17:23 PM	0.01
6:18:23 PM	0.01
6:19:23 PM	0.01
6:20:23 PM	0.009
6:21:23 PM	0.01
6:22:23 PM	0.163
6:23:23 PM	0.024

6:24:23 PM	0.019
6:25:23 PM	0.012
6:26:23 PM	0.011
6:27:23 PM	0.014
6:28:23 PM	0.036
6:29:23 PM	0.121
6:30:23 PM	0.048
6:31:23 PM	0.087
6:32:23 PM	0.018
6:33:23 PM	0.012
6:34:23 PM	0.012
6:35:23 PM	0.011
6:36:23 PM	0.01
6:37:23 PM	0.224
6:38:23 PM	0.054
6:39:23 PM	0.02
6:40:23 PM	0.014

Device Serial No	Log Time	Log Type	Sensor 1 Type	Sensor 1 Serial Number	Sensor 1 Status	Sensor 1 Gas Reading
592-601274	6/11/2024 19:29	Readings	PID	SC23030921B3	Normal	0
592-601274	6/11/2024 19:28	Readings	PID	SC23030921B3	Normal	0
592-601274	6/11/2024 19:27	Readings	PID	SC23030921B3	Normal	0
592-601274	6/11/2024 19:26	Readings	PID	SC23030921B3	Normal	0
592-601274	6/11/2024 19:25	Readings	PID	SC23030921B3	Normal	0
592-601274	6/11/2024 19:24	Readings	PID	SC23030921B3	Normal	0
592-601274	6/11/2024 19:23	Readings	PID	SC23030921B3	Normal	0
592-601274	6/11/2024 19:22	Readings	PID	SC23030921B3	Normal	0
592-601274	6/11/2024 19:21	Readings	PID	SC23030921B3	Normal	0
592-601274	6/11/2024 19:20	Readings	PID	SC23030921B3	Normal	0
592-601274	6/11/2024 19:19	Readings	PID	SC23030921B3	Normal	0
592-601274	6/11/2024 19:18	Readings	PID	SC23030921B3	Normal	0
592-601274	6/11/2024 19:17	Readings	PID	SC23030921B3	Normal	0
592-601274	6/11/2024 19:16	Readings	PID	SC23030921B3	Normal	0
592-601274	6/11/2024 19:15	Readings	PID	SC23030921B3	Normal	0
592-601274	6/11/2024 19:14	Readings	PID	SC23030921B3	Normal	0
592-601274	6/11/2024 19:13	Readings	PID	SC23030921B3	Normal	0
592-601274	6/11/2024 19:12	Readings	PID	SC23030921B3	Normal	0
592-601274	6/11/2024 19:11	Readings	PID	SC23030921B3	Normal	0
592-601274	6/11/2024 19:10	Readings	PID	SC23030921B3	Normal	0
592-601274	6/11/2024 19:09	Readings	PID	SC23030921B3	Normal	0
592-601274	6/11/2024 19:08	Readings	PID	SC23030921B3	Normal	0
592-601274	6/11/2024 19:07	Readings	PID	SC23030921B3	Normal	0
592-601274	6/11/2024 19:06	Readings	PID	SC23030921B3	Normal	0
592-601274	6/11/2024 19:05	Readings	PID	SC23030921B3	Normal	0
592-601274	6/11/2024 19:04	Readings	PID	SC23030921B3	Normal	0
592-601274	6/11/2024 19:03	Readings	PID	SC23030921B3	Normal	0
592-601274	6/11/2024 19:02	Readings	PID	SC23030921B3	Normal	0
592-601274	6/11/2024 19:01	Readings	PID	SC23030921B3	Normal	0
592-601274	6/11/2024 19:00	Readings	PID	SC23030921B3	Normal	0
592-601274	6/11/2024 18:59	Readings	PID	SC23030921B3	Normal	0
592-601274	6/11/2024 18:58	Readings	PID	SC23030921B3	Normal	0

592-601274	6/11/2024 10:09	Readings	PID	SC23030921B3	Normal	0
592-601274	6/11/2024 10:08	Readings	PID	SC23030921B3	Normal	0
592-601274	6/11/2024 10:07	Readings	PID	SC23030921B3	Normal	0
592-601274	6/11/2024 10:06	Readings	PID	SC23030921B3	Normal	0
592-601274	6/11/2024 10:05	Readings	PID	SC23030921B3	Normal	0
592-601274	6/11/2024 10:04	Readings	PID	SC23030921B3	Normal	0
592-601274	6/11/2024 10:03	Readings	PID	SC23030921B3	Normal	0
592-601274	6/11/2024 10:02	Readings	PID	SC23030921B3	Normal	0
592-601274	6/11/2024 10:01	Readings	PID	SC23030921B3	Normal	0
592-601274	6/11/2024 10:00	Readings	PID	SC23030921B3	Normal	0
592-601274	6/11/2024 9:59	Readings	PID	SC23030921B3	Normal	0
592-601274	6/11/2024 9:58	Readings	PID	SC23030921B3	Normal	0
592-601274	6/11/2024 9:57	Readings	PID	SC23030921B3	Normal	0
592-601274	6/11/2024 9:56	Readings	PID	SC23030921B3	Normal	0
592-601274	6/11/2024 9:55	Readings	PID	SC23030921B3	Normal	0
592-601274	6/11/2024 9:54	Readings	PID	SC23030921B3	Normal	0
592-601274	6/11/2024 9:53	Readings	PID	SC23030921B3	Normal	0
592-601274	6/11/2024 9:52	Readings	PID	SC23030921B3	Normal	0
592-601274	6/11/2024 9:51	Readings	PID	SC23030921B3	Normal	0
592-601274	6/11/2024 9:50	Readings	PID	SC23030921B3	Normal	0
592-601274	6/11/2024 9:49	Readings	PID	SC23030921B3	Normal	0
592-601274	6/11/2024 9:48	Readings	PID	SC23030921B3	Normal	0
592-601274	6/11/2024 9:47	Readings	PID	SC23030921B3	Normal	0
592-601274	6/11/2024 9:46	Readings	PID	SC23030921B3	Normal	0
592-601274	6/11/2024 9:45	Readings	PID	SC23030921B3	Normal	0
592-601274	6/11/2024 9:44	Readings	PID	SC23030921B3	Normal	0
592-601274	6/11/2024 9:43	Readings	PID	SC23030921B3	Normal	0
592-601274	6/11/2024 9:42	Readings	PID	SC23030921B3	Normal	0
592-601274	6/11/2024 9:41	Readings	PID	SC23030921B3	Normal	0
592-601274	6/11/2024 9:40	Readings	PID	SC23030921B3	Normal	0
592-601274	6/11/2024 9:39	Readings	PID	SC23030921B3	Normal	0
592-601274	6/11/2024 9:38	Readings	PID	SC23030921B3	Normal	0
592-601274	6/11/2024 9:37	Readings	PID	SC23030921B3	Normal	0

592-601274	6/11/2024 9:03	Readings	PID	SC23030921B3	Normal	0
592-601274	6/11/2024 9:02	Readings	PID	SC23030921B3	Normal	0
592-601274	6/11/2024 9:01	Readings	PID	SC23030921B3	Normal	0
592-601274	6/11/2024 9:00	Readings	PID	SC23030921B3	Normal	0
592-601274	6/11/2024 8:59	Readings	PID	SC23030921B3	Normal	0
592-601274	6/11/2024 8:58	Readings	PID	SC23030921B3	Normal	0
592-601274	6/11/2024 8:57	Readings	PID	SC23030921B3	Normal	0
592-601274	6/11/2024 8:56	Readings	PID	SC23030921B3	Normal	0
592-601274	6/11/2024 8:55	Readings	PID	SC23030921B3	Normal	0
592-601274	6/11/2024 8:54	Readings	PID	SC23030921B3	Normal	0
592-601274	6/11/2024 8:53	Readings	PID	SC23030921B3	Normal	0
592-601274	6/11/2024 8:52	Readings	PID	SC23030921B3	Normal	0
592-601274	6/11/2024 8:51	Readings	PID	SC23030921B3	Normal	0
592-601274	6/11/2024 8:50	Readings	PID	SC23030921B3	Normal	0
592-601274	6/11/2024 8:49	Readings	PID	SC23030921B3	Normal	0
592-601274	6/11/2024 8:48	Readings	PID	SC23030921B3	Normal	0
592-601274	6/11/2024 8:47	Readings	PID	SC23030921B3	Normal	0
592-601274	6/11/2024 8:46	Readings	PID	SC23030921B3	Normal	0
592-601274	6/11/2024 8:45	Readings	PID	SC23030921B3	Normal	0
592-601274	6/11/2024 8:44	Readings	PID	SC23030921B3	Normal	0
592-601274	6/11/2024 8:43	Readings	PID	SC23030921B3	Normal	0
592-601274	6/11/2024 8:42	Readings	PID	SC23030921B3	Normal	0
592-601274	6/11/2024 8:41	Readings	PID	SC23030921B3	Normal	0
592-601274	6/11/2024 8:40	Readings	PID	SC23030921B3	Normal	0
592-601274	6/11/2024 8:39	Readings	PID	SC23030921B3	Normal	0
592-601274	6/11/2024 8:38	Readings	PID	SC23030921B3	Normal	0
592-601274	6/11/2024 8:37	Readings	PID	SC23030921B3	Normal	0
592-601274	6/11/2024 8:36	Readings	PID	SC23030921B3	Normal	0
592-601274	6/11/2024 8:35	Readings	PID	SC23030921B3	Normal	0
592-601274	6/11/2024 8:34	Readings	PID	SC23030921B3	Normal	0
592-601274	6/11/2024 8:33	Readings	PID	SC23030921B3	Normal	0
592-601274	6/11/2024 8:32	Readings	PID	SC23030921B3	Normal	0
592-601274	6/11/2024 8:31	Readings	PID	SC23030921B3	Normal	0

592-601274	6/11/2024 8:30 Readings	PID	SC23030921B3	Normal	0
592-601274	6/11/2024 8:29 Readings	PID	SC23030921B3	Normal	0
592-601274	6/11/2024 8:28 Readings	PID	SC23030921B3	Normal	0
592-601274	6/11/2024 8:27 Readings	PID	SC23030921B3	Normal	0
592-601274	6/11/2024 8:26 Readings	PID	SC23030921B3	Normal	0
592-601274	6/11/2024 8:25 Readings	PID	SC23030921B3	Normal	0
592-601274	6/11/2024 8:24 Readings	PID	SC23030921B3	Normal	0
592-601274	6/11/2024 8:23 Readings	PID	SC23030921B3	Normal	0
592-601274	6/11/2024 8:22 Readings	PID	SC23030921B3	Normal	0
592-601274	6/11/2024 8:21 Readings	PID	SC23030921B3	Normal	0
592-601274	6/11/2024 8:20 Readings	PID	SC23030921B3	Normal	0
592-601274	6/11/2024 8:19 Readings	PID	SC23030921B3	Normal	0
592-601274	6/11/2024 8:18 Readings	PID	SC23030921B3	Normal	0
592-601274	6/11/2024 8:17 Readings	PID	SC23030921B3	Normal	0
592-601274	6/11/2024 8:16 Readings	PID	SC23030921B3	Normal	0
592-601274	6/11/2024 8:15 Readings	PID	SC23030921B3	Normal	0
592-601274	6/11/2024 8:14 Readings	PID	SC23030921B3	Normal	0
592-601274	6/11/2024 8:13 Readings	PID	SC23030921B3	Normal	0
592-601274	6/11/2024 8:12 Readings	PID	SC23030921B3	Normal	0
592-601274	6/11/2024 8:11 Readings	PID	SC23030921B3	Normal	0
592-601274	6/11/2024 8:10 Readings	PID	SC23030921B3	Normal	0
592-601274	6/11/2024 8:09 Readings	PID	SC23030921B3	Normal	0
592-601274	6/11/2024 8:08 Readings	PID	SC23030921B3	Normal	0
592-601274	6/11/2024 8:07 Readings	PID	SC23030921B3	Normal	0.2
592-601274	6/11/2024 8:06 Readings	PID	SC23030921B3	Normal	0
592-601274	6/11/2024 8:05 Readings	PID	SC23030921B3	Normal	0
592-601274	6/11/2024 8:04 Readings	PID	SC23030921B3	Normal	0.5
592-601274	6/11/2024 8:03 Readings	PID	SC23030921B3	Normal	0
592-601274	6/11/2024 8:02 Readings	PID	SC23030921B3	Normal	0
592-601274	6/11/2024 8:01 Readings	PID	SC23030921B3	Normal	0
592-601274	6/11/2024 8:00 Readings	PID	SC23030921B3	Normal	0
592-601274	6/11/2024 7:59 Readings	PID	SC23030921B3	Normal	0
592-601274	6/11/2024 7:58 Readings	PID	SC23030921B3	Normal	0

592-601274	6/11/2024 7:57 Readings	PID	SC23030921B3	Normal	0
592-601274	6/11/2024 7:56 Readings	PID	SC23030921B3	Normal	0
592-601274	6/11/2024 7:55 Readings	PID	SC23030921B3	Normal	0
592-601274	6/11/2024 7:54 Readings	PID	SC23030921B3	Normal	0
592-601274	6/11/2024 7:53 Readings	PID	SC23030921B3	Normal	0
592-601274	6/11/2024 7:52 Readings	PID	SC23030921B3	Normal	0
592-601274	6/11/2024 7:51 Readings	PID	SC23030921B3	Normal	0
592-601274	6/11/2024 7:50 Readings	PID	SC23030921B3	Normal	0
592-601274	6/11/2024 7:49 Readings	PID	SC23030921B3	Normal	0
592-601274	6/11/2024 7:48 Readings	PID	SC23030921B3	Normal	0
592-601274	6/11/2024 7:47 Readings	PID	SC23030921B3	Normal	0
592-601274	6/11/2024 7:46 Readings	PID	SC23030921B3	Normal	0
592-601274	6/11/2024 7:45 Readings	PID	SC23030921B3	Normal	0
592-601274	6/11/2024 7:44 Readings	PID	SC23030921B3	Normal	0
592-601274	6/11/2024 7:43 Readings	PID	SC23030921B3	Normal	0
592-601274	6/11/2024 7:42 Readings	PID	SC23030921B3	Normal	0.1
592-601274	6/11/2024 7:41 Readings	PID	SC23030921B3	Normal	0.3
592-601274	6/11/2024 7:40 Readings	PID	SC23030921B3	Normal	0.7
592-601274	6/11/2024 7:39 Readings	PID	SC23030921B3	Normal	0.7
592-601274	6/11/2024 7:38 Readings	PID	SC23030921B3	Normal	0
592-601274	6/11/2024 7:37 Readings	PID	SC23030921B3	Normal	0.2
592-601274	6/11/2024 7:36 Readings	PID	SC23030921B3	Normal	0.4
592-601274	6/11/2024 7:35 Readings	PID	SC23030921B3	Normal	0.6
592-601274	6/11/2024 7:34 Readings	PID	SC23030921B3	Normal	0.8
592-601274	6/11/2024 7:33 Readings	PID	SC23030921B3	Normal	0.9
592-601274	6/11/2024 7:32 Readings	PID	SC23030921B3	Normal	0.9
592-601274	6/11/2024 7:31 Readings	PID	SC23030921B3	Normal	0.6
592-601274	6/11/2024 7:30 CONFIG	PID	SC23030921B3		

DOWNWIND CAMP READINGS

251 DOUGLASS STREET, BROOKLYN, NY



Instrument Name	DustTrak II
Model Number	8530
Serial Number	8530224601
Firmware Version	3.1
Calibration Date	11/9/2022
Test Name	MANUAL_010
Test Start Time	6:50:04 AM
Test Start Date	6/11/2024
Test Length [D:H:M]	0:11:58
Test Interval [M:S]	1:00
Mass Average [mg/m3]	0.024
Mass Minimum [mg/m3]	0
Mass Maximum [mg/m3]	0.232
Mass TWA [mg/m3]	0.027
Photometric User Cal	1
Flow User Cal	0
Errors	Flow Error
Number of Samples	716

Elapsed Time [s]	Mass [mg/m3]	Alarms	Errors
6:50:04 AM	0.016		
6:51:04 AM	0.016		
6:52:04 AM	0.038		
6:53:04 AM	0.106		
6:54:04 AM	0.015		
6:55:04 AM	0.014		
6:56:04 AM	0.012		
6:57:04 AM	0.011		
6:58:04 AM	0.011		
6:59:04 AM	0.01		
7:00:04 AM	0.152		
7:01:04 AM	0.232		
7:02:04 AM	0.071		
7:03:04 AM	0.037		
7:04:04 AM	0.071		
7:05:04 AM	0.025		
7:06:04 AM	0.028		
7:07:04 AM	0.018		
7:08:04 AM	0.015		
7:09:04 AM	0.032		
7:10:04 AM	0.058		
7:11:04 AM	0.047		
7:12:04 AM	0.018		
7:13:04 AM	0.062		

7:14:04 AM	0.013
7:15:04 AM	0.016
7:16:04 AM	0.056
7:17:04 AM	0
7:18:04 AM	0.034
7:19:04 AM	0.055
7:20:04 AM	0.055
7:21:04 AM	0.037
7:22:04 AM	0.031
7:23:04 AM	0.025
7:24:04 AM	0.02
7:25:04 AM	0.013
7:26:04 AM	0.021
7:27:04 AM	0.066
7:28:04 AM	0.02
7:29:04 AM	0.019
7:30:04 AM	0.018
7:31:04 AM	0.029
7:32:04 AM	0.053
7:33:04 AM	0.023
7:34:04 AM	0.016
7:35:04 AM	0.017
7:36:04 AM	0.017
7:37:04 AM	0.022
7:38:04 AM	0.031
7:39:04 AM	0.072
7:40:04 AM	0.083
7:41:04 AM	0.1
7:42:04 AM	0.075
7:43:04 AM	0.071
7:44:04 AM	0.147
7:45:04 AM	0.066
7:46:04 AM	0.055
7:47:04 AM	0.163
7:48:04 AM	0.139
7:49:04 AM	0.056
7:50:04 AM	0.171
7:51:04 AM	0.058
7:52:04 AM	0.021
7:53:04 AM	0.022
7:54:04 AM	0.019
7:55:04 AM	0.036
7:56:04 AM	0.017
7:57:04 AM	0.019

7:58:04 AM	0.045
7:59:04 AM	0.049
8:00:04 AM	0.023
8:01:04 AM	0.017
8:02:04 AM	0.019
8:03:04 AM	0.014
8:04:04 AM	0.012
8:05:04 AM	0.013
8:06:04 AM	0.025
8:07:04 AM	0.01
8:08:04 AM	0.012
8:09:04 AM	0.057
8:10:04 AM	0.027
8:11:04 AM	0.022
8:12:04 AM	0.016
8:13:04 AM	0.013
8:14:04 AM	0.019
8:15:04 AM	0.021
8:16:04 AM	0.019
8:17:04 AM	0.018
8:18:04 AM	0.018
8:19:04 AM	0.032
8:20:04 AM	0.043
8:21:04 AM	0.03
8:22:04 AM	0.024
8:23:04 AM	0.012
8:24:04 AM	0.015
8:25:04 AM	0.039
8:26:04 AM	0.041
8:27:04 AM	0.016
8:28:04 AM	0.012
8:29:04 AM	0.013
8:30:04 AM	0.013
8:31:04 AM	0.014
8:32:04 AM	0.015
8:33:04 AM	0.037
8:34:04 AM	0.019
8:35:04 AM	0.022
8:36:04 AM	0.024
8:37:04 AM	0.015
8:38:04 AM	0.022
8:39:04 AM	0.015
8:40:04 AM	0.012
8:41:04 AM	0.02

8:42:04 AM	0.02
8:43:04 AM	0.012
8:44:04 AM	0.016
8:45:04 AM	0.018
8:46:04 AM	0.018
8:47:04 AM	0.014
8:48:04 AM	0.019
8:49:04 AM	0.013
8:50:04 AM	0.014
8:51:04 AM	0.013
8:52:04 AM	0.018
8:53:04 AM	0.019
8:54:04 AM	0.016
8:55:04 AM	0.023
8:56:04 AM	0.185
8:57:04 AM	0.068
8:58:04 AM	0.038
8:59:04 AM	0.023
9:00:04 AM	0.013
9:01:04 AM	0.022
9:02:04 AM	0.012
9:03:04 AM	0.018
9:04:04 AM	0.022
9:05:04 AM	0.021
9:06:04 AM	0.019
9:07:04 AM	0.016
9:08:04 AM	0.014
9:09:04 AM	0.038
9:10:04 AM	0.019
9:11:04 AM	0.021
9:12:04 AM	0.015
9:13:04 AM	0.108
9:14:04 AM	0.021
9:15:04 AM	0.022
9:16:04 AM	0.016
9:17:04 AM	0.015
9:18:04 AM	0.013
9:19:04 AM	0.013
9:20:04 AM	0.019
9:21:04 AM	0.012
9:22:04 AM	0.019
9:23:04 AM	0.022
9:24:04 AM	0.015
9:25:04 AM	0.012

9:26:04 AM	0.015
9:27:04 AM	0.018
9:28:04 AM	0.03
9:29:04 AM	0.02
9:30:04 AM	0.018
9:31:04 AM	0.015
9:32:04 AM	0.019
9:33:04 AM	0.023
9:34:04 AM	0.014
9:35:04 AM	0.01
9:36:04 AM	0.011
9:37:04 AM	0.023
9:38:04 AM	0.023
9:39:04 AM	0.02
9:40:04 AM	0.013
9:41:04 AM	0.015
9:42:04 AM	0.044
9:43:04 AM	0.017
9:44:04 AM	0.014
9:45:04 AM	0.069
9:46:04 AM	0.038
9:47:04 AM	0.036
9:48:04 AM	0.054
9:49:04 AM	0.019
9:50:04 AM	0.02
9:51:04 AM	0.02
9:52:04 AM	0.018
9:53:04 AM	0.019
9:54:04 AM	0.015
9:55:04 AM	0.008
9:56:04 AM	0.018
9:57:04 AM	0.017
9:58:04 AM	0.022
9:59:04 AM	0.026
10:00:04 AM	0.018
10:01:04 AM	0.059
10:02:04 AM	0.14
10:03:04 AM	0.024
10:04:04 AM	0.05
10:05:04 AM	0.041
10:06:04 AM	0.016
10:07:04 AM	0.014
10:08:04 AM	0.015
10:09:04 AM	0.021

10:10:04 AM	0.013
10:11:04 AM	0.021
10:12:04 AM	0.025
10:13:04 AM	0.028
10:14:04 AM	0.014
10:15:04 AM	0.022
10:16:04 AM	0.023
10:17:04 AM	0.019
10:18:04 AM	0.02
10:19:04 AM	0.013
10:20:04 AM	0.012
10:21:04 AM	0.023
10:22:04 AM	0.021
10:23:04 AM	0.017
10:24:04 AM	0.025
10:25:04 AM	0.043
10:26:04 AM	0.037
10:27:04 AM	0.034
10:28:04 AM	0.116
10:29:04 AM	0.072
10:30:04 AM	0.023
10:31:04 AM	0.016
10:32:04 AM	0.02
10:33:04 AM	0.02
10:34:04 AM	0.02
10:35:04 AM	0.029
10:36:04 AM	0.019
10:37:04 AM	0.014
10:38:04 AM	0.009
10:39:04 AM	0.01
10:40:04 AM	0.014
10:41:04 AM	0.026
10:42:04 AM	0.022
10:43:04 AM	0.08
10:44:04 AM	0.024
10:45:04 AM	0.019
10:46:04 AM	0.016
10:47:04 AM	0.018
10:48:04 AM	0.021
10:49:04 AM	0.018
10:50:04 AM	0.02
10:51:04 AM	0.015
10:52:04 AM	0.017
10:53:04 AM	0.03

10:54:04 AM	0.022
10:55:04 AM	0.055
10:56:04 AM	0.019
10:57:04 AM	0.014
10:58:04 AM	0.01
10:59:04 AM	0.02
11:00:04 AM	0.016
11:01:04 AM	0.02
11:02:04 AM	0.016
11:03:04 AM	0.017
11:04:04 AM	0.033
11:05:04 AM	0.022
11:06:04 AM	0.018
11:07:04 AM	0.013
11:08:04 AM	0.018
11:09:04 AM	0.014
11:10:04 AM	0.013
11:11:04 AM	0.012
11:12:04 AM	0.046
11:13:04 AM	0.045
11:14:04 AM	0.015
11:15:04 AM	0.013
11:16:04 AM	0.009
11:17:04 AM	0.013
11:18:04 AM	0.024
11:19:04 AM	0.02
11:20:04 AM	0.015
11:21:04 AM	0.011
11:22:04 AM	0.012
11:23:04 AM	0.018
11:24:04 AM	0.016
11:25:04 AM	0.012
11:26:04 AM	0.013
11:27:04 AM	0.015
11:28:04 AM	0.018
11:29:04 AM	0.022
11:30:04 AM	0.014
11:31:04 AM	0.011
11:32:04 AM	0.01
11:33:04 AM	0.01
11:34:04 AM	0.014
11:35:04 AM	0.011
11:36:04 AM	0.028
11:37:04 AM	0.042

11:38:04 AM	0.016
11:39:04 AM	0.019
11:40:04 AM	0.015
11:41:04 AM	0.017
11:42:04 AM	0.027
11:43:04 AM	0.012
11:44:04 AM	0.014
11:45:04 AM	0.014
11:46:04 AM	0.016
11:47:04 AM	0.019
11:48:04 AM	0.017
11:49:04 AM	0.017
11:50:04 AM	0.012
11:51:04 AM	0.011
11:52:04 AM	0.013
11:53:04 AM	0.026
11:54:04 AM	0.02
11:55:04 AM	0.011
11:56:04 AM	0.03
11:57:04 AM	0.019
11:58:04 AM	0.026
11:59:04 AM	0.024
12:00:04 PM	0.018
12:01:04 PM	0.013
12:02:04 PM	0.01
12:03:04 PM	0.013
12:04:04 PM	0.015
12:05:04 PM	0.014
12:06:04 PM	0.011
12:07:04 PM	0.224
12:08:04 PM	0.021
12:09:04 PM	0.014
12:10:04 PM	0.011
12:11:04 PM	0.013
12:12:04 PM	0.01
12:13:04 PM	0.018
12:14:04 PM	0.012
12:15:04 PM	0.013
12:16:04 PM	0.04
12:17:04 PM	0.013
12:18:04 PM	0.011
12:19:04 PM	0.013
12:20:04 PM	0.018
12:21:04 PM	0.027

12:22:04 PM	0.023
12:23:04 PM	0.025
12:24:04 PM	0.014
12:25:04 PM	0.013
12:26:04 PM	0.021
12:27:04 PM	0.024
12:28:04 PM	0.013
12:29:04 PM	0.013
12:30:04 PM	0.012
12:31:04 PM	0.02
12:32:04 PM	0.02
12:33:04 PM	0.027
12:34:04 PM	0.021
12:35:04 PM	0.03
12:36:04 PM	0.03
12:37:04 PM	0.016
12:38:04 PM	0.03
12:39:04 PM	0.018
12:40:04 PM	0.027
12:41:04 PM	0.022
12:42:04 PM	0.011
12:43:04 PM	0.012
12:44:04 PM	0.013
12:45:04 PM	0.014
12:46:04 PM	0.021
12:47:04 PM	0.015
12:48:04 PM	0.022
12:49:04 PM	0.013
12:50:04 PM	0.014
12:51:04 PM	0.024
12:52:04 PM	0.019
12:53:04 PM	0.015
12:54:04 PM	0.014
12:55:04 PM	0.013
12:56:04 PM	0.016
12:57:04 PM	0.021
12:58:04 PM	0.017
12:59:04 PM	0.012
1:00:04 PM	0.015
1:01:04 PM	0.021
1:02:04 PM	0.026
1:03:04 PM	0.08
1:04:04 PM	0.154
1:05:04 PM	0.064

1:06:04 PM	0.081
1:07:04 PM	0.078
1:08:04 PM	0.023
1:09:04 PM	0.014
1:10:04 PM	0.024
1:11:04 PM	0.045
1:12:04 PM	0.042
1:13:04 PM	0.024
1:14:04 PM	0.022
1:15:04 PM	0.021
1:16:04 PM	0.043
1:17:04 PM	0.07
1:18:04 PM	0.047
1:19:04 PM	0.017
1:20:04 PM	0.015
1:21:04 PM	0.035
1:22:04 PM	0.063
1:23:04 PM	0.06
1:24:04 PM	0.019
1:25:04 PM	0.024
1:26:04 PM	0.023
1:27:04 PM	0.021
1:28:04 PM	0.017
1:29:04 PM	0.019
1:30:04 PM	0.027
1:31:04 PM	0.033
1:32:04 PM	0.029
1:33:04 PM	0.023
1:34:04 PM	0.025
1:35:04 PM	0.038
1:36:04 PM	0.043
1:37:04 PM	0.024
1:38:04 PM	0.016
1:39:04 PM	0.014
1:40:04 PM	0.013
1:41:04 PM	0.012
1:42:04 PM	0.015
1:43:04 PM	0.025
1:44:04 PM	0.056
1:45:04 PM	0.021
1:46:04 PM	0.02
1:47:04 PM	0.018
1:48:04 PM	0.023
1:49:04 PM	0.017

1:50:04 PM	0.014
1:51:04 PM	0.043
1:52:04 PM	0.147
1:53:04 PM	0.041
1:54:04 PM	0.017
1:55:04 PM	0.015
1:56:04 PM	0.011
1:57:04 PM	0.01
1:58:04 PM	0.047
1:59:04 PM	0.023
2:00:04 PM	0.026
2:01:04 PM	0.018
2:02:04 PM	0.02
2:03:04 PM	0.023
2:04:04 PM	0.027
2:05:04 PM	0.02
2:06:04 PM	0.018
2:07:04 PM	0.015
2:08:04 PM	0.015
2:09:04 PM	0.017
2:10:04 PM	0.019
2:11:04 PM	0.014
2:12:04 PM	0.013
2:13:04 PM	0.01
2:14:04 PM	0.014
2:15:04 PM	0.02
2:16:04 PM	0.019
2:17:04 PM	0.02
2:18:04 PM	0.019
2:19:04 PM	0.017
2:20:04 PM	0.014
2:21:04 PM	0.015
2:22:04 PM	0.015
2:23:04 PM	0.043
2:24:04 PM	0.021
2:25:04 PM	0.014
2:26:04 PM	0.019
2:27:04 PM	0.022
2:28:04 PM	0.024
2:29:04 PM	0.028
2:30:04 PM	0.016
2:31:04 PM	0.025
2:32:04 PM	0.021
2:33:04 PM	0.015

2:34:04 PM	0.018
2:35:04 PM	0.013
2:36:04 PM	0.017
2:37:04 PM	0.018
2:38:04 PM	0.015
2:39:04 PM	0.015
2:40:04 PM	0.017
2:41:04 PM	0.016
2:42:04 PM	0.014
2:43:04 PM	0.011
2:44:04 PM	0.012
2:45:04 PM	0.012
2:46:04 PM	0.012
2:47:04 PM	0.013
2:48:04 PM	0.013
2:49:04 PM	0.015
2:50:04 PM	0.017
2:51:04 PM	0.013
2:52:04 PM	0.032
2:53:04 PM	0.023
2:54:04 PM	0.015
2:55:04 PM	0.012
2:56:04 PM	0.012
2:57:04 PM	0.013
2:58:04 PM	0.013
2:59:04 PM	0.013
3:00:04 PM	0.015
3:01:04 PM	0.033
3:02:04 PM	0.027
3:03:04 PM	0.015
3:04:04 PM	0.014
3:05:04 PM	0.017
3:06:04 PM	0.018
3:07:04 PM	0.019
3:08:04 PM	0.017
3:09:04 PM	0.013
3:10:04 PM	0.015
3:11:04 PM	0.013
3:12:04 PM	0.017
3:13:04 PM	0.016
3:14:04 PM	0.015
3:15:04 PM	0.014
3:16:04 PM	0.012
3:17:04 PM	0.014

3:18:04 PM	0.015
3:19:04 PM	0.016
3:20:04 PM	0.026
3:21:04 PM	0.014
3:22:04 PM	0.014
3:23:04 PM	0.015
3:24:04 PM	0.023
3:25:04 PM	0.015
3:26:04 PM	0.019
3:27:04 PM	0.06
3:28:04 PM	0.031
3:29:04 PM	0.012
3:30:04 PM	0.012
3:31:04 PM	0.015
3:32:04 PM	0.021
3:33:04 PM	0.016
3:34:04 PM	0.014
3:35:04 PM	0.011
3:36:04 PM	0.012
3:37:04 PM	0.012
3:38:04 PM	0.014
3:39:04 PM	0.015
3:40:04 PM	0.011
3:41:04 PM	0.011
3:42:04 PM	0.013
3:43:04 PM	0.014
3:44:04 PM	0.012
3:45:04 PM	0.01
3:46:04 PM	0.012
3:47:04 PM	0.012
3:48:04 PM	0.015
3:49:04 PM	0.013
3:50:04 PM	0.025
3:51:04 PM	0.038
3:52:04 PM	0.018
3:53:04 PM	0.012
3:54:04 PM	0.011
3:55:04 PM	0.013
3:56:04 PM	0.02
3:57:04 PM	0.02
3:58:04 PM	0.043
3:59:04 PM	0.033
4:00:04 PM	0.016
4:01:04 PM	0.029

4:02:04 PM	0.022
4:03:04 PM	0.012
4:04:04 PM	0.011
4:05:04 PM	0.013
4:06:04 PM	0.013
4:07:04 PM	0.012
4:08:04 PM	0.011
4:09:04 PM	0.011
4:10:04 PM	0.013
4:11:04 PM	0.01
4:12:04 PM	0.011
4:13:04 PM	0.011
4:14:04 PM	0.011
4:15:04 PM	0.011
4:16:04 PM	0.013
4:17:04 PM	0.019
4:18:04 PM	0.03
4:19:04 PM	0.044
4:20:04 PM	0.033
4:21:04 PM	0.012
4:22:04 PM	0.01
4:23:04 PM	0.013
4:24:04 PM	0.011
4:25:04 PM	0.009
4:26:04 PM	0.01
4:27:04 PM	0.016
4:28:04 PM	0.015
4:29:04 PM	0.014
4:30:04 PM	0.014
4:31:04 PM	0.013
4:32:04 PM	0.047
4:33:04 PM	0.021
4:34:04 PM	0.013
4:35:04 PM	0.014
4:36:04 PM	0.012
4:37:04 PM	0.012
4:38:04 PM	0.012
4:39:04 PM	0.011
4:40:04 PM	0.01
4:41:04 PM	0.011
4:42:04 PM	0.011
4:43:04 PM	0.011
4:44:04 PM	0.01
4:45:04 PM	0.01

4:46:04 PM	0.01
4:47:04 PM	0.01
4:48:04 PM	0.012
4:49:04 PM	0.011
4:50:04 PM	0.011
4:51:04 PM	0.012
4:52:04 PM	0.011
4:53:04 PM	0.011
4:54:04 PM	0.012
4:55:04 PM	0.012
4:56:04 PM	0.012
4:57:04 PM	0.01
4:58:04 PM	0.01
4:59:04 PM	0.01
5:00:04 PM	0.01
5:01:04 PM	0.011
5:02:04 PM	0.015
5:03:04 PM	0.011
5:04:04 PM	0.01
5:05:04 PM	0.011
5:06:04 PM	0.009
5:07:04 PM	0.01
5:08:04 PM	0.014
5:09:04 PM	0.018
5:10:04 PM	0.02
5:11:04 PM	0.018
5:12:04 PM	0.017
5:13:04 PM	0.023
5:14:04 PM	0.019
5:15:04 PM	0.022
5:16:04 PM	0.019
5:17:04 PM	0.018
5:18:04 PM	0.024
5:19:04 PM	0.024
5:20:04 PM	0.023
5:21:04 PM	0.022
5:22:04 PM	0.017
5:23:04 PM	0.019
5:24:04 PM	0.019
5:25:04 PM	0.02
5:26:04 PM	0.018
5:27:04 PM	0.024
5:28:04 PM	0.022
5:29:04 PM	0.02

5:30:04 PM	0.019
5:31:04 PM	0.021
5:32:04 PM	0.024
5:33:04 PM	0.025
5:34:04 PM	0.023
5:35:04 PM	0.025
5:36:04 PM	0.027
5:37:04 PM	0.028
5:38:04 PM	0.03
5:39:04 PM	0.022
5:40:04 PM	0.021
5:41:04 PM	0.02
5:42:04 PM	0.021
5:43:04 PM	0.022
5:44:04 PM	0.02
5:45:04 PM	0.019
5:46:04 PM	0.021
5:47:04 PM	0.02
5:48:04 PM	0.02
5:49:04 PM	0.019
5:50:04 PM	0.018
5:51:04 PM	0.017
5:52:04 PM	0.027
5:53:04 PM	0.021
5:54:04 PM	0.017
5:55:04 PM	0.021
5:56:04 PM	0.018
5:57:04 PM	0.018
5:58:04 PM	0.018
5:59:04 PM	0.018
6:00:04 PM	0.023
6:01:04 PM	0.019
6:02:04 PM	0.023
6:03:04 PM	0.022
6:04:04 PM	0.025
6:05:04 PM	0.022
6:06:04 PM	0.022
6:07:04 PM	0.021
6:08:04 PM	0.019
6:09:04 PM	0.019
6:10:04 PM	0.018
6:11:04 PM	0.019
6:12:04 PM	0.019
6:13:04 PM	0.02

6:14:04 PM	0.02
6:15:04 PM	0.02
6:16:04 PM	0.021
6:17:04 PM	0.021
6:18:04 PM	0.022
6:19:04 PM	0.023
6:20:04 PM	0.024
6:21:04 PM	0.02
6:22:04 PM	0.02
6:23:04 PM	0.02
6:24:04 PM	0.022
6:25:04 PM	0.035
6:26:04 PM	0.03
6:27:04 PM	0.049
6:28:04 PM	0.028
6:29:04 PM	0.036
6:30:04 PM	0.033
6:31:04 PM	0.073
6:32:04 PM	0.025
6:33:04 PM	0.023
6:34:04 PM	0.023
6:35:04 PM	0.024
6:36:04 PM	0.027
6:37:04 PM	0.026
6:38:04 PM	0.029
6:39:04 PM	0.022
6:40:04 PM	0.023
6:41:04 PM	0.024
6:42:04 PM	0.027
6:43:04 PM	0.027
6:44:04 PM	0.023
6:45:04 PM	0.023

Device Serial No	Log Time	Log Type	Sensor 1 Type	Sensor 1 Serial Number	Sensor 1 Status	Sensor 1 Gas Reading
592-602816	6/11/2024 19:30	Readings	PID	SC23030324C7	Normal	0.3
592-602816	6/11/2024 19:29	Readings	PID	SC23030324C7	Normal	0.3
592-602816	6/11/2024 19:28	Readings	PID	SC23030324C7	Normal	0.3
592-602816	6/11/2024 19:27	Readings	PID	SC23030324C7	Normal	0.3
592-602816	6/11/2024 19:26	Readings	PID	SC23030324C7	Normal	0.3
592-602816	6/11/2024 19:25	Readings	PID	SC23030324C7	Normal	0.4
592-602816	6/11/2024 19:24	Readings	PID	SC23030324C7	Normal	0.4
592-602816	6/11/2024 19:23	Readings	PID	SC23030324C7	Normal	0.4
592-602816	6/11/2024 19:22	Readings	PID	SC23030324C7	Normal	0.3
592-602816	6/11/2024 19:21	Readings	PID	SC23030324C7	Normal	0.3
592-602816	6/11/2024 19:20	Readings	PID	SC23030324C7	Normal	0.4
592-602816	6/11/2024 19:19	Readings	PID	SC23030324C7	Normal	0.4
592-602816	6/11/2024 19:18	Readings	PID	SC23030324C7	Normal	0.4
592-602816	6/11/2024 19:17	Readings	PID	SC23030324C7	Normal	0.4
592-602816	6/11/2024 19:16	Readings	PID	SC23030324C7	Normal	0.3
592-602816	6/11/2024 19:15	Readings	PID	SC23030324C7	Normal	0.3
592-602816	6/11/2024 19:14	Readings	PID	SC23030324C7	Normal	0.3
592-602816	6/11/2024 19:13	Readings	PID	SC23030324C7	Normal	0.3
592-602816	6/11/2024 19:12	Readings	PID	SC23030324C7	Normal	0.3
592-602816	6/11/2024 19:11	Readings	PID	SC23030324C7	Normal	0.3
592-602816	6/11/2024 19:10	Readings	PID	SC23030324C7	Normal	0.4
592-602816	6/11/2024 19:09	Readings	PID	SC23030324C7	Normal	0.4
592-602816	6/11/2024 19:08	Readings	PID	SC23030324C7	Normal	0.4
592-602816	6/11/2024 19:07	Readings	PID	SC23030324C7	Normal	0.3
592-602816	6/11/2024 19:06	Readings	PID	SC23030324C7	Normal	0.4
592-602816	6/11/2024 19:05	Readings	PID	SC23030324C7	Normal	0.3
592-602816	6/11/2024 19:04	Readings	PID	SC23030324C7	Normal	0.4
592-602816	6/11/2024 19:03	Readings	PID	SC23030324C7	Normal	0.4
592-602816	6/11/2024 19:02	Readings	PID	SC23030324C7	Normal	0.4
592-602816	6/11/2024 19:01	Readings	PID	SC23030324C7	Normal	0.4
592-602816	6/11/2024 19:00	Readings	PID	SC23030324C7	Normal	0.4
592-602816	6/11/2024 18:59	Readings	PID	SC23030324C7	Normal	0.4

592-602816	6/11/2024 18:58	Readings	PID	SC23030324C7	Normal	0.4
592-602816	6/11/2024 18:57	Readings	PID	SC23030324C7	Normal	0.4
592-602816	6/11/2024 18:56	Readings	PID	SC23030324C7	Normal	0.4
592-602816	6/11/2024 18:55	Readings	PID	SC23030324C7	Normal	0.4
592-602816	6/11/2024 18:54	Readings	PID	SC23030324C7	Normal	0.3
592-602816	6/11/2024 18:53	Readings	PID	SC23030324C7	Normal	0.3
592-602816	6/11/2024 18:52	Readings	PID	SC23030324C7	Normal	0.4
592-602816	6/11/2024 18:51	Readings	PID	SC23030324C7	Normal	0.4
592-602816	6/11/2024 18:50	Readings	PID	SC23030324C7	Normal	0.4
592-602816	6/11/2024 18:49	Readings	PID	SC23030324C7	Normal	0.4
592-602816	6/11/2024 18:48	Readings	PID	SC23030324C7	Normal	0.4
592-602816	6/11/2024 18:47	Readings	PID	SC23030324C7	Normal	0.4
592-602816	6/11/2024 18:46	Readings	PID	SC23030324C7	Normal	0.5
592-602816	6/11/2024 18:45	Readings	PID	SC23030324C7	Normal	0.4
592-602816	6/11/2024 18:44	Readings	PID	SC23030324C7	Normal	0.4
592-602816	6/11/2024 18:43	Readings	PID	SC23030324C7	Normal	0.4
592-602816	6/11/2024 18:42	Readings	PID	SC23030324C7	Normal	0.4
592-602816	6/11/2024 18:41	Readings	PID	SC23030324C7	Normal	0.4
592-602816	6/11/2024 18:40	Readings	PID	SC23030324C7	Normal	0.4
592-602816	6/11/2024 18:39	Readings	PID	SC23030324C7	Normal	0.5
592-602816	6/11/2024 18:38	Readings	PID	SC23030324C7	Normal	0.4
592-602816	6/11/2024 18:37	Readings	PID	SC23030324C7	Normal	0.4
592-602816	6/11/2024 18:36	Readings	PID	SC23030324C7	Normal	0.4
592-602816	6/11/2024 18:35	Readings	PID	SC23030324C7	Normal	0.4
592-602816	6/11/2024 18:34	Readings	PID	SC23030324C7	Normal	0.4
592-602816	6/11/2024 18:33	Readings	PID	SC23030324C7	Normal	0.4
592-602816	6/11/2024 18:32	Readings	PID	SC23030324C7	Normal	0.3
592-602816	6/11/2024 18:31	Readings	PID	SC23030324C7	Normal	0.3
592-602816	6/11/2024 18:30	Readings	PID	SC23030324C7	Normal	0.4
592-602816	6/11/2024 18:29	Readings	PID	SC23030324C7	Normal	0.4
592-602816	6/11/2024 18:28	Readings	PID	SC23030324C7	Normal	0.4
592-602816	6/11/2024 18:27	Readings	PID	SC23030324C7	Normal	0.5
592-602816	6/11/2024 18:26	Readings	PID	SC23030324C7	Normal	0.5

592-602816	6/11/2024 18:25	Readings	PID	SC23030324C7	Normal	0.4
592-602816	6/11/2024 18:24	Readings	PID	SC23030324C7	Normal	0.4
592-602816	6/11/2024 18:23	Readings	PID	SC23030324C7	Normal	0.4
592-602816	6/11/2024 18:22	Readings	PID	SC23030324C7	Normal	0.4
592-602816	6/11/2024 18:21	Readings	PID	SC23030324C7	Normal	0.4
592-602816	6/11/2024 18:20	Readings	PID	SC23030324C7	Normal	0.4
592-602816	6/11/2024 18:19	Readings	PID	SC23030324C7	Normal	0.4
592-602816	6/11/2024 18:18	Readings	PID	SC23030324C7	Normal	0.4
592-602816	6/11/2024 18:17	Readings	PID	SC23030324C7	Normal	0.5
592-602816	6/11/2024 18:16	Readings	PID	SC23030324C7	Normal	0.4
592-602816	6/11/2024 18:15	Readings	PID	SC23030324C7	Normal	0.4
592-602816	6/11/2024 18:14	Readings	PID	SC23030324C7	Normal	0.5
592-602816	6/11/2024 18:13	Readings	PID	SC23030324C7	Normal	0.5
592-602816	6/11/2024 18:12	Readings	PID	SC23030324C7	Normal	0.7
592-602816	6/11/2024 18:11	Readings	PID	SC23030324C7	Normal	0.5
592-602816	6/11/2024 18:10	Readings	PID	SC23030324C7	Normal	0.4
592-602816	6/11/2024 18:09	Readings	PID	SC23030324C7	Normal	0.4
592-602816	6/11/2024 18:08	Readings	PID	SC23030324C7	Normal	0.4
592-602816	6/11/2024 18:07	Readings	PID	SC23030324C7	Normal	0.4
592-602816	6/11/2024 18:06	Readings	PID	SC23030324C7	Normal	0.5
592-602816	6/11/2024 18:05	Readings	PID	SC23030324C7	Normal	0.4
592-602816	6/11/2024 18:04	Readings	PID	SC23030324C7	Normal	0.4
592-602816	6/11/2024 18:03	Readings	PID	SC23030324C7	Normal	0.4
592-602816	6/11/2024 18:02	Readings	PID	SC23030324C7	Normal	0.4
592-602816	6/11/2024 18:01	Readings	PID	SC23030324C7	Normal	0.4
592-602816	6/11/2024 18:00	Readings	PID	SC23030324C7	Normal	0.3
592-602816	6/11/2024 17:59	Readings	PID	SC23030324C7	Normal	0.3
592-602816	6/11/2024 17:58	Readings	PID	SC23030324C7	Normal	0.3
592-602816	6/11/2024 17:57	Readings	PID	SC23030324C7	Normal	0.3
592-602816	6/11/2024 17:56	Readings	PID	SC23030324C7	Normal	0.3
592-602816	6/11/2024 17:55	Readings	PID	SC23030324C7	Normal	0.3
592-602816	6/11/2024 17:54	Readings	PID	SC23030324C7	Normal	0.3
592-602816	6/11/2024 17:53	Readings	PID	SC23030324C7	Normal	0.3

592-602816	6/11/2024 17:19	Readings	PID	SC23030324C7	Normal	0.3
592-602816	6/11/2024 17:18	Readings	PID	SC23030324C7	Normal	0.3
592-602816	6/11/2024 17:17	Readings	PID	SC23030324C7	Normal	0.3
592-602816	6/11/2024 17:16	Readings	PID	SC23030324C7	Normal	0.3
592-602816	6/11/2024 17:15	Readings	PID	SC23030324C7	Normal	0.3
592-602816	6/11/2024 17:14	Readings	PID	SC23030324C7	Normal	0.4
592-602816	6/11/2024 17:13	Readings	PID	SC23030324C7	Normal	0.3
592-602816	6/11/2024 17:12	Readings	PID	SC23030324C7	Normal	0.2
592-602816	6/11/2024 17:11	Readings	PID	SC23030324C7	Normal	0.2
592-602816	6/11/2024 17:10	Readings	PID	SC23030324C7	Normal	0.2
592-602816	6/11/2024 17:09	Readings	PID	SC23030324C7	Normal	0.3
592-602816	6/11/2024 17:08	Readings	PID	SC23030324C7	Normal	0.4
592-602816	6/11/2024 17:07	Readings	PID	SC23030324C7	Normal	0.3
592-602816	6/11/2024 17:06	Readings	PID	SC23030324C7	Normal	0.3
592-602816	6/11/2024 17:05	Readings	PID	SC23030324C7	Normal	0.3
592-602816	6/11/2024 17:04	Readings	PID	SC23030324C7	Normal	0.2
592-602816	6/11/2024 17:03	Readings	PID	SC23030324C7	Normal	0.3
592-602816	6/11/2024 17:02	Readings	PID	SC23030324C7	Normal	0.2
592-602816	6/11/2024 17:01	Readings	PID	SC23030324C7	Normal	0.2
592-602816	6/11/2024 17:00	Readings	PID	SC23030324C7	Normal	0.2
592-602816	6/11/2024 16:59	Readings	PID	SC23030324C7	Normal	0.2
592-602816	6/11/2024 16:58	Readings	PID	SC23030324C7	Normal	0.2
592-602816	6/11/2024 16:57	Readings	PID	SC23030324C7	Normal	0.2
592-602816	6/11/2024 16:56	Readings	PID	SC23030324C7	Normal	0.2
592-602816	6/11/2024 16:55	Readings	PID	SC23030324C7	Normal	0.2
592-602816	6/11/2024 16:54	Readings	PID	SC23030324C7	Normal	0.3
592-602816	6/11/2024 16:53	Readings	PID	SC23030324C7	Normal	0.3
592-602816	6/11/2024 16:52	Readings	PID	SC23030324C7	Normal	0.3
592-602816	6/11/2024 16:51	Readings	PID	SC23030324C7	Normal	0.3
592-602816	6/11/2024 16:50	Readings	PID	SC23030324C7	Normal	0.3
592-602816	6/11/2024 16:49	Readings	PID	SC23030324C7	Normal	0.5
592-602816	6/11/2024 16:48	Readings	PID	SC23030324C7	Normal	0.3
592-602816	6/11/2024 16:47	Readings	PID	SC23030324C7	Normal	0.3

592-602816	6/11/2024 16:46	Readings	PID	SC23030324C7	Normal	0.3
592-602816	6/11/2024 16:45	Readings	PID	SC23030324C7	Normal	0.2
592-602816	6/11/2024 16:44	Readings	PID	SC23030324C7	Normal	0.3
592-602816	6/11/2024 16:43	Readings	PID	SC23030324C7	Normal	0.3
592-602816	6/11/2024 16:42	Readings	PID	SC23030324C7	Normal	0.3
592-602816	6/11/2024 16:41	Readings	PID	SC23030324C7	Normal	0.2
592-602816	6/11/2024 16:40	Readings	PID	SC23030324C7	Normal	0.2
592-602816	6/11/2024 16:39	Readings	PID	SC23030324C7	Normal	0.4
592-602816	6/11/2024 16:38	Readings	PID	SC23030324C7	Normal	0.3
592-602816	6/11/2024 16:37	Readings	PID	SC23030324C7	Normal	0.2
592-602816	6/11/2024 16:36	Readings	PID	SC23030324C7	Normal	0.2
592-602816	6/11/2024 16:35	Readings	PID	SC23030324C7	Normal	0.2
592-602816	6/11/2024 16:34	Readings	PID	SC23030324C7	Normal	0.2
592-602816	6/11/2024 16:33	Readings	PID	SC23030324C7	Normal	0.2
592-602816	6/11/2024 16:32	Readings	PID	SC23030324C7	Normal	0.2
592-602816	6/11/2024 16:31	Readings	PID	SC23030324C7	Normal	0.2
592-602816	6/11/2024 16:30	Readings	PID	SC23030324C7	Normal	0.3
592-602816	6/11/2024 16:29	Readings	PID	SC23030324C7	Normal	0.3
592-602816	6/11/2024 16:28	Readings	PID	SC23030324C7	Normal	0.2
592-602816	6/11/2024 16:27	Readings	PID	SC23030324C7	Normal	0.2
592-602816	6/11/2024 16:26	Readings	PID	SC23030324C7	Normal	0.2
592-602816	6/11/2024 16:25	Readings	PID	SC23030324C7	Normal	0.2
592-602816	6/11/2024 16:24	Readings	PID	SC23030324C7	Normal	0.2
592-602816	6/11/2024 16:23	Readings	PID	SC23030324C7	Normal	0.2
592-602816	6/11/2024 16:22	Readings	PID	SC23030324C7	Normal	0.2
592-602816	6/11/2024 16:21	Readings	PID	SC23030324C7	Normal	0.2
592-602816	6/11/2024 16:20	Readings	PID	SC23030324C7	Normal	0.2
592-602816	6/11/2024 16:19	Readings	PID	SC23030324C7	Normal	0.2
592-602816	6/11/2024 16:18	Readings	PID	SC23030324C7	Normal	0.2
592-602816	6/11/2024 16:17	Readings	PID	SC23030324C7	Normal	0.2
592-602816	6/11/2024 16:16	Readings	PID	SC23030324C7	Normal	0.2
592-602816	6/11/2024 16:15	Readings	PID	SC23030324C7	Normal	0.2
592-602816	6/11/2024 16:14	Readings	PID	SC23030324C7	Normal	0.2

592-602816	6/11/2024 16:13	Readings	PID	SC23030324C7	Normal	0.2
592-602816	6/11/2024 16:12	Readings	PID	SC23030324C7	Normal	0.3
592-602816	6/11/2024 16:11	Readings	PID	SC23030324C7	Normal	0.2
592-602816	6/11/2024 16:10	Readings	PID	SC23030324C7	Normal	0.3
592-602816	6/11/2024 16:09	Readings	PID	SC23030324C7	Normal	0.3
592-602816	6/11/2024 16:08	Readings	PID	SC23030324C7	Normal	0.2
592-602816	6/11/2024 16:07	Readings	PID	SC23030324C7	Normal	0.2
592-602816	6/11/2024 16:06	Readings	PID	SC23030324C7	Normal	0.2
592-602816	6/11/2024 16:05	Readings	PID	SC23030324C7	Normal	0.2
592-602816	6/11/2024 16:04	Readings	PID	SC23030324C7	Normal	0.3
592-602816	6/11/2024 16:03	Readings	PID	SC23030324C7	Normal	0.2
592-602816	6/11/2024 16:02	Readings	PID	SC23030324C7	Normal	0.2
592-602816	6/11/2024 16:01	Readings	PID	SC23030324C7	Normal	0.2
592-602816	6/11/2024 16:00	Readings	PID	SC23030324C7	Normal	0.3
592-602816	6/11/2024 15:59	Readings	PID	SC23030324C7	Normal	0.3
592-602816	6/11/2024 15:58	Readings	PID	SC23030324C7	Normal	0.3
592-602816	6/11/2024 15:57	Readings	PID	SC23030324C7	Normal	0.2
592-602816	6/11/2024 15:56	Readings	PID	SC23030324C7	Normal	0.3
592-602816	6/11/2024 15:55	Readings	PID	SC23030324C7	Normal	0.5
592-602816	6/11/2024 15:54	Readings	PID	SC23030324C7	Normal	0.3
592-602816	6/11/2024 15:53	Readings	PID	SC23030324C7	Normal	0.3
592-602816	6/11/2024 15:52	Readings	PID	SC23030324C7	Normal	0.2
592-602816	6/11/2024 15:51	Readings	PID	SC23030324C7	Normal	0.3
592-602816	6/11/2024 15:50	Readings	PID	SC23030324C7	Normal	0.3
592-602816	6/11/2024 15:49	Readings	PID	SC23030324C7	Normal	0.2
592-602816	6/11/2024 15:48	Readings	PID	SC23030324C7	Normal	0.3
592-602816	6/11/2024 15:47	Readings	PID	SC23030324C7	Normal	0.3
592-602816	6/11/2024 15:46	Readings	PID	SC23030324C7	Normal	0.2
592-602816	6/11/2024 15:45	Readings	PID	SC23030324C7	Normal	0.2
592-602816	6/11/2024 15:44	Readings	PID	SC23030324C7	Normal	0.3
592-602816	6/11/2024 15:43	Readings	PID	SC23030324C7	Normal	0.2
592-602816	6/11/2024 15:42	Readings	PID	SC23030324C7	Normal	0.3
592-602816	6/11/2024 15:41	Readings	PID	SC23030324C7	Normal	0.3

592-602816	6/11/2024 15:40	Readings	PID	SC23030324C7	Normal	0.3
592-602816	6/11/2024 15:39	Readings	PID	SC23030324C7	Normal	0.3
592-602816	6/11/2024 15:38	Readings	PID	SC23030324C7	Normal	0.4
592-602816	6/11/2024 15:37	Readings	PID	SC23030324C7	Normal	0.2
592-602816	6/11/2024 15:36	Readings	PID	SC23030324C7	Normal	0.2
592-602816	6/11/2024 15:35	Readings	PID	SC23030324C7	Normal	0.2
592-602816	6/11/2024 15:34	Readings	PID	SC23030324C7	Normal	0.2
592-602816	6/11/2024 15:33	Readings	PID	SC23030324C7	Normal	0.3
592-602816	6/11/2024 15:32	Readings	PID	SC23030324C7	Normal	0.3
592-602816	6/11/2024 15:31	Readings	PID	SC23030324C7	Normal	0.3
592-602816	6/11/2024 15:30	Readings	PID	SC23030324C7	Normal	0.3
592-602816	6/11/2024 15:29	Readings	PID	SC23030324C7	Normal	0.3
592-602816	6/11/2024 15:28	Readings	PID	SC23030324C7	Normal	0.3
592-602816	6/11/2024 15:27	Readings	PID	SC23030324C7	Normal	0.3
592-602816	6/11/2024 15:26	Readings	PID	SC23030324C7	Normal	0.3
592-602816	6/11/2024 15:25	Readings	PID	SC23030324C7	Normal	0.2
592-602816	6/11/2024 15:24	Readings	PID	SC23030324C7	Normal	0.2
592-602816	6/11/2024 15:23	Readings	PID	SC23030324C7	Normal	0.3
592-602816	6/11/2024 15:22	Readings	PID	SC23030324C7	Normal	0.4
592-602816	6/11/2024 15:21	Readings	PID	SC23030324C7	Normal	0.3
592-602816	6/11/2024 15:20	Readings	PID	SC23030324C7	Normal	0.4
592-602816	6/11/2024 15:19	Readings	PID	SC23030324C7	Normal	0.3
592-602816	6/11/2024 15:18	Readings	PID	SC23030324C7	Normal	0.3
592-602816	6/11/2024 15:17	Readings	PID	SC23030324C7	Normal	0.3
592-602816	6/11/2024 15:16	Readings	PID	SC23030324C7	Normal	0.4
592-602816	6/11/2024 15:15	Readings	PID	SC23030324C7	Normal	0.4
592-602816	6/11/2024 15:14	Readings	PID	SC23030324C7	Normal	0.3
592-602816	6/11/2024 15:13	Readings	PID	SC23030324C7	Normal	0.3
592-602816	6/11/2024 15:12	Readings	PID	SC23030324C7	Normal	0.3
592-602816	6/11/2024 15:11	Readings	PID	SC23030324C7	Normal	0.4
592-602816	6/11/2024 15:10	Readings	PID	SC23030324C7	Normal	0.4
592-602816	6/11/2024 15:09	Readings	PID	SC23030324C7	Normal	0.4
592-602816	6/11/2024 15:08	Readings	PID	SC23030324C7	Normal	0.5

592-602816	6/11/2024 15:07	Readings	PID	SC23030324C7	Normal	0.3
592-602816	6/11/2024 15:06	Readings	PID	SC23030324C7	Normal	0.3
592-602816	6/11/2024 15:05	Readings	PID	SC23030324C7	Normal	0.3
592-602816	6/11/2024 15:04	Readings	PID	SC23030324C7	Normal	0.4
592-602816	6/11/2024 15:03	Readings	PID	SC23030324C7	Normal	0.3
592-602816	6/11/2024 15:02	Readings	PID	SC23030324C7	Normal	0.3
592-602816	6/11/2024 15:01	Readings	PID	SC23030324C7	Normal	0.4
592-602816	6/11/2024 15:00	Readings	PID	SC23030324C7	Normal	0.3
592-602816	6/11/2024 14:59	Readings	PID	SC23030324C7	Normal	0.3
592-602816	6/11/2024 14:58	Readings	PID	SC23030324C7	Normal	0.3
592-602816	6/11/2024 14:57	Readings	PID	SC23030324C7	Normal	0.3
592-602816	6/11/2024 14:56	Readings	PID	SC23030324C7	Normal	0.3
592-602816	6/11/2024 14:55	Readings	PID	SC23030324C7	Normal	0.2
592-602816	6/11/2024 14:54	Readings	PID	SC23030324C7	Normal	0.2
592-602816	6/11/2024 14:53	Readings	PID	SC23030324C7	Normal	0.3
592-602816	6/11/2024 14:52	Readings	PID	SC23030324C7	Normal	0.3
592-602816	6/11/2024 14:51	Readings	PID	SC23030324C7	Normal	0.3
592-602816	6/11/2024 14:50	Readings	PID	SC23030324C7	Normal	0.3
592-602816	6/11/2024 14:49	Readings	PID	SC23030324C7	Normal	0.3
592-602816	6/11/2024 14:48	Readings	PID	SC23030324C7	Normal	0.3
592-602816	6/11/2024 14:47	Readings	PID	SC23030324C7	Normal	0.3
592-602816	6/11/2024 14:46	Readings	PID	SC23030324C7	Normal	0.4
592-602816	6/11/2024 14:45	Readings	PID	SC23030324C7	Normal	0.4
592-602816	6/11/2024 14:44	Readings	PID	SC23030324C7	Normal	0.4
592-602816	6/11/2024 14:43	Readings	PID	SC23030324C7	Normal	0.3
592-602816	6/11/2024 14:42	Readings	PID	SC23030324C7	Normal	0.3
592-602816	6/11/2024 14:41	Readings	PID	SC23030324C7	Normal	0.2
592-602816	6/11/2024 14:40	Readings	PID	SC23030324C7	Normal	0.2
592-602816	6/11/2024 14:39	Readings	PID	SC23030324C7	Normal	0.2
592-602816	6/11/2024 14:38	Readings	PID	SC23030324C7	Normal	0.2
592-602816	6/11/2024 14:37	Readings	PID	SC23030324C7	Normal	0.3
592-602816	6/11/2024 14:36	Readings	PID	SC23030324C7	Normal	0.3
592-602816	6/11/2024 14:35	Readings	PID	SC23030324C7	Normal	0.3

592-602816	6/11/2024 14:34	Readings	PID	SC23030324C7	Normal	0.3
592-602816	6/11/2024 14:33	Readings	PID	SC23030324C7	Normal	0.3
592-602816	6/11/2024 14:32	Readings	PID	SC23030324C7	Normal	0.3
592-602816	6/11/2024 14:31	Readings	PID	SC23030324C7	Normal	0.3
592-602816	6/11/2024 14:30	Readings	PID	SC23030324C7	Normal	0.4
592-602816	6/11/2024 14:29	Readings	PID	SC23030324C7	Normal	0.3
592-602816	6/11/2024 14:28	Readings	PID	SC23030324C7	Normal	0.4
592-602816	6/11/2024 14:27	Readings	PID	SC23030324C7	Normal	0.3
592-602816	6/11/2024 14:26	Readings	PID	SC23030324C7	Normal	0.3
592-602816	6/11/2024 14:25	Readings	PID	SC23030324C7	Normal	0.5
592-602816	6/11/2024 14:24	Readings	PID	SC23030324C7	Normal	0.5
592-602816	6/11/2024 14:23	Readings	PID	SC23030324C7	Normal	0.3
592-602816	6/11/2024 14:22	Readings	PID	SC23030324C7	Normal	0.3
592-602816	6/11/2024 14:21	Readings	PID	SC23030324C7	Normal	0.3
592-602816	6/11/2024 14:20	Readings	PID	SC23030324C7	Normal	0.4
592-602816	6/11/2024 14:19	Readings	PID	SC23030324C7	Normal	0.5
592-602816	6/11/2024 14:18	Readings	PID	SC23030324C7	Normal	0.5
592-602816	6/11/2024 14:17	Readings	PID	SC23030324C7	Normal	0.4
592-602816	6/11/2024 14:16	Readings	PID	SC23030324C7	Normal	0.5
592-602816	6/11/2024 14:15	Readings	PID	SC23030324C7	Normal	0.2
592-602816	6/11/2024 14:14	Readings	PID	SC23030324C7	Normal	0.3
592-602816	6/11/2024 14:13	Readings	PID	SC23030324C7	Normal	0.3
592-602816	6/11/2024 14:12	Readings	PID	SC23030324C7	Normal	0.3
592-602816	6/11/2024 14:11	Readings	PID	SC23030324C7	Normal	0.3
592-602816	6/11/2024 14:10	Readings	PID	SC23030324C7	Normal	0.3
592-602816	6/11/2024 14:09	Readings	PID	SC23030324C7	Normal	0.3
592-602816	6/11/2024 14:08	Readings	PID	SC23030324C7	Normal	0.3
592-602816	6/11/2024 14:07	Readings	PID	SC23030324C7	Normal	0.3
592-602816	6/11/2024 14:06	Readings	PID	SC23030324C7	Normal	0.3
592-602816	6/11/2024 14:05	Readings	PID	SC23030324C7	Normal	0.3
592-602816	6/11/2024 14:04	Readings	PID	SC23030324C7	Normal	0.3
592-602816	6/11/2024 14:03	Readings	PID	SC23030324C7	Normal	0.3
592-602816	6/11/2024 14:02	Readings	PID	SC23030324C7	Normal	0.3

592-602816	6/11/2024 14:01	Readings	PID	SC23030324C7	Normal	0.2
592-602816	6/11/2024 14:00	Readings	PID	SC23030324C7	Normal	0.2
592-602816	6/11/2024 13:59	Readings	PID	SC23030324C7	Normal	0.3
592-602816	6/11/2024 13:58	Readings	PID	SC23030324C7	Normal	0.2
592-602816	6/11/2024 13:57	Readings	PID	SC23030324C7	Normal	0.3
592-602816	6/11/2024 13:56	Readings	PID	SC23030324C7	Normal	0.2
592-602816	6/11/2024 13:55	Readings	PID	SC23030324C7	Normal	0.2
592-602816	6/11/2024 13:54	Readings	PID	SC23030324C7	Normal	0.2
592-602816	6/11/2024 13:53	Readings	PID	SC23030324C7	Normal	0.2
592-602816	6/11/2024 13:52	Readings	PID	SC23030324C7	Normal	0.2
592-602816	6/11/2024 13:51	Readings	PID	SC23030324C7	Normal	0.2
592-602816	6/11/2024 13:50	Readings	PID	SC23030324C7	Normal	0.2
592-602816	6/11/2024 13:49	Readings	PID	SC23030324C7	Normal	0.2
592-602816	6/11/2024 13:48	Readings	PID	SC23030324C7	Normal	0.2
592-602816	6/11/2024 13:47	Readings	PID	SC23030324C7	Normal	0.2
592-602816	6/11/2024 13:46	Readings	PID	SC23030324C7	Normal	0.2
592-602816	6/11/2024 13:45	Readings	PID	SC23030324C7	Normal	0.2
592-602816	6/11/2024 13:44	Readings	PID	SC23030324C7	Normal	0.2
592-602816	6/11/2024 13:43	Readings	PID	SC23030324C7	Normal	0.2
592-602816	6/11/2024 13:42	Readings	PID	SC23030324C7	Normal	0.2
592-602816	6/11/2024 13:41	Readings	PID	SC23030324C7	Normal	0.2
592-602816	6/11/2024 13:40	Readings	PID	SC23030324C7	Normal	0.2
592-602816	6/11/2024 13:39	Readings	PID	SC23030324C7	Normal	0.2
592-602816	6/11/2024 13:38	Readings	PID	SC23030324C7	Normal	0.2
592-602816	6/11/2024 13:37	Readings	PID	SC23030324C7	Normal	0.3
592-602816	6/11/2024 13:36	Readings	PID	SC23030324C7	Normal	0.4
592-602816	6/11/2024 13:35	Readings	PID	SC23030324C7	Normal	0.3
592-602816	6/11/2024 13:34	Readings	PID	SC23030324C7	Normal	0.3
592-602816	6/11/2024 13:33	Readings	PID	SC23030324C7	Normal	0.3
592-602816	6/11/2024 13:32	Readings	PID	SC23030324C7	Normal	0.3
592-602816	6/11/2024 13:31	Readings	PID	SC23030324C7	Normal	0.3
592-602816	6/11/2024 13:30	Readings	PID	SC23030324C7	Normal	0.3
592-602816	6/11/2024 13:29	Readings	PID	SC23030324C7	Normal	0.3

592-602816	6/11/2024 13:28	Readings	PID	SC23030324C7	Normal	0.4
592-602816	6/11/2024 13:27	Readings	PID	SC23030324C7	Normal	0.4
592-602816	6/11/2024 13:26	Readings	PID	SC23030324C7	Normal	0.3
592-602816	6/11/2024 13:25	Readings	PID	SC23030324C7	Normal	0.3
592-602816	6/11/2024 13:24	Readings	PID	SC23030324C7	Normal	0.3
592-602816	6/11/2024 13:23	Readings	PID	SC23030324C7	Normal	0.3
592-602816	6/11/2024 13:22	Readings	PID	SC23030324C7	Normal	0.3
592-602816	6/11/2024 13:21	Readings	PID	SC23030324C7	Normal	0.3
592-602816	6/11/2024 13:20	Readings	PID	SC23030324C7	Normal	0.3
592-602816	6/11/2024 13:19	Readings	PID	SC23030324C7	Normal	0.3
592-602816	6/11/2024 13:18	Readings	PID	SC23030324C7	Normal	0.3
592-602816	6/11/2024 13:17	Readings	PID	SC23030324C7	Normal	0.3
592-602816	6/11/2024 13:16	Readings	PID	SC23030324C7	Normal	0.3
592-602816	6/11/2024 13:15	Readings	PID	SC23030324C7	Normal	0.3
592-602816	6/11/2024 13:14	Readings	PID	SC23030324C7	Normal	0.3
592-602816	6/11/2024 13:13	Readings	PID	SC23030324C7	Normal	0.3
592-602816	6/11/2024 13:12	Readings	PID	SC23030324C7	Normal	0.3
592-602816	6/11/2024 13:11	Readings	PID	SC23030324C7	Normal	0.3
592-602816	6/11/2024 13:10	Readings	PID	SC23030324C7	Normal	0.3
592-602816	6/11/2024 13:09	Readings	PID	SC23030324C7	Normal	0.3
592-602816	6/11/2024 13:08	Readings	PID	SC23030324C7	Normal	0.3
592-602816	6/11/2024 13:07	Readings	PID	SC23030324C7	Normal	0.2
592-602816	6/11/2024 13:06	Readings	PID	SC23030324C7	Normal	0.2
592-602816	6/11/2024 13:05	Readings	PID	SC23030324C7	Normal	0.3
592-602816	6/11/2024 13:04	Readings	PID	SC23030324C7	Normal	0.4
592-602816	6/11/2024 13:03	Readings	PID	SC23030324C7	Normal	0.3
592-602816	6/11/2024 13:02	Readings	PID	SC23030324C7	Normal	0.4
592-602816	6/11/2024 13:01	Readings	PID	SC23030324C7	Normal	0.5
592-602816	6/11/2024 13:00	Readings	PID	SC23030324C7	Normal	0.5
592-602816	6/11/2024 12:59	Readings	PID	SC23030324C7	Normal	0.5
592-602816	6/11/2024 12:58	Readings	PID	SC23030324C7	Normal	0.4
592-602816	6/11/2024 12:57	Readings	PID	SC23030324C7	Normal	0.3
592-602816	6/11/2024 12:56	Readings	PID	SC23030324C7	Normal	0.4

592-602816	6/11/2024 12:55	Readings	PID	SC23030324C7	Normal	0.3
592-602816	6/11/2024 12:54	Readings	PID	SC23030324C7	Normal	0.2
592-602816	6/11/2024 12:53	Readings	PID	SC23030324C7	Normal	0.2
592-602816	6/11/2024 12:52	Readings	PID	SC23030324C7	Normal	0.2
592-602816	6/11/2024 12:51	Readings	PID	SC23030324C7	Normal	0.3
592-602816	6/11/2024 12:50	Readings	PID	SC23030324C7	Normal	0.2
592-602816	6/11/2024 12:49	Readings	PID	SC23030324C7	Normal	0.2
592-602816	6/11/2024 12:48	Readings	PID	SC23030324C7	Normal	0.2
592-602816	6/11/2024 12:47	Readings	PID	SC23030324C7	Normal	0.3
592-602816	6/11/2024 12:46	Readings	PID	SC23030324C7	Normal	0.3
592-602816	6/11/2024 12:45	Readings	PID	SC23030324C7	Normal	0.2
592-602816	6/11/2024 12:44	Readings	PID	SC23030324C7	Normal	0.2
592-602816	6/11/2024 12:43	Readings	PID	SC23030324C7	Normal	0.3
592-602816	6/11/2024 12:42	Readings	PID	SC23030324C7	Normal	0.3
592-602816	6/11/2024 12:41	Readings	PID	SC23030324C7	Normal	0.3
592-602816	6/11/2024 12:40	Readings	PID	SC23030324C7	Normal	0.3
592-602816	6/11/2024 12:39	Readings	PID	SC23030324C7	Normal	0.3
592-602816	6/11/2024 12:38	Readings	PID	SC23030324C7	Normal	0.3
592-602816	6/11/2024 12:37	Readings	PID	SC23030324C7	Normal	0.3
592-602816	6/11/2024 12:36	Readings	PID	SC23030324C7	Normal	0.3
592-602816	6/11/2024 12:35	Readings	PID	SC23030324C7	Normal	0.2
592-602816	6/11/2024 12:34	Readings	PID	SC23030324C7	Normal	0.2
592-602816	6/11/2024 12:33	Readings	PID	SC23030324C7	Normal	0.3
592-602816	6/11/2024 12:32	Readings	PID	SC23030324C7	Normal	0.2
592-602816	6/11/2024 12:31	Readings	PID	SC23030324C7	Normal	0.3
592-602816	6/11/2024 12:30	Readings	PID	SC23030324C7	Normal	0.3
592-602816	6/11/2024 12:29	Readings	PID	SC23030324C7	Normal	0.3
592-602816	6/11/2024 12:28	Readings	PID	SC23030324C7	Normal	0.3
592-602816	6/11/2024 12:27	Readings	PID	SC23030324C7	Normal	0.3
592-602816	6/11/2024 12:26	Readings	PID	SC23030324C7	Normal	0.3
592-602816	6/11/2024 12:25	Readings	PID	SC23030324C7	Normal	0.3
592-602816	6/11/2024 12:24	Readings	PID	SC23030324C7	Normal	0.5
592-602816	6/11/2024 12:23	Readings	PID	SC23030324C7	Normal	1

592-602816	6/11/2024 12:22	Readings	PID	SC23030324C7	Normal	1.4
592-602816	6/11/2024 12:21	Readings	PID	SC23030324C7	Normal	0.9
592-602816	6/11/2024 12:20	Readings	PID	SC23030324C7	Normal	1.3
592-602816	6/11/2024 12:19	Readings	PID	SC23030324C7	Normal	1.4
592-602816	6/11/2024 12:18	Readings	PID	SC23030324C7	Normal	1.6
592-602816	6/11/2024 12:17	Readings	PID	SC23030324C7	Normal	0.2
592-602816	6/11/2024 12:16	Readings	PID	SC23030324C7	Normal	0.2
592-602816	6/11/2024 12:15	Readings	PID	SC23030324C7	Normal	0.2
592-602816	6/11/2024 12:14	Readings	PID	SC23030324C7	Normal	0.2
592-602816	6/11/2024 12:13	Readings	PID	SC23030324C7	Normal	0.3
592-602816	6/11/2024 12:12	Readings	PID	SC23030324C7	Normal	0.3
592-602816	6/11/2024 12:11	Readings	PID	SC23030324C7	Normal	0.3
592-602816	6/11/2024 12:10	Readings	PID	SC23030324C7	Normal	0.3
592-602816	6/11/2024 12:09	Readings	PID	SC23030324C7	Normal	0.3
592-602816	6/11/2024 12:08	Readings	PID	SC23030324C7	Normal	0.3
592-602816	6/11/2024 12:07	Readings	PID	SC23030324C7	Normal	0.3
592-602816	6/11/2024 12:06	Readings	PID	SC23030324C7	Normal	0.3
592-602816	6/11/2024 12:05	Readings	PID	SC23030324C7	Normal	0.4
592-602816	6/11/2024 12:04	Readings	PID	SC23030324C7	Normal	0.6
592-602816	6/11/2024 12:03	Readings	PID	SC23030324C7	Normal	0.6
592-602816	6/11/2024 12:02	Readings	PID	SC23030324C7	Normal	0.3
592-602816	6/11/2024 12:01	Readings	PID	SC23030324C7	Normal	0.4
592-602816	6/11/2024 12:00	Readings	PID	SC23030324C7	Normal	0.3
592-602816	6/11/2024 11:59	Readings	PID	SC23030324C7	Normal	0.4
592-602816	6/11/2024 11:58	Readings	PID	SC23030324C7	Normal	0.3
592-602816	6/11/2024 11:57	Readings	PID	SC23030324C7	Normal	0.3
592-602816	6/11/2024 11:56	Readings	PID	SC23030324C7	Normal	0.3
592-602816	6/11/2024 11:55	Readings	PID	SC23030324C7	Normal	0.3
592-602816	6/11/2024 11:54	Readings	PID	SC23030324C7	Normal	0.3
592-602816	6/11/2024 11:53	Readings	PID	SC23030324C7	Normal	0.3
592-602816	6/11/2024 11:52	Readings	PID	SC23030324C7	Normal	0.5
592-602816	6/11/2024 11:51	Readings	PID	SC23030324C7	Normal	0.3
592-602816	6/11/2024 11:50	Readings	PID	SC23030324C7	Normal	0.3

592-602816	6/11/2024 11:49	Readings	PID	SC23030324C7	Normal	0.3
592-602816	6/11/2024 11:48	Readings	PID	SC23030324C7	Normal	0.3
592-602816	6/11/2024 11:47	Readings	PID	SC23030324C7	Normal	0.3
592-602816	6/11/2024 11:46	Readings	PID	SC23030324C7	Normal	0.4
592-602816	6/11/2024 11:45	Readings	PID	SC23030324C7	Normal	0.3
592-602816	6/11/2024 11:44	Readings	PID	SC23030324C7	Normal	0.4
592-602816	6/11/2024 11:43	Readings	PID	SC23030324C7	Normal	0.5
592-602816	6/11/2024 11:42	Readings	PID	SC23030324C7	Normal	0.3
592-602816	6/11/2024 11:41	Readings	PID	SC23030324C7	Normal	0.5
592-602816	6/11/2024 11:40	Readings	PID	SC23030324C7	Normal	0.4
592-602816	6/11/2024 11:39	Readings	PID	SC23030324C7	Normal	0.3
592-602816	6/11/2024 11:38	Readings	PID	SC23030324C7	Normal	0.3
592-602816	6/11/2024 11:37	Readings	PID	SC23030324C7	Normal	0.3
592-602816	6/11/2024 11:36	Readings	PID	SC23030324C7	Normal	0.3
592-602816	6/11/2024 11:35	Readings	PID	SC23030324C7	Normal	0.3
592-602816	6/11/2024 11:34	Readings	PID	SC23030324C7	Normal	0.3
592-602816	6/11/2024 11:33	Readings	PID	SC23030324C7	Normal	0.3
592-602816	6/11/2024 11:32	Readings	PID	SC23030324C7	Normal	0.3
592-602816	6/11/2024 11:31	Readings	PID	SC23030324C7	Normal	0.3
592-602816	6/11/2024 11:30	Readings	PID	SC23030324C7	Normal	0.2
592-602816	6/11/2024 11:29	Readings	PID	SC23030324C7	Normal	0.3
592-602816	6/11/2024 11:28	Readings	PID	SC23030324C7	Normal	0.3
592-602816	6/11/2024 11:27	Readings	PID	SC23030324C7	Normal	0.3
592-602816	6/11/2024 11:26	Readings	PID	SC23030324C7	Normal	0.3
592-602816	6/11/2024 11:25	Readings	PID	SC23030324C7	Normal	0.3
592-602816	6/11/2024 11:24	Readings	PID	SC23030324C7	Normal	0.3
592-602816	6/11/2024 11:23	Readings	PID	SC23030324C7	Normal	0.3
592-602816	6/11/2024 11:22	Readings	PID	SC23030324C7	Normal	0.3
592-602816	6/11/2024 11:21	Readings	PID	SC23030324C7	Normal	0.3
592-602816	6/11/2024 11:20	Readings	PID	SC23030324C7	Normal	0.2
592-602816	6/11/2024 11:19	Readings	PID	SC23030324C7	Normal	0.2
592-602816	6/11/2024 11:18	Readings	PID	SC23030324C7	Normal	0.2
592-602816	6/11/2024 11:17	Readings	PID	SC23030324C7	Normal	0.3

592-602816	6/11/2024 10:10 Readings	PID	SC23030324C7	Normal	0.3
592-602816	6/11/2024 10:09 Readings	PID	SC23030324C7	Normal	0.3
592-602816	6/11/2024 10:08 Readings	PID	SC23030324C7	Normal	0.3
592-602816	6/11/2024 10:07 Readings	PID	SC23030324C7	Normal	0.3
592-602816	6/11/2024 10:06 Readings	PID	SC23030324C7	Normal	0.3
592-602816	6/11/2024 10:05 Readings	PID	SC23030324C7	Normal	0.3
592-602816	6/11/2024 10:04 Readings	PID	SC23030324C7	Normal	0.3
592-602816	6/11/2024 10:03 Readings	PID	SC23030324C7	Normal	0.3
592-602816	6/11/2024 10:02 Readings	PID	SC23030324C7	Normal	0.3
592-602816	6/11/2024 10:01 Readings	PID	SC23030324C7	Normal	0.3
592-602816	6/11/2024 10:00 Readings	PID	SC23030324C7	Normal	0.3
592-602816	6/11/2024 9:59 Readings	PID	SC23030324C7	Normal	0.4
592-602816	6/11/2024 9:58 Readings	PID	SC23030324C7	Normal	0.3
592-602816	6/11/2024 9:57 Readings	PID	SC23030324C7	Normal	0.3
592-602816	6/11/2024 9:56 Readings	PID	SC23030324C7	Normal	0.3
592-602816	6/11/2024 9:55 Readings	PID	SC23030324C7	Normal	0.4
592-602816	6/11/2024 9:54 Readings	PID	SC23030324C7	Normal	0.3
592-602816	6/11/2024 9:53 Readings	PID	SC23030324C7	Normal	0.3
592-602816	6/11/2024 9:52 Readings	PID	SC23030324C7	Normal	0.4
592-602816	6/11/2024 9:51 Readings	PID	SC23030324C7	Normal	0.3
592-602816	6/11/2024 9:50 Readings	PID	SC23030324C7	Normal	0.3
592-602816	6/11/2024 9:49 Readings	PID	SC23030324C7	Normal	0.3
592-602816	6/11/2024 9:48 Readings	PID	SC23030324C7	Normal	0.4
592-602816	6/11/2024 9:47 Readings	PID	SC23030324C7	Normal	0.3
592-602816	6/11/2024 9:46 Readings	PID	SC23030324C7	Normal	0.3
592-602816	6/11/2024 9:45 Readings	PID	SC23030324C7	Normal	0.4
592-602816	6/11/2024 9:44 Readings	PID	SC23030324C7	Normal	0.3
592-602816	6/11/2024 9:43 Readings	PID	SC23030324C7	Normal	0.3
592-602816	6/11/2024 9:42 Readings	PID	SC23030324C7	Normal	0.3
592-602816	6/11/2024 9:41 Readings	PID	SC23030324C7	Normal	0.3
592-602816	6/11/2024 9:40 Readings	PID	SC23030324C7	Normal	0.4
592-602816	6/11/2024 9:39 Readings	PID	SC23030324C7	Normal	0.3
592-602816	6/11/2024 9:38 Readings	PID	SC23030324C7	Normal	0.3

592-602816	6/11/2024 9:37	Readings	PID	SC23030324C7	Normal	0.3
592-602816	6/11/2024 9:36	Readings	PID	SC23030324C7	Normal	0.3
592-602816	6/11/2024 9:35	Readings	PID	SC23030324C7	Normal	0.5
592-602816	6/11/2024 9:34	Readings	PID	SC23030324C7	Normal	0.6
592-602816	6/11/2024 9:33	Readings	PID	SC23030324C7	Normal	0.3
592-602816	6/11/2024 9:32	Readings	PID	SC23030324C7	Normal	0.4
592-602816	6/11/2024 9:31	Readings	PID	SC23030324C7	Normal	0.3
592-602816	6/11/2024 9:30	Readings	PID	SC23030324C7	Normal	0.4
592-602816	6/11/2024 9:29	Readings	PID	SC23030324C7	Normal	0.8
592-602816	6/11/2024 9:28	Readings	PID	SC23030324C7	Normal	0.7
592-602816	6/11/2024 9:27	Readings	PID	SC23030324C7	Normal	0.3
592-602816	6/11/2024 9:26	Readings	PID	SC23030324C7	Normal	0.3
592-602816	6/11/2024 9:25	Readings	PID	SC23030324C7	Normal	0.4
592-602816	6/11/2024 9:24	Readings	PID	SC23030324C7	Normal	0.4
592-602816	6/11/2024 9:23	Readings	PID	SC23030324C7	Normal	0.3
592-602816	6/11/2024 9:22	Readings	PID	SC23030324C7	Normal	0.3
592-602816	6/11/2024 9:21	Readings	PID	SC23030324C7	Normal	0.3
592-602816	6/11/2024 9:20	Readings	PID	SC23030324C7	Normal	0.4
592-602816	6/11/2024 9:19	Readings	PID	SC23030324C7	Normal	0.4
592-602816	6/11/2024 9:18	Readings	PID	SC23030324C7	Normal	0.4
592-602816	6/11/2024 9:17	Readings	PID	SC23030324C7	Normal	0.4
592-602816	6/11/2024 9:16	Readings	PID	SC23030324C7	Normal	0.4
592-602816	6/11/2024 9:15	Readings	PID	SC23030324C7	Normal	0.3
592-602816	6/11/2024 9:14	Readings	PID	SC23030324C7	Normal	0.4
592-602816	6/11/2024 9:13	Readings	PID	SC23030324C7	Normal	0.3
592-602816	6/11/2024 9:12	Readings	PID	SC23030324C7	Normal	0.3
592-602816	6/11/2024 9:11	Readings	PID	SC23030324C7	Normal	0.3
592-602816	6/11/2024 9:10	Readings	PID	SC23030324C7	Normal	0.3
592-602816	6/11/2024 9:09	Readings	PID	SC23030324C7	Normal	0.3
592-602816	6/11/2024 9:08	Readings	PID	SC23030324C7	Normal	0.3
592-602816	6/11/2024 9:07	Readings	PID	SC23030324C7	Normal	0.3
592-602816	6/11/2024 9:06	Readings	PID	SC23030324C7	Normal	0.3
592-602816	6/11/2024 9:05	Readings	PID	SC23030324C7	Normal	0.4

592-602816	6/11/2024 9:04	Readings	PID	SC23030324C7	Normal	0.4
592-602816	6/11/2024 9:03	Readings	PID	SC23030324C7	Normal	0.3
592-602816	6/11/2024 9:02	Readings	PID	SC23030324C7	Normal	0.4
592-602816	6/11/2024 9:01	Readings	PID	SC23030324C7	Normal	0.3
592-602816	6/11/2024 9:00	Readings	PID	SC23030324C7	Normal	0.3
592-602816	6/11/2024 8:59	Readings	PID	SC23030324C7	Normal	0.3
592-602816	6/11/2024 8:58	Readings	PID	SC23030324C7	Normal	0.3
592-602816	6/11/2024 8:57	Readings	PID	SC23030324C7	Normal	0.4
592-602816	6/11/2024 8:56	Readings	PID	SC23030324C7	Normal	0.5
592-602816	6/11/2024 8:55	Readings	PID	SC23030324C7	Normal	0.3
592-602816	6/11/2024 8:54	Readings	PID	SC23030324C7	Normal	0.3
592-602816	6/11/2024 8:53	Readings	PID	SC23030324C7	Normal	0.3
592-602816	6/11/2024 8:52	Readings	PID	SC23030324C7	Normal	0.3
592-602816	6/11/2024 8:51	Readings	PID	SC23030324C7	Normal	0.2
592-602816	6/11/2024 8:50	Readings	PID	SC23030324C7	Normal	0.2
592-602816	6/11/2024 8:49	Readings	PID	SC23030324C7	Normal	0.2
592-602816	6/11/2024 8:48	Readings	PID	SC23030324C7	Normal	0.3
592-602816	6/11/2024 8:47	Readings	PID	SC23030324C7	Normal	0.3
592-602816	6/11/2024 8:46	Readings	PID	SC23030324C7	Normal	0.3
592-602816	6/11/2024 8:45	Readings	PID	SC23030324C7	Normal	0.3
592-602816	6/11/2024 8:44	Readings	PID	SC23030324C7	Normal	0.6
592-602816	6/11/2024 8:43	Readings	PID	SC23030324C7	Normal	1.2
592-602816	6/11/2024 8:42	Readings	PID	SC23030324C7	Normal	0.3
592-602816	6/11/2024 8:41	Readings	PID	SC23030324C7	Normal	0.3
592-602816	6/11/2024 8:40	Readings	PID	SC23030324C7	Normal	0.2
592-602816	6/11/2024 8:39	Readings	PID	SC23030324C7	Normal	0.3
592-602816	6/11/2024 8:38	Readings	PID	SC23030324C7	Normal	0.3
592-602816	6/11/2024 8:37	Readings	PID	SC23030324C7	Normal	0.3
592-602816	6/11/2024 8:36	Readings	PID	SC23030324C7	Normal	0.2
592-602816	6/11/2024 8:35	Readings	PID	SC23030324C7	Normal	0.2
592-602816	6/11/2024 8:34	Readings	PID	SC23030324C7	Normal	0.2
592-602816	6/11/2024 8:33	Readings	PID	SC23030324C7	Normal	0.2
592-602816	6/11/2024 8:32	Readings	PID	SC23030324C7	Normal	0.2

592-602816	6/11/2024 8:31	Readings	PID	SC23030324C7	Normal	0.2
592-602816	6/11/2024 8:30	Readings	PID	SC23030324C7	Normal	0.2
592-602816	6/11/2024 8:29	Readings	PID	SC23030324C7	Normal	0.2
592-602816	6/11/2024 8:28	Readings	PID	SC23030324C7	Normal	0.3
592-602816	6/11/2024 8:27	Readings	PID	SC23030324C7	Normal	0.3
592-602816	6/11/2024 8:26	Readings	PID	SC23030324C7	Normal	0.2
592-602816	6/11/2024 8:25	Readings	PID	SC23030324C7	Normal	0.2
592-602816	6/11/2024 8:24	Readings	PID	SC23030324C7	Normal	0.2
592-602816	6/11/2024 8:23	Readings	PID	SC23030324C7	Normal	0.1
592-602816	6/11/2024 8:22	Readings	PID	SC23030324C7	Normal	0.2
592-602816	6/11/2024 8:21	Readings	PID	SC23030324C7	Normal	0.2
592-602816	6/11/2024 8:20	Readings	PID	SC23030324C7	Normal	0.2
592-602816	6/11/2024 8:19	Readings	PID	SC23030324C7	Normal	0.2
592-602816	6/11/2024 8:18	Readings	PID	SC23030324C7	Normal	0.2
592-602816	6/11/2024 8:17	Readings	PID	SC23030324C7	Normal	0.2
592-602816	6/11/2024 8:16	Readings	PID	SC23030324C7	Normal	0.2
592-602816	6/11/2024 8:15	Readings	PID	SC23030324C7	Normal	0.1
592-602816	6/11/2024 8:14	Readings	PID	SC23030324C7	Normal	0.2
592-602816	6/11/2024 8:13	Readings	PID	SC23030324C7	Normal	0.2
592-602816	6/11/2024 8:12	Readings	PID	SC23030324C7	Normal	0.1
592-602816	6/11/2024 8:11	Readings	PID	SC23030324C7	Normal	0.2
592-602816	6/11/2024 8:10	Readings	PID	SC23030324C7	Normal	0.1
592-602816	6/11/2024 8:09	Readings	PID	SC23030324C7	Normal	0.1
592-602816	6/11/2024 8:08	Readings	PID	SC23030324C7	Normal	0.2
592-602816	6/11/2024 8:07	Readings	PID	SC23030324C7	Normal	0.2
592-602816	6/11/2024 8:06	Readings	PID	SC23030324C7	Normal	0.2
592-602816	6/11/2024 8:05	Readings	PID	SC23030324C7	Normal	0.3
592-602816	6/11/2024 8:04	Readings	PID	SC23030324C7	Normal	0.2
592-602816	6/11/2024 8:03	Readings	PID	SC23030324C7	Normal	0.1
592-602816	6/11/2024 8:02	Readings	PID	SC23030324C7	Normal	0.1
592-602816	6/11/2024 8:01	Readings	PID	SC23030324C7	Normal	0.1
592-602816	6/11/2024 8:00	Readings	PID	SC23030324C7	Normal	0.1
592-602816	6/11/2024 7:59	Readings	PID	SC23030324C7	Normal	0.1

592-602816	6/11/2024 7:58 Readings	PID	SC23030324C7	Normal	0.1
592-602816	6/11/2024 7:57 Readings	PID	SC23030324C7	Normal	0.1
592-602816	6/11/2024 7:56 Readings	PID	SC23030324C7	Normal	0.1
592-602816	6/11/2024 7:55 Readings	PID	SC23030324C7	Normal	0.2
592-602816	6/11/2024 7:54 Readings	PID	SC23030324C7	Normal	0.1
592-602816	6/11/2024 7:53 Readings	PID	SC23030324C7	Normal	0.1
592-602816	6/11/2024 7:52 Readings	PID	SC23030324C7	Normal	0.1
592-602816	6/11/2024 7:51 Readings	PID	SC23030324C7	Normal	0.1
592-602816	6/11/2024 7:50 Readings	PID	SC23030324C7	Normal	0.1
592-602816	6/11/2024 7:49 Readings	PID	SC23030324C7	Normal	0.3
592-602816	6/11/2024 7:48 Readings	PID	SC23030324C7	Normal	1
592-602816	6/11/2024 7:47 Readings	PID	SC23030324C7	Normal	0.1
592-602816	6/11/2024 7:46 Readings	PID	SC23030324C7	Normal	0.1
592-602816	6/11/2024 7:45 Readings	PID	SC23030324C7	Normal	0
592-602816	6/11/2024 7:44 Readings	PID	SC23030324C7	Normal	0
592-602816	6/11/2024 7:43 Readings	PID	SC23030324C7	Normal	0
592-602816	6/11/2024 7:42 Readings	PID	SC23030324C7	Normal	0
592-602816	6/11/2024 7:41 Readings	PID	SC23030324C7	Normal	0
592-602816	6/11/2024 7:40 Readings	PID	SC23030324C7	Normal	0
592-602816	6/11/2024 7:39 Readings	PID	SC23030324C7	Normal	0
592-602816	6/11/2024 7:38 Readings	PID	SC23030324C7	Normal	0
592-602816	6/11/2024 7:37 CONFIG	PID	SC23030324C7		

Instrument Name	DustTrak DRX
Model Number	8533
Serial Number	8533181205
Firmware Version	3.1
Calibration Date	5/31/2023
Test Name	MANUAL_009
Test Start Time	6:57:29 AM
Test Start Date	6/11/2024
Test Length [D:H:M]	0:11:47
Test Interval [M:S]	1:00
PM10 Average [mg/m3]	0.043
PM10 Minimum [mg/m3]	0.009
PM10 Maximum [mg/m3]	0.783
PM10 TWA [mg/m3]	0.06
Photometric User Cal	1
Size Correction User Cal	1
Flow User Cal	0
Errors	
Number of Samples	707

Elapsed Time [s]	PM10 [mg/m3]	Alarms	Errors
6:57:29 AM	0.087		
6:58:29 AM	0.024		
6:59:29 AM	0.015		
7:00:29 AM	0.017		
7:01:29 AM	0.012		
7:02:29 AM	0.013		
7:03:29 AM	0.023		
7:04:29 AM	0.012		
7:05:29 AM	0.012		
7:06:29 AM	0.014		
7:07:29 AM	0.037		
7:08:29 AM	0.021		
7:09:29 AM	0.083		
7:10:29 AM	0.046		
7:11:29 AM	0.011		
7:12:29 AM	0.072		
7:13:29 AM	0.012		
7:14:29 AM	0.011		
7:15:29 AM	0.01		
7:16:29 AM	0.02		
7:17:29 AM	0.017		
7:18:29 AM	0.046		
7:19:29 AM	0.022		

7:20:29 AM	0.017
7:21:29 AM	0.035
7:22:29 AM	0.027
7:23:29 AM	0.171
7:24:29 AM	12.3
7:25:29 AM	0.05
7:26:29 AM	0.064
7:27:29 AM	0.081
7:28:29 AM	0.026
7:29:29 AM	0.023
7:30:29 AM	0.035
7:31:29 AM	0.097
7:32:29 AM	0.129
7:33:29 AM	0.024
7:34:29 AM	0.012
7:35:29 AM	0.042
7:36:29 AM	0.097
7:37:29 AM	0.083
7:38:29 AM	0.013
7:39:29 AM	0.017
7:40:29 AM	0.019
7:41:29 AM	0.028
7:42:29 AM	0.011
7:43:29 AM	0.015
7:44:29 AM	0.012
7:45:29 AM	0.013
7:46:29 AM	0.045
7:47:29 AM	0.063
7:48:29 AM	0.076
7:49:29 AM	0.082
7:50:29 AM	0.025
7:51:29 AM	0.03
7:52:29 AM	0.01
7:53:29 AM	0.021
7:54:29 AM	0.013
7:55:29 AM	0.016
7:56:29 AM	0.013
7:57:29 AM	0.023
7:58:29 AM	0.025
7:59:29 AM	0.01
8:00:29 AM	0.009
8:01:29 AM	0.009
8:02:29 AM	0.009
8:03:29 AM	0.022

8:04:29 AM	0.011
8:05:29 AM	0.011
8:06:29 AM	0.015
8:07:29 AM	0.012
8:08:29 AM	0.013
8:09:29 AM	0.02
8:10:29 AM	0.014
8:11:29 AM	0.022
8:12:29 AM	0.014
8:13:29 AM	0.017
8:14:29 AM	0.013
8:15:29 AM	0.012
8:16:29 AM	0.022
8:17:29 AM	0.024
8:18:29 AM	0.015
8:19:29 AM	0.025
8:20:29 AM	0.018
8:21:29 AM	0.036
8:22:29 AM	0.027
8:23:29 AM	0.03
8:24:29 AM	0.033
8:25:29 AM	0.03
8:26:29 AM	0.023
8:27:29 AM	0.019
8:28:29 AM	0.017
8:29:29 AM	0.02
8:30:29 AM	0.066
8:31:29 AM	0.052
8:32:29 AM	0.02
8:33:29 AM	0.022
8:34:29 AM	0.012
8:35:29 AM	0.027
8:36:29 AM	0.027
8:37:29 AM	0.018
8:38:29 AM	0.025
8:39:29 AM	0.033
8:40:29 AM	0.025
8:41:29 AM	0.022
8:42:29 AM	0.014
8:43:29 AM	0.016
8:44:29 AM	0.012
8:45:29 AM	0.013
8:46:29 AM	0.016
8:47:29 AM	0.015

8:48:29 AM	0.015
8:49:29 AM	0.015
8:50:29 AM	0.013
8:51:29 AM	0.014
8:52:29 AM	0.02
8:53:29 AM	0.022
8:54:29 AM	0.034
8:55:29 AM	0.039
8:56:29 AM	0.053
8:57:29 AM	0.021
8:58:29 AM	0.022
8:59:29 AM	0.025
9:00:29 AM	0.036
9:01:29 AM	0.029
9:02:29 AM	0.071
9:03:29 AM	0.027
9:04:29 AM	0.018
9:05:29 AM	0.038
9:06:29 AM	0.062
9:07:29 AM	0.027
9:08:29 AM	0.048
9:09:29 AM	0.08
9:10:29 AM	0.041
9:11:29 AM	0.025
9:12:29 AM	0.028
9:13:29 AM	0.065
9:14:29 AM	0.039
9:15:29 AM	0.038
9:16:29 AM	0.04
9:17:29 AM	0.043
9:18:29 AM	0.024
9:19:29 AM	0.034
9:20:29 AM	0.023
9:21:29 AM	0.02
9:22:29 AM	0.022
9:23:29 AM	0.02
9:24:29 AM	0.012
9:25:29 AM	0.036
9:26:29 AM	0.019
9:27:29 AM	0.038
9:28:29 AM	0.038
9:29:29 AM	0.024
9:30:29 AM	0.03
9:31:29 AM	0.023

9:32:29 AM	0.022
9:33:29 AM	0.022
9:34:29 AM	0.016
9:35:29 AM	0.027
9:36:29 AM	0.027
9:37:29 AM	0.026
9:38:29 AM	0.023
9:39:29 AM	0.026
9:40:29 AM	0.023
9:41:29 AM	0.028
9:42:29 AM	0.028
9:43:29 AM	0.081
9:44:29 AM	0.03
9:45:29 AM	0.02
9:46:29 AM	0.176
9:47:29 AM	0.08
9:48:29 AM	0.1
9:49:29 AM	0.116
9:50:29 AM	0.045
9:51:29 AM	0.022
9:52:29 AM	0.024
9:53:29 AM	0.05
9:54:29 AM	0.116
9:55:29 AM	0.041
9:56:29 AM	0.086
9:57:29 AM	0.072
9:58:29 AM	0.059
9:59:29 AM	0.033
10:00:29 AM	0.066
10:01:29 AM	0.129
10:02:29 AM	0.036
10:03:29 AM	0.052
10:04:29 AM	0.083
10:05:29 AM	0.142
10:06:29 AM	0.058
10:07:29 AM	0.071
10:08:29 AM	0.04
10:09:29 AM	0.024
10:10:29 AM	0.024
10:11:29 AM	0.034
10:12:29 AM	0.109
10:13:29 AM	0.032
10:14:29 AM	0.032
10:15:29 AM	0.025

10:16:29 AM	0.021
10:17:29 AM	0.019
10:18:29 AM	0.024
10:19:29 AM	0.084
10:20:29 AM	0.072
10:21:29 AM	0.026
10:22:29 AM	0.014
10:23:29 AM	0.011
10:24:29 AM	0.011
10:25:29 AM	0.049
10:26:29 AM	0.05
10:27:29 AM	0.027
10:28:29 AM	0.031
10:29:29 AM	0.03
10:30:29 AM	0.042
10:31:29 AM	0.046
10:32:29 AM	0.05
10:33:29 AM	0.053
10:34:29 AM	0.038
10:35:29 AM	0.022
10:36:29 AM	0.026
10:37:29 AM	0.027
10:38:29 AM	0.045
10:39:29 AM	0.047
10:40:29 AM	0.012
10:41:29 AM	0.016
10:42:29 AM	0.026
10:43:29 AM	0.017
10:44:29 AM	0.011
10:45:29 AM	0.04
10:46:29 AM	0.012
10:47:29 AM	0.018
10:48:29 AM	0.016
10:49:29 AM	0.012
10:50:29 AM	0.015
10:51:29 AM	0.027
10:52:29 AM	0.02
10:53:29 AM	0.014
10:54:29 AM	0.01
10:55:29 AM	0.017
10:56:29 AM	0.032
10:57:29 AM	0.027
10:58:29 AM	0.036
10:59:29 AM	0.026

11:00:29 AM	0.018
11:01:29 AM	0.02
11:02:29 AM	0.034
11:03:29 AM	0.027
11:04:29 AM	0.04
11:05:29 AM	0.021
11:06:29 AM	0.019
11:07:29 AM	0.027
11:08:29 AM	0.039
11:09:29 AM	0.034
11:10:29 AM	0.028
11:11:29 AM	0.021
11:12:29 AM	0.024
11:13:29 AM	0.03
11:14:29 AM	0.098
11:15:29 AM	0.117
11:16:29 AM	0.019
11:17:29 AM	0.023
11:18:29 AM	0.013
11:19:29 AM	0.02
11:20:29 AM	0.021
11:21:29 AM	0.016
11:22:29 AM	0.022
11:23:29 AM	0.017
11:24:29 AM	0.013
11:25:29 AM	0.022
11:26:29 AM	0.025
11:27:29 AM	0.023
11:28:29 AM	0.029
11:29:29 AM	0.021
11:30:29 AM	0.022
11:31:29 AM	0.025
11:32:29 AM	0.022
11:33:29 AM	0.041
11:34:29 AM	0.013
11:35:29 AM	0.033
11:36:29 AM	0.053
11:37:29 AM	0.067
11:38:29 AM	0.07
11:39:29 AM	0.023
11:40:29 AM	0.034
11:41:29 AM	0.023
11:42:29 AM	0.012
11:43:29 AM	0.014

11:44:29 AM	0.036
11:45:29 AM	0.05
11:46:29 AM	0.014
11:47:29 AM	0.027
11:48:29 AM	0.021
11:49:29 AM	0.05
11:50:29 AM	0.058
11:51:29 AM	0.053
11:52:29 AM	0.028
11:53:29 AM	0.029
11:54:29 AM	0.02
11:55:29 AM	0.022
11:56:29 AM	0.019
11:57:29 AM	0.014
11:58:29 AM	0.014
11:59:29 AM	0.013
12:00:29 PM	0.019
12:01:29 PM	0.03
12:02:29 PM	0.022
12:03:29 PM	0.019
12:04:29 PM	0.029
12:05:29 PM	0.016
12:06:29 PM	0.02
12:07:29 PM	0.01
12:08:29 PM	0.079
12:09:29 PM	0.117
12:10:29 PM	0.031
12:11:29 PM	0.022
12:12:29 PM	0.02
12:13:29 PM	0.016
12:14:29 PM	0.021
12:15:29 PM	0.014
12:16:29 PM	0.013
12:17:29 PM	0.019
12:18:29 PM	0.017
12:19:29 PM	0.015
12:20:29 PM	0.013
12:21:29 PM	0.015
12:22:29 PM	0.02
12:23:29 PM	0.017
12:24:29 PM	0.019
12:25:29 PM	0.019
12:26:29 PM	0.015
12:27:29 PM	0.014

12:28:29 PM	0.055
12:29:29 PM	0.044
12:30:29 PM	0.024
12:31:29 PM	0.017
12:32:29 PM	0.013
12:33:29 PM	0.012
12:34:29 PM	0.018
12:35:29 PM	0.031
12:36:29 PM	0.053
12:37:29 PM	0.024
12:38:29 PM	0.026
12:39:29 PM	0.018
12:40:29 PM	0.023
12:41:29 PM	0.026
12:42:29 PM	0.018
12:43:29 PM	0.067
12:44:29 PM	0.039
12:45:29 PM	0.018
12:46:29 PM	0.012
12:47:29 PM	0.012
12:48:29 PM	0.012
12:49:29 PM	0.108
12:50:29 PM	0.029
12:51:29 PM	0.026
12:52:29 PM	0.054
12:53:29 PM	0.032
12:54:29 PM	0.04
12:55:29 PM	0.036
12:56:29 PM	0.028
12:57:29 PM	0.023
12:58:29 PM	0.029
12:59:29 PM	0.031
1:00:29 PM	0.043
1:01:29 PM	0.026
1:02:29 PM	0.052
1:03:29 PM	0.039
1:04:29 PM	0.04
1:05:29 PM	0.02
1:06:29 PM	0.13
1:07:29 PM	0.061
1:08:29 PM	0.03
1:09:29 PM	0.026
1:10:29 PM	0.028
1:11:29 PM	0.037

1:12:29 PM	0.043
1:13:29 PM	0.046
1:14:29 PM	0.045
1:15:29 PM	0.038
1:16:29 PM	0.025
1:17:29 PM	0.038
1:18:29 PM	0.044
1:19:29 PM	0.056
1:20:29 PM	0.072
1:21:29 PM	0.025
1:22:29 PM	0.018
1:23:29 PM	0.067
1:24:29 PM	0.039
1:25:29 PM	0.045
1:26:29 PM	0.052
1:27:29 PM	0.067
1:28:29 PM	0.061
1:29:29 PM	0.06
1:30:29 PM	0.149
1:31:29 PM	0.091
1:32:29 PM	0.069
1:33:29 PM	0.107
1:34:29 PM	0.243
1:35:29 PM	0.13
1:36:29 PM	0.346
1:37:29 PM	0.068
1:38:29 PM	0.049
1:39:29 PM	0.056
1:40:29 PM	0.026
1:41:29 PM	0.02
1:42:29 PM	0.016
1:43:29 PM	0.021
1:44:29 PM	0.02
1:45:29 PM	0.023
1:46:29 PM	0.042
1:47:29 PM	0.032
1:48:29 PM	0.037
1:49:29 PM	0.035
1:50:29 PM	0.036
1:51:29 PM	0.055
1:52:29 PM	0.032
1:53:29 PM	0.033
1:54:29 PM	0.032
1:55:29 PM	0.044

1:56:29 PM	0.035
1:57:29 PM	0.036
1:58:29 PM	0.033
1:59:29 PM	0.023
2:00:29 PM	0.026
2:01:29 PM	0.044
2:02:29 PM	0.033
2:03:29 PM	0.026
2:04:29 PM	0.021
2:05:29 PM	0.024
2:06:29 PM	0.028
2:07:29 PM	0.033
2:08:29 PM	0.028
2:09:29 PM	0.035
2:10:29 PM	0.033
2:11:29 PM	0.032
2:12:29 PM	0.037
2:13:29 PM	0.029
2:14:29 PM	0.024
2:15:29 PM	0.051
2:16:29 PM	0.037
2:17:29 PM	0.02
2:18:29 PM	0.029
2:19:29 PM	0.058
2:20:29 PM	0.03
2:21:29 PM	0.039
2:22:29 PM	0.028
2:23:29 PM	0.027
2:24:29 PM	0.022
2:25:29 PM	0.018
2:26:29 PM	0.024
2:27:29 PM	0.039
2:28:29 PM	0.04
2:29:29 PM	0.027
2:30:29 PM	0.022
2:31:29 PM	0.017
2:32:29 PM	0.02
2:33:29 PM	0.026
2:34:29 PM	0.029
2:35:29 PM	0.026
2:36:29 PM	0.076
2:37:29 PM	0.026
2:38:29 PM	0.023
2:39:29 PM	0.03

2:40:29 PM	0.023
2:41:29 PM	0.015
2:42:29 PM	0.021
2:43:29 PM	0.022
2:44:29 PM	0.019
2:45:29 PM	0.012
2:46:29 PM	0.013
2:47:29 PM	0.014
2:48:29 PM	0.014
2:49:29 PM	0.015
2:50:29 PM	0.019
2:51:29 PM	0.02
2:52:29 PM	0.027
2:53:29 PM	0.028
2:54:29 PM	0.023
2:55:29 PM	0.028
2:56:29 PM	0.024
2:57:29 PM	0.022
2:58:29 PM	0.034
2:59:29 PM	0.022
3:00:29 PM	0.06
3:01:29 PM	0.026
3:02:29 PM	0.082
3:03:29 PM	0.026
3:04:29 PM	0.045
3:05:29 PM	0.036
3:06:29 PM	0.016
3:07:29 PM	0.047
3:08:29 PM	0.023
3:09:29 PM	0.022
3:10:29 PM	0.022
3:11:29 PM	0.016
3:12:29 PM	0.016
3:13:29 PM	0.023
3:14:29 PM	0.02
3:15:29 PM	0.021
3:16:29 PM	0.016
3:17:29 PM	0.022
3:18:29 PM	0.018
3:19:29 PM	0.013
3:20:29 PM	0.026
3:21:29 PM	0.016
3:22:29 PM	0.014
3:23:29 PM	0.015

3:24:29 PM	0.017
3:25:29 PM	0.016
3:26:29 PM	0.031
3:27:29 PM	0.029
3:28:29 PM	0.018
3:29:29 PM	0.016
3:30:29 PM	0.019
3:31:29 PM	0.018
3:32:29 PM	0.013
3:33:29 PM	0.021
3:34:29 PM	0.02
3:35:29 PM	0.026
3:36:29 PM	0.028
3:37:29 PM	0.014
3:38:29 PM	0.029
3:39:29 PM	0.029
3:40:29 PM	0.018
3:41:29 PM	0.026
3:42:29 PM	0.047
3:43:29 PM	0.034
3:44:29 PM	0.023
3:45:29 PM	0.02
3:46:29 PM	0.021
3:47:29 PM	0.013
3:48:29 PM	0.016
3:49:29 PM	0.016
3:50:29 PM	0.029
3:51:29 PM	0.019
3:52:29 PM	0.012
3:53:29 PM	0.017
3:54:29 PM	0.03
3:55:29 PM	0.034
3:56:29 PM	0.016
3:57:29 PM	0.011
3:58:29 PM	0.018
3:59:29 PM	0.017
4:00:29 PM	0.017
4:01:29 PM	0.029
4:02:29 PM	0.027
4:03:29 PM	0.025
4:04:29 PM	0.032
4:05:29 PM	0.02
4:06:29 PM	0.013
4:07:29 PM	0.022

4:08:29 PM	0.015
4:09:29 PM	0.015
4:10:29 PM	0.011
4:11:29 PM	0.011
4:12:29 PM	0.014
4:13:29 PM	0.012
4:14:29 PM	0.01
4:15:29 PM	0.011
4:16:29 PM	0.011
4:17:29 PM	0.012
4:18:29 PM	0.041
4:19:29 PM	0.026
4:20:29 PM	0.048
4:21:29 PM	0.029
4:22:29 PM	0.029
4:23:29 PM	0.023
4:24:29 PM	0.013
4:25:29 PM	0.011
4:26:29 PM	0.011
4:27:29 PM	0.012
4:28:29 PM	0.012
4:29:29 PM	0.01
4:30:29 PM	0.01
4:31:29 PM	0.011
4:32:29 PM	0.013
4:33:29 PM	0.015
4:34:29 PM	0.013
4:35:29 PM	0.012
4:36:29 PM	0.014
4:37:29 PM	0.013
4:38:29 PM	0.014
4:39:29 PM	0.011
4:40:29 PM	0.011
4:41:29 PM	0.012
4:42:29 PM	0.012
4:43:29 PM	0.012
4:44:29 PM	0.011
4:45:29 PM	0.014
4:46:29 PM	0.012
4:47:29 PM	0.011
4:48:29 PM	0.01
4:49:29 PM	0.011
4:50:29 PM	0.011
4:51:29 PM	0.011

4:52:29 PM	0.011
4:53:29 PM	0.015
4:54:29 PM	0.015
4:55:29 PM	0.014
4:56:29 PM	0.014
4:57:29 PM	0.014
4:58:29 PM	0.017
4:59:29 PM	0.013
5:00:29 PM	0.015
5:01:29 PM	0.022
5:02:29 PM	0.022
5:03:29 PM	0.02
5:04:29 PM	0.019
5:05:29 PM	0.016
5:06:29 PM	0.015
5:07:29 PM	0.014
5:08:29 PM	0.016
5:09:29 PM	0.017
5:10:29 PM	0.016
5:11:29 PM	0.021
5:12:29 PM	0.072
5:13:29 PM	0.039
5:14:29 PM	0.018
5:15:29 PM	0.027
5:16:29 PM	0.031
5:17:29 PM	0.044
5:18:29 PM	0.212
5:19:29 PM	0.313
5:20:29 PM	0.057
5:21:29 PM	0.032
5:22:29 PM	0.026
5:23:29 PM	0.196
5:24:29 PM	0.223
5:25:29 PM	0.086
5:26:29 PM	0.031
5:27:29 PM	0.122
5:28:29 PM	0.153
5:29:29 PM	0.027
5:30:29 PM	0.069
5:31:29 PM	0.088
5:32:29 PM	0.066
5:33:29 PM	0.082
5:34:29 PM	0.09
5:35:29 PM	0.099

5:36:29 PM	0.082
5:37:29 PM	0.054
5:38:29 PM	0.077
5:39:29 PM	0.032
5:40:29 PM	0.034
5:41:29 PM	0.037
5:42:29 PM	0.467
5:43:29 PM	0.783
5:44:29 PM	0.265
5:45:29 PM	0.044
5:46:29 PM	0.028
5:47:29 PM	0.056
5:48:29 PM	0.033
5:49:29 PM	0.022
5:50:29 PM	0.026
5:51:29 PM	0.021
5:52:29 PM	0.018
5:53:29 PM	0.017
5:54:29 PM	0.029
5:55:29 PM	0.015
5:56:29 PM	0.019
5:57:29 PM	0.016
5:58:29 PM	0.016
5:59:29 PM	0.019
6:00:29 PM	0.017
6:01:29 PM	0.016
6:02:29 PM	0.018
6:03:29 PM	0.017
6:04:29 PM	0.02
6:05:29 PM	0.021
6:06:29 PM	0.023
6:07:29 PM	0.018
6:08:29 PM	0.019
6:09:29 PM	0.018
6:10:29 PM	0.019
6:11:29 PM	0.018
6:12:29 PM	0.018
6:13:29 PM	0.018
6:14:29 PM	0.017
6:15:29 PM	0.017
6:16:29 PM	0.018
6:17:29 PM	0.017
6:18:29 PM	0.017
6:19:29 PM	0.026

6:20:29 PM	0.02
6:21:29 PM	0.019
6:22:29 PM	0.02
6:23:29 PM	0.018
6:24:29 PM	0.018
6:25:29 PM	0.017
6:26:29 PM	0.017
6:27:29 PM	0.028
6:28:29 PM	0.032
6:29:29 PM	0.028
6:30:29 PM	0.029
6:31:29 PM	0.022
6:32:29 PM	0.364
6:33:29 PM	0.153
6:34:29 PM	0.042
6:35:29 PM	0.02
6:36:29 PM	0.021
6:37:29 PM	0.021
6:38:29 PM	0.026
6:39:29 PM	0.035
6:40:29 PM	0.035
6:41:29 PM	0.022
6:42:29 PM	0.02
6:43:29 PM	0.024

Device Serial No	Log Time	Log Type	Sensor 1 Type	Sensor 1 Serial Number	Sensor 1 Status	Sensor 1 Gas Reading
592-600871	6/11/2024 19:36	Readings	PID	SC23030408A8	Normal	0
592-600871	6/11/2024 19:35	Readings	PID	SC23030408A8	Normal	0
592-600871	6/11/2024 19:34	Readings	PID	SC23030408A8	Normal	0
592-600871	6/11/2024 19:33	Readings	PID	SC23030408A8	Normal	0
592-600871	6/11/2024 19:32	Readings	PID	SC23030408A8	Normal	0
592-600871	6/11/2024 19:31	Readings	PID	SC23030408A8	Normal	0
592-600871	6/11/2024 19:30	Readings	PID	SC23030408A8	Normal	0
592-600871	6/11/2024 19:29	Readings	PID	SC23030408A8	Normal	0
592-600871	6/11/2024 19:28	Readings	PID	SC23030408A8	Normal	0
592-600871	6/11/2024 19:27	Readings	PID	SC23030408A8	Normal	0
592-600871	6/11/2024 19:26	Readings	PID	SC23030408A8	Normal	0
592-600871	6/11/2024 19:25	Readings	PID	SC23030408A8	Normal	0
592-600871	6/11/2024 19:24	Readings	PID	SC23030408A8	Normal	0
592-600871	6/11/2024 19:23	Readings	PID	SC23030408A8	Normal	0
592-600871	6/11/2024 19:22	Readings	PID	SC23030408A8	Normal	0
592-600871	6/11/2024 19:21	Readings	PID	SC23030408A8	Normal	0
592-600871	6/11/2024 19:20	Readings	PID	SC23030408A8	Normal	0
592-600871	6/11/2024 19:19	Readings	PID	SC23030408A8	Normal	0
592-600871	6/11/2024 19:18	Readings	PID	SC23030408A8	Normal	0
592-600871	6/11/2024 19:17	Readings	PID	SC23030408A8	Normal	0
592-600871	6/11/2024 19:16	Readings	PID	SC23030408A8	Normal	0
592-600871	6/11/2024 19:15	Readings	PID	SC23030408A8	Normal	0
592-600871	6/11/2024 19:14	Readings	PID	SC23030408A8	Normal	0
592-600871	6/11/2024 19:13	Readings	PID	SC23030408A8	Normal	0
592-600871	6/11/2024 19:12	Readings	PID	SC23030408A8	Normal	0
592-600871	6/11/2024 19:11	Readings	PID	SC23030408A8	Normal	0
592-600871	6/11/2024 19:10	Readings	PID	SC23030408A8	Normal	0
592-600871	6/11/2024 19:09	Readings	PID	SC23030408A8	Normal	0
592-600871	6/11/2024 19:08	Readings	PID	SC23030408A8	Normal	0
592-600871	6/11/2024 19:07	Readings	PID	SC23030408A8	Normal	0
592-600871	6/11/2024 19:06	Readings	PID	SC23030408A8	Normal	0
592-600871	6/11/2024 19:05	Readings	PID	SC23030408A8	Normal	0

592-600871	6/11/2024 10:16	Readings	PID	SC23030408A8	Normal	0
592-600871	6/11/2024 10:15	Readings	PID	SC23030408A8	Normal	0
592-600871	6/11/2024 10:14	Readings	PID	SC23030408A8	Normal	0
592-600871	6/11/2024 10:13	Readings	PID	SC23030408A8	Normal	0
592-600871	6/11/2024 10:12	Readings	PID	SC23030408A8	Normal	0
592-600871	6/11/2024 10:11	Readings	PID	SC23030408A8	Normal	0
592-600871	6/11/2024 10:10	Readings	PID	SC23030408A8	Normal	0
592-600871	6/11/2024 10:09	Readings	PID	SC23030408A8	Normal	0
592-600871	6/11/2024 10:08	Readings	PID	SC23030408A8	Normal	0
592-600871	6/11/2024 10:07	Readings	PID	SC23030408A8	Normal	0
592-600871	6/11/2024 10:06	Readings	PID	SC23030408A8	Normal	0
592-600871	6/11/2024 10:05	Readings	PID	SC23030408A8	Normal	0
592-600871	6/11/2024 10:04	Readings	PID	SC23030408A8	Normal	0
592-600871	6/11/2024 10:03	Readings	PID	SC23030408A8	Normal	0
592-600871	6/11/2024 10:02	Readings	PID	SC23030408A8	Normal	0
592-600871	6/11/2024 10:01	Readings	PID	SC23030408A8	Normal	0
592-600871	6/11/2024 10:00	Readings	PID	SC23030408A8	Normal	0
592-600871	6/11/2024 9:59	Readings	PID	SC23030408A8	Normal	0
592-600871	6/11/2024 9:58	Readings	PID	SC23030408A8	Normal	0
592-600871	6/11/2024 9:57	Readings	PID	SC23030408A8	Normal	0
592-600871	6/11/2024 9:56	Readings	PID	SC23030408A8	Normal	0
592-600871	6/11/2024 9:55	Readings	PID	SC23030408A8	Normal	0
592-600871	6/11/2024 9:54	Readings	PID	SC23030408A8	Normal	0
592-600871	6/11/2024 9:53	Readings	PID	SC23030408A8	Normal	0
592-600871	6/11/2024 9:52	Readings	PID	SC23030408A8	Normal	0
592-600871	6/11/2024 9:51	Readings	PID	SC23030408A8	Normal	0
592-600871	6/11/2024 9:50	Readings	PID	SC23030408A8	Normal	0
592-600871	6/11/2024 9:49	Readings	PID	SC23030408A8	Normal	0
592-600871	6/11/2024 9:48	Readings	PID	SC23030408A8	Normal	0
592-600871	6/11/2024 9:47	Readings	PID	SC23030408A8	Normal	0
592-600871	6/11/2024 9:46	Readings	PID	SC23030408A8	Normal	0
592-600871	6/11/2024 9:45	Readings	PID	SC23030408A8	Normal	0
592-600871	6/11/2024 9:44	Readings	PID	SC23030408A8	Normal	0

592-600871	6/11/2024 8:04 Readings	PID	SC23030408A8	Normal	0
592-600871	6/11/2024 8:03 Readings	PID	SC23030408A8	Normal	0
592-600871	6/11/2024 8:02 Readings	PID	SC23030408A8	Normal	0
592-600871	6/11/2024 8:01 Readings	PID	SC23030408A8	Normal	0
592-600871	6/11/2024 8:00 Readings	PID	SC23030408A8	Normal	0
592-600871	6/11/2024 7:59 Readings	PID	SC23030408A8	Normal	0
592-600871	6/11/2024 7:58 Readings	PID	SC23030408A8	Normal	0
592-600871	6/11/2024 7:57 Readings	PID	SC23030408A8	Normal	0
592-600871	6/11/2024 7:56 Readings	PID	SC23030408A8	Normal	0
592-600871	6/11/2024 7:55 Readings	PID	SC23030408A8	Normal	0
592-600871	6/11/2024 7:54 Readings	PID	SC23030408A8	Normal	0
592-600871	6/11/2024 7:53 CONFIG	PID	SC23030408A8		