



DAILY STATUS REPORT

Prepared By:

Ryan Just

WEATHER	Snow	Rain	Overcast	Partly Cloudy	X	Bright Sun	X	Wind
TEMP.	< 32	32-50	50-70	X	70-85	X	>85	W – 4 MPH

IEC Project No:	13928	NYSDEC BCP Site No:	C224367	Date: 06/12/24
Project:	251 Douglass Street, Brooklyn, NY			

<p>Consultant: Impact Environmental Engineering and Geology, PLLC (IEEG)</p> <p>Time On: 06:40 Time Out: 22:20</p>	<p>Personnel On Site: IEEG (Environmental) – Ryan Just Broadway Construction Group - Tom Caporale Cascade GES MTL National Grid WSP - Charlie Lambert Equipment On Site: (3) MiniRAE 3000 PID, (3) DustTrak II</p>
---	--

Scope of Work: ISS column installation.

Site Activities:

- Deployed three (3) CAMP stations prior to the start of work activities;
- GES finished conducting oversight of geo-technical drilling by MTL;
- National Grid completed sidewalk work adjacent to Douglass Street;
- Cascade drilled **Column 587** with column specification below:
 - Column is 8’ diameter and drilled 51’ deep from Site grade;
 - The column consisted of a total of 24 batches;
 - Downstroke 1 was paused from 11:35 to 11:57 due to auger teeth replacement.
- Cascade drilled **Column 621** with column specification below:
 - Column is 8’ diameter and drilled 51’ deep from Site grade;
 - The column consisted of a total of 21 batches;
 - The column was incorrectly drilled to 36’ on 6/11/2024;
 - A wet mix sample was collected at 41.75’;
 - Downstroke 1 was paused from 20:37 to 20:47 due to clogged chute at the mixing plant.
- Cascade drilled **Column 639** with column specification below:
 - Column is 8’ diameter and drilled 51’ deep from Site grade;
 - The column consisted of a total of 20 batches;
 - The column was incorrectly drilled to 36’ on 6/11/2024;
 - A wet mix sample was collected at 40.75’.

Community Air Monitoring Program (CAMP) - CAMP action level for dust (0.1 mg/m³) and VOCs (5 ppm)

- PID remained at nominal levels throughout the day
- No sustained dust exceedances were observed over a 1-min period during monitoring;
- Startup Upwind Conditions – PID = 0.2 ppm @ 06:45, Dust = 0.023 mg/m³ @ 06:53
- High Conditions (Upwind) – PID = 0.2 ppm @ 06:45, Dust = 0.109 mg/m³ @ 14:06
- High Conditions (Downwind 1) – PID = 1.2 ppm @ 16:49, Dust = 0.135 mg/m³ @ 17:20
- High Conditions (Downwind 2) – PID = 0.2 ppm @ 07:05, Dust = 0.240 mg/m³ @ 18:28

Notable Site Conditions:

- The SCM Reports do not reflect accurately all of the observations made on site. Column 587 did not reach 18 feet/minute for penetration speed on Downstroke 1 and the speed is missing for Upstroke 1. Also, the end time for Column 587 Upstroke 2 was 12:52 and not 15:27, as reflected in the SCM report. The penetration speeds also are higher than what was observed for columns 621 and 639. Cascade was notified of these inconsistencies and they are reaching out to Bauer and ECA to resolve the reporting issues.

Planned for the Next Day/Week:

- Continuation of ISS column installation.
- ADT will be onsite to begin coring from 6/13/24 to 6/14/24.



PHOTO LOG

251 DOUGLASS STREET, BROOKLYN, NY



Photo 1-
Representative
photo of
completed
national grid
work.



Photo 2-
Representative
photo of Cascade
preparing to
sample column
621.



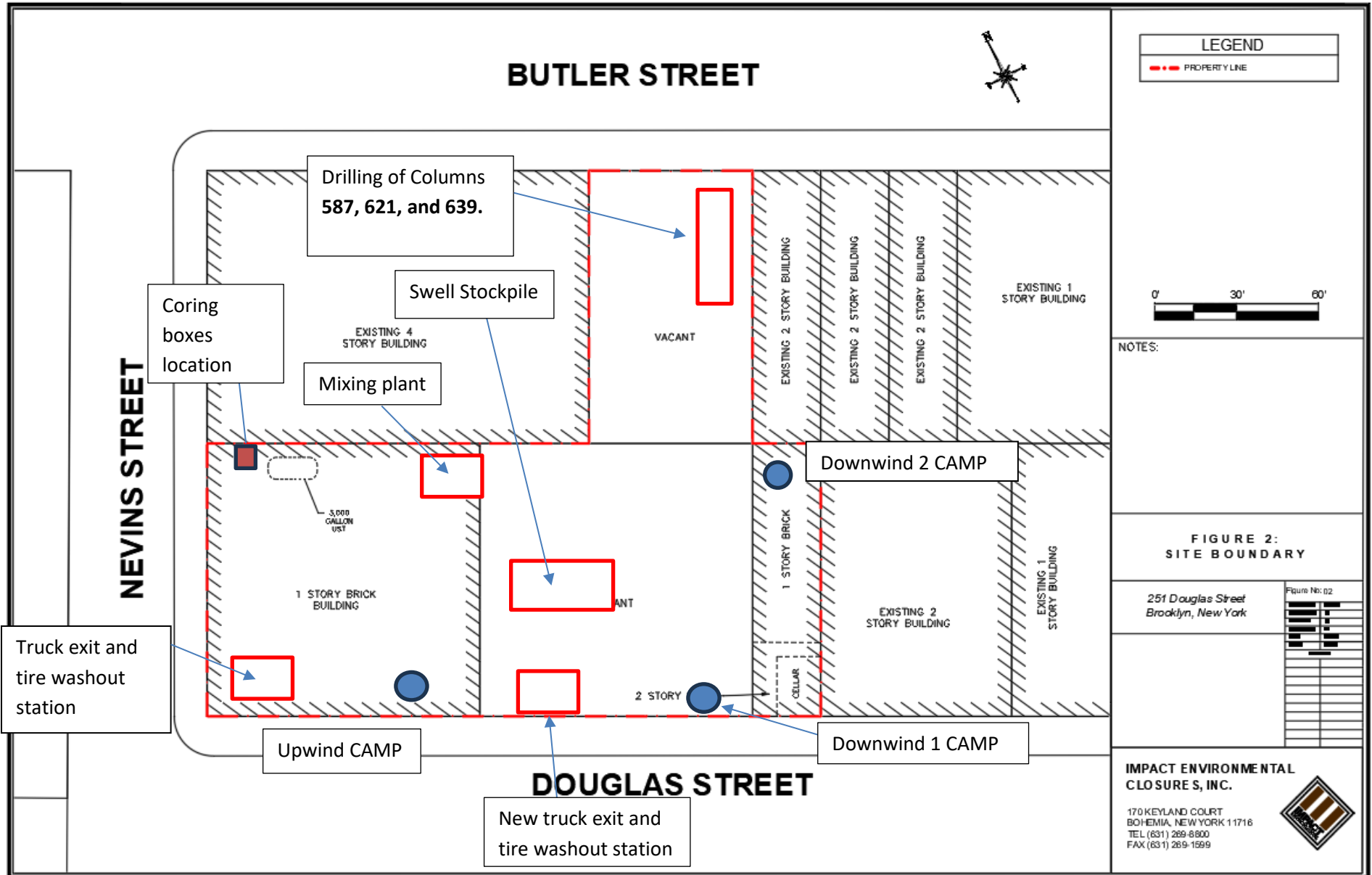
Photo 3-
Representative
photo of wet mix
sample collected
from column
621.



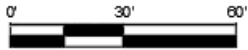
SITE PLANS

251 DOUGLASS STREET, BROOKLYN, NY





LEGEND
 - - - - - PROPERTY LINE




NOTES:

FIGURE 2: SITE BOUNDARY

251 Douglas Street
Brooklyn, New York

Figure No: 02

IMPACT ENVIRONMENTAL CLOSURES, INC.
 170 KEYLAND COURT
 BOHEMIA, NEW YORK 11716
 TEL (631) 269-8800
 FAX (631) 269-1599



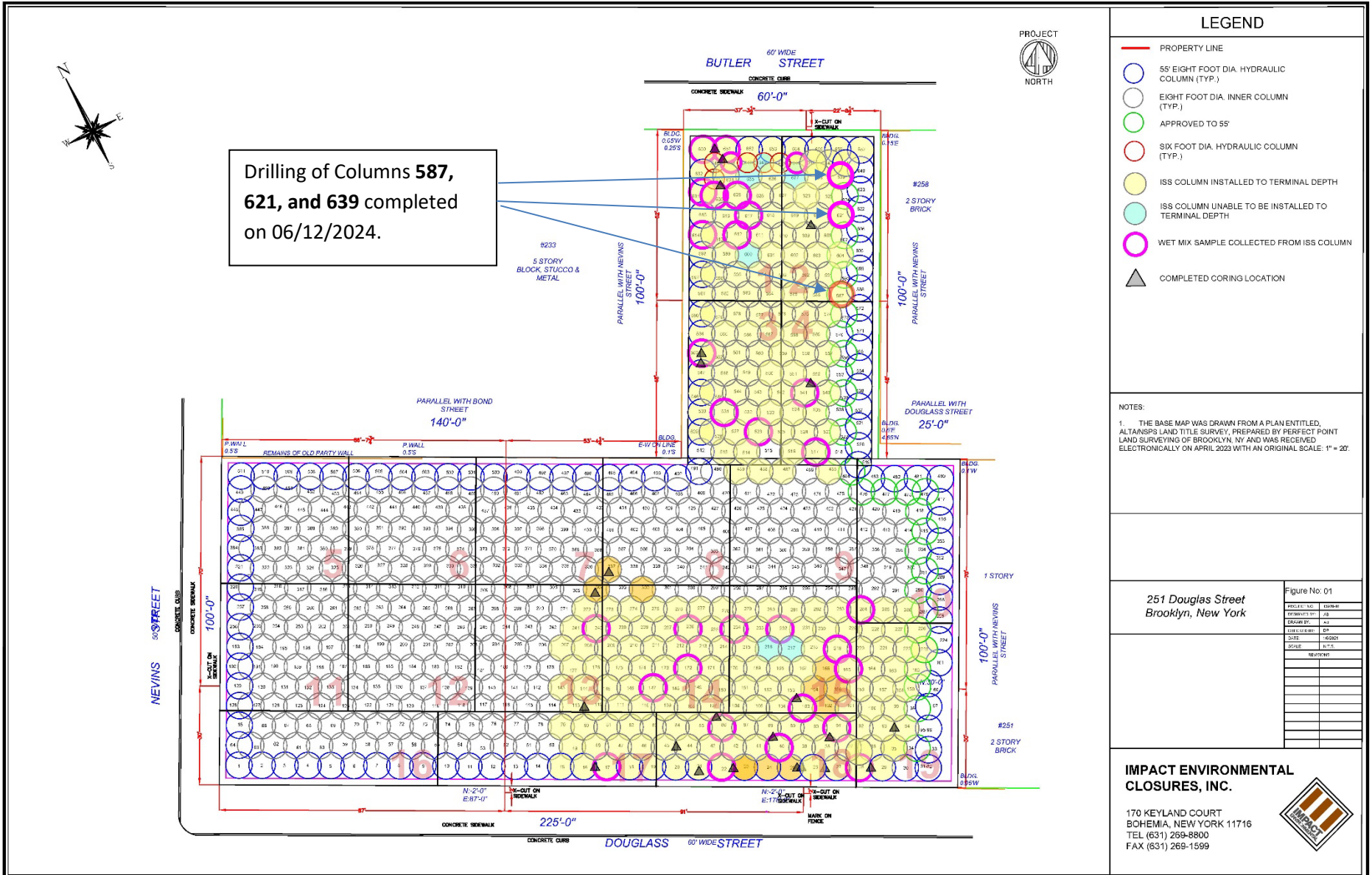


IMPACT ENVIRONMENTAL

welcome to solid ground...

170 Keyland Court | Bohemia | NY | 11716 | 631.269.8800

www.impactenvironmental.com





IMPACT ENVIRONMENTAL

170 Keyland Court | Bohemia | NY | 11716 | 631.269.8800

welcome to solid ground...

www.impactenvironmental.com

UPWIND CAMP READINGS

251 DOUGLASS STREET, BROOKLYN, NY

Instrument Name	DustTrak DRX
Model Number	8533
Serial Number	8533181207
Firmware Version	3.1
Calibration Date	6/1/2023
Test Name	MANUAL_010
Test Start Time	6:52:42 AM
Test Start Date	6/12/2024
Test Length [D:H:M]	0:14:34
Test Interval [M:S]	1:00
PM1 Average [mg/m3]	0.011
PM1 Minimum [mg/m3]	0.002
PM1 Maximum [mg/m3]	0.109
PM1 TWA [mg/m3]	0.007
Photometric User Cal	1
Size Correction User Cal	1
Flow User Cal	0
Errors	
Number of Samples	874

Elapsed Time [s]	PM1 [mg/m3]	Alarms	Errors
6:53	0.023		
6:54	0.003		
6:55	0.003		
6:56	0.003		
6:57	0.003		
6:58	0.003		
6:59	0.003		
7:00	0.003		
7:01	0.003		
7:02	0.003		
7:03	0.003		
7:04	0.002		
7:05	0.002		
7:06	0.003		
7:07	0.004		
7:08	0.005		
7:09	0.003		
7:10	0.003		
7:11	0.003		
7:12	0.004		
7:13	0.004		
7:14	0.004		
7:15	0.005		

7:16	0.004
7:17	0.003
7:18	0.003
7:19	0.003
7:20	0.003
7:21	0.004
7:22	0.004
7:23	0.003
7:24	0.004
7:25	0.004
7:26	0.004
7:27	0.004
7:28	0.006
7:29	0.006
7:30	0.006
7:31	0.007
7:32	0.008
7:33	0.007
7:34	0.008
7:35	0.008
7:36	0.01
7:37	0.009
7:38	0.005
7:39	0.006
7:40	0.006
7:41	0.01
7:42	0.031
7:43	0.025
7:44	0.018
7:45	0.018
7:46	0.014
7:47	0.009
7:48	0.007
7:49	0.005
7:50	0.006
7:51	0.006
7:52	0.005
7:53	0.006
7:54	0.008
7:55	0.01
7:56	0.011
7:57	0.009
7:58	0.007
7:59	0.009

8:00	0.008
8:01	0.006
8:02	0.007
8:03	0.011
8:04	0.01
8:05	0.017
8:06	0.02
8:07	0.006
8:08	0.02
8:09	0.007
8:10	0.007
8:11	0.004
8:12	0.005
8:13	0.005
8:14	0.006
8:15	0.004
8:16	0.004
8:17	0.009
8:18	0.009
8:19	0.009
8:20	0.012
8:21	0.007
8:22	0.007
8:23	0.006
8:24	0.021
8:25	0.012
8:26	0.006
8:27	0.015
8:28	0.005
8:29	0.003
8:30	0.013
8:31	0.011
8:32	0.004
8:33	0.007
8:34	0.013
8:35	0.013
8:36	0.011
8:37	0.007
8:38	0.004
8:39	0.009
8:40	0.015
8:41	0.011
8:42	0.011
8:43	0.005

8:44	0.004
8:45	0.004
8:46	0.007
8:47	0.011
8:48	0.012
8:49	0.009
8:50	0.005
8:51	0.016
8:52	0.005
8:53	0.004
8:54	0.003
8:55	0.003
8:56	0.003
8:57	0.003
8:58	0.004
8:59	0.004
9:00	0.003
9:01	0.003
9:02	0.003
9:03	0.003
9:04	0.004
9:05	0.004
9:06	0.003
9:07	0.003
9:08	0.005
9:09	0.004
9:10	0.005
9:11	0.004
9:12	0.004
9:13	0.005
9:14	0.005
9:15	0.005
9:16	0.004
9:17	0.004
9:18	0.004
9:19	0.005
9:20	0.007
9:21	0.011
9:22	0.01
9:23	0.005
9:24	0.008
9:25	0.005
9:26	0.004
9:27	0.006

9:28	0.013
9:29	0.004
9:30	0.003
9:31	0.004
9:32	0.005
9:33	0.002
9:34	0.002
9:35	0.002
9:36	0.002
9:37	0.003
9:38	0.012
9:39	0.014
9:40	0.005
9:41	0.002
9:42	0.004
9:43	0.003
9:44	0.003
9:45	0.003
9:46	0.003
9:47	0.005
9:48	0.008
9:49	0.005
9:50	0.004
9:51	0.004
9:52	0.003
9:53	0.003
9:54	0.004
9:55	0.005
9:56	0.006
9:57	0.003
9:58	0.003
9:59	0.005
10:00	0.004
10:01	0.005
10:02	0.011
10:03	0.004
10:04	0.002
10:05	0.004
10:06	0.005
10:07	0.005
10:08	0.004
10:09	0.005
10:10	0.004
10:11	0.004

10:12	0.008
10:13	0.013
10:14	0.005
10:15	0.003
10:16	0.004
10:17	0.005
10:18	0.004
10:19	0.004
10:20	0.003
10:21	0.005
10:22	0.005
10:23	0.004
10:24	0.006
10:25	0.009
10:26	0.008
10:27	0.006
10:28	0.008
10:29	0.006
10:30	0.003
10:31	0.004
10:32	0.007
10:33	0.005
10:34	0.005
10:35	0.01
10:36	0.005
10:37	0.007
10:38	0.01
10:39	0.012
10:40	0.009
10:41	0.007
10:42	0.005
10:43	0.005
10:44	0.005
10:45	0.005
10:46	0.004
10:47	0.004
10:48	0.006
10:49	0.011
10:50	0.011
10:51	0.009
10:52	0.007
10:53	0.007
10:54	0.007
10:55	0.01

10:56	0.008
10:57	0.011
10:58	0.009
10:59	0.008
11:00	0.009
11:01	0.007
11:02	0.006
11:03	0.006
11:04	0.006
11:05	0.006
11:06	0.006
11:07	0.006
11:08	0.005
11:09	0.007
11:10	0.009
11:11	0.007
11:12	0.005
11:13	0.006
11:14	0.009
11:15	0.007
11:16	0.01
11:17	0.007
11:18	0.008
11:19	0.007
11:20	0.01
11:21	0.008
11:22	0.005
11:23	0.008
11:24	0.009
11:25	0.011
11:26	0.008
11:27	0.007
11:28	0.008
11:29	0.008
11:30	0.009
11:31	0.008
11:32	0.007
11:33	0.007
11:34	0.005
11:35	0.006
11:36	0.01
11:37	0.007
11:38	0.008
11:39	0.007

11:40	0.009
11:41	0.011
11:42	0.007
11:43	0.006
11:44	0.005
11:45	0.007
11:46	0.008
11:47	0.009
11:48	0.009
11:49	0.013
11:50	0.01
11:51	0.008
11:52	0.012
11:53	0.011
11:54	0.011
11:55	0.007
11:56	0.008
11:57	0.006
11:58	0.008
11:59	0.007
12:00	0.009
12:01	0.008
12:02	0.007
12:03	0.008
12:04	0.008
12:05	0.008
12:06	0.014
12:07	0.011
12:08	0.017
12:09	0.015
12:10	0.007
12:11	0.009
12:12	0.009
12:13	0.009
12:14	0.008
12:15	0.009
12:16	0.008
12:17	0.017
12:18	0.011
12:19	0.012
12:20	0.01
12:21	0.011
12:22	0.014
12:23	0.01

12:24	0.008
12:25	0.009
12:26	0.009
12:27	0.007
12:28	0.007
12:29	0.007
12:30	0.007
12:31	0.007
12:32	0.007
12:33	0.01
12:34	0.006
12:35	0.005
12:36	0.007
12:37	0.006
12:38	0.007
12:39	0.006
12:40	0.007
12:41	0.005
12:42	0.004
12:43	0.006
12:44	0.008
12:45	0.009
12:46	0.011
12:47	0.009
12:48	0.007
12:49	0.006
12:50	0.009
12:51	0.009
12:52	0.011
12:53	0.01
12:54	0.007
12:55	0.008
12:56	0.012
12:57	0.01
12:58	0.007
12:59	0.009
13:00	0.007
13:01	0.006
13:02	0.006
13:03	0.007
13:04	0.008
13:05	0.009
13:06	0.008
13:07	0.006

13:08	0.008
13:09	0.006
13:10	0.007
13:11	0.007
13:12	0.006
13:13	0.006
13:14	0.006
13:15	0.007
13:16	0.01
13:17	0.01
13:18	0.006
13:19	0.006
13:20	0.006
13:21	0.008
13:22	0.007
13:23	0.006
13:24	0.008
13:25	0.007
13:26	0.006
13:27	0.005
13:28	0.005
13:29	0.005
13:30	0.007
13:31	0.007
13:32	0.007
13:33	0.006
13:34	0.005
13:35	0.01
13:36	0.009
13:37	0.006
13:38	0.005
13:39	0.005
13:40	0.006
13:41	0.006
13:42	0.005
13:43	0.006
13:44	0.005
13:45	0.005
13:46	0.005
13:47	0.005
13:48	0.005
13:49	0.006
13:50	0.007
13:51	0.006

13:52	0.006
13:53	0.008
13:54	0.009
13:55	0.008
13:56	0.007
13:57	0.007
13:58	0.006
13:59	0.009
14:00	0.007
14:01	0.006
14:02	0.005
14:03	0.005
14:04	0.005
14:05	0.007
14:06	0.109
14:07	0.013
14:08	0.007
14:09	0.006
14:10	0.006
14:11	0.007
14:12	0.007
14:13	0.008
14:14	0.008
14:15	0.007
14:16	0.008
14:17	0.008
14:18	0.006
14:19	0.008
14:20	0.009
14:21	0.008
14:22	0.008
14:23	0.009
14:24	0.009
14:25	0.008
14:26	0.007
14:27	0.009
14:28	0.008
14:29	0.008
14:30	0.007
14:31	0.007
14:32	0.007
14:33	0.009
14:34	0.008
14:35	0.008

14:36	0.008
14:37	0.01
14:38	0.009
14:39	0.011
14:40	0.008
14:41	0.007
14:42	0.008
14:43	0.008
14:44	0.006
14:45	0.007
14:46	0.006
14:47	0.006
14:48	0.007
14:49	0.007
14:50	0.007
14:51	0.009
14:52	0.008
14:53	0.009
14:54	0.009
14:55	0.007
14:56	0.011
14:57	0.014
14:58	0.011
14:59	0.018
15:00	0.008
15:01	0.008
15:02	0.008
15:03	0.008
15:04	0.007
15:05	0.007
15:06	0.007
15:07	0.009
15:08	0.008
15:09	0.008
15:10	0.008
15:11	0.007
15:12	0.008
15:13	0.008
15:14	0.007
15:15	0.008
15:16	0.008
15:17	0.007
15:18	0.008
15:19	0.008

15:20	0.01
15:21	0.01
15:22	0.009
15:23	0.009
15:24	0.02
15:25	0.009
15:26	0.028
15:27	0.009
15:28	0.009
15:29	0.01
15:30	0.008
15:31	0.007
15:32	0.008
15:33	0.014
15:34	0.023
15:35	0.013
15:36	0.009
15:37	0.008
15:38	0.01
15:39	0.01
15:40	0.009
15:41	0.009
15:42	0.009
15:43	0.009
15:44	0.027
15:45	0.012
15:46	0.01
15:47	0.015
15:48	0.01
15:49	0.009
15:50	0.011
15:51	0.009
15:52	0.009
15:53	0.008
15:54	0.009
15:55	0.01
15:56	0.009
15:57	0.01
15:58	0.011
15:59	0.012
16:00	0.014
16:01	0.009
16:02	0.008
16:03	0.009

16:04	0.014
16:05	0.013
16:06	0.032
16:07	0.011
16:08	0.008
16:09	0.008
16:10	0.009
16:11	0.011
16:12	0.012
16:13	0.014
16:14	0.011
16:15	0.009
16:16	0.01
16:17	0.014
16:18	0.011
16:19	0.01
16:20	0.01
16:21	0.011
16:22	0.011
16:23	0.012
16:24	0.011
16:25	0.012
16:26	0.011
16:27	0.011
16:28	0.029
16:29	0.013
16:30	0.012
16:31	0.011
16:32	0.011
16:33	0.01
16:34	0.009
16:35	0.01
16:36	0.01
16:37	0.016
16:38	0.011
16:39	0.01
16:40	0.013
16:41	0.015
16:42	0.011
16:43	0.011
16:44	0.011
16:45	0.011
16:46	0.011
16:47	0.032

16:48	0.017
16:49	0.014
16:50	0.012
16:51	0.014
16:52	0.013
16:53	0.011
16:54	0.016
16:55	0.01
16:56	0.01
16:57	0.013
16:58	0.011
16:59	0.01
17:00	0.011
17:01	0.009
17:02	0.01
17:03	0.01
17:04	0.015
17:05	0.01
17:06	0.01
17:07	0.012
17:08	0.01
17:09	0.009
17:10	0.009
17:11	0.011
17:12	0.009
17:13	0.01
17:14	0.009
17:15	0.018
17:16	0.011
17:17	0.01
17:18	0.024
17:19	0.009
17:20	0.009
17:21	0.009
17:22	0.012
17:23	0.009
17:24	0.009
17:25	0.013
17:26	0.033
17:27	0.013
17:28	0.014
17:29	0.012
17:30	0.009
17:31	0.009

17:32	0.01
17:33	0.014
17:34	0.009
17:35	0.009
17:36	0.009
17:37	0.01
17:38	0.022
17:39	0.014
17:40	0.01
17:41	0.01
17:42	0.01
17:43	0.013
17:44	0.017
17:45	0.017
17:46	0.012
17:47	0.01
17:48	0.009
17:49	0.01
17:50	0.015
17:51	0.009
17:52	0.009
17:53	0.01
17:54	0.012
17:55	0.01
17:56	0.01
17:57	0.01
17:58	0.011
17:59	0.011
18:00	0.011
18:01	0.011
18:02	0.01
18:03	0.01
18:04	0.015
18:05	0.017
18:06	0.034
18:07	0.013
18:08	0.016
18:09	0.03
18:10	0.03
18:11	0.047
18:12	0.02
18:13	0.015
18:14	0.012
18:15	0.073

18:16	0.047
18:17	0.055
18:18	0.056
18:19	0.028
18:20	0.012
18:21	0.028
18:22	0.015
18:23	0.012
18:24	0.011
18:25	0.011
18:26	0.011
18:27	0.012
18:28	0.014
18:29	0.037
18:30	0.016
18:31	0.013
18:32	0.014
18:33	0.04
18:34	0.012
18:35	0.011
18:36	0.01
18:37	0.011
18:38	0.012
18:39	0.013
18:40	0.012
18:41	0.011
18:42	0.013
18:43	0.015
18:44	0.015
18:45	0.015
18:46	0.017
18:47	0.02
18:48	0.017
18:49	0.018
18:50	0.018
18:51	0.016
18:52	0.014
18:53	0.014
18:54	0.013
18:55	0.013
18:56	0.012
18:57	0.013
18:58	0.014
18:59	0.014

19:00	0.02
19:01	0.027
19:02	0.037
19:03	0.03
19:04	0.027
19:05	0.046
19:06	0.045
19:07	0.02
19:08	0.027
19:09	0.043
19:10	0.03
19:11	0.067
19:12	0.072
19:13	0.04
19:14	0.085
19:15	0.053
19:16	0.047
19:17	0.039
19:18	0.026
19:19	0.024
19:20	0.039
19:21	0.02
19:22	0.014
19:23	0.02
19:24	0.013
19:25	0.013
19:26	0.014
19:27	0.013
19:28	0.014
19:29	0.014
19:30	0.013
19:31	0.013
19:32	0.013
19:33	0.014
19:34	0.016
19:35	0.015
19:36	0.014
19:37	0.014
19:38	0.015
19:39	0.015
19:40	0.015
19:41	0.014
19:42	0.014
19:43	0.014

19:44	0.015
19:45	0.014
19:46	0.014
19:47	0.015
19:48	0.015
19:49	0.014
19:50	0.015
19:51	0.013
19:52	0.015
19:53	0.015
19:54	0.013
19:55	0.017
19:56	0.013
19:57	0.014
19:58	0.015
19:59	0.016
20:00	0.015
20:01	0.014
20:02	0.015
20:03	0.015
20:04	0.015
20:05	0.02
20:06	0.019
20:07	0.016
20:08	0.015
20:09	0.015
20:10	0.016
20:11	0.016
20:12	0.016
20:13	0.016
20:14	0.014
20:15	0.014
20:16	0.015
20:17	0.015
20:18	0.015
20:19	0.017
20:20	0.015
20:21	0.015
20:22	0.015
20:23	0.015
20:24	0.016
20:25	0.016
20:26	0.017
20:27	0.017

20:28	0.017
20:29	0.016
20:30	0.017
20:31	0.027
20:32	0.022
20:33	0.019
20:34	0.02
20:35	0.02
20:36	0.016
20:37	0.015
20:38	0.016
20:39	0.017
20:40	0.017
20:41	0.018
20:42	0.017
20:43	0.016
20:44	0.017
20:45	0.016
20:46	0.016
20:47	0.016
20:48	0.017
20:49	0.017
20:50	0.018
20:51	0.018
20:52	0.018
20:53	0.016
20:54	0.017
20:55	0.018
20:56	0.018
20:57	0.018
20:58	0.02
20:59	0.02
21:00	0.019
21:01	0.02
21:02	0.021
21:03	0.019
21:04	0.018
21:05	0.019
21:06	0.021
21:07	0.02
21:08	0.021
21:09	0.02
21:10	0.019
21:11	0.017

21:12	0.018
21:13	0.019
21:14	0.018
21:15	0.017
21:16	0.019
21:17	0.023
21:18	0.02
21:19	0.018
21:20	0.017
21:21	0.017
21:22	0.019
21:23	0.02
21:24	0.03
21:25	0.022
21:26	0.023

Device Serial No	Log Time	Log Type	Sensor 1 Type	Sensor 1 Serial Number	Sensor 1 Status	Sensor 1 Gas Reading
592-601274	6/12/2024 6:44	CONFIG	PID	SC23030921B3		
592-601274	6/12/2024 6:45	Readings	PID	SC23030921B3	Normal	0.2
592-601274	6/12/2024 6:46	Readings	PID	SC23030921B3	Normal	0.2
592-601274	6/12/2024 6:47	Readings	PID	SC23030921B3	Normal	0
592-601274	6/12/2024 6:48	Readings	PID	SC23030921B3	Normal	0
592-601274	6/12/2024 6:49	Readings	PID	SC23030921B3	Normal	0
592-601274	6/12/2024 6:50	Readings	PID	SC23030921B3	Normal	0
592-601274	6/12/2024 6:51	Readings	PID	SC23030921B3	Normal	0
592-601274	6/12/2024 6:52	Readings	PID	SC23030921B3	Normal	0
592-601274	6/12/2024 6:53	Readings	PID	SC23030921B3	Normal	0
592-601274	6/12/2024 6:54	Readings	PID	SC23030921B3	Normal	0
592-601274	6/12/2024 6:55	Readings	PID	SC23030921B3	Normal	0
592-601274	6/12/2024 6:56	Readings	PID	SC23030921B3	Normal	0
592-601274	6/12/2024 6:57	Readings	PID	SC23030921B3	Normal	0
592-601274	6/12/2024 6:58	Readings	PID	SC23030921B3	Normal	0
592-601274	6/12/2024 6:59	Readings	PID	SC23030921B3	Normal	0
592-601274	6/12/2024 7:00	Readings	PID	SC23030921B3	Normal	0
592-601274	6/12/2024 7:01	Readings	PID	SC23030921B3	Normal	0
592-601274	6/12/2024 7:02	Readings	PID	SC23030921B3	Normal	0
592-601274	6/12/2024 7:03	Readings	PID	SC23030921B3	Normal	0
592-601274	6/12/2024 7:04	Readings	PID	SC23030921B3	Normal	0
592-601274	6/12/2024 7:05	Readings	PID	SC23030921B3	Normal	0
592-601274	6/12/2024 7:06	Readings	PID	SC23030921B3	Normal	0
592-601274	6/12/2024 7:07	Readings	PID	SC23030921B3	Normal	0
592-601274	6/12/2024 7:08	Readings	PID	SC23030921B3	Normal	0
592-601274	6/12/2024 7:09	Readings	PID	SC23030921B3	Normal	0
592-601274	6/12/2024 7:10	Readings	PID	SC23030921B3	Normal	0
592-601274	6/12/2024 7:11	Readings	PID	SC23030921B3	Normal	0
592-601274	6/12/2024 7:12	Readings	PID	SC23030921B3	Normal	0
592-601274	6/12/2024 7:13	Readings	PID	SC23030921B3	Normal	0
592-601274	6/12/2024 7:14	Readings	PID	SC23030921B3	Normal	0
592-601274	6/12/2024 7:15	Readings	PID	SC23030921B3	Normal	0

592-601274	6/12/2024 9:28	Readings	PID	SC23030921B3	Normal	0
592-601274	6/12/2024 9:29	Readings	PID	SC23030921B3	Normal	0
592-601274	6/12/2024 9:30	Readings	PID	SC23030921B3	Normal	0
592-601274	6/12/2024 9:31	Readings	PID	SC23030921B3	Normal	0
592-601274	6/12/2024 9:32	Readings	PID	SC23030921B3	Normal	0
592-601274	6/12/2024 9:33	Readings	PID	SC23030921B3	Normal	0
592-601274	6/12/2024 9:34	Readings	PID	SC23030921B3	Normal	0
592-601274	6/12/2024 9:35	Readings	PID	SC23030921B3	Normal	0
592-601274	6/12/2024 9:36	Readings	PID	SC23030921B3	Normal	0
592-601274	6/12/2024 9:37	Readings	PID	SC23030921B3	Normal	0
592-601274	6/12/2024 9:38	Readings	PID	SC23030921B3	Normal	0
592-601274	6/12/2024 9:39	Readings	PID	SC23030921B3	Normal	0
592-601274	6/12/2024 9:40	Readings	PID	SC23030921B3	Normal	0
592-601274	6/12/2024 9:41	Readings	PID	SC23030921B3	Normal	0
592-601274	6/12/2024 9:42	Readings	PID	SC23030921B3	Normal	0
592-601274	6/12/2024 9:43	Readings	PID	SC23030921B3	Normal	0
592-601274	6/12/2024 9:44	Readings	PID	SC23030921B3	Normal	0
592-601274	6/12/2024 9:45	Readings	PID	SC23030921B3	Normal	0
592-601274	6/12/2024 9:46	Readings	PID	SC23030921B3	Normal	0
592-601274	6/12/2024 9:47	Readings	PID	SC23030921B3	Normal	0
592-601274	6/12/2024 9:48	Readings	PID	SC23030921B3	Normal	0
592-601274	6/12/2024 9:49	Readings	PID	SC23030921B3	Normal	0
592-601274	6/12/2024 9:50	Readings	PID	SC23030921B3	Normal	0
592-601274	6/12/2024 9:51	Readings	PID	SC23030921B3	Normal	0
592-601274	6/12/2024 9:52	Readings	PID	SC23030921B3	Normal	0
592-601274	6/12/2024 9:53	Readings	PID	SC23030921B3	Normal	0
592-601274	6/12/2024 9:54	Readings	PID	SC23030921B3	Normal	0
592-601274	6/12/2024 9:55	Readings	PID	SC23030921B3	Normal	0
592-601274	6/12/2024 9:56	Readings	PID	SC23030921B3	Normal	0
592-601274	6/12/2024 9:57	Readings	PID	SC23030921B3	Normal	0
592-601274	6/12/2024 9:58	Readings	PID	SC23030921B3	Normal	0
592-601274	6/12/2024 9:59	Readings	PID	SC23030921B3	Normal	0
592-601274	6/12/2024 10:00	Readings	PID	SC23030921B3	Normal	0

592-601274	6/12/2024 21:01	Readings	PID	SC23030921B3	Normal	0
592-601274	6/12/2024 21:02	Readings	PID	SC23030921B3	Normal	0
592-601274	6/12/2024 21:03	Readings	PID	SC23030921B3	Normal	0
592-601274	6/12/2024 21:04	Readings	PID	SC23030921B3	Normal	0
592-601274	6/12/2024 21:05	Readings	PID	SC23030921B3	Normal	0
592-601274	6/12/2024 21:06	Readings	PID	SC23030921B3	Normal	0
592-601274	6/12/2024 21:07	Readings	PID	SC23030921B3	Normal	0
592-601274	6/12/2024 21:08	Readings	PID	SC23030921B3	Normal	0
592-601274	6/12/2024 21:09	Readings	PID	SC23030921B3	Normal	0
592-601274	6/12/2024 21:10	Readings	PID	SC23030921B3	Normal	0
592-601274	6/12/2024 21:11	Readings	PID	SC23030921B3	Normal	0
592-601274	6/12/2024 21:12	Readings	PID	SC23030921B3	Normal	0
592-601274	6/12/2024 21:13	Readings	PID	SC23030921B3	Normal	0
592-601274	6/12/2024 21:14	Readings	PID	SC23030921B3	Normal	0
592-601274	6/12/2024 21:15	Readings	PID	SC23030921B3	Normal	0
592-601274	6/12/2024 21:16	Readings	PID	SC23030921B3	Normal	0
592-601274	6/12/2024 21:17	Readings	PID	SC23030921B3	Normal	0
592-601274	6/12/2024 21:18	Readings	PID	SC23030921B3	Normal	0
592-601274	6/12/2024 21:19	Readings	PID	SC23030921B3	Normal	0
592-601274	6/12/2024 21:20	Readings	PID	SC23030921B3	Normal	0
592-601274	6/12/2024 21:21	Readings	PID	SC23030921B3	Normal	0
592-601274	6/12/2024 21:22	Readings	PID	SC23030921B3	Normal	0
592-601274	6/12/2024 21:23	Readings	PID	SC23030921B3	Normal	0
592-601274	6/12/2024 21:24	Readings	PID	SC23030921B3	Normal	0
592-601274	6/12/2024 21:25	Readings	PID	SC23030921B3	Normal	0
592-601274	6/12/2024 21:26	Readings	PID	SC23030921B3	Normal	0
592-601274	6/12/2024 21:27	Readings	PID	SC23030921B3	Normal	0
592-601274	6/12/2024 21:28	Readings	PID	SC23030921B3	Normal	0
592-601274	6/12/2024 21:29	Readings	PID	SC23030921B3	Normal	0
592-601274	6/12/2024 21:30	Readings	PID	SC23030921B3	Normal	0

DOWNWIND CAMP READINGS

251 DOUGLASS STREET, BROOKLYN, NY



Instrument Name	DustTrak DRX
Model Number	8533
Serial Number	8533181205
Firmware Version	3.1
Calibration Date	5/31/2023
Test Name	MANUAL_010
Test Start Time	6:55:09 AM
Test Start Date	6/12/2024
Test Length [D:H:M]	0:14:29
Test Interval [M:S]	1:00
PM1 Average [mg/m3]	0.02
PM1 Minimum [mg/m3]	0.009
PM1 Maximum [mg/m3]	0.135
PM1 TWA [mg/m3]	0.018
Photometric User Cal	1
Size Correction User Cal	1
Flow User Cal	0
Errors	
Number of Samples	869

Elapsed Time [s]	PM1 [mg/m3]	Alarms	Errors
6:56	0.016		
6:57	0.011		
6:58	0.014		
6:59	0.042		
7:00	0.01		
7:01	0.042		
7:02	0.018		
7:03	0.012		
7:04	0.029		
7:05	0.009		
7:06	0.009		
7:07	0.009		
7:08	0.01		
7:09	0.011		
7:10	0.015		
7:11	0.009		
7:12	0.012		
7:13	0.009		
7:14	0.009		
7:15	0.009		
7:16	0.009		
7:17	0.009		
7:18	0.01		

7:19	0.01
7:20	0.011
7:21	0.012
7:22	0.015
7:23	0.013
7:24	0.013
7:25	0.012
7:26	0.01
7:27	0.011
7:28	0.012
7:29	0.01
7:30	0.01
7:31	0.01
7:32	0.01
7:33	0.01
7:34	0.012
7:35	0.013
7:36	0.013
7:37	0.013
7:38	0.014
7:39	0.024
7:40	0.018
7:41	0.017
7:42	0.016
7:43	0.015
7:44	0.015
7:45	0.016
7:46	0.011
7:47	0.013
7:48	0.016
7:49	0.013
7:50	0.014
7:51	0.012
7:52	0.011
7:53	0.013
7:54	0.011
7:55	0.013
7:56	0.013
7:57	0.013
7:58	0.016
7:59	0.017
8:00	0.021
8:01	0.016
8:02	0.017

8:03	0.015
8:04	0.014
8:05	0.01
8:06	0.011
8:07	0.015
8:08	0.018
8:09	0.016
8:10	0.015
8:11	0.017
8:12	0.028
8:13	0.02
8:14	0.02
8:15	0.011
8:16	0.014
8:17	0.014
8:18	0.014
8:19	0.016
8:20	0.013
8:21	0.014
8:22	0.012
8:23	0.01
8:24	0.013
8:25	0.016
8:26	0.018
8:27	0.017
8:28	0.018
8:29	0.015
8:30	0.013
8:31	0.012
8:32	0.01
8:33	0.011
8:34	0.015
8:35	0.016
8:36	0.013
8:37	0.015
8:38	0.014
8:39	0.013
8:40	0.014
8:41	0.013
8:42	0.015
8:43	0.013
8:44	0.019
8:45	0.017
8:46	0.015

8:47	0.017
8:48	0.011
8:49	0.012
8:50	0.014
8:51	0.016
8:52	0.013
8:53	0.013
8:54	0.037
8:55	0.018
8:56	0.015
8:57	0.013
8:58	0.018
8:59	0.022
9:00	0.014
9:01	0.011
9:02	0.011
9:03	0.011
9:04	0.013
9:05	0.011
9:06	0.011
9:07	0.011
9:08	0.011
9:09	0.011
9:10	0.012
9:11	0.011
9:12	0.013
9:13	0.013
9:14	0.016
9:15	0.012
9:16	0.012
9:17	0.011
9:18	0.013
9:19	0.014
9:20	0.011
9:21	0.015
9:22	0.023
9:23	0.012
9:24	0.013
9:25	0.013
9:26	0.014
9:27	0.015
9:28	0.011
9:29	0.013
9:30	0.012

9:31	0.039
9:32	0.029
9:33	0.017
9:34	0.013
9:35	0.01
9:36	0.012
9:37	0.011
9:38	0.01
9:39	0.072
9:40	0.024
9:41	0.024
9:42	0.027
9:43	0.019
9:44	0.011
9:45	0.01
9:46	0.01
9:47	0.012
9:48	0.015
9:49	0.015
9:50	0.012
9:51	0.011
9:52	0.011
9:53	0.012
9:54	0.015
9:55	0.02
9:56	0.014
9:57	0.012
9:58	0.012
9:59	0.015
10:00	0.013
10:01	0.012
10:02	0.016
10:03	0.017
10:04	0.016
10:05	0.025
10:06	0.016
10:07	0.017
10:08	0.013
10:09	0.011
10:10	0.012
10:11	0.014
10:12	0.015
10:13	0.01
10:14	0.011

10:15	0.017
10:16	0.014
10:17	0.014
10:18	0.016
10:19	0.016
10:20	0.018
10:21	0.013
10:22	0.016
10:23	0.013
10:24	0.015
10:25	0.013
10:26	0.016
10:27	0.017
10:28	0.015
10:29	0.019
10:30	0.017
10:31	0.015
10:32	0.016
10:33	0.017
10:34	0.013
10:35	0.043
10:36	0.023
10:37	0.018
10:38	0.014
10:39	0.016
10:40	0.013
10:41	0.015
10:42	0.017
10:43	0.018
10:44	0.032
10:45	0.026
10:46	0.017
10:47	0.025
10:48	0.019
10:49	0.019
10:50	0.016
10:51	0.02
10:52	0.017
10:53	0.015
10:54	0.02
10:55	0.083
10:56	0.021
10:57	0.019
10:58	0.018

10:59	0.017
11:00	0.026
11:01	0.026
11:02	0.013
11:03	0.016
11:04	0.016
11:05	0.014
11:06	0.014
11:07	0.019
11:08	0.018
11:09	0.016
11:10	0.016
11:11	0.02
11:12	0.022
11:13	0.017
11:14	0.017
11:15	0.019
11:16	0.015
11:17	0.02
11:18	0.058
11:19	0.024
11:20	0.025
11:21	0.018
11:22	0.016
11:23	0.019
11:24	0.02
11:25	0.02
11:26	0.018
11:27	0.025
11:28	0.014
11:29	0.017
11:30	0.02
11:31	0.015
11:32	0.017
11:33	0.016
11:34	0.02
11:35	0.018
11:36	0.017
11:37	0.015
11:38	0.015
11:39	0.015
11:40	0.016
11:41	0.019
11:42	0.019

11:43	0.023
11:44	0.019
11:45	0.024
11:46	0.032
11:47	0.032
11:48	0.022
11:49	0.053
11:50	0.038
11:51	0.014
11:52	0.015
11:53	0.017
11:54	0.017
11:55	0.018
11:56	0.016
11:57	0.014
11:58	0.017
11:59	0.018
12:00	0.015
12:01	0.015
12:02	0.016
12:03	0.016
12:04	0.015
12:05	0.018
12:06	0.017
12:07	0.017
12:08	0.017
12:09	0.023
12:10	0.026
12:11	0.021
12:12	0.019
12:13	0.016
12:14	0.019
12:15	0.017
12:16	0.021
12:17	0.024
12:18	0.023
12:19	0.02
12:20	0.017
12:21	0.015
12:22	0.016
12:23	0.017
12:24	0.015
12:25	0.014
12:26	0.014

12:27	0.022
12:28	0.015
12:29	0.016
12:30	0.017
12:31	0.016
12:32	0.015
12:33	0.021
12:34	0.017
12:35	0.018
12:36	0.013
12:37	0.015
12:38	0.022
12:39	0.019
12:40	0.034
12:41	0.018
12:42	0.025
12:43	0.02
12:44	0.022
12:45	0.025
12:46	0.02
12:47	0.02
12:48	0.021
12:49	0.015
12:50	0.03
12:51	0.022
12:52	0.018
12:53	0.023
12:54	0.018
12:55	0.014
12:56	0.014
12:57	0.017
12:58	0.017
12:59	0.02
13:00	0.03
13:01	0.02
13:02	0.017
13:03	0.026
13:04	0.017
13:05	0.014
13:06	0.013
13:07	0.033
13:08	0.015
13:09	0.033
13:10	0.027

13:11	0.018
13:12	0.014
13:13	0.04
13:14	0.042
13:15	0.032
13:16	0.028
13:17	0.018
13:18	0.018
13:19	0.028
13:20	0.018
13:21	0.018
13:22	0.013
13:23	0.012
13:24	0.012
13:25	0.035
13:26	0.018
13:27	0.017
13:28	0.016
13:29	0.019
13:30	0.026
13:31	0.018
13:32	0.014
13:33	0.021
13:34	0.014
13:35	0.016
13:36	0.016
13:37	0.019
13:38	0.013
13:39	0.012
13:40	0.013
13:41	0.013
13:42	0.013
13:43	0.014
13:44	0.016
13:45	0.015
13:46	0.019
13:47	0.023
13:48	0.02
13:49	0.018
13:50	0.017
13:51	0.015
13:52	0.015
13:53	0.033
13:54	0.015

13:55	0.013
13:56	0.017
13:57	0.016
13:58	0.016
13:59	0.027
14:00	0.017
14:01	0.013
14:02	0.015
14:03	0.015
14:04	0.013
14:05	0.013
14:06	0.012
14:07	0.014
14:08	0.025
14:09	0.026
14:10	0.016
14:11	0.028
14:12	0.013
14:13	0.014
14:14	0.017
14:15	0.018
14:16	0.021
14:17	0.025
14:18	0.019
14:19	0.014
14:20	0.014
14:21	0.017
14:22	0.025
14:23	0.013
14:24	0.018
14:25	0.013
14:26	0.016
14:27	0.014
14:28	0.019
14:29	0.018
14:30	0.016
14:31	0.025
14:32	0.044
14:33	0.018
14:34	0.024
14:35	0.018
14:36	0.015
14:37	0.018
14:38	0.015

14:39	0.014
14:40	0.015
14:41	0.014
14:42	0.015
14:43	0.014
14:44	0.017
14:45	0.014
14:46	0.052
14:47	0.017
14:48	0.017
14:49	0.014
14:50	0.017
14:51	0.021
14:52	0.019
14:53	0.027
14:54	0.021
14:55	0.014
14:56	0.014
14:57	0.014
14:58	0.013
14:59	0.014
15:00	0.015
15:01	0.013
15:02	0.016
15:03	0.016
15:04	0.016
15:05	0.017
15:06	0.016
15:07	0.015
15:08	0.015
15:09	0.038
15:10	0.038
15:11	0.016
15:12	0.023
15:13	0.021
15:14	0.016
15:15	0.015
15:16	0.014
15:17	0.014
15:18	0.014
15:19	0.03
15:20	0.015
15:21	0.015
15:22	0.015

15:23	0.018
15:24	0.017
15:25	0.016
15:26	0.018
15:27	0.016
15:28	0.016
15:29	0.015
15:30	0.019
15:31	0.014
15:32	0.015
15:33	0.014
15:34	0.017
15:35	0.02
15:36	0.016
15:37	0.016
15:38	0.014
15:39	0.015
15:40	0.016
15:41	0.019
15:42	0.022
15:43	0.016
15:44	0.014
15:45	0.016
15:46	0.016
15:47	0.026
15:48	0.018
15:49	0.015
15:50	0.016
15:51	0.017
15:52	0.016
15:53	0.017
15:54	0.016
15:55	0.015
15:56	0.015
15:57	0.015
15:58	0.015
15:59	0.018
16:00	0.021
16:01	0.015
16:02	0.014
16:03	0.014
16:04	0.015
16:05	0.016
16:06	0.016

16:07	0.02
16:08	0.019
16:09	0.016
16:10	0.022
16:11	0.021
16:12	0.018
16:13	0.016
16:14	0.016
16:15	0.017
16:16	0.017
16:17	0.019
16:18	0.02
16:19	0.015
16:20	0.014
16:21	0.015
16:22	0.064
16:23	0.016
16:24	0.016
16:25	0.016
16:26	0.015
16:27	0.014
16:28	0.015
16:29	0.016
16:30	0.019
16:31	0.029
16:32	0.046
16:33	0.031
16:34	0.017
16:35	0.02
16:36	0.023
16:37	0.02
16:38	0.015
16:39	0.015
16:40	0.015
16:41	0.014
16:42	0.015
16:43	0.016
16:44	0.016
16:45	0.019
16:46	0.027
16:47	0.017
16:48	0.015
16:49	0.016
16:50	0.014

16:51	0.015
16:52	0.015
16:53	0.014
16:54	0.021
16:55	0.015
16:56	0.015
16:57	0.015
16:58	0.017
16:59	0.02
17:00	0.016
17:01	0.015
17:02	0.016
17:03	0.016
17:04	0.015
17:05	0.014
17:06	0.014
17:07	0.016
17:08	0.014
17:09	0.035
17:10	0.023
17:11	0.017
17:12	0.03
17:13	0.099
17:14	0.016
17:15	0.018
17:16	0.049
17:17	0.021
17:18	0.015
17:19	0.02
17:20	0.135
17:21	0.041
17:22	0.016
17:23	0.033
17:24	0.021
17:25	0.014
17:26	0.015
17:27	0.018
17:28	0.015
17:29	0.016
17:30	0.014
17:31	0.016
17:32	0.024
17:33	0.022
17:34	0.016

17:35	0.015
17:36	0.014
17:37	0.031
17:38	0.02
17:39	0.042
17:40	0.02
17:41	0.016
17:42	0.022
17:43	0.015
17:44	0.055
17:45	0.017
17:46	0.015
17:47	0.014
17:48	0.015
17:49	0.016
17:50	0.015
17:51	0.016
17:52	0.018
17:53	0.015
17:54	0.015
17:55	0.014
17:56	0.014
17:57	0.015
17:58	0.015
17:59	0.016
18:00	0.015
18:01	0.03
18:02	0.017
18:03	0.017
18:04	0.019
18:05	0.038
18:06	0.02
18:07	0.057
18:08	0.032
18:09	0.016
18:10	0.016
18:11	0.017
18:12	0.015
18:13	0.015
18:14	0.017
18:15	0.017
18:16	0.021
18:17	0.016
18:18	0.018

18:19	0.018
18:20	0.037
18:21	0.026
18:22	0.019
18:23	0.019
18:24	0.016
18:25	0.045
18:26	0.016
18:27	0.017
18:28	0.016
18:29	0.02
18:30	0.021
18:31	0.022
18:32	0.018
18:33	0.018
18:34	0.018
18:35	0.018
18:36	0.105
18:37	0.07
18:38	0.02
18:39	0.023
18:40	0.021
18:41	0.019
18:42	0.049
18:43	0.025
18:44	0.017
18:45	0.017
18:46	0.018
18:47	0.025
18:48	0.02
18:49	0.021
18:50	0.025
18:51	0.026
18:52	0.018
18:53	0.021
18:54	0.019
18:55	0.017
18:56	0.021
18:57	0.033
18:58	0.024
18:59	0.017
19:00	0.051
19:01	0.081
19:02	0.026

19:03	0.019
19:04	0.021
19:05	0.018
19:06	0.019
19:07	0.019
19:08	0.022
19:09	0.019
19:10	0.02
19:11	0.017
19:12	0.019
19:13	0.019
19:14	0.023
19:15	0.048
19:16	0.035
19:17	0.044
19:18	0.028
19:19	0.049
19:20	0.026
19:21	0.022
19:22	0.016
19:23	0.033
19:24	0.016
19:25	0.016
19:26	0.016
19:27	0.016
19:28	0.016
19:29	0.016
19:30	0.018
19:31	0.017
19:32	0.018
19:33	0.019
19:34	0.021
19:35	0.019
19:36	0.019
19:37	0.02
19:38	0.019
19:39	0.017
19:40	0.018
19:41	0.02
19:42	0.022
19:43	0.02
19:44	0.019
19:45	0.018
19:46	0.019

19:47	0.018
19:48	0.018
19:49	0.025
19:50	0.02
19:51	0.017
19:52	0.017
19:53	0.018
19:54	0.019
19:55	0.018
19:56	0.018
19:57	0.019
19:58	0.018
19:59	0.033
20:00	0.02
20:01	0.02
20:02	0.023
20:03	0.018
20:04	0.027
20:05	0.02
20:06	0.021
20:07	0.034
20:08	0.018
20:09	0.019
20:10	0.024
20:11	0.021
20:12	0.021
20:13	0.019
20:14	0.018
20:15	0.031
20:16	0.02
20:17	0.046
20:18	0.026
20:19	0.025
20:20	0.026
20:21	0.022
20:22	0.028
20:23	0.04
20:24	0.022
20:25	0.019
20:26	0.019
20:27	0.023
20:28	0.021
20:29	0.02
20:30	0.021

20:31	0.035
20:32	0.022
20:33	0.019
20:34	0.022
20:35	0.021
20:36	0.025
20:37	0.03
20:38	0.027
20:39	0.024
20:40	0.022
20:41	0.021
20:42	0.021
20:43	0.024
20:44	0.026
20:45	0.025
20:46	0.02
20:47	0.02
20:48	0.02
20:49	0.022
20:50	0.022
20:51	0.021
20:52	0.02
20:53	0.021
20:54	0.025
20:55	0.025
20:56	0.024
20:57	0.029
20:58	0.026
20:59	0.026
21:00	0.023
21:01	0.022
21:02	0.024
21:03	0.022
21:04	0.024
21:05	0.021
21:06	0.02
21:07	0.022
21:08	0.022
21:09	0.02
21:10	0.021
21:11	0.027
21:12	0.023
21:13	0.022
21:14	0.021

21:15	0.021
21:16	0.022
21:17	0.021
21:18	0.022
21:19	0.022
21:20	0.021
21:21	0.023
21:22	0.026
21:23	0.023
21:24	0.045

Device Serial No	Log Time	Log Type	Sensor 1 Type	Sensor 1 Serial Number	Sensor 1 Status	Sensor 1 Gas Reading
592-602816	6/12/2024 6:47	CONFIG	PID	SC23030324C7		
592-602816	6/12/2024 6:48	Readings	PID	SC23030324C7	Normal	0
592-602816	6/12/2024 6:49	Readings	PID	SC23030324C7	Normal	0
592-602816	6/12/2024 6:50	Readings	PID	SC23030324C7	Normal	0
592-602816	6/12/2024 6:51	Readings	PID	SC23030324C7	Normal	0
592-602816	6/12/2024 6:52	Readings	PID	SC23030324C7	Normal	0
592-602816	6/12/2024 6:53	Readings	PID	SC23030324C7	Normal	0
592-602816	6/12/2024 6:54	Readings	PID	SC23030324C7	Normal	0
592-602816	6/12/2024 6:55	Readings	PID	SC23030324C7	Normal	0
592-602816	6/12/2024 6:56	Readings	PID	SC23030324C7	Normal	0
592-602816	6/12/2024 6:57	Readings	PID	SC23030324C7	Normal	0
592-602816	6/12/2024 6:58	Readings	PID	SC23030324C7	Normal	0
592-602816	6/12/2024 6:59	Readings	PID	SC23030324C7	Normal	0
592-602816	6/12/2024 7:00	Readings	PID	SC23030324C7	Normal	0
592-602816	6/12/2024 7:01	Readings	PID	SC23030324C7	Normal	0
592-602816	6/12/2024 7:02	Readings	PID	SC23030324C7	Normal	0
592-602816	6/12/2024 7:03	Readings	PID	SC23030324C7	Normal	0
592-602816	6/12/2024 7:04	Readings	PID	SC23030324C7	Normal	0
592-602816	6/12/2024 7:05	Readings	PID	SC23030324C7	Normal	0
592-602816	6/12/2024 7:06	Readings	PID	SC23030324C7	Normal	0
592-602816	6/12/2024 7:07	Readings	PID	SC23030324C7	Normal	0
592-602816	6/12/2024 7:08	Readings	PID	SC23030324C7	Normal	0
592-602816	6/12/2024 7:09	Readings	PID	SC23030324C7	Normal	0
592-602816	6/12/2024 7:10	Readings	PID	SC23030324C7	Normal	0
592-602816	6/12/2024 7:11	Readings	PID	SC23030324C7	Normal	0
592-602816	6/12/2024 7:12	Readings	PID	SC23030324C7	Normal	0
592-602816	6/12/2024 7:13	Readings	PID	SC23030324C7	Normal	0
592-602816	6/12/2024 7:14	Readings	PID	SC23030324C7	Normal	0
592-602816	6/12/2024 7:15	Readings	PID	SC23030324C7	Normal	0
592-602816	6/12/2024 7:16	Readings	PID	SC23030324C7	Normal	0
592-602816	6/12/2024 7:17	Readings	PID	SC23030324C7	Normal	0
592-602816	6/12/2024 7:18	Readings	PID	SC23030324C7	Normal	0

592-602816	6/12/2024 7:19	Readings	PID	SC23030324C7	Normal	0
592-602816	6/12/2024 7:20	Readings	PID	SC23030324C7	Normal	0
592-602816	6/12/2024 7:21	Readings	PID	SC23030324C7	Normal	0
592-602816	6/12/2024 7:22	Readings	PID	SC23030324C7	Normal	0
592-602816	6/12/2024 7:23	Readings	PID	SC23030324C7	Normal	0
592-602816	6/12/2024 7:24	Readings	PID	SC23030324C7	Normal	0
592-602816	6/12/2024 7:25	Readings	PID	SC23030324C7	Normal	0.1
592-602816	6/12/2024 7:26	Readings	PID	SC23030324C7	Normal	0.1
592-602816	6/12/2024 7:27	Readings	PID	SC23030324C7	Normal	0
592-602816	6/12/2024 7:28	Readings	PID	SC23030324C7	Normal	0.1
592-602816	6/12/2024 7:29	Readings	PID	SC23030324C7	Normal	0.1
592-602816	6/12/2024 7:30	Readings	PID	SC23030324C7	Normal	0.1
592-602816	6/12/2024 7:31	Readings	PID	SC23030324C7	Normal	0.1
592-602816	6/12/2024 7:32	Readings	PID	SC23030324C7	Normal	0.1
592-602816	6/12/2024 7:33	Readings	PID	SC23030324C7	Normal	0.1
592-602816	6/12/2024 7:34	Readings	PID	SC23030324C7	Normal	0.1
592-602816	6/12/2024 7:35	Readings	PID	SC23030324C7	Normal	0.1
592-602816	6/12/2024 7:36	Readings	PID	SC23030324C7	Normal	0.1
592-602816	6/12/2024 7:37	Readings	PID	SC23030324C7	Normal	0.1
592-602816	6/12/2024 7:38	Readings	PID	SC23030324C7	Normal	0.1
592-602816	6/12/2024 7:39	Readings	PID	SC23030324C7	Normal	0.1
592-602816	6/12/2024 7:40	Readings	PID	SC23030324C7	Normal	0.1
592-602816	6/12/2024 7:41	Readings	PID	SC23030324C7	Normal	0.1
592-602816	6/12/2024 7:42	Readings	PID	SC23030324C7	Normal	0.1
592-602816	6/12/2024 7:43	Readings	PID	SC23030324C7	Normal	0.1
592-602816	6/12/2024 7:44	Readings	PID	SC23030324C7	Normal	0.1
592-602816	6/12/2024 7:45	Readings	PID	SC23030324C7	Normal	0.1
592-602816	6/12/2024 7:46	Readings	PID	SC23030324C7	Normal	0.2
592-602816	6/12/2024 7:47	Readings	PID	SC23030324C7	Normal	0.2
592-602816	6/12/2024 7:48	Readings	PID	SC23030324C7	Normal	0.2
592-602816	6/12/2024 7:49	Readings	PID	SC23030324C7	Normal	0.1
592-602816	6/12/2024 7:50	Readings	PID	SC23030324C7	Normal	0.1
592-602816	6/12/2024 7:51	Readings	PID	SC23030324C7	Normal	0.1

592-602816	6/12/2024 8:25	Readings	PID	SC23030324C7	Normal	0.1
592-602816	6/12/2024 8:26	Readings	PID	SC23030324C7	Normal	0.1
592-602816	6/12/2024 8:27	Readings	PID	SC23030324C7	Normal	0.1
592-602816	6/12/2024 8:28	Readings	PID	SC23030324C7	Normal	0.1
592-602816	6/12/2024 8:29	Readings	PID	SC23030324C7	Normal	0.1
592-602816	6/12/2024 8:30	Readings	PID	SC23030324C7	Normal	0.1
592-602816	6/12/2024 8:31	Readings	PID	SC23030324C7	Normal	0.1
592-602816	6/12/2024 8:32	Readings	PID	SC23030324C7	Normal	0.1
592-602816	6/12/2024 8:33	Readings	PID	SC23030324C7	Normal	0.1
592-602816	6/12/2024 8:34	Readings	PID	SC23030324C7	Normal	0.1
592-602816	6/12/2024 8:35	Readings	PID	SC23030324C7	Normal	0.1
592-602816	6/12/2024 8:36	Readings	PID	SC23030324C7	Normal	0.1
592-602816	6/12/2024 8:37	Readings	PID	SC23030324C7	Normal	0.1
592-602816	6/12/2024 8:38	Readings	PID	SC23030324C7	Normal	0.1
592-602816	6/12/2024 8:39	Readings	PID	SC23030324C7	Normal	0.2
592-602816	6/12/2024 8:40	Readings	PID	SC23030324C7	Normal	0.2
592-602816	6/12/2024 8:41	Readings	PID	SC23030324C7	Normal	0.2
592-602816	6/12/2024 8:42	Readings	PID	SC23030324C7	Normal	0.2
592-602816	6/12/2024 8:43	Readings	PID	SC23030324C7	Normal	0.1
592-602816	6/12/2024 8:44	Readings	PID	SC23030324C7	Normal	0.1
592-602816	6/12/2024 8:45	Readings	PID	SC23030324C7	Normal	0.1
592-602816	6/12/2024 8:46	Readings	PID	SC23030324C7	Normal	0.2
592-602816	6/12/2024 8:47	Readings	PID	SC23030324C7	Normal	0.2
592-602816	6/12/2024 8:48	Readings	PID	SC23030324C7	Normal	0.2
592-602816	6/12/2024 8:49	Readings	PID	SC23030324C7	Normal	0.2
592-602816	6/12/2024 8:50	Readings	PID	SC23030324C7	Normal	0.2
592-602816	6/12/2024 8:51	Readings	PID	SC23030324C7	Normal	0.2
592-602816	6/12/2024 8:52	Readings	PID	SC23030324C7	Normal	0.2
592-602816	6/12/2024 8:53	Readings	PID	SC23030324C7	Normal	0.2
592-602816	6/12/2024 8:54	Readings	PID	SC23030324C7	Normal	0.2
592-602816	6/12/2024 8:55	Readings	PID	SC23030324C7	Normal	0.3
592-602816	6/12/2024 8:56	Readings	PID	SC23030324C7	Normal	0.2
592-602816	6/12/2024 8:57	Readings	PID	SC23030324C7	Normal	0.2

592-602816	6/12/2024 8:58	Readings	PID	SC23030324C7	Normal	0.2
592-602816	6/12/2024 8:59	Readings	PID	SC23030324C7	Normal	0.2
592-602816	6/12/2024 9:00	Readings	PID	SC23030324C7	Normal	0.2
592-602816	6/12/2024 9:01	Readings	PID	SC23030324C7	Normal	0.2
592-602816	6/12/2024 9:02	Readings	PID	SC23030324C7	Normal	0.2
592-602816	6/12/2024 9:03	Readings	PID	SC23030324C7	Normal	0.2
592-602816	6/12/2024 9:04	Readings	PID	SC23030324C7	Normal	0.1
592-602816	6/12/2024 9:05	Readings	PID	SC23030324C7	Normal	0.1
592-602816	6/12/2024 9:06	Readings	PID	SC23030324C7	Normal	0.1
592-602816	6/12/2024 9:07	Readings	PID	SC23030324C7	Normal	0.1
592-602816	6/12/2024 9:08	Readings	PID	SC23030324C7	Normal	0.1
592-602816	6/12/2024 9:09	Readings	PID	SC23030324C7	Normal	0.1
592-602816	6/12/2024 9:10	Readings	PID	SC23030324C7	Normal	0.1
592-602816	6/12/2024 9:11	Readings	PID	SC23030324C7	Normal	0.1
592-602816	6/12/2024 9:12	Readings	PID	SC23030324C7	Normal	0.1
592-602816	6/12/2024 9:13	Readings	PID	SC23030324C7	Normal	0.1
592-602816	6/12/2024 9:14	Readings	PID	SC23030324C7	Normal	0.1
592-602816	6/12/2024 9:15	Readings	PID	SC23030324C7	Normal	0.1
592-602816	6/12/2024 9:16	Readings	PID	SC23030324C7	Normal	0.1
592-602816	6/12/2024 9:17	Readings	PID	SC23030324C7	Normal	0.2
592-602816	6/12/2024 9:18	Readings	PID	SC23030324C7	Normal	0.2
592-602816	6/12/2024 9:19	Readings	PID	SC23030324C7	Normal	0.2
592-602816	6/12/2024 9:20	Readings	PID	SC23030324C7	Normal	0.2
592-602816	6/12/2024 9:21	Readings	PID	SC23030324C7	Normal	0.2
592-602816	6/12/2024 9:22	Readings	PID	SC23030324C7	Normal	0.1
592-602816	6/12/2024 9:23	Readings	PID	SC23030324C7	Normal	0.2
592-602816	6/12/2024 9:24	Readings	PID	SC23030324C7	Normal	0.1
592-602816	6/12/2024 9:25	Readings	PID	SC23030324C7	Normal	0.1
592-602816	6/12/2024 9:26	Readings	PID	SC23030324C7	Normal	0.1
592-602816	6/12/2024 9:27	Readings	PID	SC23030324C7	Normal	0.1
592-602816	6/12/2024 9:28	Readings	PID	SC23030324C7	Normal	0.1
592-602816	6/12/2024 9:29	Readings	PID	SC23030324C7	Normal	0.1
592-602816	6/12/2024 9:30	Readings	PID	SC23030324C7	Normal	0.1

592-602816	6/12/2024 9:31	Readings	PID	SC23030324C7	Normal	0.1
592-602816	6/12/2024 9:32	Readings	PID	SC23030324C7	Normal	0.2
592-602816	6/12/2024 9:33	Readings	PID	SC23030324C7	Normal	0.2
592-602816	6/12/2024 9:34	Readings	PID	SC23030324C7	Normal	0.1
592-602816	6/12/2024 9:35	Readings	PID	SC23030324C7	Normal	0.1
592-602816	6/12/2024 9:36	Readings	PID	SC23030324C7	Normal	0.1
592-602816	6/12/2024 9:37	Readings	PID	SC23030324C7	Normal	0.1
592-602816	6/12/2024 9:38	Readings	PID	SC23030324C7	Normal	0.1
592-602816	6/12/2024 9:39	Readings	PID	SC23030324C7	Normal	0.1
592-602816	6/12/2024 9:40	Readings	PID	SC23030324C7	Normal	0.1
592-602816	6/12/2024 9:41	Readings	PID	SC23030324C7	Normal	0.1
592-602816	6/12/2024 9:42	Readings	PID	SC23030324C7	Normal	0.1
592-602816	6/12/2024 9:43	Readings	PID	SC23030324C7	Normal	0.2
592-602816	6/12/2024 9:44	Readings	PID	SC23030324C7	Normal	0.2
592-602816	6/12/2024 9:45	Readings	PID	SC23030324C7	Normal	0.2
592-602816	6/12/2024 9:46	Readings	PID	SC23030324C7	Normal	0.2
592-602816	6/12/2024 9:47	Readings	PID	SC23030324C7	Normal	0.2
592-602816	6/12/2024 9:48	Readings	PID	SC23030324C7	Normal	0.1
592-602816	6/12/2024 9:49	Readings	PID	SC23030324C7	Normal	0.1
592-602816	6/12/2024 9:50	Readings	PID	SC23030324C7	Normal	0.1
592-602816	6/12/2024 9:51	Readings	PID	SC23030324C7	Normal	0.1
592-602816	6/12/2024 9:52	Readings	PID	SC23030324C7	Normal	0.1
592-602816	6/12/2024 9:53	Readings	PID	SC23030324C7	Normal	0.2
592-602816	6/12/2024 9:54	Readings	PID	SC23030324C7	Normal	0.2
592-602816	6/12/2024 9:55	Readings	PID	SC23030324C7	Normal	0.2
592-602816	6/12/2024 9:56	Readings	PID	SC23030324C7	Normal	0.1
592-602816	6/12/2024 9:57	Readings	PID	SC23030324C7	Normal	0.1
592-602816	6/12/2024 9:58	Readings	PID	SC23030324C7	Normal	0.1
592-602816	6/12/2024 9:59	Readings	PID	SC23030324C7	Normal	0.1
592-602816	6/12/2024 10:00	Readings	PID	SC23030324C7	Normal	0.1
592-602816	6/12/2024 10:01	Readings	PID	SC23030324C7	Normal	0.1
592-602816	6/12/2024 10:02	Readings	PID	SC23030324C7	Normal	0.1
592-602816	6/12/2024 10:03	Readings	PID	SC23030324C7	Normal	0.1

592-602816	6/12/2024 10:04	Readings	PID	SC23030324C7	Normal	0.1
592-602816	6/12/2024 10:05	Readings	PID	SC23030324C7	Normal	0.2
592-602816	6/12/2024 10:06	Readings	PID	SC23030324C7	Normal	0.2
592-602816	6/12/2024 10:07	Readings	PID	SC23030324C7	Normal	0.2
592-602816	6/12/2024 10:08	Readings	PID	SC23030324C7	Normal	0.2
592-602816	6/12/2024 10:09	Readings	PID	SC23030324C7	Normal	0.2
592-602816	6/12/2024 10:10	Readings	PID	SC23030324C7	Normal	0.2
592-602816	6/12/2024 10:11	Readings	PID	SC23030324C7	Normal	0.2
592-602816	6/12/2024 10:12	Readings	PID	SC23030324C7	Normal	0.2
592-602816	6/12/2024 10:13	Readings	PID	SC23030324C7	Normal	0.2
592-602816	6/12/2024 10:14	Readings	PID	SC23030324C7	Normal	0.2
592-602816	6/12/2024 10:15	Readings	PID	SC23030324C7	Normal	0.1
592-602816	6/12/2024 10:16	Readings	PID	SC23030324C7	Normal	0.2
592-602816	6/12/2024 10:17	Readings	PID	SC23030324C7	Normal	0.2
592-602816	6/12/2024 10:18	Readings	PID	SC23030324C7	Normal	0.1
592-602816	6/12/2024 10:19	Readings	PID	SC23030324C7	Normal	0.2
592-602816	6/12/2024 10:20	Readings	PID	SC23030324C7	Normal	0.2
592-602816	6/12/2024 10:21	Readings	PID	SC23030324C7	Normal	0.1
592-602816	6/12/2024 10:22	Readings	PID	SC23030324C7	Normal	0.2
592-602816	6/12/2024 10:23	Readings	PID	SC23030324C7	Normal	0.1
592-602816	6/12/2024 10:24	Readings	PID	SC23030324C7	Normal	0.1
592-602816	6/12/2024 10:25	Readings	PID	SC23030324C7	Normal	0.1
592-602816	6/12/2024 10:26	Readings	PID	SC23030324C7	Normal	0.1
592-602816	6/12/2024 10:27	Readings	PID	SC23030324C7	Normal	0.1
592-602816	6/12/2024 10:28	Readings	PID	SC23030324C7	Normal	0.1
592-602816	6/12/2024 10:29	Readings	PID	SC23030324C7	Normal	0.1
592-602816	6/12/2024 10:30	Readings	PID	SC23030324C7	Normal	0.1
592-602816	6/12/2024 10:31	Readings	PID	SC23030324C7	Normal	0.2
592-602816	6/12/2024 10:32	Readings	PID	SC23030324C7	Normal	0.1
592-602816	6/12/2024 10:33	Readings	PID	SC23030324C7	Normal	0.1
592-602816	6/12/2024 10:34	Readings	PID	SC23030324C7	Normal	0.1
592-602816	6/12/2024 10:35	Readings	PID	SC23030324C7	Normal	0.1
592-602816	6/12/2024 10:36	Readings	PID	SC23030324C7	Normal	0.1

592-602816	6/12/2024 10:37	Readings	PID	SC23030324C7	Normal	0.1
592-602816	6/12/2024 10:38	Readings	PID	SC23030324C7	Normal	0.1
592-602816	6/12/2024 10:39	Readings	PID	SC23030324C7	Normal	0.1
592-602816	6/12/2024 10:40	Readings	PID	SC23030324C7	Normal	0.1
592-602816	6/12/2024 10:41	Readings	PID	SC23030324C7	Normal	0.1
592-602816	6/12/2024 10:42	Readings	PID	SC23030324C7	Normal	0.1
592-602816	6/12/2024 10:43	Readings	PID	SC23030324C7	Normal	0.1
592-602816	6/12/2024 10:44	Readings	PID	SC23030324C7	Normal	0.1
592-602816	6/12/2024 10:45	Readings	PID	SC23030324C7	Normal	0.1
592-602816	6/12/2024 10:46	Readings	PID	SC23030324C7	Normal	0.1
592-602816	6/12/2024 10:47	Readings	PID	SC23030324C7	Normal	0.1
592-602816	6/12/2024 10:48	Readings	PID	SC23030324C7	Normal	0.1
592-602816	6/12/2024 10:49	Readings	PID	SC23030324C7	Normal	0.1
592-602816	6/12/2024 10:50	Readings	PID	SC23030324C7	Normal	0.1
592-602816	6/12/2024 10:51	Readings	PID	SC23030324C7	Normal	0.1
592-602816	6/12/2024 10:52	Readings	PID	SC23030324C7	Normal	0.1
592-602816	6/12/2024 10:53	Readings	PID	SC23030324C7	Normal	0.1
592-602816	6/12/2024 10:54	Readings	PID	SC23030324C7	Normal	0.1
592-602816	6/12/2024 10:55	Readings	PID	SC23030324C7	Normal	0.2
592-602816	6/12/2024 10:56	Readings	PID	SC23030324C7	Normal	0.2
592-602816	6/12/2024 10:57	Readings	PID	SC23030324C7	Normal	0.2
592-602816	6/12/2024 10:58	Readings	PID	SC23030324C7	Normal	0.2
592-602816	6/12/2024 10:59	Readings	PID	SC23030324C7	Normal	0.1
592-602816	6/12/2024 11:00	Readings	PID	SC23030324C7	Normal	0.1
592-602816	6/12/2024 11:01	Readings	PID	SC23030324C7	Normal	0.1
592-602816	6/12/2024 11:02	Readings	PID	SC23030324C7	Normal	0.1
592-602816	6/12/2024 11:03	Readings	PID	SC23030324C7	Normal	0.1
592-602816	6/12/2024 11:04	Readings	PID	SC23030324C7	Normal	0.1
592-602816	6/12/2024 11:05	Readings	PID	SC23030324C7	Normal	0.1
592-602816	6/12/2024 11:06	Readings	PID	SC23030324C7	Normal	0
592-602816	6/12/2024 11:07	Readings	PID	SC23030324C7	Normal	0
592-602816	6/12/2024 11:08	Readings	PID	SC23030324C7	Normal	0.1
592-602816	6/12/2024 11:09	Readings	PID	SC23030324C7	Normal	0.1

592-602816	6/12/2024 11:10	Readings	PID	SC23030324C7	Normal	0.1
592-602816	6/12/2024 11:11	Readings	PID	SC23030324C7	Normal	0.1
592-602816	6/12/2024 11:12	Readings	PID	SC23030324C7	Normal	0
592-602816	6/12/2024 11:13	Readings	PID	SC23030324C7	Normal	0.1
592-602816	6/12/2024 11:14	Readings	PID	SC23030324C7	Normal	0.1
592-602816	6/12/2024 11:15	Readings	PID	SC23030324C7	Normal	0.1
592-602816	6/12/2024 11:16	Readings	PID	SC23030324C7	Normal	0.1
592-602816	6/12/2024 11:17	Readings	PID	SC23030324C7	Normal	0.1
592-602816	6/12/2024 11:18	Readings	PID	SC23030324C7	Normal	0.1
592-602816	6/12/2024 11:19	Readings	PID	SC23030324C7	Normal	0.1
592-602816	6/12/2024 11:20	Readings	PID	SC23030324C7	Normal	0
592-602816	6/12/2024 11:21	Readings	PID	SC23030324C7	Normal	0.1
592-602816	6/12/2024 11:22	Readings	PID	SC23030324C7	Normal	0.1
592-602816	6/12/2024 11:23	Readings	PID	SC23030324C7	Normal	0.1
592-602816	6/12/2024 11:24	Readings	PID	SC23030324C7	Normal	0.1
592-602816	6/12/2024 11:25	Readings	PID	SC23030324C7	Normal	0.1
592-602816	6/12/2024 11:26	Readings	PID	SC23030324C7	Normal	0.1
592-602816	6/12/2024 11:27	Readings	PID	SC23030324C7	Normal	0
592-602816	6/12/2024 11:28	Readings	PID	SC23030324C7	Normal	0.1
592-602816	6/12/2024 11:29	Readings	PID	SC23030324C7	Normal	0.1
592-602816	6/12/2024 11:30	Readings	PID	SC23030324C7	Normal	0.1
592-602816	6/12/2024 11:31	Readings	PID	SC23030324C7	Normal	0.1
592-602816	6/12/2024 11:32	Readings	PID	SC23030324C7	Normal	0.1
592-602816	6/12/2024 11:33	Readings	PID	SC23030324C7	Normal	0.1
592-602816	6/12/2024 11:34	Readings	PID	SC23030324C7	Normal	0.1
592-602816	6/12/2024 11:35	Readings	PID	SC23030324C7	Normal	0.2
592-602816	6/12/2024 11:36	Readings	PID	SC23030324C7	Normal	0.1
592-602816	6/12/2024 11:37	Readings	PID	SC23030324C7	Normal	0.1
592-602816	6/12/2024 11:38	Readings	PID	SC23030324C7	Normal	0.1
592-602816	6/12/2024 11:39	Readings	PID	SC23030324C7	Normal	0.1
592-602816	6/12/2024 11:40	Readings	PID	SC23030324C7	Normal	0
592-602816	6/12/2024 11:41	Readings	PID	SC23030324C7	Normal	0.1
592-602816	6/12/2024 11:42	Readings	PID	SC23030324C7	Normal	0.3

592-602816	6/12/2024 11:43	Readings	PID	SC23030324C7	Normal	0.1
592-602816	6/12/2024 11:44	Readings	PID	SC23030324C7	Normal	0.1
592-602816	6/12/2024 11:45	Readings	PID	SC23030324C7	Normal	0.1
592-602816	6/12/2024 11:46	Readings	PID	SC23030324C7	Normal	0.1
592-602816	6/12/2024 11:47	Readings	PID	SC23030324C7	Normal	0.1
592-602816	6/12/2024 11:48	Readings	PID	SC23030324C7	Normal	0
592-602816	6/12/2024 11:49	Readings	PID	SC23030324C7	Normal	0
592-602816	6/12/2024 11:50	Readings	PID	SC23030324C7	Normal	0.1
592-602816	6/12/2024 11:51	Readings	PID	SC23030324C7	Normal	0.1
592-602816	6/12/2024 11:52	Readings	PID	SC23030324C7	Normal	0.2
592-602816	6/12/2024 11:53	Readings	PID	SC23030324C7	Normal	0.2
592-602816	6/12/2024 11:54	Readings	PID	SC23030324C7	Normal	0.1
592-602816	6/12/2024 11:55	Readings	PID	SC23030324C7	Normal	0.1
592-602816	6/12/2024 11:56	Readings	PID	SC23030324C7	Normal	0.1
592-602816	6/12/2024 11:57	Readings	PID	SC23030324C7	Normal	0.1
592-602816	6/12/2024 11:58	Readings	PID	SC23030324C7	Normal	0.1
592-602816	6/12/2024 11:59	Readings	PID	SC23030324C7	Normal	0.1
592-602816	6/12/2024 12:00	Readings	PID	SC23030324C7	Normal	0.1
592-602816	6/12/2024 12:01	Readings	PID	SC23030324C7	Normal	0.1
592-602816	6/12/2024 12:02	Readings	PID	SC23030324C7	Normal	0.1
592-602816	6/12/2024 12:03	Readings	PID	SC23030324C7	Normal	0.1
592-602816	6/12/2024 12:04	Readings	PID	SC23030324C7	Normal	0.1
592-602816	6/12/2024 12:05	Readings	PID	SC23030324C7	Normal	0.1
592-602816	6/12/2024 12:06	Readings	PID	SC23030324C7	Normal	0.1
592-602816	6/12/2024 12:07	Readings	PID	SC23030324C7	Normal	0.2
592-602816	6/12/2024 12:08	Readings	PID	SC23030324C7	Normal	0.2
592-602816	6/12/2024 12:09	Readings	PID	SC23030324C7	Normal	0.1
592-602816	6/12/2024 12:10	Readings	PID	SC23030324C7	Normal	0.1
592-602816	6/12/2024 12:11	Readings	PID	SC23030324C7	Normal	0.1
592-602816	6/12/2024 12:12	Readings	PID	SC23030324C7	Normal	0.2
592-602816	6/12/2024 12:13	Readings	PID	SC23030324C7	Normal	0.2
592-602816	6/12/2024 12:14	Readings	PID	SC23030324C7	Normal	0.2
592-602816	6/12/2024 12:15	Readings	PID	SC23030324C7	Normal	0.2

592-602816	6/12/2024 12:16	Readings	PID	SC23030324C7	Normal	0.2
592-602816	6/12/2024 12:17	Readings	PID	SC23030324C7	Normal	0.2
592-602816	6/12/2024 12:18	Readings	PID	SC23030324C7	Normal	0.1
592-602816	6/12/2024 12:19	Readings	PID	SC23030324C7	Normal	0.2
592-602816	6/12/2024 12:20	Readings	PID	SC23030324C7	Normal	0.1
592-602816	6/12/2024 12:21	Readings	PID	SC23030324C7	Normal	0.2
592-602816	6/12/2024 12:22	Readings	PID	SC23030324C7	Normal	0.3
592-602816	6/12/2024 12:23	Readings	PID	SC23030324C7	Normal	0.2
592-602816	6/12/2024 12:24	Readings	PID	SC23030324C7	Normal	0.3
592-602816	6/12/2024 12:25	Readings	PID	SC23030324C7	Normal	0.3
592-602816	6/12/2024 12:26	Readings	PID	SC23030324C7	Normal	0.2
592-602816	6/12/2024 12:27	Readings	PID	SC23030324C7	Normal	0.2
592-602816	6/12/2024 12:28	Readings	PID	SC23030324C7	Normal	0.2
592-602816	6/12/2024 12:29	Readings	PID	SC23030324C7	Normal	0.3
592-602816	6/12/2024 12:30	Readings	PID	SC23030324C7	Normal	0.2
592-602816	6/12/2024 12:31	Readings	PID	SC23030324C7	Normal	0.2
592-602816	6/12/2024 12:32	Readings	PID	SC23030324C7	Normal	0.2
592-602816	6/12/2024 12:33	Readings	PID	SC23030324C7	Normal	0.2
592-602816	6/12/2024 12:34	Readings	PID	SC23030324C7	Normal	0.2
592-602816	6/12/2024 12:35	Readings	PID	SC23030324C7	Normal	0.2
592-602816	6/12/2024 12:36	Readings	PID	SC23030324C7	Normal	0.2
592-602816	6/12/2024 12:37	Readings	PID	SC23030324C7	Normal	0.2
592-602816	6/12/2024 12:38	Readings	PID	SC23030324C7	Normal	0.2
592-602816	6/12/2024 12:39	Readings	PID	SC23030324C7	Normal	0.1
592-602816	6/12/2024 12:40	Readings	PID	SC23030324C7	Normal	0.2
592-602816	6/12/2024 12:41	Readings	PID	SC23030324C7	Normal	0.2
592-602816	6/12/2024 12:42	Readings	PID	SC23030324C7	Normal	0.2
592-602816	6/12/2024 12:43	Readings	PID	SC23030324C7	Normal	0.2
592-602816	6/12/2024 12:44	Readings	PID	SC23030324C7	Normal	0.2
592-602816	6/12/2024 12:45	Readings	PID	SC23030324C7	Normal	0.2
592-602816	6/12/2024 12:46	Readings	PID	SC23030324C7	Normal	0.1
592-602816	6/12/2024 12:47	Readings	PID	SC23030324C7	Normal	0.1
592-602816	6/12/2024 12:48	Readings	PID	SC23030324C7	Normal	0.1

592-602816	6/12/2024 13:22	Readings	PID	SC23030324C7	Normal	0.1
592-602816	6/12/2024 13:23	Readings	PID	SC23030324C7	Normal	0.1
592-602816	6/12/2024 13:24	Readings	PID	SC23030324C7	Normal	0.1
592-602816	6/12/2024 13:25	Readings	PID	SC23030324C7	Normal	0.2
592-602816	6/12/2024 13:26	Readings	PID	SC23030324C7	Normal	0.2
592-602816	6/12/2024 13:27	Readings	PID	SC23030324C7	Normal	0.1
592-602816	6/12/2024 13:28	Readings	PID	SC23030324C7	Normal	0.1
592-602816	6/12/2024 13:29	Readings	PID	SC23030324C7	Normal	0.1
592-602816	6/12/2024 13:30	Readings	PID	SC23030324C7	Normal	0
592-602816	6/12/2024 13:31	Readings	PID	SC23030324C7	Normal	0
592-602816	6/12/2024 13:32	Readings	PID	SC23030324C7	Normal	0
592-602816	6/12/2024 13:33	Readings	PID	SC23030324C7	Normal	0
592-602816	6/12/2024 13:34	Readings	PID	SC23030324C7	Normal	0.1
592-602816	6/12/2024 13:35	Readings	PID	SC23030324C7	Normal	0.1
592-602816	6/12/2024 13:36	Readings	PID	SC23030324C7	Normal	0.1
592-602816	6/12/2024 13:37	Readings	PID	SC23030324C7	Normal	0.1
592-602816	6/12/2024 13:38	Readings	PID	SC23030324C7	Normal	0.1
592-602816	6/12/2024 13:39	Readings	PID	SC23030324C7	Normal	0.1
592-602816	6/12/2024 13:40	Readings	PID	SC23030324C7	Normal	0.1
592-602816	6/12/2024 13:41	Readings	PID	SC23030324C7	Normal	0.1
592-602816	6/12/2024 13:42	Readings	PID	SC23030324C7	Normal	0
592-602816	6/12/2024 13:43	Readings	PID	SC23030324C7	Normal	0
592-602816	6/12/2024 13:44	Readings	PID	SC23030324C7	Normal	0
592-602816	6/12/2024 13:45	Readings	PID	SC23030324C7	Normal	0
592-602816	6/12/2024 13:46	Readings	PID	SC23030324C7	Normal	0
592-602816	6/12/2024 13:47	Readings	PID	SC23030324C7	Normal	0
592-602816	6/12/2024 13:48	Readings	PID	SC23030324C7	Normal	0.1
592-602816	6/12/2024 13:49	Readings	PID	SC23030324C7	Normal	0.1
592-602816	6/12/2024 13:50	Readings	PID	SC23030324C7	Normal	0
592-602816	6/12/2024 13:51	Readings	PID	SC23030324C7	Normal	0
592-602816	6/12/2024 13:52	Readings	PID	SC23030324C7	Normal	0
592-602816	6/12/2024 13:53	Readings	PID	SC23030324C7	Normal	0.1
592-602816	6/12/2024 13:54	Readings	PID	SC23030324C7	Normal	0.1

592-602816	6/12/2024 13:55	Readings	PID	SC23030324C7	Normal	0
592-602816	6/12/2024 13:56	Readings	PID	SC23030324C7	Normal	0.1
592-602816	6/12/2024 13:57	Readings	PID	SC23030324C7	Normal	0.1
592-602816	6/12/2024 13:58	Readings	PID	SC23030324C7	Normal	0
592-602816	6/12/2024 13:59	Readings	PID	SC23030324C7	Normal	0.1
592-602816	6/12/2024 14:00	Readings	PID	SC23030324C7	Normal	0.1
592-602816	6/12/2024 14:01	Readings	PID	SC23030324C7	Normal	0
592-602816	6/12/2024 14:02	Readings	PID	SC23030324C7	Normal	0
592-602816	6/12/2024 14:03	Readings	PID	SC23030324C7	Normal	0.1
592-602816	6/12/2024 14:04	Readings	PID	SC23030324C7	Normal	0.1
592-602816	6/12/2024 14:05	Readings	PID	SC23030324C7	Normal	0
592-602816	6/12/2024 14:06	Readings	PID	SC23030324C7	Normal	0
592-602816	6/12/2024 14:07	Readings	PID	SC23030324C7	Normal	0
592-602816	6/12/2024 14:08	Readings	PID	SC23030324C7	Normal	0
592-602816	6/12/2024 14:09	Readings	PID	SC23030324C7	Normal	0
592-602816	6/12/2024 14:10	Readings	PID	SC23030324C7	Normal	0
592-602816	6/12/2024 14:11	Readings	PID	SC23030324C7	Normal	0.1
592-602816	6/12/2024 14:12	Readings	PID	SC23030324C7	Normal	0
592-602816	6/12/2024 14:13	Readings	PID	SC23030324C7	Normal	0
592-602816	6/12/2024 14:14	Readings	PID	SC23030324C7	Normal	0
592-602816	6/12/2024 14:15	Readings	PID	SC23030324C7	Normal	0
592-602816	6/12/2024 14:16	Readings	PID	SC23030324C7	Normal	0
592-602816	6/12/2024 14:17	Readings	PID	SC23030324C7	Normal	0
592-602816	6/12/2024 14:18	Readings	PID	SC23030324C7	Normal	0
592-602816	6/12/2024 14:19	Readings	PID	SC23030324C7	Normal	0
592-602816	6/12/2024 14:20	Readings	PID	SC23030324C7	Normal	0.1
592-602816	6/12/2024 14:21	Readings	PID	SC23030324C7	Normal	0.1
592-602816	6/12/2024 14:22	Readings	PID	SC23030324C7	Normal	0.1
592-602816	6/12/2024 14:23	Readings	PID	SC23030324C7	Normal	0.1
592-602816	6/12/2024 14:24	Readings	PID	SC23030324C7	Normal	0.1
592-602816	6/12/2024 14:25	Readings	PID	SC23030324C7	Normal	0.1
592-602816	6/12/2024 14:26	Readings	PID	SC23030324C7	Normal	0.1
592-602816	6/12/2024 14:27	Readings	PID	SC23030324C7	Normal	0.1

592-602816	6/12/2024 14:28	Readings	PID	SC23030324C7	Normal	0
592-602816	6/12/2024 14:29	Readings	PID	SC23030324C7	Normal	0
592-602816	6/12/2024 14:30	Readings	PID	SC23030324C7	Normal	0
592-602816	6/12/2024 14:31	Readings	PID	SC23030324C7	Normal	0
592-602816	6/12/2024 14:32	Readings	PID	SC23030324C7	Normal	0.1
592-602816	6/12/2024 14:33	Readings	PID	SC23030324C7	Normal	0
592-602816	6/12/2024 14:34	Readings	PID	SC23030324C7	Normal	0
592-602816	6/12/2024 14:35	Readings	PID	SC23030324C7	Normal	0.1
592-602816	6/12/2024 14:36	Readings	PID	SC23030324C7	Normal	0.1
592-602816	6/12/2024 14:37	Readings	PID	SC23030324C7	Normal	0.1
592-602816	6/12/2024 14:38	Readings	PID	SC23030324C7	Normal	0
592-602816	6/12/2024 14:39	Readings	PID	SC23030324C7	Normal	0.1
592-602816	6/12/2024 14:40	Readings	PID	SC23030324C7	Normal	0.1
592-602816	6/12/2024 14:41	Readings	PID	SC23030324C7	Normal	0
592-602816	6/12/2024 14:42	Readings	PID	SC23030324C7	Normal	0
592-602816	6/12/2024 14:43	Readings	PID	SC23030324C7	Normal	0.1
592-602816	6/12/2024 14:44	Readings	PID	SC23030324C7	Normal	0.1
592-602816	6/12/2024 14:45	Readings	PID	SC23030324C7	Normal	0.1
592-602816	6/12/2024 14:46	Readings	PID	SC23030324C7	Normal	0
592-602816	6/12/2024 14:47	Readings	PID	SC23030324C7	Normal	0.1
592-602816	6/12/2024 14:48	Readings	PID	SC23030324C7	Normal	0.1
592-602816	6/12/2024 14:49	Readings	PID	SC23030324C7	Normal	0
592-602816	6/12/2024 14:50	Readings	PID	SC23030324C7	Normal	0
592-602816	6/12/2024 14:51	Readings	PID	SC23030324C7	Normal	0
592-602816	6/12/2024 14:52	Readings	PID	SC23030324C7	Normal	0
592-602816	6/12/2024 14:53	Readings	PID	SC23030324C7	Normal	0
592-602816	6/12/2024 14:54	Readings	PID	SC23030324C7	Normal	0
592-602816	6/12/2024 14:55	Readings	PID	SC23030324C7	Normal	0
592-602816	6/12/2024 14:56	Readings	PID	SC23030324C7	Normal	0
592-602816	6/12/2024 14:57	Readings	PID	SC23030324C7	Normal	0
592-602816	6/12/2024 14:58	Readings	PID	SC23030324C7	Normal	0
592-602816	6/12/2024 14:59	Readings	PID	SC23030324C7	Normal	0
592-602816	6/12/2024 15:00	Readings	PID	SC23030324C7	Normal	0

592-602816	6/12/2024 15:01	Readings	PID	SC23030324C7	Normal	0
592-602816	6/12/2024 15:02	Readings	PID	SC23030324C7	Normal	0
592-602816	6/12/2024 15:03	Readings	PID	SC23030324C7	Normal	0
592-602816	6/12/2024 15:04	Readings	PID	SC23030324C7	Normal	0
592-602816	6/12/2024 15:05	Readings	PID	SC23030324C7	Normal	0
592-602816	6/12/2024 15:06	Readings	PID	SC23030324C7	Normal	0
592-602816	6/12/2024 15:07	Readings	PID	SC23030324C7	Normal	0
592-602816	6/12/2024 15:08	Readings	PID	SC23030324C7	Normal	0
592-602816	6/12/2024 15:09	Readings	PID	SC23030324C7	Normal	0
592-602816	6/12/2024 15:10	Readings	PID	SC23030324C7	Normal	0
592-602816	6/12/2024 15:11	Readings	PID	SC23030324C7	Normal	0
592-602816	6/12/2024 15:12	Readings	PID	SC23030324C7	Normal	0
592-602816	6/12/2024 15:13	Readings	PID	SC23030324C7	Normal	0
592-602816	6/12/2024 15:14	Readings	PID	SC23030324C7	Normal	0
592-602816	6/12/2024 15:15	Readings	PID	SC23030324C7	Normal	0
592-602816	6/12/2024 15:16	Readings	PID	SC23030324C7	Normal	0
592-602816	6/12/2024 15:17	Readings	PID	SC23030324C7	Normal	0
592-602816	6/12/2024 15:18	Readings	PID	SC23030324C7	Normal	0
592-602816	6/12/2024 15:19	Readings	PID	SC23030324C7	Normal	0
592-602816	6/12/2024 15:20	Readings	PID	SC23030324C7	Normal	0.1
592-602816	6/12/2024 15:21	Readings	PID	SC23030324C7	Normal	0
592-602816	6/12/2024 15:22	Readings	PID	SC23030324C7	Normal	0
592-602816	6/12/2024 15:23	Readings	PID	SC23030324C7	Normal	0
592-602816	6/12/2024 15:24	Readings	PID	SC23030324C7	Normal	0.2
592-602816	6/12/2024 15:25	Readings	PID	SC23030324C7	Normal	0.2
592-602816	6/12/2024 15:26	Readings	PID	SC23030324C7	Normal	0
592-602816	6/12/2024 15:27	Readings	PID	SC23030324C7	Normal	0
592-602816	6/12/2024 15:28	Readings	PID	SC23030324C7	Normal	0
592-602816	6/12/2024 15:29	Readings	PID	SC23030324C7	Normal	0
592-602816	6/12/2024 15:30	Readings	PID	SC23030324C7	Normal	0
592-602816	6/12/2024 15:31	Readings	PID	SC23030324C7	Normal	0
592-602816	6/12/2024 15:32	Readings	PID	SC23030324C7	Normal	0
592-602816	6/12/2024 15:33	Readings	PID	SC23030324C7	Normal	0.1

592-602816	6/12/2024 15:34	Readings	PID	SC23030324C7	Normal	0.1
592-602816	6/12/2024 15:35	Readings	PID	SC23030324C7	Normal	0
592-602816	6/12/2024 15:36	Readings	PID	SC23030324C7	Normal	0
592-602816	6/12/2024 15:37	Readings	PID	SC23030324C7	Normal	0
592-602816	6/12/2024 15:38	Readings	PID	SC23030324C7	Normal	0
592-602816	6/12/2024 15:39	Readings	PID	SC23030324C7	Normal	0
592-602816	6/12/2024 15:40	Readings	PID	SC23030324C7	Normal	0
592-602816	6/12/2024 15:41	Readings	PID	SC23030324C7	Normal	0
592-602816	6/12/2024 15:42	Readings	PID	SC23030324C7	Normal	0
592-602816	6/12/2024 15:43	Readings	PID	SC23030324C7	Normal	0
592-602816	6/12/2024 15:44	Readings	PID	SC23030324C7	Normal	0
592-602816	6/12/2024 15:45	Readings	PID	SC23030324C7	Normal	0.1
592-602816	6/12/2024 15:46	Readings	PID	SC23030324C7	Normal	0.1
592-602816	6/12/2024 15:47	Readings	PID	SC23030324C7	Normal	0
592-602816	6/12/2024 15:48	Readings	PID	SC23030324C7	Normal	0.1
592-602816	6/12/2024 15:49	Readings	PID	SC23030324C7	Normal	0.1
592-602816	6/12/2024 15:50	Readings	PID	SC23030324C7	Normal	0.1
592-602816	6/12/2024 15:51	Readings	PID	SC23030324C7	Normal	0
592-602816	6/12/2024 15:52	Readings	PID	SC23030324C7	Normal	0
592-602816	6/12/2024 15:53	Readings	PID	SC23030324C7	Normal	0
592-602816	6/12/2024 15:54	Readings	PID	SC23030324C7	Normal	0
592-602816	6/12/2024 15:55	Readings	PID	SC23030324C7	Normal	0
592-602816	6/12/2024 15:56	Readings	PID	SC23030324C7	Normal	0
592-602816	6/12/2024 15:57	Readings	PID	SC23030324C7	Normal	0
592-602816	6/12/2024 15:58	Readings	PID	SC23030324C7	Normal	0
592-602816	6/12/2024 15:59	Readings	PID	SC23030324C7	Normal	0
592-602816	6/12/2024 16:00	Readings	PID	SC23030324C7	Normal	0.1
592-602816	6/12/2024 16:01	Readings	PID	SC23030324C7	Normal	0.1
592-602816	6/12/2024 16:02	Readings	PID	SC23030324C7	Normal	0
592-602816	6/12/2024 16:03	Readings	PID	SC23030324C7	Normal	0.1
592-602816	6/12/2024 16:04	Readings	PID	SC23030324C7	Normal	0.1
592-602816	6/12/2024 16:05	Readings	PID	SC23030324C7	Normal	0
592-602816	6/12/2024 16:06	Readings	PID	SC23030324C7	Normal	0

592-602816	6/12/2024 16:07	Readings	PID	SC23030324C7	Normal	0
592-602816	6/12/2024 16:08	Readings	PID	SC23030324C7	Normal	0
592-602816	6/12/2024 16:09	Readings	PID	SC23030324C7	Normal	0
592-602816	6/12/2024 16:10	Readings	PID	SC23030324C7	Normal	0
592-602816	6/12/2024 16:11	Readings	PID	SC23030324C7	Normal	0.1
592-602816	6/12/2024 16:12	Readings	PID	SC23030324C7	Normal	0
592-602816	6/12/2024 16:13	Readings	PID	SC23030324C7	Normal	0
592-602816	6/12/2024 16:14	Readings	PID	SC23030324C7	Normal	0
592-602816	6/12/2024 16:15	Readings	PID	SC23030324C7	Normal	0
592-602816	6/12/2024 16:16	Readings	PID	SC23030324C7	Normal	0.1
592-602816	6/12/2024 16:17	Readings	PID	SC23030324C7	Normal	0
592-602816	6/12/2024 16:18	Readings	PID	SC23030324C7	Normal	0
592-602816	6/12/2024 16:19	Readings	PID	SC23030324C7	Normal	0
592-602816	6/12/2024 16:20	Readings	PID	SC23030324C7	Normal	0
592-602816	6/12/2024 16:21	Readings	PID	SC23030324C7	Normal	0
592-602816	6/12/2024 16:22	Readings	PID	SC23030324C7	Normal	0.1
592-602816	6/12/2024 16:23	Readings	PID	SC23030324C7	Normal	0.1
592-602816	6/12/2024 16:24	Readings	PID	SC23030324C7	Normal	0
592-602816	6/12/2024 16:25	Readings	PID	SC23030324C7	Normal	0
592-602816	6/12/2024 16:26	Readings	PID	SC23030324C7	Normal	0
592-602816	6/12/2024 16:27	Readings	PID	SC23030324C7	Normal	0
592-602816	6/12/2024 16:28	Readings	PID	SC23030324C7	Normal	0.1
592-602816	6/12/2024 16:29	Readings	PID	SC23030324C7	Normal	0
592-602816	6/12/2024 16:30	Readings	PID	SC23030324C7	Normal	0
592-602816	6/12/2024 16:31	Readings	PID	SC23030324C7	Normal	0
592-602816	6/12/2024 16:32	Readings	PID	SC23030324C7	Normal	0.1
592-602816	6/12/2024 16:33	Readings	PID	SC23030324C7	Normal	0.1
592-602816	6/12/2024 16:34	Readings	PID	SC23030324C7	Normal	0
592-602816	6/12/2024 16:35	Readings	PID	SC23030324C7	Normal	0.1
592-602816	6/12/2024 16:36	Readings	PID	SC23030324C7	Normal	0
592-602816	6/12/2024 16:37	Readings	PID	SC23030324C7	Normal	0.1
592-602816	6/12/2024 16:38	Readings	PID	SC23030324C7	Normal	0.1
592-602816	6/12/2024 16:39	Readings	PID	SC23030324C7	Normal	0.1

592-602816	6/12/2024 16:40	Readings	PID	SC23030324C7	Normal	0.1
592-602816	6/12/2024 16:41	Readings	PID	SC23030324C7	Normal	0
592-602816	6/12/2024 16:42	Readings	PID	SC23030324C7	Normal	0
592-602816	6/12/2024 16:43	Readings	PID	SC23030324C7	Normal	0
592-602816	6/12/2024 16:44	Readings	PID	SC23030324C7	Normal	0.2
592-602816	6/12/2024 16:45	Readings	PID	SC23030324C7	Normal	0
592-602816	6/12/2024 16:46	Readings	PID	SC23030324C7	Normal	0
592-602816	6/12/2024 16:47	Readings	PID	SC23030324C7	Normal	0.1
592-602816	6/12/2024 16:48	Readings	PID	SC23030324C7	Normal	0.2
592-602816	6/12/2024 16:49	Readings	PID	SC23030324C7	Normal	1.2
592-602816	6/12/2024 16:50	Readings	PID	SC23030324C7	Normal	0.5
592-602816	6/12/2024 16:51	Readings	PID	SC23030324C7	Normal	0.2
592-602816	6/12/2024 16:52	Readings	PID	SC23030324C7	Normal	0.2
592-602816	6/12/2024 16:53	Readings	PID	SC23030324C7	Normal	0.3
592-602816	6/12/2024 16:54	Readings	PID	SC23030324C7	Normal	0.5
592-602816	6/12/2024 16:55	Readings	PID	SC23030324C7	Normal	0.3
592-602816	6/12/2024 16:56	Readings	PID	SC23030324C7	Normal	0.4
592-602816	6/12/2024 16:57	Readings	PID	SC23030324C7	Normal	0.2
592-602816	6/12/2024 16:58	Readings	PID	SC23030324C7	Normal	0.2
592-602816	6/12/2024 16:59	Readings	PID	SC23030324C7	Normal	0.5
592-602816	6/12/2024 17:00	Readings	PID	SC23030324C7	Normal	0.2
592-602816	6/12/2024 17:01	Readings	PID	SC23030324C7	Normal	0.3
592-602816	6/12/2024 17:02	Readings	PID	SC23030324C7	Normal	0.2
592-602816	6/12/2024 17:03	Readings	PID	SC23030324C7	Normal	0.3
592-602816	6/12/2024 17:04	Readings	PID	SC23030324C7	Normal	0.4
592-602816	6/12/2024 17:05	Readings	PID	SC23030324C7	Normal	0.4
592-602816	6/12/2024 17:06	Readings	PID	SC23030324C7	Normal	0.3
592-602816	6/12/2024 17:07	Readings	PID	SC23030324C7	Normal	0.3
592-602816	6/12/2024 17:08	Readings	PID	SC23030324C7	Normal	0.2
592-602816	6/12/2024 17:09	Readings	PID	SC23030324C7	Normal	0.3
592-602816	6/12/2024 17:10	Readings	PID	SC23030324C7	Normal	0.1
592-602816	6/12/2024 17:11	Readings	PID	SC23030324C7	Normal	0.1
592-602816	6/12/2024 17:12	Readings	PID	SC23030324C7	Normal	0.1

592-602816	6/12/2024 17:13	Readings	PID	SC23030324C7	Normal	0.1
592-602816	6/12/2024 17:14	Readings	PID	SC23030324C7	Normal	0.1
592-602816	6/12/2024 17:15	Readings	PID	SC23030324C7	Normal	0.1
592-602816	6/12/2024 17:16	Readings	PID	SC23030324C7	Normal	0.2
592-602816	6/12/2024 17:17	Readings	PID	SC23030324C7	Normal	0.2
592-602816	6/12/2024 17:18	Readings	PID	SC23030324C7	Normal	0.2
592-602816	6/12/2024 17:19	Readings	PID	SC23030324C7	Normal	0.1
592-602816	6/12/2024 17:20	Readings	PID	SC23030324C7	Normal	0.2
592-602816	6/12/2024 17:21	Readings	PID	SC23030324C7	Normal	0.2
592-602816	6/12/2024 17:22	Readings	PID	SC23030324C7	Normal	0.2
592-602816	6/12/2024 17:23	Readings	PID	SC23030324C7	Normal	0.1
592-602816	6/12/2024 17:24	Readings	PID	SC23030324C7	Normal	0.1
592-602816	6/12/2024 17:25	Readings	PID	SC23030324C7	Normal	0.2
592-602816	6/12/2024 17:26	Readings	PID	SC23030324C7	Normal	0.2
592-602816	6/12/2024 17:27	Readings	PID	SC23030324C7	Normal	0.2
592-602816	6/12/2024 17:28	Readings	PID	SC23030324C7	Normal	0.1
592-602816	6/12/2024 17:29	Readings	PID	SC23030324C7	Normal	0.1
592-602816	6/12/2024 17:30	Readings	PID	SC23030324C7	Normal	0.1
592-602816	6/12/2024 17:31	Readings	PID	SC23030324C7	Normal	0.1
592-602816	6/12/2024 17:32	Readings	PID	SC23030324C7	Normal	0.2
592-602816	6/12/2024 17:33	Readings	PID	SC23030324C7	Normal	0.2
592-602816	6/12/2024 17:34	Readings	PID	SC23030324C7	Normal	0.1
592-602816	6/12/2024 17:35	Readings	PID	SC23030324C7	Normal	0.1
592-602816	6/12/2024 17:36	Readings	PID	SC23030324C7	Normal	0.2
592-602816	6/12/2024 17:37	Readings	PID	SC23030324C7	Normal	0.1
592-602816	6/12/2024 17:38	Readings	PID	SC23030324C7	Normal	0.1
592-602816	6/12/2024 17:39	Readings	PID	SC23030324C7	Normal	0.1
592-602816	6/12/2024 17:40	Readings	PID	SC23030324C7	Normal	0.1
592-602816	6/12/2024 17:41	Readings	PID	SC23030324C7	Normal	0
592-602816	6/12/2024 17:42	Readings	PID	SC23030324C7	Normal	0.1
592-602816	6/12/2024 17:43	Readings	PID	SC23030324C7	Normal	0
592-602816	6/12/2024 17:44	Readings	PID	SC23030324C7	Normal	0.1
592-602816	6/12/2024 17:45	Readings	PID	SC23030324C7	Normal	0.1

592-602816	6/12/2024 17:46	Readings	PID	SC23030324C7	Normal	0.1
592-602816	6/12/2024 17:47	Readings	PID	SC23030324C7	Normal	0.1
592-602816	6/12/2024 17:48	Readings	PID	SC23030324C7	Normal	0.1
592-602816	6/12/2024 17:49	Readings	PID	SC23030324C7	Normal	0.1
592-602816	6/12/2024 17:50	Readings	PID	SC23030324C7	Normal	0.1
592-602816	6/12/2024 17:51	Readings	PID	SC23030324C7	Normal	0.1
592-602816	6/12/2024 17:52	Readings	PID	SC23030324C7	Normal	0
592-602816	6/12/2024 17:53	Readings	PID	SC23030324C7	Normal	0.1
592-602816	6/12/2024 17:54	Readings	PID	SC23030324C7	Normal	0.2
592-602816	6/12/2024 17:55	Readings	PID	SC23030324C7	Normal	0.2
592-602816	6/12/2024 17:56	Readings	PID	SC23030324C7	Normal	0.1
592-602816	6/12/2024 17:57	Readings	PID	SC23030324C7	Normal	0.1
592-602816	6/12/2024 17:58	Readings	PID	SC23030324C7	Normal	0.1
592-602816	6/12/2024 17:59	Readings	PID	SC23030324C7	Normal	0.1
592-602816	6/12/2024 18:00	Readings	PID	SC23030324C7	Normal	0.1
592-602816	6/12/2024 18:01	Readings	PID	SC23030324C7	Normal	0.1
592-602816	6/12/2024 18:02	Readings	PID	SC23030324C7	Normal	0.2
592-602816	6/12/2024 18:03	Readings	PID	SC23030324C7	Normal	0.2
592-602816	6/12/2024 18:04	Readings	PID	SC23030324C7	Normal	0.2
592-602816	6/12/2024 18:05	Readings	PID	SC23030324C7	Normal	0.1
592-602816	6/12/2024 18:06	Readings	PID	SC23030324C7	Normal	0.2
592-602816	6/12/2024 18:07	Readings	PID	SC23030324C7	Normal	0.1
592-602816	6/12/2024 18:08	Readings	PID	SC23030324C7	Normal	0.2
592-602816	6/12/2024 18:09	Readings	PID	SC23030324C7	Normal	0.1
592-602816	6/12/2024 18:10	Readings	PID	SC23030324C7	Normal	0.1
592-602816	6/12/2024 18:11	Readings	PID	SC23030324C7	Normal	0.2
592-602816	6/12/2024 18:12	Readings	PID	SC23030324C7	Normal	0.1
592-602816	6/12/2024 18:13	Readings	PID	SC23030324C7	Normal	0.1
592-602816	6/12/2024 18:14	Readings	PID	SC23030324C7	Normal	0.1
592-602816	6/12/2024 18:15	Readings	PID	SC23030324C7	Normal	0.1
592-602816	6/12/2024 18:16	Readings	PID	SC23030324C7	Normal	0.2
592-602816	6/12/2024 18:17	Readings	PID	SC23030324C7	Normal	0.1
592-602816	6/12/2024 18:18	Readings	PID	SC23030324C7	Normal	0.1

592-602816	6/12/2024 18:52	Readings	PID	SC23030324C7	Normal	0.1
592-602816	6/12/2024 18:53	Readings	PID	SC23030324C7	Normal	0.1
592-602816	6/12/2024 18:54	Readings	PID	SC23030324C7	Normal	0.2
592-602816	6/12/2024 18:55	Readings	PID	SC23030324C7	Normal	0.2
592-602816	6/12/2024 18:56	Readings	PID	SC23030324C7	Normal	0.2
592-602816	6/12/2024 18:57	Readings	PID	SC23030324C7	Normal	0.1
592-602816	6/12/2024 18:58	Readings	PID	SC23030324C7	Normal	0.1
592-602816	6/12/2024 18:59	Readings	PID	SC23030324C7	Normal	0.1
592-602816	6/12/2024 19:00	Readings	PID	SC23030324C7	Normal	0.2
592-602816	6/12/2024 19:01	Readings	PID	SC23030324C7	Normal	0.1
592-602816	6/12/2024 19:02	Readings	PID	SC23030324C7	Normal	0.2
592-602816	6/12/2024 19:03	Readings	PID	SC23030324C7	Normal	0.2
592-602816	6/12/2024 19:04	Readings	PID	SC23030324C7	Normal	0.2
592-602816	6/12/2024 19:05	Readings	PID	SC23030324C7	Normal	0.1
592-602816	6/12/2024 19:06	Readings	PID	SC23030324C7	Normal	0.1
592-602816	6/12/2024 19:07	Readings	PID	SC23030324C7	Normal	0.2
592-602816	6/12/2024 19:08	Readings	PID	SC23030324C7	Normal	0.2
592-602816	6/12/2024 19:09	Readings	PID	SC23030324C7	Normal	0.2
592-602816	6/12/2024 19:10	Readings	PID	SC23030324C7	Normal	0.2
592-602816	6/12/2024 19:11	Readings	PID	SC23030324C7	Normal	0.1
592-602816	6/12/2024 19:12	Readings	PID	SC23030324C7	Normal	0.1
592-602816	6/12/2024 19:13	Readings	PID	SC23030324C7	Normal	0.2
592-602816	6/12/2024 19:14	Readings	PID	SC23030324C7	Normal	0.1
592-602816	6/12/2024 19:15	Readings	PID	SC23030324C7	Normal	0.1
592-602816	6/12/2024 19:16	Readings	PID	SC23030324C7	Normal	0.1
592-602816	6/12/2024 19:17	Readings	PID	SC23030324C7	Normal	0.2
592-602816	6/12/2024 19:18	Readings	PID	SC23030324C7	Normal	0.1
592-602816	6/12/2024 19:19	Readings	PID	SC23030324C7	Normal	0.1
592-602816	6/12/2024 19:20	Readings	PID	SC23030324C7	Normal	0.1
592-602816	6/12/2024 19:21	Readings	PID	SC23030324C7	Normal	0.2
592-602816	6/12/2024 19:22	Readings	PID	SC23030324C7	Normal	0.1
592-602816	6/12/2024 19:23	Readings	PID	SC23030324C7	Normal	0.1
592-602816	6/12/2024 19:24	Readings	PID	SC23030324C7	Normal	0.2

592-602816	6/12/2024 20:31	Readings	PID	SC23030324C7	Normal	0.1
592-602816	6/12/2024 20:32	Readings	PID	SC23030324C7	Normal	0.2
592-602816	6/12/2024 20:33	Readings	PID	SC23030324C7	Normal	0.2
592-602816	6/12/2024 20:34	Readings	PID	SC23030324C7	Normal	0.2
592-602816	6/12/2024 20:35	Readings	PID	SC23030324C7	Normal	0.2
592-602816	6/12/2024 20:36	Readings	PID	SC23030324C7	Normal	0.1
592-602816	6/12/2024 20:37	Readings	PID	SC23030324C7	Normal	0.2
592-602816	6/12/2024 20:38	Readings	PID	SC23030324C7	Normal	0.2
592-602816	6/12/2024 20:39	Readings	PID	SC23030324C7	Normal	0.2
592-602816	6/12/2024 20:40	Readings	PID	SC23030324C7	Normal	0.1
592-602816	6/12/2024 20:41	Readings	PID	SC23030324C7	Normal	0.2
592-602816	6/12/2024 20:42	Readings	PID	SC23030324C7	Normal	0.2
592-602816	6/12/2024 20:43	Readings	PID	SC23030324C7	Normal	0.1
592-602816	6/12/2024 20:44	Readings	PID	SC23030324C7	Normal	0.2
592-602816	6/12/2024 20:45	Readings	PID	SC23030324C7	Normal	0.1
592-602816	6/12/2024 20:46	Readings	PID	SC23030324C7	Normal	0.1
592-602816	6/12/2024 20:47	Readings	PID	SC23030324C7	Normal	0.2
592-602816	6/12/2024 20:48	Readings	PID	SC23030324C7	Normal	0.2
592-602816	6/12/2024 20:49	Readings	PID	SC23030324C7	Normal	0.1
592-602816	6/12/2024 20:50	Readings	PID	SC23030324C7	Normal	0.2
592-602816	6/12/2024 20:51	Readings	PID	SC23030324C7	Normal	0.2
592-602816	6/12/2024 20:52	Readings	PID	SC23030324C7	Normal	0.2
592-602816	6/12/2024 20:53	Readings	PID	SC23030324C7	Normal	0.2
592-602816	6/12/2024 20:54	Readings	PID	SC23030324C7	Normal	0.2
592-602816	6/12/2024 20:55	Readings	PID	SC23030324C7	Normal	0.2
592-602816	6/12/2024 20:56	Readings	PID	SC23030324C7	Normal	0.2
592-602816	6/12/2024 20:57	Readings	PID	SC23030324C7	Normal	0.2
592-602816	6/12/2024 20:58	Readings	PID	SC23030324C7	Normal	0.2
592-602816	6/12/2024 20:59	Readings	PID	SC23030324C7	Normal	0.2
592-602816	6/12/2024 21:00	Readings	PID	SC23030324C7	Normal	0.2
592-602816	6/12/2024 21:01	Readings	PID	SC23030324C7	Normal	0.2
592-602816	6/12/2024 21:02	Readings	PID	SC23030324C7	Normal	0.2
592-602816	6/12/2024 21:03	Readings	PID	SC23030324C7	Normal	0.2

592-602816	6/12/2024 21:37 Readings	PID	SC23030324C7	Normal	0.2
592-602816	6/12/2024 21:38 Readings	PID	SC23030324C7	Normal	0.2

Instrument Name	DustTrak II
Model Number	8530
Serial Number	8530224601
Firmware Version	3.1
Calibration Date	11/9/2022
Test Name	MANUAL_011
Test Start Time	6:42:01 AM
Test Start Date	6/12/2024
Test Length [D:H:M]	0:14:48
Test Interval [M:S]	1:00
Mass Average [mg/m3]	0.024
Mass Minimum [mg/m3]	0.01
Mass Maximum [mg/m3]	0.24
Mass TWA [mg/m3]	0.023
Photometric User Cal	1
Flow User Cal	0
Errors	
Number of Samples	888

Elapsed Time [s]	Mass [mg/m3]	Alarms	Errors
6:43	0.022		
6:44	0.016		
6:45	0.013		
6:46	0.019		
6:47	0.018		
6:48	0.013		
6:49	0.013		
6:50	0.012		
6:51	0.013		
6:52	0.013		
6:53	0.013		
6:54	0.013		
6:55	0.013		
6:56	0.013		
6:57	0.012		
6:58	0.013		
6:59	0.016		
7:00	0.013		
7:01	0.025		
7:02	0.029		
7:03	0.015		
7:04	0.02		
7:05	0.014		
7:06	0.013		

7:07	0.013
7:08	0.012
7:09	0.014
7:10	0.015
7:11	0.019
7:12	0.014
7:13	0.014
7:14	0.013
7:15	0.013
7:16	0.017
7:17	0.021
7:18	0.02
7:19	0.016
7:20	0.029
7:21	0.019
7:22	0.084
7:23	0.018
7:24	0.021
7:25	0.017
7:26	0.02
7:27	0.02
7:28	0.019
7:29	0.015
7:30	0.016
7:31	0.021
7:32	0.023
7:33	0.014
7:34	0.016
7:35	0.015
7:36	0.019
7:37	0.023
7:38	0.043
7:39	0.028
7:40	0.026
7:41	0.023
7:42	0.018
7:43	0.017
7:44	0.017
7:45	0.018
7:46	0.02
7:47	0.025
7:48	0.021
7:49	0.017
7:50	0.027

7:51	0.025
7:52	0.021
7:53	0.015
7:54	0.018
7:55	0.02
7:56	0.017
7:57	0.021
7:58	0.025
7:59	0.025
8:00	0.037
8:01	0.021
8:02	0.023
8:03	0.016
8:04	0.026
8:05	0.02
8:06	0.016
8:07	0.013
8:08	0.016
8:09	0.018
8:10	0.02
8:11	0.016
8:12	0.016
8:13	0.029
8:14	0.024
8:15	0.022
8:16	0.016
8:17	0.016
8:18	0.02
8:19	0.018
8:20	0.02
8:21	0.021
8:22	0.019
8:23	0.021
8:24	0.013
8:25	0.013
8:26	0.039
8:27	0.019
8:28	0.016
8:29	0.016
8:30	0.021
8:31	0.063
8:32	0.029
8:33	0.025
8:34	0.016

8:35	0.017
8:36	0.056
8:37	0.024
8:38	0.033
8:39	0.018
8:40	0.014
8:41	0.015
8:42	0.021
8:43	0.024
8:44	0.018
8:45	0.024
8:46	0.032
8:47	0.018
8:48	0.017
8:49	0.017
8:50	0.013
8:51	0.013
8:52	0.011
8:53	0.012
8:54	0.016
8:55	0.013
8:56	0.012
8:57	0.011
8:58	0.012
8:59	0.023
9:00	0.017
9:01	0.013
9:02	0.013
9:03	0.012
9:04	0.013
9:05	0.014
9:06	0.014
9:07	0.016
9:08	0.015
9:09	0.013
9:10	0.013
9:11	0.015
9:12	0.017
9:13	0.013
9:14	0.014
9:15	0.016
9:16	0.017
9:17	0.015
9:18	0.016

9:19	0.018
9:20	0.016
9:21	0.015
9:22	0.013
9:23	0.015
9:24	0.02
9:25	0.012
9:26	0.012
9:27	0.013
9:28	0.017
9:29	0.011
9:30	0.011
9:31	0.012
9:32	0.01
9:33	0.016
9:34	0.039
9:35	0.023
9:36	0.017
9:37	0.011
9:38	0.014
9:39	0.011
9:40	0.012
9:41	0.015
9:42	0.022
9:43	0.014
9:44	0.025
9:45	0.02
9:46	0.014
9:47	0.015
9:48	0.038
9:49	0.064
9:50	0.015
9:51	0.017
9:52	0.022
9:53	0.029
9:54	0.079
9:55	0.02
9:56	0.014
9:57	0.021
9:58	0.036
9:59	0.016
10:00	0.013
10:01	0.014
10:02	0.013

10:03	0.012
10:04	0.015
10:05	0.015
10:06	0.014
10:07	0.014
10:08	0.04
10:09	0.022
10:10	0.015
10:11	0.012
10:12	0.013
10:13	0.015
10:14	0.014
10:15	0.01
10:16	0.012
10:17	0.015
10:18	0.012
10:19	0.012
10:20	0.013
10:21	0.02
10:22	0.024
10:23	0.015
10:24	0.02
10:25	0.013
10:26	0.011
10:27	0.013
10:28	0.015
10:29	0.015
10:30	0.052
10:31	0.019
10:32	0.015
10:33	0.046
10:34	0.031
10:35	0.017
10:36	0.014
10:37	0.064
10:38	0.03
10:39	0.052
10:40	0.017
10:41	0.03
10:42	0.012
10:43	0.015
10:44	0.035
10:45	0.026
10:46	0.044

10:47	0.022
10:48	0.019
10:49	0.02
10:50	0.018
10:51	0.024
10:52	0.025
10:53	0.028
10:54	0.018
10:55	0.018
10:56	0.054
10:57	0.013
10:58	0.014
10:59	0.015
11:00	0.015
11:01	0.02
11:02	0.019
11:03	0.014
11:04	0.013
11:05	0.018
11:06	0.017
11:07	0.019
11:08	0.016
11:09	0.019
11:10	0.022
11:11	0.027
11:12	0.031
11:13	0.024
11:14	0.027
11:15	0.044
11:16	0.039
11:17	0.017
11:18	0.022
11:19	0.057
11:20	0.032
11:21	0.024
11:22	0.02
11:23	0.018
11:24	0.018
11:25	0.016
11:26	0.019
11:27	0.02
11:28	0.017
11:29	0.017
11:30	0.02

11:31	0.033
11:32	0.026
11:33	0.021
11:34	0.019
11:35	0.017
11:36	0.021
11:37	0.017
11:38	0.021
11:39	0.031
11:40	0.015
11:41	0.016
11:42	0.019
11:43	0.019
11:44	0.022
11:45	0.042
11:46	0.02
11:47	0.023
11:48	0.039
11:49	0.037
11:50	0.021
11:51	0.02
11:52	0.016
11:53	0.015
11:54	0.019
11:55	0.021
11:56	0.019
11:57	0.017
11:58	0.021
11:59	0.085
12:00	0.041
12:01	0.021
12:02	0.017
12:03	0.019
12:04	0.033
12:05	0.019
12:06	0.016
12:07	0.022
12:08	0.019
12:09	0.017
12:10	0.019
12:11	0.039
12:12	0.021
12:13	0.029
12:14	0.015

12:15	0.022
12:16	0.022
12:17	0.022
12:18	0.024
12:19	0.023
12:20	0.019
12:21	0.023
12:22	0.022
12:23	0.018
12:24	0.018
12:25	0.018
12:26	0.015
12:27	0.019
12:28	0.016
12:29	0.029
12:30	0.014
12:31	0.014
12:32	0.017
12:33	0.019
12:34	0.019
12:35	0.022
12:36	0.017
12:37	0.014
12:38	0.016
12:39	0.015
12:40	0.019
12:41	0.02
12:42	0.029
12:43	0.019
12:44	0.029
12:45	0.018
12:46	0.025
12:47	0.028
12:48	0.025
12:49	0.018
12:50	0.015
12:51	0.019
12:52	0.036
12:53	0.018
12:54	0.019
12:55	0.019
12:56	0.02
12:57	0.016
12:58	0.017

12:59	0.016
13:00	0.019
13:01	0.029
13:02	0.022
13:03	0.016
13:04	0.02
13:05	0.021
13:06	0.018
13:07	0.016
13:08	0.016
13:09	0.015
13:10	0.016
13:11	0.02
13:12	0.045
13:13	0.03
13:14	0.021
13:15	0.02
13:16	0.019
13:17	0.028
13:18	0.019
13:19	0.015
13:20	0.022
13:21	0.02
13:22	0.015
13:23	0.013
13:24	0.013
13:25	0.024
13:26	0.02
13:27	0.036
13:28	0.018
13:29	0.017
13:30	0.016
13:31	0.041
13:32	0.022
13:33	0.025
13:34	0.017
13:35	0.015
13:36	0.015
13:37	0.014
13:38	0.015
13:39	0.018
13:40	0.03
13:41	0.015
13:42	0.014

13:43	0.014
13:44	0.014
13:45	0.016
13:46	0.016
13:47	0.016
13:48	0.017
13:49	0.02
13:50	0.022
13:51	0.017
13:52	0.017
13:53	0.022
13:54	0.014
13:55	0.017
13:56	0.015
13:57	0.054
13:58	0.016
13:59	0.016
14:00	0.015
14:01	0.023
14:02	0.034
14:03	0.027
14:04	0.018
14:05	0.016
14:06	0.02
14:07	0.025
14:08	0.018
14:09	0.019
14:10	0.022
14:11	0.026
14:12	0.052
14:13	0.024
14:14	0.017
14:15	0.02
14:16	0.028
14:17	0.024
14:18	0.022
14:19	0.02
14:20	0.02
14:21	0.02
14:22	0.022
14:23	0.037
14:24	0.029
14:25	0.024
14:26	0.018

14:27	0.017
14:28	0.031
14:29	0.02
14:30	0.052
14:31	0.03
14:32	0.023
14:33	0.027
14:34	0.032
14:35	0.027
14:36	0.051
14:37	0.023
14:38	0.021
14:39	0.02
14:40	0.017
14:41	0.018
14:42	0.016
14:43	0.017
14:44	0.017
14:45	0.017
14:46	0.02
14:47	0.051
14:48	0.026
14:49	0.04
14:50	0.021
14:51	0.018
14:52	0.022
14:53	0.024
14:54	0.019
14:55	0.024
14:56	0.016
14:57	0.017
14:58	0.018
14:59	0.019
15:00	0.026
15:01	0.015
15:02	0.016
15:03	0.03
15:04	0.019
15:05	0.018
15:06	0.019
15:07	0.016
15:08	0.017
15:09	0.016
15:10	0.016

15:11	0.027
15:12	0.026
15:13	0.025
15:14	0.027
15:15	0.023
15:16	0.025
15:17	0.022
15:18	0.019
15:19	0.019
15:20	0.016
15:21	0.017
15:22	0.018
15:23	0.018
15:24	0.019
15:25	0.023
15:26	0.019
15:27	0.018
15:28	0.02
15:29	0.021
15:30	0.024
15:31	0.019
15:32	0.018
15:33	0.017
15:34	0.021
15:35	0.018
15:36	0.019
15:37	0.02
15:38	0.018
15:39	0.018
15:40	0.018
15:41	0.023
15:42	0.018
15:43	0.018
15:44	0.02
15:45	0.017
15:46	0.024
15:47	0.019
15:48	0.02
15:49	0.022
15:50	0.018
15:51	0.021
15:52	0.024
15:53	0.02
15:54	0.02

15:55	0.019
15:56	0.018
15:57	0.018
15:58	0.022
15:59	0.018
16:00	0.019
16:01	0.026
16:02	0.026
16:03	0.017
16:04	0.017
16:05	0.016
16:06	0.017
16:07	0.019
16:08	0.024
16:09	0.029
16:10	0.026
16:11	0.02
16:12	0.023
16:13	0.025
16:14	0.037
16:15	0.024
16:16	0.02
16:17	0.043
16:18	0.02
16:19	0.028
16:20	0.022
16:21	0.018
16:22	0.017
16:23	0.041
16:24	0.03
16:25	0.021
16:26	0.035
16:27	0.022
16:28	0.023
16:29	0.018
16:30	0.02
16:31	0.027
16:32	0.019
16:33	0.067
16:34	0.017
16:35	0.024
16:36	0.023
16:37	0.017
16:38	0.02

16:39	0.02
16:40	0.018
16:41	0.025
16:42	0.019
16:43	0.023
16:44	0.018
16:45	0.021
16:46	0.022
16:47	0.025
16:48	0.022
16:49	0.02
16:50	0.044
16:51	0.021
16:52	0.022
16:53	0.018
16:54	0.018
16:55	0.019
16:56	0.023
16:57	0.019
16:58	0.019
16:59	0.019
17:00	0.027
17:01	0.018
17:02	0.017
17:03	0.018
17:04	0.019
17:05	0.018
17:06	0.017
17:07	0.021
17:08	0.06
17:09	0.021
17:10	0.02
17:11	0.037
17:12	0.023
17:13	0.025
17:14	0.026
17:15	0.02
17:16	0.017
17:17	0.019
17:18	0.024
17:19	0.019
17:20	0.019
17:21	0.018
17:22	0.023

17:23	0.023
17:24	0.024
17:25	0.018
17:26	0.018
17:27	0.017
17:28	0.018
17:29	0.017
17:30	0.02
17:31	0.017
17:32	0.017
17:33	0.062
17:34	0.037
17:35	0.025
17:36	0.022
17:37	0.019
17:38	0.016
17:39	0.016
17:40	0.028
17:41	0.047
17:42	0.023
17:43	0.017
17:44	0.021
17:45	0.017
17:46	0.019
17:47	0.017
17:48	0.017
17:49	0.017
17:50	0.02
17:51	0.022
17:52	0.018
17:53	0.019
17:54	0.019
17:55	0.018
17:56	0.019
17:57	0.02
17:58	0.018
17:59	0.018
18:00	0.017
18:01	0.02
18:02	0.031
18:03	0.025
18:04	0.018
18:05	0.028
18:06	0.098

18:07	0.073
18:08	0.033
18:09	0.02
18:10	0.023
18:11	0.029
18:12	0.027
18:13	0.023
18:14	0.019
18:15	0.019
18:16	0.026
18:17	0.024
18:18	0.019
18:19	0.026
18:20	0.02
18:21	0.019
18:22	0.02
18:23	0.02
18:24	0.022
18:25	0.029
18:26	0.02
18:27	0.025
18:28	0.24
18:29	0.108
18:30	0.036
18:31	0.019
18:32	0.02
18:33	0.019
18:34	0.037
18:35	0.02
18:36	0.022
18:37	0.024
18:38	0.02
18:39	0.027
18:40	0.03
18:41	0.032
18:42	0.021
18:43	0.025
18:44	0.039
18:45	0.028
18:46	0.035
18:47	0.039
18:48	0.022
18:49	0.021
18:50	0.023

18:51	0.022
18:52	0.02
18:53	0.022
18:54	0.025
18:55	0.025
18:56	0.027
18:57	0.025
18:58	0.027
18:59	0.039
19:00	0.027
19:01	0.036
19:02	0.03
19:03	0.032
19:04	0.039
19:05	0.041
19:06	0.027
19:07	0.027
19:08	0.026
19:09	0.027
19:10	0.026
19:11	0.031
19:12	0.025
19:13	0.03
19:14	0.029
19:15	0.029
19:16	0.042
19:17	0.033
19:18	0.024
19:19	0.021
19:20	0.026
19:21	0.033
19:22	0.024
19:23	0.022
19:24	0.024
19:25	0.027
19:26	0.026
19:27	0.021
19:28	0.021
19:29	0.022
19:30	0.024
19:31	0.022
19:32	0.023
19:33	0.024
19:34	0.023

19:35	0.023
19:36	0.025
19:37	0.026
19:38	0.024
19:39	0.023
19:40	0.024
19:41	0.023
19:42	0.025
19:43	0.03
19:44	0.024
19:45	0.023
19:46	0.024
19:47	0.025
19:48	0.024
19:49	0.025
19:50	0.023
19:51	0.023
19:52	0.024
19:53	0.024
19:54	0.027
19:55	0.024
19:56	0.024
19:57	0.024
19:58	0.025
19:59	0.024
20:00	0.025
20:01	0.03
20:02	0.028
20:03	0.027
20:04	0.025
20:05	0.026
20:06	0.026
20:07	0.025
20:08	0.025
20:09	0.025
20:10	0.025
20:11	0.025
20:12	0.025
20:13	0.025
20:14	0.026
20:15	0.026
20:16	0.027
20:17	0.026
20:18	0.025

20:19	0.026
20:20	0.026
20:21	0.028
20:22	0.026
20:23	0.024
20:24	0.028
20:25	0.028
20:26	0.03
20:27	0.026
20:28	0.027
20:29	0.037
20:30	0.028
20:31	0.027
20:32	0.026
20:33	0.028
20:34	0.027
20:35	0.031
20:36	0.029
20:37	0.029
20:38	0.029
20:39	0.028
20:40	0.027
20:41	0.03
20:42	0.029
20:43	0.028
20:44	0.029
20:45	0.03
20:46	0.031
20:47	0.03
20:48	0.034
20:49	0.039
20:50	0.03
20:51	0.032
20:52	0.031
20:53	0.031
20:54	0.031
20:55	0.033
20:56	0.031
20:57	0.045
20:58	0.037
20:59	0.035
21:00	0.034
21:01	0.037
21:02	0.03

21:03	0.032
21:04	0.033
21:05	0.033
21:06	0.031
21:07	0.03
21:08	0.031
21:09	0.037
21:10	0.034
21:11	0.03
21:12	0.03
21:13	0.033
21:14	0.032
21:15	0.029
21:16	0.028
21:17	0.03
21:18	0.031
21:19	0.031
21:20	0.03
21:21	0.03
21:22	0.033
21:23	0.032
21:24	0.033
21:25	0.047
21:26	0.043
21:27	0.036
21:28	0.033
21:29	0.033
21:30	0.039

Device Serial No	Log Time	Log Type	Sensor 1 Type	Sensor 1 Serial Number	Sensor 1 Status	Sensor 1 Gas Reading
592-600871	6/12/2024 6:43	CONFIG	PID	SC23030408A8		
592-600871	6/12/2024 6:44	Readings	PID	SC23030408A8	Normal	0
592-600871	6/12/2024 6:45	Readings	PID	SC23030408A8	Normal	0
592-600871	6/12/2024 6:46	Readings	PID	SC23030408A8	Normal	0
592-600871	6/12/2024 6:47	Readings	PID	SC23030408A8	Normal	0
592-600871	6/12/2024 6:48	Readings	PID	SC23030408A8	Normal	0
592-600871	6/12/2024 6:49	Readings	PID	SC23030408A8	Normal	0
592-600871	6/12/2024 6:50	Readings	PID	SC23030408A8	Normal	0
592-600871	6/12/2024 6:51	Readings	PID	SC23030408A8	Normal	0
592-600871	6/12/2024 6:52	Readings	PID	SC23030408A8	Normal	0
592-600871	6/12/2024 6:53	Readings	PID	SC23030408A8	Normal	0
592-600871	6/12/2024 6:54	Readings	PID	SC23030408A8	Normal	0
592-600871	6/12/2024 6:55	Readings	PID	SC23030408A8	Normal	0
592-600871	6/12/2024 6:56	Readings	PID	SC23030408A8	Normal	0
592-600871	6/12/2024 6:57	Readings	PID	SC23030408A8	Normal	0
592-600871	6/12/2024 6:58	Readings	PID	SC23030408A8	Normal	0
592-600871	6/12/2024 6:59	Readings	PID	SC23030408A8	Normal	0
592-600871	6/12/2024 7:00	Readings	PID	SC23030408A8	Normal	0
592-600871	6/12/2024 7:01	Readings	PID	SC23030408A8	Normal	0
592-600871	6/12/2024 7:02	Readings	PID	SC23030408A8	Normal	0
592-600871	6/12/2024 7:03	Readings	PID	SC23030408A8	Normal	0.1
592-600871	6/12/2024 7:04	Readings	PID	SC23030408A8	Normal	0
592-600871	6/12/2024 7:05	Readings	PID	SC23030408A8	Normal	0.2
592-600871	6/12/2024 7:06	Readings	PID	SC23030408A8	Normal	0
592-600871	6/12/2024 7:07	Readings	PID	SC23030408A8	Normal	0.2
592-600871	6/12/2024 7:08	Readings	PID	SC23030408A8	Normal	0
592-600871	6/12/2024 7:09	Readings	PID	SC23030408A8	Normal	0
592-600871	6/12/2024 7:10	Readings	PID	SC23030408A8	Normal	0.2
592-600871	6/12/2024 7:11	Readings	PID	SC23030408A8	Normal	0
592-600871	6/12/2024 7:12	Readings	PID	SC23030408A8	Normal	0
592-600871	6/12/2024 7:13	Readings	PID	SC23030408A8	Normal	0
592-600871	6/12/2024 7:14	Readings	PID	SC23030408A8	Normal	0

592-600871	6/12/2024 7:15 Readings	PID	SC23030408A8	Normal	0
592-600871	6/12/2024 7:16 Readings	PID	SC23030408A8	Normal	0
592-600871	6/12/2024 7:17 Readings	PID	SC23030408A8	Normal	0
592-600871	6/12/2024 7:18 Readings	PID	SC23030408A8	Normal	0
592-600871	6/12/2024 7:19 Readings	PID	SC23030408A8	Normal	0
592-600871	6/12/2024 7:20 Readings	PID	SC23030408A8	Normal	0
592-600871	6/12/2024 7:21 Readings	PID	SC23030408A8	Normal	0
592-600871	6/12/2024 7:22 Readings	PID	SC23030408A8	Normal	0
592-600871	6/12/2024 7:23 Readings	PID	SC23030408A8	Normal	0
592-600871	6/12/2024 7:24 Readings	PID	SC23030408A8	Normal	0
592-600871	6/12/2024 7:25 Readings	PID	SC23030408A8	Normal	0
592-600871	6/12/2024 7:26 Readings	PID	SC23030408A8	Normal	0
592-600871	6/12/2024 7:27 Readings	PID	SC23030408A8	Normal	0
592-600871	6/12/2024 7:28 Readings	PID	SC23030408A8	Normal	0
592-600871	6/12/2024 7:29 Readings	PID	SC23030408A8	Normal	0
592-600871	6/12/2024 7:30 Readings	PID	SC23030408A8	Normal	0
592-600871	6/12/2024 7:31 Readings	PID	SC23030408A8	Normal	0
592-600871	6/12/2024 7:32 Readings	PID	SC23030408A8	Normal	0
592-600871	6/12/2024 7:33 Readings	PID	SC23030408A8	Normal	0.1
592-600871	6/12/2024 7:34 Readings	PID	SC23030408A8	Normal	0
592-600871	6/12/2024 7:35 Readings	PID	SC23030408A8	Normal	0
592-600871	6/12/2024 7:36 Readings	PID	SC23030408A8	Normal	0
592-600871	6/12/2024 7:37 Readings	PID	SC23030408A8	Normal	0
592-600871	6/12/2024 7:38 Readings	PID	SC23030408A8	Normal	0
592-600871	6/12/2024 7:39 Readings	PID	SC23030408A8	Normal	0
592-600871	6/12/2024 7:40 Readings	PID	SC23030408A8	Normal	0
592-600871	6/12/2024 7:41 Readings	PID	SC23030408A8	Normal	0
592-600871	6/12/2024 7:42 Readings	PID	SC23030408A8	Normal	0
592-600871	6/12/2024 7:43 Readings	PID	SC23030408A8	Normal	0
592-600871	6/12/2024 7:44 Readings	PID	SC23030408A8	Normal	0
592-600871	6/12/2024 7:45 Readings	PID	SC23030408A8	Normal	0
592-600871	6/12/2024 7:46 Readings	PID	SC23030408A8	Normal	0
592-600871	6/12/2024 7:47 Readings	PID	SC23030408A8	Normal	0

592-600871	6/12/2024 21:00	Readings	PID	SC23030408A8	Normal	0
592-600871	6/12/2024 21:01	Readings	PID	SC23030408A8	Normal	0
592-600871	6/12/2024 21:02	Readings	PID	SC23030408A8	Normal	0
592-600871	6/12/2024 21:03	Readings	PID	SC23030408A8	Normal	0
592-600871	6/12/2024 21:04	Readings	PID	SC23030408A8	Normal	0
592-600871	6/12/2024 21:05	Readings	PID	SC23030408A8	Normal	0
592-600871	6/12/2024 21:06	Readings	PID	SC23030408A8	Normal	0
592-600871	6/12/2024 21:07	Readings	PID	SC23030408A8	Normal	0
592-600871	6/12/2024 21:08	Readings	PID	SC23030408A8	Normal	0
592-600871	6/12/2024 21:09	Readings	PID	SC23030408A8	Normal	0
592-600871	6/12/2024 21:10	Readings	PID	SC23030408A8	Normal	0
592-600871	6/12/2024 21:11	Readings	PID	SC23030408A8	Normal	0
592-600871	6/12/2024 21:12	Readings	PID	SC23030408A8	Normal	0
592-600871	6/12/2024 21:13	Readings	PID	SC23030408A8	Normal	0
592-600871	6/12/2024 21:14	Readings	PID	SC23030408A8	Normal	0
592-600871	6/12/2024 21:15	Readings	PID	SC23030408A8	Normal	0
592-600871	6/12/2024 21:16	Readings	PID	SC23030408A8	Normal	0
592-600871	6/12/2024 21:17	Readings	PID	SC23030408A8	Normal	0
592-600871	6/12/2024 21:18	Readings	PID	SC23030408A8	Normal	0
592-600871	6/12/2024 21:19	Readings	PID	SC23030408A8	Normal	0
592-600871	6/12/2024 21:20	Readings	PID	SC23030408A8	Normal	0
592-600871	6/12/2024 21:21	Readings	PID	SC23030408A8	Normal	0
592-600871	6/12/2024 21:22	Readings	PID	SC23030408A8	Normal	0
592-600871	6/12/2024 21:23	Readings	PID	SC23030408A8	Normal	0
592-600871	6/12/2024 21:24	Readings	PID	SC23030408A8	Normal	0
592-600871	6/12/2024 21:25	Readings	PID	SC23030408A8	Normal	0
592-600871	6/12/2024 21:26	Readings	PID	SC23030408A8	Normal	0
592-600871	6/12/2024 21:27	Readings	PID	SC23030408A8	Normal	0
592-600871	6/12/2024 21:28	Readings	PID	SC23030408A8	Normal	0
592-600871	6/12/2024 21:29	Readings	PID	SC23030408A8	Normal	0
592-600871	6/12/2024 21:30	Readings	PID	SC23030408A8	Normal	0