



DAILY STATUS REPORT

Prepared By:
Ryan Just

WEATHER	Snow	Rain	Overcast	Partly Cloudy	X	Bright Sun	X	Wind
TEMP.	< 32	32-50	50-70	70-85	X	>85	X	NNE – 4 mph

IEEG Project No:	13928	NYSDEC BCP Site No:	C224367	Date:	07/08/24
Project:	251 Douglass Street, Brooklyn, NY				

<p>Consultant: Impact Environmental Engineering and Geology, PLLC (IEEG)</p> <p>Time On: 06:35 Time Out: 18:05</p>	<p>Personnel On Site: IEEG (Environmental) – Ryan Just Broadway Construction Group - Tom Caporale Cascade Concrete Courses WSP – Chris DiScalfani</p> <p>Equipment On Site: (3) MiniRAE 3000 PID, (3) DustTrak II</p>
---	---

Scope of Work: Cascade to continue with ISS column installation; Concrete Courses to begin subgrade work in the northern alley.

- Site Activities:**
- Deployed three (3) CAMP stations prior to the start of work activities;
 - Cascade received one (1) delivery of slag to the silos;
 - Cascade received the sampling rod and assembled it together for wet mix sample collection;
 - Cascade continued to stockpile swell material for loadout;
 - Concrete Courses began mobilizing equipment in the northern portion of the alley adjacent to Butler Street for subgrade work and vapor barrier installation;
 - Cascade drilled **Column 486** with column specification below:
 - Column is 8’ diameter and drilled 36’ deep from Site grade;
 - The column consisted of a total of 27 batches;
 - A wet mix sample was collected 28.9’ deep from Site grade;
 - Cascade drilled **Column 491** with column specification below:
 - Column is 8’ diameter and drilled 51’ deep from Site grade;
 - The column consisted of a total of 27 batches;
 - A wet mix sample was collected 42.3’ deep from Site grade;

Community Air Monitoring Program (CAMP) - CAMP action level for dust (0.1 mg/m³) and VOCs (5 ppm)

- PID remained at nominal levels throughout the day
- No sustained dust exceedances were observed over a 15-min period during monitoring.
- Startup Upwind Conditions – PID = 1.5 ppm @ 06:53, Dust = 0.089 mg/m³ @ 07:00
- High Conditions (Upwind) – PID = 4.2 ppm @06:58, Dust = 0.738 mg/m³ @ 07:42
- High Conditions (Downwind 1) – PID = 1.1 ppm @ 06:45, Dust = 0.542 mg/m³ @ 14:50
- High Conditions (Downwind 2) – PID = 0.0 ppm, Dust = 0.895 mg/m³ @ 13:38

Notable Site Conditions:

- None.

Planned for the Next Day/Week:

- Continuation of ISS column installation;
- Continuation of subgrade work in the alley; and,
- Swell material load out.



PHOTO LOG

251 DOUGLASS STREET, BROOKLYN, NY



Photo 1-
Representative
photo of ISS wet
mix sample
collection from
column 486.



Photo 2-
Representative
photo of
subgrade work in
the Butler
corridor.



Photo 3-
Representative
photo of wet
sample taken
from Column
491.



Photo 4-
Representative
photo of slag
delivery to the
silo.



Photo 5-
Representative
photo of
sampling rod
assembly.



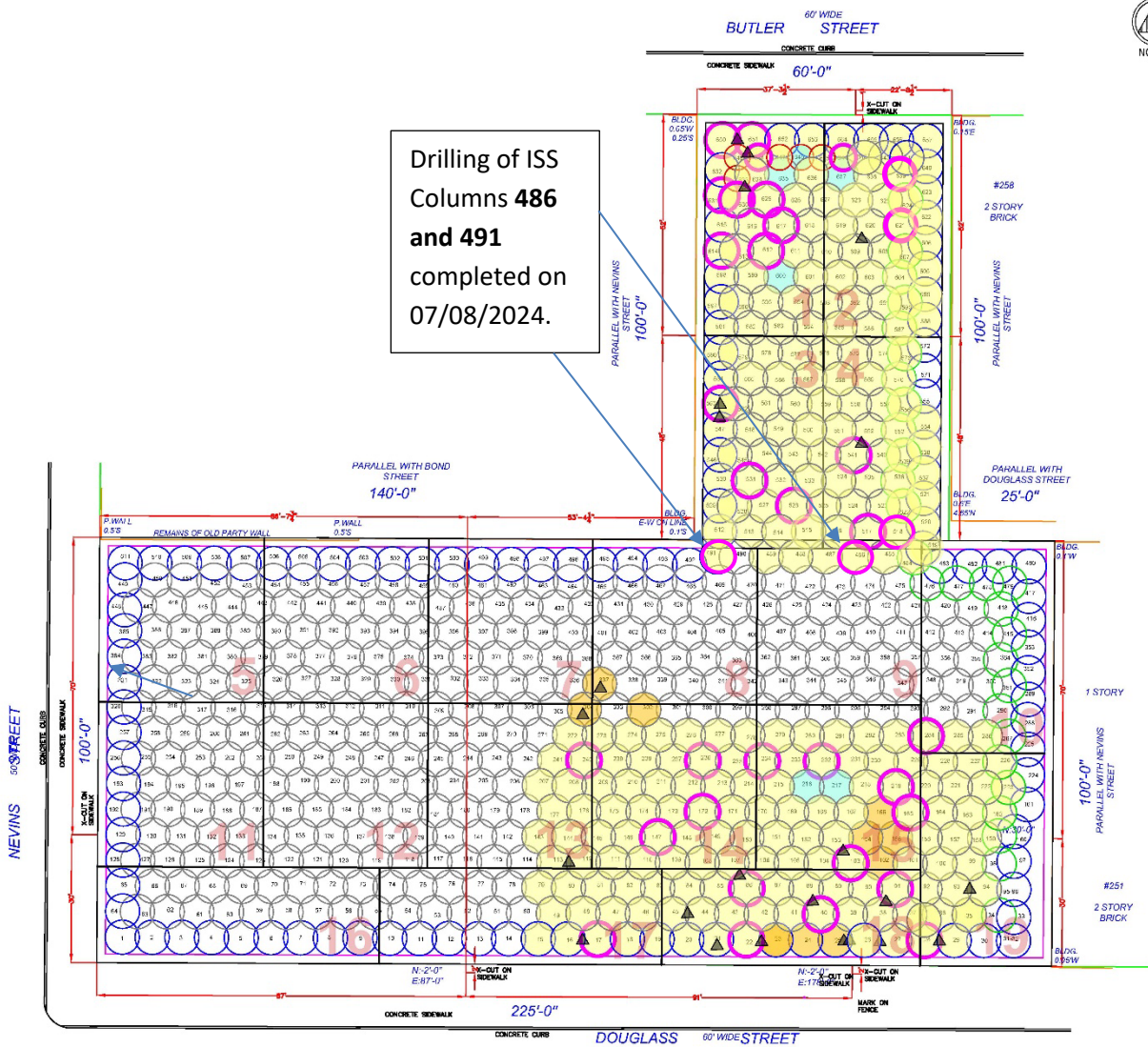
SITE PLANS

251 DOUGLASS STREET, BROOKLYN, NY





Drilling of ISS Columns 486 and 491 completed on 07/08/2024.



PROJECT NORTH

LEGEND

- PROPERTY LINE
- 55' EIGHT FOOT DIA. HYDRAULIC COLUMN (TYP.)
- EIGHT FOOT DIA. INNER COLUMN (TYP.)
- APPROVED TO 55'
- SIX FOOT DIA. HYDRAULIC COLUMN (TYP.)
- ISS COLUMN INSTALLED TO TERMINAL DEPTH
- ISS COLUMN UNABLE TO BE INSTALLED TO TERMINAL DEPTH
- WET MIX SAMPLE COLLECTED FROM ISS COLUMN
- ▲ COMPLETED CORING LOCATION

NOTES:
1. THE BASE MAP WAS DRAWN FROM A PLAN ENTITLED, ALTAIRNSP LAND TITLE SURVEY, PREPARED BY PERFECT POINT LAND SURVEYING OF BROOKLYN, NY AND WAS RECEIVED ELECTRONICALLY ON APRIL 2023 WITH AN ORIGINAL SCALE: 1" = 20'.

251 Douglas Street
Brooklyn, New York

Figure No. 01

PROJECT NO.	D25101
FORMULATED BY	JS
DESIGNED BY	AC
ENGINEERED BY	EP
DATE	6/2024
SCALE	AS SHOWN

IMPACT ENVIRONMENTAL CLOSURES, INC.

170 KEYLAND COURT
BOHEMIA, NEW YORK 11716
TEL (631) 269-8800
FAX (631) 269-1599



SCM Report

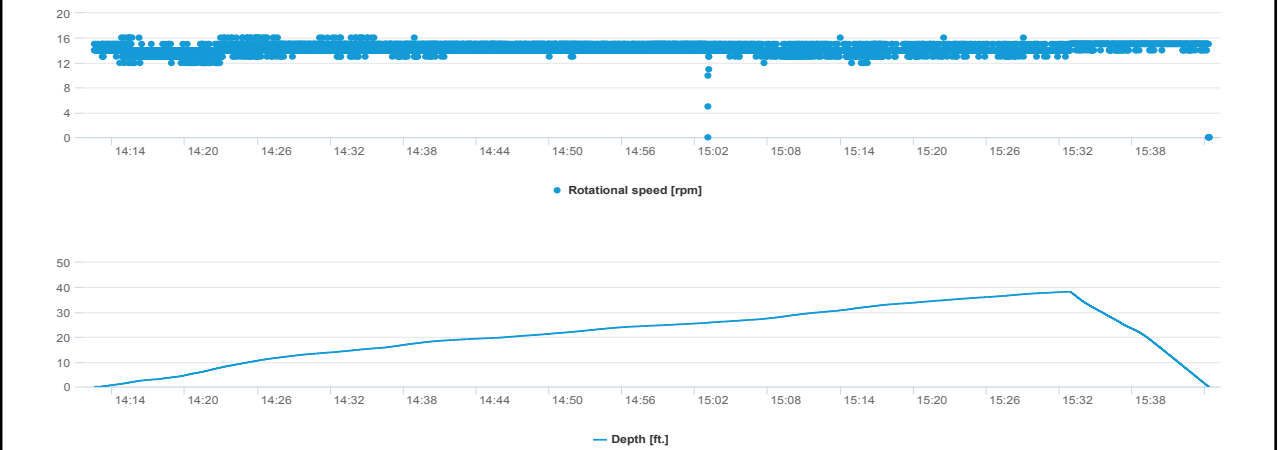
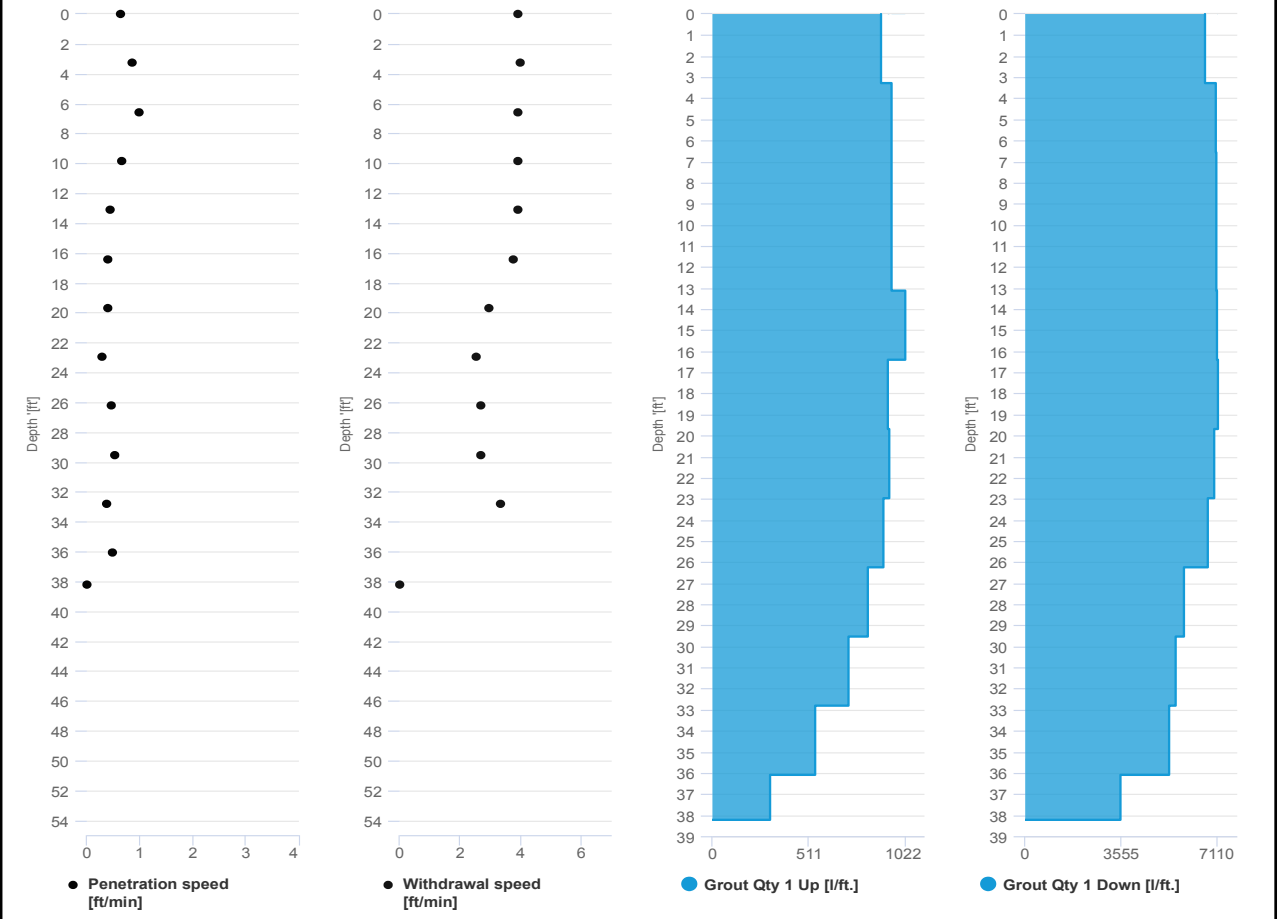


Project name: Douglass Street BCG ISS Element name: 486a
Project number

Start date: 07/08/2024

Drilling rig: BG36H_5717

Details		Start time: 02:12 PM	
Max. depth: 38.22 ft.		End Date: 07/08/2024	
Volume/m 1: 64.27 ft³		End time: 03:44 PM	
		Production duration: 01:31:48	
		Final depth time: 03:32 PM	
		Total suspension quantity: 746.87 ft³	



SCM Report

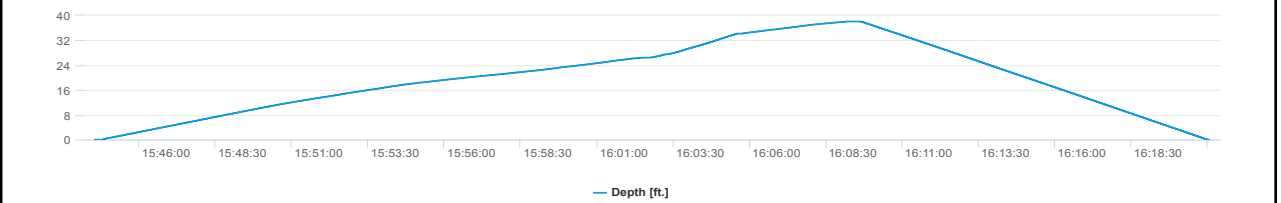
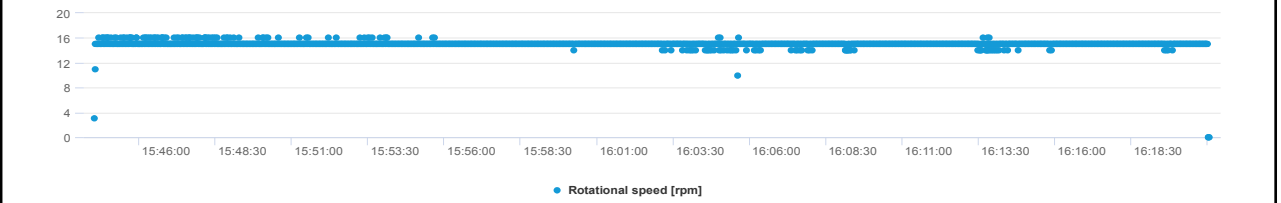
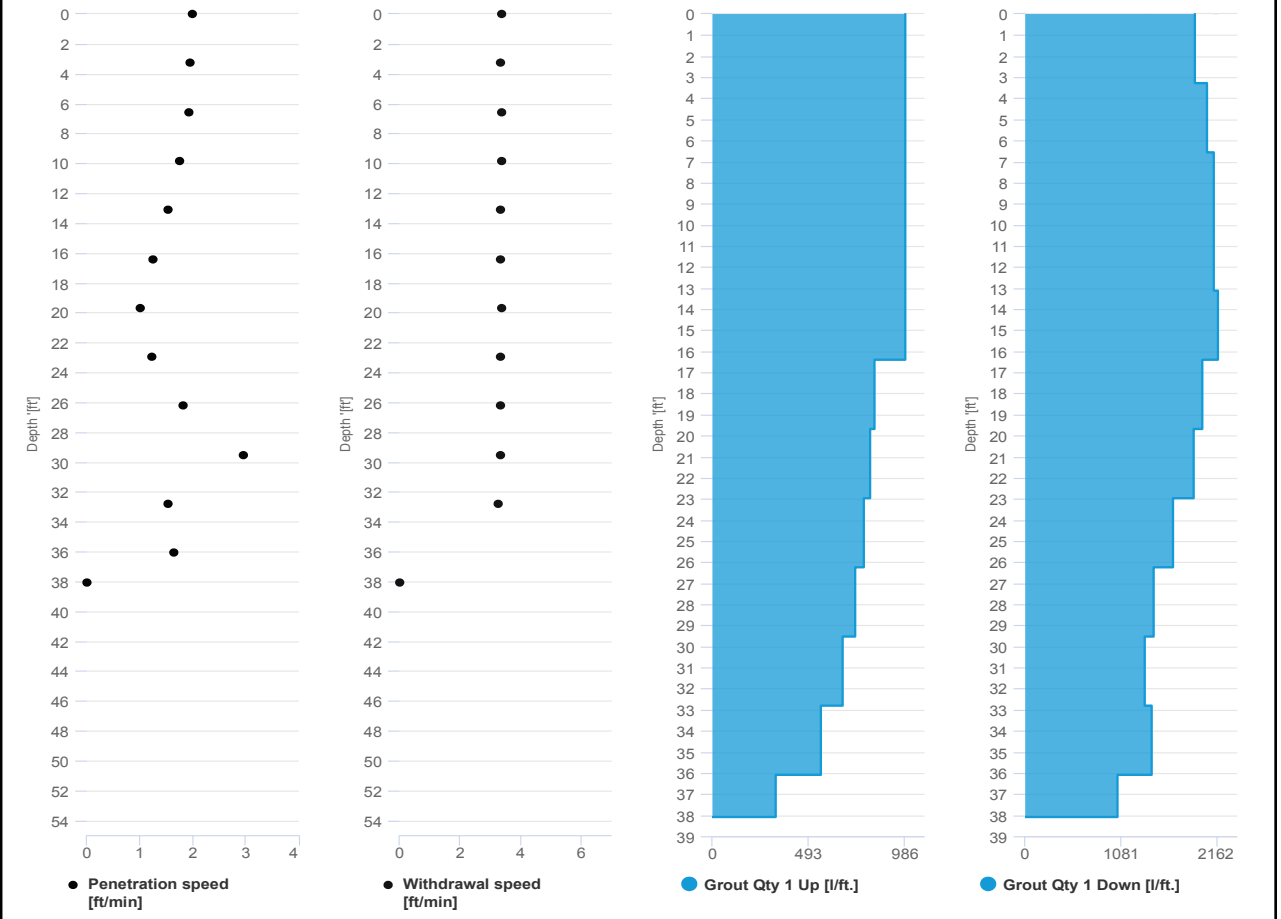


Project name: Douglass Street BCG ISS Element name: 486b
Project number

Start date: 07/08/2024

Drilling rig: BG36H_5717

Details		Start time: 03:44 PM	
Max. depth: 38.09 ft.		End Date: 07/08/2024	
Volume/m 1: 25.77 ft³		End time: 04:21 PM	
		Production duration: 00:36:32	
		Final depth time: 04:09 PM	
		Total suspension quantity: 300.1 ft³	



SCM Report

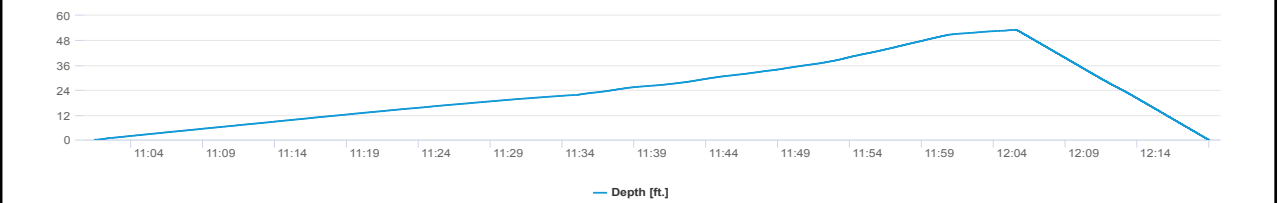
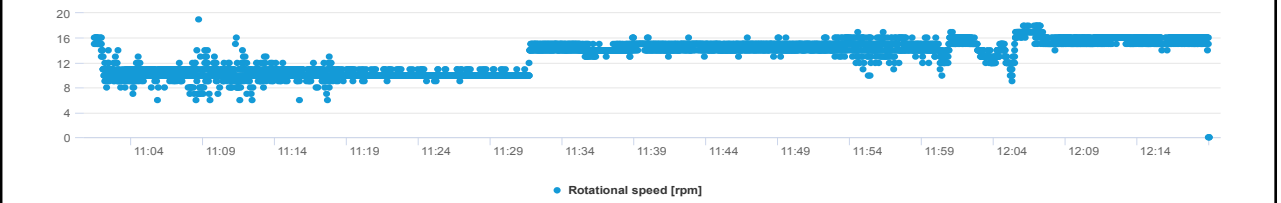
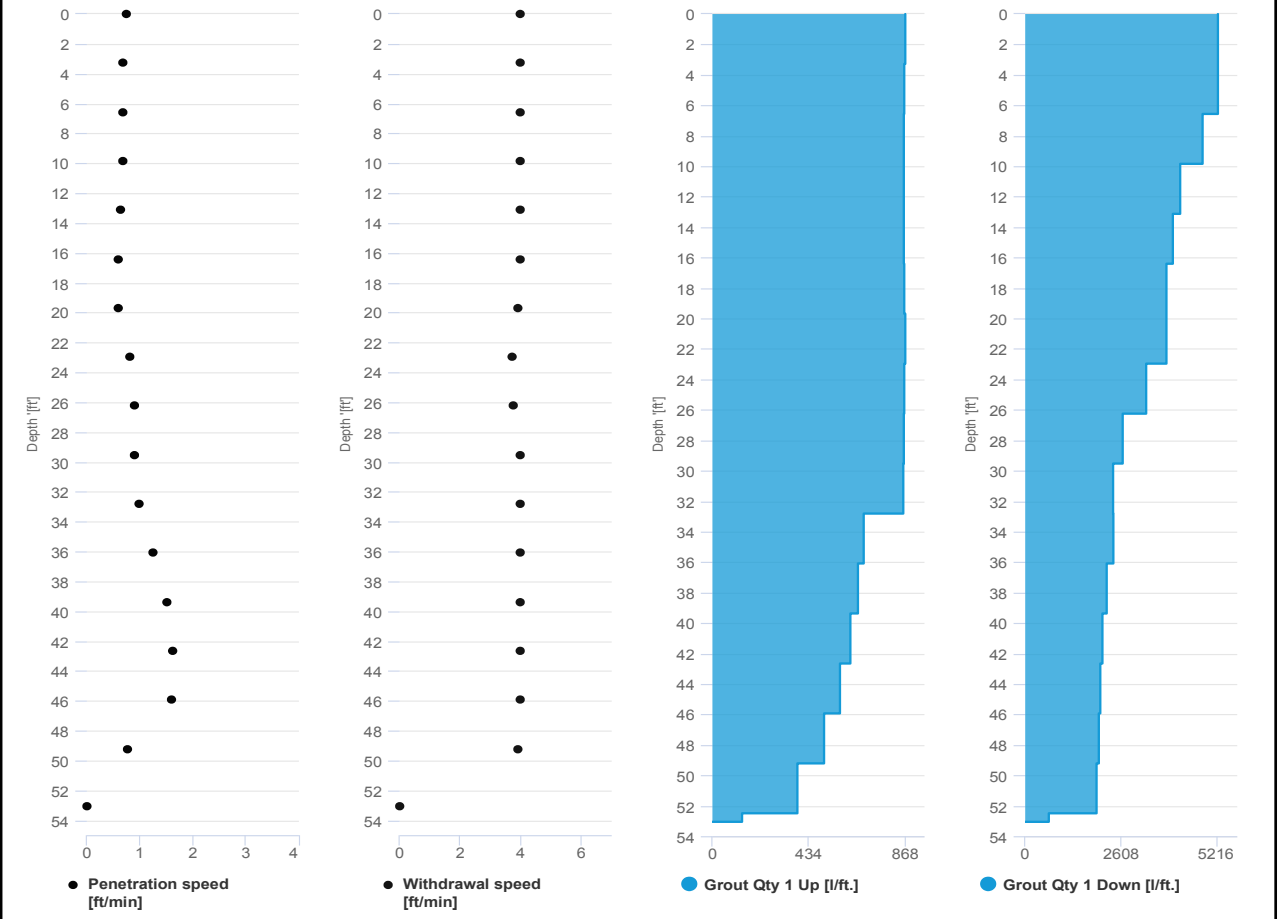


Project name: Douglass Street BCG ISS Element name: 491a
 Project number

Start date: 07/08/2024

Drilling rig: BG36H_5717

Details		Start time	
Max. depth	53.05 ft.		11:01 AM
Volume/m 1	42.02 ft ³	End Date	07/08/2024
		End time	12:19 PM
		Production duration	01:17:33
		Final depth time	12:05 PM
		Total suspension quantity	677.124 ft ³



SCM Report

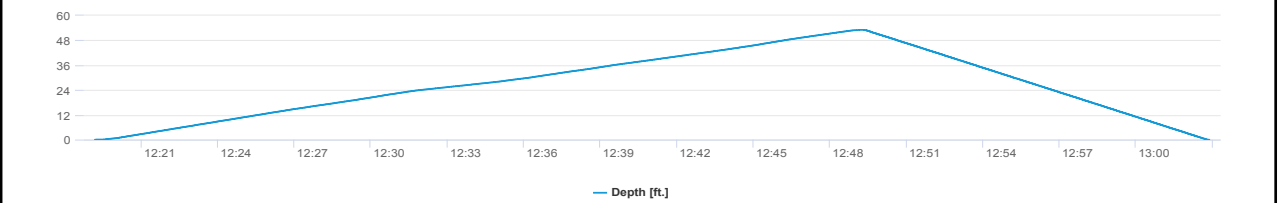
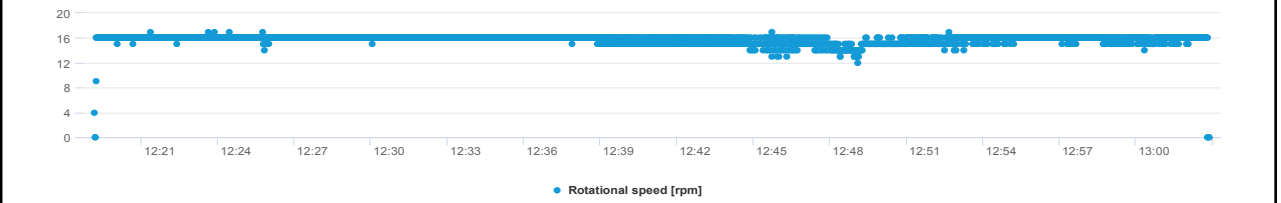
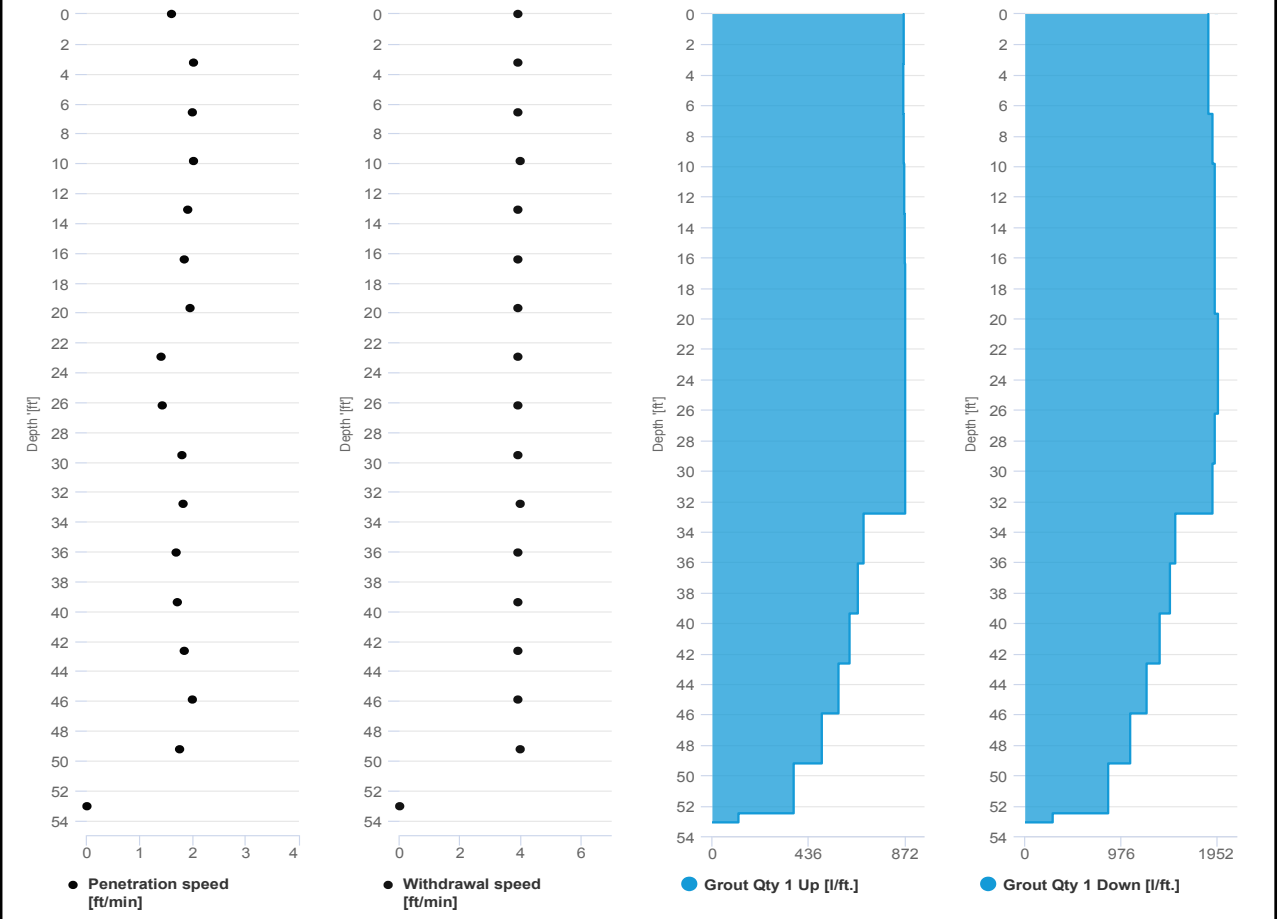


Project name: Douglass Street BCG ISS Element name: 491b
Project number

Start date: 07/08/2024

Drilling rig: BG36H_5717

Details		Start time: 12:19 PM	
Max. depth: 53.08 ft.		End Date: 07/08/2024	
Volume/m 1: 22.95 ft³		End time: 01:02 PM	
		Production duration: 00:43:43	
		Final depth time: 12:49 PM	
		Total suspension quantity: 373.064 ft³	





IMPACT ENVIRONMENTAL

welcome to solid ground...

170 Keyland Court | Bohemia | NY | 11716 | 631.269.8800

www.impactenvironmental.com

UPWIND CAMP READINGS

251 DOUGLASS STREET, BROOKLYN, NY

Instrument Name	DustTrak DRX
Model Number	8533
Serial Number	8533181205
Firmware Version	3.1
Calibration Date	5/31/2023
Test Name	MANUAL_005
Test Start Time	6:59:22 AM
Test Start Date	7/8/2024
Test Length [D:H:M]	0:10:19
Test Interval [M:S]	1:00
PM10 Average [mg/m3]	0.101
PM10 Minimum [mg/m3]	0.024
PM10 Maximum [mg/m3]	0.738
PM10 TWA [mg/m3]	0.121
Photometric User Cal	1
Size Correction User Cal	1
Flow User Cal	0
Errors	
Number of Samples	619

Elapsed Time [s]	PM10 [mg/m3]	Alarms	Errors
7:00	0.089		
7:01	0.07		
7:02	0.054		
7:03	0.049		
7:04	0.051		
7:05	0.052		
7:06	0.05		
7:07	0.052		
7:08	0.065		
7:09	0.058		
7:10	0.055		
7:11	0.055		
7:12	0.053		
7:13	0.052		
7:14	0.053		
7:15	0.062		
7:16	0.065		
7:17	0.07		
7:18	0.061		
7:19	0.057		
7:20	0.058		
7:21	0.055		
7:22	0.052		

7:23	0.055
7:24	0.063
7:25	0.059
7:26	0.055
7:27	0.058
7:28	0.059
7:29	0.06
7:30	0.059
7:31	0.061
7:32	0.061
7:33	0.058
7:34	0.057
7:35	0.059
7:36	0.056
7:37	0.055
7:38	0.056
7:39	0.092
7:40	0.207
7:41	0.406
7:42	0.738
7:43	0.13
7:44	0.092
7:45	0.448
7:46	0.166
7:47	0.059
7:48	0.059
7:49	0.071
7:50	0.071
7:51	0.061
7:52	0.063
7:53	0.059
7:54	0.082
7:55	0.122
7:56	0.096
7:57	0.064
7:58	0.092
7:59	0.091
8:00	0.085
8:01	0.079
8:02	0.085
8:03	0.059
8:04	0.061
8:05	0.055
8:06	0.063

8:07	0.058
8:08	0.056
8:09	0.055
8:10	0.057
8:11	0.061
8:12	0.053
8:13	0.056
8:14	0.058
8:15	0.093
8:16	0.061
8:17	0.069
8:18	0.133
8:19	0.114
8:20	0.104
8:21	0.129
8:22	0.138
8:23	0.432
8:24	0.366
8:25	0.213
8:26	0.167
8:27	0.096
8:28	0.086
8:29	0.086
8:30	0.092
8:31	0.095
8:32	0.132
8:33	0.116
8:34	0.152
8:35	0.082
8:36	0.093
8:37	0.08
8:38	0.127
8:39	0.118
8:40	0.065
8:41	0.063
8:42	0.061
8:43	0.062
8:44	0.065
8:45	0.064
8:46	0.061
8:47	0.068
8:48	0.053
8:49	0.05
8:50	0.056

8:51	0.053
8:52	0.049
8:53	0.062
8:54	0.058
8:55	0.052
8:56	0.054
8:57	0.053
8:58	0.055
8:59	0.05
9:00	0.05
9:01	0.05
9:02	0.048
9:03	0.048
9:04	0.046
9:05	0.043
9:06	0.051
9:07	0.042
9:08	0.047
9:09	0.042
9:10	0.042
9:11	0.042
9:12	0.042
9:13	0.038
9:14	0.038
9:15	0.038
9:16	0.041
9:17	0.04
9:18	0.038
9:19	0.039
9:20	0.038
9:21	0.038
9:22	0.038
9:23	0.038
9:24	0.037
9:25	0.039
9:26	0.038
9:27	0.04
9:28	0.042
9:29	0.043
9:30	0.039
9:31	0.044
9:32	0.041
9:33	0.04
9:34	0.053

9:35	0.104
9:36	0.202
9:37	0.094
9:38	0.098
9:39	0.151
9:40	0.165
9:41	0.083
9:42	0.466
9:43	0.155
9:44	0.114
9:45	0.07
9:46	0.253
9:47	0.26
9:48	0.666
9:49	0.083
9:50	0.065
9:51	0.086
9:52	0.062
9:53	0.436
9:54	0.101
9:55	0.085
9:56	0.17
9:57	0.081
9:58	0.17
9:59	0.08
10:00	0.062
10:01	0.081
10:02	0.057
10:03	0.173
10:04	0.217
10:05	0.081
10:06	0.135
10:07	0.071
10:08	0.086
10:09	0.204
10:10	0.056
10:11	0.179
10:12	0.209
10:13	0.052
10:14	0.053
10:15	0.445
10:16	0.193
10:17	0.29
10:18	0.459

10:19	0.235
10:20	0.145
10:21	0.051
10:22	0.066
10:23	0.046
10:24	0.199
10:25	0.109
10:26	0.068
10:27	0.183
10:28	0.217
10:29	0.095
10:30	0.059
10:31	0.05
10:32	0.059
10:33	0.133
10:34	0.042
10:35	0.043
10:36	0.065
10:37	0.066
10:38	0.048
10:39	0.05
10:40	0.106
10:41	0.069
10:42	0.059
10:43	0.063
10:44	0.142
10:45	0.205
10:46	0.154
10:47	0.099
10:48	0.092
10:49	0.139
10:50	0.111
10:51	0.164
10:52	0.299
10:53	0.129
10:54	0.081
10:55	0.064
10:56	0.143
10:57	0.082
10:58	0.099
10:59	0.133
11:00	0.235
11:01	0.15
11:02	0.169

11:03	0.292
11:04	0.225
11:05	0.172
11:06	0.198
11:07	0.106
11:08	0.163
11:09	0.141
11:10	0.121
11:11	0.126
11:12	0.083
11:13	0.097
11:14	0.138
11:15	0.175
11:16	0.187
11:17	0.126
11:18	0.347
11:19	0.518
11:20	0.143
11:21	0.138
11:22	0.12
11:23	0.16
11:24	0.138
11:25	0.11
11:26	0.064
11:27	0.064
11:28	0.171
11:29	0.107
11:30	0.088
11:31	0.172
11:32	0.188
11:33	0.193
11:34	0.248
11:35	0.116
11:36	0.116
11:37	0.168
11:38	0.247
11:39	0.313
11:40	0.25
11:41	0.077
11:42	0.049
11:43	0.117
11:44	0.062
11:45	0.089
11:46	0.077

11:47	0.047
11:48	0.086
11:49	0.058
11:50	0.069
11:51	0.066
11:52	0.067
11:53	0.053
11:54	0.238
11:55	0.338
11:56	0.043
11:57	0.041
11:58	0.039
11:59	0.039
12:00	0.041
12:01	0.045
12:02	0.042
12:03	0.04
12:04	0.046
12:05	0.043
12:06	0.038
12:07	0.043
12:08	0.048
12:09	0.049
12:10	0.047
12:11	0.049
12:12	0.053
12:13	0.054
12:14	0.069
12:15	0.059
12:16	0.041
12:17	0.045
12:18	0.06
12:19	0.057
12:20	0.058
12:21	0.05
12:22	0.069
12:23	0.08
12:24	0.084
12:25	0.075
12:26	0.18
12:27	0.191
12:28	0.092
12:29	0.067
12:30	0.069

12:31	0.099
12:32	0.078
12:33	0.083
12:34	0.098
12:35	0.091
12:36	0.09
12:37	0.065
12:38	0.167
12:39	0.245
12:40	0.389
12:41	0.194
12:42	0.384
12:43	0.084
12:44	0.532
12:45	0.189
12:46	0.086
12:47	0.168
12:48	0.158
12:49	0.224
12:50	0.14
12:51	0.183
12:52	0.154
12:53	0.265
12:54	0.123
12:55	0.086
12:56	0.209
12:57	0.218
12:58	0.176
12:59	0.213
13:00	0.152
13:01	0.186
13:02	0.345
13:03	0.227
13:04	0.275
13:05	0.175
13:06	0.18
13:07	0.11
13:08	0.09
13:09	0.201
13:10	0.177
13:11	0.093
13:12	0.152
13:13	0.218
13:14	0.117

13:15	0.16
13:16	0.141
13:17	0.151
13:18	0.167
13:19	0.248
13:20	0.104
13:21	0.134
13:22	0.11
13:23	0.096
13:24	0.427
13:25	0.172
13:26	0.147
13:27	0.112
13:28	0.092
13:29	0.23
13:30	0.222
13:31	0.108
13:32	0.128
13:33	0.142
13:34	0.07
13:35	0.083
13:36	0.113
13:37	0.076
13:38	0.163
13:39	0.144
13:40	0.051
13:41	0.062
13:42	0.051
13:43	0.059
13:44	0.065
13:45	0.062
13:46	0.047
13:47	0.046
13:48	0.057
13:49	0.056
13:50	0.045
13:51	0.051
13:52	0.045
13:53	0.049
13:54	0.067
13:55	0.064
13:56	0.1
13:57	0.081
13:58	0.055

13:59	0.052
14:00	0.05
14:01	0.049
14:02	0.042
14:03	0.047
14:04	0.048
14:05	0.061
14:06	0.058
14:07	0.056
14:08	0.047
14:09	0.044
14:10	0.044
14:11	0.062
14:12	0.107
14:13	0.066
14:14	0.099
14:15	0.076
14:16	0.053
14:17	0.049
14:18	0.047
14:19	0.046
14:20	0.046
14:21	0.048
14:22	0.045
14:23	0.041
14:24	0.046
14:25	0.058
14:26	0.109
14:27	0.084
14:28	0.064
14:29	0.041
14:30	0.043
14:31	0.043
14:32	0.039
14:33	0.037
14:34	0.04
14:35	0.041
14:36	0.036
14:37	0.063
14:38	0.047
14:39	0.041
14:40	0.062
14:41	0.036
14:42	0.036

14:43	0.041
14:44	0.035
14:45	0.036
14:46	0.041
14:47	0.037
14:48	0.033
14:49	0.035
14:50	0.035
14:51	0.032
14:52	0.037
14:53	0.042
14:54	0.043
14:55	0.031
14:56	0.034
14:57	0.082
14:58	0.048
14:59	0.04
15:00	0.037
15:01	0.032
15:02	0.041
15:03	0.038
15:04	0.03
15:05	0.027
15:06	0.033
15:07	0.069
15:08	0.039
15:09	0.03
15:10	0.031
15:11	0.033
15:12	0.036
15:13	0.037
15:14	0.035
15:15	0.04
15:16	0.042
15:17	0.082
15:18	0.038
15:19	0.028
15:20	0.029
15:21	0.037
15:22	0.085
15:23	0.035
15:24	0.029
15:25	0.033
15:26	0.03

15:27	0.03
15:28	0.03
15:29	0.035
15:30	0.03
15:31	0.03
15:32	0.038
15:33	0.031
15:34	0.033
15:35	0.052
15:36	0.035
15:37	0.03
15:38	0.031
15:39	0.029
15:40	0.032
15:41	0.032
15:42	0.028
15:43	0.029
15:44	0.033
15:45	0.027
15:46	0.037
15:47	0.03
15:48	0.027
15:49	0.027
15:50	0.027
15:51	0.028
15:52	0.026
15:53	0.028
15:54	0.027
15:55	0.115
15:56	0.029
15:57	0.028
15:58	0.031
15:59	0.027
16:00	0.03
16:01	0.03
16:02	0.027
16:03	0.027
16:04	0.027
16:05	0.031
16:06	0.029
16:07	0.027
16:08	0.044
16:09	0.028
16:10	0.028

16:11	0.029
16:12	0.027
16:13	0.027
16:14	0.026
16:15	0.027
16:16	0.029
16:17	0.026
16:18	0.031
16:19	0.027
16:20	0.026
16:21	0.026
16:22	0.024
16:23	0.025
16:24	0.026
16:25	0.029
16:26	0.028
16:27	0.028
16:28	0.027
16:29	0.027
16:30	0.025
16:31	0.026
16:32	0.029
16:33	0.026
16:34	0.026
16:35	0.027
16:36	0.027
16:37	0.026
16:38	0.026
16:39	0.027
16:40	0.028
16:41	0.027
16:42	0.028
16:43	0.027
16:44	0.029
16:45	0.028
16:46	0.028
16:47	0.038
16:48	0.045
16:49	0.031
16:50	0.027
16:51	0.028
16:52	0.026
16:53	0.026
16:54	0.027

16:55	0.027
16:56	0.027
16:57	0.028
16:58	0.026
16:59	0.026
17:00	0.026
17:01	0.028
17:02	0.025
17:03	0.026
17:04	0.03
17:05	0.025
17:06	0.027
17:07	0.026
17:08	0.027
17:09	0.029
17:10	0.027
17:11	0.028
17:12	0.026
17:13	0.027
17:14	0.028
17:15	0.032
17:16	0.028
17:17	0.027
17:18	0.027

DOWNWIND CAMP READINGS

251 DOUGLASS STREET, BROOKLYN, NY



Instrument Name	DustTrak II
Model Number	8530
Serial Number	8530224601
Firmware Version	3.1
Calibration Date	11/9/2022
Test Name	MANUAL_005
Test Start Time	6:52:10 AM
Test Start Date	7/8/2024
Test Length [D:H:M]	0:10:36
Test Interval [M:S]	1:00
Mass Average [mg/m3]	0.093
Mass Minimum [mg/m3]	0.021
Mass Maximum [mg/m3]	0.542
Mass TWA [mg/m3]	0.102
Photometric User Cal	1
Flow User Cal	0
Errors	
Number of Samples	636

Elapsed Time [s]	Mass [mg/m3]	Alarms	Errors
6:53	0.109		
6:54	0.102		
6:55	0.076		
6:56	0.071		
6:57	0.076		
6:58	0.082		
6:59	0.078		
7:00	0.109		
7:01	0.094		
7:02	0.078		
7:03	0.113		
7:04	0.082		
7:05	0.083		
7:06	0.079		
7:07	0.103		
7:08	0.08		
7:09	0.071		
7:10	0.08		
7:11	0.072		
7:12	0.072		
7:13	0.07		
7:14	0.066		
7:15	0.067		
7:16	0.072		

7:17	0.074
7:18	0.071
7:19	0.077
7:20	0.079
7:21	0.133
7:22	0.141
7:23	0.083
7:24	0.073
7:25	0.077
7:26	0.067
7:27	0.072
7:28	0.069
7:29	0.067
7:30	0.068
7:31	0.07
7:32	0.075
7:33	0.081
7:34	0.088
7:35	0.088
7:36	0.034
7:37	0.157
7:38	0.097
7:39	0.088
7:40	0.062
7:41	0.093
7:42	0.083
7:43	0.093
7:44	0.084
7:45	0.086
7:46	0.084
7:47	0.093
7:48	0.097
7:49	0.118
7:50	0.116
7:51	0.063
7:52	0.114
7:53	0.049
7:54	0.093
7:55	0.08
7:56	0.07
7:57	0.071
7:58	0.075
7:59	0.073
8:00	0.095

8:01	0.073
8:02	0.076
8:03	0.07
8:04	0.091
8:05	0.141
8:06	0.099
8:07	0.103
8:08	0.093
8:09	0.078
8:10	0.07
8:11	0.065
8:12	0.088
8:13	0.102
8:14	0.128
8:15	0.118
8:16	0.098
8:17	0.121
8:18	0.101
8:19	0.093
8:20	0.094
8:21	0.074
8:22	0.081
8:23	0.082
8:24	0.085
8:25	0.123
8:26	0.086
8:27	0.091
8:28	0.162
8:29	0.173
8:30	0.091
8:31	0.068
8:32	0.073
8:33	0.073
8:34	0.07
8:35	0.077
8:36	0.067
8:37	0.068
8:38	0.066
8:39	0.084
8:40	0.094
8:41	0.062
8:42	0.072
8:43	0.065
8:44	0.065

8:45	0.059
8:46	0.065
8:47	0.064
8:48	0.07
8:49	0.063
8:50	0.062
8:51	0.065
8:52	0.068
8:53	0.064
8:54	0.062
8:55	0.065
8:56	0.071
8:57	0.081
8:58	0.087
8:59	0.076
9:00	0.074
9:01	0.067
9:02	0.072
9:03	0.07
9:04	0.069
9:05	0.064
9:06	0.064
9:07	0.08
9:08	0.068
9:09	0.066
9:10	0.057
9:11	0.058
9:12	0.056
9:13	0.064
9:14	0.122
9:15	0.101
9:16	0.056
9:17	0.051
9:18	0.053
9:19	0.056
9:20	0.056
9:21	0.053
9:22	0.057
9:23	0.06
9:24	0.055
9:25	0.061
9:26	0.06
9:27	0.056
9:28	0.053

9:29	0.062
9:30	0.055
9:31	0.048
9:32	0.059
9:33	0.049
9:34	0.064
9:35	0.073
9:36	0.078
9:37	0.05
9:38	0.053
9:39	0.059
9:40	0.053
9:41	0.053
9:42	0.052
9:43	0.053
9:44	0.063
9:45	0.053
9:46	0.053
9:47	0.054
9:48	0.062
9:49	0.063
9:50	0.061
9:51	0.056
9:52	0.057
9:53	0.054
9:54	0.05
9:55	0.077
9:56	0.071
9:57	0.07
9:58	0.071
9:59	0.055
10:00	0.05
10:01	0.048
10:02	0.051
10:03	0.056
10:04	0.053
10:05	0.052
10:06	0.079
10:07	0.061
10:08	0.065
10:09	0.078
10:10	0.057
10:11	0.051
10:12	0.069

10:13	0.101
10:14	0.071
10:15	0.051
10:16	0.056
10:17	0.047
10:18	0.048
10:19	0.108
10:20	0.098
10:21	0.065
10:22	0.063
10:23	0.069
10:24	0.061
10:25	0.056
10:26	0.058
10:27	0.065
10:28	0.115
10:29	0.167
10:30	0.377
10:31	0.206
10:32	0.096
10:33	0.083
10:34	0.084
10:35	0.078
10:36	0.139
10:37	0.326
10:38	0.134
10:39	0.136
10:40	0.11
10:41	0.082
10:42	0.066
10:43	0.172
10:44	0.16
10:45	0.14
10:46	0.047
10:47	0.126
10:48	0.194
10:49	0.078
10:50	0.07
10:51	0.086
10:52	0.088
10:53	0.088
10:54	0.08
10:55	0.119
10:56	0.11

10:57	0.13
10:58	0.082
10:59	0.071
11:00	0.125
11:01	0.138
11:02	0.162
11:03	0.095
11:04	0.086
11:05	0.257
11:06	0.092
11:07	0.088
11:08	0.102
11:09	0.112
11:10	0.139
11:11	0.091
11:12	0.095
11:13	0.084
11:14	0.084
11:15	0.117
11:16	0.146
11:17	0.114
11:18	0.093
11:19	0.09
11:20	0.098
11:21	0.083
11:22	0.065
11:23	0.068
11:24	0.07
11:25	0.063
11:26	0.061
11:27	0.077
11:28	0.095
11:29	0.071
11:30	0.084
11:31	0.058
11:32	0.048
11:33	0.089
11:34	0.058
11:35	0.05
11:36	0.045
11:37	0.152
11:38	0.105
11:39	0.05
11:40	0.094

11:41	0.109
11:42	0.102
11:43	0.071
11:44	0.109
11:45	0.067
11:46	0.064
11:47	0.093
11:48	0.053
11:49	0.078
11:50	0.068
11:51	0.101
11:52	0.075
11:53	0.096
11:54	0.087
11:55	0.097
11:56	0.082
11:57	0.095
11:58	0.081
11:59	0.064
12:00	0.056
12:01	0.059
12:02	0.054
12:03	0.049
12:04	0.059
12:05	0.07
12:06	0.066
12:07	0.057
12:08	0.05
12:09	0.047
12:10	0.052
12:11	0.059
12:12	0.063
12:13	0.06
12:14	0.069
12:15	0.066
12:16	0.057
12:17	0.051
12:18	0.063
12:19	0.066
12:20	0.064
12:21	0.058
12:22	0.078
12:23	0.122
12:24	0.096

12:25	0.083
12:26	0.098
12:27	0.19
12:28	0.124
12:29	0.107
12:30	0.097
12:31	0.101
12:32	0.093
12:33	0.087
12:34	0.101
12:35	0.196
12:36	0.099
12:37	0.078
12:38	0.09
12:39	0.083
12:40	0.083
12:41	0.086
12:42	0.093
12:43	0.089
12:44	0.091
12:45	0.195
12:46	0.078
12:47	0.085
12:48	0.087
12:49	0.078
12:50	0.078
12:51	0.084
12:52	0.082
12:53	0.082
12:54	0.074
12:55	0.077
12:56	0.074
12:57	0.075
12:58	0.12
12:59	0.105
13:00	0.111
13:01	0.082
13:02	0.12
13:03	0.1
13:04	0.104
13:05	0.13
13:06	0.104
13:07	0.089
13:08	0.084

13:09	0.082
13:10	0.094
13:11	0.092
13:12	0.084
13:13	0.132
13:14	0.078
13:15	0.073
13:16	0.079
13:17	0.076
13:18	0.085
13:19	0.08
13:20	0.101
13:21	0.099
13:22	0.065
13:23	0.075
13:24	0.076
13:25	0.102
13:26	0.094
13:27	0.124
13:28	0.191
13:29	0.1
13:30	0.092
13:31	0.106
13:32	0.135
13:33	0.112
13:34	0.157
13:35	0.186
13:36	0.173
13:37	0.185
13:38	0.113
13:39	0.077
13:40	0.362
13:41	0.098
13:42	0.08
13:43	0.078
13:44	0.118
13:45	0.038
13:46	0.085
13:47	0.067
13:48	0.12
13:49	0.102
13:50	0.064
13:51	0.021
13:52	0.112

13:53	0.089
13:54	0.083
13:55	0.101
13:56	0.095
13:57	0.093
13:58	0.145
13:59	0.165
14:00	0.105
14:01	0.074
14:02	0.071
14:03	0.069
14:04	0.125
14:05	0.085
14:06	0.07
14:07	0.08
14:08	0.078
14:09	0.079
14:10	0.075
14:11	0.125
14:12	0.083
14:13	0.081
14:14	0.173
14:15	0.06
14:16	0.062
14:17	0.057
14:18	0.055
14:19	0.066
14:20	0.064
14:21	0.054
14:22	0.062
14:23	0.103
14:24	0.071
14:25	0.07
14:26	0.103
14:27	0.068
14:28	0.072
14:29	0.061
14:30	0.052
14:31	0.055
14:32	0.058
14:33	0.057
14:34	0.052
14:35	0.05
14:36	0.051

14:37	0.05
14:38	0.065
14:39	0.05
14:40	0.346
14:41	0.405
14:42	0.09
14:43	0.073
14:44	0.27
14:45	0.37
14:46	0.11
14:47	0.071
14:48	0.139
14:49	0.076
14:50	0.542
14:51	0.091
14:52	0.069
14:53	0.051
14:54	0.055
14:55	0.057
14:56	0.043
14:57	0.104
14:58	0.043
14:59	0.055
15:00	0.092
15:01	0.051
15:02	0.039
15:03	0.039
15:04	0.038
15:05	0.045
15:06	0.248
15:07	0.063
15:08	0.039
15:09	0.043
15:10	0.039
15:11	0.05
15:12	0.135
15:13	0.101
15:14	0.36
15:15	0.14
15:16	0.063
15:17	0.046
15:18	0.055
15:19	0.066
15:20	0.043

15:21	0.039
15:22	0.044
15:23	0.045
15:24	0.042
15:25	0.037
15:26	0.037
15:27	0.038
15:28	0.038
15:29	0.042
15:30	0.039
15:31	0.047
15:32	0.053
15:33	0.045
15:34	0.051
15:35	0.04
15:36	0.049
15:37	0.081
15:38	0.075
15:39	0.042
15:40	0.055
15:41	0.047
15:42	0.044
15:43	0.039
15:44	0.048
15:45	0.041
15:46	0.052
15:47	0.042
15:48	0.041
15:49	0.039
15:50	0.05
15:51	0.041
15:52	0.042
15:53	0.039
15:54	0.044
15:55	0.041
15:56	0.063
15:57	0.042
15:58	0.039
15:59	0.045
16:00	0.045
16:01	0.045
16:02	0.106
16:03	0.097
16:04	0.065

16:05	0.064
16:06	0.096
16:07	0.095
16:08	0.082
16:09	0.079
16:10	0.091
16:11	0.066
16:12	0.047
16:13	0.063
16:14	0.11
16:15	0.049
16:16	0.043
16:17	0.046
16:18	0.083
16:19	0.053
16:20	0.047
16:21	0.045
16:22	0.041
16:23	0.037
16:24	0.041
16:25	0.04
16:26	0.051
16:27	0.039
16:28	0.038
16:29	0.039
16:30	0.046
16:31	0.04
16:32	0.062
16:33	0.063
16:34	0.04
16:35	0.046
16:36	0.049
16:37	0.078
16:38	0.054
16:39	0.043
16:40	0.113
16:41	0.047
16:42	0.04
16:43	0.044
16:44	0.043
16:45	0.042
16:46	0.051
16:47	0.081
16:48	0.065

16:49	0.136
16:50	0.062
16:51	0.064
16:52	0.054
16:53	0.06
16:54	0.073
16:55	0.104
16:56	0.065
16:57	0.056
16:58	0.06
16:59	0.057
17:00	0.062
17:01	0.05
17:02	0.092
17:03	0.054
17:04	0.056
17:05	0.068
17:06	0.05
17:07	0.051
17:08	0.05
17:09	0.066
17:10	0.045
17:11	0.047
17:12	0.061
17:13	0.045
17:14	0.042
17:15	0.045
17:16	0.051
17:17	0.047
17:18	0.044
17:19	0.041
17:20	0.042
17:21	0.041
17:22	0.04
17:23	0.042
17:24	0.044
17:25	0.043
17:26	0.04
17:27	0.045
17:28	0.106

Instrument Name	DustTrak II
Model Number	8530
Serial Number	8530224603
Firmware Version	3.1
Calibration Date	4/3/2024
Test Name	MANUAL_006
Test Start Time	6:55:28 AM
Test Start Date	7/8/2024
Test Length [D:H:M]	0:10:29
Test Interval [M:S]	1:00
Mass Average [mg/m3]	0.05
Mass Minimum [mg/m3]	0.022
Mass Maximum [mg/m3]	0.895
Mass TWA [mg/m3]	0.057
Photometric User Cal	1
Flow User Cal	0
Errors	
Number of Samples	629

Elapsed Time [s]	Mass [mg/m3]	Alarms	Errors
6:56	0.139		
6:57	0.066		
6:58	0.062		
6:59	0.062		
7:00	0.061		
7:01	0.066		
7:02	0.077		
7:03	0.063		
7:04	0.066		
7:05	0.064		
7:06	0.065		
7:07	0.065		
7:08	0.065		
7:09	0.066		
7:10	0.067		
7:11	0.068		
7:12	0.064		
7:13	0.065		
7:14	0.065		
7:15	0.064		
7:16	0.066		
7:17	0.065		
7:18	0.067		
7:19	0.065		

7:20	0.065
7:21	0.076
7:22	0.133
7:23	0.087
7:24	0.069
7:25	0.067
7:26	0.071
7:27	0.07
7:28	0.065
7:29	0.064
7:30	0.065
7:31	0.068
7:32	0.066
7:33	0.072
7:34	0.081
7:35	0.08
7:36	0.075
7:37	0.104
7:38	0.098
7:39	0.09
7:40	0.088
7:41	0.089
7:42	0.085
7:43	0.079
7:44	0.083
7:45	0.128
7:46	0.132
7:47	0.081
7:48	0.099
7:49	0.089
7:50	0.075
7:51	0.07
7:52	0.073
7:53	0.079
7:54	0.076
7:55	0.078
7:56	0.081
7:57	0.07
7:58	0.07
7:59	0.067
8:00	0.065
8:01	0.066
8:02	0.066
8:03	0.065

8:04	0.071
8:05	0.082
8:06	0.081
8:07	0.085
8:08	0.071
8:09	0.07
8:10	0.073
8:11	0.067
8:12	0.077
8:13	0.094
8:14	0.102
8:15	0.087
8:16	0.077
8:17	0.072
8:18	0.069
8:19	0.082
8:20	0.074
8:21	0.066
8:22	0.065
8:23	0.064
8:24	0.065
8:25	0.059
8:26	0.062
8:27	0.063
8:28	0.068
8:29	0.096
8:30	0.061
8:31	0.059
8:32	0.057
8:33	0.058
8:34	0.057
8:35	0.069
8:36	0.075
8:37	0.06
8:38	0.066
8:39	0.073
8:40	0.057
8:41	0.06
8:42	0.063
8:43	0.064
8:44	0.058
8:45	0.057
8:46	0.06
8:47	0.057

8:48	0.057
8:49	0.061
8:50	0.058
8:51	0.058
8:52	0.062
8:53	0.061
8:54	0.058
8:55	0.058
8:56	0.054
8:57	0.056
8:58	0.054
8:59	0.053
9:00	0.059
9:01	0.052
9:02	0.05
9:03	0.052
9:04	0.05
9:05	0.052
9:06	0.056
9:07	0.061
9:08	0.054
9:09	0.055
9:10	0.048
9:11	0.044
9:12	0.043
9:13	0.049
9:14	0.047
9:15	0.044
9:16	0.044
9:17	0.042
9:18	0.043
9:19	0.044
9:20	0.049
9:21	0.047
9:22	0.049
9:23	0.049
9:24	0.041
9:25	0.042
9:26	0.073
9:27	0.053
9:28	0.043
9:29	0.036
9:30	0.045
9:31	0.049

9:32	0.038
9:33	0.038
9:34	0.04
9:35	0.042
9:36	0.04
9:37	0.036
9:38	0.041
9:39	0.039
9:40	0.04
9:41	0.041
9:42	0.04
9:43	0.039
9:44	0.038
9:45	0.038
9:46	0.036
9:47	0.037
9:48	0.036
9:49	0.04
9:50	0.043
9:51	0.04
9:52	0.043
9:53	0.04
9:54	0.036
9:55	0.048
9:56	0.058
9:57	0.051
9:58	0.046
9:59	0.049
10:00	0.05
10:01	0.038
10:02	0.033
10:03	0.037
10:04	0.036
10:05	0.03
10:06	0.033
10:07	0.034
10:08	0.036
10:09	0.034
10:10	0.035
10:11	0.032
10:12	0.031
10:13	0.03
10:14	0.033
10:15	0.043

10:16	0.039
10:17	0.035
10:18	0.036
10:19	0.038
10:20	0.037
10:21	0.035
10:22	0.037
10:23	0.038
10:24	0.045
10:25	0.035
10:26	0.038
10:27	0.035
10:28	0.042
10:29	0.06
10:30	0.084
10:31	0.039
10:32	0.038
10:33	0.034
10:34	0.033
10:35	0.032
10:36	0.034
10:37	0.031
10:38	0.035
10:39	0.035
10:40	0.033
10:41	0.052
10:42	0.035
10:43	0.033
10:44	0.031
10:45	0.032
10:46	0.033
10:47	0.033
10:48	0.036
10:49	0.044
10:50	0.054
10:51	0.053
10:52	0.049
10:53	0.043
10:54	0.041
10:55	0.036
10:56	0.031
10:57	0.038
10:58	0.053
10:59	0.054

11:00	0.053
11:01	0.045
11:02	0.041
11:03	0.061
11:04	0.054
11:05	0.056
11:06	0.058
11:07	0.058
11:08	0.059
11:09	0.06
11:10	0.062
11:11	0.063
11:12	0.056
11:13	0.059
11:14	0.061
11:15	0.055
11:16	0.063
11:17	0.073
11:18	0.081
11:19	0.073
11:20	0.051
11:21	0.045
11:22	0.046
11:23	0.048
11:24	0.045
11:25	0.044
11:26	0.046
11:27	0.055
11:28	0.061
11:29	0.061
11:30	0.051
11:31	0.043
11:32	0.041
11:33	0.045
11:34	0.041
11:35	0.037
11:36	0.036
11:37	0.043
11:38	0.04
11:39	0.043
11:40	0.043
11:41	0.061
11:42	0.069
11:43	0.036

11:44	0.034
11:45	0.036
11:46	0.035
11:47	0.036
11:48	0.037
11:49	0.043
11:50	0.073
11:51	0.044
11:52	0.037
11:53	0.066
11:54	0.048
11:55	0.049
11:56	0.047
11:57	0.04
11:58	0.045
11:59	0.046
12:00	0.043
12:01	0.04
12:02	0.044
12:03	0.039
12:04	0.053
12:05	0.039
12:06	0.044
12:07	0.041
12:08	0.034
12:09	0.034
12:10	0.034
12:11	0.035
12:12	0.037
12:13	0.035
12:14	0.036
12:15	0.038
12:16	0.039
12:17	0.039
12:18	0.036
12:19	0.034
12:20	0.036
12:21	0.04
12:22	0.055
12:23	0.064
12:24	0.066
12:25	0.062
12:26	0.087
12:27	0.075

12:28	0.073
12:29	0.078
12:30	0.076
12:31	0.067
12:32	0.064
12:33	0.065
12:34	0.072
12:35	0.091
12:36	0.081
12:37	0.081
12:38	0.07
12:39	0.069
12:40	0.066
12:41	0.07
12:42	0.071
12:43	0.069
12:44	0.076
12:45	0.07
12:46	0.058
12:47	0.065
12:48	0.065
12:49	0.065
12:50	0.069
12:51	0.06
12:52	0.057
12:53	0.054
12:54	0.058
12:55	0.056
12:56	0.052
12:57	0.054
12:58	0.056
12:59	0.055
13:00	0.059
13:01	0.057
13:02	0.061
13:03	0.054
13:04	0.056
13:05	0.056
13:06	0.051
13:07	0.064
13:08	0.06
13:09	0.059
13:10	0.057
13:11	0.054

13:12	0.056
13:13	0.061
13:14	0.056
13:15	0.052
13:16	0.056
13:17	0.058
13:18	0.054
13:19	0.055
13:20	0.051
13:21	0.049
13:22	0.07
13:23	0.053
13:24	0.056
13:25	0.051
13:26	0.074
13:27	0.074
13:28	0.08
13:29	0.068
13:30	0.048
13:31	0.051
13:32	0.052
13:33	0.087
13:34	0.09
13:35	0.052
13:36	0.056
13:37	0.054
13:38	0.895
13:39	0.062
13:40	0.051
13:41	0.054
13:42	0.046
13:43	0.044
13:44	0.049
13:45	0.048
13:46	0.051
13:47	0.051
13:48	0.047
13:49	0.051
13:50	0.067
13:51	0.085
13:52	0.055
13:53	0.054
13:54	0.059
13:55	0.056

13:56	0.051
13:57	0.056
13:58	0.051
13:59	0.049
14:00	0.047
14:01	0.05
14:02	0.06
14:03	0.04
14:04	0.042
14:05	0.046
14:06	0.043
14:07	0.049
14:08	0.052
14:09	0.046
14:10	0.045
14:11	0.048
14:12	0.049
14:13	0.041
14:14	0.049
14:15	0.046
14:16	0.044
14:17	0.044
14:18	0.041
14:19	0.042
14:20	0.044
14:21	0.046
14:22	0.048
14:23	0.045
14:24	0.054
14:25	0.046
14:26	0.05
14:27	0.096
14:28	0.044
14:29	0.038
14:30	0.041
14:31	0.037
14:32	0.041
14:33	0.039
14:34	0.037
14:35	0.036
14:36	0.032
14:37	0.033
14:38	0.033
14:39	0.031

14:40	0.034
14:41	0.063
14:42	0.052
14:43	0.04
14:44	0.039
14:45	0.051
14:46	0.044
14:47	0.064
14:48	0.041
14:49	0.035
14:50	0.051
14:51	0.036
14:52	0.033
14:53	0.03
14:54	0.035
14:55	0.059
14:56	0.039
14:57	0.029
14:58	0.025
14:59	0.036
15:00	0.038
15:01	0.035
15:02	0.028
15:03	0.024
15:04	0.031
15:05	0.03
15:06	0.028
15:07	0.028
15:08	0.025
15:09	0.024
15:10	0.024
15:11	0.029
15:12	0.022
15:13	0.023
15:14	0.052
15:15	0.032
15:16	0.025
15:17	0.03
15:18	0.024
15:19	0.025
15:20	0.025
15:21	0.023
15:22	0.024
15:23	0.024

15:24	0.024
15:25	0.024
15:26	0.023
15:27	0.024
15:28	0.028
15:29	0.026
15:30	0.028
15:31	0.025
15:32	0.026
15:33	0.028
15:34	0.027
15:35	0.029
15:36	0.031
15:37	0.039
15:38	0.038
15:39	0.028
15:40	0.029
15:41	0.029
15:42	0.028
15:43	0.026
15:44	0.027
15:45	0.029
15:46	0.03
15:47	0.026
15:48	0.027
15:49	0.027
15:50	0.029
15:51	0.027
15:52	0.029
15:53	0.03
15:54	0.03
15:55	0.029
15:56	0.034
15:57	0.039
15:58	0.027
15:59	0.032
16:00	0.028
16:01	0.03
16:02	0.028
16:03	0.031
16:04	0.032
16:05	0.032
16:06	0.026
16:07	0.028

16:08	0.03
16:09	0.025
16:10	0.025
16:11	0.032
16:12	0.031
16:13	0.035
16:14	0.036
16:15	0.041
16:16	0.027
16:17	0.026
16:18	0.027
16:19	0.032
16:20	0.032
16:21	0.03
16:22	0.034
16:23	0.029
16:24	0.026
16:25	0.026
16:26	0.03
16:27	0.027
16:28	0.025
16:29	0.029
16:30	0.028
16:31	0.03
16:32	0.033
16:33	0.031
16:34	0.026
16:35	0.067
16:36	0.038
16:37	0.055
16:38	0.029
16:39	0.027
16:40	0.026
16:41	0.026
16:42	0.026
16:43	0.028
16:44	0.028
16:45	0.028
16:46	0.03
16:47	0.029
16:48	0.029
16:49	0.027
16:50	0.028
16:51	0.038

16:52	0.035
16:53	0.029
16:54	0.03
16:55	0.031
16:56	0.028
16:57	0.033
16:58	0.028
16:59	0.028
17:00	0.027
17:01	0.025
17:02	0.026
17:03	0.026
17:04	0.027
17:05	0.028
17:06	0.025
17:07	0.034
17:08	0.028
17:09	0.034
17:10	0.027
17:11	0.025
17:12	0.027
17:13	0.048
17:14	0.036
17:15	0.026
17:16	0.03
17:17	0.029
17:18	0.029
17:19	0.045
17:20	0.032
17:21	0.026
17:22	0.026
17:23	0.028
17:24	0.026

Device Serial No	Log Time	Log Type	Sensor 1 Type	Sensor 1 Serial Number	Sensor 1 Status	Sensor 1 Gas Reading
592-600871	7/8/2024 6:46	CONFIG	PID	SC23030408A8		
592-600871	7/8/2024 6:47	Readings	PID	SC23030408A8	Normal	0
592-600871	7/8/2024 6:48	Readings	PID	SC23030408A8	Normal	0
592-600871	7/8/2024 6:49	Readings	PID	SC23030408A8	Normal	0
592-600871	7/8/2024 6:50	Readings	PID	SC23030408A8	Normal	0
592-600871	7/8/2024 6:51	Readings	PID	SC23030408A8	Normal	0
592-600871	7/8/2024 6:52	Readings	PID	SC23030408A8	Normal	0
592-600871	7/8/2024 6:53	Readings	PID	SC23030408A8	Normal	0
592-600871	7/8/2024 6:54	Readings	PID	SC23030408A8	Normal	0
592-600871	7/8/2024 6:55	Readings	PID	SC23030408A8	Normal	0
592-600871	7/8/2024 6:56	Readings	PID	SC23030408A8	Normal	0
592-600871	7/8/2024 6:57	Readings	PID	SC23030408A8	Normal	0
592-600871	7/8/2024 6:58	Readings	PID	SC23030408A8	Normal	0
592-600871	7/8/2024 6:59	Readings	PID	SC23030408A8	Normal	0
592-600871	7/8/2024 7:00	Readings	PID	SC23030408A8	Normal	0
592-600871	7/8/2024 7:01	Readings	PID	SC23030408A8	Normal	0
592-600871	7/8/2024 7:02	Readings	PID	SC23030408A8	Normal	0
592-600871	7/8/2024 7:03	Readings	PID	SC23030408A8	Normal	0
592-600871	7/8/2024 7:04	Readings	PID	SC23030408A8	Normal	0
592-600871	7/8/2024 7:05	Readings	PID	SC23030408A8	Normal	0
592-600871	7/8/2024 7:06	Readings	PID	SC23030408A8	Normal	0
592-600871	7/8/2024 7:07	Readings	PID	SC23030408A8	Normal	0
592-600871	7/8/2024 7:08	Readings	PID	SC23030408A8	Normal	0
592-600871	7/8/2024 7:09	Readings	PID	SC23030408A8	Normal	0
592-600871	7/8/2024 7:10	Readings	PID	SC23030408A8	Normal	0
592-600871	7/8/2024 7:11	Readings	PID	SC23030408A8	Normal	0
592-600871	7/8/2024 7:12	Readings	PID	SC23030408A8	Normal	0
592-600871	7/8/2024 7:13	Readings	PID	SC23030408A8	Normal	0
592-600871	7/8/2024 7:14	Readings	PID	SC23030408A8	Normal	0
592-600871	7/8/2024 7:15	Readings	PID	SC23030408A8	Normal	0
592-600871	7/8/2024 7:16	Readings	PID	SC23030408A8	Normal	0
592-600871	7/8/2024 7:17	Readings	PID	SC23030408A8	Normal	0

592-600871	7/8/2024 17:12 Readings	PID	SC23030408A8	Normal	0
592-600871	7/8/2024 17:13 Readings	PID	SC23030408A8	Normal	0
592-600871	7/8/2024 17:14 Readings	PID	SC23030408A8	Normal	0
592-600871	7/8/2024 17:15 Readings	PID	SC23030408A8	Normal	0
592-600871	7/8/2024 17:16 Readings	PID	SC23030408A8	Normal	0
592-600871	7/8/2024 17:17 Readings	PID	SC23030408A8	Normal	0
592-600871	7/8/2024 17:18 Readings	PID	SC23030408A8	Normal	0
592-600871	7/8/2024 17:19 Readings	PID	SC23030408A8	Normal	0
592-600871	7/8/2024 17:20 Readings	PID	SC23030408A8	Normal	0
592-600871	7/8/2024 17:21 Readings	PID	SC23030408A8	Normal	0
592-600871	7/8/2024 17:22 Readings	PID	SC23030408A8	Normal	0