



**DAILY STATUS REPORT**

**Prepared By:**  
Ryan Just

WEATHER	Snow	Rain	Overcast	Partly Cloudy	X	Bright Sun	X	Wind
TEMP.	< 32	32-50	50-70	70-85	X	>85	X	SSW – 8 mph

<b>IEEG Project No:</b>	13928	<b>NYSDEC BCP Site No:</b>	C224367	<b>Date:</b>	07/11/24
<b>Project:</b>	251 Douglass Street, Brooklyn, NY				

<p><b>Consultant:</b> Impact Environmental Engineering and Geology, PLLC (IEEG)</p> <p>Time On: 06:45 Time Out: 17:45</p>	<p><b>Personnel On Site:</b> IEEG (Environmental) – Ryan Just Broadway Construction Group - Tom Caporale Cascade Concrete Courses WSP - Charlie Lambert</p> <p><b>Equipment On Site:</b> (3) MiniRAE 3000 PID, (3) DustTrak II</p>
---	--

**Scope of Work:** Cascade to continue with ISS column installation; Concrete Courses to continue subgrade work in the northern alley.

**Site Activities:**

- Deployed three (3) CAMP stations prior to the start of work activities;
- Cascade received one (1) delivery of slag and one (1) delivery of portland cement to the silos;
- Concrete Courses continued subgrade work in the Butler Corridor to prepare for vapor barrier installation;
- Cascade drilled **Column 469** with column specification below:
  - Column is 8’ diameter and drilled 36’ deep from Site grade;
  - The column consisted of a total of 22 batches;
- Cascade drilled **Column 482** with column specification below:
  - Column is 8’ diameter and drilled 51’ deep from Site grade;
  - The column consisted of a total of 28 batches;
- Cascade drilled **Column 492** with column specification below:
  - Column is 8’ diameter and drilled 51’ deep from Site grade;
  - The column consisted of a total of 24 batches;
- Cascade attempted to drill **Column 480** with column specification below:
  - Column id 8’ diameter and planned to be drilled 51’ deep from Site grade; however, obstructions were encountered from approximately 4’ to 8’ deep from Site grade;
  - Cascade attempted to drill through the obstruction from 11:06 to 11:36;
  - Ancora Engineering will evaluate the obstruction due to its proximity to two neighboring buildings and will assess the structural stability of those buildings-this column was not completed;
  - The column consisted of a total of 5 batches;

**Community Air Monitoring Program (CAMP) - CAMP** action level for dust (0.1 mg/m<sup>3</sup>) and VOCs (5 ppm)

- PID remained at nominal levels throughout the day
- No sustained dust exceedances were observed over a 15-min period during monitoring.
- Startup Upwind Conditions – PID = \_0.0\_ ppm, Dust = \_0.085\_ mg/m<sup>3</sup> @ 06:55
- High Conditions (Upwind) – PID = \_0.0\_ ppm, Dust = \_0.252\_ mg/m<sup>3</sup> @ 09:36
- High Conditions (Downwind 1) – PID = \_0.0\_ ppm, Dust = \_0.193\_ mg/m<sup>3</sup> @ 09:04
- High Conditions (Downwind 2) – PID = \_0.0\_ ppm, Dust = \_0.162\_ mg/m<sup>3</sup> @ 08:37

**Notable Site Conditions:**

- The grout line for the ISS drill rig was clogged from approximately 12:08 to 12:42, between columns 480 and 482. Cascade was able to resolve the issue and continue with ISS column installation.

**Planned for the Next Day/Week:**

- Continuation of ISS column installation;
- Loadout of swell material to Bayshore;
- Continuation of subgrade work in the alley.



**PHOTO LOG**

251 DOUGLASS STREET, BROOKLYN, NY



**Photo 1-**  
Representative  
photo of Column  
492 installation.



**Photo 2-**  
Representative  
photo of Cascade  
attempting to  
install column  
480.



**Photo 3-**

Representative photo of surface of column 480 after failure to install column.



**Photo 4-**

Representative photo of slag delivery to the silo.



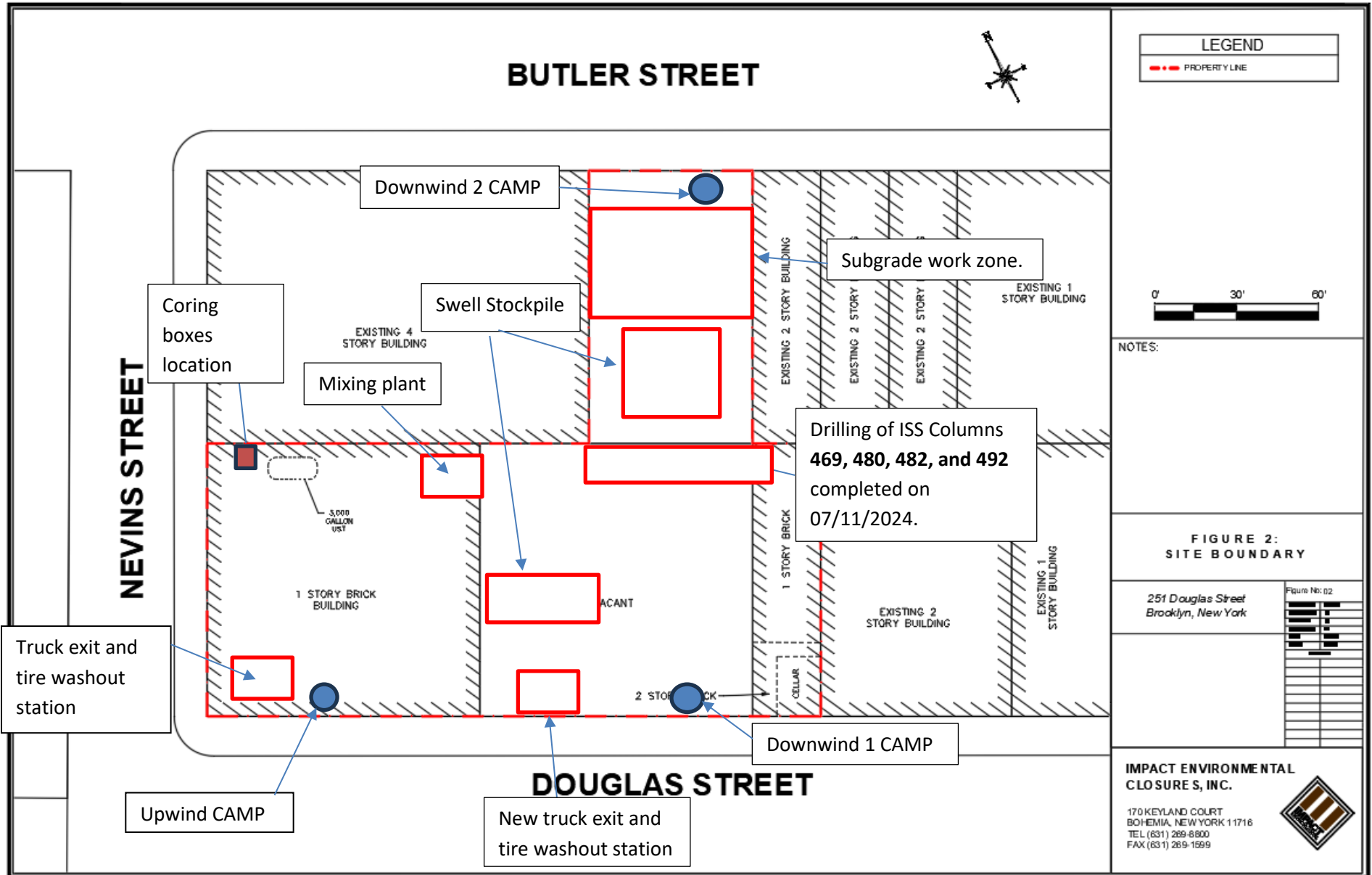
**Photo 5-**  
Representative  
photo of Cascade  
unclogging grout  
line and auger for  
ISS column  
installation.



## **SITE PLANS**

251 DOUGLASS STREET, BROOKLYN, NY









# SCM Report

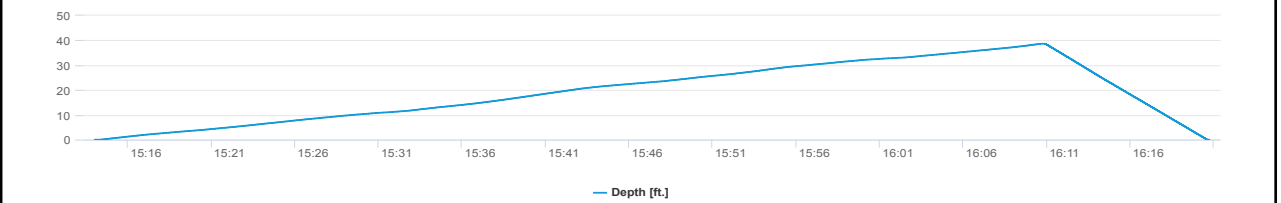
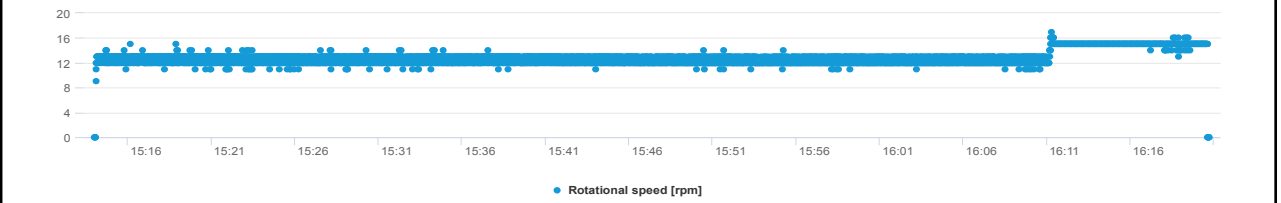
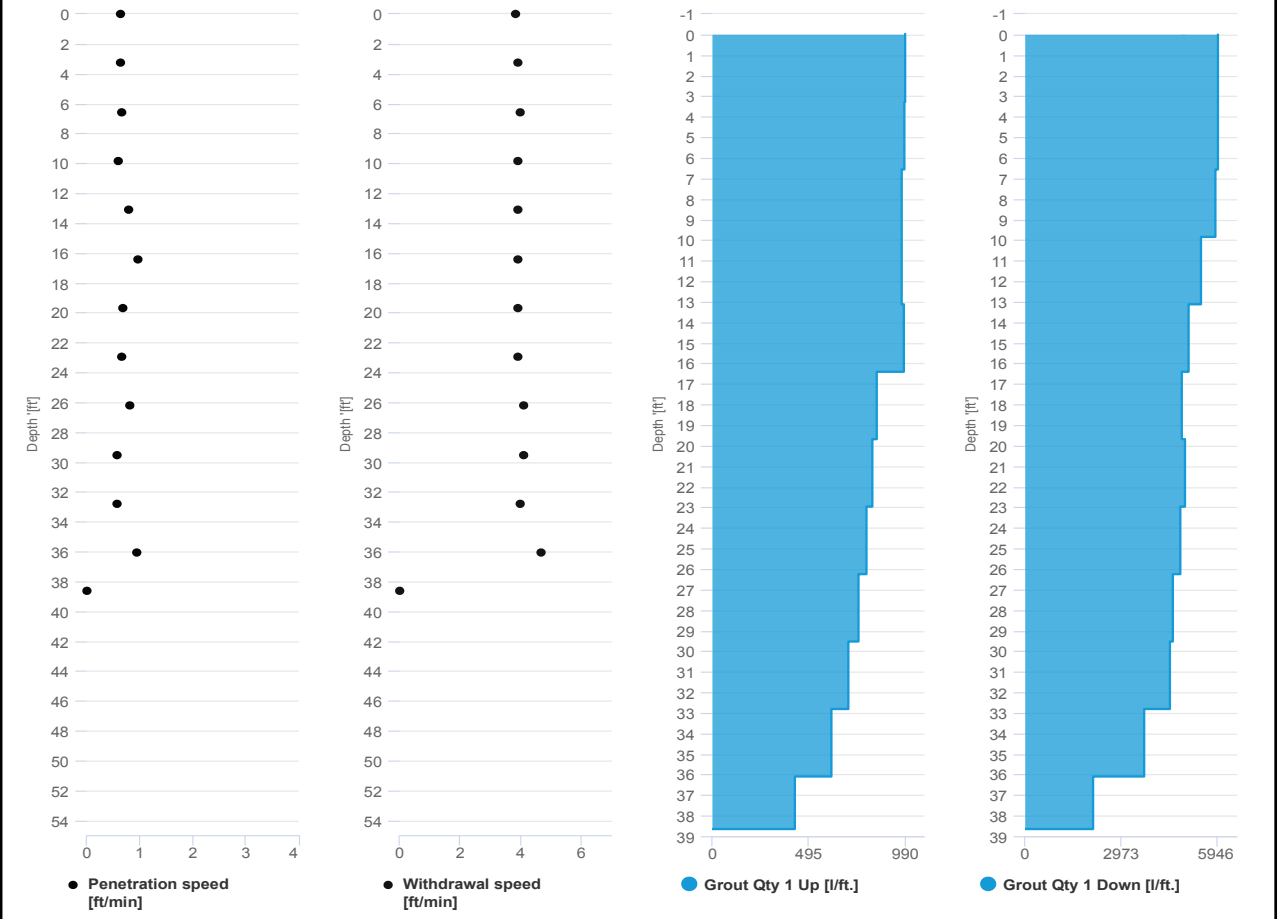


Project name: Douglass Street BCG ISS      Element name: 469a  
Project number

Start date: 07/11/2024

Drilling rig: BG36H\_5717

<b>Details</b>		Start time: 03:14 PM	
Max. depth: 38.64 ft.		End Date: 07/11/2024	
Volume/m 1: 55.09 ft³		End time: 04:20 PM	
		Production duration: 01:06:43	
		Final depth time: 04:10 PM	
		Total suspension quantity: 650.108 ft³	



# SCM Report

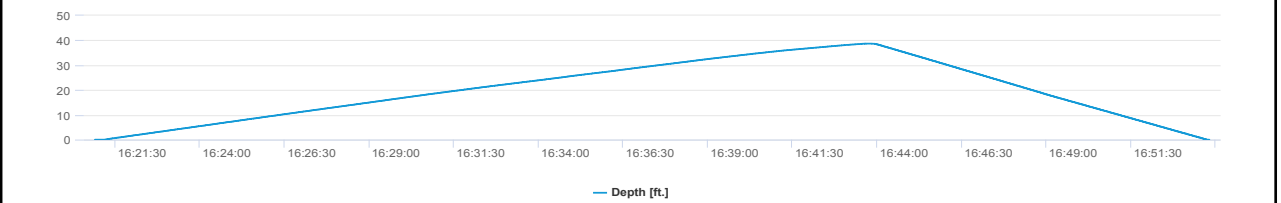
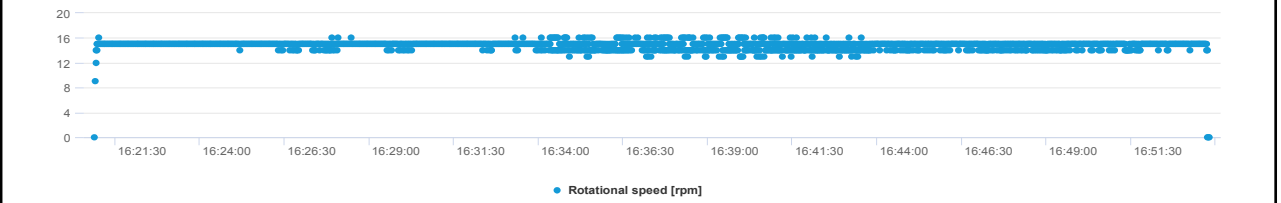
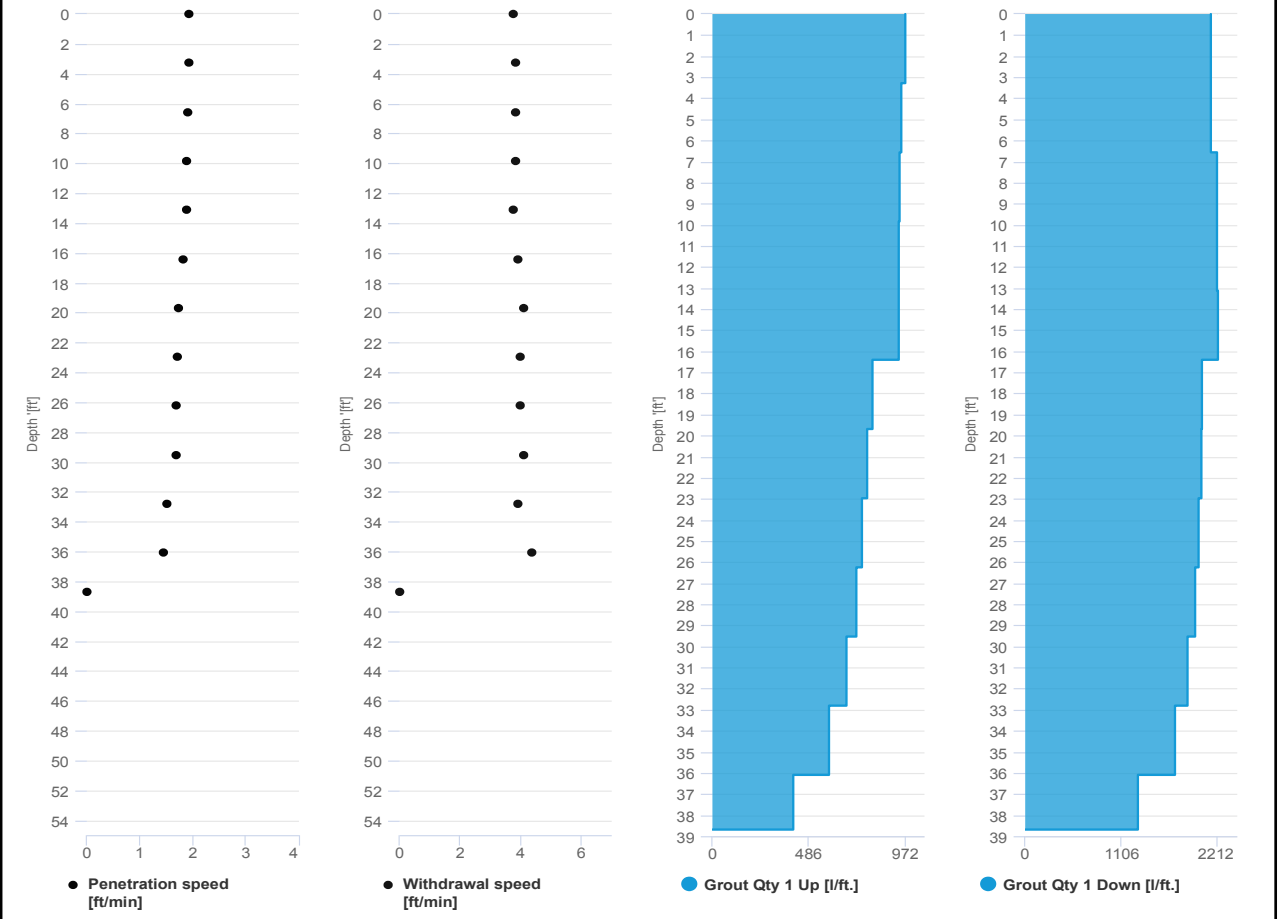


Project name: Douglass Street BCG ISS      Element name: 469b  
Project number

Start date: 07/11/2024

Drilling rig: BG36H\_5717

<b>Details</b>		Start time: 04:20 PM	
Max. depth: 38.68 ft.		End Date: 07/11/2024	
Volume/m 1: 26.13 ft³		End time: 04:53 PM	
		Production duration: 00:32:56	
		Final depth time: 04:43 PM	
		Total suspension quantity: 307.979 ft³	



# SCM Report

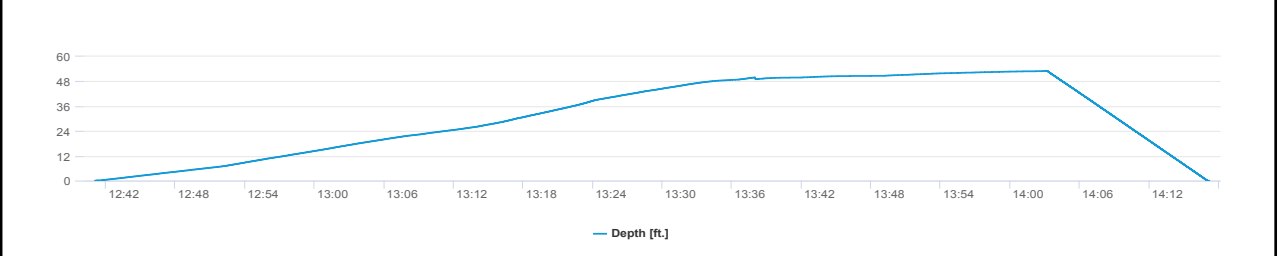
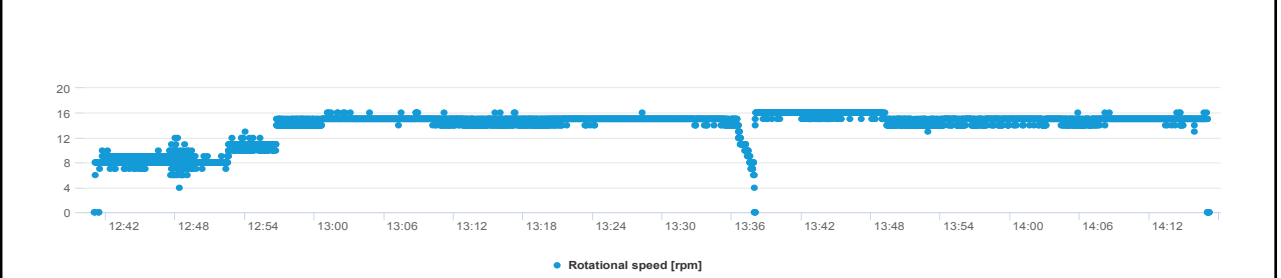
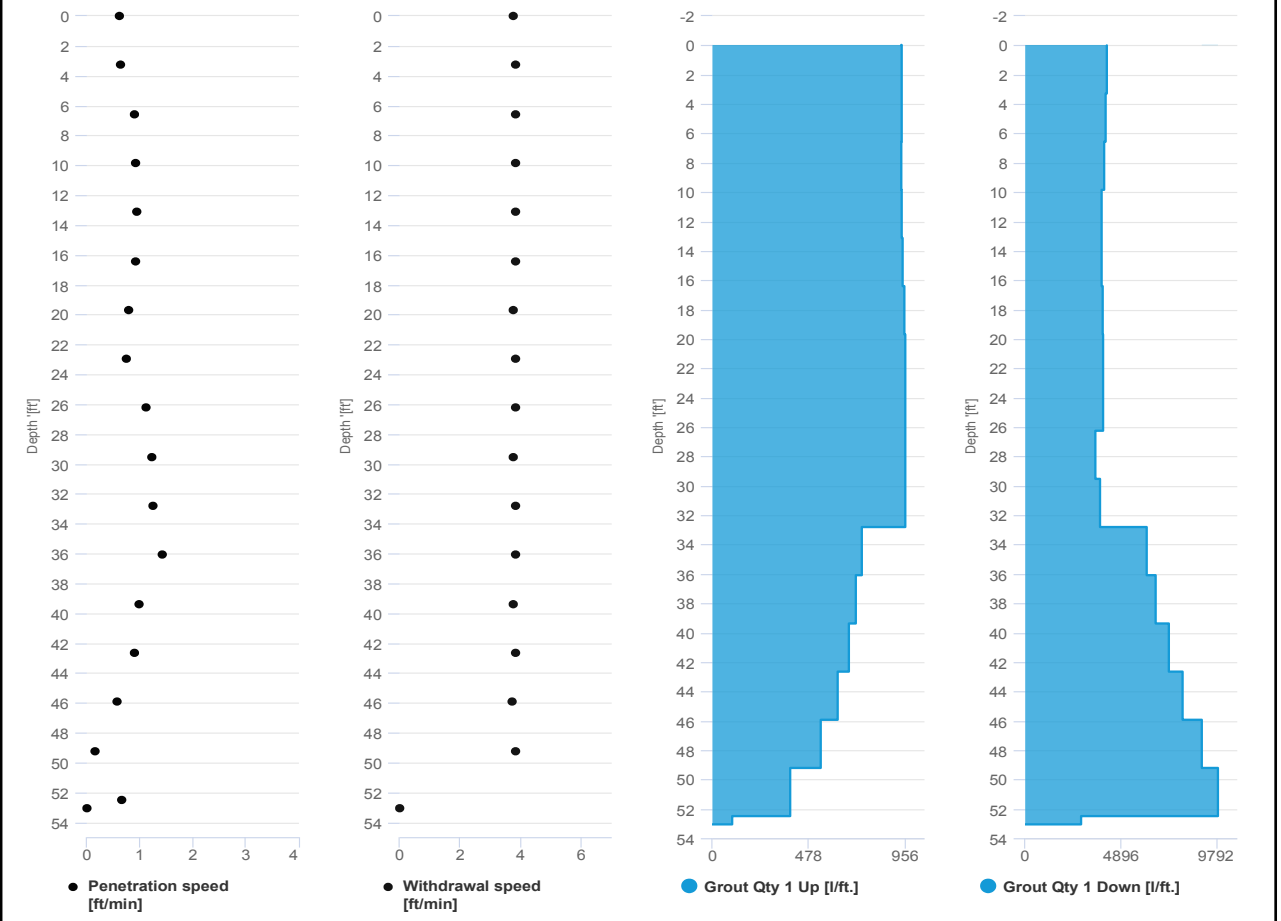


Project name	Douglass Street BCG ISS	Element name	482a
		Project number	

		Start date	07/11/2024
--	--	------------	------------

Drilling rig	BG36H_5717
--------------	------------

<b>Details</b>			
Max. depth	53.05 ft.	Start time	12:41 PM
Volume/m 1	54.73 ft <sup>3</sup>	End Date	07/11/2024
		End time	02:17 PM
		Production duration	01:36:09
		Final depth time	02:03 PM
		Total suspension quantity	885.657 ft <sup>3</sup>



# SCM Report

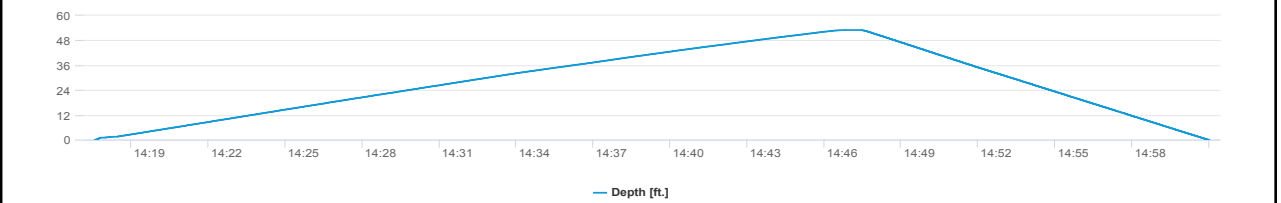
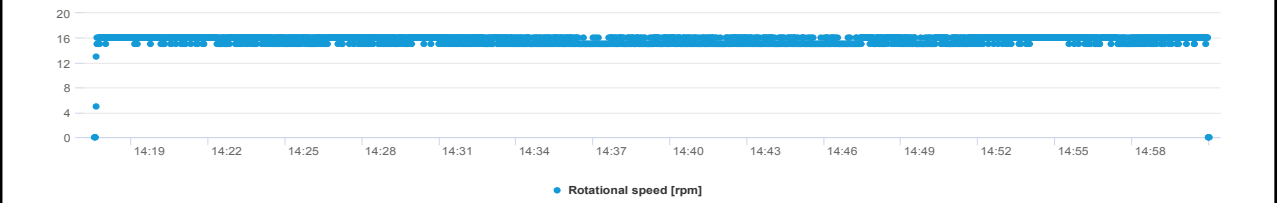
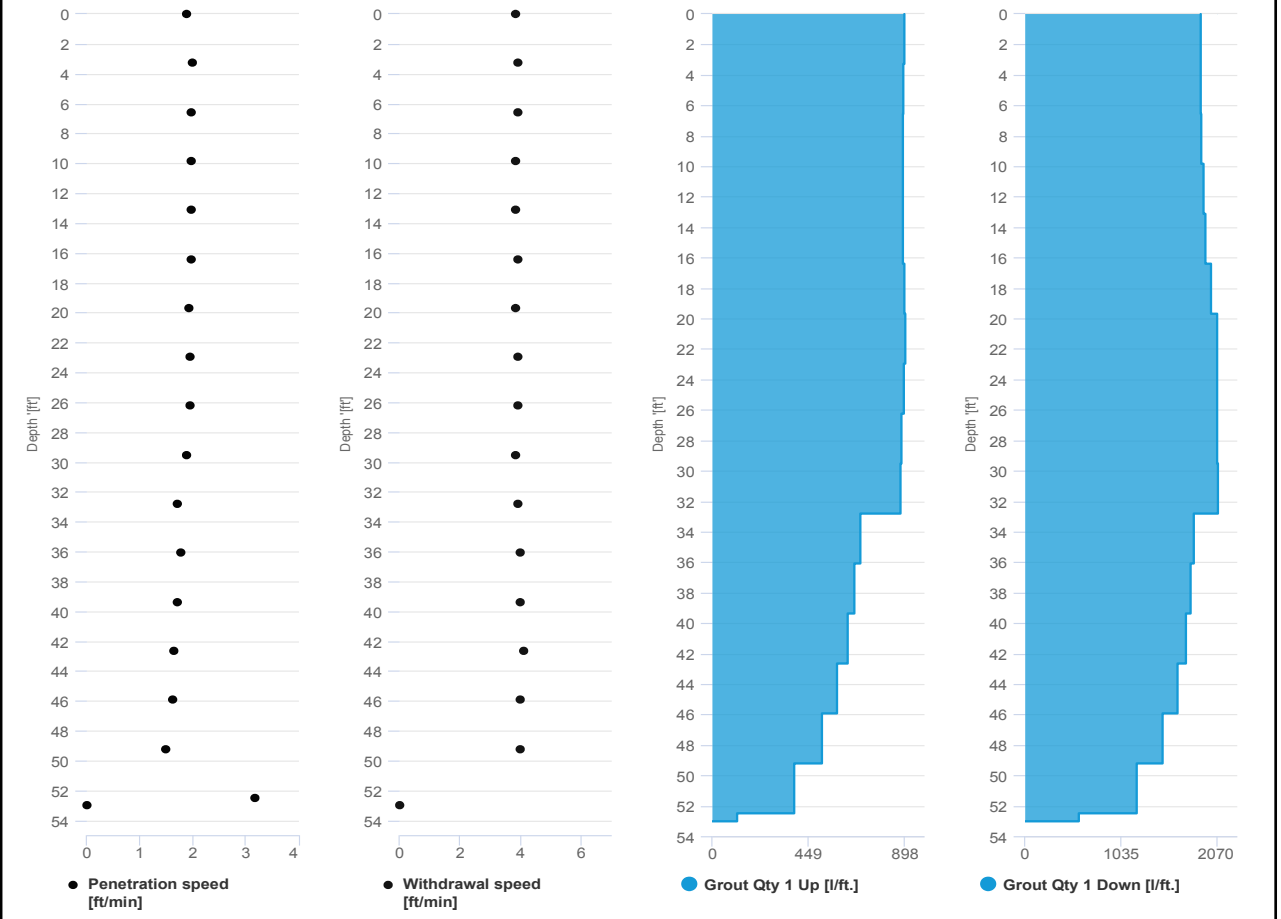


Project name: Douglass Street BCG ISS      Element name: 482b  
Project number

Start date: 07/11/2024

Drilling rig: BG36H\_5717

<b>Details</b>		Start time: 02:17 PM	
Max. depth: 53.01 ft.		End Date: 07/11/2024	
Volume/m 1: 24.36 ft³		End time: 03:01 PM	
		Production duration: 00:43:27	
		Final depth time: 02:47 PM	
		Total suspension quantity: 390.93 ft³	



# SCM Report

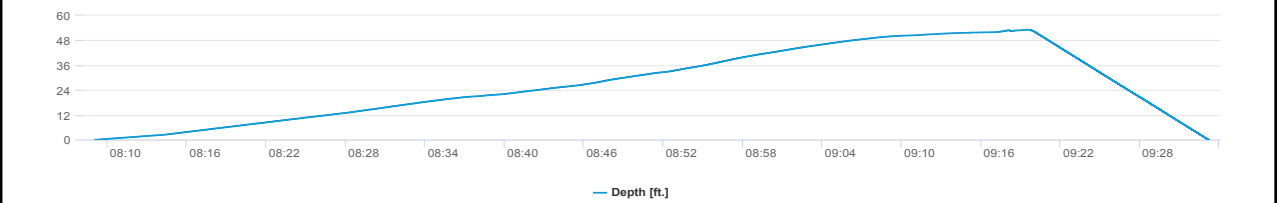
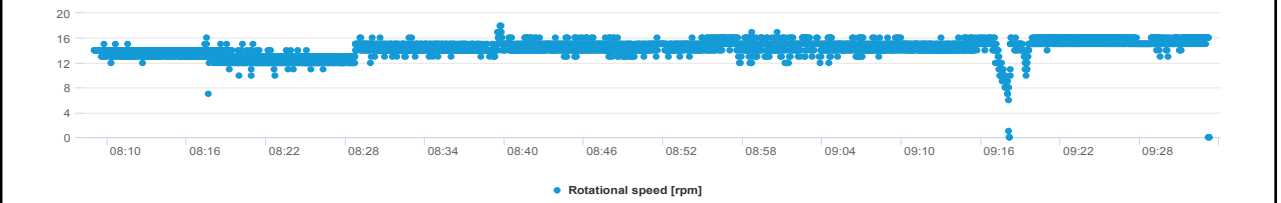
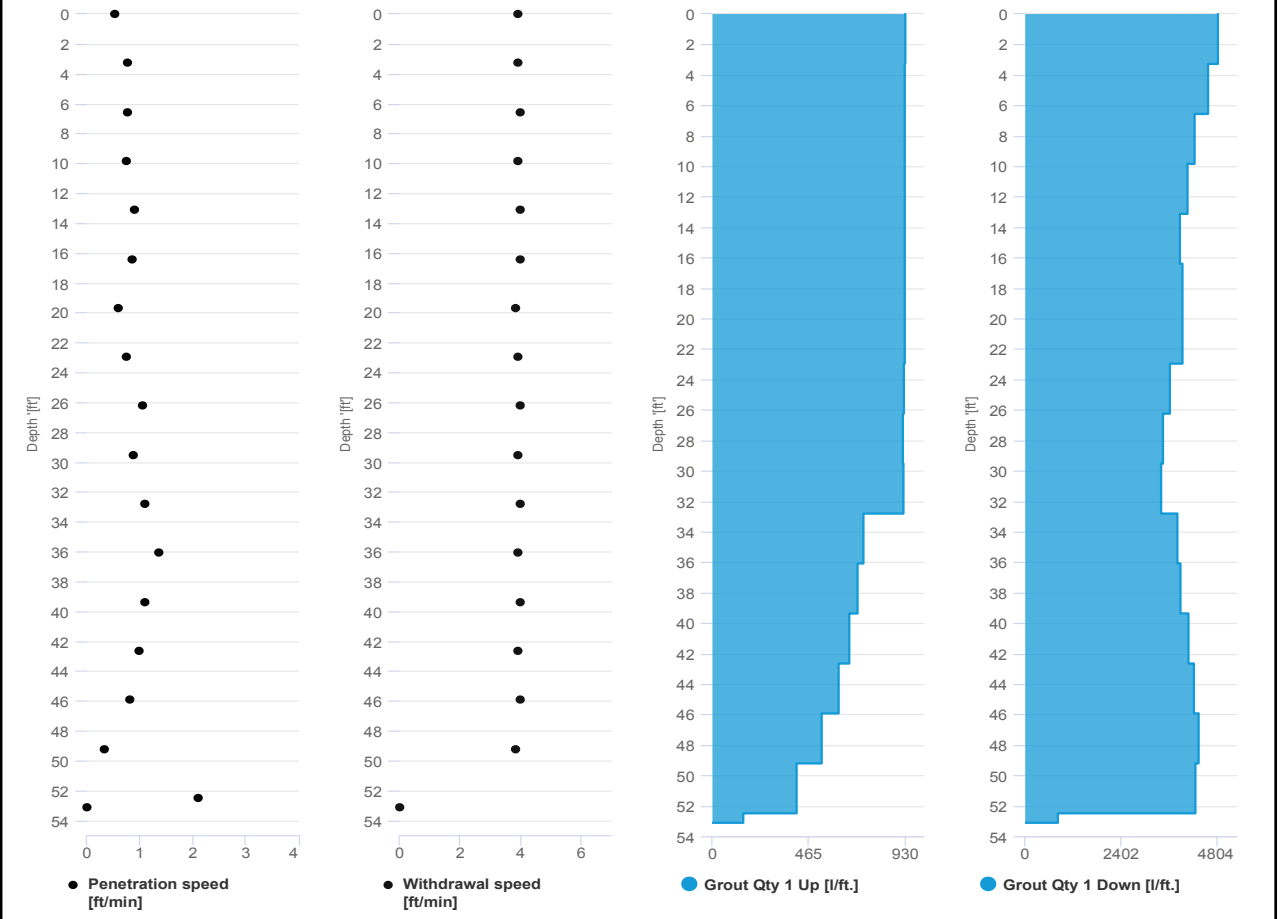


Project name: Douglass Street BCG ISS      Element name: 492a  
Project number

Start date: 07/11/2024

Drilling rig: BG36H\_5717

<b>Details</b>		Start time: 08:09 AM	
Max. depth: 53.11 ft.		End Date: 07/11/2024	
Volume/m 1: 46.96 ft³		End time: 09:33 AM	
		Production duration: 01:24:13	
		Final depth time: 09:19 AM_	
		Total suspension quantity: 759.583 ft³	



# SCM Report

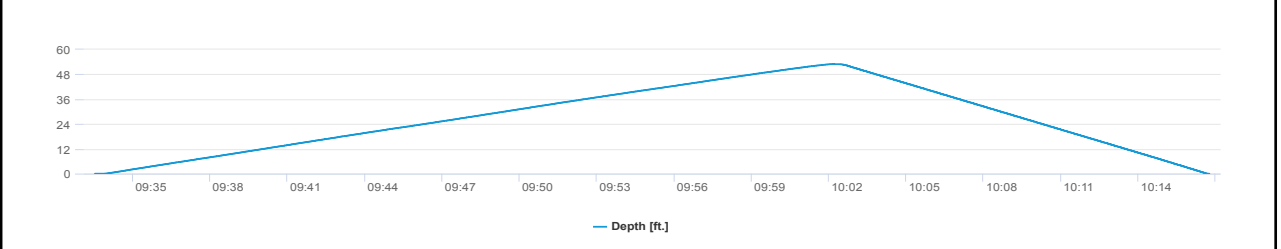
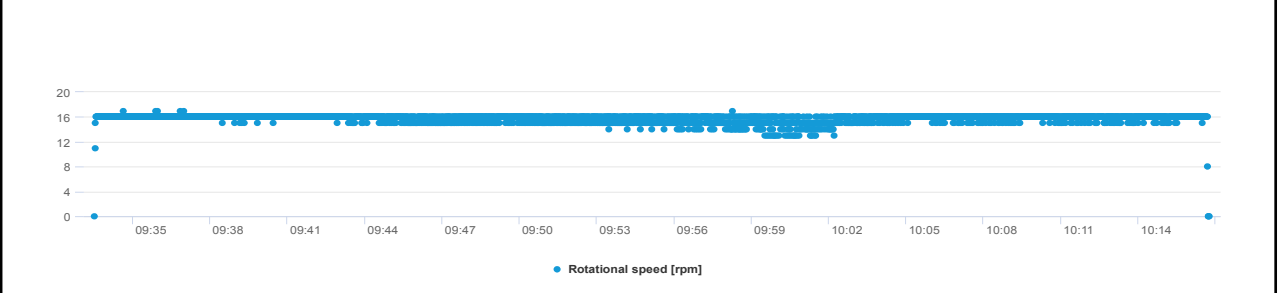
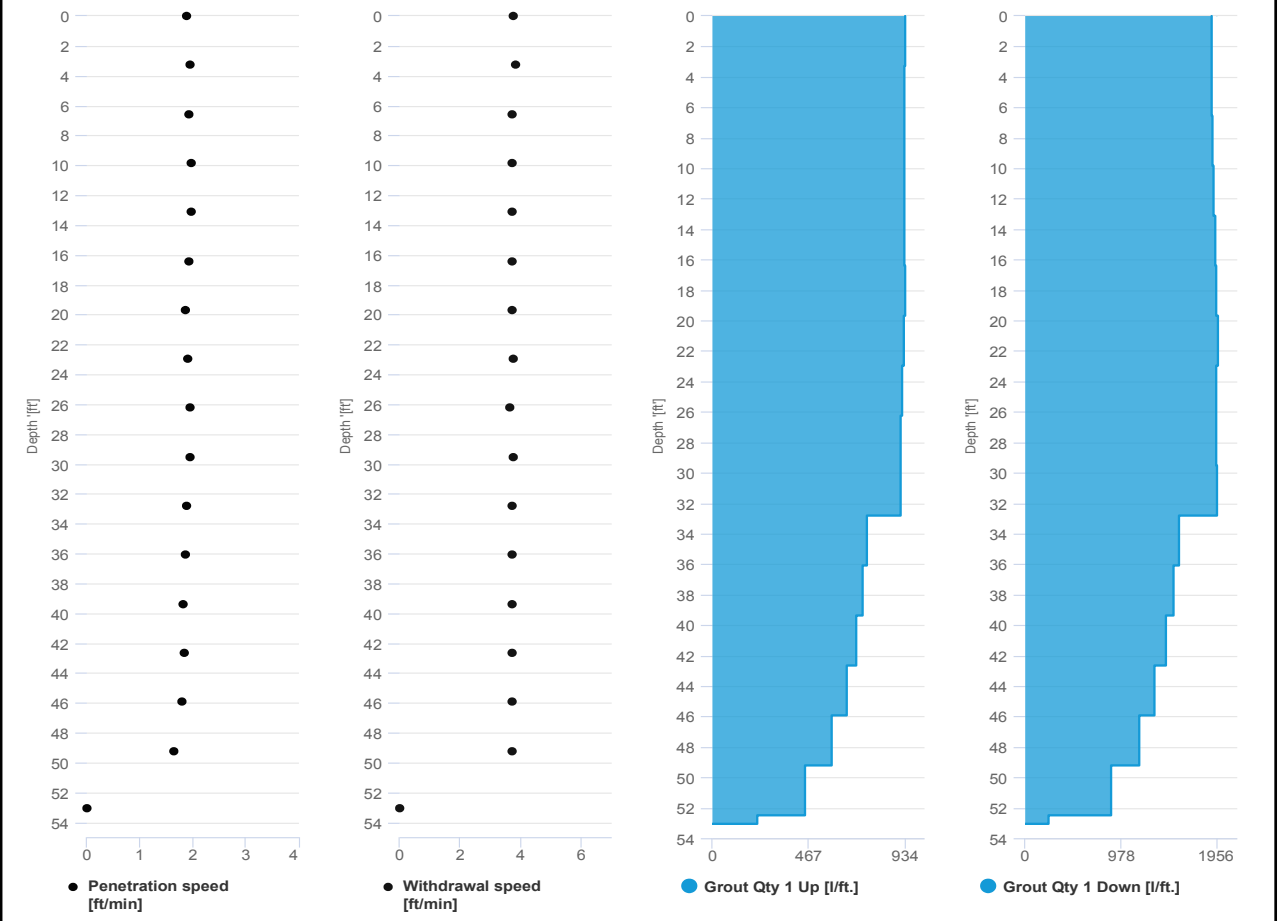


Project name: Douglass Street BCG ISS      Element name: 492b  
Project number

Start date: 07/11/2024

Drilling rig: BG36H\_5717

<b>Details</b>		Start time: 09:33 AM	
Max. depth: 53.05 ft.		End Date: 07/11/2024	
Volume/m 1: 23.66 ft <sup>3</sup>		End time: 10:16 AM	
		Production duration: 00:43:15	
		Final depth time: 10:02 AM	
		Total suspension quantity: 380.48 ft <sup>3</sup>	





**IMPACT ENVIRONMENTAL**

170 Keyland Court | Bohemia | NY | 11716 | 631.269.8800

welcome to solid ground...

[www.impactenvironmental.com](http://www.impactenvironmental.com)

---

**UPWIND CAMP READINGS**

251 DOUGLASS STREET, BROOKLYN, NY



Instrument Name	DustTrak II
Model Number	8530
Serial Number	8530224603
Firmware Version	3.1
Calibration Date	4/3/2024
Test Name	MANUAL_010
Test Start Time	6:54:31 AM
Test Start Date	7/11/2024
Test Length [D:H:M]	0:10:27
Test Interval [M:S]	1:00
Mass Average [mg/m3]	0.016
Mass Minimum [mg/m3]	0.003
Mass Maximum [mg/m3]	0.252
Mass TWA [mg/m3]	0.017
Photometric User Cal	1
Flow User Cal	0
Errors	
Number of Samples	627

Elapsed Time [s]	Mass [mg/m3]	Alarms	Errors
6:55	0.085		
6:56	0.012		
6:57	0.012		
6:58	0.011		
6:59	0.013		
7:00	0.013		
7:01	0.01		
7:02	0.011		
7:03	0.011		
7:04	0.012		
7:05	0.01		
7:06	0.011		
7:07	0.013		
7:08	0.013		
7:09	0.012		
7:10	0.011		
7:11	0.012		
7:12	0.012		
7:13	0.01		
7:14	0.011		
7:15	0.012		
7:16	0.014		
7:17	0.011		
7:18	0.012		

7:19	0.012
7:20	0.012
7:21	0.016
7:22	0.015
7:23	0.012
7:24	0.012
7:25	0.012
7:26	0.012
7:27	0.012
7:28	0.011
7:29	0.011
7:30	0.012
7:31	0.011
7:32	0.014
7:33	0.012
7:34	0.014
7:35	0.013
7:36	0.014
7:37	0.012
7:38	0.011
7:39	0.012
7:40	0.013
7:41	0.013
7:42	0.013
7:43	0.012
7:44	0.018
7:45	0.013
7:46	0.015
7:47	0.014
7:48	0.014
7:49	0.045
7:50	0.013
7:51	0.014
7:52	0.014
7:53	0.013
7:54	0.013
7:55	0.014
7:56	0.012
7:57	0.011
7:58	0.013
7:59	0.013
8:00	0.013
8:01	0.015
8:02	0.014

8:03	0.014
8:04	0.015
8:05	0.014
8:06	0.015
8:07	0.016
8:08	0.016
8:09	0.013
8:10	0.014
8:11	0.014
8:12	0.013
8:13	0.013
8:14	0.016
8:15	0.017
8:16	0.015
8:17	0.015
8:18	0.013
8:19	0.013
8:20	0.013
8:21	0.016
8:22	0.012
8:23	0.013
8:24	0.011
8:25	0.014
8:26	0.013
8:27	0.011
8:28	0.011
8:29	0.012
8:30	0.014
8:31	0.012
8:32	0.012
8:33	0.011
8:34	0.012
8:35	0.011
8:36	0.014
8:37	0.014
8:38	0.016
8:39	0.025
8:40	0.017
8:41	0.02
8:42	0.018
8:43	0.021
8:44	0.021
8:45	0.014
8:46	0.012

8:47	0.013
8:48	0.029
8:49	0.013
8:50	0.013
8:51	0.01
8:52	0.015
8:53	0.029
8:54	0.017
8:55	0.014
8:56	0.012
8:57	0.015
8:58	0.022
8:59	0.013
9:00	0.015
9:01	0.016
9:02	0.063
9:03	0.088
9:04	0.035
9:05	0.018
9:06	0.026
9:07	0.017
9:08	0.015
9:09	0.013
9:10	0.013
9:11	0.016
9:12	0.015
9:13	0.013
9:14	0.015
9:15	0.012
9:16	0.014
9:17	0.012
9:18	0.012
9:19	0.013
9:20	0.012
9:21	0.01
9:22	0.013
9:23	0.015
9:24	0.013
9:25	0.011
9:26	0.01
9:27	0.01
9:28	0.009
9:29	0.015
9:30	0.008

9:31	0.007
9:32	0.01
9:33	0.011
9:34	0.009
9:35	0.009
9:36	0.252
9:37	0.013
9:38	0.011
9:39	0.007
9:40	0.005
9:41	0.008
9:42	0.007
9:43	0.008
9:44	0.01
9:45	0.009
9:46	0.009
9:47	0.009
9:48	0.007
9:49	0.007
9:50	0.007
9:51	0.008
9:52	0.007
9:53	0.006
9:54	0.008
9:55	0.008
9:56	0.008
9:57	0.007
9:58	0.014
9:59	0.007
10:00	0.007
10:01	0.007
10:02	0.006
10:03	0.005
10:04	0.008
10:05	0.02
10:06	0.071
10:07	0.14
10:08	0.039
10:09	0.02
10:10	0.011
10:11	0.009
10:12	0.008
10:13	0.008
10:14	0.007

10:15	0.006
10:16	0.006
10:17	0.006
10:18	0.009
10:19	0.01
10:20	0.005
10:21	0.004
10:22	0.005
10:23	0.015
10:24	0.012
10:25	0.007
10:26	0.058
10:27	0.01
10:28	0.006
10:29	0.007
10:30	0.005
10:31	0.007
10:32	0.01
10:33	0.005
10:34	0.007
10:35	0.01
10:36	0.014
10:37	0.011
10:38	0.007
10:39	0.005
10:40	0.006
10:41	0.012
10:42	0.008
10:43	0.006
10:44	0.008
10:45	0.006
10:46	0.006
10:47	0.005
10:48	0.004
10:49	0.007
10:50	0.008
10:51	0.012
10:52	0.004
10:53	0.006
10:54	0.004
10:55	0.003
10:56	0.005
10:57	0.005
10:58	0.011

10:59	0.011
11:00	0.007
11:01	0.01
11:02	0.009
11:03	0.005
11:04	0.005
11:05	0.004
11:06	0.004
11:07	0.009
11:08	0.007
11:09	0.014
11:10	0.015
11:11	0.005
11:12	0.006
11:13	0.004
11:14	0.004
11:15	0.004
11:16	0.006
11:17	0.007
11:18	0.005
11:19	0.004
11:20	0.005
11:21	0.006
11:22	0.004
11:23	0.004
11:24	0.003
11:25	0.004
11:26	0.014
11:27	0.01
11:28	0.007
11:29	0.008
11:30	0.009
11:31	0.008
11:32	0.01
11:33	0.023
11:34	0.005
11:35	0.009
11:36	0.004
11:37	0.008
11:38	0.012
11:39	0.012
11:40	0.027
11:41	0.005
11:42	0.005

11:43	0.005
11:44	0.01
11:45	0.012
11:46	0.014
11:47	0.01
11:48	0.008
11:49	0.012
11:50	0.013
11:51	0.012
11:52	0.014
11:53	0.012
11:54	0.015
11:55	0.014
11:56	0.022
11:57	0.018
11:58	0.012
11:59	0.017
12:00	0.044
12:01	0.019
12:02	0.01
12:03	0.011
12:04	0.011
12:05	0.03
12:06	0.021
12:07	0.015
12:08	0.007
12:09	0.015
12:10	0.016
12:11	0.014
12:12	0.003
12:13	0.008
12:14	0.012
12:15	0.008
12:16	0.008
12:17	0.004
12:18	0.202
12:19	0.079
12:20	0.032
12:21	0.12
12:22	0.245
12:23	0.149
12:24	0.026
12:25	0.009
12:26	0.009



12:27	0.007
12:28	0.009
12:29	0.018
12:30	0.008
12:31	0.01
12:32	0.01
12:33	0.01
12:34	0.011
12:35	0.008
12:36	0.008
12:37	0.006
12:38	0.004
12:39	0.005
12:40	0.011
12:41	0.01
12:42	0.017
12:43	0.011
12:44	0.023
12:45	0.005
12:46	0.004
12:47	0.008
12:48	0.007
12:49	0.006
12:50	0.009
12:51	0.014
12:52	0.01
12:53	0.015
12:54	0.01
12:55	0.009
12:56	0.006
12:57	0.013
12:58	0.027
12:59	0.015
13:00	0.011
13:01	0.008
13:02	0.008
13:03	0.017
13:04	0.007
13:05	0.006
13:06	0.015
13:07	0.012
13:08	0.008
13:09	0.013
13:10	0.006

13:11	0.009
13:12	0.014
13:13	0.008
13:14	0.042
13:15	0.066
13:16	0.062
13:17	0.036
13:18	0.014
13:19	0.017
13:20	0.008
13:21	0.008
13:22	0.011
13:23	0.013
13:24	0.008
13:25	0.007
13:26	0.03
13:27	0.006
13:28	0.007
13:29	0.009
13:30	0.01
13:31	0.006
13:32	0.006
13:33	0.005
13:34	0.01
13:35	0.011
13:36	0.008
13:37	0.021
13:38	0.009
13:39	0.006
13:40	0.007
13:41	0.007
13:42	0.009
13:43	0.007
13:44	0.005
13:45	0.021
13:46	0.02
13:47	0.014
13:48	0.012
13:49	0.012
13:50	0.013
13:51	0.005
13:52	0.01
13:53	0.005
13:54	0.008

13:55	0.006
13:56	0.007
13:57	0.013
13:58	0.01
13:59	0.007
14:00	0.009
14:01	0.009
14:02	0.01
14:03	0.011
14:04	0.013
14:05	0.011
14:06	0.009
14:07	0.01
14:08	0.008
14:09	0.005
14:10	0.007
14:11	0.008
14:12	0.008
14:13	0.009
14:14	0.013
14:15	0.008
14:16	0.009
14:17	0.015
14:18	0.008
14:19	0.006
14:20	0.008
14:21	0.019
14:22	0.007
14:23	0.008
14:24	0.004
14:25	0.029
14:26	0.008
14:27	0.006
14:28	0.012
14:29	0.008
14:30	0.008
14:31	0.009
14:32	0.007
14:33	0.006
14:34	0.007
14:35	0.054
14:36	0.007
14:37	0.017
14:38	0.013

14:39	0.006
14:40	0.005
14:41	0.006
14:42	0.006
14:43	0.007
14:44	0.008
14:45	0.007
14:46	0.007
14:47	0.007
14:48	0.007
14:49	0.007
14:50	0.006
14:51	0.006
14:52	0.007
14:53	0.006
14:54	0.006
14:55	0.009
14:56	0.008
14:57	0.013
14:58	0.013
14:59	0.021
15:00	0.011
15:01	0.021
15:02	0.014
15:03	0.011
15:04	0.024
15:05	0.015
15:06	0.013
15:07	0.012
15:08	0.017
15:09	0.014
15:10	0.012
15:11	0.015
15:12	0.013
15:13	0.01
15:14	0.009
15:15	0.017
15:16	0.017
15:17	0.012
15:18	0.009
15:19	0.009
15:20	0.009
15:21	0.009
15:22	0.009

15:23	0.008
15:24	0.013
15:25	0.009
15:26	0.008
15:27	0.009
15:28	0.009
15:29	0.01
15:30	0.01
15:31	0.01
15:32	0.014
15:33	0.009
15:34	0.013
15:35	0.011
15:36	0.01
15:37	0.009
15:38	0.015
15:39	0.013
15:40	0.01
15:41	0.009
15:42	0.011
15:43	0.009
15:44	0.011
15:45	0.01
15:46	0.009
15:47	0.01
15:48	0.014
15:49	0.011
15:50	0.011
15:51	0.012
15:52	0.012
15:53	0.012
15:54	0.009
15:55	0.019
15:56	0.009
15:57	0.009
15:58	0.008
15:59	0.01
16:00	0.01
16:01	0.009
16:02	0.011
16:03	0.013
16:04	0.022
16:05	0.011
16:06	0.009

16:07	0.01
16:08	0.02
16:09	0.01
16:10	0.012
16:11	0.037
16:12	0.009
16:13	0.01
16:14	0.015
16:15	0.014
16:16	0.015
16:17	0.019
16:18	0.015
16:19	0.015
16:20	0.014
16:21	0.015
16:22	0.014
16:23	0.011
16:24	0.012
16:25	0.012
16:26	0.012
16:27	0.013
16:28	0.011
16:29	0.013
16:30	0.013
16:31	0.017
16:32	0.025
16:33	0.014
16:34	0.014
16:35	0.012
16:36	0.019
16:37	0.015
16:38	0.013
16:39	0.012
16:40	0.013
16:41	0.013
16:42	0.02
16:43	0.017
16:44	0.014
16:45	0.014
16:46	0.013
16:47	0.013
16:48	0.014
16:49	0.013
16:50	0.027

16:51	0.015
16:52	0.014
16:53	0.015
16:54	0.017
16:55	0.019
16:56	0.02
16:57	0.031
16:58	0.017
16:59	0.015
17:00	0.016
17:01	0.027
17:02	0.029
17:03	0.015
17:04	0.014
17:05	0.023
17:06	0.036
17:07	0.049
17:08	0.019
17:09	0.016
17:10	0.017
17:11	0.02
17:12	0.018
17:13	0.013
17:14	0.013
17:15	0.017
17:16	0.018
17:17	0.032
17:18	0.023
17:19	0.019
17:20	0.017
17:21	0.013

Device Serial No	Log Time	Log Type	Sensor 1 Type	Sensor 1 Serial Number	Sensor 1 Status	Sensor 1 Gas Reading
592-601274	7/11/2024 6:43	CONFIG	PID	SC23030921B3		
592-601274	7/11/2024 6:44	Readings	PID	SC23030921B3	Normal	0
592-601274	7/11/2024 6:45	Readings	PID	SC23030921B3	Normal	0
592-601274	7/11/2024 6:46	Readings	PID	SC23030921B3	Normal	0
592-601274	7/11/2024 6:47	Readings	PID	SC23030921B3	Normal	0
592-601274	7/11/2024 6:48	Readings	PID	SC23030921B3	Normal	0
592-601274	7/11/2024 6:49	Readings	PID	SC23030921B3	Normal	0
592-601274	7/11/2024 6:50	Readings	PID	SC23030921B3	Normal	0
592-601274	7/11/2024 6:51	Readings	PID	SC23030921B3	Normal	0
592-601274	7/11/2024 6:52	Readings	PID	SC23030921B3	Normal	0
592-601274	7/11/2024 6:53	Readings	PID	SC23030921B3	Normal	0
592-601274	7/11/2024 6:54	Readings	PID	SC23030921B3	Normal	0
592-601274	7/11/2024 6:55	Readings	PID	SC23030921B3	Normal	0
592-601274	7/11/2024 6:56	Readings	PID	SC23030921B3	Normal	0
592-601274	7/11/2024 6:57	Readings	PID	SC23030921B3	Normal	0
592-601274	7/11/2024 6:58	Readings	PID	SC23030921B3	Normal	0
592-601274	7/11/2024 6:59	Readings	PID	SC23030921B3	Normal	0
592-601274	7/11/2024 7:00	Readings	PID	SC23030921B3	Normal	0
592-601274	7/11/2024 7:01	Readings	PID	SC23030921B3	Normal	0
592-601274	7/11/2024 7:02	Readings	PID	SC23030921B3	Normal	0
592-601274	7/11/2024 7:03	Readings	PID	SC23030921B3	Normal	0
592-601274	7/11/2024 7:04	Readings	PID	SC23030921B3	Normal	0
592-601274	7/11/2024 7:05	Readings	PID	SC23030921B3	Normal	0
592-601274	7/11/2024 7:06	Readings	PID	SC23030921B3	Normal	0
592-601274	7/11/2024 7:07	Readings	PID	SC23030921B3	Normal	0
592-601274	7/11/2024 7:08	Readings	PID	SC23030921B3	Normal	0
592-601274	7/11/2024 7:09	Readings	PID	SC23030921B3	Normal	0
592-601274	7/11/2024 7:10	Readings	PID	SC23030921B3	Normal	0
592-601274	7/11/2024 7:11	Readings	PID	SC23030921B3	Normal	0
592-601274	7/11/2024 7:12	Readings	PID	SC23030921B3	Normal	0
592-601274	7/11/2024 7:13	Readings	PID	SC23030921B3	Normal	0
592-601274	7/11/2024 7:14	Readings	PID	SC23030921B3	Normal	0











































592-601274	7/11/2024 17:09 Readings	PID	SC23030921B3	Normal	0
592-601274	7/11/2024 17:10 Readings	PID	SC23030921B3	Normal	0
592-601274	7/11/2024 17:11 Readings	PID	SC23030921B3	Normal	0
592-601274	7/11/2024 17:12 Readings	PID	SC23030921B3	Normal	0
592-601274	7/11/2024 17:13 Readings	PID	SC23030921B3	Normal	0
592-601274	7/11/2024 17:14 Readings	PID	SC23030921B3	Normal	0
592-601274	7/11/2024 17:15 Readings	PID	SC23030921B3	Normal	0
592-601274	7/11/2024 17:16 Readings	PID	SC23030921B3	Normal	0
592-601274	7/11/2024 17:17 Readings	PID	SC23030921B3	Normal	0
592-601274	7/11/2024 17:18 Readings	PID	SC23030921B3	Normal	0
592-601274	7/11/2024 17:19 Readings	PID	SC23030921B3	Normal	0
592-601274	7/11/2024 17:20 Readings	PID	SC23030921B3	Normal	0
592-601274	7/11/2024 17:21 Readings	PID	SC23030921B3	Normal	0
592-601274	7/11/2024 17:22 Readings	PID	SC23030921B3	Normal	0
592-601274	7/11/2024 17:23 Readings	PID	SC23030921B3	Normal	0

**DOWNWIND CAMP READINGS**

251 DOUGLASS STREET, BROOKLYN, NY



Instrument Name	DustTrak II
Model Number	8530
Serial Number	8530224601
Firmware Version	3.1
Calibration Date	11/9/2022
Test Name	MANUAL_008
Test Start Time	6:44:20 AM
Test Start Date	7/11/2024
Test Length [D:H:M]	0:10:40
Test Interval [M:S]	1:00
Mass Average [mg/m3]	0.038
Mass Minimum [mg/m3]	0.014
Mass Maximum [mg/m3]	0.193
Mass TWA [mg/m3]	0.037
Photometric User Cal	1
Flow User Cal	0
Errors	
Number of Samples	640

Elapsed Time [s]	Mass [mg/m3]	Alarms	Errors
6:45	0.066		
6:46	0.033		
6:47	0.019		
6:48	0.021		
6:49	0.02		
6:50	0.019		
6:51	0.02		
6:52	0.018		
6:53	0.018		
6:54	0.026		
6:55	0.016		
6:56	0.02		
6:57	0.018		
6:58	0.018		
6:59	0.016		
7:00	0.018		
7:01	0.017		
7:02	0.017		
7:03	0.016		
7:04	0.017		
7:05	0.016		
7:06	0.016		
7:07	0.017		
7:08	0.017		

7:09	0.016
7:10	0.017
7:11	0.016
7:12	0.016
7:13	0.016
7:14	0.016
7:15	0.016
7:16	0.018
7:17	0.016
7:18	0.017
7:19	0.017
7:20	0.016
7:21	0.018
7:22	0.019
7:23	0.017
7:24	0.017
7:25	0.021
7:26	0.016
7:27	0.016
7:28	0.022
7:29	0.019
7:30	0.016
7:31	0.017
7:32	0.016
7:33	0.041
7:34	0.019
7:35	0.017
7:36	0.017
7:37	0.016
7:38	0.017
7:39	0.016
7:40	0.018
7:41	0.018
7:42	0.018
7:43	0.019
7:44	0.019
7:45	0.018
7:46	0.018
7:47	0.02
7:48	0.018
7:49	0.019
7:50	0.018
7:51	0.018
7:52	0.018

7:53	0.018
7:54	0.018
7:55	0.02
7:56	0.019
7:57	0.017
7:58	0.017
7:59	0.018
8:00	0.019
8:01	0.019
8:02	0.027
8:03	0.024
8:04	0.02
8:05	0.026
8:06	0.02
8:07	0.018
8:08	0.02
8:09	0.02
8:10	0.02
8:11	0.024
8:12	0.019
8:13	0.019
8:14	0.024
8:15	0.023
8:16	0.022
8:17	0.021
8:18	0.022
8:19	0.019
8:20	0.018
8:21	0.019
8:22	0.018
8:23	0.018
8:24	0.021
8:25	0.021
8:26	0.018
8:27	0.021
8:28	0.017
8:29	0.018
8:30	0.018
8:31	0.019
8:32	0.017
8:33	0.02
8:34	0.019
8:35	0.017
8:36	0.017

8:37	0.018
8:38	0.02
8:39	0.02
8:40	0.021
8:41	0.019
8:42	0.018
8:43	0.018
8:44	0.027
8:45	0.026
8:46	0.016
8:47	0.023
8:48	0.019
8:49	0.018
8:50	0.02
8:51	0.03
8:52	0.015
8:53	0.021
8:54	0.023
8:55	0.02
8:56	0.045
8:57	0.023
8:58	0.019
8:59	0.018
9:00	0.025
9:01	0.02
9:02	0.019
9:03	0.062
9:04	0.193
9:05	0.059
9:06	0.067
9:07	0.034
9:08	0.142
9:09	0.051
9:10	0.022
9:11	0.035
9:12	0.028
9:13	0.022
9:14	0.024
9:15	0.024
9:16	0.024
9:17	0.02
9:18	0.021
9:19	0.023
9:20	0.019



9:21	0.019
9:22	0.02
9:23	0.024
9:24	0.024
9:25	0.019
9:26	0.026
9:27	0.017
9:28	0.019
9:29	0.019
9:30	0.017
9:31	0.017
9:32	0.015
9:33	0.02
9:34	0.017
9:35	0.017
9:36	0.12
9:37	0.029
9:38	0.078
9:39	0.059
9:40	0.021
9:41	0.015
9:42	0.015
9:43	0.014
9:44	0.051
9:45	0.023
9:46	0.017
9:47	0.023
9:48	0.027
9:49	0.086
9:50	0.027
9:51	0.02
9:52	0.019
9:53	0.023
9:54	0.019
9:55	0.028
9:56	0.02
9:57	0.018
9:58	0.025
9:59	0.018
10:00	0.015
10:01	0.016
10:02	0.015
10:03	0.015
10:04	0.018

10:05	0.02
10:06	0.016
10:07	0.018
10:08	0.02
10:09	0.017
10:10	0.017
10:11	0.015
10:12	0.016
10:13	0.016
10:14	0.015
10:15	0.018
10:16	0.018
10:17	0.127
10:18	0.141
10:19	0.102
10:20	0.039
10:21	0.054
10:22	0.079
10:23	0.095
10:24	0.027
10:25	0.054
10:26	0.097
10:27	0.049
10:28	0.018
10:29	0.02
10:30	0.021
10:31	0.031
10:32	0.026
10:33	0.023
10:34	0.019
10:35	0.098
10:36	0.03
10:37	0.024
10:38	0.021
10:39	0.019
10:40	0.019
10:41	0.019
10:42	0.019
10:43	0.018
10:44	0.024
10:45	0.094
10:46	0.034
10:47	0.036
10:48	0.018

10:49	0.047
10:50	0.03
10:51	0.042
10:52	0.021
10:53	0.125
10:54	0.017
10:55	0.016
10:56	0.034
10:57	0.028
10:58	0.022
10:59	0.017
11:00	0.072
11:01	0.022
11:02	0.057
11:03	0.018
11:04	0.019
11:05	0.017
11:06	0.018
11:07	0.019
11:08	0.022
11:09	0.088
11:10	0.024
11:11	0.022
11:12	0.018
11:13	0.062
11:14	0.043
11:15	0.018
11:16	0.02
11:17	0.02
11:18	0.02
11:19	0.018
11:20	0.047
11:21	0.033
11:22	0.019
11:23	0.018
11:24	0.111
11:25	0.024
11:26	0.019
11:27	0.042
11:28	0.025
11:29	0.018
11:30	0.027
11:31	0.022
11:32	0.027

11:33	0.028
11:34	0.017
11:35	0.023
11:36	0.025
11:37	0.018
11:38	0.019
11:39	0.027
11:40	0.08
11:41	0.019
11:42	0.02
11:43	0.044
11:44	0.026
11:45	0.024
11:46	0.021
11:47	0.029
11:48	0.019
11:49	0.022
11:50	0.032
11:51	0.038
11:52	0.082
11:53	0.038
11:54	0.037
11:55	0.042
11:56	0.031
11:57	0.042
11:58	0.026
11:59	0.045
12:00	0.032
12:01	0.035
12:02	0.027
12:03	0.027
12:04	0.021
12:05	0.068
12:06	0.028
12:07	0.07
12:08	0.075
12:09	0.092
12:10	0.027
12:11	0.029
12:12	0.021
12:13	0.033
12:14	0.035
12:15	0.028
12:16	0.053

12:17	0.023
12:18	0.177
12:19	0.04
12:20	0.042
12:21	0.034
12:22	0.041
12:23	0.032
12:24	0.02
12:25	0.059
12:26	0.035
12:27	0.022
12:28	0.024
12:29	0.03
12:30	0.022
12:31	0.02
12:32	0.039
12:33	0.024
12:34	0.023
12:35	0.026
12:36	0.024
12:37	0.025
12:38	0.036
12:39	0.019
12:40	0.021
12:41	0.034
12:42	0.033
12:43	0.053
12:44	0.048
12:45	0.033
12:46	0.026
12:47	0.093
12:48	0.037
12:49	0.019
12:50	0.018
12:51	0.026
12:52	0.032
12:53	0.107
12:54	0.056
12:55	0.189
12:56	0.021
12:57	0.02
12:58	0.032
12:59	0.024
13:00	0.017

13:01	0.018
13:02	0.019
13:03	0.021
13:04	0.027
13:05	0.029
13:06	0.049
13:07	0.028
13:08	0.026
13:09	0.018
13:10	0.018
13:11	0.018
13:12	0.066
13:13	0.02
13:14	0.027
13:15	0.086
13:16	0.067
13:17	0.07
13:18	0.025
13:19	0.072
13:20	0.119
13:21	0.078
13:22	0.024
13:23	0.027
13:24	0.026
13:25	0.026
13:26	0.028
13:27	0.022
13:28	0.02
13:29	0.026
13:30	0.023
13:31	0.025
13:32	0.023
13:33	0.136
13:34	0.145
13:35	0.031
13:36	0.044
13:37	0.048
13:38	0.051
13:39	0.022
13:40	0.02
13:41	0.022
13:42	0.023
13:43	0.021
13:44	0.021

13:45	0.036
13:46	0.038
13:47	0.025
13:48	0.022
13:49	0.024
13:50	0.024
13:51	0.019
13:52	0.024
13:53	0.023
13:54	0.045
13:55	0.026
13:56	0.043
13:57	0.028
13:58	0.048
13:59	0.043
14:00	0.059
14:01	0.04
14:02	0.048
14:03	0.029
14:04	0.051
14:05	0.025
14:06	0.122
14:07	0.024
14:08	0.023
14:09	0.019
14:10	0.098
14:11	0.023
14:12	0.021
14:13	0.024
14:14	0.022
14:15	0.021
14:16	0.023
14:17	0.033
14:18	0.032
14:19	0.022
14:20	0.07
14:21	0.087
14:22	0.175
14:23	0.033
14:24	0.04
14:25	0.036
14:26	0.028
14:27	0.086
14:28	0.07

14:29	0.073
14:30	0.108
14:31	0.148
14:32	0.053
14:33	0.024
14:34	0.021
14:35	0.038
14:36	0.048
14:37	0.049
14:38	0.03
14:39	0.02
14:40	0.019
14:41	0.022
14:42	0.02
14:43	0.022
14:44	0.022
14:45	0.023
14:46	0.085
14:47	0.028
14:48	0.021
14:49	0.021
14:50	0.027
14:51	0.021
14:52	0.025
14:53	0.027
14:54	0.092
14:55	0.046
14:56	0.031
14:57	0.03
14:58	0.072
14:59	0.037
15:00	0.028
15:01	0.025
15:02	0.032
15:03	0.037
15:04	0.035
15:05	0.028
15:06	0.067
15:07	0.028
15:08	0.034
15:09	0.034
15:10	0.027
15:11	0.029
15:12	0.027



15:13	0.031
15:14	0.023
15:15	0.03
15:16	0.051
15:17	0.024
15:18	0.023
15:19	0.023
15:20	0.035
15:21	0.024
15:22	0.023
15:23	0.023
15:24	0.025
15:25	0.023
15:26	0.023
15:27	0.03
15:28	0.025
15:29	0.025
15:30	0.024
15:31	0.024
15:32	0.025
15:33	0.043
15:34	0.038
15:35	0.064
15:36	0.024
15:37	0.043
15:38	0.035
15:39	0.032
15:40	0.024
15:41	0.026
15:42	0.026
15:43	0.024
15:44	0.025
15:45	0.025
15:46	0.023
15:47	0.075
15:48	0.054
15:49	0.025
15:50	0.028
15:51	0.029
15:52	0.032
15:53	0.025
15:54	0.023
15:55	0.025
15:56	0.024

15:57	0.025
15:58	0.03
15:59	0.027
16:00	0.026
16:01	0.025
16:02	0.025
16:03	0.026
16:04	0.026
16:05	0.027
16:06	0.024
16:07	0.024
16:08	0.024
16:09	0.025
16:10	0.025
16:11	0.023
16:12	0.027
16:13	0.097
16:14	0.04
16:15	0.042
16:16	0.091
16:17	0.04
16:18	0.032
16:19	0.036
16:20	0.03
16:21	0.035
16:22	0.028
16:23	0.027
16:24	0.028
16:25	0.032
16:26	0.027
16:27	0.03
16:28	0.031
16:29	0.036
16:30	0.028
16:31	0.034
16:32	0.073
16:33	0.027
16:34	0.027
16:35	0.027
16:36	0.027
16:37	0.031
16:38	0.026
16:39	0.027
16:40	0.026

16:41	0.035
16:42	0.04
16:43	0.048
16:44	0.032
16:45	0.026
16:46	0.026
16:47	0.027
16:48	0.028
16:49	0.026
16:50	0.035
16:51	0.043
16:52	0.028
16:53	0.029
16:54	0.068
16:55	0.058
16:56	0.034
16:57	0.038
16:58	0.028
16:59	0.028
17:00	0.028
17:01	0.029
17:02	0.032
17:03	0.03
17:04	0.029
17:05	0.06
17:06	0.03
17:07	0.028
17:08	0.029
17:09	0.027
17:10	0.045
17:11	0.108
17:12	0.039
17:13	0.09
17:14	0.09
17:15	0.037
17:16	0.03
17:17	0.033
17:18	0.041
17:19	0.045
17:20	0.035
17:21	0.04
17:22	0.037
17:23	0.031
17:24	0.03

Device Serial No	Log Time	Log Type	Sensor 1 Type	Sensor 1 Serial Number	Sensor 1 Status	Sensor 1 Gas Reading
592-602816	7/11/2024 6:44	CONFIG	PID	SC23030324C7		
592-602816	7/11/2024 6:45	Readings	PID	SC23030324C7	Normal	0
592-602816	7/11/2024 6:46	Readings	PID	SC23030324C7	Normal	0
592-602816	7/11/2024 6:47	Readings	PID	SC23030324C7	Normal	0
592-602816	7/11/2024 6:48	Readings	PID	SC23030324C7	Normal	0
592-602816	7/11/2024 6:49	Readings	PID	SC23030324C7	Normal	0
592-602816	7/11/2024 6:50	Readings	PID	SC23030324C7	Normal	0
592-602816	7/11/2024 6:51	Readings	PID	SC23030324C7	Normal	0
592-602816	7/11/2024 6:52	Readings	PID	SC23030324C7	Normal	0
592-602816	7/11/2024 6:53	Readings	PID	SC23030324C7	Normal	0
592-602816	7/11/2024 6:54	Readings	PID	SC23030324C7	Normal	0
592-602816	7/11/2024 6:55	Readings	PID	SC23030324C7	Normal	0
592-602816	7/11/2024 6:56	Readings	PID	SC23030324C7	Normal	0
592-602816	7/11/2024 6:57	Readings	PID	SC23030324C7	Normal	0
592-602816	7/11/2024 6:58	Readings	PID	SC23030324C7	Normal	0
592-602816	7/11/2024 6:59	Readings	PID	SC23030324C7	Normal	0
592-602816	7/11/2024 7:00	Readings	PID	SC23030324C7	Normal	0
592-602816	7/11/2024 7:01	Readings	PID	SC23030324C7	Normal	0
592-602816	7/11/2024 7:02	Readings	PID	SC23030324C7	Normal	0
592-602816	7/11/2024 7:03	Readings	PID	SC23030324C7	Normal	0
592-602816	7/11/2024 7:04	Readings	PID	SC23030324C7	Normal	0
592-602816	7/11/2024 7:05	Readings	PID	SC23030324C7	Normal	0
592-602816	7/11/2024 7:06	Readings	PID	SC23030324C7	Normal	0
592-602816	7/11/2024 7:07	Readings	PID	SC23030324C7	Normal	0
592-602816	7/11/2024 7:08	Readings	PID	SC23030324C7	Normal	0
592-602816	7/11/2024 7:09	Readings	PID	SC23030324C7	Normal	0
592-602816	7/11/2024 7:10	Readings	PID	SC23030324C7	Normal	0
592-602816	7/11/2024 7:11	Readings	PID	SC23030324C7	Normal	0
592-602816	7/11/2024 7:12	Readings	PID	SC23030324C7	Normal	0
592-602816	7/11/2024 7:13	Readings	PID	SC23030324C7	Normal	0
592-602816	7/11/2024 7:14	Readings	PID	SC23030324C7	Normal	0
592-602816	7/11/2024 7:15	Readings	PID	SC23030324C7	Normal	0











592-602816	7/11/2024 9:28	Readings	PID	SC23030324C7	Normal	0
592-602816	7/11/2024 9:29	Readings	PID	SC23030324C7	Normal	0
592-602816	7/11/2024 9:30	Readings	PID	SC23030324C7	Normal	0
592-602816	7/11/2024 9:31	Readings	PID	SC23030324C7	Normal	0
592-602816	7/11/2024 9:32	Readings	PID	SC23030324C7	Normal	0
592-602816	7/11/2024 9:33	Readings	PID	SC23030324C7	Normal	0
592-602816	7/11/2024 9:34	Readings	PID	SC23030324C7	Normal	0
592-602816	7/11/2024 9:35	Readings	PID	SC23030324C7	Normal	0
592-602816	7/11/2024 9:36	Readings	PID	SC23030324C7	Normal	0
592-602816	7/11/2024 9:37	Readings	PID	SC23030324C7	Normal	0
592-602816	7/11/2024 9:38	Readings	PID	SC23030324C7	Normal	0
592-602816	7/11/2024 9:39	Readings	PID	SC23030324C7	Normal	0
592-602816	7/11/2024 9:40	Readings	PID	SC23030324C7	Normal	0
592-602816	7/11/2024 9:41	Readings	PID	SC23030324C7	Normal	0
592-602816	7/11/2024 9:42	Readings	PID	SC23030324C7	Normal	0
592-602816	7/11/2024 9:43	Readings	PID	SC23030324C7	Normal	0
592-602816	7/11/2024 9:44	Readings	PID	SC23030324C7	Normal	0
592-602816	7/11/2024 9:45	Readings	PID	SC23030324C7	Normal	0
592-602816	7/11/2024 9:46	Readings	PID	SC23030324C7	Normal	0
592-602816	7/11/2024 9:47	Readings	PID	SC23030324C7	Normal	0
592-602816	7/11/2024 9:48	Readings	PID	SC23030324C7	Normal	0
592-602816	7/11/2024 9:49	Readings	PID	SC23030324C7	Normal	0
592-602816	7/11/2024 9:50	Readings	PID	SC23030324C7	Normal	0
592-602816	7/11/2024 9:51	Readings	PID	SC23030324C7	Normal	0
592-602816	7/11/2024 9:52	Readings	PID	SC23030324C7	Normal	0
592-602816	7/11/2024 9:53	Readings	PID	SC23030324C7	Normal	0
592-602816	7/11/2024 9:54	Readings	PID	SC23030324C7	Normal	0
592-602816	7/11/2024 9:55	Readings	PID	SC23030324C7	Normal	0
592-602816	7/11/2024 9:56	Readings	PID	SC23030324C7	Normal	0
592-602816	7/11/2024 9:57	Readings	PID	SC23030324C7	Normal	0
592-602816	7/11/2024 9:58	Readings	PID	SC23030324C7	Normal	0
592-602816	7/11/2024 9:59	Readings	PID	SC23030324C7	Normal	0
592-602816	7/11/2024 10:00	Readings	PID	SC23030324C7	Normal	0





























592-602816	7/11/2024 17:10 Readings	PID	SC23030324C7	Normal	0
592-602816	7/11/2024 17:11 Readings	PID	SC23030324C7	Normal	0
592-602816	7/11/2024 17:12 Readings	PID	SC23030324C7	Normal	0
592-602816	7/11/2024 17:13 Readings	PID	SC23030324C7	Normal	0
592-602816	7/11/2024 17:14 Readings	PID	SC23030324C7	Normal	0
592-602816	7/11/2024 17:15 Readings	PID	SC23030324C7	Normal	0
592-602816	7/11/2024 17:16 Readings	PID	SC23030324C7	Normal	0
592-602816	7/11/2024 17:17 Readings	PID	SC23030324C7	Normal	0
592-602816	7/11/2024 17:18 Readings	PID	SC23030324C7	Normal	0
592-602816	7/11/2024 17:19 Readings	PID	SC23030324C7	Normal	0
592-602816	7/11/2024 17:20 Readings	PID	SC23030324C7	Normal	0
592-602816	7/11/2024 17:21 Readings	PID	SC23030324C7	Normal	0
592-602816	7/11/2024 17:22 Readings	PID	SC23030324C7	Normal	0
592-602816	7/11/2024 17:23 Readings	PID	SC23030324C7	Normal	0
592-602816	7/11/2024 17:24 Readings	PID	SC23030324C7	Normal	0
592-602816	7/11/2024 17:25 Readings	PID	SC23030324C7	Normal	0
592-602816	7/11/2024 17:26 Readings	PID	SC23030324C7	Normal	0
592-602816	7/11/2024 17:27 Readings	PID	SC23030324C7	Normal	0

Instrument Name	DustTrak DRX
Model Number	8533
Serial Number	8533181205
Firmware Version	3.1
Calibration Date	5/31/2023
Test Name	MANUAL_008
Test Start Time	6:50:31 AM
Test Start Date	7/11/2024
Test Length [D:H:M]	0:10:25
Test Interval [M:S]	1:00
PM1 Average [mg/m3]	0.02
PM1 Minimum [mg/m3]	0
PM1 Maximum [mg/m3]	0.162
PM1 TWA [mg/m3]	0.01
Photometric User Cal	1
Size Correction User Cal	1
Flow User Cal	0
Errors	
Number of Samples	257

Elapsed Time [s]	PM1 [mg/m3]	Alarms	Errors
6:51	0.074		
6:52	0.013		
6:53	0.014		
6:54	0.013		
6:55	0.013		
6:56	0.013		
6:57	0.012		
6:58	0.012		
6:59	0.012		
7:00	0.012		
7:01	0.012		
7:02	0.011		
7:03	0.012		
7:04	0.012		
7:05	0.015		
7:06	0.012		
7:07	0.012		
7:08	0.012		
7:09	0.011		
7:10	0.012		
7:11	0.012		
7:12	0.01		
7:13	0.011		



7:14	0.012
7:15	0.012
7:16	0.012
7:17	0.011
7:18	0.013
7:19	0.012
7:20	0.011
7:21	0.012
7:22	0.014
7:23	0.013
7:24	0.012
7:25	0.012
7:26	0.012
7:27	0.021
7:28	0.018
7:29	0.014
7:30	0.012
7:31	0.013
7:32	0.012
7:33	0.013
7:34	0.016
7:35	0.018
7:36	0.018
7:37	0.017
7:38	0.016
7:39	0.014
7:40	0.015
7:41	0.017
7:42	0.013
7:43	0.013
7:44	0.014
7:45	0.013
7:46	0.014
7:47	0.014
7:48	0.013
7:49	0.014
7:50	0.013
7:51	0.014
7:52	0.014
7:53	0.013
7:54	0.016
7:55	0.015
7:56	0.019
7:57	0.019

7:58	0.014
7:59	0.014
8:00	0.014
8:01	0.016
8:02	0.041
8:03	0.016
8:04	0.017
8:05	0.014
8:06	0.016
8:07	0.017
8:08	0.018
8:09	0.015
8:10	0.017
8:11	0.016
8:12	0.017
8:13	0.013
8:14	0.017
8:15	0.016
8:16	0.017
8:17	0.037
8:18	0.016
8:19	0.016
8:20	0.018
8:21	0.023
8:22	0.021
8:23	0.051
8:24	0.02
8:25	0.025
8:26	0.023
8:27	0.024
8:28	0.036
8:29	0.051
8:30	0.044
8:31	0.036
8:32	0.033
8:33	0.045
8:34	0.064
8:35	0.026
8:36	0.021
8:37	0.162
8:38	0.026
8:39	0.029
8:40	0.026
8:41	0.022

8:42	0.026
8:43	0.031
8:44	0.026
8:45	0.017
8:46	0.015
8:47	0.014
8:48	0.015
8:49	0.022
8:50	0.019
8:51	0.019
8:52	0.02
8:53	0.017
8:54	0.016
8:55	0.025
8:56	0.024
8:57	0.022
8:58	0.017
8:59	0.024
9:00	0.02
9:01	0.02
9:02	0.022
9:03	0.024
9:04	0.021
9:05	0.024
9:06	0.018
9:07	0.016
9:08	0.018
9:09	0.015
9:10	0.026
9:11	0.015
9:12	0.019
9:13	0.017
9:14	0.014
9:15	0.015
9:16	0.013
9:17	0.012
9:18	0.013
9:19	0.016
9:20	0.019
9:21	0.018
9:22	0.019
9:23	0.014
9:24	0.015
9:25	0.014

9:26	0.017
9:27	0.014
9:28	0.013
9:29	0.025
9:30	0.013
9:31	0.011
9:32	0.012
9:33	0.011
9:34	0.01
9:35	0.01
9:36	0.012
9:37	0.01
9:38	0.011
9:39	0.014
9:40	0.01
9:41	0.013
9:42	0.016
9:43	0.012
9:44	0.016
9:45	0.013
9:46	0.013
9:47	0.014
9:48	0.011
9:49	0.011
9:50	0.014
9:51	0.011
9:52	0.018
9:53	0.011
9:54	0.01
9:55	0.012
9:56	0.012
9:57	0.011
9:58	0.011
9:59	0.012
10:00	0.032
10:01	0.015
10:02	0.013
10:03	0.013
10:04	0.013
10:05	0.019
10:06	0.016
10:07	0.016
10:08	0.016
10:09	0.021

10:10	0.015
10:11	0.014
10:12	0.014
10:13	0.01
10:14	0.012
10:15	0.013
10:16	0.01
10:17	0.02
10:18	0.018
10:19	0.026
10:20	0.039
10:21	0.039
10:22	0.016
10:23	0.03
10:24	0.026
10:25	0.065
10:26	0.022
10:27	0.012
10:28	0.013
10:29	0.017
10:30	0.01
10:31	0.019
10:32	0.017
10:33	0.014
10:34	0.011
10:35	0.01
10:36	0.024
10:37	0.02
10:38	0.023
10:39	0.023
10:40	0.022
10:41	0.017
10:42	0.012
10:43	0.01
10:44	0.014
10:45	0.018
10:46	0.02
10:47	0.01
10:48	0.02
10:49	0.009
10:50	0.019
10:51	0.012
10:52	0.02
10:53	0.012

10:54	0.02
10:55	0.01
10:56	0.01
10:57	0.013
10:58	0.011
10:59	0.01
11:00	0.009
11:01	0.018
11:02	0.013
11:03	0.014
11:04	0.01
11:05	0.011
17:25	0
17:26	0.034

Device Serial No	Log Time	Log Type	Sensor 1 Type	Sensor 1 Serial Number	Sensor 1 Status	Sensor 1 Gas Reading
592-600871	7/11/2024 6:40	CONFIG	PID	SC23030408A8		
592-600871	7/11/2024 6:41	Readings	PID	SC23030408A8	Normal	0
592-600871	7/11/2024 6:42	Readings	PID	SC23030408A8	Normal	0
592-600871	7/11/2024 6:43	Readings	PID	SC23030408A8	Normal	0
592-600871	7/11/2024 6:44	Readings	PID	SC23030408A8	Normal	0
592-600871	7/11/2024 6:45	Readings	PID	SC23030408A8	Normal	0
592-600871	7/11/2024 6:46	Readings	PID	SC23030408A8	Normal	0
592-600871	7/11/2024 6:47	Readings	PID	SC23030408A8	Normal	0
592-600871	7/11/2024 6:48	Readings	PID	SC23030408A8	Normal	0
592-600871	7/11/2024 6:49	Readings	PID	SC23030408A8	Normal	0
592-600871	7/11/2024 6:50	Readings	PID	SC23030408A8	Normal	0
592-600871	7/11/2024 6:51	Readings	PID	SC23030408A8	Normal	0
592-600871	7/11/2024 6:52	Readings	PID	SC23030408A8	Normal	0
592-600871	7/11/2024 6:53	Readings	PID	SC23030408A8	Normal	0
592-600871	7/11/2024 6:54	Readings	PID	SC23030408A8	Normal	0
592-600871	7/11/2024 6:55	Readings	PID	SC23030408A8	Normal	0
592-600871	7/11/2024 6:56	Readings	PID	SC23030408A8	Normal	0
592-600871	7/11/2024 6:57	Readings	PID	SC23030408A8	Normal	0
592-600871	7/11/2024 6:58	Readings	PID	SC23030408A8	Normal	0
592-600871	7/11/2024 6:59	Readings	PID	SC23030408A8	Normal	0
592-600871	7/11/2024 7:00	Readings	PID	SC23030408A8	Normal	0
592-600871	7/11/2024 7:01	Readings	PID	SC23030408A8	Normal	0
592-600871	7/11/2024 7:02	Readings	PID	SC23030408A8	Normal	0
592-600871	7/11/2024 7:03	Readings	PID	SC23030408A8	Normal	0
592-600871	7/11/2024 7:04	Readings	PID	SC23030408A8	Normal	0
592-600871	7/11/2024 7:05	Readings	PID	SC23030408A8	Normal	0
592-600871	7/11/2024 7:06	Readings	PID	SC23030408A8	Normal	0
592-600871	7/11/2024 7:07	Readings	PID	SC23030408A8	Normal	0
592-600871	7/11/2024 7:08	Readings	PID	SC23030408A8	Normal	0
592-600871	7/11/2024 7:09	Readings	PID	SC23030408A8	Normal	0
592-600871	7/11/2024 7:10	Readings	PID	SC23030408A8	Normal	0
592-600871	7/11/2024 7:11	Readings	PID	SC23030408A8	Normal	0











































592-600871	7/11/2024 17:06 Readings	PID	SC23030408A8	Normal	0
592-600871	7/11/2024 17:07 Readings	PID	SC23030408A8	Normal	0
592-600871	7/11/2024 17:08 Readings	PID	SC23030408A8	Normal	0
592-600871	7/11/2024 17:09 Readings	PID	SC23030408A8	Normal	0
592-600871	7/11/2024 17:10 Readings	PID	SC23030408A8	Normal	0
592-600871	7/11/2024 17:11 Readings	PID	SC23030408A8	Normal	0