



DAILY STATUS REPORT

Prepared By:

Victor Barraza

WEATHER	Snow	Rain	x	Overcast	x	Partly Cloudy	Bright Sun	Wind
TEMP.	< 32	32-50		50-70		70-85	x >85	SW – 5 MPH

IEEG Project No:	13928	NYSDEC BCP Site No:	C224367	Date:	07/13/24
Project:	251 Douglass Street, Brooklyn, NY				

<p>Consultant: Impact Environmental Engineering and Geology, PLLC (IEEG)</p> <p>Time On: 06:50 Time Out: 13:30</p>	<p>Personnel On Site: IEEG (Environmental) – Victor Barraza Broadway Construction Group – Alex Vega Cascade Concrete course</p> <p>Equipment On Site: (3) MiniRAE 3000 PID, (3) DustTrak II</p>
---	---

Scope of Work: Batch plant and rig maintenance; swell stockpiling; and weld rig auger.

Site Activities:

- Deployed three (3) CAMP stations prior to the start of work activities;
- Cascade begins rig maintenance and batch plant maintenance;
- Swell material stockpiling in the butler corridor to be loaded on Monday 07/15/24 by cascade and concrete course excavators and
- Rig auger being welded.

Community Air Monitoring Program (CAMP) - CAMP action level for dust (0.1 mg/m³) and VOCs (5 ppm)

- PID remained at nominal levels throughout the day
- No sustained dust exceedances were observed over a 15-min period during monitoring;
- Startup Upwind Conditions – PID = _0.0_ ppm, Dust = _0.013_ mg/m³ @ 07:24
- High Conditions (Upwind) – PID = _0.0_ ppm, Dust = _0.083_ mg/m³ @ 09:07
- High Conditions (Downwind 1) – PID = _0.0_ ppm, Dust = _0.258_ mg/m³ @ 09:59
- High Conditions (Downwind 2) – PID = _0.1_ ppm @12:35, Dust = _0.479_ mg/m³ @ 12:06

Notable Site Conditions:

- N/A

Planned for the Next Day/Week:

- Continuation of ISS column installation.
- Load out trucks with swell material.

PHOTO LOG

251 DOUGLASS STREET, BROOKLYN, NY



Photo 1-
Representative photo of batch plant being cleaned out and serviced.



Photo 2-
Representative photo of swell material being moved to stock pile.



Photo 3-
Representative photo of rig auger being welded and serviced.



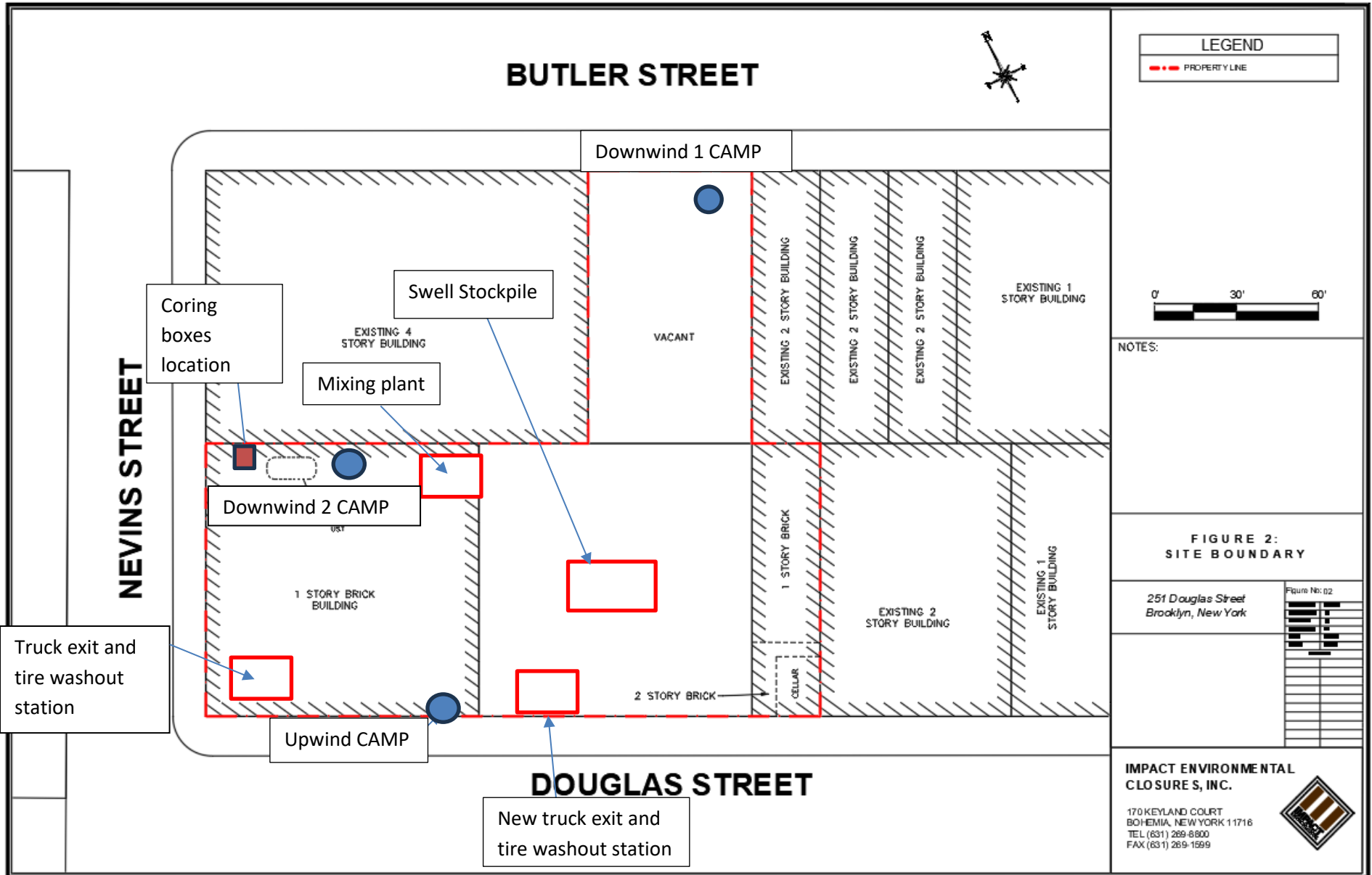
Photo 4-
Representative photo of Site at the end of the workday.

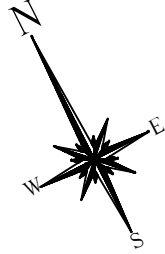


SITE PLANS

251 DOUGLASS STREET, BROOKLYN, NY







LEGEND

- PROPERTY LINE
- 55' EIGHT FOOT DIA. HYDRAULIC COLUMN (TYP.)
- EIGHT FOOT DIA. INNER COLUMN (TYP.)
- APPROVED TO 55'
- SIX FOOT DIA. HYDRAULIC COLUMN (TYP.)
- ISS COLUMN INSTALLED TO TERMINAL DEPTH
- ISS COLUMN UNABLE TO BE INSTALLED TO TERMINAL DEPTH
- ISS COLUMN UNABLE TO BE INSTALLED DUE TO OBSTRUCTION
- WET MIX SAMPLE COLLECTED FROM ISS COLUMN
- ▲ COMPLETED CORING LOCATION

NOTES:

1. THE BASE MAP WAS DRAWN FROM A PLAN ENTITLED, ALTA/NSPS LAND TITLE SURVEY, PREPARED BY PERFECT POINT LAND SURVEYING OF BROOKLYN, NY AND WAS RECEIVED ELECTRONICALLY ON APRIL 2023 WITH AN ORIGINAL SCALE: 1" = 20'.

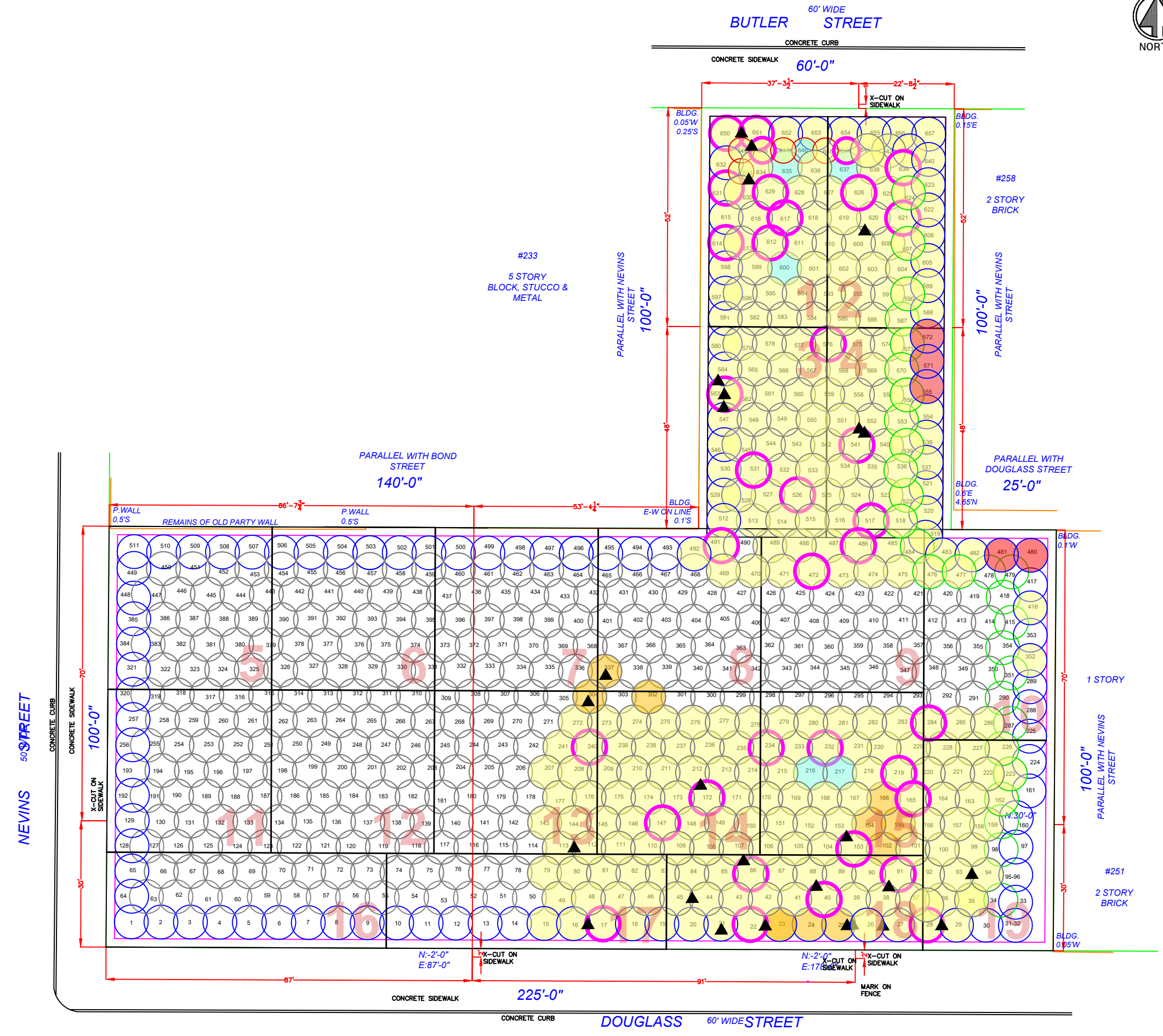
**251 Douglas Street
Brooklyn, New York**

Figure No: 01

PROJECT NO:	13028-01
DESIGNED BY:	AB
DRAWN BY:	AB
CHECKED BY:	DP
DATE:	1/6/2021
SCALE:	N.T.S.
REVISIONS	

**IMPACT ENVIRONMENTAL
CLOSURES, INC.**

170 KEYLAND COURT
BOHEMIA, NEW YORK 11716
TEL (631) 269-8800
FAX (631) 269-1599





IMPACT ENVIRONMENTAL

170 Keyland Court | Bohemia | NY | 11716 | 631.269.8800

welcome to solid ground...

www.impactenvironmental.com

UPWIND CAMP READINGS

251 DOUGLASS STREET, BROOKLYN, NY

Instrument Name	DustTrak II
Model Number	8530
Serial Number	8530224601
Firmware Version	3.1
Calibration Date	11/9/2022
Test Name	MANUAL_010
Test Start Time	7:24:00 AM
Test Start Date	7/13/2024
Test Length [D:H:M]	0:05:21
Test Interval [M:S]	1:00
Mass Average [mg/m3]	0.021
Mass Minimum [mg/m3]	0.006
Mass Maximum [mg/m3]	0.083
Mass TWA [mg/m3]	0.014
Photometric User Cal	1
Flow User Cal	0
Errors	
Number of Samples	321

Elapsed Time [s]	Mass [mg/m3]	Alarms	Errors
60	0.013		
120	0.01		
180	0.01		
240	0.009		
300	0.008		
360	0.008		
420	0.01		
480	0.007		
540	0.007		
600	0.007		
660	0.009		
720	0.011		
780	0.01		
840	0.009		
900	0.007		
960	0.006		
1020	0.006		
1080	0.006		
1140	0.006		
1200	0.006		
1260	0.006		
1320	0.006		
1380	0.007		
1440	0.009		

1500	0.008
1560	0.007
1620	0.006
1680	0.007
1740	0.007
1800	0.008
1860	0.007
1920	0.007
1980	0.007
2040	0.023
2100	0.033
2160	0.019
2220	0.01
2280	0.026
2340	0.014
2400	0.01
2460	0.009
2520	0.015
2580	0.014
2640	0.011
2700	0.013
2760	0.01
2820	0.008
2880	0.008
2940	0.008
3000	0.007
3060	0.007
3120	0.008
3180	0.007
3240	0.007
3300	0.007
3360	0.009
3420	0.03
3480	0.027
3540	0.017
3600	0.035
3660	0.037
3720	0.037
3780	0.015
3840	0.016
3900	0.017
3960	0.015
4020	0.012
4080	0.011

4140	0.012
4200	0.012
4260	0.01
4320	0.01
4380	0.01
4440	0.012
4500	0.012
4560	0.012
4620	0.012
4680	0.012
4740	0.012
4800	0.071
4860	0.032
4920	0.013
4980	0.012
5040	0.009
5100	0.016
5160	0.041
5220	0.017
5280	0.023
5340	0.016
5400	0.014
5460	0.012
5520	0.008
5580	0.01
5640	0.009
5700	0.009
5760	0.021
5820	0.021
5880	0.026
5940	0.02
6000	0.015
6060	0.013
6120	0.021
6180	0.083
6240	0.029
6300	0.021
6360	0.017
6420	0.015
6480	0.019
6540	0.013
6600	0.014
6660	0.025
6720	0.036

6780	0.045
6840	0.029
6900	0.025
6960	0.03
7020	0.04
7080	0.017
7140	0.028
7200	0.028
7260	0.033
7320	0.024
7380	0.021
7440	0.018
7500	0.019
7560	0.021
7620	0.03
7680	0.04
7740	0.03
7800	0.033
7860	0.025
7920	0.015
7980	0.015
8040	0.021
8100	0.015
8160	0.014
8220	0.019
8280	0.024
8340	0.024
8400	0.06
8460	0.031
8520	0.035
8580	0.034
8640	0.057
8700	0.073
8760	0.053
8820	0.059
8880	0.068
8940	0.082
9000	0.055
9060	0.066
9120	0.06
9180	0.054
9240	0.055
9300	0.041
9360	0.038

9420	0.028
9480	0.059
9540	0.058
9600	0.025
9660	0.05
9720	0.03
9780	0.023
9840	0.042
9900	0.034
9960	0.021
10020	0.019
10080	0.019
10140	0.02
10200	0.027
10260	0.023
10320	0.025
10380	0.023
10440	0.017
10500	0.02
10560	0.037
10620	0.026
10680	0.02
10740	0.017
10800	0.032
10860	0.017
10920	0.016
10980	0.015
11040	0.017
11100	0.023
11160	0.043
11220	0.023
11280	0.037
11340	0.07
11400	0.062
11460	0.072
11520	0.054
11580	0.037
11640	0.07
11700	0.043
11760	0.024
11820	0.025
11880	0.021
11940	0.016
12000	0.023

12060	0.02
12120	0.02
12180	0.032
12240	0.035
12300	0.023
12360	0.025
12420	0.019
12480	0.017
12540	0.016
12600	0.016
12660	0.019
12720	0.025
12780	0.034
12840	0.041
12900	0.027
12960	0.021
13020	0.024
13080	0.02
13140	0.018
13200	0.018
13260	0.02
13320	0.028
13380	0.022
13440	0.033
13500	0.023
13560	0.018
13620	0.017
13680	0.017
13740	0.021
13800	0.019
13860	0.019
13920	0.018
13980	0.016
14040	0.016
14100	0.015
14160	0.02
14220	0.033
14280	0.022
14340	0.023
14400	0.019
14460	0.016
14520	0.016
14580	0.016
14640	0.016

14700	0.018
14760	0.021
14820	0.024
14880	0.052
14940	0.031
15000	0.021
15060	0.022
15120	0.019
15180	0.017
15240	0.014
15300	0.01
15360	0.008
15420	0.008
15480	0.008
15540	0.007
15600	0.007
15660	0.007
15720	0.009
15780	0.009
15840	0.009
15900	0.01
15960	0.01
16020	0.01
16080	0.009
16140	0.01
16200	0.009
16260	0.01
16320	0.01
16380	0.01
16440	0.01
16500	0.01
16560	0.009
16620	0.01
16680	0.008
16740	0.01
16800	0.011
16860	0.012
16920	0.012
16980	0.014
17040	0.015
17100	0.015
17160	0.015
17220	0.017
17280	0.014

17340	0.016
17400	0.014
17460	0.01
17520	0.013
17580	0.012
17640	0.014
17700	0.013
17760	0.013
17820	0.013
17880	0.013
17940	0.014
18000	0.013
18060	0.013
18120	0.013
18180	0.012
18240	0.013
18300	0.012
18360	0.018
18420	0.013
18480	0.012
18540	0.014
18600	0.015
18660	0.015
18720	0.015
18780	0.015
18840	0.016
18900	0.015
18960	0.015
19020	0.016
19080	0.017
19140	0.015
19200	0.014
19260	0.014

Device Serial No	Log Time	Log Type	Sensor 1 Type	Sensor 1 Serial Number	Sensor 1 Status	Sensor 1 Gas Reading
592-601274	7/13/2024 12:52	Readings	PID	SC23030921B3	Normal	0
592-601274	7/13/2024 12:51	Readings	PID	SC23030921B3	Normal	0
592-601274	7/13/2024 12:50	Readings	PID	SC23030921B3	Normal	0
592-601274	7/13/2024 12:49	Readings	PID	SC23030921B3	Normal	0
592-601274	7/13/2024 12:48	Readings	PID	SC23030921B3	Normal	0
592-601274	7/13/2024 12:47	Readings	PID	SC23030921B3	Normal	0
592-601274	7/13/2024 12:46	Readings	PID	SC23030921B3	Normal	0
592-601274	7/13/2024 12:45	Readings	PID	SC23030921B3	Normal	0
592-601274	7/13/2024 12:44	Readings	PID	SC23030921B3	Normal	0
592-601274	7/13/2024 12:43	Readings	PID	SC23030921B3	Normal	0
592-601274	7/13/2024 12:42	Readings	PID	SC23030921B3	Normal	0
592-601274	7/13/2024 12:41	Readings	PID	SC23030921B3	Normal	0
592-601274	7/13/2024 12:40	Readings	PID	SC23030921B3	Normal	0
592-601274	7/13/2024 12:39	Readings	PID	SC23030921B3	Normal	0
592-601274	7/13/2024 12:38	Readings	PID	SC23030921B3	Normal	0
592-601274	7/13/2024 12:37	Readings	PID	SC23030921B3	Normal	0
592-601274	7/13/2024 12:36	Readings	PID	SC23030921B3	Normal	0
592-601274	7/13/2024 12:35	Readings	PID	SC23030921B3	Normal	0
592-601274	7/13/2024 12:34	Readings	PID	SC23030921B3	Normal	0
592-601274	7/13/2024 12:33	Readings	PID	SC23030921B3	Normal	0
592-601274	7/13/2024 12:32	Readings	PID	SC23030921B3	Normal	0
592-601274	7/13/2024 12:31	Readings	PID	SC23030921B3	Normal	0
592-601274	7/13/2024 12:30	Readings	PID	SC23030921B3	Normal	0
592-601274	7/13/2024 12:29	Readings	PID	SC23030921B3	Normal	0
592-601274	7/13/2024 12:28	Readings	PID	SC23030921B3	Normal	0
592-601274	7/13/2024 12:27	Readings	PID	SC23030921B3	Normal	0
592-601274	7/13/2024 12:26	Readings	PID	SC23030921B3	Normal	0
592-601274	7/13/2024 12:25	Readings	PID	SC23030921B3	Normal	0
592-601274	7/13/2024 12:24	Readings	PID	SC23030921B3	Normal	0
592-601274	7/13/2024 12:23	Readings	PID	SC23030921B3	Normal	0
592-601274	7/13/2024 12:22	Readings	PID	SC23030921B3	Normal	0
592-601274	7/13/2024 12:21	Readings	PID	SC23030921B3	Normal	0

592-601274	7/13/2024 10:08	Readings	PID	SC23030921B3	Normal	0
592-601274	7/13/2024 10:07	Readings	PID	SC23030921B3	Normal	0
592-601274	7/13/2024 10:06	Readings	PID	SC23030921B3	Normal	0
592-601274	7/13/2024 10:05	Readings	PID	SC23030921B3	Normal	0
592-601274	7/13/2024 10:04	Readings	PID	SC23030921B3	Normal	0
592-601274	7/13/2024 10:03	Readings	PID	SC23030921B3	Normal	0
592-601274	7/13/2024 10:02	Readings	PID	SC23030921B3	Normal	0
592-601274	7/13/2024 10:01	Readings	PID	SC23030921B3	Normal	0
592-601274	7/13/2024 10:00	Readings	PID	SC23030921B3	Normal	0
592-601274	7/13/2024 9:59	Readings	PID	SC23030921B3	Normal	0
592-601274	7/13/2024 9:58	Readings	PID	SC23030921B3	Normal	0
592-601274	7/13/2024 9:57	Readings	PID	SC23030921B3	Normal	0
592-601274	7/13/2024 9:56	Readings	PID	SC23030921B3	Normal	0
592-601274	7/13/2024 9:55	Readings	PID	SC23030921B3	Normal	0
592-601274	7/13/2024 9:54	Readings	PID	SC23030921B3	Normal	0
592-601274	7/13/2024 9:53	Readings	PID	SC23030921B3	Normal	0
592-601274	7/13/2024 9:52	Readings	PID	SC23030921B3	Normal	0
592-601274	7/13/2024 9:51	Readings	PID	SC23030921B3	Normal	0
592-601274	7/13/2024 9:50	Readings	PID	SC23030921B3	Normal	0
592-601274	7/13/2024 9:49	Readings	PID	SC23030921B3	Normal	0
592-601274	7/13/2024 9:48	Readings	PID	SC23030921B3	Normal	0
592-601274	7/13/2024 9:47	Readings	PID	SC23030921B3	Normal	0
592-601274	7/13/2024 9:46	Readings	PID	SC23030921B3	Normal	0
592-601274	7/13/2024 9:45	Readings	PID	SC23030921B3	Normal	0
592-601274	7/13/2024 9:44	Readings	PID	SC23030921B3	Normal	0
592-601274	7/13/2024 9:43	Readings	PID	SC23030921B3	Normal	0
592-601274	7/13/2024 9:42	Readings	PID	SC23030921B3	Normal	0
592-601274	7/13/2024 9:41	Readings	PID	SC23030921B3	Normal	0
592-601274	7/13/2024 9:40	Readings	PID	SC23030921B3	Normal	0
592-601274	7/13/2024 9:39	Readings	PID	SC23030921B3	Normal	0
592-601274	7/13/2024 9:38	Readings	PID	SC23030921B3	Normal	0
592-601274	7/13/2024 9:37	Readings	PID	SC23030921B3	Normal	0
592-601274	7/13/2024 9:36	Readings	PID	SC23030921B3	Normal	0

592-601274	7/13/2024 7:23 Readings	PID	SC23030921B3	Normal	0
592-601274	7/13/2024 7:22 Readings	PID	SC23030921B3	Normal	0
592-601274	7/13/2024 7:21 Readings	PID	SC23030921B3	Normal	0
592-601274	7/13/2024 7:20 Readings	PID	SC23030921B3	Normal	0
592-601274	7/13/2024 7:19 Readings	PID	SC23030921B3	Normal	0
592-601274	7/13/2024 7:18 Readings	PID	SC23030921B3	Normal	0
592-601274	7/13/2024 7:17 Readings	PID	SC23030921B3	Normal	0
592-601274	7/13/2024 7:16 Readings	PID	SC23030921B3	Normal	0
592-601274	7/13/2024 7:15 Readings	PID	SC23030921B3	Normal	0
592-601274	7/13/2024 7:14 Readings	PID	SC23030921B3	Normal	0
592-601274	7/13/2024 7:13 Readings	PID	SC23030921B3	Normal	0
592-601274	7/13/2024 7:12 CONFIG	PID	SC23030921B3		

DOWNWIND CAMP READINGS

251 DOUGLASS STREET, BROOKLYN, NY



Instrument Name	DustTrak II
Model Number	8530
Serial Number	8530224603
Firmware Version	3.1
Calibration Date	4/3/2024
Test Name	MANUAL_012
Test Start Time	7:12:17 AM
Test Start Date	7/13/2024
Test Length [D:H:M]	0:05:40
Test Interval [M:S]	1:00
Mass Average [mg/m3]	0.013
Mass Minimum [mg/m3]	0.005
Mass Maximum [mg/m3]	0.258
Mass TWA [mg/m3]	0.009
Photometric User Cal	1
Flow User Cal	0
Errors	
Number of Samples	340

Elapsed Time [s]	Mass [mg/m3]	Alarms	Errors
60	0.044		
120	0.007		
180	0.007		
240	0.007		
300	0.007		
360	0.008		
420	0.006		
480	0.007		
540	0.008		
600	0.008		
660	0.008		
720	0.008		
780	0.007		
840	0.007		
900	0.007		
960	0.009		
1020	0.01		
1080	0.011		
1140	0.009		
1200	0.009		
1260	0.008		
1320	0.01		
1380	0.01		
1440	0.01		

1500	0.009
1560	0.01
1620	0.008
1680	0.006
1740	0.006
1800	0.006
1860	0.006
1920	0.007
1980	0.007
2040	0.007
2100	0.007
2160	0.006
2220	0.005
2280	0.005
2340	0.005
2400	0.006
2460	0.005
2520	0.006
2580	0.005
2640	0.006
2700	0.006
2760	0.005
2820	0.005
2880	0.006
2940	0.008
3000	0.009
3060	0.007
3120	0.006
3180	0.006
3240	0.006
3300	0.006
3360	0.006
3420	0.006
3480	0.006
3540	0.005
3600	0.005
3660	0.006
3720	0.006
3780	0.006
3840	0.006
3900	0.006
3960	0.006
4020	0.006
4080	0.006

4140	0.007
4200	0.007
4260	0.007
4320	0.007
4380	0.007
4440	0.007
4500	0.007
4560	0.007
4620	0.008
4680	0.008
4740	0.008
4800	0.008
4860	0.008
4920	0.008
4980	0.008
5040	0.008
5100	0.008
5160	0.008
5220	0.009
5280	0.008
5340	0.008
5400	0.008
5460	0.008
5520	0.007
5580	0.006
5640	0.006
5700	0.006
5760	0.006
5820	0.006
5880	0.006
5940	0.006
6000	0.006
6060	0.006
6120	0.006
6180	0.006
6240	0.006
6300	0.006
6360	0.006
6420	0.012
6480	0.009
6540	0.007
6600	0.007
6660	0.009
6720	0.01

6780	0.011
6840	0.012
6900	0.01
6960	0.01
7020	0.01
7080	0.01
7140	0.014
7200	0.011
7260	0.009
7320	0.009
7380	0.009
7440	0.009
7500	0.009
7560	0.011
7620	0.008
7680	0.013
7740	0.009
7800	0.009
7860	0.009
7920	0.009
7980	0.011
8040	0.012
8100	0.009
8160	0.135
8220	0.05
8280	0.067
8340	0.082
8400	0.017
8460	0.02
8520	0.011
8580	0.009
8640	0.009
8700	0.021
8760	0.011
8820	0.008
8880	0.008
8940	0.01
9000	0.011
9060	0.013
9120	0.01
9180	0.01
9240	0.01
9300	0.01
9360	0.012

9420	0.013
9480	0.011
9540	0.009
9600	0.01
9660	0.011
9720	0.01
9780	0.01
9840	0.018
9900	0.125
9960	0.074
10020	0.258
10080	0.134
10140	0.079
10200	0.024
10260	0.013
10320	0.01
10380	0.016
10440	0.014
10500	0.012
10560	0.012
10620	0.012
10680	0.014
10740	0.013
10800	0.013
10860	0.012
10920	0.013
10980	0.013
11040	0.013
11100	0.013
11160	0.013
11220	0.013
11280	0.018
11340	0.017
11400	0.016
11460	0.014
11520	0.013
11580	0.013
11640	0.013
11700	0.013
11760	0.014
11820	0.015
11880	0.015
11940	0.017
12000	0.016

12060	0.015
12120	0.015
12180	0.015
12240	0.015
12300	0.015
12360	0.016
12420	0.015
12480	0.014
12540	0.014
12600	0.014
12660	0.014
12720	0.014
12780	0.014
12840	0.014
12900	0.013
12960	0.013
13020	0.014
13080	0.013
13140	0.014
13200	0.014
13260	0.014
13320	0.015
13380	0.016
13440	0.016
13500	0.015
13560	0.014
13620	0.015
13680	0.015
13740	0.015
13800	0.015
13860	0.015
13920	0.014
13980	0.013
14040	0.013
14100	0.012
14160	0.013
14220	0.013
14280	0.012
14340	0.013
14400	0.013
14460	0.013
14520	0.012
14580	0.012
14640	0.011

14700	0.011
14760	0.011
14820	0.011
14880	0.011
14940	0.011
15000	0.012
15060	0.012
15120	0.013
15180	0.013
15240	0.014
15300	0.013
15360	0.013
15420	0.013
15480	0.014
15540	0.017
15600	0.017
15660	0.013
15720	0.012
15780	0.01
15840	0.011
15900	0.01
15960	0.01
16020	0.01
16080	0.01
16140	0.01
16200	0.009
16260	0.011
16320	0.012
16380	0.007
16440	0.007
16500	0.032
16560	0.008
16620	0.009
16680	0.009
16740	0.012
16800	0.014
16860	0.007
16920	0.009
16980	0.019
17040	0.012
17100	0.014
17160	0.012
17220	0.013
17280	0.012

17340	0.013
17400	0.008
17460	0.007
17520	0.005
17580	0.007
17640	0.008
17700	0.015
17760	0.011
17820	0.009
17880	0.008
17940	0.007
18000	0.006
18060	0.006
18120	0.006
18180	0.007
18240	0.006
18300	0.007
18360	0.007
18420	0.007
18480	0.007
18540	0.009
18600	0.014
18660	0.014
18720	0.012
18780	0.013
18840	0.013
18900	0.012
18960	0.013
19020	0.012
19080	0.011
19140	0.011
19200	0.011
19260	0.01
19320	0.011
19380	0.011
19440	0.01
19500	0.011
19560	0.01
19620	0.009
19680	0.01
19740	0.01
19800	0.013
19860	0.01
19920	0.011

19980	0.012
20040	0.011
20100	0.012
20160	0.012
20220	0.011
20280	0.011
20340	0.011
20400	0.011

Device Serial No	Log Time	Log Type	Sensor 1 Type	Sensor 1 Serial Number	Sensor 1 Status	Sensor 1 Gas Reading
592-602816	7/13/2024 12:46	Readings	PID	SC23030324C7	Normal	0
592-602816	7/13/2024 12:45	Readings	PID	SC23030324C7	Normal	0
592-602816	7/13/2024 12:44	Readings	PID	SC23030324C7	Normal	0
592-602816	7/13/2024 12:43	Readings	PID	SC23030324C7	Normal	0
592-602816	7/13/2024 12:42	Readings	PID	SC23030324C7	Normal	0
592-602816	7/13/2024 12:41	Readings	PID	SC23030324C7	Normal	0
592-602816	7/13/2024 12:40	Readings	PID	SC23030324C7	Normal	0
592-602816	7/13/2024 12:39	Readings	PID	SC23030324C7	Normal	0
592-602816	7/13/2024 12:38	Readings	PID	SC23030324C7	Normal	0
592-602816	7/13/2024 12:37	Readings	PID	SC23030324C7	Normal	0
592-602816	7/13/2024 12:36	Readings	PID	SC23030324C7	Normal	0
592-602816	7/13/2024 12:35	Readings	PID	SC23030324C7	Normal	0
592-602816	7/13/2024 12:34	Readings	PID	SC23030324C7	Normal	0
592-602816	7/13/2024 12:33	Readings	PID	SC23030324C7	Normal	0
592-602816	7/13/2024 12:32	Readings	PID	SC23030324C7	Normal	0
592-602816	7/13/2024 12:31	Readings	PID	SC23030324C7	Normal	0
592-602816	7/13/2024 12:30	Readings	PID	SC23030324C7	Normal	0
592-602816	7/13/2024 12:29	Readings	PID	SC23030324C7	Normal	0
592-602816	7/13/2024 12:28	Readings	PID	SC23030324C7	Normal	0
592-602816	7/13/2024 12:27	Readings	PID	SC23030324C7	Normal	0
592-602816	7/13/2024 12:26	Readings	PID	SC23030324C7	Normal	0
592-602816	7/13/2024 12:25	Readings	PID	SC23030324C7	Normal	0
592-602816	7/13/2024 12:24	Readings	PID	SC23030324C7	Normal	0
592-602816	7/13/2024 12:23	Readings	PID	SC23030324C7	Normal	0
592-602816	7/13/2024 12:22	Readings	PID	SC23030324C7	Normal	0
592-602816	7/13/2024 12:21	Readings	PID	SC23030324C7	Normal	0
592-602816	7/13/2024 12:20	Readings	PID	SC23030324C7	Normal	0
592-602816	7/13/2024 12:19	Readings	PID	SC23030324C7	Normal	0
592-602816	7/13/2024 12:18	Readings	PID	SC23030324C7	Normal	0
592-602816	7/13/2024 12:17	Readings	PID	SC23030324C7	Normal	0
592-602816	7/13/2024 12:16	Readings	PID	SC23030324C7	Normal	0
592-602816	7/13/2024 12:15	Readings	PID	SC23030324C7	Normal	0

592-602816	7/13/2024 10:02	Readings	PID	SC23030324C7	Normal	0
592-602816	7/13/2024 10:01	Readings	PID	SC23030324C7	Normal	0
592-602816	7/13/2024 10:00	Readings	PID	SC23030324C7	Normal	0
592-602816	7/13/2024 9:59	Readings	PID	SC23030324C7	Normal	0
592-602816	7/13/2024 9:58	Readings	PID	SC23030324C7	Normal	0
592-602816	7/13/2024 9:57	Readings	PID	SC23030324C7	Normal	0
592-602816	7/13/2024 9:56	Readings	PID	SC23030324C7	Normal	0
592-602816	7/13/2024 9:55	Readings	PID	SC23030324C7	Normal	0
592-602816	7/13/2024 9:54	Readings	PID	SC23030324C7	Normal	0
592-602816	7/13/2024 9:53	Readings	PID	SC23030324C7	Normal	0
592-602816	7/13/2024 9:52	Readings	PID	SC23030324C7	Normal	0
592-602816	7/13/2024 9:51	Readings	PID	SC23030324C7	Normal	0
592-602816	7/13/2024 9:50	Readings	PID	SC23030324C7	Normal	0
592-602816	7/13/2024 9:49	Readings	PID	SC23030324C7	Normal	0
592-602816	7/13/2024 9:48	Readings	PID	SC23030324C7	Normal	0
592-602816	7/13/2024 9:47	Readings	PID	SC23030324C7	Normal	0
592-602816	7/13/2024 9:46	Readings	PID	SC23030324C7	Normal	0
592-602816	7/13/2024 9:45	Readings	PID	SC23030324C7	Normal	0
592-602816	7/13/2024 9:44	Readings	PID	SC23030324C7	Normal	0
592-602816	7/13/2024 9:43	Readings	PID	SC23030324C7	Normal	0
592-602816	7/13/2024 9:42	Readings	PID	SC23030324C7	Normal	0
592-602816	7/13/2024 9:41	Readings	PID	SC23030324C7	Normal	0
592-602816	7/13/2024 9:40	Readings	PID	SC23030324C7	Normal	0
592-602816	7/13/2024 9:39	Readings	PID	SC23030324C7	Normal	0
592-602816	7/13/2024 9:38	Readings	PID	SC23030324C7	Normal	0
592-602816	7/13/2024 9:37	Readings	PID	SC23030324C7	Normal	0
592-602816	7/13/2024 9:36	Readings	PID	SC23030324C7	Normal	0
592-602816	7/13/2024 9:35	Readings	PID	SC23030324C7	Normal	0
592-602816	7/13/2024 9:34	Readings	PID	SC23030324C7	Normal	0
592-602816	7/13/2024 9:33	Readings	PID	SC23030324C7	Normal	0
592-602816	7/13/2024 9:32	Readings	PID	SC23030324C7	Normal	0
592-602816	7/13/2024 9:31	Readings	PID	SC23030324C7	Normal	0
592-602816	7/13/2024 9:30	Readings	PID	SC23030324C7	Normal	0

592-602816	7/13/2024 7:50 Readings	PID	SC23030324C7	Normal	0
592-602816	7/13/2024 7:49 Readings	PID	SC23030324C7	Normal	0
592-602816	7/13/2024 7:48 Readings	PID	SC23030324C7	Normal	0
592-602816	7/13/2024 7:47 Readings	PID	SC23030324C7	Normal	0
592-602816	7/13/2024 7:46 Readings	PID	SC23030324C7	Normal	0
592-602816	7/13/2024 7:45 Readings	PID	SC23030324C7	Normal	0
592-602816	7/13/2024 7:44 Readings	PID	SC23030324C7	Normal	0
592-602816	7/13/2024 7:43 Readings	PID	SC23030324C7	Normal	0
592-602816	7/13/2024 7:42 Readings	PID	SC23030324C7	Normal	0
592-602816	7/13/2024 7:41 Readings	PID	SC23030324C7	Normal	0
592-602816	7/13/2024 7:40 Readings	PID	SC23030324C7	Normal	0
592-602816	7/13/2024 7:39 Readings	PID	SC23030324C7	Normal	0
592-602816	7/13/2024 7:38 Readings	PID	SC23030324C7	Normal	0
592-602816	7/13/2024 7:37 Readings	PID	SC23030324C7	Normal	0
592-602816	7/13/2024 7:36 Readings	PID	SC23030324C7	Normal	0
592-602816	7/13/2024 7:35 Readings	PID	SC23030324C7	Normal	0
592-602816	7/13/2024 7:34 Readings	PID	SC23030324C7	Normal	0
592-602816	7/13/2024 7:33 Readings	PID	SC23030324C7	Normal	0
592-602816	7/13/2024 7:32 Readings	PID	SC23030324C7	Normal	0
592-602816	7/13/2024 7:31 Readings	PID	SC23030324C7	Normal	0
592-602816	7/13/2024 7:30 Readings	PID	SC23030324C7	Normal	0
592-602816	7/13/2024 7:29 Readings	PID	SC23030324C7	Normal	0
592-602816	7/13/2024 7:28 Readings	PID	SC23030324C7	Normal	0
592-602816	7/13/2024 7:27 Readings	PID	SC23030324C7	Normal	0
592-602816	7/13/2024 7:26 CONFIG	PID	SC23030324C7		

Instrument Name	DustTrak DRX
Model Number	8533
Serial Number	8533181205
Firmware Version	3.1
Calibration Date	5/31/2023
Test Name	MANUAL_010
Test Start Time	7:17:01 AM
Test Start Date	7/13/2024
Test Length [D:H:M]	0:05:38
Test Interval [M:S]	1:00
PM1 Average [mg/m3]	0.014
PM1 Minimum [mg/m3]	0.004
PM1 Maximum [mg/m3]	0.479
PM1 TWA [mg/m3]	0.01
Photometric User Cal	1
Size Correction User Cal	1
Flow User Cal	0
Errors	
Number of Samples	338

Elapsed Time [s]	PM1 [mg/m3]	Alarms	Errors
60	0.011		
120	0.006		
180	0.006		
240	0.007		
300	0.005		
360	0.005		
420	0.006		
480	0.005		
540	0.006		
600	0.006		
660	0.008		
720	0.007		
780	0.008		
840	0.007		
900	0.007		
960	0.007		
1020	0.005		
1080	0.006		
1140	0.006		
1200	0.008		
1260	0.012		
1320	0.008		
1380	0.006		

1440	0.005
1500	0.004
1560	0.005
1620	0.005
1680	0.005
1740	0.004
1800	0.004
1860	0.004
1920	0.004
1980	0.004
2040	0.004
2100	0.004
2160	0.004
2220	0.004
2280	0.004
2340	0.004
2400	0.004
2460	0.004
2520	0.004
2580	0.004
2640	0.004
2700	0.004
2760	0.004
2820	0.004
2880	0.005
2940	0.004
3000	0.004
3060	0.004
3120	0.004
3180	0.004
3240	0.004
3300	0.004
3360	0.004
3420	0.004
3480	0.004
3540	0.004
3600	0.004
3660	0.004
3720	0.004
3780	0.004
3840	0.004
3900	0.004
3960	0.004
4020	0.005

4080	0.005
4140	0.005
4200	0.005
4260	0.005
4320	0.005
4380	0.005
4440	0.005
4500	0.005
4560	0.005
4620	0.005
4680	0.005
4740	0.005
4800	0.005
4860	0.005
4920	0.005
4980	0.005
5040	0.005
5100	0.005
5160	0.005
5220	0.004
5280	0.004
5340	0.004
5400	0.004
5460	0.004
5520	0.004
5580	0.006
5640	0.004
5700	0.004
5760	0.004
5820	0.004
5880	0.004
5940	0.004
6000	0.004
6060	0.004
6120	0.005
6180	0.005
6240	0.006
6300	0.006
6360	0.006
6420	0.006
6480	0.007
6540	0.007
6600	0.007
6660	0.007

6720	0.007
6780	0.007
6840	0.007
6900	0.007
6960	0.007
7020	0.006
7080	0.006
7140	0.008
7200	0.008
7260	0.008
7320	0.006
7380	0.01
7440	0.016
7500	0.009
7560	0.007
7620	0.009
7680	0.016
7740	0.014
7800	0.026
7860	0.014
7920	0.032
7980	0.015
8040	0.02
8100	0.01
8160	0.011
8220	0.012
8280	0.008
8340	0.006
8400	0.006
8460	0.007
8520	0.006
8580	0.006
8640	0.007
8700	0.007
8760	0.007
8820	0.007
8880	0.007
8940	0.007
9000	0.008
9060	0.008
9120	0.01
9180	0.016
9240	0.014
9300	0.009

9360	0.013
9420	0.24
9480	0.022
9540	0.013
9600	0.023
9660	0.017
9720	0.025
9780	0.02
9840	0.035
9900	0.016
9960	0.01
10020	0.008
10080	0.122
10140	0.031
10200	0.01
10260	0.01
10320	0.009
10380	0.009
10440	0.011
10500	0.011
10560	0.009
10620	0.01
10680	0.01
10740	0.011
10800	0.01
10860	0.009
10920	0.01
10980	0.016
11040	0.018
11100	0.012
11160	0.011
11220	0.01
11280	0.009
11340	0.01
11400	0.009
11460	0.009
11520	0.01
11580	0.01
11640	0.01
11700	0.011
11760	0.011
11820	0.013
11880	0.011
11940	0.011

12000	0.011
12060	0.011
12120	0.011
12180	0.01
12240	0.01
12300	0.01
12360	0.01
12420	0.01
12480	0.01
12540	0.01
12600	0.009
12660	0.01
12720	0.01
12780	0.011
12840	0.01
12900	0.01
12960	0.01
13020	0.011
13080	0.011
13140	0.011
13200	0.01
13260	0.009
13320	0.01
13380	0.01
13440	0.011
13500	0.01
13560	0.011
13620	0.01
13680	0.009
13740	0.009
13800	0.01
13860	0.01
13920	0.009
13980	0.01
14040	0.011
14100	0.009
14160	0.009
14220	0.009
14280	0.009
14340	0.008
14400	0.008
14460	0.009
14520	0.009
14580	0.009

14640	0.01
14700	0.011
14760	0.011
14820	0.012
14880	0.01
14940	0.01
15000	0.011
15060	0.011
15120	0.034
15180	0.012
15240	0.009
15300	0.007
15360	0.007
15420	0.009
15480	0.008
15540	0.007
15600	0.008
15660	0.008
15720	0.007
15780	0.008
15840	0.007
15900	0.006
15960	0.009
16020	0.012
16080	0.007
16140	0.007
16200	0.007
16260	0.045
16320	0.08
16380	0.01
16440	0.008
16500	0.024
16560	0.012
16620	0.006
16680	0.006
16740	0.007
16800	0.006
16860	0.029
16920	0.045
16980	0.029
17040	0.007
17100	0.008
17160	0.006
17220	0.005

17280	0.206
17340	0.479
17400	0.298
17460	0.234
17520	0.136
17580	0.021
17640	0.006
17700	0.005
17760	0.005
17820	0.005
17880	0.005
17940	0.005
18000	0.006
18060	0.006
18120	0.006
18180	0.006
18240	0.006
18300	0.009
18360	0.024
18420	0.016
18480	0.012
18540	0.013
18600	0.013
18660	0.011
18720	0.01
18780	0.011
18840	0.009
18900	0.01
18960	0.009
19020	0.009
19080	0.009
19140	0.01
19200	0.011
19260	0.01
19320	0.009
19380	0.008
19440	0.009
19500	0.01
19560	0.009
19620	0.008
19680	0.01
19740	0.01
19800	0.01
19860	0.009

19920	0.009
19980	0.009
20040	0.009
20100	0.01
20160	0.009
20220	0.01
20280	0.009

Device Serial No	Log Time	Log Type	Sensor 1 Type	Sensor 1 Serial Number	Sensor 1 Status	Sensor 1 Gas Reading
592-600871	7/13/2024 12:56	Readings	PID	SC23030408A8	Normal	0
592-600871	7/13/2024 12:55	Readings	PID	SC23030408A8	Normal	0
592-600871	7/13/2024 12:54	Readings	PID	SC23030408A8	Normal	0
592-600871	7/13/2024 12:53	Readings	PID	SC23030408A8	Normal	0
592-600871	7/13/2024 12:52	Readings	PID	SC23030408A8	Normal	0
592-600871	7/13/2024 12:51	Readings	PID	SC23030408A8	Normal	0
592-600871	7/13/2024 12:50	Readings	PID	SC23030408A8	Normal	0
592-600871	7/13/2024 12:49	Readings	PID	SC23030408A8	Normal	0
592-600871	7/13/2024 12:48	Readings	PID	SC23030408A8	Normal	0
592-600871	7/13/2024 12:47	Readings	PID	SC23030408A8	Normal	0
592-600871	7/13/2024 12:46	Readings	PID	SC23030408A8	Normal	0
592-600871	7/13/2024 12:45	Readings	PID	SC23030408A8	Normal	0
592-600871	7/13/2024 12:44	Readings	PID	SC23030408A8	Normal	0
592-600871	7/13/2024 12:43	Readings	PID	SC23030408A8	Normal	0
592-600871	7/13/2024 12:42	Readings	PID	SC23030408A8	Normal	0
592-600871	7/13/2024 12:41	Readings	PID	SC23030408A8	Normal	0
592-600871	7/13/2024 12:40	Readings	PID	SC23030408A8	Normal	0
592-600871	7/13/2024 12:39	Readings	PID	SC23030408A8	Normal	0
592-600871	7/13/2024 12:38	Readings	PID	SC23030408A8	Normal	0
592-600871	7/13/2024 12:37	Readings	PID	SC23030408A8	Normal	0
592-600871	7/13/2024 12:36	Readings	PID	SC23030408A8	Normal	0
592-600871	7/13/2024 12:35	Readings	PID	SC23030408A8	Normal	0.1
592-600871	7/13/2024 12:34	Readings	PID	SC23030408A8	Normal	0
592-600871	7/13/2024 12:33	Readings	PID	SC23030408A8	Normal	0
592-600871	7/13/2024 12:32	Readings	PID	SC23030408A8	Normal	0
592-600871	7/13/2024 12:31	Readings	PID	SC23030408A8	Normal	0
592-600871	7/13/2024 12:30	Readings	PID	SC23030408A8	Normal	0
592-600871	7/13/2024 12:29	Readings	PID	SC23030408A8	Normal	0
592-600871	7/13/2024 12:28	Readings	PID	SC23030408A8	Normal	0
592-600871	7/13/2024 12:27	Readings	PID	SC23030408A8	Normal	0
592-600871	7/13/2024 12:26	Readings	PID	SC23030408A8	Normal	0
592-600871	7/13/2024 12:25	Readings	PID	SC23030408A8	Normal	0

592-600871	7/13/2024 10:12	Readings	PID	SC23030408A8	Normal	0
592-600871	7/13/2024 10:11	Readings	PID	SC23030408A8	Normal	0
592-600871	7/13/2024 10:10	Readings	PID	SC23030408A8	Normal	0
592-600871	7/13/2024 10:09	Readings	PID	SC23030408A8	Normal	0
592-600871	7/13/2024 10:08	Readings	PID	SC23030408A8	Normal	0
592-600871	7/13/2024 10:07	Readings	PID	SC23030408A8	Normal	0
592-600871	7/13/2024 10:06	Readings	PID	SC23030408A8	Normal	0
592-600871	7/13/2024 10:05	Readings	PID	SC23030408A8	Normal	0
592-600871	7/13/2024 10:04	Readings	PID	SC23030408A8	Normal	0
592-600871	7/13/2024 10:03	Readings	PID	SC23030408A8	Normal	0
592-600871	7/13/2024 10:02	Readings	PID	SC23030408A8	Normal	0
592-600871	7/13/2024 10:01	Readings	PID	SC23030408A8	Normal	0
592-600871	7/13/2024 10:00	Readings	PID	SC23030408A8	Normal	0
592-600871	7/13/2024 9:59	Readings	PID	SC23030408A8	Normal	0
592-600871	7/13/2024 9:58	Readings	PID	SC23030408A8	Normal	0
592-600871	7/13/2024 9:57	Readings	PID	SC23030408A8	Normal	0
592-600871	7/13/2024 9:56	Readings	PID	SC23030408A8	Normal	0
592-600871	7/13/2024 9:55	Readings	PID	SC23030408A8	Normal	0
592-600871	7/13/2024 9:54	Readings	PID	SC23030408A8	Normal	0
592-600871	7/13/2024 9:53	Readings	PID	SC23030408A8	Normal	0
592-600871	7/13/2024 9:52	Readings	PID	SC23030408A8	Normal	0
592-600871	7/13/2024 9:51	Readings	PID	SC23030408A8	Normal	0
592-600871	7/13/2024 9:50	Readings	PID	SC23030408A8	Normal	0
592-600871	7/13/2024 9:49	Readings	PID	SC23030408A8	Normal	0
592-600871	7/13/2024 9:48	Readings	PID	SC23030408A8	Normal	0
592-600871	7/13/2024 9:47	Readings	PID	SC23030408A8	Normal	0
592-600871	7/13/2024 9:46	Readings	PID	SC23030408A8	Normal	0
592-600871	7/13/2024 9:45	Readings	PID	SC23030408A8	Normal	0
592-600871	7/13/2024 9:44	Readings	PID	SC23030408A8	Normal	0
592-600871	7/13/2024 9:43	Readings	PID	SC23030408A8	Normal	0
592-600871	7/13/2024 9:42	Readings	PID	SC23030408A8	Normal	0
592-600871	7/13/2024 9:41	Readings	PID	SC23030408A8	Normal	0
592-600871	7/13/2024 9:40	Readings	PID	SC23030408A8	Normal	0

592-600871	7/13/2024 7:27 Readings	PID	SC23030408A8	Normal	0
592-600871	7/13/2024 7:26 Readings	PID	SC23030408A8	Normal	0
592-600871	7/13/2024 7:25 Readings	PID	SC23030408A8	Normal	0
592-600871	7/13/2024 7:24 Readings	PID	SC23030408A8	Normal	0
592-600871	7/13/2024 7:23 Readings	PID	SC23030408A8	Normal	0
592-600871	7/13/2024 7:22 Readings	PID	SC23030408A8	Normal	0
592-600871	7/13/2024 7:21 Readings	PID	SC23030408A8	Normal	0
592-600871	7/13/2024 7:20 Readings	PID	SC23030408A8	Normal	0
592-600871	7/13/2024 7:19 Readings	PID	SC23030408A8	Normal	0
592-600871	7/13/2024 7:18 CONFIG	PID	SC23030408A8		