



DAILY STATUS REPORT

Prepared By:
Ryan Just

WEATHER	Snow	Rain	Overcast	Partly Cloudy	X	Bright Sun	X	Wind
TEMP.	< 32	32-50	50-70	X	70-85	X	>85	NW – 13 mph

IEEG Project No:	13928	NYSDEC BCP Site No:	C224367	Date: 08/20/24
Project:	251 Douglass Street, Brooklyn, NY			

<p>Consultant: Impact Environmental Engineering and Geology, PLLC (IEEG)</p> <p>Time On: 06:45 Time Out: 20:20</p>	<p>Personnel On Site: IEEG (Environmental) – Ryan Just ADT Broadway Construction Group – Shannon Dowling / Tom Caporale WSP – Charlie Lambert Cascade – John Vollmer Concrete Courses</p> <p>Equipment On Site: (3) MiniRAE 3000 PID, (3) DustTrak II</p>
---	---

Scope of Work: IEEG to deploy CAMP stations according to wind direction; Cascade to continue with ISS column installation; Concrete Courses to begin concrete pour of the second floor in the Butler corridor.

- Site Activities:**
- IEEG deployed three (3) CAMP stations prior to the start of work activities;
 - Concrete Courses continued concrete and rebar work in the second floor of the Butler Corridor;
 - Cascade received one (1) slag delivery to the silos;
 - IEEG technicians installed hoses for the water treatment system onsite;
 - ADT completed QA/QC coring at 354C and 421C;
 - A total of twenty (20) trucks of swell material was transported offsite for disposal at the Conestoga facility;
 - Cascade graded the site and consolidated swell material stockpile;
 - IEEG applied ISS spray-foam throughout the day to the swell stockpile and drilling area;
 - Cascade drilled **Column 399** with column specification below:
 - Column is 8’ diameter and drilled 36’ deep from Site grade;
 - The column consisted of a total of 23 batches;
 - A wet mix sample was collected 35.5’ deep from site grade;
 - Cascade drilled **Column 401** with column specification below:
 - Column is 8’ diameter and drilled 36’ deep from Site grade;
 - The column consisted of a total of 16 batches;
 - Cascade drilled **Column 403** with column specification below:
 - Column is 8’ diameter and drilled 36’ deep from Site grade;
 - The column consisted of a total of 17 batches;
 - Cascade drilled **Column 464** with column specification below:
 - Column is 8’ diameter and drilled 36’ deep from Site grade;
 - The column consisted of a total of 17 batches;

- Cascade drilled **Column 466** with column specification below:
 - Column is 8' diameter and drilled 36' deep from Site grade;
 - The column consisted of a total of 19 batches;

Community Air Monitoring Program (CAMP) - CAMP action level for dust (0.1 mg/m³) and VOCs (5 ppm)

- PID remained at nominal levels throughout the day
- No sustained dust exceedances were observed over a 15-min period during monitoring.
- Startup Upwind Conditions – PID = _0.0_ ppm, Dust = _0.120_ mg/m³ @ 07:20
- High Conditions (Upwind) – PID = _0.0_ ppm, Dust = _0.158_ mg/m³ @ 12:32
- High Conditions (Downwind 1) – PID = _0.0_ ppm, Dust = _0.123_ mg/m³ @ 16:38
- High Conditions (Downwind 2) – PID = _0.0_ ppm, Dust = _0.104_ mg/m³ @ 16:12

Notable Site Conditions:

- It should be noted that there was a software issue with Bauer system resulting in the SCM reports notating incorrect times for columns. The *ISS Column Spreadsheet* represents the true times.

Planned for the Next Day/Week:

- Cascade to continue with ISS column installation;
- Concrete Courses to continue concrete and rebar fabrication;



PHOTO LOG

251 DOUGLASS STREET, BROOKLYN, NY



Photo 1-
Representative
photo of ISS
column
installation.



Photo 2-
Representative
photo of wet mix
sample collected
from column
399.



Photo 3-
Representative
photo of QA/QC
cores.



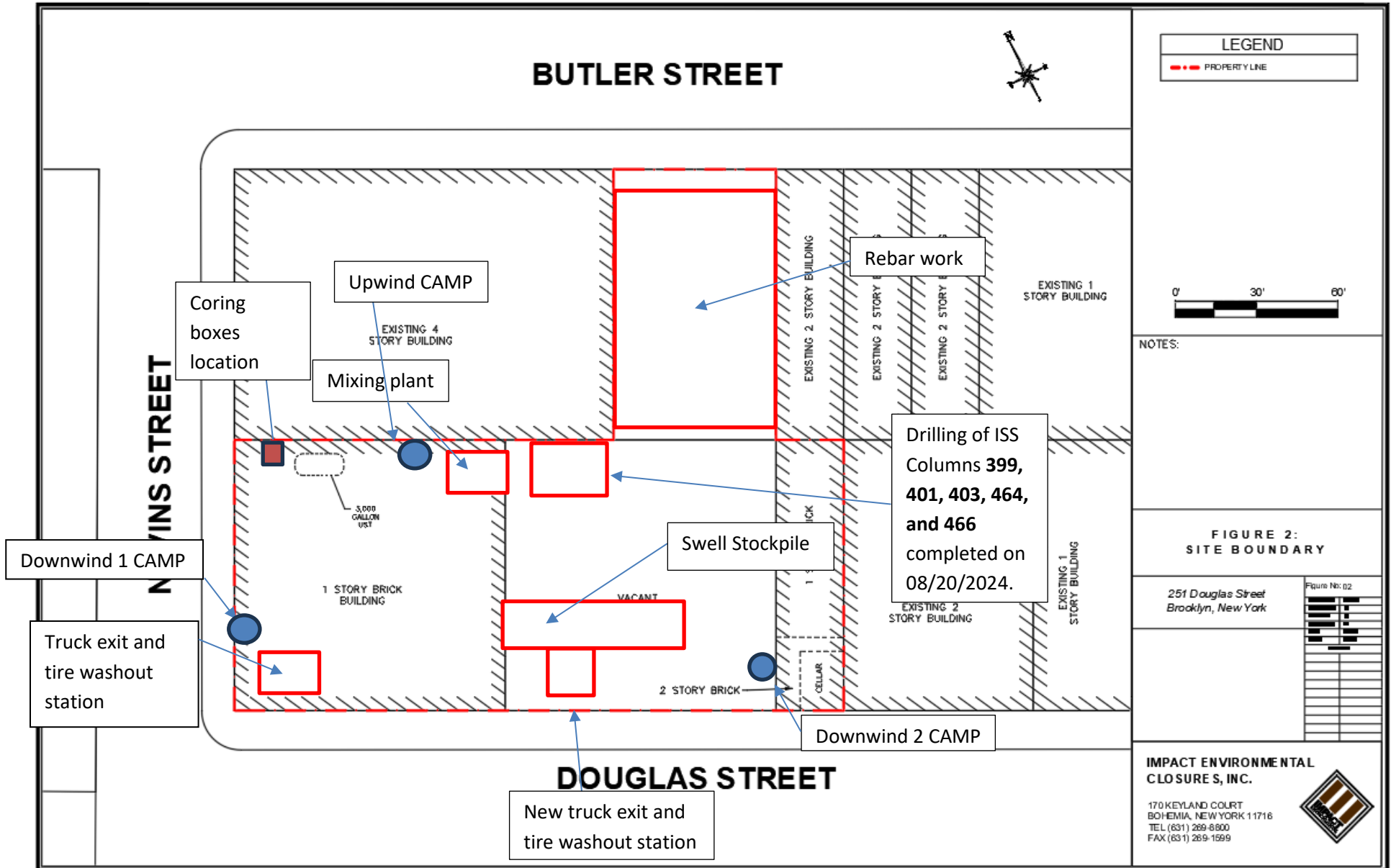
Photo 4-
Representative
photo of swell
truck cover
strapped down
securely.



SITE PLANS

251 DOUGLASS STREET, BROOKLYN, NY





NOTES:

FIGURE 2: SITE BOUNDARY

251 Douglas Street
Brooklyn, New York

IMPACT ENVIRONMENTAL
CLOSURE S, INC.

170 KEYLAND COURT
BOHEMIA, NEW YORK 11716
TEL (631) 269-8800
FAX (631) 269-1599



IMPACT ENVIRONMENTAL

welcome to solid ground...

170 Keyland Court | Bohemia | NY | 11716 | 631.269.8800

www.impactenvironmental.com

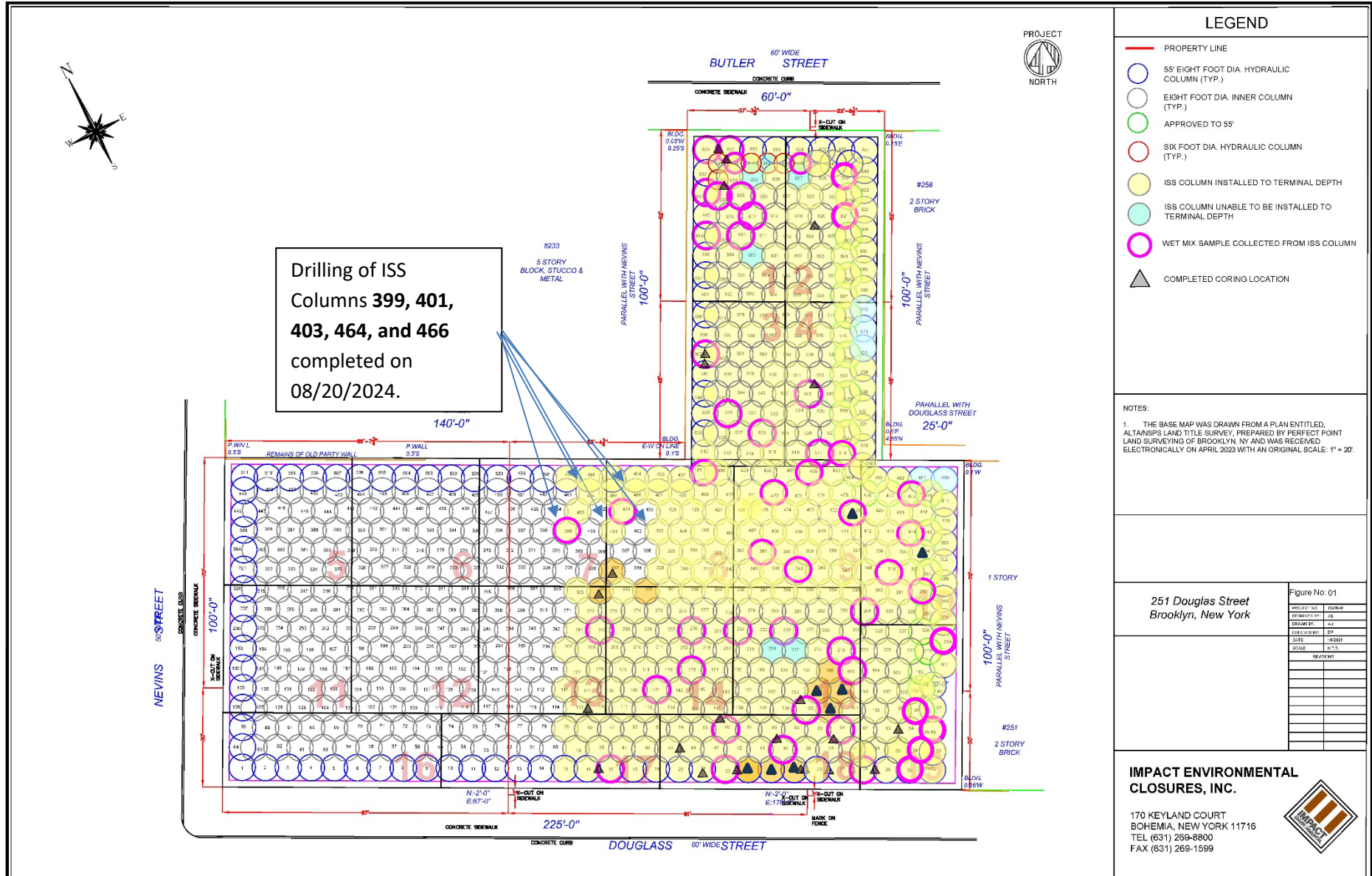
LEGEND

- PROPERTY LINE
- 55' EIGHT FOOT DIA. HYDRAULIC COLUMN (TYP.)
- EIGHT FOOT DIA. INNER COLUMN (TYP.)
- APPROVED TO 55'
- SIX FOOT DIA. HYDRAULIC COLUMN (TYP.)
- ISS COLUMN INSTALLED TO TERMINAL DEPTH
- ISS COLUMN UNABLE TO BE INSTALLED TO TERMINAL DEPTH
- WET MIX SAMPLE COLLECTED FROM ISS COLUMN
- ▲ COMPLETED CORING LOCATION

NOTES:
1. THE BASE MAP WAS DRAWN FROM A PLAN ENTITLED, ALTAIRNSP LAND TITLE SURVEY, PREPARED BY PERFECT POINT LAND SURVEYING OF BROOKLYN, NY AND WAS RECEIVED ELECTRONICALLY ON APRIL 2023 WITH AN ORIGINAL SCALE: 1" = 20'.

251 Douglas Street Brooklyn, New York		Figure No: 01	
		PROJECT NO.	DISPER.
PREPARED BY:		J.S.	
DRAWN BY:		A.C.	
CHECKED BY:		E.P.	
DATE:		06/24	
SCALE:		1:100	
SHEET:		01 OF 01	

IMPACT ENVIRONMENTAL CLOSURES, INC.
170 KEYLAND COURT
BOHEMIA, NEW YORK 11716
TEL (631) 269-8800
FAX (631) 269-1599

Drilling of ISS Columns 399, 401, 403, 464, and 466 completed on 08/20/2024.

SCM Report

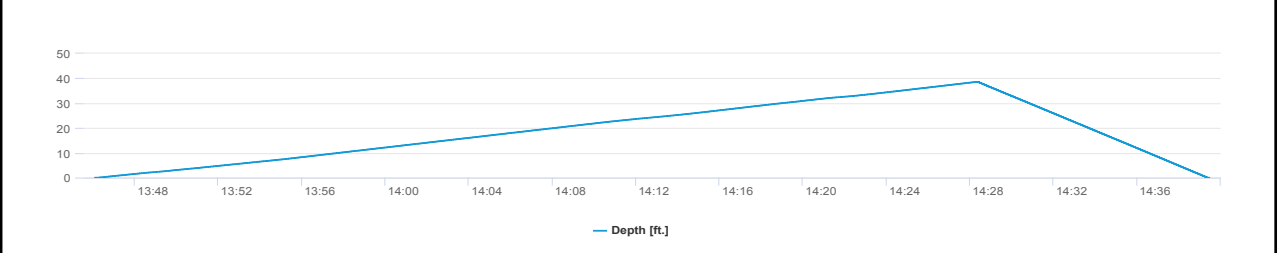
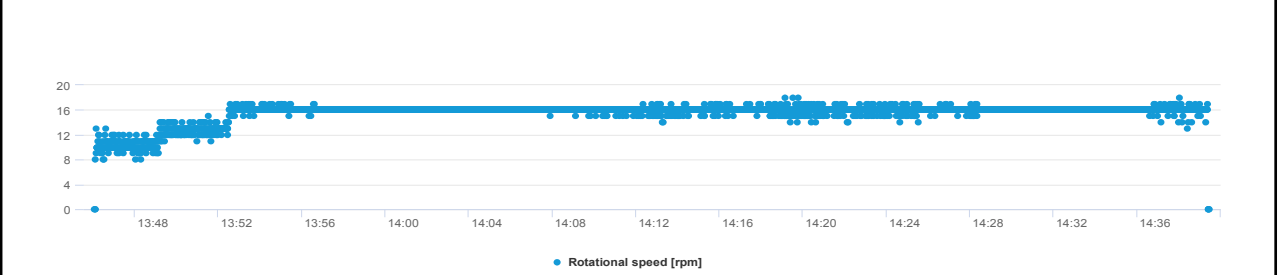
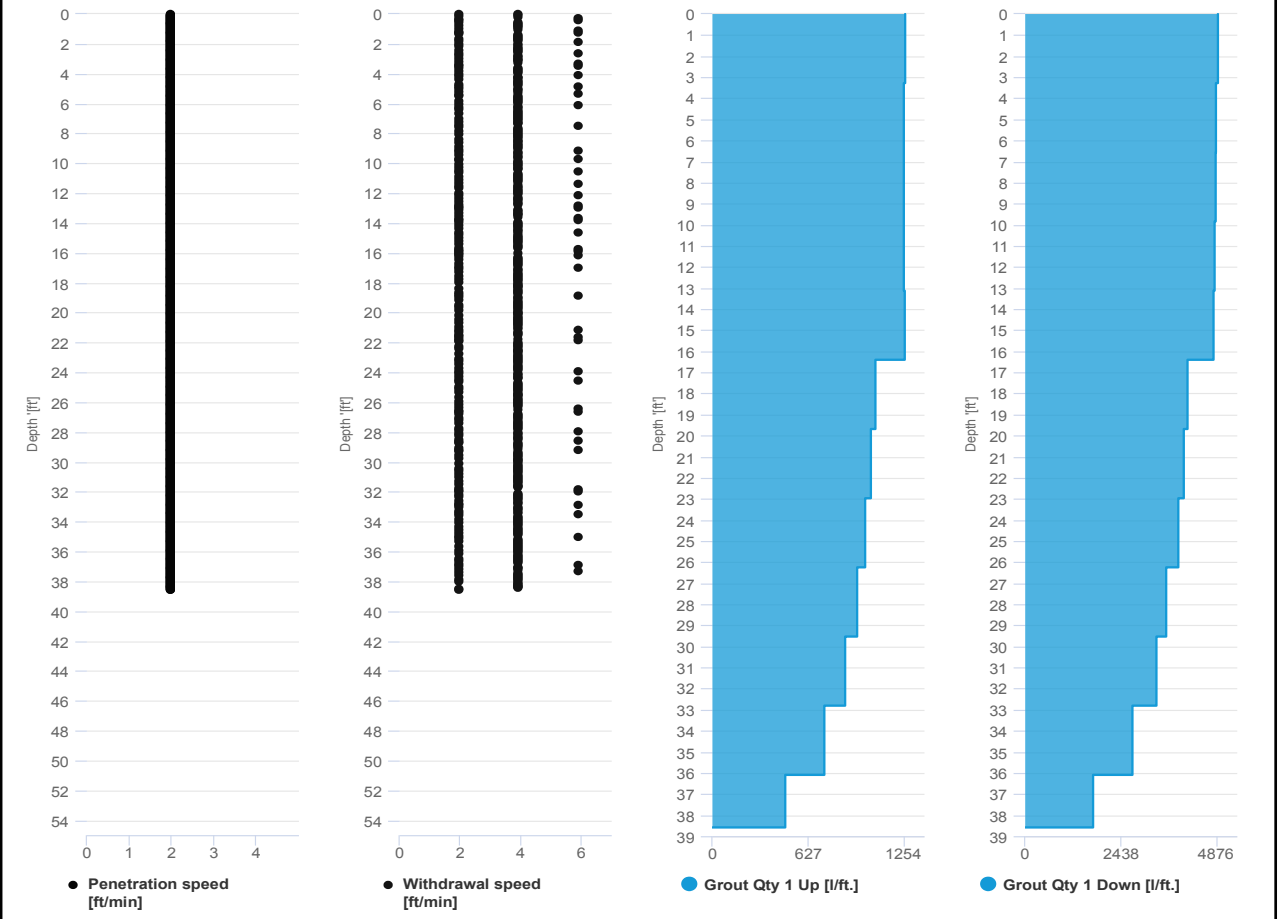


Project name: Douglass Street BCG ISS Element name: 399a
Project number

Start date: 08/20/2024

Drilling rig: BG36H_5717

Details		Start time: 09:46 AM	
Max. depth: 38.583 ft.		End Date: 08/20/2024	
Volume/m 1: 49.794 ft³		End time: 10:39 AM	
		Production duration: 00:53:23	
		Final depth time: 10:28 AM	
		Total suspension quantity: 586.153 ft³	



SCM Report

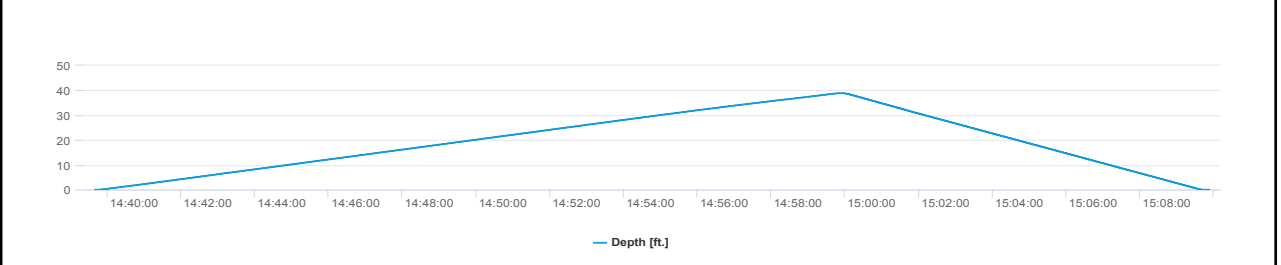
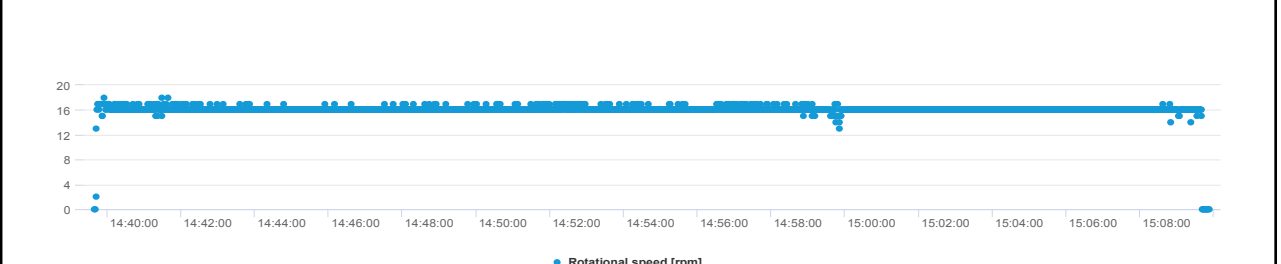
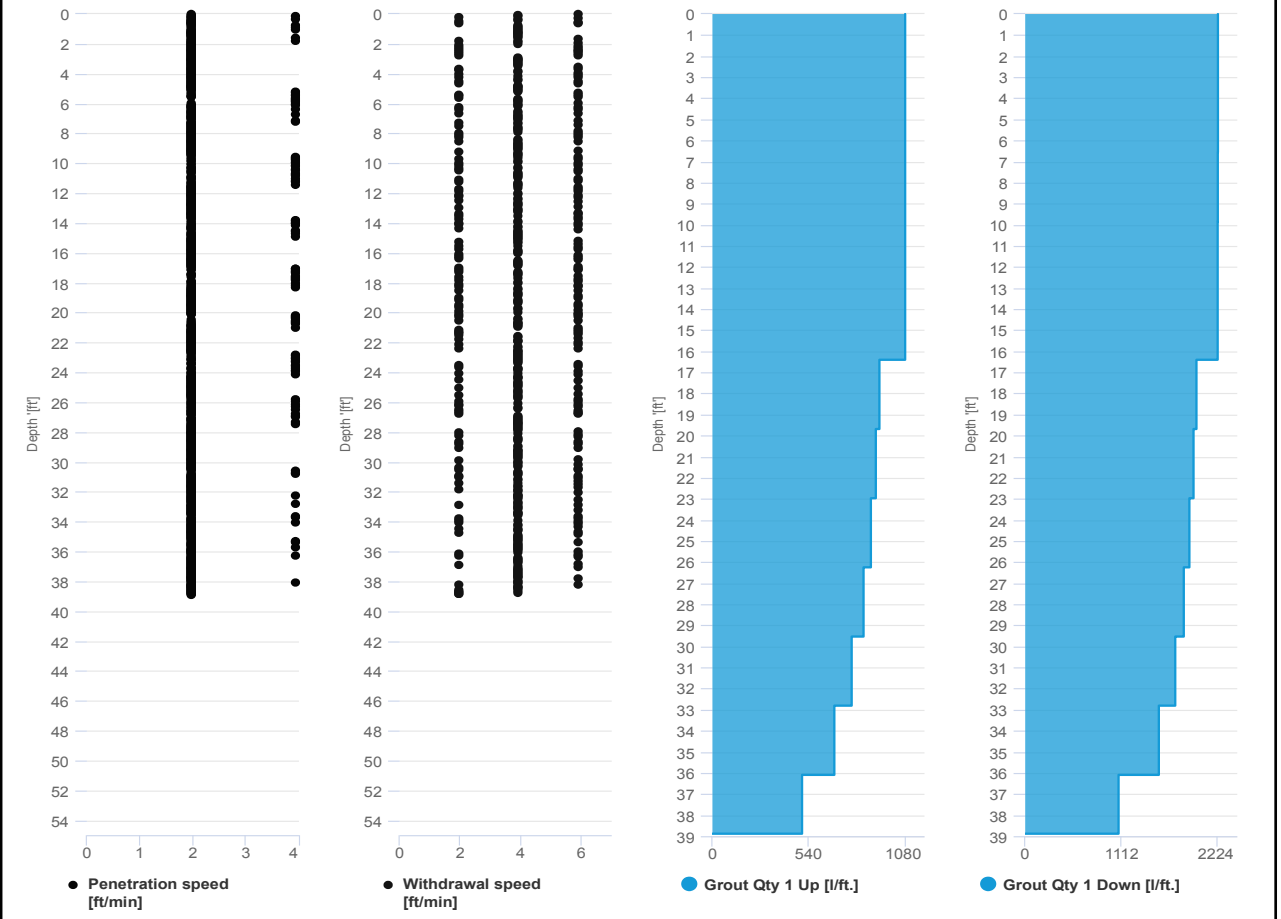


Project name: Douglass Street BCG ISS Element name: 399b
Project number

Start date: 08/20/2024

Drilling rig: BG36H_5717

Details		Start time	
Max. depth	38.878 ft.	10:39 AM	
Volume/m 1	27.545 ft ³	End Date	08/20/2024
		End time	11:09 AM
		Production duration	00:30:14
		Final depth time	10:59 AM
		Total suspension quantity	327.826 ft ³



SCM Report

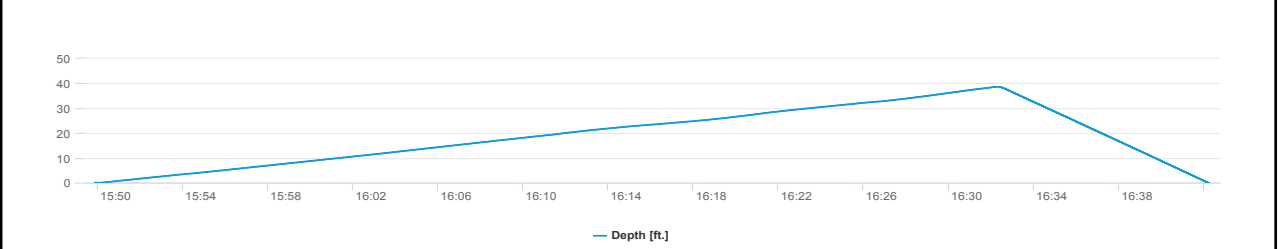
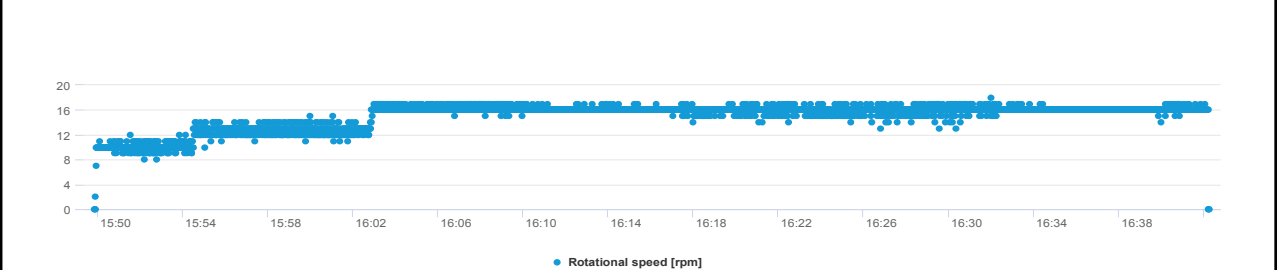
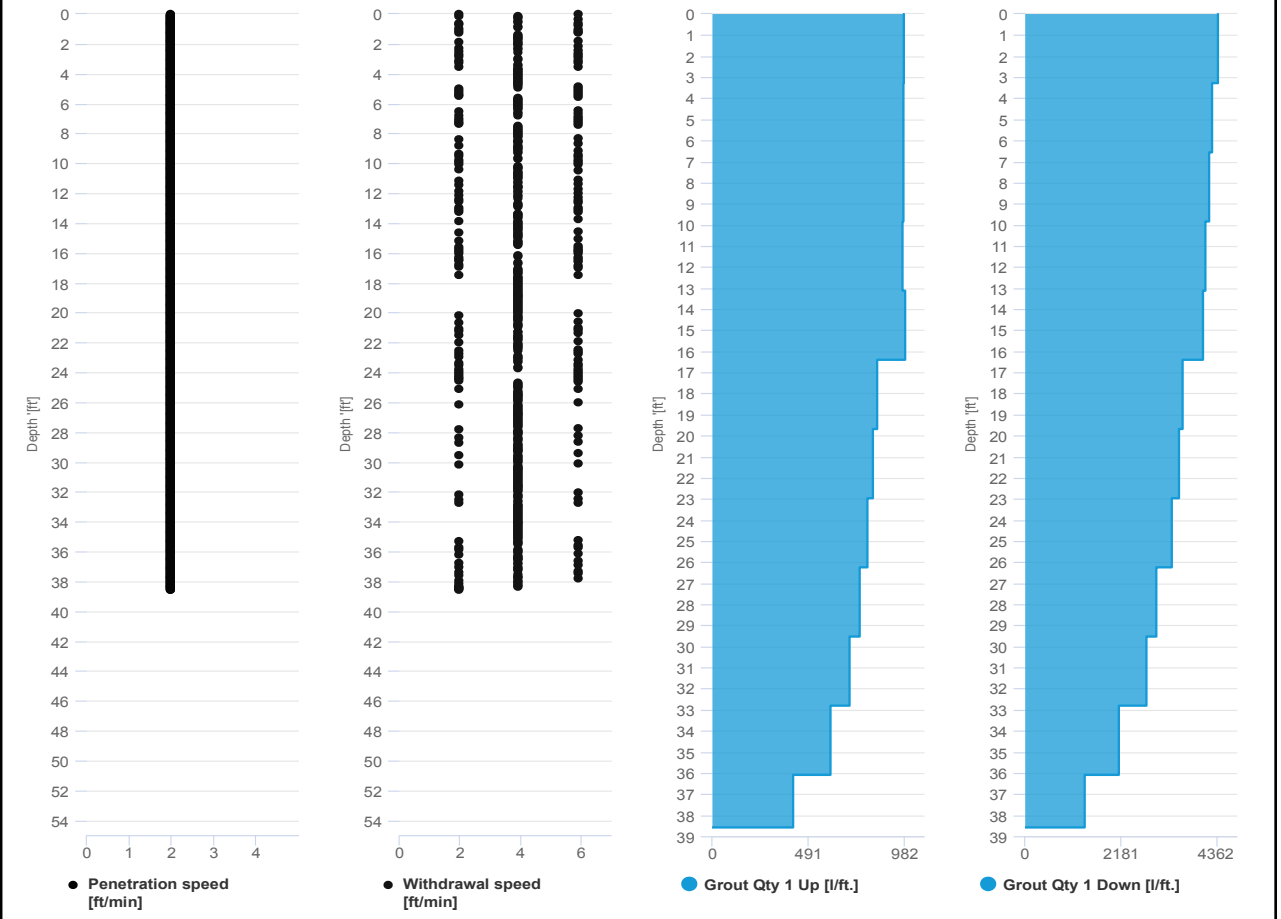


Project name: Douglass Street BCG ISS Element name: 401a
Project number

Start date: 08/20/2024

Drilling rig: BG36H_5717

Details		Start time: 03:49 PM	
Max. depth: 38.583 ft.		End Date: 08/20/2024	
Volume/m 1: 42.378 ft³		End time: 04:42 PM	
		Production duration: 00:52:24	
		Final depth time: 04:32 PM	
		Total suspension quantity: 498.926 ft³	



SCM Report

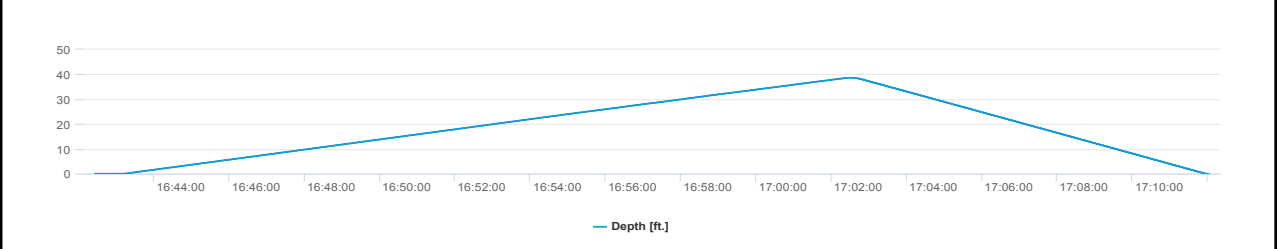
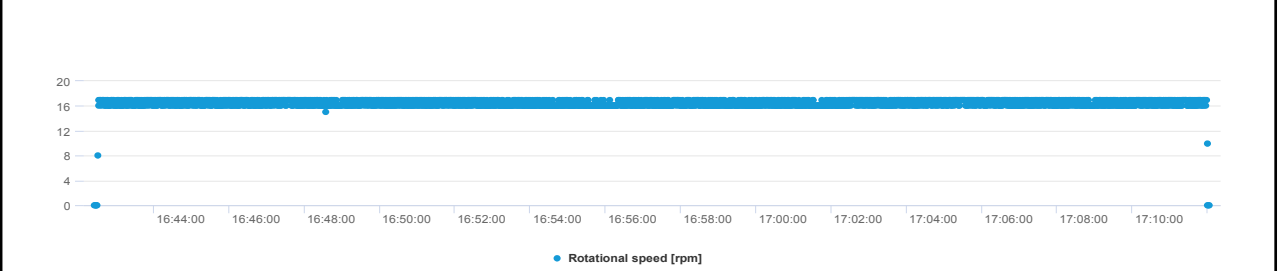
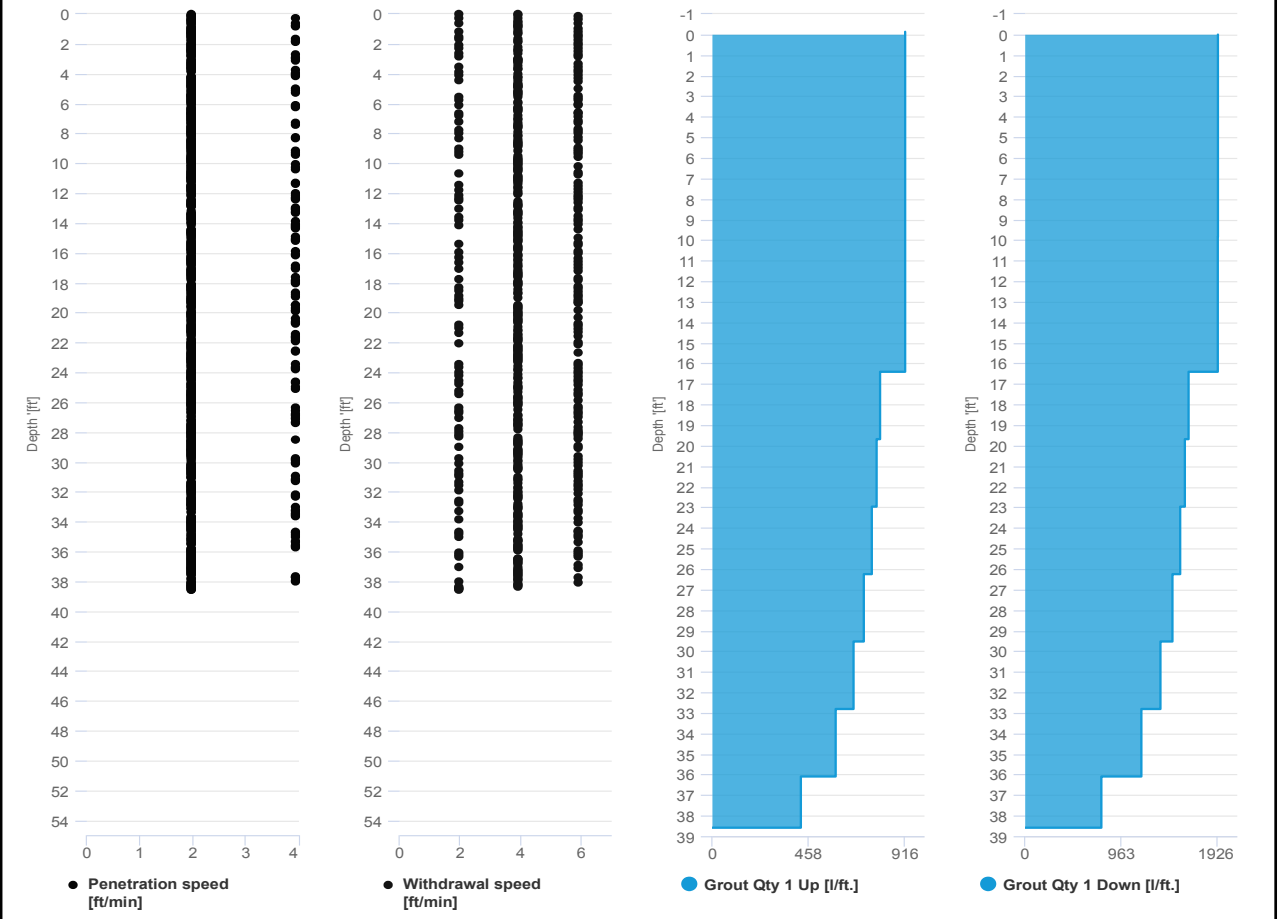


Project name: Douglass Street BCG ISS Element name: 401b
Project number

Start date: 08/20/2024

Drilling rig: BG36H_5717

Details		Start time	
Max. depth	38.583 ft.	04:42 PM	08/20/2024
Volume/m 1	24.014 ft³	End time	05:12 PM
		Production duration	00:29:38
		Final depth time	05:02 PM
		Total suspension quantity	281.176 ft³



SCM Report

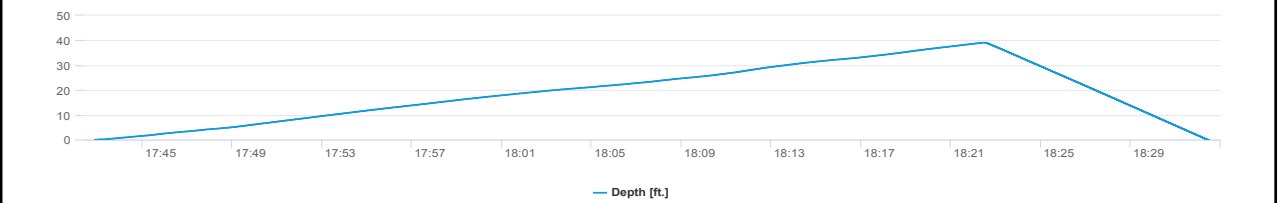
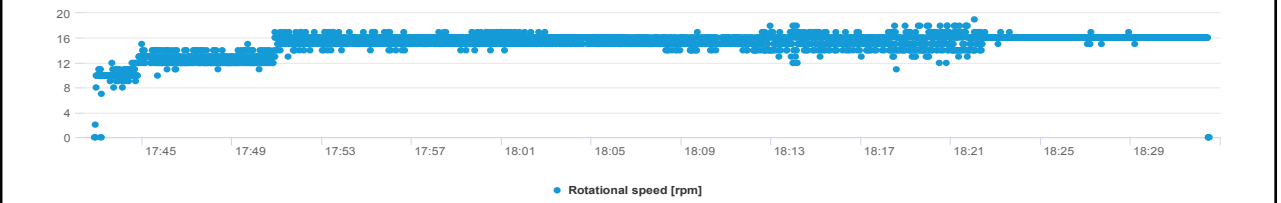
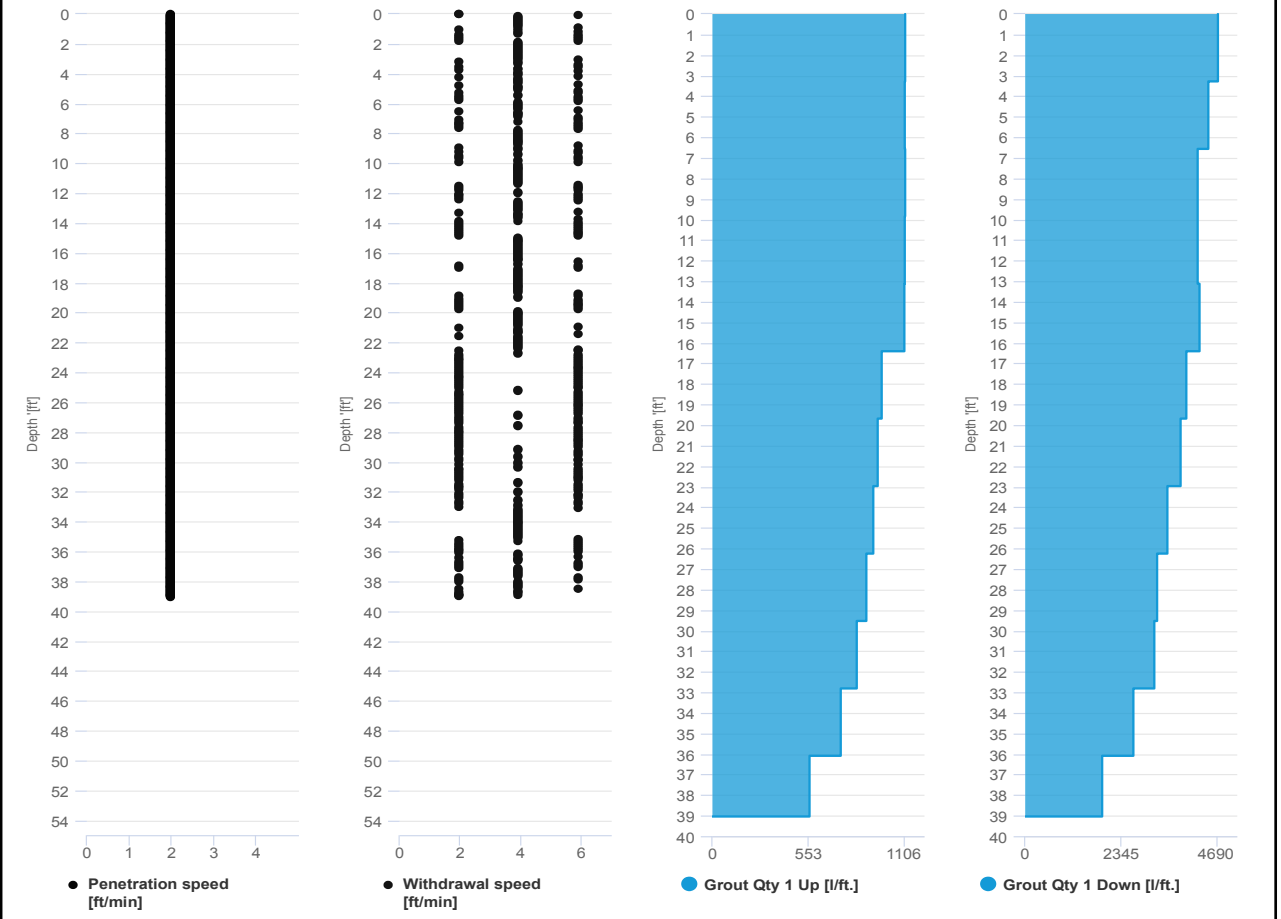


Project name: Douglass Street BCG ISS Element name: 403a
Project number

Start date: 08/20/2024

Drilling rig: BG36H_5717

Details		Start time: 05:42 PM	
Max. depth: 39.042 ft.		End Date: 08/20/2024	
Volume/m 1: 45.556 ft³		End time: 06:32 PM	
		Production duration: 00:49:39	
		Final depth time: 06:22 PM	
		Total suspension quantity: 542.858 ft³	



SCM Report

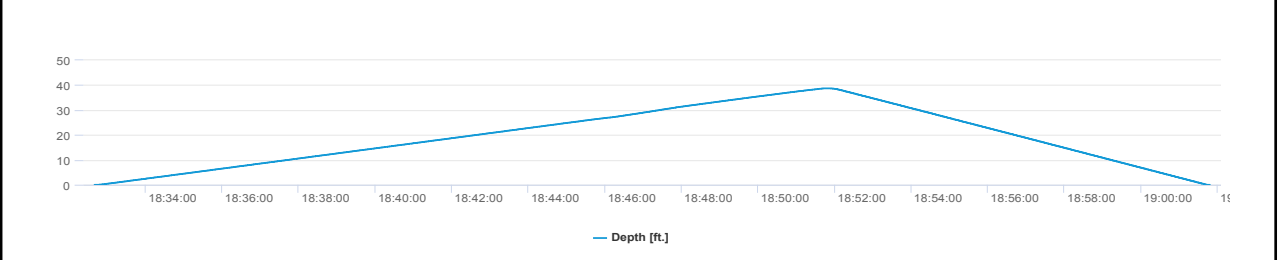
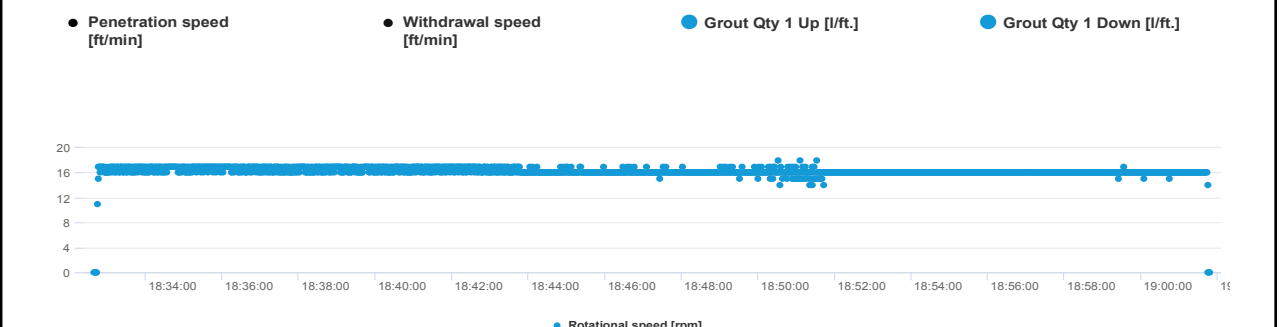
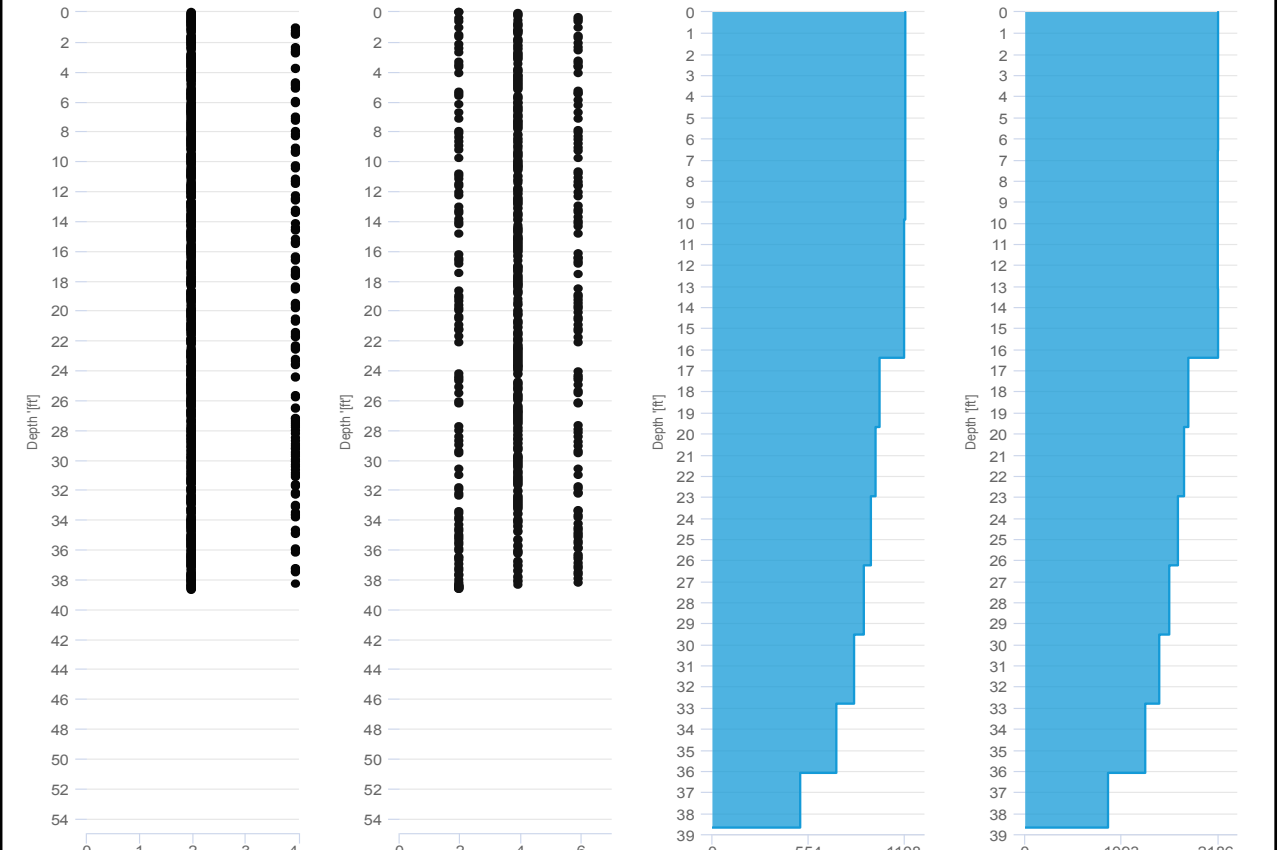


Project name: Douglass Street BCG ISS Element name: 403b
 Project number

Start date: 08/20/2024

Drilling rig: BG36H_5717

Details		Start time: 06:32 PM	
Max. depth: 38.681 ft.		End Date: 08/20/2024	
Volume/m 1: 27.192 ft³		End time: 07:01 PM	
		Production duration: 00:29:09	
		Final depth time: 06:51 PM	
		Total suspension quantity: 319.421 ft³	



SCM Report

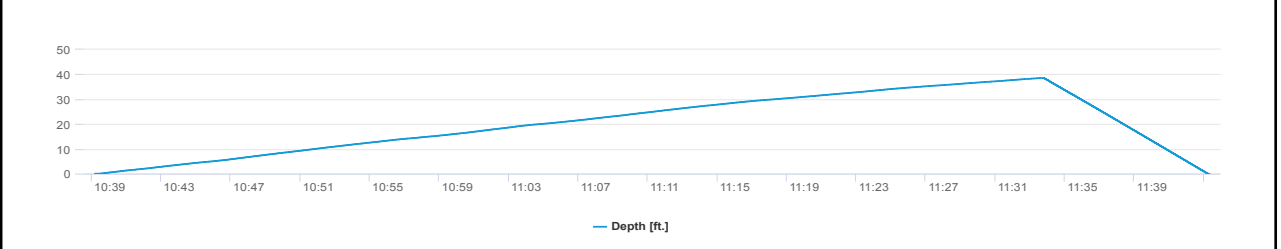
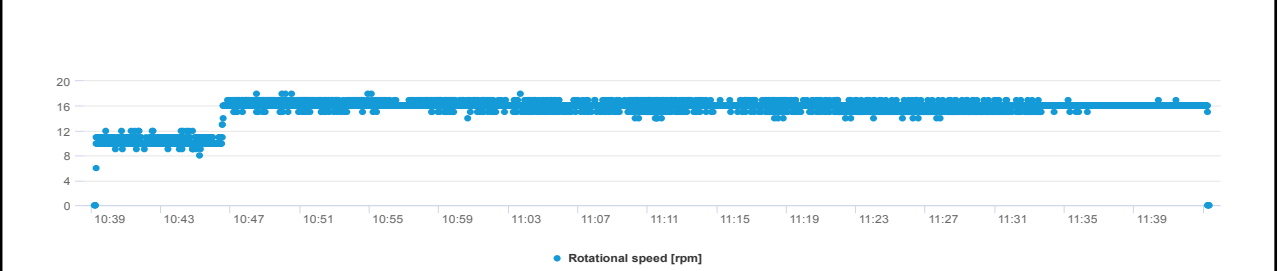
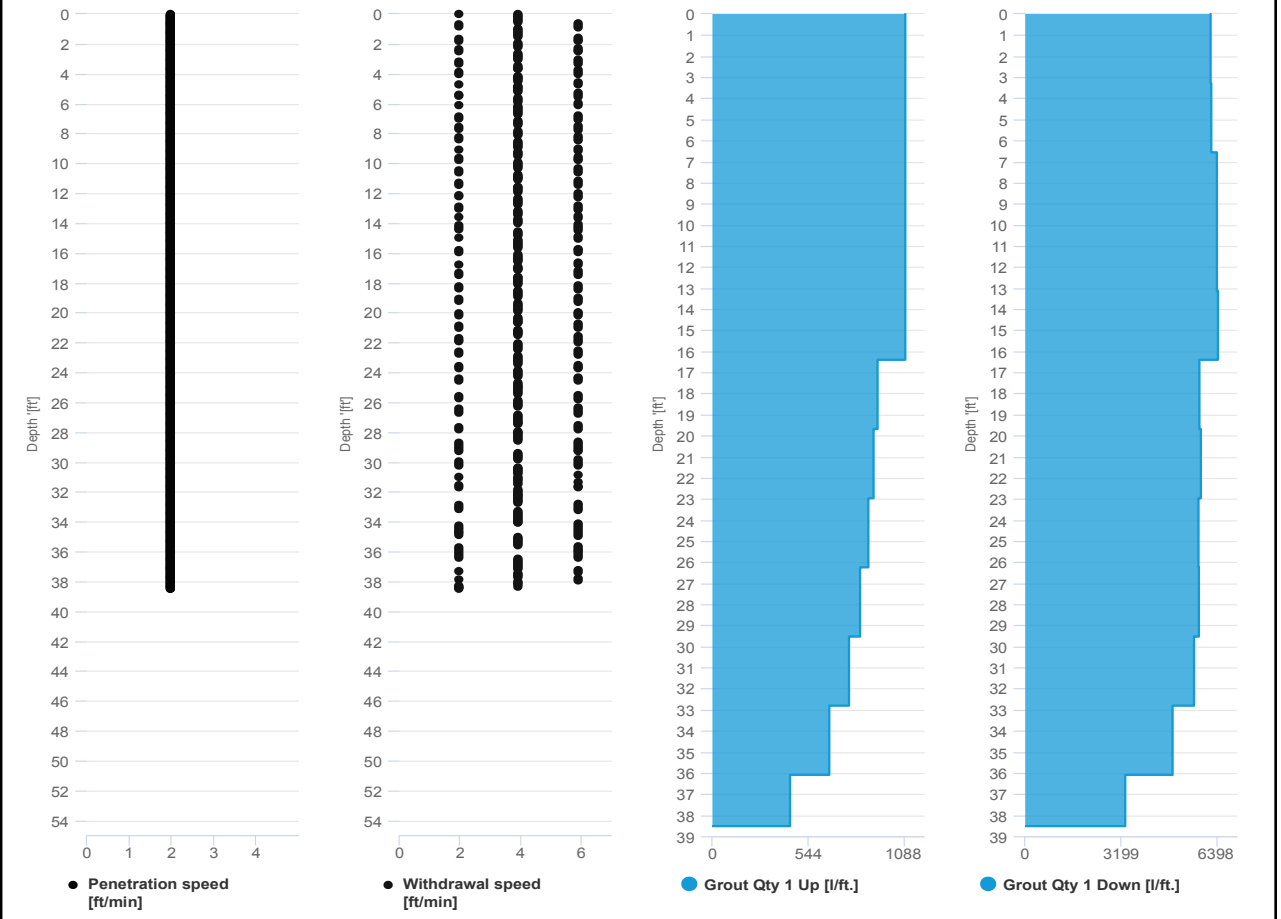


Project name: Douglass Street BCG ISS Element name: 464a
Project number

Start date: 08/20/2024

Drilling rig: BG36H_5717

Details		Start time: 10:39 AM	
Max. depth: 38.517 ft.		End Date: 08/20/2024	
Volume/m 1: 61.448 ft³		End time: 11:43 AM	
		Production duration: 01:04:09	
		Final depth time: 11:33 AM	
		Total suspension quantity: 719.466 ft³	



SCM Report

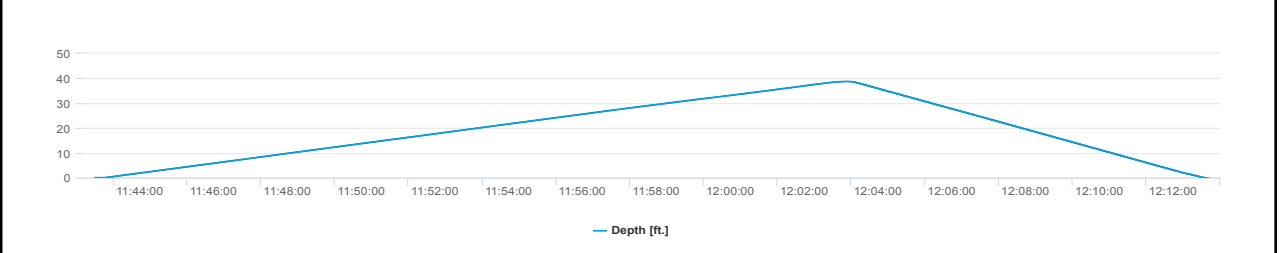
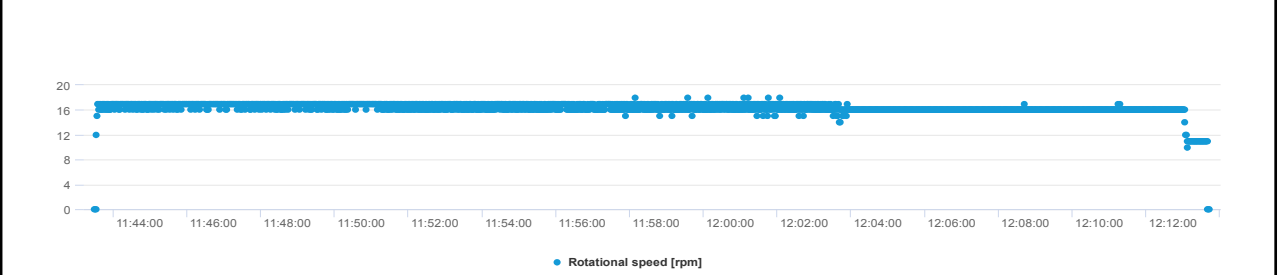
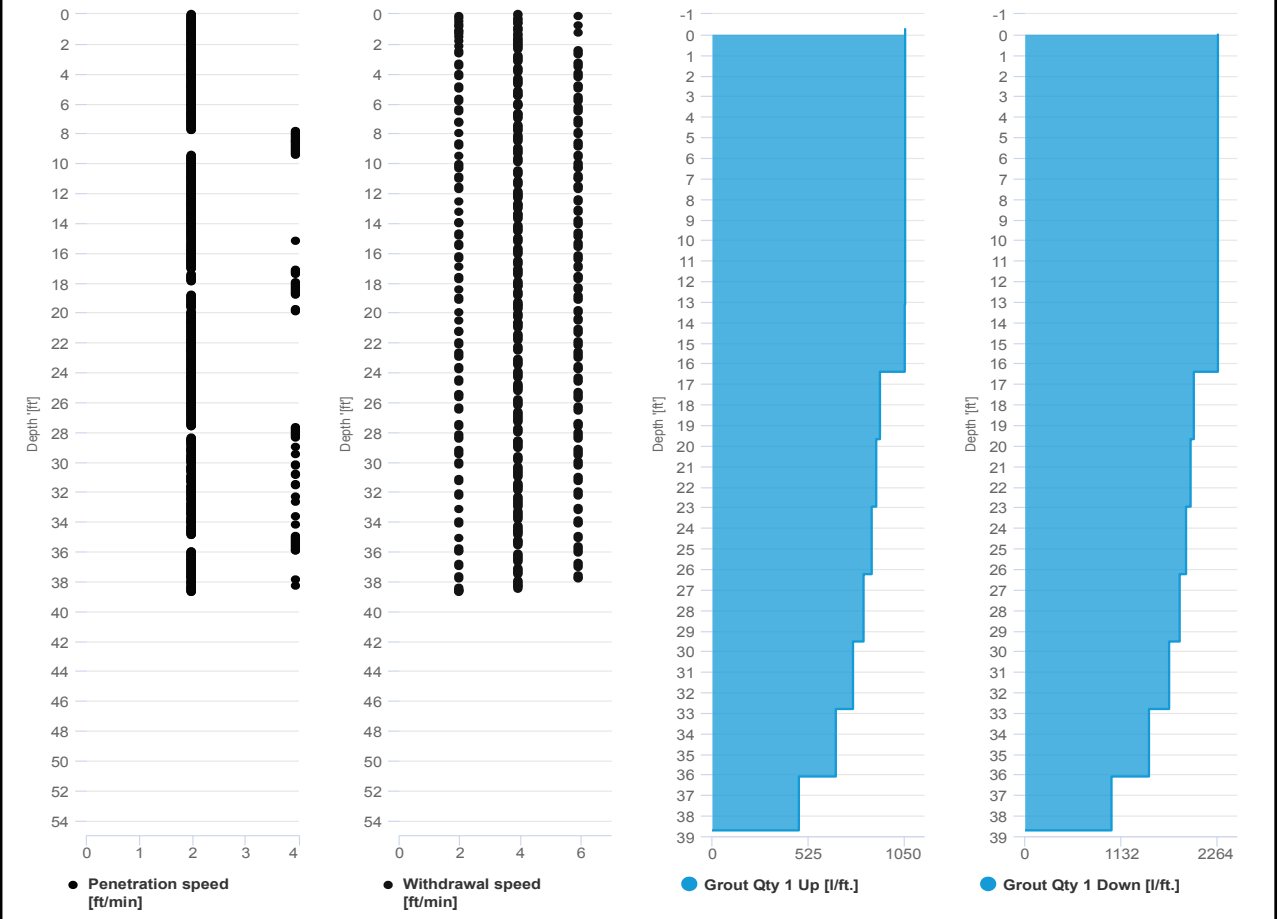


Project name: Douglass Street BCG ISS Element name: 464b
Project number

Start date: 08/20/2024

Drilling rig: BG36H_5717

Details		Start time: 11:43 AM	
Max. depth: 38.714 ft.		End Date: 08/20/2024	
Volume/m 1: 27.899 ft³		End time: 12:13 PM	
		Production duration: 00:30:14	
		Final depth time: 12:03 PM	
		Total suspension quantity: 327.614 ft³	



SCM Report

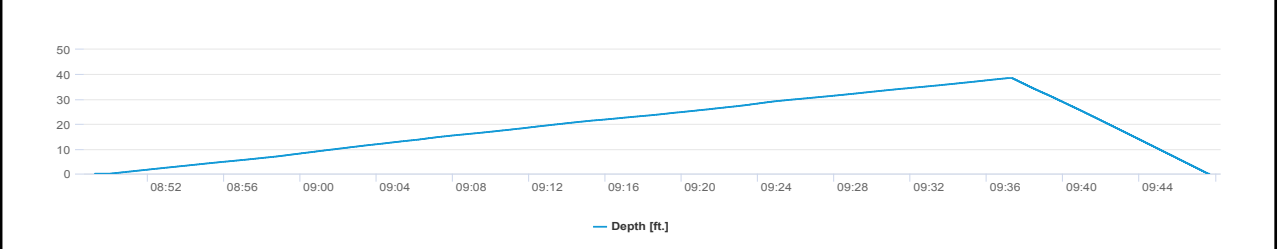
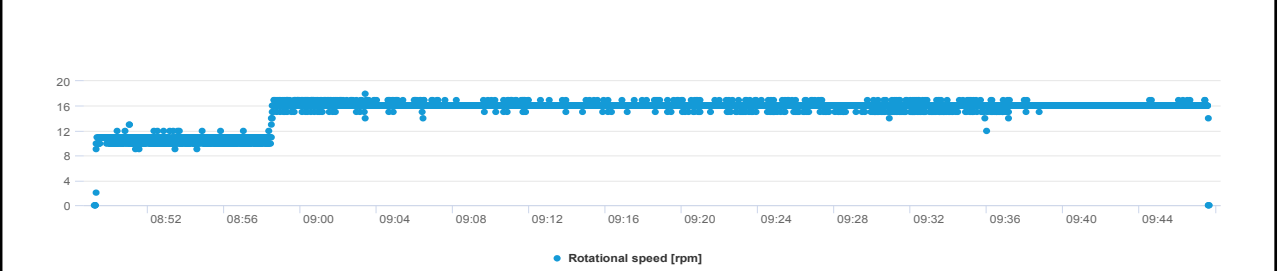
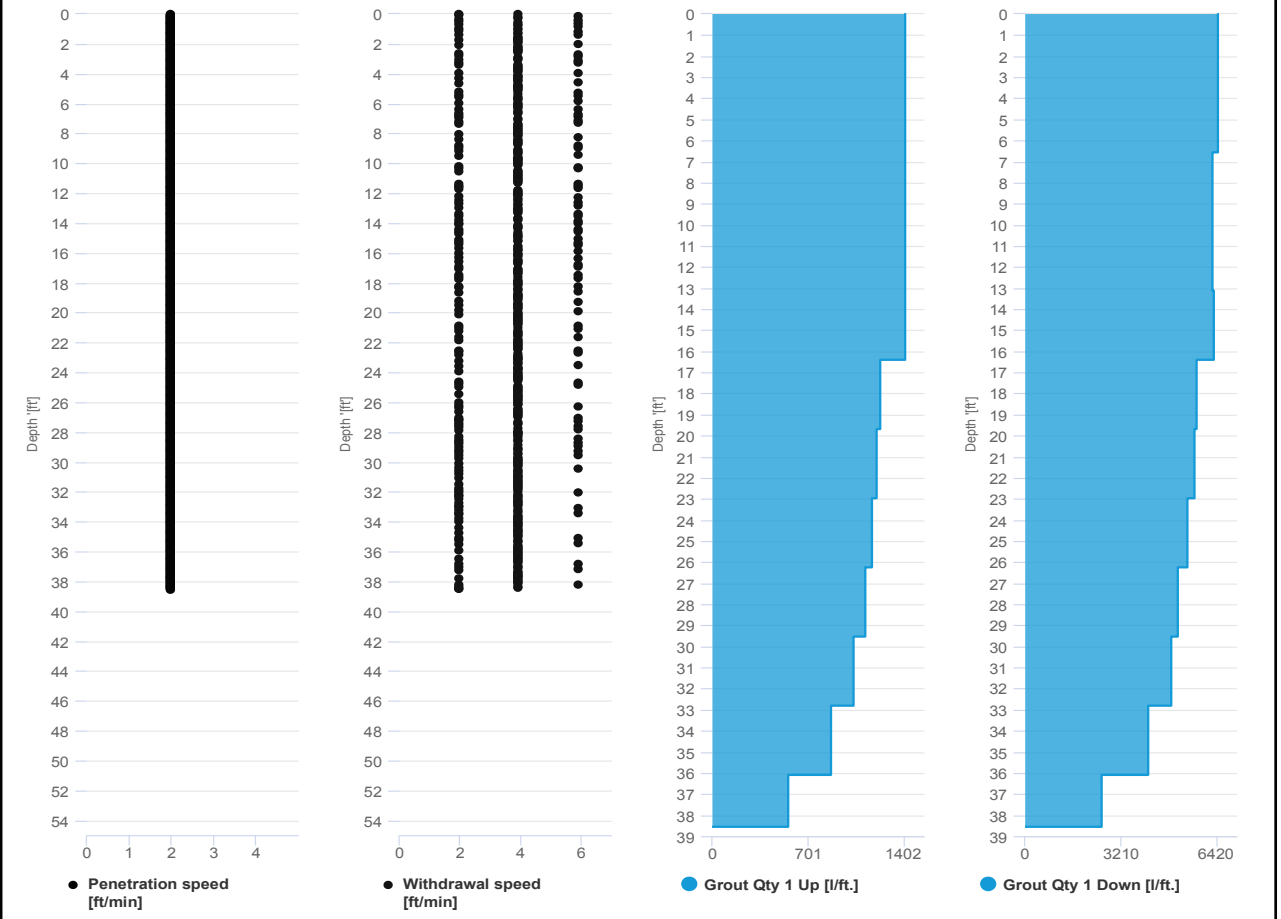


Project name: Douglass Street BCG ISS Element name: 466a
Project number

Start date: 08/20/2024

Drilling rig: BG36H_5717

Details		Start time: 08:49 AM	
Max. depth: 38.55 ft.		End Date: 08/20/2024	
Volume/m 1: 64.273 ft³		End time: 09:47 AM	
		Production duration: 00:58:27	
		Final depth time: 09:37 AM	
		Total suspension quantity: 753.934 ft³	

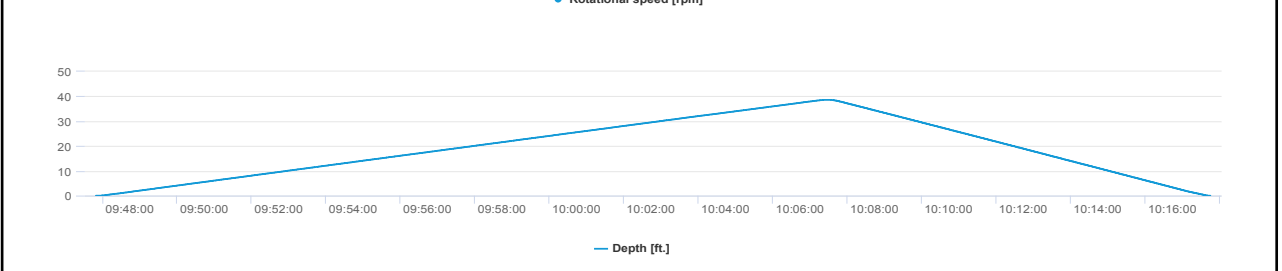
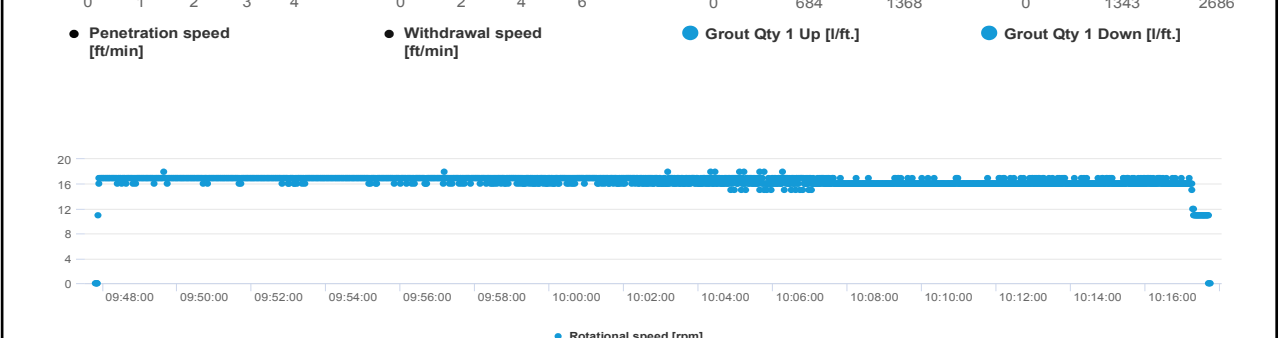
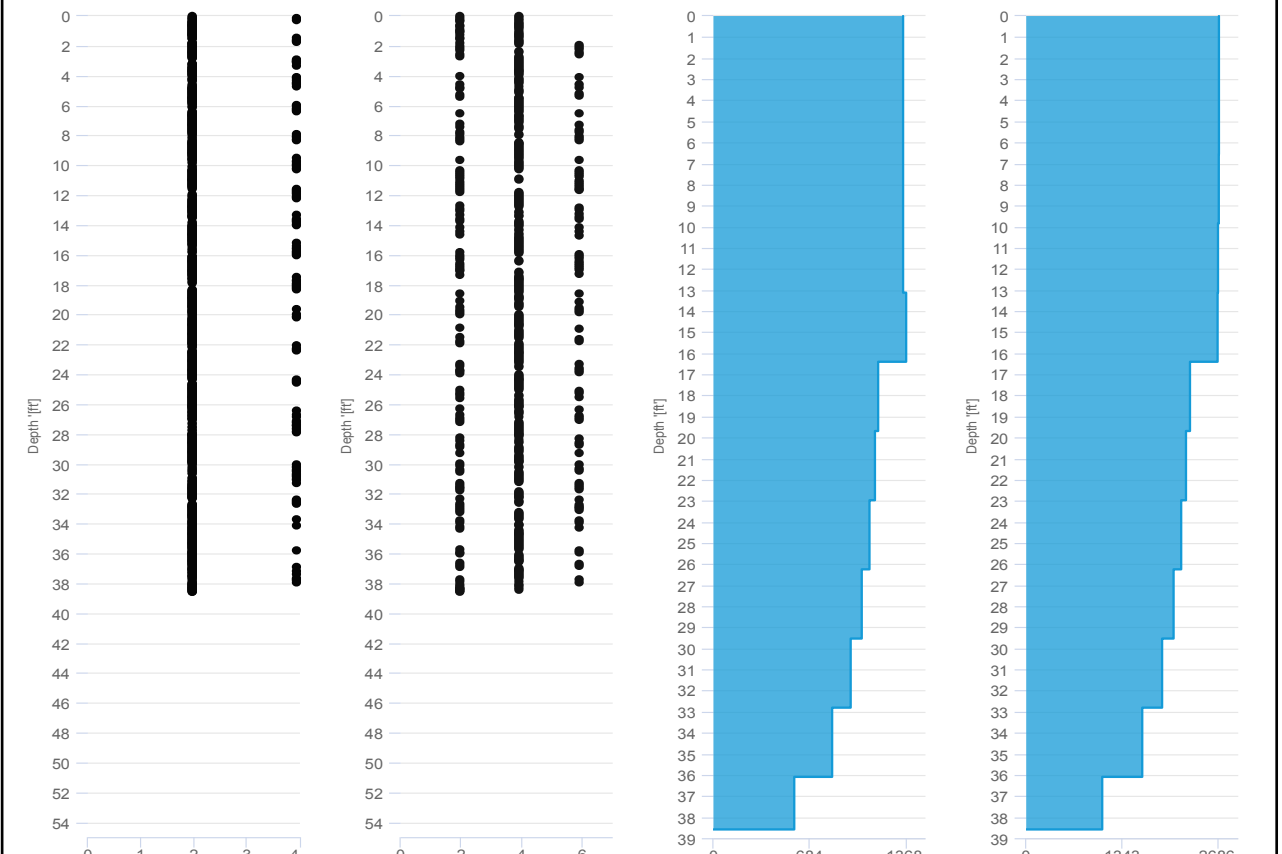


SCM Report



Project name	Douglass Street BCG ISS	Element name	466b
		Project number	
		Start date	08/20/2024
Drilling rig	BG36H_5717		

Details			
Max. depth	38.583 ft.	Start time	09:47 AM
Volume/m 1	33.196 ft³	End Date	08/20/2024
		End time	10:17 AM
		Production duration	00:29:57
		Final depth time	10:07 AM
		Total suspension quantity	391.711 ft³





IMPACT ENVIRONMENTAL

welcome to solid ground...

170 Keyland Court | Bohemia | NY | 11716 | 631.269.8800

www.impactenvironmental.com

UPWIND CAMP READINGS

251 DOUGLASS STREET, BROOKLYN, NY

Instrument Name	DustTrak II
Model Number	8530
Serial Number	8530224603
Firmware Version	3.1
Calibration Date	4/3/2024
Test Name	MANUAL_003
Test Start Time	7:19:45 AM
Test Start Date	8/20/2024
Test Length [D:H:M]	0:12:02
Test Interval [M:S]	1:00
Mass Average [mg/m3]	0.013
Mass Minimum [mg/m3]	0.005
Mass Maximum [mg/m3]	0.158
Mass TWA [mg/m3]	0.013
Photometric User Cal	1
Flow User Cal	0
Errors	
Number of Samples	722

Elapsed Time [s]	Mass [mg/m3]	Alarms	Errors
7:20	0.12		
7:21	0.007		
7:22	0.007		
7:23	0.007		
7:24	0.008		
7:25	0.007		
7:26	0.006		
7:27	0.006		
7:28	0.007		
7:29	0.005		
7:30	0.006		
7:31	0.007		
7:32	0.006		
7:33	0.007		
7:34	0.007		
7:35	0.007		
7:36	0.007		
7:37	0.007		
7:38	0.007		
7:39	0.007		
7:40	0.006		
7:41	0.015		
7:42	0.009		
7:43	0.006		

7:44	0.006
7:45	0.007
7:46	0.007
7:47	0.006
7:48	0.008
7:49	0.007
7:50	0.008
7:51	0.007
7:52	0.008
7:53	0.007
7:54	0.007
7:55	0.007
7:56	0.008
7:57	0.01
7:58	0.009
7:59	0.006
8:00	0.006
8:01	0.007
8:02	0.006
8:03	0.006
8:04	0.007
8:05	0.007
8:06	0.011
8:07	0.008
8:08	0.007
8:09	0.007
8:10	0.008
8:11	0.008
8:12	0.007
8:13	0.008
8:14	0.008
8:15	0.008
8:16	0.007
8:17	0.007
8:18	0.008
8:19	0.008
8:20	0.008
8:21	0.008
8:22	0.009
8:23	0.008
8:24	0.007
8:25	0.007
8:26	0.011
8:27	0.008

8:28	0.008
8:29	0.008
8:30	0.009
8:31	0.01
8:32	0.011
8:33	0.009
8:34	0.009
8:35	0.011
8:36	0.011
8:37	0.008
8:38	0.008
8:39	0.01
8:40	0.011
8:41	0.009
8:42	0.008
8:43	0.009
8:44	0.009
8:45	0.009
8:46	0.018
8:47	0.009
8:48	0.009
8:49	0.011
8:50	0.015
8:51	0.009
8:52	0.011
8:53	0.008
8:54	0.008
8:55	0.009
8:56	0.009
8:57	0.011
8:58	0.011
8:59	0.048
9:00	0.011
9:01	0.008
9:02	0.008
9:03	0.009
9:04	0.008
9:05	0.008
9:06	0.011
9:07	0.01
9:08	0.008
9:09	0.009
9:10	0.009
9:11	0.008

9:12	0.008
9:13	0.009
9:14	0.008
9:15	0.009
9:16	0.008
9:17	0.01
9:18	0.01
9:19	0.009
9:20	0.013
9:21	0.009
9:22	0.009
9:23	0.009
9:24	0.01
9:25	0.009
9:26	0.009
9:27	0.011
9:28	0.009
9:29	0.009
9:30	0.01
9:31	0.009
9:32	0.009
9:33	0.009
9:34	0.009
9:35	0.009
9:36	0.01
9:37	0.012
9:38	0.021
9:39	0.014
9:40	0.01
9:41	0.01
9:42	0.009
9:43	0.01
9:44	0.01
9:45	0.009
9:46	0.009
9:47	0.01
9:48	0.009
9:49	0.01
9:50	0.009
9:51	0.01
9:52	0.01
9:53	0.011
9:54	0.012
9:55	0.013

9:56	0.012
9:57	0.01
9:58	0.011
9:59	0.011
10:00	0.011
10:01	0.011
10:02	0.011
10:03	0.011
10:04	0.013
10:05	0.011
10:06	0.011
10:07	0.011
10:08	0.011
10:09	0.011
10:10	0.012
10:11	0.02
10:12	0.012
10:13	0.013
10:14	0.014
10:15	0.014
10:16	0.014
10:17	0.013
10:18	0.013
10:19	0.013
10:20	0.014
10:21	0.012
10:22	0.012
10:23	0.014
10:24	0.013
10:25	0.013
10:26	0.012
10:27	0.014
10:28	0.013
10:29	0.012
10:30	0.013
10:31	0.013
10:32	0.013
10:33	0.013
10:34	0.014
10:35	0.013
10:36	0.014
10:37	0.014
10:38	0.013
10:39	0.013

10:40	0.016
10:41	0.015
10:42	0.016
10:43	0.016
10:44	0.014
10:45	0.014
10:46	0.014
10:47	0.015
10:48	0.013
10:49	0.014
10:50	0.016
10:51	0.018
10:52	0.013
10:53	0.015
10:54	0.014
10:55	0.015
10:56	0.015
10:57	0.013
10:58	0.016
10:59	0.015
11:00	0.013
11:01	0.013
11:02	0.014
11:03	0.013
11:04	0.013
11:05	0.015
11:06	0.013
11:07	0.015
11:08	0.013
11:09	0.012
11:10	0.013
11:11	0.012
11:12	0.015
11:13	0.015
11:14	0.019
11:15	0.019
11:16	0.014
11:17	0.042
11:18	0.014
11:19	0.018
11:20	0.015
11:21	0.013
11:22	0.014
11:23	0.015

11:24	0.015
11:25	0.014
11:26	0.013
11:27	0.015
11:28	0.014
11:29	0.013
11:30	0.014
11:31	0.014
11:32	0.013
11:33	0.014
11:34	0.015
11:35	0.014
11:36	0.014
11:37	0.013
11:38	0.014
11:39	0.015
11:40	0.014
11:41	0.02
11:42	0.023
11:43	0.015
11:44	0.015
11:45	0.015
11:46	0.015
11:47	0.014
11:48	0.015
11:49	0.015
11:50	0.04
11:51	0.014
11:52	0.016
11:53	0.014
11:54	0.014
11:55	0.015
11:56	0.013
11:57	0.016
11:58	0.015
11:59	0.014
12:00	0.016
12:01	0.013
12:02	0.013
12:03	0.013
12:04	0.013
12:05	0.015
12:06	0.015
12:07	0.013

12:08	0.014
12:09	0.012
12:10	0.013
12:11	0.013
12:12	0.014
12:13	0.013
12:14	0.014
12:15	0.014
12:16	0.014
12:17	0.016
12:18	0.013
12:19	0.013
12:20	0.013
12:21	0.013
12:22	0.014
12:23	0.014
12:24	0.019
12:25	0.016
12:26	0.021
12:27	0.013
12:28	0.013
12:29	0.013
12:30	0.014
12:31	0.013
12:32	0.158
12:33	0.041
12:34	0.015
12:35	0.013
12:36	0.019
12:37	0.014
12:38	0.014
12:39	0.014
12:40	0.016
12:41	0.015
12:42	0.016
12:43	0.012
12:44	0.013
12:45	0.014
12:46	0.013
12:47	0.012
12:48	0.012
12:49	0.014
12:50	0.016
12:51	0.013

12:52	0.013
12:53	0.017
12:54	0.012
12:55	0.012
12:56	0.016
12:57	0.012
12:58	0.013
12:59	0.016
13:00	0.014
13:01	0.014
13:02	0.014
13:03	0.013
13:04	0.013
13:05	0.013
13:06	0.012
13:07	0.012
13:08	0.014
13:09	0.013
13:10	0.013
13:11	0.014
13:12	0.012
13:13	0.013
13:14	0.013
13:15	0.012
13:16	0.012
13:17	0.014
13:18	0.024
13:19	0.022
13:20	0.018
13:21	0.015
13:22	0.016
13:23	0.016
13:24	0.016
13:25	0.017
13:26	0.021
13:27	0.016
13:28	0.018
13:29	0.014
13:30	0.02
13:31	0.017
13:32	0.015
13:33	0.016
13:34	0.018
13:35	0.026

13:36	0.016
13:37	0.014
13:38	0.016
13:39	0.016
13:40	0.014
13:41	0.016
13:42	0.016
13:43	0.016
13:44	0.017
13:45	0.018
13:46	0.014
13:47	0.015
13:48	0.015
13:49	0.015
13:50	0.019
13:51	0.014
13:52	0.015
13:53	0.015
13:54	0.016
13:55	0.02
13:56	0.016
13:57	0.016
13:58	0.015
13:59	0.018
14:00	0.015
14:01	0.015
14:02	0.016
14:03	0.016
14:04	0.015
14:05	0.014
14:06	0.015
14:07	0.019
14:08	0.016
14:09	0.015
14:10	0.014
14:11	0.016
14:12	0.017
14:13	0.013
14:14	0.013
14:15	0.017
14:16	0.018
14:17	0.015
14:18	0.016
14:19	0.017

14:20	0.017
14:21	0.019
14:22	0.017
14:23	0.015
14:24	0.017
14:25	0.013
14:26	0.012
14:27	0.014
14:28	0.011
14:29	0.014
14:30	0.014
14:31	0.025
14:32	0.014
14:33	0.013
14:34	0.016
14:35	0.019
14:36	0.013
14:37	0.012
14:38	0.012
14:39	0.01
14:40	0.01
14:41	0.013
14:42	0.009
14:43	0.01
14:44	0.013
14:45	0.013
14:46	0.015
14:47	0.012
14:48	0.015
14:49	0.013
14:50	0.029
14:51	0.015
14:52	0.045
14:53	0.018
14:54	0.01
14:55	0.012
14:56	0.011
14:57	0.012
14:58	0.01
14:59	0.01
15:00	0.009
15:01	0.01
15:02	0.009
15:03	0.011

15:04	0.01
15:05	0.012
15:06	0.011
15:07	0.011
15:08	0.01
15:09	0.016
15:10	0.012
15:11	0.01
15:12	0.01
15:13	0.011
15:14	0.01
15:15	0.022
15:16	0.01
15:17	0.01
15:18	0.009
15:19	0.009
15:20	0.01
15:21	0.009
15:22	0.009
15:23	0.009
15:24	0.009
15:25	0.011
15:26	0.009
15:27	0.009
15:28	0.009
15:29	0.009
15:30	0.009
15:31	0.01
15:32	0.009
15:33	0.009
15:34	0.012
15:35	0.009
15:36	0.01
15:37	0.008
15:38	0.008
15:39	0.01
15:40	0.018
15:41	0.012
15:42	0.013
15:43	0.013
15:44	0.011
15:45	0.015
15:46	0.013
15:47	0.012

15:48	0.012
15:49	0.013
15:50	0.017
15:51	0.017
15:52	0.012
15:53	0.012
15:54	0.012
15:55	0.013
15:56	0.014
15:57	0.021
15:58	0.017
15:59	0.013
16:00	0.015
16:01	0.014
16:02	0.013
16:03	0.01
16:04	0.01
16:05	0.026
16:06	0.012
16:07	0.014
16:08	0.017
16:09	0.011
16:10	0.011
16:11	0.011
16:12	0.019
16:13	0.014
16:14	0.015
16:15	0.011
16:16	0.011
16:17	0.015
16:18	0.013
16:19	0.011
16:20	0.01
16:21	0.013
16:22	0.013
16:23	0.014
16:24	0.012
16:25	0.015
16:26	0.014
16:27	0.015
16:28	0.014
16:29	0.015
16:30	0.014
16:31	0.011

16:32	0.012
16:33	0.014
16:34	0.015
16:35	0.013
16:36	0.014
16:37	0.015
16:38	0.016
16:39	0.015
16:40	0.012
16:41	0.015
16:42	0.016
16:43	0.012
16:44	0.014
16:45	0.012
16:46	0.016
16:47	0.011
16:48	0.013
16:49	0.015
16:50	0.011
16:51	0.013
16:52	0.016
16:53	0.016
16:54	0.013
16:55	0.013
16:56	0.011
16:57	0.01
16:58	0.011
16:59	0.009
17:00	0.01
17:01	0.014
17:02	0.014
17:03	0.011
17:04	0.011
17:05	0.012
17:06	0.012
17:07	0.016
17:08	0.021
17:09	0.012
17:10	0.008
17:11	0.009
17:12	0.008
17:13	0.008
17:14	0.009
17:15	0.009

17:16	0.009
17:17	0.008
17:18	0.016
17:19	0.008
17:20	0.008
17:21	0.009
17:22	0.012
17:23	0.009
17:24	0.008
17:25	0.008
17:26	0.01
17:27	0.009
17:28	0.009
17:29	0.008
17:30	0.008
17:31	0.008
17:32	0.008
17:33	0.008
17:34	0.009
17:35	0.007
17:36	0.008
17:37	0.008
17:38	0.008
17:39	0.008
17:40	0.008
17:41	0.008
17:42	0.008
17:43	0.009
17:44	0.008
17:45	0.009
17:46	0.009
17:47	0.008
17:48	0.008
17:49	0.008
17:50	0.01
17:51	0.015
17:52	0.009
17:53	0.012
17:54	0.01
17:55	0.011
17:56	0.011
17:57	0.011
17:58	0.012
17:59	0.012

18:00	0.013
18:01	0.014
18:02	0.014
18:03	0.016
18:04	0.012
18:05	0.011
18:06	0.011
18:07	0.014
18:08	0.01
18:09	0.01
18:10	0.012
18:11	0.014
18:12	0.015
18:13	0.014
18:14	0.014
18:15	0.011
18:16	0.011
18:17	0.015
18:18	0.008
18:19	0.007
18:20	0.012
18:21	0.011
18:22	0.013
18:23	0.011
18:24	0.014
18:25	0.009
18:26	0.014
18:27	0.013
18:28	0.012
18:29	0.013
18:30	0.011
18:31	0.009
18:32	0.01
18:33	0.015
18:34	0.016
18:35	0.017
18:36	0.016
18:37	0.017
18:38	0.012
18:39	0.012
18:40	0.013
18:41	0.013
18:42	0.011
18:43	0.013

18:44	0.011
18:45	0.014
18:46	0.013
18:47	0.013
18:48	0.013
18:49	0.009
18:50	0.009
18:51	0.012
18:52	0.013
18:53	0.015
18:54	0.014
18:55	0.012
18:56	0.011
18:57	0.009
18:58	0.01
18:59	0.01
19:00	0.015
19:01	0.017
19:02	0.014
19:03	0.011
19:04	0.013
19:05	0.016
19:06	0.018
19:07	0.015
19:08	0.01
19:09	0.01
19:10	0.009
19:11	0.014
19:12	0.011
19:13	0.01
19:14	0.018
19:15	0.017
19:16	0.015
19:17	0.014
19:18	0.016
19:19	0.016
19:20	0.017
19:21	0.014

Device Serial No	Log Time	Log Type	Sensor 1 Type	Sensor 1 Serial Number	Sensor 1 Status	Sensor 1 Gas Reading
592-001278	8/20/2024 6:47	CONFIG	PID	SC23030041T3		
592-001278	8/20/2024 6:48	Readings	PID	SC23030041T3	Normal	0
592-001278	8/20/2024 6:49	Readings	PID	SC23030041T3	Normal	0
592-001278	8/20/2024 6:50	Readings	PID	SC23030041T3	Normal	0
592-001278	8/20/2024 6:51	Readings	PID	SC23030041T3	Normal	0
592-001278	8/20/2024 6:52	Readings	PID	SC23030041T3	Normal	0
592-001278	8/20/2024 6:53	Readings	PID	SC23030041T3	Normal	0
592-001278	8/20/2024 6:54	Readings	PID	SC23030041T3	Normal	0
592-001278	8/20/2024 6:55	Readings	PID	SC23030041T3	Normal	0
592-001278	8/20/2024 6:56	Readings	PID	SC23030041T3	Normal	0
592-001278	8/20/2024 6:57	Readings	PID	SC23030041T3	Normal	0
592-001278	8/20/2024 6:58	Readings	PID	SC23030041T3	Normal	0
592-001278	8/20/2024 6:59	Readings	PID	SC23030041T3	Normal	0
592-001278	8/20/2024 7:00	Readings	PID	SC23030041T3	Normal	0
592-001278	8/20/2024 7:01	Readings	PID	SC23030041T3	Normal	0
592-001278	8/20/2024 7:02	Readings	PID	SC23030041T3	Normal	0
592-001278	8/20/2024 7:03	Readings	PID	SC23030041T3	Normal	0
592-001278	8/20/2024 7:04	Readings	PID	SC23030041T3	Normal	0
592-001278	8/20/2024 7:05	Readings	PID	SC23030041T3	Normal	0
592-001278	8/20/2024 7:06	Readings	PID	SC23030041T3	Normal	0
592-001278	8/20/2024 7:07	Readings	PID	SC23030041T3	Normal	0
592-001278	8/20/2024 7:08	Readings	PID	SC23030041T3	Normal	0
592-001278	8/20/2024 7:09	Readings	PID	SC23030041T3	Normal	0
592-001278	8/20/2024 7:10	Readings	PID	SC23030041T3	Normal	0
592-001278	8/20/2024 7:11	Readings	PID	SC23030041T3	Normal	0
592-001278	8/20/2024 7:12	Readings	PID	SC23030041T3	Normal	0
592-001278	8/20/2024 7:13	Readings	PID	SC23030041T3	Normal	0
592-001278	8/20/2024 7:14	Readings	PID	SC23030041T3	Normal	0
592-001278	8/20/2024 7:15	Readings	PID	SC23030041T3	Normal	0
592-001278	8/20/2024 7:16	Readings	PID	SC23030041T3	Normal	0
592-001278	8/20/2024 7:17	Readings	PID	SC23030041T3	Normal	0
592-001278	8/20/2024 7:18	Readings	PID	SC23030041T3	Normal	0

592-001278	8/20/2024 18:52 Readings	PID	SC23030041T3	Normal	0
592-001278	8/20/2024 18:53 Readings	PID	SC23030041T3	Normal	0
592-001278	8/20/2024 18:54 Readings	PID	SC23030041T3	Normal	0
592-001278	8/20/2024 18:55 Readings	PID	SC23030041T3	Normal	0
592-001278	8/20/2024 18:56 Readings	PID	SC23030041T3	Normal	0
592-001278	8/20/2024 18:57 Readings	PID	SC23030041T3	Normal	0
592-001278	8/20/2024 18:58 Readings	PID	SC23030041T3	Normal	0
592-001278	8/20/2024 18:59 Readings	PID	SC23030041T3	Normal	0
592-001278	8/20/2024 19:00 Readings	PID	SC23030041T3	Normal	0
592-001278	8/20/2024 19:01 Readings	PID	SC23030041T3	Normal	0
592-001278	8/20/2024 19:02 Readings	PID	SC23030041T3	Normal	0
592-001278	8/20/2024 19:03 Readings	PID	SC23030041T3	Normal	0
592-001278	8/20/2024 19:04 Readings	PID	SC23030041T3	Normal	0
592-001278	8/20/2024 19:05 Readings	PID	SC23030041T3	Normal	0
592-001278	8/20/2024 19:06 Readings	PID	SC23030041T3	Normal	0
592-001278	8/20/2024 19:07 Readings	PID	SC23030041T3	Normal	0
592-001278	8/20/2024 19:08 Readings	PID	SC23030041T3	Normal	0
592-001278	8/20/2024 19:09 Readings	PID	SC23030041T3	Normal	0
592-001278	8/20/2024 19:10 Readings	PID	SC23030041T3	Normal	0
592-001278	8/20/2024 19:11 Readings	PID	SC23030041T3	Normal	0
592-001278	8/20/2024 19:12 Readings	PID	SC23030041T3	Normal	0
592-001278	8/20/2024 19:13 Readings	PID	SC23030041T3	Normal	0

DOWNWIND CAMP READINGS

251 DOUGLASS STREET, BROOKLYN, NY



Instrument Name	DustTrak II
Model Number	8530
Serial Number	8530224601
Firmware Version	3.1
Calibration Date	11/9/2022
Test Name	MANUAL_003
Test Start Time	6:57:57 AM
Test Start Date	8/20/2024
Test Length [D:H:M]	0:12:14
Test Interval [M:S]	1:00
Mass Average [mg/m3]	0.008
Mass Minimum [mg/m3]	0.001
Mass Maximum [mg/m3]	0.123
Mass TWA [mg/m3]	0.001
Photometric User Cal	1
Flow User Cal	0
Errors	
Number of Samples	52

Elapsed Time [s]	Mass [mg/m3]	Alarms	Errors
6:58	0.012		
6:59	0.012		
7:00	0.006		
7:01	0.006		
7:02	0.005		
7:03	0.006		
7:04	0.005		
7:05	0.005		
7:06	0.005		
7:07	0.005		
7:08	0.005		
7:09	0.006		
7:10	0.009		
7:11	0.01		
7:12	0.007		
7:13	0.012		
7:14	0.009		
7:15	0.007		
7:16	0.006		
7:17	0.008		
7:18	0.007		
7:19	0.007		
7:20	0.008		
7:21	0.014		

7:22	0.009
7:23	0.009
7:24	0.009
7:25	0.007
7:26	0.008
7:27	0.02
7:28	0.019
7:29	0.016
7:30	0.019
7:31	0.01
7:32	0.009
7:33	0.01
7:34	0.01
7:35	0.009
7:36	0.006
7:37	0.002
7:38	0.027
7:39	0.001
7:40	0.012
7:41	0.009
7:42	0.001
7:43	0.003
7:44	0.01
7:45	0.062
7:46	0.092
7:47	0.023
7:48	0.022
7:49	0.011
7:50	0.035
7:51	0.035
7:52	0.036
7:53	0.035
7:54	0.036
7:55	0.035
7:56	0.034
7:57	0.034
7:58	0.034
7:59	0.035
8:00	0.036
8:01	0.034
8:02	0.035
8:03	0.051
8:04	0.038
8:05	0.054

8:06	0.046
8:07	0.035
8:08	0.036
8:09	0.038
8:10	0.037
8:11	0.039
8:12	0.037
8:13	0.037
8:14	0.04
8:15	0.041
8:16	0.038
8:17	0.039
8:18	0.043
8:19	0.044
8:20	0.043
8:21	0.043
8:22	0.041
8:23	0.048
8:24	0.055
8:25	0.056
8:26	0.049
8:27	0.041
8:28	0.06
8:29	0.045
8:30	0.049
8:31	0.044
8:32	0.054
8:33	0.059
8:34	0.045
8:35	0.044
8:36	0.06
8:37	0.044
8:38	0.108
8:39	0.046
8:40	0.073
8:41	0.117
8:42	0.048
8:43	0.043
8:44	0.043
8:45	0.043
8:46	0.044
8:47	0.043
8:48	0.044
8:49	0.043

8:50	0.061
8:51	0.067
8:52	0.071
8:53	0.054
8:54	0.046
8:55	0.052
8:56	0.05
8:57	0.049
8:58	0.047
8:59	0.047
9:00	0.046
9:01	0.046
9:02	0.045
9:03	0.046
9:04	0.044
9:05	0.045
9:06	0.047
9:07	0.045
9:08	0.047
9:09	0.064
9:10	0.048
9:11	0.056
9:12	0.048
9:13	0.046
9:14	0.045
9:15	0.045
9:16	0.046
9:17	0.046
9:18	0.045
9:19	0.055
9:20	0.04
9:21	0.039
9:22	0.041
9:23	0.076
9:24	0.089
9:25	0.049
9:26	0.041
9:27	0.041
9:28	0.05
9:29	0.102
9:30	0.044
9:31	0.051
9:32	0.041
9:33	0.04

9:34	0.043
9:35	0.042
9:36	0.076
9:37	0.041
9:38	0.041
9:39	0.043
9:40	0.042
9:41	0.043
9:42	0.044
9:43	0.044
9:44	0.044
9:45	0.062
9:46	0.044
9:47	0.044
9:48	0.046
9:49	0.045
9:50	0.046
9:51	0.047
9:52	0.057
9:53	0.044
9:54	0.045
9:55	0.046
9:56	0.045
9:57	0.045
9:58	0.046
9:59	0.046
10:00	0.046
10:01	0.045
10:02	0.046
10:03	0.045
10:04	0.045
10:05	0.046
10:06	0.045
10:07	0.044
10:08	0.047
10:09	0.045
10:10	0.045
10:11	0.046
10:12	0.047
10:13	0.047
10:14	0.045
10:15	0.046
10:16	0.046
10:17	0.046

10:18	0.046
10:19	0.046
10:20	0.046
10:21	0.047
10:22	0.05
10:23	0.049
10:24	0.048
10:25	0.048
10:26	0.047
10:27	0.047
10:28	0.05
10:29	0.048
10:30	0.062
10:31	0.048
10:32	0.047
10:33	0.048
10:34	0.047
10:35	0.048
10:36	0.048
10:37	0.048
10:38	0.051
10:39	0.048
10:40	0.047
10:41	0.048
10:42	0.059
10:43	0.051
10:44	0.049
10:45	0.05
10:46	0.05
10:47	0.05
10:48	0.05
10:49	0.05
10:50	0.052
10:51	0.051
10:52	0.05
10:53	0.049
10:54	0.052
10:55	0.05
10:56	0.052
10:57	0.052
10:58	0.05
10:59	0.05
11:00	0.051
11:01	0.055

11:02	0.051
11:03	0.051
11:04	0.049
11:05	0.049
11:06	0.049
11:07	0.05
11:08	0.05
11:09	0.05
11:10	0.061
11:11	0.053
11:12	0.05
11:13	0.05
11:14	0.051
11:15	0.05
11:16	0.049
11:17	0.049
11:18	0.057
11:19	0.052
11:20	0.051
11:21	0.053
11:22	0.05
11:23	0.05
11:24	0.092
11:25	0.077
11:26	0.063
11:27	0.054
11:28	0.05
11:29	0.051
11:30	0.056
11:31	0.051
11:32	0.051
11:33	0.051
11:34	0.053
11:35	0.054
11:36	0.054
11:37	0.053
11:38	0.052
11:39	0.051
11:40	0.051
11:41	0.05
11:42	0.051
11:43	0.05
11:44	0.05
11:45	0.051

11:46	0.05
11:47	0.051
11:48	0.051
11:49	0.052
11:50	0.052
11:51	0.052
11:52	0.057
11:53	0.052
11:54	0.054
11:55	0.051
11:56	0.052
11:57	0.052
11:58	0.053
11:59	0.051
12:00	0.05
12:01	0.05
12:02	0.05
12:03	0.049
12:04	0.049
12:05	0.049
12:06	0.049
12:07	0.048
12:08	0.048
12:09	0.048
12:10	0.047
12:11	0.048
12:12	0.048
12:13	0.048
12:14	0.023
12:15	0.021
12:16	0.023
12:17	0.023
12:18	0.04
12:19	0.025
12:20	0.023
12:21	0.024
12:22	0.022
12:23	0.026
12:24	0.021
12:25	0.023
12:26	0.021
12:27	0.022
12:28	0.02
12:29	0.021

12:30	0.021
12:31	0.019
12:32	0.02
12:33	0.02
12:34	0.02
12:35	0.018
12:36	0.019
12:37	0.02
12:38	0.021
12:39	0.019
12:40	0.017
12:41	0.019
12:42	0.016
12:43	0.016
12:44	0.017
12:45	0.018
12:46	0.016
12:47	0.017
12:48	0.015
12:49	0.016
12:50	0.023
12:51	0.019
12:52	0.016
12:53	0.018
12:54	0.016
12:55	0.017
12:56	0.016
12:57	0.017
12:58	0.019
12:59	0.014
13:00	0.015
13:01	0.013
13:02	0.011
13:03	0.016
13:04	0.013
13:05	0.012
13:06	0.019
13:07	0.016
13:08	0.024
13:09	0.065
13:10	0.025
13:11	0.009
13:12	0.01
13:13	0.025

13:14	0.018
13:15	0.03
13:16	0.018
13:17	0.023
13:18	0.052
13:19	0.025
13:20	0.033
13:21	0.038
13:22	0.012
13:23	0.038
13:24	0.016
13:25	0.053
13:26	0.019
13:27	0.006
13:28	0.013
13:29	0.008
13:30	0.007
13:31	0.007
13:32	0.005
13:33	0.005
13:34	0.007
13:35	0.008
13:36	0.013
13:37	0.014
13:38	0.098
13:39	0.082
13:40	0.014
13:41	0.008
13:42	0.021
13:43	0.006
13:44	0.006
13:45	0.006
13:46	0.006
13:47	0.006
13:48	0.005
13:49	0.018
13:50	0.018
13:51	0.008
13:52	0.025
13:53	0.02
13:54	0.022
13:55	0.01
13:56	0.019
13:57	0.011

13:58	0.007
13:59	0.094
14:00	0.043
14:01	0.036
14:02	0.022
14:03	0.013
14:04	0.029
14:05	0.018
14:06	0.026
14:07	0.005
14:08	0.004
14:09	0.029
14:10	0.028
14:11	0.014
14:12	0.006
14:13	0.018
14:14	0.013
14:15	0.006
14:16	0.008
14:17	0.012
14:18	0.016
14:19	0.007
14:20	0.014
14:21	0.015
14:22	0.018
14:23	0.009
14:24	0.006
14:25	0.007
14:26	0.007
14:27	0.004
14:28	0.008
14:29	0.006
14:30	0.006
14:31	0.004
14:32	0.004
14:33	0.003
14:34	0.008
14:35	0.008
14:36	0.009
14:37	0.009
14:38	0.03
14:39	0.027
14:40	0.016
14:41	0.007

14:42	0.013
14:43	0.015
14:44	0.01
14:45	0.018
14:46	0.008
14:47	0.005
14:48	0.008
14:49	0.012
14:50	0.009
14:51	0.007
14:52	0.007
14:53	0.015
14:54	0.023
14:55	0.016
14:56	0.01
14:57	0.004
14:58	0.003
14:59	0.007
15:00	0.004
15:01	0.012
15:02	0.004
15:03	0.003
15:04	0.01
15:05	0.01
15:06	0.009
15:07	0.014
15:08	0.005
15:09	0.008
15:10	0.014
15:11	0.014
15:12	0.014
15:13	0.007
15:14	0.008
15:15	0.014
15:16	0.021
15:17	0.01
15:18	0.012
15:19	0.019
15:20	0.009
15:21	0.003
15:22	0.007
15:23	0.013
15:24	0.008
15:25	0.014

15:26	0.006
15:27	0.004
15:28	0.013
15:29	0.011
15:30	0.007
15:31	0.006
15:32	0.008
15:33	0.009
15:34	0.005
15:35	0.013
15:36	0.01
15:37	0.014
15:38	0.008
15:39	0.003
15:40	0.005
15:41	0.004
15:42	0.009
15:43	0.005
15:44	0.006
15:45	0.008
15:46	0.007
15:47	0.008
15:48	0.01
15:49	0.009
15:50	0.005
15:51	0.006
15:52	0.006
15:53	0.011
15:54	0.01
15:55	0.007
15:56	0.003
15:57	0.004
15:58	0.007
15:59	0.012
16:00	0.032
16:01	0.015
16:02	0.012
16:03	0.012
16:04	0.018
16:05	0.007
16:06	0.02
16:07	0.011
16:08	0.005
16:09	0.005

16:10	0.005
16:11	0.006
16:12	0.004
16:13	0.004
16:14	0.004
16:15	0.012
16:16	0.012
16:17	0.036
16:18	0.012
16:19	0.01
16:20	0.007
16:21	0.013
16:22	0.028
16:23	0.017
16:24	0.014
16:25	0.005
16:26	0.009
16:27	0.068
16:28	0.033
16:29	0.021
16:30	0.017
16:31	0.007
16:32	0.012
16:33	0.011
16:34	0.013
16:35	0.013
16:36	0.011
16:37	0.025
16:38	0.123
16:39	0.039
16:40	0.01
16:41	0.026
16:42	0.013
16:43	0.015
16:44	0.01
16:45	0.015
16:46	0.009
16:47	0.009
16:48	0.007
16:49	0.004
16:50	0.01
16:51	0.006
16:52	0.008
16:53	0.006

16:54	0.023
16:55	0.011
16:56	0.005
16:57	0.004
16:58	0.005
16:59	0.006
17:00	0.009
17:01	0.016
17:02	0.003
17:03	0.003
17:04	0.016
17:05	0.041
17:06	0.034
17:07	0.023
17:08	0.024
17:09	0.024
17:10	0.022
17:11	0.024
17:12	0.023
17:13	0.027
17:14	0.024
17:15	0.022
17:16	0.024
17:17	0.024
17:18	0.025
17:19	0.022
17:20	0.022
17:21	0.023
17:22	0.021
17:23	0.023
17:24	0.023
17:25	0.04
17:26	0.025
17:27	0.023

Device Serial No	Log Time	Log Type	Sensor 1 Type	Sensor 1 Serial Number	Sensor 1 Status	Sensor 1 Gas Reading
592-601225	8/20/2024 6:56	CONFIG	PID	SC23030037D3		
592-601225	8/20/2024 6:57	Readings	PID	SC23030037D3	Normal	0
592-601225	8/20/2024 6:58	Readings	PID	SC23030037D3	Normal	0
592-601225	8/20/2024 6:59	Readings	PID	SC23030037D3	Normal	0
592-601225	8/20/2024 7:00	Readings	PID	SC23030037D3	Normal	0
592-601225	8/20/2024 7:01	Readings	PID	SC23030037D3	Normal	0
592-601225	8/20/2024 7:02	Readings	PID	SC23030037D3	Normal	0
592-601225	8/20/2024 7:03	Readings	PID	SC23030037D3	Normal	0
592-601225	8/20/2024 7:04	Readings	PID	SC23030037D3	Normal	0
592-601225	8/20/2024 7:05	Readings	PID	SC23030037D3	Normal	0
592-601225	8/20/2024 7:06	Readings	PID	SC23030037D3	Normal	0
592-601225	8/20/2024 7:07	Readings	PID	SC23030037D3	Normal	0
592-601225	8/20/2024 7:08	Readings	PID	SC23030037D3	Normal	0
592-601225	8/20/2024 7:09	Readings	PID	SC23030037D3	Normal	0
592-601225	8/20/2024 7:10	Readings	PID	SC23030037D3	Normal	0
592-601225	8/20/2024 7:11	Readings	PID	SC23030037D3	Normal	0
592-601225	8/20/2024 7:12	Readings	PID	SC23030037D3	Normal	0
592-601225	8/20/2024 7:13	Readings	PID	SC23030037D3	Normal	0
592-601225	8/20/2024 7:14	Readings	PID	SC23030037D3	Normal	0
592-601225	8/20/2024 7:15	Readings	PID	SC23030037D3	Normal	0
592-601225	8/20/2024 7:16	Readings	PID	SC23030037D3	Normal	0
592-601225	8/20/2024 7:17	Readings	PID	SC23030037D3	Normal	0
592-601225	8/20/2024 7:18	Readings	PID	SC23030037D3	Normal	0
592-601225	8/20/2024 7:19	Readings	PID	SC23030037D3	Normal	0
592-601225	8/20/2024 7:20	Readings	PID	SC23030037D3	Normal	0
592-601225	8/20/2024 7:21	Readings	PID	SC23030037D3	Normal	0
592-601225	8/20/2024 7:22	Readings	PID	SC23030037D3	Normal	0
592-601225	8/20/2024 7:23	Readings	PID	SC23030037D3	Normal	0
592-601225	8/20/2024 7:24	Readings	PID	SC23030037D3	Normal	0
592-601225	8/20/2024 7:25	Readings	PID	SC23030037D3	Normal	0
592-601225	8/20/2024 7:26	Readings	PID	SC23030037D3	Normal	0
592-601225	8/20/2024 7:27	Readings	PID	SC23030037D3	Normal	0

592-601225	8/20/2024 19:01	Readings	PID	SC23030037D3	Normal	0
592-601225	8/20/2024 19:02	Readings	PID	SC23030037D3	Normal	0
592-601225	8/20/2024 19:03	Readings	PID	SC23030037D3	Normal	0
592-601225	8/20/2024 19:04	Readings	PID	SC23030037D3	Normal	0
592-601225	8/20/2024 19:05	Readings	PID	SC23030037D3	Normal	0
592-601225	8/20/2024 19:06	Readings	PID	SC23030037D3	Normal	0
592-601225	8/20/2024 19:07	Readings	PID	SC23030037D3	Normal	0
592-601225	8/20/2024 19:08	Readings	PID	SC23030037D3	Normal	0
592-601225	8/20/2024 19:09	Readings	PID	SC23030037D3	Normal	0
592-601225	8/20/2024 19:10	Readings	PID	SC23030037D3	Normal	0
592-601225	8/20/2024 19:11	Readings	PID	SC23030037D3	Normal	0
592-601225	8/20/2024 19:12	Readings	PID	SC23030037D3	Normal	0
592-601225	8/20/2024 19:13	Readings	PID	SC23030037D3	Normal	0
592-601225	8/20/2024 19:14	Readings	PID	SC23030037D3	Normal	0
592-601225	8/20/2024 19:15	Readings	PID	SC23030037D3	Normal	0
592-601225	8/20/2024 19:16	Readings	PID	SC23030037D3	Normal	0
592-601225	8/20/2024 19:17	Readings	PID	SC23030037D3	Normal	0
592-601225	8/20/2024 19:18	Readings	PID	SC23030037D3	Normal	0
592-601225	8/20/2024 19:19	Readings	PID	SC23030037D3	Normal	0
592-601225	8/20/2024 19:20	Readings	PID	SC23030037D3	Normal	0
592-601225	8/20/2024 19:21	Readings	PID	SC23030037D3	Normal	0
592-601225	8/20/2024 19:22	Readings	PID	SC23030037D3	Normal	0
592-601225	8/20/2024 19:23	Readings	PID	SC23030037D3	Normal	0
592-601225	8/20/2024 19:24	Readings	PID	SC23030037D3	Normal	0
592-601225	8/20/2024 19:25	Readings	PID	SC23030037D3	Normal	0
592-601225	8/20/2024 19:26	Readings	PID	SC23030037D3	Normal	0
592-601225	8/20/2024 19:27	Readings	PID	SC23030037D3	Normal	0
592-601225	8/20/2024 19:28	Readings	PID	SC23030037D3	Normal	0
592-601225	8/20/2024 19:29	Readings	PID	SC23030037D3	Normal	0
592-601225	8/20/2024 19:30	Readings	PID	SC23030037D3	Normal	0

Instrument Name	DustTrak DRX
Model Number	8533
Serial Number	8533181207
Firmware Version	3.1
Calibration Date	7/11/2024
Test Name	MANUAL_003
Test Start Time	7:00:25 AM
Test Start Date	8/20/2024
Test Length [D:H:M]	0:12:17
Test Interval [M:S]	1:00
PM1 Average [mg/m3]	0.01
PM1 Minimum [mg/m3]	0.003
PM1 Maximum [mg/m3]	0.104
PM1 TWA [mg/m3]	0.011
Photometric User Cal	1
Size Correction User Cal	1
Flow User Cal	0
Errors	
Number of Samples	737

Elapsed Time [s]	PM1 [mg/m3]	Alarms	Errors
7:01	0.004		
7:02	0.003		
7:03	0.003		
7:04	0.003		
7:05	0.003		
7:06	0.003		
7:07	0.003		
7:08	0.003		
7:09	0.003		
7:10	0.005		
7:11	0.012		
7:12	0.003		
7:13	0.009		
7:14	0.012		
7:15	0.004		
7:16	0.003		
7:17	0.003		
7:18	0.004		
7:19	0.004		
7:20	0.004		
7:21	0.004		
7:22	0.005		
7:23	0.005		

7:24	0.009
7:25	0.005
7:26	0.005
7:27	0.004
7:28	0.007
7:29	0.004
7:30	0.005
7:31	0.005
7:32	0.006
7:33	0.008
7:34	0.008
7:35	0.012
7:36	0.006
7:37	0.006
7:38	0.005
7:39	0.007
7:40	0.007
7:41	0.007
7:42	0.007
7:43	0.005
7:44	0.004
7:45	0.005
7:46	0.004
7:47	0.005
7:48	0.005
7:49	0.007
7:50	0.006
7:51	0.005
7:52	0.008
7:53	0.006
7:54	0.015
7:55	0.004
7:56	0.005
7:57	0.004
7:58	0.005
7:59	0.004
8:00	0.004
8:01	0.006
8:02	0.004
8:03	0.004
8:04	0.004
8:05	0.005
8:06	0.01
8:07	0.006

8:08	0.005
8:09	0.004
8:10	0.004
8:11	0.006
8:12	0.005
8:13	0.006
8:14	0.007
8:15	0.005
8:16	0.006
8:17	0.007
8:18	0.006
8:19	0.006
8:20	0.005
8:21	0.005
8:22	0.005
8:23	0.005
8:24	0.007
8:25	0.006
8:26	0.008
8:27	0.006
8:28	0.005
8:29	0.005
8:30	0.007
8:31	0.007
8:32	0.007
8:33	0.026
8:34	0.021
8:35	0.009
8:36	0.009
8:37	0.01
8:38	0.012
8:39	0.011
8:40	0.007
8:41	0.007
8:42	0.006
8:43	0.005
8:44	0.006
8:45	0.007
8:46	0.006
8:47	0.008
8:48	0.008
8:49	0.007
8:50	0.007
8:51	0.009

8:52	0.006
8:53	0.008
8:54	0.005
8:55	0.005
8:56	0.008
8:57	0.022
8:58	0.009
8:59	0.016
9:00	0.01
9:01	0.006
9:02	0.005
9:03	0.005
9:04	0.006
9:05	0.006
9:06	0.007
9:07	0.011
9:08	0.007
9:09	0.006
9:10	0.005
9:11	0.005
9:12	0.014
9:13	0.007
9:14	0.005
9:15	0.005
9:16	0.008
9:17	0.011
9:18	0.008
9:19	0.006
9:20	0.008
9:21	0.006
9:22	0.006
9:23	0.01
9:24	0.012
9:25	0.008
9:26	0.006
9:27	0.006
9:28	0.006
9:29	0.007
9:30	0.008
9:31	0.009
9:32	0.014
9:33	0.015
9:34	0.014
9:35	0.007

9:36	0.012
9:37	0.009
9:38	0.007
9:39	0.008
9:40	0.007
9:41	0.007
9:42	0.006
9:43	0.006
9:44	0.007
9:45	0.008
9:46	0.007
9:47	0.006
9:48	0.006
9:49	0.007
9:50	0.006
9:51	0.005
9:52	0.007
9:53	0.007
9:54	0.008
9:55	0.007
9:56	0.008
9:57	0.007
9:58	0.008
9:59	0.025
10:00	0.012
10:01	0.008
10:02	0.009
10:03	0.007
10:04	0.008
10:05	0.007
10:06	0.008
10:07	0.009
10:08	0.013
10:09	0.008
10:10	0.008
10:11	0.008
10:12	0.008
10:13	0.009
10:14	0.017
10:15	0.012
10:16	0.009
10:17	0.009
10:18	0.008
10:19	0.009

10:20	0.033
10:21	0.01
10:22	0.009
10:23	0.026
10:24	0.009
10:25	0.009
10:26	0.009
10:27	0.008
10:28	0.008
10:29	0.008
10:30	0.008
10:31	0.009
10:32	0.009
10:33	0.018
10:34	0.009
10:35	0.01
10:36	0.013
10:37	0.014
10:38	0.018
10:39	0.014
10:40	0.016
10:41	0.023
10:42	0.016
10:43	0.011
10:44	0.01
10:45	0.012
10:46	0.01
10:47	0.01
10:48	0.014
10:49	0.01
10:50	0.011
10:51	0.016
10:52	0.012
10:53	0.011
10:54	0.012
10:55	0.011
10:56	0.009
10:57	0.009
10:58	0.011
10:59	0.013
11:00	0.01
11:01	0.01
11:02	0.025
11:03	0.01

11:04	0.011
11:05	0.01
11:06	0.009
11:07	0.01
11:08	0.01
11:09	0.01
11:10	0.012
11:11	0.01
11:12	0.016
11:13	0.014
11:14	0.011
11:15	0.01
11:16	0.017
11:17	0.01
11:18	0.012
11:19	0.01
11:20	0.019
11:21	0.015
11:22	0.011
11:23	0.015
11:24	0.016
11:25	0.012
11:26	0.011
11:27	0.01
11:28	0.018
11:29	0.012
11:30	0.011
11:31	0.01
11:32	0.009
11:33	0.01
11:34	0.011
11:35	0.031
11:36	0.013
11:37	0.014
11:38	0.012
11:39	0.014
11:40	0.013
11:41	0.01
11:42	0.011
11:43	0.011
11:44	0.01
11:45	0.011
11:46	0.011
11:47	0.012

11:48	0.01
11:49	0.011
11:50	0.01
11:51	0.011
11:52	0.011
11:53	0.01
11:54	0.009
11:55	0.01
11:56	0.01
11:57	0.011
11:58	0.011
11:59	0.012
12:00	0.011
12:01	0.011
12:02	0.009
12:03	0.009
12:04	0.009
12:05	0.009
12:06	0.01
12:07	0.012
12:08	0.011
12:09	0.01
12:10	0.01
12:11	0.019
12:12	0.015
12:13	0.012
12:14	0.013
12:15	0.013
12:16	0.015
12:17	0.01
12:18	0.01
12:19	0.01
12:20	0.01
12:21	0.015
12:22	0.015
12:23	0.01
12:24	0.016
12:25	0.01
12:26	0.021
12:27	0.017
12:28	0.012
12:29	0.01
12:30	0.013
12:31	0.012

12:32	0.01
12:33	0.021
12:34	0.013
12:35	0.01
12:36	0.011
12:37	0.017
12:38	0.016
12:39	0.011
12:40	0.015
12:41	0.012
12:42	0.011
12:43	0.011
12:44	0.01
12:45	0.011
12:46	0.01
12:47	0.01
12:48	0.01
12:49	0.01
12:50	0.016
12:51	0.012
12:52	0.011
12:53	0.018
12:54	0.012
12:55	0.01
12:56	0.011
12:57	0.012
12:58	0.011
12:59	0.012
13:00	0.033
13:01	0.012
13:02	0.012
13:03	0.01
13:04	0.011
13:05	0.012
13:06	0.014
13:07	0.014
13:08	0.013
13:09	0.014
13:10	0.015
13:11	0.012
13:12	0.01
13:13	0.011
13:14	0.012
13:15	0.013

13:16	0.01
13:17	0.01
13:18	0.013
13:19	0.023
13:20	0.019
13:21	0.016
13:22	0.013
13:23	0.012
13:24	0.012
13:25	0.013
13:26	0.018
13:27	0.025
13:28	0.014
13:29	0.013
13:30	0.016
13:31	0.012
13:32	0.017
13:33	0.013
13:34	0.014
13:35	0.017
13:36	0.013
13:37	0.012
13:38	0.013
13:39	0.014
13:40	0.016
13:41	0.013
13:42	0.019
13:43	0.013
13:44	0.013
13:45	0.015
13:46	0.012
13:47	0.011
13:48	0.034
13:49	0.012
13:50	0.012
13:51	0.021
13:52	0.014
13:53	0.014
13:54	0.012
13:55	0.015
13:56	0.015
13:57	0.017
13:58	0.015
13:59	0.015

14:00	0.013
14:01	0.014
14:02	0.014
14:03	0.013
14:04	0.012
14:05	0.012
14:06	0.013
14:07	0.021
14:08	0.012
14:09	0.013
14:10	0.013
14:11	0.011
14:12	0.013
14:13	0.011
14:14	0.012
14:15	0.011
14:16	0.013
14:17	0.017
14:18	0.014
14:19	0.01
14:20	0.014
14:21	0.016
14:22	0.014
14:23	0.012
14:24	0.016
14:25	0.013
14:26	0.014
14:27	0.014
14:28	0.021
14:29	0.015
14:30	0.013
14:31	0.014
14:32	0.013
14:33	0.012
14:34	0.014
14:35	0.015
14:36	0.025
14:37	0.013
14:38	0.013
14:39	0.01
14:40	0.009
14:41	0.01
14:42	0.011
14:43	0.009

14:44	0.011
14:45	0.013
14:46	0.012
14:47	0.01
14:48	0.013
14:49	0.013
14:50	0.014
14:51	0.048
14:52	0.039
14:53	0.015
14:54	0.014
14:55	0.01
14:56	0.011
14:57	0.015
14:58	0.01
14:59	0.01
15:00	0.009
15:01	0.01
15:02	0.009
15:03	0.009
15:04	0.013
15:05	0.011
15:06	0.011
15:07	0.009
15:08	0.01
15:09	0.01
15:10	0.014
15:11	0.011
15:12	0.012
15:13	0.023
15:14	0.017
15:15	0.027
15:16	0.011
15:17	0.011
15:18	0.009
15:19	0.01
15:20	0.01
15:21	0.01
15:22	0.009
15:23	0.013
15:24	0.008
15:25	0.012
15:26	0.015
15:27	0.008

15:28	0.011
15:29	0.014
15:30	0.008
15:31	0.008
15:32	0.008
15:33	0.008
15:34	0.008
15:35	0.009
15:36	0.019
15:37	0.008
15:38	0.008
15:39	0.007
15:40	0.011
15:41	0.011
15:42	0.011
15:43	0.01
15:44	0.011
15:45	0.01
15:46	0.01
15:47	0.01
15:48	0.009
15:49	0.013
15:50	0.011
15:51	0.015
15:52	0.011
15:53	0.012
15:54	0.011
15:55	0.01
15:56	0.011
15:57	0.016
15:58	0.019
15:59	0.011
16:00	0.012
16:01	0.014
16:02	0.01
16:03	0.01
16:04	0.01
16:05	0.011
16:06	0.011
16:07	0.01
16:08	0.013
16:09	0.01
16:10	0.01
16:11	0.011

16:12	0.104
16:13	0.035
16:14	0.012
16:15	0.015
16:16	0.034
16:17	0.019
16:18	0.012
16:19	0.014
16:20	0.018
16:21	0.011
16:22	0.01
16:23	0.009
16:24	0.01
16:25	0.009
16:26	0.017
16:27	0.01
16:28	0.01
16:29	0.009
16:30	0.011
16:31	0.009
16:32	0.012
16:33	0.009
16:34	0.012
16:35	0.017
16:36	0.013
16:37	0.009
16:38	0.009
16:39	0.009
16:40	0.015
16:41	0.009
16:42	0.009
16:43	0.012
16:44	0.012
16:45	0.01
16:46	0.01
16:47	0.007
16:48	0.009
16:49	0.011
16:50	0.011
16:51	0.01
16:52	0.024
16:53	0.011
16:54	0.012
16:55	0.008

16:56	0.009
16:57	0.011
16:58	0.009
16:59	0.008
17:00	0.007
17:01	0.008
17:02	0.008
17:03	0.008
17:04	0.009
17:05	0.009
17:06	0.009
17:07	0.019
17:08	0.01
17:09	0.007
17:10	0.007
17:11	0.006
17:12	0.006
17:13	0.006
17:14	0.006
17:15	0.006
17:16	0.006
17:17	0.008
17:18	0.016
17:19	0.005
17:20	0.005
17:21	0.005
17:22	0.005
17:23	0.005
17:24	0.007
17:25	0.006
17:26	0.034
17:27	0.012
17:28	0.007
17:29	0.006
17:30	0.005
17:31	0.005
17:32	0.005
17:33	0.005
17:34	0.005
17:35	0.005
17:36	0.005
17:37	0.005
17:38	0.005
17:39	0.005

17:40	0.005
17:41	0.005
17:42	0.005
17:43	0.005
17:44	0.005
17:45	0.005
17:46	0.005
17:47	0.005
17:48	0.004
17:49	0.004
17:50	0.005
17:51	0.006
17:52	0.006
17:53	0.007
17:54	0.007
17:55	0.006
17:56	0.008
17:57	0.006
17:58	0.006
17:59	0.008
18:00	0.007
18:01	0.009
18:02	0.007
18:03	0.009
18:04	0.009
18:05	0.007
18:06	0.009
18:07	0.008
18:08	0.007
18:09	0.006
18:10	0.007
18:11	0.008
18:12	0.007
18:13	0.009
18:14	0.009
18:15	0.008
18:16	0.006
18:17	0.006
18:18	0.005
18:19	0.006
18:20	0.005
18:21	0.007
18:22	0.006
18:23	0.006

18:24	0.007
18:25	0.005
18:26	0.005
18:27	0.007
18:28	0.007
18:29	0.006
18:30	0.006
18:31	0.028
18:32	0.006
18:33	0.007
18:34	0.005
18:35	0.007
18:36	0.009
18:37	0.007
18:38	0.007
18:39	0.008
18:40	0.007
18:41	0.008
18:42	0.007
18:43	0.006
18:44	0.006
18:45	0.007
18:46	0.007
18:47	0.007
18:48	0.007
18:49	0.007
18:50	0.006
18:51	0.008
18:52	0.007
18:53	0.006
18:54	0.006
18:55	0.007
18:56	0.005
18:57	0.005
18:58	0.004
18:59	0.006
19:00	0.008
19:01	0.009
19:02	0.006
19:03	0.007
19:04	0.006
19:05	0.005
19:06	0.007
19:07	0.005

19:08	0.005
19:09	0.007
19:10	0.005
19:11	0.005
19:12	0.006
19:13	0.006
19:14	0.004
19:15	0.006
19:16	0.008
19:17	0.008

Device Serial No	Log Time	Log Type	Sensor 1 Type	Sensor 1 Serial Number	Sensor 1 Status	Sensor 1 Gas Reading
592-923428	8/20/2024 7:05	CONFIG	PID	SC23030029V2		
592-923428	8/20/2024 7:06	Readings	PID	SC23030029V2	Normal	0
592-923428	8/20/2024 7:07	Readings	PID	SC23030029V2	Normal	0
592-923428	8/20/2024 7:08	Readings	PID	SC23030029V2	Normal	0
592-923428	8/20/2024 7:09	Readings	PID	SC23030029V2	Normal	0
592-923428	8/20/2024 7:10	Readings	PID	SC23030029V2	Normal	0
592-923428	8/20/2024 7:11	Readings	PID	SC23030029V2	Normal	0
592-923428	8/20/2024 7:12	Readings	PID	SC23030029V2	Normal	0
592-923428	8/20/2024 7:13	Readings	PID	SC23030029V2	Normal	0
592-923428	8/20/2024 7:14	Readings	PID	SC23030029V2	Normal	0
592-923428	8/20/2024 7:15	Readings	PID	SC23030029V2	Normal	0
592-923428	8/20/2024 7:16	Readings	PID	SC23030029V2	Normal	0
592-923428	8/20/2024 7:17	Readings	PID	SC23030029V2	Normal	0
592-923428	8/20/2024 7:18	Readings	PID	SC23030029V2	Normal	0
592-923428	8/20/2024 7:19	Readings	PID	SC23030029V2	Normal	0
592-923428	8/20/2024 7:20	Readings	PID	SC23030029V2	Normal	0
592-923428	8/20/2024 7:21	Readings	PID	SC23030029V2	Normal	0
592-923428	8/20/2024 7:22	Readings	PID	SC23030029V2	Normal	0
592-923428	8/20/2024 7:23	Readings	PID	SC23030029V2	Normal	0
592-923428	8/20/2024 7:24	Readings	PID	SC23030029V2	Normal	0
592-923428	8/20/2024 7:25	Readings	PID	SC23030029V2	Normal	0
592-923428	8/20/2024 7:26	Readings	PID	SC23030029V2	Normal	0
592-923428	8/20/2024 7:27	Readings	PID	SC23030029V2	Normal	0
592-923428	8/20/2024 7:28	Readings	PID	SC23030029V2	Normal	0
592-923428	8/20/2024 7:29	Readings	PID	SC23030029V2	Normal	0
592-923428	8/20/2024 7:30	Readings	PID	SC23030029V2	Normal	0
592-923428	8/20/2024 7:31	Readings	PID	SC23030029V2	Normal	0
592-923428	8/20/2024 7:32	Readings	PID	SC23030029V2	Normal	0
592-923428	8/20/2024 7:33	Readings	PID	SC23030029V2	Normal	0
592-923428	8/20/2024 7:34	Readings	PID	SC23030029V2	Normal	0
592-923428	8/20/2024 7:35	Readings	PID	SC23030029V2	Normal	0
592-923428	8/20/2024 7:36	Readings	PID	SC23030029V2	Normal	0

592-923428	8/20/2024 9:49	Readings	PID	SC23030029V2	Normal	0
592-923428	8/20/2024 9:50	Readings	PID	SC23030029V2	Normal	0
592-923428	8/20/2024 9:51	Readings	PID	SC23030029V2	Normal	0
592-923428	8/20/2024 9:52	Readings	PID	SC23030029V2	Normal	0
592-923428	8/20/2024 9:53	Readings	PID	SC23030029V2	Normal	0
592-923428	8/20/2024 9:54	Readings	PID	SC23030029V2	Normal	0
592-923428	8/20/2024 9:55	Readings	PID	SC23030029V2	Normal	0
592-923428	8/20/2024 9:56	Readings	PID	SC23030029V2	Normal	0
592-923428	8/20/2024 9:57	Readings	PID	SC23030029V2	Normal	0
592-923428	8/20/2024 9:58	Readings	PID	SC23030029V2	Normal	0
592-923428	8/20/2024 9:59	Readings	PID	SC23030029V2	Normal	0
592-923428	8/20/2024 10:00	Readings	PID	SC23030029V2	Normal	0
592-923428	8/20/2024 10:01	Readings	PID	SC23030029V2	Normal	0
592-923428	8/20/2024 10:02	Readings	PID	SC23030029V2	Normal	0
592-923428	8/20/2024 10:03	Readings	PID	SC23030029V2	Normal	0
592-923428	8/20/2024 10:04	Readings	PID	SC23030029V2	Normal	0
592-923428	8/20/2024 10:05	Readings	PID	SC23030029V2	Normal	0
592-923428	8/20/2024 10:06	Readings	PID	SC23030029V2	Normal	0
592-923428	8/20/2024 10:07	Readings	PID	SC23030029V2	Normal	0
592-923428	8/20/2024 10:08	Readings	PID	SC23030029V2	Normal	0
592-923428	8/20/2024 10:09	Readings	PID	SC23030029V2	Normal	0
592-923428	8/20/2024 10:10	Readings	PID	SC23030029V2	Normal	0
592-923428	8/20/2024 10:11	Readings	PID	SC23030029V2	Normal	0
592-923428	8/20/2024 10:12	Readings	PID	SC23030029V2	Normal	0
592-923428	8/20/2024 10:13	Readings	PID	SC23030029V2	Normal	0
592-923428	8/20/2024 10:14	Readings	PID	SC23030029V2	Normal	0
592-923428	8/20/2024 10:15	Readings	PID	SC23030029V2	Normal	0
592-923428	8/20/2024 10:16	Readings	PID	SC23030029V2	Normal	0
592-923428	8/20/2024 10:17	Readings	PID	SC23030029V2	Normal	0
592-923428	8/20/2024 10:18	Readings	PID	SC23030029V2	Normal	0
592-923428	8/20/2024 10:19	Readings	PID	SC23030029V2	Normal	0
592-923428	8/20/2024 10:20	Readings	PID	SC23030029V2	Normal	0
592-923428	8/20/2024 10:21	Readings	PID	SC23030029V2	Normal	0

592-923428	8/20/2024 19:10 Readings	PID	SC23030029V2	Normal	0
592-923428	8/20/2024 19:11 Readings	PID	SC23030029V2	Normal	0
592-923428	8/20/2024 19:12 Readings	PID	SC23030029V2	Normal	0
592-923428	8/20/2024 19:13 Readings	PID	SC23030029V2	Normal	0
592-923428	8/20/2024 19:14 Readings	PID	SC23030029V2	Normal	0
592-923428	8/20/2024 19:15 Readings	PID	SC23030029V2	Normal	0
592-923428	8/20/2024 19:16 Readings	PID	SC23030029V2	Normal	0
592-923428	8/20/2024 19:17 Readings	PID	SC23030029V2	Normal	0
592-923428	8/20/2024 19:18 Readings	PID	SC23030029V2	Normal	0
592-923428	8/20/2024 19:19 Readings	PID	SC23030029V2	Normal	0
592-923428	8/20/2024 19:20 Readings	PID	SC23030029V2	Normal	0
592-923428	8/20/2024 19:21 Readings	PID	SC23030029V2	Normal	0
592-923428	8/20/2024 19:22 Readings	PID	SC23030029V2	Normal	0
592-923428	8/20/2024 19:23 Readings	PID	SC23030029V2	Normal	0
592-923428	8/20/2024 19:24 Readings	PID	SC23030029V2	Normal	0