



**DAILY STATUS REPORT**

**Prepared By:**  
Ryan Just

WEATHER	Snow	Rain	Overcast	Partly Cloudy	X	Bright Sun	X	Wind
TEMP.	< 32	32-50	50-70	X	70-85	X	>85	NE – 8 mph

<b>IEEG Project No:</b>	13928	<b>NYSDEC BCP Site No:</b>	C224367	<b>Date:</b> 09/03/24
<b>Project:</b>	251 Douglass Street, Brooklyn, NY			

<p><b>Consultant:</b> Impact Environmental Engineering and Geology, PLLC (IEEG)</p> <p>Time On: 06:35 Time Out: 20:00</p>	<p><b>Personnel On Site:</b> IEEG (Environmental) – Ryan Just Broadway Construction Group – Shannon Dowling / Tom Caporale WSP – Charlie Lambert Cascade – John Vollmer Concrete Courses</p> <p><b>Equipment On Site:</b> (3) MiniRAE 3000 PID, (3) DustTrak II</p>
---	---

**Scope of Work:** IEEG to deploy CAMP stations according to wind direction; Cascade to loadout swell material for disposal to Pure Soil; Cascade to continue re-drilling pilot columns; Concrete Courses to continue with rebar fabrication and concrete-form construction in the Butler corridor.

- Site Activities:**
- IEEG deployed three (3) CAMP stations prior to the start of work activities;
  - Concrete Courses continued rebar fabrication and concrete-form construction in the Butler Corridor;
  - ACT delivered one (1) load of slag to the silos;
  - A total of fifteen (15) truckloads of swell material were transported offsite for disposal to the Pure Soil facility;
  - Cascade consolidated swell material into stockpile;
  - IEEG applied ISS foam spray to the swell material throughout the shift and at the end of the shift;
  - Cascade drilled **Column 23** with column specification below:
    - Column is 8’ diameter and drilled 51’ deep from Site grade;
    - The column consisted of a total of 42 batches;
  - Cascade drilled **Column 154** with column specification below:
    - Column is 8’ diameter and drilled 36’ deep from Site grade;
    - The column consisted of a total of 21 batches;
  - Cascade drilled **Column 337** with column specification below:
    - Column is 8’ diameter and drilled 36’ deep from Site grade;
    - The column consisted of a total of 22 batches;

**Community Air Monitoring Program (CAMP) - CAMP** action level for dust (0.1 mg/m<sup>3</sup>) and VOCs (5 ppm)

- PID remained at nominal levels throughout the day
- No sustained dust exceedances were observed over a 15-min period during monitoring.
- Startup Upwind Conditions – PID = \_0.0\_ ppm, Dust = \_0.135\_ mg/m<sup>3</sup> @ 06:43
- High Conditions (Upwind) – PID = \_0.0\_ ppm, Dust = \_0.692\_ mg/m<sup>3</sup> @ 14:36
- High Conditions (Downwind 1) – PID = \_4.0\_ ppm @ 09:34, Dust = \_0.120\_ mg/m<sup>3</sup> @ 09:54
- High Conditions (Downwind 2) – PID = \_0.0\_ ppm, Dust = \_0.226\_ mg/m<sup>3</sup> @ 06:47

**Notable Site Conditions:**

- None.

**Planned for the Next Day/Week:**

- Cascade to continue to re-install ISS pilot-columns; and
- Concrete Courses to continue superstructure work in the Butler corridor.



**PHOTO LOG**

251 DOUGLASS STREET, BROOKLYN, NY





**Photo 1-**  
Representative  
photo of ISS  
column  
installation.



**Photo 2-**  
Representative  
photo of ATMOS  
foam applied to  
ISS work area.





**Photo 3-**

Representative photo of ISS swell truck cover secured prior to exiting the Site.



**Photo 4-**

Representative photo ATMOS foam sprayed atop consolidated swell stockpile.



**SITE PLANS**

251 DOUGLASS STREET, BROOKLYN, NY







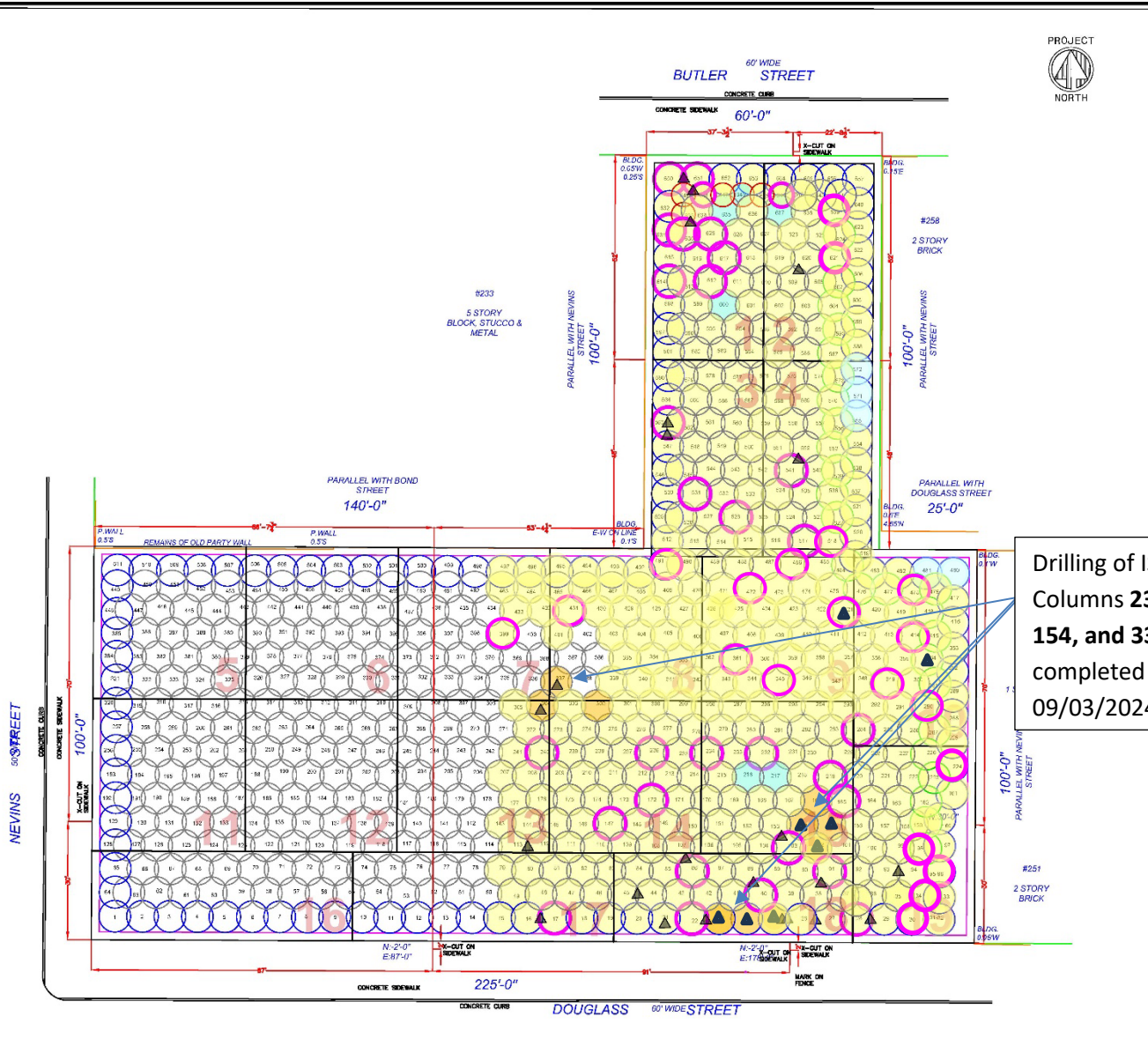


# IMPACT ENVIRONMENTAL

welcome to solid ground...

170 Keyland Court | Bohemia | NY | 11716 | 631.269.8800

[www.impactenvironmental.com](http://www.impactenvironmental.com)



## LEGEND

- PROPERTY LINE
- 55' EIGHT FOOT DIA. HYDRAULIC COLUMN (TYP.)
- EIGHT FOOT DIA. INNER COLUMN (TYP.)
- APPROVED TO 55'
- SIX FOOT DIA. HYDRAULIC COLUMN (TYP.)
- ISS COLUMN INSTALLED TO TERMINAL DEPTH
- ISS COLUMN UNABLE TO BE INSTALLED TO TERMINAL DEPTH
- WET MIX SAMPLE COLLECTED FROM ISS COLUMN
- ▲ COMPLETED CORING LOCATION

NOTES:  
 1. THE BASE MAP WAS DRAWN FROM A PLAN ENTITLED, ALTAIRNSP LAND TITLE SURVEY, PREPARED BY PERFECT POINT LAND SURVEYING OF BROOKLYN, NY AND WAS RECEIVED ELECTRONICALLY ON APRIL 2023 WITH AN ORIGINAL SCALE: 1" = 20'.

Drilling of ISS Columns 23, 154, and 337 completed on 09/03/2024.

51 Douglas Street  
Brooklyn, New York

Figure No. 01

PROJECT NO.	D2024-01
PREPARED BY	JLS
CHECKED BY	AK
DATE	09/03/24
SCALE	AS SHOWN

**IMPACT ENVIRONMENTAL CLOSURES, INC.**

170 KEYLAND COURT  
BOHEMIA, NEW YORK 11716  
TEL (631) 269-8800  
FAX (631) 269-1599



# SCM Report

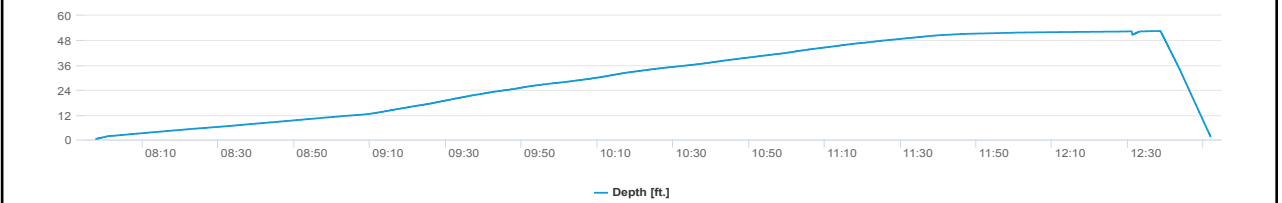
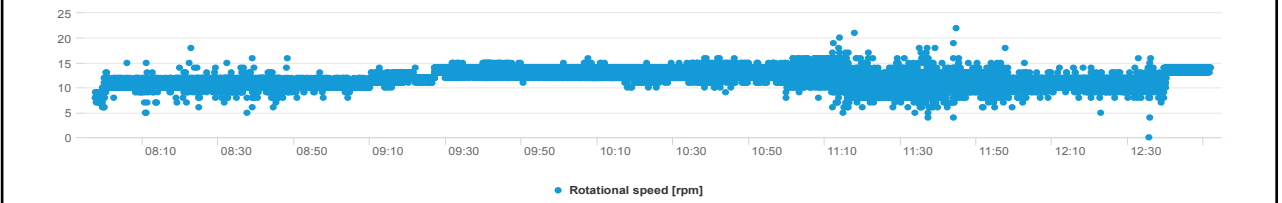
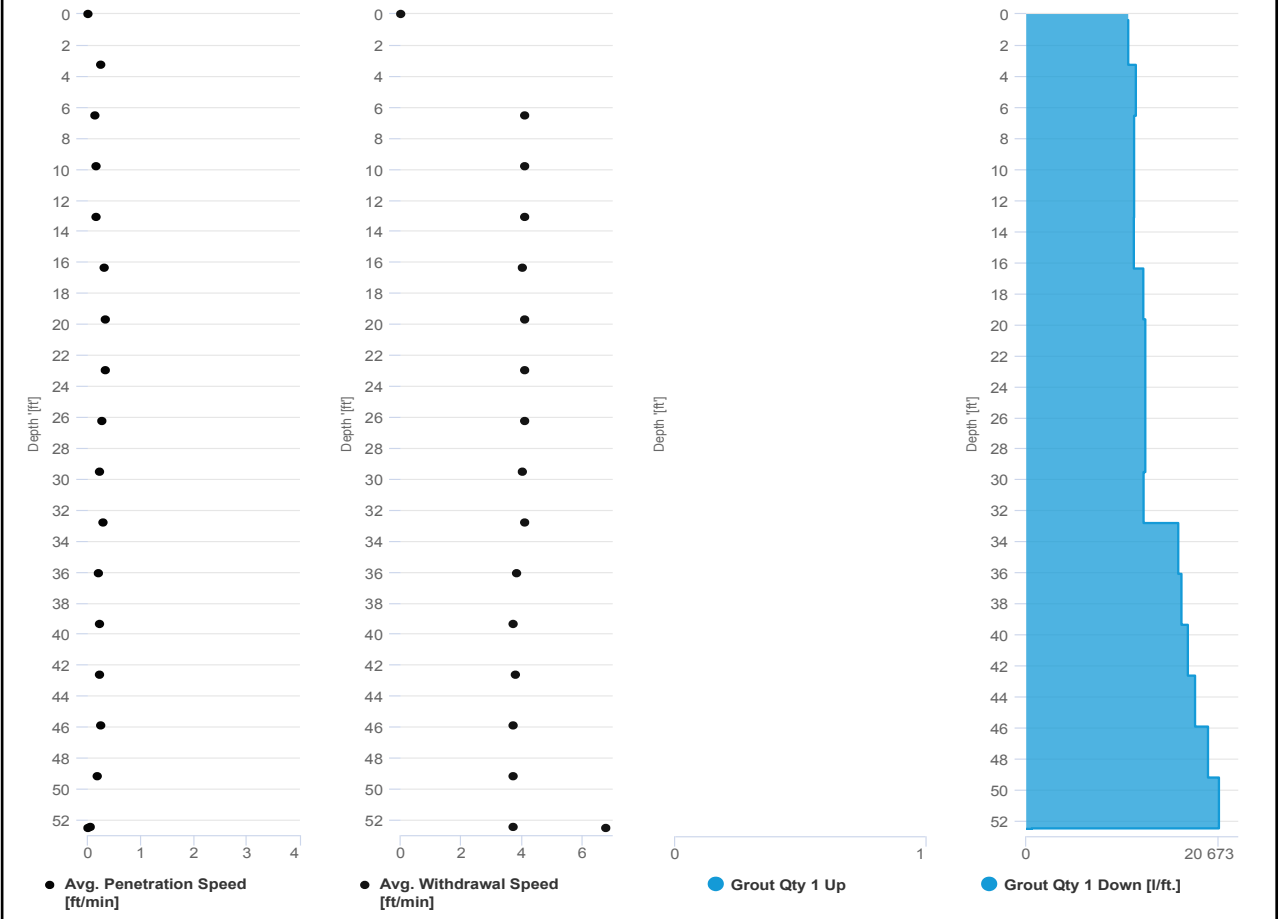


Project name	Douglass Street BCG ISS	Element name	23ar
		Project number	

		Start date	09/03/2024
--	--	------------	------------

Drilling rig	BG36H_5717
--------------	------------

<b>Details</b>			
Max. depth	52.526 ft.	Start time	07:57 AM
Volume/m 1	132.077 ft³	End Date	09/03/2024
		End time	12:51 PM
		Production duration	04:54:06
		Final depth time	12:38 PM
		Total suspension quantity	2,115.386 ft³



# SCM Report

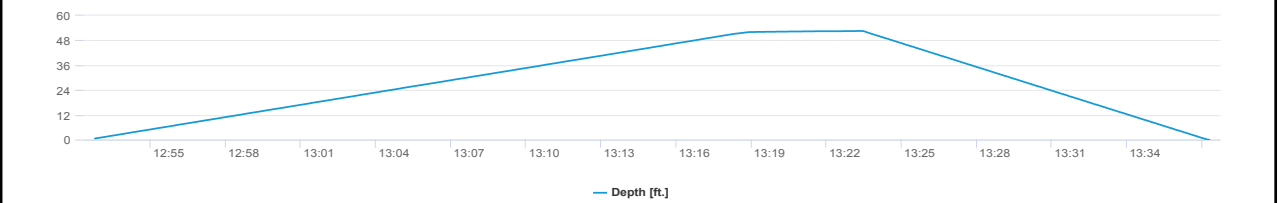
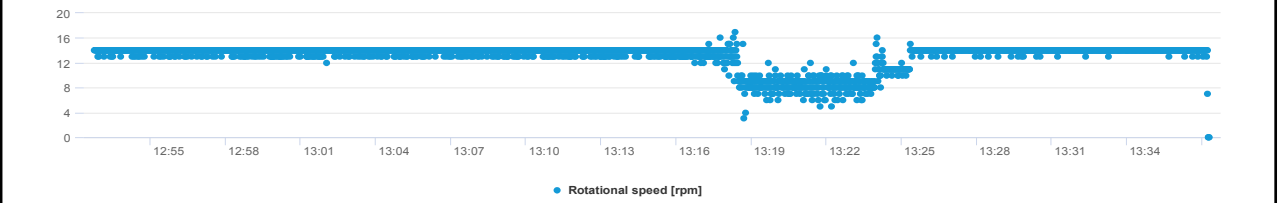
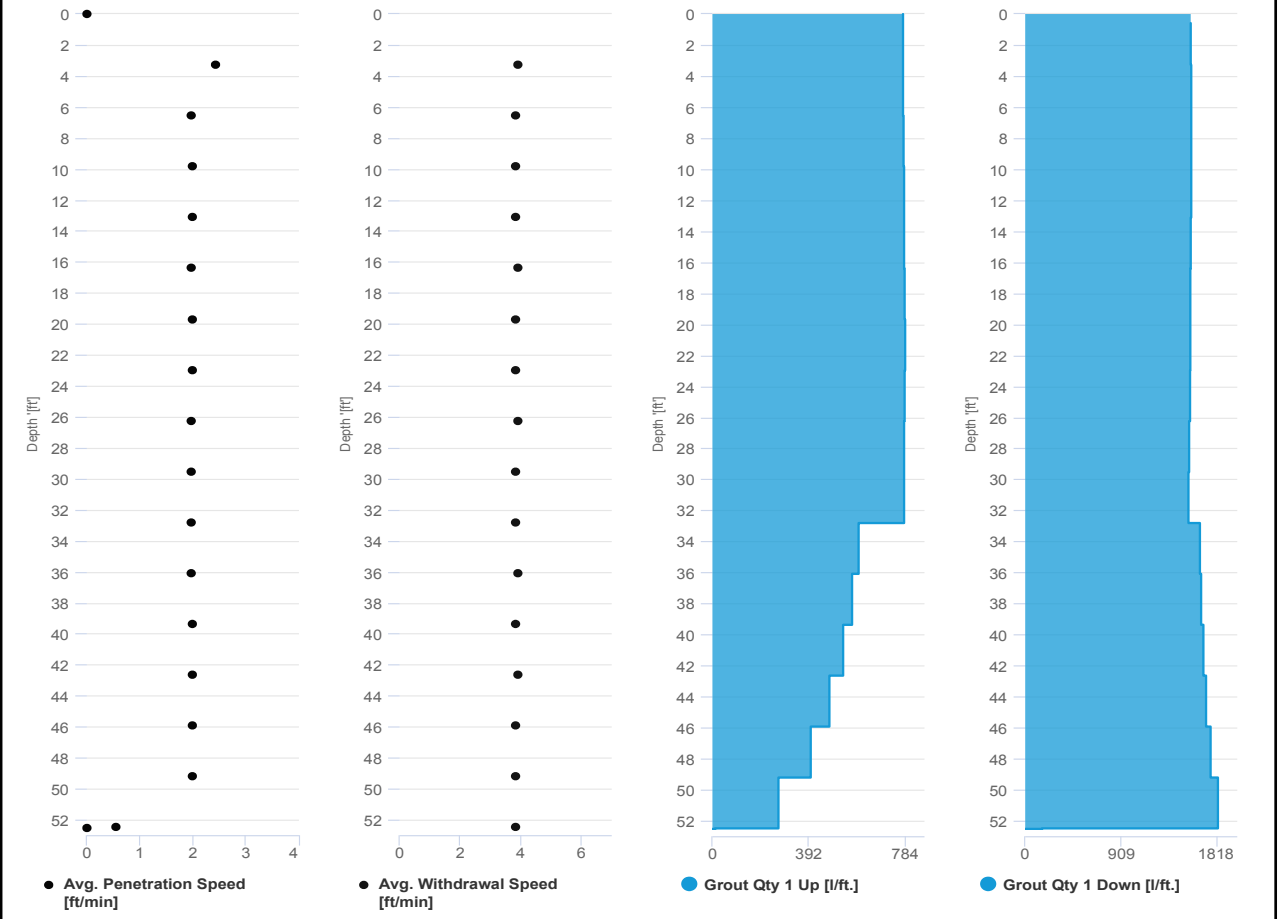


Project name: Douglass Street BCG ISS      Element name: 23br  
Project number

Start date: 09/03/2024

Drilling rig: BG36H\_5717

Details		Start time	
Max. depth	52.526 ft.		12:52 PM
Volume/m 1	20.836 ft³	End Date	09/03/2024
		End time	01:37 PM
		Production duration	00:44:32
		Final depth time	01:23 PM
		Total suspension quantity	335.702 ft³





# SCM Report

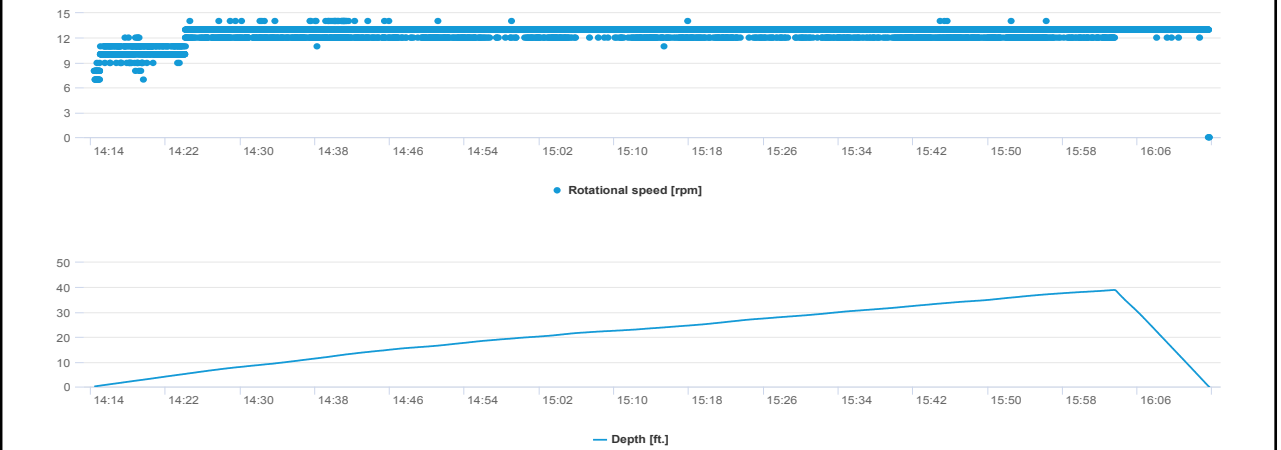
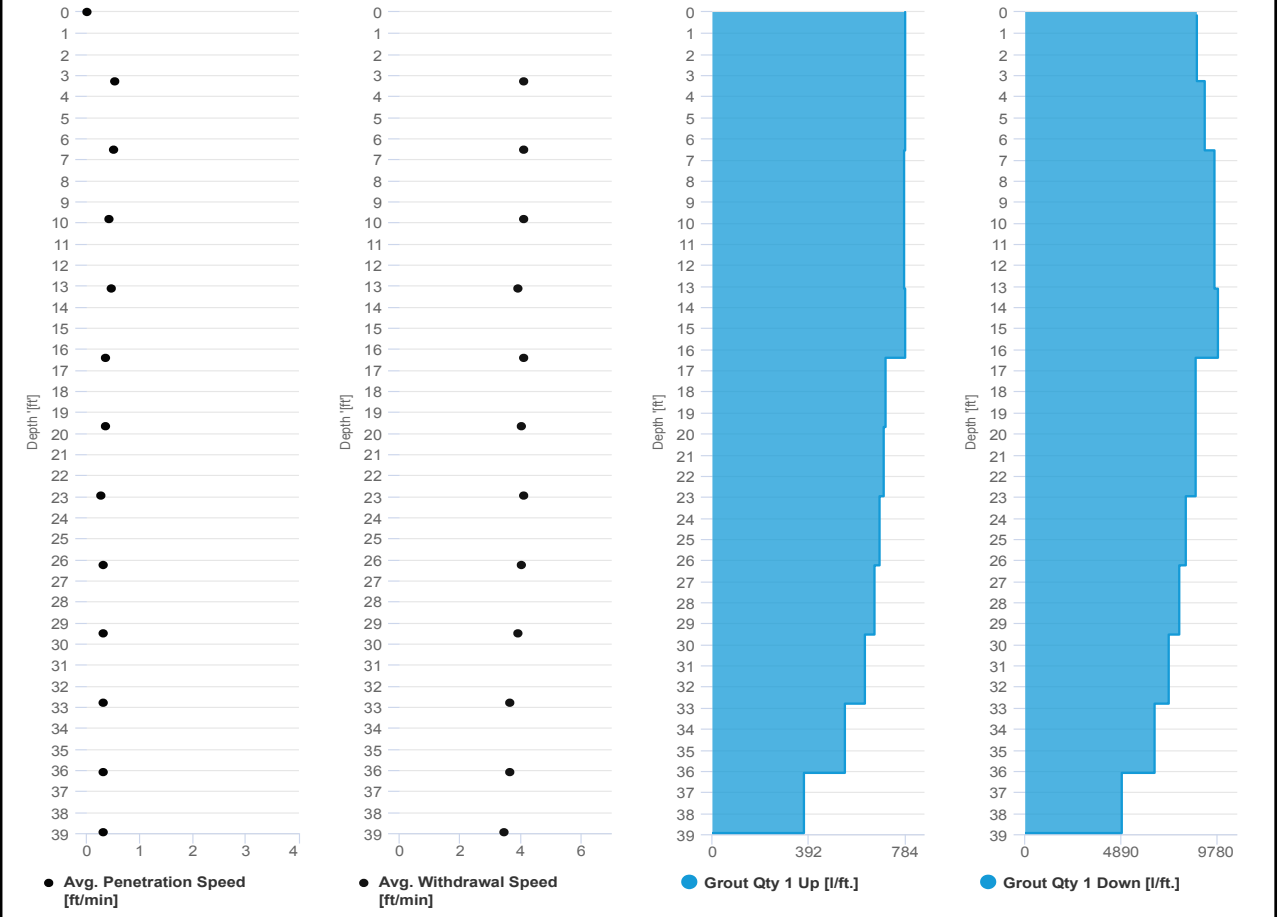


Project name: Douglass Street BCG ISS      Element name: 154ar  
Project number

Start date: 09/03/2024

Drilling rig: BG36H\_5717

<b>Details</b>		Start time: 02:14 PM	
Max. depth: 38.944 ft.		End Date: 09/03/2024	
Volume/m 1: 76.633 ft³		End time: 04:13 PM	
		Production duration: 01:59:16	
		Final depth time: 04:03 PM	
		Total suspension quantity: 911.19 ft³	



# SCM Report

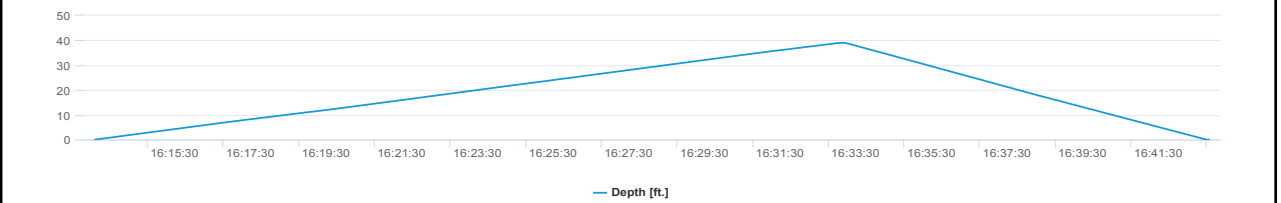
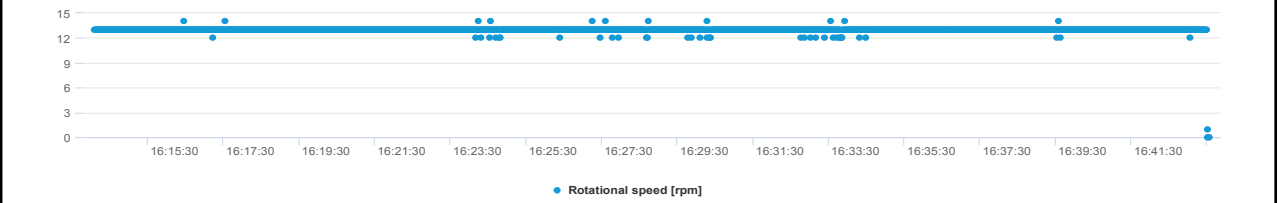
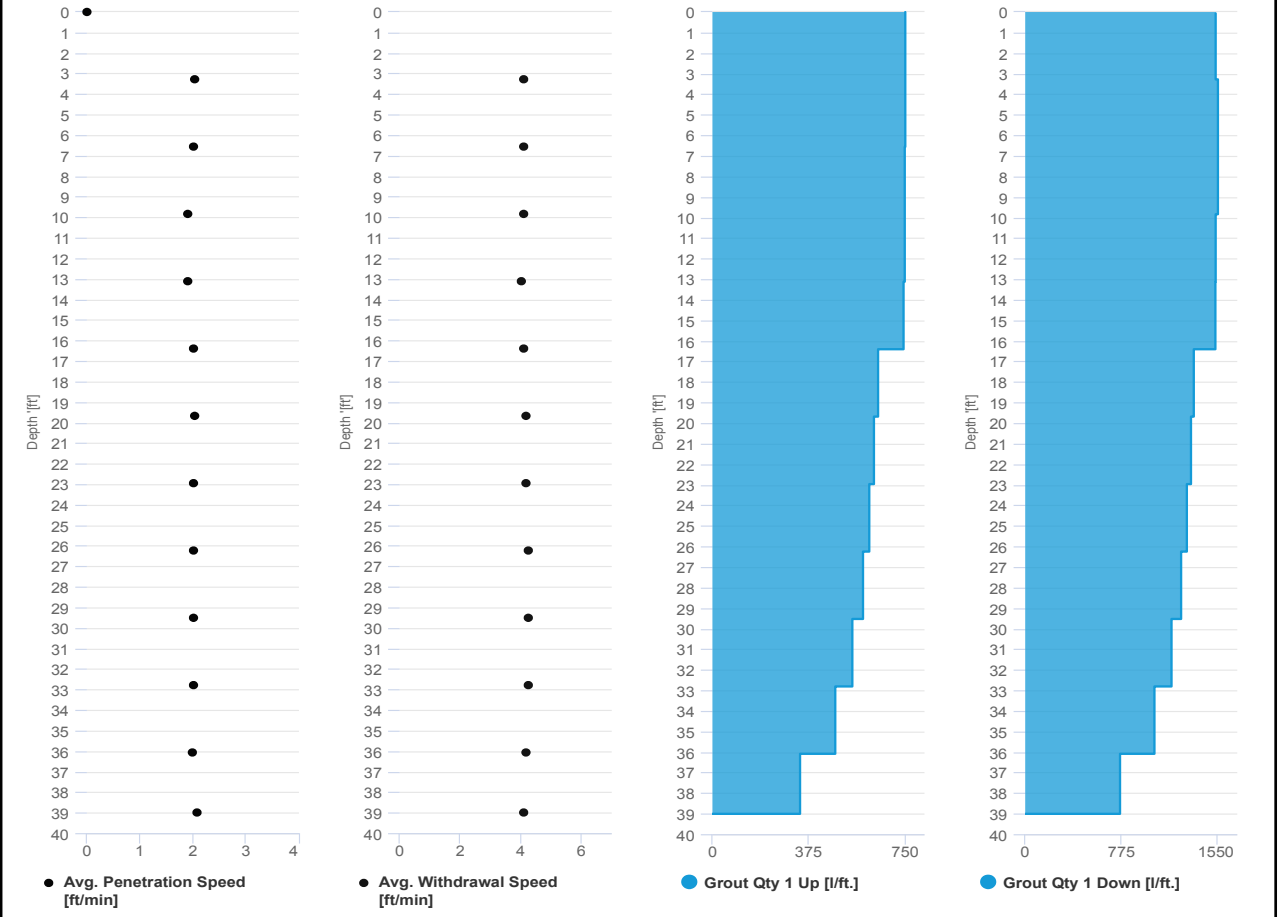


Project name: Douglass Street BCG ISS      Element name: 154br  
 Project number

Start date: 09/03/2024

Drilling rig: BG36H\_5717

Details		Start time	
Max. depth	39.009 ft.	04:14 PM	04:14 PM
Volume/m 1	19.07 ft³	End Date	09/03/2024
		End time	04:43 PM
		Production duration	00:29:29
		Final depth time	04:33 PM
		Total suspension quantity	224.743 ft³







**UPWIND CAMP READINGS**

251 DOUGLASS STREET, BROOKLYN, NY

Instrument Name	DustTrak II
Model Number	8530
Serial Number	8530224603
Firmware Version	3.1
Calibration Date	4/3/2024
Test Name	MANUAL_013
Test Start Time	6:42:20 AM
Test Start Date	9/3/2024
Test Length [D:H:M]	0:12:34
Test Interval [M:S]	1:00
Mass Average [mg/m3]	0.016
Mass Minimum [mg/m3]	0.002
Mass Maximum [mg/m3]	0.692
Mass TWA [mg/m3]	0.016
Photometric User Cal	1
Flow User Cal	0
Errors	
Number of Samples	754

Elapsed Time [s]	Mass [mg/m3]	Alarms	Errors
6:43	0.135		
6:44	0.01		
6:45	0.005		
6:46	0.003		
6:47	0.009		
6:48	0.008		
6:49	0.003		
6:50	0.003		
6:51	0.005		
6:52	0.003		
6:53	0.005		
6:54	0.002		
6:55	0.003		
6:56	0.008		
6:57	0.005		
6:58	0.004		
6:59	0.011		
7:00	0.014		
7:01	0.009		
7:02	0.004		
7:03	0.003		
7:04	0.003		
7:05	0.003		
7:06	0.013		



7:07	0.02
7:08	0.024
7:09	0.005
7:10	0.003
7:11	0.003
7:12	0.017
7:13	0.015
7:14	0.009
7:15	0.005
7:16	0.013
7:17	0.007
7:18	0.005
7:19	0.004
7:20	0.005
7:21	0.004
7:22	0.009
7:23	0.01
7:24	0.008
7:25	0.015
7:26	0.008
7:27	0.008
7:28	0.021
7:29	0.03
7:30	0.015
7:31	0.019
7:32	0.007
7:33	0.007
7:34	0.011
7:35	0.007
7:36	0.005
7:37	0.01
7:38	0.012
7:39	0.006
7:40	0.006
7:41	0.005
7:42	0.021
7:43	0.012
7:44	0.007
7:45	0.008
7:46	0.014
7:47	0.01
7:48	0.008
7:49	0.008
7:50	0.009

7:51	0.006
7:52	0.007
7:53	0.008
7:54	0.013
7:55	0.025
7:56	0.027
7:57	0.014
7:58	0.009
7:59	0.026
8:00	0.014
8:01	0.011
8:02	0.011
8:03	0.009
8:04	0.015
8:05	0.012
8:06	0.008
8:07	0.007
8:08	0.012
8:09	0.01
8:10	0.01
8:11	0.016
8:12	0.007
8:13	0.009
8:14	0.011
8:15	0.012
8:16	0.007
8:17	0.004
8:18	0.021
8:19	0.009
8:20	0.012
8:21	0.005
8:22	0.004
8:23	0.003
8:24	0.005
8:25	0.003
8:26	0.004
8:27	0.003
8:28	0.007
8:29	0.013
8:30	0.015
8:31	0.006
8:32	0.004
8:33	0.004
8:34	0.005



8:35	0.005
8:36	0.006
8:37	0.005
8:38	0.006
8:39	0.005
8:40	0.004
8:41	0.005
8:42	0.005
8:43	0.006
8:44	0.009
8:45	0.007
8:46	0.008
8:47	0.007
8:48	0.006
8:49	0.006
8:50	0.006
8:51	0.006
8:52	0.006
8:53	0.007
8:54	0.013
8:55	0.007
8:56	0.007
8:57	0.011
8:58	0.009
8:59	0.011
9:00	0.012
9:01	0.008
9:02	0.009
9:03	0.008
9:04	0.007
9:05	0.006
9:06	0.008
9:07	0.01
9:08	0.015
9:09	0.014
9:10	0.012
9:11	0.022
9:12	0.015
9:13	0.016
9:14	0.013
9:15	0.008
9:16	0.007
9:17	0.029
9:18	0.012

9:19	0.009
9:20	0.011
9:21	0.017
9:22	0.052
9:23	0.023
9:24	0.033
9:25	0.021
9:26	0.01
9:27	0.013
9:28	0.012
9:29	0.008
9:30	0.009
9:31	0.035
9:32	0.012
9:33	0.01
9:34	0.006
9:35	0.007
9:36	0.005
9:37	0.005
9:38	0.005
9:39	0.007
9:40	0.006
9:41	0.015
9:42	0.037
9:43	0.015
9:44	0.007
9:45	0.02
9:46	0.012
9:47	0.009
9:48	0.009
9:49	0.01
9:50	0.006
9:51	0.007
9:52	0.005
9:53	0.006
9:54	0.007
9:55	0.007
9:56	0.007
9:57	0.015
9:58	0.006
9:59	0.007
10:00	0.009
10:01	0.007
10:02	0.006

10:03	0.005
10:04	0.004
10:05	0.006
10:06	0.006
10:07	0.007
10:08	0.007
10:09	0.034
10:10	0.007
10:11	0.009
10:12	0.017
10:13	0.02
10:14	0.012
10:15	0.02
10:16	0.015
10:17	0.014
10:18	0.015
10:19	0.009
10:20	0.009
10:21	0.01
10:22	0.007
10:23	0.008
10:24	0.009
10:25	0.018
10:26	0.011
10:27	0.011
10:28	0.016
10:29	0.011
10:30	0.013
10:31	0.016
10:32	0.011
10:33	0.028
10:34	0.029
10:35	0.017
10:36	0.006
10:37	0.008
10:38	0.009
10:39	0.009
10:40	0.017
10:41	0.021
10:42	0.018
10:43	0.01
10:44	0.03
10:45	0.032
10:46	0.015



10:47	0.019
10:48	0.017
10:49	0.011
10:50	0.013
10:51	0.013
10:52	0.035
10:53	0.008
10:54	0.006
10:55	0.008
10:56	0.007
10:57	0.015
10:58	0.019
10:59	0.007
11:00	0.013
11:01	0.008
11:02	0.007
11:03	0.009
11:04	0.006
11:05	0.007
11:06	0.01
11:07	0.009
11:08	0.007
11:09	0.009
11:10	0.009
11:11	0.006
11:12	0.006
11:13	0.008
11:14	0.012
11:15	0.007
11:16	0.006
11:17	0.007
11:18	0.007
11:19	0.006
11:20	0.007
11:21	0.007
11:22	0.015
11:23	0.027
11:24	0.008
11:25	0.007
11:26	0.008
11:27	0.008
11:28	0.007
11:29	0.008
11:30	0.007

11:31	0.006
11:32	0.006
11:33	0.006
11:34	0.008
11:35	0.008
11:36	0.008
11:37	0.008
11:38	0.008
11:39	0.005
11:40	0.005
11:41	0.005
11:42	0.007
11:43	0.008
11:44	0.008
11:45	0.031
11:46	0.01
11:47	0.008
11:48	0.009
11:49	0.008
11:50	0.01
11:51	0.01
11:52	0.009
11:53	0.008
11:54	0.008
11:55	0.011
11:56	0.009
11:57	0.022
11:58	0.01
11:59	0.015
12:00	0.014
12:01	0.015
12:02	0.008
12:03	0.009
12:04	0.008
12:05	0.009
12:06	0.01
12:07	0.008
12:08	0.009
12:09	0.013
12:10	0.009
12:11	0.009
12:12	0.019
12:13	0.013
12:14	0.01

12:15	0.009
12:16	0.009
12:17	0.01
12:18	0.01
12:19	0.009
12:20	0.009
12:21	0.007
12:22	0.007
12:23	0.007
12:24	0.008
12:25	0.009
12:26	0.008
12:27	0.023
12:28	0.016
12:29	0.011
12:30	0.008
12:31	0.008
12:32	0.009
12:33	0.053
12:34	0.055
12:35	0.01
12:36	0.009
12:37	0.039
12:38	0.025
12:39	0.01
12:40	0.017
12:41	0.009
12:42	0.009
12:43	0.008
12:44	0.014
12:45	0.014
12:46	0.01
12:47	0.009
12:48	0.007
12:49	0.01
12:50	0.008
12:51	0.007
12:52	0.092
12:53	0.057
12:54	0.023
12:55	0.013
12:56	0.013
12:57	0.024
12:58	0.018

12:59	0.009
13:00	0.007
13:01	0.019
13:02	0.013
13:03	0.01
13:04	0.009
13:05	0.011
13:06	0.023
13:07	0.041
13:08	0.015
13:09	0.012
13:10	0.013
13:11	0.023
13:12	0.023
13:13	0.016
13:14	0.023
13:15	0.014
13:16	0.013
13:17	0.014
13:18	0.014
13:19	0.037
13:20	0.018
13:21	0.012
13:22	0.01
13:23	0.015
13:24	0.012
13:25	0.014
13:26	0.029
13:27	0.088
13:28	0.016
13:29	0.011
13:30	0.017
13:31	0.021
13:32	0.022
13:33	0.013
13:34	0.012
13:35	0.011
13:36	0.021
13:37	0.031
13:38	0.016
13:39	0.015
13:40	0.019
13:41	0.024
13:42	0.016



13:43	0.017
13:44	0.02
13:45	0.02
13:46	0.018
13:47	0.043
13:48	0.029
13:49	0.024
13:50	0.016
13:51	0.023
13:52	0.034
13:53	0.021
13:54	0.02
13:55	0.014
13:56	0.014
13:57	0.015
13:58	0.015
13:59	0.017
14:00	0.167
14:01	0.092
14:02	0.066
14:03	0.023
14:04	0.026
14:05	0.023
14:06	0.024
14:07	0.018
14:08	0.033
14:09	0.021
14:10	0.019
14:11	0.014
14:12	0.012
14:13	0.013
14:14	0.017
14:15	0.024
14:16	0.014
14:17	0.013
14:18	0.039
14:19	0.067
14:20	0.048
14:21	0.034
14:22	0.013
14:23	0.023
14:24	0.016
14:25	0.024
14:26	0.054

14:27	0.02
14:28	0.026
14:29	0.014
14:30	0.014
14:31	0.013
14:32	0.014
14:33	0.015
14:34	0.021
14:35	0.167
14:36	0.692
14:37	0.025
14:38	0.017
14:39	0.013
14:40	0.018
14:41	0.023
14:42	0.027
14:43	0.017
14:44	0.018
14:45	0.014
14:46	0.018
14:47	0.019
14:48	0.015
14:49	0.013
14:50	0.016
14:51	0.022
14:52	0.016
14:53	0.022
14:54	0.023
14:55	0.023
14:56	0.028
14:57	0.023
14:58	0.013
14:59	0.012
15:00	0.016
15:01	0.013
15:02	0.016
15:03	0.014
15:04	0.013
15:05	0.03
15:06	0.026
15:07	0.017
15:08	0.015
15:09	0.013
15:10	0.017

15:11	0.014
15:12	0.014
15:13	0.019
15:14	0.03
15:15	0.062
15:16	0.04
15:17	0.03
15:18	0.052
15:19	0.053
15:20	0.029
15:21	0.036
15:22	0.038
15:23	0.064
15:24	0.025
15:25	0.04
15:26	0.019
15:27	0.015
15:28	0.016
15:29	0.038
15:30	0.023
15:31	0.021
15:32	0.021
15:33	0.021
15:34	0.013
15:35	0.052
15:36	0.018
15:37	0.022
15:38	0.038
15:39	0.024
15:40	0.016
15:41	0.016
15:42	0.015
15:43	0.015
15:44	0.018
15:45	0.015
15:46	0.016
15:47	0.012
15:48	0.015
15:49	0.02
15:50	0.026
15:51	0.016
15:52	0.015
15:53	0.013
15:54	0.018

15:55	0.027
15:56	0.021
15:57	0.016
15:58	0.015
15:59	0.014
16:00	0.017
16:01	0.014
16:02	0.014
16:03	0.011
16:04	0.012
16:05	0.015
16:06	0.013
16:07	0.011
16:08	0.012
16:09	0.014
16:10	0.013
16:11	0.012
16:12	0.012
16:13	0.022
16:14	0.012
16:15	0.013
16:16	0.015
16:17	0.017
16:18	0.019
16:19	0.013
16:20	0.02
16:21	0.012
16:22	0.011
16:23	0.011
16:24	0.01
16:25	0.016
16:26	0.015
16:27	0.011
16:28	0.012
16:29	0.016
16:30	0.026
16:31	0.015
16:32	0.013
16:33	0.012
16:34	0.012
16:35	0.014
16:36	0.016
16:37	0.012
16:38	0.01



16:39	0.012
16:40	0.009
16:41	0.01
16:42	0.01
16:43	0.011
16:44	0.012
16:45	0.024
16:46	0.017
16:47	0.014
16:48	0.013
16:49	0.028
16:50	0.016
16:51	0.012
16:52	0.017
16:53	0.03
16:54	0.016
16:55	0.027
16:56	0.065
16:57	0.082
16:58	0.011
16:59	0.011
17:00	0.018
17:01	0.011
17:02	0.011
17:03	0.011
17:04	0.012
17:05	0.009
17:06	0.01
17:07	0.011
17:08	0.01
17:09	0.012
17:10	0.011
17:11	0.011
17:12	0.011
17:13	0.009
17:14	0.01
17:15	0.009
17:16	0.01
17:17	0.009
17:18	0.009
17:19	0.009
17:20	0.009
17:21	0.03
17:22	0.017

17:23	0.015
17:24	0.033
17:25	0.015
17:26	0.013
17:27	0.011
17:28	0.01
17:29	0.015
17:30	0.015
17:31	0.011
17:32	0.013
17:33	0.012
17:34	0.013
17:35	0.009
17:36	0.01
17:37	0.011
17:38	0.011
17:39	0.01
17:40	0.013
17:41	0.01
17:42	0.01
17:43	0.01
17:44	0.01
17:45	0.009
17:46	0.009
17:47	0.009
17:48	0.011
17:49	0.01
17:50	0.013
17:51	0.011
17:52	0.011
17:53	0.012
17:54	0.01
17:55	0.011
17:56	0.012
17:57	0.011
17:58	0.01
17:59	0.011
18:00	0.011
18:01	0.012
18:02	0.012
18:03	0.011
18:04	0.011
18:05	0.01
18:06	0.01

18:07	0.01
18:08	0.011
18:09	0.01
18:10	0.012
18:11	0.011
18:12	0.012
18:13	0.011
18:14	0.01
18:15	0.011
18:16	0.011
18:17	0.012
18:18	0.012
18:19	0.012
18:20	0.012
18:21	0.012
18:22	0.012
18:23	0.014
18:24	0.012
18:25	0.012
18:26	0.012
18:27	0.012
18:28	0.011
18:29	0.012
18:30	0.012
18:31	0.012
18:32	0.012
18:33	0.011
18:34	0.011
18:35	0.012
18:36	0.013
18:37	0.012
18:38	0.012
18:39	0.013
18:40	0.013
18:41	0.022
18:42	0.013
18:43	0.013
18:44	0.012
18:45	0.013
18:46	0.013
18:47	0.013
18:48	0.014
18:49	0.013
18:50	0.013

18:51	0.014
18:52	0.015
18:53	0.015
18:54	0.014
18:55	0.017
18:56	0.014
18:57	0.013
18:58	0.013
18:59	0.013
19:00	0.013
19:01	0.013
19:02	0.014
19:03	0.014
19:04	0.013
19:05	0.013
19:06	0.013
19:07	0.014
19:08	0.013
19:09	0.013
19:10	0.014
19:11	0.014
19:12	0.015
19:13	0.016
19:14	0.017
19:15	0.021
19:16	0.018

Device Serial No	Log Time	Log Type	Sensor 1 Type	Sensor 1 Serial Number	Sensor 1 Status	Sensor 1 Gas Reading
592-601274	9/3/2024 6:41	CONFIG	PID	SC23030921B3		
592-601274	9/3/2024 6:42	Readings	PID	SC23030921B3	Normal	0
592-601274	9/3/2024 6:43	Readings	PID	SC23030921B3	Normal	0
592-601274	9/3/2024 6:44	Readings	PID	SC23030921B3	Normal	0
592-601274	9/3/2024 6:45	Readings	PID	SC23030921B3	Normal	0
592-601274	9/3/2024 6:46	Readings	PID	SC23030921B3	Normal	0
592-601274	9/3/2024 6:47	Readings	PID	SC23030921B3	Normal	0
592-601274	9/3/2024 6:48	Readings	PID	SC23030921B3	Normal	0
592-601274	9/3/2024 6:49	Readings	PID	SC23030921B3	Normal	0
592-601274	9/3/2024 6:50	Readings	PID	SC23030921B3	Normal	0
592-601274	9/3/2024 6:51	Readings	PID	SC23030921B3	Normal	0
592-601274	9/3/2024 6:52	Readings	PID	SC23030921B3	Normal	0
592-601274	9/3/2024 6:53	Readings	PID	SC23030921B3	Normal	0
592-601274	9/3/2024 6:54	Readings	PID	SC23030921B3	Normal	0
592-601274	9/3/2024 6:55	Readings	PID	SC23030921B3	Normal	0
592-601274	9/3/2024 6:56	Readings	PID	SC23030921B3	Normal	0
592-601274	9/3/2024 6:57	Readings	PID	SC23030921B3	Normal	0
592-601274	9/3/2024 6:58	Readings	PID	SC23030921B3	Normal	0
592-601274	9/3/2024 6:59	Readings	PID	SC23030921B3	Normal	0
592-601274	9/3/2024 7:00	Readings	PID	SC23030921B3	Normal	0
592-601274	9/3/2024 7:01	Readings	PID	SC23030921B3	Normal	0
592-601274	9/3/2024 7:02	Readings	PID	SC23030921B3	Normal	0
592-601274	9/3/2024 7:03	Readings	PID	SC23030921B3	Normal	0
592-601274	9/3/2024 7:04	Readings	PID	SC23030921B3	Normal	0
592-601274	9/3/2024 7:05	Readings	PID	SC23030921B3	Normal	0
592-601274	9/3/2024 7:06	Readings	PID	SC23030921B3	Normal	0
592-601274	9/3/2024 7:07	Readings	PID	SC23030921B3	Normal	0
592-601274	9/3/2024 7:08	Readings	PID	SC23030921B3	Normal	0
592-601274	9/3/2024 7:09	Readings	PID	SC23030921B3	Normal	0
592-601274	9/3/2024 7:10	Readings	PID	SC23030921B3	Normal	0
592-601274	9/3/2024 7:11	Readings	PID	SC23030921B3	Normal	0
592-601274	9/3/2024 7:12	Readings	PID	SC23030921B3	Normal	0





















































**DOWNWIND CAMP READINGS**

251 DOUGLASS STREET, BROOKLYN, NY



Instrument Name	DustTrak DRX
Model Number	8533
Serial Number	8533181207
Firmware Version	3.1
Calibration Date	7/11/2024
Test Name	MANUAL_013
Test Start Time	6:54:15 AM
Test Start Date	9/3/2024
Test Length [D:H:M]	0:12:28
Test Interval [M:S]	1:00
PM1 Average [mg/m3]	0.015
PM1 Minimum [mg/m3]	0.001
PM1 Maximum [mg/m3]	0.12
PM1 TWA [mg/m3]	0.015
Photometric User Cal	1
Size Correction User Cal	1
Flow User Cal	0
Errors	
Number of Samples	748

Elapsed Time [s]	PM1 [mg/m3]	Alarms	Errors
6:55	0.021		
6:56	0.002		
6:57	0.002		
6:58	0.004		
6:59	0.001		
7:00	0.002		
7:01	0.002		
7:02	0.002		
7:03	0.003		
7:04	0.003		
7:05	0.004		
7:06	0.002		
7:07	0.004		
7:08	0.024		
7:09	0.024		
7:10	0.013		
7:11	0.036		
7:12	0.01		
7:13	0.004		
7:14	0.007		
7:15	0.004		
7:16	0.002		
7:17	0.003		

7:18	0.004
7:19	0.005
7:20	0.004
7:21	0.013
7:22	0.003
7:23	0.004
7:24	0.006
7:25	0.006
7:26	0.014
7:27	0.006
7:28	0.007
7:29	0.005
7:30	0.004
7:31	0.004
7:32	0.004
7:33	0.005
7:34	0.002
7:35	0.003
7:36	0.005
7:37	0.005
7:38	0.004
7:39	0.005
7:40	0.004
7:41	0.005
7:42	0.003
7:43	0.005
7:44	0.002
7:45	0.002
7:46	0.002
7:47	0.005
7:48	0.003
7:49	0.003
7:50	0.002
7:51	0.002
7:52	0.005
7:53	0.004
7:54	0.005
7:55	0.006
7:56	0.013
7:57	0.008
7:58	0.01
7:59	0.004
8:00	0.007
8:01	0.007

8:02	0.01
8:03	0.004
8:04	0.004
8:05	0.004
8:06	0.004
8:07	0.004
8:08	0.003
8:09	0.003
8:10	0.004
8:11	0.008
8:12	0.004
8:13	0.003
8:14	0.006
8:15	0.003
8:16	0.004
8:17	0.016
8:18	0.01
8:19	0.009
8:20	0.004
8:21	0.004
8:22	0.005
8:23	0.006
8:24	0.005
8:25	0.005
8:26	0.013
8:27	0.006
8:28	0.006
8:29	0.006
8:30	0.006
8:31	0.03
8:32	0.008
8:33	0.017
8:34	0.012
8:35	0.012
8:36	0.008
8:37	0.023
8:38	0.006
8:39	0.007
8:40	0.005
8:41	0.008
8:42	0.005
8:43	0.007
8:44	0.006
8:45	0.007

8:46	0.01
8:47	0.005
8:48	0.004
8:49	0.004
8:50	0.004
8:51	0.004
8:52	0.005
8:53	0.005
8:54	0.005
8:55	0.005
8:56	0.005
8:57	0.006
8:58	0.009
8:59	0.005
9:00	0.005
9:01	0.006
9:02	0.007
9:03	0.006
9:04	0.006
9:05	0.01
9:06	0.007
9:07	0.007
9:08	0.008
9:09	0.011
9:10	0.017
9:11	0.013
9:12	0.016
9:13	0.01
9:14	0.005
9:15	0.007
9:16	0.006
9:17	0.01
9:18	0.009
9:19	0.014
9:20	0.007
9:21	0.007
9:22	0.007
9:23	0.007
9:24	0.007
9:25	0.007
9:26	0.008
9:27	0.01
9:28	0.011
9:29	0.009

9:30	0.014
9:31	0.035
9:32	0.012
9:33	0.006
9:34	0.007
9:35	0.018
9:36	0.011
9:37	0.007
9:38	0.008
9:39	0.021
9:40	0.021
9:41	0.008
9:42	0.013
9:43	0.011
9:44	0.009
9:45	0.007
9:46	0.008
9:47	0.014
9:48	0.02
9:49	0.02
9:50	0.017
9:51	0.032
9:52	0.013
9:53	0.021
9:54	0.12
9:55	0.027
9:56	0.011
9:57	0.011
9:58	0.012
9:59	0.017
10:00	0.012
10:01	0.009
10:02	0.009
10:03	0.008
10:04	0.013
10:05	0.009
10:06	0.014
10:07	0.023
10:08	0.026
10:09	0.011
10:10	0.01
10:11	0.019
10:12	0.035
10:13	0.013

10:14	0.01
10:15	0.011
10:16	0.018
10:17	0.01
10:18	0.011
10:19	0.009
10:20	0.01
10:21	0.05
10:22	0.076
10:23	0.013
10:24	0.009
10:25	0.008
10:26	0.008
10:27	0.008
10:28	0.01
10:29	0.009
10:30	0.013
10:31	0.008
10:32	0.009
10:33	0.021
10:34	0.014
10:35	0.015
10:36	0.013
10:37	0.01
10:38	0.01
10:39	0.013
10:40	0.017
10:41	0.041
10:42	0.008
10:43	0.009
10:44	0.017
10:45	0.014
10:46	0.012
10:47	0.053
10:48	0.023
10:49	0.025
10:50	0.042
10:51	0.017
10:52	0.023
10:53	0.019
10:54	0.01
10:55	0.016
10:56	0.012
10:57	0.067

10:58	0.032
10:59	0.028
11:00	0.02
11:01	0.018
11:02	0.04
11:03	0.014
11:04	0.014
11:05	0.012
11:06	0.012
11:07	0.022
11:08	0.022
11:09	0.012
11:10	0.014
11:11	0.011
11:12	0.016
11:13	0.024
11:14	0.016
11:15	0.014
11:16	0.017
11:17	0.013
11:18	0.013
11:19	0.012
11:20	0.009
11:21	0.009
11:22	0.016
11:23	0.018
11:24	0.01
11:25	0.011
11:26	0.012
11:27	0.01
11:28	0.009
11:29	0.009
11:30	0.01
11:31	0.009
11:32	0.009
11:33	0.011
11:34	0.01
11:35	0.014
11:36	0.012
11:37	0.014
11:38	0.011
11:39	0.014
11:40	0.009
11:41	0.011



11:42	0.018
11:43	0.02
11:44	0.014
11:45	0.019
11:46	0.011
11:47	0.01
11:48	0.009
11:49	0.017
11:50	0.021
11:51	0.016
11:52	0.015
11:53	0.012
11:54	0.012
11:55	0.014
11:56	0.012
11:57	0.012
11:58	0.019
11:59	0.02
12:00	0.01
12:01	0.01
12:02	0.009
12:03	0.009
12:04	0.009
12:05	0.01
12:06	0.011
12:07	0.01
12:08	0.01
12:09	0.009
12:10	0.012
12:11	0.024
12:12	0.012
12:13	0.012
12:14	0.01
12:15	0.01
12:16	0.01
12:17	0.014
12:18	0.016
12:19	0.01
12:20	0.01
12:21	0.009
12:22	0.01
12:23	0.009
12:24	0.009
12:25	0.01

12:26	0.009
12:27	0.01
12:28	0.012
12:29	0.009
12:30	0.011
12:31	0.01
12:32	0.011
12:33	0.01
12:34	0.013
12:35	0.015
12:36	0.01
12:37	0.011
12:38	0.015
12:39	0.012
12:40	0.013
12:41	0.013
12:42	0.01
12:43	0.009
12:44	0.01
12:45	0.011
12:46	0.01
12:47	0.009
12:48	0.01
12:49	0.01
12:50	0.009
12:51	0.01
12:52	0.01
12:53	0.009
12:54	0.011
12:55	0.009
12:56	0.011
12:57	0.012
12:58	0.012
12:59	0.009
13:00	0.01
13:01	0.017
13:02	0.018
13:03	0.012
13:04	0.009
13:05	0.014
13:06	0.009
13:07	0.009
13:08	0.008
13:09	0.009

13:10	0.012
13:11	0.009
13:12	0.009
13:13	0.011
13:14	0.013
13:15	0.011
13:16	0.013
13:17	0.011
13:18	0.011
13:19	0.012
13:20	0.011
13:21	0.011
13:22	0.012
13:23	0.014
13:24	0.01
13:25	0.009
13:26	0.009
13:27	0.009
13:28	0.009
13:29	0.011
13:30	0.01
13:31	0.013
13:32	0.01
13:33	0.01
13:34	0.009
13:35	0.009
13:36	0.019
13:37	0.016
13:38	0.011
13:39	0.011
13:40	0.016
13:41	0.025
13:42	0.017
13:43	0.012
13:44	0.016
13:45	0.017
13:46	0.014
13:47	0.011
13:48	0.012
13:49	0.008
13:50	0.009
13:51	0.012
13:52	0.011
13:53	0.008

13:54	0.009
13:55	0.009
13:56	0.01
13:57	0.011
13:58	0.013
13:59	0.01
14:00	0.01
14:01	0.009
14:02	0.012
14:03	0.018
14:04	0.014
14:05	0.036
14:06	0.028
14:07	0.013
14:08	0.011
14:09	0.013
14:10	0.01
14:11	0.01
14:12	0.01
14:13	0.01
14:14	0.011
14:15	0.012
14:16	0.011
14:17	0.009
14:18	0.012
14:19	0.015
14:20	0.012
14:21	0.012
14:22	0.009
14:23	0.01
14:24	0.015
14:25	0.019
14:26	0.011
14:27	0.012
14:28	0.015
14:29	0.011
14:30	0.009
14:31	0.009
14:32	0.01
14:33	0.013
14:34	0.012
14:35	0.011
14:36	0.013
14:37	0.009

14:38	0.008
14:39	0.01
14:40	0.013
14:41	0.013
14:42	0.01
14:43	0.037
14:44	0.02
14:45	0.012
14:46	0.017
14:47	0.012
14:48	0.011
14:49	0.013
14:50	0.028
14:51	0.012
14:52	0.011
14:53	0.012
14:54	0.012
14:55	0.017
14:56	0.03
14:57	0.014
14:58	0.01
14:59	0.009
15:00	0.011
15:01	0.01
15:02	0.013
15:03	0.01
15:04	0.024
15:05	0.014
15:06	0.009
15:07	0.014
15:08	0.01
15:09	0.01
15:10	0.011
15:11	0.011
15:12	0.009
15:13	0.014
15:14	0.011
15:15	0.058
15:16	0.028
15:17	0.009
15:18	0.024
15:19	0.016
15:20	0.029
15:21	0.018

15:22	0.014
15:23	0.013
15:24	0.011
15:25	0.021
15:26	0.016
15:27	0.012
15:28	0.014
15:29	0.029
15:30	0.016
15:31	0.014
15:32	0.045
15:33	0.056
15:34	0.013
15:35	0.009
15:36	0.01
15:37	0.012
15:38	0.015
15:39	0.012
15:40	0.013
15:41	0.01
15:42	0.012
15:43	0.009
15:44	0.008
15:45	0.01
15:46	0.01
15:47	0.008
15:48	0.01
15:49	0.011
15:50	0.009
15:51	0.01
15:52	0.008
15:53	0.009
15:54	0.01
15:55	0.01
15:56	0.011
15:57	0.013
15:58	0.016
15:59	0.015
16:00	0.01
16:01	0.009
16:02	0.007
16:03	0.007
16:04	0.008
16:05	0.012

16:06	0.011
16:07	0.01
16:08	0.008
16:09	0.008
16:10	0.01
16:11	0.009
16:12	0.01
16:13	0.012
16:14	0.009
16:15	0.01
16:16	0.009
16:17	0.009
16:18	0.023
16:19	0.009
16:20	0.009
16:21	0.008
16:22	0.007
16:23	0.008
16:24	0.008
16:25	0.01
16:26	0.008
16:27	0.008
16:28	0.008
16:29	0.007
16:30	0.015
16:31	0.009
16:32	0.008
16:33	0.007
16:34	0.009
16:35	0.008
16:36	0.007
16:37	0.008
16:38	0.007
16:39	0.007
16:40	0.007
16:41	0.007
16:42	0.009
16:43	0.008
16:44	0.008
16:45	0.008
16:46	0.008
16:47	0.008
16:48	0.008
16:49	0.008

16:50	0.018
16:51	0.012
16:52	0.011
16:53	0.01
16:54	0.018
16:55	0.015
16:56	0.009
16:57	0.007
16:58	0.008
16:59	0.008
17:00	0.008
17:01	0.008
17:02	0.009
17:03	0.009
17:04	0.007
17:05	0.007
17:06	0.007
17:07	0.007
17:08	0.008
17:09	0.01
17:10	0.008
17:11	0.009
17:12	0.007
17:13	0.008
17:14	0.007
17:15	0.007
17:16	0.007
17:17	0.035
17:18	0.039
17:19	0.008
17:20	0.008
17:21	0.009
17:22	0.011
17:23	0.011
17:24	0.008
17:25	0.009
17:26	0.011
17:27	0.007
17:28	0.014
17:29	0.007
17:30	0.007
17:31	0.008
17:32	0.007
17:33	0.007



17:34	0.008
17:35	0.006
17:36	0.007
17:37	0.007
17:38	0.008
17:39	0.009
17:40	0.007
17:41	0.007
17:42	0.007
17:43	0.007
17:44	0.016
17:45	0.01
17:46	0.007
17:47	0.007
17:48	0.008
17:49	0.008
17:50	0.008
17:51	0.008
17:52	0.009
17:53	0.007
17:54	0.008
17:55	0.01
17:56	0.008
17:57	0.008
17:58	0.009
17:59	0.008
18:00	0.008
18:01	0.008
18:02	0.007
18:03	0.008
18:04	0.006
18:05	0.007
18:06	0.007
18:07	0.009
18:08	0.008
18:09	0.011
18:10	0.008
18:11	0.007
18:12	0.013
18:13	0.041
18:14	0.007
18:15	0.007
18:16	0.007
18:17	0.007

18:18	0.008
18:19	0.009
18:20	0.009
18:21	0.009
18:22	0.008
18:23	0.008
18:24	0.007
18:25	0.007
18:26	0.007
18:27	0.007
18:28	0.007
18:29	0.008
18:30	0.008
18:31	0.008
18:32	0.008
18:33	0.007
18:34	0.007
18:35	0.007
18:36	0.007
18:37	0.008
18:38	0.007
18:39	0.007
18:40	0.007
18:41	0.007
18:42	0.008
18:43	0.009
18:44	0.008
18:45	0.007
18:46	0.008
18:47	0.007
18:48	0.008
18:49	0.021
18:50	0.079
18:51	0.032
18:52	0.041
18:53	0.01
18:54	0.008
18:55	0.013
18:56	0.02
18:57	0.013
18:58	0.009
18:59	0.007
19:00	0.008
19:01	0.007

19:02	0.008
19:03	0.007
19:04	0.007
19:05	0.007
19:06	0.007
19:07	0.007
19:08	0.008
19:09	0.007
19:10	0.007
19:11	0.012
19:12	0.009
19:13	0.009
19:14	0.01
19:15	0.011
19:16	0.01
19:17	0.009
19:18	0.009
19:19	0.009
19:20	0.01
19:21	0.01
19:22	0.01

Device Serial No	Log Time	Log Type	Sensor 1 Type	Sensor 1 Serial Number	Sensor 1 Status	Sensor 1 Gas Reading
592-906376	9/3/2024 6:38	CONFIG	PID	SC23030159V4		
592-906376	9/3/2024 6:39	Readings	PID	SC23030159V4	Normal	0
592-906376	9/3/2024 6:40	Readings	PID	SC23030159V4	Normal	0
592-906376	9/3/2024 6:41	Readings	PID	SC23030159V4	Normal	0
592-906376	9/3/2024 6:42	Readings	PID	SC23030159V4	Normal	0.1
592-906376	9/3/2024 6:43	Readings	PID	SC23030159V4	Normal	0
592-906376	9/3/2024 6:44	Readings	PID	SC23030159V4	Normal	0
592-906376	9/3/2024 6:45	Readings	PID	SC23030159V4	Normal	0
592-906376	9/3/2024 6:46	Readings	PID	SC23030159V4	Normal	0
592-906376	9/3/2024 6:47	Readings	PID	SC23030159V4	Normal	0
592-906376	9/3/2024 6:48	Readings	PID	SC23030159V4	Normal	0.1
592-906376	9/3/2024 6:49	Readings	PID	SC23030159V4	Normal	0
592-906376	9/3/2024 6:50	Readings	PID	SC23030159V4	Normal	0
592-906376	9/3/2024 6:51	Readings	PID	SC23030159V4	Normal	0
592-906376	9/3/2024 6:52	Readings	PID	SC23030159V4	Normal	0
592-906376	9/3/2024 6:53	Readings	PID	SC23030159V4	Normal	0
592-906376	9/3/2024 6:54	Readings	PID	SC23030159V4	Normal	0
592-906376	9/3/2024 6:55	Readings	PID	SC23030159V4	Normal	0
592-906376	9/3/2024 6:56	Readings	PID	SC23030159V4	Normal	0.1
592-906376	9/3/2024 6:57	Readings	PID	SC23030159V4	Normal	0
592-906376	9/3/2024 6:58	Readings	PID	SC23030159V4	Normal	0
592-906376	9/3/2024 6:59	Readings	PID	SC23030159V4	Normal	0
592-906376	9/3/2024 7:00	Readings	PID	SC23030159V4	Normal	0
592-906376	9/3/2024 7:01	Readings	PID	SC23030159V4	Normal	0
592-906376	9/3/2024 7:02	Readings	PID	SC23030159V4	Normal	0
592-906376	9/3/2024 7:03	Readings	PID	SC23030159V4	Normal	0
592-906376	9/3/2024 7:04	Readings	PID	SC23030159V4	Normal	0.1
592-906376	9/3/2024 7:05	Readings	PID	SC23030159V4	Normal	0.2
592-906376	9/3/2024 7:06	Readings	PID	SC23030159V4	Normal	0
592-906376	9/3/2024 7:07	Readings	PID	SC23030159V4	Normal	0
592-906376	9/3/2024 7:08	Readings	PID	SC23030159V4	Normal	0
592-906376	9/3/2024 7:09	Readings	PID	SC23030159V4	Normal	0

592-906376	9/3/2024 7:10 Readings	PID	SC23030159V4	Normal	0
592-906376	9/3/2024 7:11 Readings	PID	SC23030159V4	Normal	0
592-906376	9/3/2024 7:12 Readings	PID	SC23030159V4	Normal	1
592-906376	9/3/2024 7:13 Readings	PID	SC23030159V4	Normal	0.2
592-906376	9/3/2024 7:14 Readings	PID	SC23030159V4	Normal	0.1
592-906376	9/3/2024 7:15 Readings	PID	SC23030159V4	Normal	0.5
592-906376	9/3/2024 7:16 Readings	PID	SC23030159V4	Normal	0.1
592-906376	9/3/2024 7:17 Readings	PID	SC23030159V4	Normal	0.1
592-906376	9/3/2024 7:18 Readings	PID	SC23030159V4	Normal	0.1
592-906376	9/3/2024 7:19 Readings	PID	SC23030159V4	Normal	0.1
592-906376	9/3/2024 7:20 Readings	PID	SC23030159V4	Normal	0.4
592-906376	9/3/2024 7:21 Readings	PID	SC23030159V4	Normal	0.2
592-906376	9/3/2024 7:22 Readings	PID	SC23030159V4	Normal	0.1
592-906376	9/3/2024 7:23 Readings	PID	SC23030159V4	Normal	0.1
592-906376	9/3/2024 7:24 Readings	PID	SC23030159V4	Normal	0
592-906376	9/3/2024 7:25 Readings	PID	SC23030159V4	Normal	0.9
592-906376	9/3/2024 7:26 Readings	PID	SC23030159V4	Normal	0.6
592-906376	9/3/2024 7:27 Readings	PID	SC23030159V4	Normal	0.4
592-906376	9/3/2024 7:28 Readings	PID	SC23030159V4	Normal	0.1
592-906376	9/3/2024 7:29 Readings	PID	SC23030159V4	Normal	0.1
592-906376	9/3/2024 7:30 Readings	PID	SC23030159V4	Normal	0.1
592-906376	9/3/2024 7:31 Readings	PID	SC23030159V4	Normal	0.2
592-906376	9/3/2024 7:32 Readings	PID	SC23030159V4	Normal	0.1
592-906376	9/3/2024 7:33 Readings	PID	SC23030159V4	Normal	0
592-906376	9/3/2024 7:34 Readings	PID	SC23030159V4	Normal	0
592-906376	9/3/2024 7:35 Readings	PID	SC23030159V4	Normal	0.1
592-906376	9/3/2024 7:36 Readings	PID	SC23030159V4	Normal	0
592-906376	9/3/2024 7:37 Readings	PID	SC23030159V4	Normal	0.8
592-906376	9/3/2024 7:38 Readings	PID	SC23030159V4	Normal	0.1
592-906376	9/3/2024 7:39 Readings	PID	SC23030159V4	Normal	0.1
592-906376	9/3/2024 7:40 Readings	PID	SC23030159V4	Normal	0
592-906376	9/3/2024 7:41 Readings	PID	SC23030159V4	Normal	0.1
592-906376	9/3/2024 7:42 Readings	PID	SC23030159V4	Normal	0.1

592-906376	9/3/2024 7:43	Readings	PID	SC23030159V4	Normal	0
592-906376	9/3/2024 7:44	Readings	PID	SC23030159V4	Normal	0
592-906376	9/3/2024 7:45	Readings	PID	SC23030159V4	Normal	0
592-906376	9/3/2024 7:46	Readings	PID	SC23030159V4	Normal	0
592-906376	9/3/2024 7:47	Readings	PID	SC23030159V4	Normal	0
592-906376	9/3/2024 7:48	Readings	PID	SC23030159V4	Normal	0
592-906376	9/3/2024 7:49	Readings	PID	SC23030159V4	Normal	0
592-906376	9/3/2024 7:50	Readings	PID	SC23030159V4	Normal	0
592-906376	9/3/2024 7:51	Readings	PID	SC23030159V4	Normal	0
592-906376	9/3/2024 7:52	Readings	PID	SC23030159V4	Normal	0
592-906376	9/3/2024 7:53	Readings	PID	SC23030159V4	Normal	0
592-906376	9/3/2024 7:54	Readings	PID	SC23030159V4	Normal	0
592-906376	9/3/2024 7:55	Readings	PID	SC23030159V4	Normal	0
592-906376	9/3/2024 7:56	Readings	PID	SC23030159V4	Normal	0.1
592-906376	9/3/2024 7:57	Readings	PID	SC23030159V4	Normal	0.1
592-906376	9/3/2024 7:58	Readings	PID	SC23030159V4	Normal	0.1
592-906376	9/3/2024 7:59	Readings	PID	SC23030159V4	Normal	0.1
592-906376	9/3/2024 8:00	Readings	PID	SC23030159V4	Normal	0
592-906376	9/3/2024 8:01	Readings	PID	SC23030159V4	Normal	0
592-906376	9/3/2024 8:02	Readings	PID	SC23030159V4	Normal	0
592-906376	9/3/2024 8:03	Readings	PID	SC23030159V4	Normal	0
592-906376	9/3/2024 8:04	Readings	PID	SC23030159V4	Normal	0.1
592-906376	9/3/2024 8:05	Readings	PID	SC23030159V4	Normal	0.1
592-906376	9/3/2024 8:06	Readings	PID	SC23030159V4	Normal	0
592-906376	9/3/2024 8:07	Readings	PID	SC23030159V4	Normal	0
592-906376	9/3/2024 8:08	Readings	PID	SC23030159V4	Normal	0
592-906376	9/3/2024 8:09	Readings	PID	SC23030159V4	Normal	0
592-906376	9/3/2024 8:10	Readings	PID	SC23030159V4	Normal	0
592-906376	9/3/2024 8:11	Readings	PID	SC23030159V4	Normal	0
592-906376	9/3/2024 8:12	Readings	PID	SC23030159V4	Normal	0.1
592-906376	9/3/2024 8:13	Readings	PID	SC23030159V4	Normal	0
592-906376	9/3/2024 8:14	Readings	PID	SC23030159V4	Normal	0
592-906376	9/3/2024 8:15	Readings	PID	SC23030159V4	Normal	0

592-906376	9/3/2024 8:16 Readings	PID	SC23030159V4	Normal	0
592-906376	9/3/2024 8:17 Readings	PID	SC23030159V4	Normal	0
592-906376	9/3/2024 8:18 Readings	PID	SC23030159V4	Normal	0.4
592-906376	9/3/2024 8:19 Readings	PID	SC23030159V4	Normal	0.2
592-906376	9/3/2024 8:20 Readings	PID	SC23030159V4	Normal	0.3
592-906376	9/3/2024 8:21 Readings	PID	SC23030159V4	Normal	0
592-906376	9/3/2024 8:22 Readings	PID	SC23030159V4	Normal	0
592-906376	9/3/2024 8:23 Readings	PID	SC23030159V4	Normal	0.1
592-906376	9/3/2024 8:24 Readings	PID	SC23030159V4	Normal	0
592-906376	9/3/2024 8:25 Readings	PID	SC23030159V4	Normal	0.9
592-906376	9/3/2024 8:26 Readings	PID	SC23030159V4	Normal	0.3
592-906376	9/3/2024 8:27 Readings	PID	SC23030159V4	Normal	0.5
592-906376	9/3/2024 8:28 Readings	PID	SC23030159V4	Normal	0.2
592-906376	9/3/2024 8:29 Readings	PID	SC23030159V4	Normal	0.5
592-906376	9/3/2024 8:30 Readings	PID	SC23030159V4	Normal	0.1
592-906376	9/3/2024 8:31 Readings	PID	SC23030159V4	Normal	0.1
592-906376	9/3/2024 8:32 Readings	PID	SC23030159V4	Normal	0.1
592-906376	9/3/2024 8:33 Readings	PID	SC23030159V4	Normal	0.5
592-906376	9/3/2024 8:34 Readings	PID	SC23030159V4	Normal	0.1
592-906376	9/3/2024 8:35 Readings	PID	SC23030159V4	Normal	0.6
592-906376	9/3/2024 8:36 Readings	PID	SC23030159V4	Normal	2.2
592-906376	9/3/2024 8:37 Readings	PID	SC23030159V4	Normal	0.5
592-906376	9/3/2024 8:38 Readings	PID	SC23030159V4	Normal	1.4
592-906376	9/3/2024 8:39 Readings	PID	SC23030159V4	Normal	0.3
592-906376	9/3/2024 8:40 Readings	PID	SC23030159V4	Normal	1.2
592-906376	9/3/2024 8:41 Readings	PID	SC23030159V4	Normal	0.5
592-906376	9/3/2024 8:42 Readings	PID	SC23030159V4	Normal	0.1
592-906376	9/3/2024 8:43 Readings	PID	SC23030159V4	Normal	0.5
592-906376	9/3/2024 8:44 Readings	PID	SC23030159V4	Normal	0.1
592-906376	9/3/2024 8:45 Readings	PID	SC23030159V4	Normal	0.1
592-906376	9/3/2024 8:46 Readings	PID	SC23030159V4	Normal	0.1
592-906376	9/3/2024 8:47 Readings	PID	SC23030159V4	Normal	0.1
592-906376	9/3/2024 8:48 Readings	PID	SC23030159V4	Normal	0.1

592-906376	9/3/2024 8:49	Readings	PID	SC23030159V4	Normal	0.1
592-906376	9/3/2024 8:50	Readings	PID	SC23030159V4	Normal	0.1
592-906376	9/3/2024 8:51	Readings	PID	SC23030159V4	Normal	0.3
592-906376	9/3/2024 8:52	Readings	PID	SC23030159V4	Normal	0.1
592-906376	9/3/2024 8:53	Readings	PID	SC23030159V4	Normal	0.9
592-906376	9/3/2024 8:54	Readings	PID	SC23030159V4	Normal	0.2
592-906376	9/3/2024 8:55	Readings	PID	SC23030159V4	Normal	0.4
592-906376	9/3/2024 8:56	Readings	PID	SC23030159V4	Normal	0.1
592-906376	9/3/2024 8:57	Readings	PID	SC23030159V4	Normal	0.1
592-906376	9/3/2024 8:58	Readings	PID	SC23030159V4	Normal	0.1
592-906376	9/3/2024 8:59	Readings	PID	SC23030159V4	Normal	0.1
592-906376	9/3/2024 9:00	Readings	PID	SC23030159V4	Normal	0.1
592-906376	9/3/2024 9:01	Readings	PID	SC23030159V4	Normal	0.1
592-906376	9/3/2024 9:02	Readings	PID	SC23030159V4	Normal	0.1
592-906376	9/3/2024 9:03	Readings	PID	SC23030159V4	Normal	0.1
592-906376	9/3/2024 9:04	Readings	PID	SC23030159V4	Normal	0.1
592-906376	9/3/2024 9:05	Readings	PID	SC23030159V4	Normal	0.8
592-906376	9/3/2024 9:06	Readings	PID	SC23030159V4	Normal	0.4
592-906376	9/3/2024 9:07	Readings	PID	SC23030159V4	Normal	1
592-906376	9/3/2024 9:08	Readings	PID	SC23030159V4	Normal	0.1
592-906376	9/3/2024 9:09	Readings	PID	SC23030159V4	Normal	0.1
592-906376	9/3/2024 9:10	Readings	PID	SC23030159V4	Normal	0.1
592-906376	9/3/2024 9:11	Readings	PID	SC23030159V4	Normal	0.1
592-906376	9/3/2024 9:12	Readings	PID	SC23030159V4	Normal	0.2
592-906376	9/3/2024 9:13	Readings	PID	SC23030159V4	Normal	0.2
592-906376	9/3/2024 9:14	Readings	PID	SC23030159V4	Normal	0.1
592-906376	9/3/2024 9:15	Readings	PID	SC23030159V4	Normal	0.5
592-906376	9/3/2024 9:16	Readings	PID	SC23030159V4	Normal	0.1
592-906376	9/3/2024 9:17	Readings	PID	SC23030159V4	Normal	0.1
592-906376	9/3/2024 9:18	Readings	PID	SC23030159V4	Normal	0.4
592-906376	9/3/2024 9:19	Readings	PID	SC23030159V4	Normal	0.3
592-906376	9/3/2024 9:20	Readings	PID	SC23030159V4	Normal	0.1
592-906376	9/3/2024 9:21	Readings	PID	SC23030159V4	Normal	0.1



592-906376	9/3/2024 9:22	Readings	PID	SC23030159V4	Normal	0.1
592-906376	9/3/2024 9:23	Readings	PID	SC23030159V4	Normal	0.3
592-906376	9/3/2024 9:24	Readings	PID	SC23030159V4	Normal	0.1
592-906376	9/3/2024 9:25	Readings	PID	SC23030159V4	Normal	0.1
592-906376	9/3/2024 9:26	Readings	PID	SC23030159V4	Normal	0.1
592-906376	9/3/2024 9:27	Readings	PID	SC23030159V4	Normal	0.1
592-906376	9/3/2024 9:28	Readings	PID	SC23030159V4	Normal	0.1
592-906376	9/3/2024 9:29	Readings	PID	SC23030159V4	Normal	0.1
592-906376	9/3/2024 9:30	Readings	PID	SC23030159V4	Normal	0.1
592-906376	9/3/2024 9:31	Readings	PID	SC23030159V4	Normal	3
592-906376	9/3/2024 9:32	Readings	PID	SC23030159V4	Normal	0.5
592-906376	9/3/2024 9:33	Readings	PID	SC23030159V4	Normal	0.2
592-906376	9/3/2024 9:34	Readings	PID	SC23030159V4	Normal	4
592-906376	9/3/2024 9:35	Readings	PID	SC23030159V4	Normal	1.5
592-906376	9/3/2024 9:36	Readings	PID	SC23030159V4	Normal	0.3
592-906376	9/3/2024 9:37	Readings	PID	SC23030159V4	Normal	0.4
592-906376	9/3/2024 9:38	Readings	PID	SC23030159V4	Normal	0.8
592-906376	9/3/2024 9:39	Readings	PID	SC23030159V4	Normal	0.4
592-906376	9/3/2024 9:40	Readings	PID	SC23030159V4	Normal	3.1
592-906376	9/3/2024 9:41	Readings	PID	SC23030159V4	Normal	0.6
592-906376	9/3/2024 9:42	Readings	PID	SC23030159V4	Normal	0.6
592-906376	9/3/2024 9:43	Readings	PID	SC23030159V4	Normal	0.5
592-906376	9/3/2024 9:44	Readings	PID	SC23030159V4	Normal	0.9
592-906376	9/3/2024 9:45	Readings	PID	SC23030159V4	Normal	0.3
592-906376	9/3/2024 9:46	Readings	PID	SC23030159V4	Normal	0.2
592-906376	9/3/2024 9:47	Readings	PID	SC23030159V4	Normal	0.2
592-906376	9/3/2024 9:48	Readings	PID	SC23030159V4	Normal	0.3
592-906376	9/3/2024 9:49	Readings	PID	SC23030159V4	Normal	1.8
592-906376	9/3/2024 9:50	Readings	PID	SC23030159V4	Normal	1.3
592-906376	9/3/2024 9:51	Readings	PID	SC23030159V4	Normal	0.2
592-906376	9/3/2024 9:52	Readings	PID	SC23030159V4	Normal	0.2
592-906376	9/3/2024 9:53	Readings	PID	SC23030159V4	Normal	0.5
592-906376	9/3/2024 9:54	Readings	PID	SC23030159V4	Normal	1.8

592-906376	9/3/2024 9:55	Readings	PID	SC23030159V4	Normal	0.2
592-906376	9/3/2024 9:56	Readings	PID	SC23030159V4	Normal	0.5
592-906376	9/3/2024 9:57	Readings	PID	SC23030159V4	Normal	1.1
592-906376	9/3/2024 9:58	Readings	PID	SC23030159V4	Normal	0.3
592-906376	9/3/2024 9:59	Readings	PID	SC23030159V4	Normal	0.3
592-906376	9/3/2024 10:00	Readings	PID	SC23030159V4	Normal	0.4
592-906376	9/3/2024 10:01	Readings	PID	SC23030159V4	Normal	0.2
592-906376	9/3/2024 10:02	Readings	PID	SC23030159V4	Normal	0.4
592-906376	9/3/2024 10:03	Readings	PID	SC23030159V4	Normal	1
592-906376	9/3/2024 10:04	Readings	PID	SC23030159V4	Normal	1.2
592-906376	9/3/2024 10:05	Readings	PID	SC23030159V4	Normal	0.8
592-906376	9/3/2024 10:06	Readings	PID	SC23030159V4	Normal	2.1
592-906376	9/3/2024 10:07	Readings	PID	SC23030159V4	Normal	1.5
592-906376	9/3/2024 10:08	Readings	PID	SC23030159V4	Normal	0.3
592-906376	9/3/2024 10:09	Readings	PID	SC23030159V4	Normal	0.6
592-906376	9/3/2024 10:10	Readings	PID	SC23030159V4	Normal	0.3
592-906376	9/3/2024 10:11	Readings	PID	SC23030159V4	Normal	0.3
592-906376	9/3/2024 10:12	Readings	PID	SC23030159V4	Normal	0.2
592-906376	9/3/2024 10:13	Readings	PID	SC23030159V4	Normal	0.2
592-906376	9/3/2024 10:14	Readings	PID	SC23030159V4	Normal	0.2
592-906376	9/3/2024 10:15	Readings	PID	SC23030159V4	Normal	0.2
592-906376	9/3/2024 10:16	Readings	PID	SC23030159V4	Normal	0.1
592-906376	9/3/2024 10:17	Readings	PID	SC23030159V4	Normal	0.1
592-906376	9/3/2024 10:18	Readings	PID	SC23030159V4	Normal	0.1
592-906376	9/3/2024 10:19	Readings	PID	SC23030159V4	Normal	0.5
592-906376	9/3/2024 10:20	Readings	PID	SC23030159V4	Normal	0.8
592-906376	9/3/2024 10:21	Readings	PID	SC23030159V4	Normal	0.7
592-906376	9/3/2024 10:22	Readings	PID	SC23030159V4	Normal	0.9
592-906376	9/3/2024 10:23	Readings	PID	SC23030159V4	Normal	0.4
592-906376	9/3/2024 10:24	Readings	PID	SC23030159V4	Normal	0.4
592-906376	9/3/2024 10:25	Readings	PID	SC23030159V4	Normal	0.4
592-906376	9/3/2024 10:26	Readings	PID	SC23030159V4	Normal	0.2
592-906376	9/3/2024 10:27	Readings	PID	SC23030159V4	Normal	0.2

592-906376	9/3/2024 10:28	Readings	PID	SC23030159V4	Normal	0.7
592-906376	9/3/2024 10:29	Readings	PID	SC23030159V4	Normal	0.3
592-906376	9/3/2024 10:30	Readings	PID	SC23030159V4	Normal	0.2
592-906376	9/3/2024 10:31	Readings	PID	SC23030159V4	Normal	0.2
592-906376	9/3/2024 10:32	Readings	PID	SC23030159V4	Normal	0.2
592-906376	9/3/2024 10:33	Readings	PID	SC23030159V4	Normal	0.2
592-906376	9/3/2024 10:34	Readings	PID	SC23030159V4	Normal	0.2
592-906376	9/3/2024 10:35	Readings	PID	SC23030159V4	Normal	0.2
592-906376	9/3/2024 10:36	Readings	PID	SC23030159V4	Normal	0.4
592-906376	9/3/2024 10:37	Readings	PID	SC23030159V4	Normal	0.2
592-906376	9/3/2024 10:38	Readings	PID	SC23030159V4	Normal	0.2
592-906376	9/3/2024 10:39	Readings	PID	SC23030159V4	Normal	0.3
592-906376	9/3/2024 10:40	Readings	PID	SC23030159V4	Normal	0.2
592-906376	9/3/2024 10:41	Readings	PID	SC23030159V4	Normal	0.6
592-906376	9/3/2024 10:42	Readings	PID	SC23030159V4	Normal	0.4
592-906376	9/3/2024 10:43	Readings	PID	SC23030159V4	Normal	0.7
592-906376	9/3/2024 10:44	Readings	PID	SC23030159V4	Normal	0.5
592-906376	9/3/2024 10:45	Readings	PID	SC23030159V4	Normal	0.5
592-906376	9/3/2024 10:46	Readings	PID	SC23030159V4	Normal	0.2
592-906376	9/3/2024 10:47	Readings	PID	SC23030159V4	Normal	0.2
592-906376	9/3/2024 10:48	Readings	PID	SC23030159V4	Normal	0.2
592-906376	9/3/2024 10:49	Readings	PID	SC23030159V4	Normal	0.1
592-906376	9/3/2024 10:50	Readings	PID	SC23030159V4	Normal	0.2
592-906376	9/3/2024 10:51	Readings	PID	SC23030159V4	Normal	0.1
592-906376	9/3/2024 10:52	Readings	PID	SC23030159V4	Normal	0.9
592-906376	9/3/2024 10:53	Readings	PID	SC23030159V4	Normal	0.6
592-906376	9/3/2024 10:54	Readings	PID	SC23030159V4	Normal	0.2
592-906376	9/3/2024 10:55	Readings	PID	SC23030159V4	Normal	0.5
592-906376	9/3/2024 10:56	Readings	PID	SC23030159V4	Normal	0.5
592-906376	9/3/2024 10:57	Readings	PID	SC23030159V4	Normal	0.5
592-906376	9/3/2024 10:58	Readings	PID	SC23030159V4	Normal	0.3
592-906376	9/3/2024 10:59	Readings	PID	SC23030159V4	Normal	0.2
592-906376	9/3/2024 11:00	Readings	PID	SC23030159V4	Normal	0.3

592-906376	9/3/2024 11:01	Readings	PID	SC23030159V4	Normal	0.6
592-906376	9/3/2024 11:02	Readings	PID	SC23030159V4	Normal	0.2
592-906376	9/3/2024 11:03	Readings	PID	SC23030159V4	Normal	0.2
592-906376	9/3/2024 11:04	Readings	PID	SC23030159V4	Normal	0.2
592-906376	9/3/2024 11:05	Readings	PID	SC23030159V4	Normal	0.4
592-906376	9/3/2024 11:06	Readings	PID	SC23030159V4	Normal	0.2
592-906376	9/3/2024 11:07	Readings	PID	SC23030159V4	Normal	0.3
592-906376	9/3/2024 11:08	Readings	PID	SC23030159V4	Normal	0.4
592-906376	9/3/2024 11:09	Readings	PID	SC23030159V4	Normal	0.3
592-906376	9/3/2024 11:10	Readings	PID	SC23030159V4	Normal	0.3
592-906376	9/3/2024 11:11	Readings	PID	SC23030159V4	Normal	0.2
592-906376	9/3/2024 11:12	Readings	PID	SC23030159V4	Normal	0.3
592-906376	9/3/2024 11:13	Readings	PID	SC23030159V4	Normal	0.3
592-906376	9/3/2024 11:14	Readings	PID	SC23030159V4	Normal	0.2
592-906376	9/3/2024 11:15	Readings	PID	SC23030159V4	Normal	0.3
592-906376	9/3/2024 11:16	Readings	PID	SC23030159V4	Normal	0.4
592-906376	9/3/2024 11:17	Readings	PID	SC23030159V4	Normal	0.2
592-906376	9/3/2024 11:18	Readings	PID	SC23030159V4	Normal	0.4
592-906376	9/3/2024 11:19	Readings	PID	SC23030159V4	Normal	0.4
592-906376	9/3/2024 11:20	Readings	PID	SC23030159V4	Normal	1.2
592-906376	9/3/2024 11:21	Readings	PID	SC23030159V4	Normal	0.7
592-906376	9/3/2024 11:22	Readings	PID	SC23030159V4	Normal	0.4
592-906376	9/3/2024 11:23	Readings	PID	SC23030159V4	Normal	0.5
592-906376	9/3/2024 11:24	Readings	PID	SC23030159V4	Normal	0.4
592-906376	9/3/2024 11:25	Readings	PID	SC23030159V4	Normal	0.3
592-906376	9/3/2024 11:26	Readings	PID	SC23030159V4	Normal	0.3
592-906376	9/3/2024 11:27	Readings	PID	SC23030159V4	Normal	0.2
592-906376	9/3/2024 11:28	Readings	PID	SC23030159V4	Normal	0.2
592-906376	9/3/2024 11:29	Readings	PID	SC23030159V4	Normal	0.2
592-906376	9/3/2024 11:30	Readings	PID	SC23030159V4	Normal	0.2
592-906376	9/3/2024 11:31	Readings	PID	SC23030159V4	Normal	0.5
592-906376	9/3/2024 11:32	Readings	PID	SC23030159V4	Normal	0.4
592-906376	9/3/2024 11:33	Readings	PID	SC23030159V4	Normal	0.3

592-906376	9/3/2024 11:34	Readings	PID	SC23030159V4	Normal	0.2
592-906376	9/3/2024 11:35	Readings	PID	SC23030159V4	Normal	0.3
592-906376	9/3/2024 11:36	Readings	PID	SC23030159V4	Normal	0.2
592-906376	9/3/2024 11:37	Readings	PID	SC23030159V4	Normal	0.1
592-906376	9/3/2024 11:38	Readings	PID	SC23030159V4	Normal	0.1
592-906376	9/3/2024 11:39	Readings	PID	SC23030159V4	Normal	0.2
592-906376	9/3/2024 11:40	Readings	PID	SC23030159V4	Normal	0.2
592-906376	9/3/2024 11:41	Readings	PID	SC23030159V4	Normal	0.4
592-906376	9/3/2024 11:42	Readings	PID	SC23030159V4	Normal	0.2
592-906376	9/3/2024 11:43	Readings	PID	SC23030159V4	Normal	0.2
592-906376	9/3/2024 11:44	Readings	PID	SC23030159V4	Normal	0.2
592-906376	9/3/2024 11:45	Readings	PID	SC23030159V4	Normal	0.2
592-906376	9/3/2024 11:46	Readings	PID	SC23030159V4	Normal	0.3
592-906376	9/3/2024 11:47	Readings	PID	SC23030159V4	Normal	0.3
592-906376	9/3/2024 11:48	Readings	PID	SC23030159V4	Normal	0.4
592-906376	9/3/2024 11:49	Readings	PID	SC23030159V4	Normal	0.2
592-906376	9/3/2024 11:50	Readings	PID	SC23030159V4	Normal	0.2
592-906376	9/3/2024 11:51	Readings	PID	SC23030159V4	Normal	0.2
592-906376	9/3/2024 11:52	Readings	PID	SC23030159V4	Normal	0.1
592-906376	9/3/2024 11:53	Readings	PID	SC23030159V4	Normal	0.2
592-906376	9/3/2024 11:54	Readings	PID	SC23030159V4	Normal	0.3
592-906376	9/3/2024 11:55	Readings	PID	SC23030159V4	Normal	0.2
592-906376	9/3/2024 11:56	Readings	PID	SC23030159V4	Normal	0.2
592-906376	9/3/2024 11:57	Readings	PID	SC23030159V4	Normal	0.1
592-906376	9/3/2024 11:58	Readings	PID	SC23030159V4	Normal	0.1
592-906376	9/3/2024 11:59	Readings	PID	SC23030159V4	Normal	0.1
592-906376	9/3/2024 12:00	Readings	PID	SC23030159V4	Normal	0.1
592-906376	9/3/2024 12:01	Readings	PID	SC23030159V4	Normal	0.2
592-906376	9/3/2024 12:02	Readings	PID	SC23030159V4	Normal	0.2
592-906376	9/3/2024 12:03	Readings	PID	SC23030159V4	Normal	0.1
592-906376	9/3/2024 12:04	Readings	PID	SC23030159V4	Normal	0.3
592-906376	9/3/2024 12:05	Readings	PID	SC23030159V4	Normal	0.2
592-906376	9/3/2024 12:06	Readings	PID	SC23030159V4	Normal	0.2

592-906376	9/3/2024 12:07	Readings	PID	SC23030159V4	Normal	0.1
592-906376	9/3/2024 12:08	Readings	PID	SC23030159V4	Normal	0.3
592-906376	9/3/2024 12:09	Readings	PID	SC23030159V4	Normal	0.2
592-906376	9/3/2024 12:10	Readings	PID	SC23030159V4	Normal	0.4
592-906376	9/3/2024 12:11	Readings	PID	SC23030159V4	Normal	0.3
592-906376	9/3/2024 12:12	Readings	PID	SC23030159V4	Normal	0.1
592-906376	9/3/2024 12:13	Readings	PID	SC23030159V4	Normal	0.1
592-906376	9/3/2024 12:14	Readings	PID	SC23030159V4	Normal	0.2
592-906376	9/3/2024 12:15	Readings	PID	SC23030159V4	Normal	0.1
592-906376	9/3/2024 12:16	Readings	PID	SC23030159V4	Normal	0.2
592-906376	9/3/2024 12:17	Readings	PID	SC23030159V4	Normal	0.1
592-906376	9/3/2024 12:18	Readings	PID	SC23030159V4	Normal	0.1
592-906376	9/3/2024 12:19	Readings	PID	SC23030159V4	Normal	0.1
592-906376	9/3/2024 12:20	Readings	PID	SC23030159V4	Normal	0.1
592-906376	9/3/2024 12:21	Readings	PID	SC23030159V4	Normal	0.2
592-906376	9/3/2024 12:22	Readings	PID	SC23030159V4	Normal	0.2
592-906376	9/3/2024 12:23	Readings	PID	SC23030159V4	Normal	0.3
592-906376	9/3/2024 12:24	Readings	PID	SC23030159V4	Normal	0.3
592-906376	9/3/2024 12:25	Readings	PID	SC23030159V4	Normal	0.2
592-906376	9/3/2024 12:26	Readings	PID	SC23030159V4	Normal	0.4
592-906376	9/3/2024 12:27	Readings	PID	SC23030159V4	Normal	0.2
592-906376	9/3/2024 12:28	Readings	PID	SC23030159V4	Normal	0.1
592-906376	9/3/2024 12:29	Readings	PID	SC23030159V4	Normal	0.1
592-906376	9/3/2024 12:30	Readings	PID	SC23030159V4	Normal	0.1
592-906376	9/3/2024 12:31	Readings	PID	SC23030159V4	Normal	0.3
592-906376	9/3/2024 12:32	Readings	PID	SC23030159V4	Normal	0.2
592-906376	9/3/2024 12:33	Readings	PID	SC23030159V4	Normal	0.2
592-906376	9/3/2024 12:34	Readings	PID	SC23030159V4	Normal	0.2
592-906376	9/3/2024 12:35	Readings	PID	SC23030159V4	Normal	0.3
592-906376	9/3/2024 12:36	Readings	PID	SC23030159V4	Normal	0.5
592-906376	9/3/2024 12:37	Readings	PID	SC23030159V4	Normal	0.3
592-906376	9/3/2024 12:38	Readings	PID	SC23030159V4	Normal	0.3
592-906376	9/3/2024 12:39	Readings	PID	SC23030159V4	Normal	0.4

592-906376	9/3/2024 12:40	Readings	PID	SC23030159V4	Normal	0.5
592-906376	9/3/2024 12:41	Readings	PID	SC23030159V4	Normal	1.2
592-906376	9/3/2024 12:42	Readings	PID	SC23030159V4	Normal	0.7
592-906376	9/3/2024 12:43	Readings	PID	SC23030159V4	Normal	0.5
592-906376	9/3/2024 12:44	Readings	PID	SC23030159V4	Normal	0.6
592-906376	9/3/2024 12:45	Readings	PID	SC23030159V4	Normal	0.3
592-906376	9/3/2024 12:46	Readings	PID	SC23030159V4	Normal	0.3
592-906376	9/3/2024 12:47	Readings	PID	SC23030159V4	Normal	0.2
592-906376	9/3/2024 12:48	Readings	PID	SC23030159V4	Normal	0.2
592-906376	9/3/2024 12:49	Readings	PID	SC23030159V4	Normal	0.2
592-906376	9/3/2024 12:50	Readings	PID	SC23030159V4	Normal	0.4
592-906376	9/3/2024 12:51	Readings	PID	SC23030159V4	Normal	0.2
592-906376	9/3/2024 12:52	Readings	PID	SC23030159V4	Normal	0.2
592-906376	9/3/2024 12:53	Readings	PID	SC23030159V4	Normal	0.2
592-906376	9/3/2024 12:54	Readings	PID	SC23030159V4	Normal	0.2
592-906376	9/3/2024 12:55	Readings	PID	SC23030159V4	Normal	0.2
592-906376	9/3/2024 12:56	Readings	PID	SC23030159V4	Normal	0.4
592-906376	9/3/2024 12:57	Readings	PID	SC23030159V4	Normal	0.7
592-906376	9/3/2024 12:58	Readings	PID	SC23030159V4	Normal	0.3
592-906376	9/3/2024 12:59	Readings	PID	SC23030159V4	Normal	0.3
592-906376	9/3/2024 13:00	Readings	PID	SC23030159V4	Normal	0.3
592-906376	9/3/2024 13:01	Readings	PID	SC23030159V4	Normal	0.2
592-906376	9/3/2024 13:02	Readings	PID	SC23030159V4	Normal	0.2
592-906376	9/3/2024 13:03	Readings	PID	SC23030159V4	Normal	0.3
592-906376	9/3/2024 13:04	Readings	PID	SC23030159V4	Normal	0.4
592-906376	9/3/2024 13:05	Readings	PID	SC23030159V4	Normal	0.3
592-906376	9/3/2024 13:06	Readings	PID	SC23030159V4	Normal	0.2
592-906376	9/3/2024 13:07	Readings	PID	SC23030159V4	Normal	0.1
592-906376	9/3/2024 13:08	Readings	PID	SC23030159V4	Normal	0.1
592-906376	9/3/2024 13:09	Readings	PID	SC23030159V4	Normal	0.1
592-906376	9/3/2024 13:10	Readings	PID	SC23030159V4	Normal	0.1
592-906376	9/3/2024 13:11	Readings	PID	SC23030159V4	Normal	0.1
592-906376	9/3/2024 13:12	Readings	PID	SC23030159V4	Normal	0.1

592-906376	9/3/2024 13:13	Readings	PID	SC23030159V4	Normal	0.1
592-906376	9/3/2024 13:14	Readings	PID	SC23030159V4	Normal	0.6
592-906376	9/3/2024 13:15	Readings	PID	SC23030159V4	Normal	0.3
592-906376	9/3/2024 13:16	Readings	PID	SC23030159V4	Normal	0.2
592-906376	9/3/2024 13:17	Readings	PID	SC23030159V4	Normal	0.2
592-906376	9/3/2024 13:18	Readings	PID	SC23030159V4	Normal	0.2
592-906376	9/3/2024 13:19	Readings	PID	SC23030159V4	Normal	0.3
592-906376	9/3/2024 13:20	Readings	PID	SC23030159V4	Normal	0.7
592-906376	9/3/2024 13:21	Readings	PID	SC23030159V4	Normal	0.4
592-906376	9/3/2024 13:22	Readings	PID	SC23030159V4	Normal	0.2
592-906376	9/3/2024 13:23	Readings	PID	SC23030159V4	Normal	0.4
592-906376	9/3/2024 13:24	Readings	PID	SC23030159V4	Normal	0.2
592-906376	9/3/2024 13:25	Readings	PID	SC23030159V4	Normal	0.4
592-906376	9/3/2024 13:26	Readings	PID	SC23030159V4	Normal	0.3
592-906376	9/3/2024 13:27	Readings	PID	SC23030159V4	Normal	0.3
592-906376	9/3/2024 13:28	Readings	PID	SC23030159V4	Normal	0.2
592-906376	9/3/2024 13:29	Readings	PID	SC23030159V4	Normal	0.3
592-906376	9/3/2024 13:30	Readings	PID	SC23030159V4	Normal	0.4
592-906376	9/3/2024 13:31	Readings	PID	SC23030159V4	Normal	0.2
592-906376	9/3/2024 13:32	Readings	PID	SC23030159V4	Normal	0.2
592-906376	9/3/2024 13:33	Readings	PID	SC23030159V4	Normal	0.2
592-906376	9/3/2024 13:34	Readings	PID	SC23030159V4	Normal	0.1
592-906376	9/3/2024 13:35	Readings	PID	SC23030159V4	Normal	0.1
592-906376	9/3/2024 13:36	Readings	PID	SC23030159V4	Normal	0.1
592-906376	9/3/2024 13:37	Readings	PID	SC23030159V4	Normal	0.1
592-906376	9/3/2024 13:38	Readings	PID	SC23030159V4	Normal	0.1
592-906376	9/3/2024 13:39	Readings	PID	SC23030159V4	Normal	0.2
592-906376	9/3/2024 13:40	Readings	PID	SC23030159V4	Normal	0.4
592-906376	9/3/2024 13:41	Readings	PID	SC23030159V4	Normal	0.2
592-906376	9/3/2024 13:42	Readings	PID	SC23030159V4	Normal	0.5
592-906376	9/3/2024 13:43	Readings	PID	SC23030159V4	Normal	0.4
592-906376	9/3/2024 13:44	Readings	PID	SC23030159V4	Normal	0.7
592-906376	9/3/2024 13:45	Readings	PID	SC23030159V4	Normal	0.2



592-906376	9/3/2024 13:46	Readings	PID	SC23030159V4	Normal	0.5
592-906376	9/3/2024 13:47	Readings	PID	SC23030159V4	Normal	0.2
592-906376	9/3/2024 13:48	Readings	PID	SC23030159V4	Normal	0.4
592-906376	9/3/2024 13:49	Readings	PID	SC23030159V4	Normal	0.3
592-906376	9/3/2024 13:50	Readings	PID	SC23030159V4	Normal	0.2
592-906376	9/3/2024 13:51	Readings	PID	SC23030159V4	Normal	0.3
592-906376	9/3/2024 13:52	Readings	PID	SC23030159V4	Normal	0.4
592-906376	9/3/2024 13:53	Readings	PID	SC23030159V4	Normal	0.4
592-906376	9/3/2024 13:54	Readings	PID	SC23030159V4	Normal	0.4
592-906376	9/3/2024 13:55	Readings	PID	SC23030159V4	Normal	0.3
592-906376	9/3/2024 13:56	Readings	PID	SC23030159V4	Normal	0.3
592-906376	9/3/2024 13:57	Readings	PID	SC23030159V4	Normal	0.8
592-906376	9/3/2024 13:58	Readings	PID	SC23030159V4	Normal	0.3
592-906376	9/3/2024 13:59	Readings	PID	SC23030159V4	Normal	0.2
592-906376	9/3/2024 14:00	Readings	PID	SC23030159V4	Normal	0.3
592-906376	9/3/2024 14:01	Readings	PID	SC23030159V4	Normal	0.6
592-906376	9/3/2024 14:02	Readings	PID	SC23030159V4	Normal	0.2
592-906376	9/3/2024 14:03	Readings	PID	SC23030159V4	Normal	0.2
592-906376	9/3/2024 14:04	Readings	PID	SC23030159V4	Normal	0.2
592-906376	9/3/2024 14:05	Readings	PID	SC23030159V4	Normal	0.2
592-906376	9/3/2024 14:06	Readings	PID	SC23030159V4	Normal	0.1
592-906376	9/3/2024 14:07	Readings	PID	SC23030159V4	Normal	0.1
592-906376	9/3/2024 14:08	Readings	PID	SC23030159V4	Normal	0.1
592-906376	9/3/2024 14:09	Readings	PID	SC23030159V4	Normal	0.1
592-906376	9/3/2024 14:10	Readings	PID	SC23030159V4	Normal	0.1
592-906376	9/3/2024 14:11	Readings	PID	SC23030159V4	Normal	0.1
592-906376	9/3/2024 14:12	Readings	PID	SC23030159V4	Normal	0.2
592-906376	9/3/2024 14:13	Readings	PID	SC23030159V4	Normal	0.2
592-906376	9/3/2024 14:14	Readings	PID	SC23030159V4	Normal	0.2
592-906376	9/3/2024 14:15	Readings	PID	SC23030159V4	Normal	0.2
592-906376	9/3/2024 14:16	Readings	PID	SC23030159V4	Normal	0.2
592-906376	9/3/2024 14:17	Readings	PID	SC23030159V4	Normal	0.2
592-906376	9/3/2024 14:18	Readings	PID	SC23030159V4	Normal	0.3

592-906376	9/3/2024 14:19	Readings	PID	SC23030159V4	Normal	0.2
592-906376	9/3/2024 14:20	Readings	PID	SC23030159V4	Normal	0.2
592-906376	9/3/2024 14:21	Readings	PID	SC23030159V4	Normal	0.2
592-906376	9/3/2024 14:22	Readings	PID	SC23030159V4	Normal	0.1
592-906376	9/3/2024 14:23	Readings	PID	SC23030159V4	Normal	0.2
592-906376	9/3/2024 14:24	Readings	PID	SC23030159V4	Normal	0.1
592-906376	9/3/2024 14:25	Readings	PID	SC23030159V4	Normal	0.1
592-906376	9/3/2024 14:26	Readings	PID	SC23030159V4	Normal	0.1
592-906376	9/3/2024 14:27	Readings	PID	SC23030159V4	Normal	0.1
592-906376	9/3/2024 14:28	Readings	PID	SC23030159V4	Normal	0.1
592-906376	9/3/2024 14:29	Readings	PID	SC23030159V4	Normal	0.3
592-906376	9/3/2024 14:30	Readings	PID	SC23030159V4	Normal	0.3
592-906376	9/3/2024 14:31	Readings	PID	SC23030159V4	Normal	0.3
592-906376	9/3/2024 14:32	Readings	PID	SC23030159V4	Normal	0.4
592-906376	9/3/2024 14:33	Readings	PID	SC23030159V4	Normal	0.3
592-906376	9/3/2024 14:34	Readings	PID	SC23030159V4	Normal	0.2
592-906376	9/3/2024 14:35	Readings	PID	SC23030159V4	Normal	0.2
592-906376	9/3/2024 14:36	Readings	PID	SC23030159V4	Normal	0.2
592-906376	9/3/2024 14:37	Readings	PID	SC23030159V4	Normal	0.2
592-906376	9/3/2024 14:38	Readings	PID	SC23030159V4	Normal	0.2
592-906376	9/3/2024 14:39	Readings	PID	SC23030159V4	Normal	0.1
592-906376	9/3/2024 14:40	Readings	PID	SC23030159V4	Normal	0.1
592-906376	9/3/2024 14:41	Readings	PID	SC23030159V4	Normal	0.1
592-906376	9/3/2024 14:42	Readings	PID	SC23030159V4	Normal	0.1
592-906376	9/3/2024 14:43	Readings	PID	SC23030159V4	Normal	0.1
592-906376	9/3/2024 14:44	Readings	PID	SC23030159V4	Normal	0.1
592-906376	9/3/2024 14:45	Readings	PID	SC23030159V4	Normal	0.1
592-906376	9/3/2024 14:46	Readings	PID	SC23030159V4	Normal	0.1
592-906376	9/3/2024 14:47	Readings	PID	SC23030159V4	Normal	0.1
592-906376	9/3/2024 14:48	Readings	PID	SC23030159V4	Normal	0.1
592-906376	9/3/2024 14:49	Readings	PID	SC23030159V4	Normal	0.1
592-906376	9/3/2024 14:50	Readings	PID	SC23030159V4	Normal	0.1
592-906376	9/3/2024 14:51	Readings	PID	SC23030159V4	Normal	0.1









592-906376	9/3/2024 17:04	Readings	PID	SC23030159V4	Normal	0.1
592-906376	9/3/2024 17:05	Readings	PID	SC23030159V4	Normal	0.1
592-906376	9/3/2024 17:06	Readings	PID	SC23030159V4	Normal	0.1
592-906376	9/3/2024 17:07	Readings	PID	SC23030159V4	Normal	0.1
592-906376	9/3/2024 17:08	Readings	PID	SC23030159V4	Normal	0.1
592-906376	9/3/2024 17:09	Readings	PID	SC23030159V4	Normal	0.1
592-906376	9/3/2024 17:10	Readings	PID	SC23030159V4	Normal	0.1
592-906376	9/3/2024 17:11	Readings	PID	SC23030159V4	Normal	0.1
592-906376	9/3/2024 17:12	Readings	PID	SC23030159V4	Normal	0.1
592-906376	9/3/2024 17:13	Readings	PID	SC23030159V4	Normal	0.1
592-906376	9/3/2024 17:14	Readings	PID	SC23030159V4	Normal	0.1
592-906376	9/3/2024 17:15	Readings	PID	SC23030159V4	Normal	0.1
592-906376	9/3/2024 17:16	Readings	PID	SC23030159V4	Normal	0.1
592-906376	9/3/2024 17:17	Readings	PID	SC23030159V4	Normal	0.1
592-906376	9/3/2024 17:18	Readings	PID	SC23030159V4	Normal	0.2
592-906376	9/3/2024 17:19	Readings	PID	SC23030159V4	Normal	0.8
592-906376	9/3/2024 17:20	Readings	PID	SC23030159V4	Normal	0.2
592-906376	9/3/2024 17:21	Readings	PID	SC23030159V4	Normal	0.1
592-906376	9/3/2024 17:22	Readings	PID	SC23030159V4	Normal	0.1
592-906376	9/3/2024 17:23	Readings	PID	SC23030159V4	Normal	0.1
592-906376	9/3/2024 17:24	Readings	PID	SC23030159V4	Normal	0.1
592-906376	9/3/2024 17:25	Readings	PID	SC23030159V4	Normal	0.1
592-906376	9/3/2024 17:26	Readings	PID	SC23030159V4	Normal	0.1
592-906376	9/3/2024 17:27	Readings	PID	SC23030159V4	Normal	0.1
592-906376	9/3/2024 17:28	Readings	PID	SC23030159V4	Normal	0.1
592-906376	9/3/2024 17:29	Readings	PID	SC23030159V4	Normal	0.1
592-906376	9/3/2024 17:30	Readings	PID	SC23030159V4	Normal	0.1
592-906376	9/3/2024 17:31	Readings	PID	SC23030159V4	Normal	0.1
592-906376	9/3/2024 17:32	Readings	PID	SC23030159V4	Normal	0.1
592-906376	9/3/2024 17:33	Readings	PID	SC23030159V4	Normal	0.1
592-906376	9/3/2024 17:34	Readings	PID	SC23030159V4	Normal	0.1
592-906376	9/3/2024 17:35	Readings	PID	SC23030159V4	Normal	0.1
592-906376	9/3/2024 17:36	Readings	PID	SC23030159V4	Normal	0.1

592-906376	9/3/2024 17:37	Readings	PID	SC23030159V4	Normal	0.1
592-906376	9/3/2024 17:38	Readings	PID	SC23030159V4	Normal	0.1
592-906376	9/3/2024 17:39	Readings	PID	SC23030159V4	Normal	0.1
592-906376	9/3/2024 17:40	Readings	PID	SC23030159V4	Normal	0.1
592-906376	9/3/2024 17:41	Readings	PID	SC23030159V4	Normal	0.1
592-906376	9/3/2024 17:42	Readings	PID	SC23030159V4	Normal	0.1
592-906376	9/3/2024 17:43	Readings	PID	SC23030159V4	Normal	0.1
592-906376	9/3/2024 17:44	Readings	PID	SC23030159V4	Normal	0.1
592-906376	9/3/2024 17:45	Readings	PID	SC23030159V4	Normal	0.1
592-906376	9/3/2024 17:46	Readings	PID	SC23030159V4	Normal	0.1
592-906376	9/3/2024 17:47	Readings	PID	SC23030159V4	Normal	0.1
592-906376	9/3/2024 17:48	Readings	PID	SC23030159V4	Normal	0.1
592-906376	9/3/2024 17:49	Readings	PID	SC23030159V4	Normal	0.1
592-906376	9/3/2024 17:50	Readings	PID	SC23030159V4	Normal	0.1
592-906376	9/3/2024 17:51	Readings	PID	SC23030159V4	Normal	0.1
592-906376	9/3/2024 17:52	Readings	PID	SC23030159V4	Normal	0.1
592-906376	9/3/2024 17:53	Readings	PID	SC23030159V4	Normal	0.1
592-906376	9/3/2024 17:54	Readings	PID	SC23030159V4	Normal	0.1
592-906376	9/3/2024 17:55	Readings	PID	SC23030159V4	Normal	0.1
592-906376	9/3/2024 17:56	Readings	PID	SC23030159V4	Normal	0.1
592-906376	9/3/2024 17:57	Readings	PID	SC23030159V4	Normal	0.1
592-906376	9/3/2024 17:58	Readings	PID	SC23030159V4	Normal	0.1
592-906376	9/3/2024 17:59	Readings	PID	SC23030159V4	Normal	0.1
592-906376	9/3/2024 18:00	Readings	PID	SC23030159V4	Normal	0.2
592-906376	9/3/2024 18:01	Readings	PID	SC23030159V4	Normal	0.5
592-906376	9/3/2024 18:02	Readings	PID	SC23030159V4	Normal	0.2
592-906376	9/3/2024 18:03	Readings	PID	SC23030159V4	Normal	0.1
592-906376	9/3/2024 18:04	Readings	PID	SC23030159V4	Normal	0.1
592-906376	9/3/2024 18:05	Readings	PID	SC23030159V4	Normal	0.1
592-906376	9/3/2024 18:06	Readings	PID	SC23030159V4	Normal	0.1
592-906376	9/3/2024 18:07	Readings	PID	SC23030159V4	Normal	0.1
592-906376	9/3/2024 18:08	Readings	PID	SC23030159V4	Normal	0.1
592-906376	9/3/2024 18:09	Readings	PID	SC23030159V4	Normal	0.1



592-906376	9/3/2024 18:10	Readings	PID	SC23030159V4	Normal	0.1
592-906376	9/3/2024 18:11	Readings	PID	SC23030159V4	Normal	0.1
592-906376	9/3/2024 18:12	Readings	PID	SC23030159V4	Normal	0.1
592-906376	9/3/2024 18:13	Readings	PID	SC23030159V4	Normal	0.1
592-906376	9/3/2024 18:14	Readings	PID	SC23030159V4	Normal	0.1
592-906376	9/3/2024 18:15	Readings	PID	SC23030159V4	Normal	0.2
592-906376	9/3/2024 18:16	Readings	PID	SC23030159V4	Normal	0.1
592-906376	9/3/2024 18:17	Readings	PID	SC23030159V4	Normal	0.1
592-906376	9/3/2024 18:18	Readings	PID	SC23030159V4	Normal	0.1
592-906376	9/3/2024 18:19	Readings	PID	SC23030159V4	Normal	0.2
592-906376	9/3/2024 18:20	Readings	PID	SC23030159V4	Normal	0.1
592-906376	9/3/2024 18:21	Readings	PID	SC23030159V4	Normal	0.1
592-906376	9/3/2024 18:22	Readings	PID	SC23030159V4	Normal	0.2
592-906376	9/3/2024 18:23	Readings	PID	SC23030159V4	Normal	0.1
592-906376	9/3/2024 18:24	Readings	PID	SC23030159V4	Normal	0.1
592-906376	9/3/2024 18:25	Readings	PID	SC23030159V4	Normal	0.1
592-906376	9/3/2024 18:26	Readings	PID	SC23030159V4	Normal	0.1
592-906376	9/3/2024 18:27	Readings	PID	SC23030159V4	Normal	0.2
592-906376	9/3/2024 18:28	Readings	PID	SC23030159V4	Normal	0.1
592-906376	9/3/2024 18:29	Readings	PID	SC23030159V4	Normal	0.3
592-906376	9/3/2024 18:30	Readings	PID	SC23030159V4	Normal	0.2
592-906376	9/3/2024 18:31	Readings	PID	SC23030159V4	Normal	0.1
592-906376	9/3/2024 18:32	Readings	PID	SC23030159V4	Normal	0.1
592-906376	9/3/2024 18:33	Readings	PID	SC23030159V4	Normal	0.4
592-906376	9/3/2024 18:34	Readings	PID	SC23030159V4	Normal	0.2
592-906376	9/3/2024 18:35	Readings	PID	SC23030159V4	Normal	0.2
592-906376	9/3/2024 18:36	Readings	PID	SC23030159V4	Normal	0.1
592-906376	9/3/2024 18:37	Readings	PID	SC23030159V4	Normal	0.1
592-906376	9/3/2024 18:38	Readings	PID	SC23030159V4	Normal	0.1
592-906376	9/3/2024 18:39	Readings	PID	SC23030159V4	Normal	0.1
592-906376	9/3/2024 18:40	Readings	PID	SC23030159V4	Normal	0.1
592-906376	9/3/2024 18:41	Readings	PID	SC23030159V4	Normal	0.1
592-906376	9/3/2024 18:42	Readings	PID	SC23030159V4	Normal	0.1

592-906376	9/3/2024 18:43	Readings	PID	SC23030159V4	Normal	0.1
592-906376	9/3/2024 18:44	Readings	PID	SC23030159V4	Normal	0.1
592-906376	9/3/2024 18:45	Readings	PID	SC23030159V4	Normal	0.1
592-906376	9/3/2024 18:46	Readings	PID	SC23030159V4	Normal	0.1
592-906376	9/3/2024 18:47	Readings	PID	SC23030159V4	Normal	0.1
592-906376	9/3/2024 18:48	Readings	PID	SC23030159V4	Normal	0.1
592-906376	9/3/2024 18:49	Readings	PID	SC23030159V4	Normal	0.1
592-906376	9/3/2024 18:50	Readings	PID	SC23030159V4	Normal	0.1
592-906376	9/3/2024 18:51	Readings	PID	SC23030159V4	Normal	0.1
592-906376	9/3/2024 18:52	Readings	PID	SC23030159V4	Normal	0.2
592-906376	9/3/2024 18:53	Readings	PID	SC23030159V4	Normal	0.1
592-906376	9/3/2024 18:54	Readings	PID	SC23030159V4	Normal	0.1
592-906376	9/3/2024 18:55	Readings	PID	SC23030159V4	Normal	0.1
592-906376	9/3/2024 18:56	Readings	PID	SC23030159V4	Normal	0.1
592-906376	9/3/2024 18:57	Readings	PID	SC23030159V4	Normal	0.3
592-906376	9/3/2024 18:58	Readings	PID	SC23030159V4	Normal	0.3
592-906376	9/3/2024 18:59	Readings	PID	SC23030159V4	Normal	0.3
592-906376	9/3/2024 19:00	Readings	PID	SC23030159V4	Normal	0.2
592-906376	9/3/2024 19:01	Readings	PID	SC23030159V4	Normal	0.1
592-906376	9/3/2024 19:02	Readings	PID	SC23030159V4	Normal	0.1
592-906376	9/3/2024 19:03	Readings	PID	SC23030159V4	Normal	0.2
592-906376	9/3/2024 19:04	Readings	PID	SC23030159V4	Normal	0.2
592-906376	9/3/2024 19:05	Readings	PID	SC23030159V4	Normal	0.1
592-906376	9/3/2024 19:06	Readings	PID	SC23030159V4	Normal	0.3
592-906376	9/3/2024 19:07	Readings	PID	SC23030159V4	Normal	0.1
592-906376	9/3/2024 19:08	Readings	PID	SC23030159V4	Normal	0.1
592-906376	9/3/2024 19:09	Readings	PID	SC23030159V4	Normal	0.4
592-906376	9/3/2024 19:10	Readings	PID	SC23030159V4	Normal	0.5
592-906376	9/3/2024 19:11	Readings	PID	SC23030159V4	Normal	0.2
592-906376	9/3/2024 19:12	Readings	PID	SC23030159V4	Normal	0.1
592-906376	9/3/2024 19:13	Readings	PID	SC23030159V4	Normal	0.3
592-906376	9/3/2024 19:14	Readings	PID	SC23030159V4	Normal	0.4
592-906376	9/3/2024 19:15	Readings	PID	SC23030159V4	Normal	0.3

592-906376	9/3/2024 19:16 Readings	PID	SC23030159V4	Normal	0.5
592-906376	9/3/2024 19:17 Readings	PID	SC23030159V4	Normal	0.4
592-906376	9/3/2024 19:18 Readings	PID	SC23030159V4	Normal	0.4
592-906376	9/3/2024 19:19 Readings	PID	SC23030159V4	Normal	0.3
592-906376	9/3/2024 19:20 Readings	PID	SC23030159V4	Normal	0.2
592-906376	9/3/2024 19:21 Readings	PID	SC23030159V4	Normal	0.3
592-906376	9/3/2024 19:22 Readings	PID	SC23030159V4	Normal	0.7
592-906376	9/3/2024 19:23 Readings	PID	SC23030159V4	Normal	0.4

Instrument Name	DustTrak II
Model Number	8530
Serial Number	8530154916
Firmware Version	3.1
Calibration Date	8/2/2024
Test Name	MANUAL_006
Test Start Time	6:46:24 AM
Test Start Date	9/3/2024
Test Length [D:H:M]	0:12:41
Test Interval [M:S]	1:00
Mass Average [mg/m3]	0.019
Mass Minimum [mg/m3]	0.009
Mass Maximum [mg/m3]	0.226
Mass TWA [mg/m3]	0.021
Photometric User Cal	1
Flow User Cal	0
Errors	
Number of Samples	761

Elapsed Time [s]	Mass [mg/m3]	Alarms	Errors
6:47	0.226		
6:48	0.027		
6:49	0.011		
6:50	0.02		
6:51	0.01		
6:52	0.011		
6:53	0.012		
6:54	0.011		
6:55	0.012		
6:56	0.013		
6:57	0.013		
6:58	0.01		
6:59	0.009		
7:00	0.01		
7:01	0.012		
7:02	0.016		
7:03	0.014		
7:04	0.013		
7:05	0.019		
7:06	0.028		
7:07	0.033		
7:08	0.015		
7:09	0.01		
7:10	0.16		

7:11	0.033
7:12	0.013
7:13	0.01
7:14	0.016
7:15	0.014
7:16	0.009
7:17	0.009
7:18	0.01
7:19	0.011
7:20	0.019
7:21	0.013
7:22	0.013
7:23	0.018
7:24	0.012
7:25	0.013
7:26	0.013
7:27	0.015
7:28	0.022
7:29	0.016
7:30	0.024
7:31	0.014
7:32	0.014
7:33	0.014
7:34	0.012
7:35	0.012
7:36	0.033
7:37	0.015
7:38	0.011
7:39	0.011
7:40	0.013
7:41	0.017
7:42	0.01
7:43	0.01
7:44	0.01
7:45	0.032
7:46	0.015
7:47	0.014
7:48	0.01
7:49	0.009
7:50	0.014
7:51	0.012
7:52	0.013
7:53	0.013
7:54	0.018

7:55	0.012
7:56	0.015
7:57	0.011
7:58	0.01
7:59	0.02
8:00	0.018
8:01	0.012
8:02	0.01
8:03	0.01
8:04	0.021
8:05	0.018
8:06	0.016
8:07	0.014
8:08	0.012
8:09	0.012
8:10	0.011
8:11	0.011
8:12	0.018
8:13	0.014
8:14	0.01
8:15	0.01
8:16	0.011
8:17	0.015
8:18	0.017
8:19	0.022
8:20	0.019
8:21	0.017
8:22	0.014
8:23	0.013
8:24	0.013
8:25	0.016
8:26	0.012
8:27	0.017
8:28	0.014
8:29	0.02
8:30	0.018
8:31	0.015
8:32	0.028
8:33	0.023
8:34	0.017
8:35	0.019
8:36	0.016
8:37	0.019
8:38	0.026

8:39	0.016
8:40	0.016
8:41	0.016
8:42	0.019
8:43	0.015
8:44	0.013
8:45	0.014
8:46	0.014
8:47	0.014
8:48	0.012
8:49	0.012
8:50	0.024
8:51	0.028
8:52	0.014
8:53	0.013
8:54	0.016
8:55	0.013
8:56	0.014
8:57	0.014
8:58	0.014
8:59	0.012
9:00	0.015
9:01	0.016
9:02	0.019
9:03	0.015
9:04	0.016
9:05	0.015
9:06	0.014
9:07	0.014
9:08	0.018
9:09	0.018
9:10	0.017
9:11	0.013
9:12	0.013
9:13	0.013
9:14	0.012
9:15	0.013
9:16	0.015
9:17	0.02
9:18	0.013
9:19	0.015
9:20	0.013
9:21	0.014
9:22	0.015

9:23	0.015
9:24	0.013
9:25	0.015
9:26	0.022
9:27	0.046
9:28	0.047
9:29	0.017
9:30	0.017
9:31	0.035
9:32	0.027
9:33	0.016
9:34	0.017
9:35	0.032
9:36	0.035
9:37	0.027
9:38	0.021
9:39	0.012
9:40	0.046
9:41	0.026
9:42	0.026
9:43	0.015
9:44	0.016
9:45	0.028
9:46	0.018
9:47	0.019
9:48	0.036
9:49	0.04
9:50	0.054
9:51	0.024
9:52	0.024
9:53	0.053
9:54	0.043
9:55	0.045
9:56	0.041
9:57	0.036
9:58	0.037
9:59	0.02
10:00	0.019
10:01	0.028
10:02	0.026
10:03	0.026
10:04	0.018
10:05	0.023
10:06	0.017



10:07	0.018
10:08	0.019
10:09	0.015
10:10	0.015
10:11	0.037
10:12	0.026
10:13	0.015
10:14	0.015
10:15	0.025
10:16	0.016
10:17	0.016
10:18	0.015
10:19	0.013
10:20	0.014
10:21	0.026
10:22	0.036
10:23	0.018
10:24	0.014
10:25	0.03
10:26	0.015
10:27	0.014
10:28	0.016
10:29	0.013
10:30	0.016
10:31	0.012
10:32	0.016
10:33	0.055
10:34	0.025
10:35	0.026
10:36	0.022
10:37	0.016
10:38	0.016
10:39	0.016
10:40	0.013
10:41	0.015
10:42	0.018
10:43	0.028
10:44	0.032
10:45	0.014
10:46	0.017
10:47	0.02
10:48	0.016
10:49	0.014
10:50	0.02

10:51	0.057
10:52	0.164
10:53	0.169
10:54	0.138
10:55	0.101
10:56	0.078
10:57	0.098
10:58	0.044
10:59	0.031
11:00	0.021
11:01	0.015
11:02	0.028
11:03	0.03
11:04	0.016
11:05	0.013
11:06	0.017
11:07	0.031
11:08	0.018
11:09	0.016
11:10	0.025
11:11	0.016
11:12	0.047
11:13	0.023
11:14	0.015
11:15	0.054
11:16	0.049
11:17	0.017
11:18	0.021
11:19	0.073
11:20	0.042
11:21	0.027
11:22	0.031
11:23	0.018
11:24	0.014
11:25	0.018
11:26	0.019
11:27	0.019
11:28	0.028
11:29	0.014
11:30	0.014
11:31	0.019
11:32	0.021
11:33	0.021
11:34	0.016

11:35	0.027
11:36	0.025
11:37	0.019
11:38	0.042
11:39	0.015
11:40	0.015
11:41	0.029
11:42	0.028
11:43	0.018
11:44	0.02
11:45	0.027
11:46	0.058
11:47	0.042
11:48	0.063
11:49	0.033
11:50	0.043
11:51	0.019
11:52	0.114
11:53	0.02
11:54	0.025
11:55	0.047
11:56	0.048
11:57	0.025
11:58	0.031
11:59	0.024
12:00	0.013
12:01	0.011
12:02	0.011
12:03	0.015
12:04	0.012
12:05	0.014
12:06	0.014
12:07	0.013
12:08	0.012
12:09	0.013
12:10	0.011
12:11	0.031
12:12	0.015
12:13	0.018
12:14	0.012
12:15	0.013
12:16	0.013
12:17	0.015
12:18	0.014

12:19	0.012
12:20	0.014
12:21	0.012
12:22	0.011
12:23	0.011
12:24	0.012
12:25	0.011
12:26	0.012
12:27	0.013
12:28	0.013
12:29	0.012
12:30	0.012
12:31	0.012
12:32	0.012
12:33	0.012
12:34	0.013
12:35	0.012
12:36	0.012
12:37	0.015
12:38	0.016
12:39	0.013
12:40	0.013
12:41	0.024
12:42	0.013
12:43	0.012
12:44	0.016
12:45	0.014
12:46	0.012
12:47	0.012
12:48	0.01
12:49	0.011
12:50	0.012
12:51	0.014
12:52	0.013
12:53	0.012
12:54	0.013
12:55	0.014
12:56	0.011
12:57	0.011
12:58	0.016
12:59	0.014
13:00	0.014
13:01	0.024
13:02	0.022

13:03	0.013
13:04	0.017
13:05	0.045
13:06	0.014
13:07	0.024
13:08	0.011
13:09	0.011
13:10	0.01
13:11	0.011
13:12	0.011
13:13	0.012
13:14	0.014
13:15	0.013
13:16	0.018
13:17	0.015
13:18	0.015
13:19	0.016
13:20	0.015
13:21	0.015
13:22	0.017
13:23	0.019
13:24	0.013
13:25	0.011
13:26	0.014
13:27	0.012
13:28	0.011
13:29	0.016
13:30	0.015
13:31	0.015
13:32	0.016
13:33	0.014
13:34	0.011
13:35	0.011
13:36	0.027
13:37	0.017
13:38	0.014
13:39	0.014
13:40	0.015
13:41	0.016
13:42	0.022
13:43	0.015
13:44	0.012
13:45	0.017
13:46	0.012

13:47	0.014
13:48	0.018
13:49	0.013
13:50	0.013
13:51	0.012
13:52	0.012
13:53	0.011
13:54	0.011
13:55	0.011
13:56	0.011
13:57	0.011
13:58	0.014
13:59	0.014
14:00	0.046
14:01	0.023
14:02	0.013
14:03	0.012
14:04	0.015
14:05	0.016
14:06	0.026
14:07	0.024
14:08	0.018
14:09	0.018
14:10	0.016
14:11	0.014
14:12	0.018
14:13	0.014
14:14	0.015
14:15	0.012
14:16	0.014
14:17	0.015
14:18	0.022
14:19	0.015
14:20	0.013
14:21	0.021
14:22	0.017
14:23	0.016
14:24	0.021
14:25	0.02
14:26	0.015
14:27	0.019
14:28	0.028
14:29	0.018
14:30	0.012

14:31	0.011
14:32	0.011
14:33	0.012
14:34	0.014
14:35	0.013
14:36	0.017
14:37	0.012
14:38	0.012
14:39	0.012
14:40	0.014
14:41	0.012
14:42	0.015
14:43	0.013
14:44	0.023
14:45	0.02
14:46	0.021
14:47	0.019
14:48	0.015
14:49	0.02
14:50	0.015
14:51	0.017
14:52	0.016
14:53	0.015
14:54	0.02
14:55	0.029
14:56	0.044
14:57	0.024
14:58	0.015
14:59	0.012
15:00	0.013
15:01	0.013
15:02	0.016
15:03	0.016
15:04	0.028
15:05	0.015
15:06	0.013
15:07	0.024
15:08	0.014
15:09	0.014
15:10	0.015
15:11	0.014
15:12	0.015
15:13	0.026
15:14	0.096

15:15	0.061
15:16	0.02
15:17	0.014
15:18	0.023
15:19	0.013
15:20	0.032
15:21	0.022
15:22	0.012
15:23	0.013
15:24	0.022
15:25	0.04
15:26	0.017
15:27	0.026
15:28	0.039
15:29	0.035
15:30	0.035
15:31	0.042
15:32	0.024
15:33	0.012
15:34	0.016
15:35	0.012
15:36	0.016
15:37	0.023
15:38	0.021
15:39	0.02
15:40	0.016
15:41	0.014
15:42	0.017
15:43	0.013
15:44	0.012
15:45	0.012
15:46	0.014
15:47	0.013
15:48	0.02
15:49	0.016
15:50	0.017
15:51	0.015
15:52	0.013
15:53	0.043
15:54	0.016
15:55	0.014
15:56	0.017
15:57	0.016
15:58	0.022



15:59	0.016
16:00	0.017
16:01	0.012
16:02	0.011
16:03	0.011
16:04	0.012
16:05	0.012
16:06	0.014
16:07	0.011
16:08	0.011
16:09	0.014
16:10	0.012
16:11	0.012
16:12	0.011
16:13	0.011
16:14	0.011
16:15	0.013
16:16	0.018
16:17	0.026
16:18	0.019
16:19	0.015
16:20	0.016
16:21	0.011
16:22	0.011
16:23	0.011
16:24	0.01
16:25	0.016
16:26	0.011
16:27	0.012
16:28	0.011
16:29	0.011
16:30	0.015
16:31	0.012
16:32	0.012
16:33	0.013
16:34	0.016
16:35	0.013
16:36	0.011
16:37	0.011
16:38	0.011
16:39	0.013
16:40	0.011
16:41	0.013
16:42	0.011

16:43	0.013
16:44	0.012
16:45	0.012
16:46	0.012
16:47	0.013
16:48	0.012
16:49	0.013
16:50	0.015
16:51	0.016
16:52	0.014
16:53	0.021
16:54	0.028
16:55	0.014
16:56	0.012
16:57	0.012
16:58	0.013
16:59	0.015
17:00	0.012
17:01	0.012
17:02	0.023
17:03	0.012
17:04	0.012
17:05	0.011
17:06	0.011
17:07	0.012
17:08	0.018
17:09	0.019
17:10	0.012
17:11	0.013
17:12	0.012
17:13	0.011
17:14	0.01
17:15	0.011
17:16	0.012
17:17	0.012
17:18	0.012
17:19	0.016
17:20	0.018
17:21	0.013
17:22	0.033
17:23	0.013
17:24	0.013
17:25	0.017
17:26	0.019

17:27	0.011
17:28	0.012
17:29	0.013
17:30	0.019
17:31	0.012
17:32	0.011
17:33	0.012
17:34	0.012
17:35	0.011
17:36	0.011
17:37	0.014
17:38	0.013
17:39	0.015
17:40	0.016
17:41	0.012
17:42	0.011
17:43	0.013
17:44	0.016
17:45	0.011
17:46	0.011
17:47	0.011
17:48	0.011
17:49	0.012
17:50	0.013
17:51	0.011
17:52	0.012
17:53	0.011
17:54	0.011
17:55	0.012
17:56	0.012
17:57	0.013
17:58	0.014
17:59	0.012
18:00	0.012
18:01	0.012
18:02	0.011
18:03	0.013
18:04	0.011
18:05	0.012
18:06	0.012
18:07	0.011
18:08	0.013
18:09	0.011
18:10	0.011

18:11	0.013
18:12	0.013
18:13	0.012
18:14	0.012
18:15	0.012
18:16	0.012
18:17	0.012
18:18	0.013
18:19	0.013
18:20	0.013
18:21	0.013
18:22	0.013
18:23	0.012
18:24	0.012
18:25	0.012
18:26	0.012
18:27	0.012
18:28	0.012
18:29	0.013
18:30	0.015
18:31	0.013
18:32	0.012
18:33	0.011
18:34	0.014
18:35	0.012
18:36	0.012
18:37	0.012
18:38	0.012
18:39	0.011
18:40	0.011
18:41	0.012
18:42	0.013
18:43	0.012
18:44	0.012
18:45	0.012
18:46	0.012
18:47	0.012
18:48	0.012
18:49	0.014
18:50	0.012
18:51	0.013
18:52	0.014
18:53	0.014
18:54	0.013

18:55	0.013
18:56	0.012
18:57	0.015
18:58	0.012
18:59	0.012
19:00	0.013
19:01	0.014
19:02	0.015
19:03	0.015
19:04	0.015
19:05	0.013
19:06	0.012
19:07	0.013
19:08	0.012
19:09	0.013
19:10	0.012
19:11	0.013
19:12	0.014
19:13	0.017
19:14	0.016
19:15	0.015
19:16	0.015
19:17	0.016
19:18	0.016
19:19	0.016
19:20	0.016
19:21	0.019
19:22	0.018
19:23	0.016
19:24	0.016
19:25	0.027
19:26	0.031
19:27	0.021

Device Serial No	Log Time	Log Type	Sensor 1 Type	Sensor 1 Serial Number	Sensor 1 Status	Sensor 1 Gas Reading
592-906020	9/3/2024 18:34	Readings	PID	SC23030396CB	Normal	0
592-906020	9/3/2024 18:33	Readings	PID	SC23030396CB	Normal	0
592-906020	9/3/2024 18:32	Readings	PID	SC23030396CB	Normal	0
592-906020	9/3/2024 18:31	Readings	PID	SC23030396CB	Normal	0
592-906020	9/3/2024 18:30	Readings	PID	SC23030396CB	Normal	0
592-906020	9/3/2024 18:29	Readings	PID	SC23030396CB	Normal	0
592-906020	9/3/2024 18:28	Readings	PID	SC23030396CB	Normal	0
592-906020	9/3/2024 18:27	Readings	PID	SC23030396CB	Normal	0
592-906020	9/3/2024 18:26	Readings	PID	SC23030396CB	Normal	0
592-906020	9/3/2024 18:25	Readings	PID	SC23030396CB	Normal	0
592-906020	9/3/2024 18:24	Readings	PID	SC23030396CB	Normal	0
592-906020	9/3/2024 18:23	Readings	PID	SC23030396CB	Normal	0
592-906020	9/3/2024 18:22	Readings	PID	SC23030396CB	Normal	0
592-906020	9/3/2024 18:21	Readings	PID	SC23030396CB	Normal	0
592-906020	9/3/2024 18:20	Readings	PID	SC23030396CB	Normal	0
592-906020	9/3/2024 18:19	Readings	PID	SC23030396CB	Normal	0
592-906020	9/3/2024 18:18	Readings	PID	SC23030396CB	Normal	0
592-906020	9/3/2024 18:17	Readings	PID	SC23030396CB	Normal	0
592-906020	9/3/2024 18:16	Readings	PID	SC23030396CB	Normal	0
592-906020	9/3/2024 18:15	Readings	PID	SC23030396CB	Normal	0
592-906020	9/3/2024 18:14	Readings	PID	SC23030396CB	Normal	0
592-906020	9/3/2024 18:13	Readings	PID	SC23030396CB	Normal	0
592-906020	9/3/2024 18:12	Readings	PID	SC23030396CB	Normal	0
592-906020	9/3/2024 18:11	Readings	PID	SC23030396CB	Normal	0
592-906020	9/3/2024 18:10	Readings	PID	SC23030396CB	Normal	0
592-906020	9/3/2024 18:09	Readings	PID	SC23030396CB	Normal	0
592-906020	9/3/2024 18:08	Readings	PID	SC23030396CB	Normal	0
592-906020	9/3/2024 18:07	Readings	PID	SC23030396CB	Normal	0
592-906020	9/3/2024 18:06	Readings	PID	SC23030396CB	Normal	0
592-906020	9/3/2024 18:05	Readings	PID	SC23030396CB	Normal	0
592-906020	9/3/2024 18:04	Readings	PID	SC23030396CB	Normal	0
592-906020	9/3/2024 18:03	Readings	PID	SC23030396CB	Normal	0















































592-906020	9/3/2024 7:02	Readings	PID	SC23030396CB	Normal	0
592-906020	9/3/2024 7:01	Readings	PID	SC23030396CB	Normal	0
592-906020	9/3/2024 7:00	Readings	PID	SC23030396CB	Normal	0
592-906020	9/3/2024 6:59	Readings	PID	SC23030396CB	Normal	0
592-906020	9/3/2024 6:58	Readings	PID	SC23030396CB	Normal	0
592-906020	9/3/2024 6:57	Readings	PID	SC23030396CB	Normal	0
592-906020	9/3/2024 6:56	Readings	PID	SC23030396CB	Normal	0
592-906020	9/3/2024 6:55	Readings	PID	SC23030396CB	Normal	0
592-906020	9/3/2024 6:54	Readings	PID	SC23030396CB	Normal	0
592-906020	9/3/2024 6:53	Readings	PID	SC23030396CB	Normal	0
592-906020	9/3/2024 6:52	Readings	PID	SC23030396CB	Normal	0
592-906020	9/3/2024 6:51	Readings	PID	SC23030396CB	Normal	0
592-906020	9/3/2024 6:50	Readings	PID	SC23030396CB	Normal	0
592-906020	9/3/2024 6:49	Readings	PID	SC23030396CB	Normal	0
592-906020	9/3/2024 6:48	Readings	PID	SC23030396CB	Normal	0
592-906020	9/3/2024 6:47	Readings	PID	SC23030396CB	Normal	0
592-906020	9/3/2024 6:46	Readings	PID	SC23030396CB	Normal	0
592-906020	9/3/2024 6:45	Readings	PID	SC23030396CB	Normal	0
592-906020	9/3/2024 6:44	Readings	PID	SC23030396CB	Normal	0
592-906020	9/3/2024 6:43	Readings	PID	SC23030396CB	Normal	0
592-906020	9/3/2024 6:42	Readings	PID	SC23030396CB	Normal	0
592-906020	9/3/2024 6:41	CONFIG	PID	SC23030396CB		