



DAILY STATUS REPORT

Prepared By:
Thomas Jensen

WEATHER	Snow	Rain	Overcast	X	Partly Cloudy	X	Bright Sun	Wind
TEMP.	< 32	32-50	50-70	X	70-85	X	>85	E – 5 mph

IEEG Project No:	13928	NYSDEC BCP Site No:	C224367	Date: 09/09/24
Project:	251 Douglass Street, Brooklyn, NY			

<p>Consultant: Impact Environmental Engineering and Geology, PLLC (IEEG)</p> <p>Time On: 06:45 Time Out: 17:30</p>	<p>Personnel On Site: IEEG (Environmental) – Thomas Jensen Broadway Construction Group – Shannon Dowling / Tom Caporale WSP – Chris DeSclafani Cascade – John Vollmer Concrete Courses FSR (Test Piles) GES (Leo)</p> <p>Equipment On Site: (3) MiniRAE 3000 PID, (3) DustTrak II</p>
---	---

Scope of Work: IEEG to deploy CAMP stations according to wind direction; Cascade to continue installing ISS columns; Concrete Courses to continue with super structure work.

Site Activities:

- IEEG deployed three (3) CAMP stations prior to the start of work activities;
- Cascade received one (1) delivery of slag;
- Cascade consolidated remaining swell material into stockpile;
- Concrete Courses begin excavation for bottom of slab on the eastern portion of the site;
- IEEG collected a waste classification sample of four (4) drums on the site;
- IEEG collected a waste classification sample for the material being excavated for the bottom of slab;
- Concrete Courses continued superstructure work in the Butler corridor;
- IEEG applied ISS ATMOS foam spray to the swell material stockpile at the end of the shift;
- Cascade drilled **Column 367** with column specification below:
 - Column is 8’ diameter and drilled 36’ deep from Site grade;
 - The column consisted of a total of 19 batches;
- Cascade drilled **Column 369** with column specification below:
 - Column is 8’ diameter and drilled 36’ deep from Site grade;
 - The column consisted of a total of 16 batches;

Community Air Monitoring Program (CAMP) - CAMP action level for dust (0.1 mg/m³) and VOCs (5 ppm)

- PID remained at nominal levels throughout the day
- No sustained dust exceedances were observed over a 15-min period during monitoring.
- Startup Upwind Conditions – PID = _0.0_ ppm, Dust = _0.718_ mg/m³ @ 06:46
- High Conditions (Upwind) – PID = _0.0_ ppm, Dust = _3.39_ mg/m³ @ 08:42
- High Conditions (Downwind 1) – PID = _1.4_ ppm @ 13:05, Dust = _1.04_ mg/m³ @ 15:23
- High Conditions (Downwind 2) – PID = _0.0_ ppm, Dust = _0.855_ mg/m³ @ 10:27

Notable Site Conditions:

- None

Planned for the Next Day/Week:

- Cascade to truck out swell material and begin removing concrete slab on the central portion of the site;
- Concrete Courses to continue with work on the superstructure in the Butler corridor.



PHOTO LOG

251 DOUGLASS STREET, BROOKLYN, NY



Photo 1-
Representative
photo of ISS
column
installation.



Photo 2-
Representative
photo of
excavation for
bottom of slab.



Photo 3-
Representative
photo of a slag
delivery.



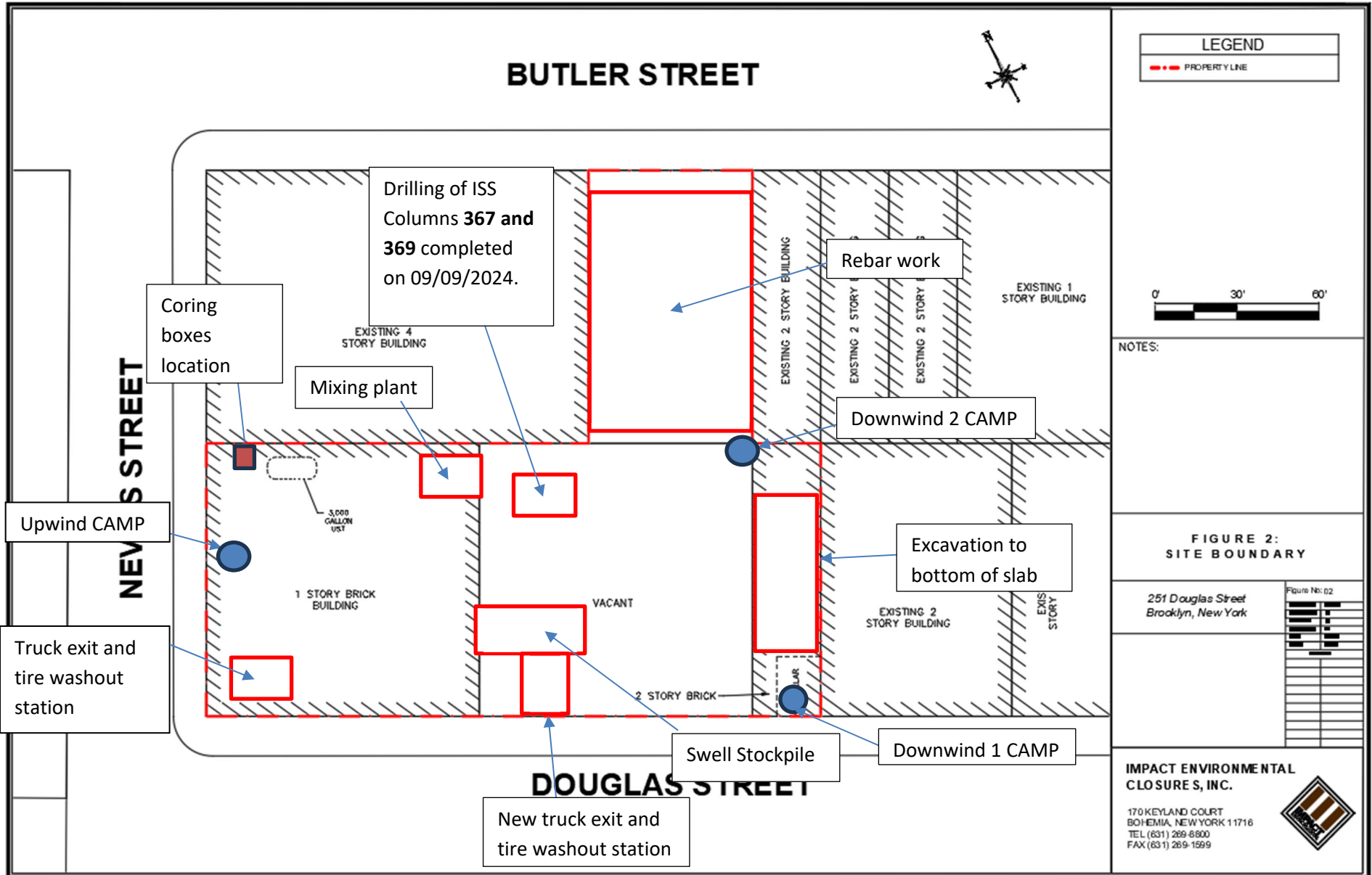
Photo 4-
Representative
photo of
stockpile sprayed
with foam at the
end of the day.

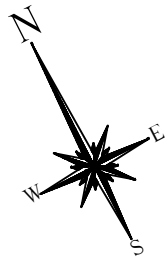


SITE PLANS

251 DOUGLASS STREET, BROOKLYN, NY







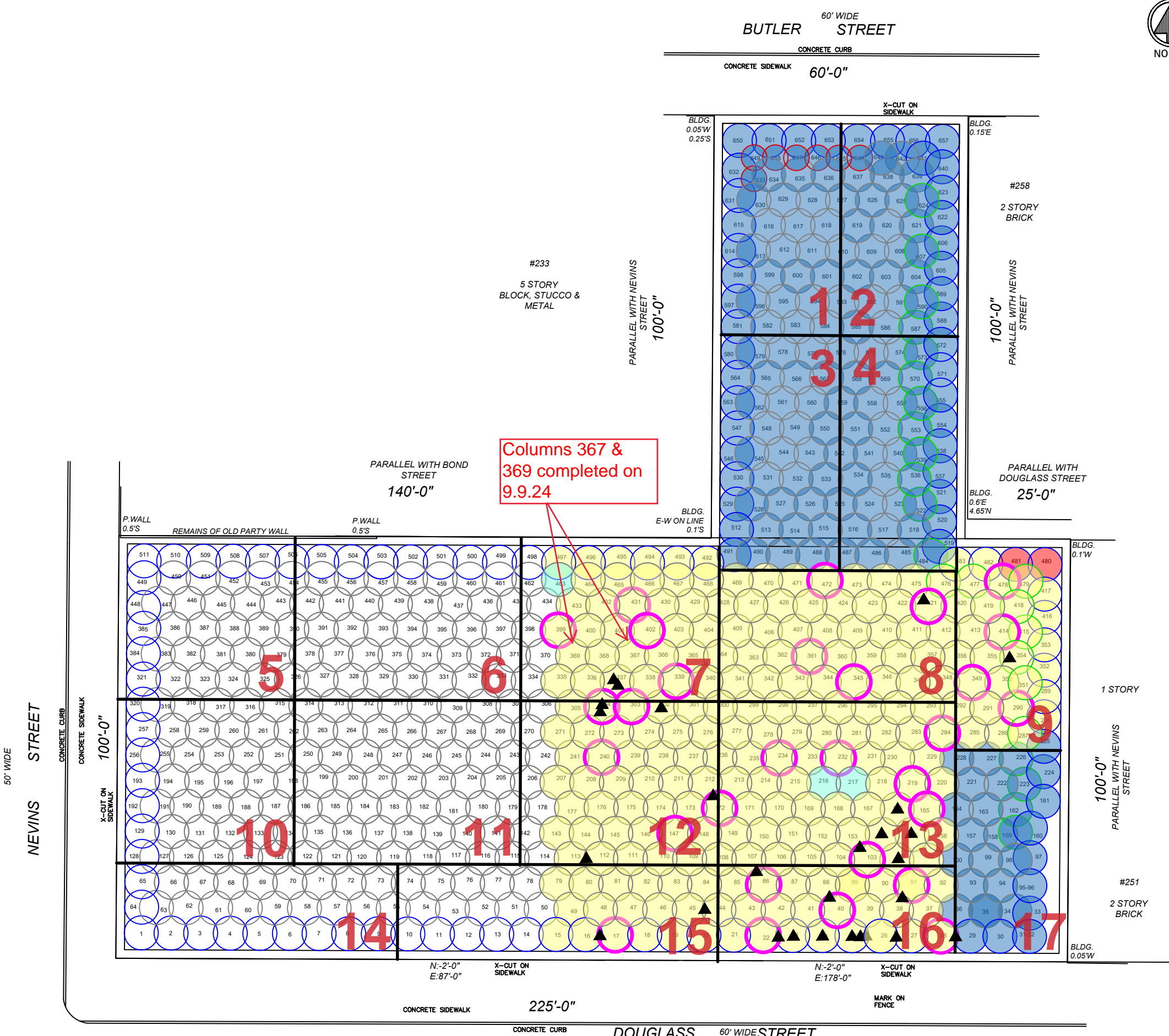
LEGEND

- PROPERTY LINE
- 55' EIGHT FOOT DIA. HYDRAULIC COLUMN (TYP.)
- EIGHT FOOT DIA. INNER COLUMN (TYP.)
- APPROVED TO 55'
- SIX FOOT DIA. HYDRAULIC COLUMN (TYP.)
- ISS COLUMN INSTALLED TO TERMINAL DEPTH
- ISS COLUMN UNABLE TO BE INSTALLED TO TERMINAL DEPTH
- ISS COLUMN UNABLE TO BE INSTALLED DUE TO OBSTRUCTION
- ISS COLUMN / GRID APPROVED BY DEC
- WET MIX SAMPLE COLLECTED FROM ISS COLUMN
- ▲ COMPLETED CORING LOCATION

NOTES:
 1. THE BASE MAP WAS DRAWN FROM A PLAN ENTITLED, ALTA/NSPS LAND TITLE SURVEY, PREPARED BY PERFECT POINT LAND SURVEYING OF BROOKLYN, NY AND WAS RECEIVED ELECTRONICALLY ON APRIL 2023 WITH AN ORIGINAL SCALE: 1" = 20'.

251 Douglass Street Brooklyn, New York	
PROJECT NO:	13028-01
DESIGNED BY:	AB
DRAWN BY:	AB
CHECKED BY:	DP
DATE:	8/27/2024
SCALE:	N.T.S.
REVISIONS	

IMPACT ENVIRONMENTAL ENGINEERING & GEOLOGY PLLC.
 170 KEYLAND COURT
 BOHEMIA, NEW YORK 11716
 TEL (631) 269-8800
 FAX (631) 269-1599



Columns 367 &
369 completed on
9.9.24





UPWIND CAMP READINGS

251 DOUGLASS STREET, BROOKLYN, NY

Instrument Name	DustTrak II
Model Number	8530
Serial Number	8530154916
Firmware Version	3.1
Calibration Date	8/2/2024
Test Name	MANUAL_011
Test Start Time	6:46:46 AM
Test Start Date	9/9/2024
Test Length [D:H:M]	0:09:22
Test Interval [M:S]	1:00
Mass Average [mg/m3]	0.043
Mass Minimum [mg/m3]	0.008
Mass Maximum [mg/m3]	3.39
Mass TWA [mg/m3]	0.046
Photometric User Cal	1
Flow User Cal	0
Errors	
Number of Samples	562

Elapsed Time [s]	Mass [mg/m3]	Alarms	Errors
6:46	0.718		
6:47	0.011		
6:48	0.018		
6:49	0.012		
6:50	0.013		
6:51	0.013		
6:52	0.013		
6:53	0.012		
6:54	0.011		
6:55	0.011		
6:56	0.018		
6:57	0.011		
6:58	0.01		
6:59	0.011		
7:00	0.01		
7:01	0.011		
7:02	0.011		
7:03	0.01		
7:04	0.01		
7:05	0.01		
7:06	0.01		
7:07	0.01		
7:08	0.012		
7:09	0.01		
7:10	0.011		
7:11	0.011		
7:12	0.012		

7:13	0.011
7:14	0.011
7:15	0.011
7:16	0.017
7:17	0.014
7:18	0.017
7:19	0.018
7:20	0.013
7:21	0.013
7:22	0.023
7:23	0.046
7:24	0.015
7:25	0.014
7:26	0.013
7:27	0.086
7:28	0.022
7:29	0.017
7:30	0.011
7:31	0.013
7:32	0.014
7:33	0.013
7:34	0.011
7:35	0.012
7:36	0.013
7:37	0.012
7:38	0.012
7:39	0.017
7:40	0.014
7:41	0.013
7:42	0.014
7:43	0.012
7:44	0.015
7:45	0.016
7:46	0.099
7:47	0.163
7:48	0.125
7:49	0.084
7:50	0.035
7:51	0.046
7:52	0.028
7:53	0.054
7:54	0.036
7:55	0.02
7:56	0.061
7:57	0.036
7:58	0.027
7:59	0.034

8:00	0.025
8:01	0.02
8:02	0.031
8:03	0.024
8:04	0.024
8:05	0.039
8:06	0.209
8:07	0.061
8:08	0.056
8:09	0.093
8:10	0.031
8:11	0.071
8:12	0.043
8:13	0.068
8:14	0.059
8:15	0.04
8:16	0.037
8:17	0.041
8:18	0.05
8:19	0.049
8:20	0.063
8:21	0.05
8:22	0.026
8:23	0.019
8:24	0.015
8:25	0.088
8:26	0.071
8:27	0.045
8:28	0.055
8:29	0.085
8:30	0.025
8:31	0.041
8:32	0.093
8:33	0.027
8:34	0.025
8:35	0.059
8:36	0.257
8:37	0.192
8:38	0.07
8:39	0.035
8:40	0.047
8:41	0.255
8:42	3.39
8:43	0.172
8:44	0.048
8:45	0.019
8:46	0.023

8:47	0.065
8:48	0.057
8:49	0.143
8:50	0.048
8:51	0.212
8:52	0.199
8:53	0.116
8:54	0.136
8:55	0.044
8:56	0.04
8:57	0.04
8:58	0.242
8:59	0.061
9:00	0.091
9:01	0.047
9:02	0.036
9:03	0.027
9:04	0.02
9:05	0.023
9:06	0.018
9:07	0.02
9:08	0.018
9:09	0.02
9:10	0.014
9:11	0.017
9:12	0.024
9:13	0.076
9:14	0.031
9:15	0.029
9:16	0.028
9:17	0.026
9:18	0.024
9:19	0.022
9:20	0.019
9:21	0.025
9:22	0.018
9:23	0.018
9:24	0.021
9:25	0.021
9:26	0.016
9:27	0.017
9:28	0.038
9:29	0.026
9:30	0.036
9:31	0.04
9:32	0.025
9:33	0.029

9:34	0.036
9:35	0.034
9:36	0.06
9:37	0.06
9:38	0.09
9:39	0.039
9:40	0.028
9:41	0.035
9:42	0.047
9:43	0.079
9:44	0.061
9:45	0.052
9:46	0.062
9:47	0.051
9:48	0.051
9:49	0.061
9:50	0.023
9:51	0.02
9:52	0.024
9:53	0.021
9:54	0.023
9:55	0.029
9:56	0.026
9:57	0.041
9:58	0.024
9:59	0.15
10:00	0.102
10:01	0.069
10:02	0.042
10:03	0.097
10:04	0.041
10:05	0.028
10:06	0.054
10:07	0.059
10:08	0.054
10:09	0.043
10:10	0.056
10:11	0.031
10:12	0.018
10:13	0.022
10:14	0.048
10:15	0.073
10:16	0.022
10:17	0.037
10:18	0.057
10:19	0.082
10:20	0.032

10:21	0.056
10:22	0.141
10:23	0.151
10:24	0.095
10:25	0.115
10:26	0.228
10:27	0.044
10:28	0.041
10:29	0.02
10:30	0.026
10:31	0.032
10:32	0.045
10:33	0.029
10:34	0.03
10:35	0.039
10:36	0.017
10:37	0.046
10:38	0.028
10:39	0.024
10:40	0.019
10:41	0.072
10:42	0.049
10:43	0.097
10:44	0.02
10:45	0.019
10:46	0.026
10:47	0.028
10:48	0.028
10:49	0.039
10:50	0.1
10:51	0.059
10:52	0.05
10:53	0.033
10:54	0.081
10:55	0.064
10:56	0.044
10:57	0.036
10:58	0.035
10:59	0.044
11:00	0.052
11:01	0.075
11:02	0.053
11:03	0.046
11:04	0.022
11:05	0.021
11:06	0.017
11:07	0.025

11:08	0.043
11:09	0.021
11:10	0.031
11:11	0.02
11:12	0.054
11:13	0.034
11:14	0.024
11:15	0.019
11:16	0.025
11:17	0.022
11:18	0.028
11:19	0.034
11:20	0.017
11:21	0.019
11:22	0.016
11:23	0.017
11:24	0.017
11:25	0.027
11:26	0.018
11:27	0.017
11:28	0.023
11:29	0.029
11:30	0.021
11:31	0.028
11:32	0.015
11:33	0.018
11:34	0.014
11:35	0.012
11:36	0.015
11:37	0.045
11:38	0.022
11:39	0.016
11:40	0.045
11:41	0.023
11:42	0.022
11:43	0.03
11:44	0.018
11:45	0.032
11:46	0.044
11:47	0.077
11:48	0.194
11:49	0.171
11:50	0.131
11:51	0.066
11:52	0.053
11:53	0.091
11:54	0.034

11:55	0.093
11:56	0.05
11:57	0.04
11:58	0.057
11:59	0.016
12:00	0.012
12:01	0.02
12:02	0.012
12:03	0.011
12:04	0.014
12:05	0.026
12:06	0.032
12:07	0.019
12:08	0.04
12:09	0.05
12:10	0.023
12:11	0.012
12:12	0.019
12:13	0.021
12:14	0.021
12:15	0.012
12:16	0.017
12:17	0.013
12:18	0.012
12:19	0.015
12:20	0.014
12:21	0.011
12:22	0.029
12:23	0.012
12:24	0.011
12:25	0.009
12:26	0.01
12:27	0.011
12:28	0.01
12:29	0.013
12:30	0.012
12:31	0.018
12:32	0.012
12:33	0.017
12:34	0.015
12:35	0.011
12:36	0.014
12:37	0.013
12:38	0.012
12:39	0.021
12:40	0.153
12:41	0.012

12:42	0.016
12:43	0.02
12:44	0.039
12:45	0.016
12:46	0.017
12:47	0.032
12:48	0.015
12:49	0.072
12:50	0.029
12:51	0.016
12:52	0.071
12:53	0.026
12:54	0.016
12:55	0.019
12:56	0.015
12:57	0.027
12:58	0.016
12:59	0.023
13:00	0.035
13:01	0.024
13:02	0.03
13:03	0.027
13:04	0.018
13:05	0.022
13:06	0.024
13:07	0.018
13:08	0.032
13:09	0.034
13:10	0.057
13:11	0.029
13:12	0.022
13:13	0.017
13:14	0.018
13:15	0.024
13:16	0.015
13:17	0.016
13:18	0.022
13:19	0.016
13:20	0.038
13:21	0.032
13:22	0.051
13:23	0.016
13:24	0.011
13:25	0.016
13:26	0.027
13:27	0.014
13:28	0.022

13:29	0.023
13:30	0.015
13:31	0.015
13:32	0.015
13:33	0.015
13:34	0.022
13:35	0.023
13:36	0.014
13:37	0.017
13:38	0.014
13:39	0.062
13:40	0.036
13:41	0.024
13:42	0.013
13:43	0.019
13:44	0.013
13:45	0.025
13:46	0.021
13:47	0.014
13:48	0.016
13:49	0.021
13:50	0.013
13:51	0.011
13:52	0.016
13:53	0.021
13:54	0.016
13:55	0.017
13:56	0.016
13:57	0.016
13:58	0.023
13:59	0.034
14:00	0.033
14:01	0.027
14:02	0.02
14:03	0.019
14:04	0.02
14:05	0.022
14:06	0.021
14:07	0.031
14:08	0.021
14:09	0.032
14:10	0.027
14:11	0.023
14:12	0.087
14:13	0.041
14:14	0.03
14:15	0.015

14:16	0.041
14:17	0.032
14:18	0.032
14:19	0.036
14:20	0.032
14:21	0.035
14:22	0.029
14:23	0.017
14:24	0.03
14:25	0.027
14:26	0.013
14:27	0.039
14:28	0.036
14:29	0.034
14:30	0.029
14:31	0.03
14:32	0.031
14:33	0.02
14:34	0.029
14:35	0.032
14:36	0.035
14:37	0.026
14:38	0.029
14:39	0.021
14:40	0.08
14:41	0.015
14:42	0.017
14:43	0.037
14:44	0.078
14:45	0.039
14:46	0.022
14:47	0.046
14:48	0.03
14:49	0.02
14:50	0.022
14:51	0.027
14:52	0.038
14:53	0.04
14:54	0.08
14:55	0.058
14:56	0.026
14:57	0.02
14:58	0.022
14:59	0.015
15:00	0.018
15:01	0.025
15:02	0.046

15:03	0.016
15:04	0.022
15:05	0.027
15:06	0.041
15:07	0.138
15:08	0.029
15:09	0.014
15:10	0.023
15:11	0.072
15:12	0.077
15:13	0.019
15:14	0.023
15:15	0.012
15:16	0.014
15:17	0.034
15:18	0.038
15:19	0.016
15:20	0.021
15:21	0.022
15:22	0.019
15:23	0.08
15:24	0.029
15:25	0.038
15:26	0.03
15:27	0.012
15:28	0.027
15:29	0.028
15:30	0.013
15:31	0.042
15:32	0.013
15:33	0.015
15:34	0.017
15:35	0.012
15:36	0.011
15:37	0.012
15:38	0.014
15:39	0.011
15:40	0.013
15:41	0.011
15:42	0.014
15:43	0.025
15:44	0.016
15:45	0.012
15:46	0.014
15:47	0.013
15:48	0.016
15:49	0.013

15:50	0.013
15:51	0.015
15:52	0.021
15:53	0.012
15:54	0.012
15:55	0.024
15:56	0.015
15:57	0.012
15:58	0.009
15:59	0.011
16:00	0.011
16:01	0.011
16:02	0.01
16:03	0.01
16:04	0.009
16:05	0.008
16:06	0.012
16:07	0.011

DOWNWIND CAMP READINGS

251 DOUGLASS STREET, BROOKLYN, NY



Instrument Name	DustTrak DRX
Model Number	8533
Serial Number	8533181207
Firmware Version	3.1
Calibration Date	7/11/2024
Test Name	MANUAL_005
Test Start Time	6:44:03 AM
Test Start Date	9/9/2024
Test Length [D:H:M]	0:09:21
Test Interval [M:S]	1:00
PM10 Average [mg/m3]	0.049
PM10 Minimum [mg/m3]	0.007
PM10 Maximum [mg/m3]	1.04
PM10 TWA [mg/m3]	0.048
Photometric User Cal	1
Size Correction User Cal	1
Flow User Cal	0
Errors	
Number of Samples	561

Elapsed Time [s]	PM10 [mg/m3]	Alarms	Errors
6:44	0.027		
6:45	0.01		
6:46	0.008		
6:47	0.011		
6:48	0.007		
6:49	0.009		
6:50	0.008		
6:51	0.01		
6:52	0.01		
6:53	0.009		
6:54	0.013		
6:55	0.009		
6:56	0.011		
6:57	0.01		
6:58	0.009		
6:59	0.008		
7:00	0.025		
7:01	0.008		
7:02	0.007		
7:03	0.007		
7:04	0.007		
7:05	0.007		
7:06	0.009		
7:07	0.01		
7:08	0.008		
7:09	0.011		

7:10	0.008
7:11	0.009
7:12	0.011
7:13	0.009
7:14	0.008
7:15	0.009
7:16	0.008
7:17	0.01
7:18	0.013
7:19	0.015
7:20	0.014
7:21	0.01
7:22	0.012
7:23	0.057
7:24	0.016
7:25	0.01
7:26	0.013
7:27	0.011
7:28	0.015
7:29	0.018
7:30	0.011
7:31	0.009
7:32	0.009
7:33	0.009
7:34	0.007
7:35	0.008
7:36	0.008
7:37	0.007
7:38	0.009
7:39	0.011
7:40	0.013
7:41	0.009
7:42	0.008
7:43	0.009
7:44	0.009
7:45	0.008
7:46	0.008
7:47	0.007
7:48	0.027
7:49	0.18
7:50	0.029
7:51	0.027
7:52	0.027
7:53	0.022
7:54	0.012
7:55	0.009
7:56	0.013

7:57	0.014
7:58	0.013
7:59	0.017
8:00	0.011
8:01	0.011
8:02	0.011
8:03	0.012
8:04	0.013
8:05	0.017
8:06	0.014
8:07	0.013
8:08	0.018
8:09	0.031
8:10	0.016
8:11	0.015
8:12	0.039
8:13	0.04
8:14	0.02
8:15	0.017
8:16	0.012
8:17	0.011
8:18	0.011
8:19	0.032
8:20	0.031
8:21	0.015
8:22	0.013
8:23	0.012
8:24	0.01
8:25	0.011
8:26	0.058
8:27	0.021
8:28	0.022
8:29	0.014
8:30	0.052
8:31	0.061
8:32	0.027
8:33	0.402
8:34	0.184
8:35	0.012
8:36	0.014
8:37	0.011
8:38	0.012
8:39	0.016
8:40	0.013
8:41	0.071
8:42	0.098
8:43	0.025

8:44	0.018
8:45	0.017
8:46	0.01
8:47	0.013
8:48	0.019
8:49	0.013
8:50	0.018
8:51	0.037
8:52	0.019
8:53	0.018
8:54	0.015
8:55	0.014
8:56	0.014
8:57	0.014
8:58	0.013
8:59	0.022
9:00	0.011
9:01	0.025
9:02	0.01
9:03	0.01
9:04	0.009
9:05	0.016
9:06	0.015
9:07	0.014
9:08	0.015
9:09	0.01
9:10	0.05
9:11	0.008
9:12	0.02
9:13	0.016
9:14	0.012
9:15	0.026
9:16	0.013
9:17	0.03
9:18	0.016
9:19	0.014
9:20	0.015
9:21	0.017
9:22	0.015
9:23	0.013
9:24	0.031
9:25	0.023
9:26	0.013
9:27	0.017
9:28	0.031
9:29	0.031
9:30	0.028

9:31	0.033
9:32	0.032
9:33	0.023
9:34	0.03
9:35	0.035
9:36	0.05
9:37	0.027
9:38	0.032
9:39	0.043
9:40	0.037
9:41	0.081
9:42	0.052
9:43	0.044
9:44	0.028
9:45	0.076
9:46	0.034
9:47	0.046
9:48	0.078
9:49	0.022
9:50	0.02
9:51	0.017
9:52	0.047
9:53	0.049
9:54	0.022
9:55	0.113
9:56	0.042
9:57	0.033
9:58	0.043
9:59	0.078
10:00	0.101
10:01	0.064
10:02	0.024
10:03	0.081
10:04	0.082
10:05	0.018
10:06	0.014
10:07	0.014
10:08	0.04
10:09	0.013
10:10	0.012
10:11	0.015
10:12	0.044
10:13	0.151
10:14	0.022
10:15	0.047
10:16	0.023
10:17	0.016

10:18	0.014
10:19	0.02
10:20	0.054
10:21	0.111
10:22	0.033
10:23	0.041
10:24	0.062
10:25	0.032
10:26	0.035
10:27	0.02
10:28	0.015
10:29	0.014
10:30	0.012
10:31	0.013
10:32	0.034
10:33	0.02
10:34	0.014
10:35	0.015
10:36	0.033
10:37	0.043
10:38	0.022
10:39	0.015
10:40	0.013
10:41	0.013
10:42	0.013
10:43	0.014
10:44	0.012
10:45	0.013
10:46	0.015
10:47	0.013
10:48	0.016
10:49	0.016
10:50	0.016
10:51	0.01
10:52	0.032
10:53	0.015
10:54	0.021
10:55	0.022
10:56	0.025
10:57	0.03
10:58	0.02
10:59	0.013
11:00	0.019
11:01	0.03
11:02	0.019
11:03	0.017
11:04	0.02

11:05	0.017
11:06	0.58
11:07	0.89
11:08	0.078
11:09	0.047
11:10	0.017
11:11	0.121
11:12	0.048
11:13	0.036
11:14	0.076
11:15	0.026
11:16	0.627
11:17	0.106
11:18	0.064
11:19	0.069
11:20	0.054
11:21	0.016
11:22	0.012
11:23	0.041
11:24	0.024
11:25	0.019
11:26	0.03
11:27	0.021
11:28	0.016
11:29	0.059
11:30	0.044
11:31	0.043
11:32	0.019
11:33	0.014
11:34	0.02
11:35	0.014
11:36	0.013
11:37	0.034
11:38	0.079
11:39	0.021
11:40	0.026
11:41	0.874
11:42	0.03
11:43	0.065
11:44	0.036
11:45	0.025
11:46	0.034
11:47	0.066
11:48	0.054
11:49	0.025
11:50	0.34
11:51	0.117

11:52	0.02
11:53	0.016
11:54	0.014
11:55	0.029
11:56	0.098
11:57	0.091
11:58	0.032
11:59	0.032
12:00	0.015
12:01	0.013
12:02	0.018
12:03	0.014
12:04	0.014
12:05	0.024
12:06	0.034
12:07	0.05
12:08	0.035
12:09	0.057
12:10	0.083
12:11	0.035
12:12	0.016
12:13	0.053
12:14	0.044
12:15	0.029
12:16	0.014
12:17	0.013
12:18	0.014
12:19	0.041
12:20	0.022
12:21	0.025
12:22	0.025
12:23	0.022
12:24	0.017
12:25	0.011
12:26	0.013
12:27	0.017
12:28	0.016
12:29	0.013
12:30	0.018
12:31	0.024
12:32	0.016
12:33	0.021
12:34	0.023
12:35	0.015
12:36	0.021
12:37	0.018
12:38	0.014

12:39	0.393
12:40	0.934
12:41	0.211
12:42	0.03
12:43	0.047
12:44	0.19
12:45	0.413
12:46	0.017
12:47	0.025
12:48	0.032
12:49	0.404
12:50	0.042
12:51	0.067
12:52	0.182
12:53	0.086
12:54	0.069
12:55	0.099
12:56	0.056
12:57	0.023
12:58	0.022
12:59	0.105
13:00	0.046
13:01	0.103
13:02	0.063
13:03	0.078
13:04	0.064
13:05	0.027
13:06	0.026
13:07	0.053
13:08	0.063
13:09	0.126
13:10	0.648
13:11	0.086
13:12	0.11
13:13	0.057
13:14	0.207
13:15	0.08
13:16	0.122
13:17	0.054
13:18	0.026
13:19	0.021
13:20	0.024
13:21	0.107
13:22	0.068
13:23	0.03
13:24	0.043
13:25	0.029

13:26	0.03
13:27	0.341
13:28	0.141
13:29	0.022
13:30	0.019
13:31	0.036
13:32	0.02
13:33	0.019
13:34	0.04
13:35	0.047
13:36	0.026
13:37	0.026
13:38	0.02
13:39	0.036
13:40	0.045
13:41	0.109
13:42	0.031
13:43	0.04
13:44	0.032
13:45	0.049
13:46	0.069
13:47	0.022
13:48	0.036
13:49	0.033
13:50	0.074
13:51	0.06
13:52	0.028
13:53	0.109
13:54	0.048
13:55	0.03
13:56	0.04
13:57	0.021
13:58	0.024
13:59	0.022
14:00	0.153
14:01	0.085
14:02	0.025
14:03	0.021
14:04	0.041
14:05	0.027
14:06	0.022
14:07	0.025
14:08	0.047
14:09	0.021
14:10	0.024
14:11	0.039
14:12	0.05

14:13	0.2
14:14	0.058
14:15	0.022
14:16	0.021
14:17	0.04
14:18	0.035
14:19	0.037
14:20	0.018
14:21	0.021
14:22	0.05
14:23	0.053
14:24	0.024
14:25	0.019
14:26	0.013
14:27	0.016
14:28	0.412
14:29	0.06
14:30	0.077
14:31	0.05
14:32	0.037
14:33	0.031
14:34	0.03
14:35	0.021
14:36	0.032
14:37	0.058
14:38	0.04
14:39	0.044
14:40	0.043
14:41	0.024
14:42	0.018
14:43	0.139
14:44	0.059
14:45	0.033
14:46	0.016
14:47	0.033
14:48	0.037
14:49	0.03
14:50	0.021
14:51	0.051
14:52	0.03
14:53	0.049
14:54	0.069
14:55	0.199
14:56	0.04
14:57	0.021
14:58	0.021
14:59	0.026

15:00	0.023
15:01	0.08
15:02	0.175
15:03	0.191
15:04	0.134
15:05	0.047
15:06	0.027
15:07	0.024
15:08	0.038
15:09	0.026
15:10	0.02
15:11	0.018
15:12	0.02
15:13	0.019
15:14	0.015
15:15	0.036
15:16	0.017
15:17	0.019
15:18	0.019
15:19	0.018
15:20	0.049
15:21	0.036
15:22	0.038
15:23	1.04
15:24	0.114
15:25	0.025
15:26	0.02
15:27	0.044
15:28	0.027
15:29	0.042
15:30	0.019
15:31	0.036
15:32	0.117
15:33	0.035
15:34	0.059
15:35	0.069
15:36	0.038
15:37	0.038
15:38	0.046
15:39	0.021
15:40	0.022
15:41	0.021
15:42	0.017
15:43	0.091
15:44	0.024
15:45	0.035
15:46	0.018

15:47	0.019
15:48	0.033
15:49	0.024
15:50	0.018
15:51	0.033
15:52	0.038
15:53	0.044
15:54	0.02
15:55	0.024
15:56	0.034
15:57	0.025
15:58	0.013
15:59	0.084
16:00	0.019
16:01	0.018
16:02	0.014
16:03	0.015
16:04	0.015

Instrument Name	DustTrak II
Model Number	8530
Serial Number	8530224603
Firmware Version	3.1
Calibration Date	4/3/2024
Test Name	MANUAL_005
Test Start Time	6:51:54 AM
Test Start Date	9/9/2024
Test Length [D:H:M]	0:09:11
Test Interval [M:S]	1:00
Mass Average [mg/m3]	0.025
Mass Minimum [mg/m3]	0.008
Mass Maximum [mg/m3]	0.855
Mass TWA [mg/m3]	0.025
Photometric User Cal	1
Flow User Cal	0
Errors	
Number of Samples	551

Elapsed Time [s]	Mass [mg/m3]	Alarms	Errors
6:51	0.221		
6:52	0.01		
6:53	0.013		
6:54	0.01		
6:55	0.012		
6:56	0.012		
6:57	0.009		
6:58	0.009		
6:59	0.01		
7:00	0.01		
7:01	0.01		
7:02	0.009		
7:03	0.009		
7:04	0.008		
7:05	0.01		
7:06	0.009		
7:07	0.008		
7:08	0.009		
7:09	0.009		
7:10	0.009		
7:11	0.009		
7:12	0.009		
7:13	0.012		
7:14	0.009		
7:15	0.008		
7:16	0.01		
7:17	0.011		

7:18	0.016
7:19	0.011
7:20	0.01
7:21	0.012
7:22	0.01
7:23	0.009
7:24	0.01
7:25	0.011
7:26	0.012
7:27	0.02
7:28	0.016
7:29	0.014
7:30	0.013
7:31	0.009
7:32	0.008
7:33	0.008
7:34	0.01
7:35	0.009
7:36	0.008
7:37	0.014
7:38	0.011
7:39	0.016
7:40	0.015
7:41	0.013
7:42	0.01
7:43	0.012
7:44	0.009
7:45	0.01
7:46	0.011
7:47	0.011
7:48	0.011
7:49	0.009
7:50	0.009
7:51	0.011
7:52	0.009
7:53	0.011
7:54	0.01
7:55	0.013
7:56	0.014
7:57	0.015
7:58	0.013
7:59	0.014
8:00	0.013
8:01	0.014
8:02	0.013
8:03	0.013
8:04	0.014

8:05	0.016
8:06	0.01
8:07	0.026
8:08	0.012
8:09	0.011
8:10	0.036
8:11	0.049
8:12	0.016
8:13	0.014
8:14	0.012
8:15	0.012
8:16	0.023
8:17	0.027
8:18	0.016
8:19	0.011
8:20	0.01
8:21	0.011
8:22	0.012
8:23	0.014
8:24	0.015
8:25	0.015
8:26	0.014
8:27	0.013
8:28	0.012
8:29	0.017
8:30	0.017
8:31	0.016
8:32	0.013
8:33	0.013
8:34	0.014
8:35	0.012
8:36	0.012
8:37	0.015
8:38	0.019
8:39	0.014
8:40	0.013
8:41	0.02
8:42	0.015
8:43	0.014
8:44	0.012
8:45	0.013
8:46	0.017
8:47	0.012
8:48	0.011
8:49	0.011
8:50	0.017
8:51	0.014

8:52	0.013
8:53	0.019
8:54	0.032
8:55	0.013
8:56	0.014
8:57	0.012
8:58	0.013
8:59	0.012
9:00	0.012
9:01	0.013
9:02	0.029
9:03	0.011
9:04	0.012
9:05	0.013
9:06	0.013
9:07	0.013
9:08	0.012
9:09	0.011
9:10	0.011
9:11	0.011
9:12	0.013
9:13	0.011
9:14	0.011
9:15	0.013
9:16	0.014
9:17	0.015
9:18	0.012
9:19	0.012
9:20	0.013
9:21	0.014
9:22	0.013
9:23	0.015
9:24	0.013
9:25	0.012
9:26	0.015
9:27	0.015
9:28	0.015
9:29	0.036
9:30	0.029
9:31	0.022
9:32	0.019
9:33	0.025
9:34	0.027
9:35	0.035
9:36	0.042
9:37	0.034
9:38	0.036

9:39	0.039
9:40	0.03
9:41	0.027
9:42	0.02
9:43	0.02
9:44	0.023
9:45	0.018
9:46	0.019
9:47	0.016
9:48	0.015
9:49	0.017
9:50	0.016
9:51	0.018
9:52	0.023
9:53	0.075
9:54	0.045
9:55	0.025
9:56	0.016
9:57	0.017
9:58	0.018
9:59	0.017
10:00	0.019
10:01	0.019
10:02	0.021
10:03	0.026
10:04	0.07
10:05	0.058
10:06	0.152
10:07	0.045
10:08	0.023
10:09	0.052
10:10	0.02
10:11	0.023
10:12	0.025
10:13	0.041
10:14	0.027
10:15	0.027
10:16	0.087
10:17	0.065
10:18	0.029
10:19	0.071
10:20	0.042
10:21	0.11
10:22	0.057
10:23	0.054
10:24	0.071
10:25	0.03

10:26	0.025
10:27	0.855
10:28	0.284
10:29	0.125
10:30	0.03
10:31	0.02
10:32	0.029
10:33	0.019
10:34	0.02
10:35	0.018
10:36	0.018
10:37	0.025
10:38	0.021
10:39	0.022
10:40	0.019
10:41	0.019
10:42	0.017
10:43	0.017
10:44	0.019
10:45	0.019
10:46	0.021
10:47	0.021
10:48	0.019
10:49	0.017
10:50	0.051
10:51	0.018
10:52	0.017
10:53	0.023
10:54	0.026
10:55	0.028
10:56	0.019
10:57	0.016
10:58	0.015
10:59	0.017
11:00	0.017
11:01	0.016
11:02	0.02
11:03	0.018
11:04	0.017
11:05	0.029
11:06	0.027
11:07	0.024
11:08	0.023
11:09	0.048
11:10	0.02
11:11	0.022
11:12	0.04

11:13	0.024
11:14	0.017
11:15	0.026
11:16	0.017
11:17	0.033
11:18	0.024
11:19	0.017
11:20	0.017
11:21	0.016
11:22	0.016
11:23	0.02
11:24	0.02
11:25	0.021
11:26	0.02
11:27	0.024
11:28	0.017
11:29	0.02
11:30	0.018
11:31	0.022
11:32	0.023
11:33	0.019
11:34	0.019
11:35	0.017
11:36	0.017
11:37	0.019
11:38	0.021
11:39	0.022
11:40	0.019
11:41	0.021
11:42	0.024
11:43	0.019
11:44	0.02
11:45	0.022
11:46	0.016
11:47	0.019
11:48	0.021
11:49	0.019
11:50	0.019
11:51	0.019
11:52	0.017
11:53	0.016
11:54	0.017
11:55	0.034
11:56	0.021
11:57	0.017
11:58	0.017
11:59	0.017

12:00	0.017
12:01	0.018
12:02	0.017
12:03	0.017
12:04	0.017
12:05	0.035
12:06	0.036
12:07	0.024
12:08	0.025
12:09	0.019
12:10	0.025
12:11	0.016
12:12	0.016
12:13	0.047
12:14	0.02
12:15	0.016
12:16	0.017
12:17	0.017
12:18	0.017
12:19	0.02
12:20	0.018
12:21	0.019
12:22	0.017
12:23	0.016
12:24	0.017
12:25	0.016
12:26	0.017
12:27	0.017
12:28	0.017
12:29	0.016
12:30	0.022
12:31	0.02
12:32	0.018
12:33	0.018
12:34	0.017
12:35	0.021
12:36	0.021
12:37	0.021
12:38	0.031
12:39	0.027
12:40	0.02
12:41	0.019
12:42	0.019
12:43	0.026
12:44	0.03
12:45	0.018
12:46	0.036

12:47	0.036
12:48	0.027
12:49	0.022
12:50	0.025
12:51	0.023
12:52	0.02
12:53	0.021
12:54	0.019
12:55	0.022
12:56	0.024
12:57	0.022
12:58	0.02
12:59	0.018
13:00	0.027
13:01	0.037
13:02	0.023
13:03	0.021
13:04	0.02
13:05	0.113
13:06	0.03
13:07	0.024
13:08	0.036
13:09	0.029
13:10	0.074
13:11	0.035
13:12	0.027
13:13	0.02
13:14	0.028
13:15	0.02
13:16	0.023
13:17	0.018
13:18	0.02
13:19	0.022
13:20	0.034
13:21	0.033
13:22	0.026
13:23	0.022
13:24	0.022
13:25	0.023
13:26	0.024
13:27	0.027
13:28	0.021
13:29	0.02
13:30	0.018
13:31	0.03
13:32	0.021
13:33	0.024

13:34	0.026
13:35	0.02
13:36	0.02
13:37	0.02
13:38	0.022
13:39	0.022
13:40	0.03
13:41	0.025
13:42	0.054
13:43	0.027
13:44	0.044
13:45	0.021
13:46	0.021
13:47	0.021
13:48	0.031
13:49	0.023
13:50	0.022
13:51	0.021
13:52	0.031
13:53	0.034
13:54	0.023
13:55	0.026
13:56	0.022
13:57	0.023
13:58	0.029
13:59	0.024
14:00	0.023
14:01	0.02
14:02	0.026
14:03	0.021
14:04	0.024
14:05	0.024
14:06	0.027
14:07	0.031
14:08	0.021
14:09	0.022
14:10	0.018
14:11	0.02
14:12	0.027
14:13	0.017
14:14	0.019
14:15	0.035
14:16	0.059
14:17	0.026
14:18	0.024
14:19	0.019
14:20	0.021

14:21	0.023
14:22	0.02
14:23	0.019
14:24	0.024
14:25	0.026
14:26	0.021
14:27	0.02
14:28	0.023
14:29	0.023
14:30	0.02
14:31	0.02
14:32	0.047
14:33	0.018
14:34	0.021
14:35	0.031
14:36	0.032
14:37	0.041
14:38	0.024
14:39	0.025
14:40	0.027
14:41	0.028
14:42	0.032
14:43	0.028
14:44	0.026
14:45	0.036
14:46	0.02
14:47	0.018
14:48	0.017
14:49	0.018
14:50	0.019
14:51	0.022
14:52	0.021
14:53	0.074
14:54	0.025
14:55	0.025
14:56	0.028
14:57	0.035
14:58	0.02
14:59	0.016
15:00	0.019
15:01	0.02
15:02	0.021
15:03	0.018
15:04	0.032
15:05	0.02
15:06	0.019
15:07	0.025

15:08	0.023
15:09	0.019
15:10	0.019
15:11	0.017
15:12	0.017
15:13	0.019
15:14	0.023
15:15	0.024
15:16	0.021
15:17	0.025
15:18	0.021
15:19	0.054
15:20	0.03
15:21	0.022
15:22	0.017
15:23	0.022
15:24	0.017
15:25	0.021
15:26	0.022
15:27	0.025
15:28	0.022
15:29	0.022
15:30	0.022
15:31	0.025
15:32	0.021
15:33	0.029
15:34	0.026
15:35	0.021
15:36	0.038
15:37	0.019
15:38	0.019
15:39	0.021
15:40	0.025
15:41	0.023
15:42	0.027
15:43	0.026
15:44	0.062
15:45	0.021
15:46	0.022
15:47	0.029
15:48	0.037
15:49	0.027
15:50	0.027
15:51	0.026
15:52	0.03
15:53	0.033
15:54	0.021

15:55	0.021
15:56	0.016
15:57	0.016
15:58	0.02
15:59	0.018
16:00	0.017
16:01	0.018

SCM Report

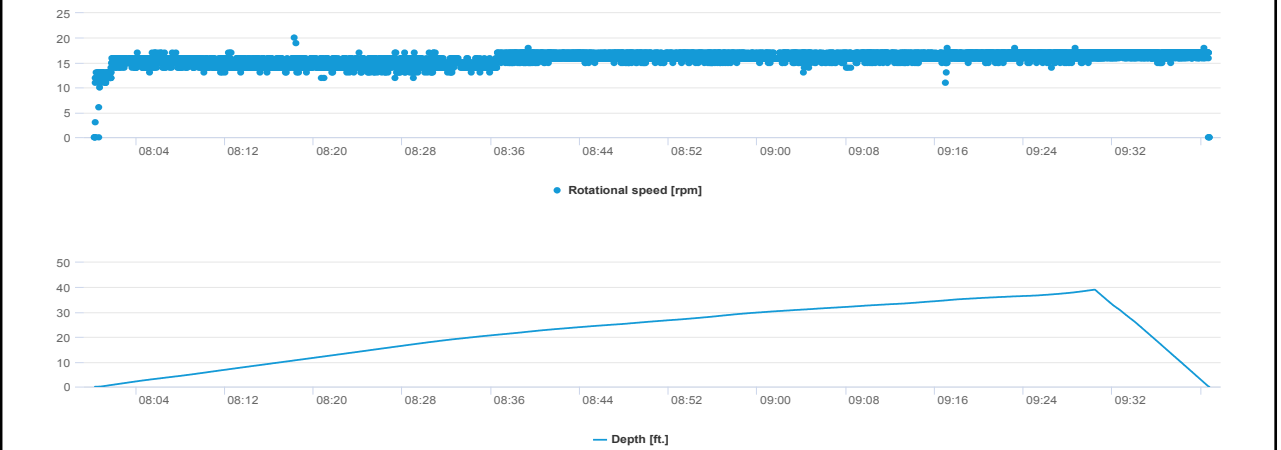
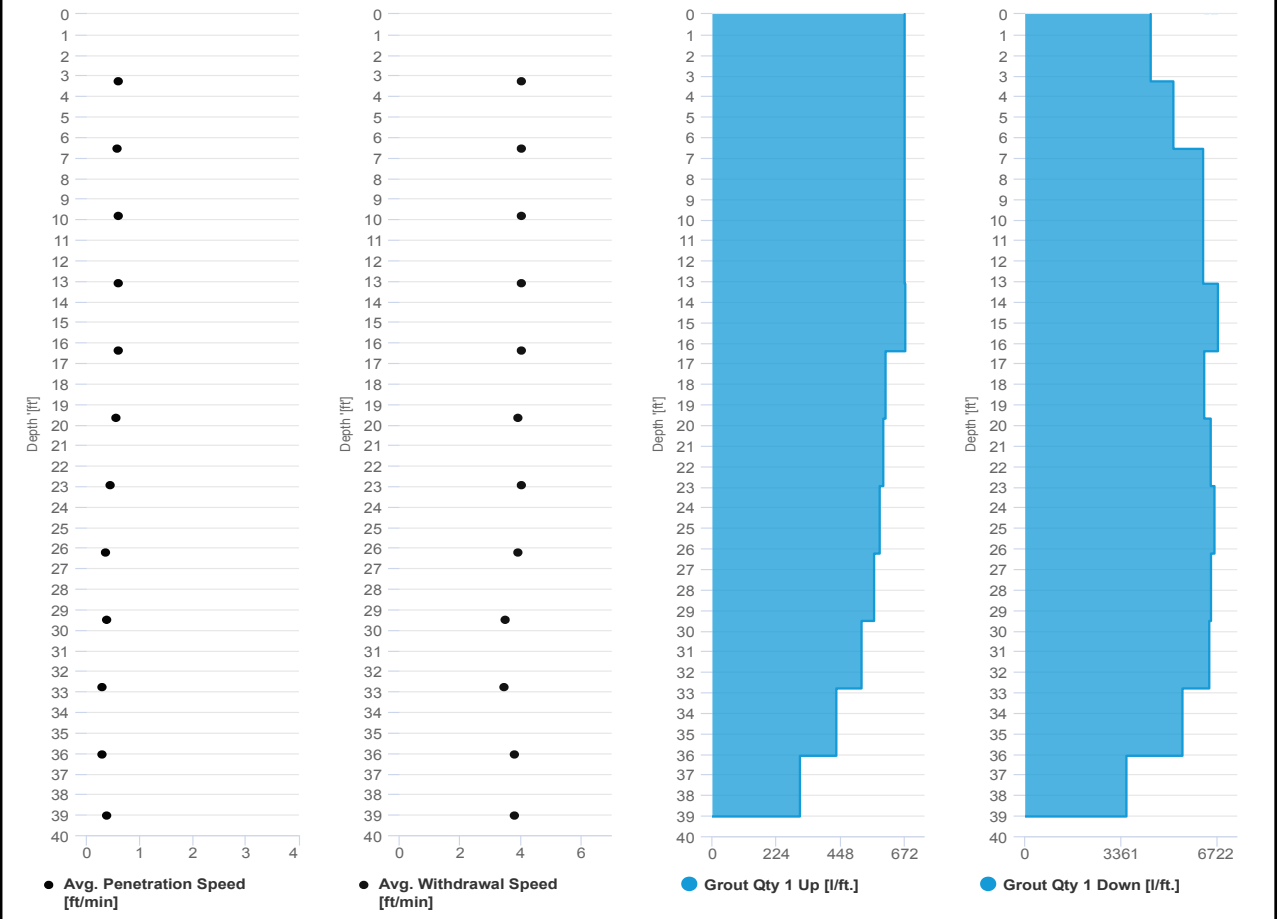


Project name: Douglass Street BCG ISS Element name: 369a
Project number

Start date: 09/09/2024

Drilling rig: BG36H_5717

Details		Start time	
Max. depth	39.042 ft.	08:00 AM	09:09/2024
Volume/m 1	52.619 ft³	End time	09:40 AM
		Production duration	01:40:30
		Final depth time	09:30 AM
		Total suspension quantity	627.472 ft³



SCM Report

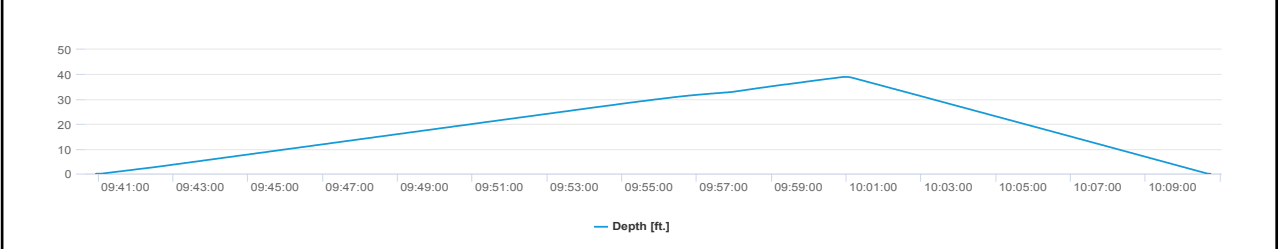
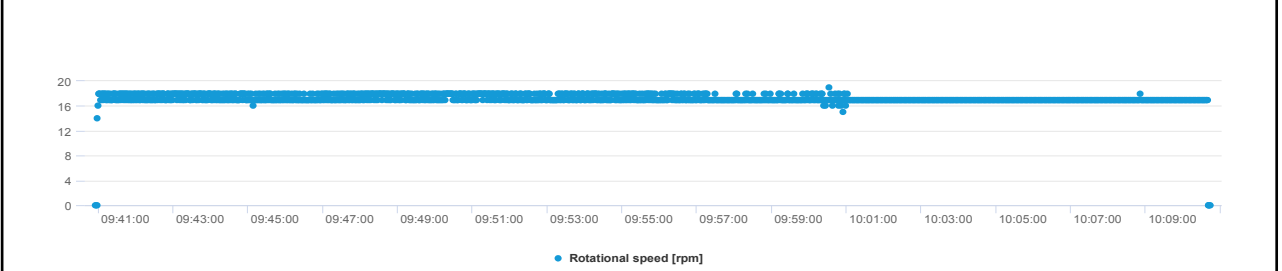
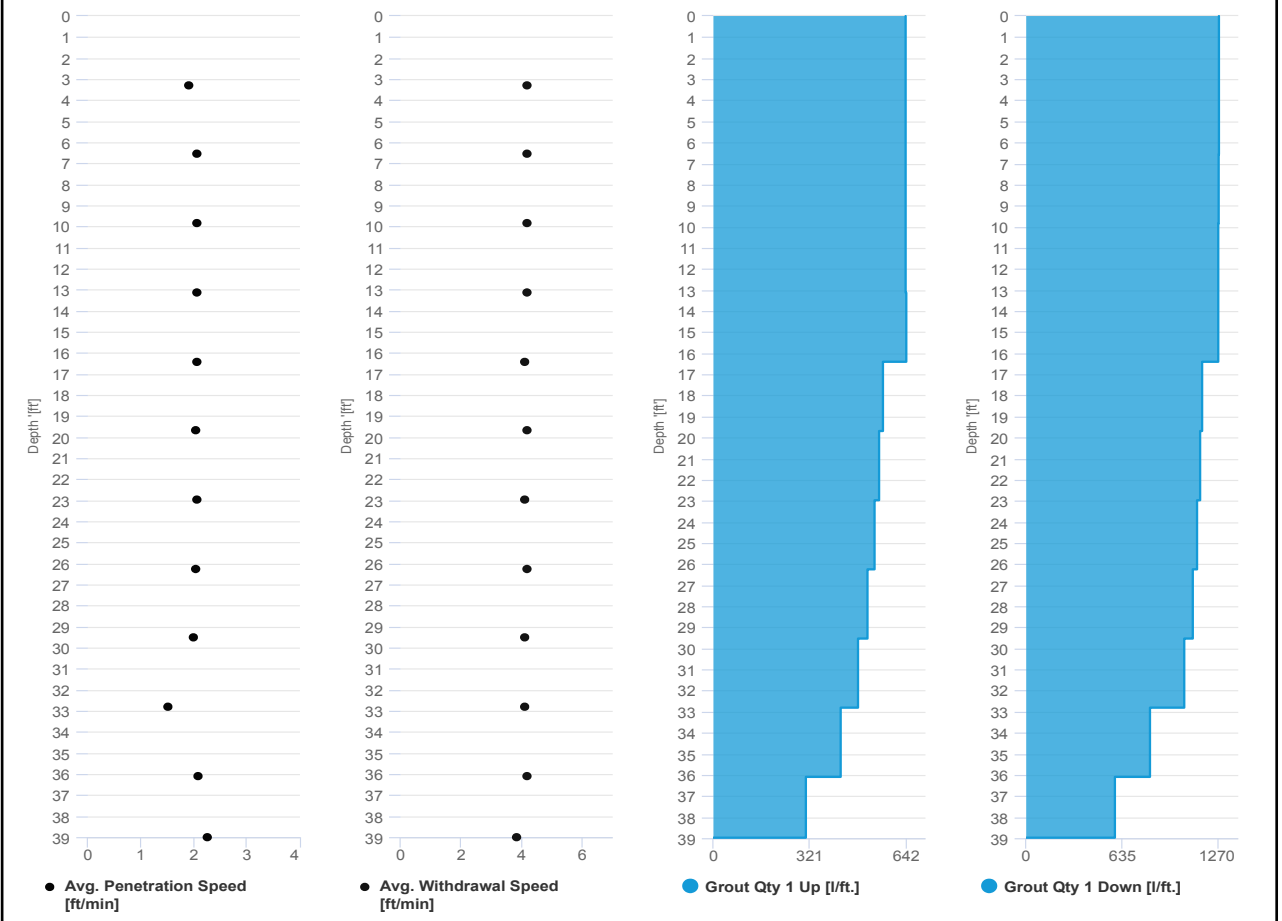


Project name: Douglass Street BCG ISS Element name: 369b
 Project number

Start date: 09/09/2024

Drilling rig: BG36H_5717

Details		Start time: 09:40 AM	
Max. depth: 38.976 ft.		End Date: 09/09/2024	
Volume/m 1: 16.245 ft³		End time: 10:10 AM	
		Production duration: 00:29:49	
		Final depth time: 10:00 AM	
		Total suspension quantity: 190.947 ft³	



SCM Report

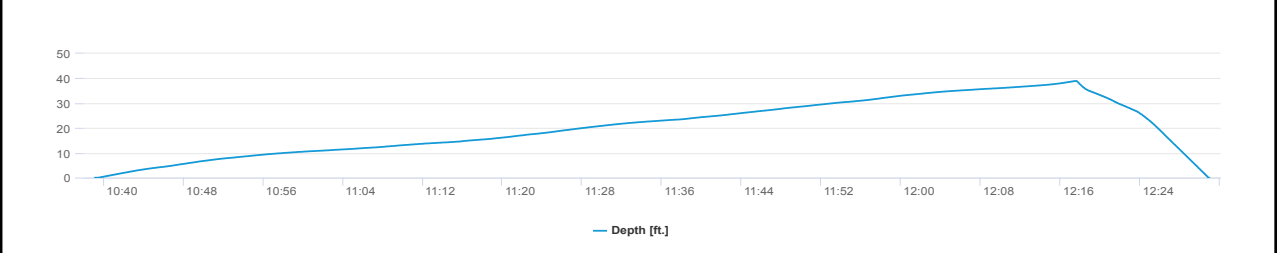
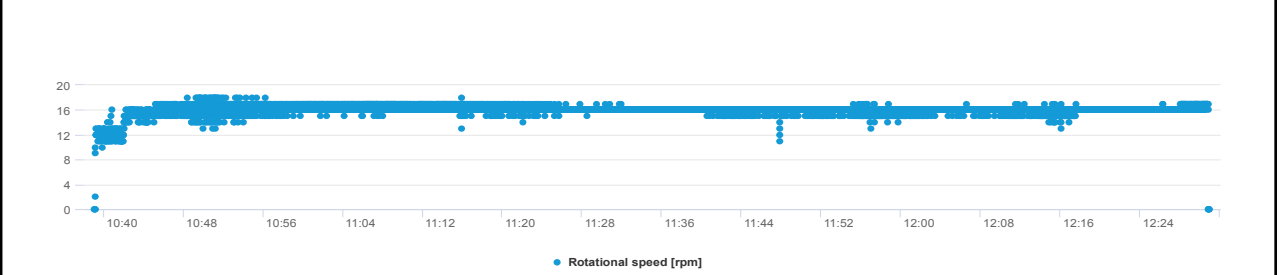
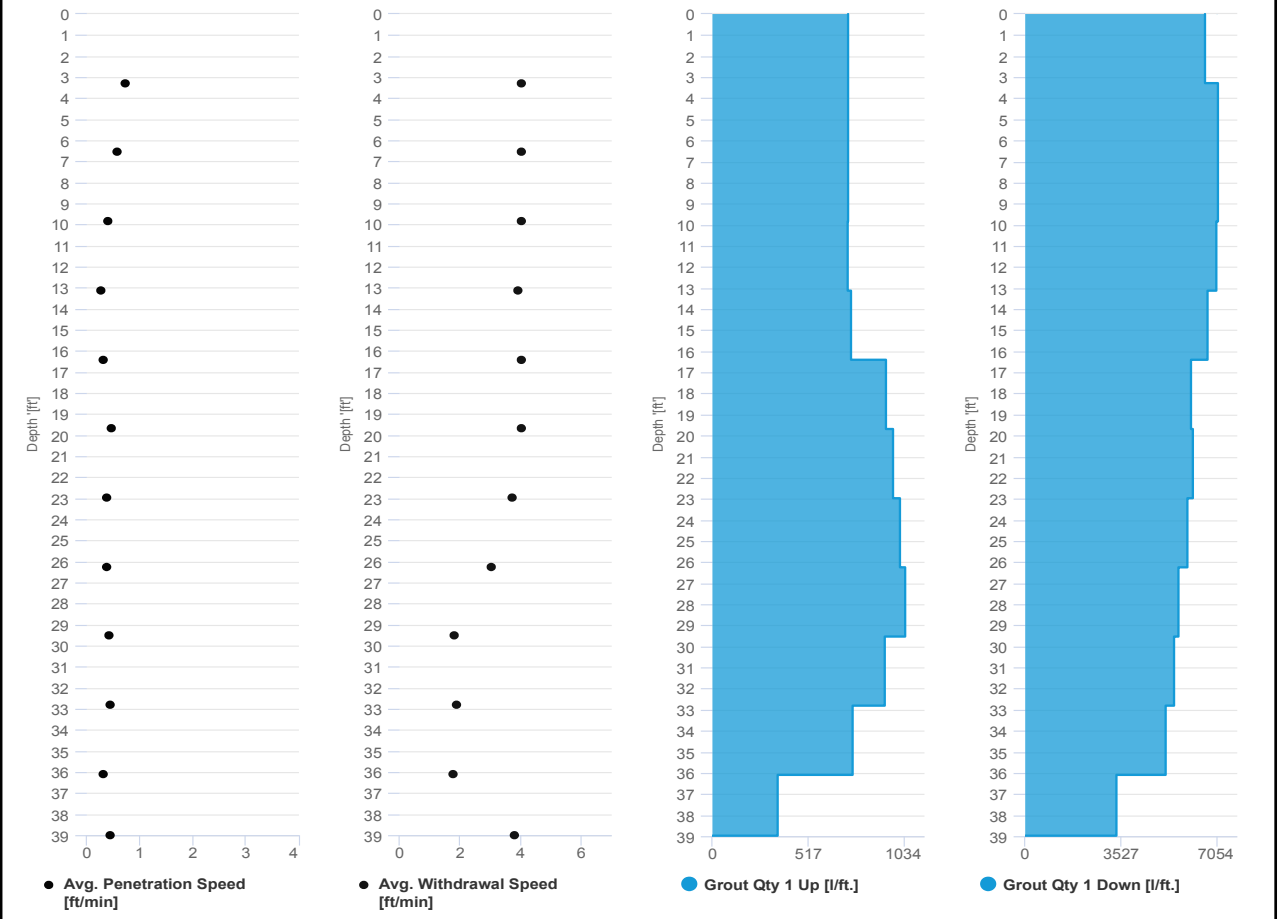


Project name: Douglass Street BCG ISS Element name: 367a
Project number

Start date: 09/09/2024

Drilling rig: BG36H_5717

Details		Start time: 10:39 AM	
Max. depth: 38.976 ft.		End Date: 09/09/2024	
Volume/m 1: 63.566 ft³		End time: 12:30 PM	
		Production duration: 01:51:52	
		Final depth time: 12:17 PM	
		Total suspension quantity: 756.617 ft³	



SCM Report



Project name: Douglass Street BCG ISS Element name: 367b
Project number

Start date: 09/09/2024

Drilling rig: BG36H_5717

Details		Start time: 12:31 PM	
Max. depth: 39.009 ft.		End Date: 09/09/2024	
Volume/m 1: 17.657 ft³		End time: 01:02 PM	
		Production duration: 00:30:55	
		Final depth time: 12:51 PM	
		Total suspension quantity: 209.628 ft³	

