



DAILY STATUS REPORT

Prepared By:
Ryan Just

WEATHER	Snow	Rain	Overcast	X	Partly Cloudy	X	Bright Sun	Wind
TEMP.	< 32	32-50	50-70	X	70-85	X	>85	NE – 7 mph

IEEG Project No:	13928	NYSDEC BCP Site No:	C224367	Date: 09/12/24
Project:	251 Douglass Street, Brooklyn, NY			

<p>Consultant: Impact Environmental Engineering and Geology, PLLC (IEEG)</p> <p>Time On: 06:40 Time Out: 17:10</p>	<p>Personnel On Site: IEEG (Environmental) – Ryan Just ABC Tank Cleaning and Repairing Broadway Construction Group – Shannon Dowling / Tom Caporale WSP – Chris DeSclafani Cascade – John Vollmer Concrete Courses</p> <p>Equipment On Site: (3) MiniRAE 3000 PID, (3) DustTrak II</p>
---	--

Scope of Work: IEEG to deploy CAMP stations according to wind direction; Cascade to continue installing ISS columns; Concrete Courses to continue with super structure work.

Site Activities:

- IEEG deployed three (3) CAMP stations prior to the start of work activities;
- Cascade performed maintenance on the auger and batch plant;
- ABC Tank Cleaning and Repairing removed, cleaned, and disposed of Tanks 3 and 4. Odors were minimal during this process, both tanks were filled with sediment that was placed into a drum during the cleaning process. ATMOS foam was administered when necessary;
- IEEG sampled the tank bottom and sidewalls for each tank;
- Concrete Courses excavated and removed obstructions around the tank area after tanks were removed and the area was sampled; and
- Concrete Courses continued superstructure work in the Butler corridor.

Community Air Monitoring Program (CAMP) - CAMP action level for dust (0.1 mg/m³) and VOCs (5 ppm)

- PID remained at nominal levels throughout the day
- No sustained dust exceedances were observed over a 15-min period during monitoring.
- Startup Upwind Conditions – PID = 0.0 ppm, Dust = 0.106 mg/m³ @ 06:49
- High Conditions (Upwind) – PID = 0.0 ppm, Dust = 0.364 mg/m³ @ 12:44
- High Conditions (Downwind 1) – PID = 0.0 ppm, Dust = 0.764 mg/m³ @ 10:50
- High Conditions (Downwind 2) – PID = 0.0 ppm, Dust = 0.350 mg/m³ @ 06:52

Notable Site Conditions:

- None

Planned for the Next Day/Week:

- Concrete Courses to continue with work on the superstructure in the Butler corridor and pour the 6th floor of the superstructure; and
- Continue to bring the portion of the Site where asphalt is still in place down to the 4' Site cut and collect remaining endpoint samples; and
- Loadout of swell/excavated soil from slab removal.



PHOTO LOG

251 DOUGLASS STREET, BROOKLYN, NY



Photo 1-

Representative photo of Tank 4 on poly for cleaning.



Photo 2-

Representative photo of sediment inside of Tank 4, sediment was drummed by ABC.



Photo 3-

Representative photo of ABC Tank Cleaning & Repair utilizing vac truck for tank graves.



Photo 4-

Representative photo of Tank 3 placed on poly and sediment removed by ABC and placed in drum.



Photo 5-
Representative
photo of Tank 3
and Tank 4
graves.



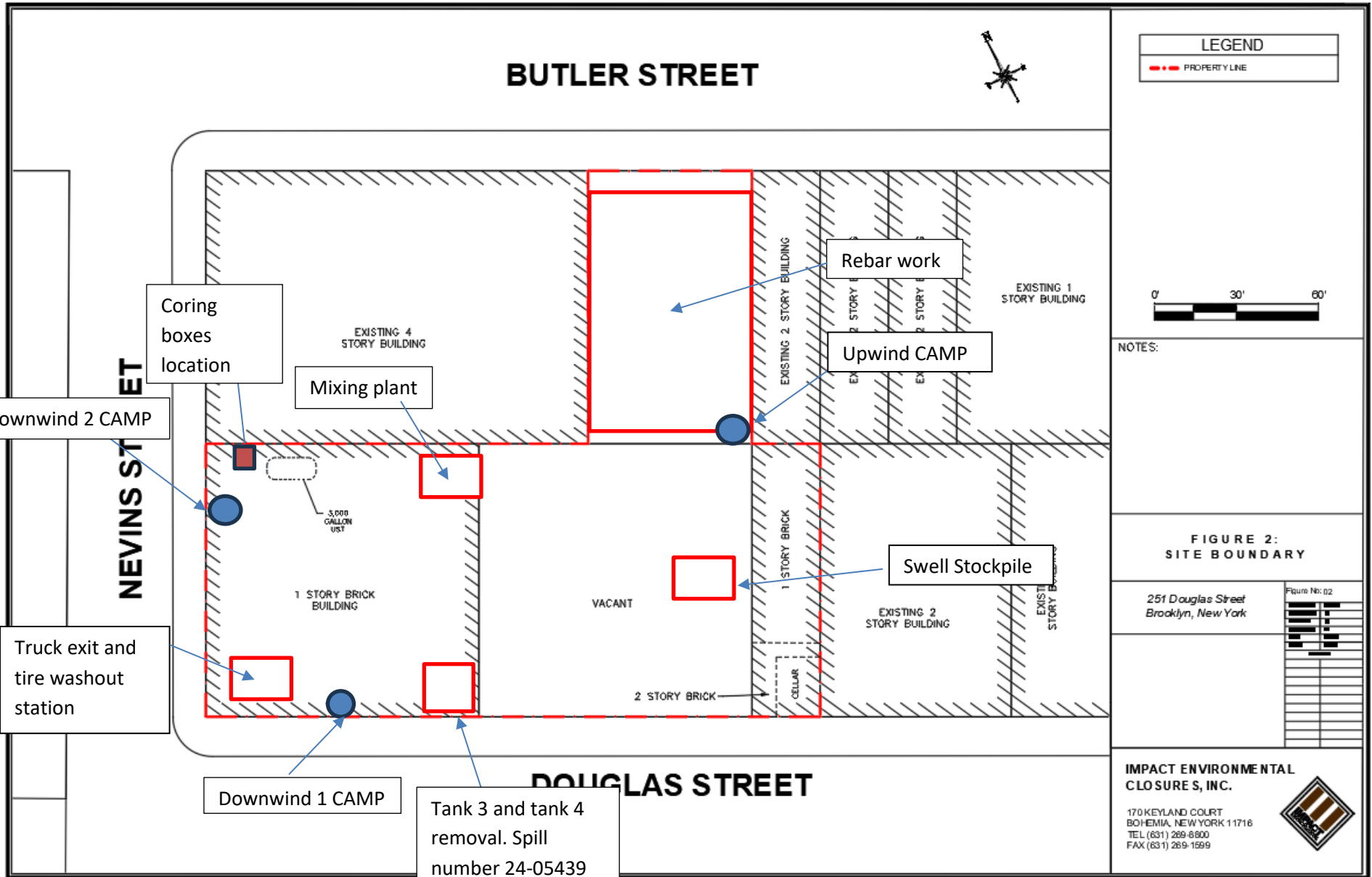
Photo 6-
Representative
photo of Butler
Corridor
superstructure.



SITE PLANS

251 DOUGLASS STREET, BROOKLYN, NY







IMPACT ENVIRONMENTAL

170 Keyland Court | Bohemia | NY | 11716 | 631.269.8800

welcome to solid ground...

www.impactenvironmental.com

UPWIND CAMP READINGS

251 DOUGLASS STREET, BROOKLYN, NY

Instrument Name	DustTrak II
Model Number	8530
Serial Number	8530154916
Firmware Version	3.1
Calibration Date	8/2/2024
Test Name	MANUAL_014
Test Start Time	6:48:48 AM
Test Start Date	9/12/2024
Test Length [D:H:M]	0:09:36
Test Interval [M:S]	1:00
Mass Average [mg/m3]	0.05
Mass Minimum [mg/m3]	0.01
Mass Maximum [mg/m3]	0.364
Mass TWA [mg/m3]	0.057
Photometric User Cal	1
Flow User Cal	0
Errors	
Number of Samples	576

Elapsed Time [s]	Mass [mg/m3]	Alarms	Errors
6:49	0.106		
6:50	0.069		
6:51	0.068		
6:52	0.067		
6:53	0.068		
6:54	0.069		
6:55	0.068		
6:56	0.069		
6:57	0.069		
6:58	0.069		
6:59	0.068		
7:00	0.069		
7:01	0.069		
7:02	0.071		
7:03	0.071		
7:04	0.069		
7:05	0.069		
7:06	0.07		
7:07	0.07		
7:08	0.07		
7:09	0.07		
7:10	0.068		
7:11	0.069		
7:12	0.069		

7:13	0.07
7:14	0.071
7:15	0.073
7:16	0.066
7:17	0.065
7:18	0.066
7:19	0.067
7:20	0.07
7:21	0.066
7:22	0.068
7:23	0.068
7:24	0.068
7:25	0.065
7:26	0.063
7:27	0.064
7:28	0.067
7:29	0.068
7:30	0.07
7:31	0.07
7:32	0.07
7:33	0.071
7:34	0.07
7:35	0.07
7:36	0.067
7:37	0.066
7:38	0.065
7:39	0.074
7:40	0.074
7:41	0.069
7:42	0.07
7:43	0.078
7:44	0.077
7:45	0.074
7:46	0.072
7:47	0.07
7:48	0.07
7:49	0.069
7:50	0.071
7:51	0.074
7:52	0.072
7:53	0.073
7:54	0.073
7:55	0.075
7:56	0.075

7:57	0.074
7:58	0.072
7:59	0.073
8:00	0.074
8:01	0.075
8:02	0.077
8:03	0.105
8:04	0.165
8:05	0.117
8:06	0.086
8:07	0.08
8:08	0.079
8:09	0.075
8:10	0.073
8:11	0.073
8:12	0.071
8:13	0.074
8:14	0.078
8:15	0.08
8:16	0.078
8:17	0.078
8:18	0.079
8:19	0.079
8:20	0.073
8:21	0.076
8:22	0.077
8:23	0.075
8:24	0.077
8:25	0.075
8:26	0.072
8:27	0.06
8:28	0.057
8:29	0.058
8:30	0.052
8:31	0.05
8:32	0.051
8:33	0.052
8:34	0.068
8:35	0.068
8:36	0.057
8:37	0.076
8:38	0.063
8:39	0.055
8:40	0.053

8:41	0.049
8:42	0.052
8:43	0.055
8:44	0.05
8:45	0.05
8:46	0.054
8:47	0.055
8:48	0.042
8:49	0.046
8:50	0.052
8:51	0.053
8:52	0.054
8:53	0.041
8:54	0.042
8:55	0.045
8:56	0.046
8:57	0.048
8:58	0.051
8:59	0.059
9:00	0.059
9:01	0.038
9:02	0.038
9:03	0.037
9:04	0.041
9:05	0.043
9:06	0.045
9:07	0.038
9:08	0.036
9:09	0.036
9:10	0.033
9:11	0.031
9:12	0.034
9:13	0.032
9:14	0.031
9:15	0.033
9:16	0.036
9:17	0.037
9:18	0.04
9:19	0.037
9:20	0.035
9:21	0.032
9:22	0.032
9:23	0.033
9:24	0.038

9:25	0.041
9:26	0.042
9:27	0.041
9:28	0.043
9:29	0.053
9:30	0.068
9:31	0.04
9:32	0.044
9:33	0.048
9:34	0.059
9:35	0.05
9:36	0.047
9:37	0.11
9:38	0.061
9:39	0.069
9:40	0.065
9:41	0.06
9:42	0.059
9:43	0.061
9:44	0.06
9:45	0.066
9:46	0.058
9:47	0.057
9:48	0.057
9:49	0.059
9:50	0.057
9:51	0.053
9:52	0.052
9:53	0.054
9:54	0.054
9:55	0.054
9:56	0.052
9:57	0.054
9:58	0.052
9:59	0.057
10:00	0.06
10:01	0.053
10:02	0.062
10:03	0.061
10:04	0.06
10:05	0.055
10:06	0.055
10:07	0.062
10:08	0.058

10:09	0.054
10:10	0.055
10:11	0.057
10:12	0.056
10:13	0.059
10:14	0.06
10:15	0.053
10:16	0.056
10:17	0.057
10:18	0.055
10:19	0.058
10:20	0.059
10:21	0.059
10:22	0.054
10:23	0.055
10:24	0.058
10:25	0.066
10:26	0.057
10:27	0.057
10:28	0.079
10:29	0.063
10:30	0.071
10:31	0.063
10:32	0.054
10:33	0.057
10:34	0.057
10:35	0.053
10:36	0.058
10:37	0.057
10:38	0.058
10:39	0.063
10:40	0.062
10:41	0.062
10:42	0.055
10:43	0.063
10:44	0.075
10:45	0.086
10:46	0.062
10:47	0.062
10:48	0.059
10:49	0.057
10:50	0.06
10:51	0.062
10:52	0.058

10:53	0.058
10:54	0.061
10:55	0.073
10:56	0.068
10:57	0.066
10:58	0.06
10:59	0.061
11:00	0.059
11:01	0.056
11:02	0.06
11:03	0.062
11:04	0.059
11:05	0.055
11:06	0.056
11:07	0.067
11:08	0.08
11:09	0.064
11:10	0.057
11:11	0.073
11:12	0.053
11:13	0.069
11:14	0.06
11:15	0.052
11:16	0.067
11:17	0.057
11:18	0.055
11:19	0.05
11:20	0.047
11:21	0.055
11:22	0.055
11:23	0.063
11:24	0.06
11:25	0.057
11:26	0.056
11:27	0.055
11:28	0.059
11:29	0.058
11:30	0.078
11:31	0.087
11:32	0.079
11:33	0.072
11:34	0.067
11:35	0.077
11:36	0.069

11:37	0.068
11:38	0.071
11:39	0.065
11:40	0.071
11:41	0.067
11:42	0.124
11:43	0.092
11:44	0.076
11:45	0.063
11:46	0.059
11:47	0.066
11:48	0.06
11:49	0.057
11:50	0.063
11:51	0.059
11:52	0.056
11:53	0.057
11:54	0.085
11:55	0.096
11:56	0.071
11:57	0.059
11:58	0.058
11:59	0.059
12:00	0.054
12:01	0.054
12:02	0.058
12:03	0.079
12:04	0.125
12:05	0.113
12:06	0.062
12:07	0.047
12:08	0.047
12:09	0.045
12:10	0.045
12:11	0.045
12:12	0.049
12:13	0.09
12:14	0.096
12:15	0.052
12:16	0.093
12:17	0.058
12:18	0.069
12:19	0.08
12:20	0.143

12:21	0.093
12:22	0.042
12:23	0.112
12:24	0.144
12:25	0.072
12:26	0.051
12:27	0.048
12:28	0.056
12:29	0.05
12:30	0.045
12:31	0.041
12:32	0.048
12:33	0.06
12:34	0.052
12:35	0.053
12:36	0.042
12:37	0.059
12:38	0.048
12:39	0.047
12:40	0.041
12:41	0.044
12:42	0.047
12:43	0.056
12:44	0.364
12:45	0.079
12:46	0.054
12:47	0.044
12:48	0.038
12:49	0.048
12:50	0.041
12:51	0.045
12:52	0.045
12:53	0.047
12:54	0.043
12:55	0.04
12:56	0.056
12:57	0.041
12:58	0.038
12:59	0.059
13:00	0.037
13:01	0.038
13:02	0.04
13:03	0.08
13:04	0.058

13:05	0.074
13:06	0.052
13:07	0.047
13:08	0.04
13:09	0.035
13:10	0.038
13:11	0.038
13:12	0.04
13:13	0.04
13:14	0.042
13:15	0.039
13:16	0.038
13:17	0.034
13:18	0.031
13:19	0.029
13:20	0.03
13:21	0.038
13:22	0.105
13:23	0.059
13:24	0.04
13:25	0.054
13:26	0.041
13:27	0.044
13:28	0.041
13:29	0.038
13:30	0.049
13:31	0.067
13:32	0.037
13:33	0.057
13:34	0.033
13:35	0.026
13:36	0.064
13:37	0.051
13:38	0.04
13:39	0.047
13:40	0.074
13:41	0.078
13:42	0.104
13:43	0.076
13:44	0.043
13:45	0.085
13:46	0.05
13:47	0.032
13:48	0.052

13:49	0.055
13:50	0.07
13:51	0.061
13:52	0.031
13:53	0.028
13:54	0.025
13:55	0.035
13:56	0.037
13:57	0.027
13:58	0.025
13:59	0.017
14:00	0.021
14:01	0.053
14:02	0.033
14:03	0.03
14:04	0.044
14:05	0.016
14:06	0.021
14:07	0.018
14:08	0.015
14:09	0.015
14:10	0.023
14:11	0.022
14:12	0.016
14:13	0.016
14:14	0.014
14:15	0.017
14:16	0.023
14:17	0.036
14:18	0.018
14:19	0.018
14:20	0.015
14:21	0.03
14:22	0.017
14:23	0.015
14:24	0.023
14:25	0.017
14:26	0.017
14:27	0.015
14:28	0.015
14:29	0.016
14:30	0.019
14:31	0.016
14:32	0.027

14:33	0.018
14:34	0.012
14:35	0.013
14:36	0.016
14:37	0.017
14:38	0.016
14:39	0.016
14:40	0.013
14:41	0.014
14:42	0.016
14:43	0.015
14:44	0.013
14:45	0.013
14:46	0.02
14:47	0.045
14:48	0.044
14:49	0.019
14:50	0.017
14:51	0.015
14:52	0.014
14:53	0.013
14:54	0.02
14:55	0.014
14:56	0.014
14:57	0.02
14:58	0.016
14:59	0.013
15:00	0.014
15:01	0.017
15:02	0.017
15:03	0.018
15:04	0.031
15:05	0.017
15:06	0.016
15:07	0.016
15:08	0.018
15:09	0.017
15:10	0.026
15:11	0.026
15:12	0.016
15:13	0.017
15:14	0.016
15:15	0.025
15:16	0.017

15:17	0.016
15:18	0.025
15:19	0.02
15:20	0.016
15:21	0.017
15:22	0.02
15:23	0.02
15:24	0.018
15:25	0.036
15:26	0.024
15:27	0.026
15:28	0.021
15:29	0.018
15:30	0.027
15:31	0.025
15:32	0.019
15:33	0.016
15:34	0.04
15:35	0.028
15:36	0.021
15:37	0.016
15:38	0.015
15:39	0.016
15:40	0.016
15:41	0.015
15:42	0.019
15:43	0.015
15:44	0.016
15:45	0.019
15:46	0.015
15:47	0.013
15:48	0.013
15:49	0.013
15:50	0.013
15:51	0.014
15:52	0.013
15:53	0.014
15:54	0.013
15:55	0.014
15:56	0.015
15:57	0.016
15:58	0.026
15:59	0.017
16:00	0.012

16:01	0.012
16:02	0.016
16:03	0.013
16:04	0.017
16:05	0.015
16:06	0.014
16:07	0.014
16:08	0.011
16:09	0.01
16:10	0.012
16:11	0.011
16:12	0.011
16:13	0.018
16:14	0.014
16:15	0.012
16:16	0.014
16:17	0.012
16:18	0.015
16:19	0.016
16:20	0.115
16:21	0.018
16:22	0.011
16:23	0.012
16:24	0.011

Device Serial No	Log Time	Log Type	Sensor 1 Type	Sensor 1 Serial Number	Sensor 1 Status	Sensor 1 Gas Reading
592-601274	9/12/2024 6:49	CONFIG	PID	SC23030921B3		
592-601274	9/12/2024 6:50	Readings	PID	SC23030921B3	Normal	0
592-601274	9/12/2024 6:51	Readings	PID	SC23030921B3	Normal	0
592-601274	9/12/2024 6:52	Readings	PID	SC23030921B3	Normal	0
592-601274	9/12/2024 6:53	Readings	PID	SC23030921B3	Normal	0
592-601274	9/12/2024 6:54	Readings	PID	SC23030921B3	Normal	0
592-601274	9/12/2024 6:55	Readings	PID	SC23030921B3	Normal	0
592-601274	9/12/2024 6:56	Readings	PID	SC23030921B3	Normal	0
592-601274	9/12/2024 6:57	Readings	PID	SC23030921B3	Normal	0
592-601274	9/12/2024 6:58	Readings	PID	SC23030921B3	Normal	0
592-601274	9/12/2024 6:59	Readings	PID	SC23030921B3	Normal	0
592-601274	9/12/2024 7:00	Readings	PID	SC23030921B3	Normal	0
592-601274	9/12/2024 7:01	Readings	PID	SC23030921B3	Normal	0
592-601274	9/12/2024 7:02	Readings	PID	SC23030921B3	Normal	0
592-601274	9/12/2024 7:03	Readings	PID	SC23030921B3	Normal	0
592-601274	9/12/2024 7:04	Readings	PID	SC23030921B3	Normal	0
592-601274	9/12/2024 7:05	Readings	PID	SC23030921B3	Normal	0
592-601274	9/12/2024 7:06	Readings	PID	SC23030921B3	Normal	0
592-601274	9/12/2024 7:07	Readings	PID	SC23030921B3	Normal	0
592-601274	9/12/2024 7:08	Readings	PID	SC23030921B3	Normal	0
592-601274	9/12/2024 7:09	Readings	PID	SC23030921B3	Normal	0
592-601274	9/12/2024 7:10	Readings	PID	SC23030921B3	Normal	0
592-601274	9/12/2024 7:11	Readings	PID	SC23030921B3	Normal	0
592-601274	9/12/2024 7:12	Readings	PID	SC23030921B3	Normal	0
592-601274	9/12/2024 7:13	Readings	PID	SC23030921B3	Normal	0
592-601274	9/12/2024 7:14	Readings	PID	SC23030921B3	Normal	0
592-601274	9/12/2024 7:15	Readings	PID	SC23030921B3	Normal	0
592-601274	9/12/2024 7:16	Readings	PID	SC23030921B3	Normal	0
592-601274	9/12/2024 7:17	Readings	PID	SC23030921B3	Normal	0
592-601274	9/12/2024 7:18	Readings	PID	SC23030921B3	Normal	0
592-601274	9/12/2024 7:19	Readings	PID	SC23030921B3	Normal	0
592-601274	9/12/2024 7:20	Readings	PID	SC23030921B3	Normal	0

592-601274	9/12/2024 16:09 Readings	PID	SC23030921B3	Normal	0
592-601274	9/12/2024 16:10 Readings	PID	SC23030921B3	Normal	0
592-601274	9/12/2024 16:11 Readings	PID	SC23030921B3	Normal	0
592-601274	9/12/2024 16:12 Readings	PID	SC23030921B3	Normal	0
592-601274	9/12/2024 16:13 Readings	PID	SC23030921B3	Normal	0
592-601274	9/12/2024 16:14 Readings	PID	SC23030921B3	Normal	0
592-601274	9/12/2024 16:15 Readings	PID	SC23030921B3	Normal	0
592-601274	9/12/2024 16:16 Readings	PID	SC23030921B3	Normal	0
592-601274	9/12/2024 16:17 Readings	PID	SC23030921B3	Normal	0
592-601274	9/12/2024 16:18 Readings	PID	SC23030921B3	Normal	0
592-601274	9/12/2024 16:19 Readings	PID	SC23030921B3	Normal	0
592-601274	9/12/2024 16:20 Readings	PID	SC23030921B3	Normal	0
592-601274	9/12/2024 16:21 Readings	PID	SC23030921B3	Normal	0
592-601274	9/12/2024 16:22 Readings	PID	SC23030921B3	Normal	0
592-601274	9/12/2024 16:23 Readings	PID	SC23030921B3	Normal	0
592-601274	9/12/2024 16:24 Readings	PID	SC23030921B3	Normal	0
592-601274	9/12/2024 16:25 Readings	PID	SC23030921B3	Normal	0
592-601274	9/12/2024 16:26 Readings	PID	SC23030921B3	Normal	0
592-601274	9/12/2024 16:27 Readings	PID	SC23030921B3	Normal	0
592-601274	9/12/2024 16:28 Readings	PID	SC23030921B3	Normal	0
592-601274	9/12/2024 16:29 Readings	PID	SC23030921B3	Normal	0
592-601274	9/12/2024 16:30 Readings	PID	SC23030921B3	Normal	0
592-601274	9/12/2024 16:31 Readings	PID	SC23030921B3	Normal	0

DOWNWIND CAMP READINGS

251 DOUGLASS STREET, BROOKLYN, NY



Instrument Name	DustTrak II
Model Number	8530
Serial Number	8530224603
Firmware Version	3.1
Calibration Date	4/3/2024
Test Name	MANUAL_008
Test Start Time	6:46:00 AM
Test Start Date	9/12/2024
Test Length [D:H:M]	0:09:43
Test Interval [M:S]	1:00
Mass Average [mg/m3]	0.056
Mass Minimum [mg/m3]	0.015
Mass Maximum [mg/m3]	0.764
Mass TWA [mg/m3]	0.061
Photometric User Cal	1
Flow User Cal	0
Errors	
Number of Samples	583

Elapsed Time [s]	Mass [mg/m3]	Alarms	Errors
6:47	0.204		
6:48	0.075		
6:49	0.075		
6:50	0.072		
6:51	0.073		
6:52	0.074		
6:53	0.072		
6:54	0.072		
6:55	0.072		
6:56	0.073		
6:57	0.071		
6:58	0.073		
6:59	0.082		
7:00	0.075		
7:01	0.072		
7:02	0.075		
7:03	0.071		
7:04	0.071		
7:05	0.071		
7:06	0.07		
7:07	0.07		
7:08	0.07		
7:09	0.07		
7:10	0.069		

7:11	0.07
7:12	0.07
7:13	0.072
7:14	0.072
7:15	0.071
7:16	0.071
7:17	0.064
7:18	0.062
7:19	0.063
7:20	0.065
7:21	0.067
7:22	0.067
7:23	0.065
7:24	0.069
7:25	0.073
7:26	0.062
7:27	0.057
7:28	0.061
7:29	0.069
7:30	0.074
7:31	0.071
7:32	0.067
7:33	0.068
7:34	0.068
7:35	0.07
7:36	0.068
7:37	0.065
7:38	0.064
7:39	0.068
7:40	0.074
7:41	0.069
7:42	0.068
7:43	0.065
7:44	0.123
7:45	0.178
7:46	0.173
7:47	0.084
7:48	0.078
7:49	0.093
7:50	0.07
7:51	0.073
7:52	0.074
7:53	0.071
7:54	0.07

7:55	0.075
7:56	0.081
7:57	0.101
7:58	0.079
7:59	0.071
8:00	0.071
8:01	0.073
8:02	0.073
8:03	0.073
8:04	0.075
8:05	0.078
8:06	0.095
8:07	0.093
8:08	0.081
8:09	0.072
8:10	0.069
8:11	0.07
8:12	0.07
8:13	0.068
8:14	0.068
8:15	0.072
8:16	0.074
8:17	0.073
8:18	0.071
8:19	0.076
8:20	0.073
8:21	0.07
8:22	0.072
8:23	0.075
8:24	0.073
8:25	0.073
8:26	0.102
8:27	0.075
8:28	0.068
8:29	0.059
8:30	0.056
8:31	0.056
8:32	0.053
8:33	0.052
8:34	0.051
8:35	0.058
8:36	0.052
8:37	0.055
8:38	0.058

8:39	0.057
8:40	0.055
8:41	0.052
8:42	0.054
8:43	0.046
8:44	0.045
8:45	0.046
8:46	0.046
8:47	0.046
8:48	0.041
8:49	0.039
8:50	0.035
8:51	0.042
8:52	0.046
8:53	0.041
8:54	0.045
8:55	0.046
8:56	0.047
8:57	0.051
8:58	0.048
8:59	0.046
9:00	0.046
9:01	0.046
9:02	0.052
9:03	0.041
9:04	0.041
9:05	0.036
9:06	0.046
9:07	0.047
9:08	0.033
9:09	0.035
9:10	0.041
9:11	0.041
9:12	0.039
9:13	0.038
9:14	0.042
9:15	0.036
9:16	0.038
9:17	0.039
9:18	0.039
9:19	0.041
9:20	0.043
9:21	0.053
9:22	0.037

9:23	0.035
9:24	0.034
9:25	0.036
9:26	0.037
9:27	0.042
9:28	0.036
9:29	0.036
9:30	0.044
9:31	0.038
9:32	0.038
9:33	0.039
9:34	0.045
9:35	0.045
9:36	0.052
9:37	0.051
9:38	0.052
9:39	0.077
9:40	0.098
9:41	0.083
9:42	0.095
9:43	0.056
9:44	0.059
9:45	0.057
9:46	0.061
9:47	0.066
9:48	0.057
9:49	0.055
9:50	0.054
9:51	0.056
9:52	0.053
9:53	0.053
9:54	0.054
9:55	0.052
9:56	0.052
9:57	0.052
9:58	0.052
9:59	0.055
10:00	0.056
10:01	0.057
10:02	0.056
10:03	0.055
10:04	0.058
10:05	0.06
10:06	0.059

10:07	0.055
10:08	0.058
10:09	0.058
10:10	0.061
10:11	0.057
10:12	0.067
10:13	0.058
10:14	0.058
10:15	0.059
10:16	0.056
10:17	0.058
10:18	0.058
10:19	0.14
10:20	0.059
10:21	0.057
10:22	0.06
10:23	0.058
10:24	0.058
10:25	0.132
10:26	0.08
10:27	0.084
10:28	0.082
10:29	0.086
10:30	0.089
10:31	0.063
10:32	0.065
10:33	0.055
10:34	0.056
10:35	0.068
10:36	0.064
10:37	0.058
10:38	0.058
10:39	0.067
10:40	0.076
10:41	0.059
10:42	0.058
10:43	0.054
10:44	0.057
10:45	0.059
10:46	0.059
10:47	0.069
10:48	0.08
10:49	0.068
10:50	0.764

10:51	0.244
10:52	0.063
10:53	0.065
10:54	0.073
10:55	0.066
10:56	0.073
10:57	0.058
10:58	0.06
10:59	0.065
11:00	0.058
11:01	0.061
11:02	0.059
11:03	0.057
11:04	0.061
11:05	0.056
11:06	0.053
11:07	0.054
11:08	0.076
11:09	0.091
11:10	0.074
11:11	0.06
11:12	0.061
11:13	0.068
11:14	0.109
11:15	0.078
11:16	0.054
11:17	0.072
11:18	0.07
11:19	0.062
11:20	0.058
11:21	0.053
11:22	0.055
11:23	0.067
11:24	0.07
11:25	0.068
11:26	0.059
11:27	0.056
11:28	0.053
11:29	0.056
11:30	0.054
11:31	0.072
11:32	0.061
11:33	0.082
11:34	0.06

11:35	0.051
11:36	0.074
11:37	0.061
11:38	0.059
11:39	0.066
11:40	0.062
11:41	0.058
11:42	0.06
11:43	0.102
11:44	0.088
11:45	0.079
11:46	0.067
11:47	0.067
11:48	0.063
11:49	0.117
11:50	0.063
11:51	0.06
11:52	0.056
11:53	0.055
11:54	0.064
11:55	0.211
11:56	0.11
11:57	0.077
11:58	0.053
11:59	0.077
12:00	0.062
12:01	0.054
12:02	0.055
12:03	0.063
12:04	0.11
12:05	0.11
12:06	0.089
12:07	0.062
12:08	0.049
12:09	0.051
12:10	0.049
12:11	0.05
12:12	0.054
12:13	0.081
12:14	0.148
12:15	0.095
12:16	0.061
12:17	0.14
12:18	0.126

12:19	0.089
12:20	0.084
12:21	0.095
12:22	0.091
12:23	0.059
12:24	0.08
12:25	0.084
12:26	0.103
12:27	0.058
12:28	0.049
12:29	0.054
12:30	0.052
12:31	0.044
12:32	0.042
12:33	0.045
12:34	0.044
12:35	0.049
12:36	0.081
12:37	0.088
12:38	0.054
12:39	0.054
12:40	0.043
12:41	0.041
12:42	0.04
12:43	0.054
12:44	0.047
12:45	0.083
12:46	0.053
12:47	0.044
12:48	0.046
12:49	0.049
12:50	0.041
12:51	0.043
12:52	0.043
12:53	0.049
12:54	0.051
12:55	0.05
12:56	0.042
12:57	0.052
12:58	0.041
12:59	0.05
13:00	0.055
13:01	0.042
13:02	0.062

13:03	0.052
13:04	0.071
13:05	0.05
13:06	0.043
13:07	0.044
13:08	0.039
13:09	0.037
13:10	0.039
13:11	0.063
13:12	0.039
13:13	0.038
13:14	0.044
13:15	0.043
13:16	0.045
13:17	0.034
13:18	0.033
13:19	0.034
13:20	0.034
13:21	0.033
13:22	0.046
13:23	0.075
13:24	0.045
13:25	0.038
13:26	0.053
13:27	0.037
13:28	0.039
13:29	0.05
13:30	0.053
13:31	0.053
13:32	0.061
13:33	0.047
13:34	0.122
13:35	0.045
13:36	0.036
13:37	0.041
13:38	0.047
13:39	0.043
13:40	0.057
13:41	0.046
13:42	0.051
13:43	0.086
13:44	0.066
13:45	0.087
13:46	0.143

13:47	0.057
13:48	0.042
13:49	0.077
13:50	0.047
13:51	0.083
13:52	0.04
13:53	0.03
13:54	0.023
13:55	0.036
13:56	0.047
13:57	0.035
13:58	0.031
13:59	0.053
14:00	0.037
14:01	0.032
14:02	0.041
14:03	0.042
14:04	0.028
14:05	0.024
14:06	0.022
14:07	0.037
14:08	0.023
14:09	0.037
14:10	0.022
14:11	0.036
14:12	0.027
14:13	0.019
14:14	0.019
14:15	0.026
14:16	0.047
14:17	0.034
14:18	0.052
14:19	0.024
14:20	0.026
14:21	0.02
14:22	0.037
14:23	0.026
14:24	0.025
14:25	0.025
14:26	0.03
14:27	0.031
14:28	0.022
14:29	0.026
14:30	0.019

14:31	0.022
14:32	0.022
14:33	0.028
14:34	0.024
14:35	0.024
14:36	0.034
14:37	0.03
14:38	0.04
14:39	0.044
14:40	0.023
14:41	0.021
14:42	0.024
14:43	0.019
14:44	0.018
14:45	0.017
14:46	0.018
14:47	0.053
14:48	0.118
14:49	0.058
14:50	0.045
14:51	0.063
14:52	0.031
14:53	0.08
14:54	0.02
14:55	0.025
14:56	0.021
14:57	0.018
14:58	0.017
14:59	0.022
15:00	0.019
15:01	0.018
15:02	0.03
15:03	0.021
15:04	0.026
15:05	0.033
15:06	0.03
15:07	0.219
15:08	0.026
15:09	0.02
15:10	0.017
15:11	0.017
15:12	0.021
15:13	0.019
15:14	0.024

15:15	0.018
15:16	0.018
15:17	0.018
15:18	0.02
15:19	0.025
15:20	0.02
15:21	0.019
15:22	0.019
15:23	0.024
15:24	0.019
15:25	0.02
15:26	0.02
15:27	0.019
15:28	0.024
15:29	0.021
15:30	0.025
15:31	0.019
15:32	0.021
15:33	0.03
15:34	0.018
15:35	0.018
15:36	0.056
15:37	0.02
15:38	0.018
15:39	0.018
15:40	0.02
15:41	0.02
15:42	0.021
15:43	0.033
15:44	0.02
15:45	0.032
15:46	0.185
15:47	0.025
15:48	0.019
15:49	0.017
15:50	0.049
15:51	0.042
15:52	0.022
15:53	0.02
15:54	0.023
15:55	0.021
15:56	0.018
15:57	0.018
15:58	0.024

15:59	0.029
16:00	0.021
16:01	0.017
16:02	0.017
16:03	0.015
16:04	0.016
16:05	0.016
16:06	0.016
16:07	0.018
16:08	0.016
16:09	0.015
16:10	0.015
16:11	0.015
16:12	0.015
16:13	0.015
16:14	0.022
16:15	0.039
16:16	0.019
16:17	0.015
16:18	0.016
16:19	0.029
16:20	0.029
16:21	0.094
16:22	0.034
16:23	0.02
16:24	0.018
16:25	0.017
16:26	0.015
16:27	0.044
16:28	0.024
16:29	0.023

Device Serial No	Log Time	Log Type	Sensor 1 Type	Sensor 1 Serial Number	Sensor 1 Status	Sensor 1 Gas Reading
592-906376	9/12/2024 6:50	CONFIG	PID	SC23030159V4		
592-906376	9/12/2024 6:51	Readings	PID	SC23030159V4	Normal	0
592-906376	9/12/2024 6:52	Readings	PID	SC23030159V4	Normal	0
592-906376	9/12/2024 6:53	Readings	PID	SC23030159V4	Normal	0
592-906376	9/12/2024 6:54	Readings	PID	SC23030159V4	Normal	0
592-906376	9/12/2024 6:55	Readings	PID	SC23030159V4	Normal	0
592-906376	9/12/2024 6:56	Readings	PID	SC23030159V4	Normal	0
592-906376	9/12/2024 6:57	Readings	PID	SC23030159V4	Normal	0
592-906376	9/12/2024 6:58	Readings	PID	SC23030159V4	Normal	0
592-906376	9/12/2024 6:59	Readings	PID	SC23030159V4	Normal	0
592-906376	9/12/2024 7:00	Readings	PID	SC23030159V4	Normal	0
592-906376	9/12/2024 7:01	Readings	PID	SC23030159V4	Normal	0
592-906376	9/12/2024 7:02	Readings	PID	SC23030159V4	Normal	0
592-906376	9/12/2024 7:03	Readings	PID	SC23030159V4	Normal	0
592-906376	9/12/2024 7:04	Readings	PID	SC23030159V4	Normal	0
592-906376	9/12/2024 7:05	Readings	PID	SC23030159V4	Normal	0
592-906376	9/12/2024 7:06	Readings	PID	SC23030159V4	Normal	0
592-906376	9/12/2024 7:07	Readings	PID	SC23030159V4	Normal	0
592-906376	9/12/2024 7:08	Readings	PID	SC23030159V4	Normal	0
592-906376	9/12/2024 7:09	Readings	PID	SC23030159V4	Normal	0
592-906376	9/12/2024 7:10	Readings	PID	SC23030159V4	Normal	0
592-906376	9/12/2024 7:11	Readings	PID	SC23030159V4	Normal	0
592-906376	9/12/2024 7:12	Readings	PID	SC23030159V4	Normal	0
592-906376	9/12/2024 7:13	Readings	PID	SC23030159V4	Normal	0
592-906376	9/12/2024 7:14	Readings	PID	SC23030159V4	Normal	0
592-906376	9/12/2024 7:15	Readings	PID	SC23030159V4	Normal	0
592-906376	9/12/2024 7:16	Readings	PID	SC23030159V4	Normal	0
592-906376	9/12/2024 7:17	Readings	PID	SC23030159V4	Normal	0
592-906376	9/12/2024 7:18	Readings	PID	SC23030159V4	Normal	0
592-906376	9/12/2024 7:19	Readings	PID	SC23030159V4	Normal	0
592-906376	9/12/2024 7:20	Readings	PID	SC23030159V4	Normal	0
592-906376	9/12/2024 7:21	Readings	PID	SC23030159V4	Normal	0

592-906376	9/12/2024 8:28	Readings	PID	SC23030159V4	Normal	0
592-906376	9/12/2024 8:29	Readings	PID	SC23030159V4	Normal	0
592-906376	9/12/2024 8:30	Readings	PID	SC23030159V4	Normal	0
592-906376	9/12/2024 8:31	Readings	PID	SC23030159V4	Normal	0
592-906376	9/12/2024 8:32	Readings	PID	SC23030159V4	Normal	0
592-906376	9/12/2024 8:33	Readings	PID	SC23030159V4	Normal	0
592-906376	9/12/2024 8:34	Readings	PID	SC23030159V4	Normal	0
592-906376	9/12/2024 8:35	Readings	PID	SC23030159V4	Normal	0
592-906376	9/12/2024 8:36	Readings	PID	SC23030159V4	Normal	0
592-906376	9/12/2024 8:37	Readings	PID	SC23030159V4	Normal	0
592-906376	9/12/2024 8:38	Readings	PID	SC23030159V4	Normal	0
592-906376	9/12/2024 8:39	Readings	PID	SC23030159V4	Normal	0
592-906376	9/12/2024 8:40	Readings	PID	SC23030159V4	Normal	0
592-906376	9/12/2024 8:41	Readings	PID	SC23030159V4	Normal	0
592-906376	9/12/2024 8:42	Readings	PID	SC23030159V4	Normal	0
592-906376	9/12/2024 8:43	Readings	PID	SC23030159V4	Normal	0
592-906376	9/12/2024 8:44	Readings	PID	SC23030159V4	Normal	0
592-906376	9/12/2024 8:45	Readings	PID	SC23030159V4	Normal	0
592-906376	9/12/2024 8:46	Readings	PID	SC23030159V4	Normal	0
592-906376	9/12/2024 8:47	Readings	PID	SC23030159V4	Normal	0
592-906376	9/12/2024 8:48	Readings	PID	SC23030159V4	Normal	0
592-906376	9/12/2024 8:49	Readings	PID	SC23030159V4	Normal	0
592-906376	9/12/2024 8:50	Readings	PID	SC23030159V4	Normal	0
592-906376	9/12/2024 8:51	Readings	PID	SC23030159V4	Normal	0
592-906376	9/12/2024 8:52	Readings	PID	SC23030159V4	Normal	0
592-906376	9/12/2024 8:53	Readings	PID	SC23030159V4	Normal	0
592-906376	9/12/2024 8:54	Readings	PID	SC23030159V4	Normal	0
592-906376	9/12/2024 8:55	Readings	PID	SC23030159V4	Normal	0
592-906376	9/12/2024 8:56	Readings	PID	SC23030159V4	Normal	0
592-906376	9/12/2024 8:57	Readings	PID	SC23030159V4	Normal	0
592-906376	9/12/2024 8:58	Readings	PID	SC23030159V4	Normal	0
592-906376	9/12/2024 8:59	Readings	PID	SC23030159V4	Normal	0
592-906376	9/12/2024 9:00	Readings	PID	SC23030159V4	Normal	0

592-906376	9/12/2024 9:34	Readings	PID	SC23030159V4	Normal	0
592-906376	9/12/2024 9:35	Readings	PID	SC23030159V4	Normal	0
592-906376	9/12/2024 9:36	Readings	PID	SC23030159V4	Normal	0
592-906376	9/12/2024 9:37	Readings	PID	SC23030159V4	Normal	0
592-906376	9/12/2024 9:38	Readings	PID	SC23030159V4	Normal	0
592-906376	9/12/2024 9:39	Readings	PID	SC23030159V4	Normal	0
592-906376	9/12/2024 9:40	Readings	PID	SC23030159V4	Normal	0
592-906376	9/12/2024 9:41	Readings	PID	SC23030159V4	Normal	0
592-906376	9/12/2024 9:42	Readings	PID	SC23030159V4	Normal	0
592-906376	9/12/2024 9:43	Readings	PID	SC23030159V4	Normal	0
592-906376	9/12/2024 9:44	Readings	PID	SC23030159V4	Normal	0
592-906376	9/12/2024 9:45	Readings	PID	SC23030159V4	Normal	0
592-906376	9/12/2024 9:46	Readings	PID	SC23030159V4	Normal	0
592-906376	9/12/2024 9:47	Readings	PID	SC23030159V4	Normal	0
592-906376	9/12/2024 9:48	Readings	PID	SC23030159V4	Normal	0
592-906376	9/12/2024 9:49	Readings	PID	SC23030159V4	Normal	0
592-906376	9/12/2024 9:50	Readings	PID	SC23030159V4	Normal	0
592-906376	9/12/2024 9:51	Readings	PID	SC23030159V4	Normal	0
592-906376	9/12/2024 9:52	Readings	PID	SC23030159V4	Normal	0
592-906376	9/12/2024 9:53	Readings	PID	SC23030159V4	Normal	0
592-906376	9/12/2024 9:54	Readings	PID	SC23030159V4	Normal	0
592-906376	9/12/2024 9:55	Readings	PID	SC23030159V4	Normal	0
592-906376	9/12/2024 9:56	Readings	PID	SC23030159V4	Normal	0
592-906376	9/12/2024 9:57	Readings	PID	SC23030159V4	Normal	0
592-906376	9/12/2024 9:58	Readings	PID	SC23030159V4	Normal	0
592-906376	9/12/2024 9:59	Readings	PID	SC23030159V4	Normal	0
592-906376	9/12/2024 10:00	Readings	PID	SC23030159V4	Normal	0
592-906376	9/12/2024 10:01	Readings	PID	SC23030159V4	Normal	0
592-906376	9/12/2024 10:02	Readings	PID	SC23030159V4	Normal	0
592-906376	9/12/2024 10:03	Readings	PID	SC23030159V4	Normal	0
592-906376	9/12/2024 10:04	Readings	PID	SC23030159V4	Normal	0
592-906376	9/12/2024 10:05	Readings	PID	SC23030159V4	Normal	0
592-906376	9/12/2024 10:06	Readings	PID	SC23030159V4	Normal	0

592-906376	9/12/2024 16:10 Readings	PID	SC23030159V4	Normal	0
592-906376	9/12/2024 16:11 Readings	PID	SC23030159V4	Normal	0
592-906376	9/12/2024 16:12 Readings	PID	SC23030159V4	Normal	0
592-906376	9/12/2024 16:13 Readings	PID	SC23030159V4	Normal	0
592-906376	9/12/2024 16:14 Readings	PID	SC23030159V4	Normal	0
592-906376	9/12/2024 16:15 Readings	PID	SC23030159V4	Normal	0
592-906376	9/12/2024 16:16 Readings	PID	SC23030159V4	Normal	0
592-906376	9/12/2024 16:17 Readings	PID	SC23030159V4	Normal	0
592-906376	9/12/2024 16:18 Readings	PID	SC23030159V4	Normal	0
592-906376	9/12/2024 16:19 Readings	PID	SC23030159V4	Normal	0
592-906376	9/12/2024 16:20 Readings	PID	SC23030159V4	Normal	0
592-906376	9/12/2024 16:21 Readings	PID	SC23030159V4	Normal	0
592-906376	9/12/2024 16:22 Readings	PID	SC23030159V4	Normal	0
592-906376	9/12/2024 16:23 Readings	PID	SC23030159V4	Normal	0
592-906376	9/12/2024 16:24 Readings	PID	SC23030159V4	Normal	0
592-906376	9/12/2024 16:25 Readings	PID	SC23030159V4	Normal	0
592-906376	9/12/2024 16:26 Readings	PID	SC23030159V4	Normal	0
592-906376	9/12/2024 16:27 Readings	PID	SC23030159V4	Normal	0
592-906376	9/12/2024 16:28 Readings	PID	SC23030159V4	Normal	0

Instrument Name	DustTrak DRX
Model Number	8533
Serial Number	8533181207
Firmware Version	3.1
Calibration Date	7/11/2024
Test Name	MANUAL_009
Test Start Time	6:51:50 AM
Test Start Date	9/12/2024
Test Length [D:H:M]	0:09:28
Test Interval [M:S]	1:00
PM1 Average [mg/m3]	0.039
PM1 Minimum [mg/m3]	0.014
PM1 Maximum [mg/m3]	0.35
PM1 TWA [mg/m3]	0.042
Photometric User Cal	1
Size Correction User Cal	1
Flow User Cal	0
Errors	
Number of Samples	568

Elapsed Time [s]	PM1 [mg/m3]	Alarms	Errors
6:52	0.35		
6:53	0.053		
6:54	0.052		
6:55	0.052		
6:56	0.062		
6:57	0.051		
6:58	0.052		
6:59	0.051		
7:00	0.051		
7:01	0.051		
7:02	0.051		
7:03	0.05		
7:04	0.05		
7:05	0.051		
7:06	0.051		
7:07	0.052		
7:08	0.052		
7:09	0.051		
7:10	0.051		
7:11	0.05		
7:12	0.051		
7:13	0.054		
7:14	0.052		

7:15	0.047
7:16	0.046
7:17	0.051
7:18	0.051
7:19	0.047
7:20	0.046
7:21	0.047
7:22	0.047
7:23	0.045
7:24	0.044
7:25	0.043
7:26	0.047
7:27	0.049
7:28	0.05
7:29	0.049
7:30	0.048
7:31	0.047
7:32	0.046
7:33	0.044
7:34	0.045
7:35	0.046
7:36	0.047
7:37	0.047
7:38	0.07
7:39	0.046
7:40	0.052
7:41	0.052
7:42	0.057
7:43	0.051
7:44	0.047
7:45	0.047
7:46	0.046
7:47	0.048
7:48	0.05
7:49	0.049
7:50	0.049
7:51	0.062
7:52	0.068
7:53	0.053
7:54	0.052
7:55	0.06
7:56	0.056
7:57	0.051
7:58	0.051

7:59	0.051
8:00	0.053
8:01	0.062
8:02	0.065
8:03	0.053
8:04	0.05
8:05	0.049
8:06	0.05
8:07	0.049
8:08	0.048
8:09	0.045
8:10	0.046
8:11	0.047
8:12	0.047
8:13	0.049
8:14	0.052
8:15	0.053
8:16	0.055
8:17	0.058
8:18	0.061
8:19	0.054
8:20	0.053
8:21	0.053
8:22	0.055
8:23	0.054
8:24	0.054
8:25	0.053
8:26	0.051
8:27	0.047
8:28	0.044
8:29	0.044
8:30	0.036
8:31	0.037
8:32	0.032
8:33	0.097
8:34	0.038
8:35	0.034
8:36	0.036
8:37	0.047
8:38	0.038
8:39	0.031
8:40	0.032
8:41	0.034
8:42	0.031

8:43	0.03
8:44	0.032
8:45	0.034
8:46	0.034
8:47	0.03
8:48	0.028
8:49	0.024
8:50	0.024
8:51	0.025
8:52	0.026
8:53	0.025
8:54	0.025
8:55	0.025
8:56	0.025
8:57	0.022
8:58	0.02
8:59	0.02
9:00	0.021
9:01	0.022
9:02	0.021
9:03	0.023
9:04	0.024
9:05	0.028
9:06	0.029
9:07	0.03
9:08	0.043
9:09	0.029
9:10	0.025
9:11	0.023
9:12	0.022
9:13	0.023
9:14	0.021
9:15	0.019
9:16	0.02
9:17	0.074
9:18	0.035
9:19	0.027
9:20	0.021
9:21	0.022
9:22	0.024
9:23	0.021
9:24	0.02
9:25	0.022
9:26	0.021

9:27	0.021
9:28	0.024
9:29	0.023
9:30	0.024
9:31	0.023
9:32	0.021
9:33	0.022
9:34	0.025
9:35	0.03
9:36	0.033
9:37	0.038
9:38	0.035
9:39	0.038
9:40	0.036
9:41	0.034
9:42	0.036
9:43	0.041
9:44	0.035
9:45	0.033
9:46	0.033
9:47	0.032
9:48	0.032
9:49	0.033
9:50	0.031
9:51	0.033
9:52	0.033
9:53	0.032
9:54	0.032
9:55	0.031
9:56	0.031
9:57	0.031
9:58	0.038
9:59	0.04
10:00	0.033
10:01	0.033
10:02	0.036
10:03	0.037
10:04	0.037
10:05	0.033
10:06	0.038
10:07	0.036
10:08	0.033
10:09	0.033
10:10	0.033

10:11	0.033
10:12	0.038
10:13	0.033
10:14	0.034
10:15	0.034
10:16	0.033
10:17	0.032
10:18	0.035
10:19	0.034
10:20	0.032
10:21	0.034
10:22	0.034
10:23	0.033
10:24	0.035
10:25	0.033
10:26	0.033
10:27	0.034
10:28	0.033
10:29	0.034
10:30	0.035
10:31	0.034
10:32	0.034
10:33	0.034
10:34	0.033
10:35	0.033
10:36	0.035
10:37	0.034
10:38	0.037
10:39	0.035
10:40	0.039
10:41	0.033
10:42	0.033
10:43	0.038
10:44	0.036
10:45	0.04
10:46	0.035
10:47	0.035
10:48	0.034
10:49	0.034
10:50	0.035
10:51	0.036
10:52	0.036
10:53	0.041
10:54	0.044

10:55	0.037
10:56	0.038
10:57	0.034
10:58	0.036
10:59	0.034
11:00	0.033
11:01	0.034
11:02	0.035
11:03	0.034
11:04	0.034
11:05	0.036
11:06	0.035
11:07	0.033
11:08	0.037
11:09	0.035
11:10	0.034
11:11	0.033
11:12	0.033
11:13	0.036
11:14	0.032
11:15	0.035
11:16	0.037
11:17	0.031
11:18	0.03
11:19	0.031
11:20	0.032
11:21	0.035
11:22	0.036
11:23	0.045
11:24	0.036
11:25	0.068
11:26	0.039
11:27	0.033
11:28	0.035
11:29	0.035
11:30	0.033
11:31	0.034
11:32	0.035
11:33	0.032
11:34	0.032
11:35	0.043
11:36	0.045
11:37	0.041
11:38	0.038

11:39	0.037
11:40	0.035
11:41	0.037
11:42	0.036
11:43	0.037
11:44	0.041
11:45	0.073
11:46	0.05
11:47	0.042
11:48	0.08
11:49	0.086
11:50	0.065
11:51	0.113
11:52	0.08
11:53	0.045
11:54	0.039
11:55	0.032
11:56	0.079
11:57	0.066
11:58	0.035
11:59	0.042
12:00	0.04
12:01	0.033
12:02	0.037
12:03	0.031
12:04	0.029
12:05	0.034
12:06	0.035
12:07	0.028
12:08	0.028
12:09	0.027
12:10	0.028
12:11	0.028
12:12	0.03
12:13	0.03
12:14	0.028
12:15	0.029
12:16	0.03
12:17	0.027
12:18	0.027
12:19	0.03
12:20	0.03
12:21	0.026
12:22	0.026

12:23	0.027
12:24	0.028
12:25	0.028
12:26	0.091
12:27	0.044
12:28	0.029
12:29	0.041
12:30	0.137
12:31	0.103
12:32	0.33
12:33	0.14
12:34	0.114
12:35	0.03
12:36	0.026
12:37	0.066
12:38	0.053
12:39	0.095
12:40	0.043
12:41	0.028
12:42	0.029
12:43	0.031
12:44	0.028
12:45	0.114
12:46	0.05
12:47	0.029
12:48	0.026
12:49	0.028
12:50	0.026
12:51	0.025
12:52	0.033
12:53	0.089
12:54	0.147
12:55	0.048
12:56	0.033
12:57	0.026
12:58	0.025
12:59	0.025
13:00	0.026
13:01	0.024
13:02	0.023
13:03	0.024
13:04	0.034
13:05	0.053
13:06	0.035

13:07	0.029
13:08	0.061
13:09	0.05
13:10	0.053
13:11	0.064
13:12	0.08
13:13	0.112
13:14	0.052
13:15	0.057
13:16	0.045
13:17	0.037
13:18	0.036
13:19	0.028
13:20	0.023
13:21	0.024
13:22	0.023
13:23	0.023
13:24	0.06
13:25	0.046
13:26	0.031
13:27	0.029
13:28	0.023
13:29	0.038
13:30	0.045
13:31	0.027
13:32	0.022
13:33	0.192
13:34	0.149
13:35	0.024
13:36	0.022
13:37	0.021
13:38	0.02
13:39	0.019
13:40	0.022
13:41	0.02
13:42	0.024
13:43	0.02
13:44	0.02
13:45	0.018
13:46	0.017
13:47	0.018
13:48	0.017
13:49	0.017
13:50	0.022

13:51	0.072
13:52	0.146
13:53	0.033
13:54	0.018
13:55	0.019
13:56	0.016
13:57	0.016
13:58	0.016
13:59	0.017
14:00	0.021
14:01	0.031
14:02	0.027
14:03	0.017
14:04	0.052
14:05	0.032
14:06	0.03
14:07	0.032
14:08	0.036
14:09	0.019
14:10	0.017
14:11	0.016
14:12	0.015
14:13	0.136
14:14	0.026
14:15	0.069
14:16	0.052
14:17	0.076
14:18	0.08
14:19	0.04
14:20	0.072
14:21	0.191
14:22	0.189
14:23	0.116
14:24	0.09
14:25	0.065
14:26	0.044
14:27	0.03
14:28	0.083
14:29	0.025
14:30	0.02
14:31	0.021
14:32	0.019
14:33	0.019
14:34	0.066

14:35	0.025
14:36	0.024
14:37	0.02
14:38	0.019
14:39	0.021
14:40	0.025
14:41	0.019
14:42	0.024
14:43	0.019
14:44	0.02
14:45	0.023
14:46	0.044
14:47	0.047
14:48	0.027
14:49	0.02
14:50	0.021
14:51	0.032
14:52	0.019
14:53	0.023
14:54	0.018
14:55	0.035
14:56	0.017
14:57	0.035
14:58	0.017
14:59	0.017
15:00	0.018
15:01	0.017
15:02	0.017
15:03	0.016
15:04	0.016
15:05	0.016
15:06	0.018
15:07	0.016
15:08	0.017
15:09	0.016
15:10	0.022
15:11	0.019
15:12	0.047
15:13	0.023
15:14	0.017
15:15	0.018
15:16	0.018
15:17	0.018
15:18	0.018

15:19	0.018
15:20	0.018
15:21	0.021
15:22	0.022
15:23	0.02
15:24	0.019
15:25	0.022
15:26	0.02
15:27	0.021
15:28	0.018
15:29	0.018
15:30	0.019
15:31	0.018
15:32	0.02
15:33	0.017
15:34	0.016
15:35	0.017
15:36	0.016
15:37	0.016
15:38	0.017
15:39	0.017
15:40	0.017
15:41	0.037
15:42	0.021
15:43	0.018
15:44	0.021
15:45	0.017
15:46	0.016
15:47	0.017
15:48	0.016
15:49	0.015
15:50	0.015
15:51	0.015
15:52	0.015
15:53	0.016
15:54	0.015
15:55	0.015
15:56	0.017
15:57	0.016
15:58	0.016
15:59	0.016
16:00	0.015
16:01	0.015
16:02	0.015

16:03	0.016
16:04	0.016
16:05	0.015
16:06	0.023
16:07	0.015
16:08	0.014
16:09	0.014
16:10	0.014
16:11	0.015
16:12	0.015
16:13	0.016
16:14	0.017
16:15	0.015
16:16	0.014
16:17	0.015
16:18	0.016
16:19	0.024

Device Serial No	Log Time	Log Type	Sensor 1 Type	Sensor 1 Serial Number	Sensor 1 Status	Sensor 1 Gas Reading
592-906020	9/12/2024 6:52	CONFIG	PID	SC23030396CB		
592-906020	9/12/2024 6:53	Readings	PID	SC23030396CB	Normal	0
592-906020	9/12/2024 6:54	Readings	PID	SC23030396CB	Normal	0
592-906020	9/12/2024 6:55	Readings	PID	SC23030396CB	Normal	0
592-906020	9/12/2024 6:56	Readings	PID	SC23030396CB	Normal	0
592-906020	9/12/2024 6:57	Readings	PID	SC23030396CB	Normal	0
592-906020	9/12/2024 6:58	Readings	PID	SC23030396CB	Normal	0
592-906020	9/12/2024 6:59	Readings	PID	SC23030396CB	Normal	0
592-906020	9/12/2024 7:00	Readings	PID	SC23030396CB	Normal	0
592-906020	9/12/2024 7:01	Readings	PID	SC23030396CB	Normal	0
592-906020	9/12/2024 7:02	Readings	PID	SC23030396CB	Normal	0
592-906020	9/12/2024 7:03	Readings	PID	SC23030396CB	Normal	0
592-906020	9/12/2024 7:04	Readings	PID	SC23030396CB	Normal	0
592-906020	9/12/2024 7:05	Readings	PID	SC23030396CB	Normal	0
592-906020	9/12/2024 7:06	Readings	PID	SC23030396CB	Normal	0
592-906020	9/12/2024 7:07	Readings	PID	SC23030396CB	Normal	0
592-906020	9/12/2024 7:08	Readings	PID	SC23030396CB	Normal	0
592-906020	9/12/2024 7:09	Readings	PID	SC23030396CB	Normal	0
592-906020	9/12/2024 7:10	Readings	PID	SC23030396CB	Normal	0
592-906020	9/12/2024 7:11	Readings	PID	SC23030396CB	Normal	0
592-906020	9/12/2024 7:12	Readings	PID	SC23030396CB	Normal	0
592-906020	9/12/2024 7:13	Readings	PID	SC23030396CB	Normal	0
592-906020	9/12/2024 7:14	Readings	PID	SC23030396CB	Normal	0
592-906020	9/12/2024 7:15	Readings	PID	SC23030396CB	Normal	0
592-906020	9/12/2024 7:16	Readings	PID	SC23030396CB	Normal	0
592-906020	9/12/2024 7:17	Readings	PID	SC23030396CB	Normal	0
592-906020	9/12/2024 7:18	Readings	PID	SC23030396CB	Normal	0
592-906020	9/12/2024 7:19	Readings	PID	SC23030396CB	Normal	0
592-906020	9/12/2024 7:20	Readings	PID	SC23030396CB	Normal	0
592-906020	9/12/2024 7:21	Readings	PID	SC23030396CB	Normal	0
592-906020	9/12/2024 7:22	Readings	PID	SC23030396CB	Normal	0
592-906020	9/12/2024 7:23	Readings	PID	SC23030396CB	Normal	0

592-906020	9/12/2024 16:12 Readings	PID	SC23030396CB	Normal	0
592-906020	9/12/2024 16:13 Readings	PID	SC23030396CB	Normal	0
592-906020	9/12/2024 16:14 Readings	PID	SC23030396CB	Normal	0
592-906020	9/12/2024 16:15 Readings	PID	SC23030396CB	Normal	0
592-906020	9/12/2024 16:16 Readings	PID	SC23030396CB	Normal	0
592-906020	9/12/2024 16:17 Readings	PID	SC23030396CB	Normal	0
592-906020	9/12/2024 16:18 Readings	PID	SC23030396CB	Normal	0
592-906020	9/12/2024 16:19 Readings	PID	SC23030396CB	Normal	0
592-906020	9/12/2024 16:20 Readings	PID	SC23030396CB	Normal	0
592-906020	9/12/2024 16:21 Readings	PID	SC23030396CB	Normal	0
592-906020	9/12/2024 16:22 Readings	PID	SC23030396CB	Normal	0