



**DAILY STATUS REPORT**

**Prepared By:**  
Ryan Just

WEATHER	Snow	Rain	Overcast	Partly Cloudy	X	Bright Sun	X	Wind
TEMP.	< 32	32-50	50-70	X	70-85	X	>85	NE – 12 mph

<b>IEEG Project No:</b>	13928	<b>NYSDEC BCP Site No:</b>	C224367	<b>Date:</b> 09/17/24
<b>Project:</b>	251 Douglass Street, Brooklyn, NY			

<p><b>Consultant:</b> Impact Environmental Engineering and Geology, PLLC (IEEG)</p> <p>Time On: 06:35 Time Out: 16:15</p>	<p><b>Personnel On Site:</b> IEEG (Environmental) – Ryan Just Broadway Construction Group – Shannon Dowling / Tom Caporale WSP – Charles Lambert Cascade – Jonathan Emers Concrete Courses GES MTL – Structural coring</p> <p><b>Equipment On Site:</b> (3) MiniRAE 3000 PID, (3) DustTrak II</p>
---	---

**Scope of Work:** IEEG to deploy CAMP stations according to wind direction; Cascade to continue site maintenance and preparing for ISS column installation; Concrete Courses to continue with super structure work; and Concrete Courses to dig elevator pit.

- Site Activities:**
- IEEG deployed three (3) CAMP stations prior to the start of work activities;
  - MTL completed coring for structural integrity testing with oversight provided by GES;
  - Cascade continued preparing western portion of the site for ISS column installation. ISS Drill Rig and mats positioned over first column to be installed;
  - Cascade received two (2) loads of approved stone from Mt. Hope Quarry through the western gate for trucking pad;
  - Concrete Courses continued work on the superstructure in the Butler Corridor;
  - Twenty (20) truckloads of material originating from the elevator pit excavation were loaded offsite for disposal to the Pure Soil facility. Material was sprayed with ATMOS foam during loadout;
  - Concrete Courses continued elevator pit excavation, minimal odors detected; and
  - IEEG and BCG relocated ATMOS foam spraying equipment to western portion of the site for column installation beginning tomorrow.

**Community Air Monitoring Program (CAMP) - CAMP** action level for dust (0.1 mg/m<sup>3</sup>) and VOCs (5 ppm)

- PID remained at nominal levels throughout the day
- No sustained dust exceedances were observed over a 15-min period during monitoring.
- Startup Upwind Conditions – PID = \_0.0\_ ppm, Dust = \_0.118\_ mg/m<sup>3</sup> @ 06:51
- High Conditions (Upwind) – PID = \_0.0\_ ppm, Dust = \_0.937\_ mg/m<sup>3</sup> @ 13:30
- High Conditions (Downwind 1) – PID = \_0.0\_ ppm, Dust = \_0.893\_ mg/m<sup>3</sup> @ 14:34
- High Conditions (Downwind 2) – PID = \_0.0\_ ppm, Dust = \_1.42\_ mg/m<sup>3</sup> @ 15:19

**Notable Site Conditions:**

- None

**Planned for the Next Day/Week:**

- Concrete Courses to continue with work on the superstructure in the Butler corridor superstructure; and
- Cascade to continue ISS Column installation.



**PHOTO LOG**

251 DOUGLASS STREET, BROOKLYN, NY



**Photo 1-**  
Representative  
photo of ATMOS  
Foam application  
during loadout.



**Photo 2-**  
Representative  
photo of  
approved stone  
delivery for  
western trucking  
pad.



**Photo 3-**

Representative photo of truck cover securely strapped down prior to exiting the Site.



**Photo 4-**

Representative photo of ATMOS Foam equipment positioned for ISS Column installation.



**Photo 5-**  
Representative  
photo of ISS  
columns marked  
out.



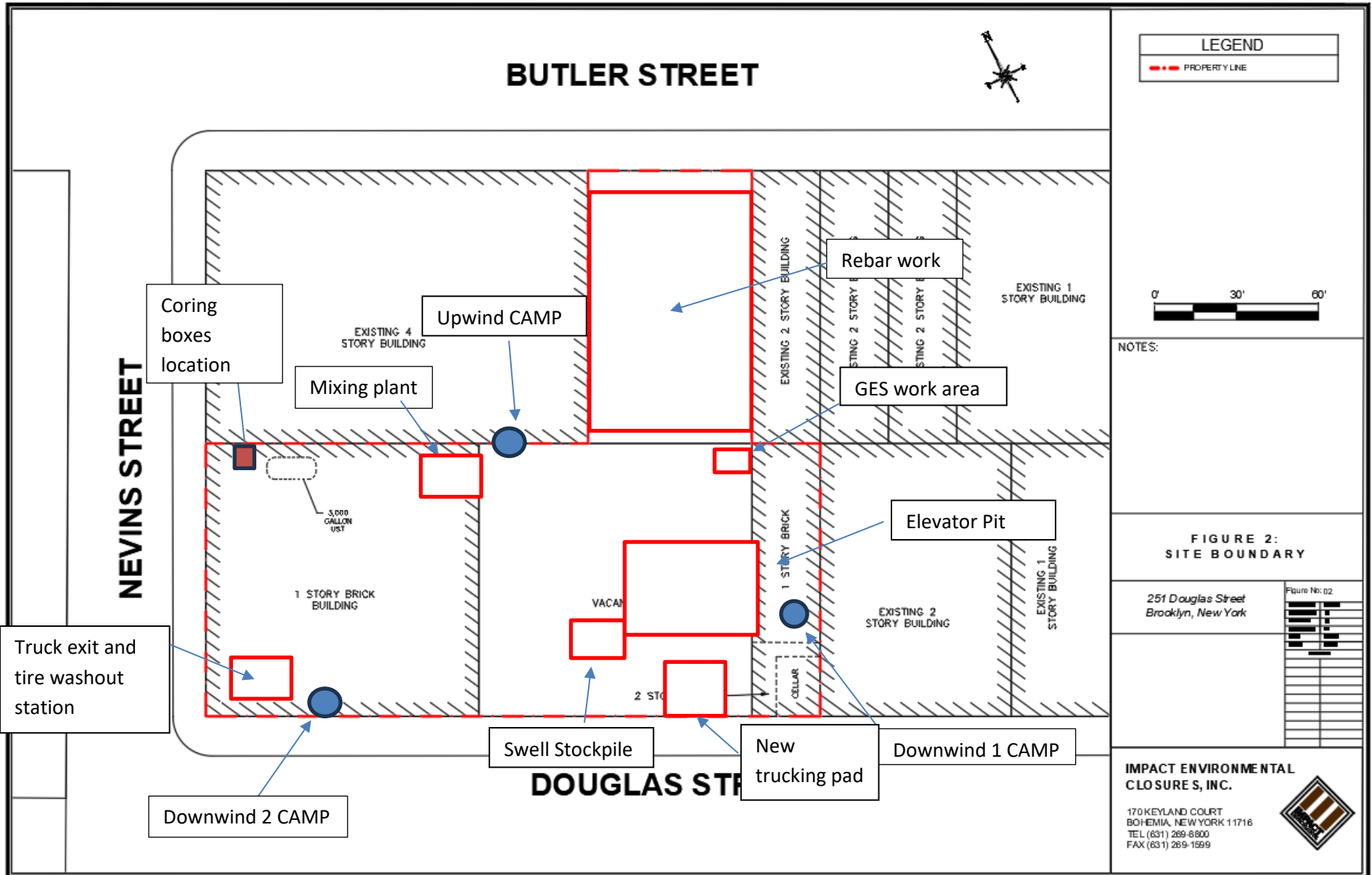
**Photo 6-**  
Representative  
photo of elevator  
pit in eastern  
portion of the  
site.



**SITE PLANS**

251 DOUGLASS STREET, BROOKLYN, NY





**LEGEND**

--- PROPERTY LINE



NOTES:

**FIGURE 2: SITE BOUNDARY**

251 Douglas Street Brooklyn, New York	Figure No: 02

**IMPACT ENVIRONMENTAL CLOSURES, INC.**

170 KEYLAND COURT  
BOHEMIA, NEW YORK 11716  
TEL (631) 269-8800  
FAX (631) 269-1599





**IMPACT ENVIRONMENTAL**

170 Keyland Court | Bohemia | NY | 11716 | 631.269.8800

welcome to solid ground...

[www.impactenvironmental.com](http://www.impactenvironmental.com)

---

**UPWIND CAMP READINGS**

251 DOUGLASS STREET, BROOKLYN, NY

Instrument Name	DustTrak II
Model Number	8530
Serial Number	8530224603
Firmware Version	3.1
Calibration Date	4/3/2024
Test Name	MANUAL_012
Test Start Time	6:50:23 AM
Test Start Date	9/17/2024
Test Length [D:H:M]	0:08:45
Test Interval [M:S]	1:00
Mass Average [mg/m3]	0.066
Mass Minimum [mg/m3]	0.023
Mass Maximum [mg/m3]	0.937
Mass TWA [mg/m3]	0.158
Photometric User Cal	1
Flow User Cal	0
Errors	
Number of Samples	525

Elapsed Time [s]	Mass [mg/m3]	Alarms	Errors
6:51	0.118		
6:52	0.046		
6:53	0.048		
6:54	0.038		
6:55	0.034		
6:56	0.033		
6:57	0.032		
6:58	0.032		
6:59	0.033		
7:00	0.034		
7:01	0.032		
7:02	0.032		
7:03	0.03		
7:04	0.031		
7:05	0.128		
7:06	0.034		
7:07	0.032		
7:08	0.036		
7:09	0.045		
7:10	0.036		
7:11	0.035		
7:12	0.045		
7:13	0.044		
7:14	0.037		
7:15	0.034		
7:16	0.034		
7:17	0.035		

7:18	0.032
7:19	0.031
7:20	0.031
7:21	0.03
7:22	0.032
7:23	0.041
7:24	0.042
7:25	0.037
7:26	0.037
7:27	0.032
7:28	0.03
7:29	0.033
7:30	0.045
7:31	0.038
7:32	0.034
7:33	0.031
7:34	0.029
7:35	0.033
7:36	0.047
7:37	0.043
7:38	0.047
7:39	0.034
7:40	0.034
7:41	0.03
7:42	0.027
7:43	0.029
7:44	0.028
7:45	0.027
7:46	0.027
7:47	0.025
7:48	0.025
7:49	0.024
7:50	0.023
7:51	0.028
7:52	0.029
7:53	0.025
7:54	0.023
7:55	0.037
7:56	0.033
7:57	0.036
7:58	0.036
7:59	0.032
8:00	0.027
8:01	0.031
8:02	0.029
8:03	0.03
8:04	0.025

8:05	0.024
8:06	0.024
8:07	0.026
8:08	0.026
8:09	0.028
8:10	0.029
8:11	0.04
8:12	0.029
8:13	0.03
8:14	0.029
8:15	0.03
8:16	0.031
8:17	0.029
8:18	0.029
8:19	0.028
8:20	0.03
8:21	0.029
8:22	0.026
8:23	0.029
8:24	0.073
8:25	0.031
8:26	0.025
8:27	0.027
8:28	0.026
8:29	0.026
8:30	0.027
8:31	0.028
8:32	0.024
8:33	0.028
8:34	0.03
8:35	0.034
8:36	0.025
8:37	0.059
8:38	0.089
8:39	0.084
8:40	0.044
8:41	0.037
8:42	0.029
8:43	0.03
8:44	0.03
8:45	0.034
8:46	0.025
8:47	0.023
8:48	0.023
8:49	0.023
8:50	0.028
8:51	0.027

8:52	0.032
8:53	0.034
8:54	0.024
8:55	0.026
8:56	0.049
8:57	0.032
8:58	0.04
8:59	0.036
9:00	0.049
9:01	0.068
9:02	0.031
9:03	0.024
9:04	0.028
9:05	0.068
9:06	0.035
9:07	0.028
9:08	0.037
9:09	0.042
9:10	0.042
9:11	0.033
9:12	0.035
9:13	0.137
9:14	0.032
9:15	0.038
9:16	0.028
9:17	0.044
9:18	0.046
9:19	0.056
9:20	0.041
9:21	0.028
9:22	0.034
9:23	0.053
9:24	0.043
9:25	0.043
9:26	0.039
9:27	0.031
9:28	0.032
9:29	0.029
9:30	0.032
9:31	0.037
9:32	0.03
9:33	0.035
9:34	0.042
9:35	0.05
9:36	0.036
9:37	0.048
9:38	0.035

9:39	0.026
9:40	0.037
9:41	0.044
9:42	0.036
9:43	0.035
9:44	0.033
9:45	0.031
9:46	0.03
9:47	0.032
9:48	0.032
9:49	0.035
9:50	0.035
9:51	0.037
9:52	0.049
9:53	0.044
9:54	0.038
9:55	0.035
9:56	0.039
9:57	0.035
9:58	0.029
9:59	0.031
10:00	0.036
10:01	0.047
10:02	0.054
10:03	0.041
10:04	0.037
10:05	0.046
10:06	0.034
10:07	0.031
10:08	0.031
10:09	0.068
10:10	0.034
10:11	0.062
10:12	0.044
10:13	0.034
10:14	0.032
10:15	0.032
10:16	0.036
10:17	0.034
10:18	0.04
10:19	0.044
10:20	0.033
10:21	0.03
10:22	0.038
10:23	0.045
10:24	0.044
10:25	0.045

10:26	0.075
10:27	0.082
10:28	0.066
10:29	0.114
10:30	0.082
10:31	0.123
10:32	0.042
10:33	0.038
10:34	0.03
10:35	0.033
10:36	0.037
10:37	0.041
10:38	0.069
10:39	0.045
10:40	0.079
10:41	0.15
10:42	0.056
10:43	0.045
10:44	0.05
10:45	0.05
10:46	0.077
10:47	0.063
10:48	0.065
10:49	0.044
10:50	0.039
10:51	0.065
10:52	0.046
10:53	0.054
10:54	0.056
10:55	0.045
10:56	0.056
10:57	0.135
10:58	0.064
10:59	0.075
11:00	0.127
11:01	0.102
11:02	0.046
11:03	0.038
11:04	0.042
11:05	0.039
11:06	0.035
11:07	0.045
11:08	0.045
11:09	0.046
11:10	0.038
11:11	0.033
11:12	0.038

11:13	0.032
11:14	0.042
11:15	0.055
11:16	0.054
11:17	0.045
11:18	0.096
11:19	0.045
11:20	0.041
11:21	0.041
11:22	0.042
11:23	0.035
11:24	0.032
11:25	0.035
11:26	0.041
11:27	0.04
11:28	0.035
11:29	0.034
11:30	0.042
11:31	0.041
11:32	0.052
11:33	0.041
11:34	0.037
11:35	0.031
11:36	0.032
11:37	0.031
11:38	0.03
11:39	0.03
11:40	0.029
11:41	0.029
11:42	0.03
11:43	0.03
11:44	0.031
11:45	0.035
11:46	0.035
11:47	0.044
11:48	0.08
11:49	0.052
11:50	0.036
11:51	0.048
11:52	0.065
11:53	0.032
11:54	0.386
11:55	0.787
11:56	0.172
11:57	0.471
11:58	0.127
11:59	0.143



12:00	0.292
12:01	0.332
12:02	0.421
12:03	0.222
12:04	0.148
12:05	0.066
12:06	0.041
12:07	0.069
12:08	0.438
12:09	0.274
12:10	0.105
12:11	0.201
12:12	0.145
12:13	0.408
12:14	0.106
12:15	0.046
12:16	0.074
12:17	0.047
12:18	0.046
12:19	0.055
12:20	0.086
12:21	0.088
12:22	0.099
12:23	0.055
12:24	0.032
12:25	0.083
12:26	0.046
12:27	0.037
12:28	0.052
12:29	0.107
12:30	0.083
12:31	0.078
12:32	0.228
12:33	0.066
12:34	0.078
12:35	0.041
12:36	0.035
12:37	0.035
12:38	0.031
12:39	0.03
12:40	0.034
12:41	0.031
12:42	0.032
12:43	0.037
12:44	0.029
12:45	0.031
12:46	0.178

12:47	0.061
12:48	0.028
12:49	0.038
12:50	0.027
12:51	0.028
12:52	0.046
12:53	0.061
12:54	0.106
12:55	0.053
12:56	0.047
12:57	0.044
12:58	0.036
12:59	0.036
13:00	0.03
13:01	0.032
13:02	0.101
13:03	0.105
13:04	0.044
13:05	0.037
13:06	0.04
13:07	0.048
13:08	0.035
13:09	0.034
13:10	0.039
13:11	0.074
13:12	0.056
13:13	0.14
13:14	0.066
13:15	0.077
13:16	0.053
13:17	0.039
13:18	0.035
13:19	0.031
13:20	0.037
13:21	0.034
13:22	0.043
13:23	0.039
13:24	0.038
13:25	0.041
13:26	0.038
13:27	0.074
13:28	0.467
13:29	0.439
13:30	0.937
13:31	0.249
13:32	0.108
13:33	0.054

13:34	0.114
13:35	0.041
13:36	0.088
13:37	0.037
13:38	0.058
13:39	0.034
13:40	0.035
13:41	0.041
13:42	0.047
13:43	0.052
13:44	0.061
13:45	0.052
13:46	0.036
13:47	0.028
13:48	0.032
13:49	0.027
13:50	0.029
13:51	0.032
13:52	0.06
13:53	0.041
13:54	0.047
13:55	0.028
13:56	0.043
13:57	0.053
13:58	0.057
13:59	0.034
14:00	0.026
14:01	0.028
14:02	0.037
14:03	0.046
14:04	0.032
14:05	0.031
14:06	0.035
14:07	0.031
14:08	0.036
14:09	0.058
14:10	0.039
14:11	0.035
14:12	0.032
14:13	0.031
14:14	0.032
14:15	0.04
14:16	0.04
14:17	0.04
14:18	0.046
14:19	0.033
14:20	0.038

14:21	0.068
14:22	0.034
14:23	0.035
14:24	0.035
14:25	0.036
14:26	0.037
14:27	0.047
14:28	0.048
14:29	0.081
14:30	0.042
14:31	0.114
14:32	0.044
14:33	0.102
14:34	0.089
14:35	0.092
14:36	0.071
14:37	0.05
14:38	0.072
14:39	0.078
14:40	0.086
14:41	0.232
14:42	0.13
14:43	0.058
14:44	0.045
14:45	0.047
14:46	0.032
14:47	0.049
14:48	0.057
14:49	0.296
14:50	0.077
14:51	0.038
14:52	0.086
14:53	0.049
14:54	0.422
14:55	0.182
14:56	0.058
14:57	0.042
14:58	0.047
14:59	0.036
15:00	0.036
15:01	0.036
15:02	0.06
15:03	0.035
15:04	0.067
15:05	0.051
15:06	0.035
15:07	0.036

15:08	0.049
15:09	0.034
15:10	0.038
15:11	0.36
15:12	0.092
15:13	0.049
15:14	0.035
15:15	0.033
15:16	0.054
15:17	0.038
15:18	0.151
15:19	0.147
15:20	0.106
15:21	0.655
15:22	0.043
15:23	0.035
15:24	0.248
15:25	0.127
15:26	0.213
15:27	0.804
15:28	0.407
15:29	0.167
15:30	0.198
15:31	0.553
15:32	0.06
15:33	0.09
15:34	0.063
15:35	0.1



















592-601274	9/17/2024 15:33 Readings	PID	SC23030921B3	Normal	0
592-601274	9/17/2024 15:34 Readings	PID	SC23030921B3	Normal	0
592-601274	9/17/2024 15:35 Readings	PID	SC23030921B3	Normal	0
592-601274	9/17/2024 15:36 Readings	PID	SC23030921B3	Normal	0
592-601274	9/17/2024 15:37 Readings	PID	SC23030921B3	Normal	0
592-601274	9/17/2024 15:38 Readings	PID	SC23030921B3	Normal	0
592-601274	9/17/2024 15:39 Readings	PID	SC23030921B3	Normal	0

**DOWNWIND CAMP READINGS**

251 DOUGLASS STREET, BROOKLYN, NY



Instrument Name	DustTrak DRX
Model Number	8533
Serial Number	8533181207
Firmware Version	3.1
Calibration Date	7/11/2024
Test Name	MANUAL_003
Test Start Time	6:54:06 AM
Test Start Date	9/17/2024
Test Length [D:H:M]	0:08:46
Test Interval [M:S]	1:00
PM10 Average [mg/m3]	0.043
PM10 Minimum [mg/m3]	0.015
PM10 Maximum [mg/m3]	0.893
PM10 TWA [mg/m3]	0.044
Photometric User Cal	1
Size Correction User Cal	1
Flow User Cal	0
Errors	
Number of Samples	526

Elapsed Time [s]	PM10 [mg/m3]	Alarms	Errors
6:55	0.116		
6:56	0.025		
6:57	0.025		
6:58	0.021		
6:59	0.032		
7:00	0.025		
7:01	0.023		
7:02	0.02		
7:03	0.021		
7:04	0.023		
7:05	0.027		
7:06	0.022		
7:07	0.025		
7:08	0.03		
7:09	0.051		
7:10	0.053		
7:11	0.115		
7:12	0.077		
7:13	0.032		
7:14	0.028		
7:15	0.036		
7:16	0.023		
7:17	0.039		
7:18	0.022		
7:19	0.022		
7:20	0.023		



7:21	0.022
7:22	0.02
7:23	0.021
7:24	0.02
7:25	0.033
7:26	0.018
7:27	0.02
7:28	0.02
7:29	0.022
7:30	0.027
7:31	0.034
7:32	0.02
7:33	0.021
7:34	0.036
7:35	0.025
7:36	0.307
7:37	0.088
7:38	0.027
7:39	0.025
7:40	0.161
7:41	0.155
7:42	0.032
7:43	0.03
7:44	0.017
7:45	0.017
7:46	0.02
7:47	0.018
7:48	0.021
7:49	0.03
7:50	0.099
7:51	0.059
7:52	0.021
7:53	0.019
7:54	0.049
7:55	0.075
7:56	0.061
7:57	0.119
7:58	0.15
7:59	0.059
8:00	0.028
8:01	0.022
8:02	0.017
8:03	0.02
8:04	0.02
8:05	0.017
8:06	0.028
8:07	0.025

8:08	0.023
8:09	0.032
8:10	0.048
8:11	0.041
8:12	0.045
8:13	0.026
8:14	0.019
8:15	0.021
8:16	0.051
8:17	0.047
8:18	0.036
8:19	0.078
8:20	0.108
8:21	0.045
8:22	0.029
8:23	0.02
8:24	0.018
8:25	0.018
8:26	0.02
8:27	0.021
8:28	0.027
8:29	0.042
8:30	0.047
8:31	0.028
8:32	0.046
8:33	0.029
8:34	0.021
8:35	0.021
8:36	0.159
8:37	0.108
8:38	0.096
8:39	0.253
8:40	0.102
8:41	0.035
8:42	0.024
8:43	0.023
8:44	0.023
8:45	0.015
8:46	0.016
8:47	0.018
8:48	0.016
8:49	0.05
8:50	0.044
8:51	0.06
8:52	0.057
8:53	0.026
8:54	0.026

8:55	0.021
8:56	0.029
8:57	0.021
8:58	0.029
8:59	0.353
9:00	0.083
9:01	0.024
9:02	0.021
9:03	0.047
9:04	0.022
9:05	0.023
9:06	0.025
9:07	0.022
9:08	0.022
9:09	0.024
9:10	0.021
9:11	0.02
9:12	0.022
9:13	0.021
9:14	0.019
9:15	0.041
9:16	0.029
9:17	0.02
9:18	0.034
9:19	0.03
9:20	0.094
9:21	0.034
9:22	0.021
9:23	0.042
9:24	0.023
9:25	0.031
9:26	0.052
9:27	0.036
9:28	0.027
9:29	0.032
9:30	0.045
9:31	0.026
9:32	0.079
9:33	0.04
9:34	0.035
9:35	0.079
9:36	0.046
9:37	0.022
9:38	0.036
9:39	0.031
9:40	0.055
9:41	0.041

9:42	0.086
9:43	0.04
9:44	0.022
9:45	0.026
9:46	0.028
9:47	0.032
9:48	0.028
9:49	0.028
9:50	0.024
9:51	0.06
9:52	0.017
9:53	0.018
9:54	0.019
9:55	0.064
9:56	0.026
9:57	0.021
9:58	0.024
9:59	0.022
10:00	0.019
10:01	0.019
10:02	0.019
10:03	0.022
10:04	0.019
10:05	0.078
10:06	0.091
10:07	0.039
10:08	0.027
10:09	0.028
10:10	0.028
10:11	0.021
10:12	0.043
10:13	0.022
10:14	0.023
10:15	0.048
10:16	0.063
10:17	0.047
10:18	0.024
10:19	0.029
10:20	0.042
10:21	0.029
10:22	0.029
10:23	0.036
10:24	0.047
10:25	0.067
10:26	0.107
10:27	0.066
10:28	0.043

10:29	0.044
10:30	0.032
10:31	0.094
10:32	0.191
10:33	0.062
10:34	0.042
10:35	0.047
10:36	0.048
10:37	0.036
10:38	0.046
10:39	0.119
10:40	0.045
10:41	0.081
10:42	0.047
10:43	0.057
10:44	0.072
10:45	0.127
10:46	0.042
10:47	0.046
10:48	0.058
10:49	0.049
10:50	0.041
10:51	0.034
10:52	0.036
10:53	0.031
10:54	0.037
10:55	0.059
10:56	0.036
10:57	0.034
10:58	0.056
10:59	0.037
11:00	0.076
11:01	0.037
11:02	0.059
11:03	0.044
11:04	0.047
11:05	0.028
11:06	0.023
11:07	0.05
11:08	0.067
11:09	0.04
11:10	0.026
11:11	0.022
11:12	0.021
11:13	0.047
11:14	0.039
11:15	0.029

11:16	0.027
11:17	0.089
11:18	0.07
11:19	0.026
11:20	0.025
11:21	0.021
11:22	0.021
11:23	0.096
11:24	0.077
11:25	0.116
11:26	0.058
11:27	0.044
11:28	0.082
11:29	0.068
11:30	0.026
11:31	0.041
11:32	0.087
11:33	0.059
11:34	0.031
11:35	0.032
11:36	0.027
11:37	0.034
11:38	0.028
11:39	0.023
11:40	0.021
11:41	0.019
11:42	0.023
11:43	0.02
11:44	0.021
11:45	0.022
11:46	0.021
11:47	0.021
11:48	0.022
11:49	0.022
11:50	0.03
11:51	0.06
11:52	0.061
11:53	0.024
11:54	0.021
11:55	0.094
11:56	0.093
11:57	0.079
11:58	0.035
11:59	0.033
12:00	0.03
12:01	0.125
12:02	0.046

12:03	0.069
12:04	0.067
12:05	0.091
12:06	0.071
12:07	0.045
12:08	0.038
12:09	0.087
12:10	0.053
12:11	0.035
12:12	0.026
12:13	0.042
12:14	0.057
12:15	0.032
12:16	0.07
12:17	0.032
12:18	0.027
12:19	0.027
12:20	0.03
12:21	0.026
12:22	0.03
12:23	0.026
12:24	0.025
12:25	0.021
12:26	0.023
12:27	0.025
12:28	0.02
12:29	0.019
12:30	0.103
12:31	0.026
12:32	0.076
12:33	0.042
12:34	0.026
12:35	0.024
12:36	0.021
12:37	0.02
12:38	0.02
12:39	0.022
12:40	0.024
12:41	0.021
12:42	0.022
12:43	0.024
12:44	0.029
12:45	0.042
12:46	0.033
12:47	0.071
12:48	0.035
12:49	0.033

12:50	0.033
12:51	0.05
12:52	0.078
12:53	0.059
12:54	0.03
12:55	0.045
12:56	0.035
12:57	0.035
12:58	0.045
12:59	0.052
13:00	0.028
13:01	0.025
13:02	0.035
13:03	0.123
13:04	0.028
13:05	0.021
13:06	0.027
13:07	0.022
13:08	0.021
13:09	0.02
13:10	0.023
13:11	0.022
13:12	0.029
13:13	0.035
13:14	0.045
13:15	0.045
13:16	0.063
13:17	0.064
13:18	0.031
13:19	0.054
13:20	0.04
13:21	0.027
13:22	0.022
13:23	0.024
13:24	0.036
13:25	0.05
13:26	0.045
13:27	0.032
13:28	0.038
13:29	0.054
13:30	0.043
13:31	0.024
13:32	0.021
13:33	0.033
13:34	0.024
13:35	0.024
13:36	0.038



13:37	0.041
13:38	0.031
13:39	0.023
13:40	0.029
13:41	0.028
13:42	0.029
13:43	0.022
13:44	0.02
13:45	0.02
13:46	0.021
13:47	0.019
13:48	0.018
13:49	0.026
13:50	0.052
13:51	0.036
13:52	0.027
13:53	0.029
13:54	0.02
13:55	0.021
13:56	0.028
13:57	0.045
13:58	0.029
13:59	0.025
14:00	0.03
14:01	0.022
14:02	0.02
14:03	0.05
14:04	0.023
14:05	0.029
14:06	0.022
14:07	0.019
14:08	0.022
14:09	0.021
14:10	0.021
14:11	0.033
14:12	0.023
14:13	0.021
14:14	0.02
14:15	0.023
14:16	0.027
14:17	0.029
14:18	0.032
14:19	0.045
14:20	0.03
14:21	0.023
14:22	0.021
14:23	0.02

14:24	0.024
14:25	0.024
14:26	0.031
14:27	0.026
14:28	0.052
14:29	0.027
14:30	0.04
14:31	0.048
14:32	0.107
14:33	0.625
14:34	0.893
14:35	0.276
14:36	0.073
14:37	0.053
14:38	0.066
14:39	0.051
14:40	0.03
14:41	0.05
14:42	0.057
14:43	0.035
14:44	0.027
14:45	0.024
14:46	0.022
14:47	0.023
14:48	0.035
14:49	0.023
14:50	0.025
14:51	0.024
14:52	0.022
14:53	0.022
14:54	0.022
14:55	0.024
14:56	0.024
14:57	0.023
14:58	0.048
14:59	0.026
15:00	0.023
15:01	0.063
15:02	0.101
15:03	0.039
15:04	0.03
15:05	0.027
15:06	0.035
15:07	0.025
15:08	0.026
15:09	0.027
15:10	0.022

15:11	0.018
15:12	0.018
15:13	0.022
15:14	0.049
15:15	0.105
15:16	0.05
15:17	0.082
15:18	0.062
15:19	0.022
15:20	0.021
15:21	0.022
15:22	0.027
15:23	0.022
15:24	0.02
15:25	0.026
15:26	0.026
15:27	0.02
15:28	0.09
15:29	0.03
15:30	0.021
15:31	0.016
15:32	0.017
15:33	0.02
15:34	0.017
15:35	0.016
15:36	0.02
15:37	0.019
15:38	0.016
15:39	0.016
15:40	0.016

















592-906376	9/17/2024 15:21 Readings	PID	SC23030159V4	Normal	0
592-906376	9/17/2024 15:22 Readings	PID	SC23030159V4	Normal	0
592-906376	9/17/2024 15:23 Readings	PID	SC23030159V4	Normal	0
592-906376	9/17/2024 15:24 Readings	PID	SC23030159V4	Normal	0
592-906376	9/17/2024 15:25 Readings	PID	SC23030159V4	Normal	0
592-906376	9/17/2024 15:26 Readings	PID	SC23030159V4	Normal	0
592-906376	9/17/2024 15:27 Readings	PID	SC23030159V4	Normal	0
592-906376	9/17/2024 15:28 Readings	PID	SC23030159V4	Normal	0
592-906376	9/17/2024 15:29 Readings	PID	SC23030159V4	Normal	0
592-906376	9/17/2024 15:30 Readings	PID	SC23030159V4	Normal	0
592-906376	9/17/2024 15:31 Readings	PID	SC23030159V4	Normal	0
592-906376	9/17/2024 15:32 Readings	PID	SC23030159V4	Normal	0
592-906376	9/17/2024 15:33 Readings	PID	SC23030159V4	Normal	0
592-906376	9/17/2024 15:34 Readings	PID	SC23030159V4	Normal	0
592-906376	9/17/2024 15:35 Readings	PID	SC23030159V4	Normal	0
592-906376	9/17/2024 15:36 Readings	PID	SC23030159V4	Normal	0
592-906376	9/17/2024 15:37 Readings	PID	SC23030159V4	Normal	0
592-906376	9/17/2024 15:38 Readings	PID	SC23030159V4	Normal	0
592-906376	9/17/2024 15:39 Readings	PID	SC23030159V4	Normal	0
592-906376	9/17/2024 15:40 Readings	PID	SC23030159V4	Normal	0
592-906376	9/17/2024 15:41 Readings	PID	SC23030159V4	Normal	0
592-906376	9/17/2024 15:42 Readings	PID	SC23030159V4	Normal	0
592-906376	9/17/2024 15:43 Readings	PID	SC23030159V4	Normal	0
592-906376	9/17/2024 15:44 Readings	PID	SC23030159V4	Normal	0

Instrument Name	DustTrak II
Model Number	8530
Serial Number	8530154916
Firmware Version	3.1
Calibration Date	8/2/2024
Test Name	MANUAL_003
Test Start Time	7:05:32 AM
Test Start Date	9/17/2024
Test Length [D:H:M]	0:08:26
Test Interval [M:S]	1:00
Mass Average [mg/m3]	0.058
Mass Minimum [mg/m3]	0
Mass Maximum [mg/m3]	1.42
Mass TWA [mg/m3]	0
Photometric User Cal	1
Flow User Cal	0
Errors	
Number of Samples	505

Elapsed Time [s]	Mass [mg/m3]	Alarms	Errors
7:06	0.093		
7:07	0.033		
7:08	0.026		
7:09	0.026		
7:10	0.028		
7:11	0.027		
7:12	0.027		
7:13	0.027		
7:14	0.027		
7:15	0.035		
7:16	0.031		
7:17	0.027		
7:18	0.024		
7:19	0.023		
7:20	0.026		
7:21	0.031		
7:22	0.043		
7:23	0.029		
7:24	0.026		
7:25	0.024		
7:26	0.024		
7:27	0.024		
7:28	0.128		
7:29	0.149		
7:30	0.028		
7:31	0.038		
7:32	0.033		

7:33	0.057
7:34	0.037
7:35	0.043
7:36	0.042
7:37	0.034
7:38	0.023
7:39	0.02
7:40	0.022
7:41	0.023
7:42	0.035
7:43	0.024
7:44	0.022
7:45	0.024
7:46	0.022
7:47	0.023
7:48	0.023
7:49	0.021
7:50	0.032
7:51	0.027
7:52	0.025
7:53	0.03
7:54	0.034
7:55	0.031
7:56	0.034
7:57	0.034
7:58	0.026
7:59	0.028
8:00	0.029
8:01	0.033
8:02	0.036
8:03	0.022
8:04	0.021
8:05	0.021
8:06	0.024
8:07	0.025
8:08	0.019
8:09	0.025
8:10	0.026
8:11	0.026
8:12	0.034
8:13	0.032
8:14	0.026
8:15	0.025
8:16	0.026
8:17	0.027
8:18	0.028
8:19	0.032

8:20	0.04
8:21	0.031
8:22	0.034
8:23	0.026
8:24	0.025
8:25	0.031
8:26	0.033
8:27	0.043
8:28	0.04
8:29	0.037
8:30	0.024
8:31	0.024
8:32	0.028
8:33	0.028
8:34	0.023
8:35	0.034
8:36	0.026
8:37	0.03
8:38	0.058
8:39	0.062
8:40	0.028
8:41	0.03
8:42	0.023
8:43	0.024
8:44	0.029
8:45	0.024
8:46	0.024
8:47	0.021
8:48	0.021
8:49	0.029
8:50	0.03
8:51	0.027
8:52	0.029
8:53	0.029
8:54	0.026
8:55	0.026
8:56	0.032
8:57	0.021
8:58	0.031
8:59	0.05
9:00	0.038
9:01	0.027
9:02	0.022
9:03	0.022
9:04	0.027
9:05	0.031
9:06	0.023

9:07	0.026
9:08	0.03
9:09	0.028
9:10	0.034
9:11	0.034
9:12	0.027
9:13	0.027
9:14	0.021
9:15	0.026
9:16	0.026
9:17	0.026
9:18	0.028
9:19	0.023
9:20	0.043
9:21	0.035
9:22	0.025
9:23	0.026
9:24	0.029
9:25	0.035
9:26	0.027
9:27	0.035
9:28	0.028
9:29	0.02
9:30	0.025
9:31	0.026
9:32	0.025
9:33	0.024
9:34	0.034
9:35	0.024
9:36	0.022
9:37	0.037
9:38	0.041
9:39	0.032
9:40	0.043
9:41	0.035
9:42	0.039
9:43	0.029
9:44	0.033
9:45	0.024
9:46	0.022
9:47	0.027
9:48	0.026
9:49	0.027
9:50	0.027
9:51	0.021
9:52	0.024
9:53	0.028

9:54	0.025
9:55	0.035
9:56	0.033
9:57	0.027
9:58	0.023
9:59	0.04
10:00	0.034
10:01	0.027
10:02	0.03
10:03	0.032
10:04	0.082
10:05	0.101
10:06	0.074
10:07	0.088
10:08	0.045
10:09	0.045
10:10	0.033
10:11	0.04
10:12	0.033
10:13	0.064
10:14	0.034
10:15	0.026
10:16	0.025
10:17	0.038
10:18	0.026
10:19	0.023
10:20	0.023
10:21	0.033
10:22	0.044
10:23	0.032
10:24	0.028
10:25	0.026
10:26	0.025
10:27	0.029
10:28	0.028
10:29	0.026
10:30	0.037
10:31	0.033
10:32	0.409
10:33	0.194
10:34	0.3
10:35	0.599
10:36	0.039
10:37	0.046
10:38	0.059
10:39	0.037
10:40	0.05



10:41	0.038
10:42	0.031
10:43	0.409
10:44	0.077
10:45	0.034
10:46	0.026
10:47	0.048
10:48	0.038
10:49	0.029
10:50	0.034
10:51	0.032
10:52	0.035
10:53	0.048
10:54	0.165
10:55	0.195
10:56	0.041
10:57	0.067
10:58	0.116
10:59	0.375
11:00	0.456
11:01	0.187
11:02	0.197
11:03	0.189
11:04	0.492
11:05	0.415
11:06	0.286
11:07	0.111
11:08	0.073
11:09	0.036
11:10	0.03
11:11	0.161
11:12	0.296
11:13	0.166
11:14	0.255
11:15	0.194
11:16	0.042
11:17	0.035
11:18	0.029
11:19	0.038
11:20	0.036
11:21	0.045
11:22	0.03
11:23	0.029
11:24	0.045
11:25	0.04
11:26	0.031
11:27	0.023

11:28	0.032
11:29	0.026
11:30	0.031
11:31	0.033
11:32	0.026
11:33	0.028
11:34	0.025
11:35	0.026
11:36	0.034
11:37	0.025
11:38	0.024
11:39	0.024
11:40	0.023
11:41	0.026
11:42	0.025
11:43	0.022
11:44	0.026
11:45	0.037
11:46	0.047
11:47	0.049
11:48	0.087
11:49	0.072
11:50	0.033
11:51	0.023
11:52	0.023
11:53	0.024
11:54	0.054
11:55	0.054
11:56	0.068
11:57	0.053
11:58	0.026
11:59	0.021
12:00	0.023
12:01	0.023
12:02	0.024
12:03	0.025
12:04	0.028
12:05	0.03
12:06	0.036
12:07	0.029
12:08	0.027
12:09	0.026
12:10	0.03
12:11	0.029
12:12	0.026
12:13	0.031
12:14	0.023

12:15	0.025
12:16	0.021
12:17	0.025
12:18	0.025
12:19	0.024
12:20	0.024
12:21	0.029
12:22	0.027
12:23	0.022
12:24	0.023
12:25	0.02
12:26	0.022
12:27	0.03
12:28	0.026
12:29	0.021
12:30	0.021
12:31	0.026
12:32	0.038
12:33	0.026
12:34	0.028
12:35	0.023
12:36	0.028
12:37	0.021
12:38	0.021
12:39	0.028
12:40	0.023
12:41	0.023
12:42	0.023
12:43	0.023
12:44	0.021
12:45	0.023
12:46	0.02
12:47	0.02
12:48	0.021
12:49	0.019
12:50	0.019
12:51	0.021
12:52	0.025
12:53	0.02
12:54	0.022
12:55	0.036
12:56	0.038
12:57	0.025
12:58	0.031
12:59	0.025
13:00	0.025
13:01	0.025

13:02	0.1
13:03	0.037
13:04	0.023
13:05	0.027
13:06	0.042
13:07	0.033
13:08	0.029
13:09	0.052
13:10	0.022
13:11	0.022
13:12	0.029
13:13	0.048
13:14	0.025
13:15	0.077
13:16	0.437
13:17	0.027
13:18	0.035
13:19	0.028
13:20	0.02
13:21	0.023
13:22	0.022
13:23	0.04
13:24	0.068
13:25	0.072
13:26	0.055
13:27	0.056
13:28	0.082
13:29	0.029
13:30	0.045
13:31	0.026
13:32	0.02
13:33	0.026
13:34	0.064
13:35	0.059
13:36	0.042
13:37	0.029
13:38	0.02
13:39	0.018
13:40	0.021
13:41	0.028
13:42	0.023
13:43	0.028
13:44	0.033
13:45	0.03
13:46	0.019
13:47	0.022
13:48	0.023

13:49	0.018
13:50	0.023
13:51	0.022
13:52	0.064
13:53	0.029
13:54	0.032
13:55	0.023
13:56	0.021
13:57	0.029
13:58	0.022
13:59	0.017
14:00	0.018
14:01	0.025
14:02	0.059
14:03	0.028
14:04	0.033
14:05	0.059
14:06	0.039
14:07	0.037
14:08	0.042
14:09	0.032
14:10	0.047
14:11	0.037
14:12	0.048
14:13	0.051
14:14	0.095
14:15	0.034
14:16	0.03
14:17	0.023
14:18	0.034
14:19	0.039
14:20	0.031
14:21	0.052
14:22	0.046
14:23	0.028
14:24	0.047
14:25	0.492
14:26	0.052
14:27	0.031
14:28	0.049
14:29	0.044
14:30	0.028
14:31	0.025
14:32	0.021
14:33	0.039
14:34	0.054
14:35	0.04

14:36	0.05
14:37	0.032
14:38	0.025
14:39	0.033
14:40	0.025
14:41	0.022
14:42	0.021
14:43	0.022
14:44	0.025
14:45	0.027
14:46	0.031
14:47	0.029
14:48	0.03
14:49	0.025
14:50	0.168
14:51	0.067
14:52	0.024
14:53	0.024
14:54	0.026
14:55	0.023
14:56	0.024
14:57	0.027
14:58	0.041
14:59	0.044
15:00	0.034
15:01	0.036
15:02	0.056
15:03	0.029
15:04	0.026
15:05	0.024
15:06	0.029
15:07	0.067
15:08	0.174
15:09	0.034
15:10	0.021
15:11	0.025
15:12	0.123
15:13	0.141
15:14	0.02
15:15	0.911
15:16	0.049
15:17	0.061
15:18	0.867
15:19	1.42
15:20	0.032
15:21	1.03
15:22	0.087

15:23	0.144
15:24	0.019
15:25	0.402
15:26	0.282
15:27	0.165
15:28	0.386
15:29	0.311
15:30	0.194



















592-906020	9/17/2024 15:28 Readings	PID	SC23030396CB	Normal	0
592-906020	9/17/2024 15:29 Readings	PID	SC23030396CB	Normal	0
592-906020	9/17/2024 15:30 Readings	PID	SC23030396CB	Normal	0
592-906020	9/17/2024 15:31 Readings	PID	SC23030396CB	Normal	0
592-906020	9/17/2024 15:32 Readings	PID	SC23030396CB	Normal	0
592-906020	9/17/2024 15:33 Readings	PID	SC23030396CB	Normal	0