



DAILY STATUS REPORT

Prepared By:
Ryan Just

WEATHER	Snow	Rain	X	Overcast	X	Partly Cloudy	X	Bright Sun		Wind
TEMP.	< 32	32-50		50-70	X	70-85	X	>85		NNE – 3 mph

IEEG Project No:	13928	NYSDEC BCP Site No:	C224367	Date: 09/23/24
Project:	251 Douglass Street, Brooklyn, NY			

<p>Consultant: Impact Environmental Engineering and Geology, PLLC (IEEG)</p> <p>Time On: 06:40 Time Out: 17:20</p>	<p>Personnel On Site: IEEG (Environmental) – Ryan Just Broadway Construction Group – Shannon Dowling / Tom Caporale WSP – Charles Lambert Cascade – John Vollmer Concrete Courses FSR GES Limongelli Electrical Corp (LEC).</p> <p>Equipment On Site: (3) MiniRAE 3000 PID, (3) DustTrak II</p>
---	---

Scope of Work: IEEG to deploy CAMP stations according to wind direction; Cascade to continue ISS column installation; Concrete Courses to continue with super structure work and pouring concrete.

Site Activities:

- IEEG deployed three (3) CAMP stations prior to the start of work activities;
- Cascade received one (1) delivery of slag to the silo;
- Concrete Courses continued work on the superstructure in the Butler Corridor;
- Concrete Courses continued grading approved stone at the southeast corner of the Site;
- A total of seven (7) truckloads of swell material was loaded off-site for disposal to the Pure Soil in Jackson facility;
- FRS began a load test on the installed helical piles for the Con Edison vault along Douglass Street. GES provided oversight for this task;
- LEC began laying electrical utility line structures on top of Stego wrap in the eastern portion of the site;
- IEEG sprayed swell cuttings and swell stockpile with ATMOS foam throughout the day;
- Cascade drilled **Column 51** with column specification below:
 - Column is 8’ diameter and drilled 36’ deep from Site grade;
 - The column consisted of a total of 15 batches;
- Cascade drilled **Column 53** with column specification below:
 - Column is 8’ diameter and drilled 36’ deep from Site grade;
 - The column consisted of a total of 15 batches;
- Cascade drilled **Column 55** with column specification below:
 - Column is 8’ diameter and drilled 36’ deep from Site grade;
 - The column consisted of a total of 15 batches;
- Cascade drilled **Column 57** with column specification below:

- Column is 8' diameter and drilled 36' deep from Site grade;
- The column consisted of a total of 16 batches;

Community Air Monitoring Program (CAMP) - CAMP action level for dust (0.1 mg/m³) and VOCs (5 ppm)

- PID remained at nominal levels throughout the day
- No sustained dust exceedances were observed over a 15-min period during monitoring.
- Startup Upwind Conditions – PID = _0.0_ ppm, Dust = _0.319_ mg/m³ @ 06:52
- High Conditions (Upwind) – PID = _0.0_ ppm, Dust = _0.319_ mg/m³ @ 06:52
- High Conditions (Downwind 1) – PID = _0.0_ ppm, Dust = _0.131_ mg/m³ @ 07:43
- High Conditions (Downwind 2) – PID = _0.0_ ppm, Dust = _0.606_ mg/m³ @ 08:09

Notable Site Conditions:

- None

Planned for the Next Day/Week:

- Concrete Courses to continue elevator pit and superstructure work;
- Cascade to continue ISS column installation.



PHOTO LOG

251 DOUGLASS STREET, BROOKLYN, NY



Photo 1-

Representative photo of ATMOS foam applied to ISS drilling area at the end of Site activities.



Photo 2-

Representative photo of swell stockpile securely covered with poly.



Photo 3-
Representative
photo of slag
delivery.



Photo 4-
Representative
photo of ISS
Column
installation.



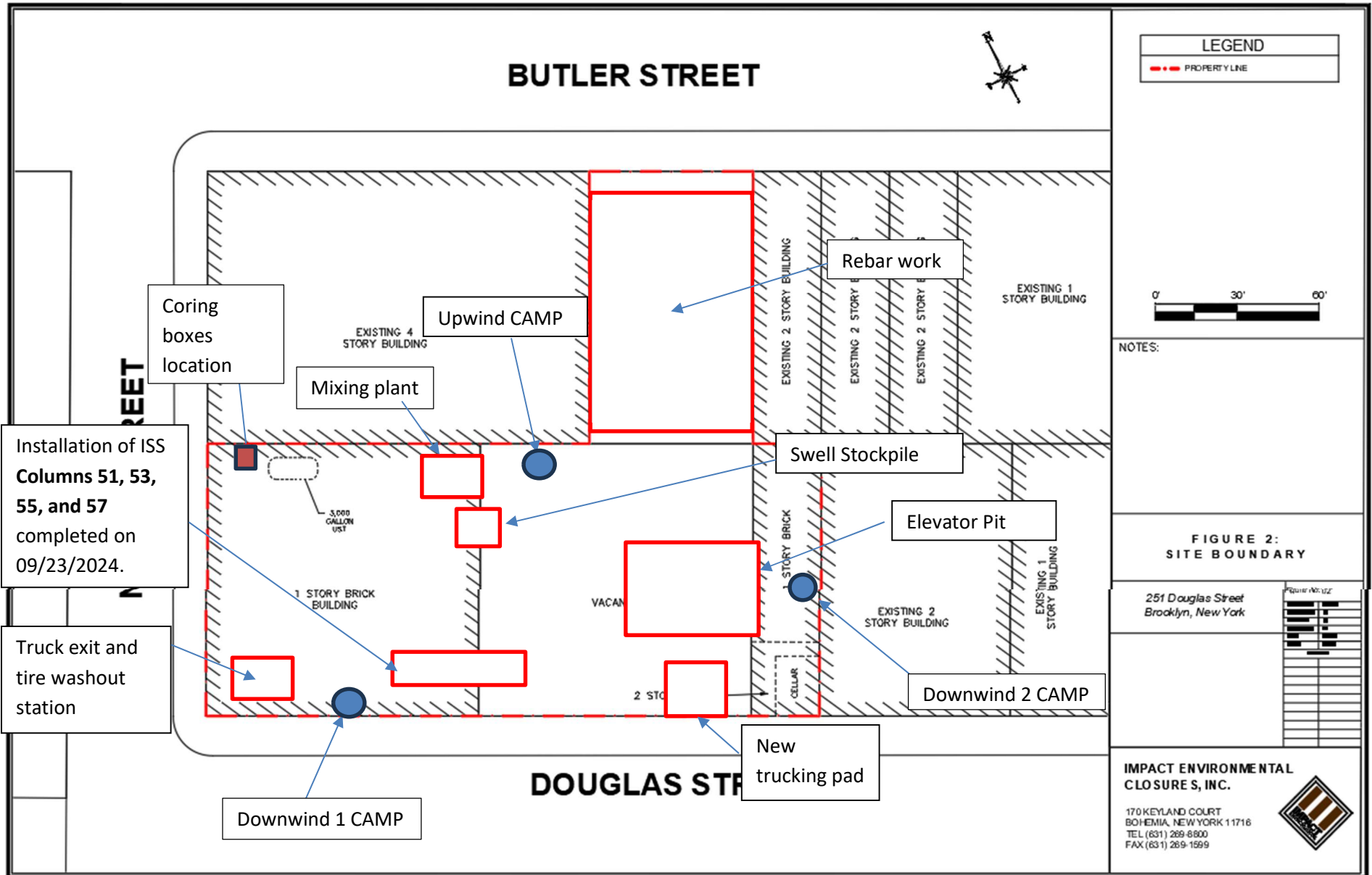
Photo 5-
Representative
photo of FSR
helical pile load
test.

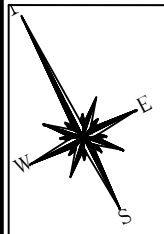


SITE PLANS

251 DOUGLASS STREET, BROOKLYN, NY







LEGEND


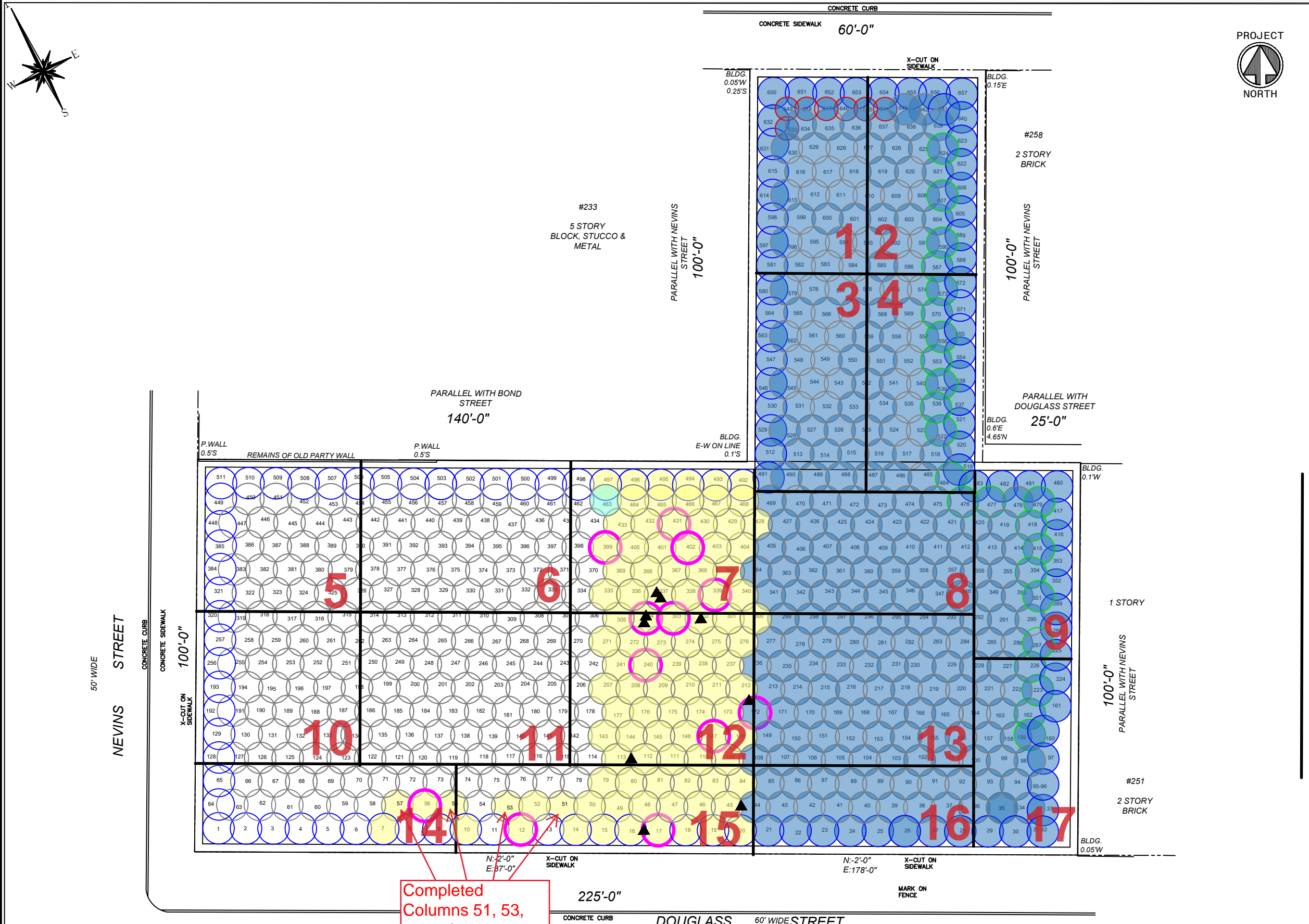
- PROPERTY LINE
- 55' EIGHT FOOT DIA. HYDRAULIC COLUMN (TYP.)
- EIGHT FOOT DIA. INNER COLUMN (TYP.)
- APPROVED TO 55'
- SIX FOOT DIA. HYDRAULIC COLUMN (TYP.)
- ISS COLUMN INSTALLED TO TERMINAL DEPTH
- ISS COLUMN UNABLE TO BE INSTALLED TO TERMINAL DEPTH
- ISS COLUMN UNABLE TO BE INSTALLED DUE TO OBSTRUCTION
- ISS COLUMN / GRID APPROVED BY DEC
- WET MIX SAMPLE COLLECTED FROM ISS COLUMN
- COMPLETED CORING LOCATION

NOTES:
 1. THE BASE MAP WAS DRAWN FROM A PLAN ENTITLED, ALTA/NSPS LAND TITLE SURVEY, PREPARED BY PERFECT POINT LAND SURVEYING OF BROOKLYN, NY AND WAS RECEIVED ELECTRONICALLY ON APRIL 2023 WITH AN ORIGINAL SCALE: 1" = 20'.

251 Douglass Street Brooklyn, New York		PROJECT NO:	13028-01
		DESIGNED BY:	AB
		DRAWN BY:	AB
		CHECKED BY:	DP
		DATE:	9/24/2024
		SCALE:	N.T.S.
		REVISIONS	

IMPACT ENVIRONMENTAL ENGINEERING & GEOLOGY PLLC.

170 KEYLAND COURT
 BOHEMIA, NEW YORK 11716
 TEL (631) 269-8800
 FAX (631) 269-1599

Completed
Columns 51, 53,
55 and 57 on
9/23/24

SCM Report

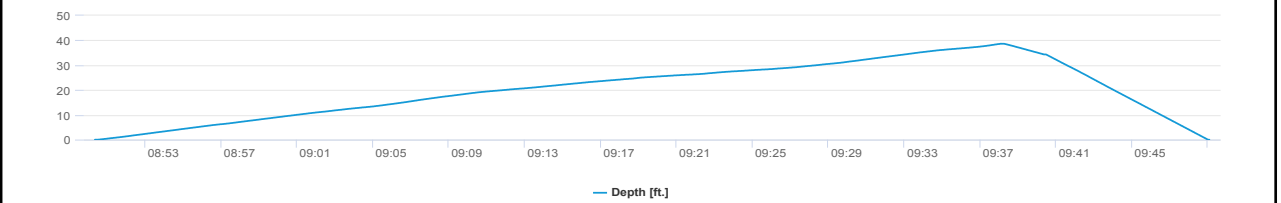
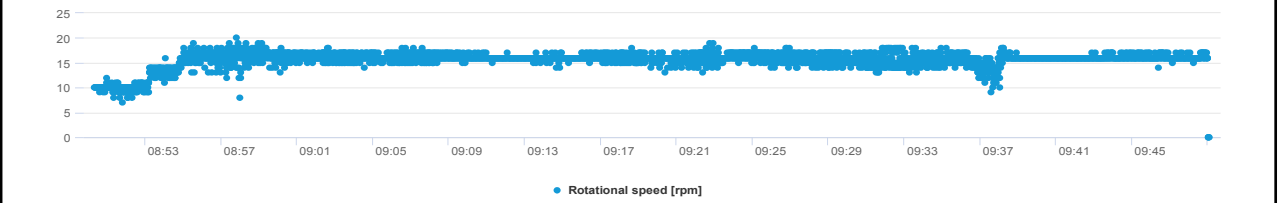
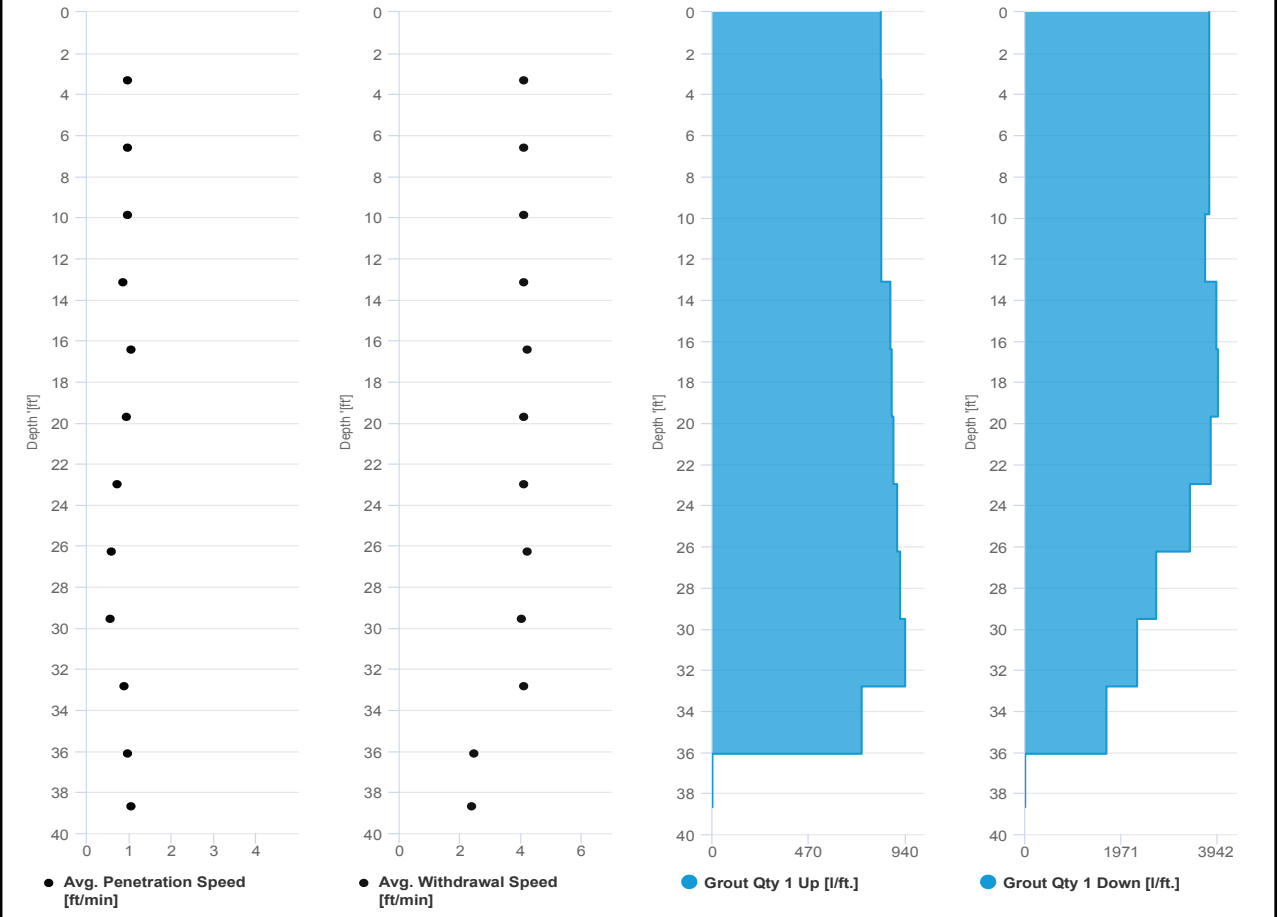


Project name: Douglass Street BCG ISS Element name: 51a
 Project number

Start date: 09/23/2024

Drilling rig: BG36H_5717

Details		Start time: 08:50 AM	
Max. depth: 38.681 ft.		End Date: 09/23/2024	
Volume/m 1: 40.965 ft ³		End time: 09:49 AM	
		Production duration: 00:58:45	
		Final depth time: 09:38 AM	
		Total suspension quantity: 483.388 ft ³	



SCM Report

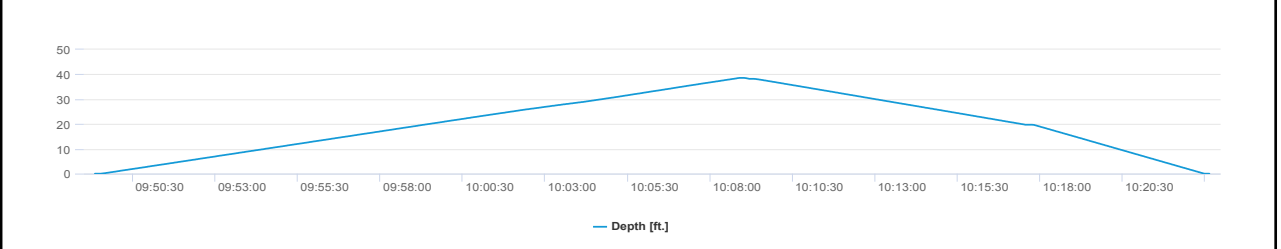
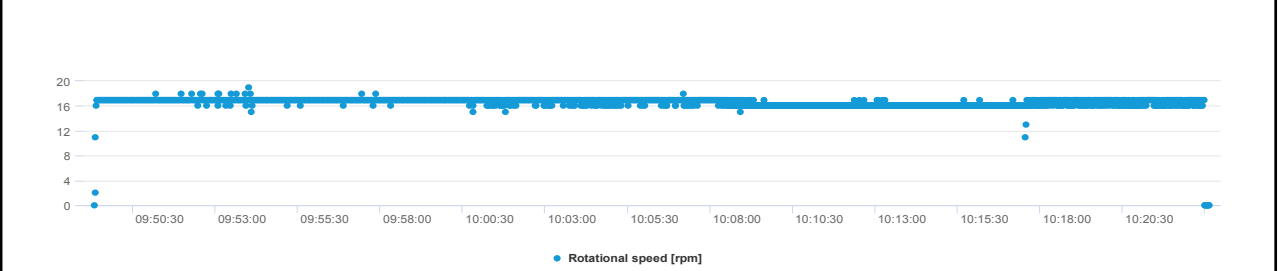
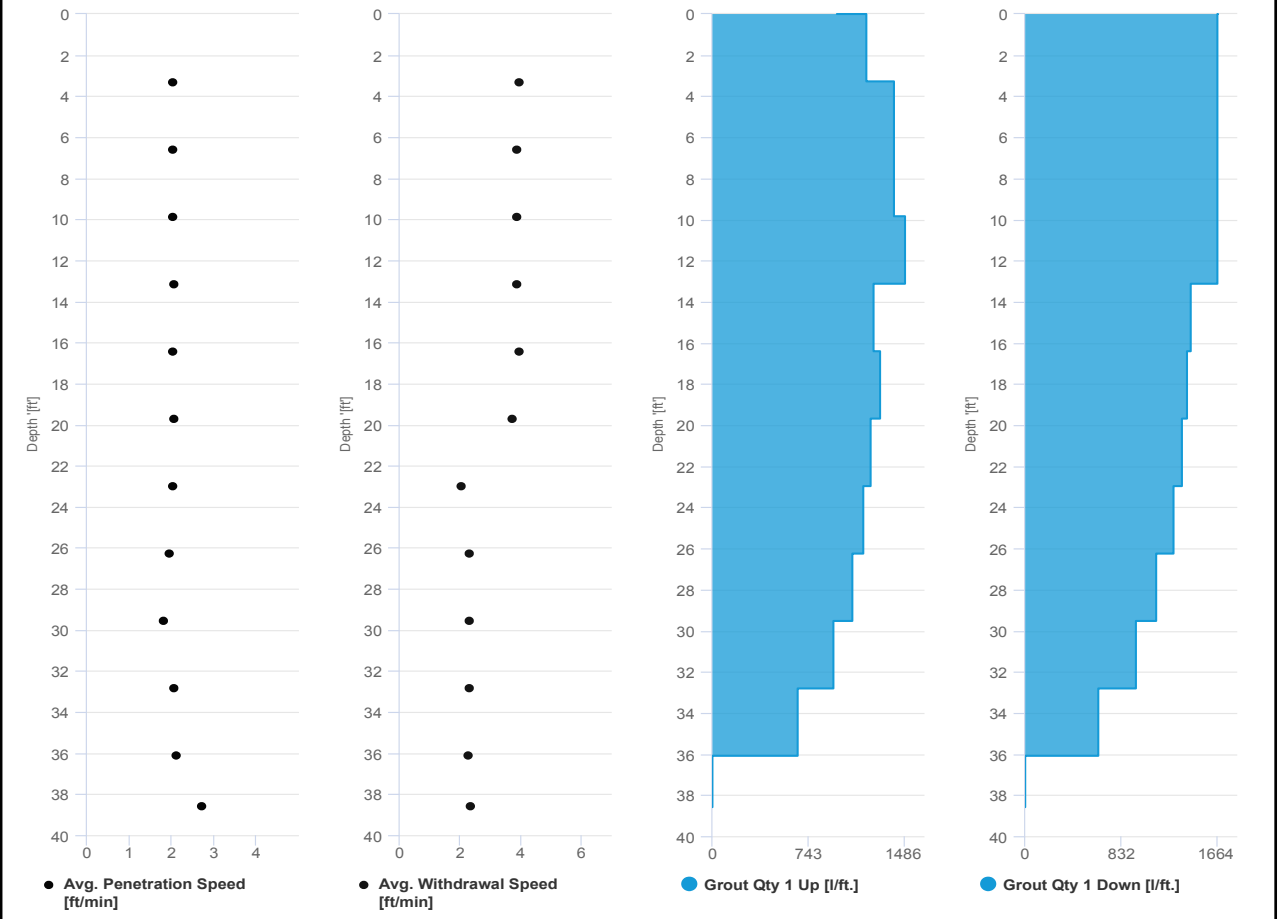


Project name: Douglass Street BCG ISS Element name: 51b
 Project number

Start date: 09/23/2024

Drilling rig: BG36H_5717

Details		Start time: 09:49 AM	
Max. depth: 38.583 ft.		End Date: 09/23/2024	
Volume/m 1: 23.661 ft³		End time: 10:23 AM	
		Production duration: 00:33:48	
		Final depth time: 10:08 AM	
		Total suspension quantity: 279.233 ft³	



SCM Report

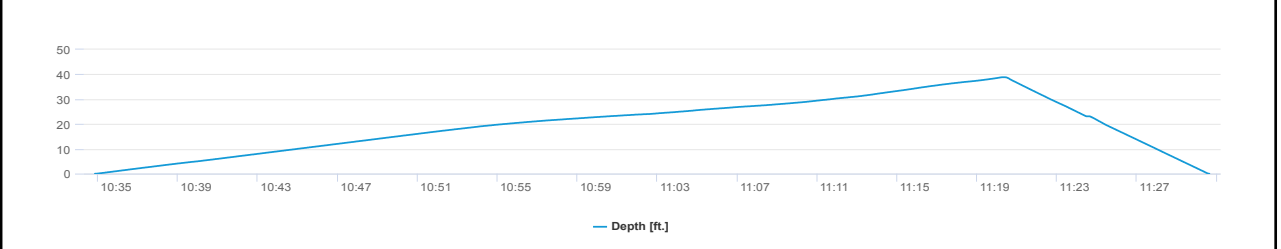
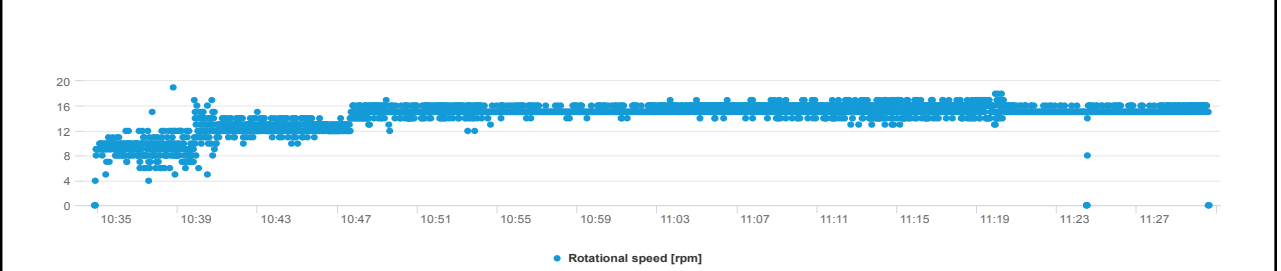
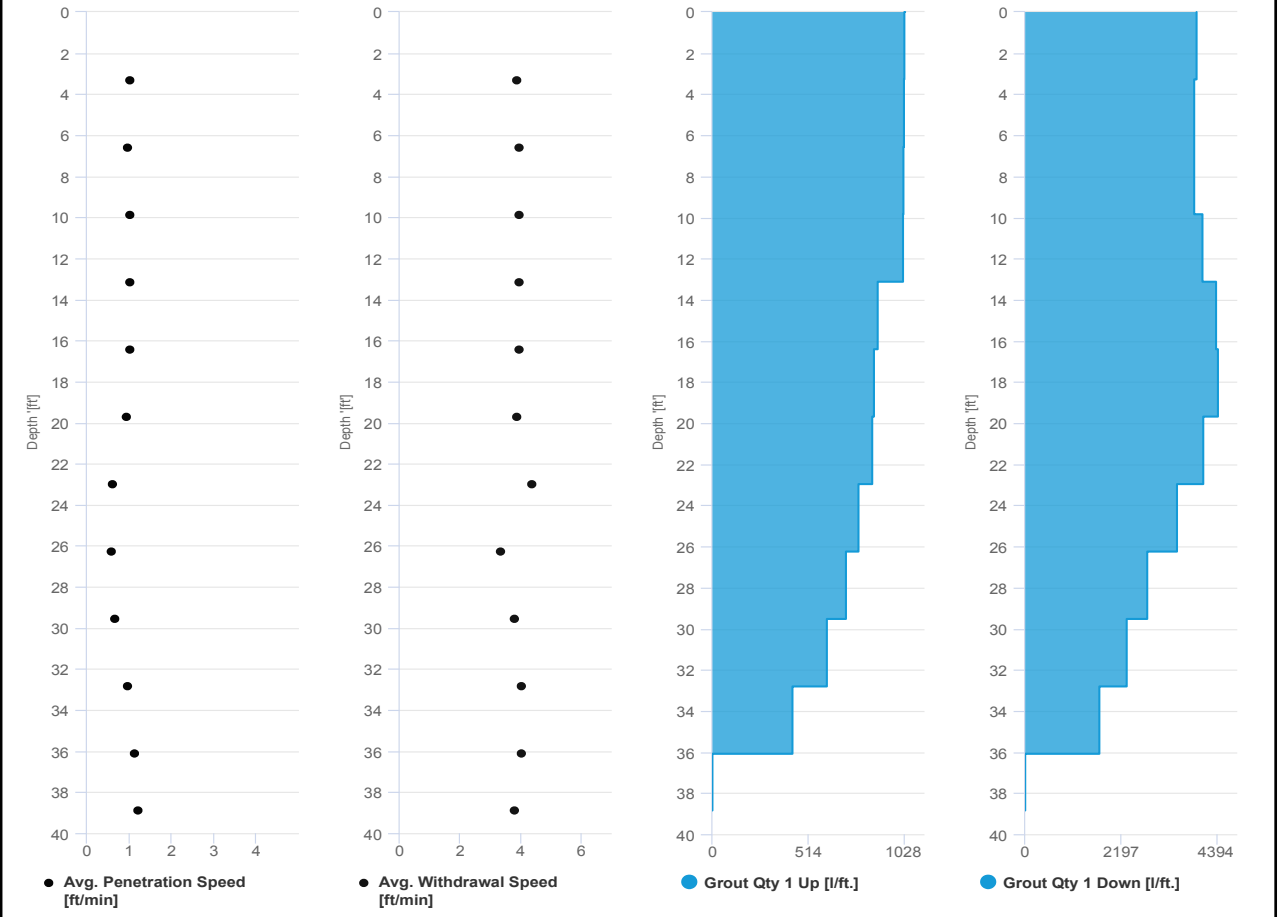


Project name: Douglass Street BCG ISS Element name: 53a
Project number

Start date: 09/23/2024

Drilling rig: BG36H_5717

Details		Start time: 10:34 AM	
Max. depth: 38.845 ft.		End Date: 09/23/2024	
Volume/m 1: 44.497 ft³		End time: 11:30 AM	
		Production duration: 00:55:48	
		Final depth time: 11:20 AM	
		Total suspension quantity: 528.167 ft³	



SCM Report

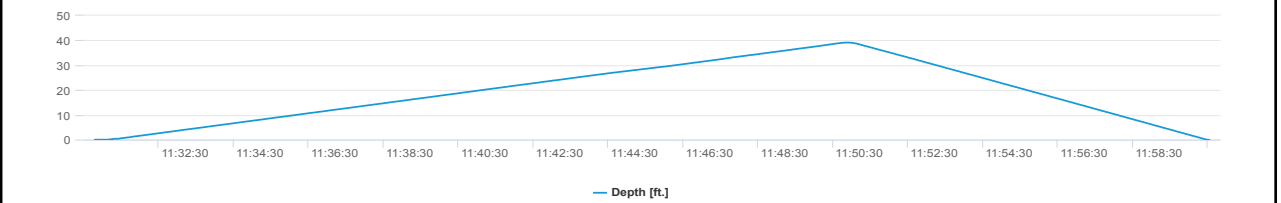
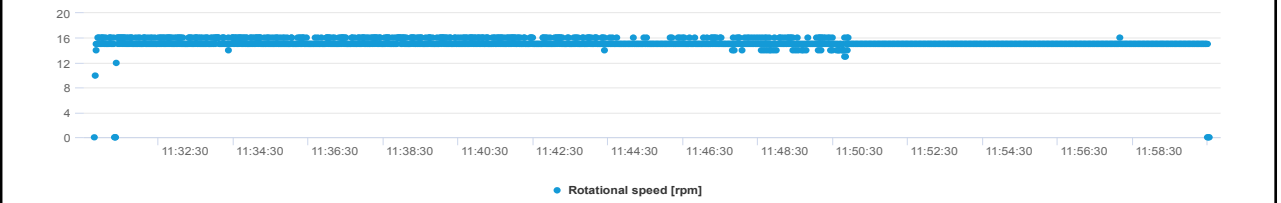
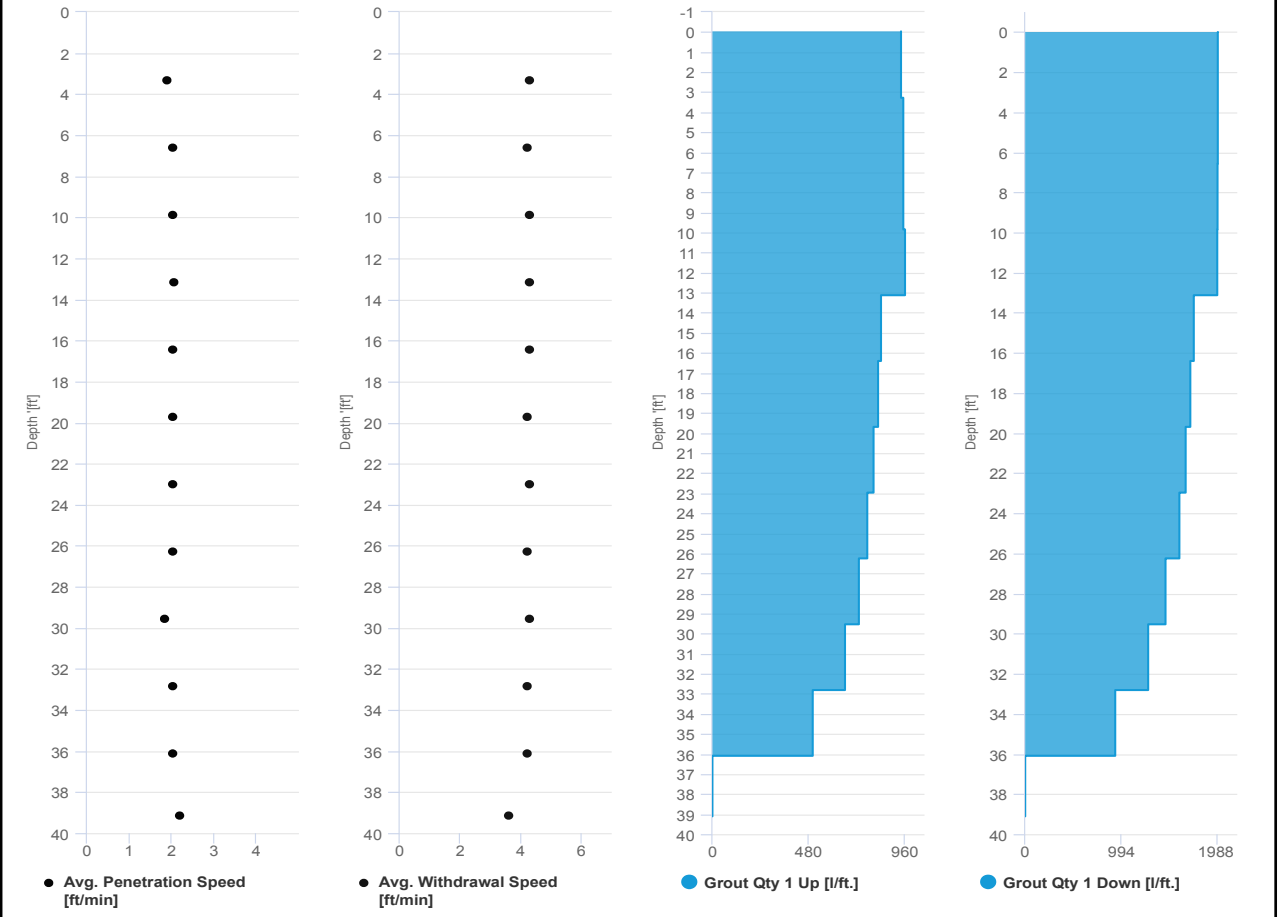


Project name: Douglass Street BCG ISS Element name: 53b
 Project number

Start date: 09/23/2024

Drilling rig: BG36H_5717

Details		Start time: 11:30 AM	
Max. depth: 39.108 ft.		End Date: 09/23/2024	
Volume/m 1: 24.367 ft ³		End time: 12:00 PM	
		Production duration: 00:29:46	
		Final depth time: 11:50 AM	
		Total suspension quantity: 290.711 ft ³	



SCM Report

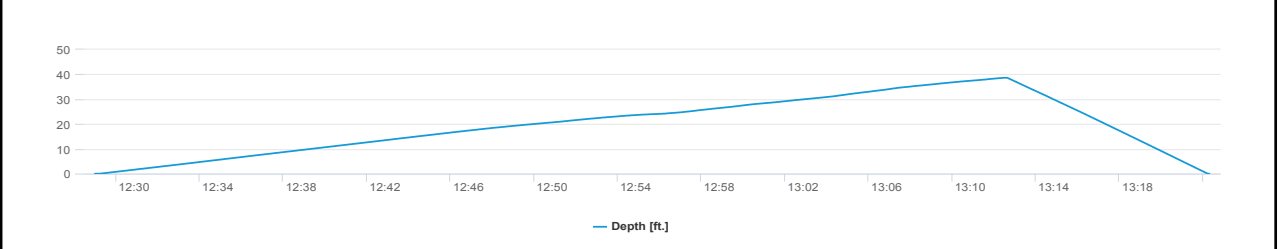
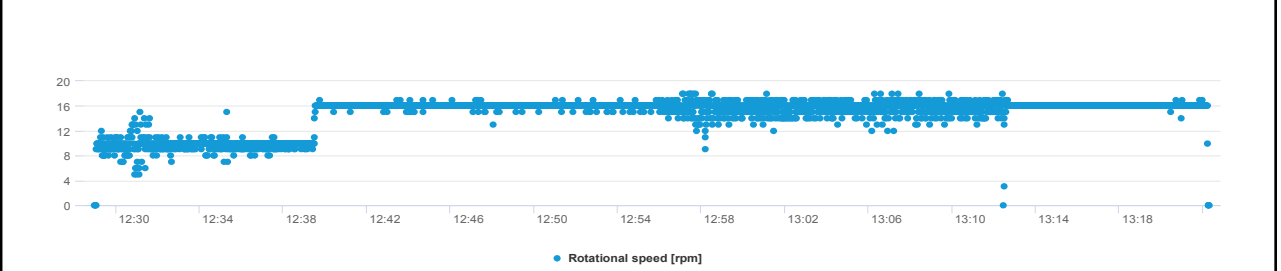
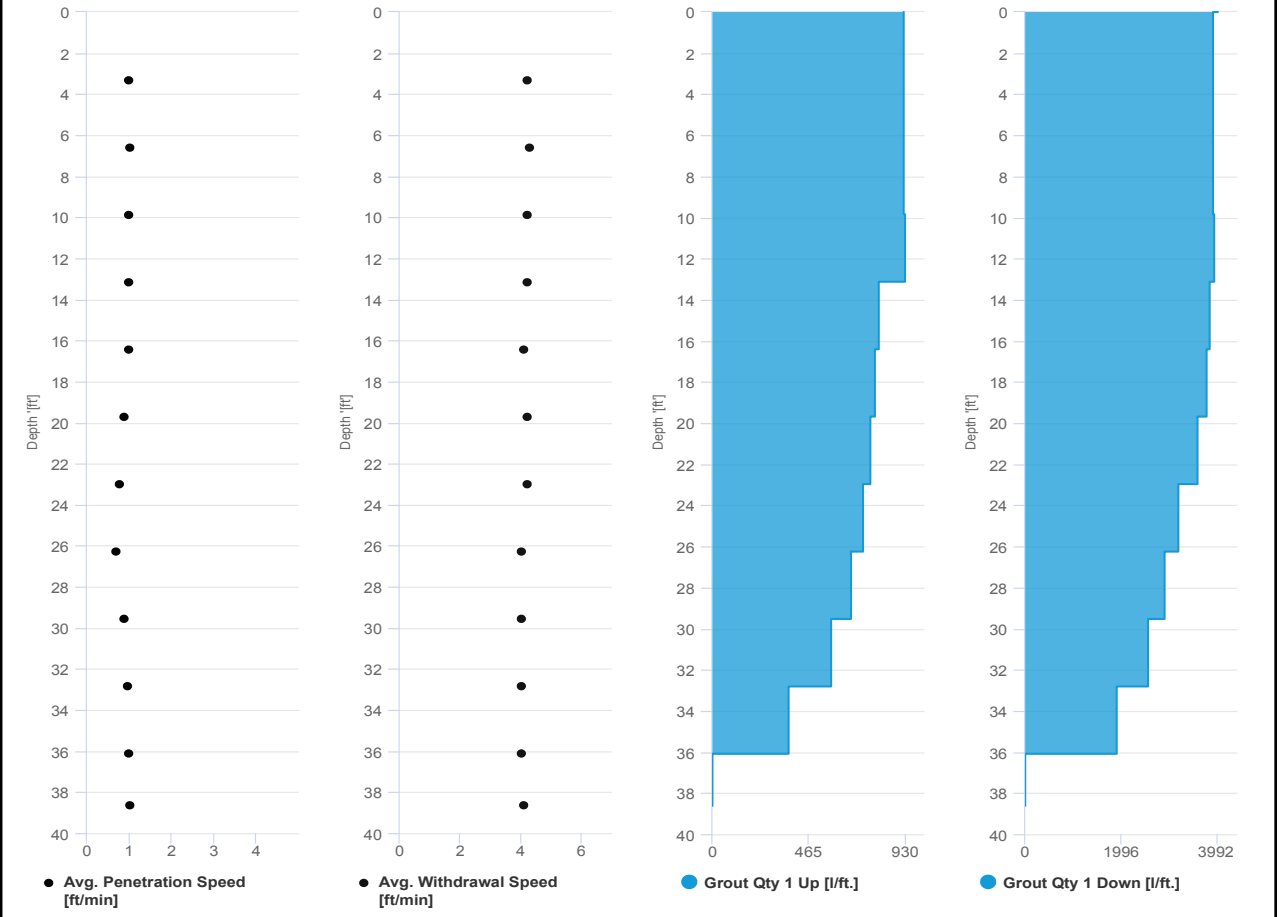


Project name: Douglass Street BCG ISS Element name: 55a
 Project number

Start date: 09/23/2024

Drilling rig: BG36H_5717

Details		Start time: 12:29 PM	
Max. depth: 38.615 ft.		End Date: 09/23/2024	
Volume/m 1: 41.671 ft³		End time: 01:22 PM	
		Production duration: 00:53:20	
		Final depth time: 01:12 PM	
		Total suspension quantity: 492.358 ft³	



SCM Report

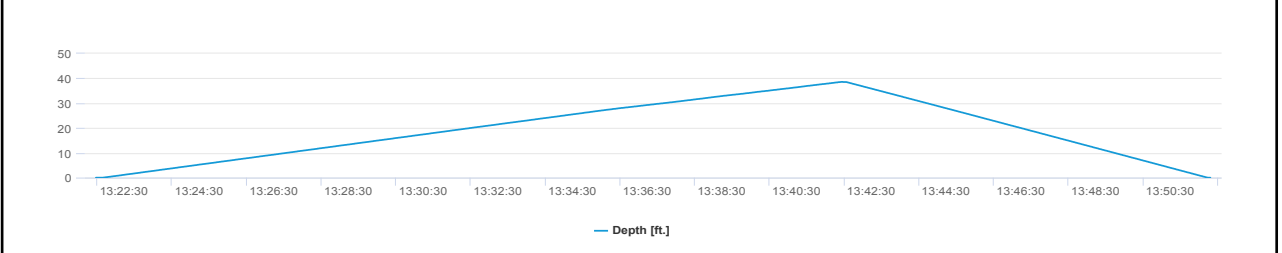
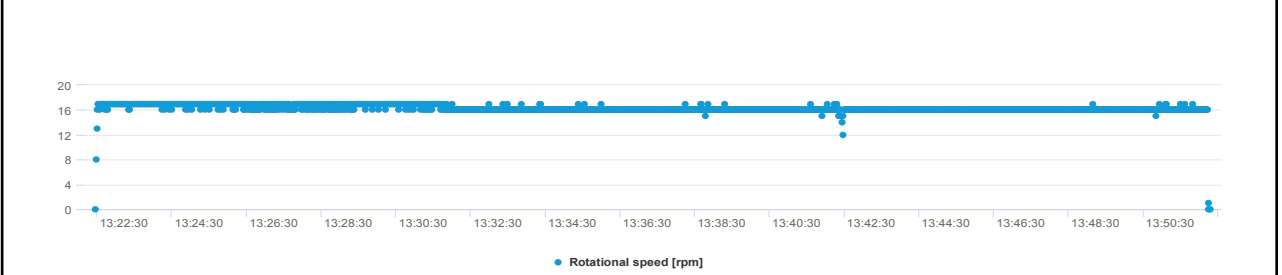
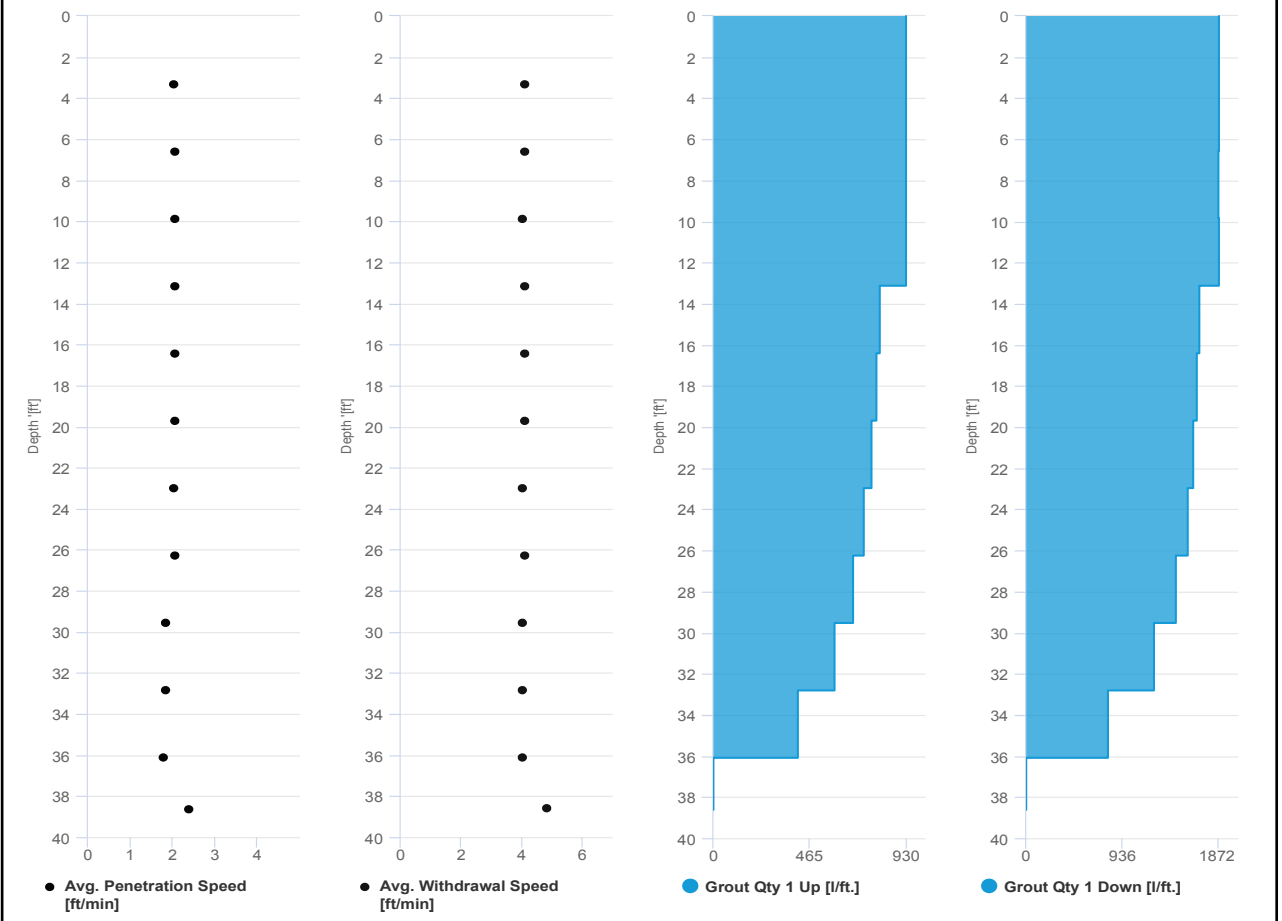


Project name	Douglass Street BCG ISS	Element name	55b
		Project number	

		Start date	09/23/2024
--	--	------------	------------

Drilling rig	BG36H_5717
--------------	------------

Details			
Max. depth	38.615 ft.	Start time	01:22 PM
Volume/m 1	23.308 ft³	End Date	09/23/2024
		End time	01:52 PM
		Production duration	00:29:51
		Final depth time	01:42 PM
		Total suspension quantity	274.925 ft³



SCM Report

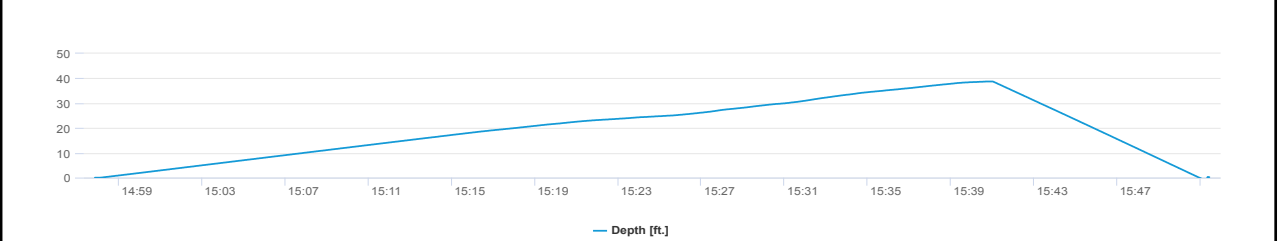
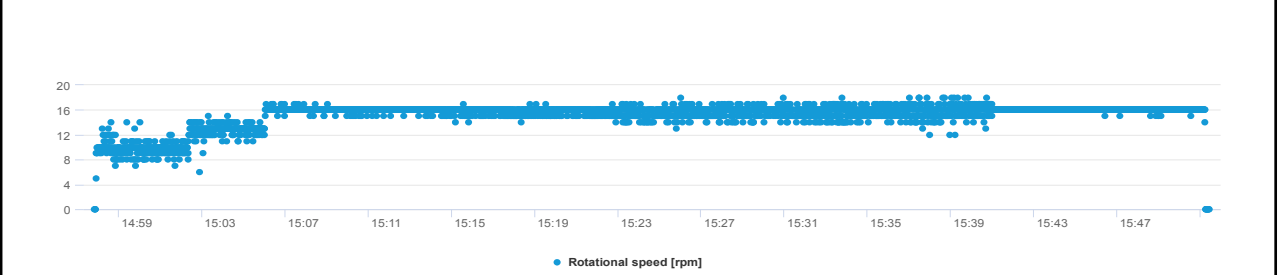
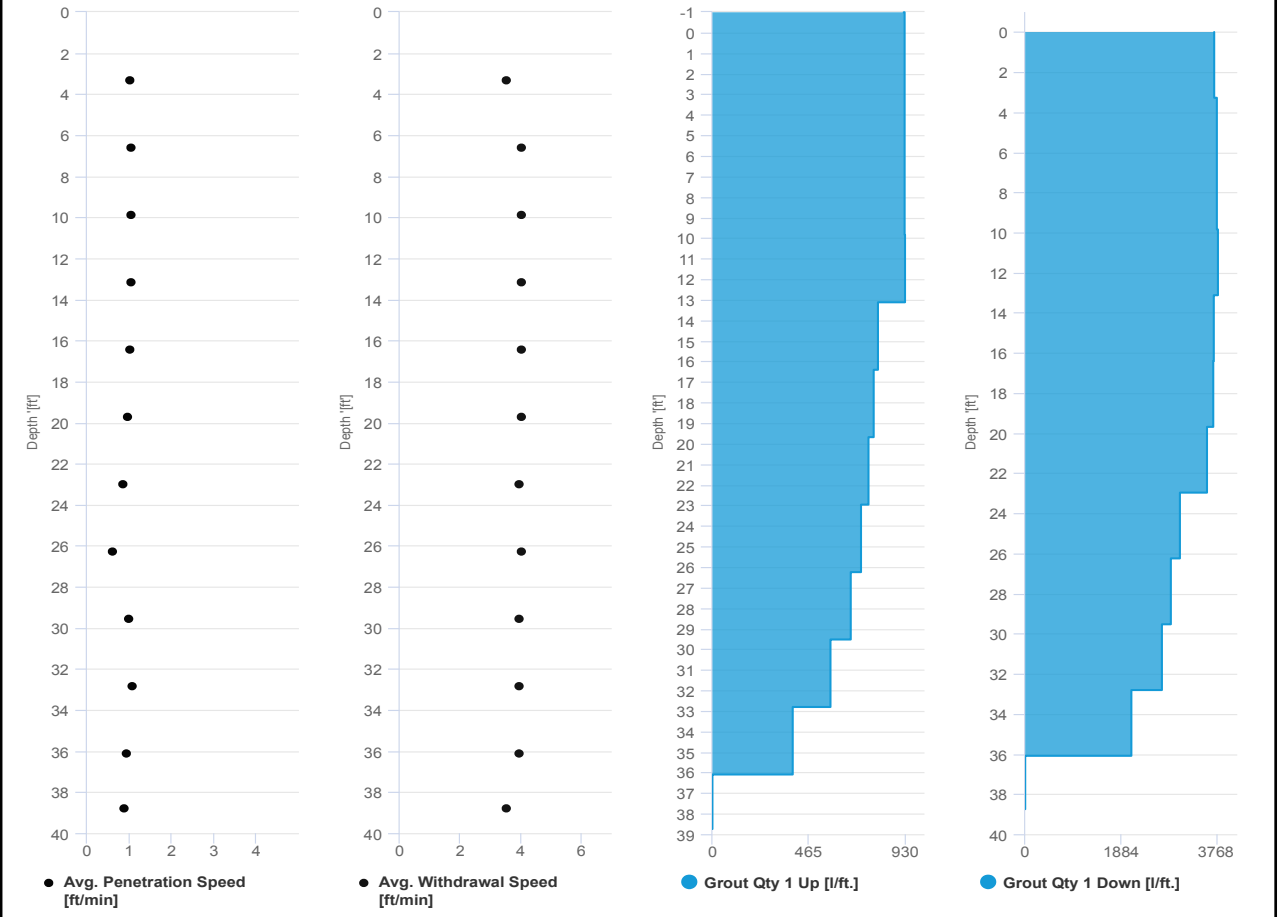


Project name: Douglass Street BCG ISS Element name: 57a
Project number

Start date: 09/23/2024

Drilling rig: BG36H_5717

Details		Start time: 02:57 PM	
Max. depth: 38.747 ft.		End Date: 09/23/2024	
Volume/m 1: 40.259 ft³		End time: 03:51 PM	
		Production duration: 00:53:36	
		Final depth time: 03:40 PM	
		Total suspension quantity: 476.643 ft³	



SCM Report

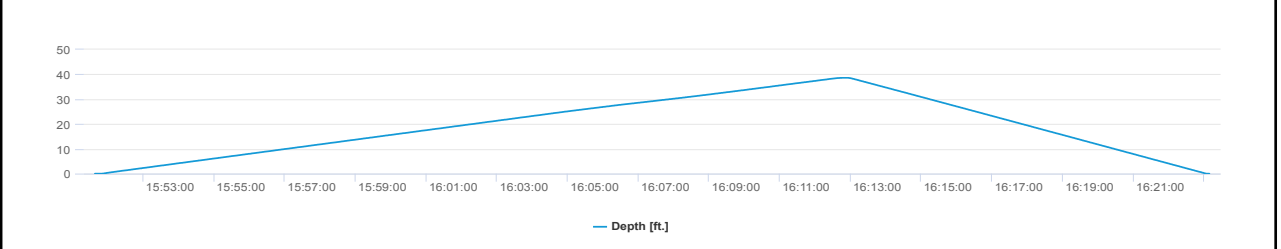
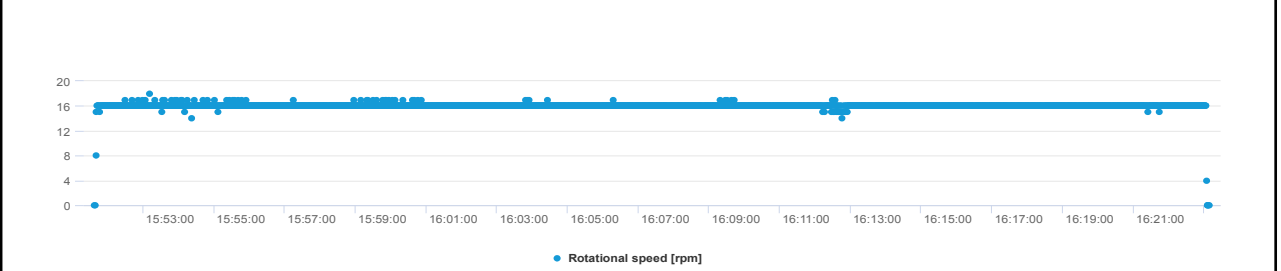
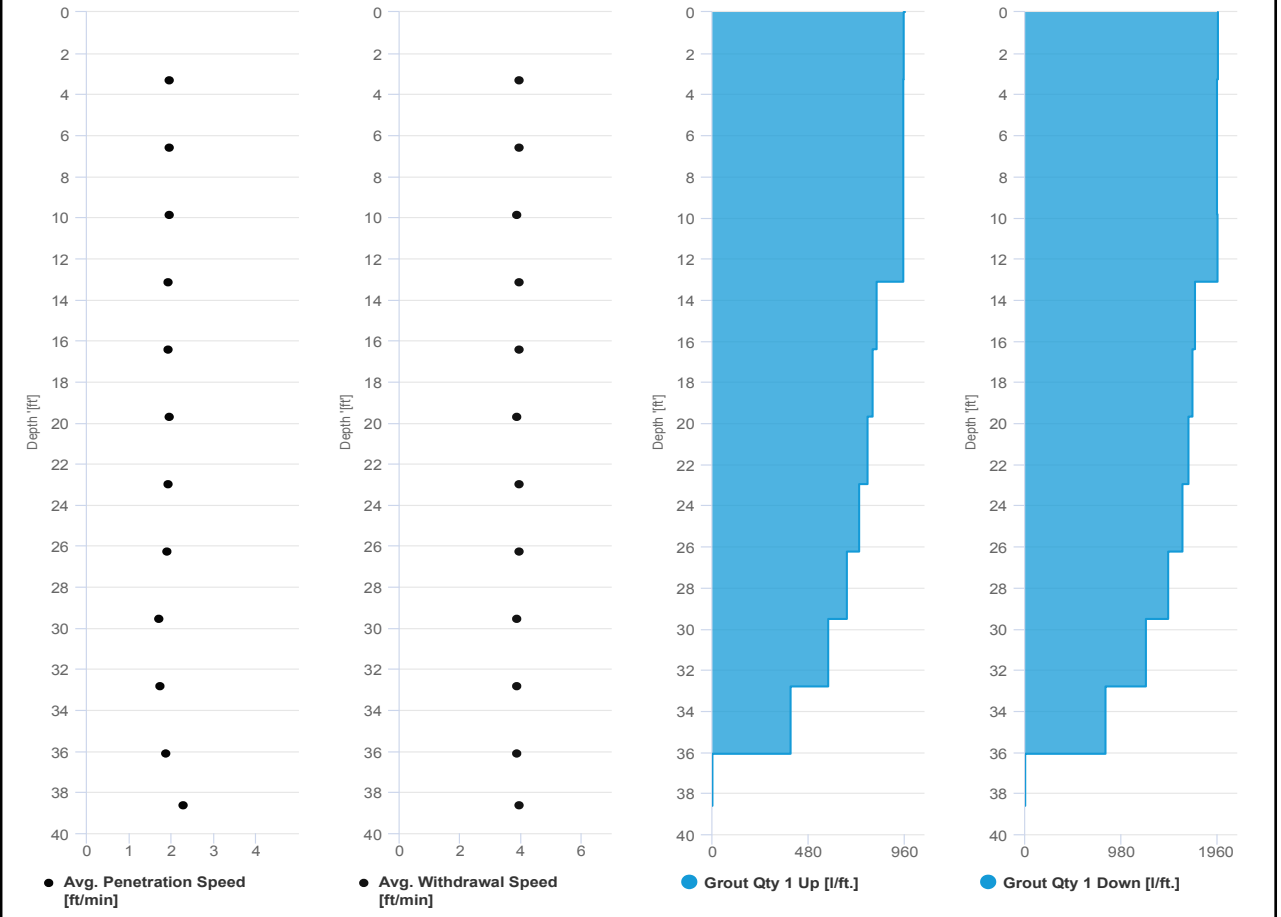


Project name: Douglass Street BCG ISS Element name: 57b
Project number

Start date: 09/23/2024

Drilling rig: BG36H_5717

Details		Start time: 03:51 PM	
Max. depth: 38.615 ft.		End Date: 09/23/2024	
Volume/m 1: 24.367 ft ³		End time: 04:23 PM	
		Production duration: 00:31:32	
		Final depth time: 04:12 PM	
		Total suspension quantity: 284.954 ft ³	





IMPACT ENVIRONMENTAL

welcome to solid ground...

170 Keyland Court | Bohemia | NY | 11716 | 631.269.8800

www.impactenvironmental.com

UPWIND CAMP READINGS

251 DOUGLASS STREET, BROOKLYN, NY

Instrument Name	DustTrak II
Model Number	8530
Serial Number	8530224603
Firmware Version	3.1
Calibration Date	4/3/2024
Test Name	MANUAL_002
Test Start Time	6:51:36 AM
Test Start Date	9/23/2024
Test Length [D:H:M]	0:09:41
Test Interval [M:S]	1:00
Mass Average [mg/m3]	0.028
Mass Minimum [mg/m3]	0.006
Mass Maximum [mg/m3]	0.319
Mass TWA [mg/m3]	0.029
Photometric User Cal	1
Flow User Cal	0
Errors	
Number of Samples	581

Elapsed Time [s]	Mass [mg/m3]	Alarms	Errors
6:52	0.319		
6:53	0.02		
6:54	0.013		
6:55	0.01		
6:56	0.01		
6:57	0.02		
6:58	0.019		
6:59	0.025		
7:00	0.028		
7:01	0.052		
7:02	0.034		
7:03	0.031		
7:04	0.03		
7:05	0.021		
7:06	0.013		
7:07	0.013		
7:08	0.023		
7:09	0.027		
7:10	0.143		
7:11	0.079		
7:12	0.021		
7:13	0.081		
7:14	0.046		
7:15	0.025		

7:16	0.054
7:17	0.048
7:18	0.033
7:19	0.032
7:20	0.056
7:21	0.018
7:22	0.03
7:23	0.026
7:24	0.035
7:25	0.039
7:26	0.054
7:27	0.133
7:28	0.016
7:29	0.038
7:30	0.035
7:31	0.036
7:32	0.035
7:33	0.037
7:34	0.031
7:35	0.02
7:36	0.021
7:37	0.032
7:38	0.059
7:39	0.029
7:40	0.026
7:41	0.02
7:42	0.032
7:43	0.026
7:44	0.026
7:45	0.042
7:46	0.067
7:47	0.087
7:48	0.054
7:49	0.052
7:50	0.035
7:51	0.128
7:52	0.053
7:53	0.02
7:54	0.026
7:55	0.014
7:56	0.016
7:57	0.024
7:58	0.028
7:59	0.015

8:00	0.018
8:01	0.024
8:02	0.022
8:03	0.026
8:04	0.035
8:05	0.054
8:06	0.066
8:07	0.024
8:08	0.027
8:09	0.023
8:10	0.019
8:11	0.019
8:12	0.059
8:13	0.147
8:14	0.021
8:15	0.016
8:16	0.01
8:17	0.014
8:18	0.011
8:19	0.026
8:20	0.017
8:21	0.016
8:22	0.019
8:23	0.012
8:24	0.011
8:25	0.014
8:26	0.016
8:27	0.014
8:28	0.048
8:29	0.022
8:30	0.013
8:31	0.012
8:32	0.011
8:33	0.011
8:34	0.015
8:35	0.023
8:36	0.015
8:37	0.009
8:38	0.009
8:39	0.014
8:40	0.022
8:41	0.014
8:42	0.011
8:43	0.019

8:44	0.113
8:45	0.105
8:46	0.025
8:47	0.017
8:48	0.014
8:49	0.016
8:50	0.017
8:51	0.014
8:52	0.016
8:53	0.014
8:54	0.016
8:55	0.014
8:56	0.014
8:57	0.032
8:58	0.014
8:59	0.012
9:00	0.01
9:01	0.01
9:02	0.009
9:03	0.007
9:04	0.007
9:05	0.008
9:06	0.006
9:07	0.007
9:08	0.012
9:09	0.008
9:10	0.013
9:11	0.011
9:12	0.012
9:13	0.027
9:14	0.019
9:15	0.014
9:16	0.006
9:17	0.014
9:18	0.013
9:19	0.015
9:20	0.011
9:21	0.01
9:22	0.009
9:23	0.009
9:24	0.012
9:25	0.021
9:26	0.014
9:27	0.014

9:28	0.049
9:29	0.015
9:30	0.029
9:31	0.037
9:32	0.024
9:33	0.02
9:34	0.011
9:35	0.015
9:36	0.012
9:37	0.01
9:38	0.013
9:39	0.007
9:40	0.01
9:41	0.02
9:42	0.025
9:43	0.024
9:44	0.015
9:45	0.045
9:46	0.032
9:47	0.03
9:48	0.032
9:49	0.07
9:50	0.146
9:51	0.054
9:52	0.035
9:53	0.044
9:54	0.033
9:55	0.024
9:56	0.039
9:57	0.017
9:58	0.012
9:59	0.015
10:00	0.015
10:01	0.014
10:02	0.014
10:03	0.056
10:04	0.078
10:05	0.043
10:06	0.05
10:07	0.048
10:08	0.04
10:09	0.039
10:10	0.042
10:11	0.045

10:12	0.03
10:13	0.024
10:14	0.022
10:15	0.032
10:16	0.043
10:17	0.029
10:18	0.035
10:19	0.035
10:20	0.047
10:21	0.013
10:22	0.006
10:23	0.019
10:24	0.043
10:25	0.032
10:26	0.023
10:27	0.022
10:28	0.014
10:29	0.02
10:30	0.027
10:31	0.032
10:32	0.016
10:33	0.014
10:34	0.012
10:35	0.012
10:36	0.015
10:37	0.02
10:38	0.039
10:39	0.039
10:40	0.021
10:41	0.024
10:42	0.031
10:43	0.029
10:44	0.015
10:45	0.038
10:46	0.075
10:47	0.088
10:48	0.035
10:49	0.03
10:50	0.027
10:51	0.063
10:52	0.019
10:53	0.024
10:54	0.03
10:55	0.025

10:56	0.022
10:57	0.03
10:58	0.044
10:59	0.019
11:00	0.024
11:01	0.021
11:02	0.011
11:03	0.009
11:04	0.01
11:05	0.011
11:06	0.013
11:07	0.025
11:08	0.018
11:09	0.042
11:10	0.018
11:11	0.009
11:12	0.014
11:13	0.02
11:14	0.015
11:15	0.008
11:16	0.018
11:17	0.047
11:18	0.026
11:19	0.027
11:20	0.018
11:21	0.02
11:22	0.046
11:23	0.028
11:24	0.022
11:25	0.018
11:26	0.015
11:27	0.021
11:28	0.012
11:29	0.013
11:30	0.014
11:31	0.013
11:32	0.008
11:33	0.012
11:34	0.013
11:35	0.014
11:36	0.01
11:37	0.019
11:38	0.048
11:39	0.021

11:40	0.017
11:41	0.021
11:42	0.019
11:43	0.027
11:44	0.023
11:45	0.034
11:46	0.03
11:47	0.038
11:48	0.03
11:49	0.035
11:50	0.039
11:51	0.018
11:52	0.012
11:53	0.011
11:54	0.023
11:55	0.017
11:56	0.016
11:57	0.012
11:58	0.021
11:59	0.025
12:00	0.04
12:01	0.065
12:02	0.042
12:03	0.026
12:04	0.015
12:05	0.016
12:06	0.014
12:07	0.012
12:08	0.018
12:09	0.017
12:10	0.015
12:11	0.01
12:12	0.012
12:13	0.011
12:14	0.01
12:15	0.011
12:16	0.011
12:17	0.011
12:18	0.016
12:19	0.016
12:20	0.014
12:21	0.056
12:22	0.038
12:23	0.015

12:24	0.021
12:25	0.021
12:26	0.019
12:27	0.017
12:28	0.042
12:29	0.045
12:30	0.035
12:31	0.027
12:32	0.054
12:33	0.042
12:34	0.026
12:35	0.021
12:36	0.013
12:37	0.012
12:38	0.081
12:39	0.109
12:40	0.054
12:41	0.059
12:42	0.023
12:43	0.021
12:44	0.01
12:45	0.034
12:46	0.023
12:47	0.013
12:48	0.019
12:49	0.019
12:50	0.02
12:51	0.023
12:52	0.037
12:53	0.039
12:54	0.024
12:55	0.029
12:56	0.029
12:57	0.02
12:58	0.012
12:59	0.018
13:00	0.016
13:01	0.013
13:02	0.016
13:03	0.017
13:04	0.015
13:05	0.019
13:06	0.013
13:07	0.014

13:08	0.015
13:09	0.011
13:10	0.018
13:11	0.014
13:12	0.026
13:13	0.029
13:14	0.044
13:15	0.022
13:16	0.019
13:17	0.017
13:18	0.016
13:19	0.038
13:20	0.025
13:21	0.022
13:22	0.021
13:23	0.029
13:24	0.031
13:25	0.02
13:26	0.025
13:27	0.025
13:28	0.021
13:29	0.085
13:30	0.059
13:31	0.053
13:32	0.028
13:33	0.028
13:34	0.071
13:35	0.044
13:36	0.045
13:37	0.032
13:38	0.023
13:39	0.011
13:40	0.011
13:41	0.021
13:42	0.042
13:43	0.016
13:44	0.013
13:45	0.017
13:46	0.019
13:47	0.018
13:48	0.011
13:49	0.015
13:50	0.025
13:51	0.051

13:52	0.125
13:53	0.243
13:54	0.051
13:55	0.025
13:56	0.021
13:57	0.05
13:58	0.021
13:59	0.032
14:00	0.122
14:01	0.125
14:02	0.039
14:03	0.018
14:04	0.027
14:05	0.017
14:06	0.017
14:07	0.017
14:08	0.017
14:09	0.025
14:10	0.018
14:11	0.014
14:12	0.014
14:13	0.019
14:14	0.019
14:15	0.013
14:16	0.018
14:17	0.038
14:18	0.052
14:19	0.041
14:20	0.031
14:21	0.048
14:22	0.029
14:23	0.024
14:24	0.017
14:25	0.017
14:26	0.042
14:27	0.023
14:28	0.018
14:29	0.014
14:30	0.017
14:31	0.086
14:32	0.035
14:33	0.032
14:34	0.089
14:35	0.078

14:36	0.061
14:37	0.051
14:38	0.018
14:39	0.02
14:40	0.022
14:41	0.026
14:42	0.024
14:43	0.018
14:44	0.034
14:45	0.016
14:46	0.014
14:47	0.019
14:48	0.021
14:49	0.026
14:50	0.016
14:51	0.013
14:52	0.015
14:53	0.013
14:54	0.01
14:55	0.011
14:56	0.034
14:57	0.111
14:58	0.024
14:59	0.028
15:00	0.02
15:01	0.015
15:02	0.013
15:03	0.013
15:04	0.014
15:05	0.012
15:06	0.02
15:07	0.024
15:08	0.019
15:09	0.015
15:10	0.017
15:11	0.014
15:12	0.018
15:13	0.017
15:14	0.021
15:15	0.012
15:16	0.03
15:17	0.026
15:18	0.058
15:19	0.052

15:20	0.041
15:21	0.057
15:22	0.049
15:23	0.074
15:24	0.083
15:25	0.039
15:26	0.053
15:27	0.027
15:28	0.046
15:29	0.036
15:30	0.024
15:31	0.017
15:32	0.013
15:33	0.013
15:34	0.015
15:35	0.016
15:36	0.012
15:37	0.011
15:38	0.039
15:39	0.036
15:40	0.014
15:41	0.016
15:42	0.013
15:43	0.012
15:44	0.019
15:45	0.018
15:46	0.02
15:47	0.023
15:48	0.022
15:49	0.022
15:50	0.037
15:51	0.02
15:52	0.014
15:53	0.019
15:54	0.011
15:55	0.011
15:56	0.011
15:57	0.01
15:58	0.014
15:59	0.013
16:00	0.01
16:01	0.012
16:02	0.015
16:03	0.022

16:04	0.01
16:05	0.008
16:06	0.008
16:07	0.009
16:08	0.007
16:09	0.007
16:10	0.008
16:11	0.007
16:12	0.007
16:13	0.006
16:14	0.006
16:15	0.006
16:16	0.007
16:17	0.007
16:18	0.007
16:19	0.008
16:20	0.008
16:21	0.009
16:22	0.01
16:23	0.013
16:24	0.01
16:25	0.008
16:26	0.009
16:27	0.011
16:28	0.009
16:29	0.009
16:30	0.008
16:31	0.008
16:32	0.034

DOWNWIND CAMP READINGS

251 DOUGLASS STREET, BROOKLYN, NY



Instrument Name	DustTrak DRX
Model Number	8533
Serial Number	8533181207
Firmware Version	3.1
Calibration Date	7/11/2024
Test Name	MANUAL_002
Test Start Time	6:55:07 AM
Test Start Date	9/23/2024
Test Length [D:H:M]	0:09:33
Test Interval [M:S]	1:00
PM1 Average [mg/m3]	0.013
PM1 Minimum [mg/m3]	0.005
PM1 Maximum [mg/m3]	0.131
PM1 TWA [mg/m3]	0.013
Photometric User Cal	1
Size Correction User Cal	1
Flow User Cal	0
Errors	
Number of Samples	573

Elapsed Time [s]	PM1 [mg/m3]	Alarms	Errors
6:56	0.109		
6:57	0.011		
6:58	0.011		
6:59	0.009		
7:00	0.012		
7:01	0.027		
7:02	0.015		
7:03	0.018		
7:04	0.019		
7:05	0.011		
7:06	0.009		
7:07	0.008		
7:08	0.007		
7:09	0.013		
7:10	0.008		
7:11	0.022		
7:12	0.012		
7:13	0.016		
7:14	0.015		
7:15	0.012		
7:16	0.015		
7:17	0.021		
7:18	0.016		

7:19	0.016
7:20	0.017
7:21	0.014
7:22	0.013
7:23	0.014
7:24	0.021
7:25	0.017
7:26	0.012
7:27	0.008
7:28	0.008
7:29	0.01
7:30	0.013
7:31	0.025
7:32	0.016
7:33	0.017
7:34	0.012
7:35	0.016
7:36	0.019
7:37	0.016
7:38	0.012
7:39	0.011
7:40	0.011
7:41	0.008
7:42	0.02
7:43	0.131
7:44	0.023
7:45	0.011
7:46	0.015
7:47	0.082
7:48	0.031
7:49	0.035
7:50	0.031
7:51	0.045
7:52	0.032
7:53	0.048
7:54	0.032
7:55	0.019
7:56	0.027
7:57	0.01
7:58	0.014
7:59	0.022
8:00	0.012
8:01	0.009
8:02	0.012

8:03	0.014
8:04	0.026
8:05	0.012
8:06	0.018
8:07	0.014
8:08	0.012
8:09	0.022
8:10	0.022
8:11	0.013
8:12	0.024
8:13	0.018
8:14	0.016
8:15	0.017
8:16	0.015
8:17	0.011
8:18	0.015
8:19	0.031
8:20	0.062
8:21	0.016
8:22	0.009
8:23	0.007
8:24	0.008
8:25	0.007
8:26	0.008
8:27	0.008
8:28	0.009
8:29	0.009
8:30	0.007
8:31	0.009
8:32	0.009
8:33	0.008
8:34	0.008
8:35	0.009
8:36	0.009
8:37	0.007
8:38	0.007
8:39	0.007
8:40	0.008
8:41	0.007
8:42	0.007
8:43	0.006
8:44	0.007
8:45	0.006
8:46	0.007

8:47	0.008
8:48	0.008
8:49	0.007
8:50	0.009
8:51	0.009
8:52	0.009
8:53	0.008
8:54	0.007
8:55	0.008
8:56	0.009
8:57	0.008
8:58	0.008
8:59	0.008
9:00	0.008
9:01	0.01
9:02	0.008
9:03	0.007
9:04	0.006
9:05	0.006
9:06	0.006
9:07	0.007
9:08	0.007
9:09	0.007
9:10	0.007
9:11	0.008
9:12	0.023
9:13	0.05
9:14	0.011
9:15	0.006
9:16	0.023
9:17	0.008
9:18	0.006
9:19	0.005
9:20	0.007
9:21	0.006
9:22	0.006
9:23	0.006
9:24	0.011
9:25	0.014
9:26	0.012
9:27	0.009
9:28	0.006
9:29	0.01
9:30	0.01

9:31	0.014
9:32	0.009
9:33	0.009
9:34	0.008
9:35	0.007
9:36	0.009
9:37	0.008
9:38	0.007
9:39	0.007
9:40	0.007
9:41	0.006
9:42	0.009
9:43	0.008
9:44	0.008
9:45	0.009
9:46	0.008
9:47	0.007
9:48	0.012
9:49	0.013
9:50	0.073
9:51	0.022
9:52	0.012
9:53	0.008
9:54	0.008
9:55	0.008
9:56	0.012
9:57	0.008
9:58	0.014
9:59	0.007
10:00	0.009
10:01	0.005
10:02	0.007
10:03	0.009
10:04	0.008
10:05	0.014
10:06	0.011
10:07	0.009
10:08	0.009
10:09	0.011
10:10	0.011
10:11	0.014
10:12	0.012
10:13	0.012
10:14	0.009

10:15	0.009
10:16	0.009
10:17	0.008
10:18	0.007
10:19	0.008
10:20	0.008
10:21	0.006
10:22	0.005
10:23	0.009
10:24	0.011
10:25	0.011
10:26	0.008
10:27	0.01
10:28	0.01
10:29	0.009
10:30	0.016
10:31	0.013
10:32	0.013
10:33	0.01
10:34	0.018
10:35	0.009
10:36	0.01
10:37	0.008
10:38	0.009
10:39	0.018
10:40	0.025
10:41	0.103
10:42	0.024
10:43	0.015
10:44	0.03
10:45	0.013
10:46	0.013
10:47	0.017
10:48	0.019
10:49	0.009
10:50	0.006
10:51	0.011
10:52	0.009
10:53	0.017
10:54	0.009
10:55	0.009
10:56	0.01
10:57	0.013
10:58	0.013

10:59	0.023
11:00	0.023
11:01	0.013
11:02	0.011
11:03	0.019
11:04	0.013
11:05	0.006
11:06	0.008
11:07	0.009
11:08	0.013
11:09	0.018
11:10	0.017
11:11	0.007
11:12	0.008
11:13	0.009
11:14	0.008
11:15	0.012
11:16	0.013
11:17	0.028
11:18	0.007
11:19	0.006
11:20	0.009
11:21	0.011
11:22	0.016
11:23	0.01
11:24	0.007
11:25	0.008
11:26	0.01
11:27	0.01
11:28	0.009
11:29	0.01
11:30	0.01
11:31	0.007
11:32	0.006
11:33	0.008
11:34	0.007
11:35	0.011
11:36	0.011
11:37	0.011
11:38	0.013
11:39	0.011
11:40	0.008
11:41	0.009
11:42	0.011

11:43	0.01
11:44	0.008
11:45	0.011
11:46	0.011
11:47	0.008
11:48	0.009
11:49	0.01
11:50	0.016
11:51	0.01
11:52	0.008
11:53	0.008
11:54	0.007
11:55	0.008
11:56	0.007
11:57	0.006
11:58	0.007
11:59	0.01
12:00	0.009
12:01	0.009
12:02	0.01
12:03	0.009
12:04	0.01
12:05	0.01
12:06	0.01
12:07	0.007
12:08	0.007
12:09	0.008
12:10	0.006
12:11	0.007
12:12	0.008
12:13	0.012
12:14	0.012
12:15	0.011
12:16	0.013
12:17	0.012
12:18	0.011
12:19	0.008
12:20	0.009
12:21	0.007
12:22	0.007
12:23	0.011
12:24	0.01
12:25	0.008
12:26	0.008

12:27	0.01
12:28	0.009
12:29	0.008
12:30	0.013
12:31	0.011
12:32	0.008
12:33	0.008
12:34	0.01
12:35	0.01
12:36	0.007
12:37	0.007
12:38	0.008
12:39	0.008
12:40	0.006
12:41	0.008
12:42	0.009
12:43	0.01
12:44	0.013
12:45	0.008
12:46	0.009
12:47	0.011
12:48	0.011
12:49	0.009
12:50	0.01
12:51	0.008
12:52	0.011
12:53	0.011
12:54	0.011
12:55	0.019
12:56	0.008
12:57	0.008
12:58	0.01
12:59	0.008
13:00	0.008
13:01	0.008
13:02	0.01
13:03	0.01
13:04	0.007
13:05	0.008
13:06	0.007
13:07	0.009
13:08	0.008
13:09	0.008
13:10	0.008

13:11	0.008
13:12	0.007
13:13	0.008
13:14	0.007
13:15	0.007
13:16	0.008
13:17	0.009
13:18	0.009
13:19	0.011
13:20	0.011
13:21	0.011
13:22	0.009
13:23	0.009
13:24	0.008
13:25	0.008
13:26	0.009
13:27	0.008
13:28	0.012
13:29	0.009
13:30	0.008
13:31	0.008
13:32	0.009
13:33	0.009
13:34	0.008
13:35	0.007
13:36	0.008
13:37	0.007
13:38	0.01
13:39	0.013
13:40	0.01
13:41	0.011
13:42	0.01
13:43	0.009
13:44	0.008
13:45	0.008
13:46	0.007
13:47	0.007
13:48	0.009
13:49	0.014
13:50	0.009
13:51	0.014
13:52	0.018
13:53	0.037
13:54	0.015

13:55	0.011
13:56	0.011
13:57	0.068
13:58	0.049
13:59	0.034
14:00	0.06
14:01	0.035
14:02	0.036
14:03	0.026
14:04	0.011
14:05	0.027
14:06	0.018
14:07	0.017
14:08	0.012
14:09	0.011
14:10	0.011
14:11	0.016
14:12	0.011
14:13	0.025
14:14	0.066
14:15	0.013
14:16	0.014
14:17	0.014
14:18	0.015
14:19	0.01
14:20	0.01
14:21	0.01
14:22	0.009
14:23	0.011
14:24	0.008
14:25	0.009
14:26	0.042
14:27	0.039
14:28	0.017
14:29	0.009
14:30	0.008
14:31	0.011
14:32	0.012
14:33	0.04
14:34	0.016
14:35	0.023
14:36	0.027
14:37	0.026
14:38	0.013

14:39	0.011
14:40	0.01
14:41	0.014
14:42	0.011
14:43	0.013
14:44	0.023
14:45	0.012
14:46	0.01
14:47	0.025
14:48	0.016
14:49	0.011
14:50	0.008
14:51	0.009
14:52	0.011
14:53	0.01
14:54	0.009
14:55	0.008
14:56	0.009
14:57	0.011
14:58	0.013
14:59	0.012
15:00	0.011
15:01	0.009
15:02	0.009
15:03	0.008
15:04	0.008
15:05	0.01
15:06	0.014
15:07	0.009
15:08	0.009
15:09	0.013
15:10	0.011
15:11	0.011
15:12	0.011
15:13	0.01
15:14	0.009
15:15	0.008
15:16	0.009
15:17	0.011
15:18	0.013
15:19	0.018
15:20	0.013
15:21	0.013
15:22	0.03

15:23	0.012
15:24	0.014
15:25	0.015
15:26	0.014
15:27	0.012
15:28	0.01
15:29	0.01
15:30	0.009
15:31	0.009
15:32	0.01
15:33	0.01
15:34	0.009
15:35	0.01
15:36	0.01
15:37	0.01
15:38	0.009
15:39	0.009
15:40	0.009
15:41	0.008
15:42	0.009
15:43	0.008
15:44	0.008
15:45	0.009
15:46	0.007
15:47	0.008
15:48	0.01
15:49	0.008
15:50	0.008
15:51	0.008
15:52	0.007
15:53	0.007
15:54	0.008
15:55	0.007
15:56	0.007
15:57	0.009
15:58	0.013
15:59	0.01
16:00	0.009
16:01	0.008
16:02	0.008
16:03	0.007
16:04	0.007
16:05	0.007
16:06	0.008

16:07	0.007
16:08	0.007
16:09	0.007
16:10	0.007
16:11	0.007
16:12	0.006
16:13	0.007
16:14	0.006
16:15	0.006
16:16	0.007
16:17	0.006
16:18	0.007
16:19	0.007
16:20	0.007
16:21	0.007
16:22	0.007
16:23	0.007
16:24	0.009
16:25	0.018
16:26	0.019
16:27	0.028
16:28	0.017

Instrument Name	DustTrak II
Model Number	8530
Serial Number	8530154916
Firmware Version	3.1
Calibration Date	8/2/2024
Test Name	MANUAL_002
Test Start Time	7:01:02 AM
Test Start Date	9/23/2024
Test Length [D:H:M]	0:09:35
Test Interval [M:S]	1:00
Mass Average [mg/m3]	0.064
Mass Minimum [mg/m3]	0.009
Mass Maximum [mg/m3]	0.606
Mass TWA [mg/m3]	0.073
Photometric User Cal	1
Flow User Cal	0
Errors	
Number of Samples	575

Elapsed Time [s]	Mass [mg/m3]	Alarms	Errors
7:02	0.213		
7:03	0.034		
7:04	0.055		
7:05	0.025		
7:06	0.02		
7:07	0.022		
7:08	0.025		
7:09	0.029		
7:10	0.043		
7:11	0.029		
7:12	0.068		
7:13	0.231		
7:14	0.1		
7:15	0.057		
7:16	0.036		
7:17	0.068		
7:18	0.06		
7:19	0.047		
7:20	0.045		
7:21	0.099		
7:22	0.235		
7:23	0.235		
7:24	0.078		
7:25	0.05		

7:26	0.042
7:27	0.043
7:28	0.029
7:29	0.046
7:30	0.246
7:31	0.433
7:32	0.162
7:33	0.106
7:34	0.098
7:35	0.056
7:36	0.062
7:37	0.134
7:38	0.063
7:39	0.041
7:40	0.06
7:41	0.048
7:42	0.142
7:43	0.06
7:44	0.428
7:45	0.523
7:46	0.157
7:47	0.096
7:48	0.037
7:49	0.052
7:50	0.032
7:51	0.029
7:52	0.122
7:53	0.058
7:54	0.037
7:55	0.03
7:56	0.026
7:57	0.029
7:58	0.023
7:59	0.081
8:00	0.067
8:01	0.032
8:02	0.029
8:03	0.042
8:04	0.17
8:05	0.287
8:06	0.402
8:07	0.019
8:08	0.391
8:09	0.606

8:10	0.036
8:11	0.034
8:12	0.043
8:13	0.034
8:14	0.034
8:15	0.021
8:16	0.061
8:17	0.074
8:18	0.028
8:19	0.025
8:20	0.022
8:21	0.025
8:22	0.019
8:23	0.017
8:24	0.017
8:25	0.028
8:26	0.026
8:27	0.04
8:28	0.023
8:29	0.021
8:30	0.034
8:31	0.017
8:32	0.019
8:33	0.036
8:34	0.027
8:35	0.033
8:36	0.048
8:37	0.051
8:38	0.026
8:39	0.024
8:40	0.026
8:41	0.041
8:42	0.053
8:43	0.037
8:44	0.028
8:45	0.077
8:46	0.069
8:47	0.023
8:48	0.024
8:49	0.122
8:50	0.062
8:51	0.032
8:52	0.024
8:53	0.041

8:54	0.023
8:55	0.032
8:56	0.067
8:57	0.02
8:58	0.03
8:59	0.041
9:00	0.034
9:01	0.023
9:02	0.019
9:03	0.024
9:04	0.017
9:05	0.018
9:06	0.018
9:07	0.018
9:08	0.019
9:09	0.023
9:10	0.059
9:11	0.041
9:12	0.024
9:13	0.023
9:14	0.026
9:15	0.026
9:16	0.031
9:17	0.037
9:18	0.035
9:19	0.036
9:20	0.04
9:21	0.032
9:22	0.041
9:23	0.031
9:24	0.054
9:25	0.112
9:26	0.059
9:27	0.02
9:28	0.017
9:29	0.058
9:30	0.157
9:31	0.081
9:32	0.038
9:33	0.029
9:34	0.022
9:35	0.026
9:36	0.024
9:37	0.016

9:38	0.032
9:39	0.035
9:40	0.046
9:41	0.055
9:42	0.1
9:43	0.045
9:44	0.02
9:45	0.022
9:46	0.034
9:47	0.277
9:48	0.146
9:49	0.27
9:50	0.026
9:51	0.047
9:52	0.038
9:53	0.097
9:54	0.269
9:55	0.046
9:56	0.033
9:57	0.06
9:58	0.029
9:59	0.024
10:00	0.043
10:01	0.032
10:02	0.019
10:03	0.022
10:04	0.036
10:05	0.016
10:06	0.022
10:07	0.071
10:08	0.023
10:09	0.044
10:10	0.058
10:11	0.069
10:12	0.051
10:13	0.045
10:14	0.043
10:15	0.077
10:16	0.06
10:17	0.04
10:18	0.049
10:19	0.066
10:20	0.045
10:21	0.023

10:22	0.018
10:23	0.042
10:24	0.091
10:25	0.039
10:26	0.026
10:27	0.085
10:28	0.044
10:29	0.03
10:30	0.039
10:31	0.056
10:32	0.058
10:33	0.023
10:34	0.034
10:35	0.041
10:36	0.022
10:37	0.035
10:38	0.095
10:39	0.049
10:40	0.023
10:41	0.124
10:42	0.072
10:43	0.025
10:44	0.024
10:45	0.033
10:46	0.065
10:47	0.123
10:48	0.037
10:49	0.043
10:50	0.03
10:51	0.024
10:52	0.028
10:53	0.033
10:54	0.028
10:55	0.038
10:56	0.032
10:57	0.094
10:58	0.051
10:59	0.032
11:00	0.047
11:01	0.059
11:02	0.031
11:03	0.013
11:04	0.02
11:05	0.075

11:06	0.06
11:07	0.038
11:08	0.03
11:09	0.018
11:10	0.017
11:11	0.017
11:12	0.024
11:13	0.03
11:14	0.049
11:15	0.036
11:16	0.027
11:17	0.102
11:18	0.02
11:19	0.019
11:20	0.025
11:21	0.015
11:22	0.043
11:23	0.038
11:24	0.021
11:25	0.019
11:26	0.042
11:27	0.116
11:28	0.234
11:29	0.035
11:30	0.023
11:31	0.021
11:32	0.048
11:33	0.082
11:34	0.019
11:35	0.015
11:36	0.018
11:37	0.075
11:38	0.044
11:39	0.091
11:40	0.082
11:41	0.048
11:42	0.204
11:43	0.076
11:44	0.043
11:45	0.042
11:46	0.061
11:47	0.139
11:48	0.065
11:49	0.049

11:50	0.047
11:51	0.039
11:52	0.02
11:53	0.018
11:54	0.055
11:55	0.032
11:56	0.029
11:57	0.021
11:58	0.023
11:59	0.065
12:00	0.085
12:01	0.085
12:02	0.031
12:03	0.028
12:04	0.015
12:05	0.044
12:06	0.016
12:07	0.014
12:08	0.011
12:09	0.011
12:10	0.012
12:11	0.009
12:12	0.009
12:13	0.011
12:14	0.011
12:15	0.01
12:16	0.012
12:17	0.012
12:18	0.01
12:19	0.011
12:20	0.012
12:21	0.012
12:22	0.015
12:23	0.024
12:24	0.019
12:25	0.026
12:26	0.016
12:27	0.019
12:28	0.019
12:29	0.017
12:30	0.019
12:31	0.021
12:32	0.026
12:33	0.014

12:34	0.019
12:35	0.018
12:36	0.015
12:37	0.081
12:38	0.158
12:39	0.114
12:40	0.075
12:41	0.142
12:42	0.033
12:43	0.022
12:44	0.016
12:45	0.07
12:46	0.059
12:47	0.016
12:48	0.027
12:49	0.031
12:50	0.036
12:51	0.071
12:52	0.077
12:53	0.05
12:54	0.072
12:55	0.03
12:56	0.022
12:57	0.019
12:58	0.015
12:59	0.021
13:00	0.023
13:01	0.094
13:02	0.044
13:03	0.044
13:04	0.017
13:05	0.016
13:06	0.013
13:07	0.013
13:08	0.014
13:09	0.016
13:10	0.016
13:11	0.021
13:12	0.025
13:13	0.03
13:14	0.035
13:15	0.04
13:16	0.029
13:17	0.031

13:18	0.024
13:19	0.029
13:20	0.025
13:21	0.02
13:22	0.047
13:23	0.027
13:24	0.057
13:25	0.026
13:26	0.026
13:27	0.017
13:28	0.056
13:29	0.137
13:30	0.104
13:31	0.043
13:32	0.016
13:33	0.098
13:34	0.091
13:35	0.052
13:36	0.05
13:37	0.025
13:38	0.015
13:39	0.014
13:40	0.011
13:41	0.013
13:42	0.012
13:43	0.014
13:44	0.013
13:45	0.029
13:46	0.02
13:47	0.019
13:48	0.015
13:49	0.02
13:50	0.021
13:51	0.156
13:52	0.093
13:53	0.082
13:54	0.031
13:55	0.034
13:56	0.019
13:57	0.084
13:58	0.016
13:59	0.022
14:00	0.016
14:01	0.018

14:02	0.023
14:03	0.024
14:04	0.015
14:05	0.015
14:06	0.018
14:07	0.022
14:08	0.02
14:09	0.014
14:10	0.015
14:11	0.017
14:12	0.015
14:13	0.016
14:14	0.016
14:15	0.016
14:16	0.012
14:17	0.022
14:18	0.031
14:19	0.055
14:20	0.028
14:21	0.013
14:22	0.016
14:23	0.041
14:24	0.027
14:25	0.019
14:26	0.028
14:27	0.024
14:28	0.023
14:29	0.026
14:30	0.032
14:31	0.036
14:32	0.482
14:33	0.07
14:34	0.03
14:35	0.176
14:36	0.448
14:37	0.074
14:38	0.039
14:39	0.032
14:40	0.025
14:41	0.017
14:42	0.024
14:43	0.025
14:44	0.014
14:45	0.013

14:46	0.014
14:47	0.014
14:48	0.021
14:49	0.017
14:50	0.018
14:51	0.016
14:52	0.02
14:53	0.017
14:54	0.014
14:55	0.012
14:56	0.482
14:57	0.343
14:58	0.257
14:59	0.048
15:00	0.053
15:01	0.032
15:02	0.016
15:03	0.017
15:04	0.017
15:05	0.012
15:06	0.013
15:07	0.032
15:08	0.031
15:09	0.018
15:10	0.017
15:11	0.022
15:12	0.021
15:13	0.019
15:14	0.016
15:15	0.016
15:16	0.014
15:17	0.018
15:18	0.015
15:19	0.035
15:20	0.021
15:21	0.056
15:22	0.042
15:23	0.058
15:24	0.066
15:25	0.041
15:26	0.037
15:27	0.023
15:28	0.031
15:29	0.021

15:30	0.044
15:31	0.03
15:32	0.017
15:33	0.016
15:34	0.015
15:35	0.016
15:36	0.013
15:37	0.013
15:38	0.014
15:39	0.015
15:40	0.017
15:41	0.021
15:42	0.019
15:43	0.016
15:44	0.013
15:45	0.015
15:46	0.021
15:47	0.019
15:48	0.018
15:49	0.025
15:50	0.019
15:51	0.013
15:52	0.015
15:53	0.016
15:54	0.016
15:55	0.016
15:56	0.012
15:57	0.011
15:58	0.018
15:59	0.018
16:00	0.013
16:01	0.013
16:02	0.013
16:03	0.012
16:04	0.011
16:05	0.011
16:06	0.01
16:07	0.01
16:08	0.01
16:09	0.011
16:10	0.011
16:11	0.012
16:12	0.014
16:13	0.01

16:14	0.01
16:15	0.011
16:16	0.01
16:17	0.01
16:18	0.011
16:19	0.012
16:20	0.012
16:21	0.012
16:22	0.011
16:23	0.011
16:24	0.011
16:25	0.012
16:26	0.013
16:27	0.014
16:28	0.014
16:29	0.013
16:30	0.013
16:31	0.013
16:32	0.014
16:33	0.012
16:34	0.012
16:35	0.012
16:36	0.012

592-906020	9/23/2024 16:40 Readings PID	SC23030396CB	Normal	0
592-906020	9/23/2024 16:41 Readings PID	SC23030396CB	Normal	0